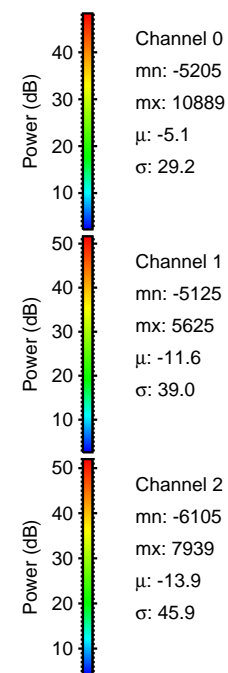
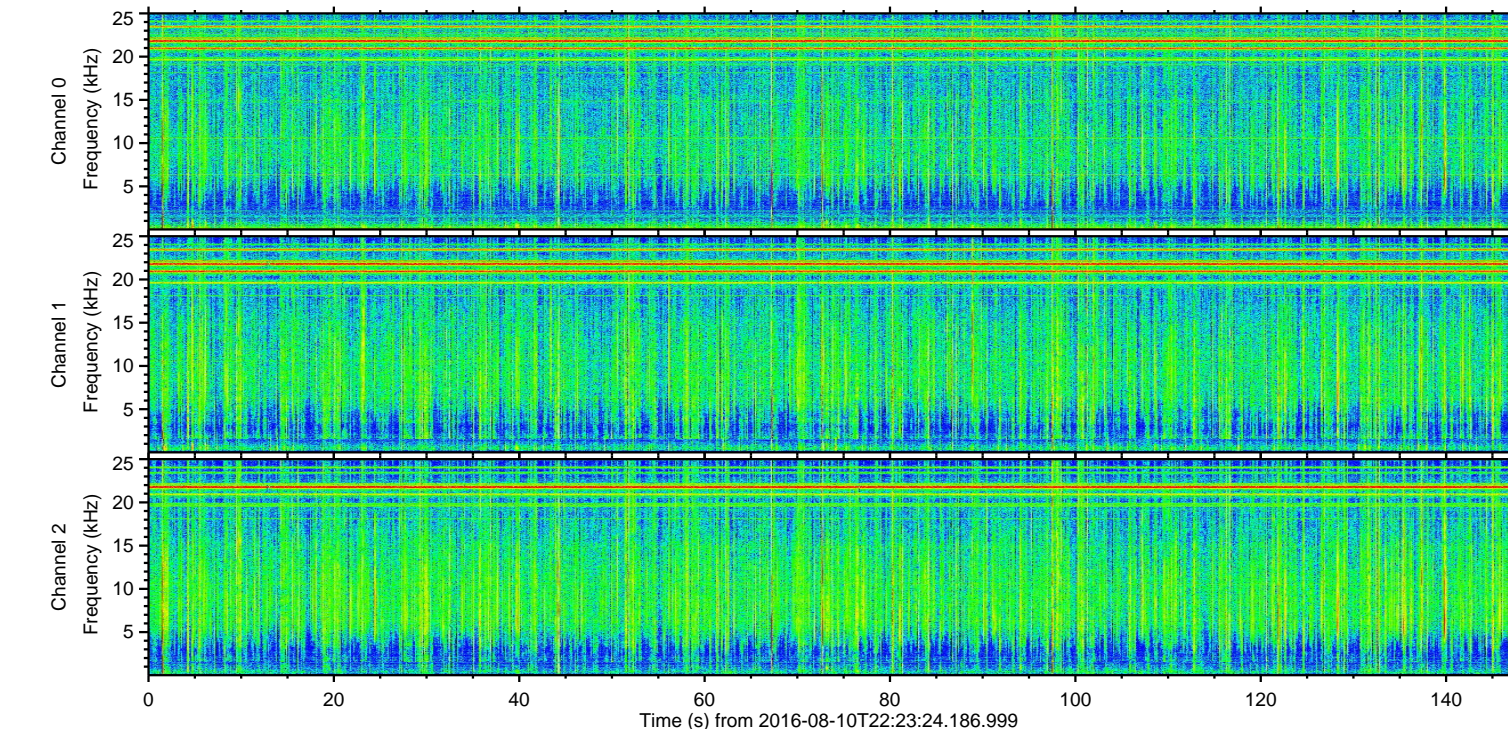
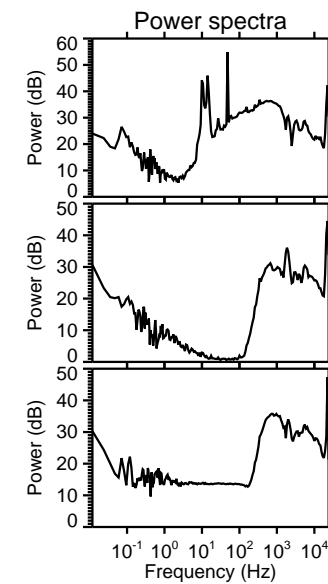
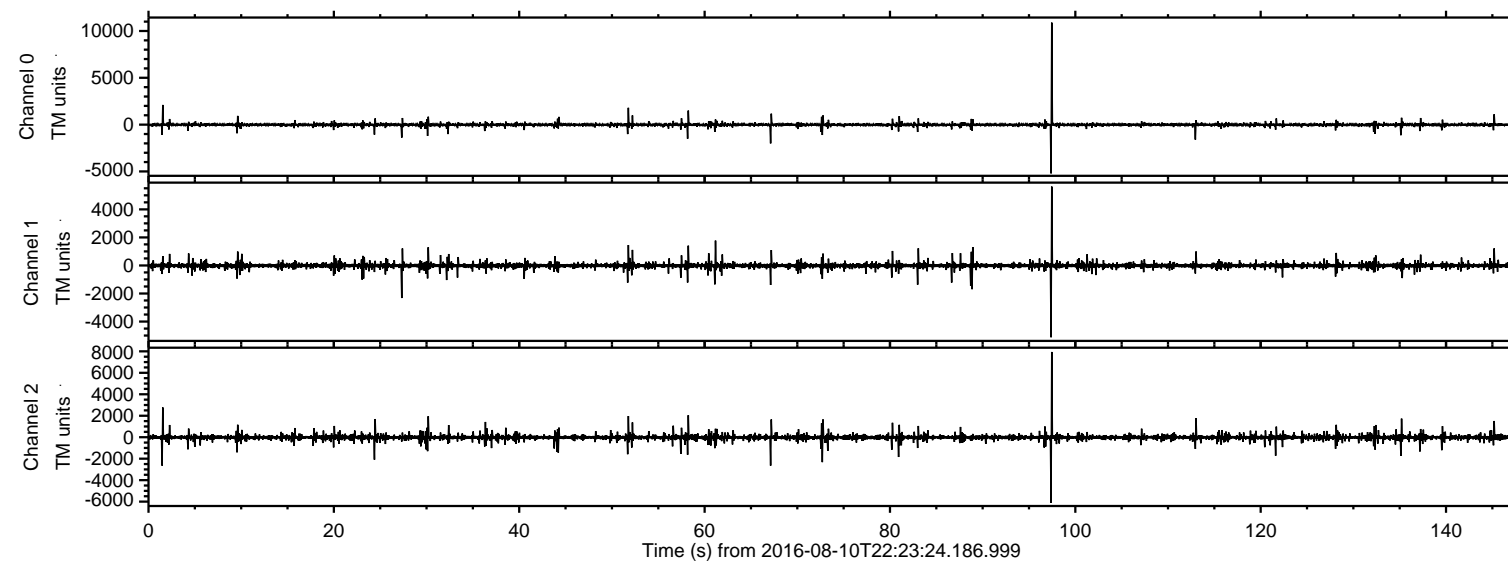


# ELMAVAN 3D WAVEFORMS (Measured data sampled at 50 kHz) 51000 packets of 144 samples from 2016-08-10T22:23:24.186.999.

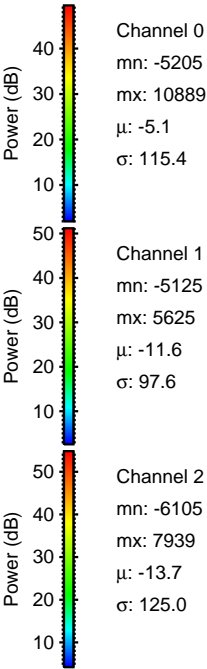
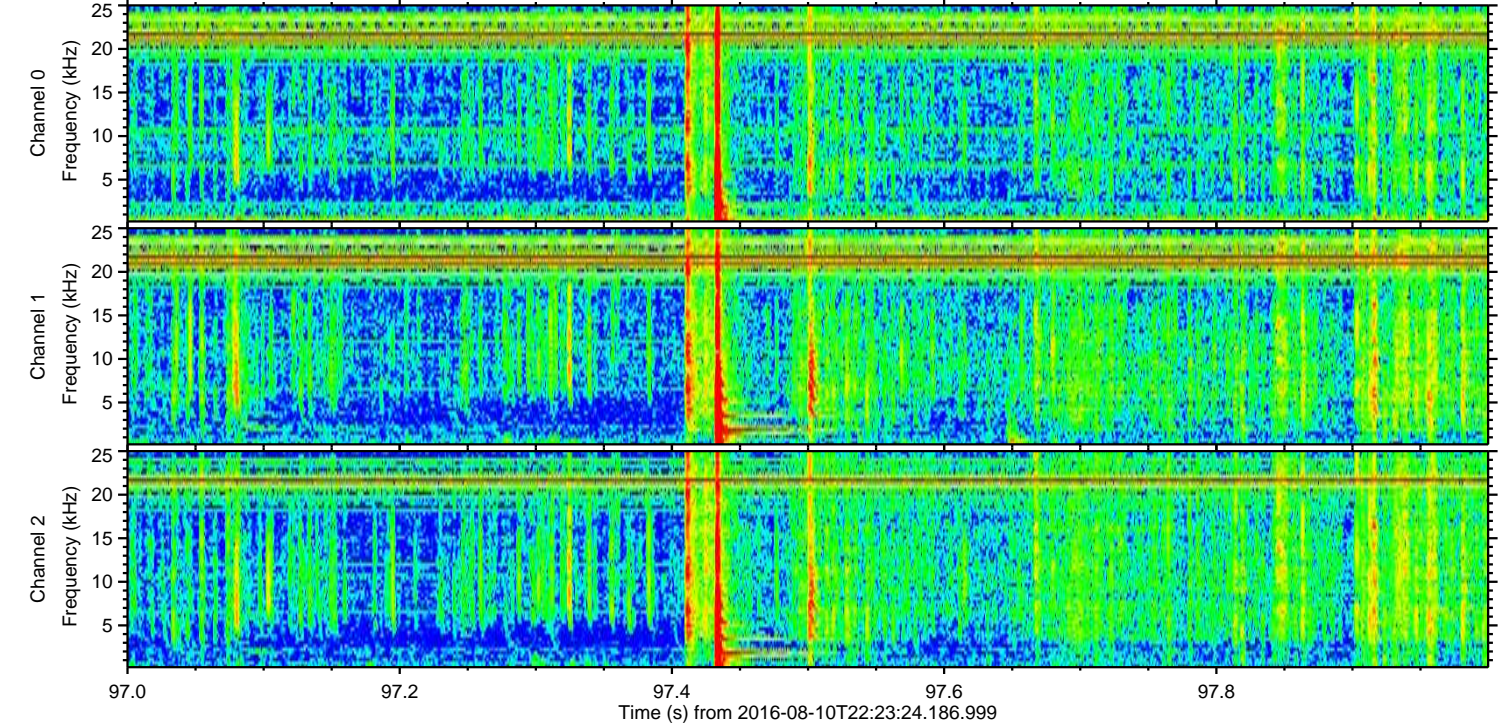
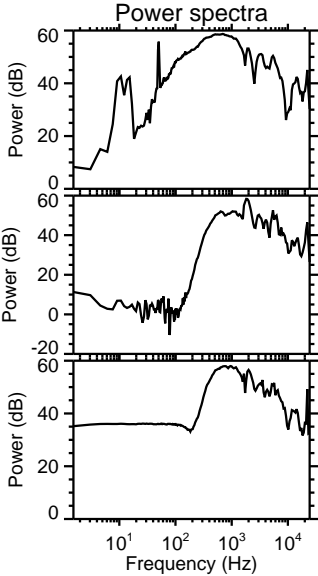
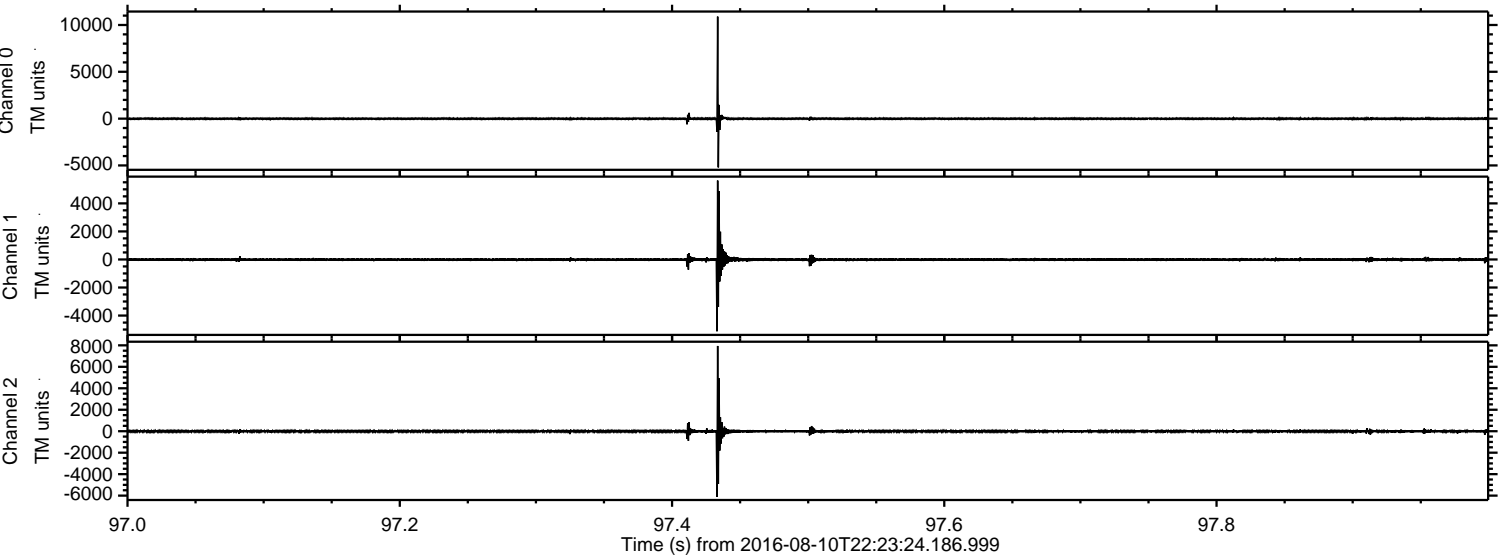
Processed Thu Aug 11 00:31:09 2016 by ELM ver.2012-10-06 from 001\_\_elm20160810\_222323\_\_dat00.bin





ELMAVAN 3D WAVEFORMS (Measured data sampled at 50 kHz) 51000 packets of 144 samples from 2016-08-10T22:23:24.186.999. Part 98/147

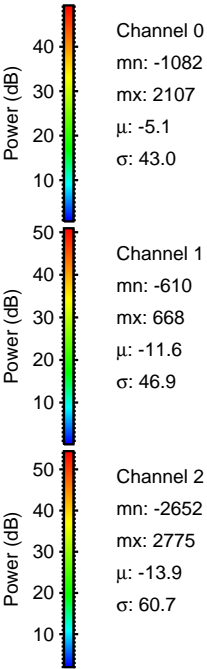
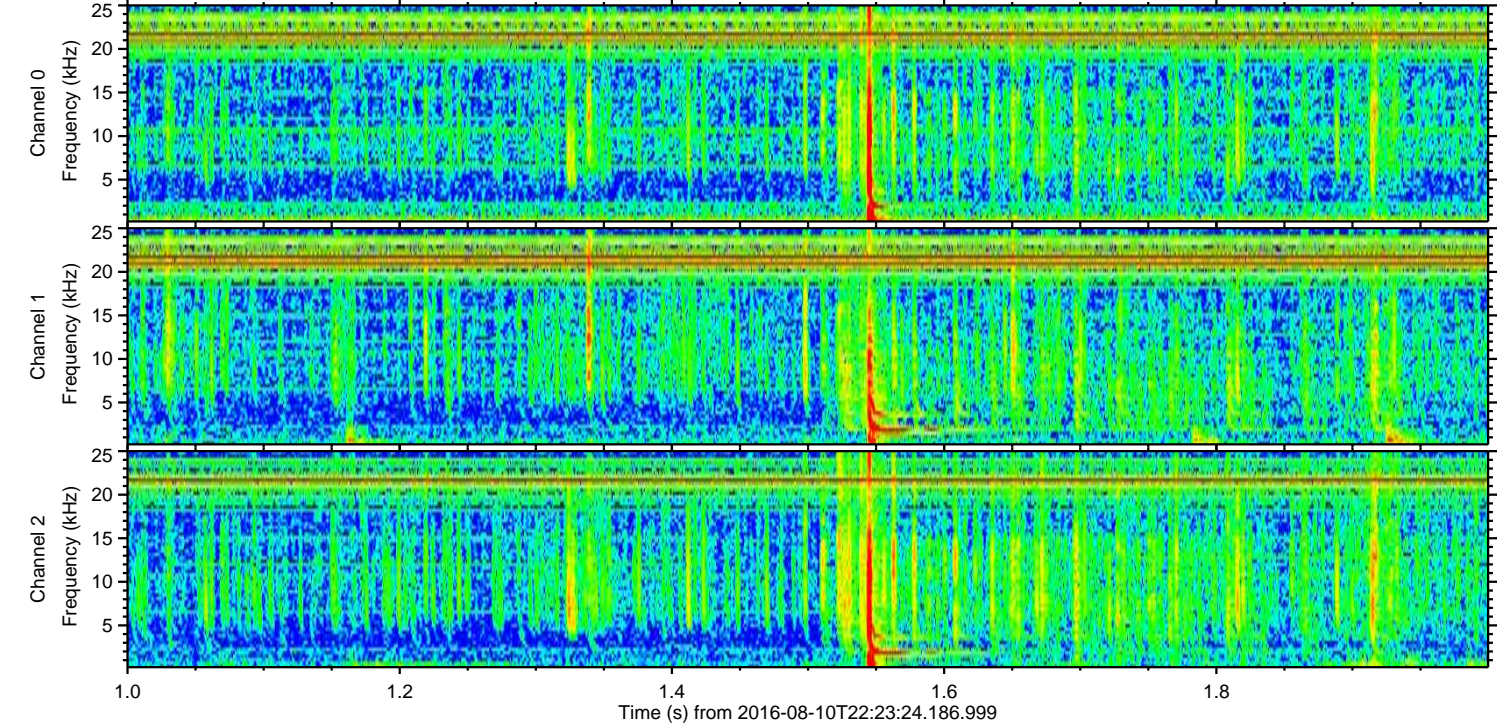
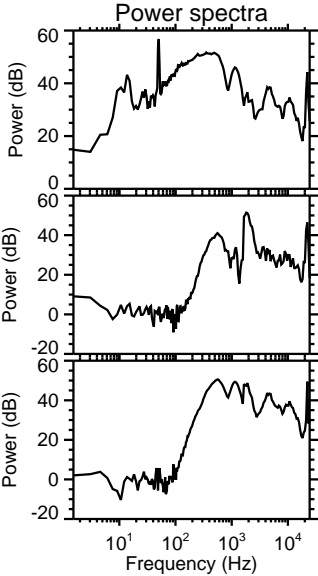
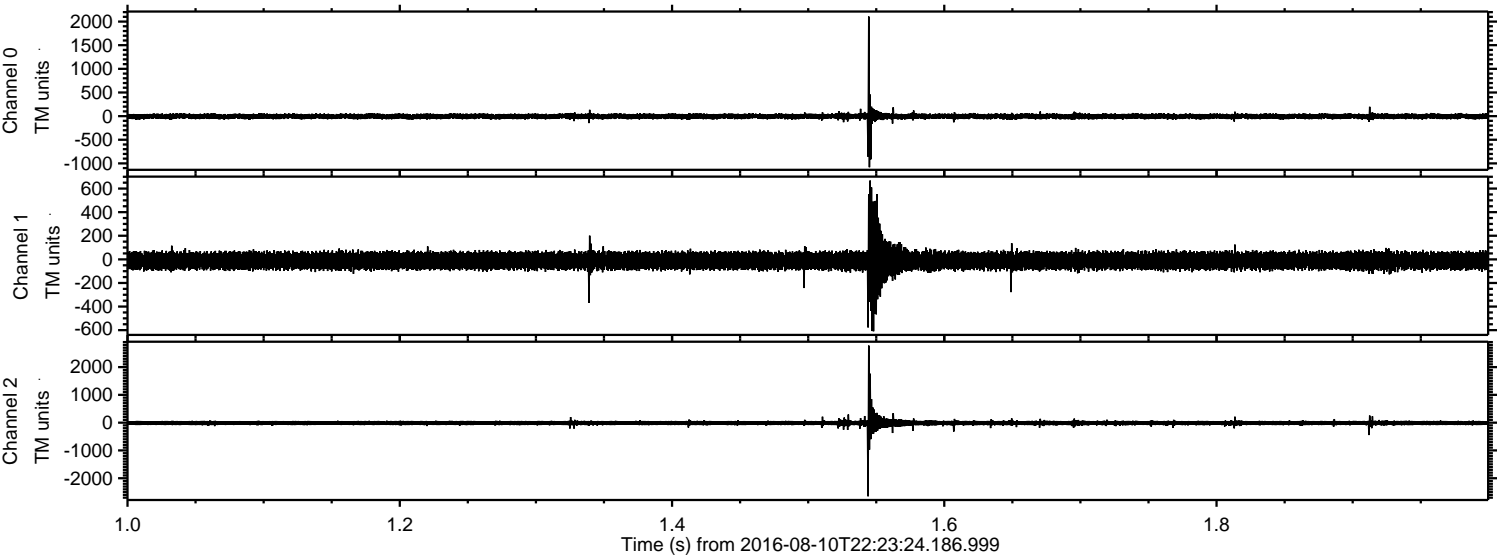
Processed Thu Aug 11 00:31:24 2016 by ELM ver.2012-10-06 from 001\_\_elm20160810\_222323\_\_dat00.bin





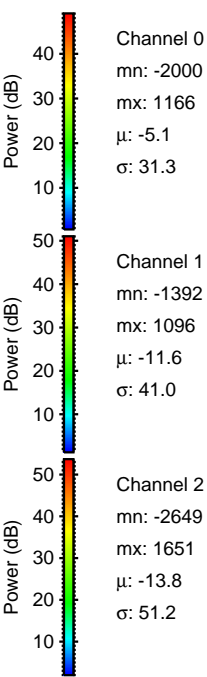
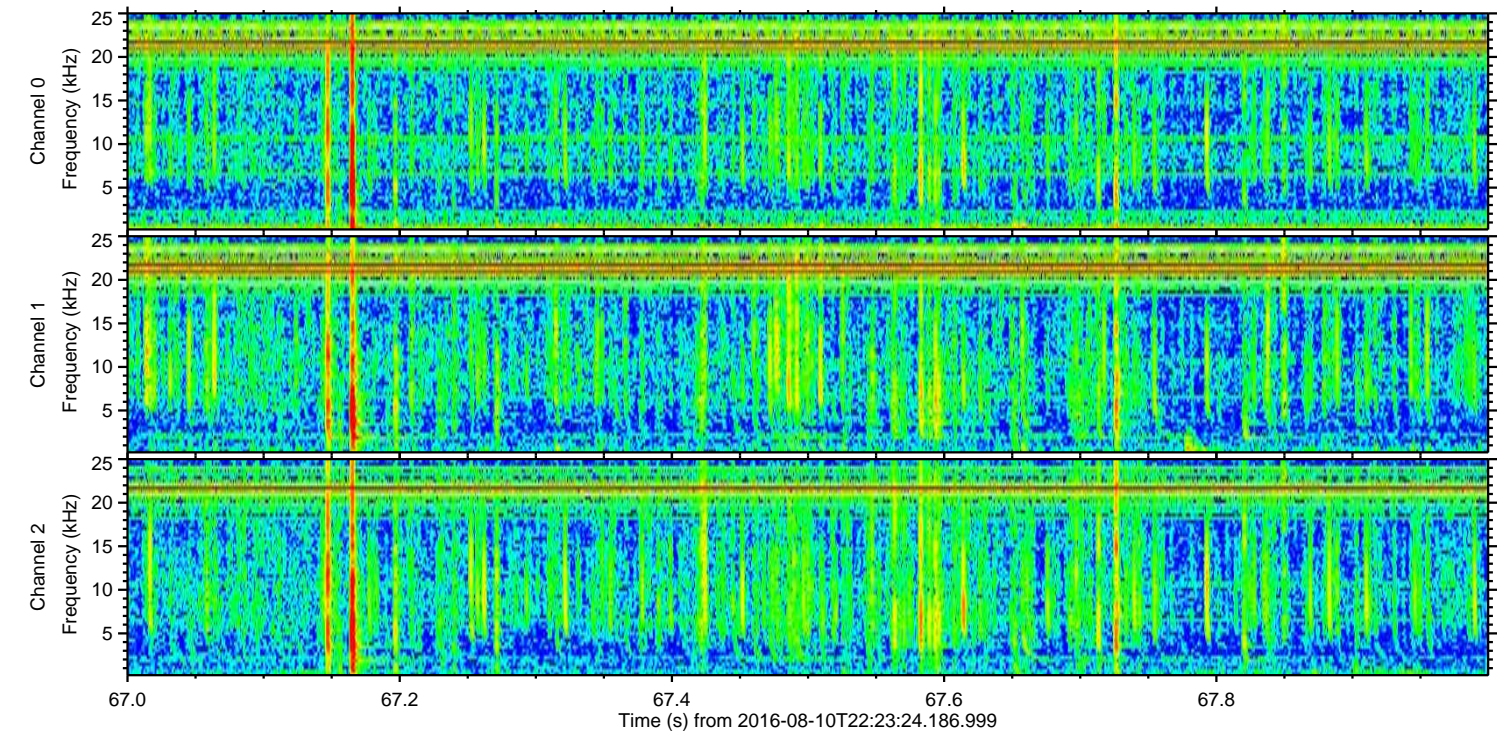
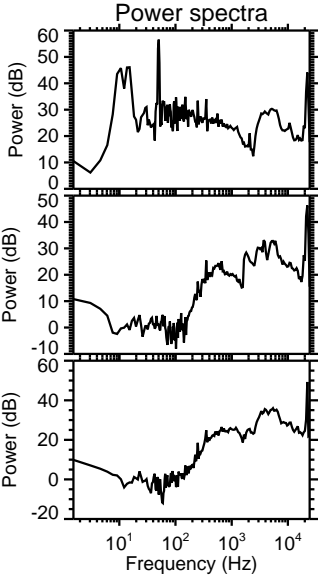
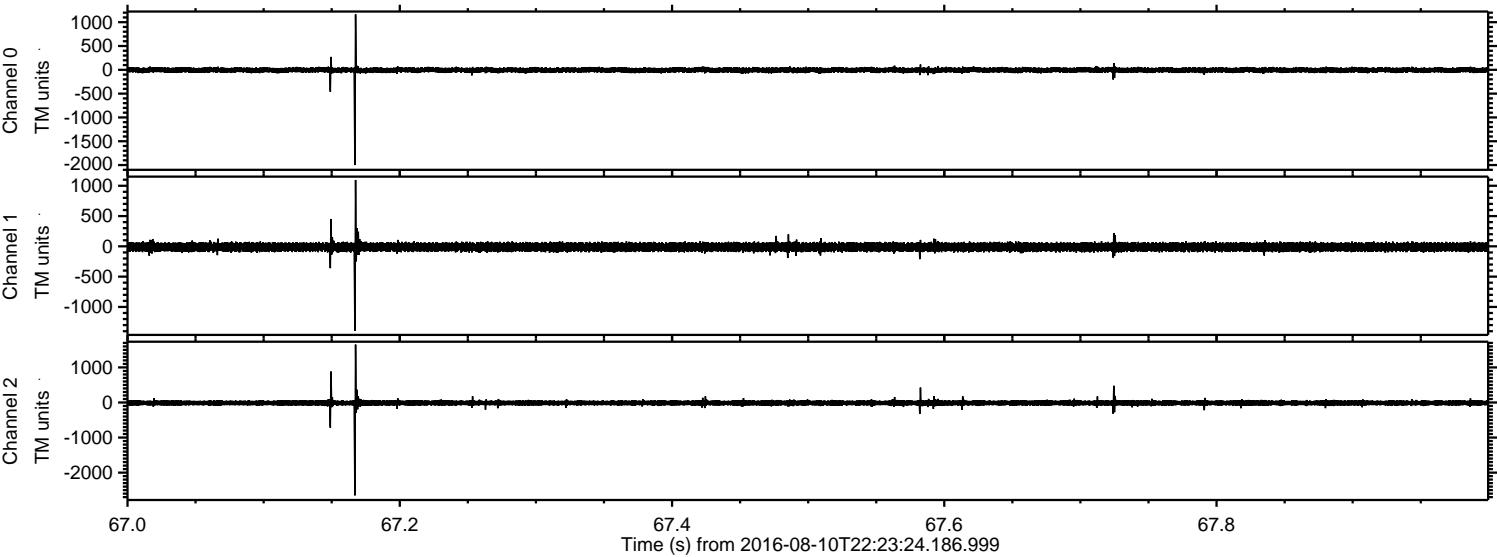
ELMAVAN 3D WAVEFORMS (Measured data sampled at 50 kHz) 51000 packets of 144 samples from 2016-08-10T22:23:24.186.999. Part 2/147

Processed Thu Aug 11 00:31:25 2016 by ELM ver.2012-10-06 from 001\_\_elm20160810\_222323\_\_dat00.bin





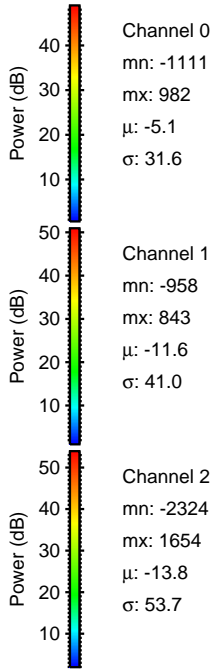
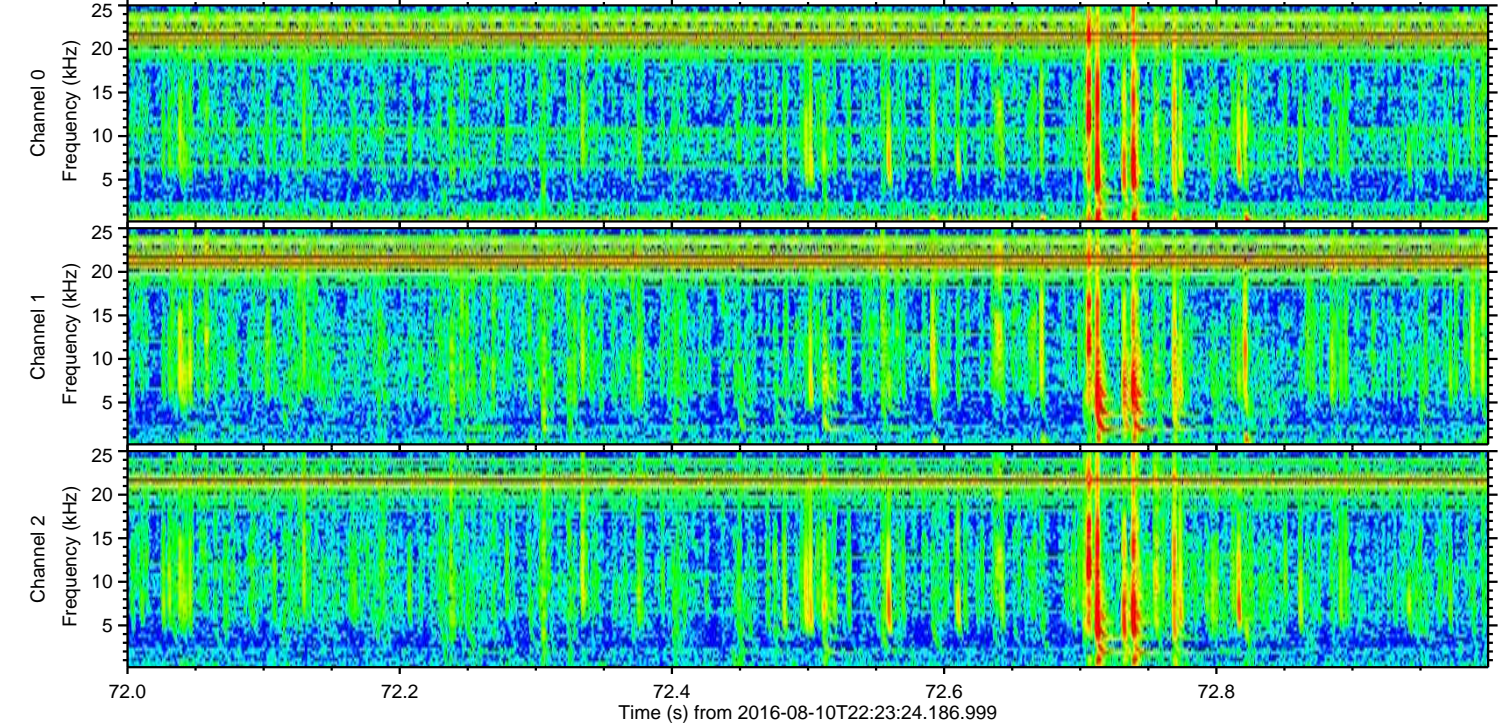
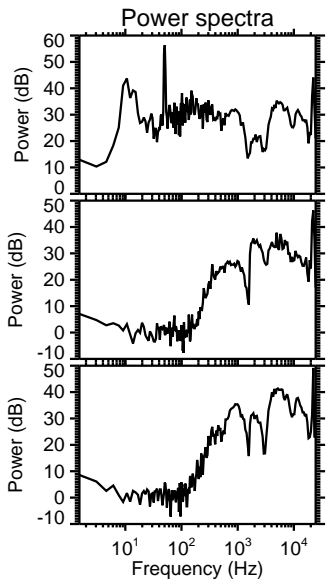
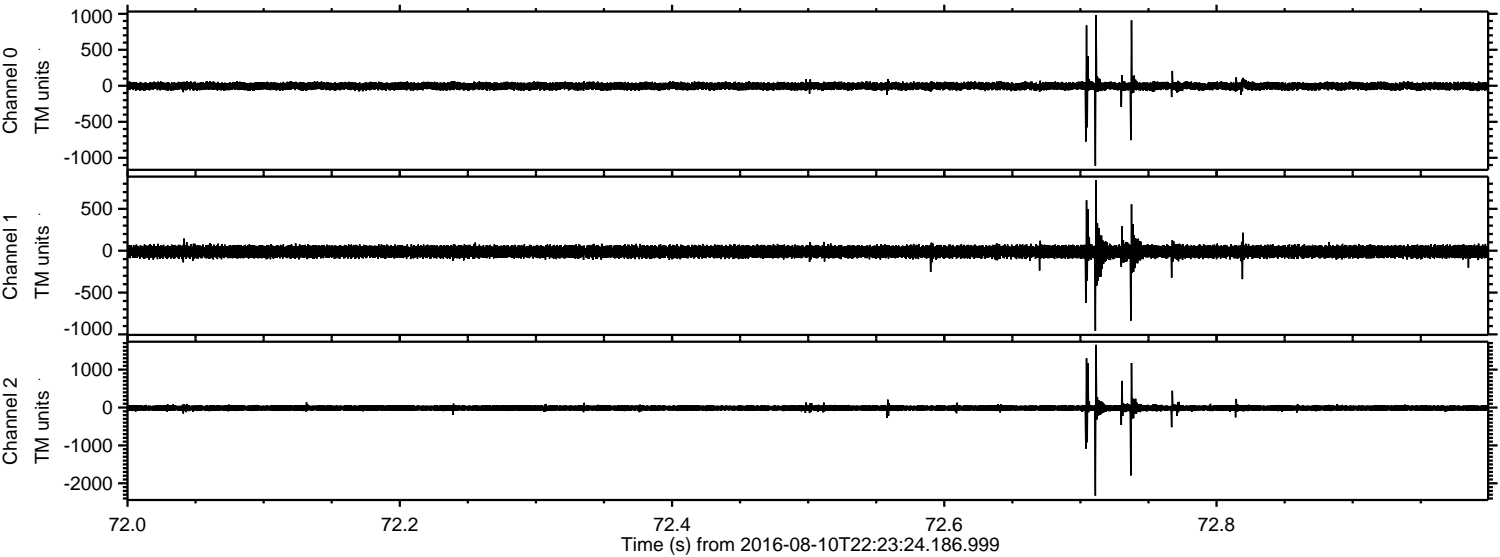
Processed Thu Aug 11 00:31:26 2016 by ELM ver.2012-10-06 from 001\_\_elm20160810\_222323\_\_dat00.bin





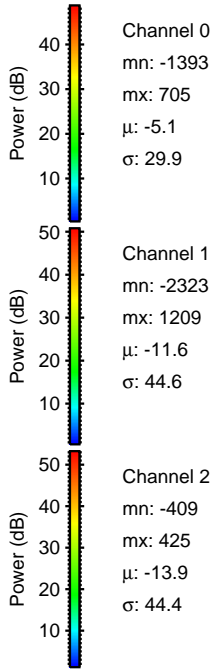
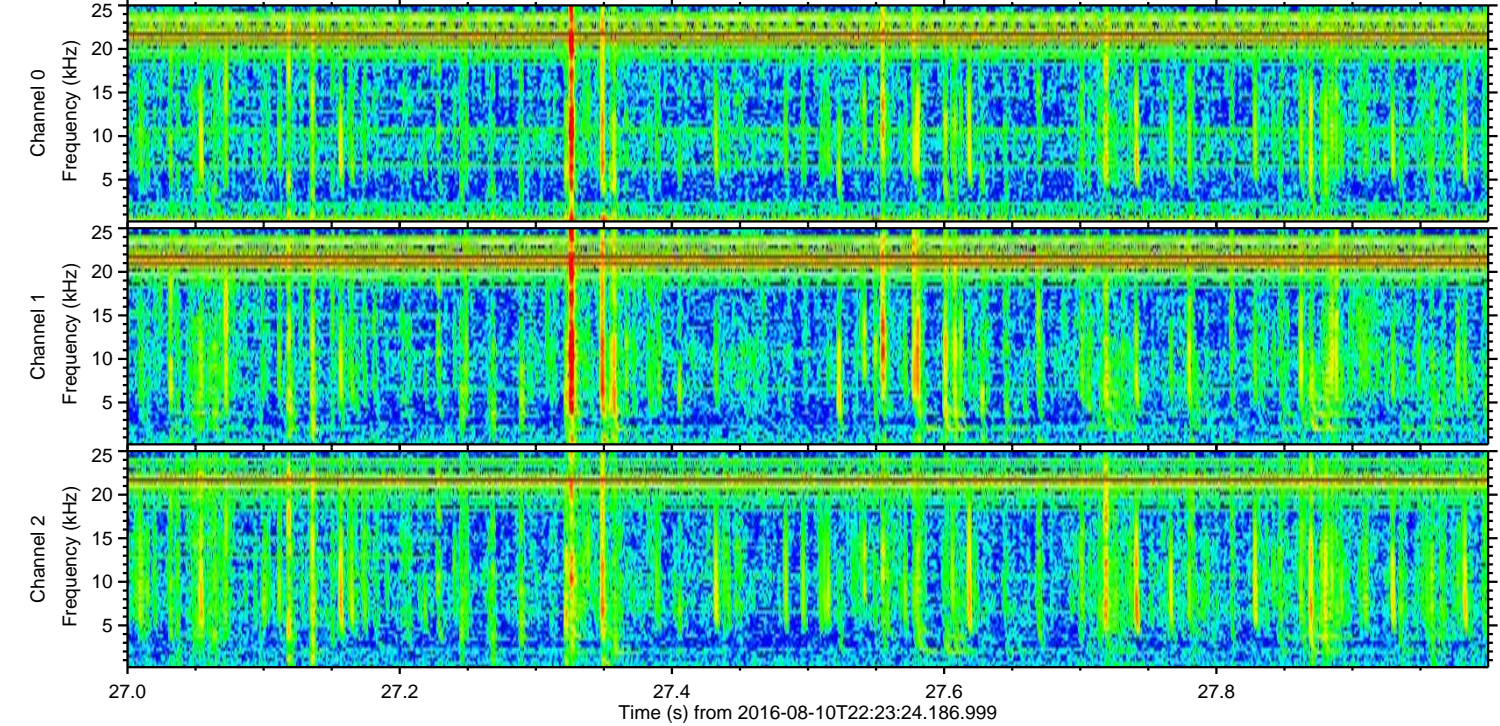
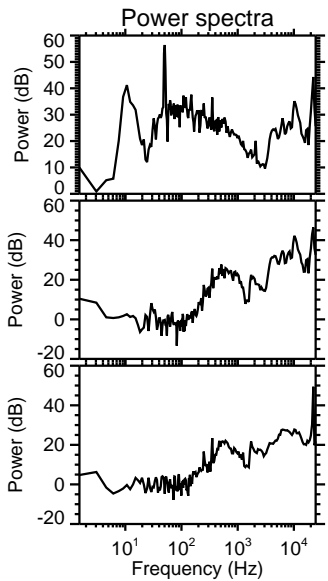
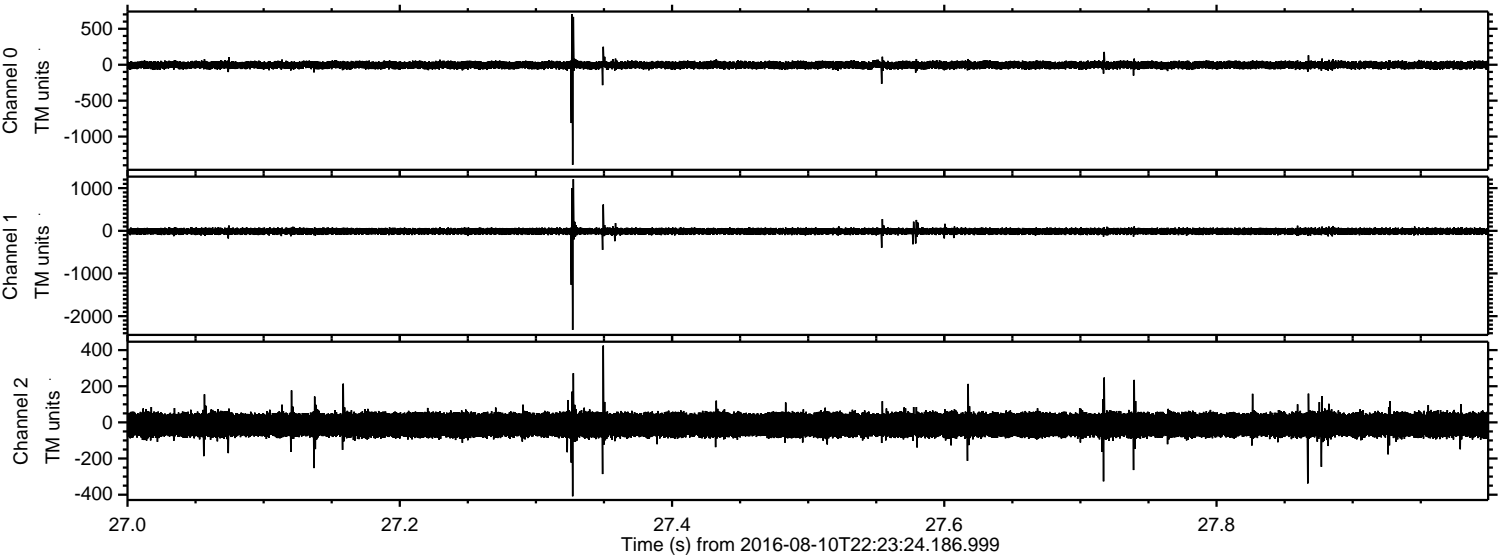
ELMAVAN 3D WAVEFORMS (Measured data sampled at 50 kHz) 51000 packets of 144 samples from 2016-08-10T22:23:24.186.999. Part 73/147

Processed Thu Aug 11 00:31:27 2016 by ELM ver.2012-10-06 from 001\_\_elm20160810\_222323\_\_dat00.bin



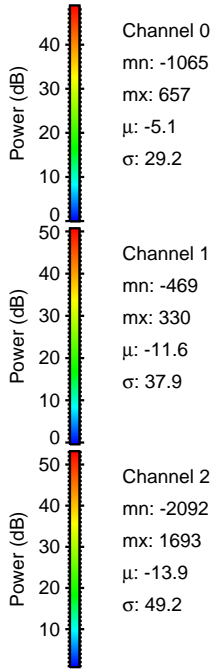
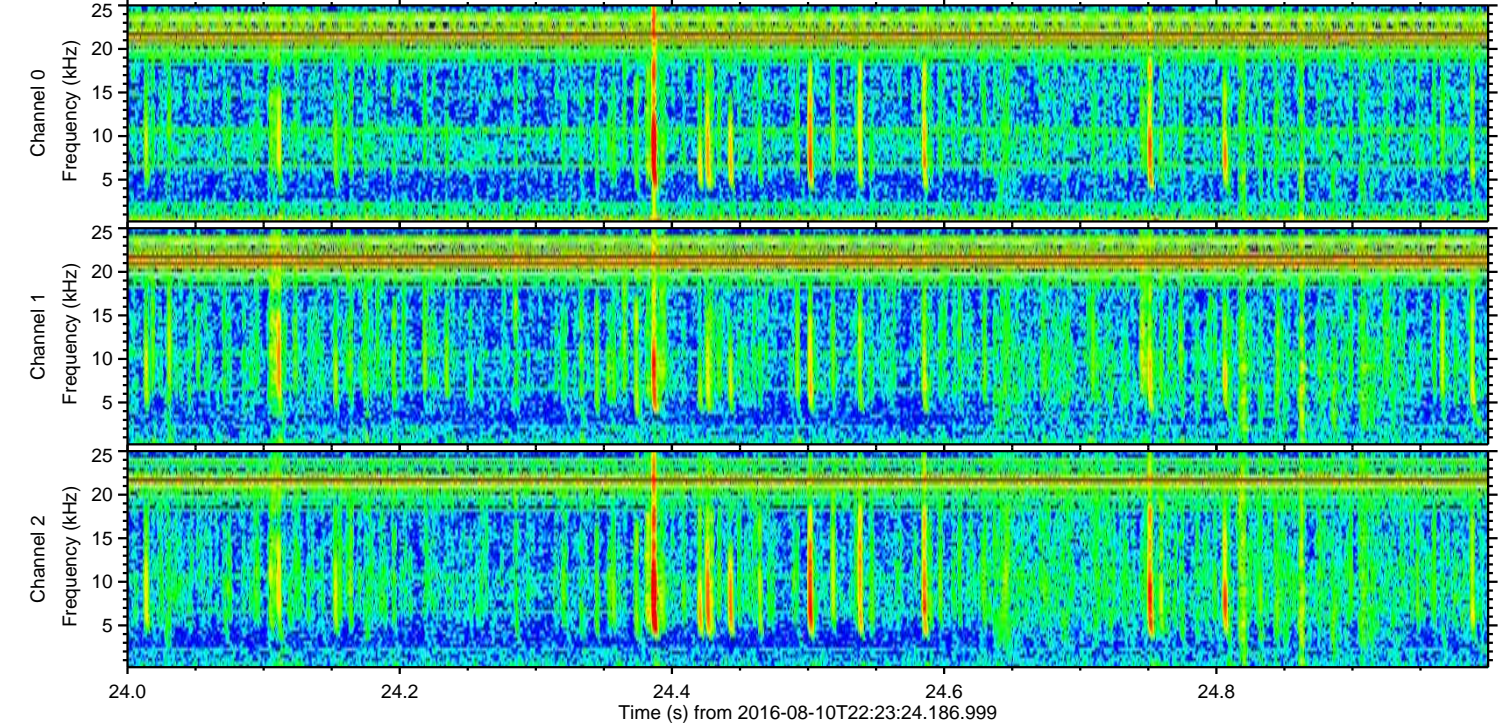
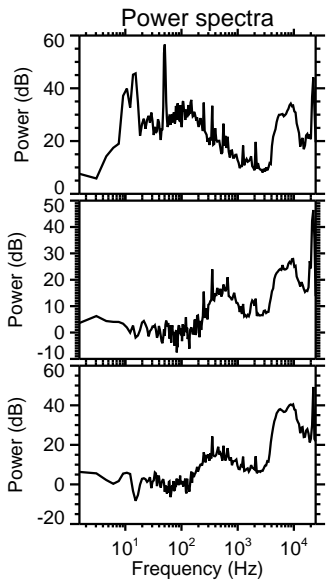
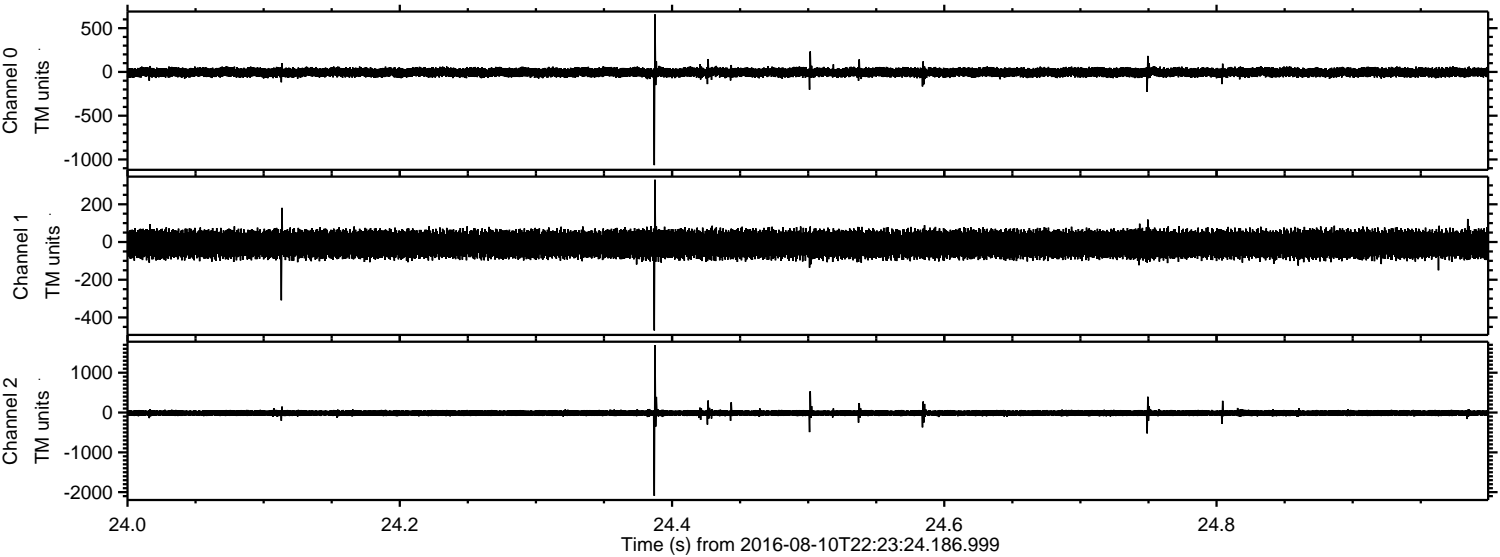


Processed Thu Aug 11 00:31:28 2016 by ELM ver.2012-10-06 from 001\_\_elm20160810\_222323\_\_dat00.bin



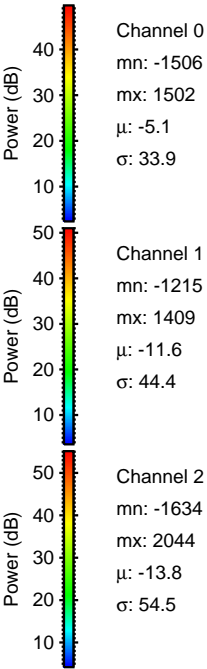
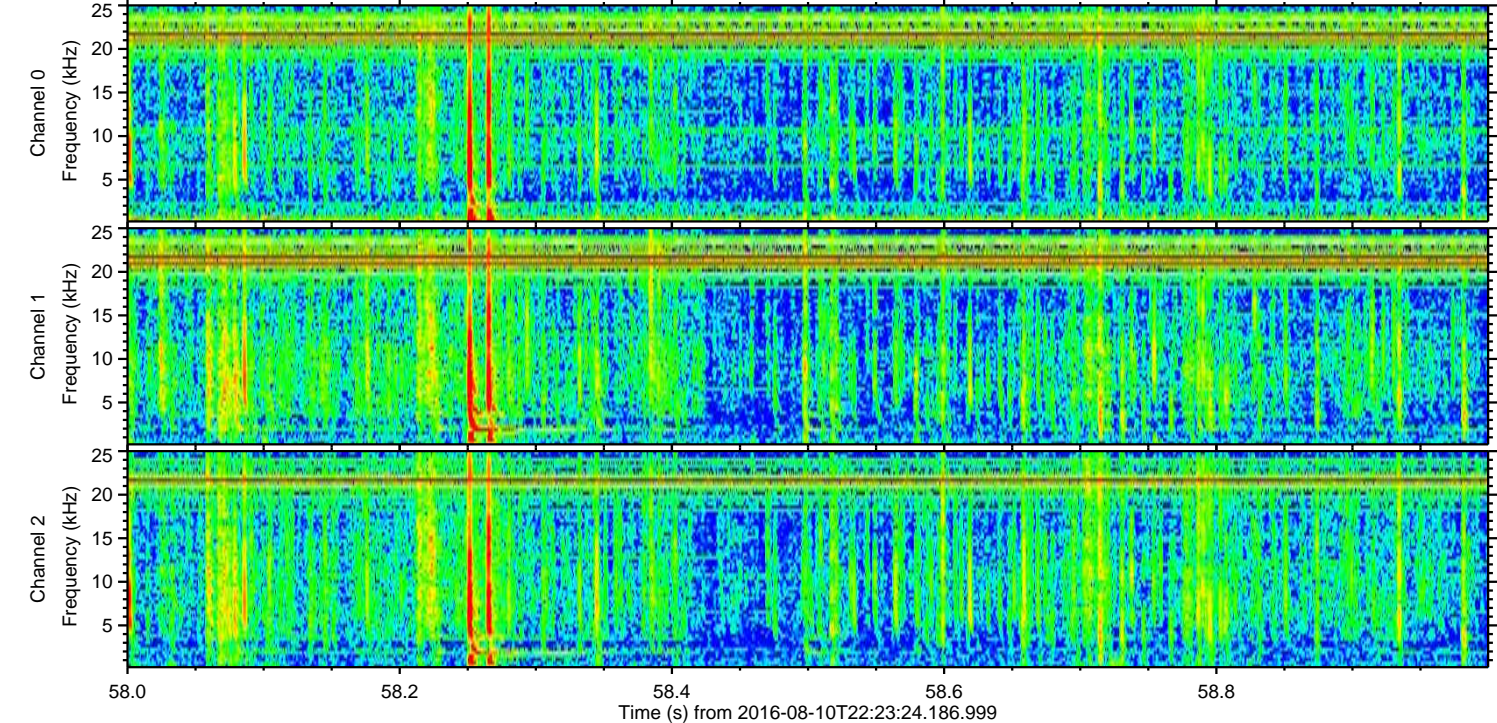
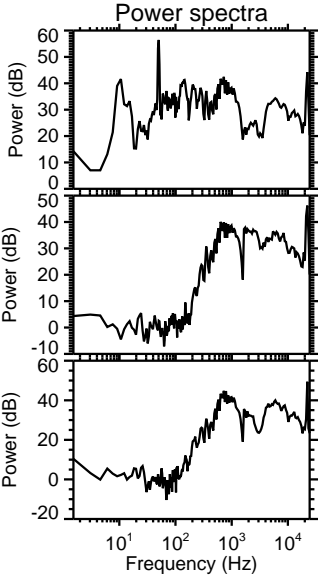
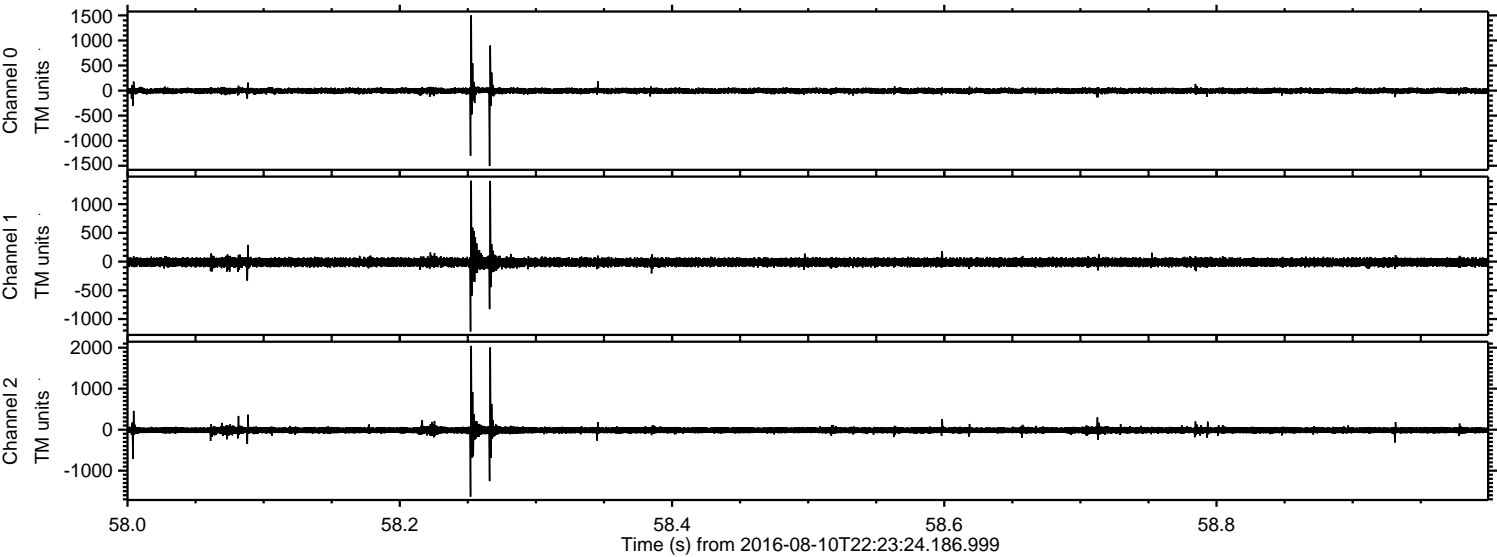


Processed Thu Aug 11 00:31:29 2016 by ELM ver.2012-10-06 from 001\_\_elm20160810\_222323\_\_dat00.bin





Processed Thu Aug 11 00:31:31 2016 by ELM ver.2012-10-06 from 001\_\_elm20160810\_222323\_\_dat00.bin



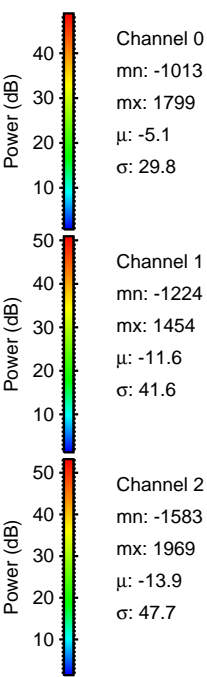
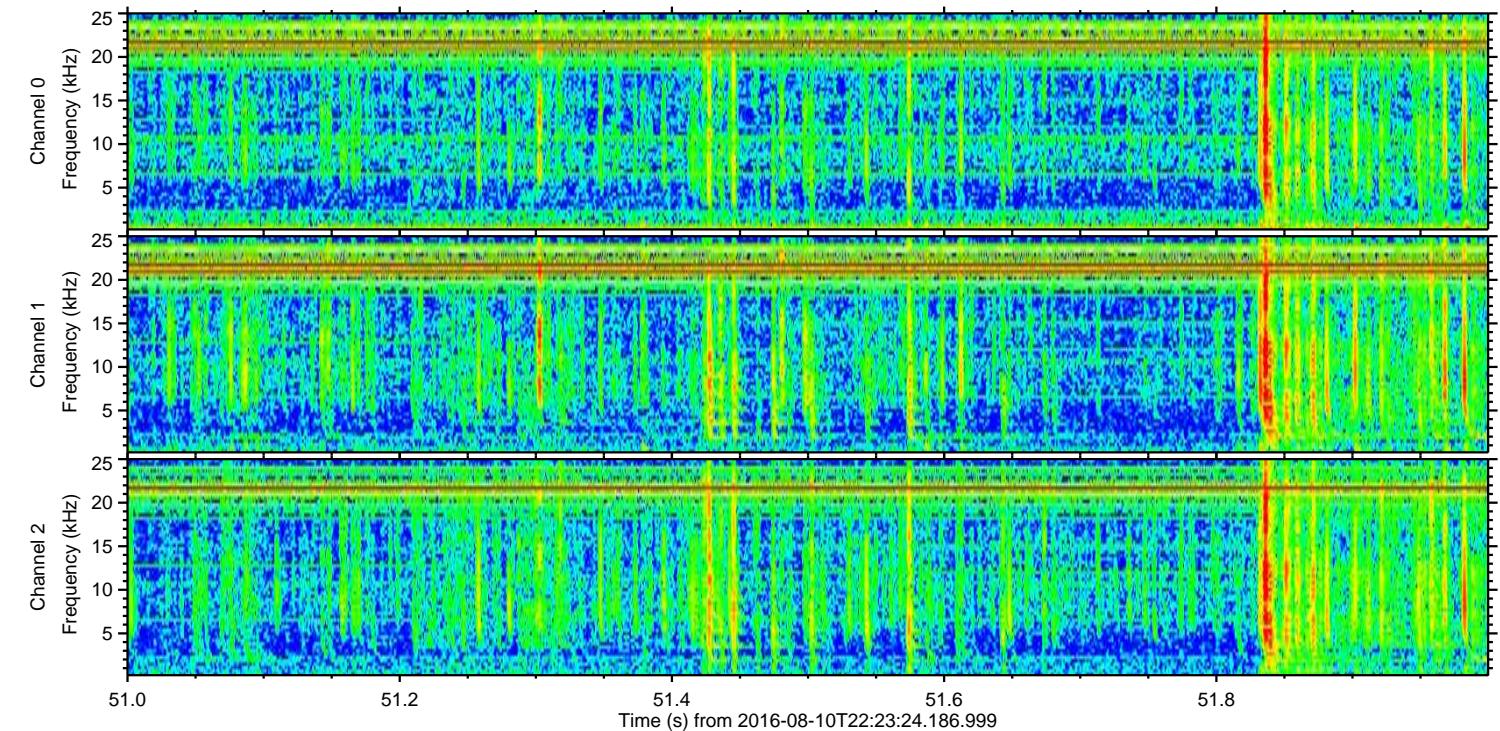
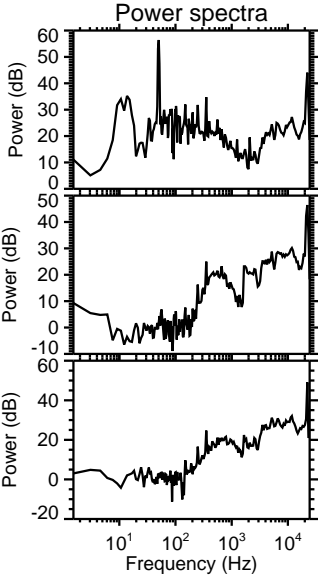
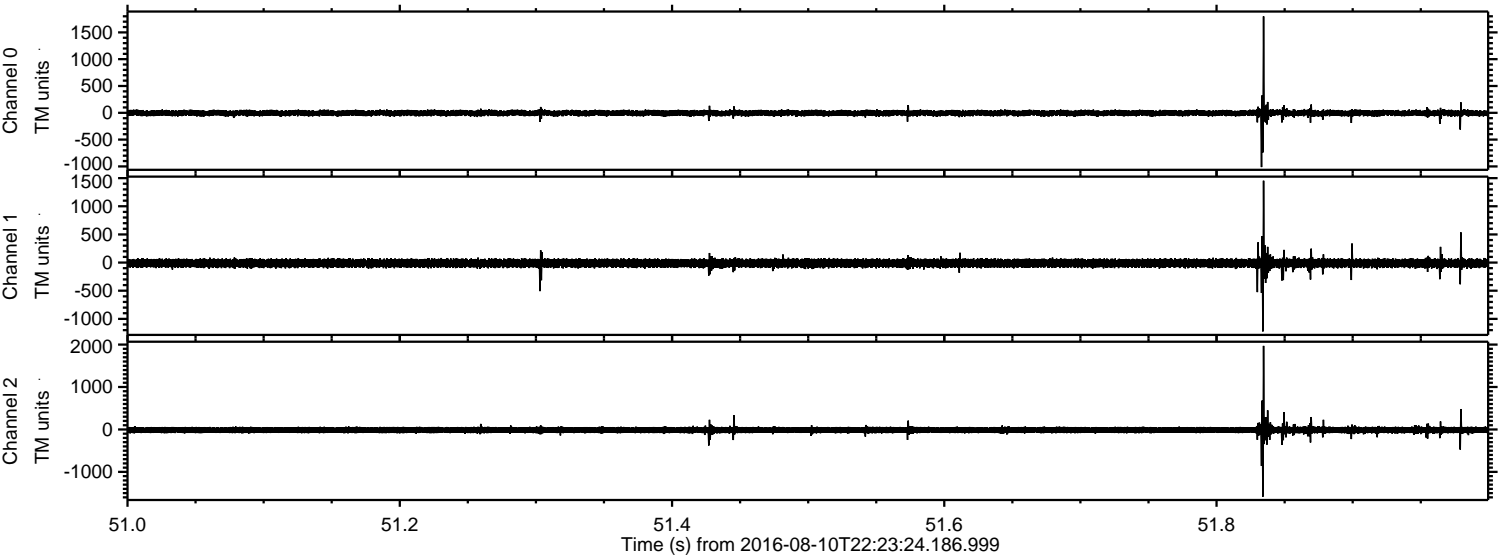
Channel 0  
mn: -1506  
mx: 1502  
 $\mu$ : -5.1  
 $\sigma$ : 33.9

Channel 1  
mn: -1215  
mx: 1409  
 $\mu$ : -11.6  
 $\sigma$ : 44.4

Channel 2  
mn: -1634  
mx: 2044  
 $\mu$ : -13.8  
 $\sigma$ : 54.5

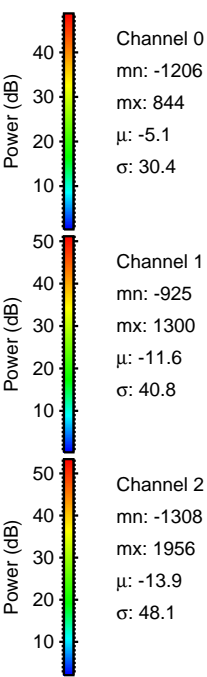
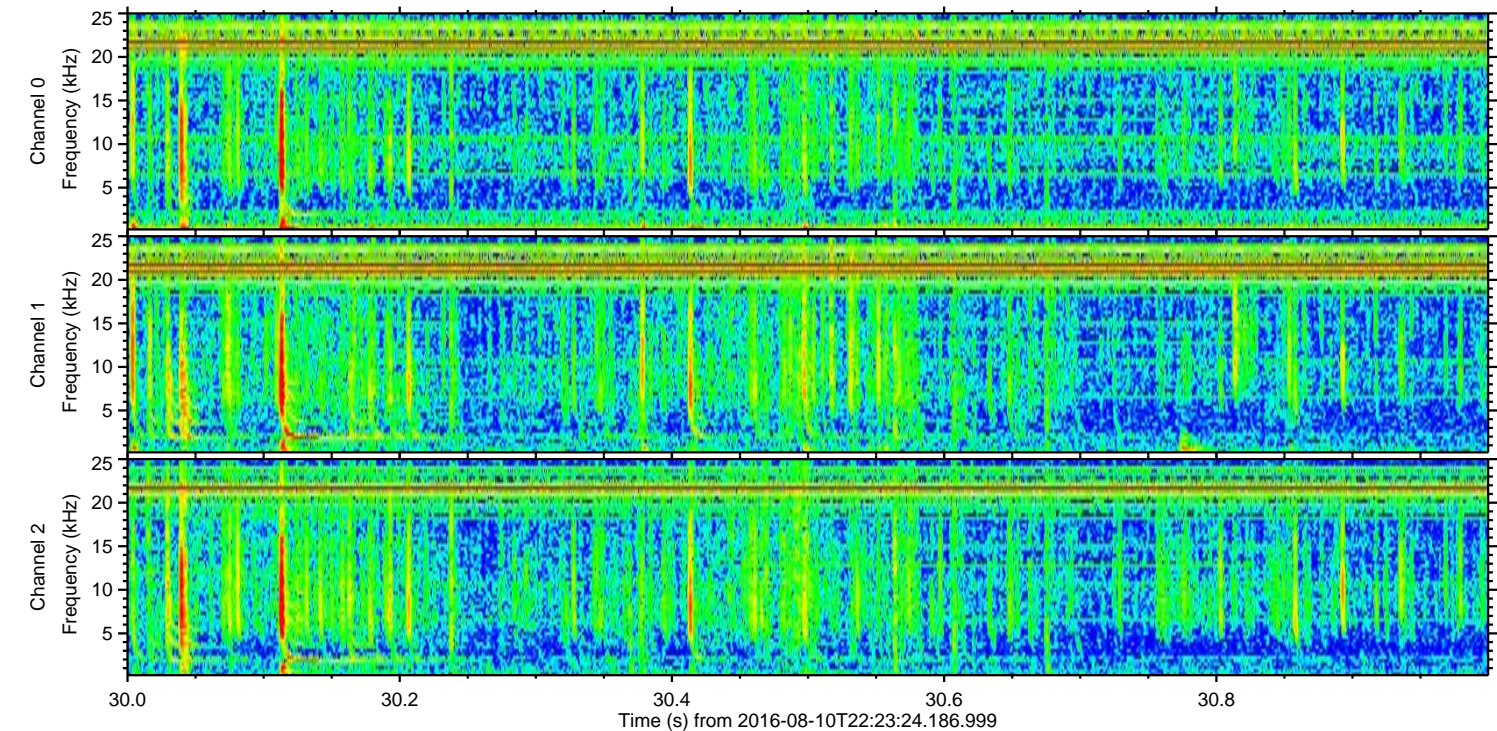
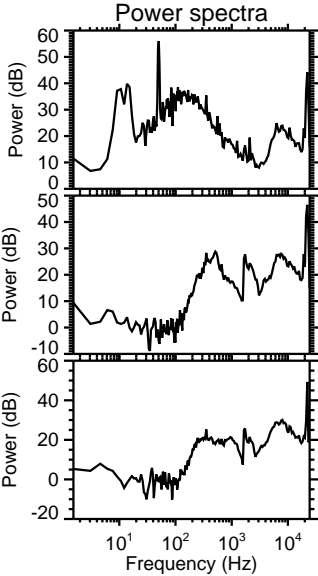
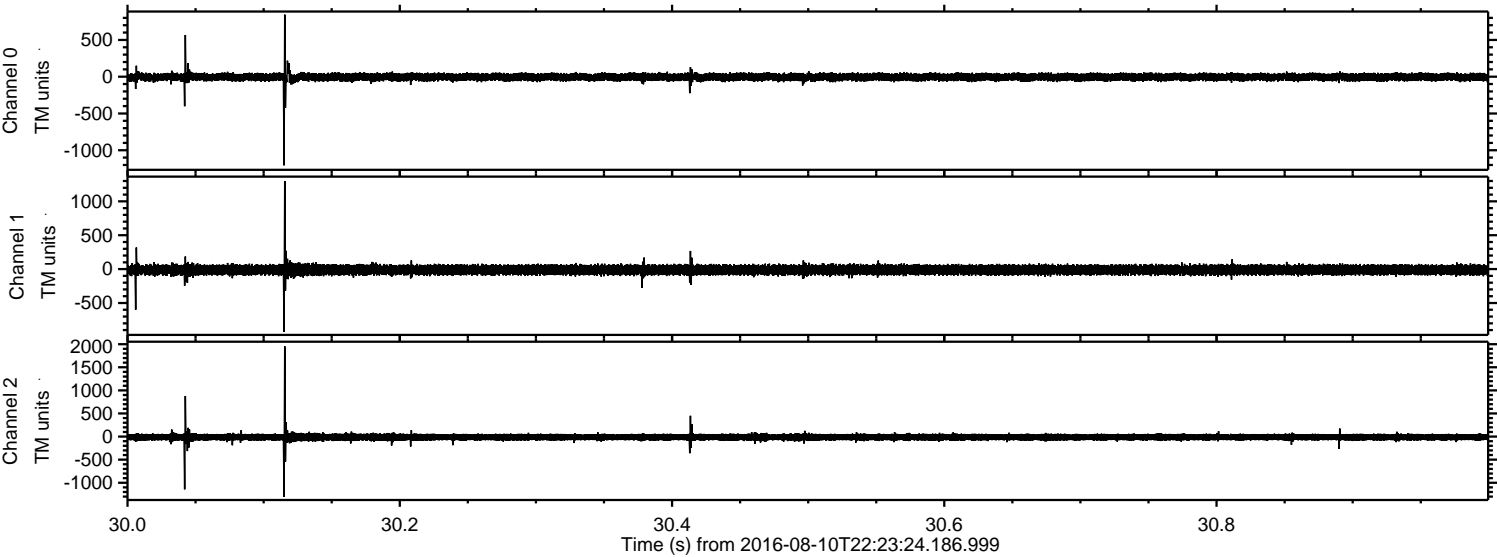


Processed Thu Aug 11 00:31:32 2016 by ELM ver.2012-10-06 from 001\_\_elm20160810\_222323\_\_dat00.bin





Processed Thu Aug 11 00:31:33 2016 by ELM ver.2012-10-06 from 001\_\_elm20160810\_222323\_\_dat00.bin



Channel 0  
mn: -1206  
mx: 844  
 $\mu$ : -5.1  
 $\sigma$ : 30.4

Channel 1  
mn: -925  
mx: 1300  
 $\mu$ : -11.6  
 $\sigma$ : 40.8

Channel 2  
mn: -1308  
mx: 1956  
 $\mu$ : -13.9  
 $\sigma$ : 48.1



Processed Thu Aug 11 00:31:34 2016 by ELM ver.2012-10-06 from 001\_\_elm20160810\_222323\_\_dat00.bin

