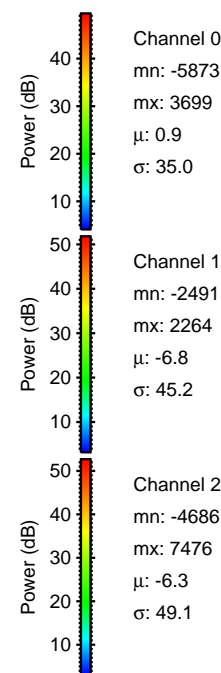
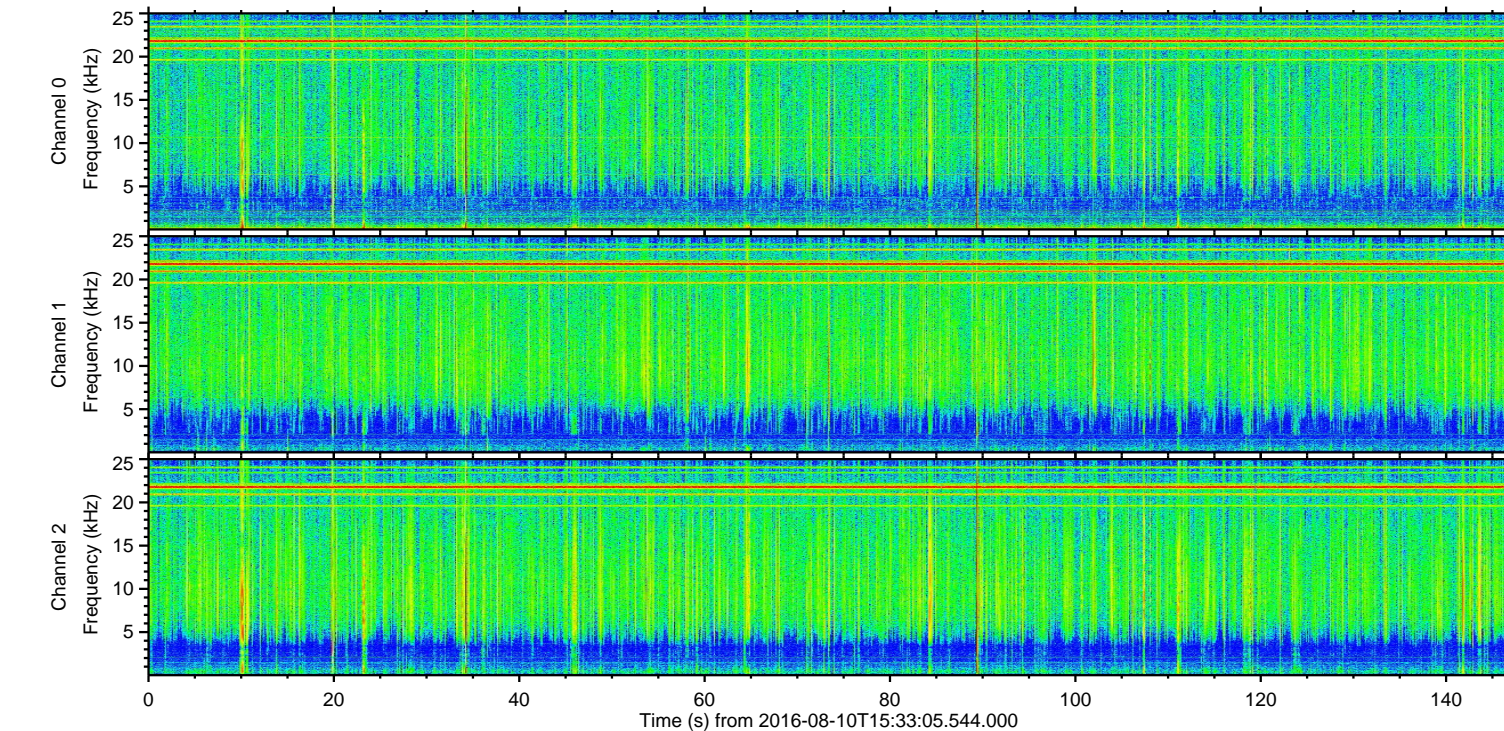
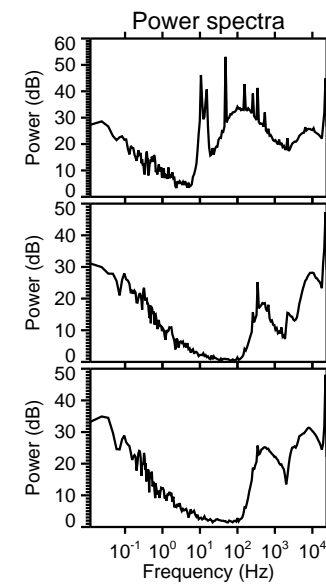
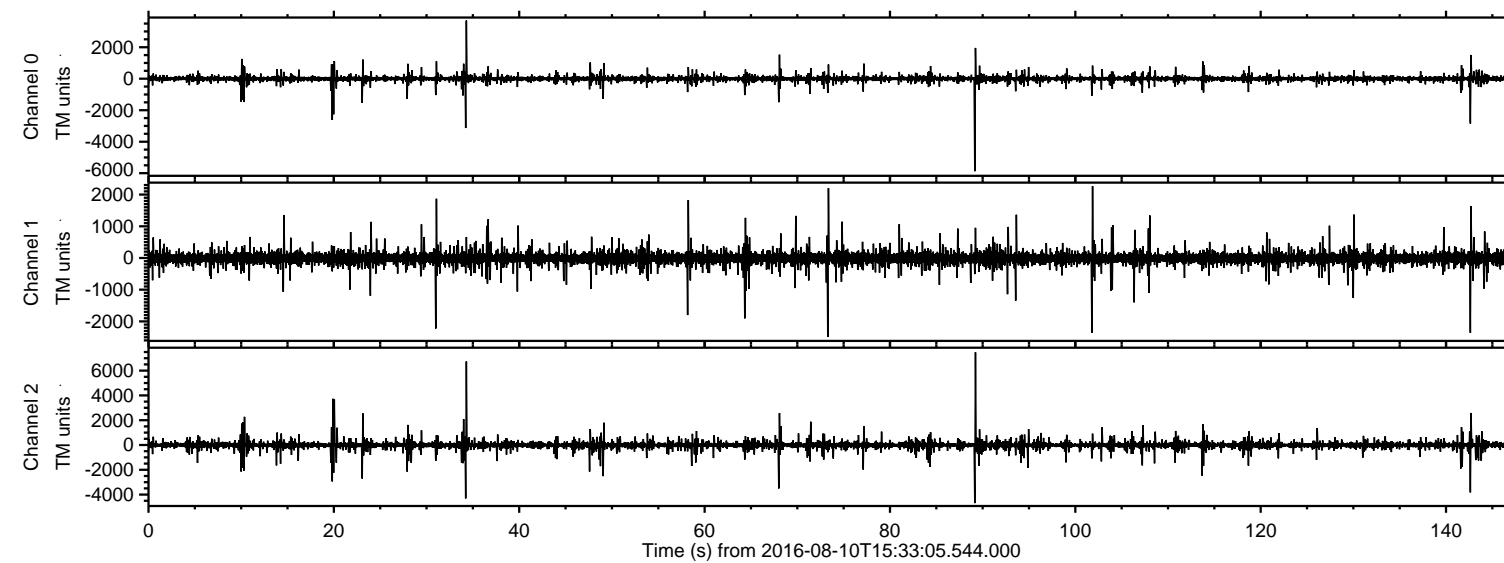


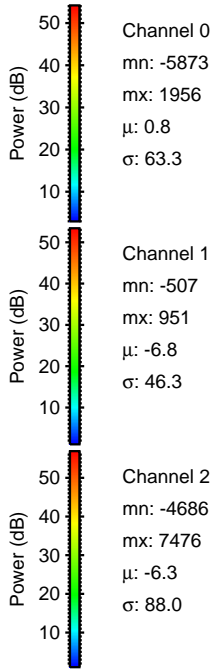
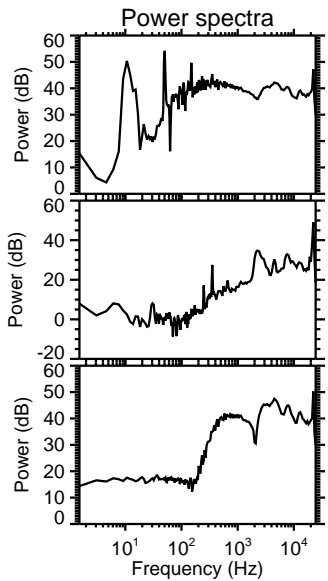
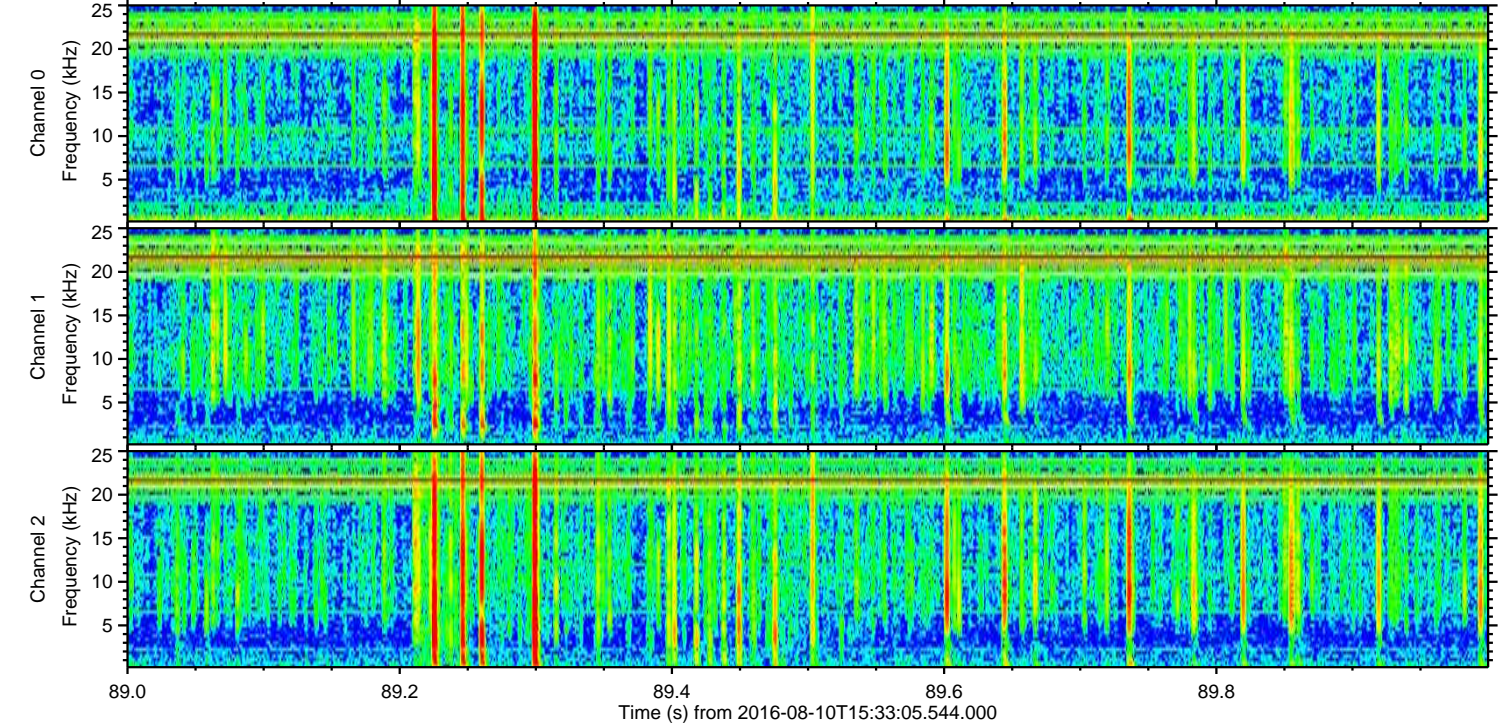
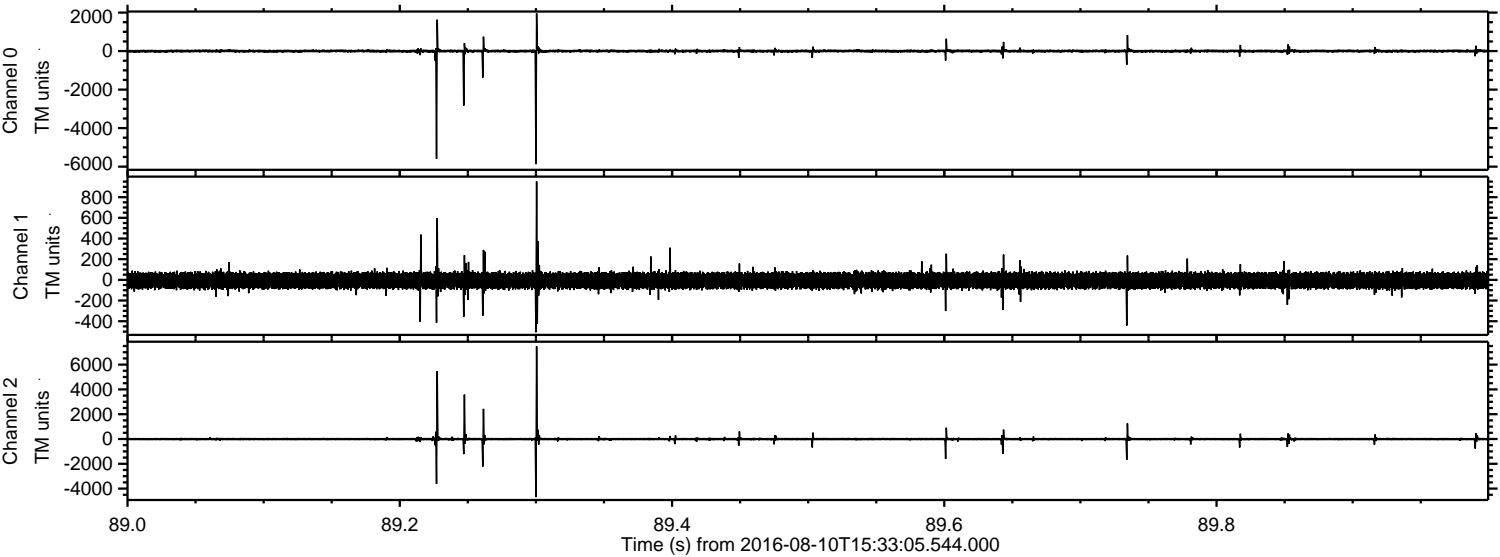
ELMAVAN 3D WAVEFORMS (Measured data sampled at 50 kHz) 51000 packets of 144 samples from 2016-08-10T15:33:05.544.000.

Processed Wed Aug 10 17:40:33 2016 by ELM ver.2012-10-06 from 001\_\_elm20160810\_153304\_\_dat00.bin



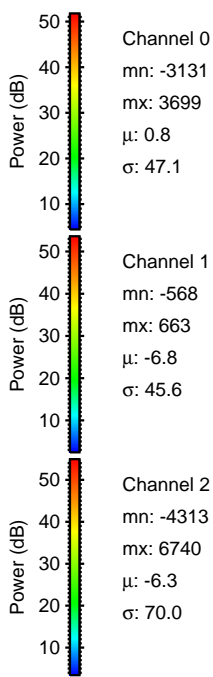
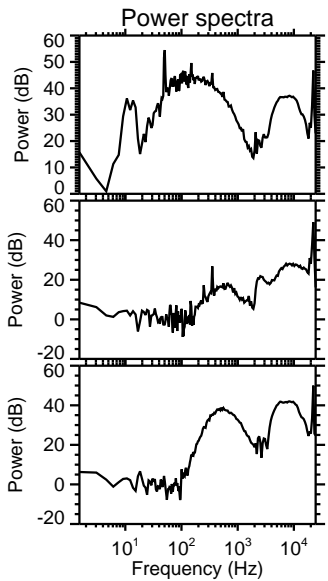
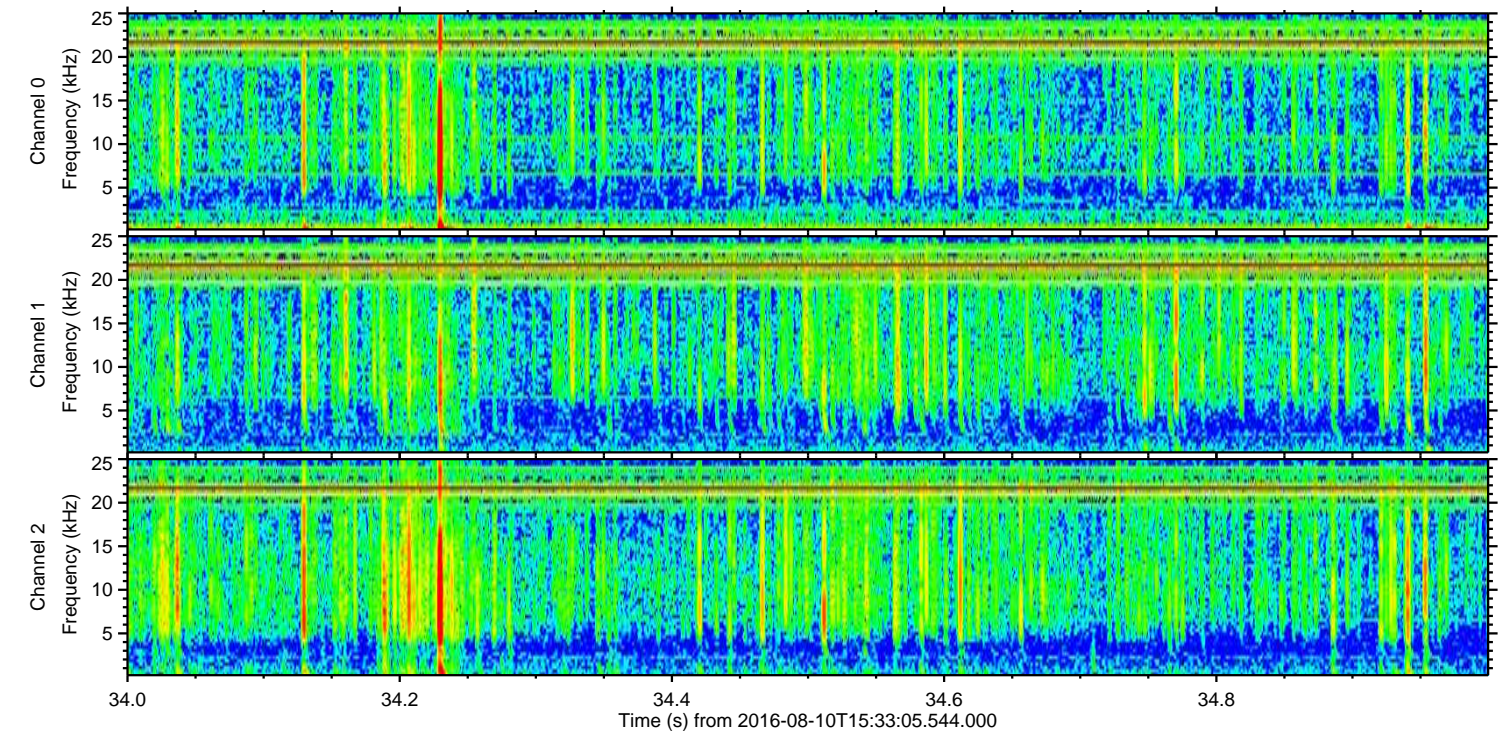
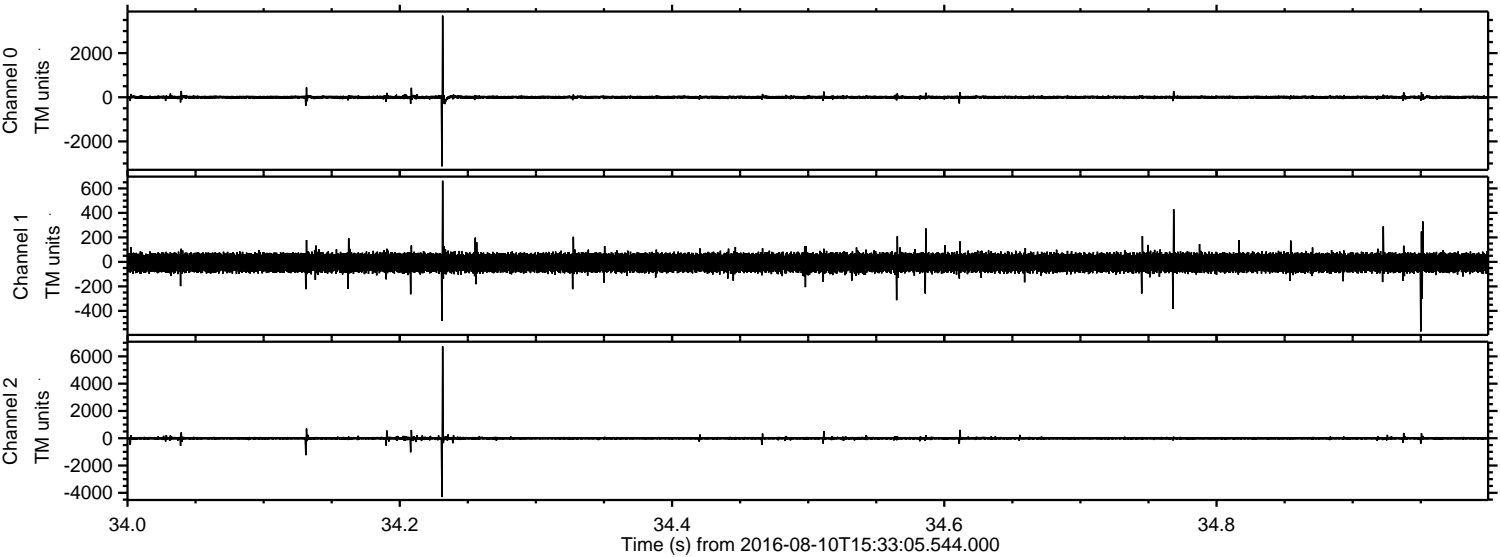


Processed Wed Aug 10 17:40:44 2016 by ELM ver.2012-10-06 from 001\_\_elm20160810\_153304\_\_dat00.bin





Processed Wed Aug 10 17:40:45 2016 by ELM ver.2012-10-06 from 001\_\_elm20160810\_153304\_\_dat00.bin



Channel 0  
mn: -3131  
mx: 3699  
 $\mu$ : 0.8  
 $\sigma$ : 47.1

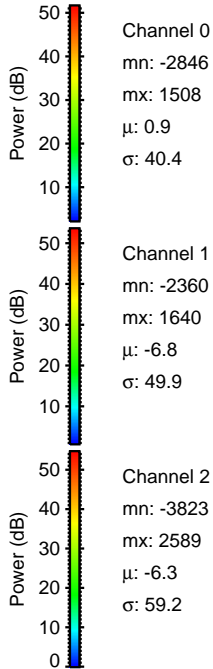
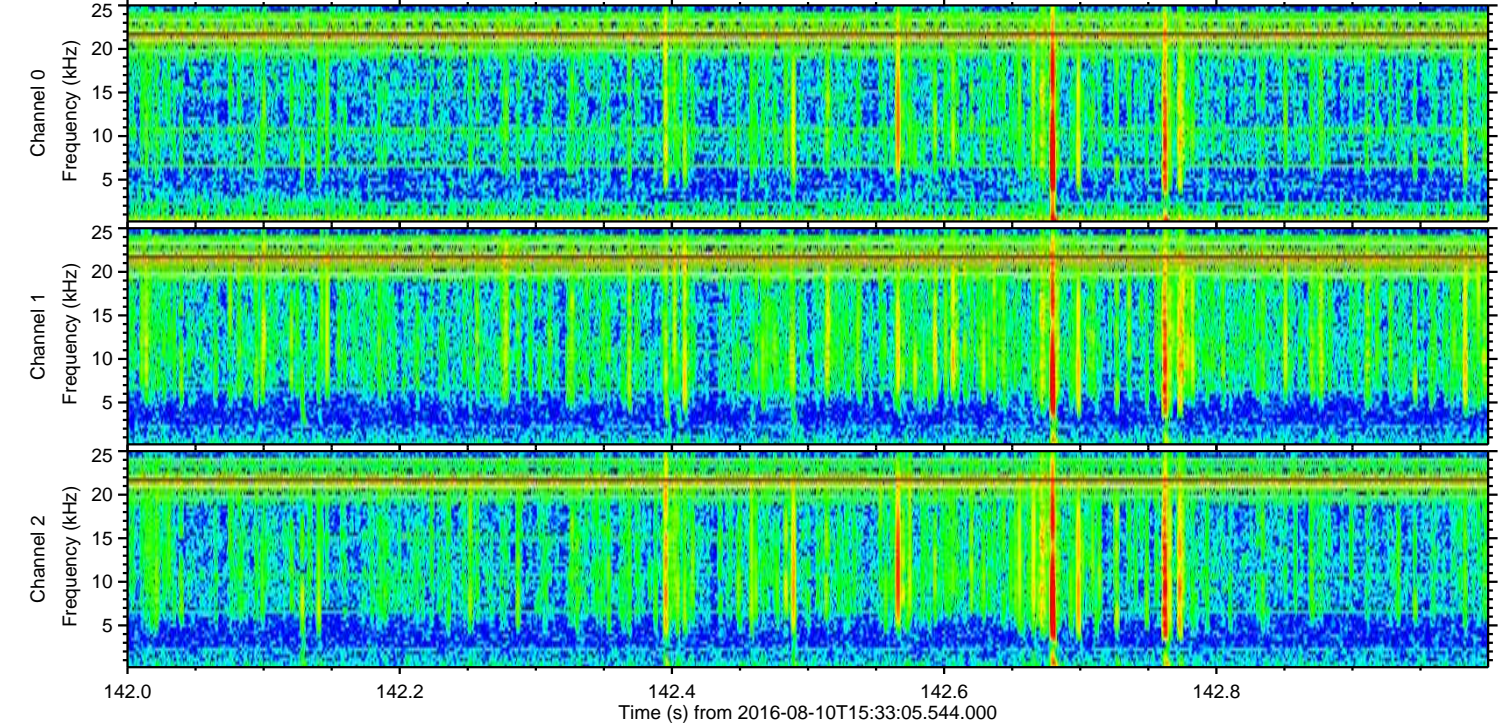
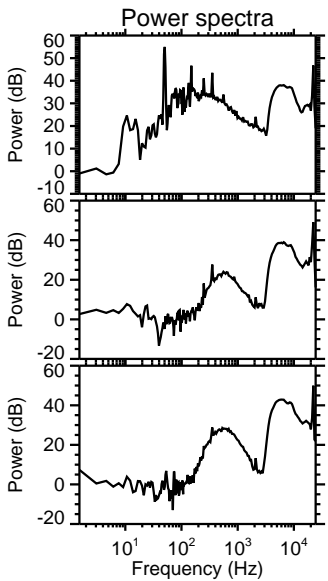
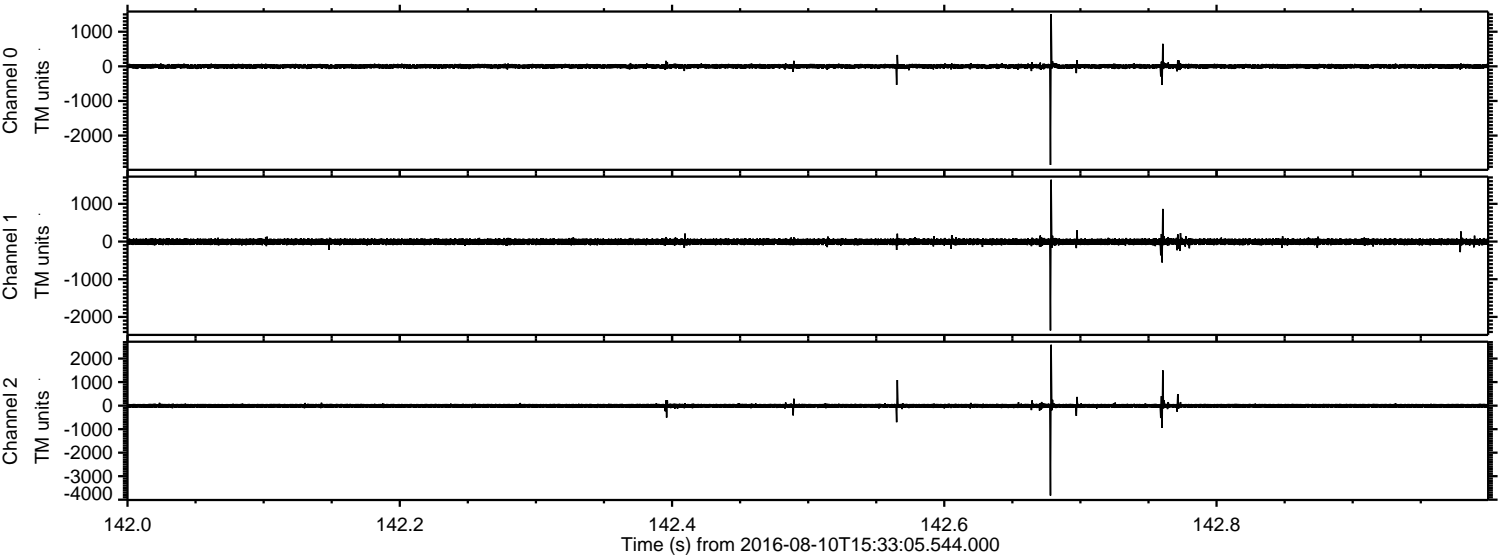
Channel 1  
mn: -568  
mx: 663  
 $\mu$ : -6.8  
 $\sigma$ : 45.6

Channel 2  
mn: -4313  
mx: 6740  
 $\mu$ : -6.3  
 $\sigma$ : 70.0



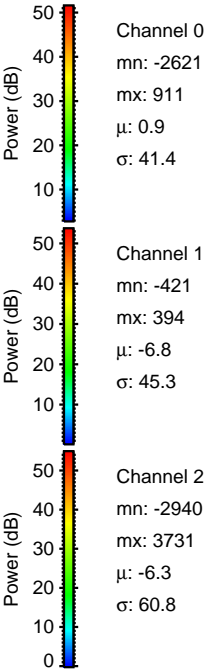
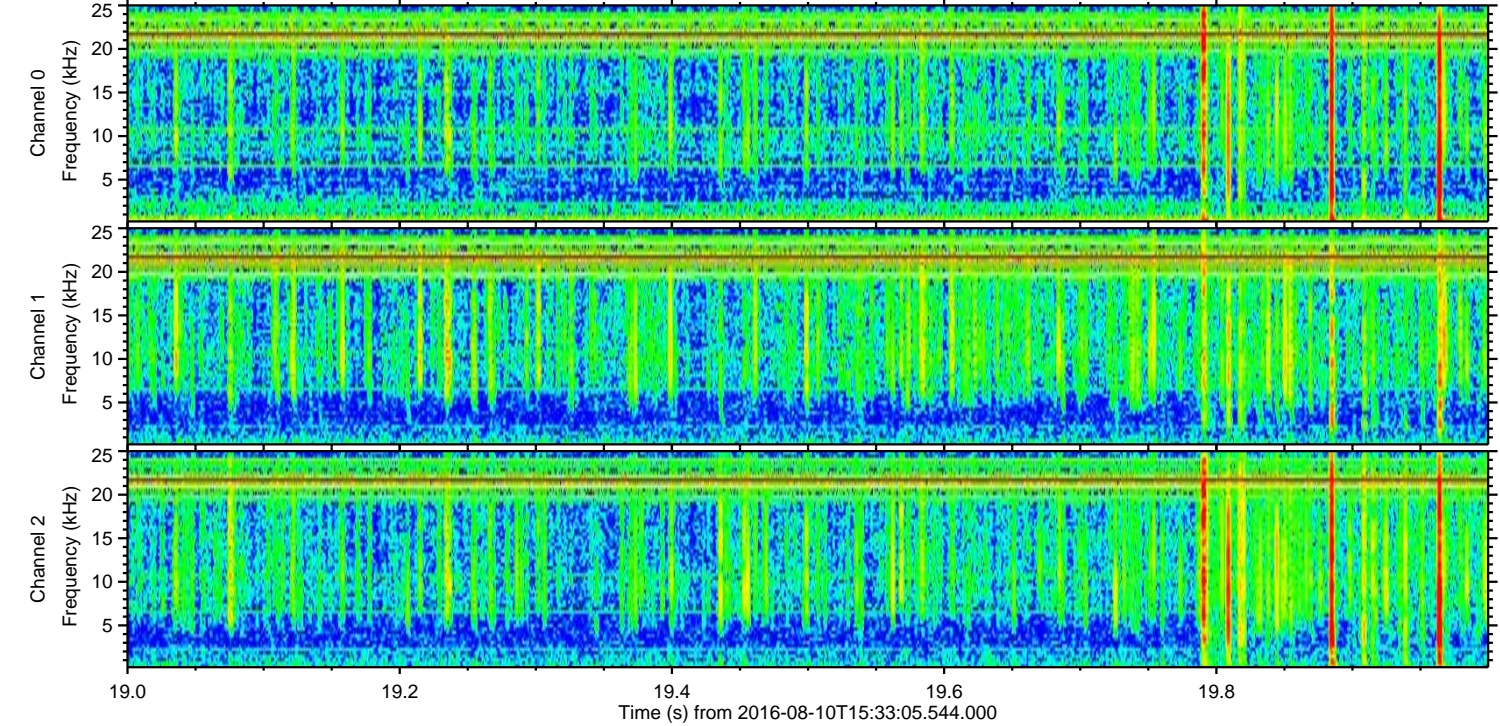
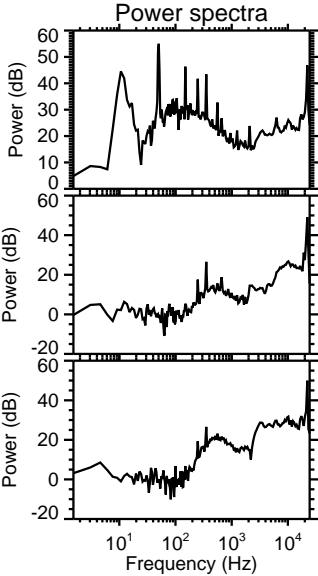
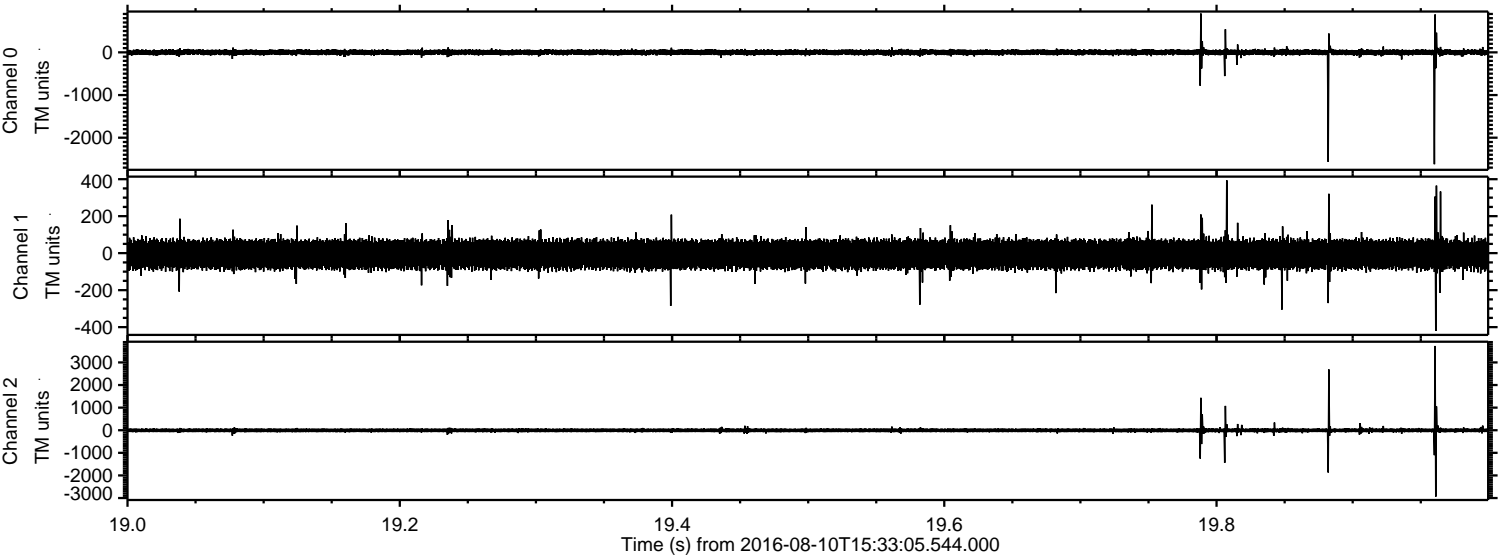
ELMAVAN 3D WAVEFORMS (Measured data sampled at 50 kHz) 51000 packets of 144 samples from 2016-08-10T15:33:05.544.000. Part 143/147

Processed Wed Aug 10 17:40:46 2016 by ELM ver.2012-10-06 from 001\_\_elm20160810\_153304\_\_dat00.bin





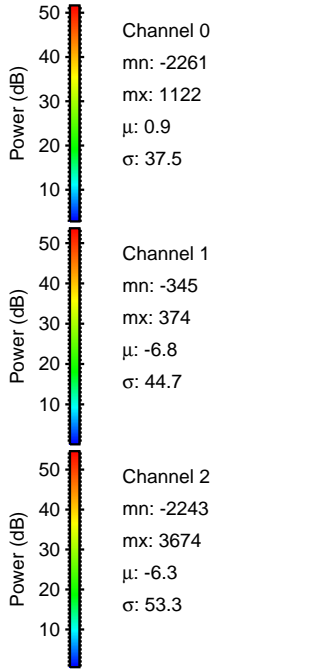
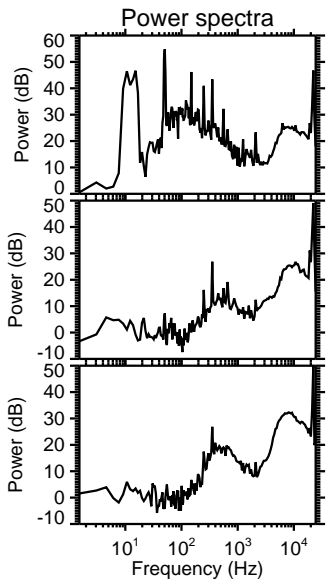
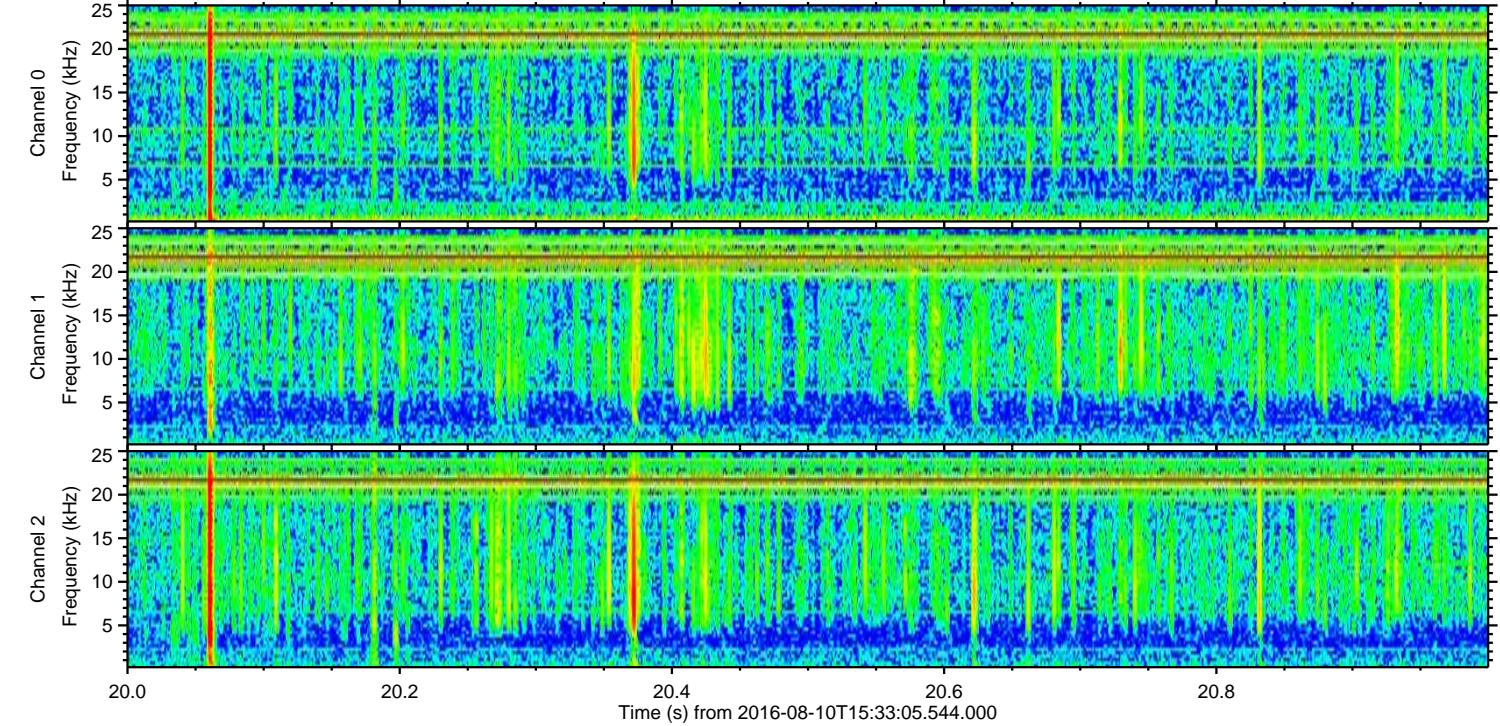
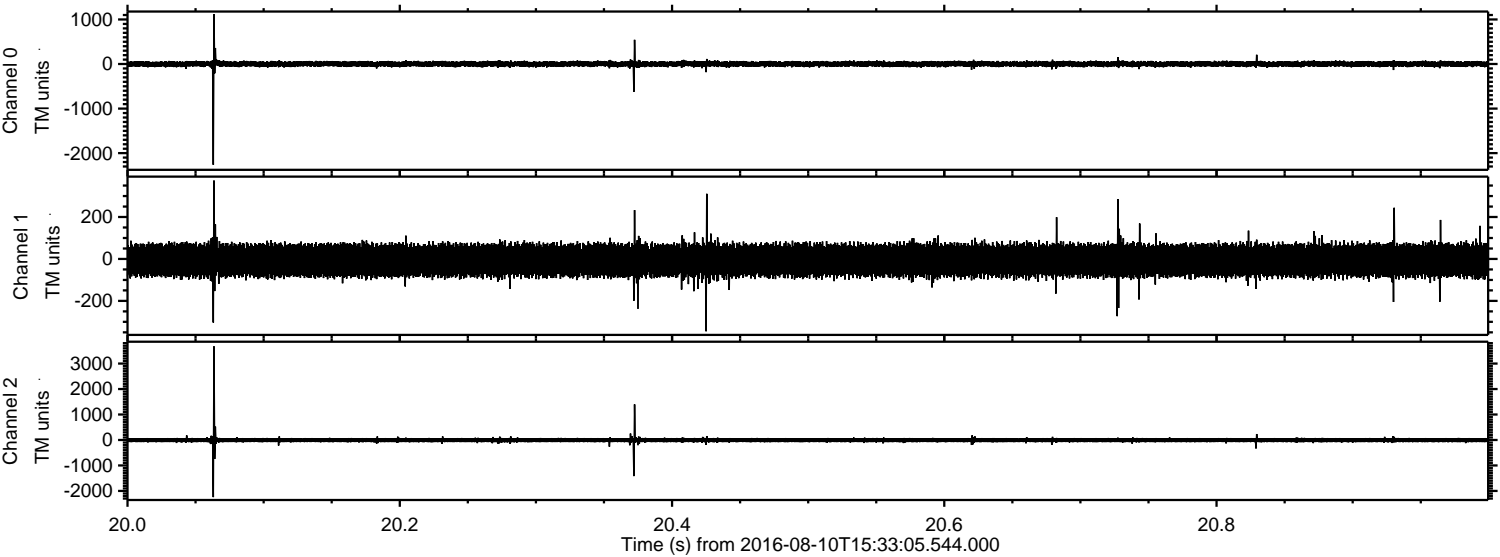
Processed Wed Aug 10 17:40:47 2016 by ELM ver.2012-10-06 from 001\_\_elm20160810\_153304\_\_dat00.bin





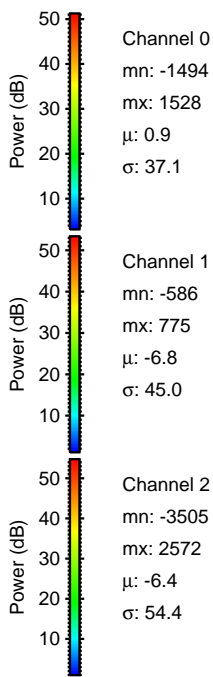
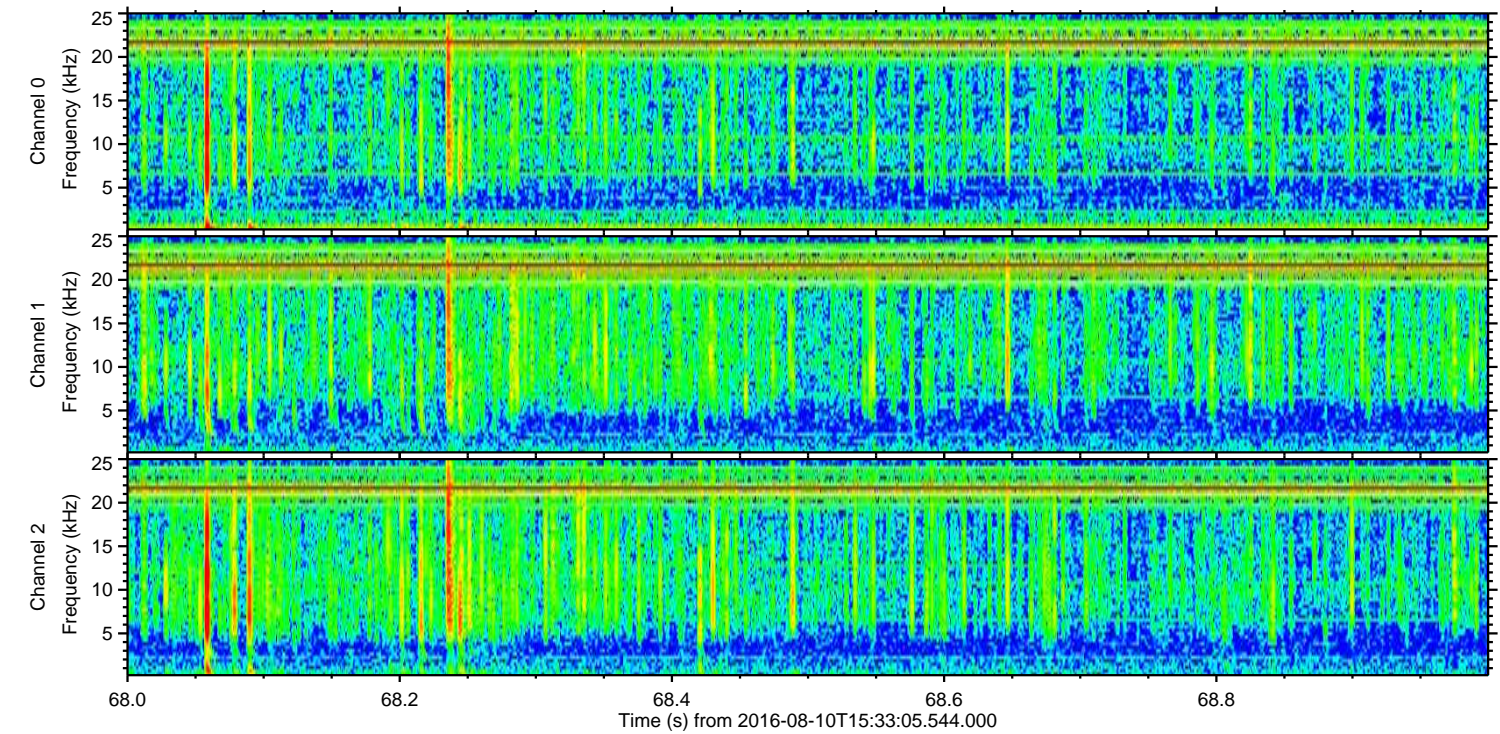
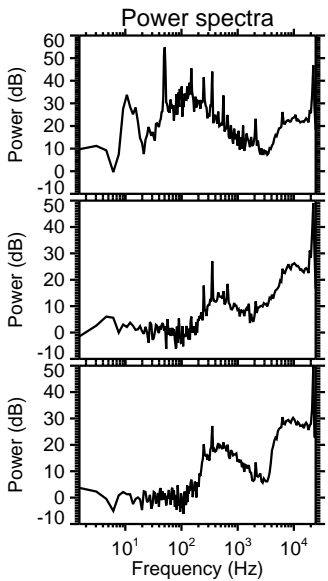
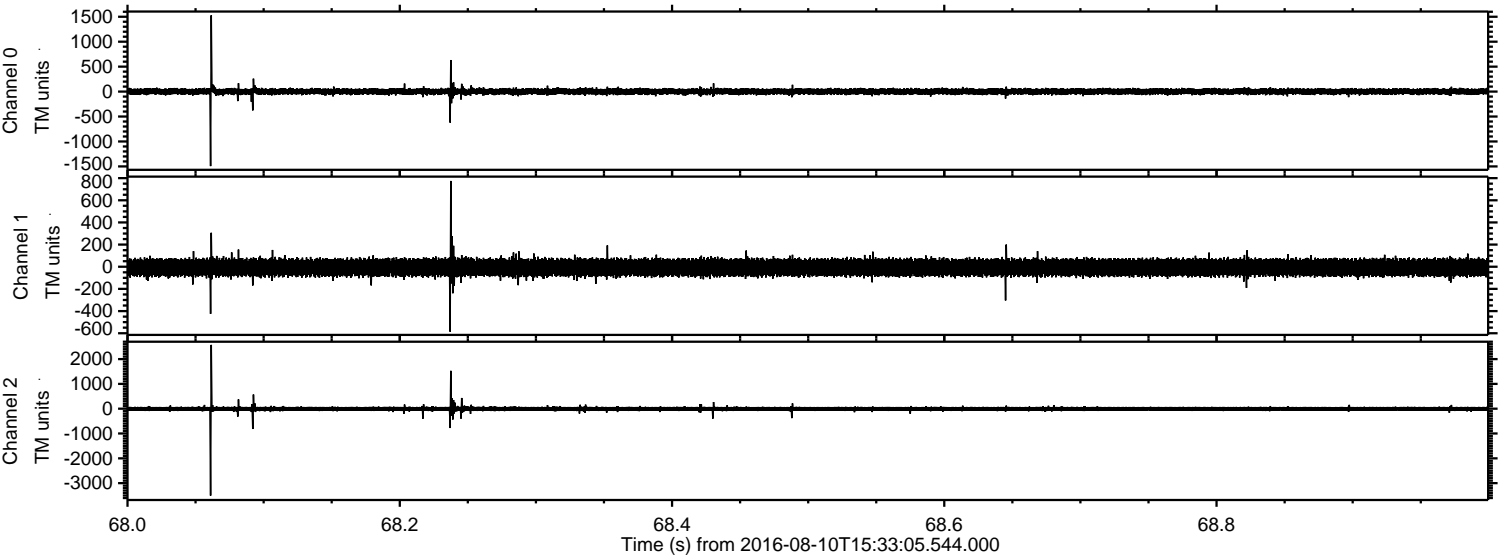
ELMAVAN 3D WAVEFORMS (Measured data sampled at 50 kHz) 51000 packets of 144 samples from 2016-08-10T15:33:05.544.000. Part 21/147

Processed Wed Aug 10 17:40:48 2016 by ELM ver.2012-10-06 from 001\_\_elm20160810\_153304\_\_dat00.bin





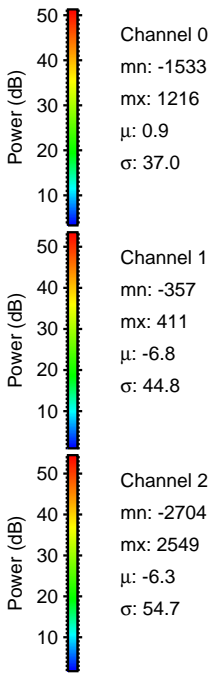
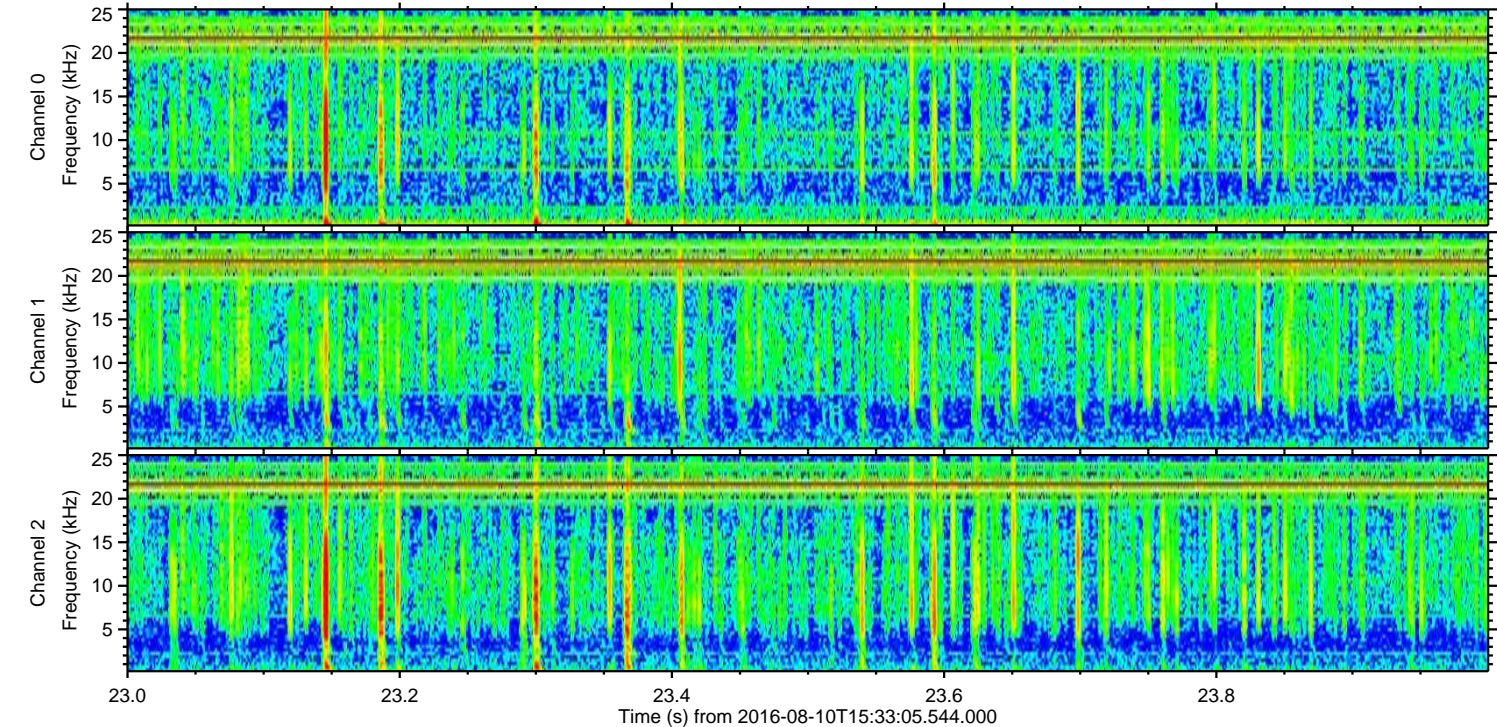
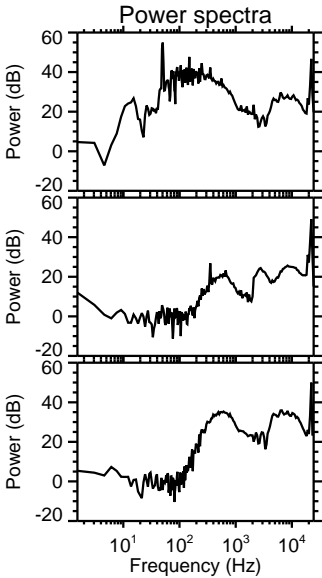
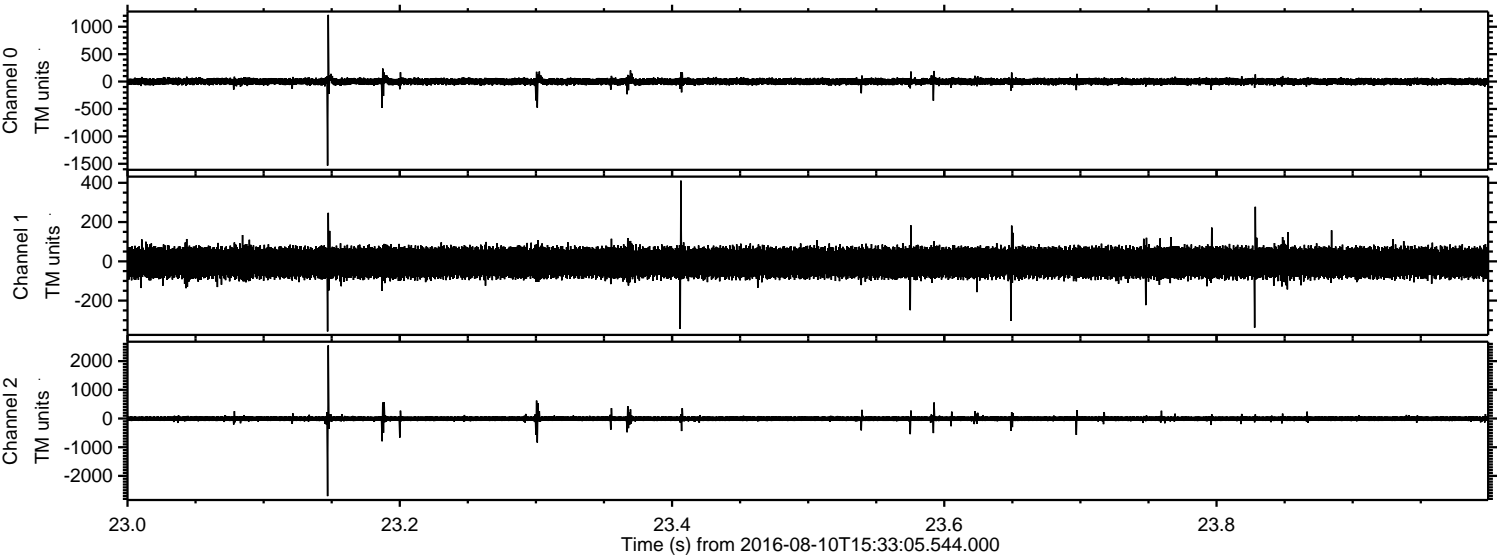
Processed Wed Aug 10 17:40:49 2016 by ELM ver.2012-10-06 from 001\_\_elm20160810\_153304\_\_dat00.bin





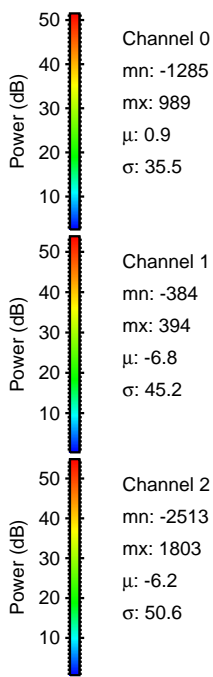
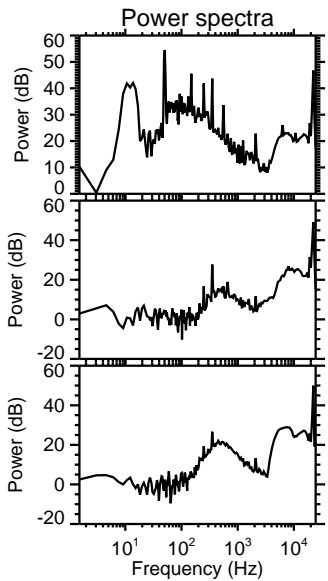
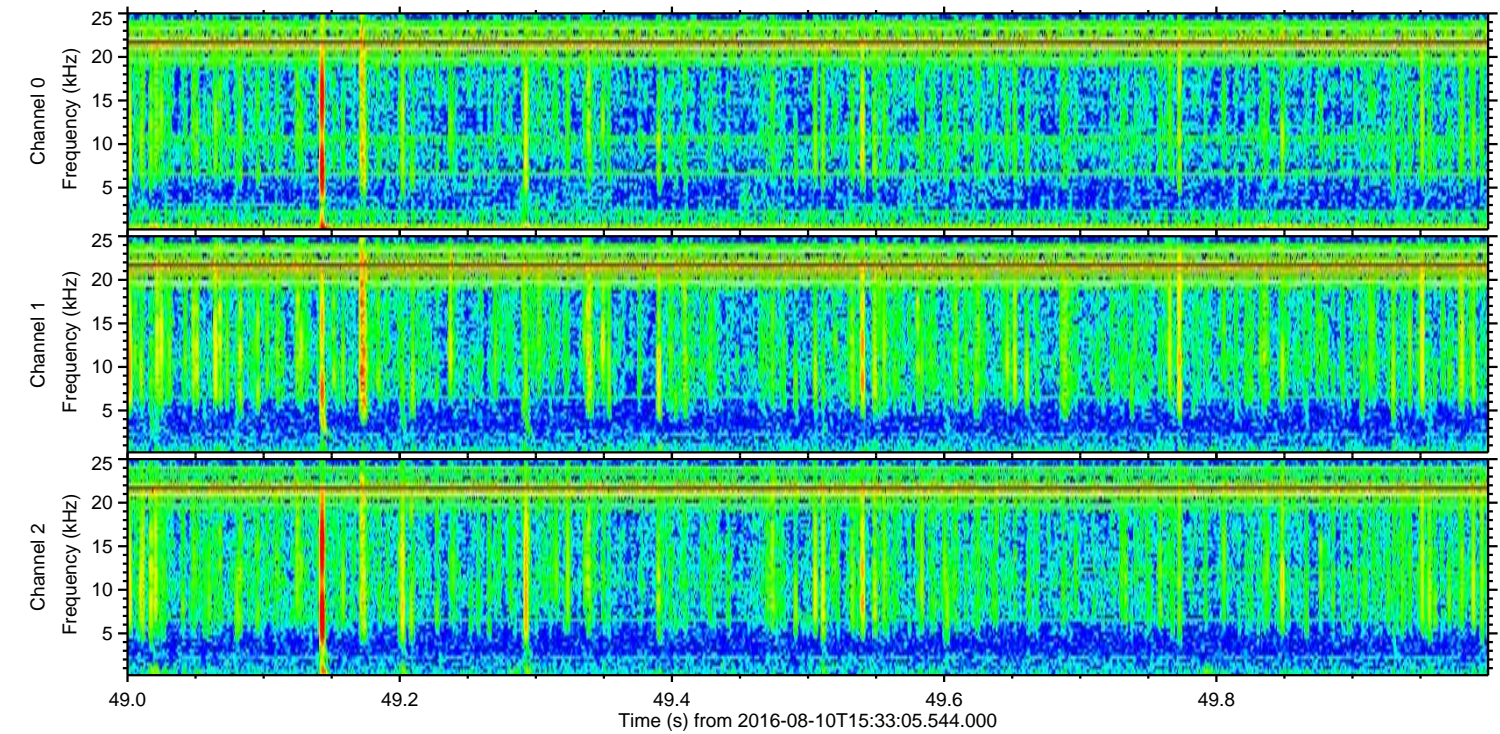
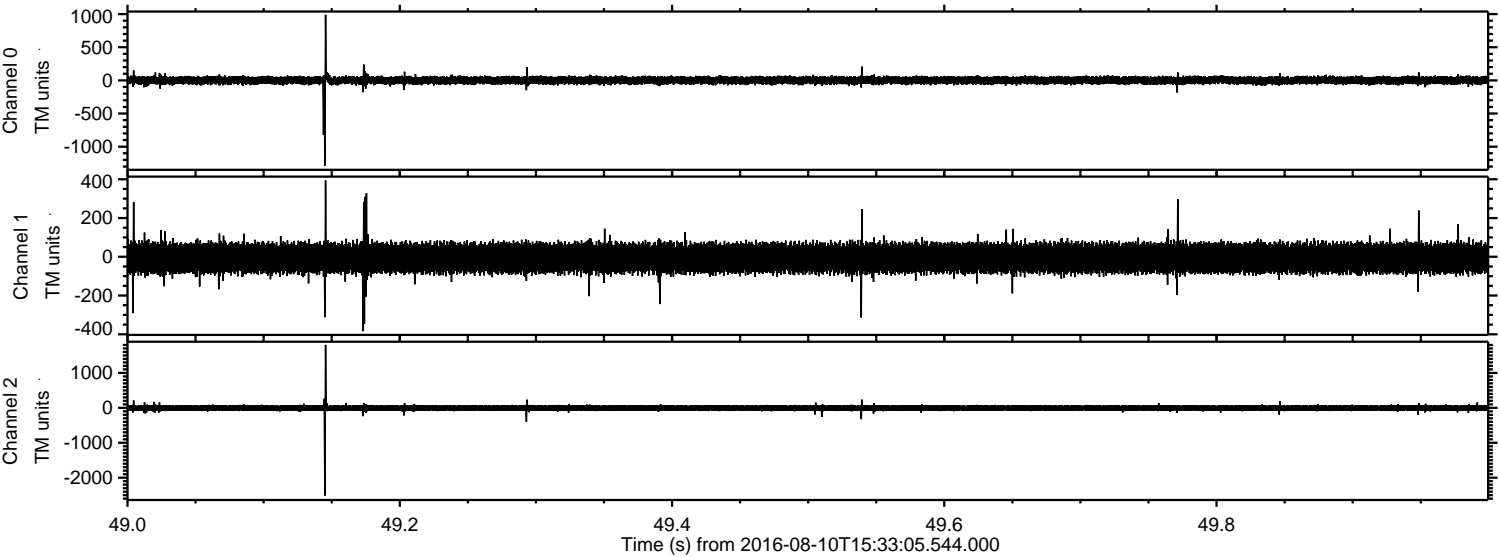
ELMAVAN 3D WAVEFORMS (Measured data sampled at 50 kHz) 51000 packets of 144 samples from 2016-08-10T15:33:05.544.000. Part 24/147

Processed Wed Aug 10 17:40:50 2016 by ELM ver.2012-10-06 from 001\_\_elm20160810\_153304\_\_dat00.bin



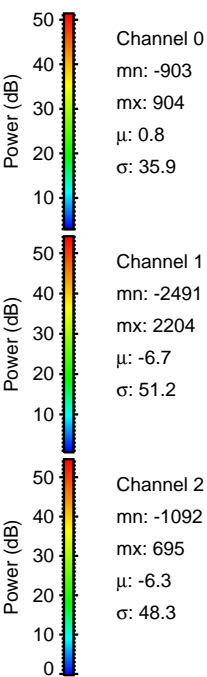
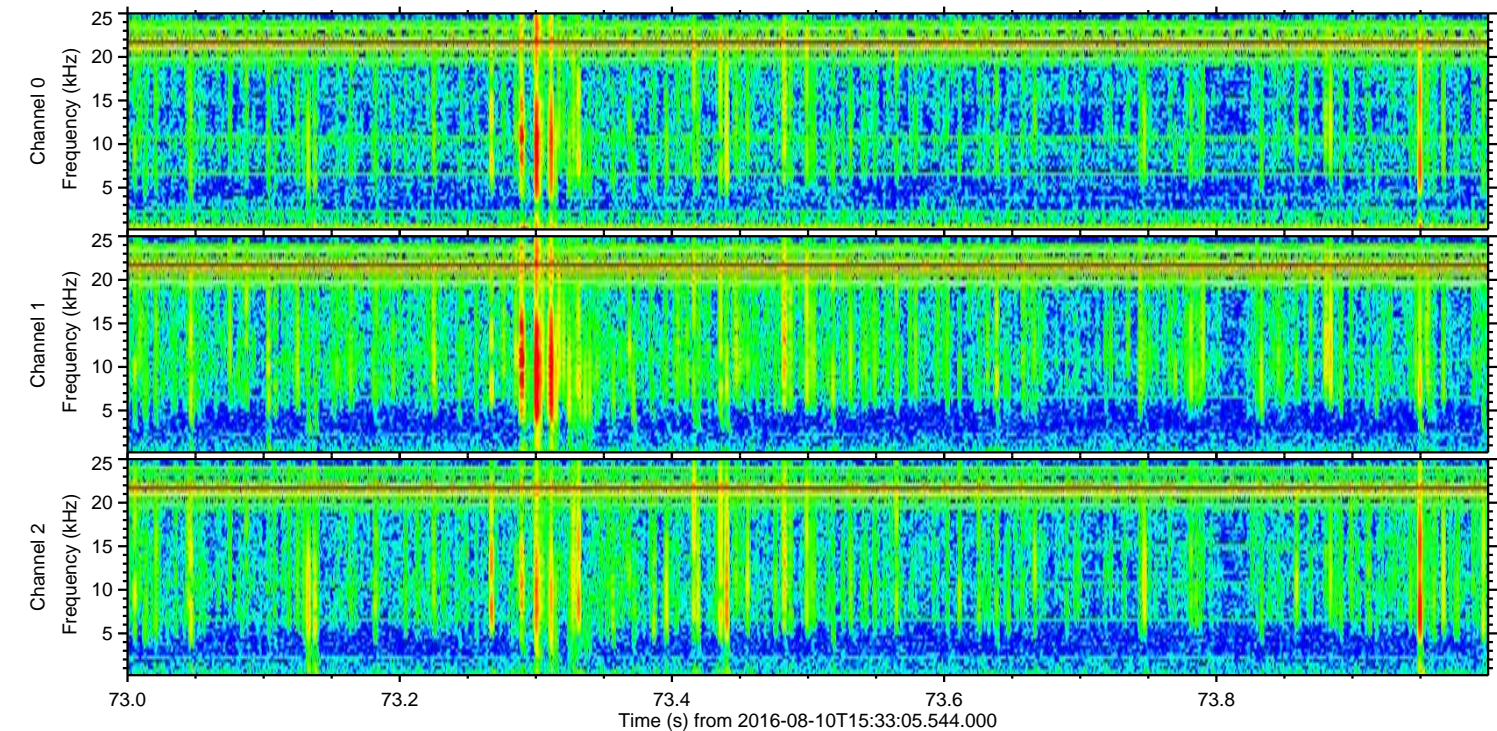
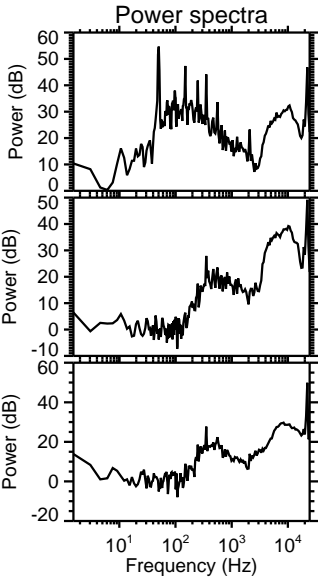
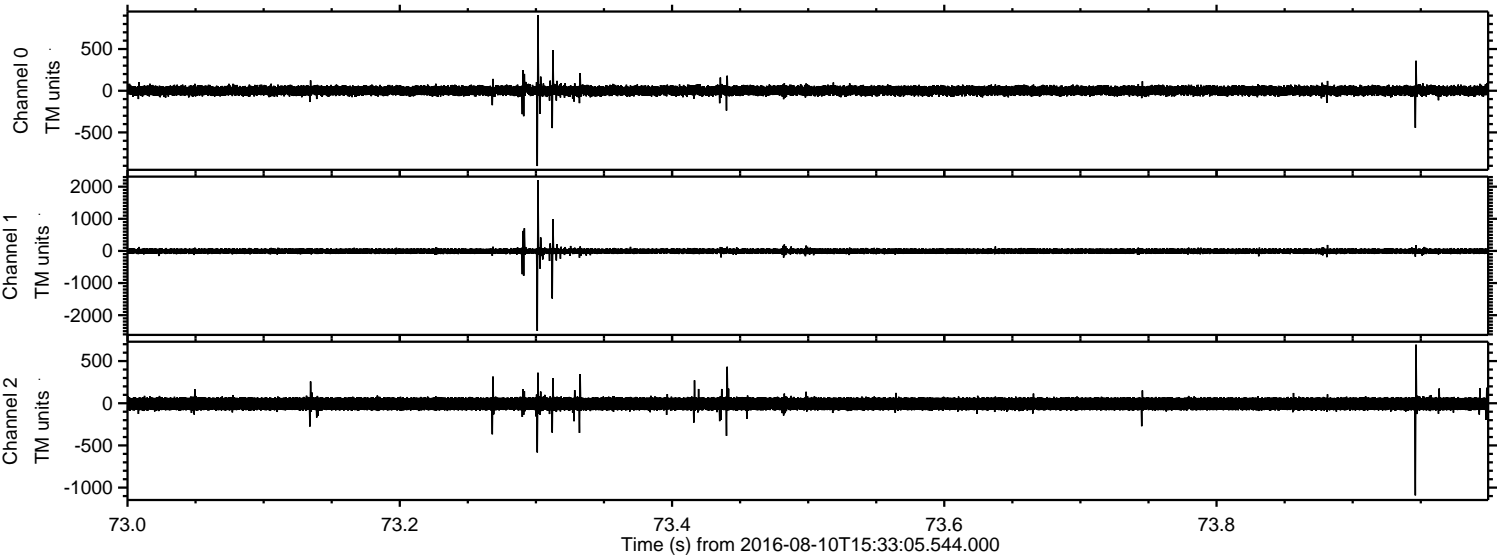


Processed Wed Aug 10 17:40:51 2016 by ELM ver.2012-10-06 from 001\_\_elm20160810\_153304\_\_dat00.bin



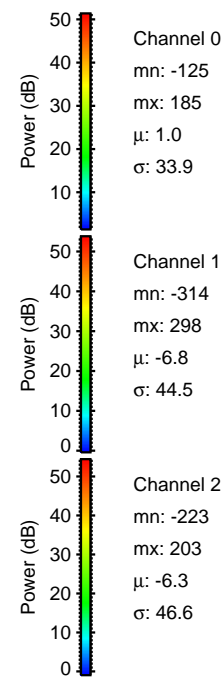
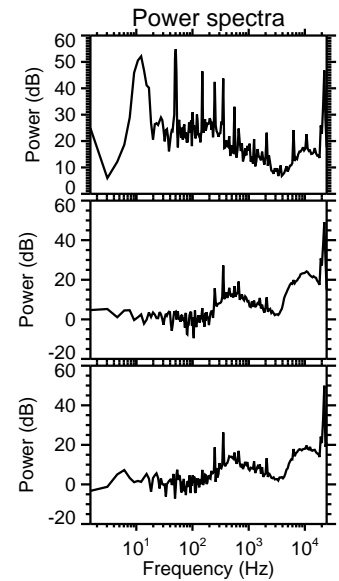
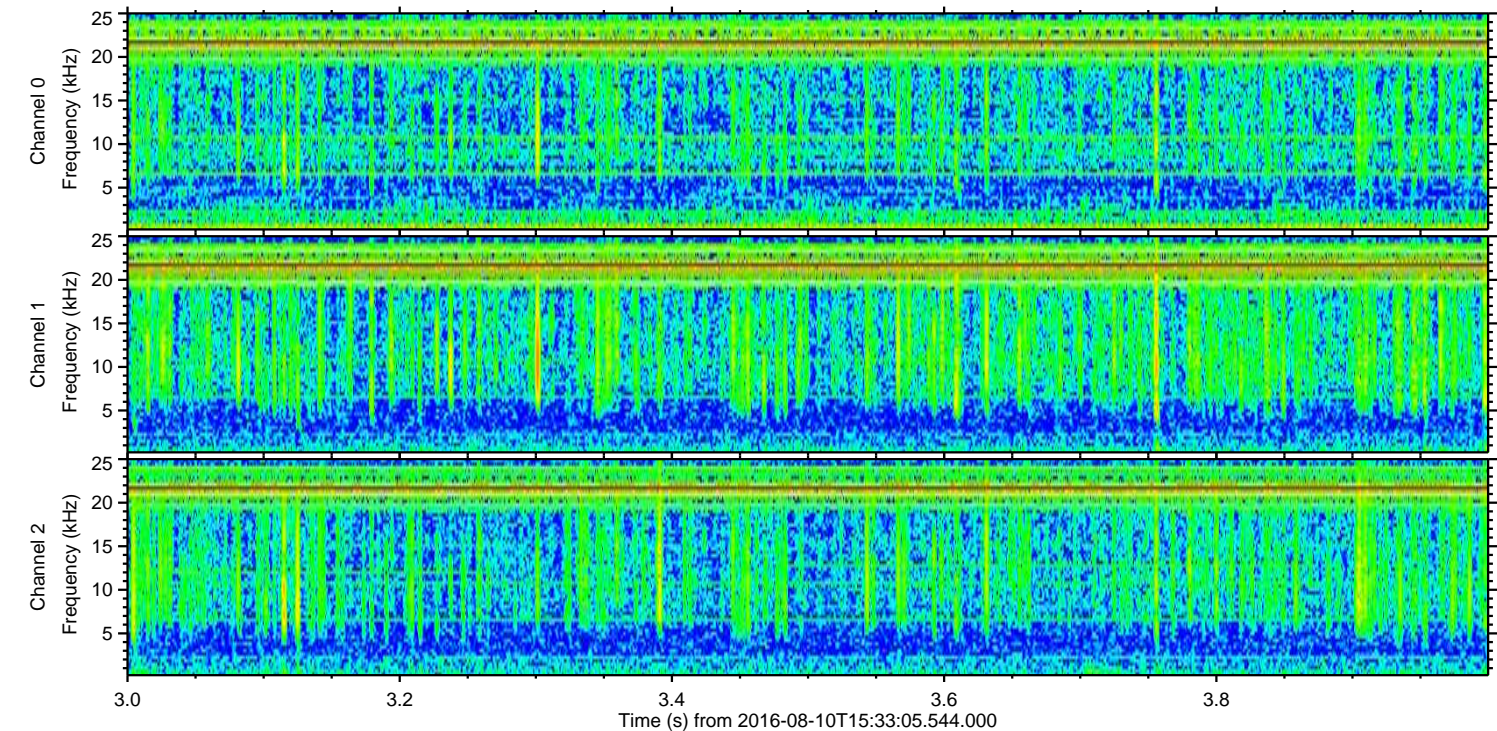
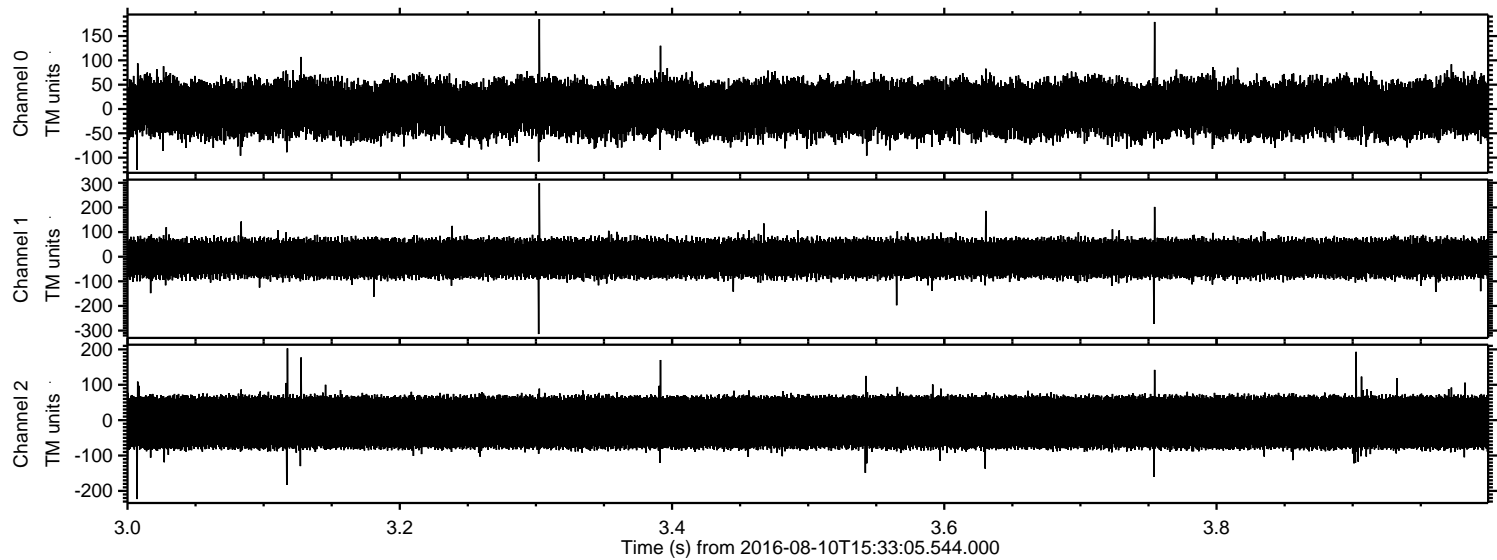


Processed Wed Aug 10 17:40:52 2016 by ELM ver.2012-10-06 from 001\_\_elm20160810\_153304\_\_dat00.bin





Processed Wed Aug 10 17:40:53 2016 by ELM ver.2012-10-06 from 001\_\_elm20160810\_153304\_\_dat00.bin



Channel 0  
mn: -125  
mx: 185  
 $\mu$ : 1.0  
 $\sigma$ : 33.9

Channel 1  
mn: -314  
mx: 298  
 $\mu$ : -6.8  
 $\sigma$ : 44.5

Channel 2  
mn: -223  
mx: 203  
 $\mu$ : -6.3  
 $\sigma$ : 46.6