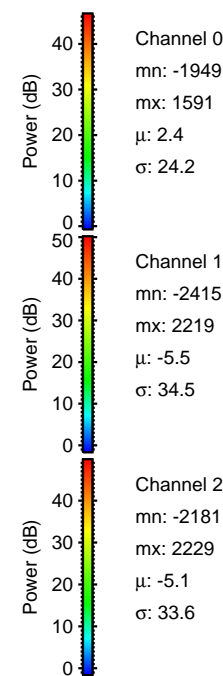
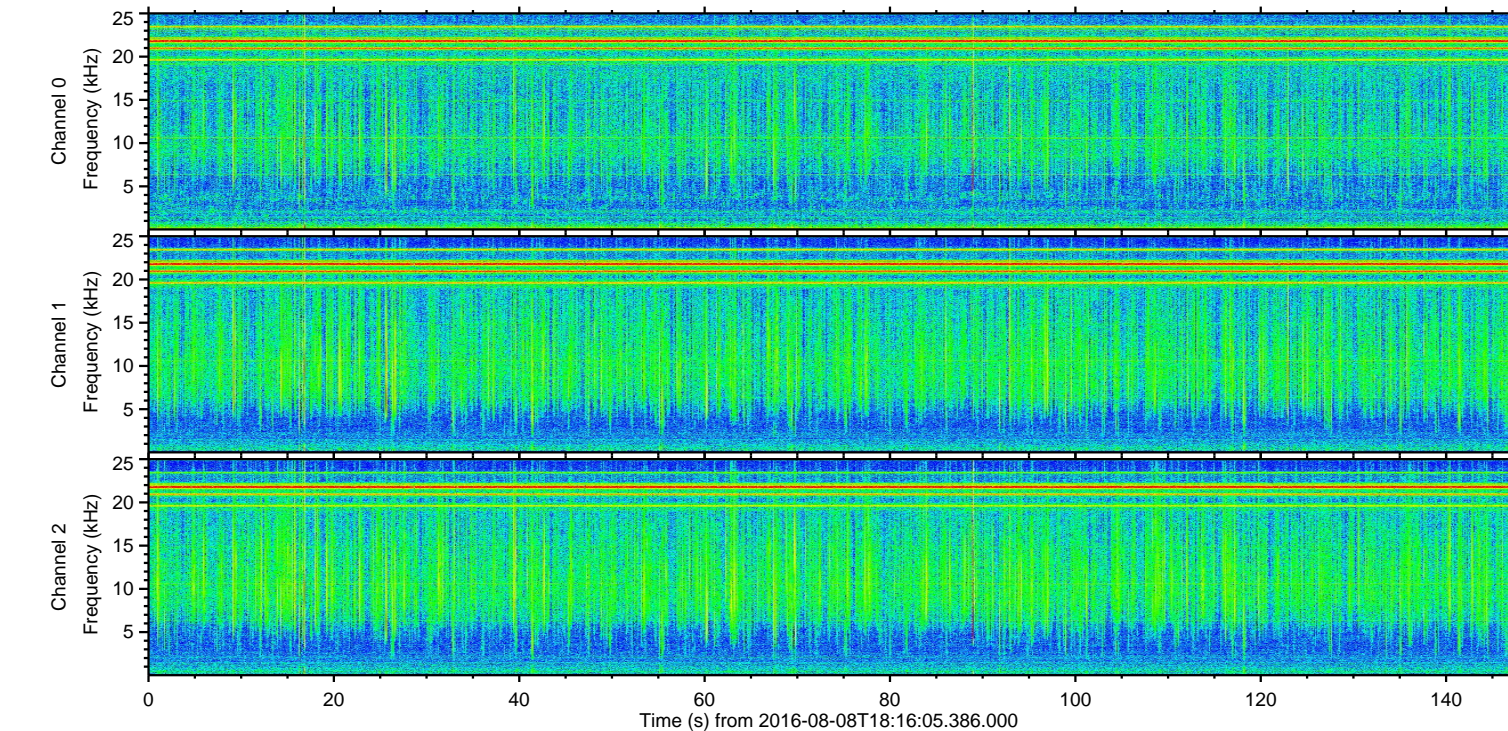
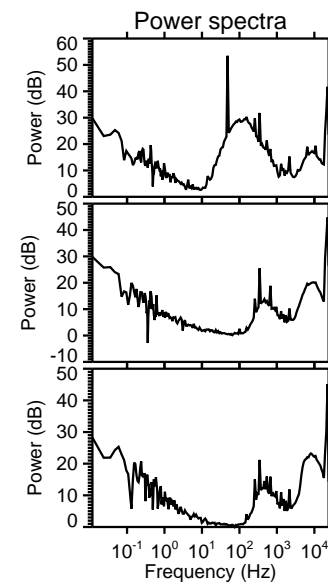
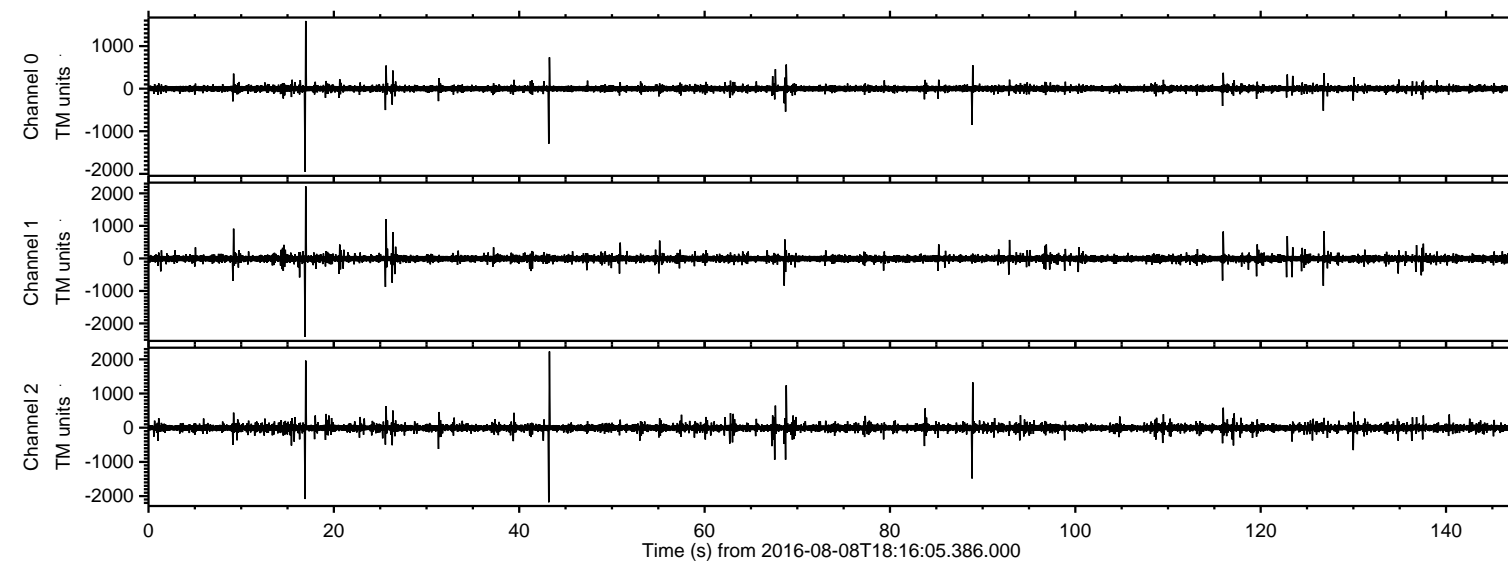


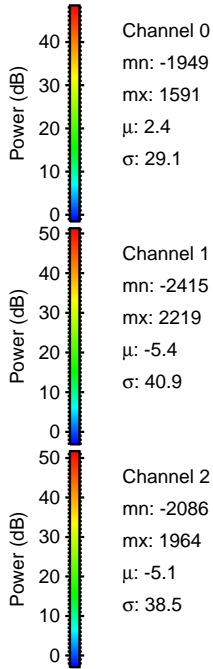
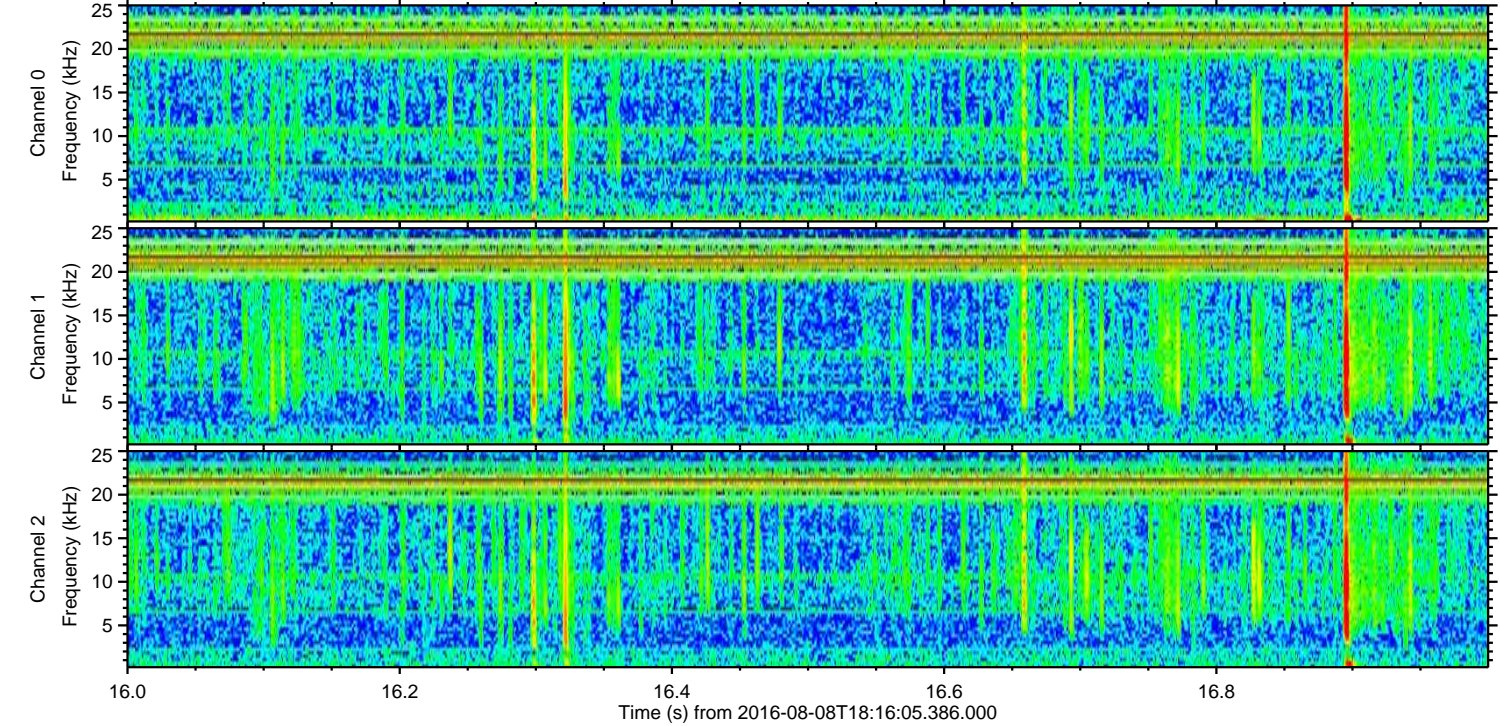
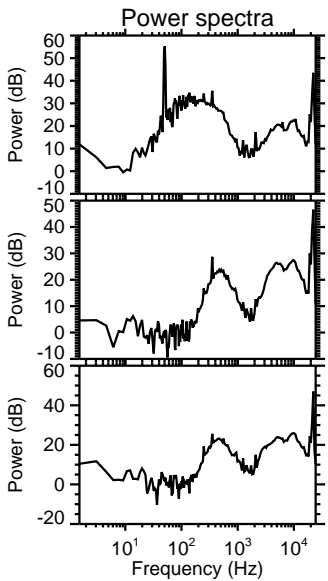
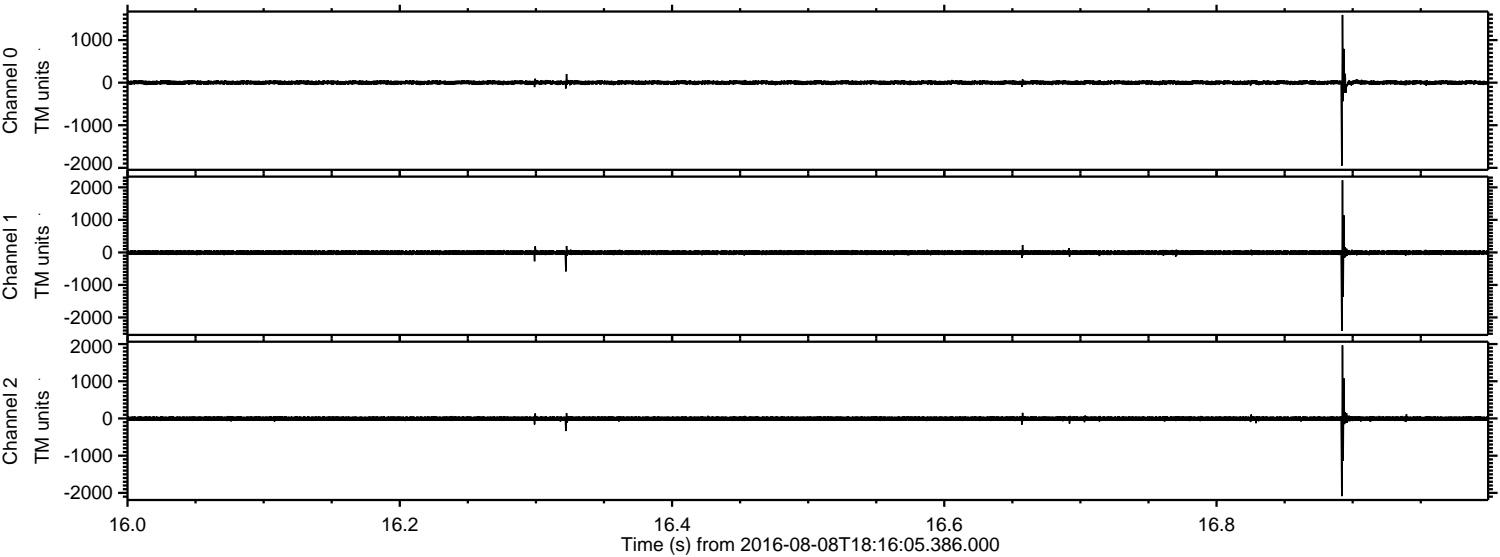
# ELMAVAN 3D WAVEFORMS (Measured data sampled at 50 kHz) 51000 packets of 144 samples from 2016-08-08T18:16:05.386.000.

Processed Mon Aug 8 20:23:41 2016 by ELM ver.2012-10-06 from 001\_\_elm20160808\_181604\_\_dat00.bin



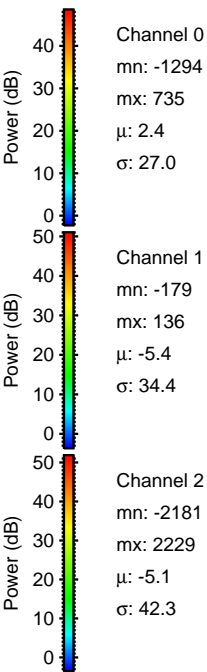
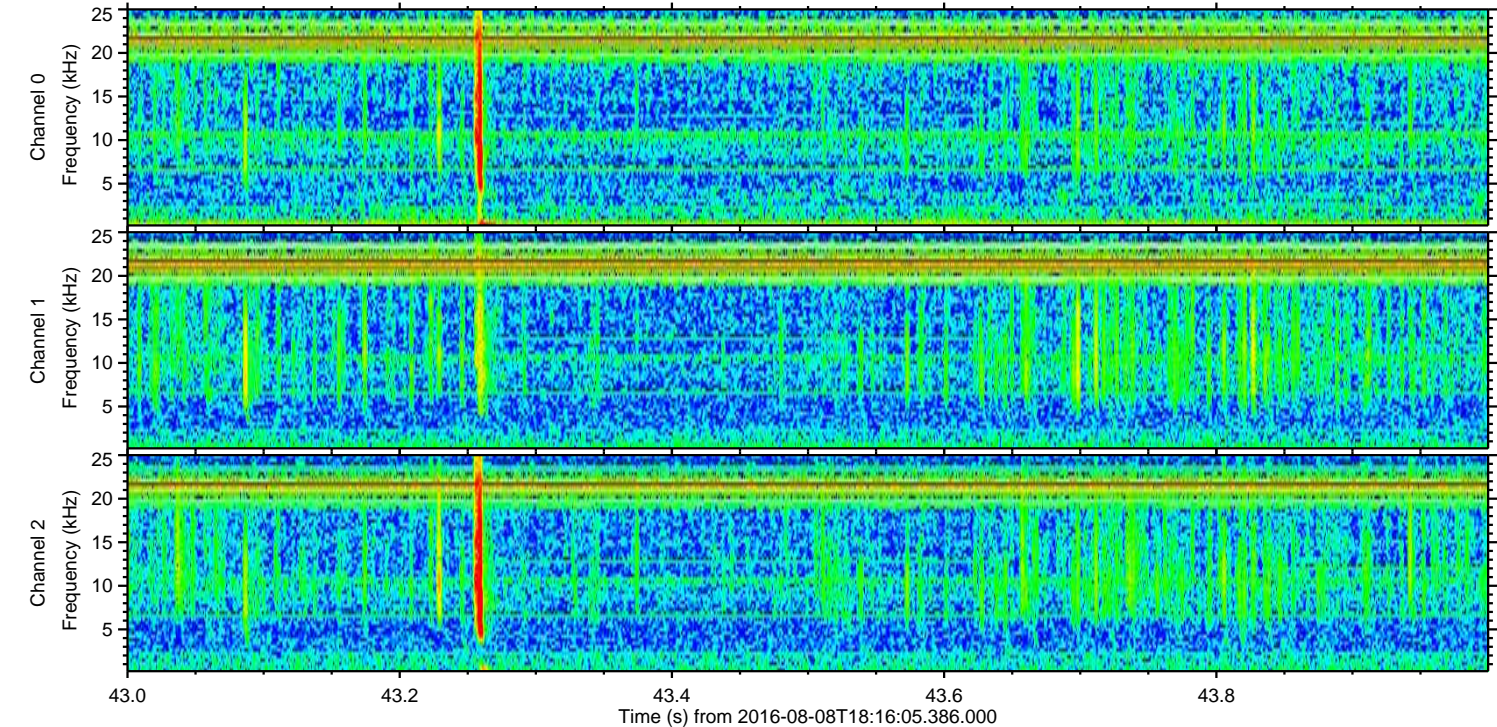
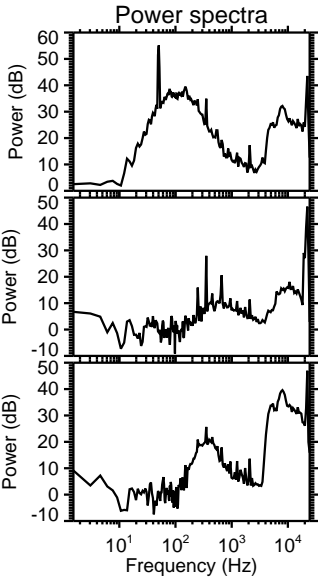
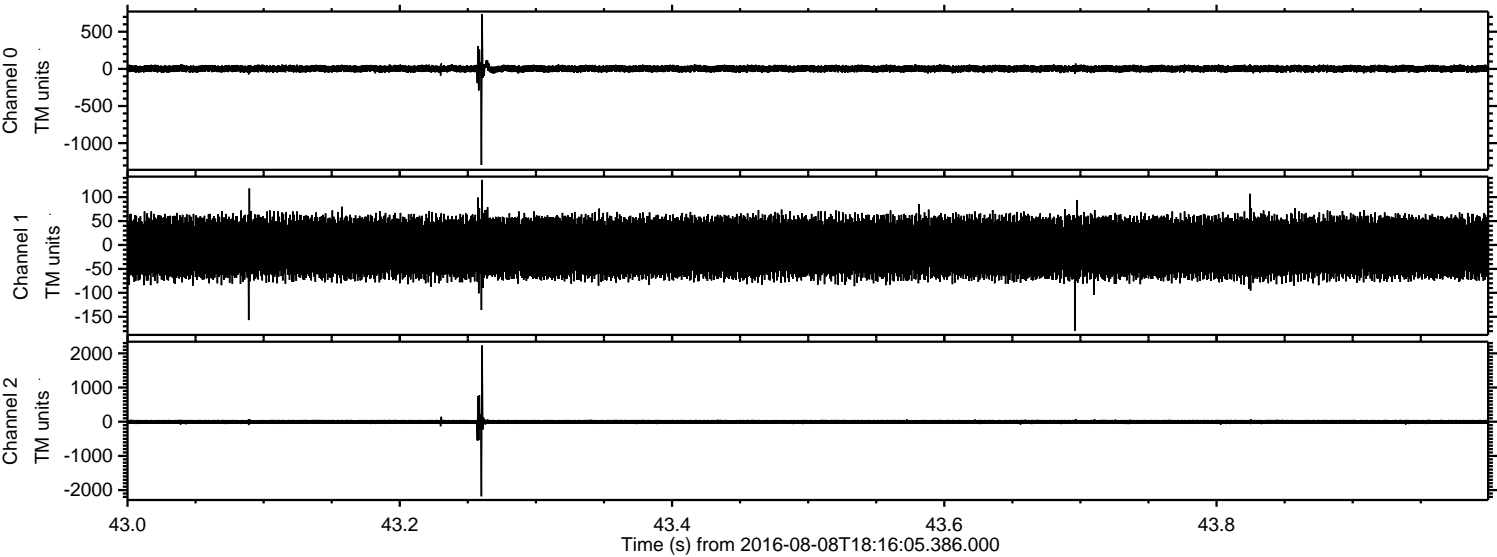


Processed Mon Aug 8 20:23:52 2016 by ELM ver.2012-10-06 from 001\_\_elm20160808\_181604\_\_dat00.bin



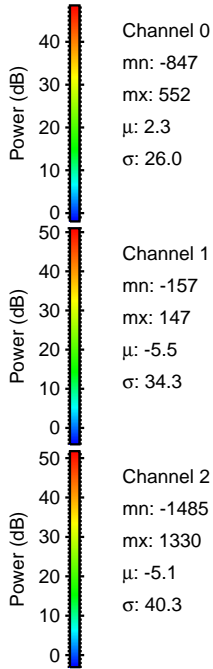
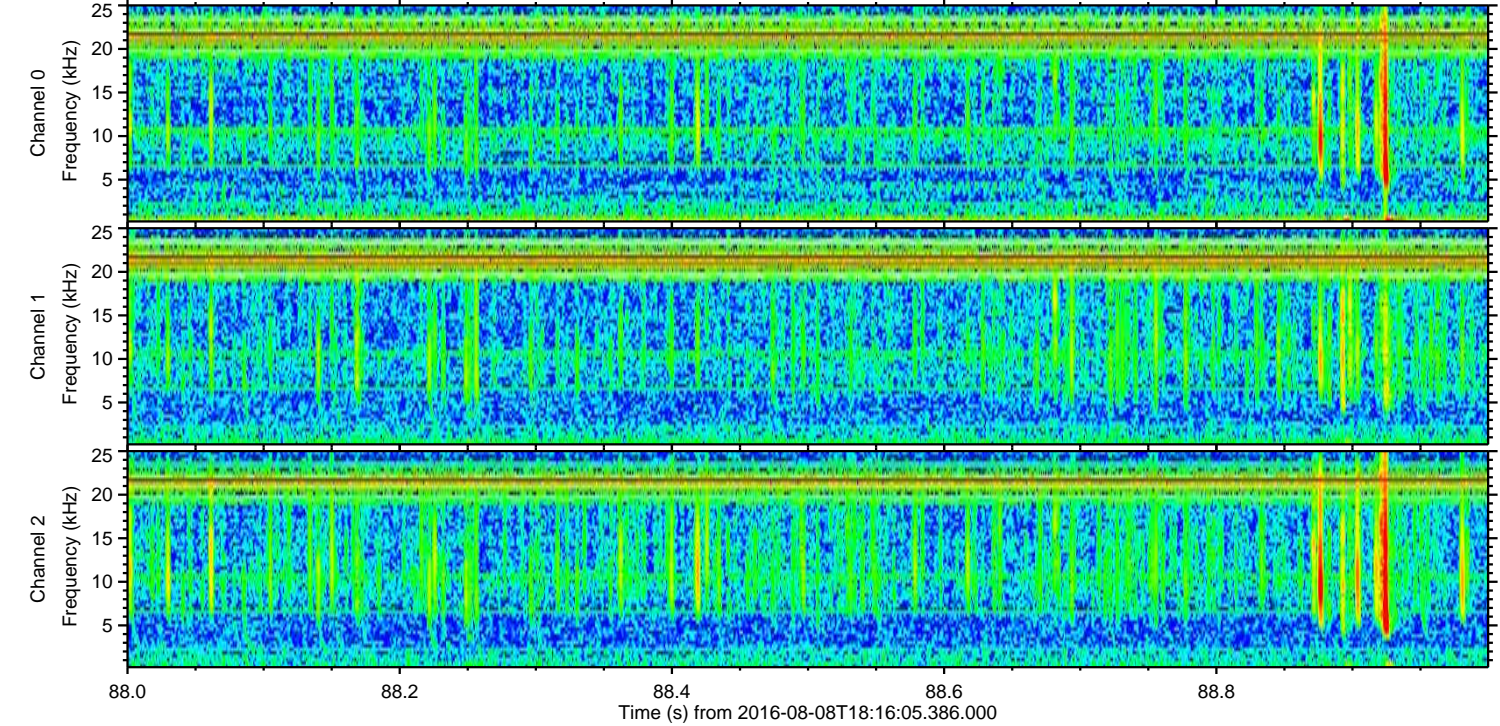
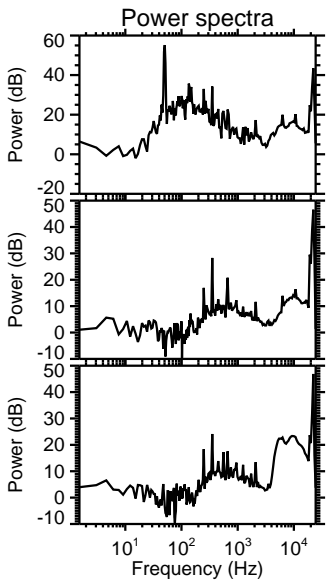
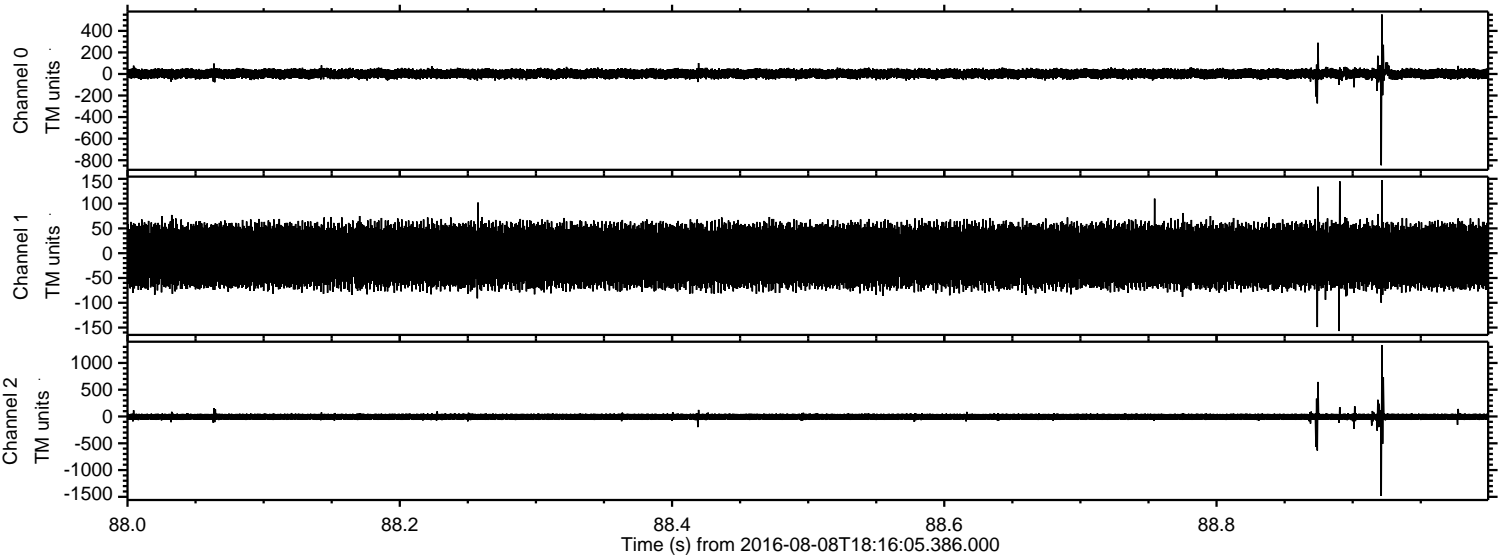


Processed Mon Aug 8 20:23:53 2016 by ELM ver.2012-10-06 from 001\_\_elm20160808\_181604\_\_dat00.bin



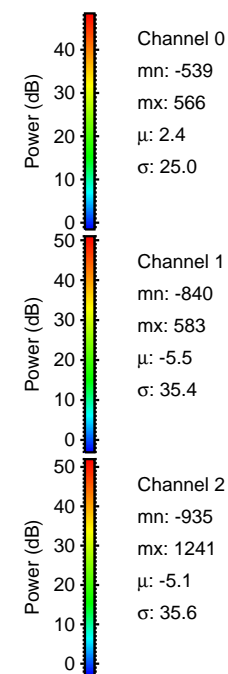
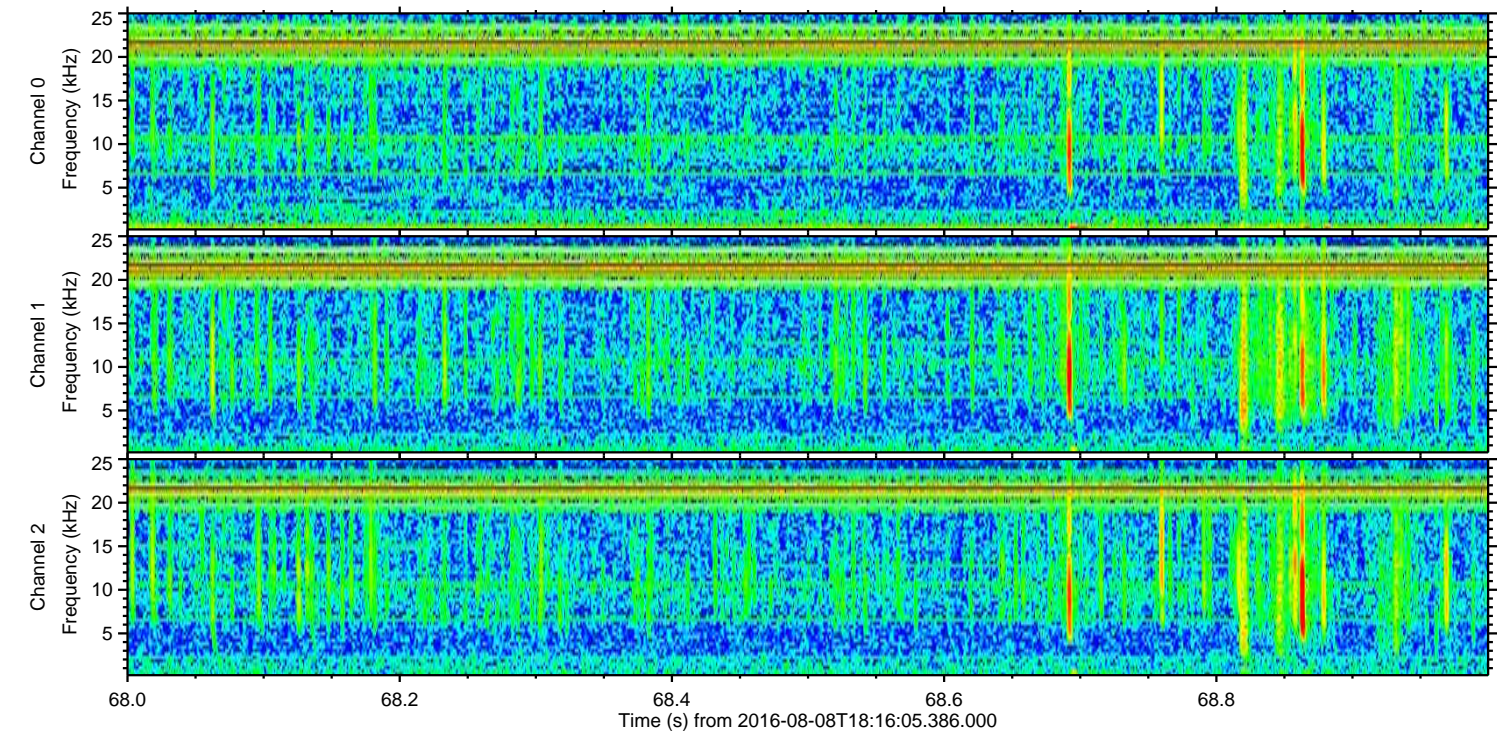
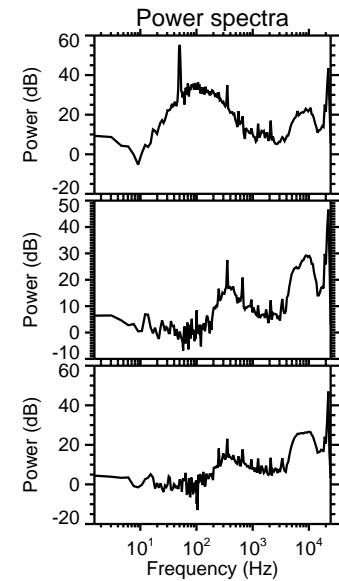
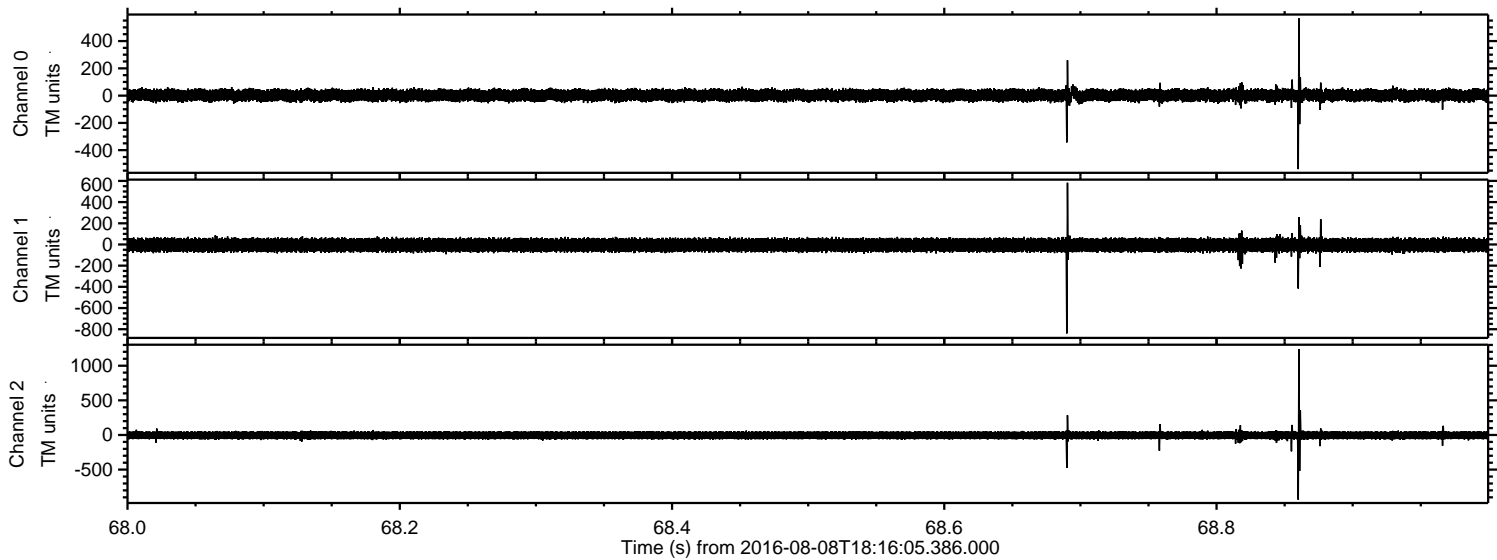


Processed Mon Aug 8 20:23:54 2016 by ELM ver.2012-10-06 from 001\_\_elm20160808\_181604\_\_dat00.bin



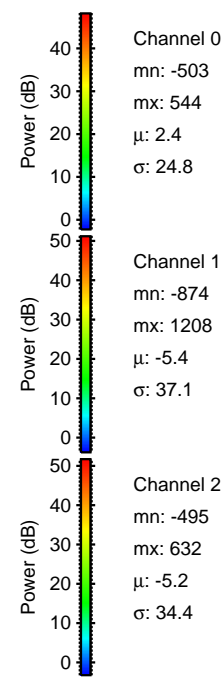
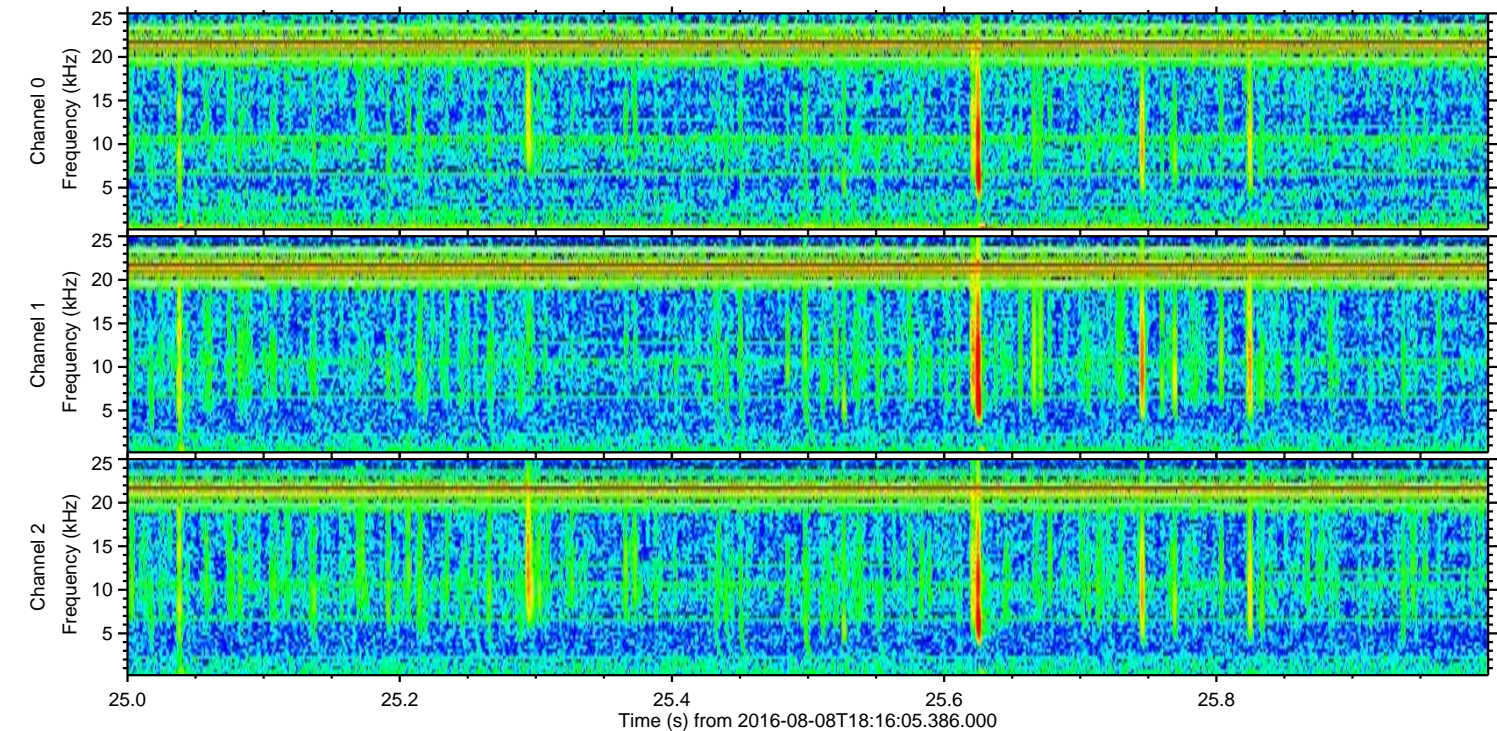
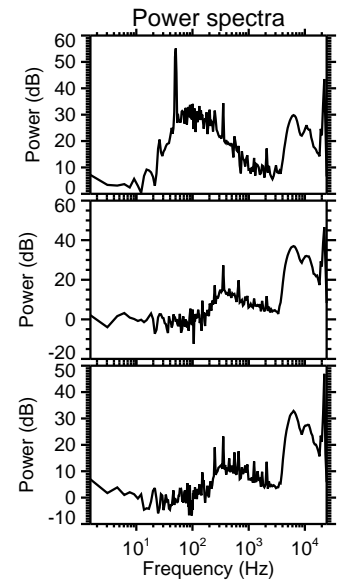
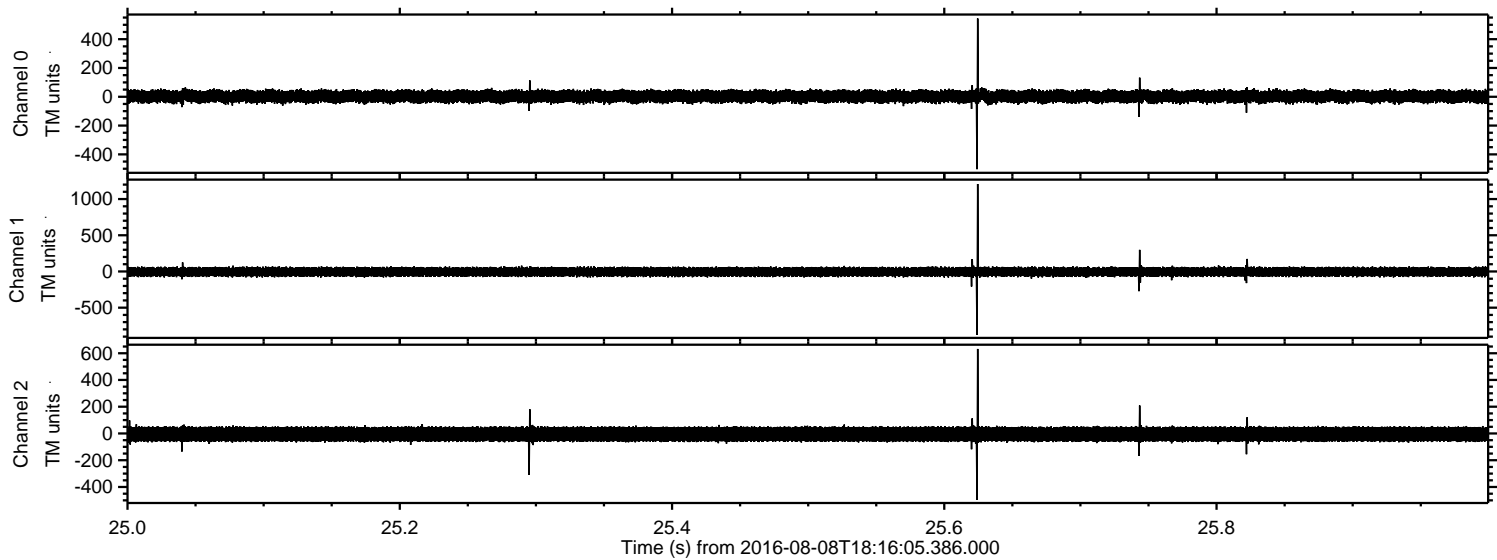


Processed Mon Aug 8 20:23:55 2016 by ELM ver.2012-10-06 from 001\_\_elm20160808\_181604\_\_dat00.bin



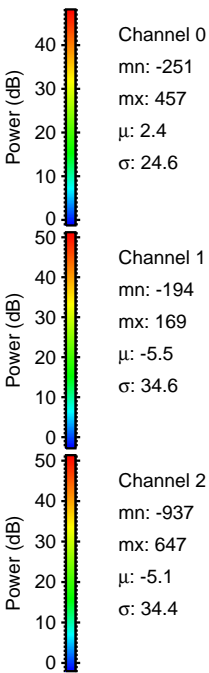
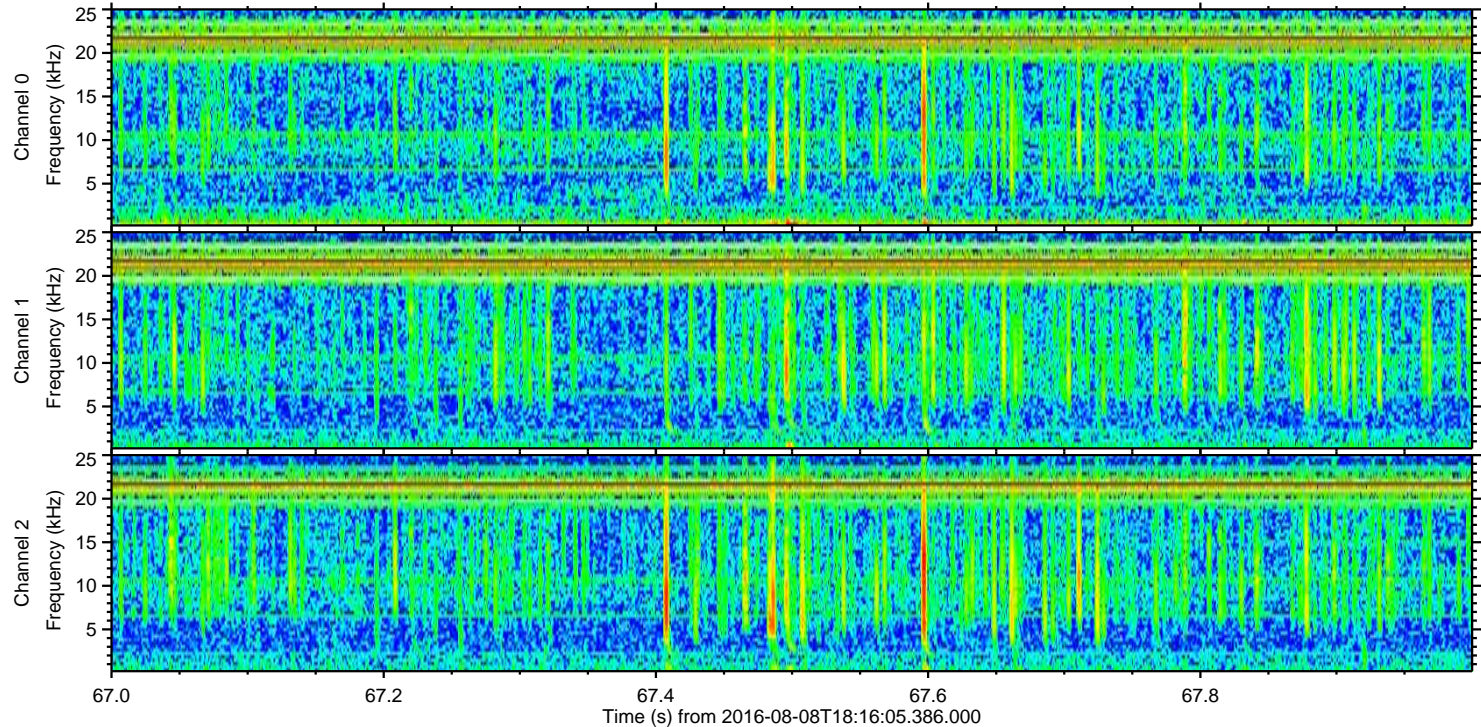
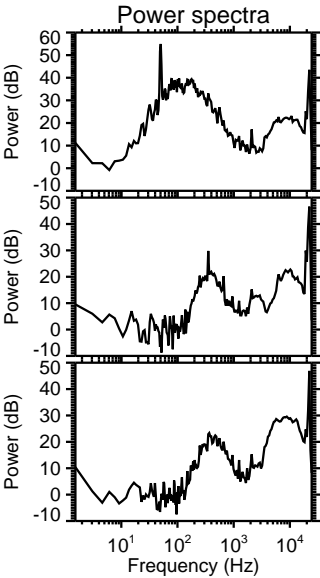
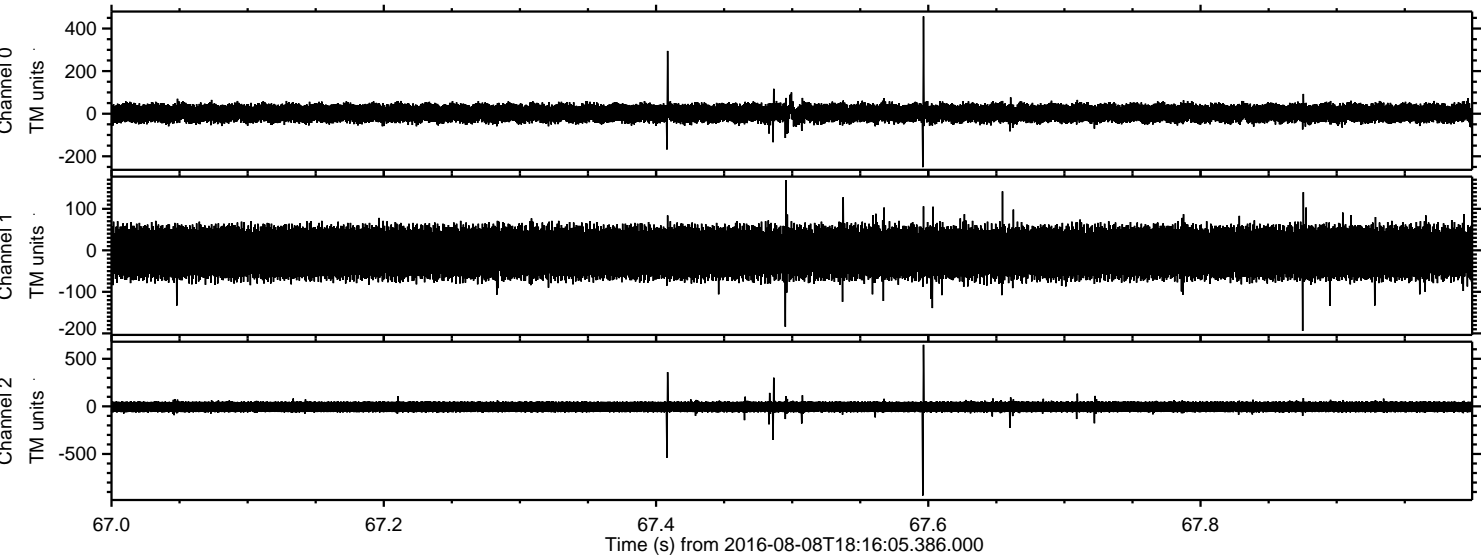


Processed Mon Aug 8 20:23:56 2016 by ELM ver.2012-10-06 from 001\_\_elm20160808\_181604\_\_dat00.bin



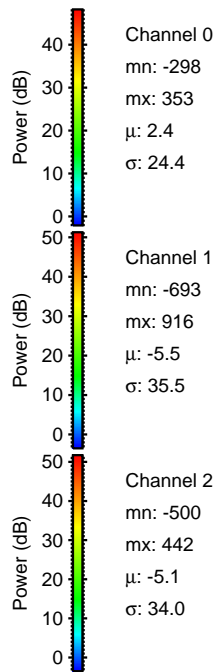
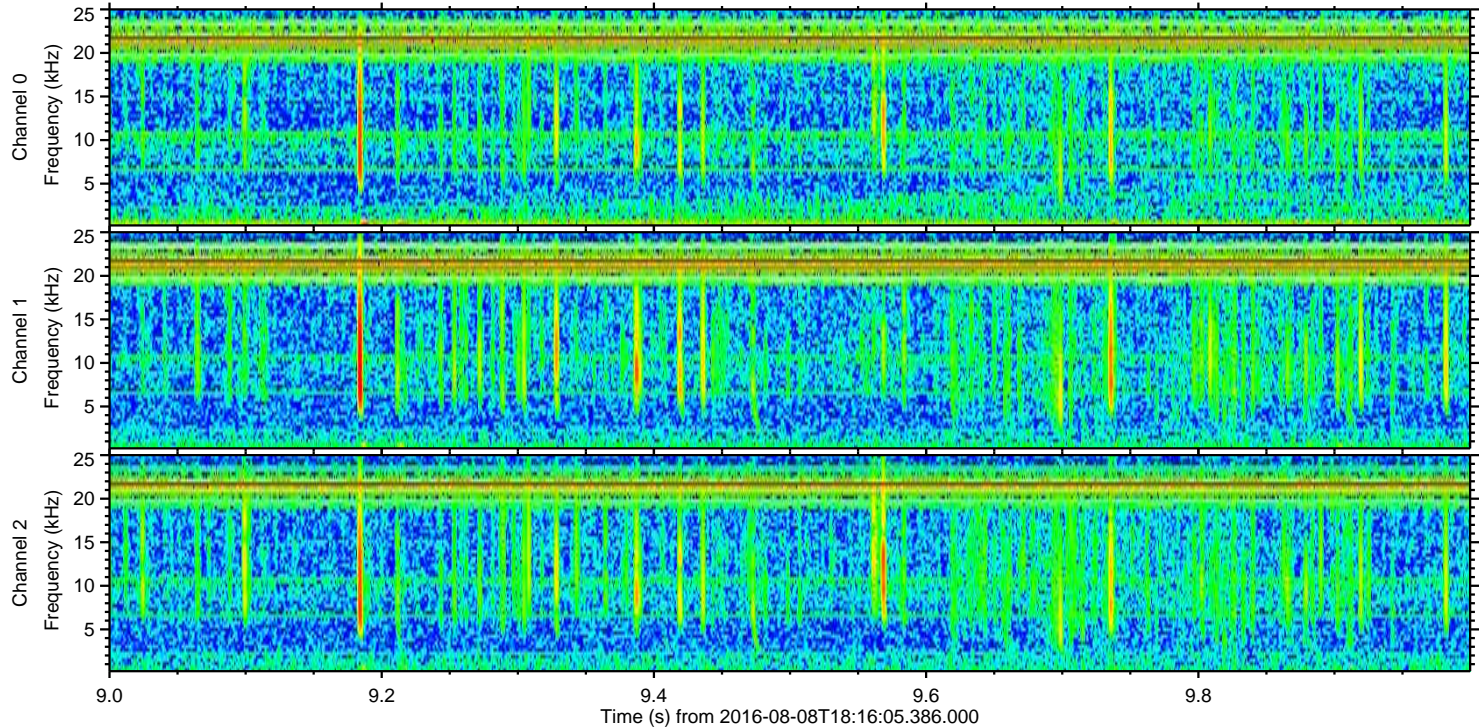
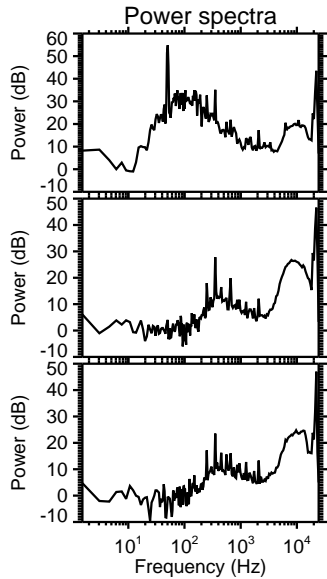
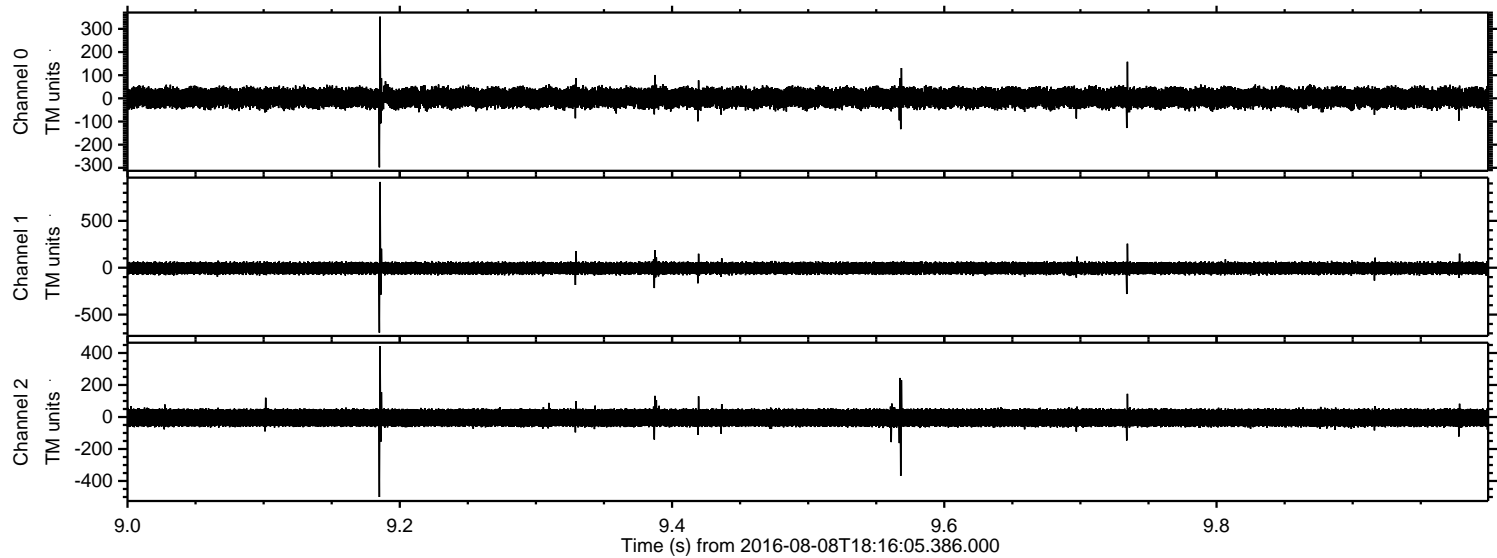


Processed Mon Aug 8 20:23:57 2016 by ELM ver.2012-10-06 from 001\_\_elm20160808\_181604\_\_dat00.bin





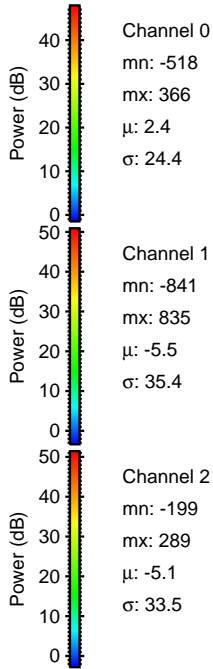
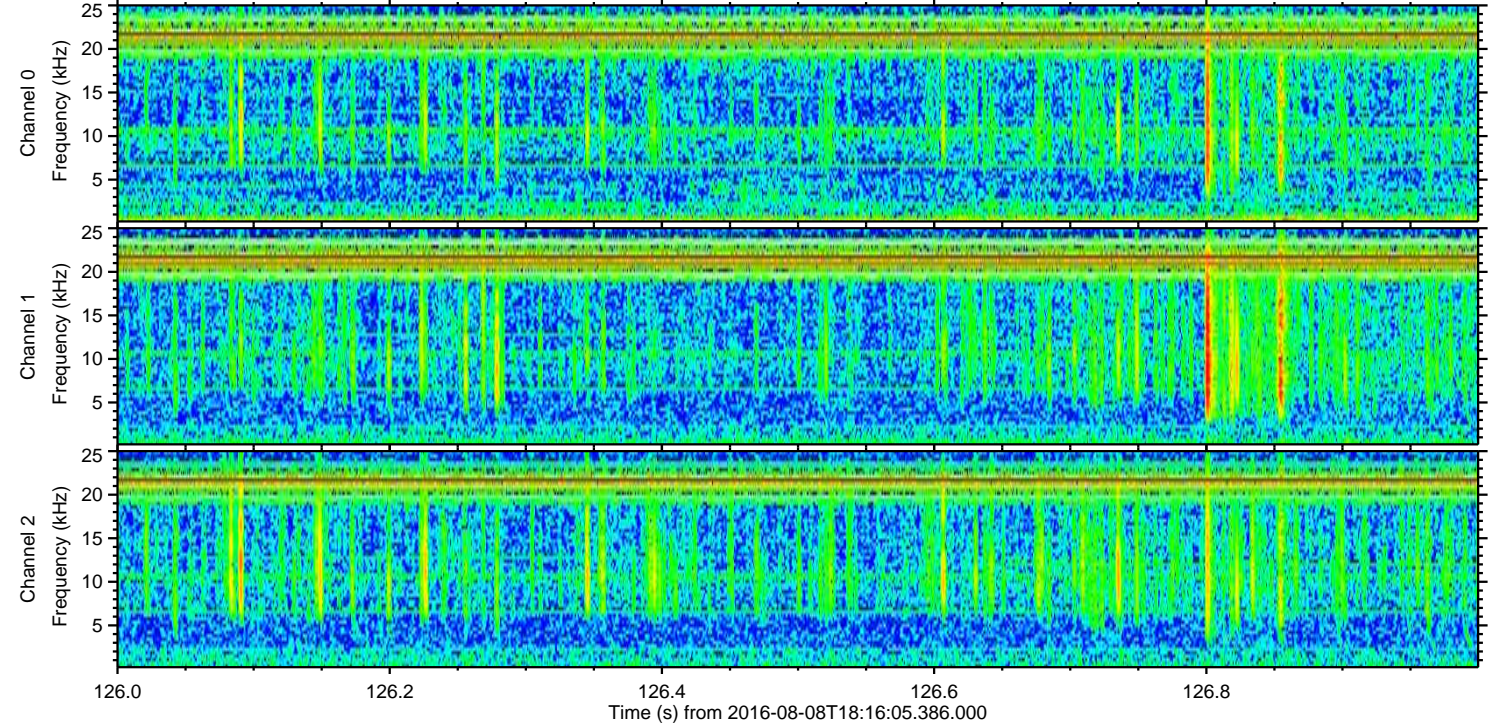
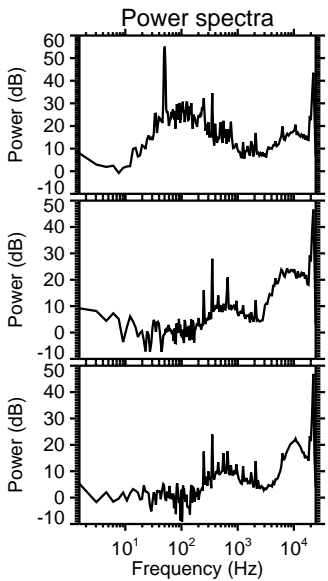
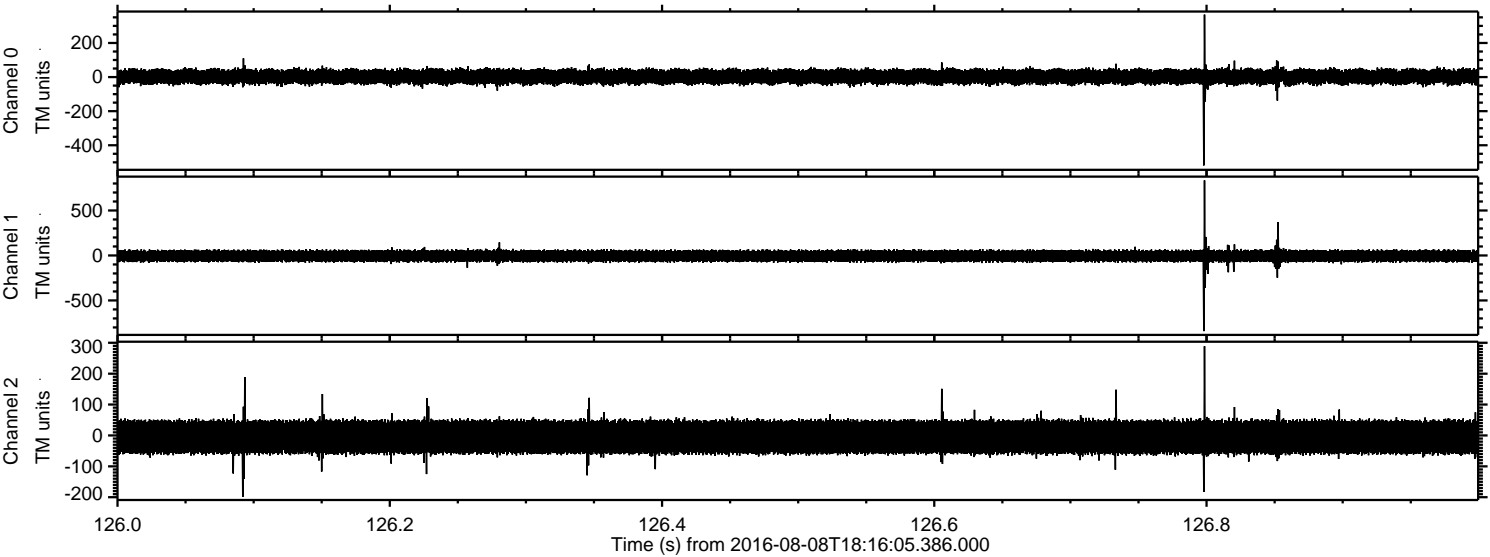
Processed Mon Aug 8 20:23:58 2016 by ELM ver.2012-10-06 from 001\_\_elm20160808\_181604\_\_dat00.bin





ELMAVAN 3D WAVEFORMS (Measured data sampled at 50 kHz) 51000 packets of 144 samples from 2016-08-08T18:16:05.386.000. Part 127/147

Processed Mon Aug 8 20:23:59 2016 by ELM ver.2012-10-06 from 001\_\_elm20160808\_181604\_\_dat00.bin





ELMAVAN 3D WAVEFORMS (Measured data sampled at 50 kHz) 51000 packets of 144 samples from 2016-08-08T18:16:05.386.000. Part 116/147

Processed Mon Aug 8 20:24:00 2016 by ELM ver.2012-10-06 from 001\_\_elm20160808\_181604\_\_dat00.bin

