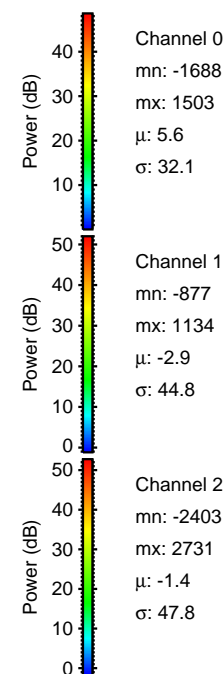
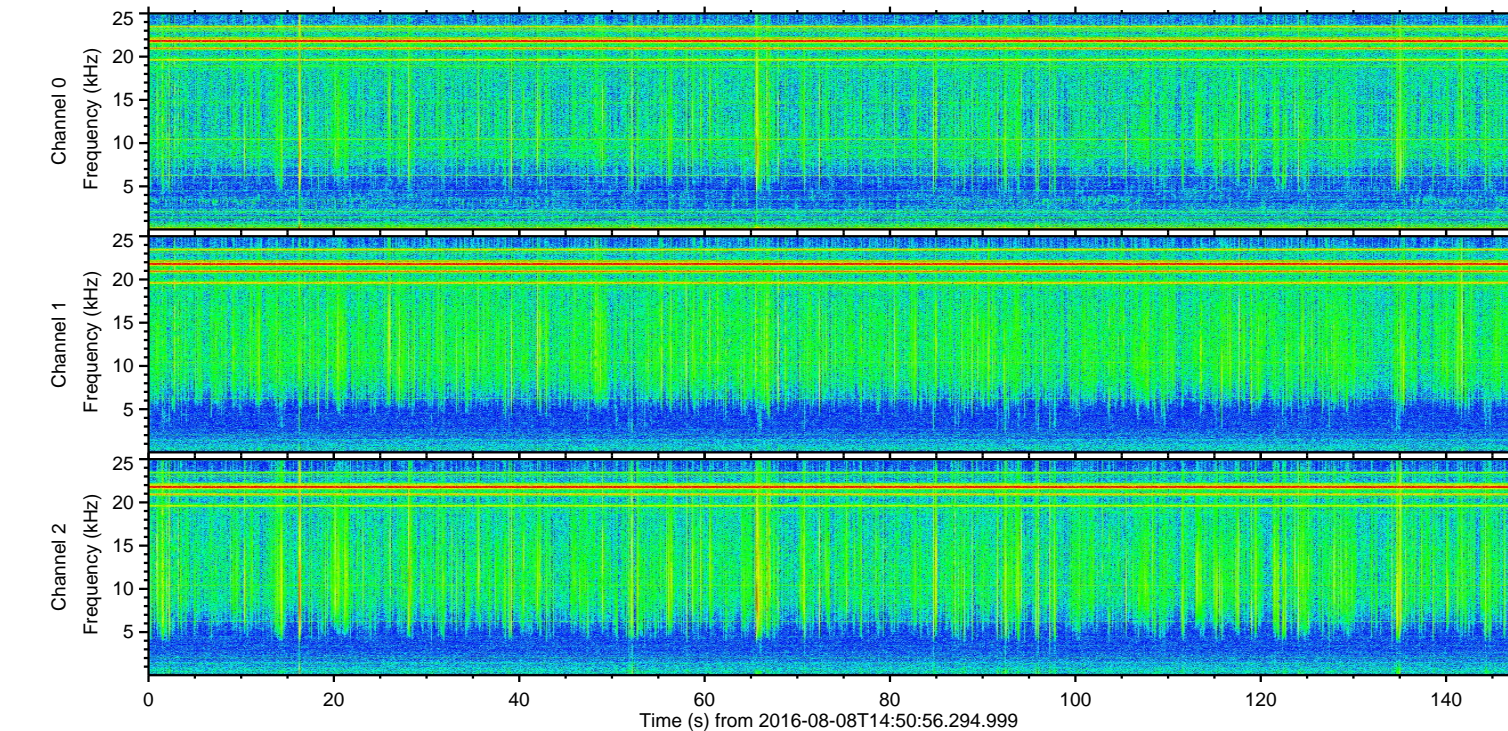
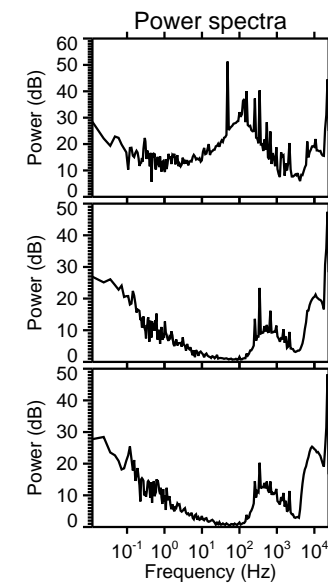
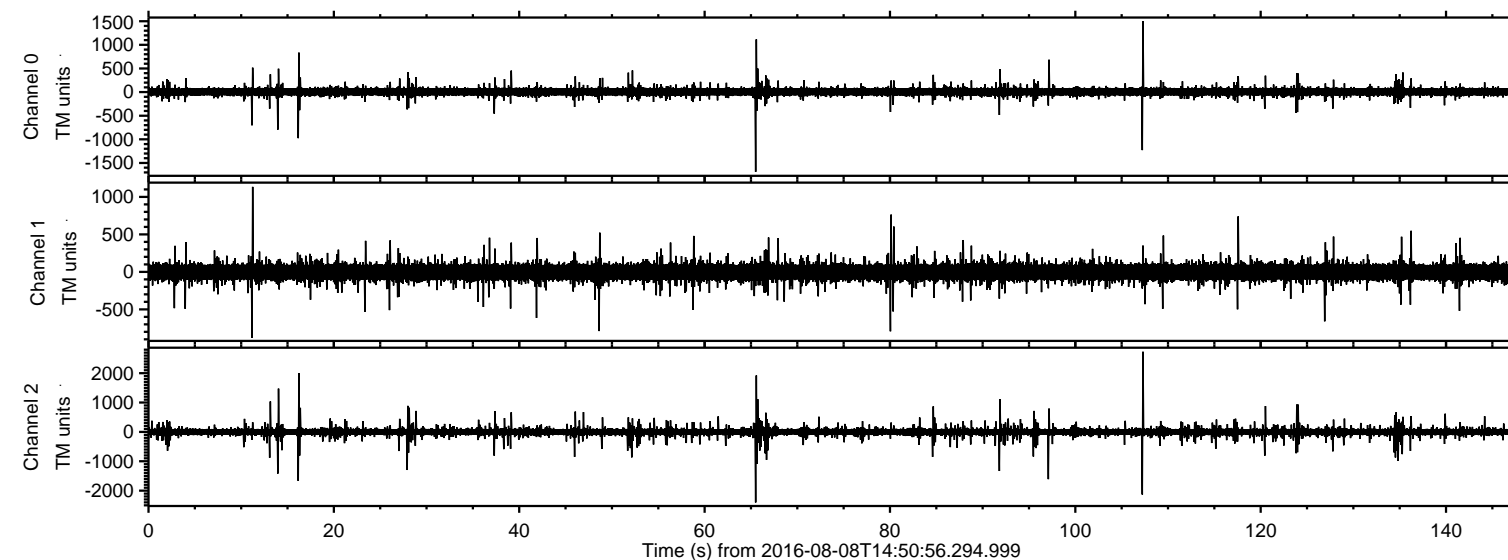


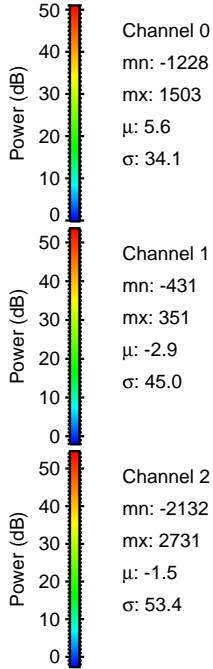
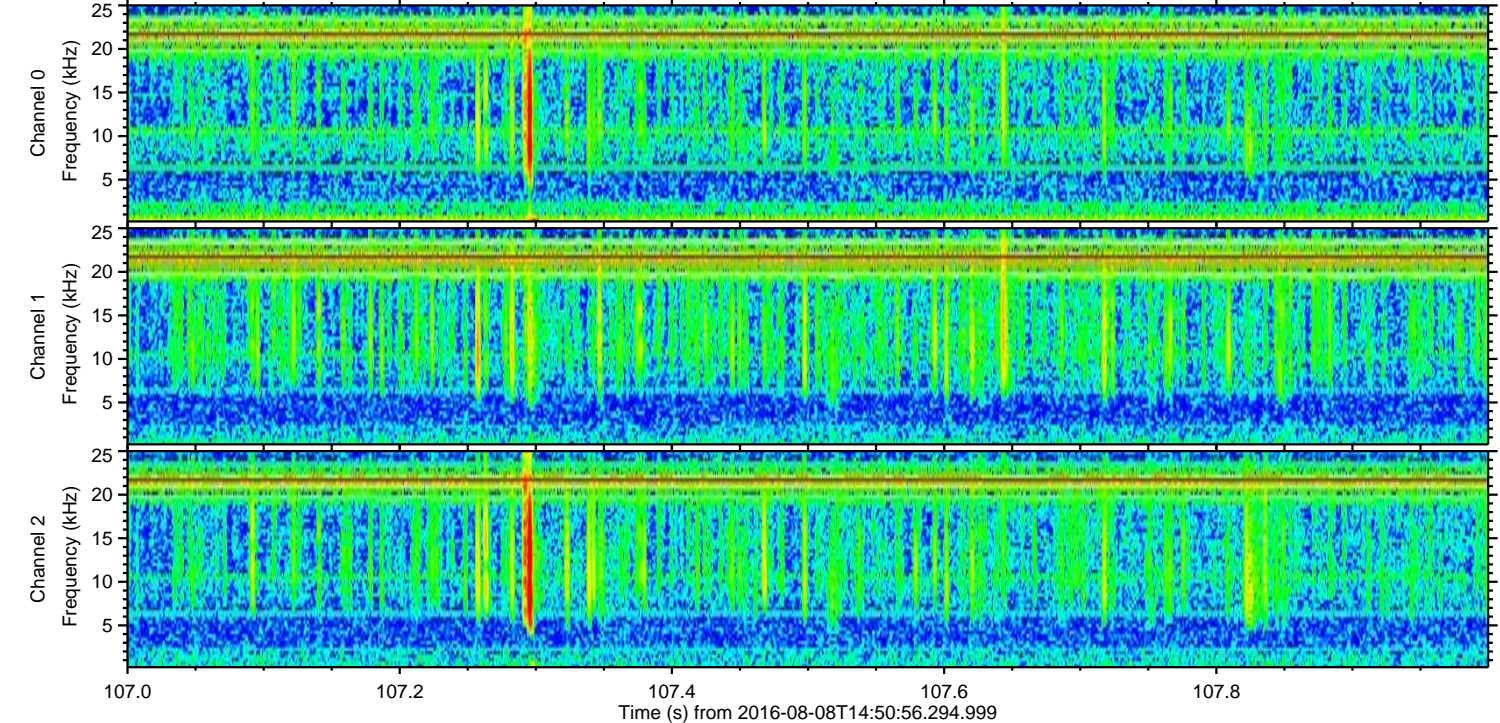
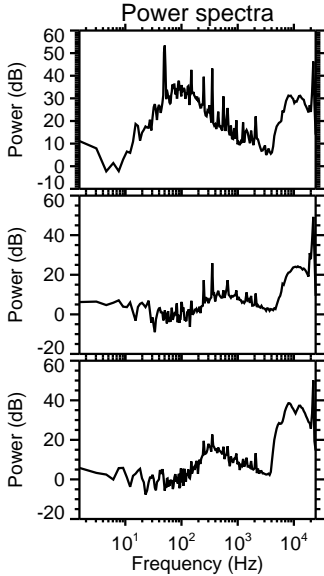
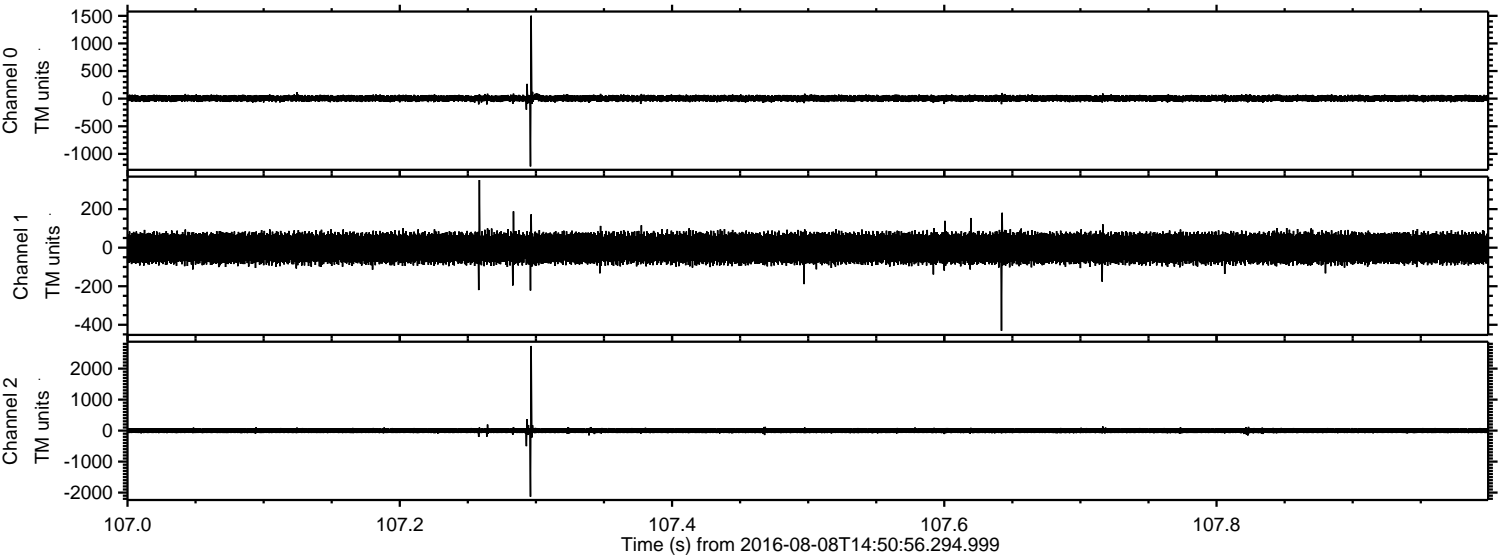
ELMAVAN 3D WAVEFORMS (Measured data sampled at 50 kHz) 51000 packets of 144 samples from 2016-08-08T14:50:56.294.999.

Processed Mon Aug 8 16:59:17 2016 by ELM ver.2012-10-06 from 001__elm20160808_145055__dat00.bin



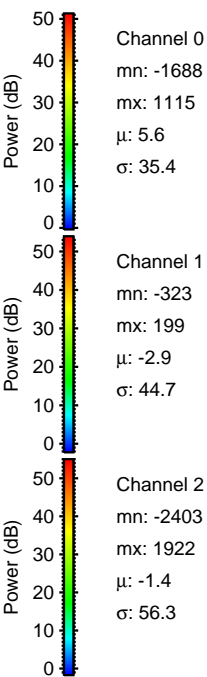
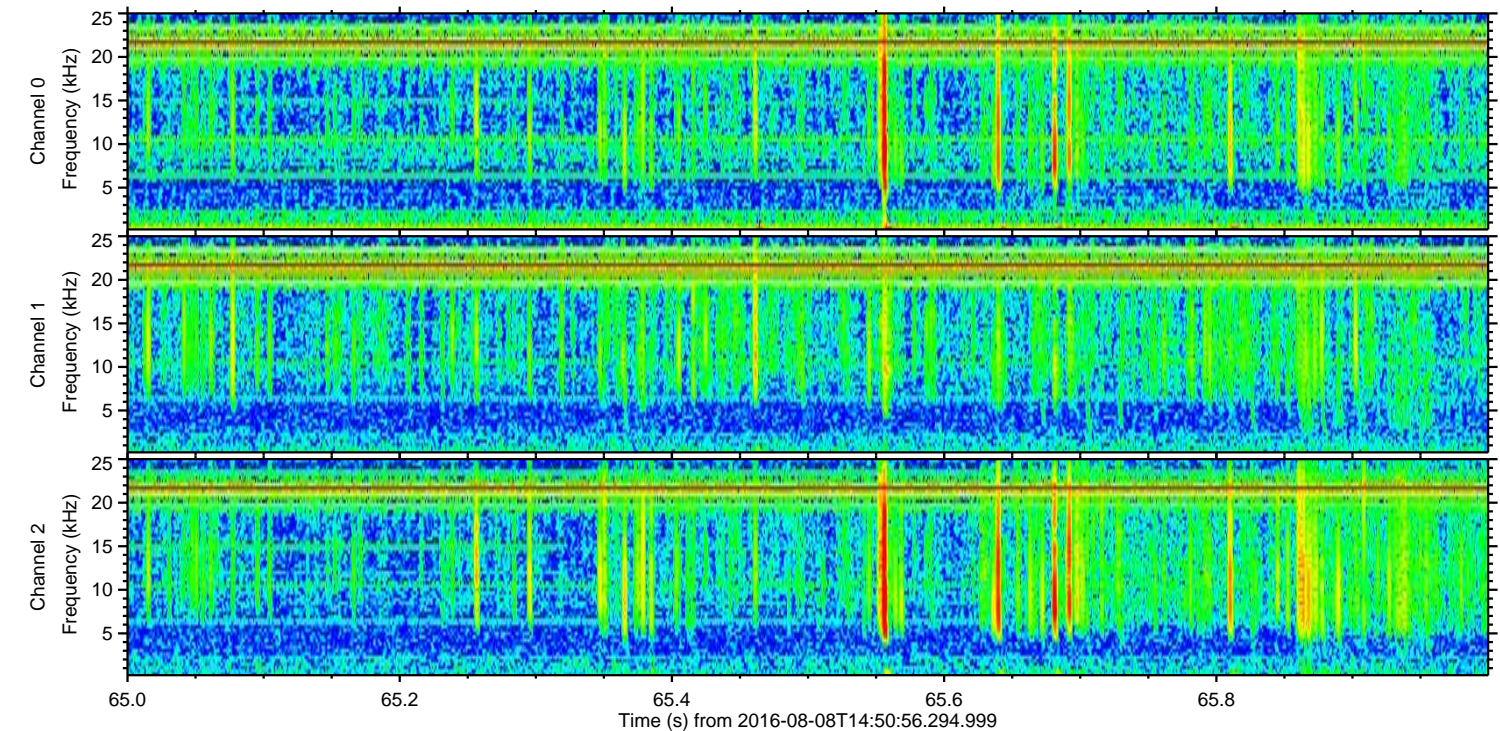
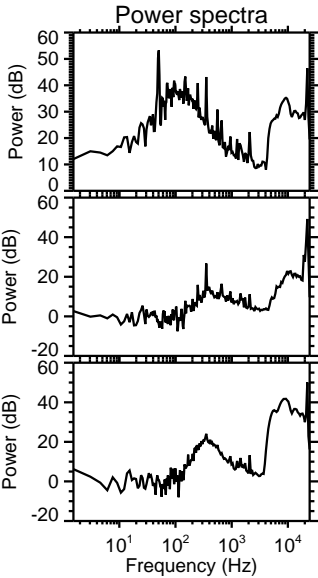
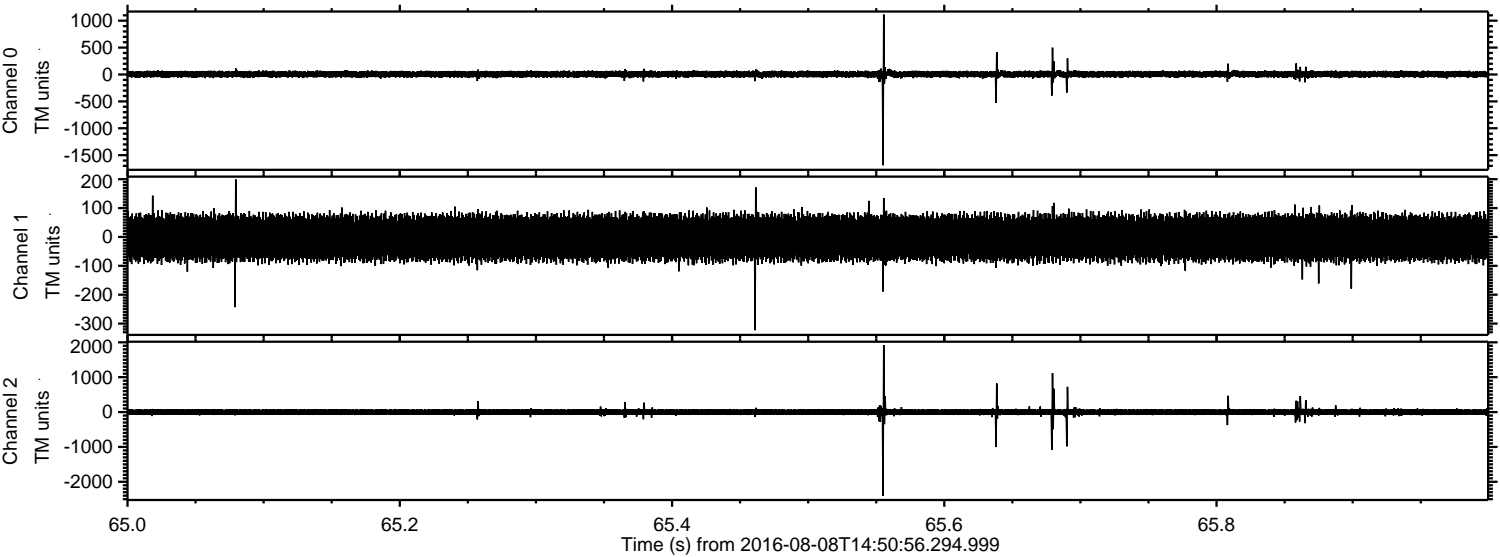
ELMAVAN 3D WAVEFORMS (Measured data sampled at 50 kHz) 51000 packets of 144 samples from 2016-08-08T14:50:56.294.999. Part 108/147

Processed Mon Aug 8 16:59:29 2016 by ELM ver.2012-10-06 from 001__elm20160808_145055__dat00.bin



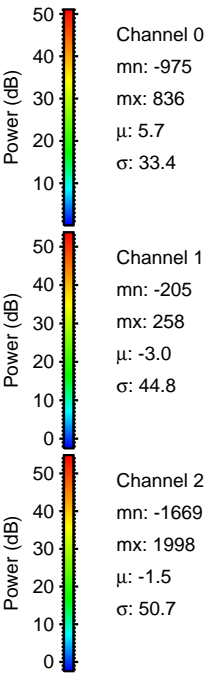
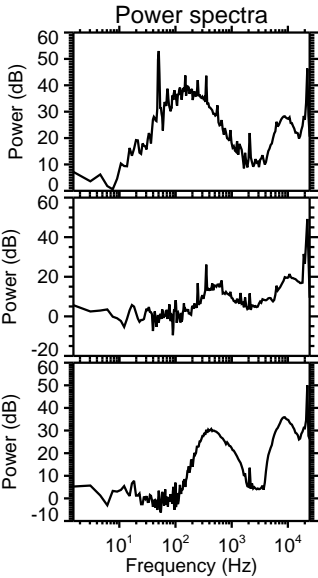
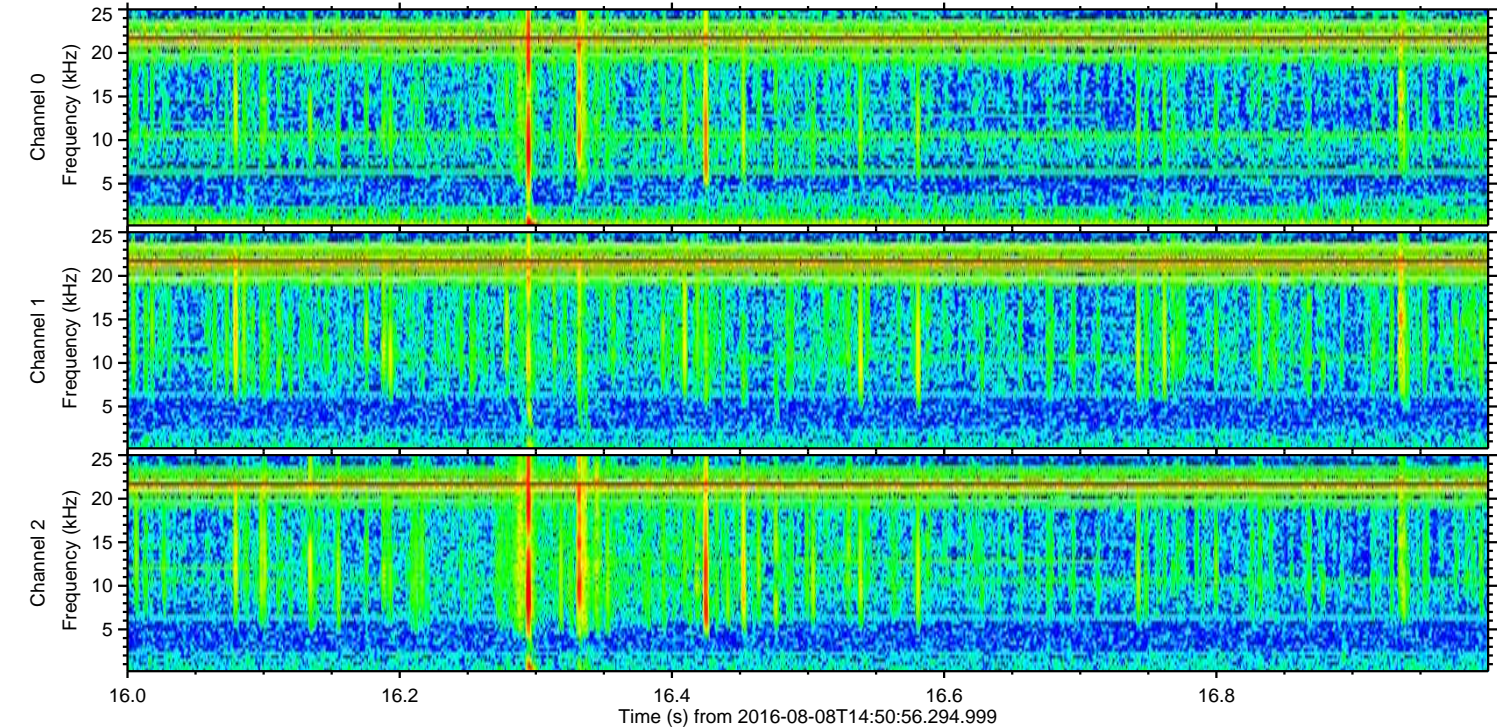
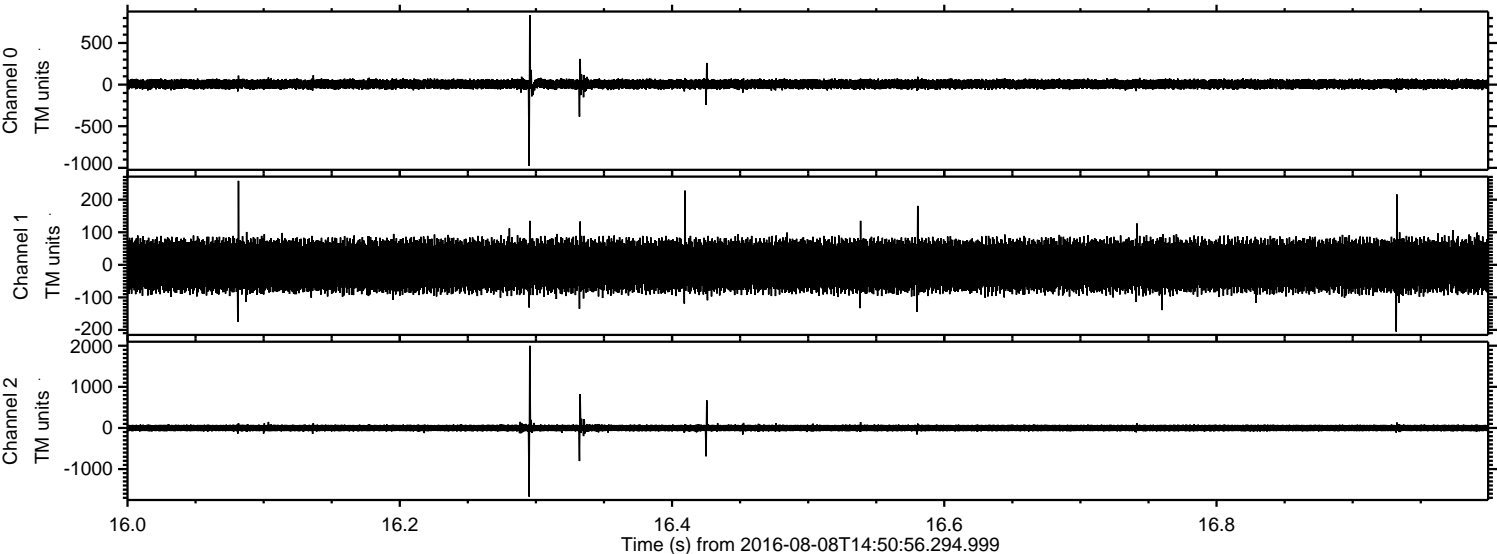
ELMAVAN 3D WAVEFORMS (Measured data sampled at 50 kHz) 51000 packets of 144 samples from 2016-08-08T14:50:56.294.999. Part 66/147

Processed Mon Aug 8 16:59:30 2016 by ELM ver.2012-10-06 from 001__elm20160808_145055__dat00.bin

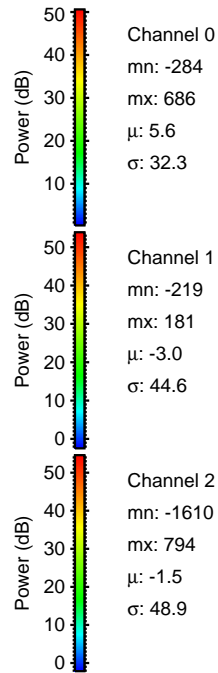
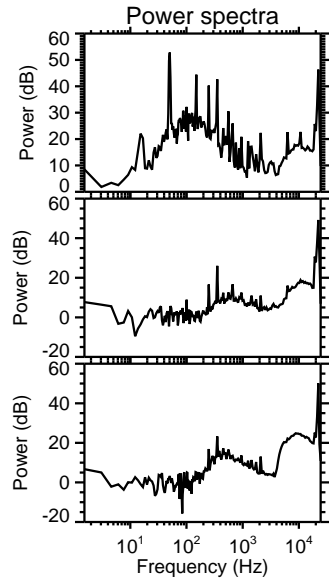
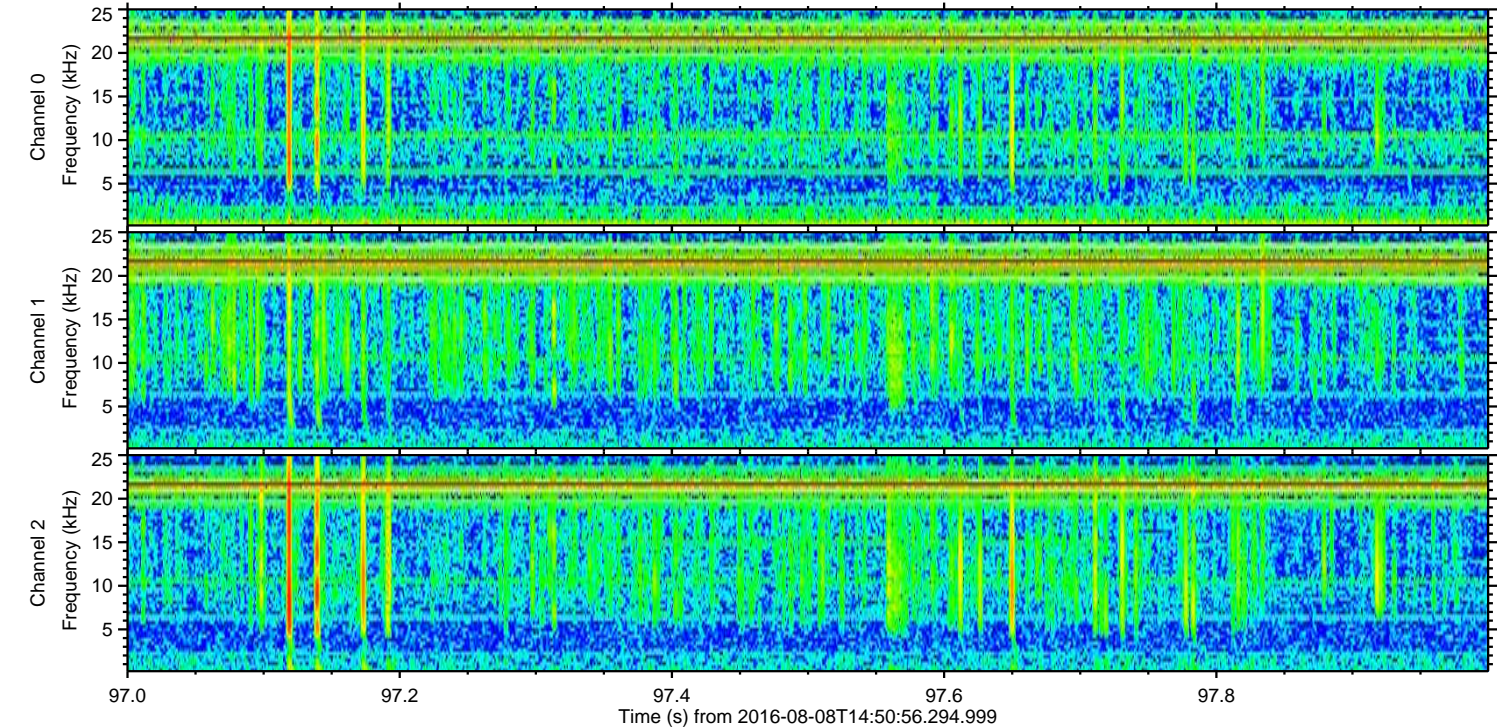
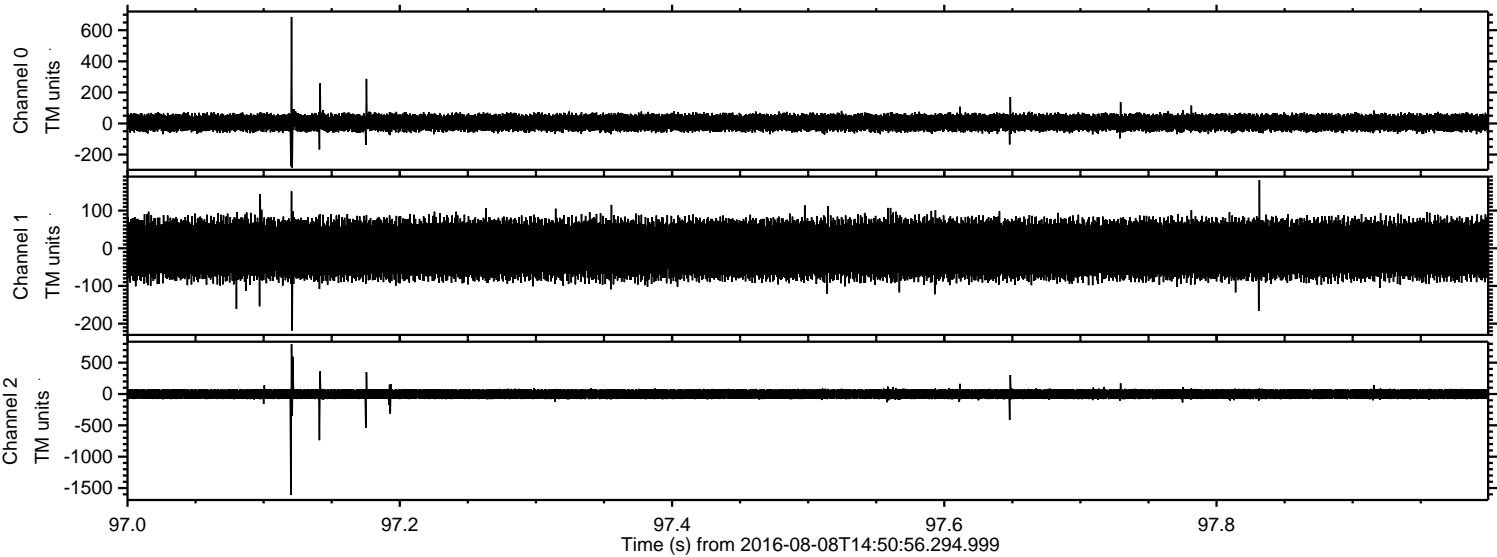


ELMAVAN 3D WAVEFORMS (Measured data sampled at 50 kHz) 51000 packets of 144 samples from 2016-08-08T14:50:56.294.999. Part 17/147

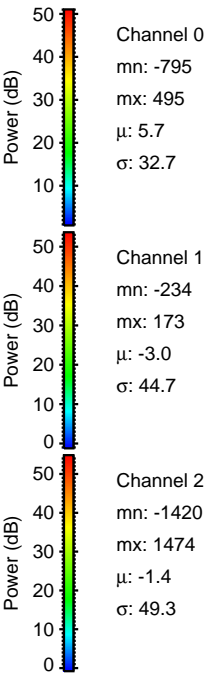
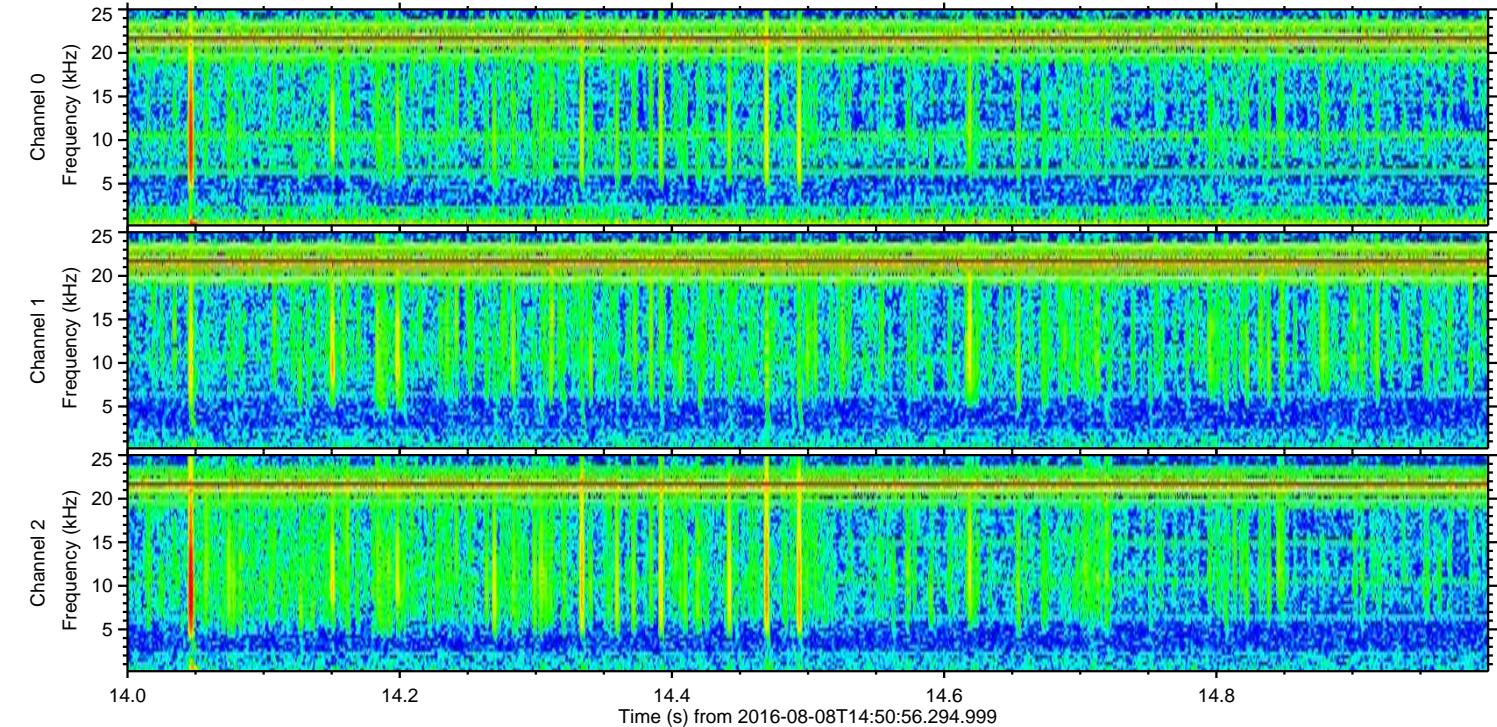
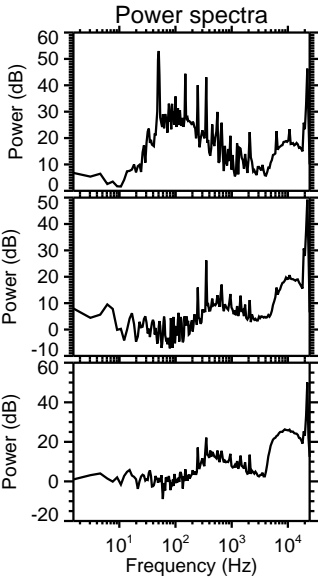
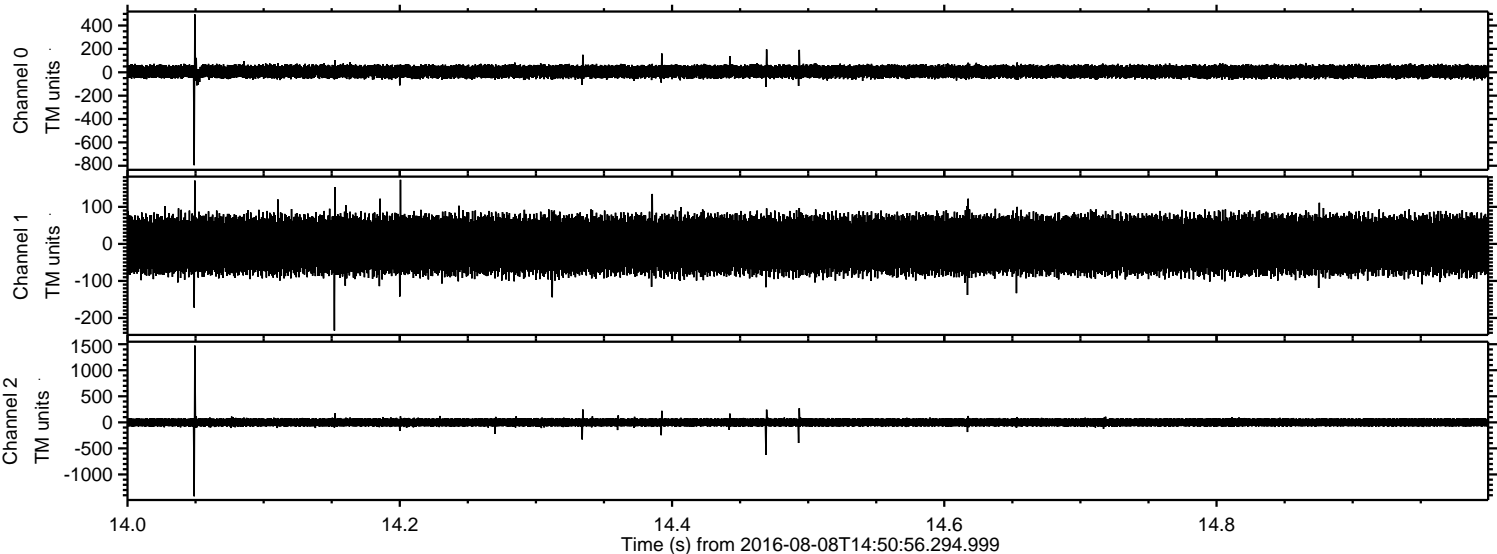
Processed Mon Aug 8 16:59:31 2016 by ELM ver.2012-10-06 from 001__elm20160808_145055__dat00.bin



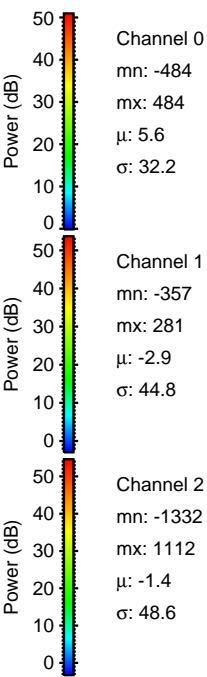
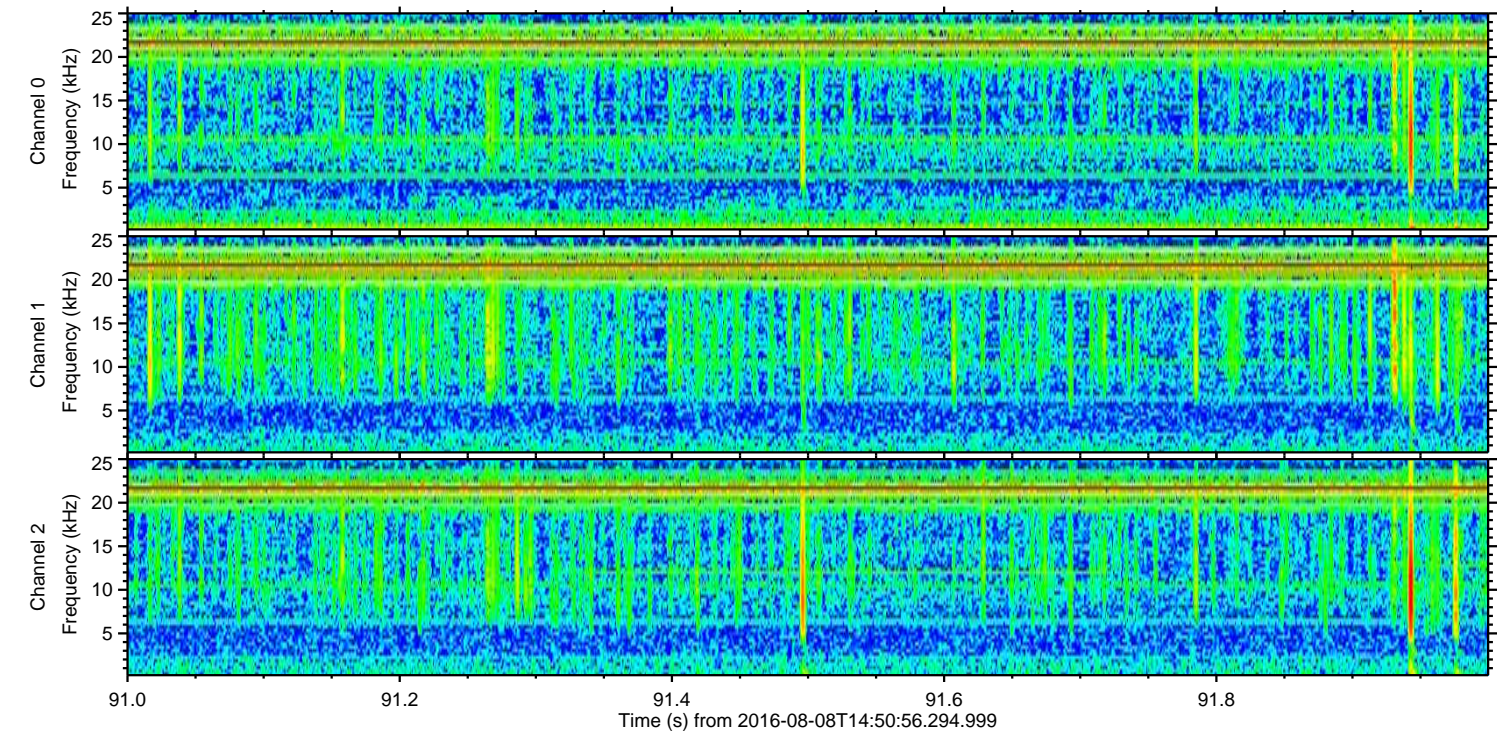
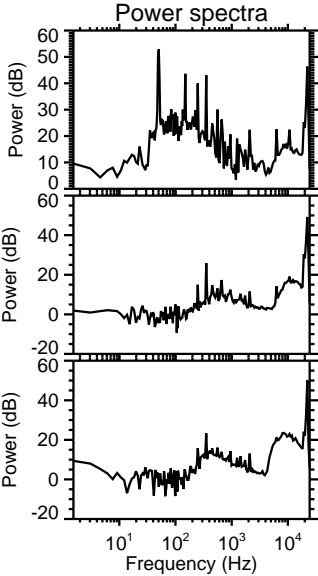
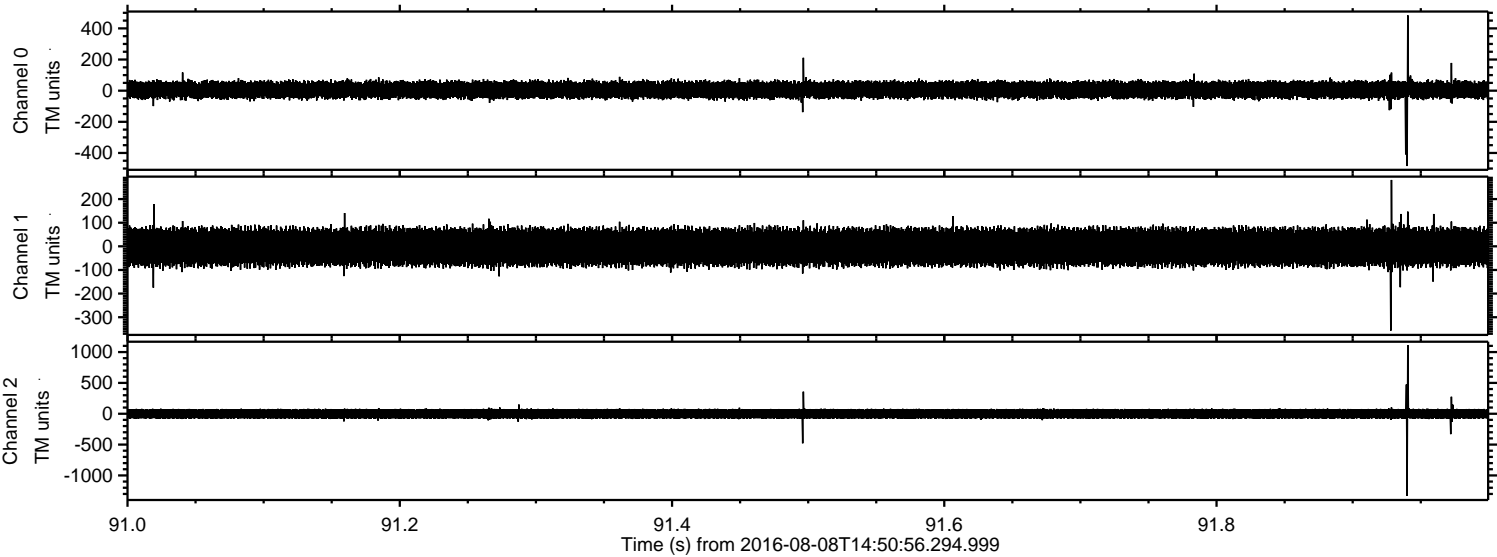
Processed Mon Aug 8 16:59:32 2016 by ELM ver.2012-10-06 from 001__elm20160808_145055__dat00.bin



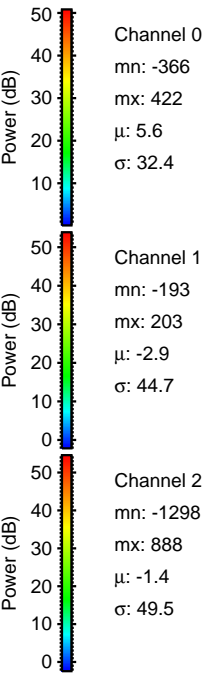
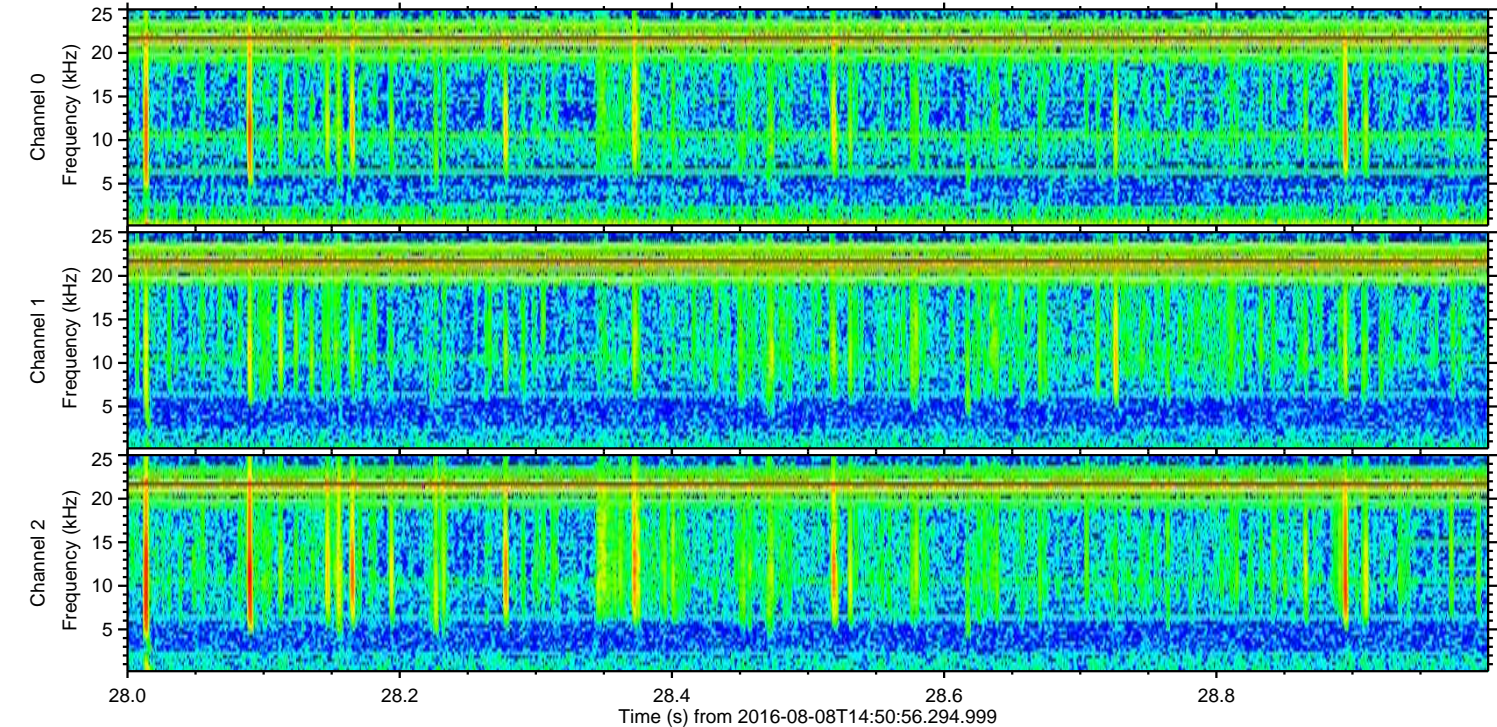
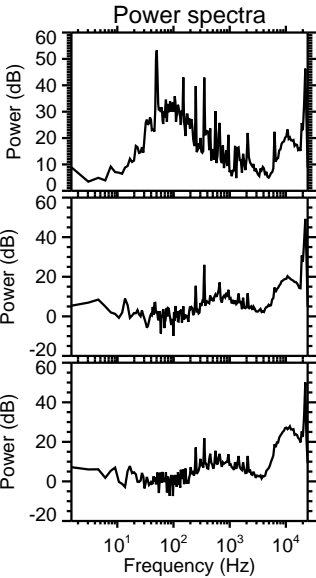
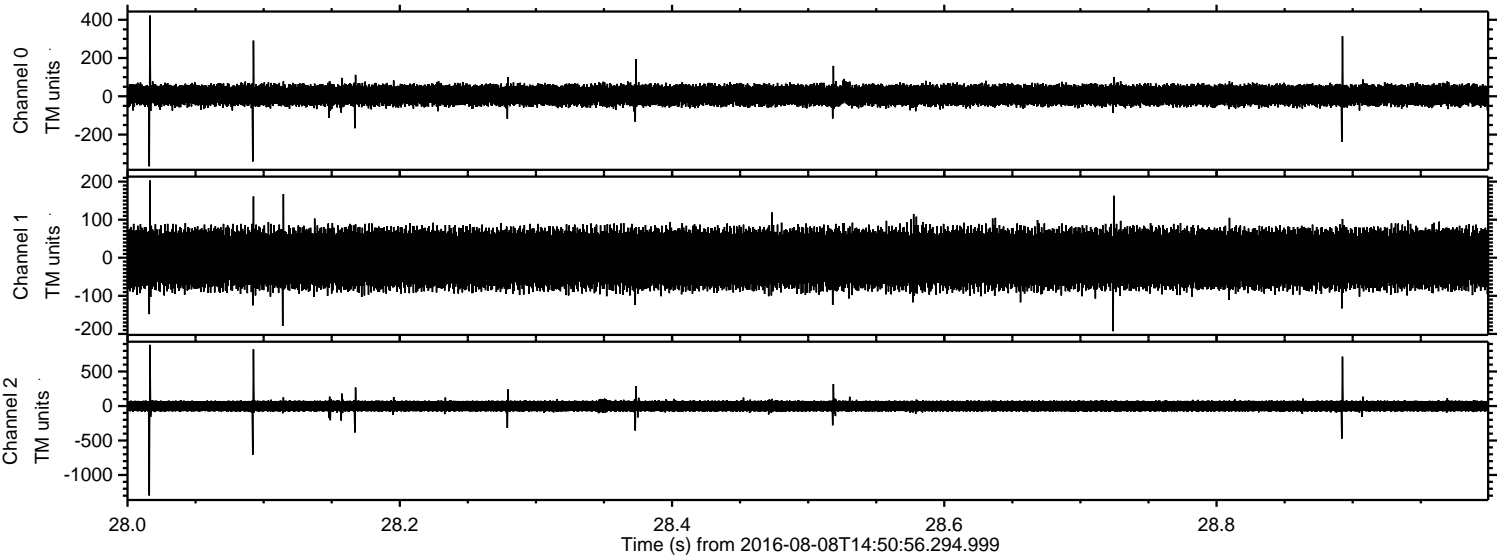
Processed Mon Aug 8 16:59:33 2016 by ELM ver.2012-10-06 from 001__elm20160808_145055__dat00.bin



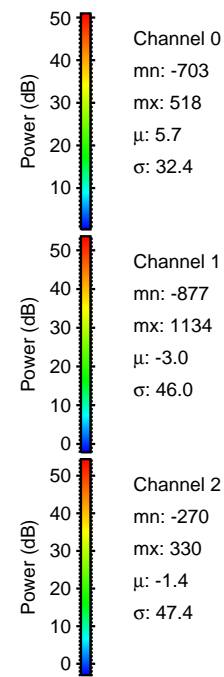
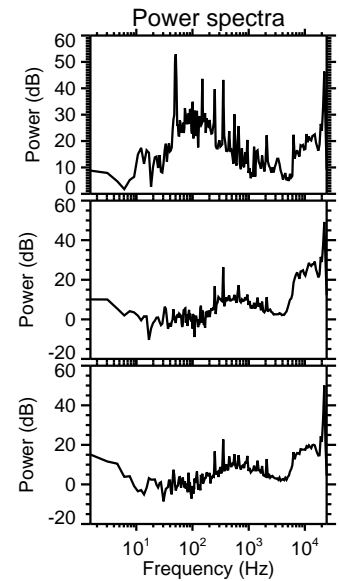
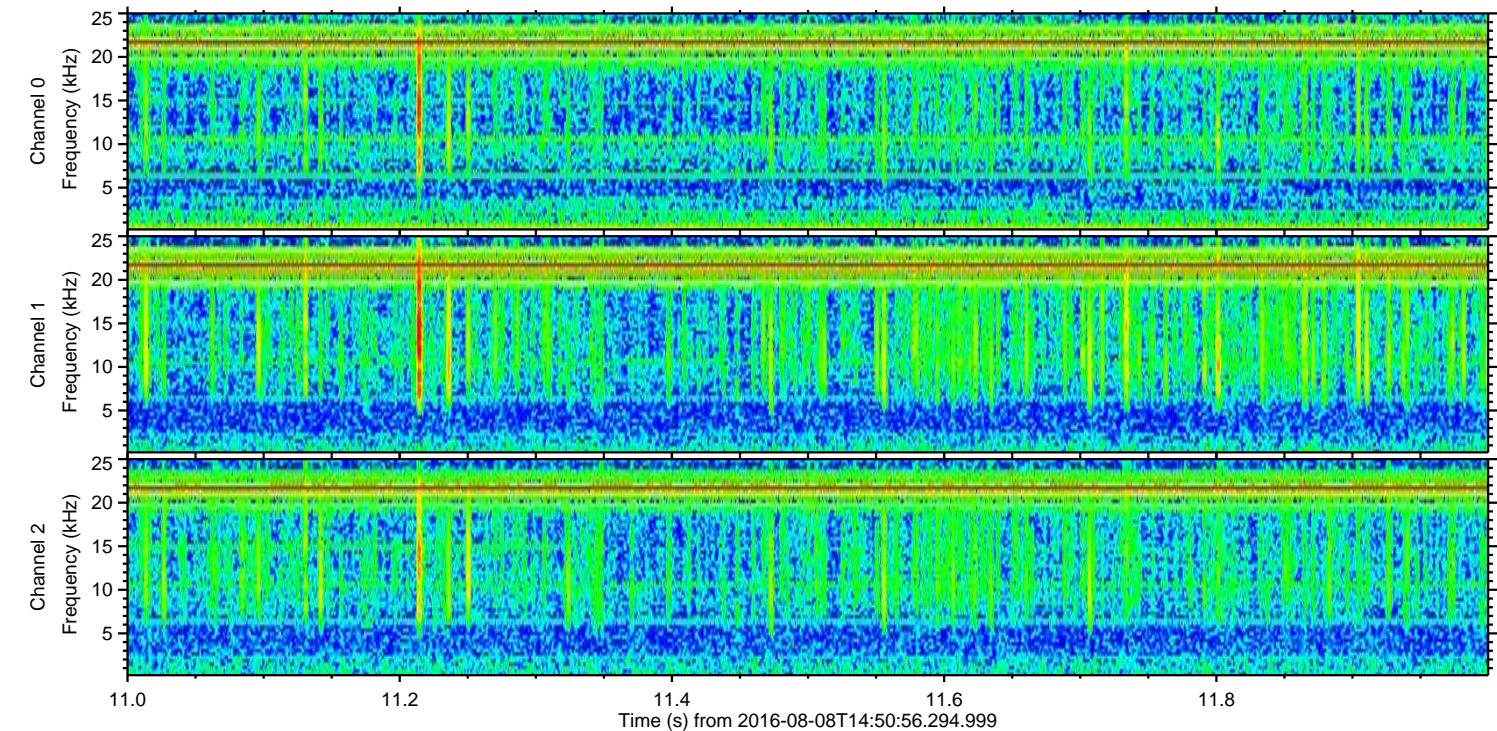
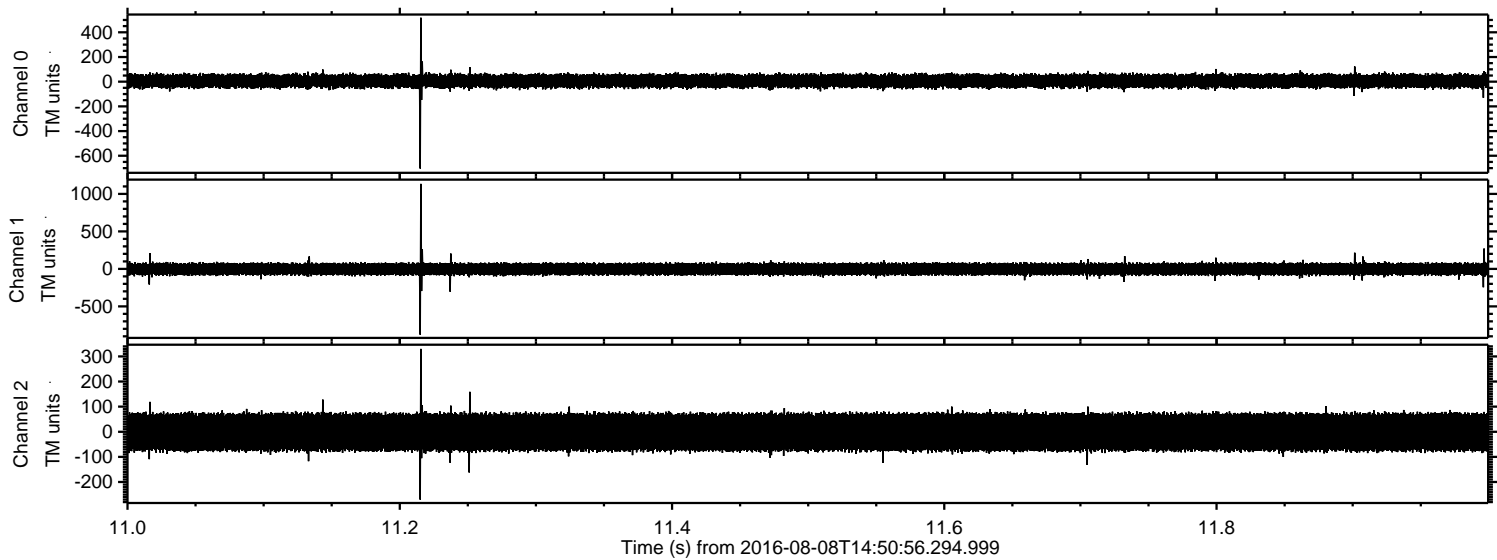
Processed Mon Aug 8 16:59:34 2016 by ELM ver.2012-10-06 from 001__elm20160808_145055__dat00.bin



Processed Mon Aug 8 16:59:35 2016 by ELM ver.2012-10-06 from 001__elm20160808_145055__dat00.bin



Processed Mon Aug 8 16:59:36 2016 by ELM ver.2012-10-06 from 001__elm20160808_145055__dat00.bin

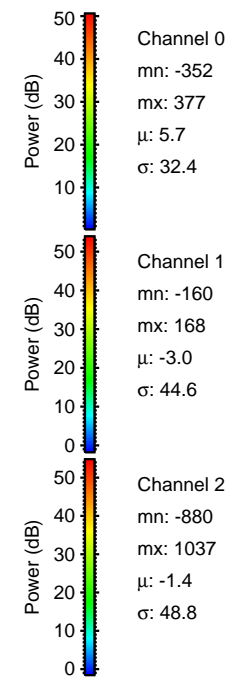
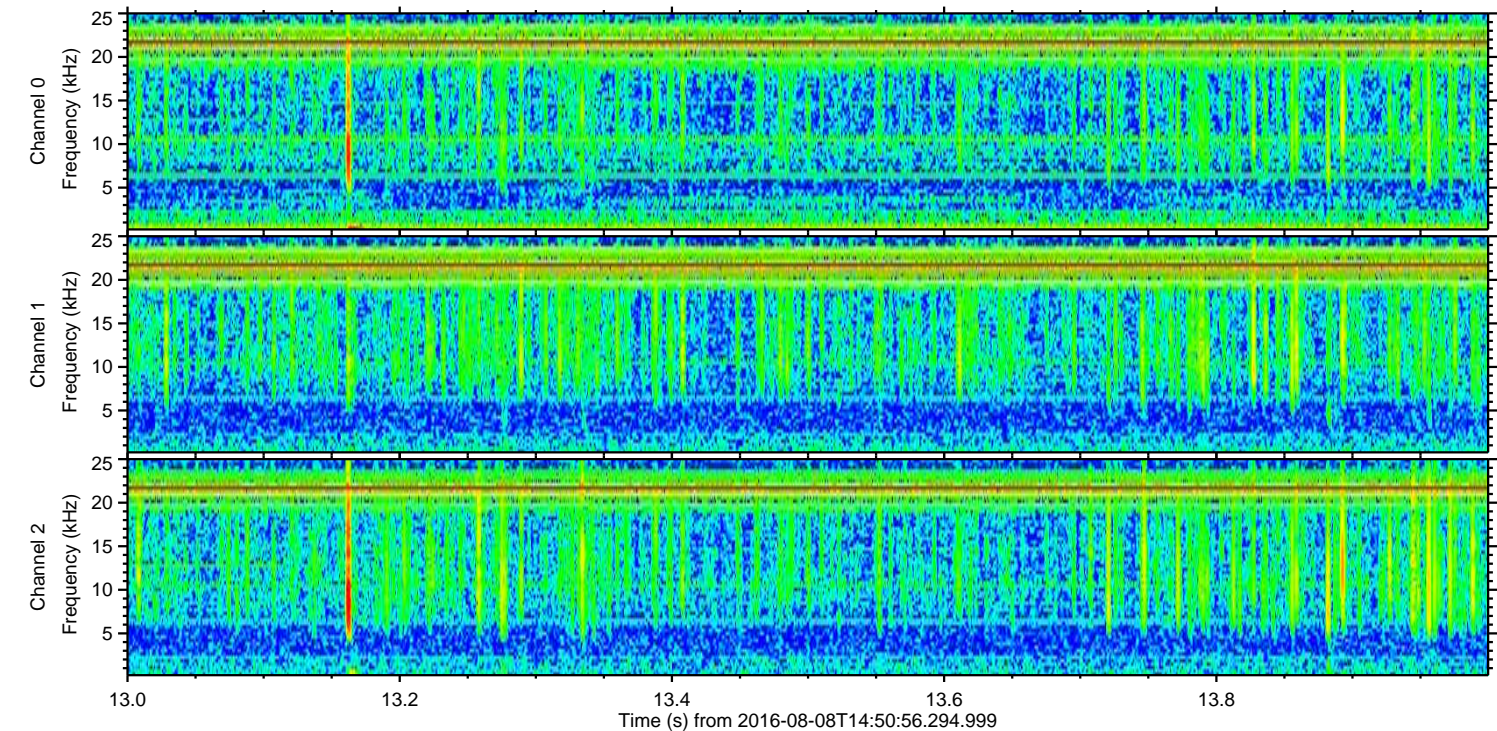
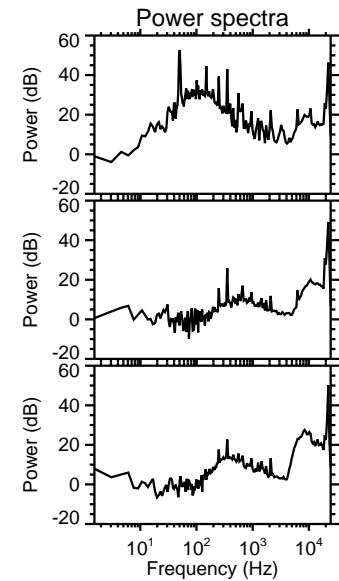
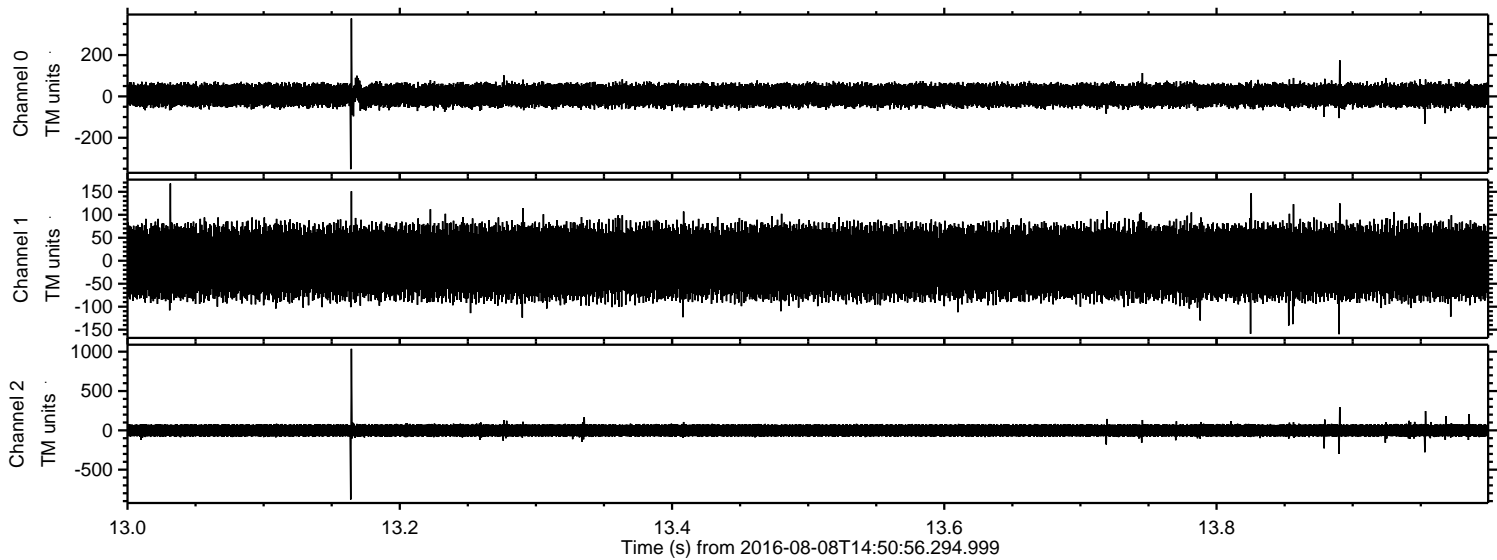


Channel 0
mn: -703
mx: 518
 μ : 5.7
 σ : 32.4

Channel 1
mn: -877
mx: 1134
 μ : -3.0
 σ : 46.0

Channel 2
mn: -270
mx: 330
 μ : -1.4
 σ : 47.4

Processed Mon Aug 8 16:59:36 2016 by ELM ver.2012-10-06 from 001__elm20160808_145055__dat00.bin



Processed Mon Aug 8 16:59:37 2016 by ELM ver.2012-10-06 from 001__elm20160808_145055__dat00.bin

