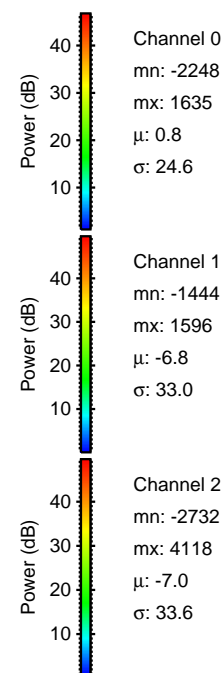
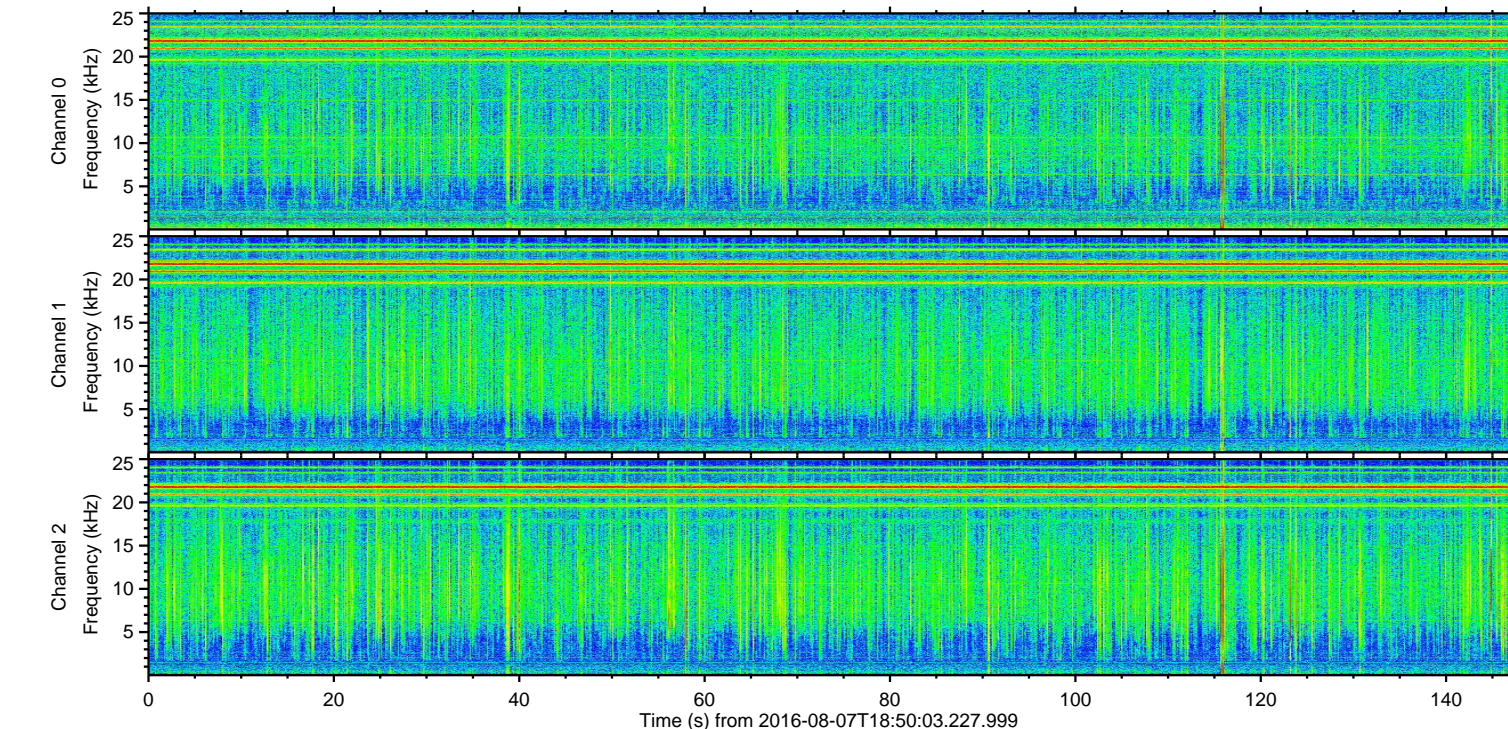
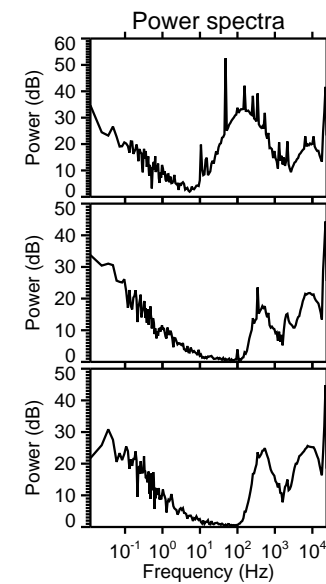
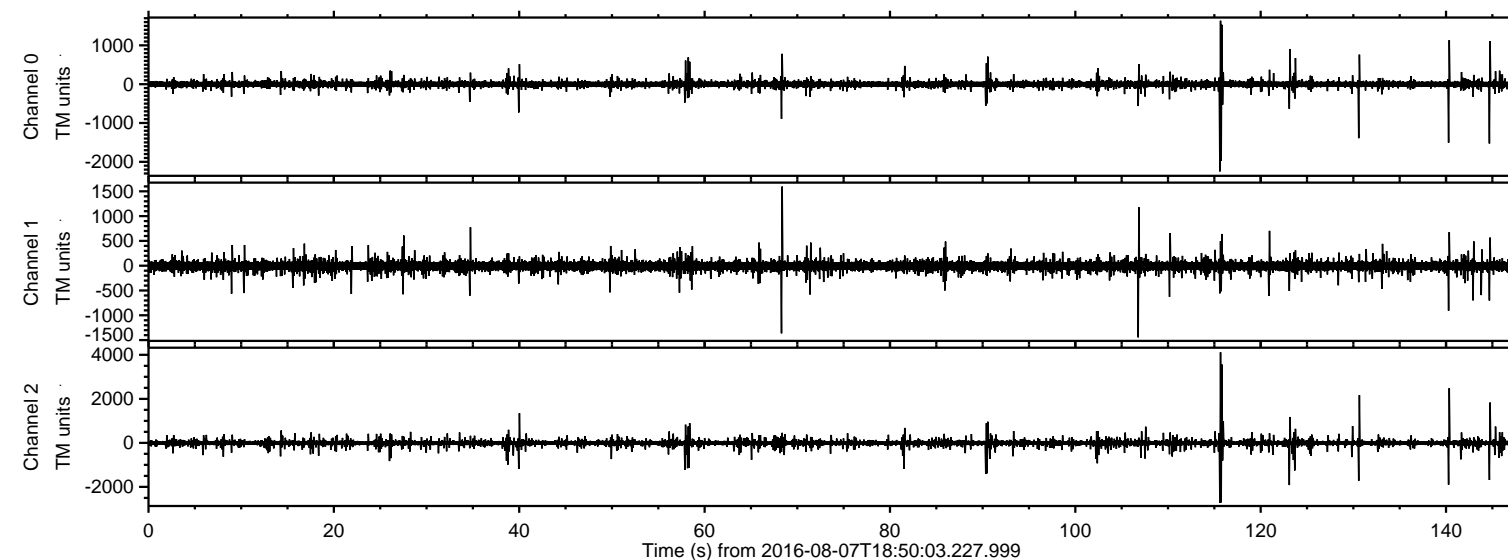


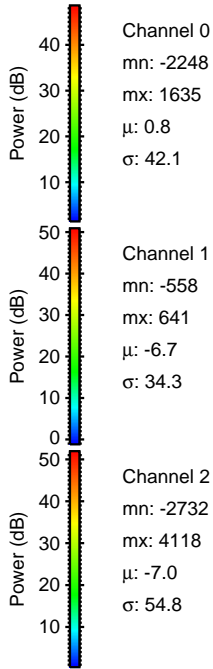
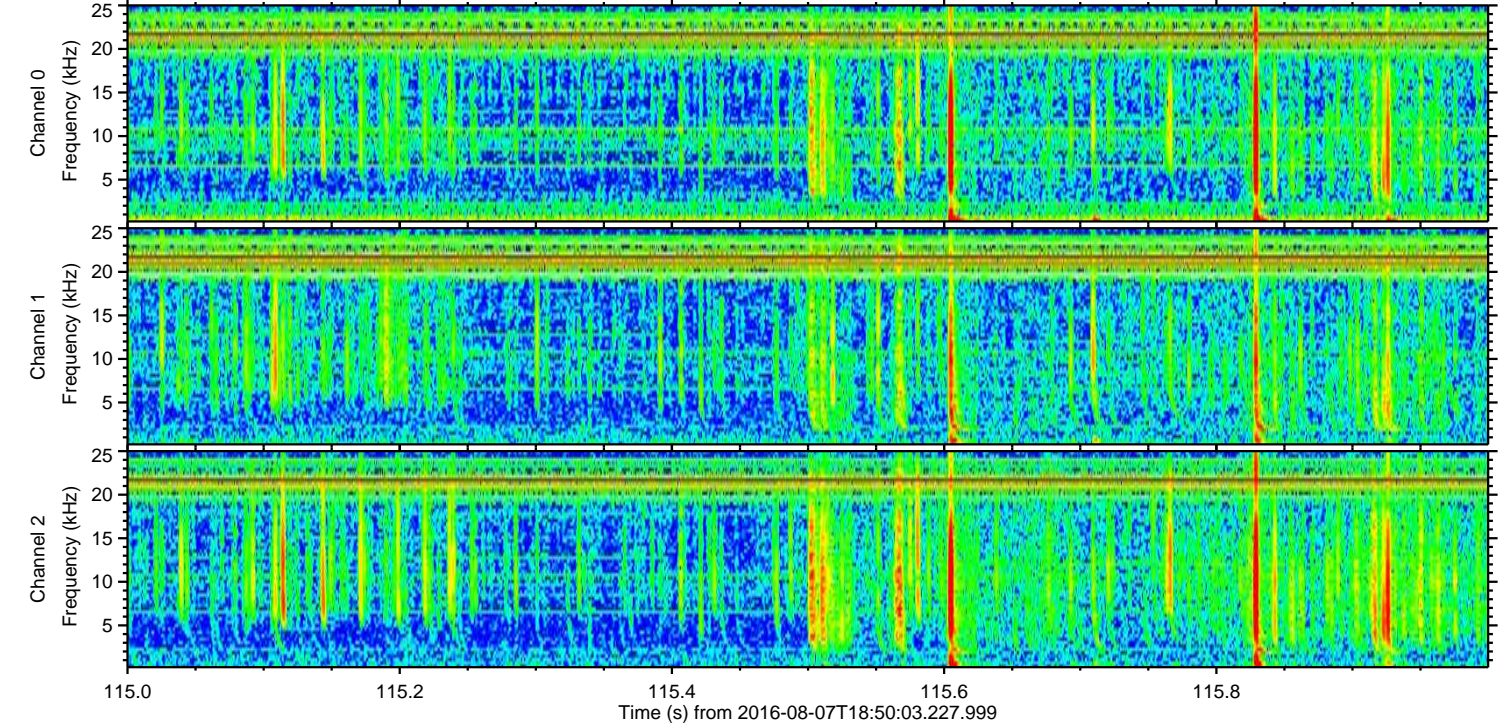
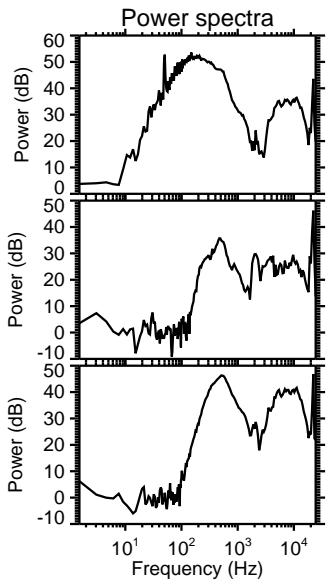
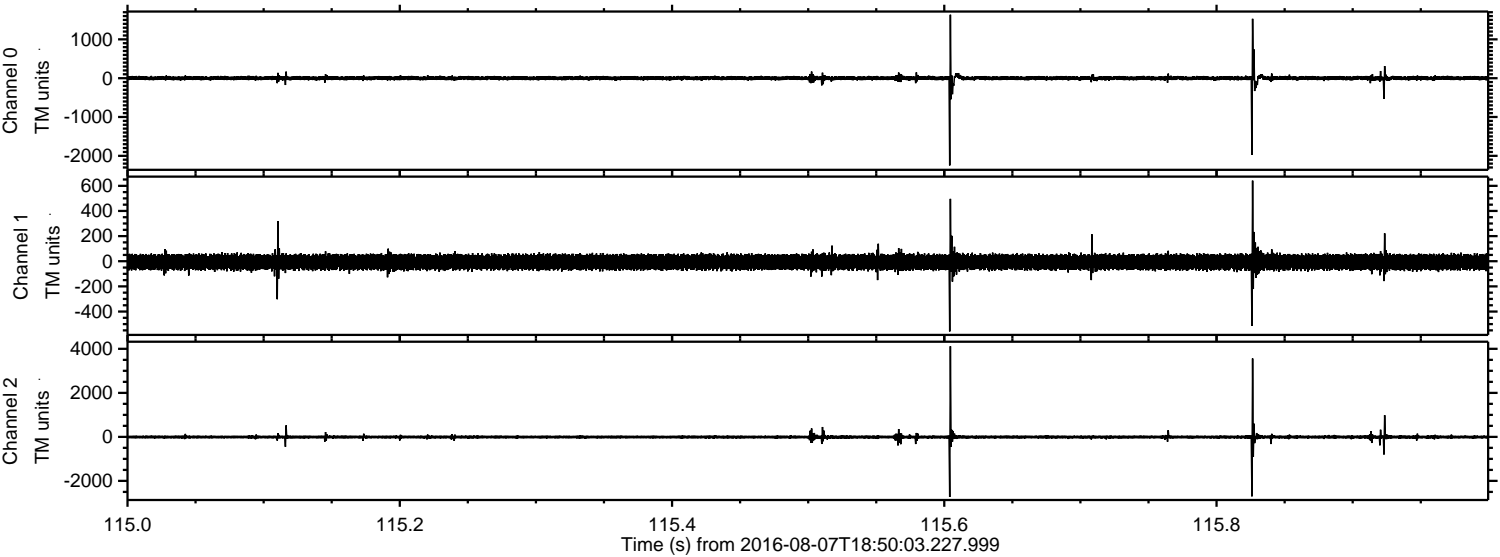
ELMAVAN 3D WAVEFORMS (Measured data sampled at 50 kHz) 51000 packets of 144 samples from 2016-08-07T18:50:03.227.999.

Processed Sun Aug 7 20:57:49 2016 by ELM ver.2012-10-06 from 001__elm20160807_185002__dat00.bin



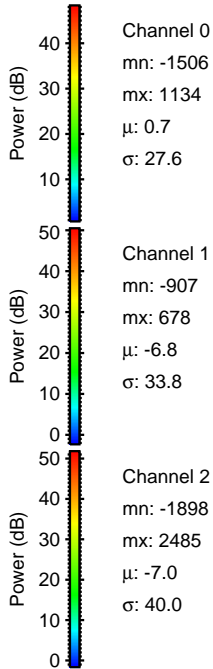
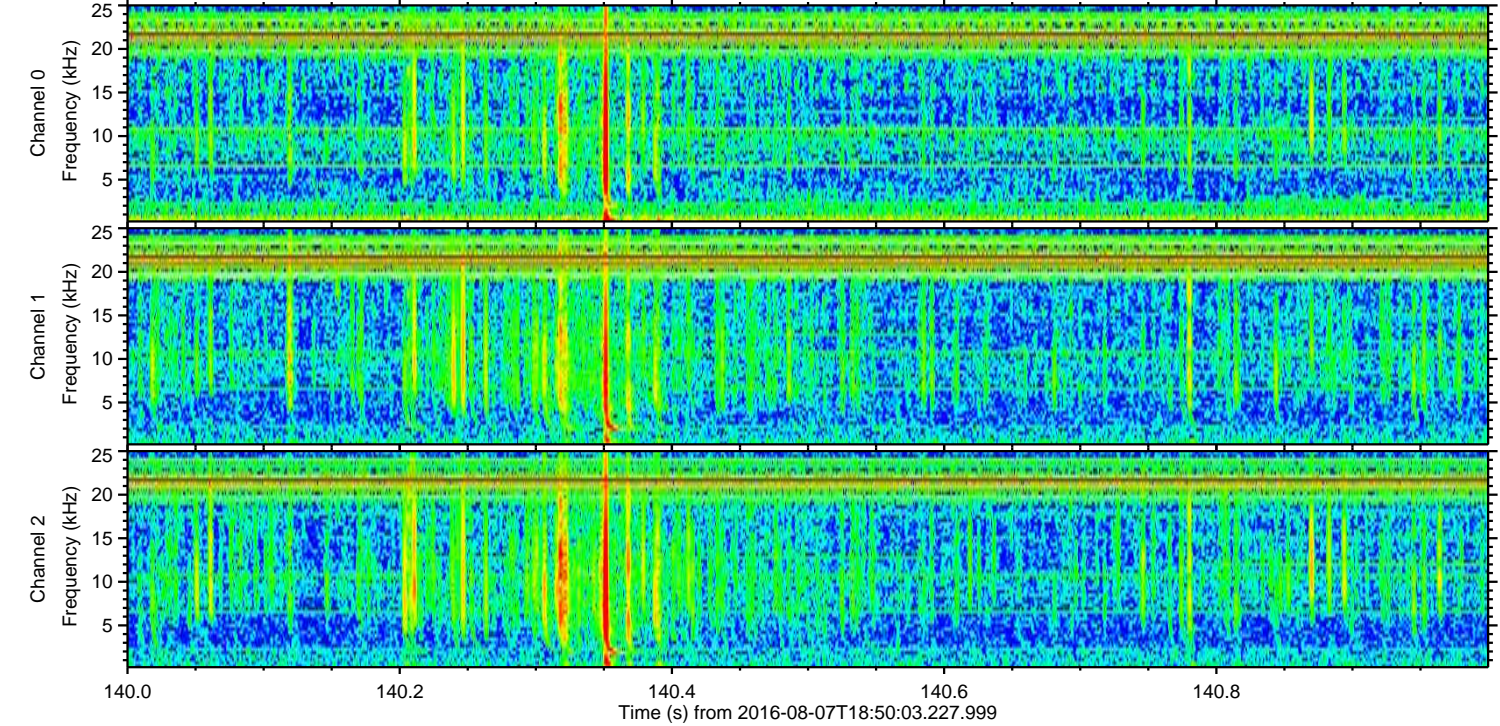
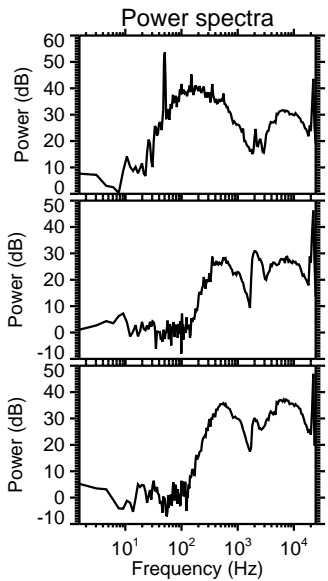
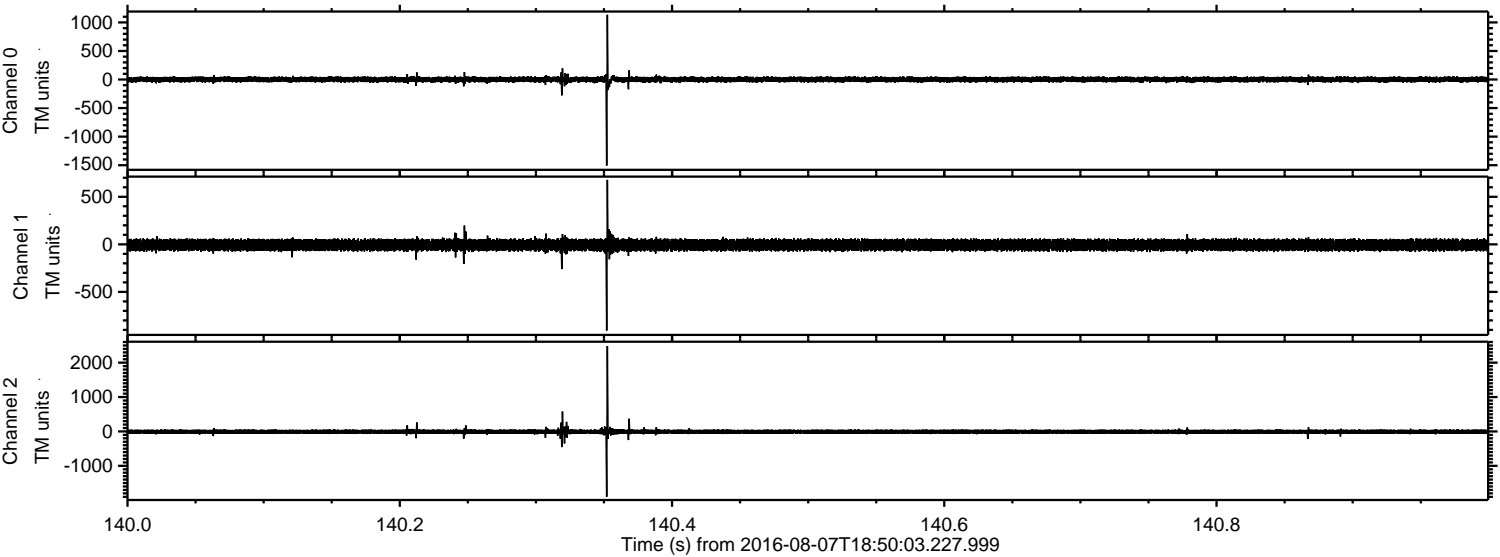
ELMAVAN 3D WAVEFORMS (Measured data sampled at 50 kHz) 51000 packets of 144 samples from 2016-08-07T18:50:03.227.999. Part 116/147

Processed Sun Aug 7 20:58:04 2016 by ELM ver.2012-10-06 from 001__elm20160807_185002__dat00.bin



ELMAVAN 3D WAVEFORMS (Measured data sampled at 50 kHz) 51000 packets of 144 samples from 2016-08-07T18:50:03.227.999. Part 141/147

Processed Sun Aug 7 20:58:05 2016 by ELM ver.2012-10-06 from 001__elm20160807_185002__dat00.bin



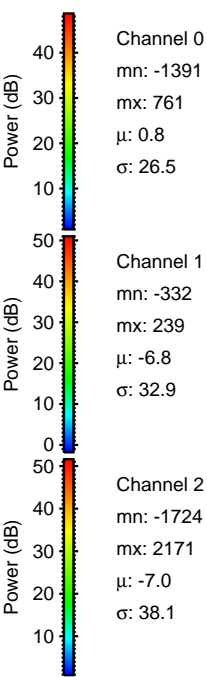
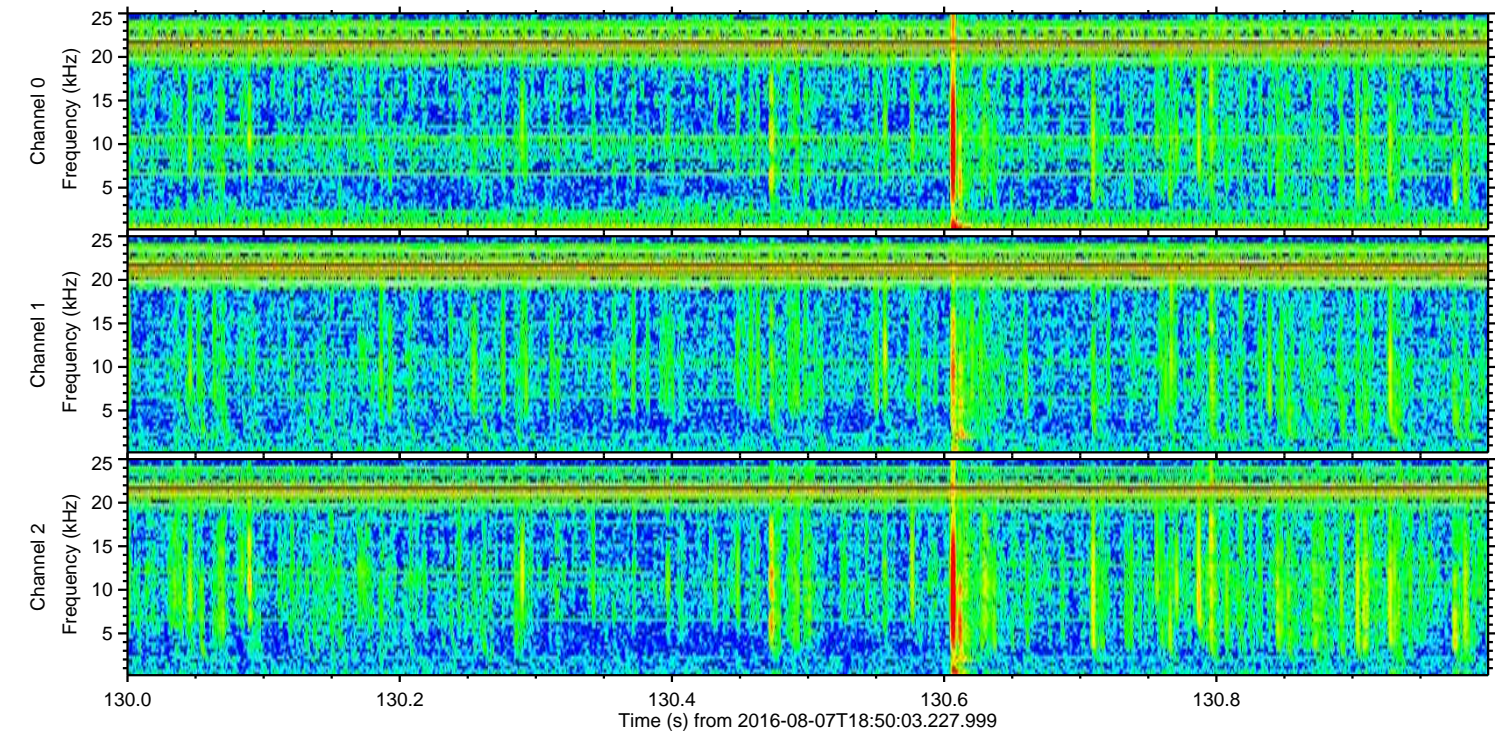
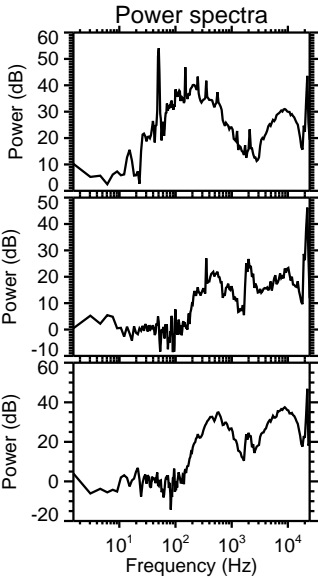
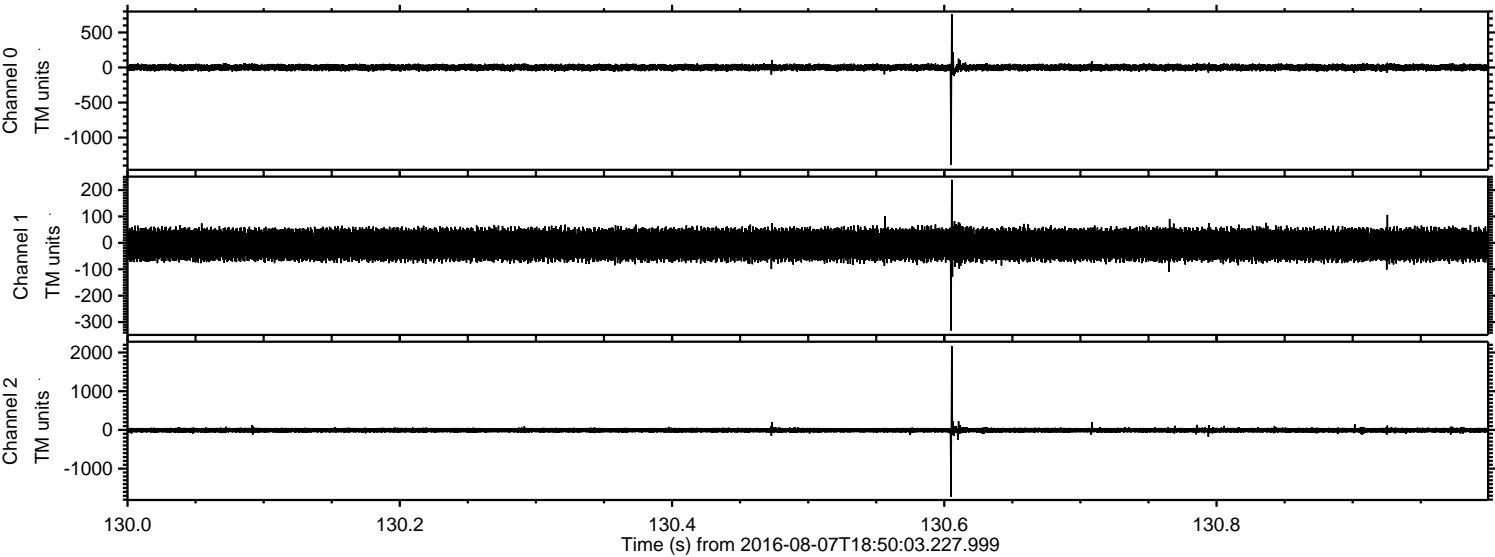
Channel 0
mn: -1506
mx: 1134
 μ : 0.7
 σ : 27.6

Channel 1
mn: -907
mx: 678
 μ : -6.8
 σ : 33.8

Channel 2
mn: -1898
mx: 2485
 μ : -7.0
 σ : 40.0

ELMAVAN 3D WAVEFORMS (Measured data sampled at 50 kHz) 51000 packets of 144 samples from 2016-08-07T18:50:03.227.999. Part 131/147

Processed Sun Aug 7 20:58:06 2016 by ELM ver.2012-10-06 from 001__elm20160807_185002__dat00.bin



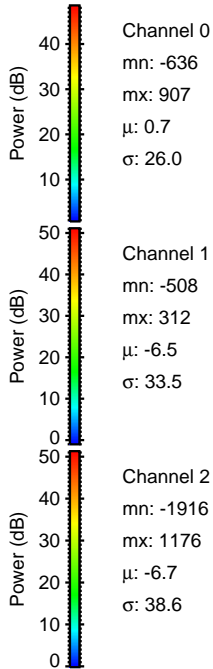
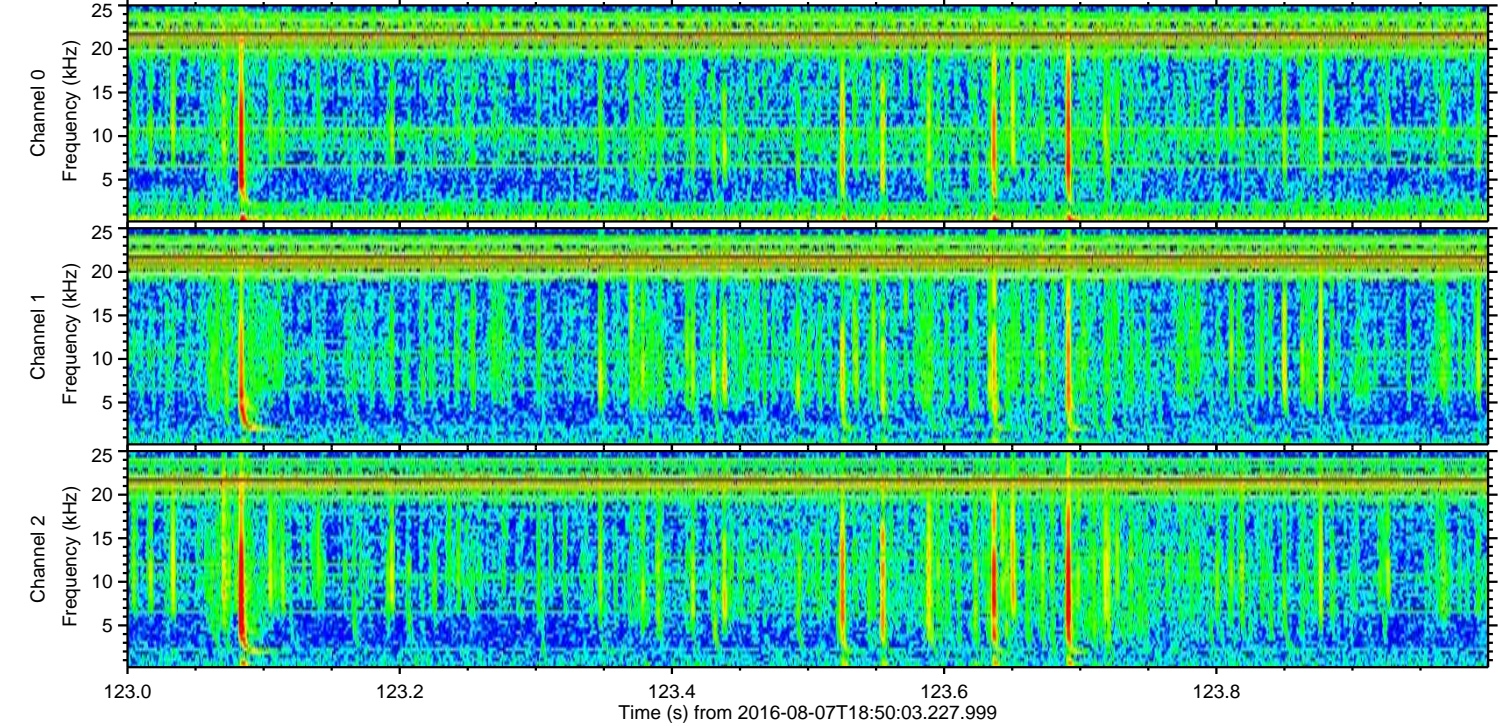
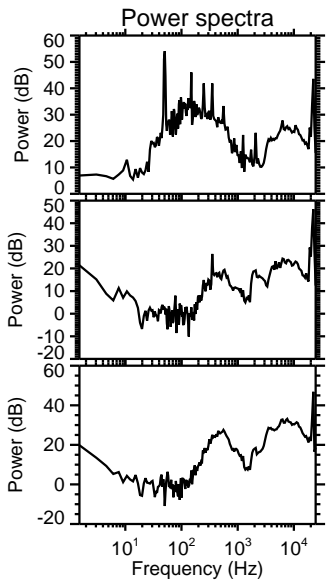
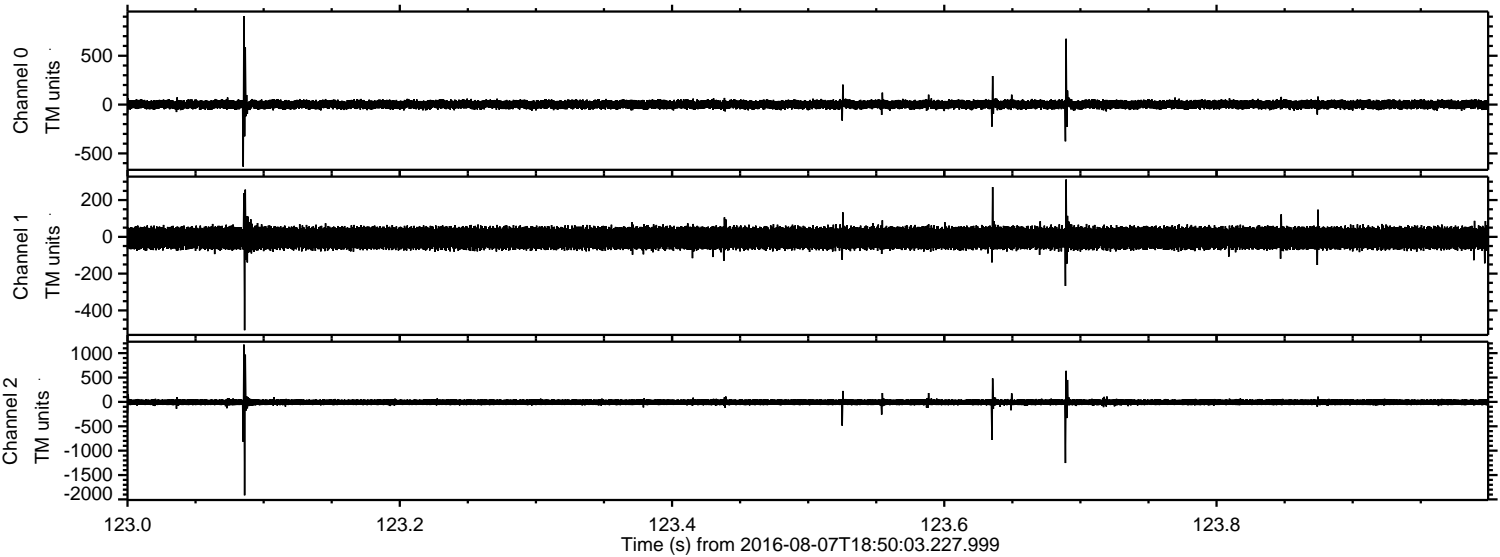
Channel 0
mn: -1391
mx: 761
 μ : 0.8
 σ : 26.5

Channel 1
mn: -332
mx: 239
 μ : -6.8
 σ : 32.9

Channel 2
mn: -1724
mx: 2171
 μ : -7.0
 σ : 38.1

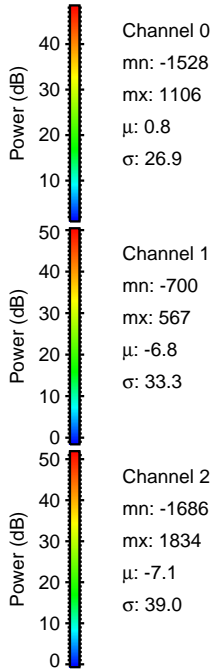
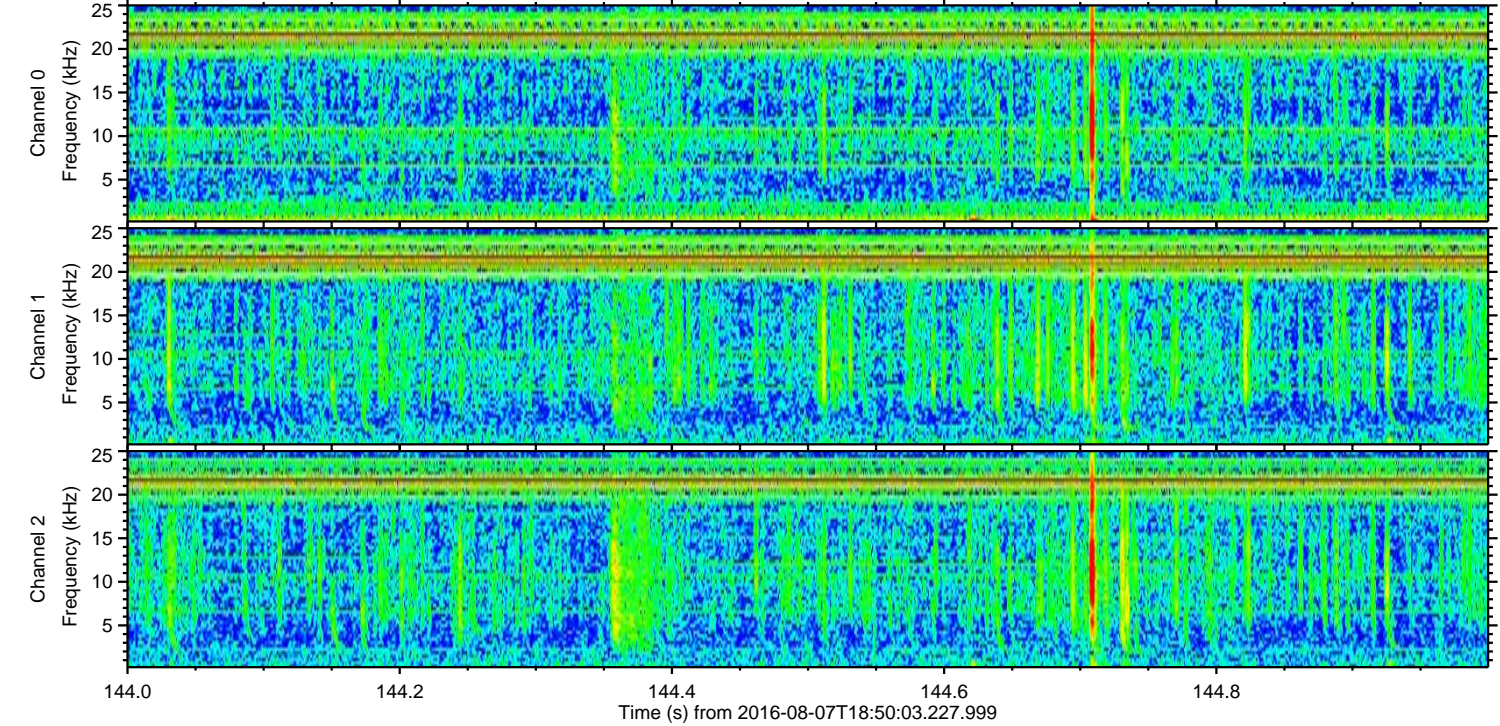
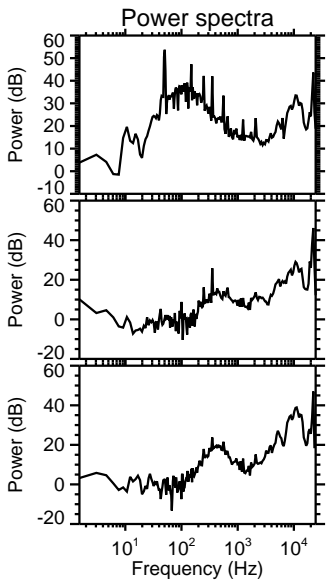
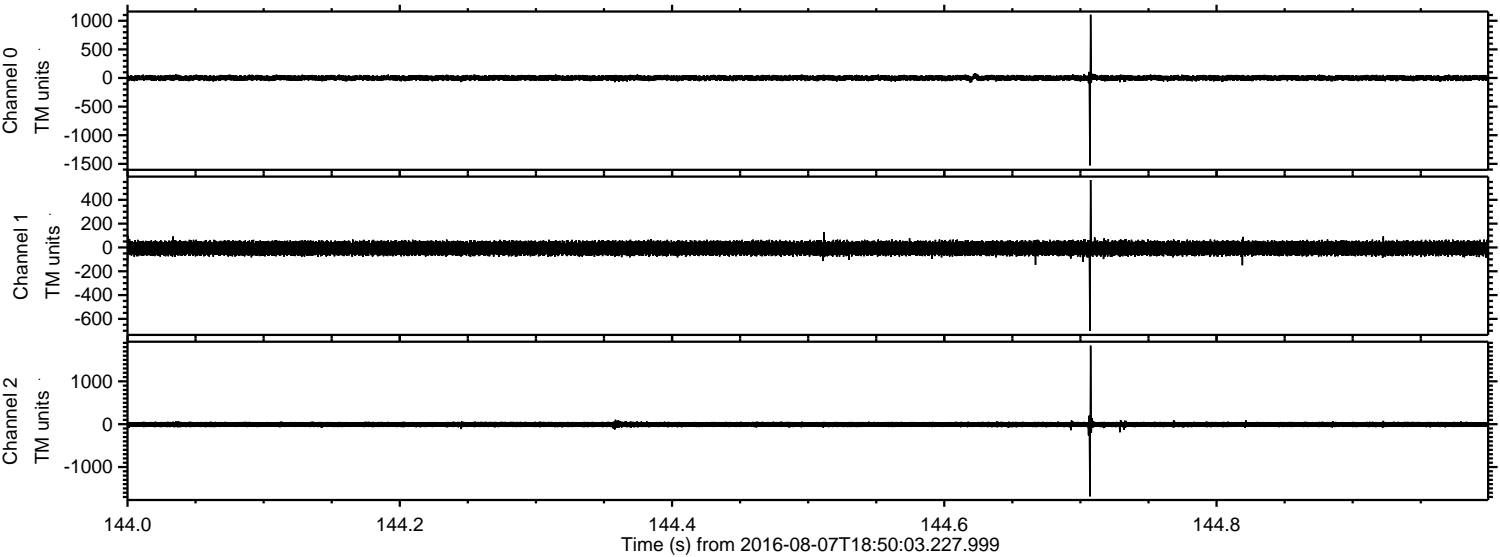
ELMAVAN 3D WAVEFORMS (Measured data sampled at 50 kHz) 51000 packets of 144 samples from 2016-08-07T18:50:03.227.999. Part 124/147

Processed Sun Aug 7 20:58:07 2016 by ELM ver.2012-10-06 from 001__elm20160807_185002__dat00.bin



ELMAVAN 3D WAVEFORMS (Measured data sampled at 50 kHz) 51000 packets of 144 samples from 2016-08-07T18:50:03.227.999. Part 145/147

Processed Sun Aug 7 20:58:08 2016 by ELM ver.2012-10-06 from 001__elm20160807_185002__dat00.bin

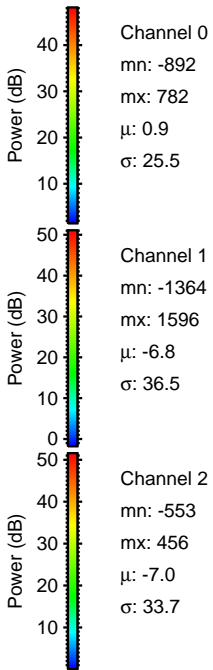
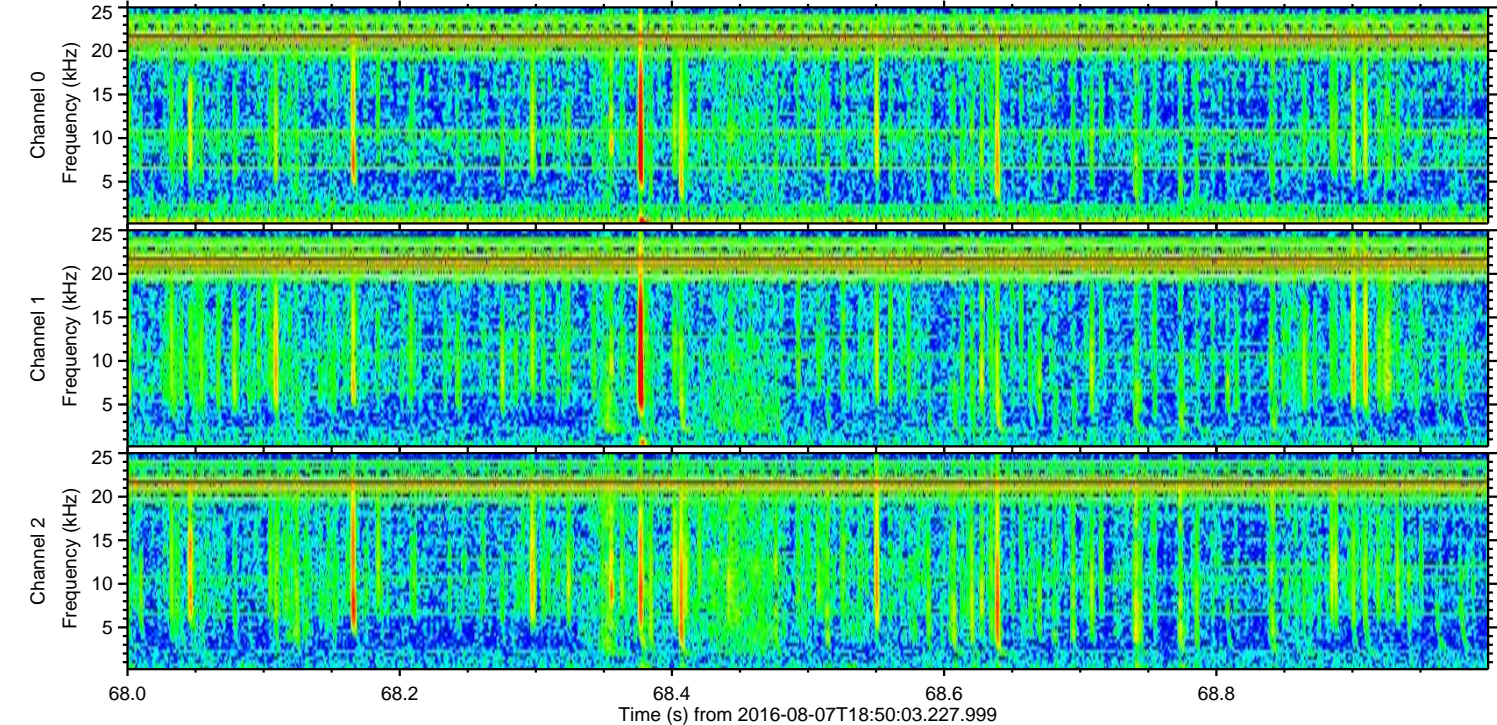
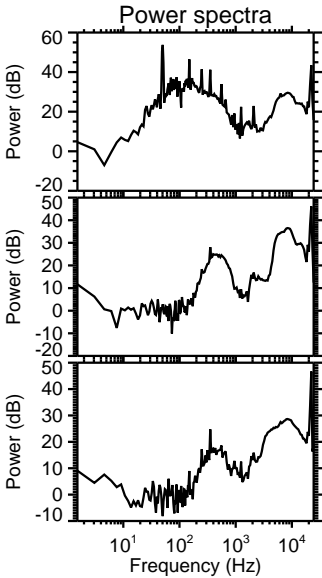
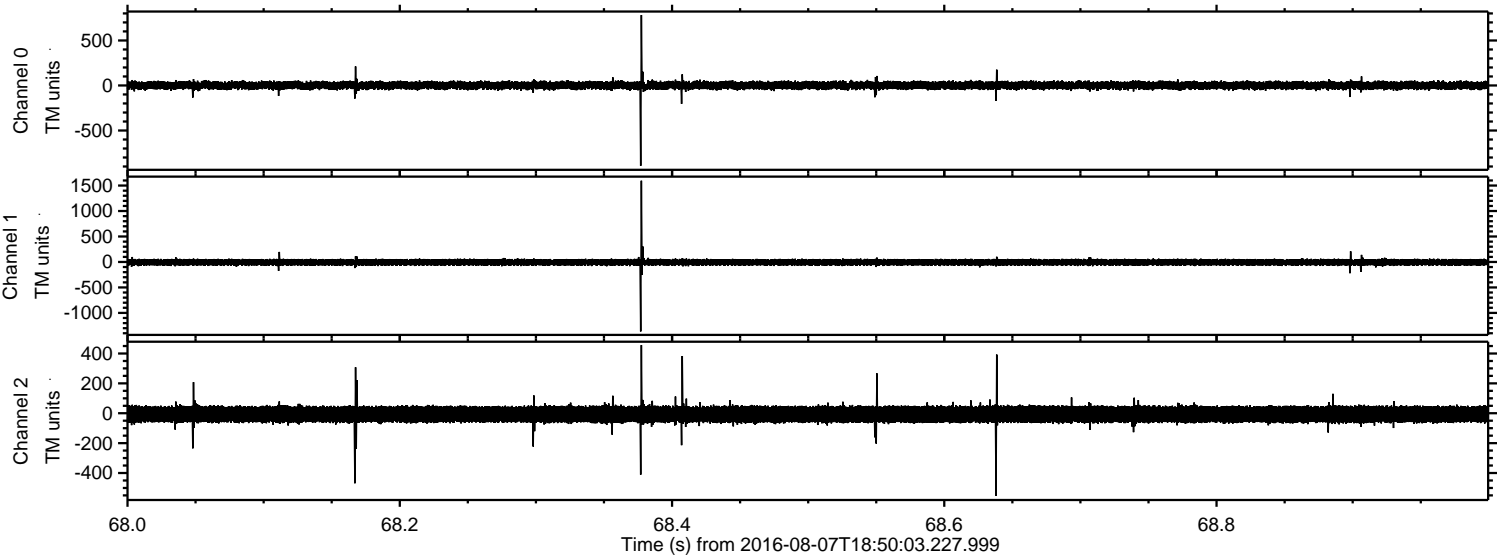


Channel 0
mn: -1528
mx: 1106
 μ : 0.8
 σ : 26.9

Channel 1
mn: -700
mx: 567
 μ : -6.8
 σ : 33.3

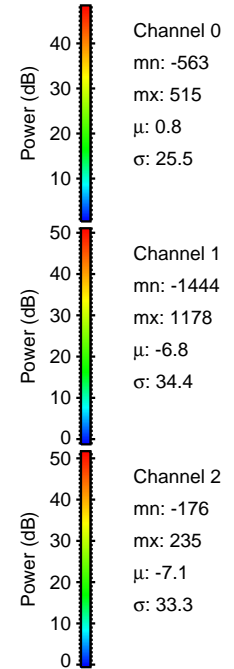
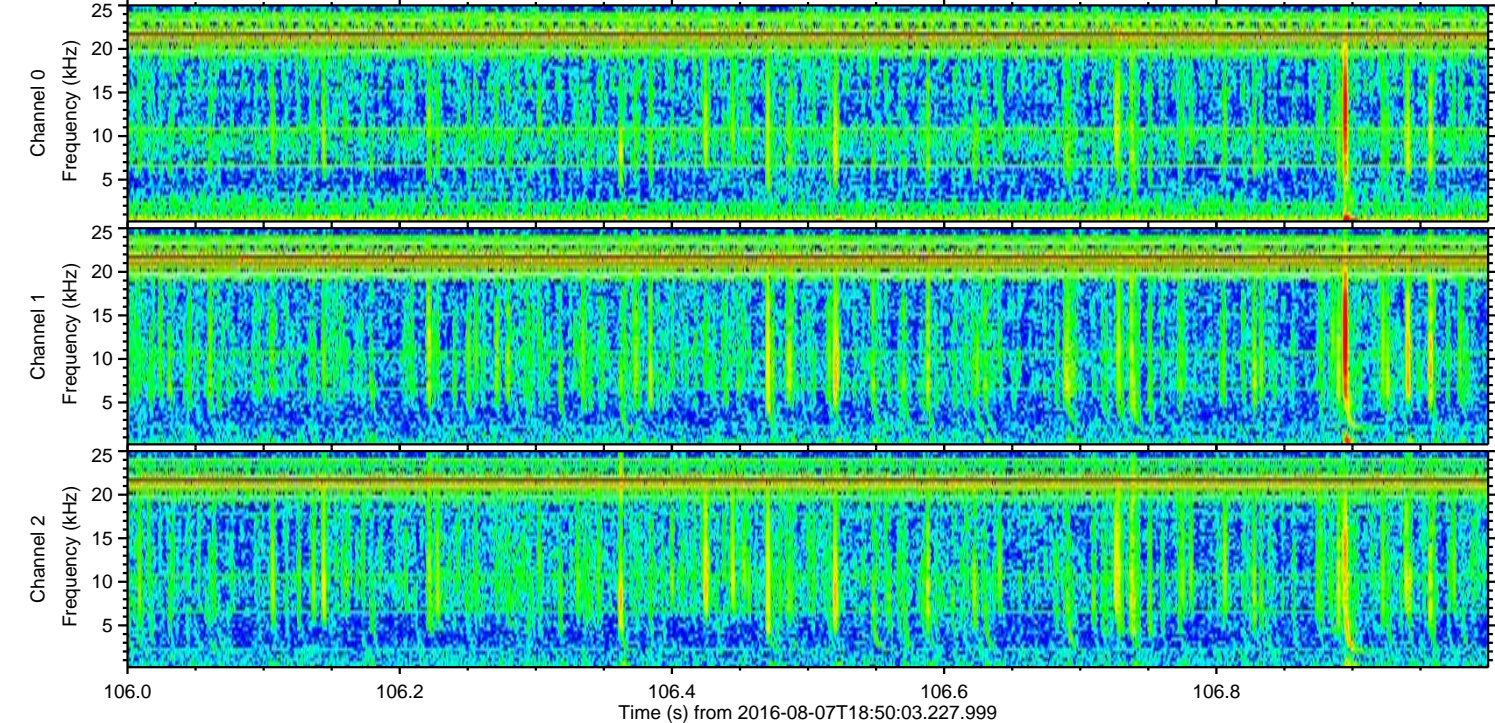
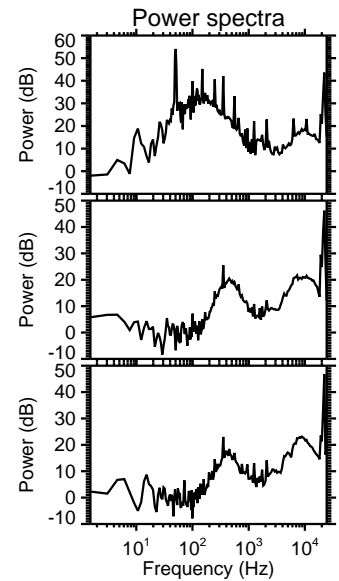
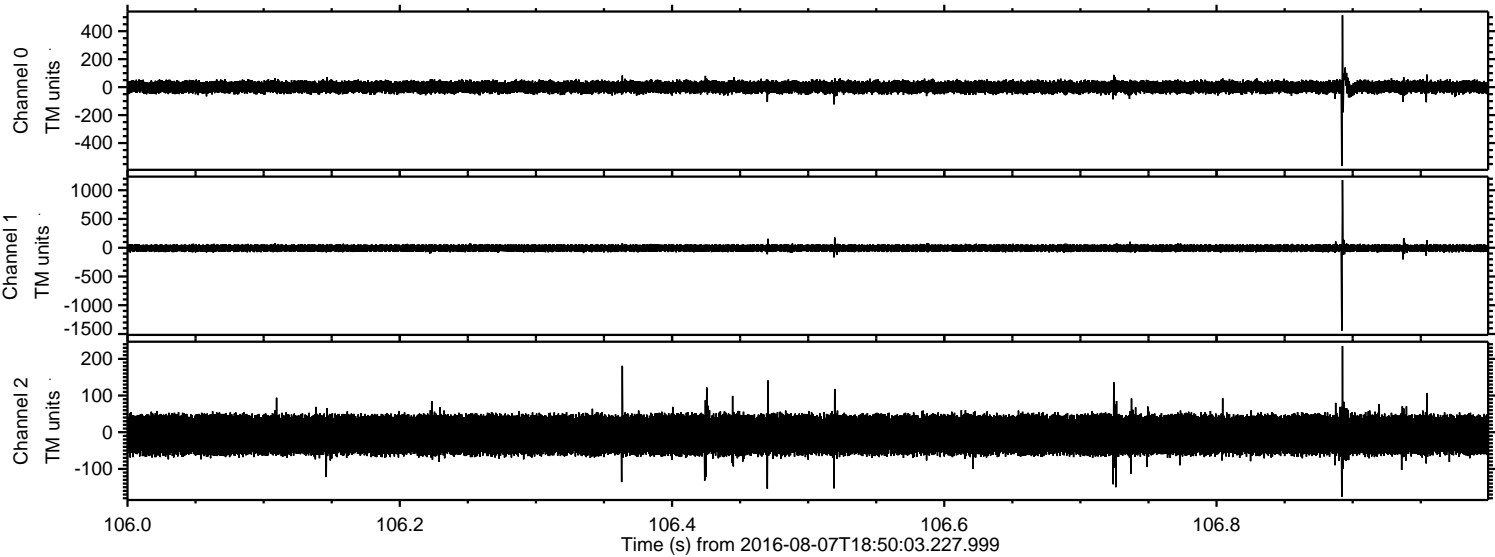
Channel 2
mn: -1686
mx: 1834
 μ : -7.1
 σ : 39.0

Processed Sun Aug 7 20:58:09 2016 by ELM ver.2012-10-06 from 001__elm20160807_185002__dat00.bin



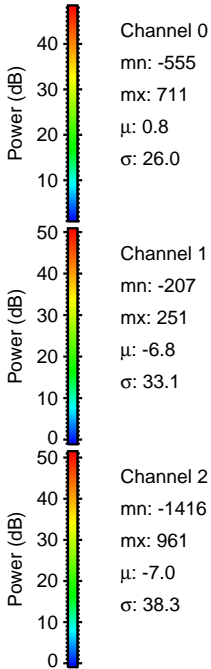
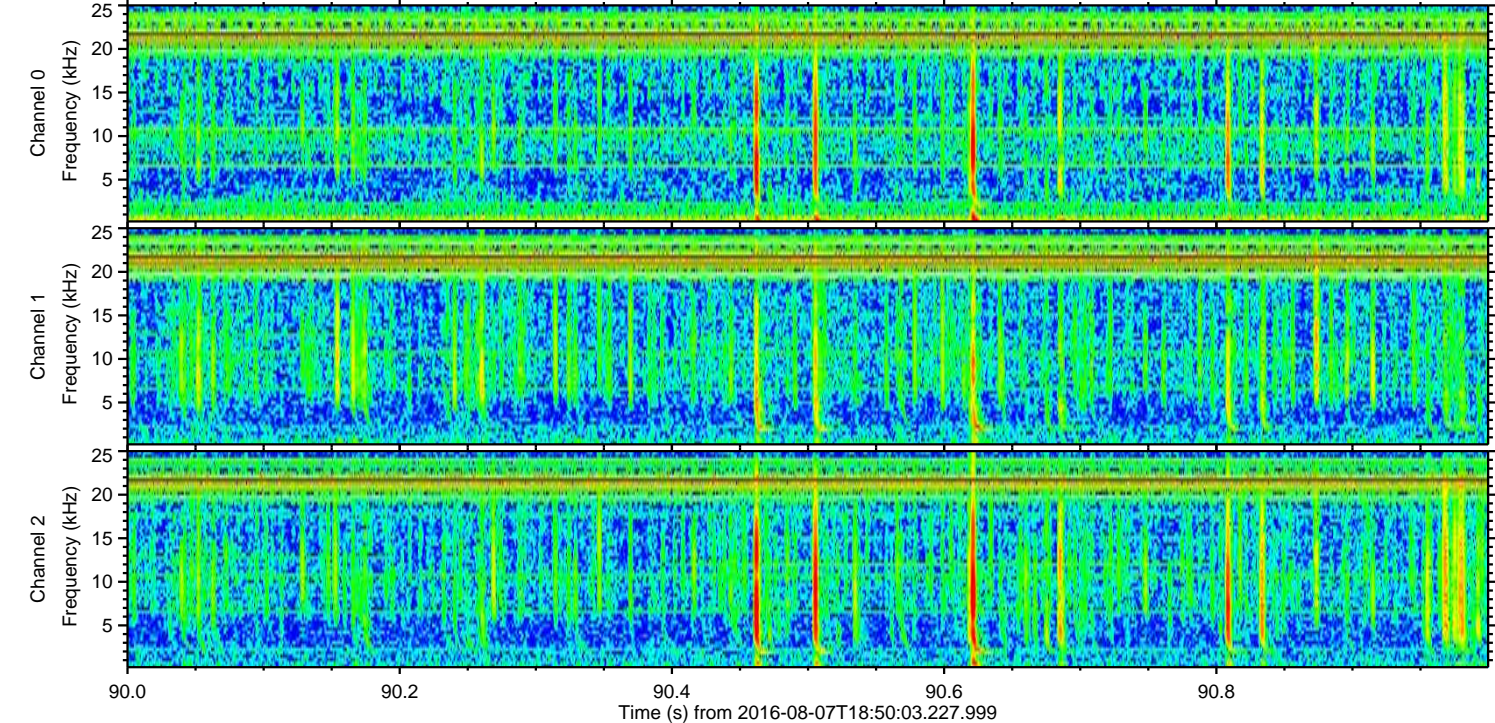
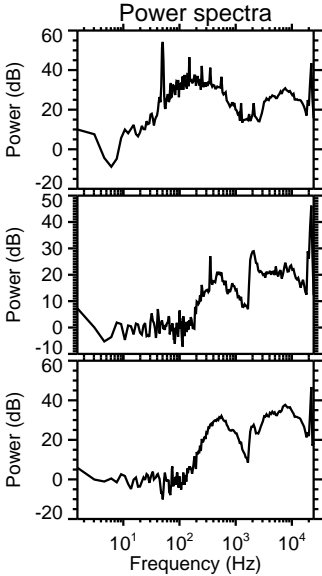
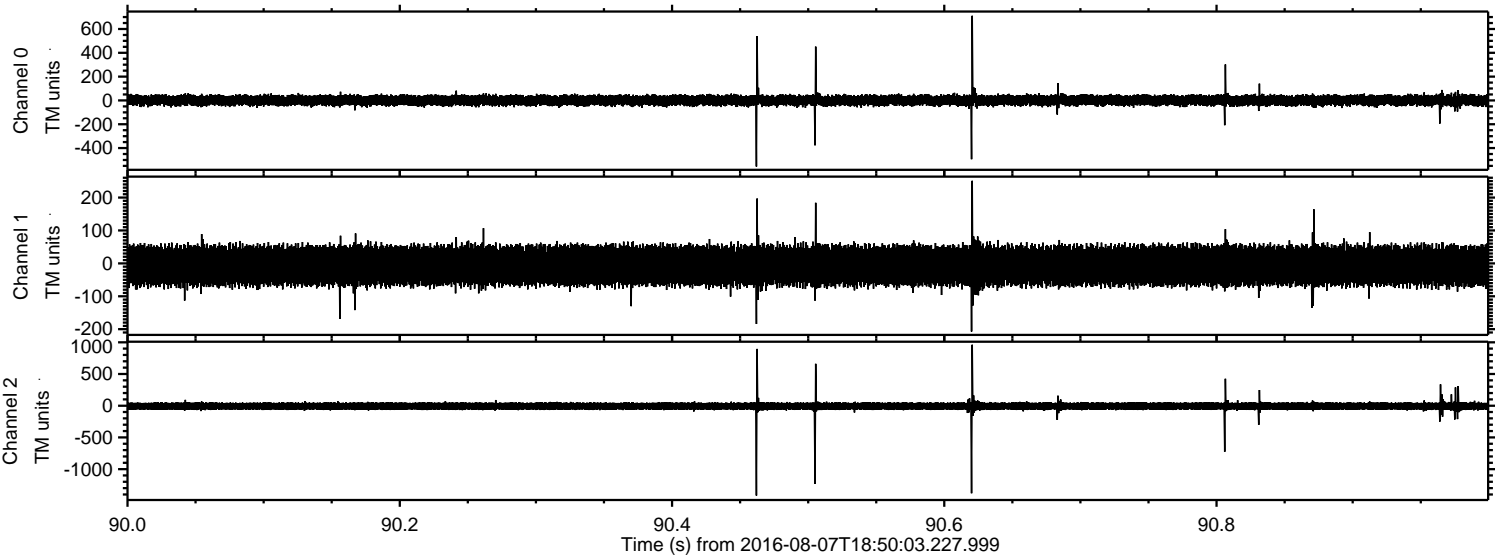
ELMAVAN 3D WAVEFORMS (Measured data sampled at 50 kHz) 51000 packets of 144 samples from 2016-08-07T18:50:03.227.999. Part 107/147

Processed Sun Aug 7 20:58:10 2016 by ELM ver.2012-10-06 from 001__elm20160807_185002__dat00.bin

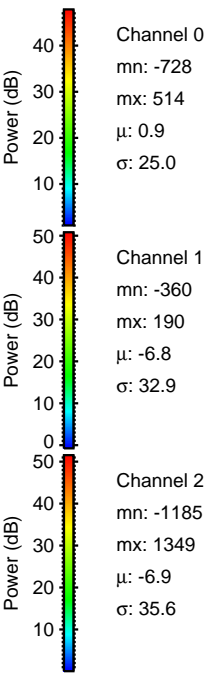
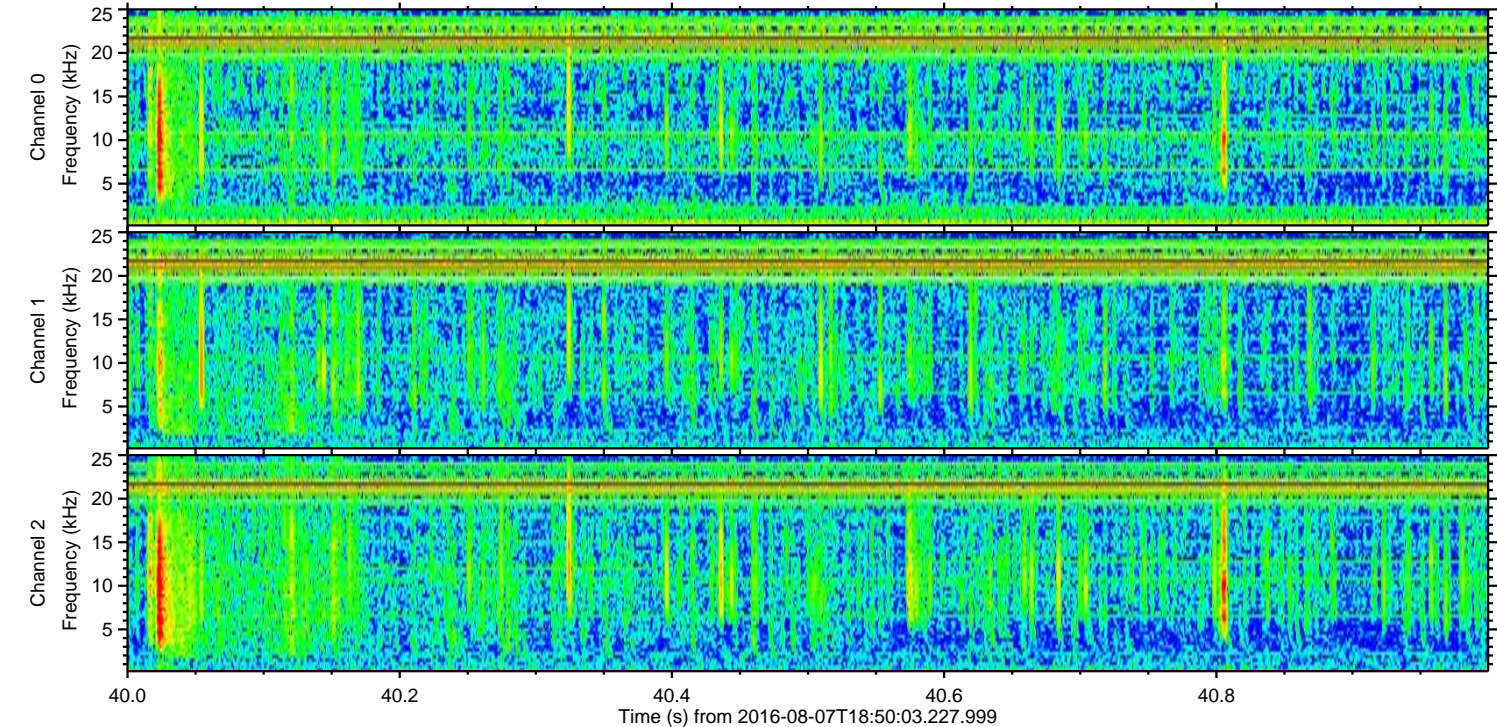
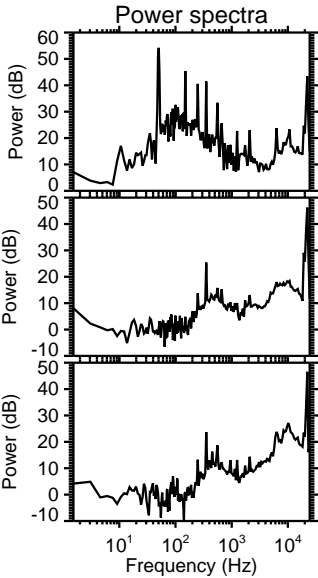
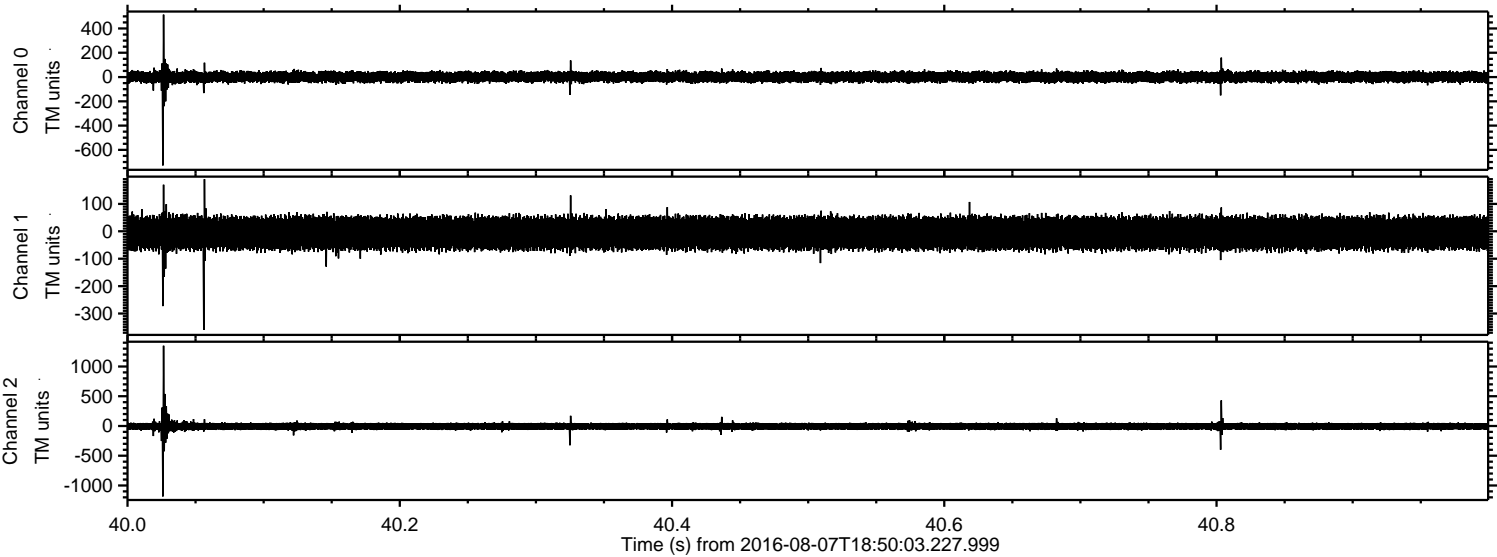


ELMAVAN 3D WAVEFORMS (Measured data sampled at 50 kHz) 51000 packets of 144 samples from 2016-08-07T18:50:03.227.999. Part 91/147

Processed Sun Aug 7 20:58:11 2016 by ELM ver.2012-10-06 from 001__elm20160807_185002__dat00.bin



Processed Sun Aug 7 20:58:12 2016 by ELM ver.2012-10-06 from 001__elm20160807_185002__dat00.bin



Processed Sun Aug 7 20:58:13 2016 by ELM ver.2012-10-06 from 001__elm20160807_185002__dat00.bin

