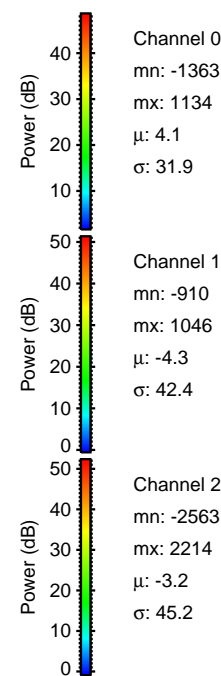
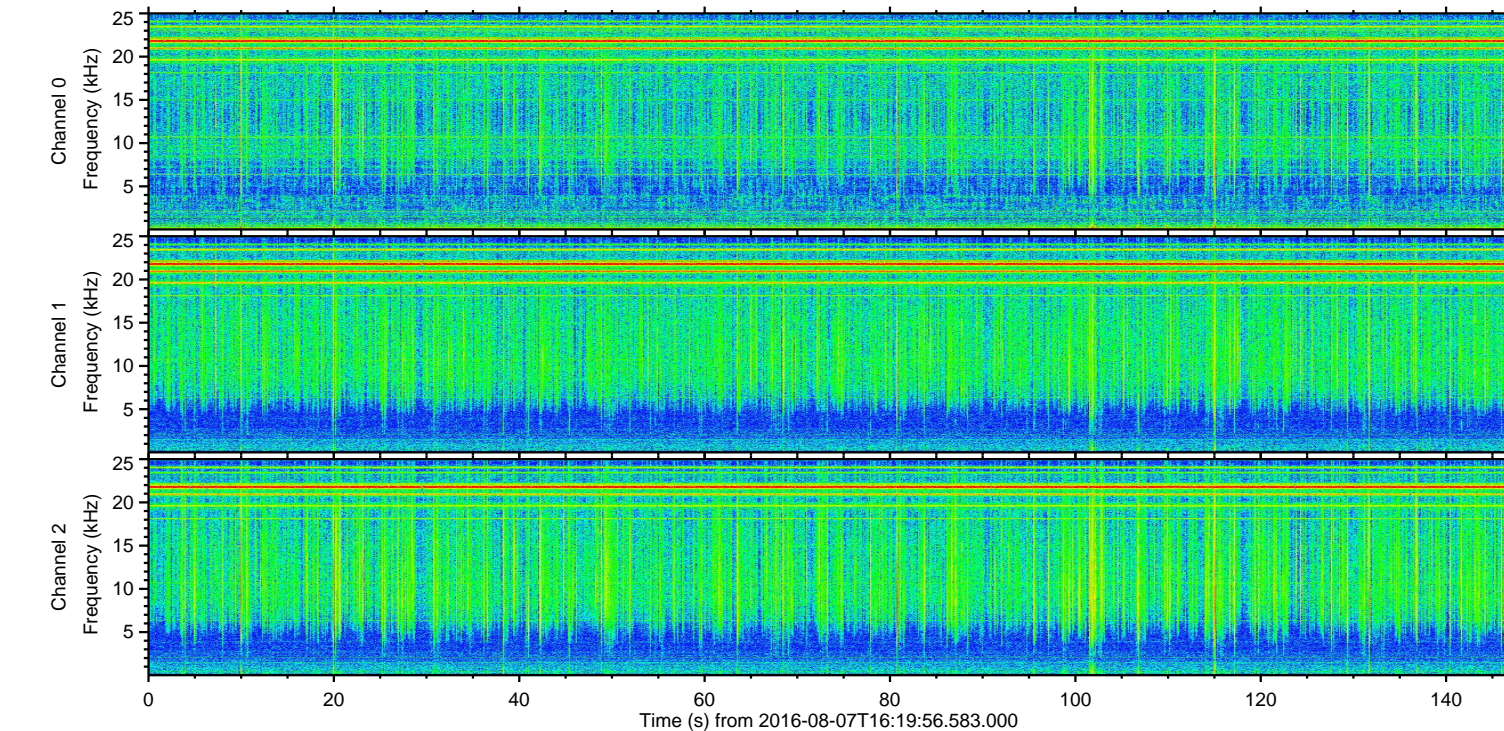
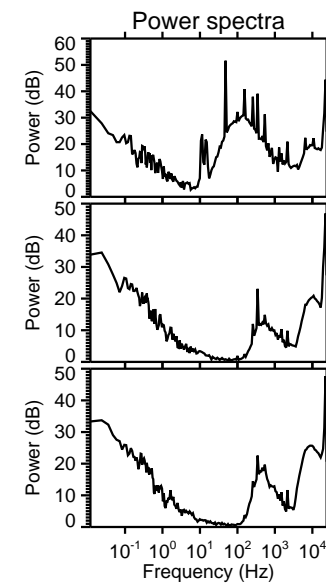
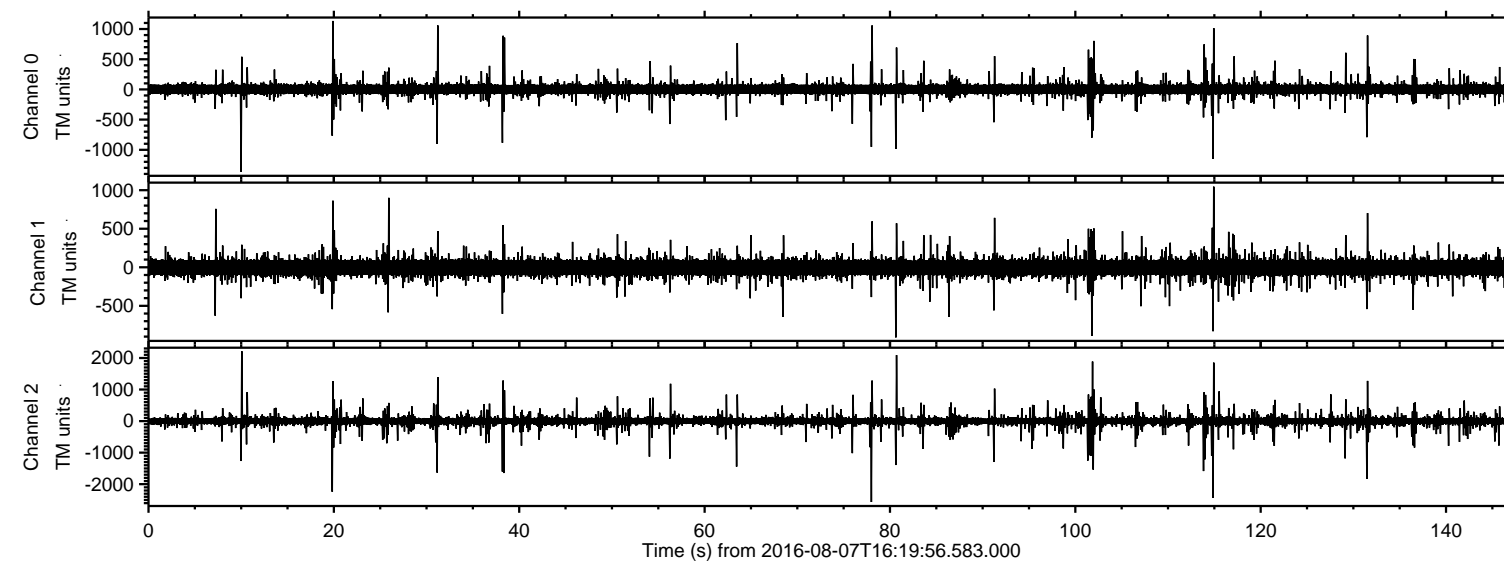
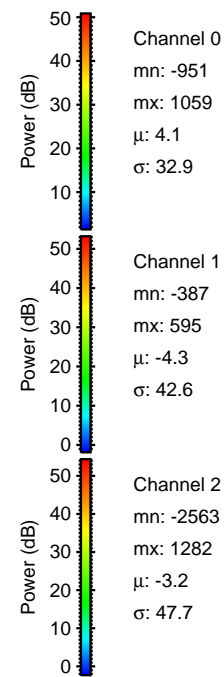
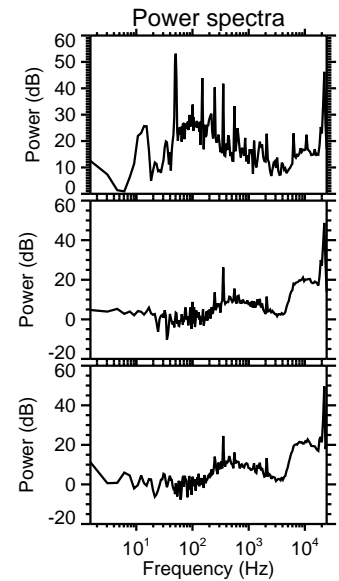
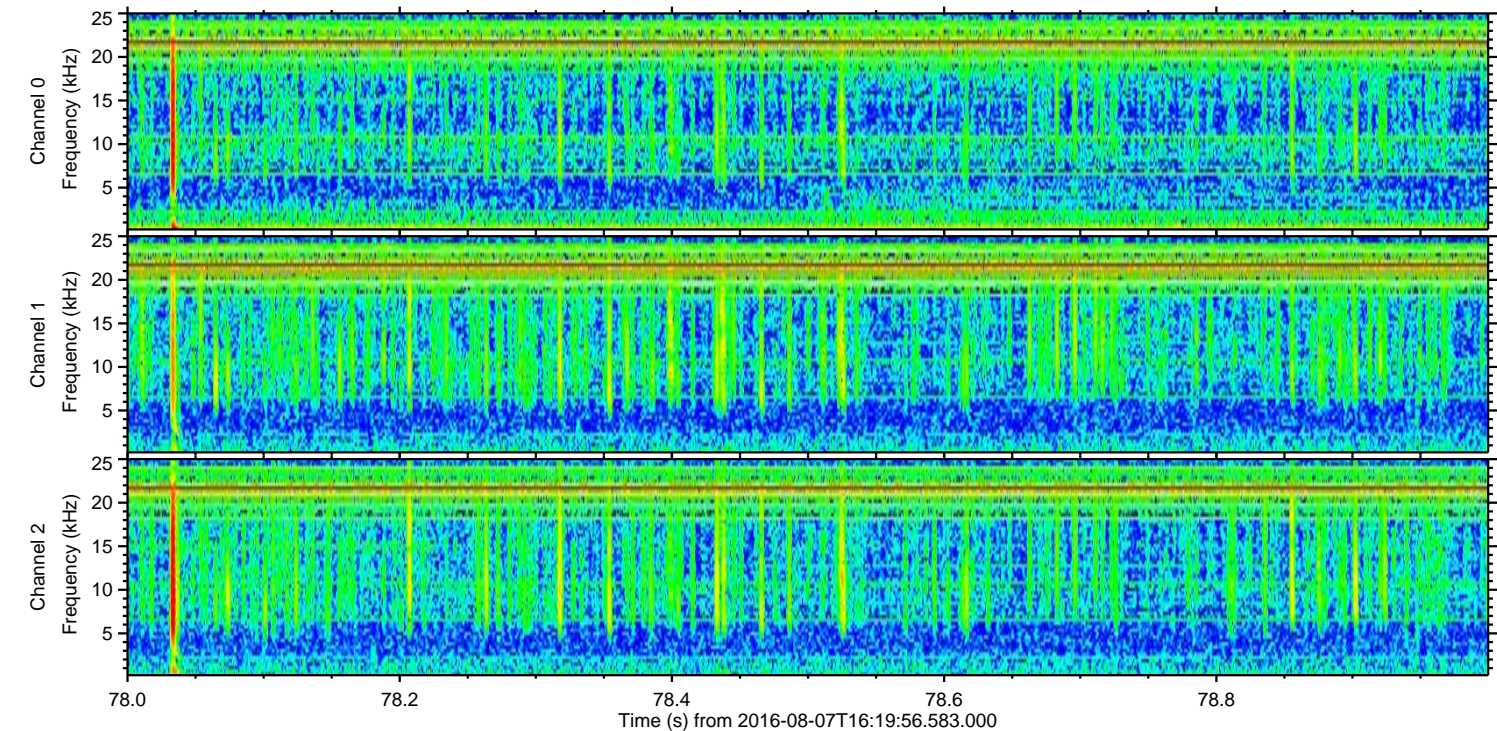
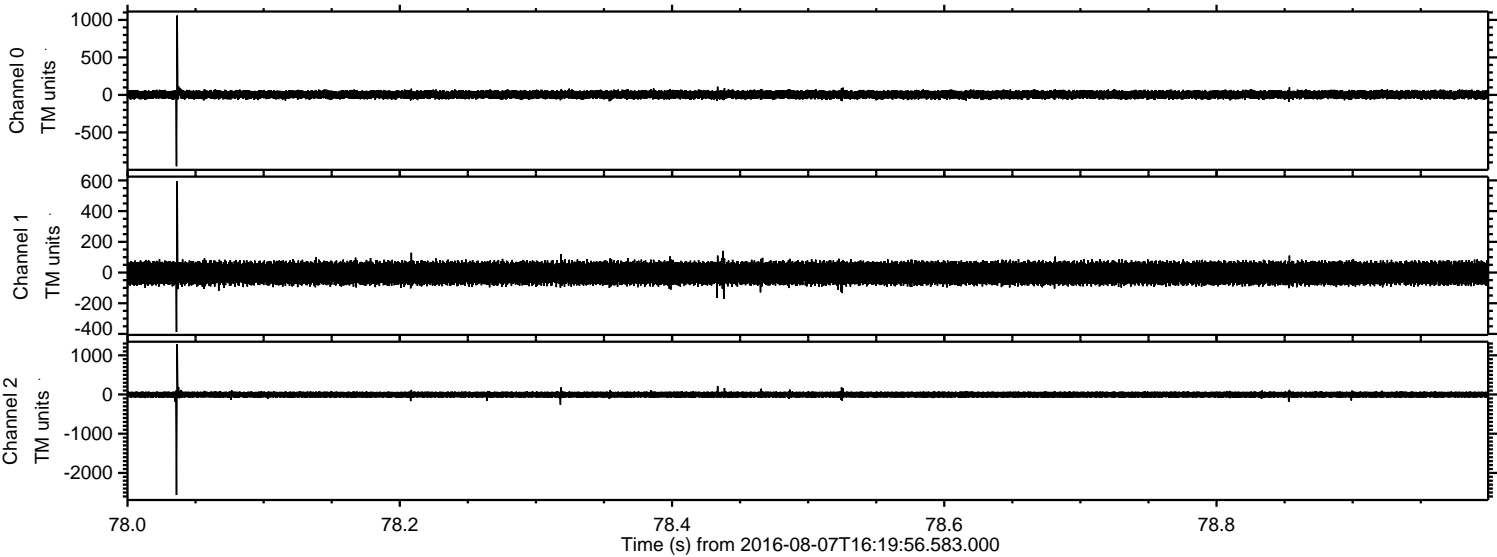


ELMAVAN 3D WAVEFORMS (Measured data sampled at 50 kHz) 51000 packets of 144 samples from 2016-08-07T16:19:56.583.000.

Processed Sun Aug 7 18:28:50 2016 by ELM ver.2012-10-06 from 001__elm20160807_161955__dat00.bin

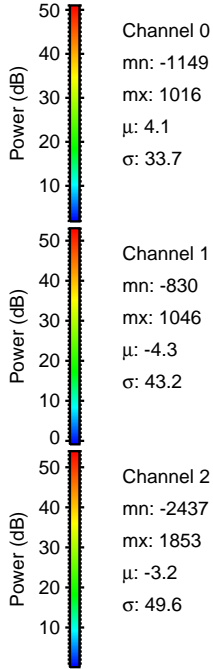
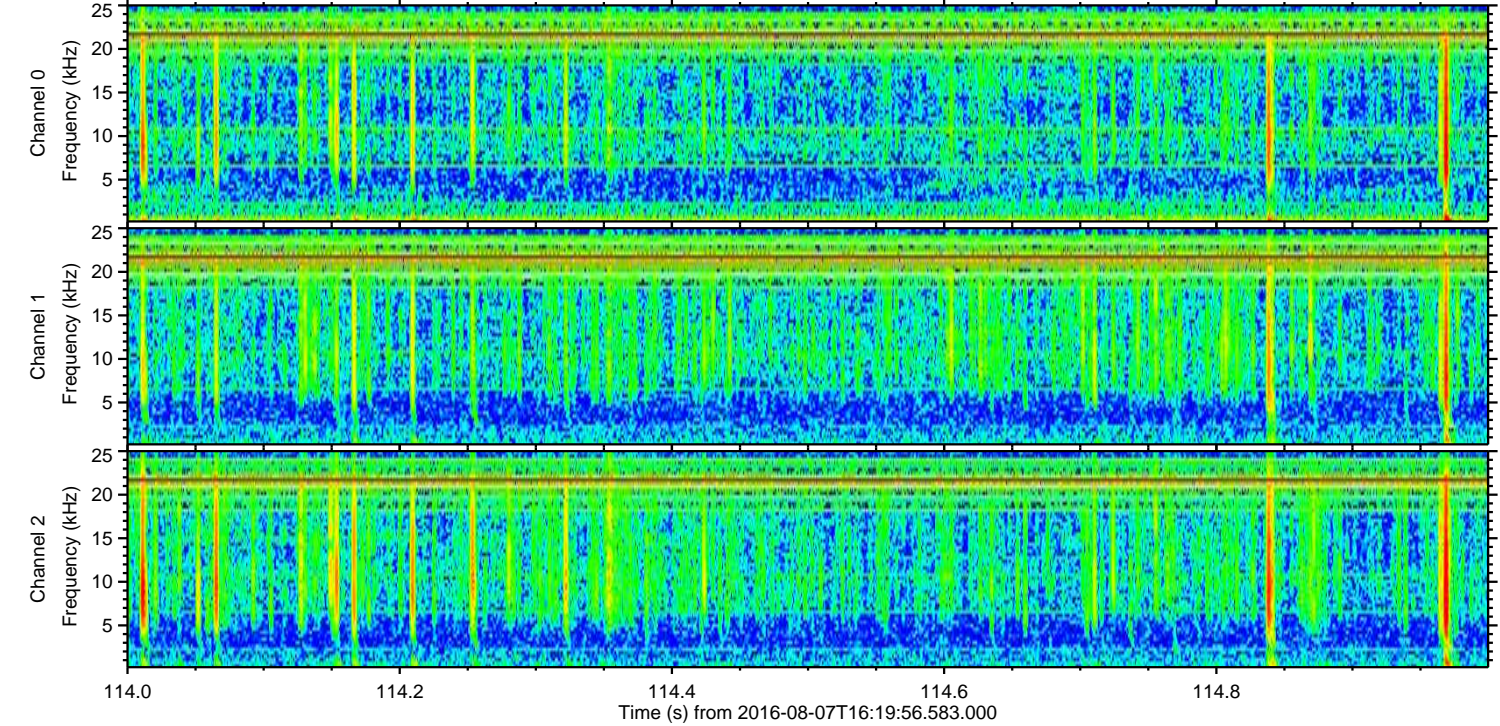
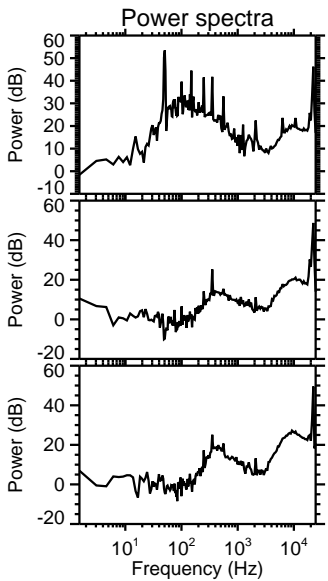
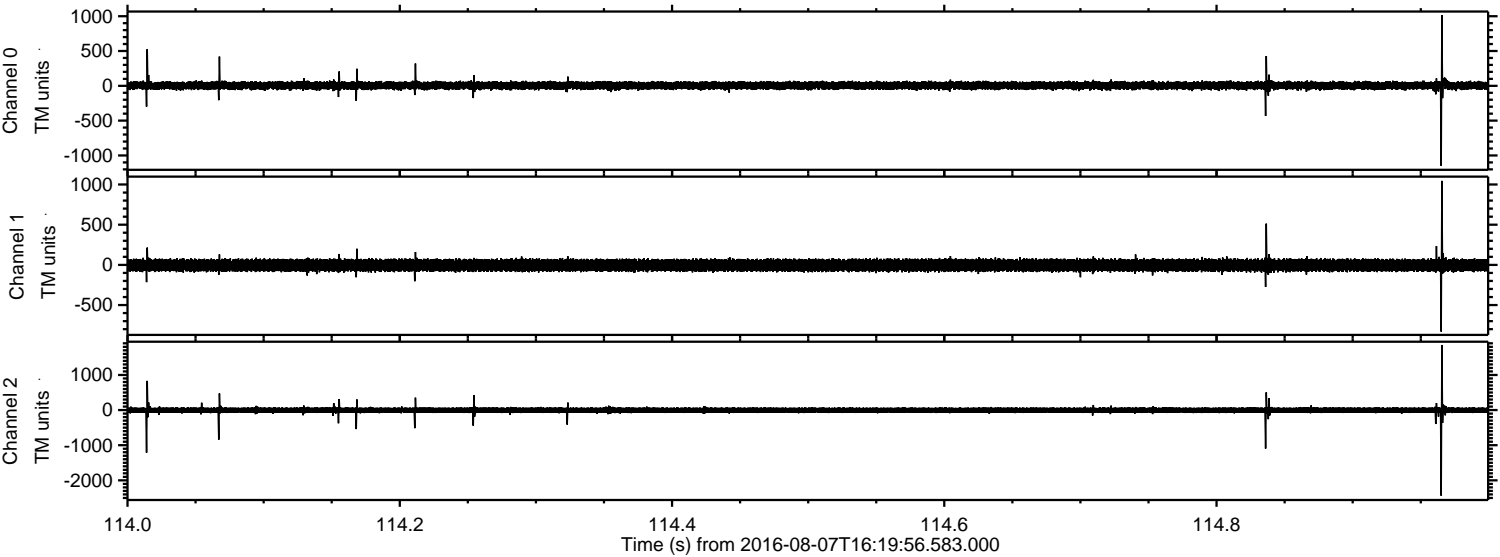


Processed Sun Aug 7 18:29:05 2016 by ELM ver.2012-10-06 from 001__elm20160807_161955__dat00.bin



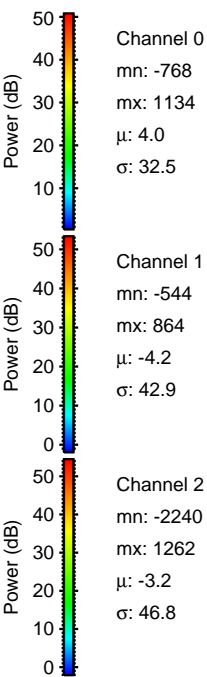
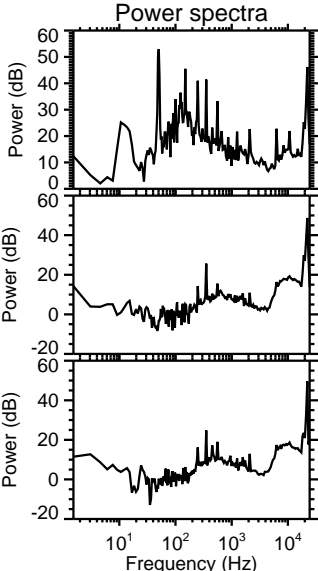
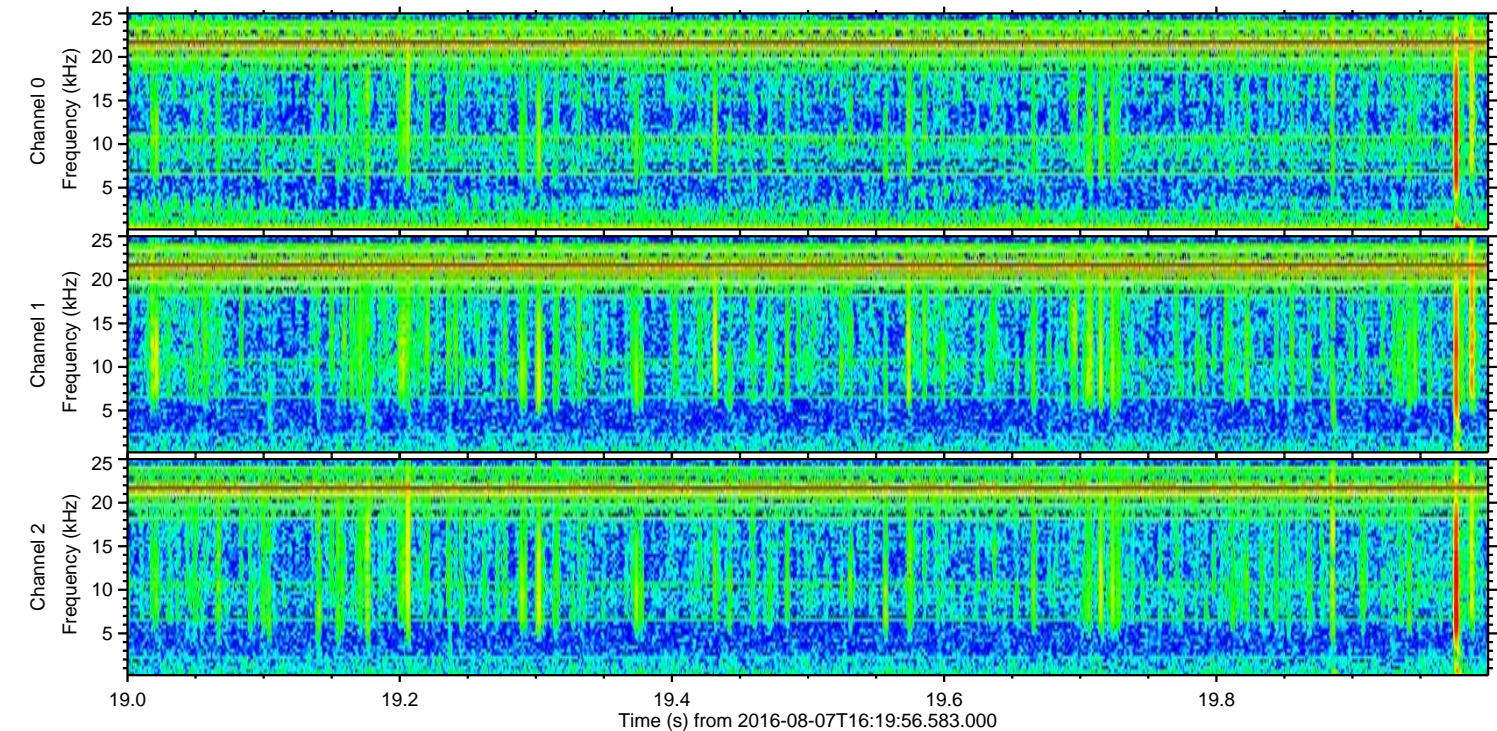
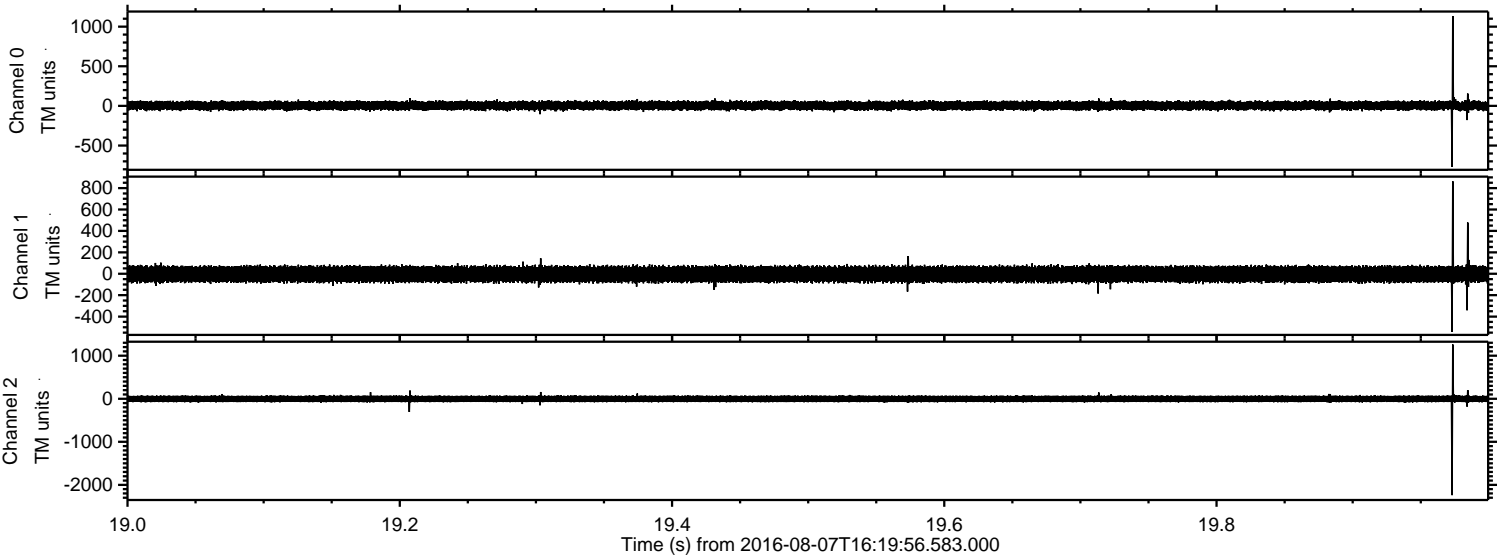
ELMAVAN 3D WAVEFORMS (Measured data sampled at 50 kHz) 51000 packets of 144 samples from 2016-08-07T16:19:56.583.000. Part 115/147

Processed Sun Aug 7 18:29:06 2016 by ELM ver.2012-10-06 from 001__elm20160807_161955__dat00.bin

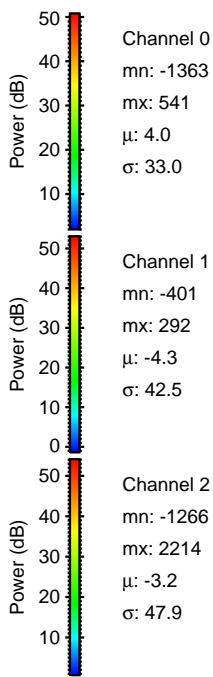
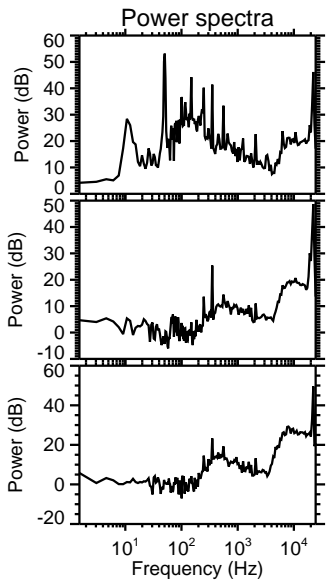
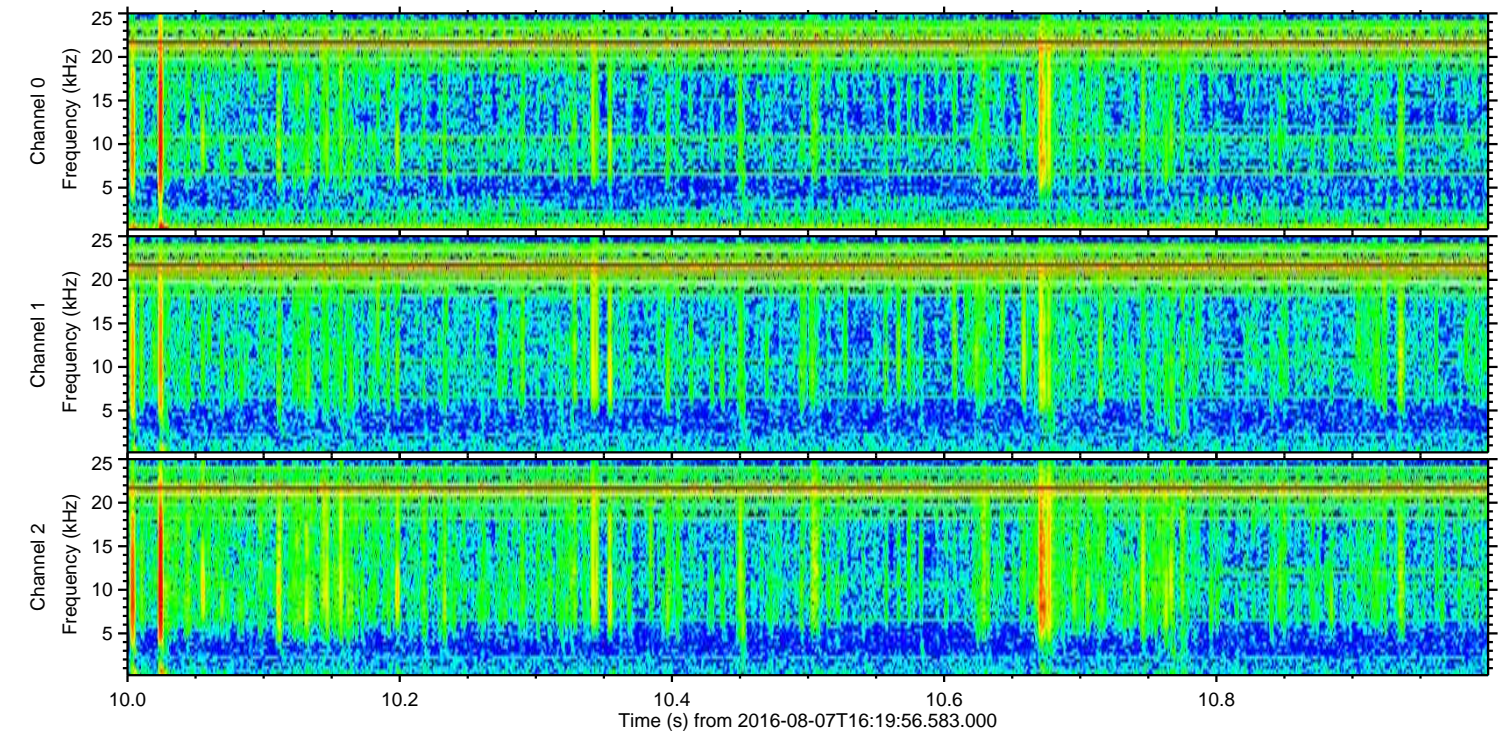
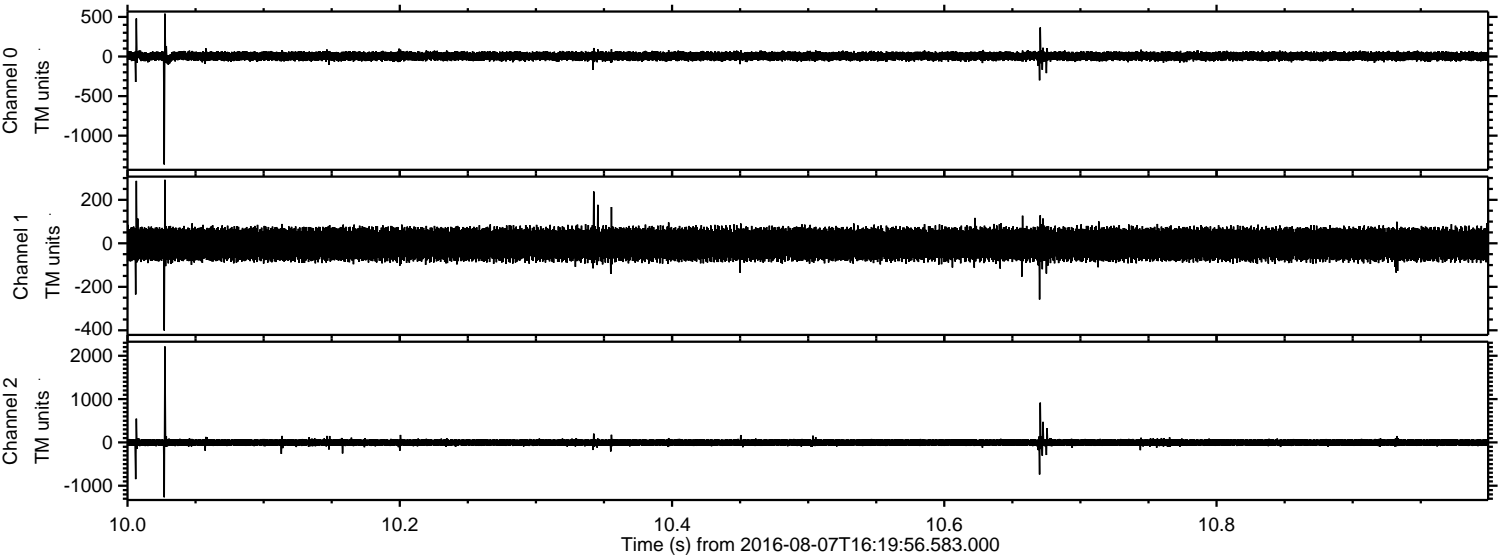


ELMAVAN 3D WAVEFORMS (Measured data sampled at 50 kHz) 51000 packets of 144 samples from 2016-08-07T16:19:56.583.000. Part 20/147

Processed Sun Aug 7 18:29:07 2016 by ELM ver.2012-10-06 from 001__elm20160807_161955__dat00.bin



Processed Sun Aug 7 18:29:08 2016 by ELM ver.2012-10-06 from 001__elm20160807_161955__dat00.bin

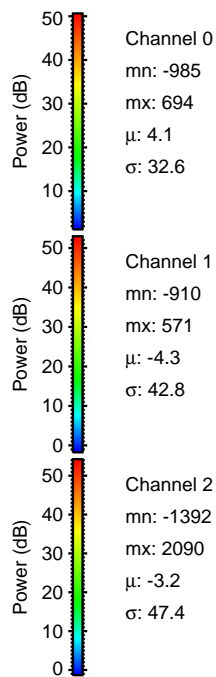
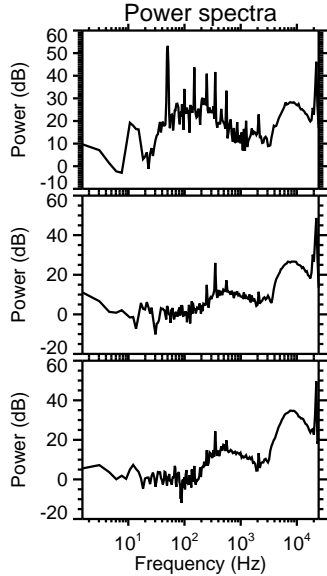
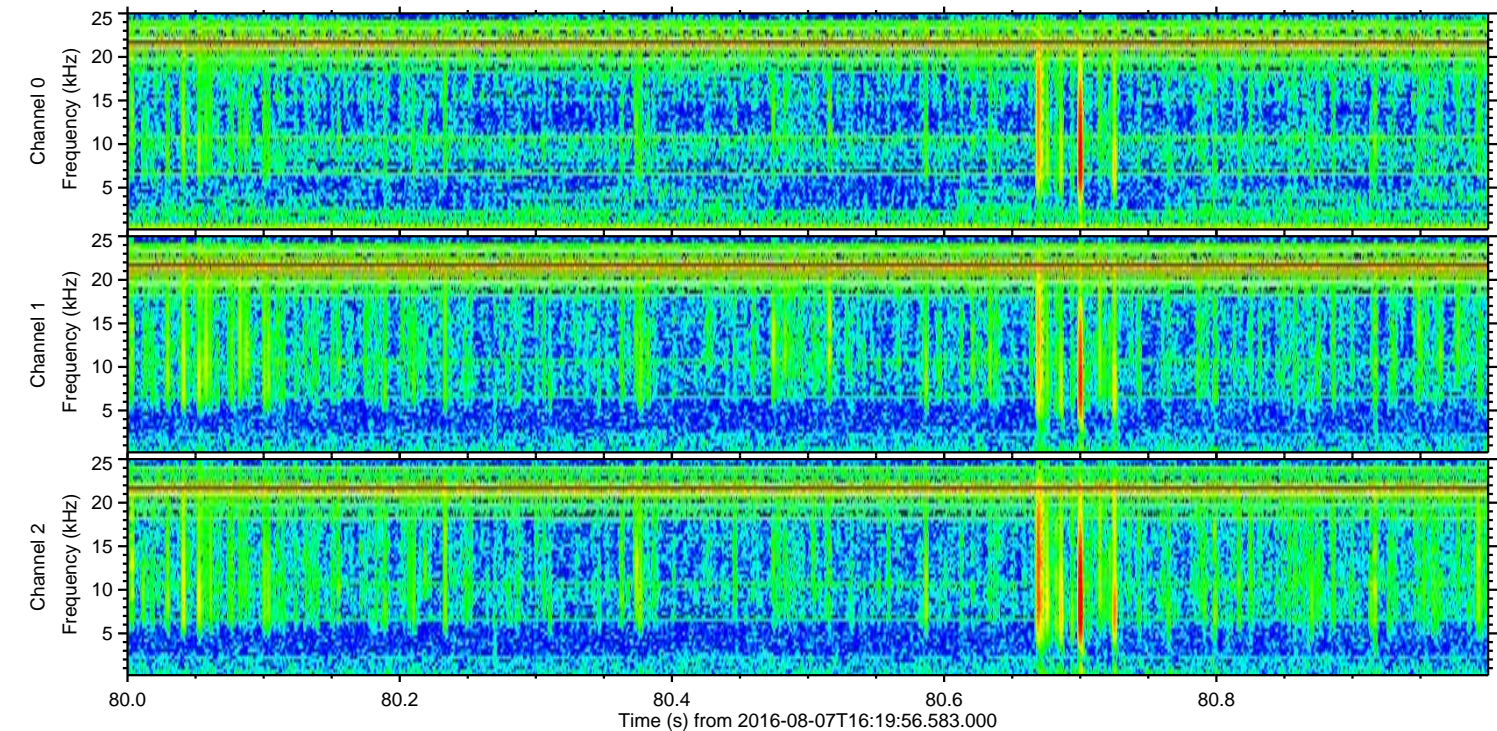
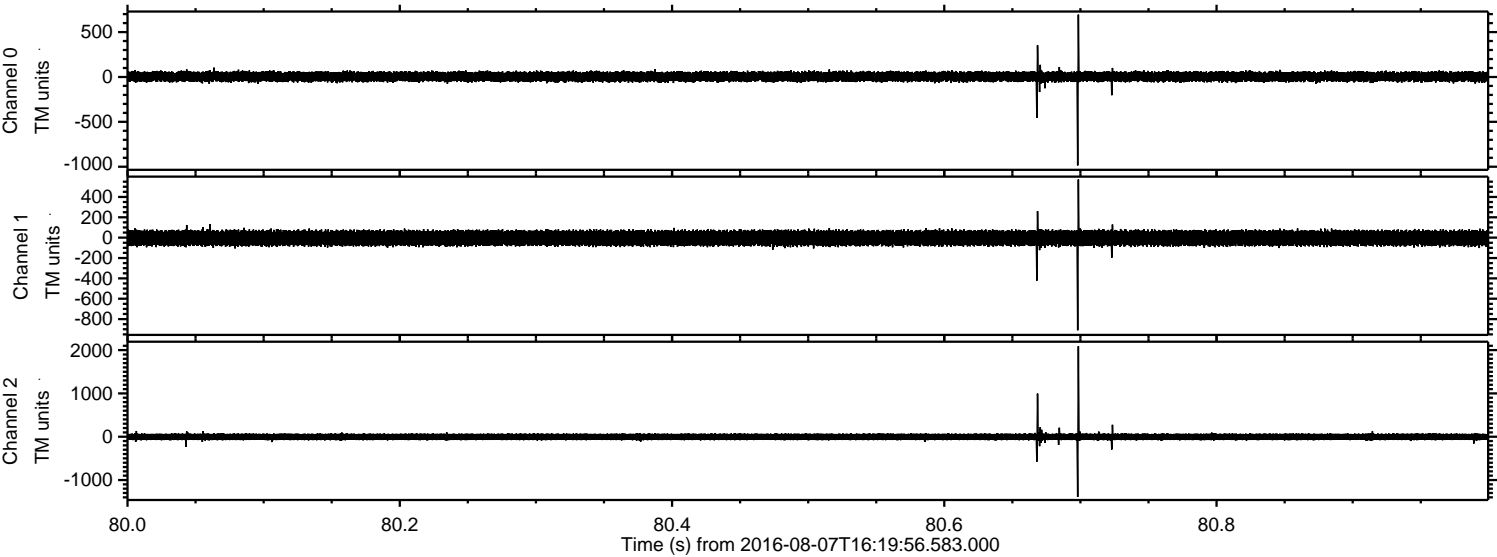


Channel 0
mn: -1363
mx: 541
 μ : 4.0
 σ : 33.0

Channel 1
mn: -401
mx: 292
 μ : -4.3
 σ : 42.5

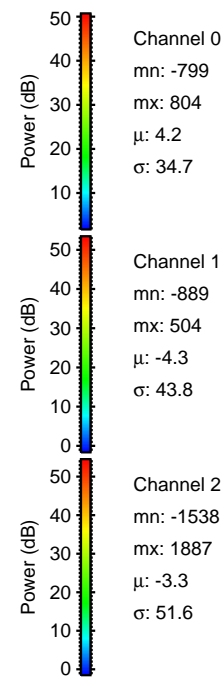
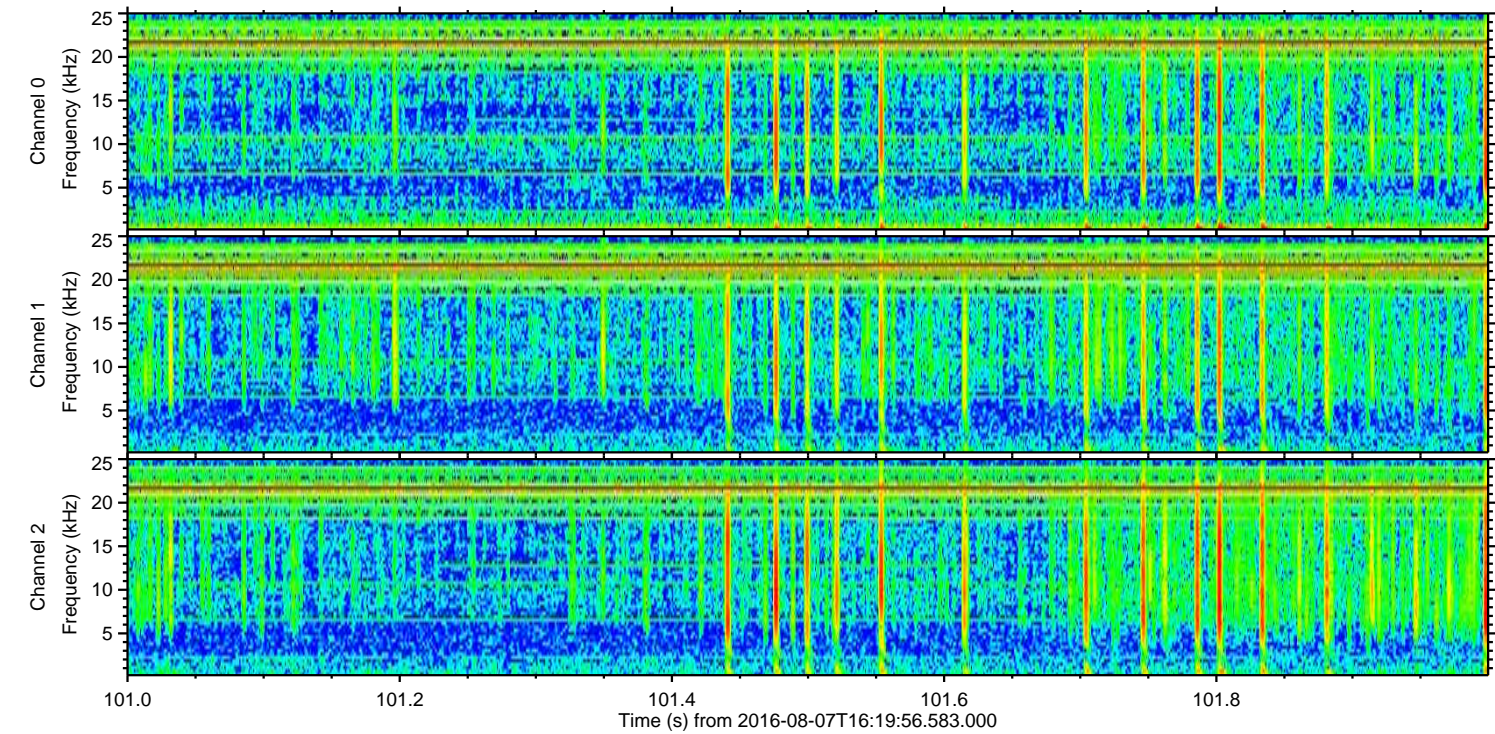
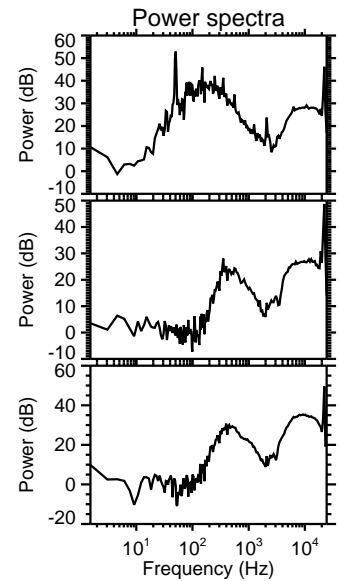
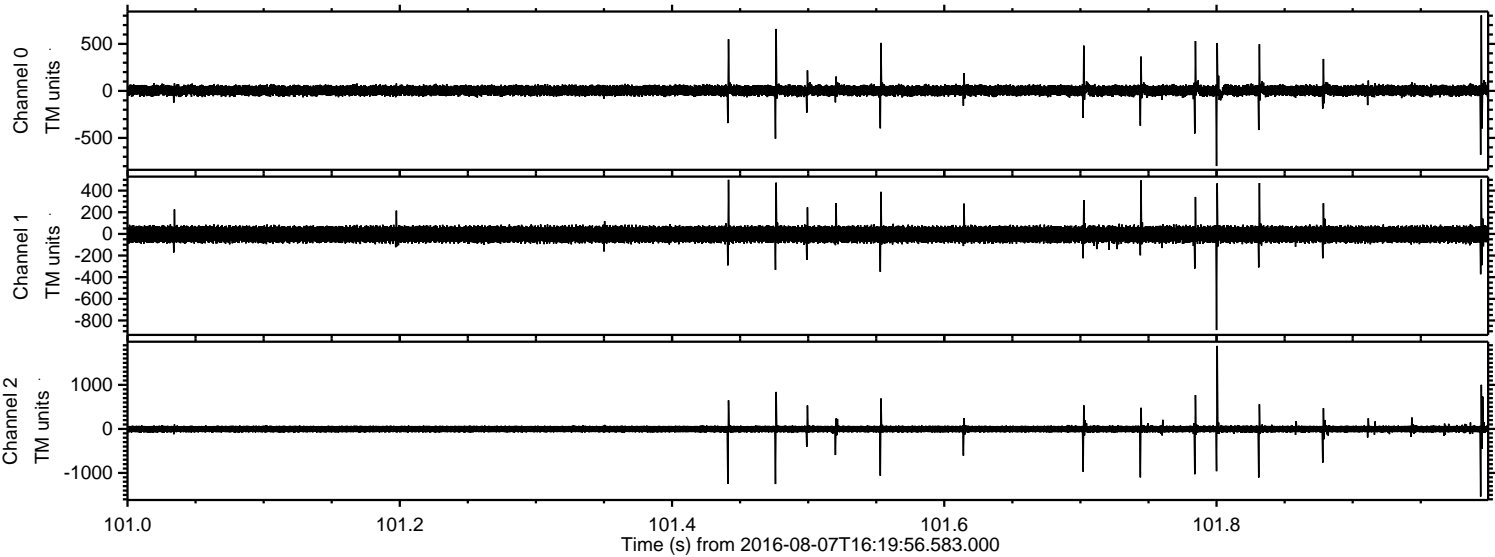
Channel 2
mn: -1266
mx: 2214
 μ : -3.2
 σ : 47.9

Processed Sun Aug 7 18:29:09 2016 by ELM ver.2012-10-06 from 001__elm20160807_161955__dat00.bin



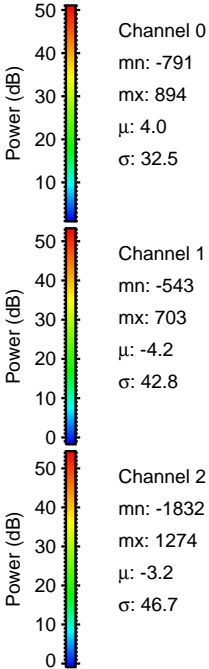
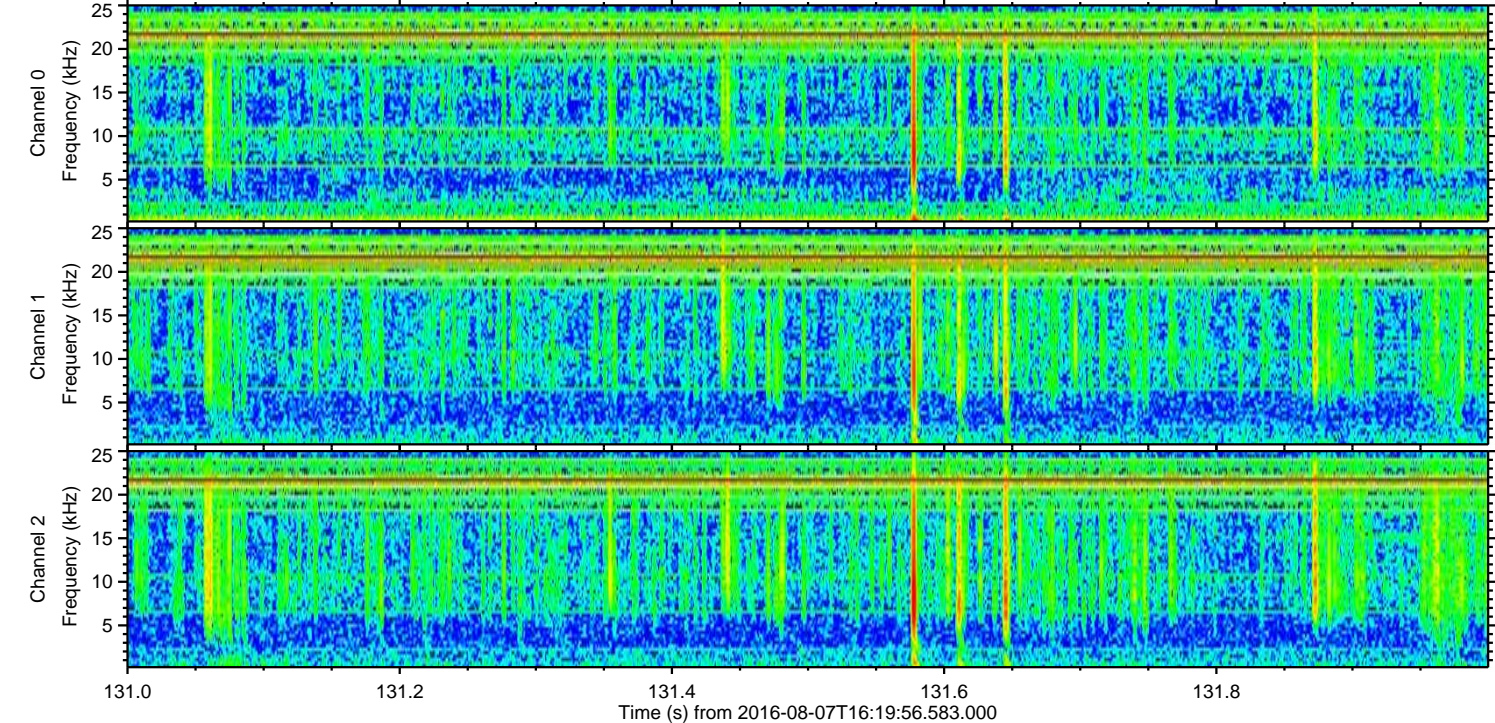
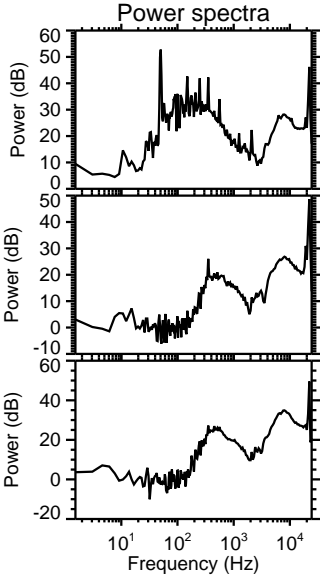
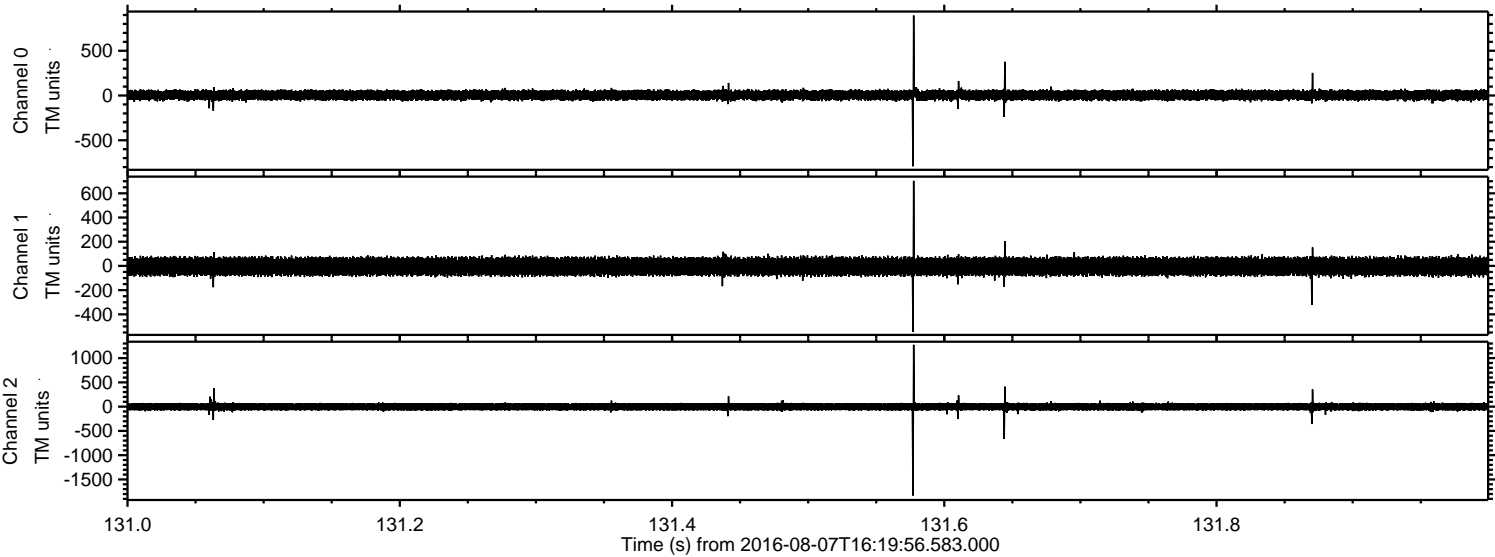
ELMAVAN 3D WAVEFORMS (Measured data sampled at 50 kHz) 51000 packets of 144 samples from 2016-08-07T16:19:56.583.000. Part 102/147

Processed Sun Aug 7 18:29:10 2016 by ELM ver.2012-10-06 from 001__elm20160807_161955__dat00.bin

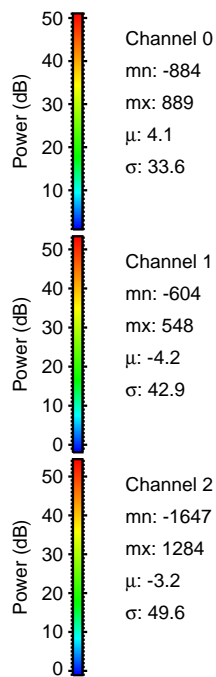
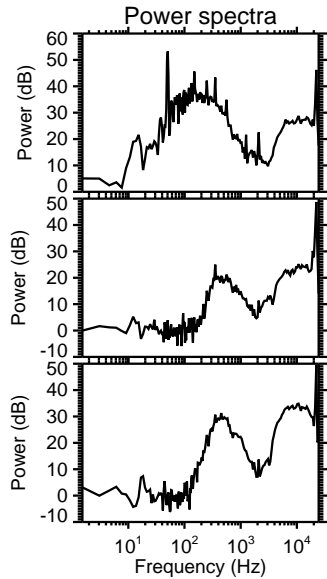
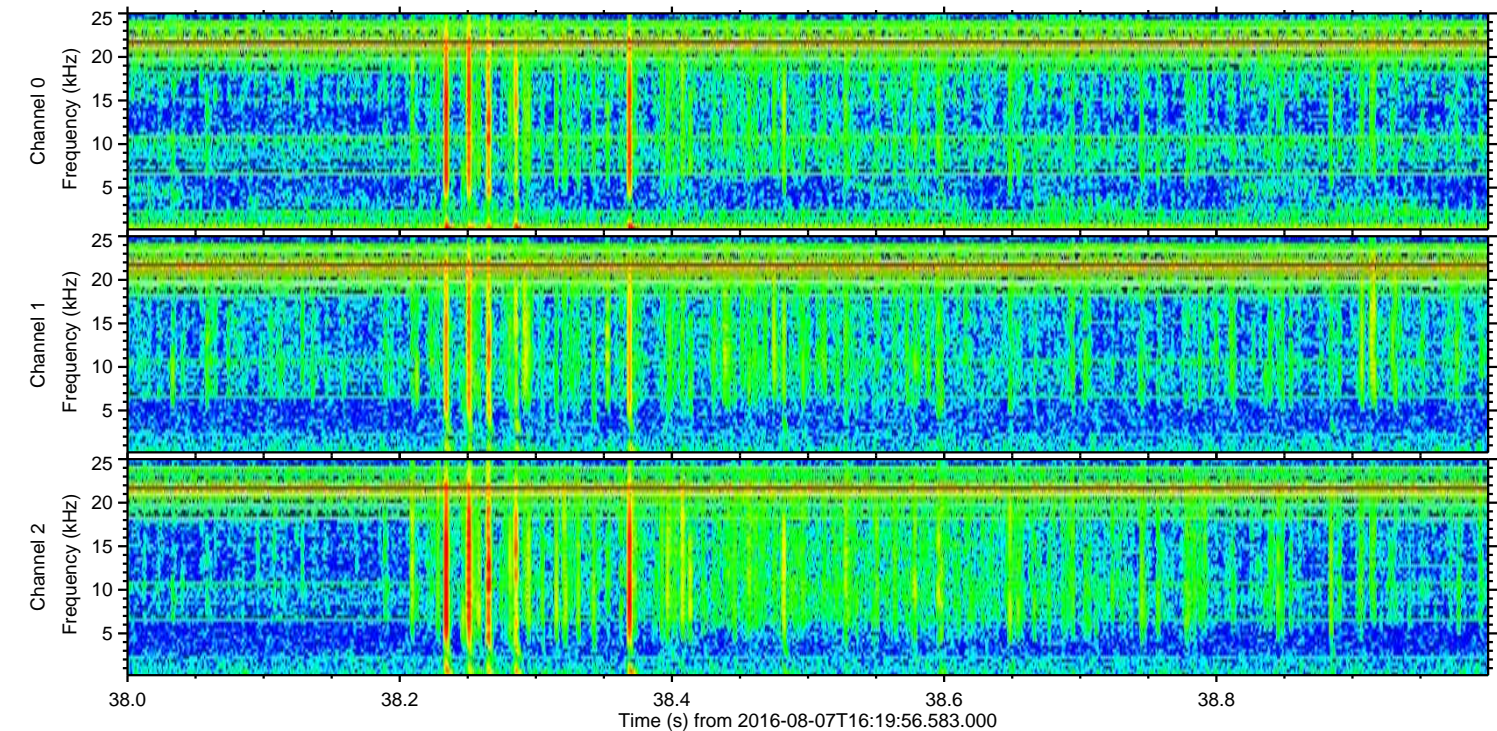
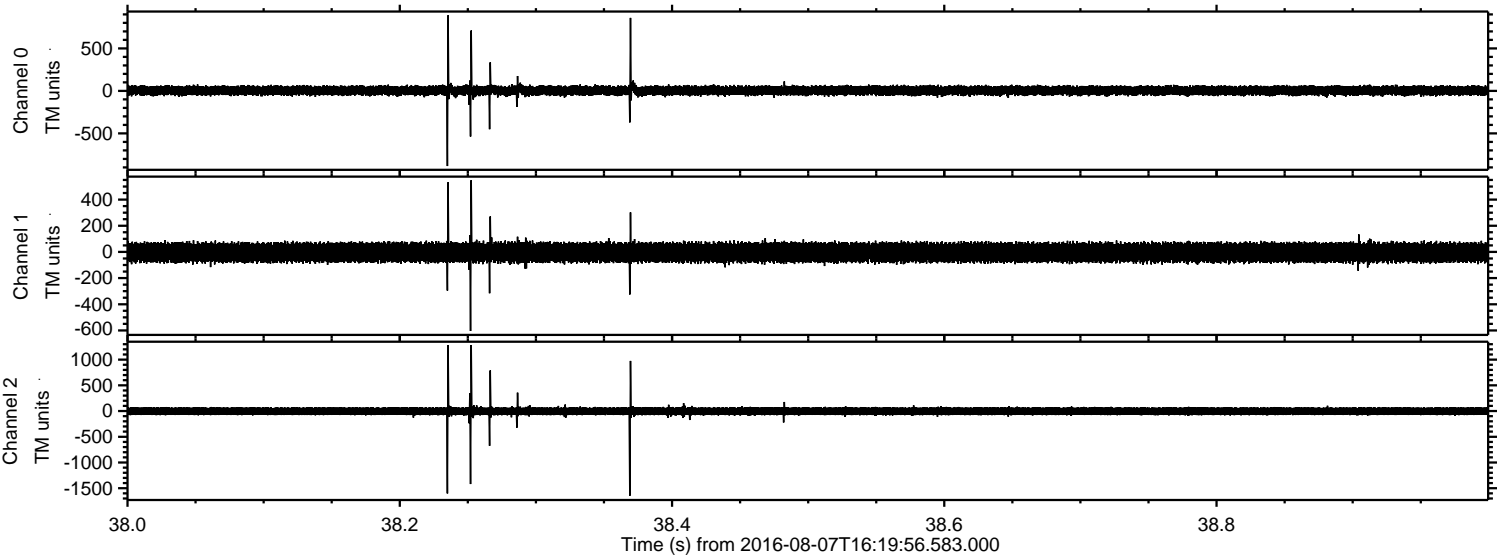


ELMAVAN 3D WAVEFORMS (Measured data sampled at 50 kHz) 51000 packets of 144 samples from 2016-08-07T16:19:56.583.000. Part 132/147

Processed Sun Aug 7 18:29:11 2016 by ELM ver.2012-10-06 from 001__elm20160807_161955__dat00.bin



Processed Sun Aug 7 18:29:12 2016 by ELM ver.2012-10-06 from 001__elm20160807_161955__dat00.bin

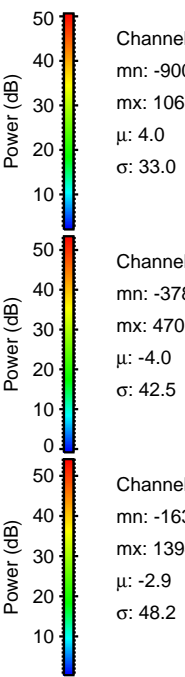
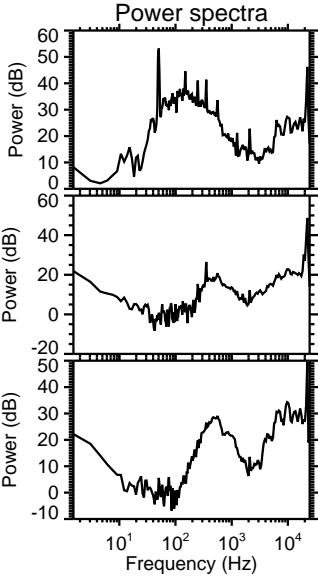
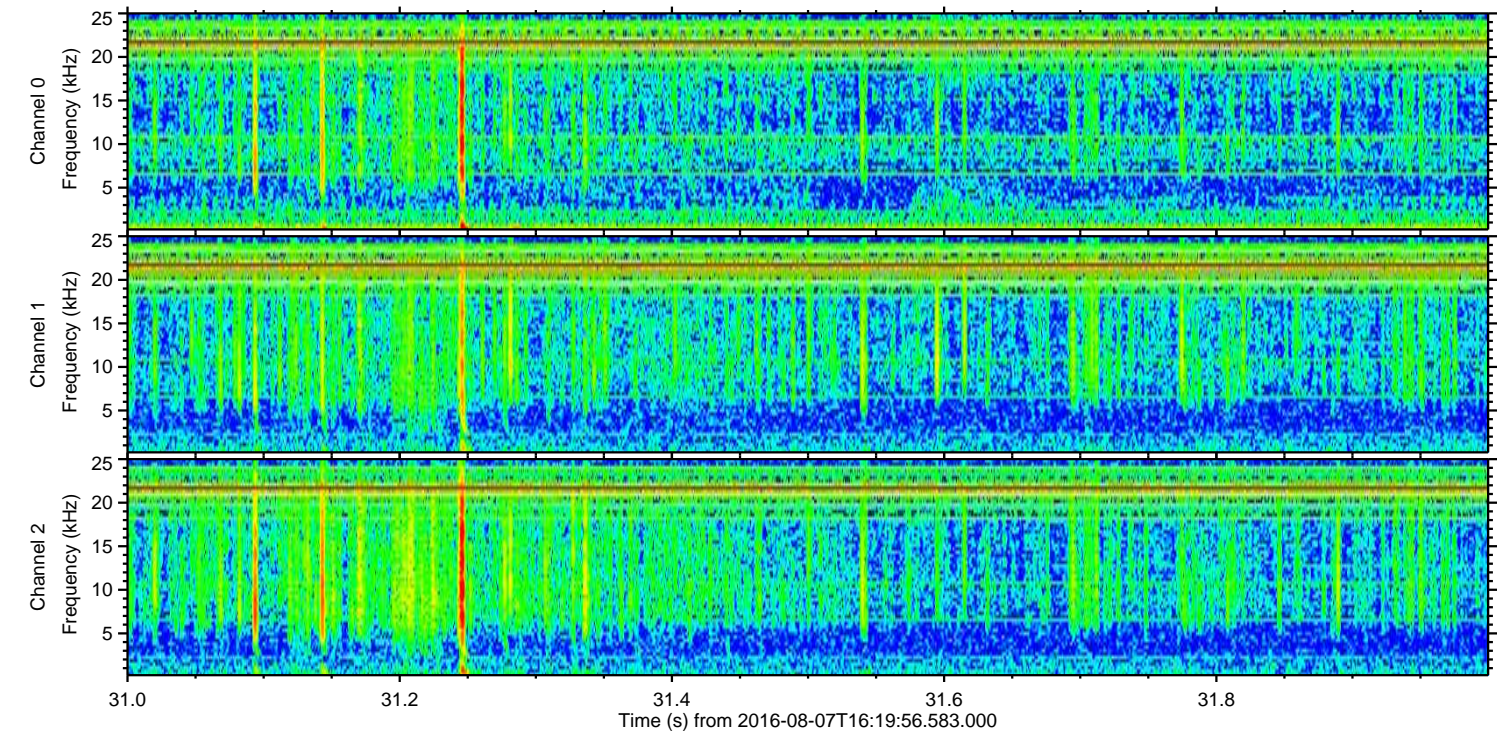
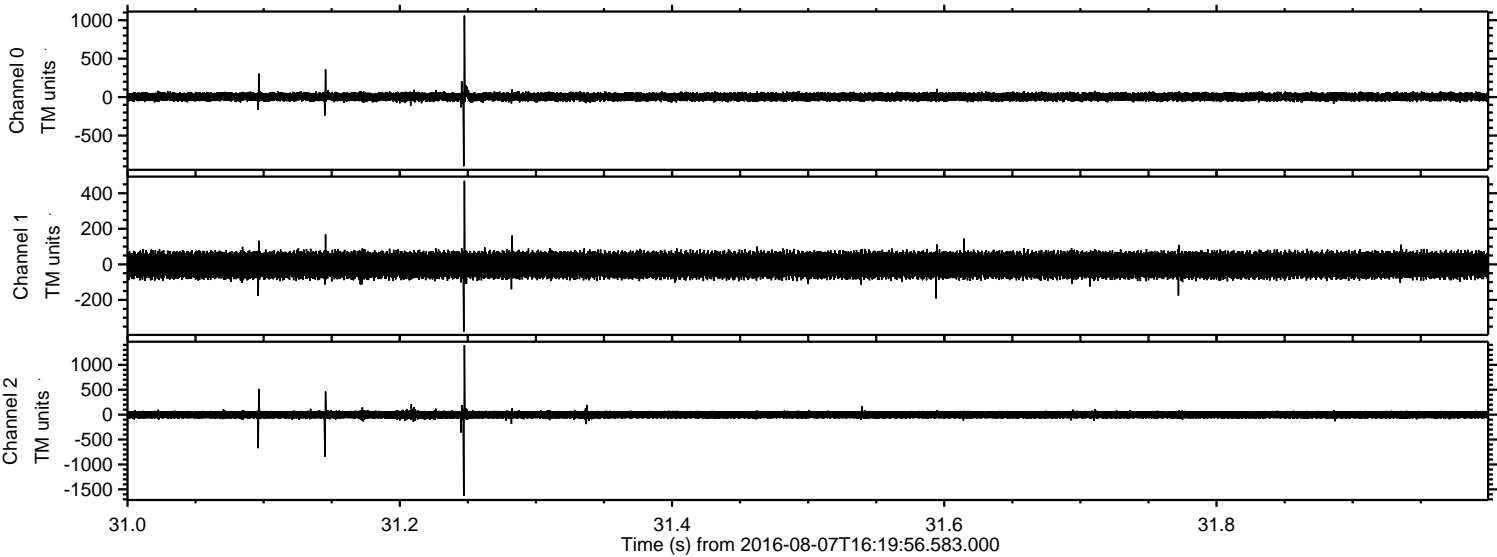


Channel 0
mn: -884
mx: 889
 μ : 4.1
 σ : 33.6

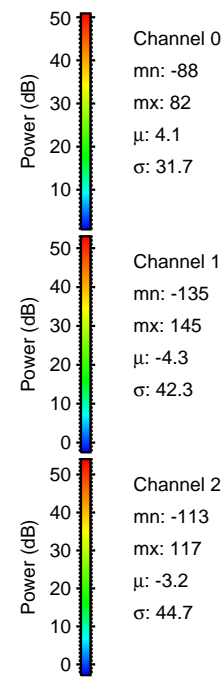
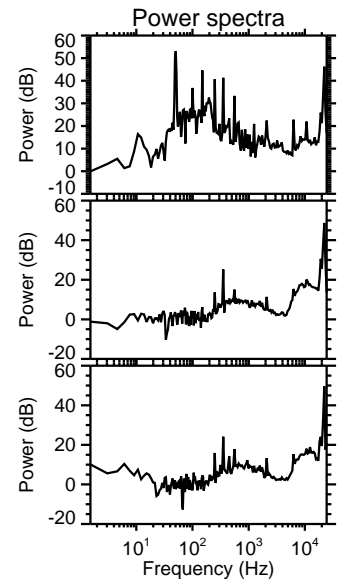
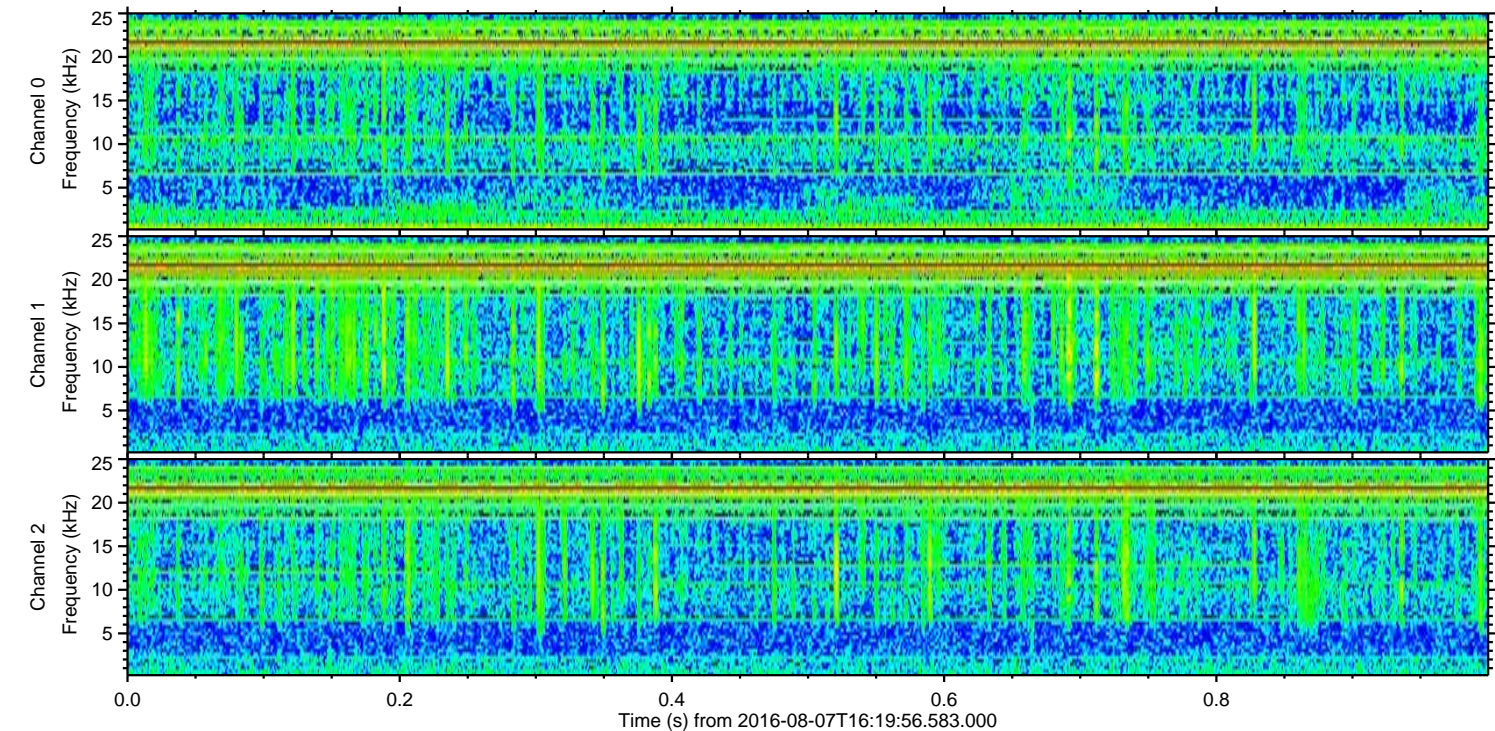
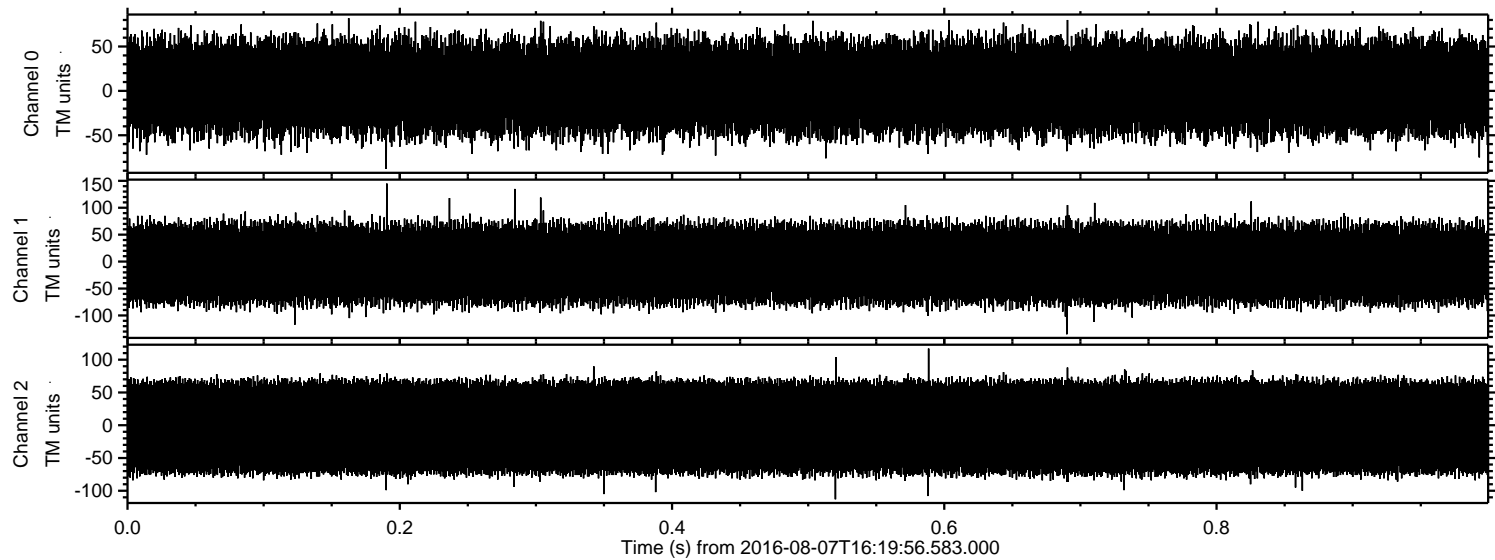
Channel 1
mn: -604
mx: 548
 μ : -4.2
 σ : 42.9

Channel 2
mn: -1647
mx: 1284
 μ : -3.2
 σ : 49.6

Processed Sun Aug 7 18:29:13 2016 by ELM ver.2012-10-06 from 001__elm20160807_161955__dat00.bin



Processed Sun Aug 7 18:29:14 2016 by ELM ver.2012-10-06 from 001__elm20160807_161955__dat00.bin



Channel 0
mn: -88
mx: 82
 μ : 4.1
 σ : 31.7

Channel 1
mn: -135
mx: 145
 μ : -4.3
 σ : 42.3

Channel 2
mn: -113
mx: 117
 μ : -3.2
 σ : 44.7