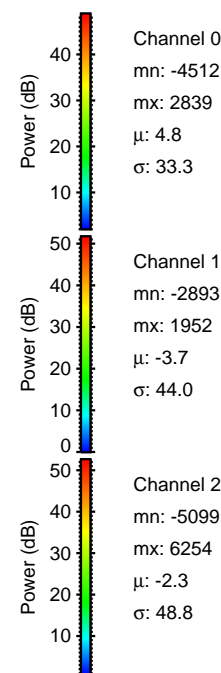
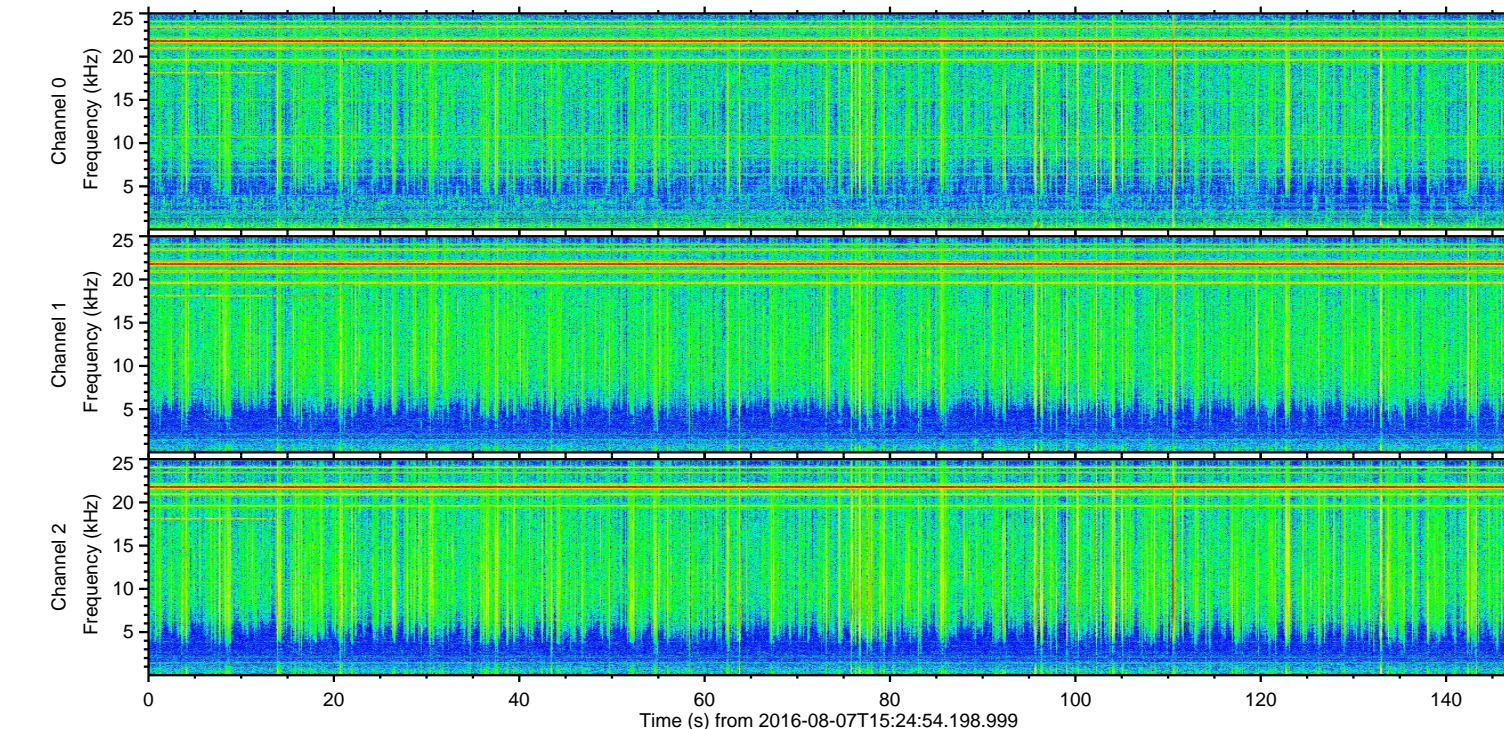
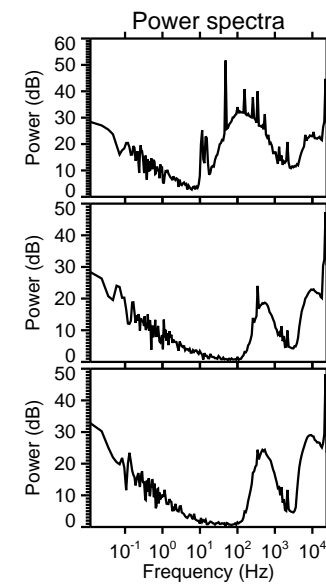
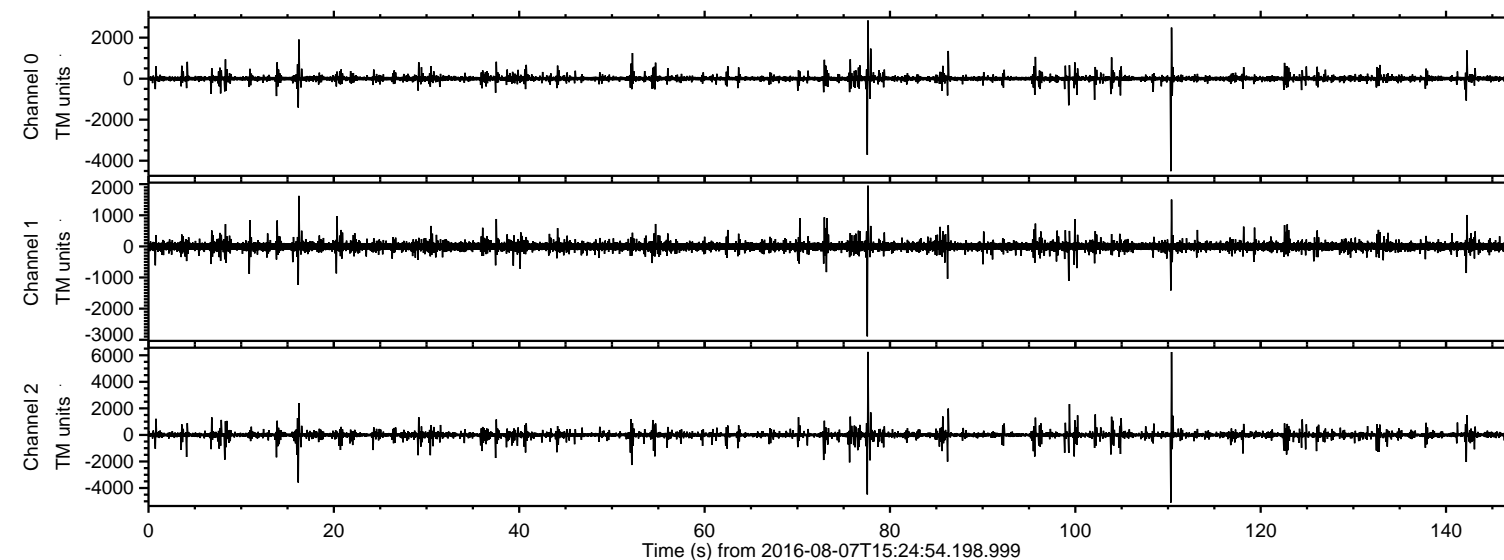
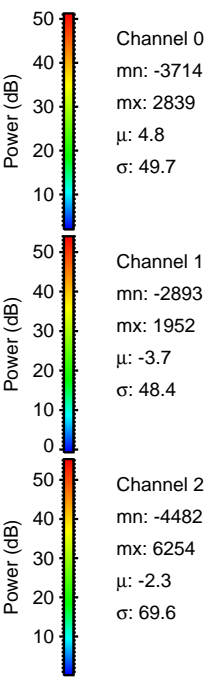
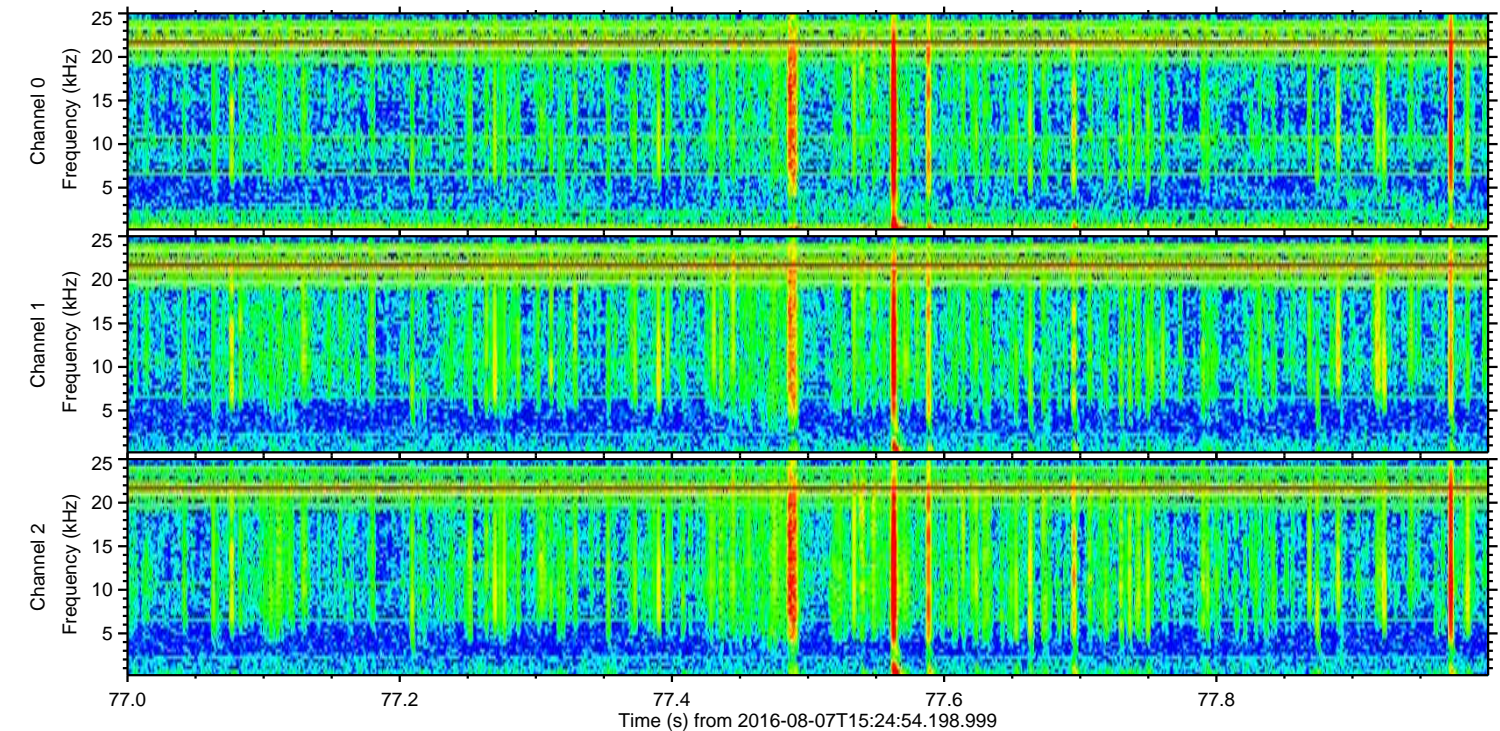
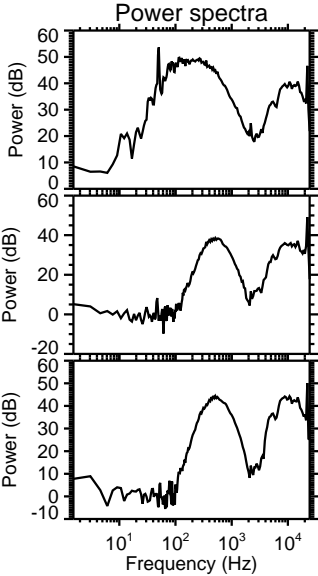
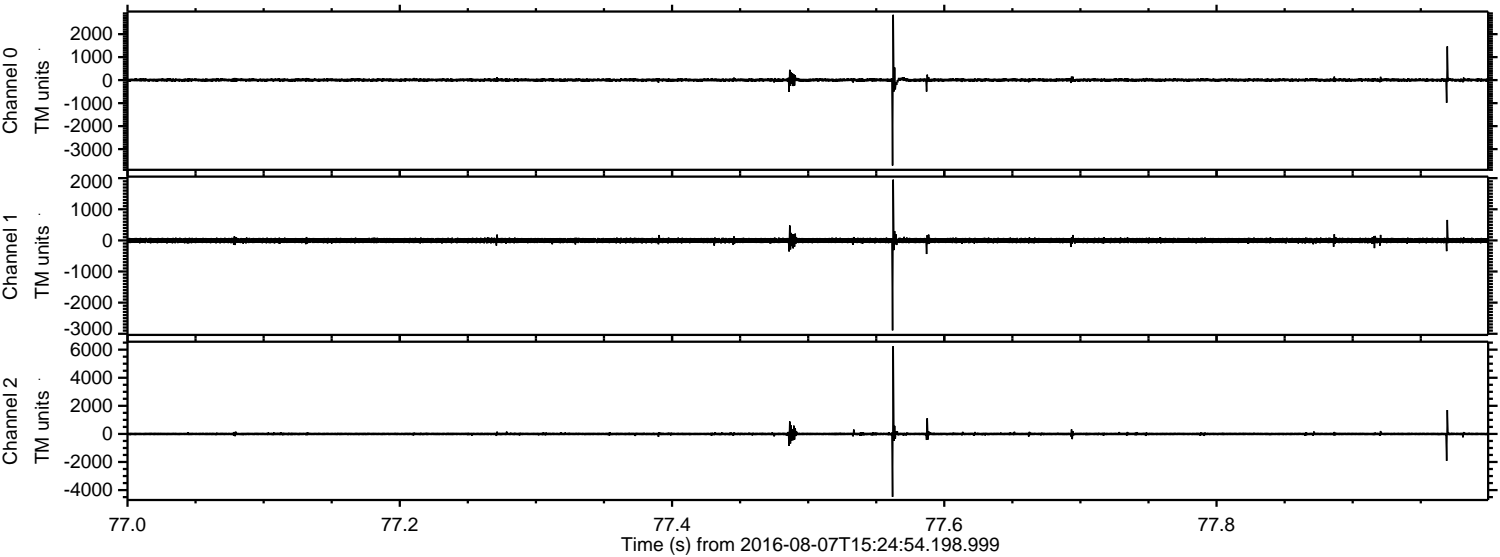


ELMAVAN 3D WAVEFORMS (Measured data sampled at 50 kHz) 51000 packets of 144 samples from 2016-08-07T15:24:54.198.999.

Processed Sun Aug 7 17:32:32 2016 by ELM ver.2012-10-06 from 001__elm20160807_152453__dat00.bin

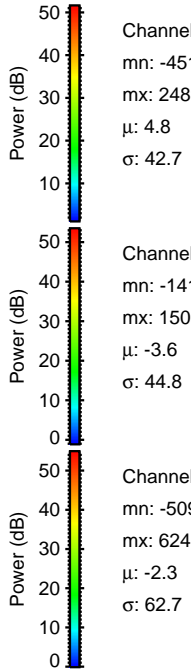
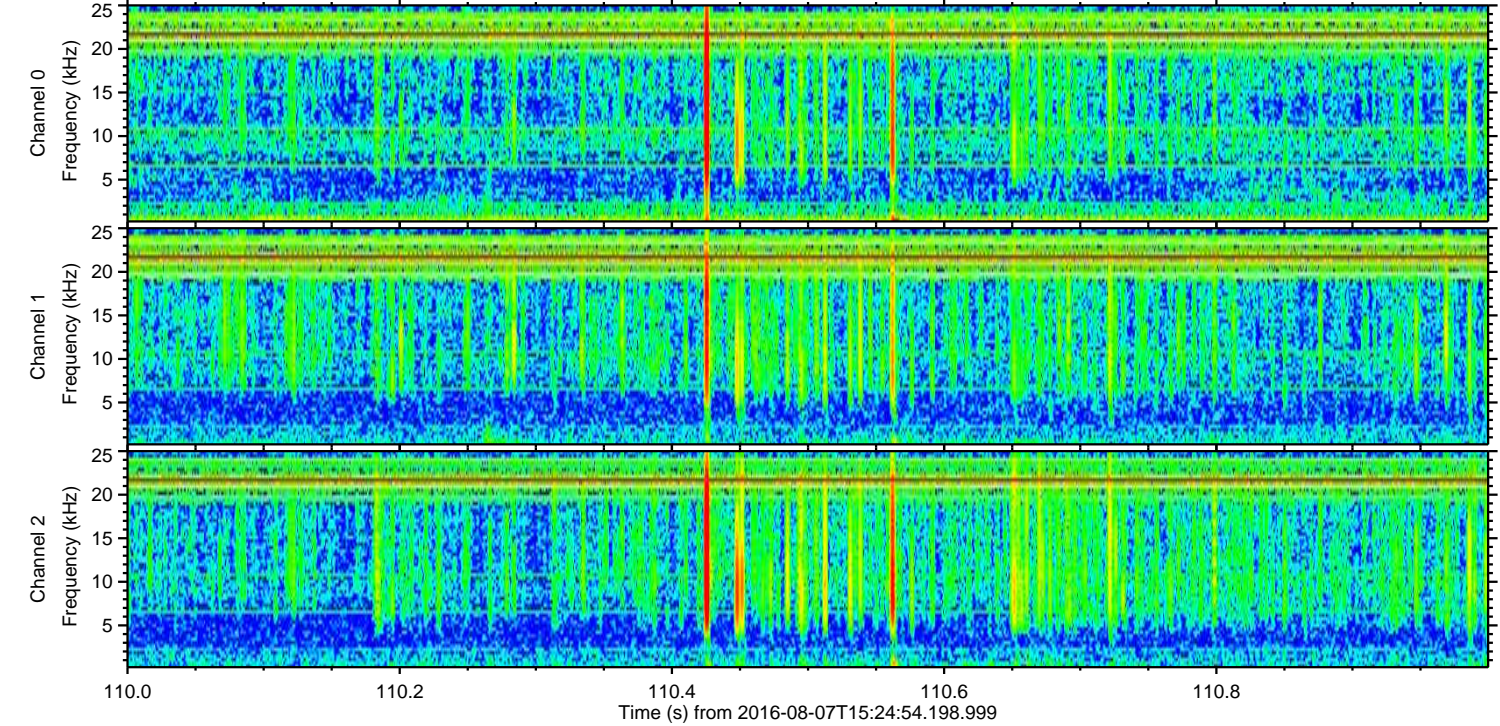
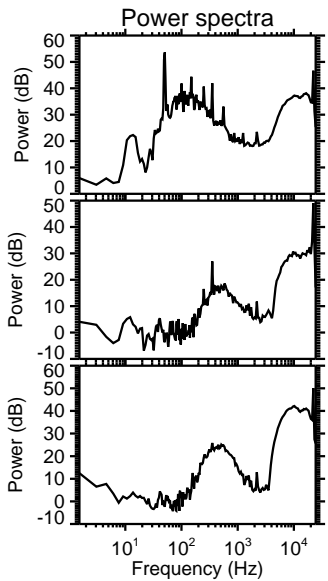
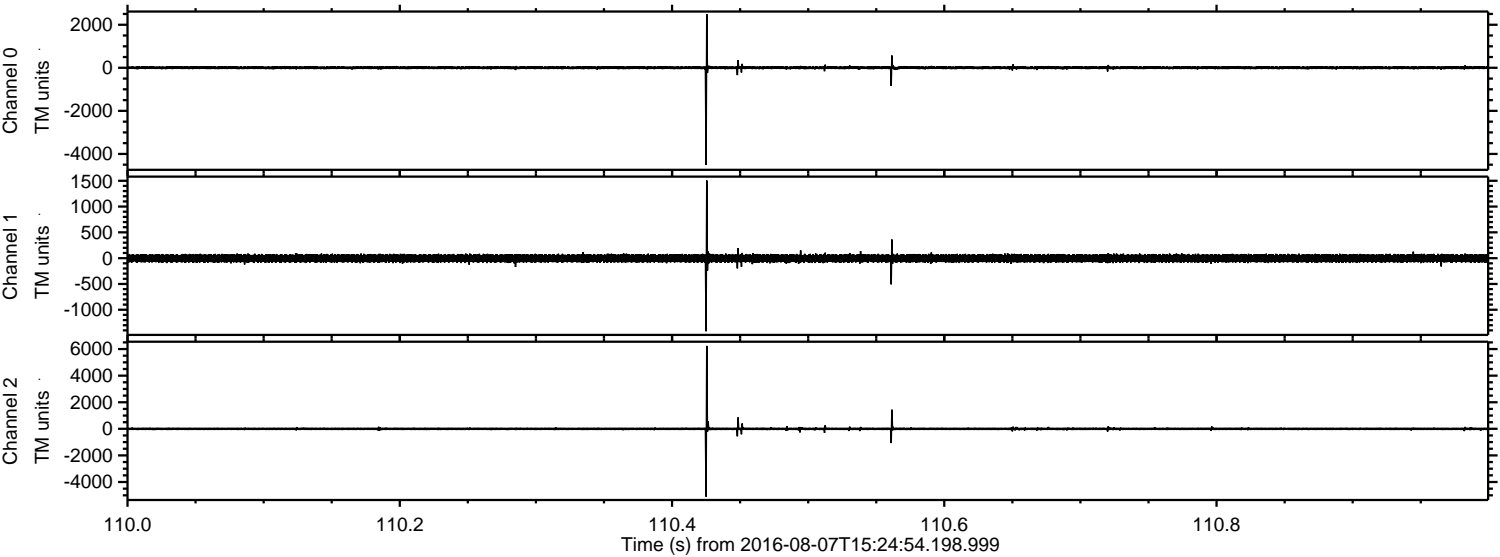


Processed Sun Aug 7 17:32:47 2016 by ELM ver.2012-10-06 from 001__elm20160807_152453__dat00.bin



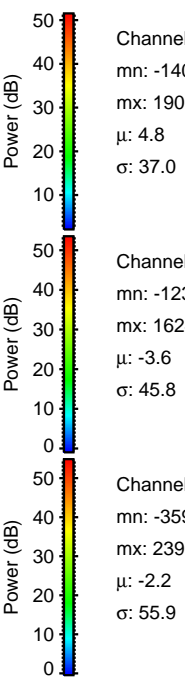
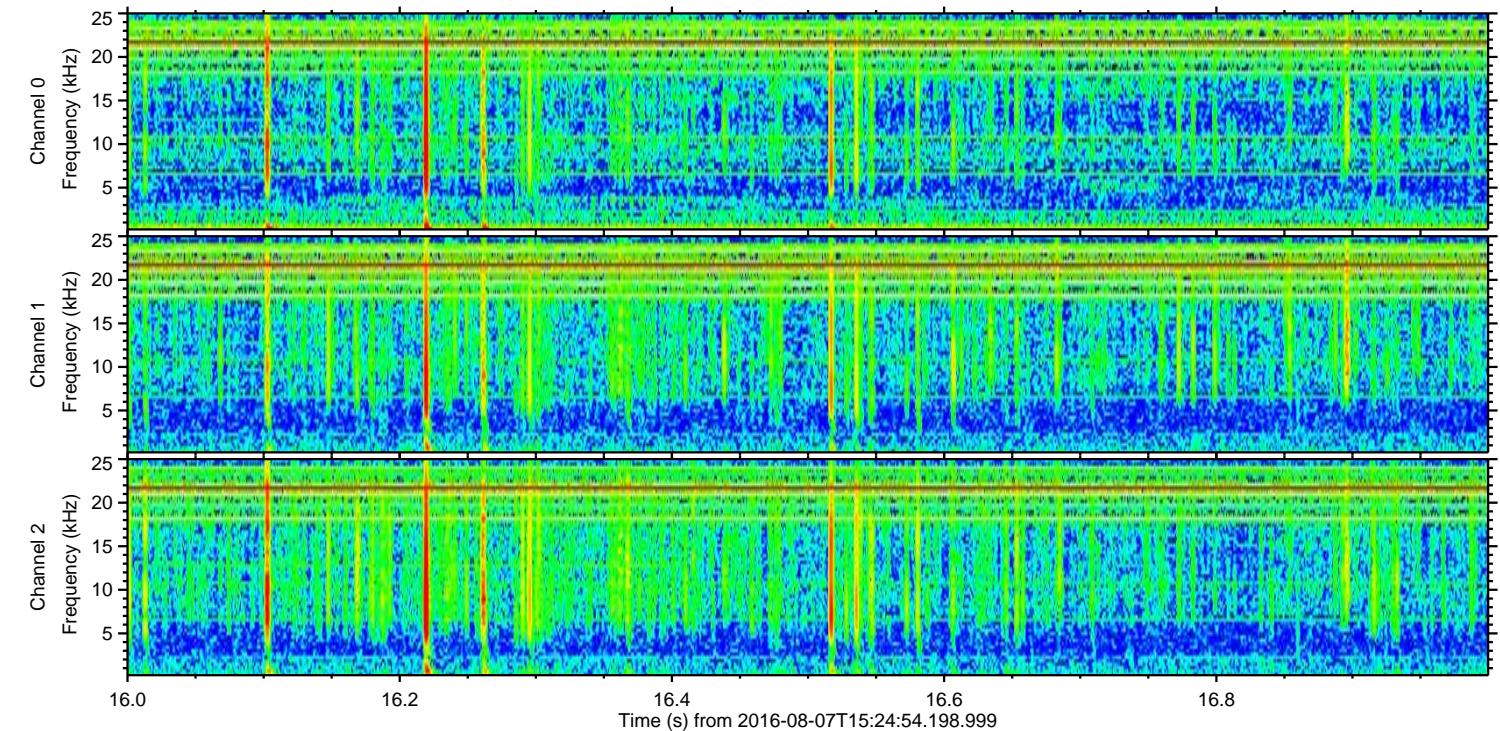
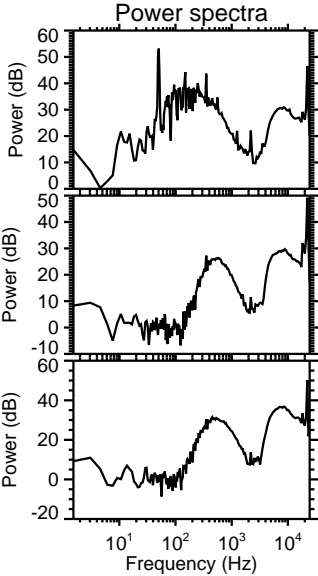
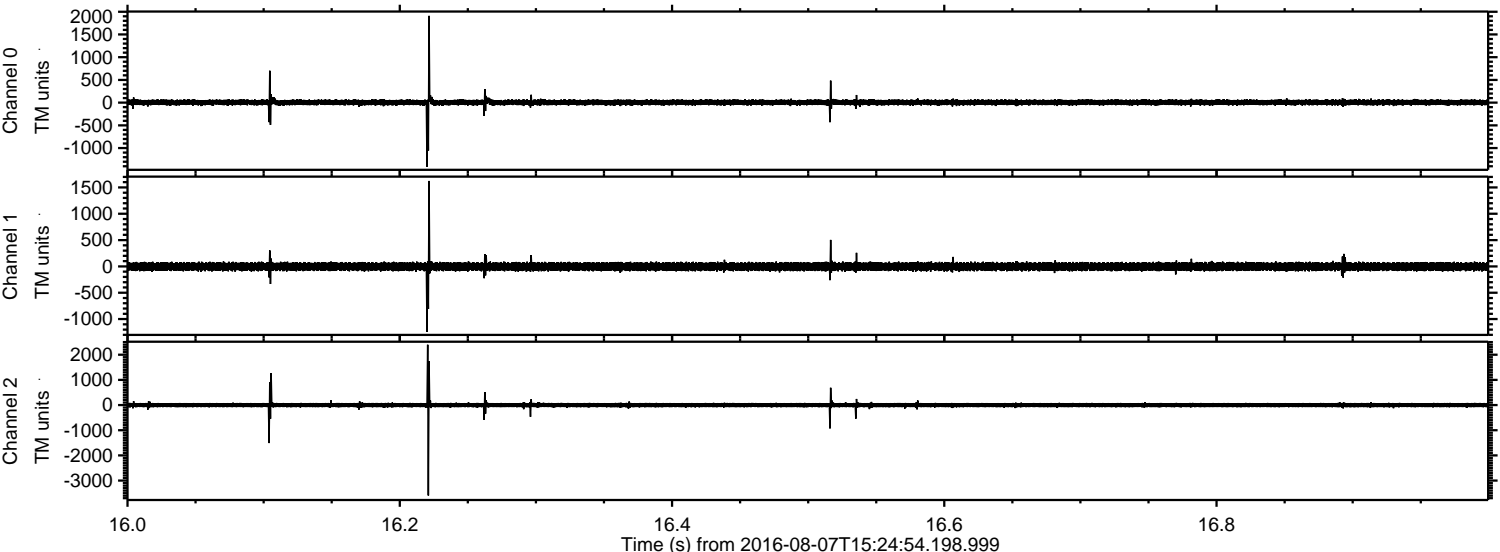
ELMAVAN 3D WAVEFORMS (Measured data sampled at 50 kHz) 51000 packets of 144 samples from 2016-08-07T15:24:54.198.999. Part 111/147

Processed Sun Aug 7 17:32:48 2016 by ELM ver.2012-10-06 from 001__elm20160807_152453__dat00.bin



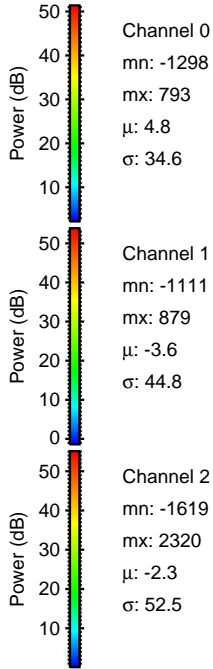
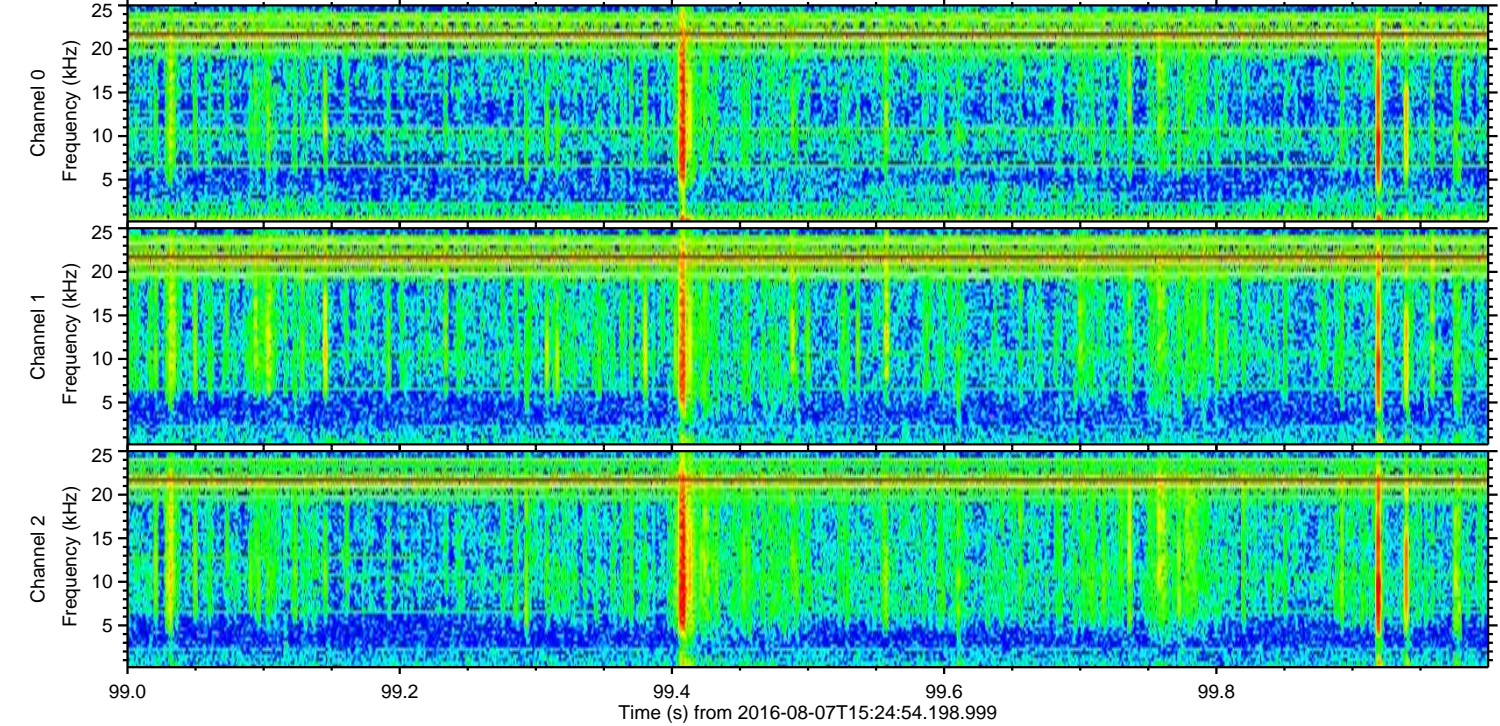
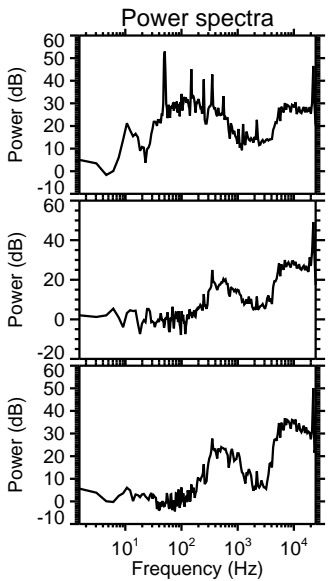
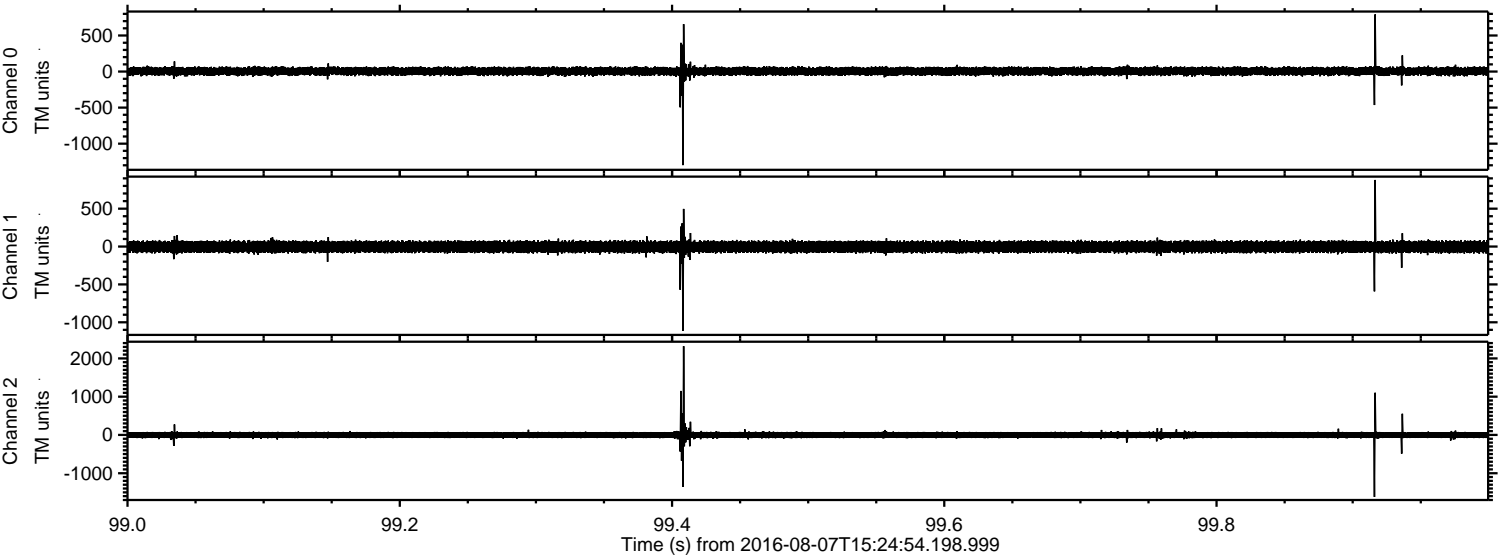
ELMAVAN 3D WAVEFORMS (Measured data sampled at 50 kHz) 51000 packets of 144 samples from 2016-08-07T15:24:54.198.999. Part 17/147

Processed Sun Aug 7 17:32:49 2016 by ELM ver.2012-10-06 from 001__elm20160807_152453__dat00.bin

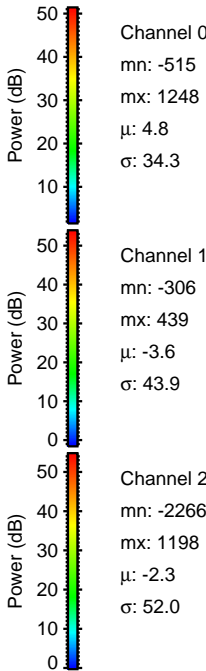
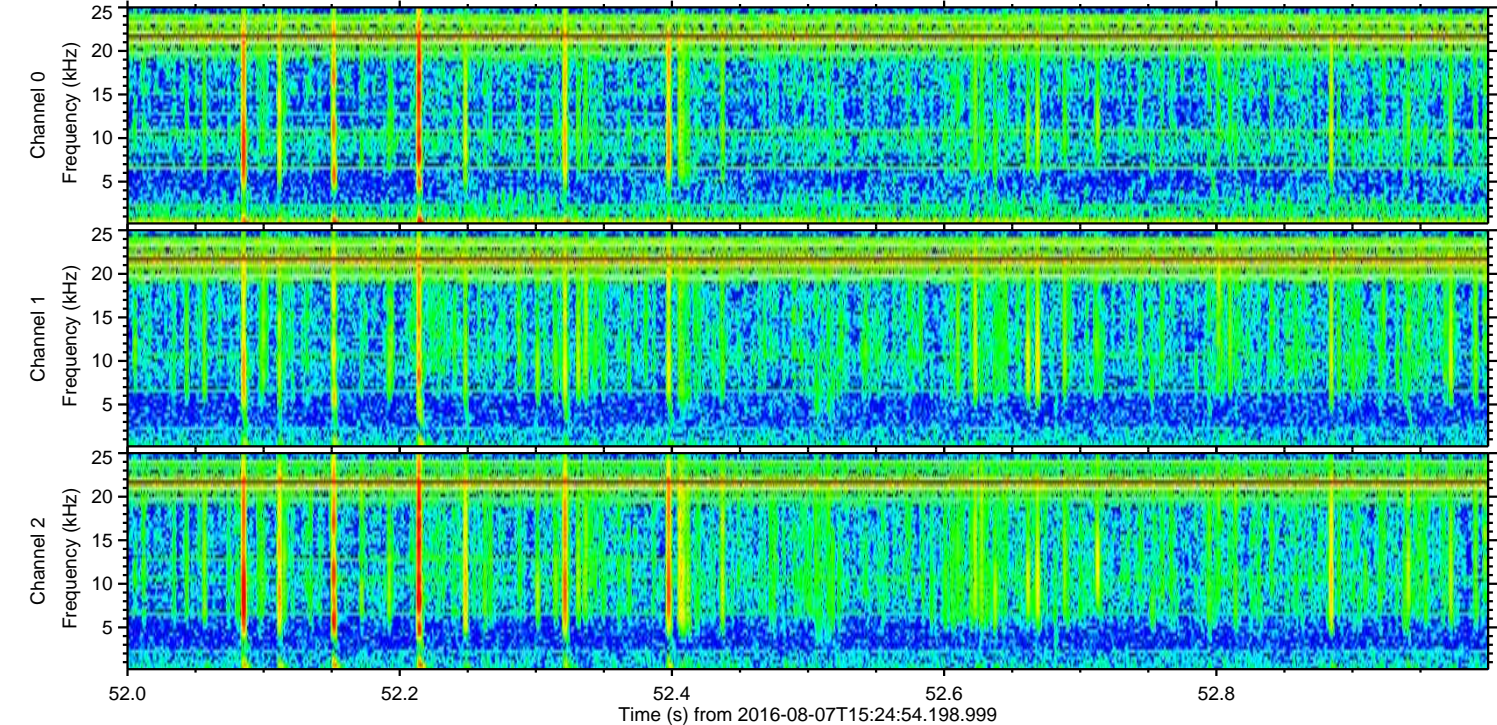
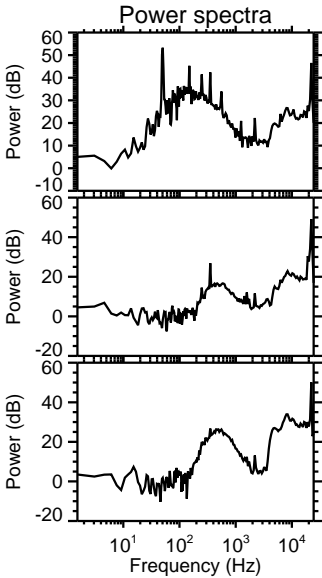
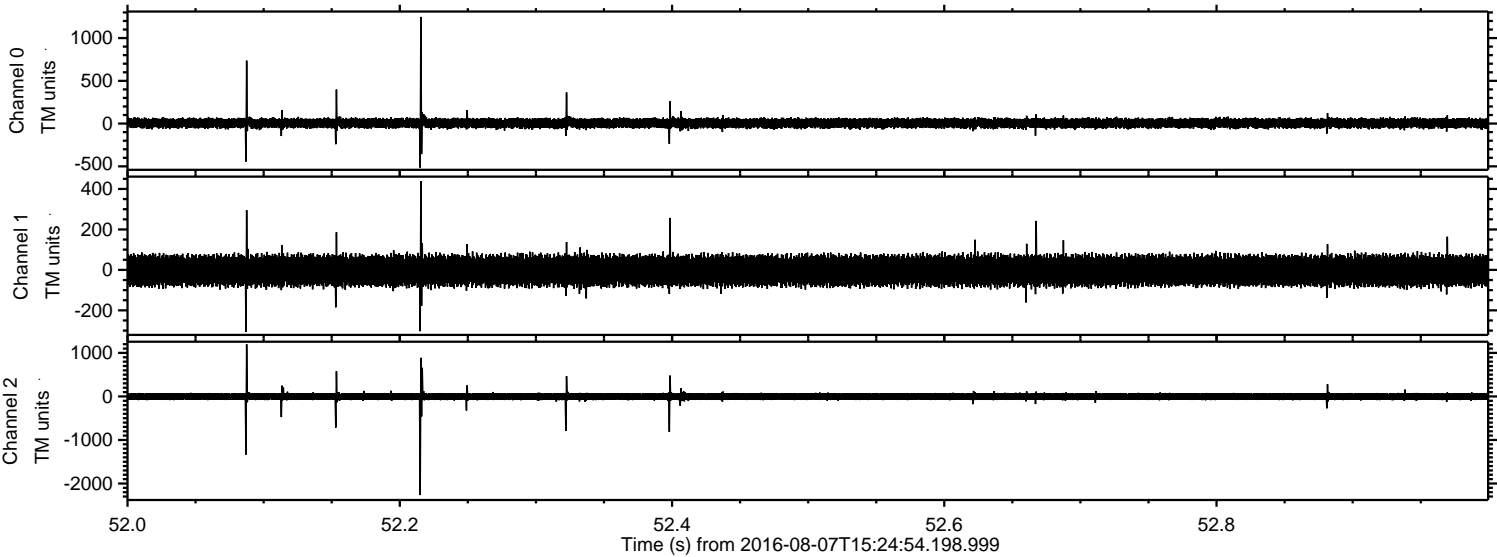


ELMAVAN 3D WAVEFORMS (Measured data sampled at 50 kHz) 51000 packets of 144 samples from 2016-08-07T15:24:54.198.999. Part 100/147

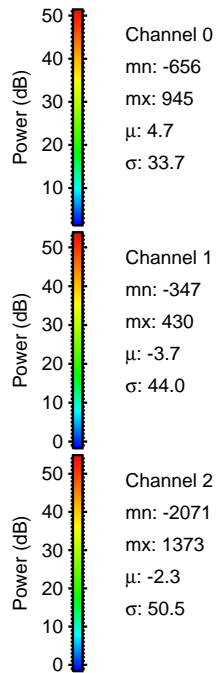
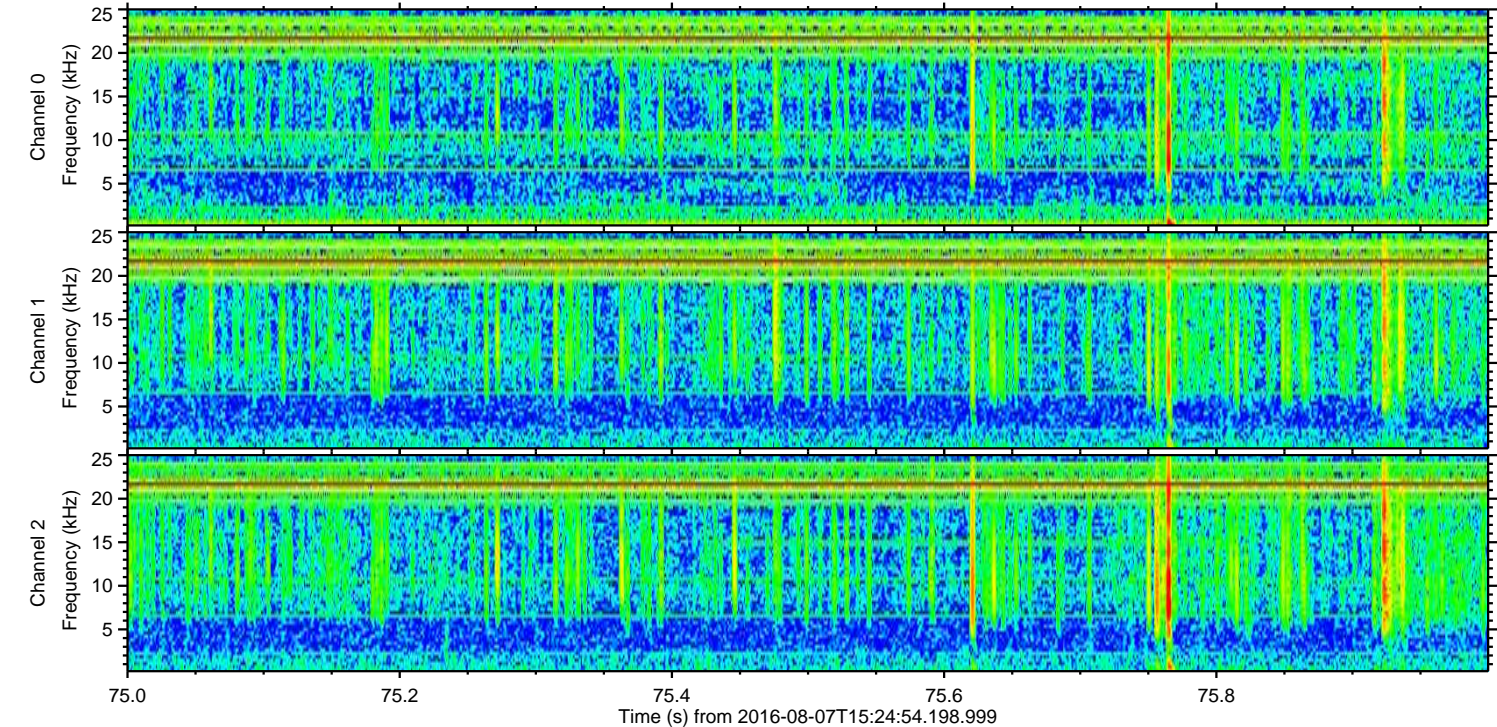
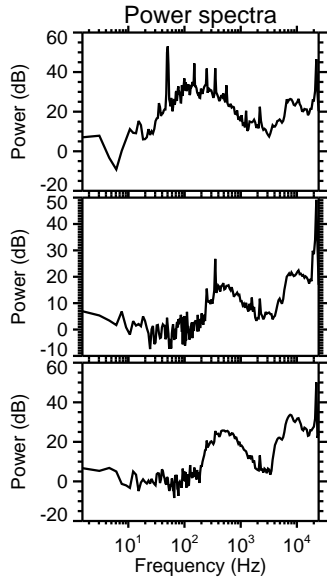
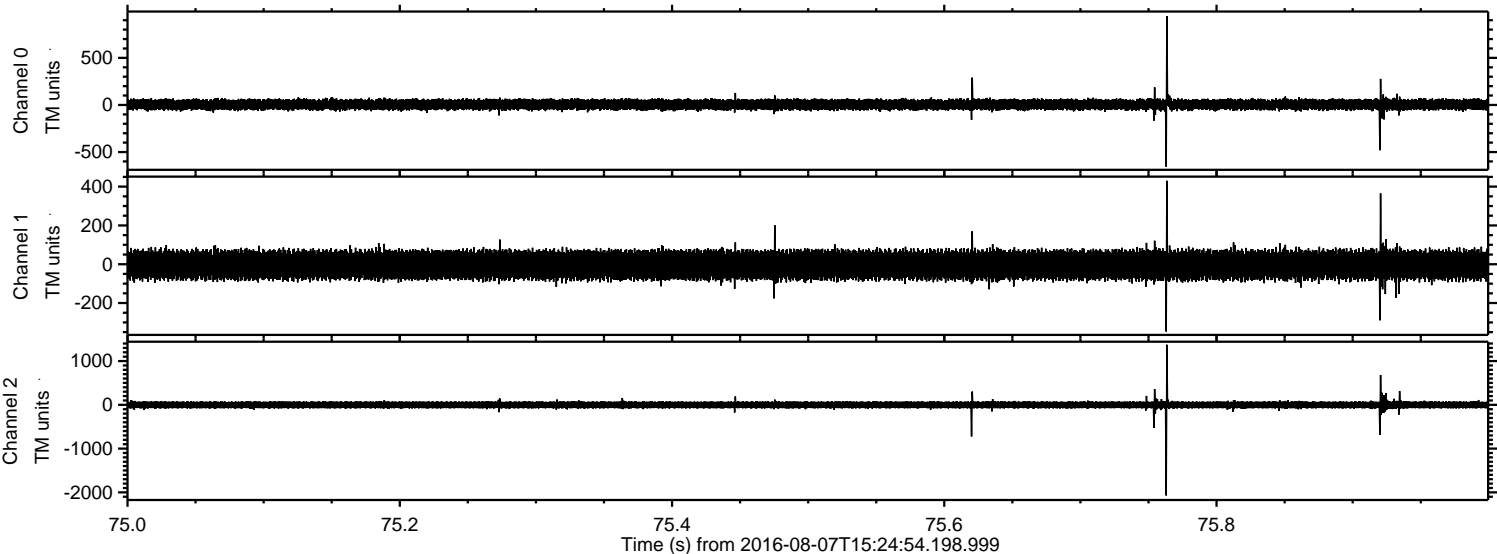
Processed Sun Aug 7 17:32:50 2016 by ELM ver.2012-10-06 from 001__elm20160807_152453__dat00.bin



Processed Sun Aug 7 17:32:51 2016 by ELM ver.2012-10-06 from 001__elm20160807_152453__dat00.bin

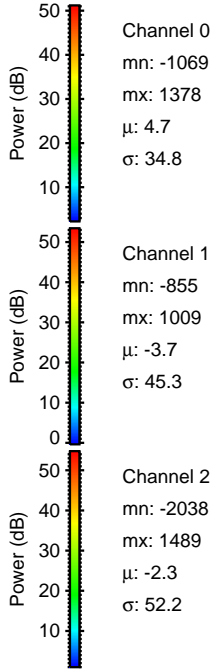
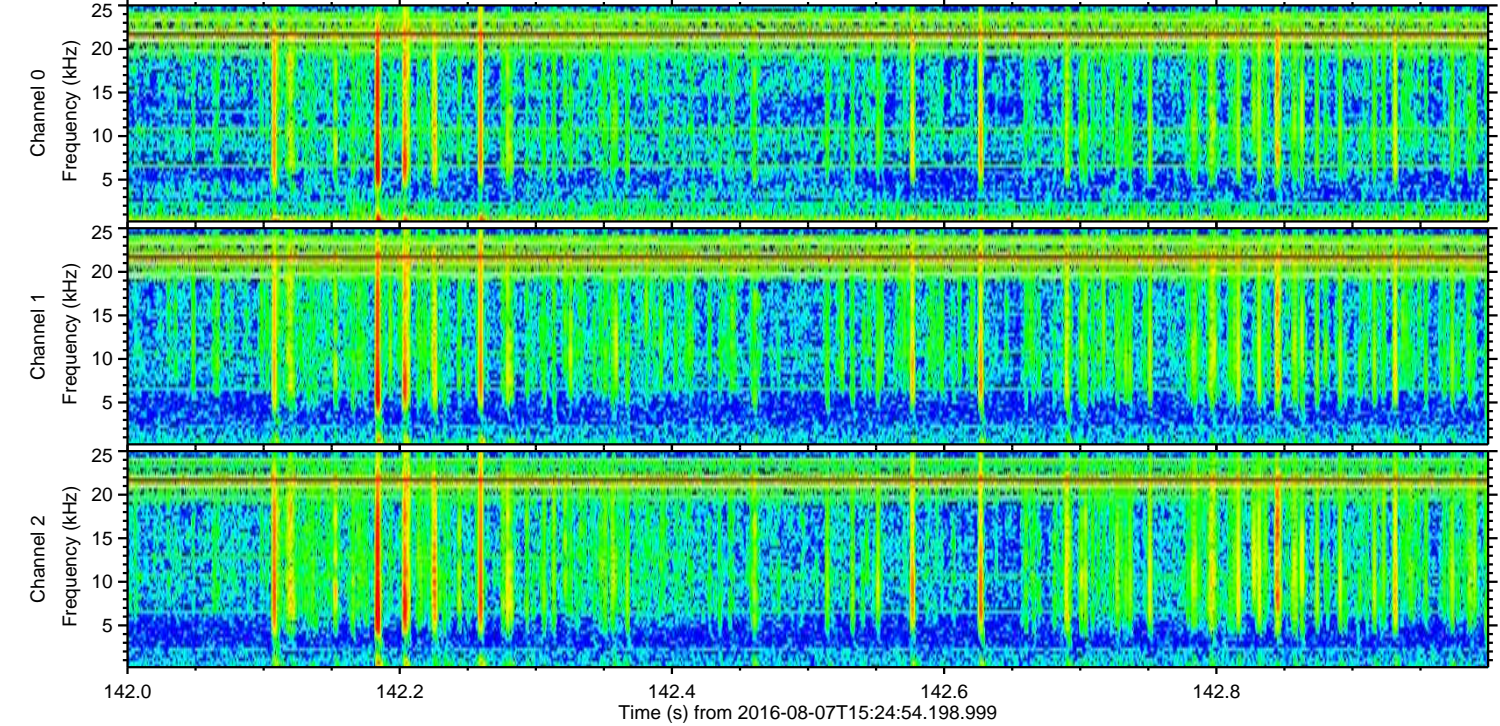
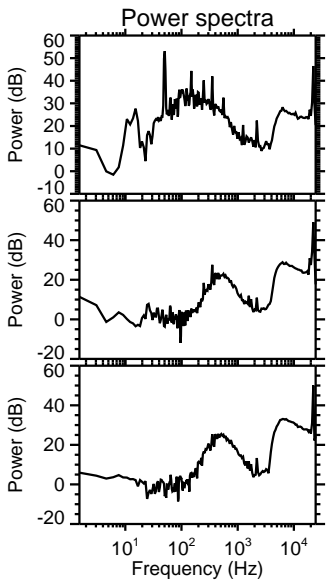
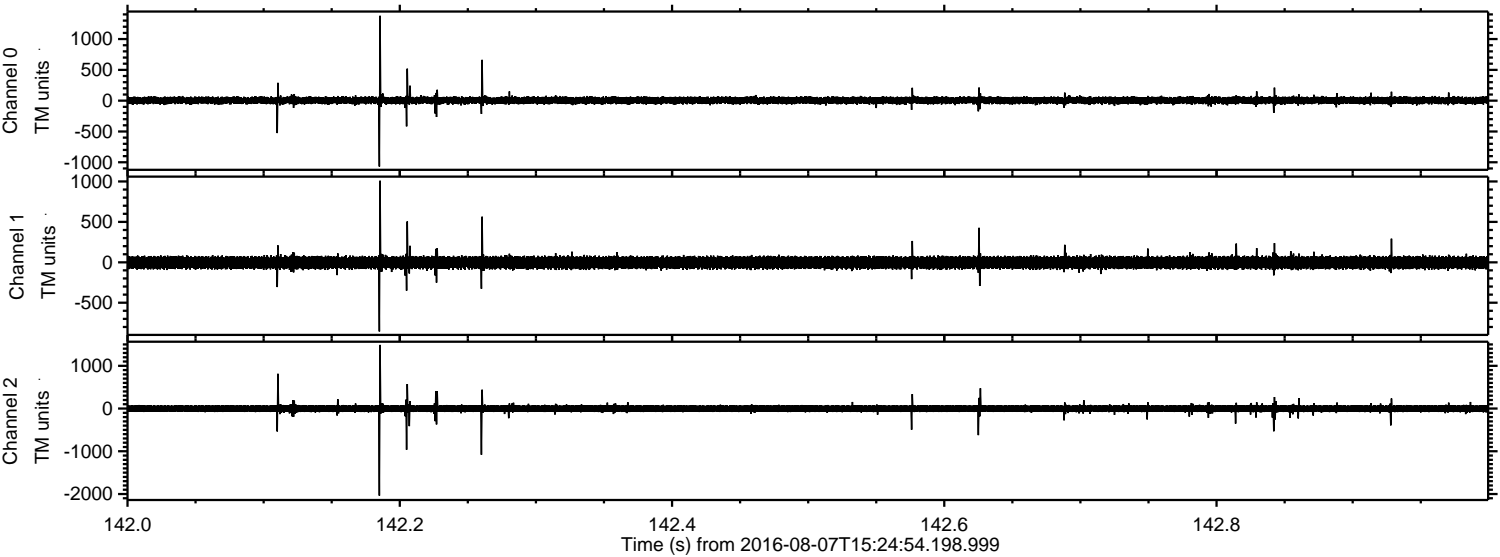


Processed Sun Aug 7 17:32:53 2016 by ELM ver.2012-10-06 from 001__elm20160807_152453__dat00.bin



ELMAVAN 3D WAVEFORMS (Measured data sampled at 50 kHz) 51000 packets of 144 samples from 2016-08-07T15:24:54.198.999. Part 143/147

Processed Sun Aug 7 17:32:54 2016 by ELM ver.2012-10-06 from 001__elm20160807_152453__dat00.bin

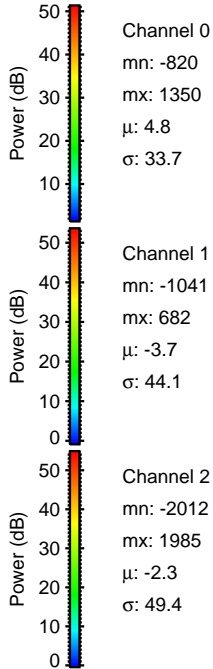
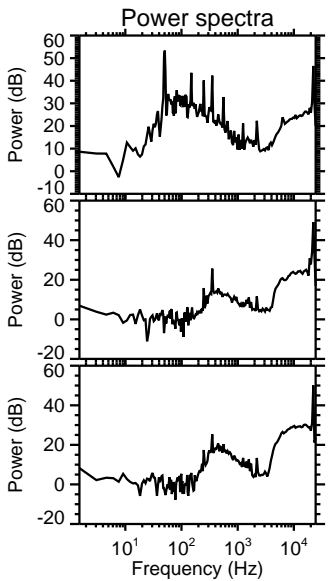
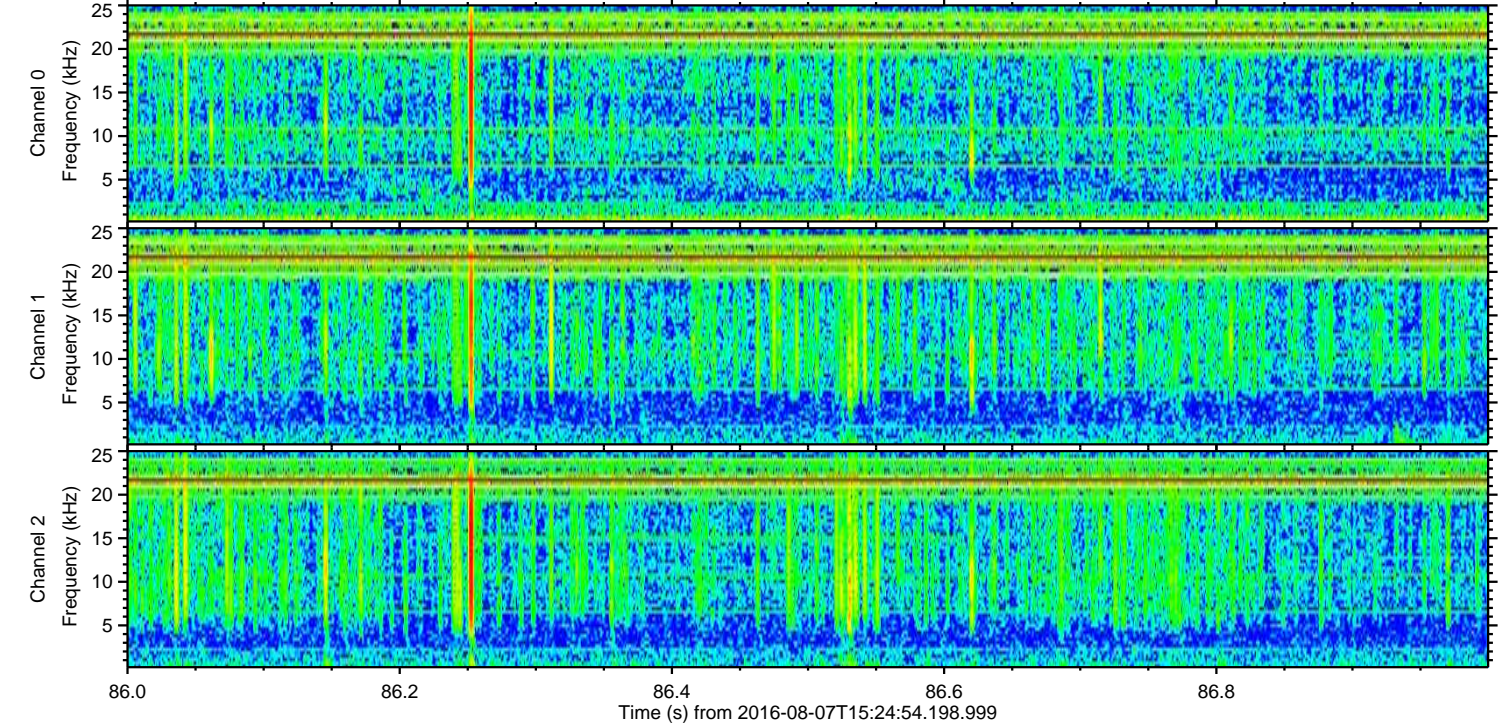
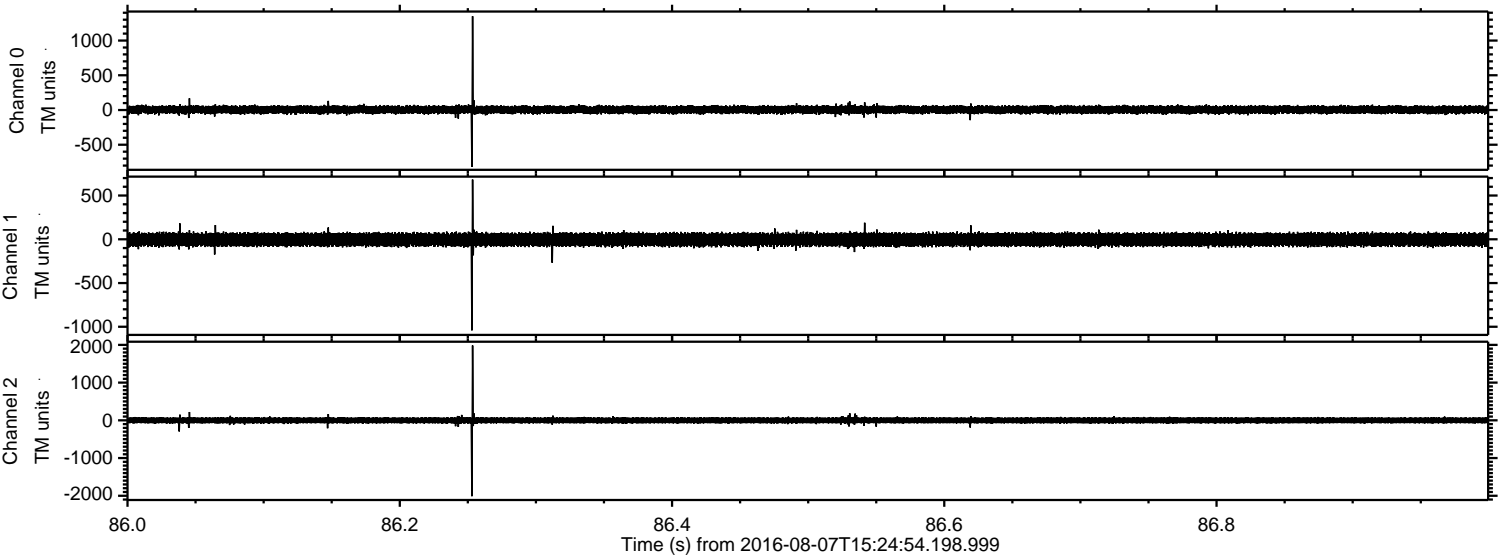


Channel 0
mn: -1069
mx: 1378
 μ : 4.7
 σ : 34.8

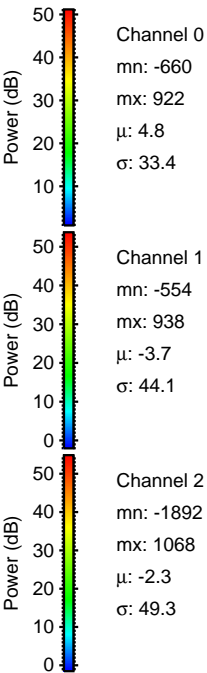
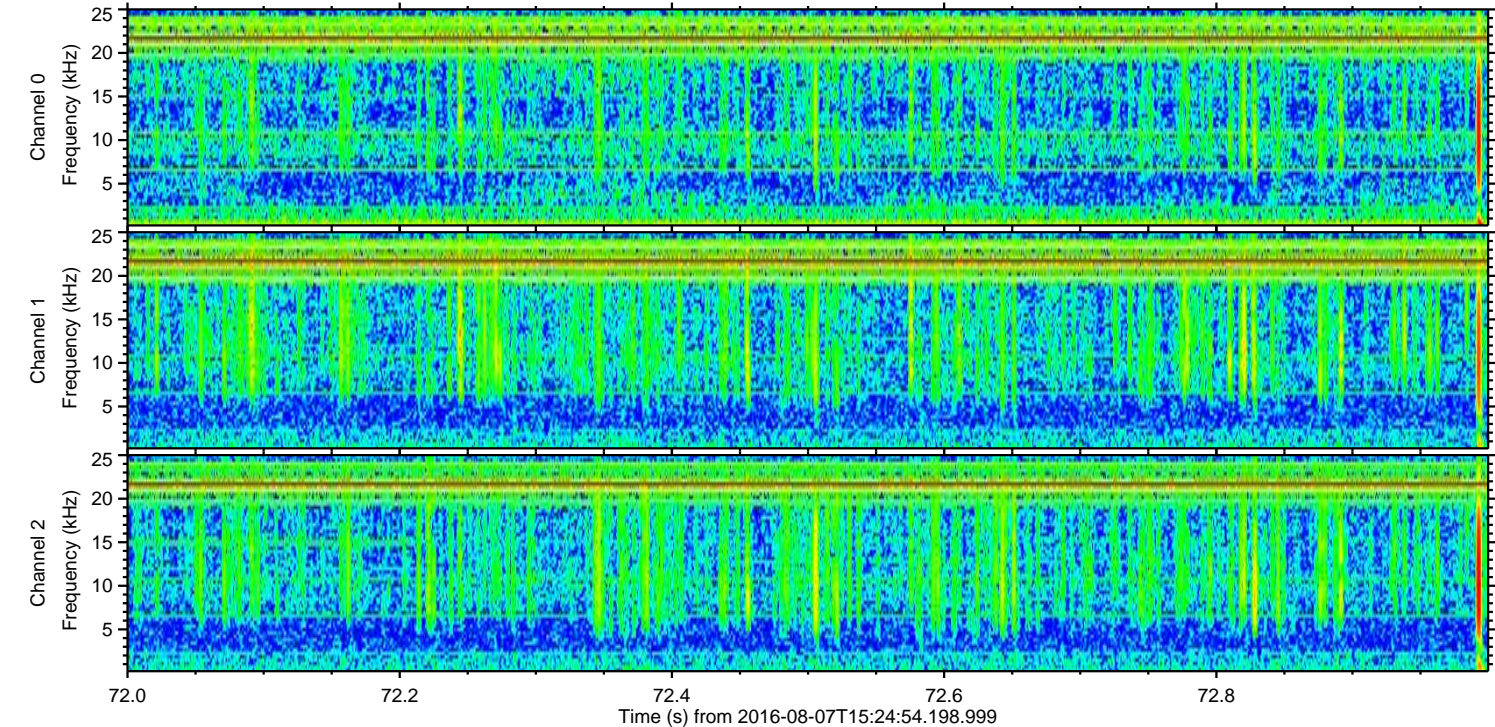
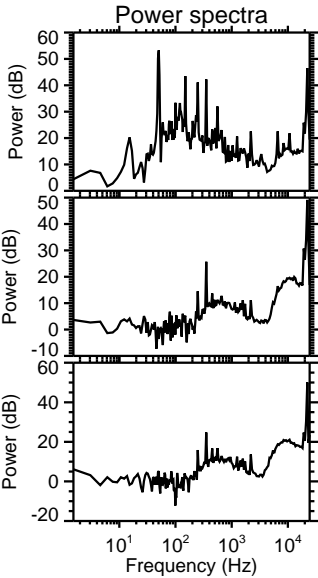
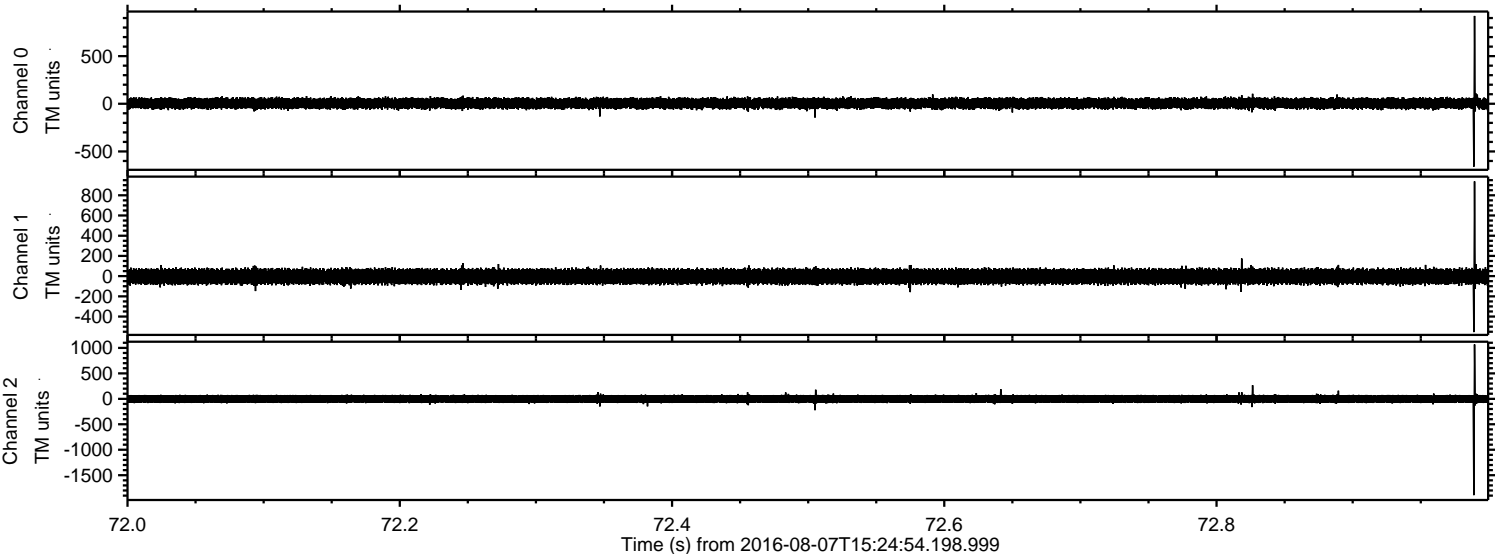
Channel 1
mn: -855
mx: 1009
 μ : -3.7
 σ : 45.3

Channel 2
mn: -2038
mx: 1489
 μ : -2.3
 σ : 52.2

Processed Sun Aug 7 17:32:55 2016 by ELM ver.2012-10-06 from 001__elm20160807_152453__dat00.bin



Processed Sun Aug 7 17:32:56 2016 by ELM ver.2012-10-06 from 001__elm20160807_152453__dat00.bin



Processed Sun Aug 7 17:32:57 2016 by ELM ver.2012-10-06 from 001__elm20160807_152453__dat00.bin

