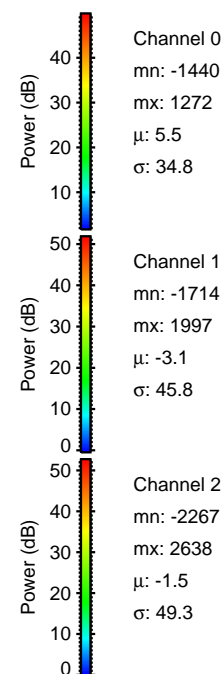
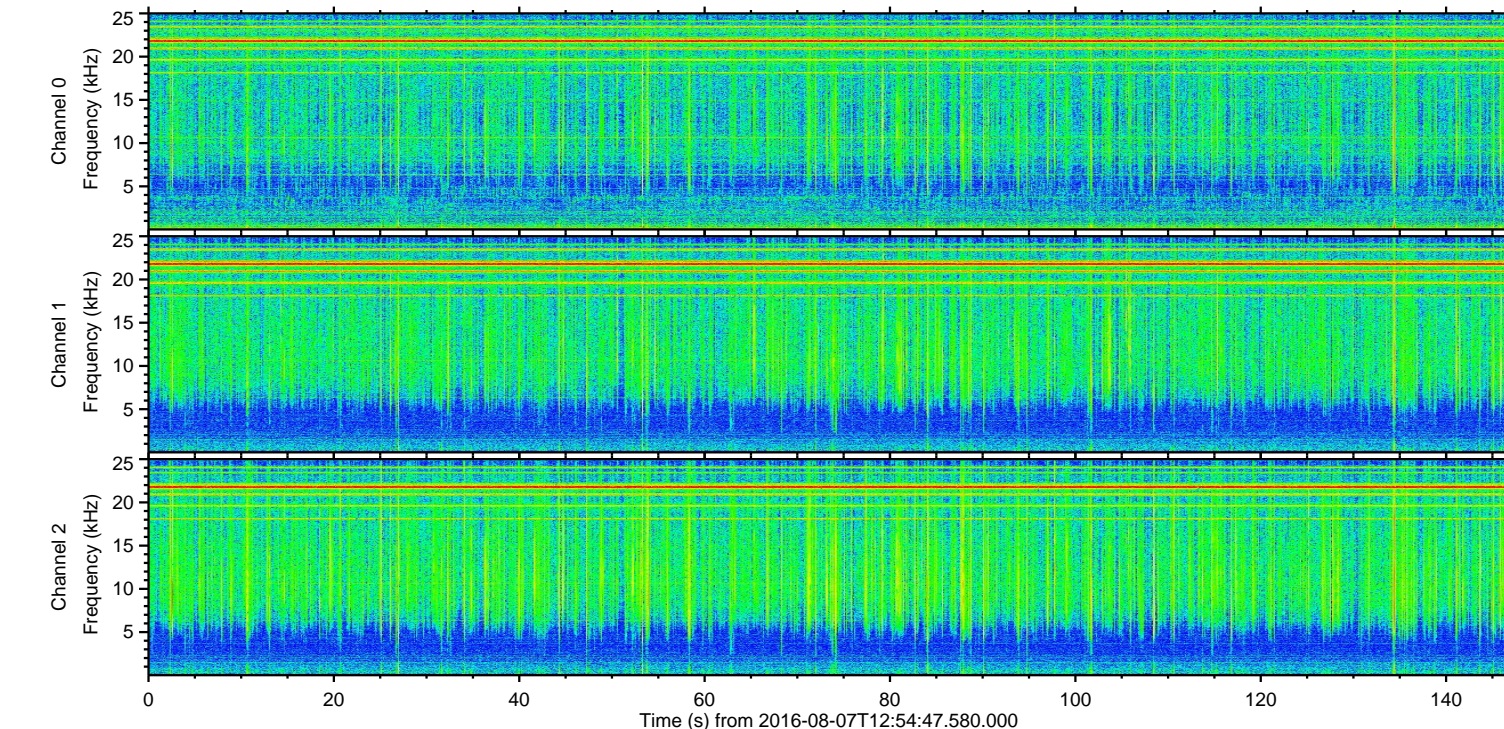
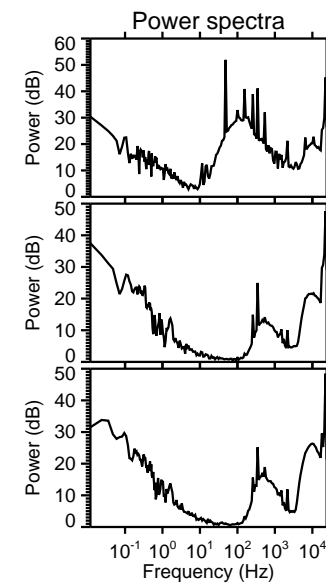
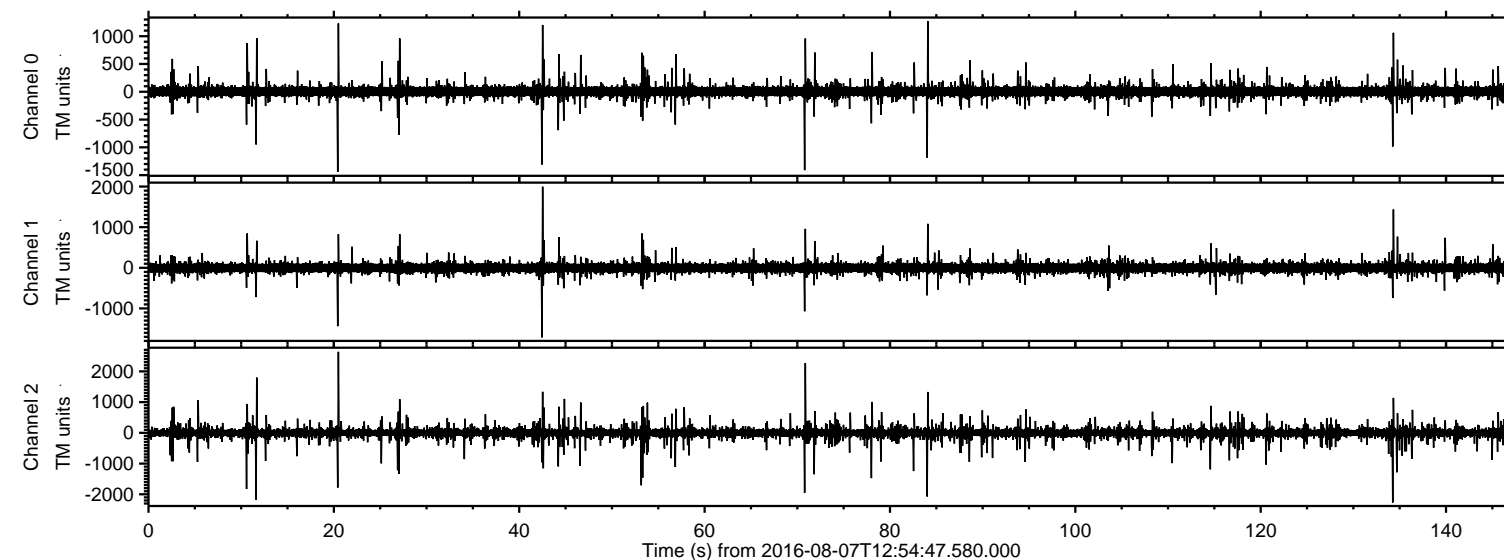


# ELMAVAN 3D WAVEFORMS (Measured data sampled at 50 kHz) 51000 packets of 144 samples from 2016-08-07T12:54:47.580.000.

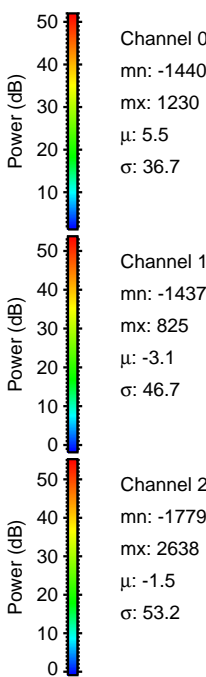
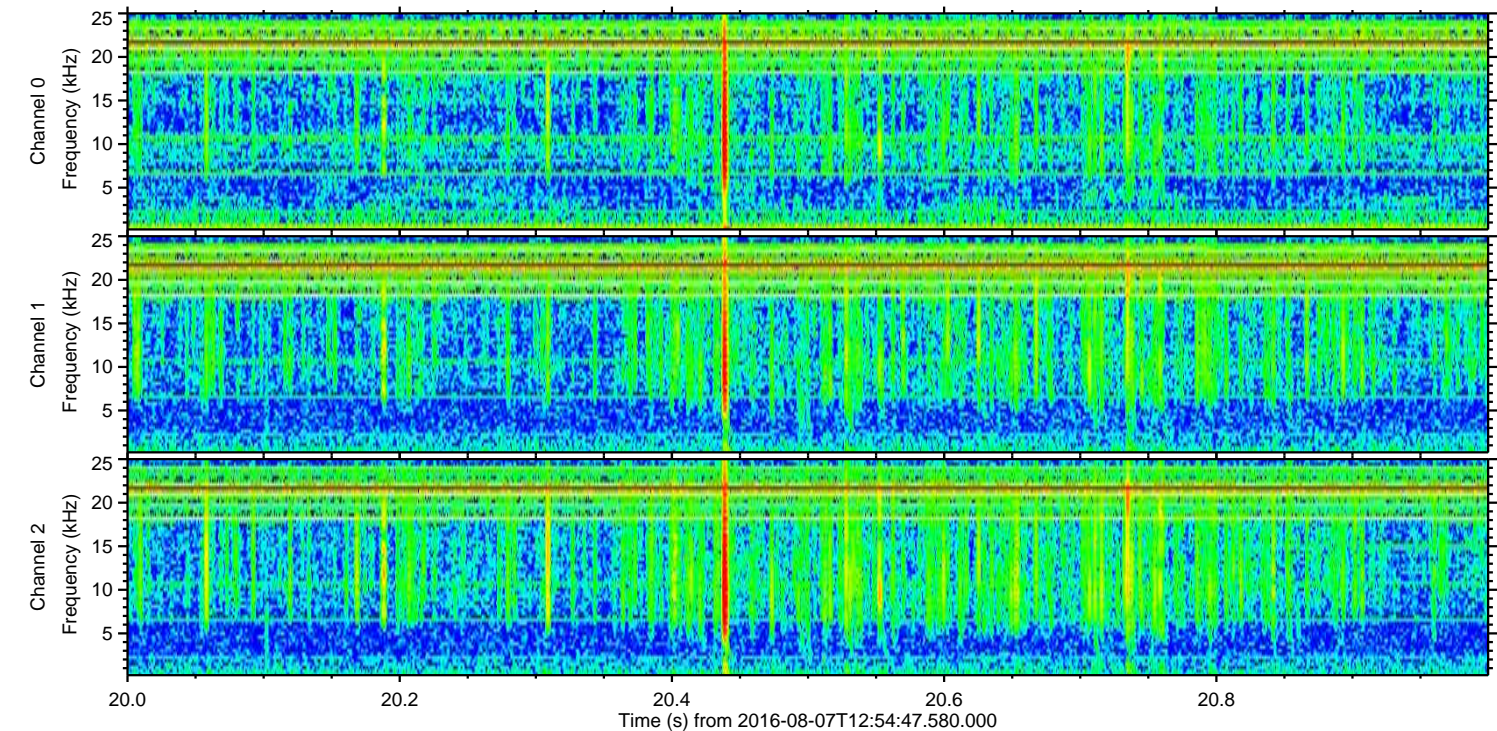
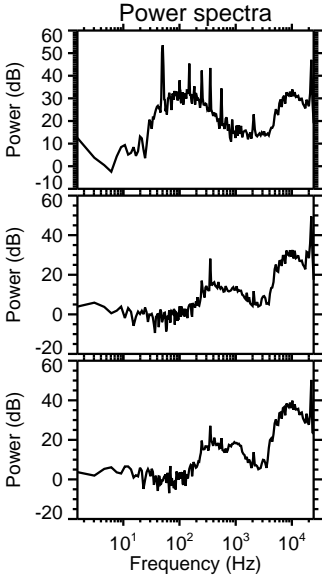
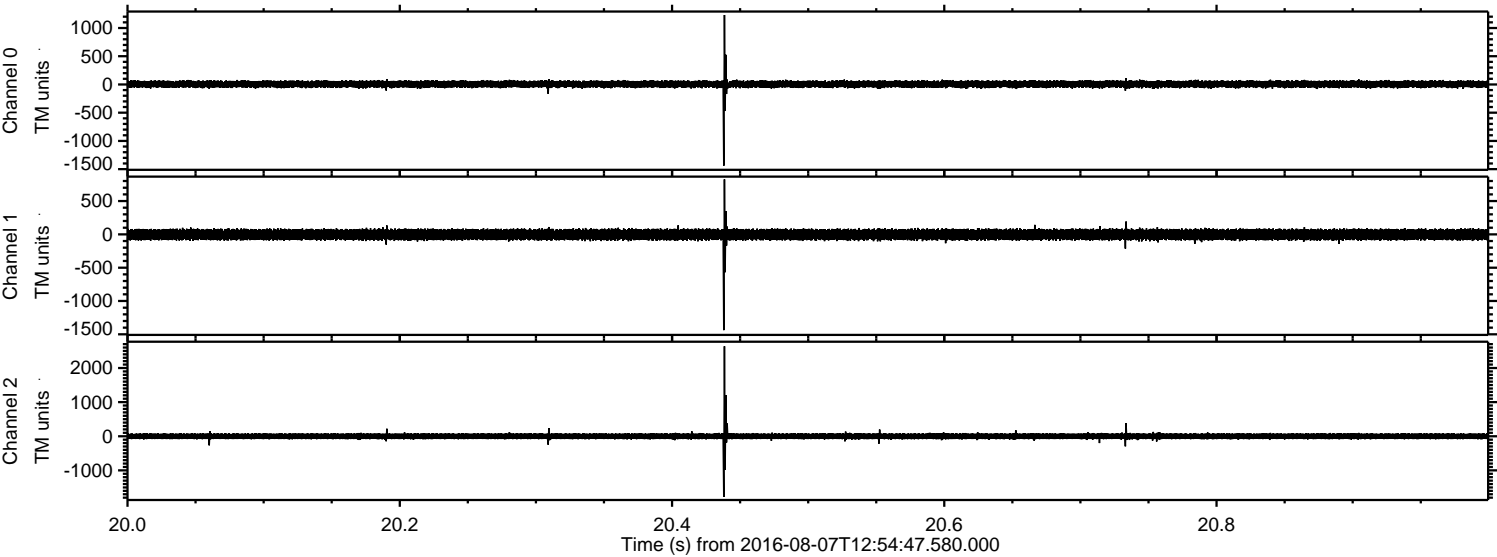
Processed Sun Aug 7 15:03:01 2016 by ELM ver.2012-10-06 from 001\_\_elm20160807\_125446\_\_dat00.bin





ELMAVAN 3D WAVEFORMS (Measured data sampled at 50 kHz) 51000 packets of 144 samples from 2016-08-07T12:54:47.580.000. Part 21/147

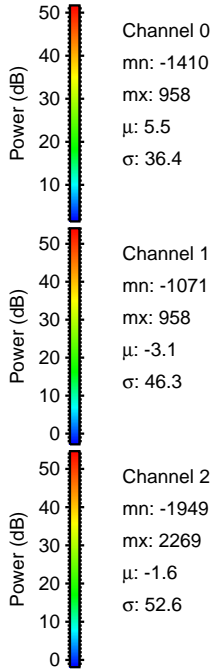
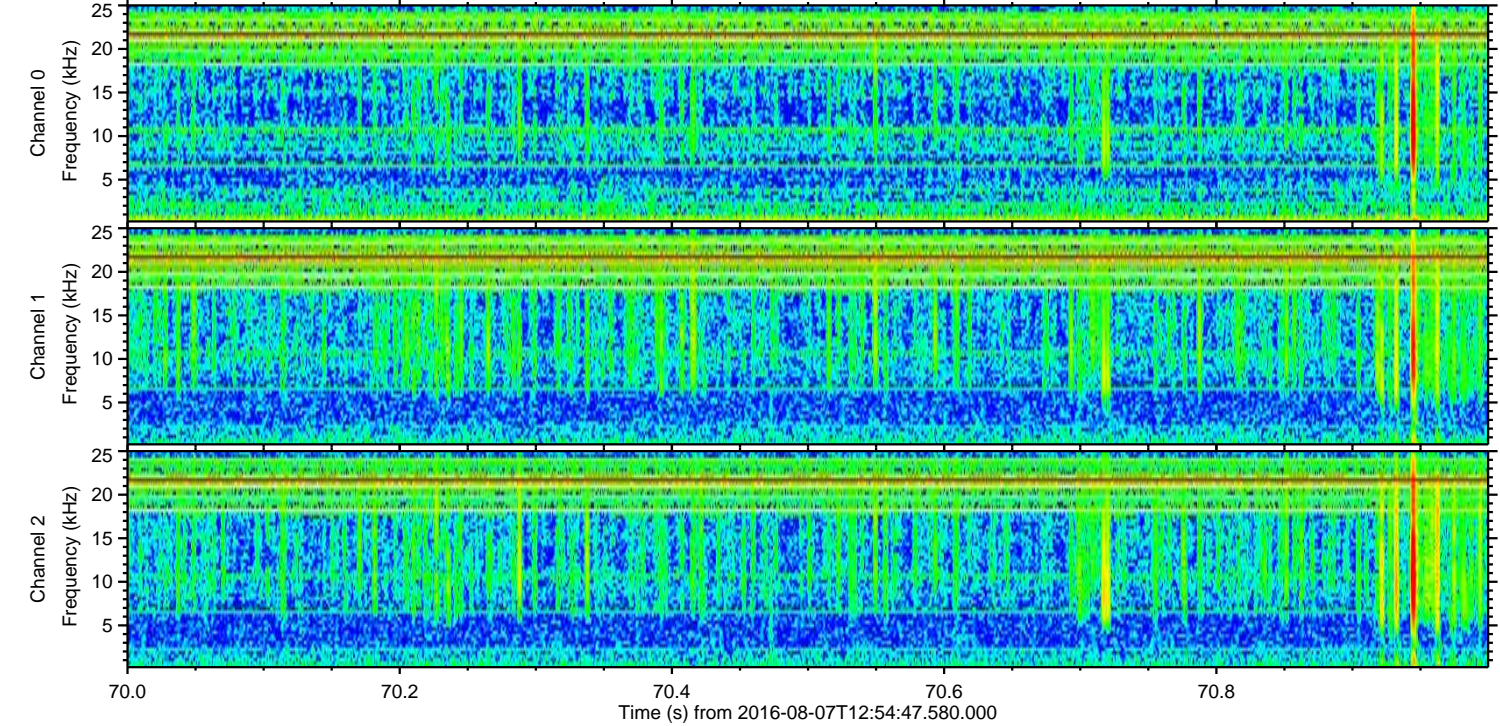
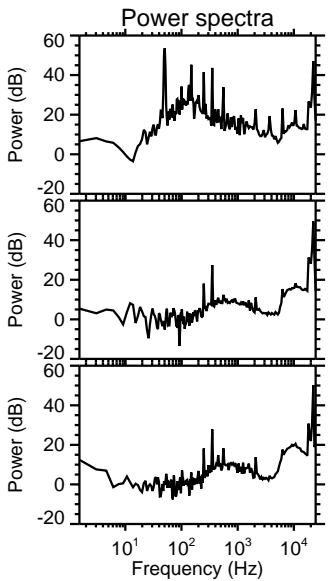
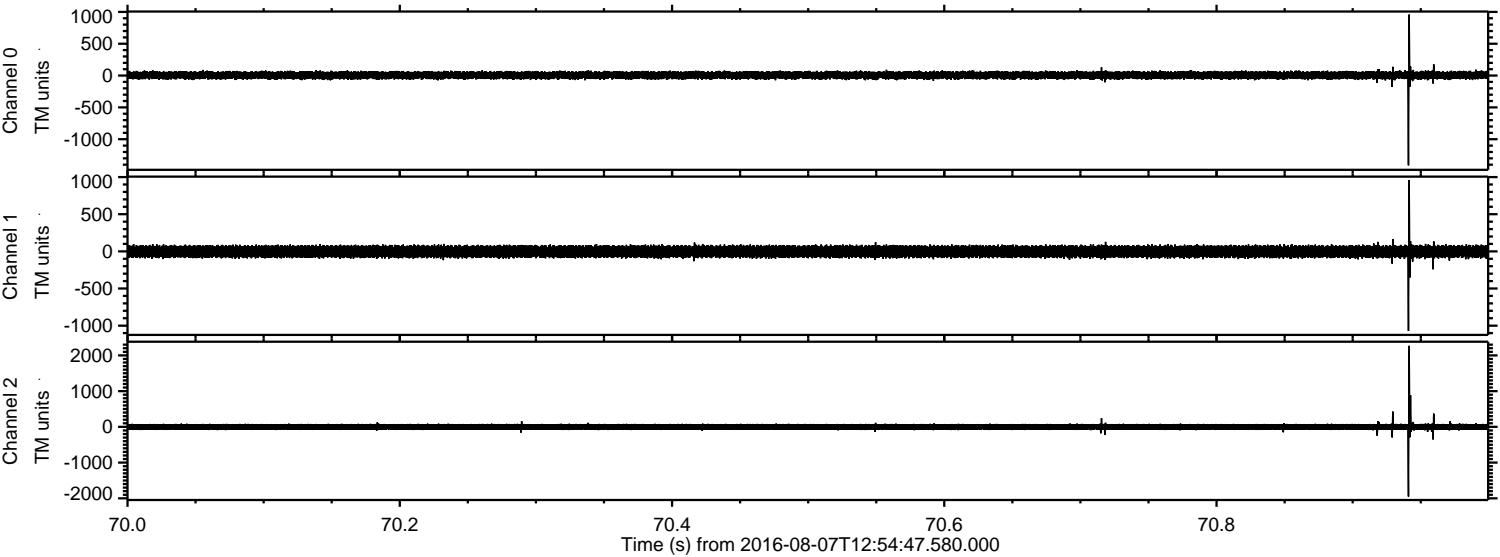
Processed Sun Aug 7 15:03:13 2016 by ELM ver.2012-10-06 from 001\_\_elm20160807\_125446\_\_dat00.bin





ELMAVAN 3D WAVEFORMS (Measured data sampled at 50 kHz) 51000 packets of 144 samples from 2016-08-07T12:54:47.580.000. Part 71/147

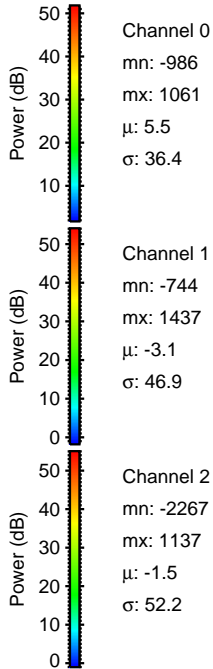
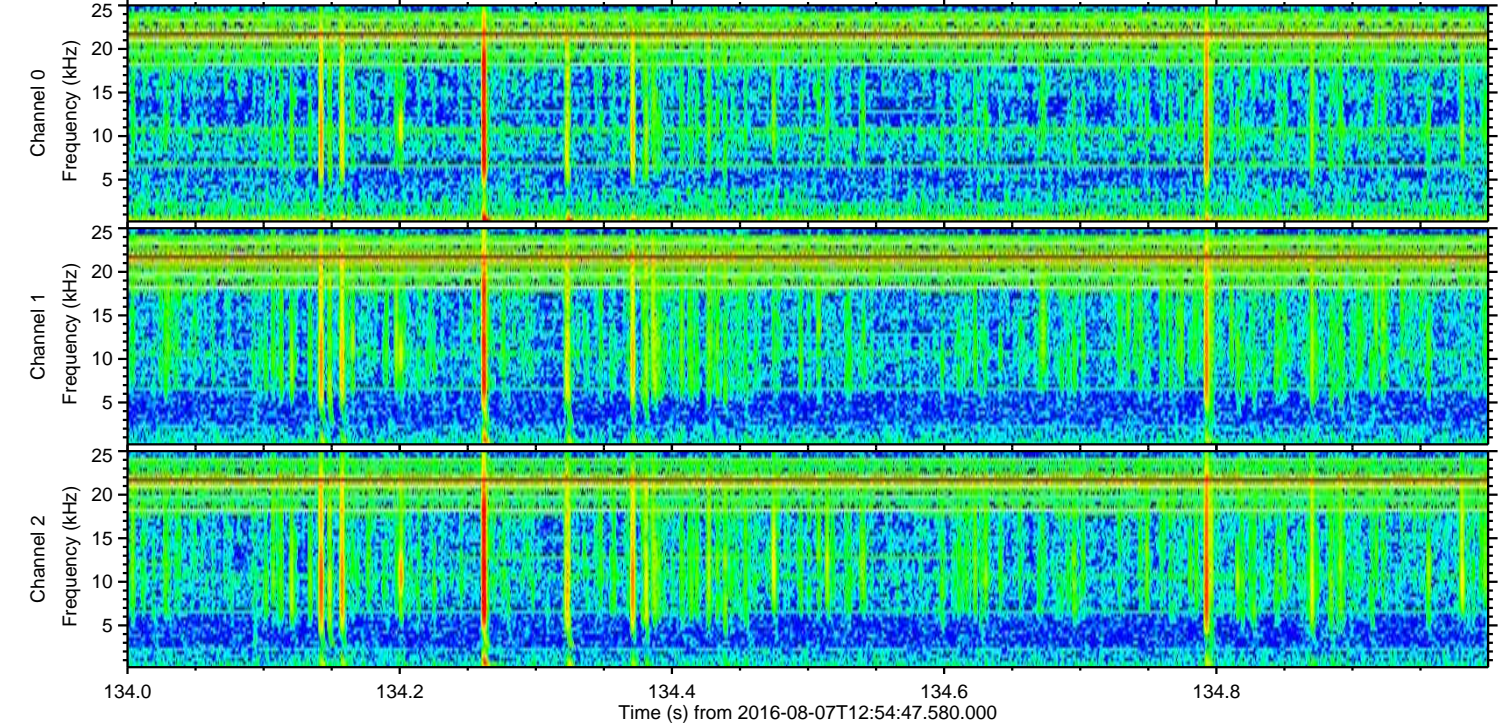
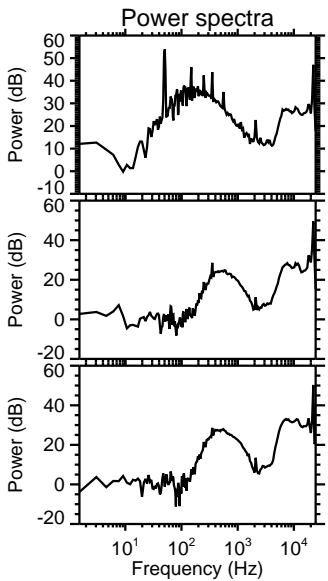
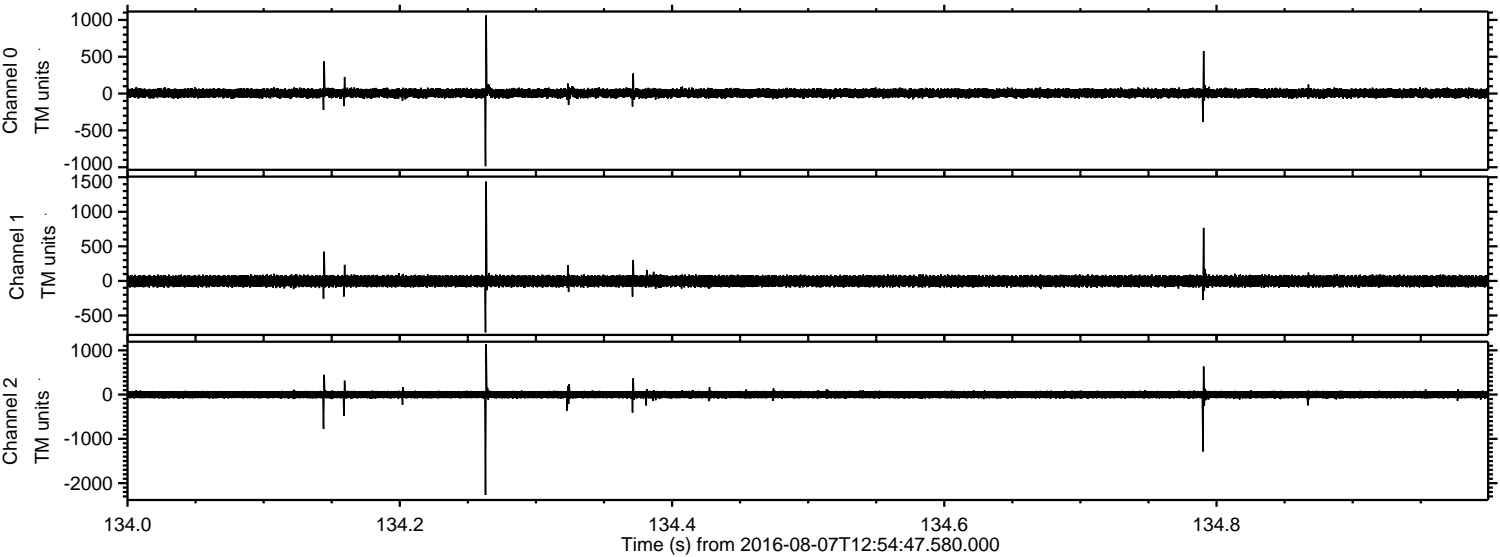
Processed Sun Aug 7 15:03:14 2016 by ELM ver.2012-10-06 from 001\_\_elm20160807\_125446\_\_dat00.bin





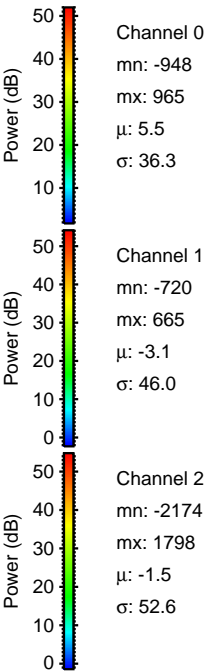
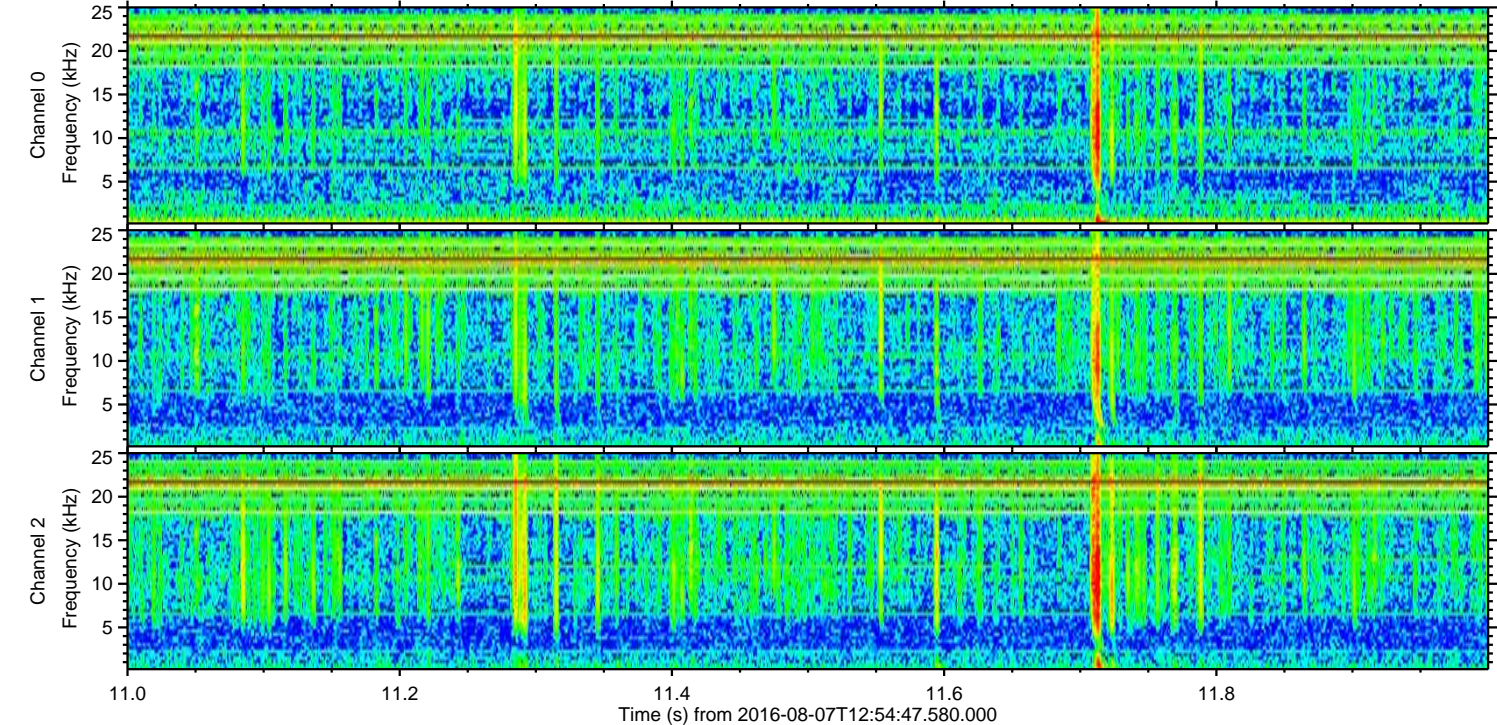
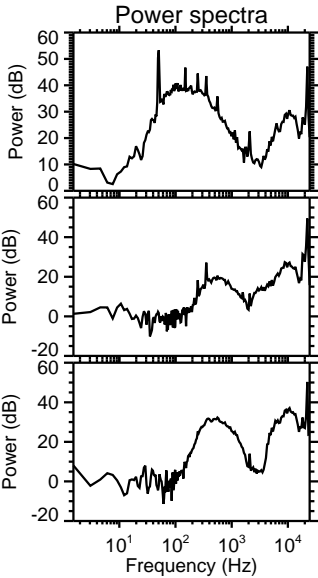
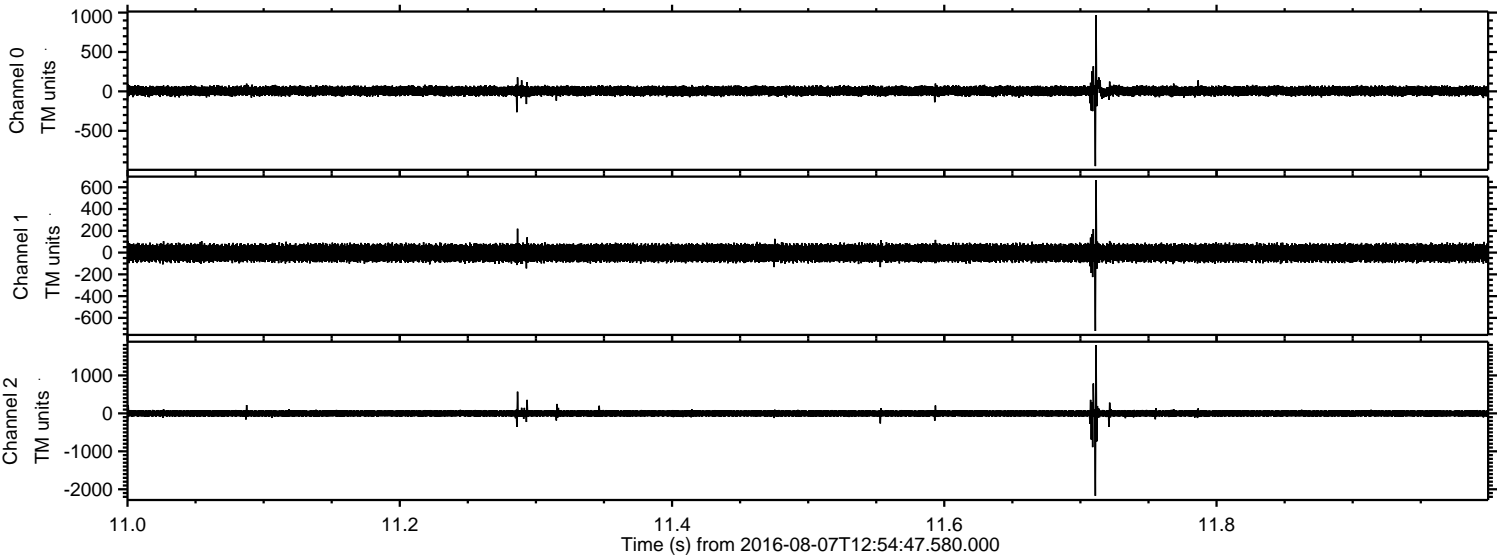
ELMAVAN 3D WAVEFORMS (Measured data sampled at 50 kHz) 51000 packets of 144 samples from 2016-08-07T12:54:47.580.000. Part 135/147

Processed Sun Aug 7 15:03:15 2016 by ELM ver.2012-10-06 from 001\_\_elm20160807\_125446\_\_dat00.bin



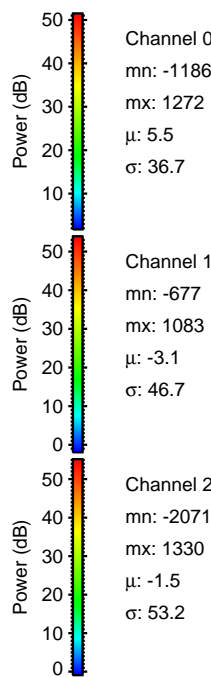
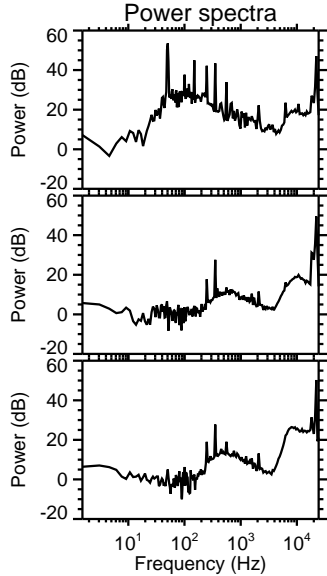
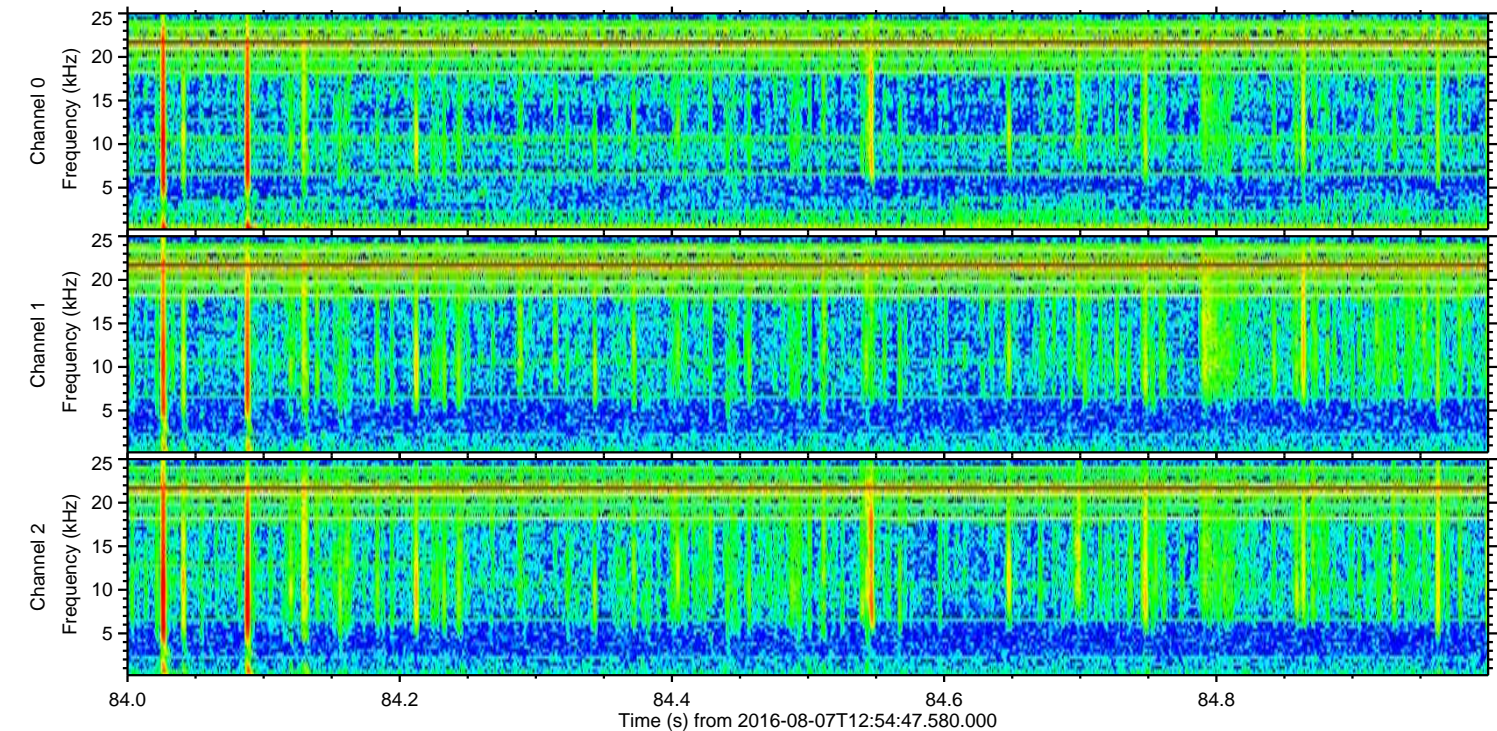
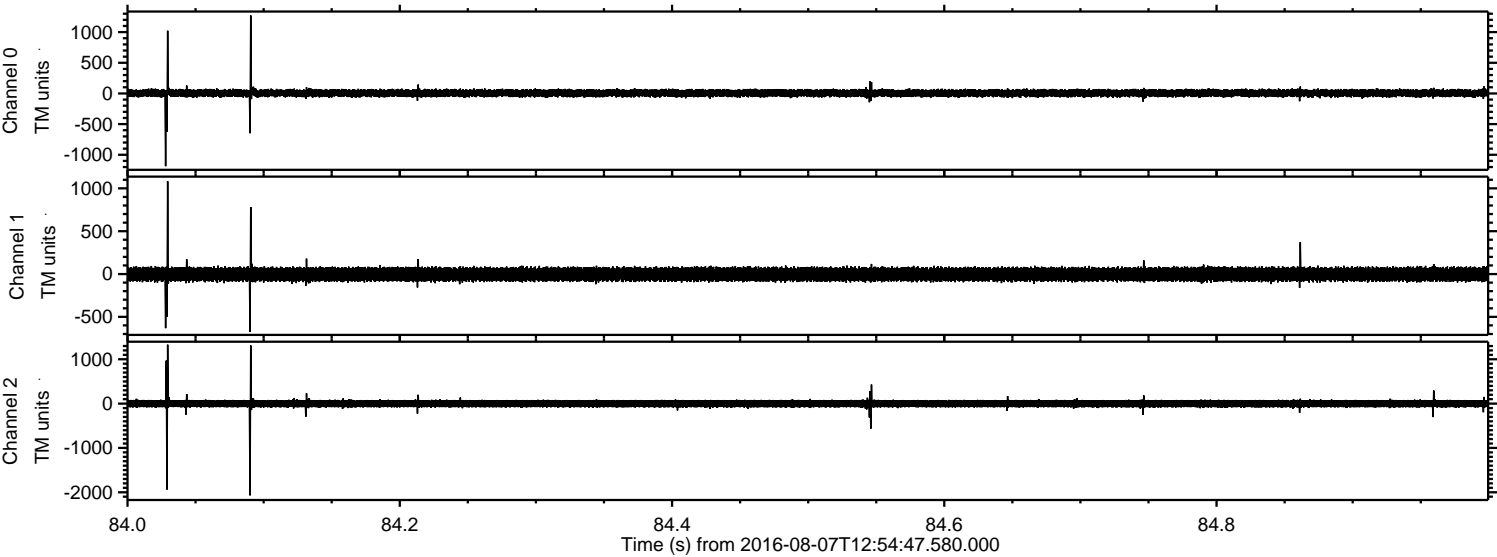


Processed Sun Aug 7 15:03:15 2016 by ELM ver.2012-10-06 from 001\_\_elm20160807\_125446\_\_dat00.bin





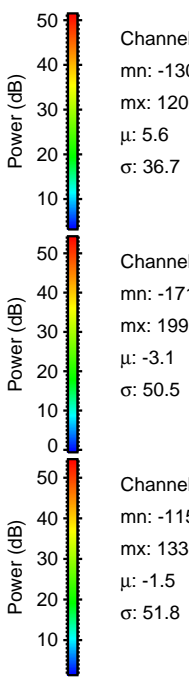
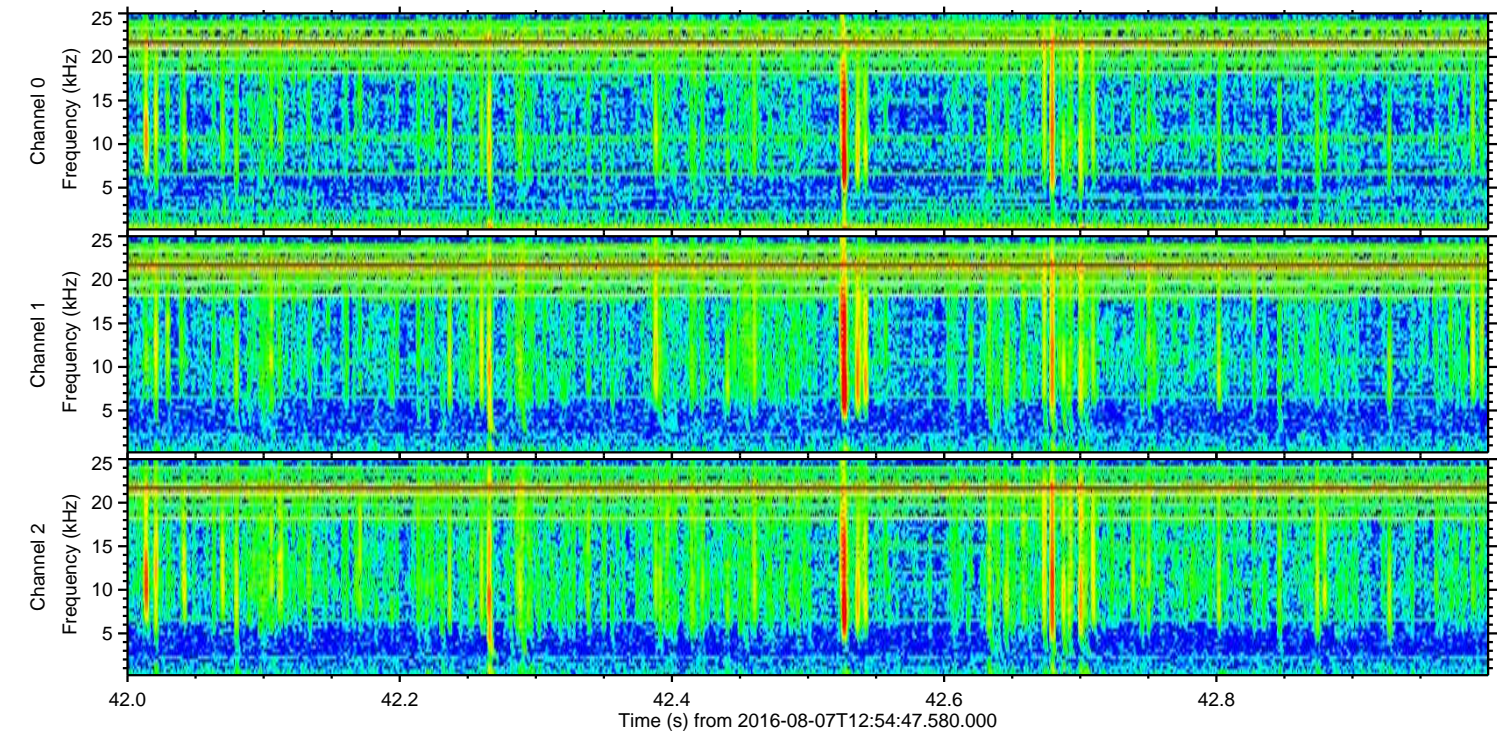
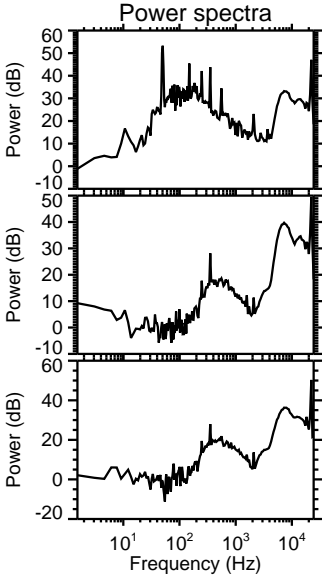
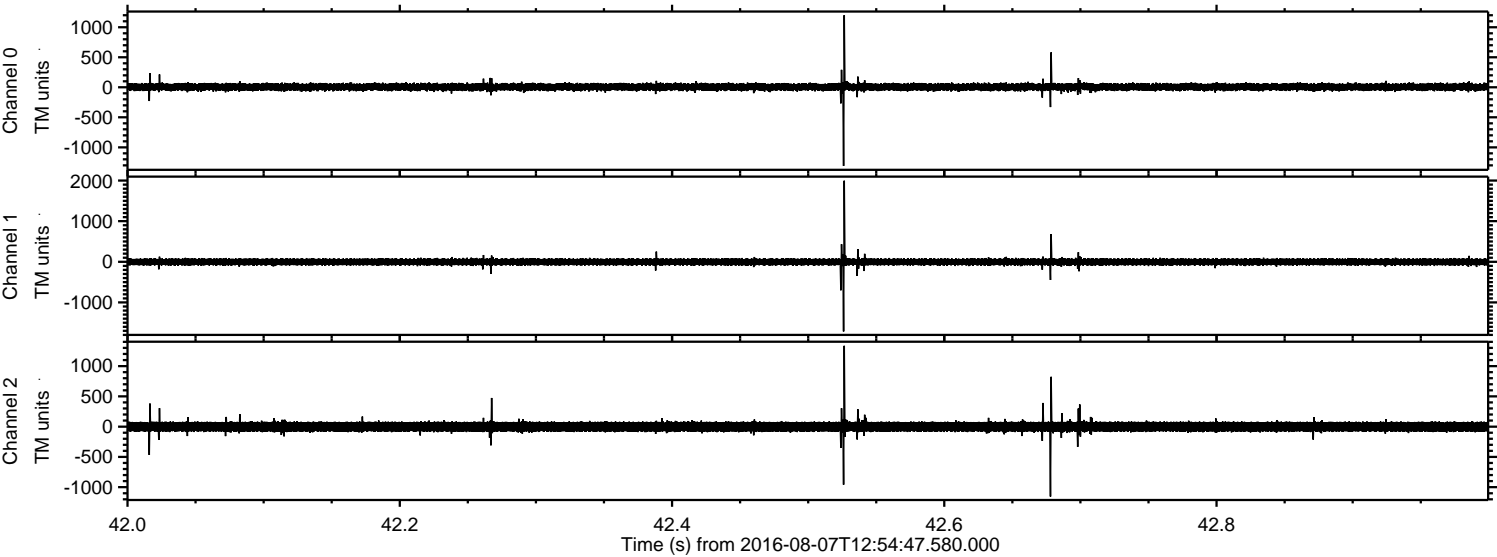
Processed Sun Aug 7 15:03:16 2016 by ELM ver.2012-10-06 from 001\_\_elm20160807\_125446\_\_dat00.bin





ELMAVAN 3D WAVEFORMS (Measured data sampled at 50 kHz) 51000 packets of 144 samples from 2016-08-07T12:54:47.580.000. Part 43/147

Processed Sun Aug 7 15:03:17 2016 by ELM ver.2012-10-06 from 001\_\_elm20160807\_125446\_\_dat00.bin



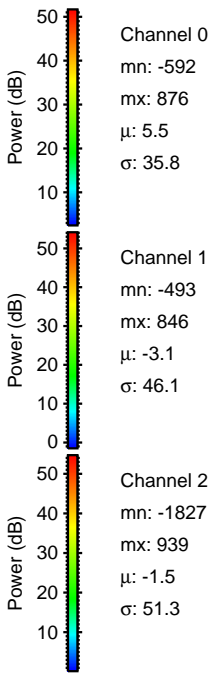
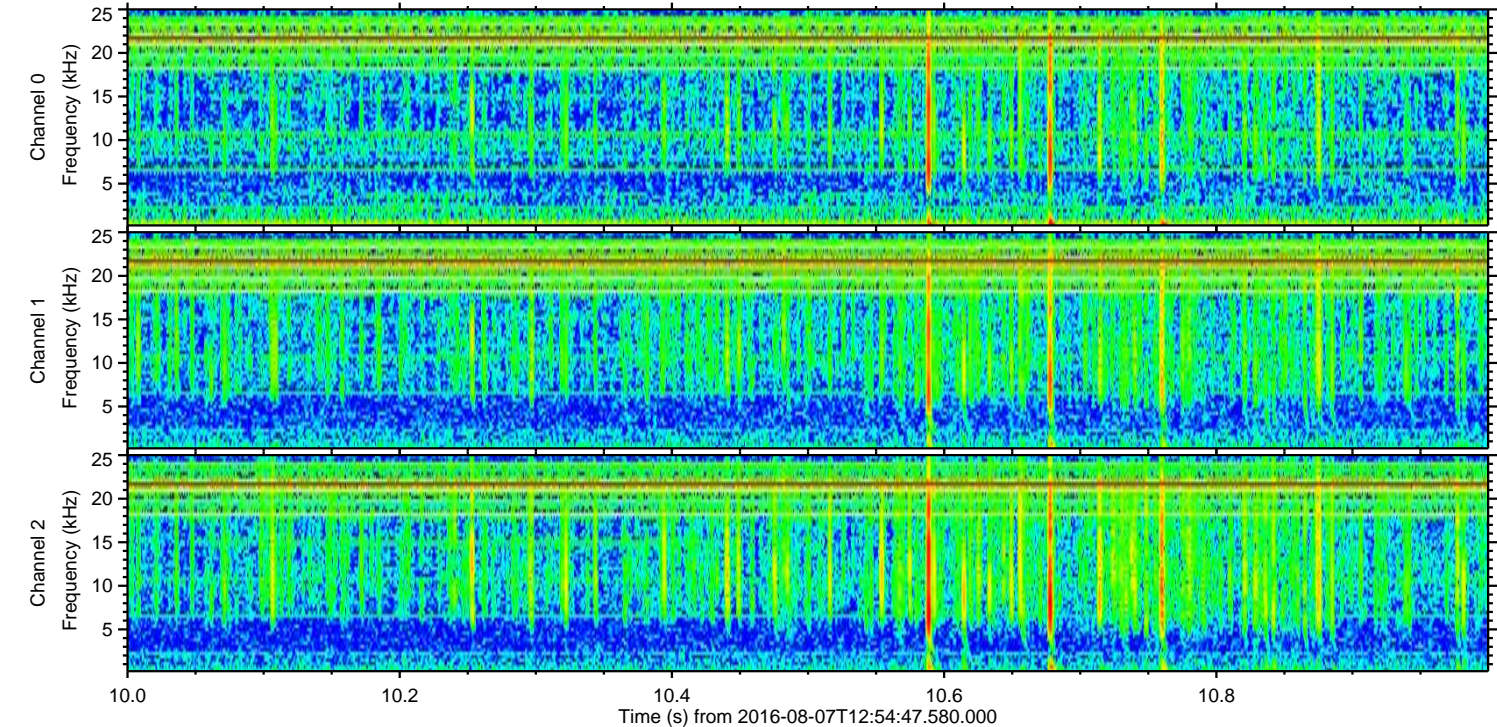
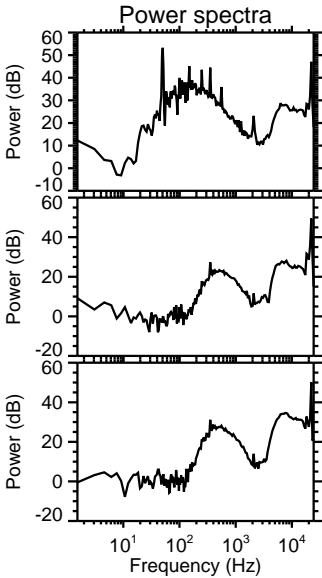
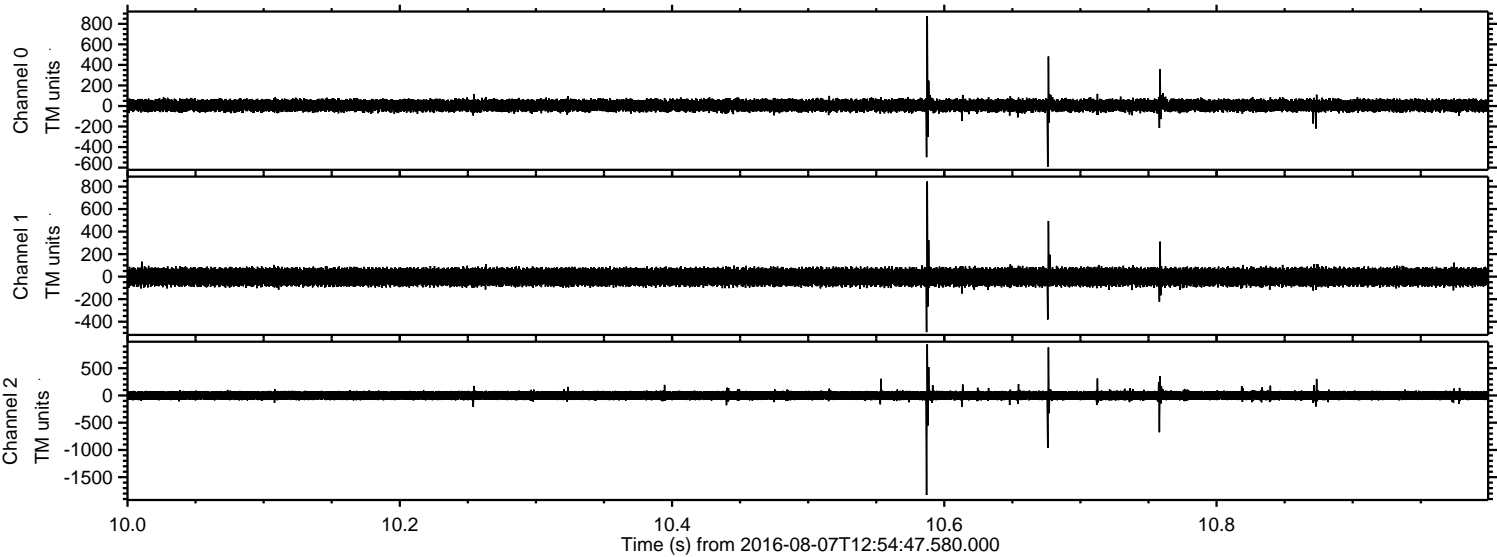
Channel 0  
mn: -1309  
mx: 1202  
 $\mu$ : 5.6  
 $\sigma$ : 36.7

Channel 1  
mn: -1714  
mx: 1997  
 $\mu$ : -3.1  
 $\sigma$ : 50.5

Channel 2  
mn: -1154  
mx: 1336  
 $\mu$ : -1.5  
 $\sigma$ : 51.8

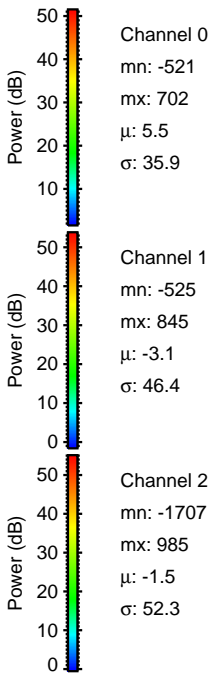
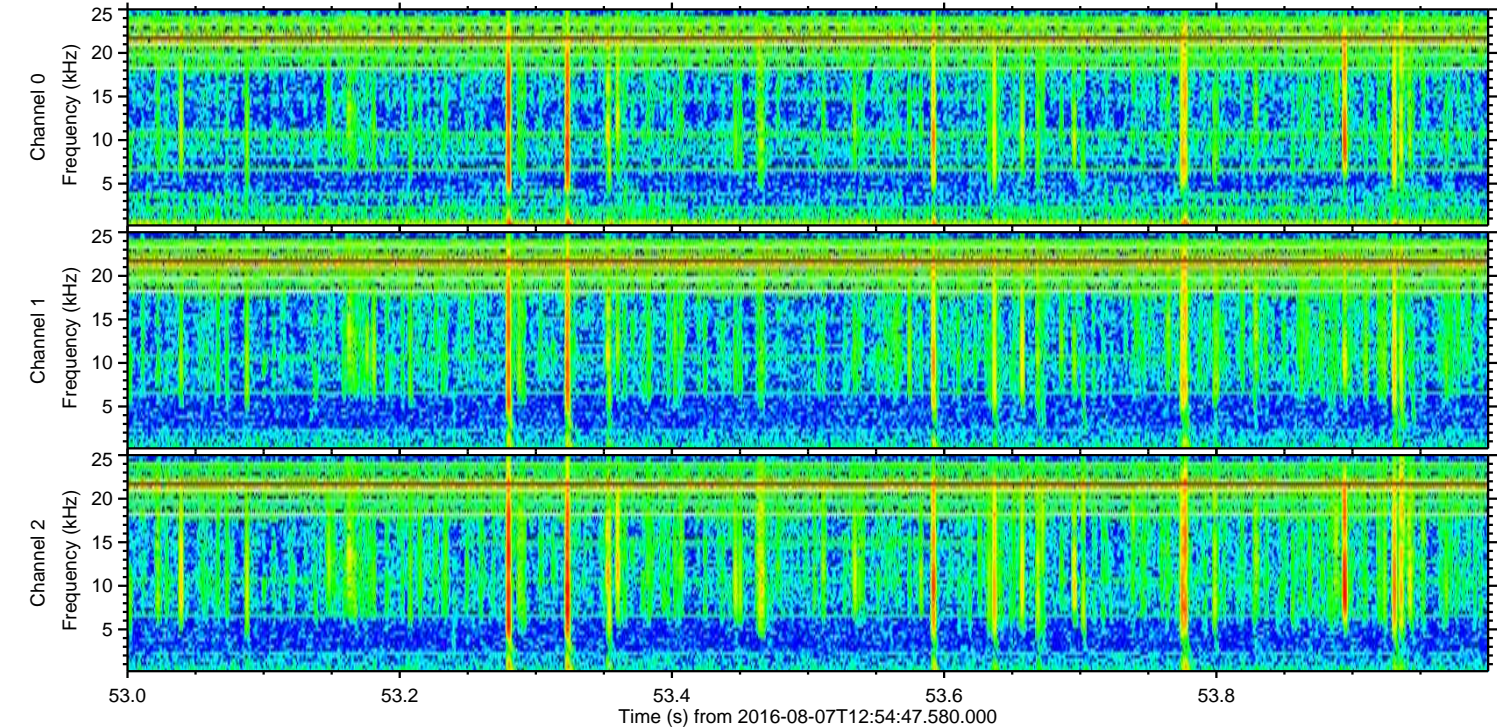
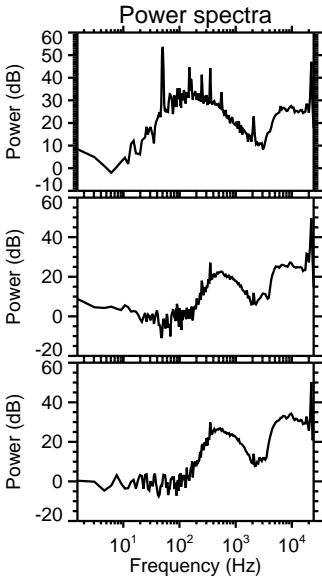
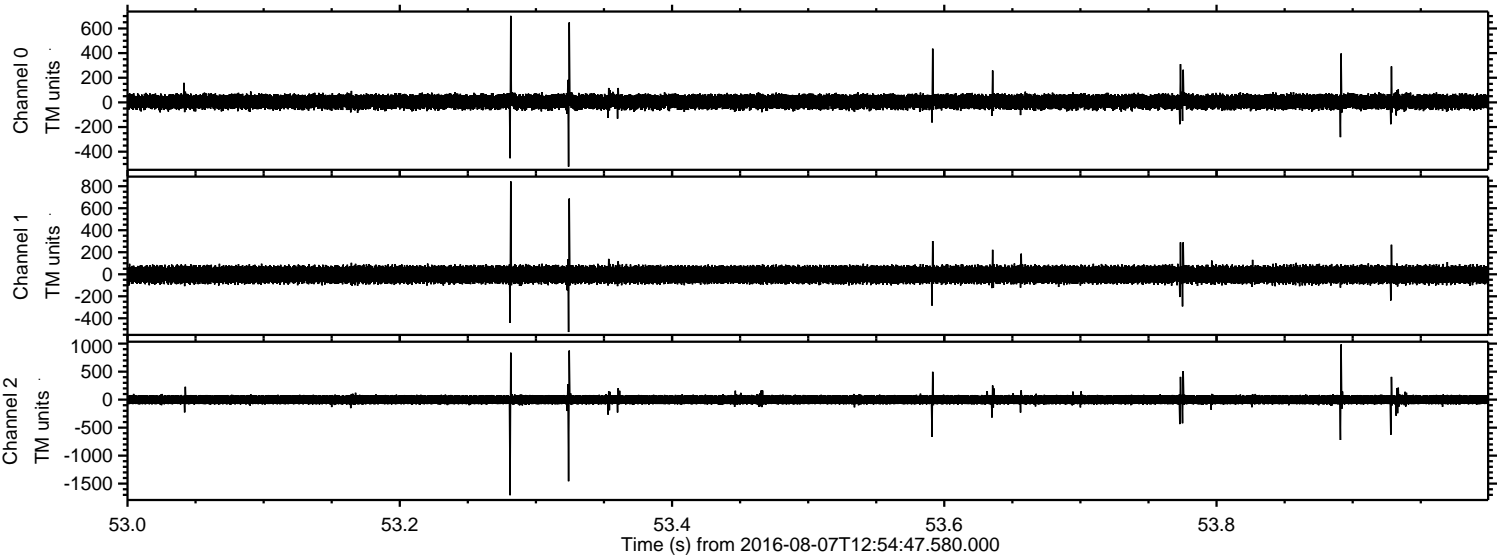


Processed Sun Aug 7 15:03:18 2016 by ELM ver.2012-10-06 from 001\_\_elm20160807\_125446\_\_dat00.bin



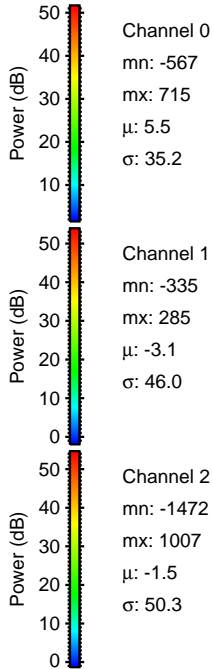
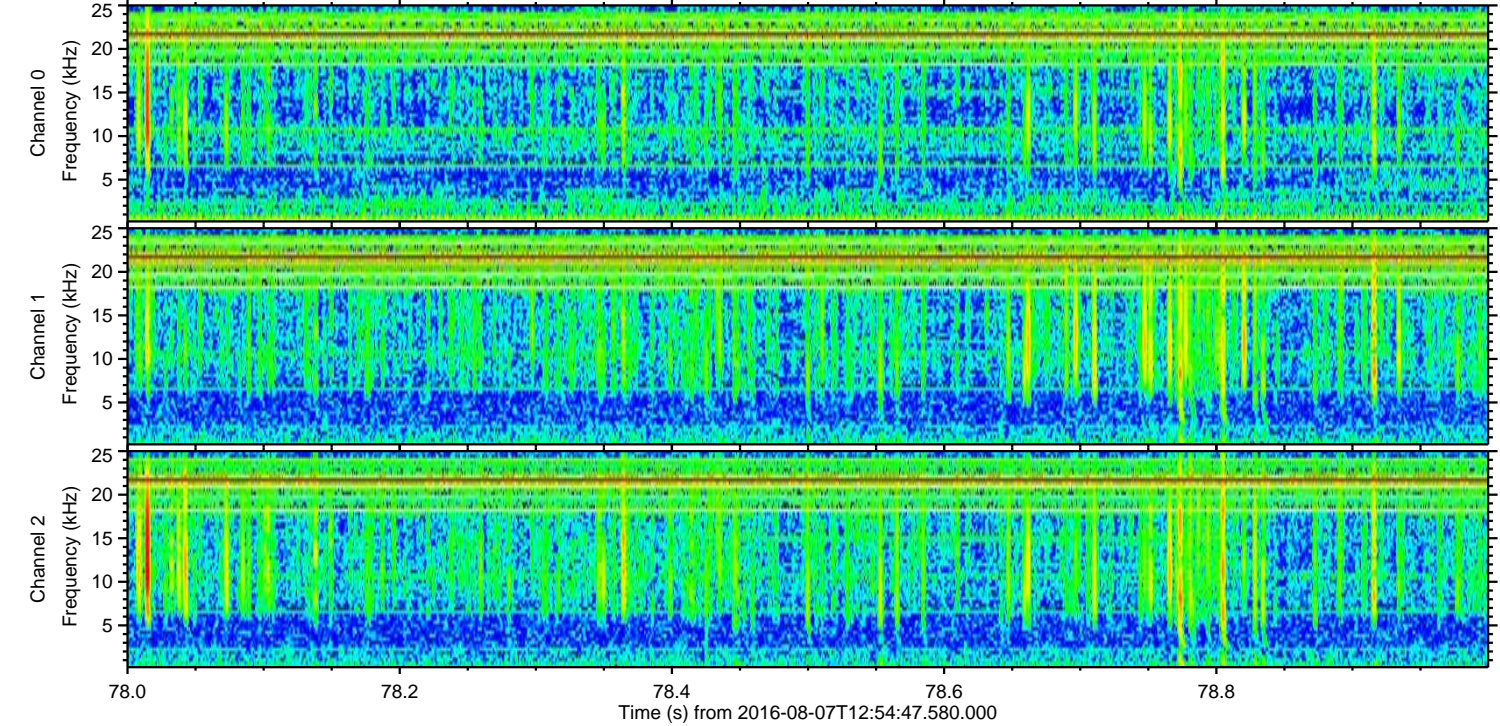
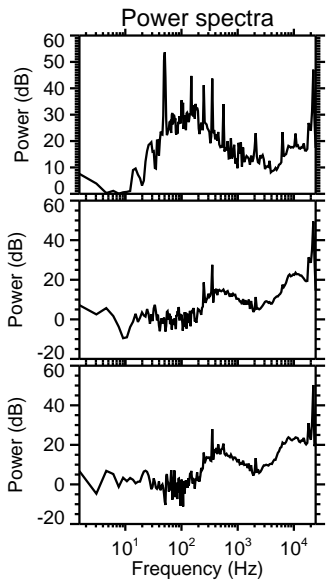
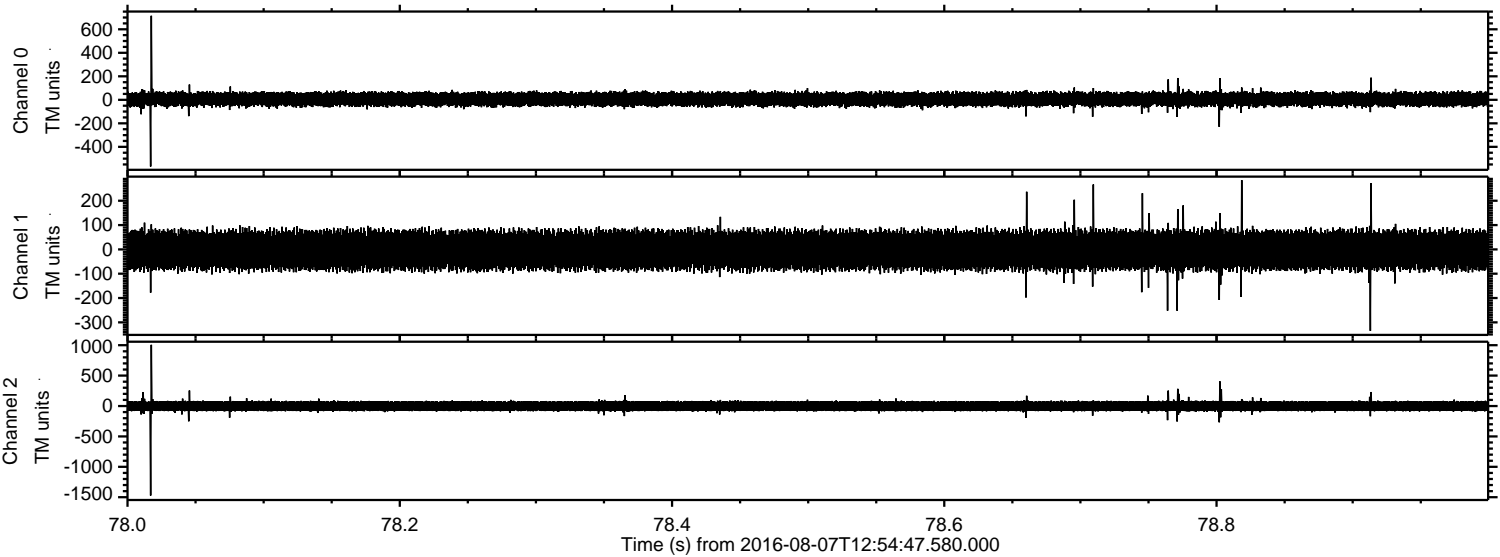


Processed Sun Aug 7 15:03:19 2016 by ELM ver.2012-10-06 from 001\_\_elm20160807\_125446\_\_dat00.bin



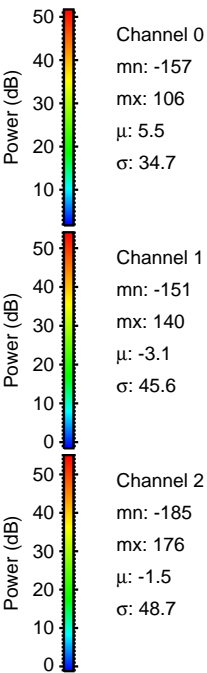
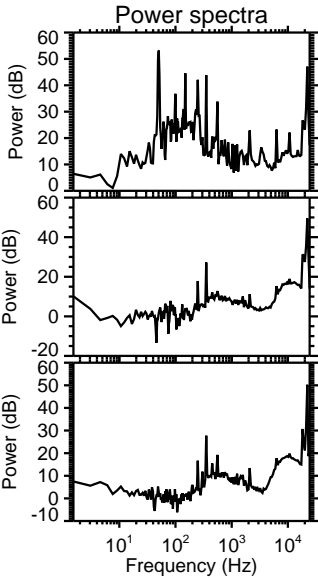
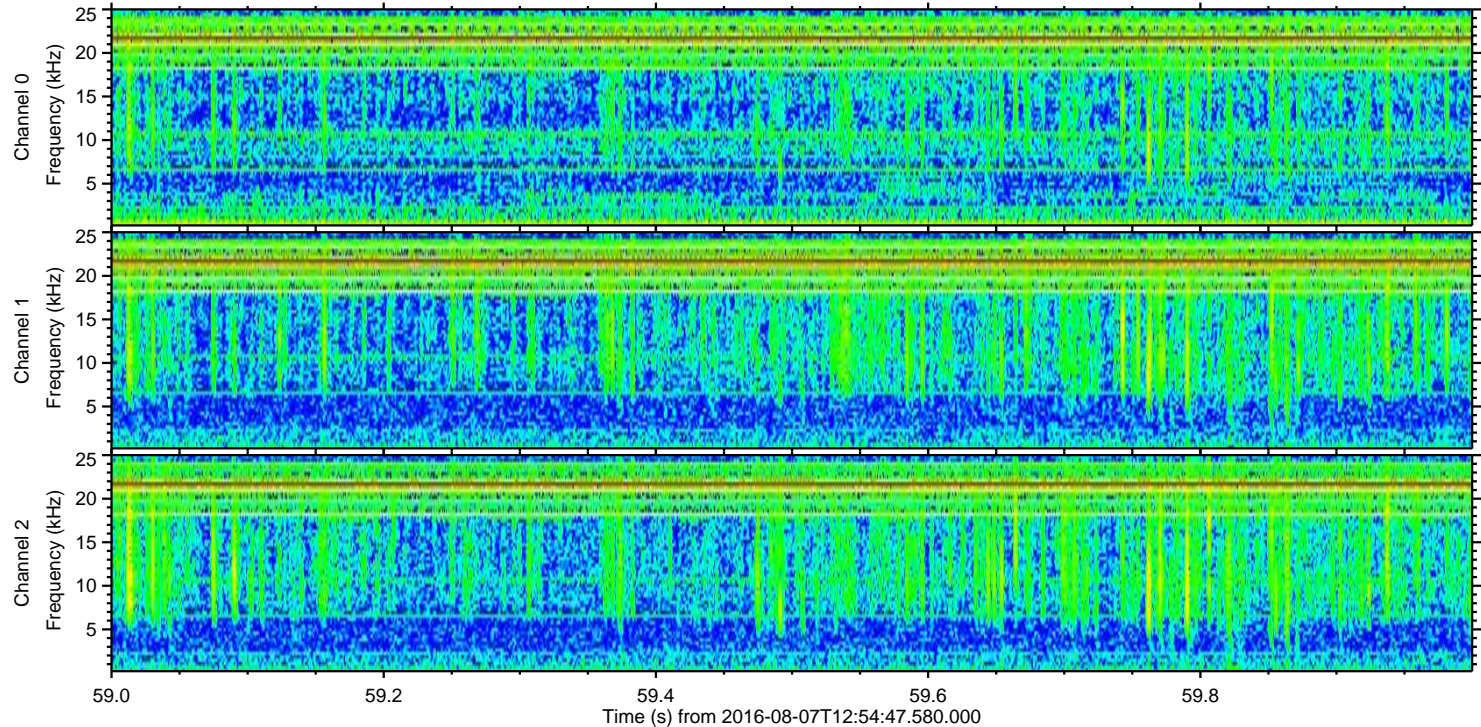
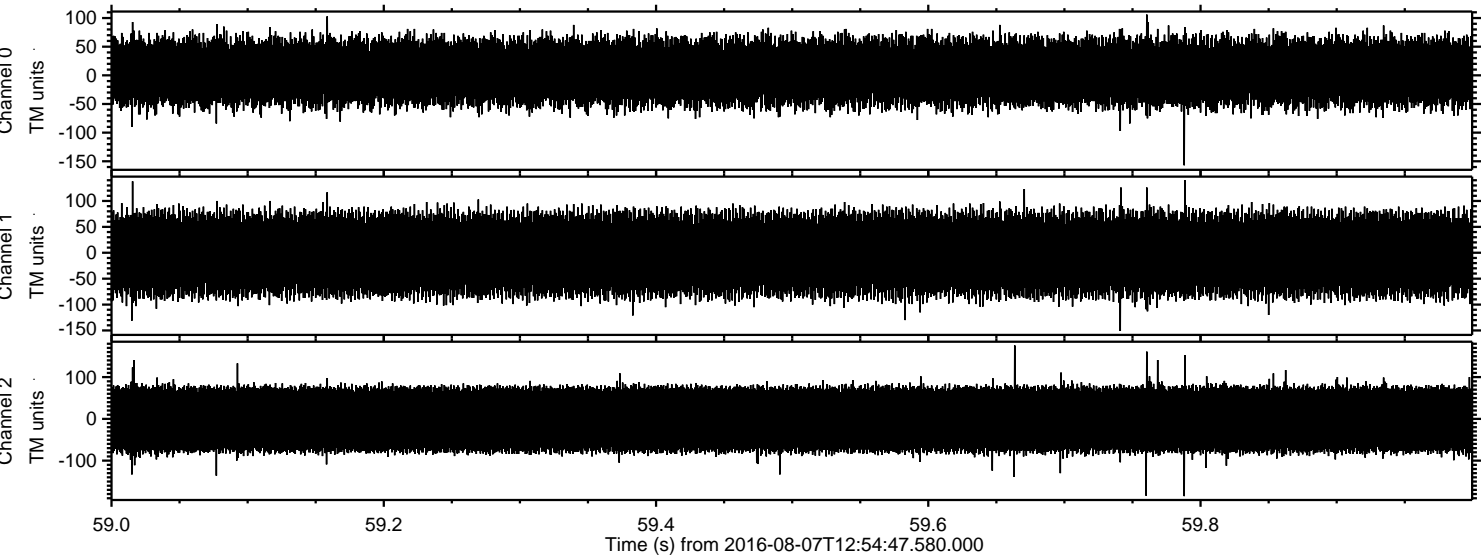


Processed Sun Aug 7 15:03:20 2016 by ELM ver.2012-10-06 from 001\_\_elm20160807\_125446\_\_dat00.bin





Processed Sun Aug 7 15:03:21 2016 by ELM ver.2012-10-06 from 001\_\_elm20160807\_125446\_\_dat00.bin



Channel 0  
mn: -157  
mx: 106  
 $\mu$ : 5.5  
 $\sigma$ : 34.7

Channel 1  
mn: -151  
mx: 140  
 $\mu$ : -3.1  
 $\sigma$ : 45.6

Channel 2  
mn: -185  
mx: 176  
 $\mu$ : -1.5  
 $\sigma$ : 48.7