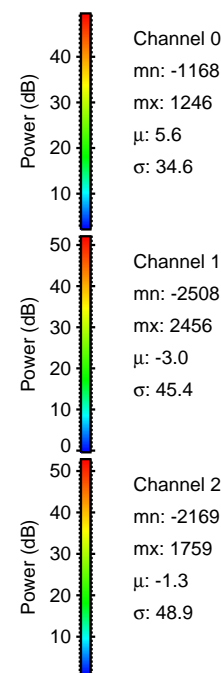
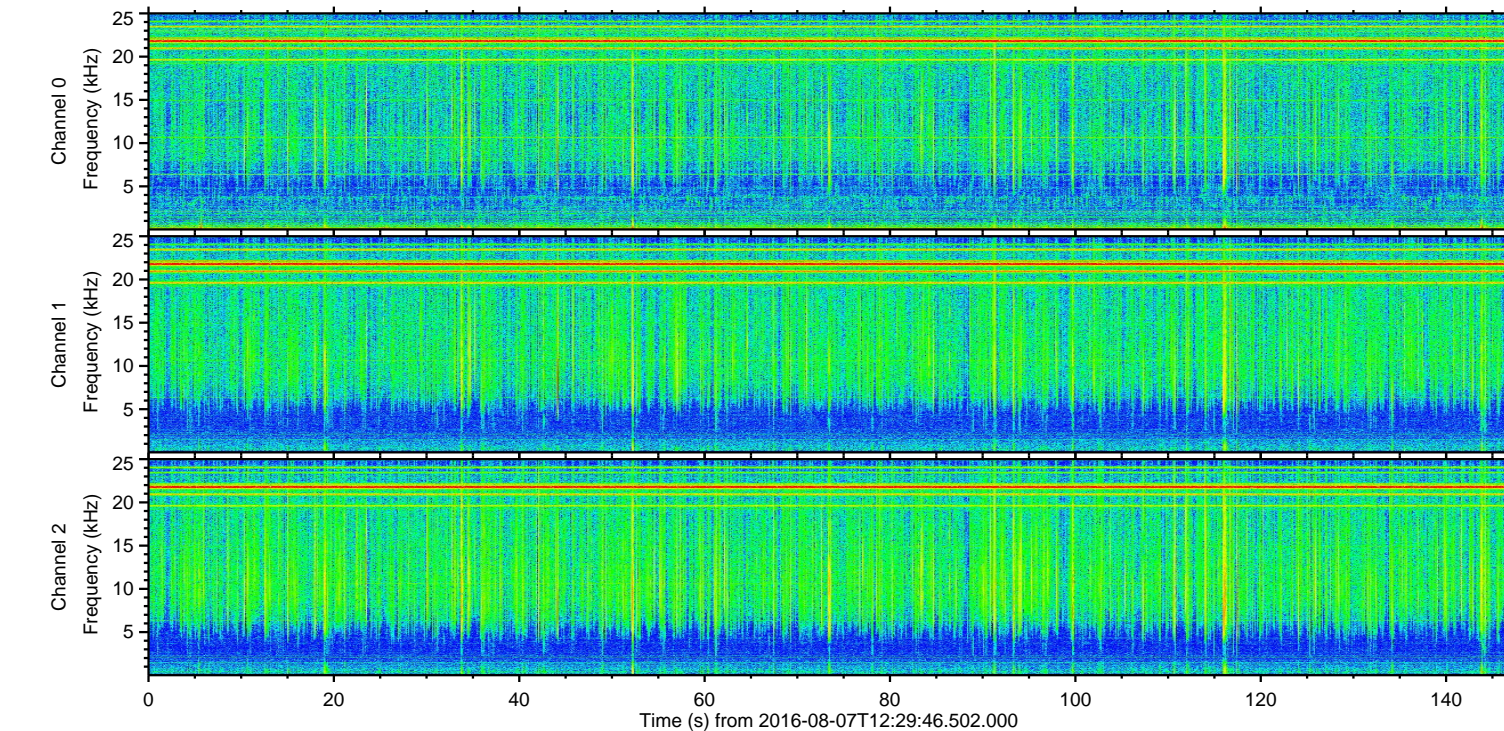
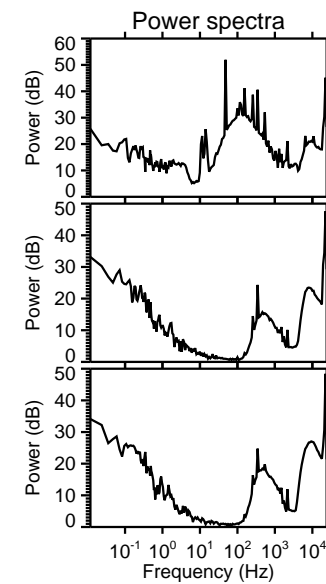
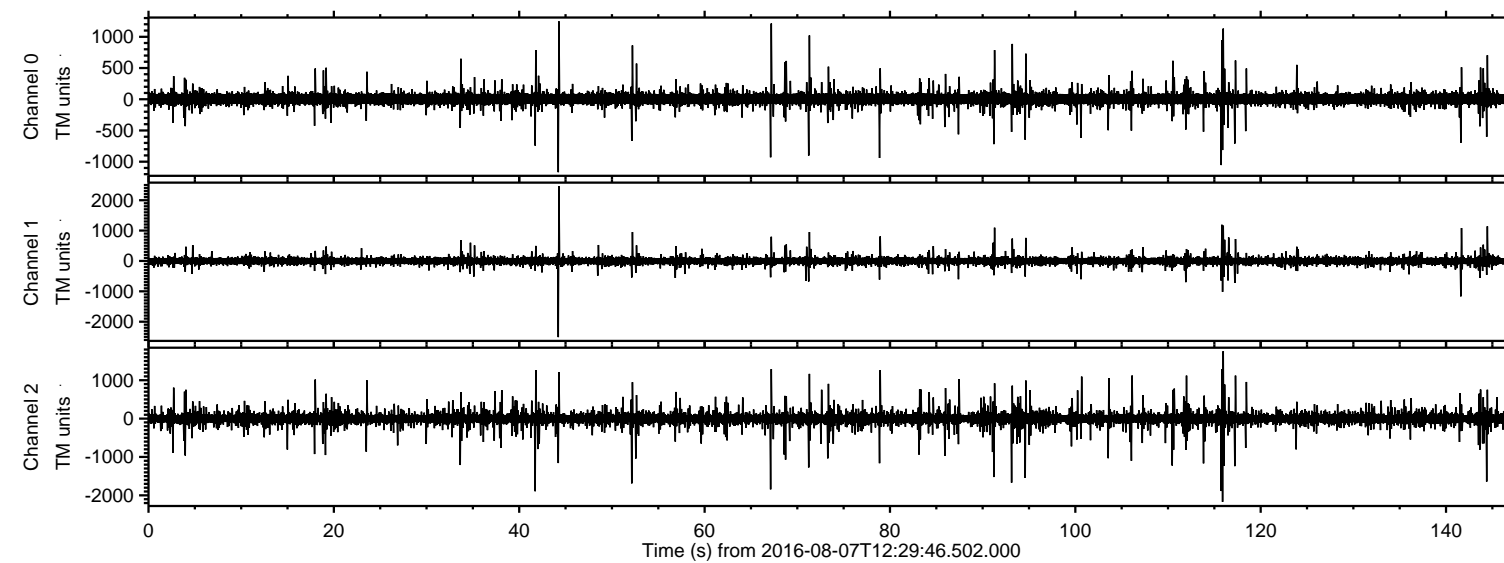
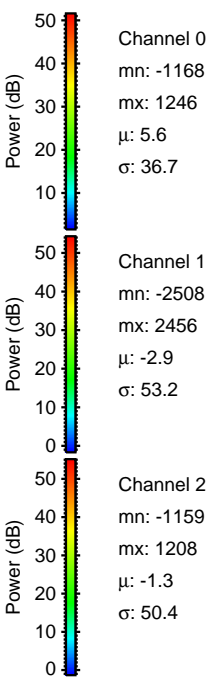
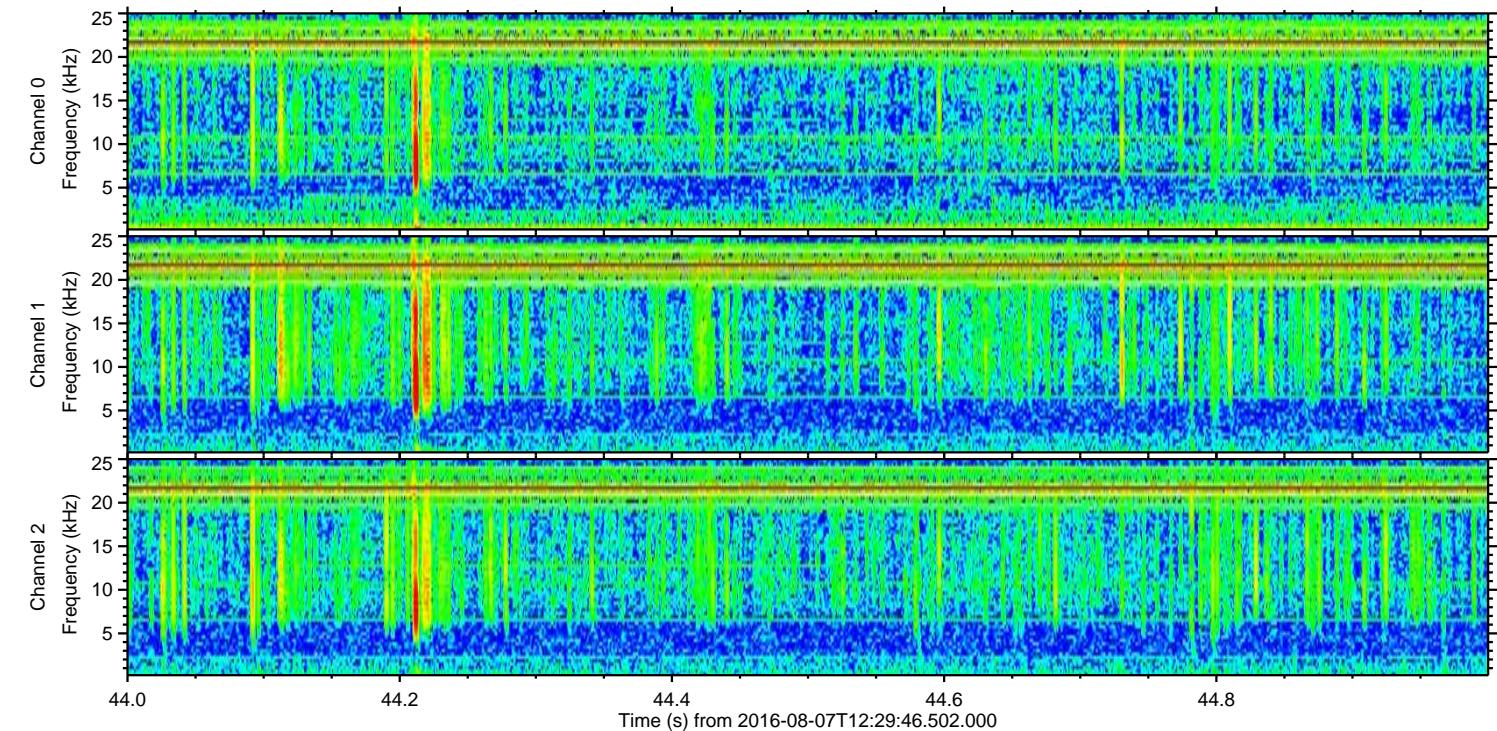
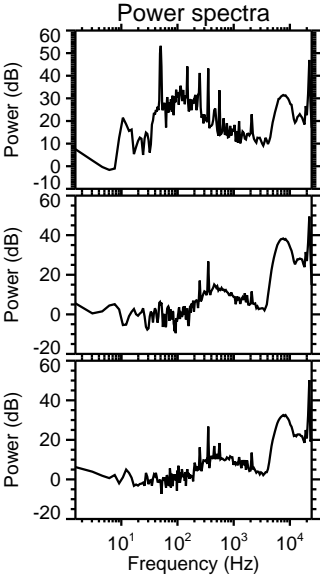
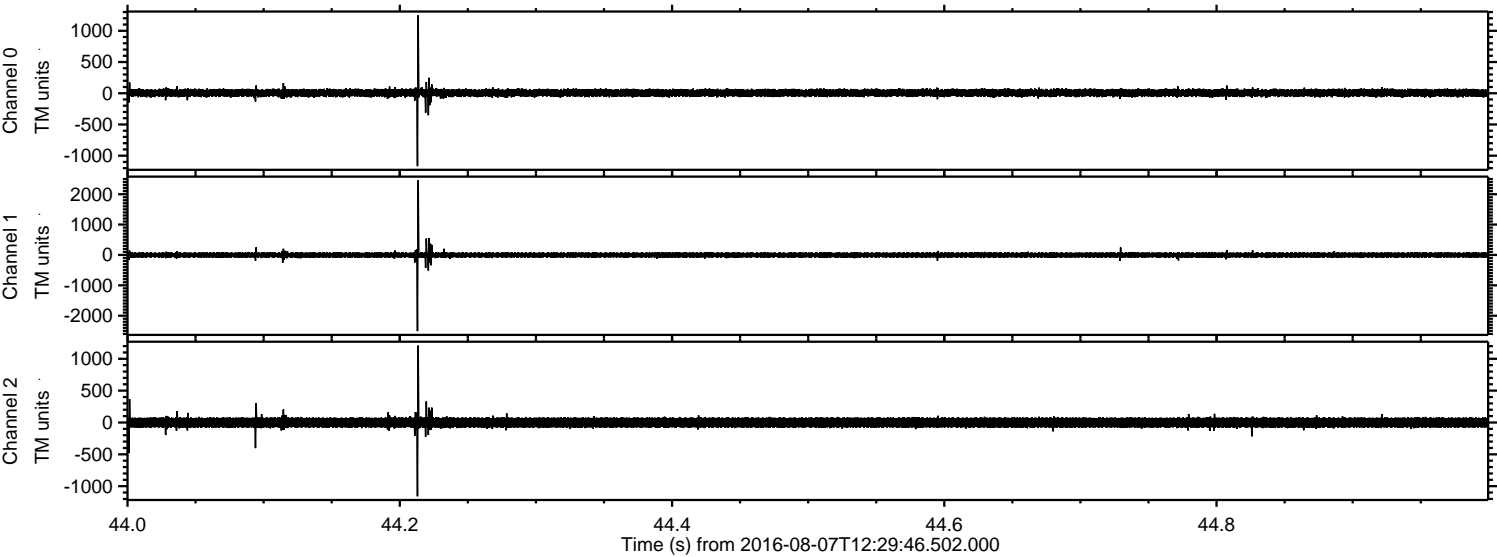


ELMAVAN 3D WAVEFORMS (Measured data sampled at 50 kHz) 51000 packets of 144 samples from 2016-08-07T12:29:46.502.000.

Processed Sun Aug 7 14:37:51 2016 by ELM ver.2012-10-06 from 001__elm20160807_122945__dat00.bin

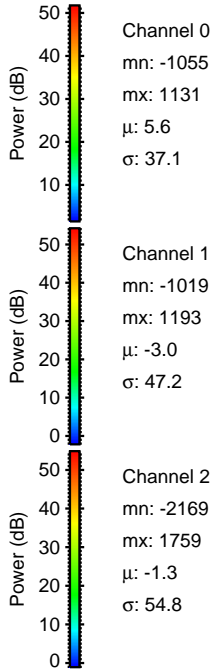
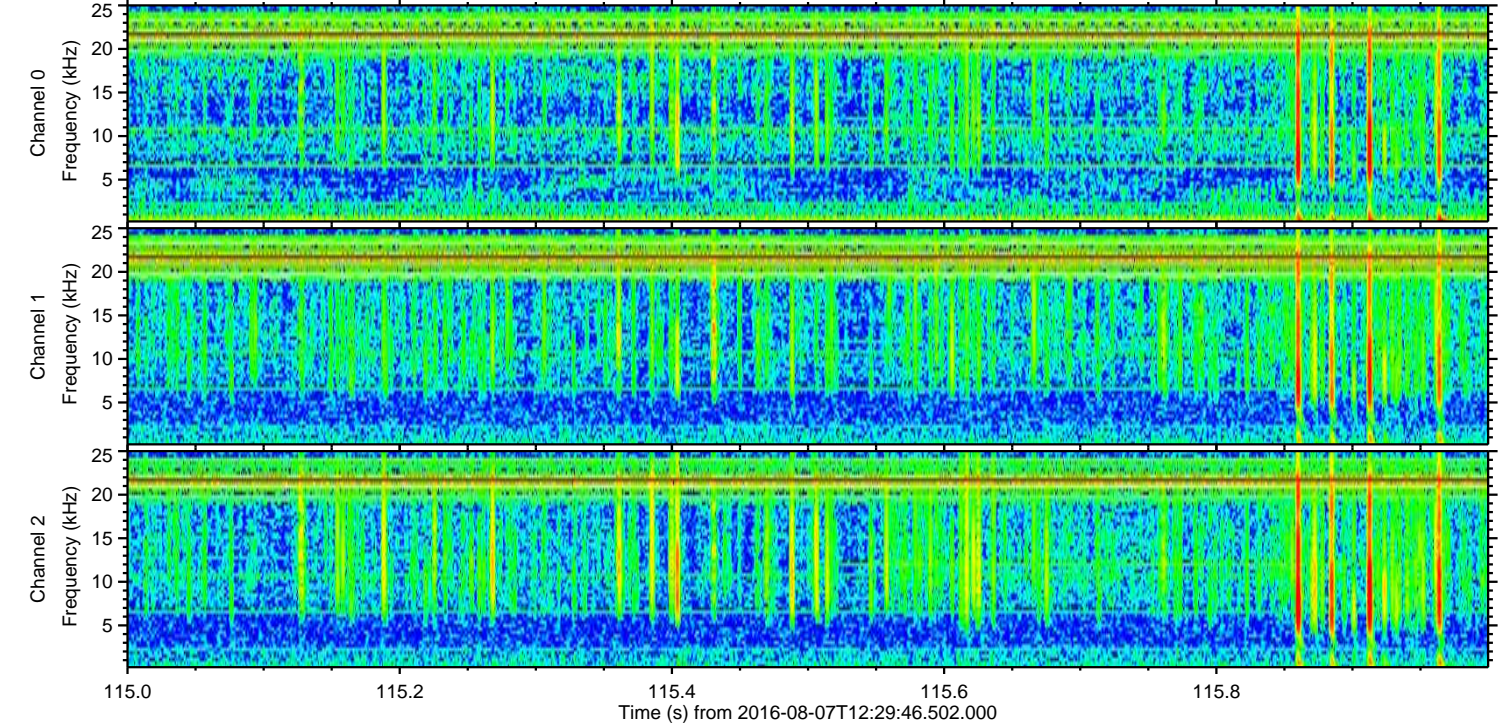
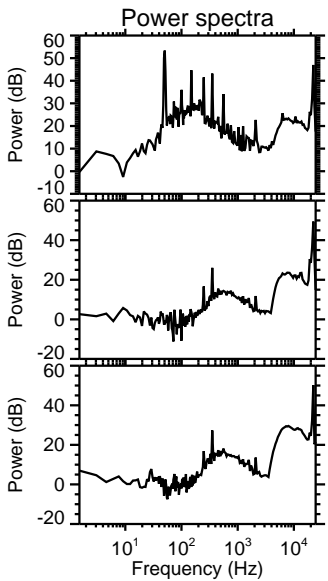
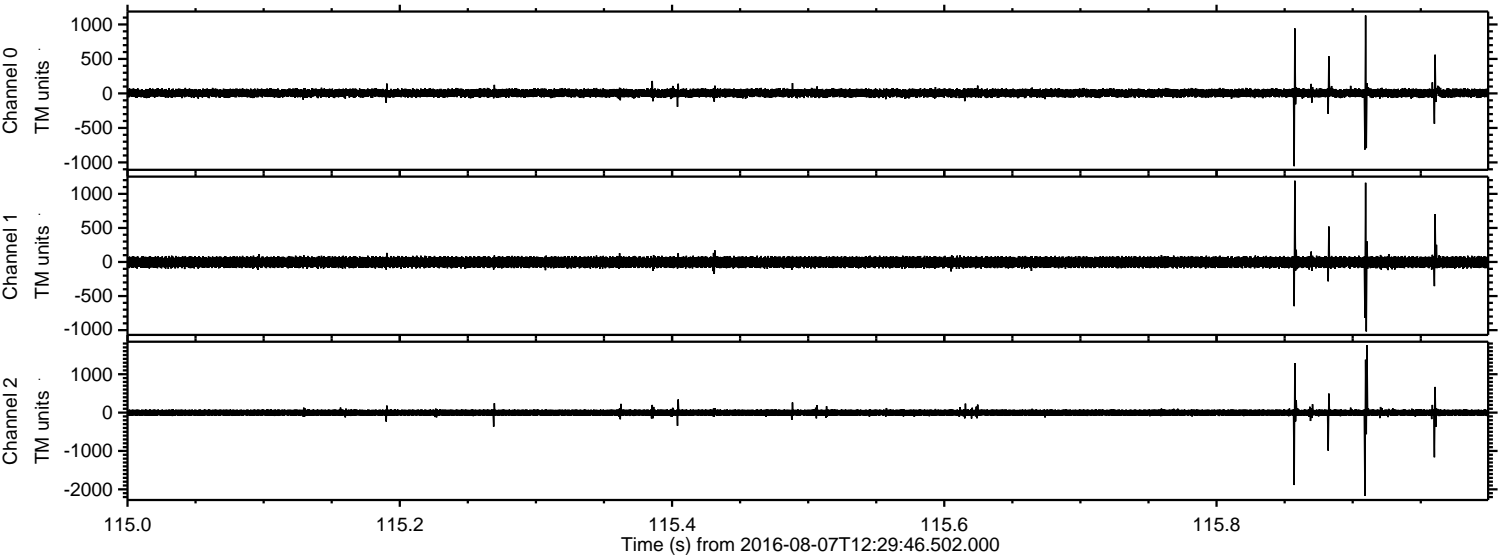


Processed Sun Aug 7 14:38:02 2016 by ELM ver.2012-10-06 from 001__elm20160807_122945__dat00.bin

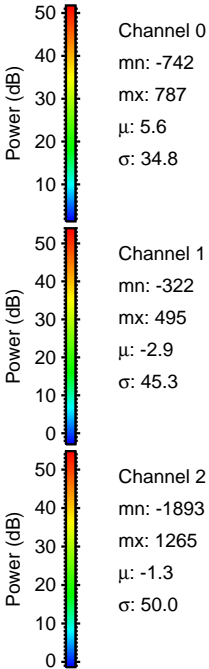
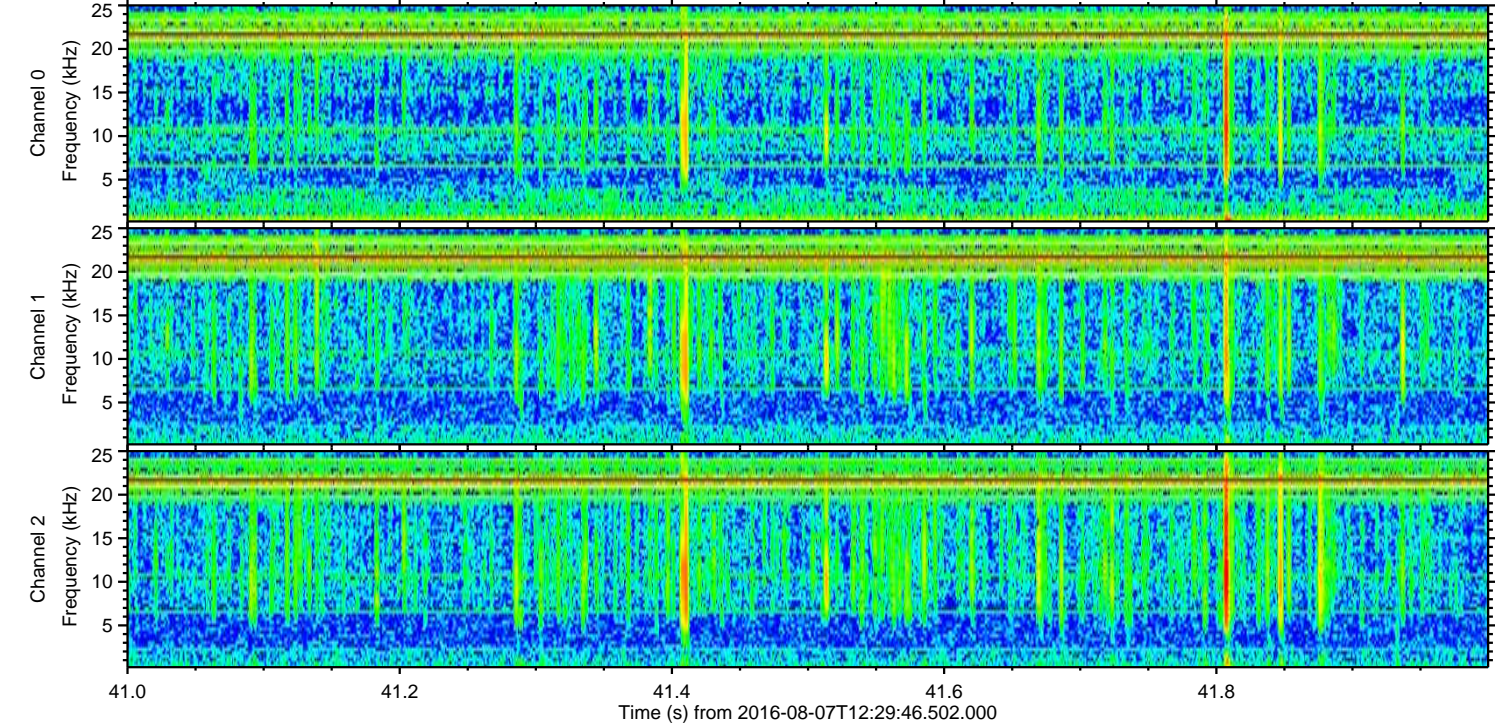
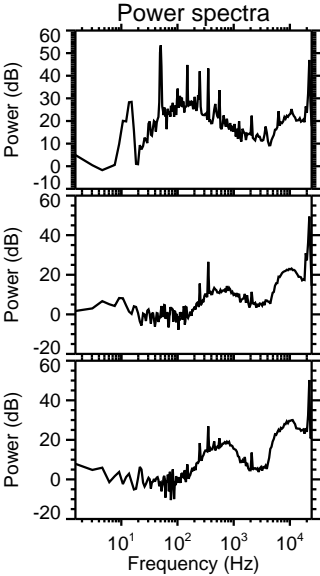
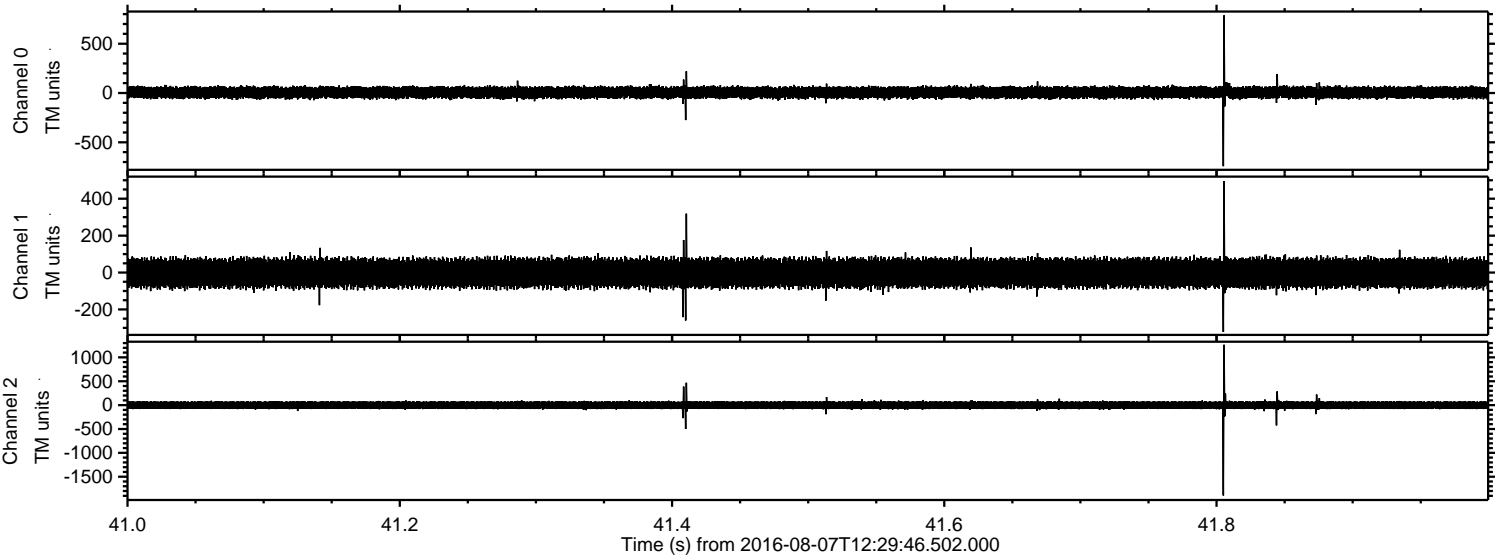


ELMAVAN 3D WAVEFORMS (Measured data sampled at 50 kHz) 51000 packets of 144 samples from 2016-08-07T12:29:46.502.000. Part 116/147

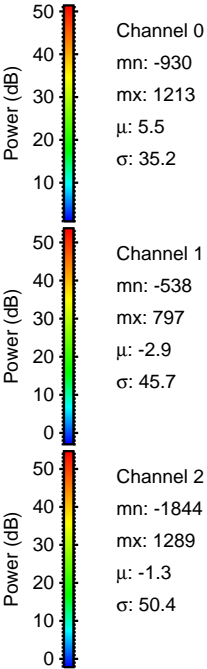
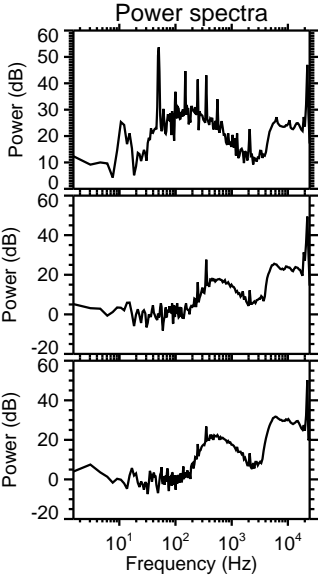
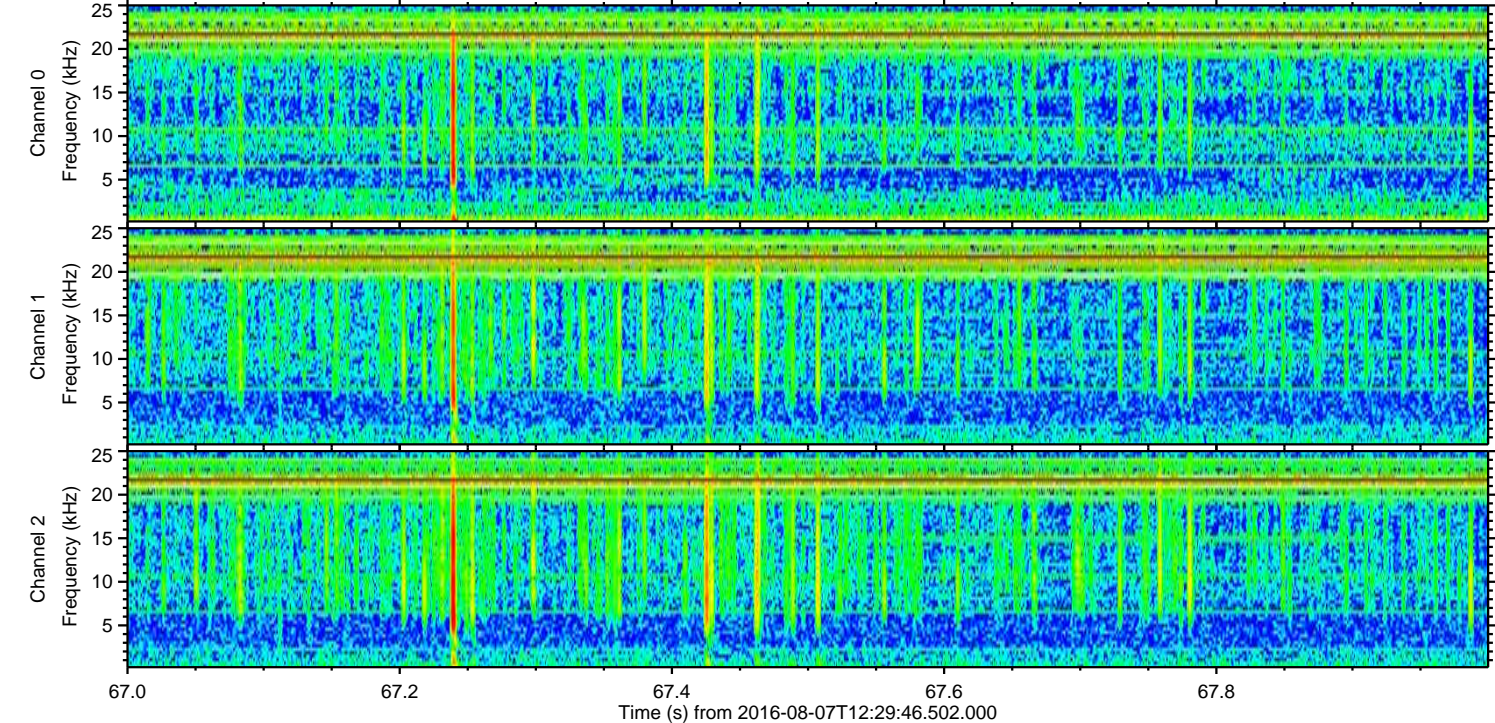
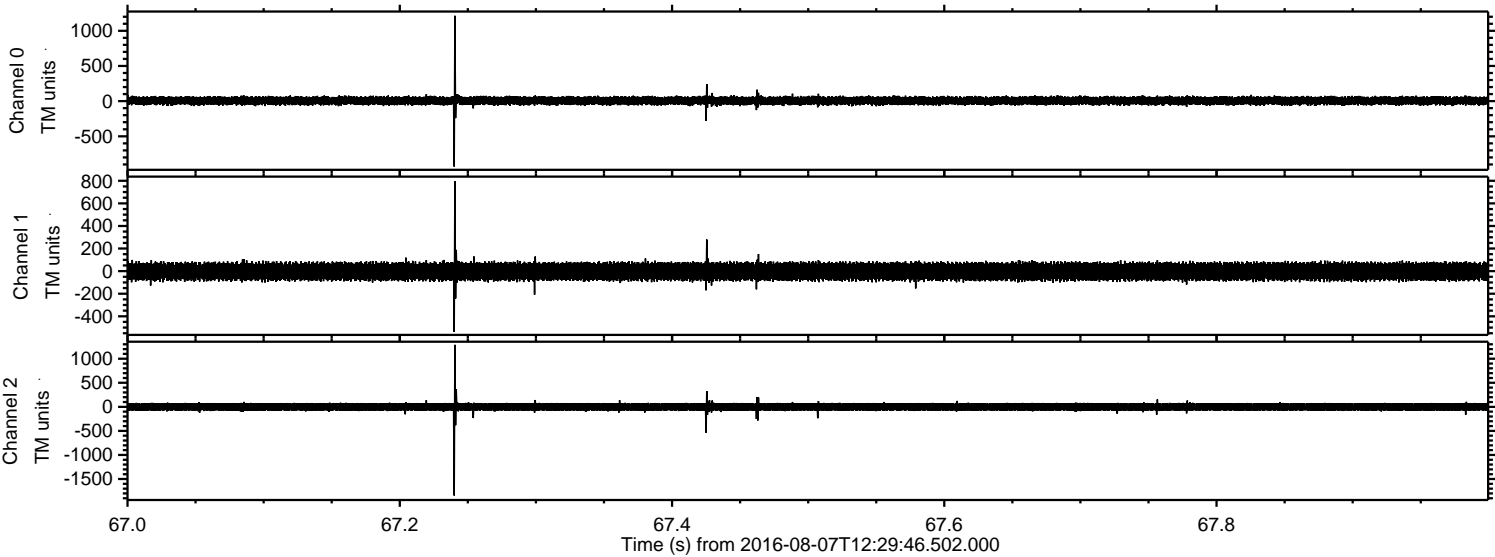
Processed Sun Aug 7 14:38:03 2016 by ELM ver.2012-10-06 from 001__elm20160807_122945__dat00.bin



Processed Sun Aug 7 14:38:04 2016 by ELM ver.2012-10-06 from 001__elm20160807_122945__dat00.bin

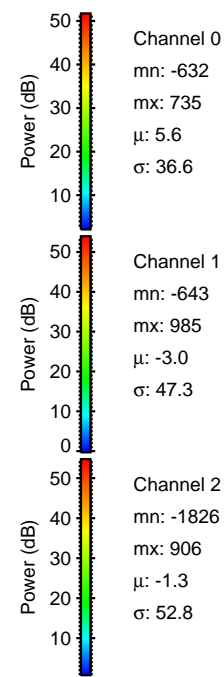
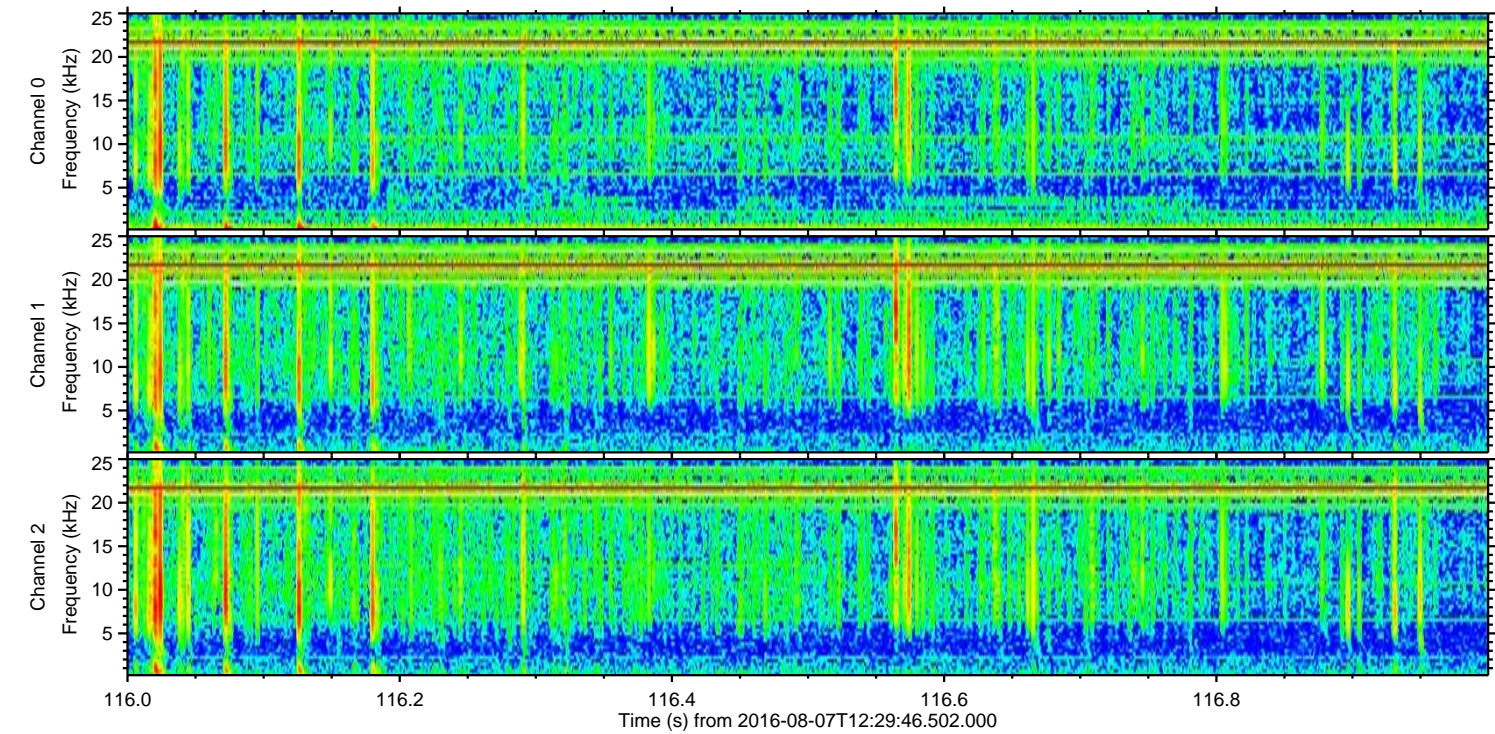
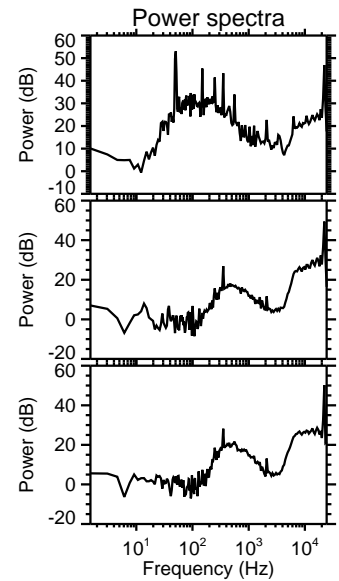
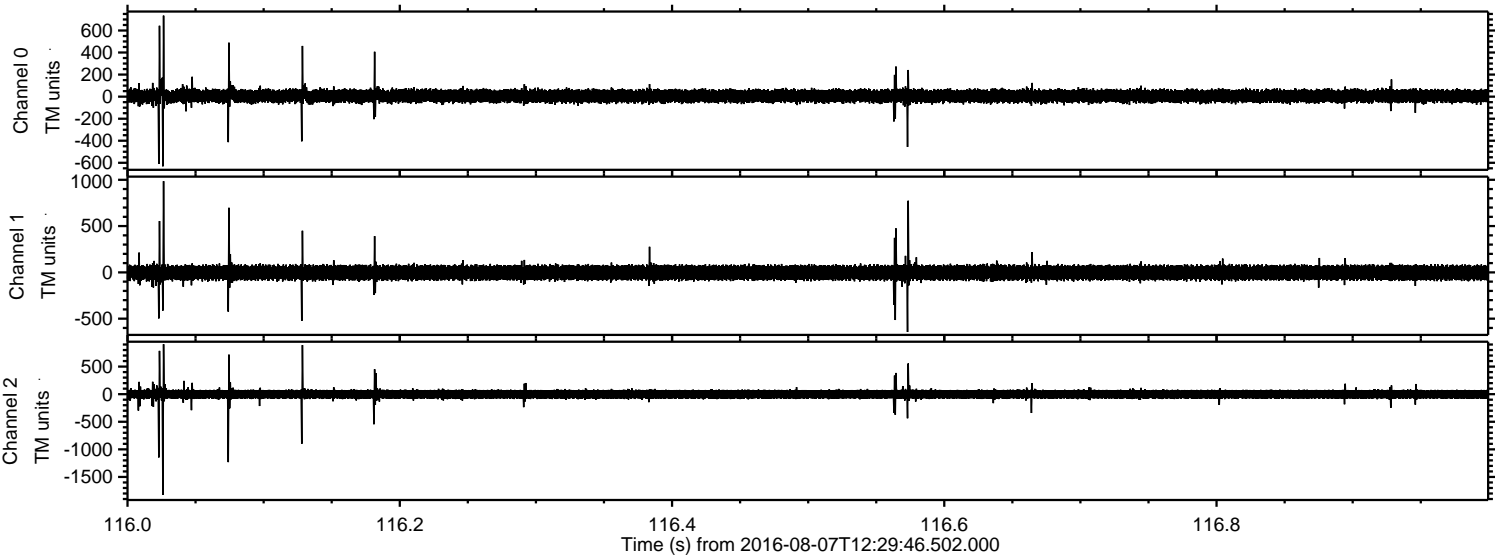


Processed Sun Aug 7 14:38:05 2016 by ELM ver.2012-10-06 from 001__elm20160807_122945__dat00.bin

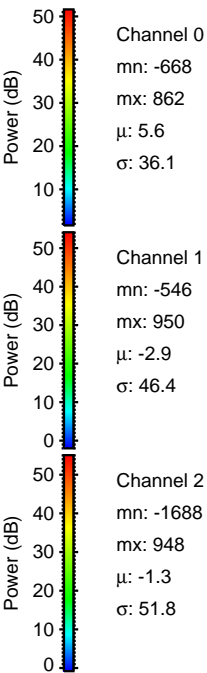
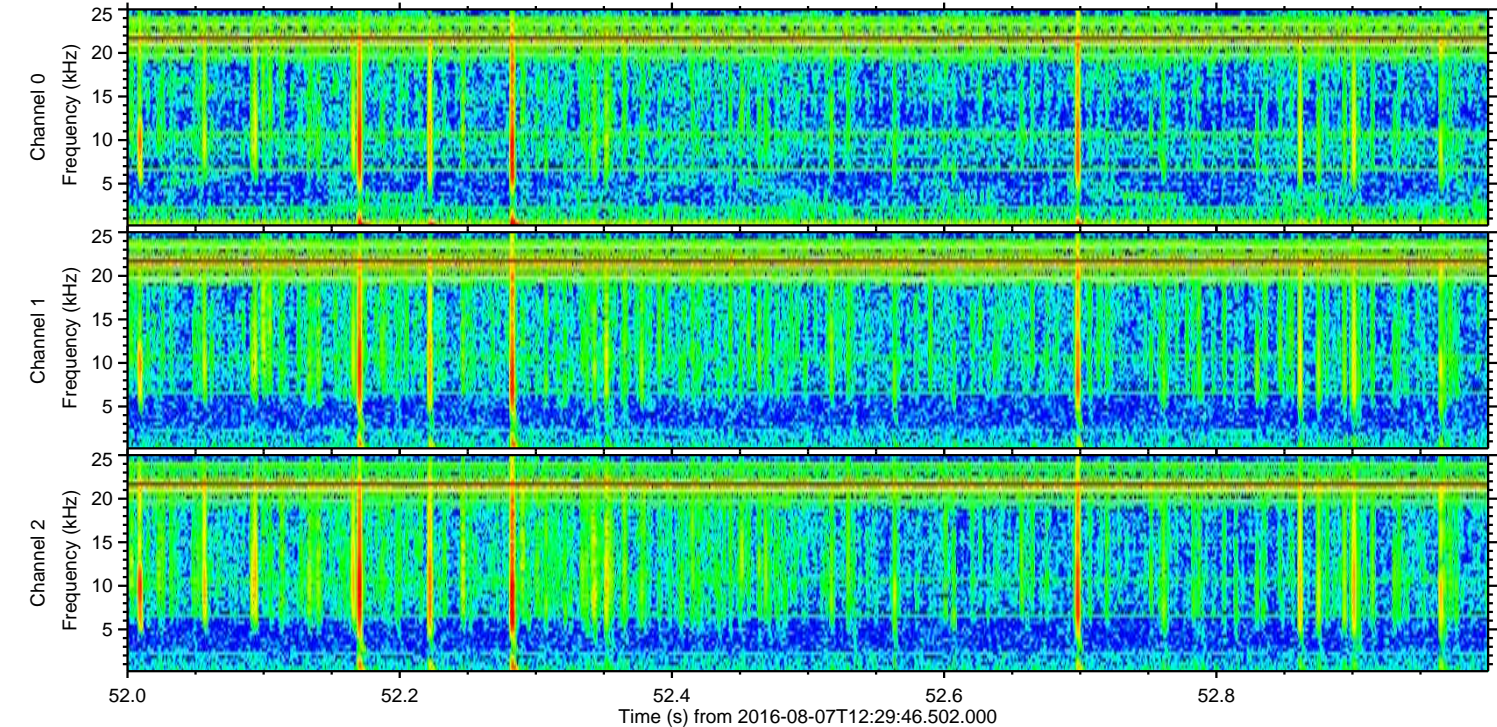
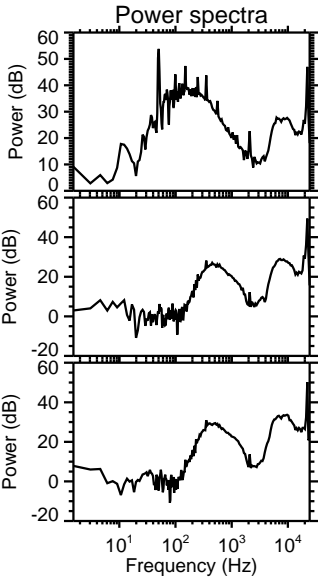
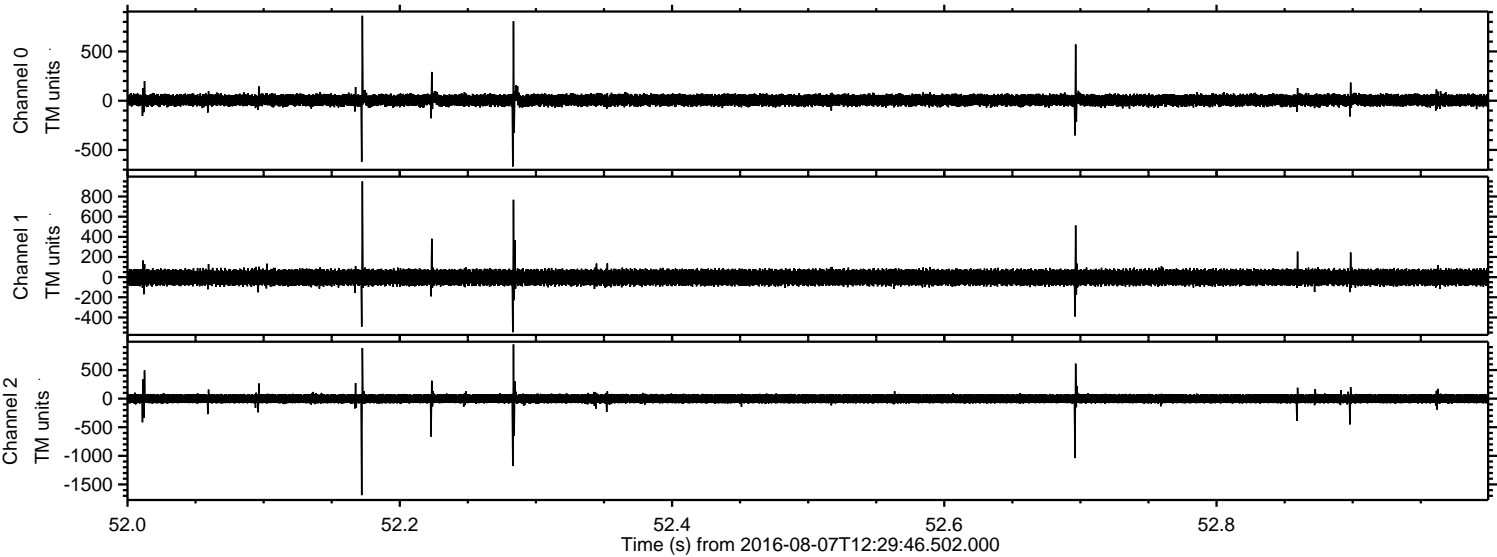


ELMAVAN 3D WAVEFORMS (Measured data sampled at 50 kHz) 51000 packets of 144 samples from 2016-08-07T12:29:46.502.000. Part 117/147

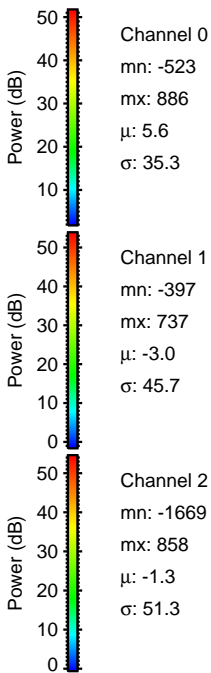
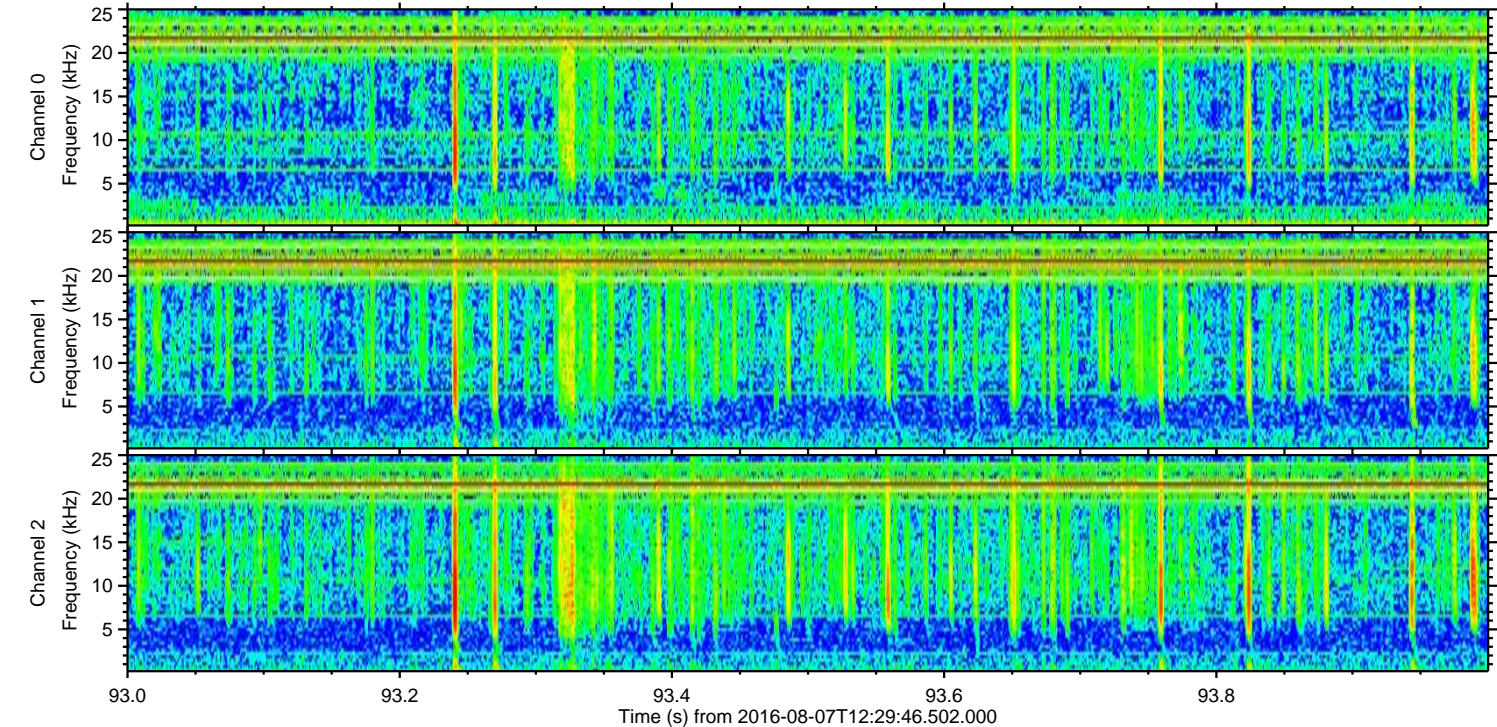
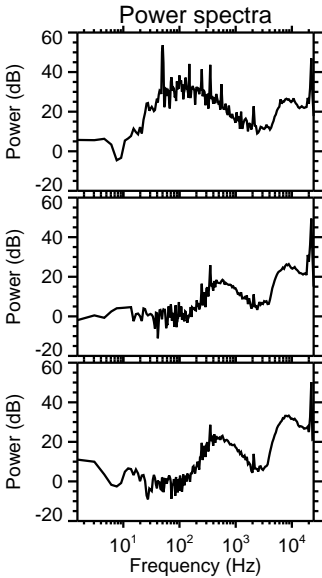
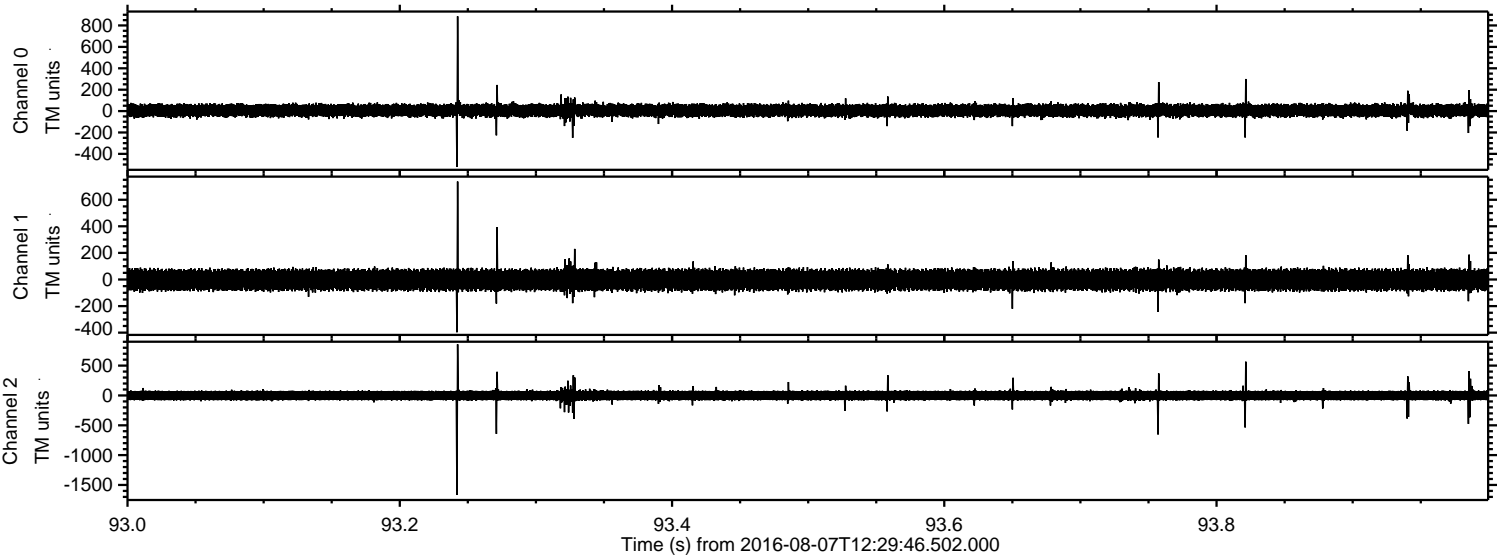
Processed Sun Aug 7 14:38:06 2016 by ELM ver.2012-10-06 from 001__elm20160807_122945__dat00.bin



Processed Sun Aug 7 14:38:07 2016 by ELM ver.2012-10-06 from 001__elm20160807_122945__dat00.bin

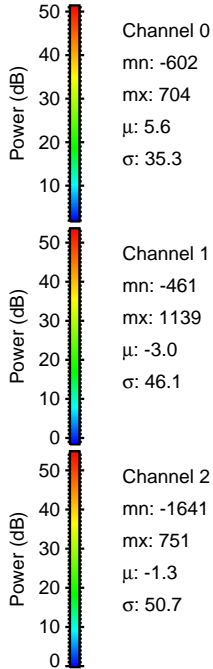
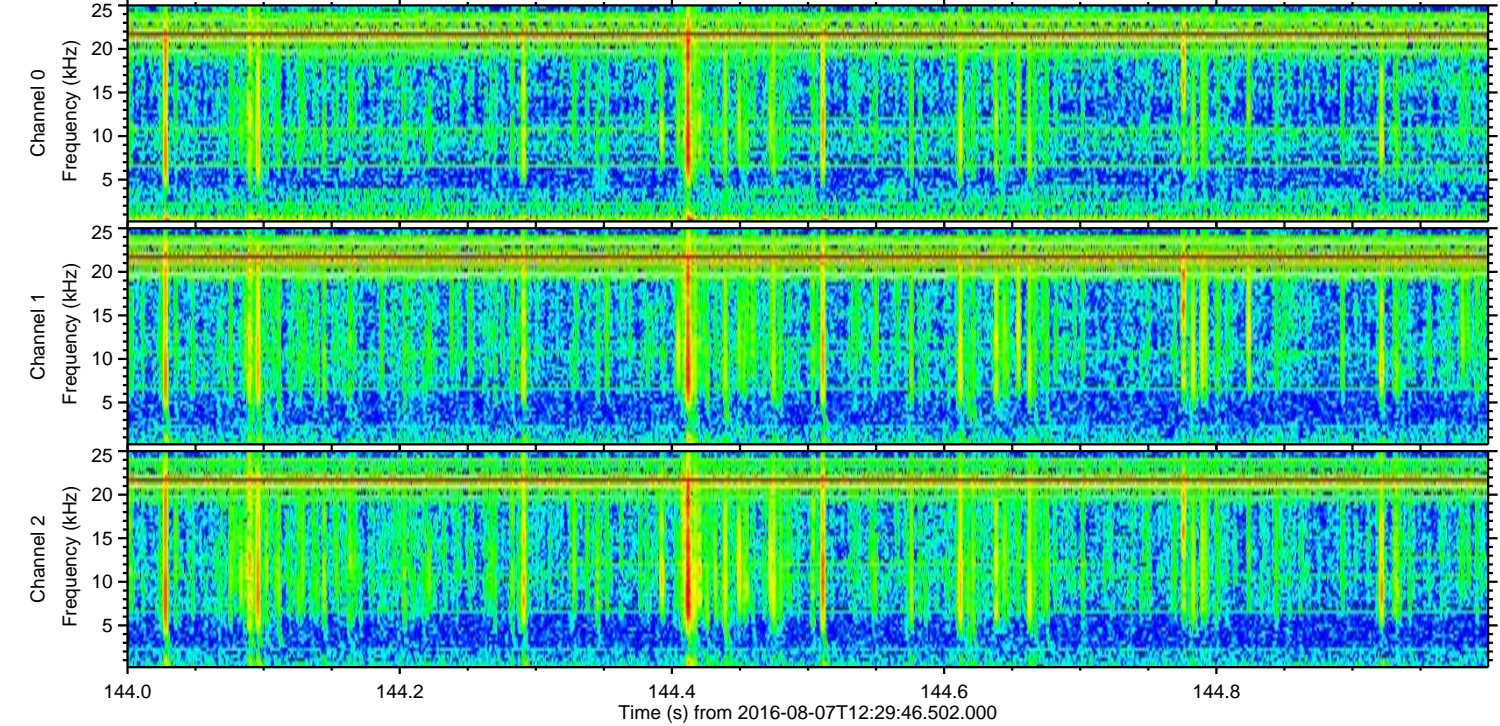
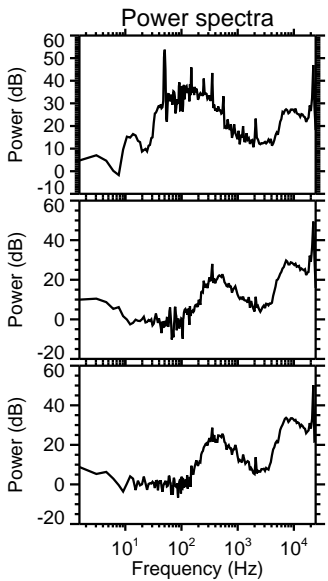
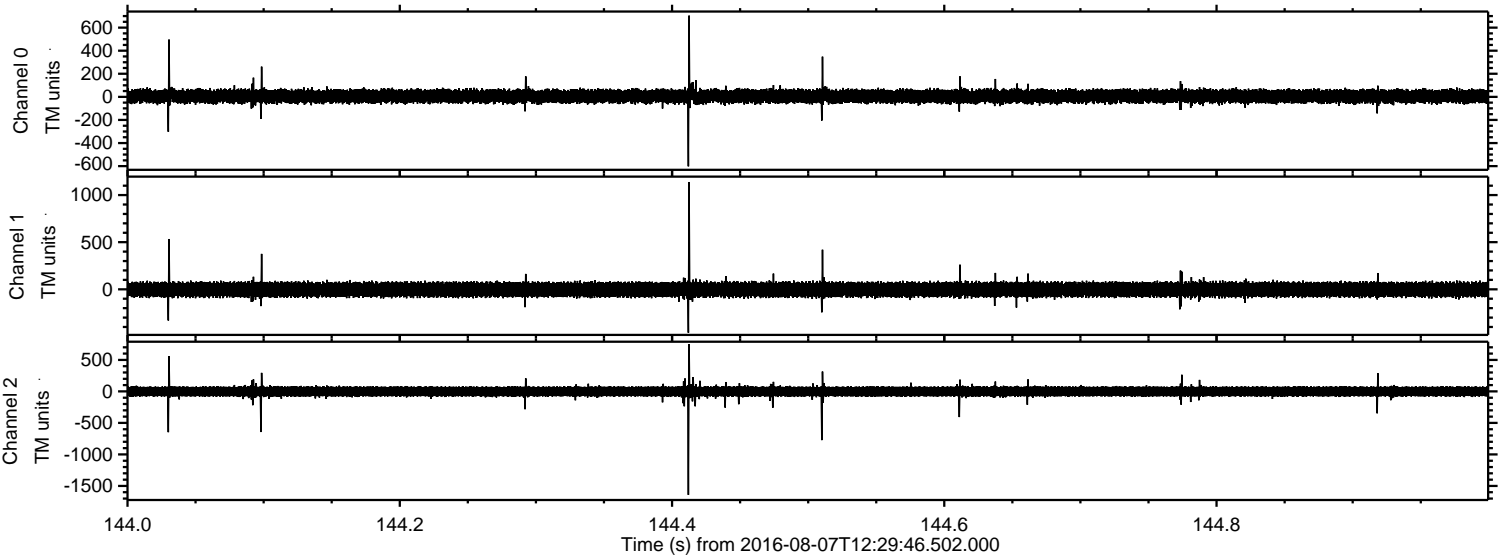


Processed Sun Aug 7 14:38:08 2016 by ELM ver.2012-10-06 from 001__elm20160807_122945__dat00.bin



ELMAVAN 3D WAVEFORMS (Measured data sampled at 50 kHz) 51000 packets of 144 samples from 2016-08-07T12:29:46.502.000. Part 145/147

Processed Sun Aug 7 14:38:09 2016 by ELM ver.2012-10-06 from 001__elm20160807_122945__dat00.bin

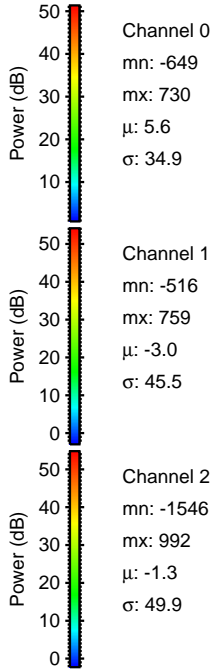
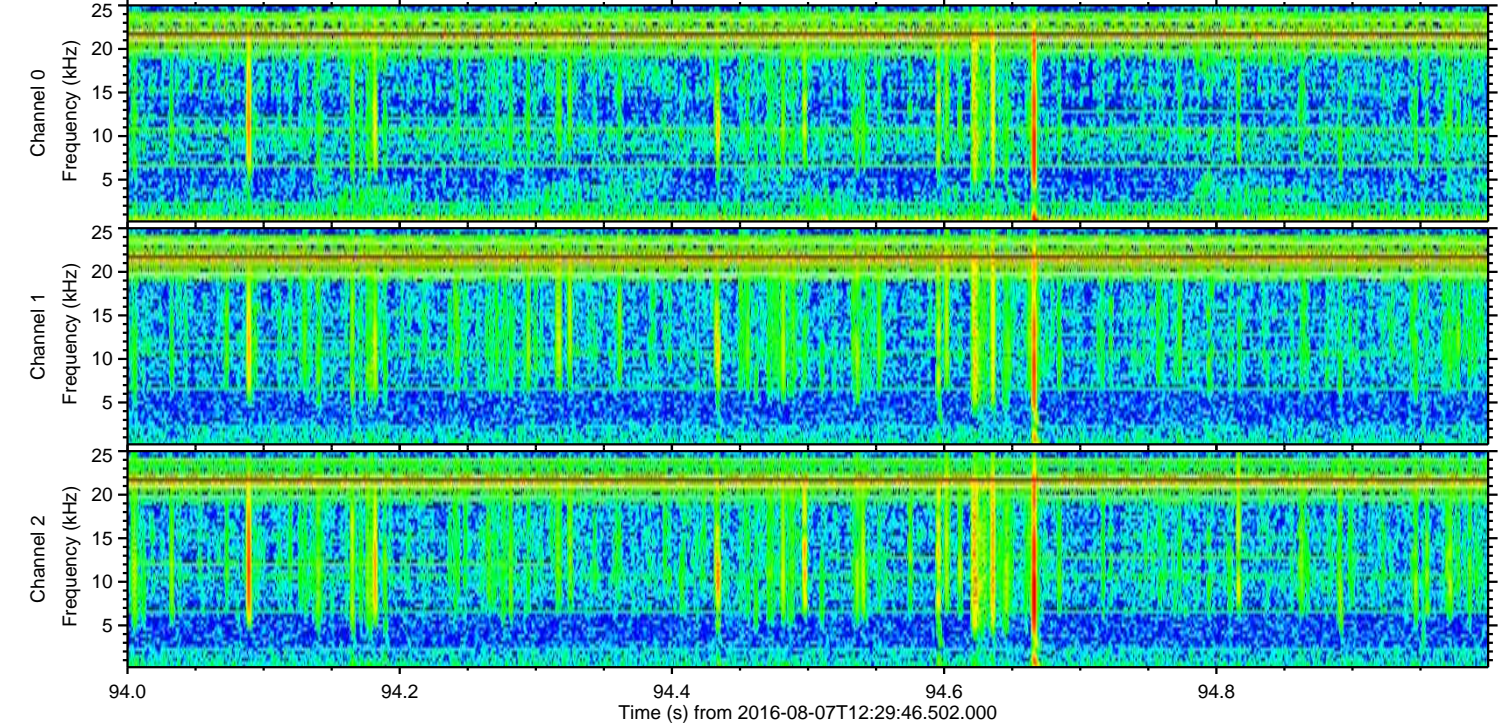
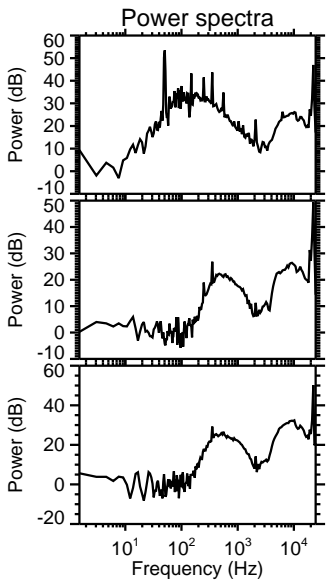
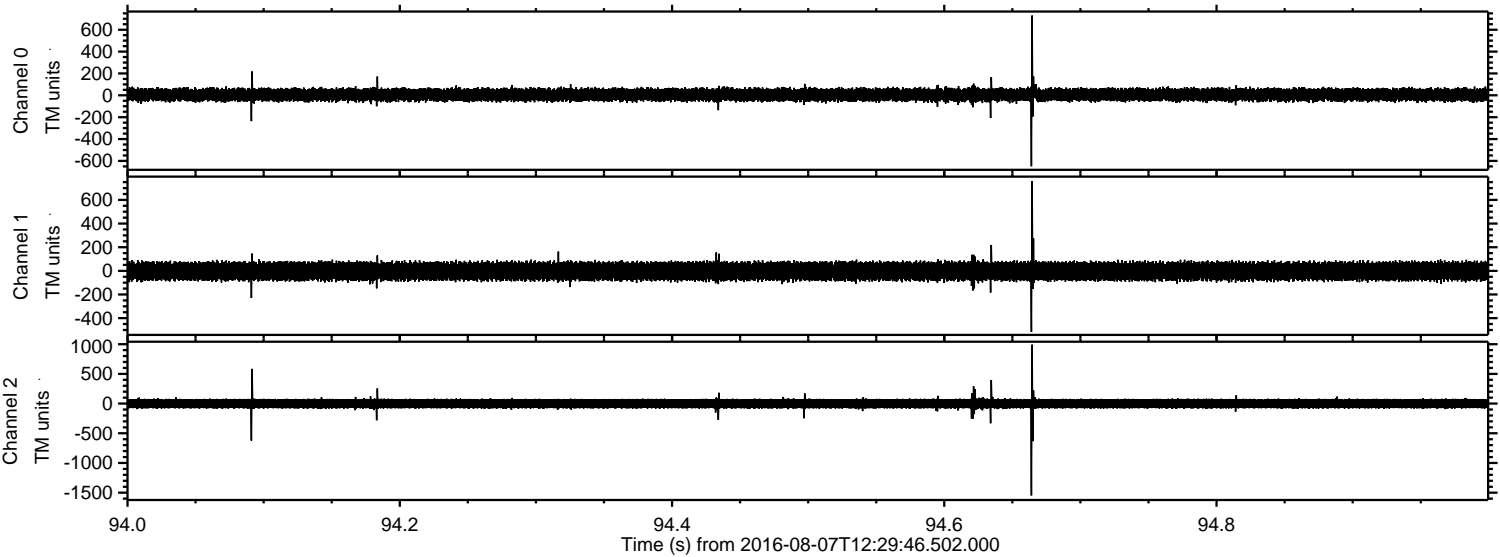


Channel 0
mn: -602
mx: 704
 μ : 5.6
 σ : 35.3

Channel 1
mn: -461
mx: 1139
 μ : -3.0
 σ : 46.1

Channel 2
mn: -1641
mx: 751
 μ : -1.3
 σ : 50.7

Processed Sun Aug 7 14:38:10 2016 by ELM ver.2012-10-06 from 001__elm20160807_122945__dat00.bin



Processed Sun Aug 7 14:38:11 2016 by ELM ver.2012-10-06 from 001__elm20160807_122945__dat00.bin

