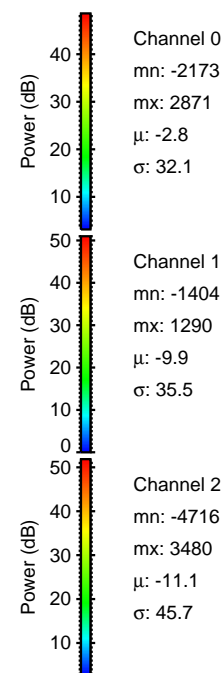
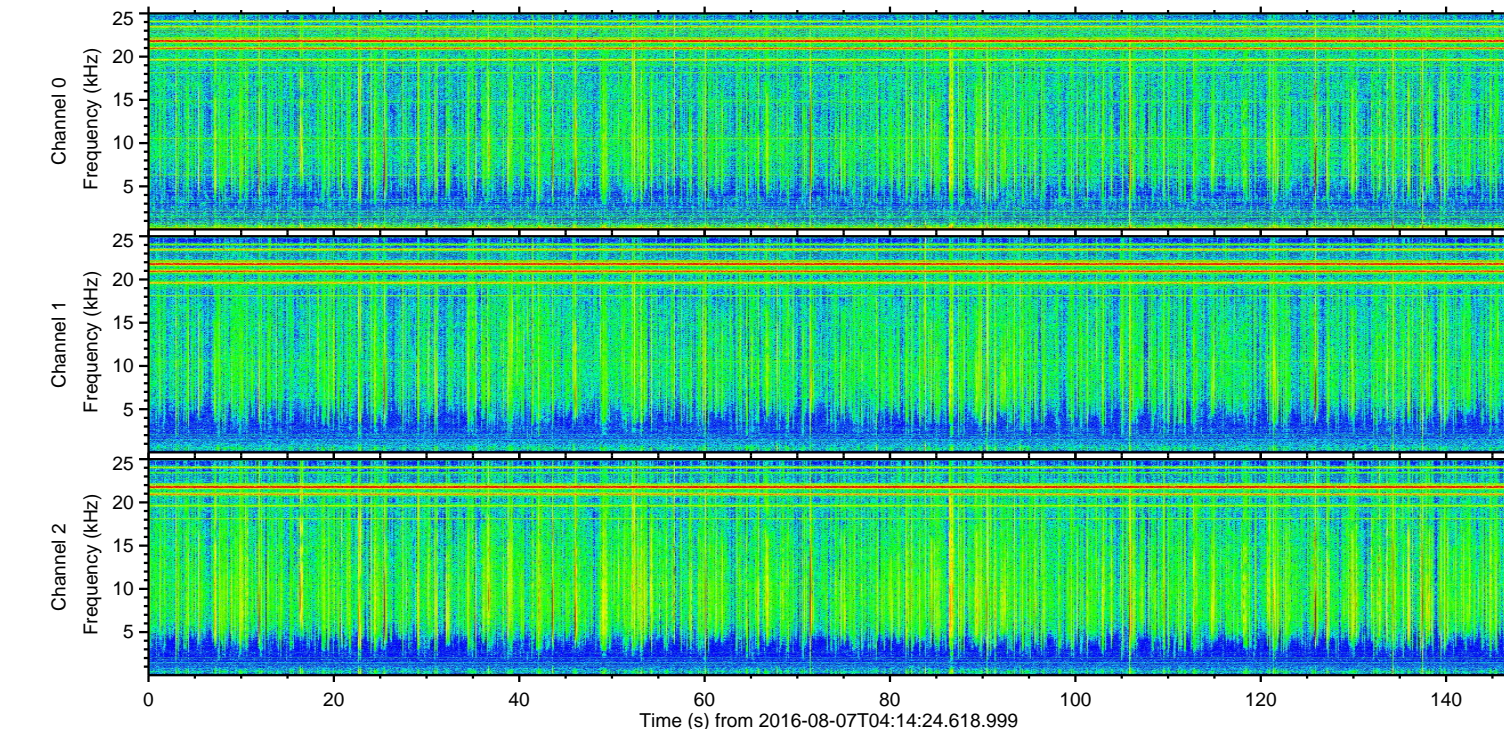
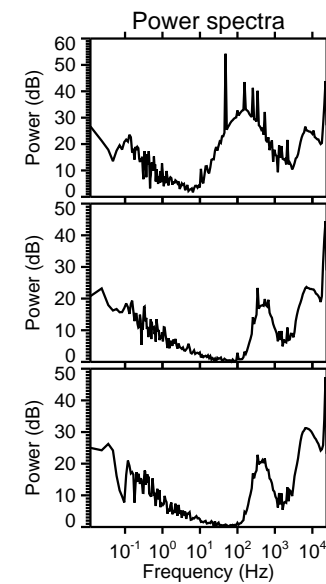
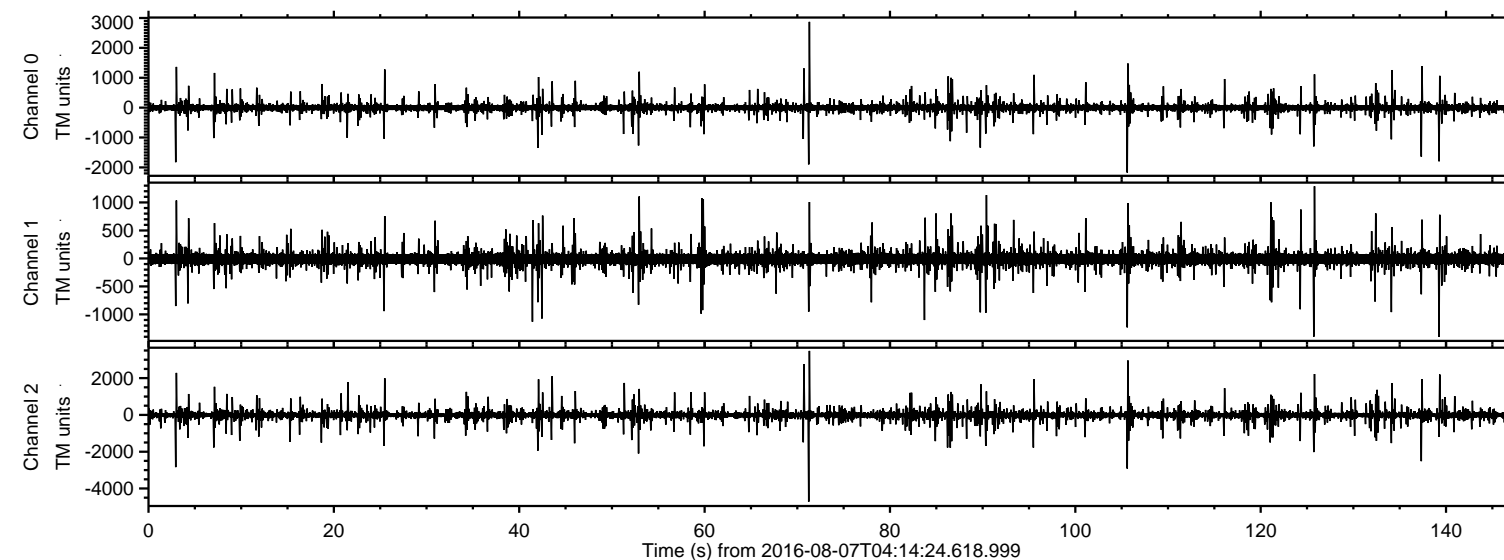


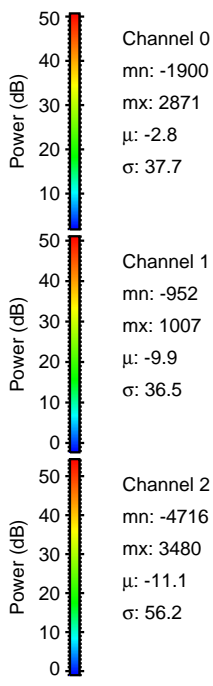
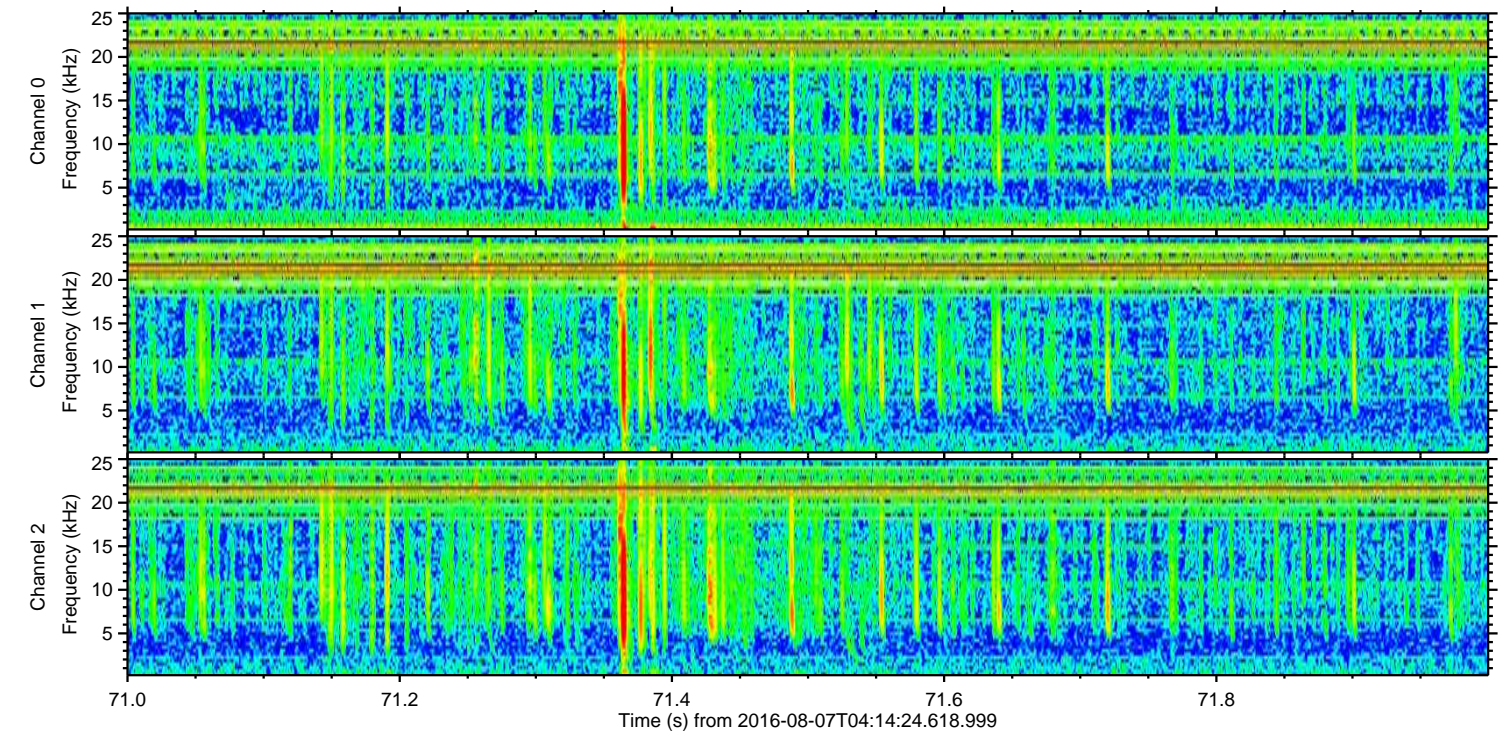
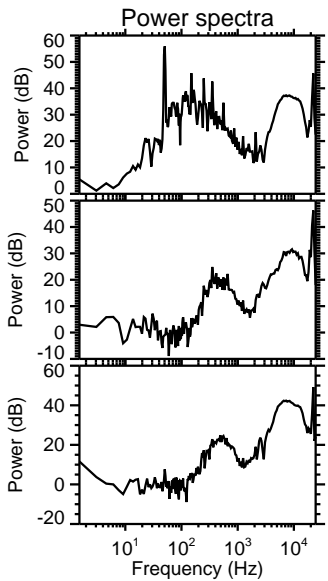
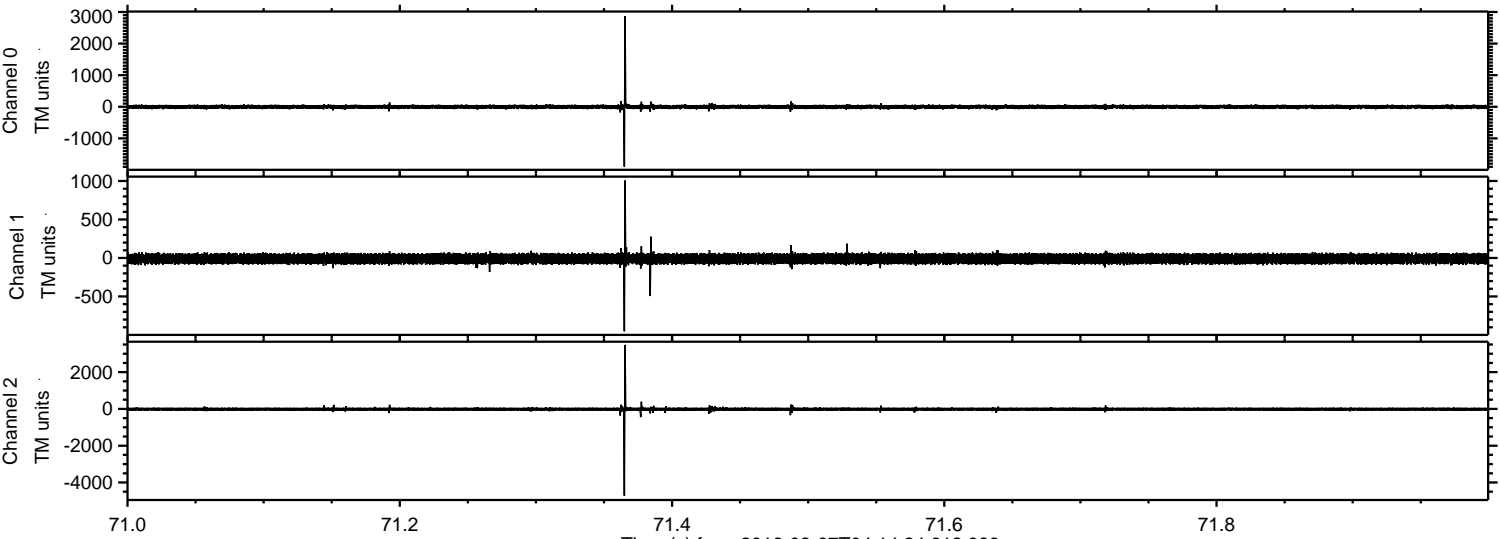
ELMAVAN 3D WAVEFORMS (Measured data sampled at 50 kHz) 51000 packets of 144 samples from 2016-08-07T04:14:24.618.999.

Processed Sun Aug 7 06:22:31 2016 by ELM ver.2012-10-06 from 001\_\_elm20160807\_041423\_\_dat00.bin





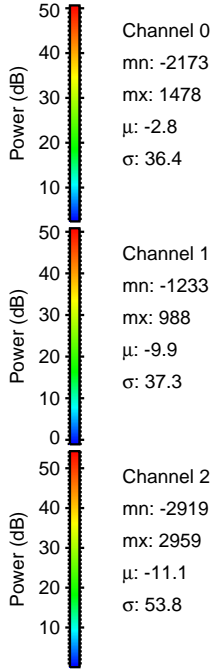
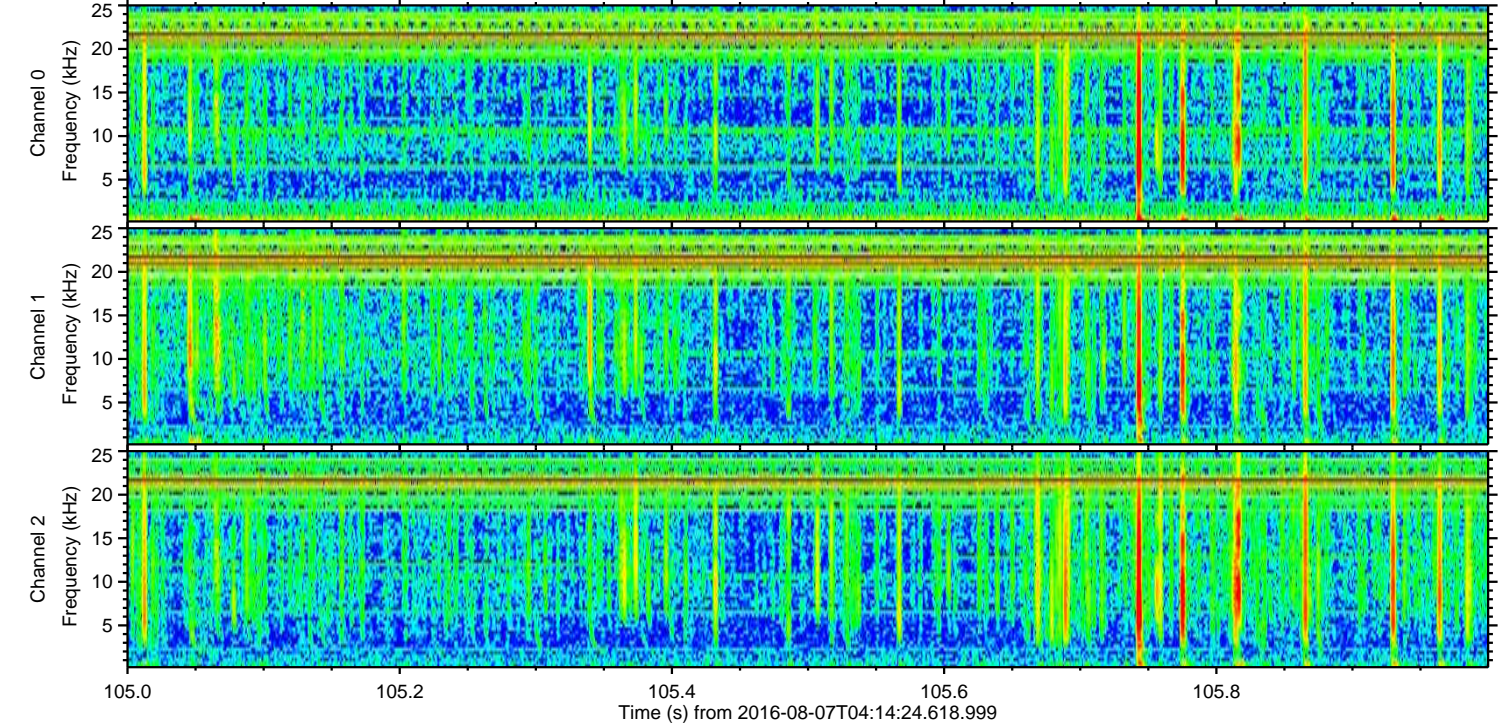
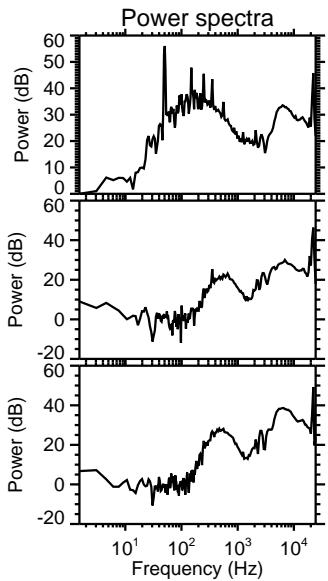
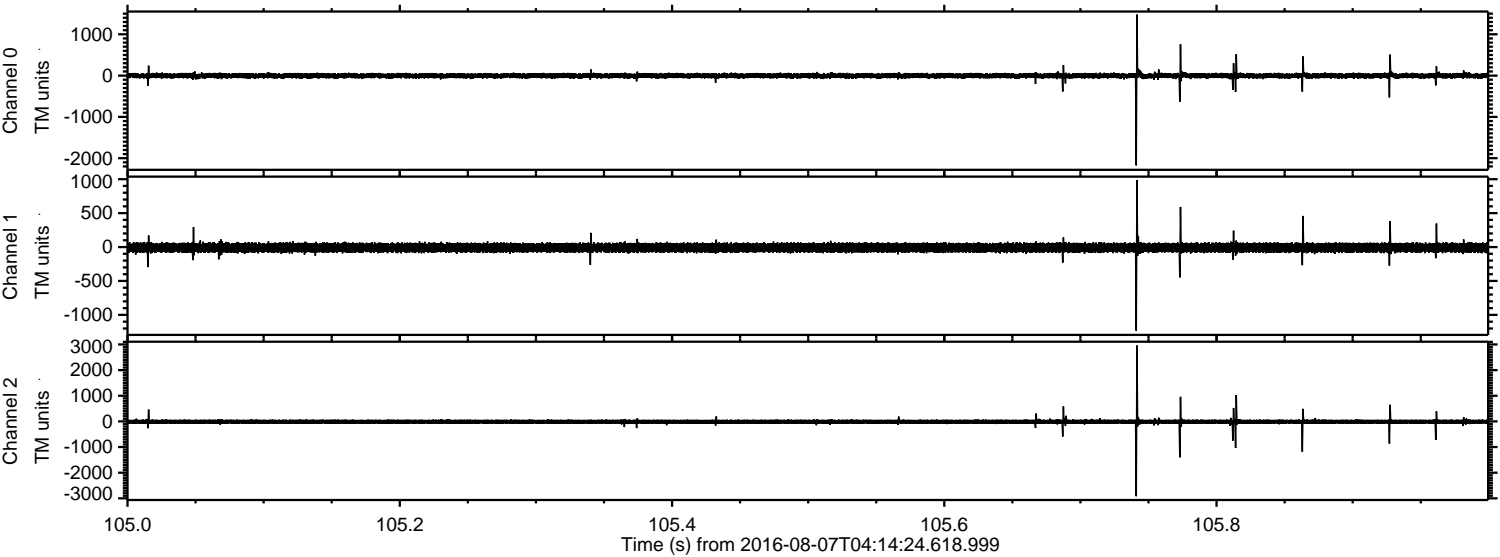
Processed Sun Aug 7 06:22:47 2016 by ELM ver.2012-10-06 from 001\_\_elm20160807\_041423\_\_dat00.bin





ELMAVAN 3D WAVEFORMS (Measured data sampled at 50 kHz) 51000 packets of 144 samples from 2016-08-07T04:14:24.618.999. Part 106/147

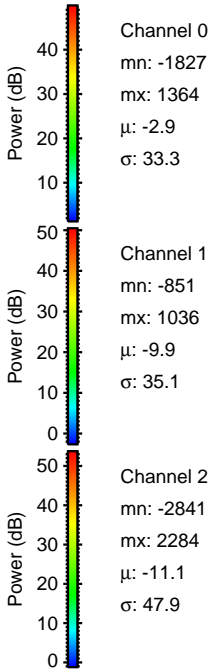
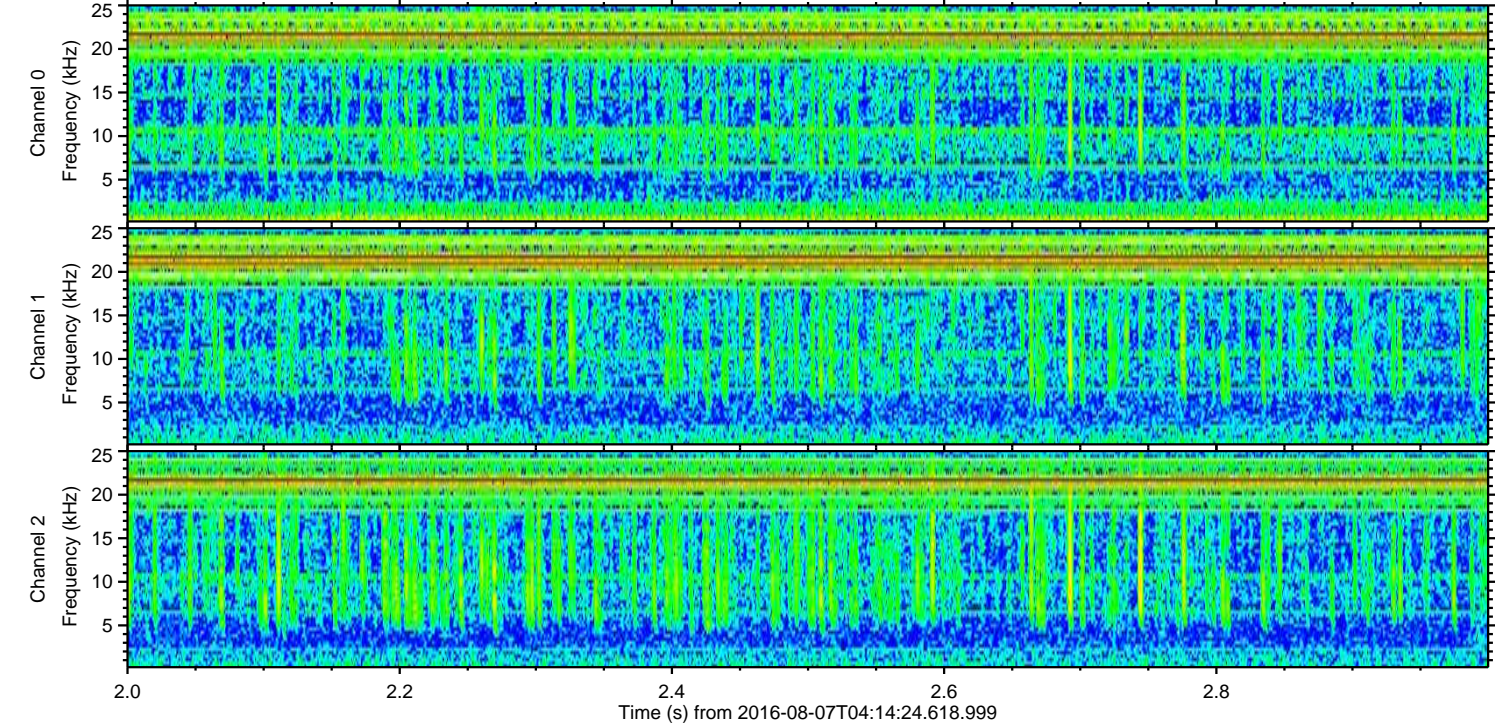
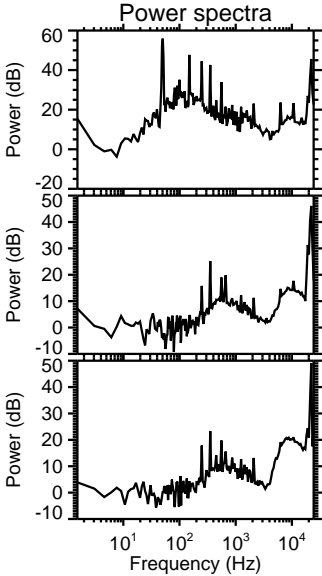
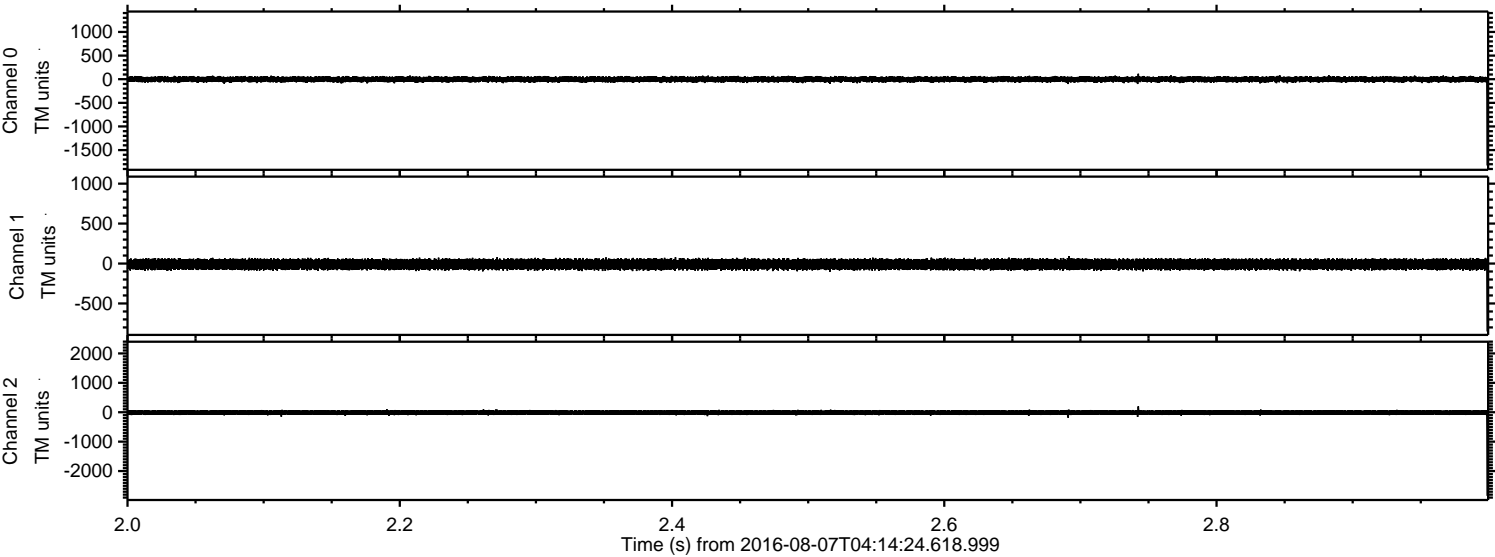
Processed Sun Aug 7 06:22:49 2016 by ELM ver.2012-10-06 from 001\_\_elm20160807\_041423\_\_dat00.bin





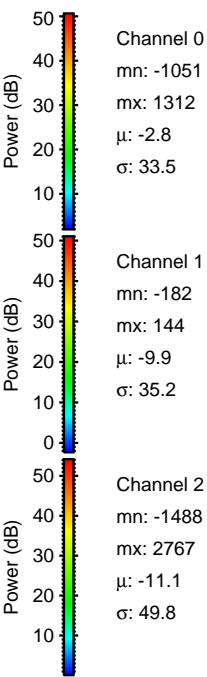
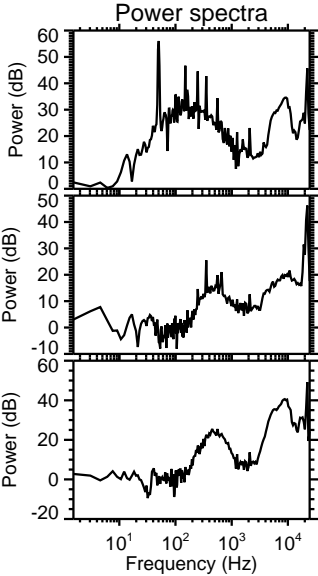
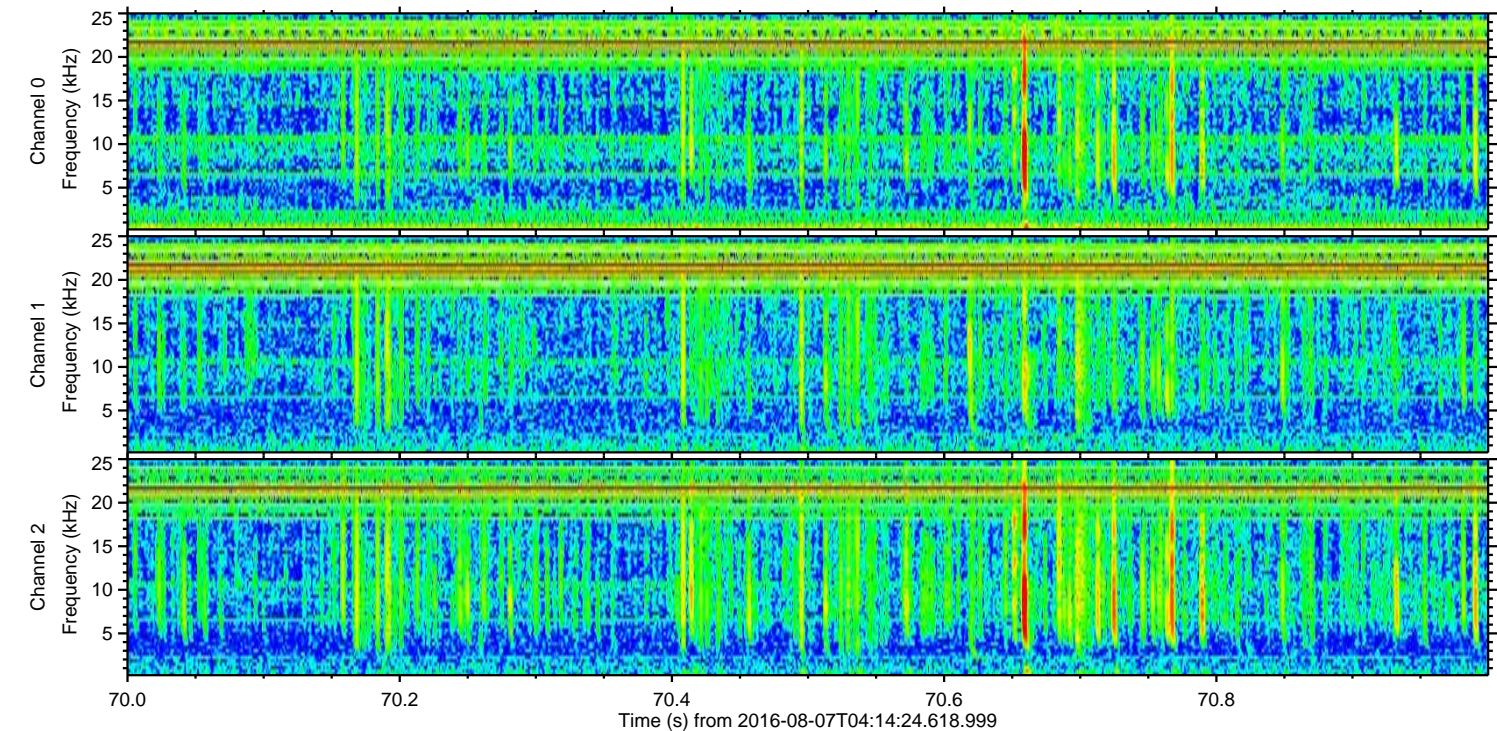
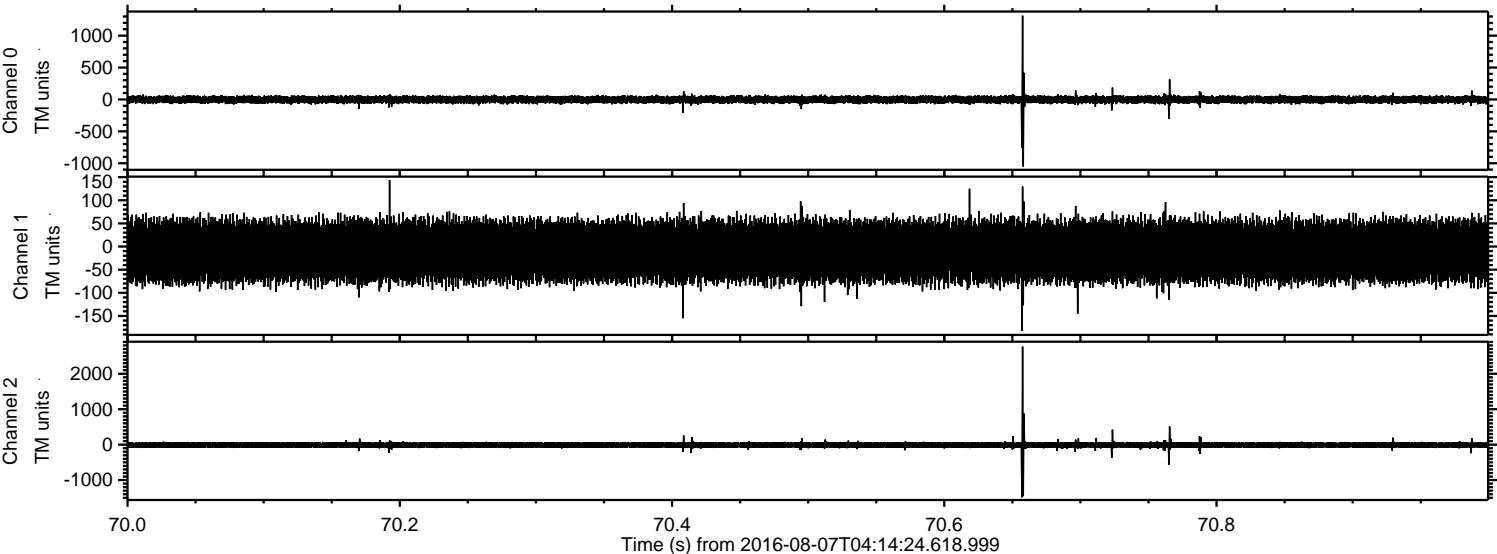
ELMAVAN 3D WAVEFORMS (Measured data sampled at 50 kHz) 51000 packets of 144 samples from 2016-08-07T04:14:24.618.999. Part 3/147

Processed Sun Aug 7 06:22:50 2016 by ELM ver.2012-10-06 from 001\_\_elm20160807\_041423\_\_dat00.bin





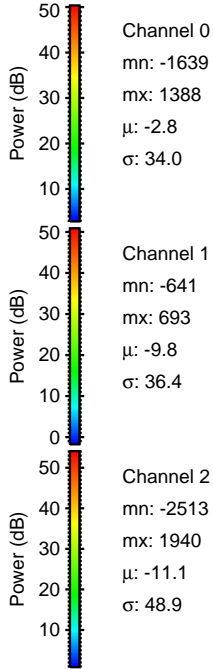
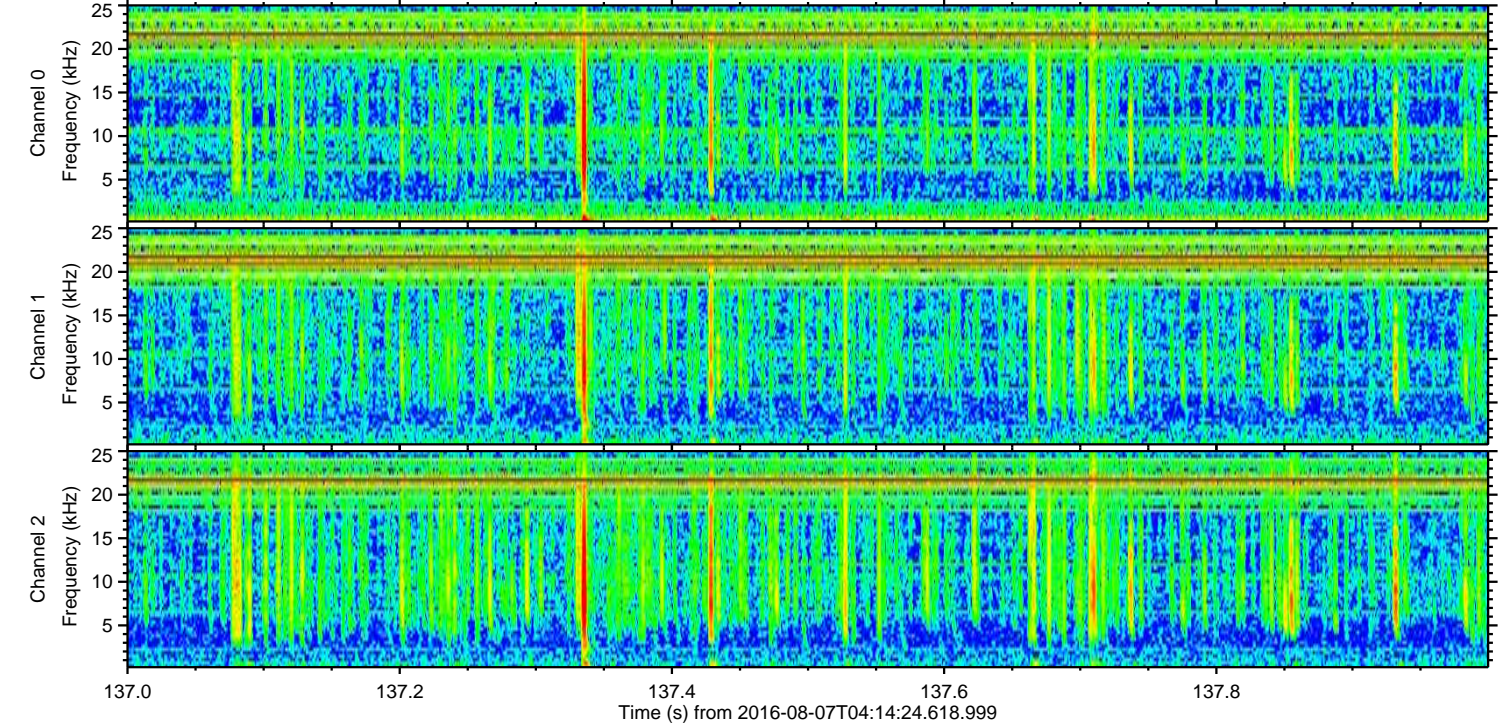
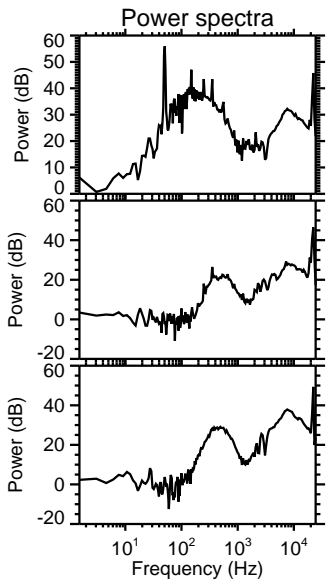
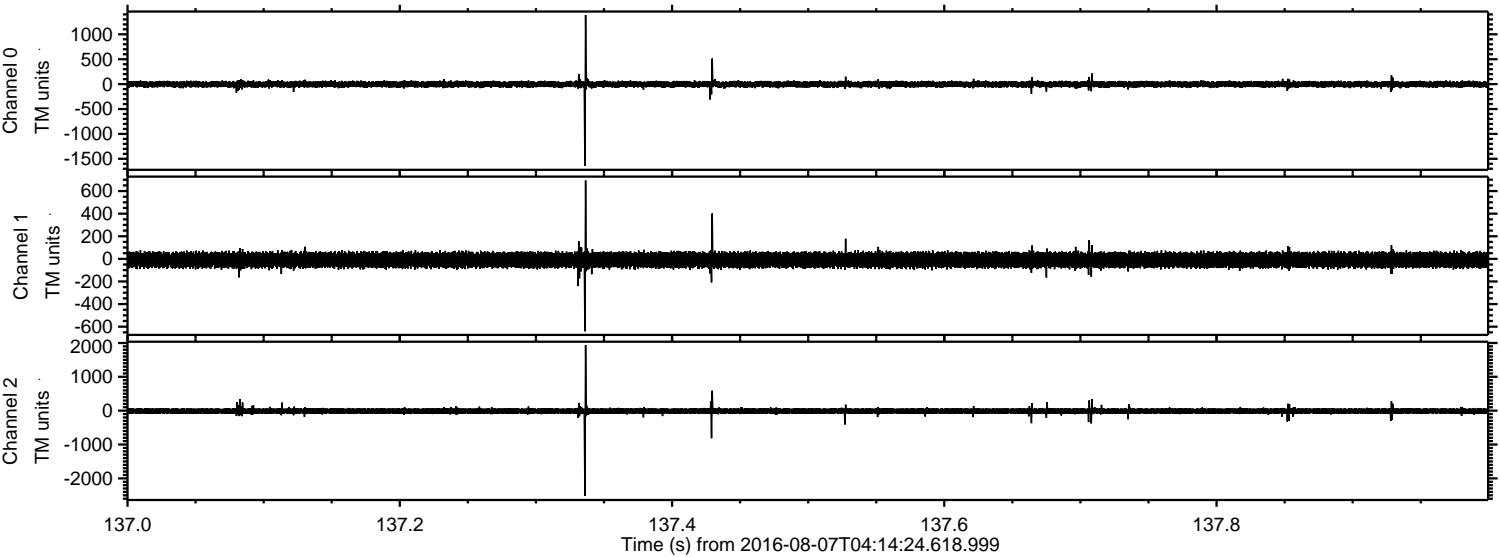
Processed Sun Aug 7 06:22:52 2016 by ELM ver.2012-10-06 from 001\_\_elm20160807\_041423\_\_dat00.bin





ELMAVAN 3D WAVEFORMS (Measured data sampled at 50 kHz) 51000 packets of 144 samples from 2016-08-07T04:14:24.618.999. Part 138/147

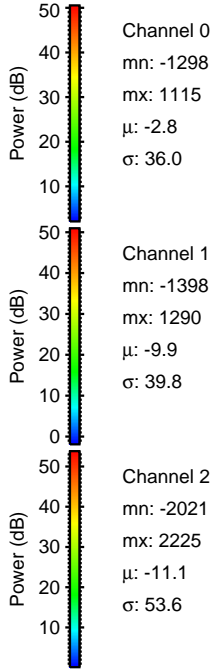
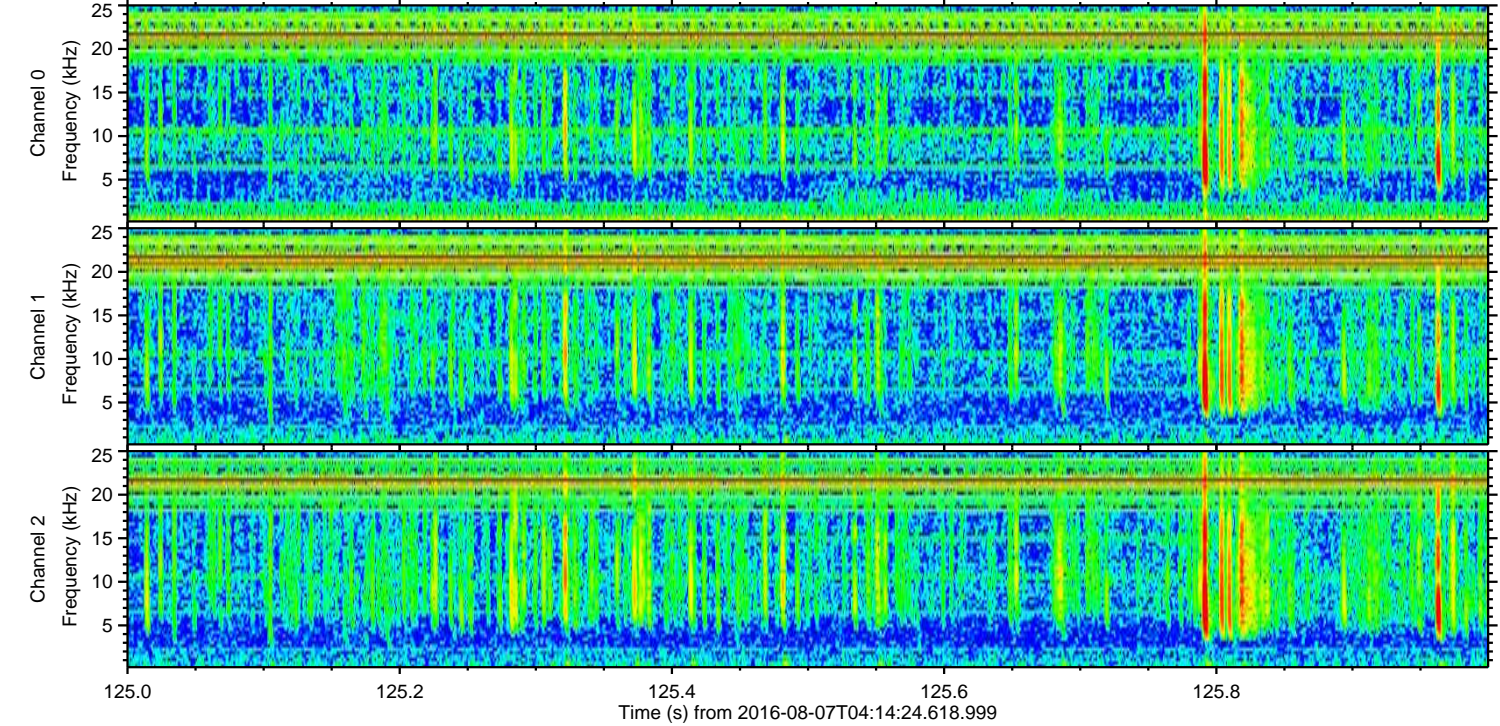
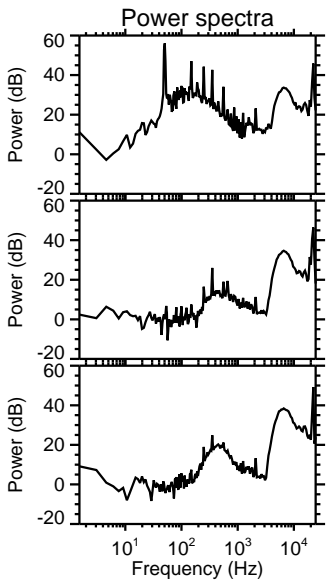
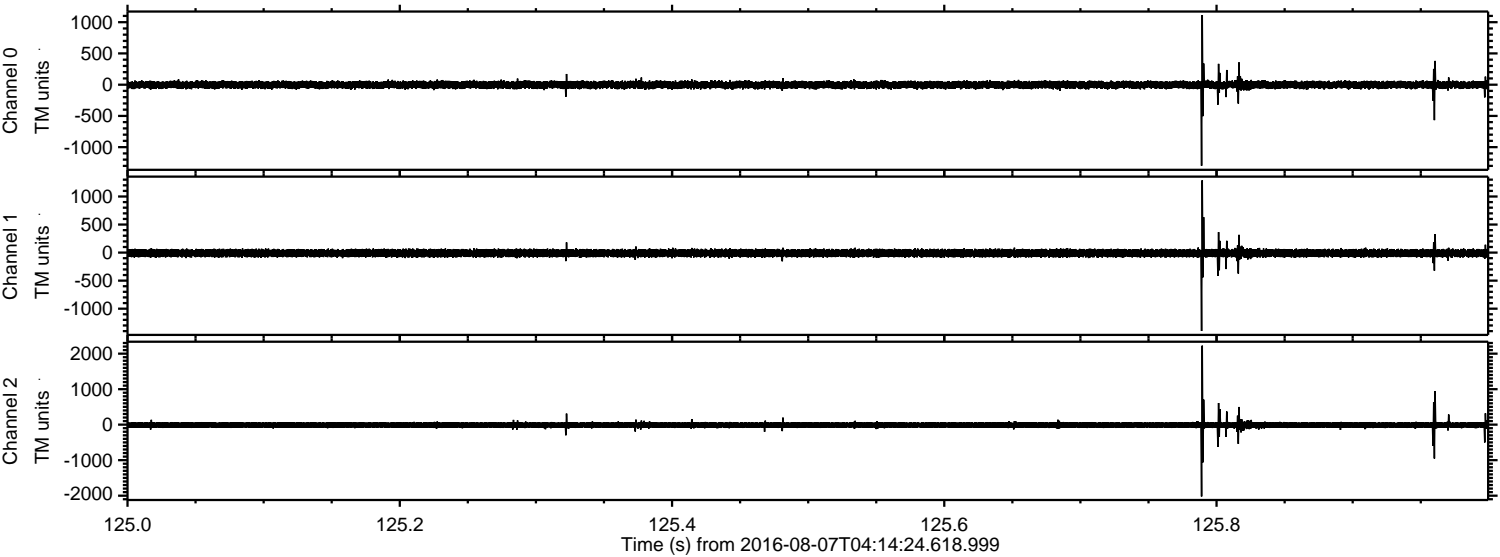
Processed Sun Aug 7 06:22:54 2016 by ELM ver.2012-10-06 from 001\_\_elm20160807\_041423\_\_dat00.bin





ELMAVAN 3D WAVEFORMS (Measured data sampled at 50 kHz) 51000 packets of 144 samples from 2016-08-07T04:14:24.618.999. Part 126/147

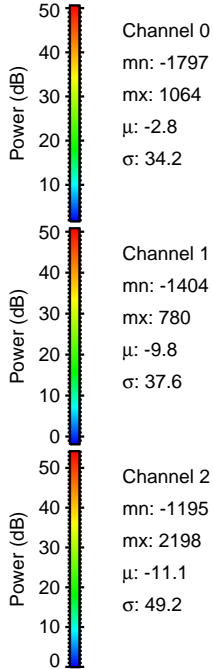
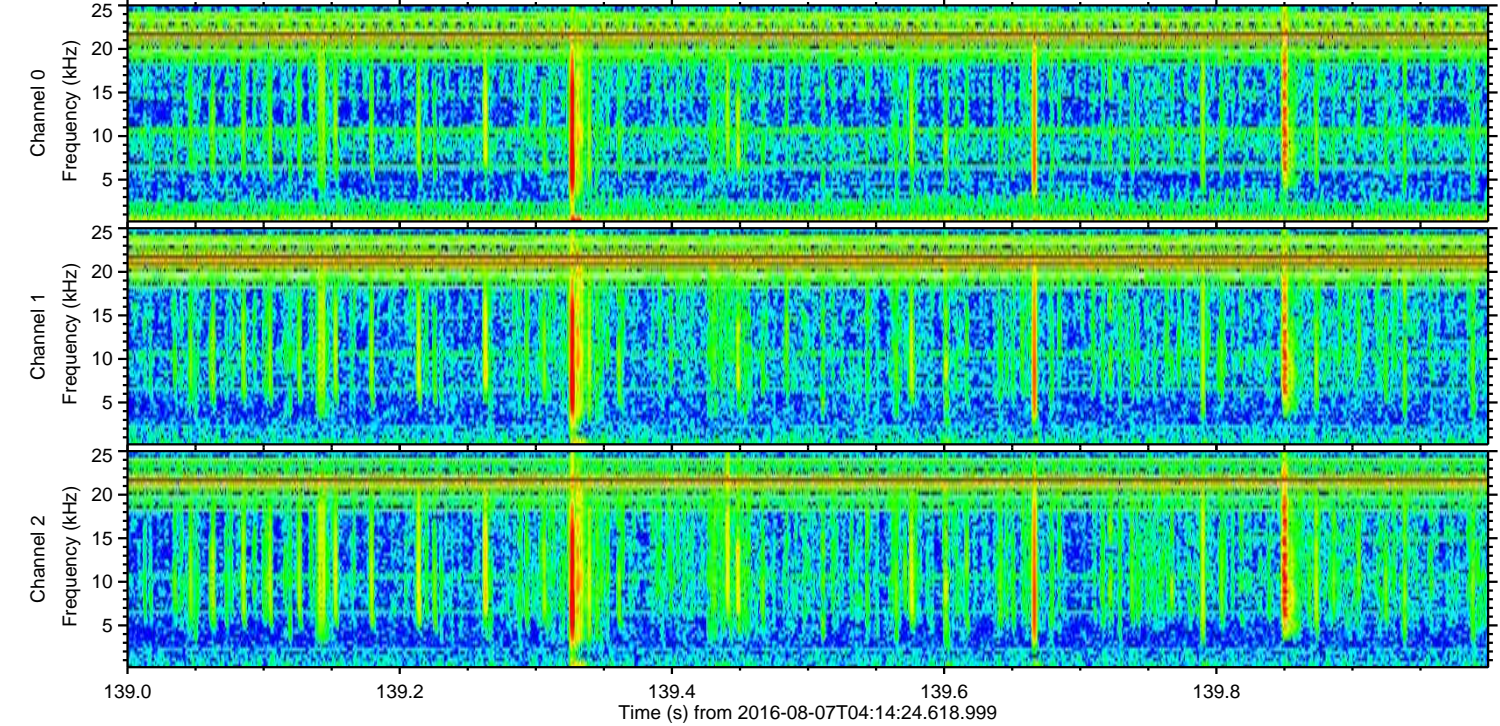
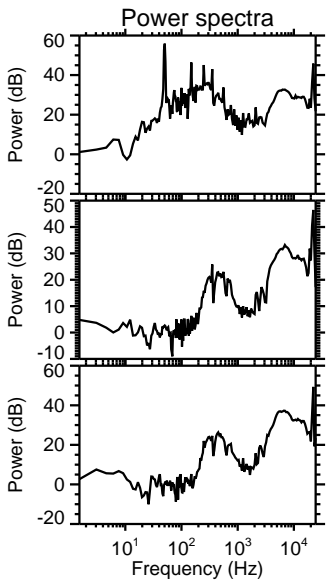
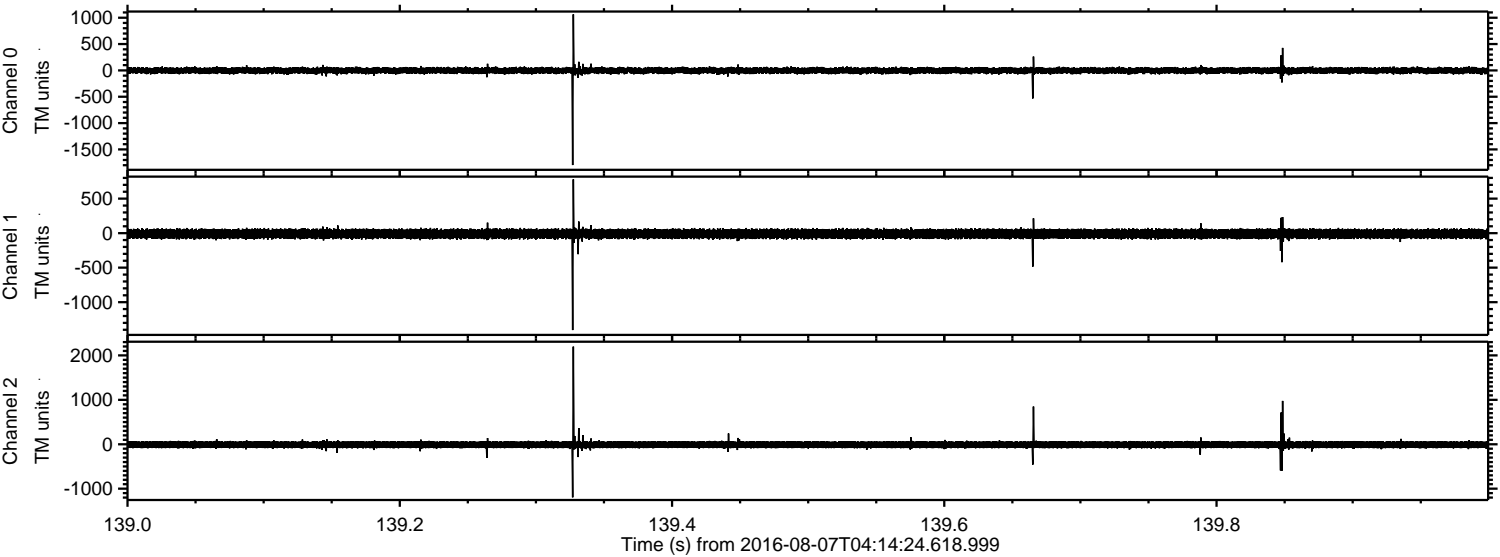
Processed Sun Aug 7 06:22:57 2016 by ELM ver.2012-10-06 from 001\_\_elm20160807\_041423\_\_dat00.bin





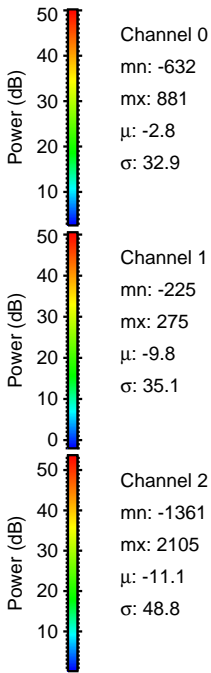
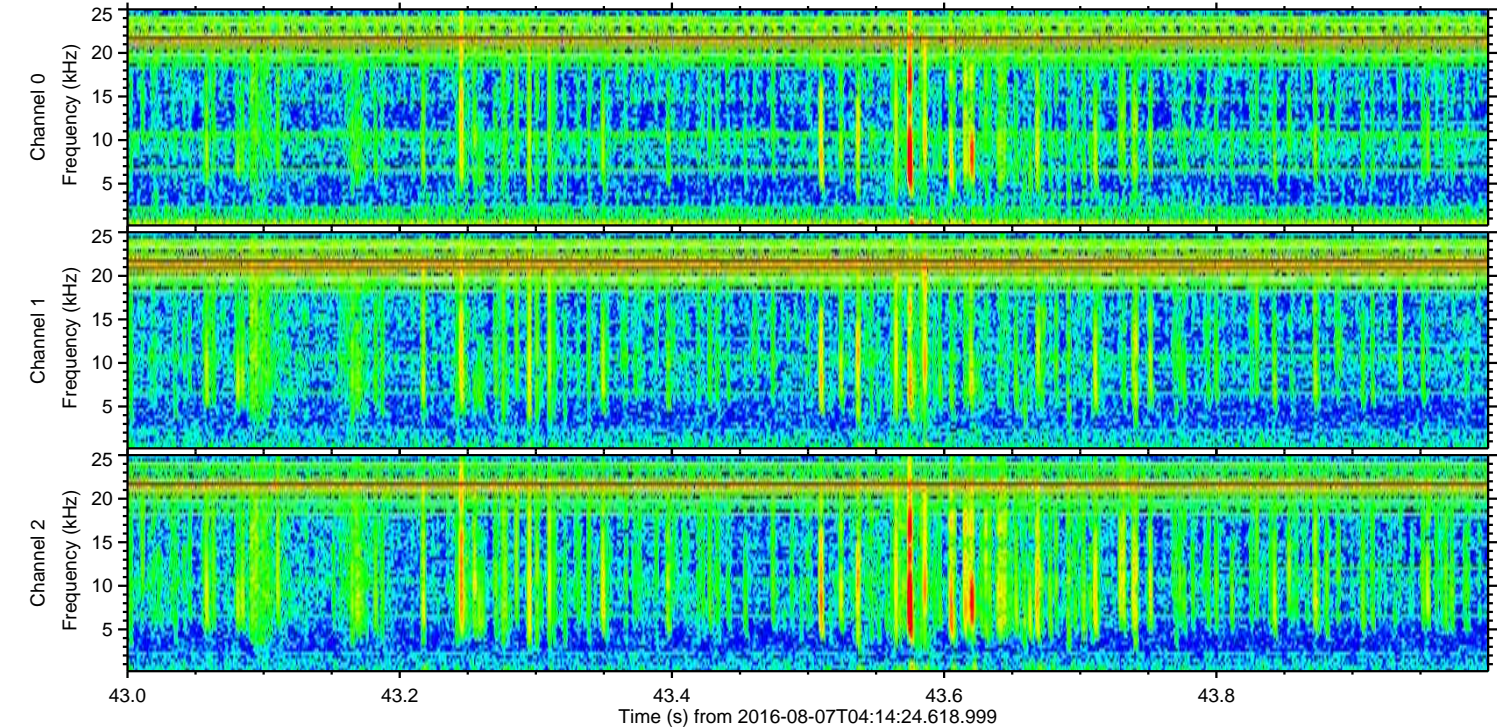
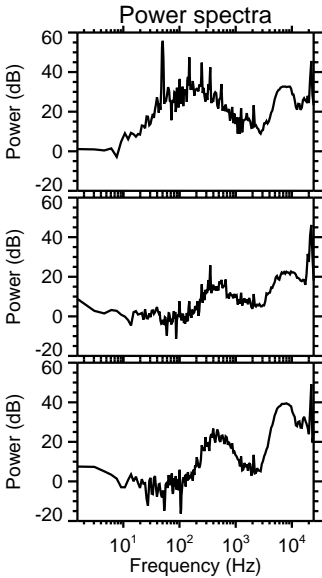
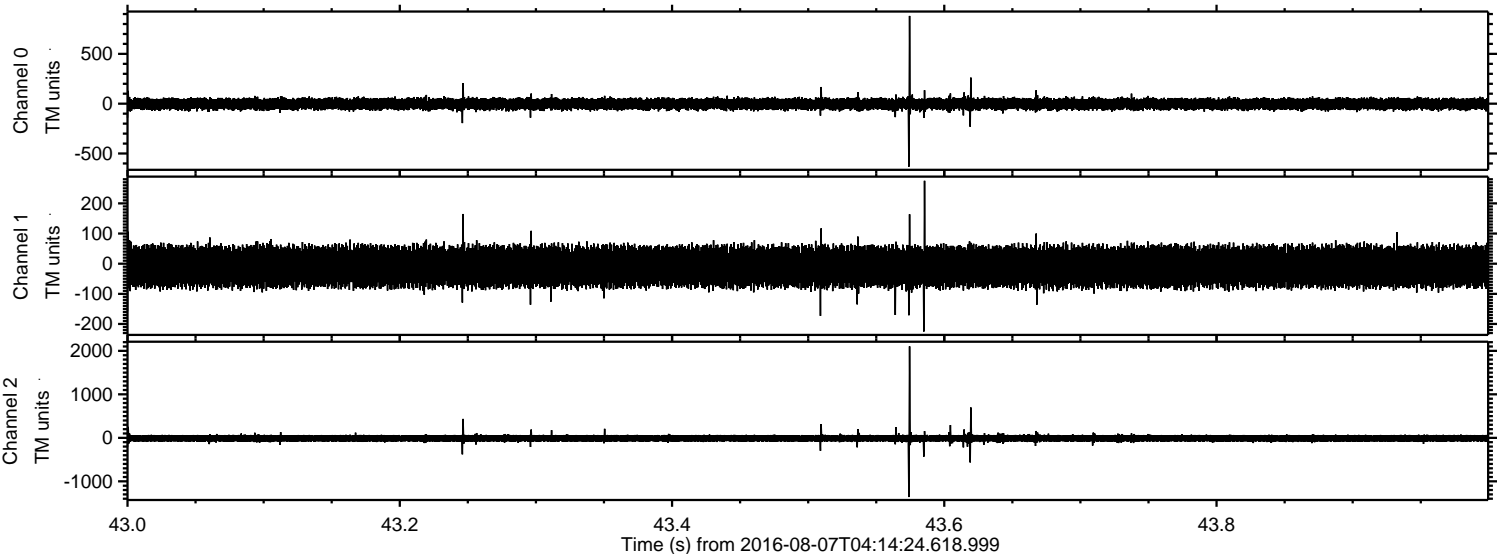
ELMAVAN 3D WAVEFORMS (Measured data sampled at 50 kHz) 51000 packets of 144 samples from 2016-08-07T04:14:24.618.999. Part 140/147

Processed Sun Aug 7 06:22:59 2016 by ELM ver.2012-10-06 from 001\_\_elm20160807\_041423\_\_dat00.bin



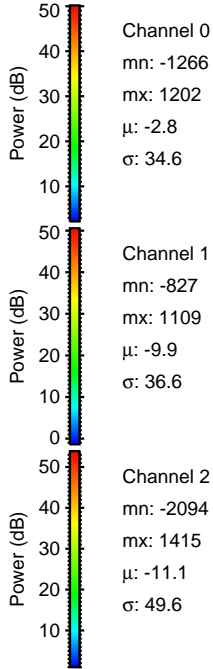
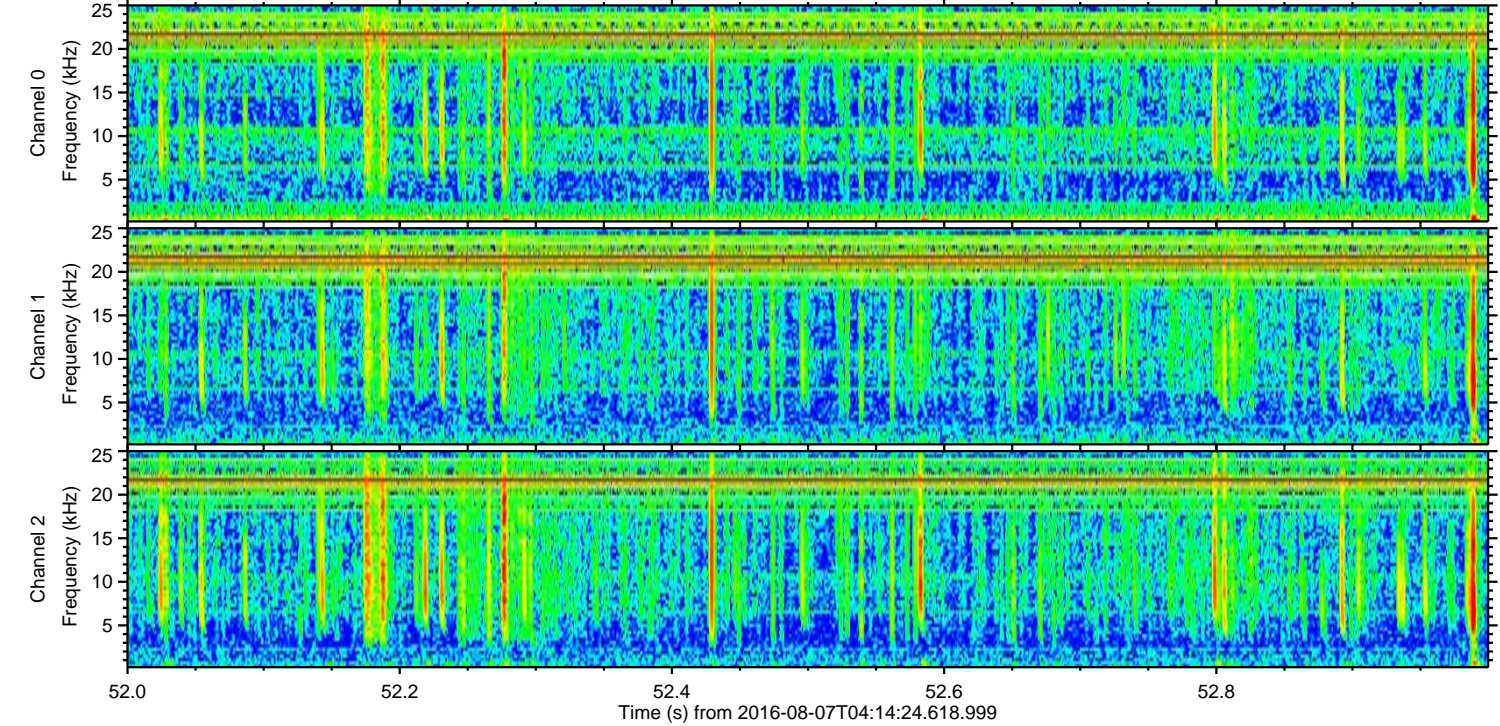
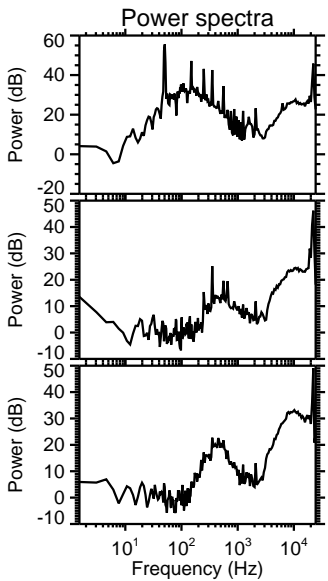
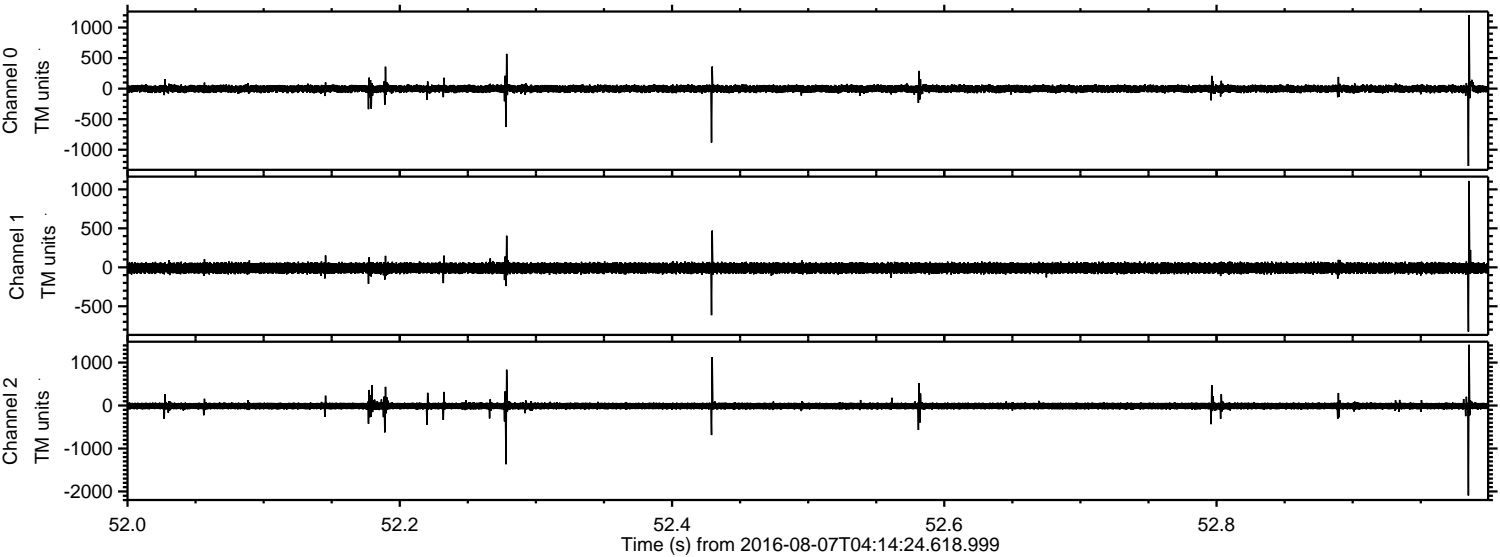


Processed Sun Aug 7 06:23:01 2016 by ELM ver.2012-10-06 from 001\_\_elm20160807\_041423\_\_dat00.bin





Processed Sun Aug 7 06:23:02 2016 by ELM ver.2012-10-06 from 001\_\_elm20160807\_041423\_\_dat00.bin



Channel 0  
mn: -1266  
mx: 1202  
 $\mu$ : -2.8  
 $\sigma$ : 34.6

Channel 1  
mn: -827  
mx: 1109  
 $\mu$ : -9.9  
 $\sigma$ : 36.6

Channel 2  
mn: -2094  
mx: 1415  
 $\mu$ : -11.1  
 $\sigma$ : 49.6



Processed Sun Aug 7 06:23:03 2016 by ELM ver.2012-10-06 from 001\_\_elm20160807\_041423\_\_dat00.bin

