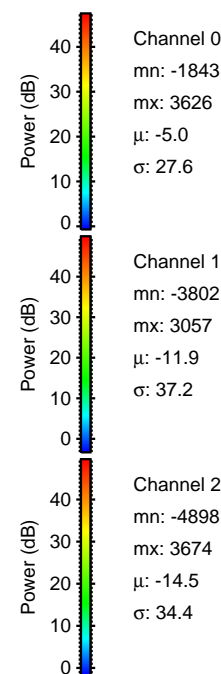
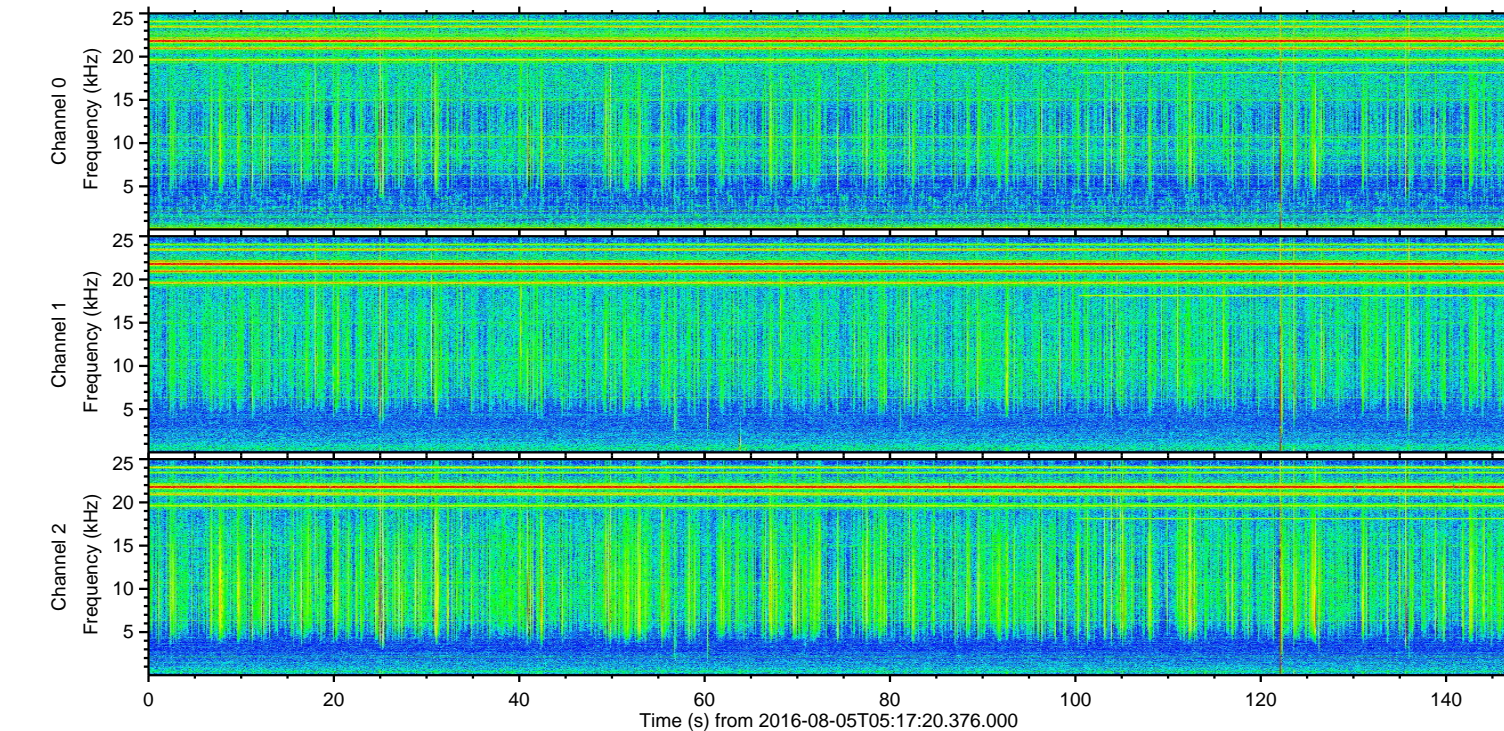
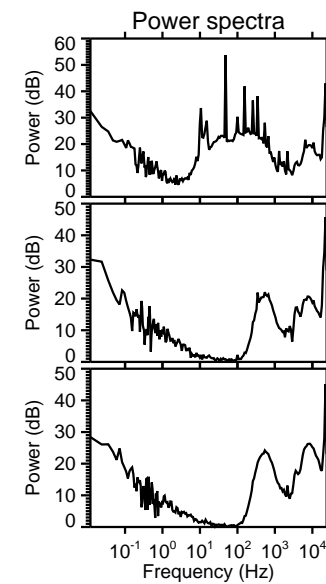
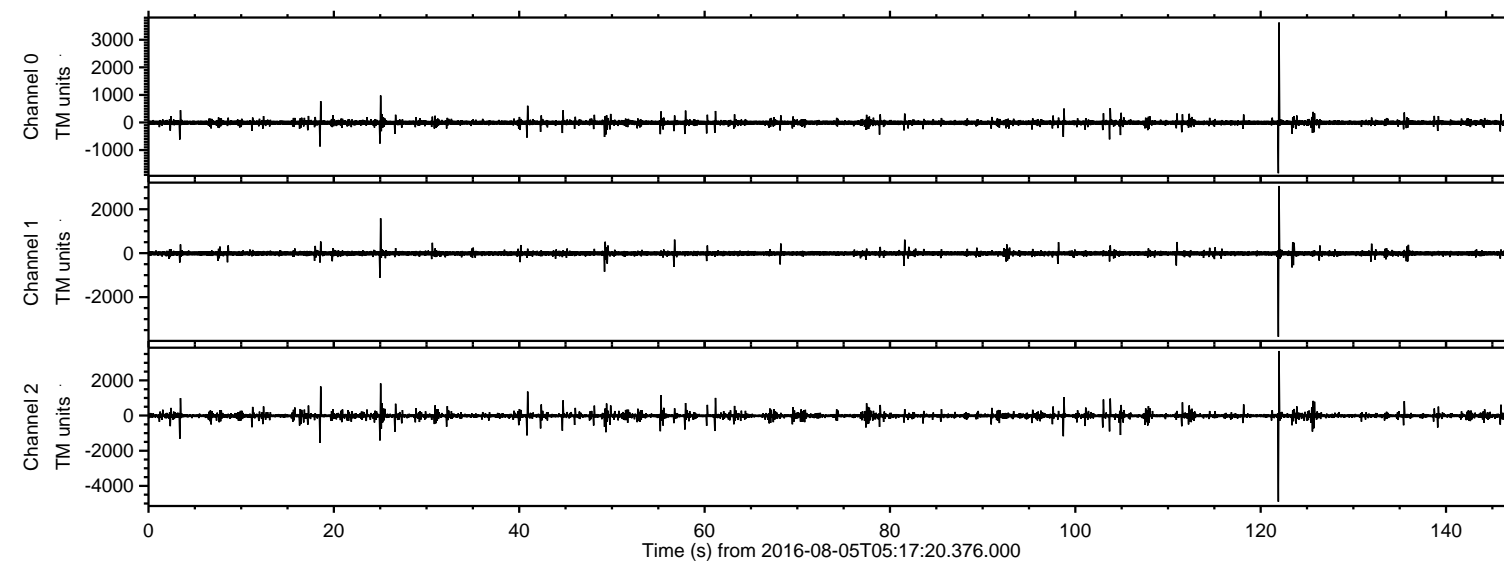


# ELMAVAN 3D WAVEFORMS (Measured data sampled at 50 kHz) 51000 packets of 144 samples from 2016-08-05T05:17:20.376.000.

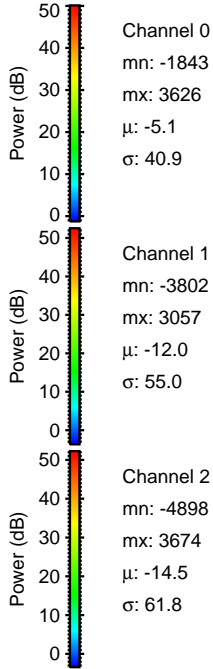
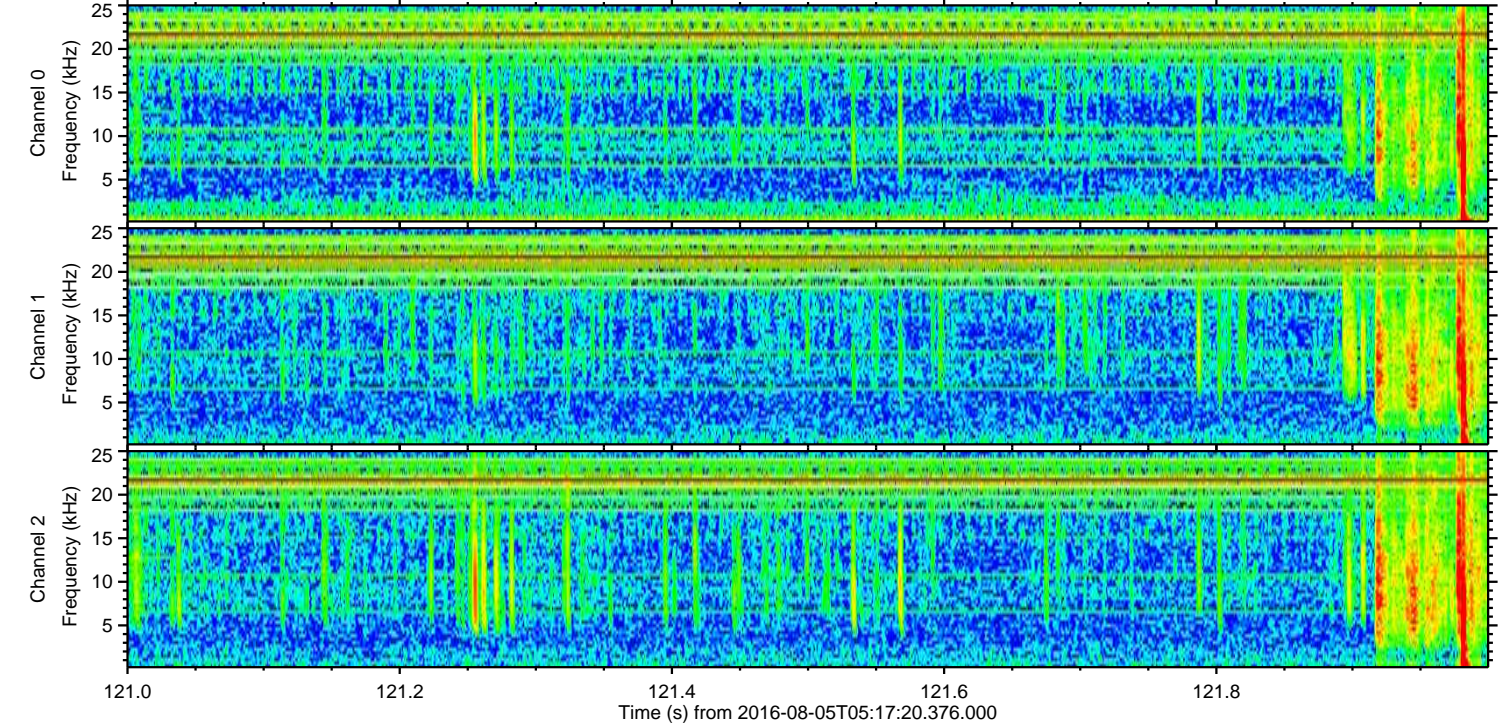
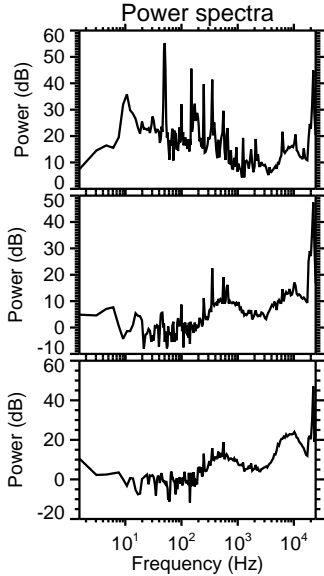
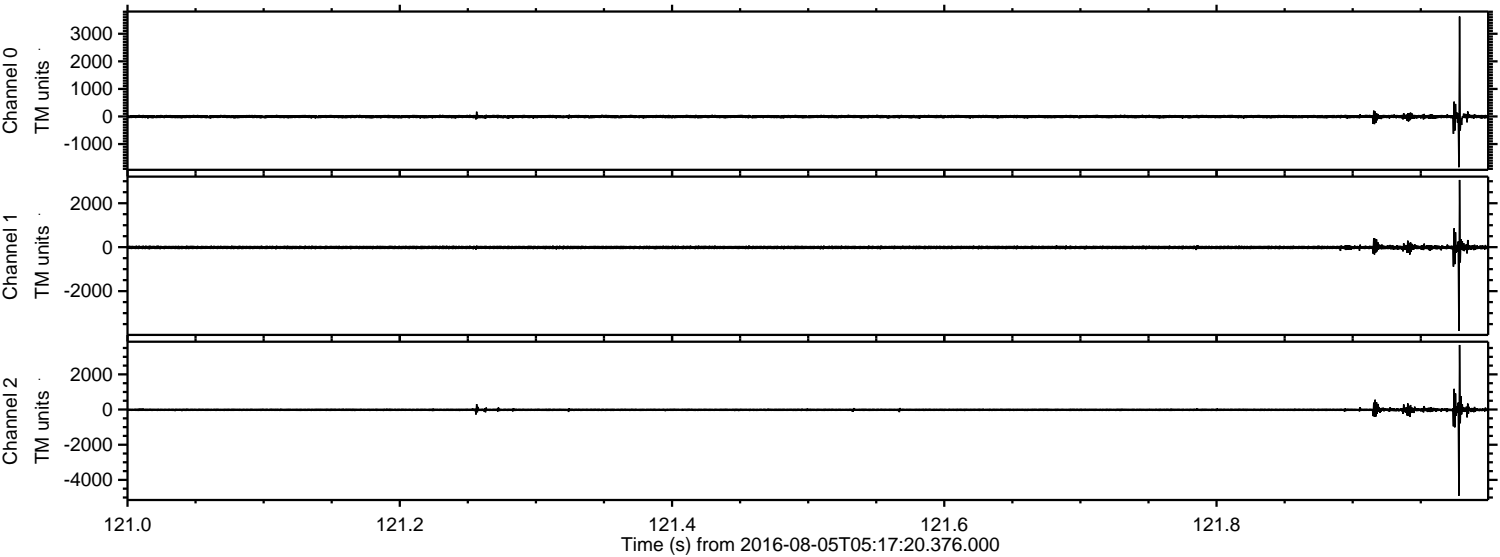
Processed Fri Aug 5 07:25:07 2016 by ELM ver.2012-10-06 from 001\_\_elm20160805\_051719\_\_dat00.bin





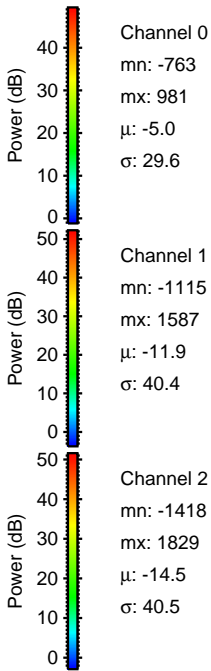
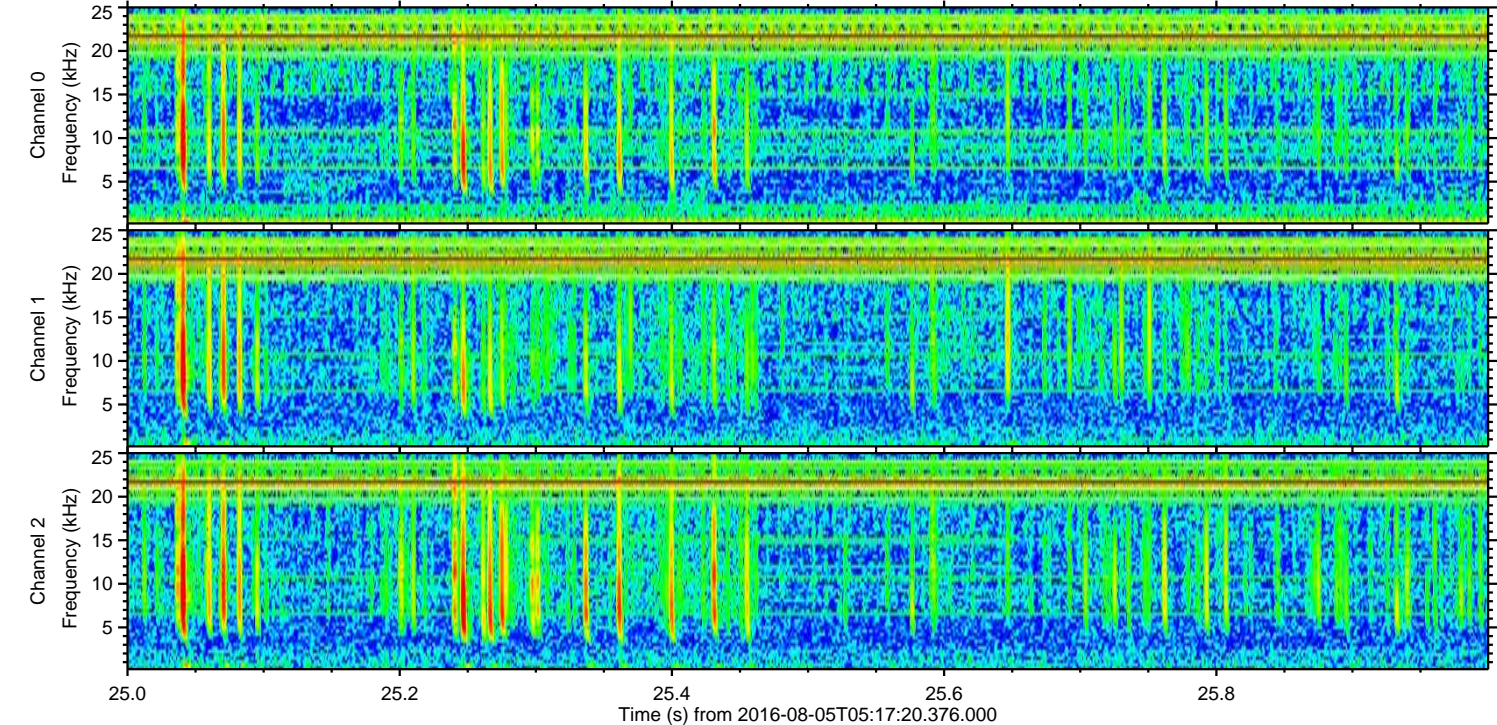
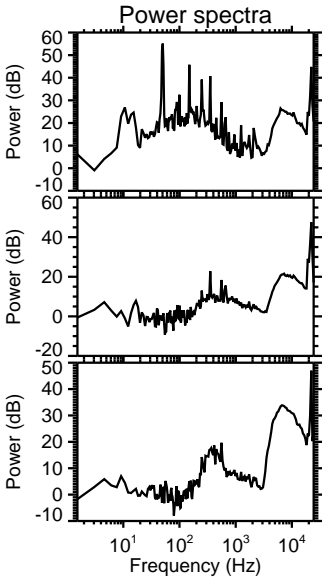
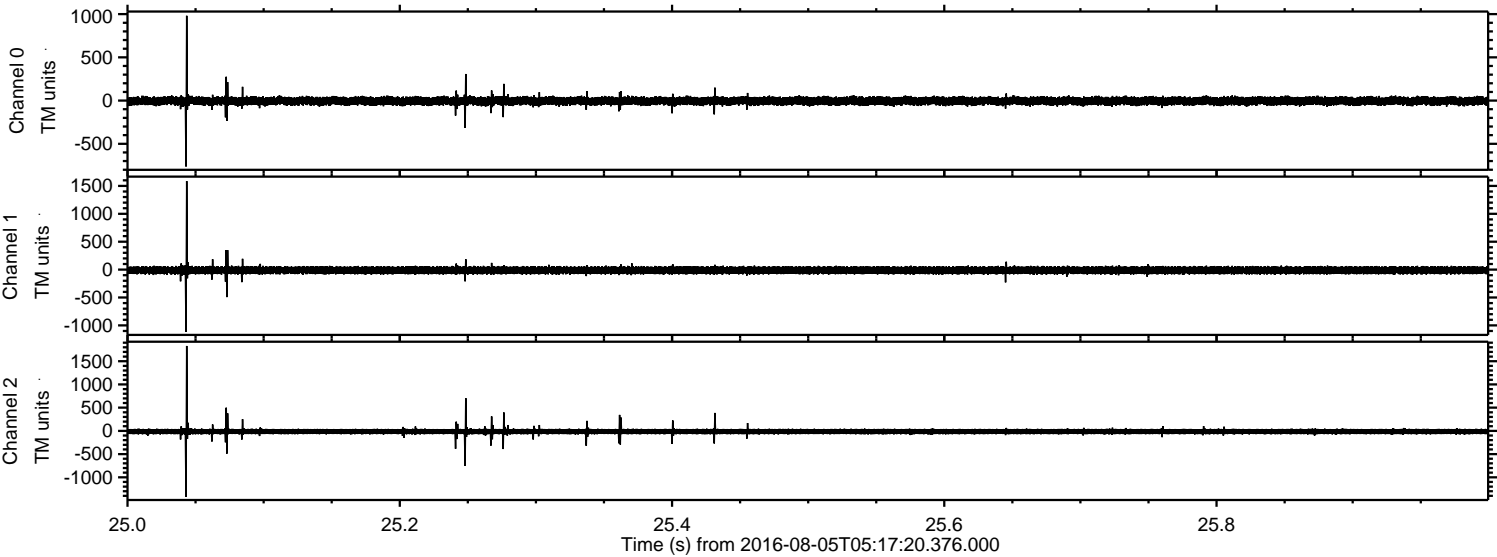
ELMAVAN 3D WAVEFORMS (Measured data sampled at 50 kHz) 51000 packets of 144 samples from 2016-08-05T05:17:20.376.000. Part 122/147

Processed Fri Aug 5 07:25:18 2016 by ELM ver.2012-10-06 from 001\_\_elm20160805\_051719\_\_dat00.bin



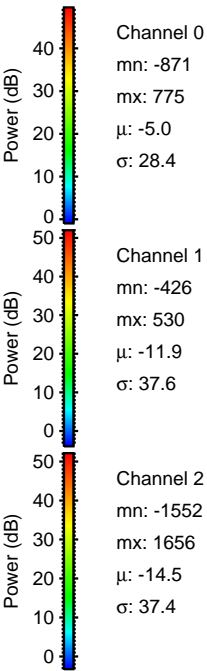
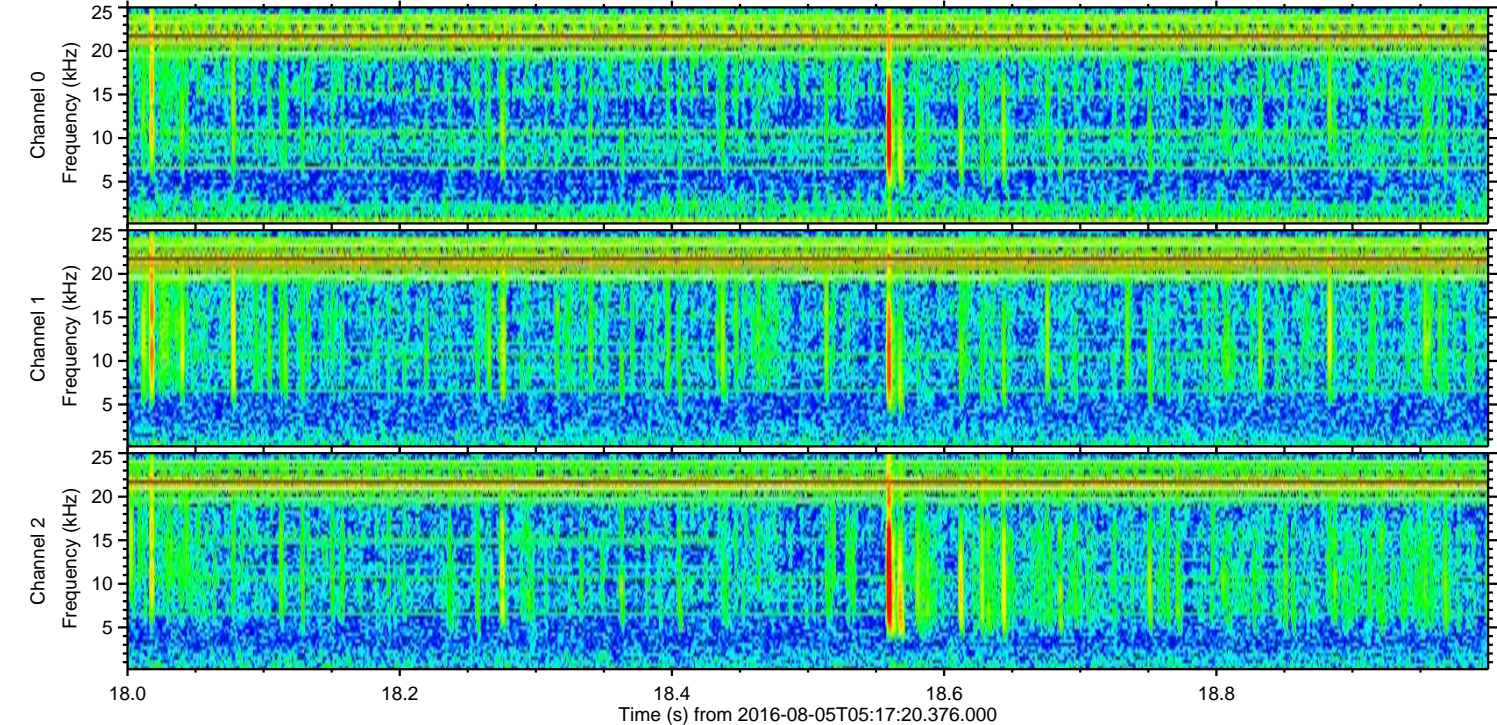
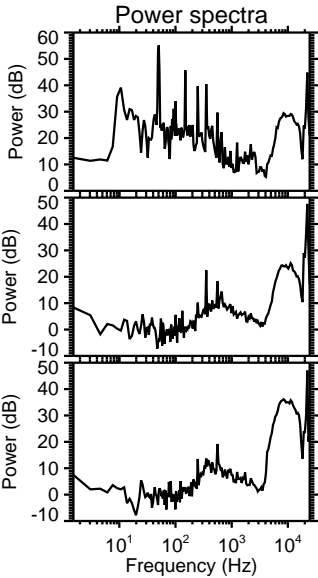
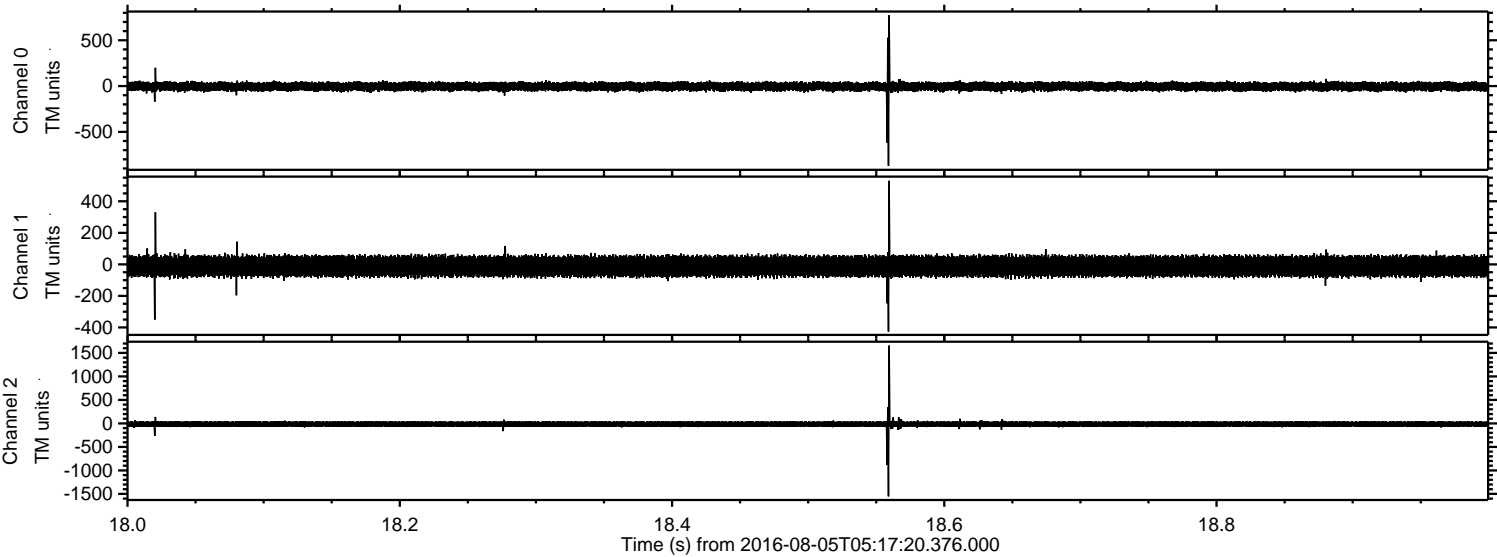


Processed Fri Aug 5 07:25:19 2016 by ELM ver.2012-10-06 from 001\_\_elm20160805\_051719\_\_dat00.bin



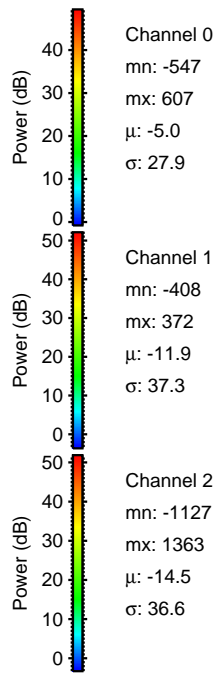
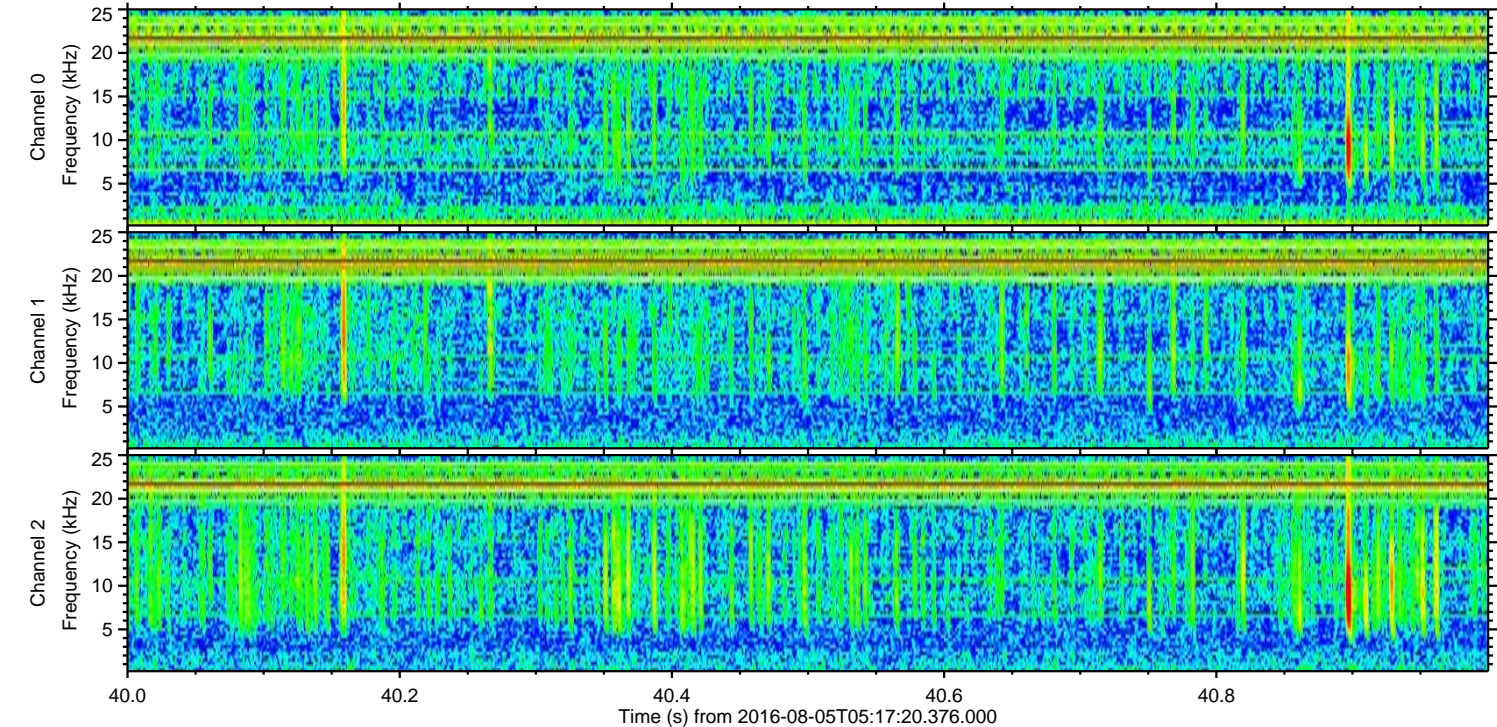
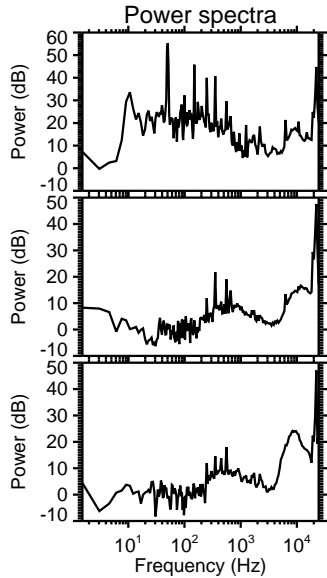
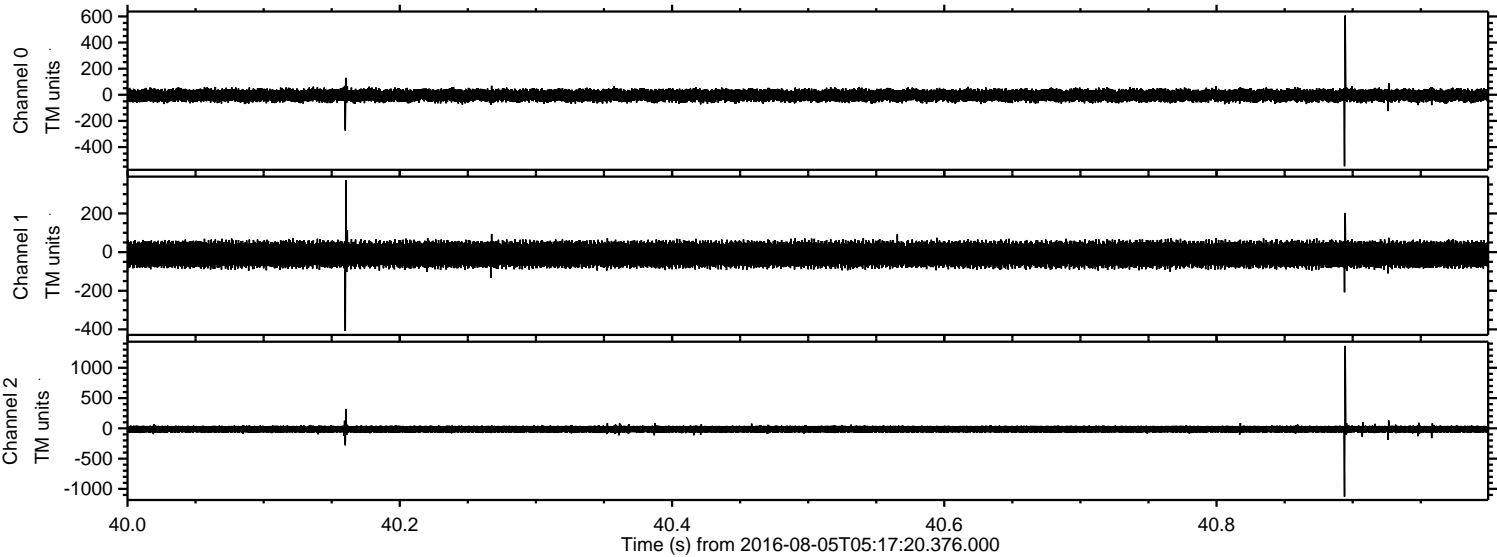


Processed Fri Aug 5 07:25:20 2016 by ELM ver.2012-10-06 from 001\_\_elm20160805\_051719\_\_dat00.bin



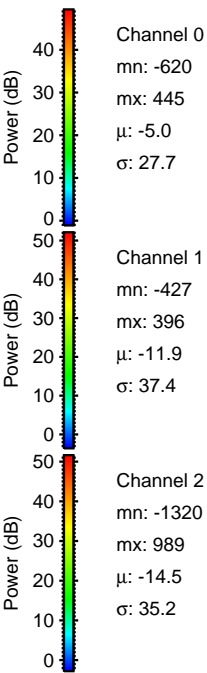
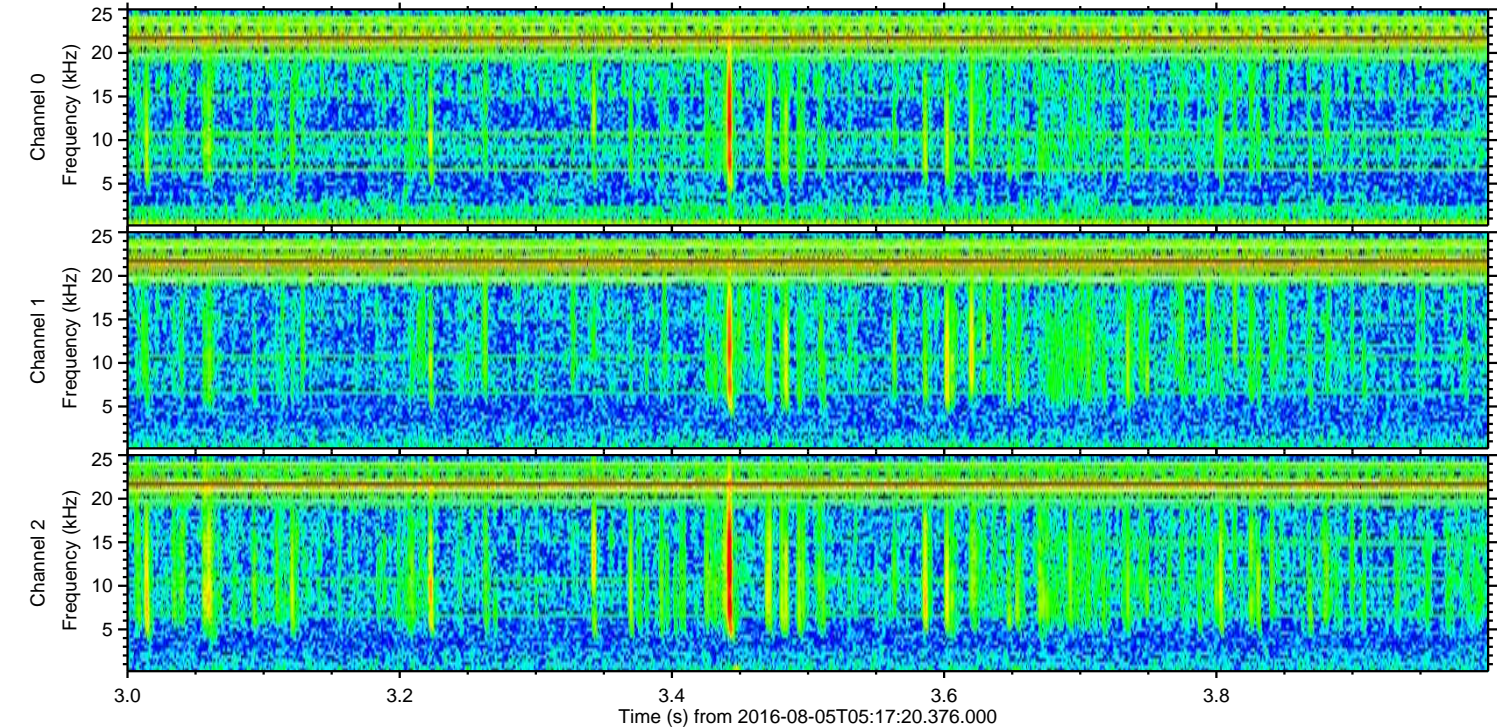
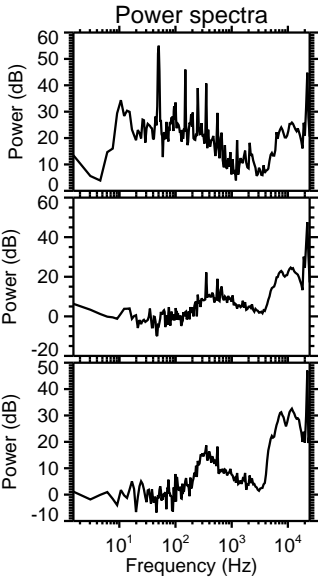
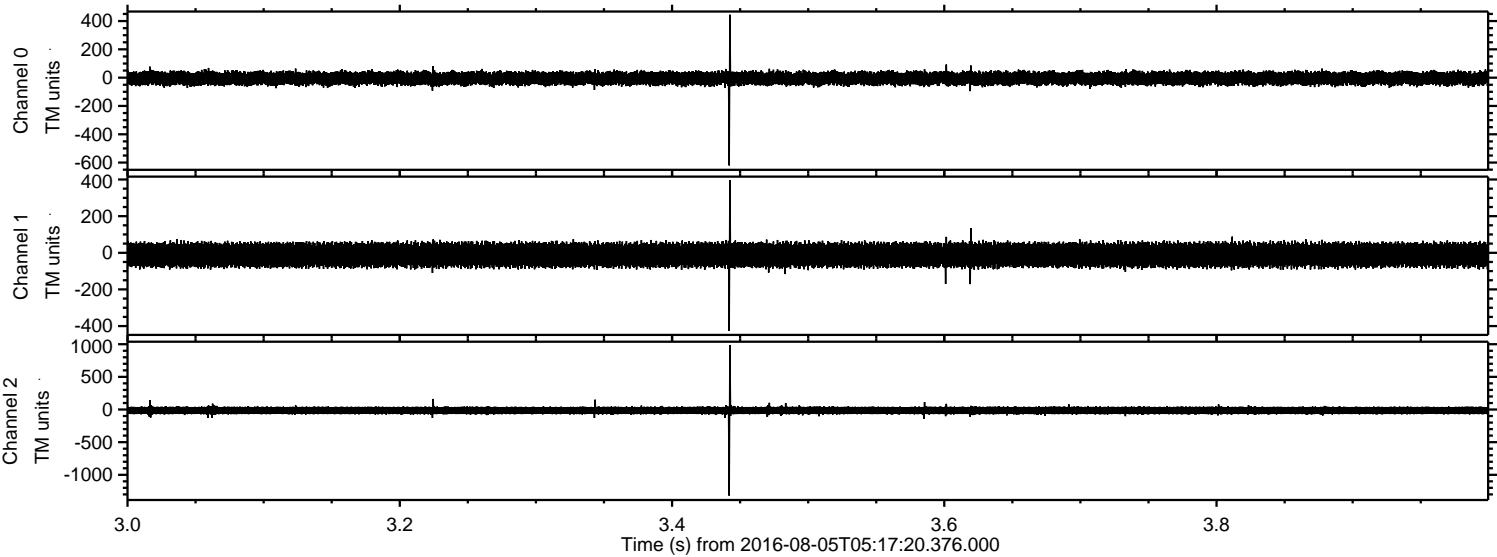


Processed Fri Aug 5 07:25:21 2016 by ELM ver.2012-10-06 from 001\_\_elm20160805\_051719\_\_dat00.bin



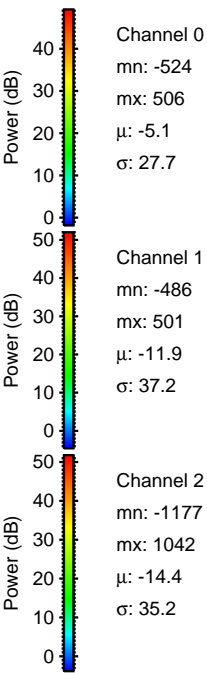
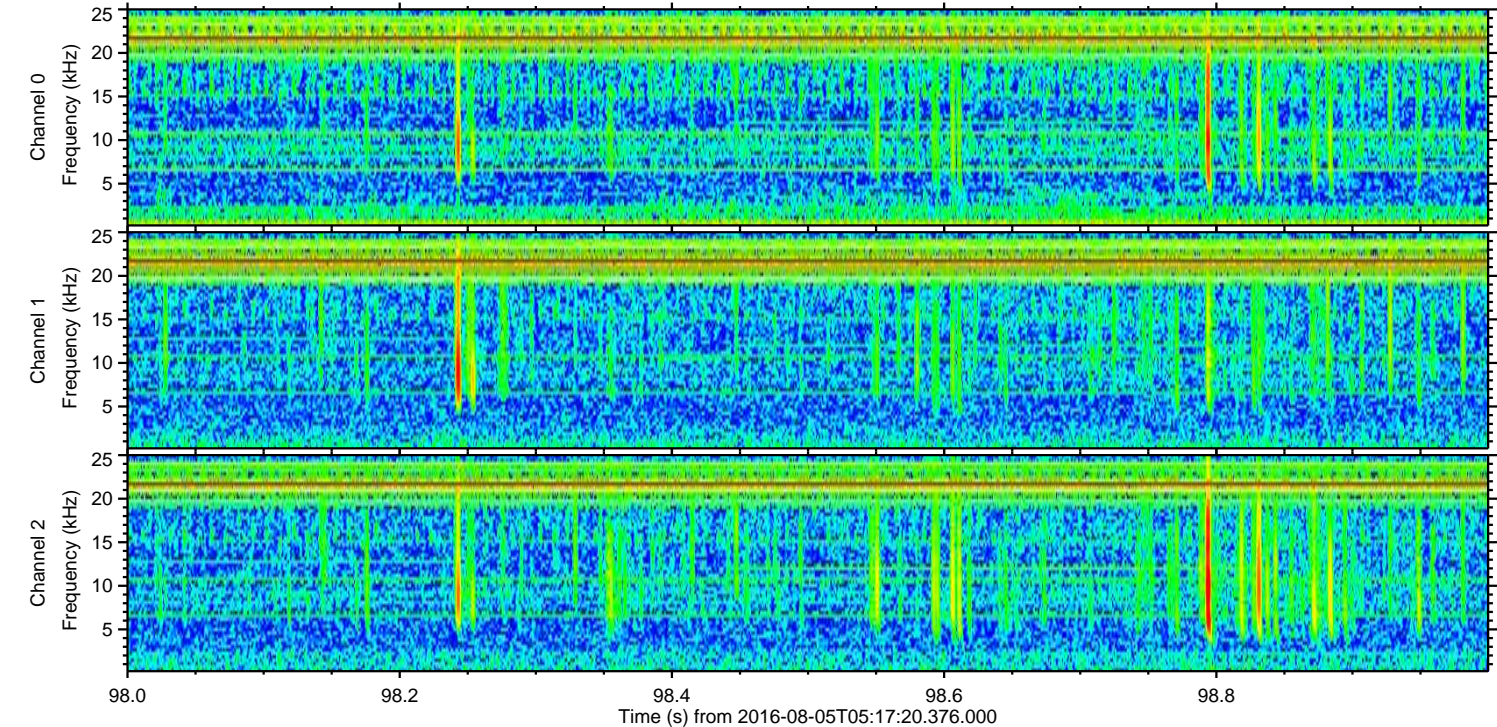
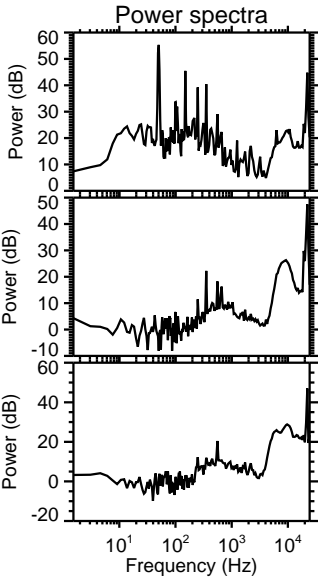
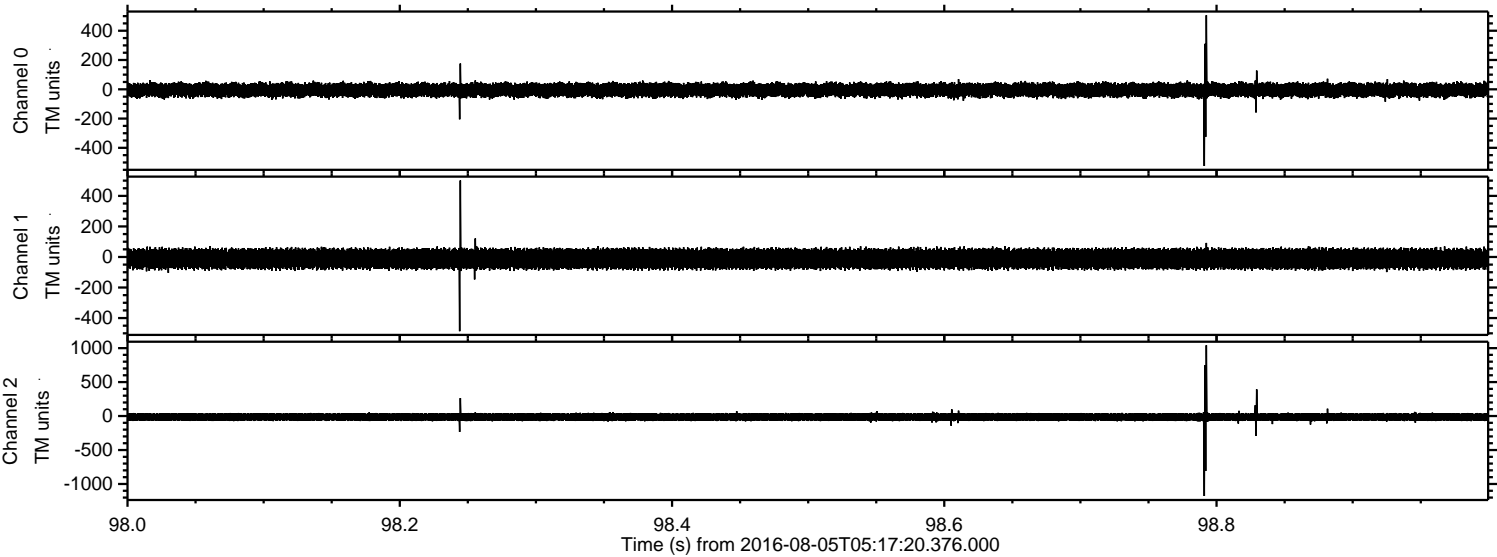


Processed Fri Aug 5 07:25:22 2016 by ELM ver.2012-10-06 from 001\_\_elm20160805\_051719\_\_dat00.bin



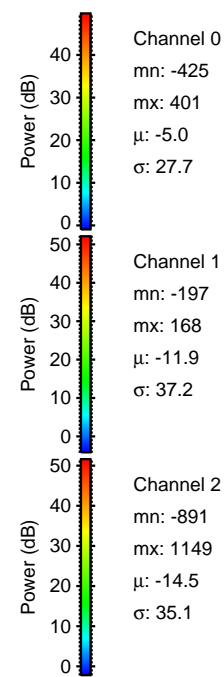
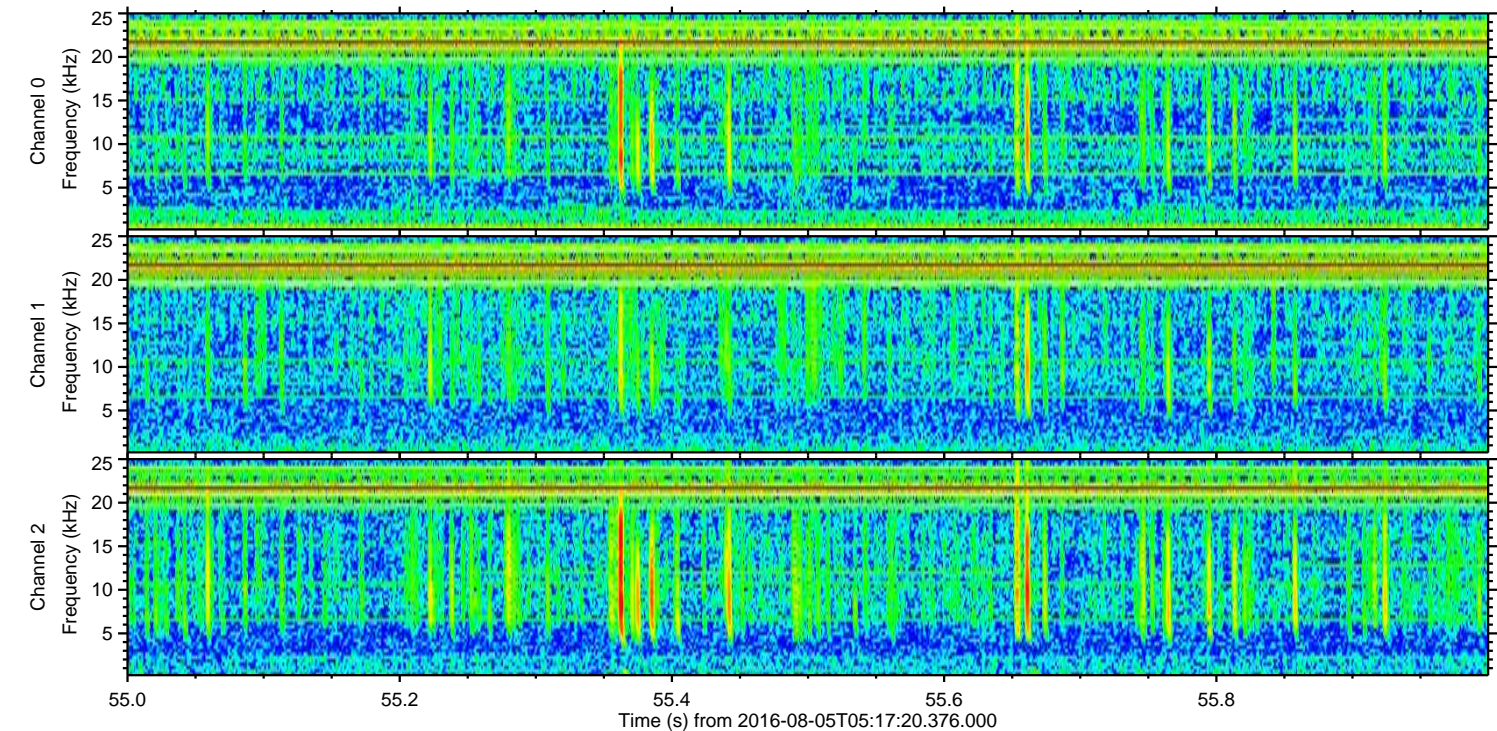
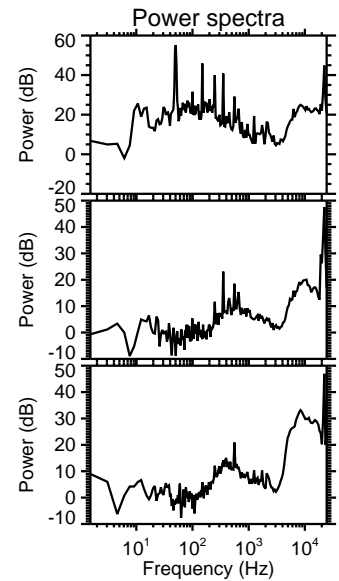
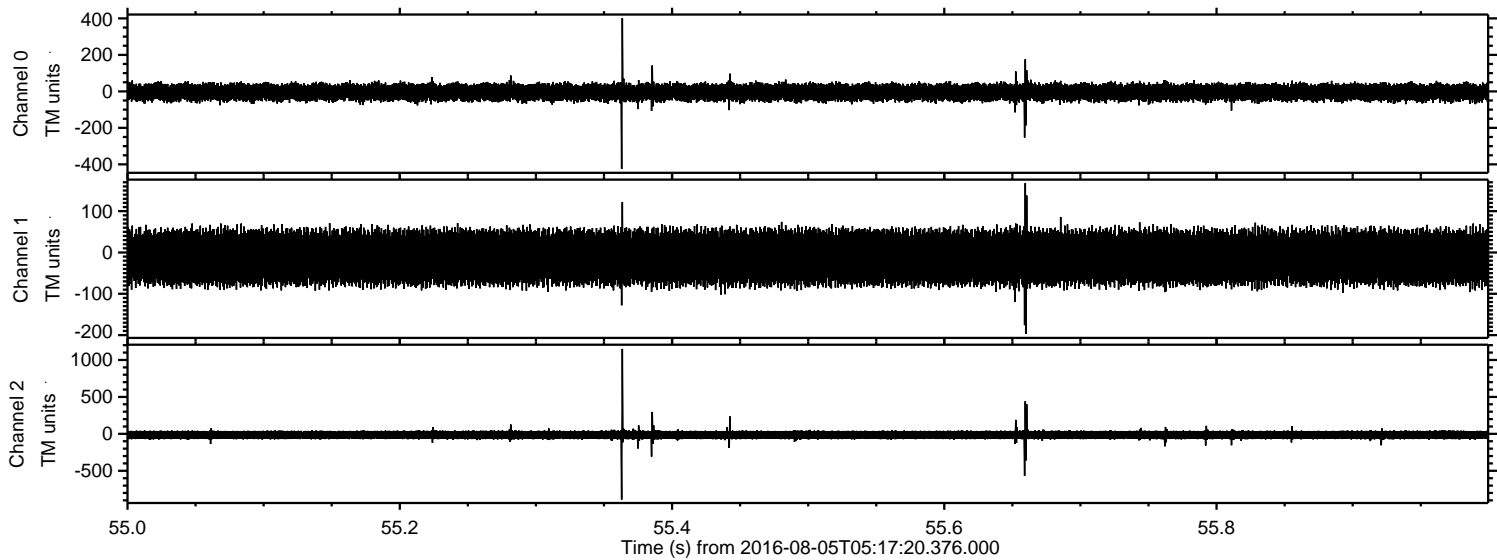


Processed Fri Aug 5 07:25:23 2016 by ELM ver.2012-10-06 from 001\_\_elm20160805\_051719\_\_dat00.bin





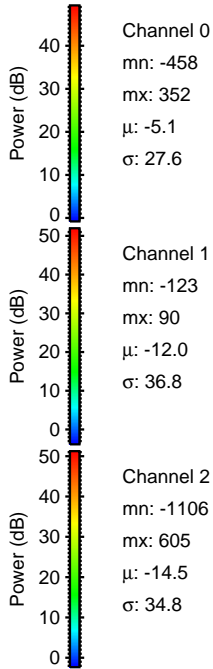
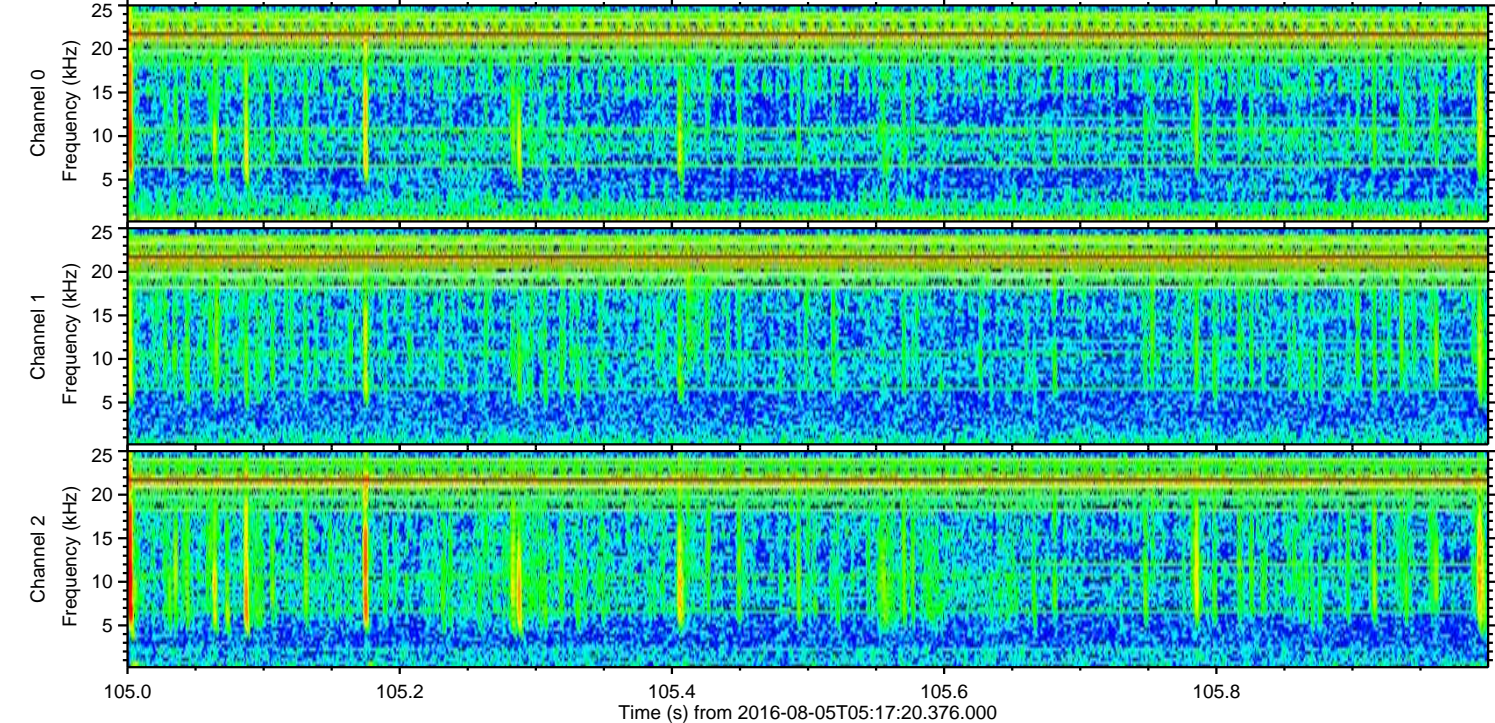
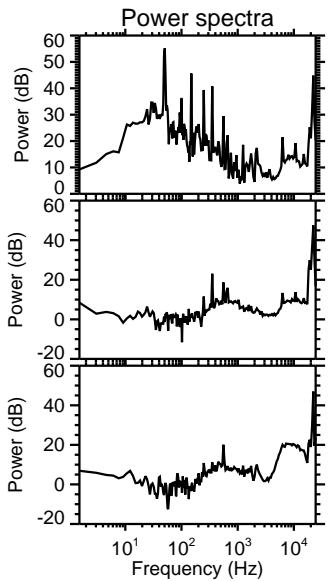
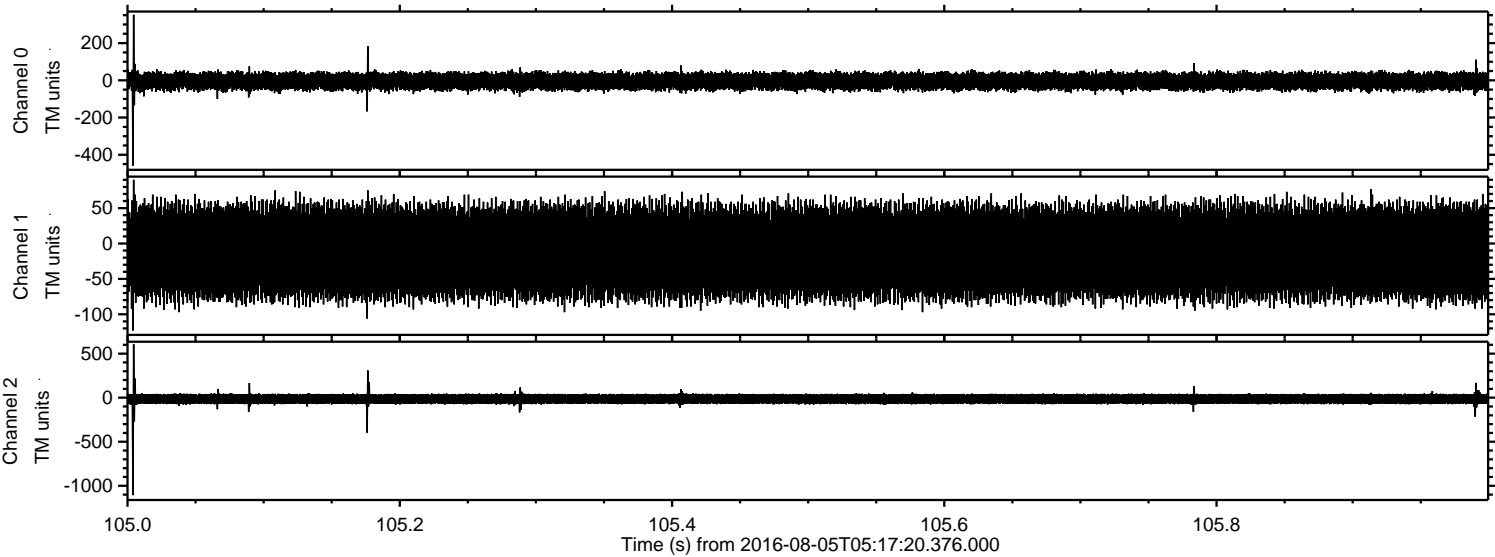
Processed Fri Aug 5 07:25:24 2016 by ELM ver.2012-10-06 from 001\_\_elm20160805\_051719\_\_dat00.bin





ELMAVAN 3D WAVEFORMS (Measured data sampled at 50 kHz) 51000 packets of 144 samples from 2016-08-05T05:17:20.376.000. Part 106/147

Processed Fri Aug 5 07:25:24 2016 by ELM ver.2012-10-06 from 001\_\_elm20160805\_051719\_\_dat00.bin





Processed Fri Aug 5 07:25:25 2016 by ELM ver.2012-10-06 from 001\_\_elm20160805\_051719\_\_dat00.bin

