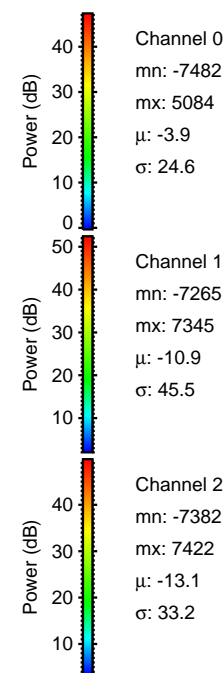
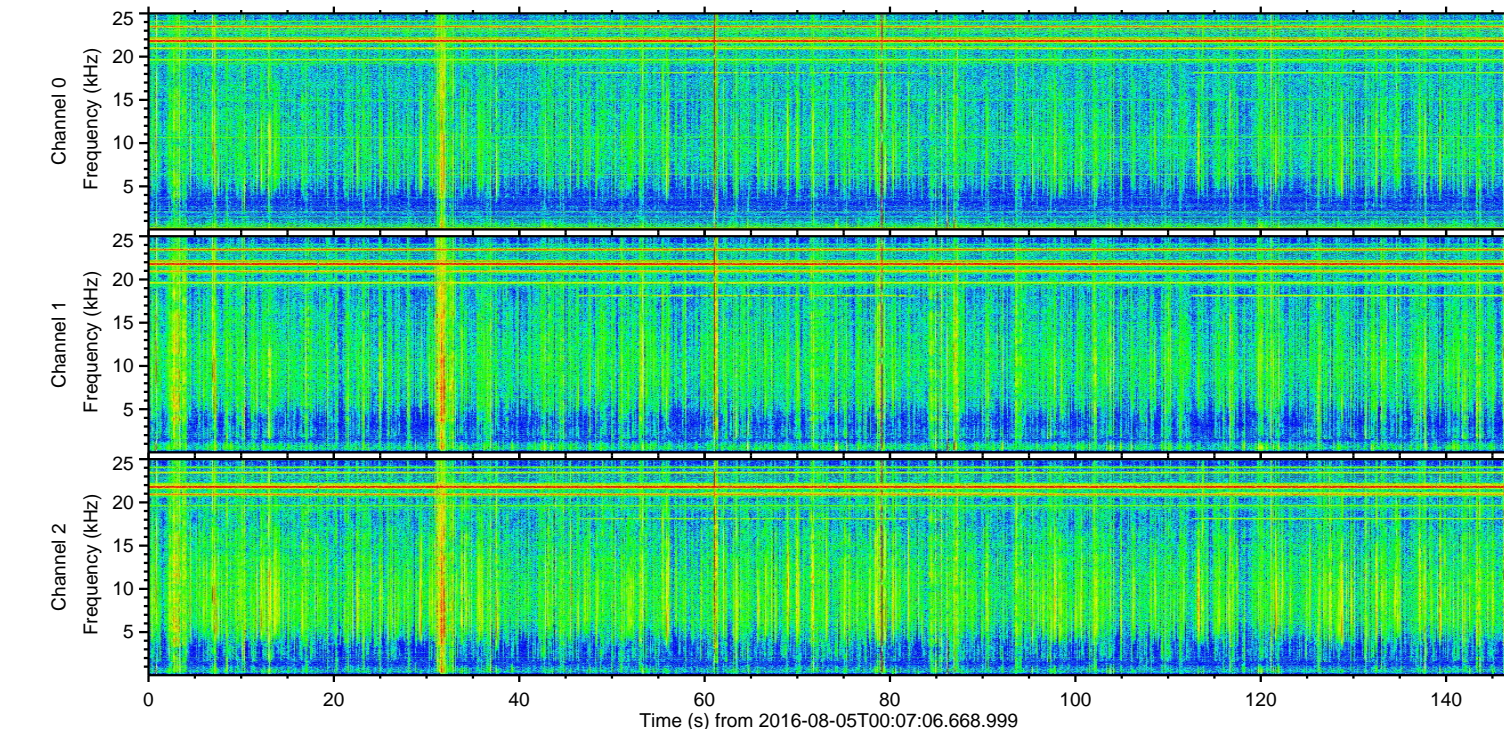
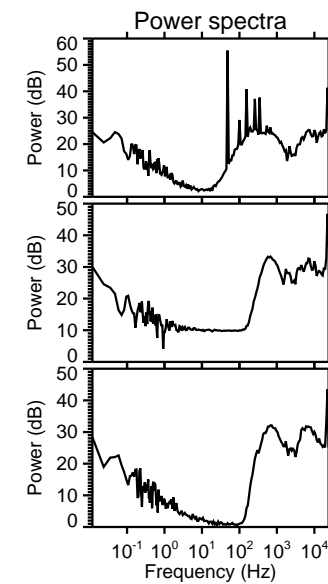
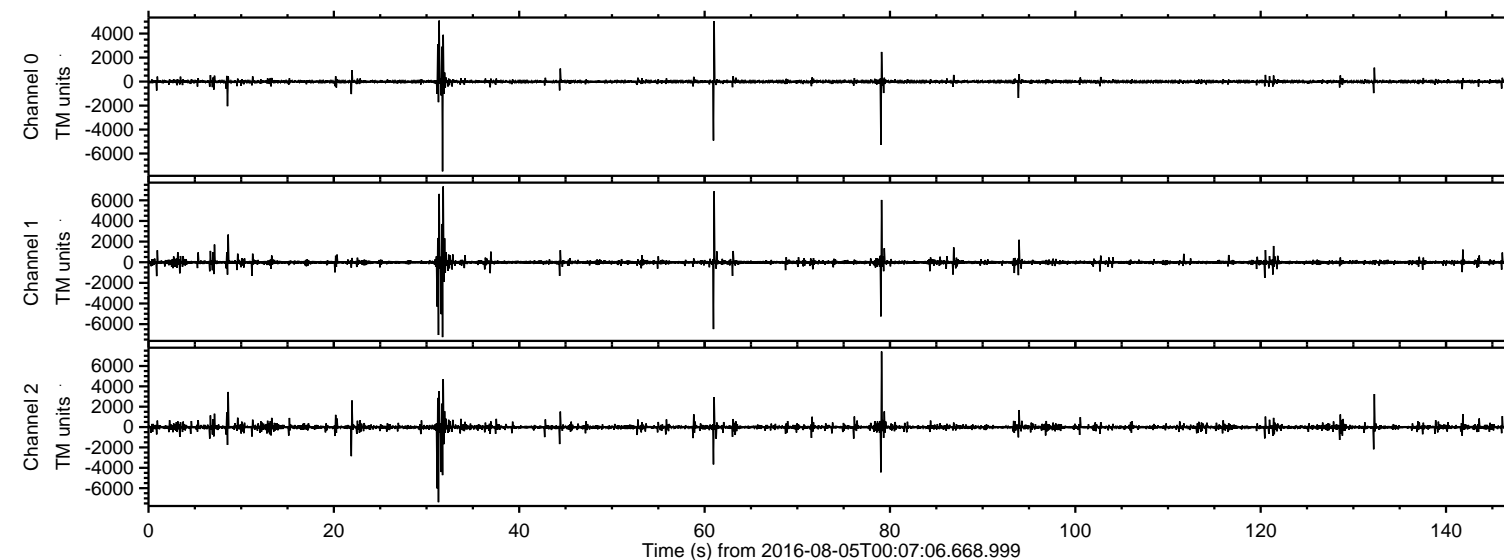


ELMAVAN 3D WAVEFORMS (Measured data sampled at 50 kHz) 51000 packets of 144 samples from 2016-08-05T00:07:06.668.999.

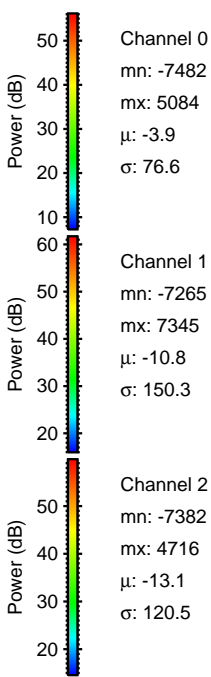
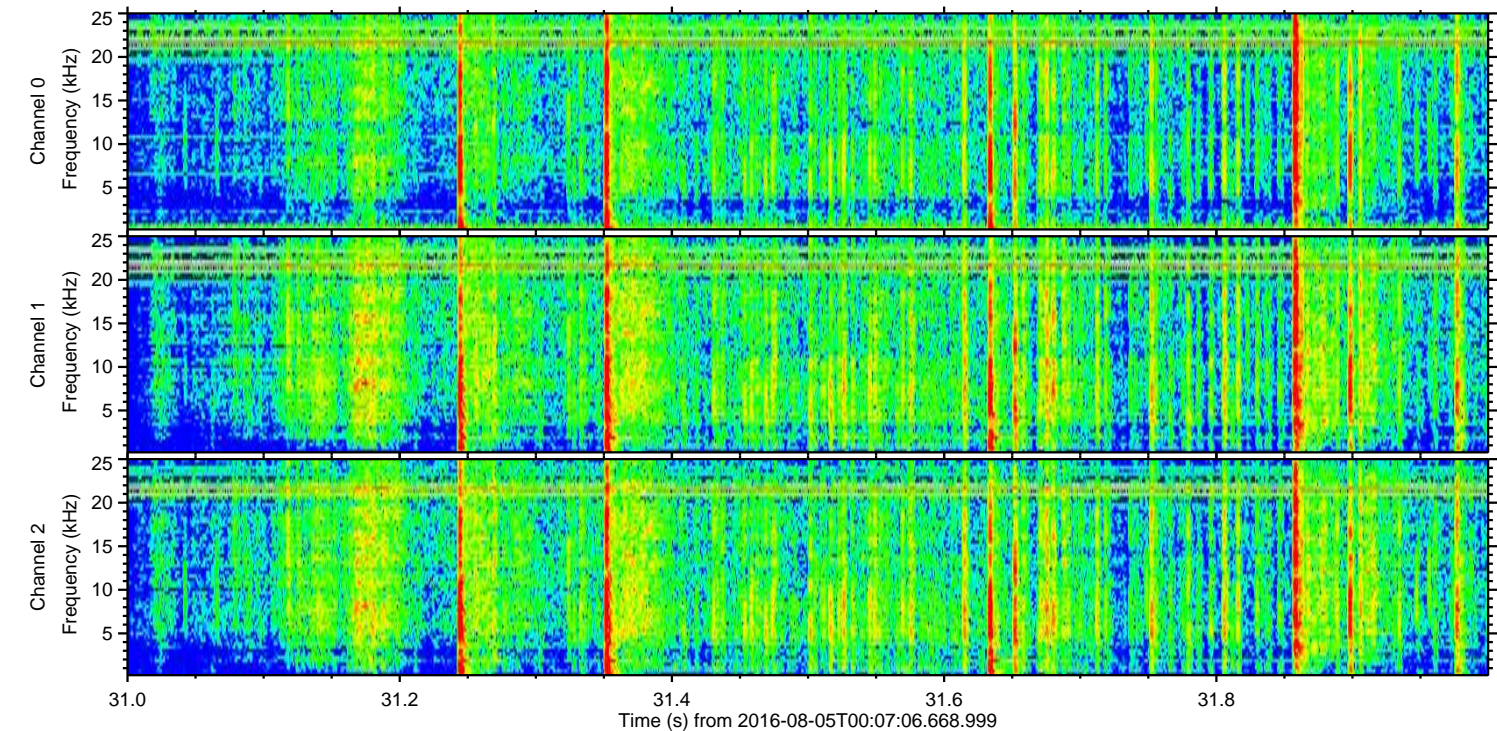
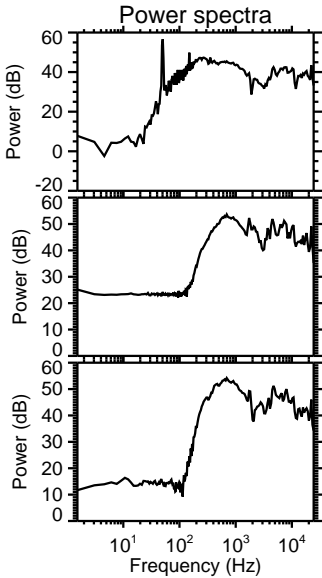
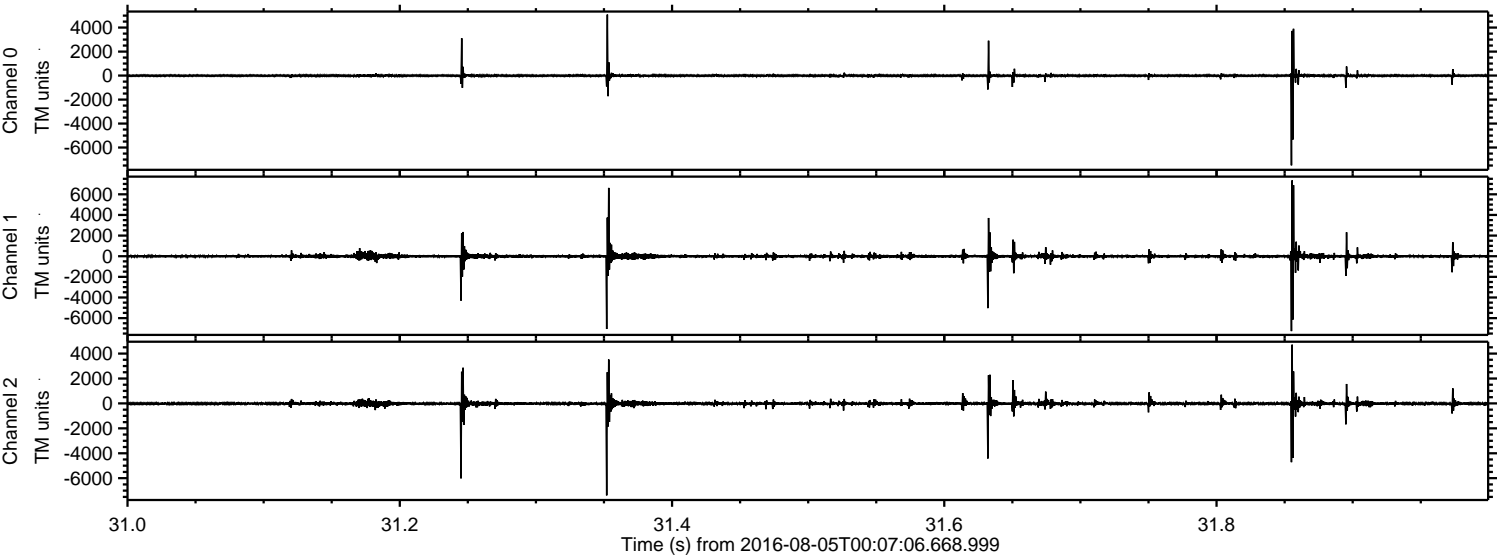
Processed Fri Aug 5 02:14:52 2016 by ELM ver.2012-10-06 from 001\_\_elm20160805\_000705\_\_dat00.bin





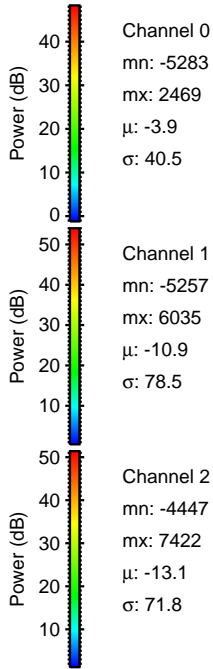
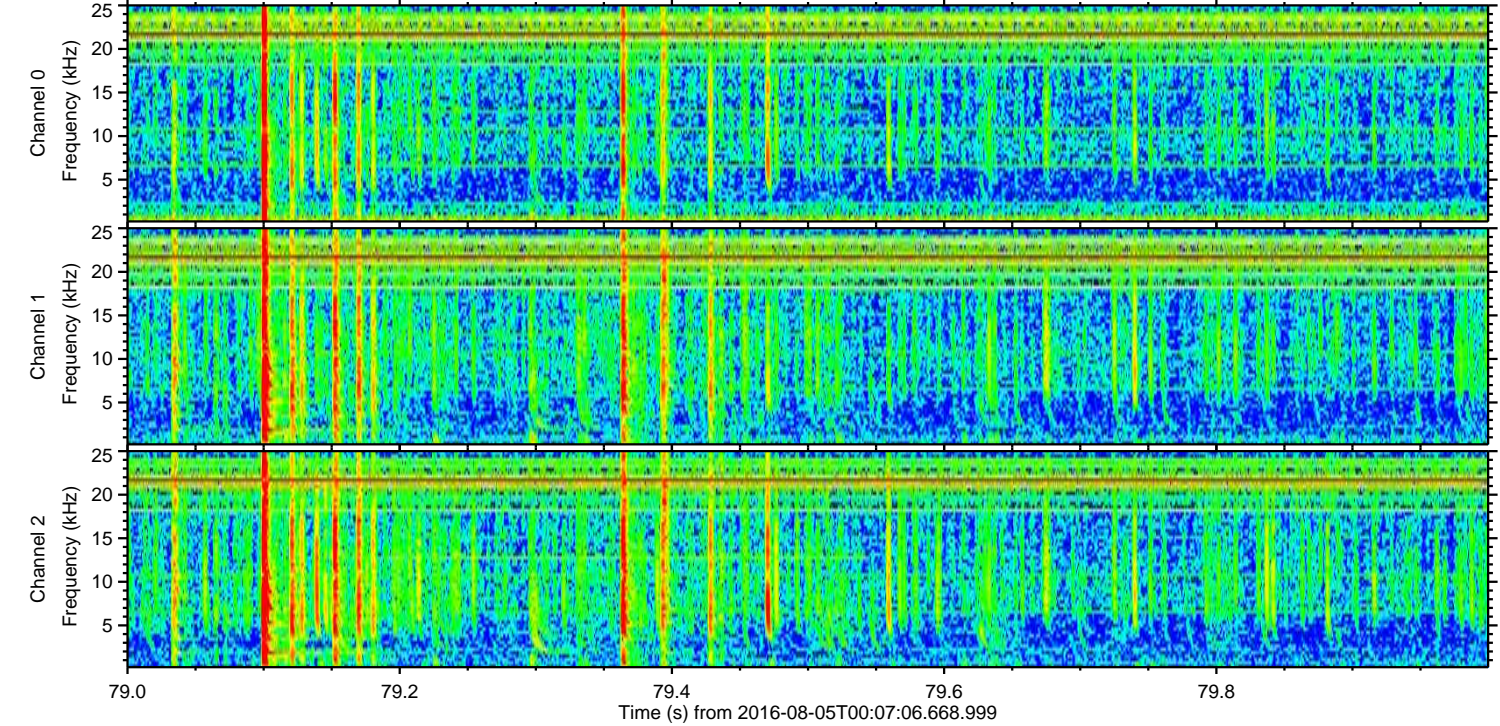
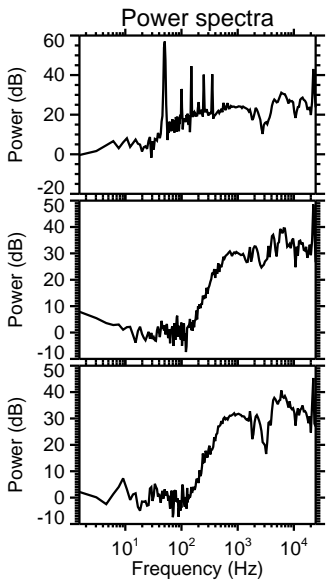
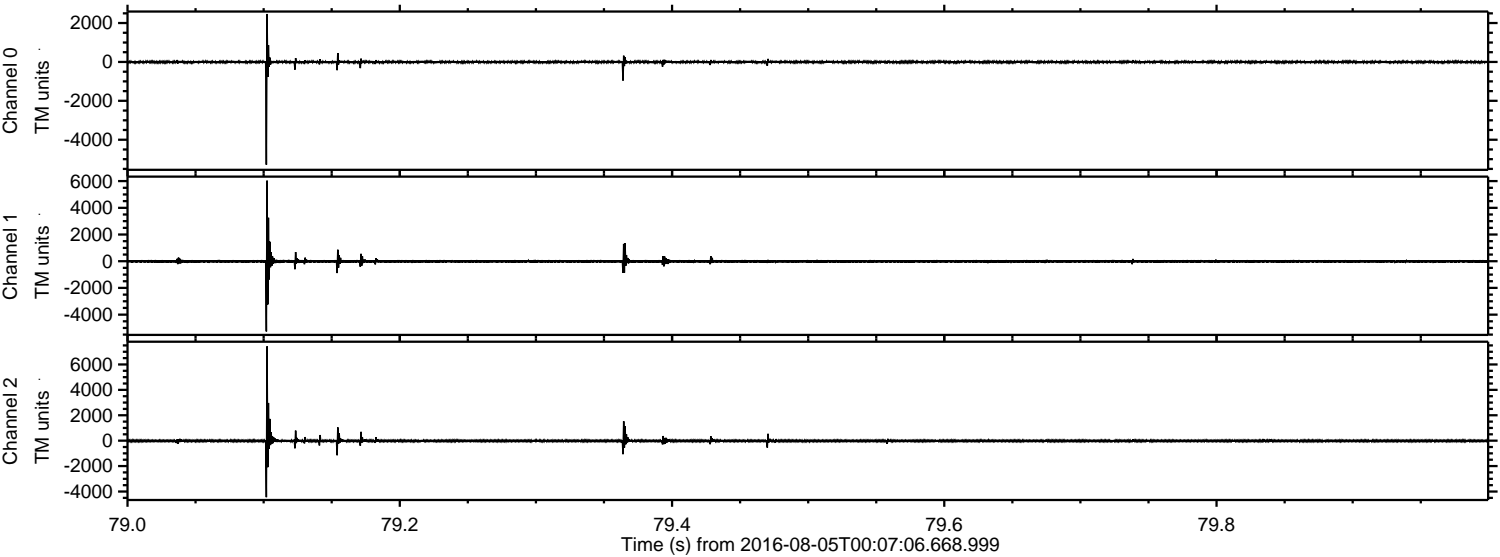
ELMAVAN 3D WAVEFORMS (Measured data sampled at 50 kHz) 51000 packets of 144 samples from 2016-08-05T00:07:06.668.999. Part 32/147

Processed Fri Aug 5 02:15:09 2016 by ELM ver.2012-10-06 from 001\_\_elm20160805\_000705\_\_dat00.bin



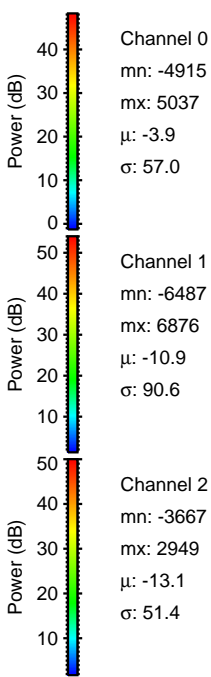
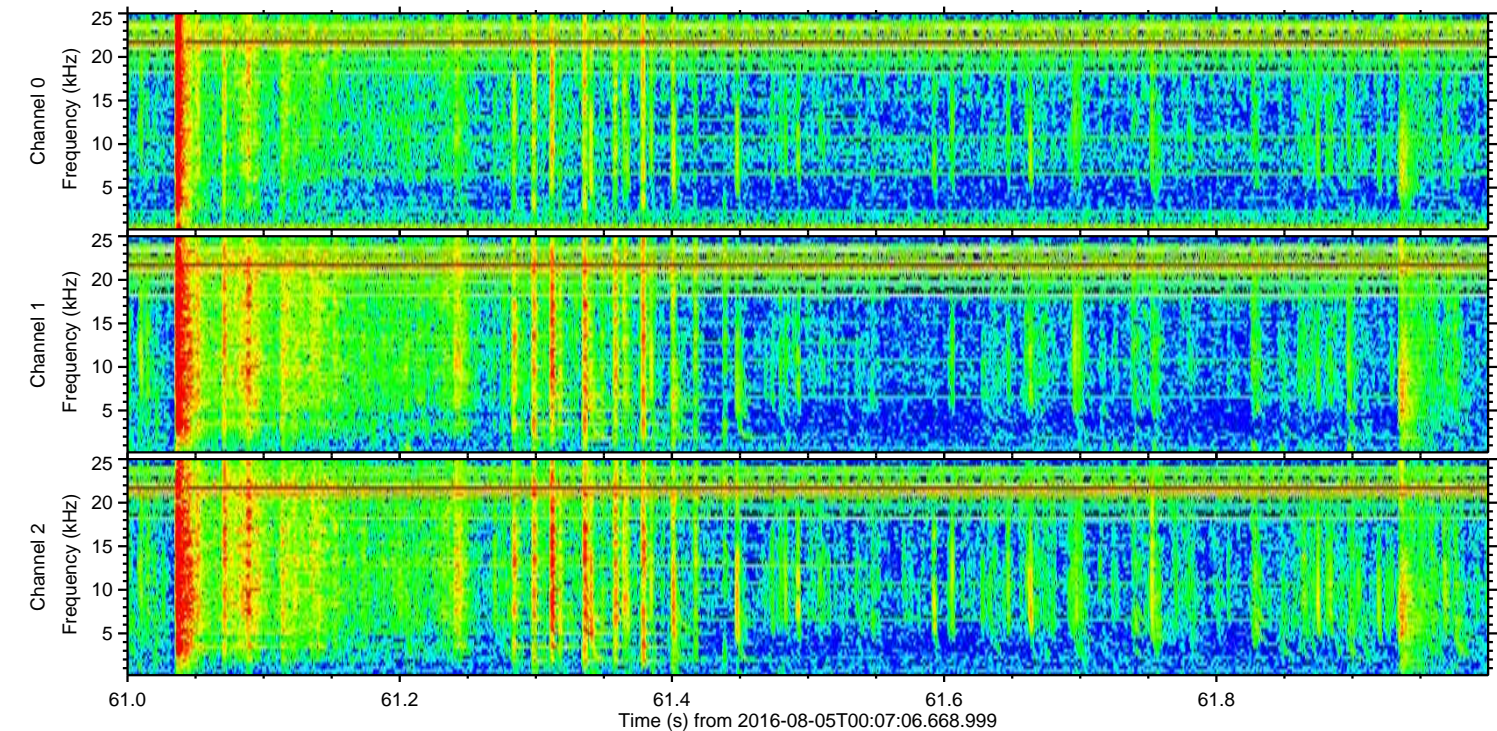
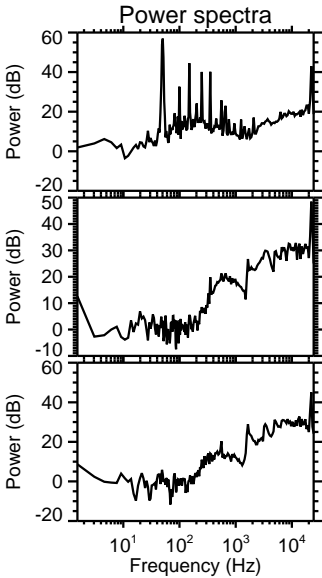
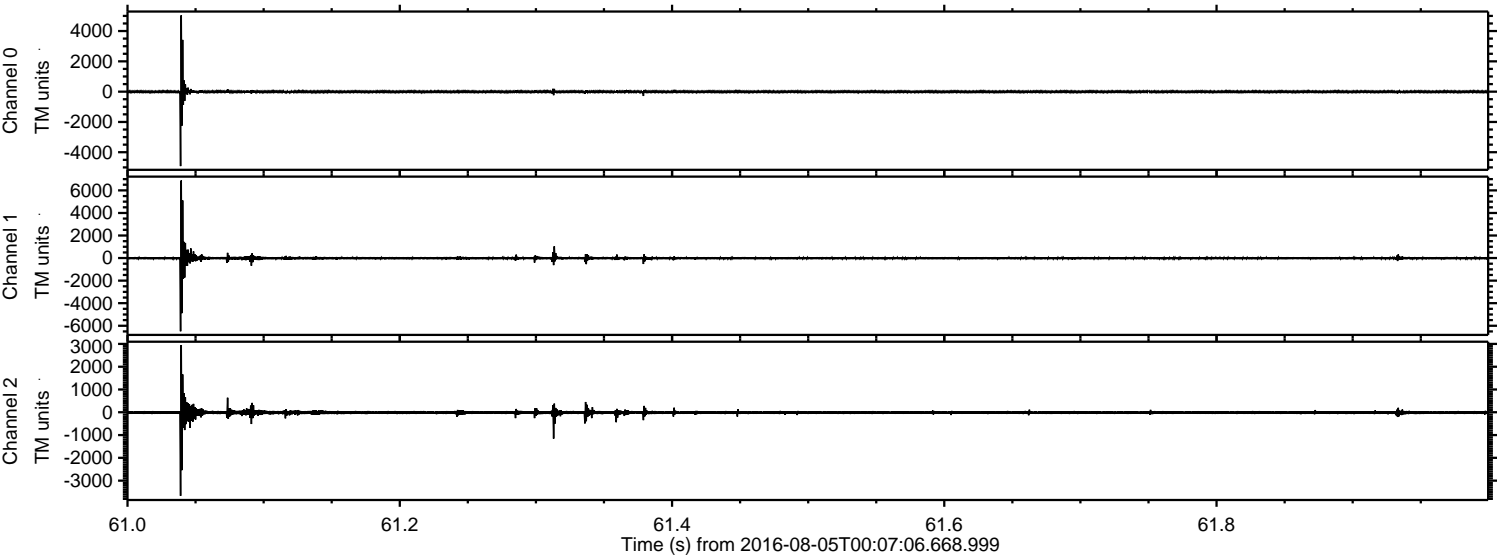


Processed Fri Aug 5 02:15:10 2016 by ELM ver.2012-10-06 from 001\_\_elm20160805\_000705\_\_dat00.bin



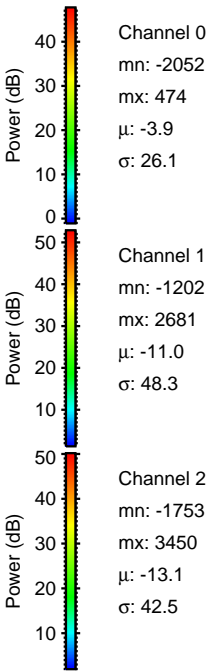
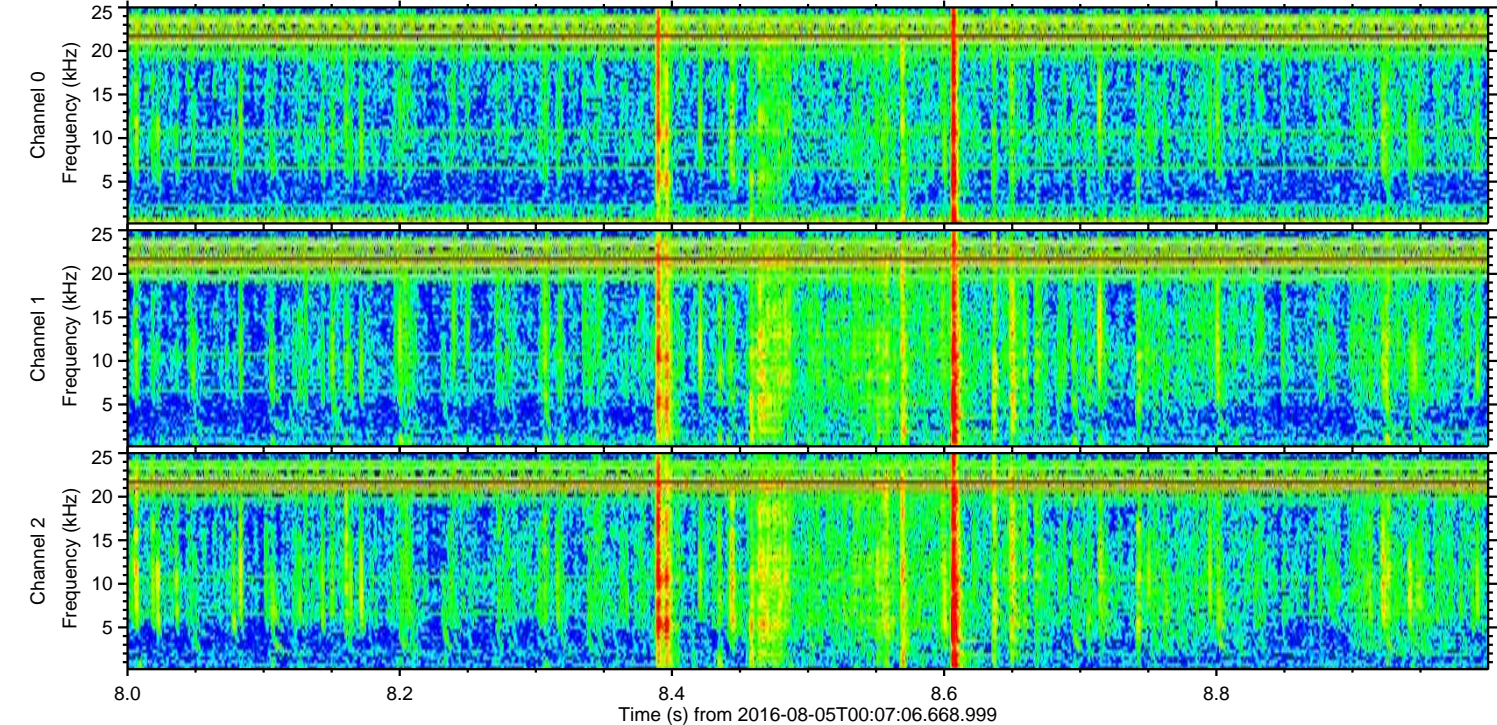
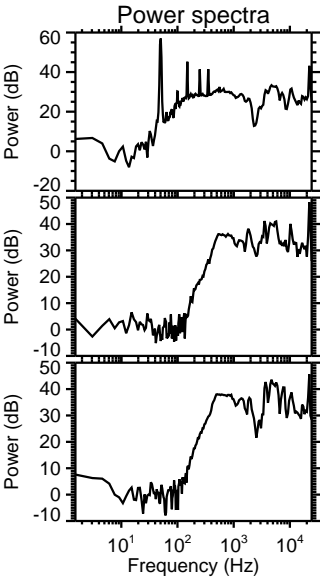
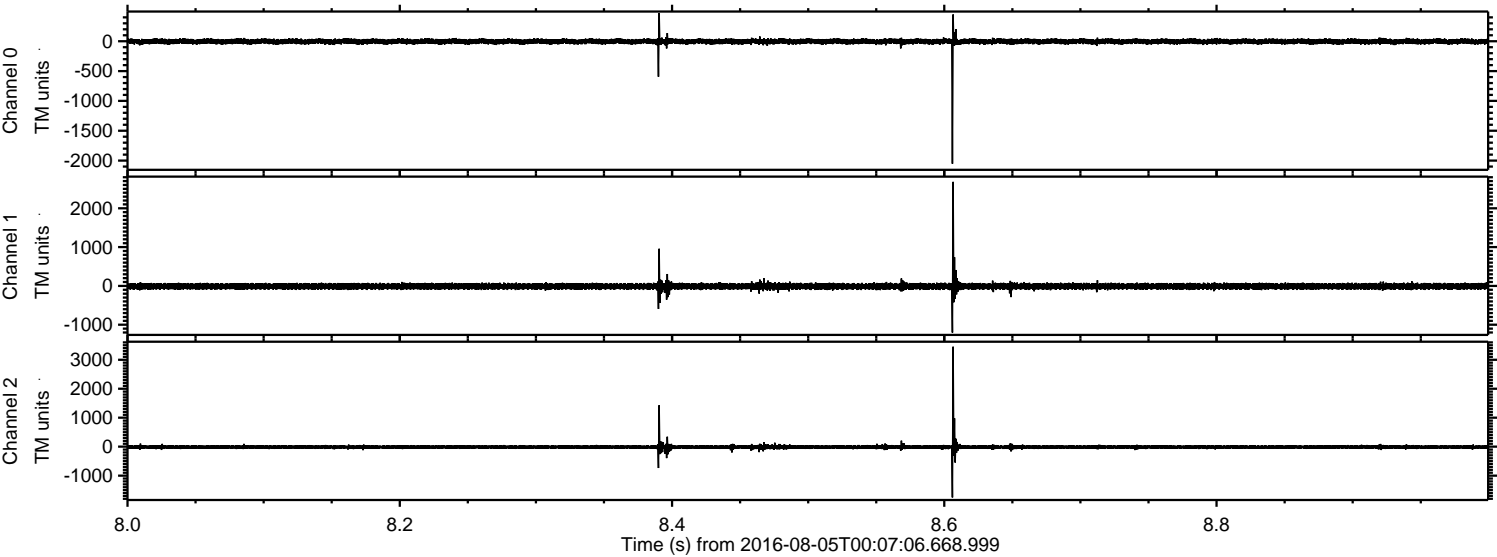


Processed Fri Aug 5 02:15:11 2016 by ELM ver.2012-10-06 from 001\_\_elm20160805\_000705\_\_dat00.bin





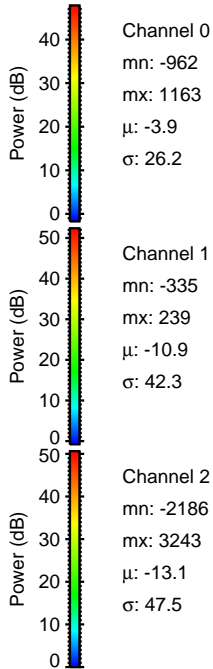
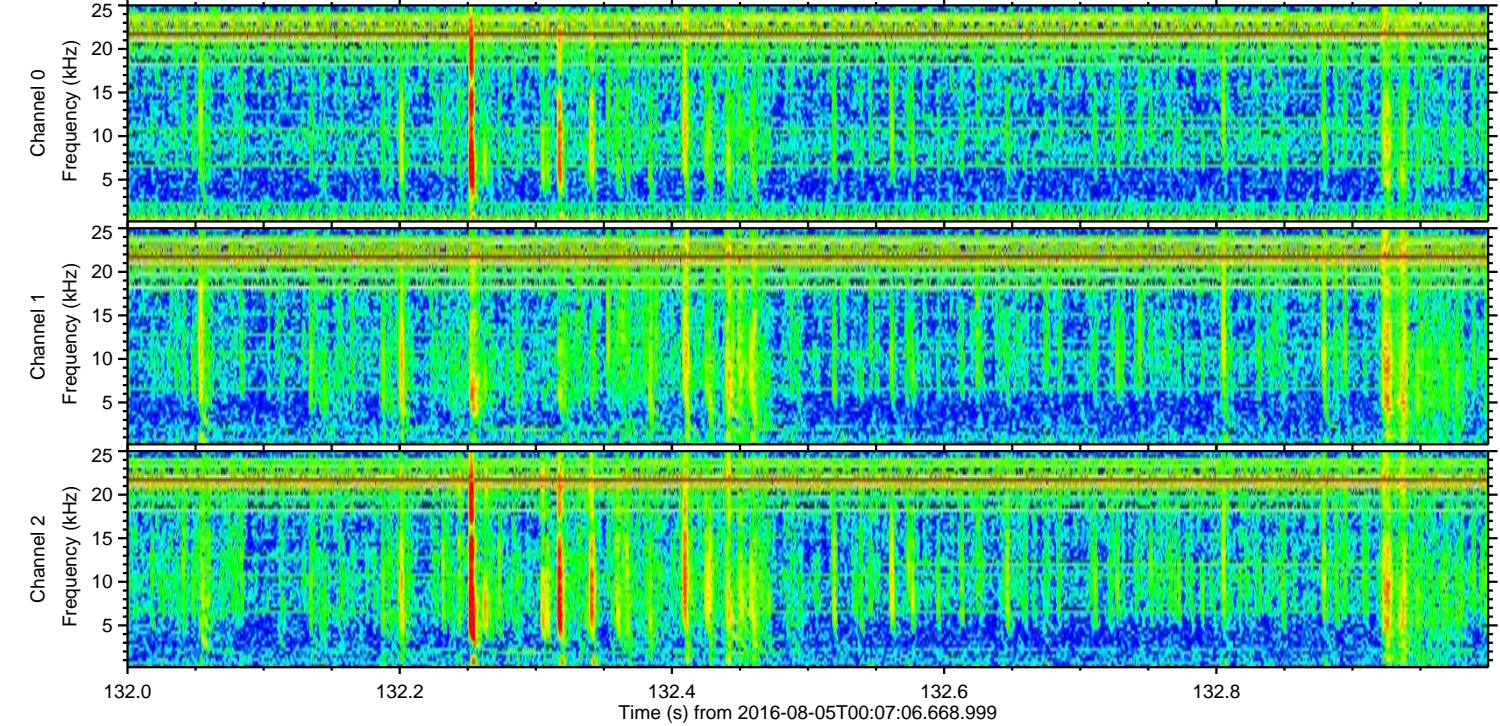
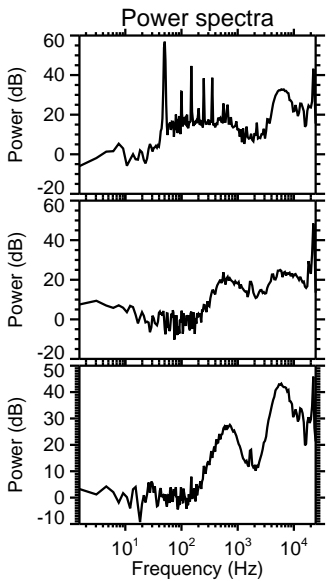
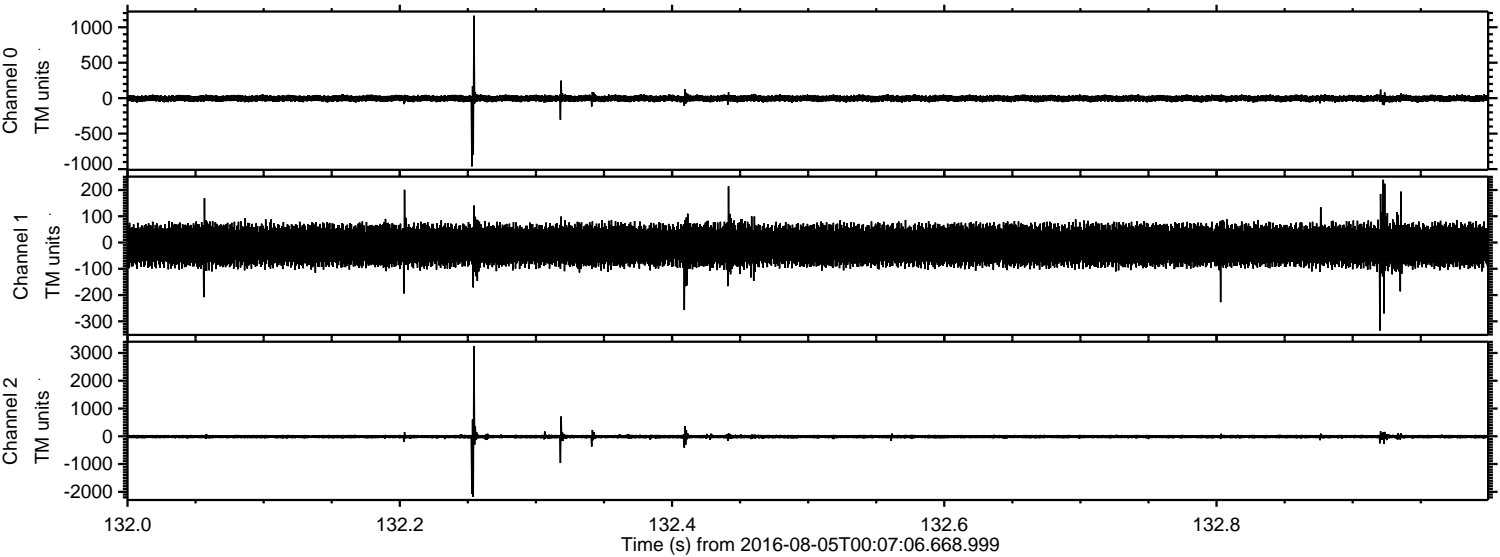
Processed Fri Aug 5 02:15:12 2016 by ELM ver.2012-10-06 from 001\_\_elm20160805\_000705\_\_dat00.bin





ELMAVAN 3D WAVEFORMS (Measured data sampled at 50 kHz) 51000 packets of 144 samples from 2016-08-05T00:07:06.668.999. Part 133/147

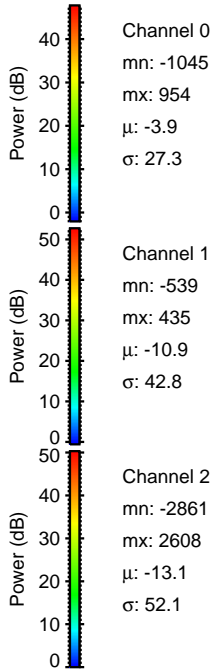
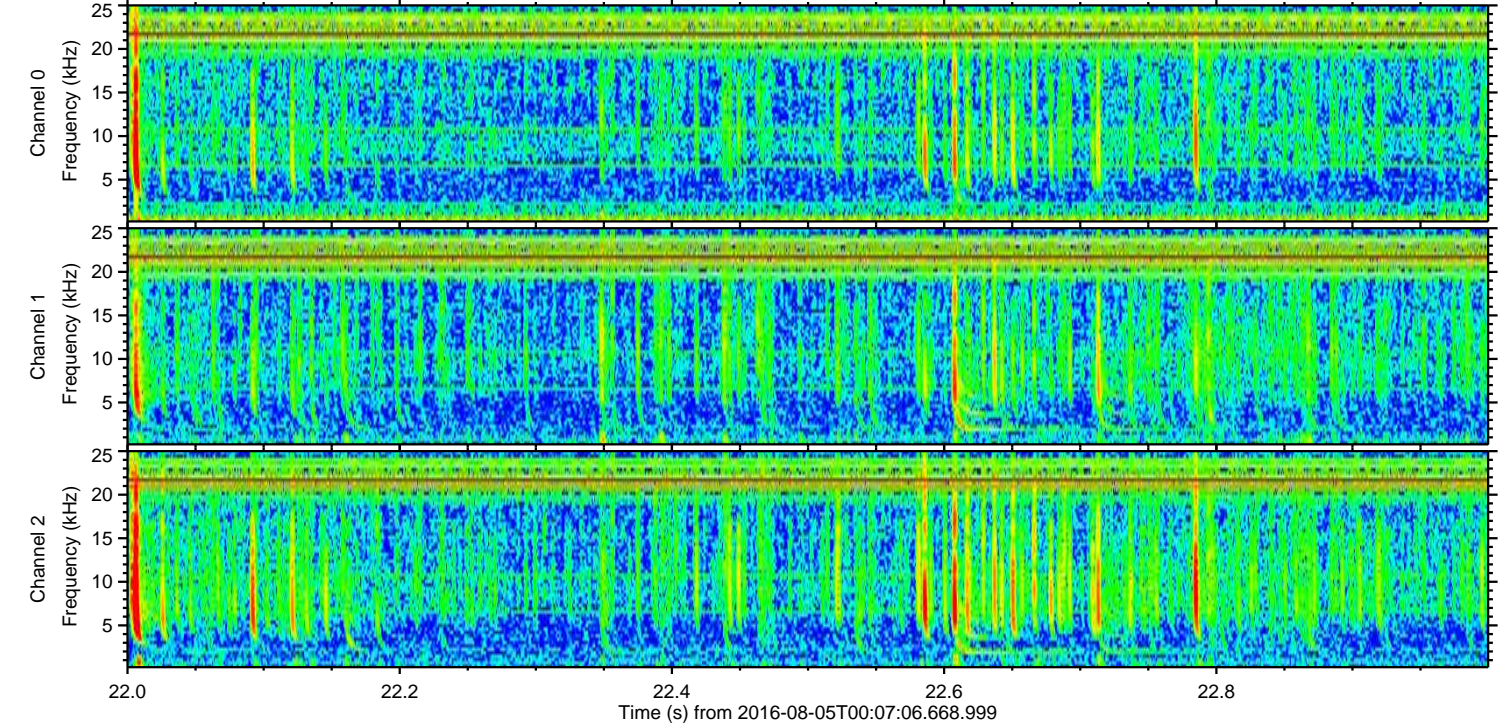
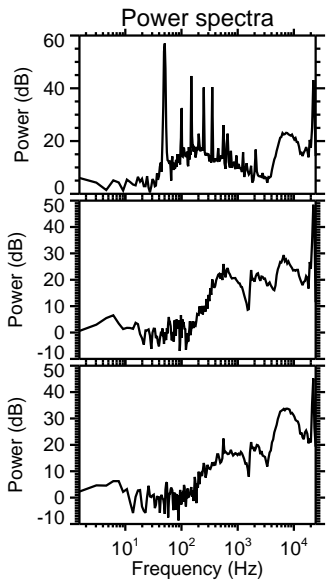
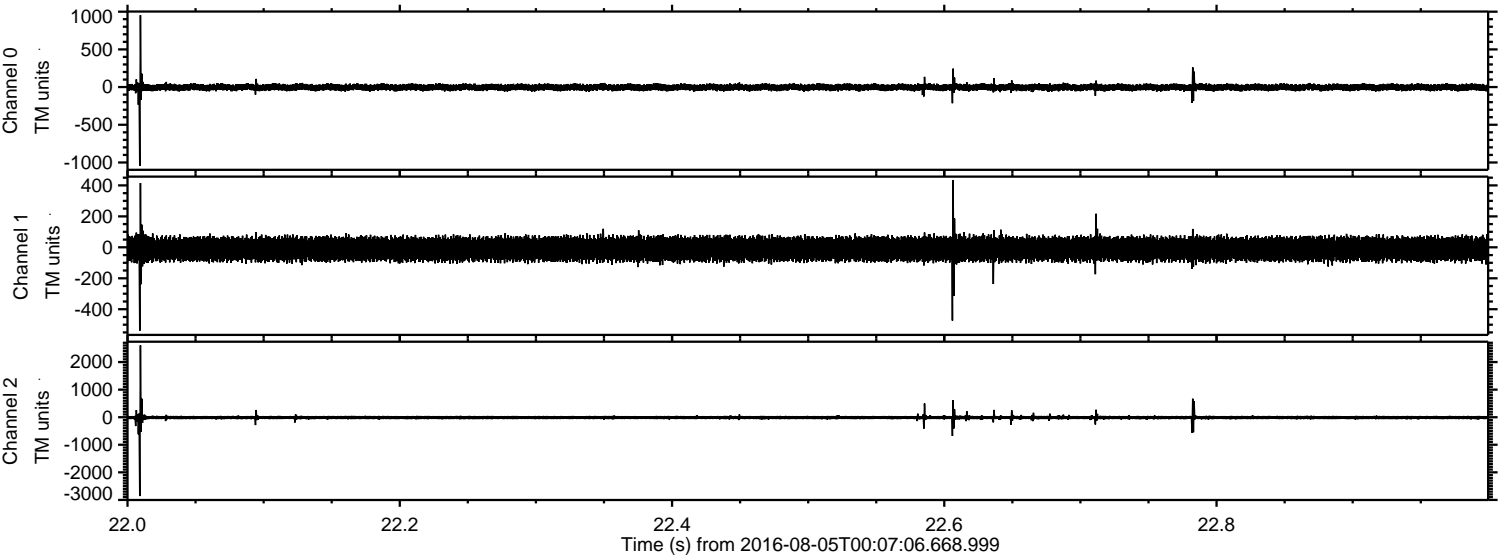
Processed Fri Aug 5 02:15:13 2016 by ELM ver.2012-10-06 from 001\_\_elm20160805\_000705\_\_dat00.bin





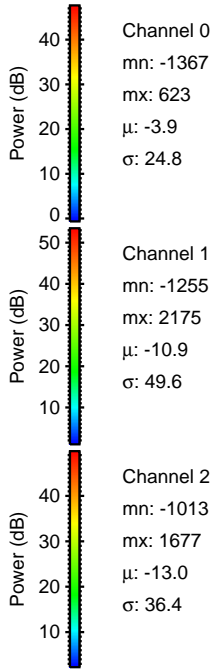
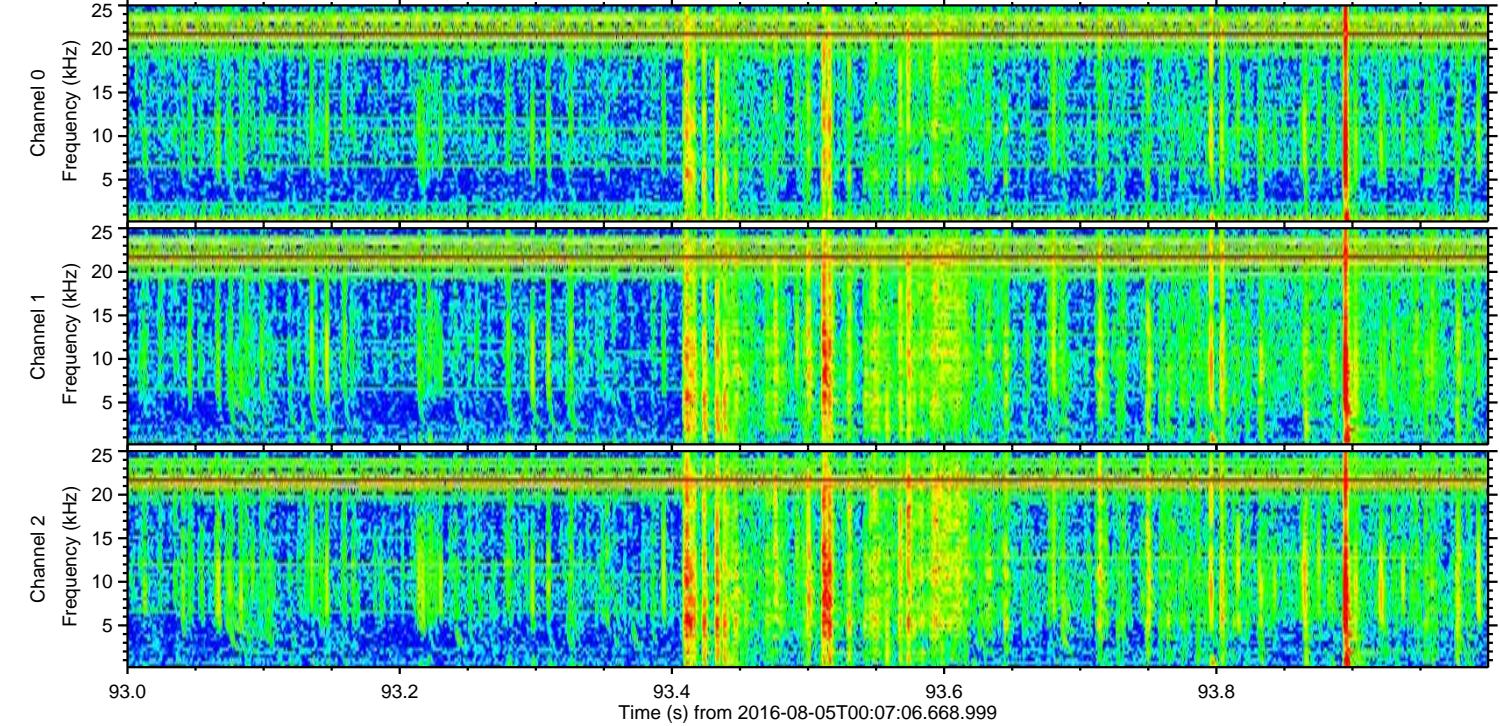
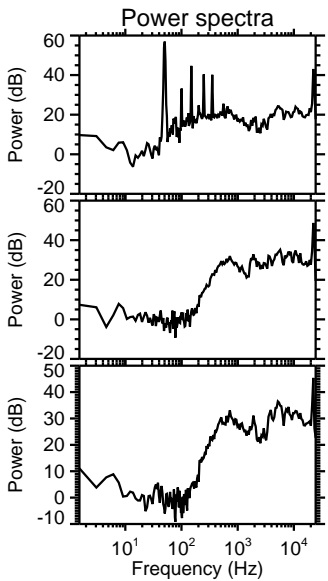
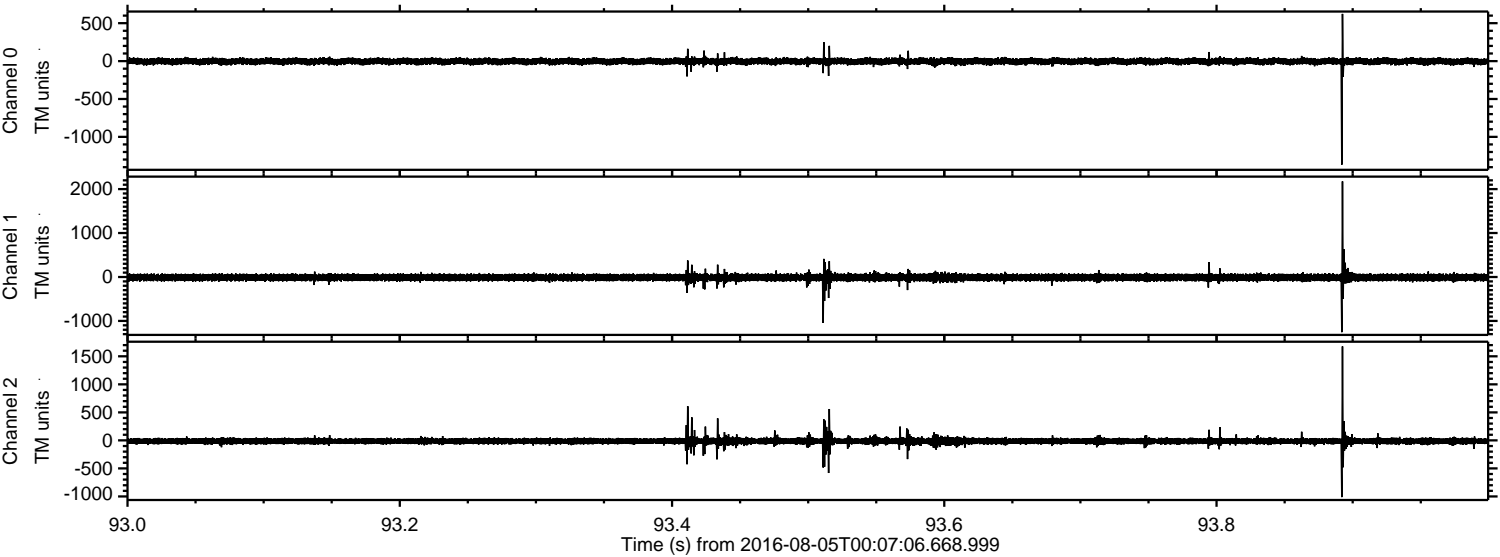
ELMAVAN 3D WAVEFORMS (Measured data sampled at 50 kHz) 51000 packets of 144 samples from 2016-08-05T00:07:06.668.999. Part 23/147

Processed Fri Aug 5 02:15:14 2016 by ELM ver.2012-10-06 from 001\_\_elm20160805\_000705\_\_dat00.bin





Processed Fri Aug 5 02:15:15 2016 by ELM ver.2012-10-06 from 001\_\_elm20160805\_000705\_\_dat00.bin



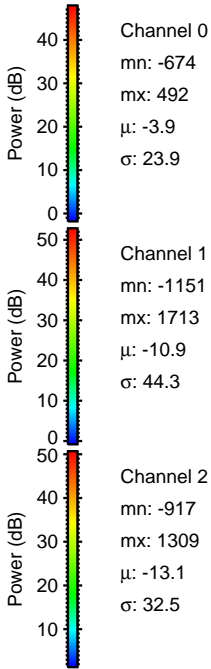
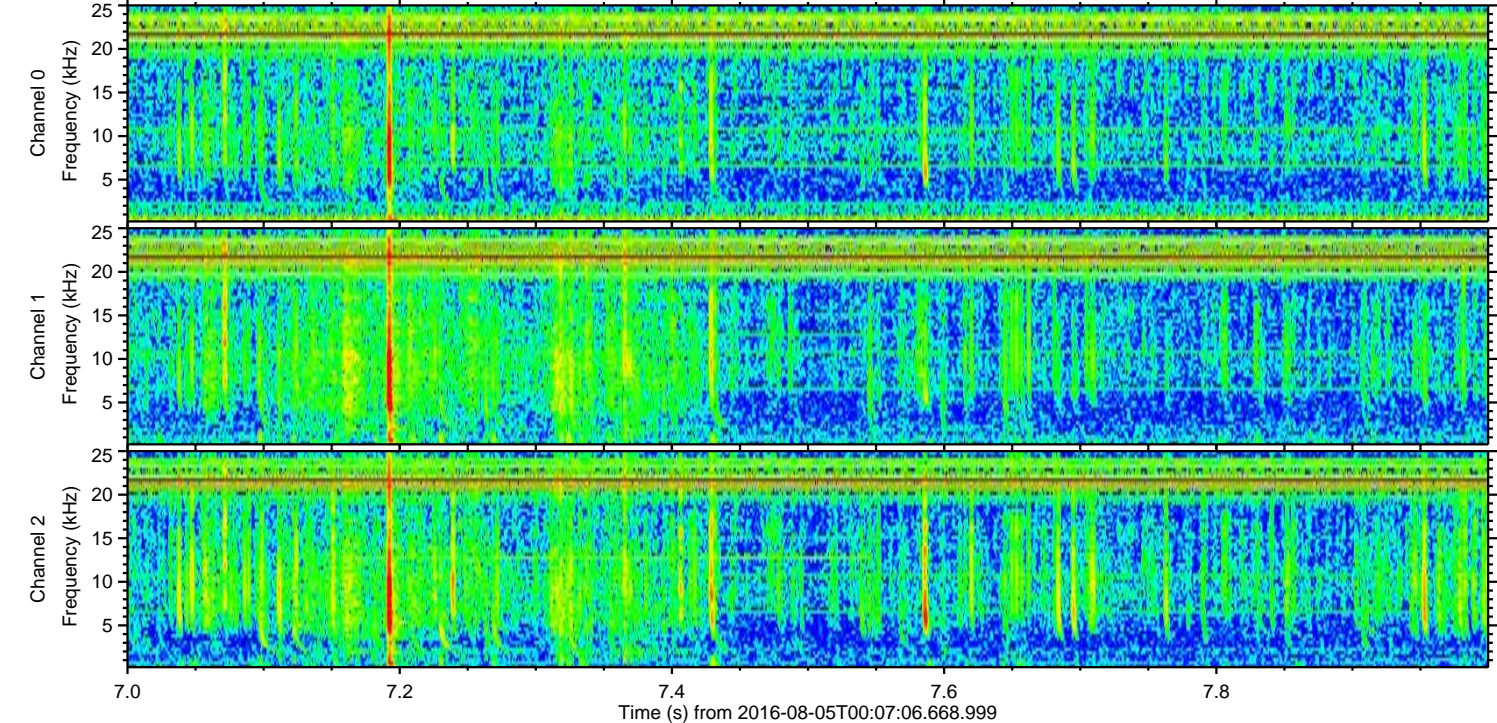
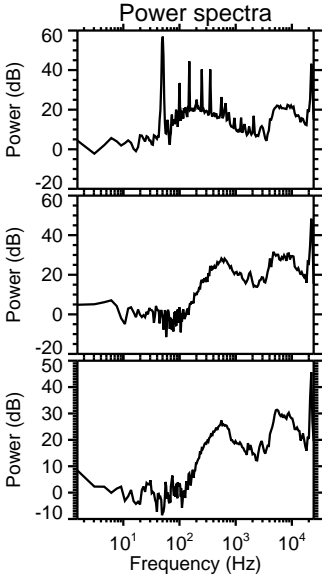
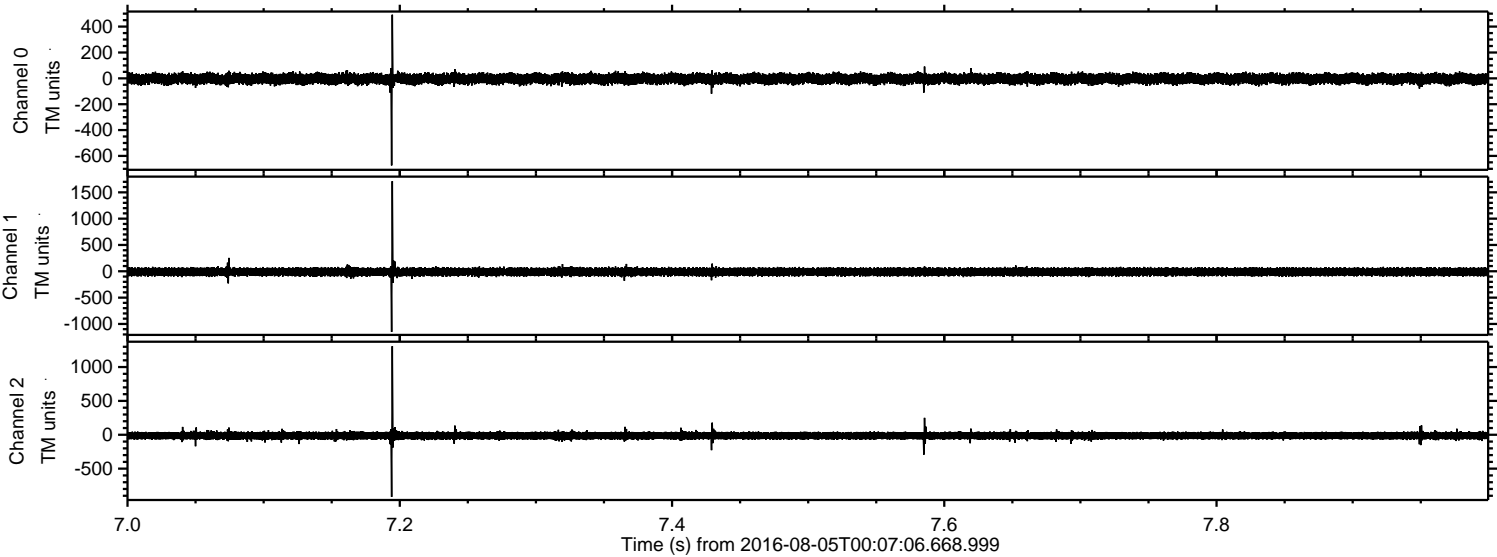
Channel 0  
mn: -1367  
mx: 623  
 $\mu$ : -3.9  
 $\sigma$ : 24.8

Channel 1  
mn: -1255  
mx: 2175  
 $\mu$ : -10.9  
 $\sigma$ : 49.6

Channel 2  
mn: -1013  
mx: 1677  
 $\mu$ : -13.0  
 $\sigma$ : 36.4



Processed Fri Aug 5 02:15:16 2016 by ELM ver.2012-10-06 from 001\_\_elm20160805\_000705\_\_dat00.bin





Processed Fri Aug 5 02:15:17 2016 by ELM ver.2012-10-06 from 001\_\_elm20160805\_000705\_\_dat00.bin

