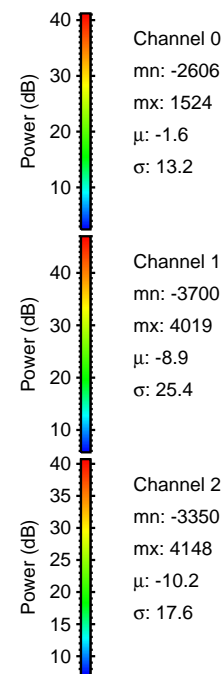
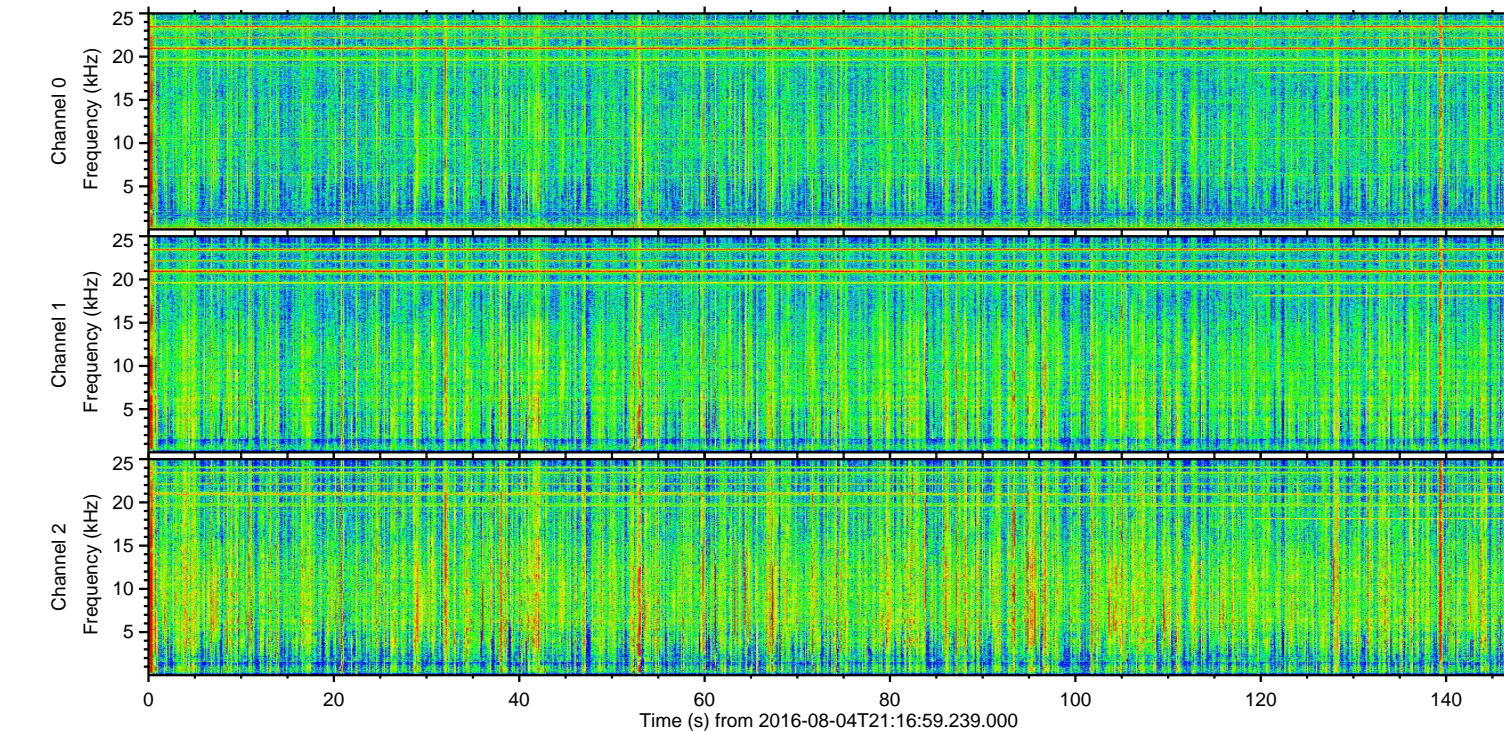
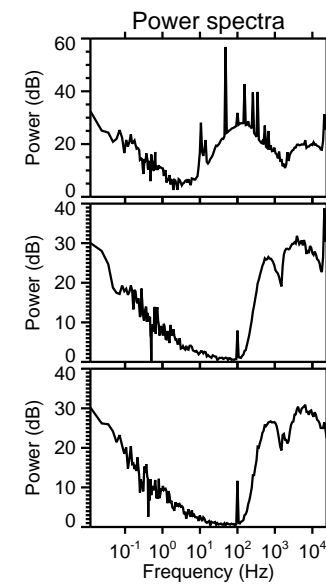
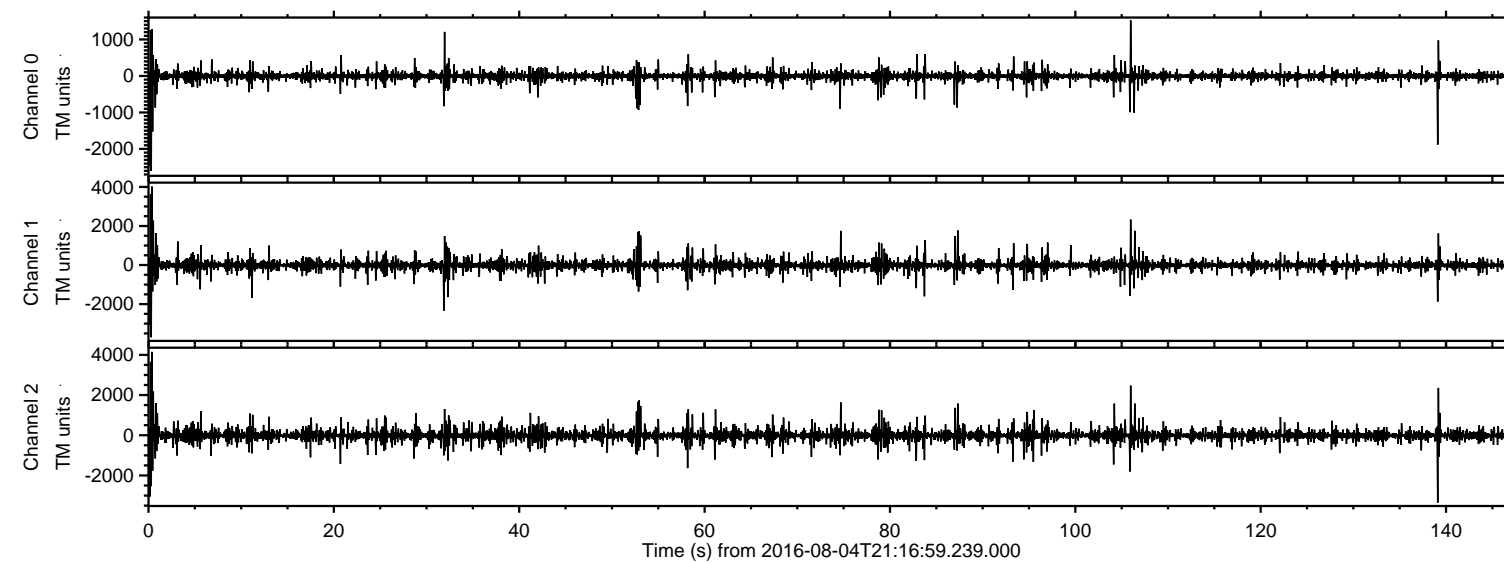


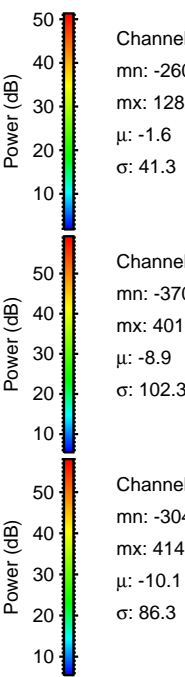
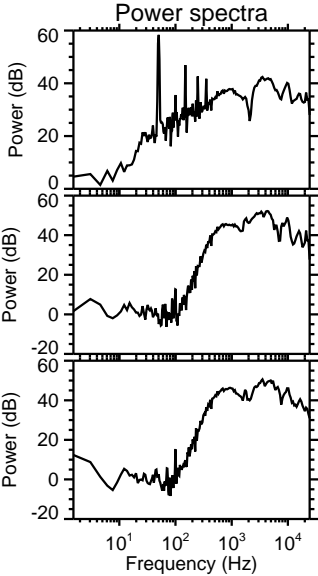
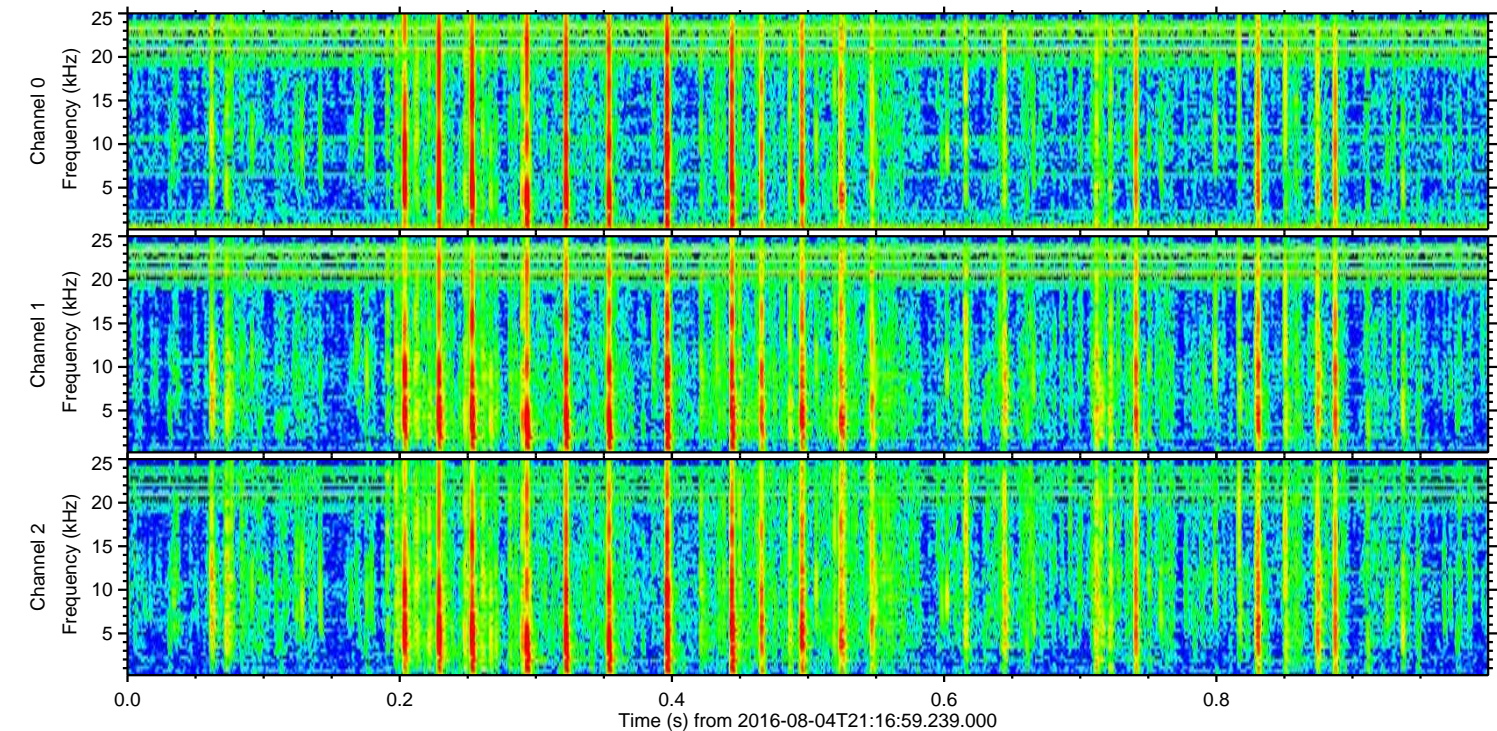
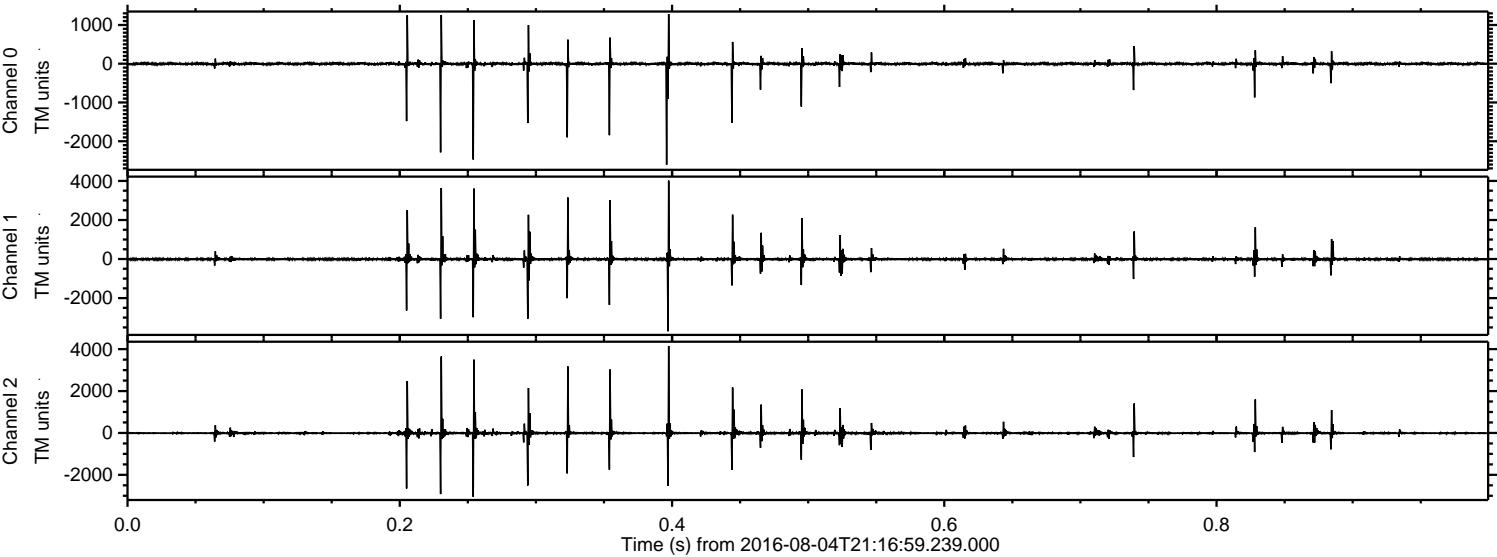
ELMAVAN 3D WAVEFORMS (Measured data sampled at 50 kHz) 51000 packets of 144 samples from 2016-08-04T21:16:59.239.000.

Processed Thu Aug 4 23:25:22 2016 by ELM ver.2012-10-06 from 001__elm20160804_211658__dat00.bin



ELMAVAN 3D WAVEFORMS (Measured data sampled at 50 kHz) 51000 packets of 144 samples from 2016-08-04T21:16:59.239.000. Part 1/147

Processed Thu Aug 4 23:25:33 2016 by ELM ver.2012-10-06 from 001__elm20160804_211658__dat00.bin



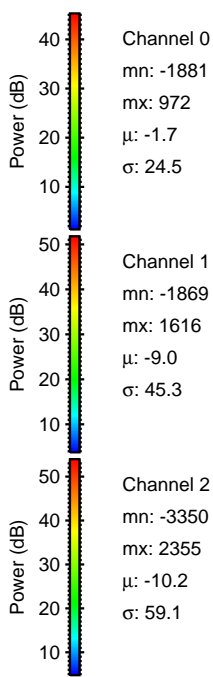
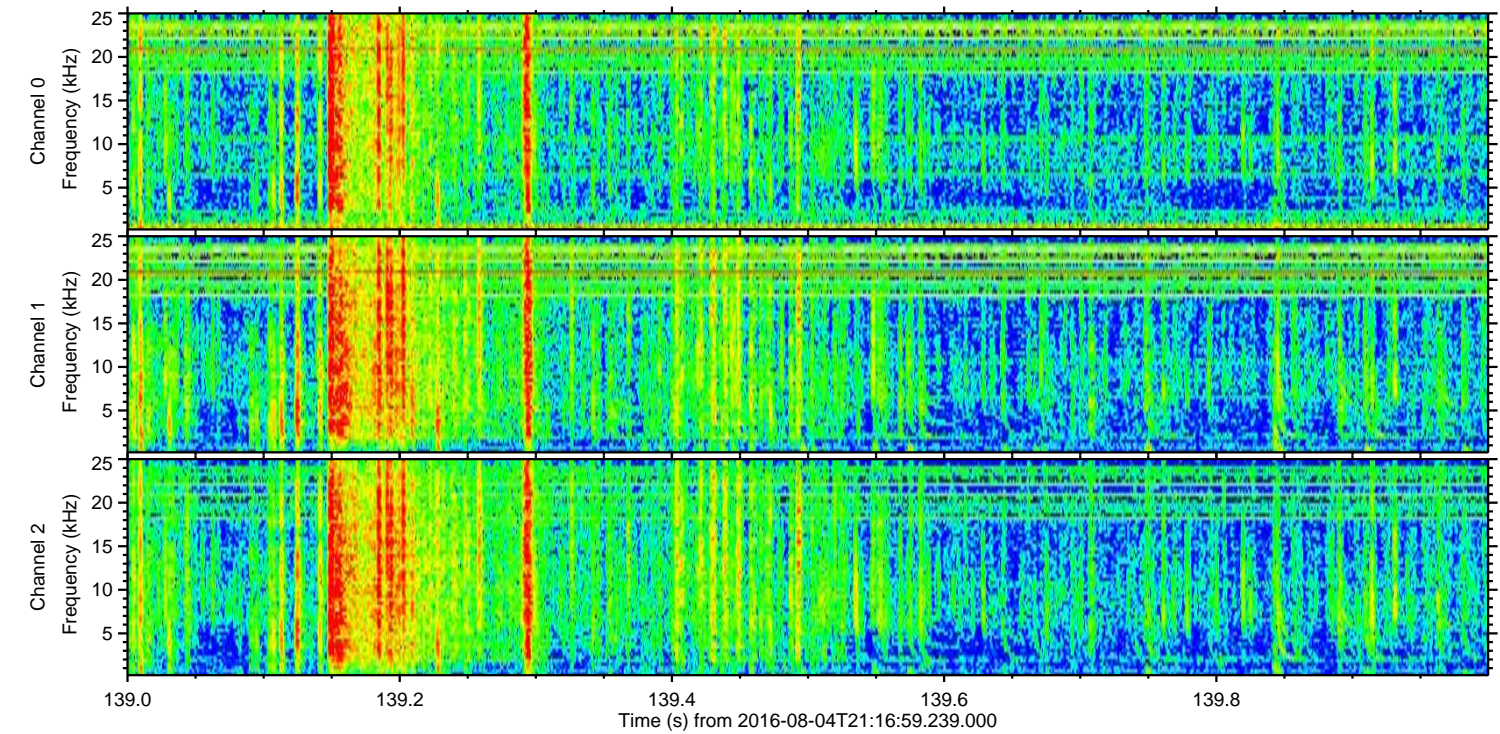
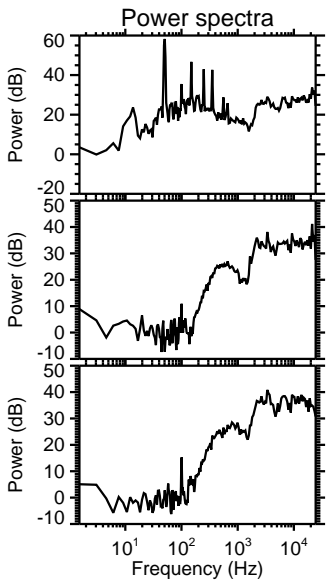
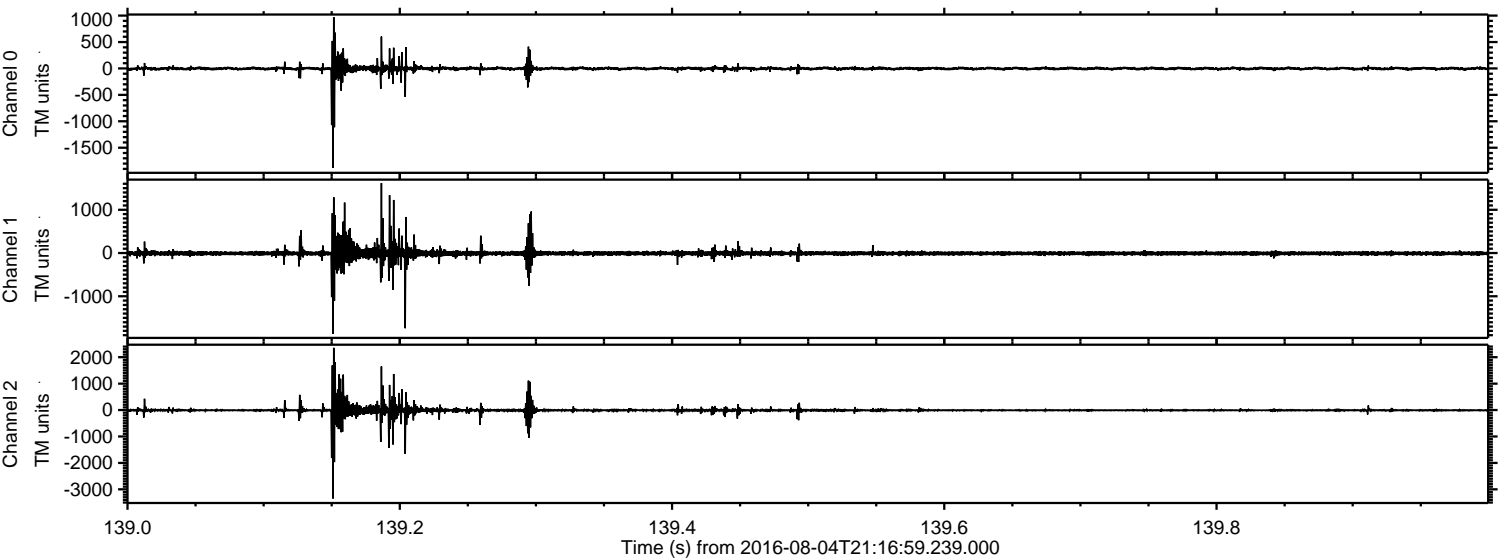
Channel 0
mn: -2606
mx: 1282
 μ : -1.6
 σ : 41.3

Channel 1
mn: -3700
mx: 4019
 μ : -8.9
 σ : 102.3

Channel 2
mn: -3048
mx: 4148
 μ : -10.1
 σ : 86.3

ELMAVAN 3D WAVEFORMS (Measured data sampled at 50 kHz) 51000 packets of 144 samples from 2016-08-04T21:16:59.239.000. Part 140/147

Processed Thu Aug 4 23:25:34 2016 by ELM ver.2012-10-06 from 001__elm20160804_211658__dat00.bin



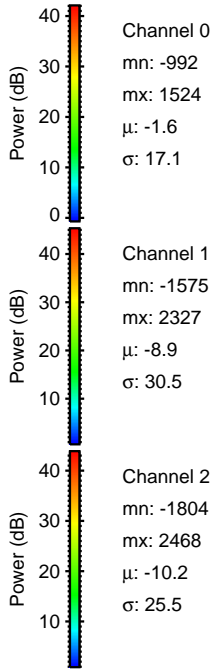
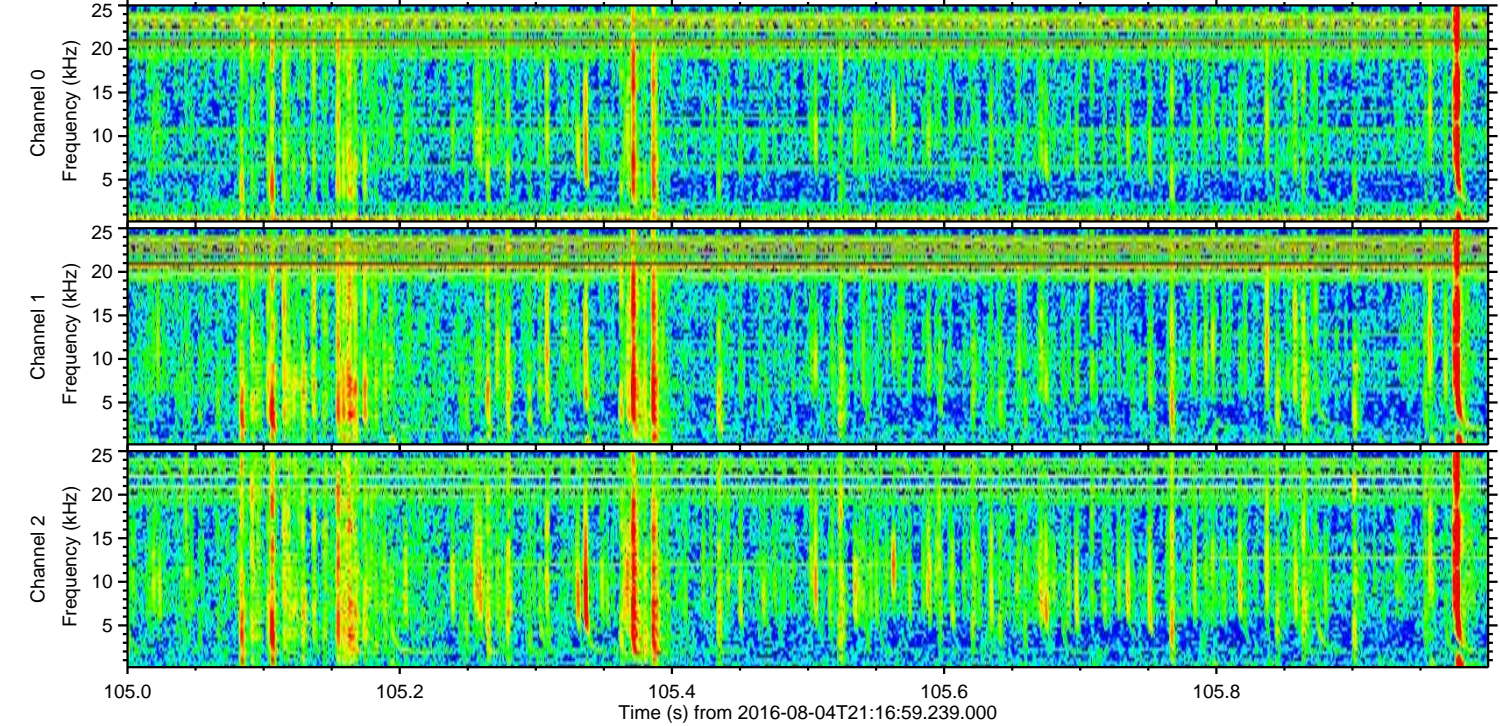
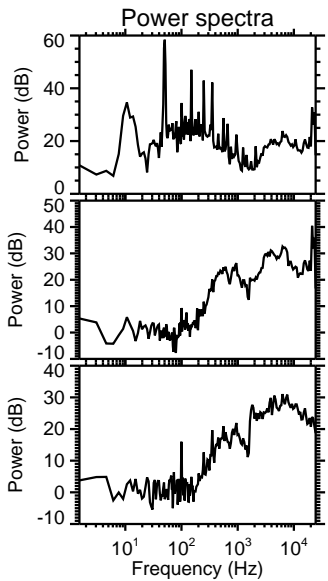
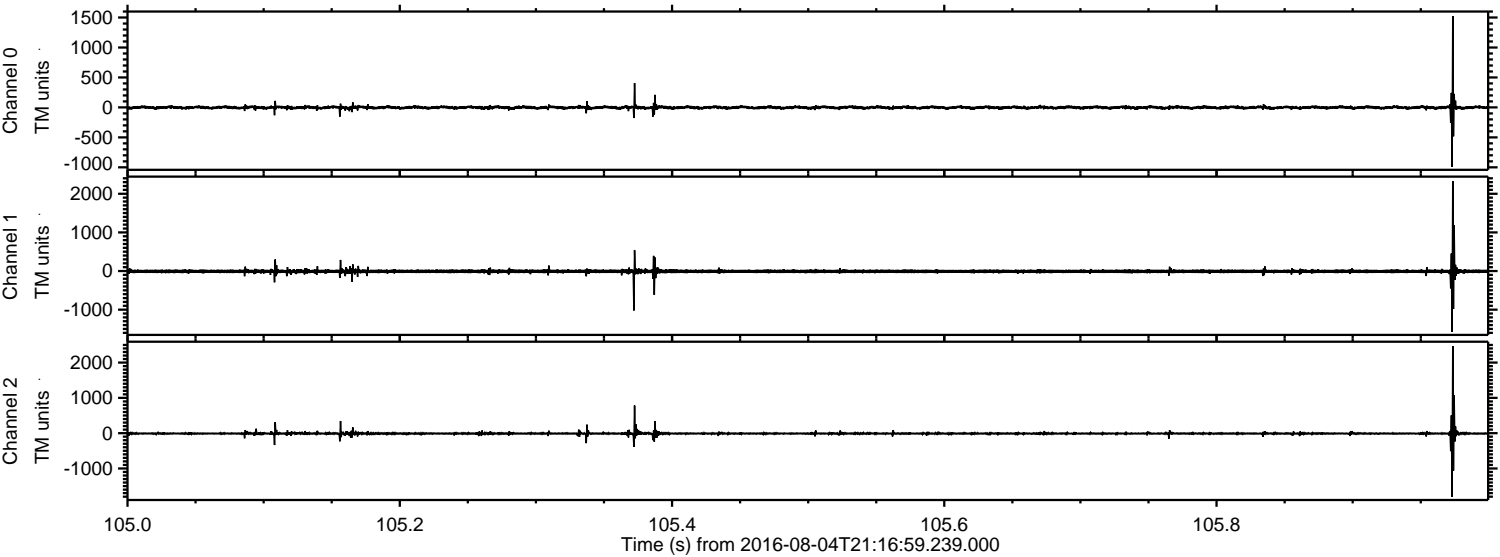
Channel 0
mn: -1881
mx: 972
 μ : -1.7
 σ : 24.5

Channel 1
mn: -1869
mx: 1616
 μ : -9.0
 σ : 45.3

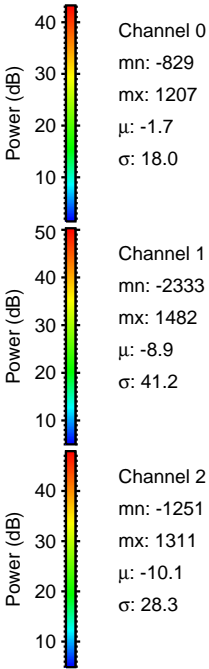
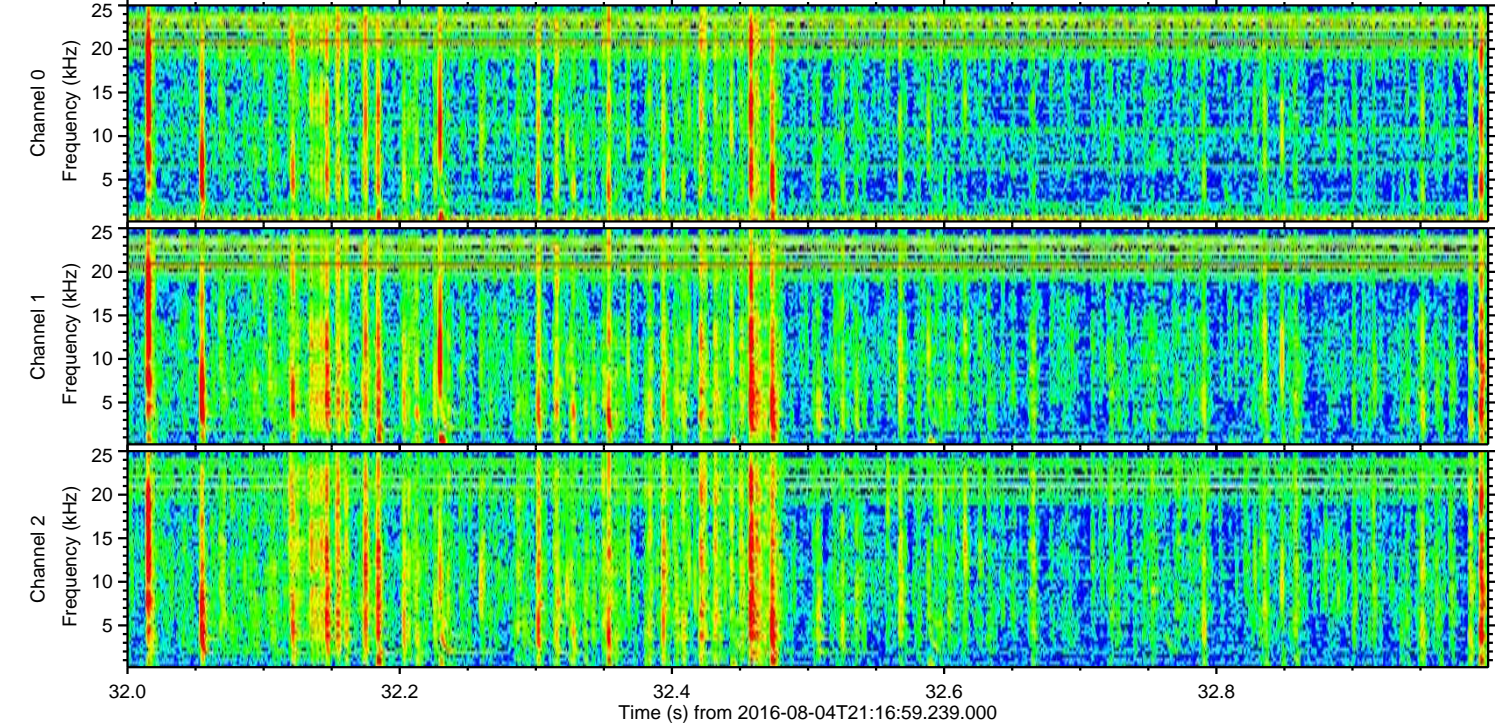
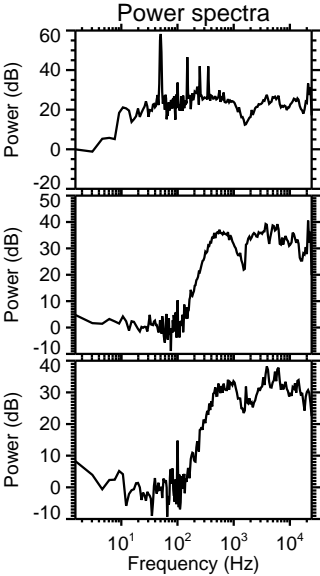
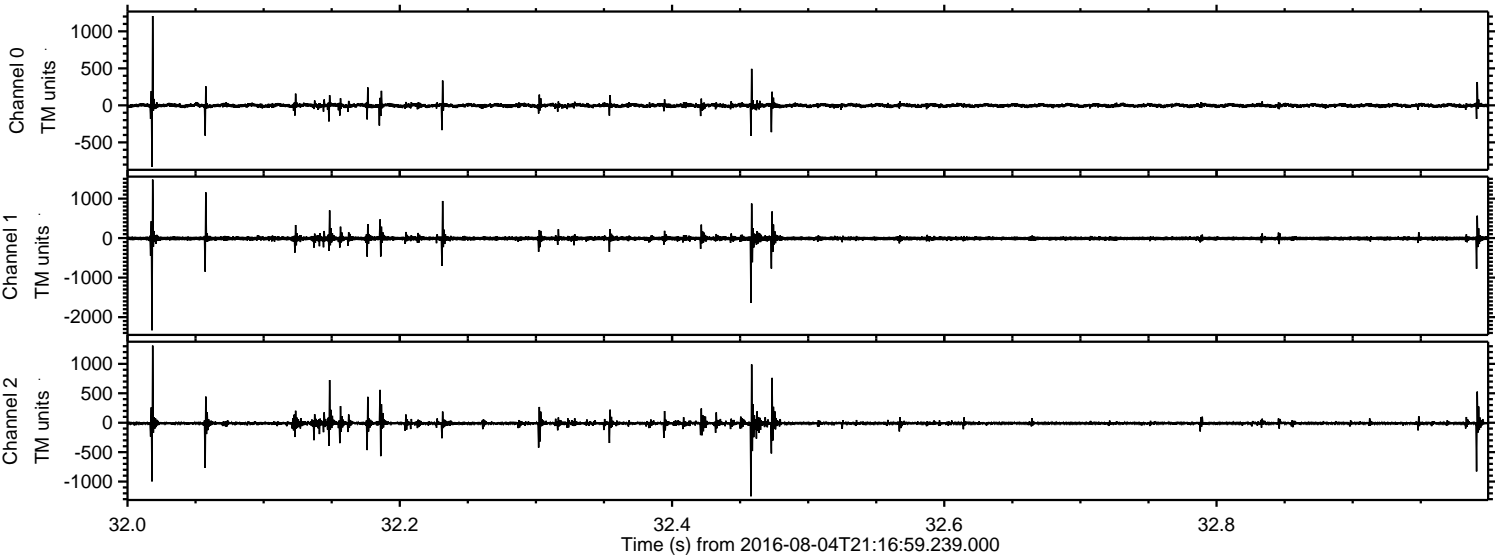
Channel 2
mn: -3350
mx: 2355
 μ : -10.2
 σ : 59.1

ELMAVAN 3D WAVEFORMS (Measured data sampled at 50 kHz) 51000 packets of 144 samples from 2016-08-04T21:16:59.239.000. Part 106/147

Processed Thu Aug 4 23:25:35 2016 by ELM ver.2012-10-06 from 001__elm20160804_211658__dat00.bin

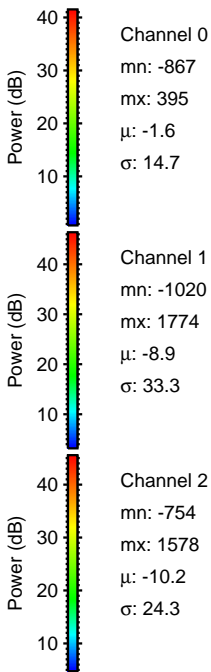
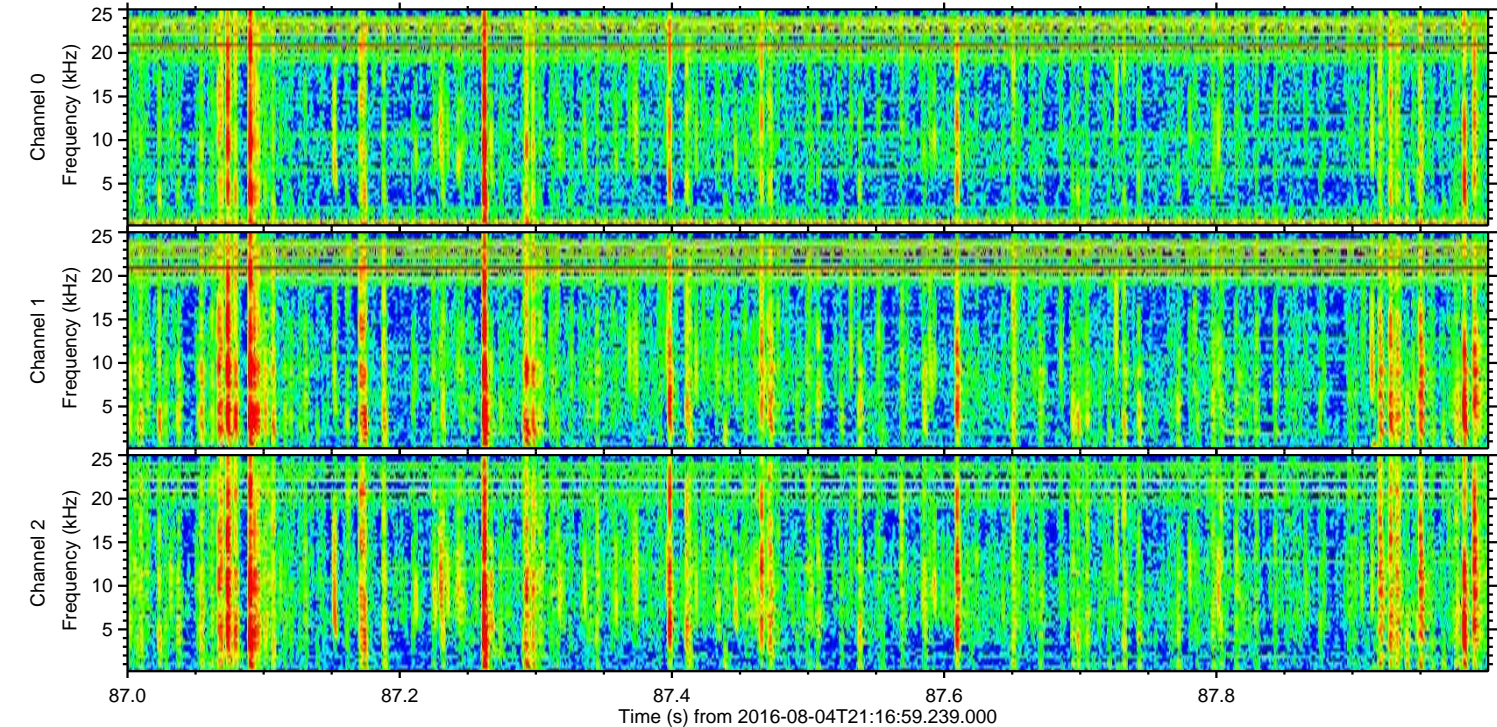
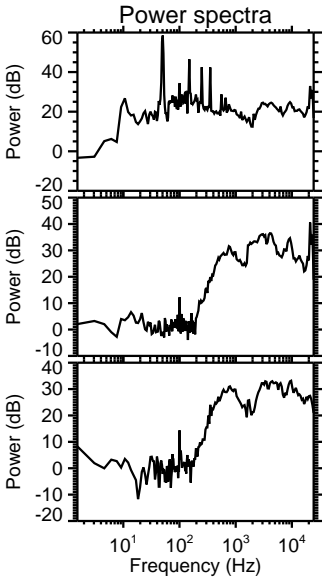
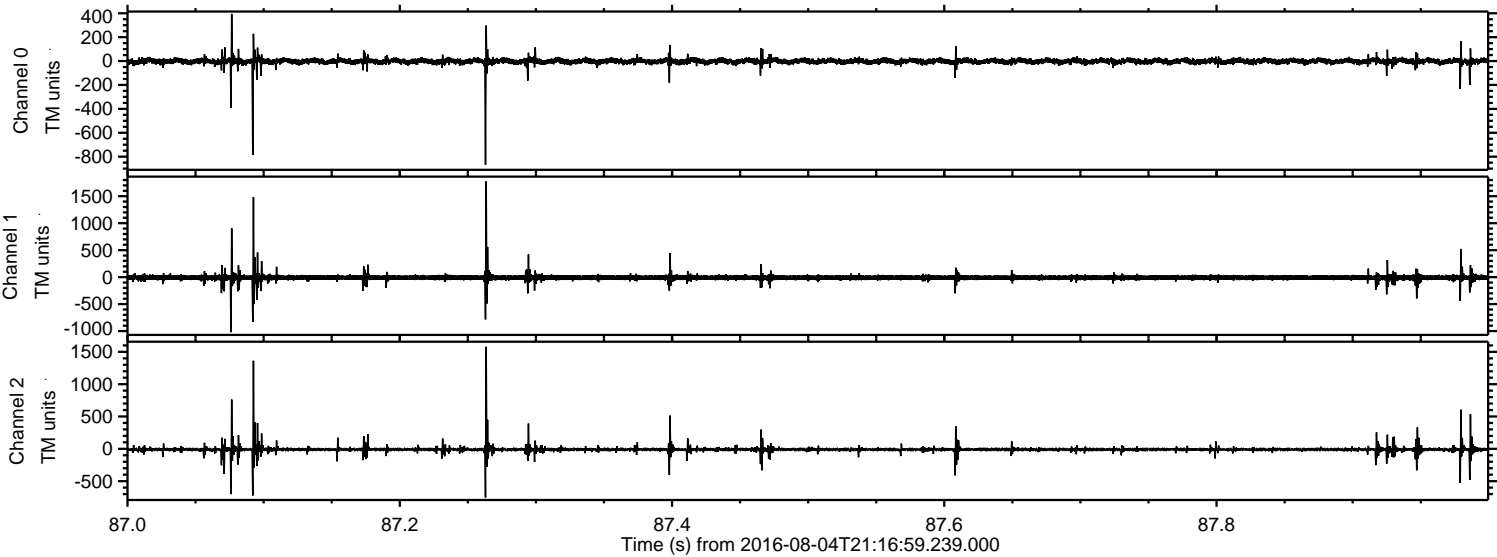


Processed Thu Aug 4 23:25:36 2016 by ELM ver.2012-10-06 from 001__elm20160804_211658__dat00.bin



ELMAVAN 3D WAVEFORMS (Measured data sampled at 50 kHz) 51000 packets of 144 samples from 2016-08-04T21:16:59.239.000. Part 88/147

Processed Thu Aug 4 23:25:37 2016 by ELM ver.2012-10-06 from 001__elm20160804_211658__dat00.bin

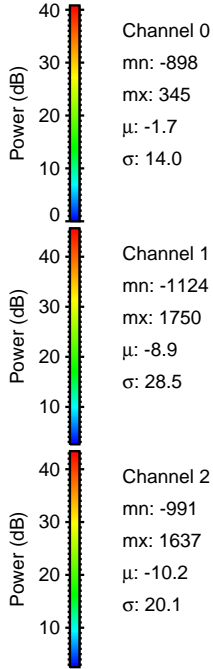
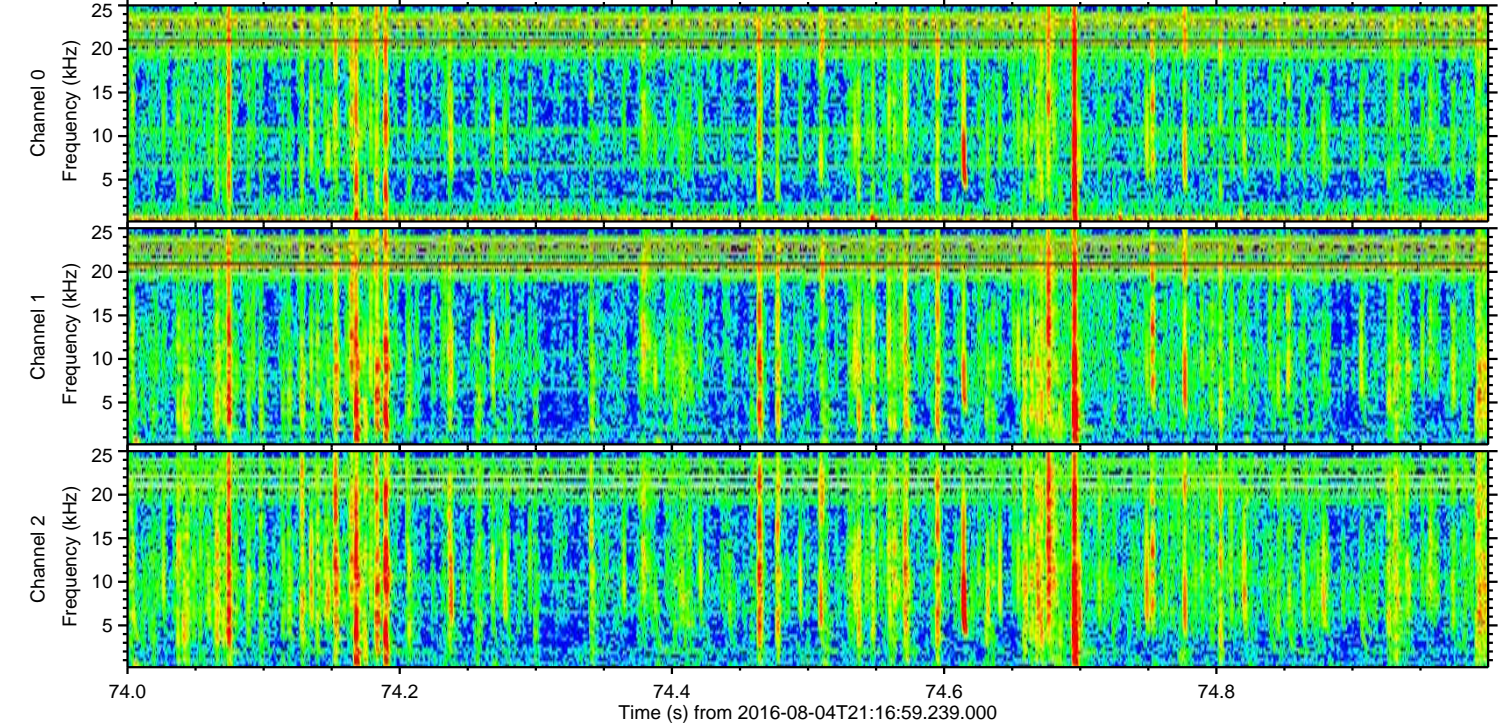
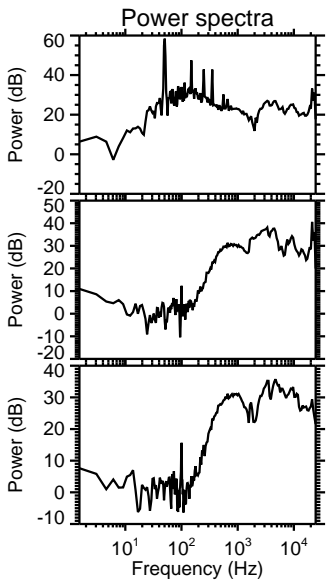
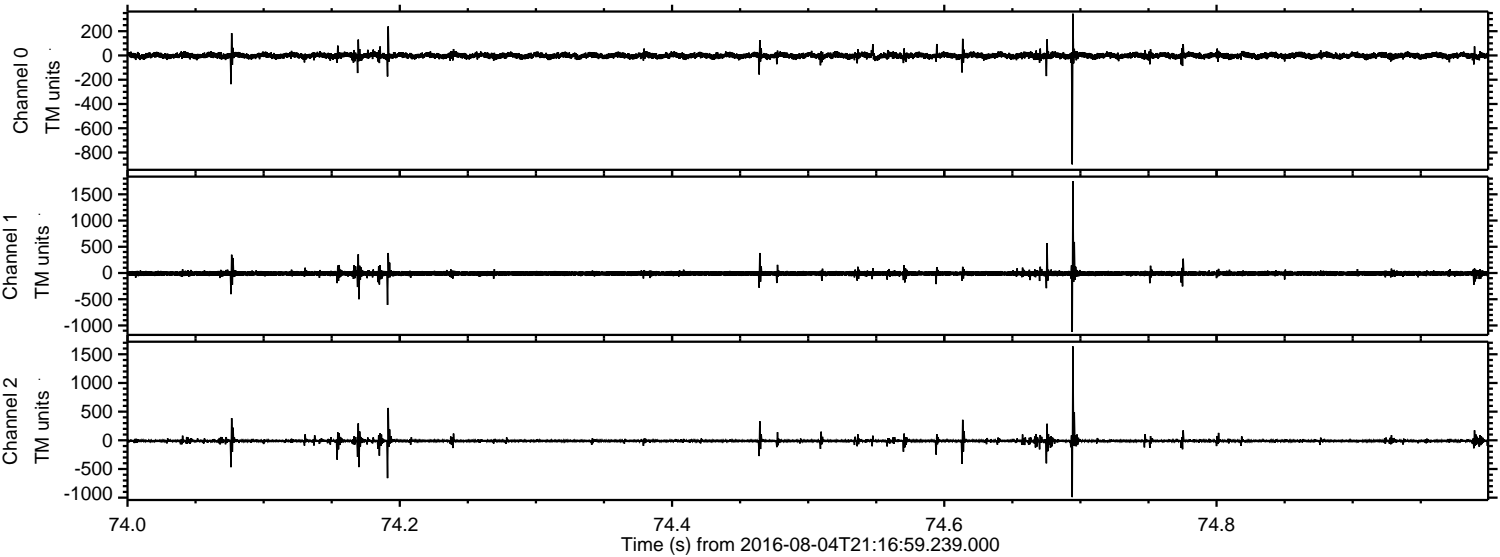


Channel 0
mn: -867
mx: 395
 μ : -1.6
 σ : 14.7

Channel 1
mn: -1020
mx: 1774
 μ : -8.9
 σ : 33.3

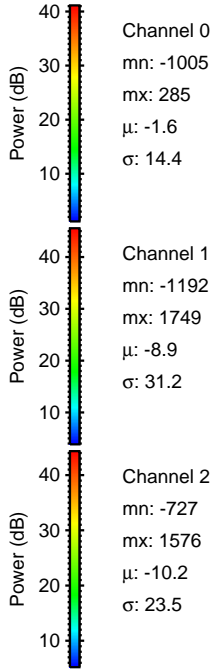
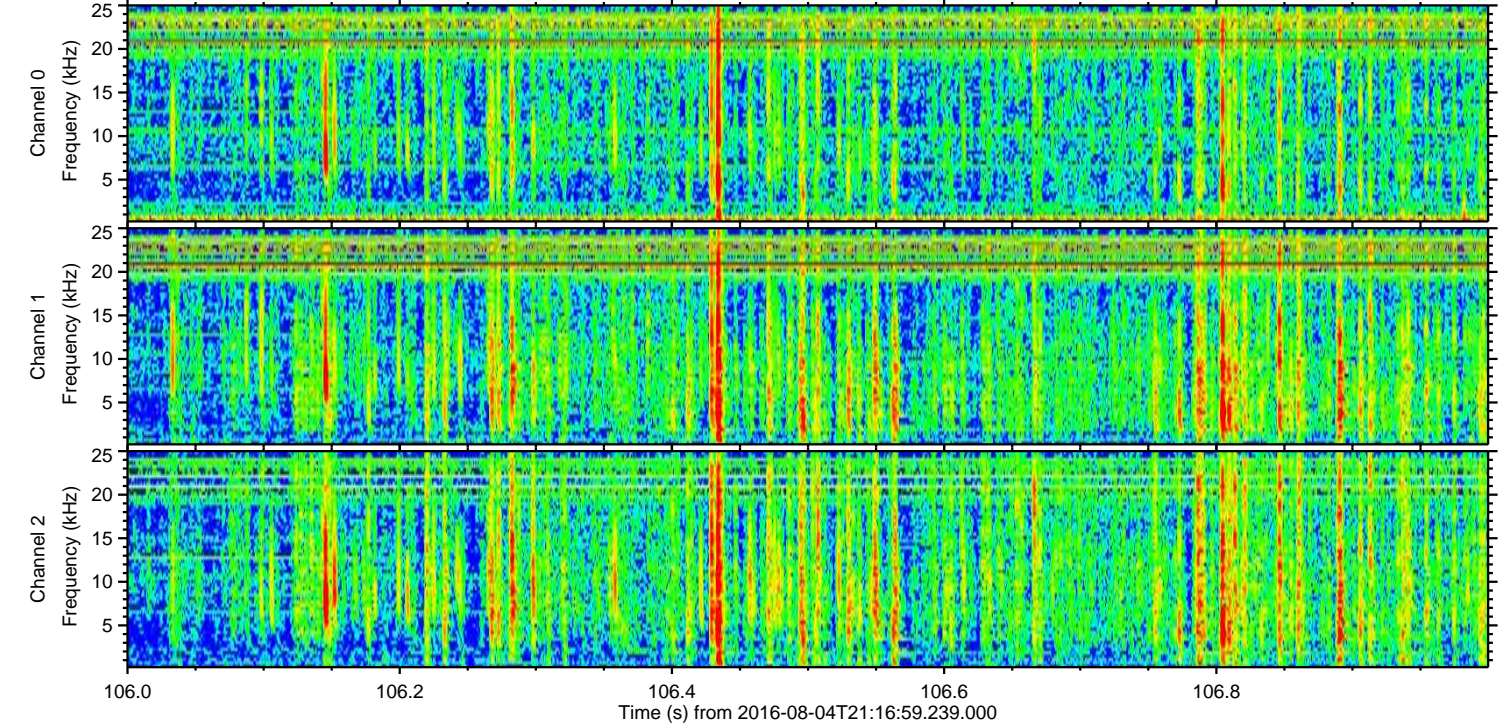
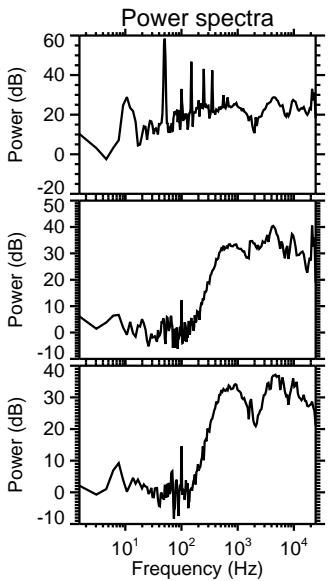
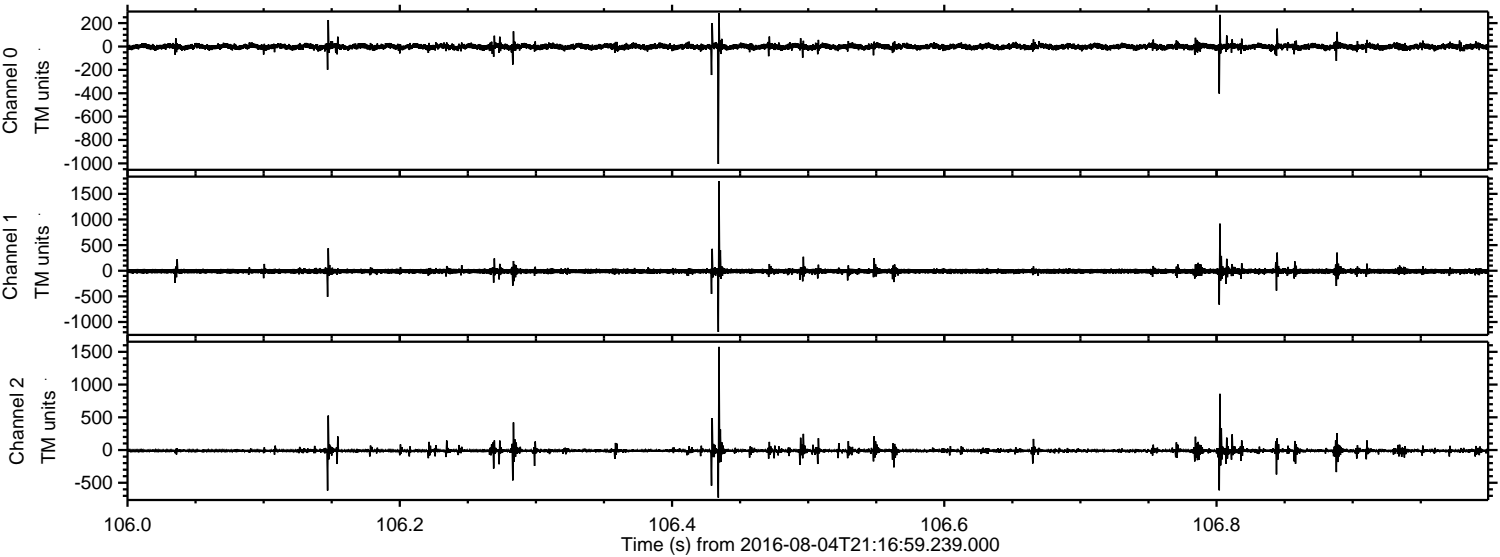
Channel 2
mn: -754
mx: 1578
 μ : -10.2
 σ : 24.3

Processed Thu Aug 4 23:25:38 2016 by ELM ver.2012-10-06 from 001__elm20160804_211658__dat00.bin



ELMAVAN 3D WAVEFORMS (Measured data sampled at 50 kHz) 51000 packets of 144 samples from 2016-08-04T21:16:59.239.000. Part 107/147

Processed Thu Aug 4 23:25:39 2016 by ELM ver.2012-10-06 from 001__elm20160804_211658__dat00.bin

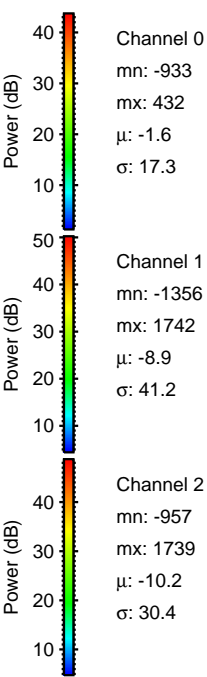
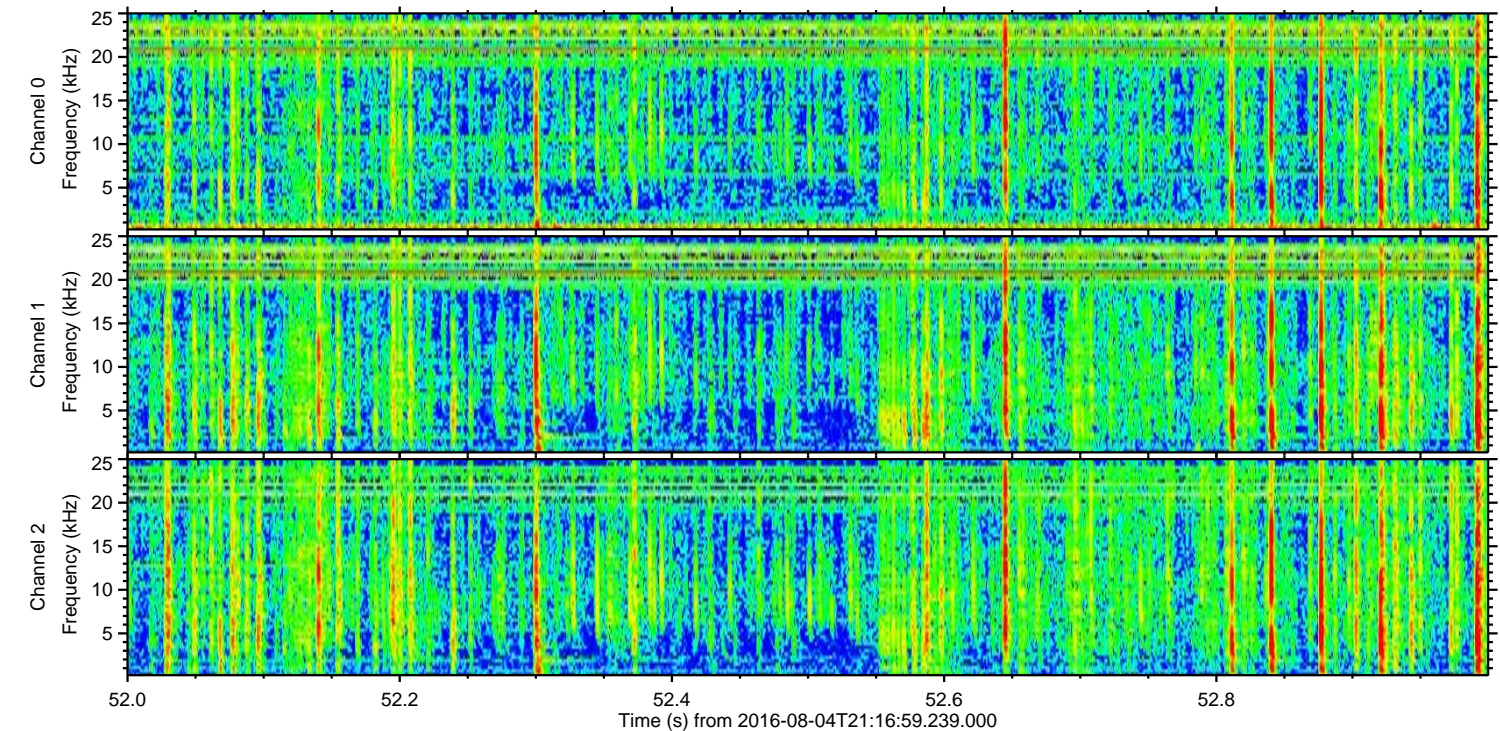
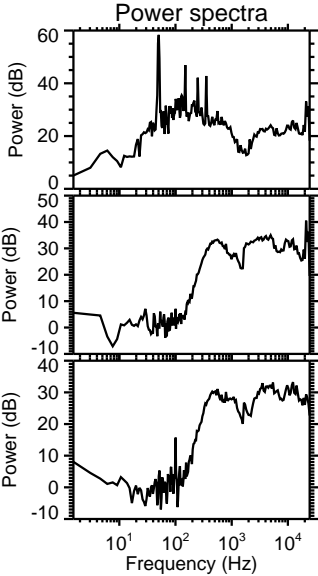
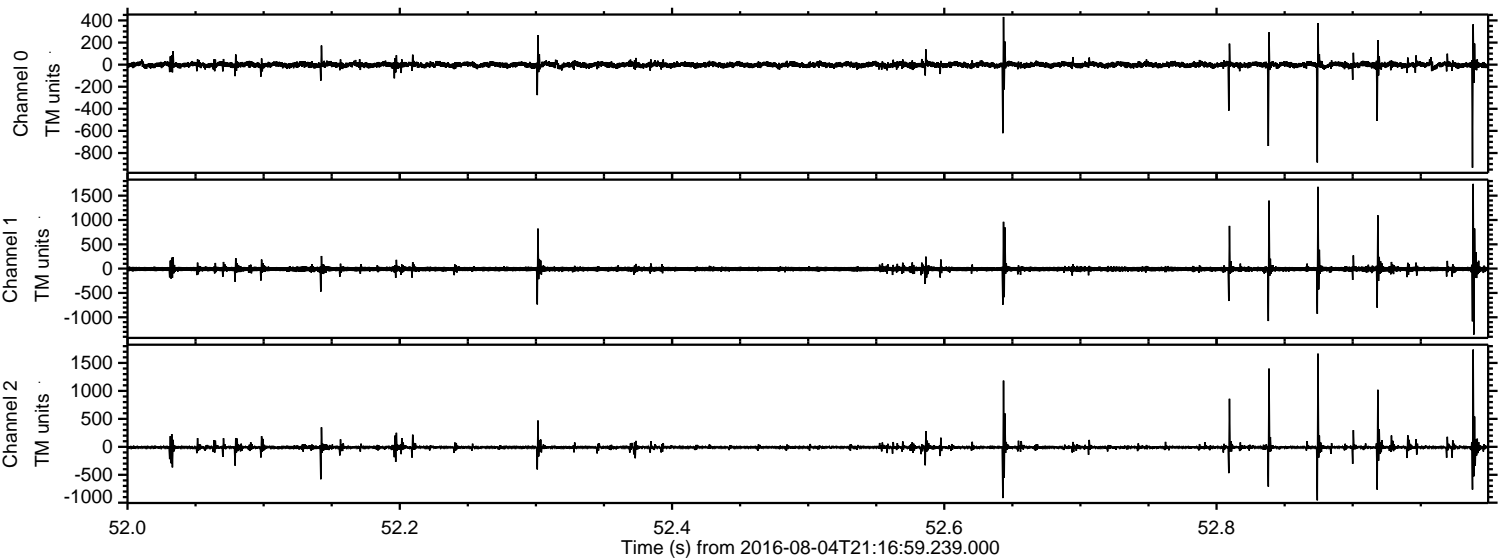


Channel 0
mn: -1005
mx: 285
 μ : -1.6
 σ : 14.4

Channel 1
mn: -1192
mx: 1749
 μ : -8.9
 σ : 31.2

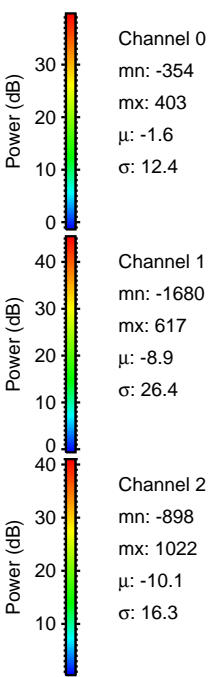
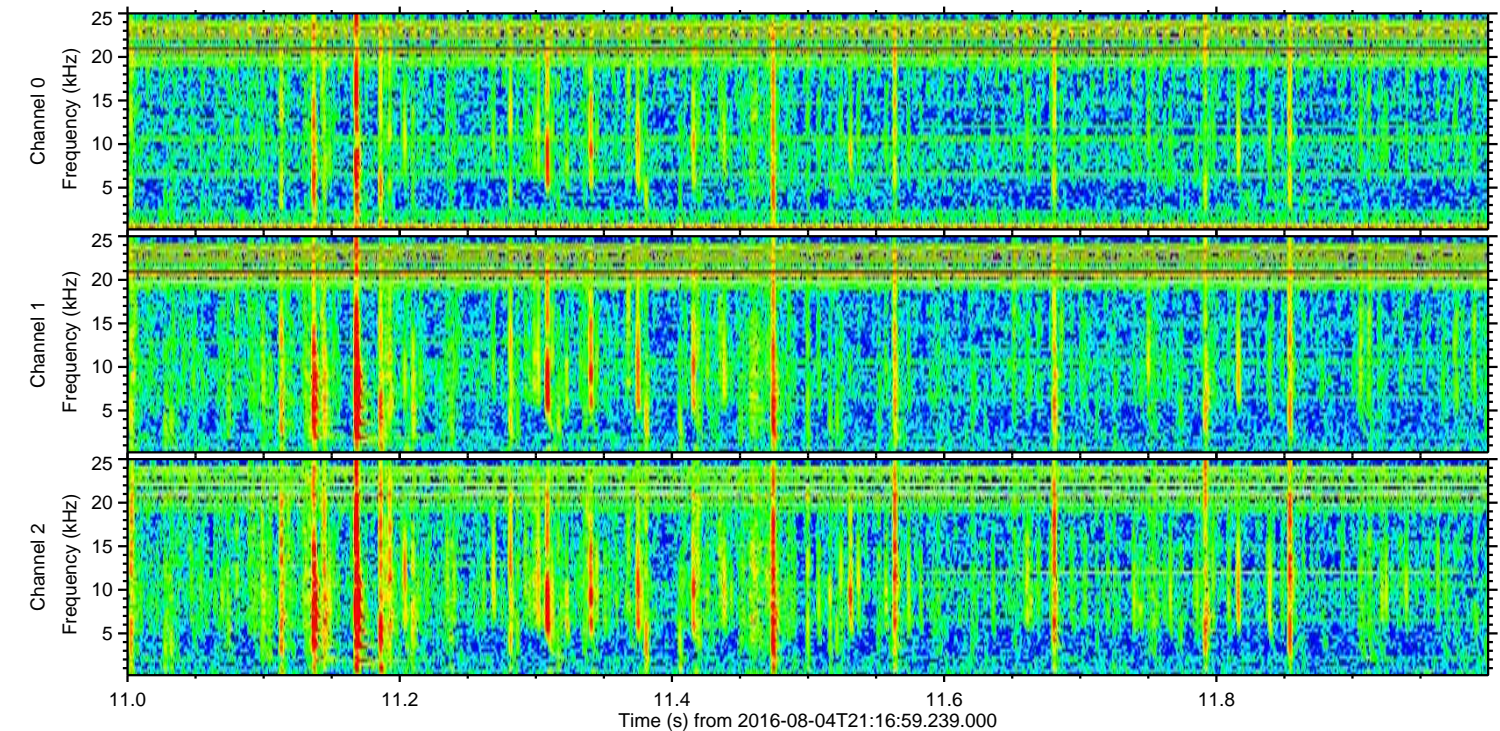
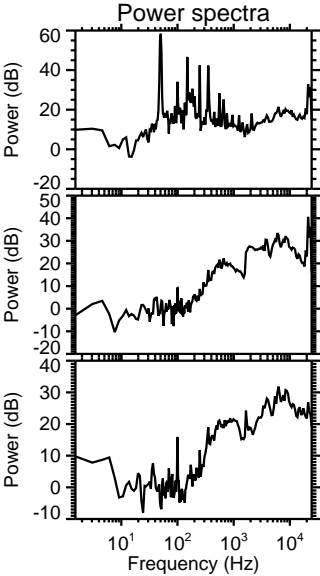
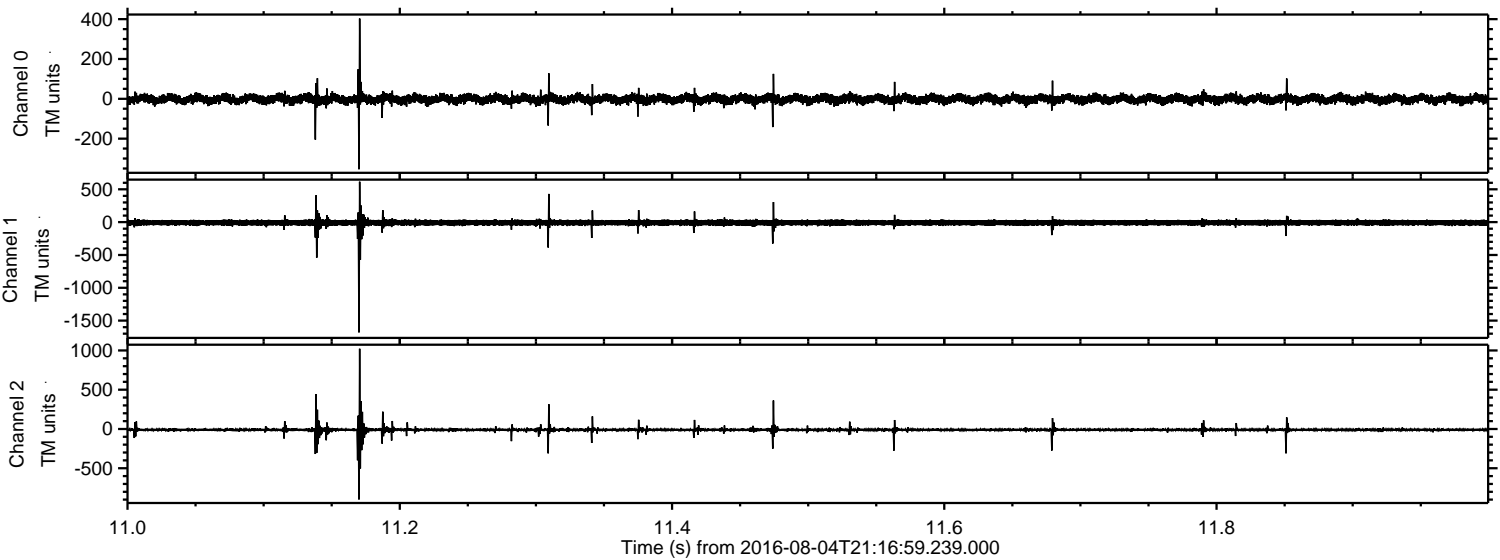
Channel 2
mn: -727
mx: 1576
 μ : -10.2
 σ : 23.5

Processed Thu Aug 4 23:25:40 2016 by ELM ver.2012-10-06 from 001__elm20160804_211658__dat00.bin



ELMAVAN 3D WAVEFORMS (Measured data sampled at 50 kHz) 51000 packets of 144 samples from 2016-08-04T21:16:59.239.000. Part 12/147

Processed Thu Aug 4 23:25:41 2016 by ELM ver.2012-10-06 from 001__elm20160804_211658__dat00.bin



ELMAVAN 3D WAVEFORMS (Measured data sampled at 50 kHz) 51000 packets of 144 samples from 2016-08-04T21:16:59.239.000. Part 125/147

Processed Thu Aug 4 23:25:41 2016 by ELM ver.2012-10-06 from 001__elm20160804_211658__dat00.bin

