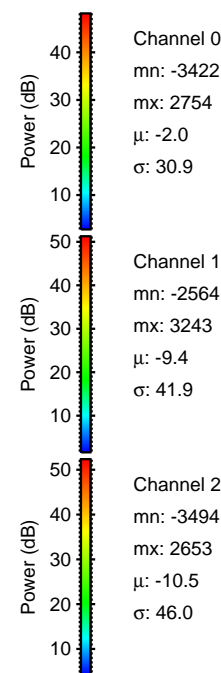
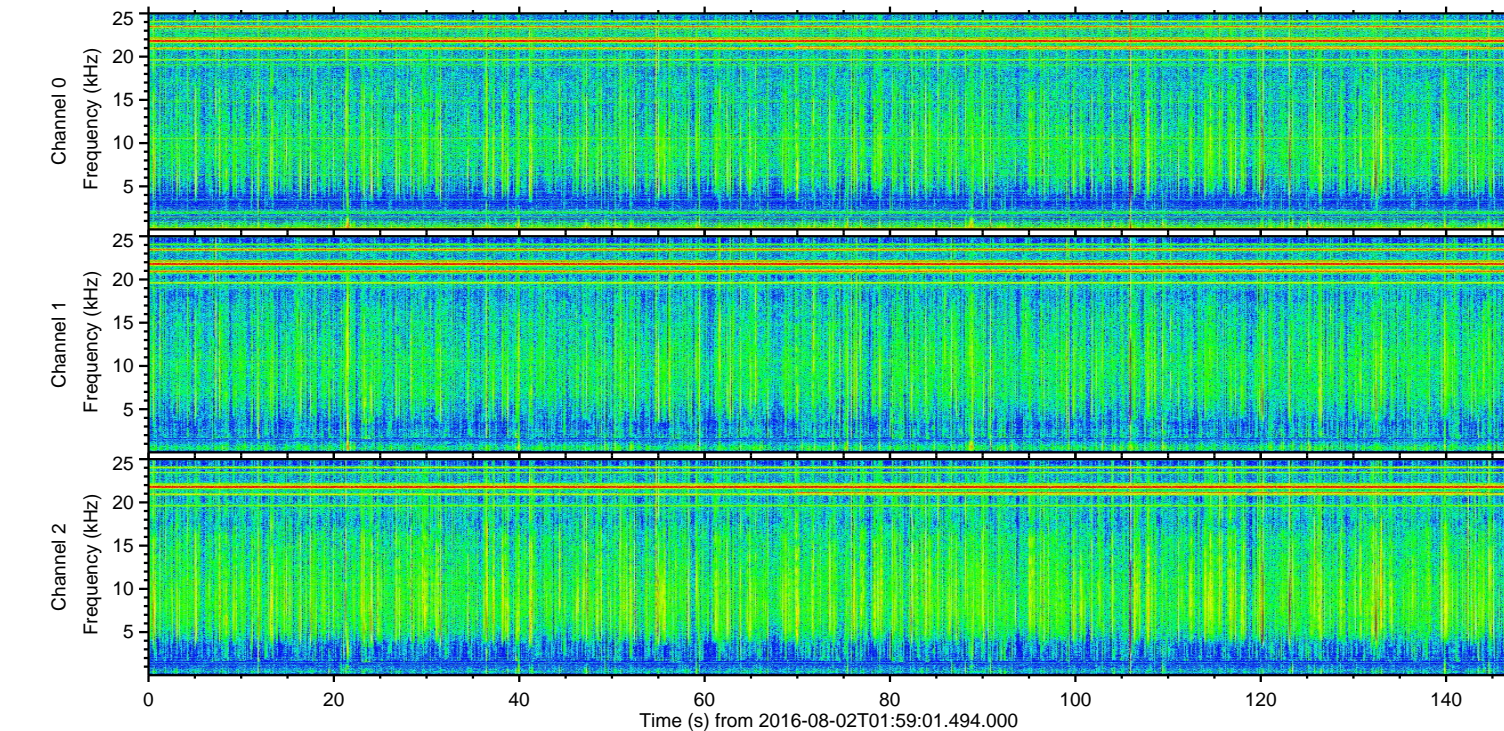
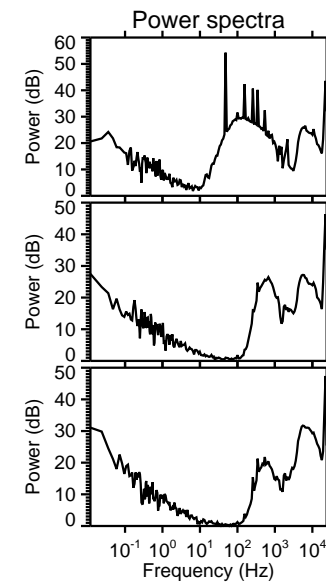
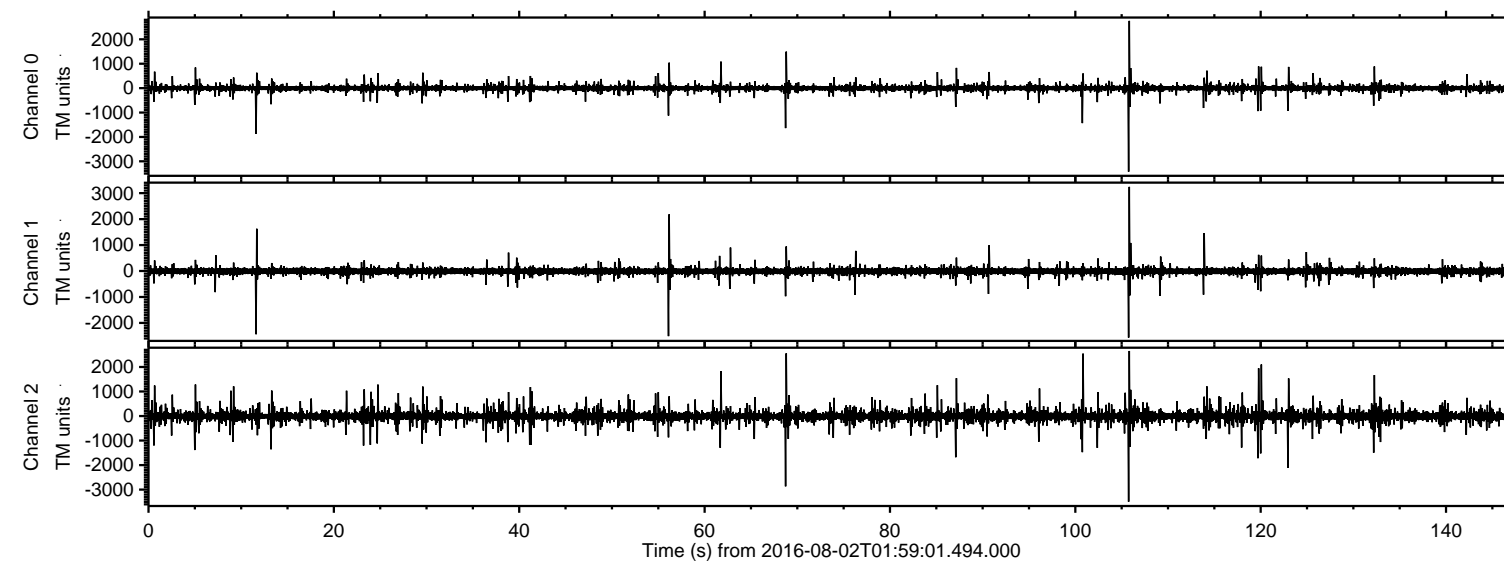


# ELMAVAN 3D WAVEFORMS (Measured data sampled at 50 kHz) 51000 packets of 144 samples from 2016-08-02T01:59:01.494.000.

Processed Tue Aug 2 04:06:19 2016 by ELM ver.2012-10-06 from 001\_\_elm20160802\_015900\_\_dat00.bin



Channel 0  
mn: -3422  
mx: 2754  
 $\mu$ : -2.0  
 $\sigma$ : 30.9

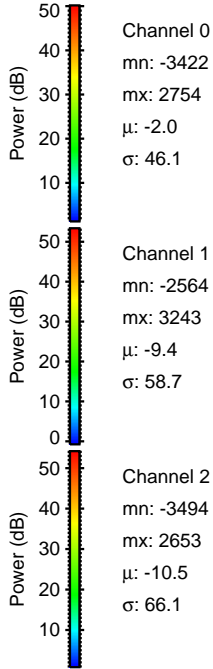
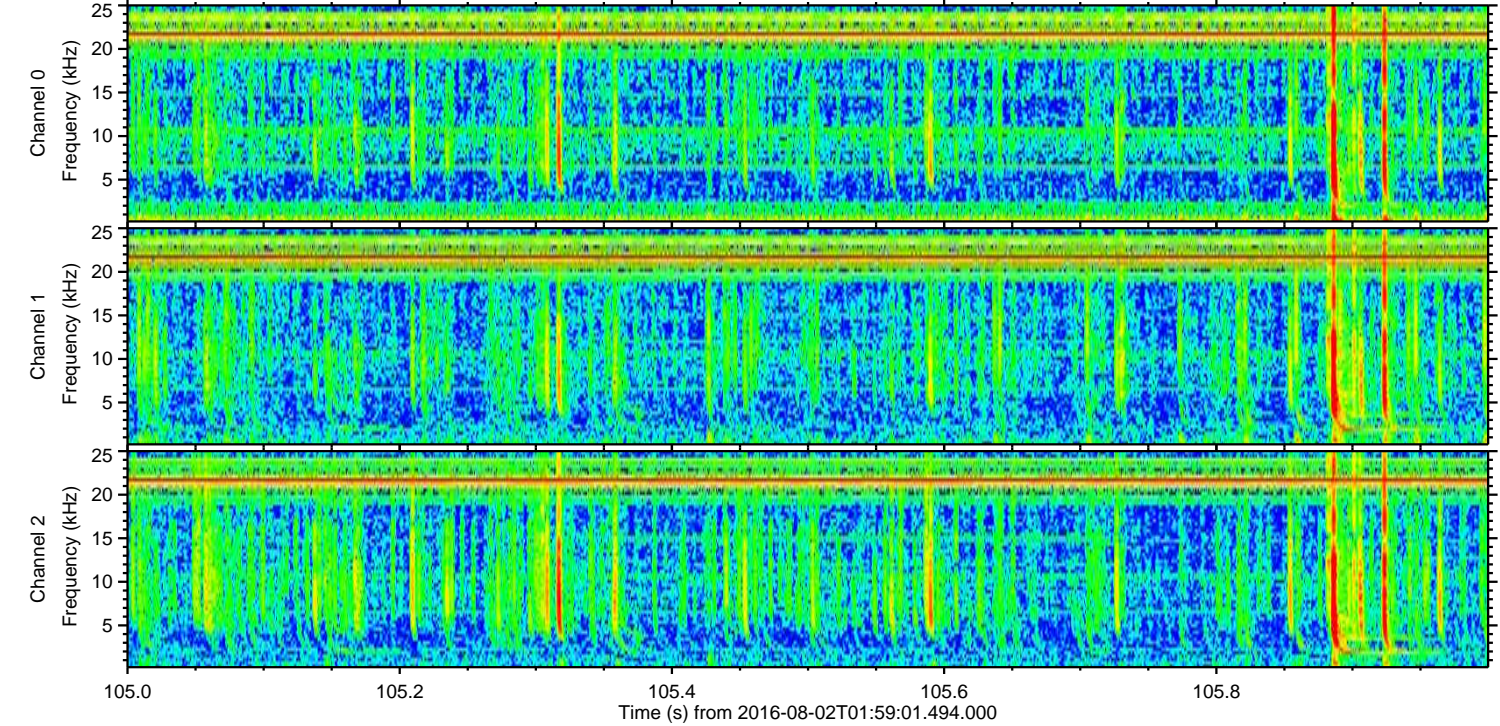
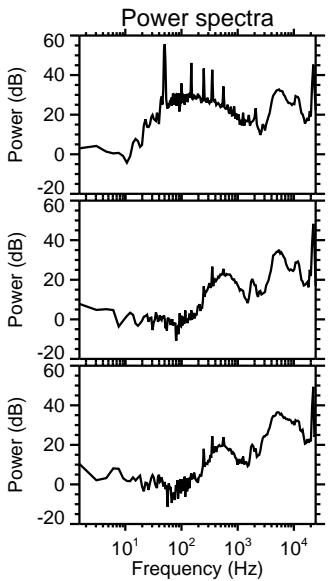
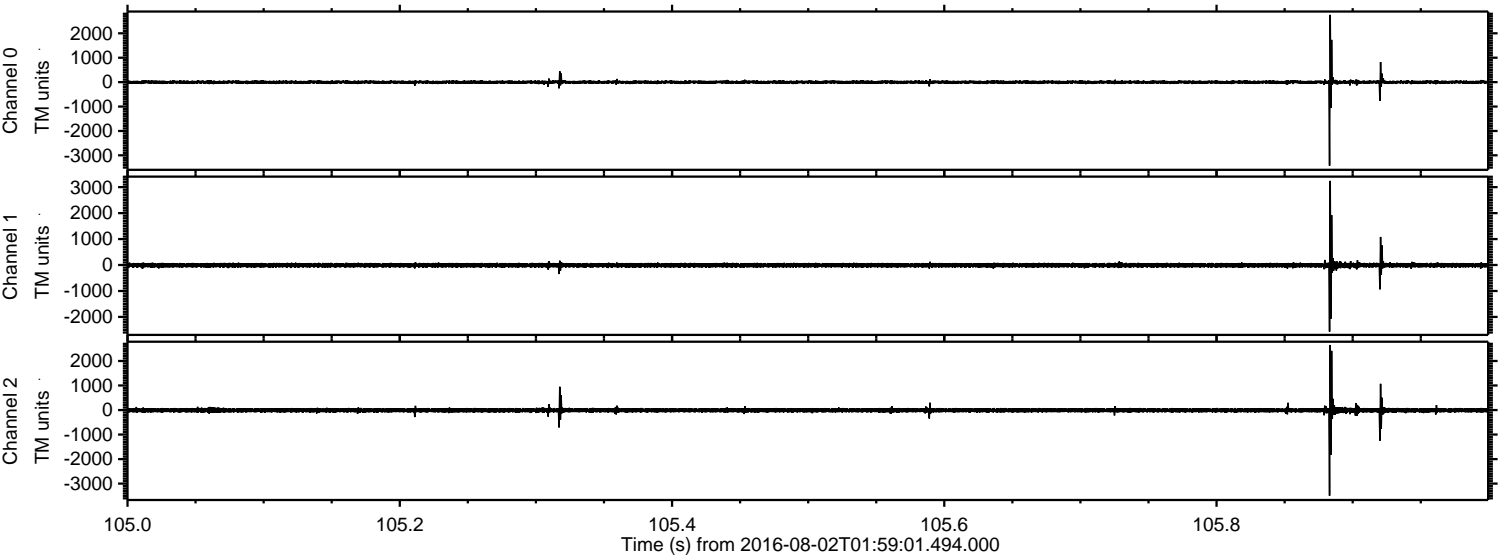
Channel 1  
mn: -2564  
mx: 3243  
 $\mu$ : -9.4  
 $\sigma$ : 41.9

Channel 2  
mn: -3494  
mx: 2653  
 $\mu$ : -10.5  
 $\sigma$ : 46.0



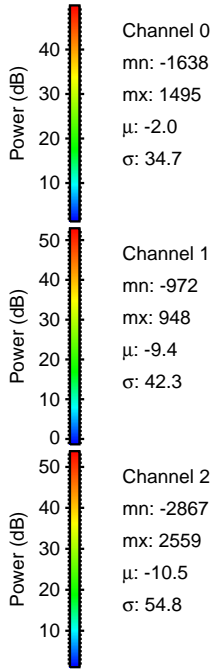
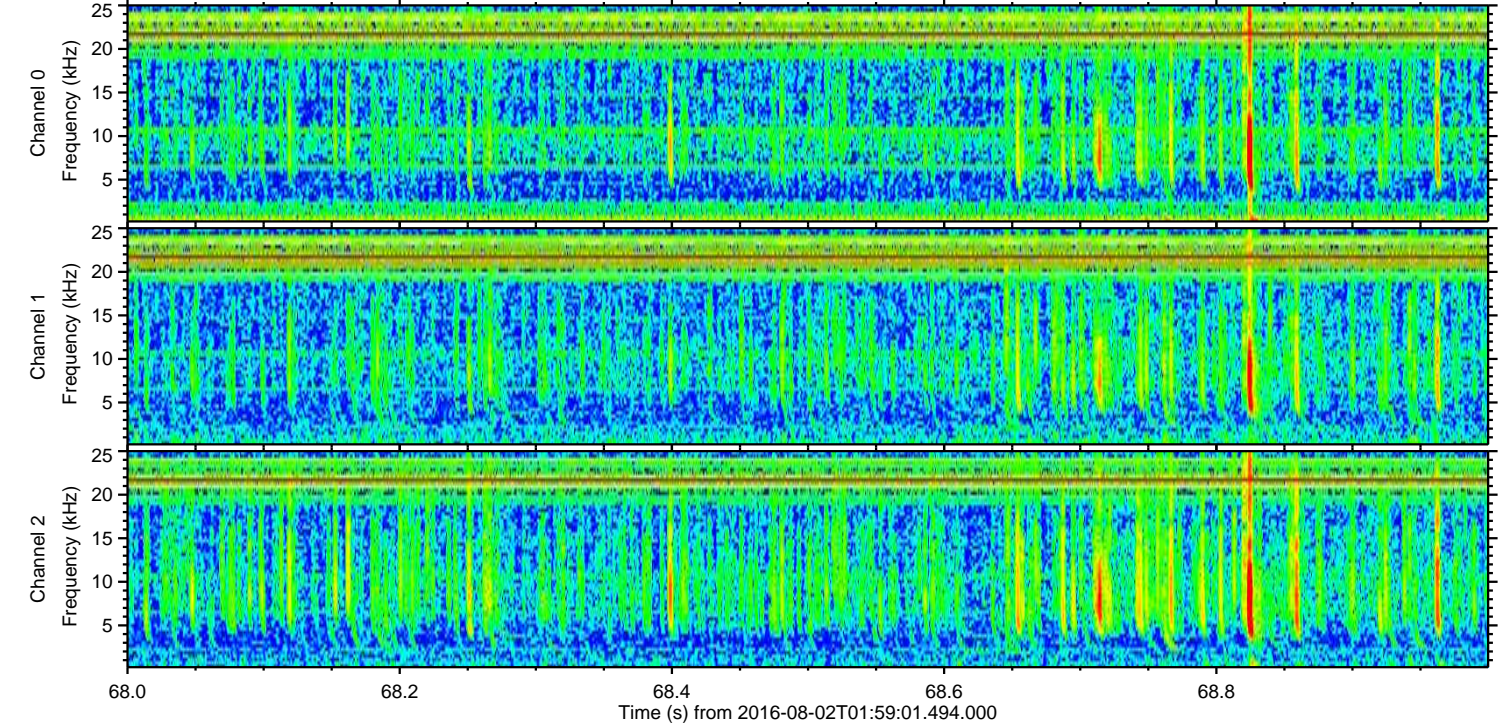
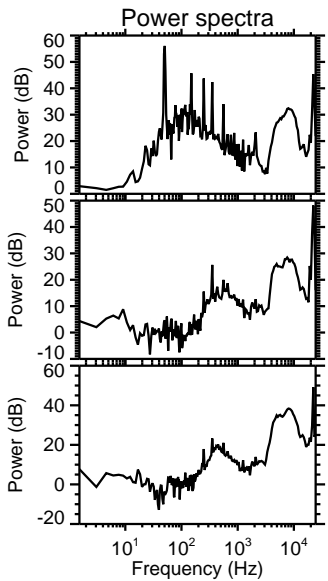
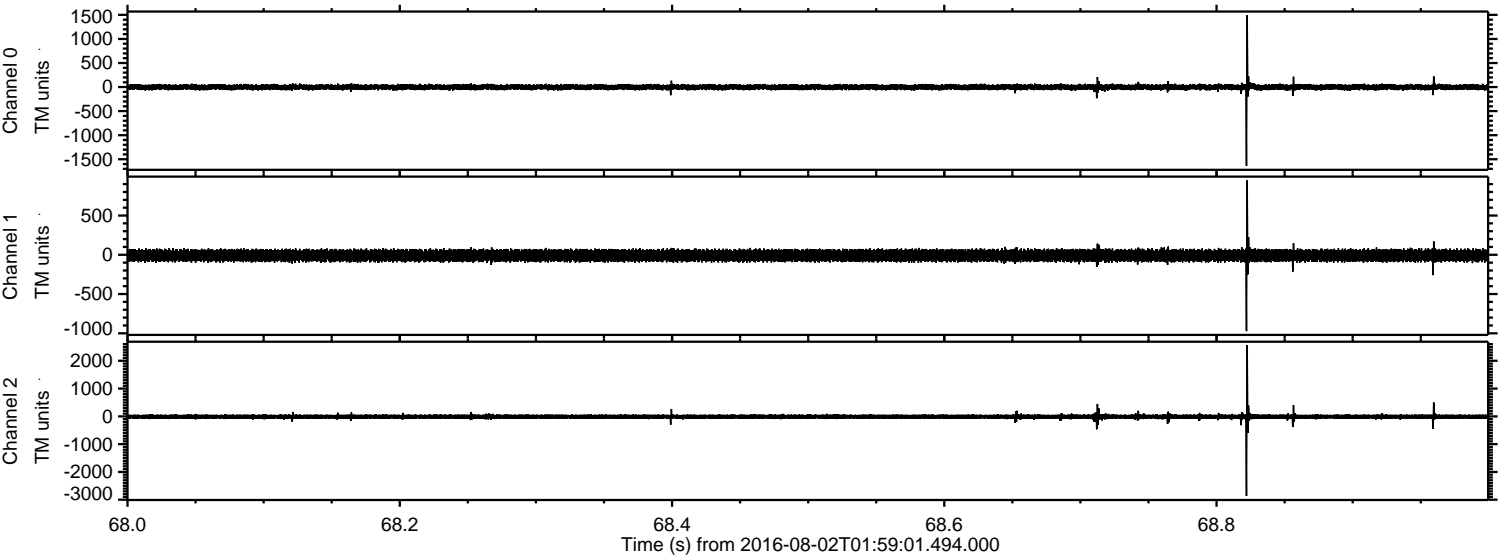
ELMAVAN 3D WAVEFORMS (Measured data sampled at 50 kHz) 51000 packets of 144 samples from 2016-08-02T01:59:01.494.000. Part 106/147

Processed Tue Aug 2 04:06:31 2016 by ELM ver.2012-10-06 from 001\_\_elm20160802\_015900\_\_dat00.bin





Processed Tue Aug 2 04:06:32 2016 by ELM ver.2012-10-06 from 001\_\_elm20160802\_015900\_\_dat00.bin



Channel 0  
mn: -1638  
mx: 1495  
 $\mu$ : -2.0  
 $\sigma$ : 34.7

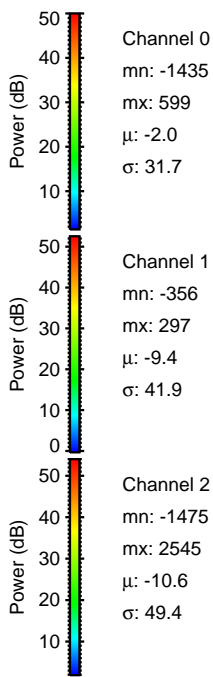
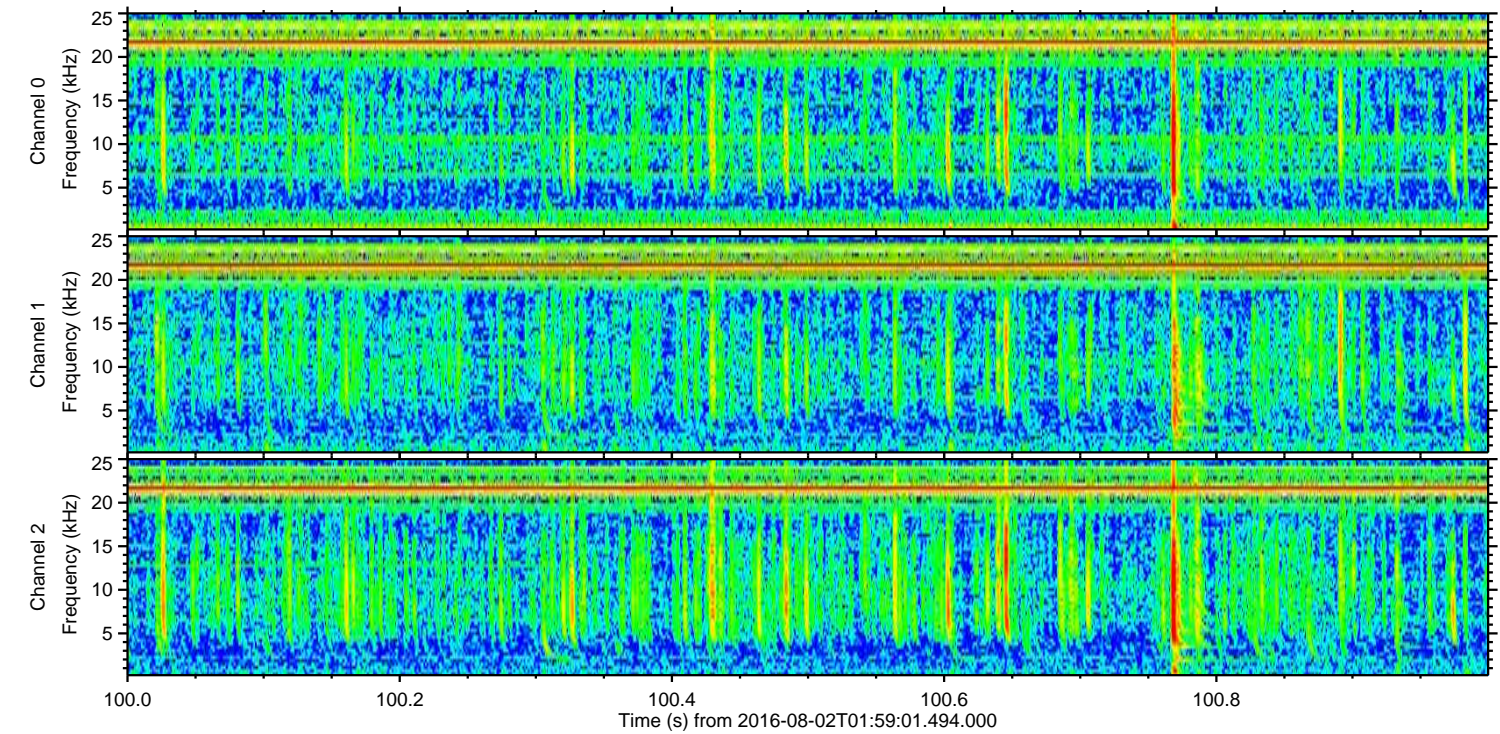
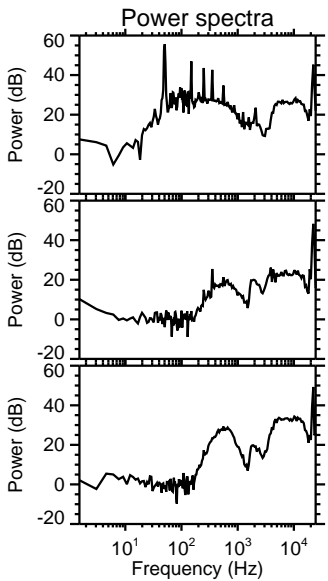
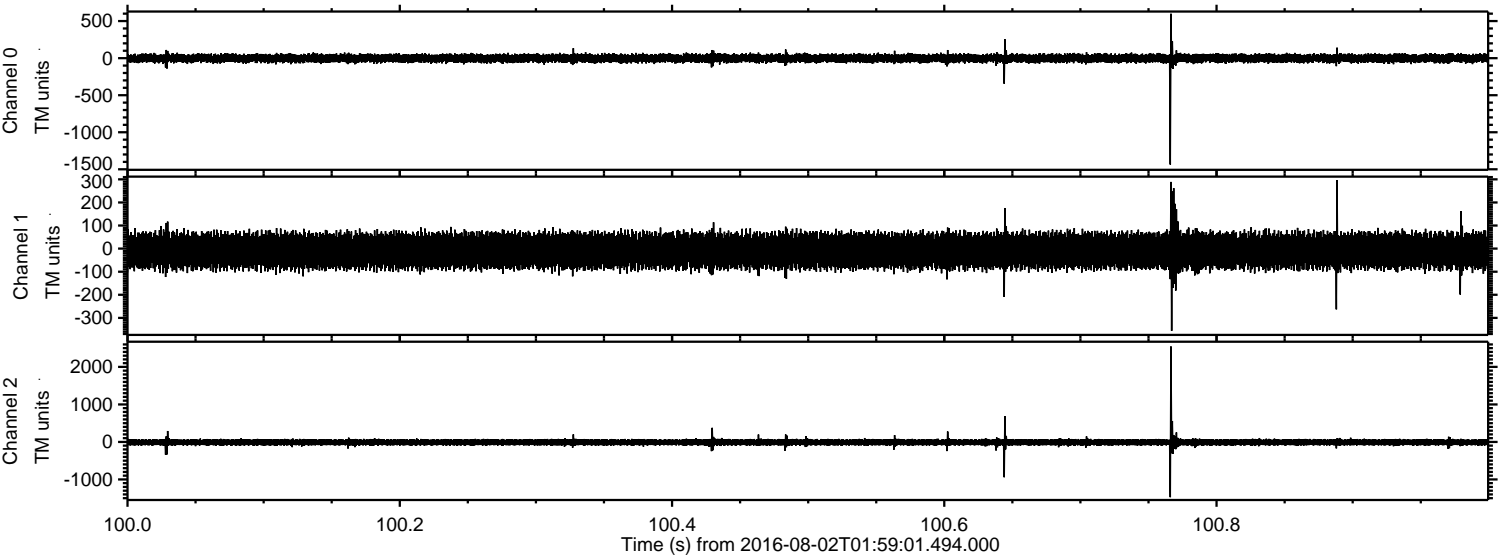
Channel 1  
mn: -972  
mx: 948  
 $\mu$ : -9.4  
 $\sigma$ : 42.3

Channel 2  
mn: -2867  
mx: 2559  
 $\mu$ : -10.5  
 $\sigma$ : 54.8



ELMAVAN 3D WAVEFORMS (Measured data sampled at 50 kHz) 51000 packets of 144 samples from 2016-08-02T01:59:01.494.000. Part 101/147

Processed Tue Aug 2 04:06:33 2016 by ELM ver.2012-10-06 from 001\_\_elm20160802\_015900\_\_dat00.bin



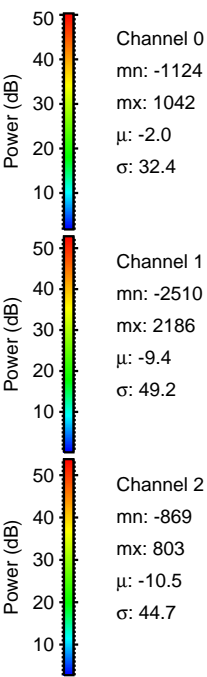
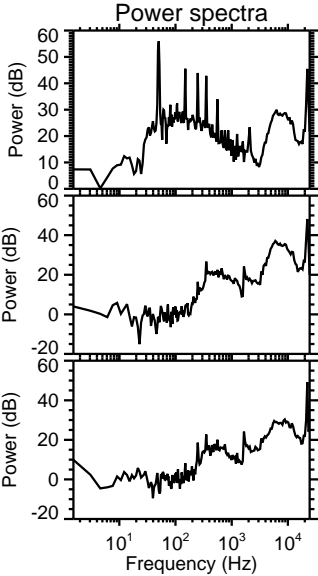
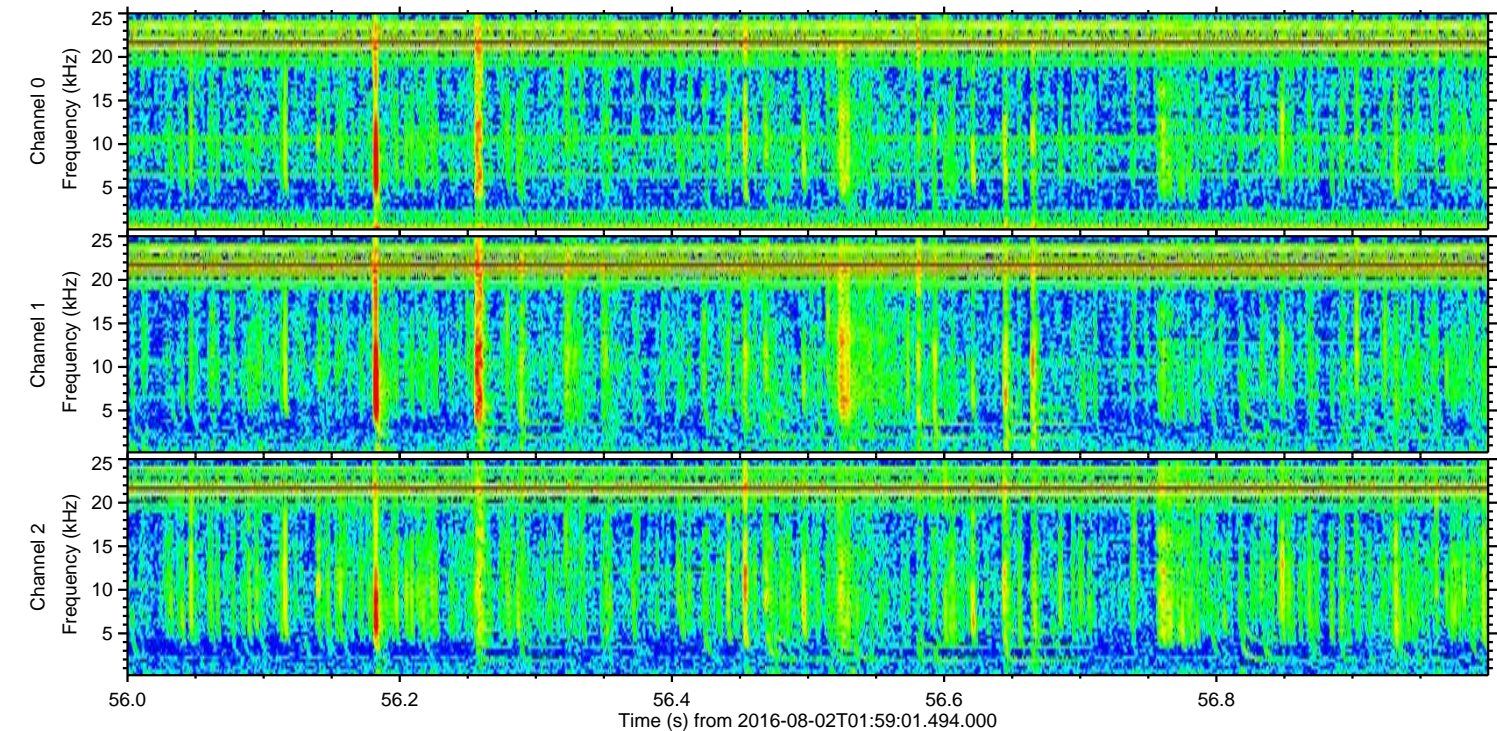
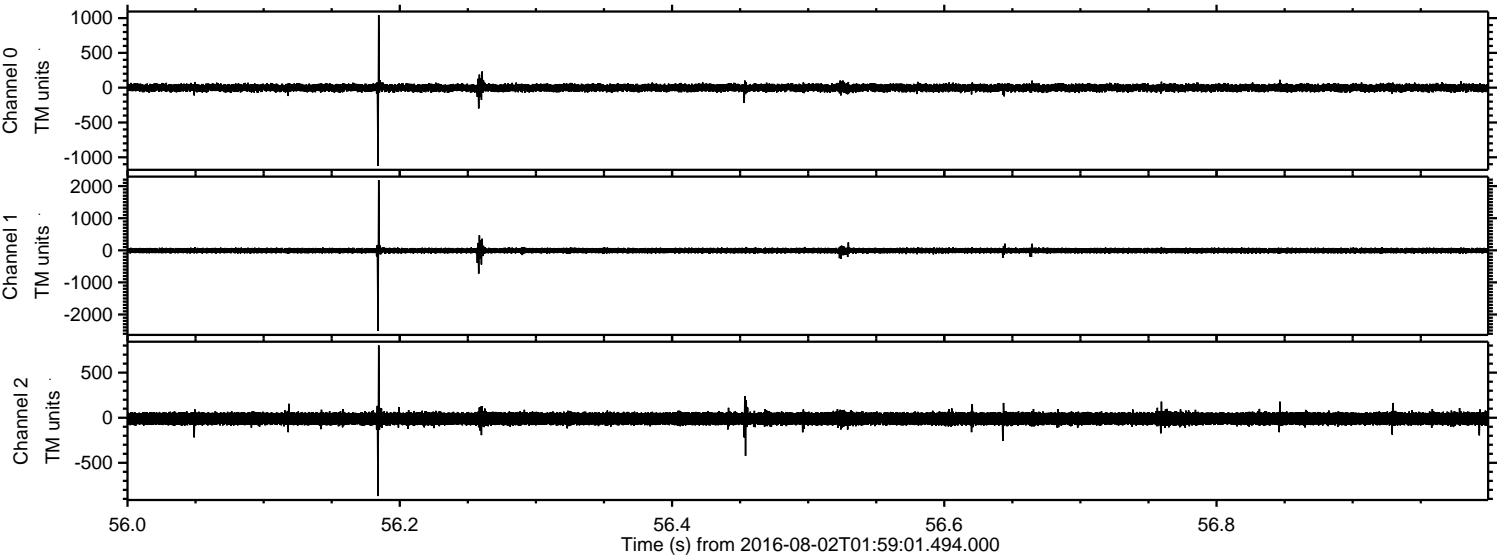
Channel 0  
mn: -1435  
mx: 599  
 $\mu$ : -2.0  
 $\sigma$ : 31.7

Channel 1  
mn: -356  
mx: 297  
 $\mu$ : -9.4  
 $\sigma$ : 41.9

Channel 2  
mn: -1475  
mx: 2545  
 $\mu$ : -10.6  
 $\sigma$ : 49.4



Processed Tue Aug 2 04:06:34 2016 by ELM ver.2012-10-06 from 001\_\_elm20160802\_015900\_\_dat00.bin



Channel 0  
mn: -1124  
mx: 1042  
 $\mu$ : -2.0  
 $\sigma$ : 32.4

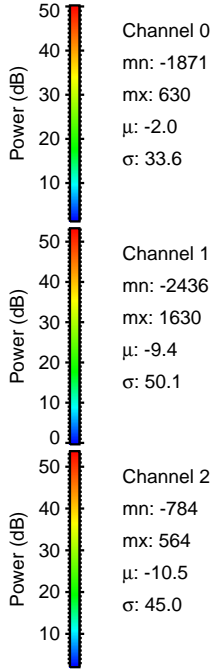
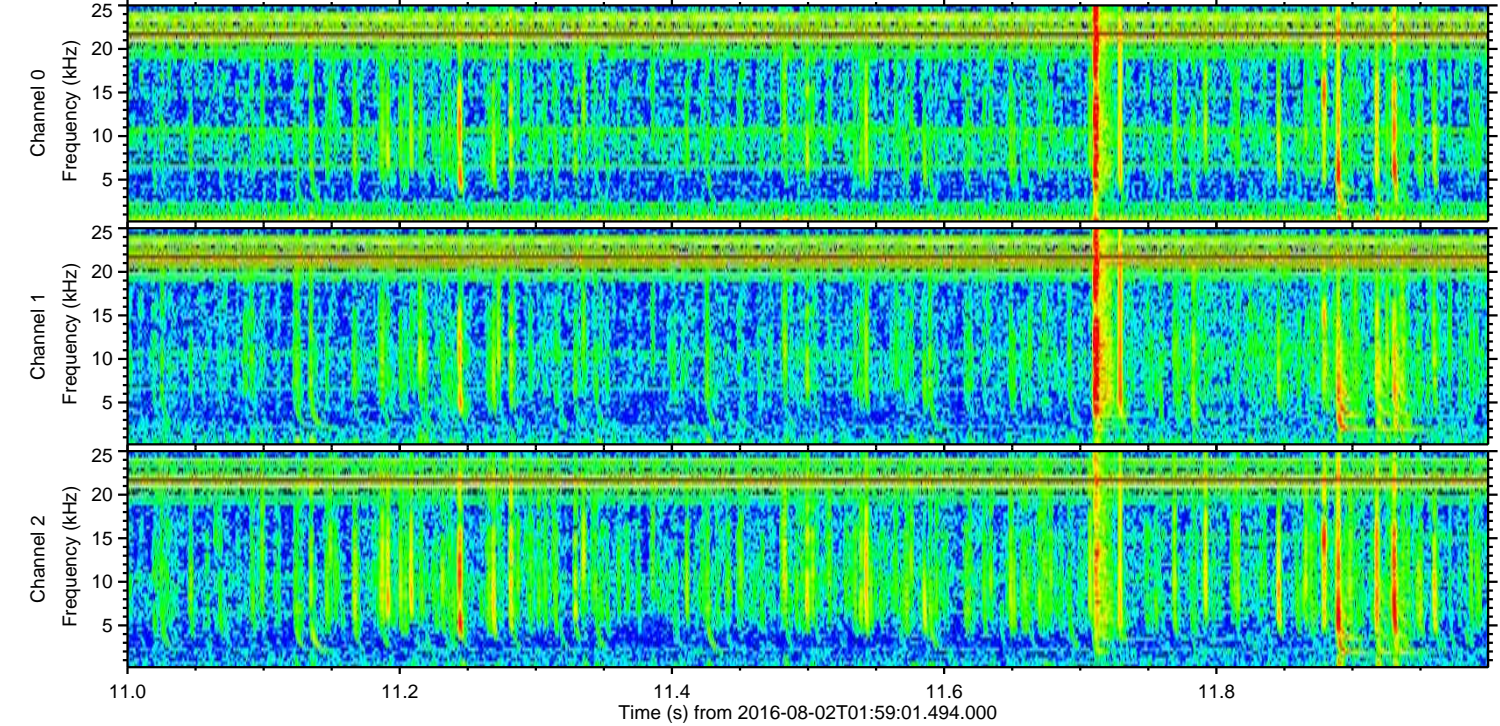
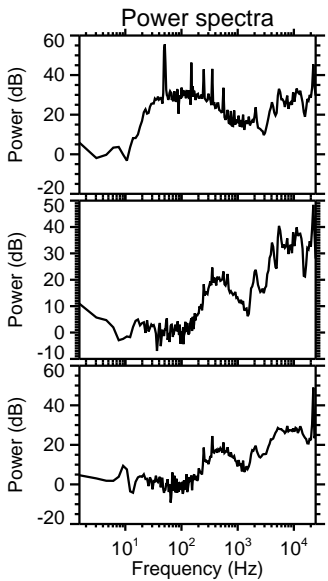
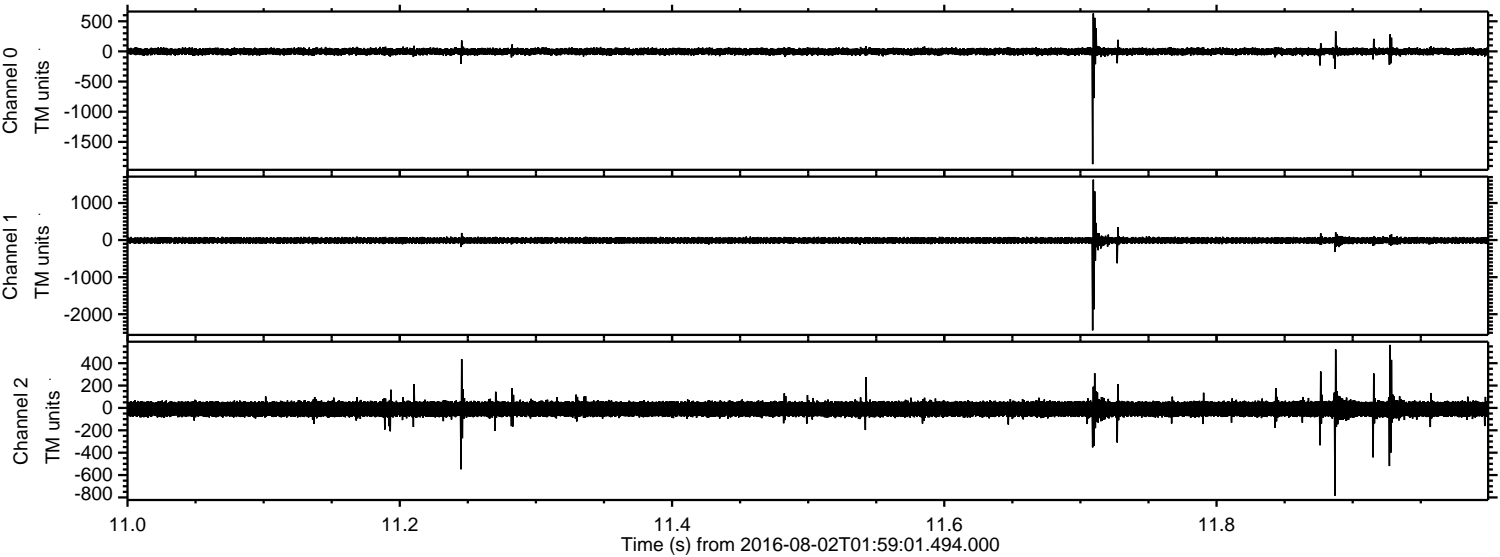
Channel 1  
mn: -2510  
mx: 2186  
 $\mu$ : -9.4  
 $\sigma$ : 49.2

Channel 2  
mn: -869  
mx: 803  
 $\mu$ : -10.5  
 $\sigma$ : 44.7



ELMAVAN 3D WAVEFORMS (Measured data sampled at 50 kHz) 51000 packets of 144 samples from 2016-08-02T01:59:01.494.000. Part 12/147

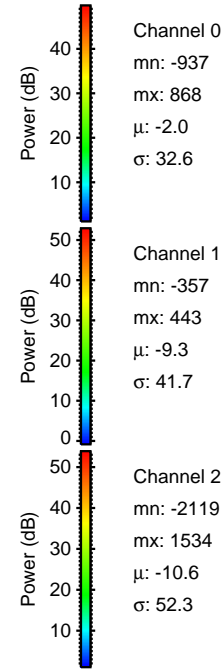
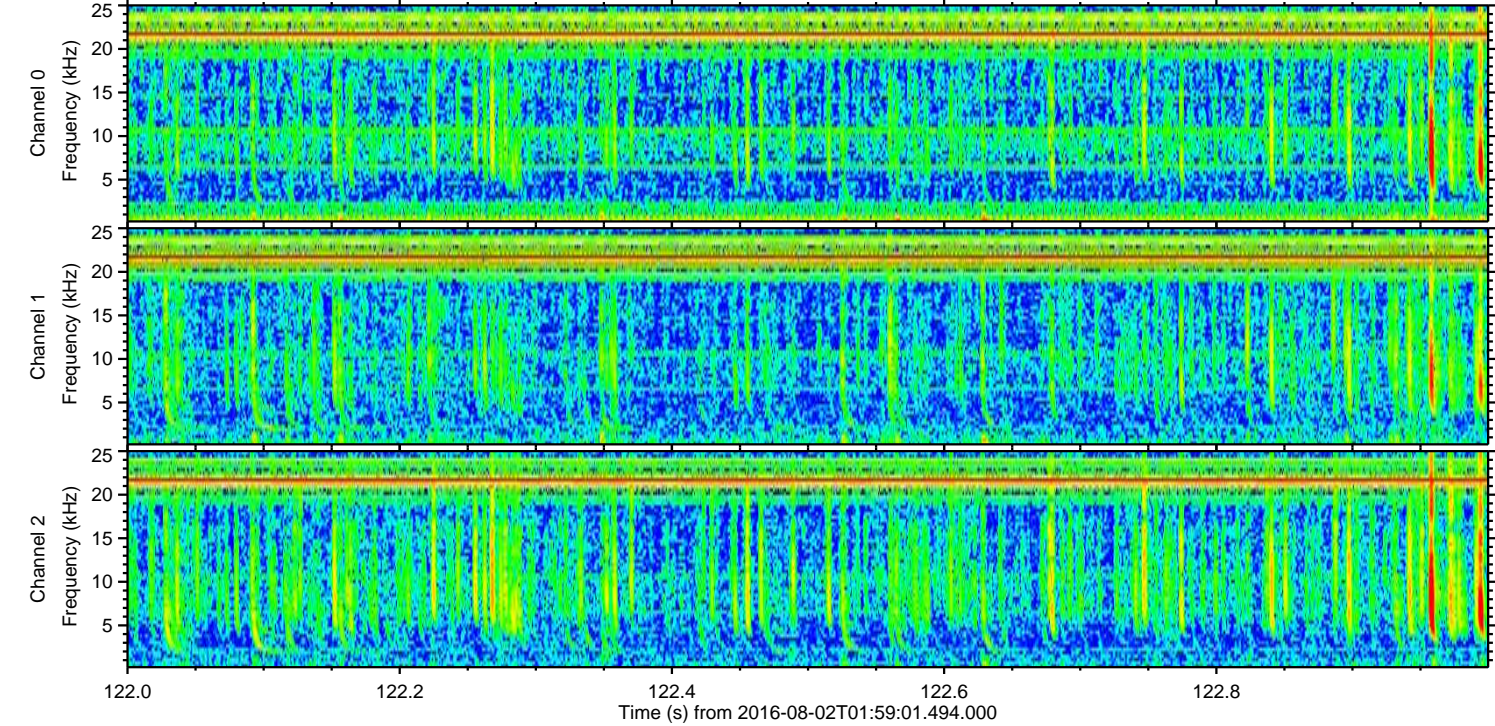
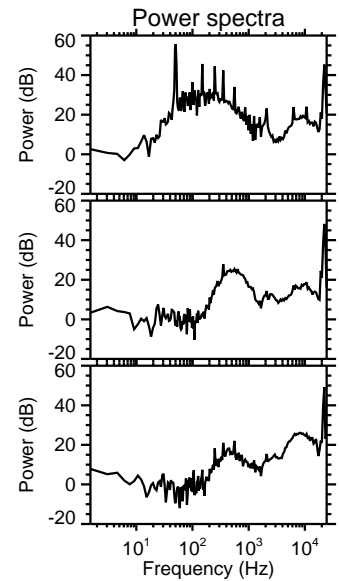
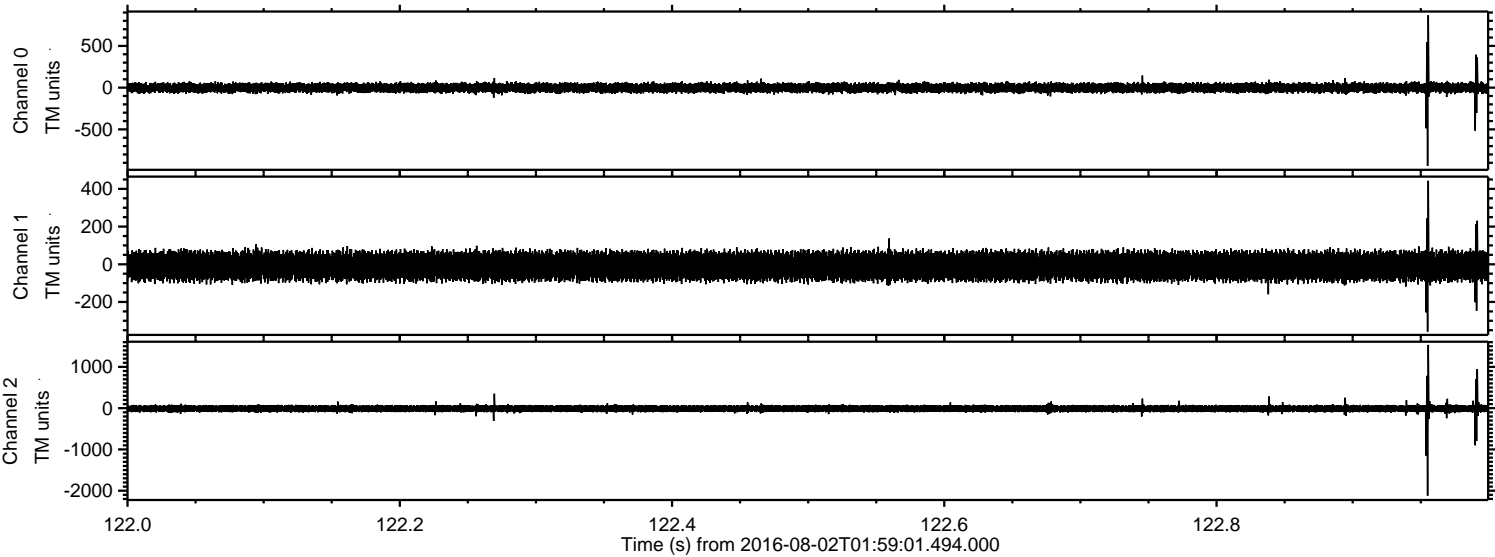
Processed Tue Aug 2 04:06:35 2016 by ELM ver.2012-10-06 from 001\_\_elm20160802\_015900\_\_dat00.bin





ELMAVAN 3D WAVEFORMS (Measured data sampled at 50 kHz) 51000 packets of 144 samples from 2016-08-02T01:59:01.494.000. Part 123/147

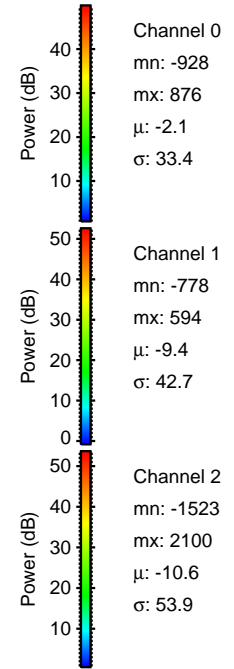
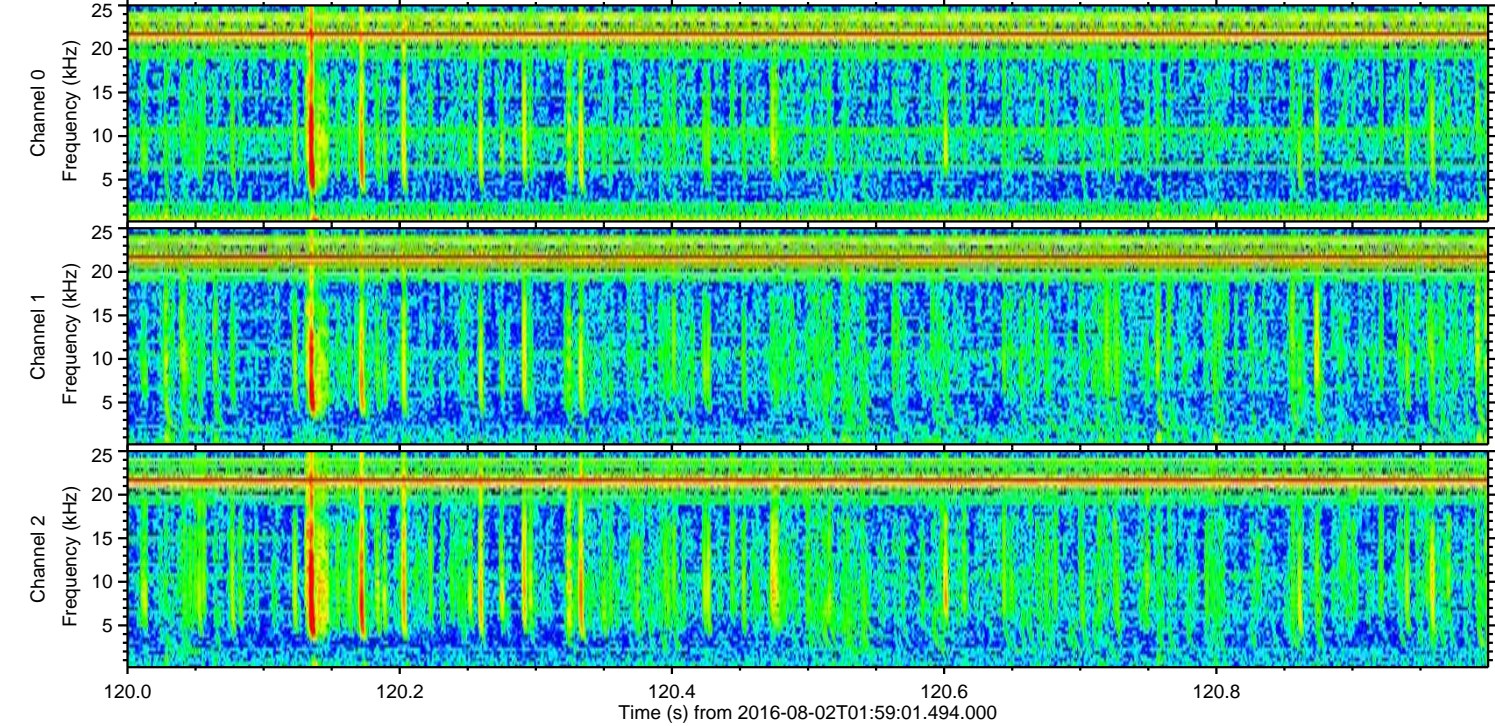
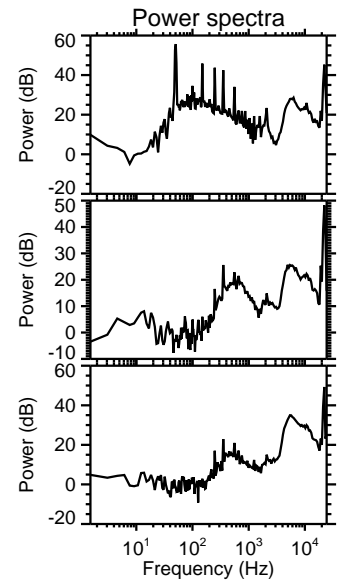
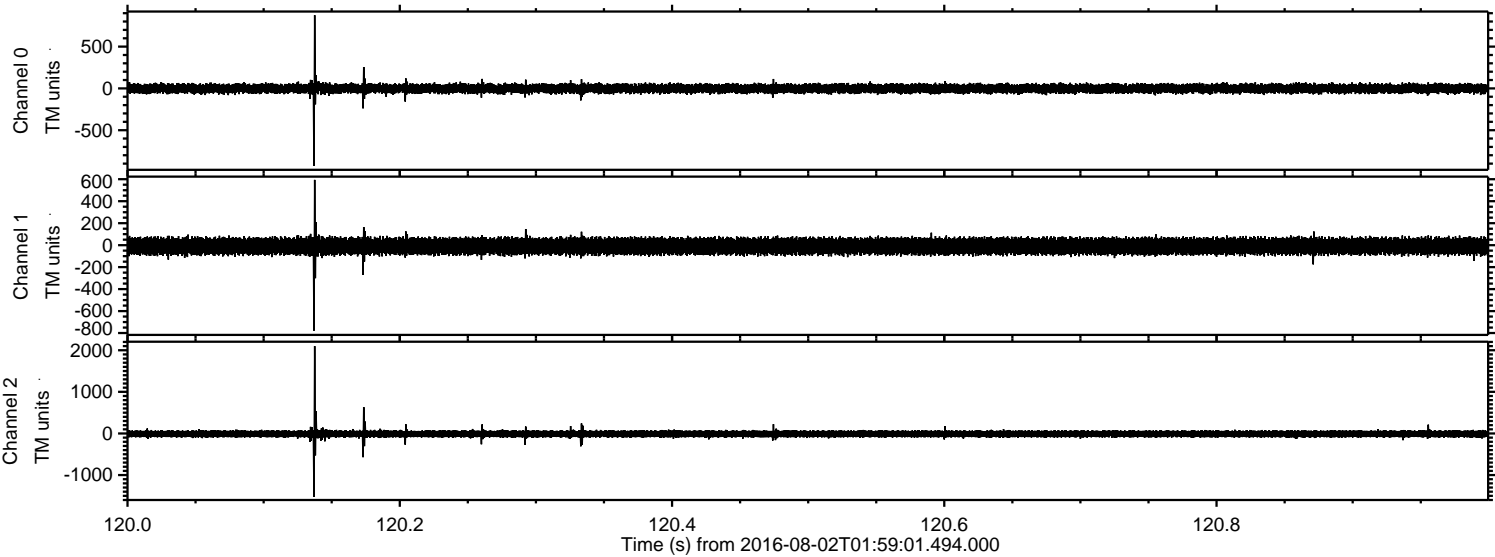
Processed Tue Aug 2 04:06:36 2016 by ELM ver.2012-10-06 from 001\_\_elm20160802\_015900\_\_dat00.bin





ELMAVAN 3D WAVEFORMS (Measured data sampled at 50 kHz) 51000 packets of 144 samples from 2016-08-02T01:59:01.494.000. Part 121/147

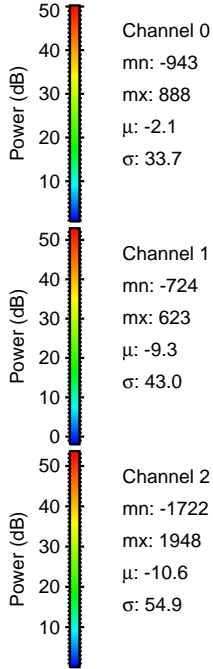
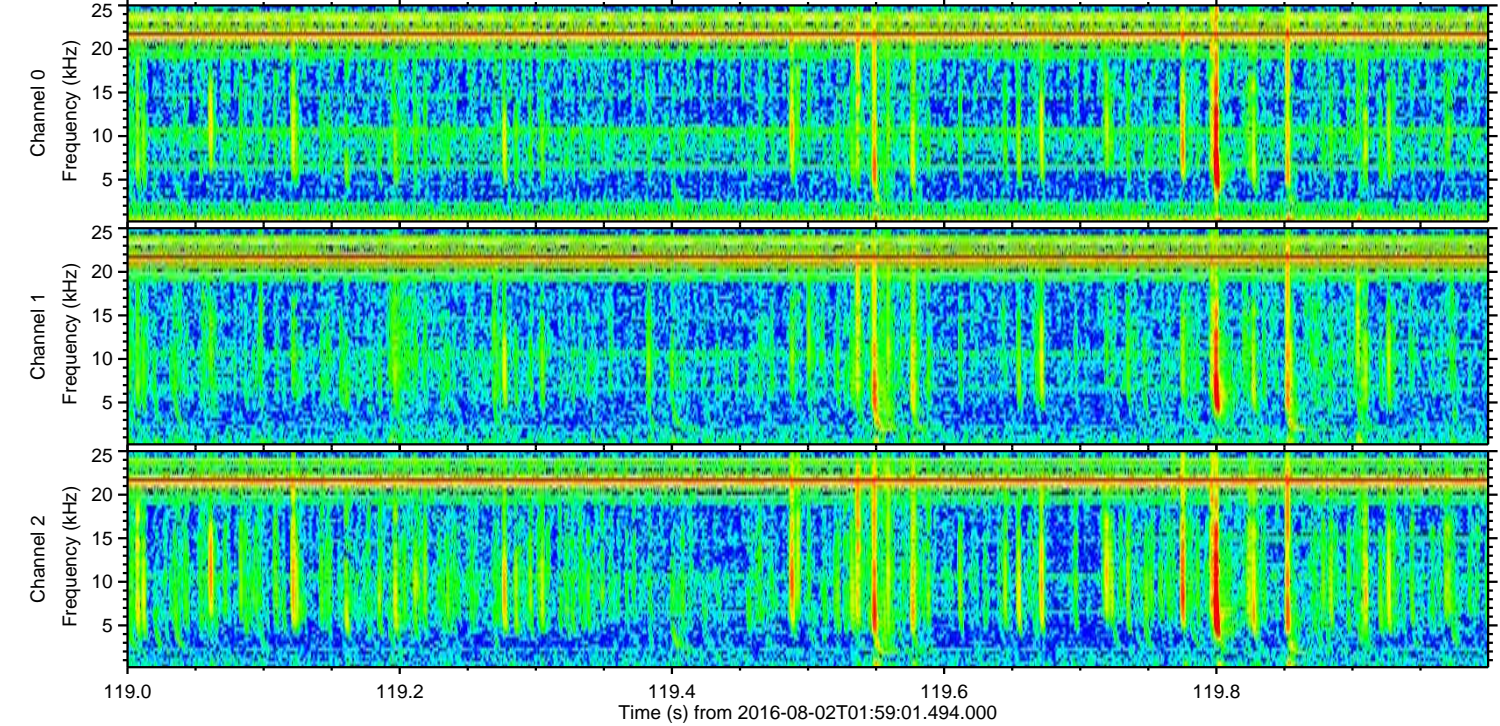
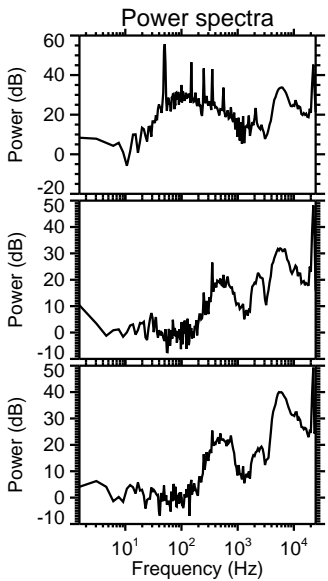
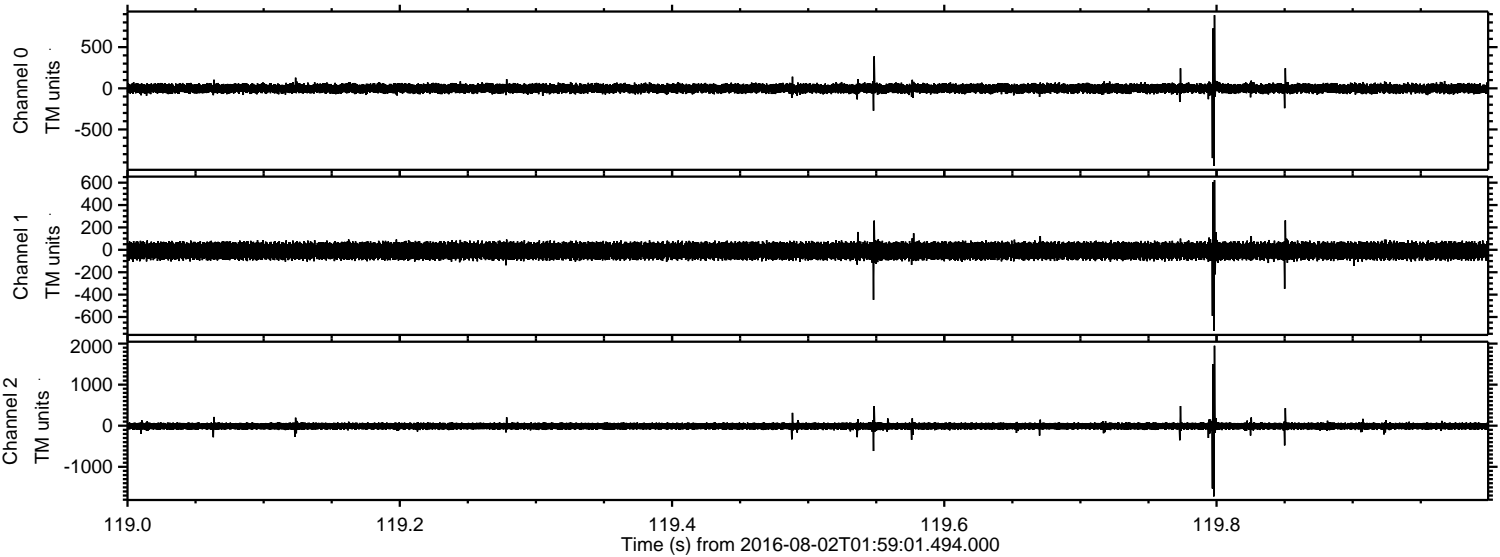
Processed Tue Aug 2 04:06:37 2016 by ELM ver.2012-10-06 from 001\_\_elm20160802\_015900\_\_dat00.bin





ELMAVAN 3D WAVEFORMS (Measured data sampled at 50 kHz) 51000 packets of 144 samples from 2016-08-02T01:59:01.494.000. Part 120/147

Processed Tue Aug 2 04:06:37 2016 by ELM ver.2012-10-06 from 001\_\_elm20160802\_015900\_\_dat00.bin



Channel 0  
mn: -943  
mx: 888  
 $\mu$ : -2.1  
 $\sigma$ : 33.7

Channel 1  
mn: -724  
mx: 623  
 $\mu$ : -9.3  
 $\sigma$ : 43.0

Channel 2  
mn: -1722  
mx: 1948  
 $\mu$ : -10.6  
 $\sigma$ : 54.9



Processed Tue Aug 2 04:06:38 2016 by ELM ver.2012-10-06 from 001\_\_elm20160802\_015900\_\_dat00.bin

