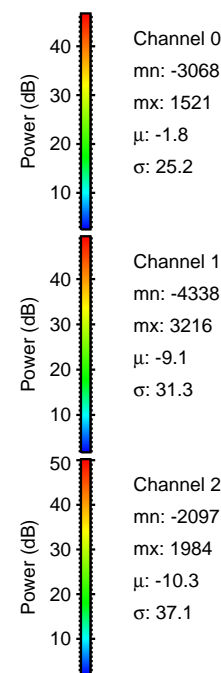
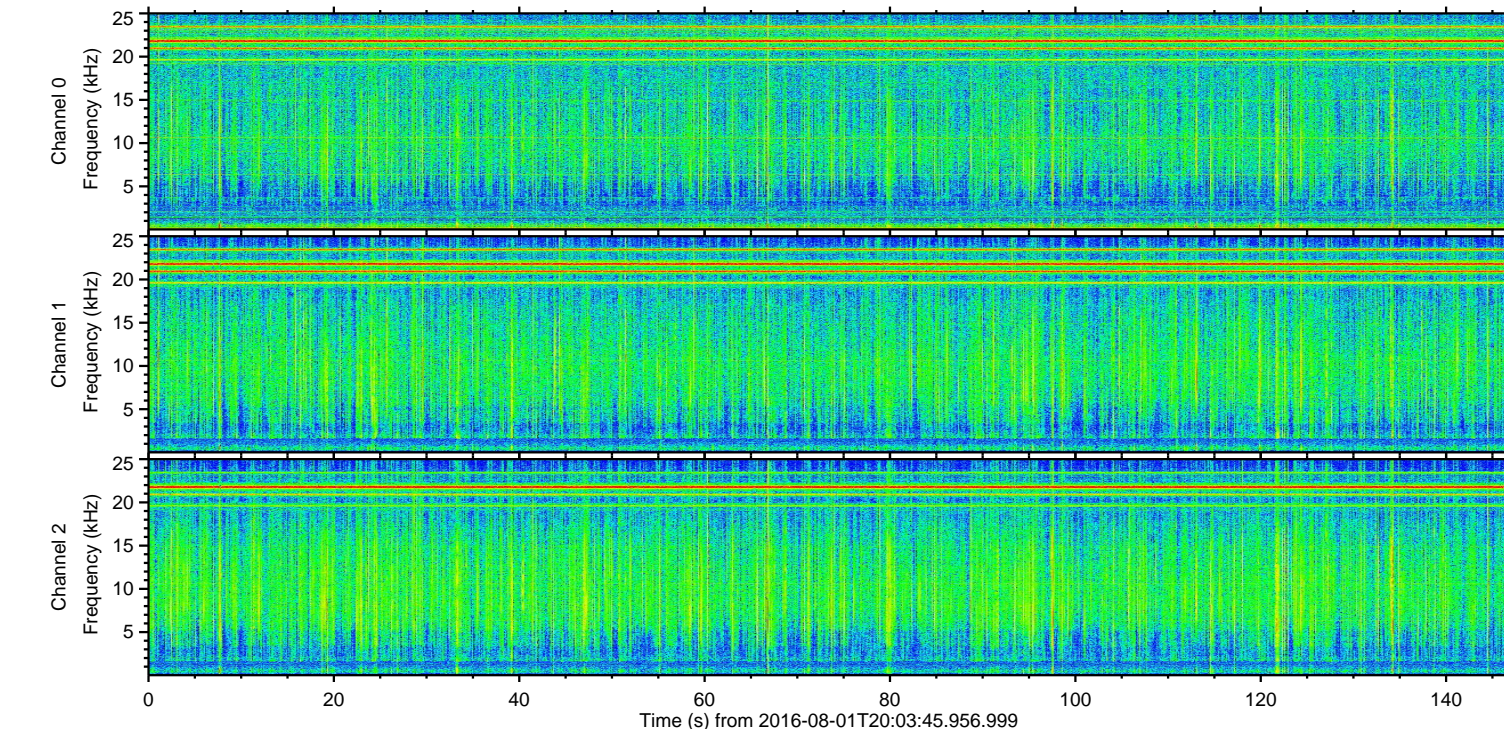
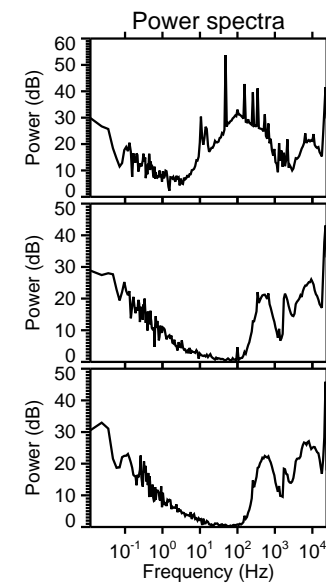
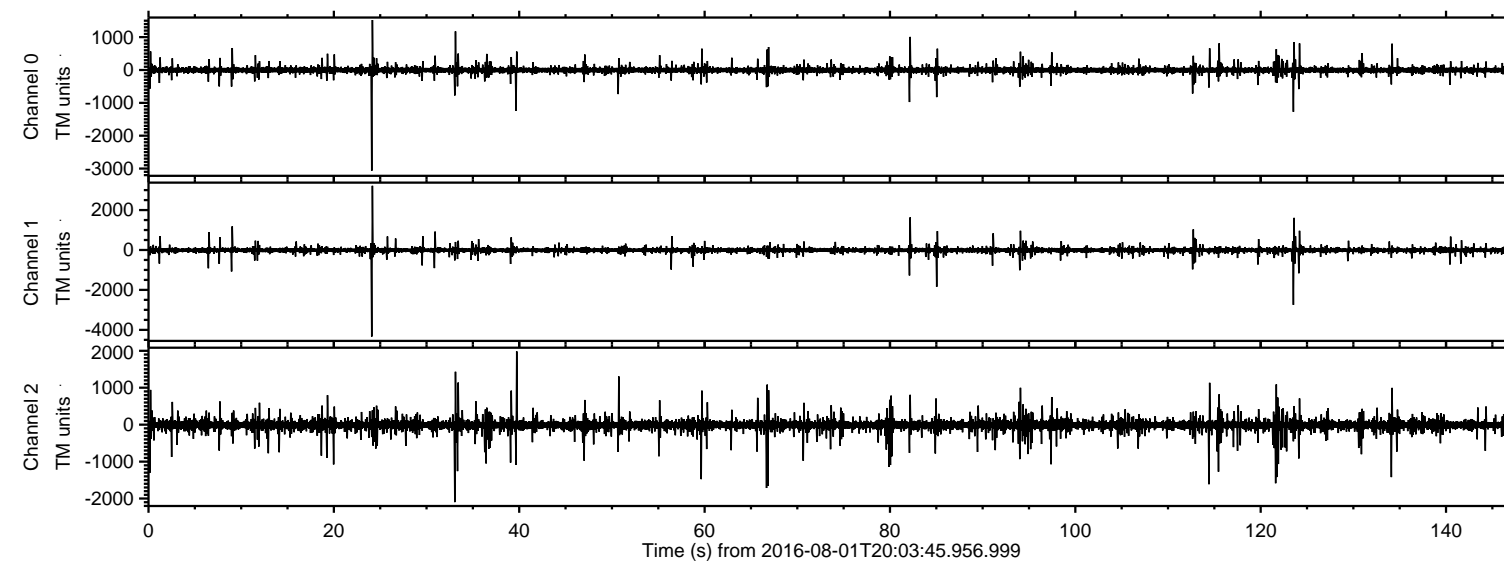


# ELMAVAN 3D WAVEFORMS (Measured data sampled at 50 kHz) 51000 packets of 144 samples from 2016-08-01T20:03:45.956.999.

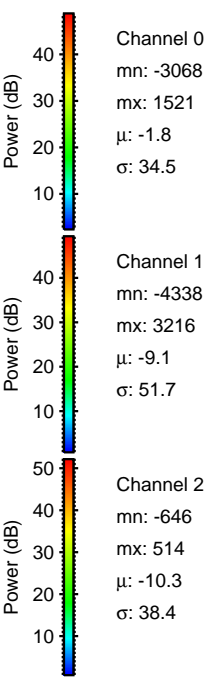
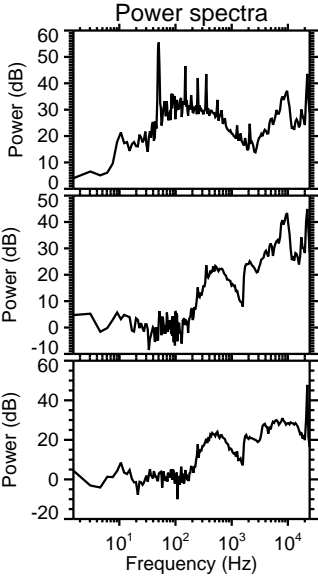
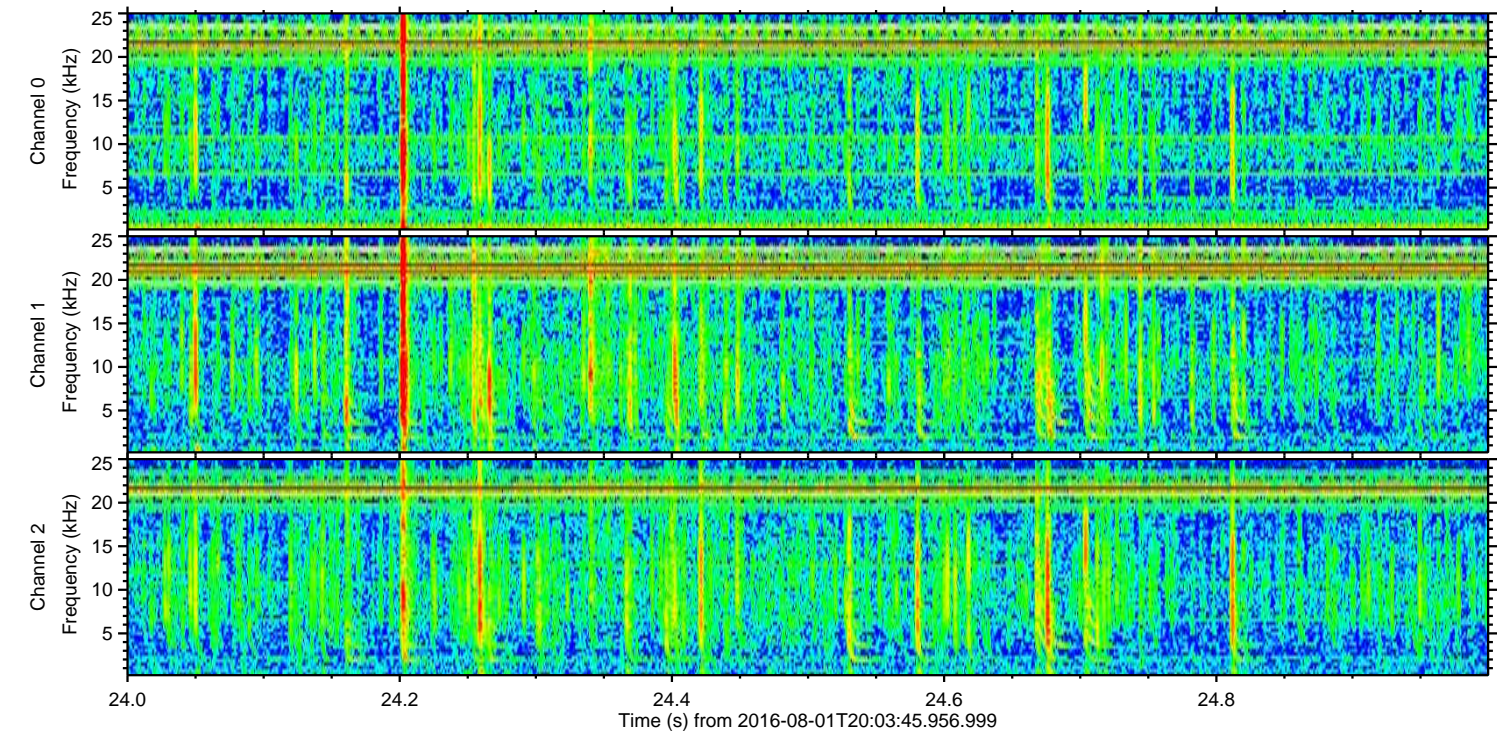
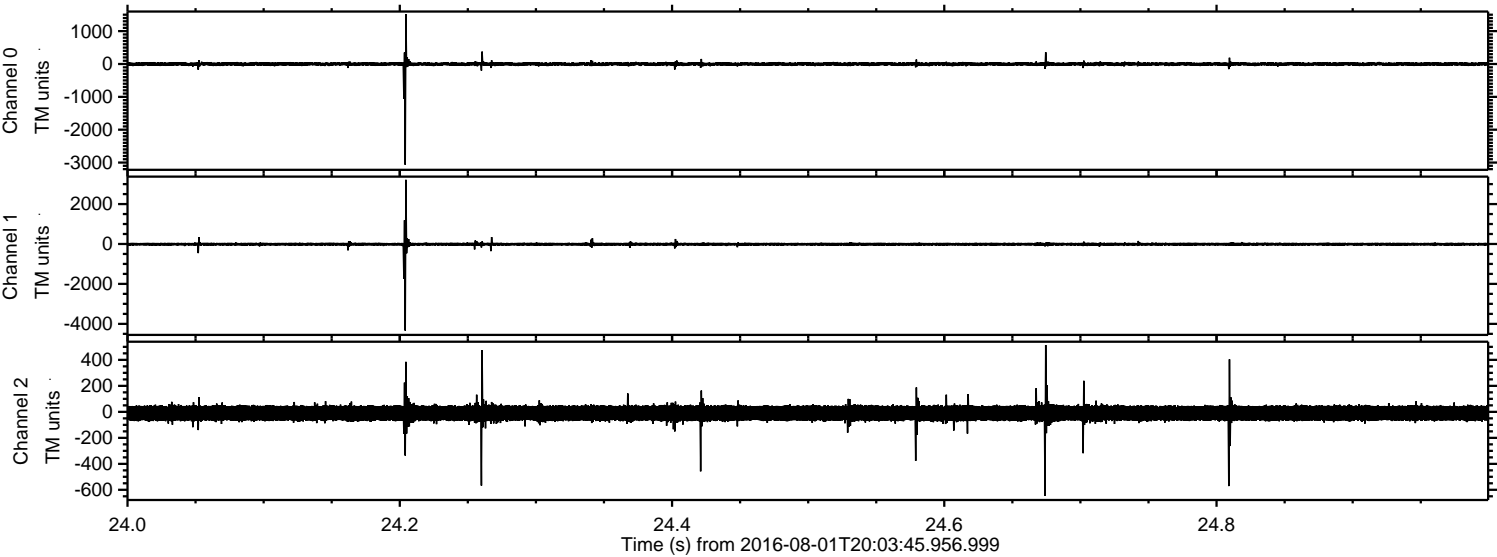
Processed Mon Aug 1 22:11:59 2016 by ELM ver.2012-10-06 from 001\_\_elm20160801\_200344\_\_dat00.bin





ELMAVAN 3D WAVEFORMS (Measured data sampled at 50 kHz) 51000 packets of 144 samples from 2016-08-01T20:03:45.956.999. Part 25/147

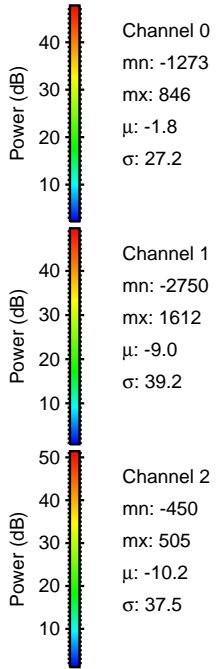
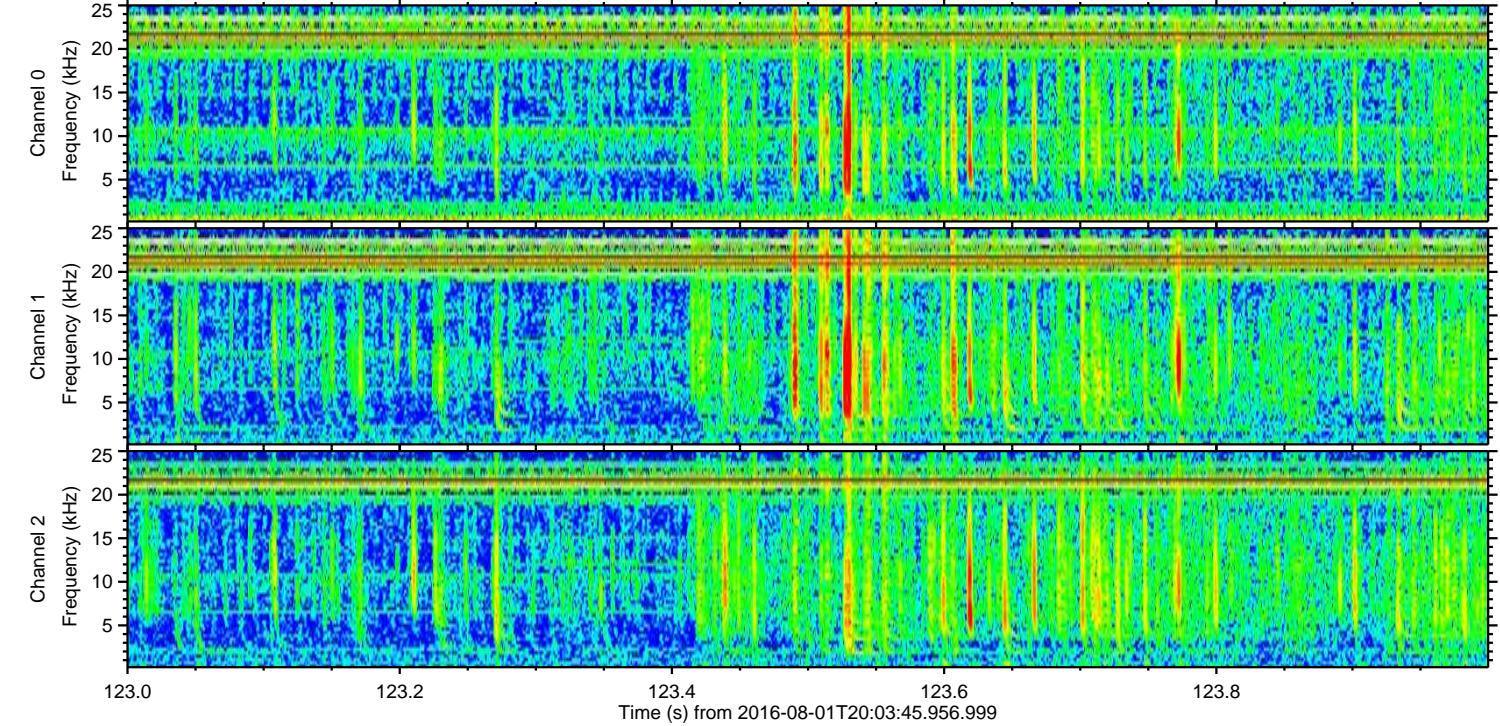
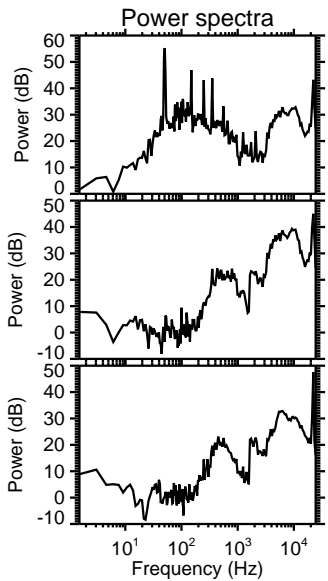
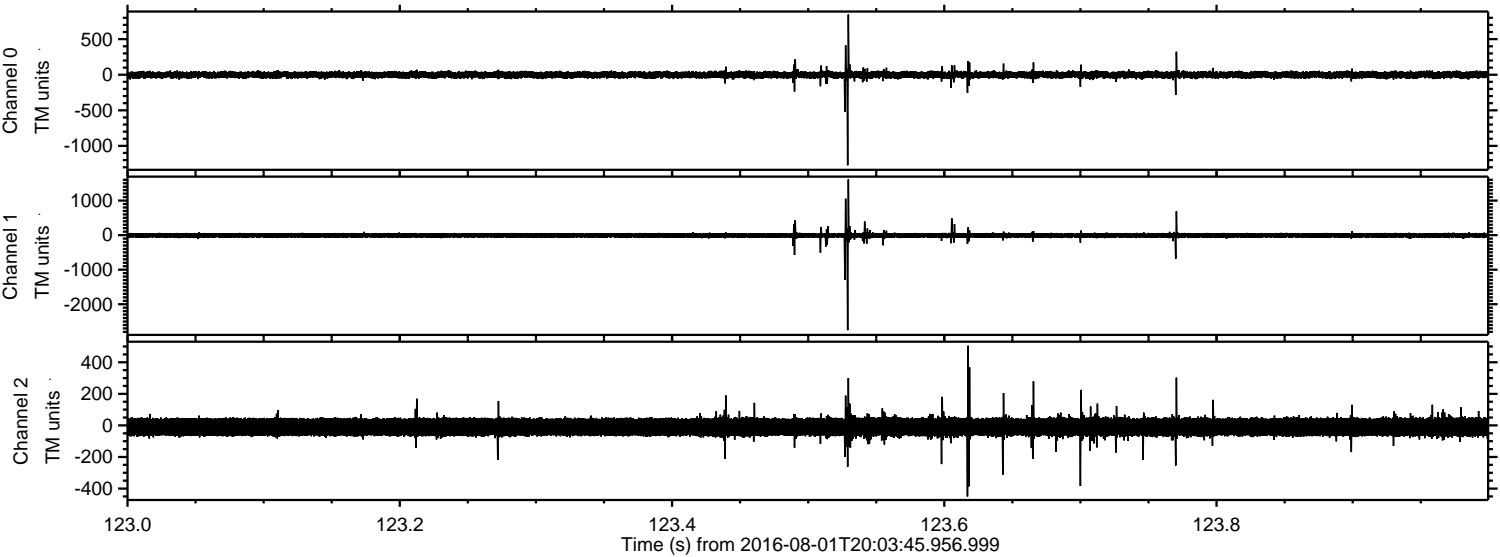
Processed Mon Aug 1 22:12:14 2016 by ELM ver.2012-10-06 from 001\_\_elm20160801\_200344\_\_dat00.bin





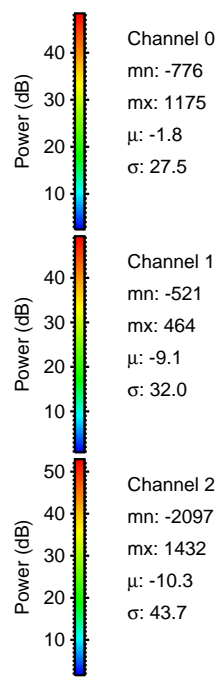
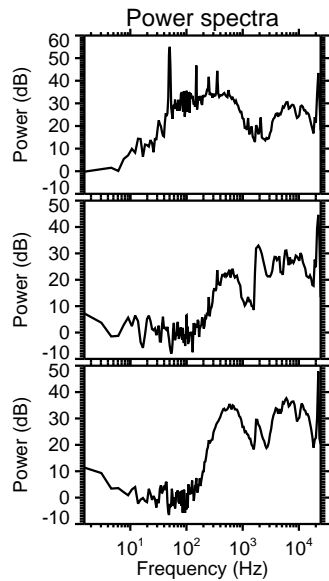
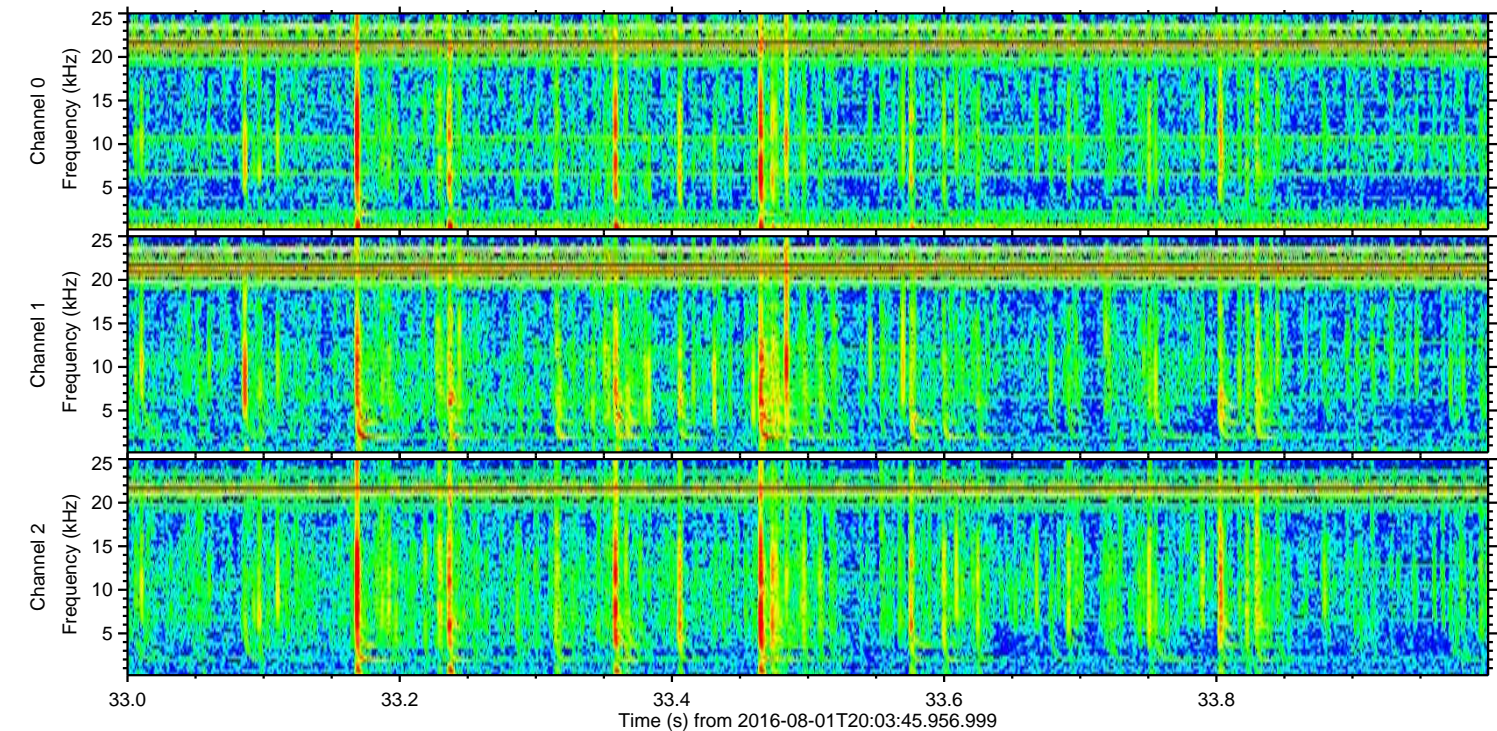
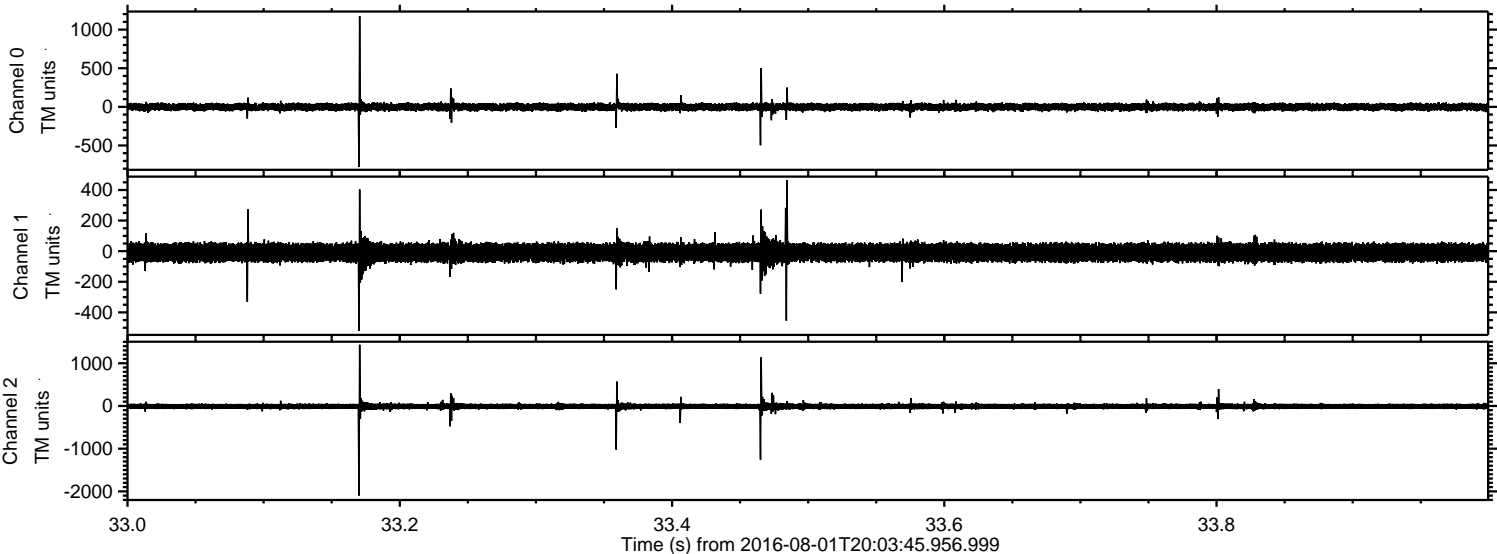
ELMAVAN 3D WAVEFORMS (Measured data sampled at 50 kHz) 51000 packets of 144 samples from 2016-08-01T20:03:45.956.999. Part 124/147

Processed Mon Aug 1 22:12:15 2016 by ELM ver.2012-10-06 from 001\_\_elm20160801\_200344\_\_dat00.bin





Processed Mon Aug 1 22:12:16 2016 by ELM ver.2012-10-06 from 001\_\_elm20160801\_200344\_\_dat00.bin



Channel 0  
mn: -776  
mx: 1175  
 $\mu$ : -1.8  
 $\sigma$ : 27.5

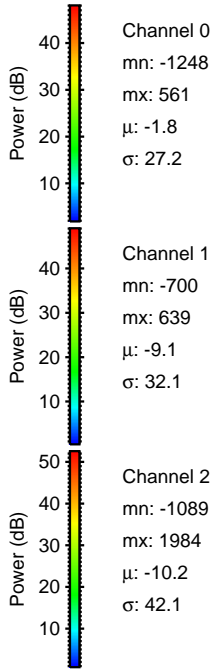
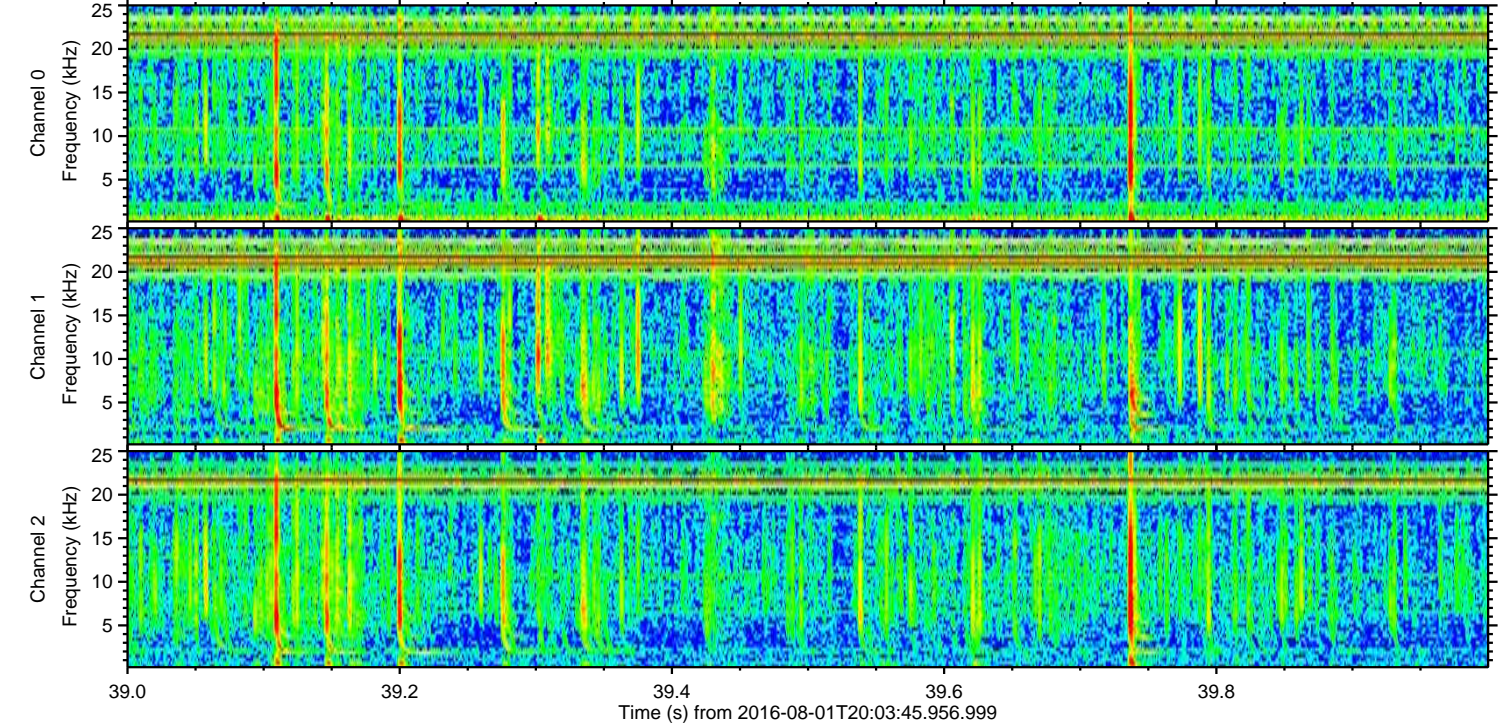
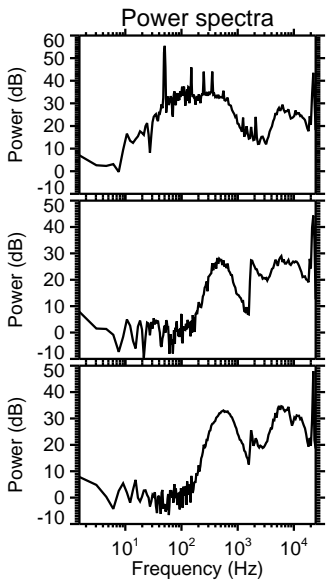
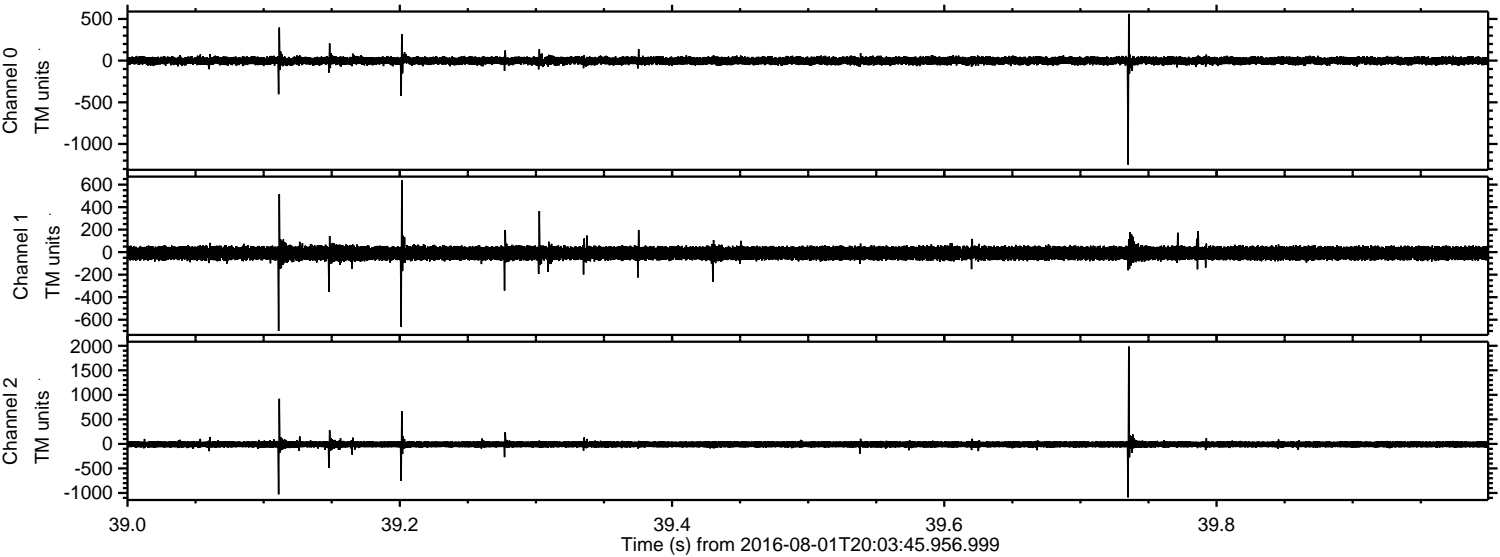
Channel 1  
mn: -521  
mx: 464  
 $\mu$ : -9.1  
 $\sigma$ : 32.0

Channel 2  
mn: -2097  
mx: 1432  
 $\mu$ : -10.3  
 $\sigma$ : 43.7



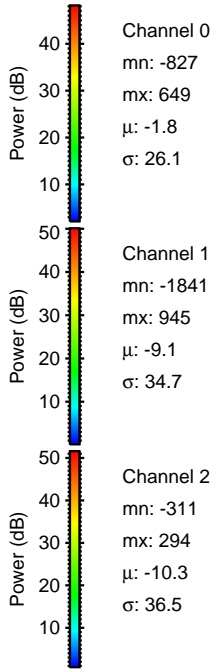
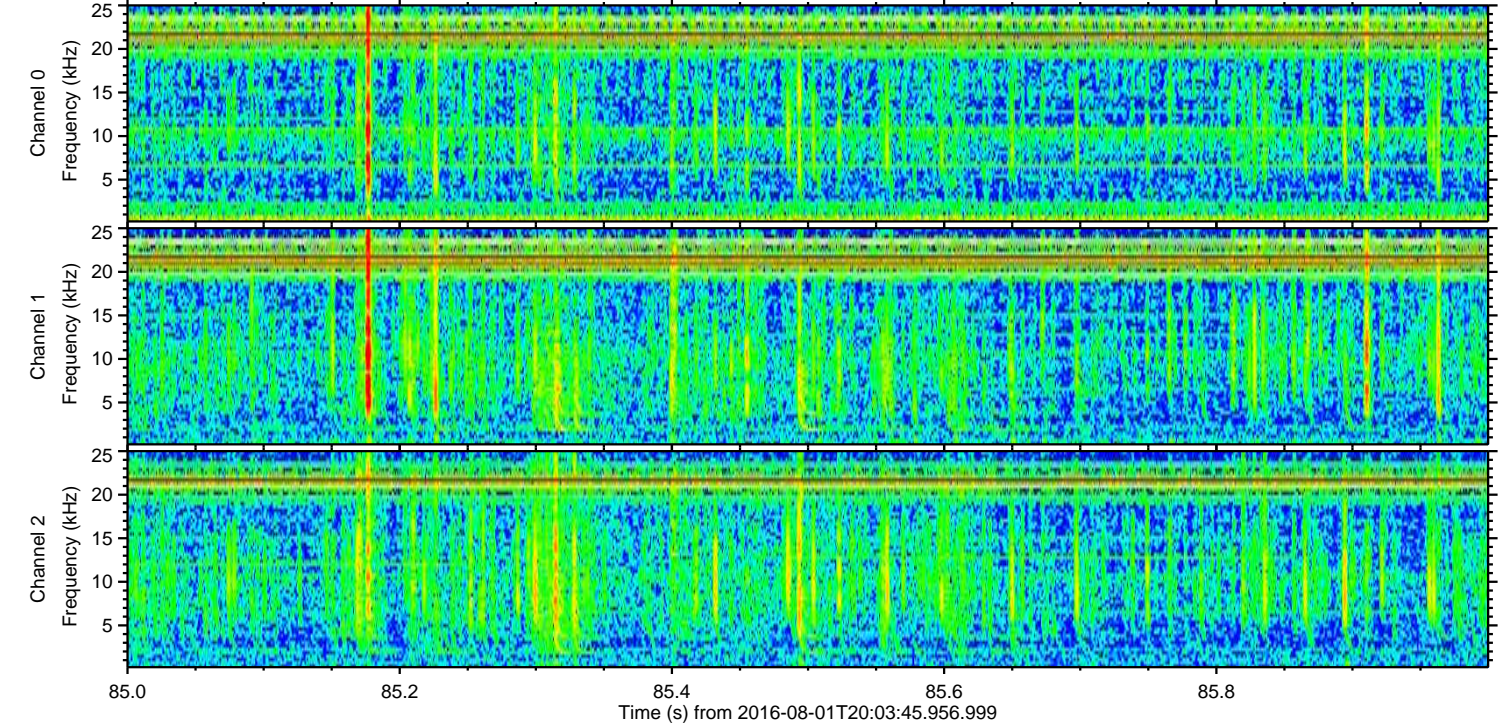
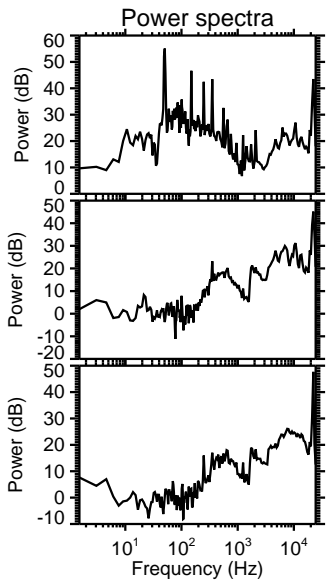
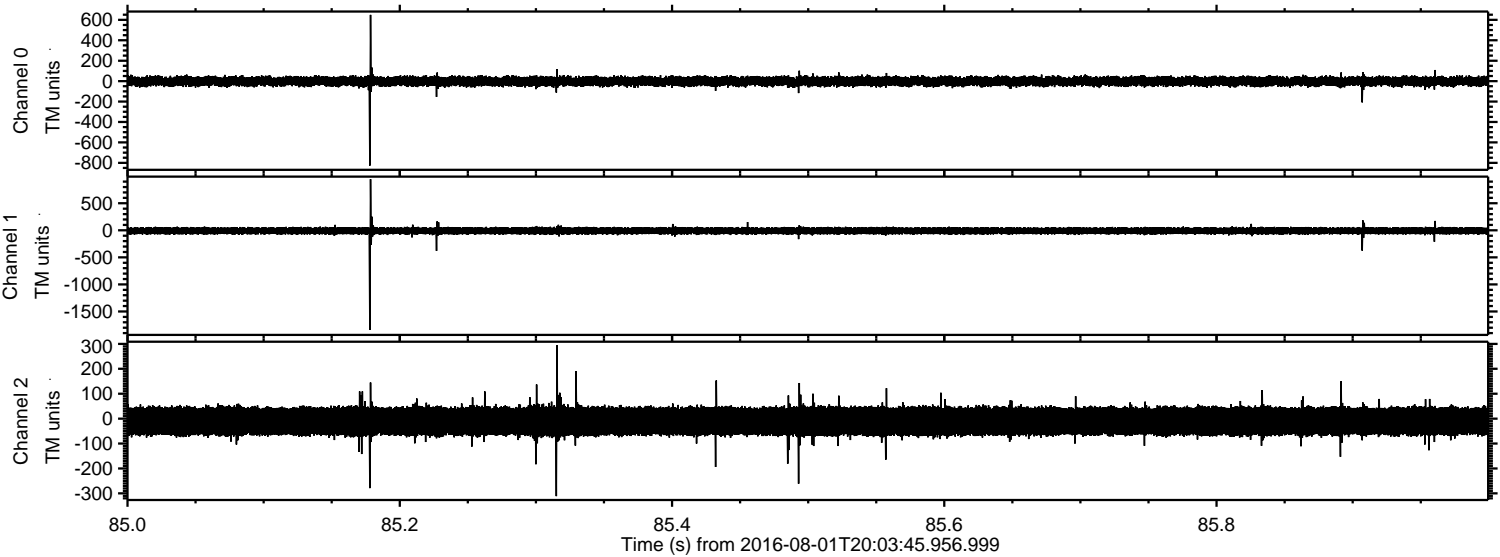
ELMAVAN 3D WAVEFORMS (Measured data sampled at 50 kHz) 51000 packets of 144 samples from 2016-08-01T20:03:45.956.999. Part 40/147

Processed Mon Aug 1 22:12:17 2016 by ELM ver.2012-10-06 from 001\_\_elm20160801\_200344\_\_dat00.bin





Processed Mon Aug 1 22:12:18 2016 by ELM ver.2012-10-06 from 001\_\_elm20160801\_200344\_\_dat00.bin



Channel 0  
mn: -827  
mx: 649  
 $\mu$ : -1.8  
 $\sigma$ : 26.1

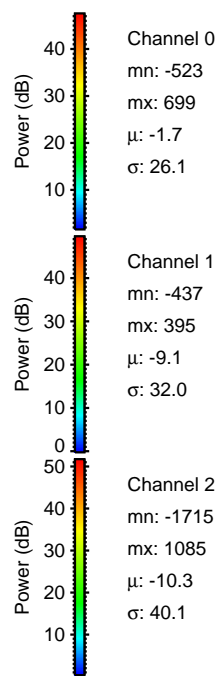
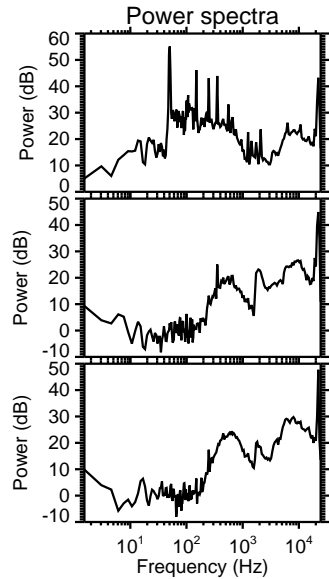
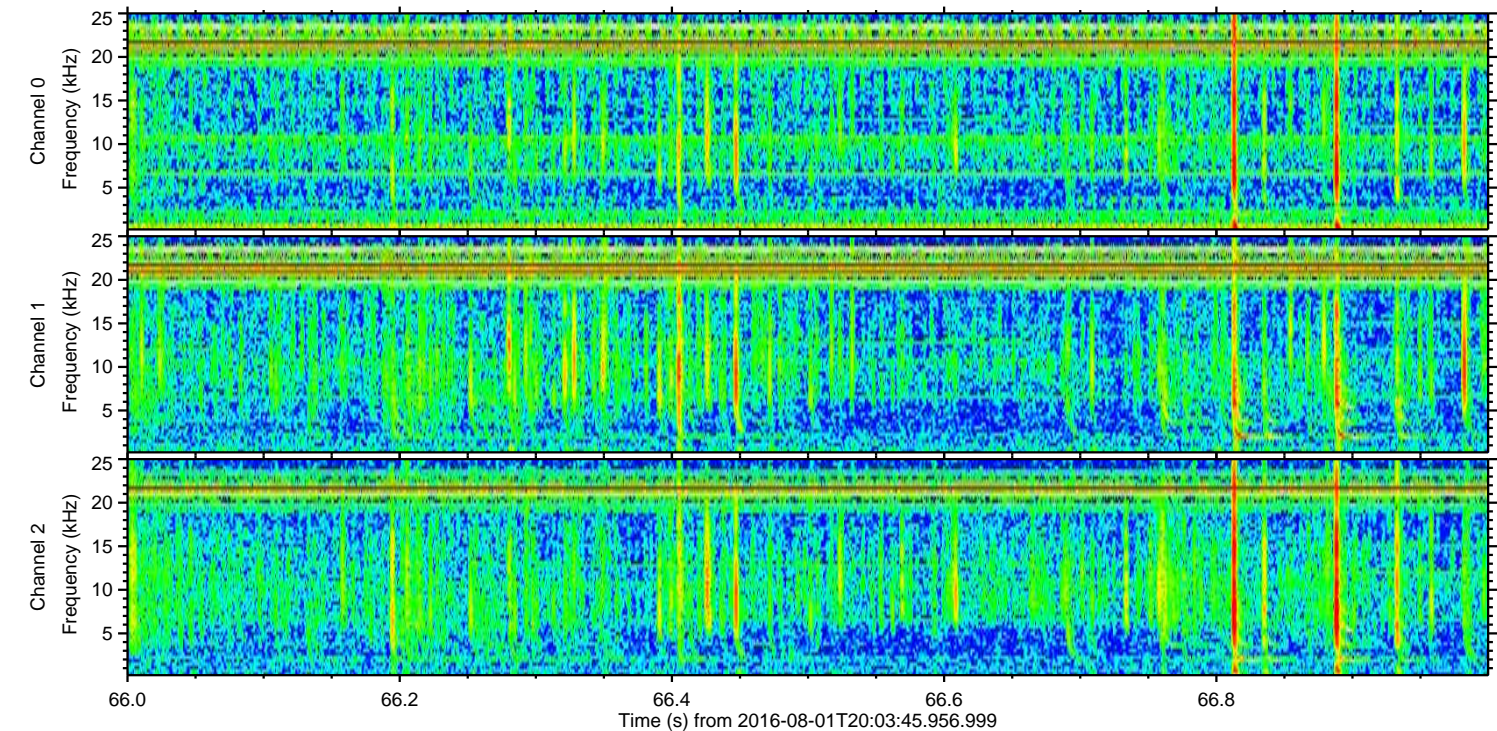
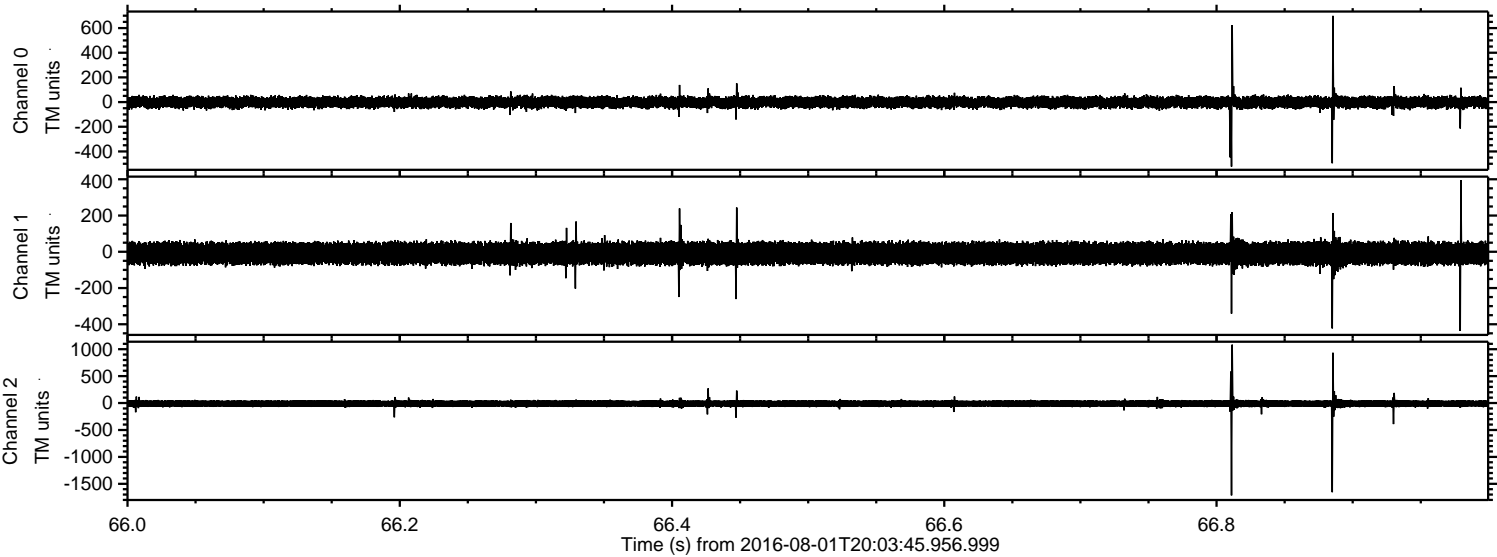
Channel 1  
mn: -1841  
mx: 945  
 $\mu$ : -9.1  
 $\sigma$ : 34.7

Channel 2  
mn: -311  
mx: 294  
 $\mu$ : -10.3  
 $\sigma$ : 36.5



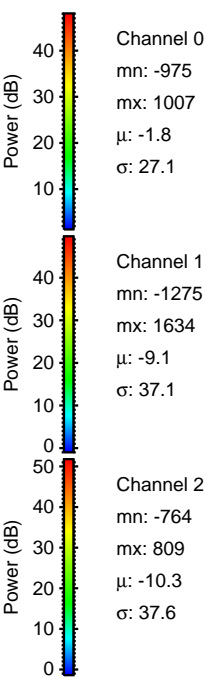
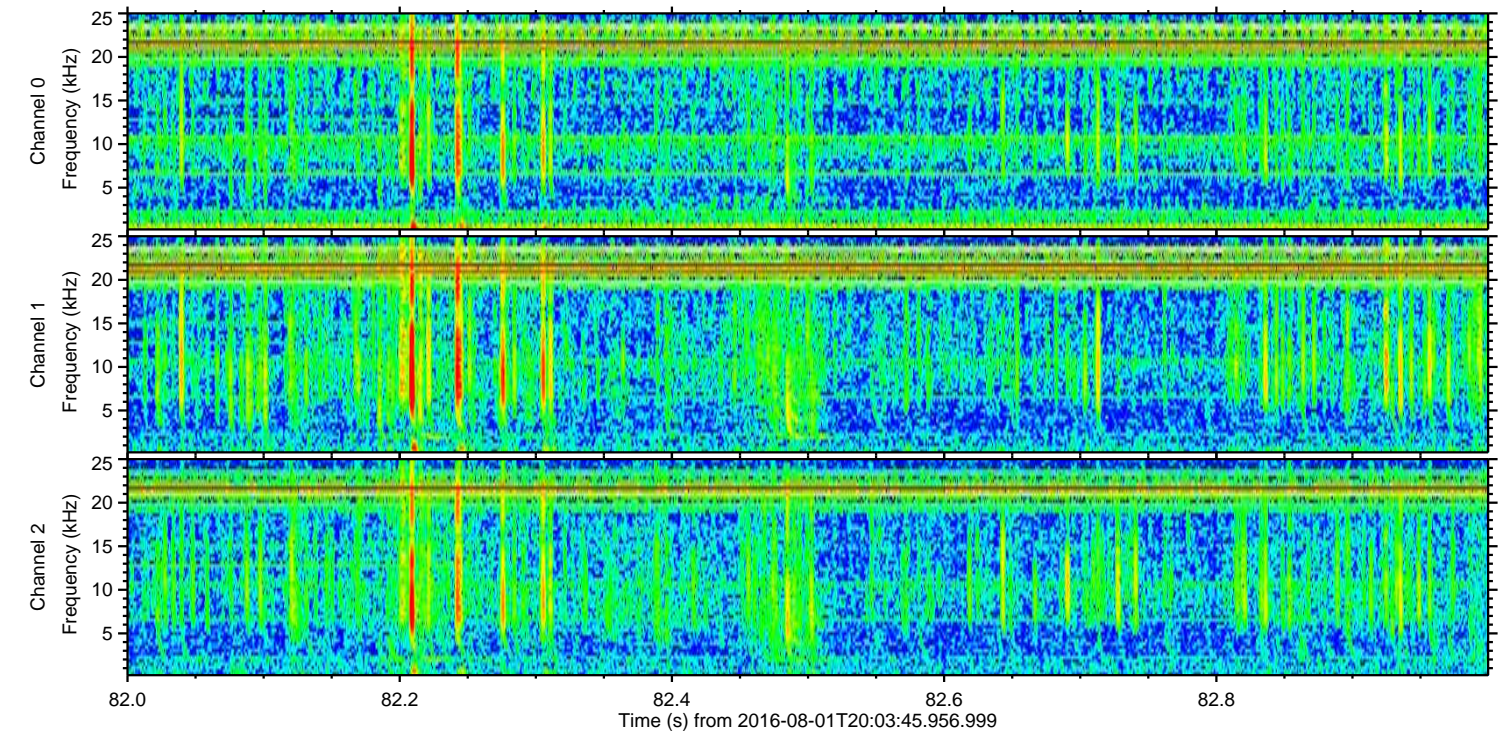
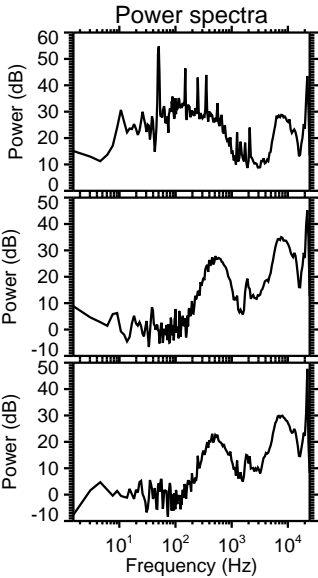
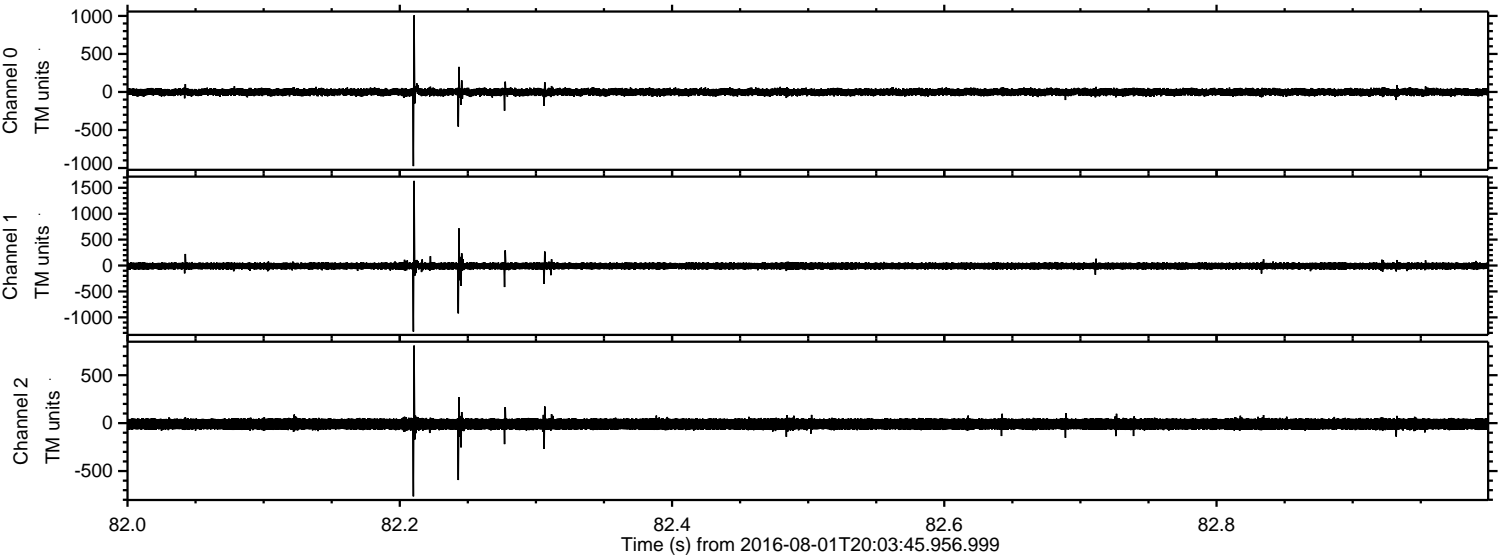
ELMAVAN 3D WAVEFORMS (Measured data sampled at 50 kHz) 51000 packets of 144 samples from 2016-08-01T20:03:45.956.999. Part 67/147

Processed Mon Aug 1 22:12:19 2016 by ELM ver.2012-10-06 from 001\_\_elm20160801\_200344\_\_dat00.bin





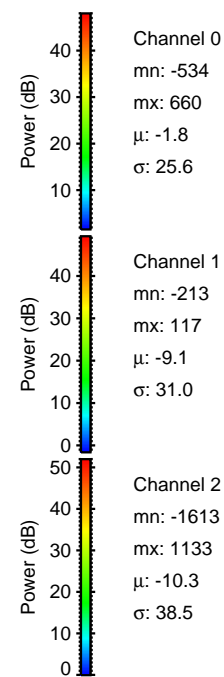
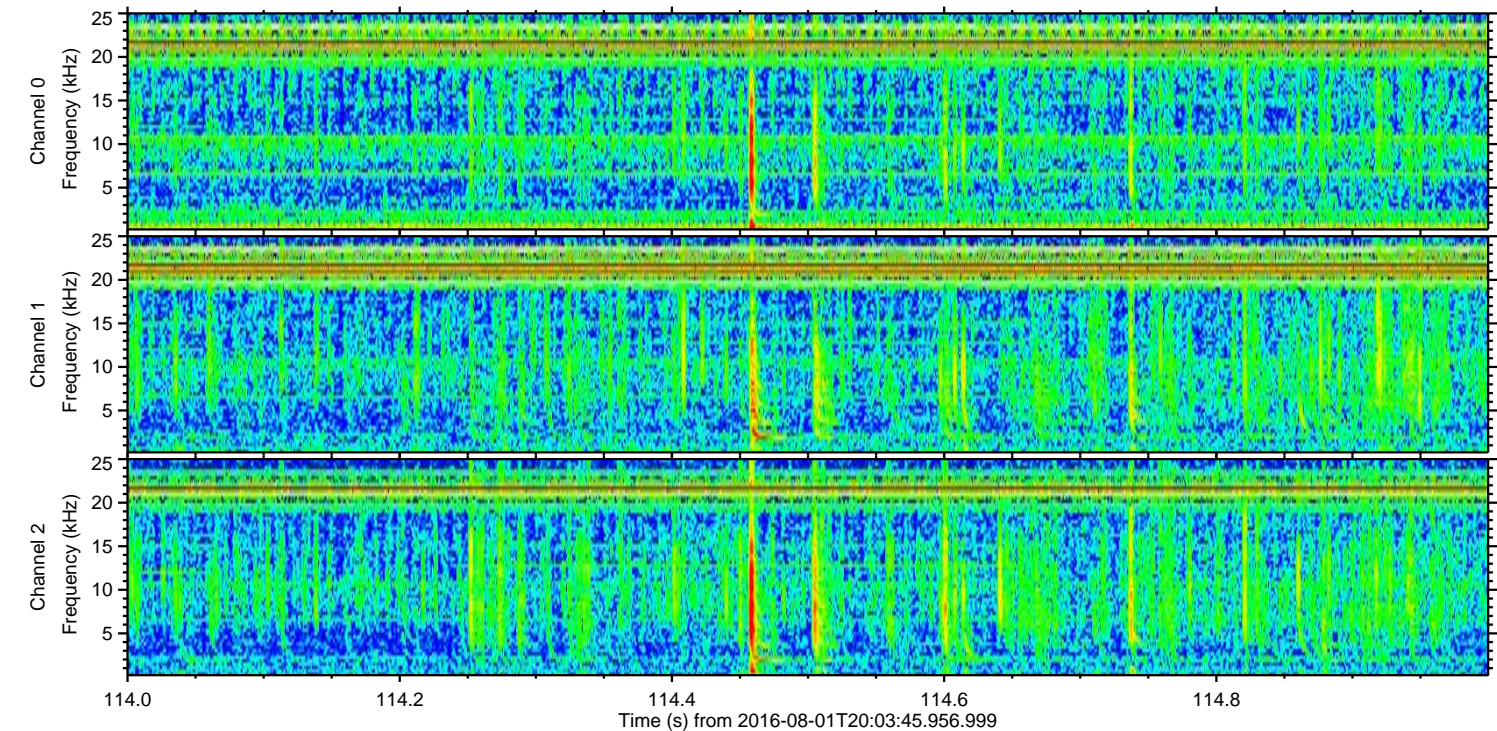
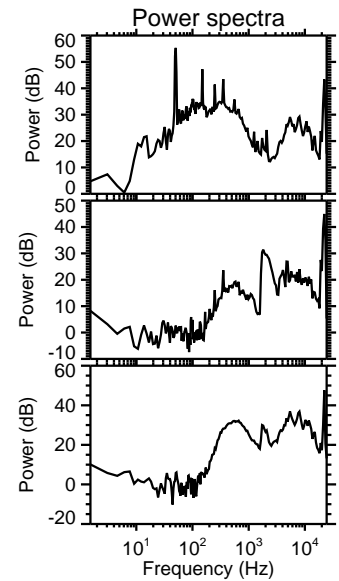
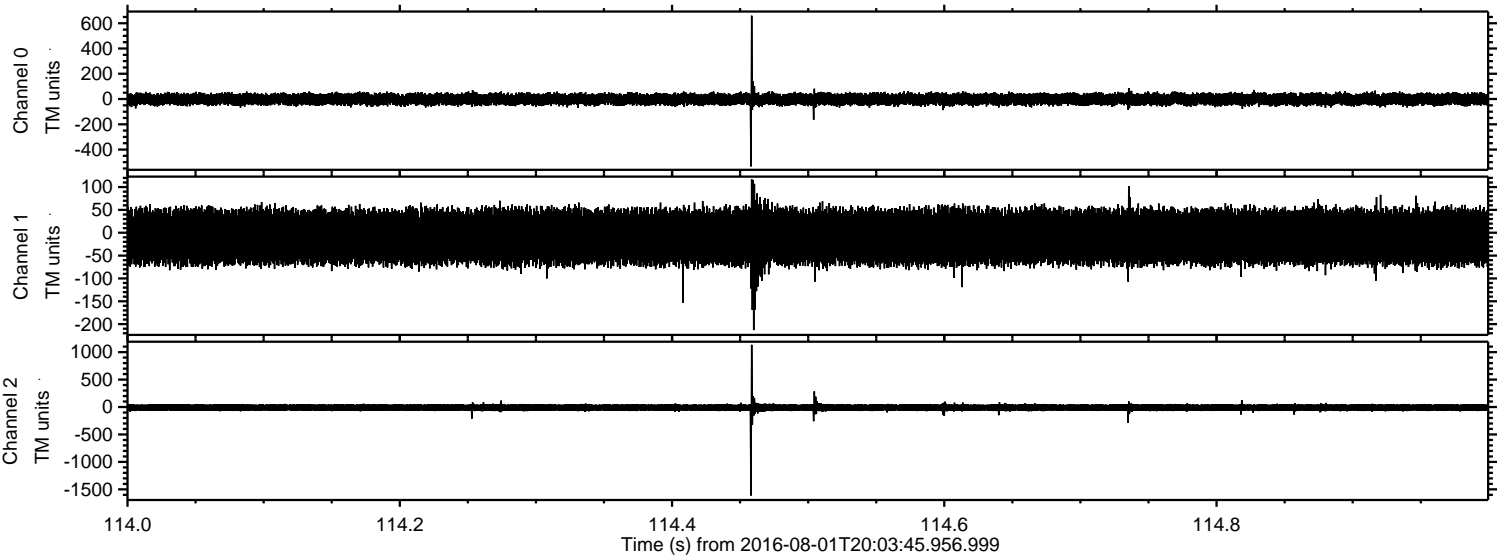
Processed Mon Aug 1 22:12:20 2016 by ELM ver.2012-10-06 from 001\_\_elm20160801\_200344\_\_dat00.bin





ELMAVAN 3D WAVEFORMS (Measured data sampled at 50 kHz) 51000 packets of 144 samples from 2016-08-01T20:03:45.956.999. Part 115/147

Processed Mon Aug 1 22:12:21 2016 by ELM ver.2012-10-06 from 001\_\_elm20160801\_200344\_\_dat00.bin



Channel 0  
mn: -534  
mx: 660  
 $\mu$ : -1.8  
 $\sigma$ : 25.6

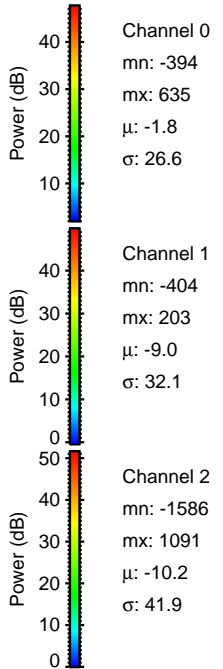
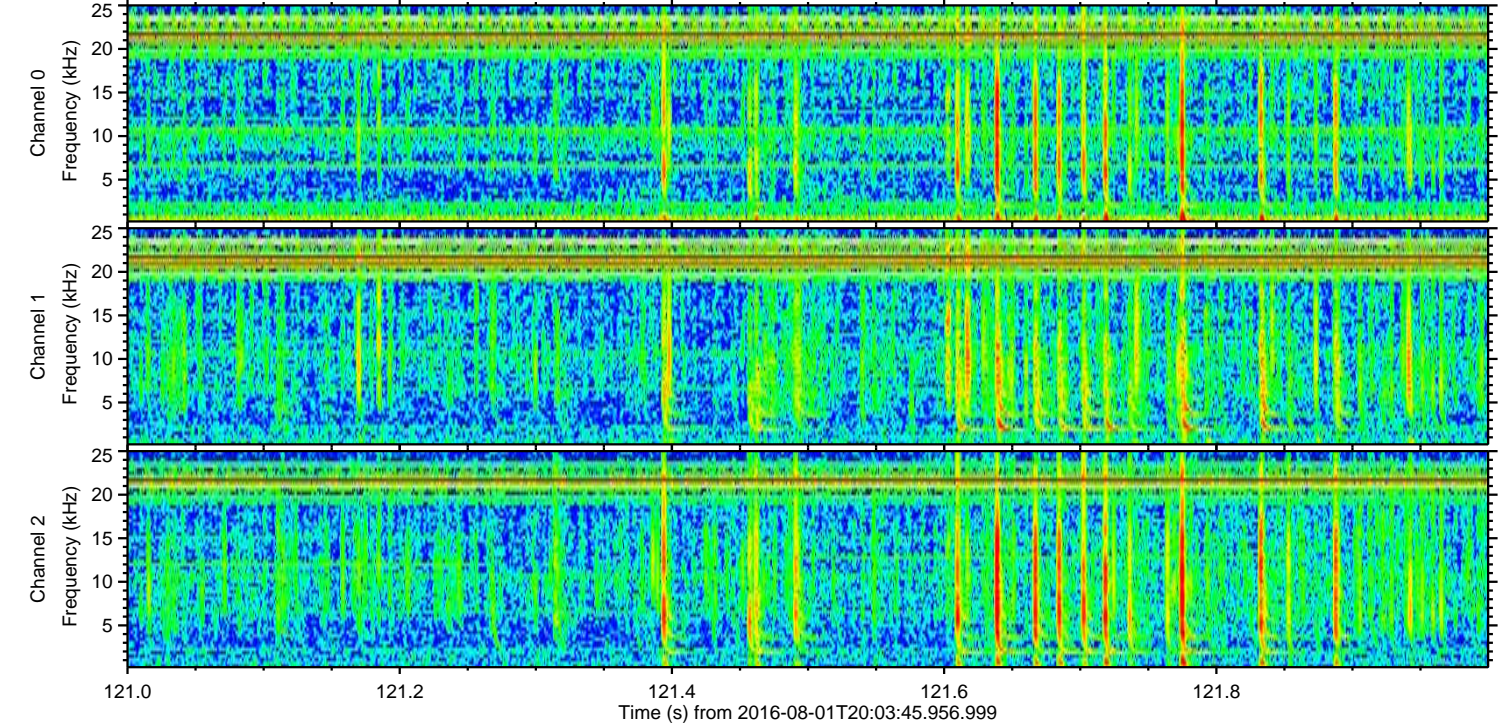
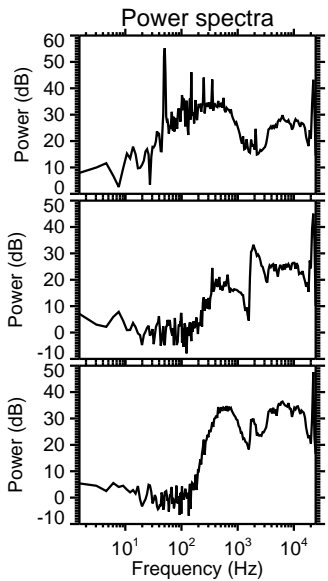
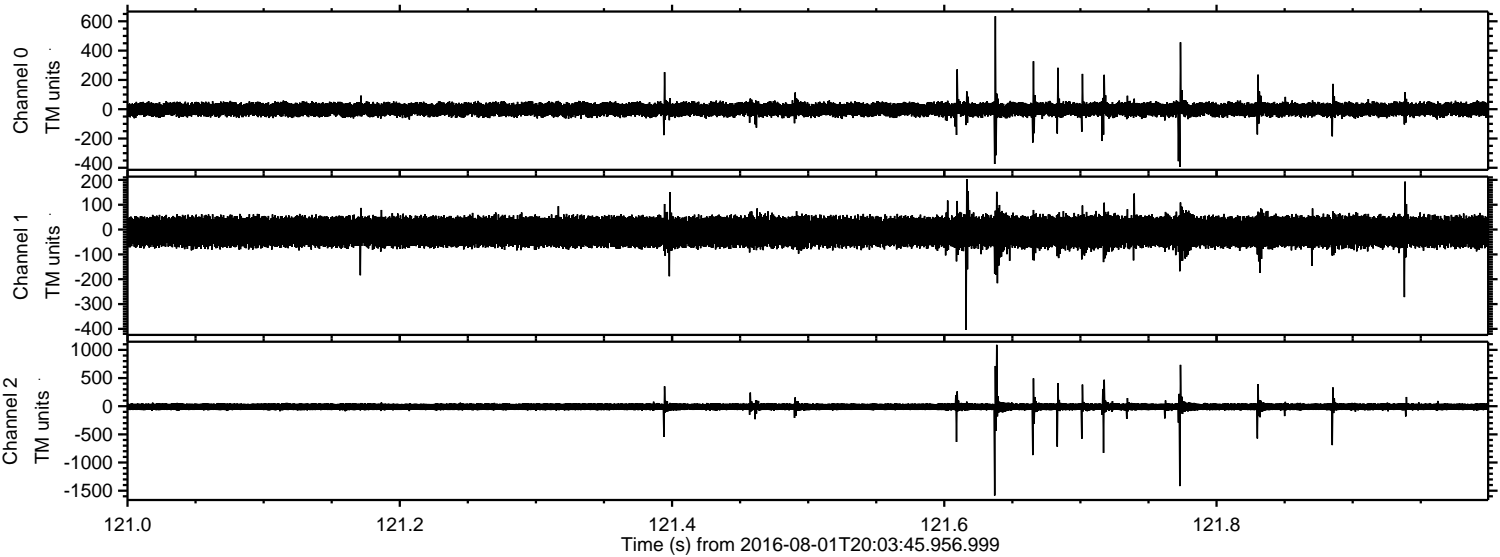
Channel 1  
mn: -213  
mx: 117  
 $\mu$ : -9.1  
 $\sigma$ : 31.0

Channel 2  
mn: -1613  
mx: 1133  
 $\mu$ : -10.3  
 $\sigma$ : 38.5



ELMAVAN 3D WAVEFORMS (Measured data sampled at 50 kHz) 51000 packets of 144 samples from 2016-08-01T20:03:45.956.999. Part 122/147

Processed Mon Aug 1 22:12:22 2016 by ELM ver.2012-10-06 from 001\_\_elm20160801\_200344\_\_dat00.bin





ELMAVAN 3D WAVEFORMS (Measured data sampled at 50 kHz) 51000 packets of 144 samples from 2016-08-01T20:03:45.956.999. Part 43/147

Processed Mon Aug 1 22:12:23 2016 by ELM ver.2012-10-06 from 001\_\_elm20160801\_200344\_\_dat00.bin

