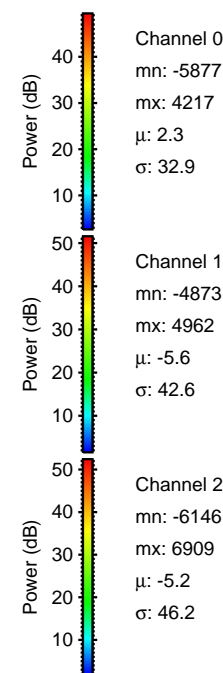
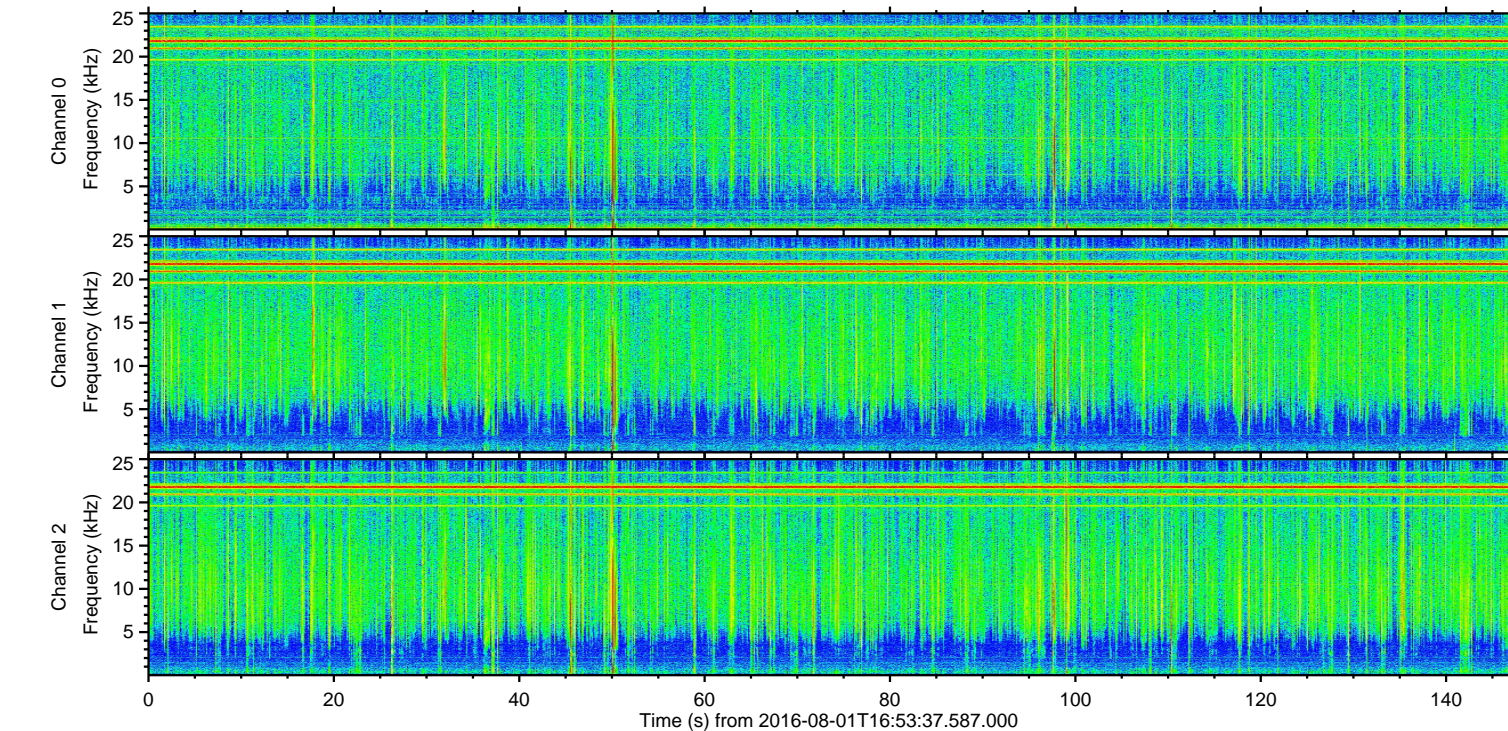
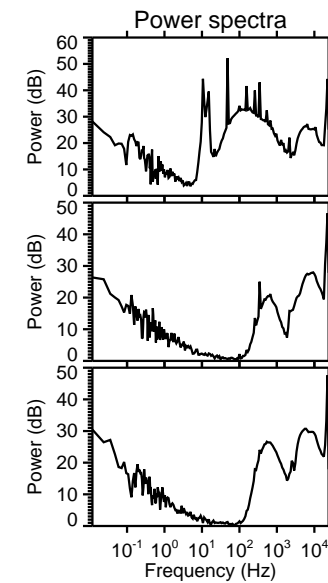
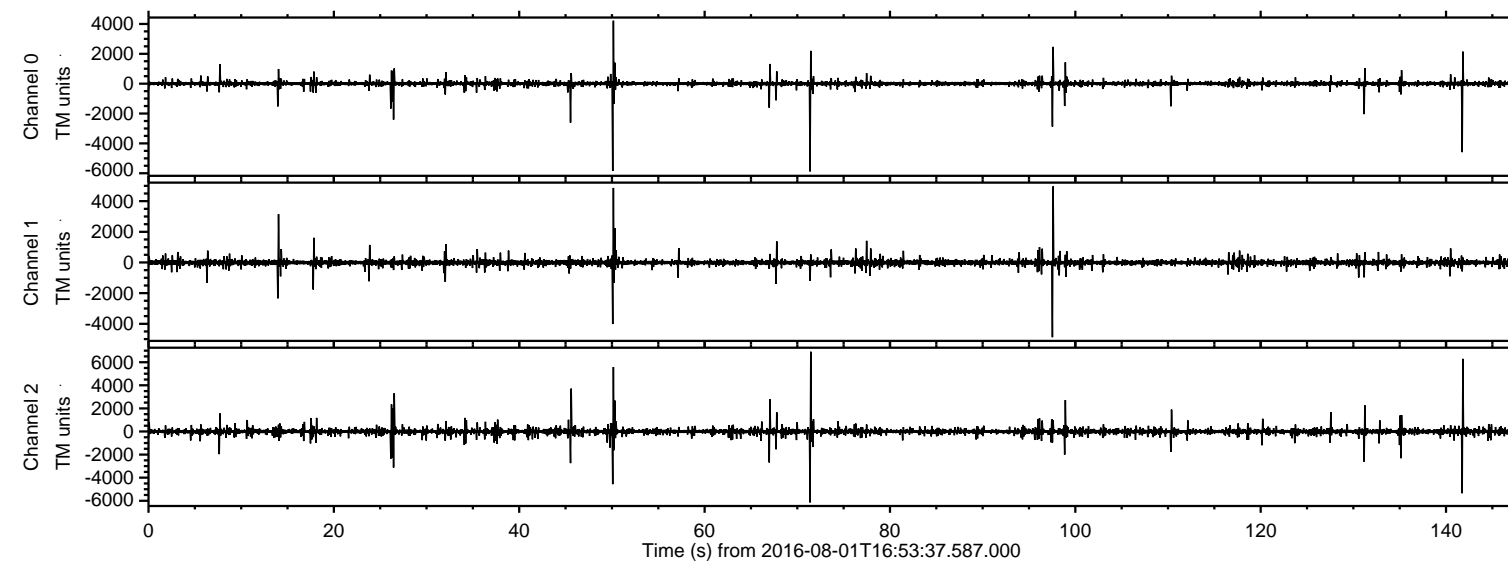
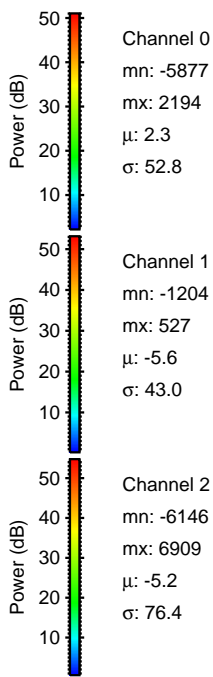
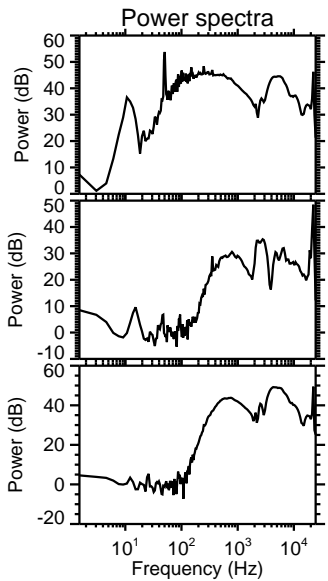
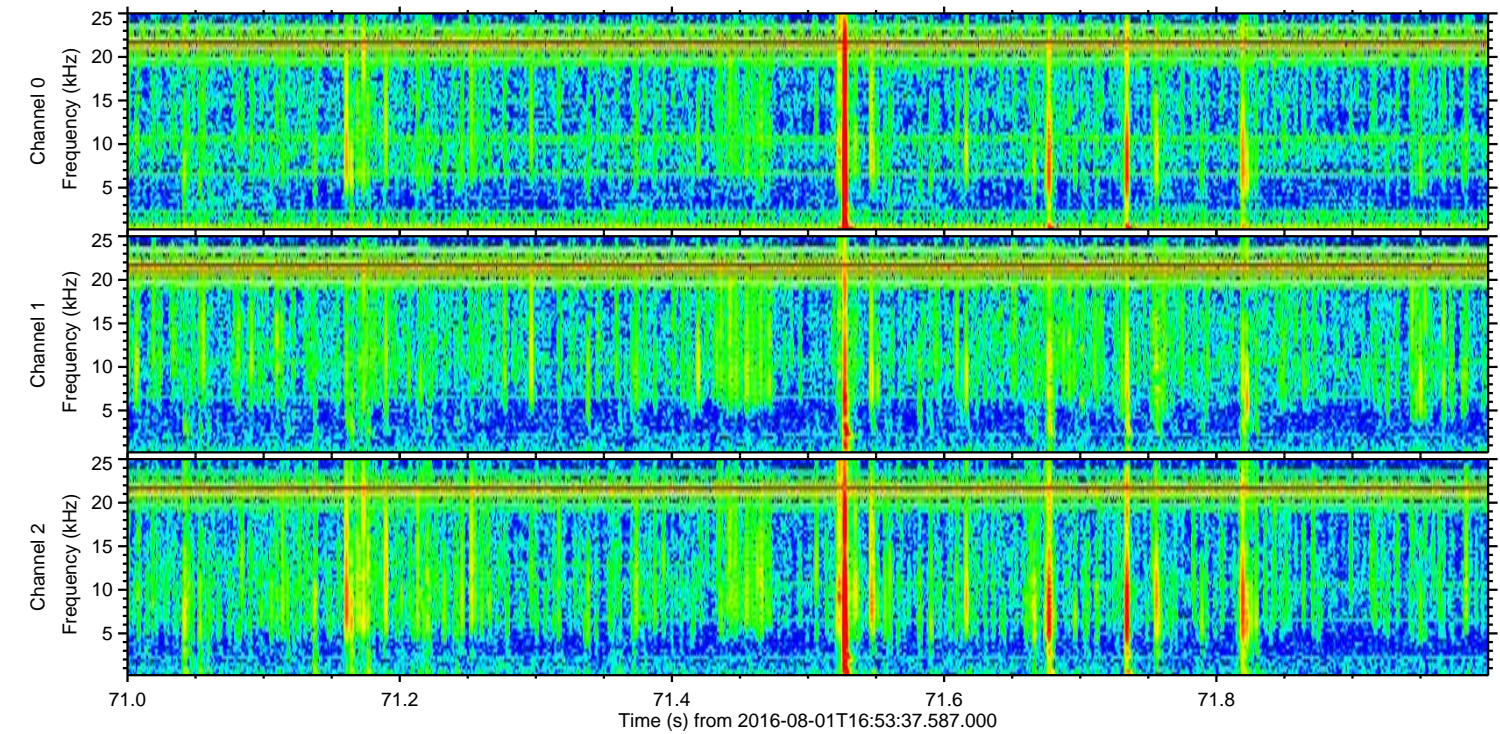
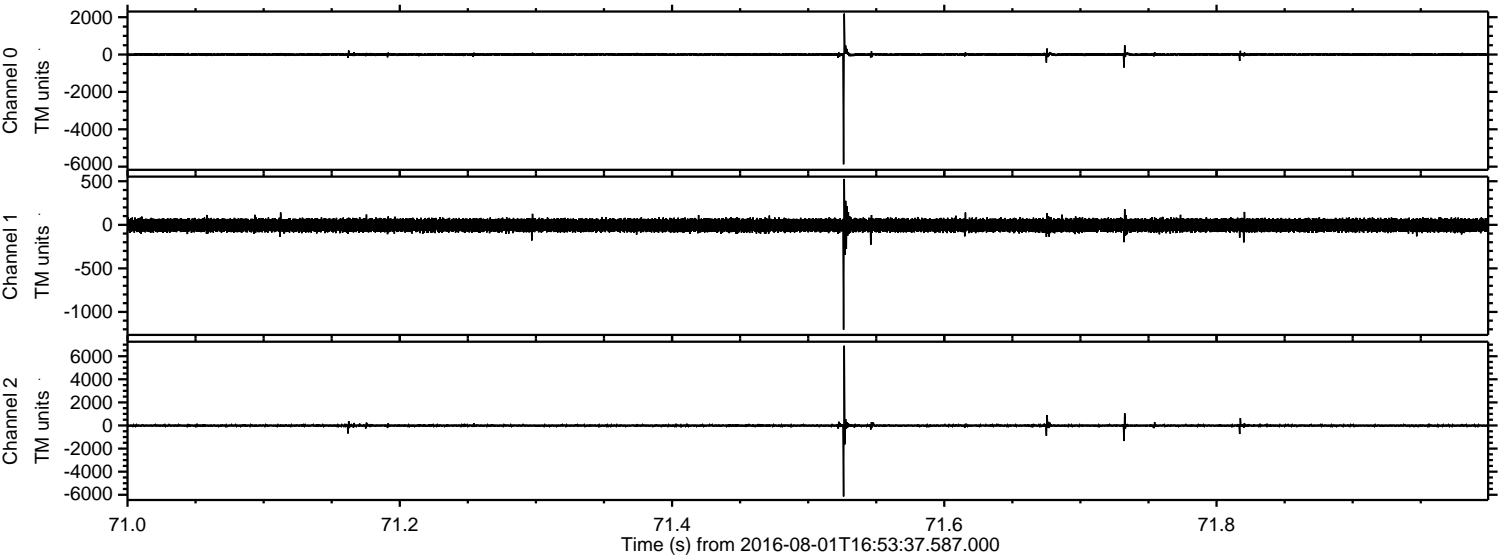


ELMAVAN 3D WAVEFORMS (Measured data sampled at 50 kHz) 51000 packets of 144 samples from 2016-08-01T16:53:37.587.000.

Processed Mon Aug 1 19:01:13 2016 by ELM ver.2012-10-06 from 001__elm20160801_165336__dat00.bin

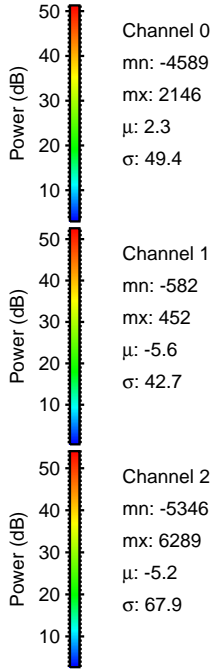
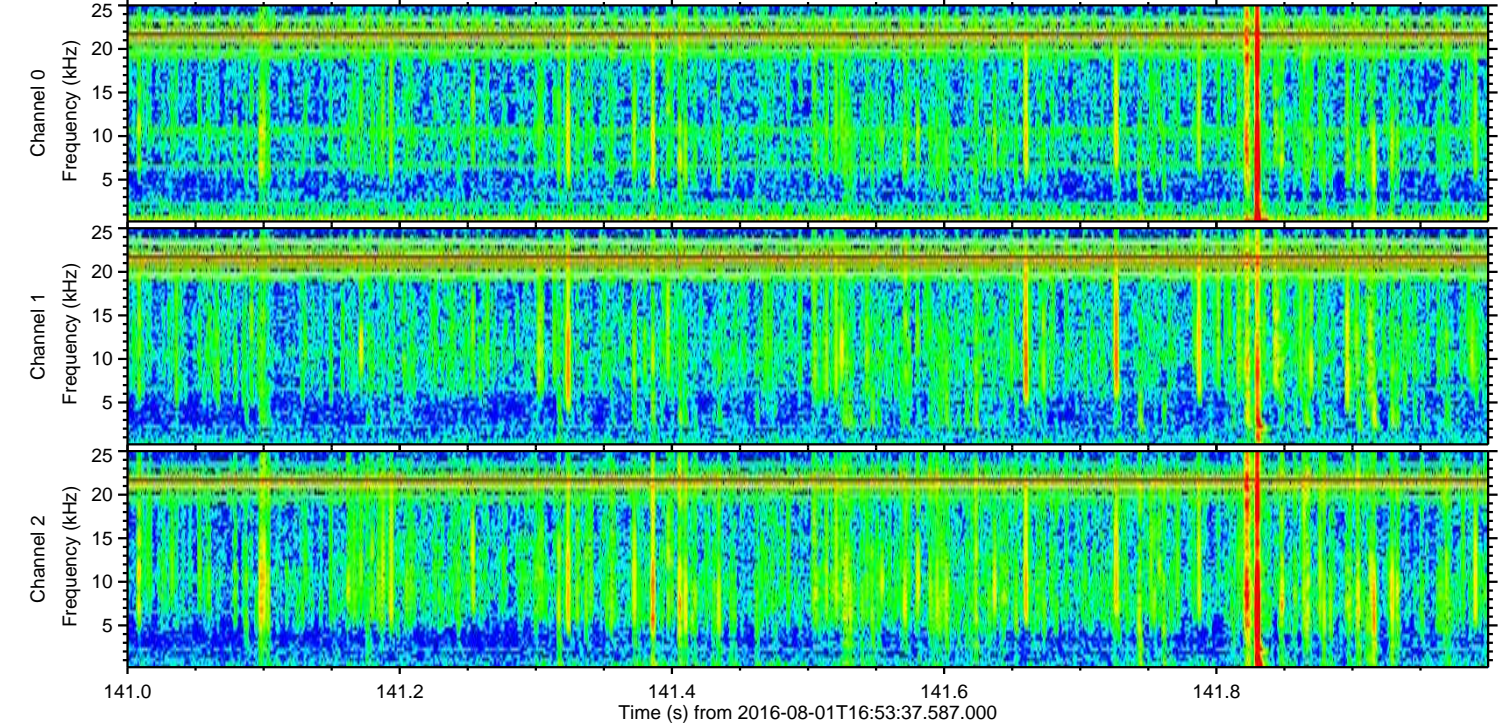
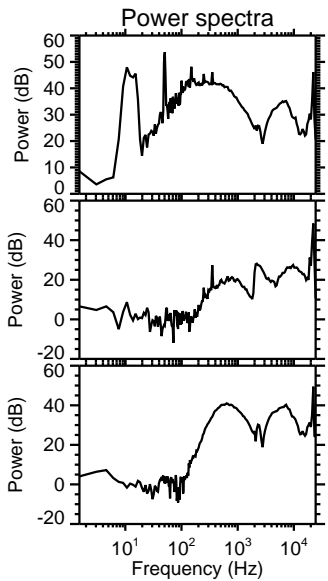
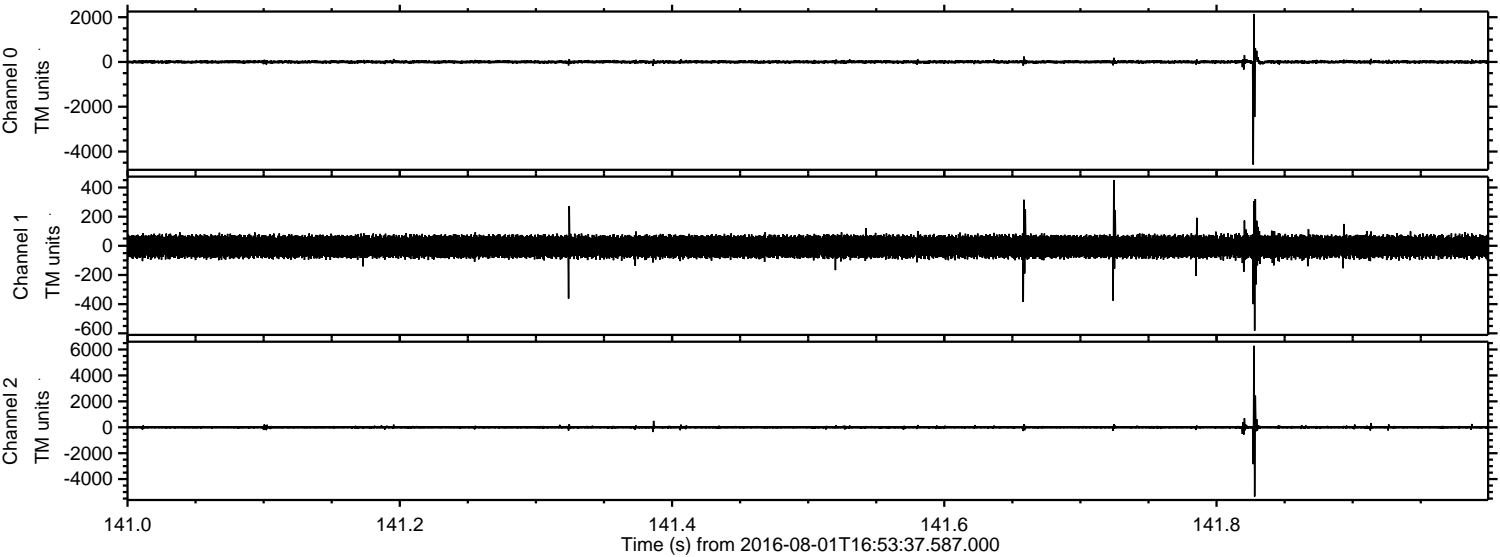


Processed Mon Aug 1 19:01:26 2016 by ELM ver.2012-10-06 from 001__elm20160801_165336__dat00.bin

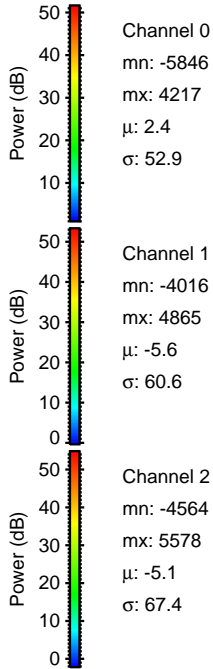
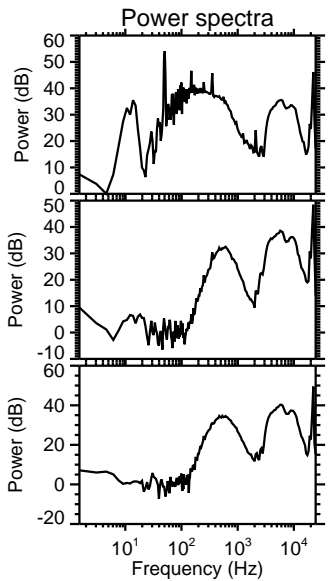
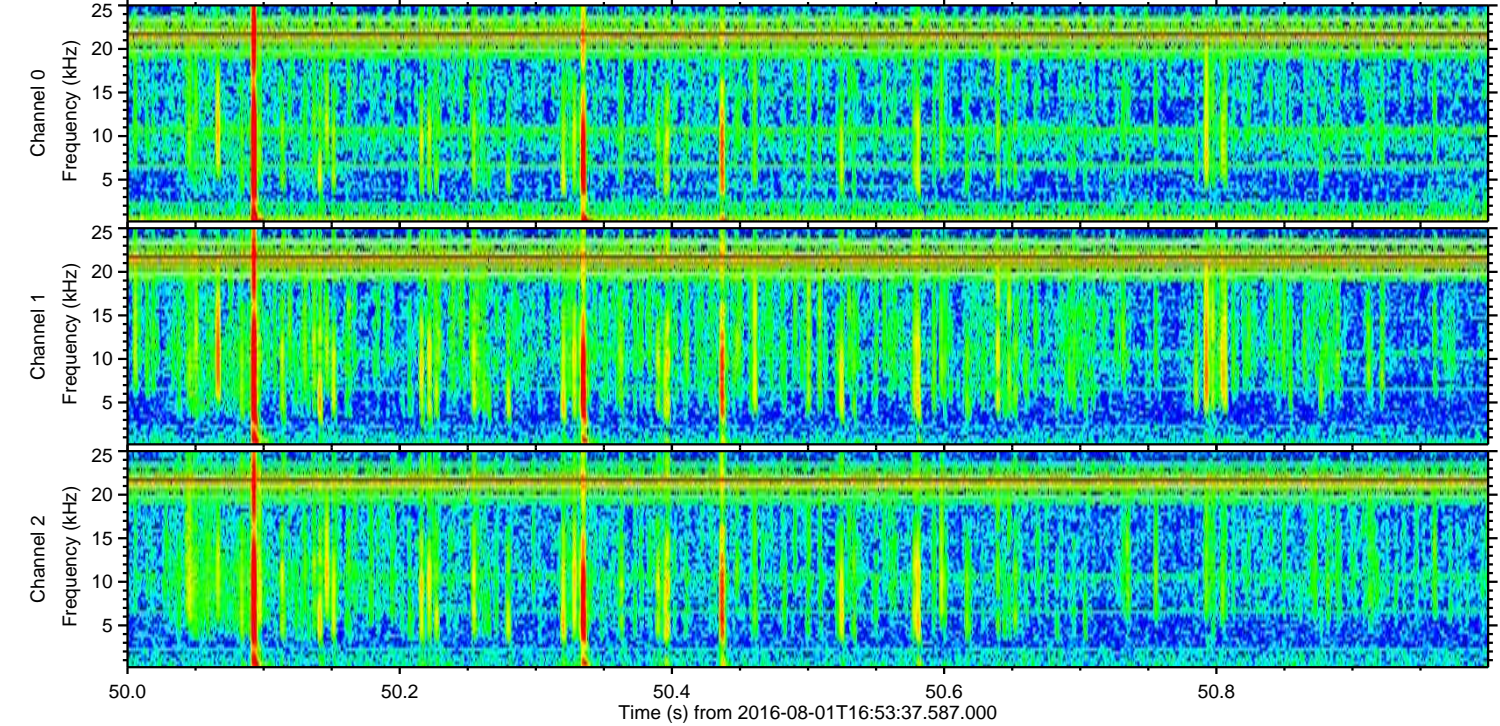
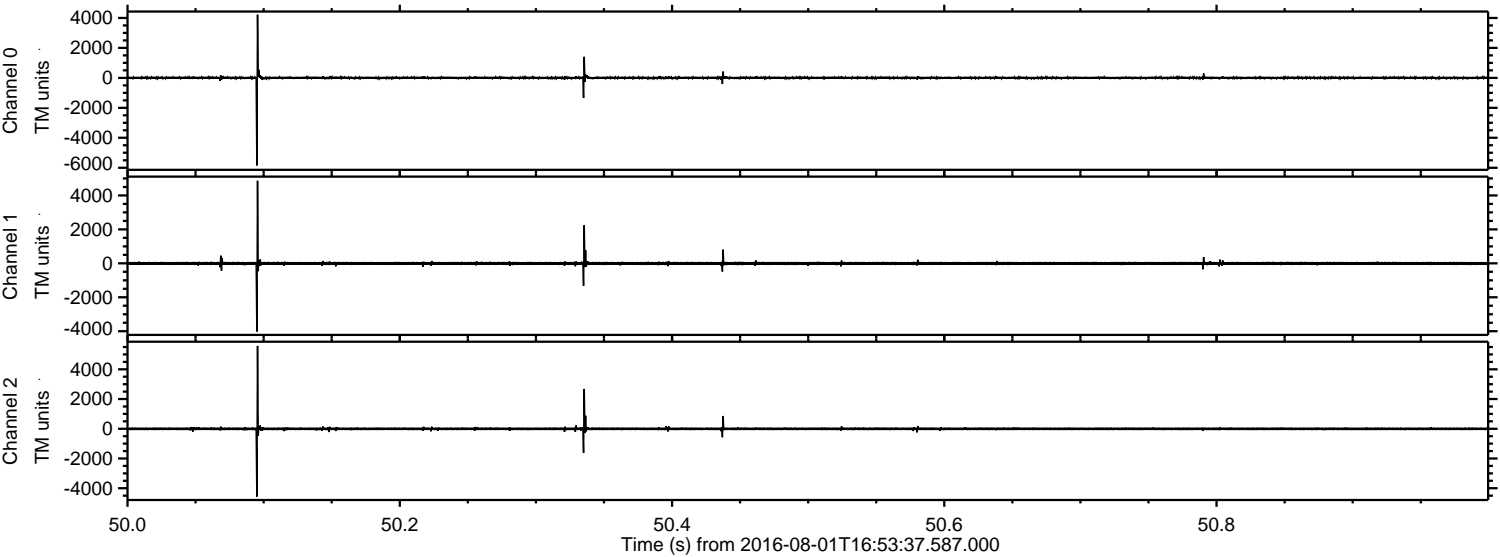


ELMAVAN 3D WAVEFORMS (Measured data sampled at 50 kHz) 51000 packets of 144 samples from 2016-08-01T16:53:37.587.000. Part 142/147

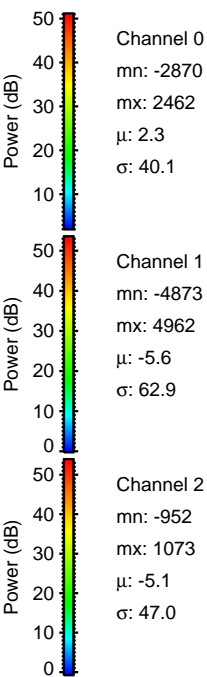
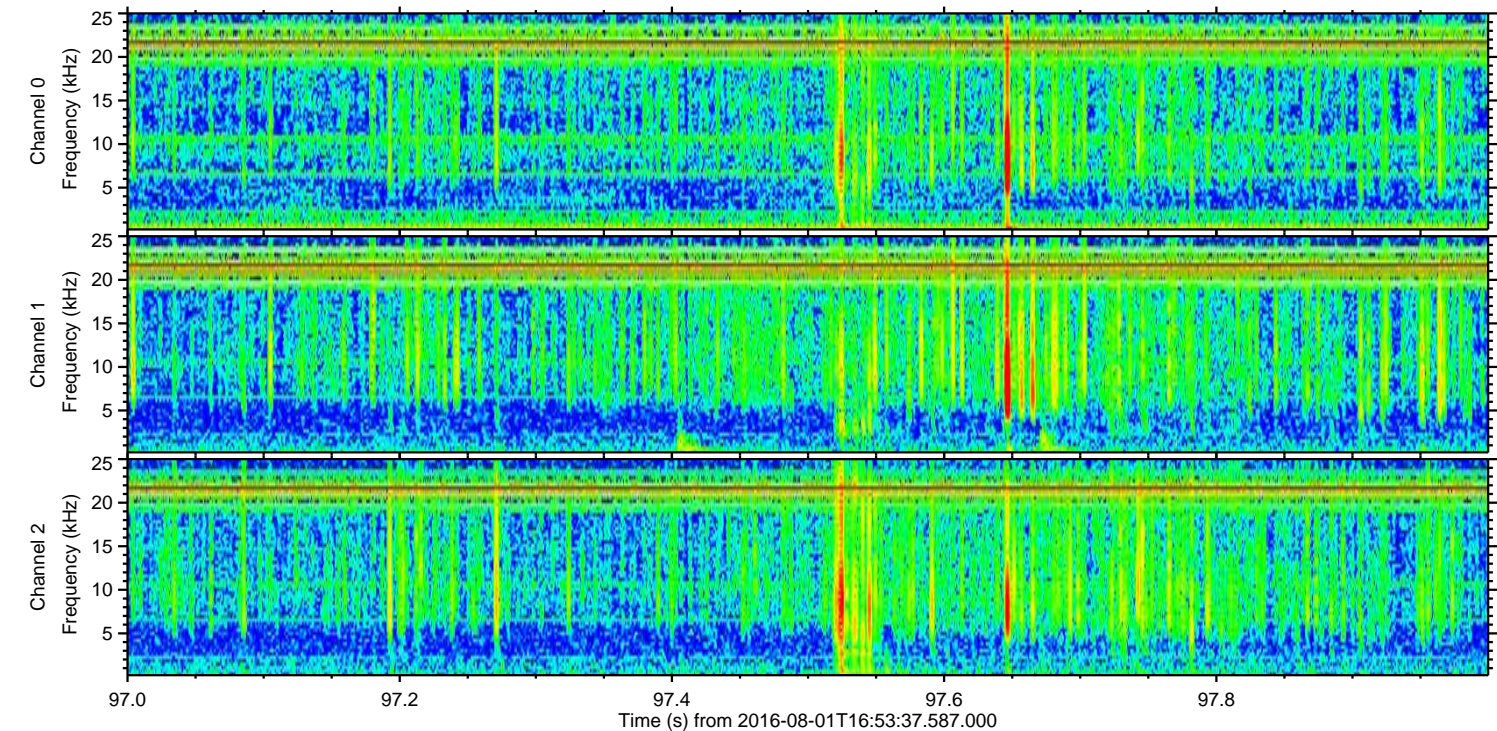
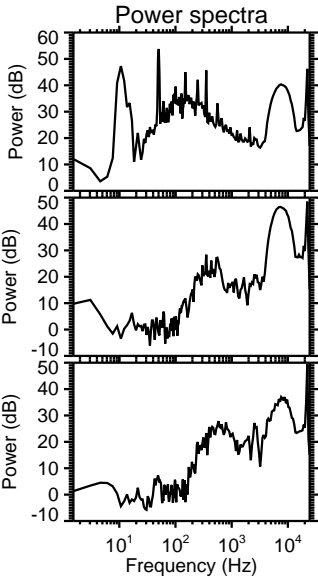
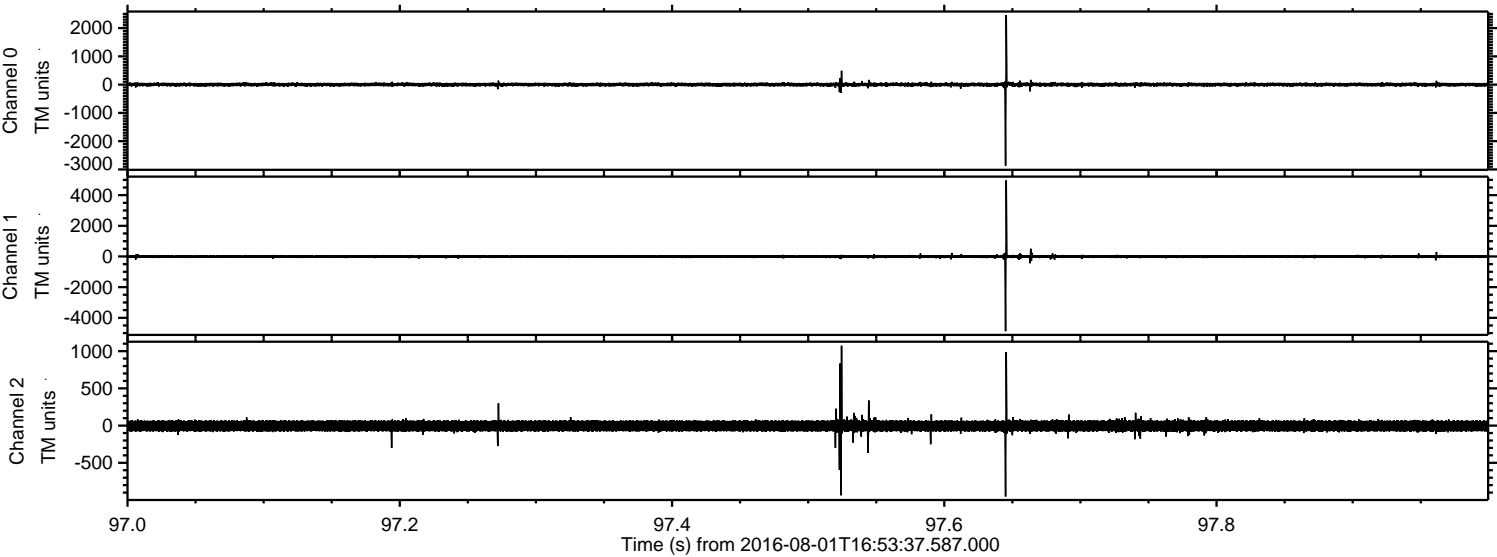
Processed Mon Aug 1 19:01:27 2016 by ELM ver.2012-10-06 from 001__elm20160801_165336__dat00.bin



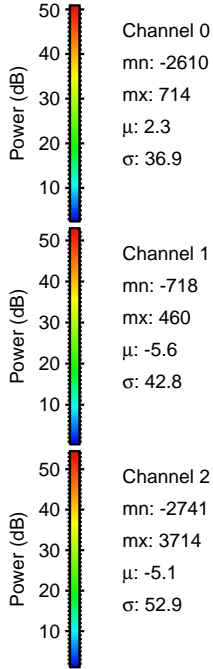
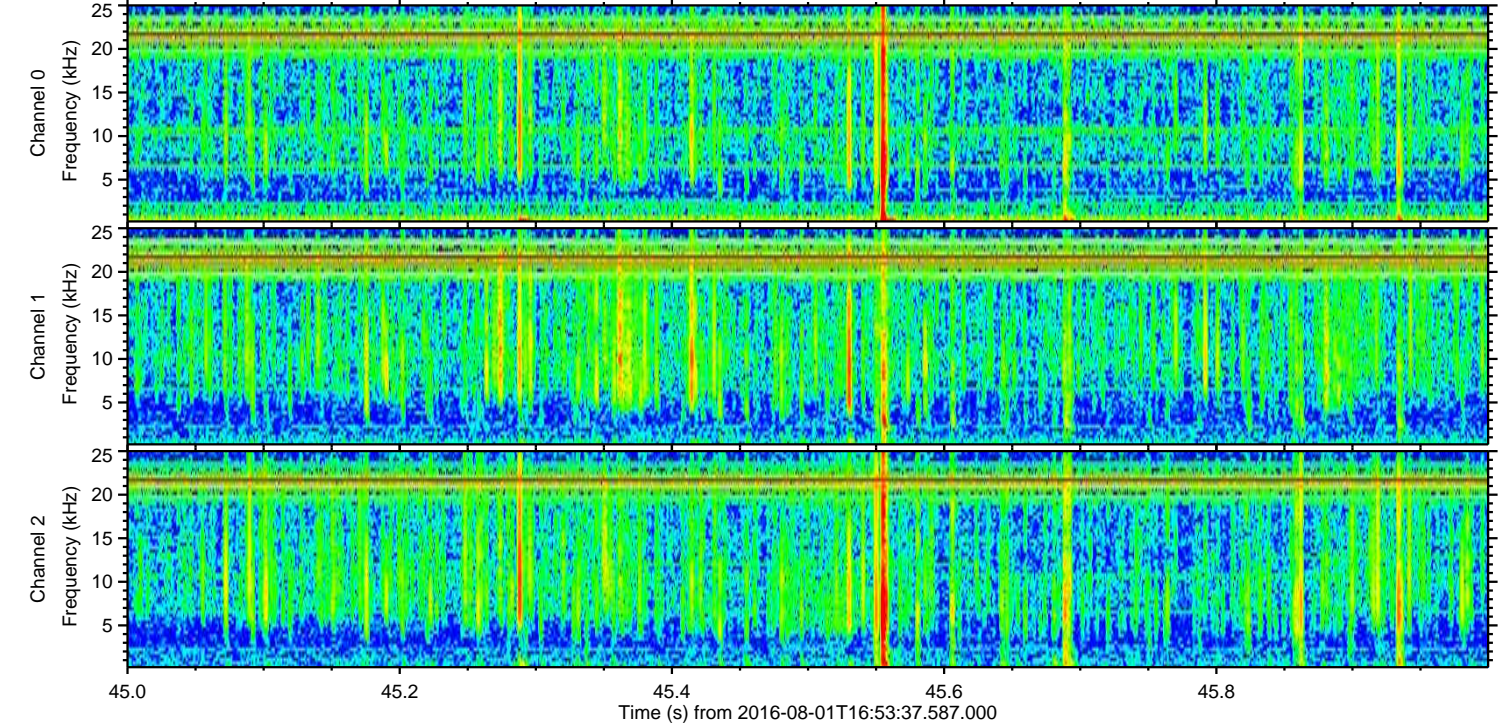
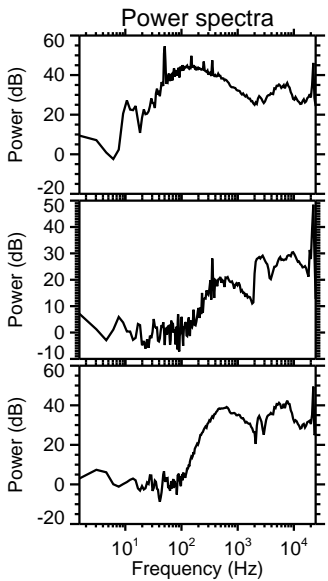
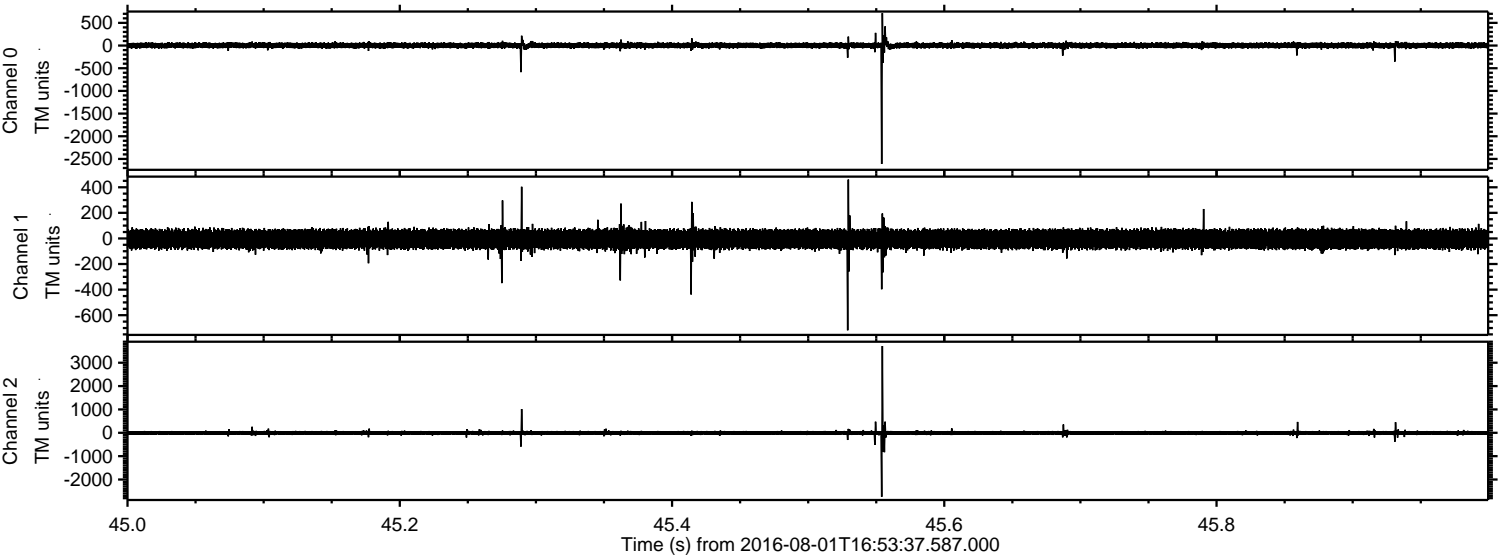
Processed Mon Aug 1 19:01:28 2016 by ELM ver.2012-10-06 from 001__elm20160801_165336__dat00.bin



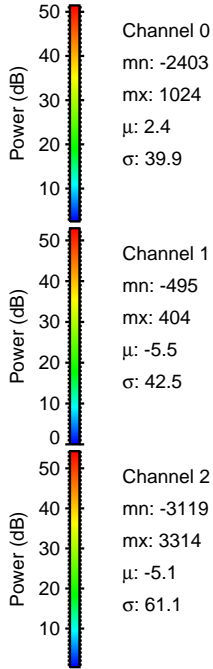
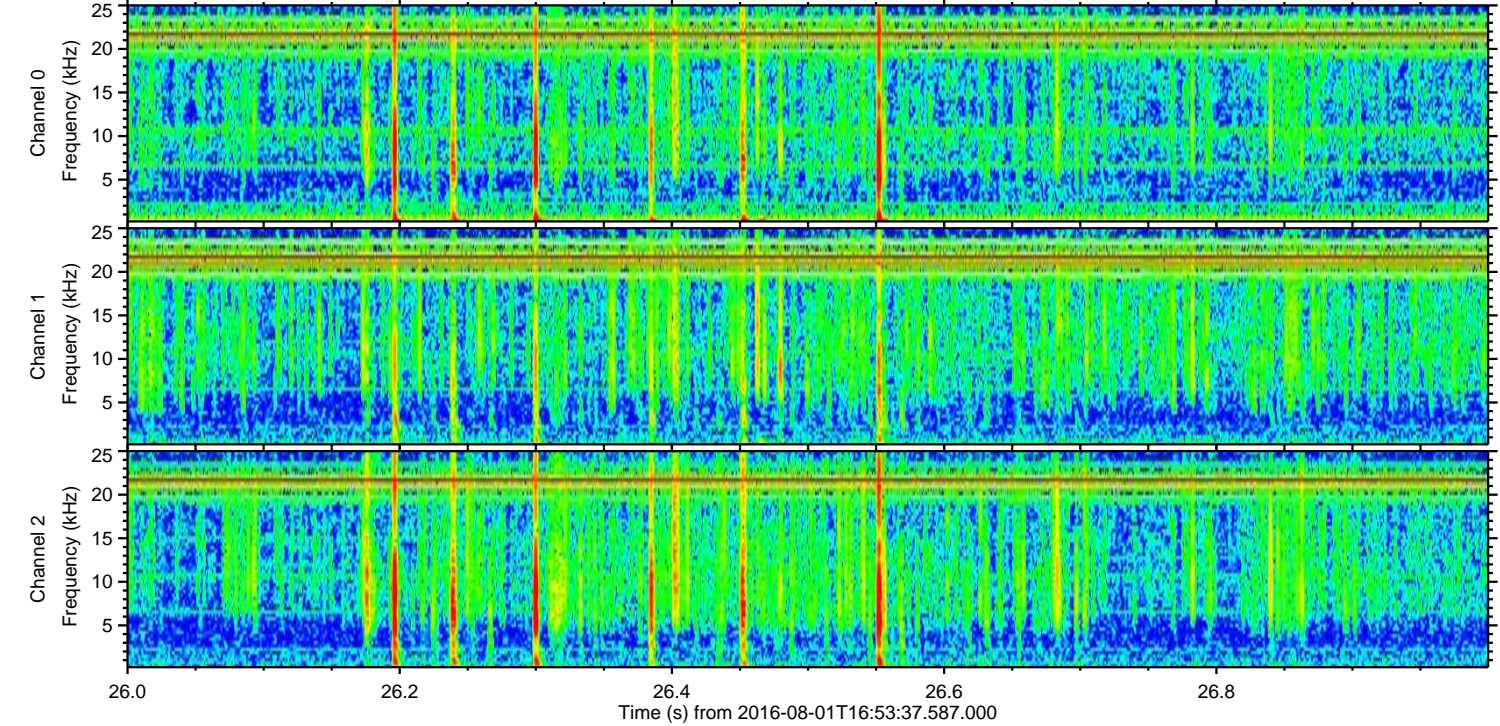
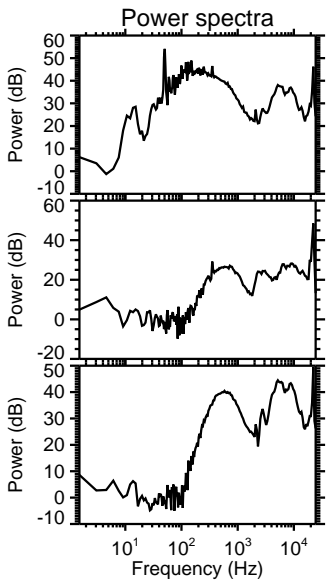
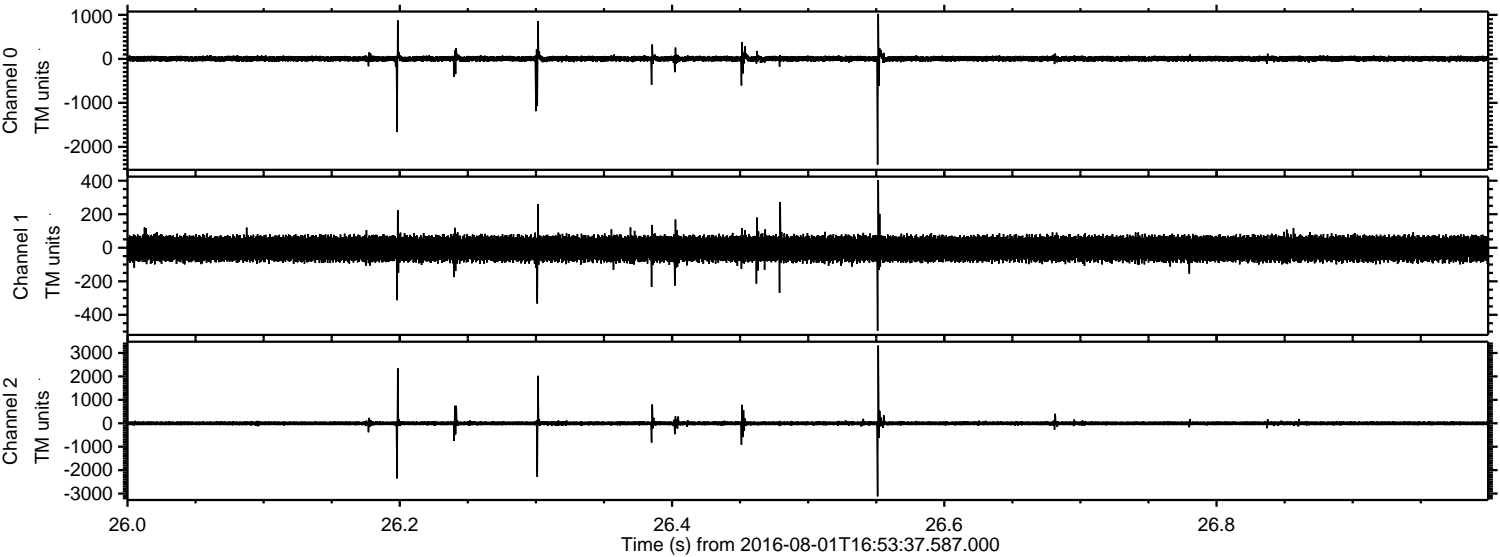
Processed Mon Aug 1 19:01:29 2016 by ELM ver.2012-10-06 from 001__elm20160801_165336__dat00.bin



Processed Mon Aug 1 19:01:30 2016 by ELM ver.2012-10-06 from 001__elm20160801_165336__dat00.bin



Processed Mon Aug 1 19:01:32 2016 by ELM ver.2012-10-06 from 001__elm20160801_165336__dat00.bin



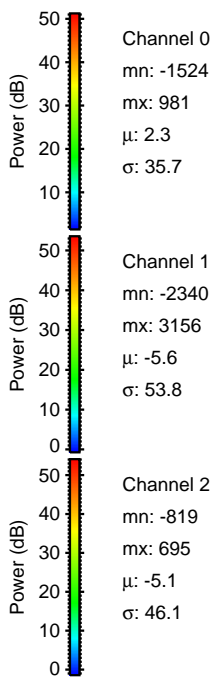
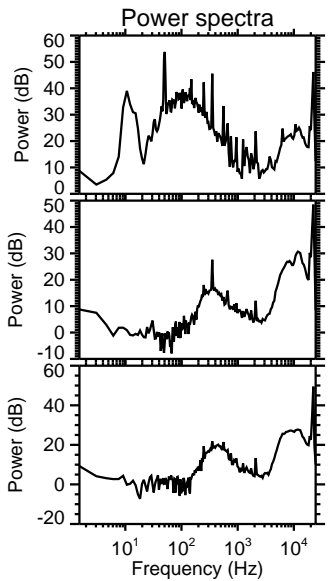
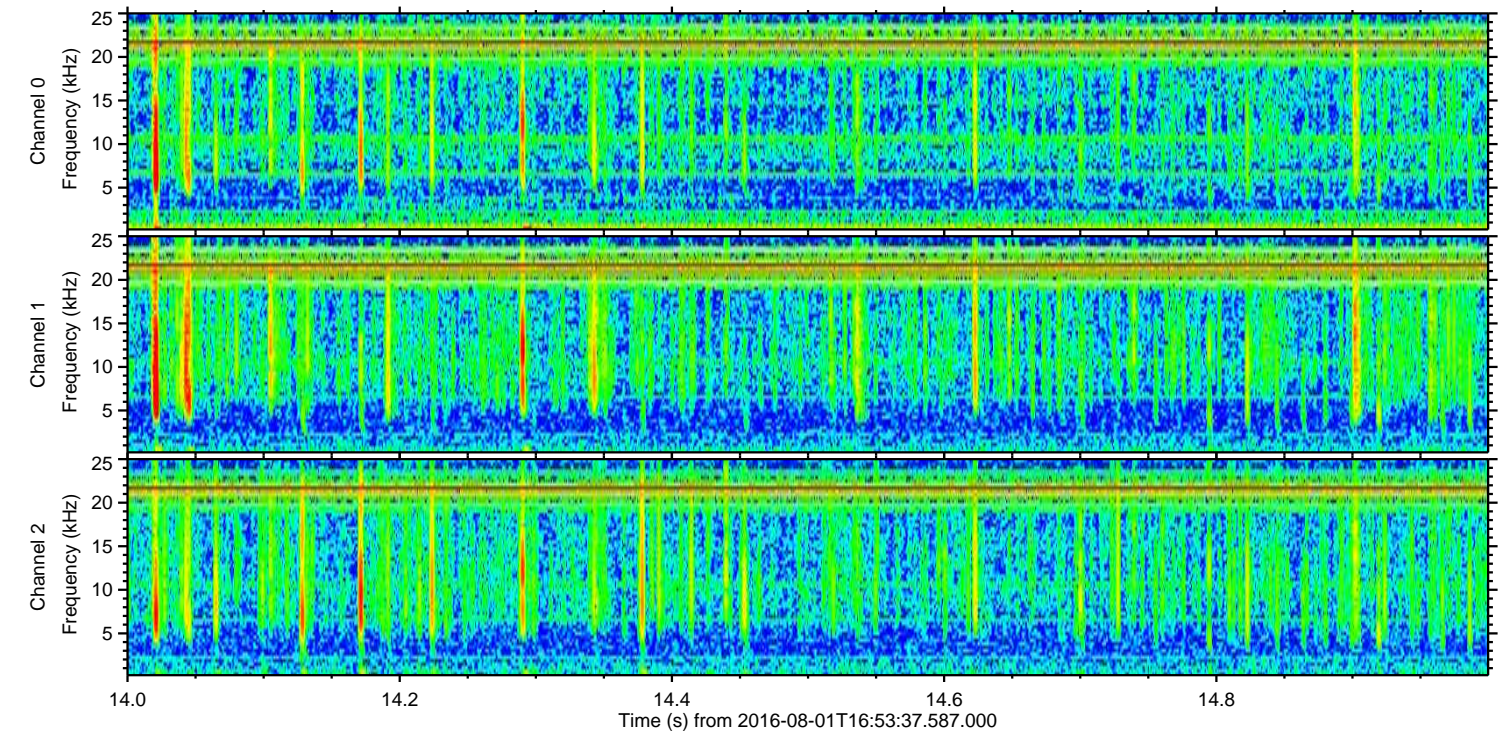
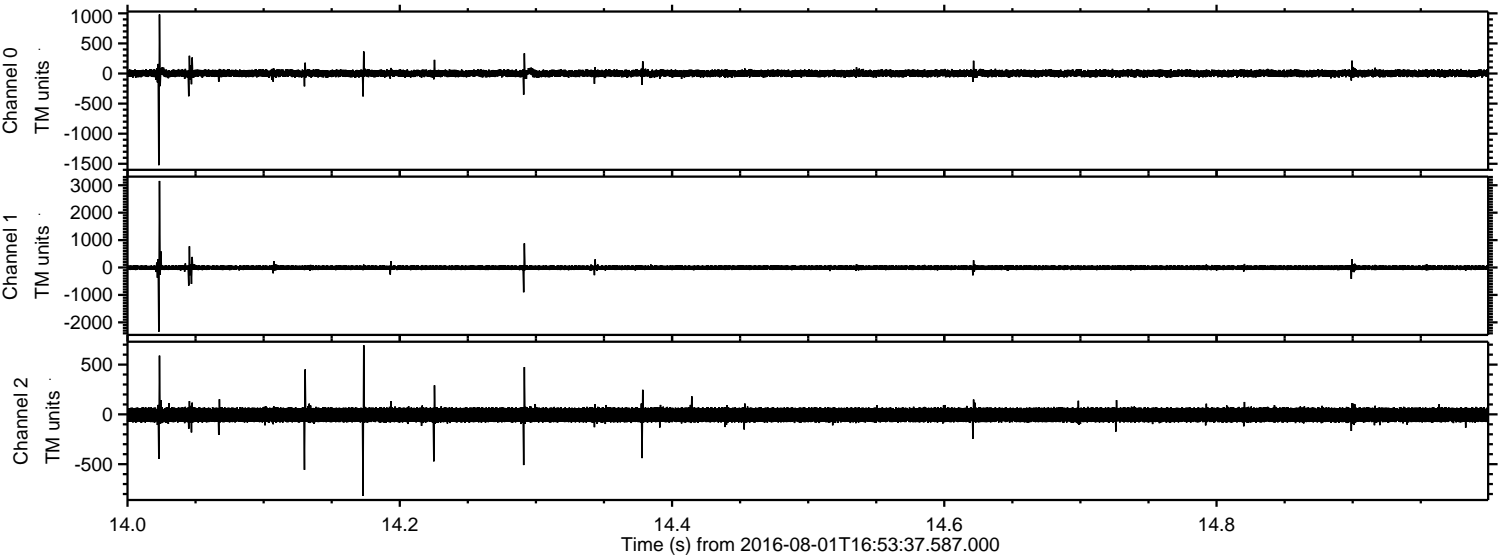
Channel 0
mn: -2403
mx: 1024
 μ : 2.4
 σ : 39.9

Channel 1
mn: -495
mx: 404
 μ : -5.5
 σ : 42.5

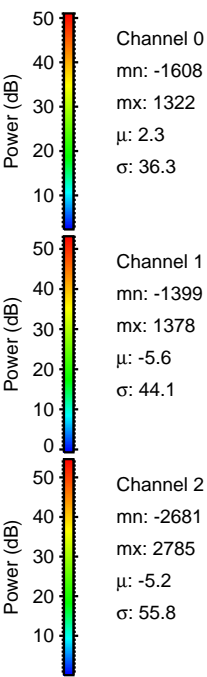
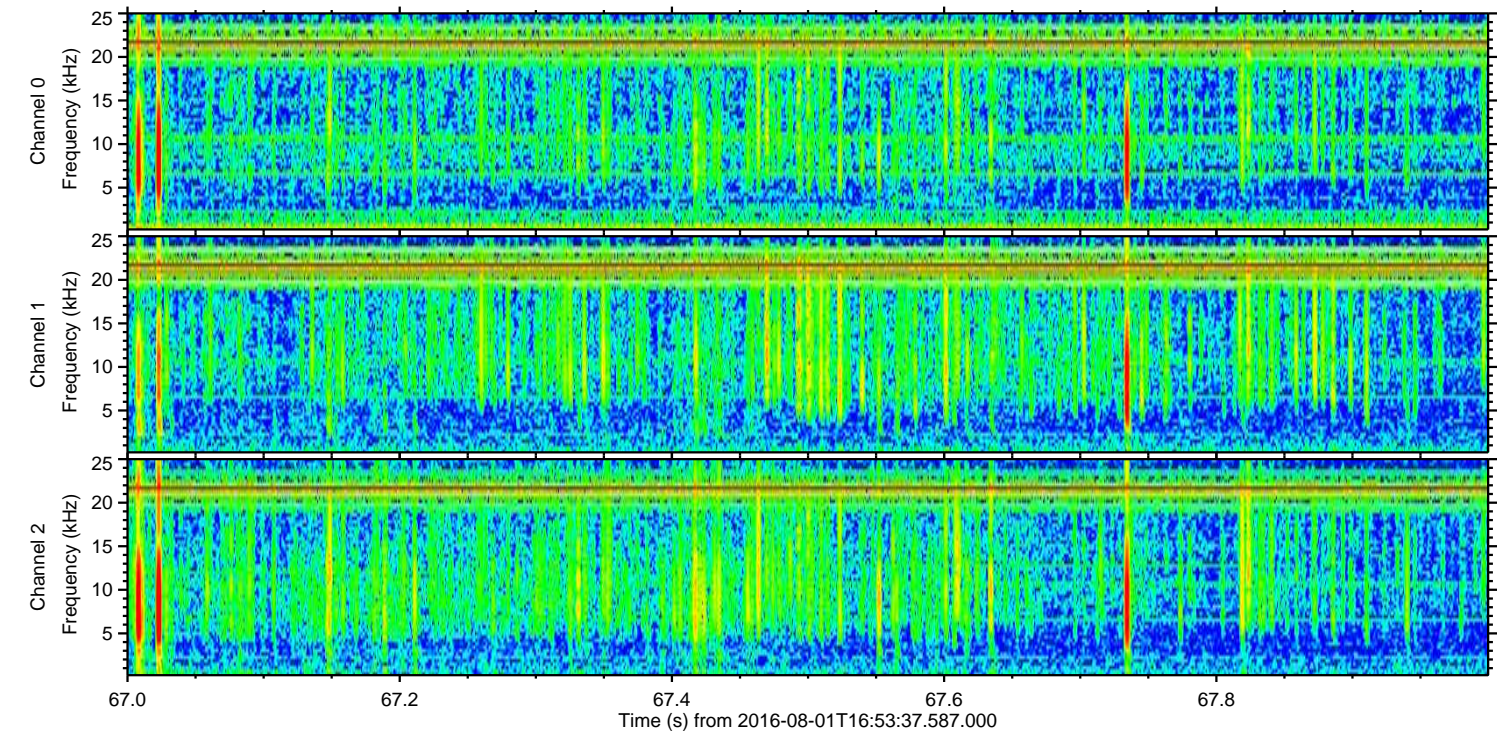
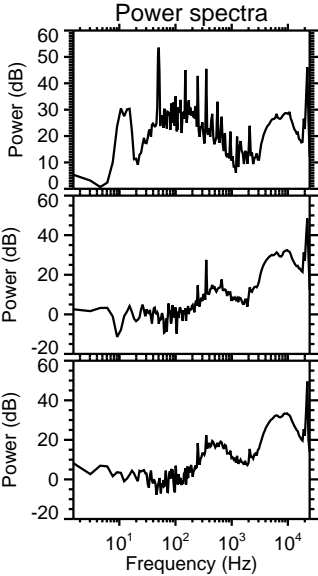
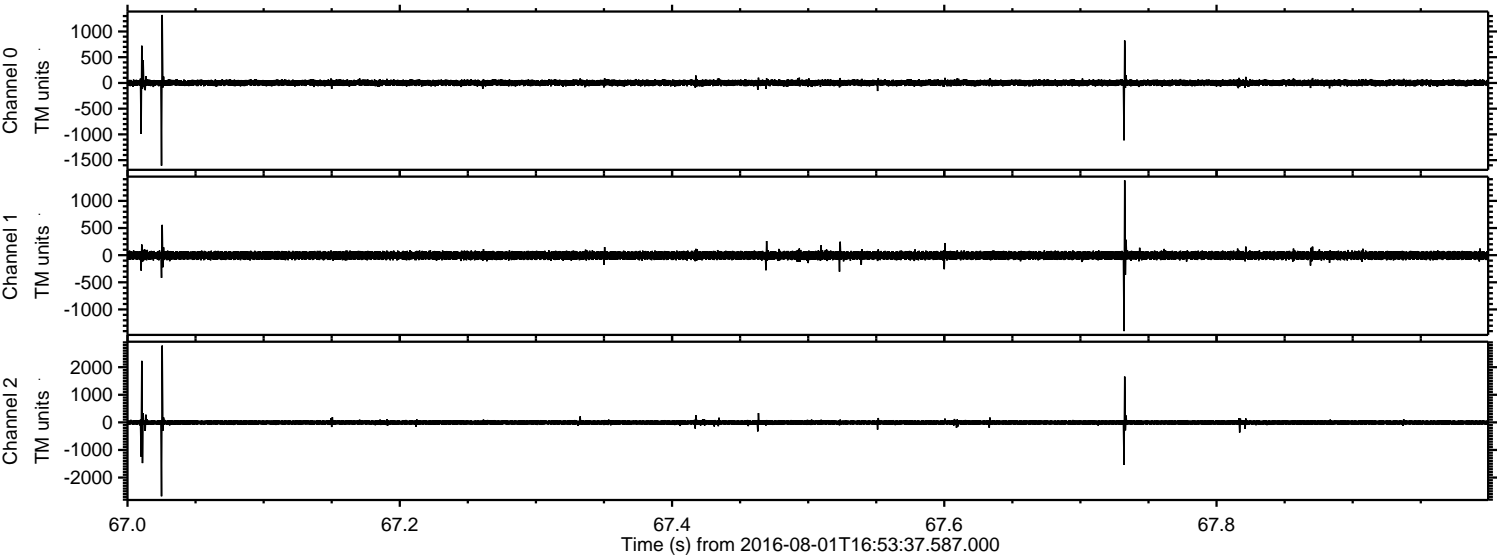
Channel 2
mn: -3119
mx: 3314
 μ : -5.1
 σ : 61.1

ELMAVAN 3D WAVEFORMS (Measured data sampled at 50 kHz) 51000 packets of 144 samples from 2016-08-01T16:53:37.587.000. Part 15/147

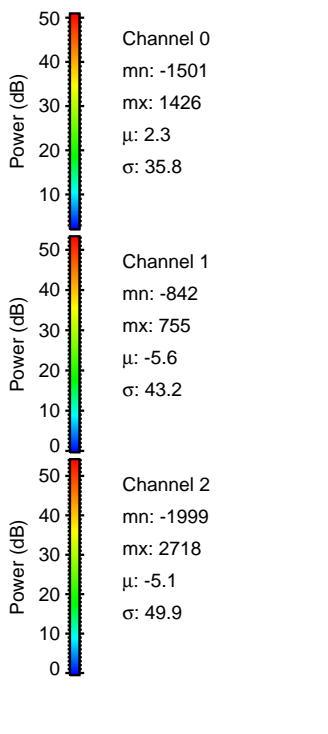
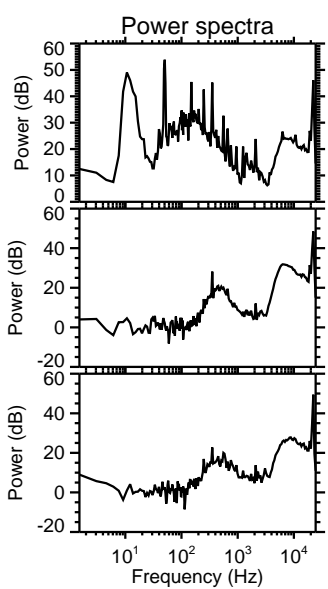
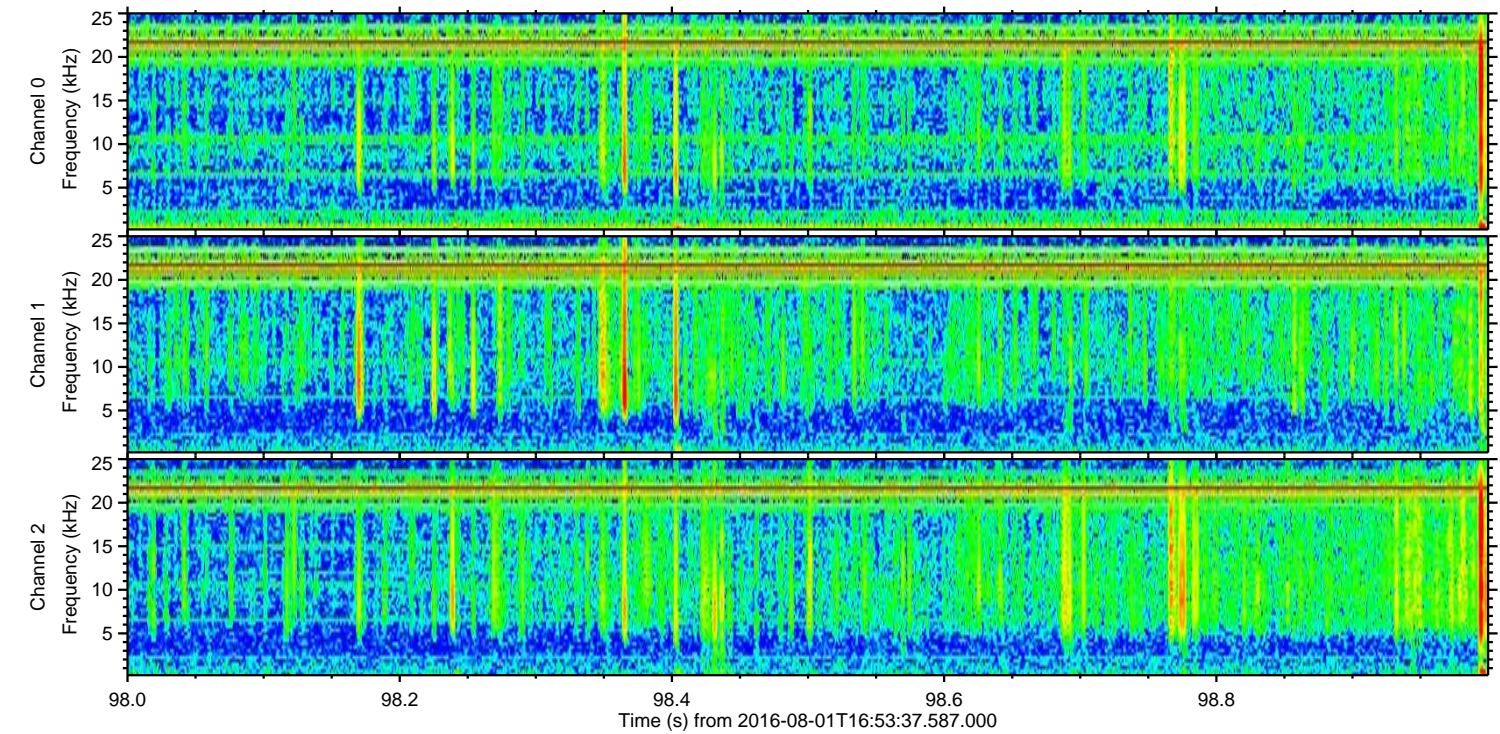
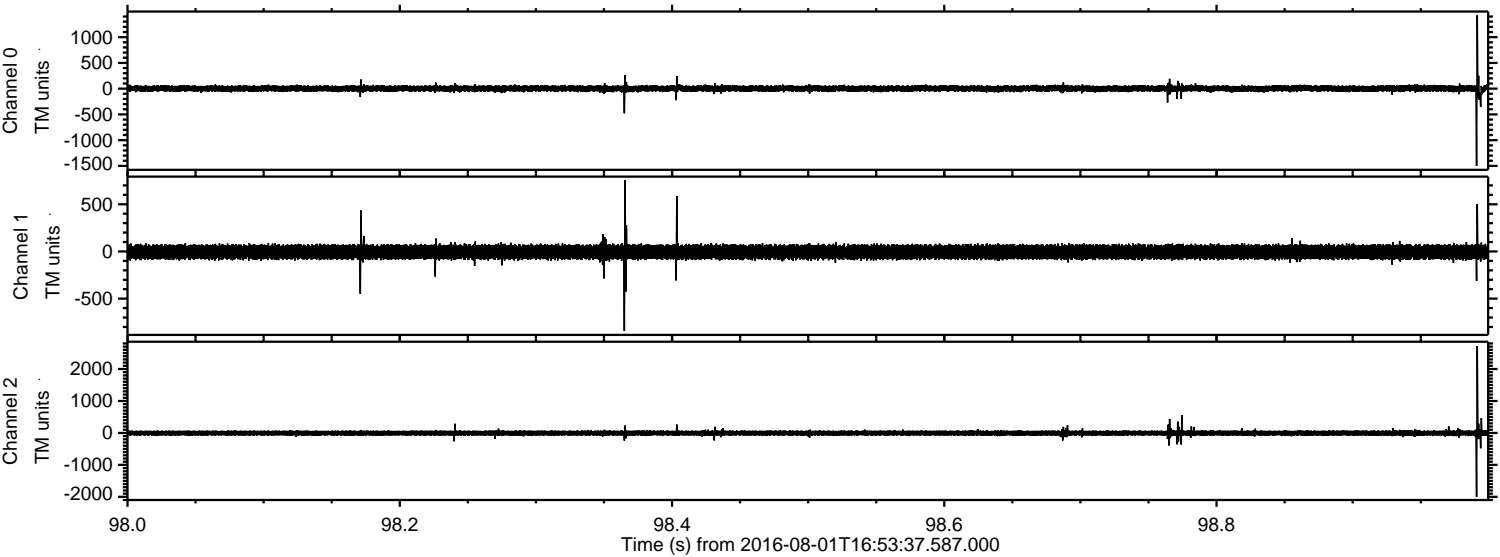
Processed Mon Aug 1 19:01:33 2016 by ELM ver.2012-10-06 from 001__elm20160801_165336__dat00.bin



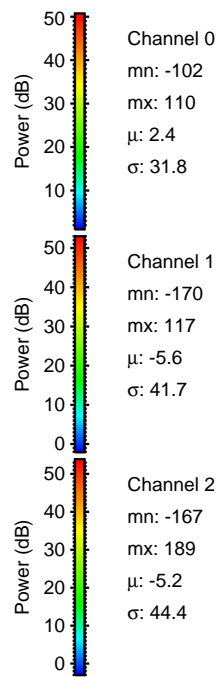
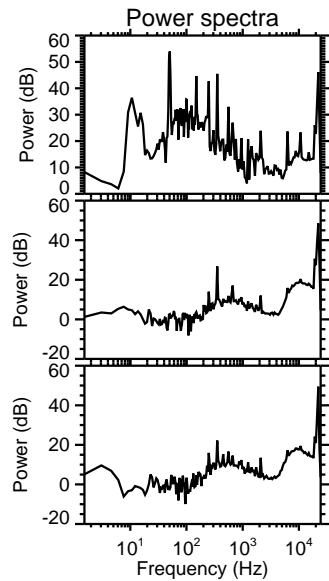
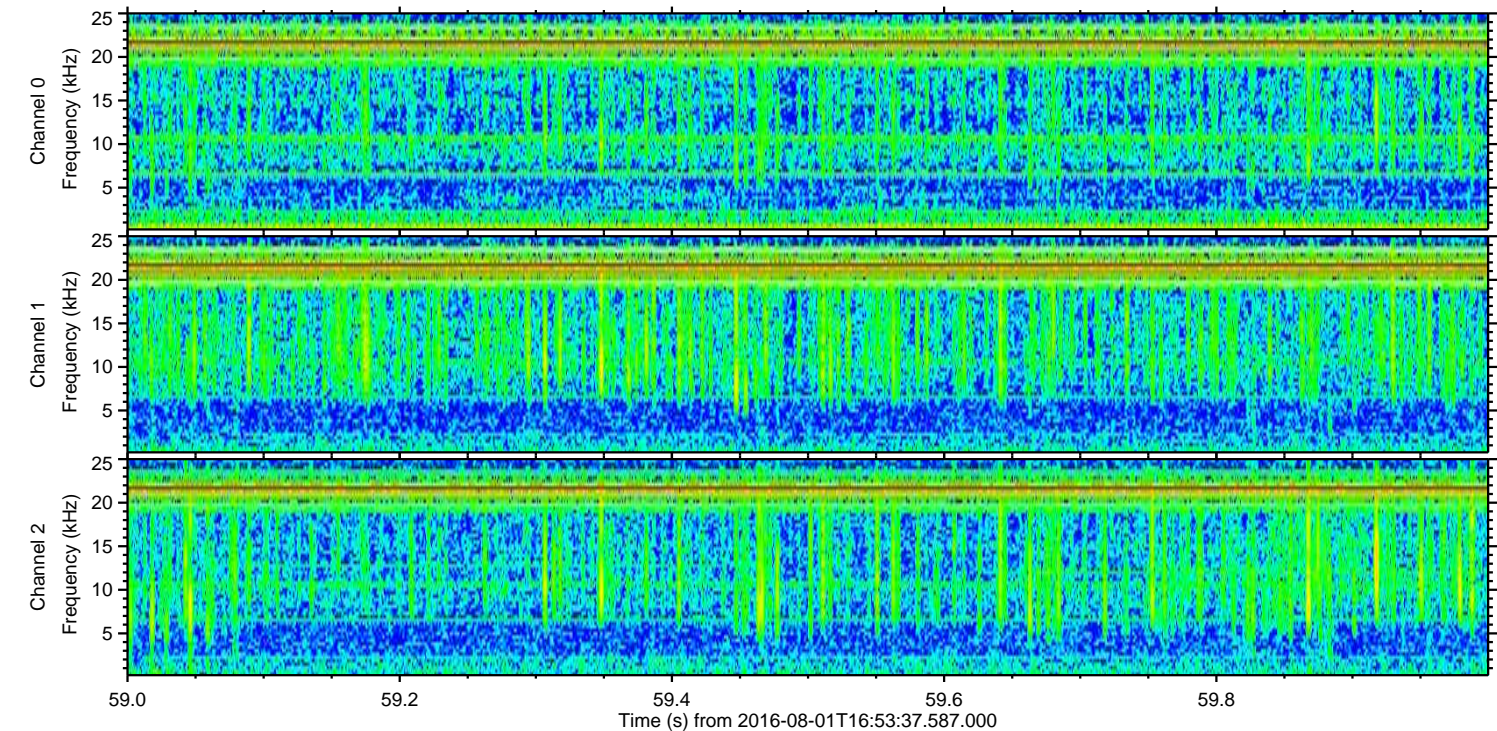
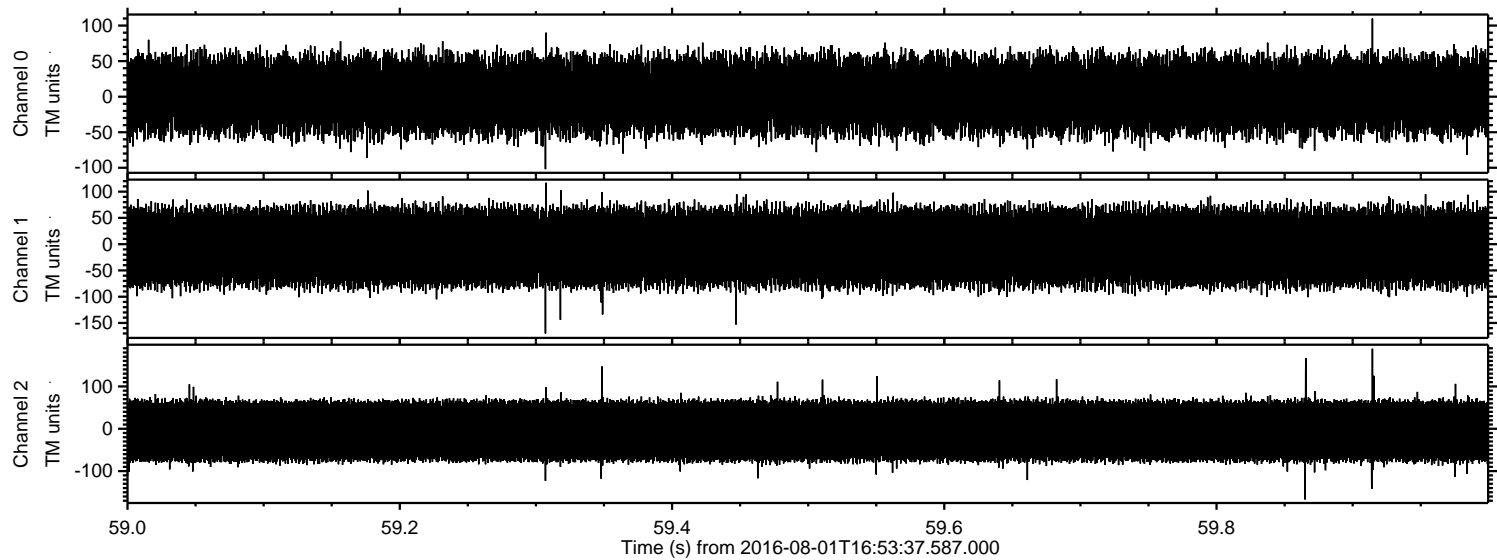
Processed Mon Aug 1 19:01:34 2016 by ELM ver.2012-10-06 from 001__elm20160801_165336__dat00.bin



Processed Mon Aug 1 19:01:35 2016 by ELM ver.2012-10-06 from 001__elm20160801_165336__dat00.bin



Processed Mon Aug 1 19:01:36 2016 by ELM ver.2012-10-06 from 001__elm20160801_165336__dat00.bin



Channel 0
mn: -102
mx: 110
 μ : 2.4
 σ : 31.8

Channel 1
mn: -170
mx: 117
 μ : -5.6
 σ : 41.7

Channel 2
mn: -167
mx: 189
 μ : -5.2
 σ : 44.4