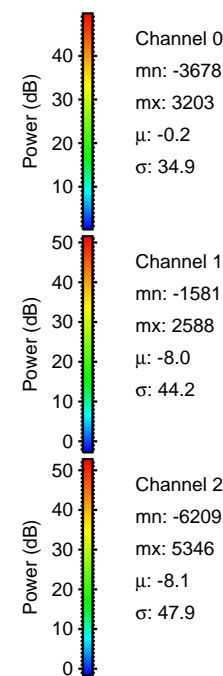
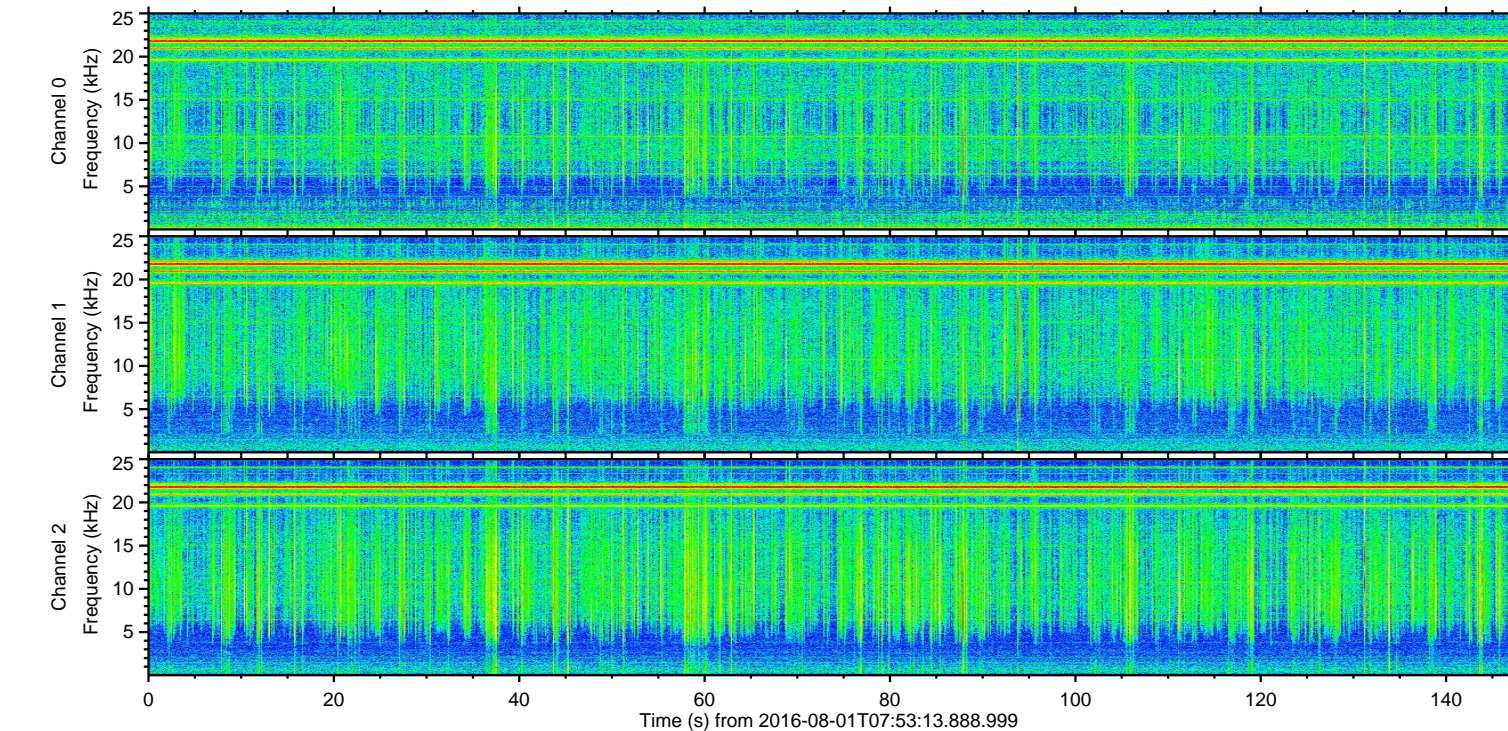
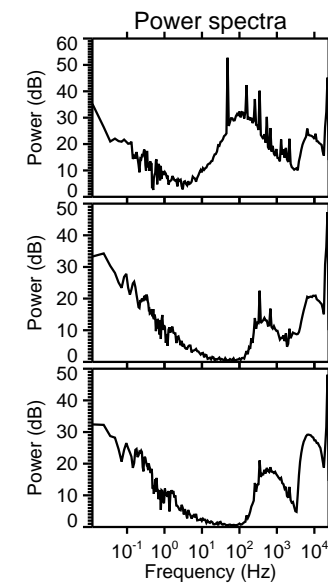
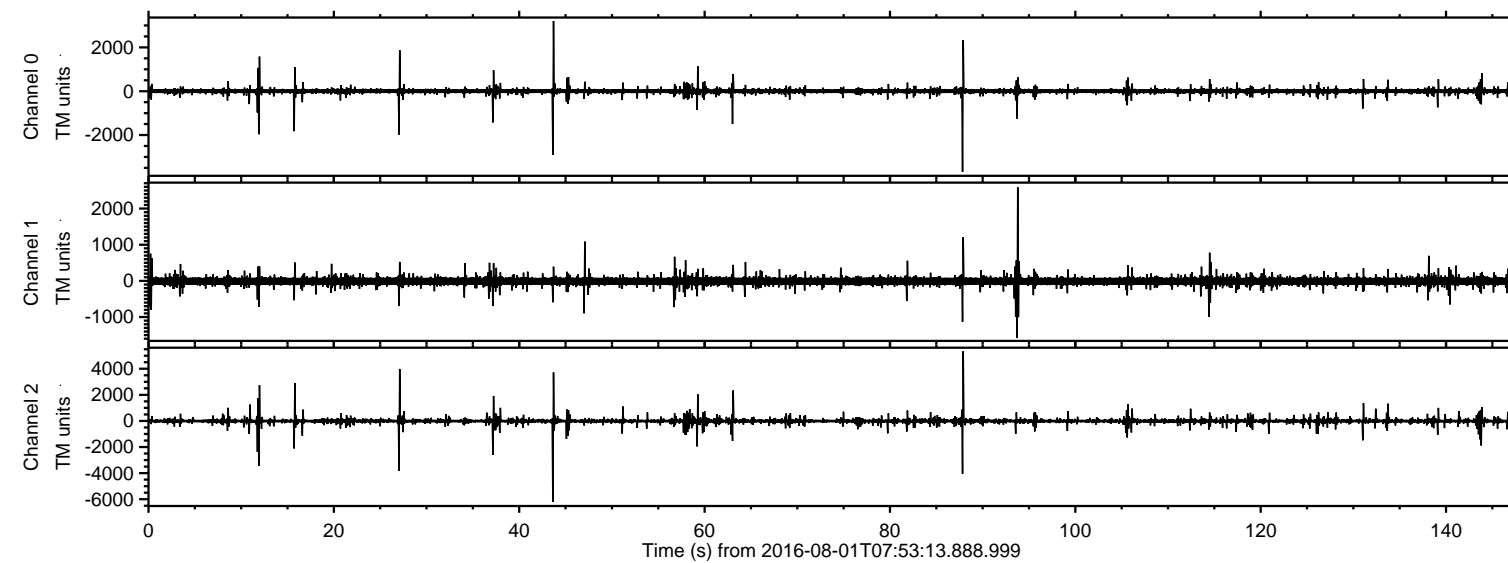
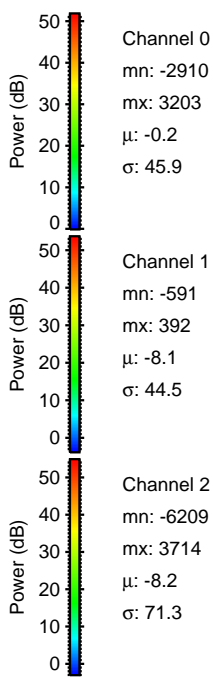
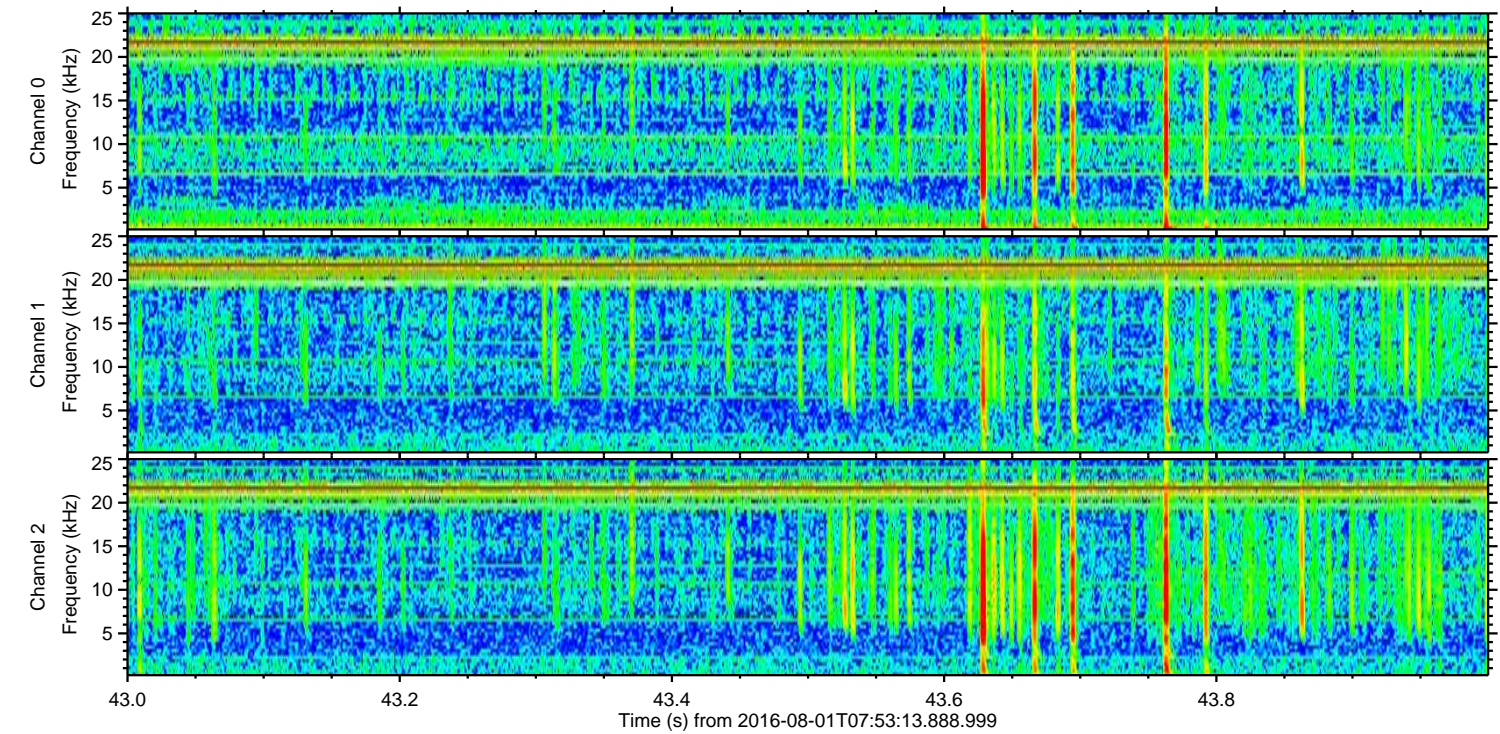
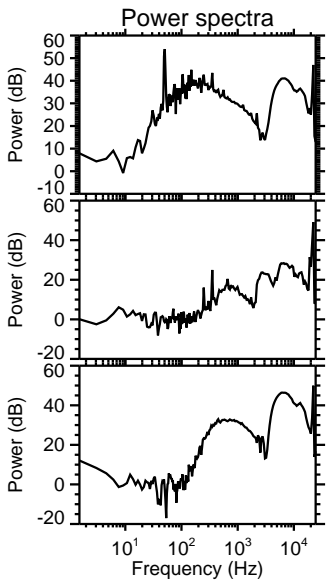
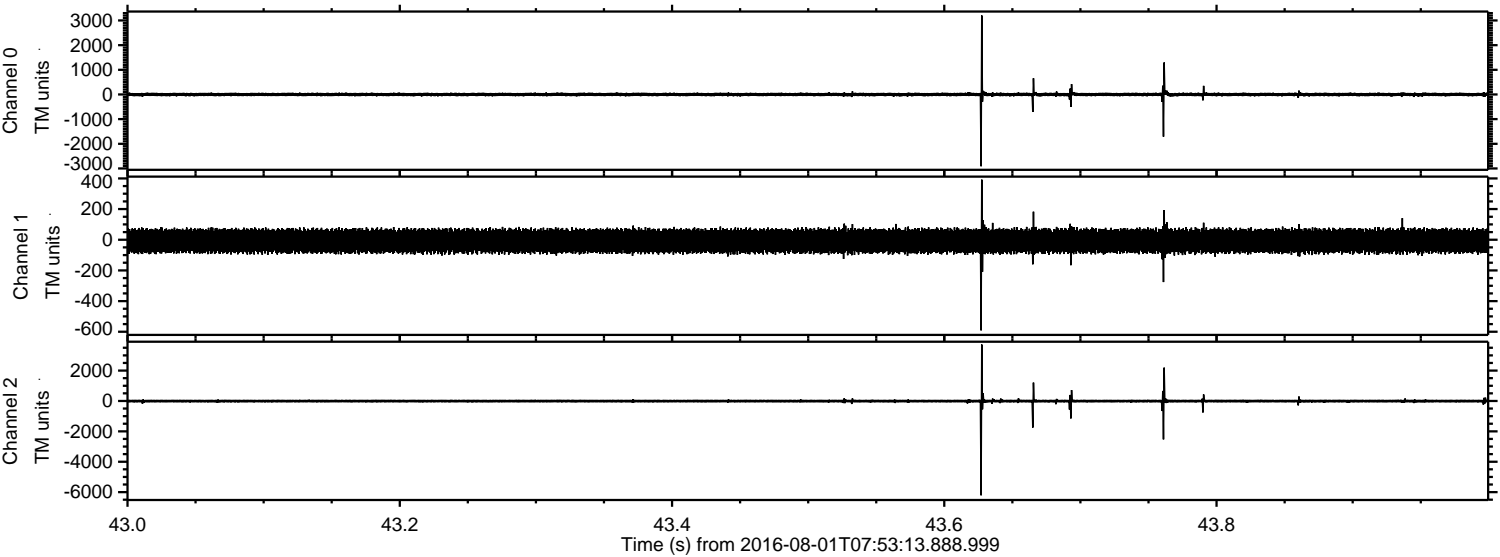


ELMAVAN 3D WAVEFORMS (Measured data sampled at 50 kHz) 51000 packets of 144 samples from 2016-08-01T07:53:13.888.999.

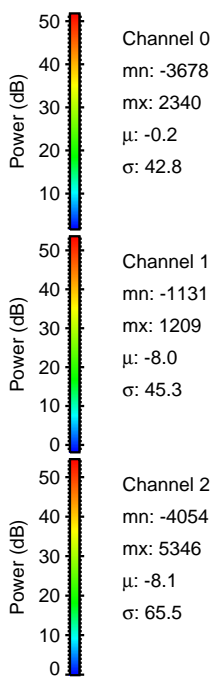
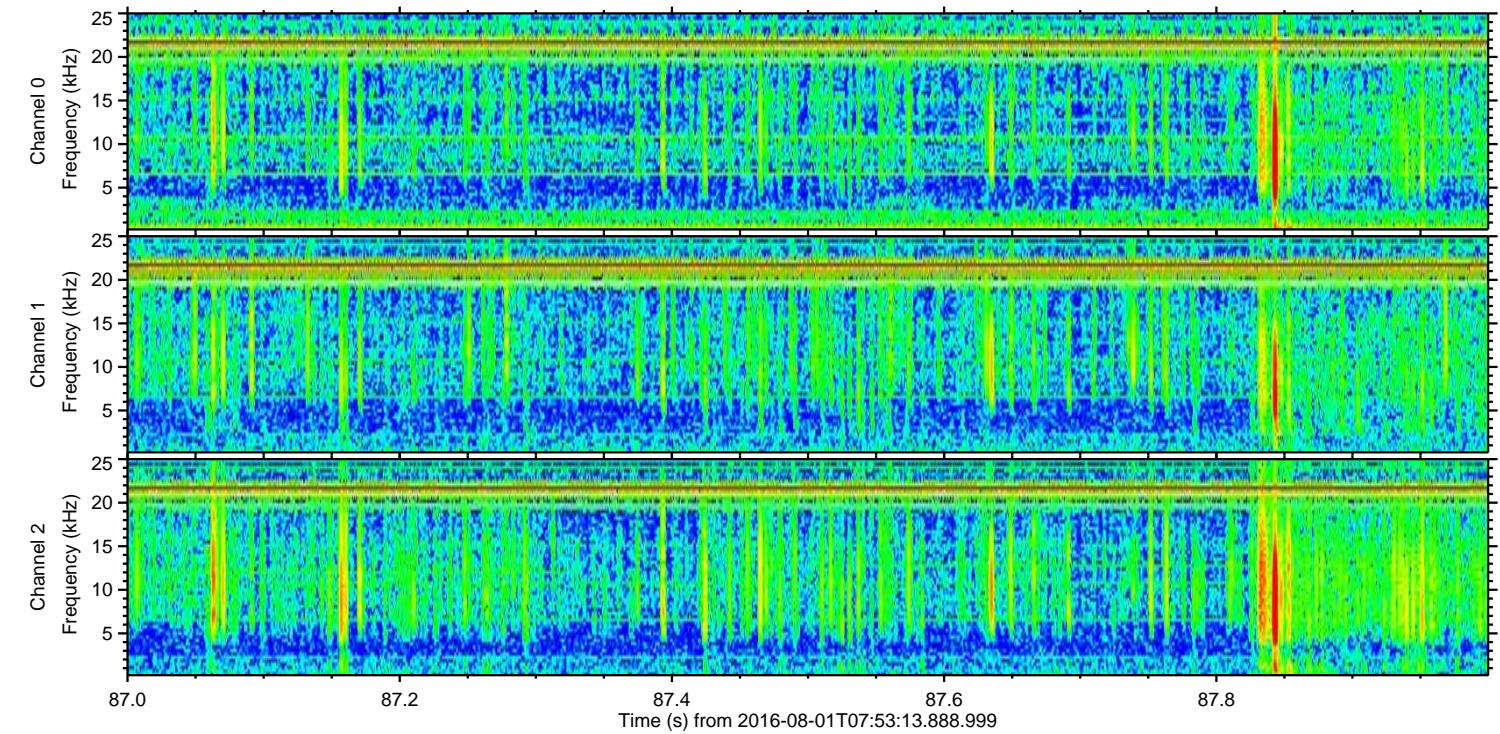
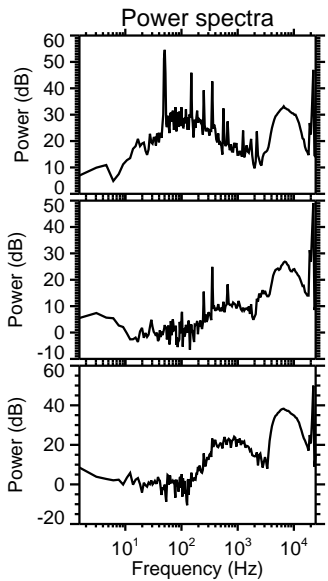
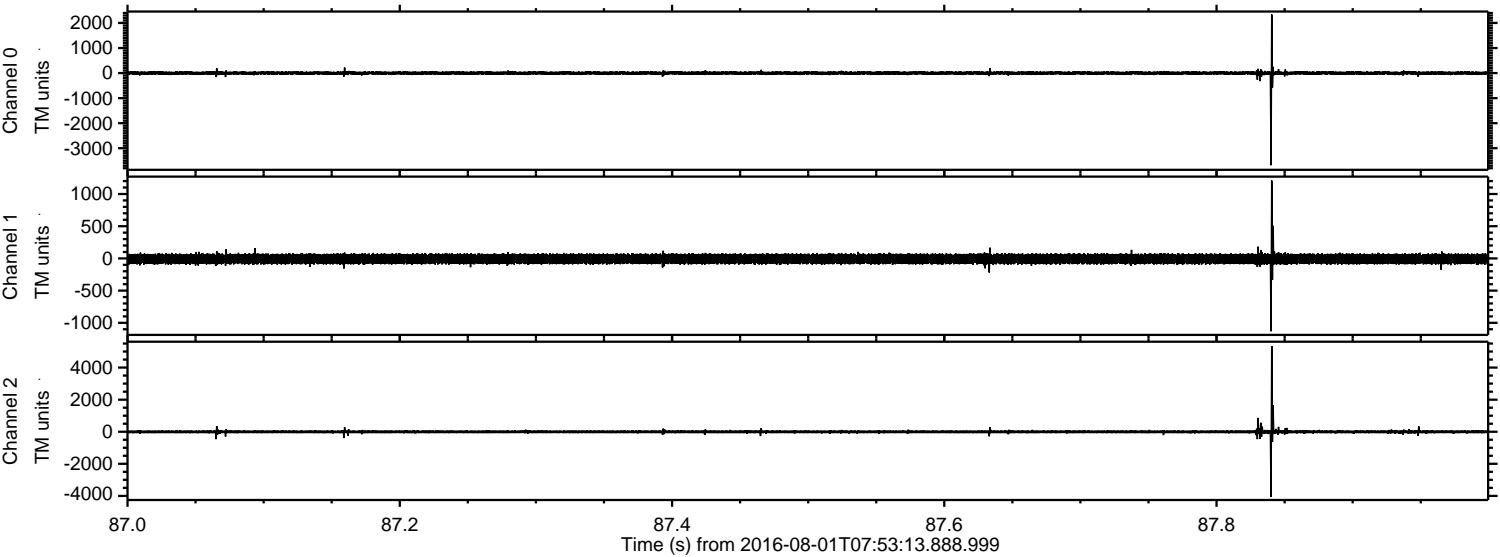
Processed Mon Aug 1 10:00:50 2016 by ELM ver.2012-10-06 from 001__elm20160801_075312__dat00.bin



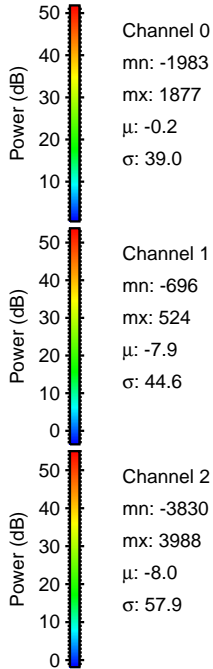
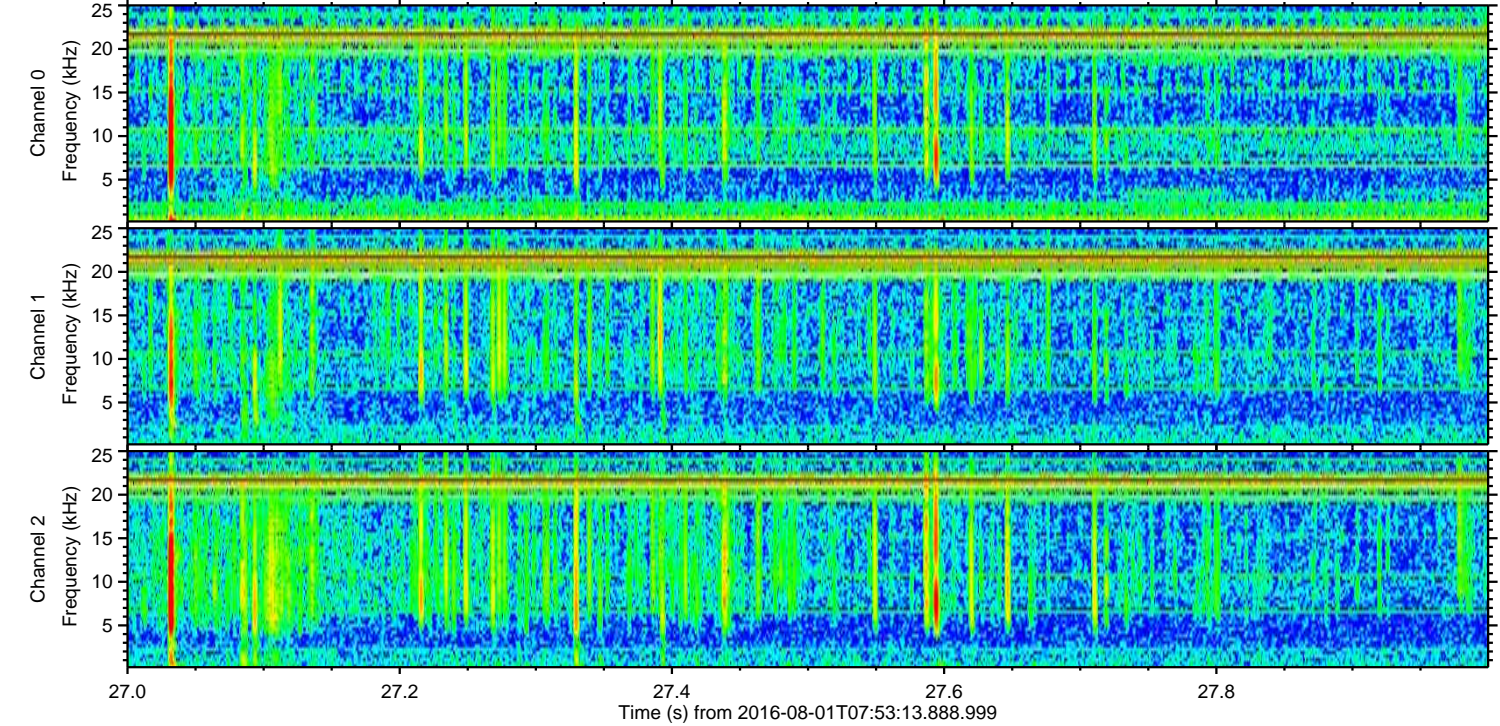
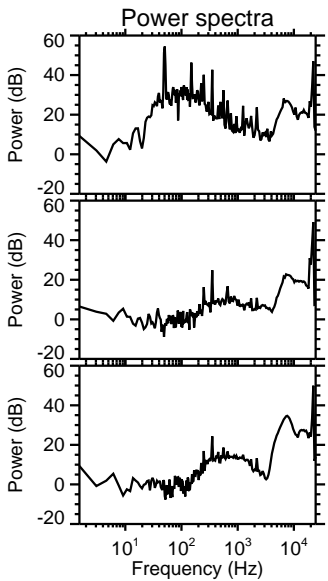
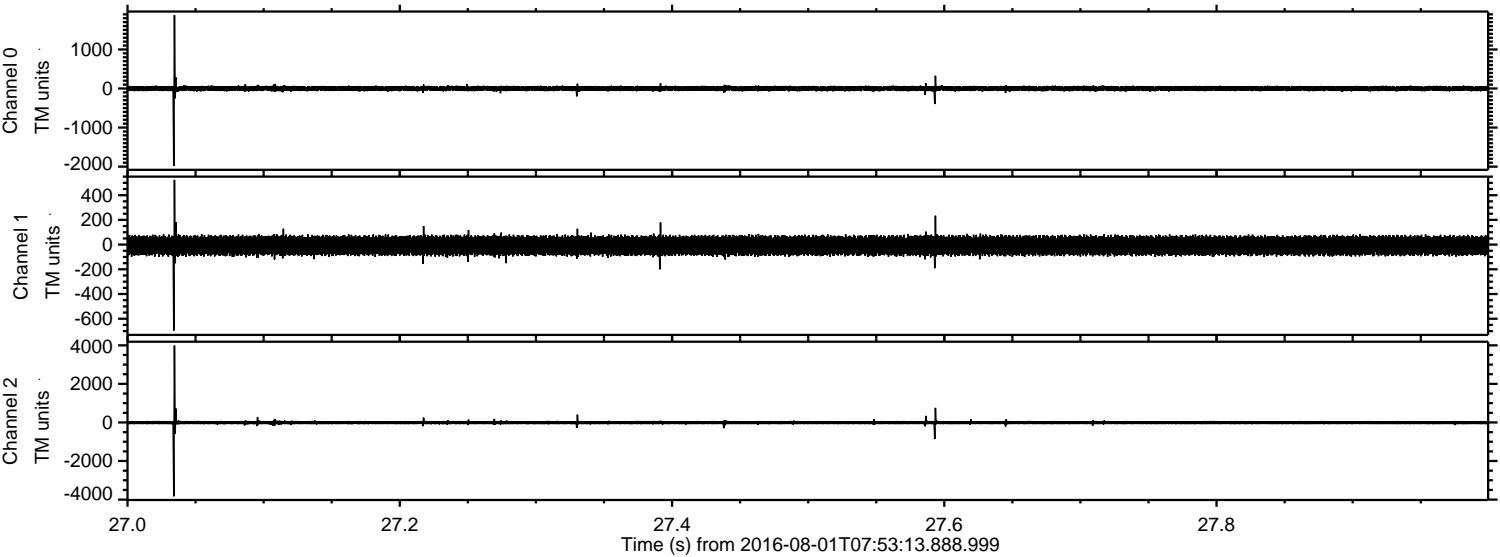
Processed Mon Aug 1 10:01:02 2016 by ELM ver.2012-10-06 from 001__elm20160801_075312__dat00.bin



Processed Mon Aug 1 10:01:03 2016 by ELM ver.2012-10-06 from 001__elm20160801_075312__dat00.bin

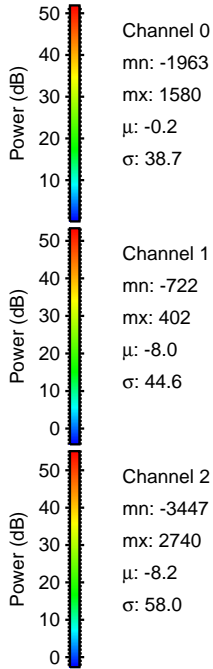
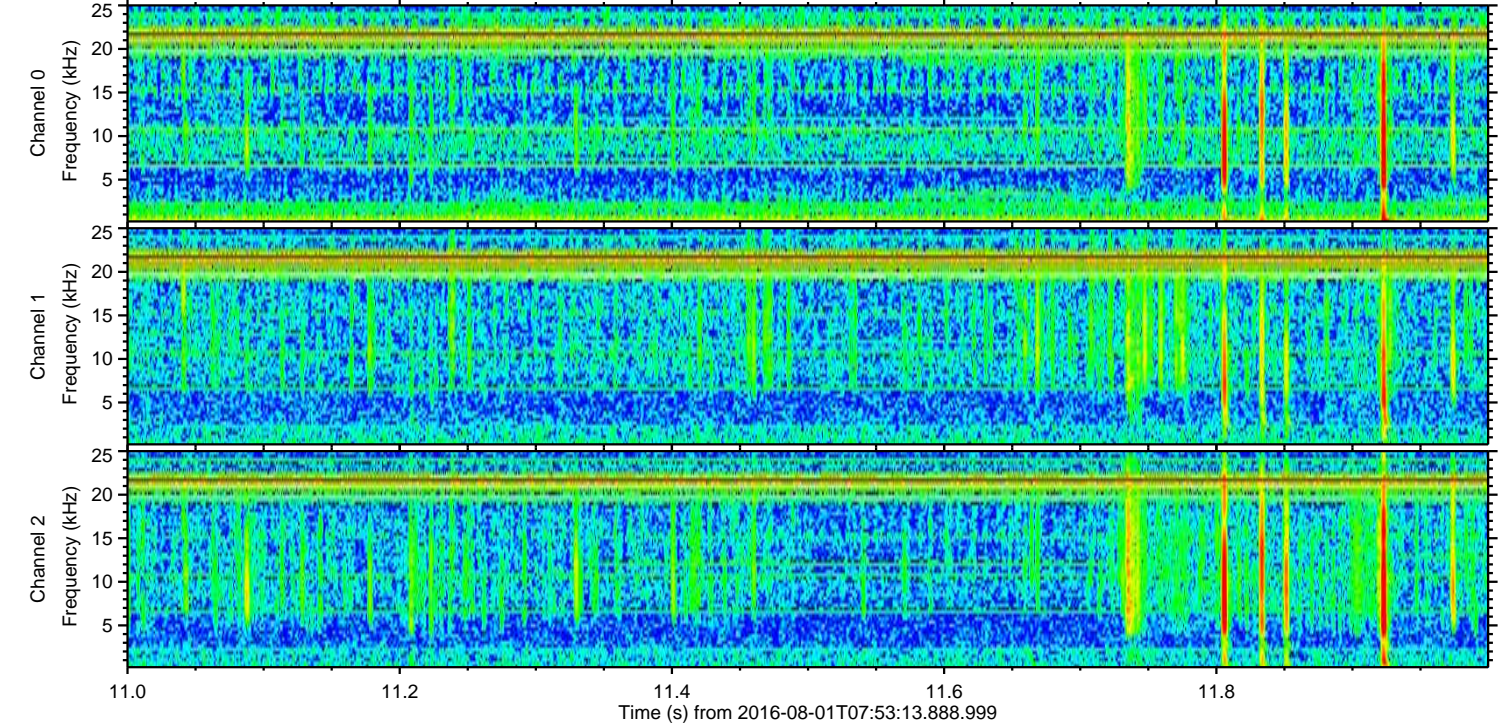
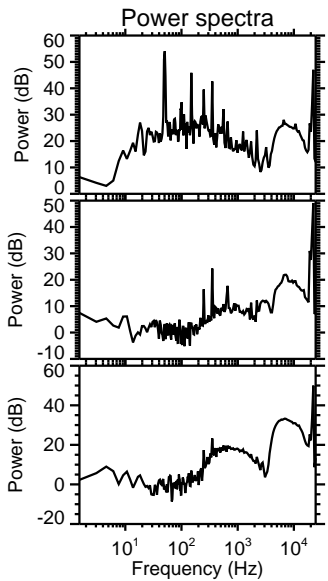
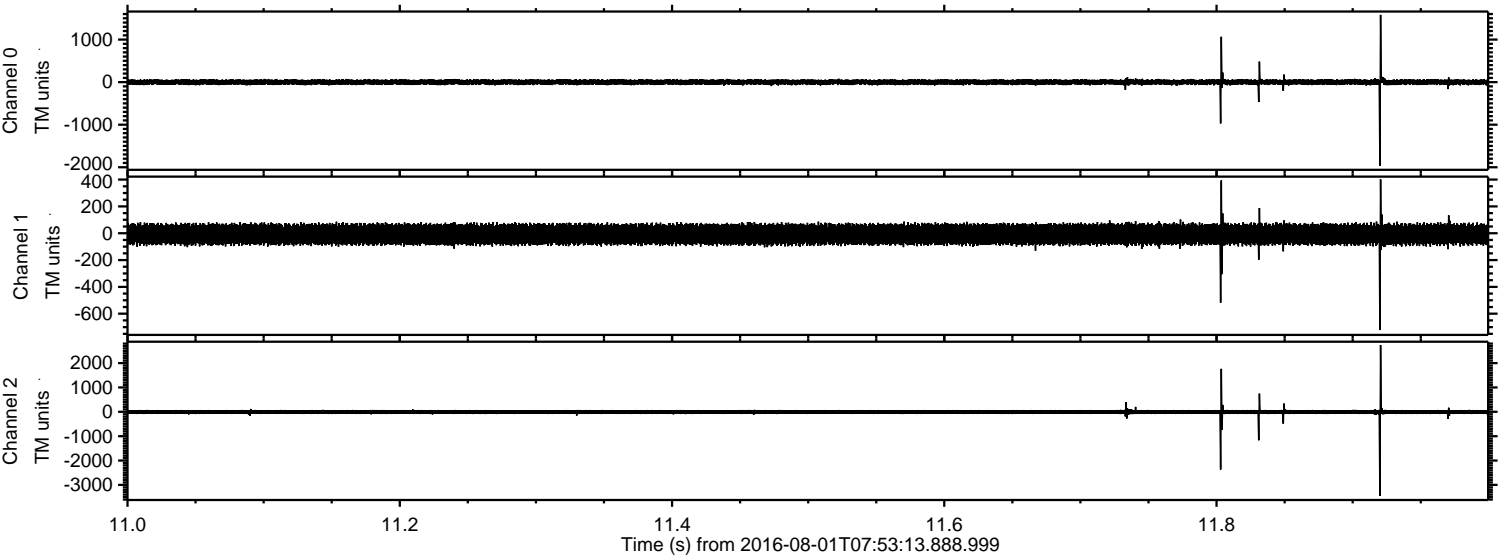


Processed Mon Aug 1 10:01:04 2016 by ELM ver.2012-10-06 from 001__elm20160801_075312__dat00.bin



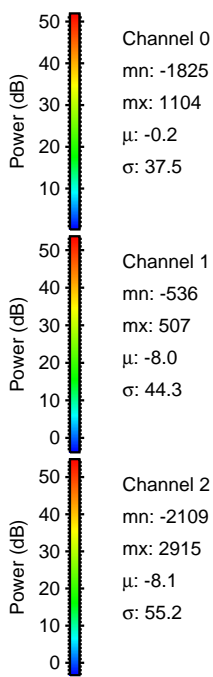
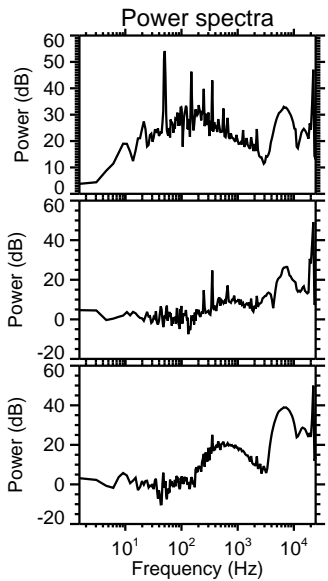
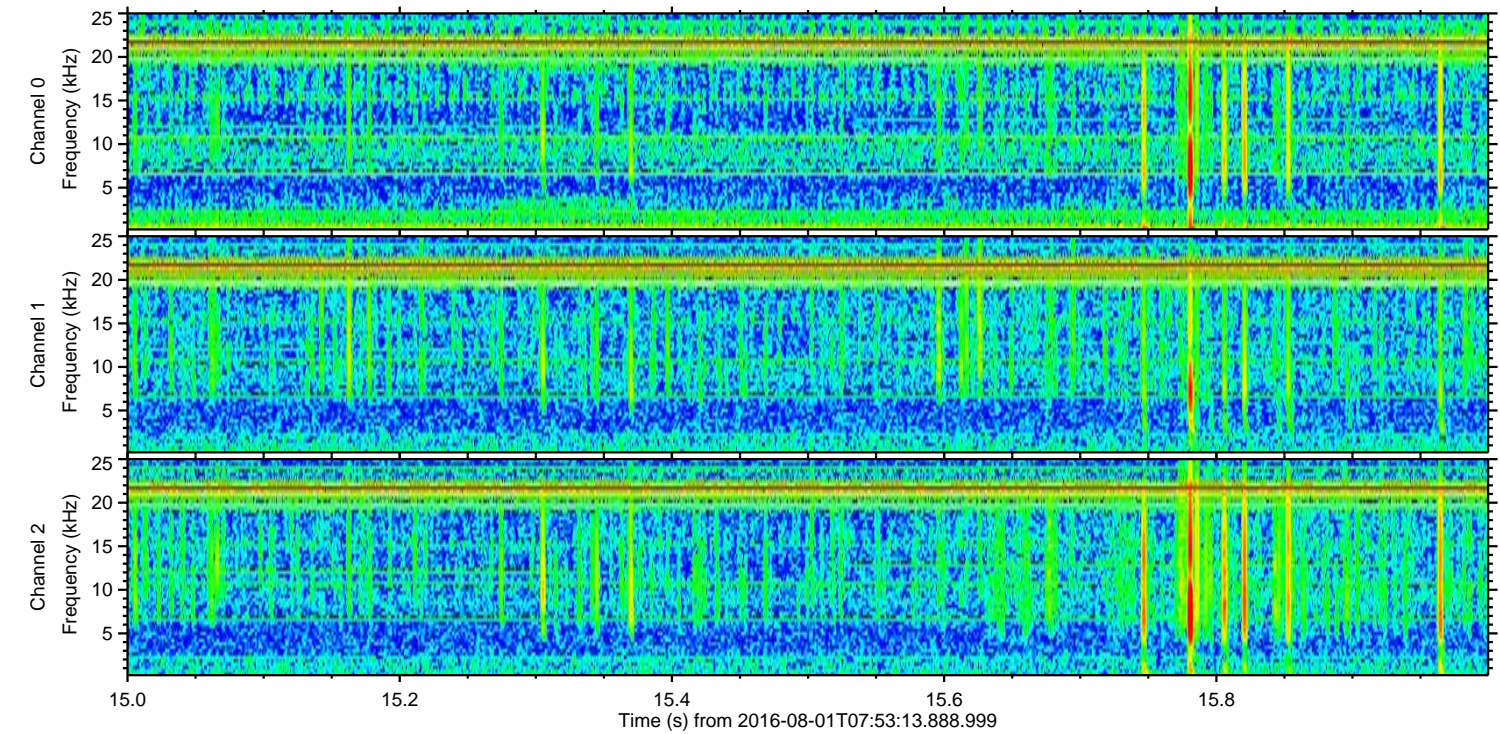
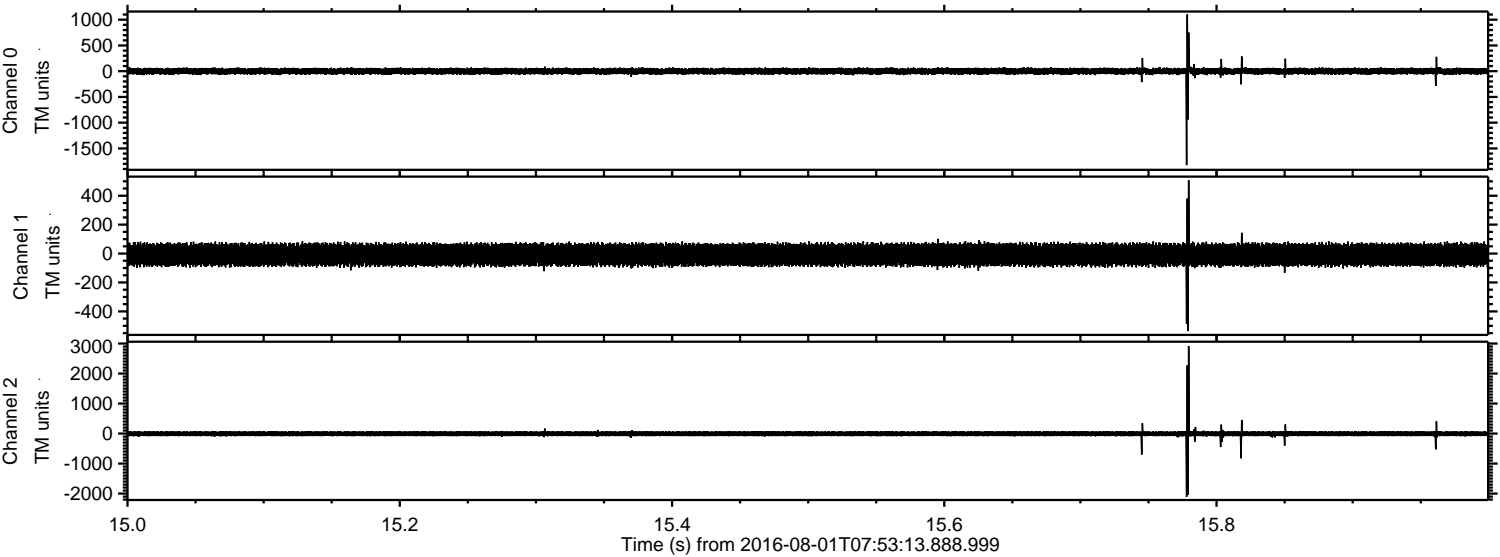
ELMAVAN 3D WAVEFORMS (Measured data sampled at 50 kHz) 51000 packets of 144 samples from 2016-08-01T07:53:13.888.999. Part 12/147

Processed Mon Aug 1 10:01:05 2016 by ELM ver.2012-10-06 from 001__elm20160801_075312__dat00.bin



ELMAVAN 3D WAVEFORMS (Measured data sampled at 50 kHz) 51000 packets of 144 samples from 2016-08-01T07:53:13.888.999. Part 16/147

Processed Mon Aug 1 10:01:05 2016 by ELM ver.2012-10-06 from 001__elm20160801_075312__dat00.bin

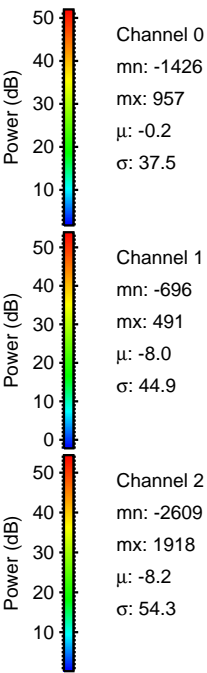
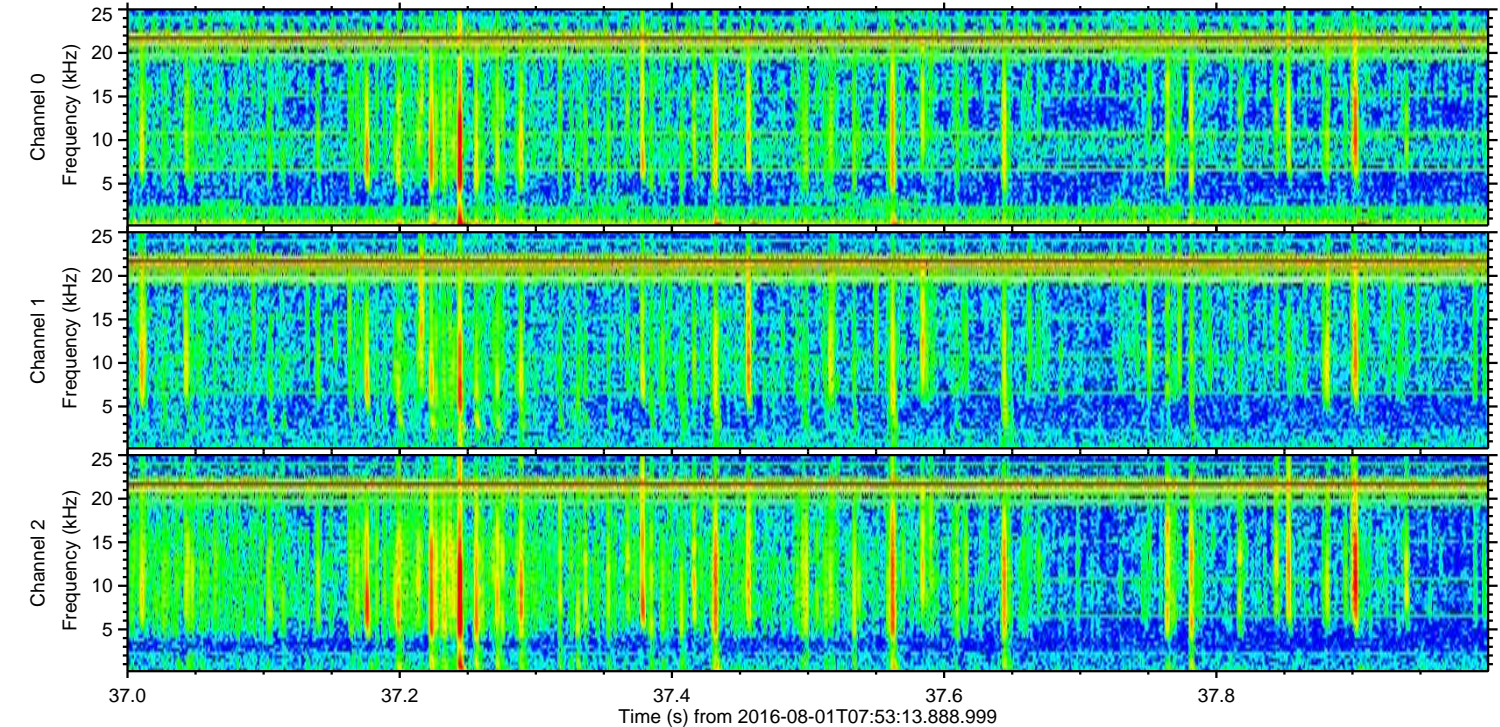
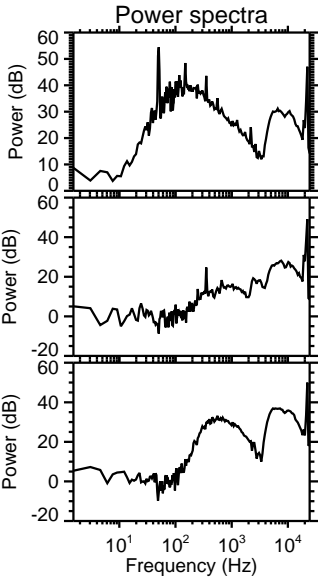
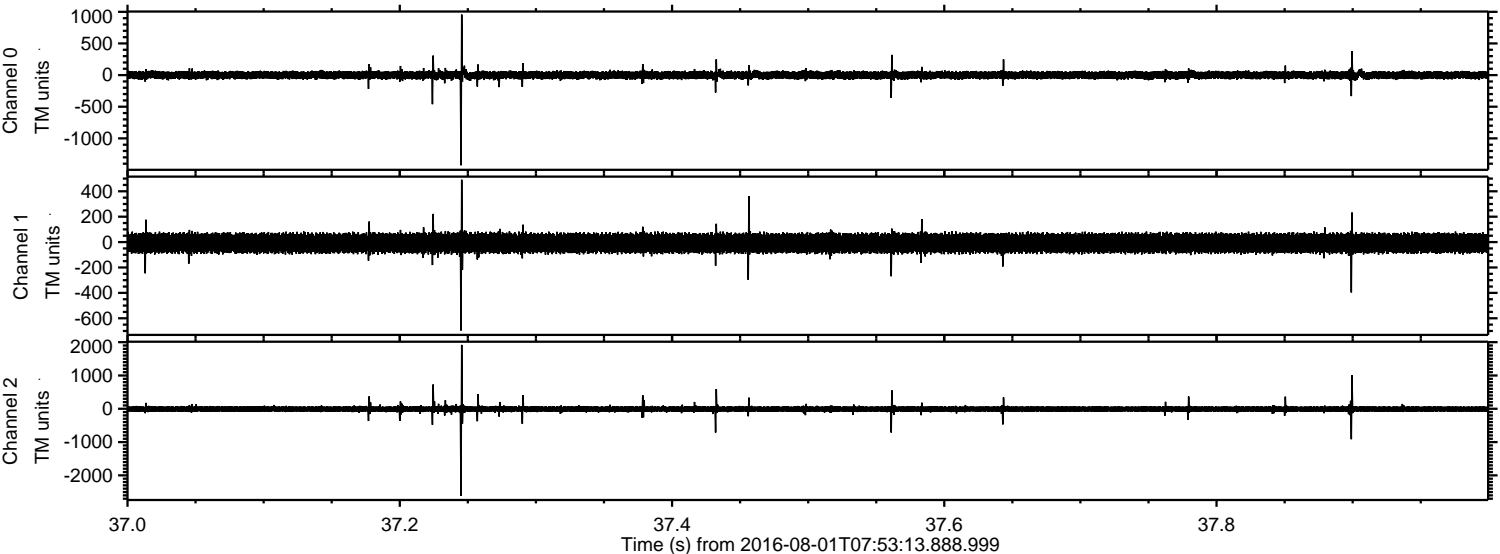


Channel 0
mn: -1825
mx: 1104
 μ : -0.2
 σ : 37.5

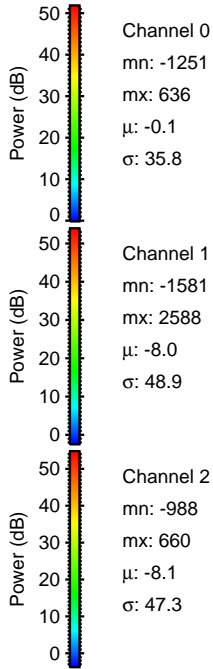
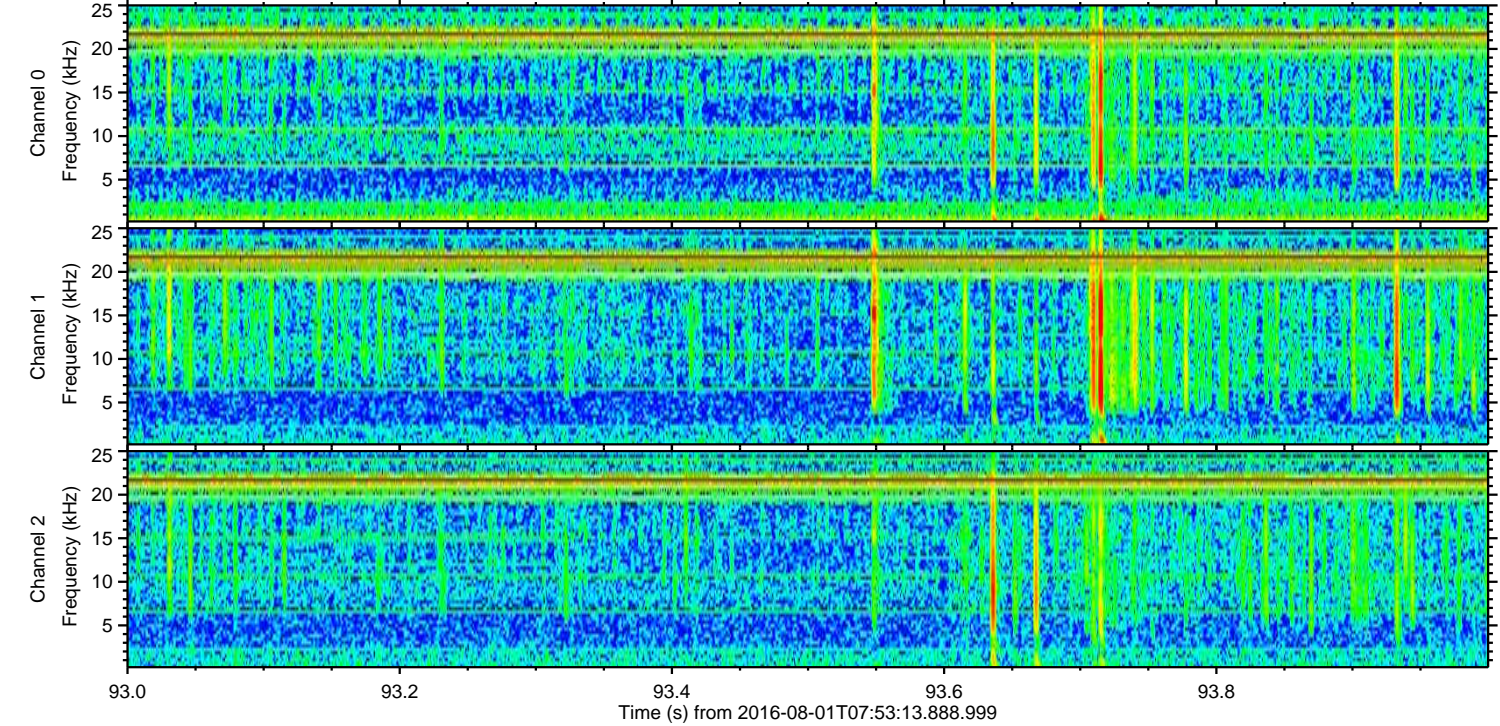
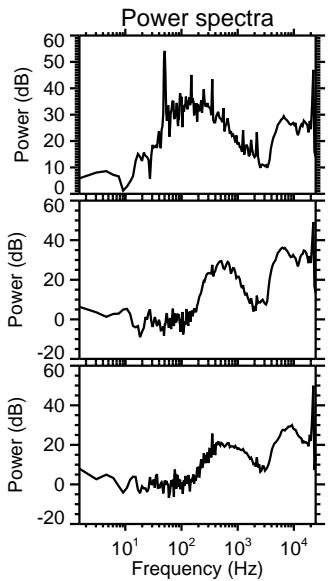
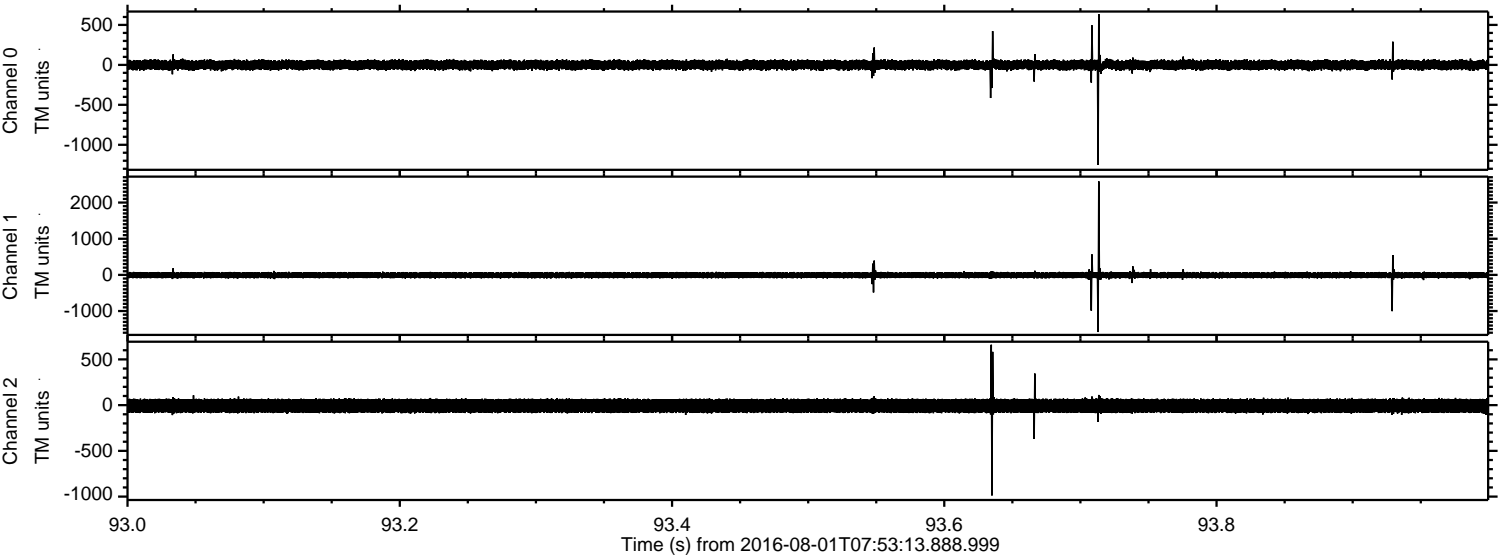
Channel 1
mn: -536
mx: 507
 μ : -8.0
 σ : 44.3

Channel 2
mn: -2109
mx: 2915
 μ : -8.1
 σ : 55.2

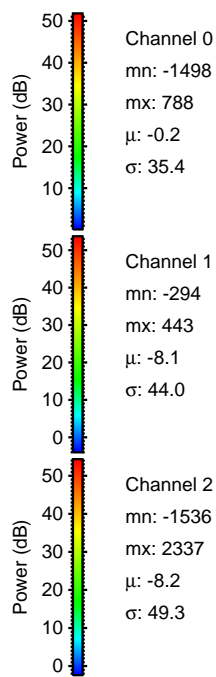
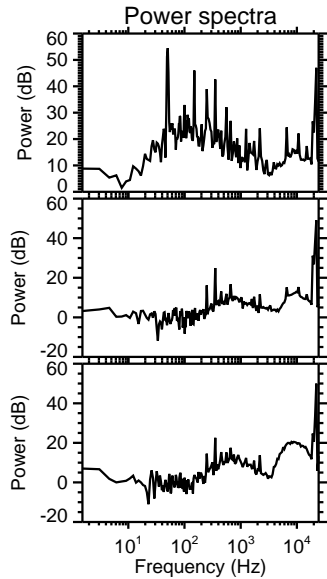
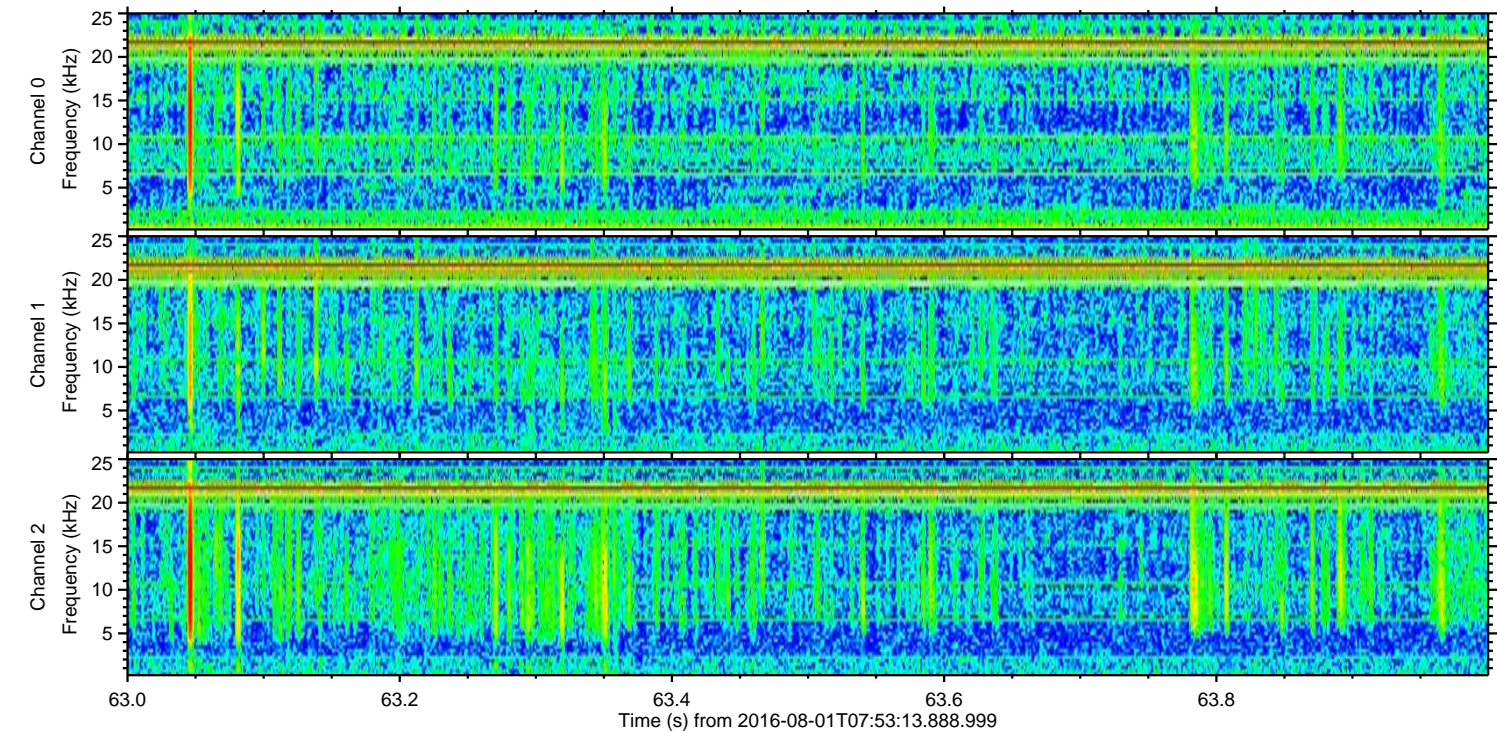
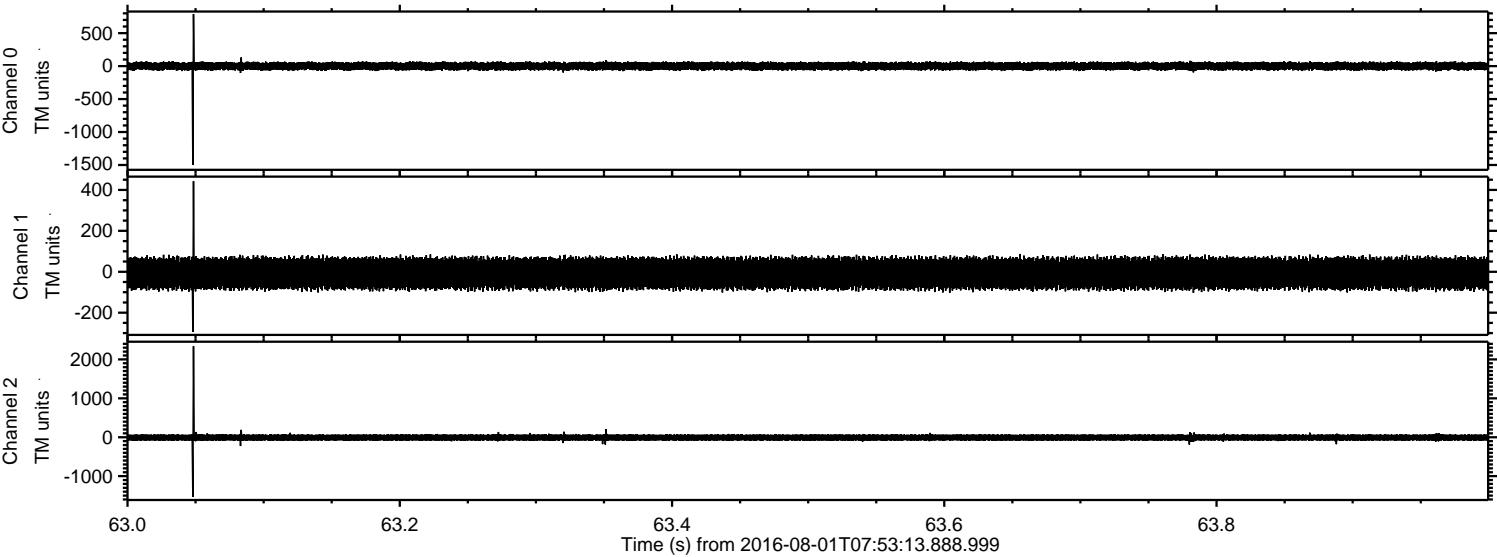
Processed Mon Aug 1 10:01:06 2016 by ELM ver.2012-10-06 from 001__elm20160801_075312__dat00.bin



Processed Mon Aug 1 10:01:07 2016 by ELM ver.2012-10-06 from 001__elm20160801_075312__dat00.bin



Processed Mon Aug 1 10:01:08 2016 by ELM ver.2012-10-06 from 001__elm20160801_075312__dat00.bin

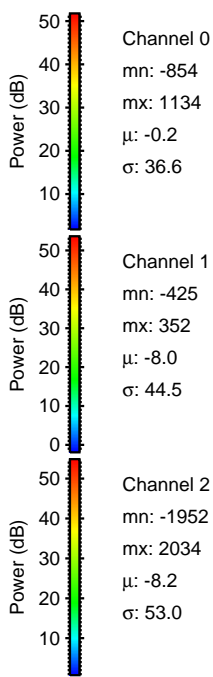
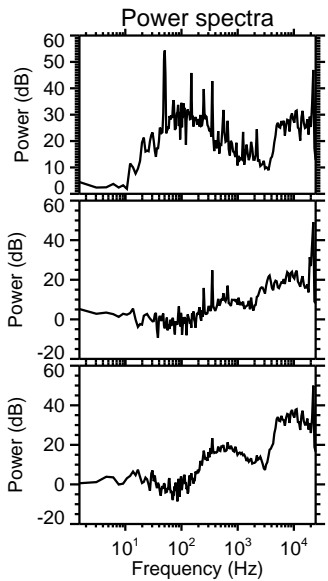
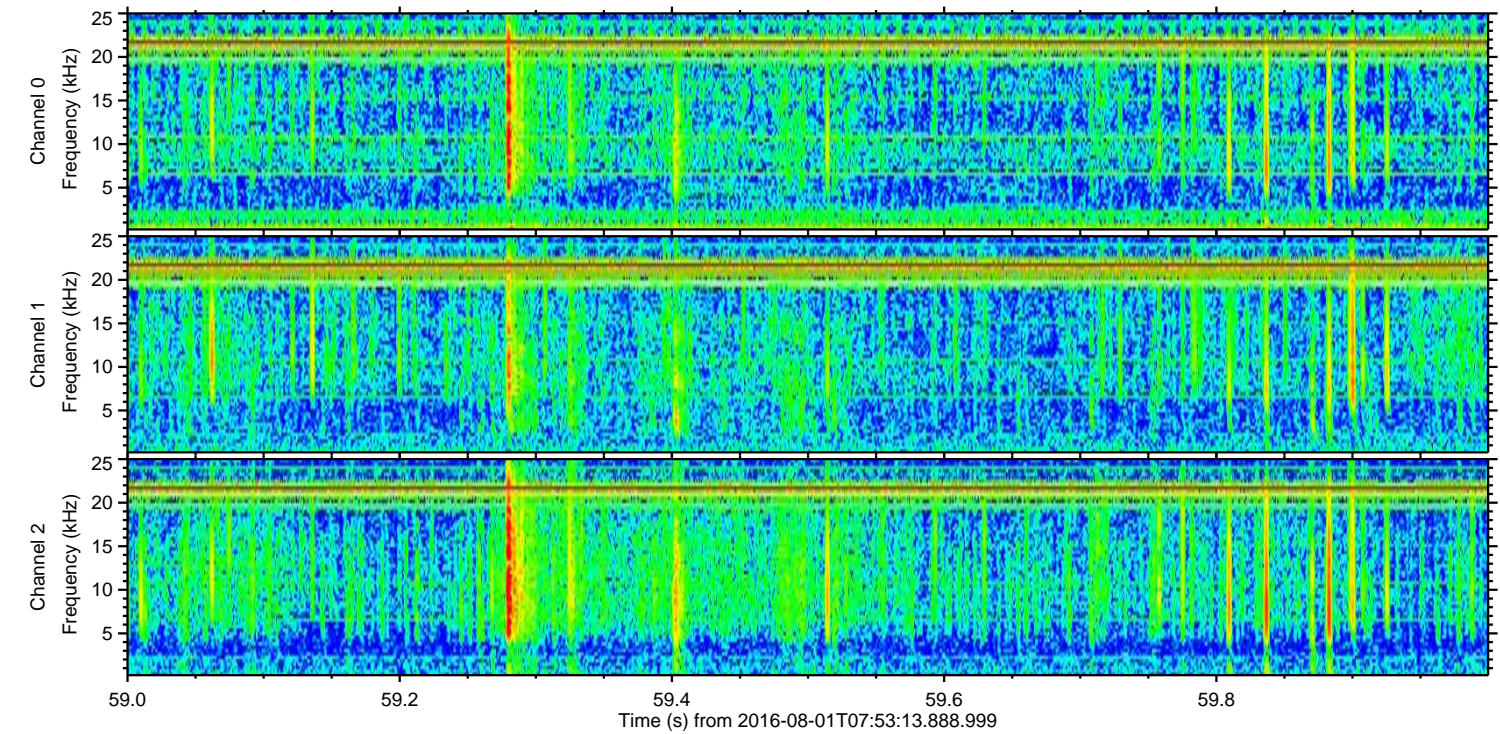
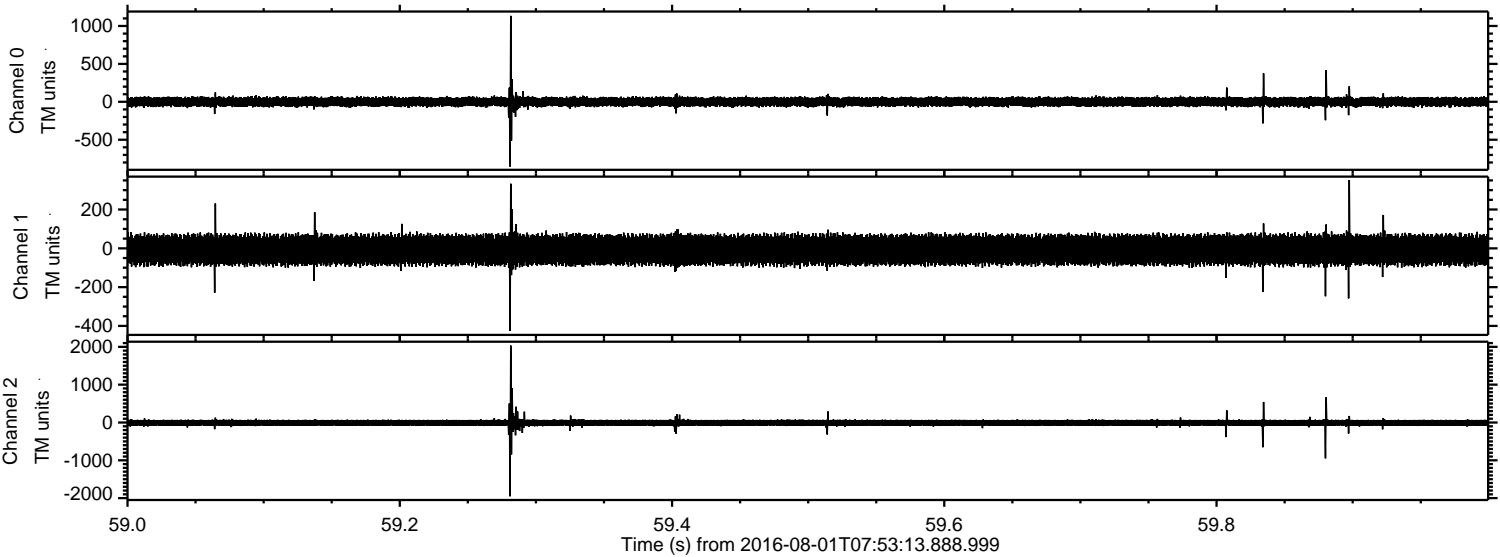


Channel 0
mn: -1498
mx: 788
 μ : -0.2
 σ : 35.4

Channel 1
mn: -294
mx: 443
 μ : -8.1
 σ : 44.0

Channel 2
mn: -1536
mx: 2337
 μ : -8.2
 σ : 49.3

Processed Mon Aug 1 10:01:09 2016 by ELM ver.2012-10-06 from 001__elm20160801_075312__dat00.bin



Processed Mon Aug 1 10:01:10 2016 by ELM ver.2012-10-06 from 001__elm20160801_075312__dat00.bin

