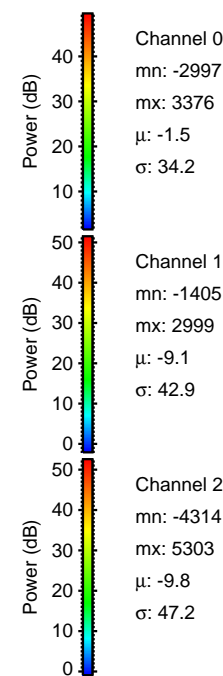
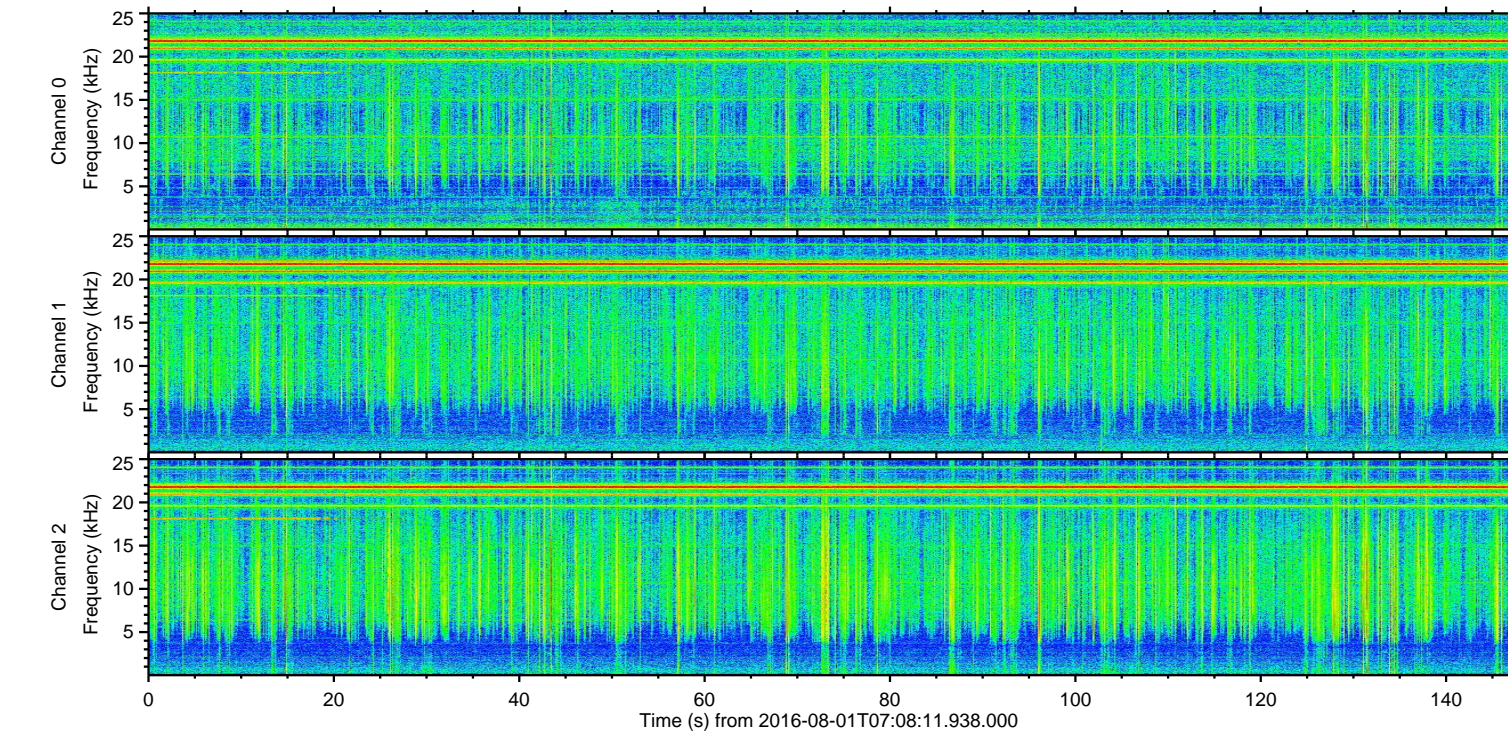
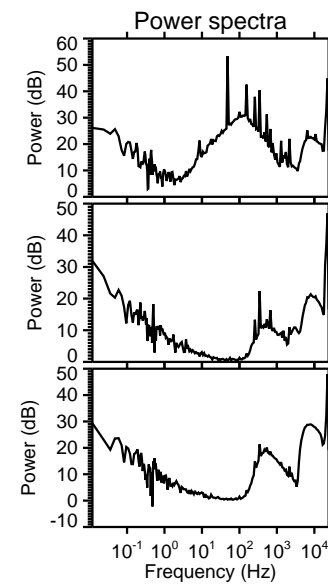
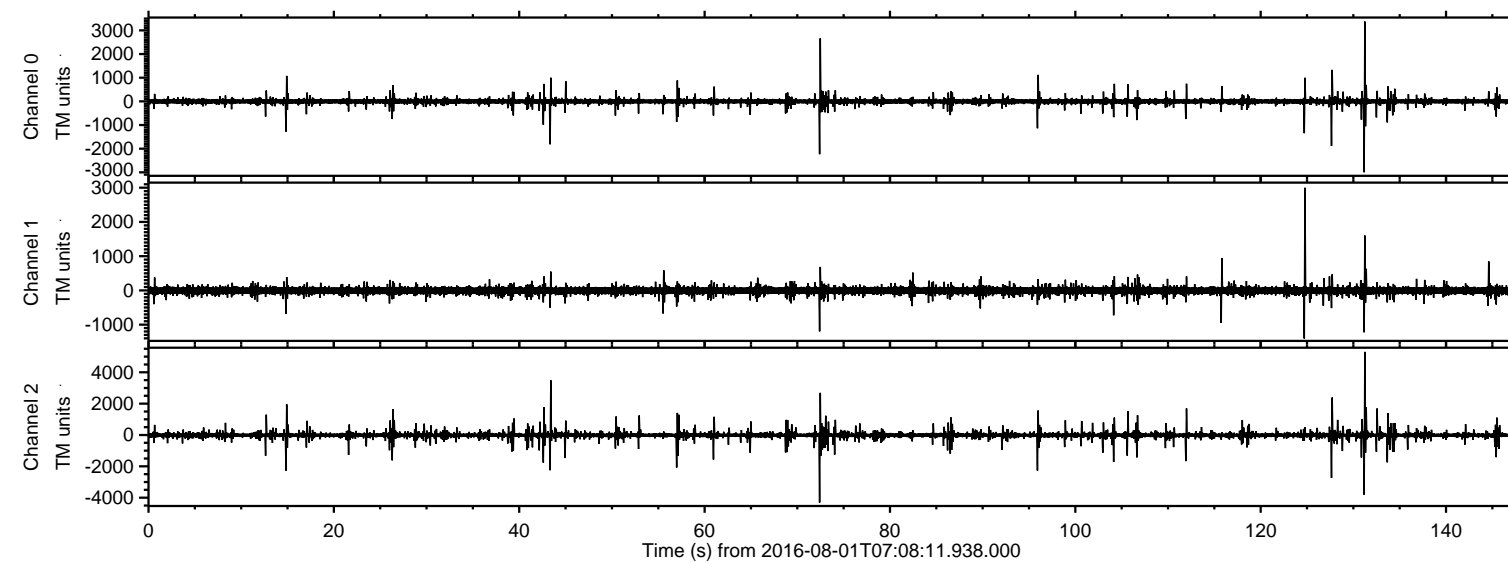


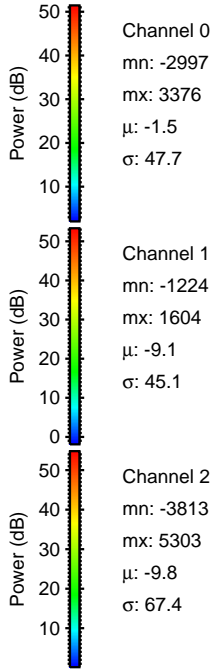
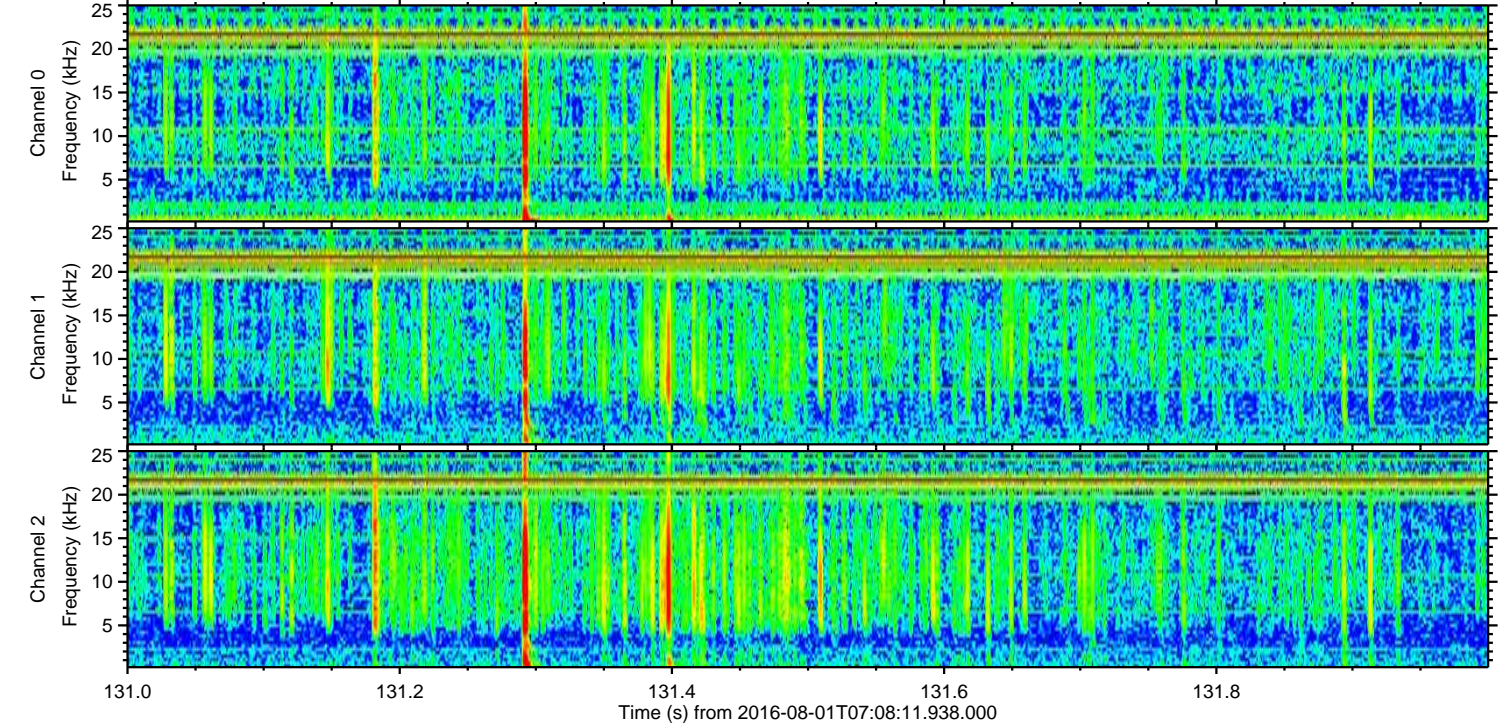
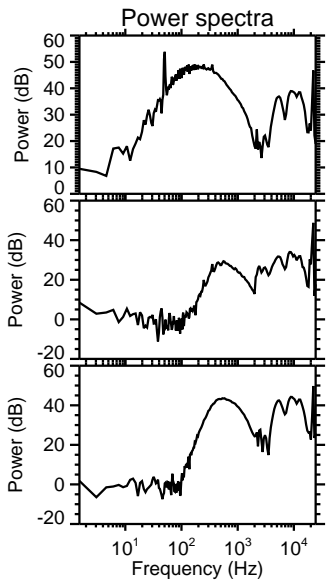
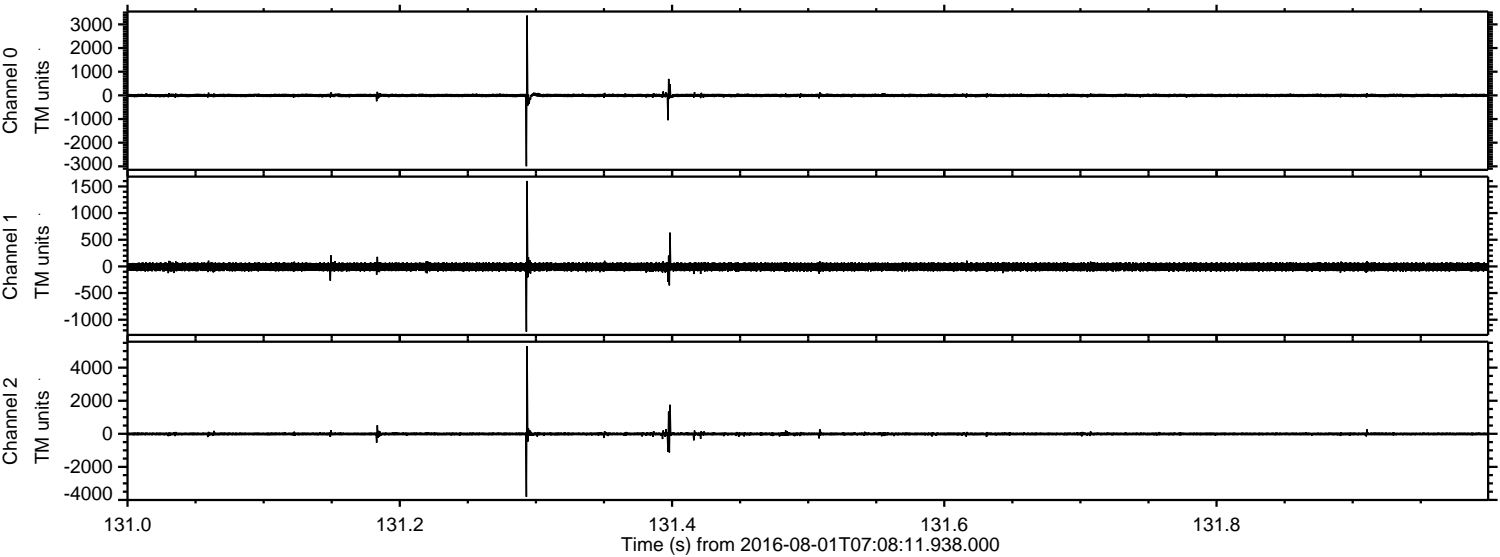
ELMAVAN 3D WAVEFORMS (Measured data sampled at 50 kHz) 51000 packets of 144 samples from 2016-08-01T07:08:11.938.000.

Processed Mon Aug 1 09:16:29 2016 by ELM ver.2012-10-06 from 001__elm20160801_070810__dat00.bin

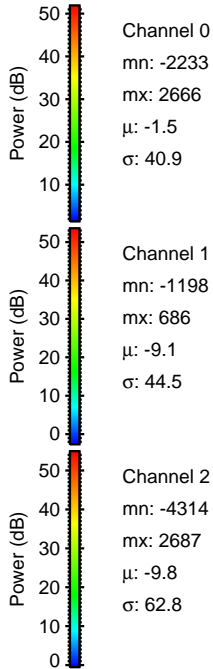
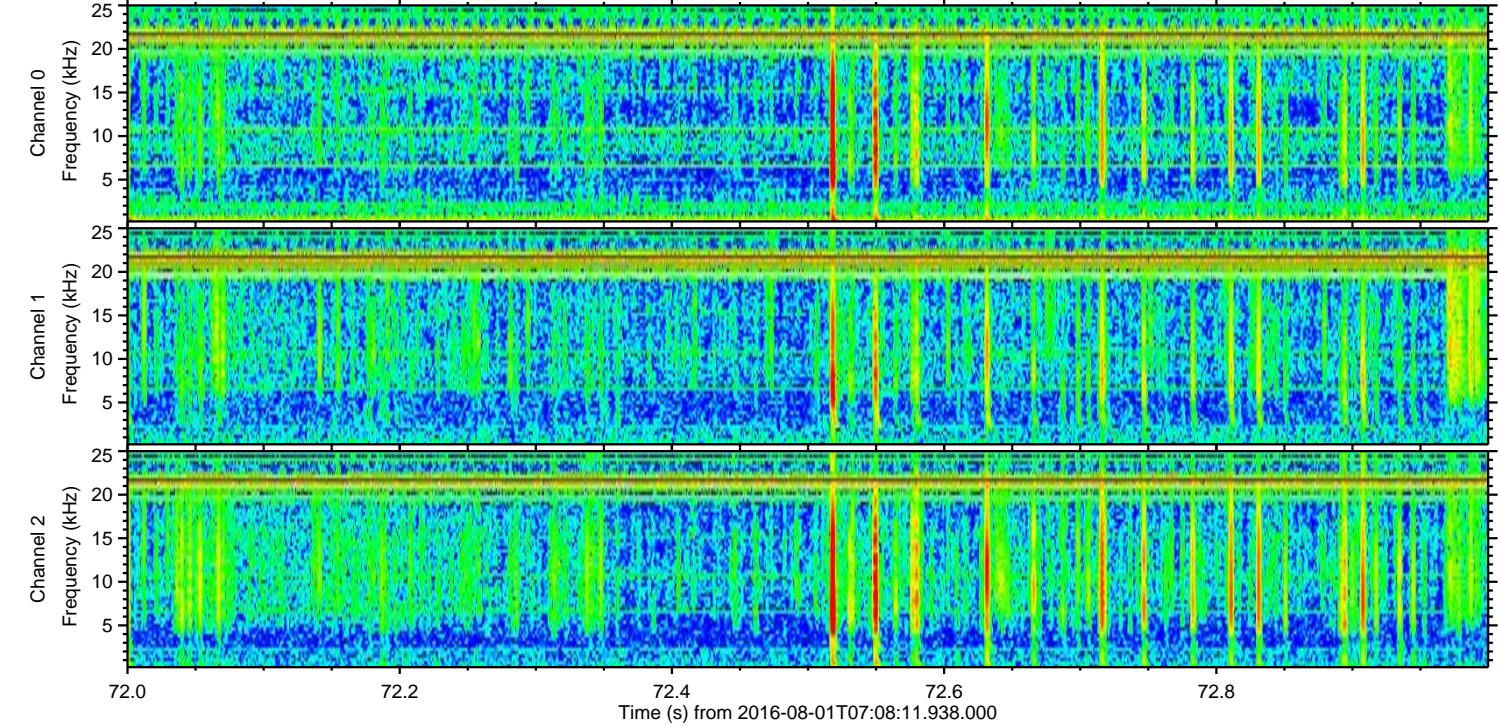
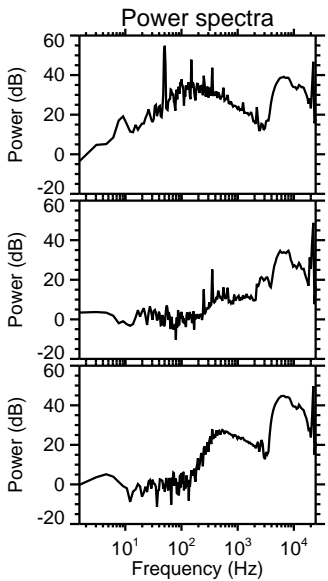
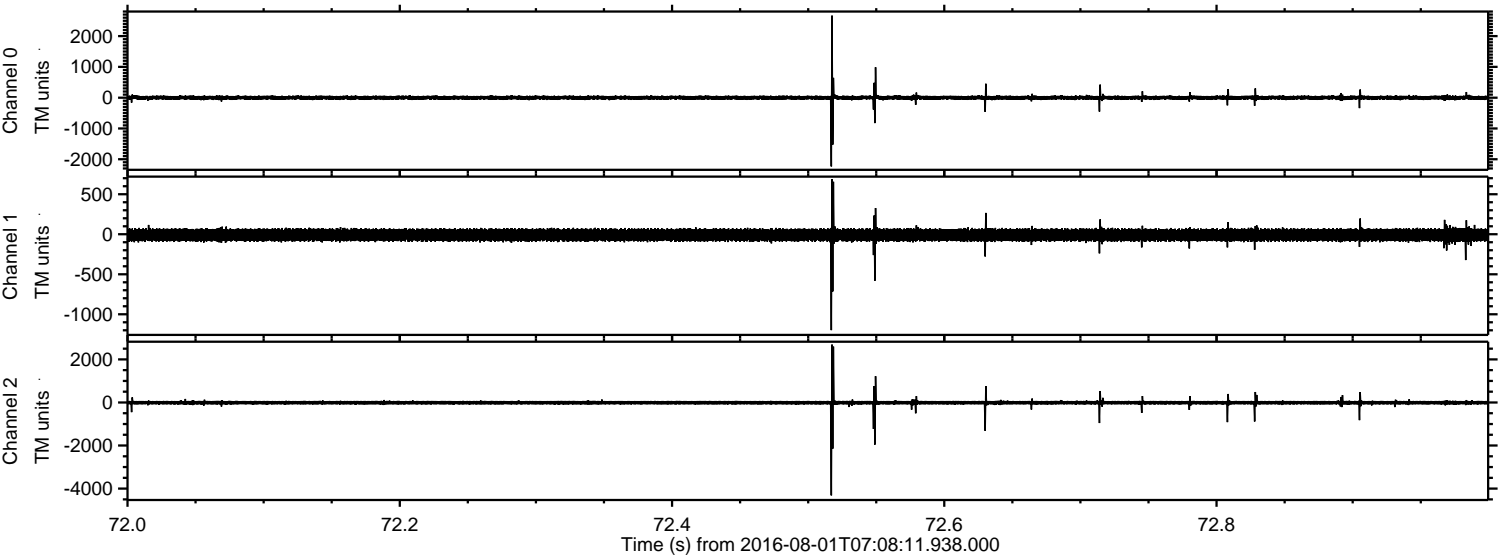


ELMAVAN 3D WAVEFORMS (Measured data sampled at 50 kHz) 51000 packets of 144 samples from 2016-08-01T07:08:11.938.000. Part 132/147

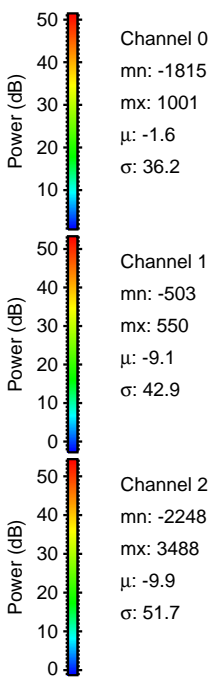
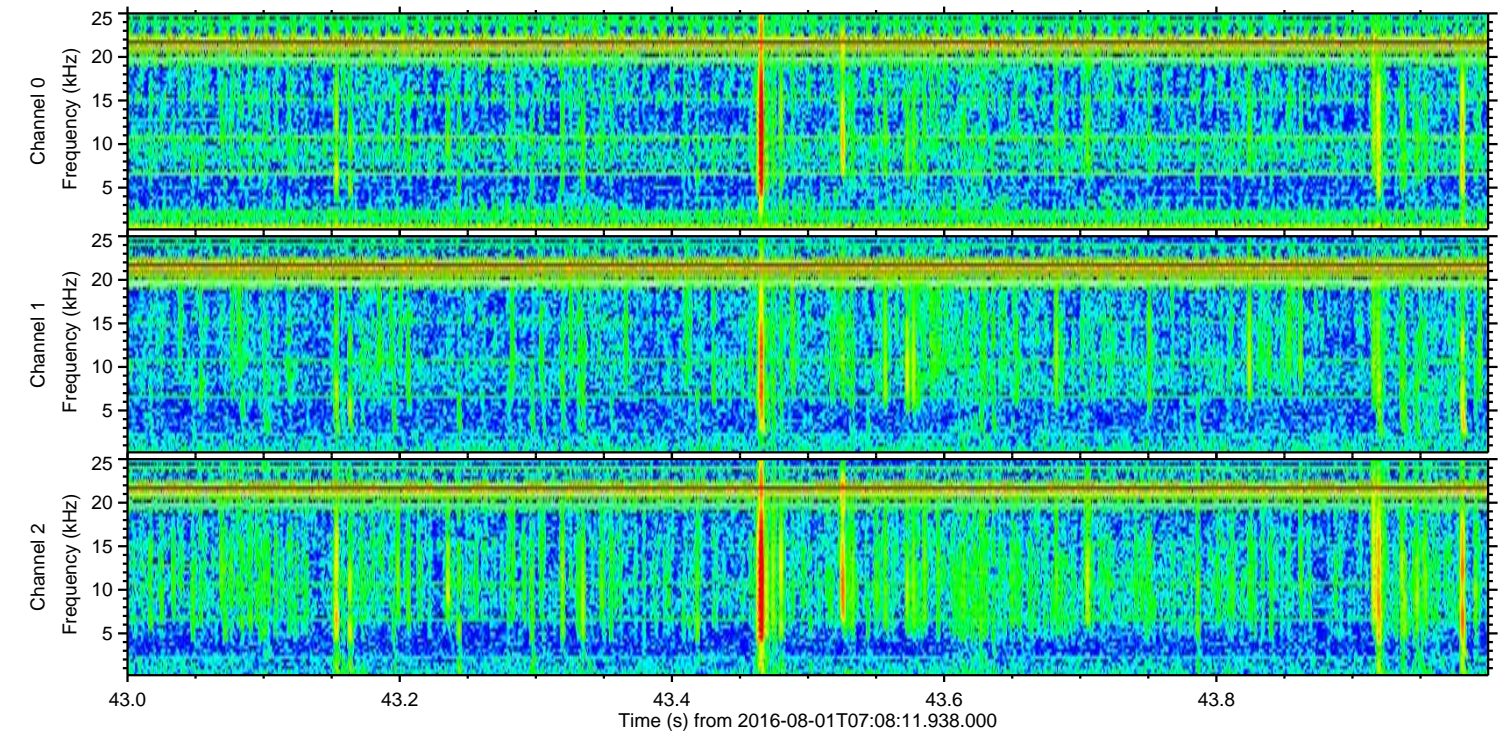
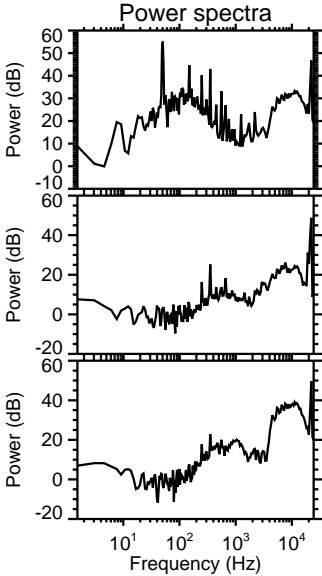
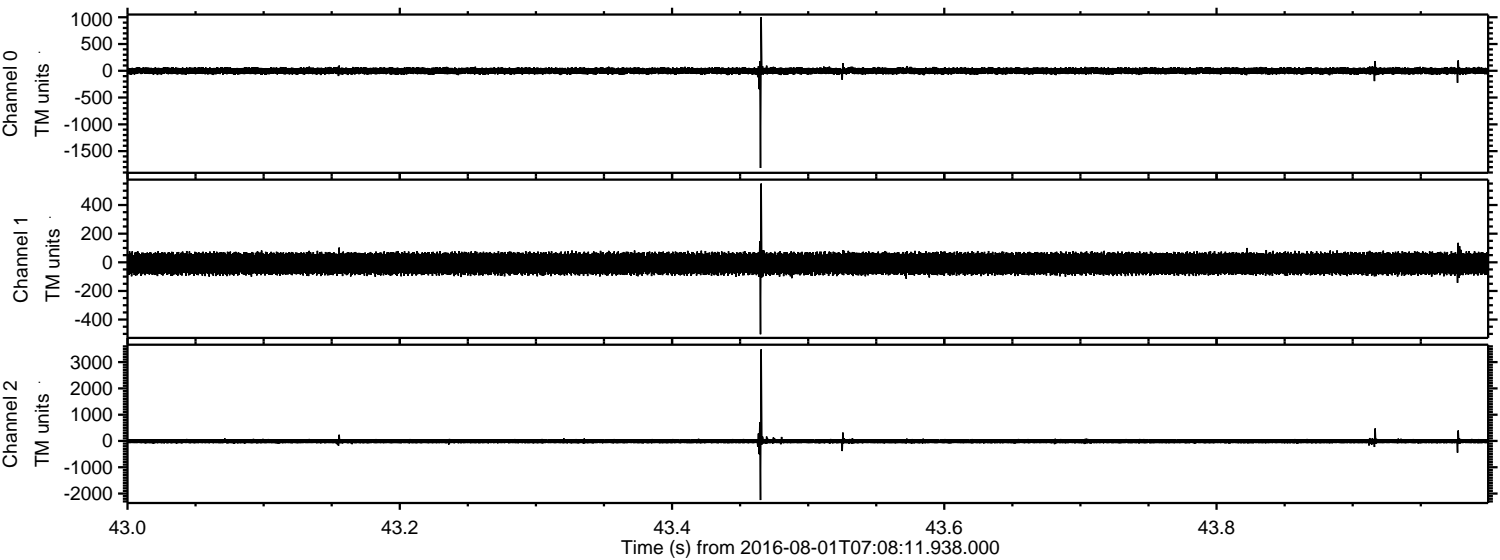
Processed Mon Aug 1 09:16:40 2016 by ELM ver.2012-10-06 from 001__elm20160801_070810__dat00.bin



Processed Mon Aug 1 09:16:41 2016 by ELM ver.2012-10-06 from 001__elm20160801_070810__dat00.bin

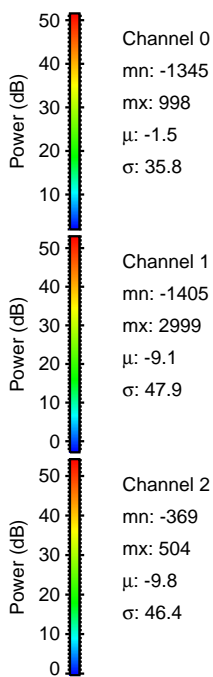
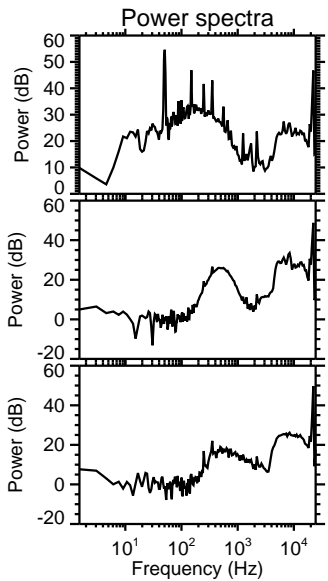
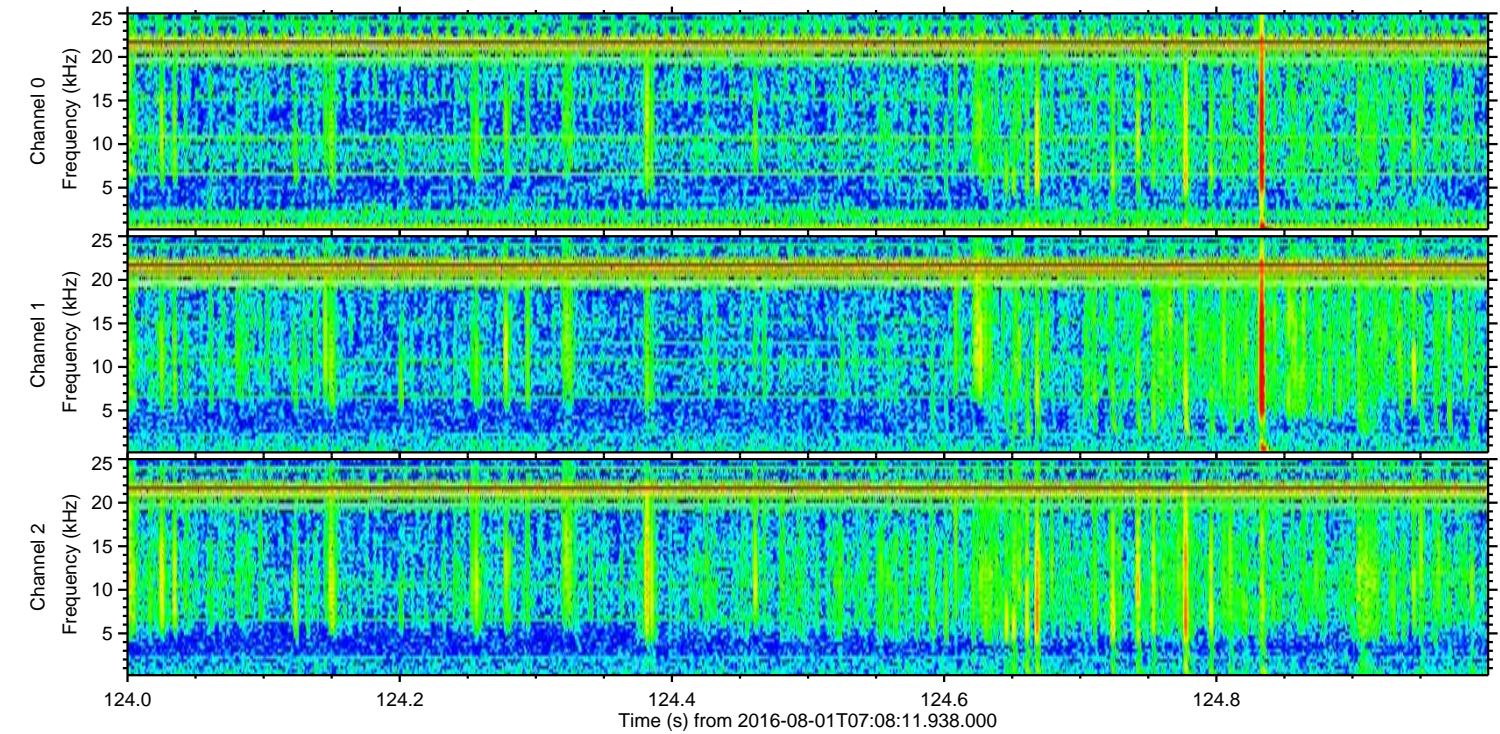
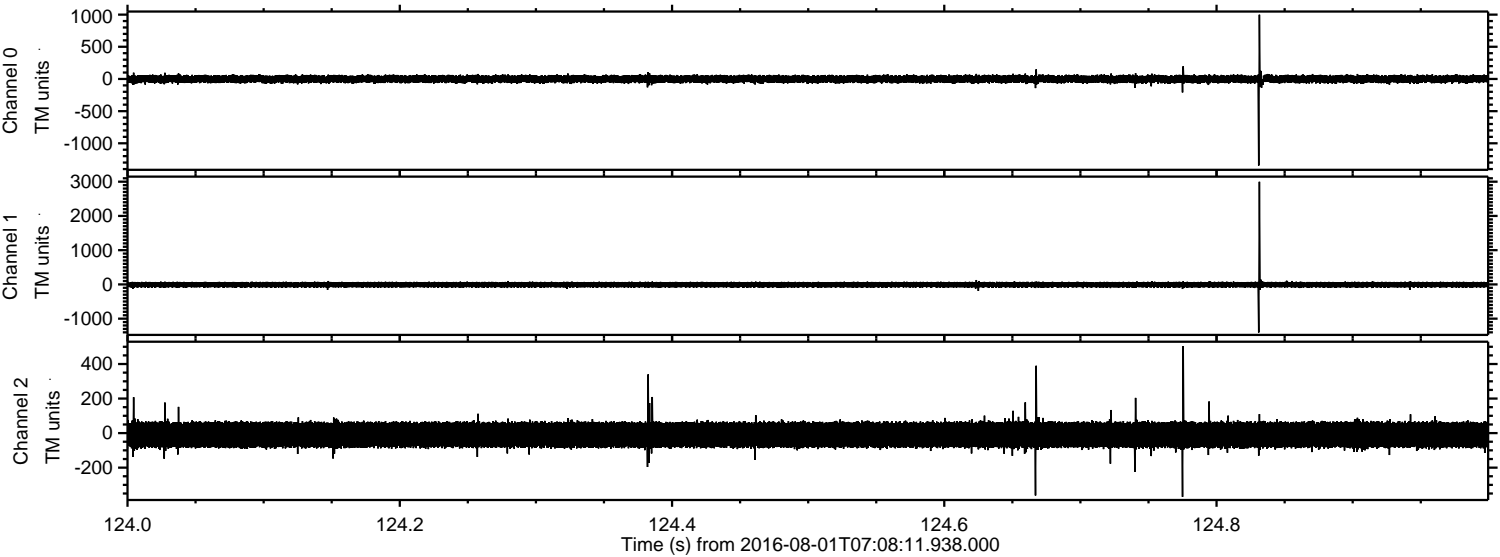


Processed Mon Aug 1 09:16:42 2016 by ELM ver.2012-10-06 from 001__elm20160801_070810__dat00.bin



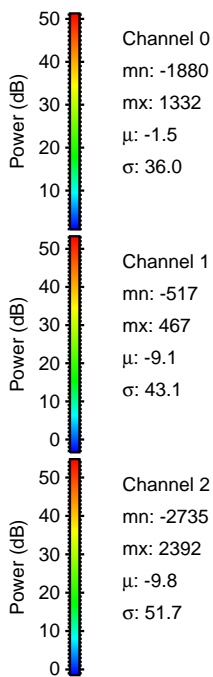
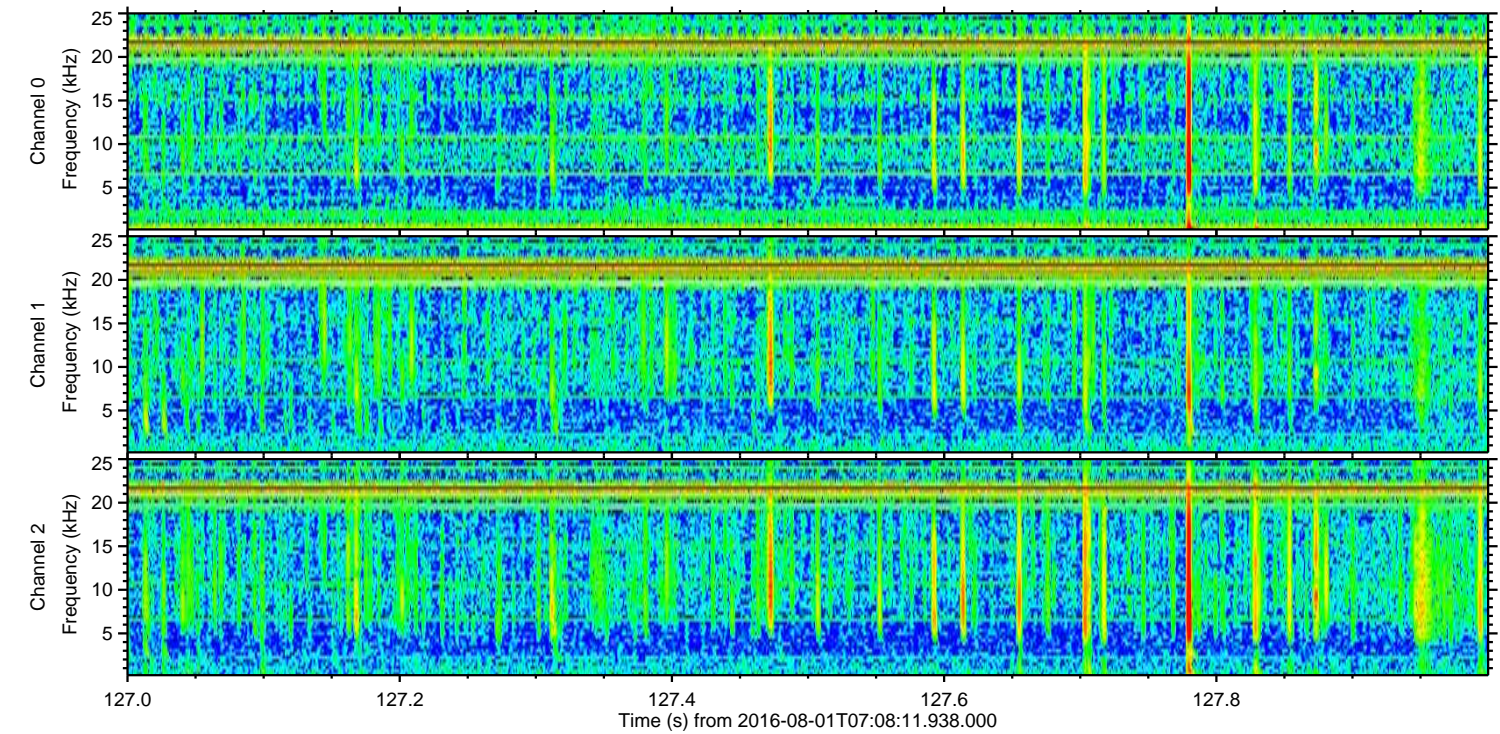
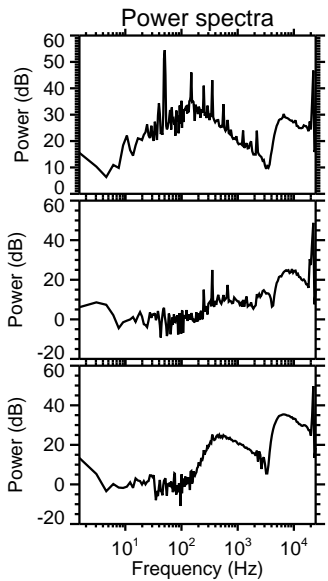
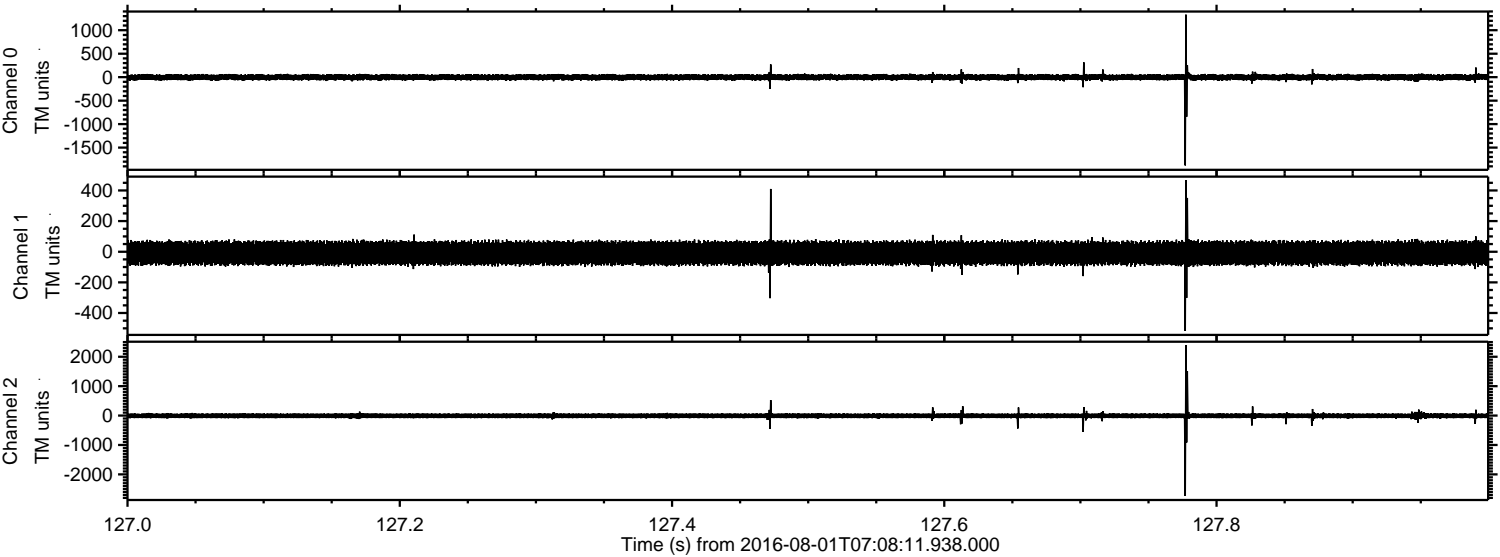
ELMAVAN 3D WAVEFORMS (Measured data sampled at 50 kHz) 51000 packets of 144 samples from 2016-08-01T07:08:11.938.000. Part 125/147

Processed Mon Aug 1 09:16:43 2016 by ELM ver.2012-10-06 from 001__elm20160801_070810__dat00.bin

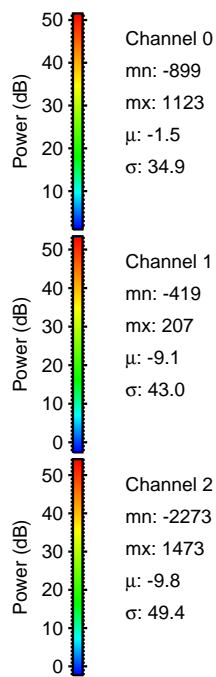
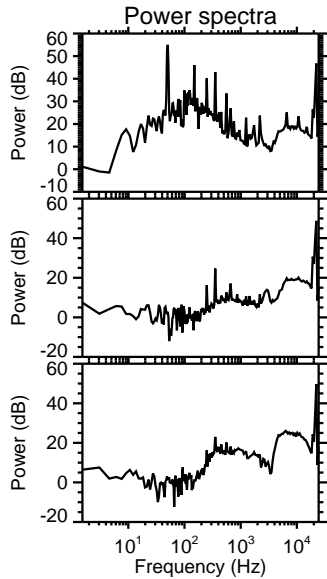
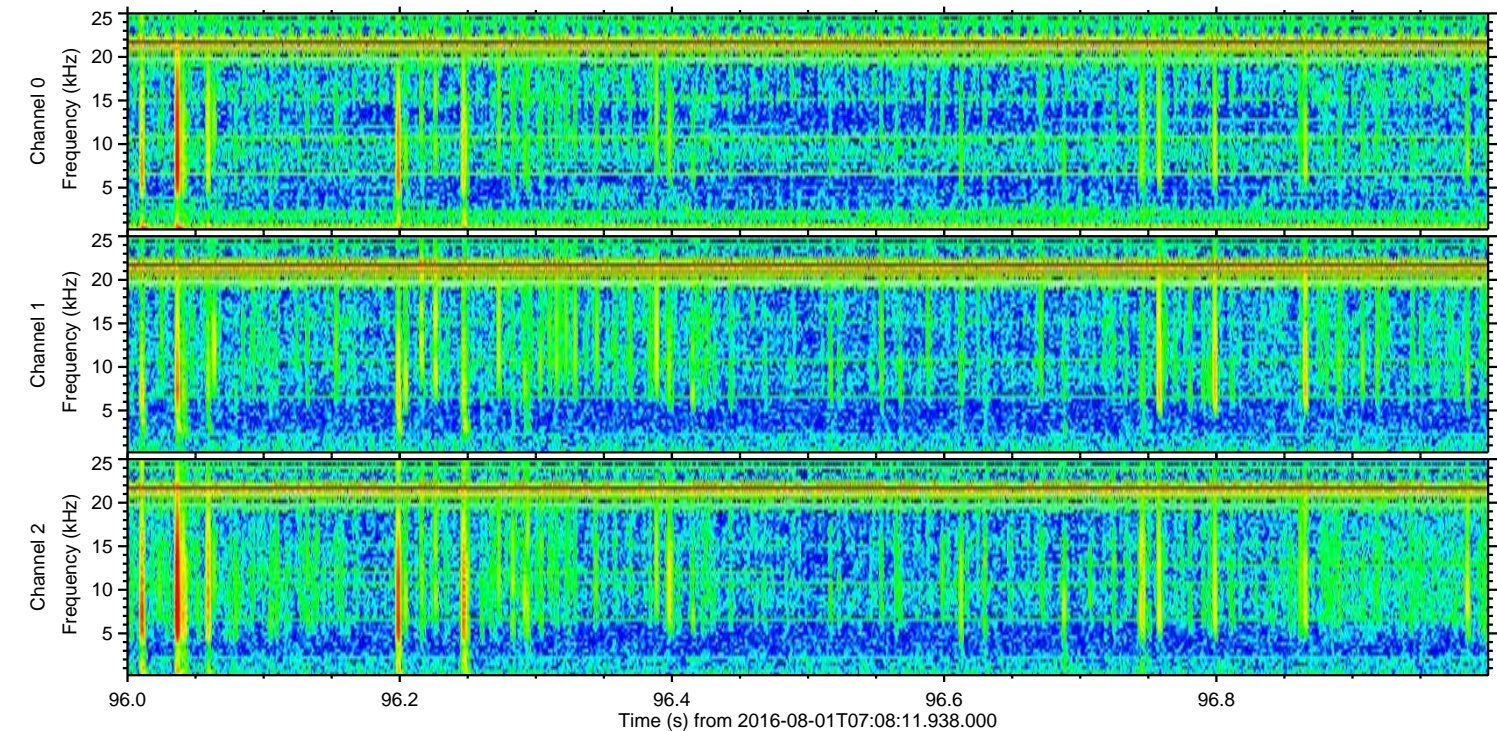
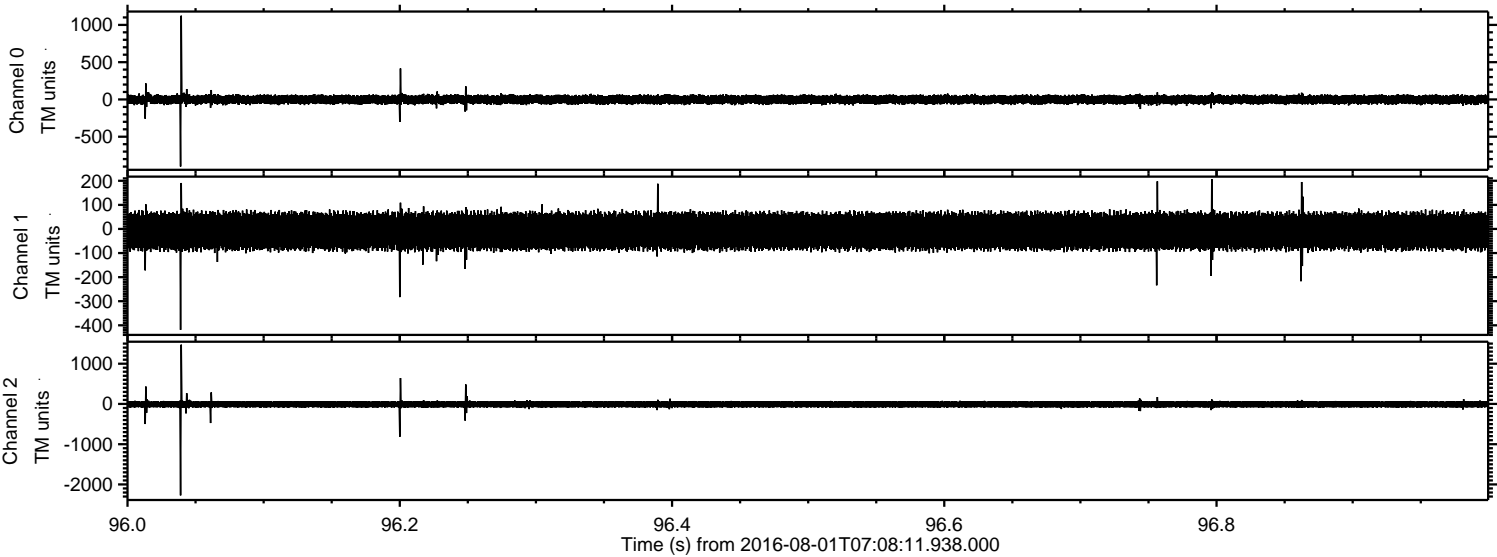


ELMAVAN 3D WAVEFORMS (Measured data sampled at 50 kHz) 51000 packets of 144 samples from 2016-08-01T07:08:11.938.000. Part 128/147

Processed Mon Aug 1 09:16:44 2016 by ELM ver.2012-10-06 from 001__elm20160801_070810__dat00.bin

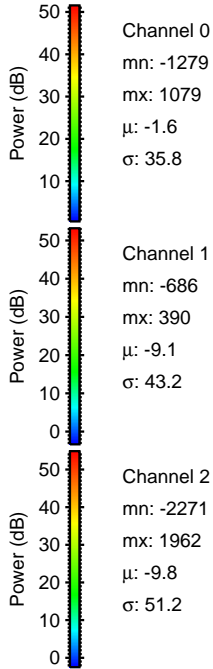
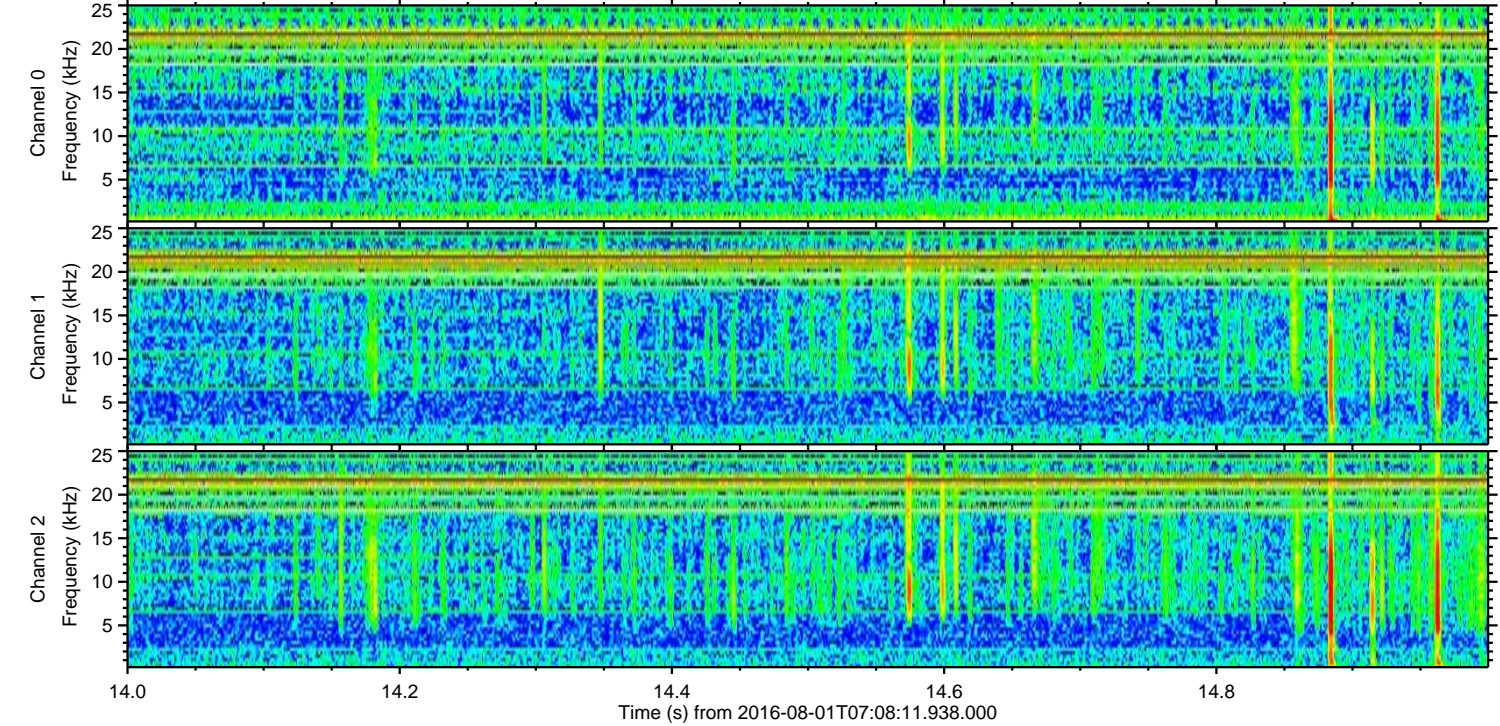
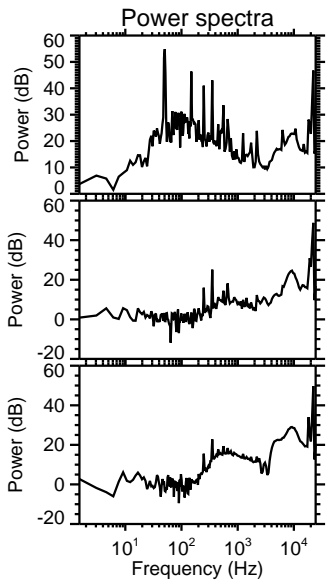
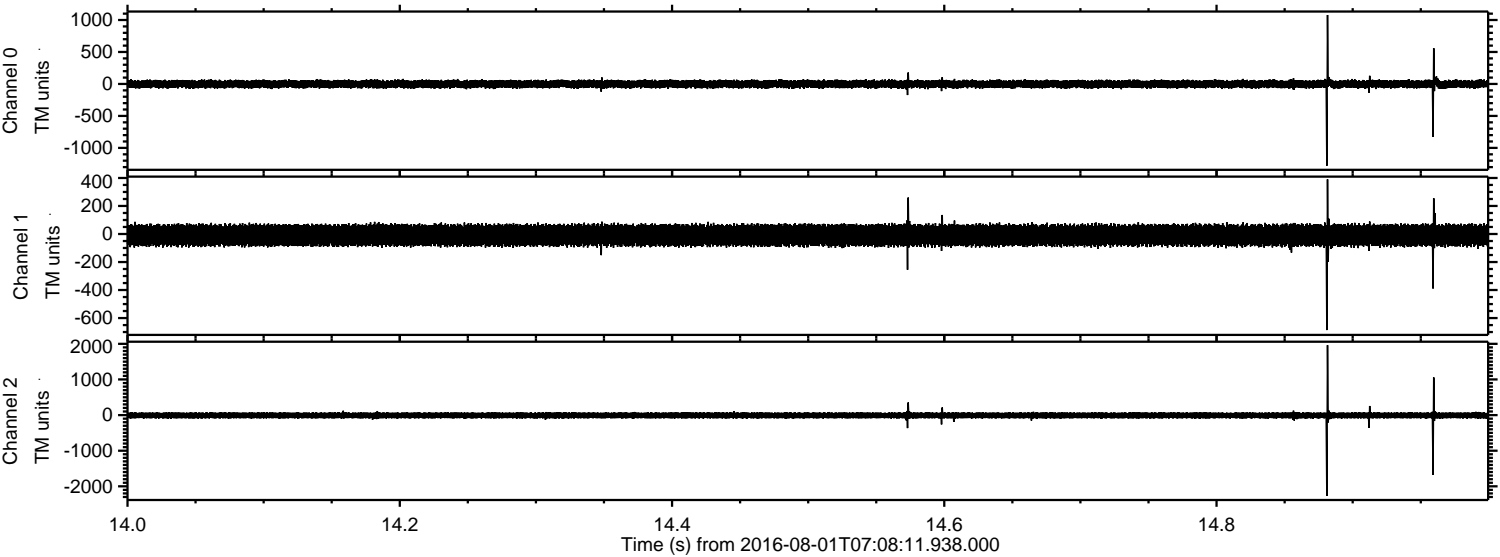


Processed Mon Aug 1 09:16:45 2016 by ELM ver.2012-10-06 from 001__elm20160801_070810__dat00.bin

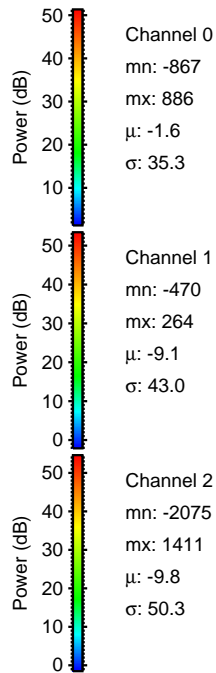
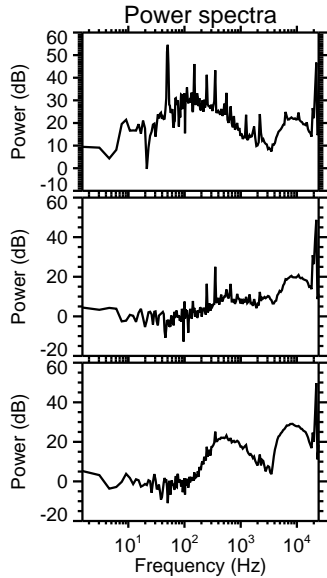
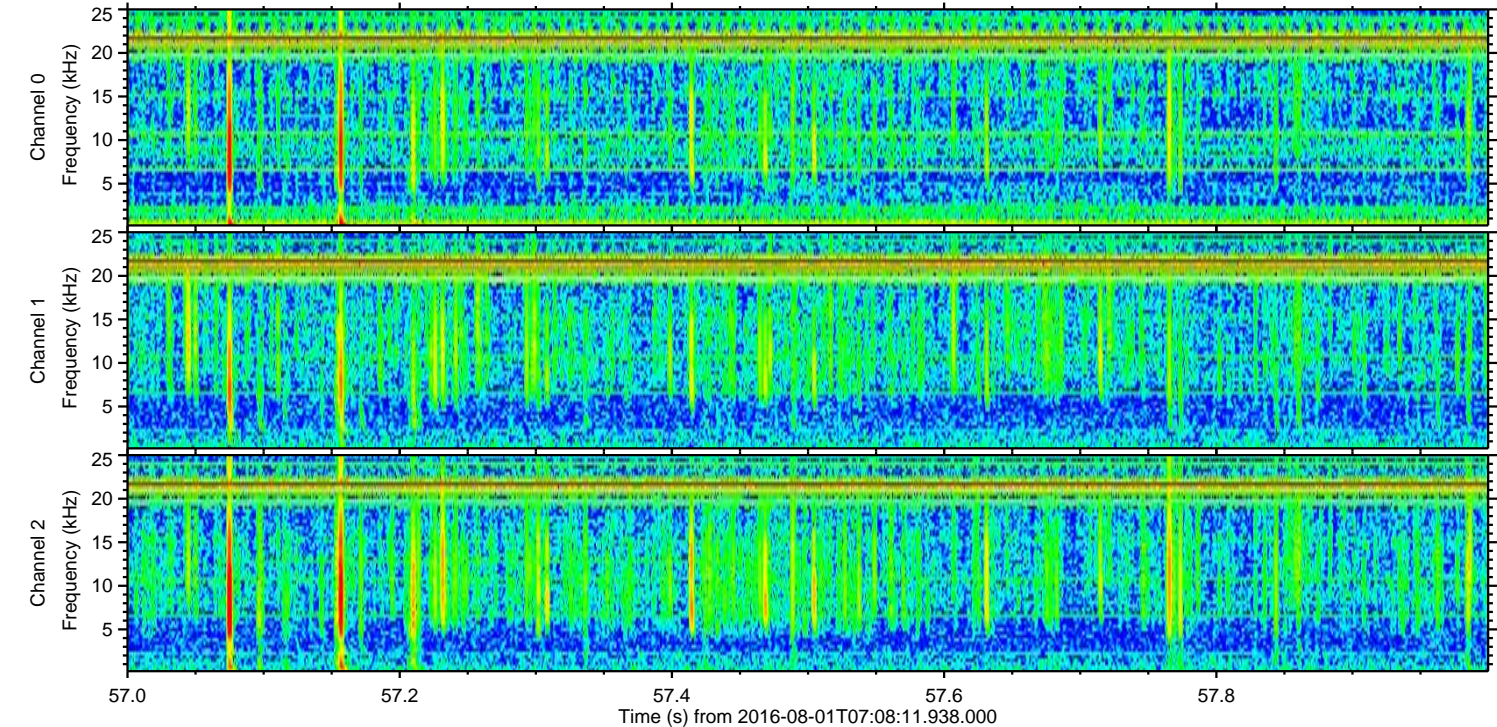
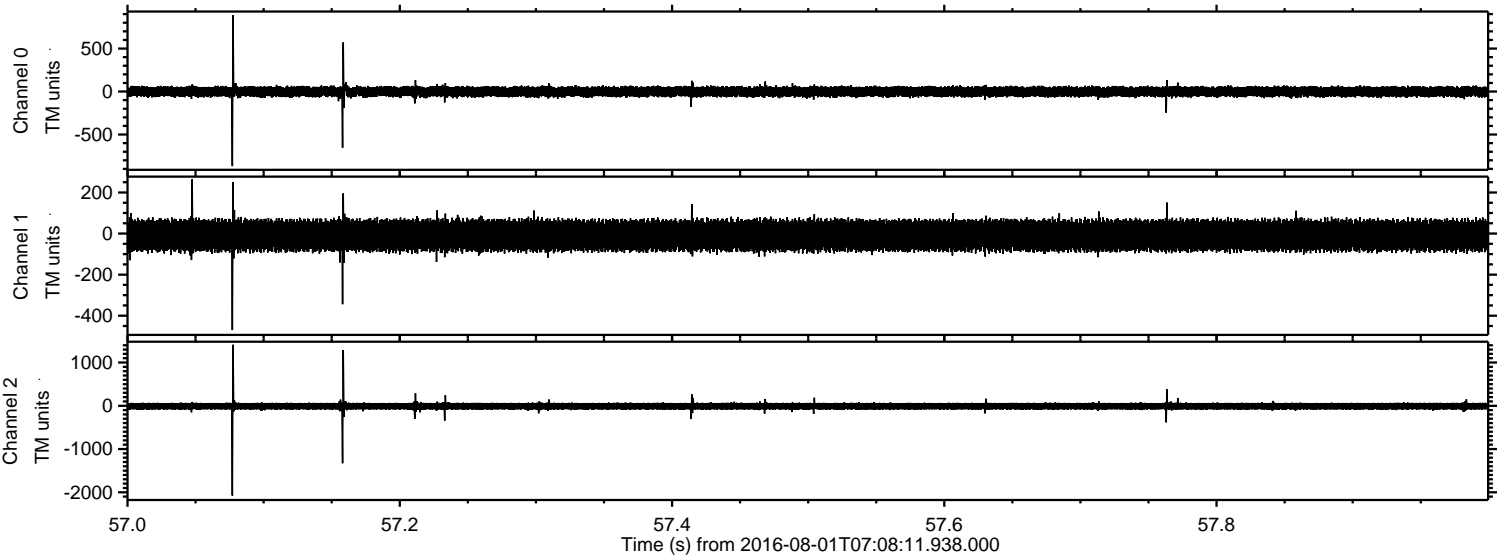


ELMAVAN 3D WAVEFORMS (Measured data sampled at 50 kHz) 51000 packets of 144 samples from 2016-08-01T07:08:11.938.000. Part 15/147

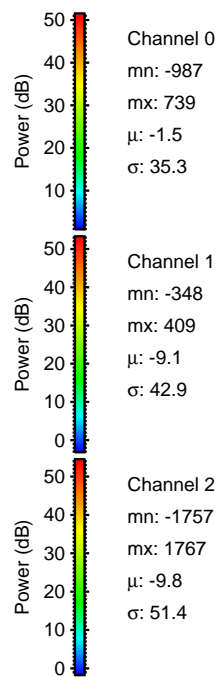
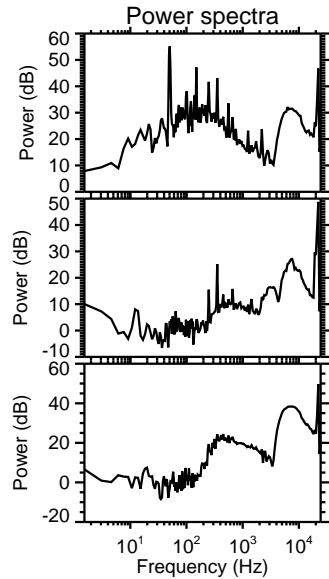
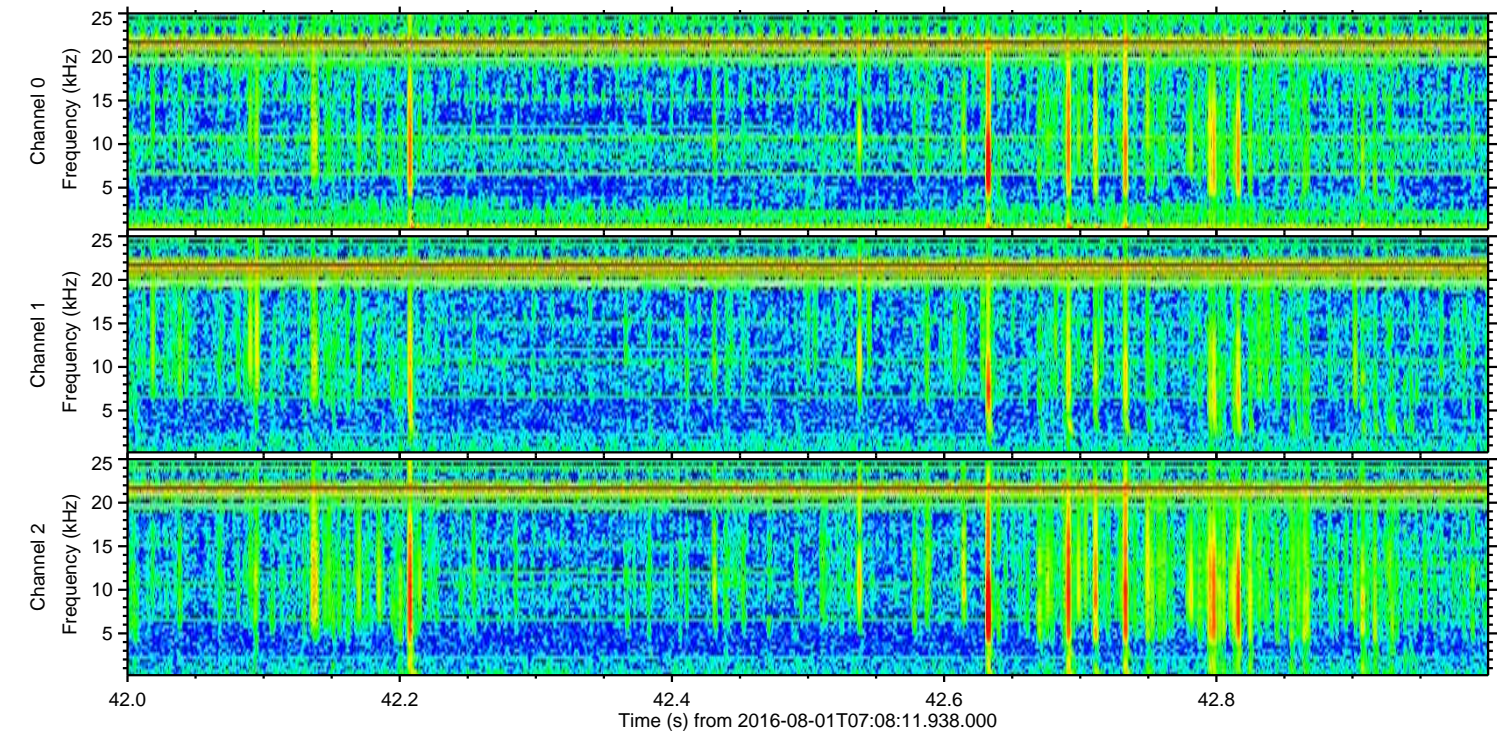
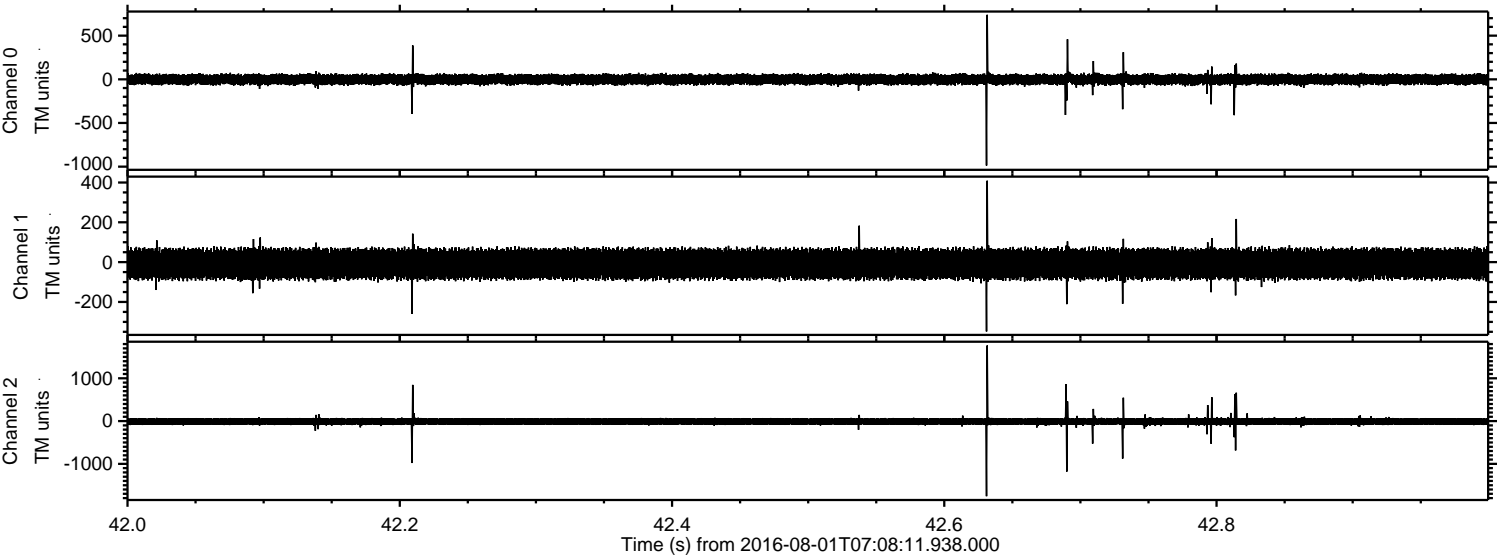
Processed Mon Aug 1 09:16:46 2016 by ELM ver.2012-10-06 from 001__elm20160801_070810__dat00.bin



Processed Mon Aug 1 09:16:47 2016 by ELM ver.2012-10-06 from 001__elm20160801_070810__dat00.bin



Processed Mon Aug 1 09:16:48 2016 by ELM ver.2012-10-06 from 001__elm20160801_070810__dat00.bin



Channel 0
mn: -987
mx: 739
 μ : -1.5
 σ : 35.3

Channel 1
mn: -348
mx: 409
 μ : -9.1
 σ : 42.9

Channel 2
mn: -1757
mx: 1767
 μ : -9.8
 σ : 51.4

Processed Mon Aug 1 09:16:49 2016 by ELM ver.2012-10-06 from 001__elm20160801_070810__dat00.bin

