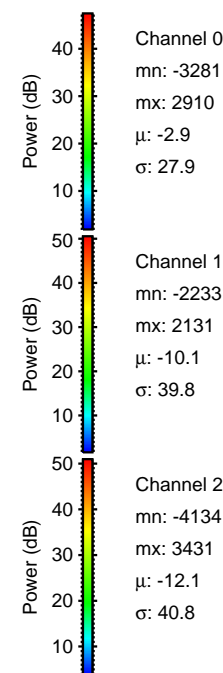
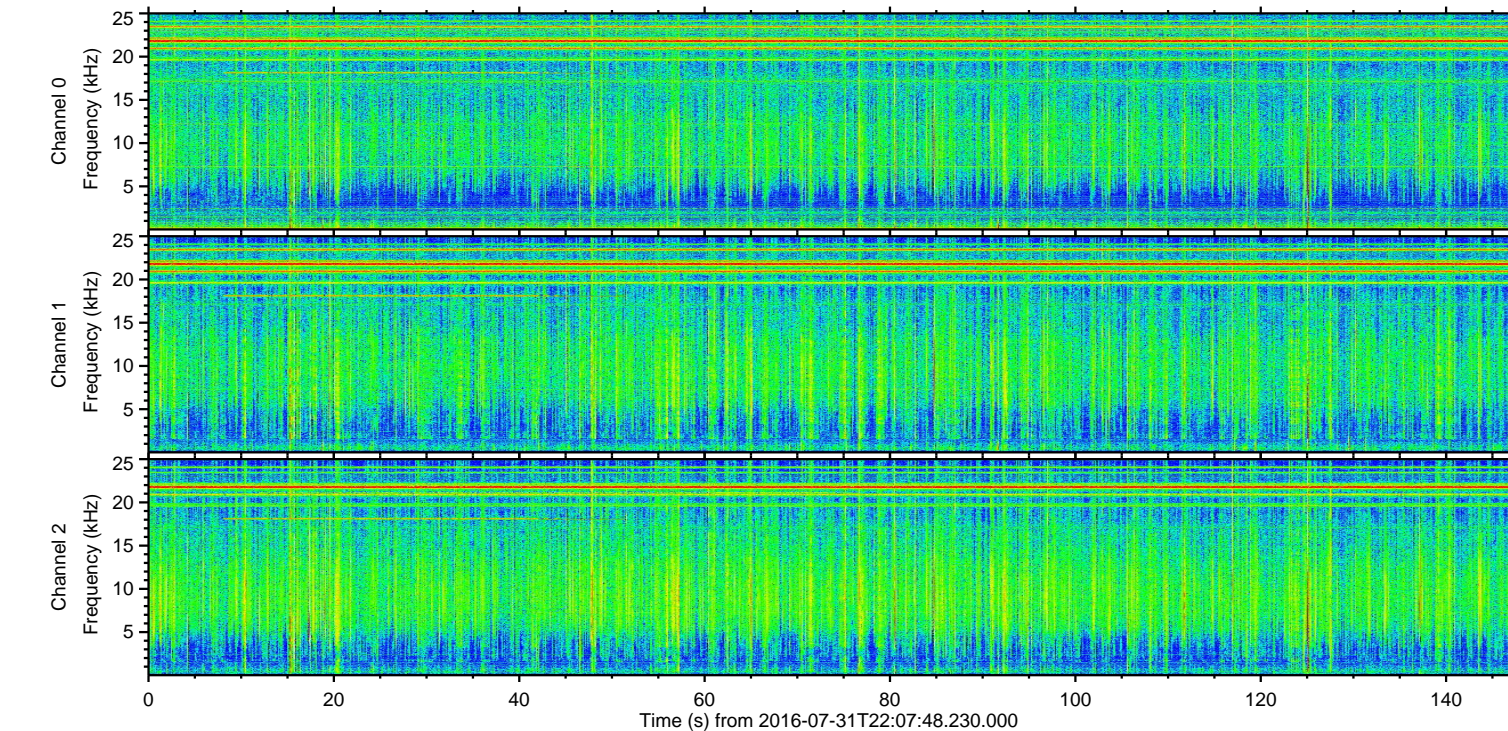
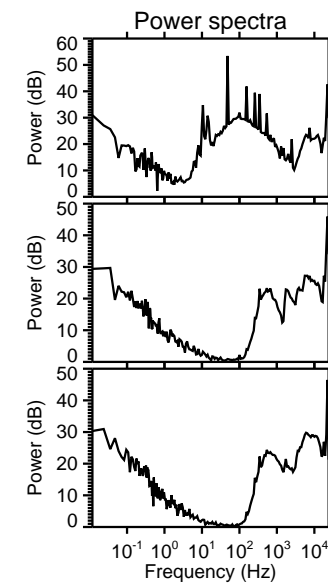
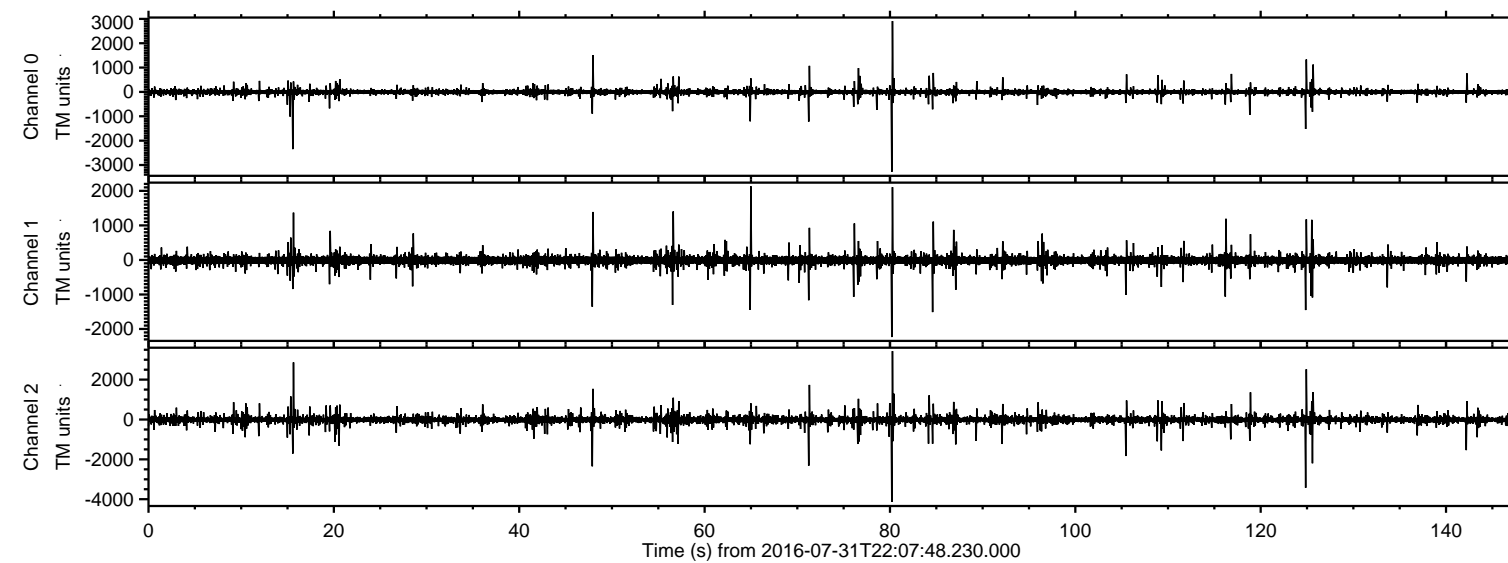


ELMAVAN 3D WAVEFORMS (Measured data sampled at 50 kHz) 51000 packets of 144 samples from 2016-07-31T22:07:48.230.000.

Processed Mon Aug 1 00:16:03 2016 by ELM ver.2012-10-06 from 001__elm20160731_220747__dat00.bin

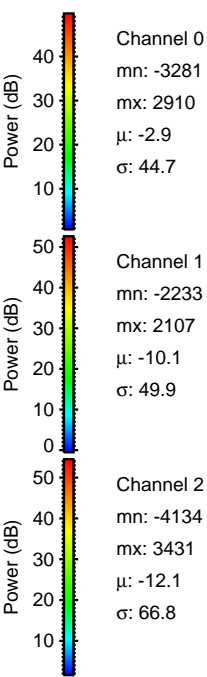
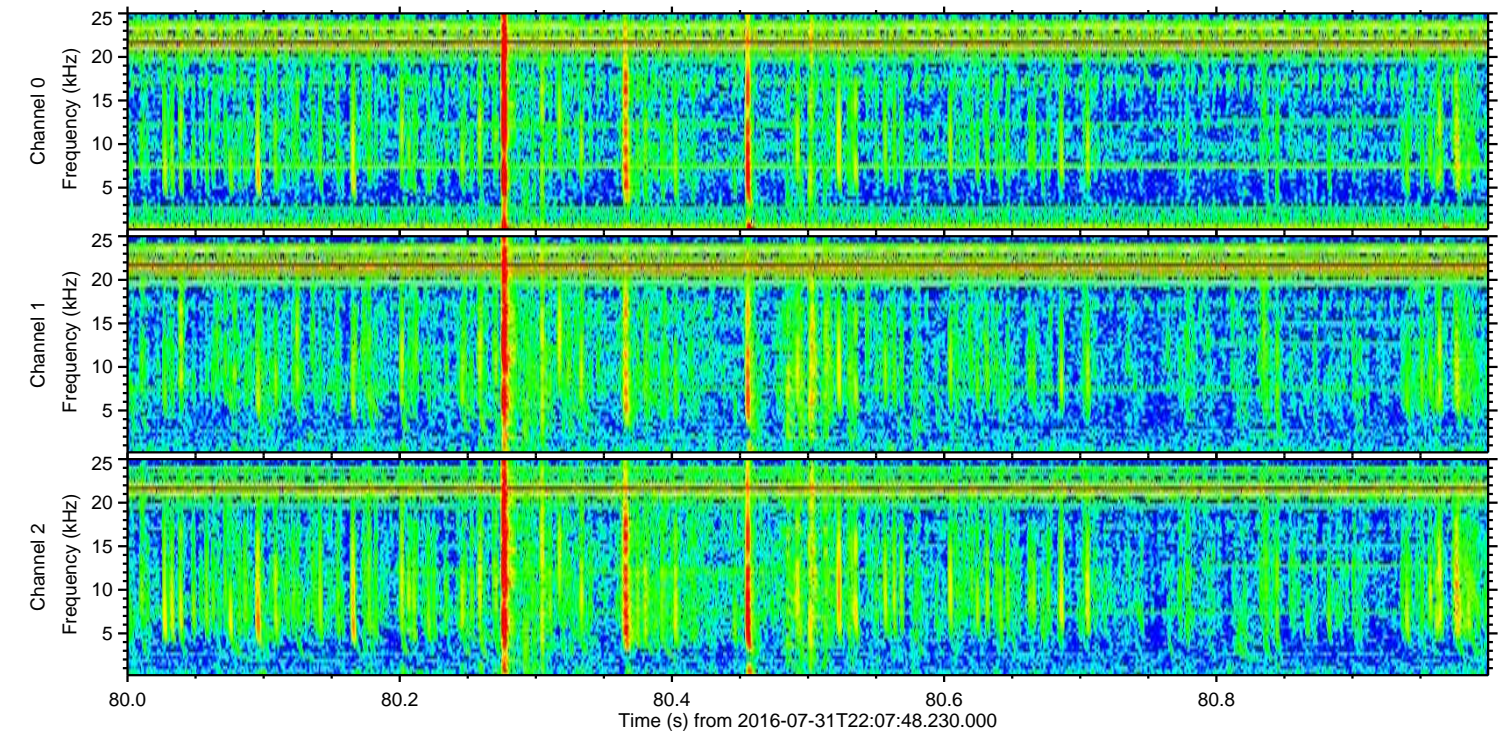
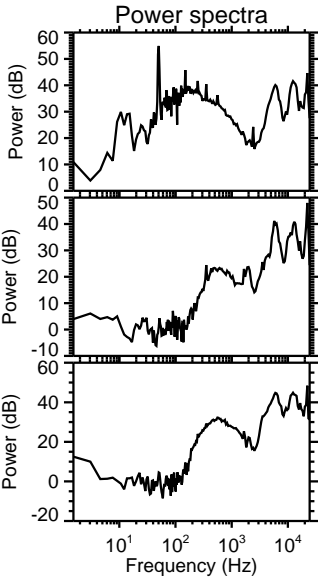
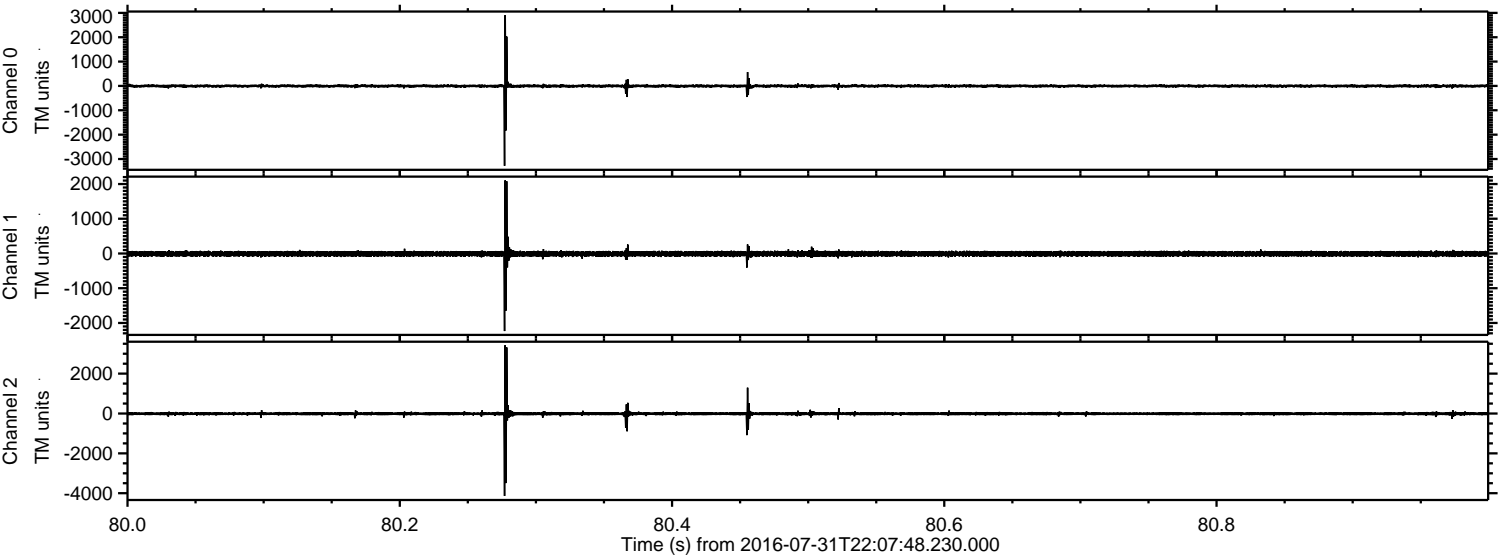


Channel 0
mn: -3281
mx: 2910
 μ : -2.9
 σ : 27.9

Channel 1
mn: -2233
mx: 2131
 μ : -10.1
 σ : 39.8

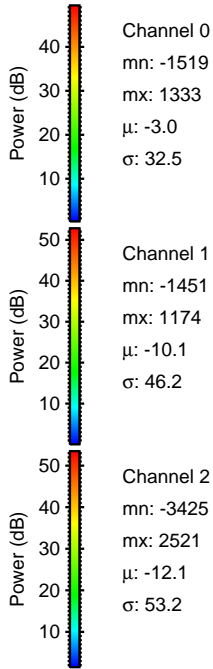
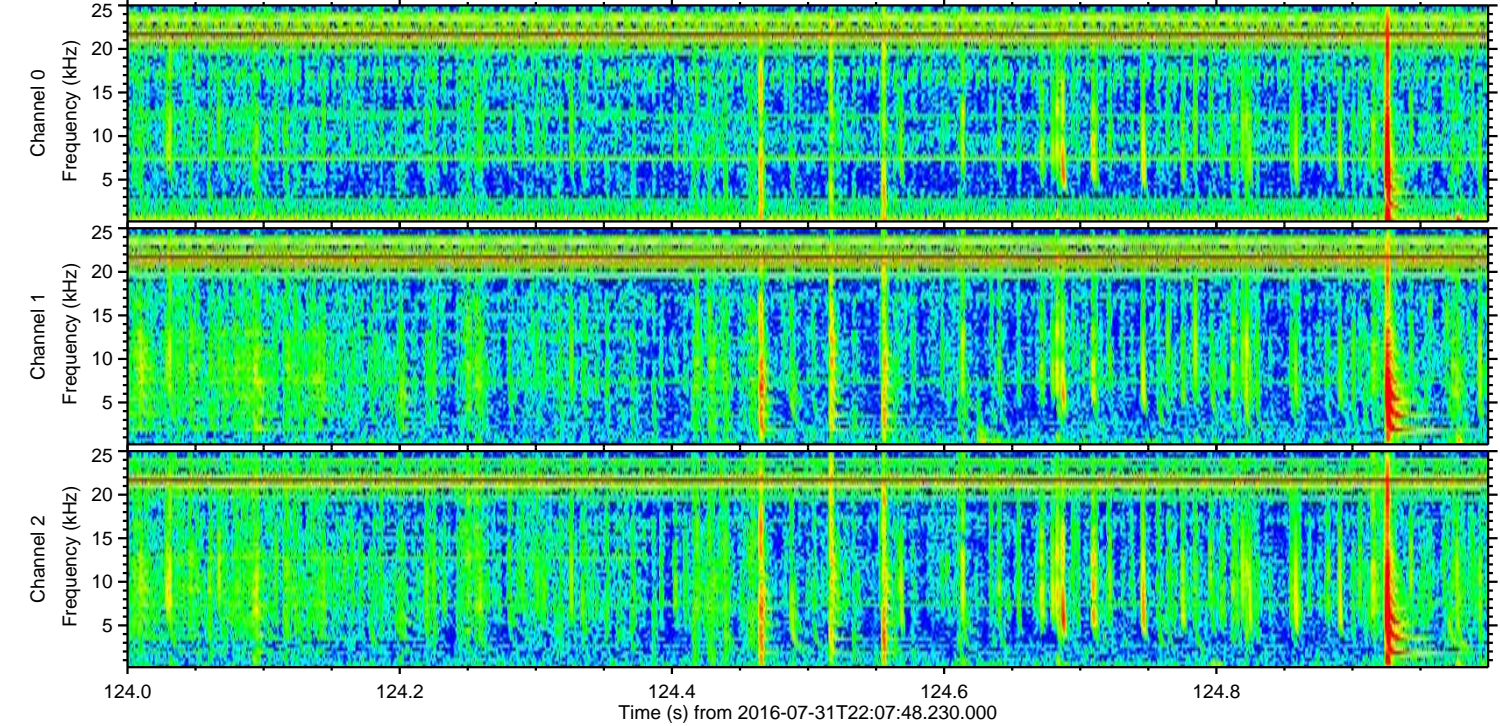
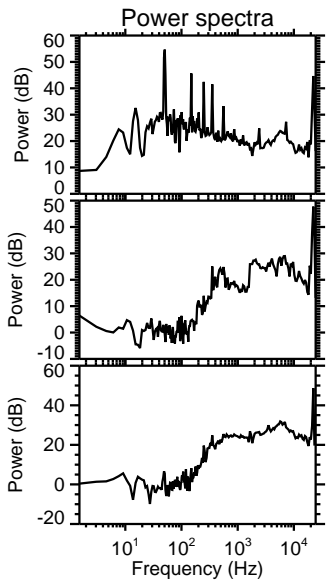
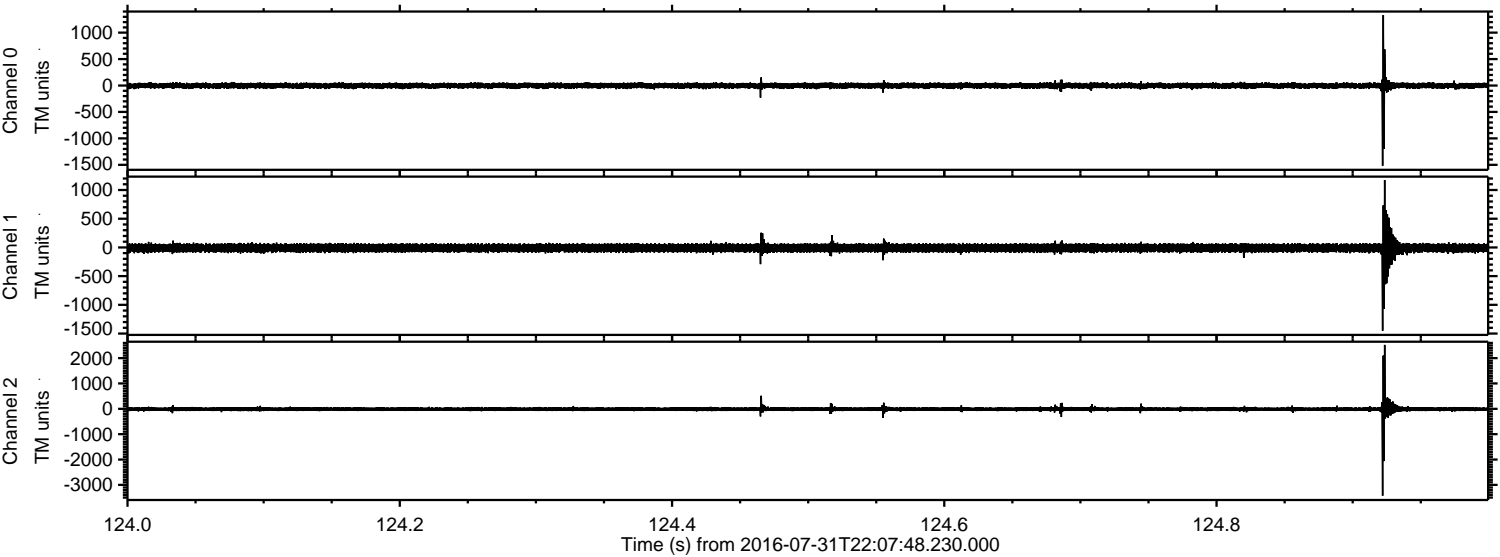
Channel 2
mn: -4134
mx: 3431
 μ : -12.1
 σ : 40.8

Processed Mon Aug 1 00:16:14 2016 by ELM ver.2012-10-06 from 001__elm20160731_220747__dat00.bin



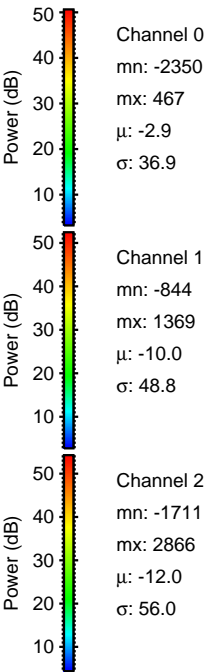
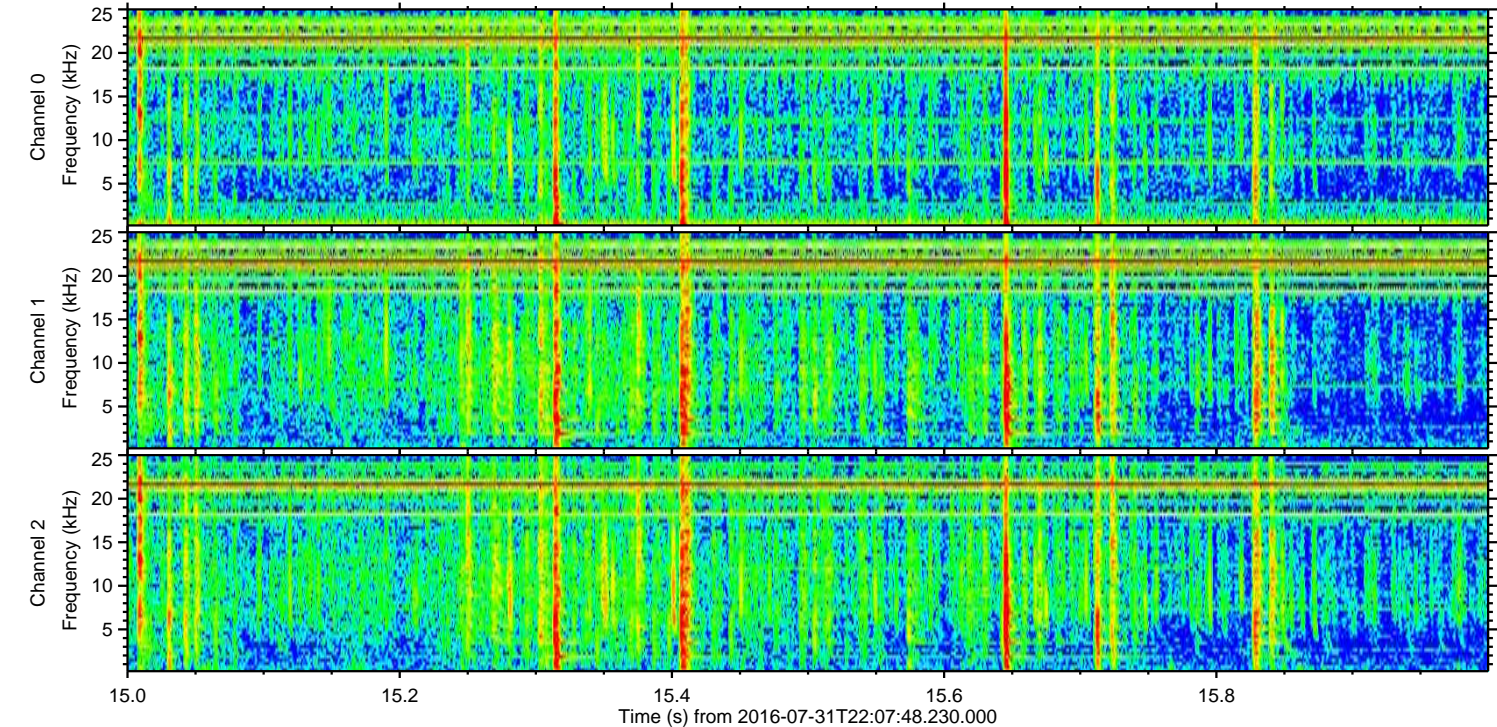
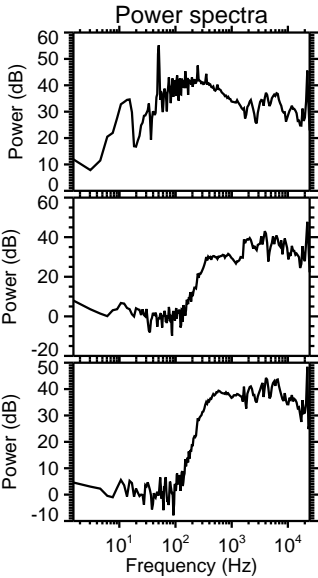
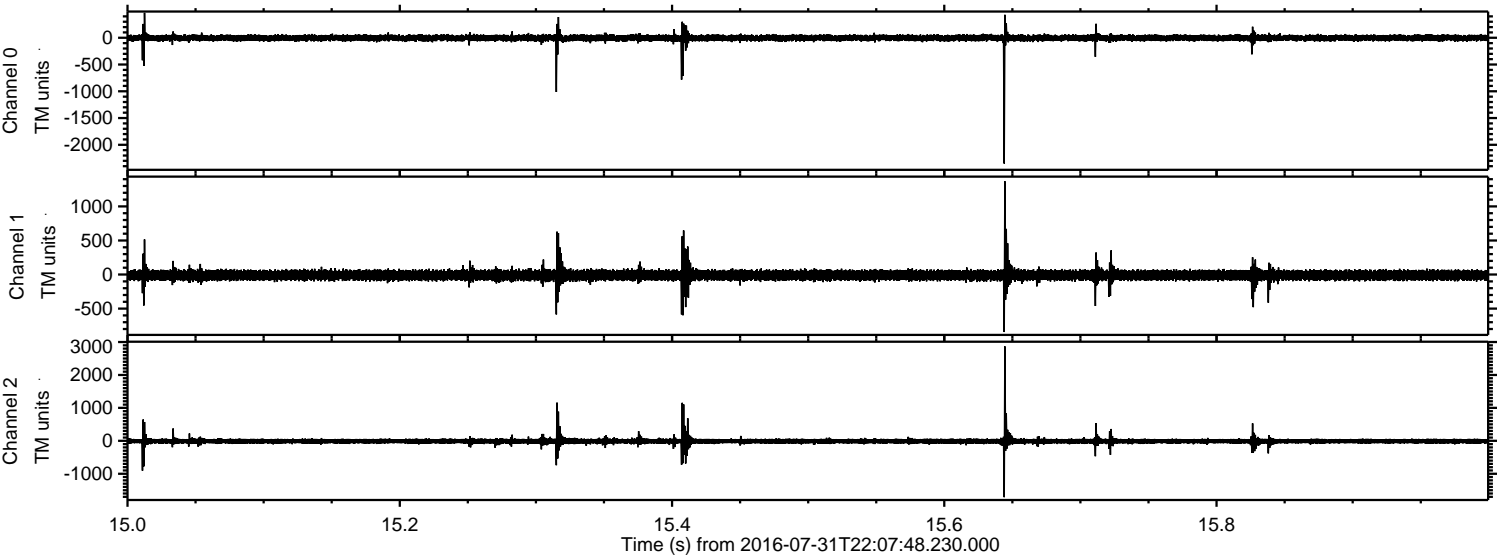
ELMAVAN 3D WAVEFORMS (Measured data sampled at 50 kHz) 51000 packets of 144 samples from 2016-07-31T22:07:48.230.000. Part 125/147

Processed Mon Aug 1 00:16:15 2016 by ELM ver.2012-10-06 from 001__elm20160731_220747__dat00.bin



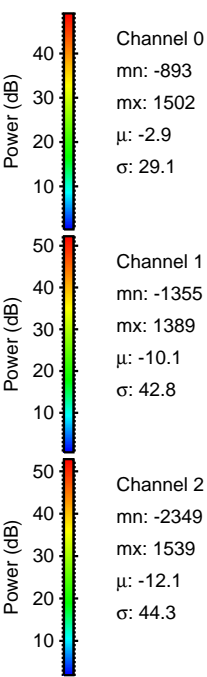
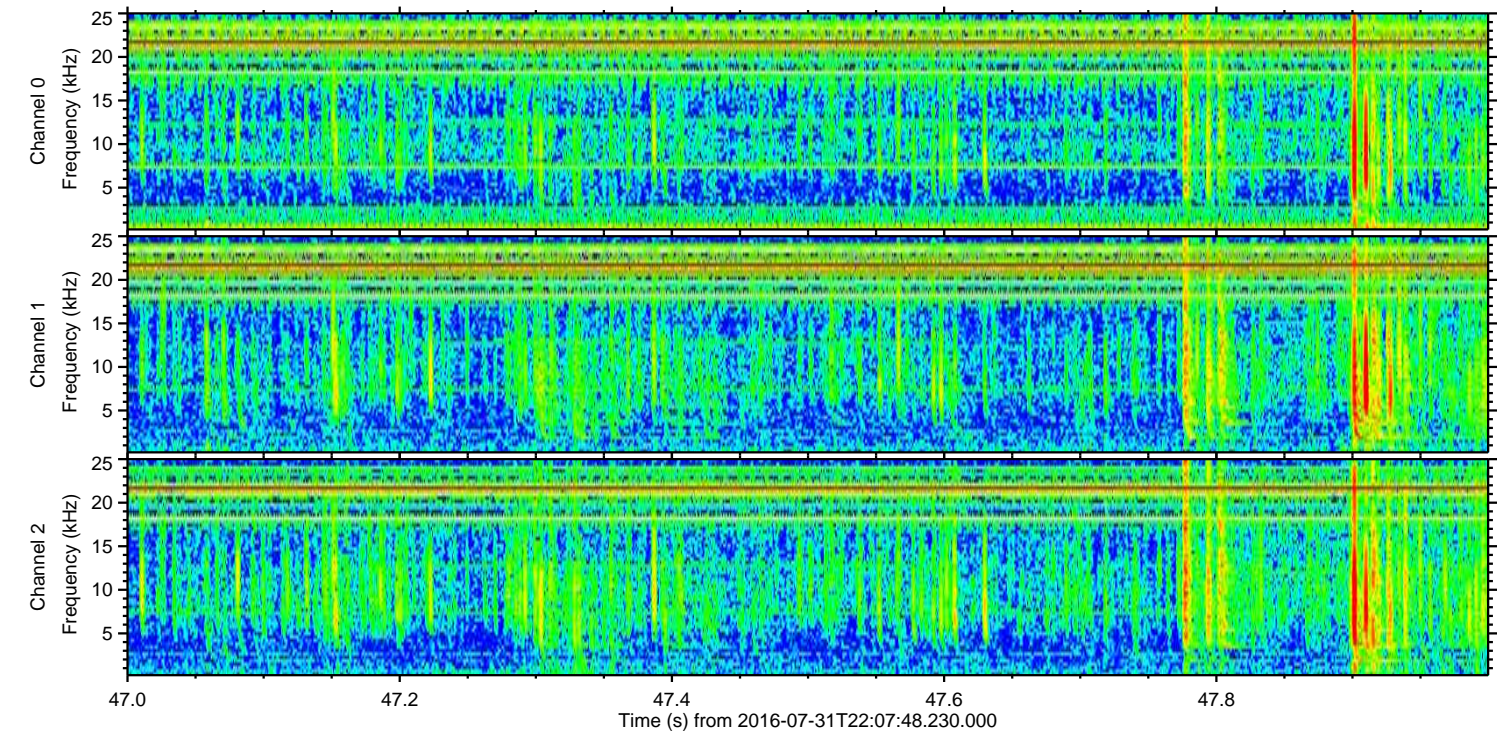
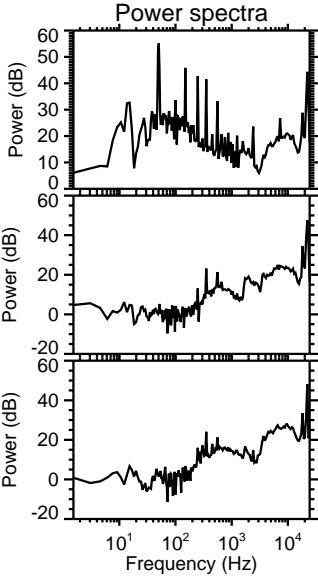
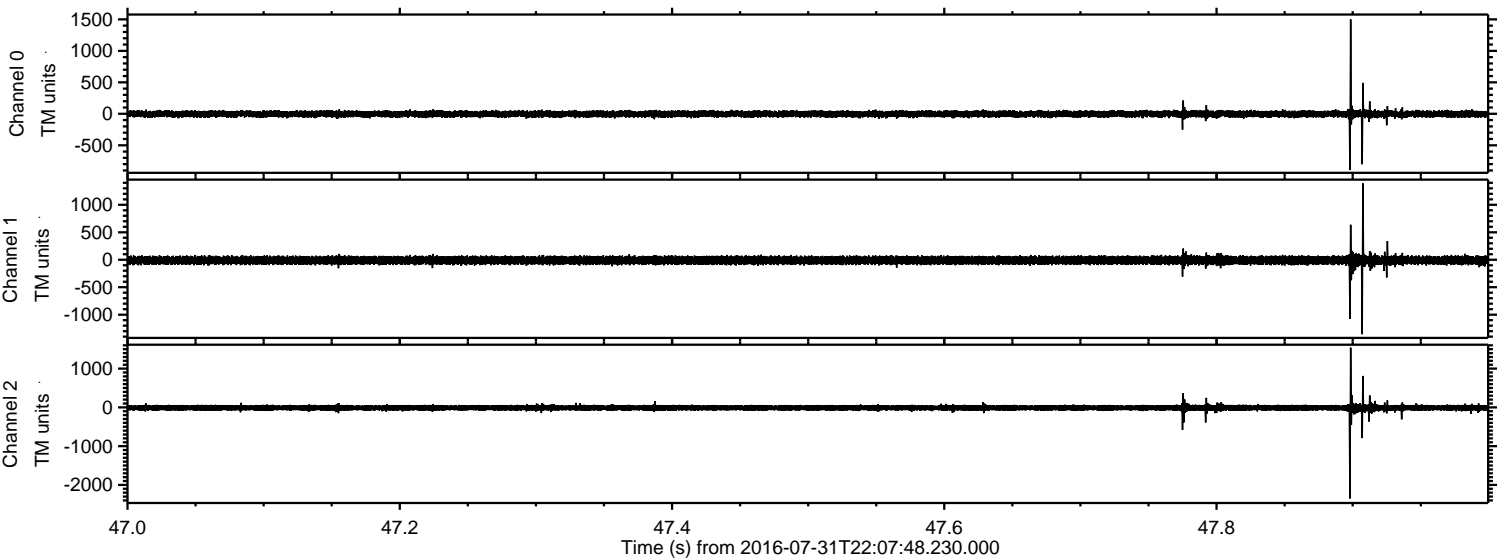
ELMAVAN 3D WAVEFORMS (Measured data sampled at 50 kHz) 51000 packets of 144 samples from 2016-07-31T22:07:48.230.000. Part 16/147

Processed Mon Aug 1 00:16:16 2016 by ELM ver.2012-10-06 from 001__elm20160731_220747__dat00.bin



ELMAVAN 3D WAVEFORMS (Measured data sampled at 50 kHz) 51000 packets of 144 samples from 2016-07-31T22:07:48.230.000. Part 48/147

Processed Mon Aug 1 00:16:17 2016 by ELM ver.2012-10-06 from 001__elm20160731_220747__dat00.bin

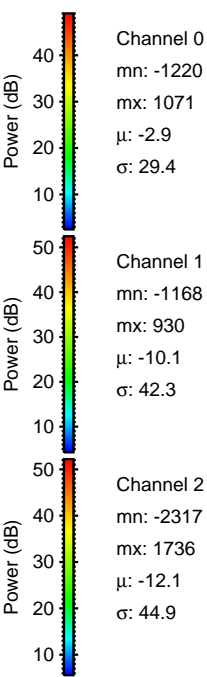
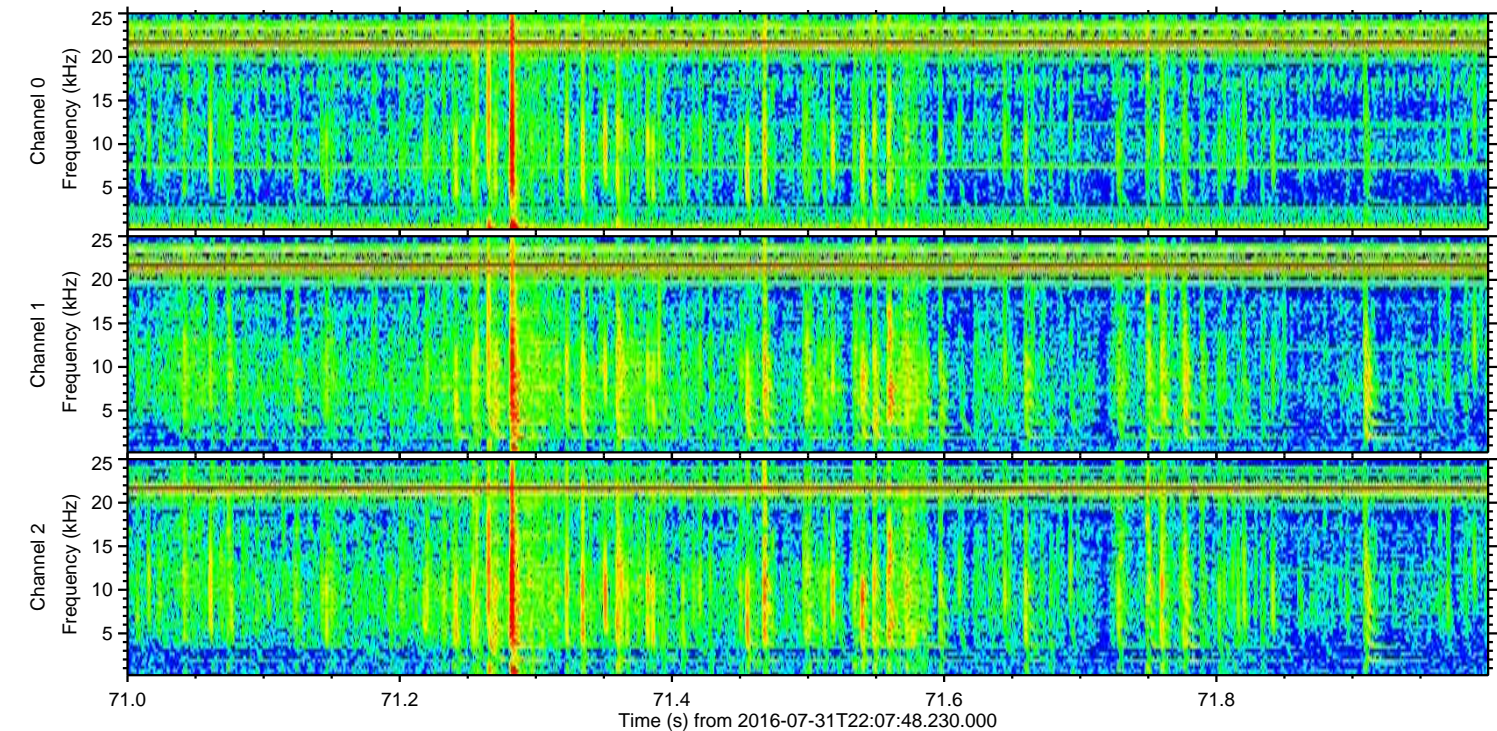
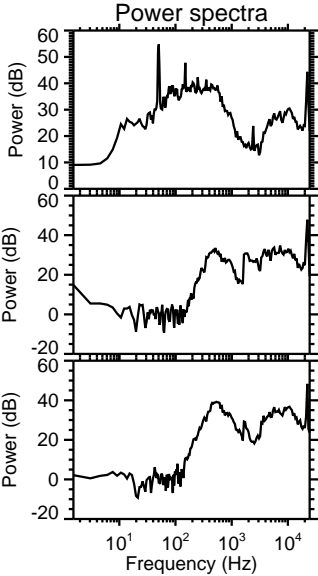
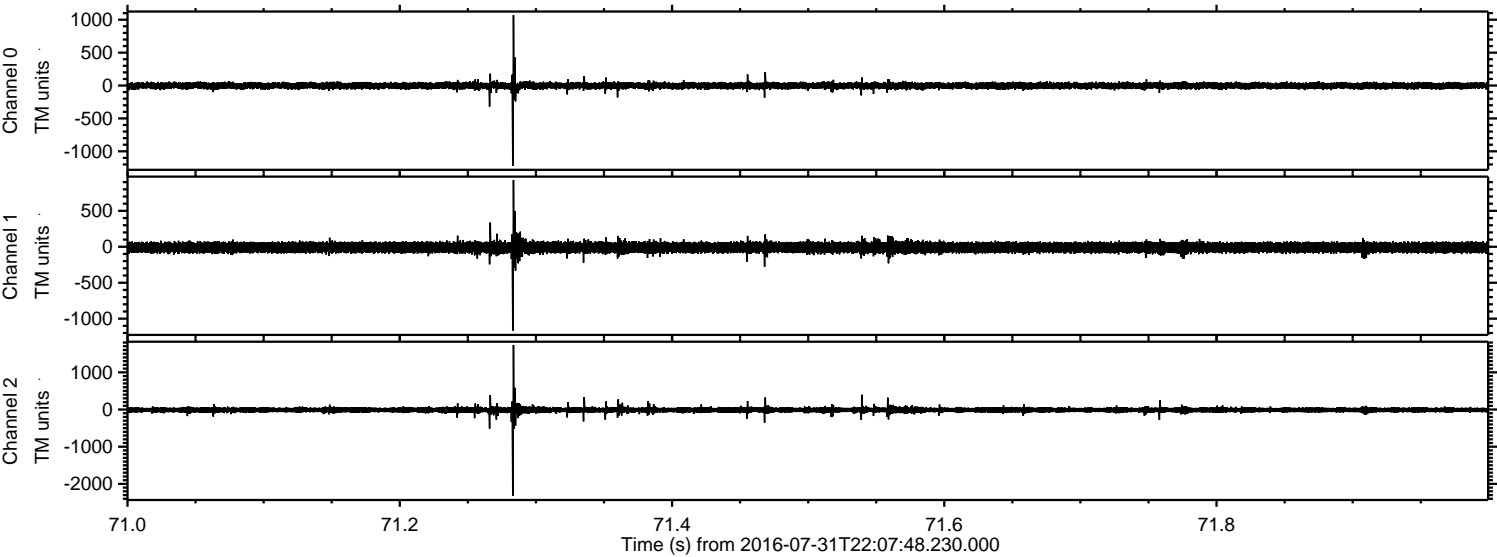


Channel 0
mn: -893
mx: 1502
 μ : -2.9
 σ : 29.1

Channel 1
mn: -1355
mx: 1389
 μ : -10.1
 σ : 42.8

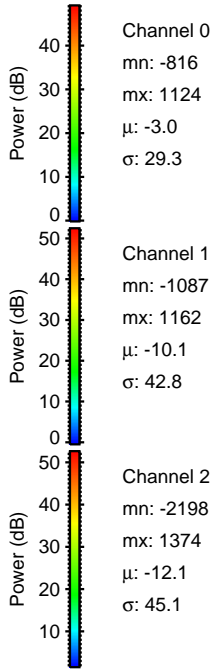
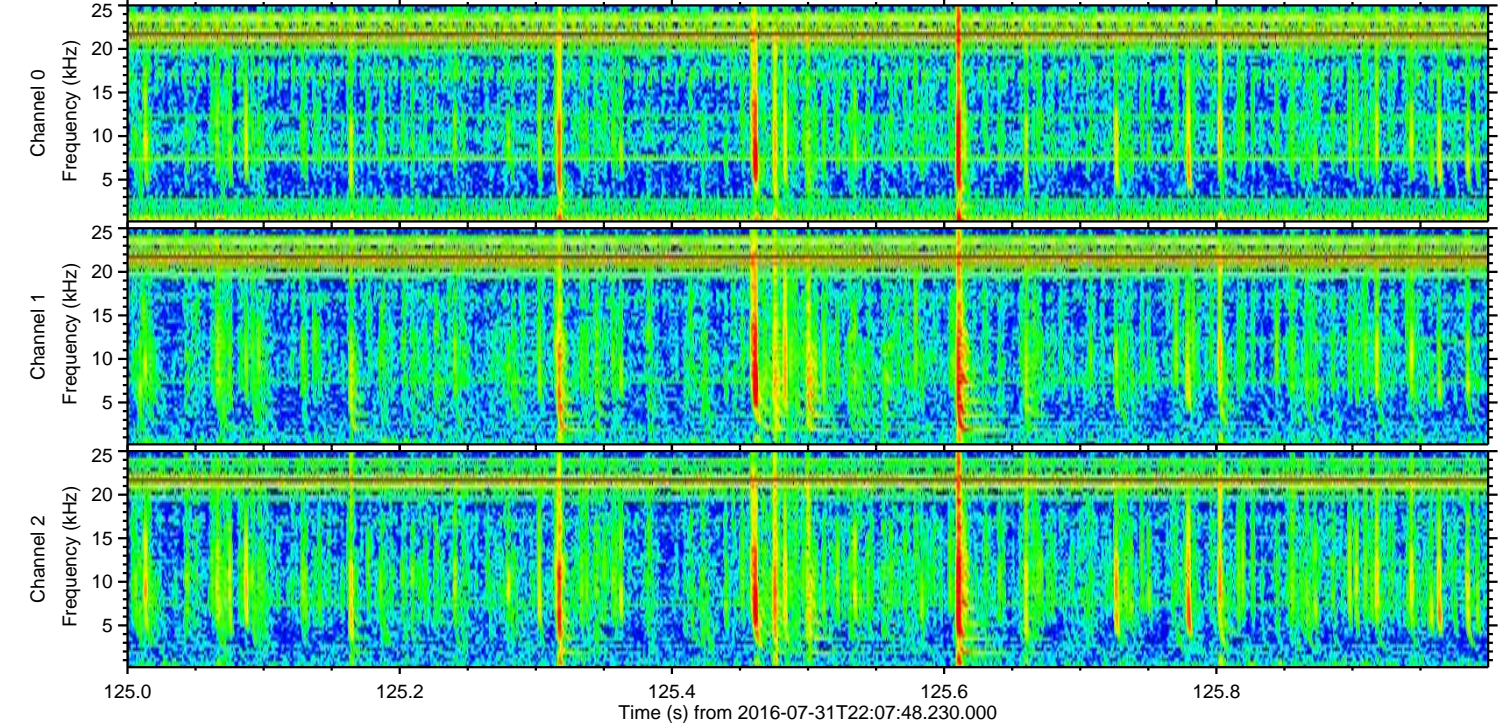
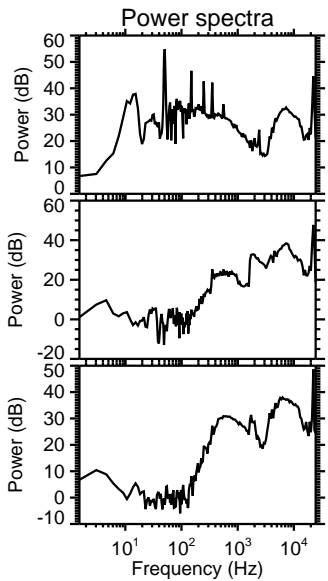
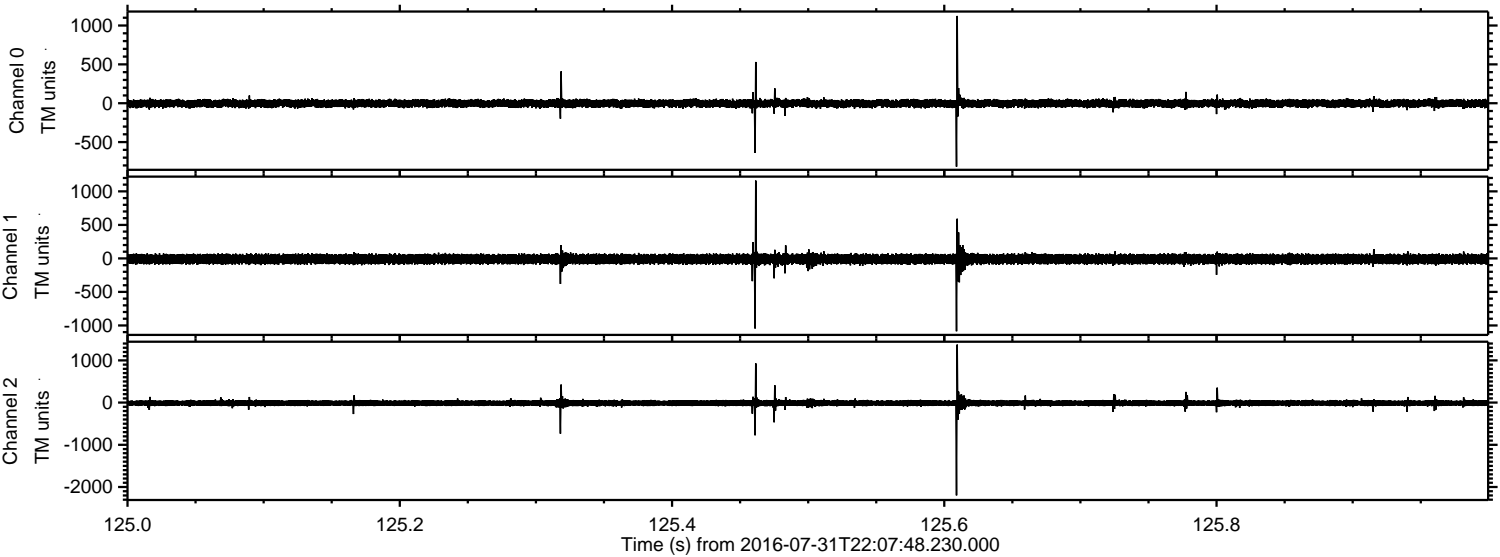
Channel 2
mn: -2349
mx: 1539
 μ : -12.1
 σ : 44.3

Processed Mon Aug 1 00:16:18 2016 by ELM ver.2012-10-06 from 001__elm20160731_220747__dat00.bin

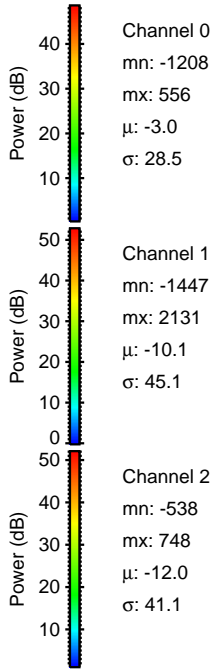
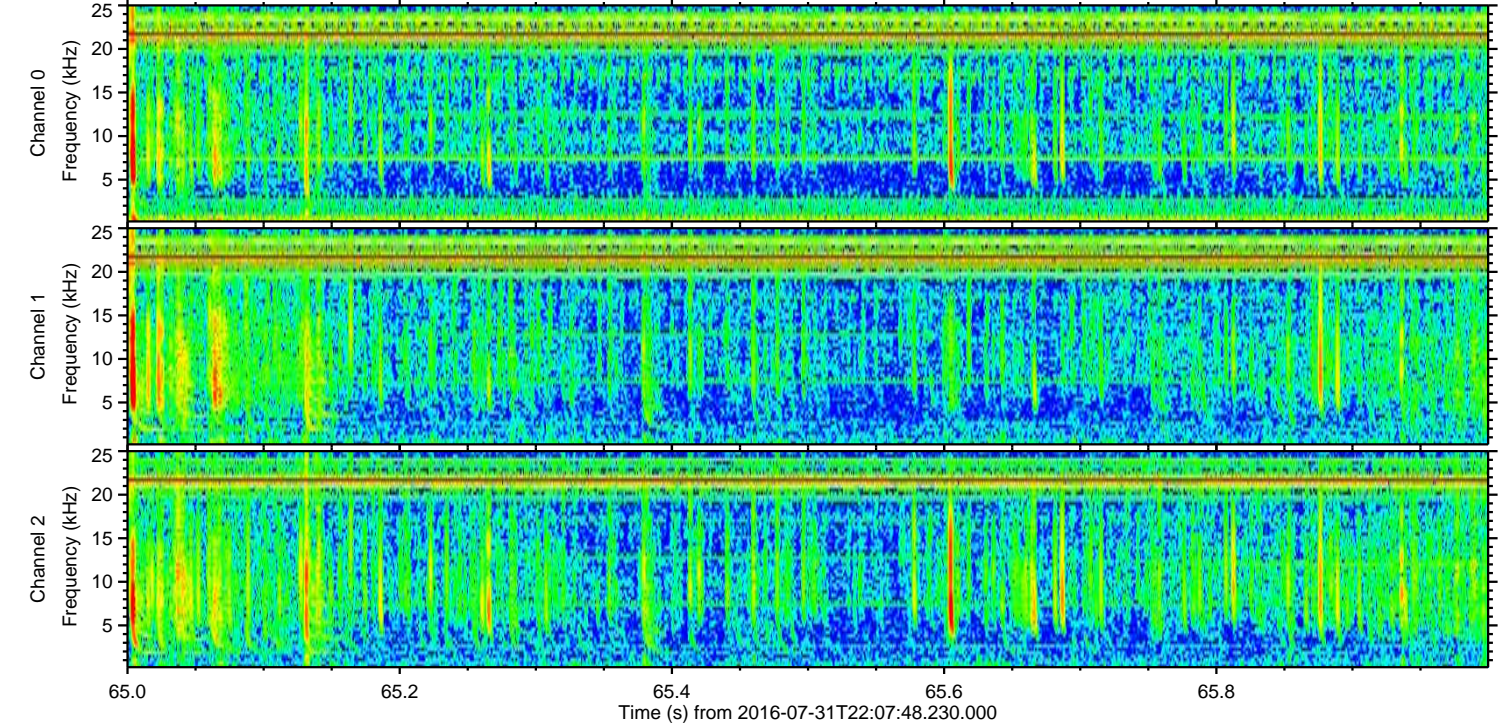
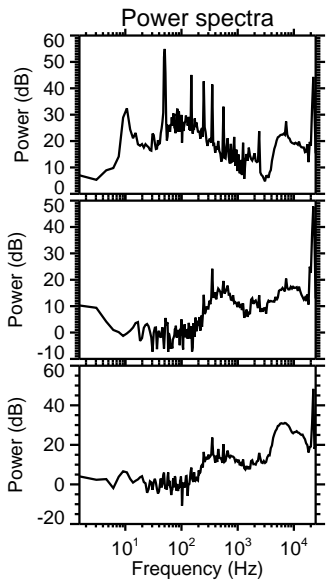
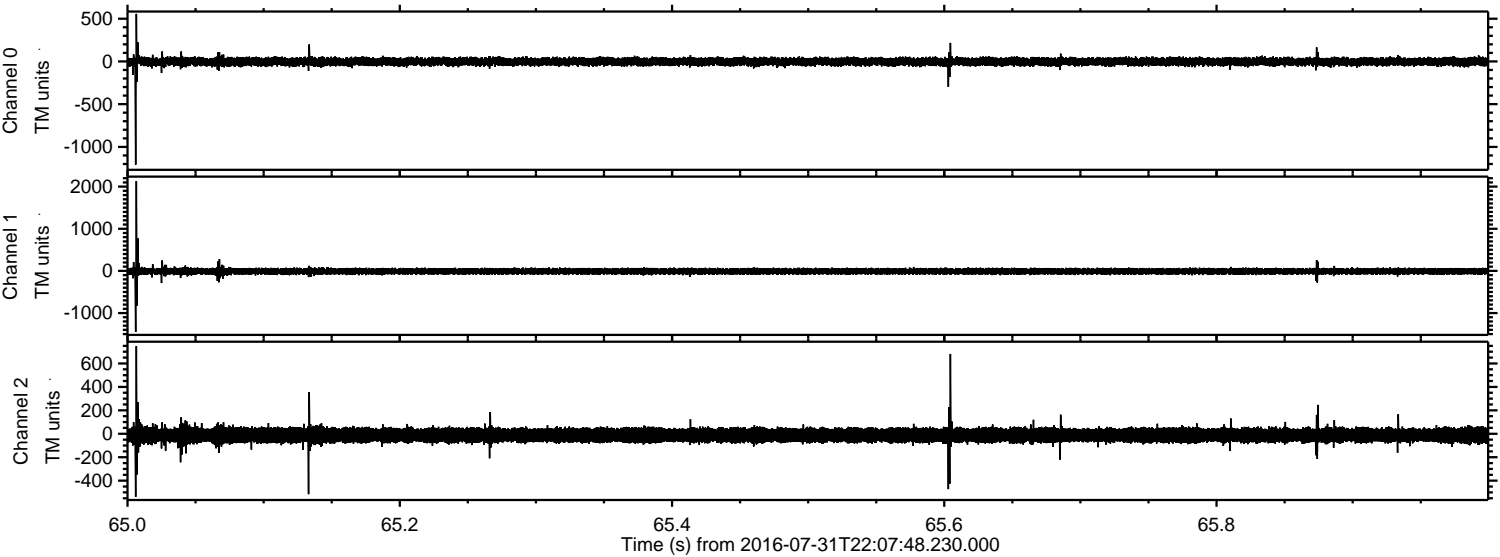


ELMAVAN 3D WAVEFORMS (Measured data sampled at 50 kHz) 51000 packets of 144 samples from 2016-07-31T22:07:48.230.000. Part 126/147

Processed Mon Aug 1 00:16:19 2016 by ELM ver.2012-10-06 from 001__elm20160731_220747__dat00.bin

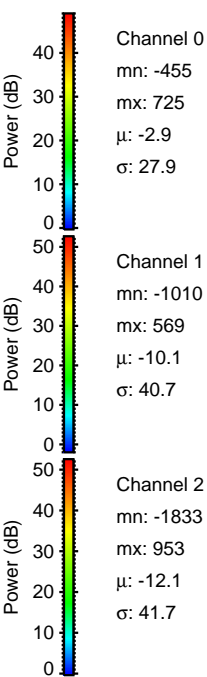
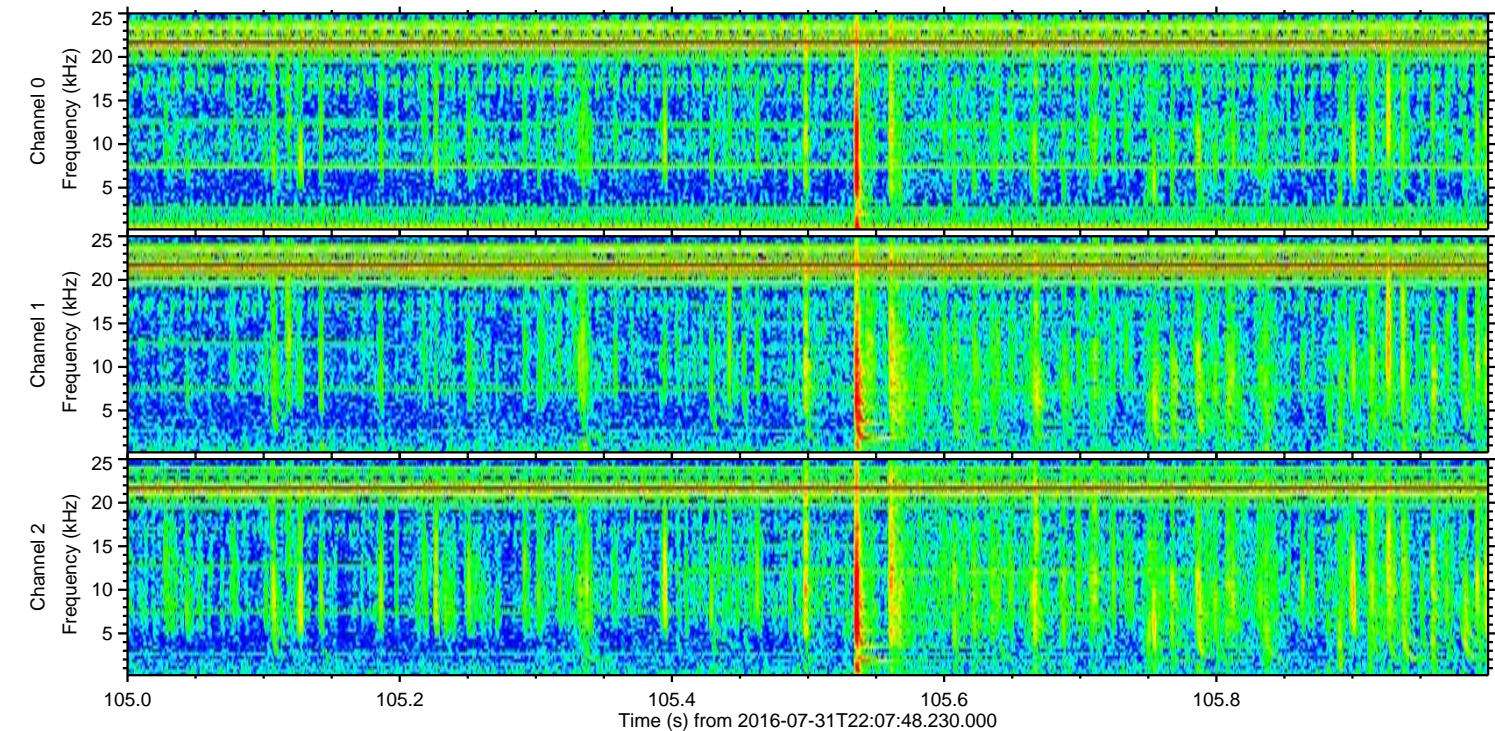
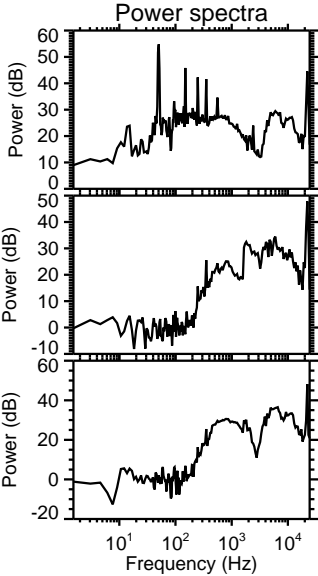
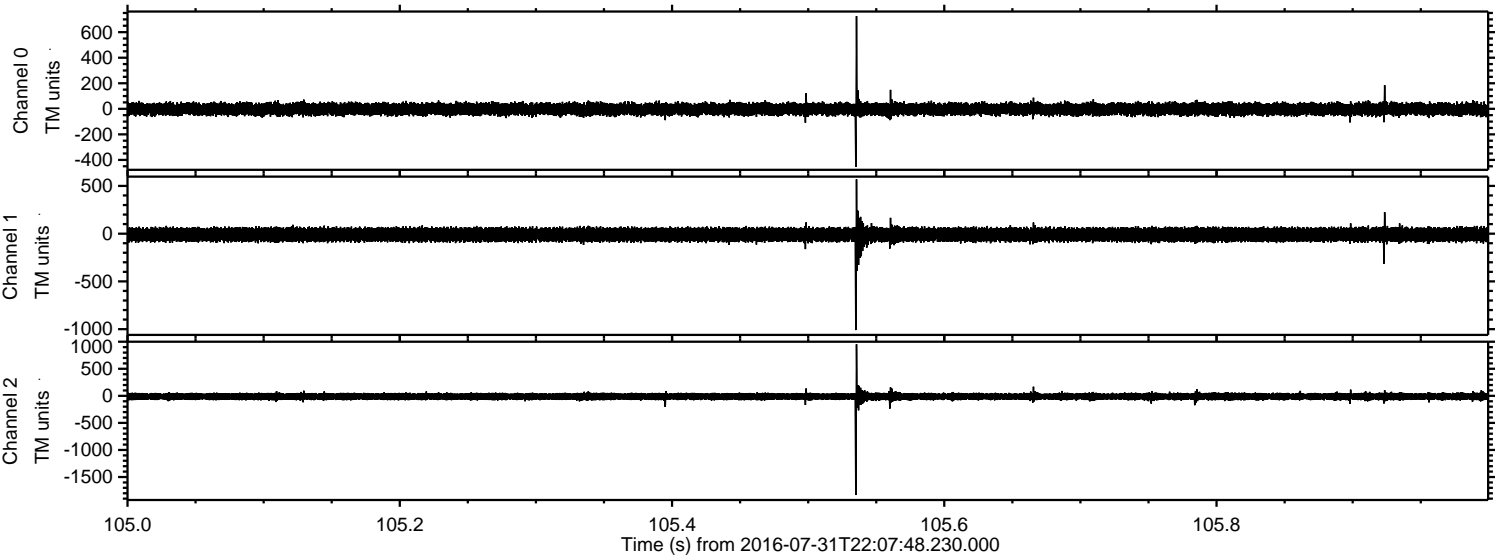


Processed Mon Aug 1 00:16:20 2016 by ELM ver.2012-10-06 from 001__elm20160731_220747__dat00.bin



ELMAVAN 3D WAVEFORMS (Measured data sampled at 50 kHz) 51000 packets of 144 samples from 2016-07-31T22:07:48.230.000. Part 106/147

Processed Mon Aug 1 00:16:21 2016 by ELM ver.2012-10-06 from 001__elm20160731_220747__dat00.bin



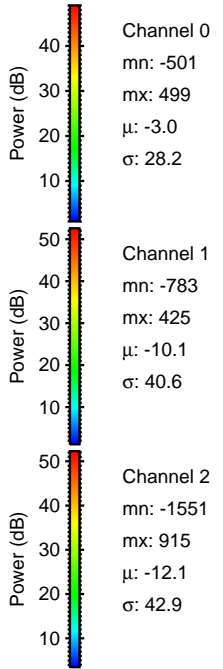
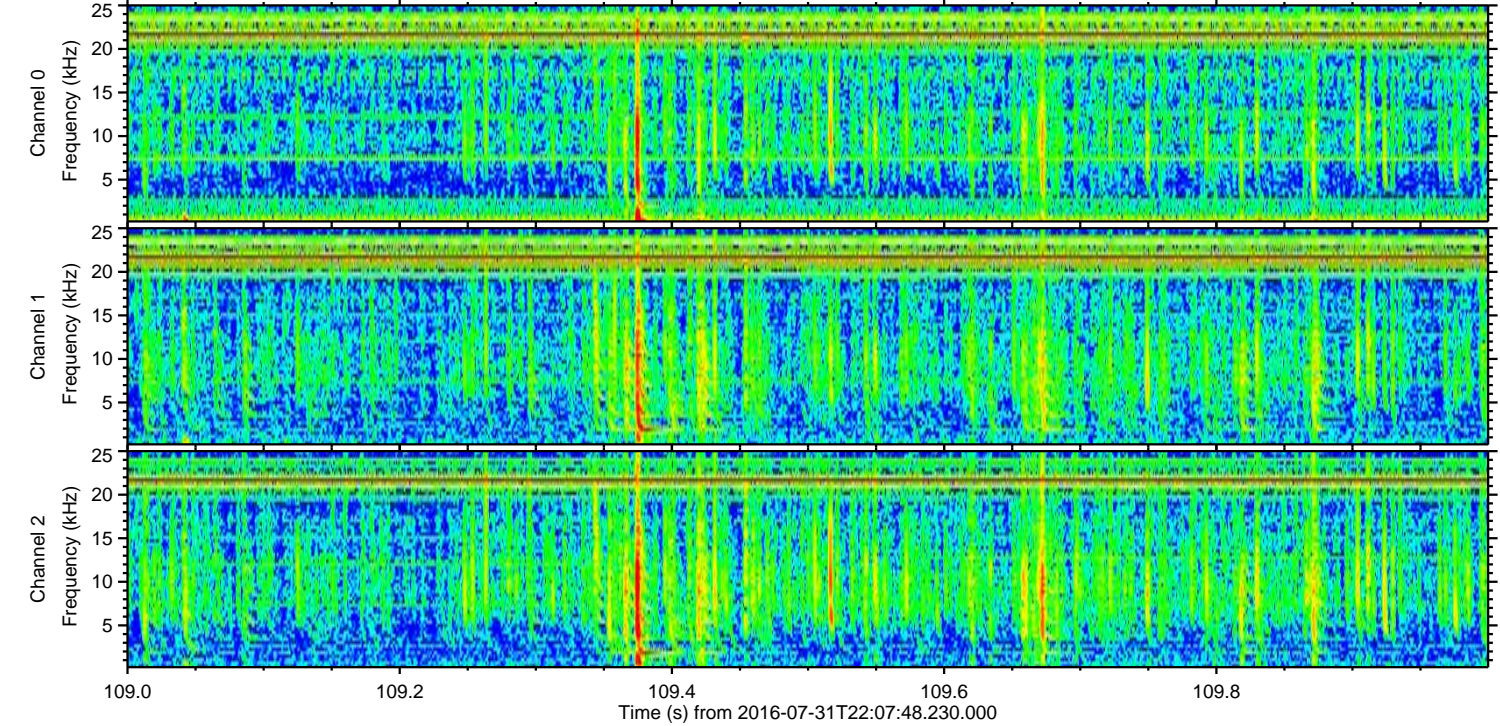
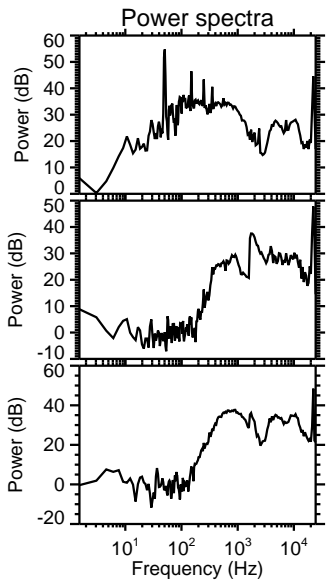
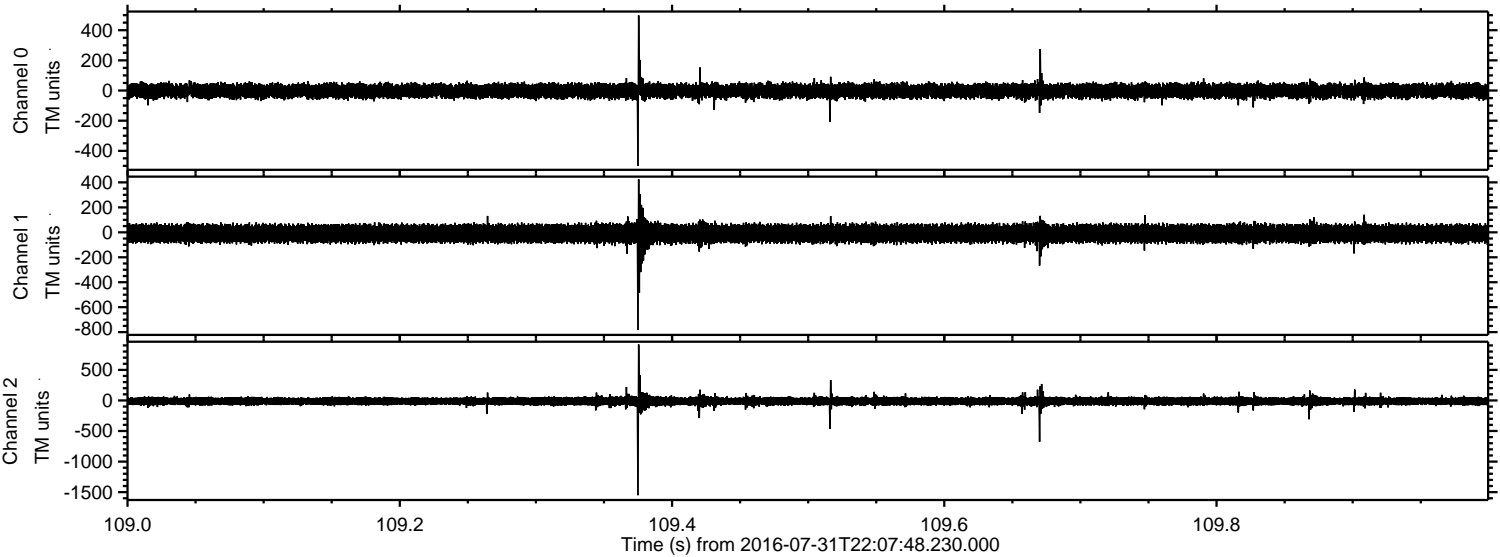
Channel 0
mn: -455
mx: 725
 μ : -2.9
 σ : 27.9

Channel 1
mn: -1010
mx: 569
 μ : -10.1
 σ : 40.7

Channel 2
mn: -1833
mx: 953
 μ : -12.1
 σ : 41.7

ELMAVAN 3D WAVEFORMS (Measured data sampled at 50 kHz) 51000 packets of 144 samples from 2016-07-31T22:07:48.230.000. Part 110/147

Processed Mon Aug 1 00:16:22 2016 by ELM ver.2012-10-06 from 001__elm20160731_220747__dat00.bin



Channel 0
mn: -501
mx: 499
 μ : -3.0
 σ : 28.2

Channel 1
mn: -783
mx: 425
 μ : -10.1
 σ : 40.6

Channel 2
mn: -1551
mx: 915
 μ : -12.1
 σ : 42.9

