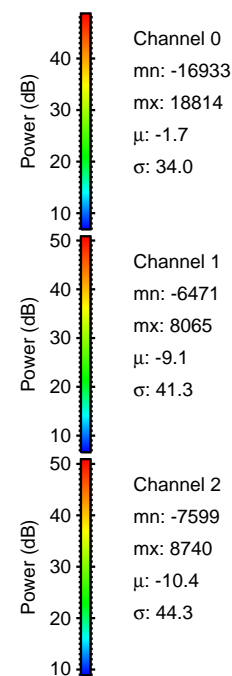
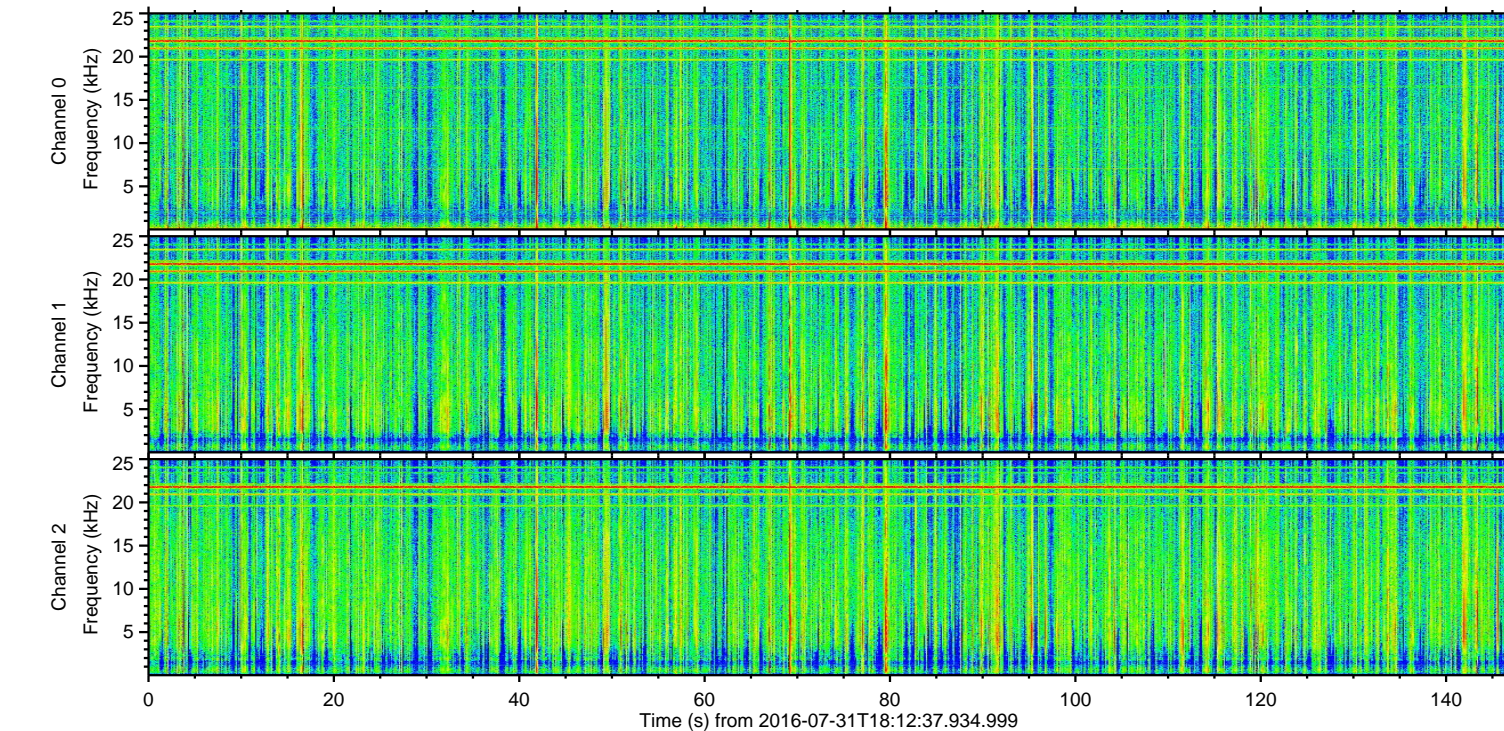
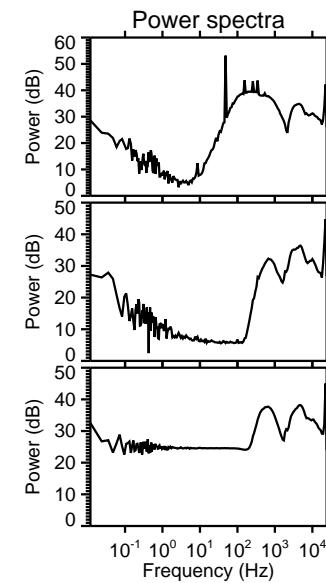
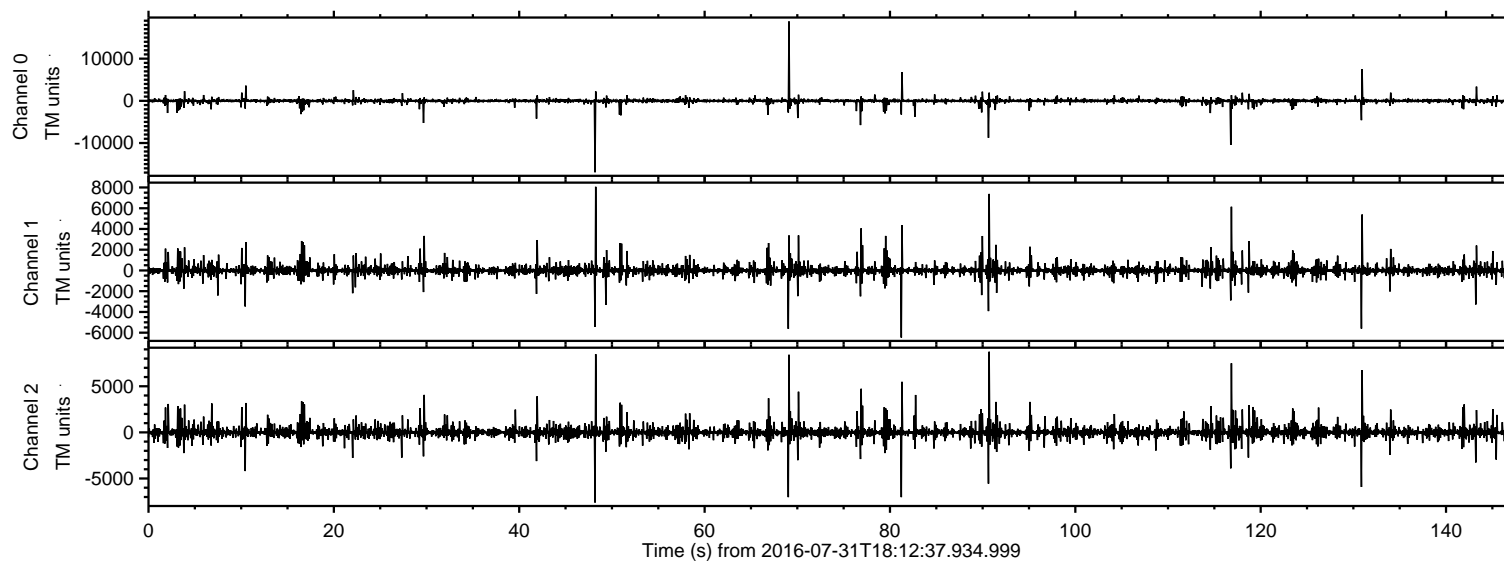


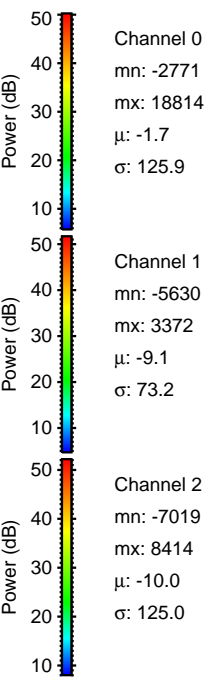
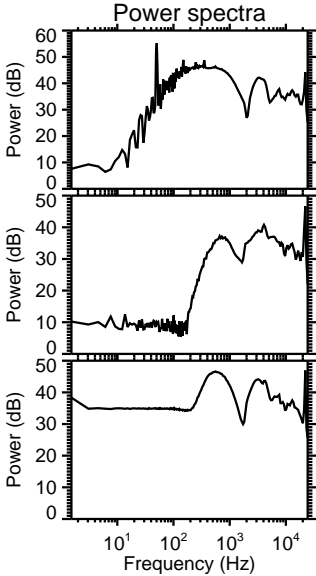
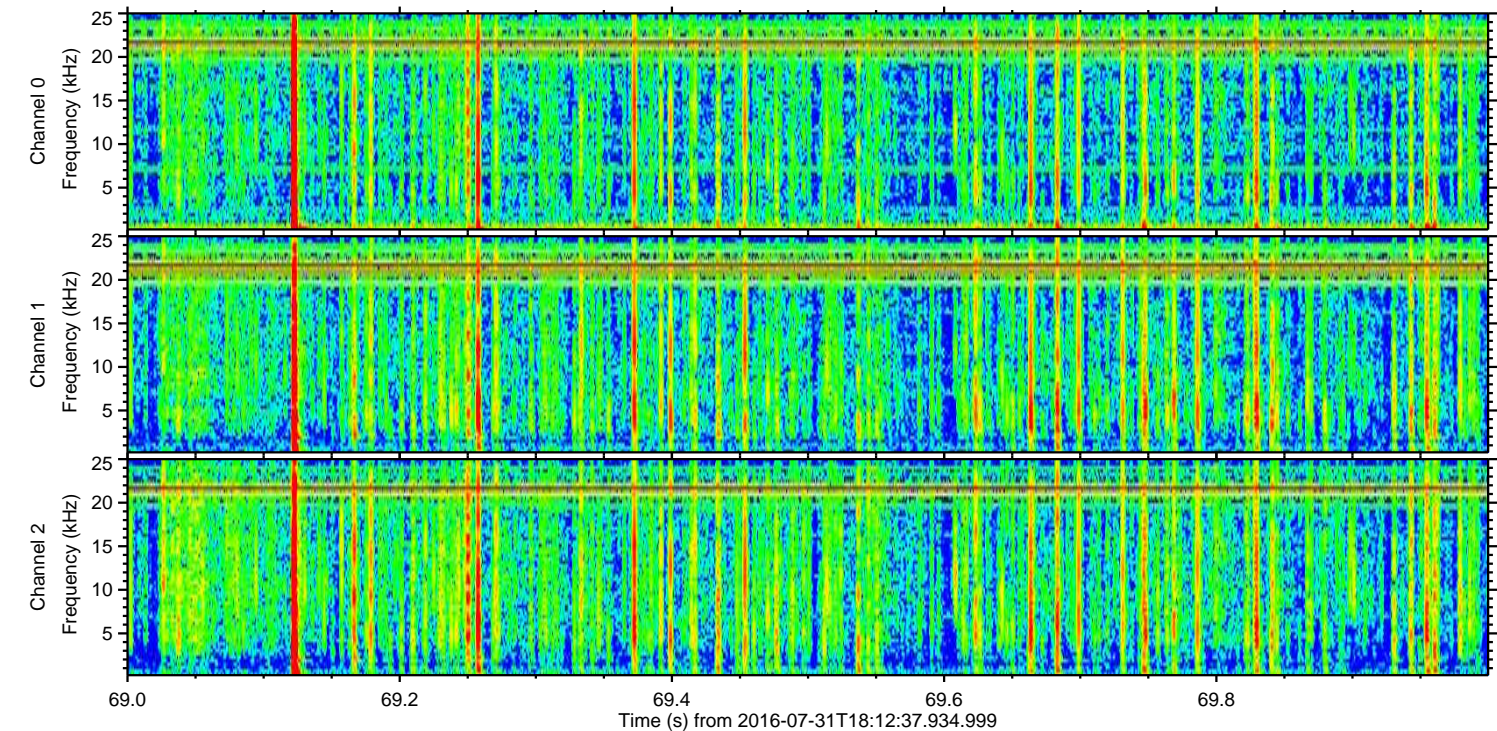
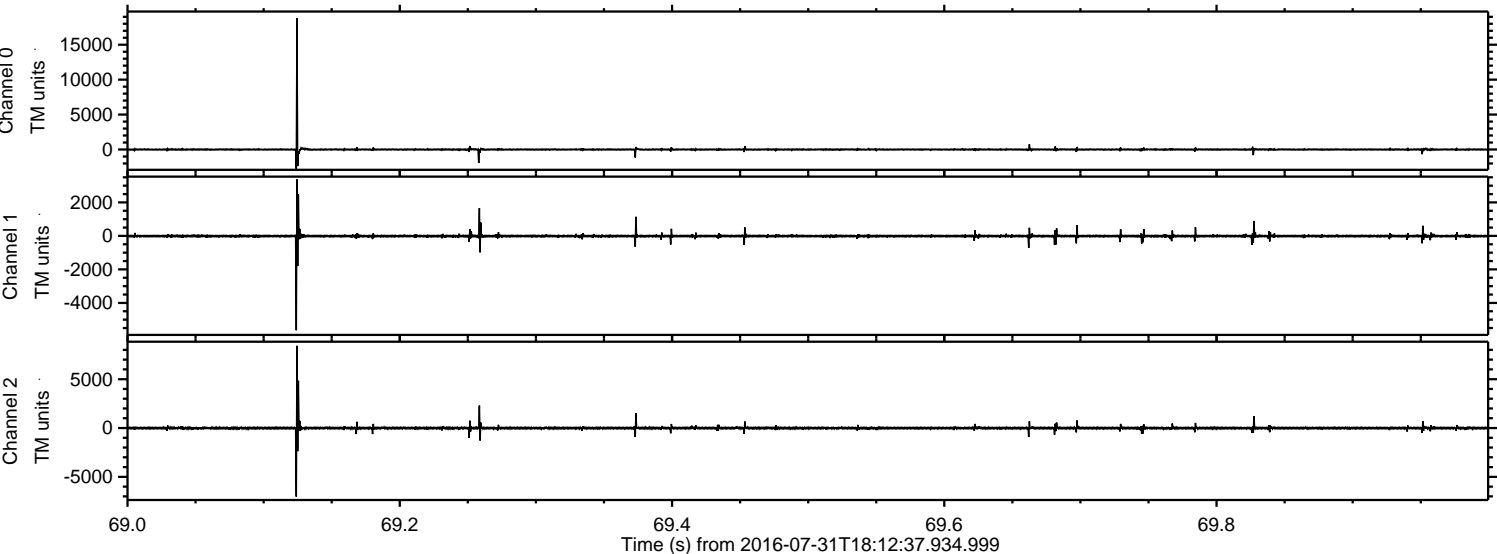
# ELMAVAN 3D WAVEFORMS (Measured data sampled at 50 kHz) 51000 packets of 144 samples from 2016-07-31T18:12:37.934.999.

Processed Sun Jul 31 20:20:54 2016 by ELM ver.2012-10-06 from 001\_\_elm20160731\_181236\_\_dat00.bin



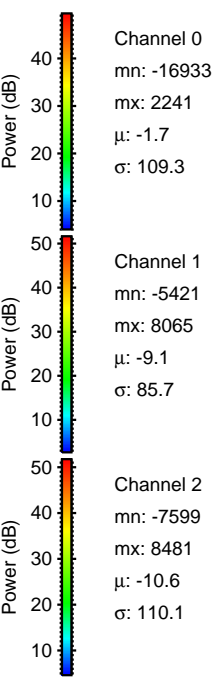
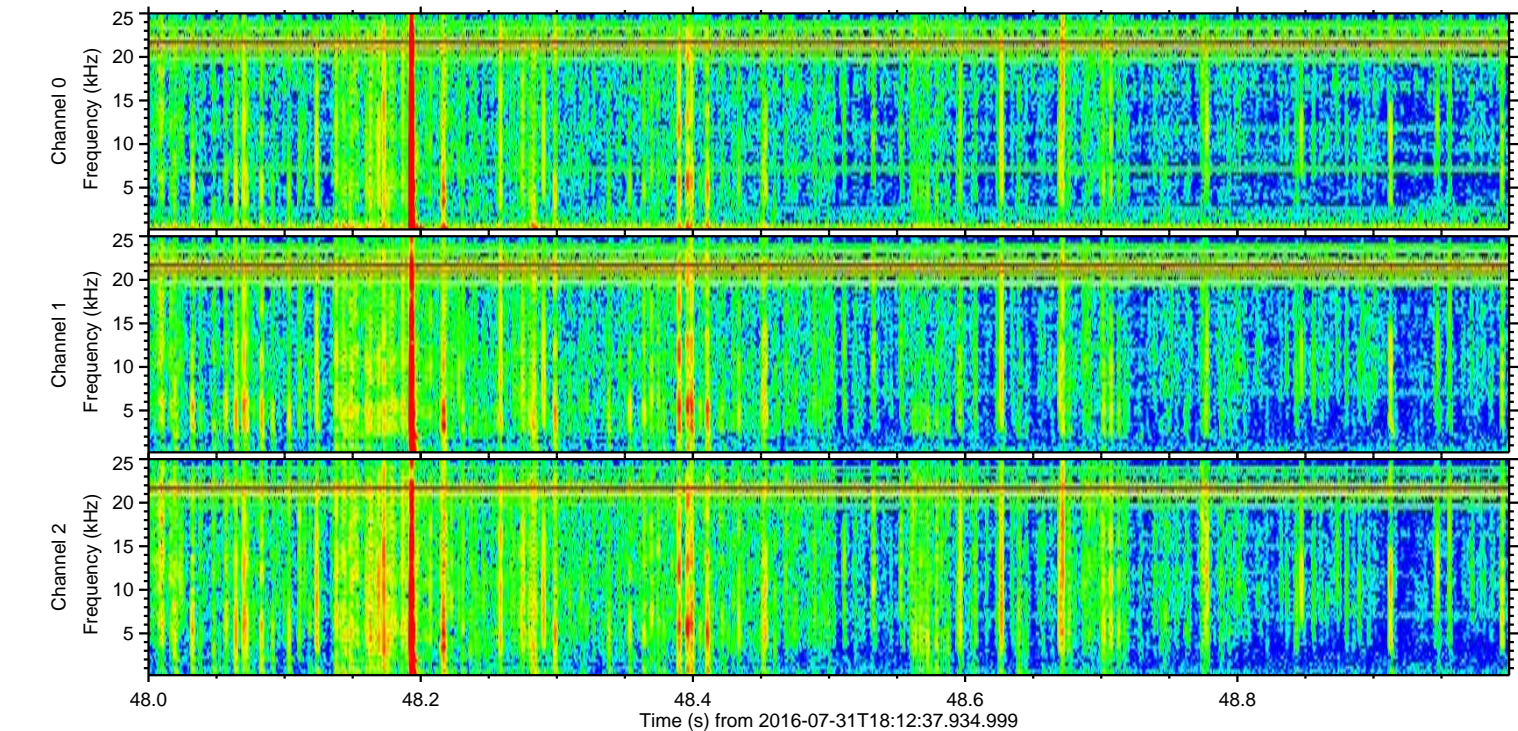
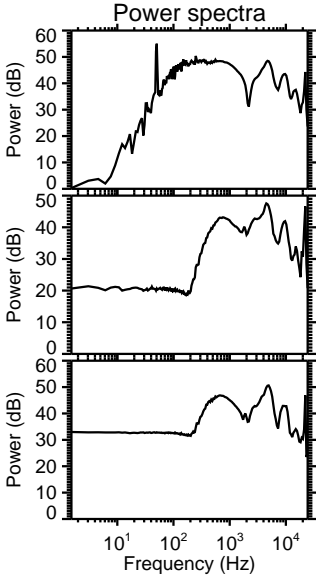
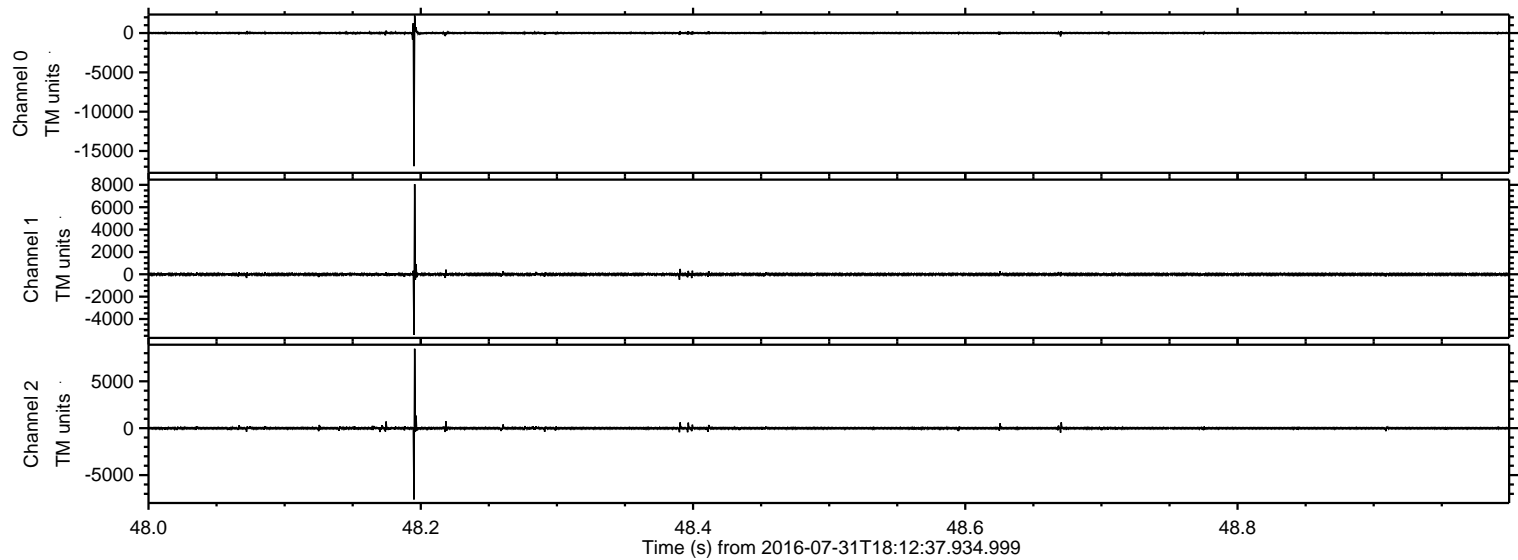


Processed Sun Jul 31 20:21:06 2016 by ELM ver.2012-10-06 from 001\_\_elm20160731\_181236\_\_dat00.bin





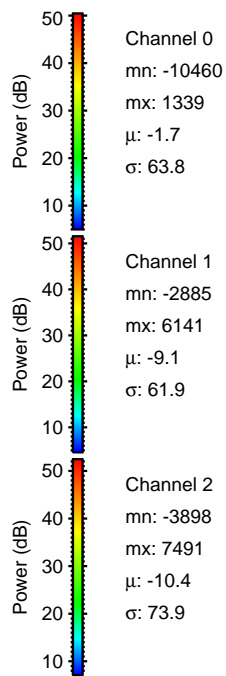
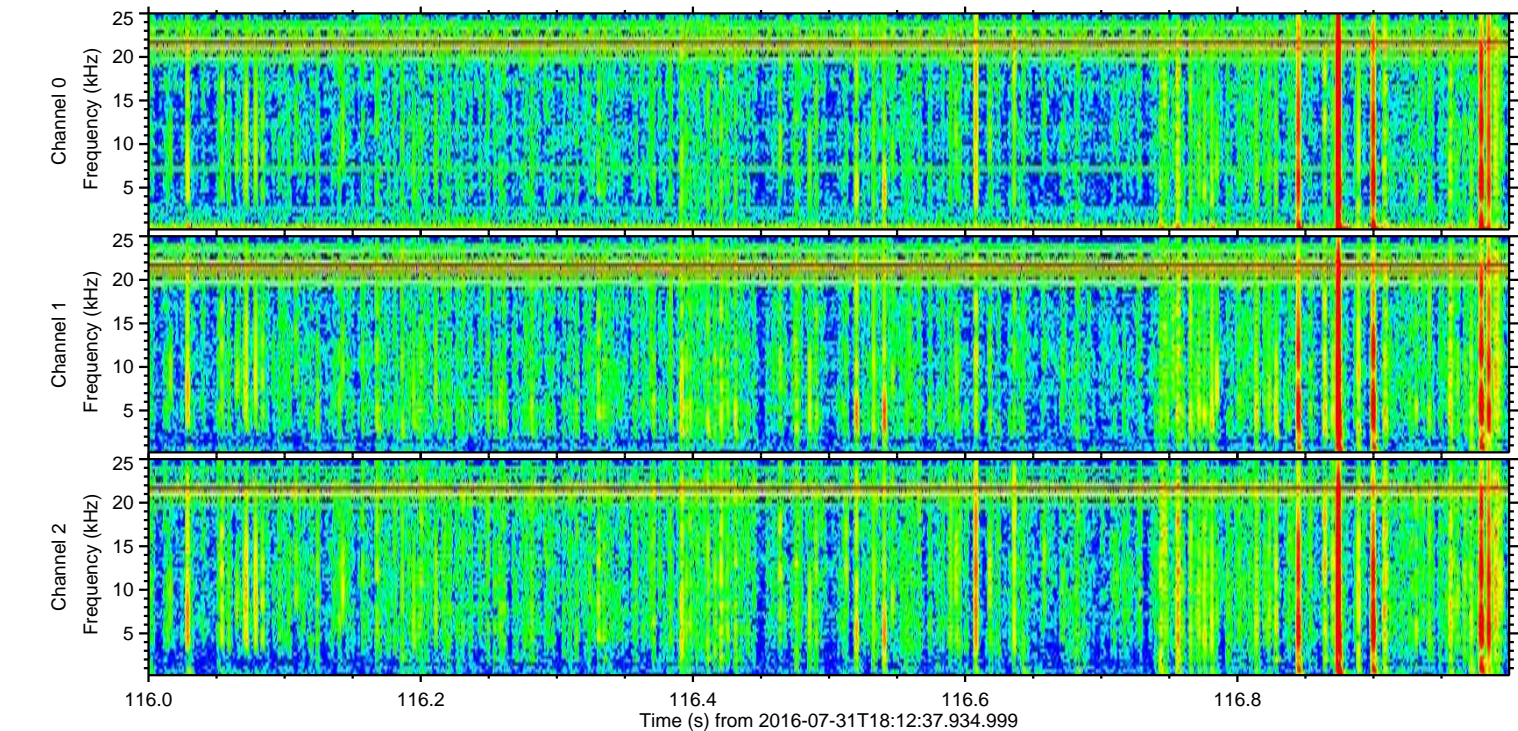
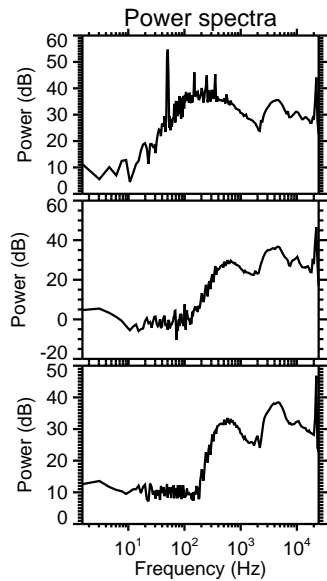
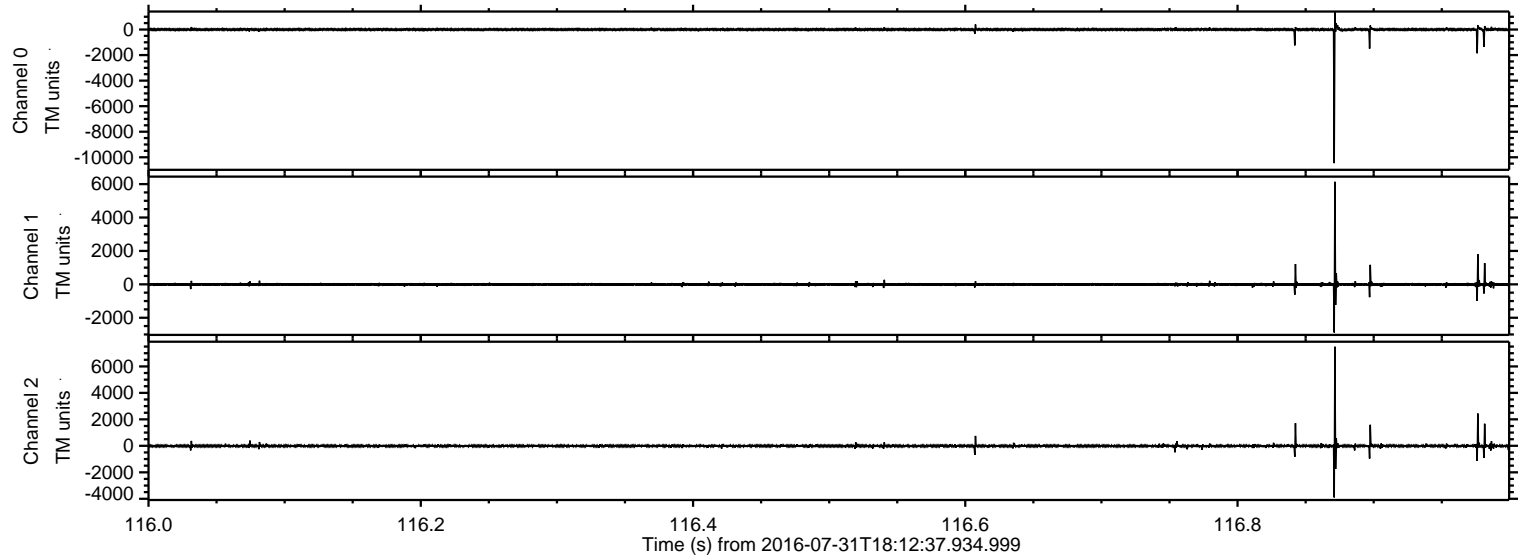
Processed Sun Jul 31 20:21:07 2016 by ELM ver.2012-10-06 from 001\_\_elm20160731\_181236\_\_dat00.bin





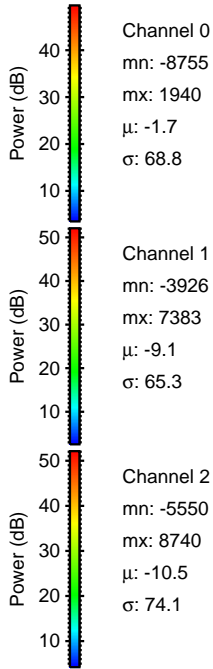
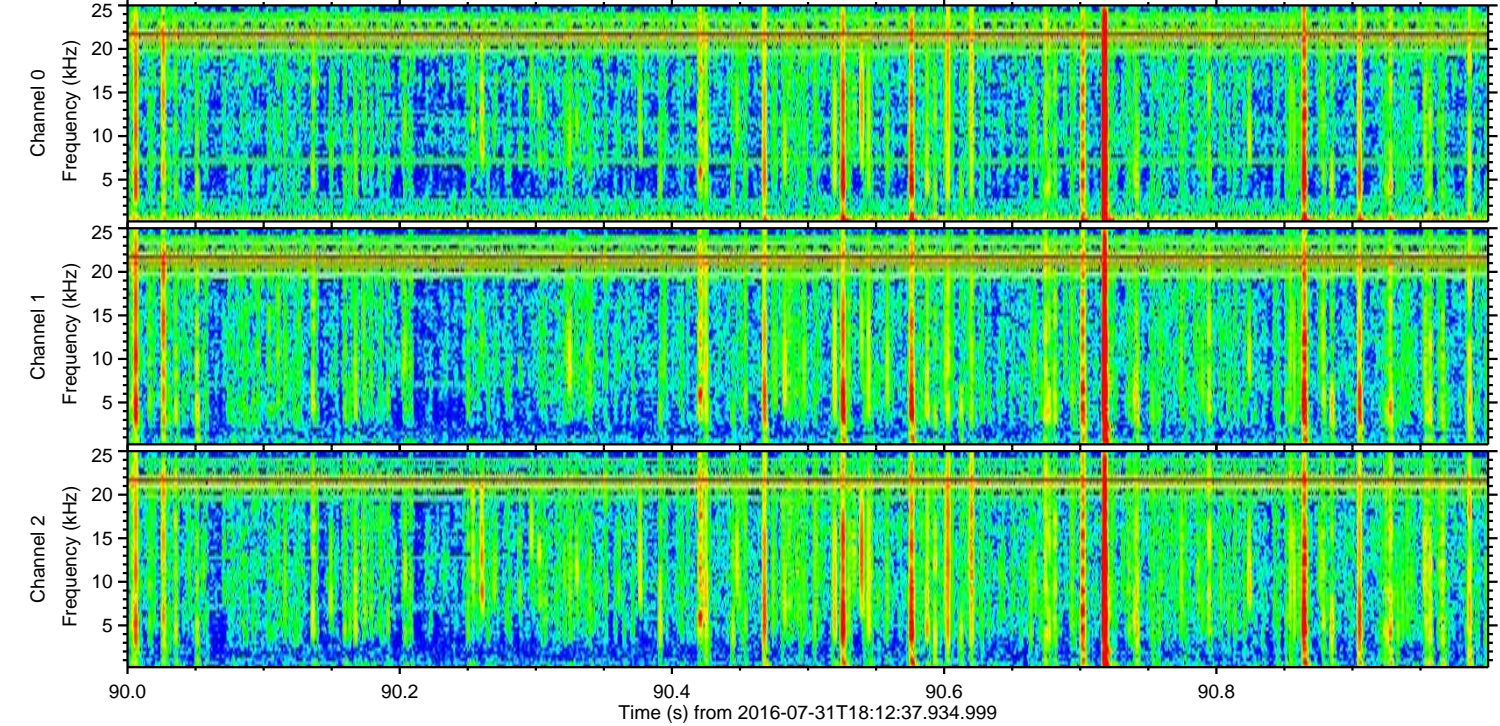
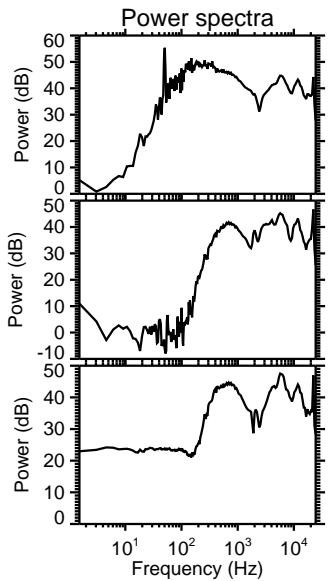
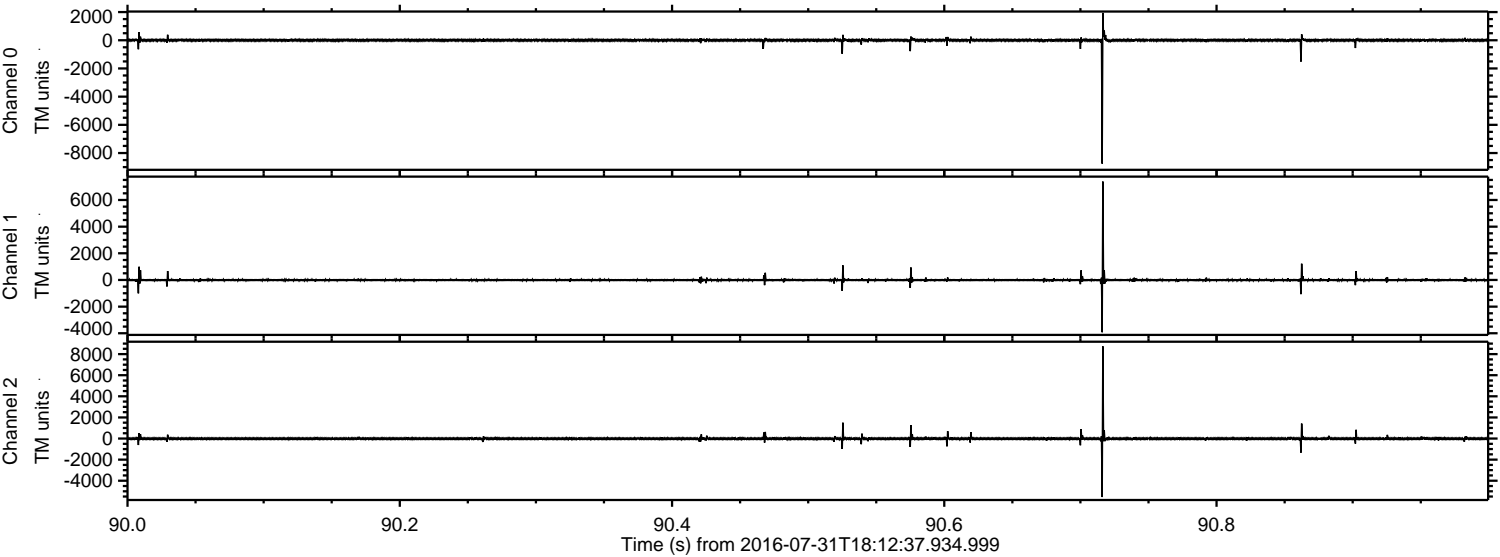
ELMAVAN 3D WAVEFORMS (Measured data sampled at 50 kHz) 51000 packets of 144 samples from 2016-07-31T18:12:37.934.999. Part 117/147

Processed Sun Jul 31 20:21:08 2016 by ELM ver.2012-10-06 from 001\_\_elm20160731\_181236\_\_dat00.bin





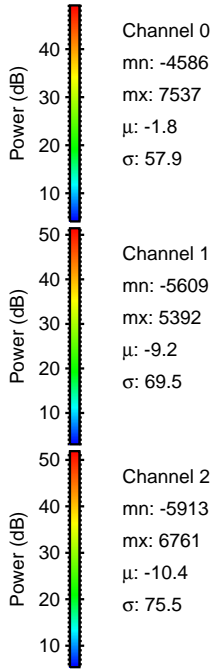
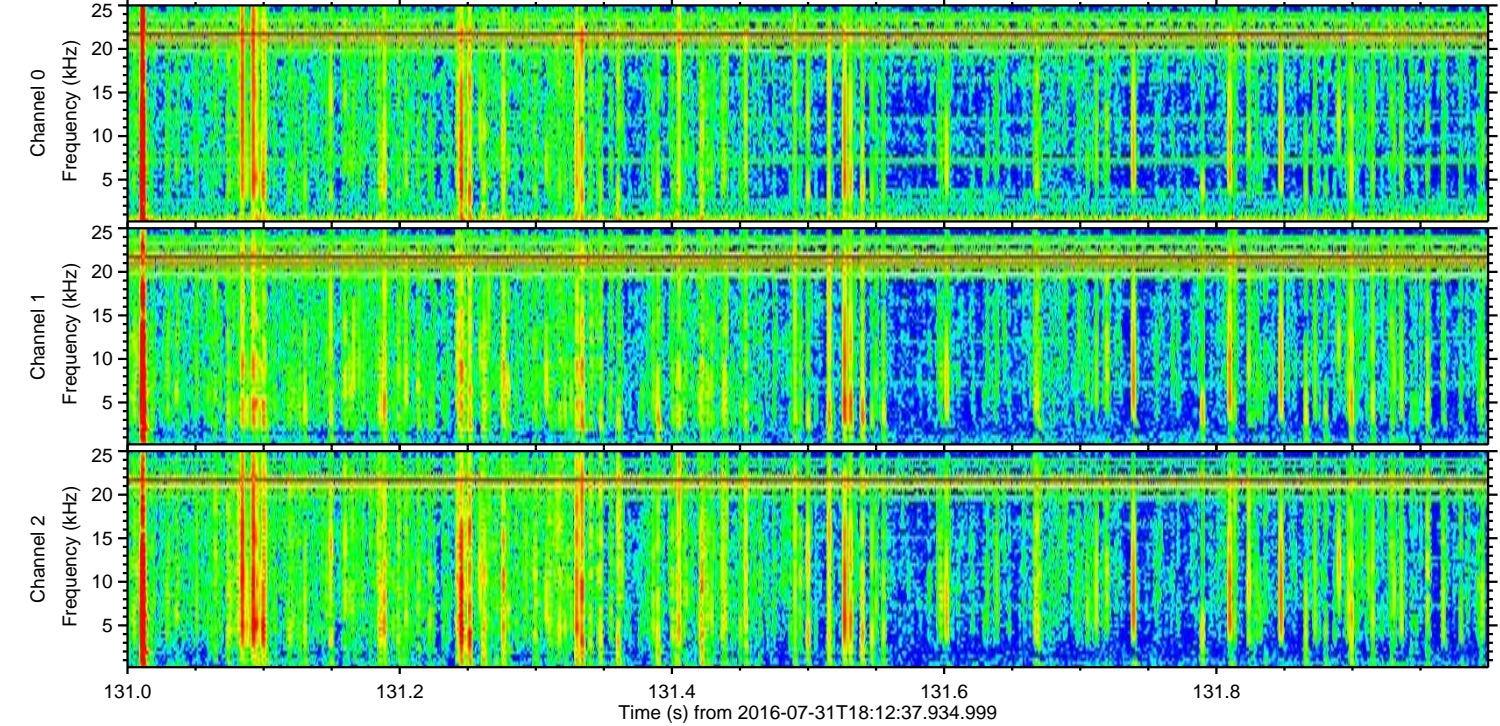
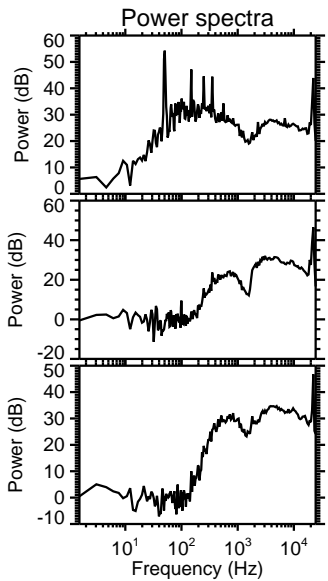
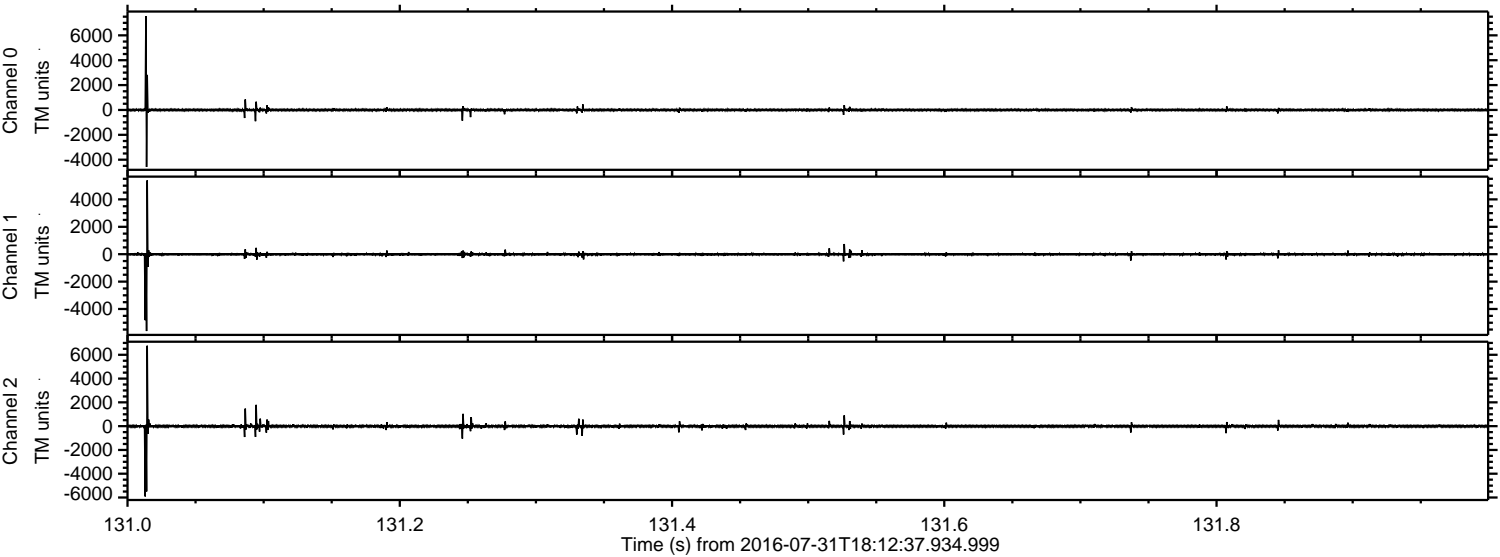
Processed Sun Jul 31 20:21:09 2016 by ELM ver.2012-10-06 from 001\_\_elm20160731\_181236\_\_dat00.bin





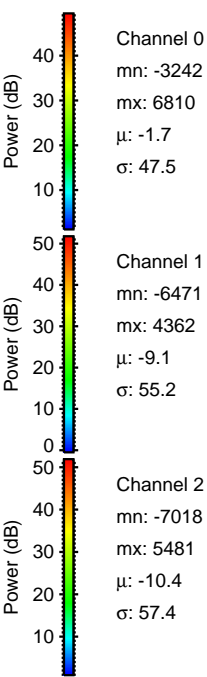
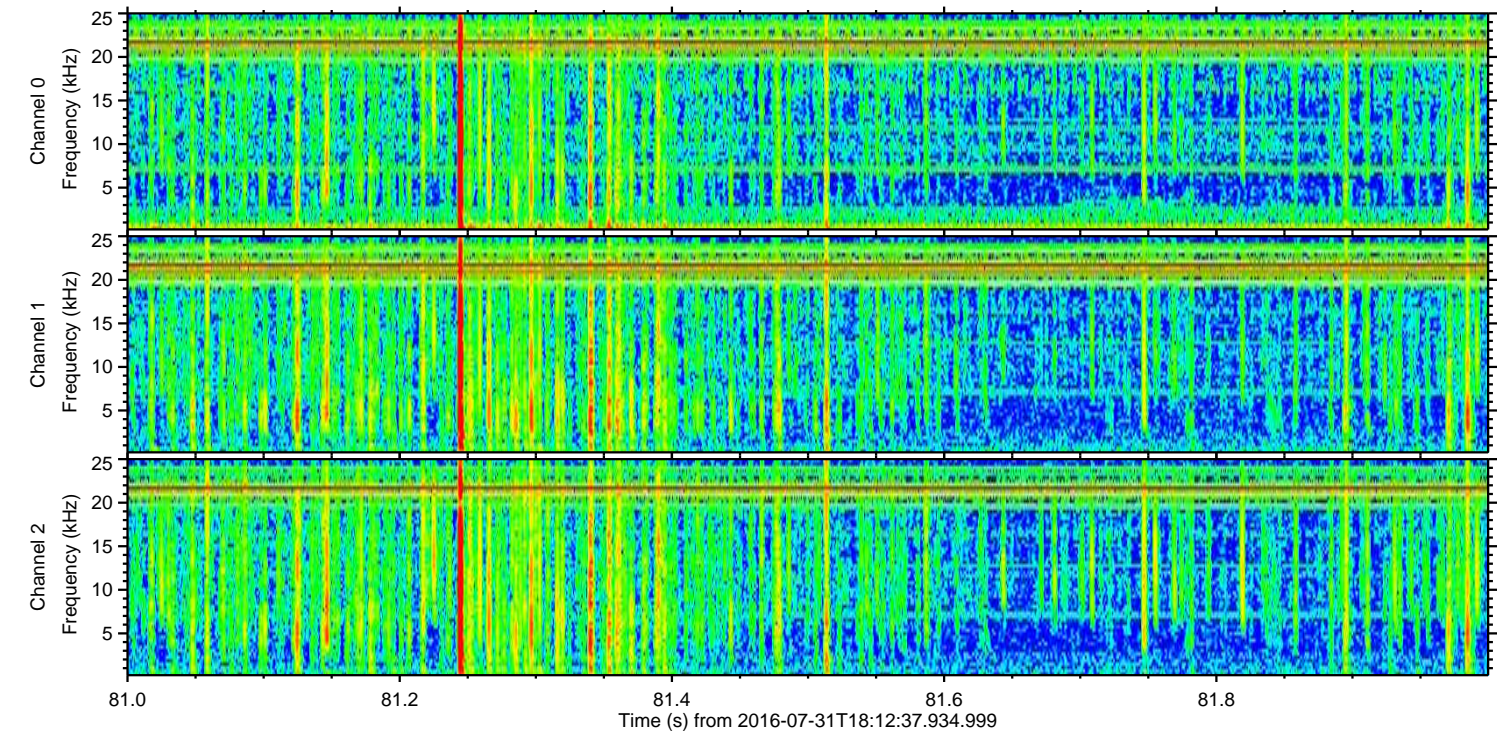
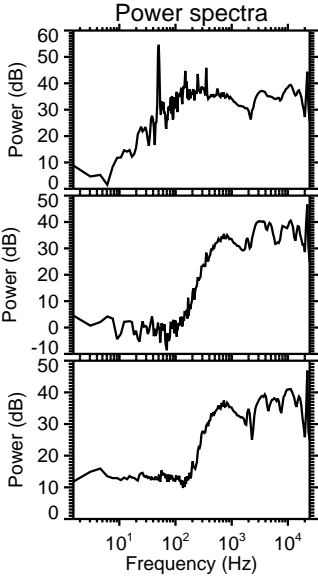
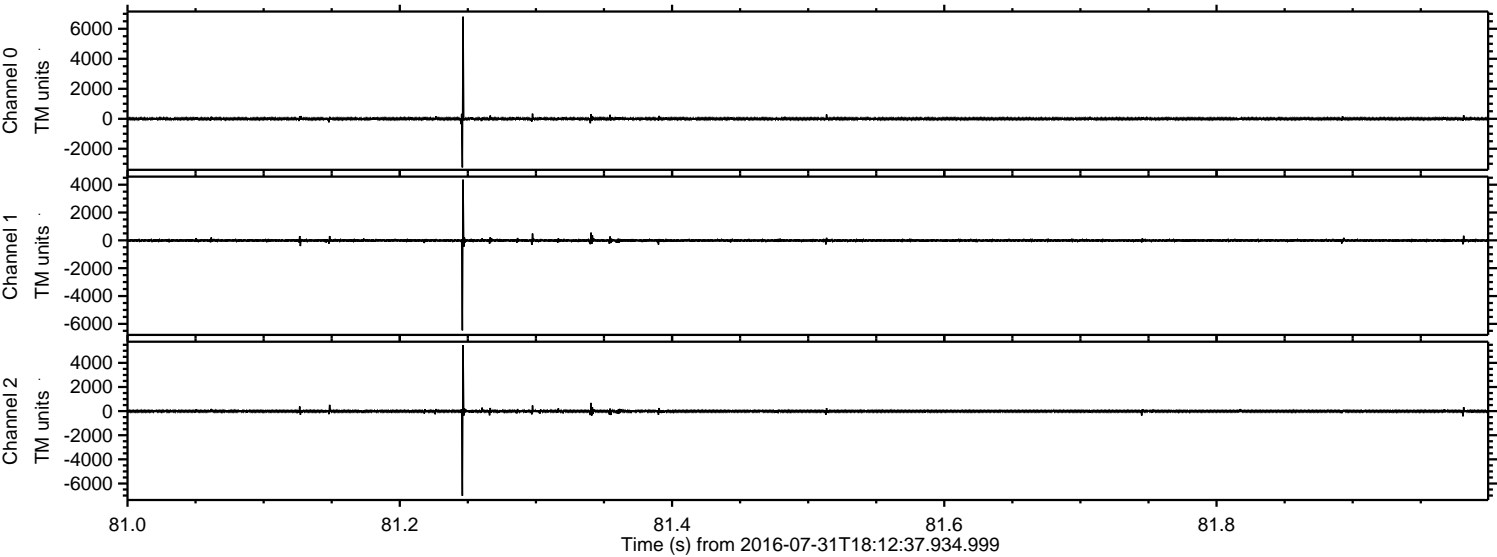
ELMAVAN 3D WAVEFORMS (Measured data sampled at 50 kHz) 51000 packets of 144 samples from 2016-07-31T18:12:37.934.999. Part 132/147

Processed Sun Jul 31 20:21:09 2016 by ELM ver.2012-10-06 from 001\_\_elm20160731\_181236\_\_dat00.bin



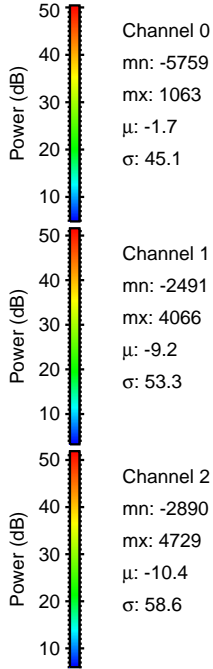
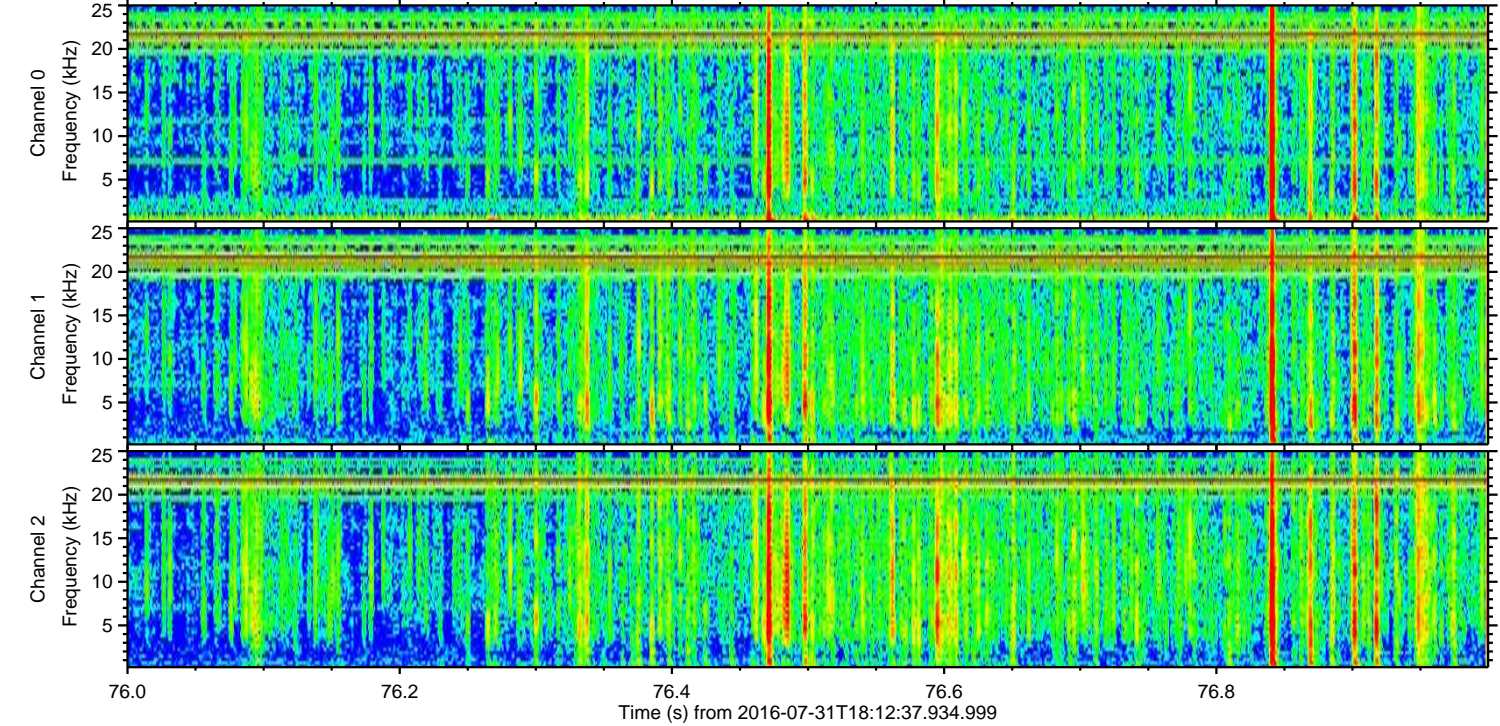
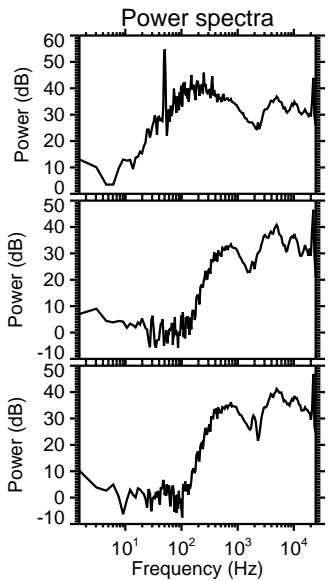
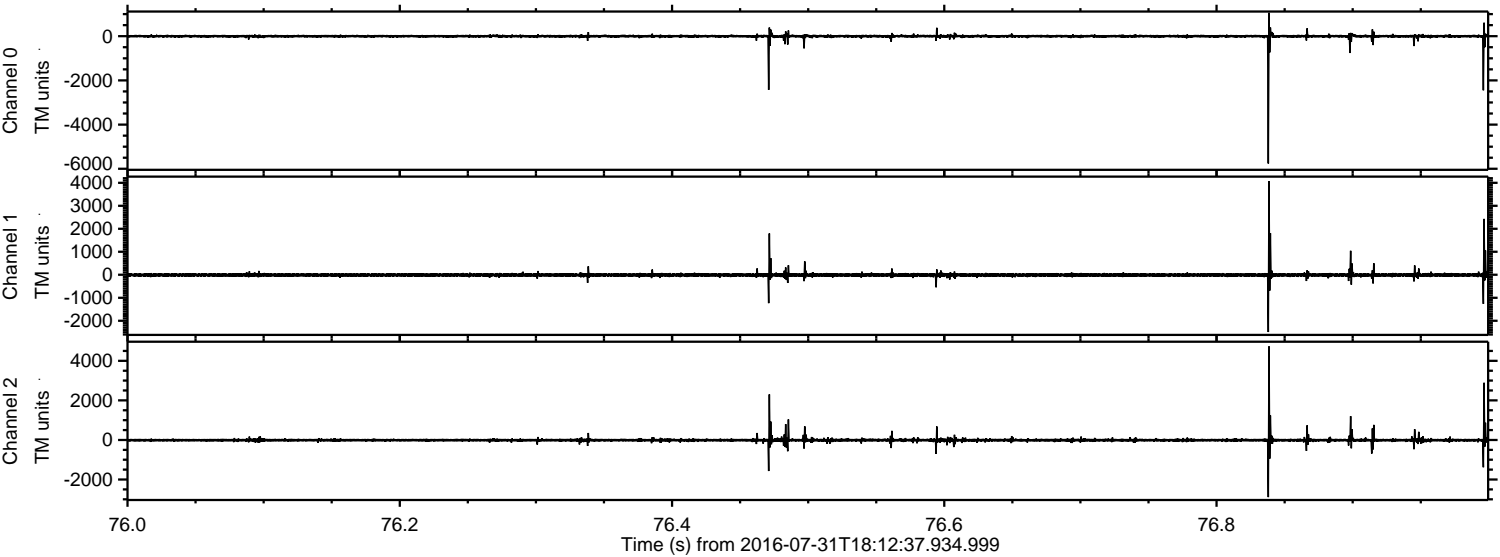


Processed Sun Jul 31 20:21:10 2016 by ELM ver.2012-10-06 from 001\_\_elm20160731\_181236\_\_dat00.bin





Processed Sun Jul 31 20:21:11 2016 by ELM ver.2012-10-06 from 001\_\_elm20160731\_181236\_\_dat00.bin



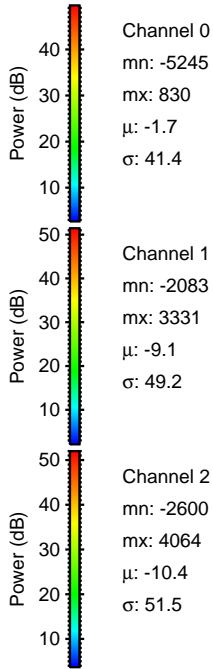
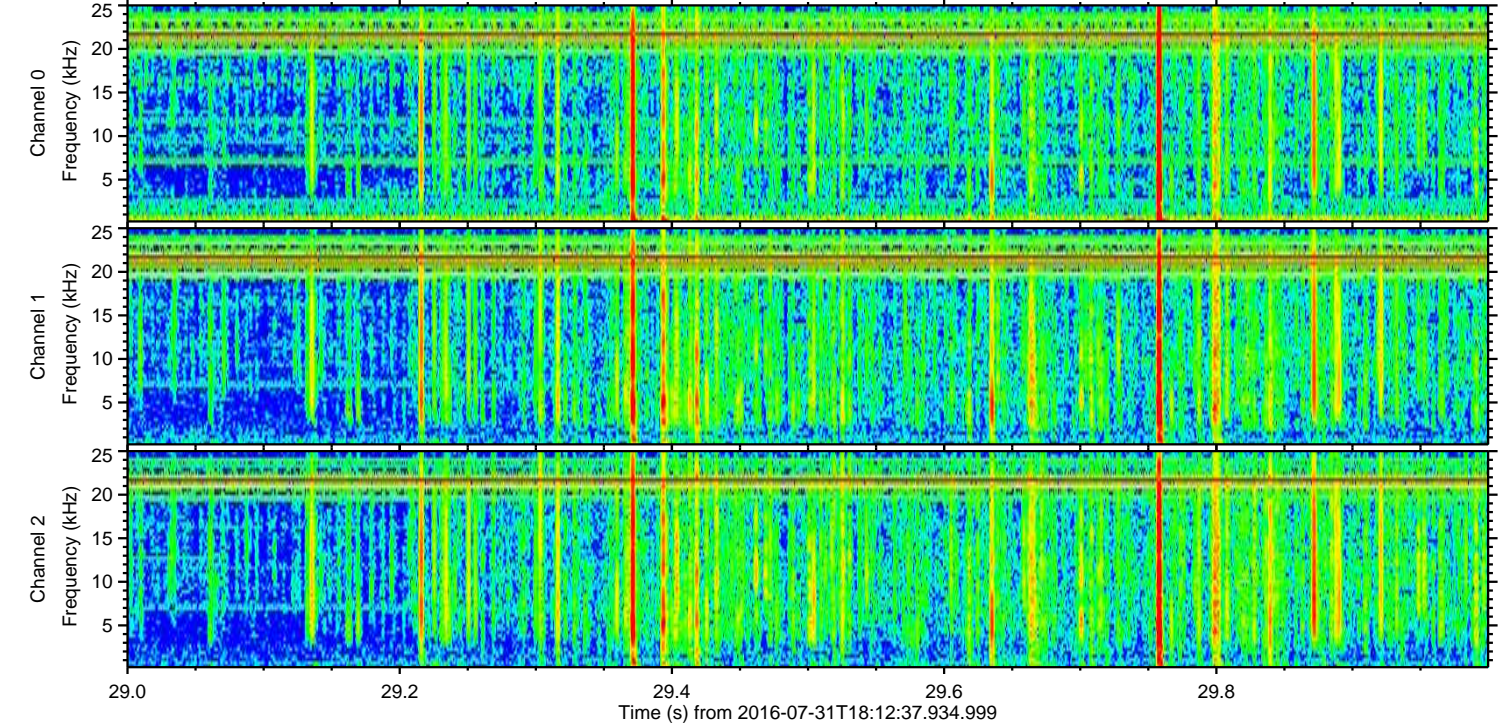
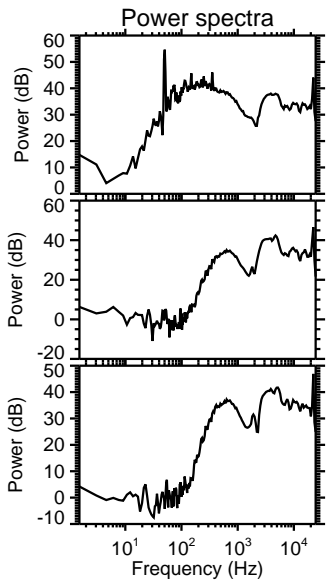
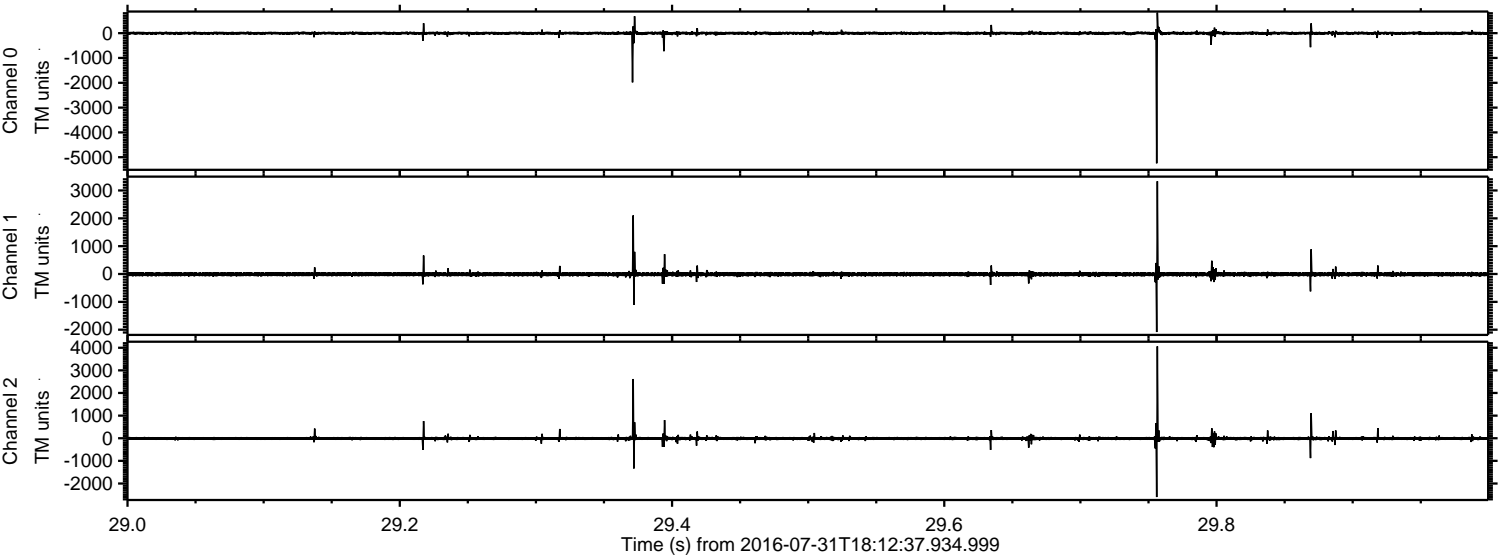
Channel 0  
mn: -5759  
mx: 1063  
 $\mu$ : -1.7  
 $\sigma$ : 45.1

Channel 1  
mn: -2491  
mx: 4066  
 $\mu$ : -9.2  
 $\sigma$ : 53.3

Channel 2  
mn: -2890  
mx: 4729  
 $\mu$ : -10.4  
 $\sigma$ : 58.6

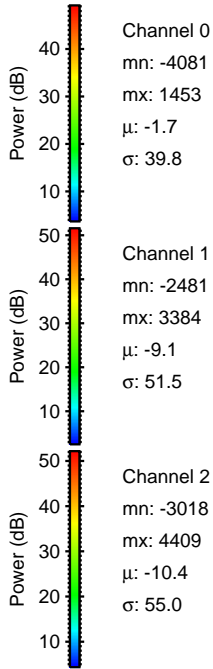
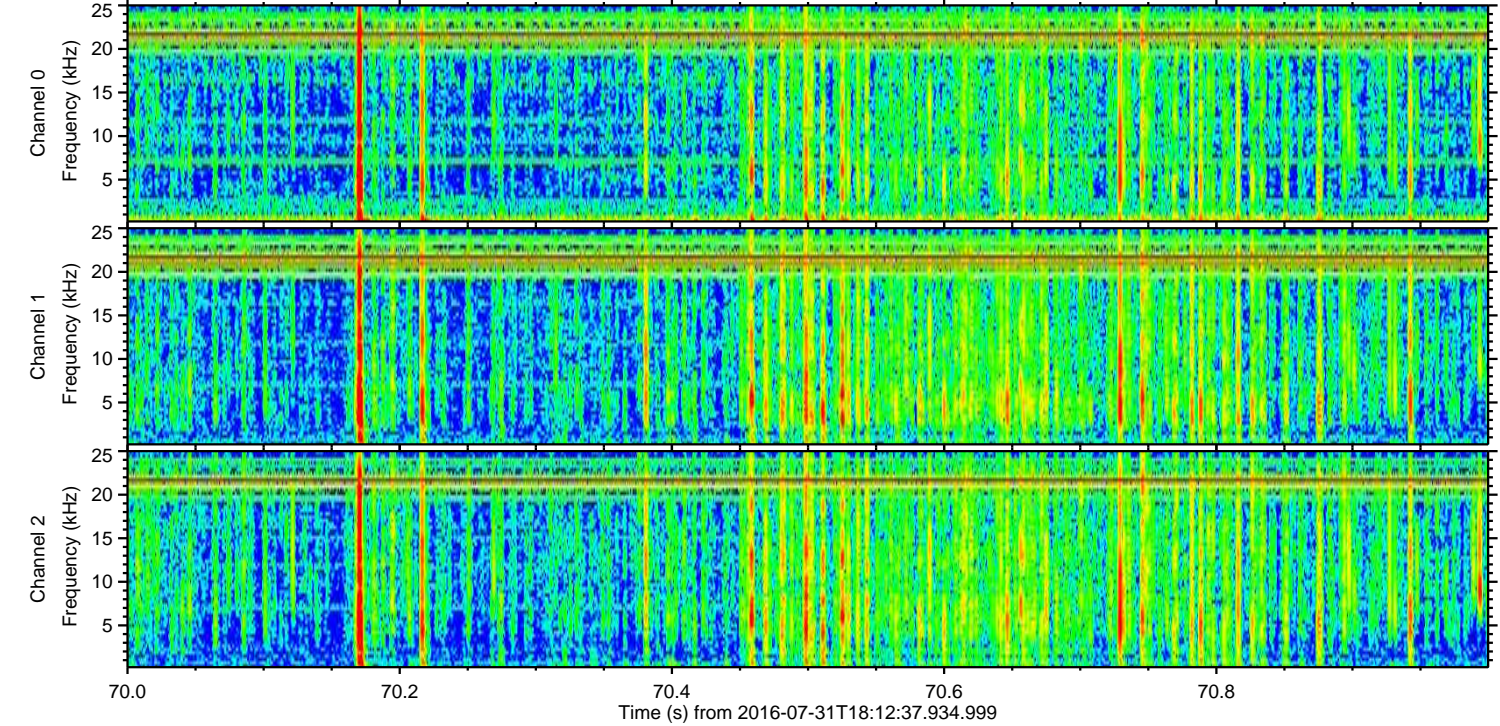
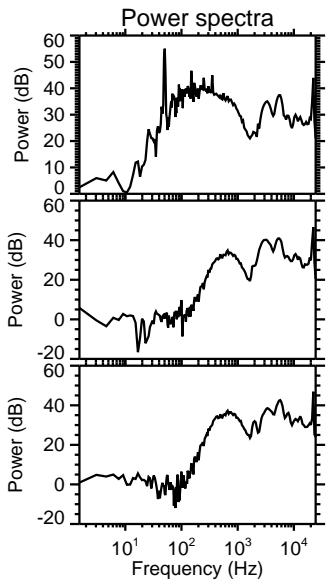
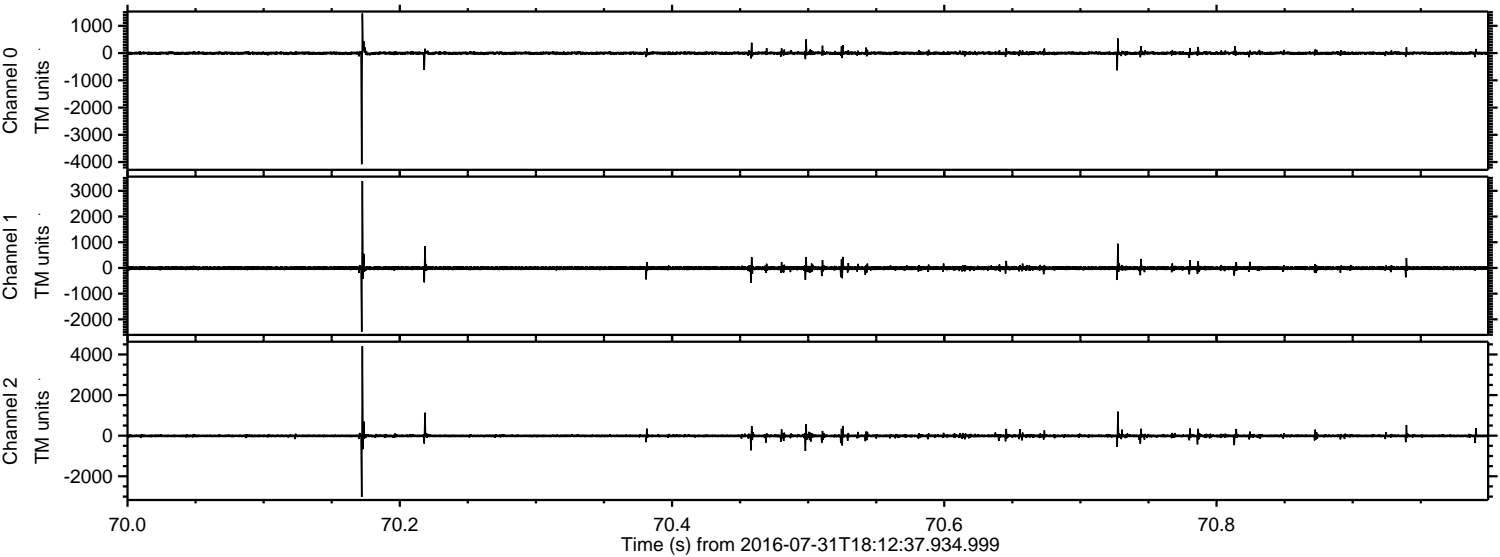


Processed Sun Jul 31 20:21:12 2016 by ELM ver.2012-10-06 from 001\_\_elm20160731\_181236\_\_dat00.bin





Processed Sun Jul 31 20:21:13 2016 by ELM ver.2012-10-06 from 001\_\_elm20160731\_181236\_\_dat00.bin



Channel 0  
mn: -4081  
mx: 1453  
 $\mu$ : -1.7  
 $\sigma$ : 39.8

Channel 1  
mn: -2481  
mx: 3384  
 $\mu$ : -9.1  
 $\sigma$ : 51.5

Channel 2  
mn: -3018  
mx: 4409  
 $\mu$ : -10.4  
 $\sigma$ : 55.0



Processed Sun Jul 31 20:21:14 2016 by ELM ver.2012-10-06 from 001\_\_elm20160731\_181236\_\_dat00.bin

