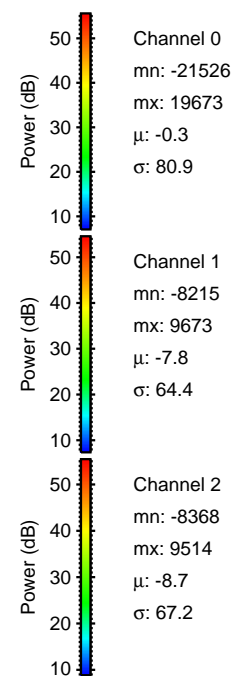
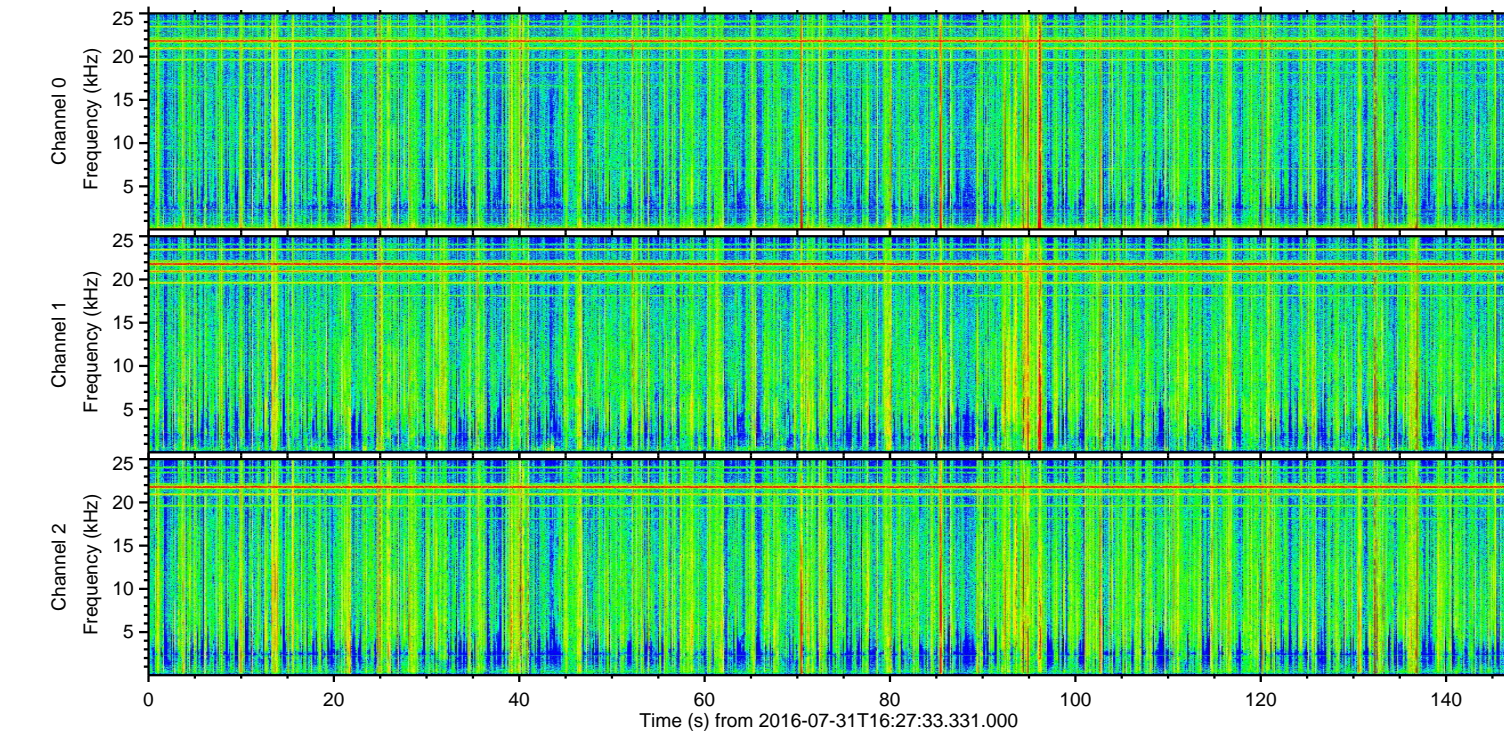
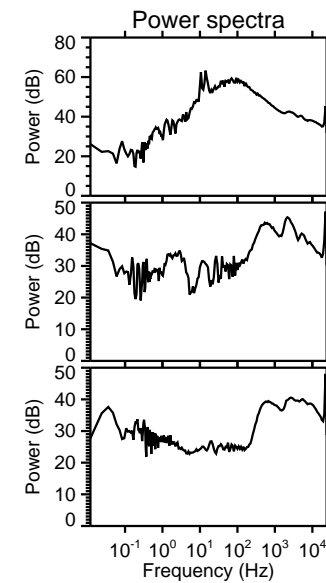
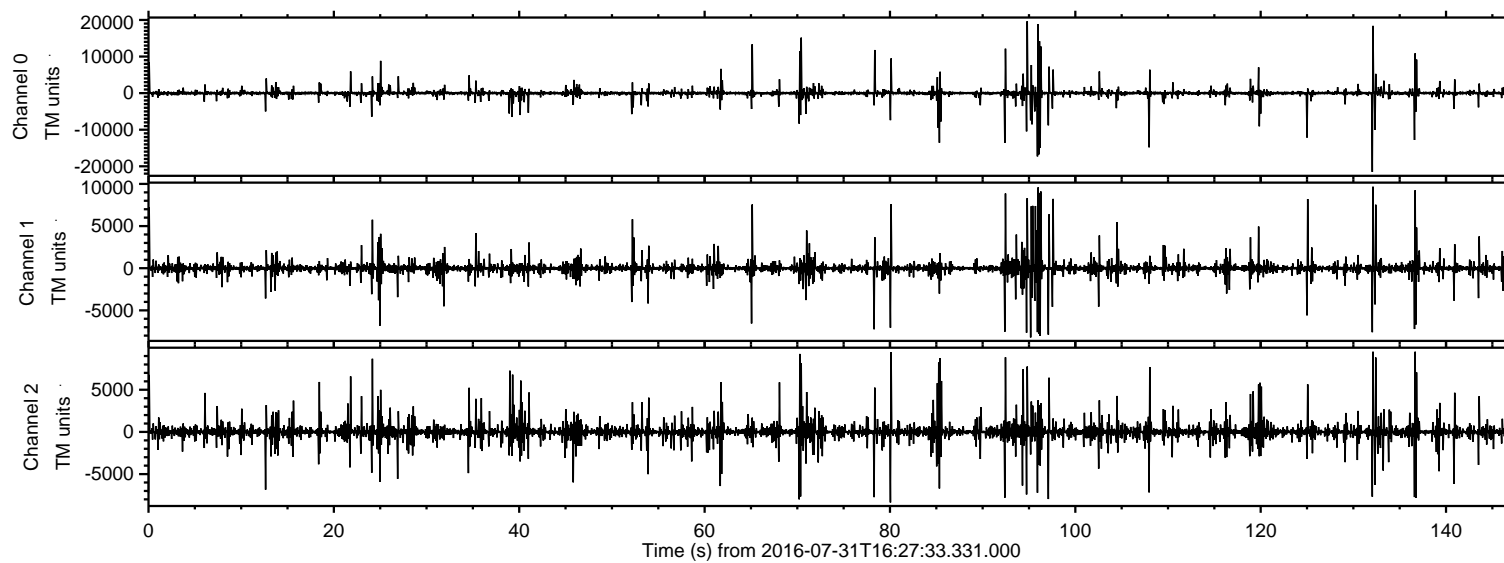


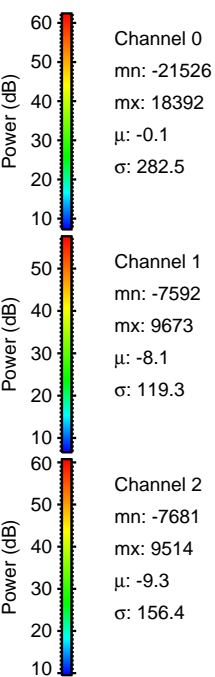
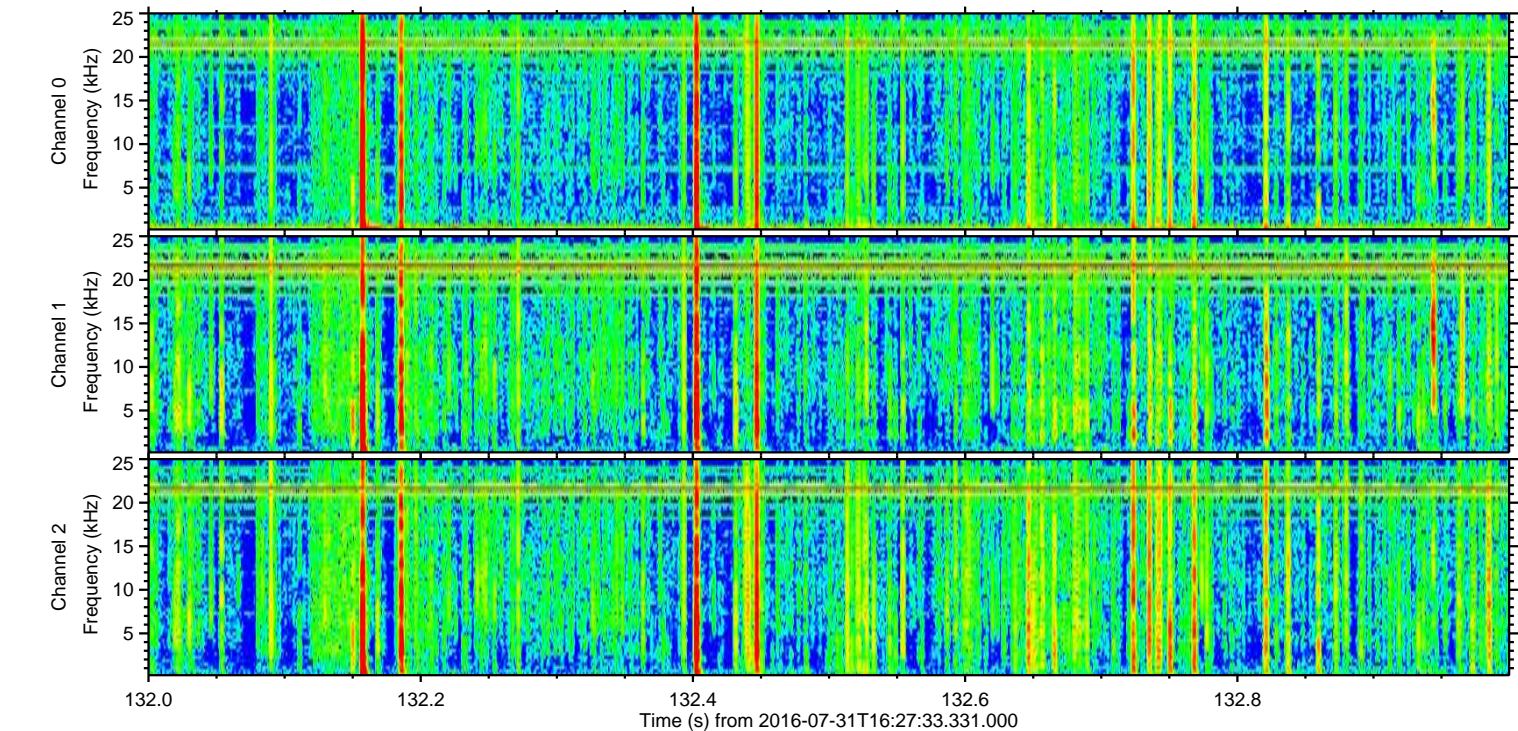
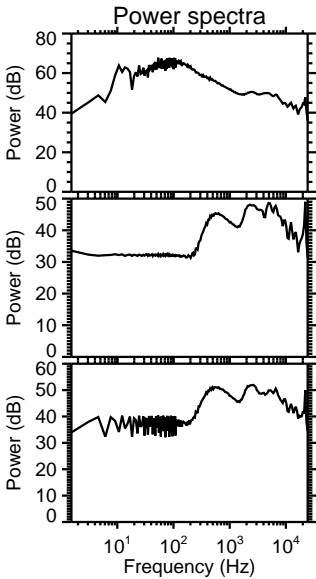
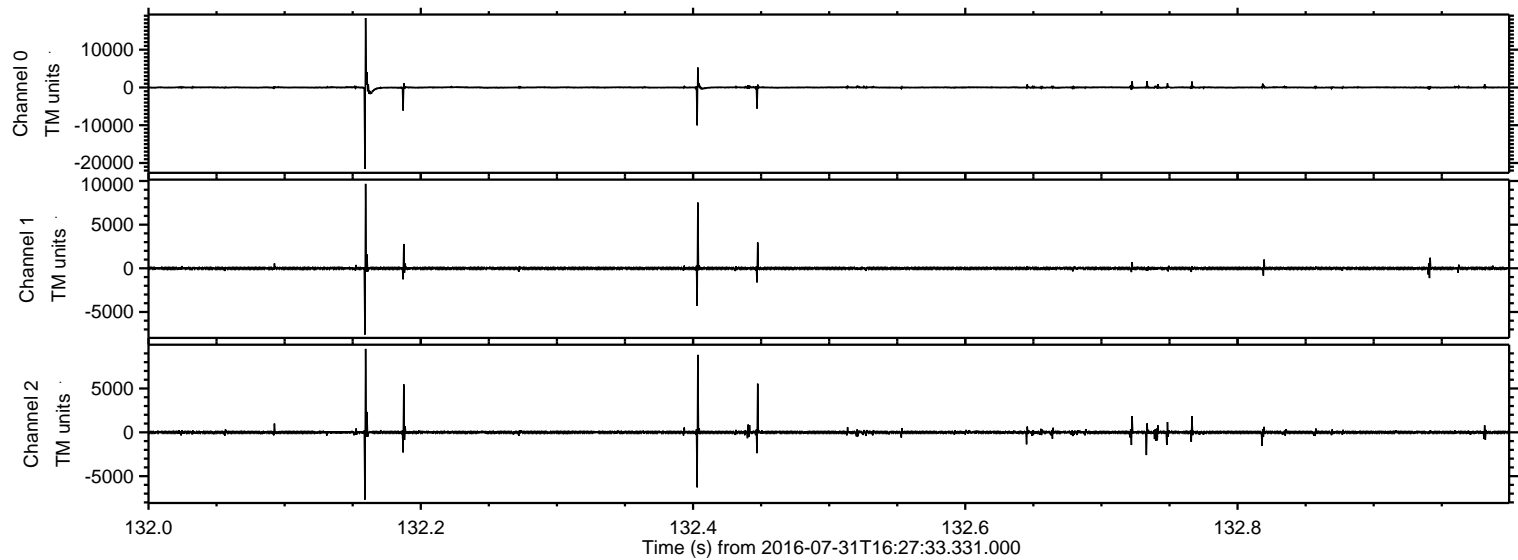
ELMAVAN 3D WAVEFORMS (Measured data sampled at 50 kHz) 51000 packets of 144 samples from 2016-07-31T16:27:33.331.000.

Processed Sun Jul 31 18:35:24 2016 by ELM ver.2012-10-06 from 001__elm20160731_162732__dat00.bin

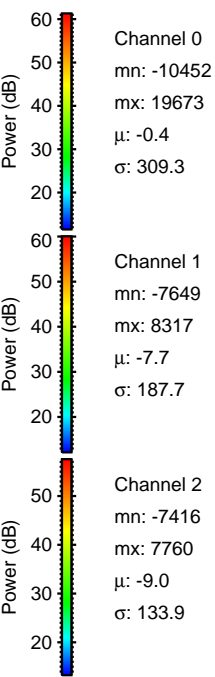
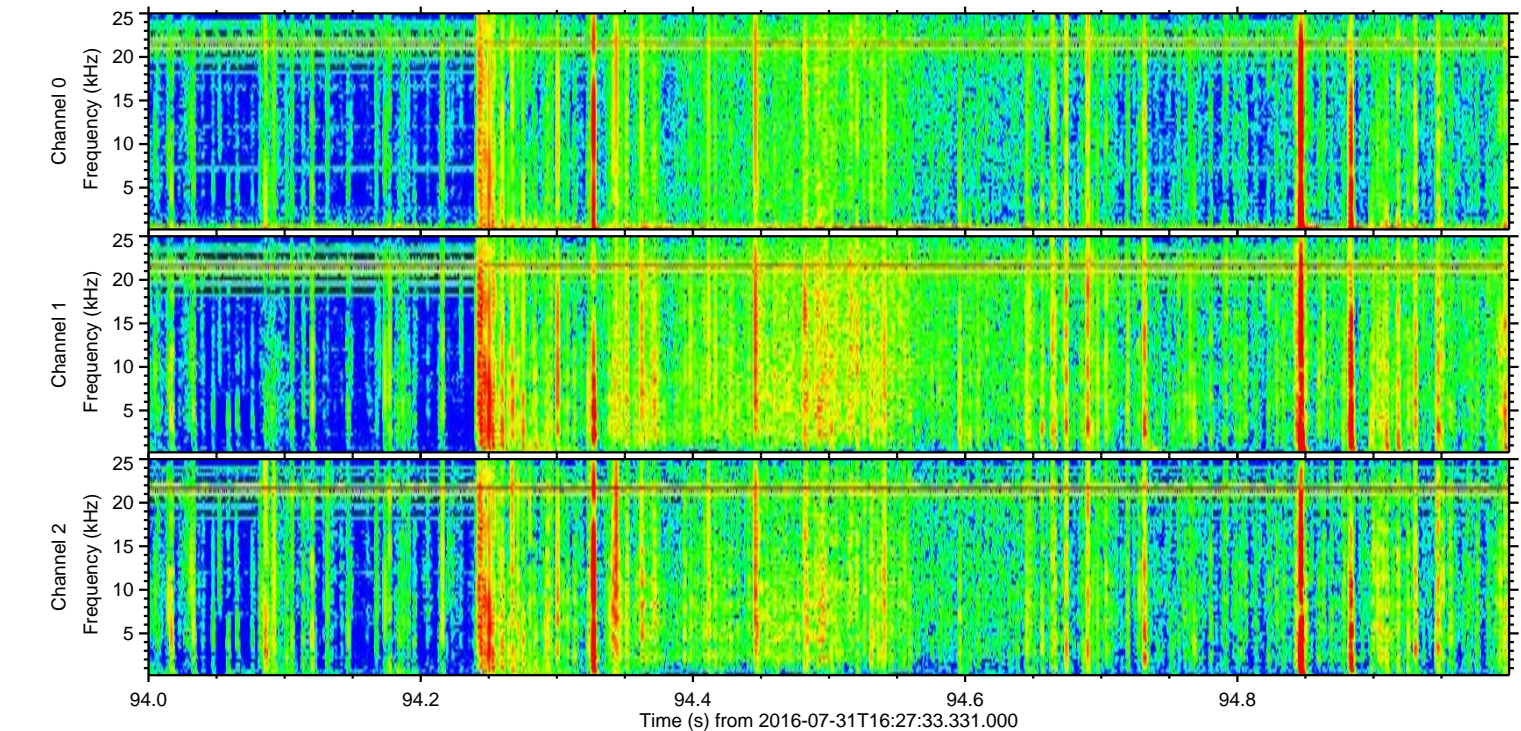
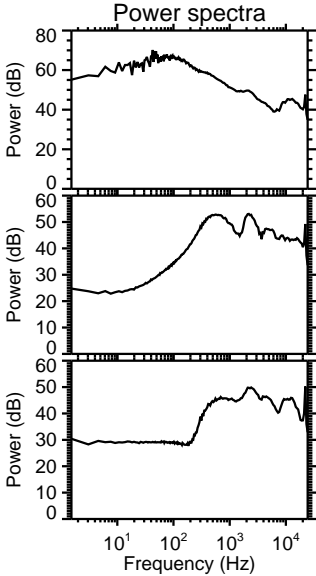
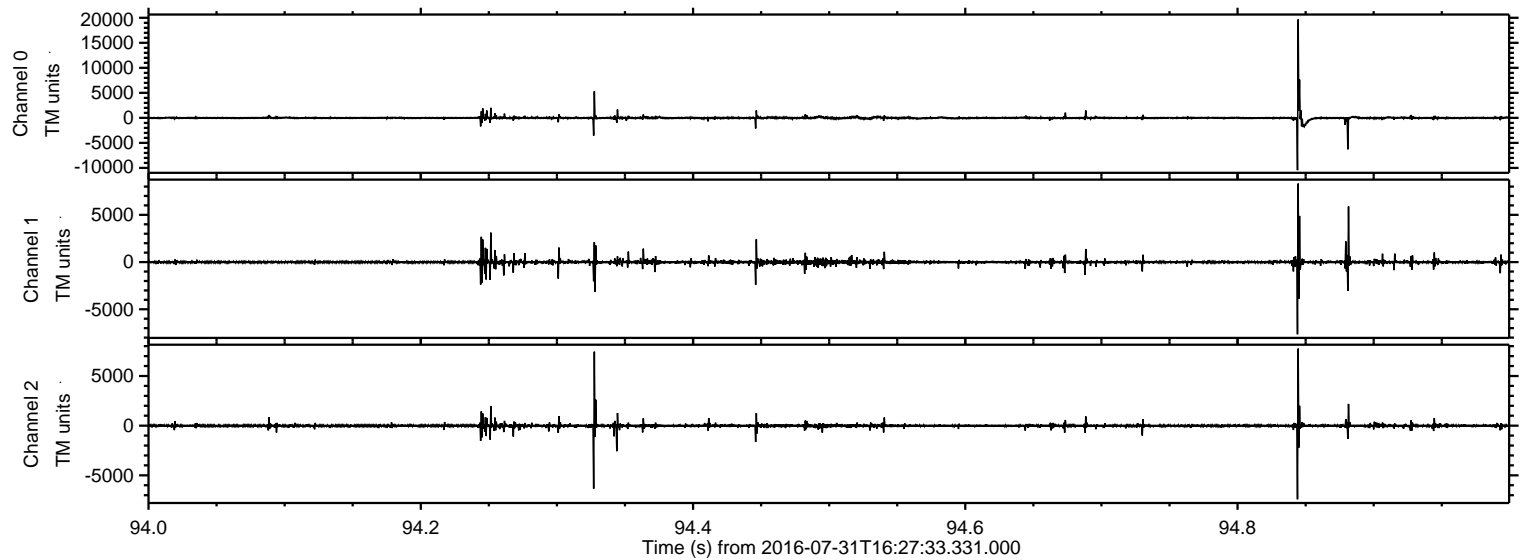


ELMAVAN 3D WAVEFORMS (Measured data sampled at 50 kHz) 51000 packets of 144 samples from 2016-07-31T16:27:33.331.000. Part 133/147

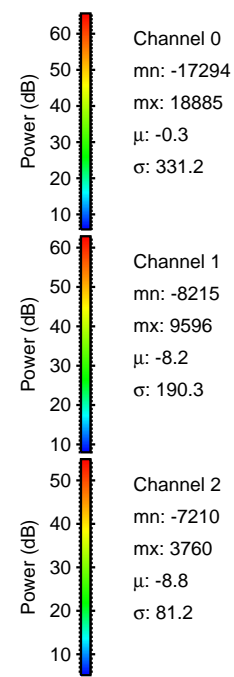
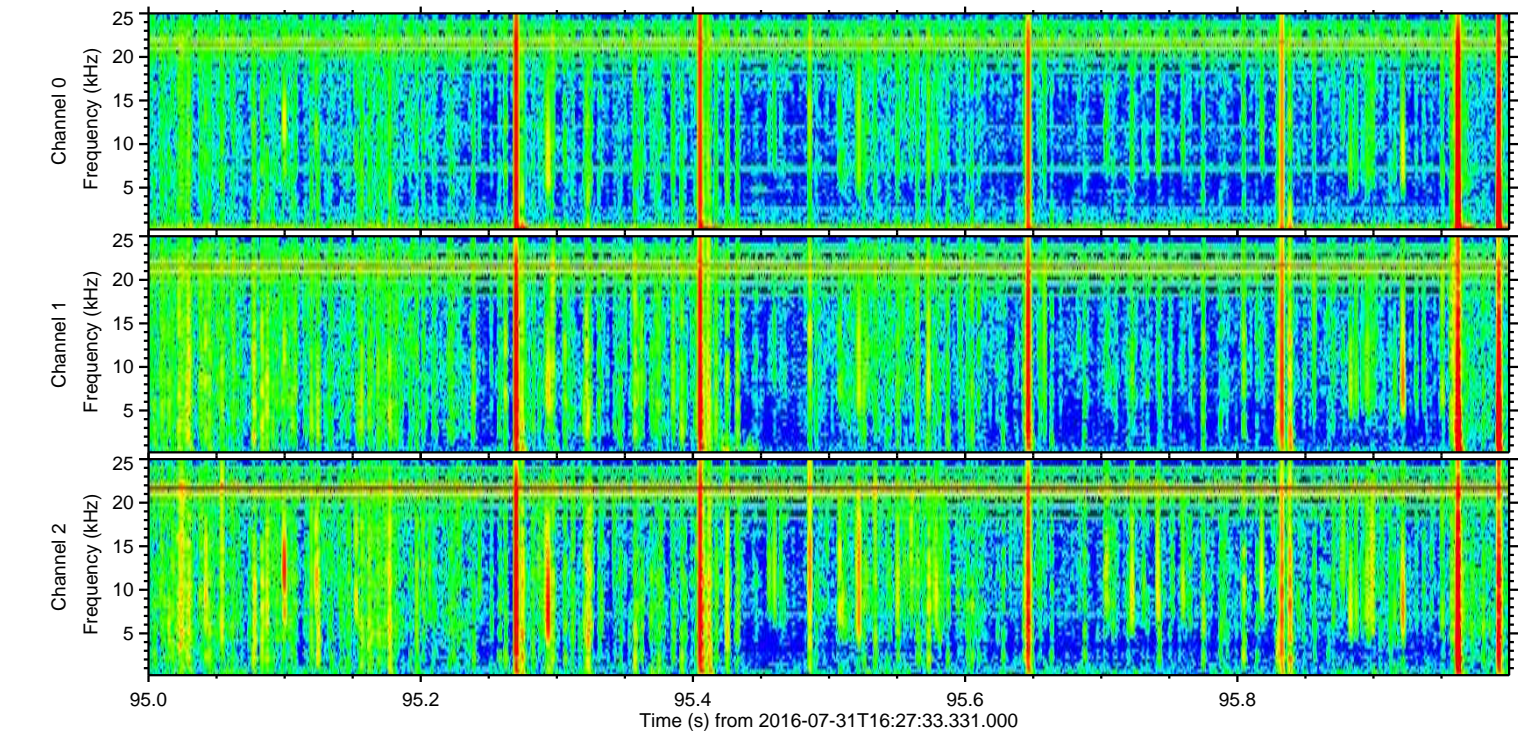
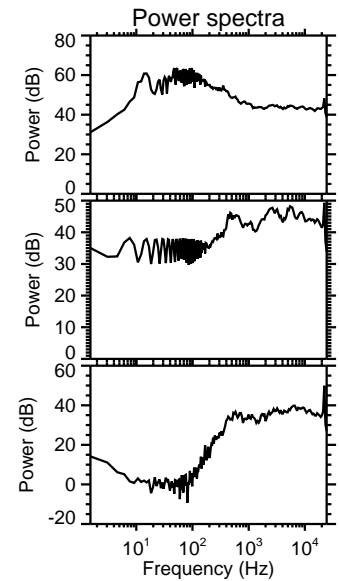
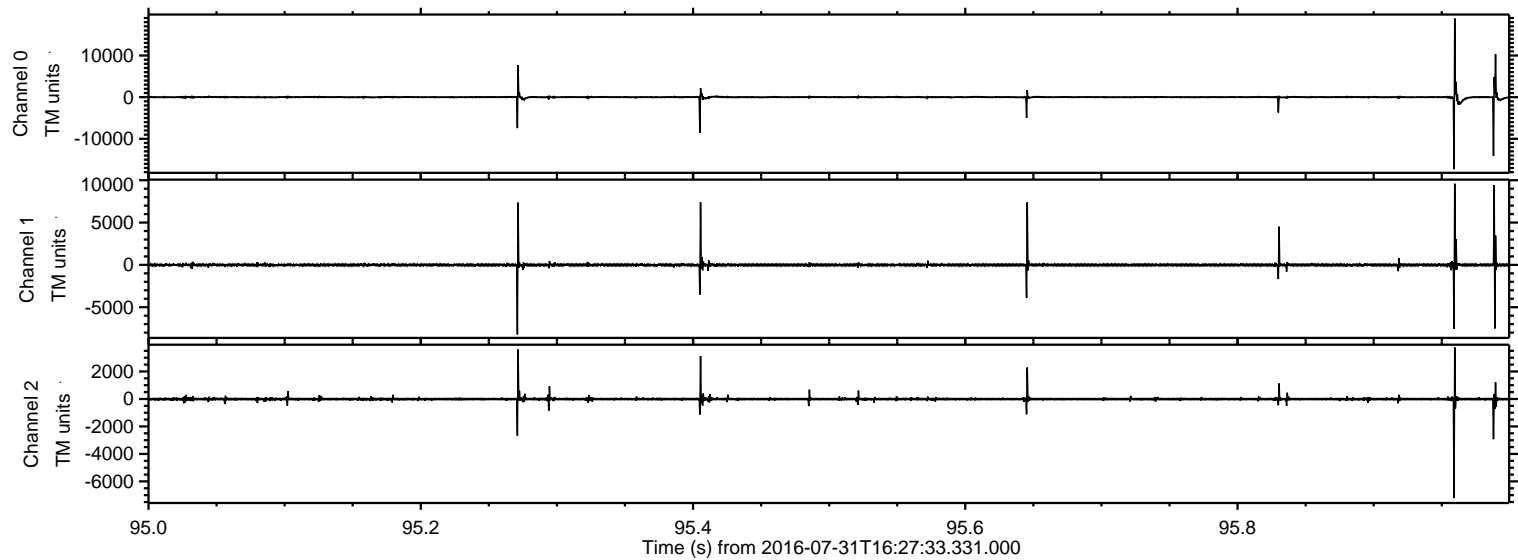
Processed Sun Jul 31 18:35:35 2016 by ELM ver.2012-10-06 from 001__elm20160731_162732__dat00.bin



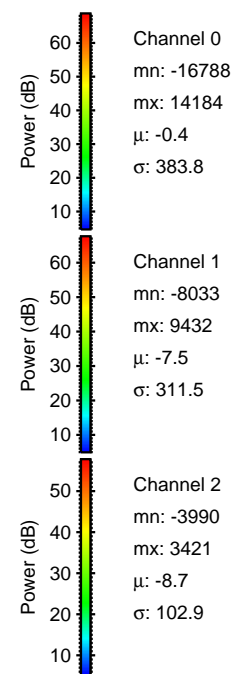
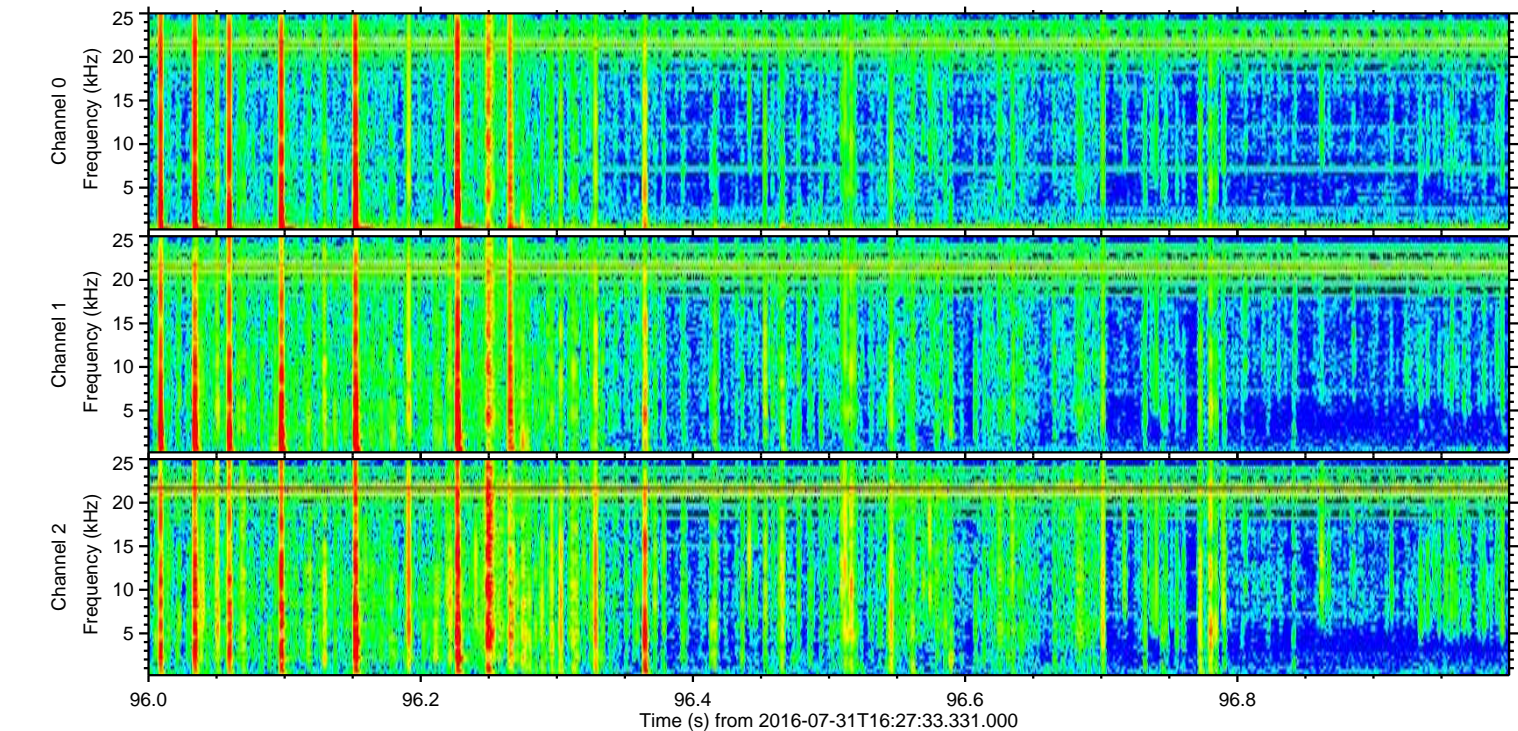
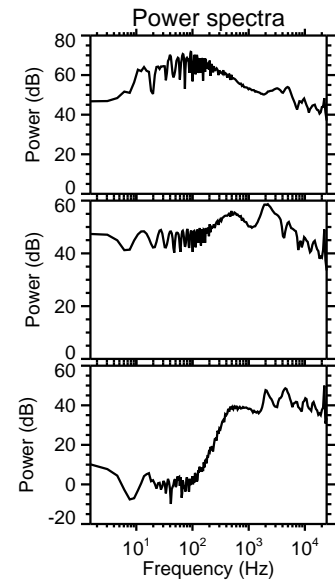
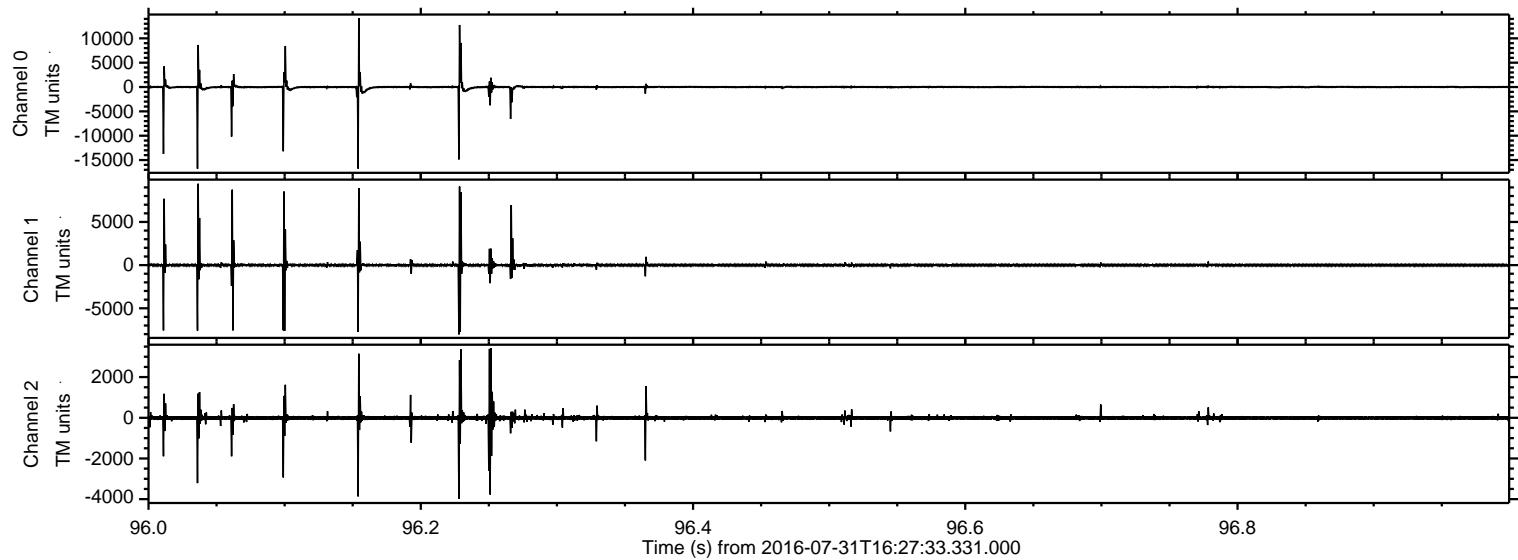
Processed Sun Jul 31 18:35:36 2016 by ELM ver.2012-10-06 from 001__elm20160731_162732__dat00.bin



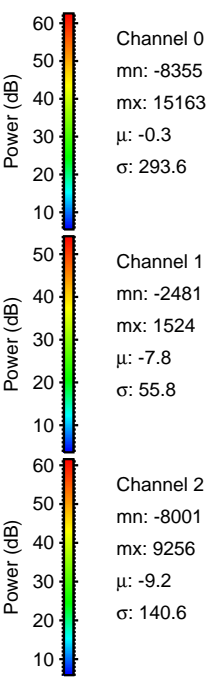
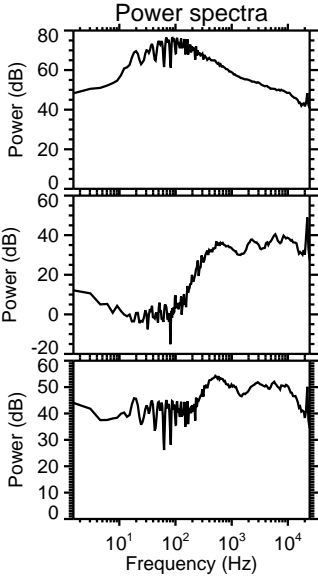
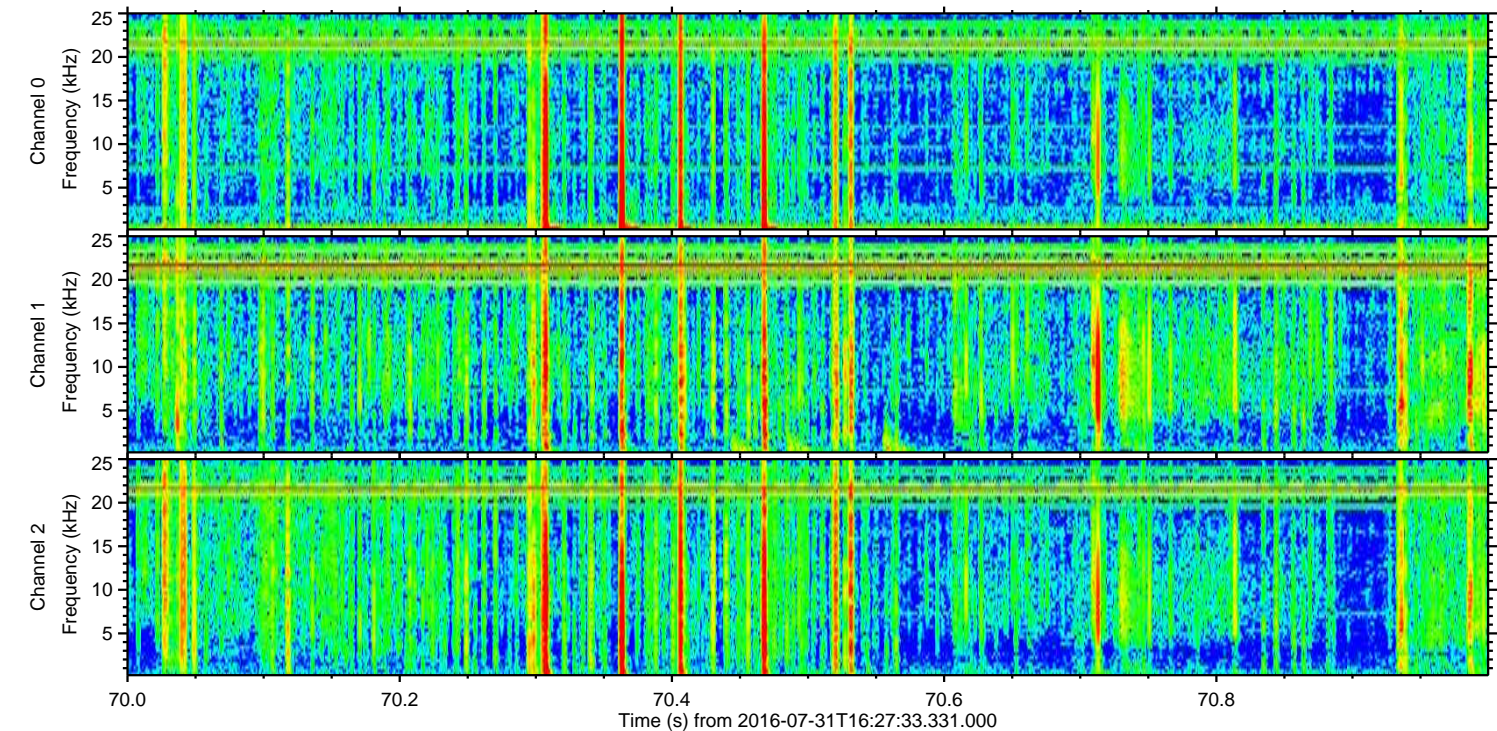
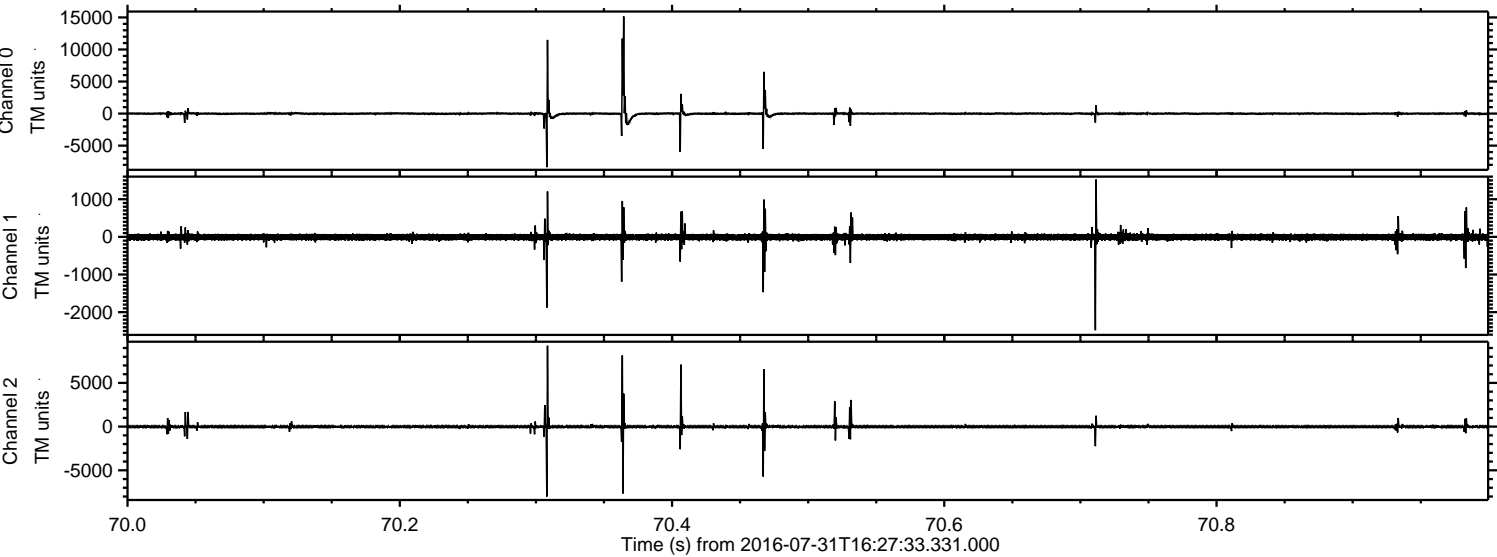
Processed Sun Jul 31 18:35:37 2016 by ELM ver.2012-10-06 from 001__elm20160731_162732__dat00.bin



Processed Sun Jul 31 18:35:38 2016 by ELM ver.2012-10-06 from 001__elm20160731_162732__dat00.bin

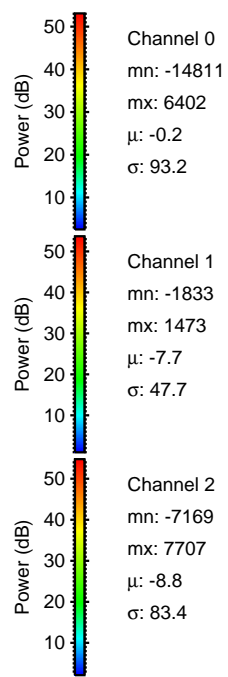
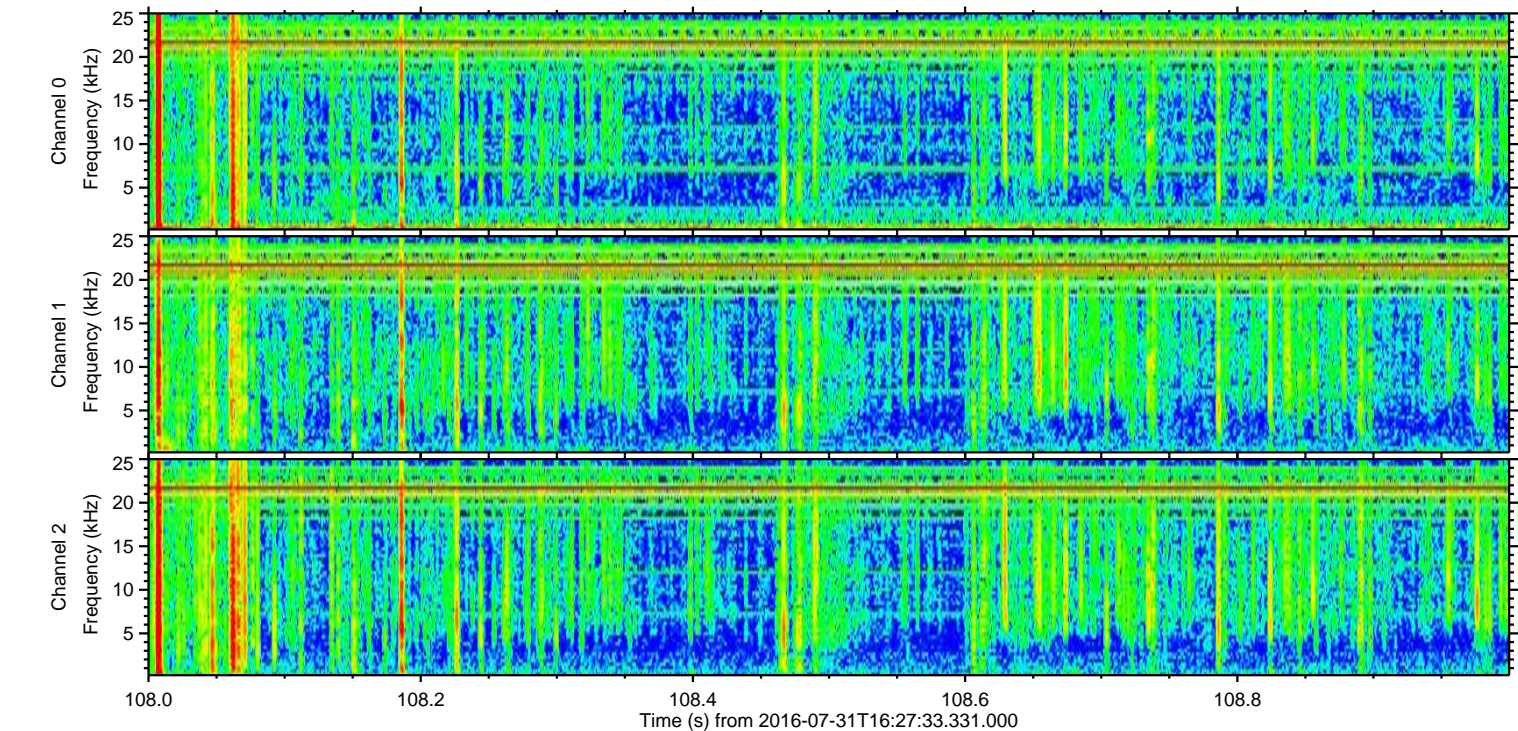
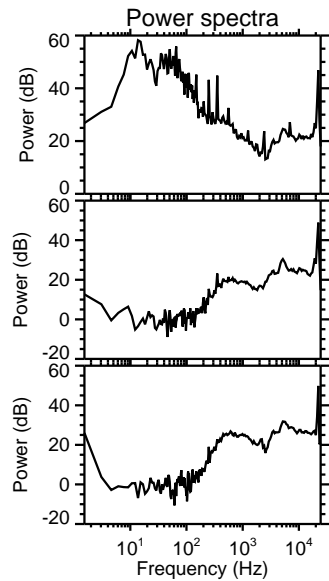
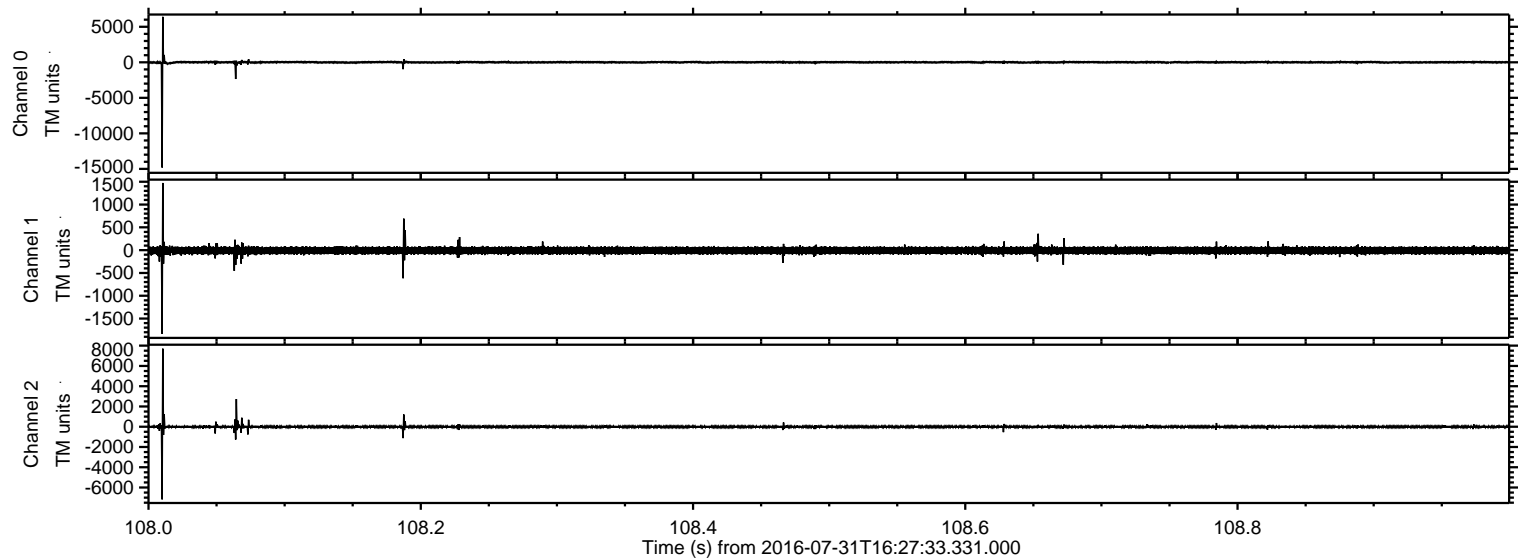


Processed Sun Jul 31 18:35:39 2016 by ELM ver.2012-10-06 from 001__elm20160731_162732__dat00.bin

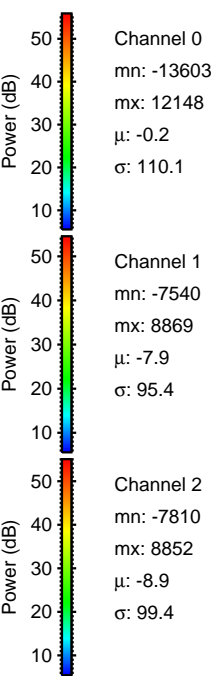
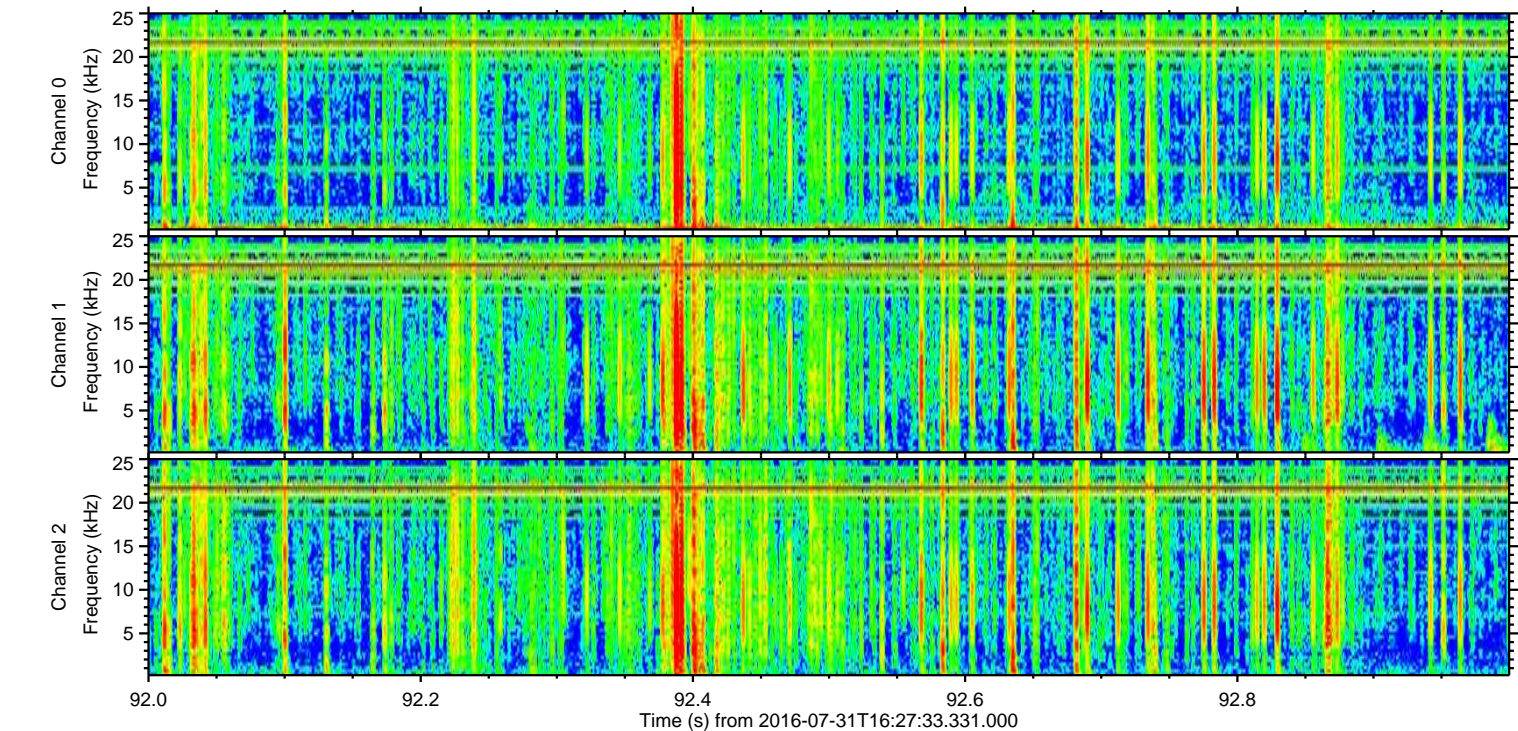
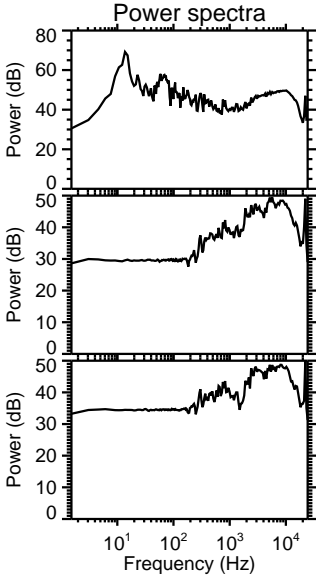
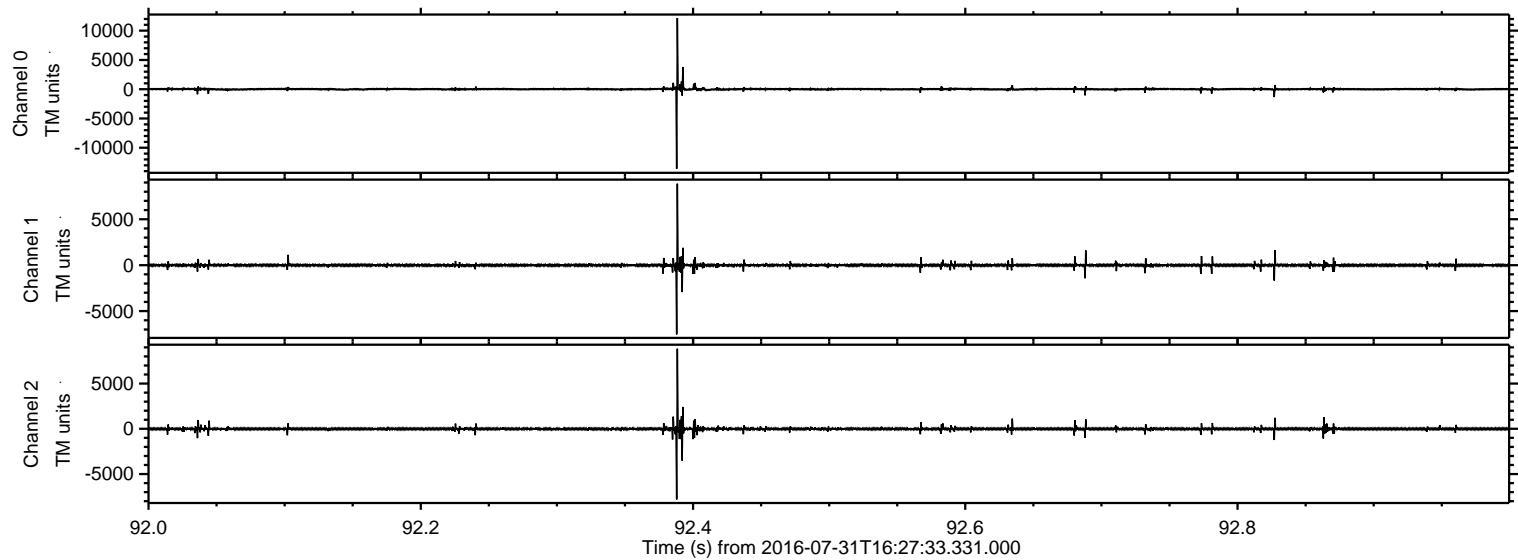


ELMAVAN 3D WAVEFORMS (Measured data sampled at 50 kHz) 51000 packets of 144 samples from 2016-07-31T16:27:33.331.000. Part 109/147

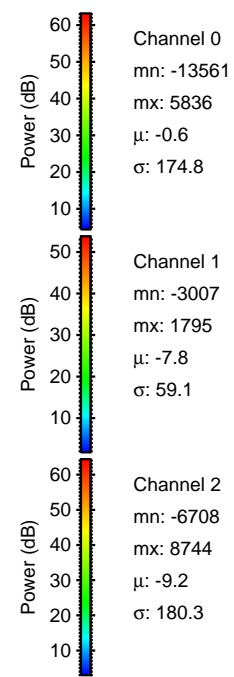
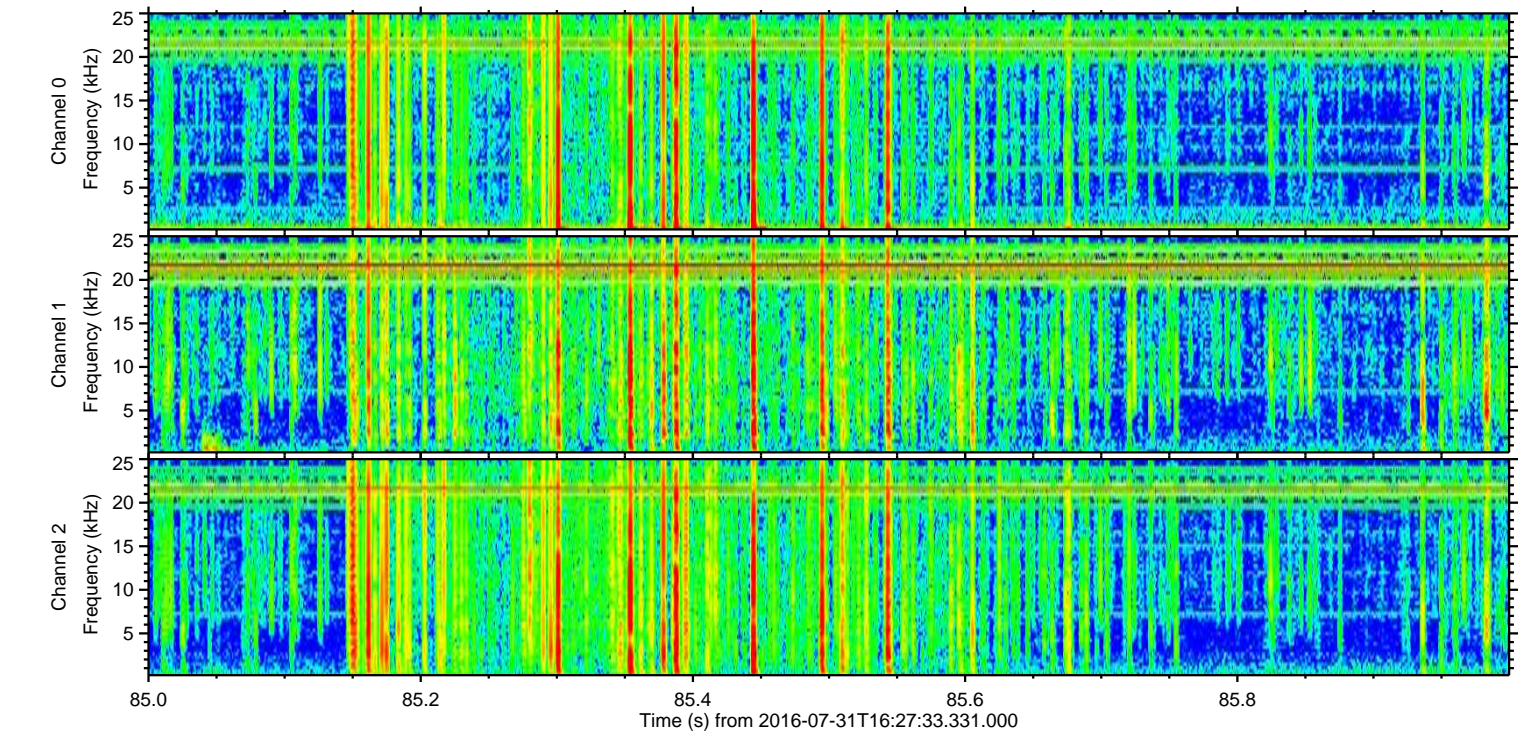
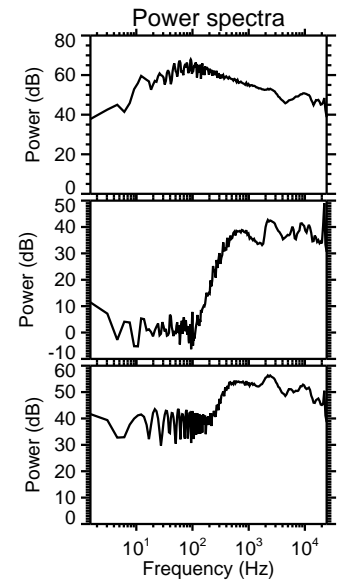
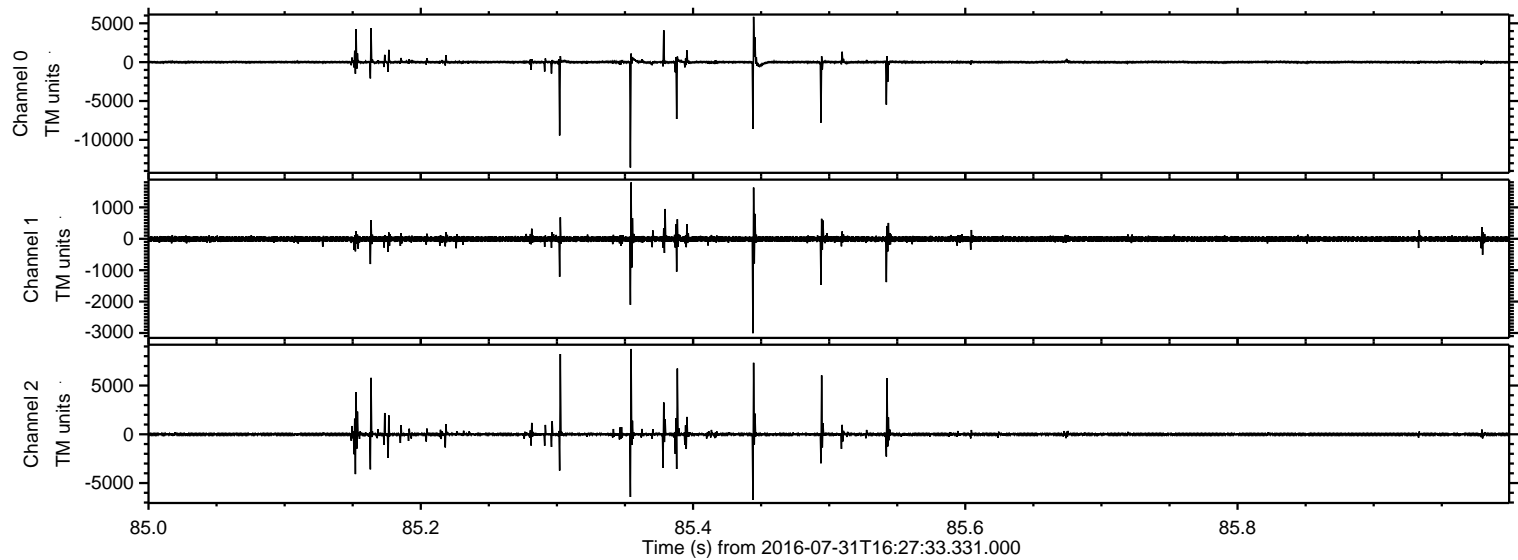
Processed Sun Jul 31 18:35:40 2016 by ELM ver.2012-10-06 from 001__elm20160731_162732__dat00.bin



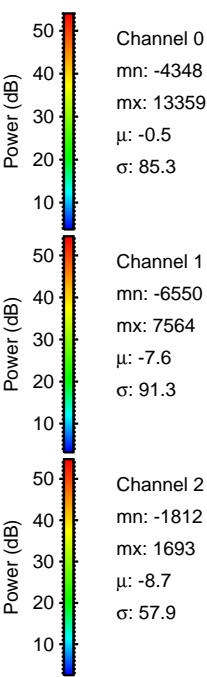
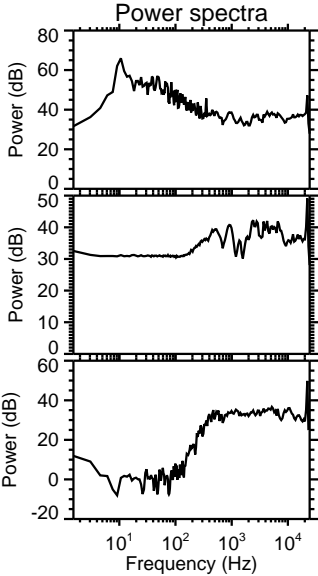
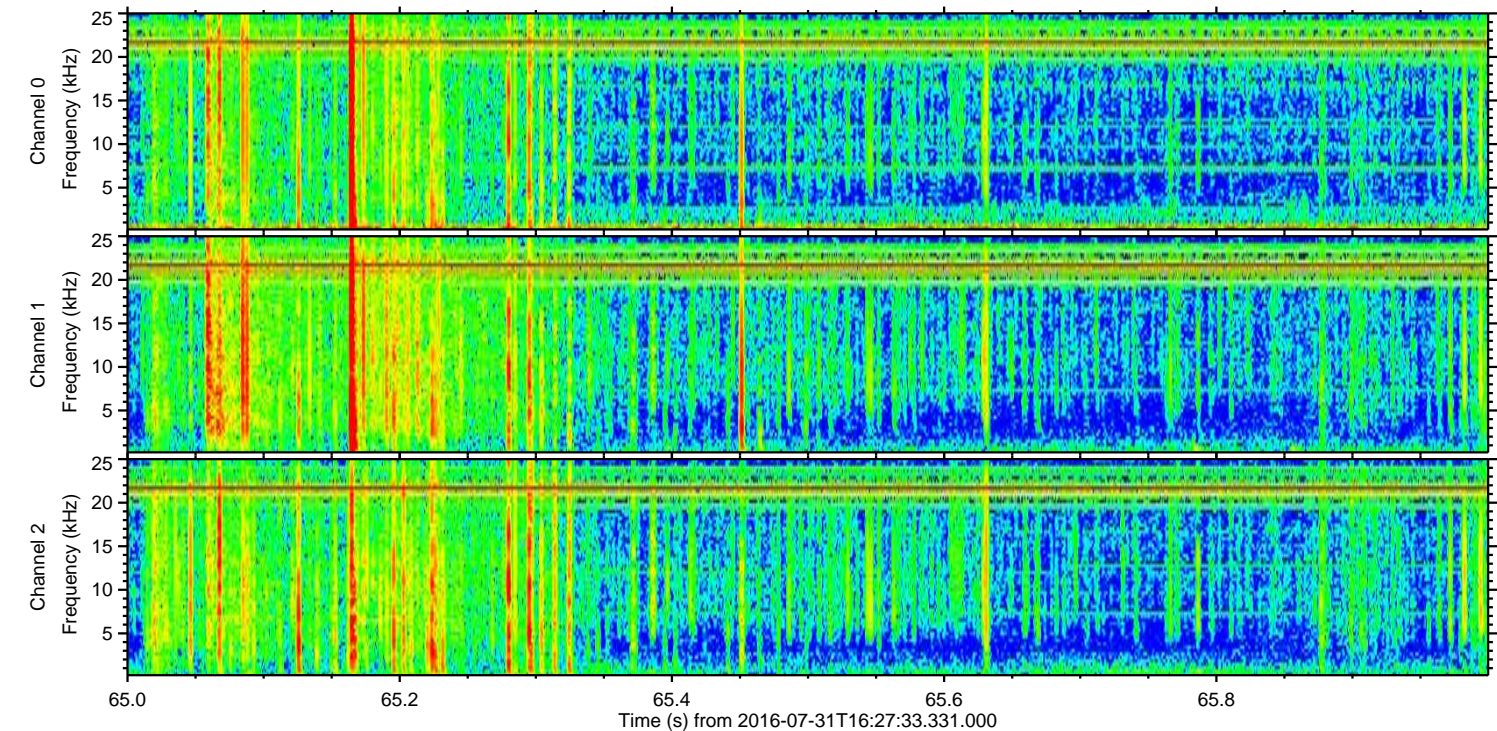
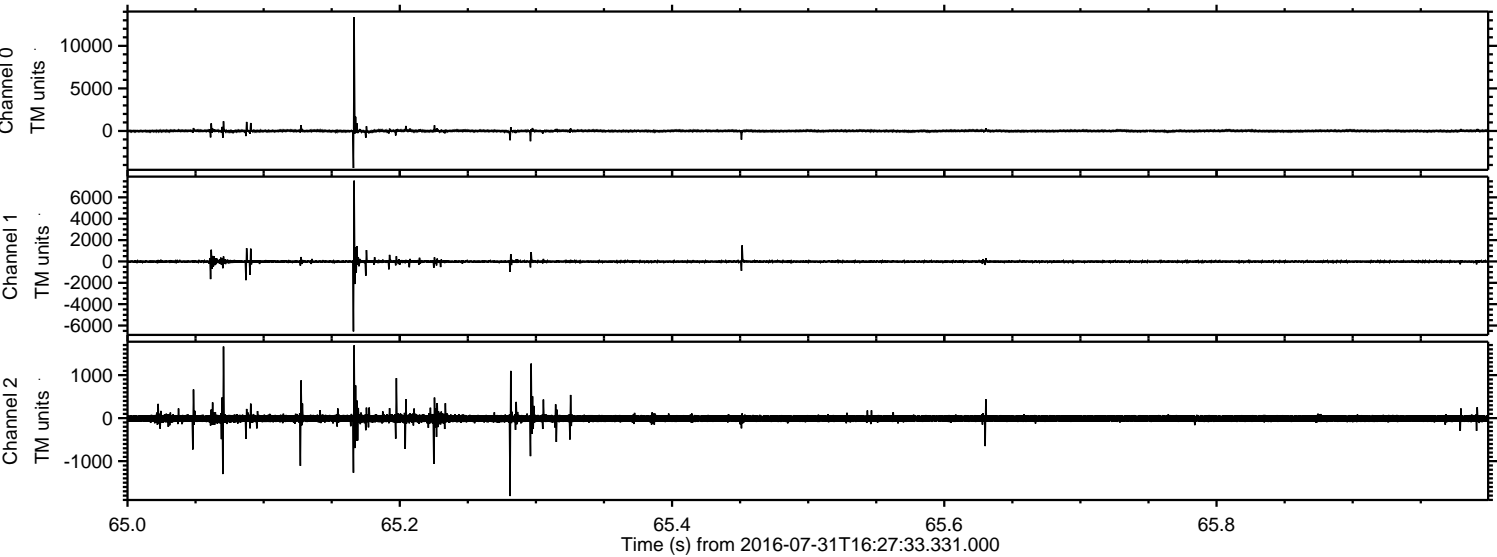
Processed Sun Jul 31 18:35:41 2016 by ELM ver.2012-10-06 from 001__elm20160731_162732__dat00.bin



Processed Sun Jul 31 18:35:42 2016 by ELM ver.2012-10-06 from 001__elm20160731_162732__dat00.bin



Processed Sun Jul 31 18:35:43 2016 by ELM ver.2012-10-06 from 001__elm20160731_162732__dat00.bin



Channel 0
mn: -4348
mx: 13359
 μ : -0.5
 σ : 85.3

Channel 1
mn: -6550
mx: 7564
 μ : -7.6
 σ : 91.3

Channel 2
mn: -1812
mx: 1693
 μ : -8.7
 σ : 57.9

Processed Sun Jul 31 18:35:44 2016 by ELM ver.2012-10-06 from 001__elm20160731_162732__dat00.bin

