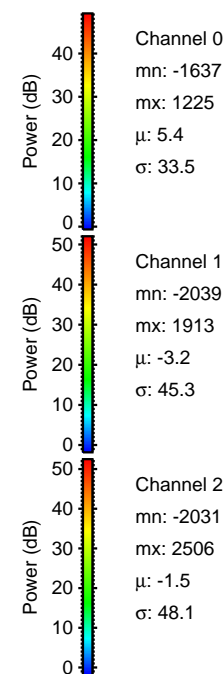
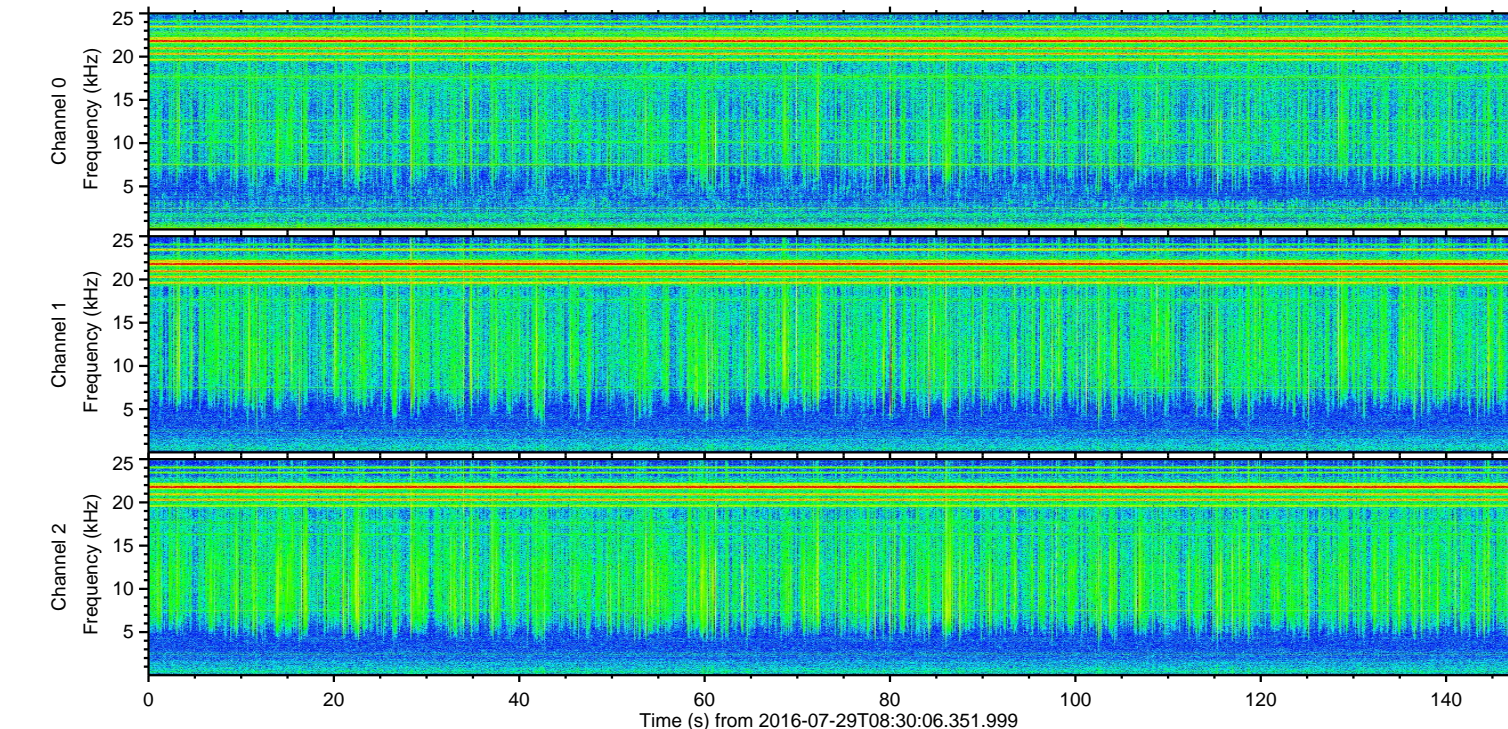
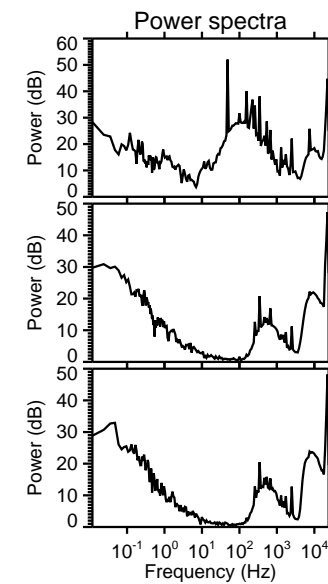
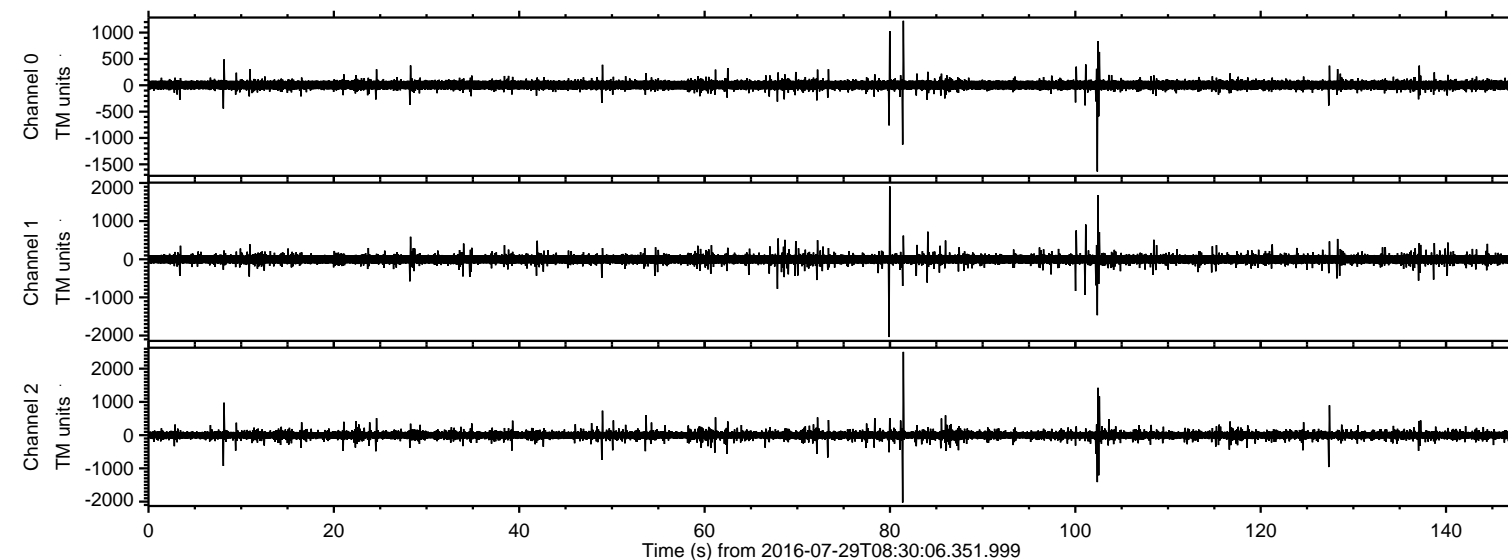


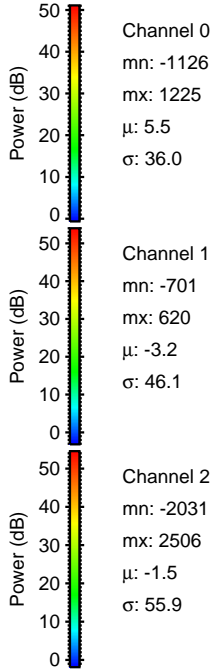
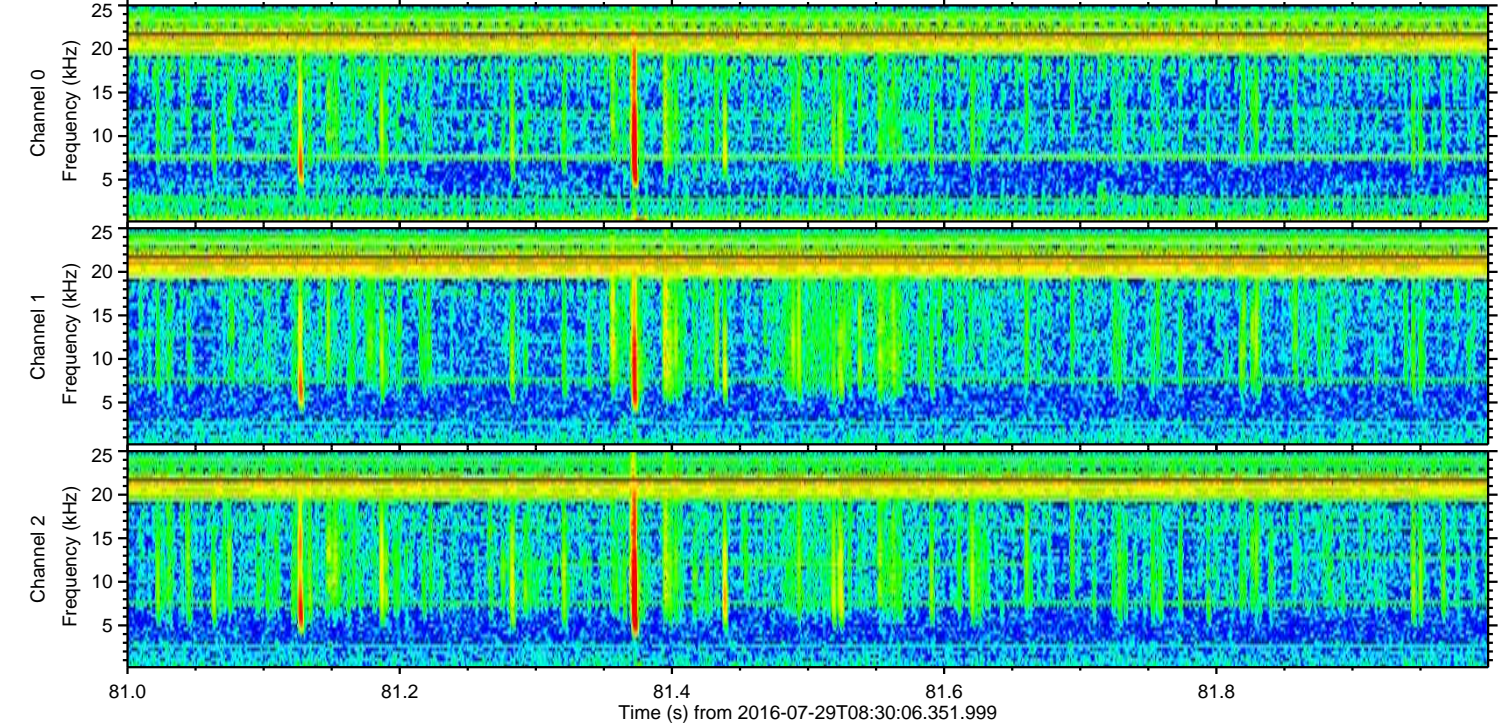
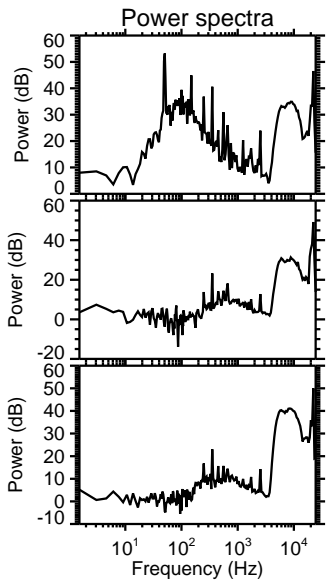
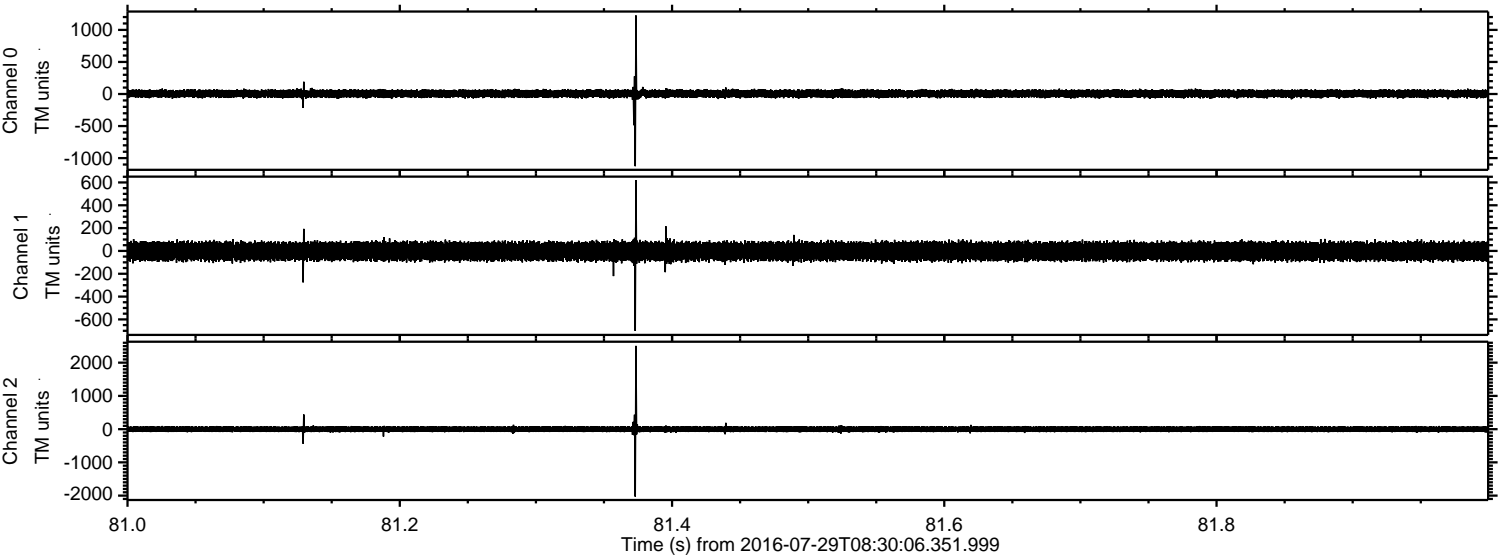
# ELMAVAN 3D WAVEFORMS (Measured data sampled at 50 kHz) 51000 packets of 144 samples from 2016-07-29T08:30:06.351.999.

Processed Fri Jul 29 10:37:54 2016 by ELM ver.2012-10-06 from 001\_\_elm20160729\_083005\_\_dat00.bin



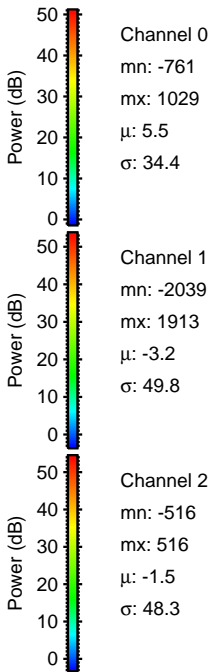
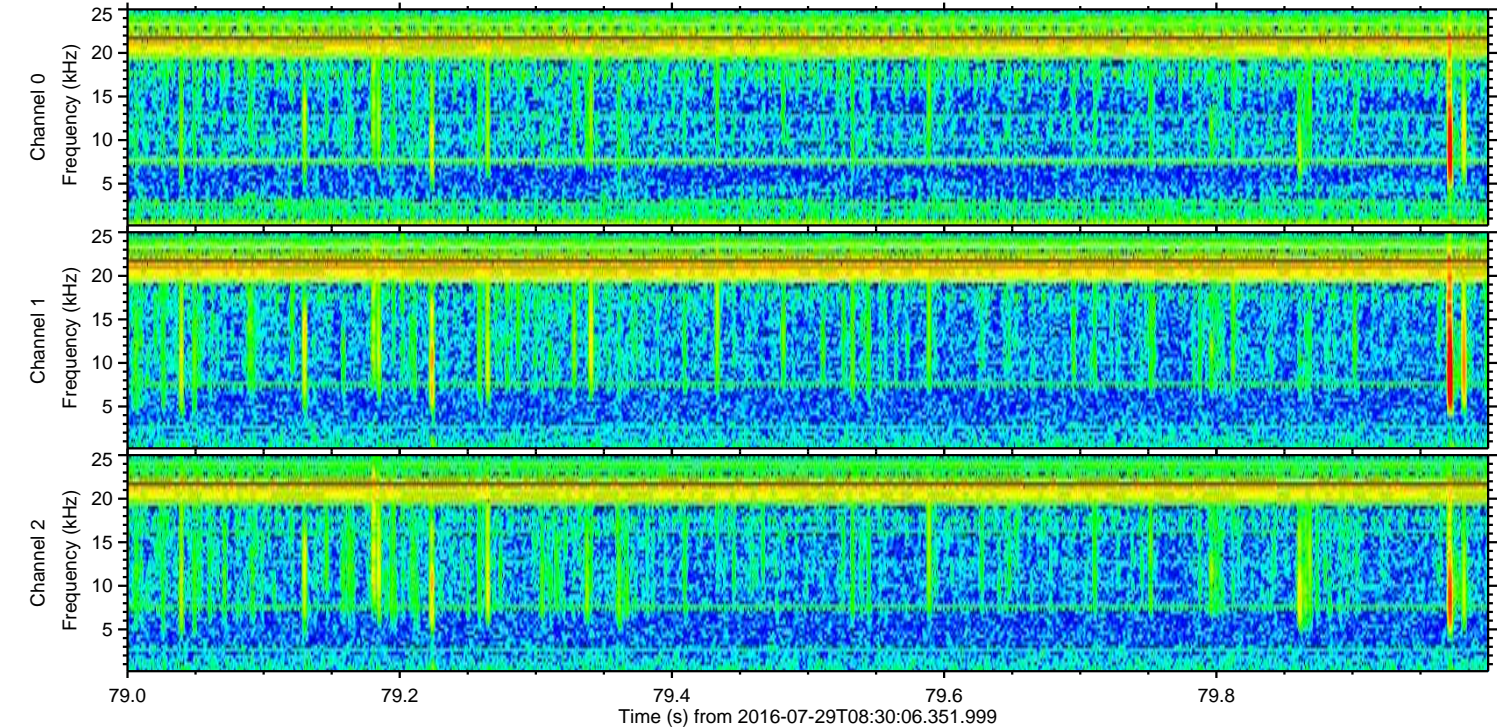
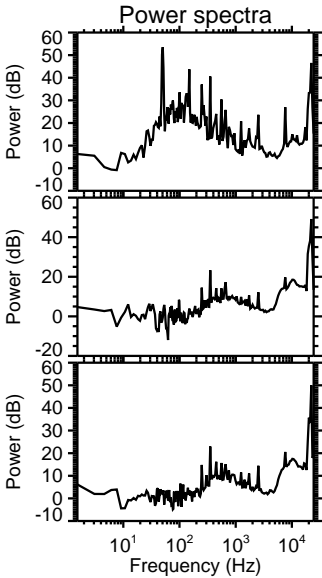
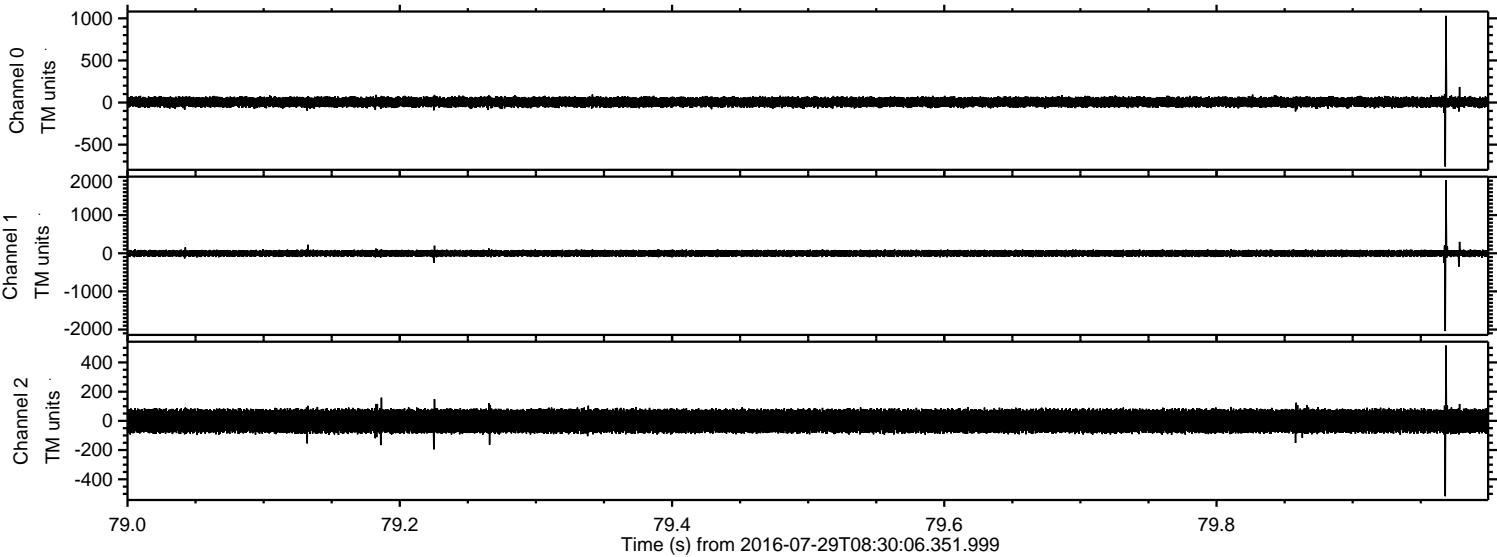


Processed Fri Jul 29 10:38:06 2016 by ELM ver.2012-10-06 from 001\_\_elm20160729\_083005\_\_dat00.bin





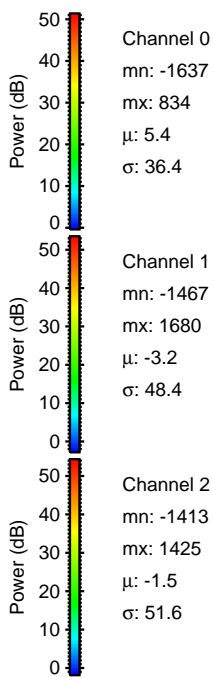
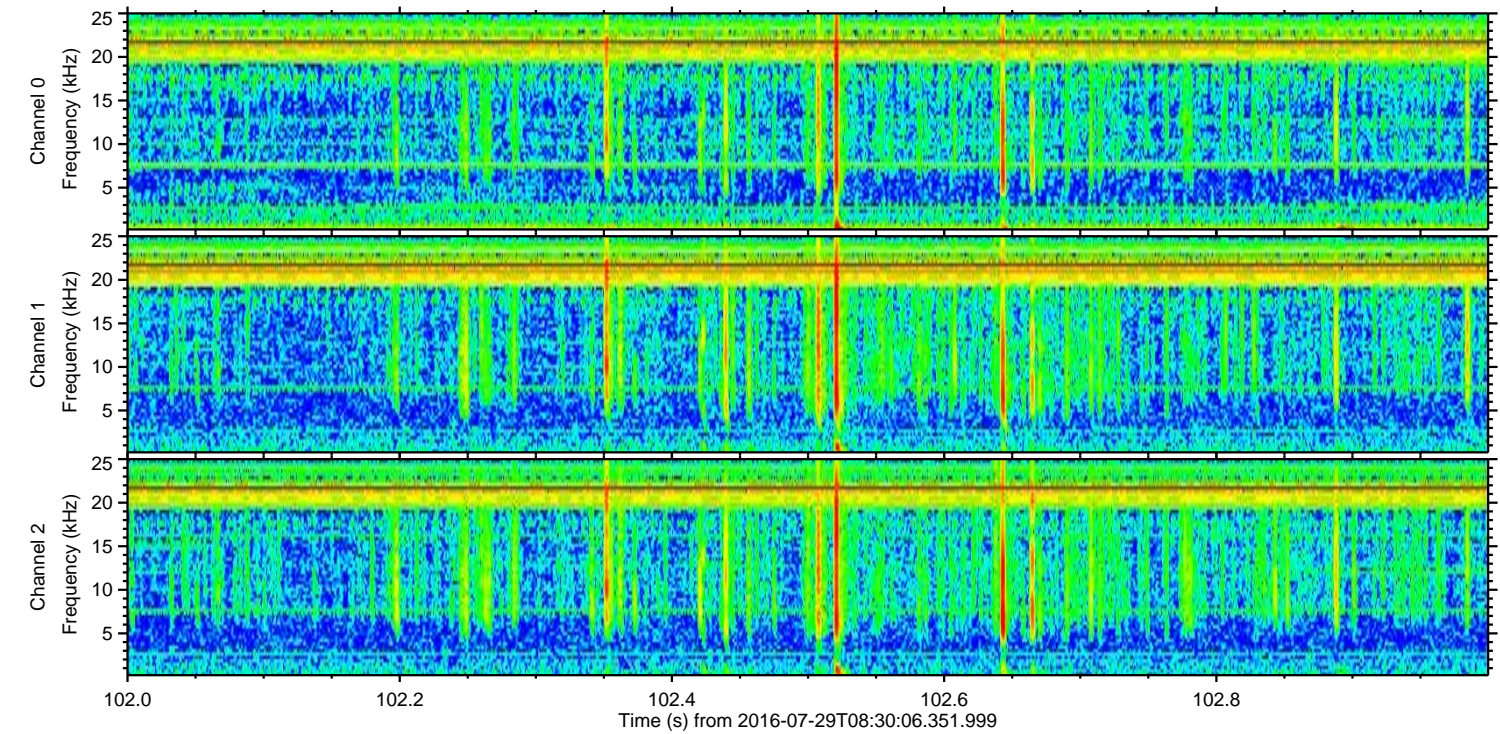
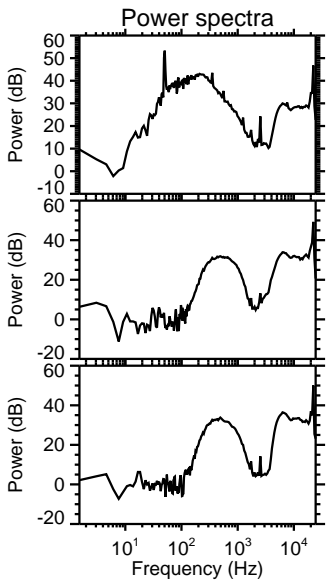
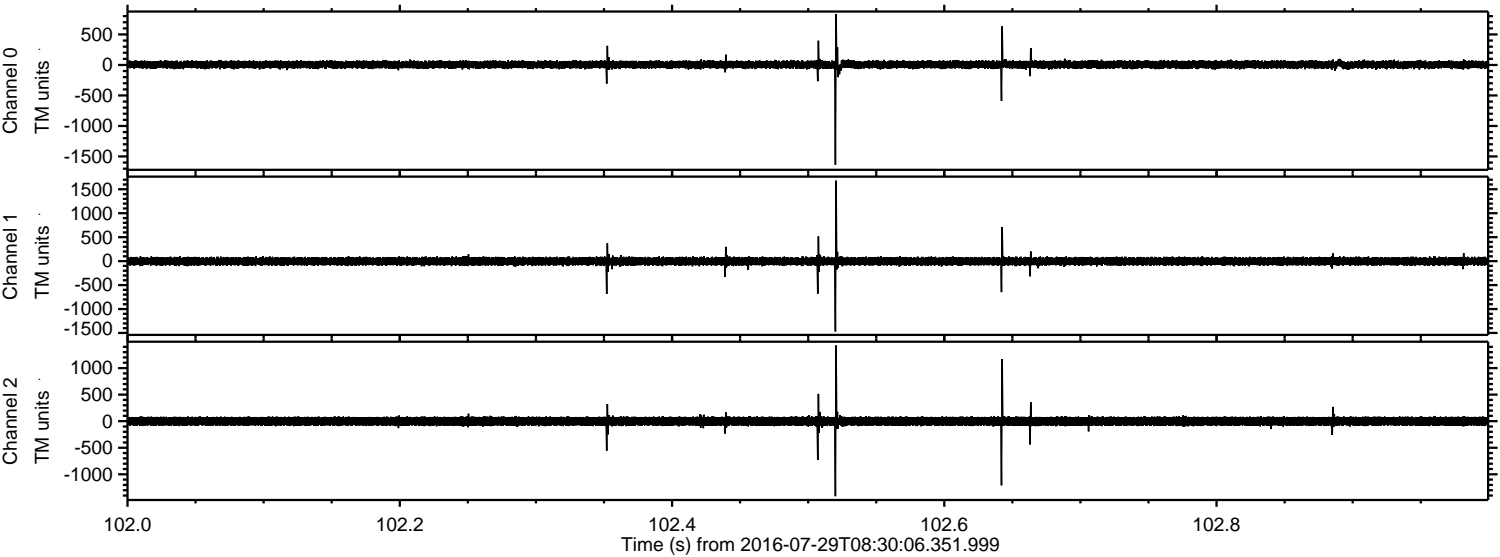
Processed Fri Jul 29 10:38:07 2016 by ELM ver.2012-10-06 from 001\_\_elm20160729\_083005\_\_dat00.bin





ELMAVAN 3D WAVEFORMS (Measured data sampled at 50 kHz) 51000 packets of 144 samples from 2016-07-29T08:30:06.351.999. Part 103/147

Processed Fri Jul 29 10:38:08 2016 by ELM ver.2012-10-06 from 001\_\_elm20160729\_083005\_\_dat00.bin



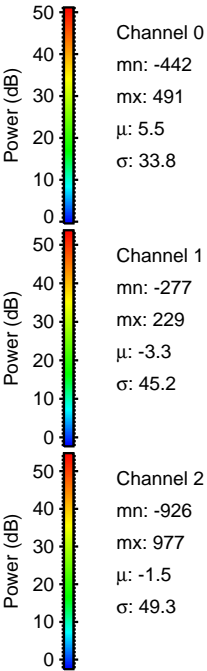
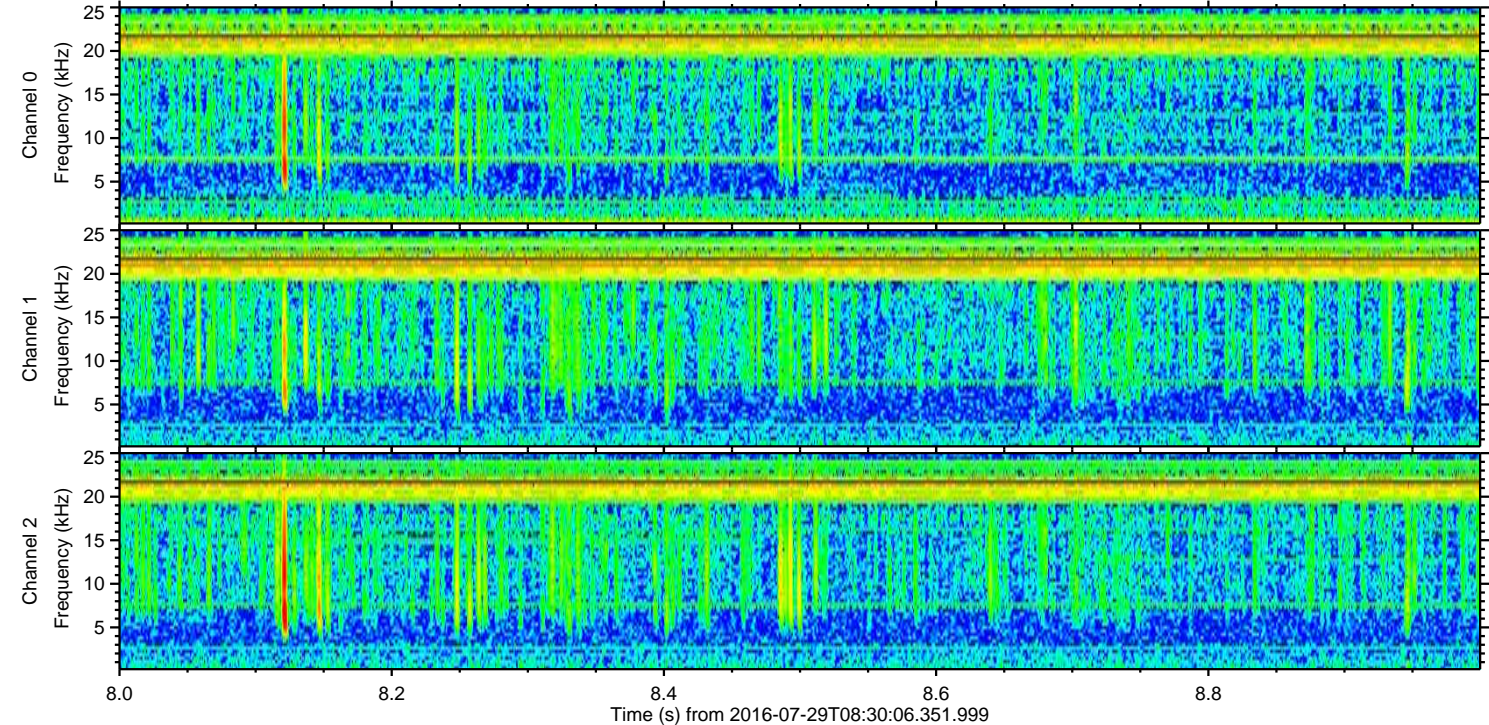
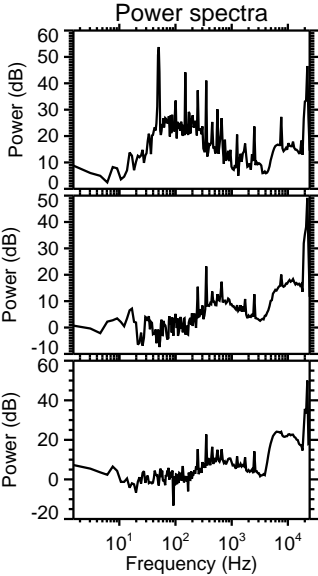
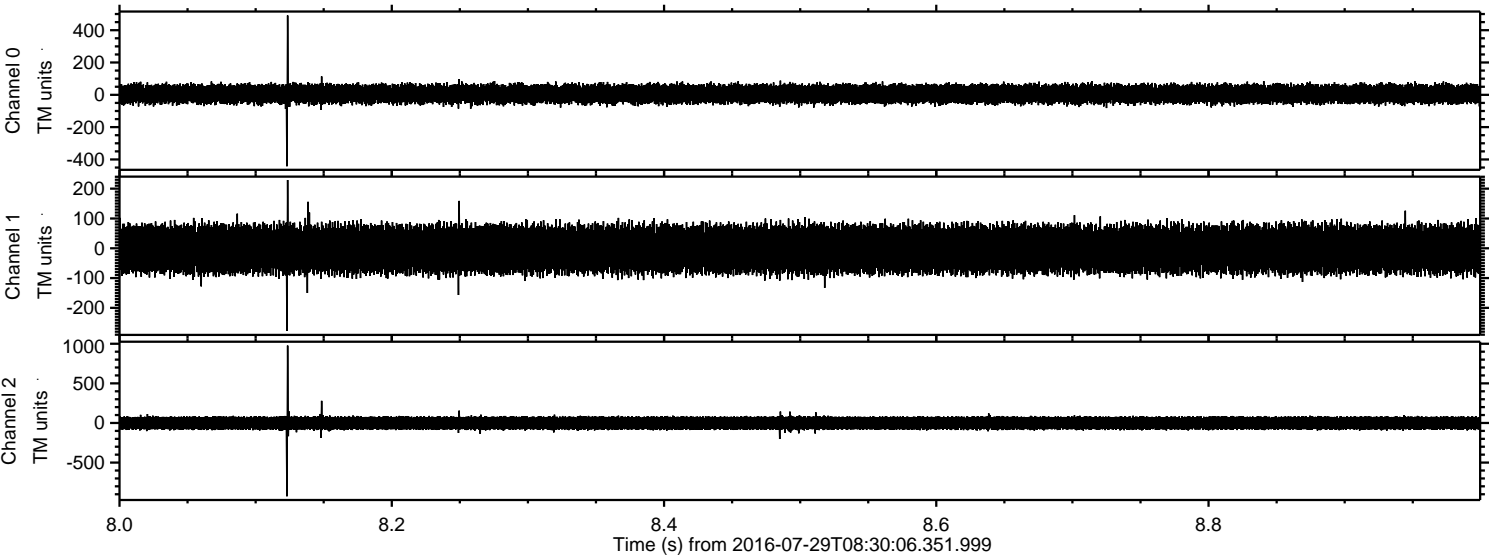
Channel 0  
mn: -1637  
mx: 834  
 $\mu$ : 5.4  
 $\sigma$ : 36.4

Channel 1  
mn: -1467  
mx: 1680  
 $\mu$ : -3.2  
 $\sigma$ : 48.4

Channel 2  
mn: -1413  
mx: 1425  
 $\mu$ : -1.5  
 $\sigma$ : 51.6



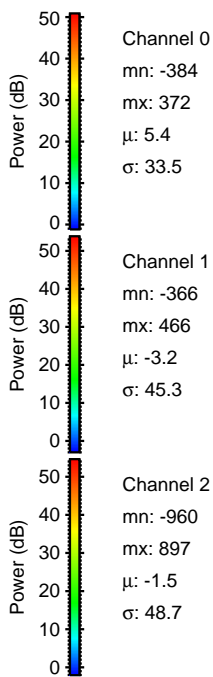
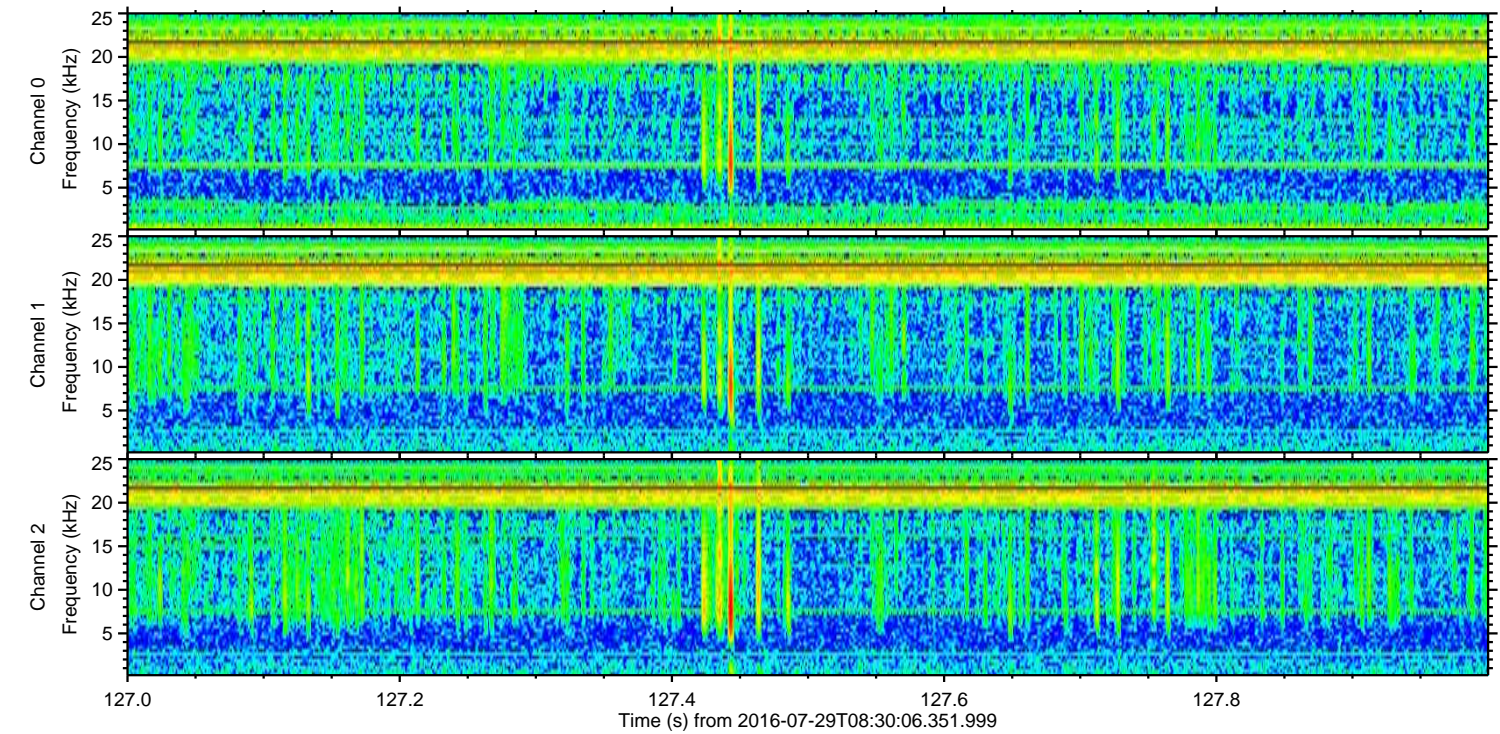
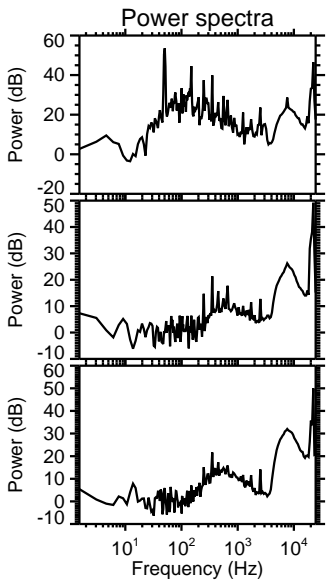
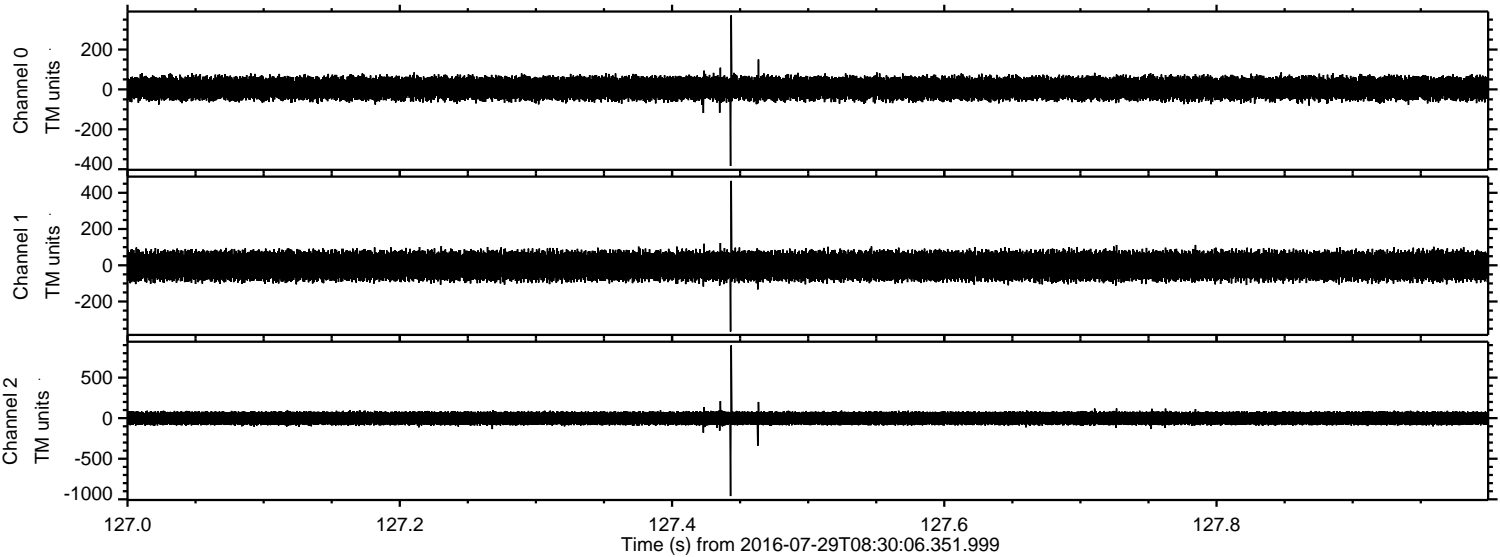
Processed Fri Jul 29 10:38:09 2016 by ELM ver.2012-10-06 from 001\_\_elm20160729\_083005\_\_dat00.bin





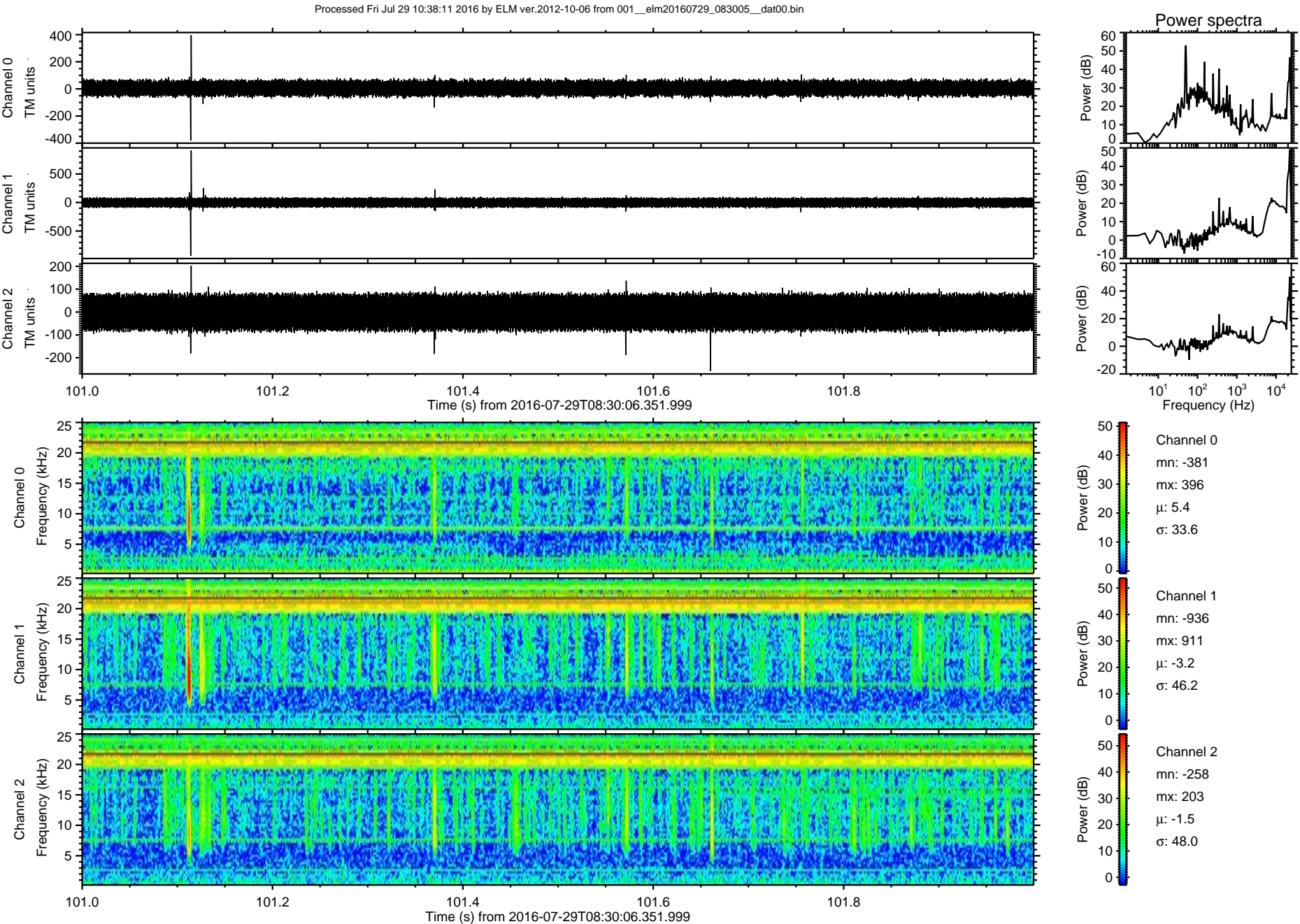
ELMAVAN 3D WAVEFORMS (Measured data sampled at 50 kHz) 51000 packets of 144 samples from 2016-07-29T08:30:06.351.999. Part 128/147

Processed Fri Jul 29 10:38:10 2016 by ELM ver.2012-10-06 from 001\_\_elm20160729\_083005\_\_dat00.bin



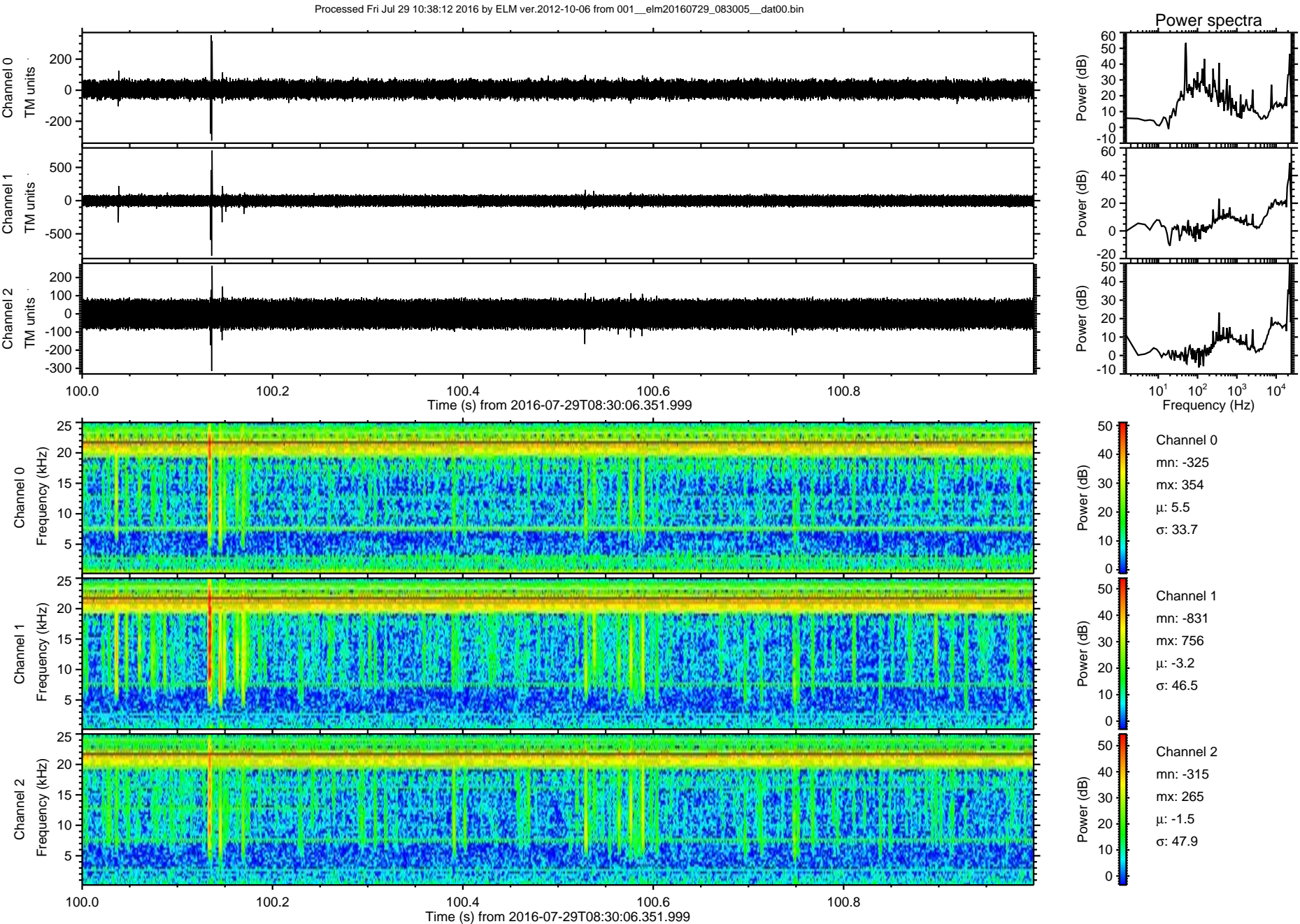


ELMAVAN 3D WAVEFORMS (Measured data sampled at 50 kHz) 51000 packets of 144 samples from 2016-07-29T08:30:06.351.999. Part 102/147





ELMAVAN 3D WAVEFORMS (Measured data sampled at 50 kHz) 51000 packets of 144 samples from 2016-07-29T08:30:06.351.999. Part 101/147





Processed Fri Jul 29 10:38:12 2016 by ELM ver.2012-10-06 from 001\_\_elm20160729\_083005\_\_dat00.bin

