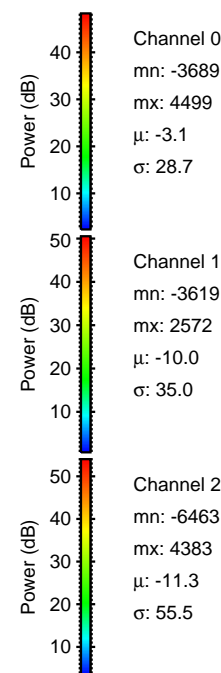
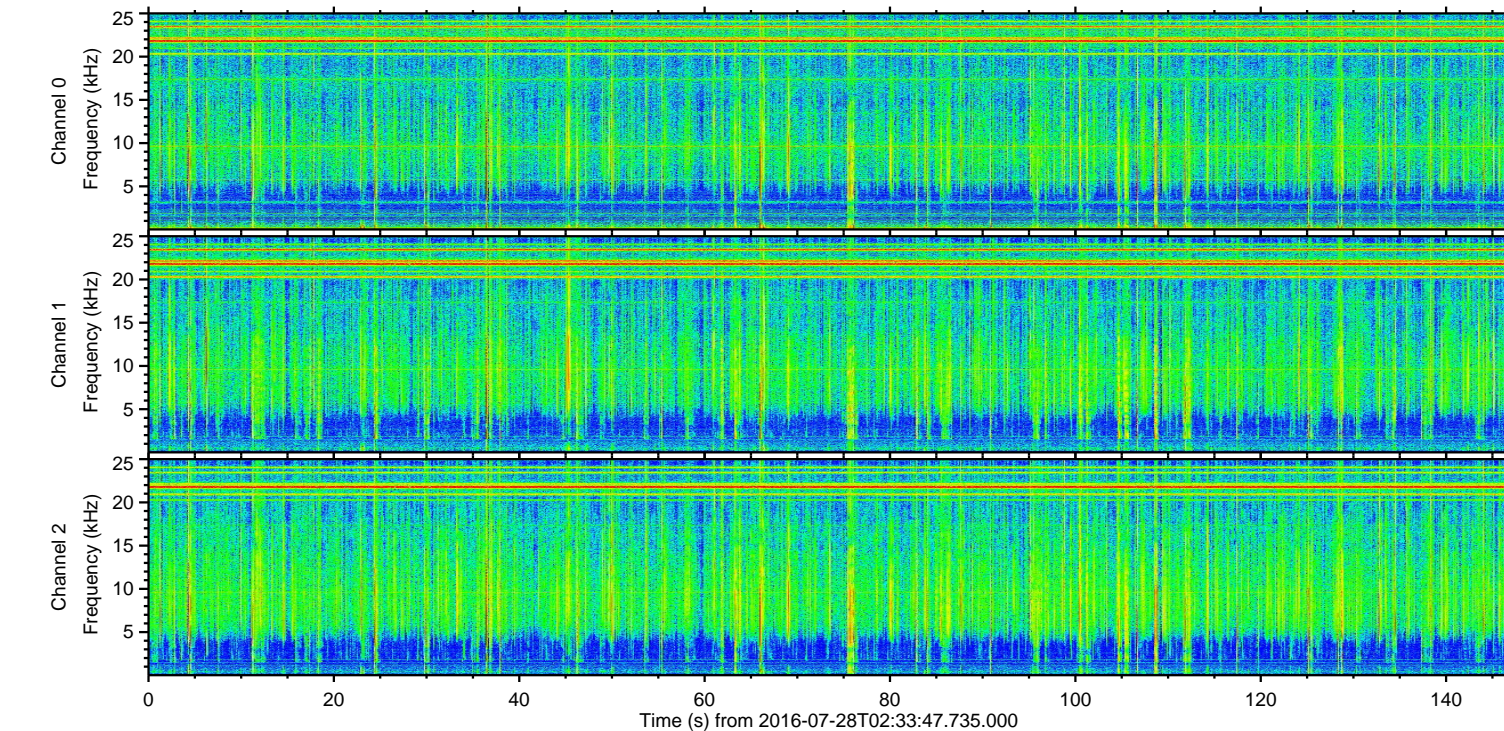
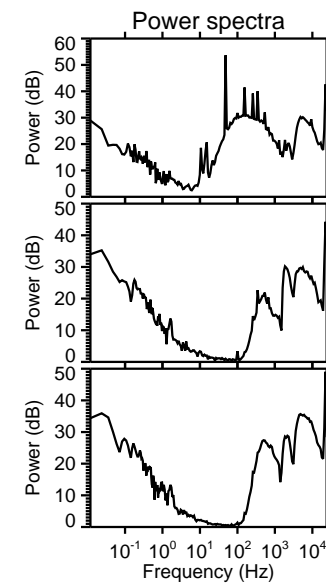
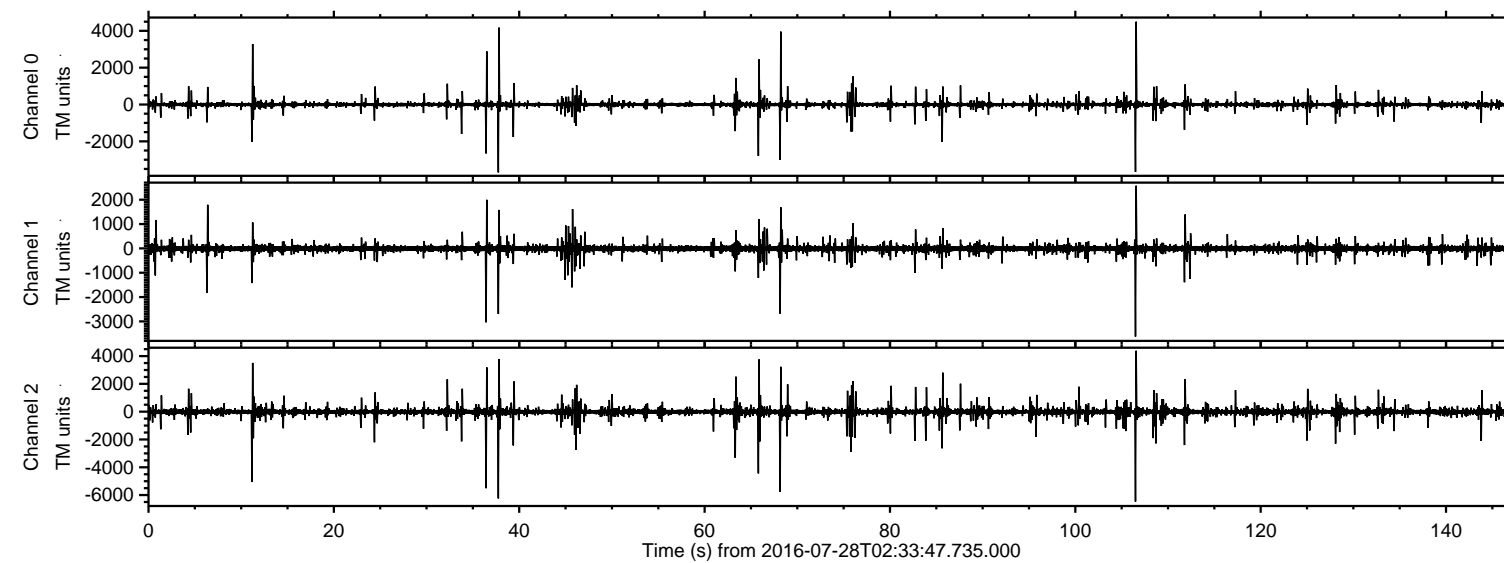


ELMAVAN 3D WAVEFORMS (Measured data sampled at 50 kHz) 51000 packets of 144 samples from 2016-07-28T02:33:47.735.000.

Processed Thu Jul 28 04:42:03 2016 by ELM ver.2012-10-06 from 001__elm20160728_023346__dat00.bin



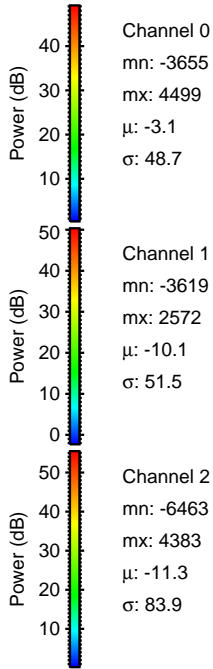
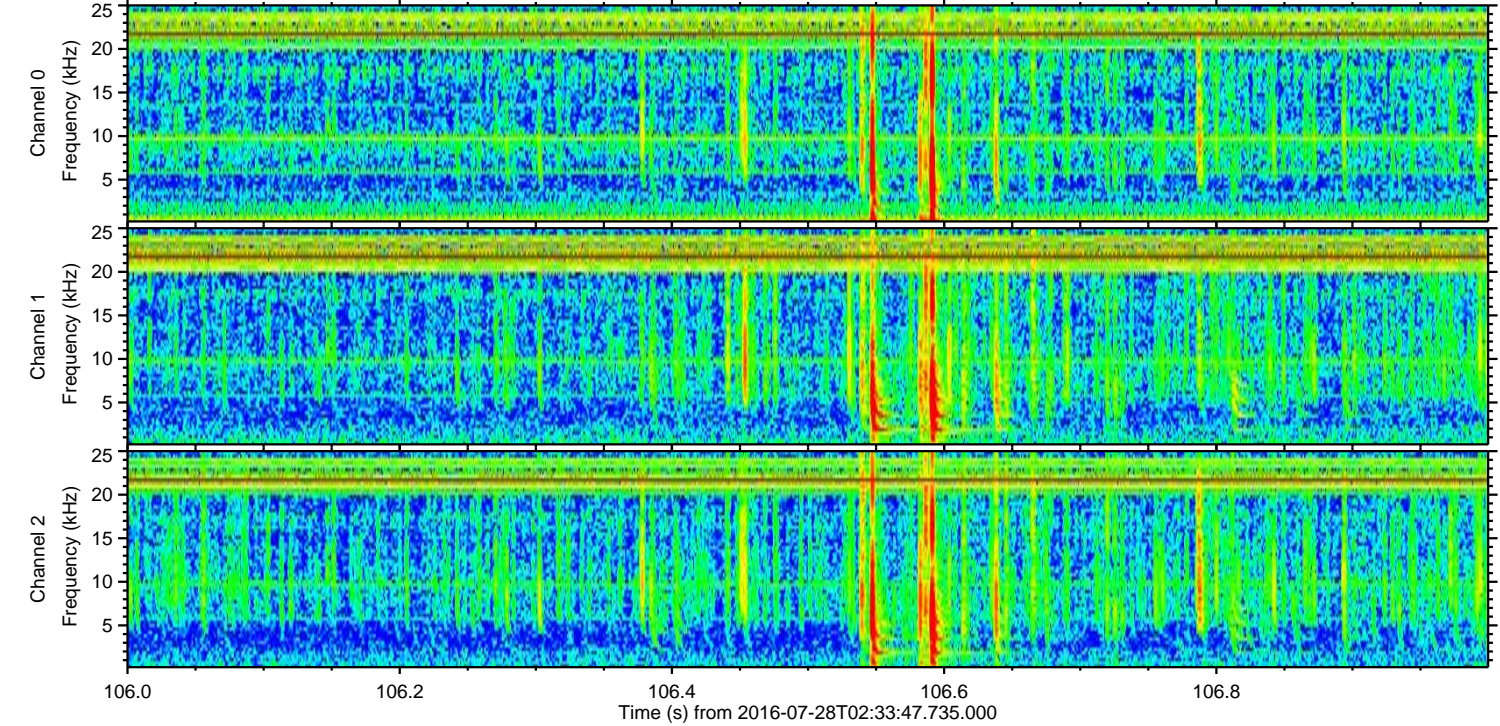
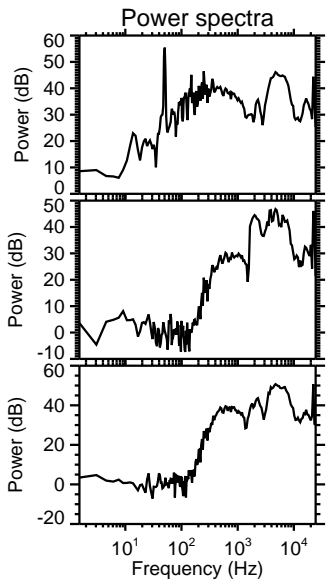
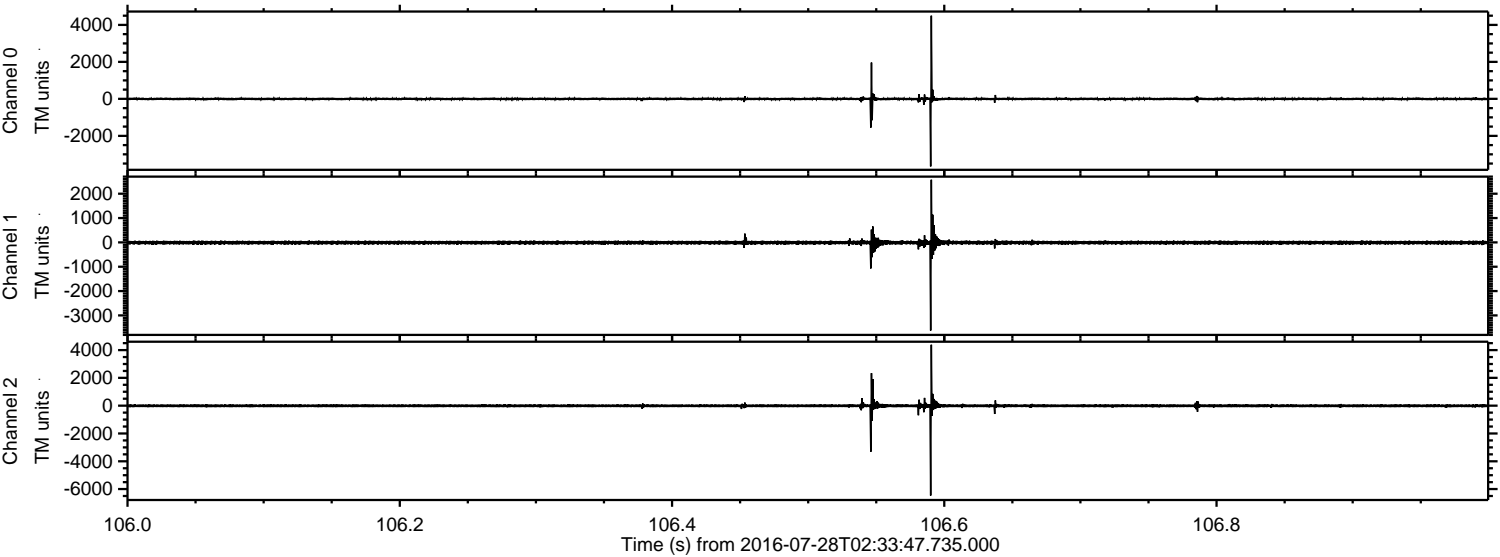
Channel 0
mn: -3689
mx: 4499
 μ : -3.1
 σ : 28.7

Channel 1
mn: -3619
mx: 2572
 μ : -10.0
 σ : 35.0

Channel 2
mn: -6463
mx: 4383
 μ : -11.3
 σ : 55.5

ELMAVAN 3D WAVEFORMS (Measured data sampled at 50 kHz) 51000 packets of 144 samples from 2016-07-28T02:33:47.735.000. Part 107/147

Processed Thu Jul 28 04:42:15 2016 by ELM ver.2012-10-06 from 001__elm20160728_023346__dat00.bin

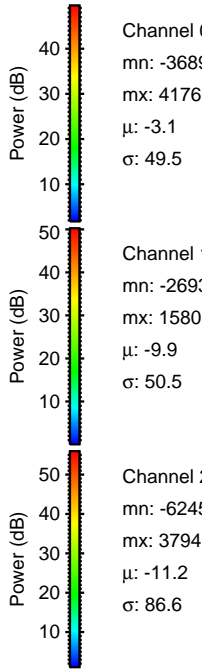
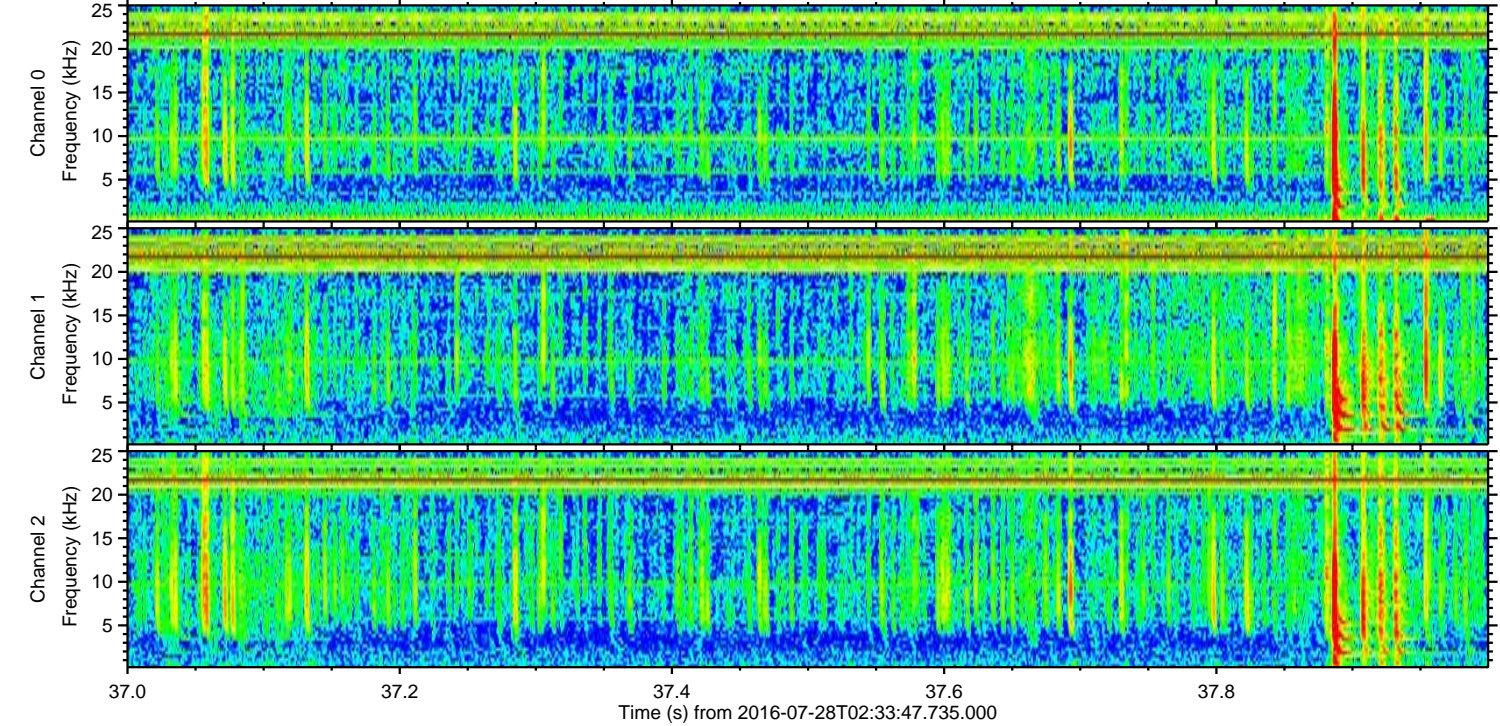
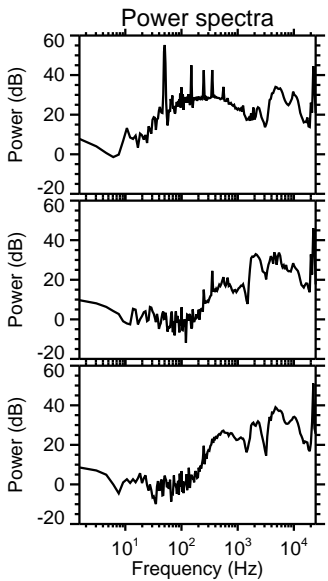
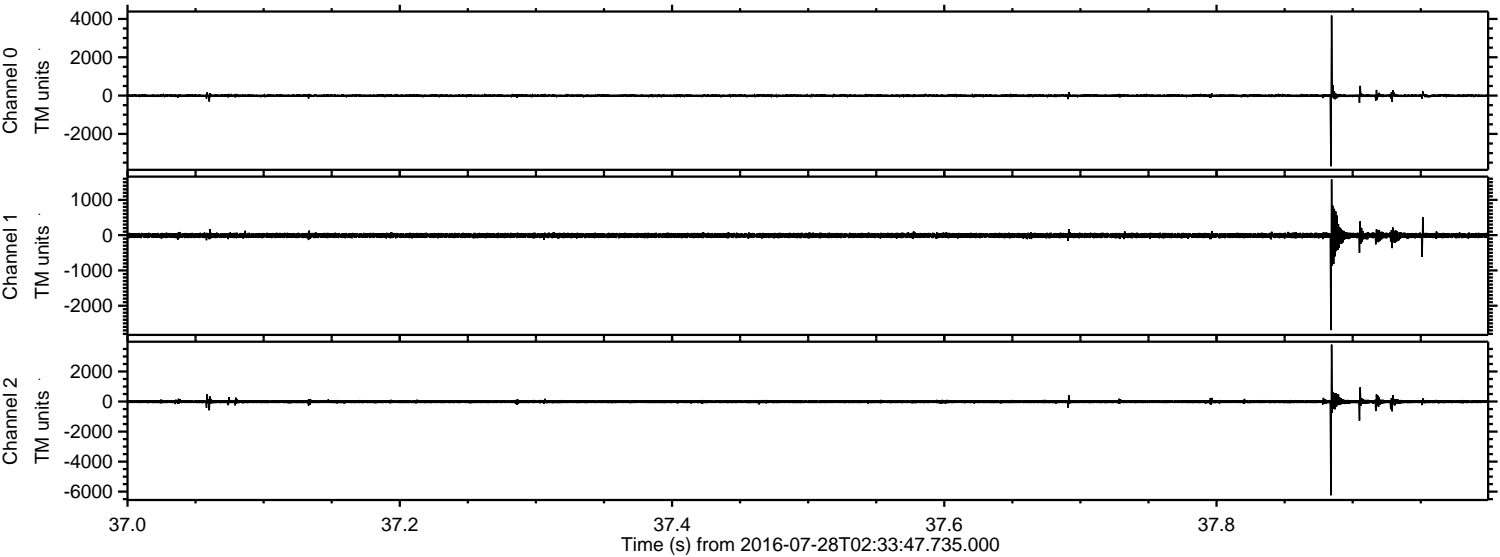


Channel 0
mn: -3655
mx: 4499
 μ : -3.1
 σ : 48.7

Channel 1
mn: -3619
mx: 2572
 μ : -10.1
 σ : 51.5

Channel 2
mn: -6463
mx: 4383
 μ : -11.3
 σ : 83.9

Processed Thu Jul 28 04:42:15 2016 by ELM ver.2012-10-06 from 001__elm20160728_023346__dat00.bin

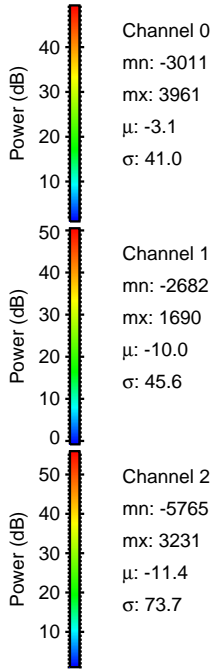
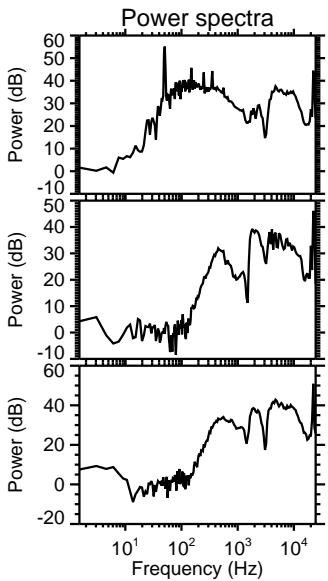
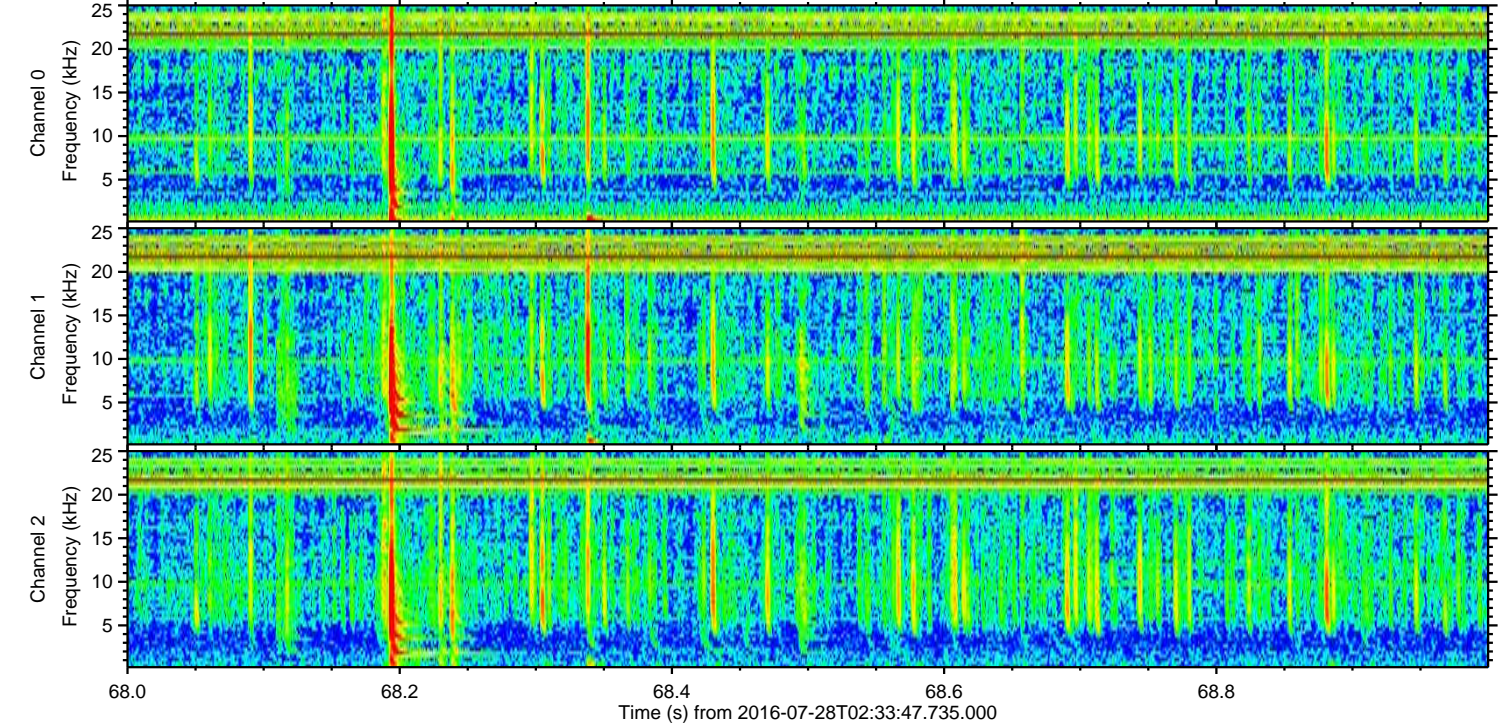
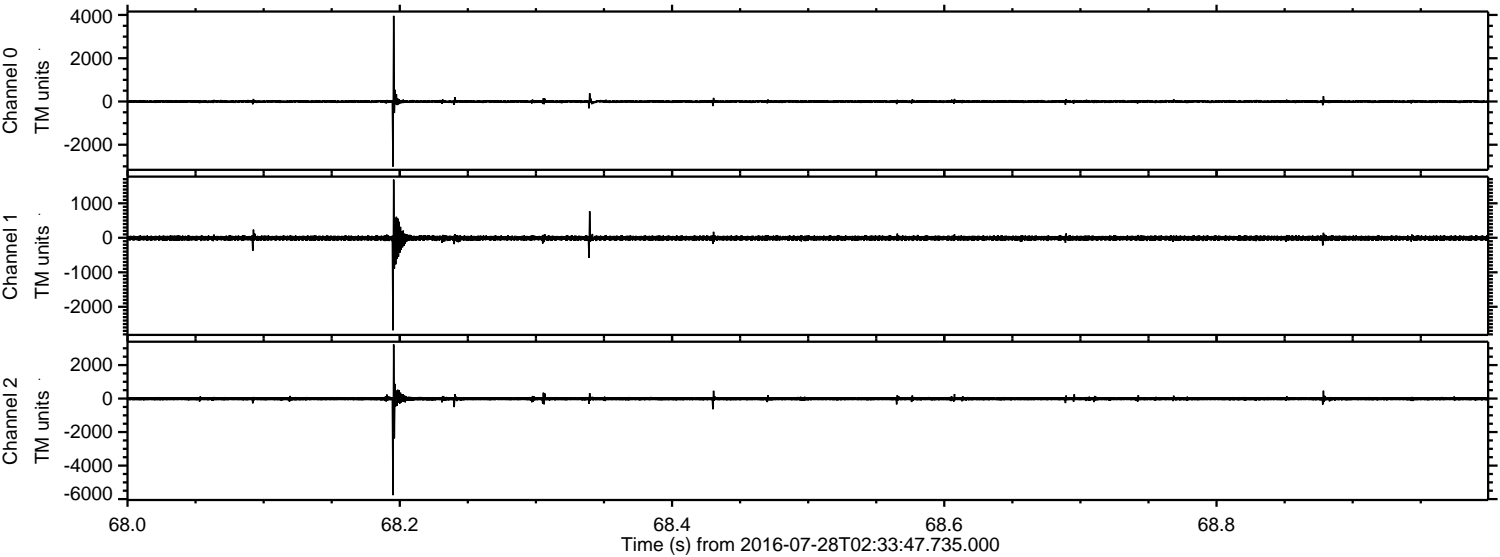


Channel 0
mn: -3689
mx: 4176
 μ : -3.1
 σ : 49.5

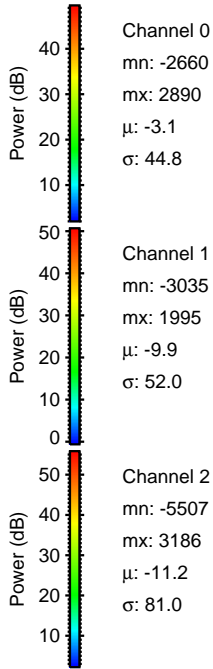
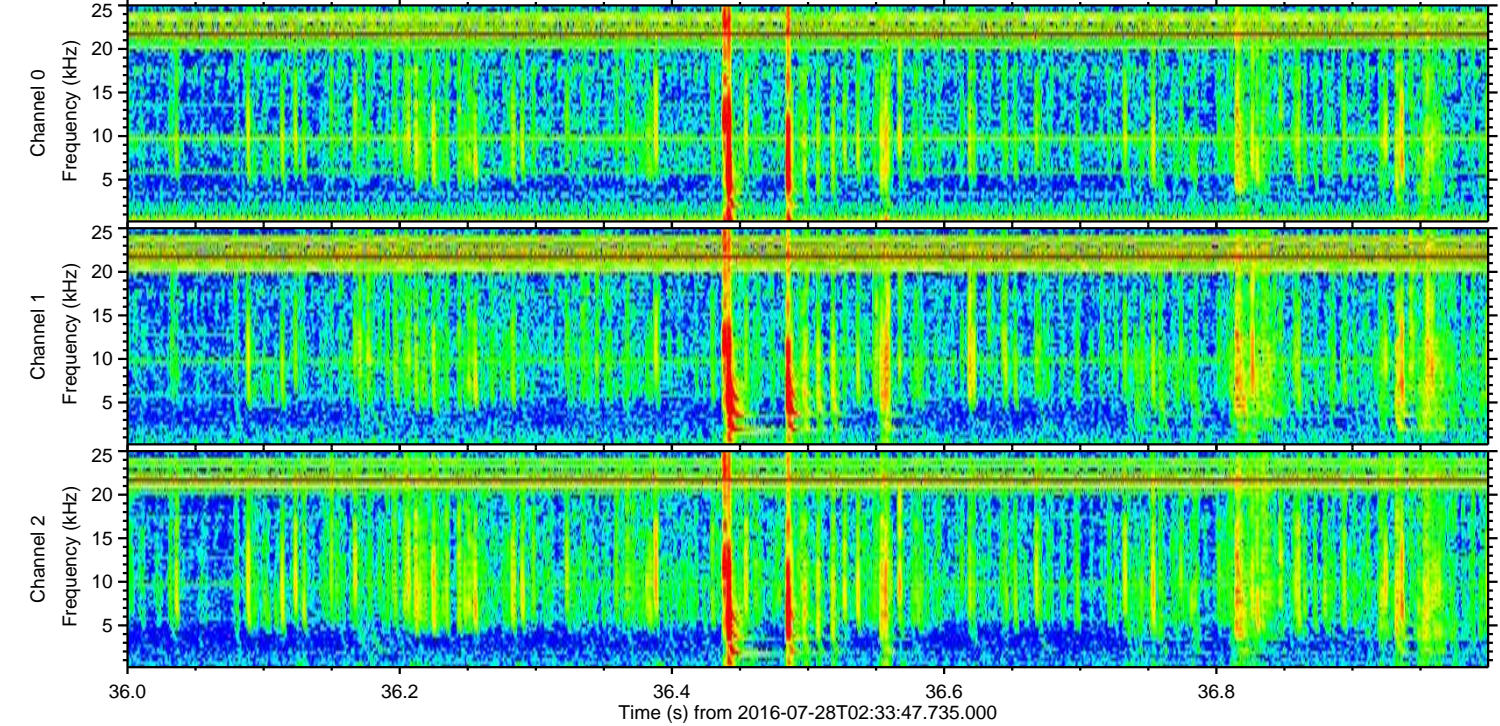
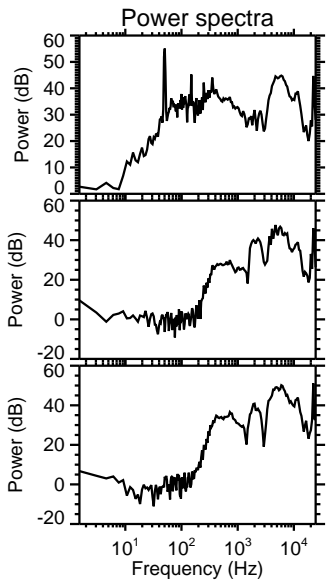
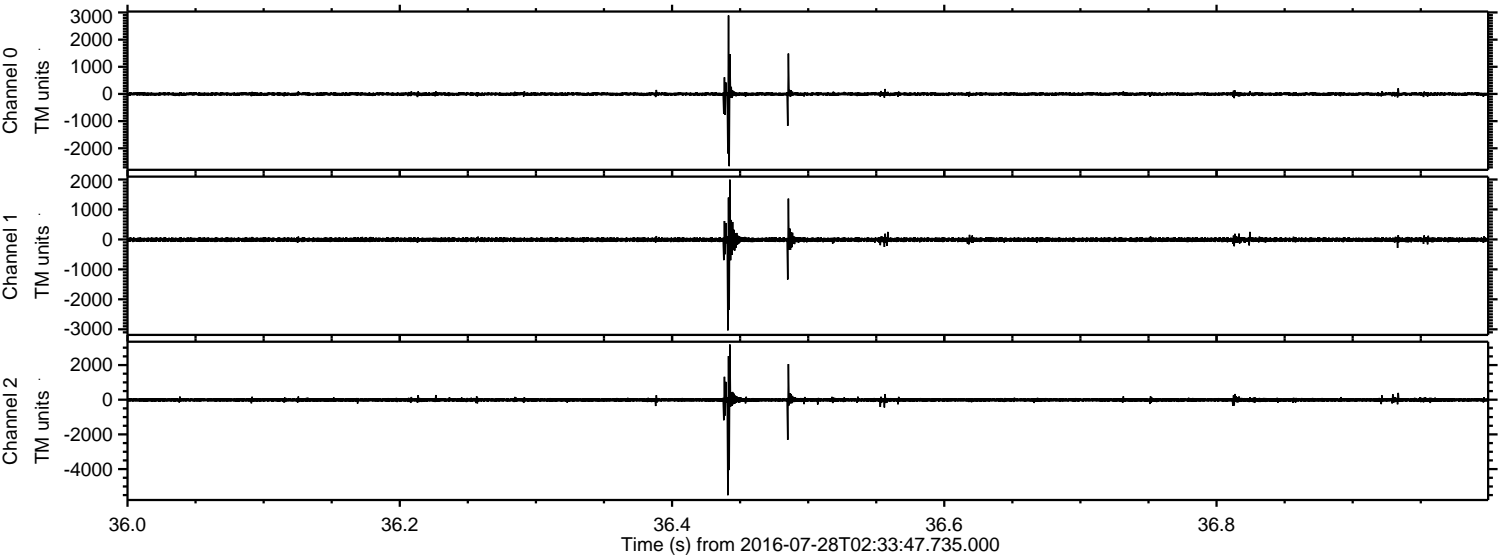
Channel 1
mn: -2693
mx: 1580
 μ : -9.9
 σ : 50.5

Channel 2
mn: -6245
mx: 3794
 μ : -11.2
 σ : 86.6

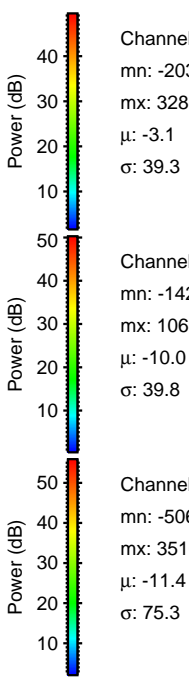
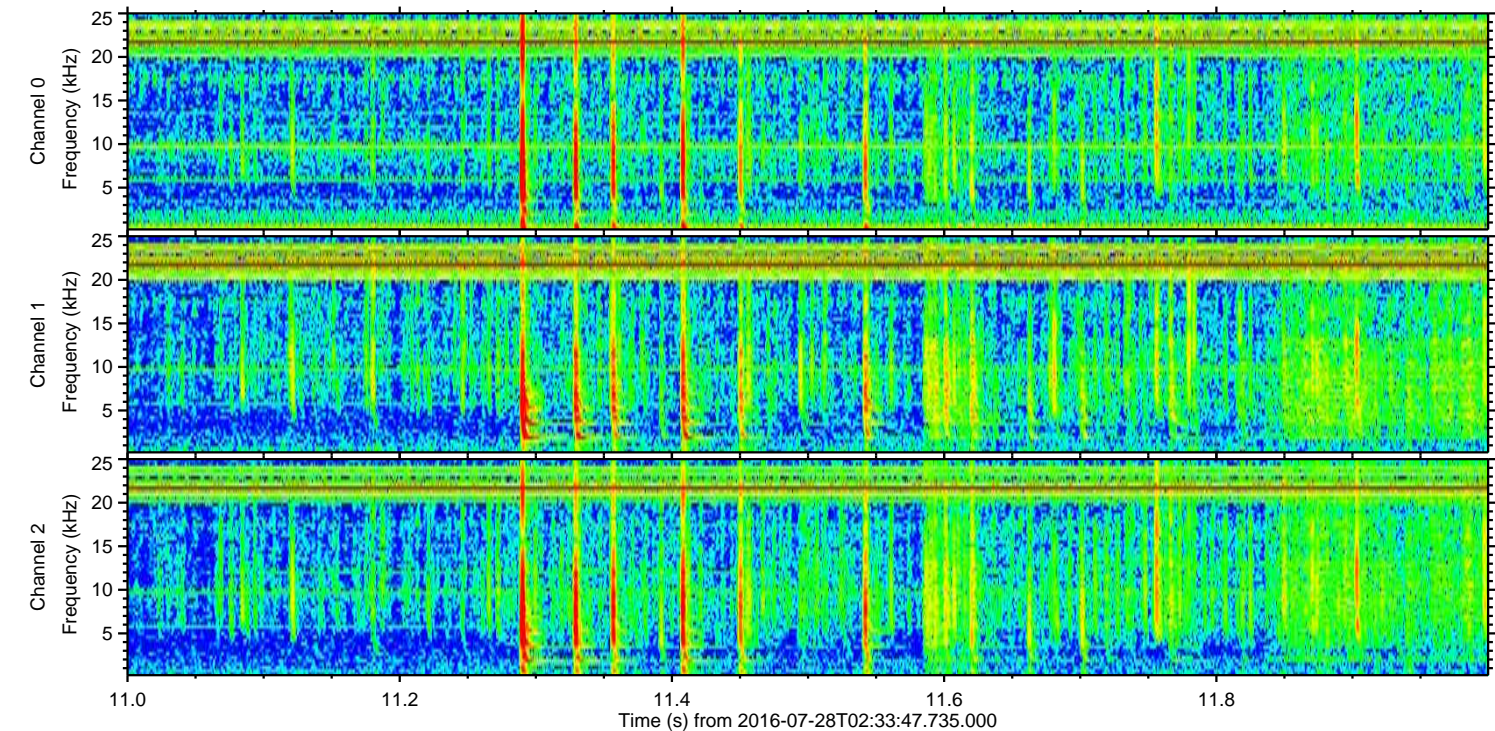
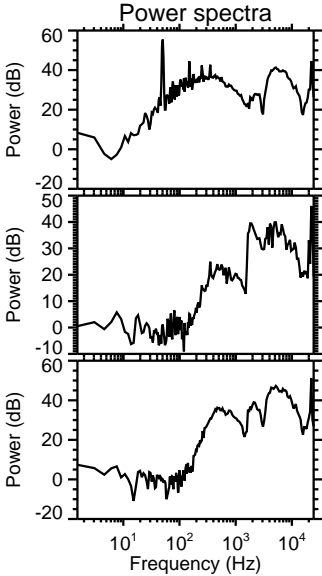
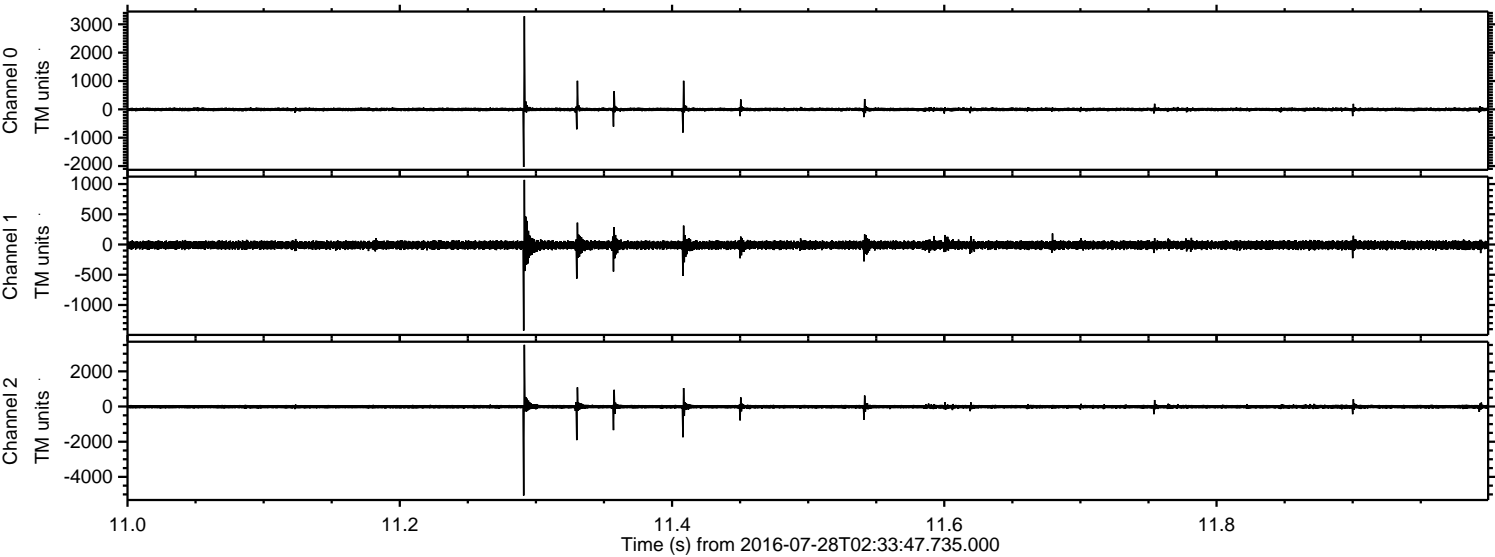
Processed Thu Jul 28 04:42:16 2016 by ELM ver.2012-10-06 from 001__elm20160728_023346__dat00.bin



Processed Thu Jul 28 04:42:17 2016 by ELM ver.2012-10-06 from 001__elm20160728_023346__dat00.bin

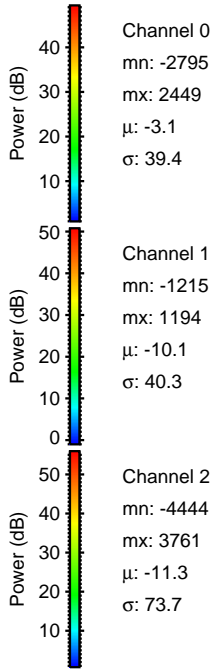
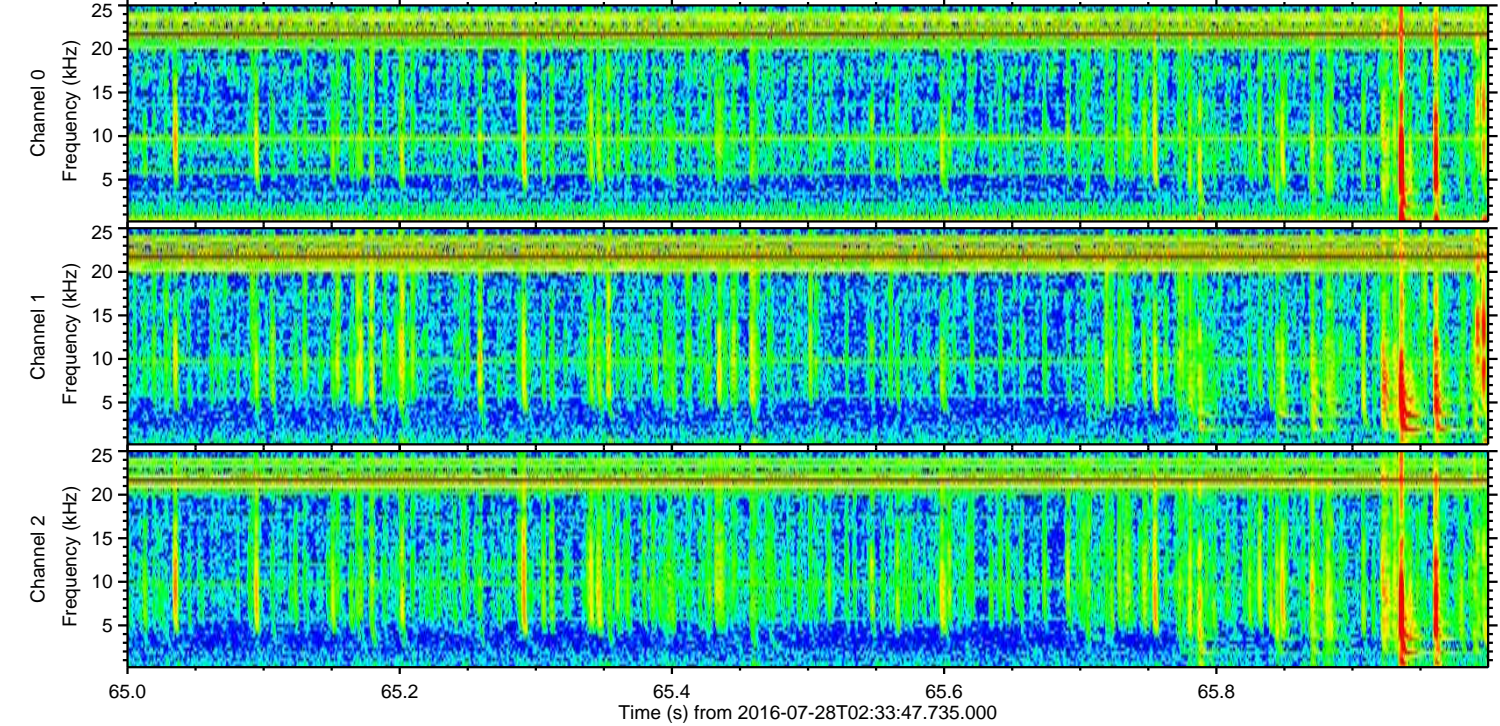
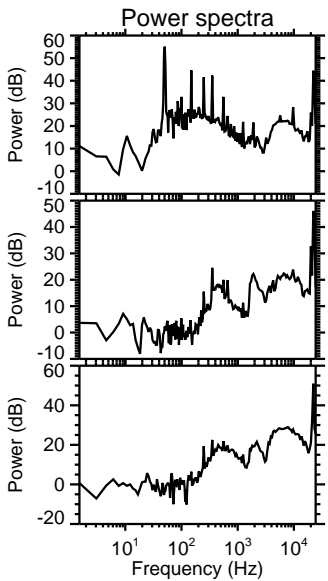
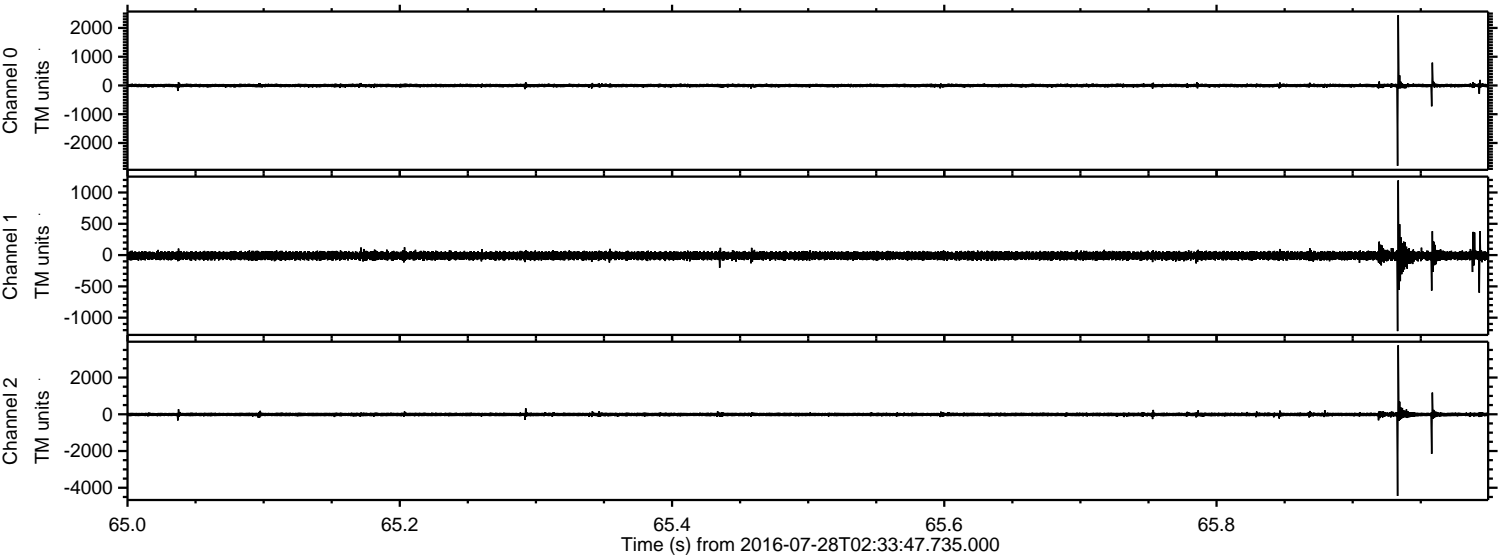


Processed Thu Jul 28 04:42:18 2016 by ELM ver.2012-10-06 from 001__elm20160728_023346__dat00.bin

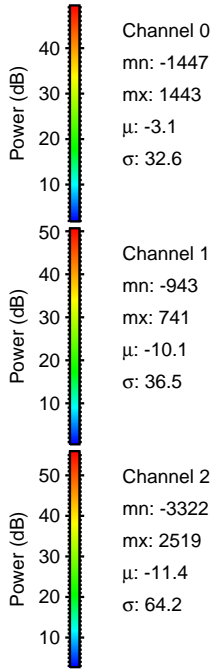
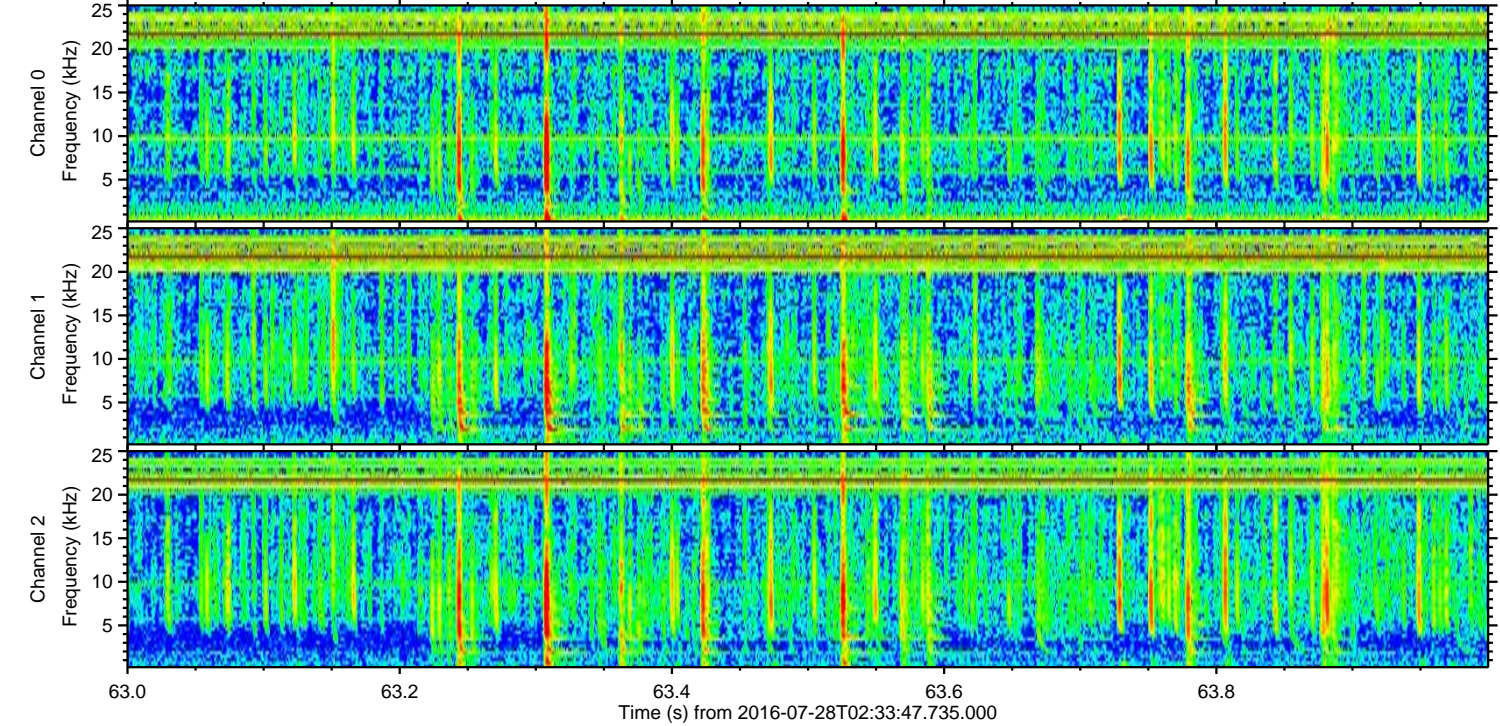
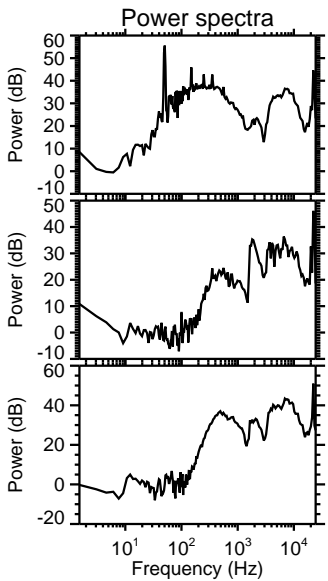
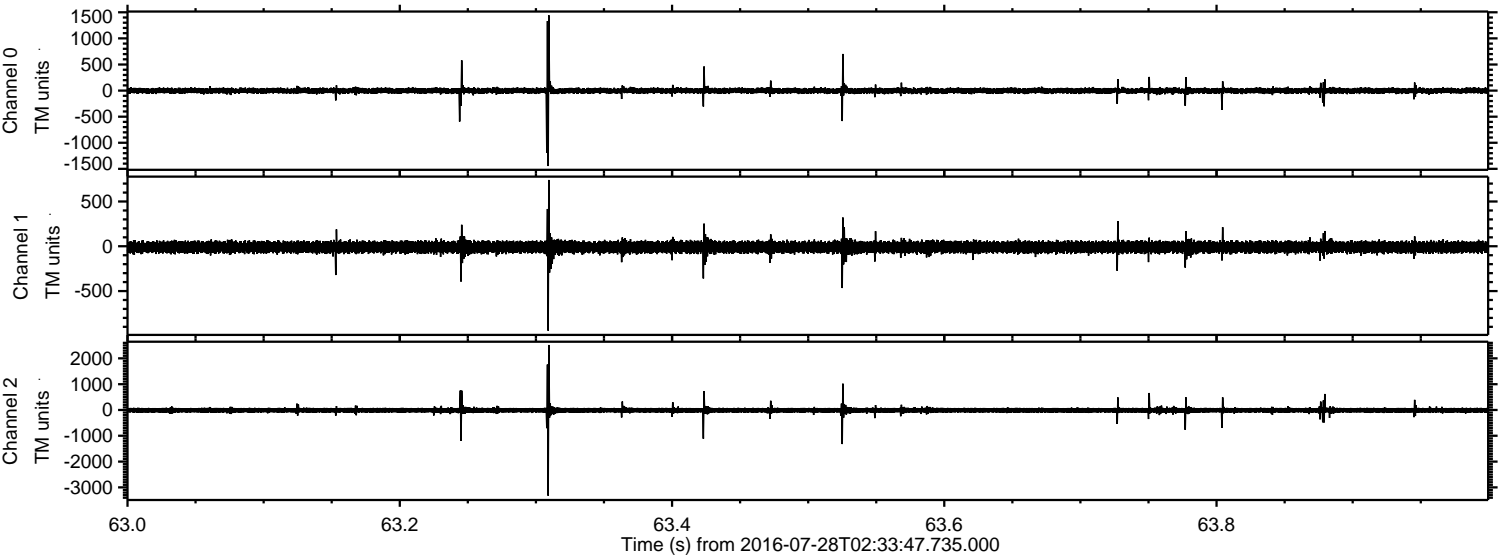


ELMAVAN 3D WAVEFORMS (Measured data sampled at 50 kHz) 51000 packets of 144 samples from 2016-07-28T02:33:47.735.000. Part 66/147

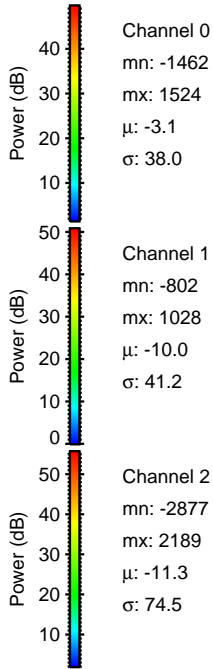
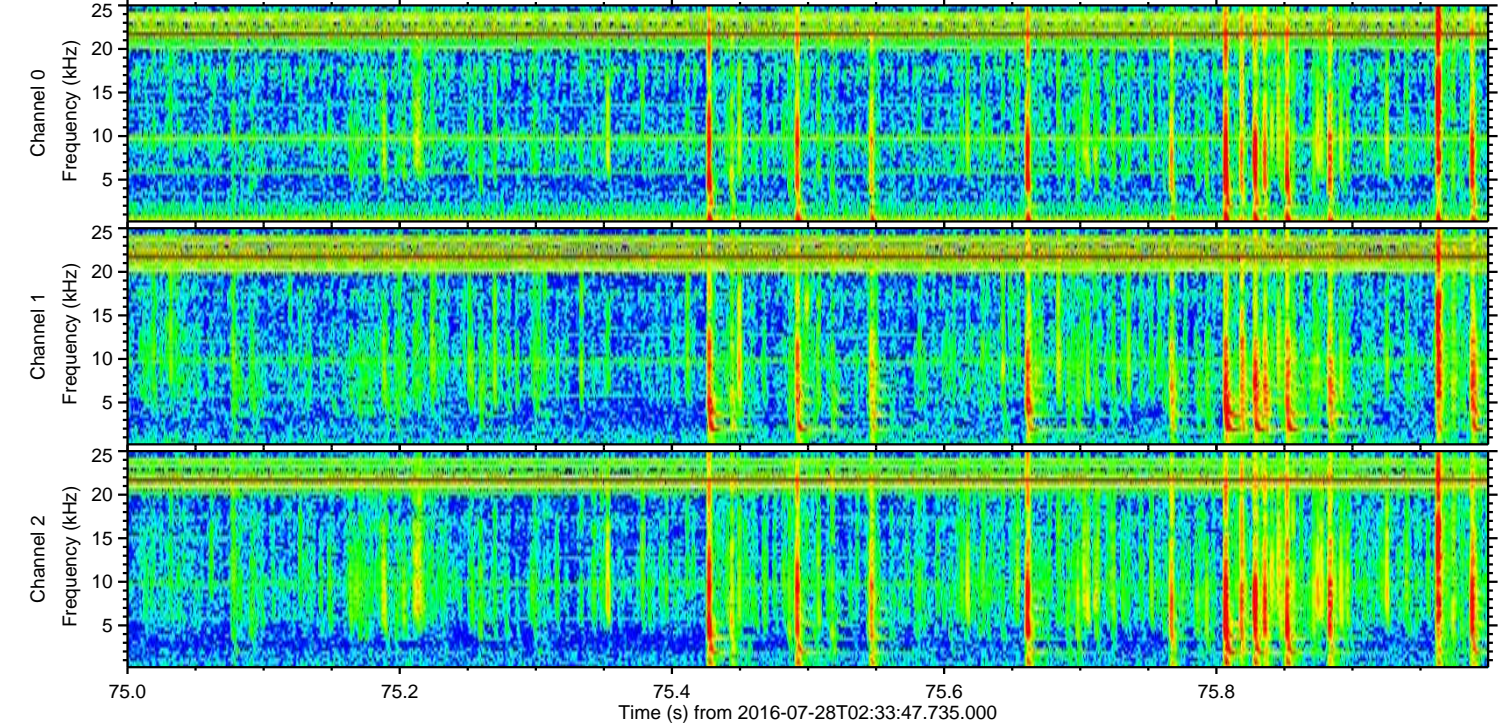
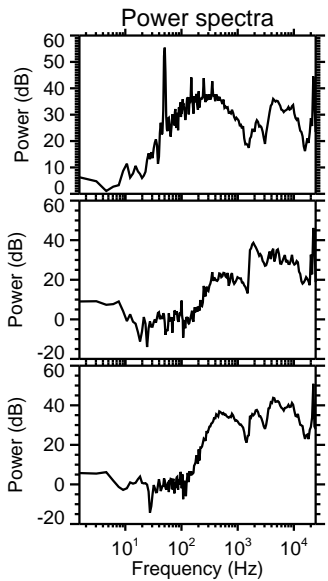
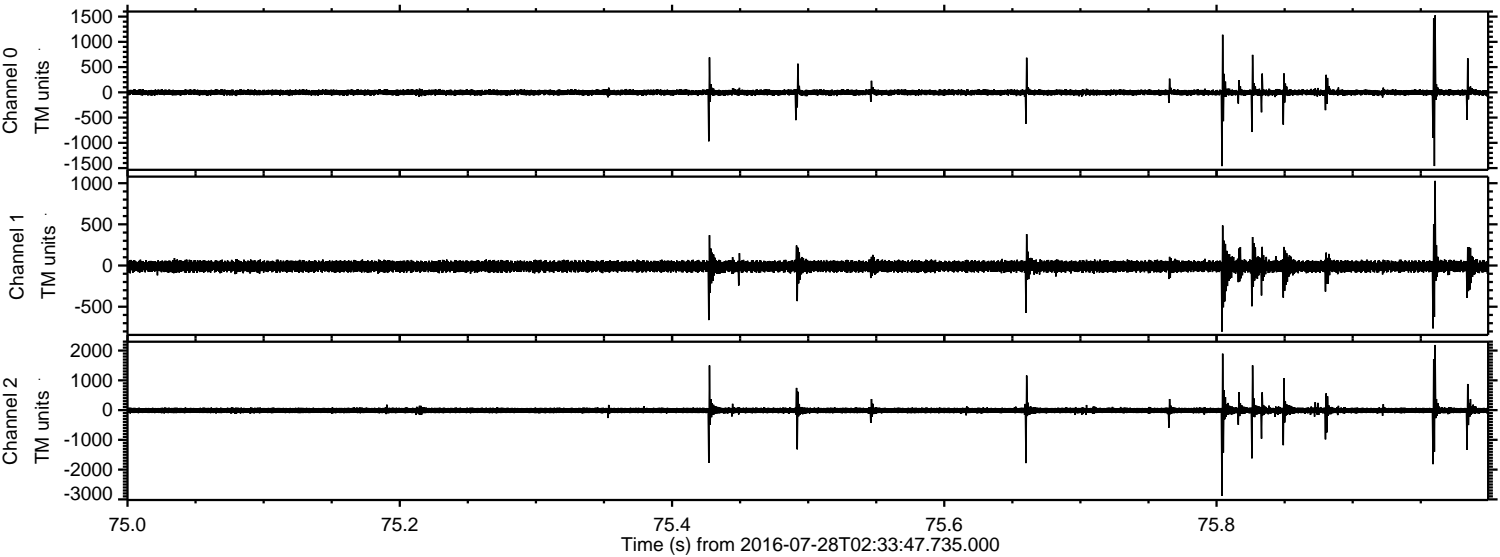
Processed Thu Jul 28 04:42:19 2016 by ELM ver.2012-10-06 from 001__elm20160728_023346__dat00.bin



Processed Thu Jul 28 04:42:20 2016 by ELM ver.2012-10-06 from 001__elm20160728_023346__dat00.bin



Processed Thu Jul 28 04:42:21 2016 by ELM ver.2012-10-06 from 001__elm20160728_023346__dat00.bin



Channel 0
mn: -1462
mx: 1524
 μ : -3.1
 σ : 38.0

Channel 1
mn: -802
mx: 1028
 μ : -10.0
 σ : 41.2

Channel 2
mn: -2877
mx: 2189
 μ : -11.3
 σ : 74.5

Processed Thu Jul 28 04:42:22 2016 by ELM ver.2012-10-06 from 001__elm20160728_023346__dat00.bin

