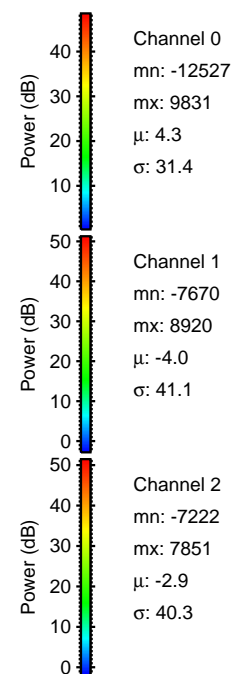
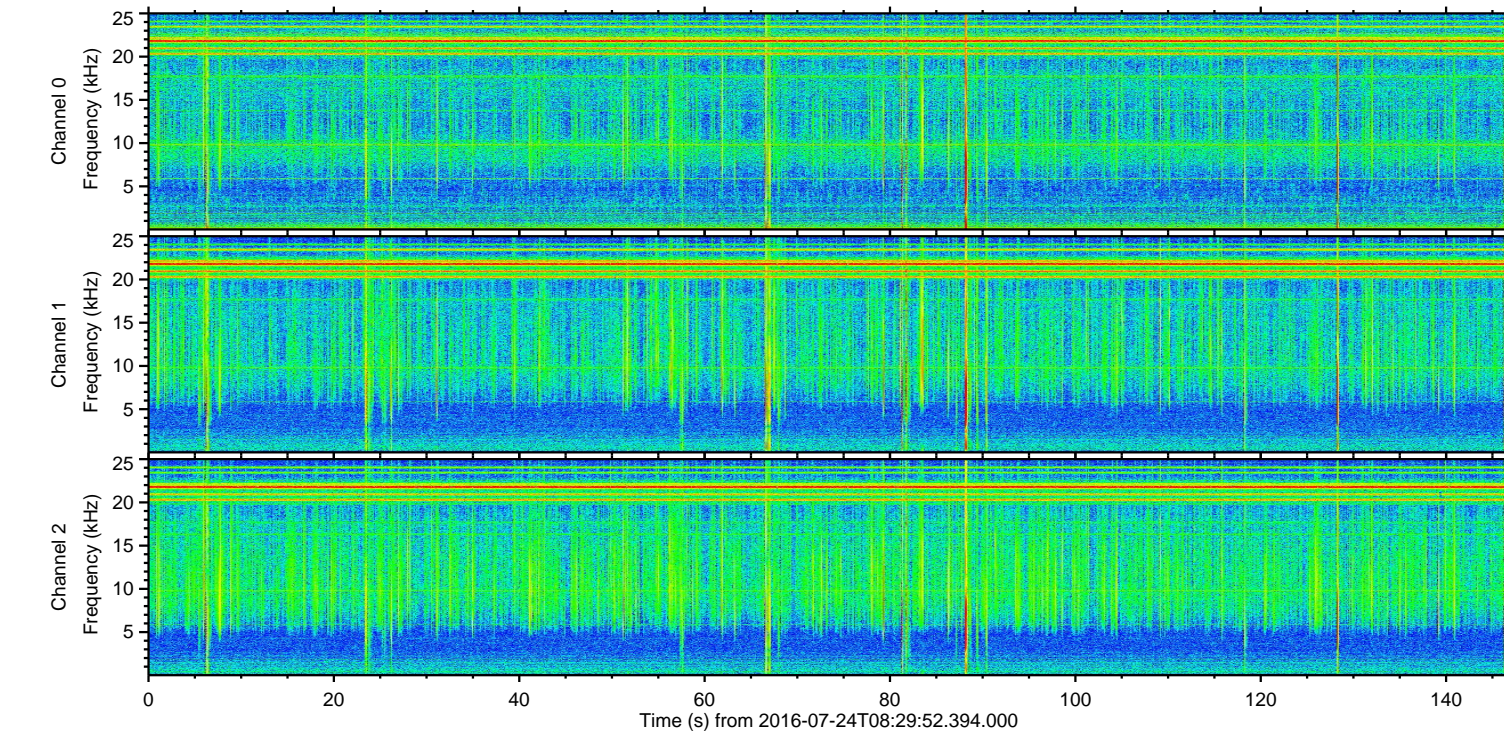
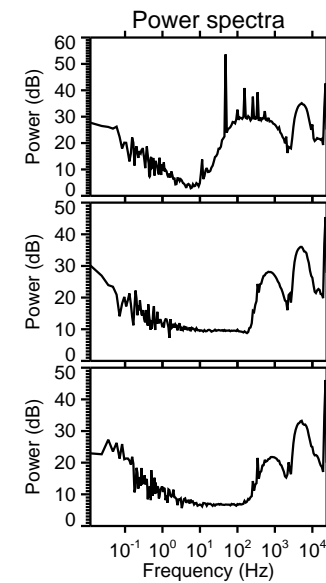
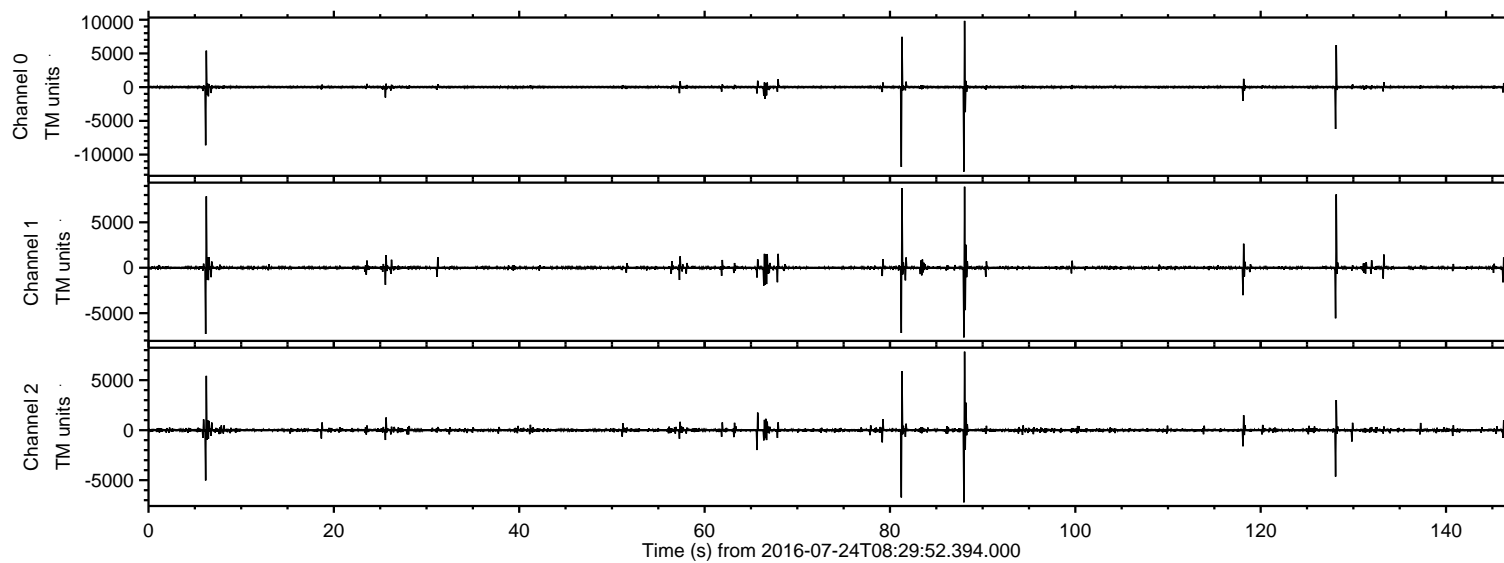
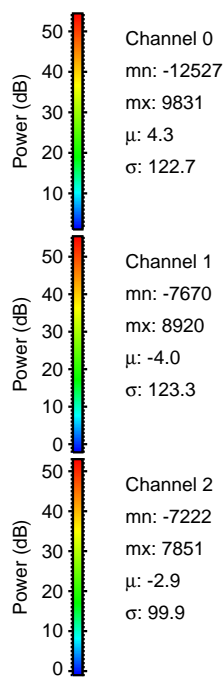
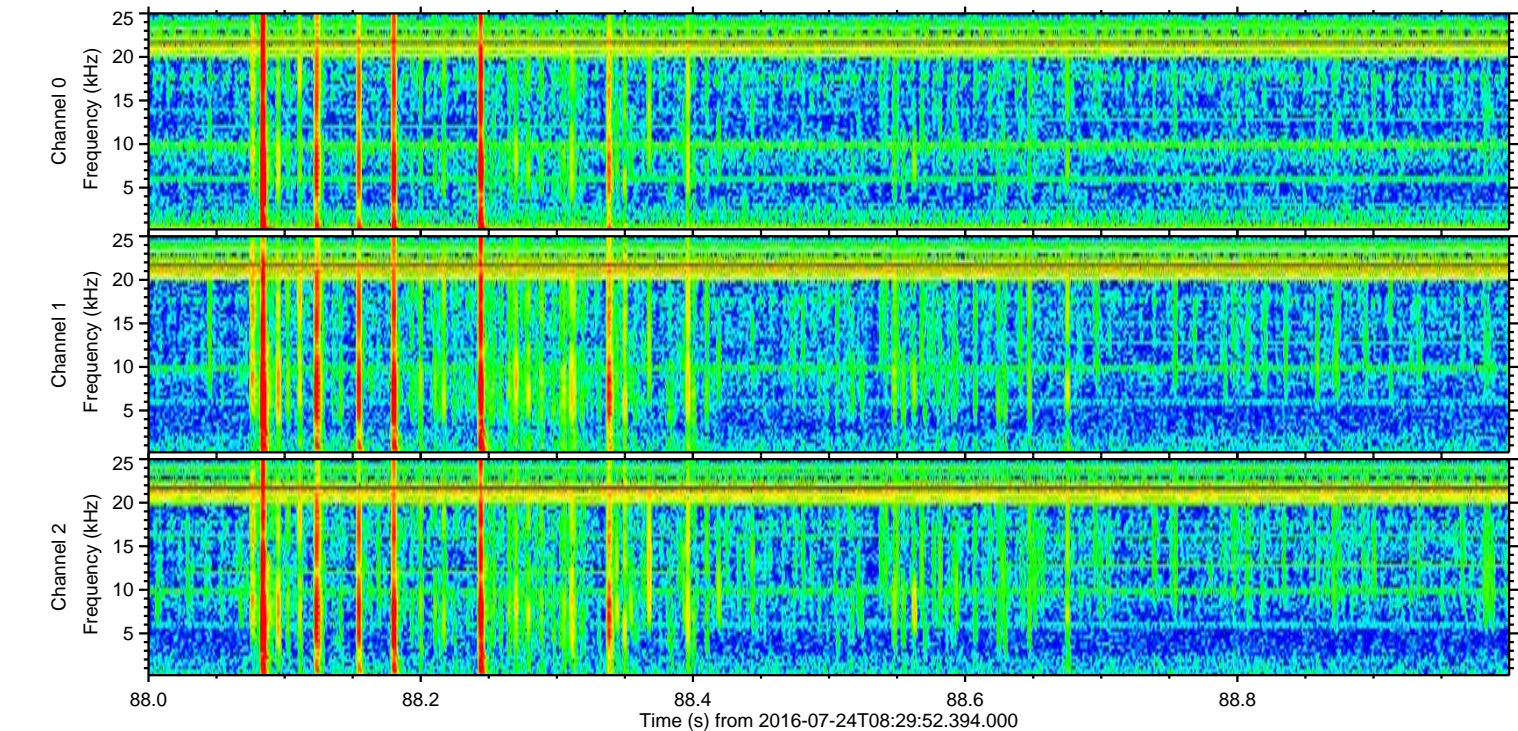
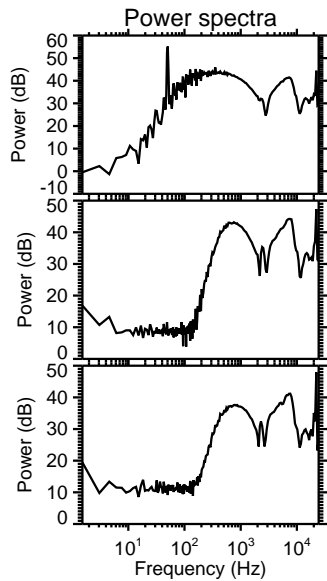
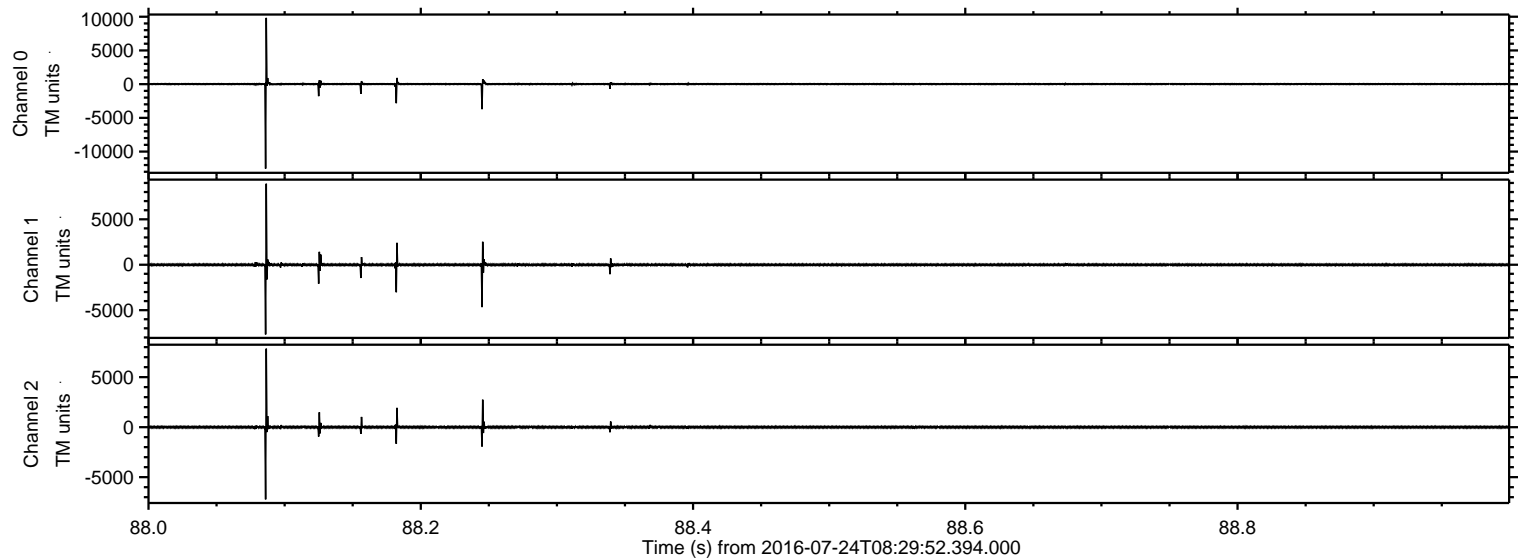


ELMAVAN 3D WAVEFORMS (Measured data sampled at 50 kHz) 51000 packets of 144 samples from 2016-07-24T08:29:52.394.000.

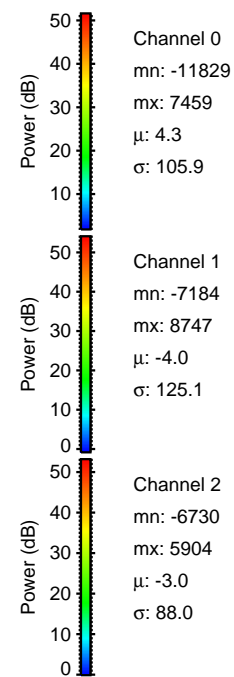
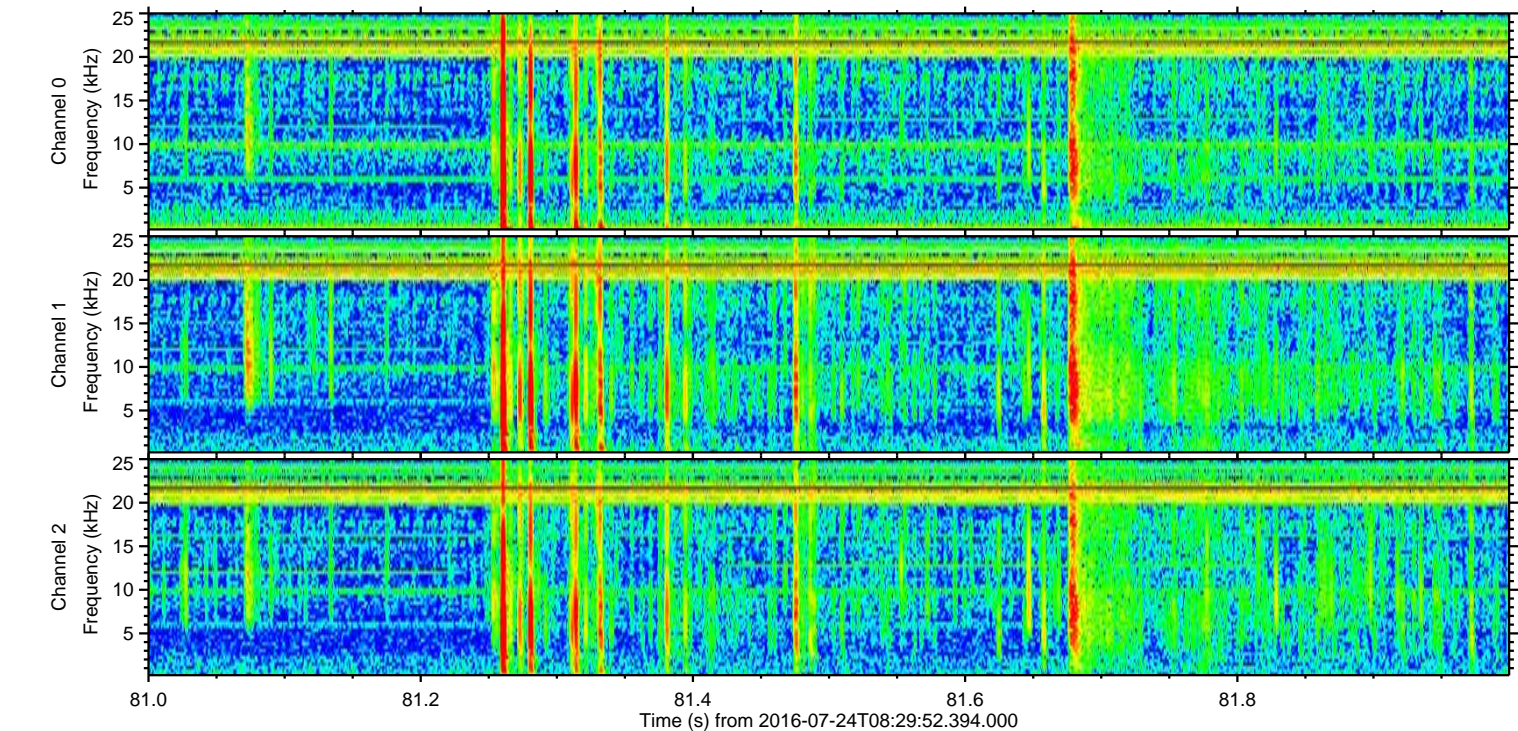
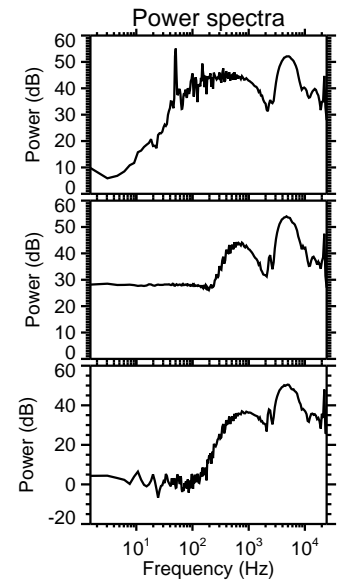
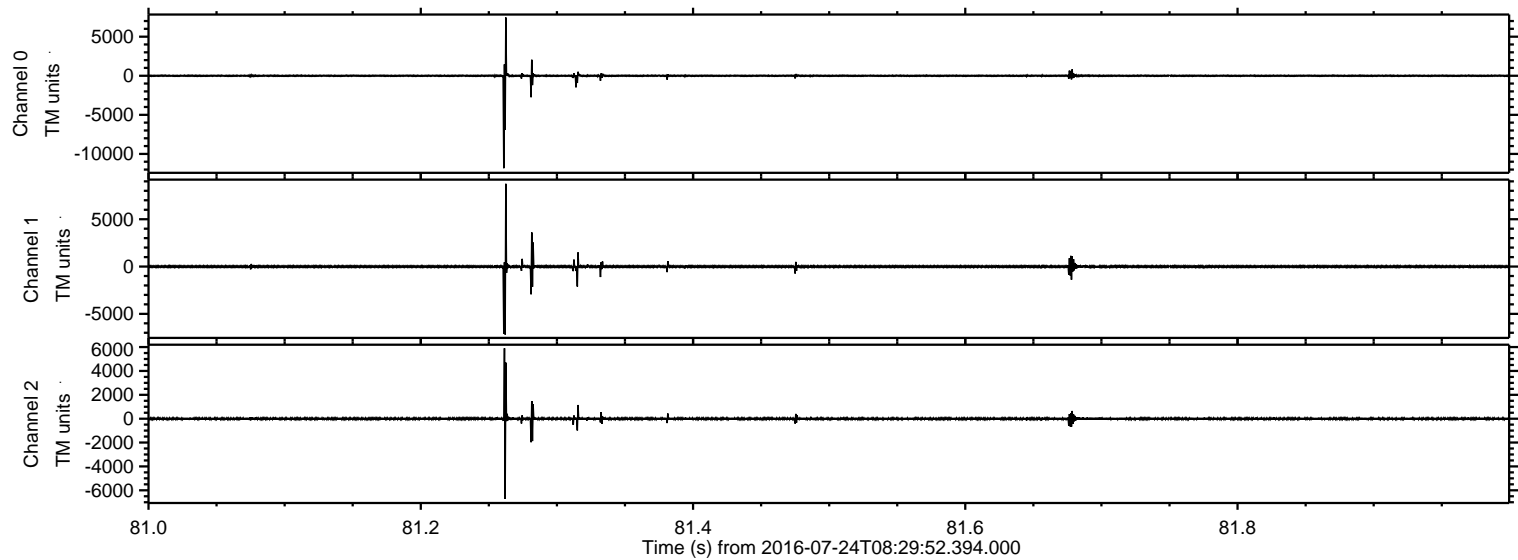
Processed Sun Jul 24 10:38:10 2016 by ELM ver.2012-10-06 from 001__elm20160724_082951__dat00.bin



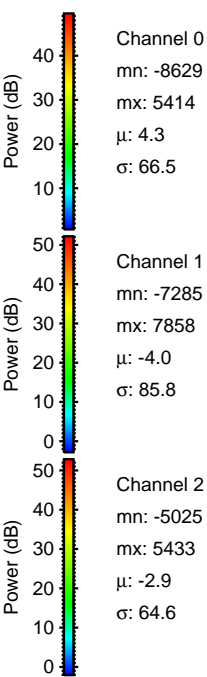
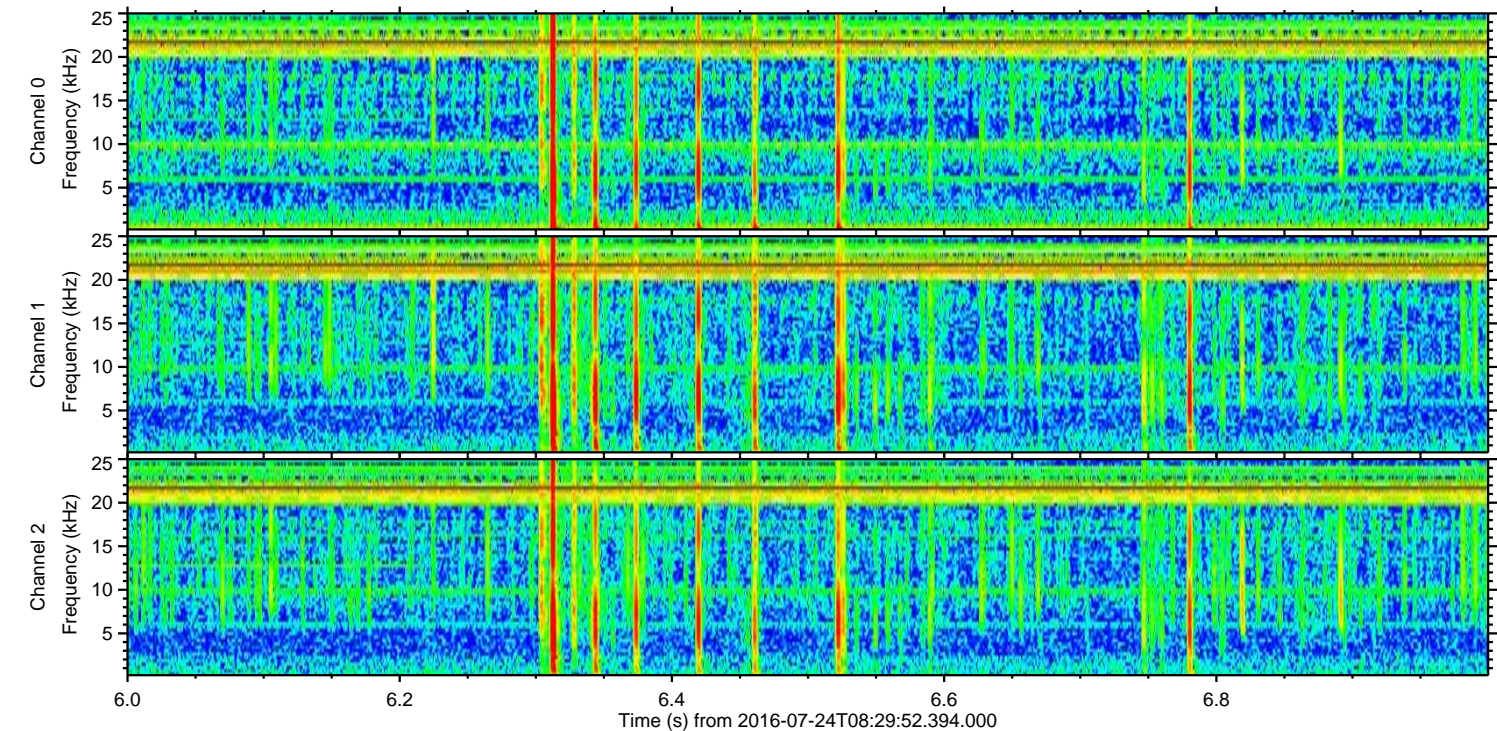
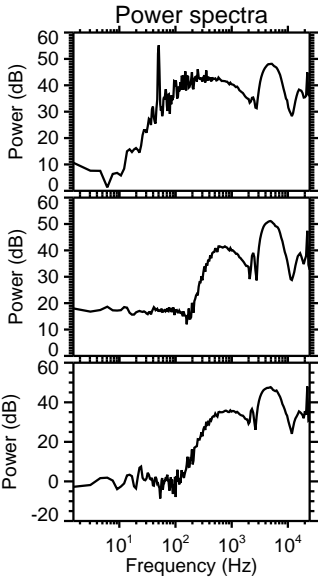
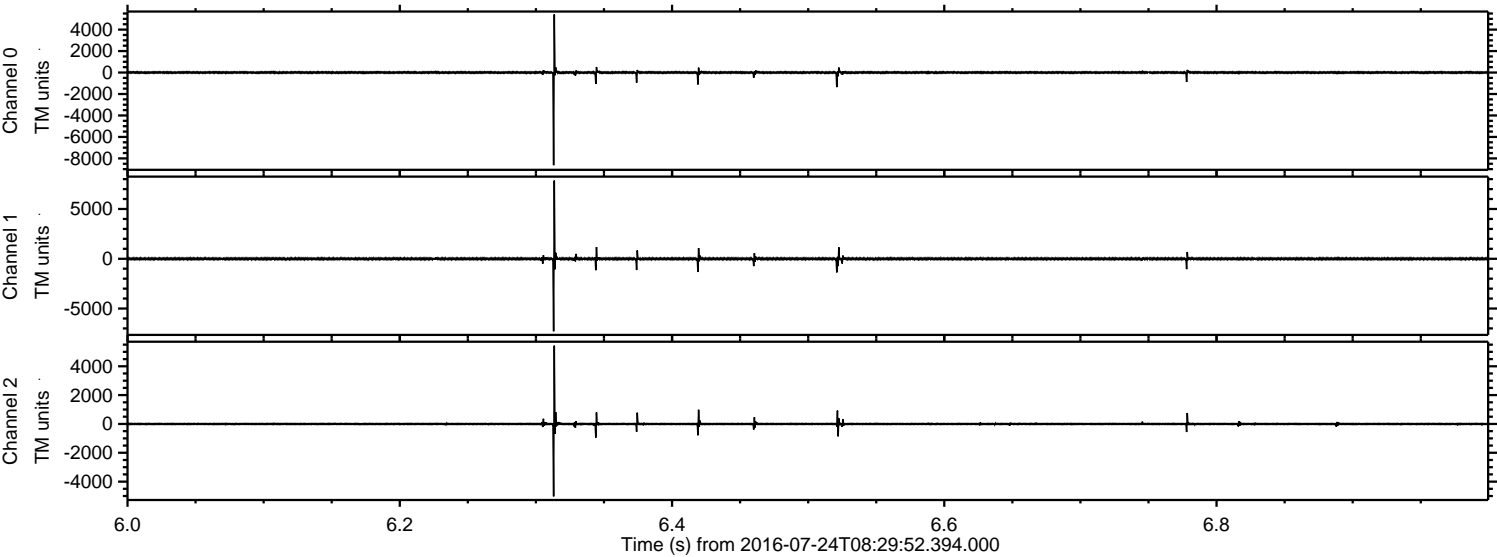
Processed Sun Jul 24 10:38:22 2016 by ELM ver.2012-10-06 from 001__elm20160724_082951__dat00.bin



Processed Sun Jul 24 10:38:22 2016 by ELM ver.2012-10-06 from 001__elm20160724_082951__dat00.bin

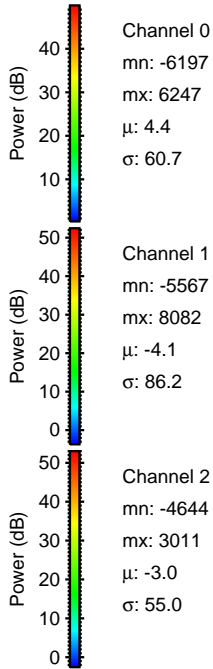
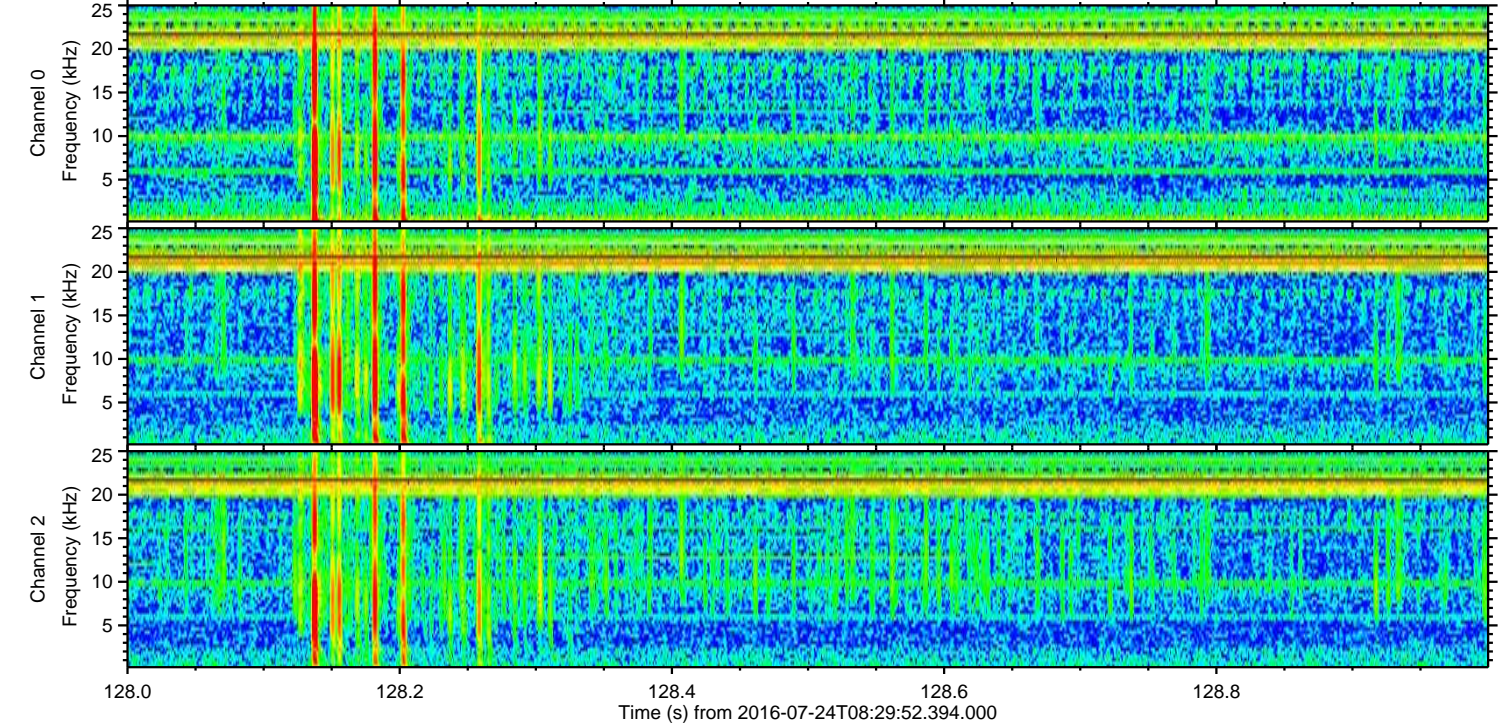
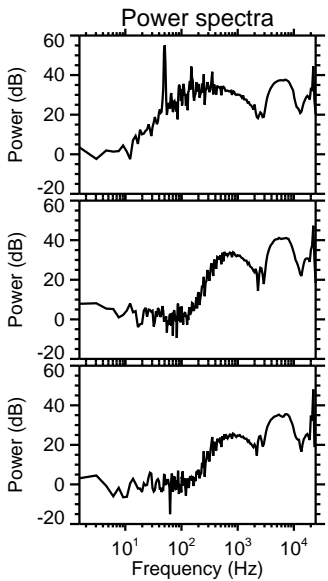
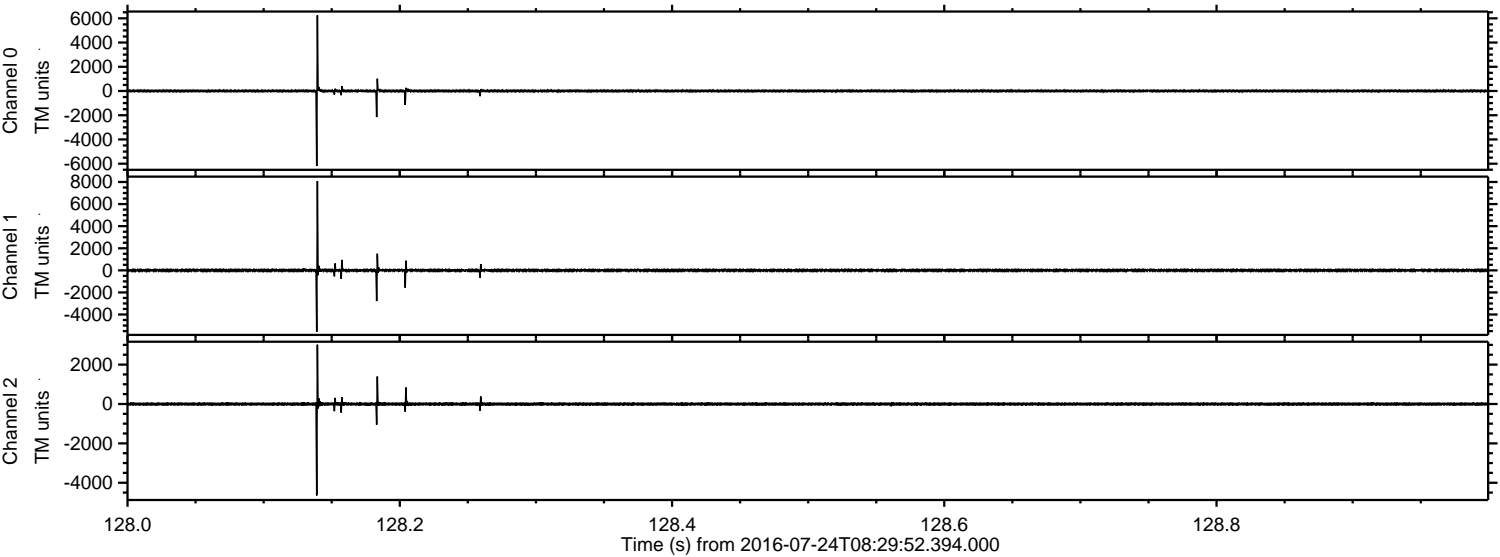


Processed Sun Jul 24 10:38:23 2016 by ELM ver.2012-10-06 from 001__elm20160724_082951__dat00.bin



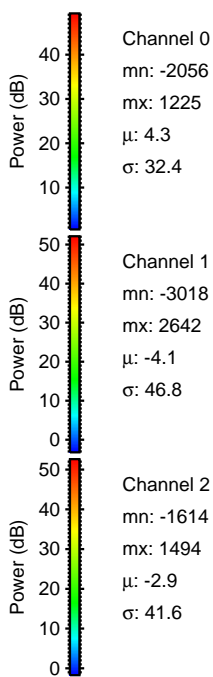
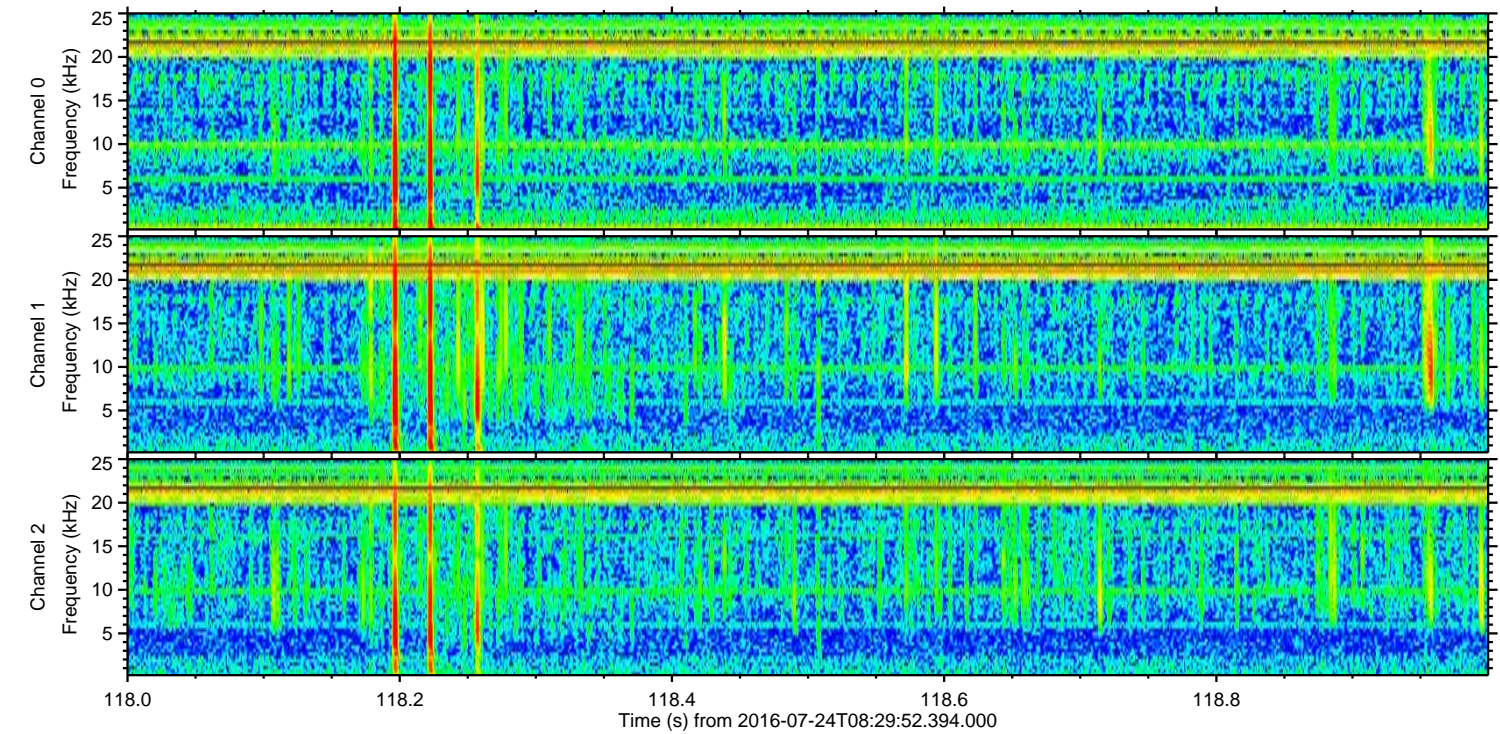
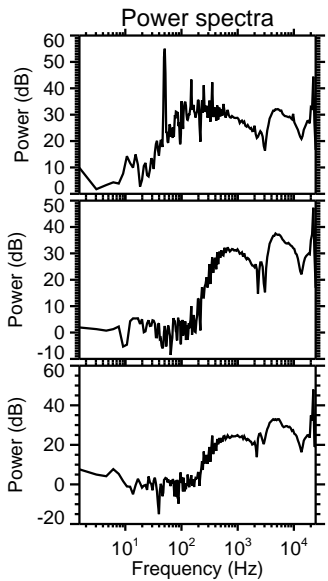
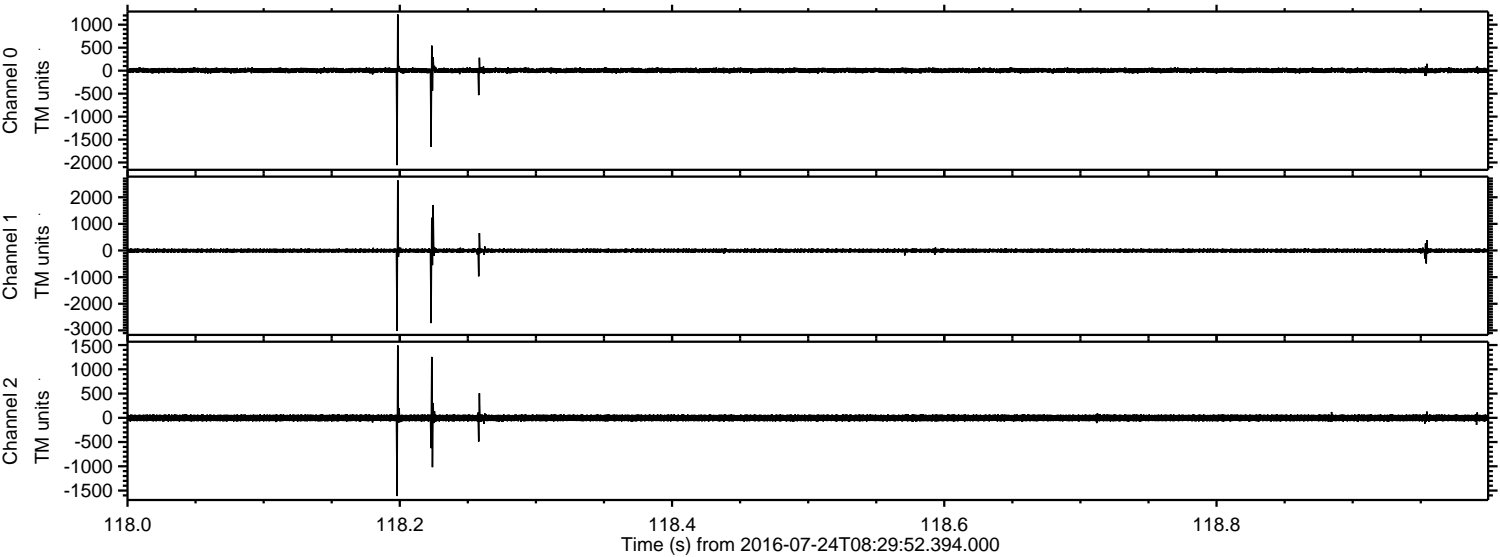
ELMAVAN 3D WAVEFORMS (Measured data sampled at 50 kHz) 51000 packets of 144 samples from 2016-07-24T08:29:52.394.000. Part 129/147

Processed Sun Jul 24 10:38:24 2016 by ELM ver.2012-10-06 from 001__elm20160724_082951__dat00.bin

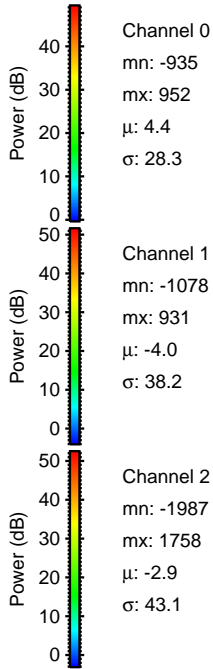
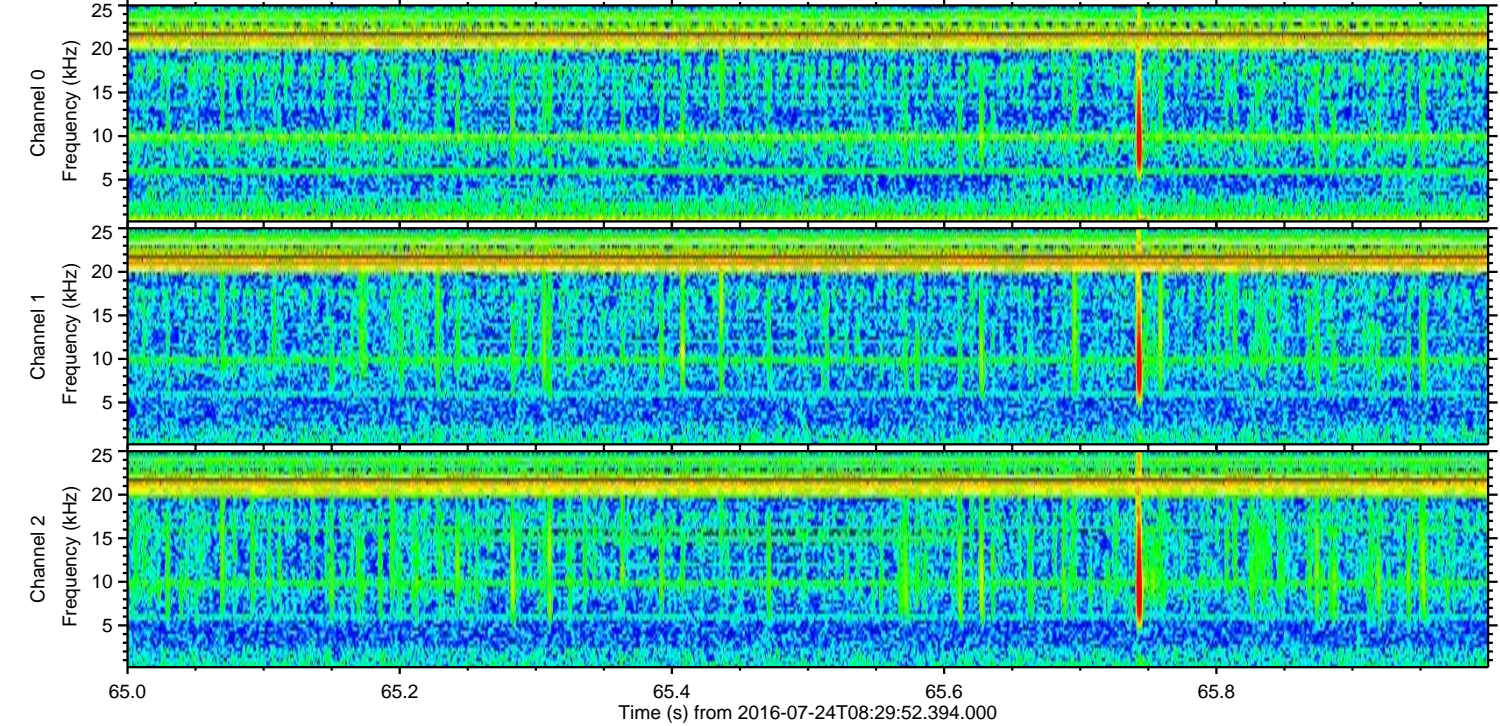
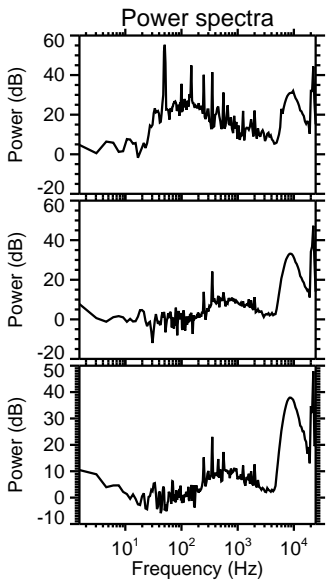
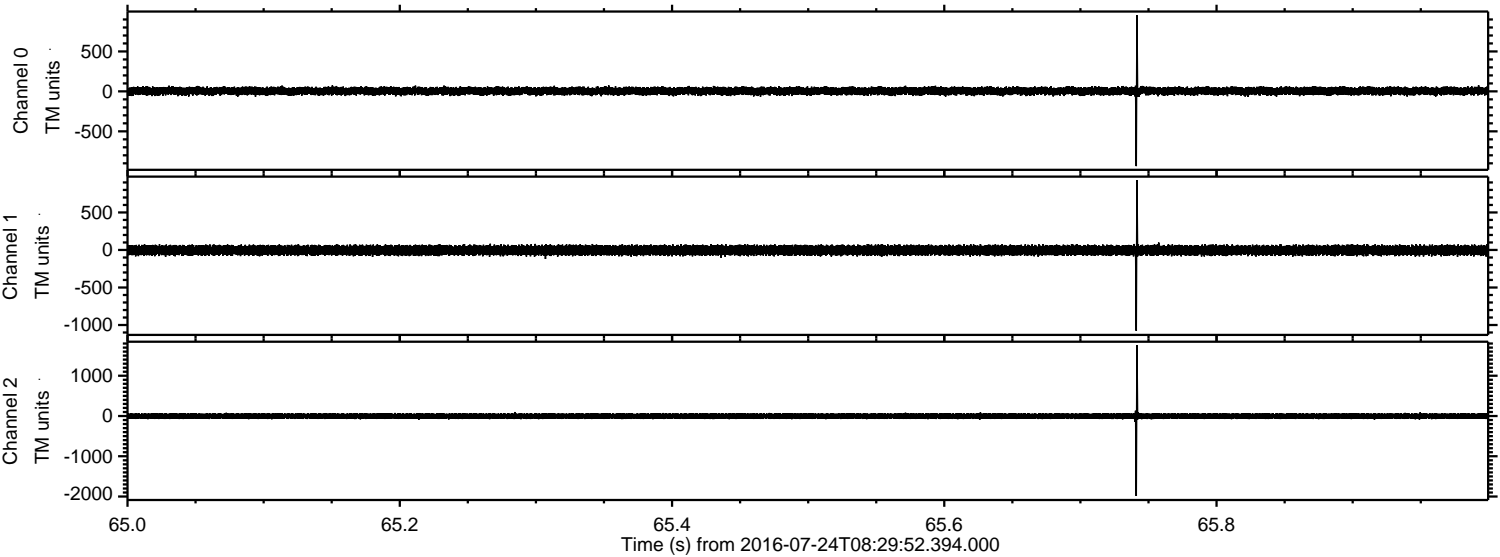


ELMAVAN 3D WAVEFORMS (Measured data sampled at 50 kHz) 51000 packets of 144 samples from 2016-07-24T08:29:52.394.000. Part 119/147

Processed Sun Jul 24 10:38:25 2016 by ELM ver.2012-10-06 from 001__elm20160724_082951__dat00.bin



Processed Sun Jul 24 10:38:26 2016 by ELM ver.2012-10-06 from 001__elm20160724_082951__dat00.bin

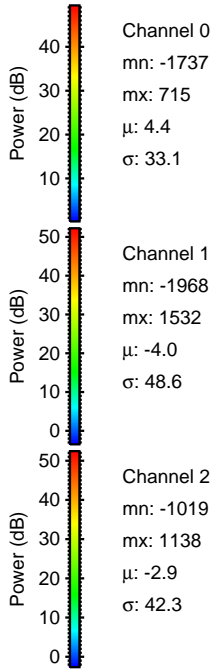
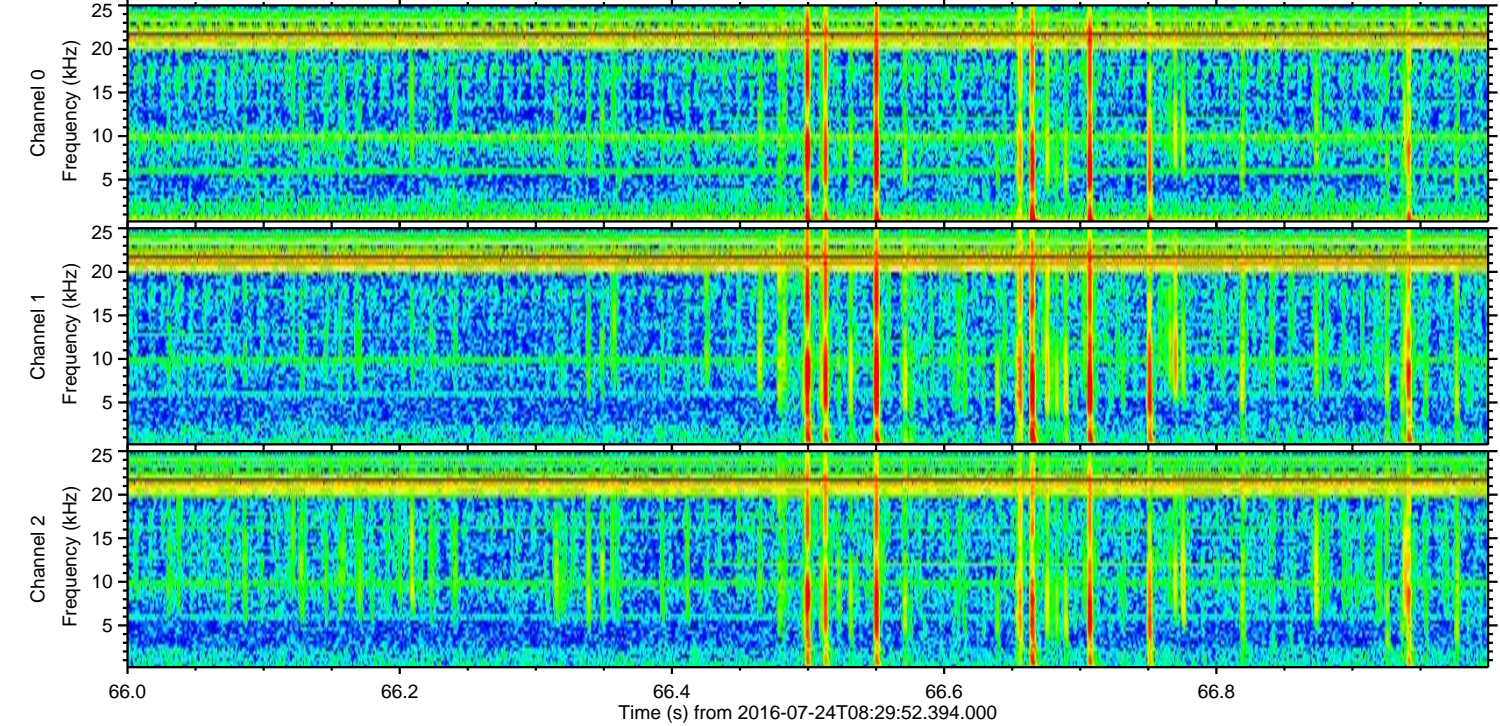
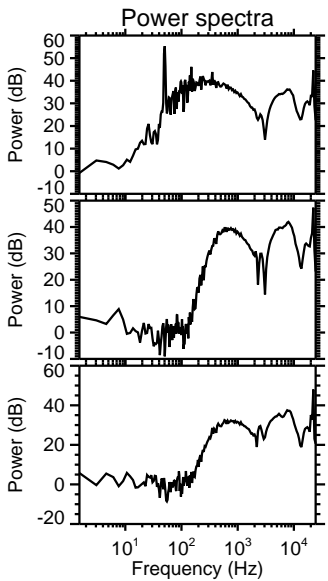
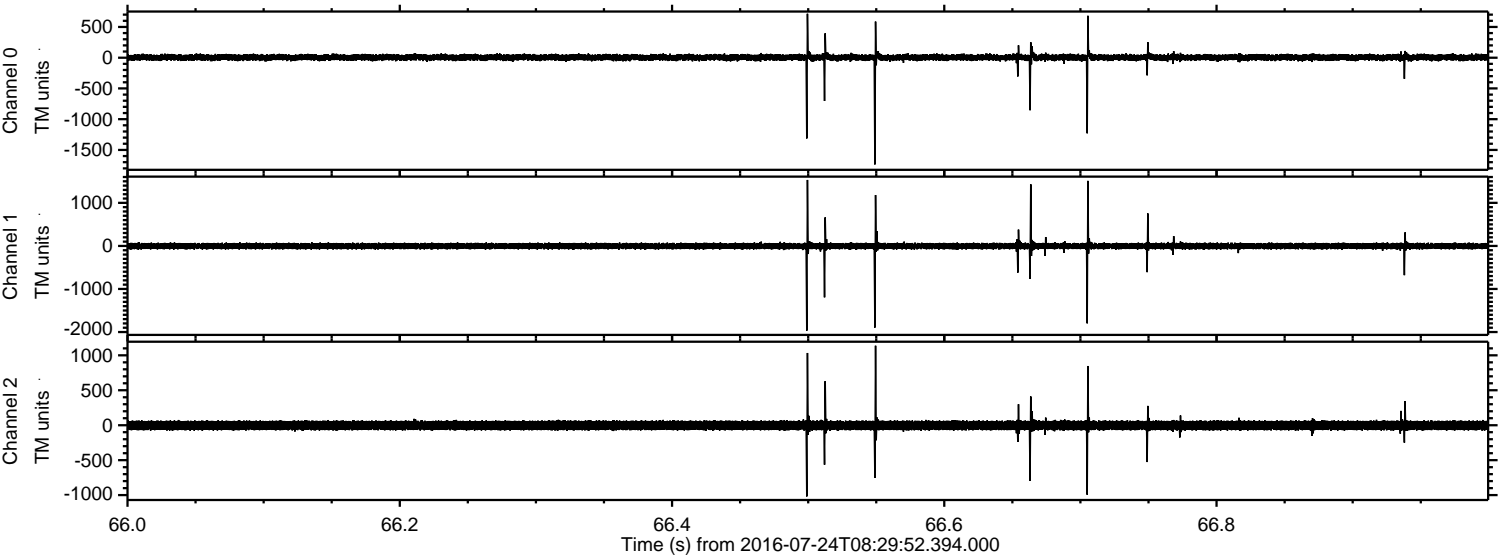


Channel 0
mn: -935
mx: 952
 μ : 4.4
 σ : 28.3

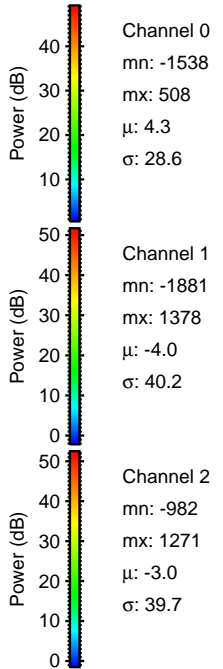
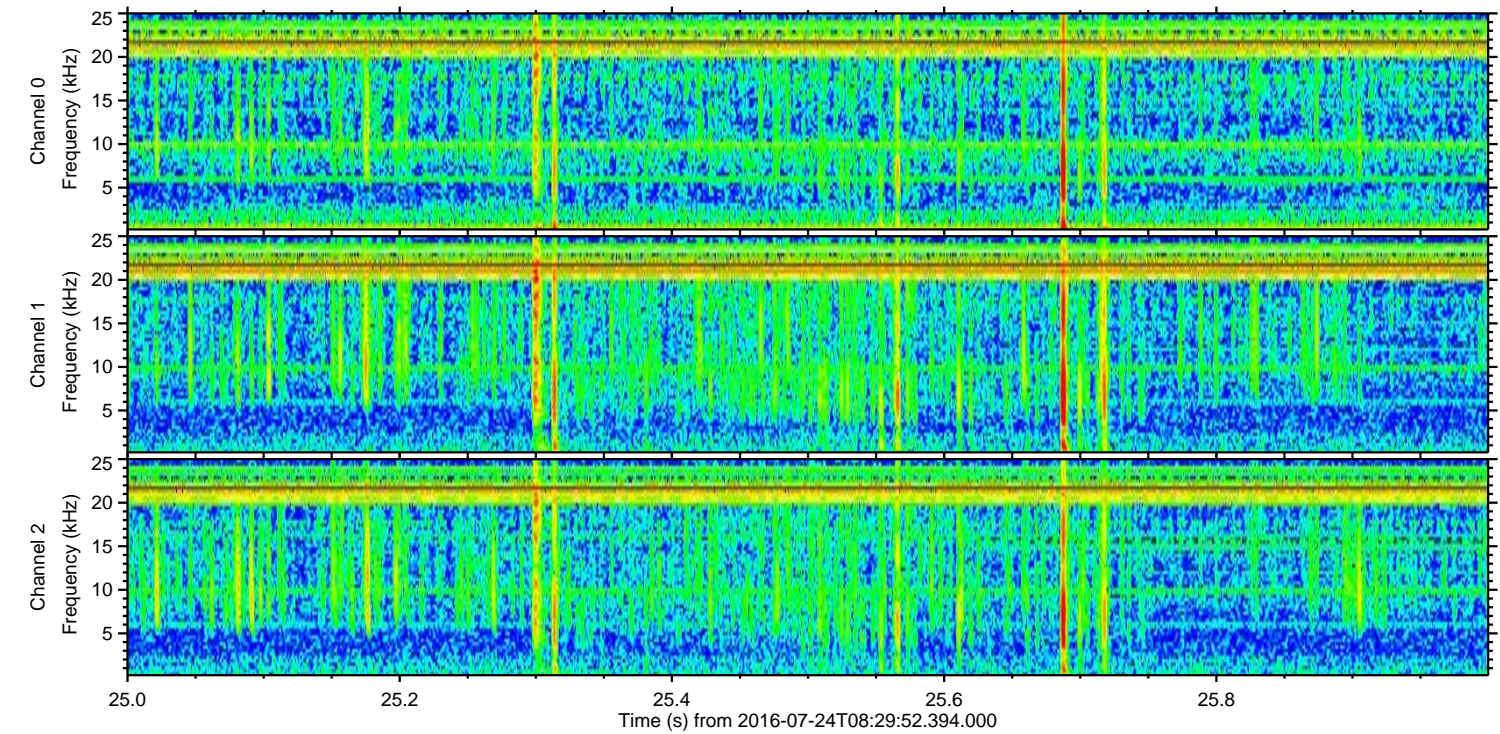
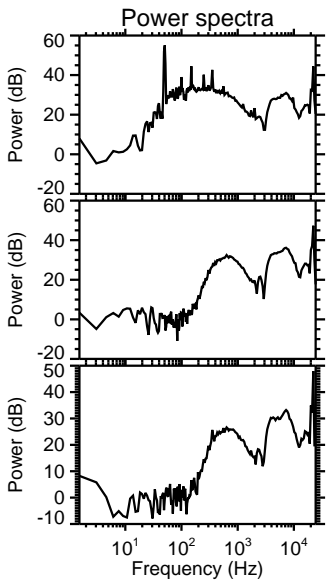
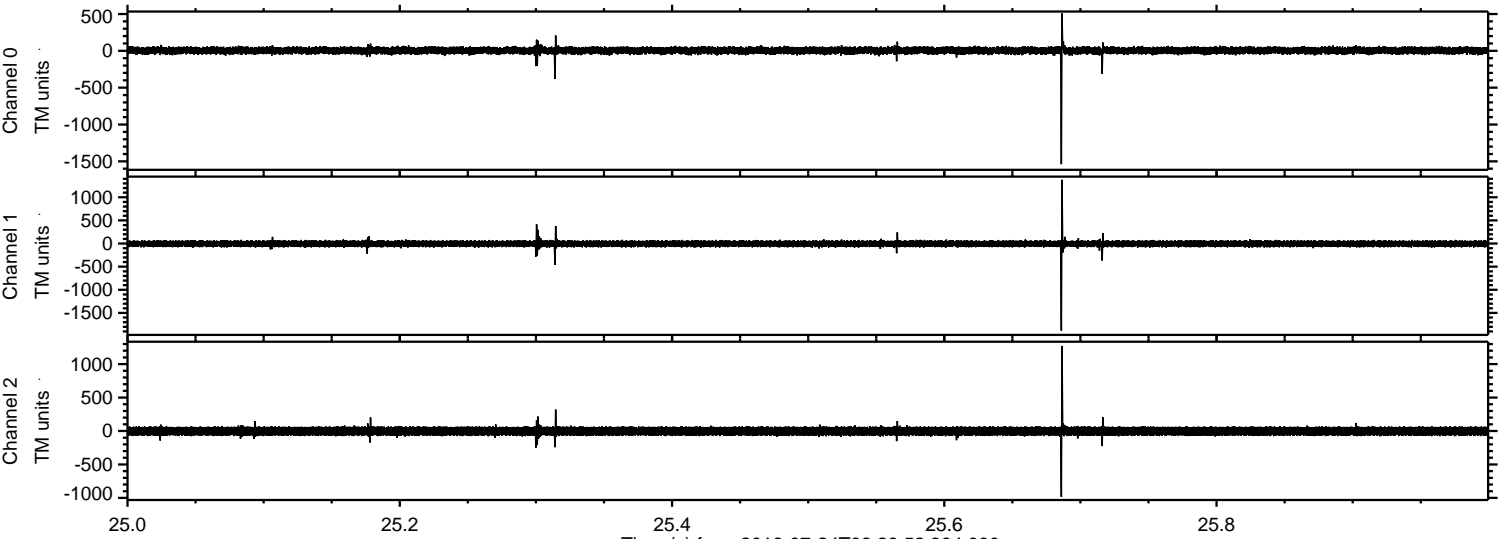
Channel 1
mn: -1078
mx: 931
 μ : -4.0
 σ : 38.2

Channel 2
mn: -1987
mx: 1758
 μ : -2.9
 σ : 43.1

Processed Sun Jul 24 10:38:27 2016 by ELM ver.2012-10-06 from 001__elm20160724_082951__dat00.bin



Processed Sun Jul 24 10:38:28 2016 by ELM ver.2012-10-06 from 001__elm20160724_082951__dat00.bin



Channel 0
mn: -1538
mx: 508
 μ : 4.3
 σ : 28.6

Channel 1
mn: -1881
mx: 1378
 μ : -4.0
 σ : 40.2

Channel 2
mn: -982
mx: 1271
 μ : -3.0
 σ : 39.7

Processed Sun Jul 24 10:38:29 2016 by ELM ver.2012-10-06 from 001__elm20160724_082951__dat00.bin

