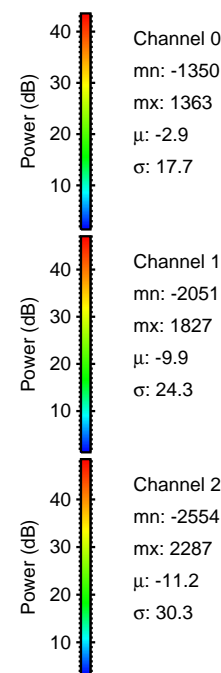
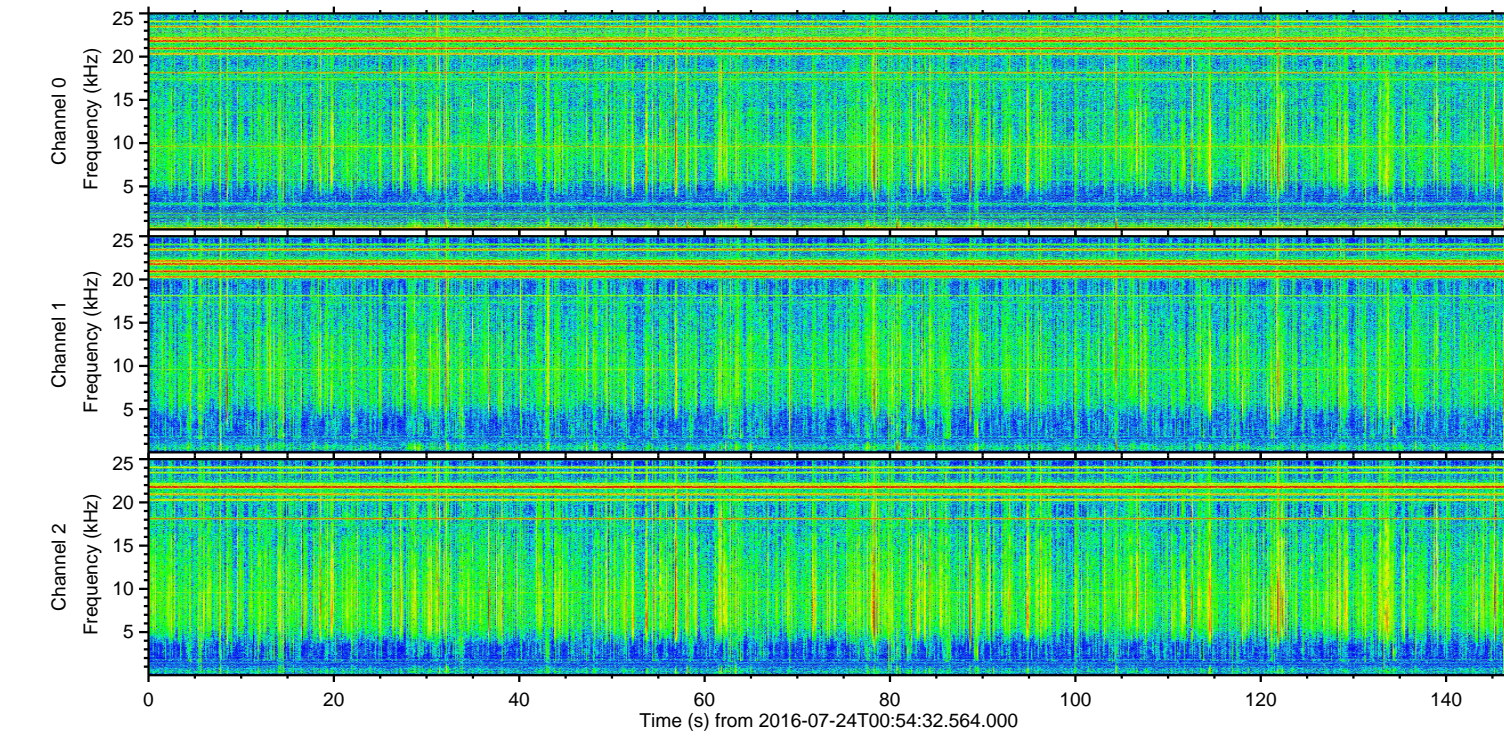
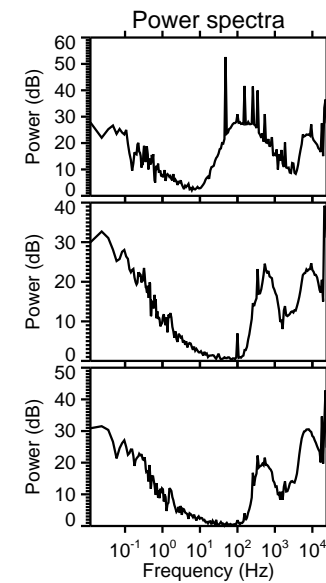
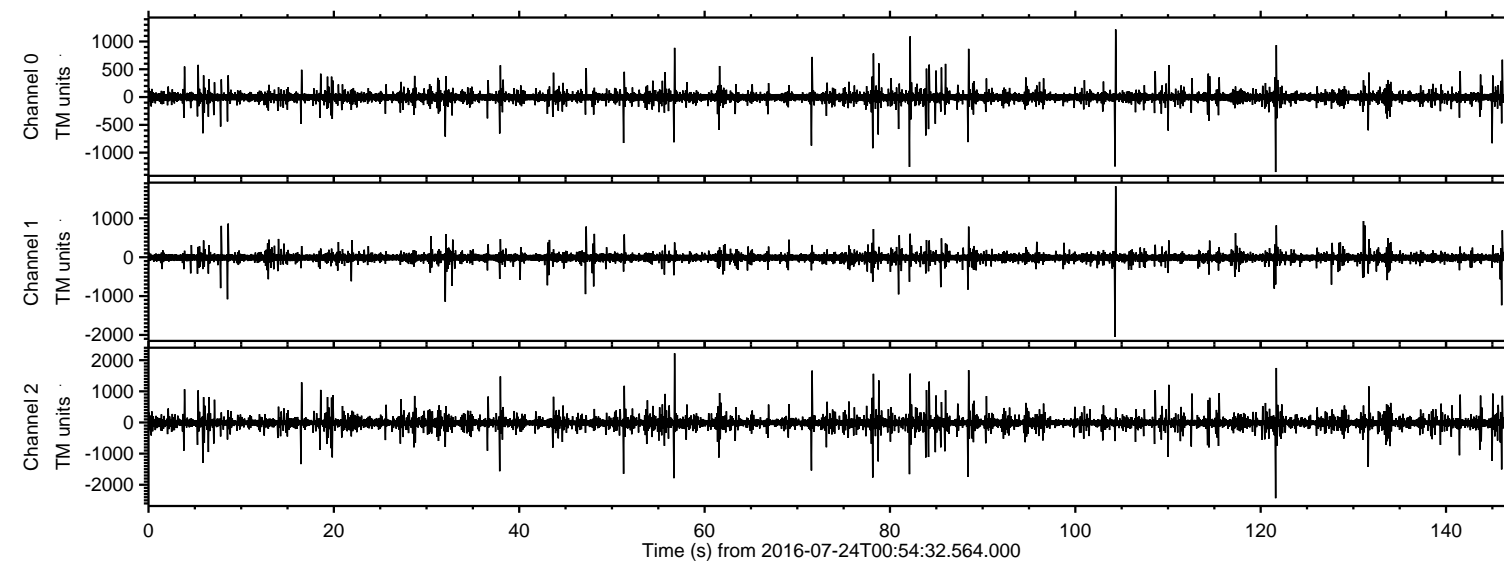


ELMAVAN 3D WAVEFORMS (Measured data sampled at 50 kHz) 51000 packets of 144 samples from 2016-07-24T00:54:32.564.000.

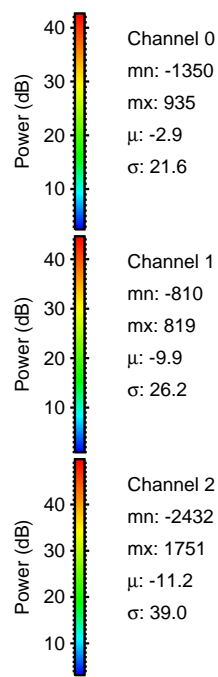
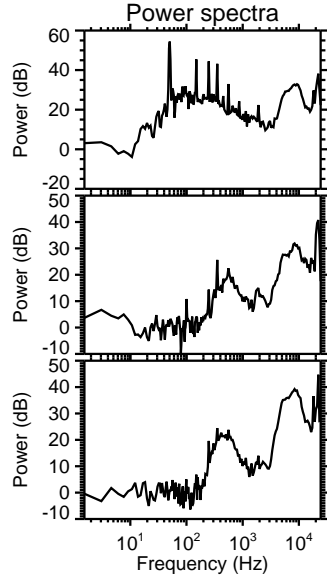
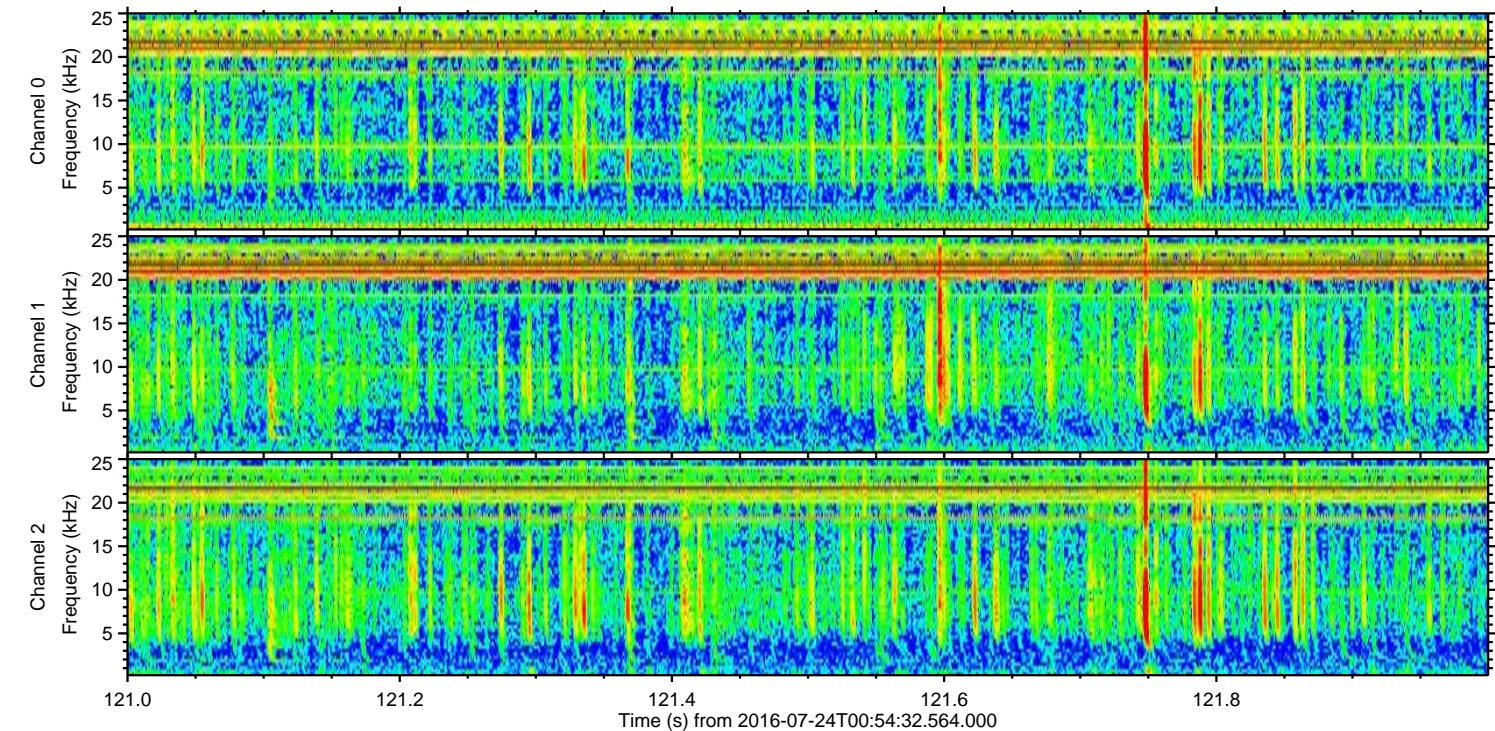
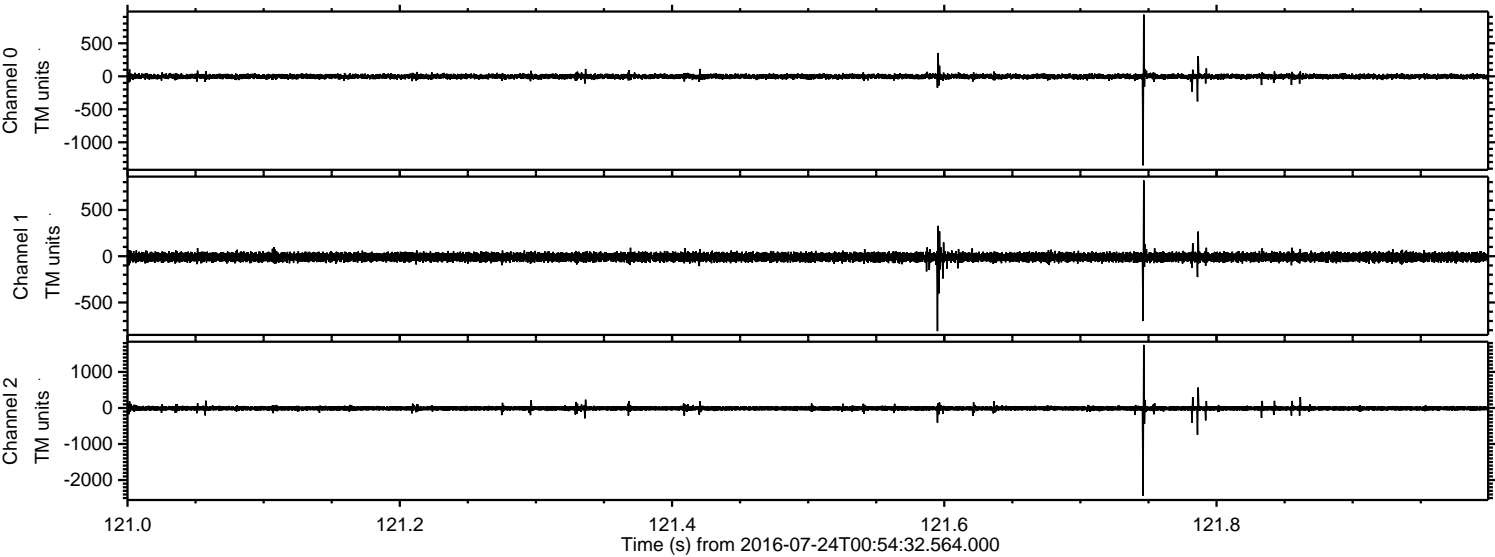
Processed Sun Jul 24 03:03:03 2016 by ELM ver.2012-10-06 from 001\_\_elm20160724\_005431\_\_dat00.bin





ELMAVAN 3D WAVEFORMS (Measured data sampled at 50 kHz) 51000 packets of 144 samples from 2016-07-24T00:54:32.564.000. Part 122/147

Processed Sun Jul 24 03:03:14 2016 by ELM ver.2012-10-06 from 001\_\_elm20160724\_005431\_\_dat00.bin



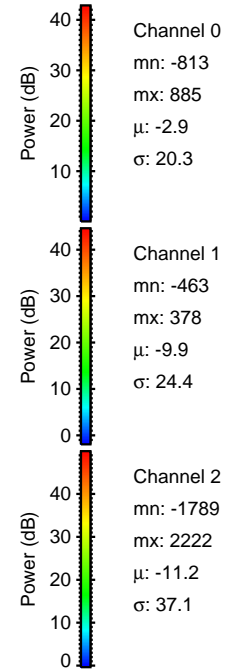
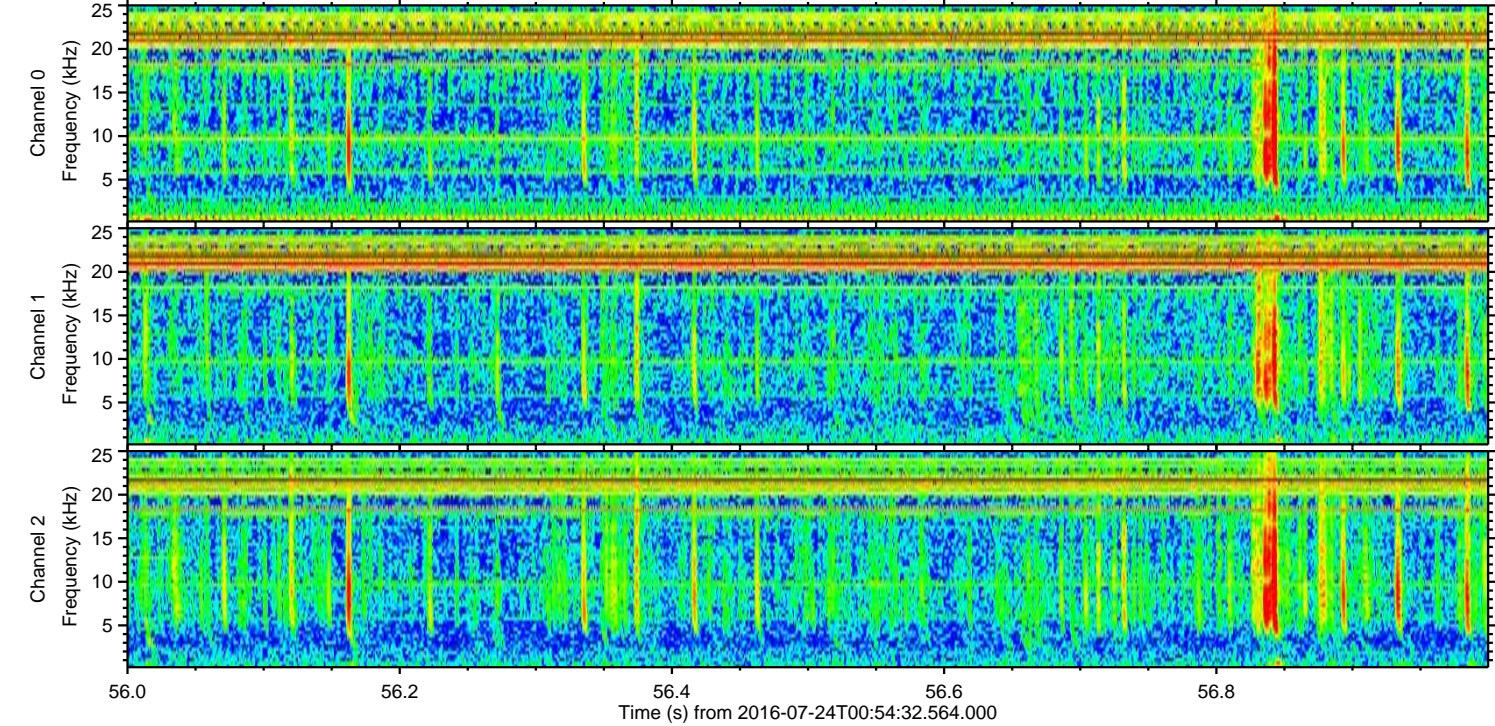
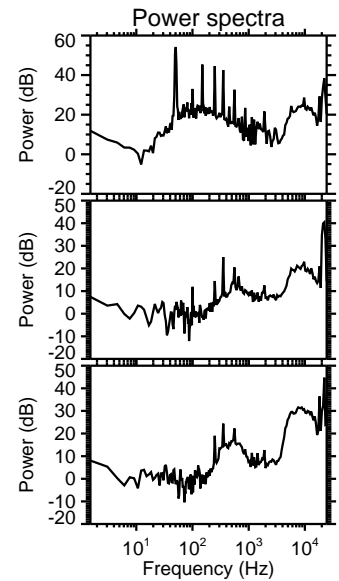
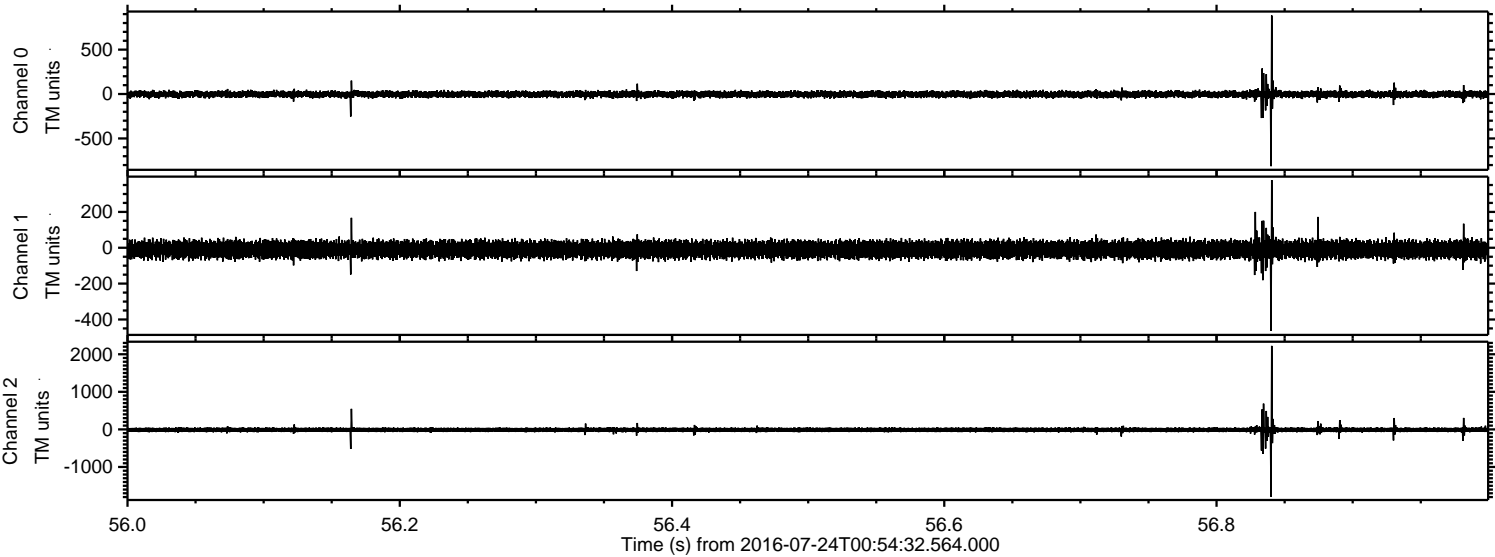
Channel 0  
mn: -1350  
mx: 935  
 $\mu$ : -2.9  
 $\sigma$ : 21.6

Channel 1  
mn: -810  
mx: 819  
 $\mu$ : -9.9  
 $\sigma$ : 26.2

Channel 2  
mn: -2432  
mx: 1751  
 $\mu$ : -11.2  
 $\sigma$ : 39.0



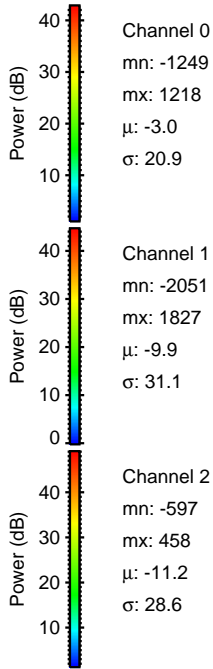
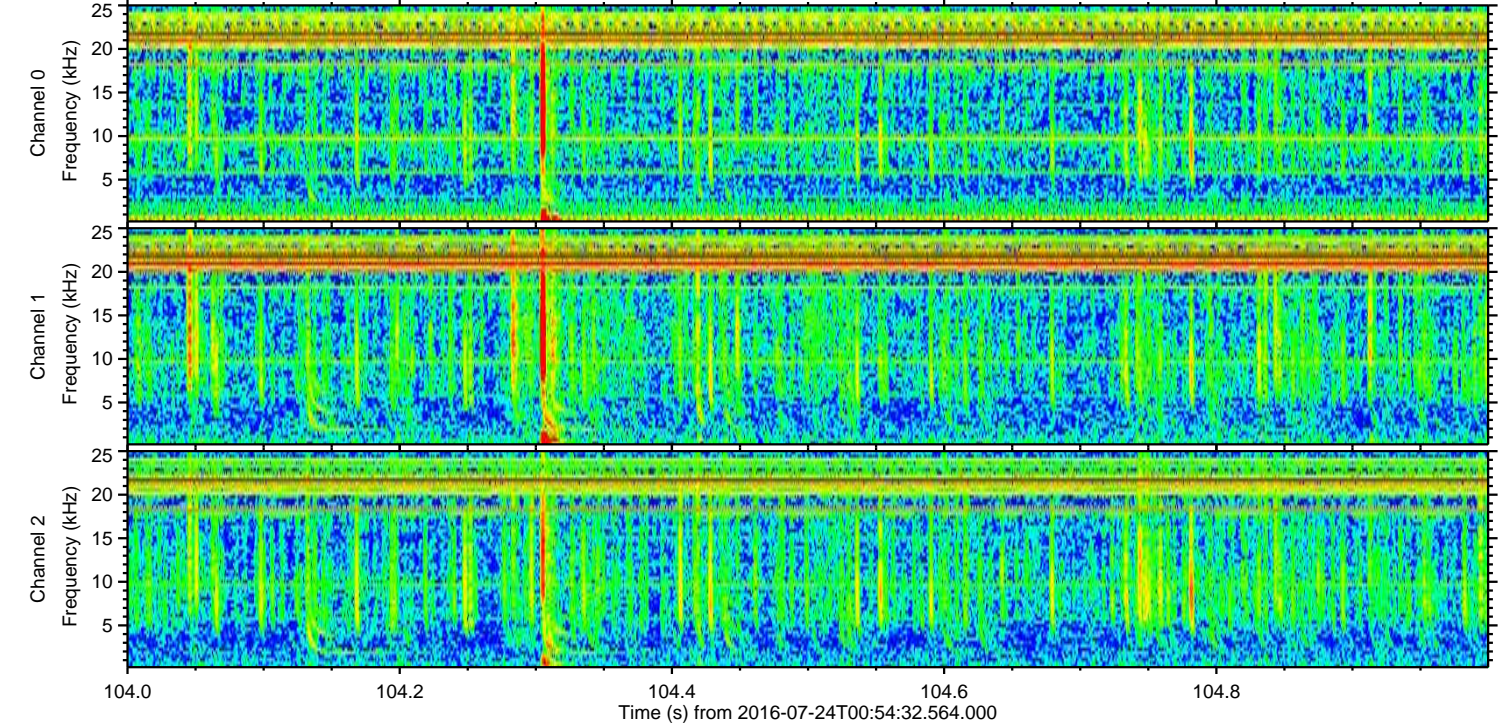
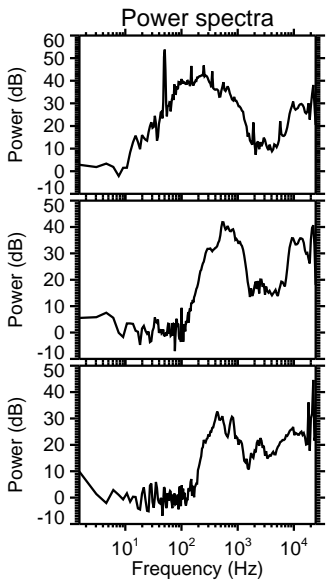
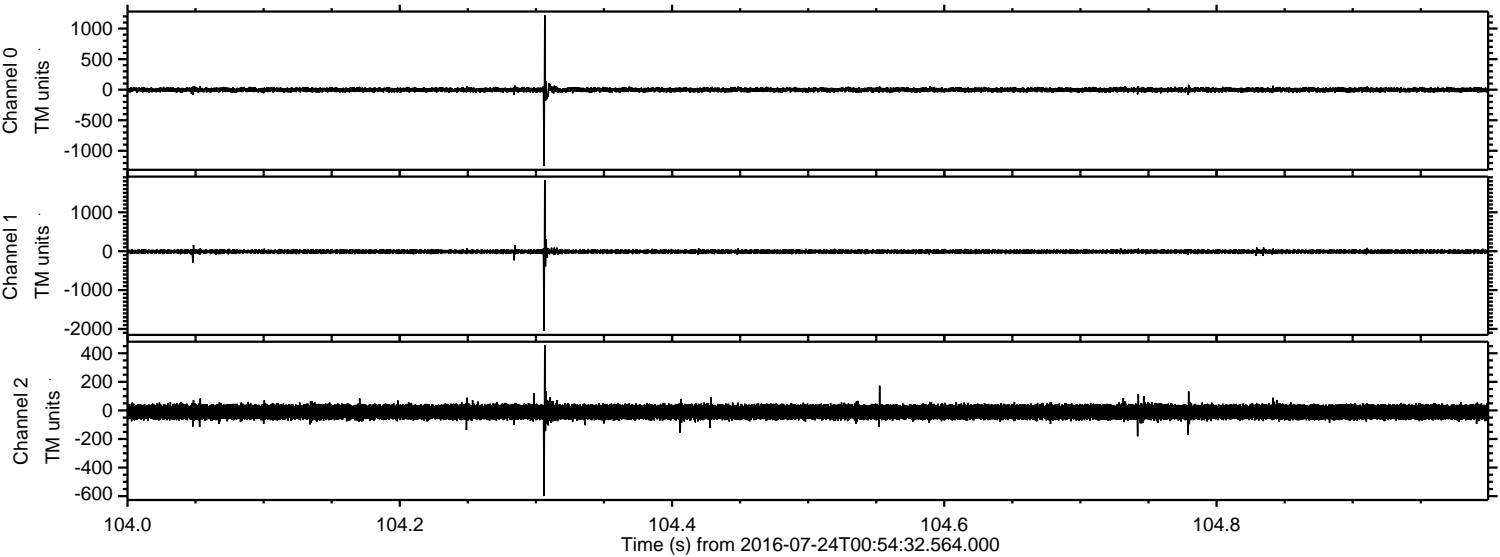
Processed Sun Jul 24 03:03:15 2016 by ELM ver.2012-10-06 from 001\_\_elm20160724\_005431\_\_dat00.bin





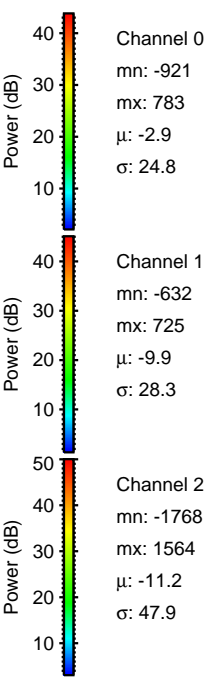
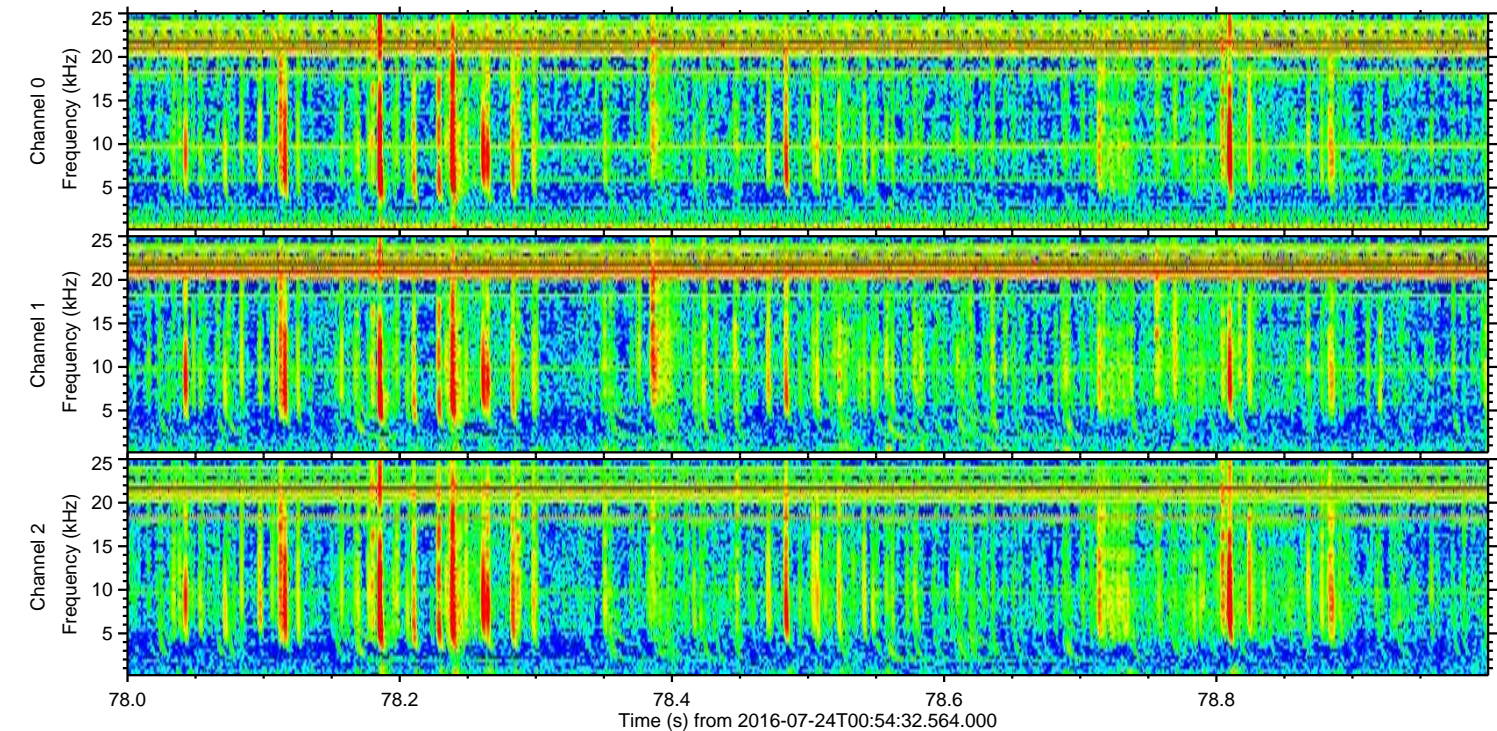
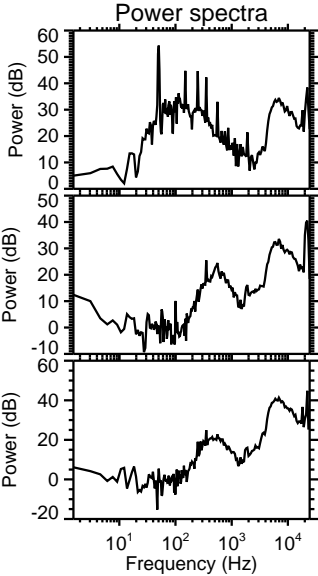
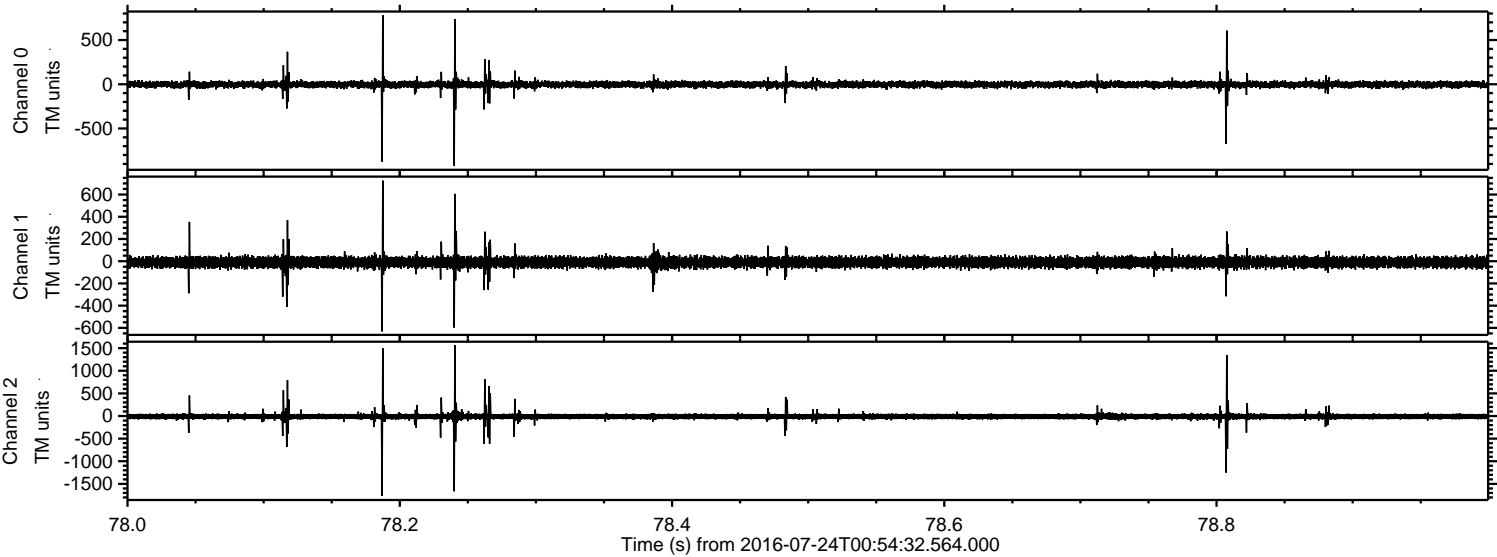
ELMAVAN 3D WAVEFORMS (Measured data sampled at 50 kHz) 51000 packets of 144 samples from 2016-07-24T00:54:32.564.000. Part 105/147

Processed Sun Jul 24 03:03:16 2016 by ELM ver.2012-10-06 from 001\_\_elm20160724\_005431\_\_dat00.bin



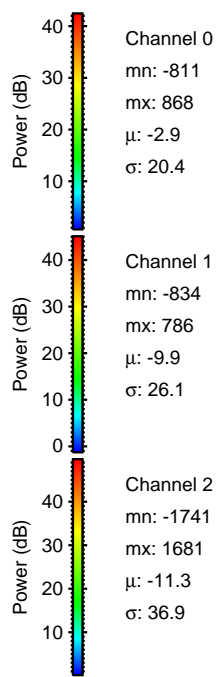
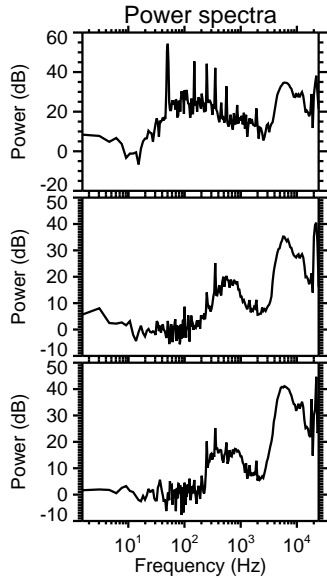
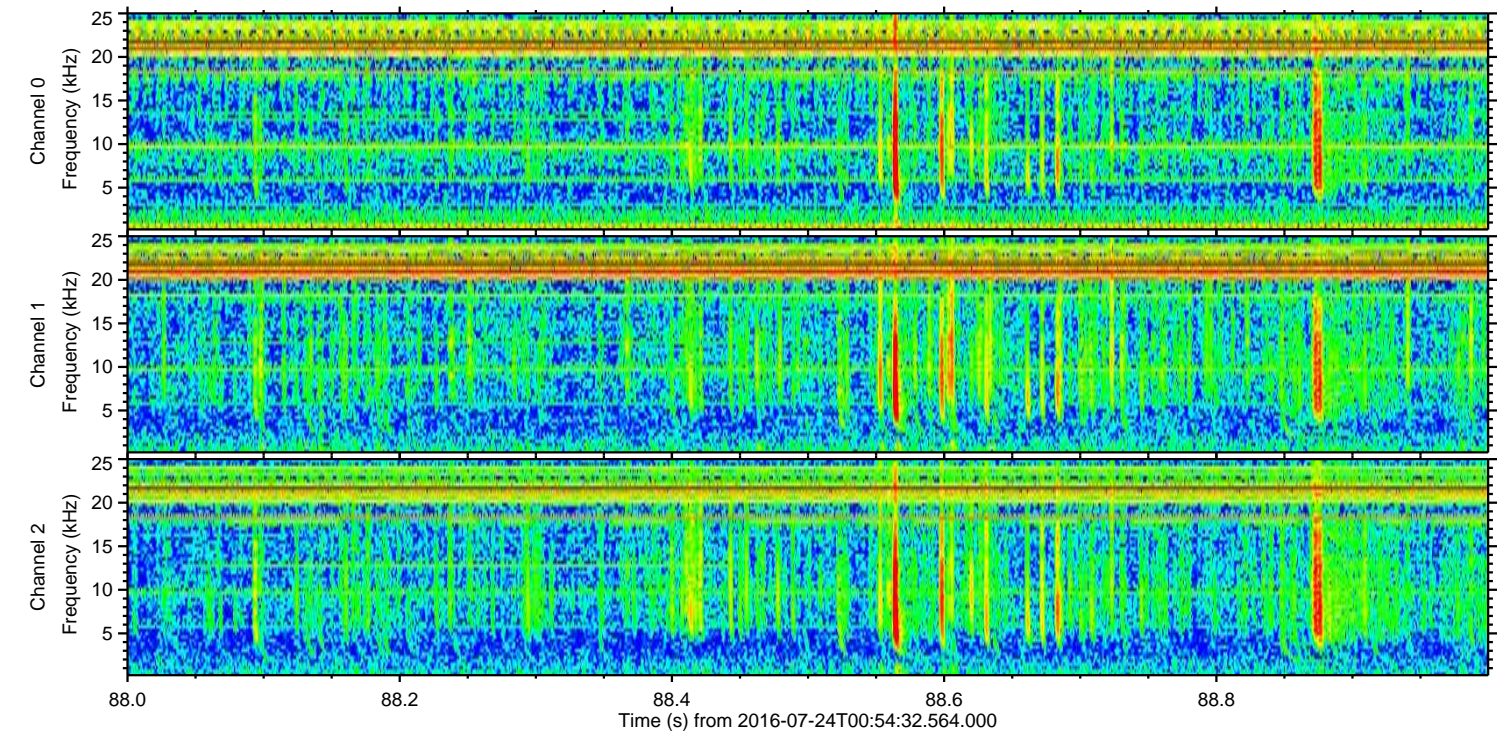
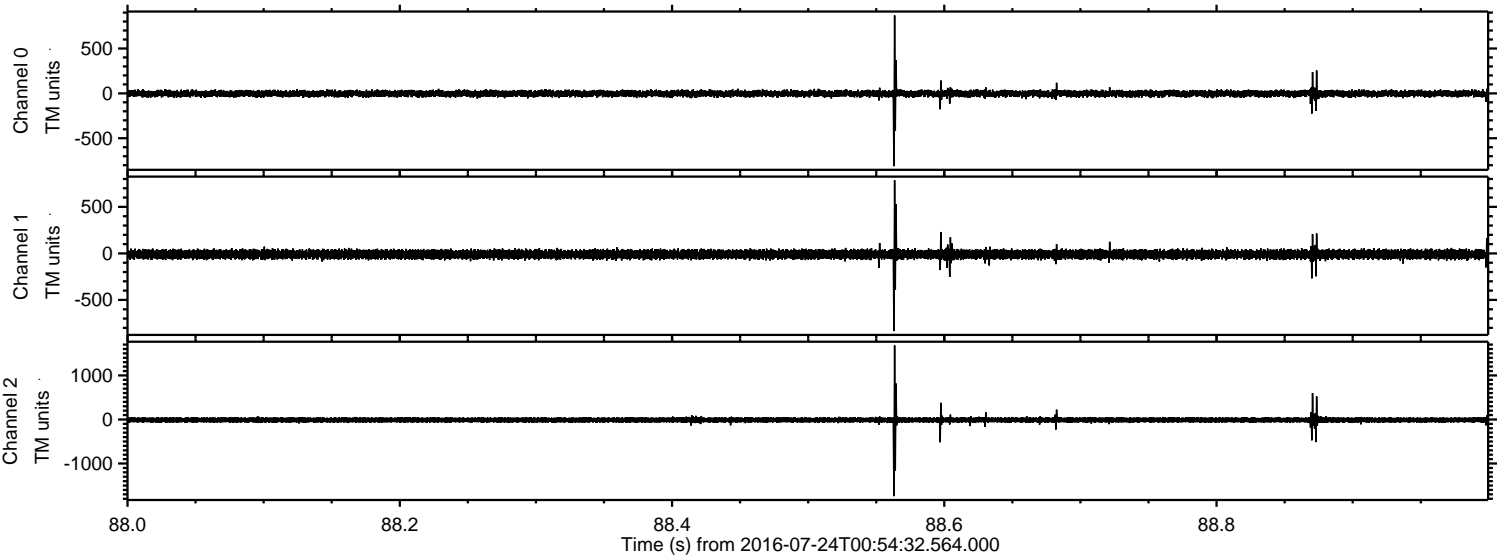


Processed Sun Jul 24 03:03:17 2016 by ELM ver.2012-10-06 from 001\_\_elm20160724\_005431\_\_dat00.bin



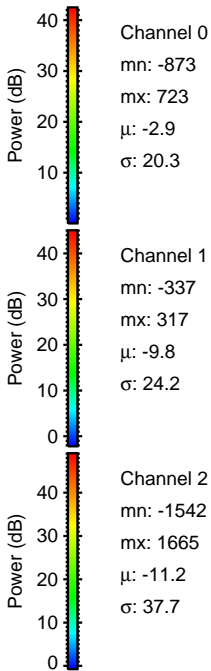
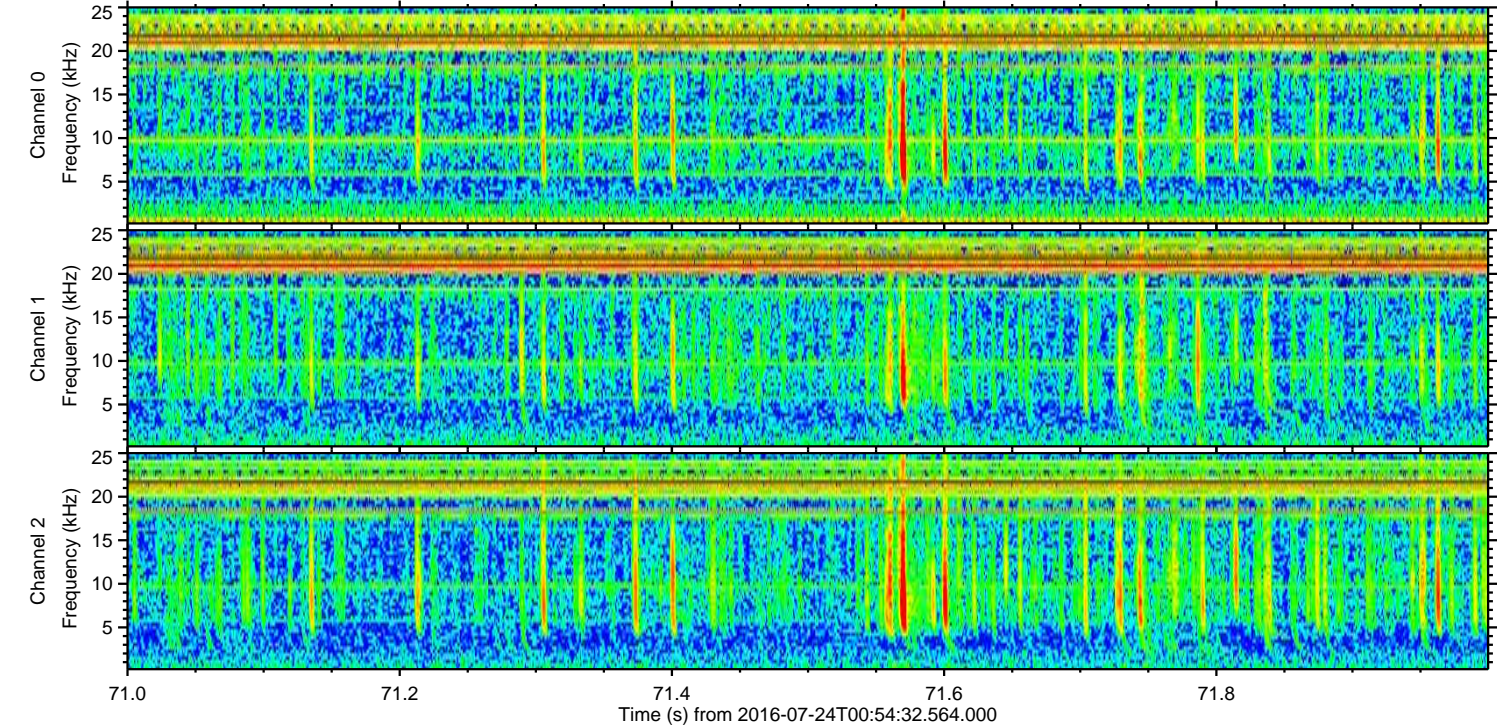
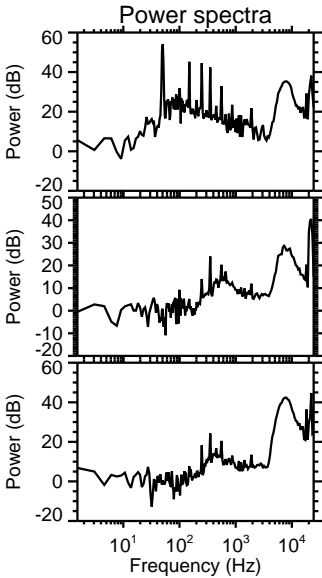
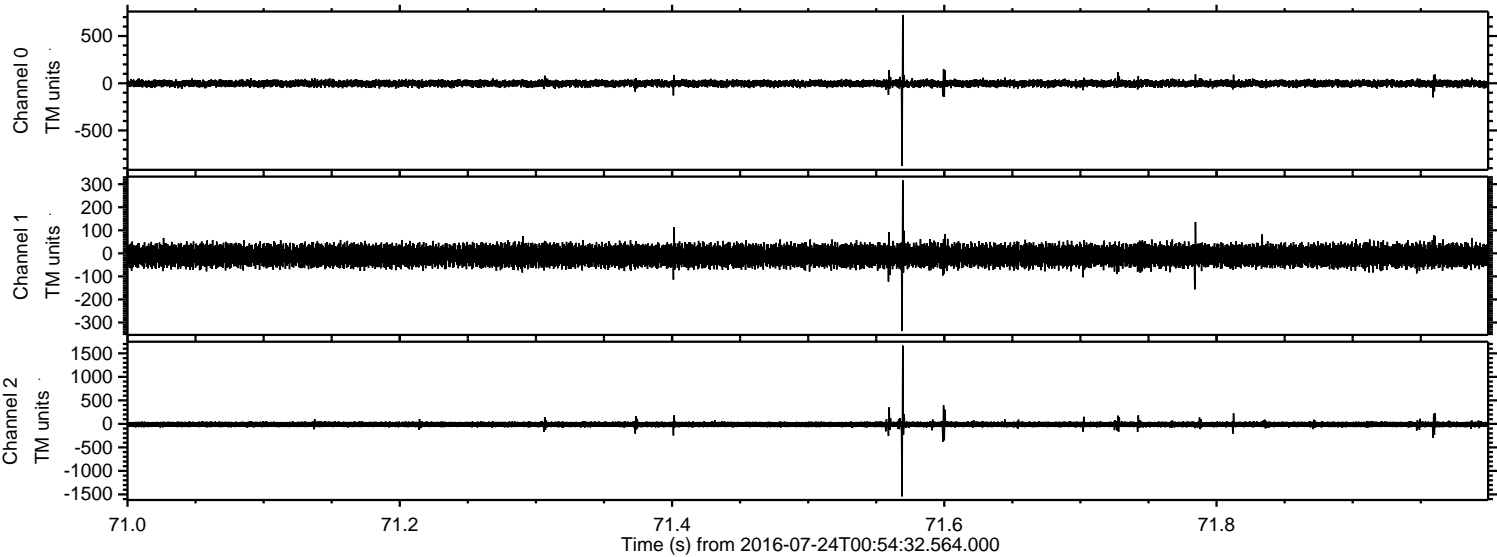


Processed Sun Jul 24 03:03:18 2016 by ELM ver.2012-10-06 from 001\_\_elm20160724\_005431\_\_dat00.bin



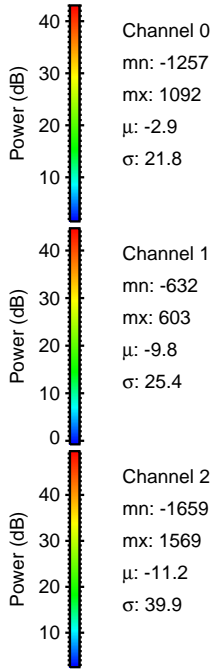
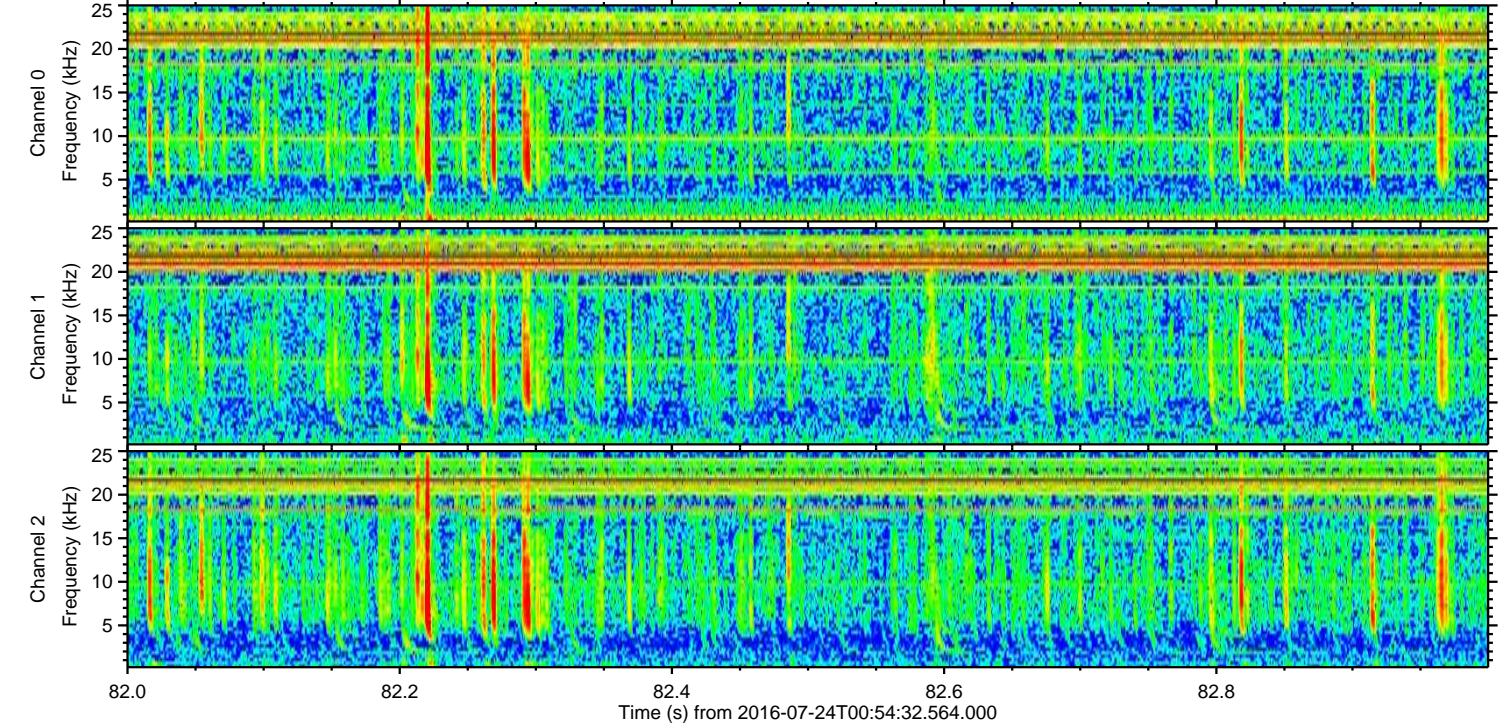
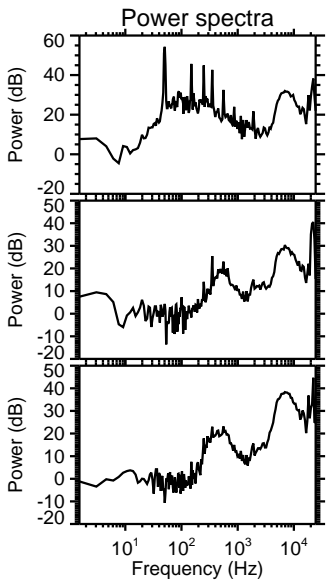
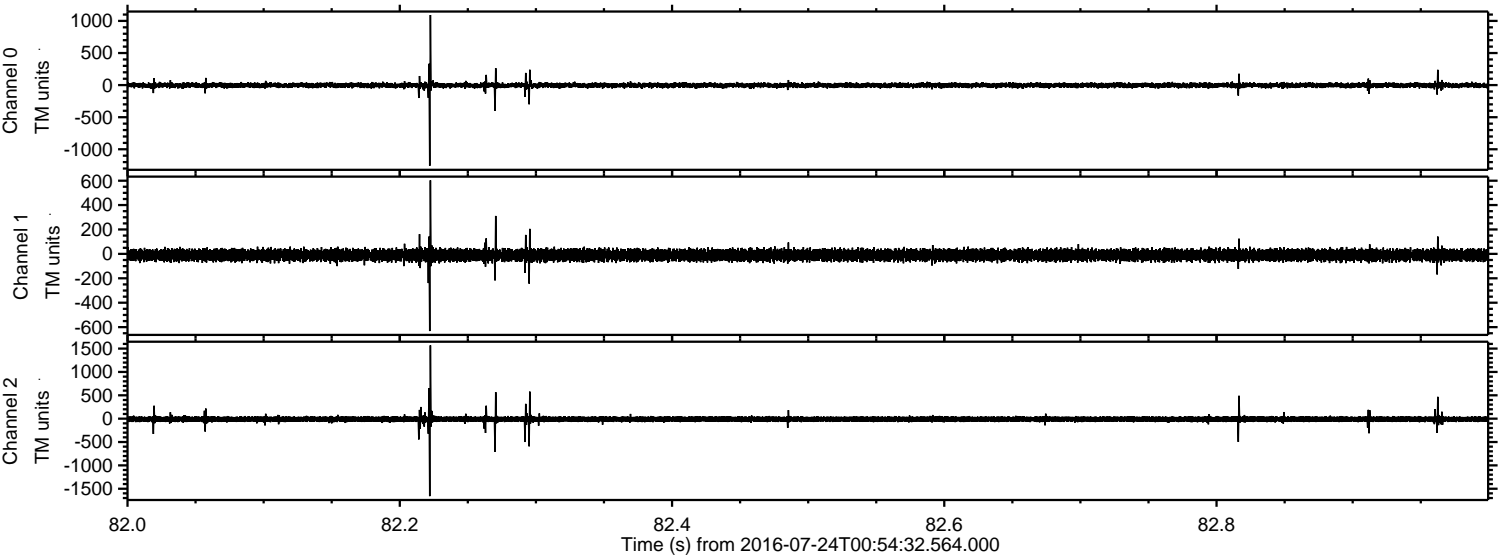


Processed Sun Jul 24 03:03:19 2016 by ELM ver.2012-10-06 from 001\_\_elm20160724\_005431\_\_dat00.bin



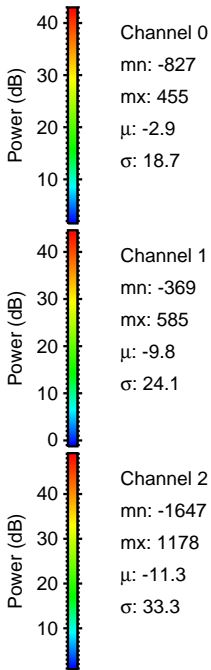
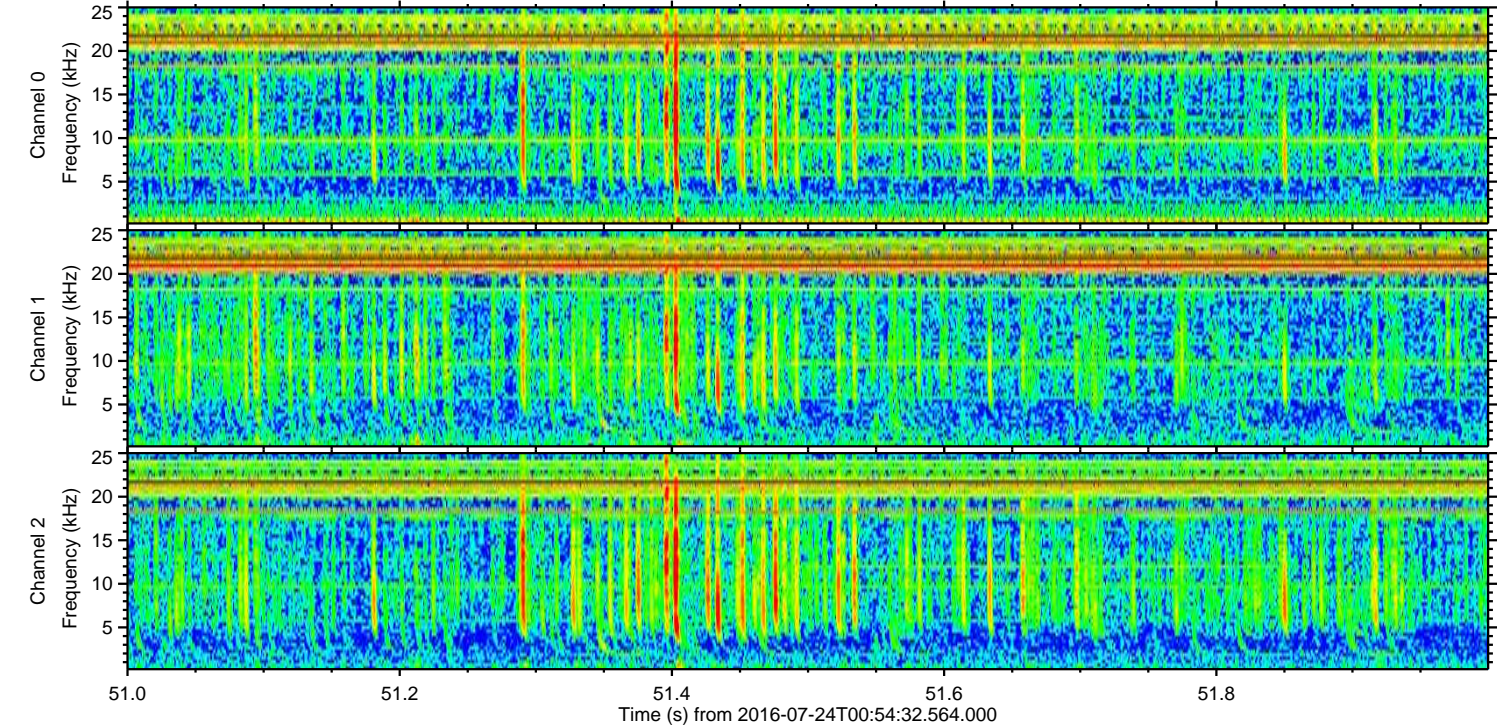
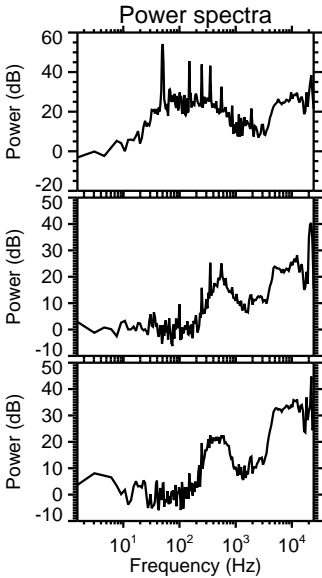
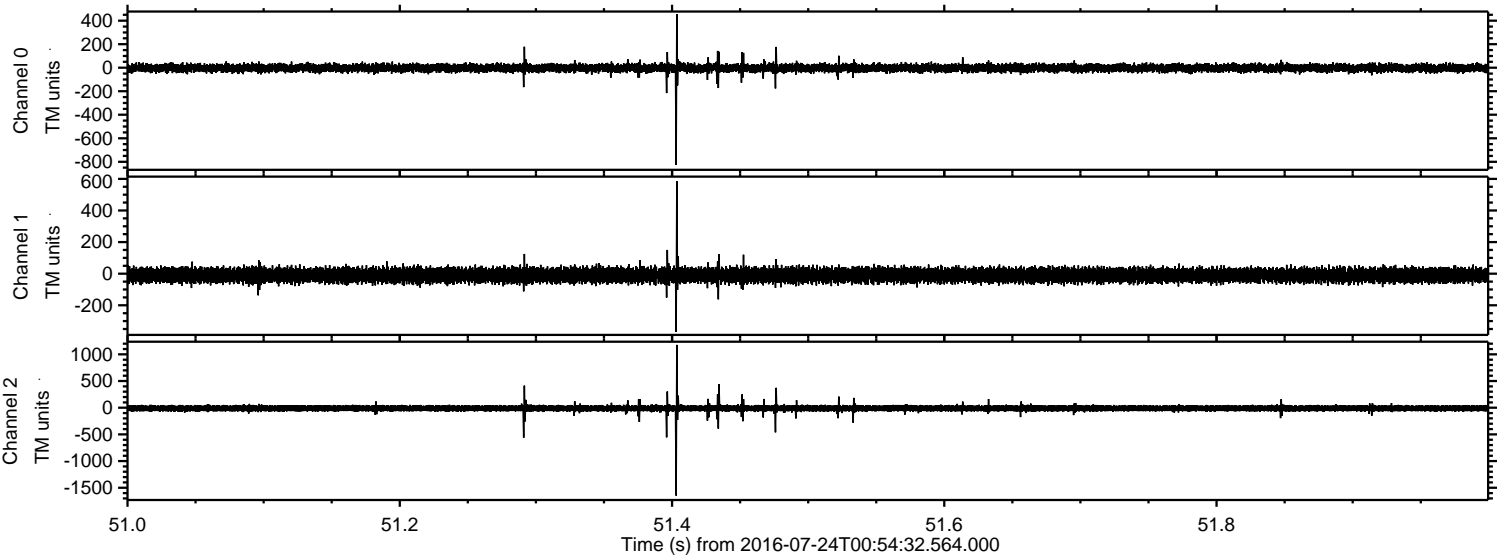


Processed Sun Jul 24 03:03:20 2016 by ELM ver.2012-10-06 from 001\_\_elm20160724\_005431\_\_dat00.bin



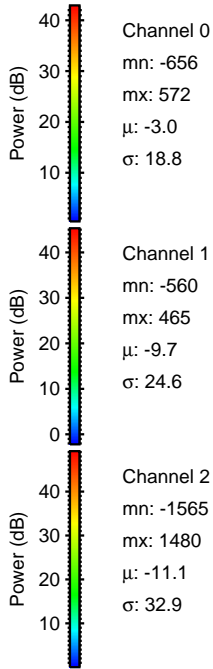
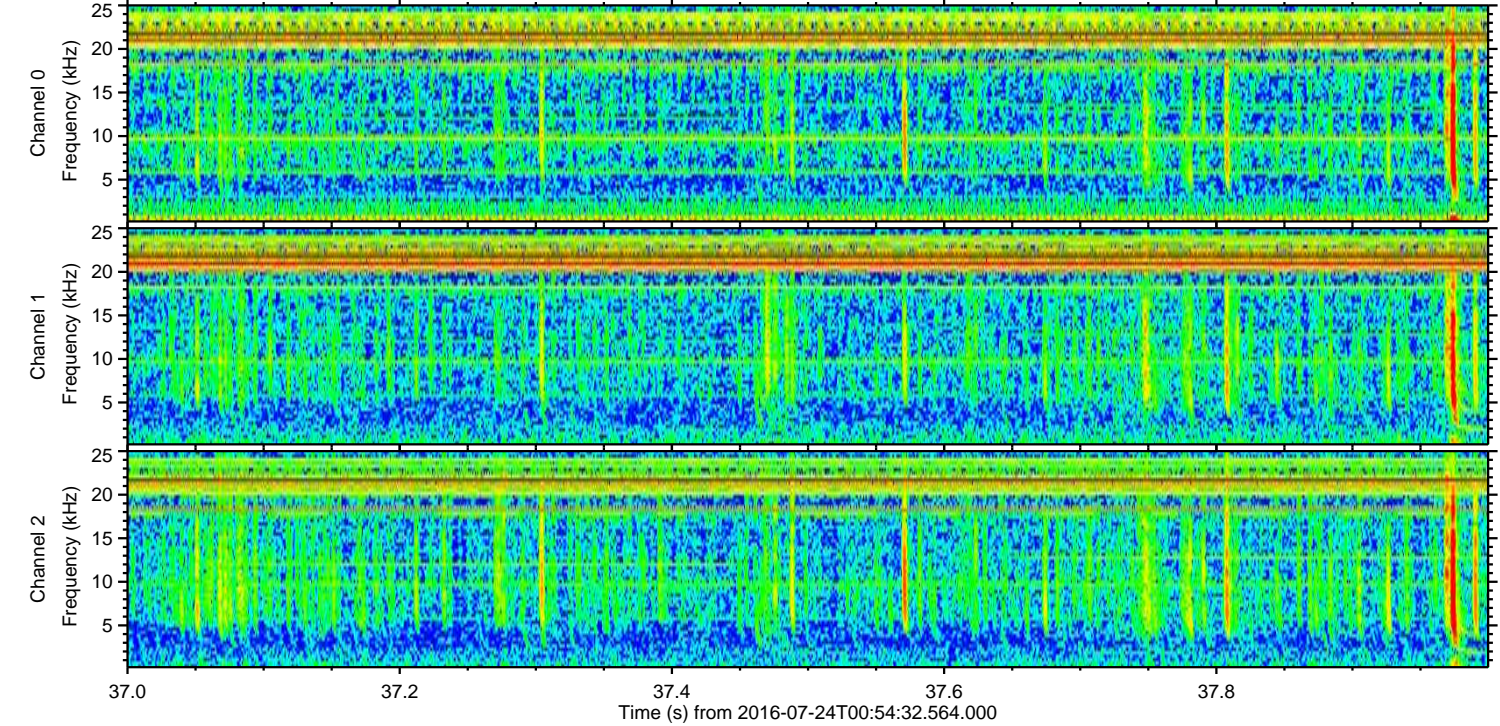
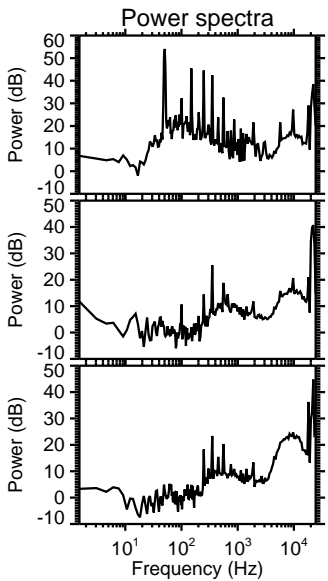
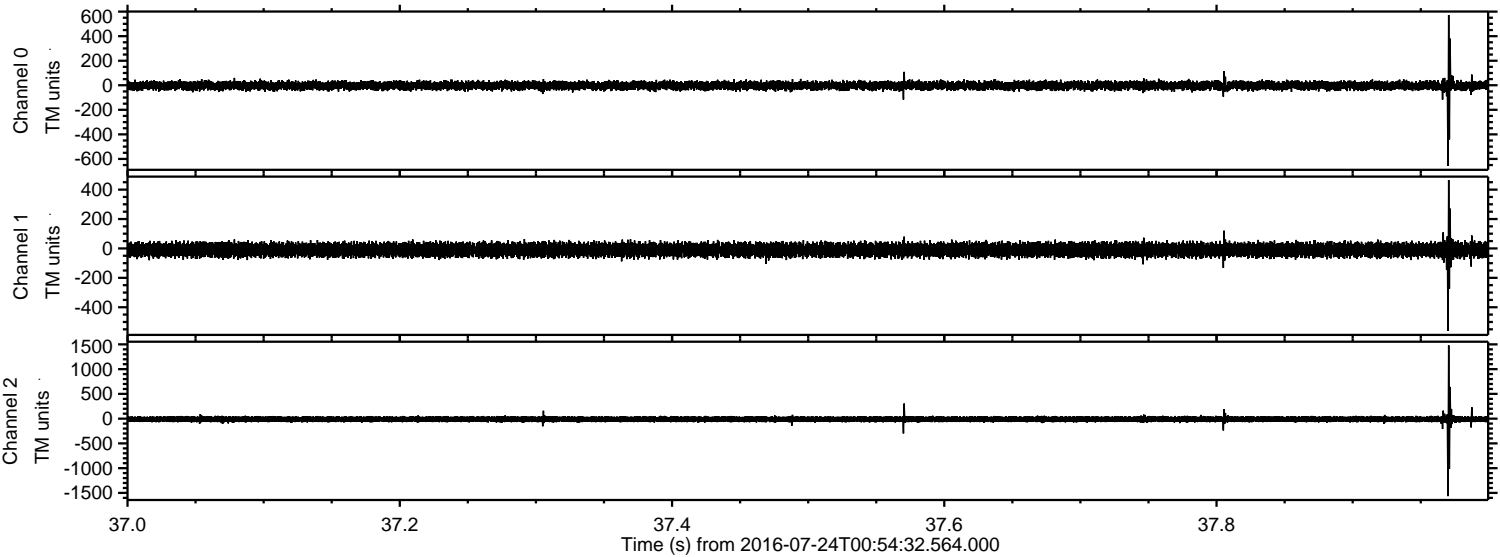


Processed Sun Jul 24 03:03:21 2016 by ELM ver.2012-10-06 from 001\_\_elm20160724\_005431\_\_dat00.bin





Processed Sun Jul 24 03:03:22 2016 by ELM ver.2012-10-06 from 001\_\_elm20160724\_005431\_\_dat00.bin





Processed Sun Jul 24 03:03:22 2016 by ELM ver.2012-10-06 from 001\_\_elm20160724\_005431\_\_dat00.bin

