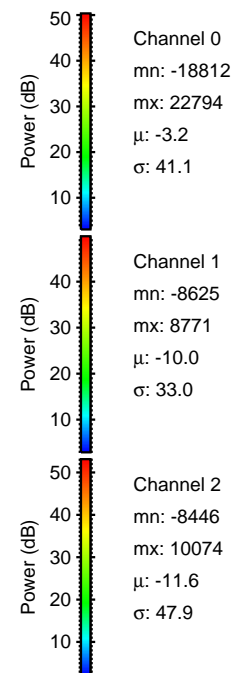
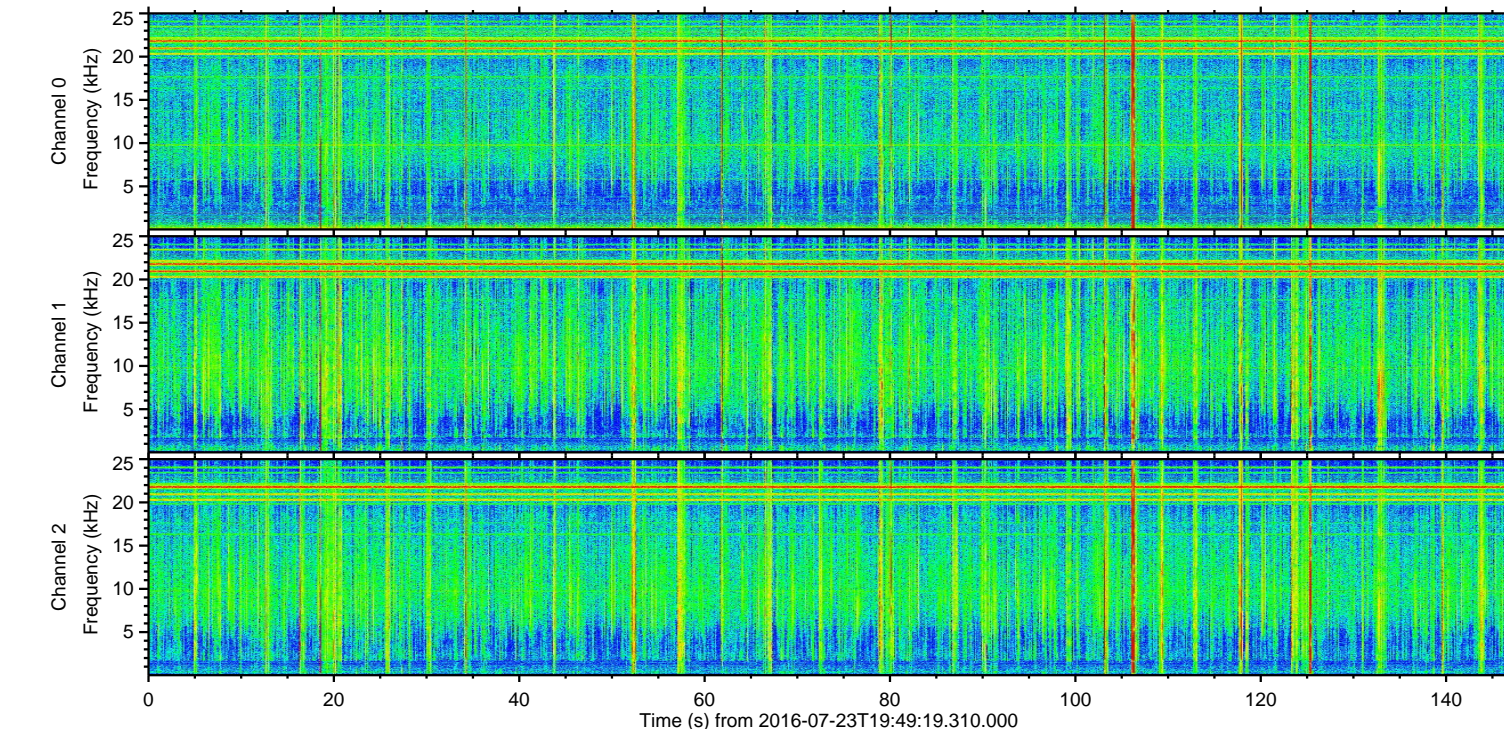
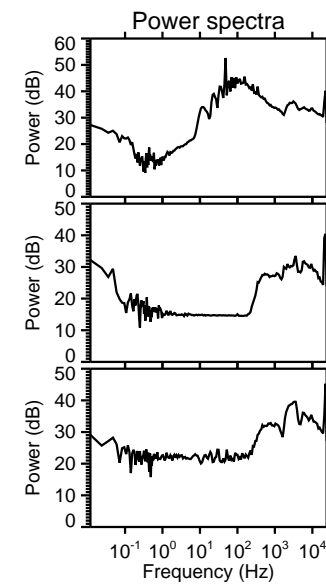
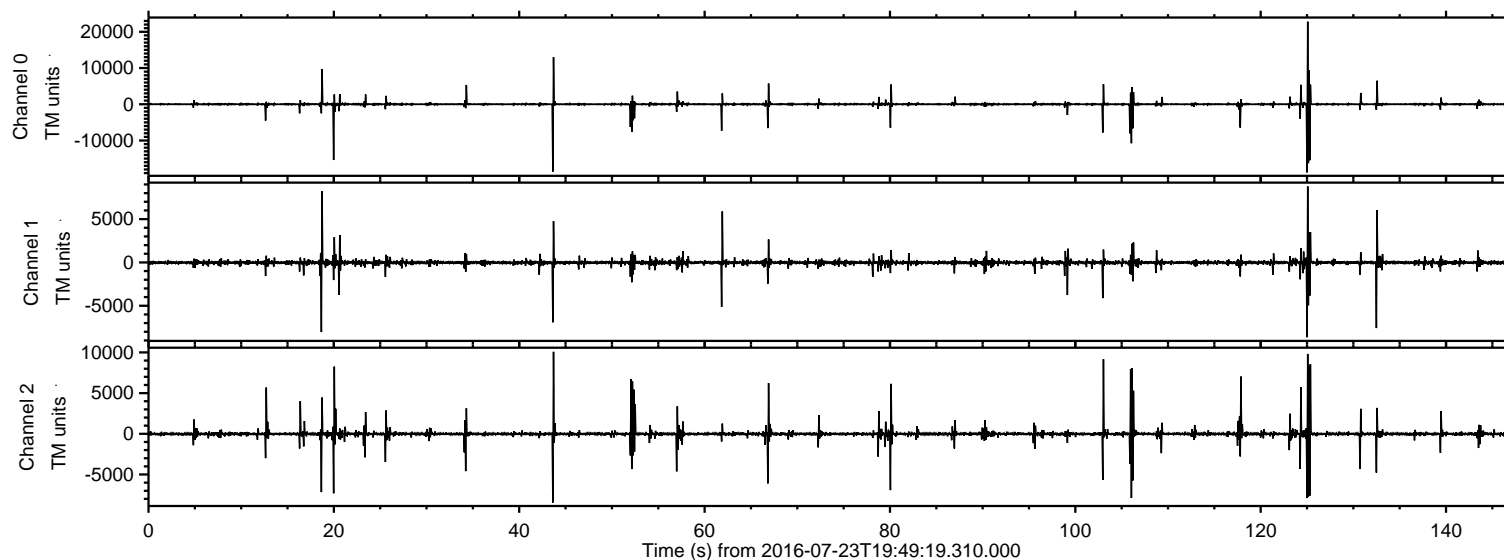


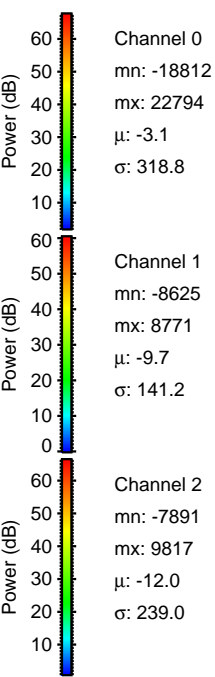
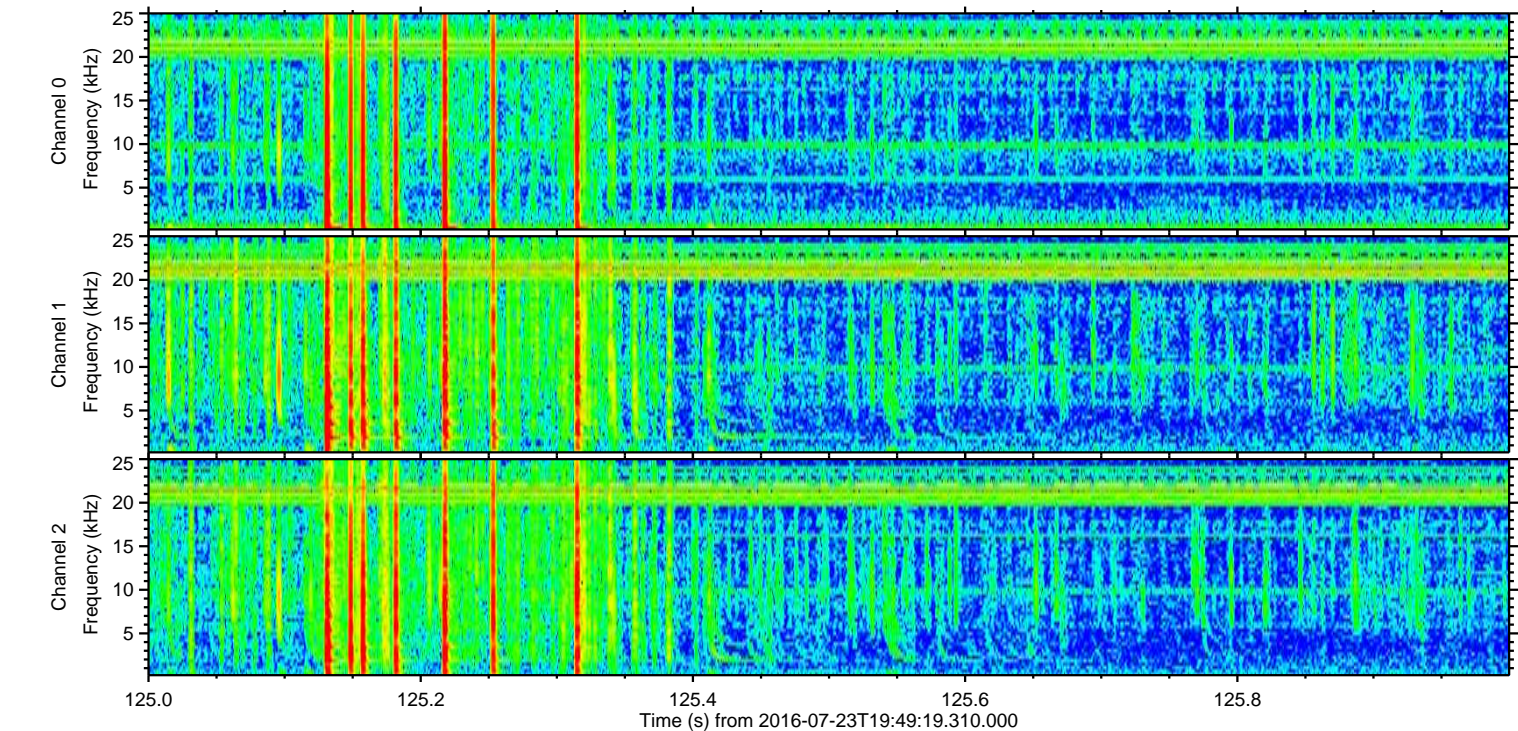
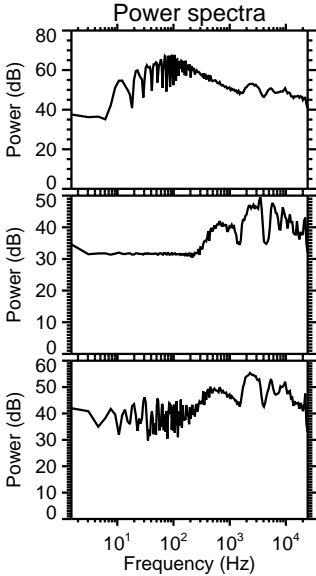
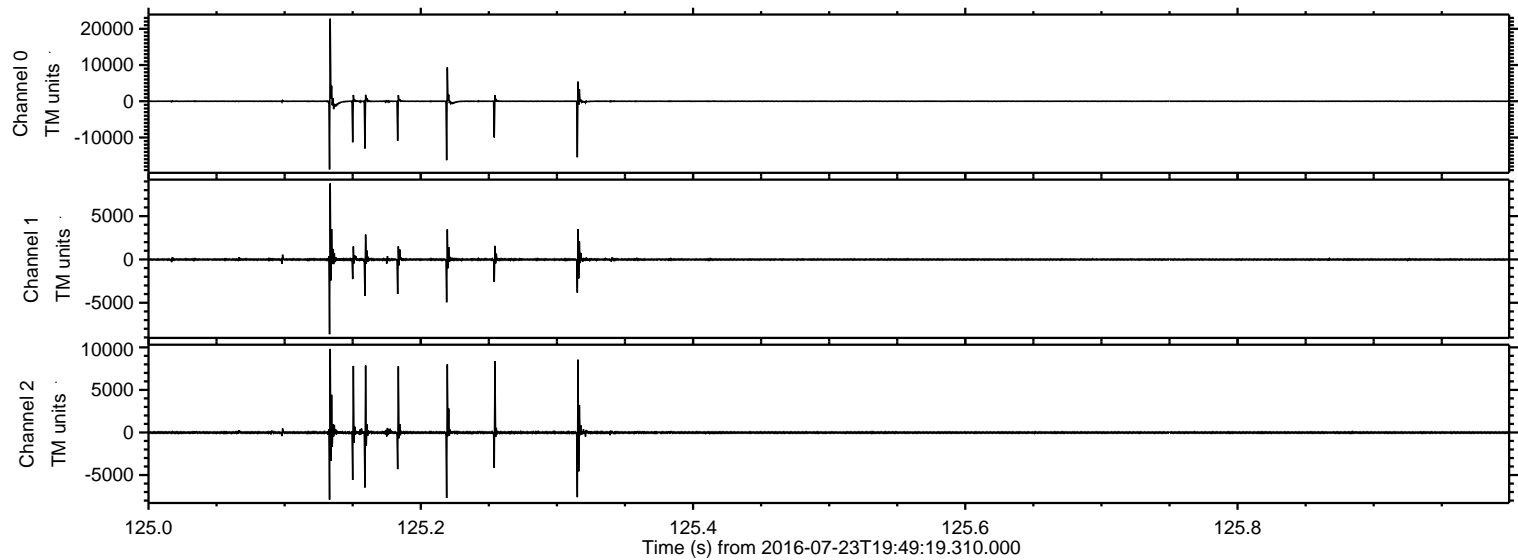
ELMAVAN 3D WAVEFORMS (Measured data sampled at 50 kHz) 51000 packets of 144 samples from 2016-07-23T19:49:19.310.000.

Processed Sat Jul 23 21:57:29 2016 by ELM ver.2012-10-06 from 001__elm20160723_194918__dat00.bin

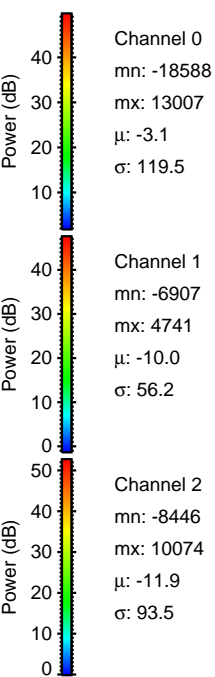
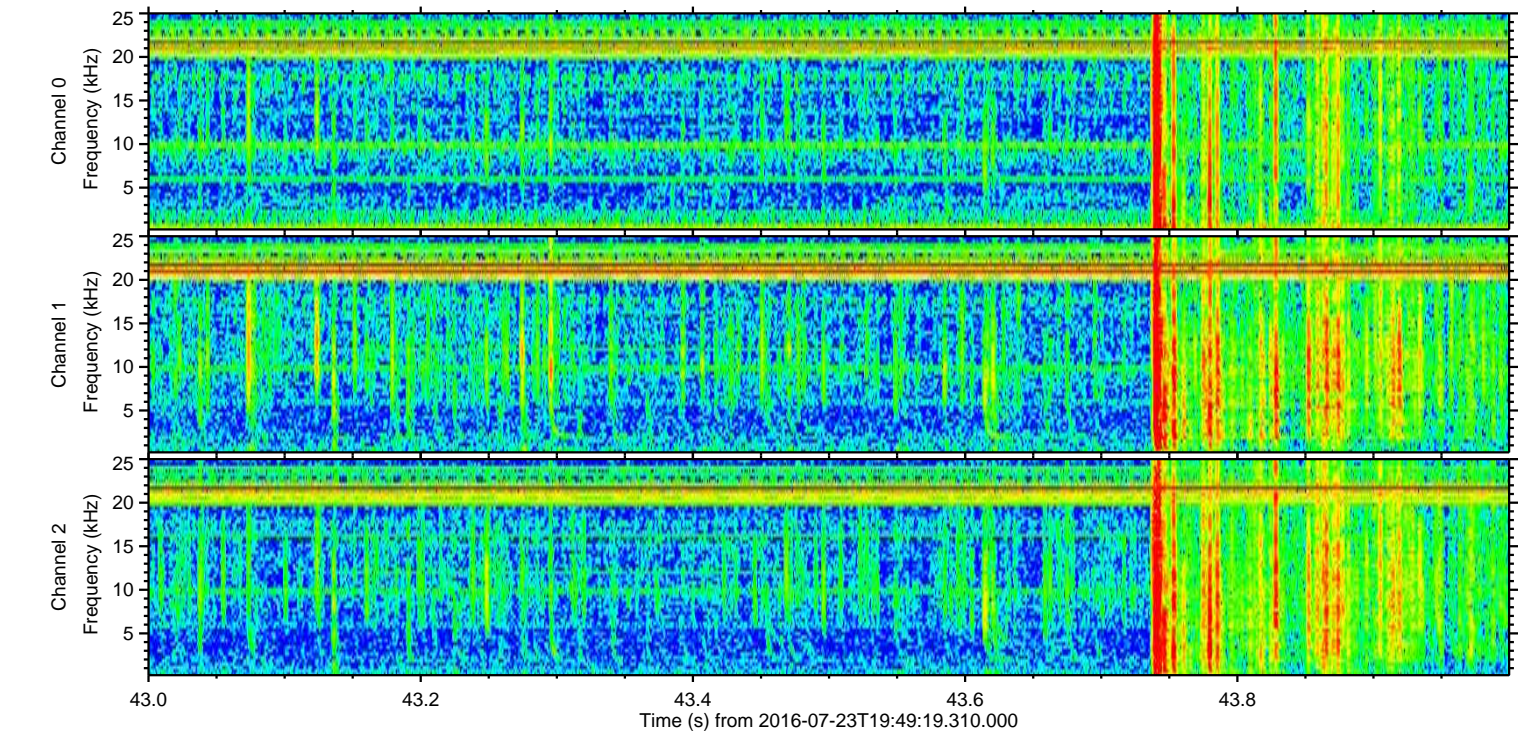
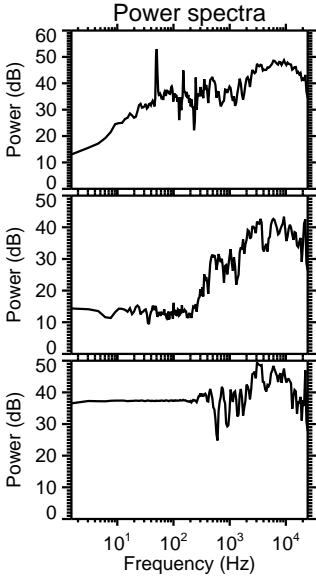
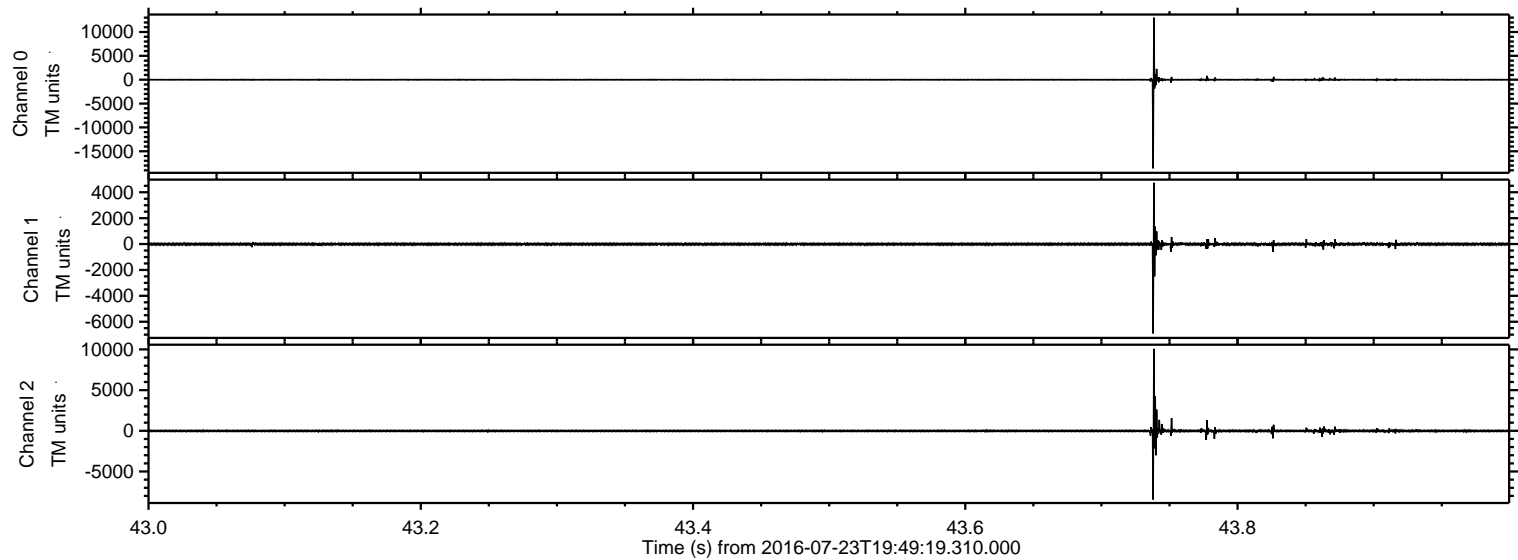


ELMAVAN 3D WAVEFORMS (Measured data sampled at 50 kHz) 51000 packets of 144 samples from 2016-07-23T19:49:19.310.000. Part 126/147

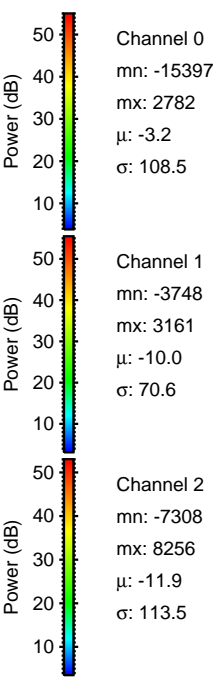
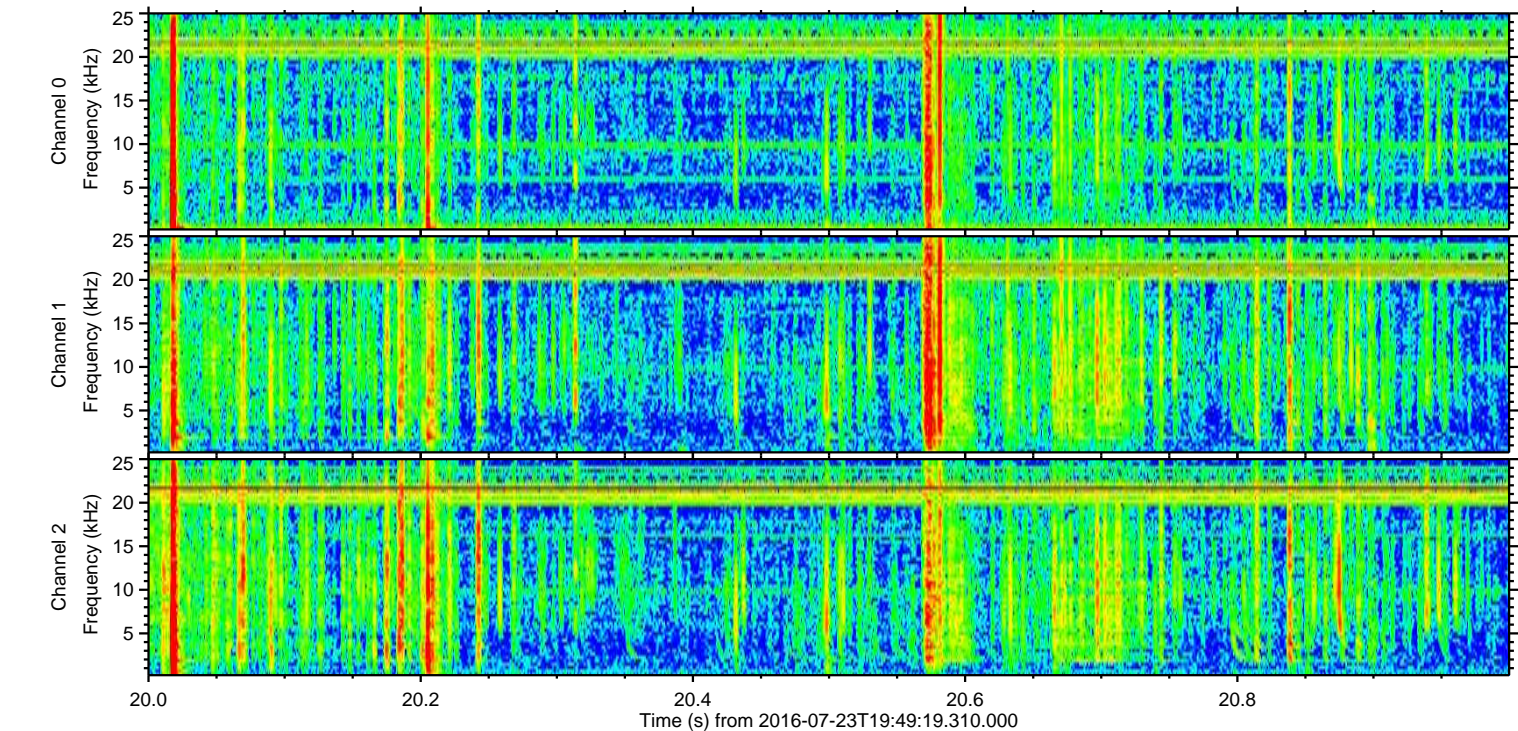
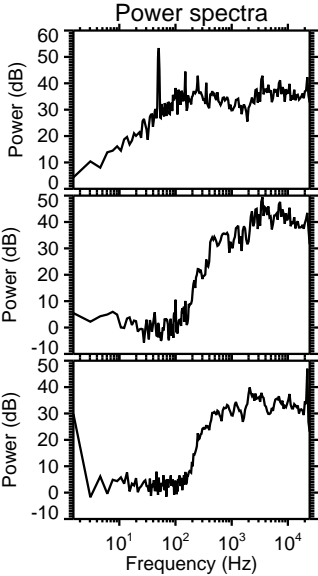
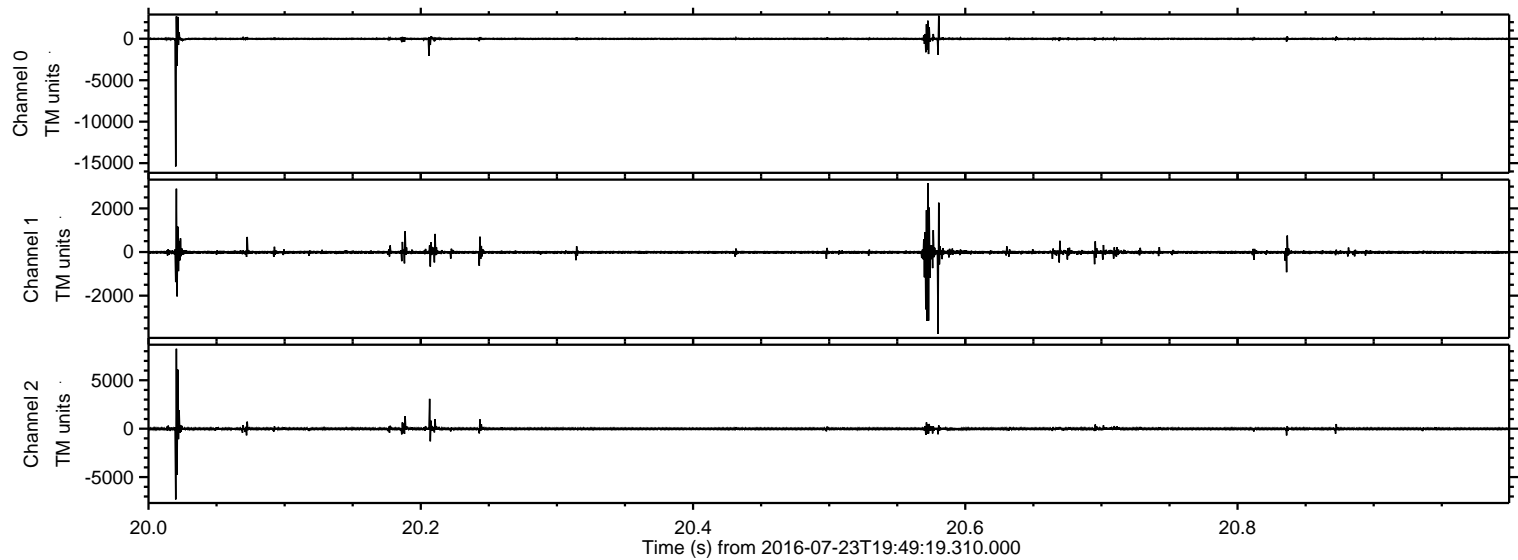
Processed Sat Jul 23 21:57:40 2016 by ELM ver.2012-10-06 from 001__elm20160723_194918__dat00.bin



Processed Sat Jul 23 21:57:41 2016 by ELM ver.2012-10-06 from 001__elm20160723_194918__dat00.bin

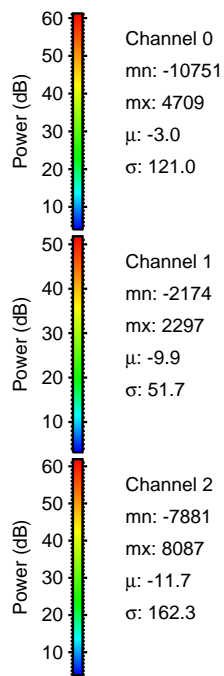
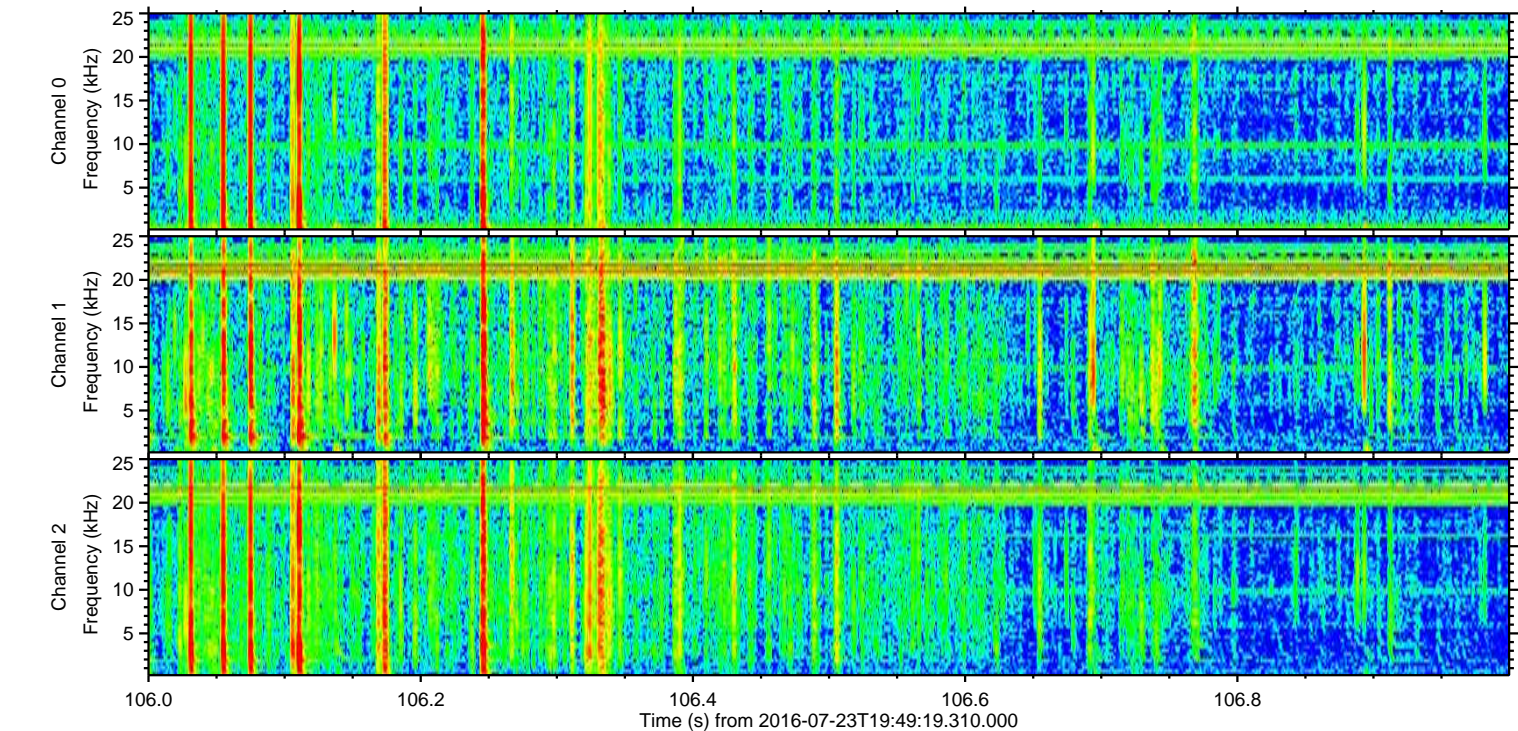
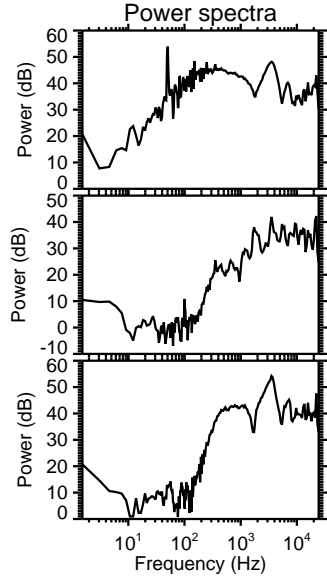
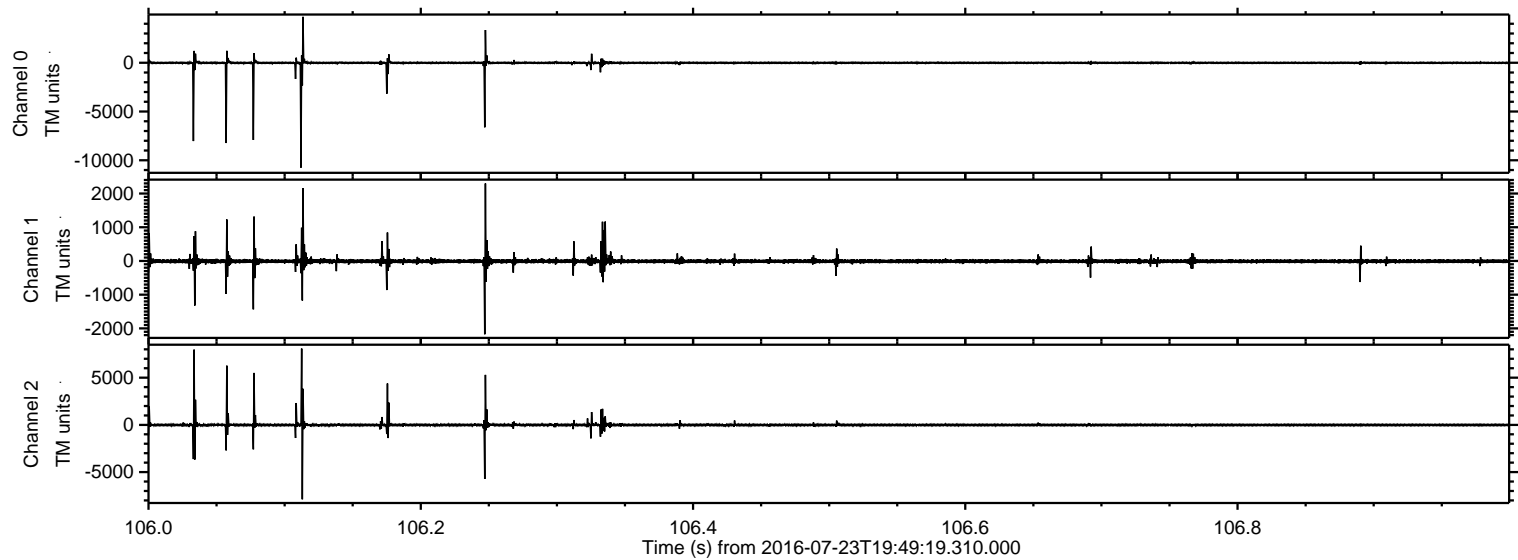


Processed Sat Jul 23 21:57:42 2016 by ELM ver.2012-10-06 from 001__elm20160723_194918__dat00.bin

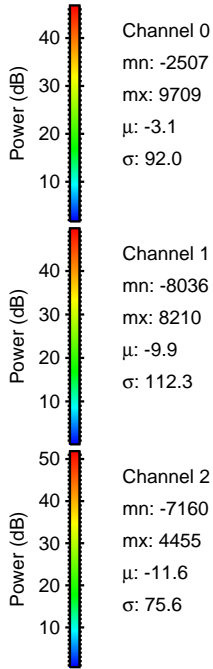
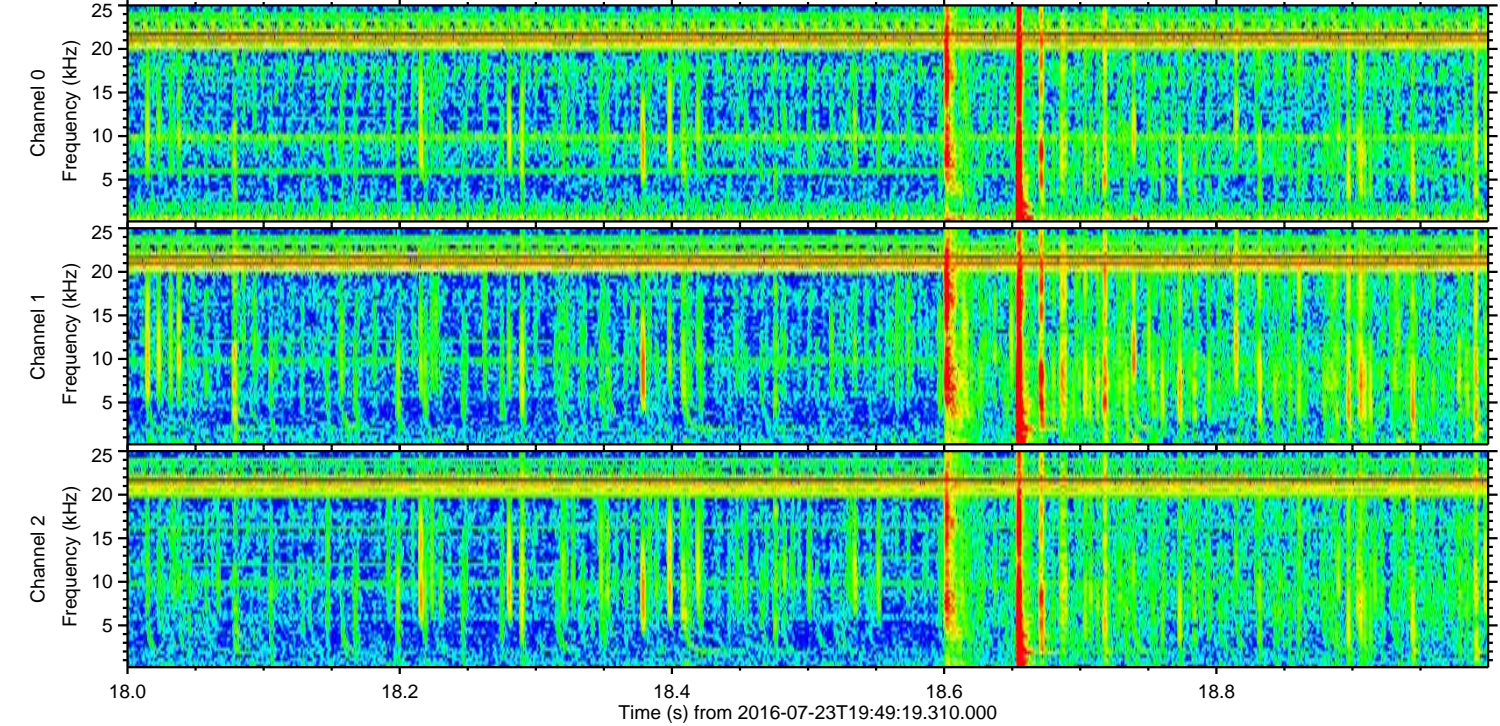
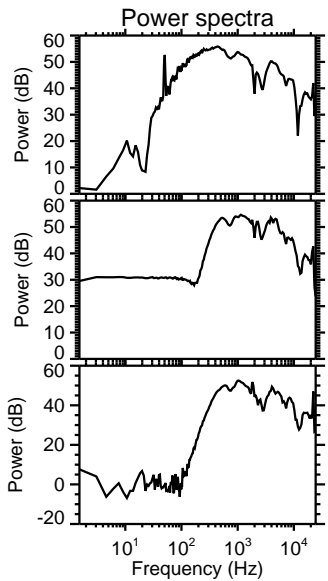
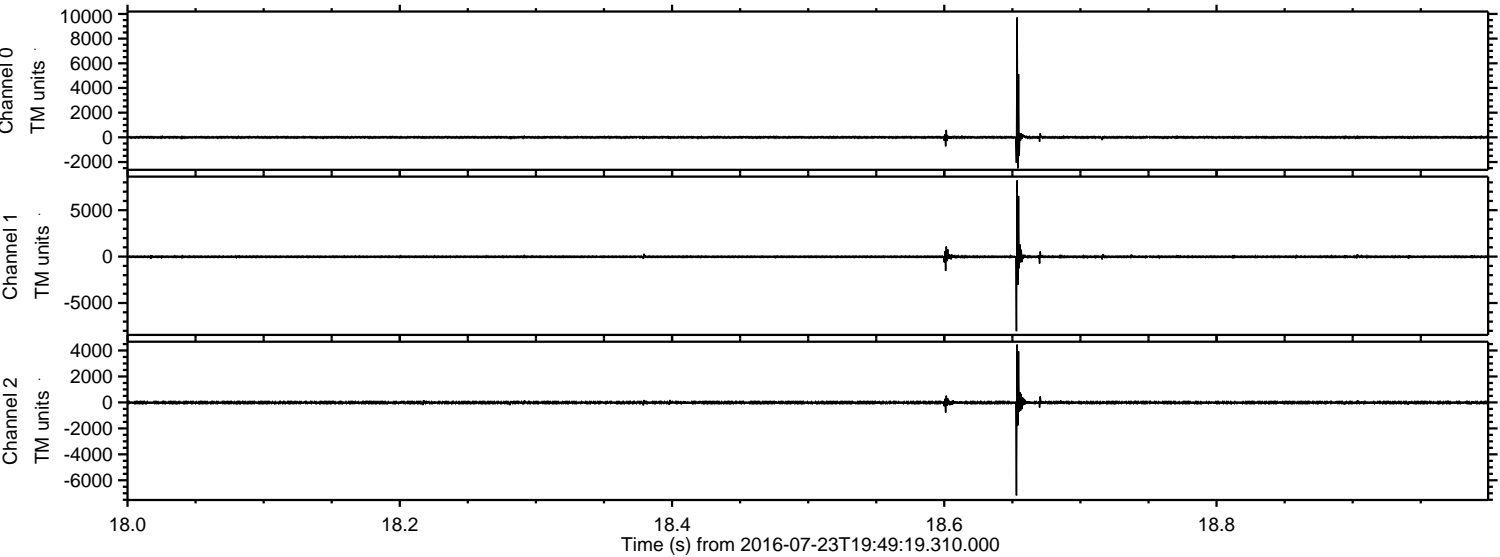


ELMAVAN 3D WAVEFORMS (Measured data sampled at 50 kHz) 51000 packets of 144 samples from 2016-07-23T19:49:19.310.000. Part 107/147

Processed Sat Jul 23 21:57:43 2016 by ELM ver.2012-10-06 from 001__elm20160723_194918__dat00.bin

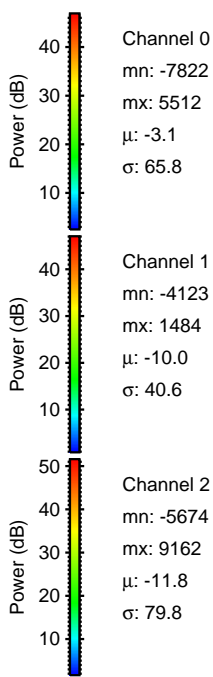
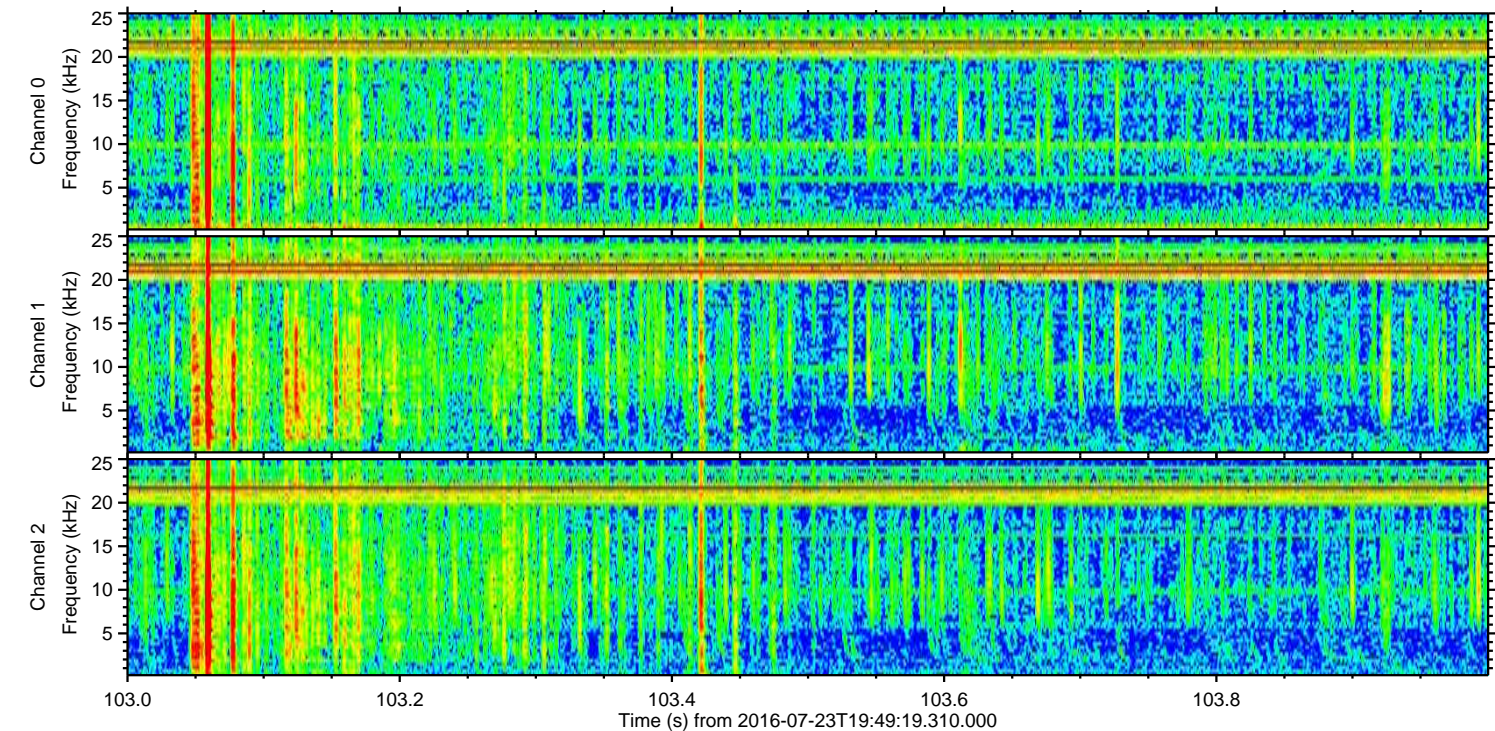
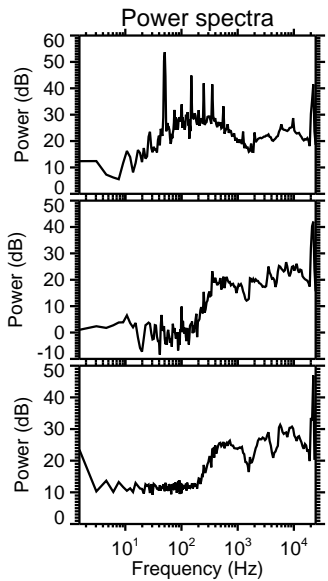
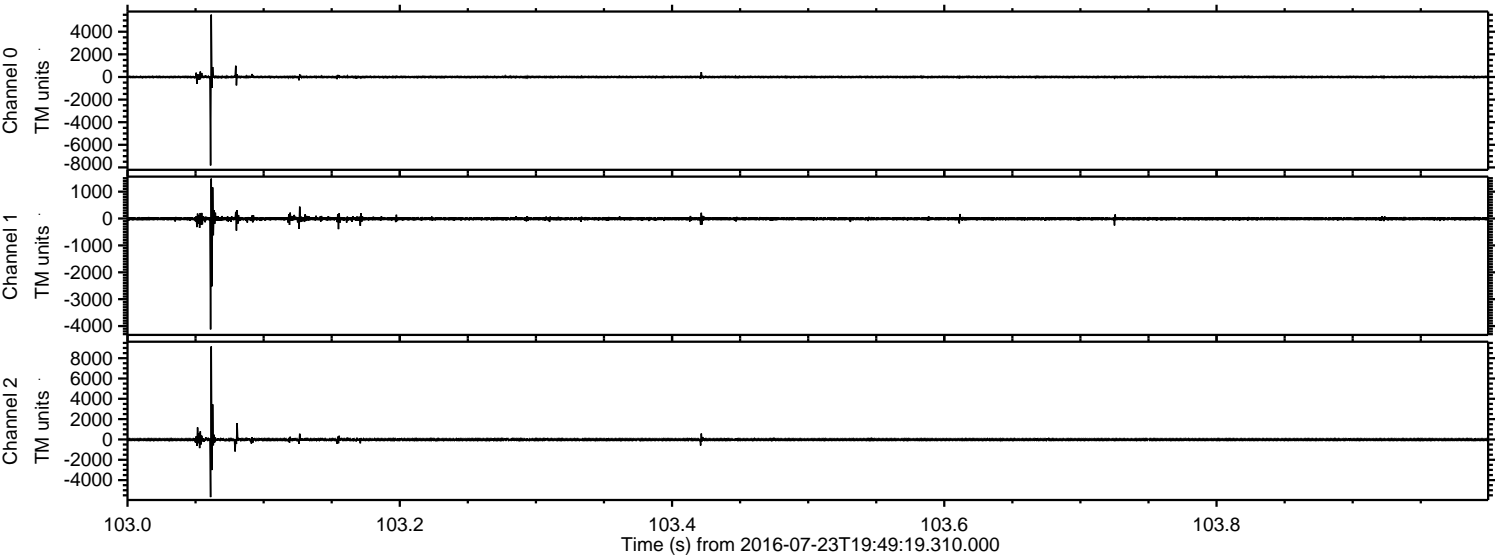


Processed Sat Jul 23 21:57:44 2016 by ELM ver.2012-10-06 from 001__elm20160723_194918__dat00.bin

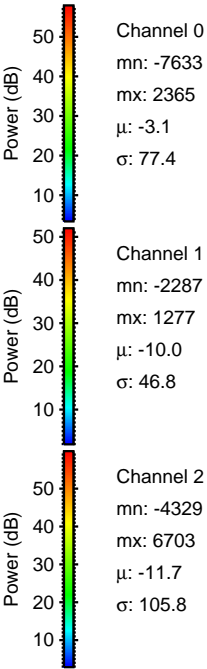
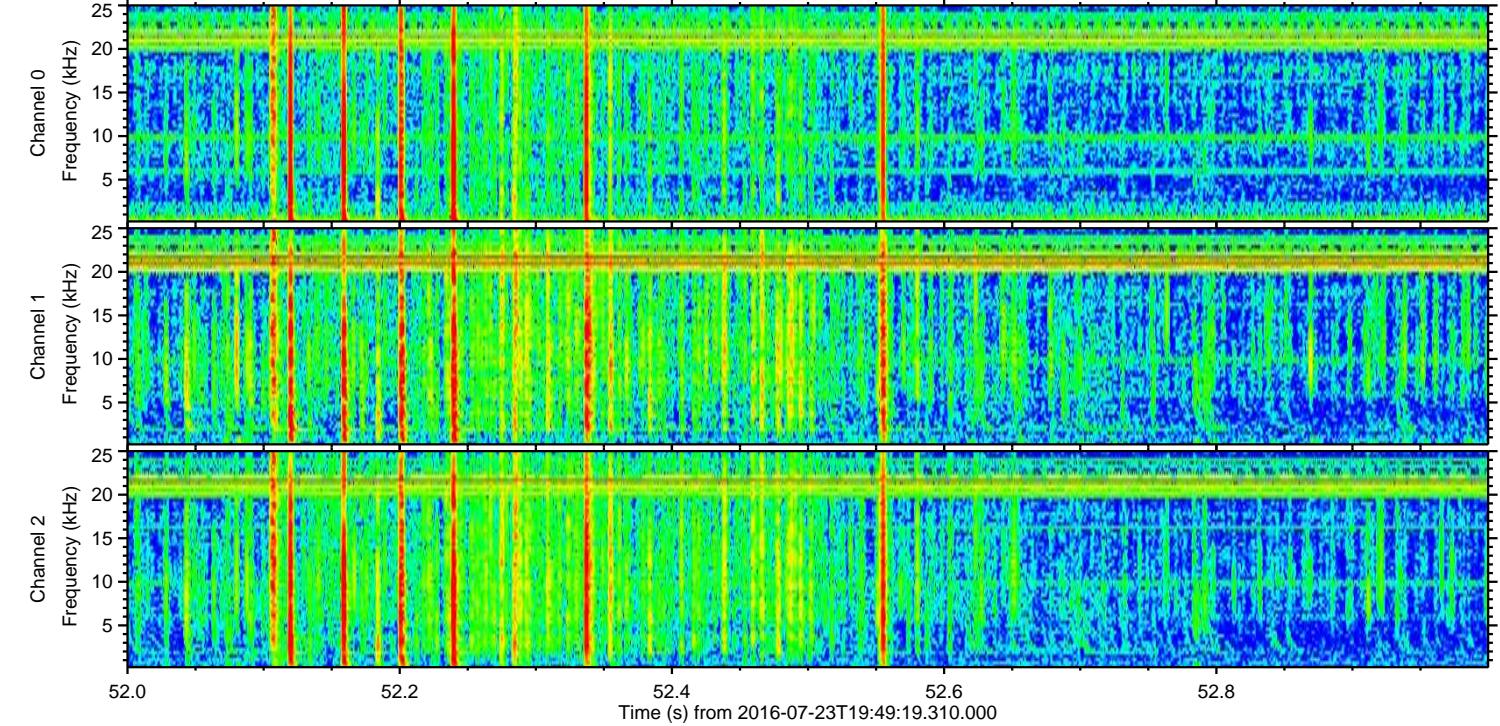
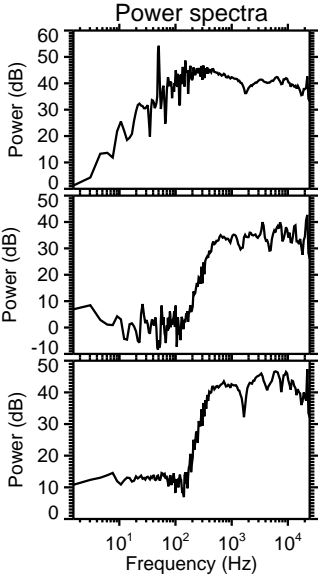
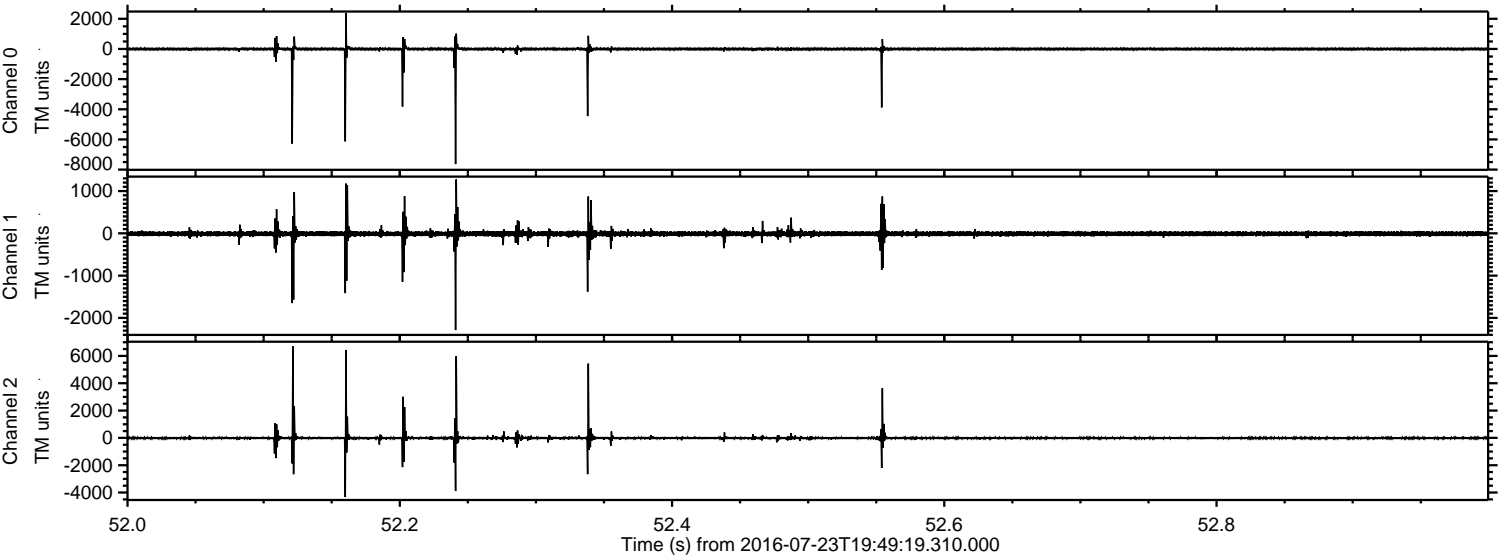


ELMAVAN 3D WAVEFORMS (Measured data sampled at 50 kHz) 51000 packets of 144 samples from 2016-07-23T19:49:19.310.000. Part 104/147

Processed Sat Jul 23 21:57:45 2016 by ELM ver.2012-10-06 from 001__elm20160723_194918__dat00.bin

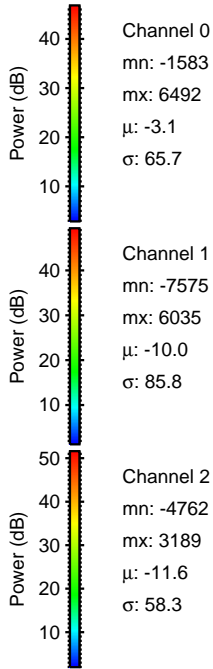
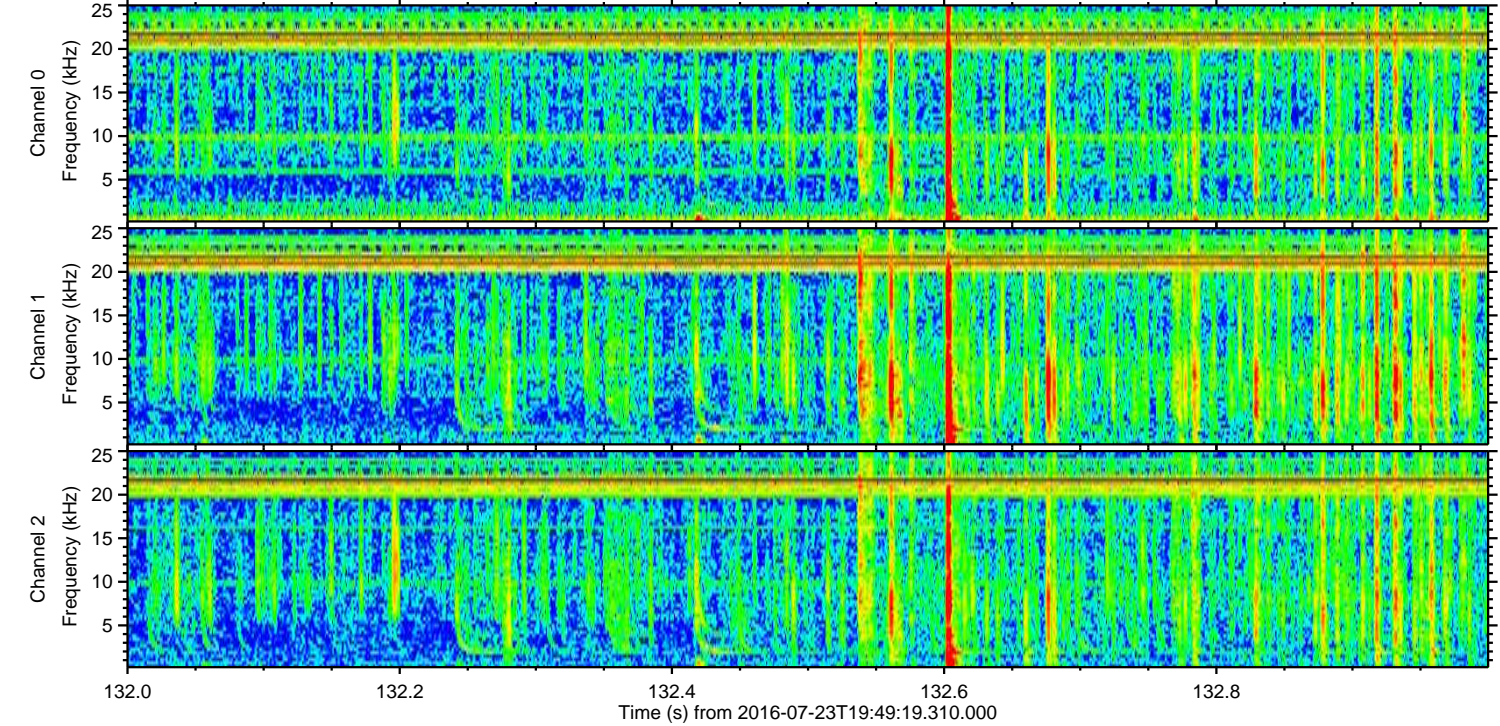
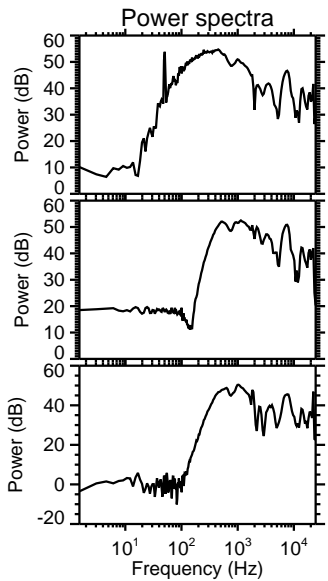
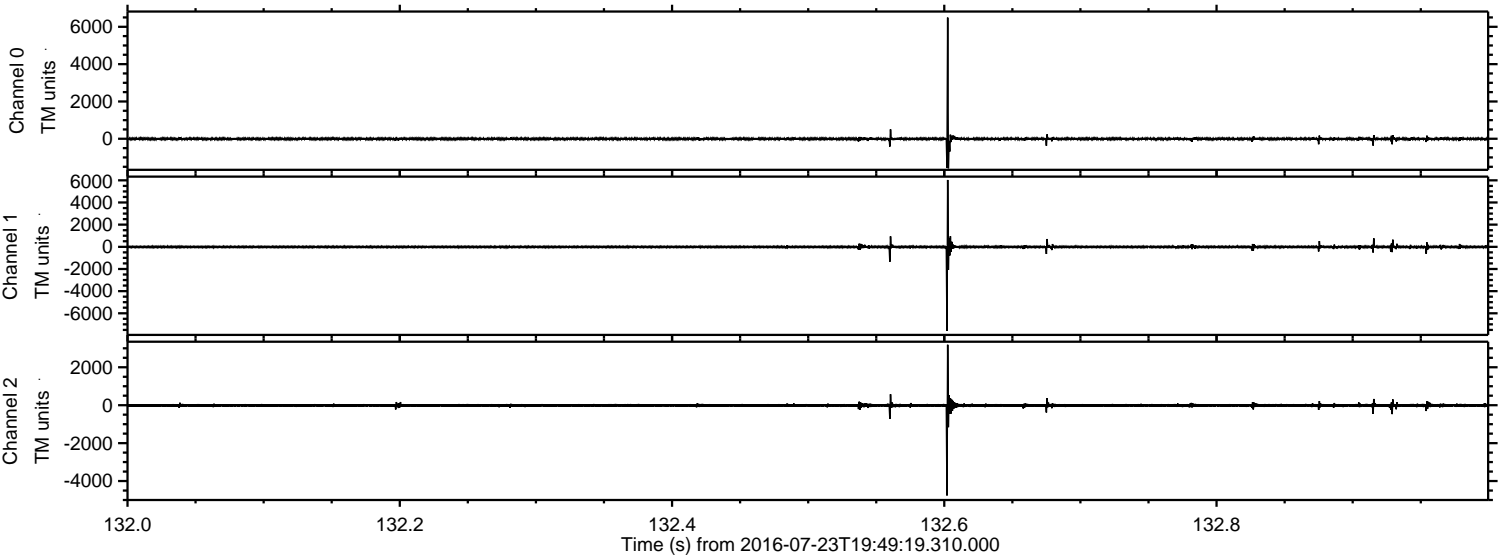


Processed Sat Jul 23 21:57:46 2016 by ELM ver.2012-10-06 from 001__elm20160723_194918__dat00.bin



ELMAVAN 3D WAVEFORMS (Measured data sampled at 50 kHz) 51000 packets of 144 samples from 2016-07-23T19:49:19.310.000. Part 133/147

Processed Sat Jul 23 21:57:47 2016 by ELM ver.2012-10-06 from 001__elm20160723_194918__dat00.bin



Channel 0
mn: -1583
mx: 6492
 μ : -3.1
 σ : 65.7

Channel 1
mn: -7575
mx: 6035
 μ : -10.0
 σ : 85.8

Channel 2
mn: -4762
mx: 3189
 μ : -11.6
 σ : 58.3

Processed Sat Jul 23 21:57:48 2016 by ELM ver.2012-10-06 from 001__elm20160723_194918__dat00.bin

