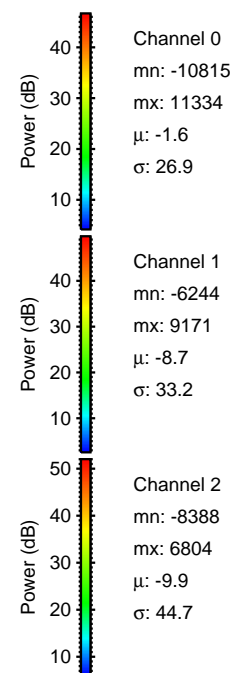
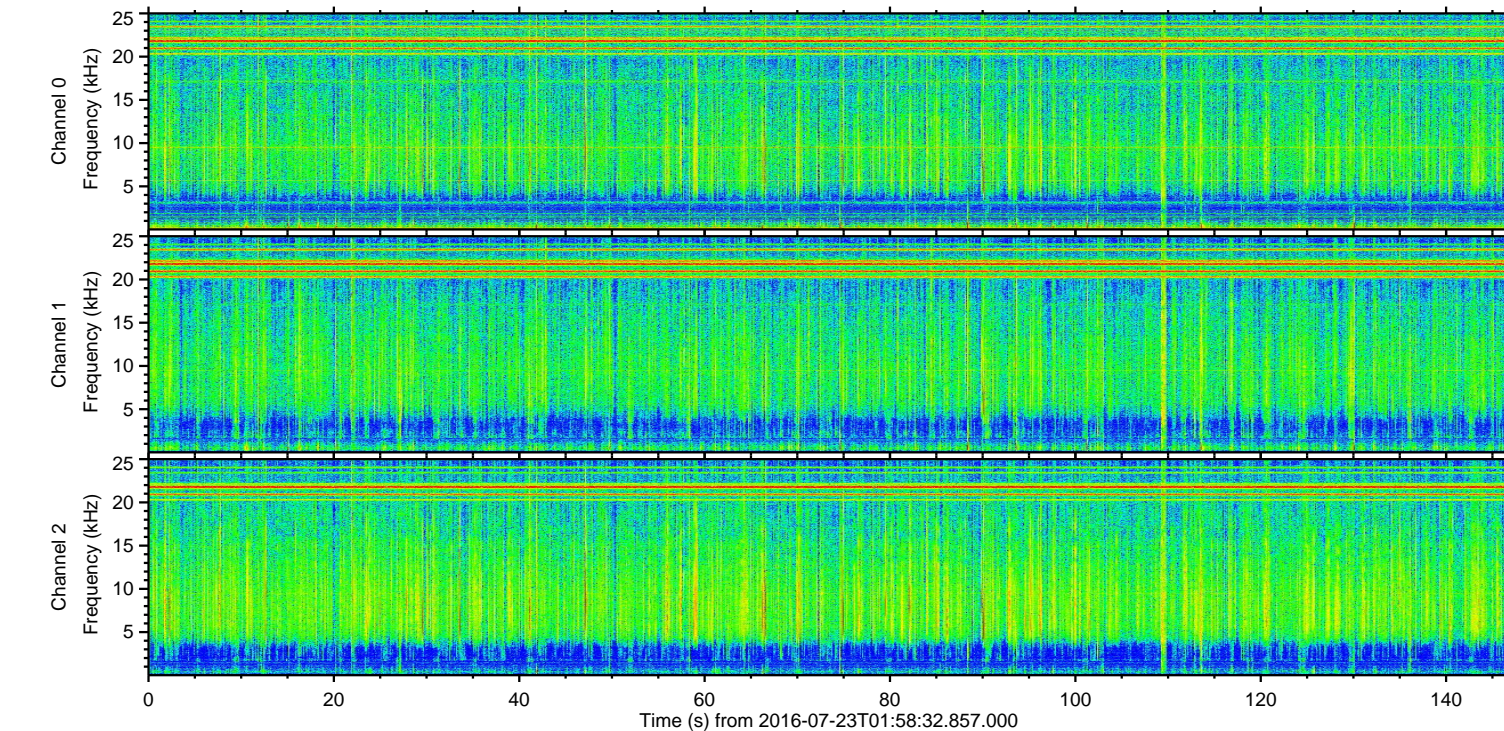
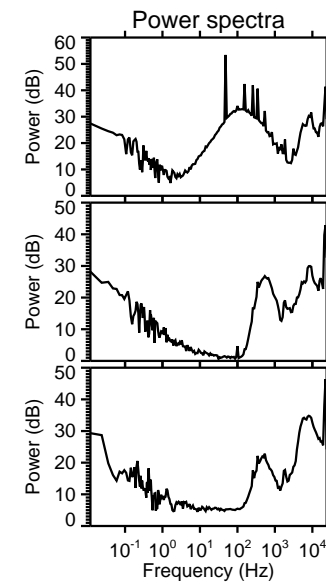
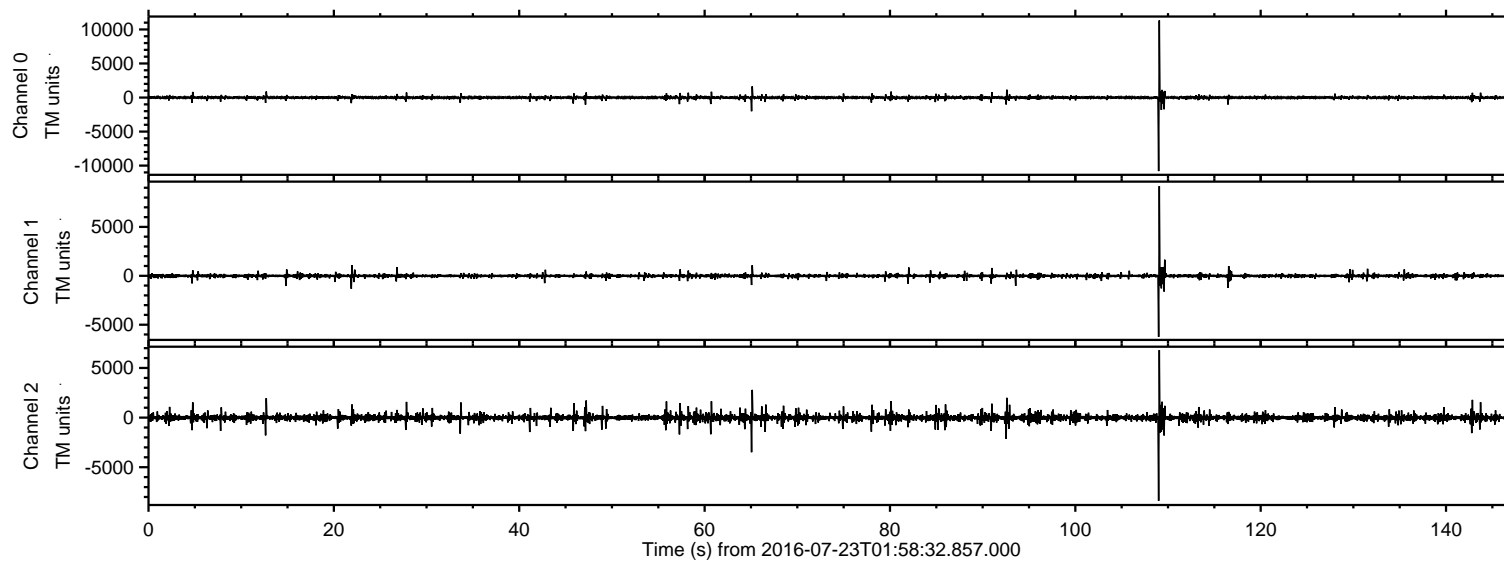


# ELMAVAN 3D WAVEFORMS (Measured data sampled at 50 kHz) 51000 packets of 144 samples from 2016-07-23T01:58:32.857.000.

Processed Sat Jul 23 04:06:47 2016 by ELM ver.2012-10-06 from 001\_\_elm20160723\_015831\_\_dat00.bin



Channel 0  
mn: -10815  
mx: 11334  
 $\mu$ : -1.6  
 $\sigma$ : 26.9

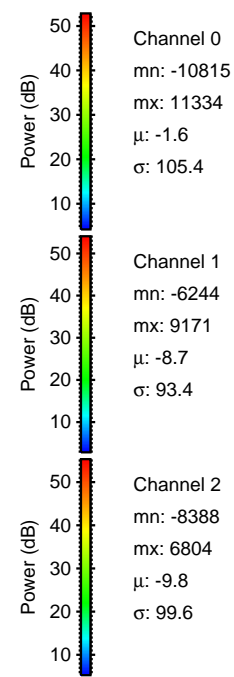
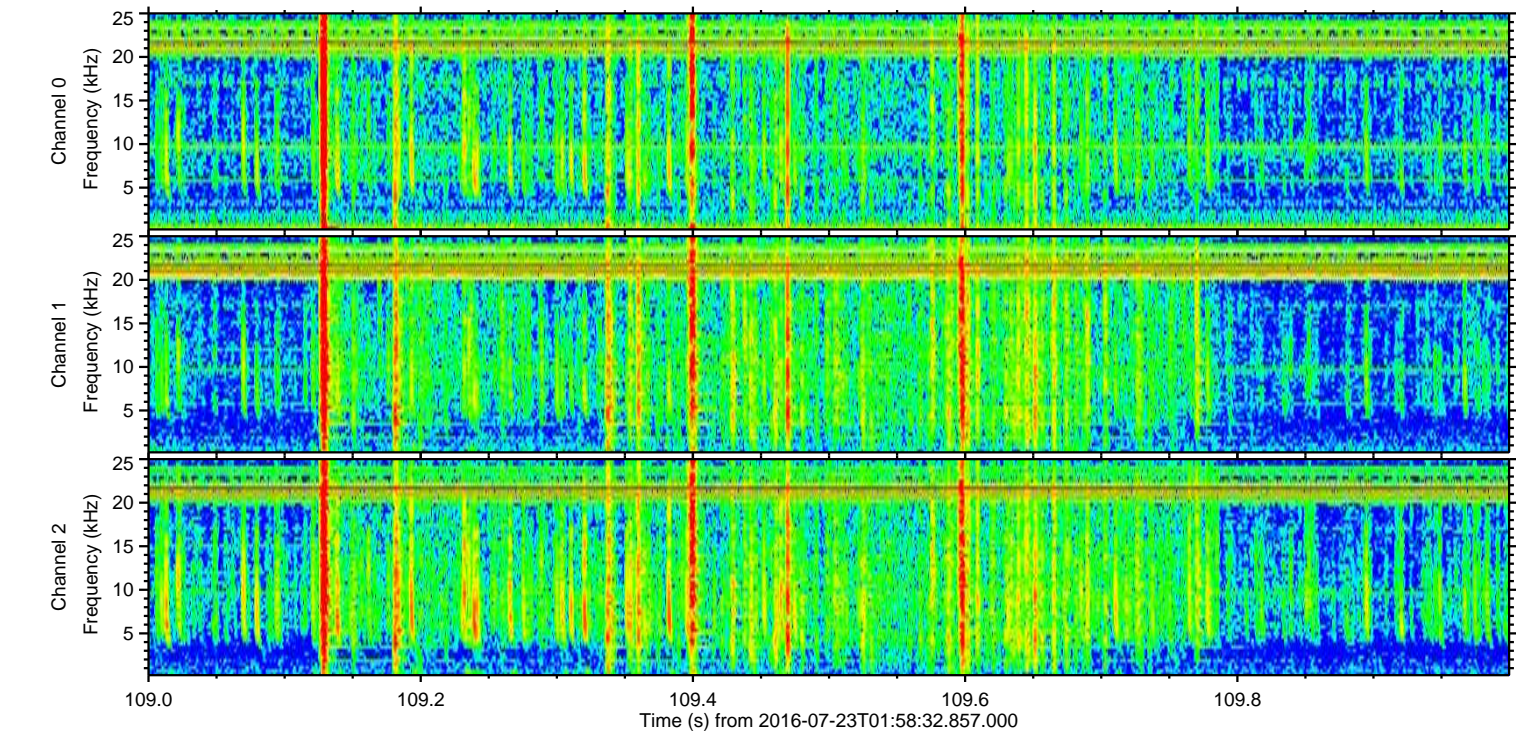
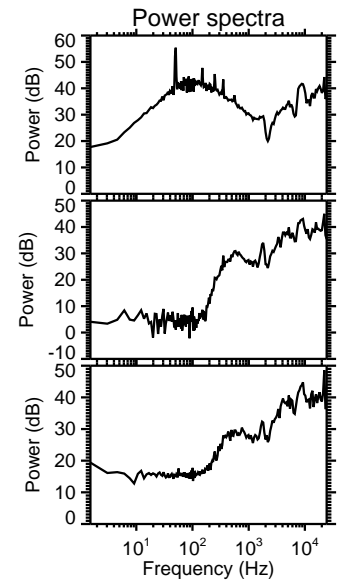
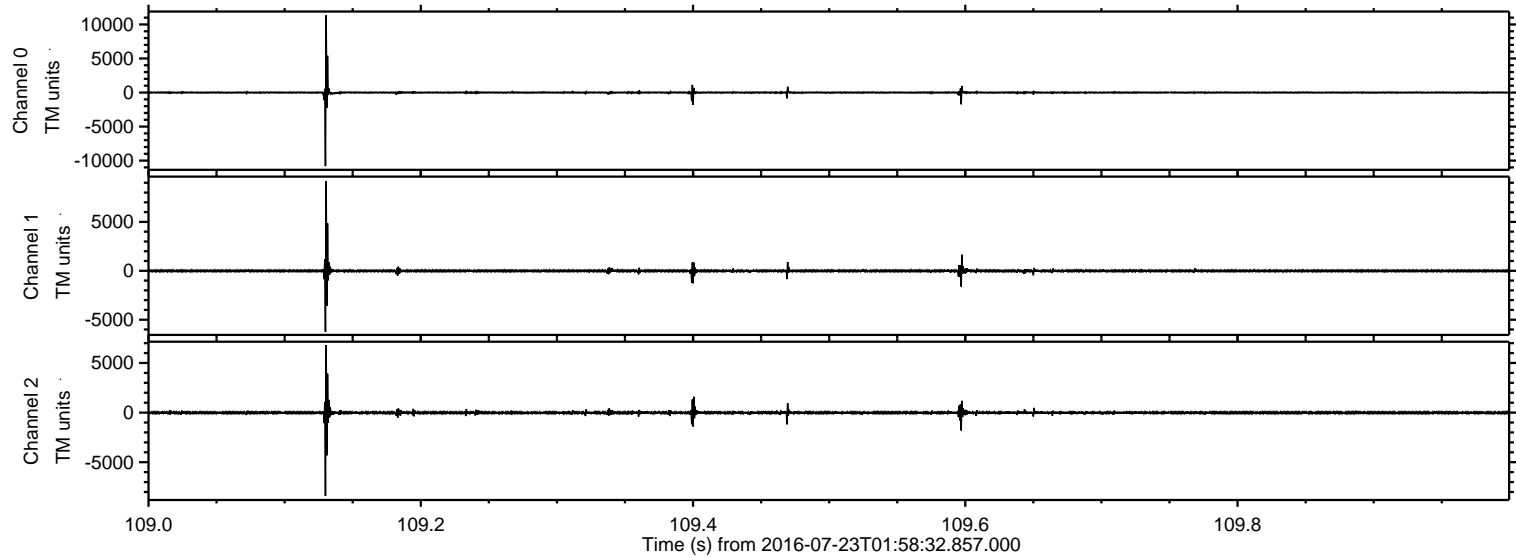
Channel 1  
mn: -6244  
mx: 9171  
 $\mu$ : -8.7  
 $\sigma$ : 33.2

Channel 2  
mn: -8388  
mx: 6804  
 $\mu$ : -9.9  
 $\sigma$ : 44.7



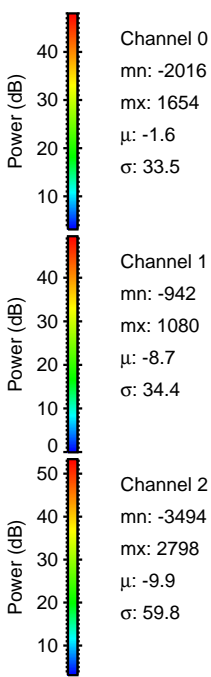
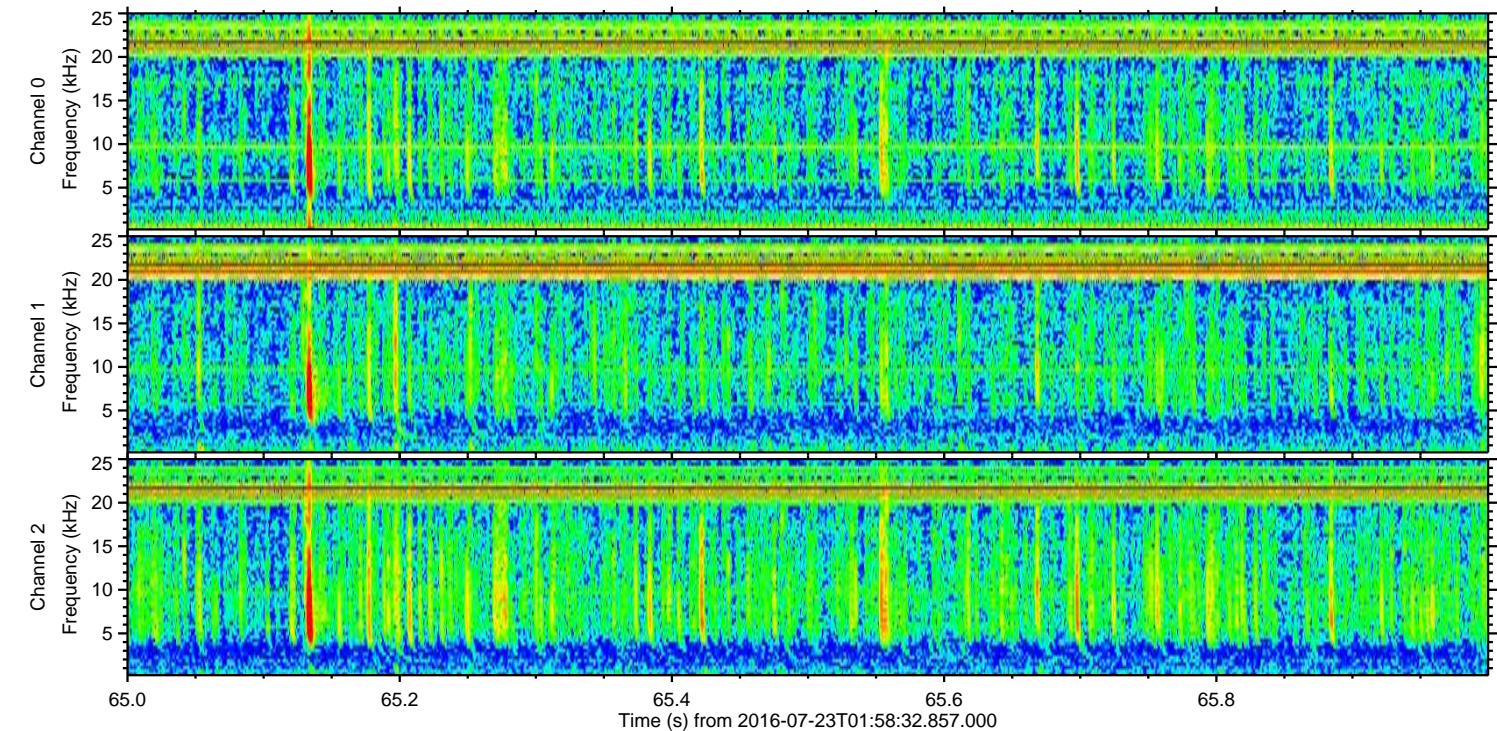
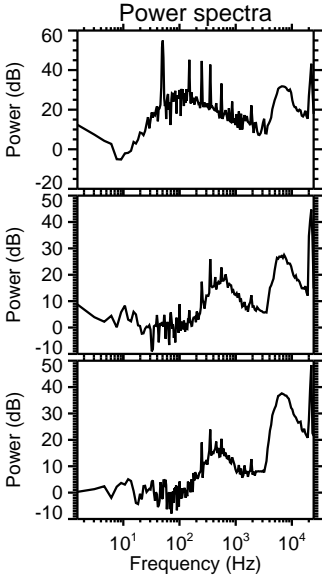
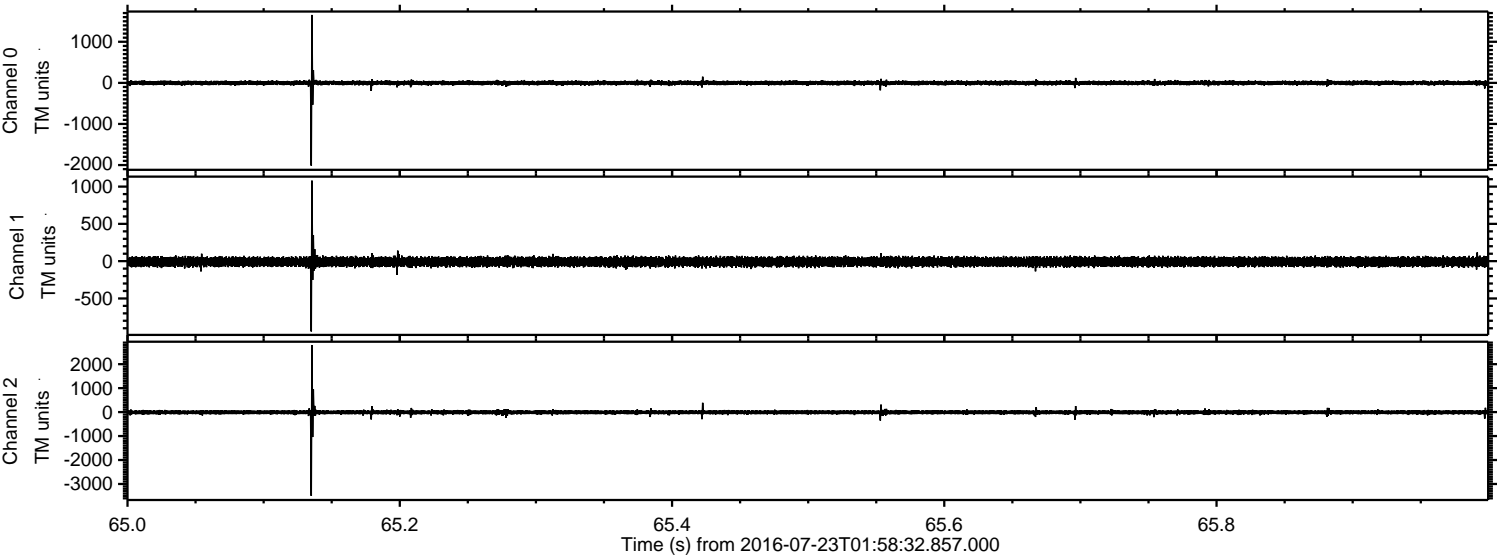
ELMAVAN 3D WAVEFORMS (Measured data sampled at 50 kHz) 51000 packets of 144 samples from 2016-07-23T01:58:32.857.000. Part 110/147

Processed Sat Jul 23 04:06:58 2016 by ELM ver.2012-10-06 from 001\_\_elm20160723\_015831\_\_dat00.bin



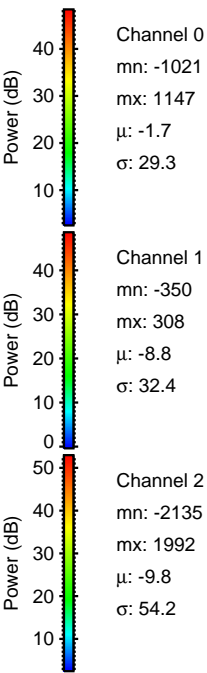
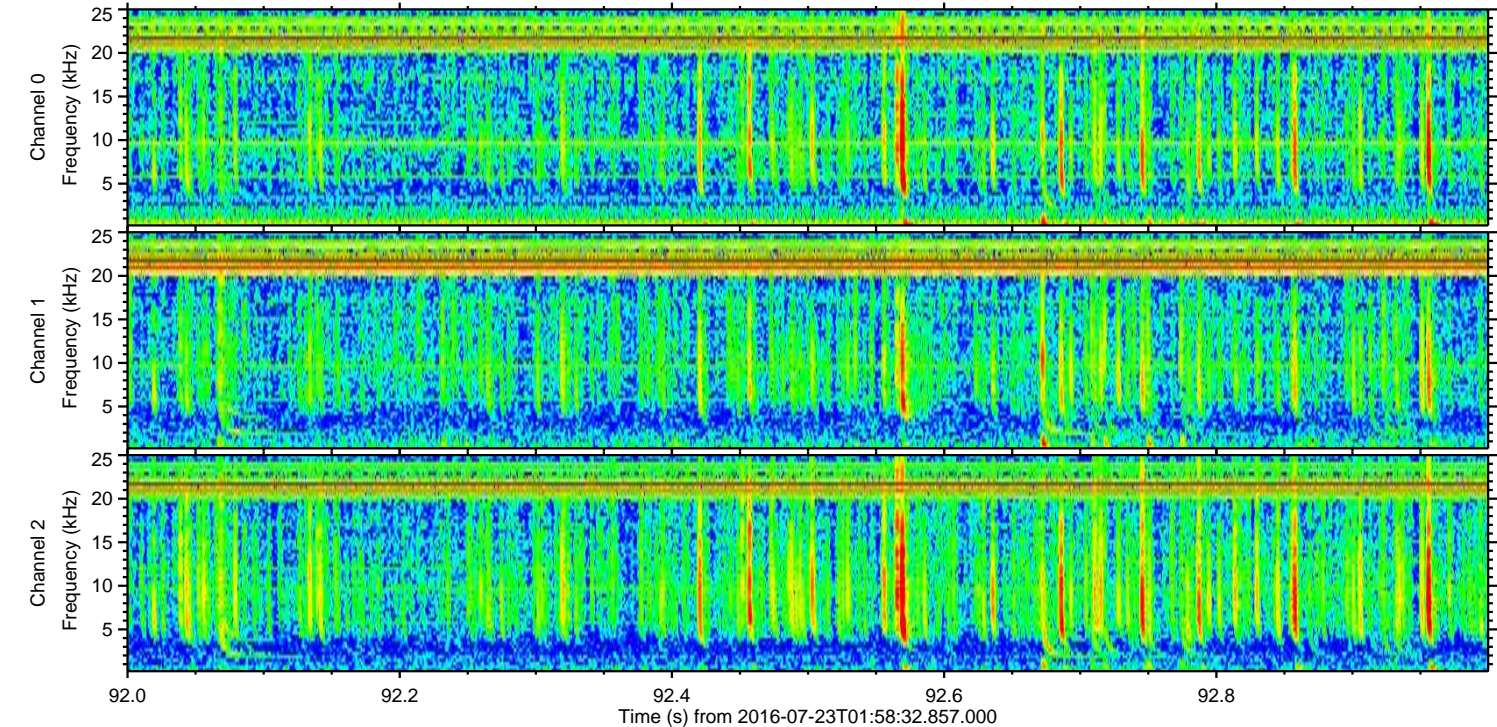
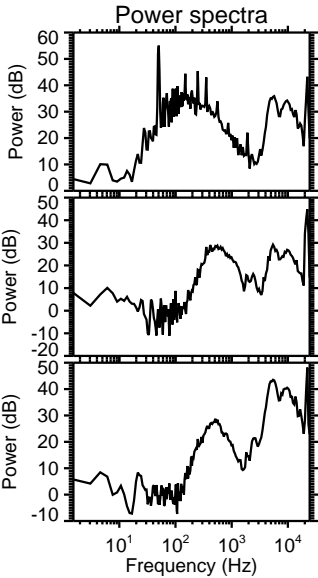
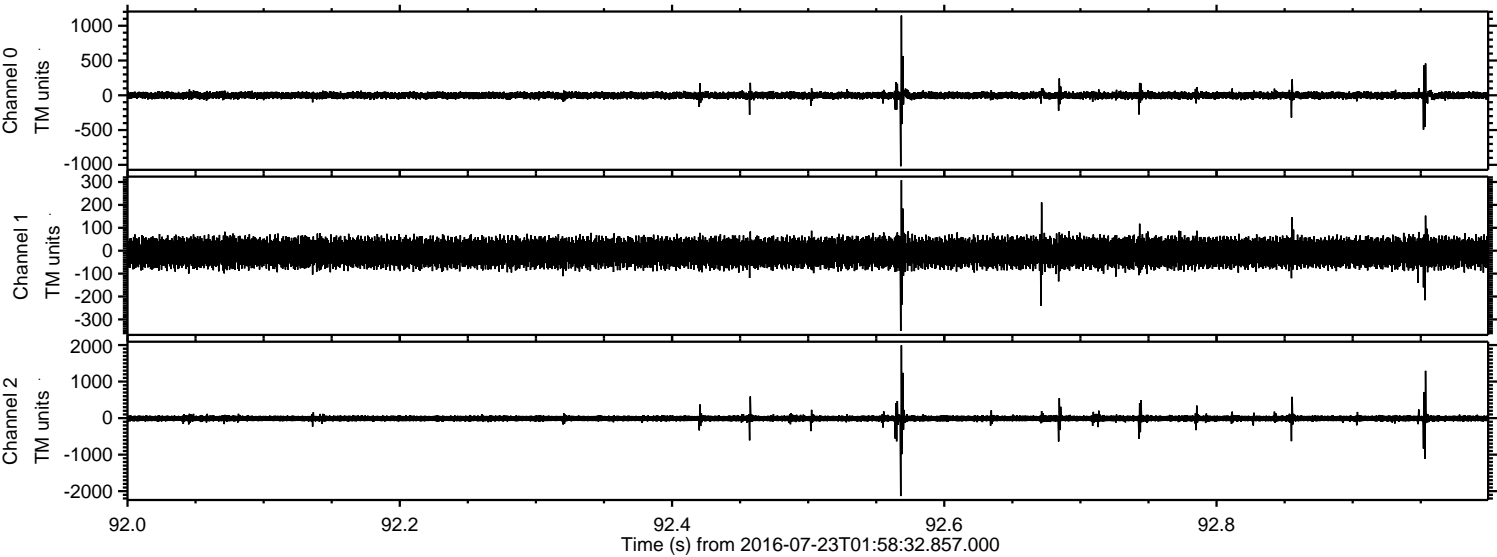


Processed Sat Jul 23 04:06:59 2016 by ELM ver.2012-10-06 from 001\_\_elm20160723\_015831\_\_dat00.bin



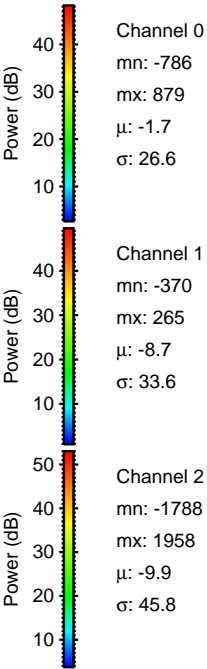
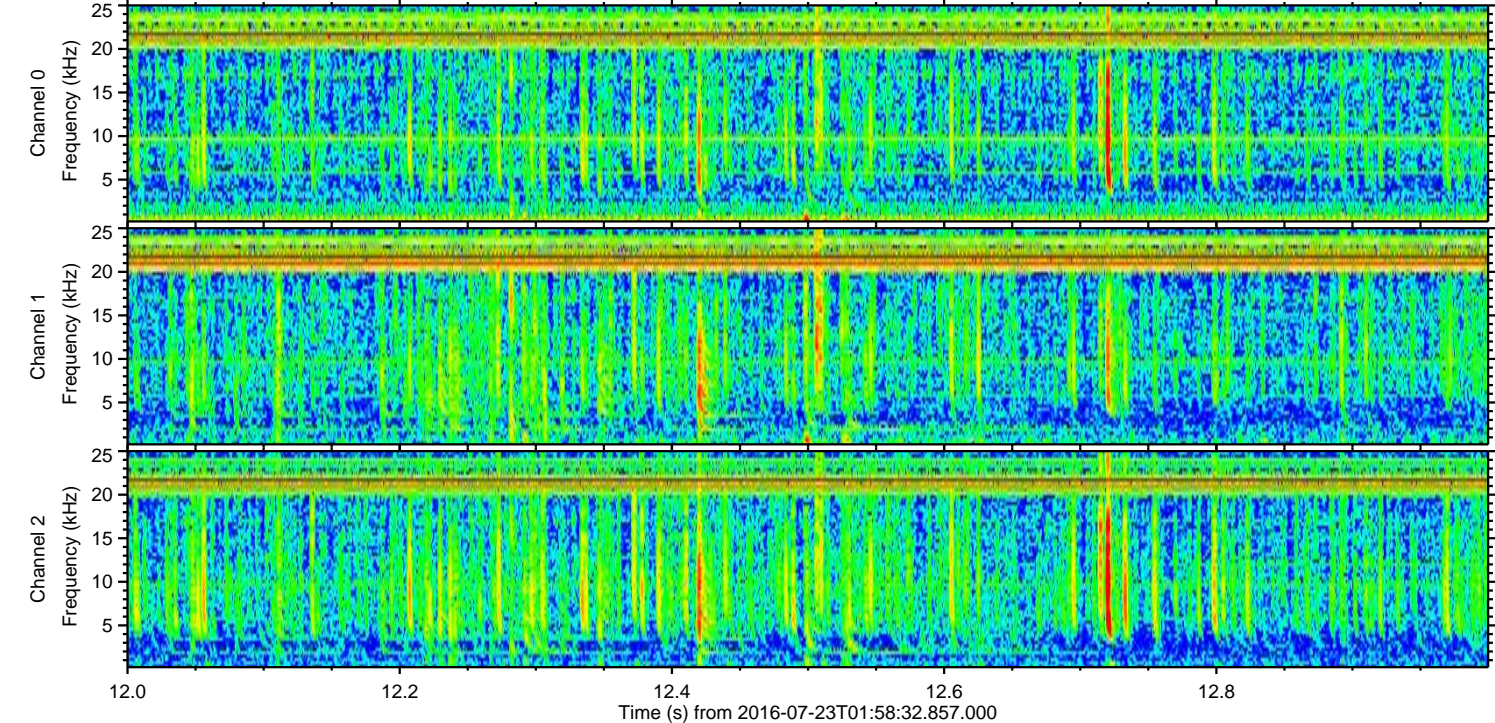
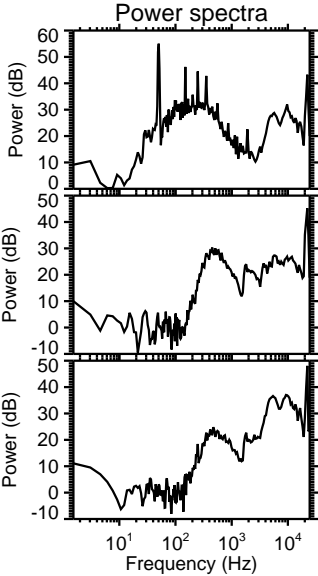
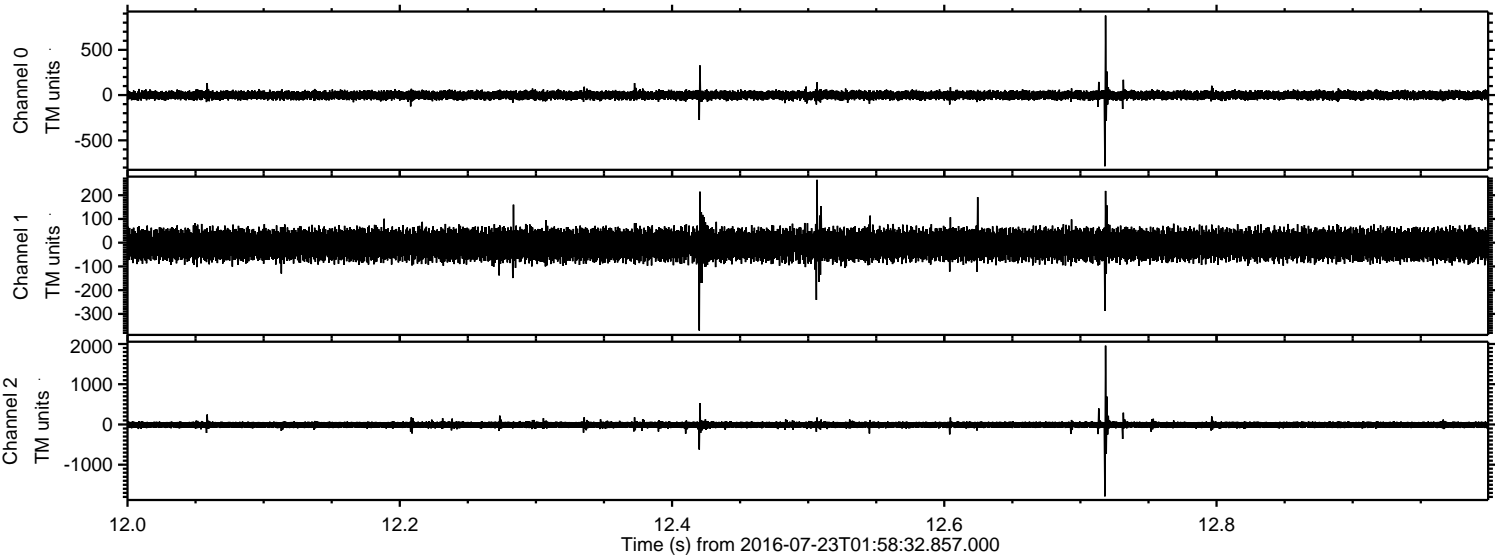


Processed Sat Jul 23 04:07:00 2016 by ELM ver.2012-10-06 from 001\_\_elm20160723\_015831\_\_dat00.bin



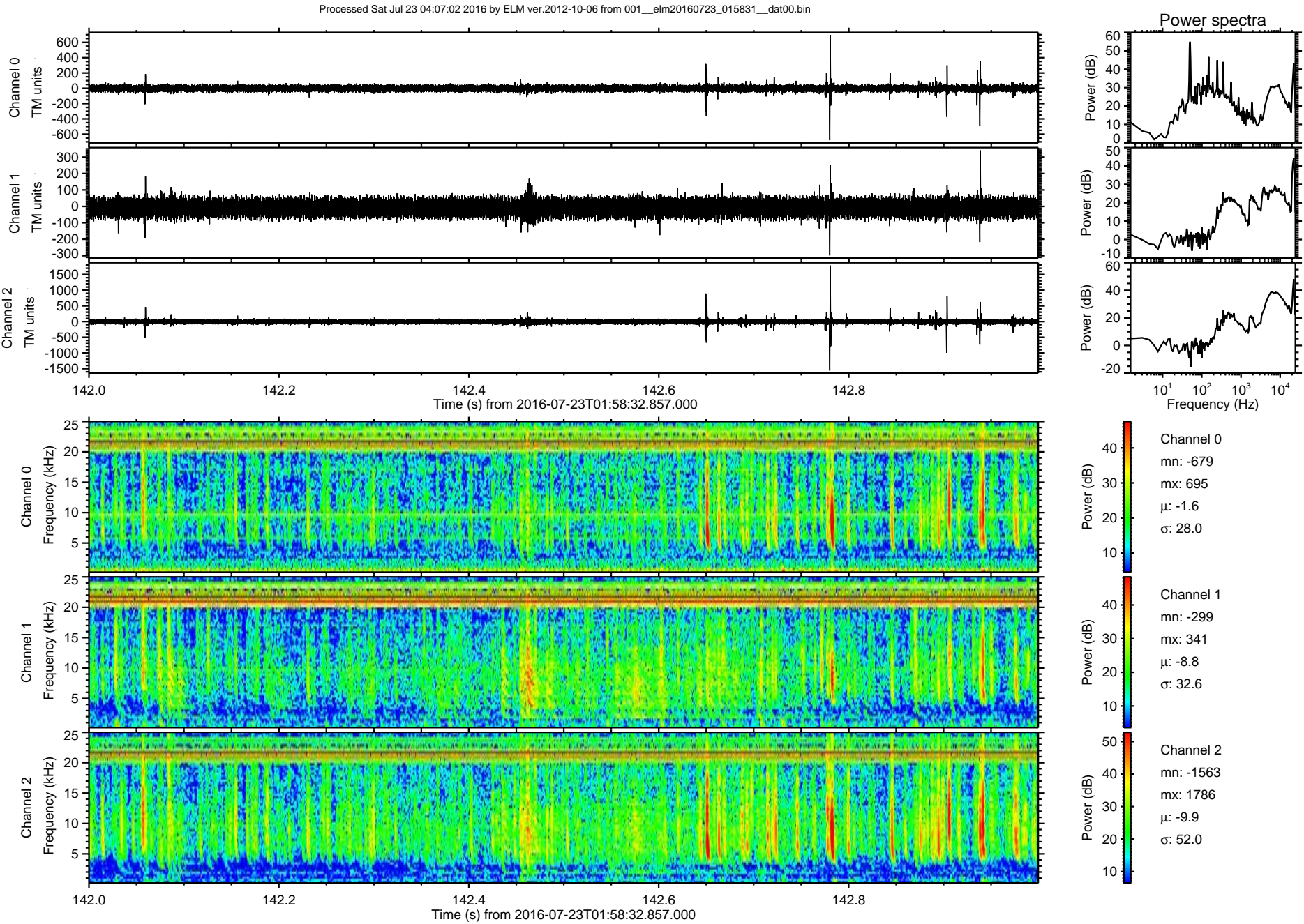


Processed Sat Jul 23 04:07:01 2016 by ELM ver.2012-10-06 from 001\_\_elm20160723\_015831\_\_dat00.bin



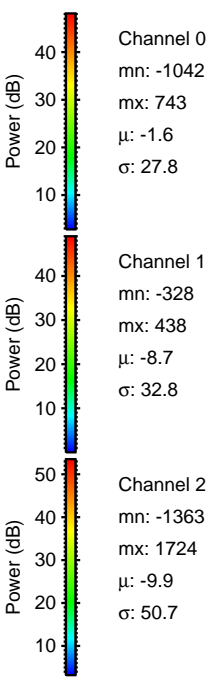
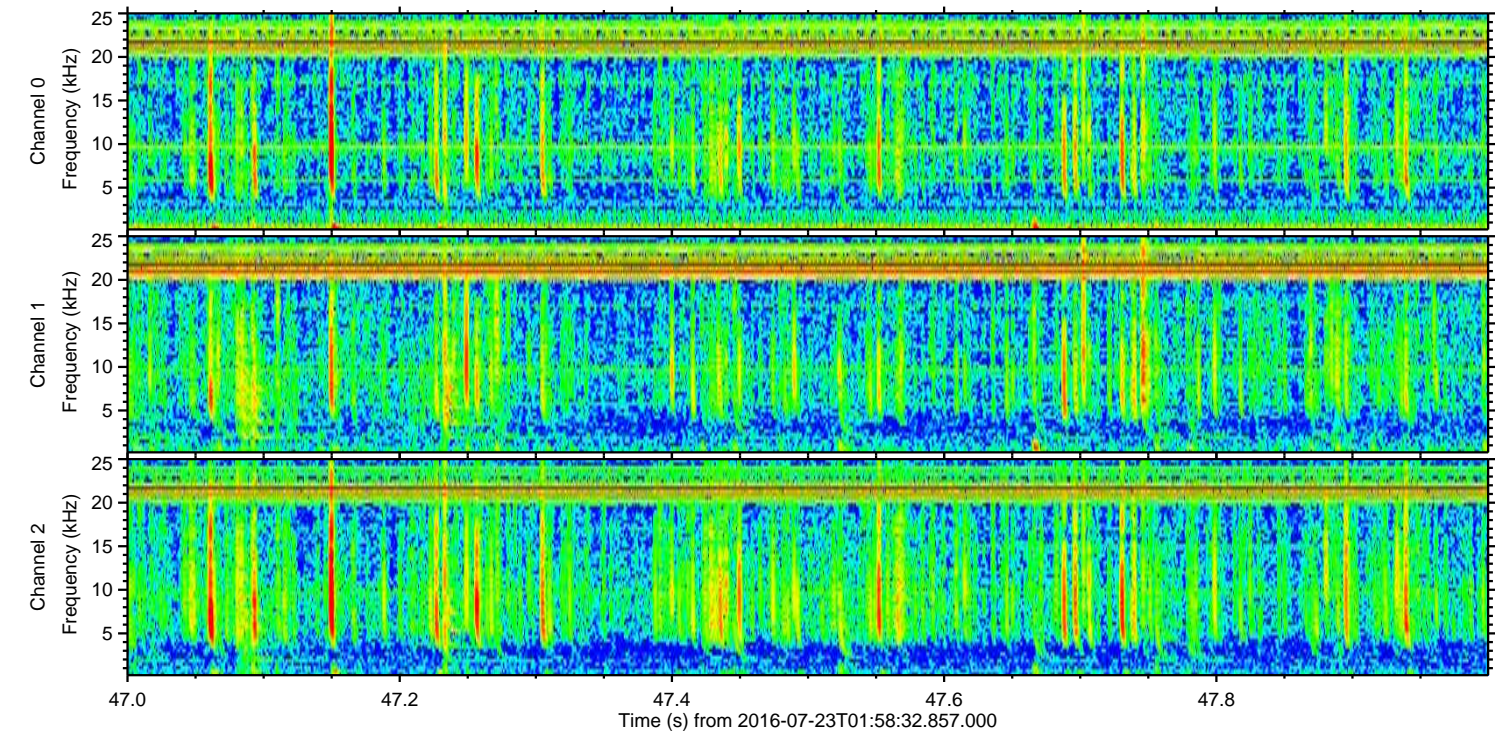
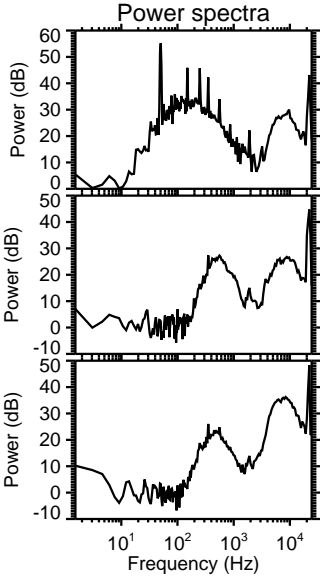
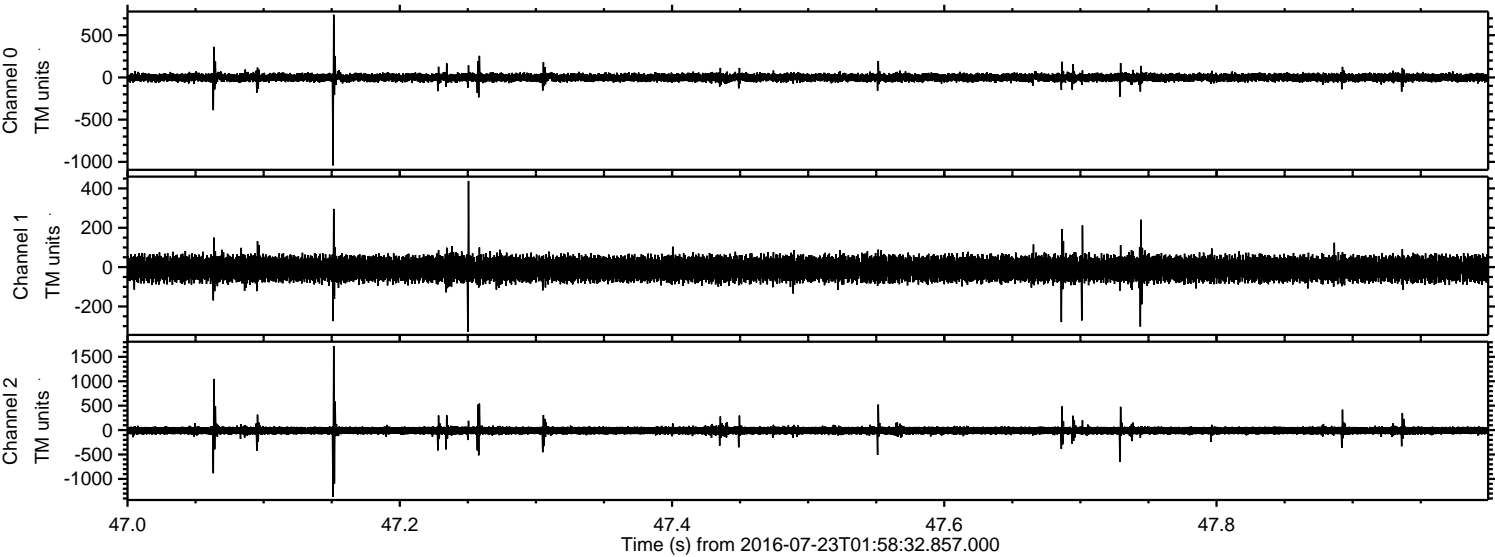


ELMAVAN 3D WAVEFORMS (Measured data sampled at 50 kHz) 51000 packets of 144 samples from 2016-07-23T01:58:32.857.000. Part 143/147



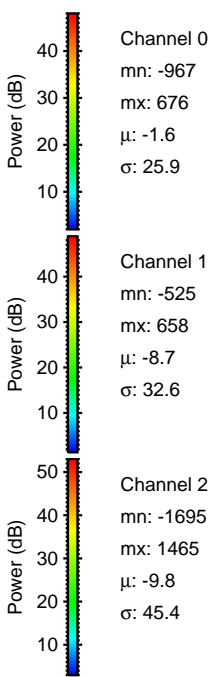
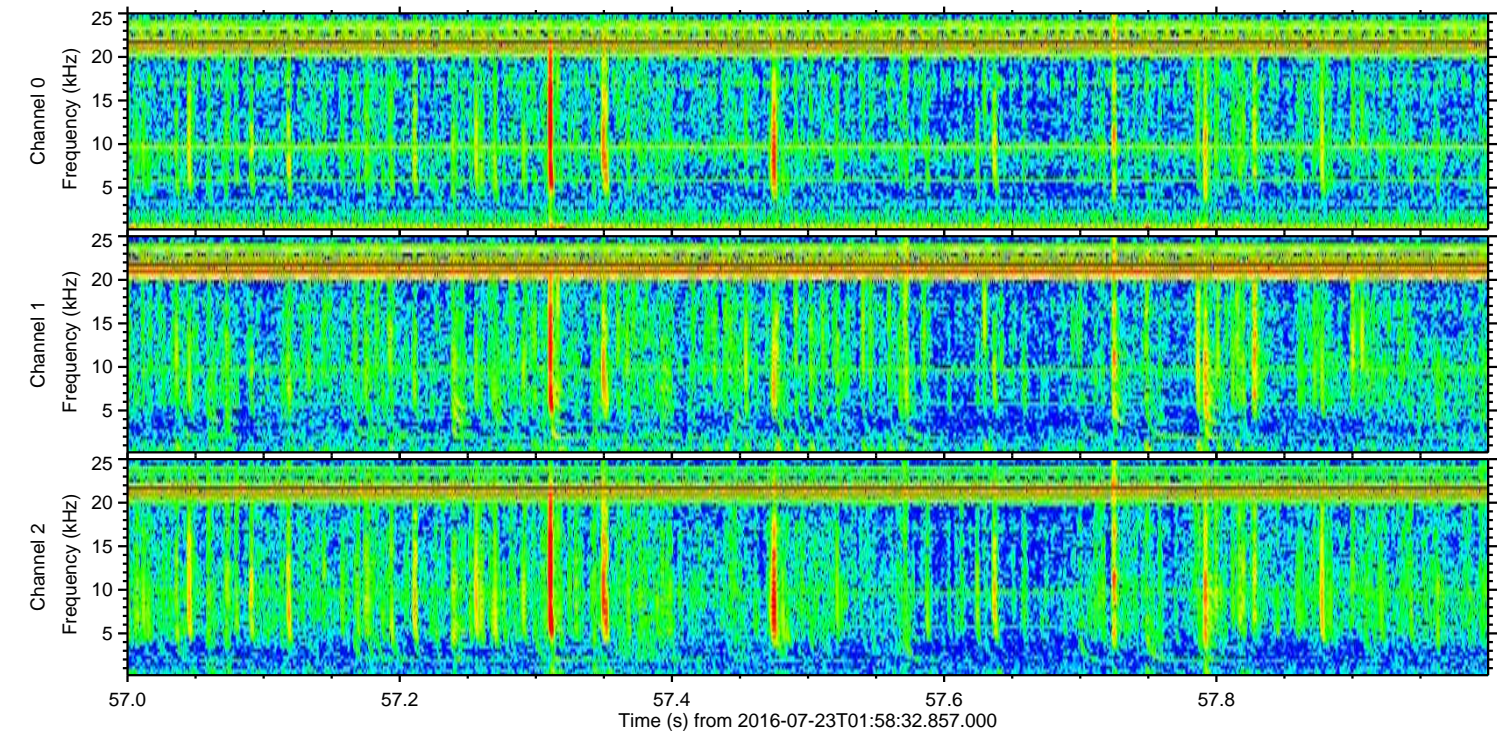
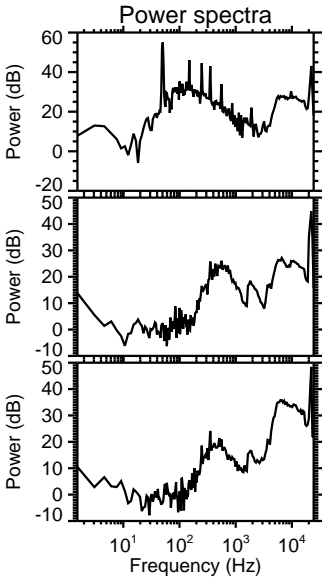
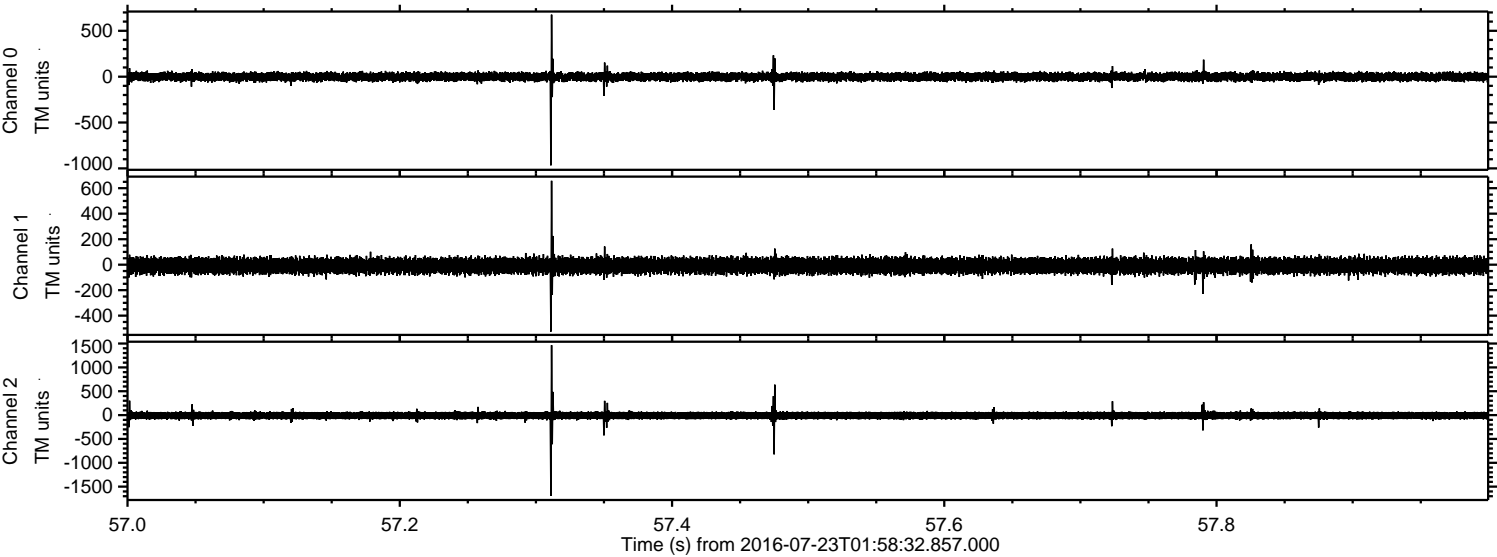


Processed Sat Jul 23 04:07:03 2016 by ELM ver.2012-10-06 from 001\_\_elm20160723\_015831\_\_dat00.bin



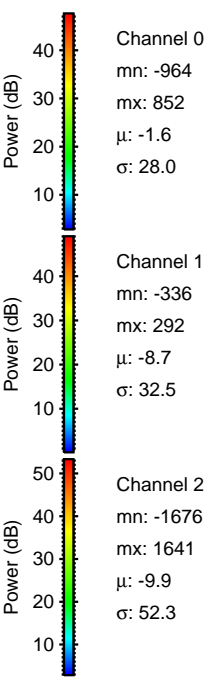
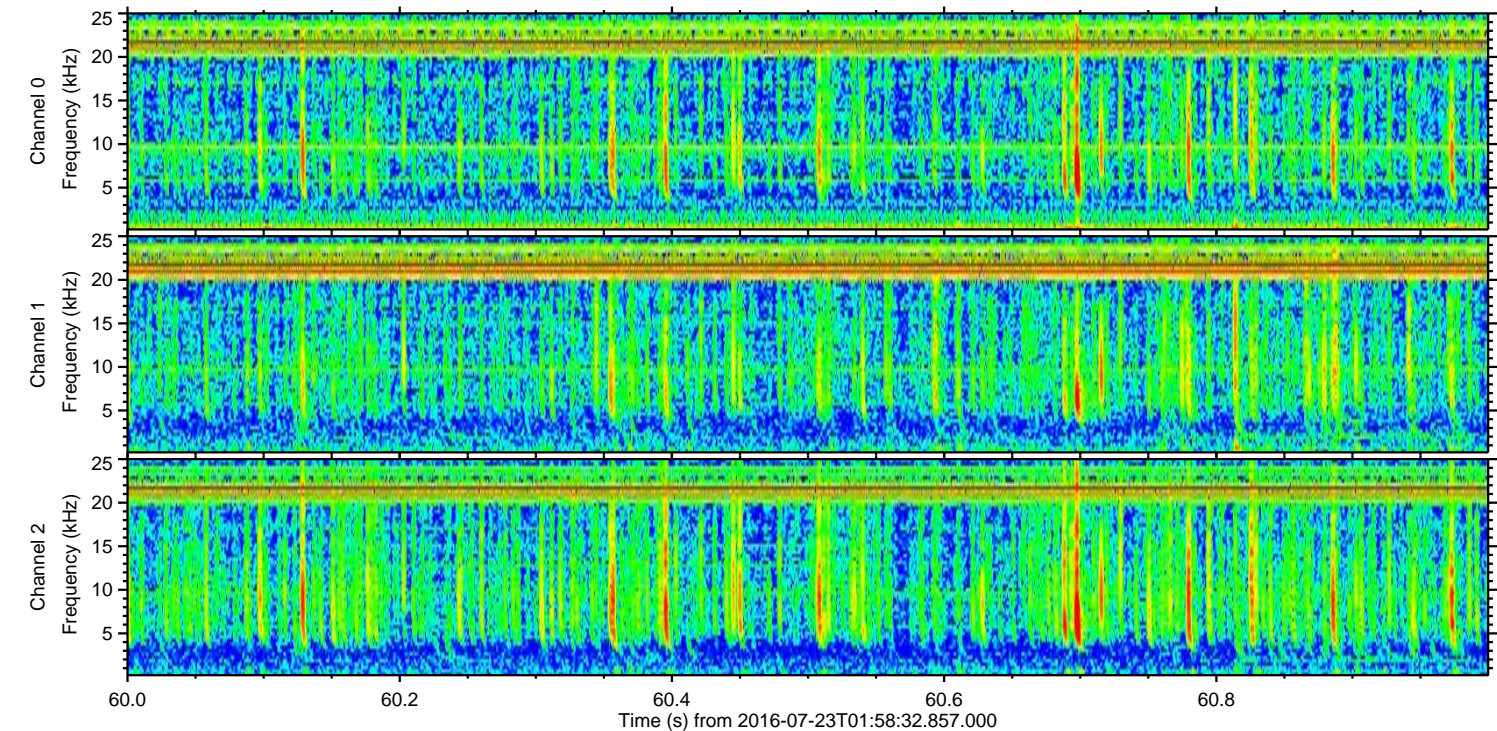
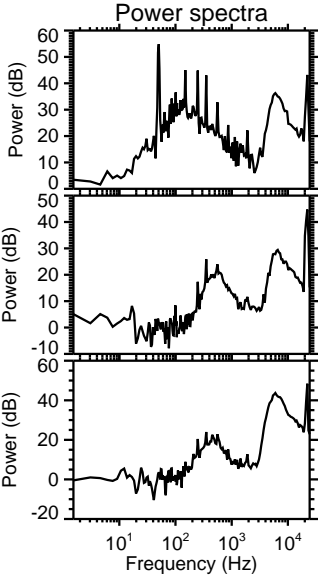
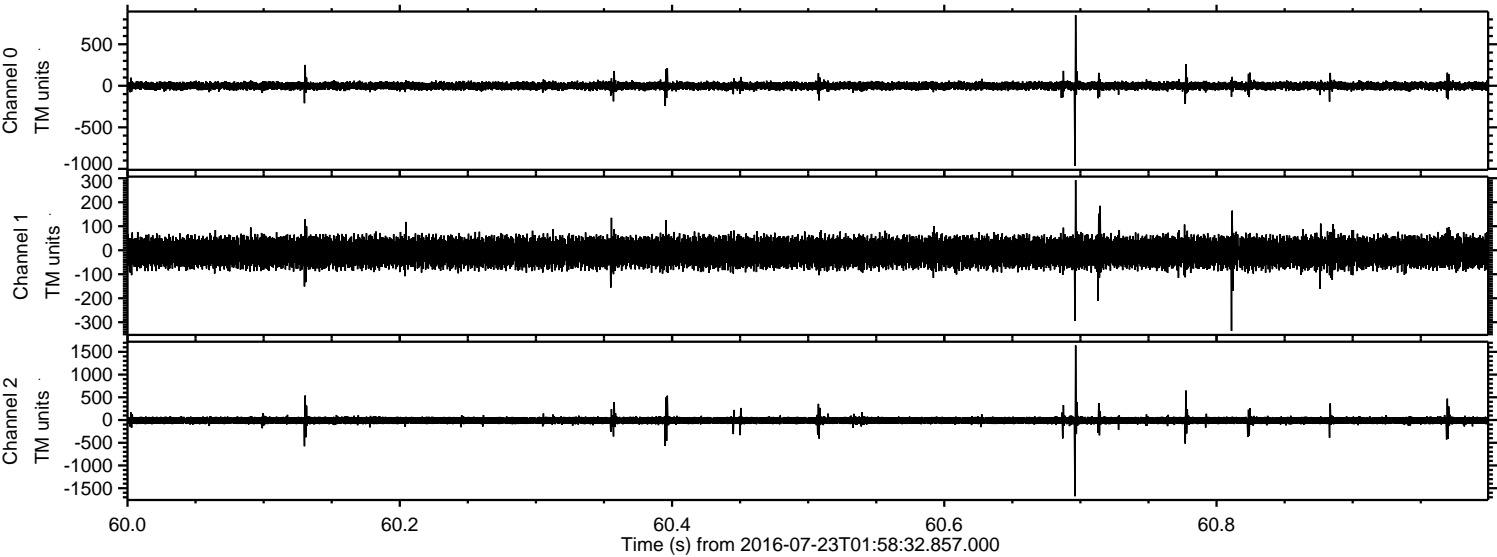


Processed Sat Jul 23 04:07:04 2016 by ELM ver.2012-10-06 from 001\_\_elm20160723\_015831\_\_dat00.bin





Processed Sat Jul 23 04:07:05 2016 by ELM ver.2012-10-06 from 001\_\_elm20160723\_015831\_\_dat00.bin



Channel 0  
mn: -964  
mx: 852  
 $\mu$ : -1.6  
 $\sigma$ : 28.0

Channel 1  
mn: -336  
mx: 292  
 $\mu$ : -8.7  
 $\sigma$ : 32.5

Channel 2  
mn: -1676  
mx: 1641  
 $\mu$ : -9.9  
 $\sigma$ : 52.3



Processed Sat Jul 23 04:07:06 2016 by ELM ver.2012-10-06 from 001\_\_elm20160723\_015831\_\_dat00.bin

