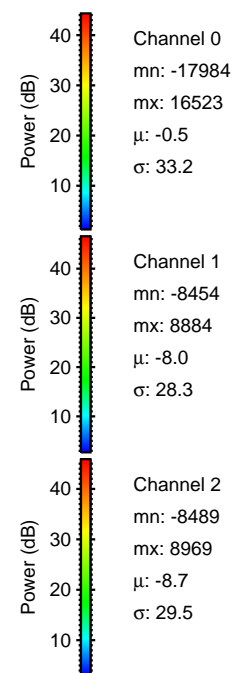
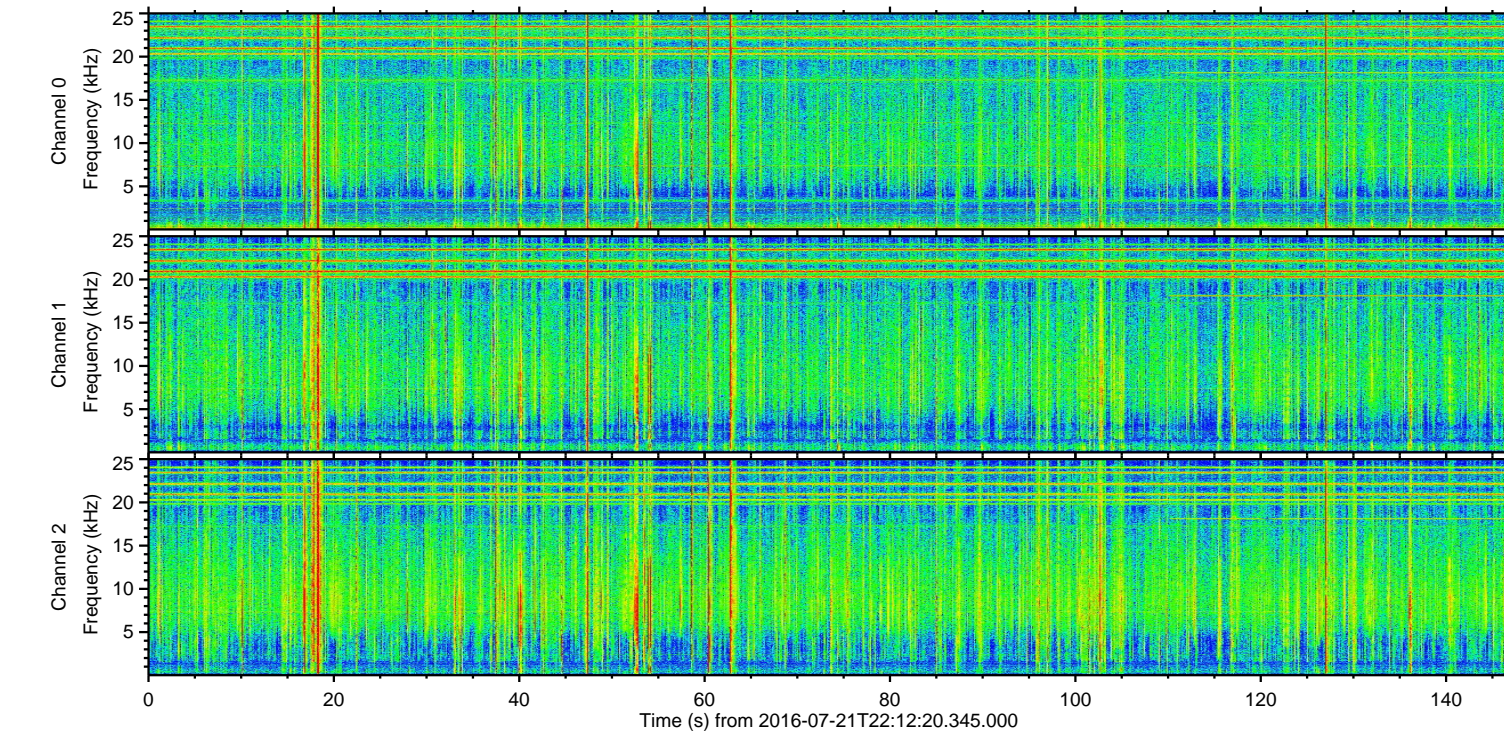
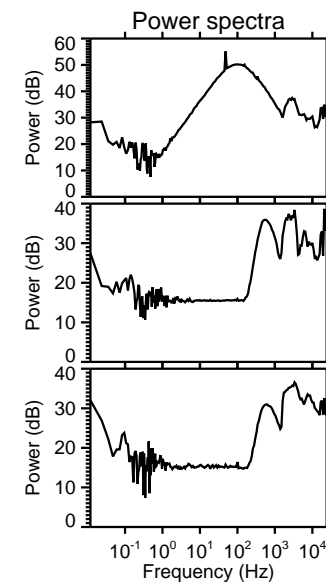
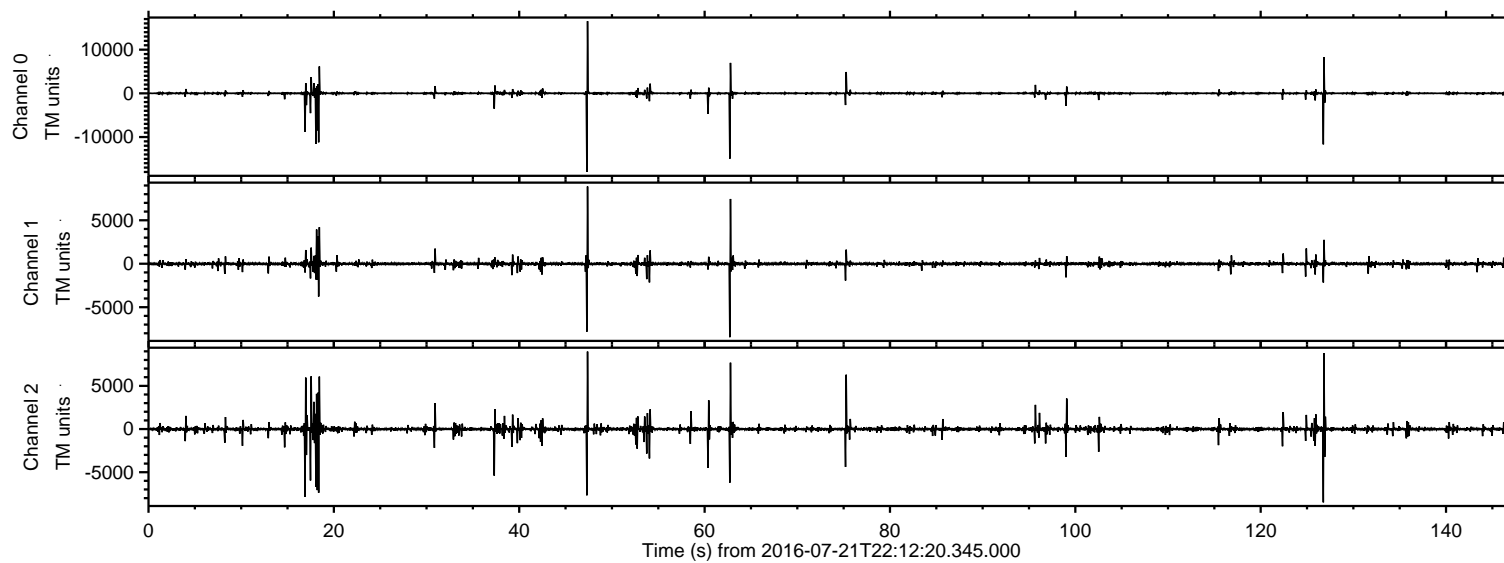
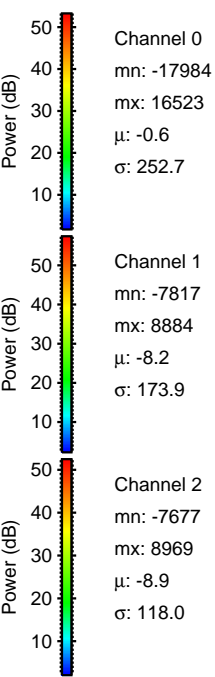
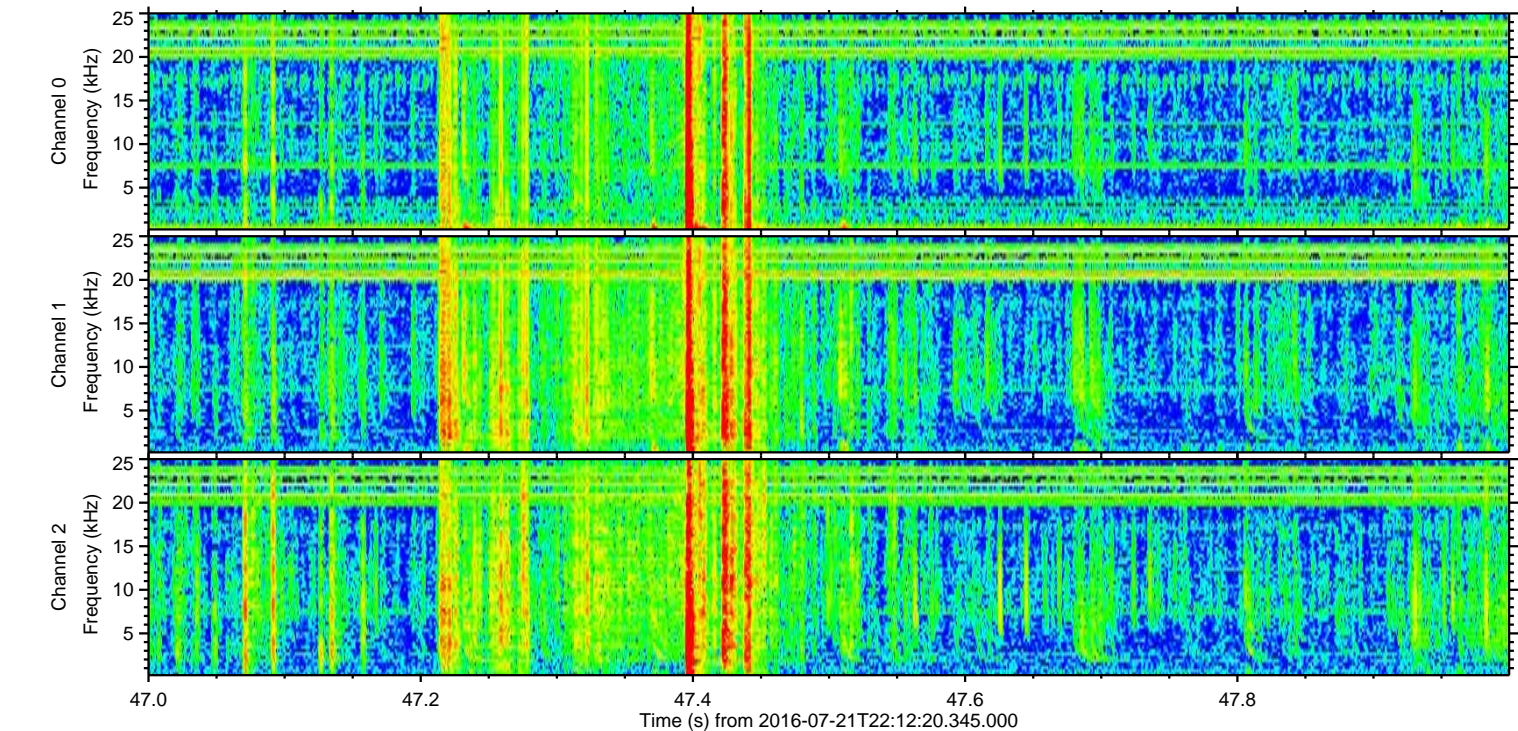
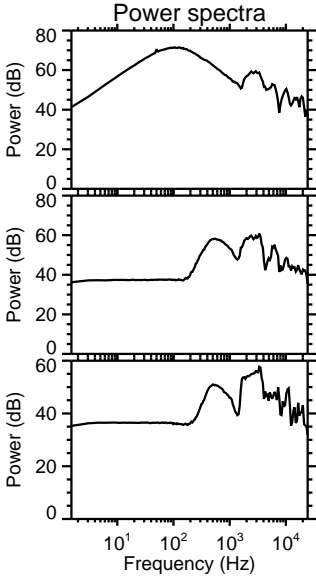
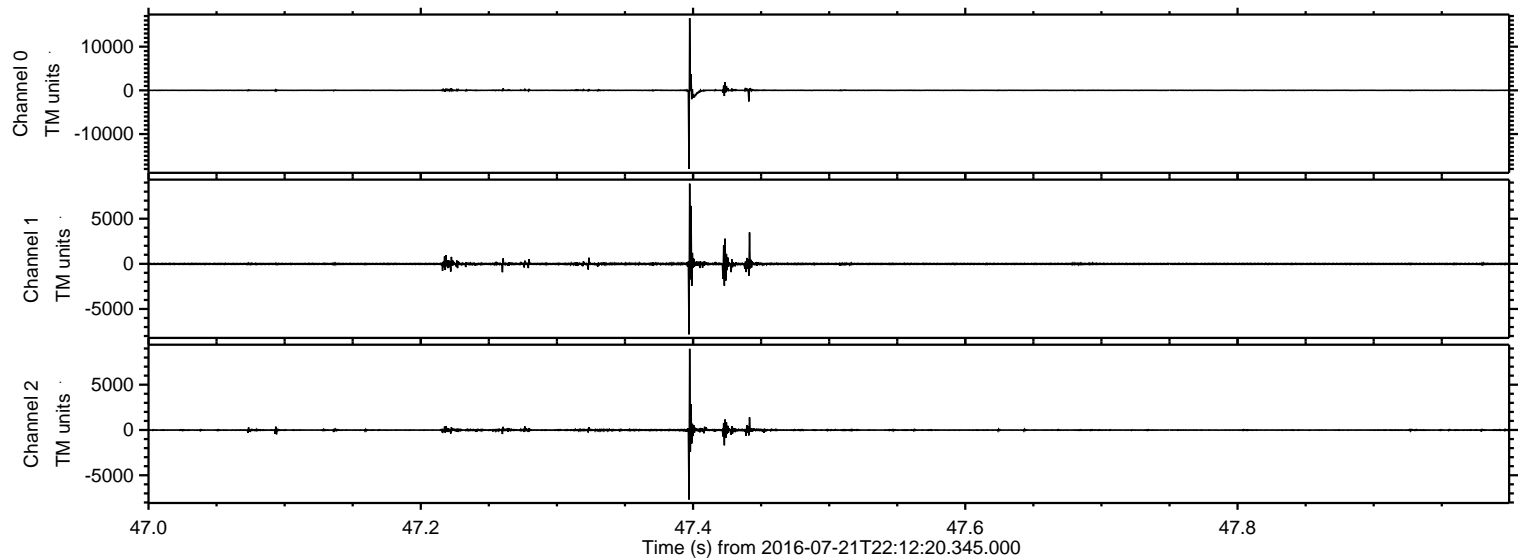


ELMAVAN 3D WAVEFORMS (Measured data sampled at 50 kHz) 51000 packets of 144 samples from 2016-07-21T22:12:20.345.000.

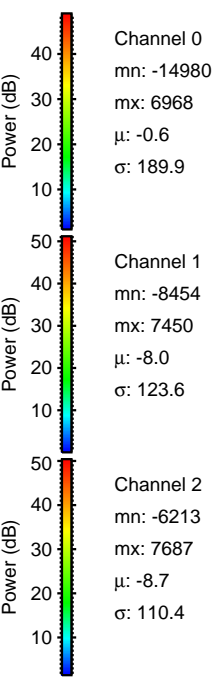
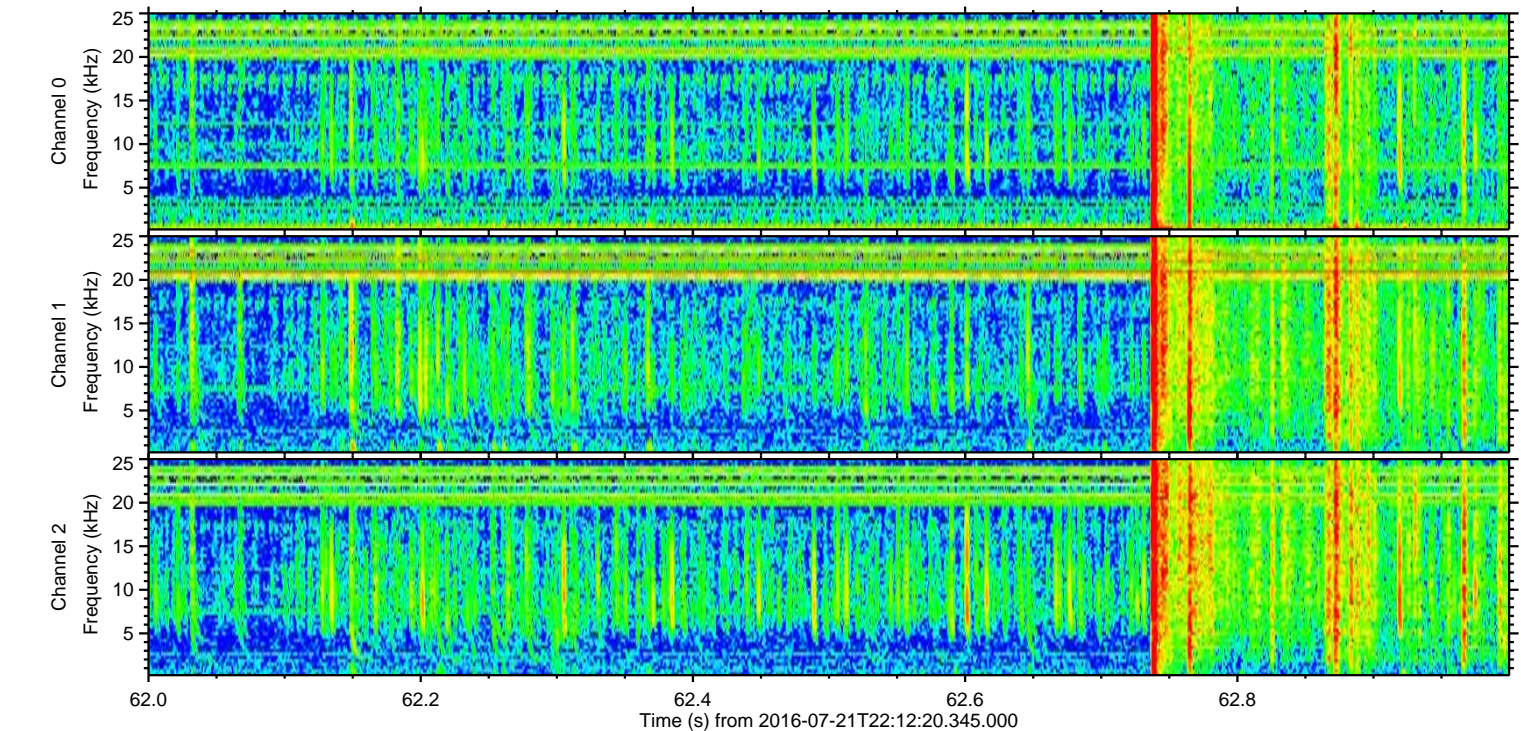
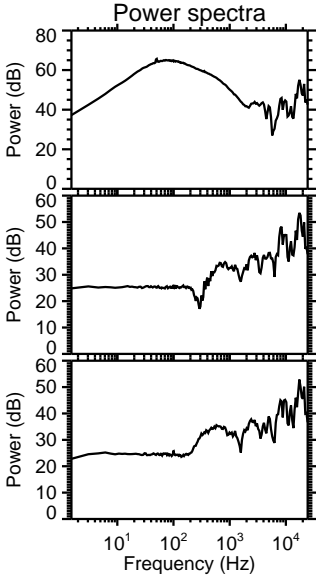
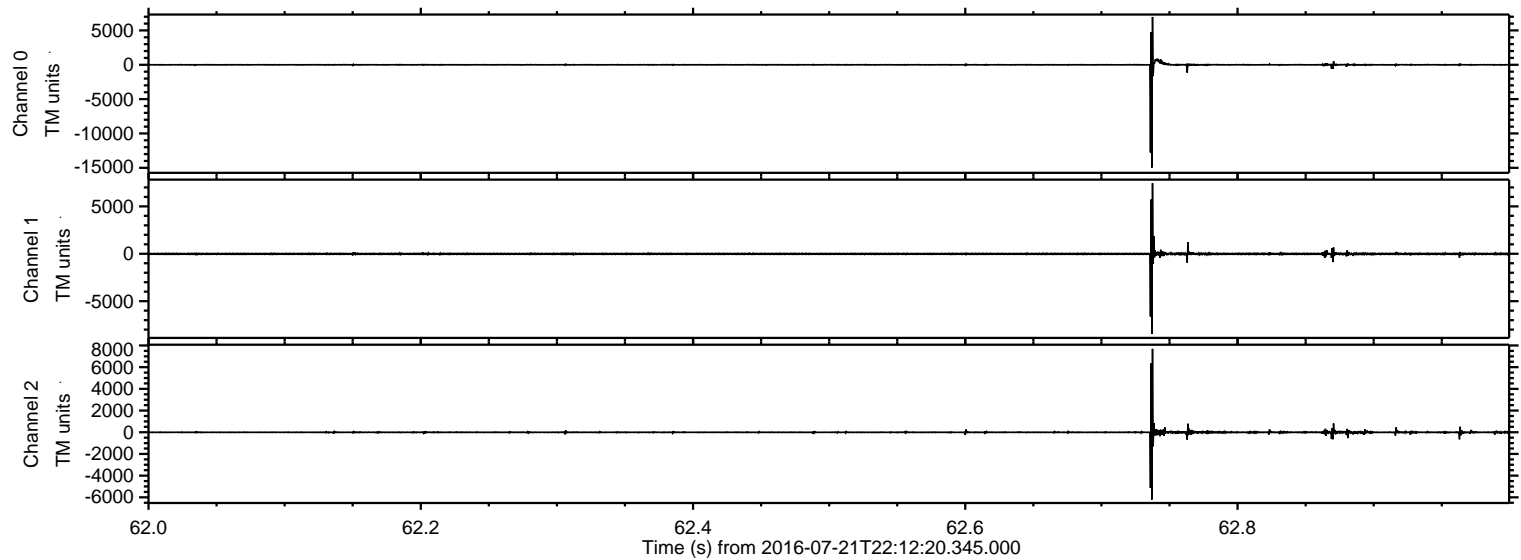
Processed Fri Jul 22 00:19:51 2016 by ELM ver.2012-10-06 from 001__elm20160721_221219__dat00.bin



Processed Fri Jul 22 00:20:03 2016 by ELM ver.2012-10-06 from 001__elm20160721_221219__dat00.bin

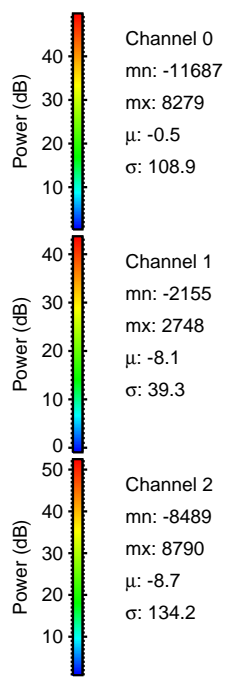
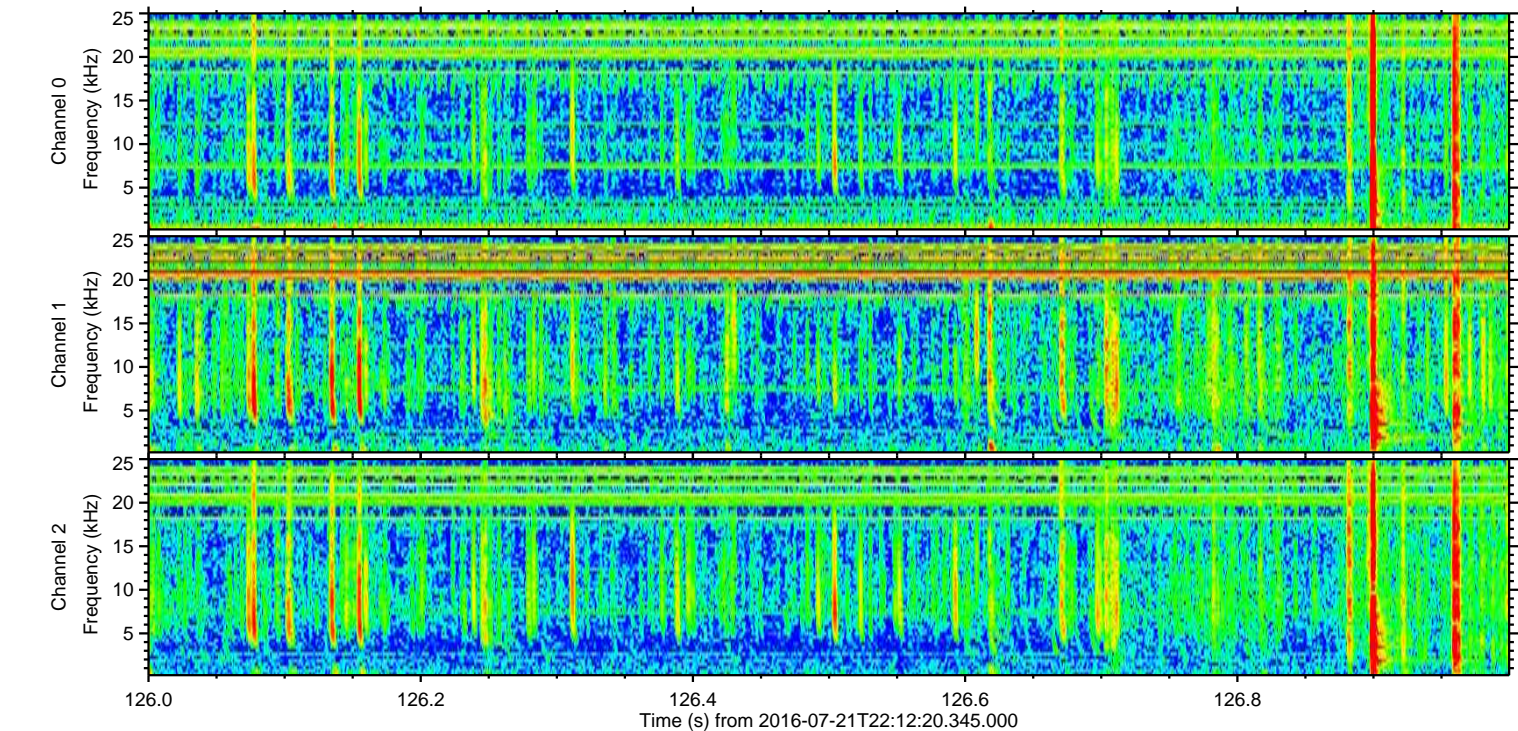
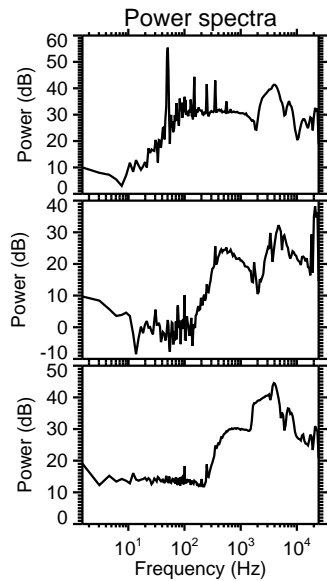
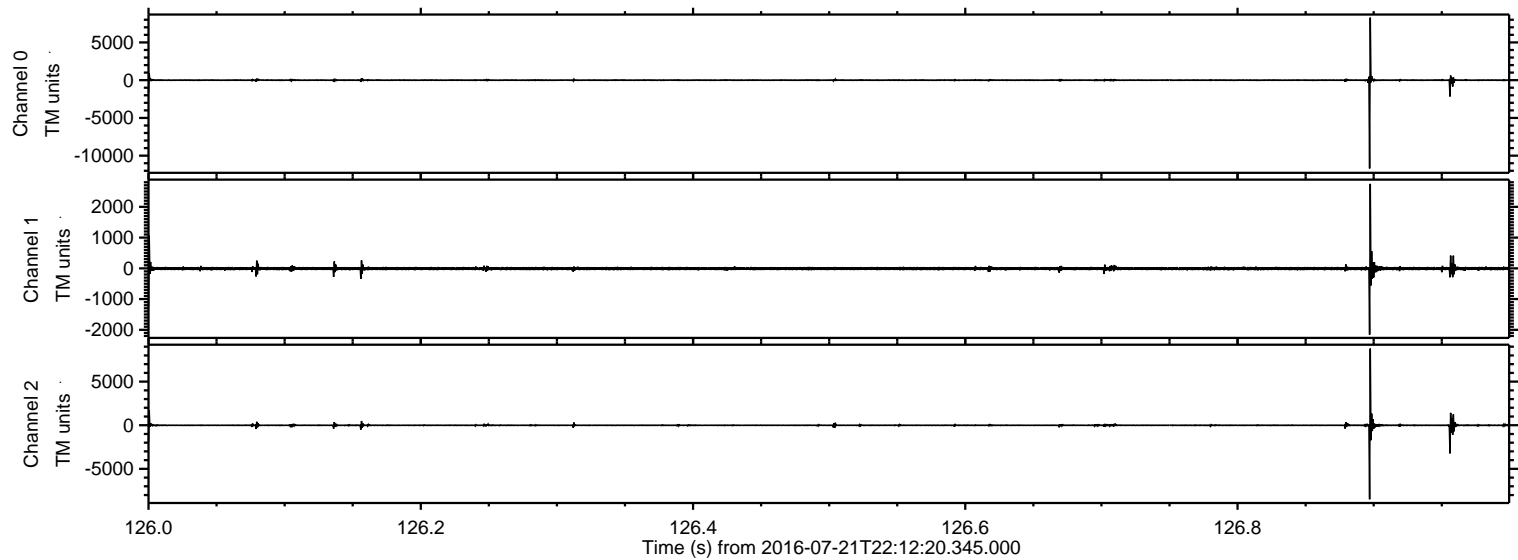


Processed Fri Jul 22 00:20:04 2016 by ELM ver.2012-10-06 from 001__elm20160721_221219__dat00.bin



ELMAVAN 3D WAVEFORMS (Measured data sampled at 50 kHz) 51000 packets of 144 samples from 2016-07-21T22:12:20.345.000. Part 127/147

Processed Fri Jul 22 00:20:04 2016 by ELM ver.2012-10-06 from 001__elm20160721_221219__dat00.bin

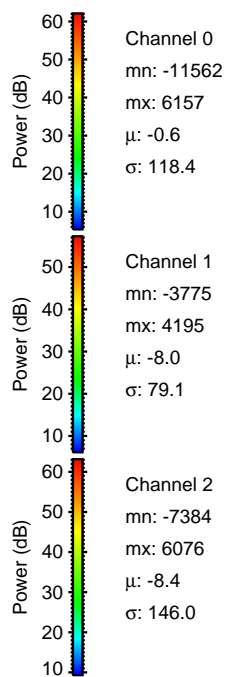
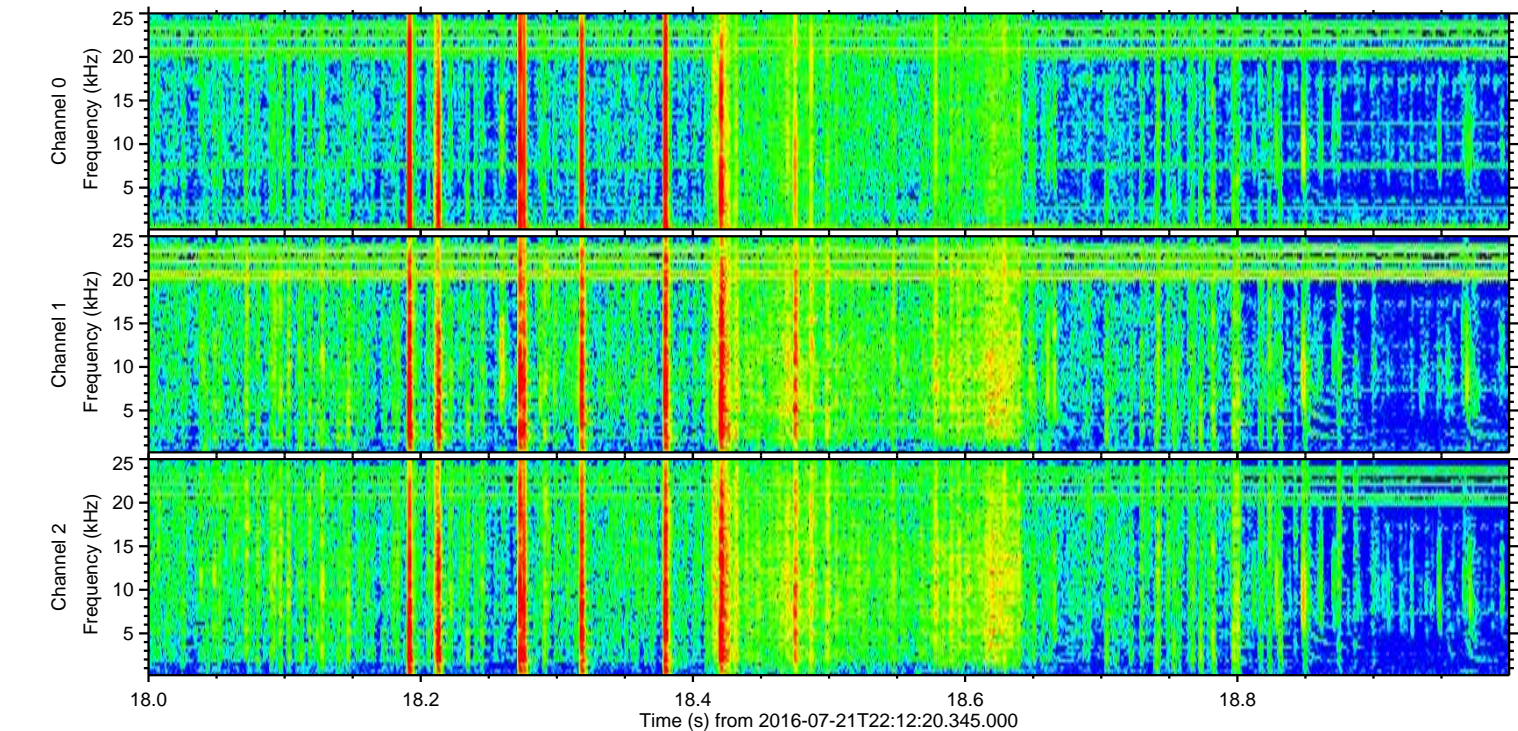
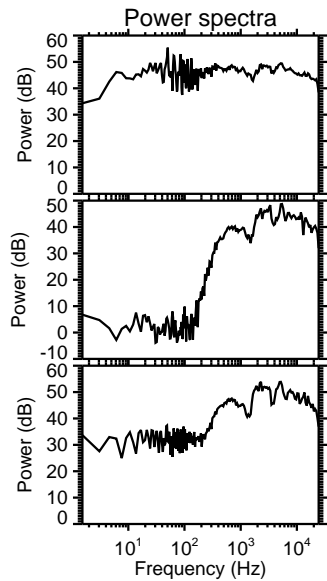
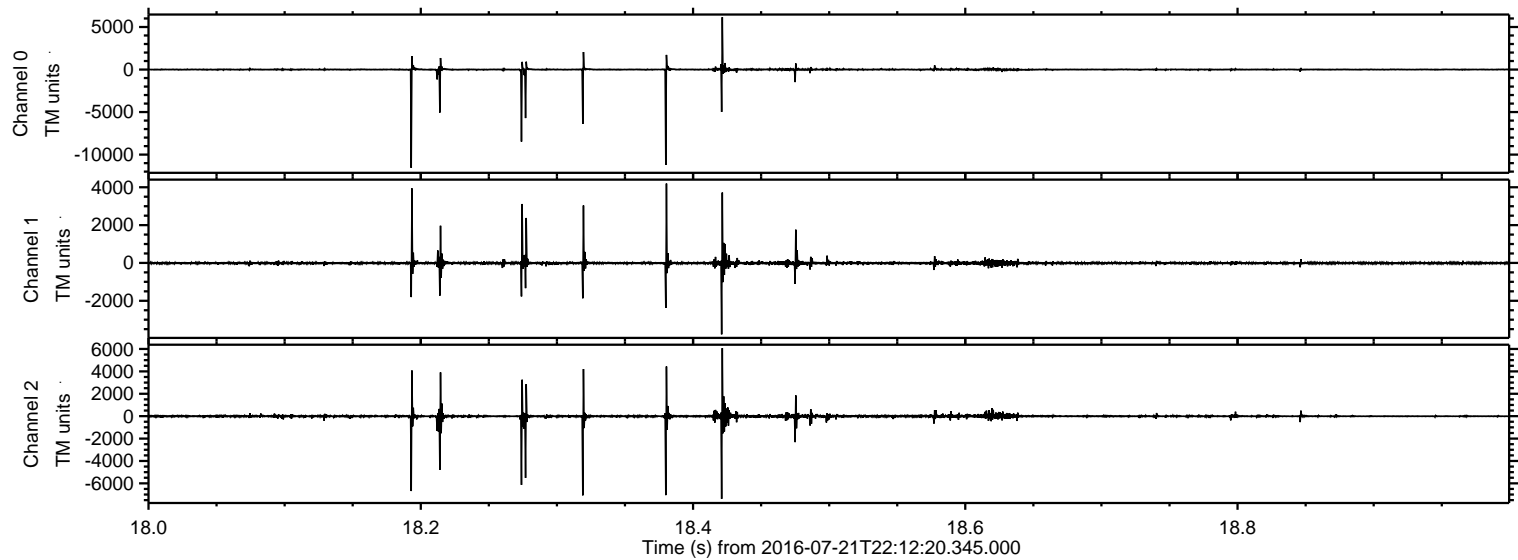


Channel 0
mn: -11687
mx: 8279
 μ : -0.5
 σ : 108.9

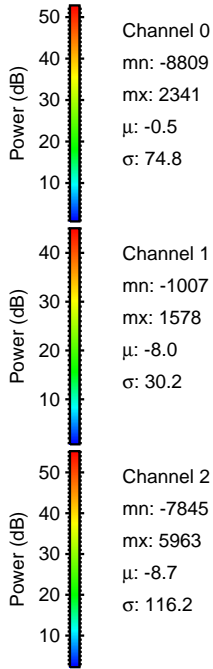
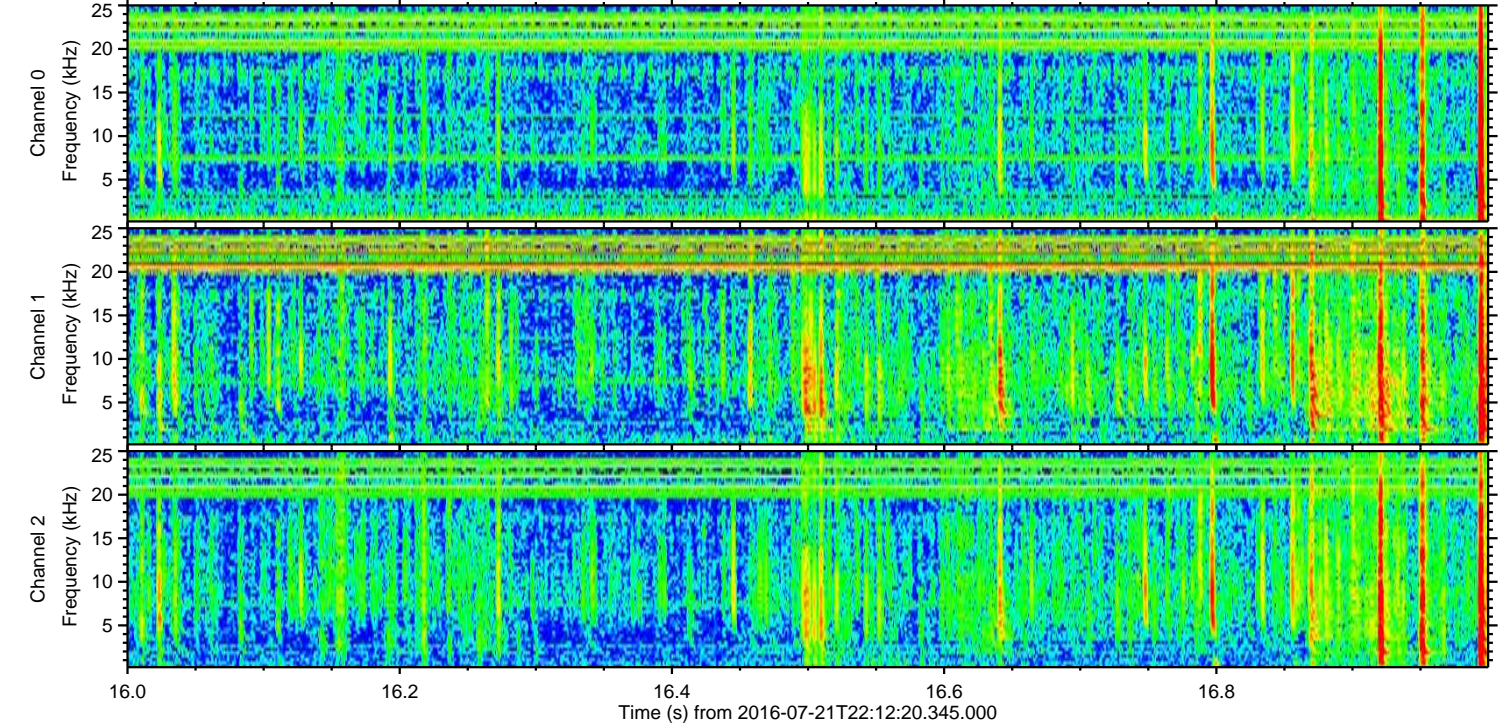
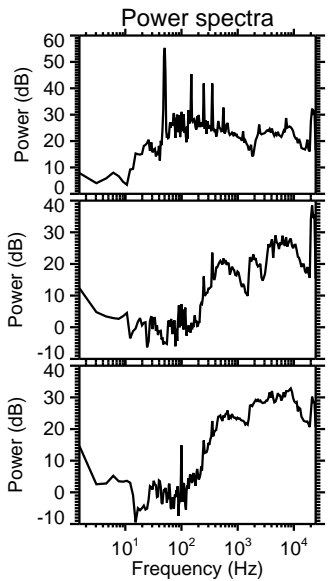
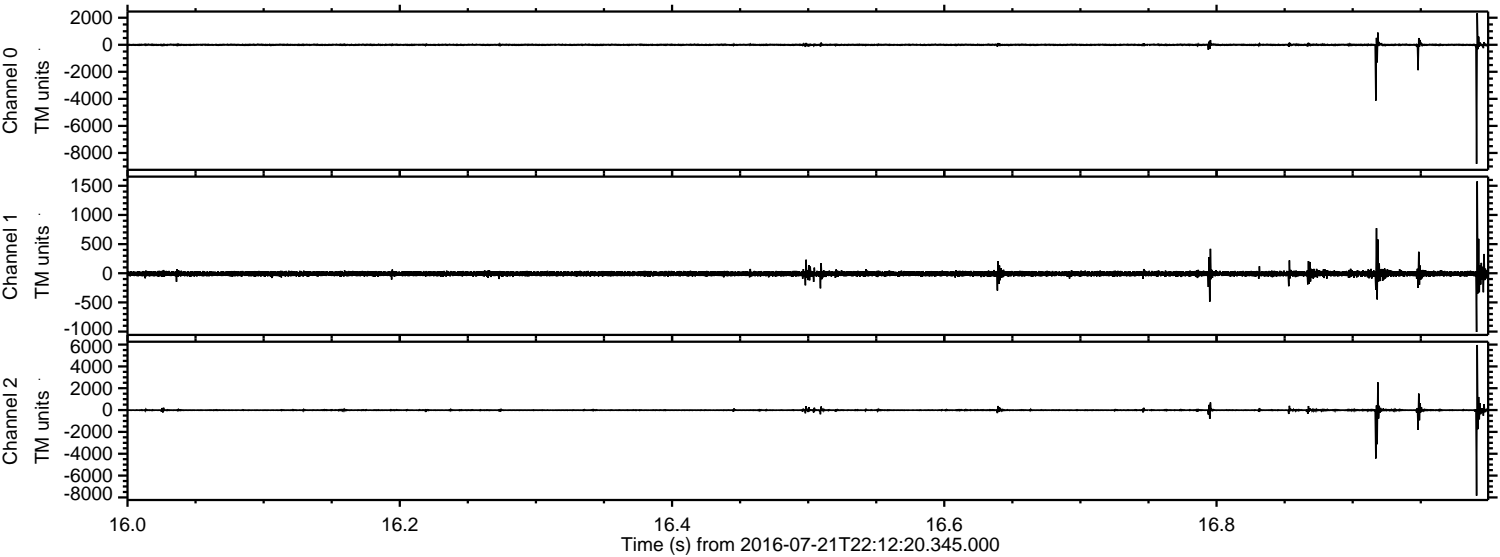
Channel 1
mn: -2155
mx: 2748
 μ : -8.1
 σ : 39.3

Channel 2
mn: -8489
mx: 8790
 μ : -8.7
 σ : 134.2

Processed Fri Jul 22 00:20:05 2016 by ELM ver.2012-10-06 from 001__elm20160721_221219__dat00.bin



Processed Fri Jul 22 00:20:06 2016 by ELM ver.2012-10-06 from 001__elm20160721_221219__dat00.bin

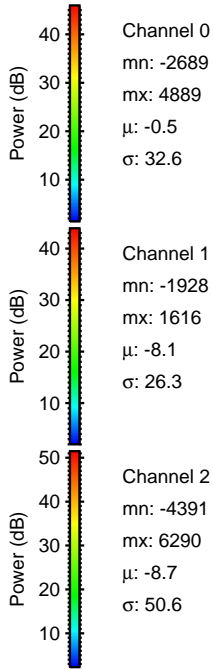
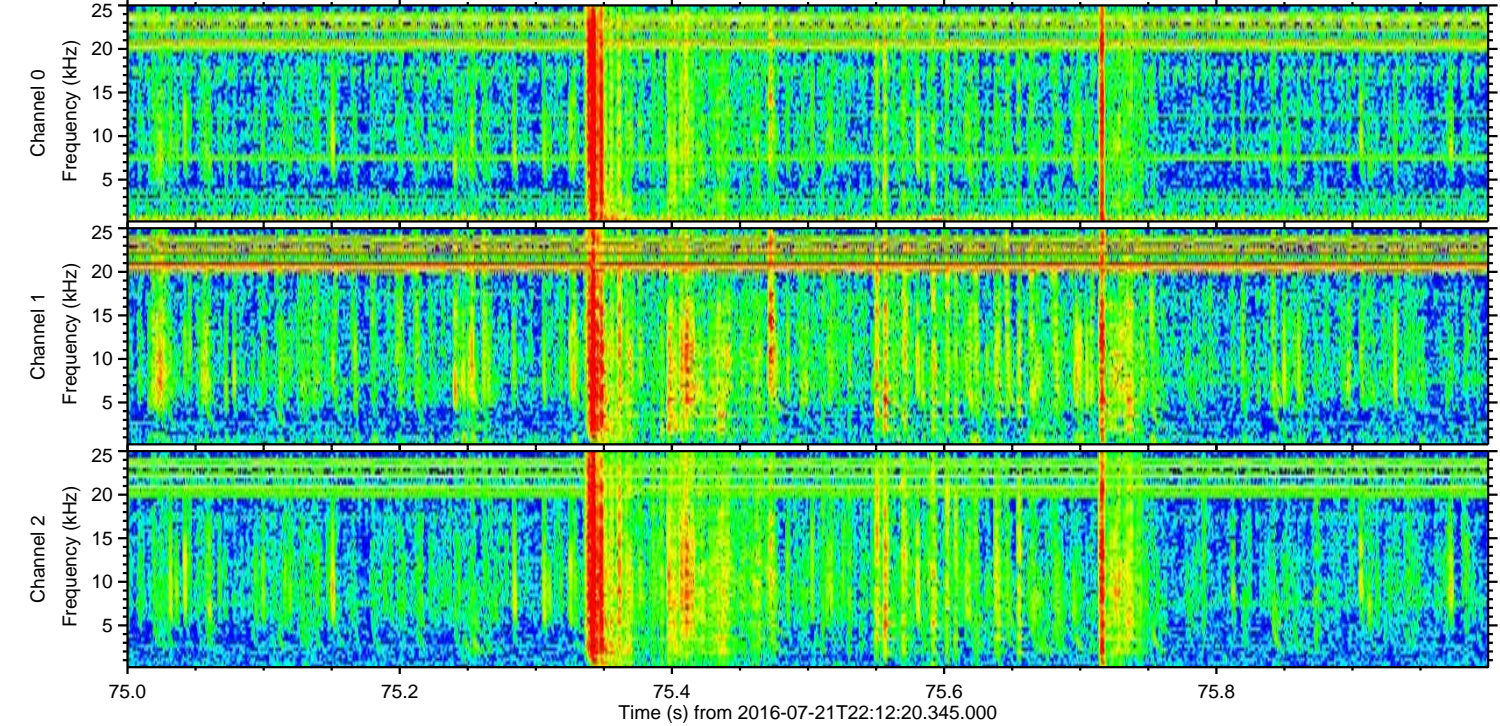
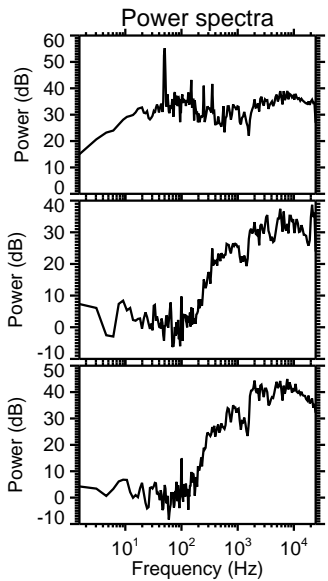
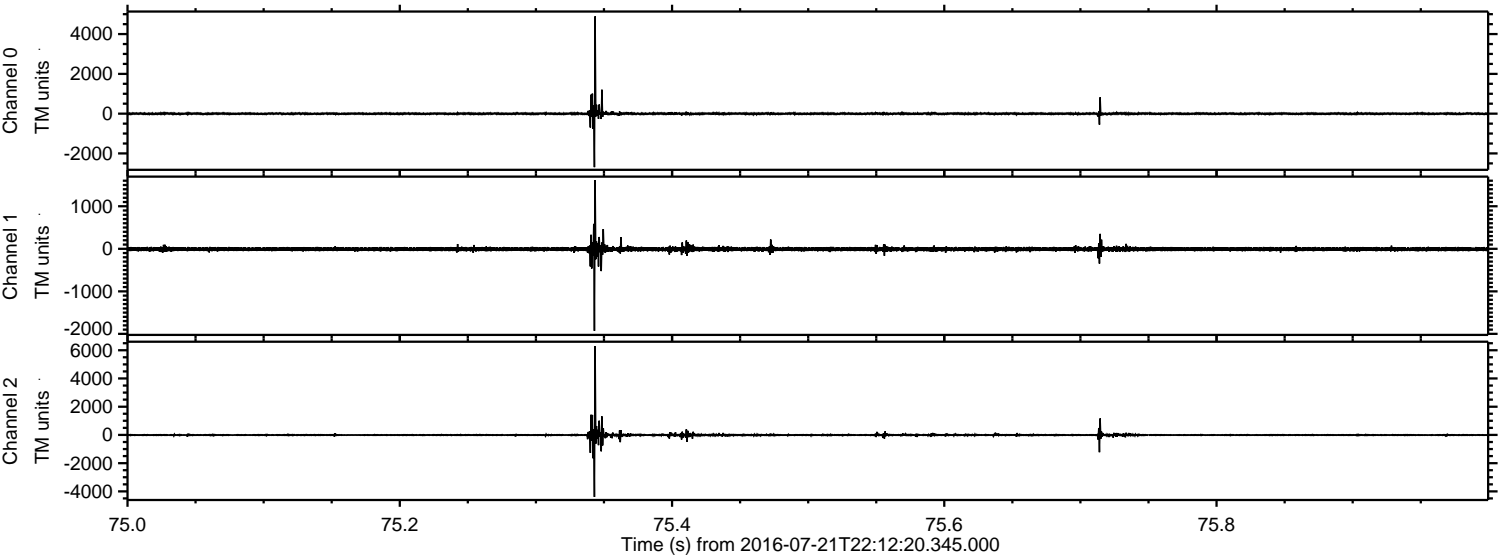


Channel 0
mn: -8809
mx: 2341
 μ : -0.5
 σ : 74.8

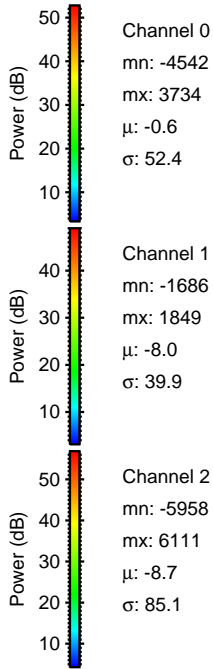
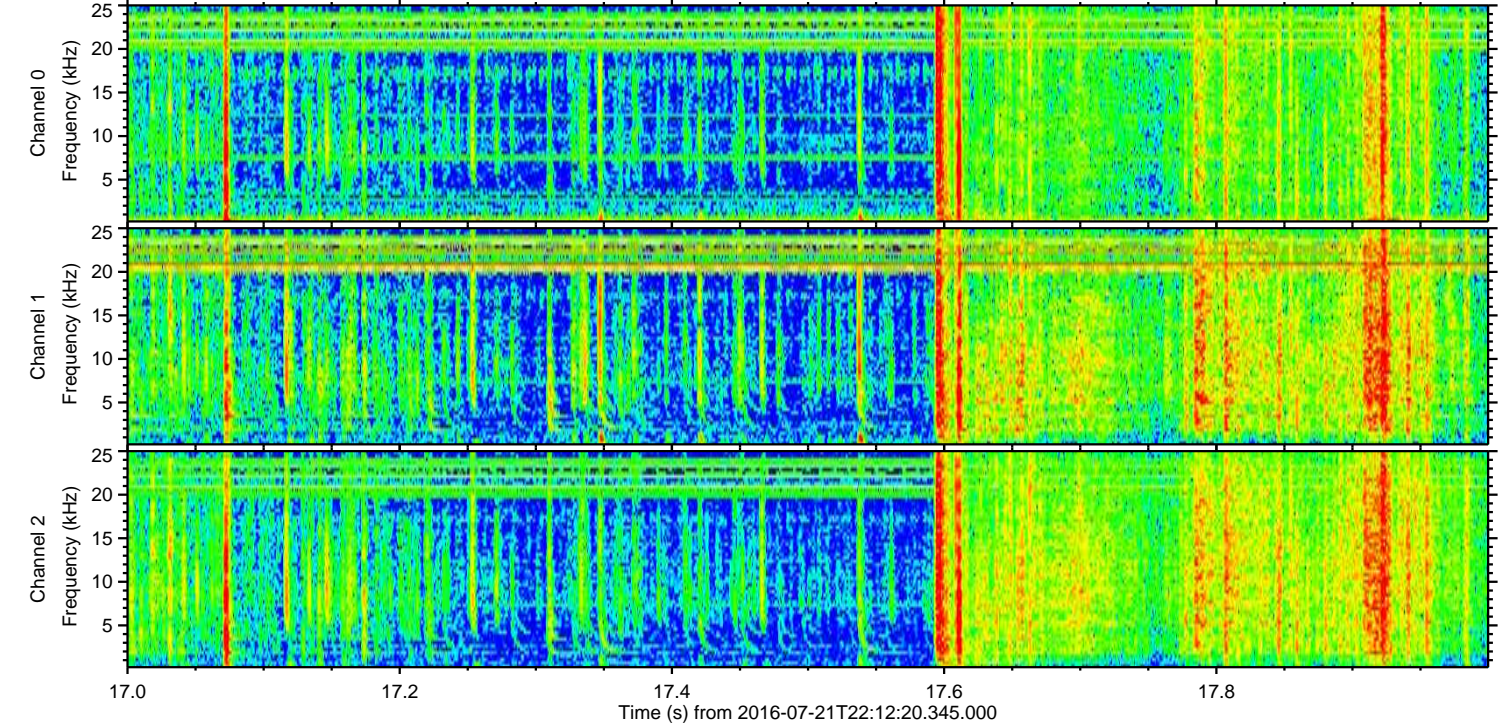
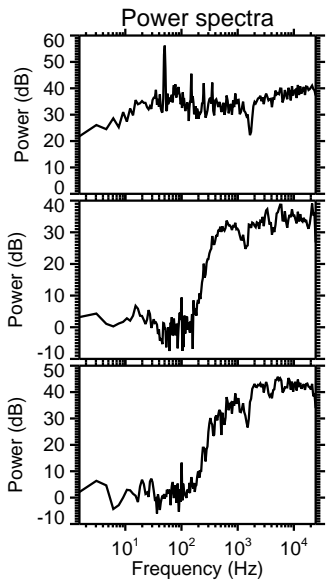
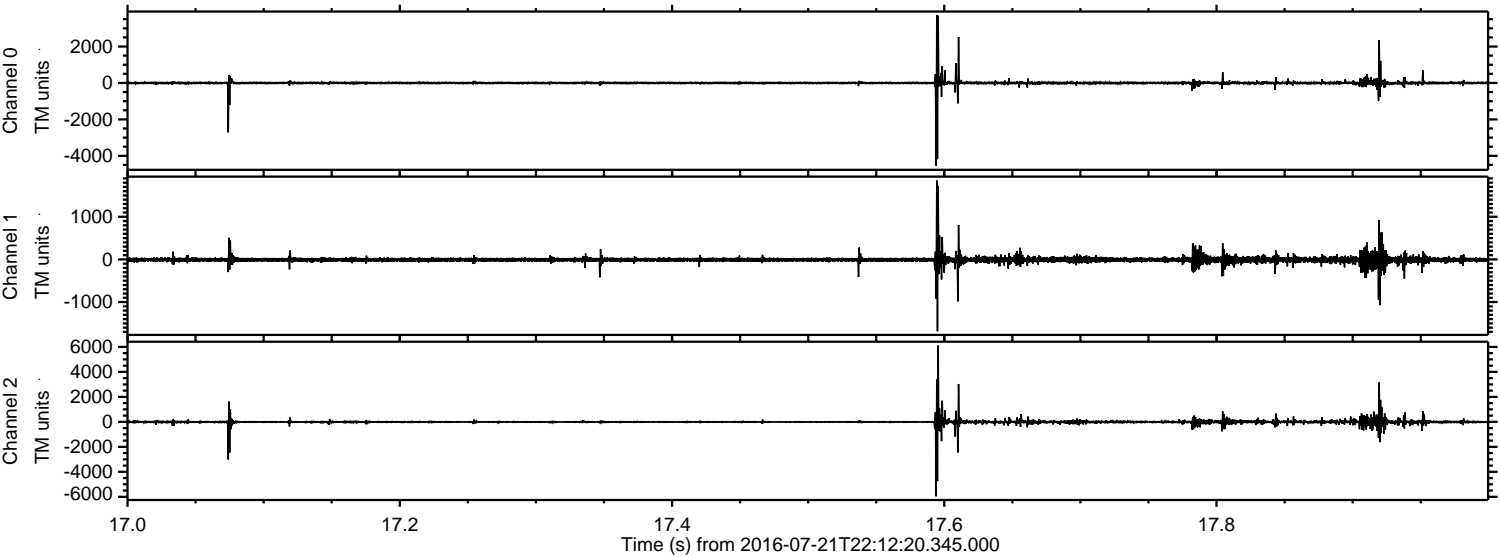
Channel 1
mn: -1007
mx: 1578
 μ : -8.0
 σ : 30.2

Channel 2
mn: -7845
mx: 5963
 μ : -8.7
 σ : 116.2

Processed Fri Jul 22 00:20:07 2016 by ELM ver.2012-10-06 from 001__elm20160721_221219__dat00.bin



Processed Fri Jul 22 00:20:08 2016 by ELM ver.2012-10-06 from 001__elm20160721_221219__dat00.bin

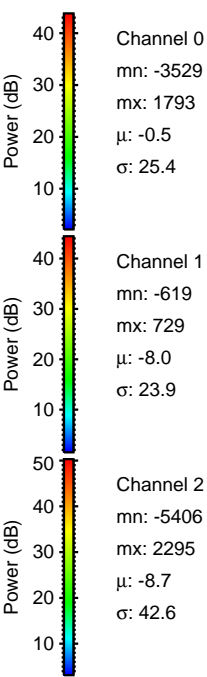
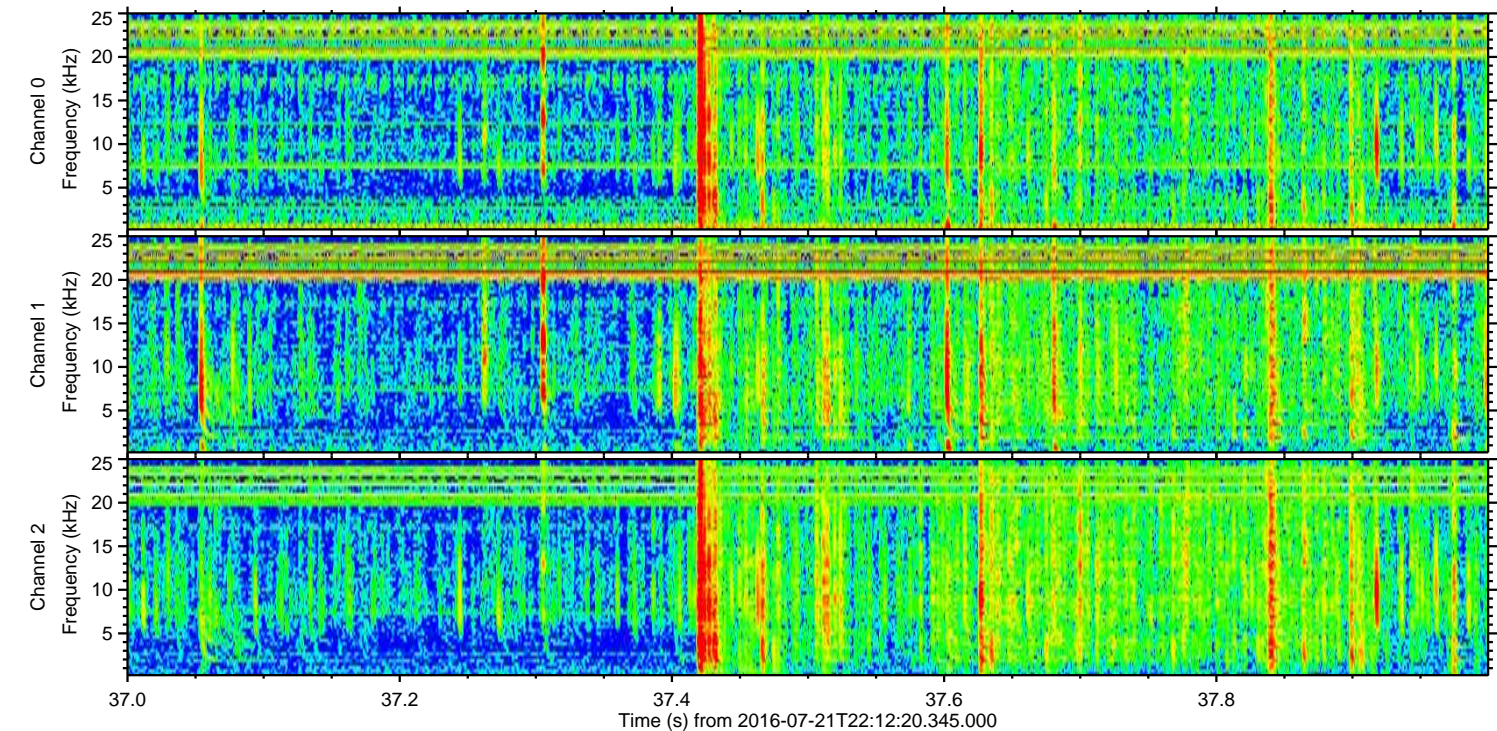
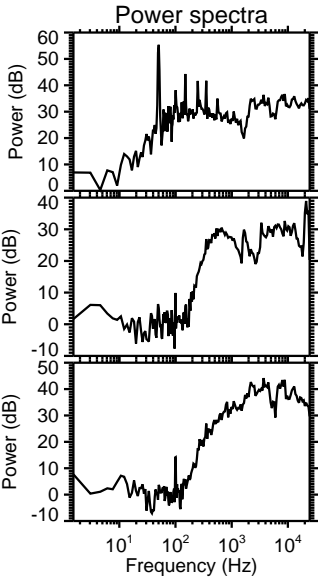
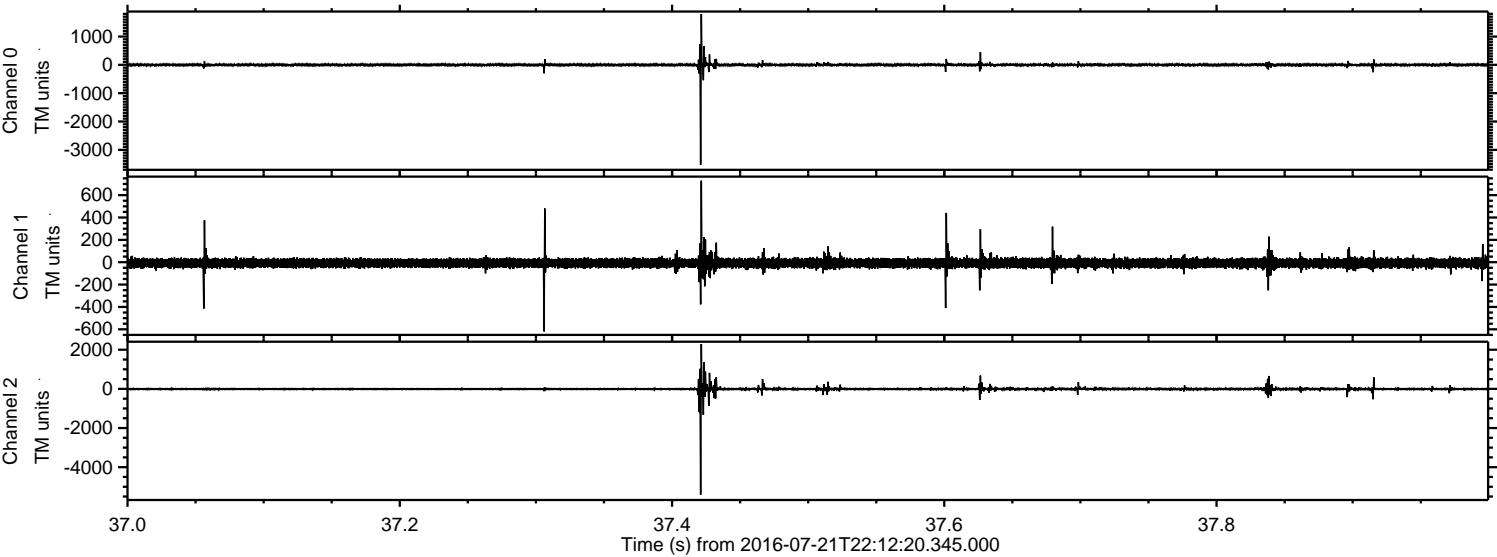


Channel 0
mn: -4542
mx: 3734
 μ : -0.6
 σ : 52.4

Channel 1
mn: -1686
mx: 1849
 μ : -8.0
 σ : 39.9

Channel 2
mn: -5958
mx: 6111
 μ : -8.7
 σ : 85.1

Processed Fri Jul 22 00:20:09 2016 by ELM ver.2012-10-06 from 001__elm20160721_221219__dat00.bin



Processed Fri Jul 22 00:20:10 2016 by ELM ver.2012-10-06 from 001__elm20160721_221219__dat00.bin

