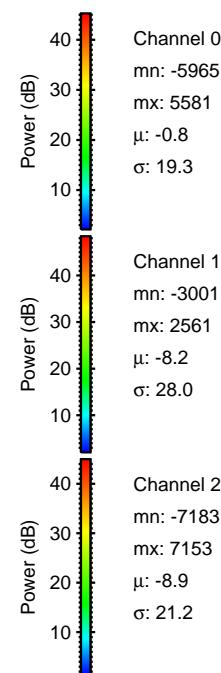
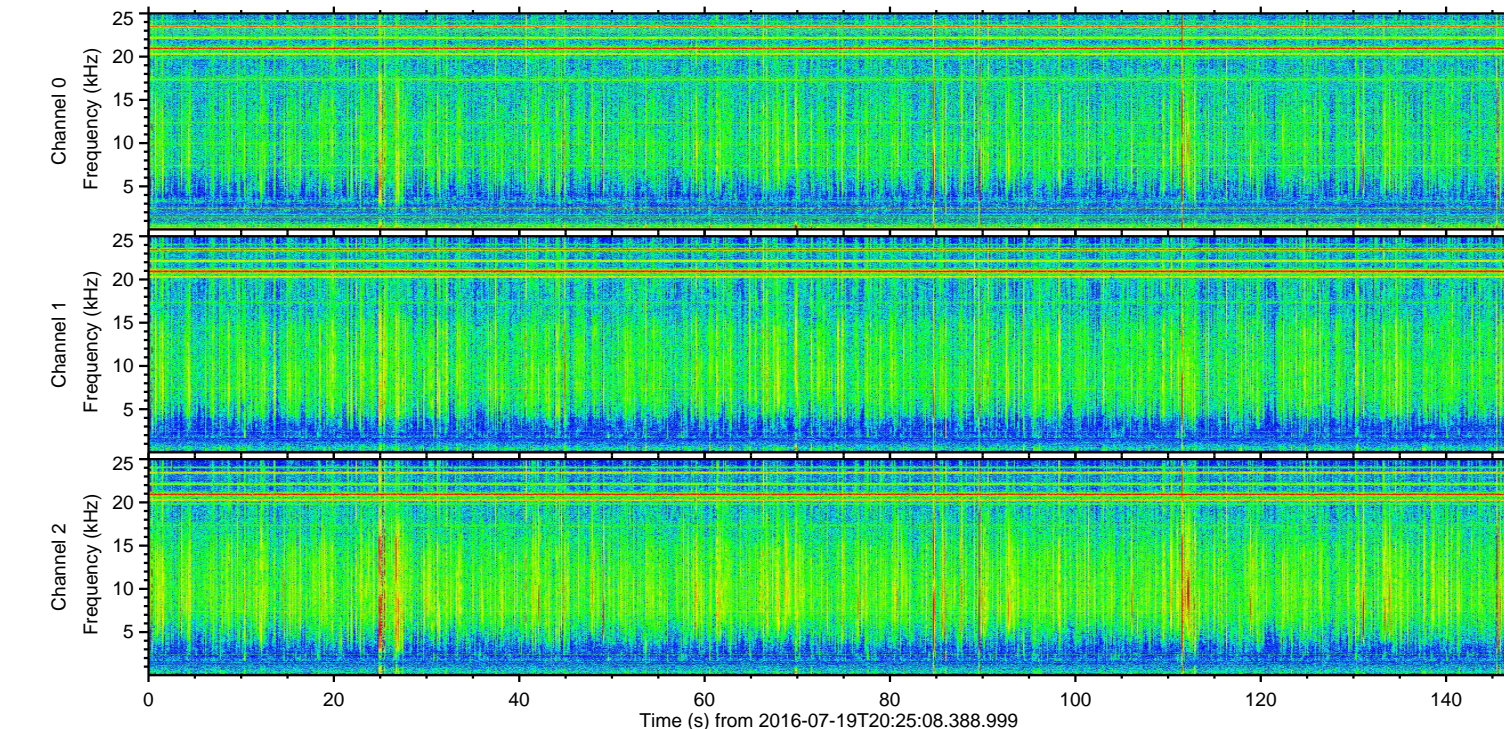
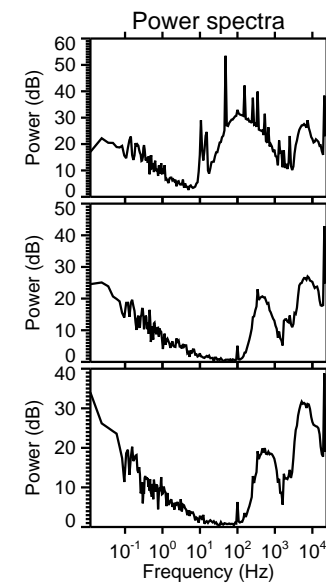
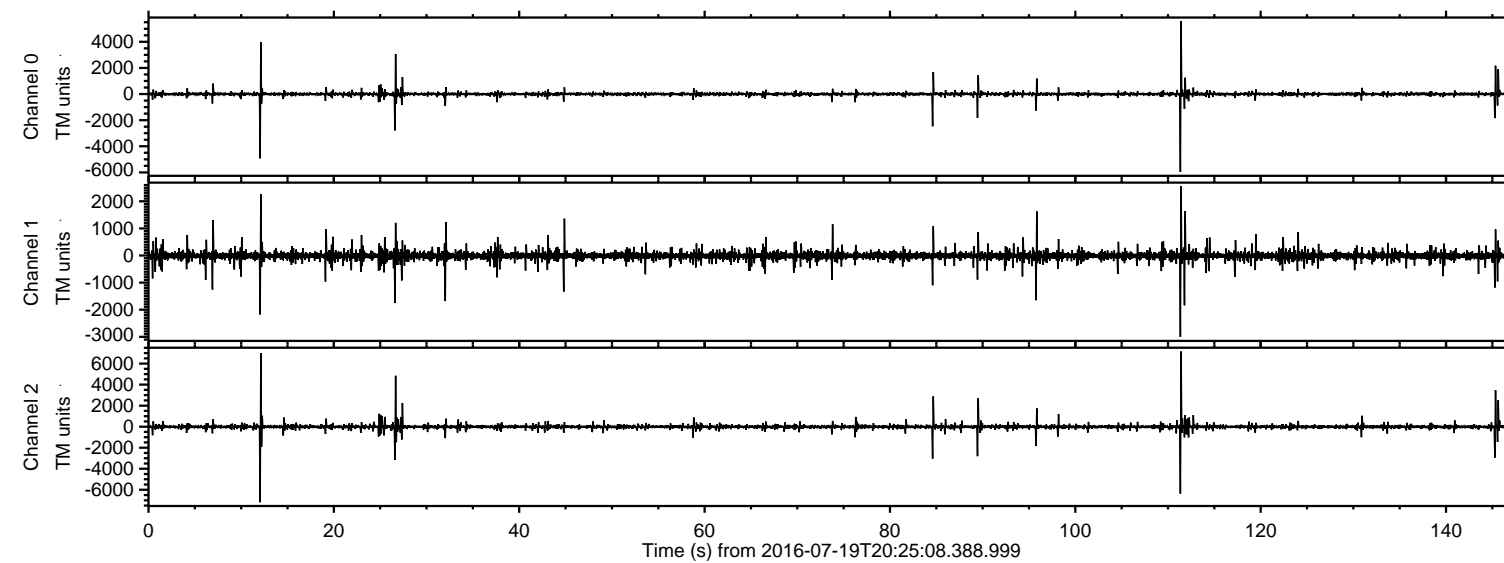


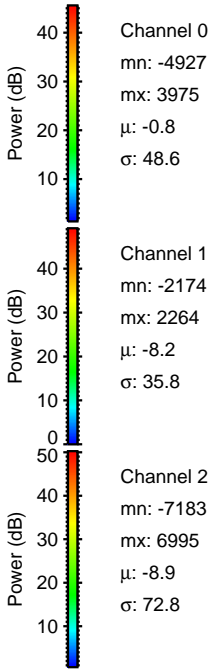
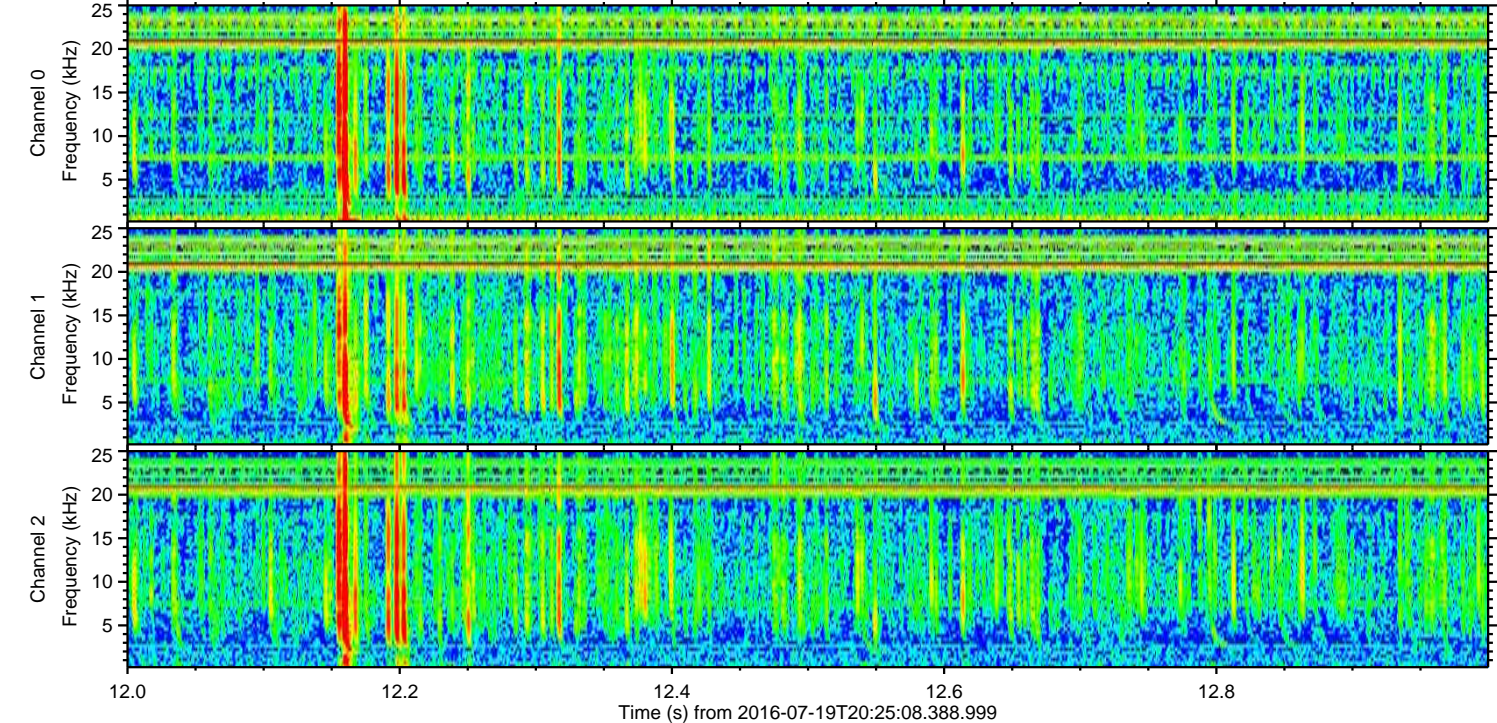
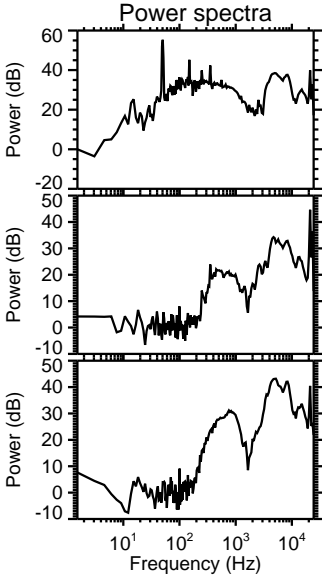
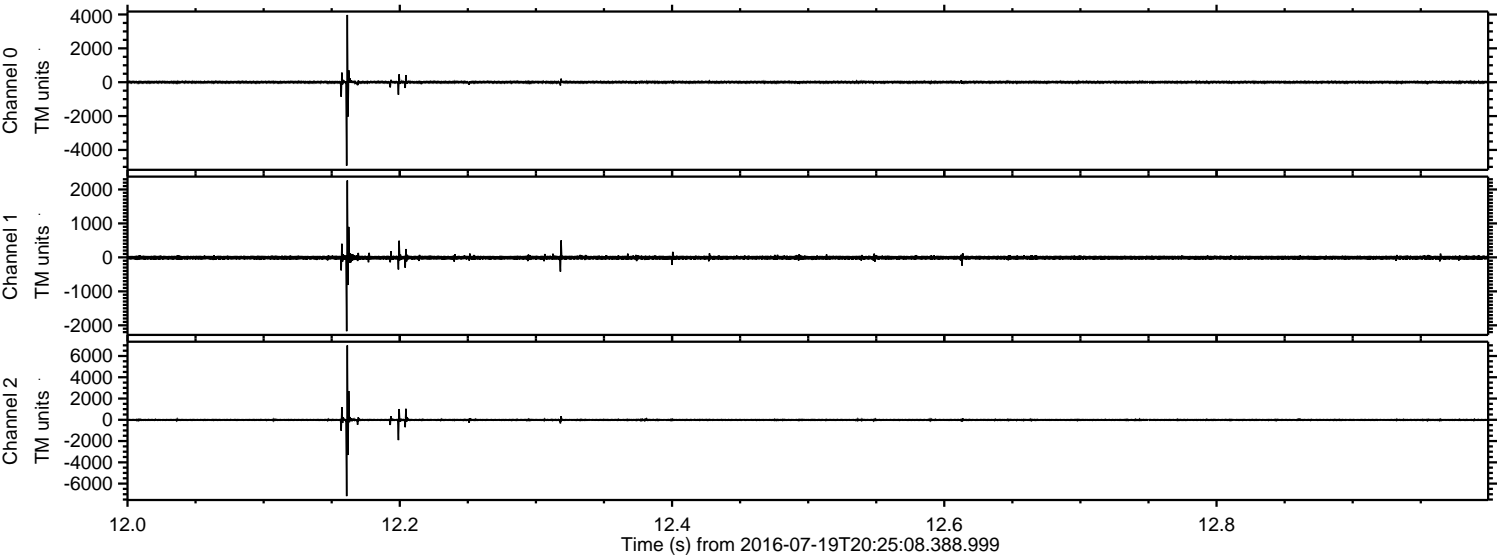
ELMAVAN 3D WAVEFORMS (Measured data sampled at 50 kHz) 51000 packets of 144 samples from 2016-07-19T20:25:08.388.999.

Processed Tue Jul 19 22:32:32 2016 by ELM ver.2012-10-06 from 001__elm20160719_202507__dat00.bin



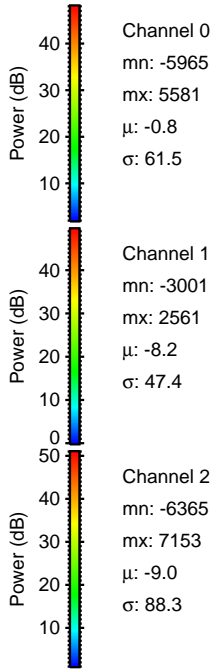
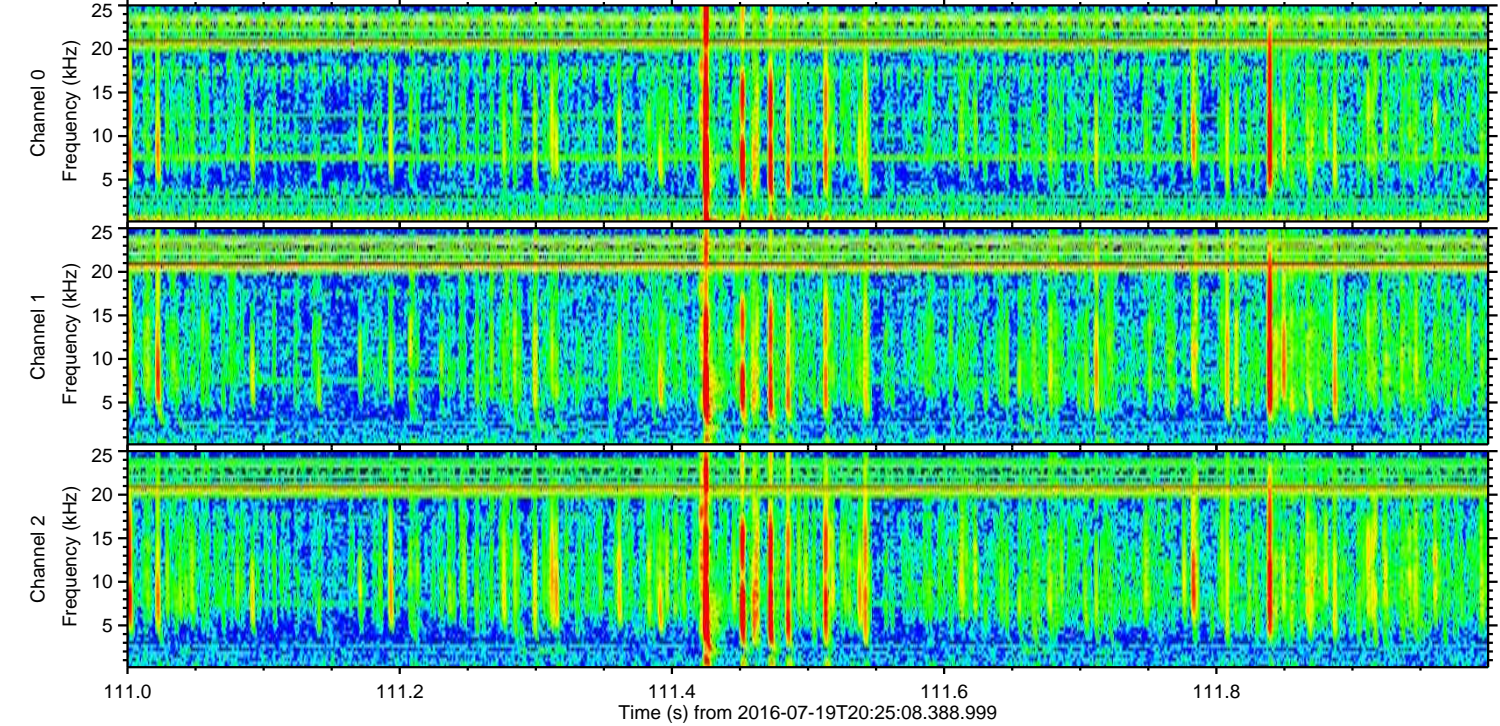
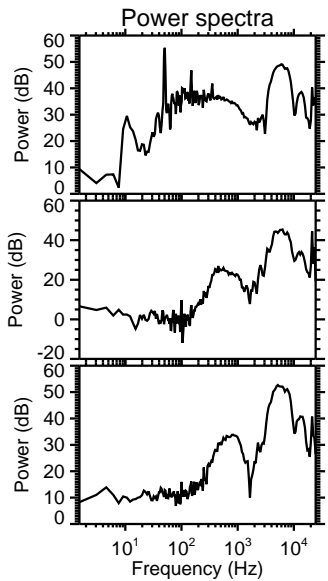
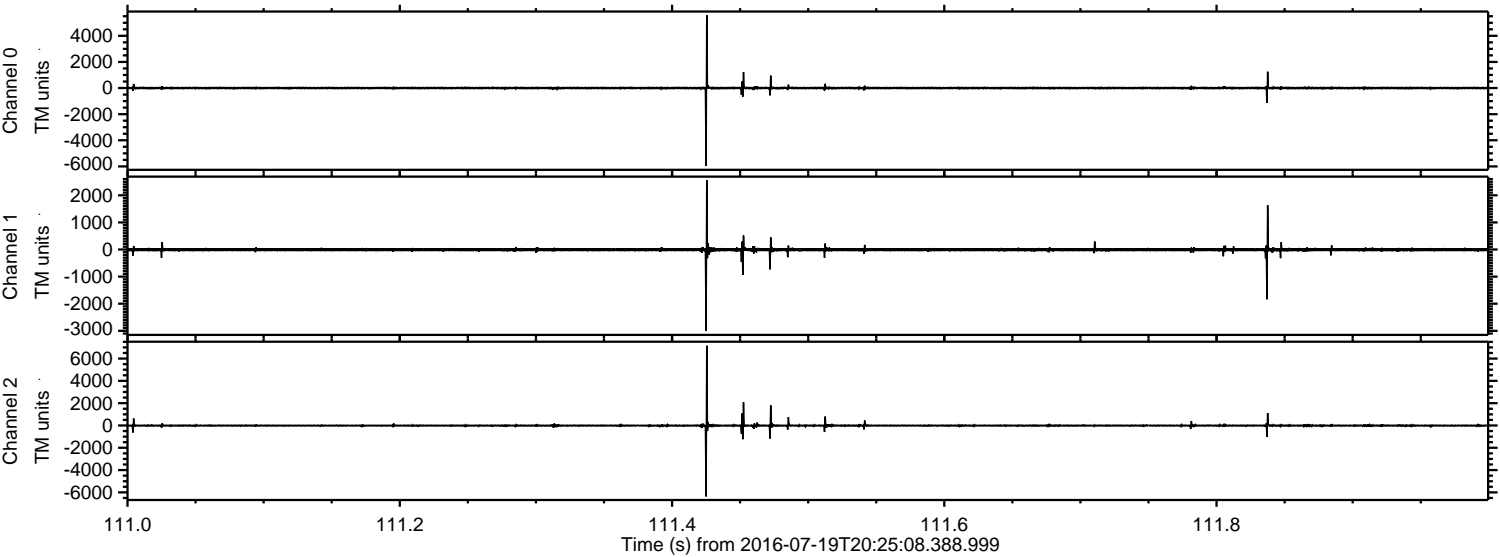
ELMAVAN 3D WAVEFORMS (Measured data sampled at 50 kHz) 51000 packets of 144 samples from 2016-07-19T20:25:08.388.999. Part 13/147

Processed Tue Jul 19 22:32:43 2016 by ELM ver.2012-10-06 from 001__elm20160719_202507__dat00.bin



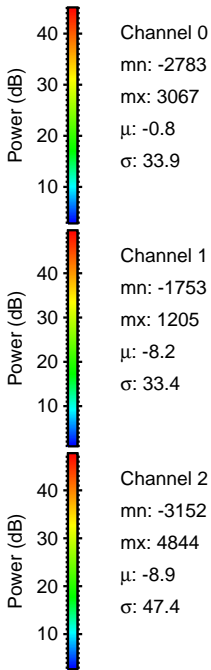
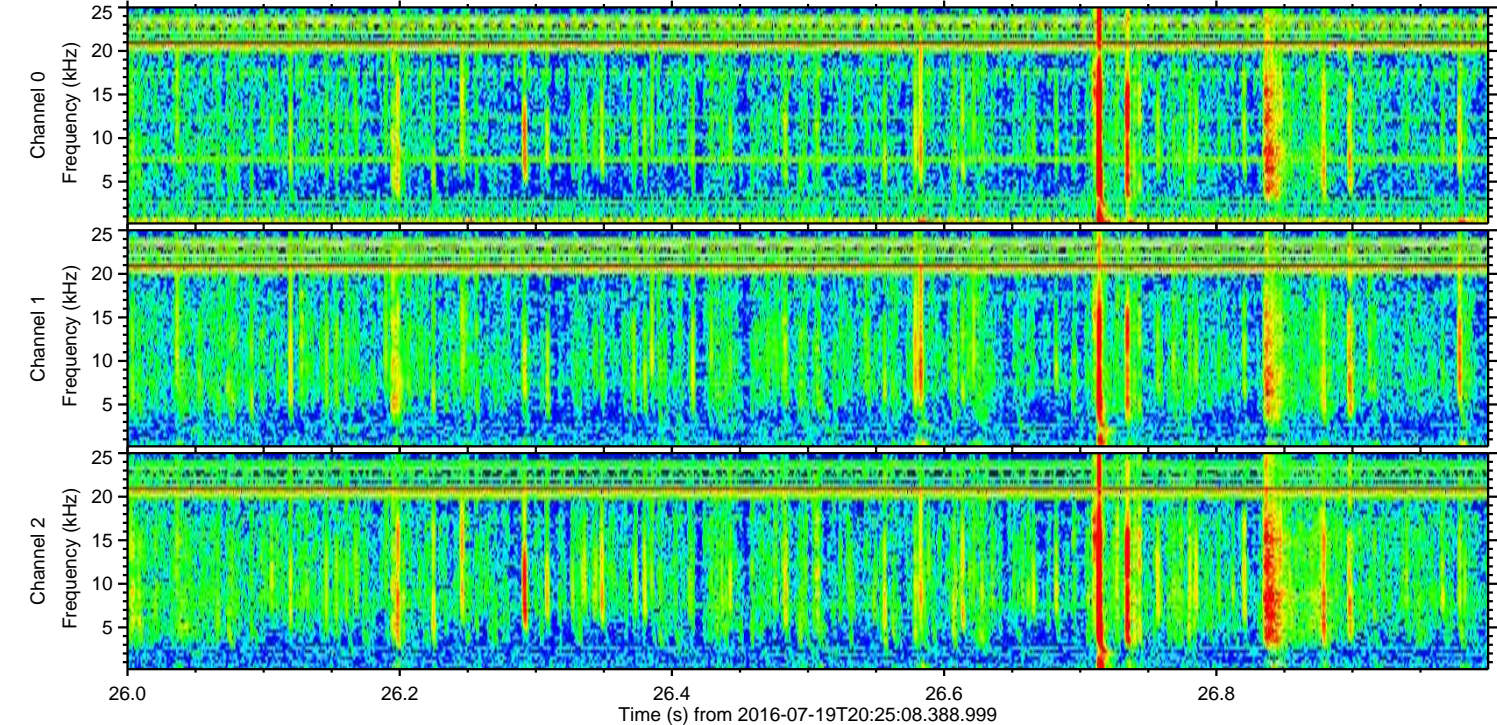
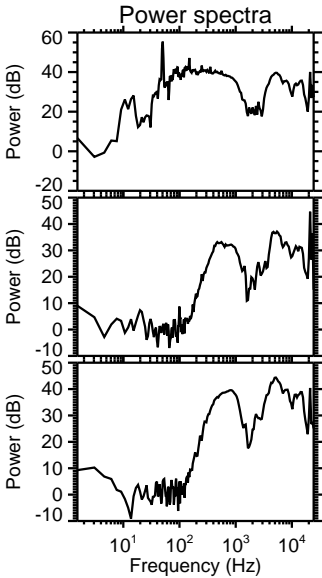
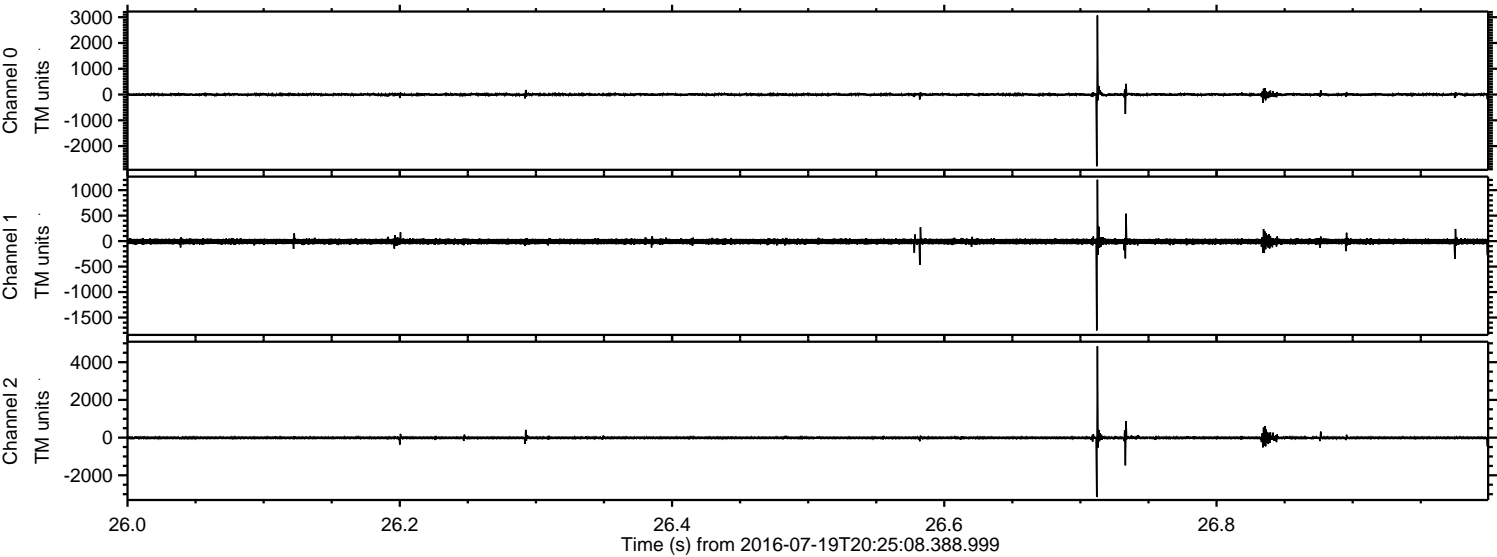
ELMAVAN 3D WAVEFORMS (Measured data sampled at 50 kHz) 51000 packets of 144 samples from 2016-07-19T20:25:08.388.999. Part 112/147

Processed Tue Jul 19 22:32:44 2016 by ELM ver.2012-10-06 from 001__elm20160719_202507__dat00.bin



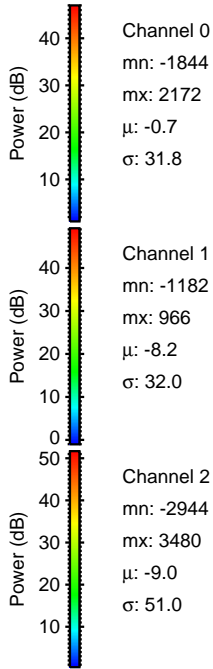
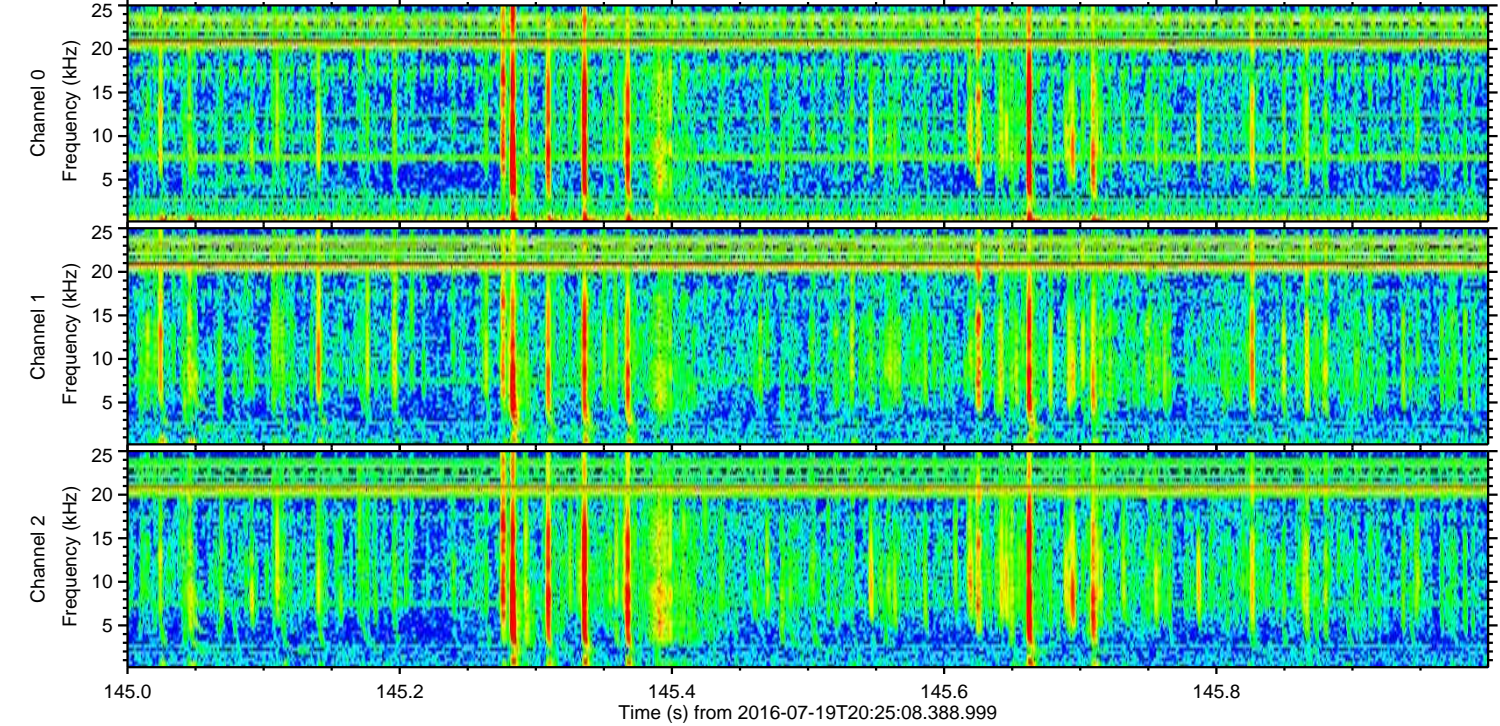
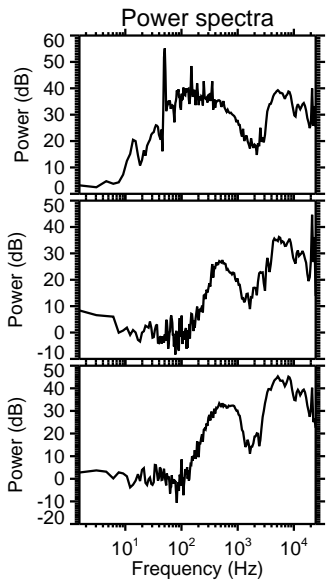
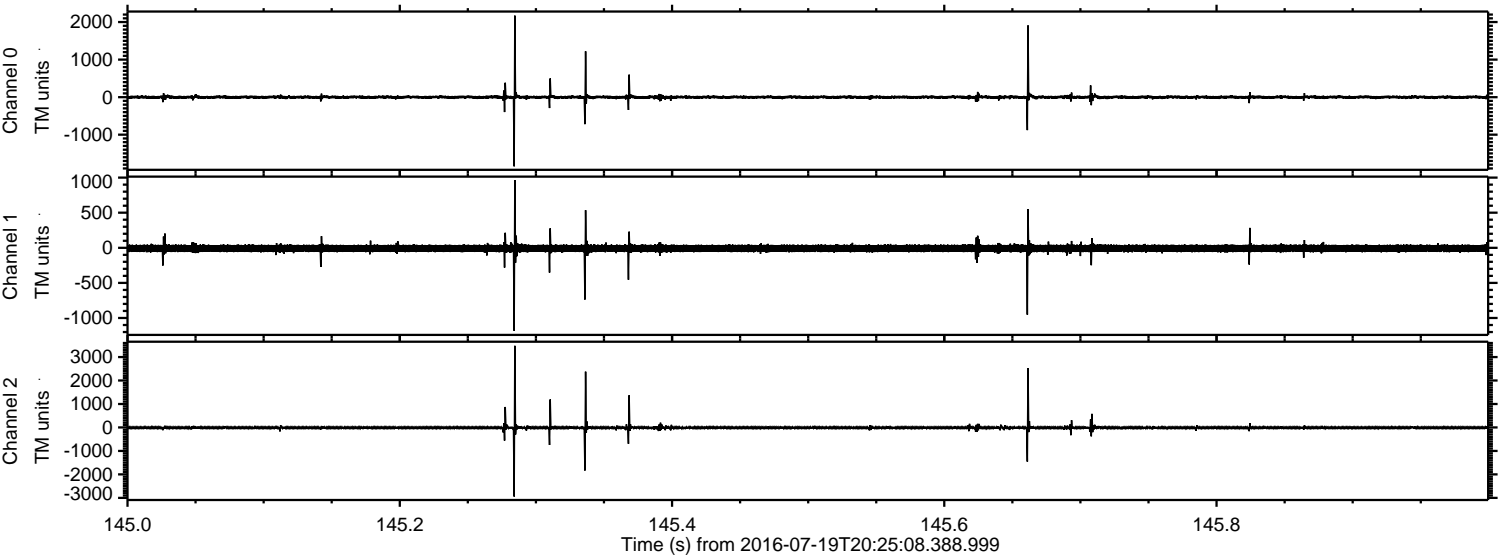
ELMAVAN 3D WAVEFORMS (Measured data sampled at 50 kHz) 51000 packets of 144 samples from 2016-07-19T20:25:08.388.999. Part 27/147

Processed Tue Jul 19 22:32:45 2016 by ELM ver.2012-10-06 from 001__elm20160719_202507__dat00.bin

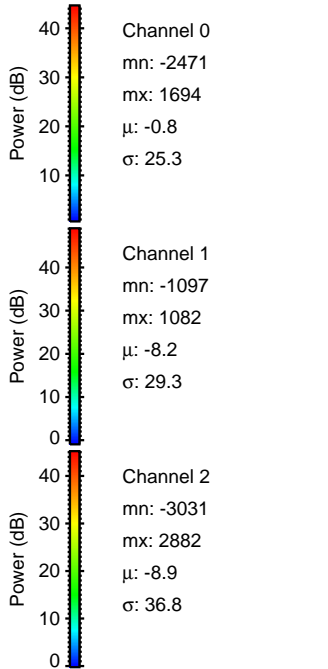
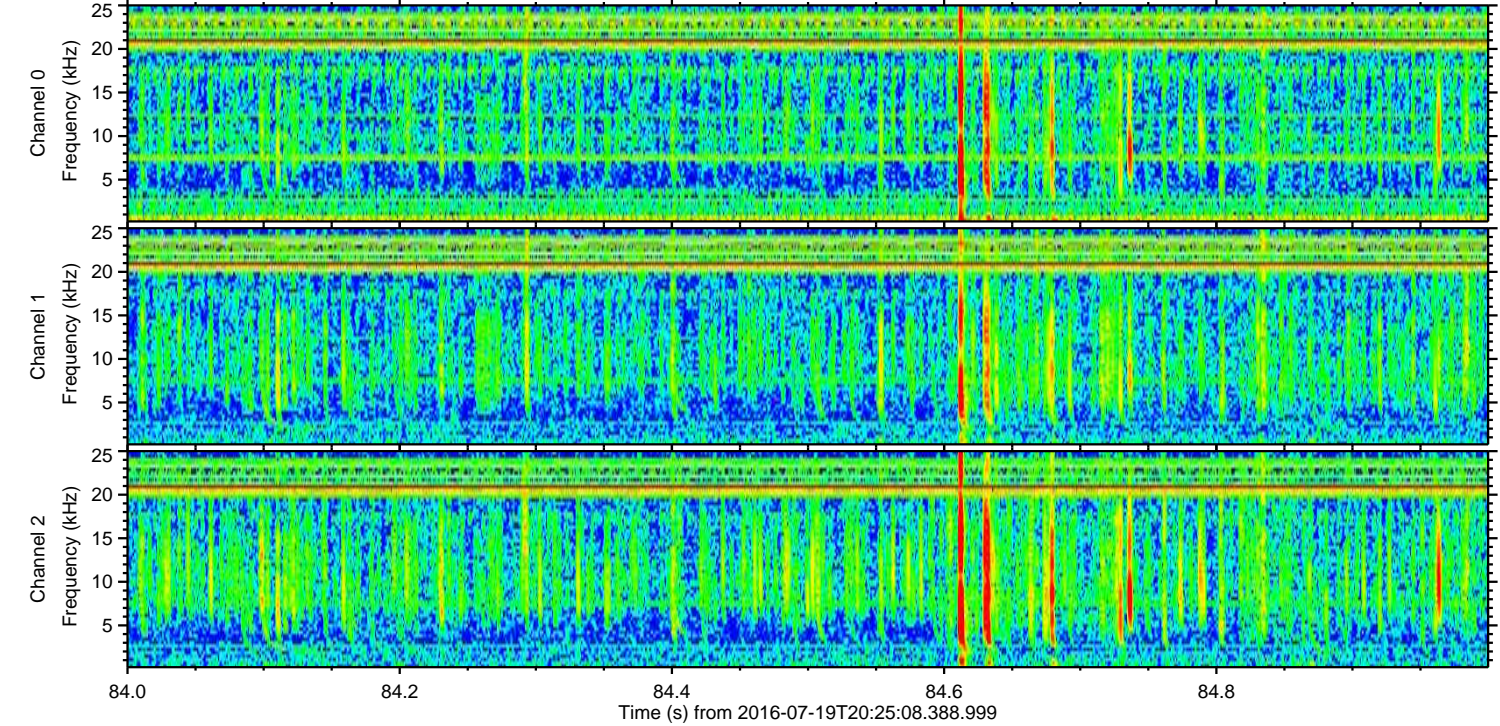
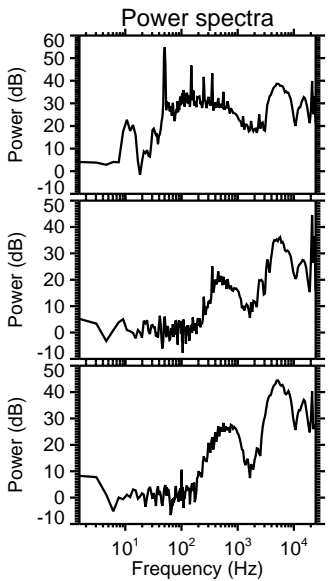
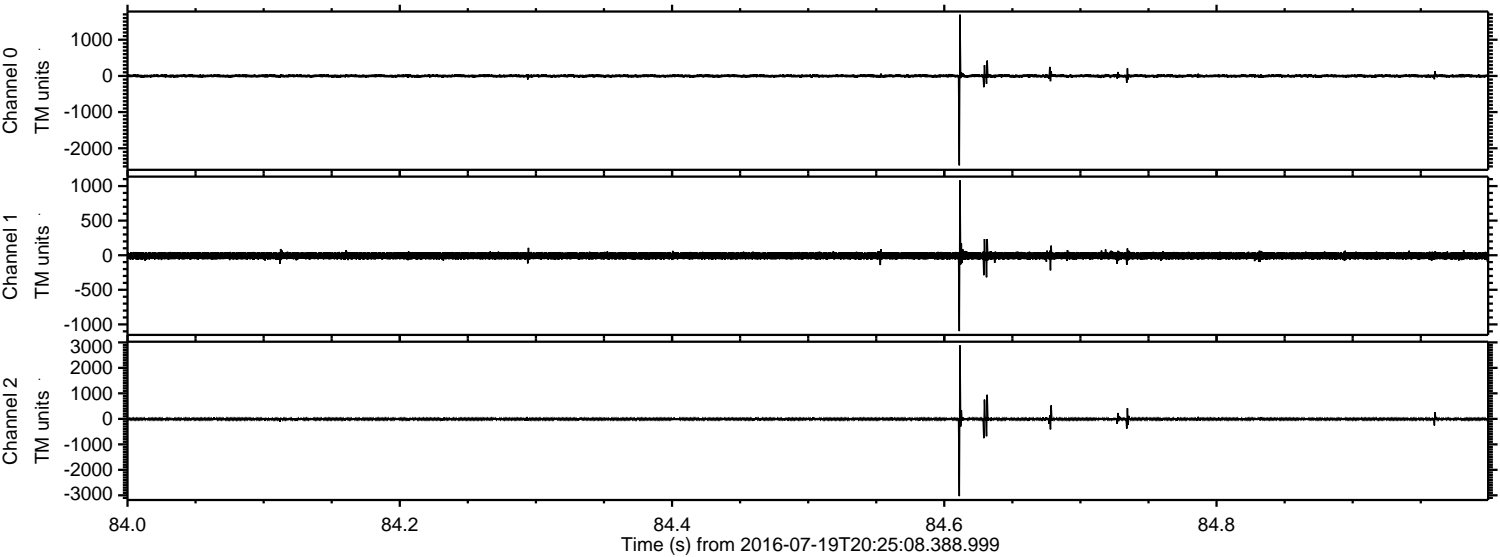


ELMAVAN 3D WAVEFORMS (Measured data sampled at 50 kHz) 51000 packets of 144 samples from 2016-07-19T20:25:08.388.999. Part 146/147

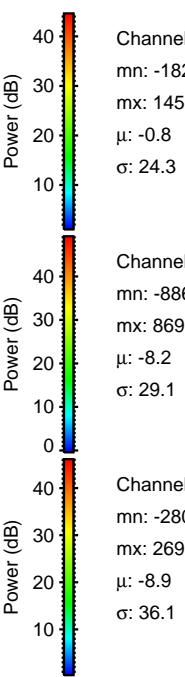
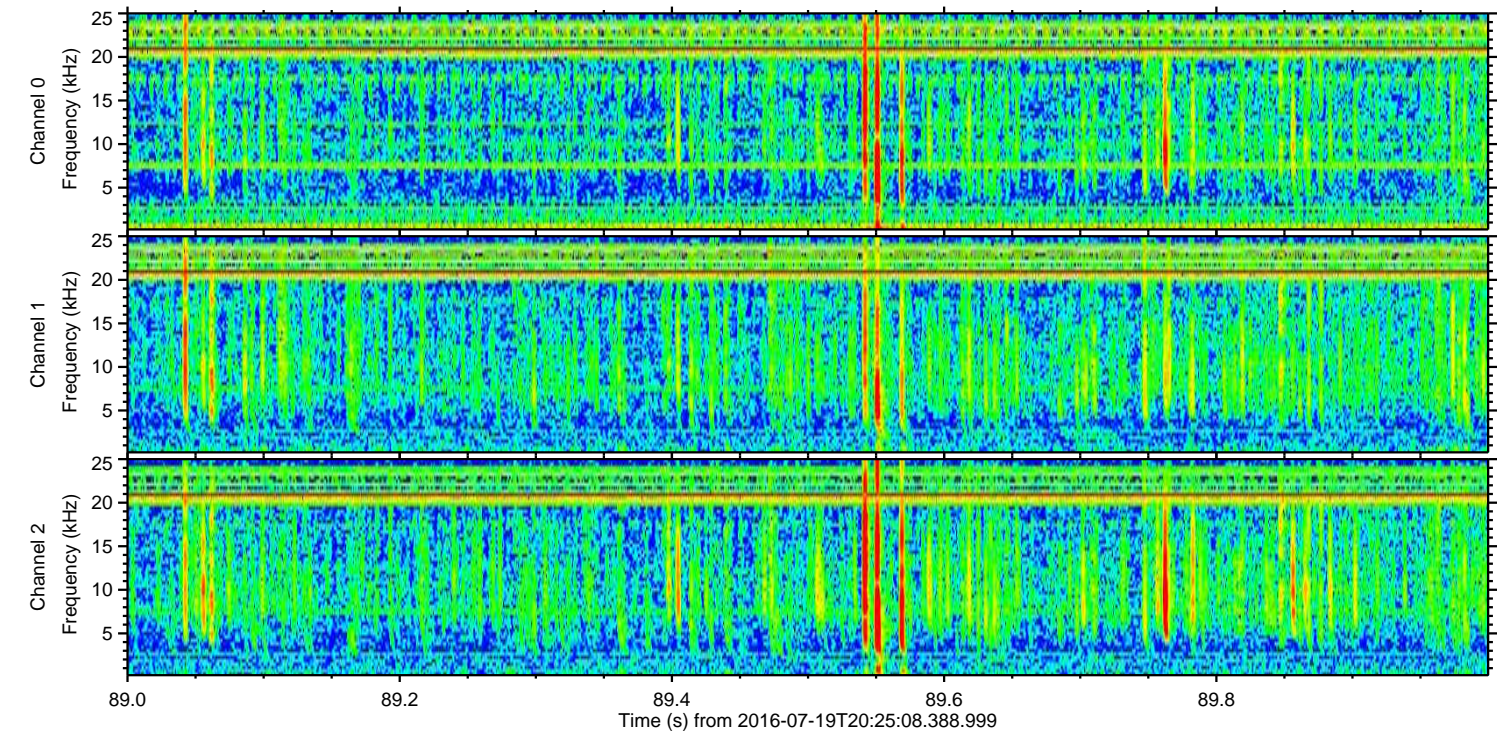
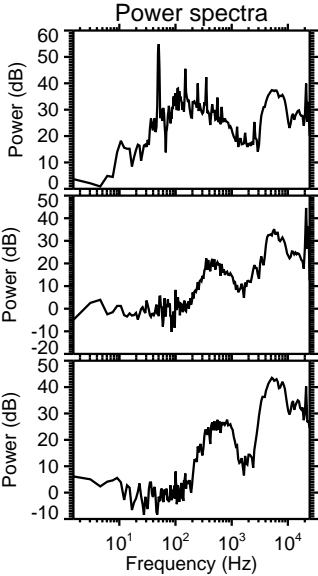
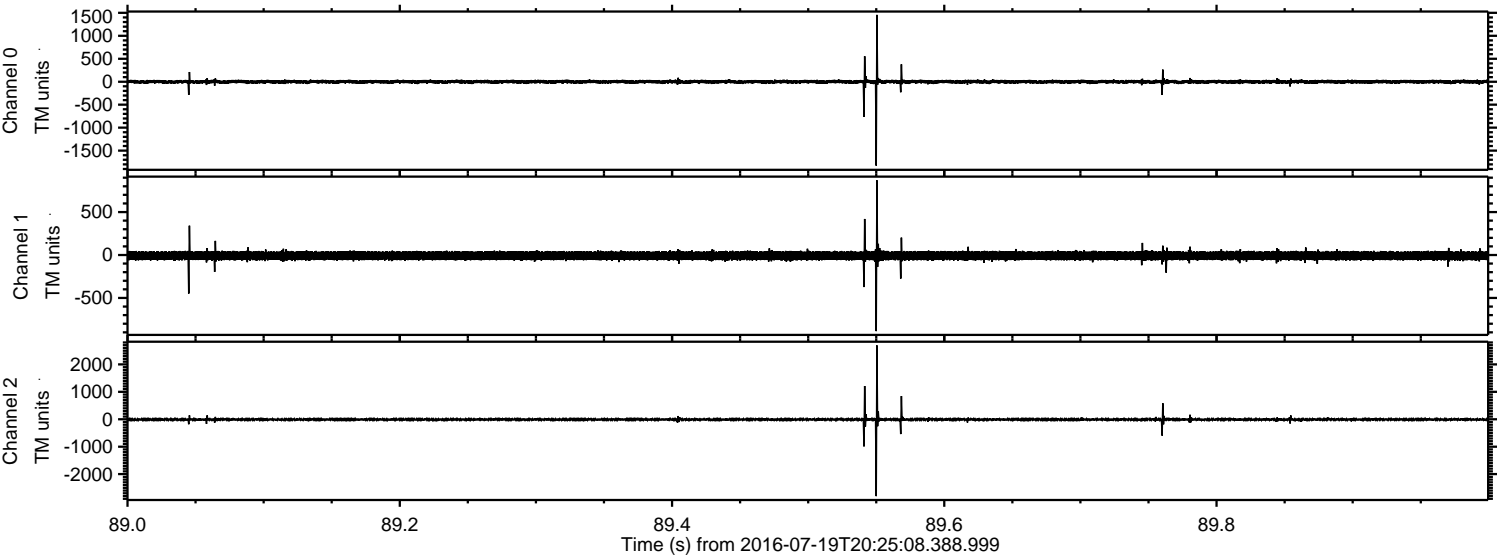
Processed Tue Jul 19 22:32:46 2016 by ELM ver.2012-10-06 from 001__elm20160719_202507__dat00.bin



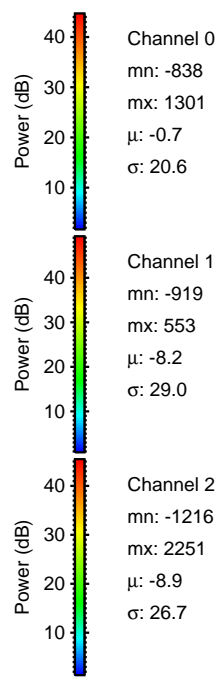
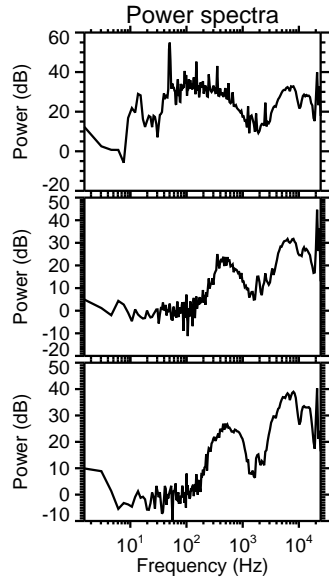
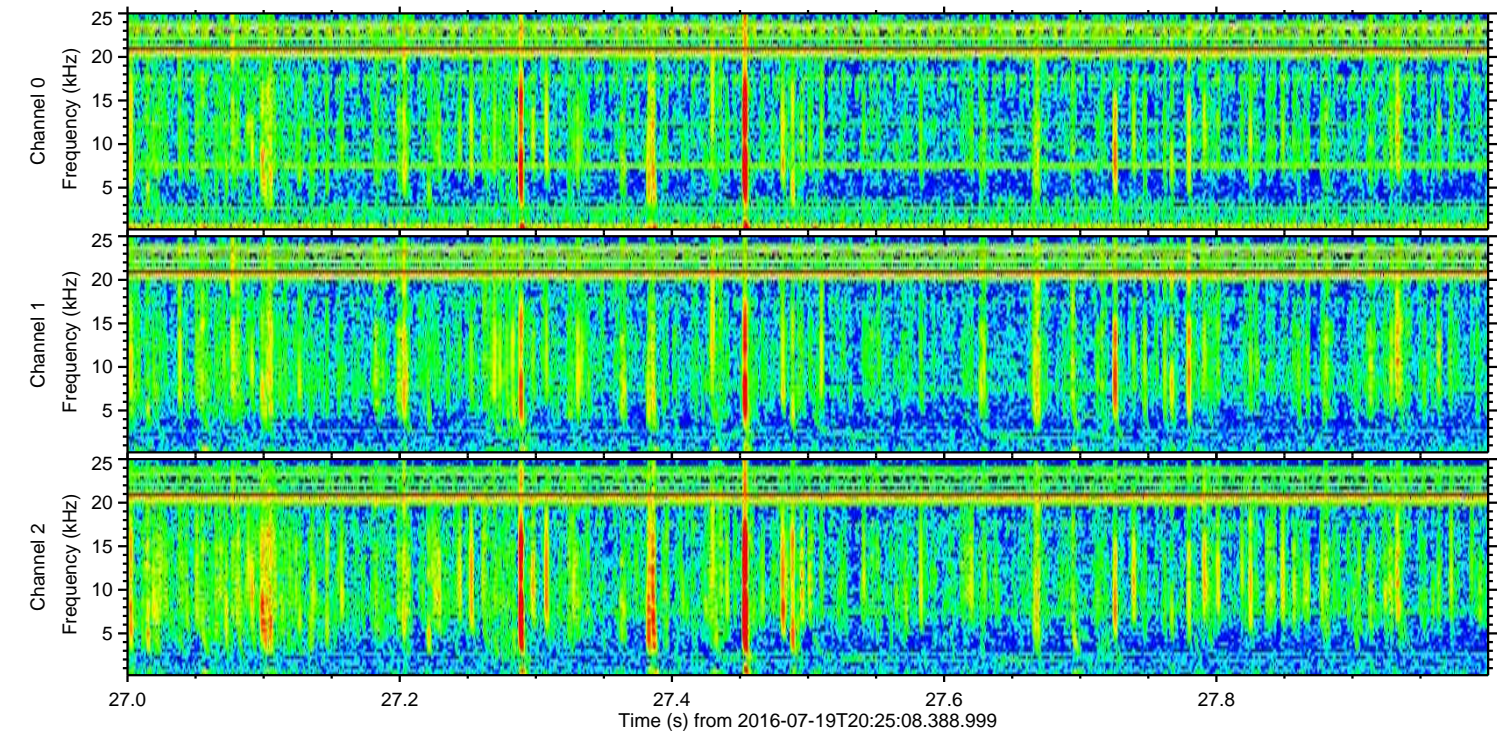
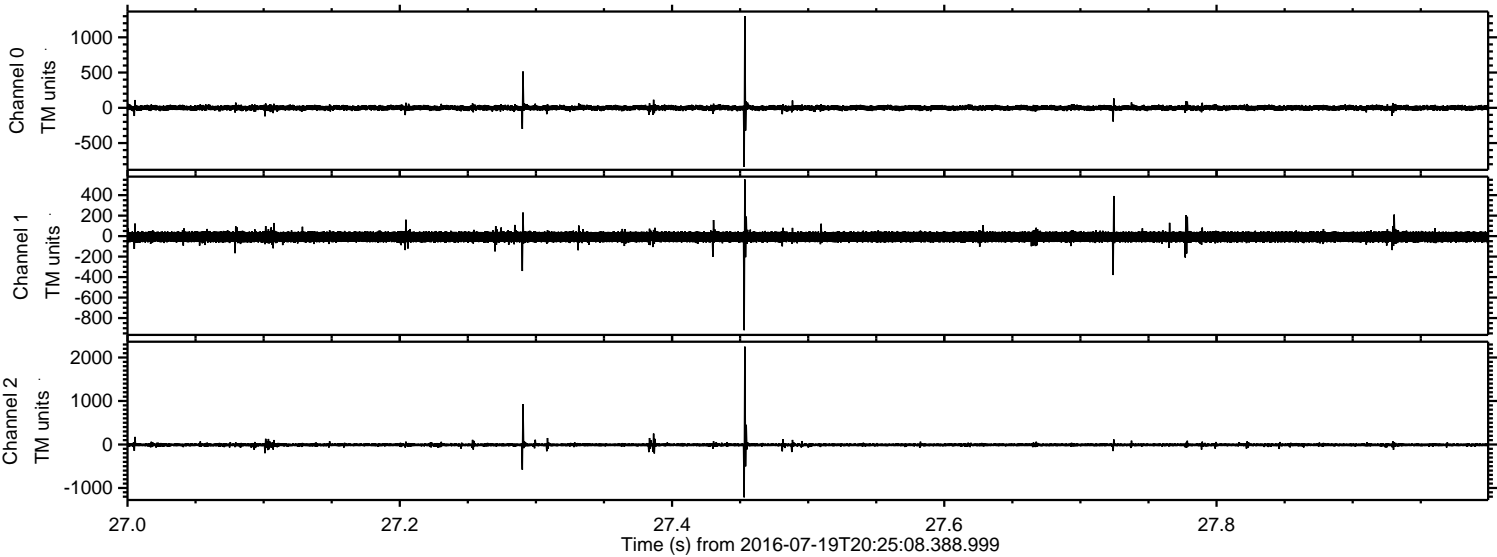
Processed Tue Jul 19 22:32:47 2016 by ELM ver.2012-10-06 from 001__elm20160719_202507__dat00.bin



Processed Tue Jul 19 22:32:48 2016 by ELM ver.2012-10-06 from 001__elm20160719_202507__dat00.bin



Processed Tue Jul 19 22:32:49 2016 by ELM ver.2012-10-06 from 001__elm20160719_202507__dat00.bin

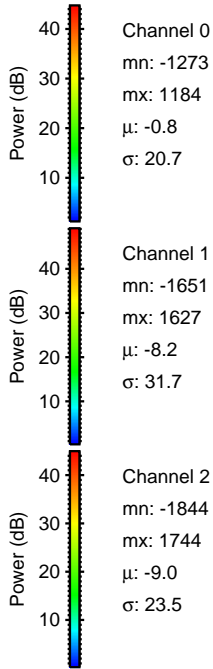
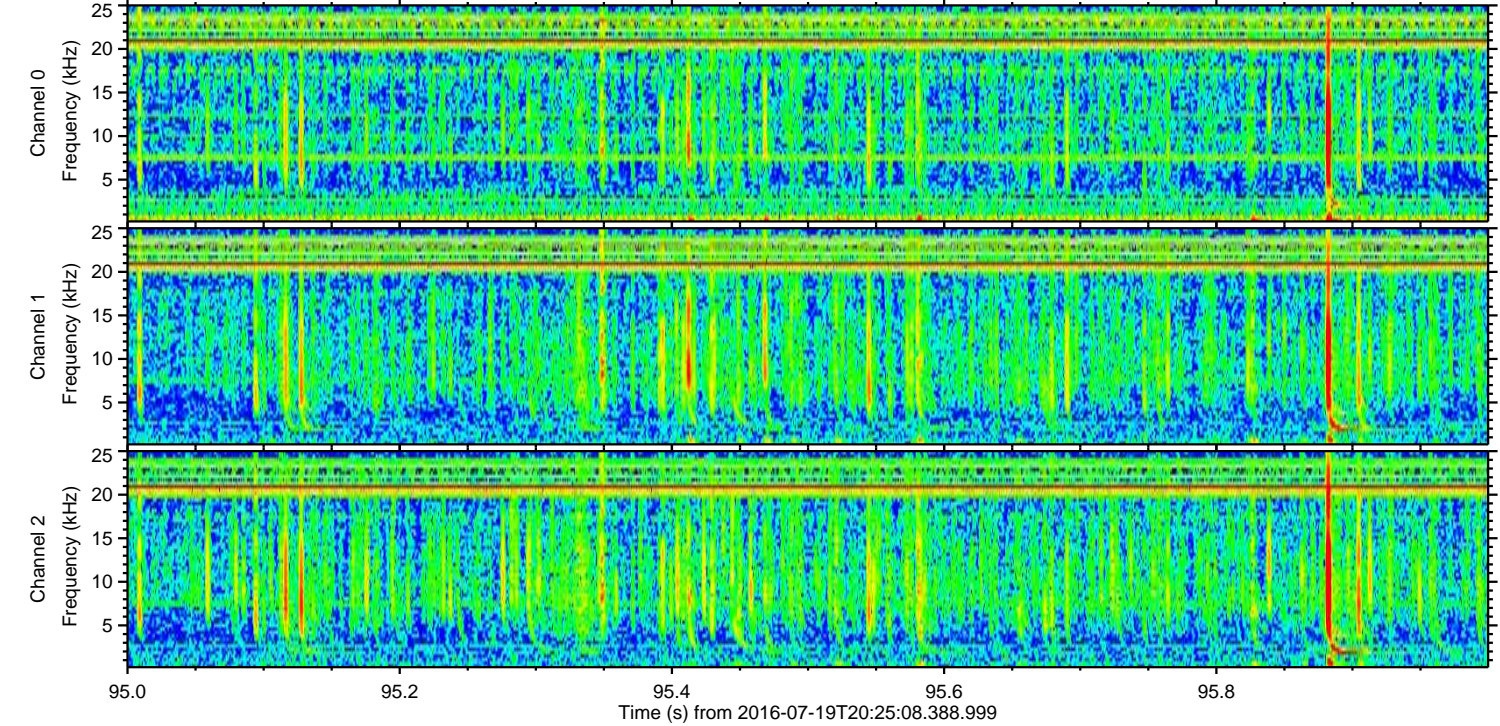
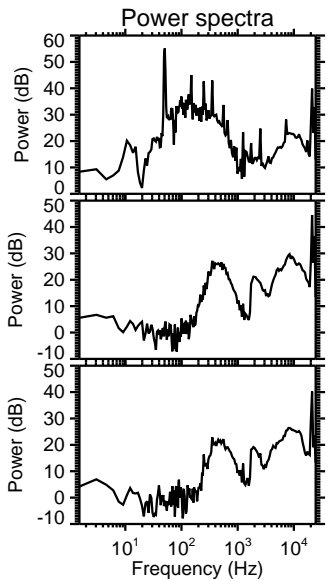
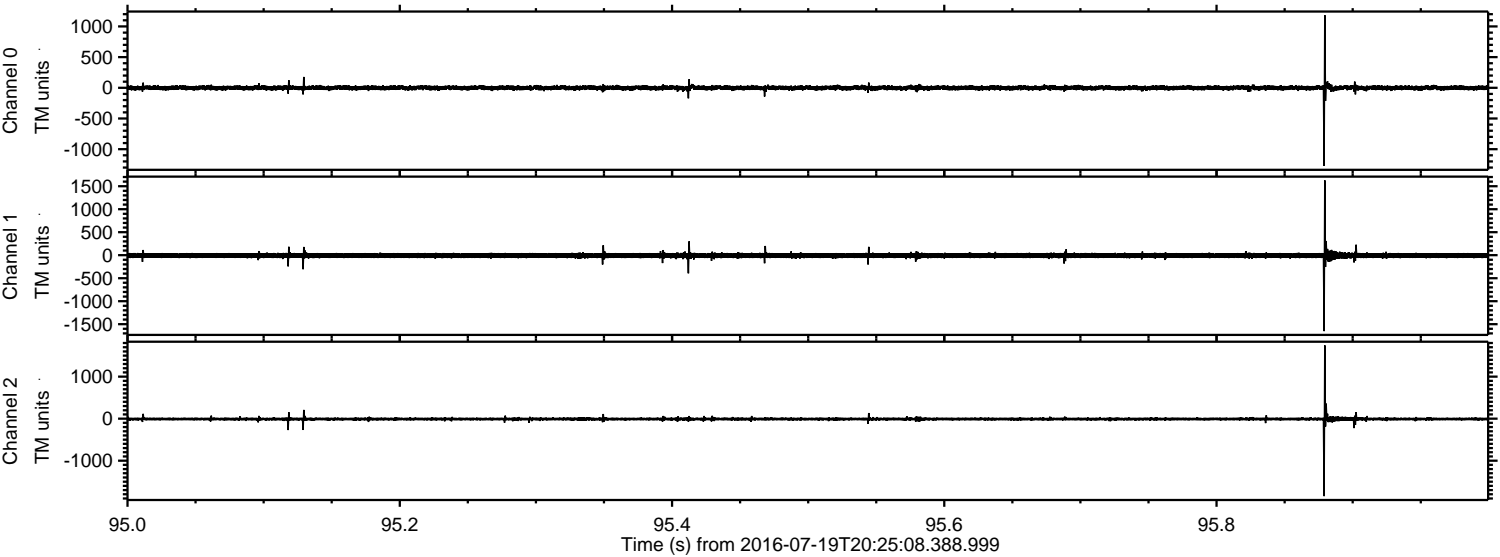


Channel 0
mn: -838
mx: 1301
 μ : -0.7
 σ : 20.6

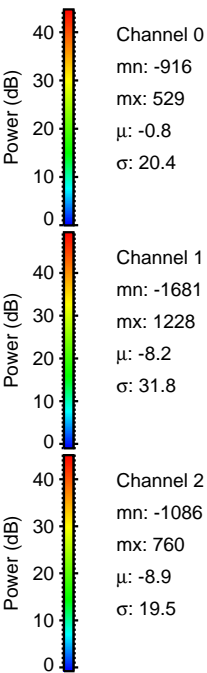
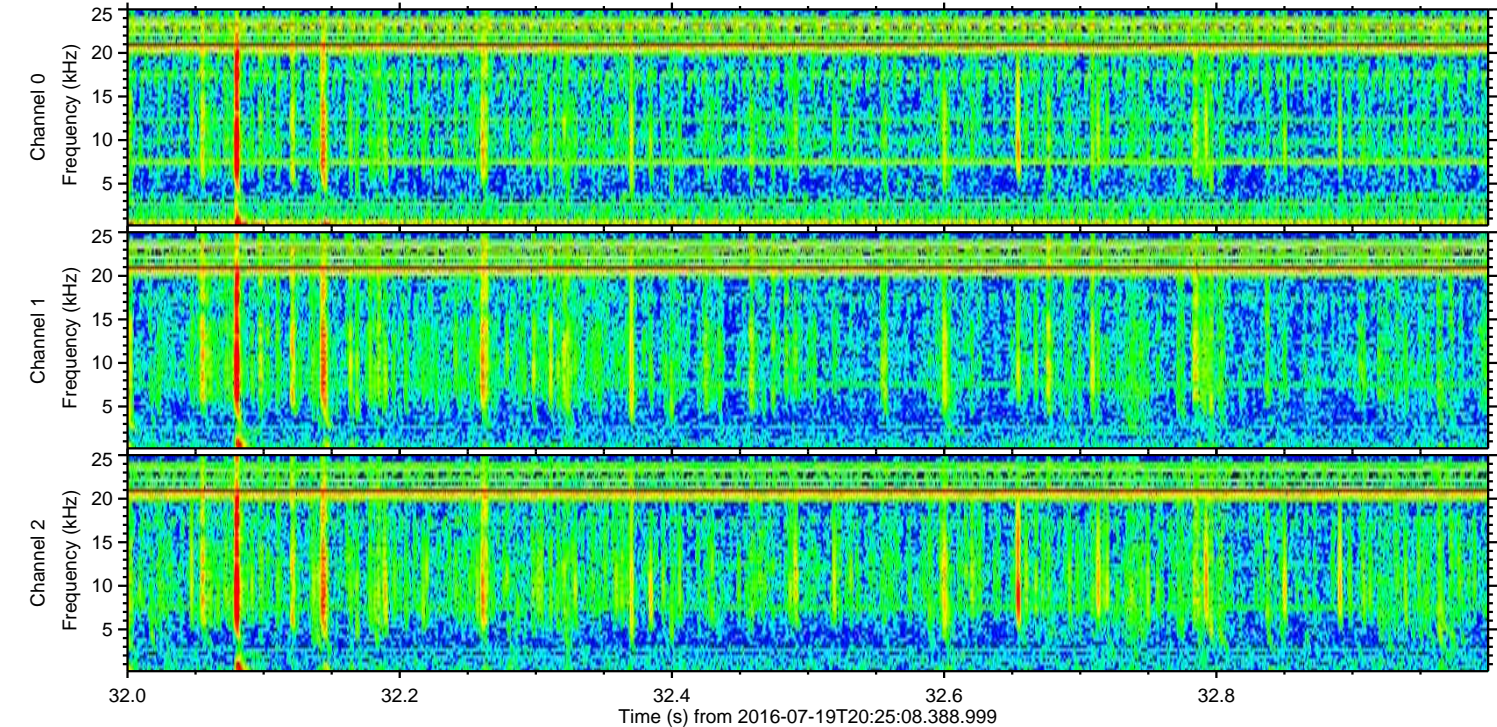
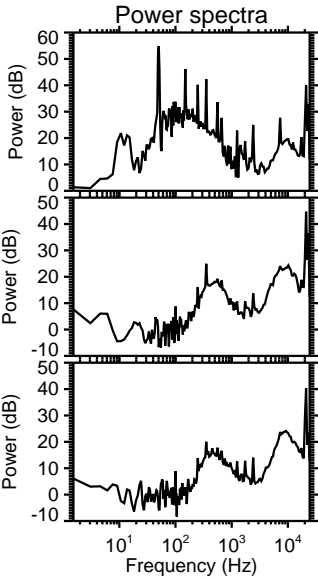
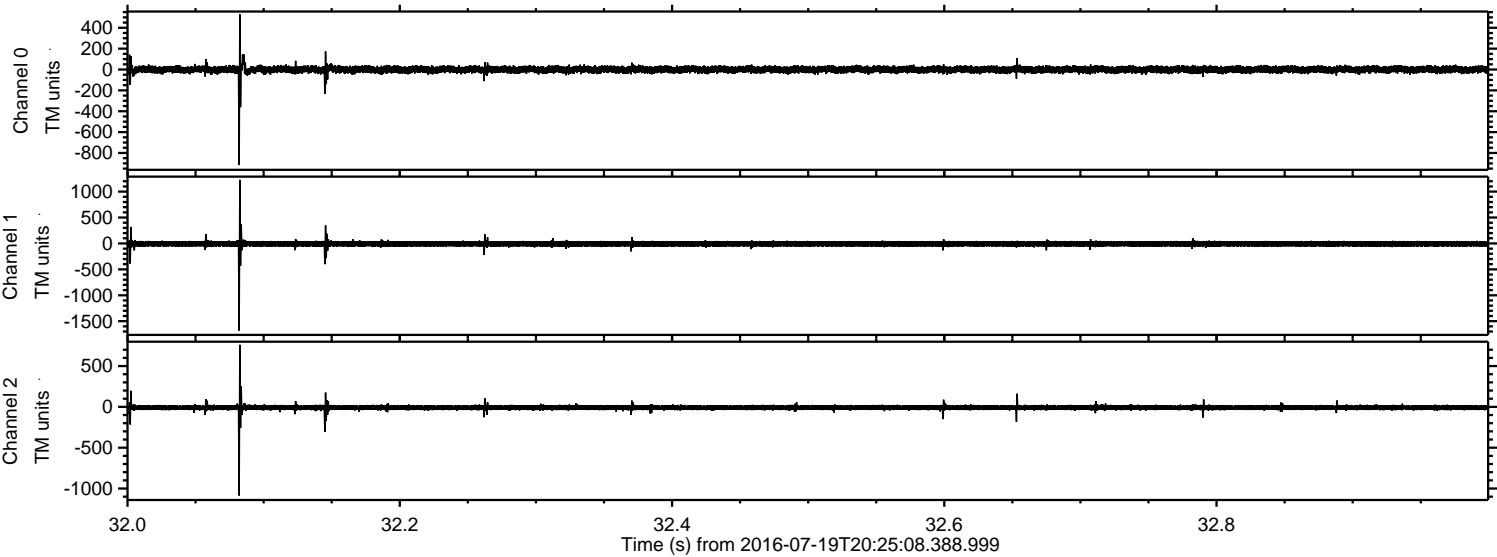
Channel 1
mn: -919
mx: 553
 μ : -8.2
 σ : 29.0

Channel 2
mn: -1216
mx: 2251
 μ : -8.9
 σ : 26.7

Processed Tue Jul 19 22:32:50 2016 by ELM ver.2012-10-06 from 001__elm20160719_202507__dat00.bin



Processed Tue Jul 19 22:32:51 2016 by ELM ver.2012-10-06 from 001__elm20160719_202507__dat00.bin



Processed Tue Jul 19 22:32:51 2016 by ELM ver.2012-10-06 from 001__elm20160719_202507__dat00.bin

