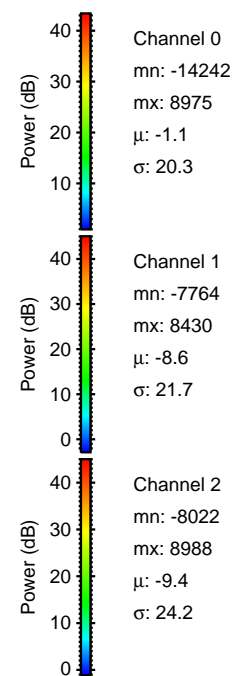
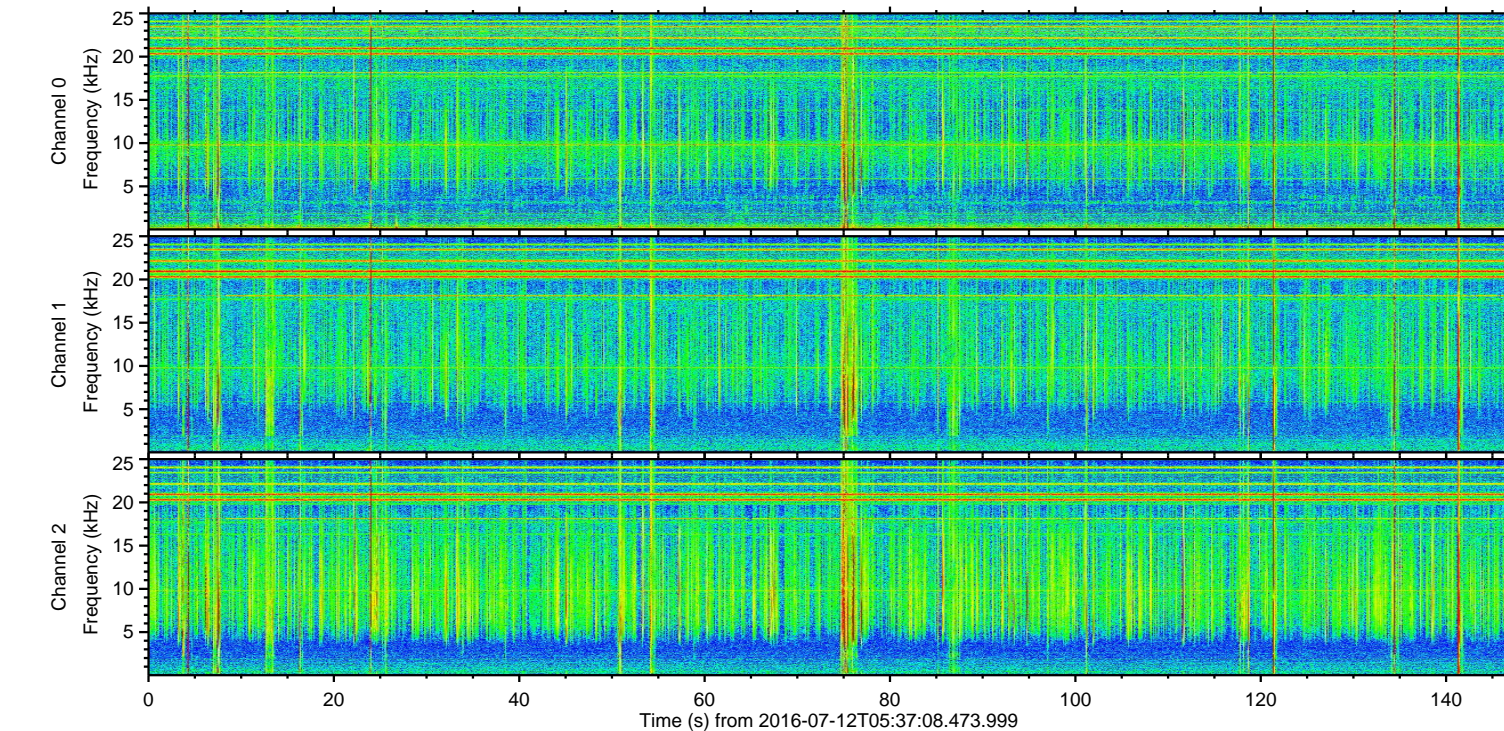
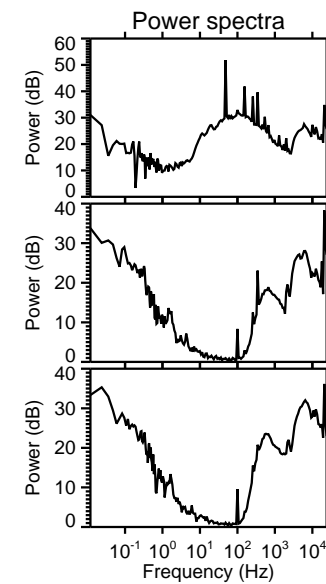
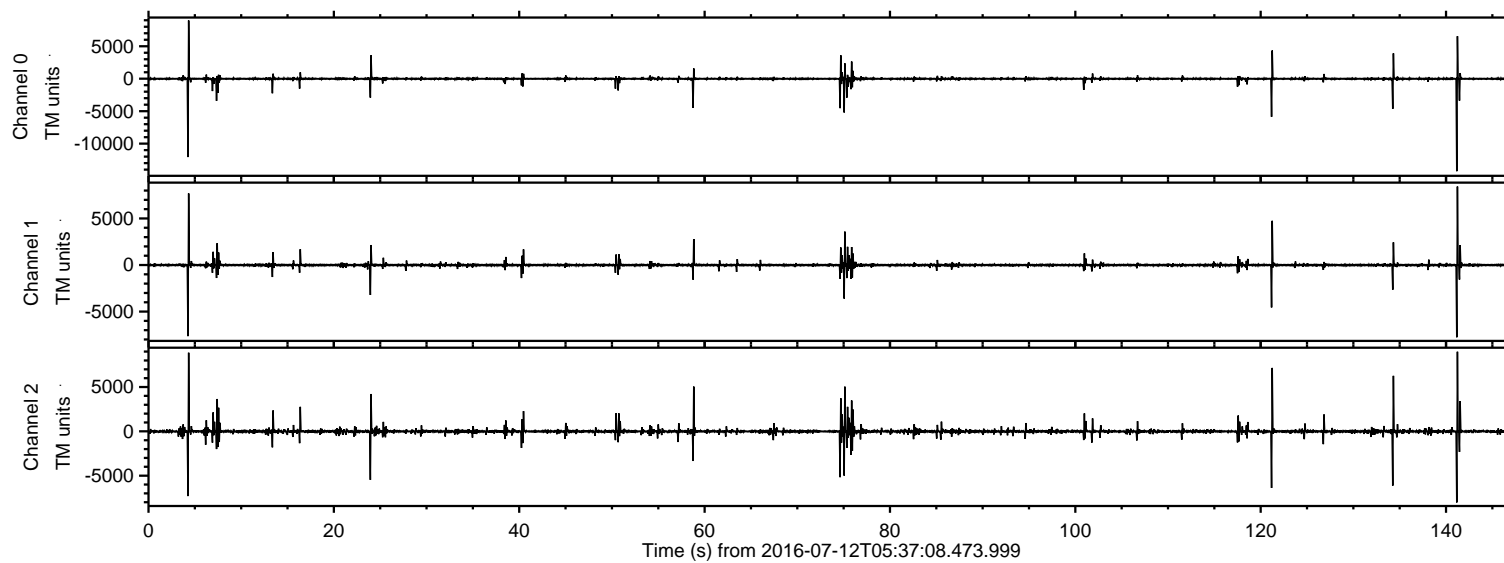


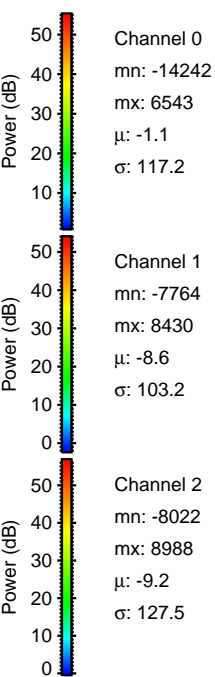
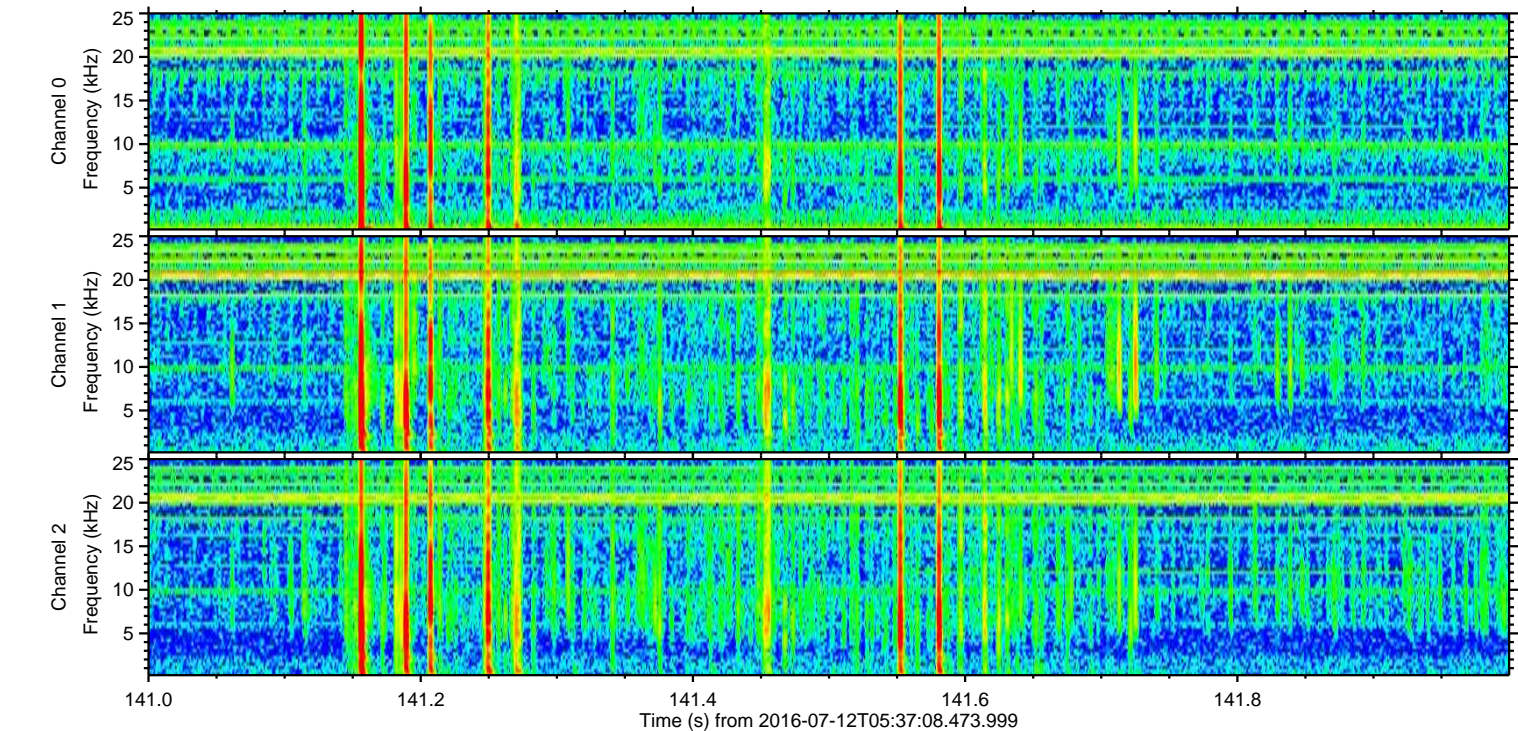
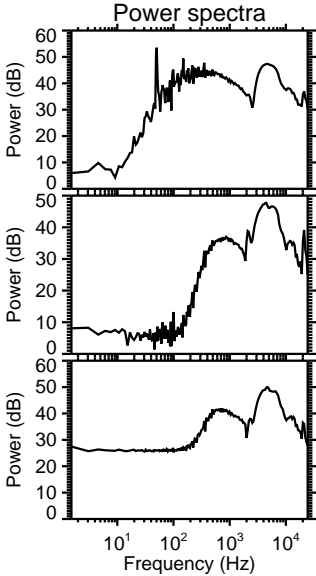
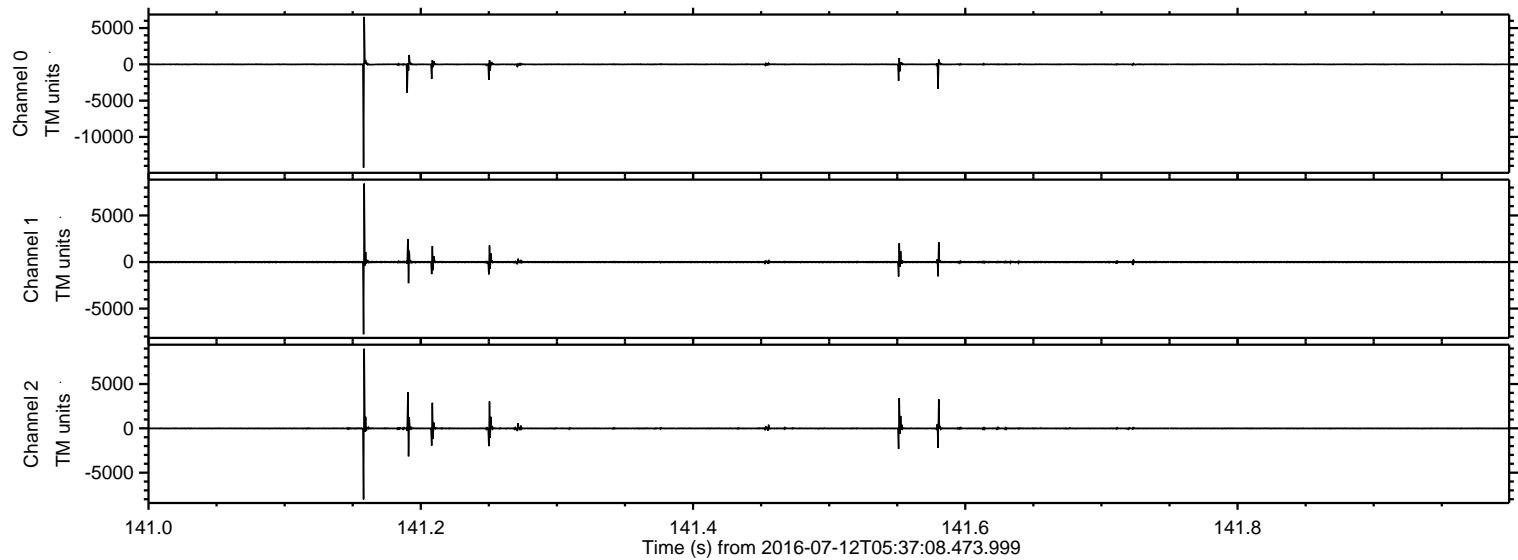
ELMAVAN 3D WAVEFORMS (Measured data sampled at 50 kHz) 51000 packets of 144 samples from 2016-07-12T05:37:08.473.999.

Processed Tue Jul 12 07:45:00 2016 by ELM ver.2012-10-06 from 001__elm20160712_053707__dat00.bin

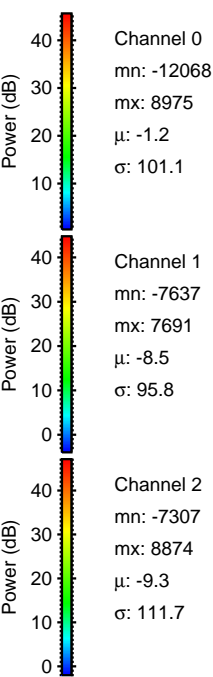
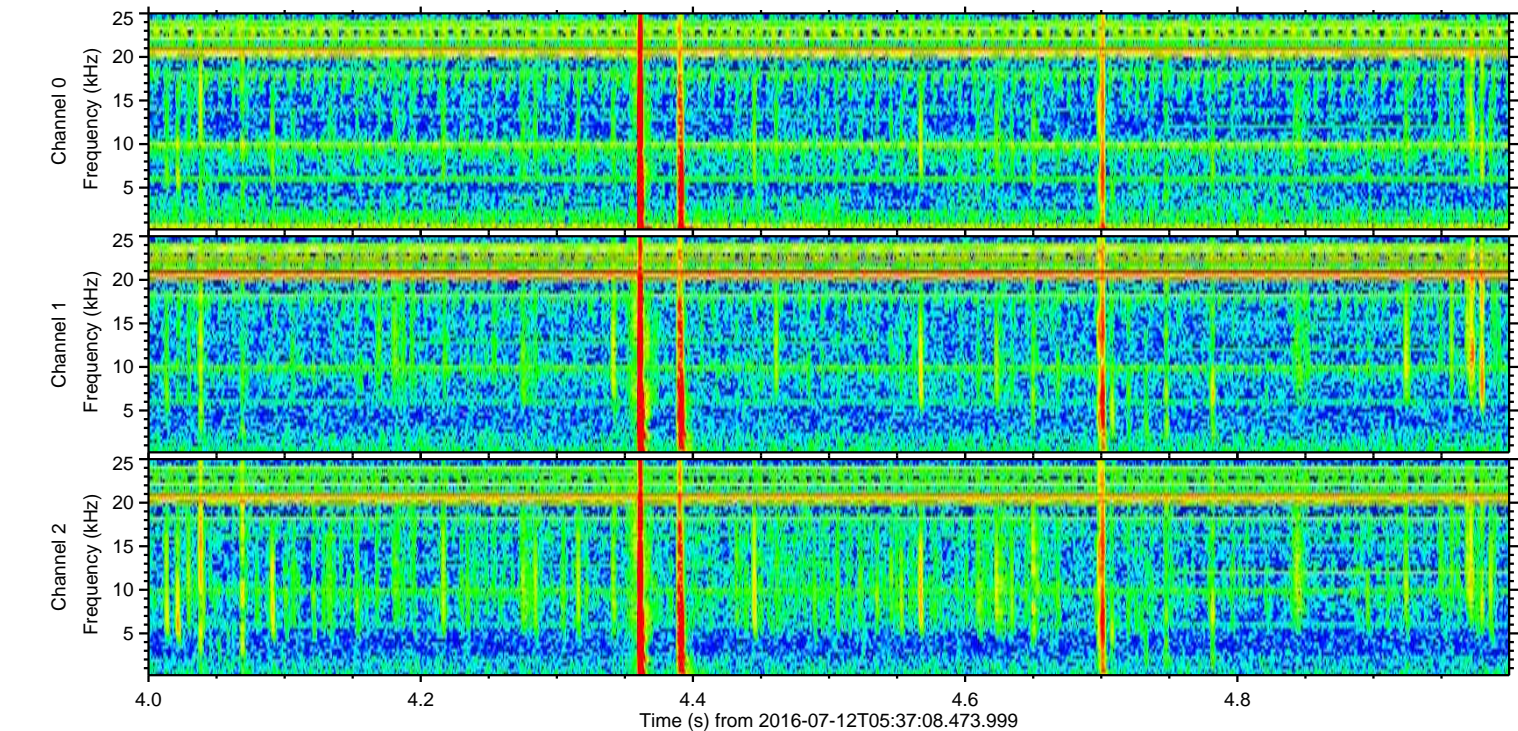
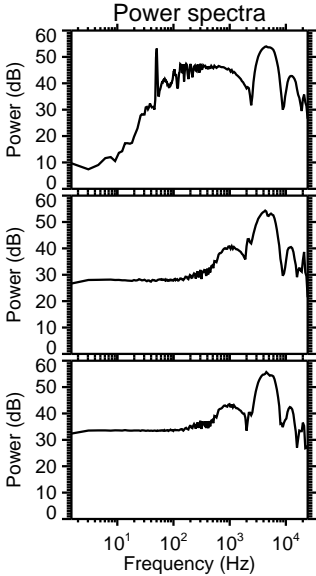
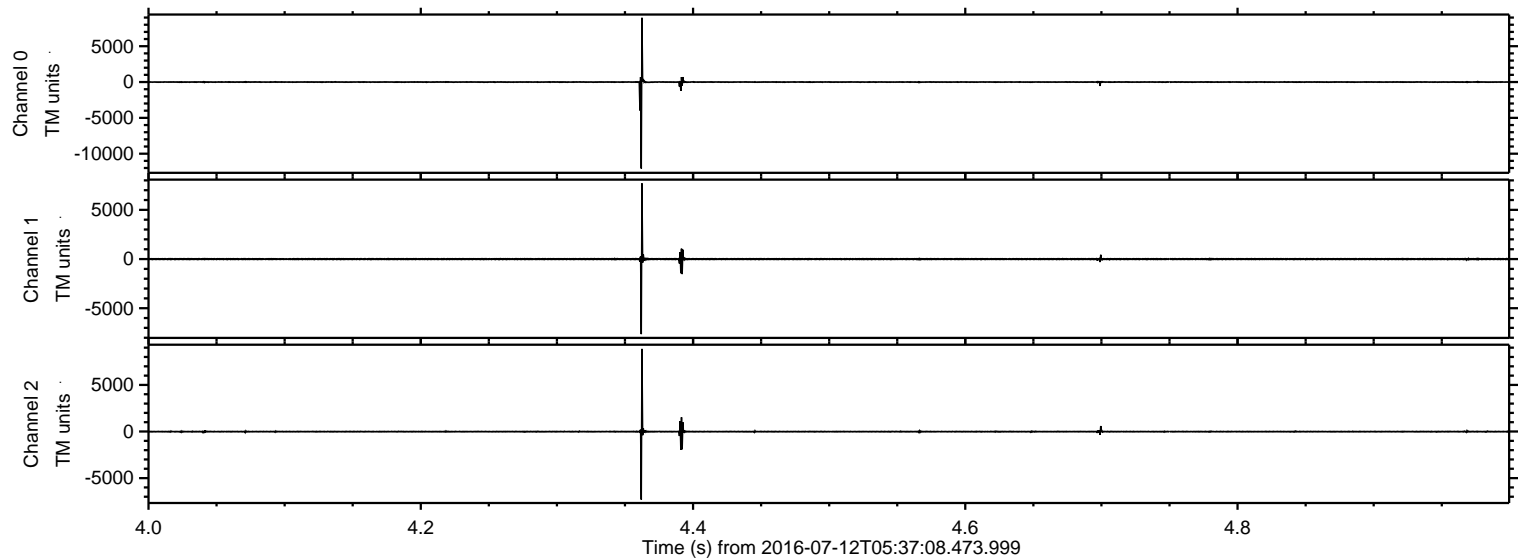


ELMAVAN 3D WAVEFORMS (Measured data sampled at 50 kHz) 51000 packets of 144 samples from 2016-07-12T05:37:08.473.999. Part 142/147

Processed Tue Jul 12 07:45:11 2016 by ELM ver.2012-10-06 from 001___elm20160712_053707___dat00.bin

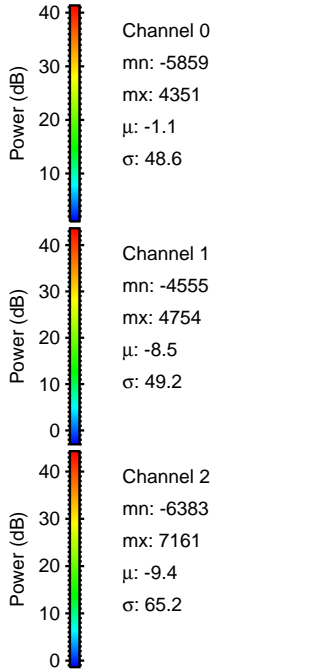
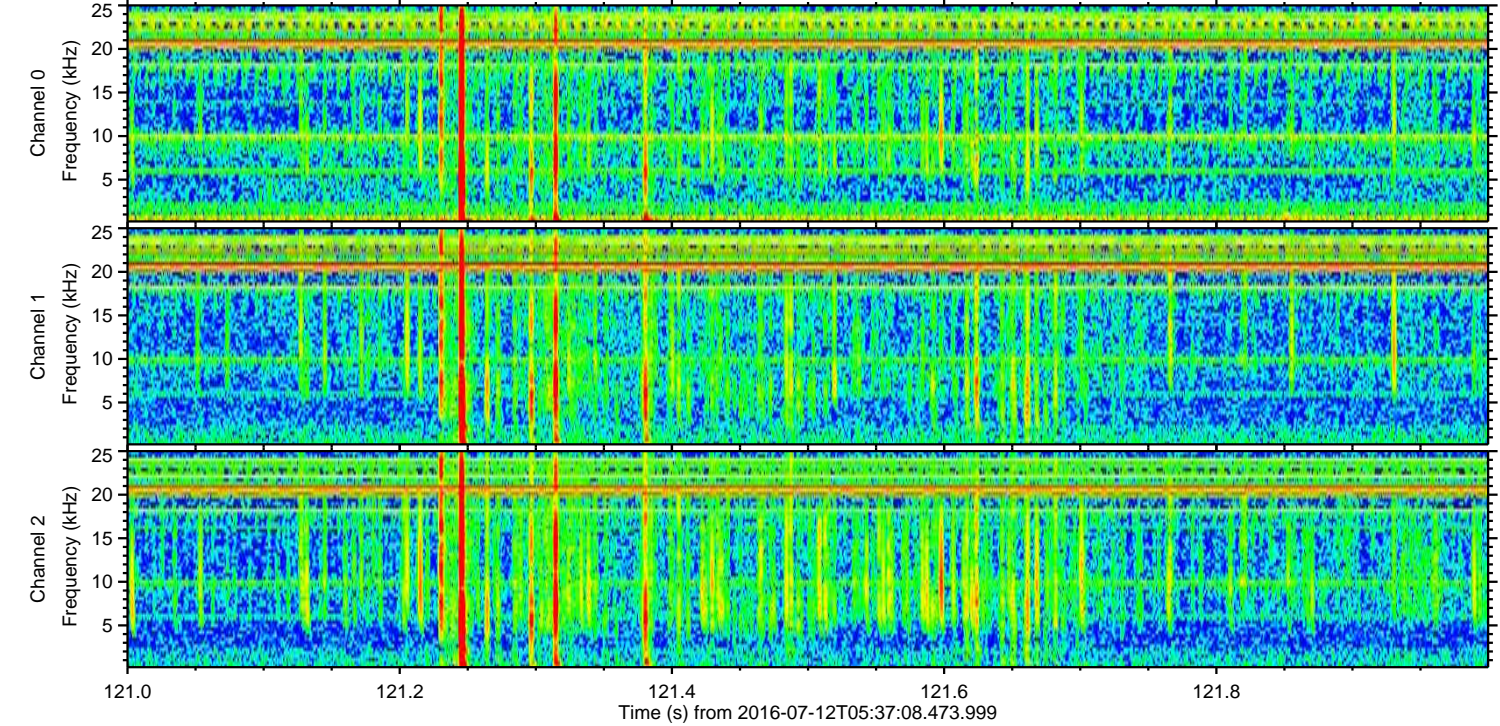
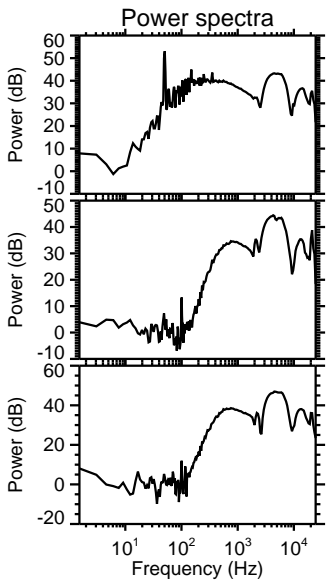
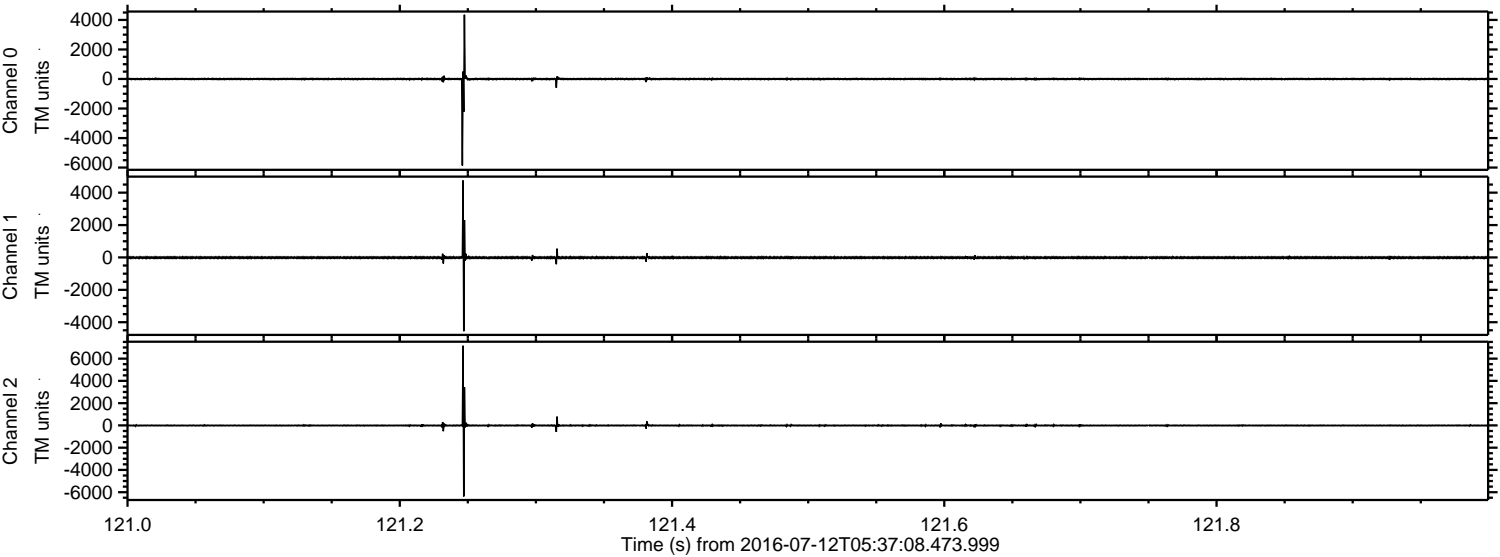


Processed Tue Jul 12 07:45:12 2016 by ELM ver.2012-10-06 from 001__elm20160712_053707__dat00.bin



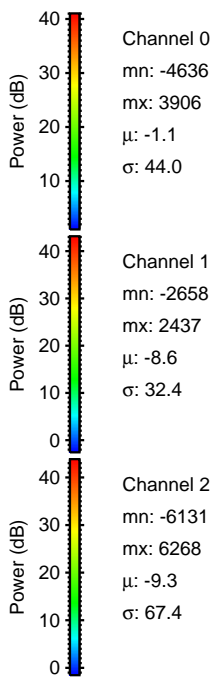
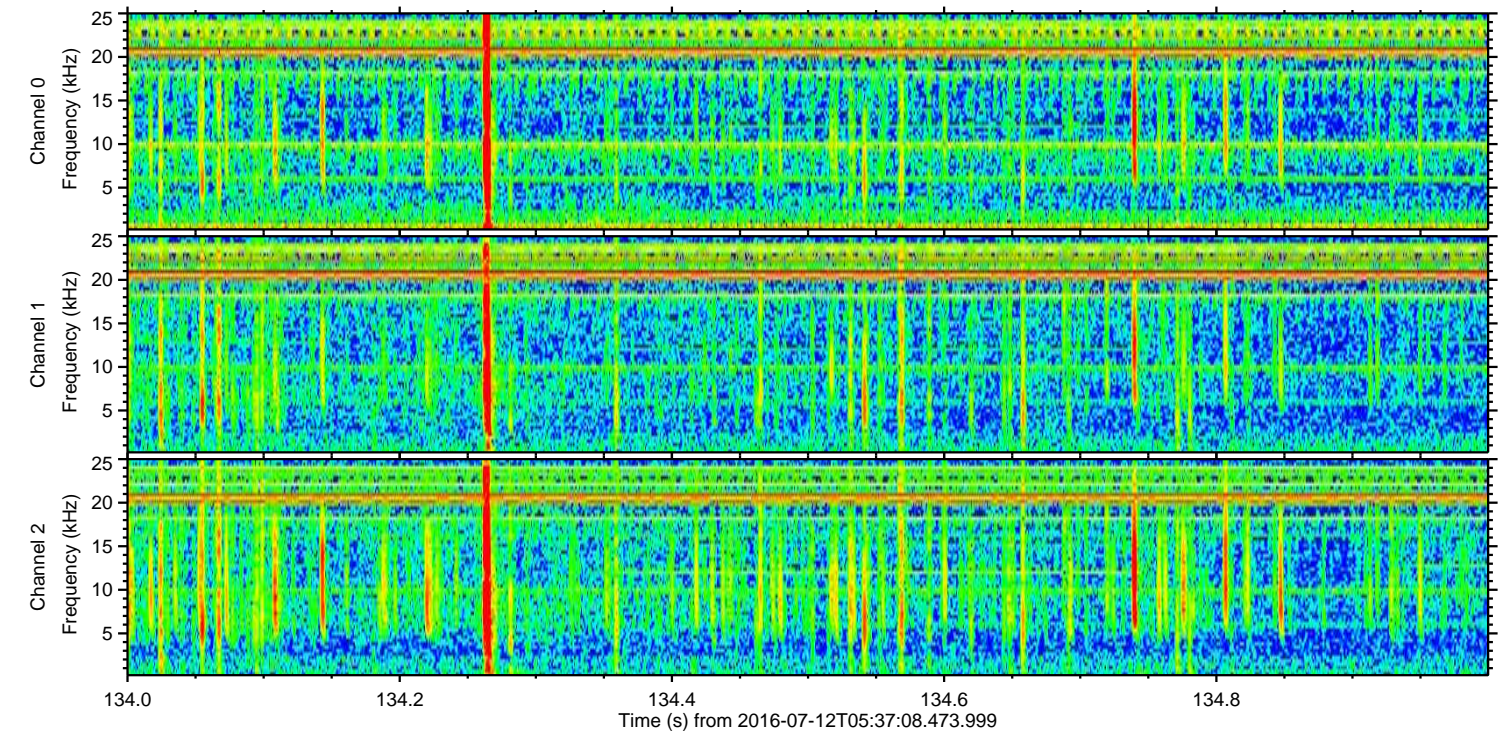
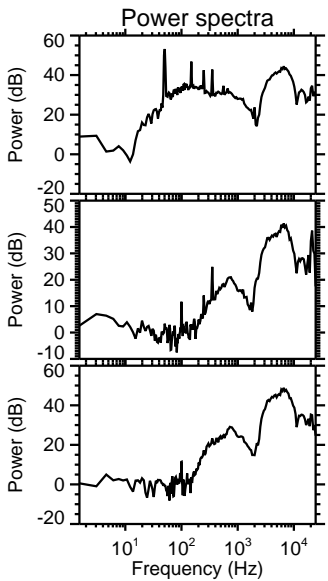
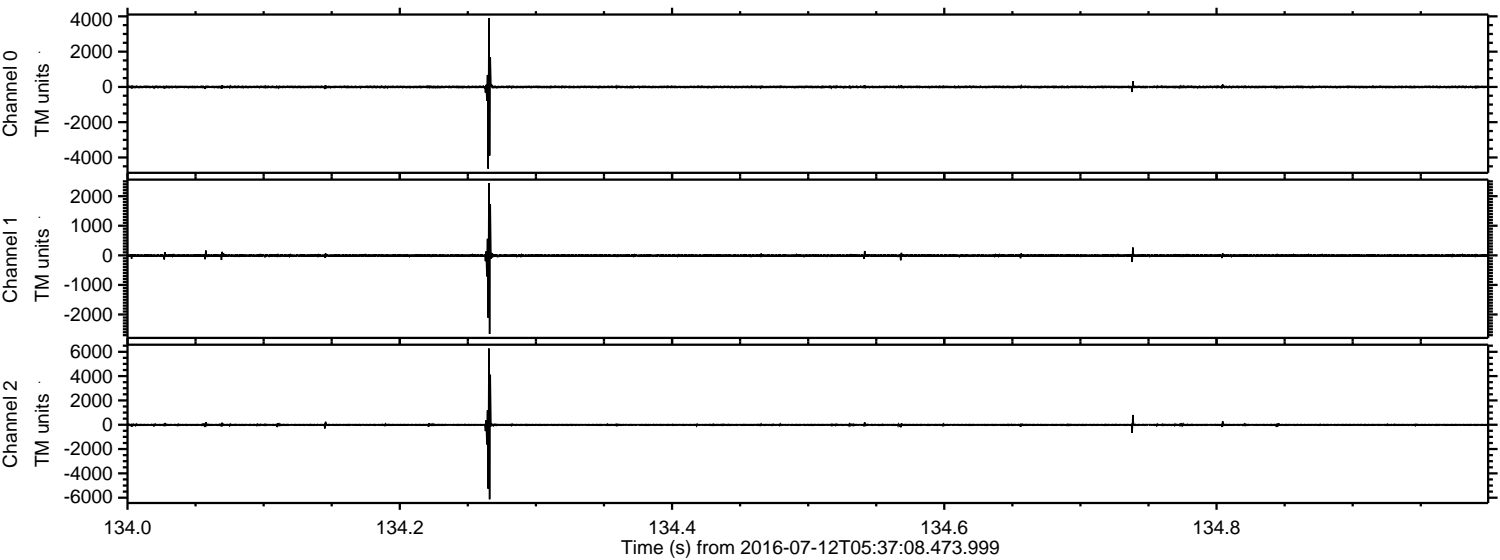
ELMAVAN 3D WAVEFORMS (Measured data sampled at 50 kHz) 51000 packets of 144 samples from 2016-07-12T05:37:08.473.999. Part 122/147

Processed Tue Jul 12 07:45:13 2016 by ELM ver.2012-10-06 from 001__elm20160712_053707__dat00.bin

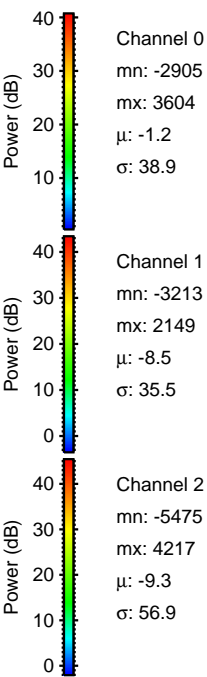
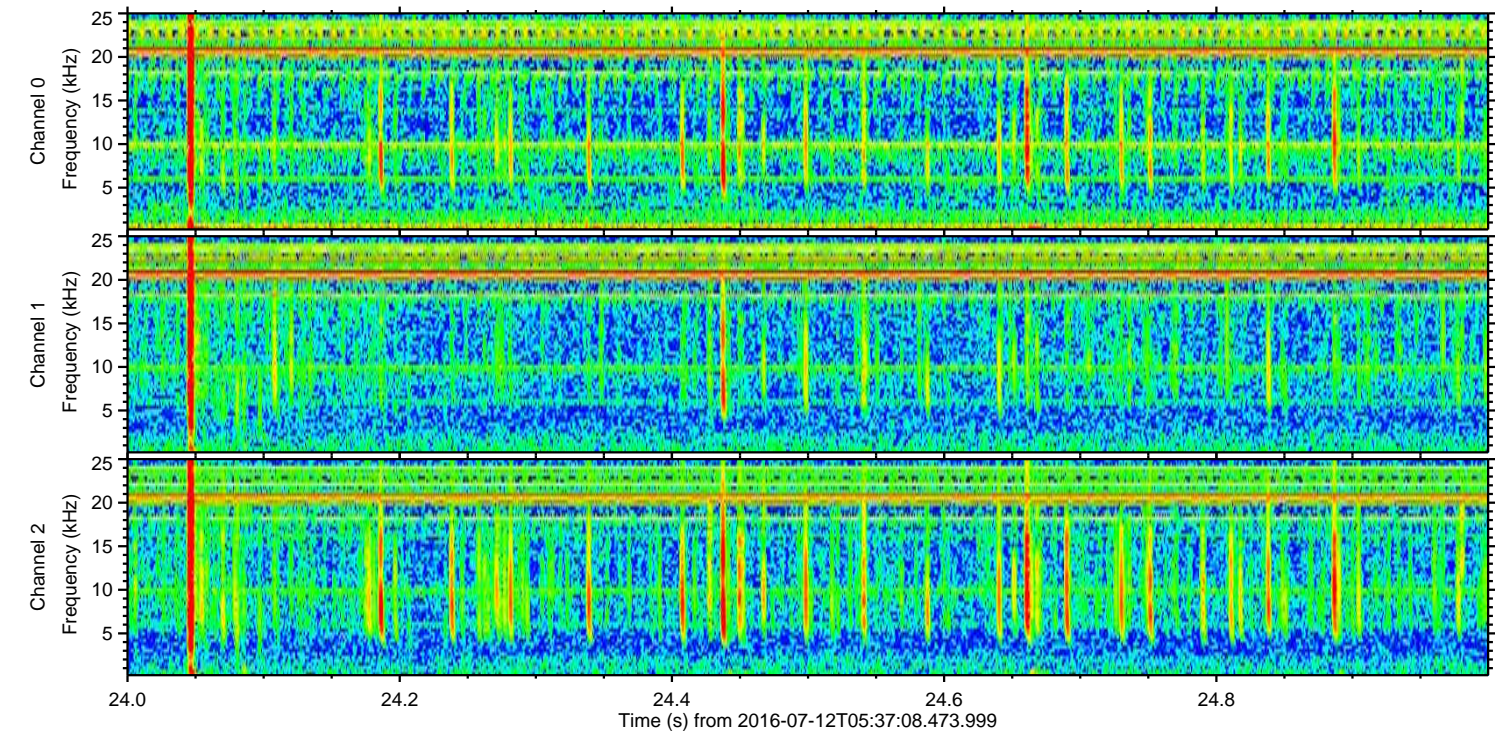
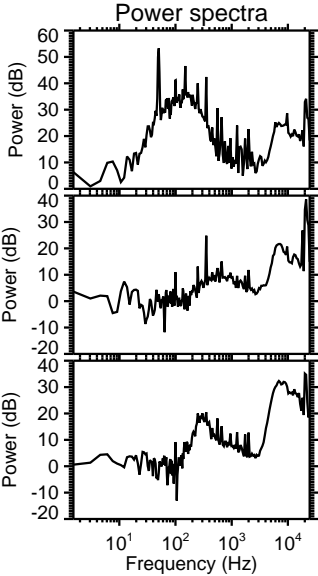
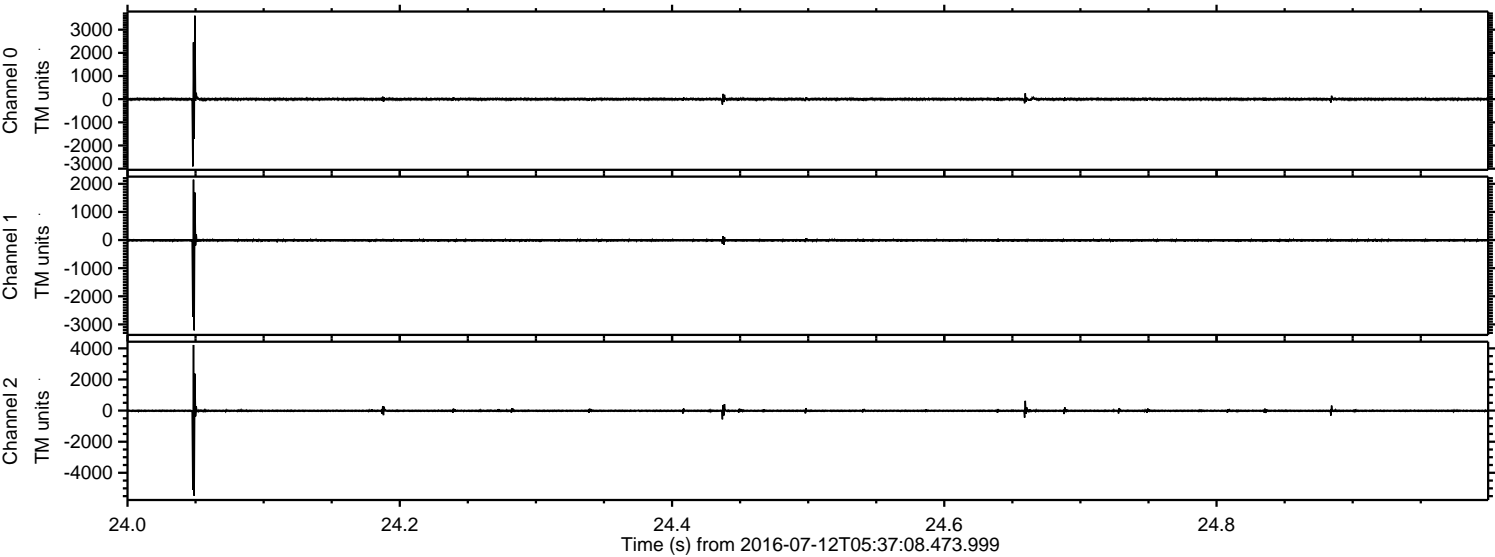


ELMAVAN 3D WAVEFORMS (Measured data sampled at 50 kHz) 51000 packets of 144 samples from 2016-07-12T05:37:08.473.999. Part 135/147

Processed Tue Jul 12 07:45:14 2016 by ELM ver.2012-10-06 from 001__elm20160712_053707__dat00.bin

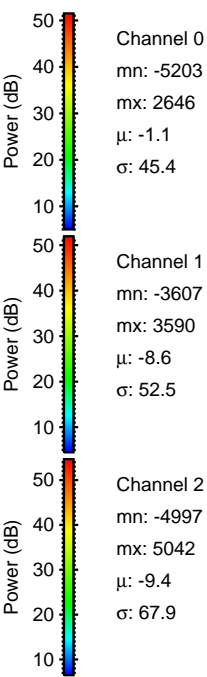
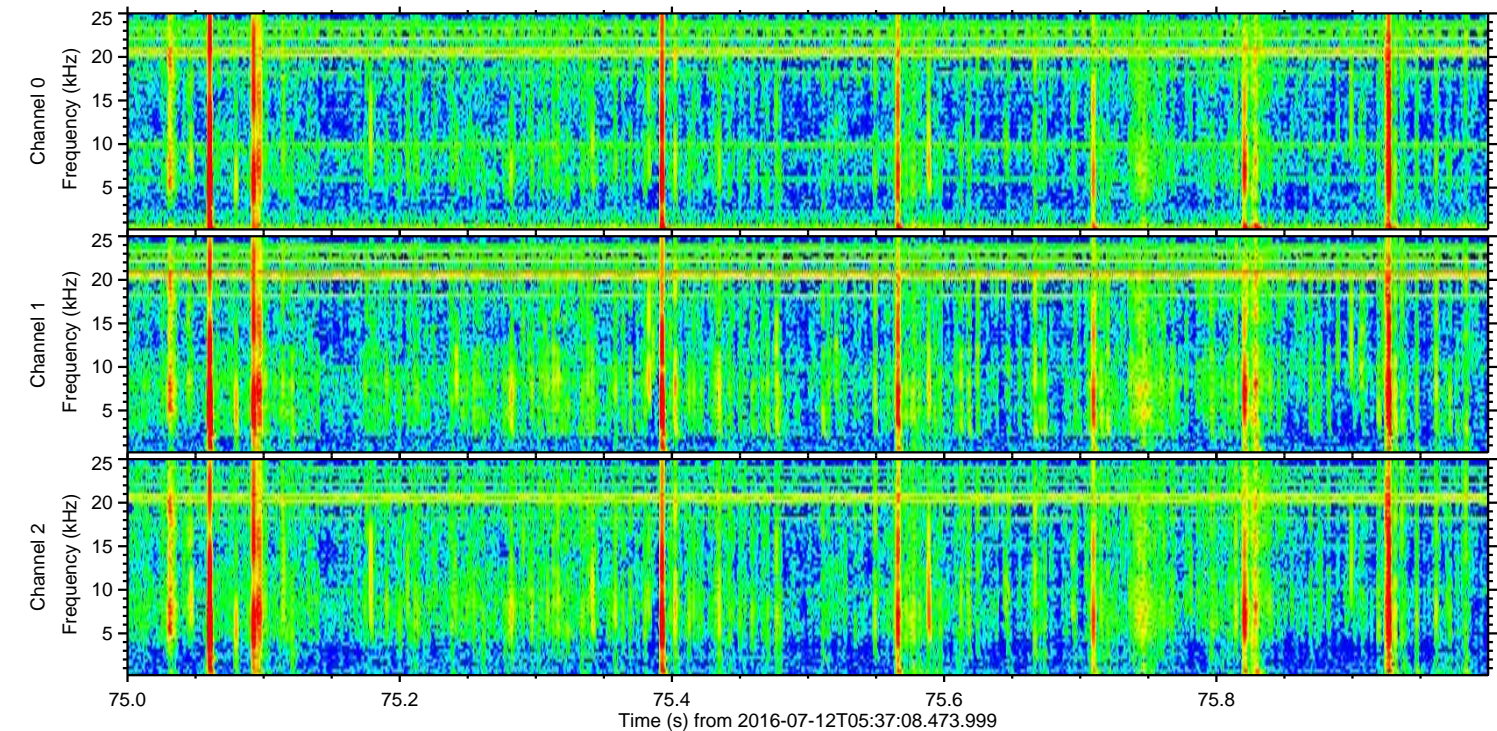
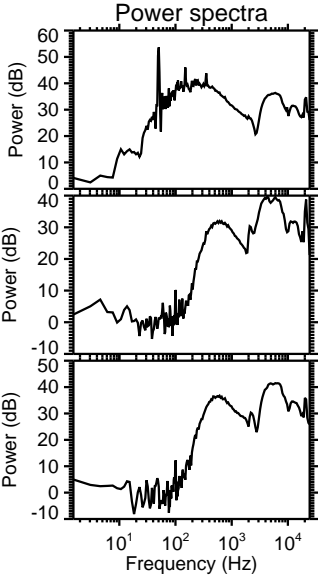
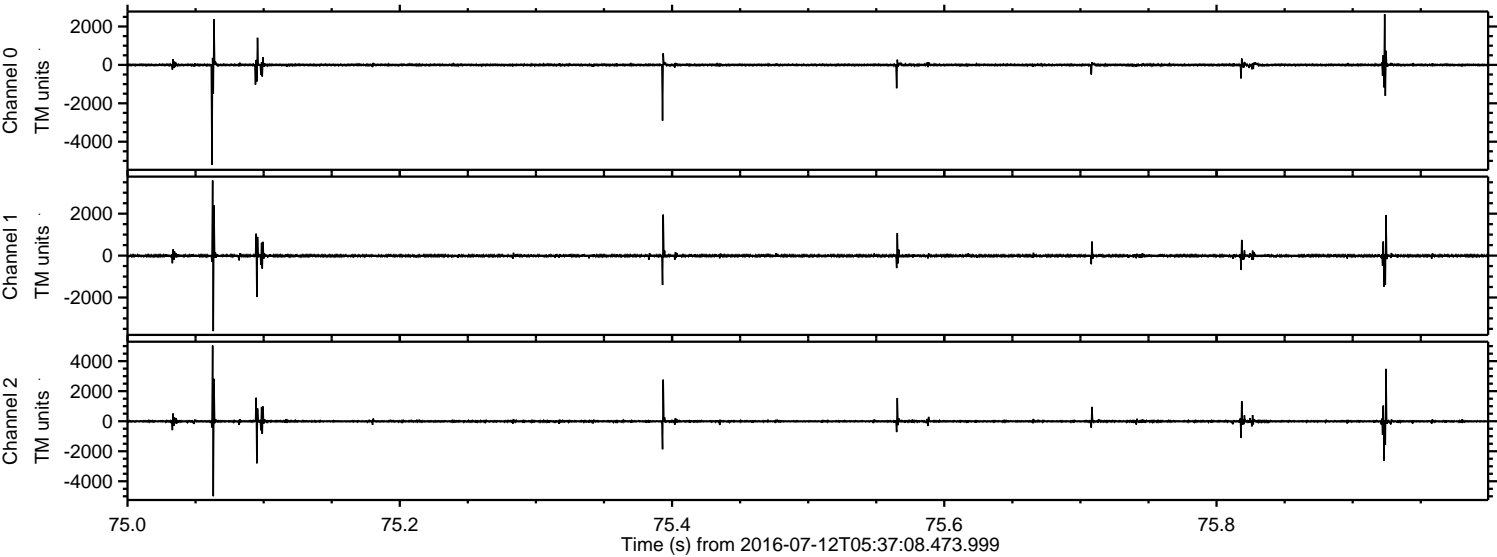


Processed Tue Jul 12 07:45:15 2016 by ELM ver.2012-10-06 from 001__elm20160712_053707__dat00.bin

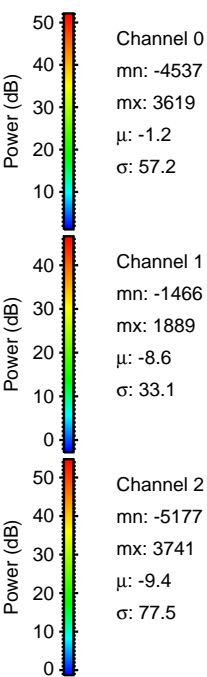
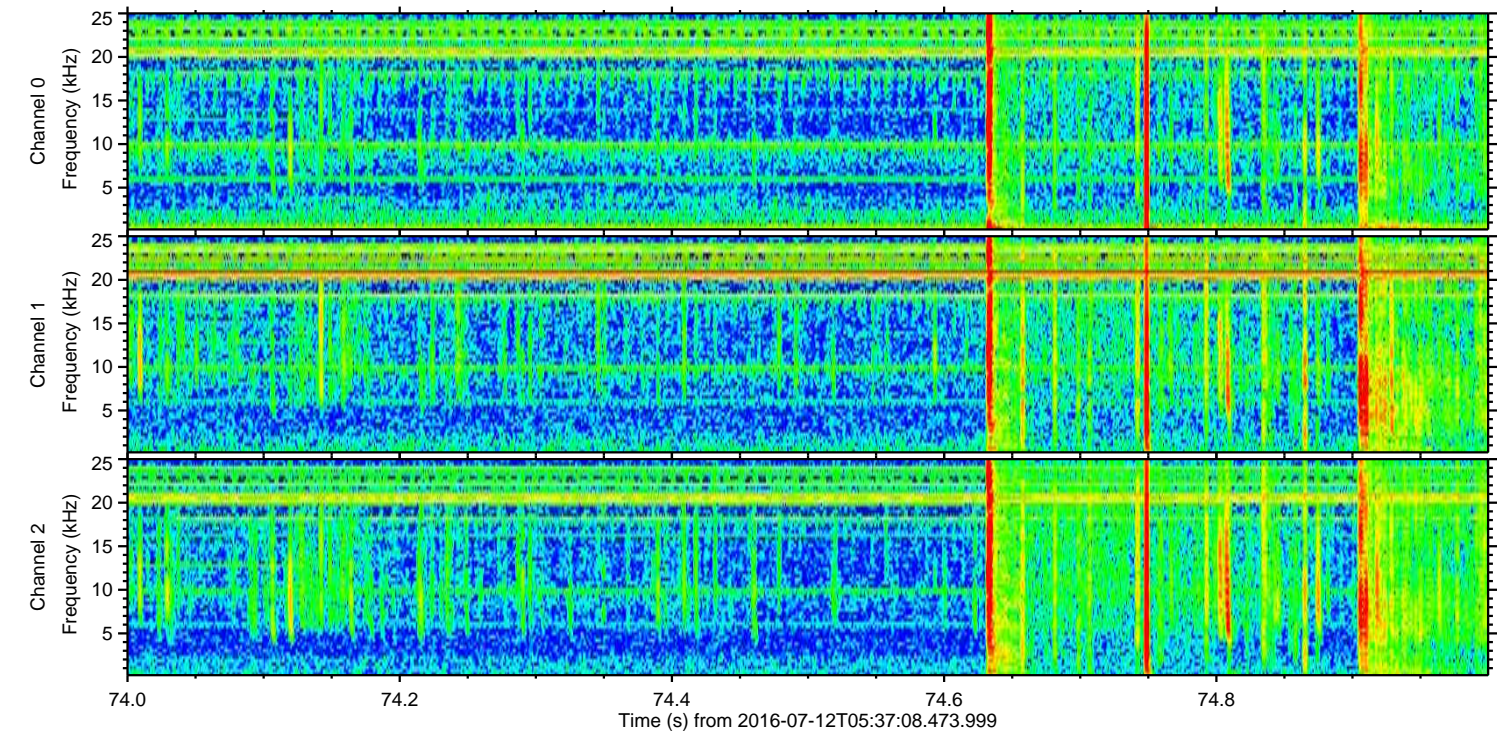
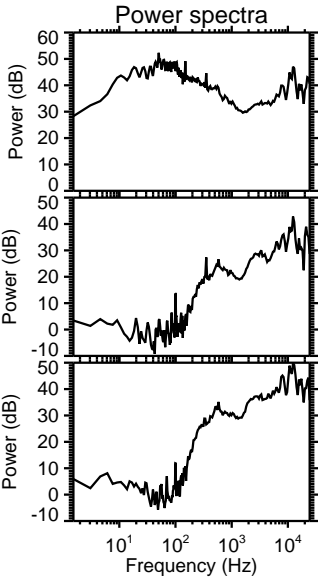
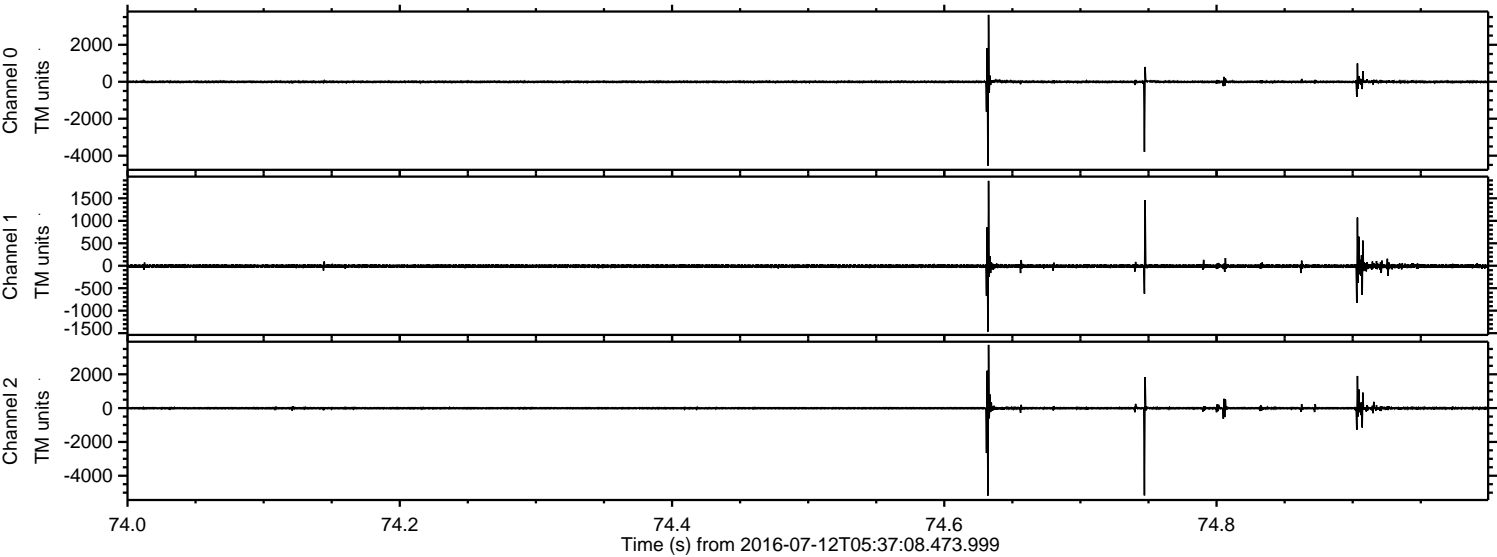


ELMAVAN 3D WAVEFORMS (Measured data sampled at 50 kHz) 51000 packets of 144 samples from 2016-07-12T05:37:08.473.999. Part 76/147

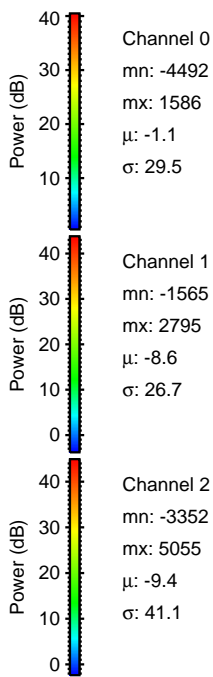
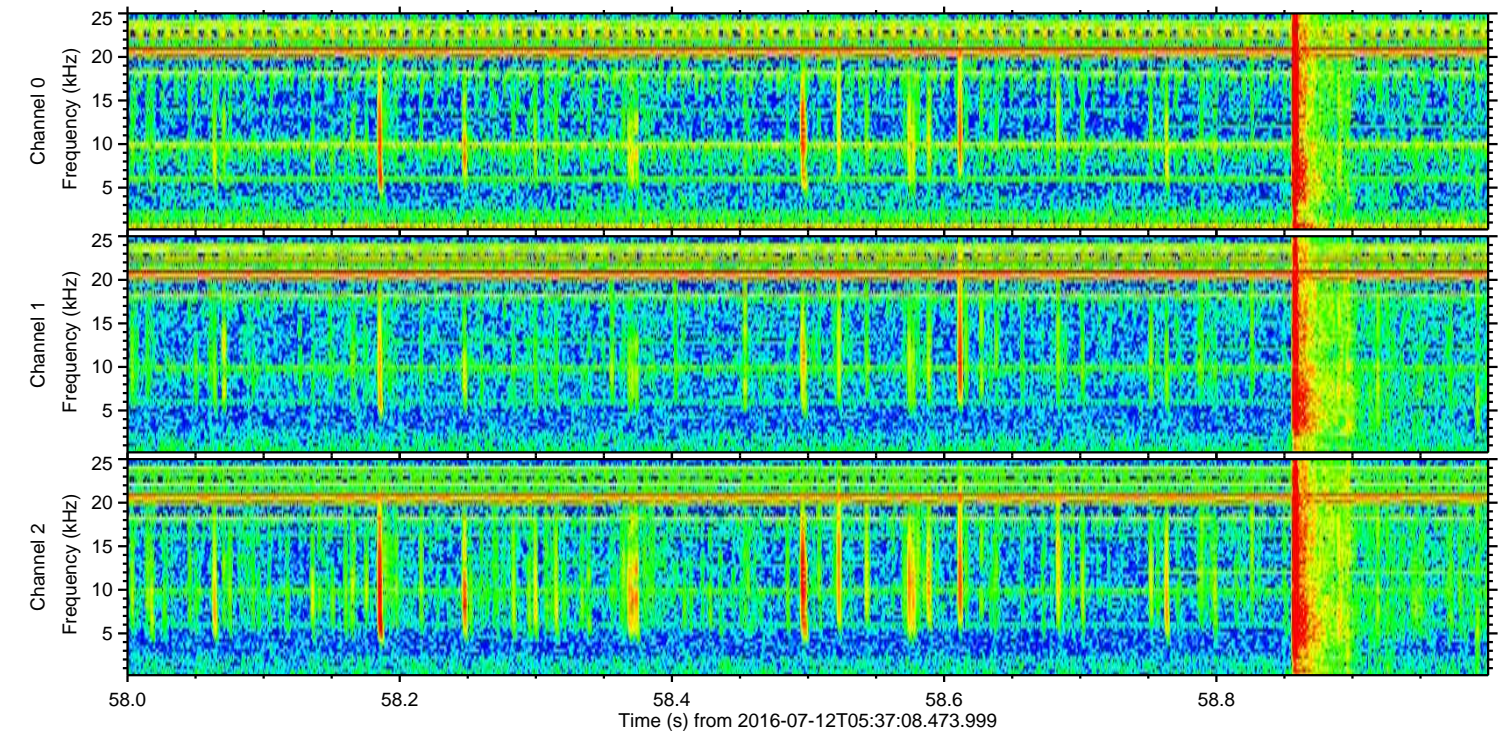
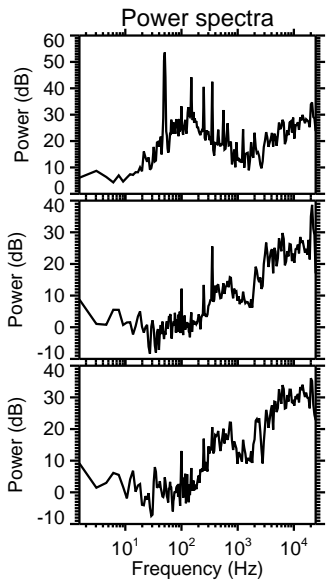
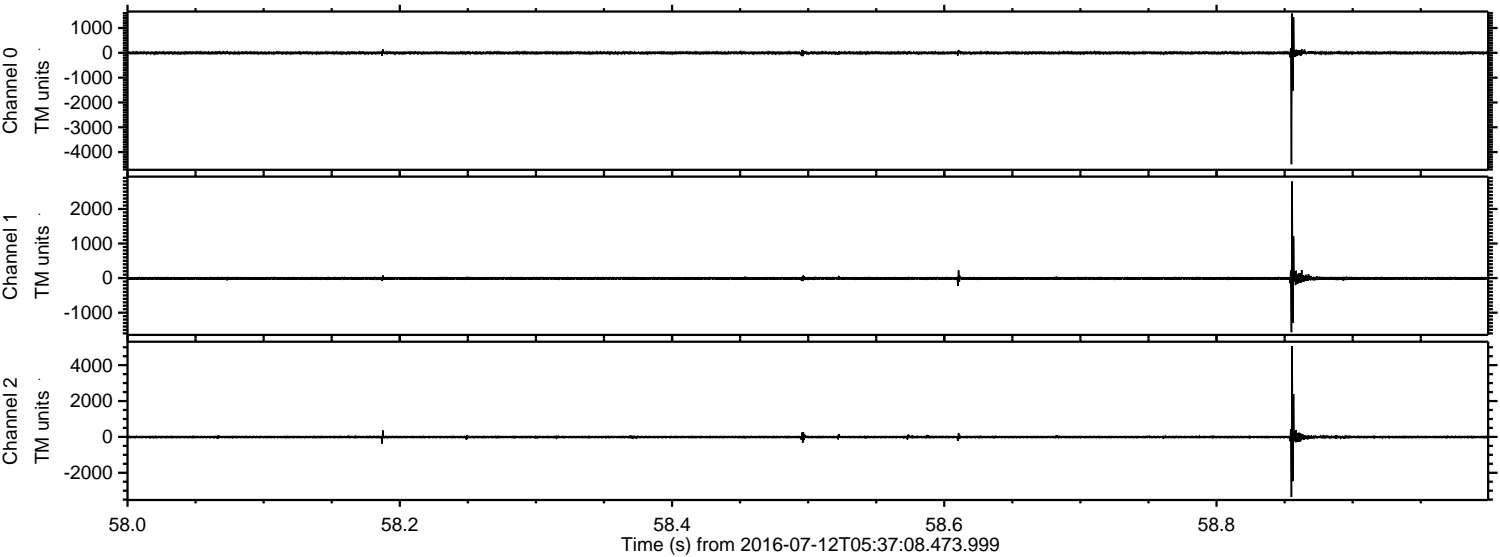
Processed Tue Jul 12 07:45:16 2016 by ELM ver.2012-10-06 from 001__elm20160712_053707__dat00.bin



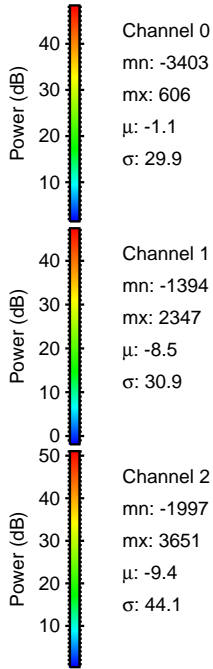
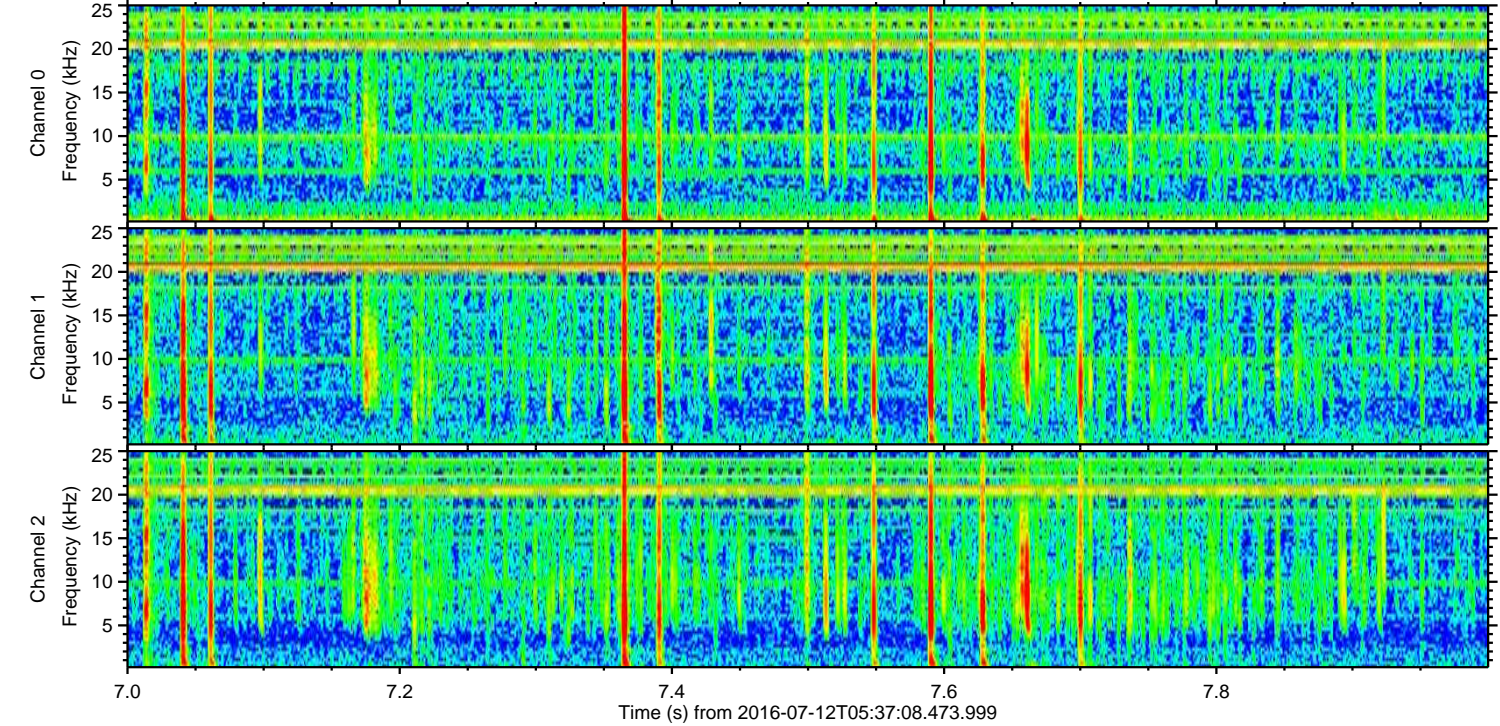
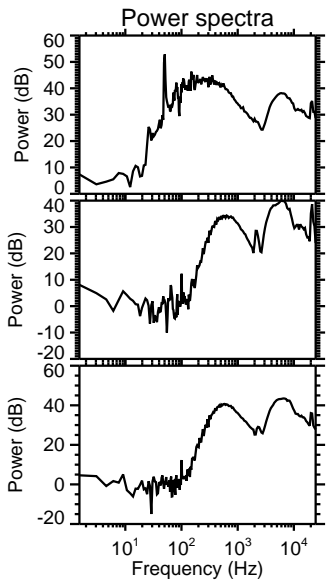
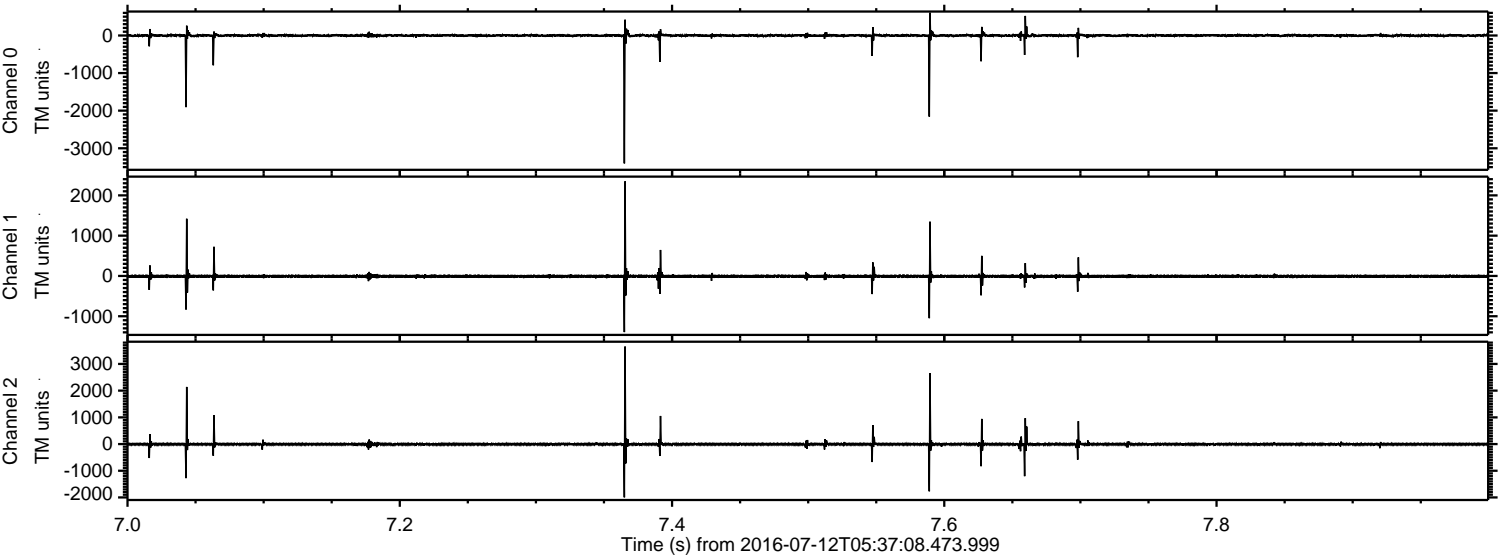
Processed Tue Jul 12 07:45:17 2016 by ELM ver.2012-10-06 from 001__elm20160712_053707__dat00.bin



Processed Tue Jul 12 07:45:18 2016 by ELM ver.2012-10-06 from 001__elm20160712_053707__dat00.bin



Processed Tue Jul 12 07:45:19 2016 by ELM ver.2012-10-06 from 001__elm20160712_053707__dat00.bin



Channel 0
mn: -3403
mx: 606
 μ : -1.1
 σ : 29.9

Channel 1
mn: -1394
mx: 2347
 μ : -8.5
 σ : 30.9

Channel 2
mn: -1997
mx: 3651
 μ : -9.4
 σ : 44.1

Processed Tue Jul 12 07:45:20 2016 by ELM ver.2012-10-06 from 001__elm20160712_053707__dat00.bin

