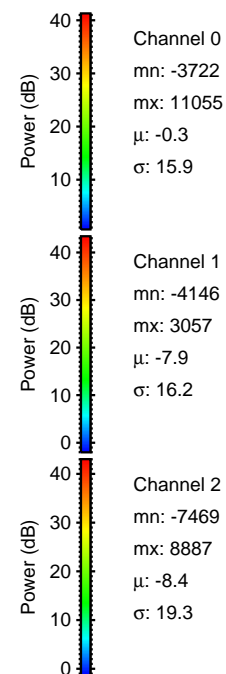
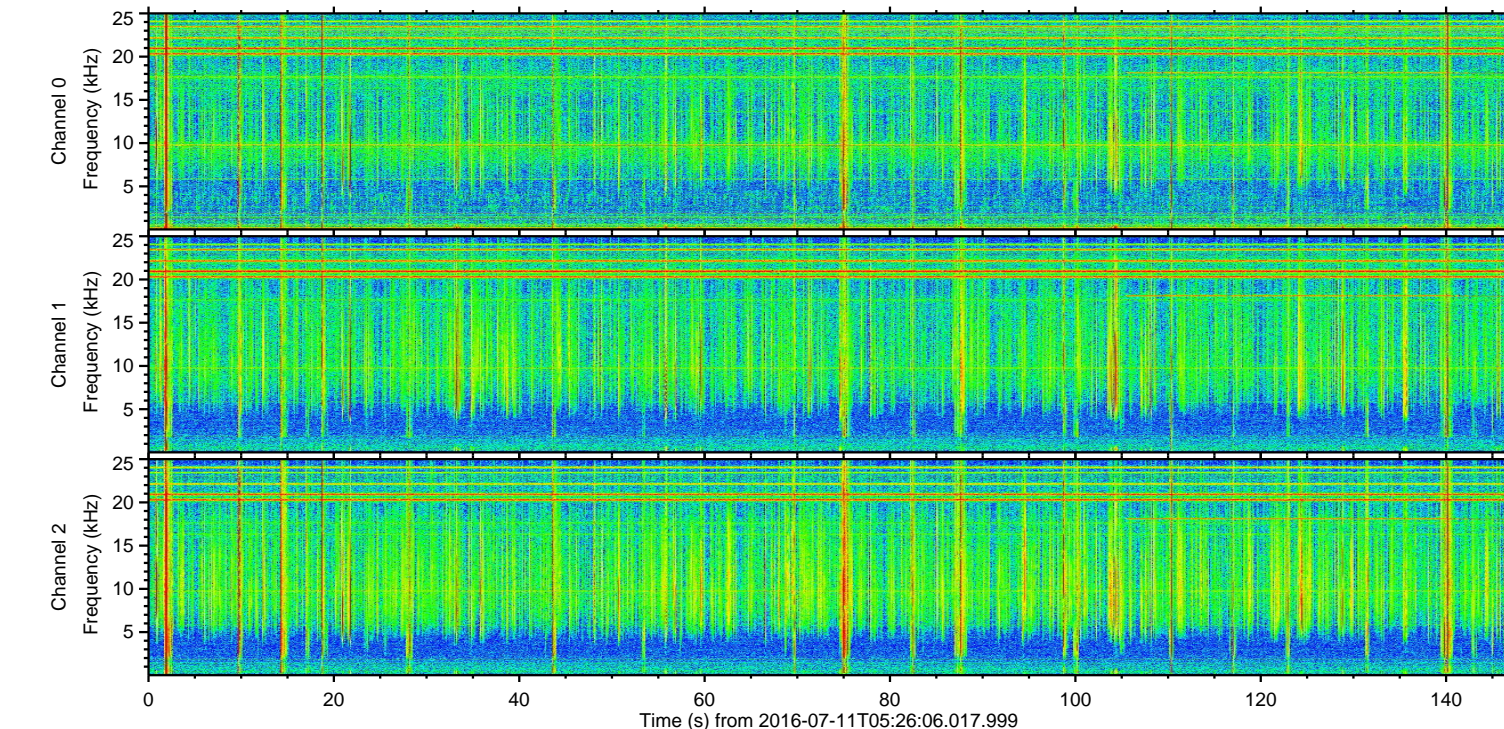
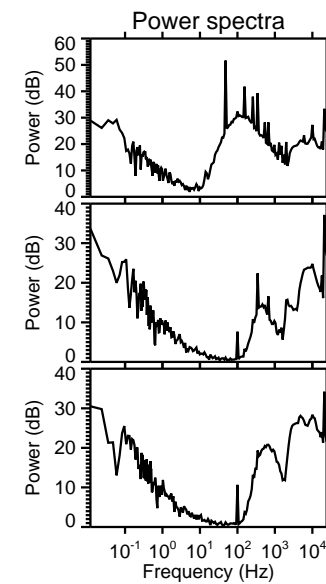
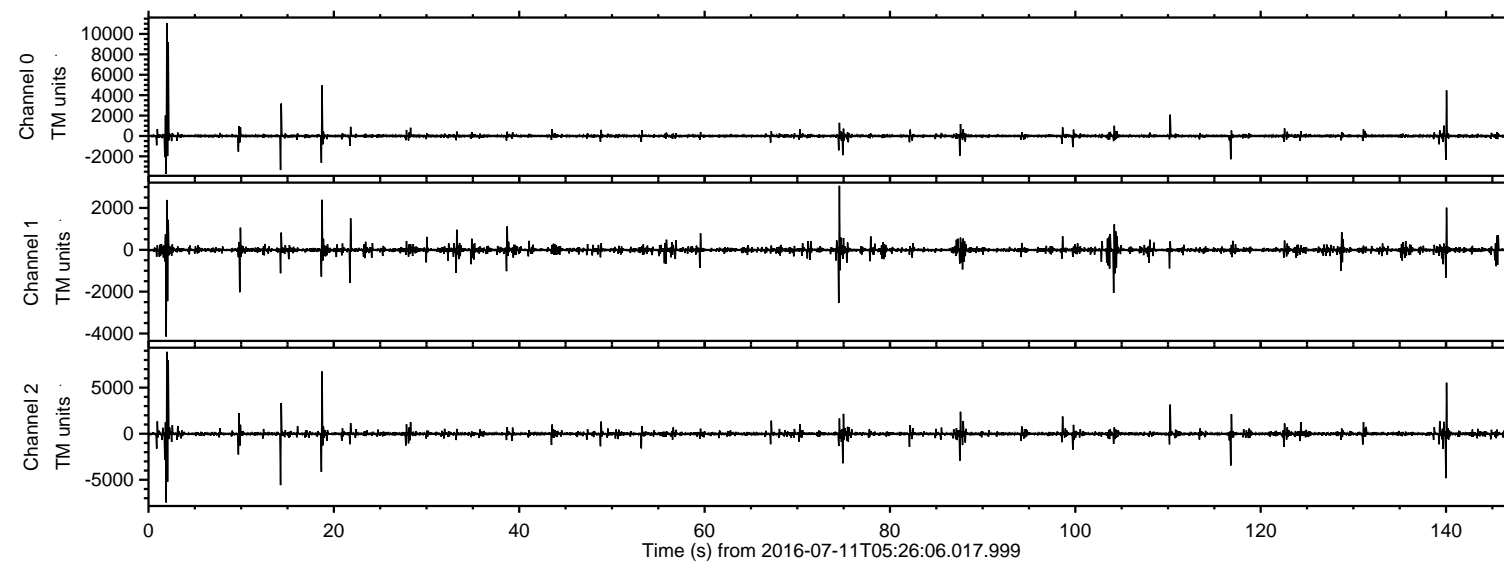


# ELMAVAN 3D WAVEFORMS (Measured data sampled at 50 kHz) 51000 packets of 144 samples from 2016-07-11T05:26:06.017.999.

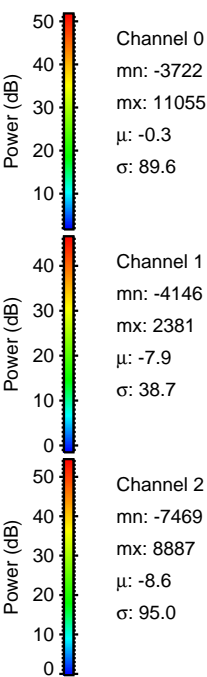
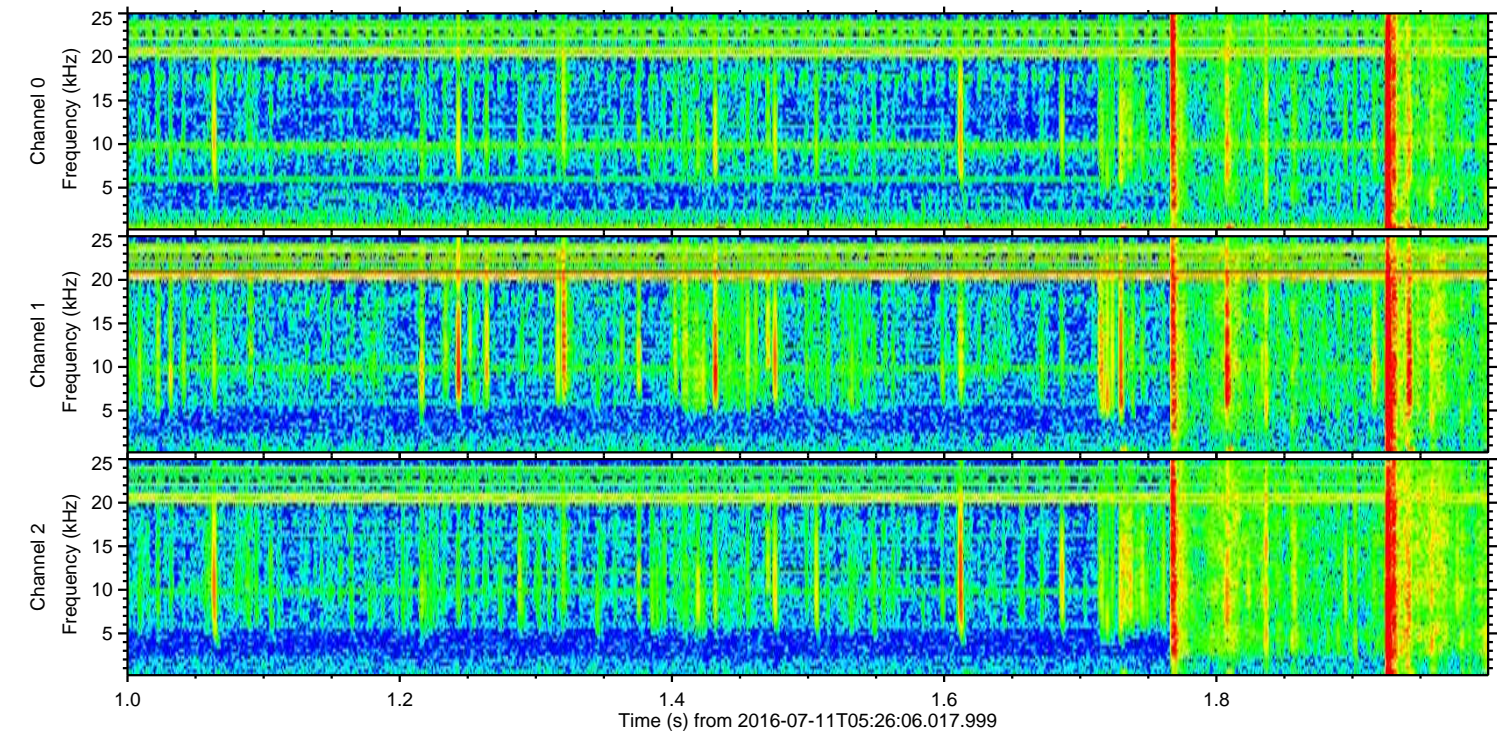
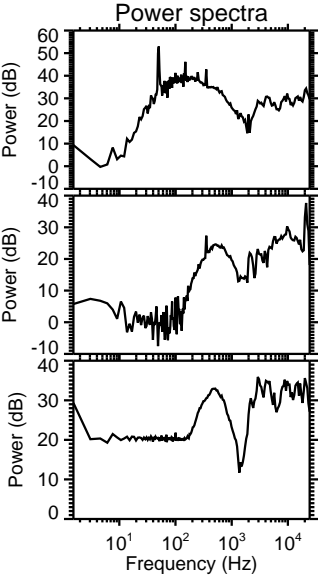
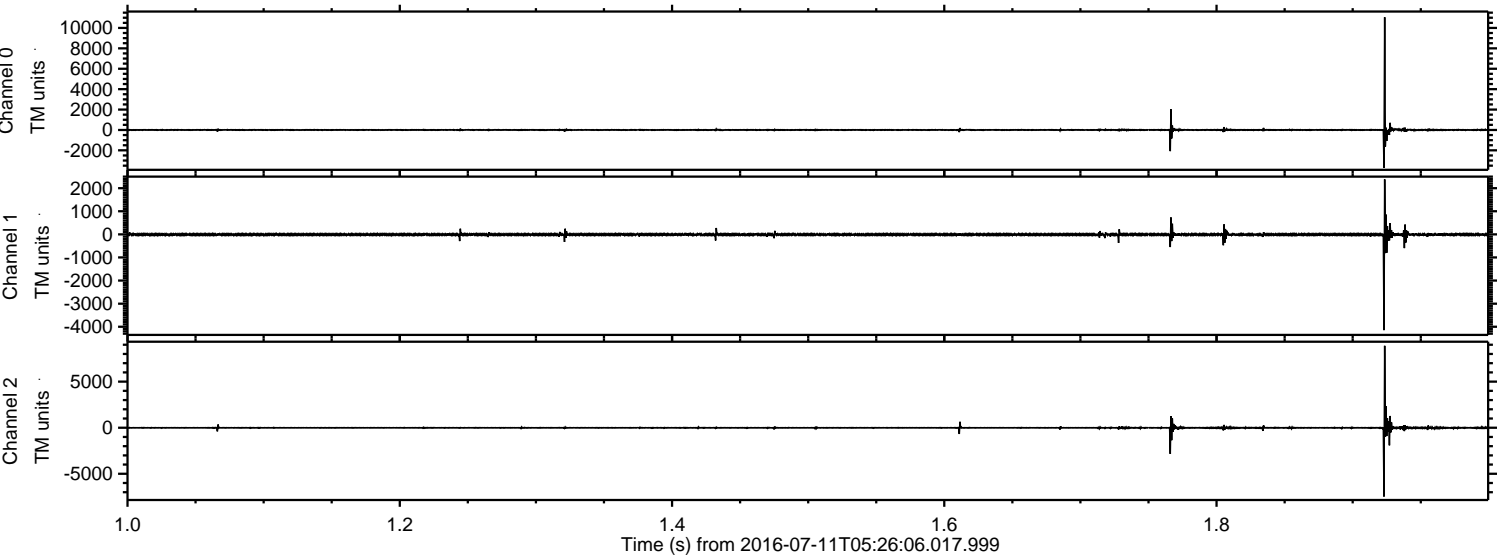
Processed Mon Jul 11 07:34:15 2016 by ELM ver.2012-10-06 from 001\_\_elm20160711\_052605\_\_dat00.bin





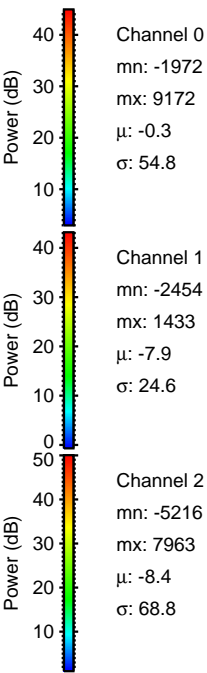
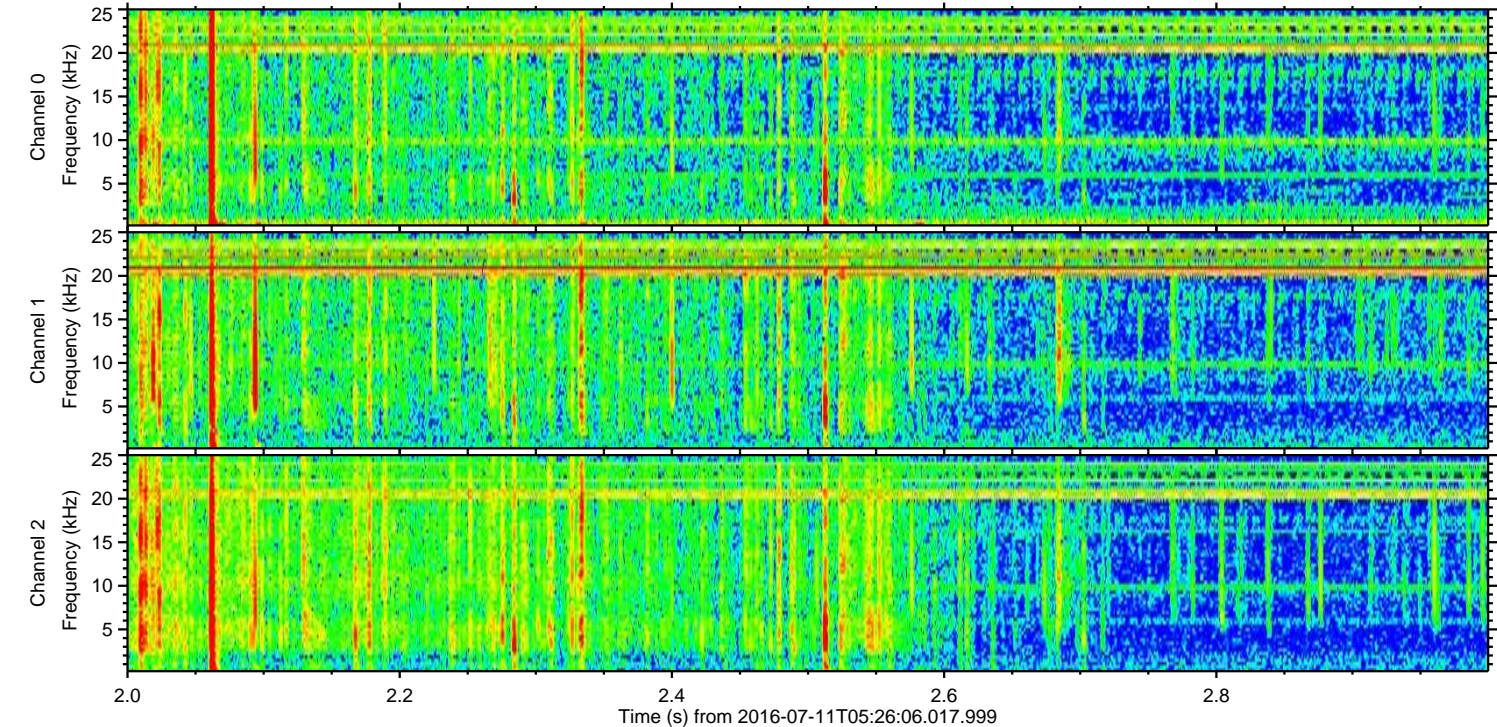
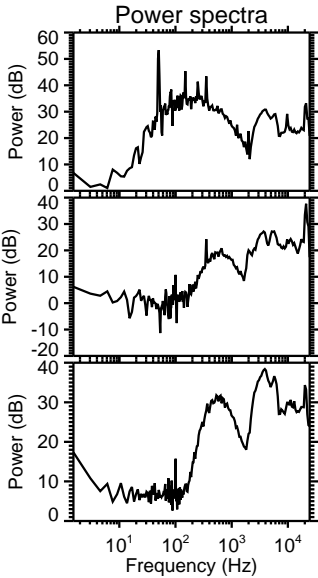
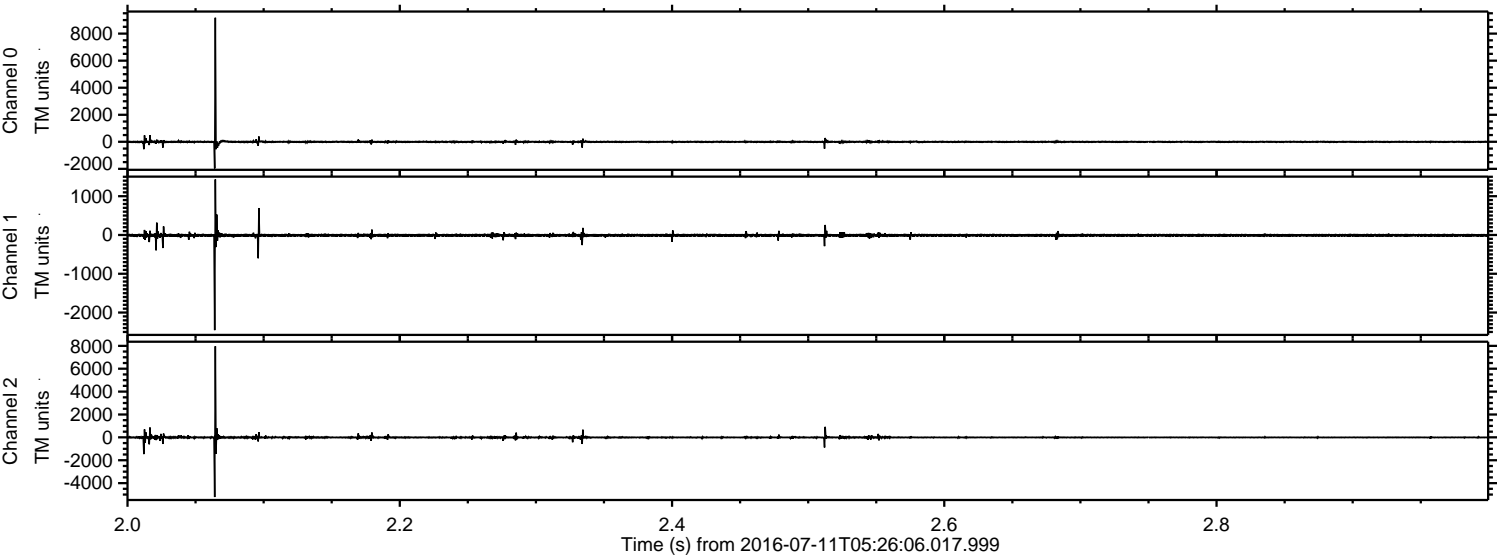
ELMAVAN 3D WAVEFORMS (Measured data sampled at 50 kHz) 51000 packets of 144 samples from 2016-07-11T05:26:06.017.999. Part 2/147

Processed Mon Jul 11 07:34:26 2016 by ELM ver.2012-10-06 from 001\_\_elm20160711\_052605\_\_dat00.bin



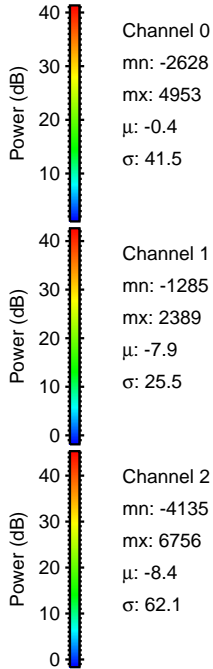
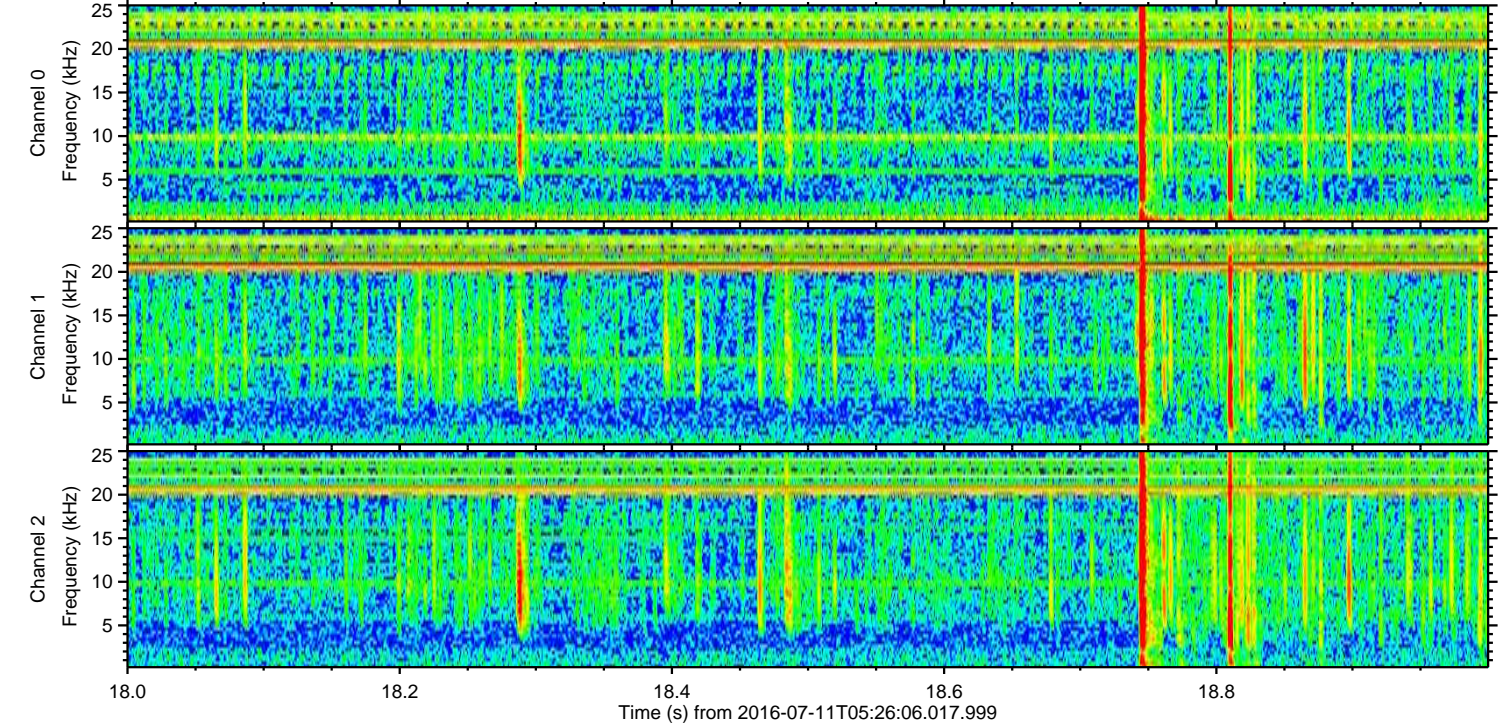
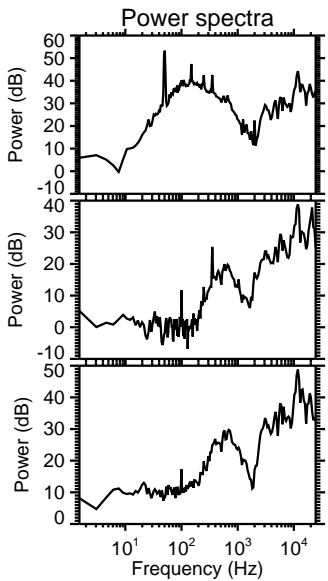
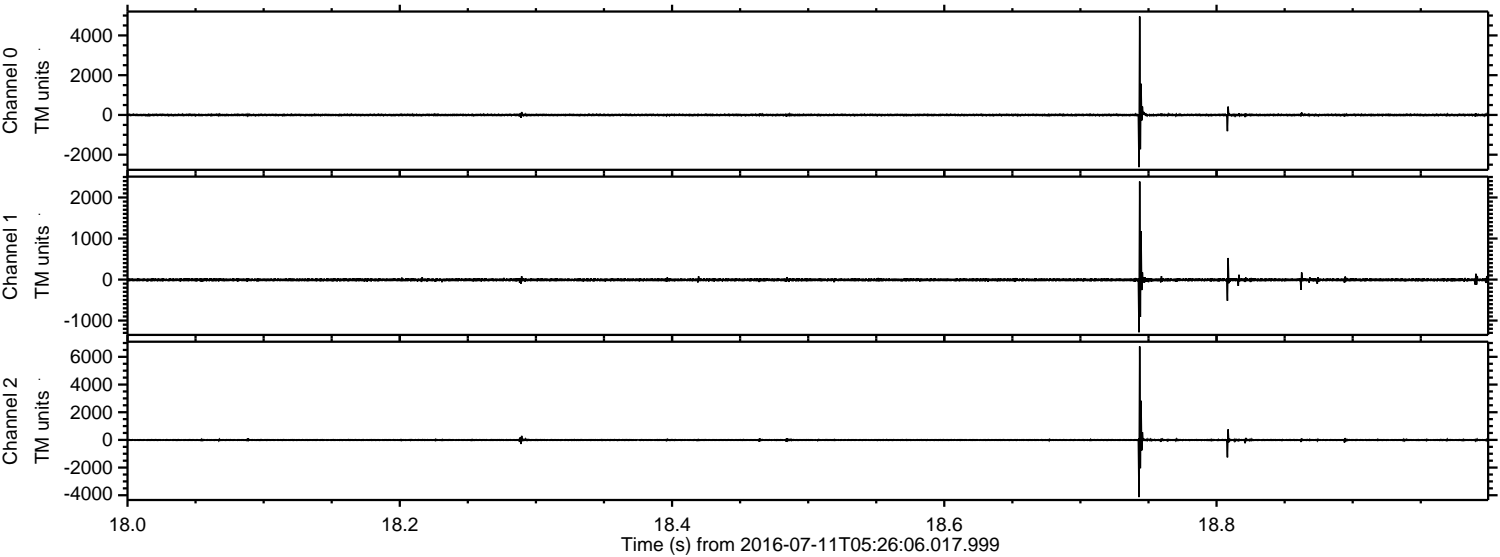


Processed Mon Jul 11 07:34:27 2016 by ELM ver.2012-10-06 from 001\_\_elm20160711\_052605\_\_dat00.bin





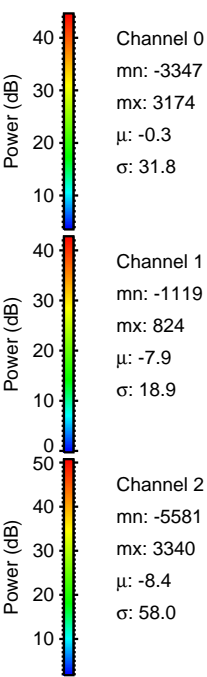
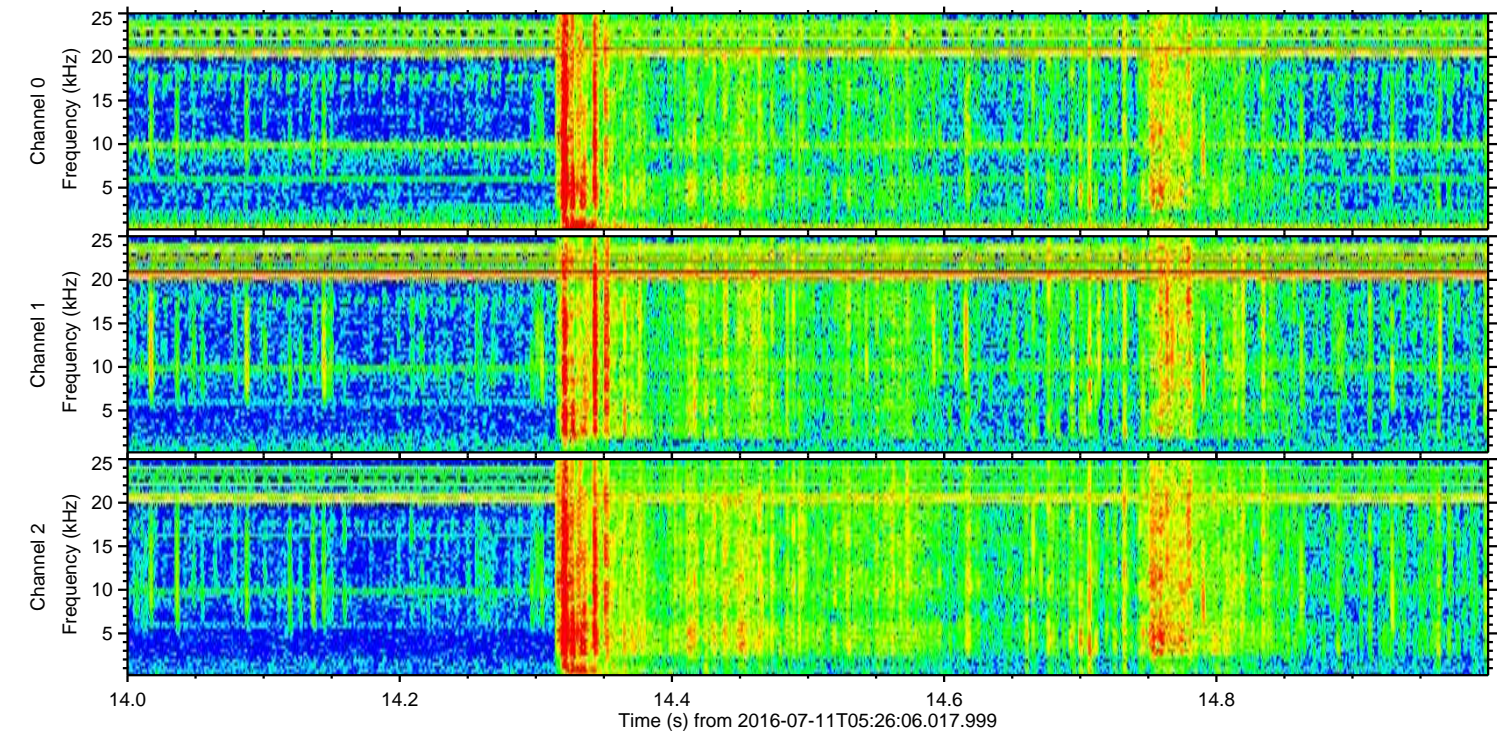
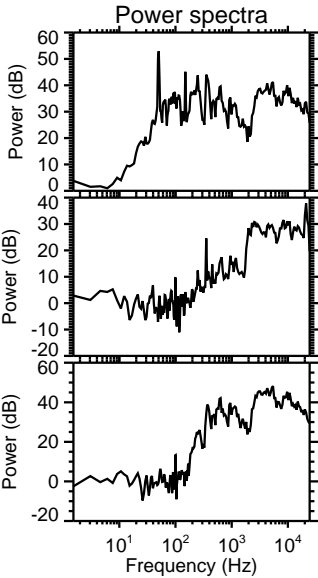
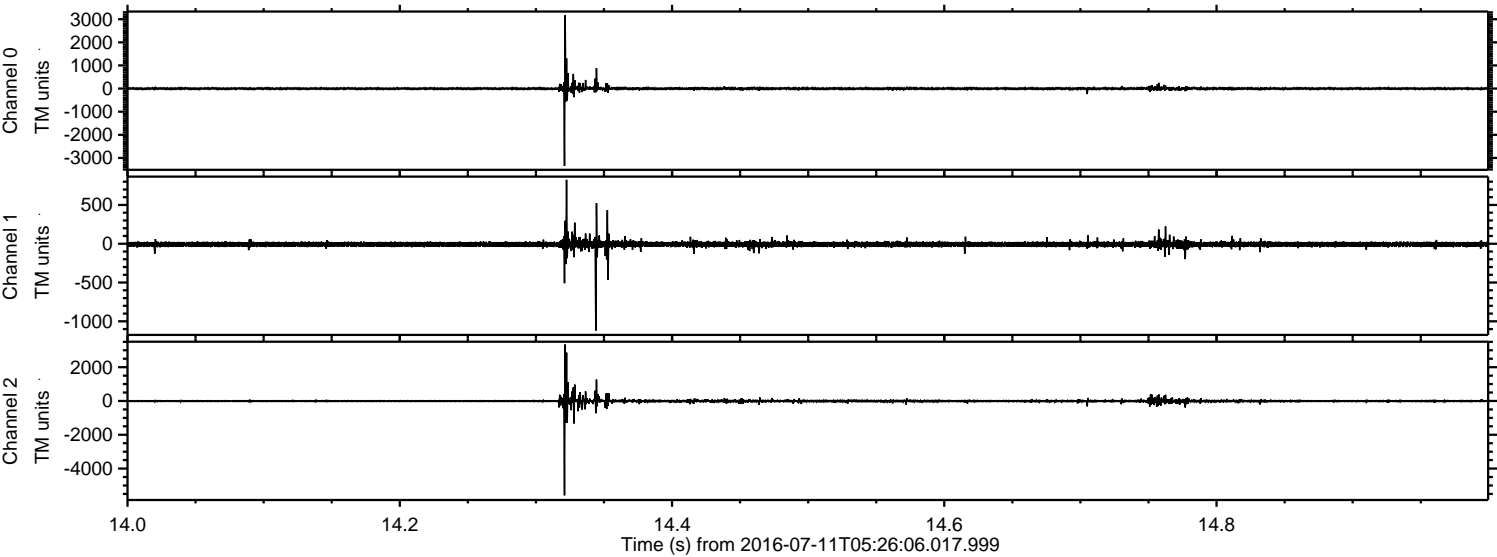
Processed Mon Jul 11 07:34:28 2016 by ELM ver.2012-10-06 from 001\_\_elm20160711\_052605\_\_dat00.bin





ELMAVAN 3D WAVEFORMS (Measured data sampled at 50 kHz) 51000 packets of 144 samples from 2016-07-11T05:26:06.017.999. Part 15/147

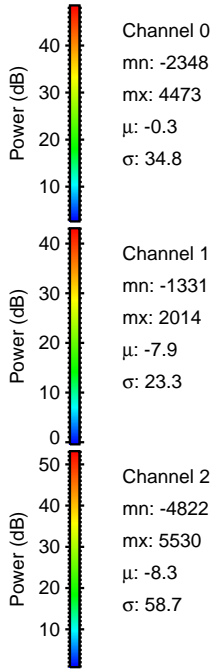
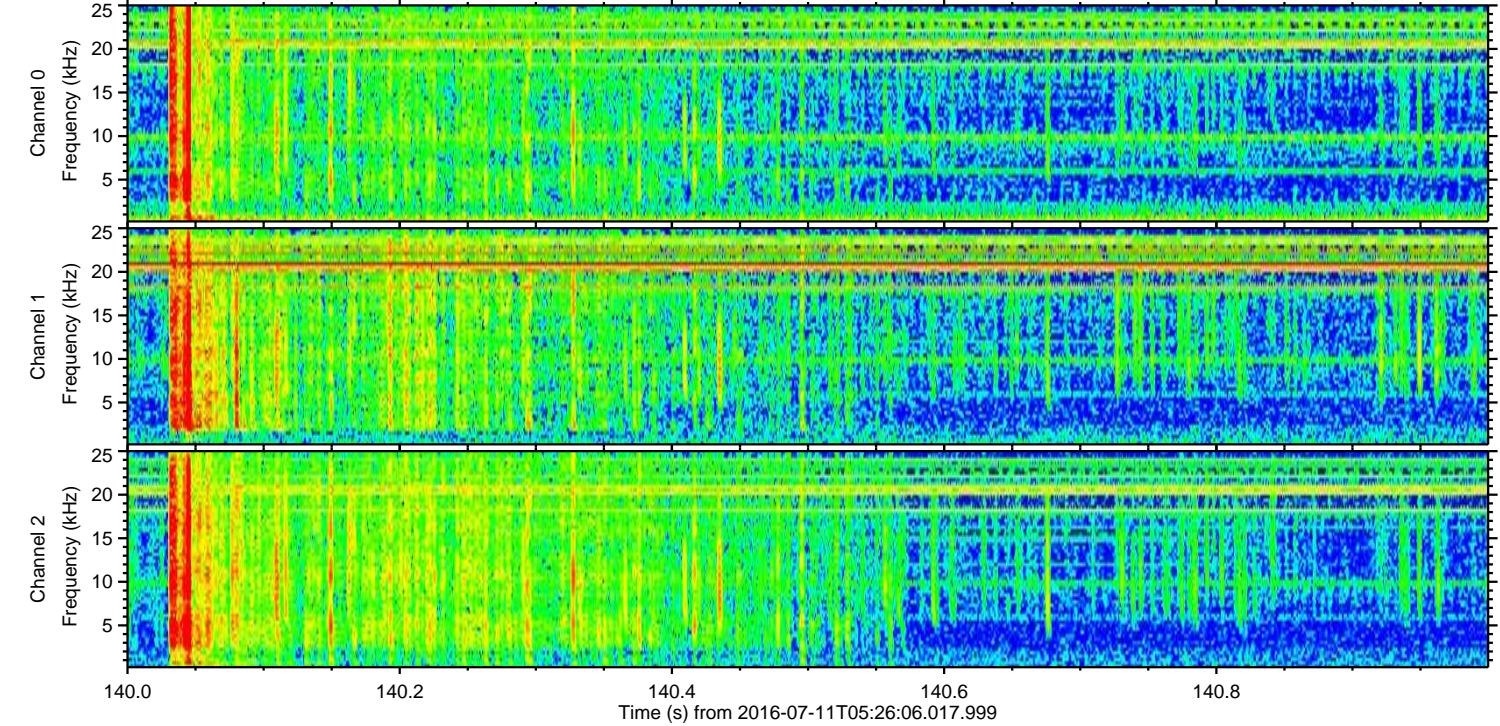
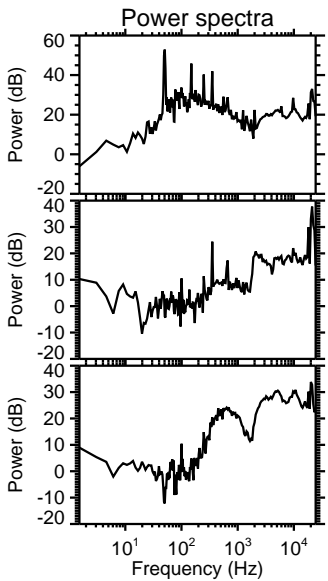
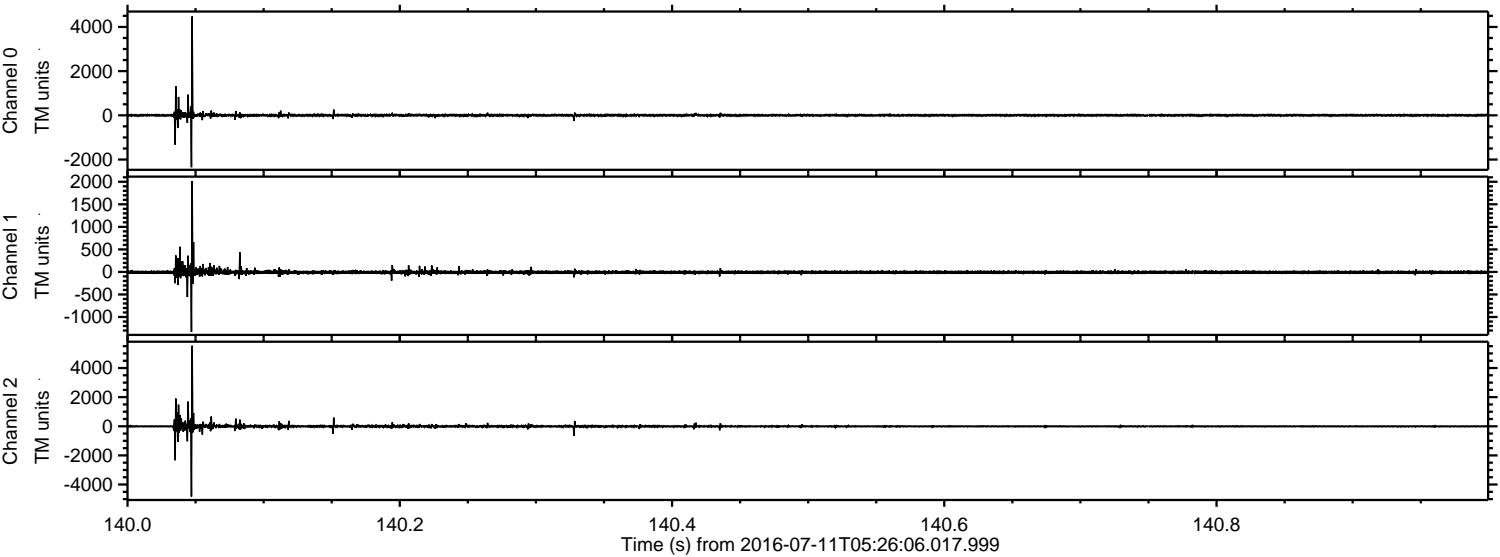
Processed Mon Jul 11 07:34:29 2016 by ELM ver.2012-10-06 from 001\_\_elm20160711\_052605\_\_dat00.bin





ELMAVAN 3D WAVEFORMS (Measured data sampled at 50 kHz) 51000 packets of 144 samples from 2016-07-11T05:26:06.017.999. Part 141/147

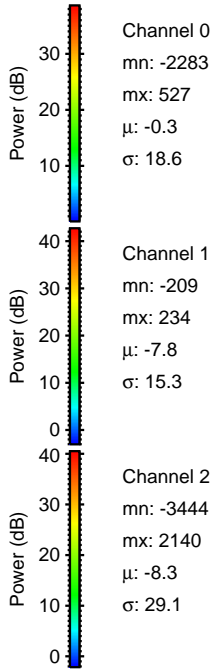
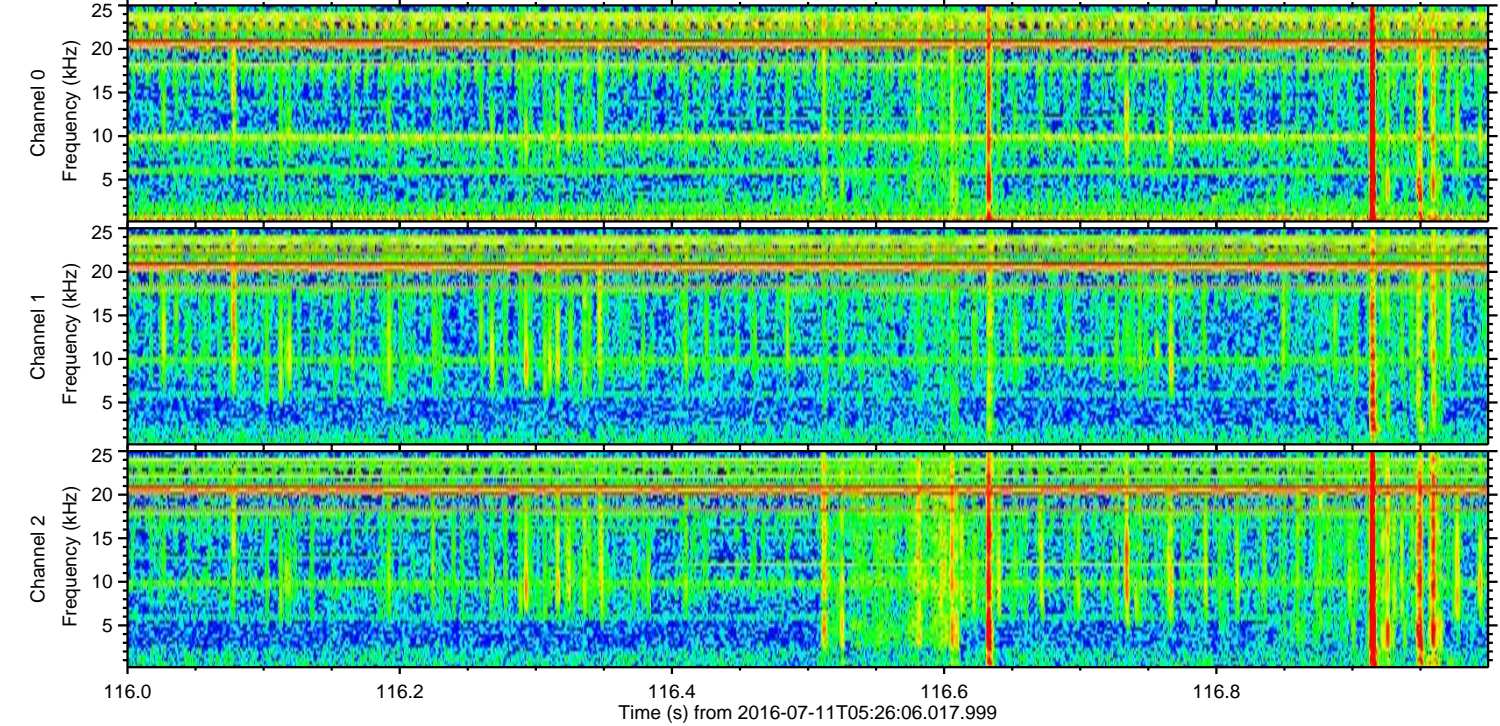
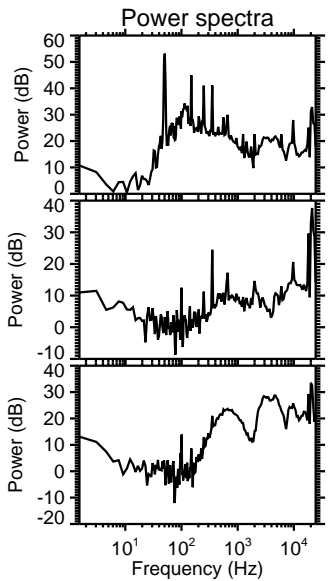
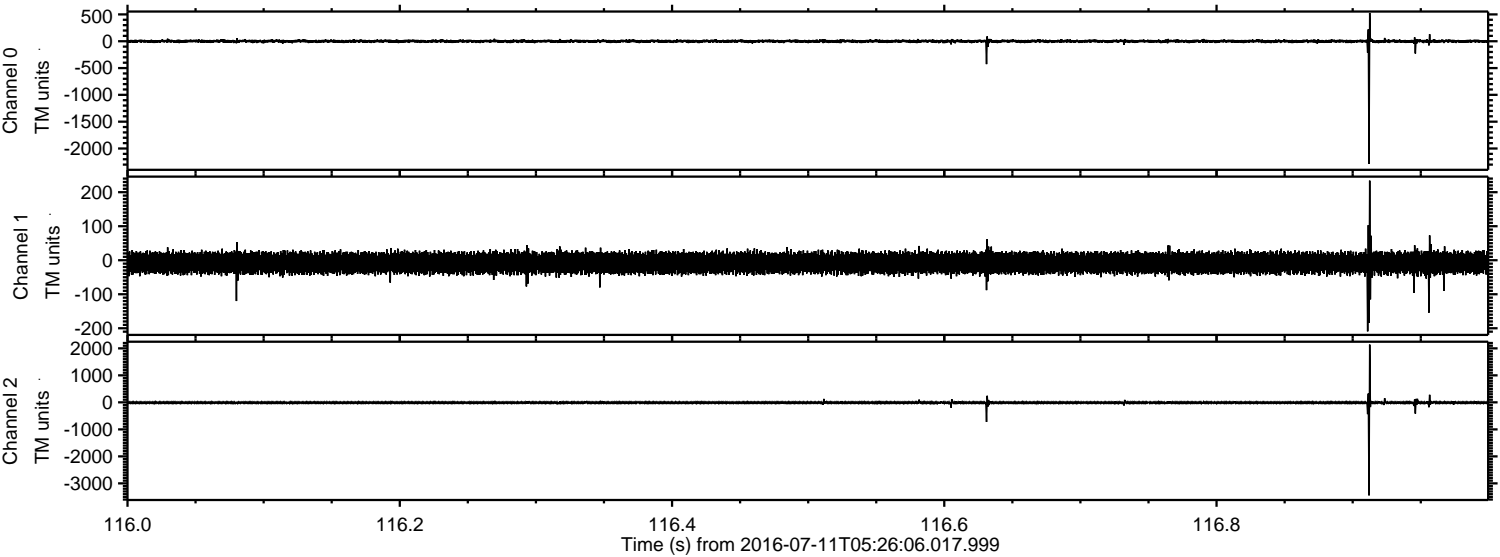
Processed Mon Jul 11 07:34:30 2016 by ELM ver.2012-10-06 from 001\_\_elm20160711\_052605\_\_dat00.bin





ELMAVAN 3D WAVEFORMS (Measured data sampled at 50 kHz) 51000 packets of 144 samples from 2016-07-11T05:26:06.017.999. Part 117/147

Processed Mon Jul 11 07:34:31 2016 by ELM ver.2012-10-06 from 001\_\_elm20160711\_052605\_\_dat00.bin



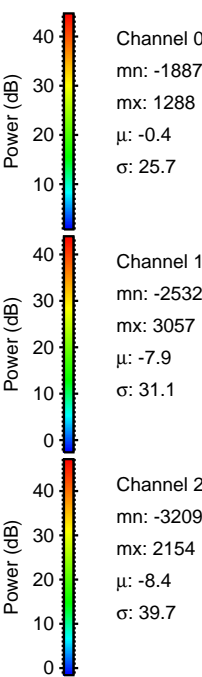
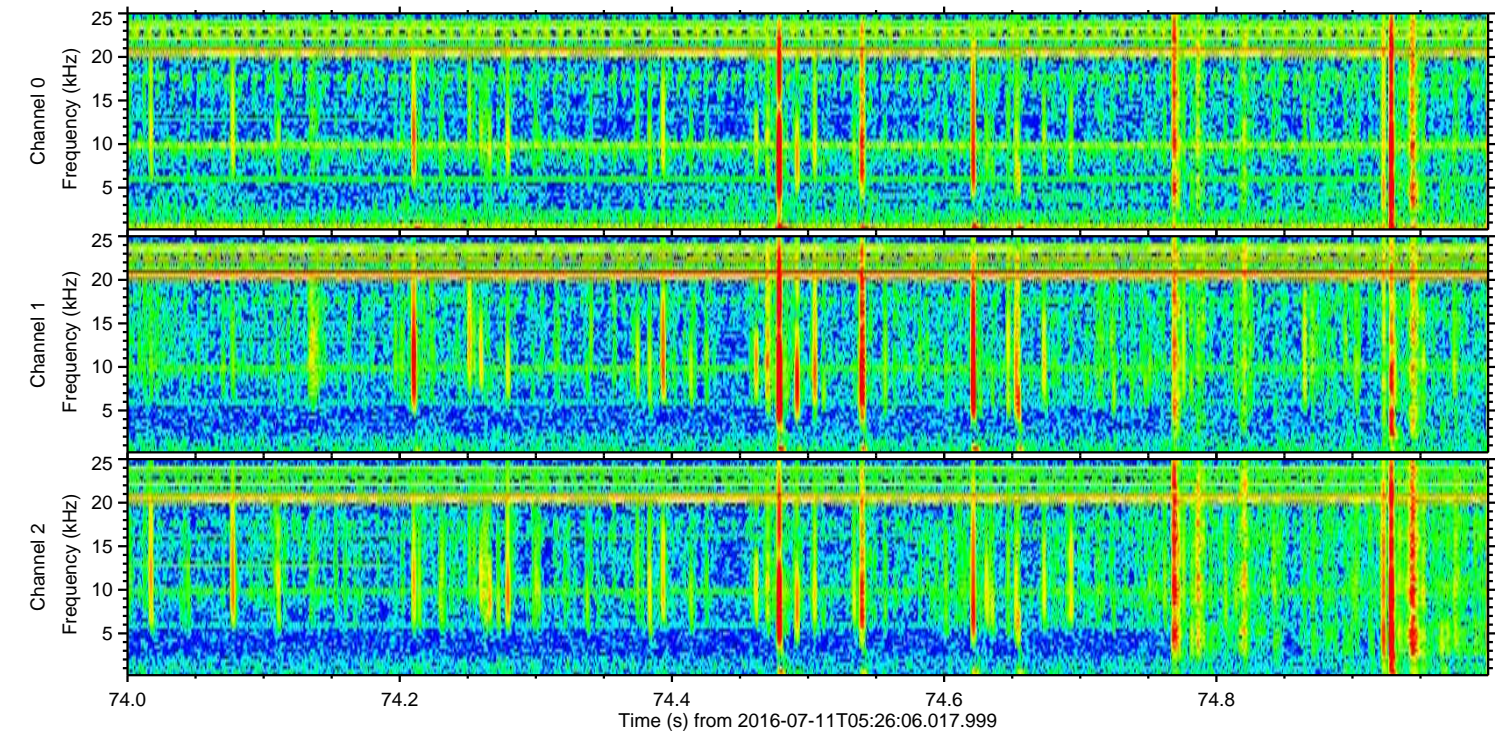
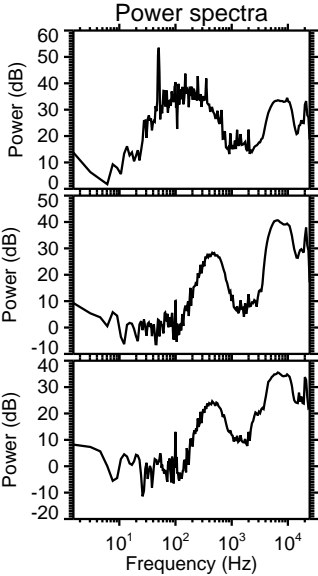
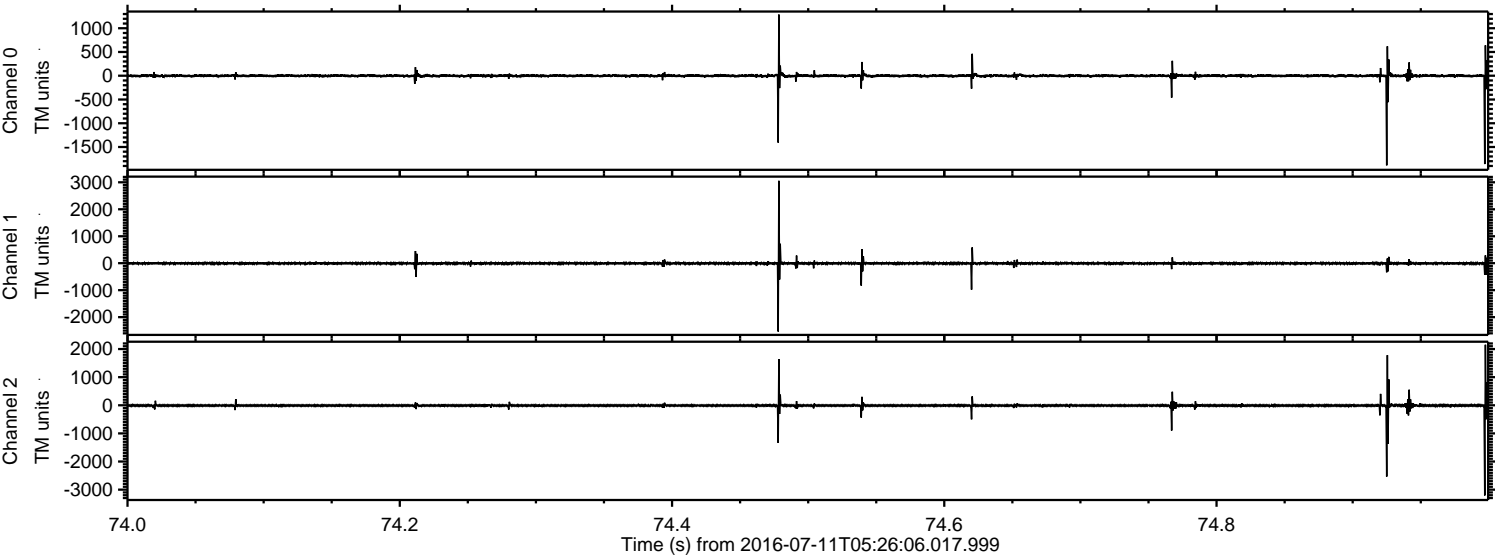
Channel 0  
mn: -2283  
mx: 527  
 $\mu$ : -0.3  
 $\sigma$ : 18.6

Channel 1  
mn: -209  
mx: 234  
 $\mu$ : -7.8  
 $\sigma$ : 15.3

Channel 2  
mn: -3444  
mx: 2140  
 $\mu$ : -8.3  
 $\sigma$ : 29.1

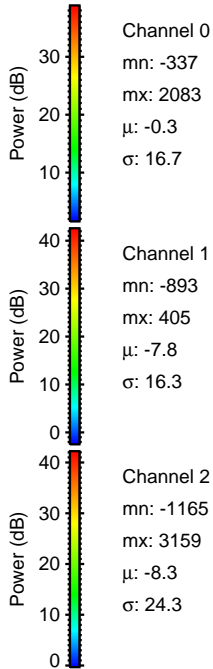
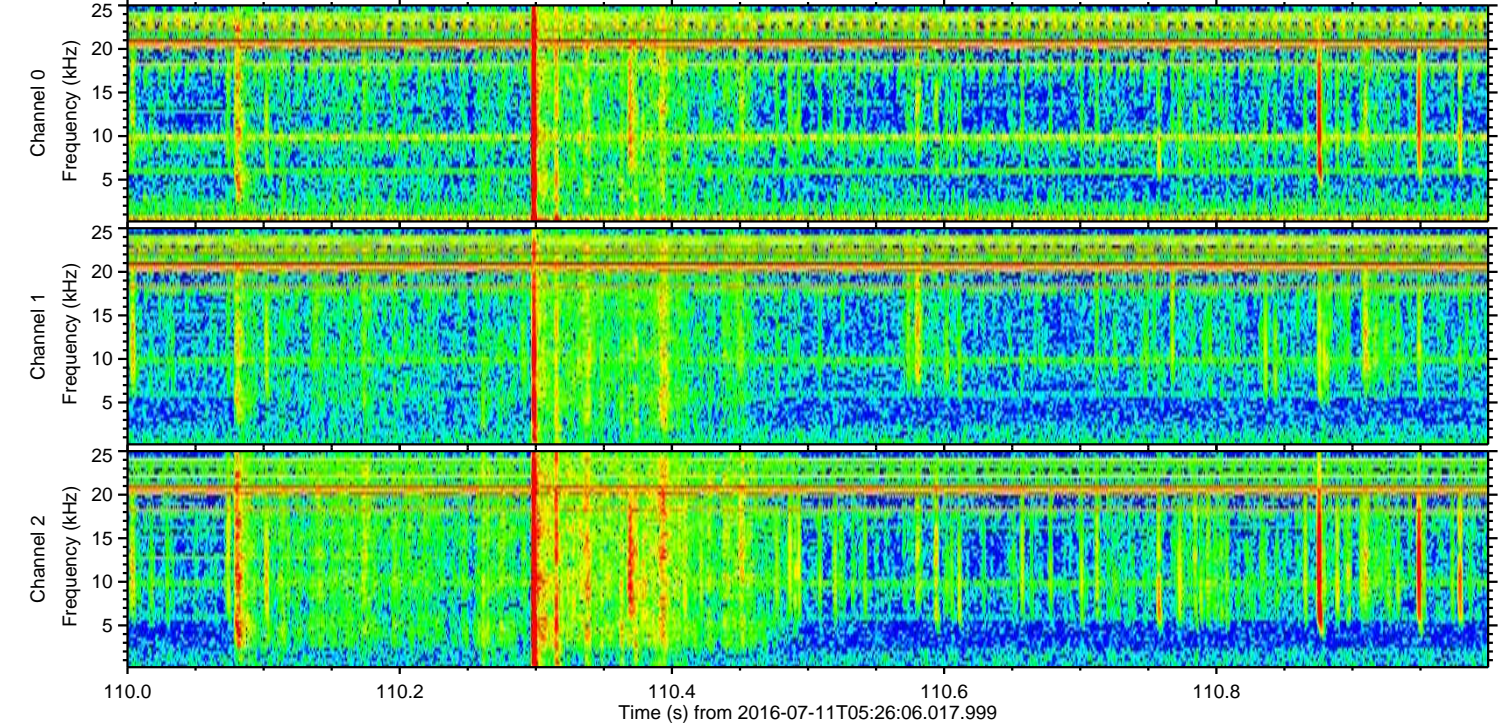
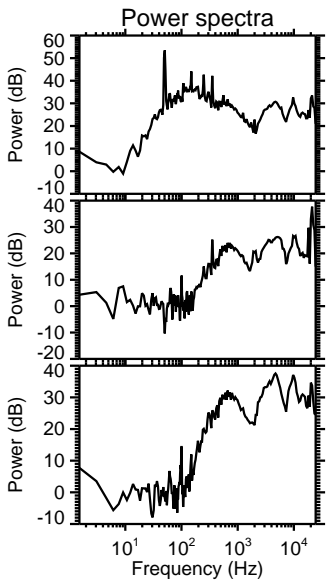
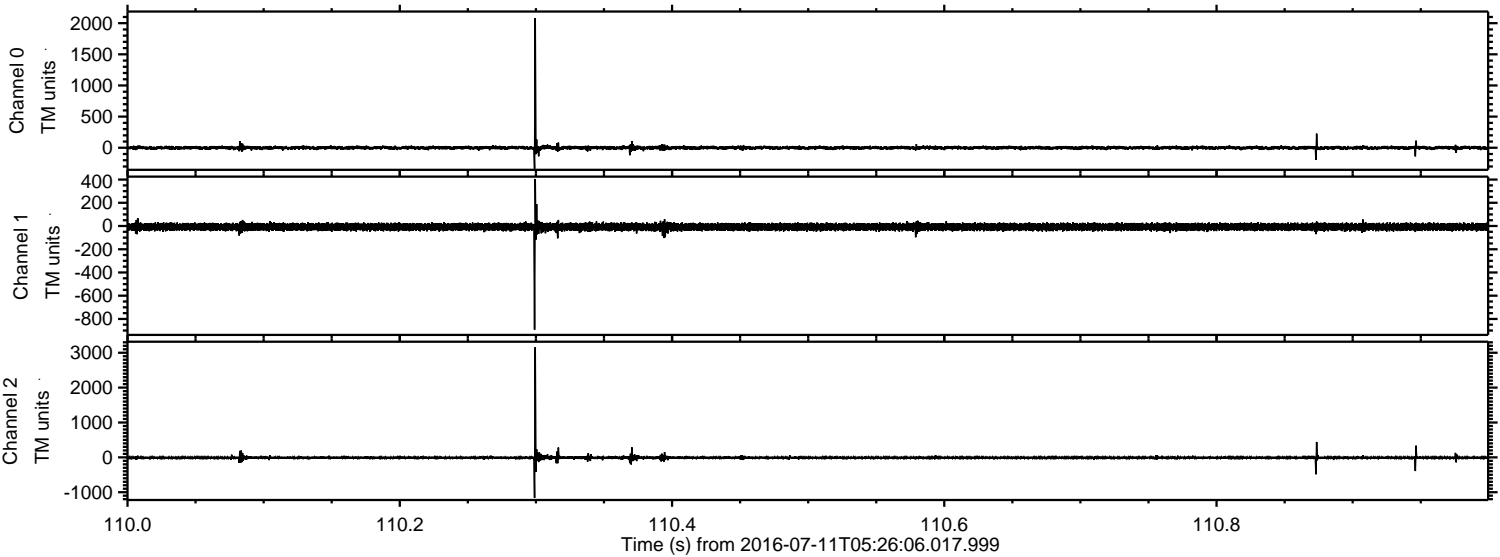


Processed Mon Jul 11 07:34:32 2016 by ELM ver.2012-10-06 from 001\_\_elm20160711\_052605\_\_dat00.bin



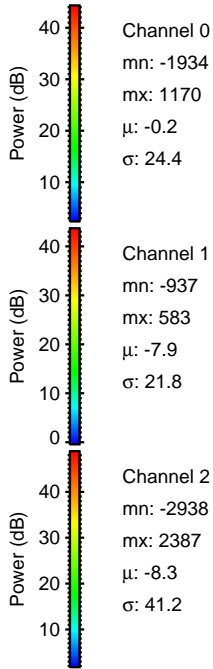
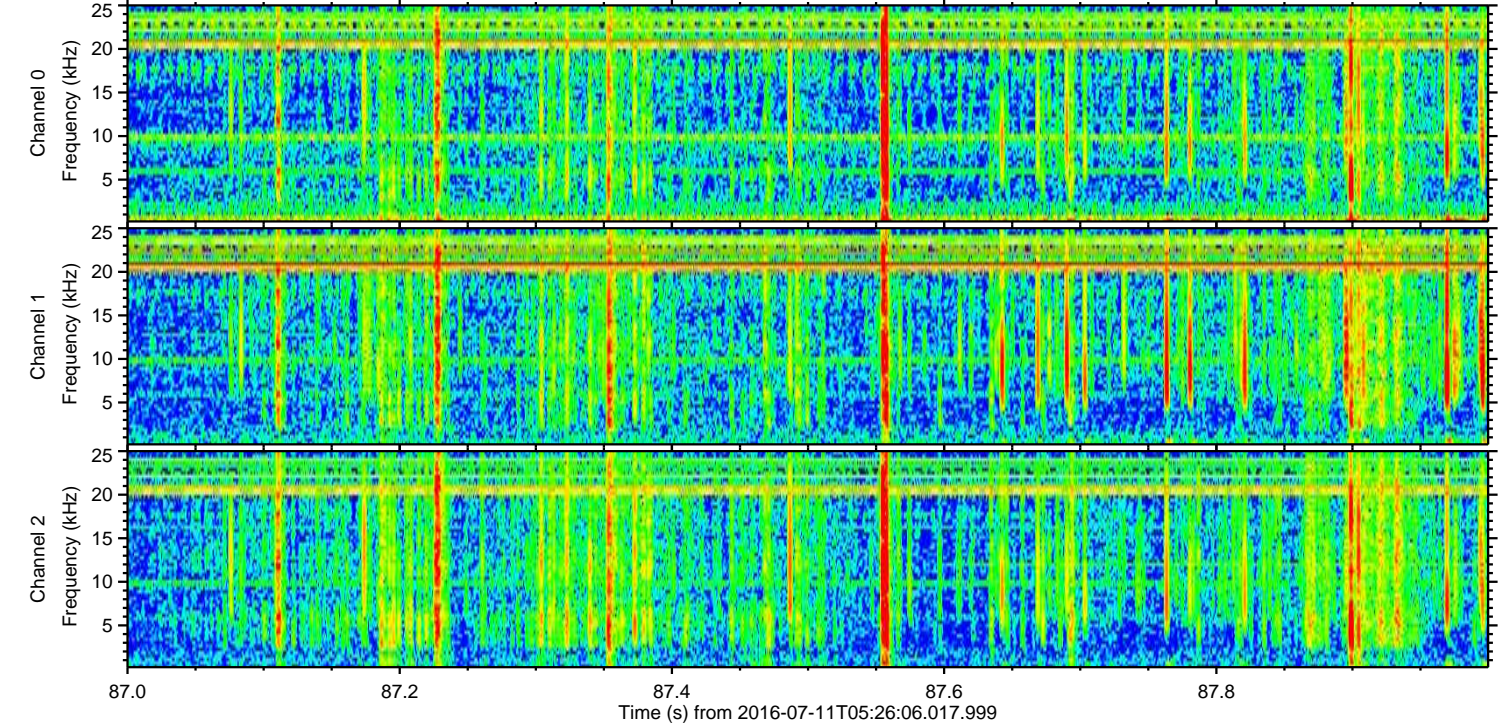
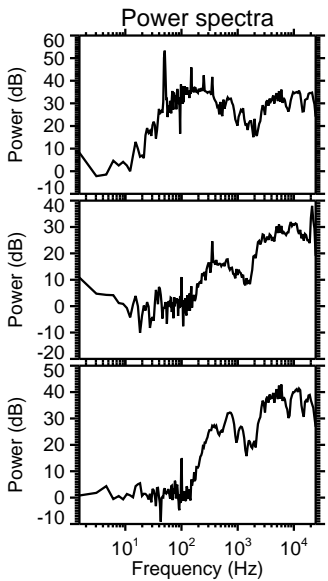
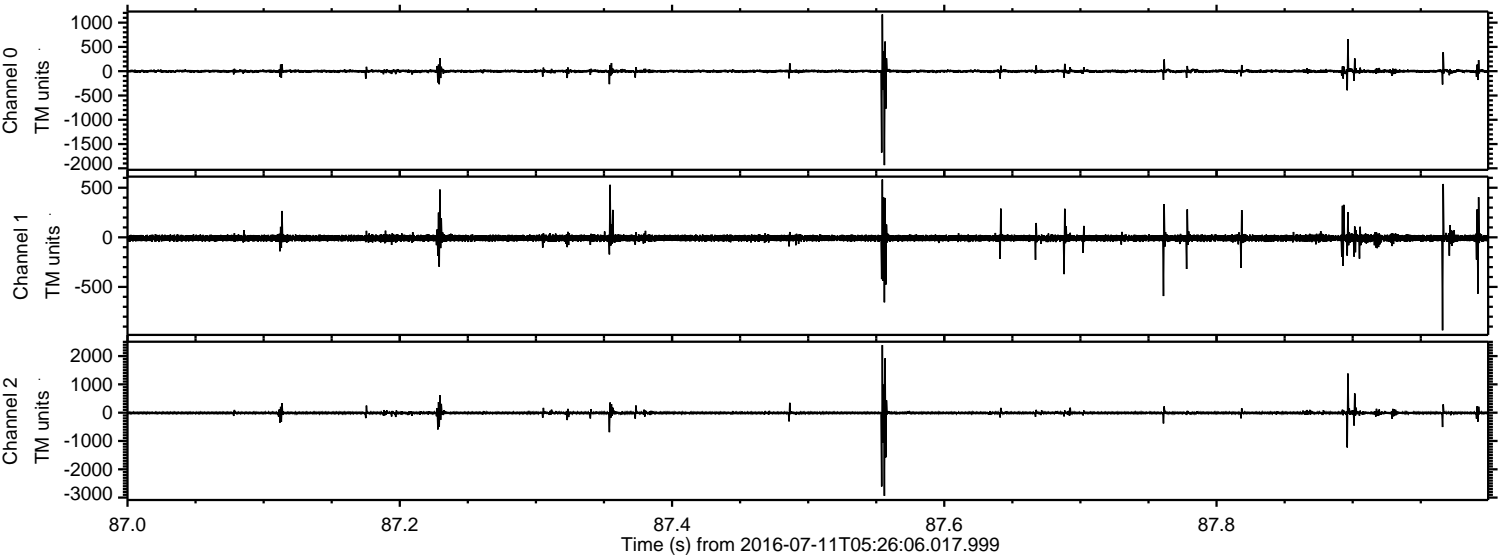


Processed Mon Jul 11 07:34:33 2016 by ELM ver.2012-10-06 from 001\_\_elm20160711\_052605\_\_dat00.bin





Processed Mon Jul 11 07:34:34 2016 by ELM ver.2012-10-06 from 001\_\_elm20160711\_052605\_\_dat00.bin



Channel 0  
mn: -1934  
mx: 1170  
 $\mu$ : -0.2  
 $\sigma$ : 24.4

Channel 1  
mn: -937  
mx: 583  
 $\mu$ : -7.9  
 $\sigma$ : 21.8

Channel 2  
mn: -2938  
mx: 2387  
 $\mu$ : -8.3  
 $\sigma$ : 41.2



Processed Mon Jul 11 07:34:35 2016 by ELM ver.2012-10-06 from 001\_\_elm20160711\_052605\_\_dat00.bin

