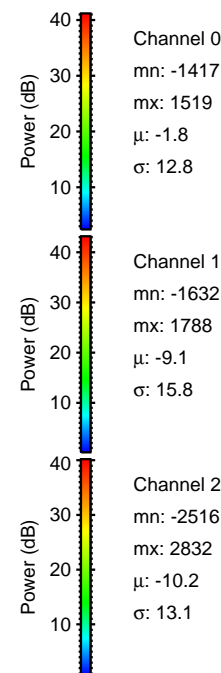
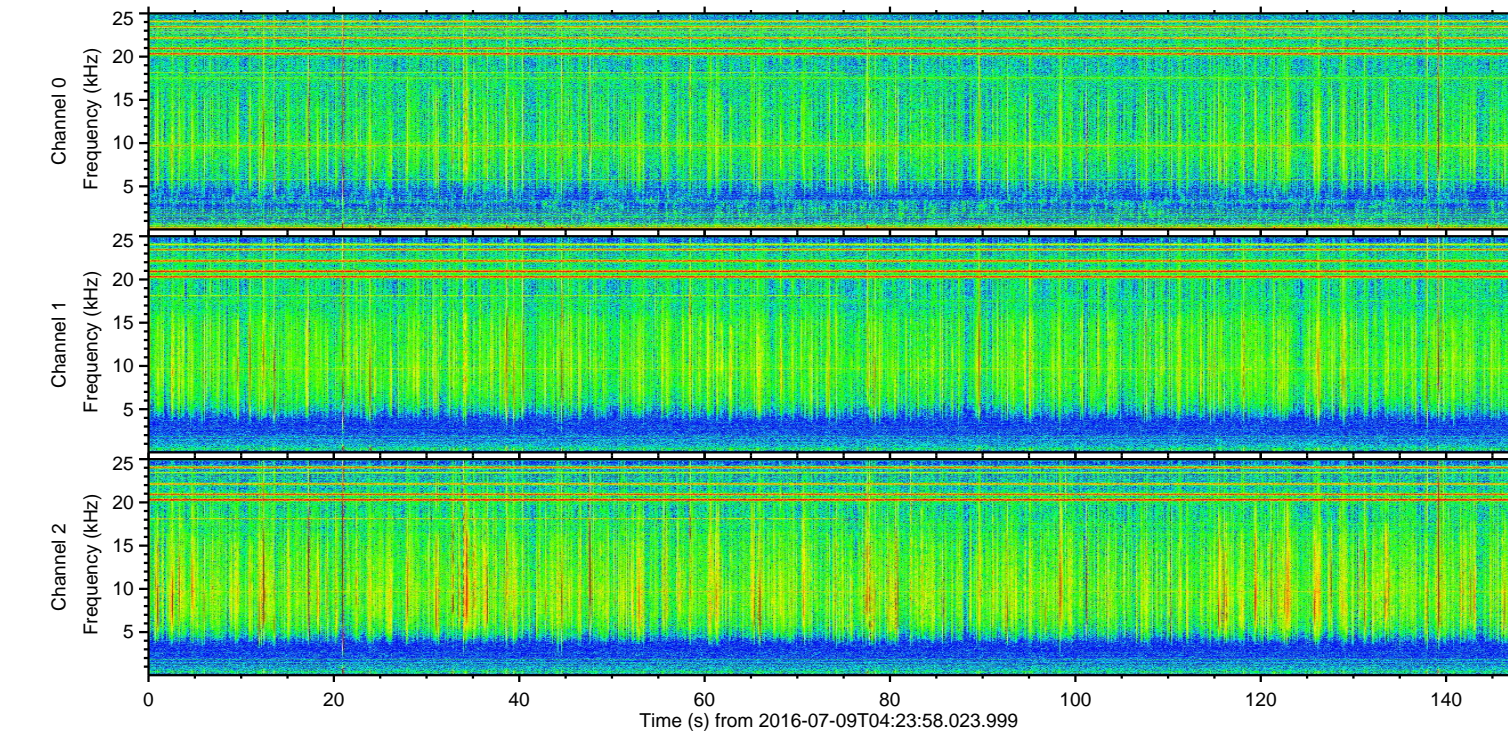
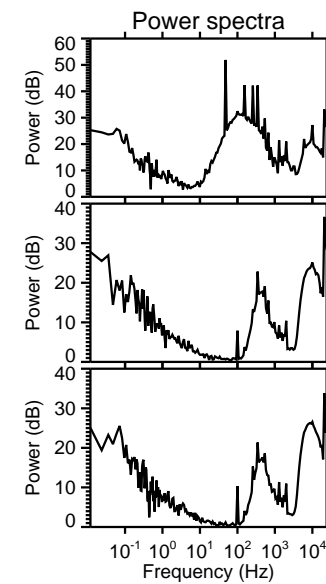
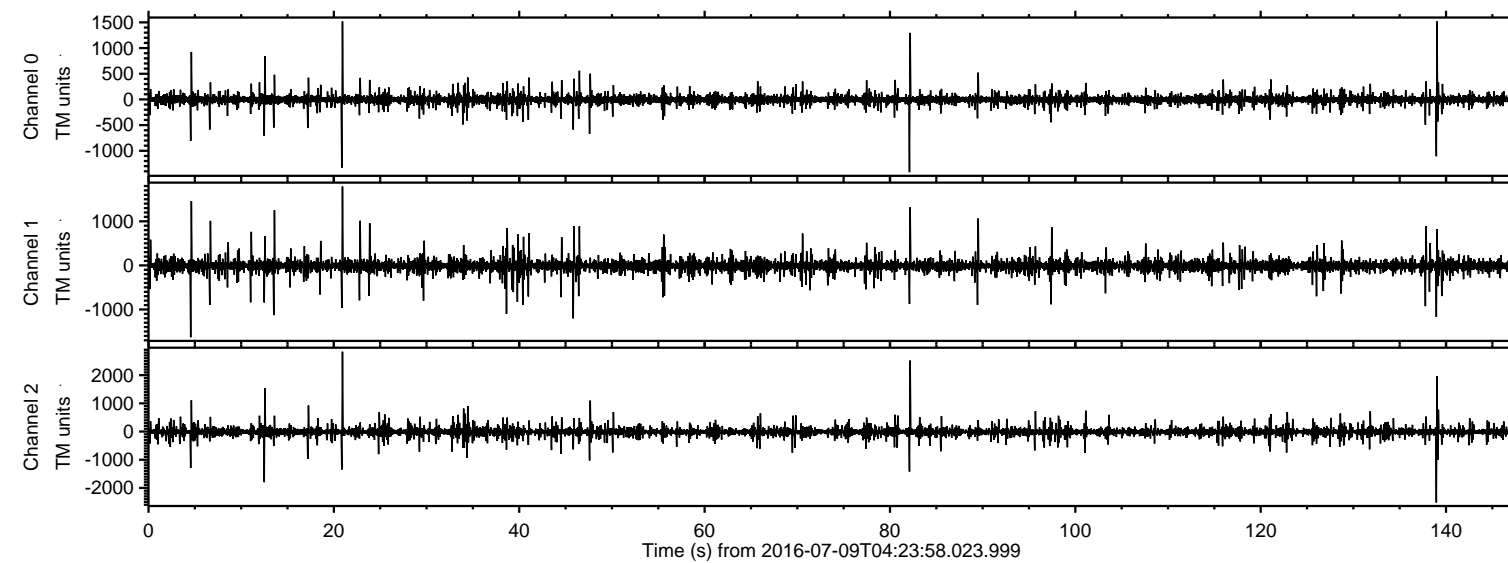


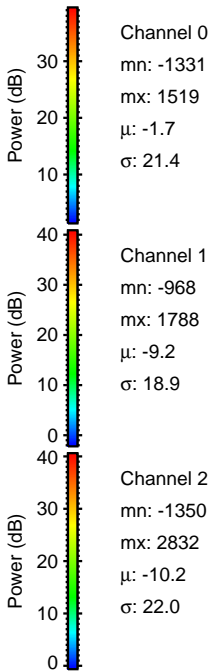
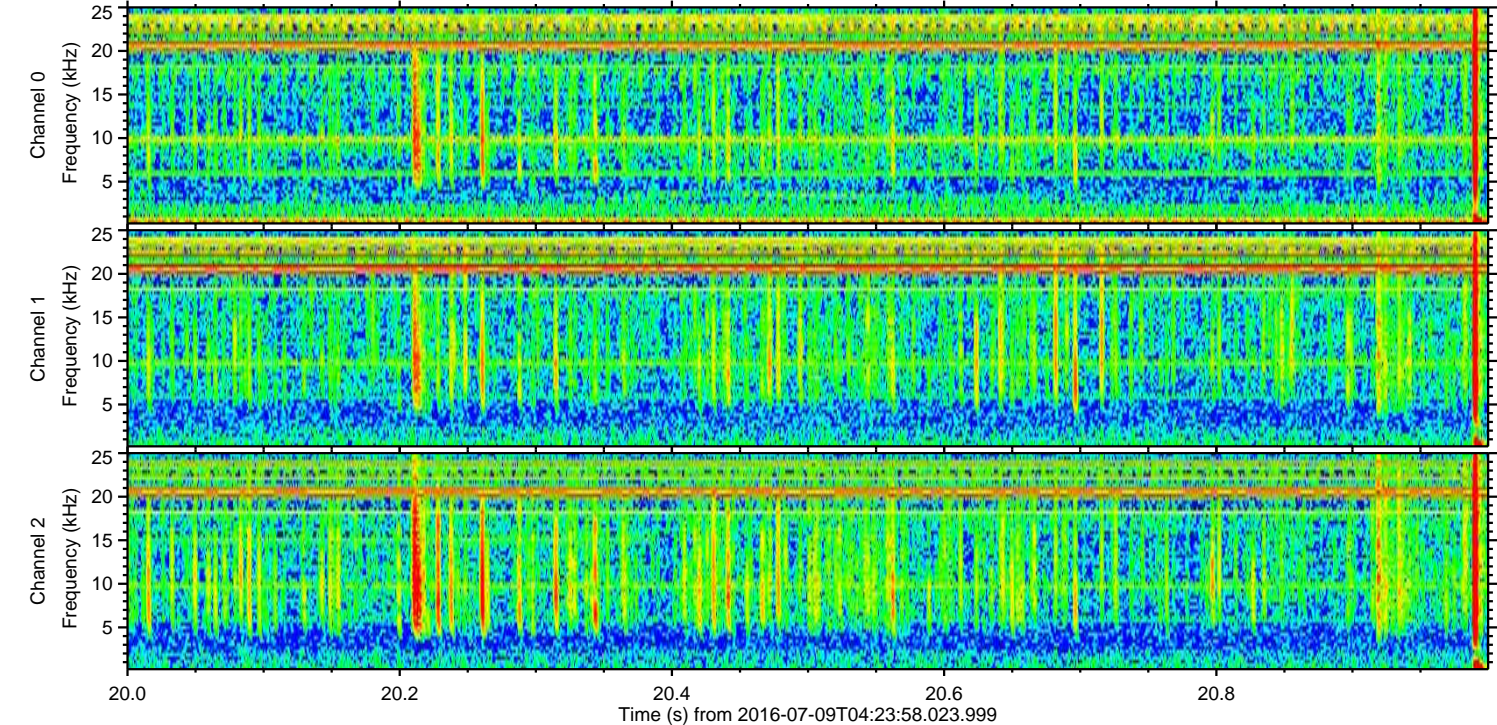
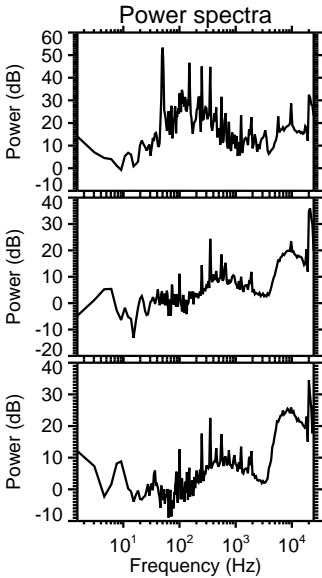
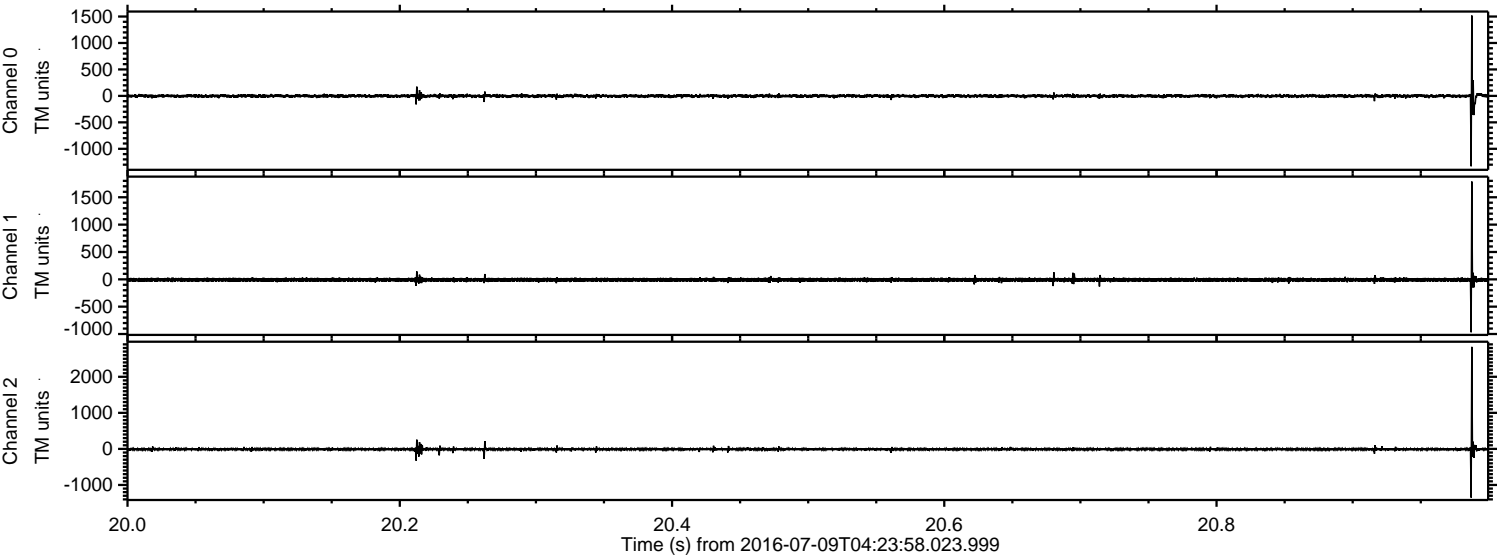
ELMAVAN 3D WAVEFORMS (Measured data sampled at 50 kHz) 51000 packets of 144 samples from 2016-07-09T04:23:58.023.999.

Processed Sat Jul 9 06:31:29 2016 by ELM ver.2012-10-06 from 001\_\_elm20160709\_042357\_\_dat00.bin



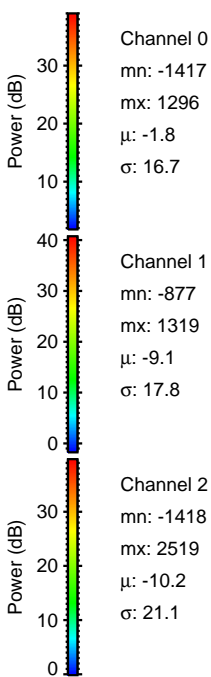
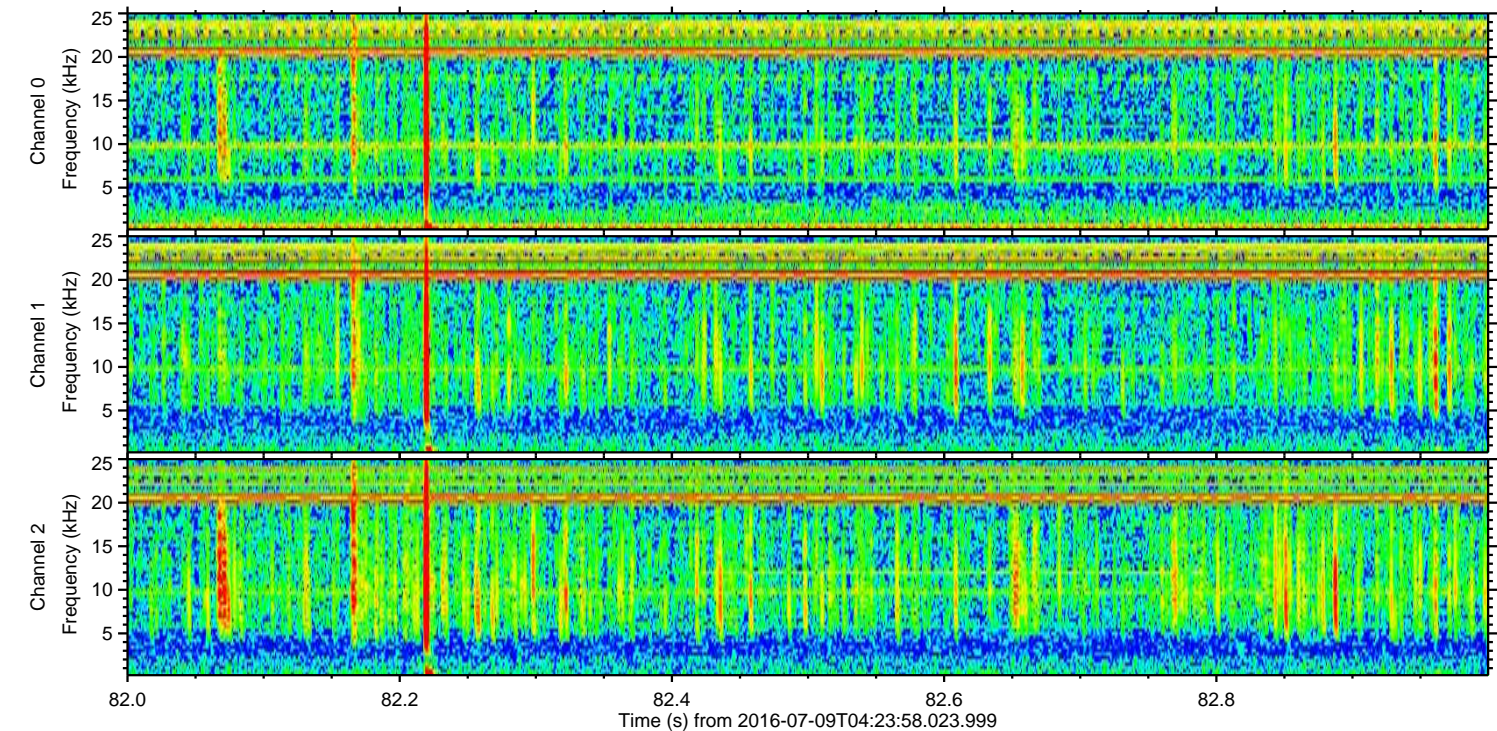
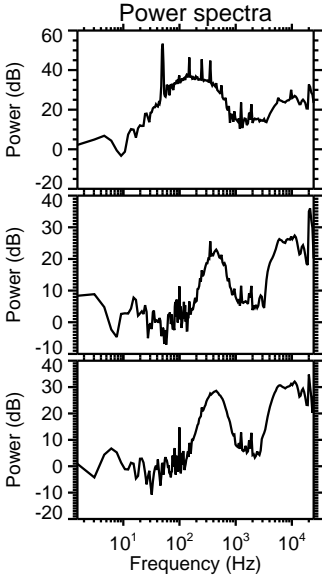
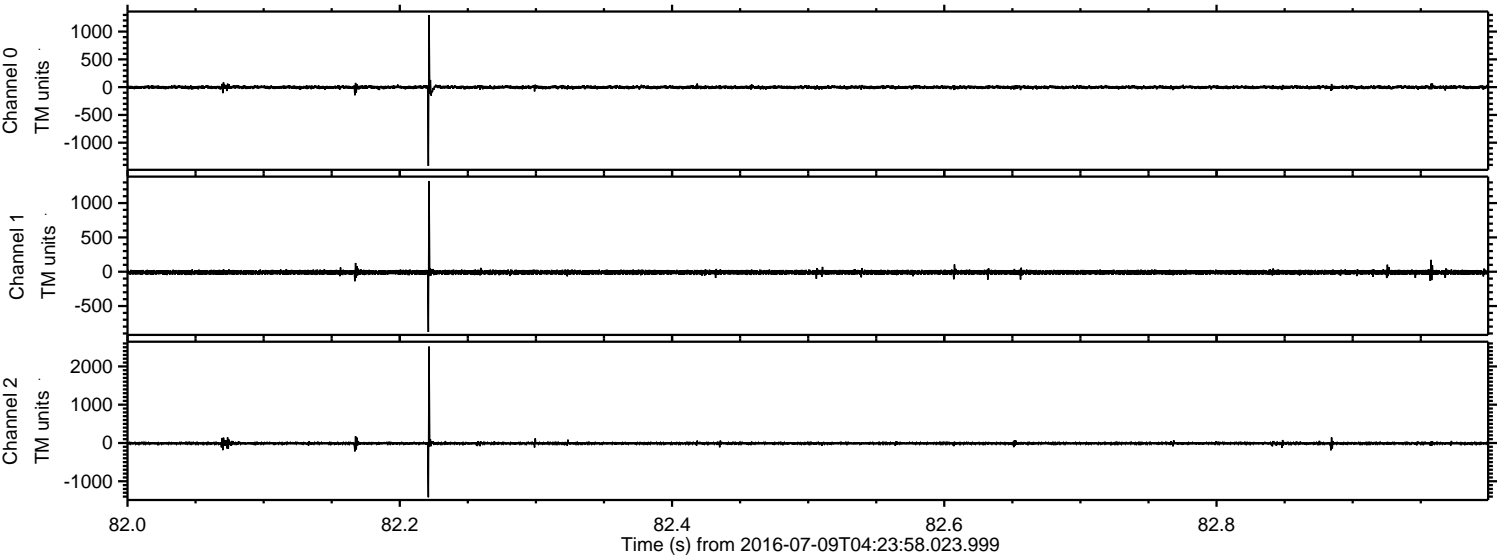


Processed Sat Jul 9 06:31:41 2016 by ELM ver.2012-10-06 from 001\_\_elm20160709\_042357\_\_dat00.bin





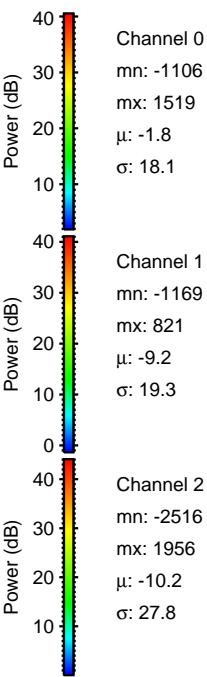
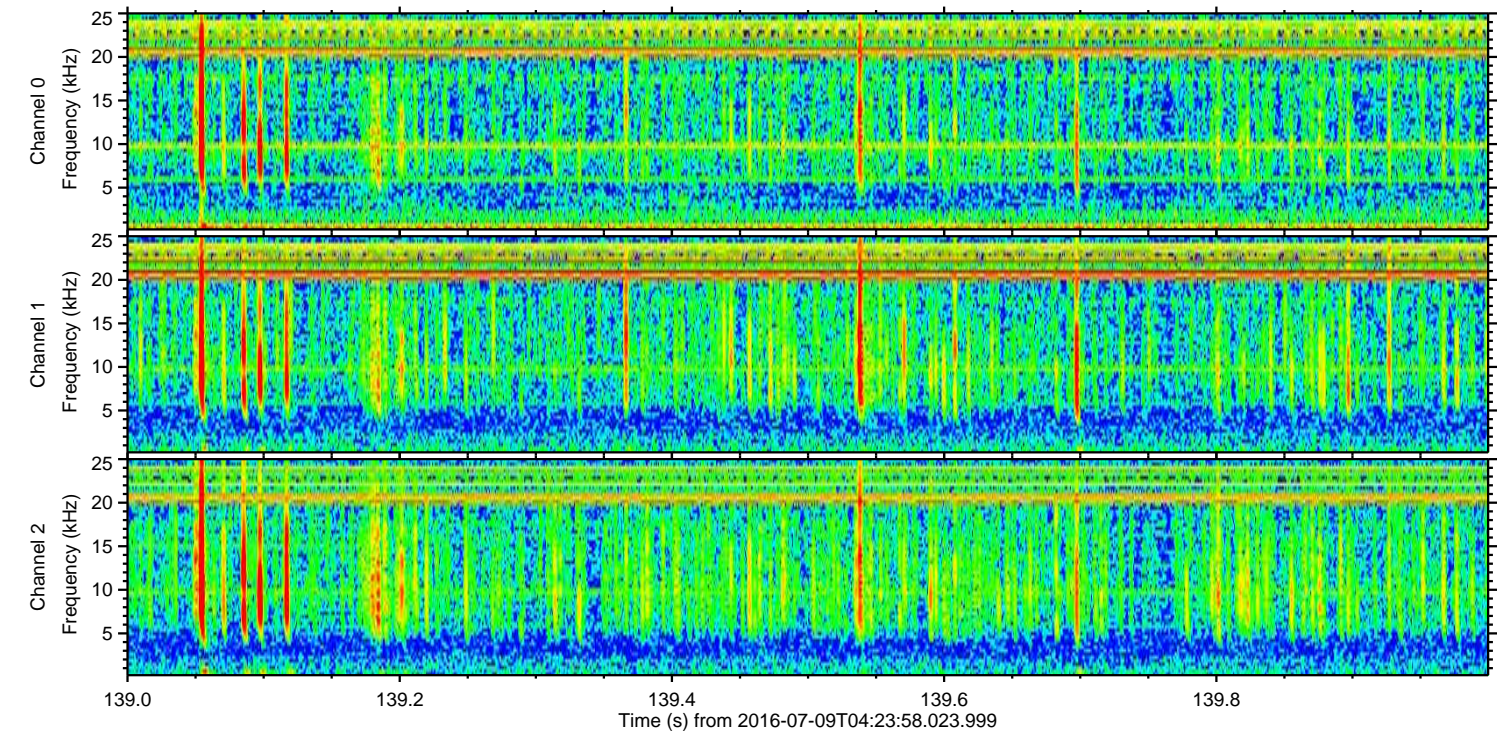
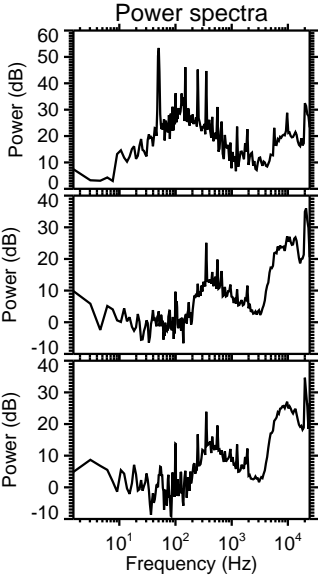
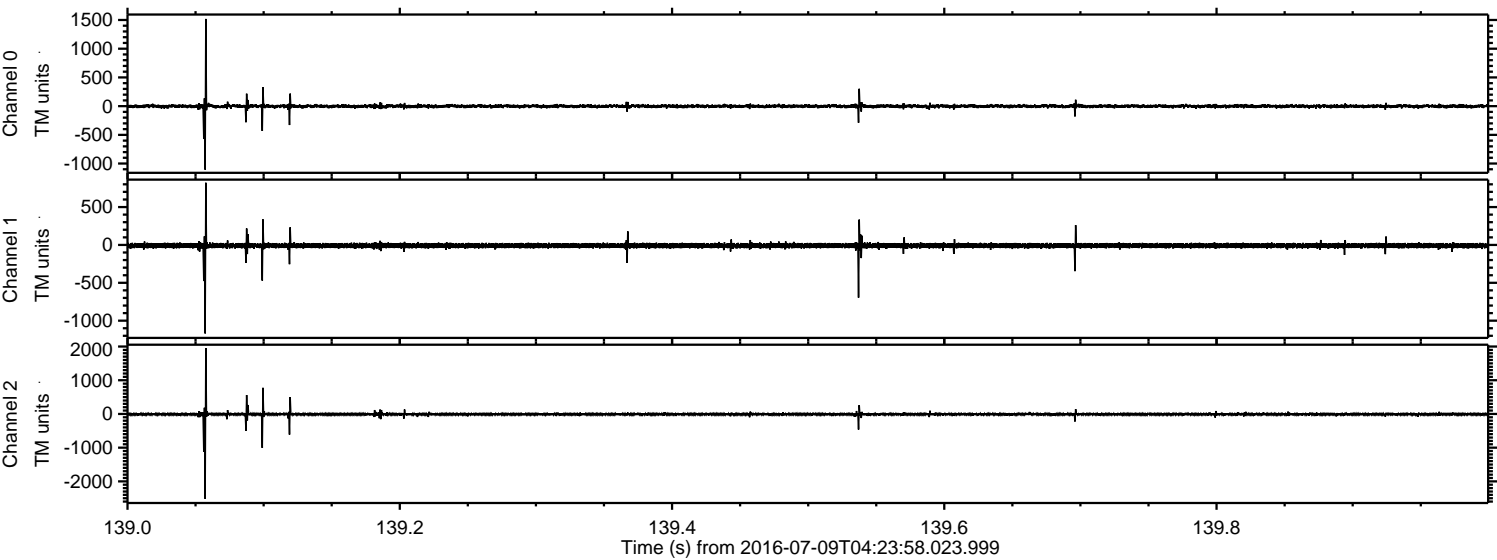
Processed Sat Jul 9 06:31:42 2016 by ELM ver.2012-10-06 from 001\_\_elm20160709\_042357\_\_dat00.bin





ELMAVAN 3D WAVEFORMS (Measured data sampled at 50 kHz) 51000 packets of 144 samples from 2016-07-09T04:23:58.023.999. Part 140/147

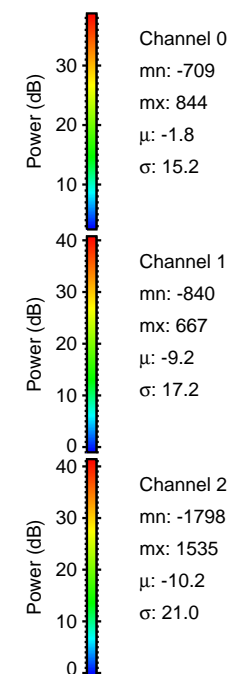
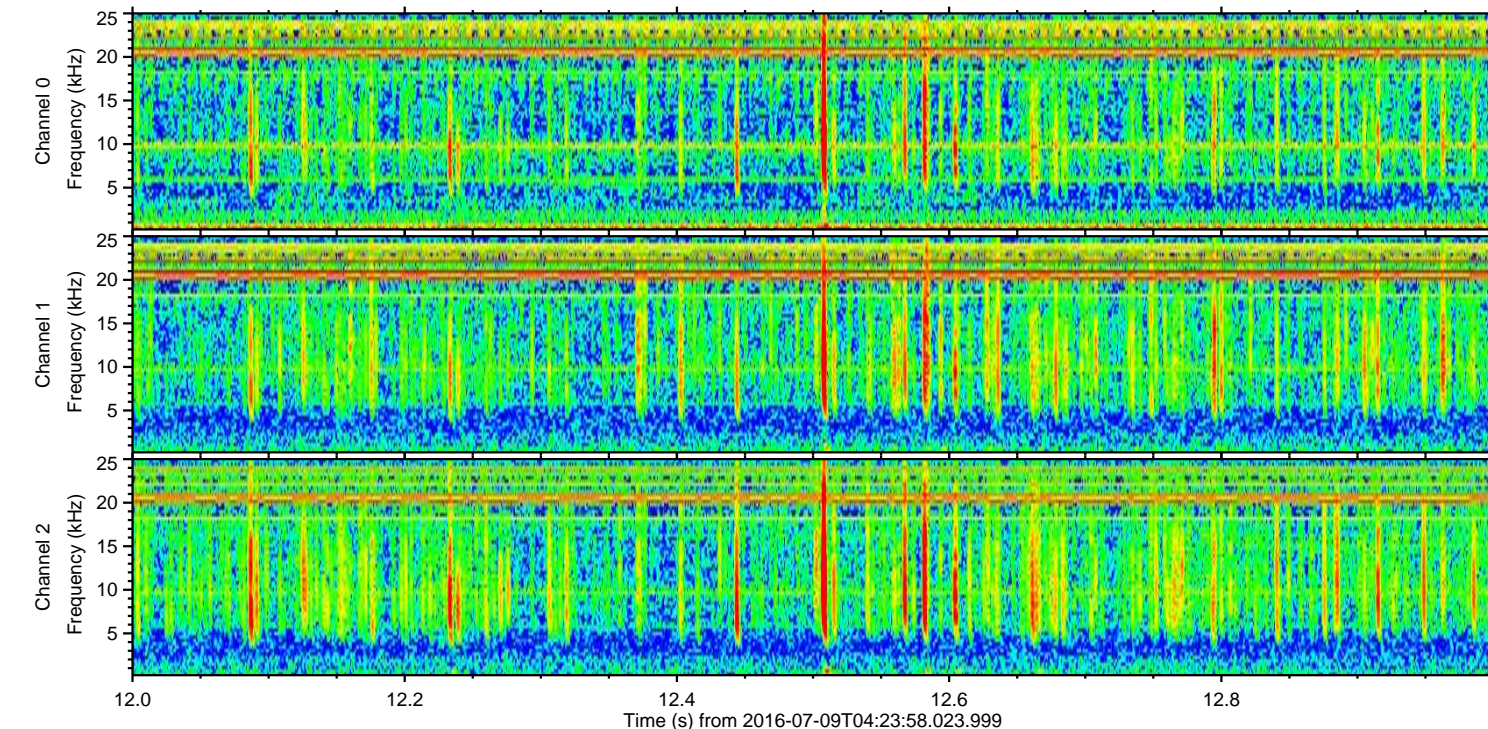
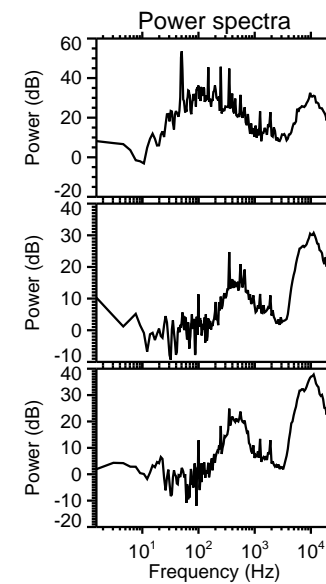
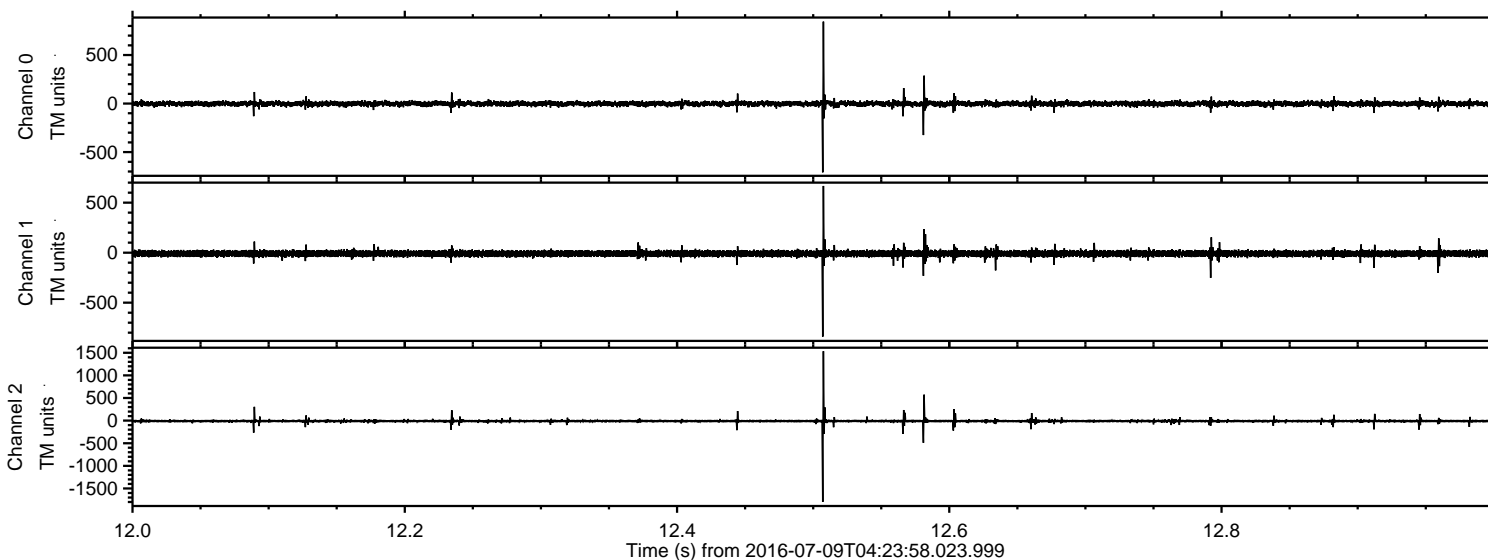
Processed Sat Jul 9 06:31:43 2016 by ELM ver.2012-10-06 from 001\_\_elm20160709\_042357\_\_dat00.bin





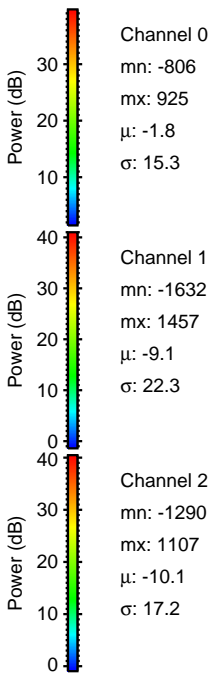
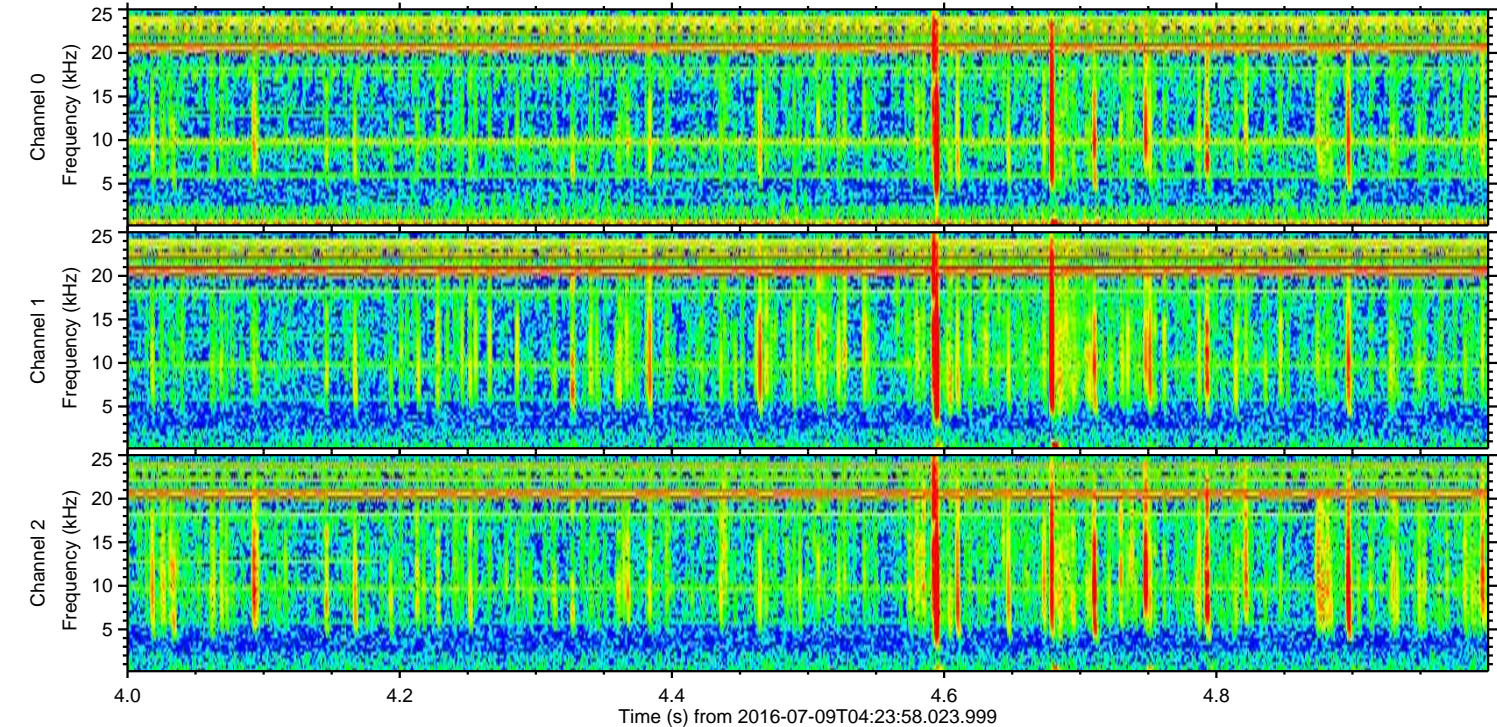
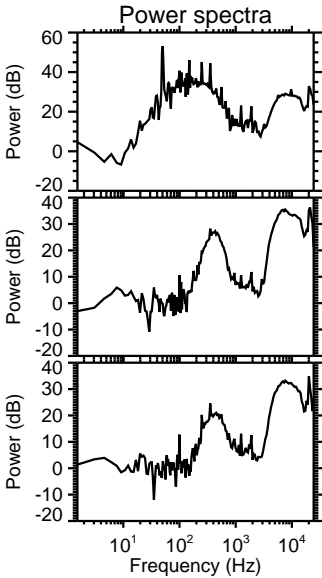
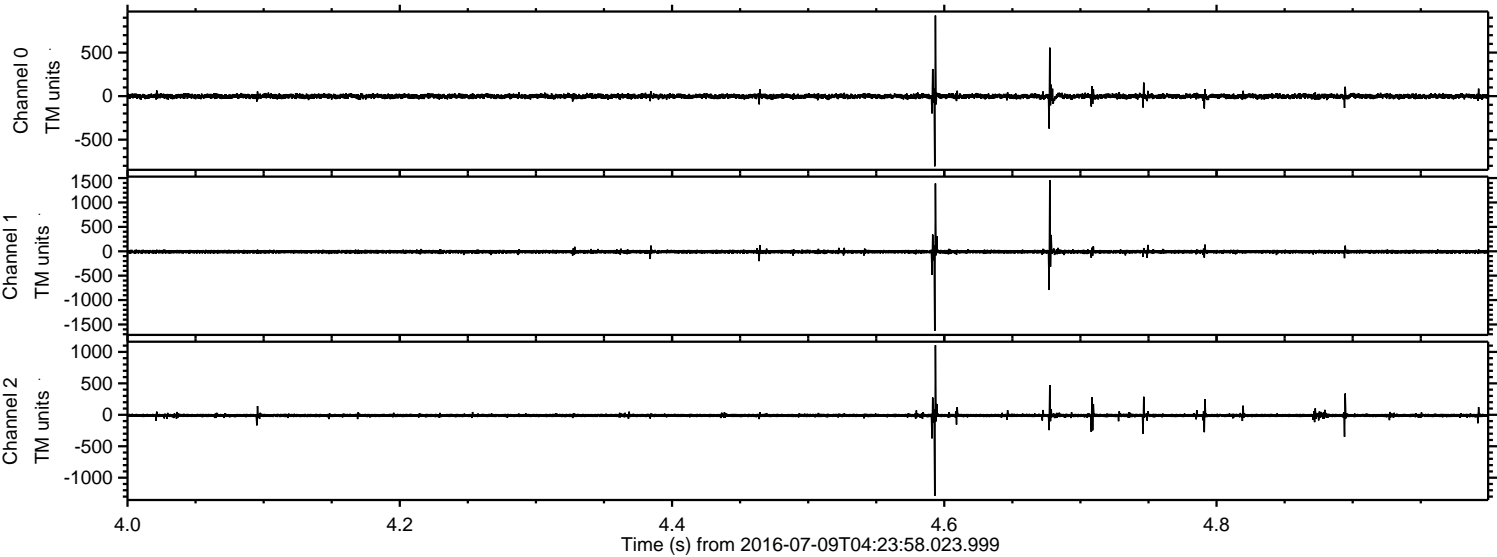
# ELMAVAN 3D WAVEFORMS (Measured data sampled at 50 kHz) 51000 packets of 144 samples from 2016-07-09T04:23:58.023.999. Part 13/147

Processed Sat Jul 9 06:31:44 2016 by ELM ver.2012-10-06 from 001\_\_elm20160709\_042357\_\_dat00.bin



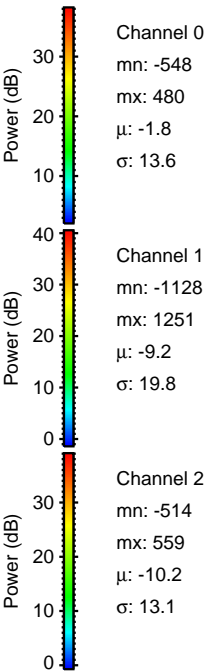
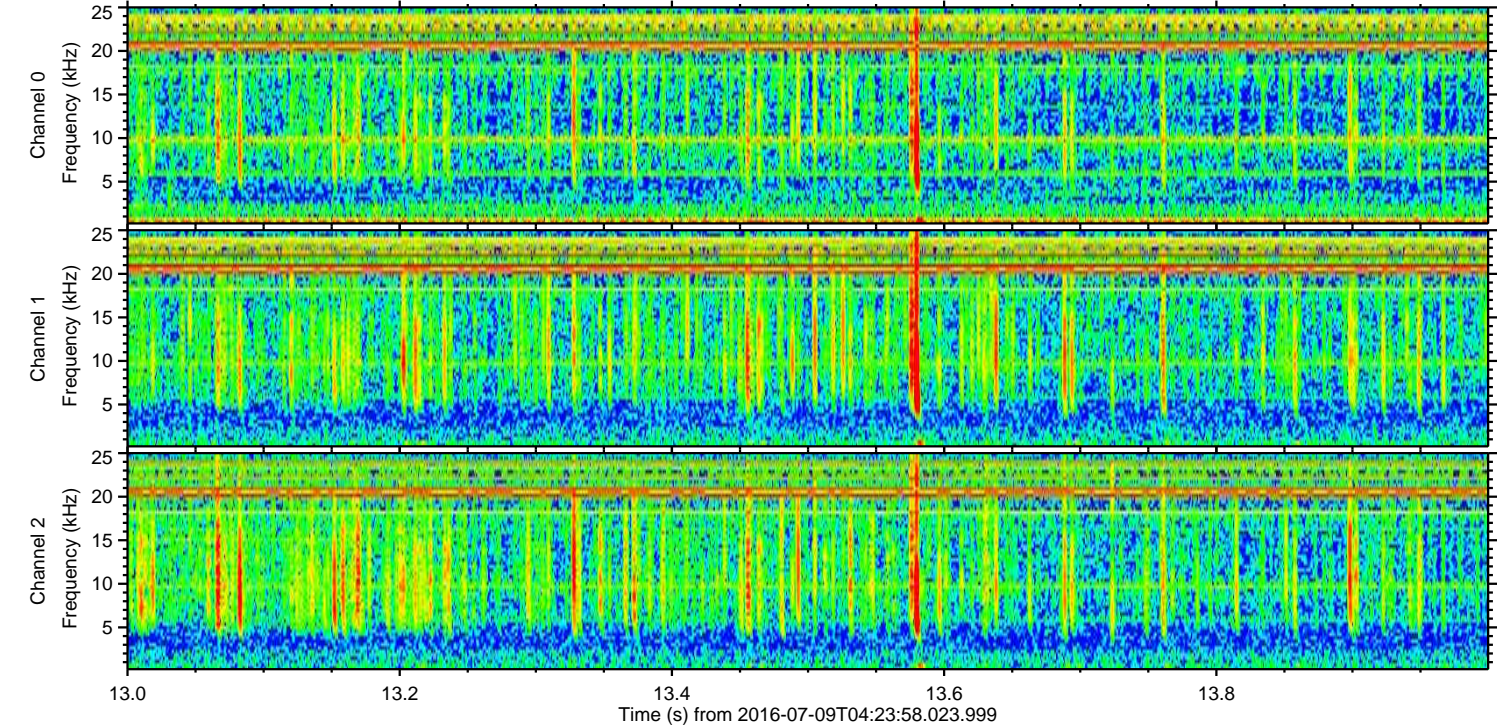
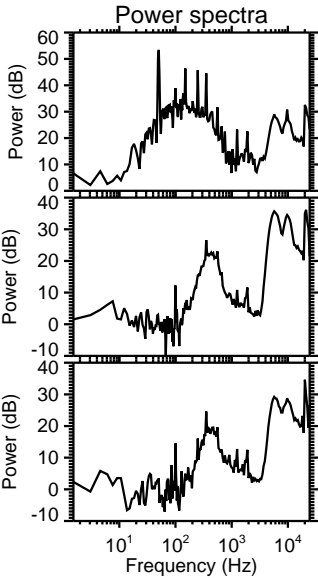
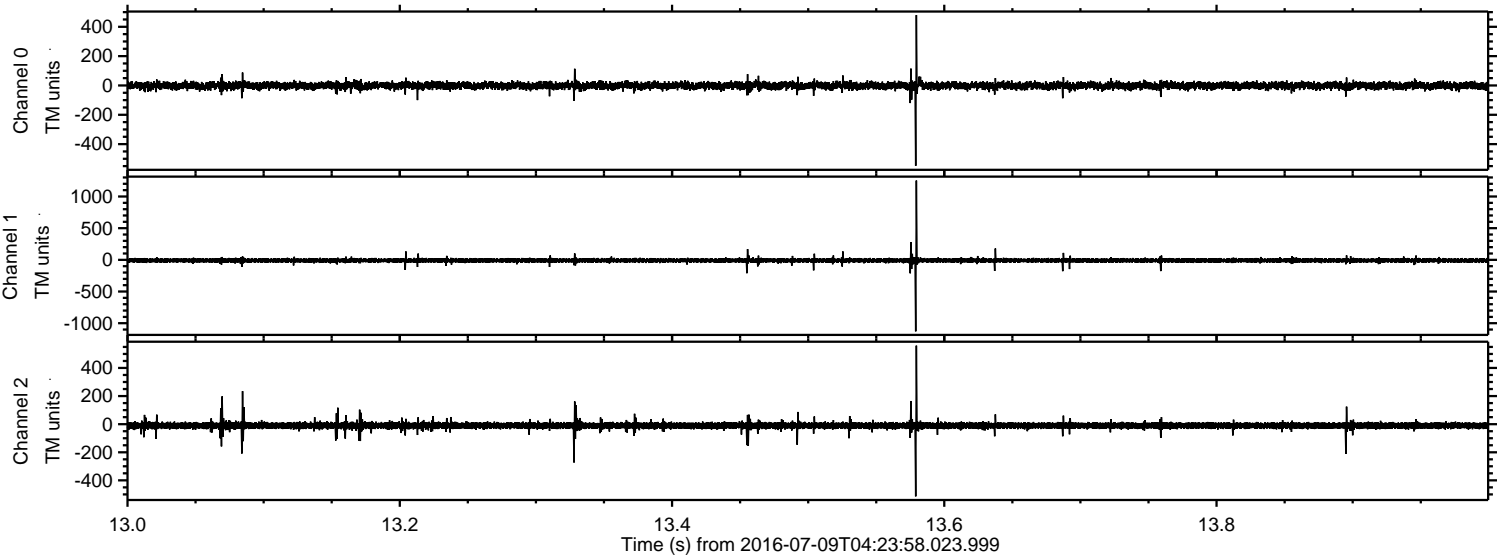


Processed Sat Jul 9 06:31:45 2016 by ELM ver.2012-10-06 from 001\_\_elm20160709\_042357\_\_dat00.bin



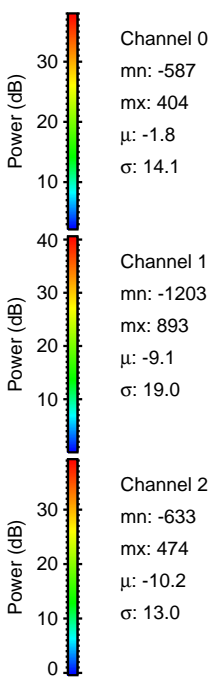
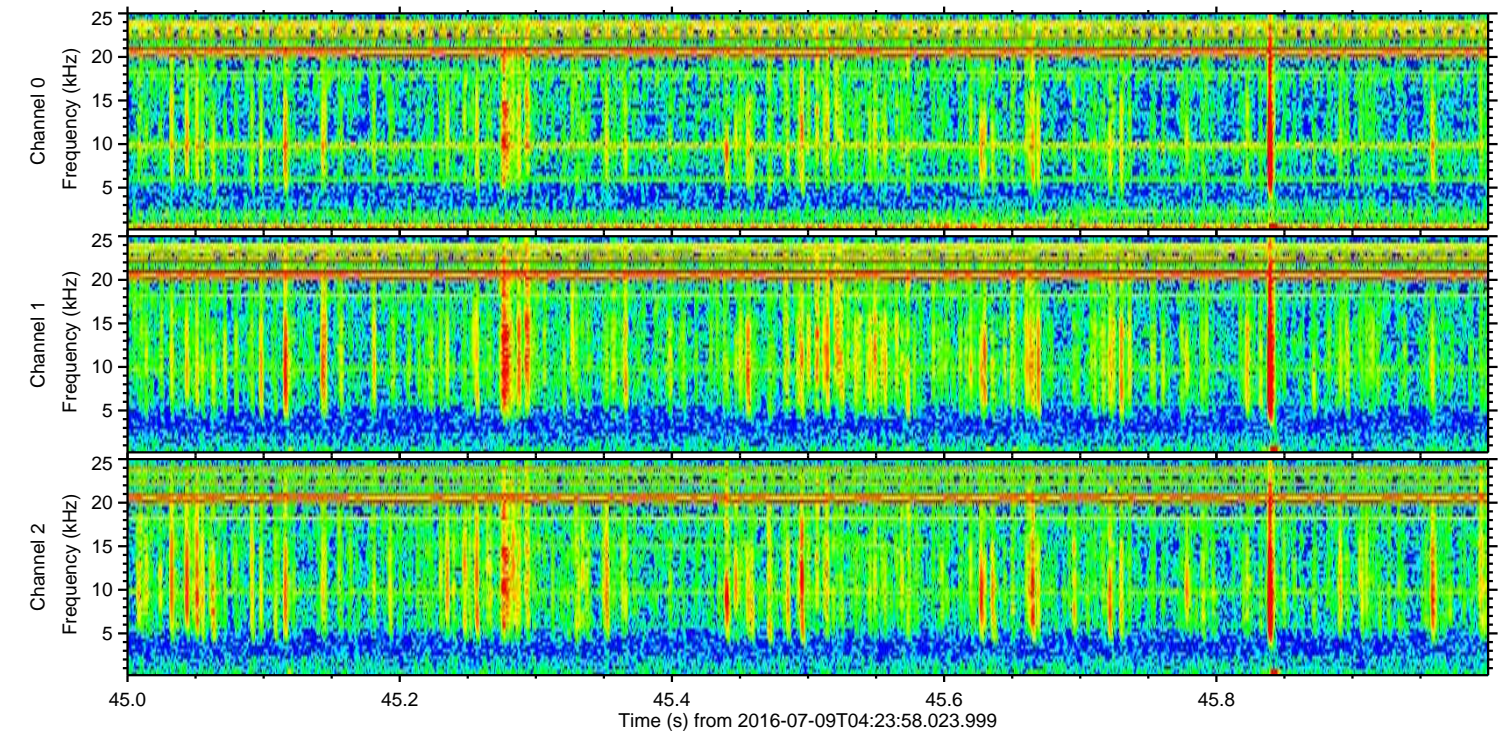
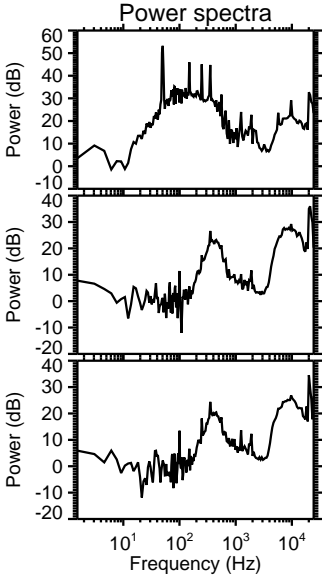
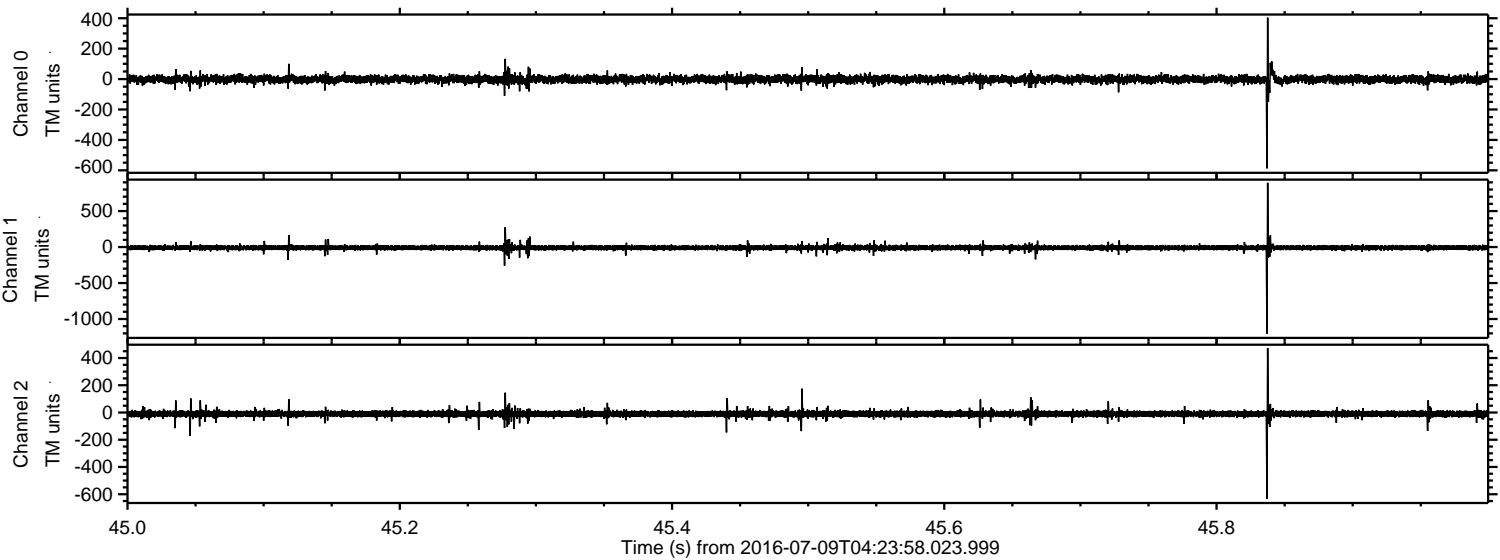


Processed Sat Jul 9 06:31:45 2016 by ELM ver.2012-10-06 from 001\_\_elm20160709\_042357\_\_dat00.bin



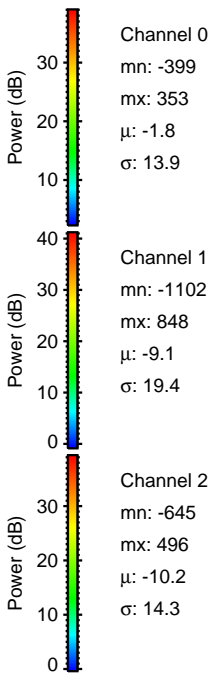
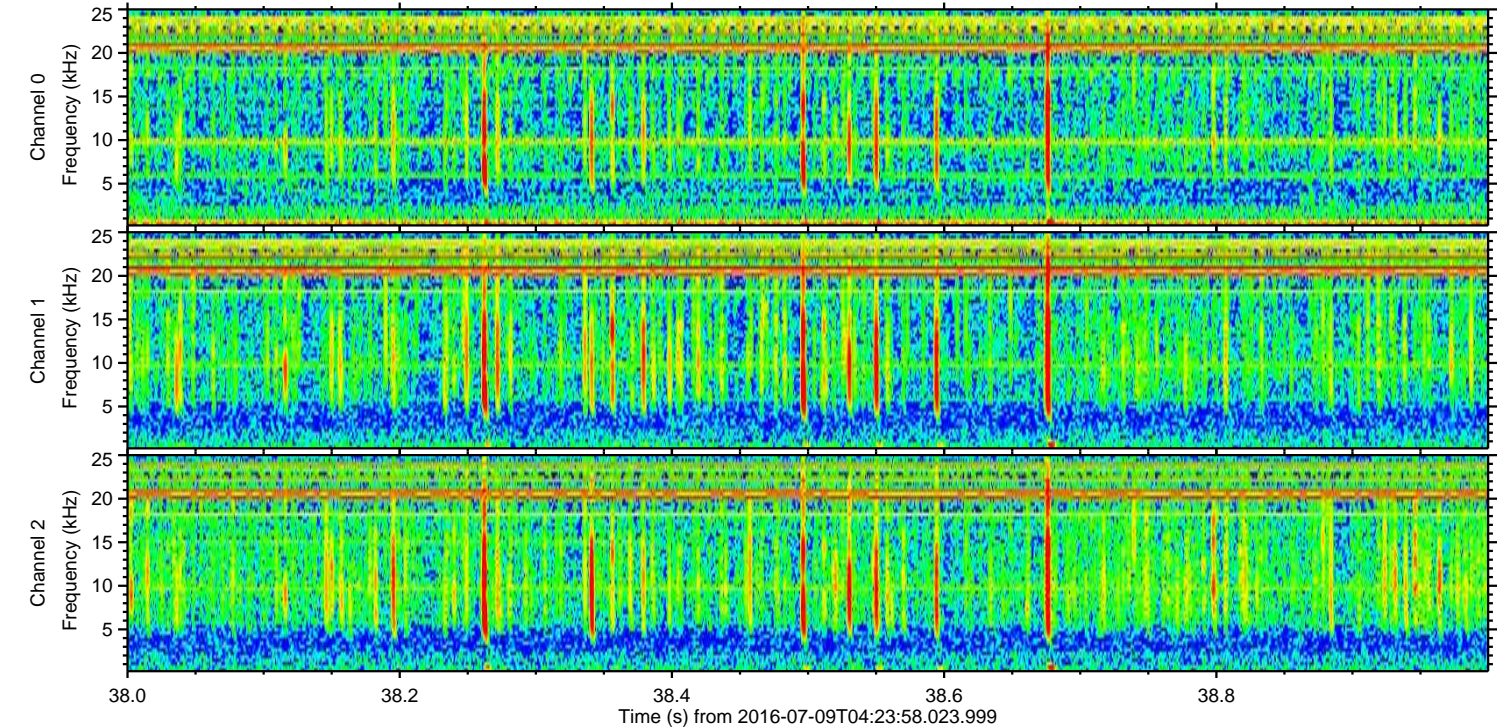
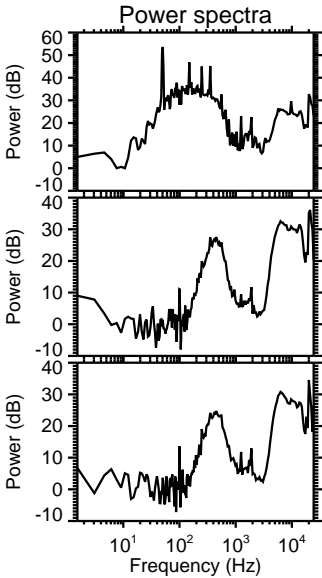
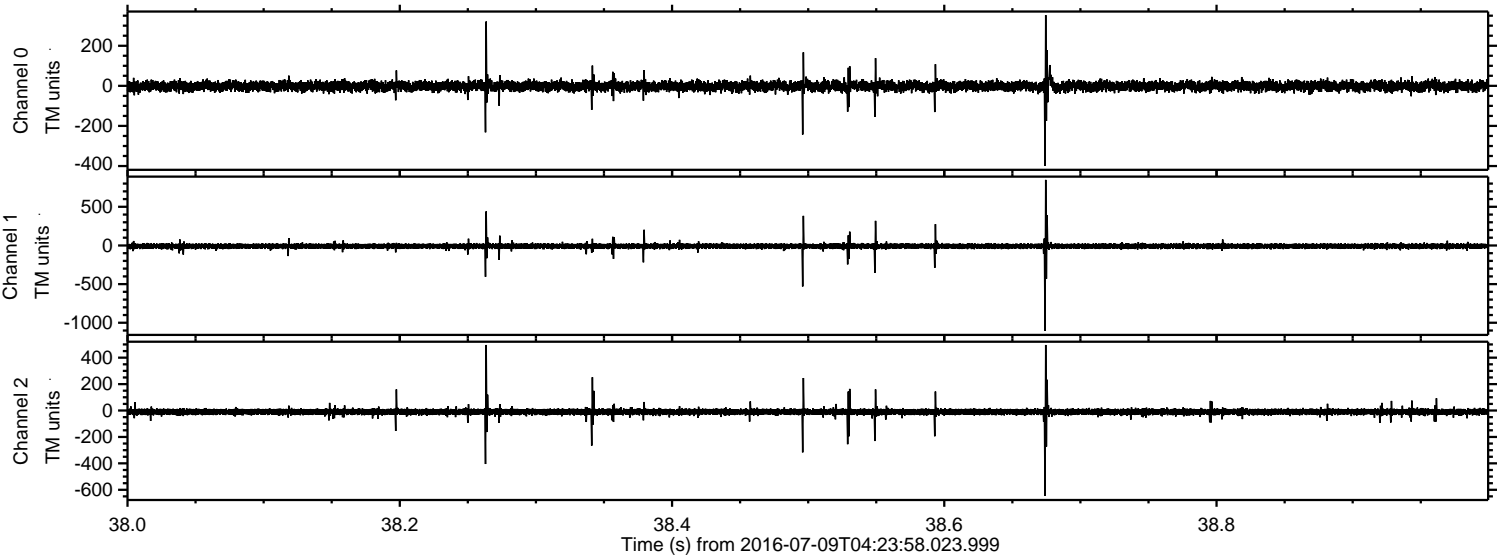


Processed Sat Jul 9 06:31:46 2016 by ELM ver.2012-10-06 from 001\_\_elm20160709\_042357\_\_dat00.bin





Processed Sat Jul 9 06:31:47 2016 by ELM ver.2012-10-06 from 001\_\_elm20160709\_042357\_\_dat00.bin





Processed Sat Jul 9 06:31:48 2016 by ELM ver.2012-10-06 from 001\_\_elm20160709\_042357\_\_dat00.bin

