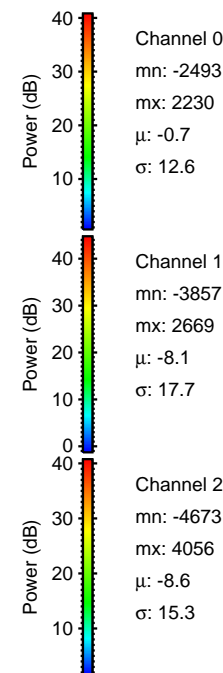
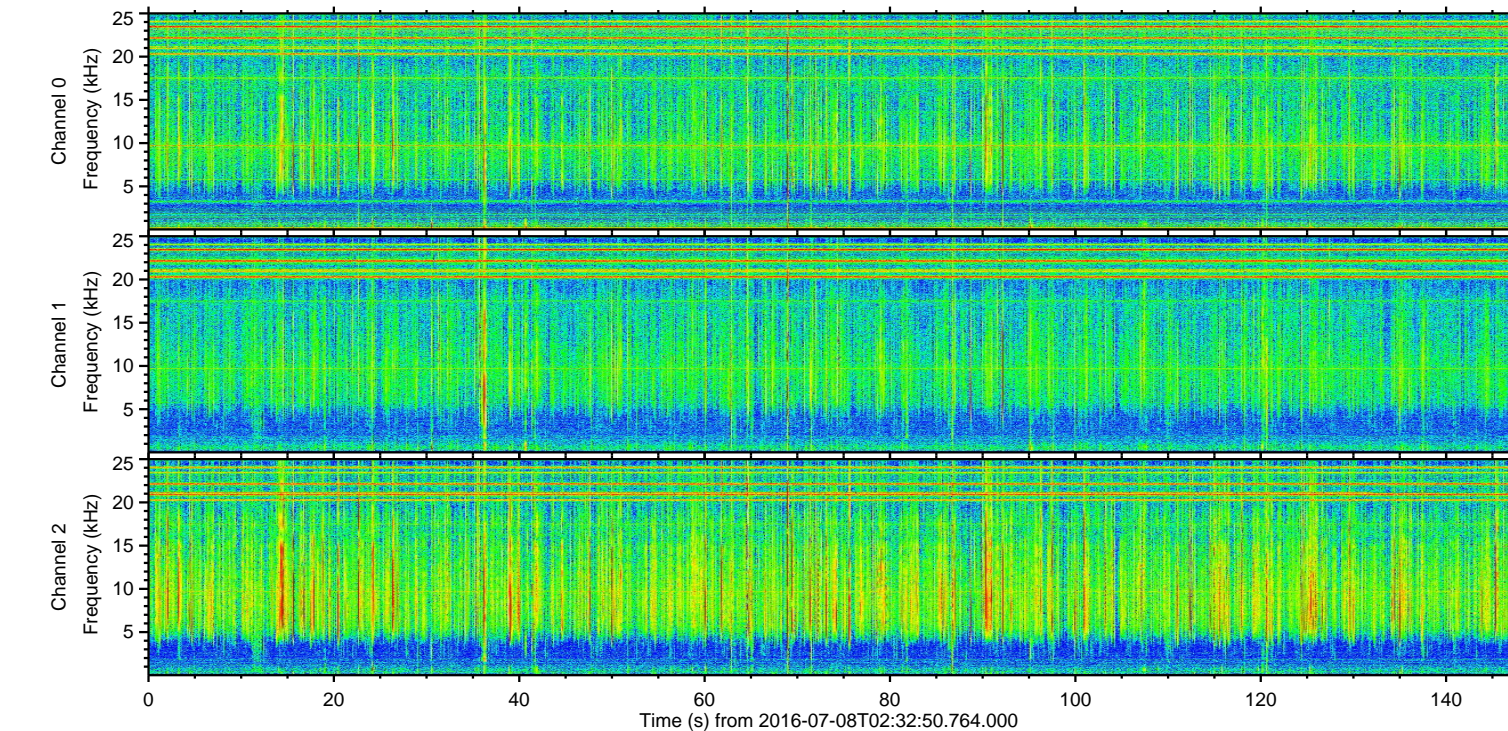
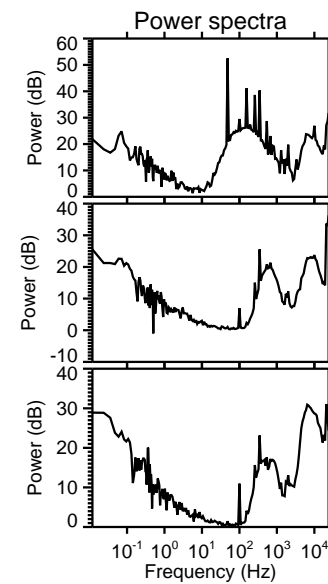
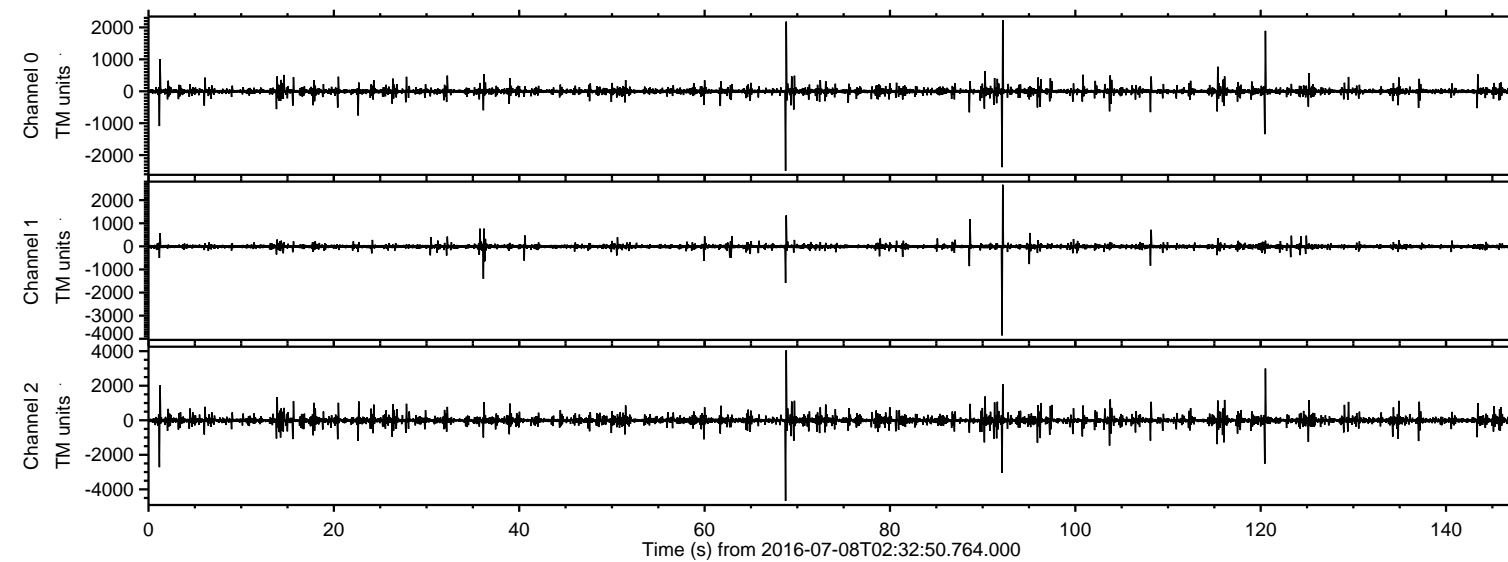


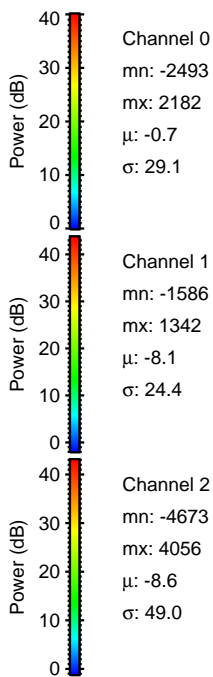
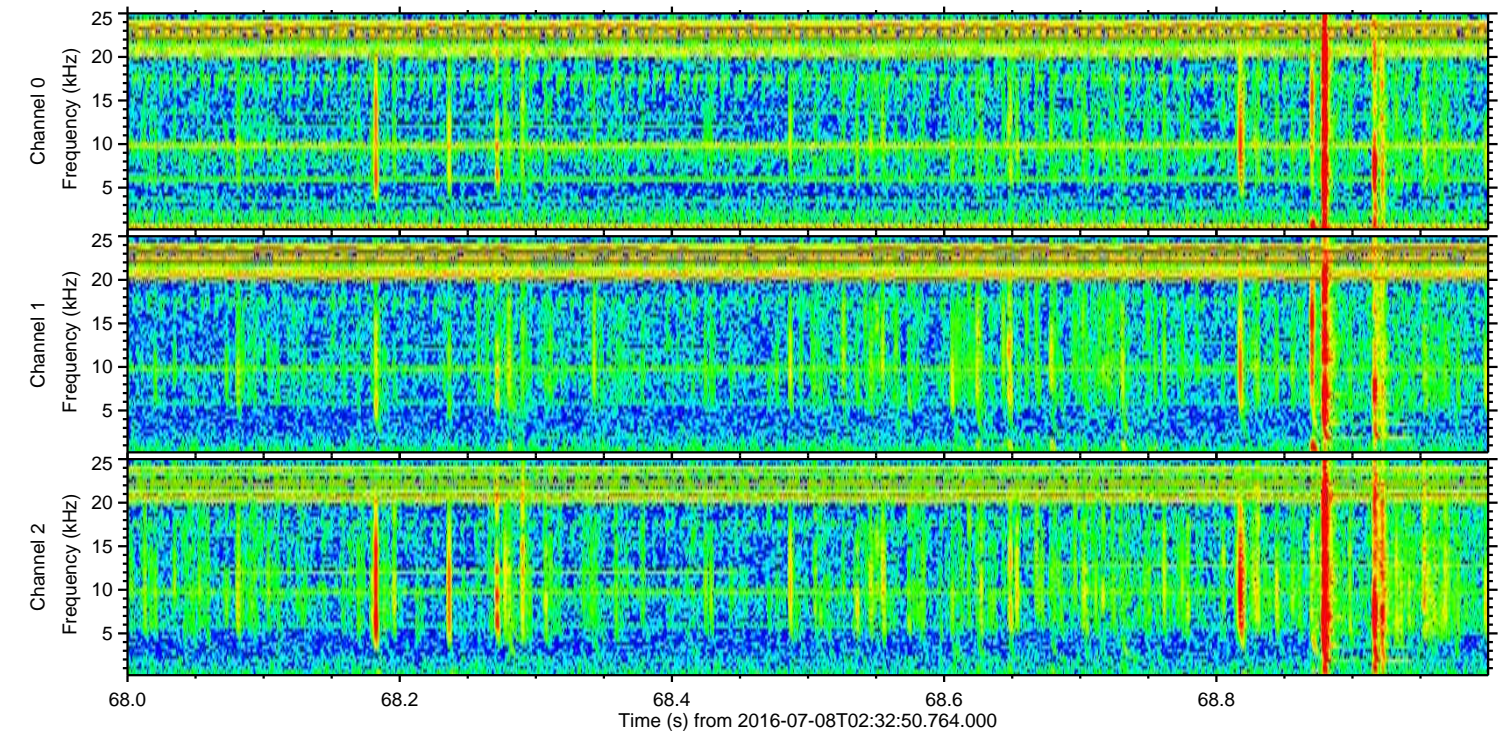
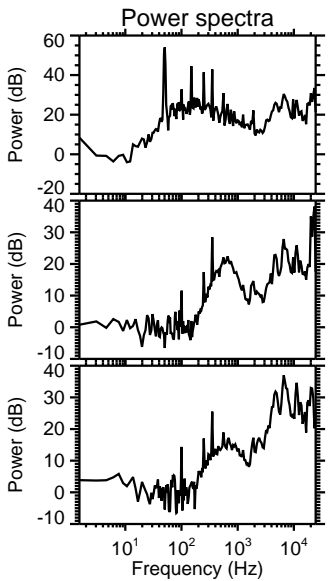
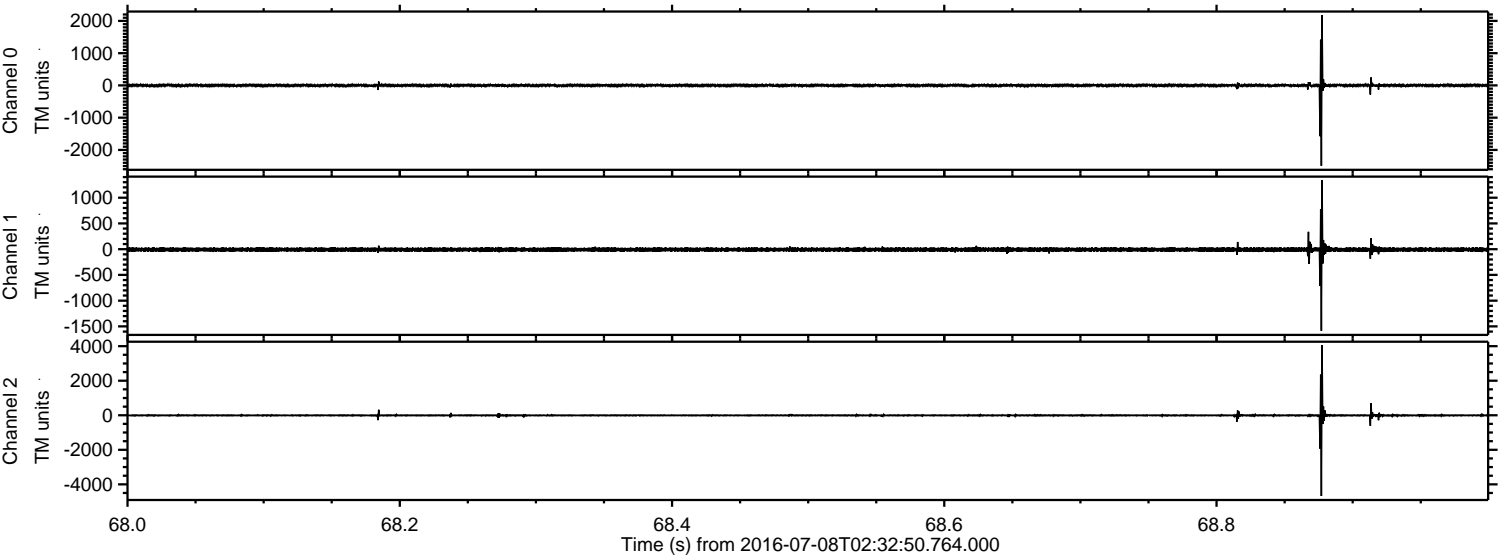
# ELMAVAN 3D WAVEFORMS (Measured data sampled at 50 kHz) 51000 packets of 144 samples from 2016-07-08T02:32:50.764.000.

Processed Fri Jul 8 04:40:54 2016 by ELM ver.2012-10-06 from 001\_\_elm20160708\_023249\_\_dat00.bin



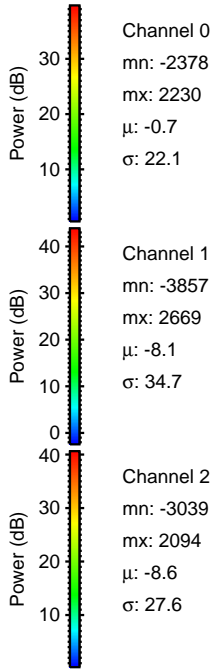
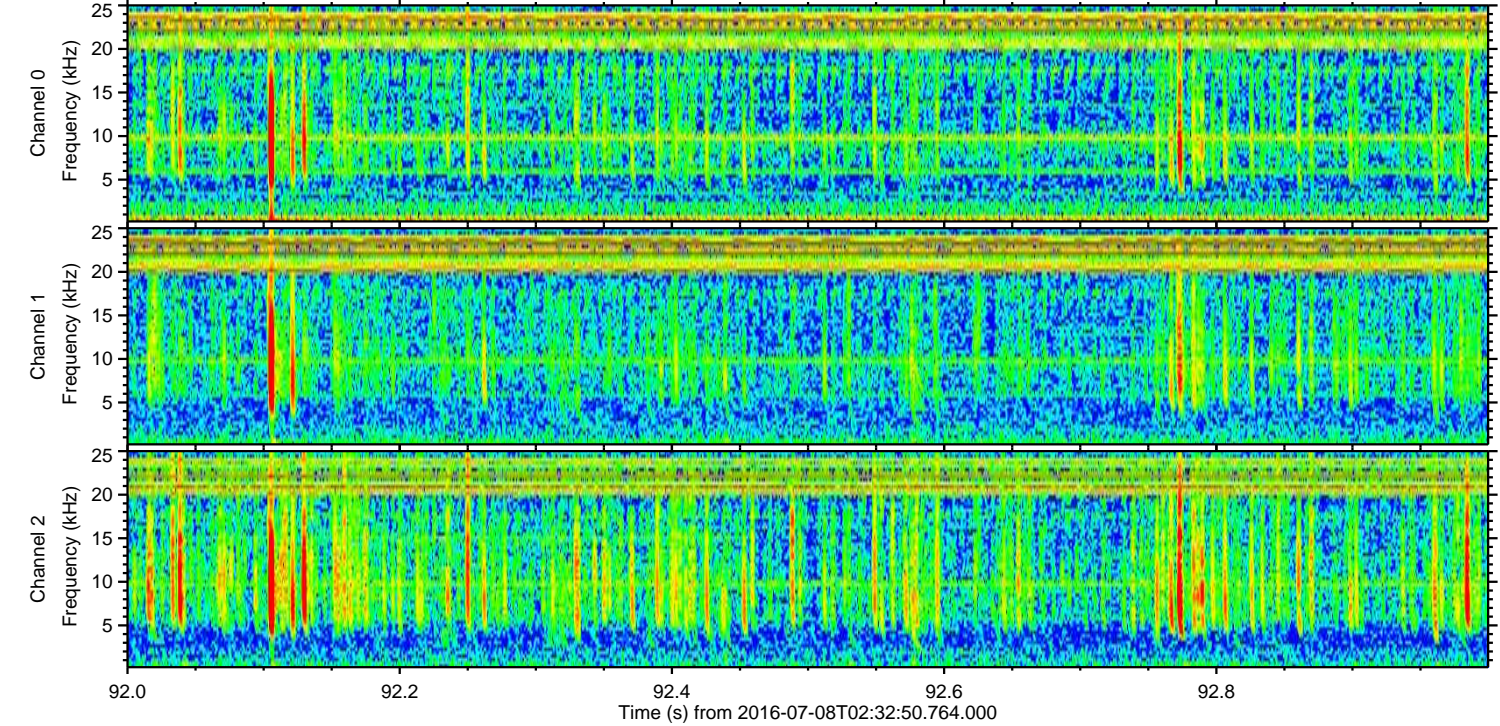
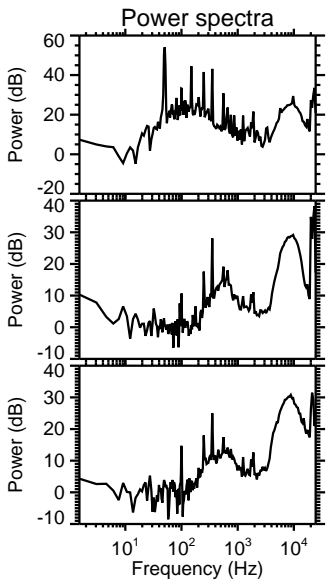
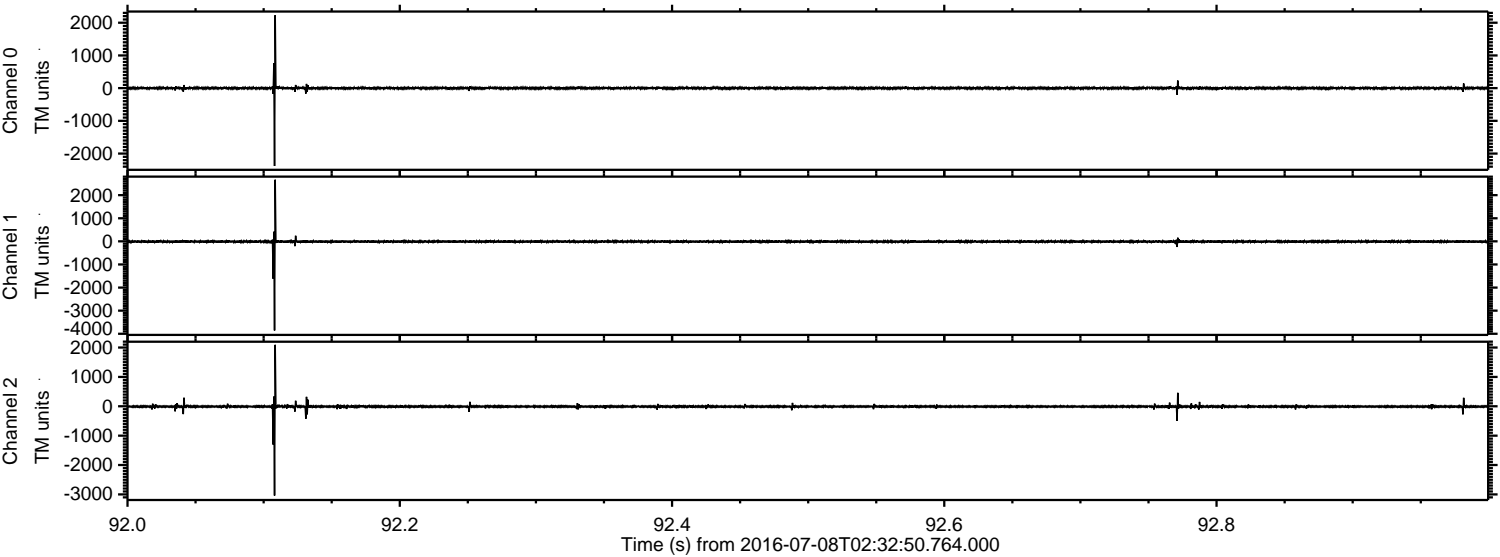


Processed Fri Jul 8 04:41:10 2016 by ELM ver.2012-10-06 from 001\_\_elm20160708\_023249\_\_dat00.bin





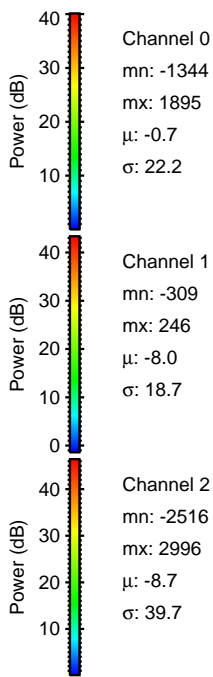
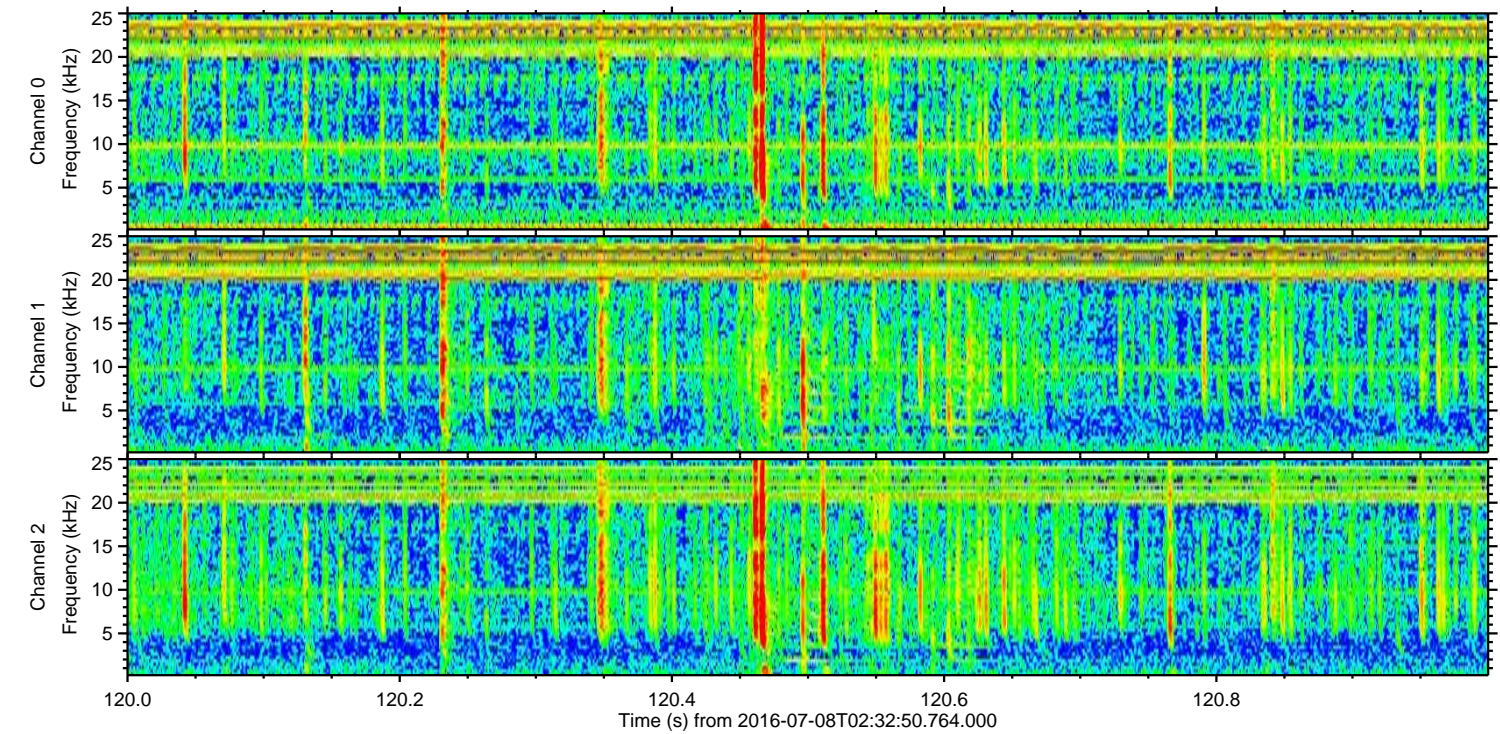
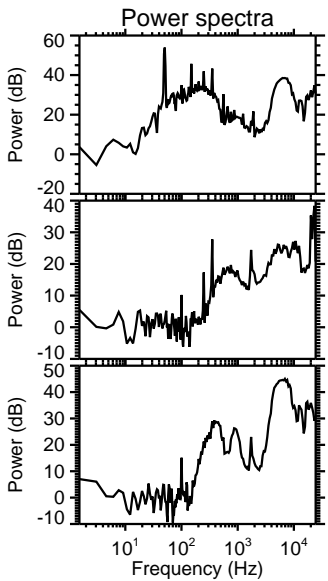
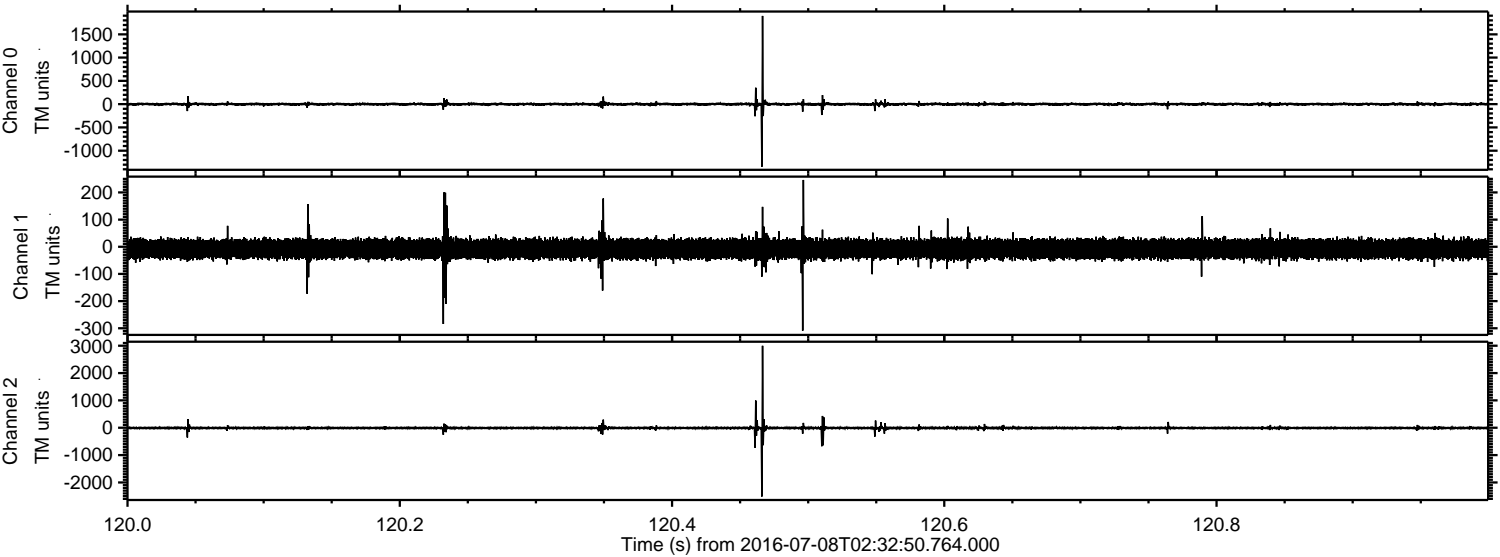
Processed Fri Jul 8 04:41:11 2016 by ELM ver.2012-10-06 from 001\_\_elm20160708\_023249\_\_dat00.bin





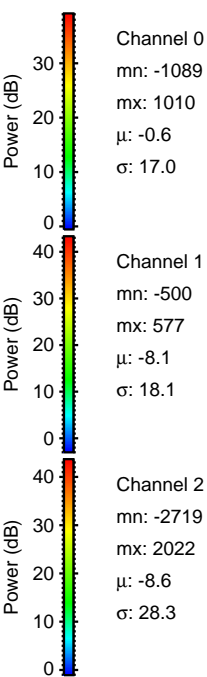
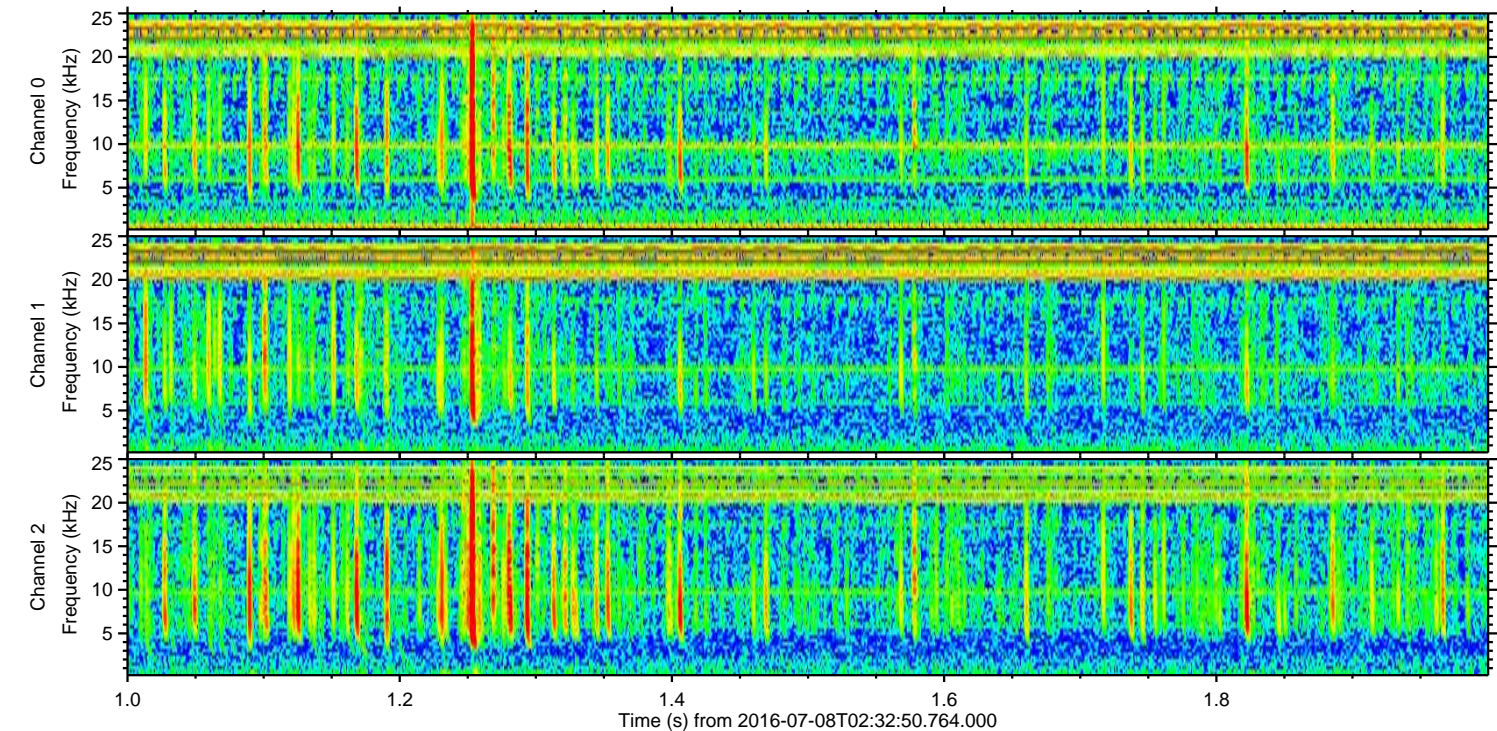
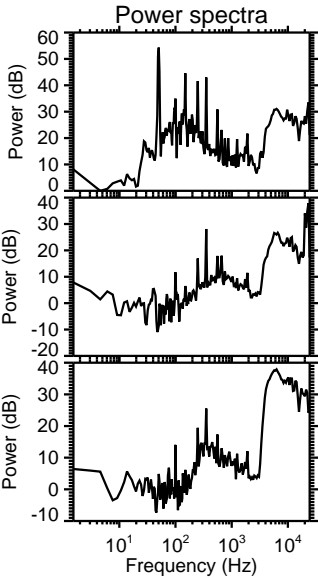
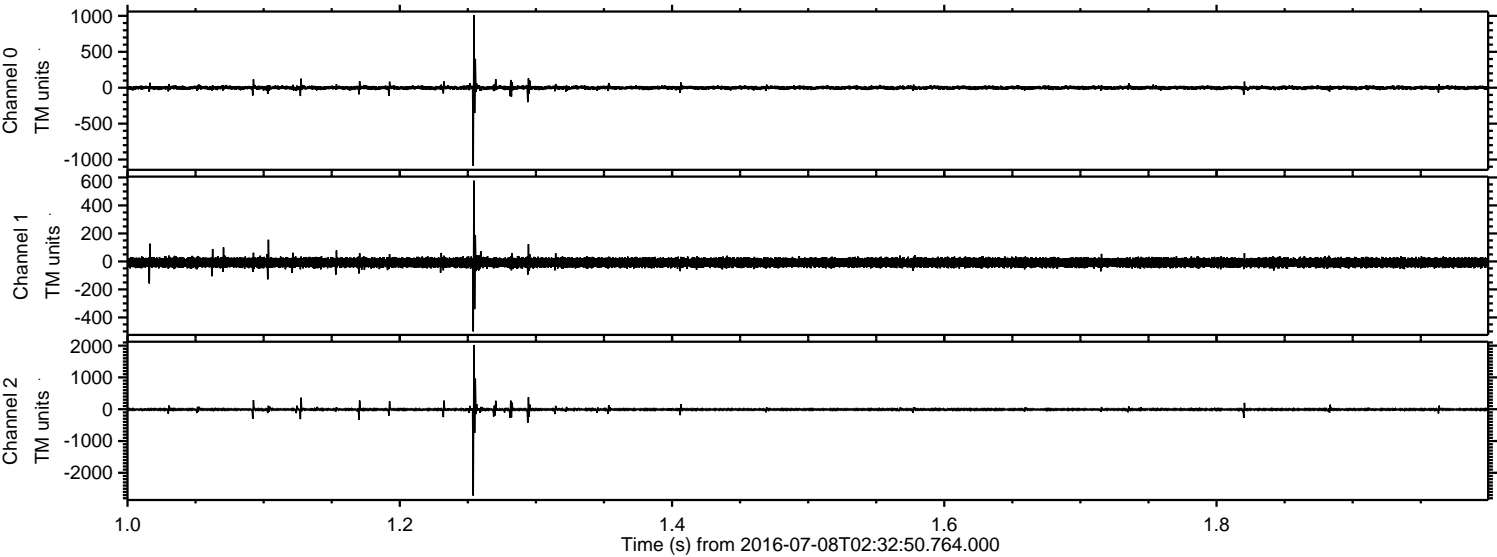
ELMAVAN 3D WAVEFORMS (Measured data sampled at 50 kHz) 51000 packets of 144 samples from 2016-07-08T02:32:50.764.000. Part 121/147

Processed Fri Jul 8 04:41:12 2016 by ELM ver.2012-10-06 from 001\_\_elm20160708\_023249\_\_dat00.bin





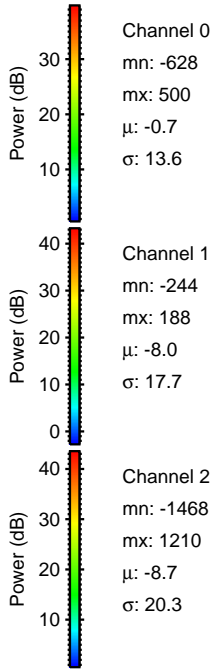
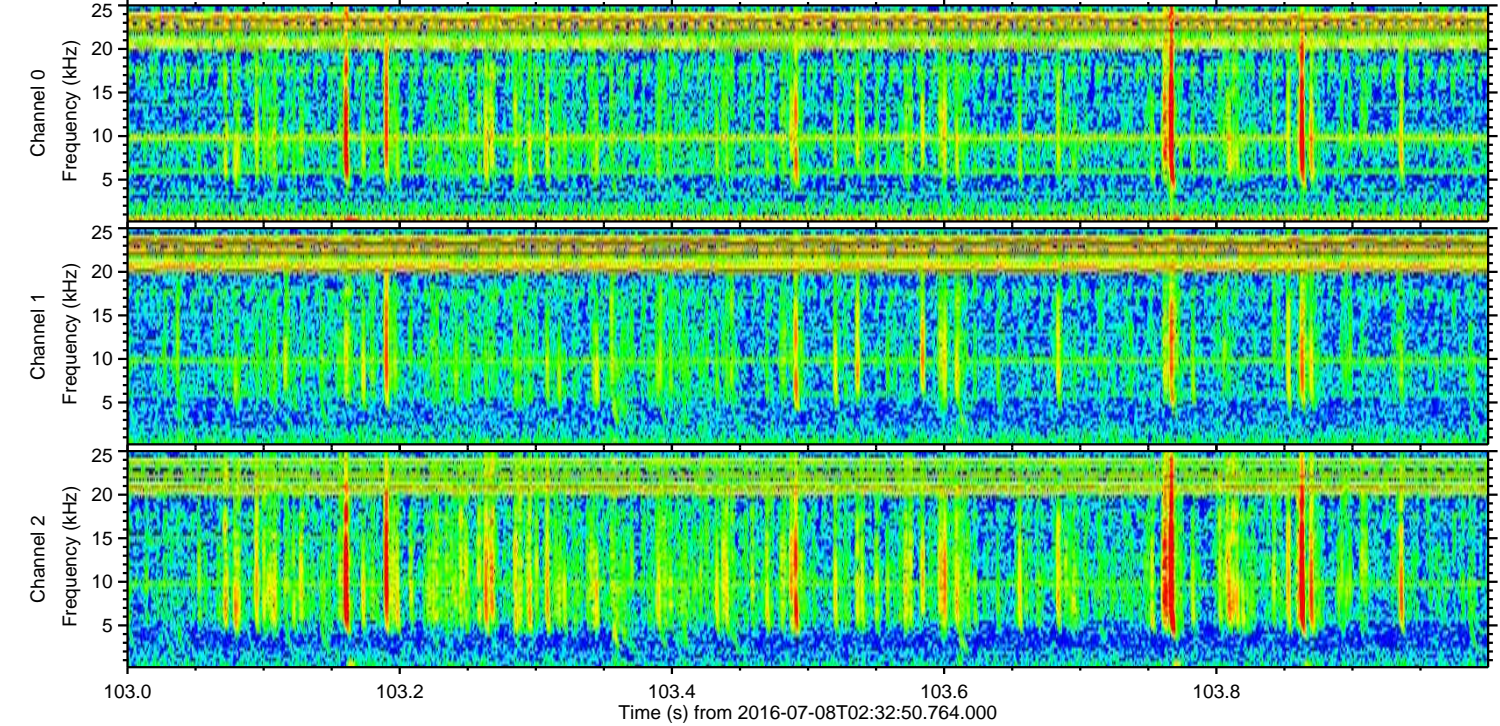
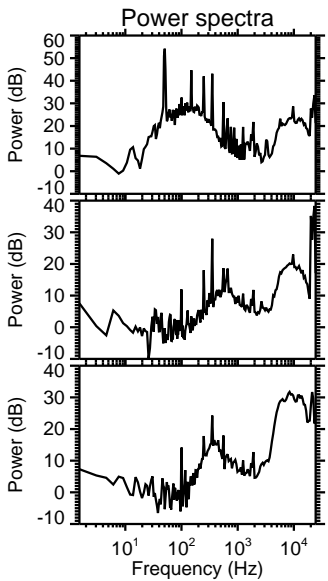
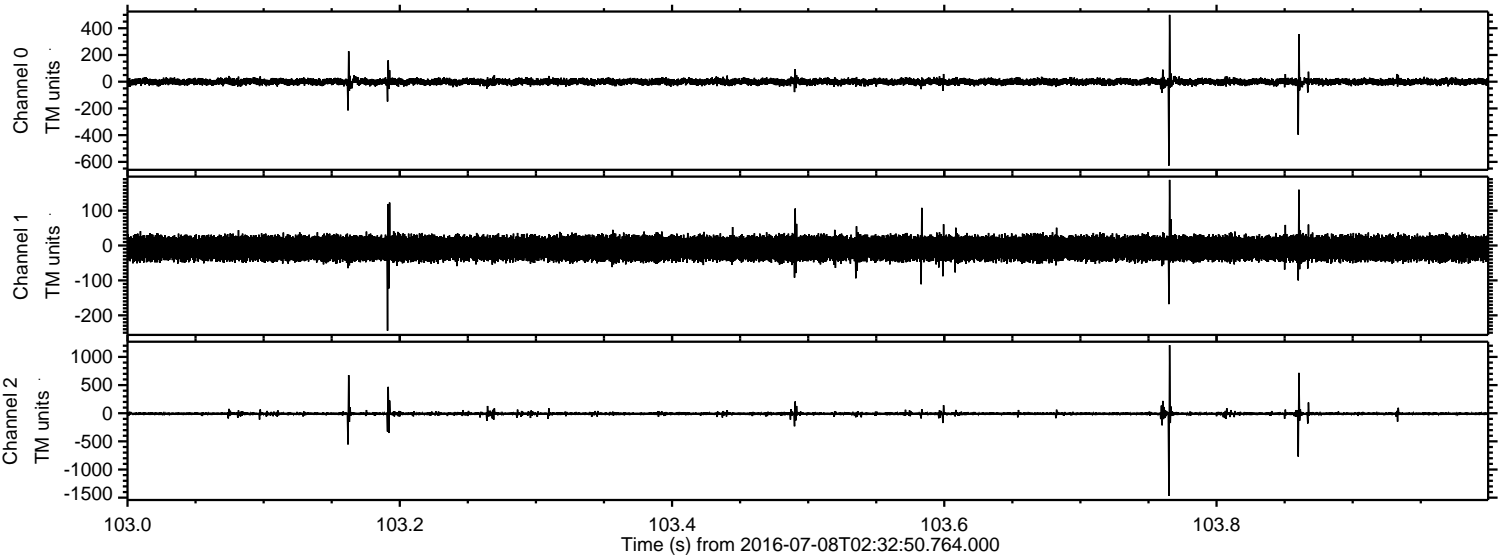
Processed Fri Jul 8 04:41:13 2016 by ELM ver.2012-10-06 from 001\_\_elm20160708\_023249\_\_dat00.bin





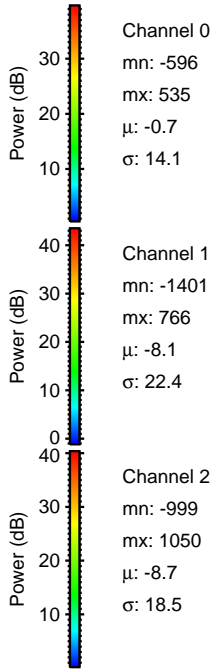
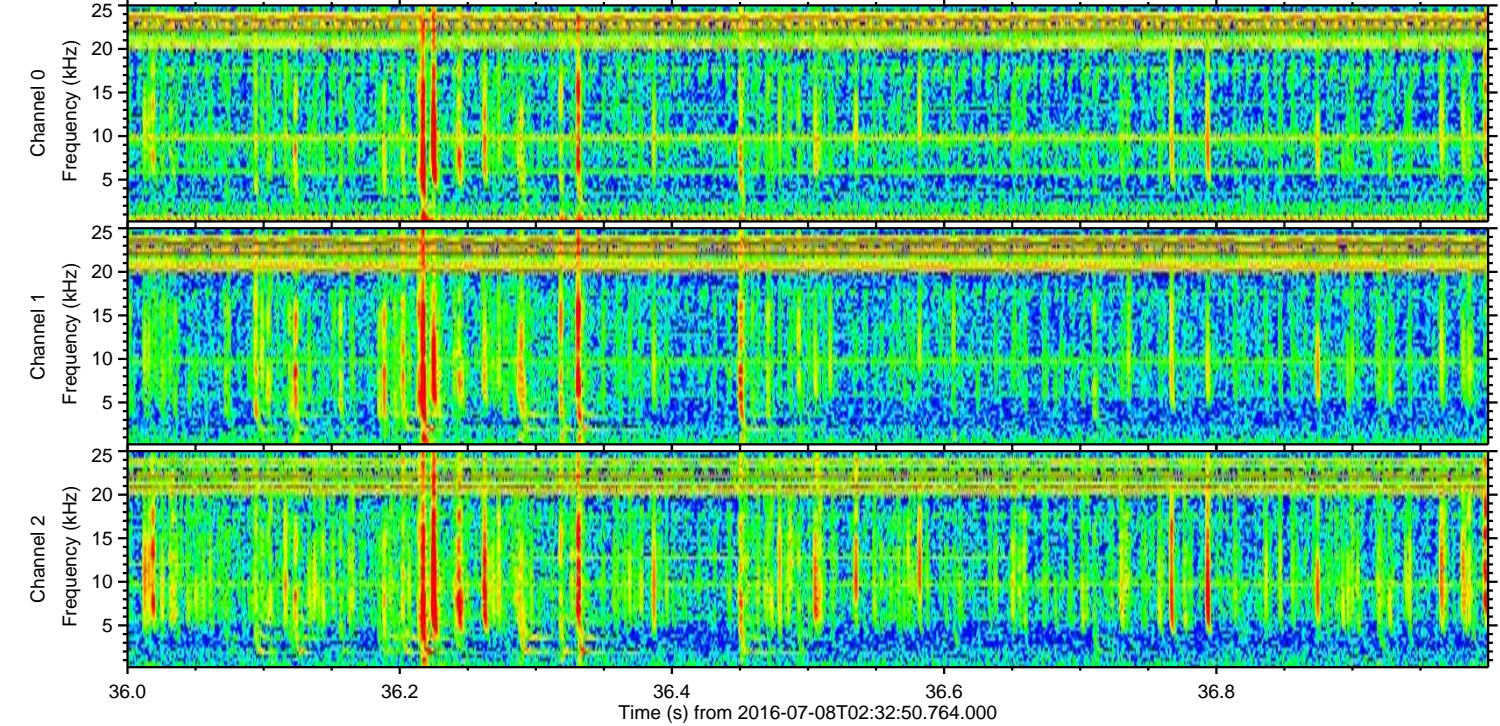
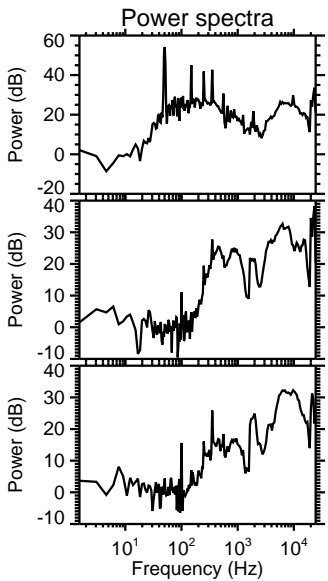
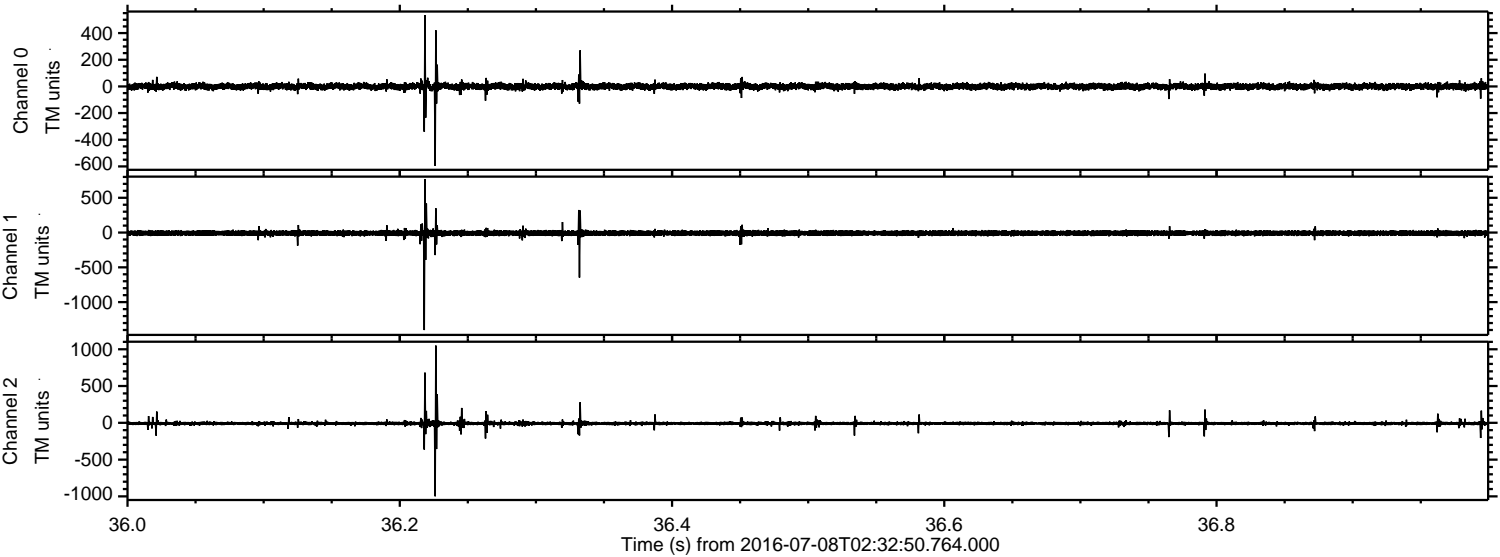
ELMAVAN 3D WAVEFORMS (Measured data sampled at 50 kHz) 51000 packets of 144 samples from 2016-07-08T02:32:50.764.000. Part 104/147

Processed Fri Jul 8 04:41:14 2016 by ELM ver.2012-10-06 from 001\_\_elm20160708\_023249\_\_dat00.bin



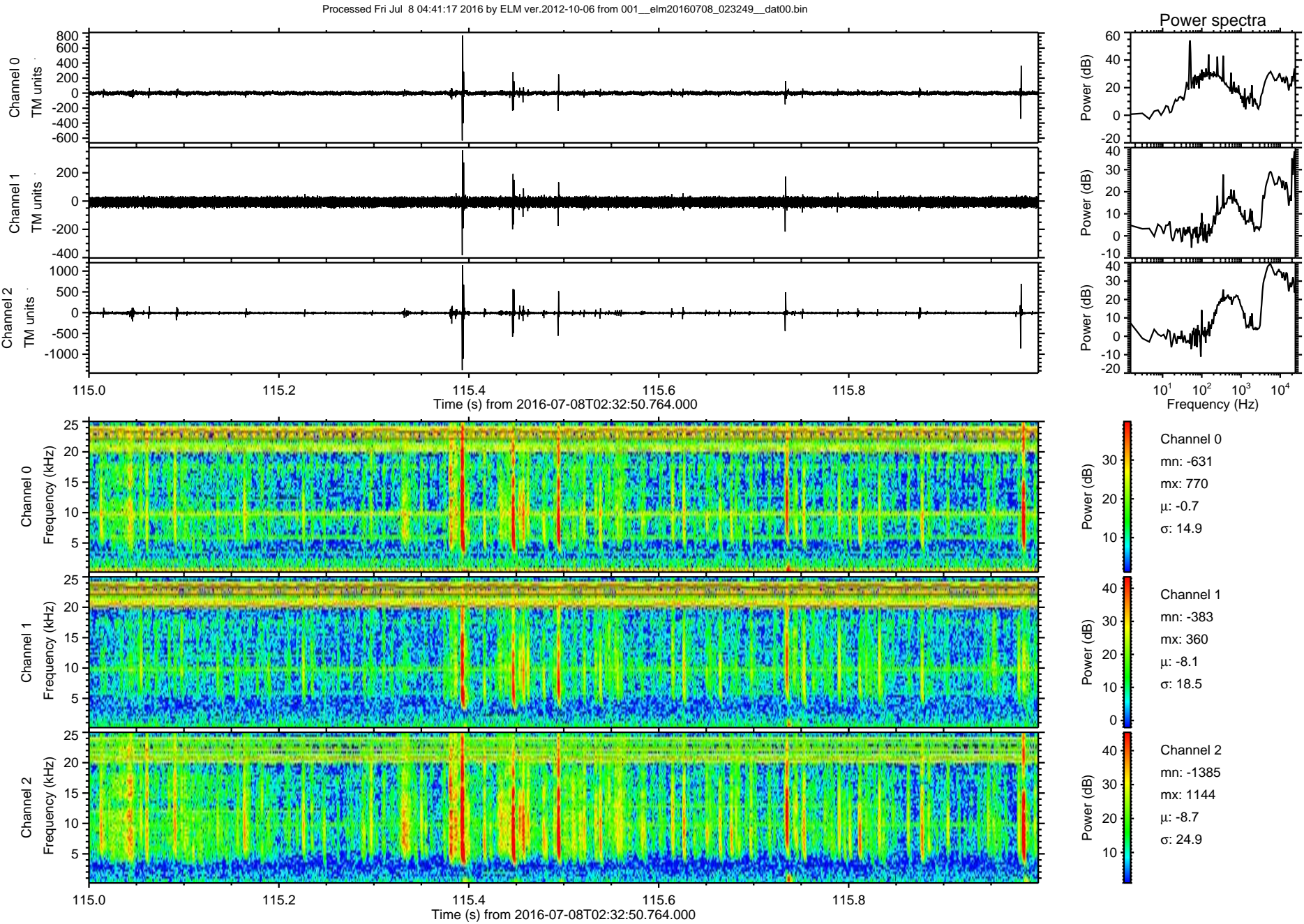


Processed Fri Jul 8 04:41:15 2016 by ELM ver.2012-10-06 from 001\_\_elm20160708\_023249\_\_dat00.bin



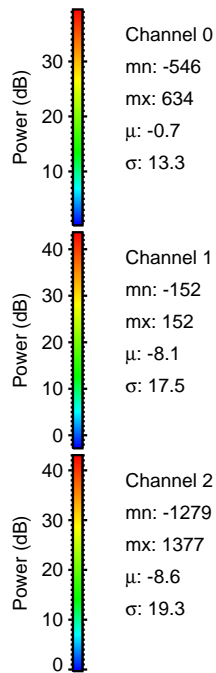
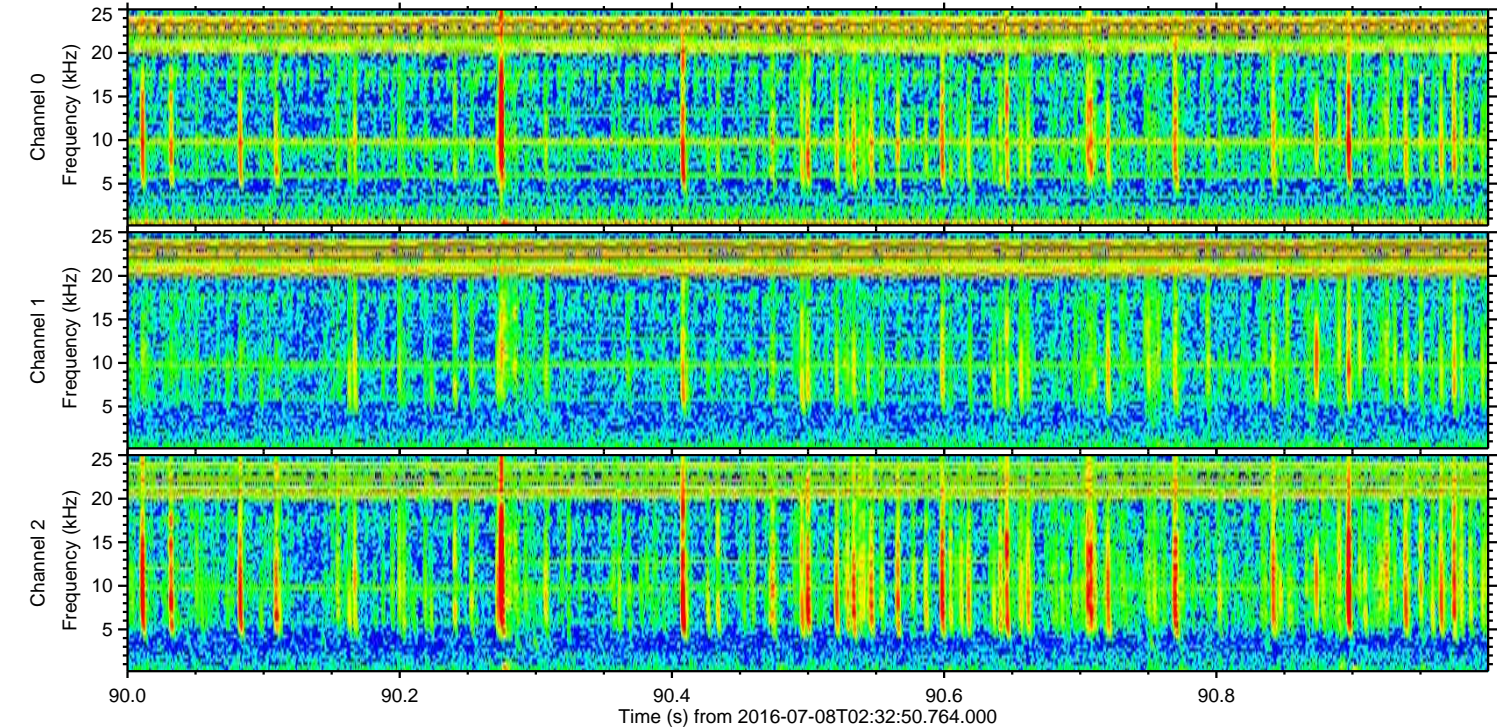
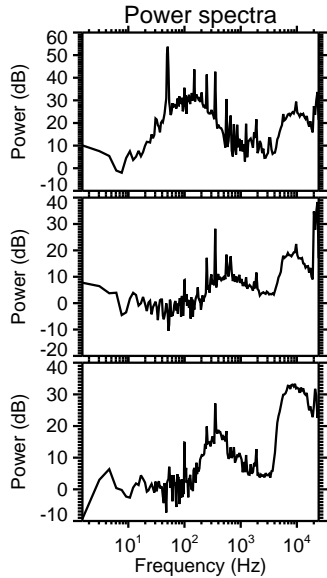
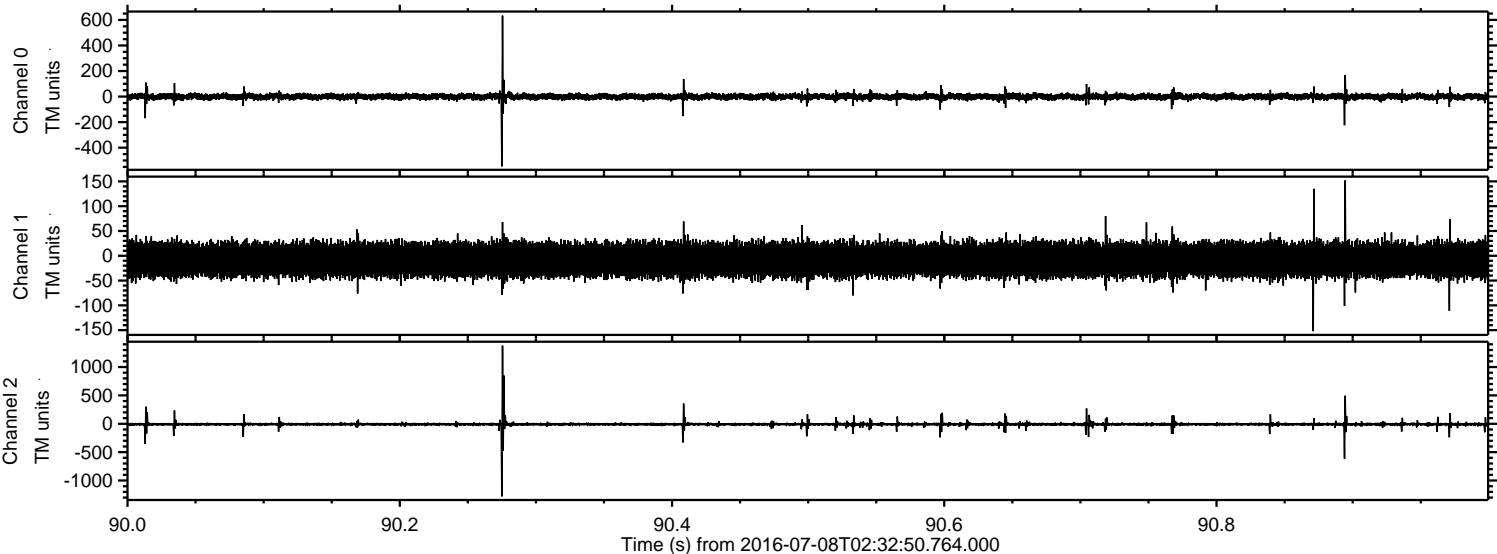


ELMAVAN 3D WAVEFORMS (Measured data sampled at 50 kHz) 51000 packets of 144 samples from 2016-07-08T02:32:50.764.000. Part 116/147





Processed Fri Jul 8 04:41:18 2016 by ELM ver.2012-10-06 from 001\_\_elm20160708\_023249\_\_dat00.bin





Processed Fri Jul 8 04:41:19 2016 by ELM ver.2012-10-06 from 001\_\_elm20160708\_023249\_\_dat00.bin

