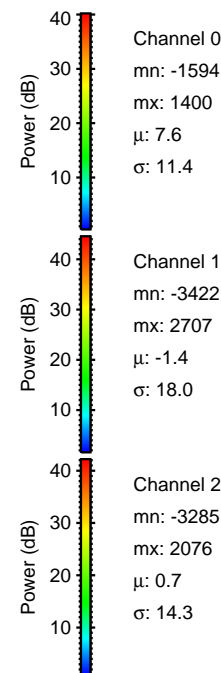
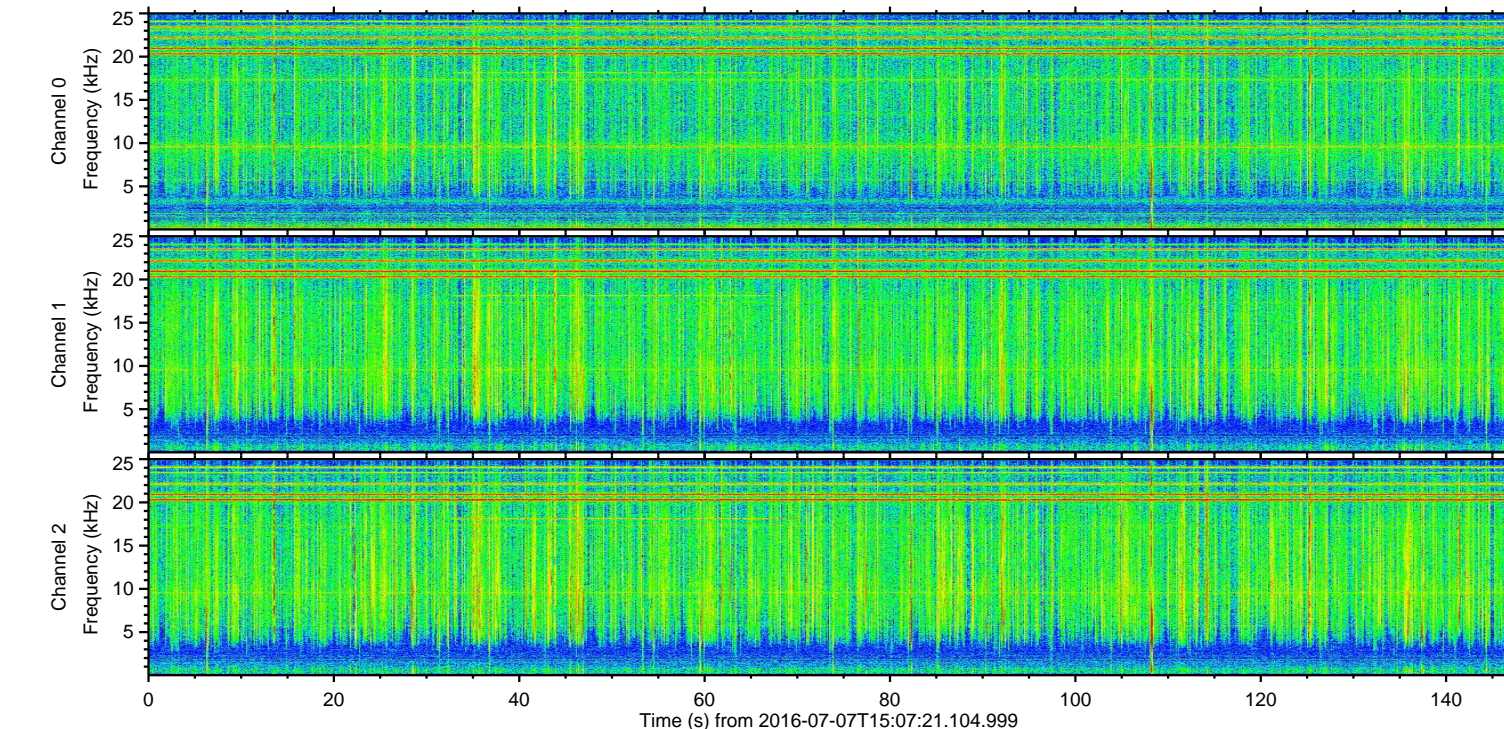
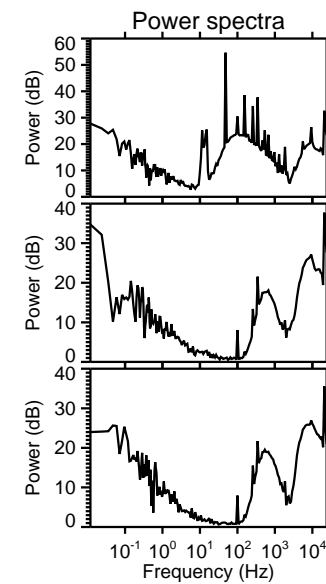
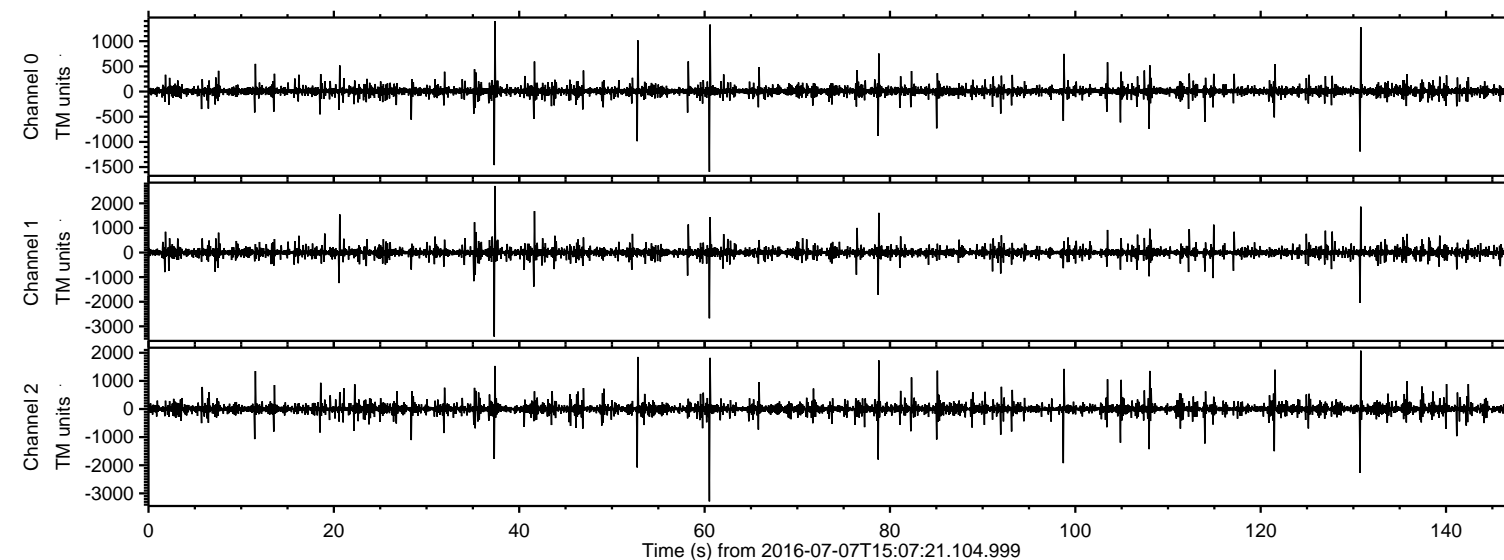


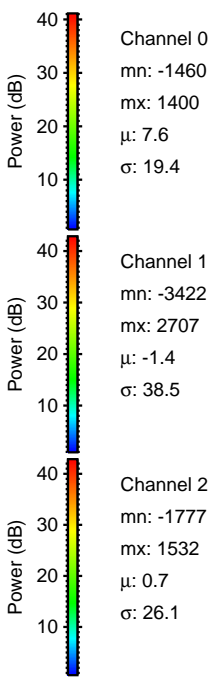
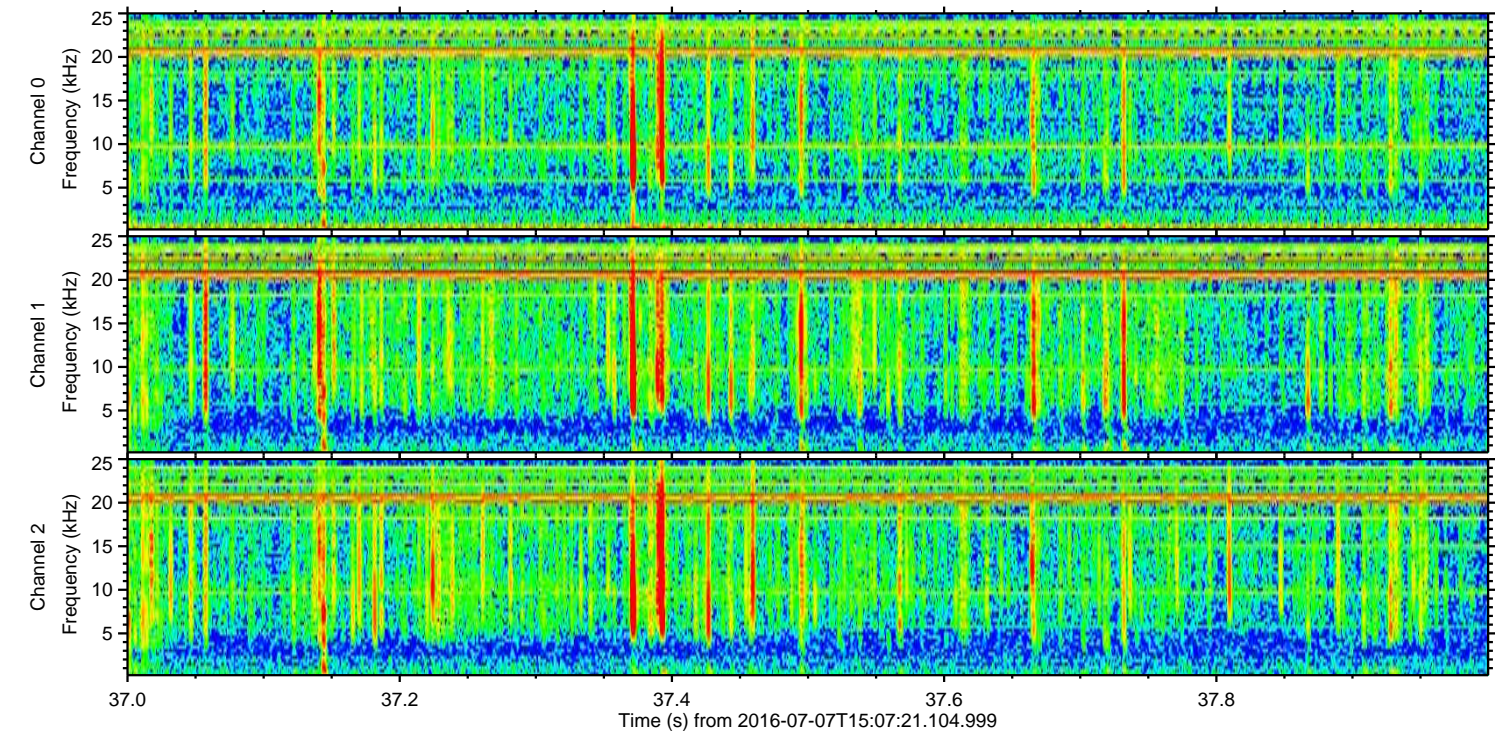
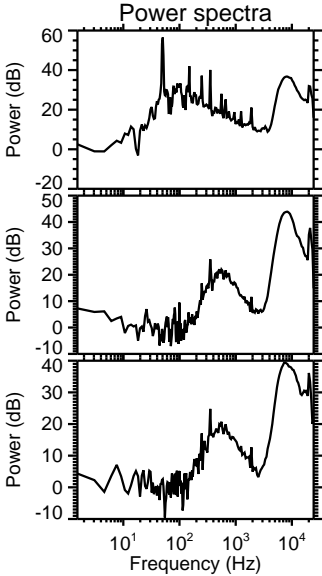
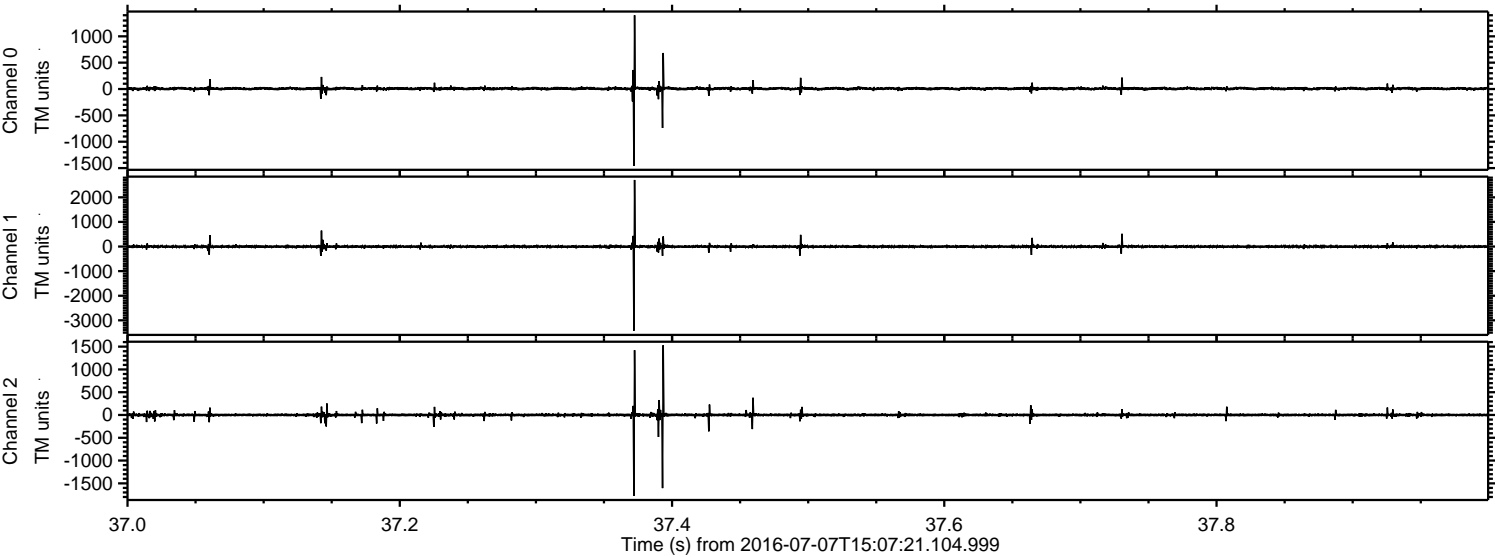
ELMAVAN 3D WAVEFORMS (Measured data sampled at 50 kHz) 51000 packets of 144 samples from 2016-07-07T15:07:21.104.999.

Processed Thu Jul 7 17:15:30 2016 by ELM ver.2012-10-06 from 001\_\_elm20160707\_150720\_\_dat00.bin



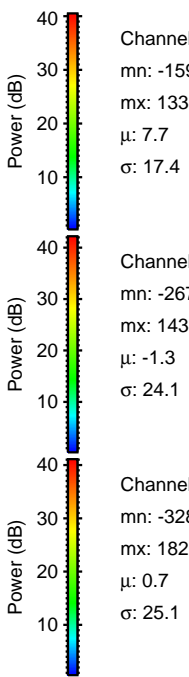
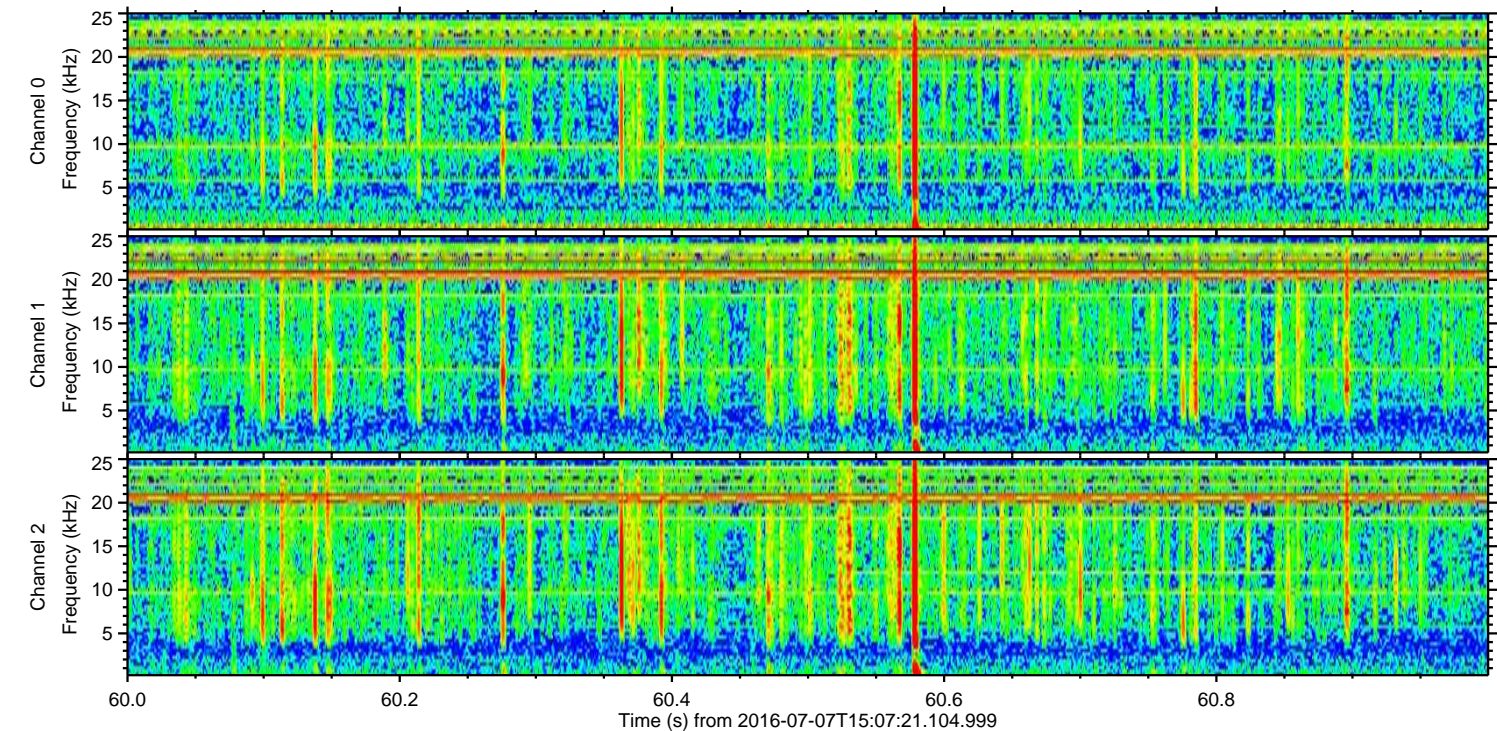
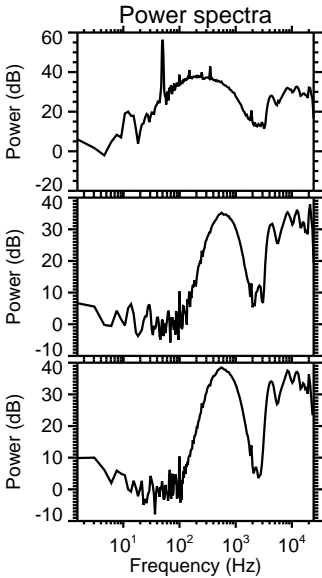
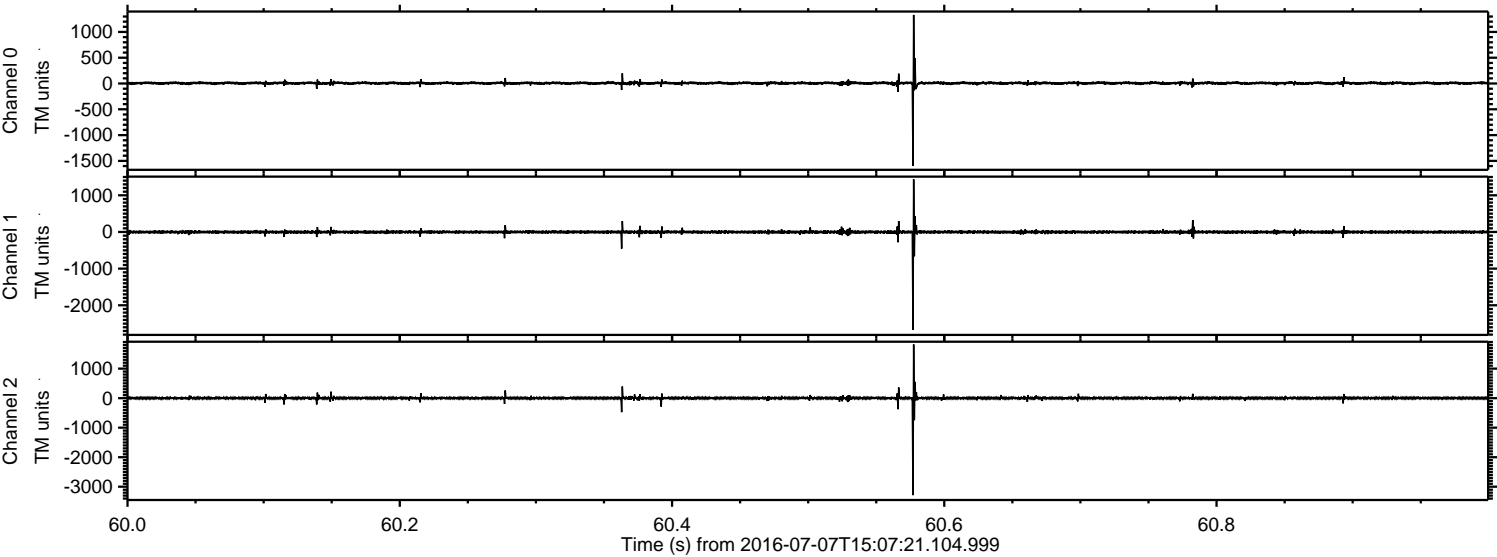


Processed Thu Jul 7 17:15:41 2016 by ELM ver.2012-10-06 from 001\_\_elm20160707\_150720\_\_dat00.bin





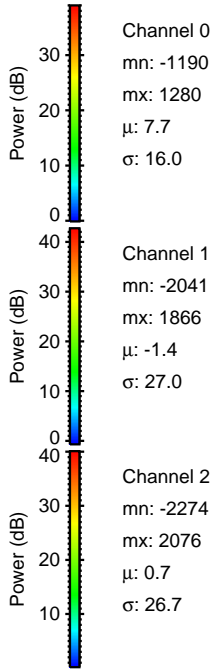
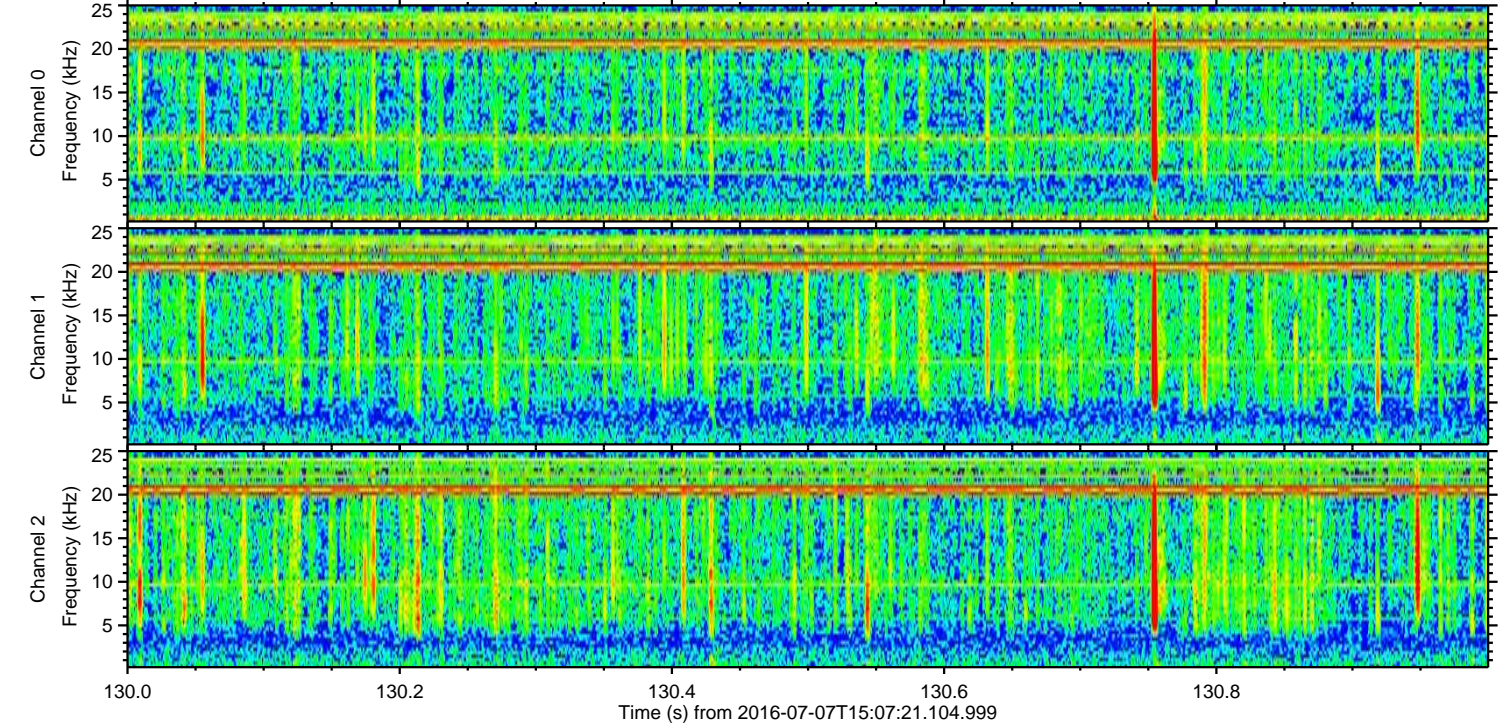
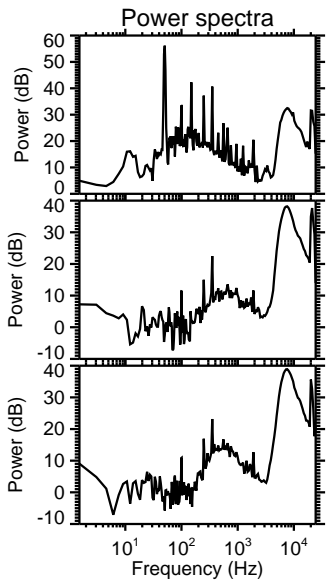
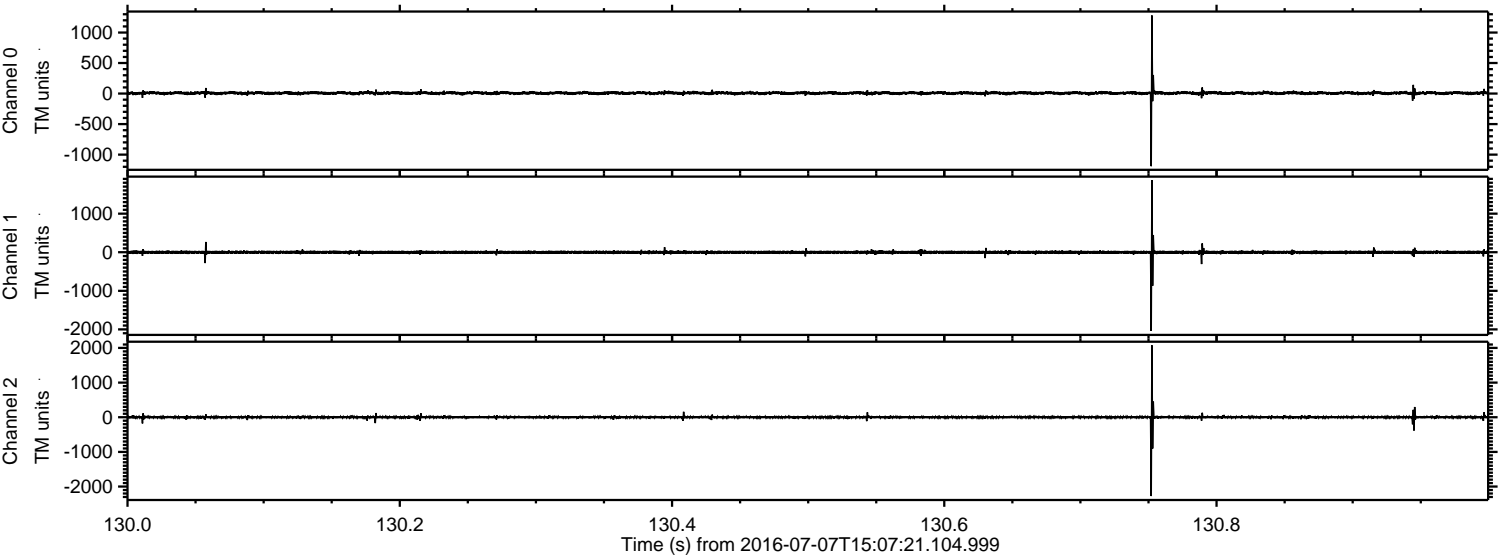
Processed Thu Jul 7 17:15:42 2016 by ELM ver.2012-10-06 from 001\_\_elm20160707\_150720\_\_dat00.bin





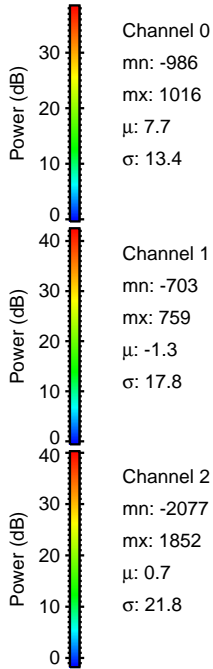
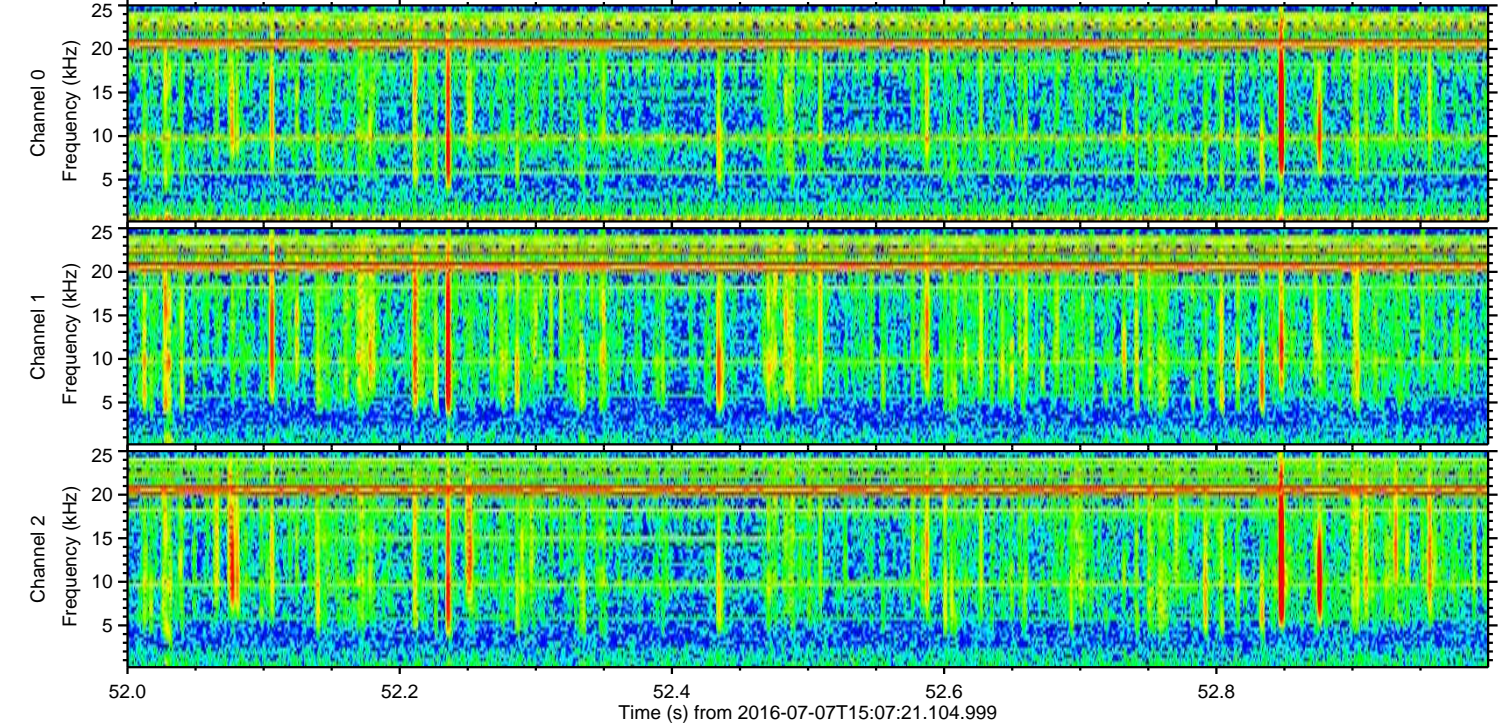
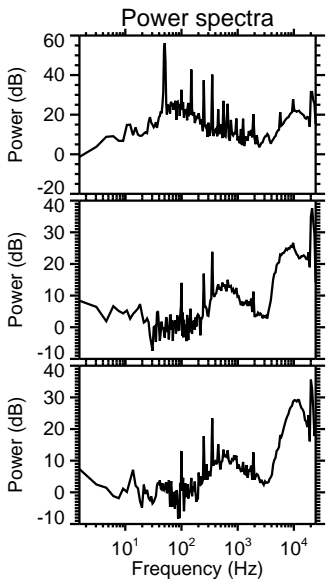
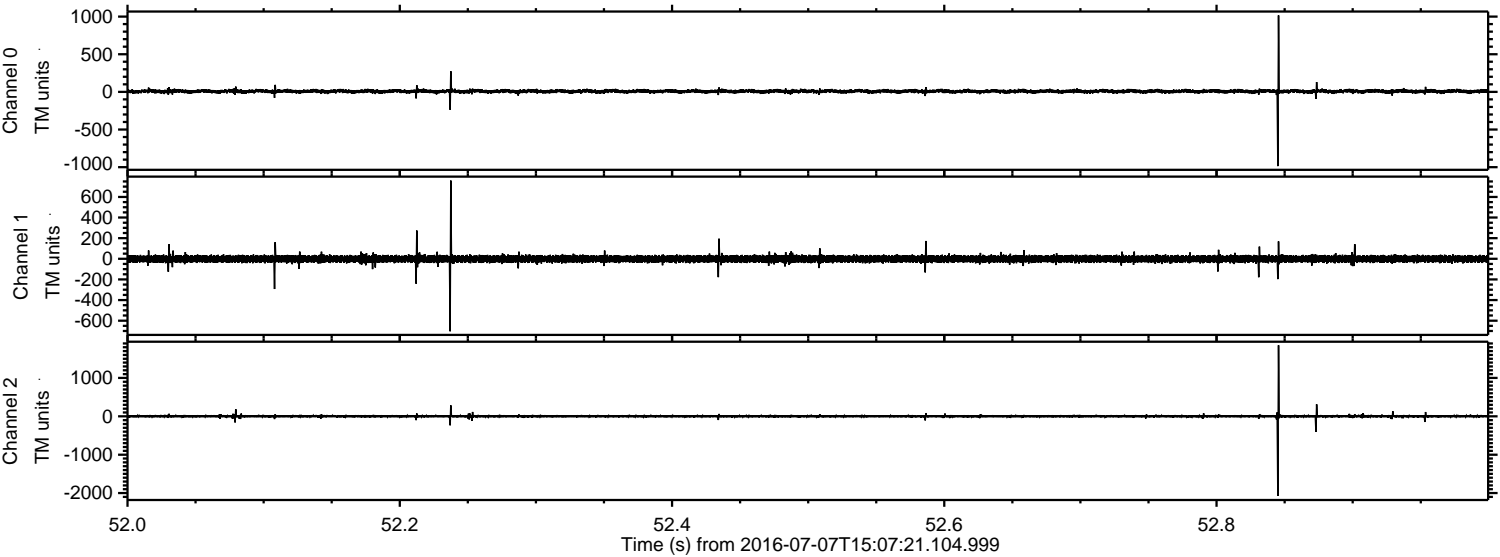
ELMAVAN 3D WAVEFORMS (Measured data sampled at 50 kHz) 51000 packets of 144 samples from 2016-07-07T15:07:21.104.999. Part 131/147

Processed Thu Jul 7 17:15:43 2016 by ELM ver.2012-10-06 from 001\_\_elm20160707\_150720\_\_dat00.bin



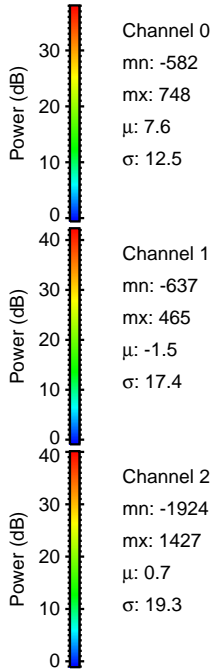
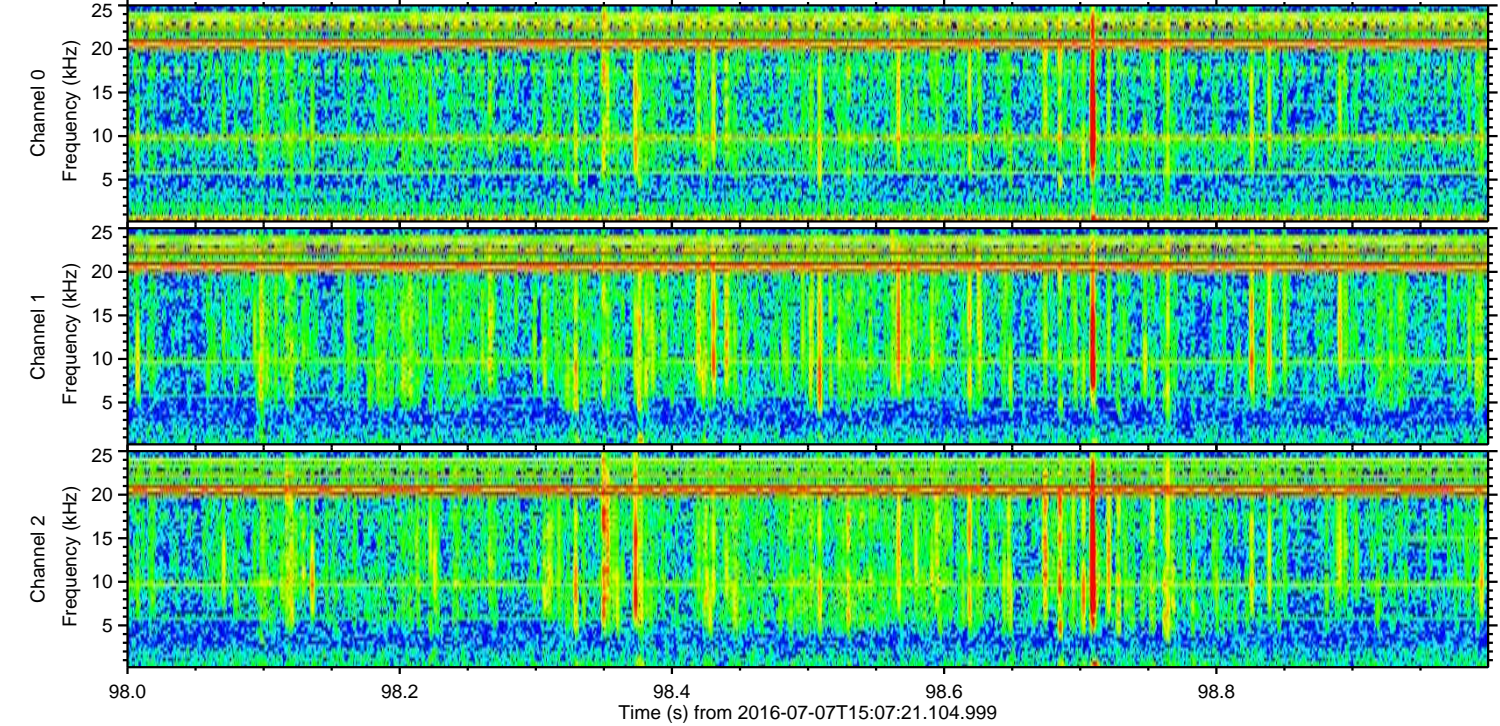
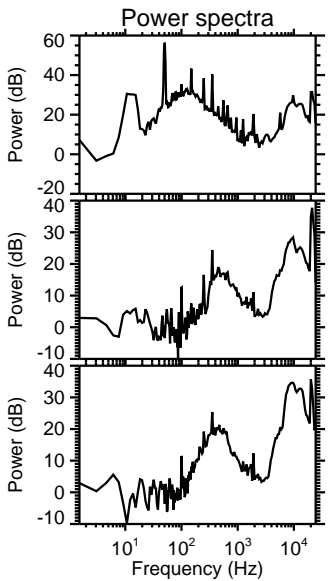
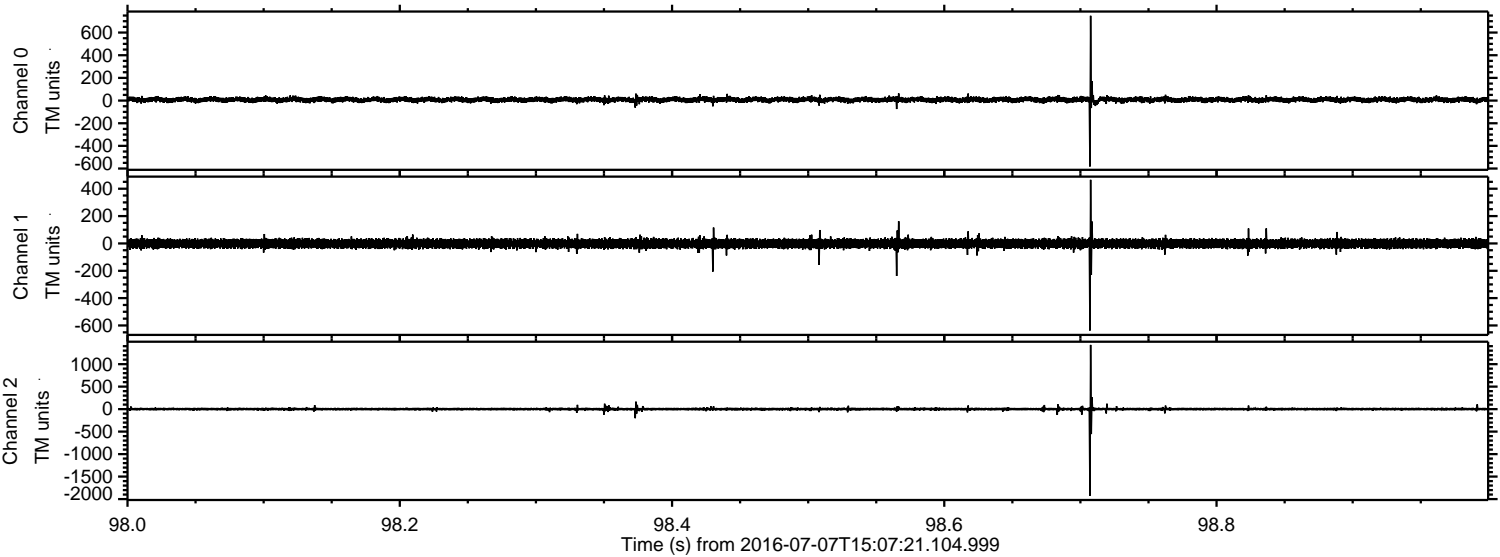


Processed Thu Jul 7 17:15:44 2016 by ELM ver.2012-10-06 from 001\_\_elm20160707\_150720\_\_dat00.bin



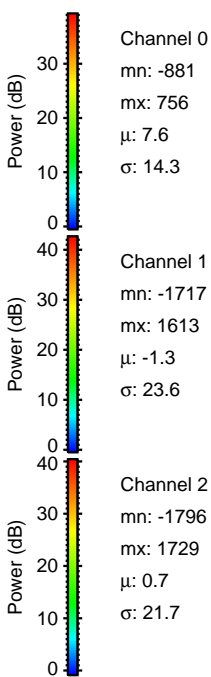
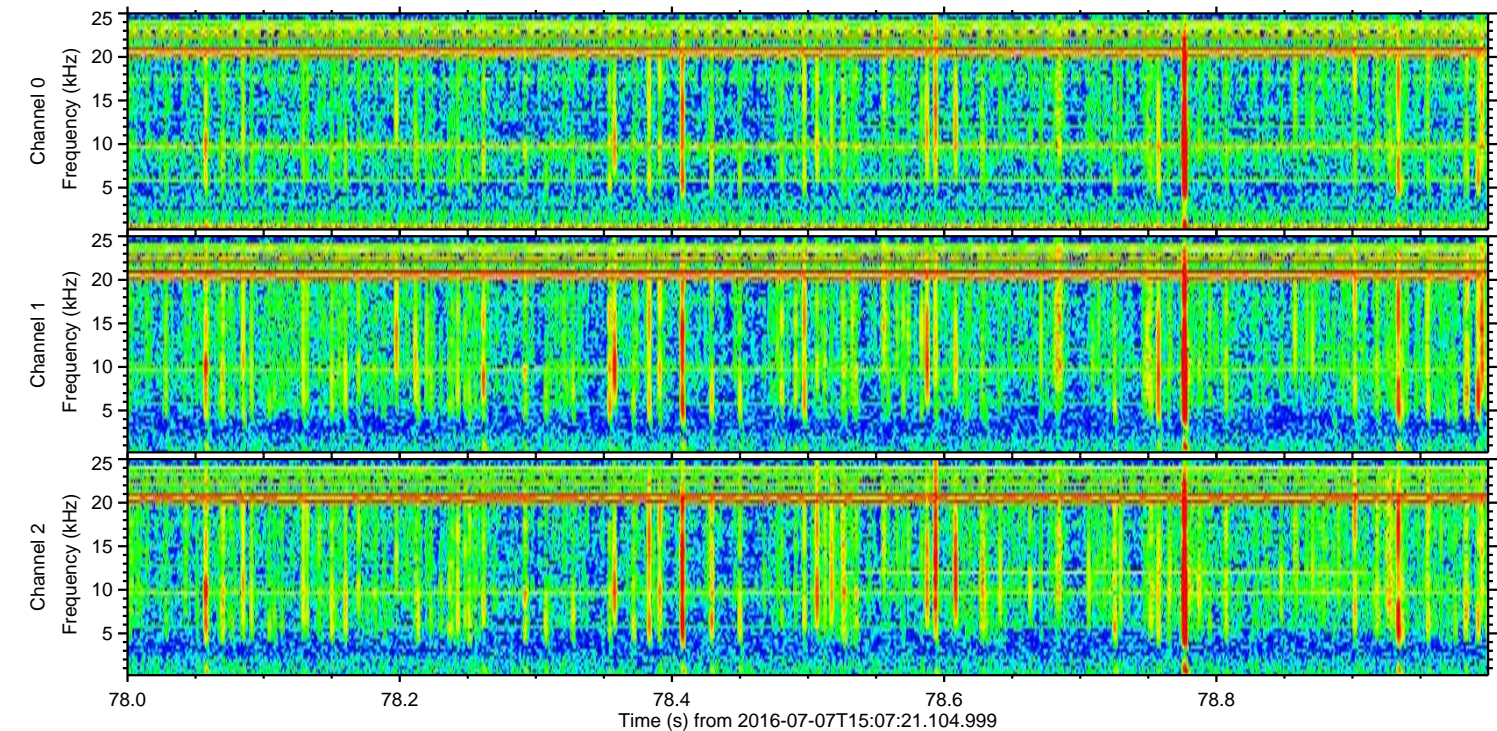
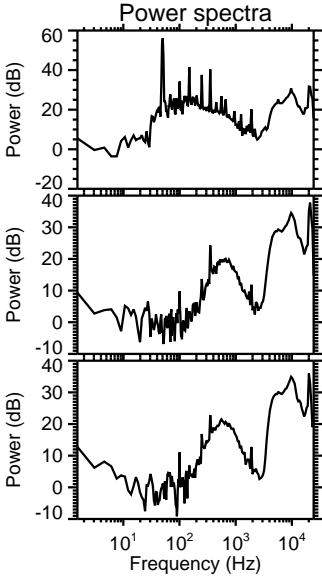
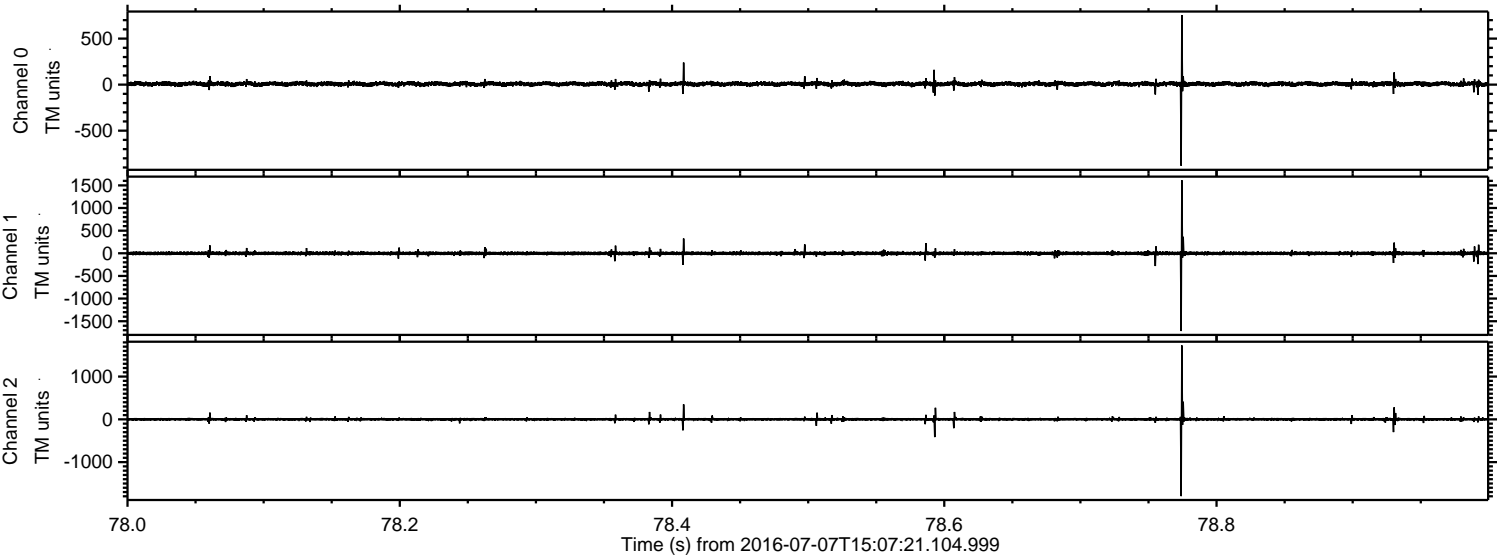


Processed Thu Jul 7 17:15:45 2016 by ELM ver.2012-10-06 from 001\_\_elm20160707\_150720\_\_dat00.bin



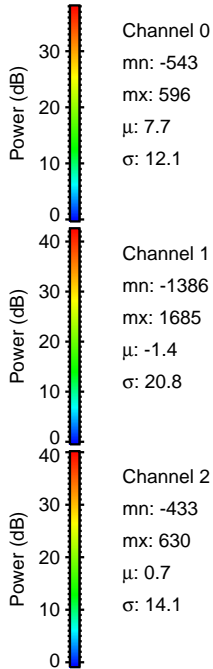
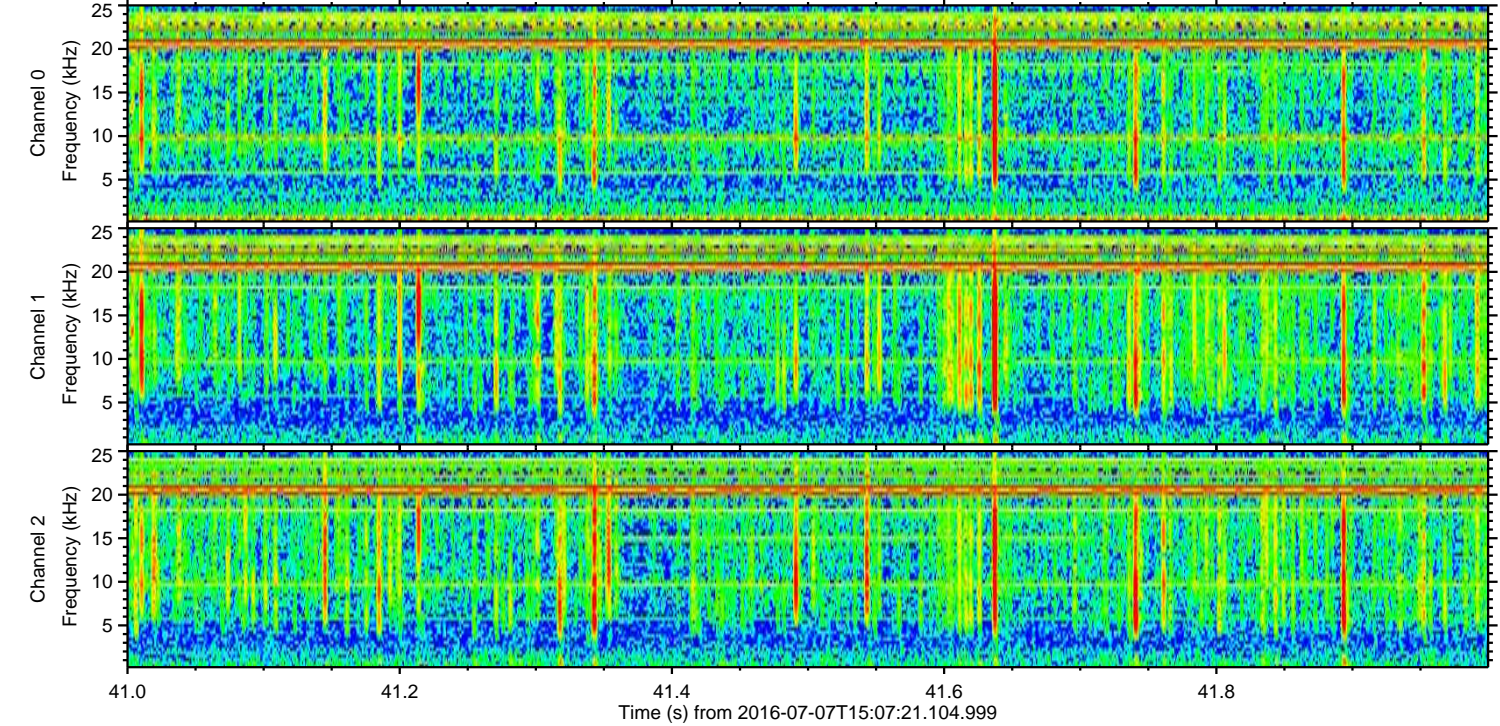
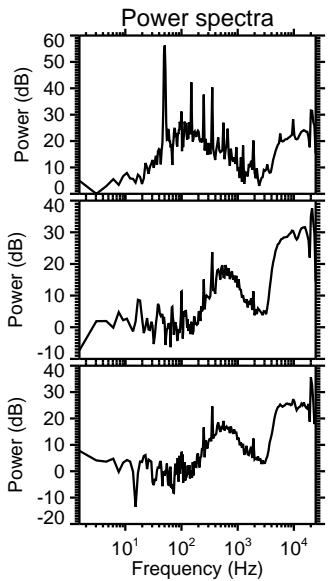
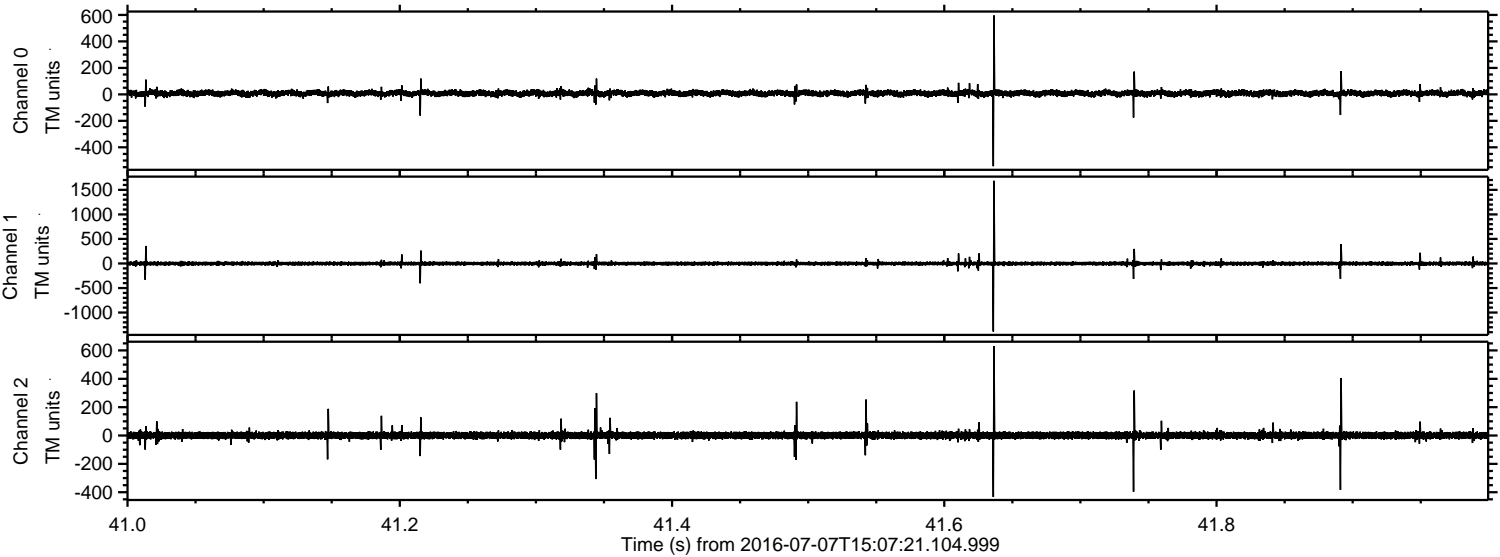


Processed Thu Jul 7 17:15:46 2016 by ELM ver.2012-10-06 from 001\_\_elm20160707\_150720\_\_dat00.bin



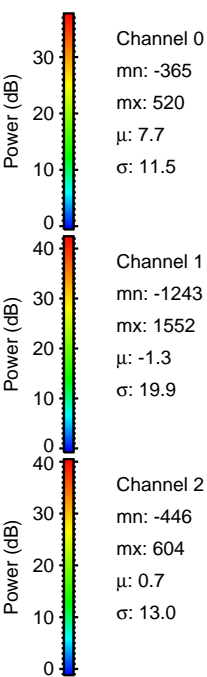
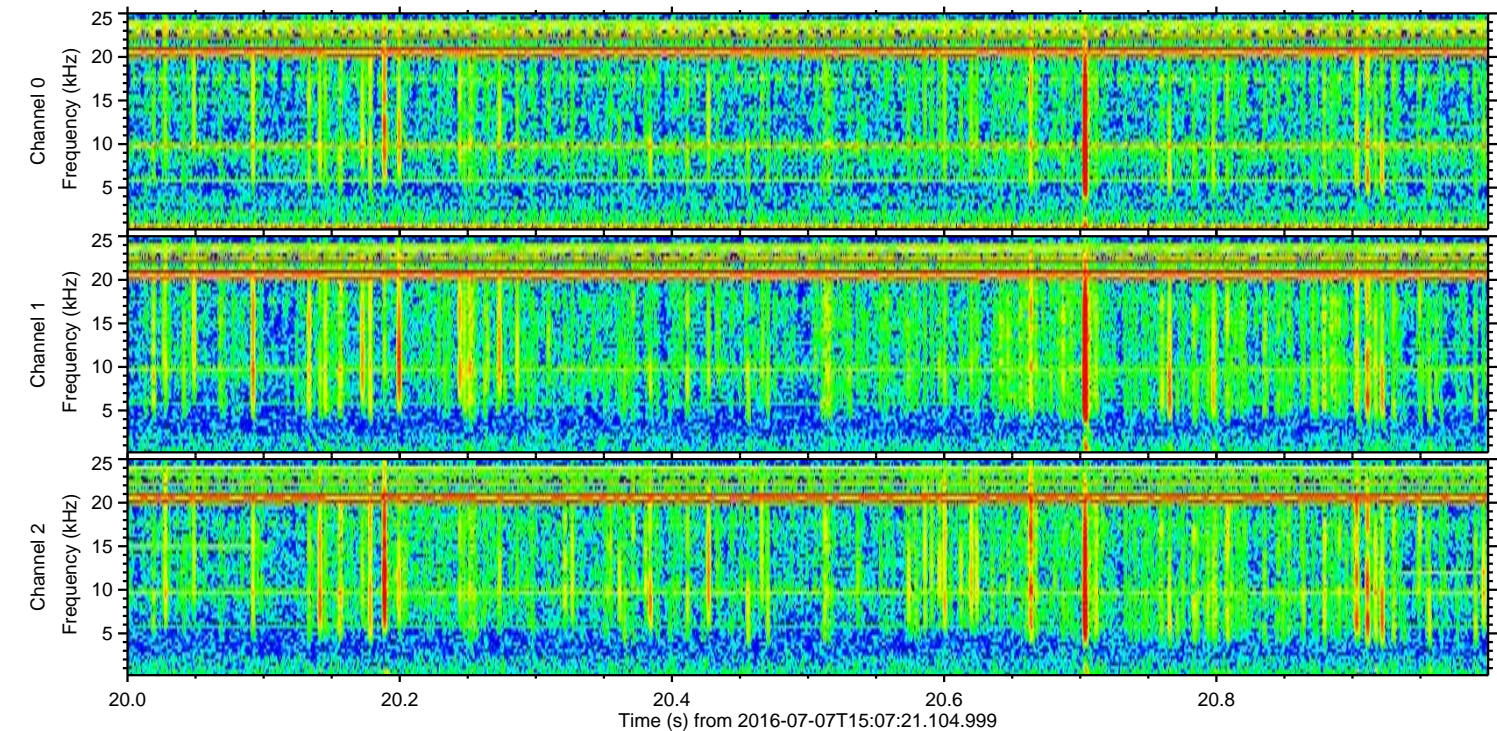
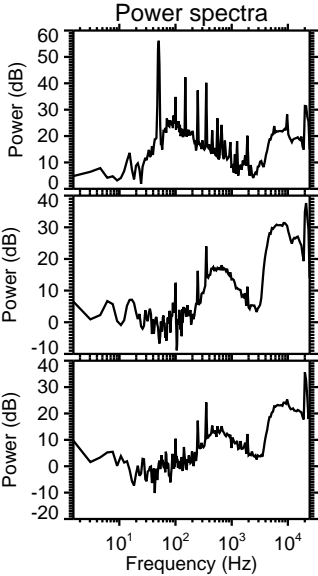
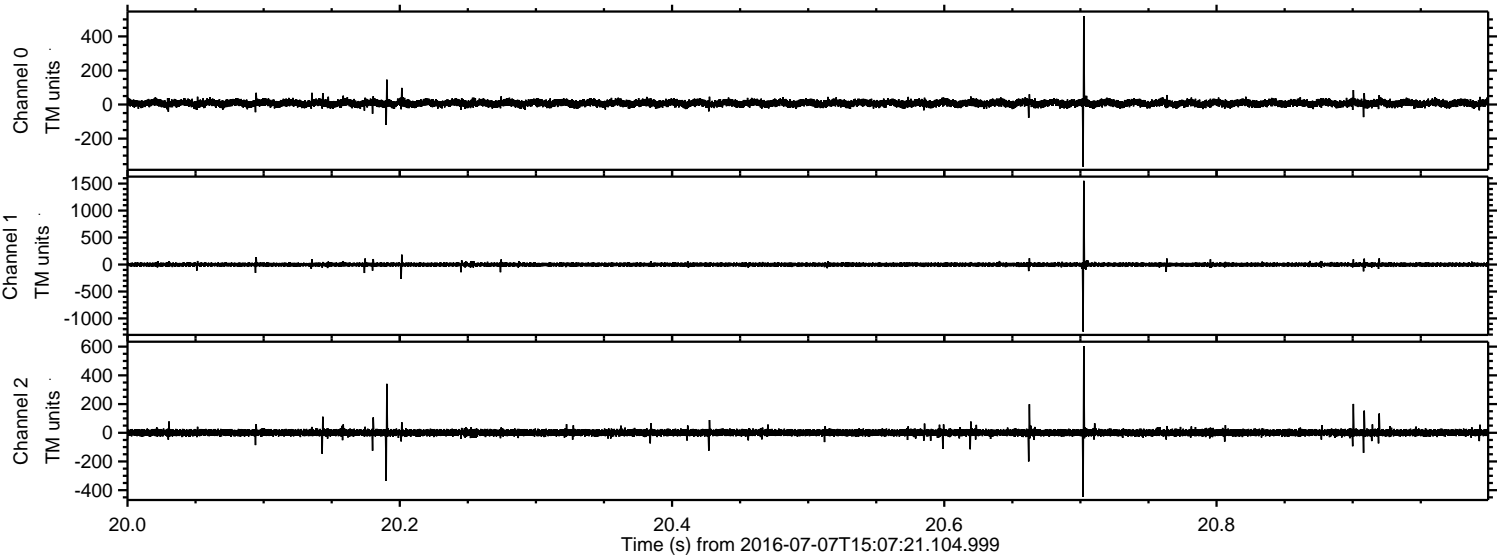


Processed Thu Jul 7 17:15:47 2016 by ELM ver.2012-10-06 from 001\_\_elm20160707\_150720\_\_dat00.bin





Processed Thu Jul 7 17:15:48 2016 by ELM ver.2012-10-06 from 001\_\_elm20160707\_150720\_\_dat00.bin





ELMAVAN 3D WAVEFORMS (Measured data sampled at 50 kHz) 51000 packets of 144 samples from 2016-07-07T15:07:21.104.999. Part 122/147

Processed Thu Jul 7 17:15:49 2016 by ELM ver.2012-10-06 from 001\_\_elm20160707\_150720\_\_dat00.bin

