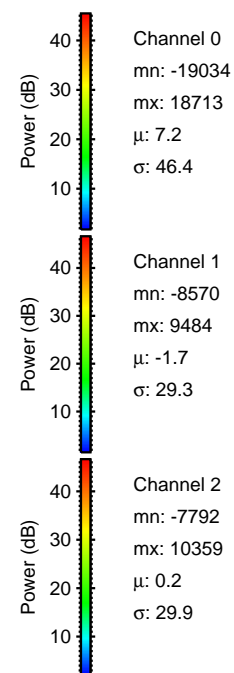
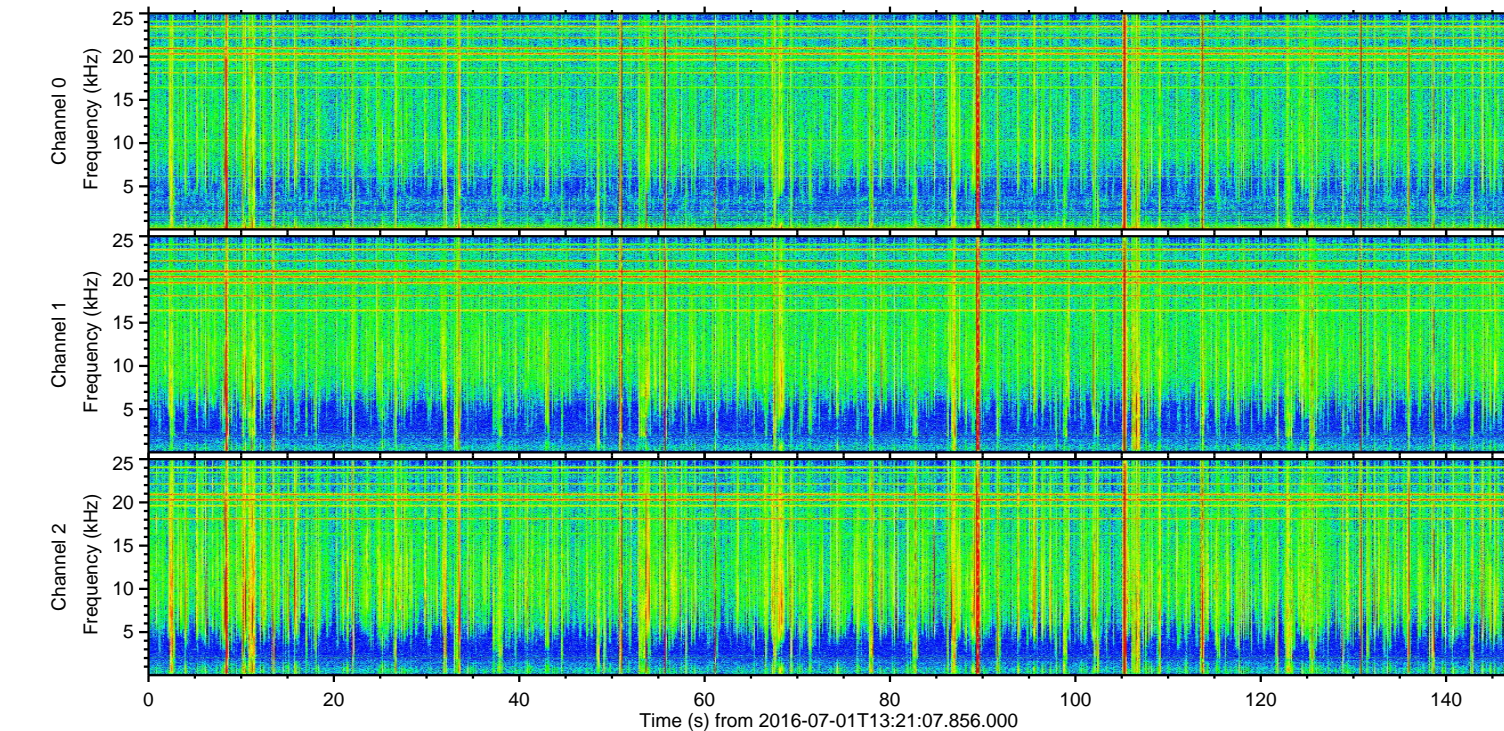
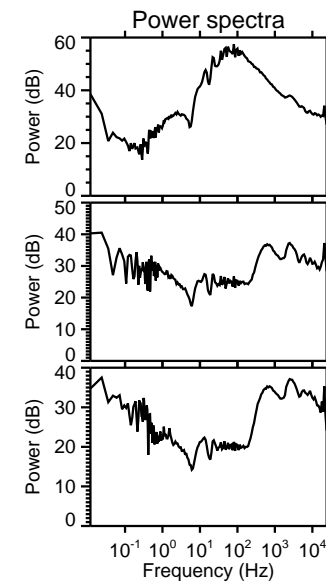
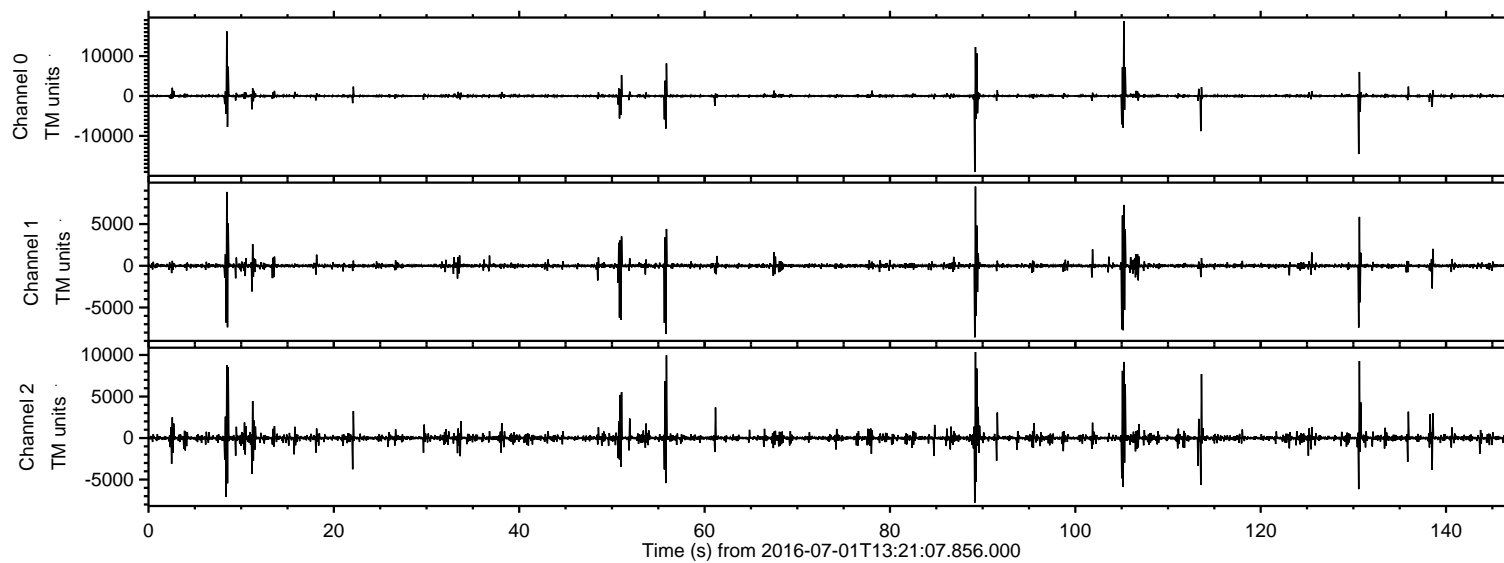
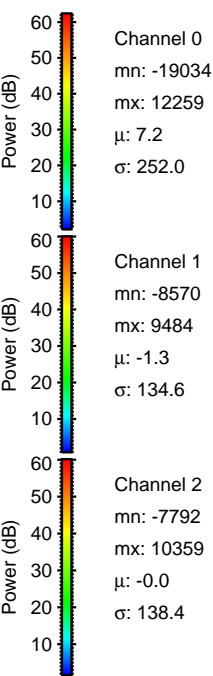
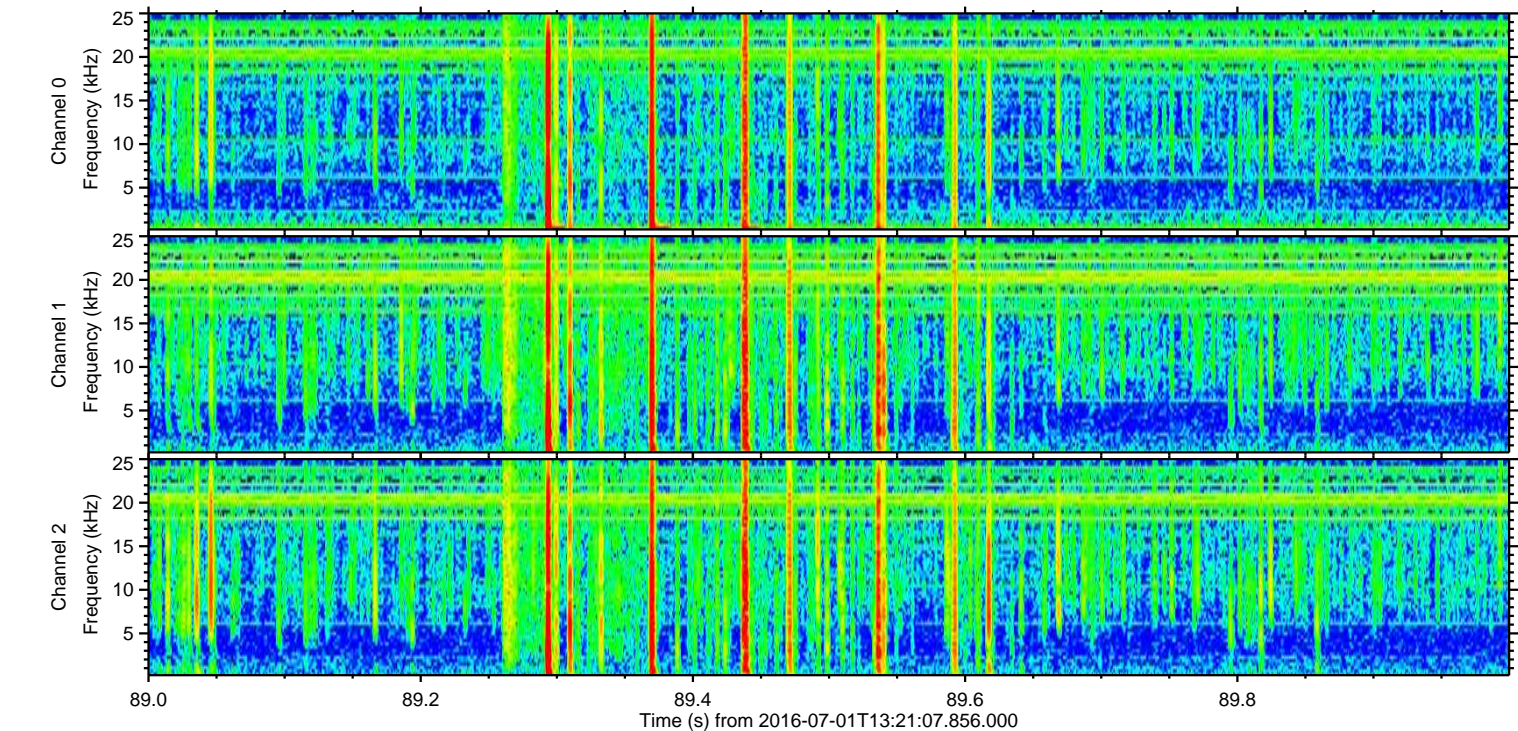
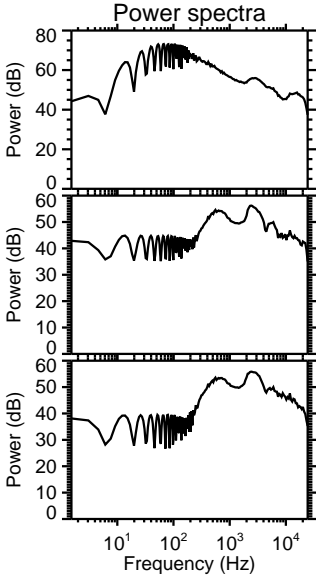
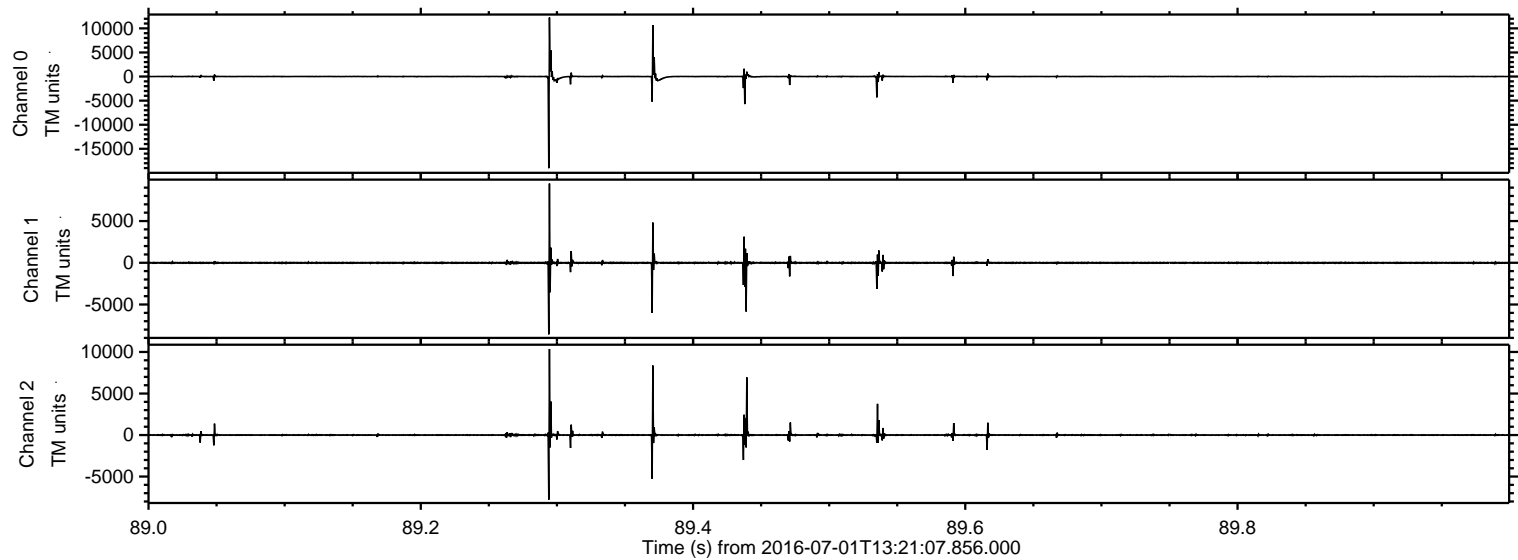


ELMAVAN 3D WAVEFORMS (Measured data sampled at 50 kHz) 51000 packets of 144 samples from 2016-07-01T13:21:07.856.000.

Processed Fri Jul 1 15:29:34 2016 by ELM ver.2012-10-06 from 001__elm20160701_132106__dat00.bin

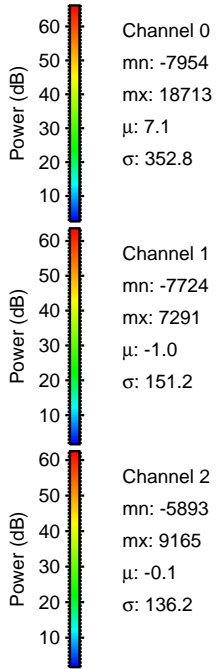
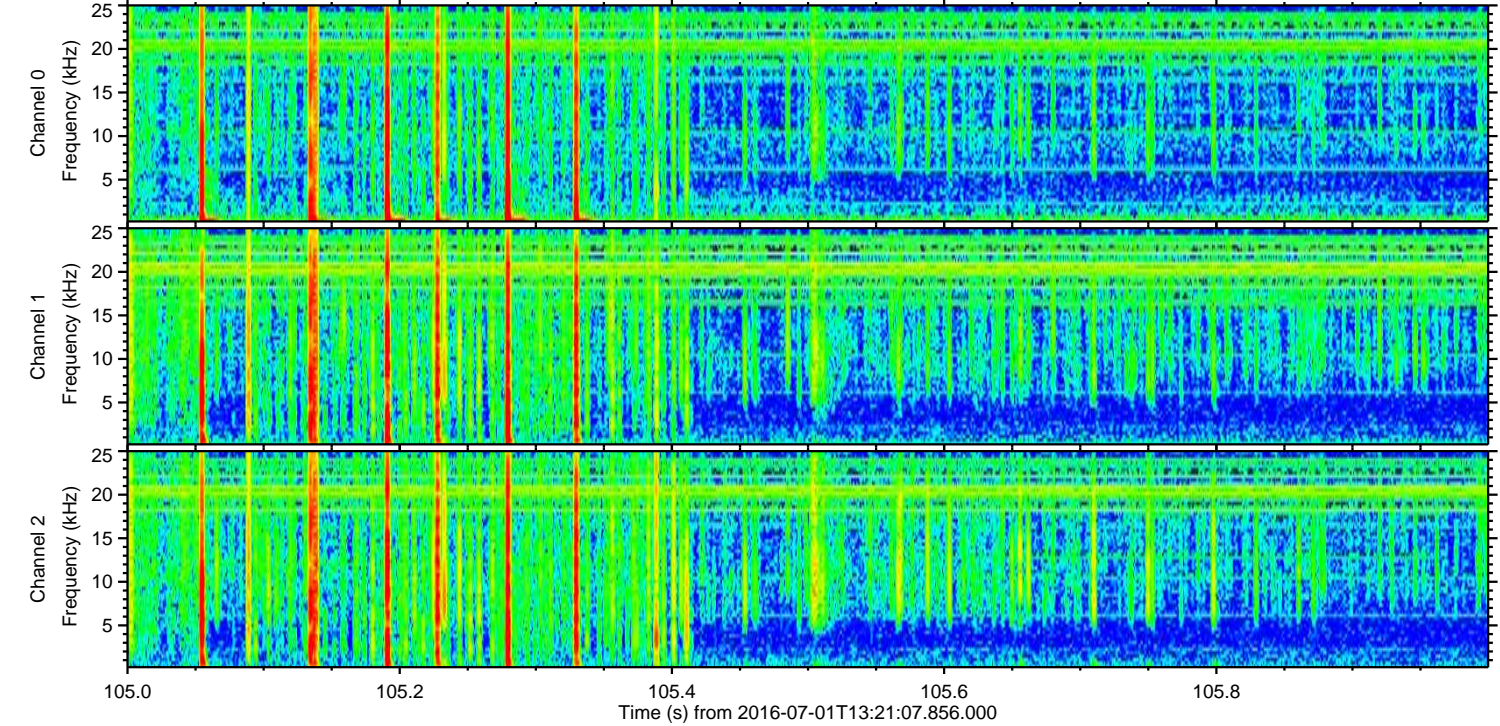
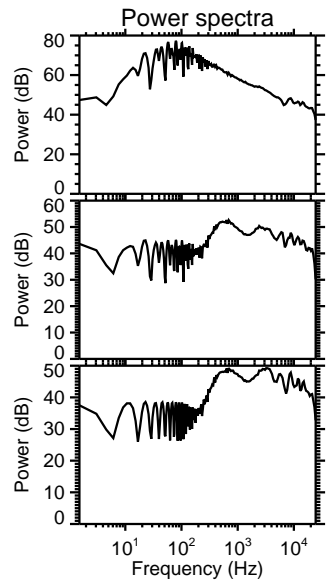
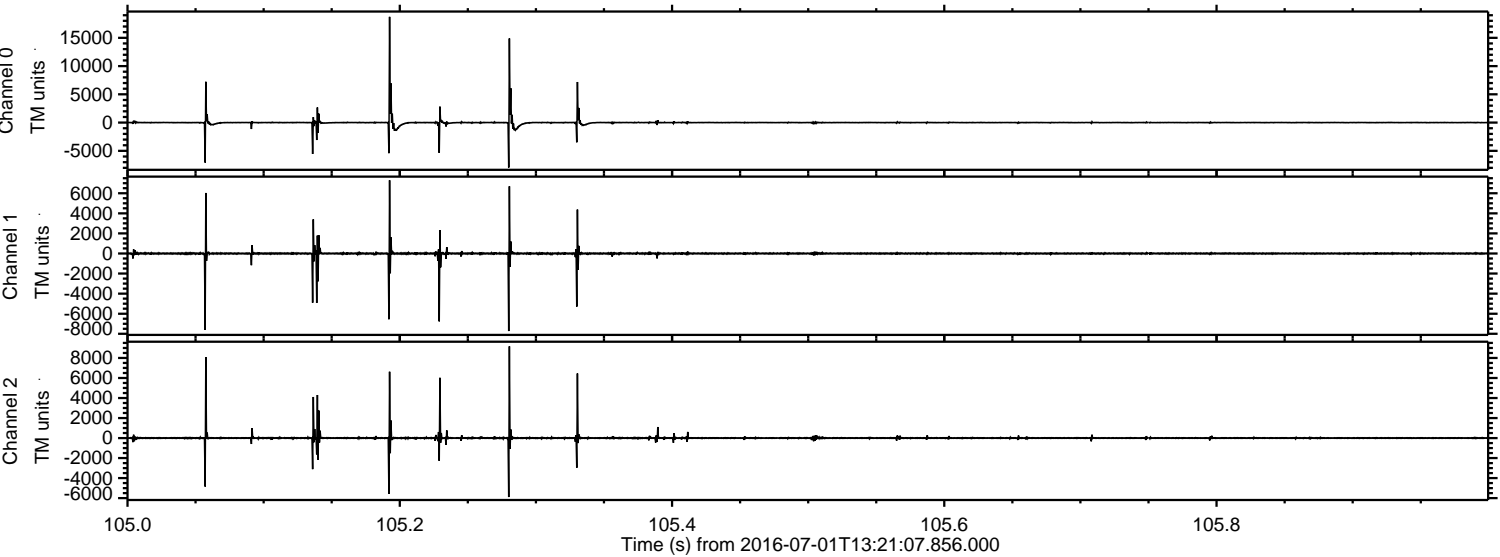


Processed Fri Jul 1 15:29:46 2016 by ELM ver.2012-10-06 from 001__elm20160701_132106__dat00.bin

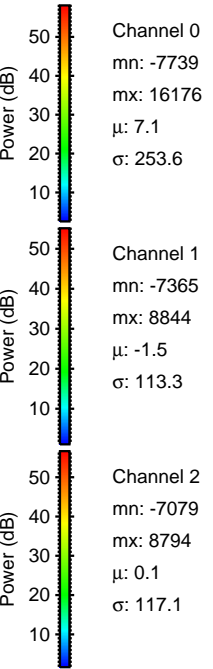
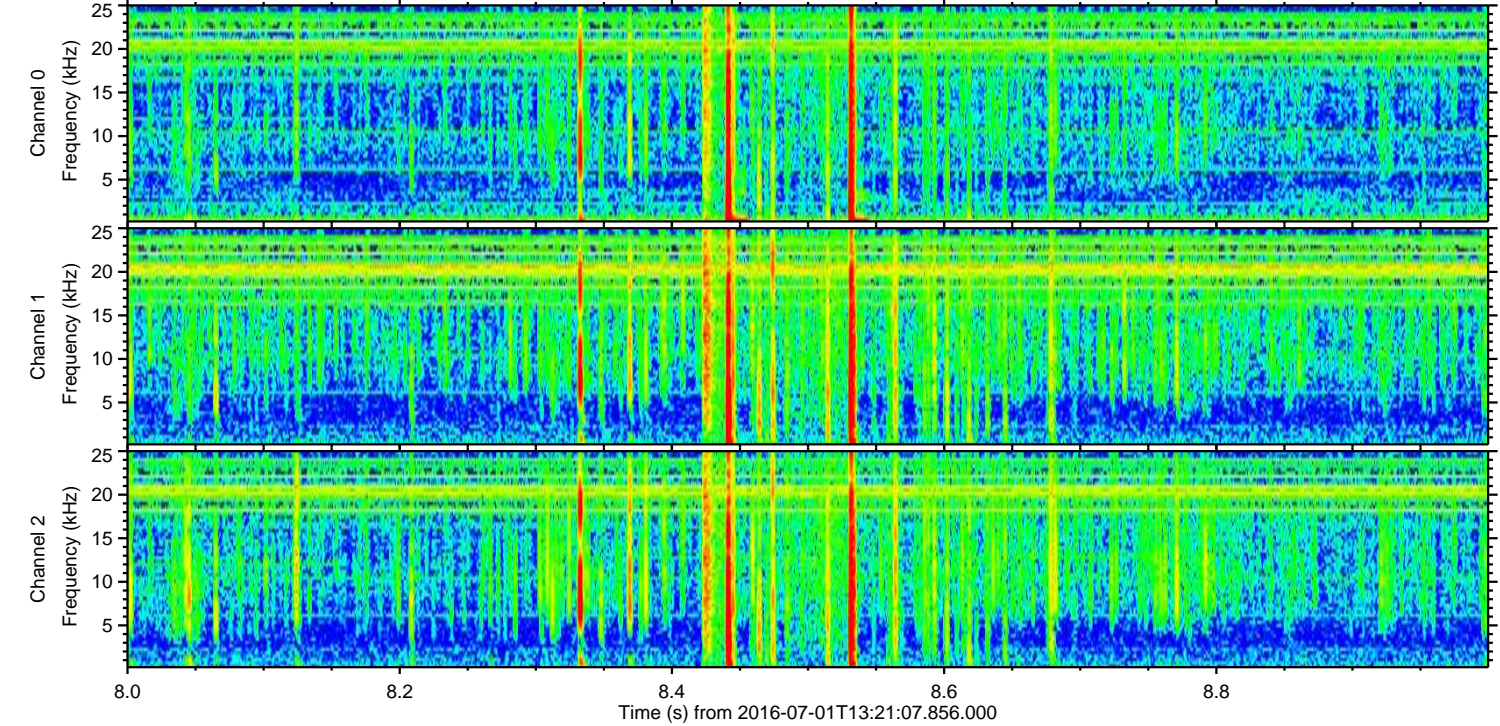
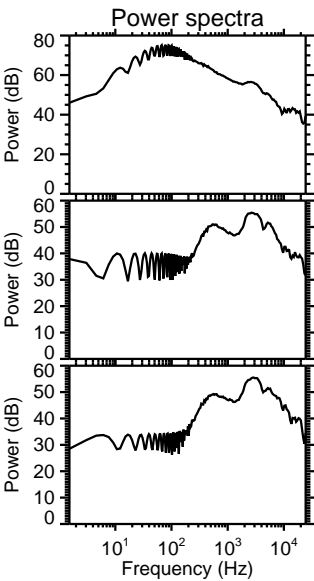
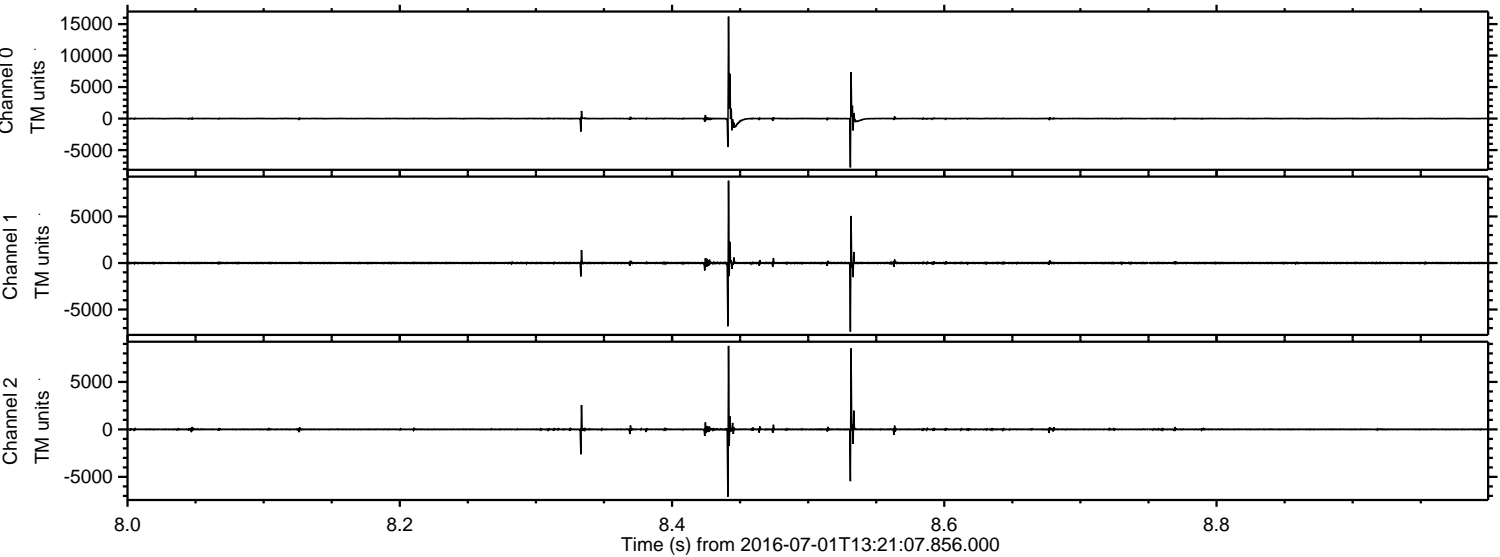


ELMAVAN 3D WAVEFORMS (Measured data sampled at 50 kHz) 51000 packets of 144 samples from 2016-07-01T13:21:07.856.000. Part 106/147

Processed Fri Jul 1 15:29:47 2016 by ELM ver.2012-10-06 from 001__elm20160701_132106__dat00.bin

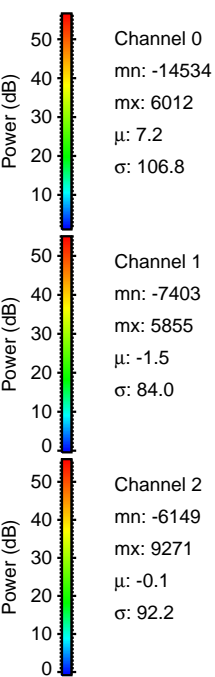
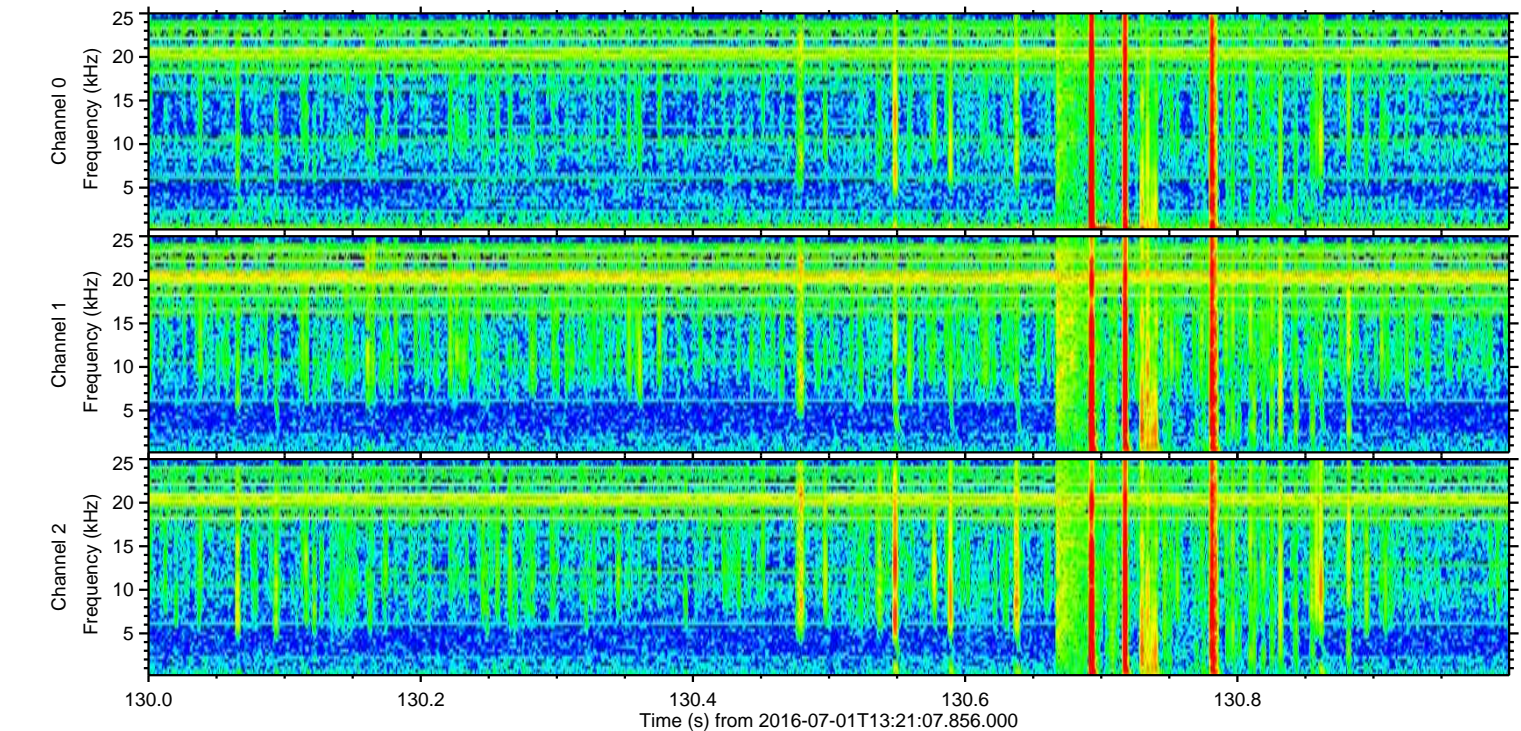
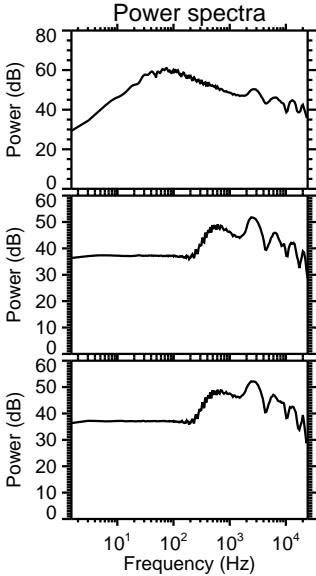
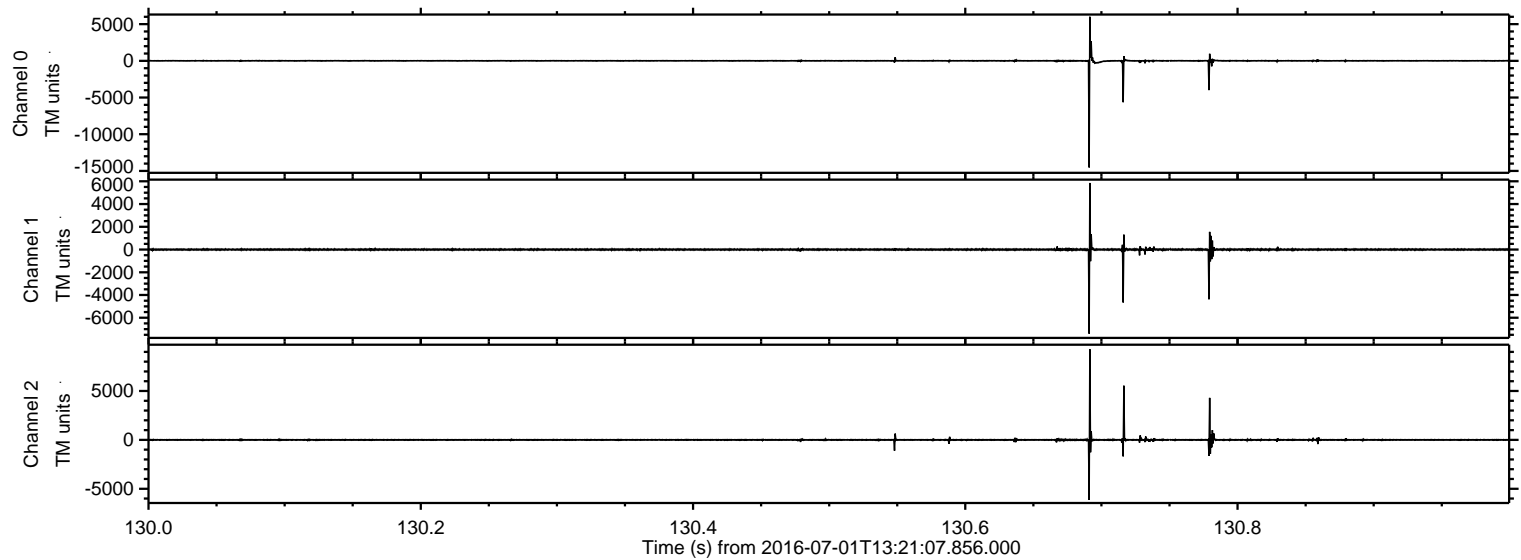


Processed Fri Jul 1 15:29:48 2016 by ELM ver.2012-10-06 from 001__elm20160701_132106__dat00.bin

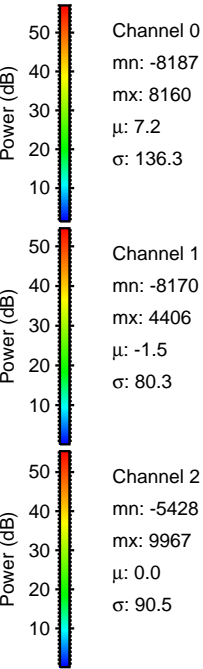
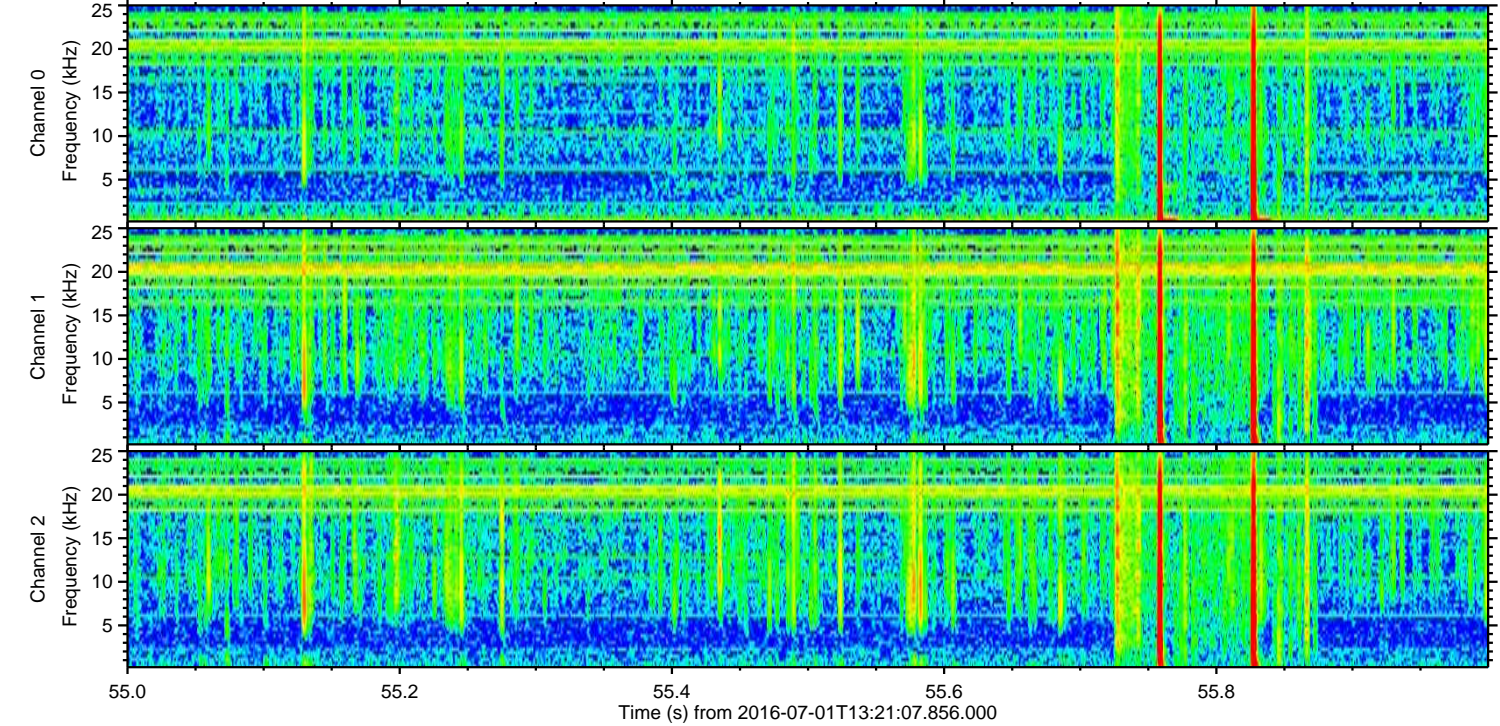
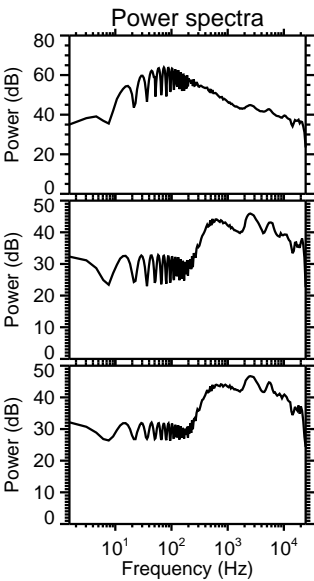
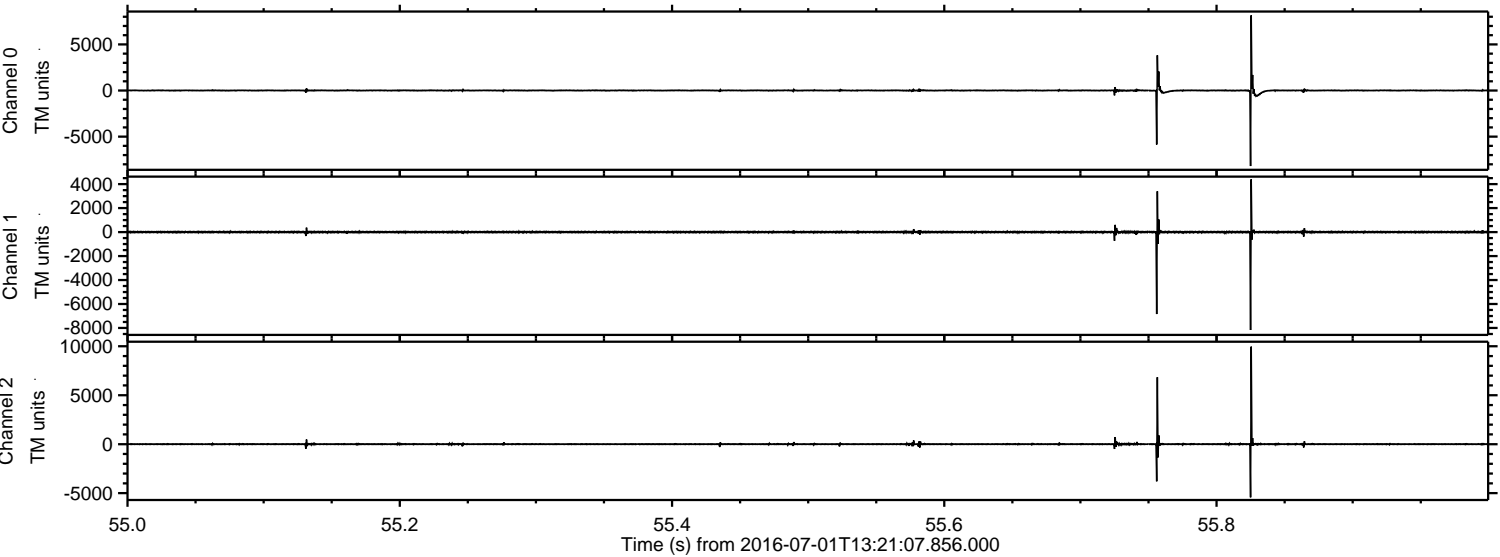


ELMAVAN 3D WAVEFORMS (Measured data sampled at 50 kHz) 51000 packets of 144 samples from 2016-07-01T13:21:07.856.000. Part 131/147

Processed Fri Jul 1 15:29:49 2016 by ELM ver.2012-10-06 from 001__elm20160701_132106__dat00.bin

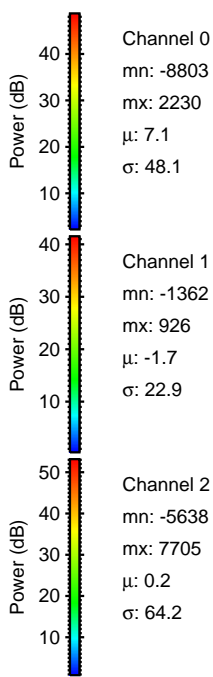
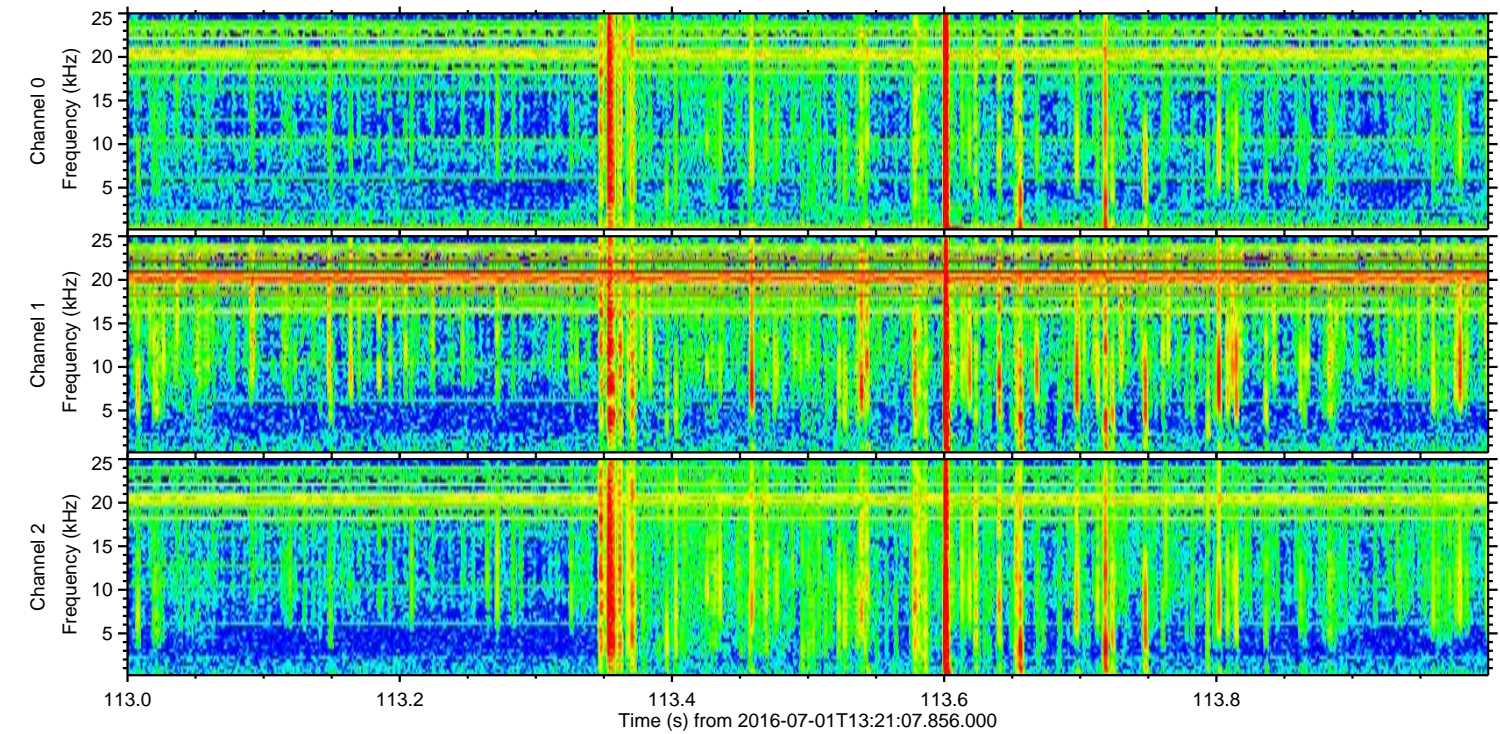
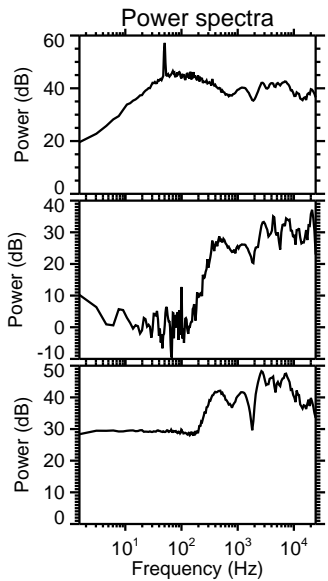
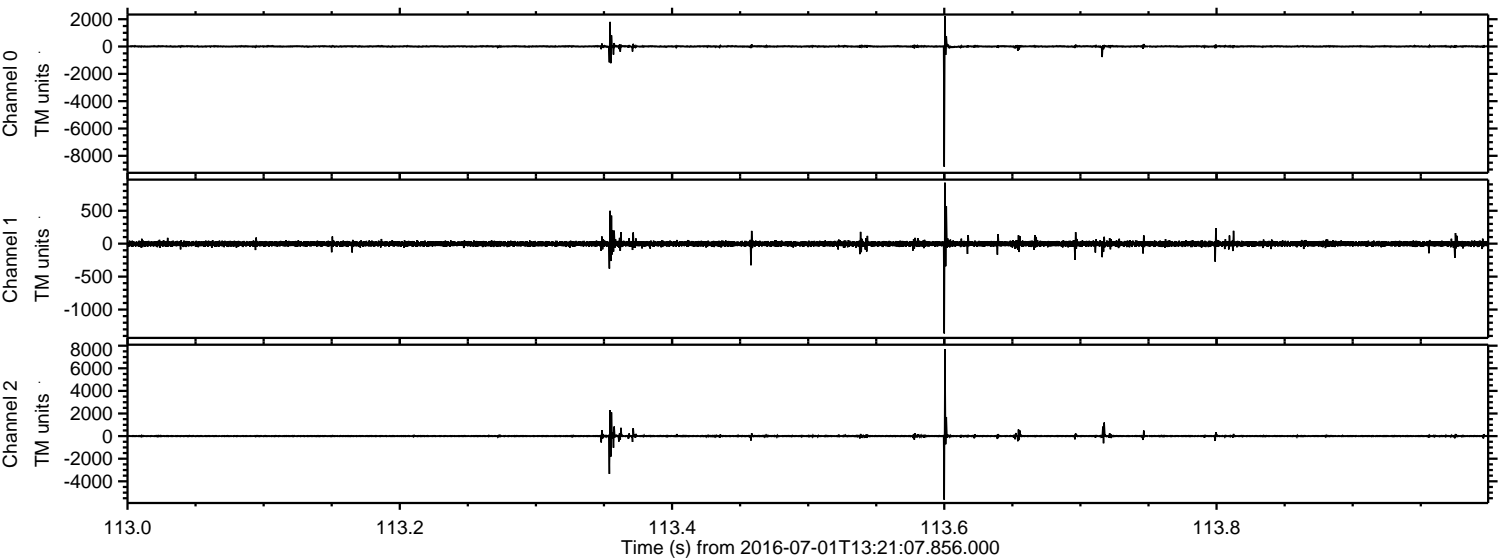


Processed Fri Jul 1 15:29:50 2016 by ELM ver.2012-10-06 from 001__elm20160701_132106__dat00.bin



ELMAVAN 3D WAVEFORMS (Measured data sampled at 50 kHz) 51000 packets of 144 samples from 2016-07-01T13:21:07.856.000. Part 114/147

Processed Fri Jul 1 15:29:51 2016 by ELM ver.2012-10-06 from 001__elm20160701_132106__dat00.bin

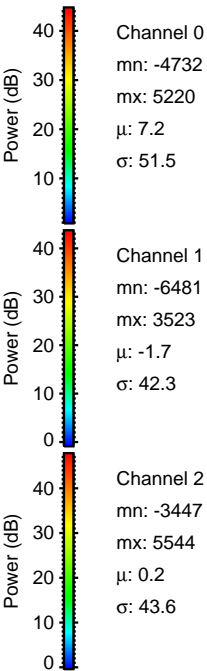
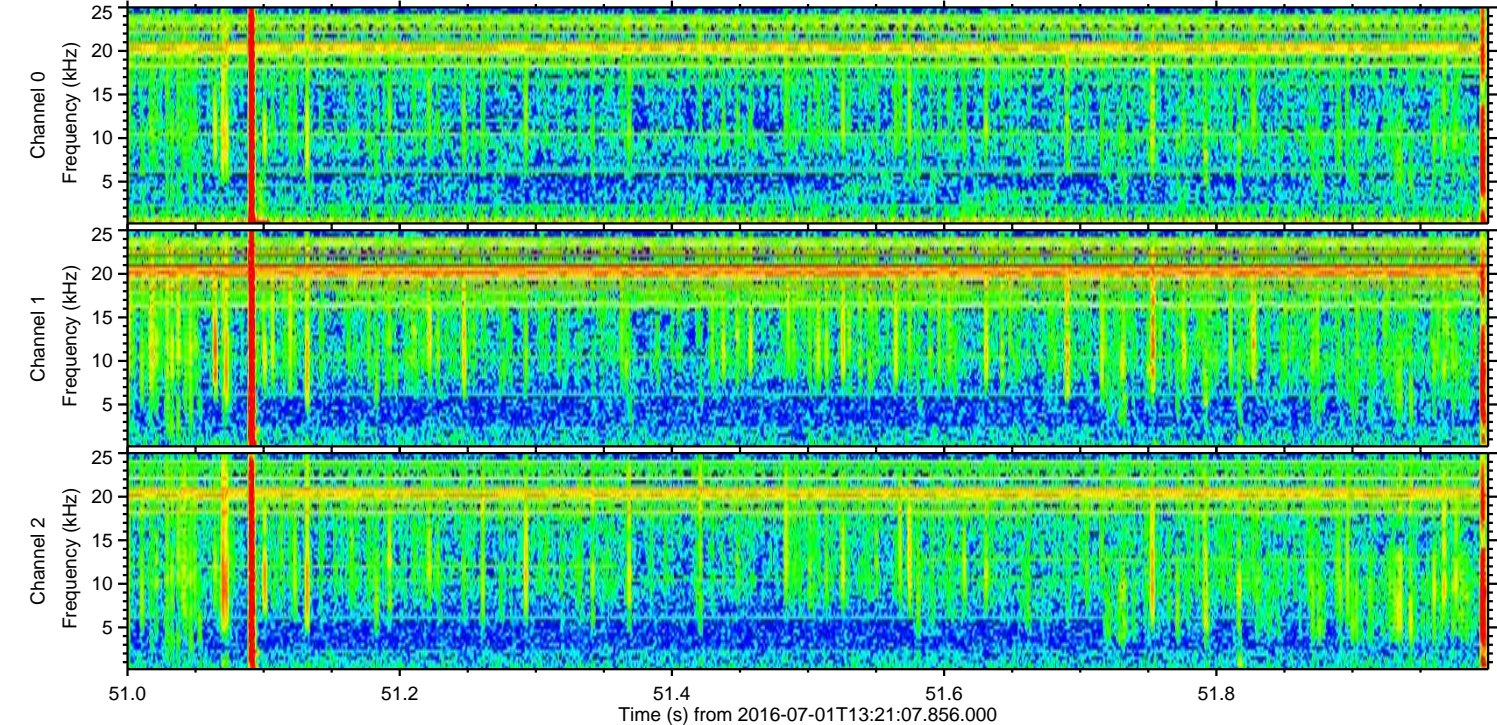
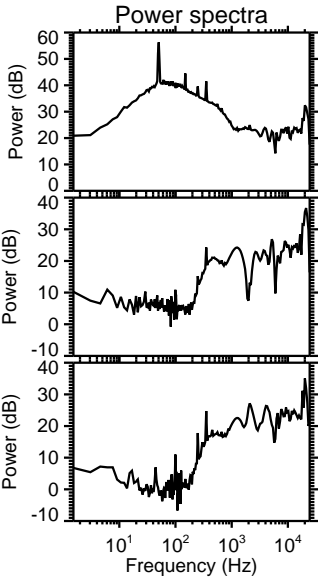
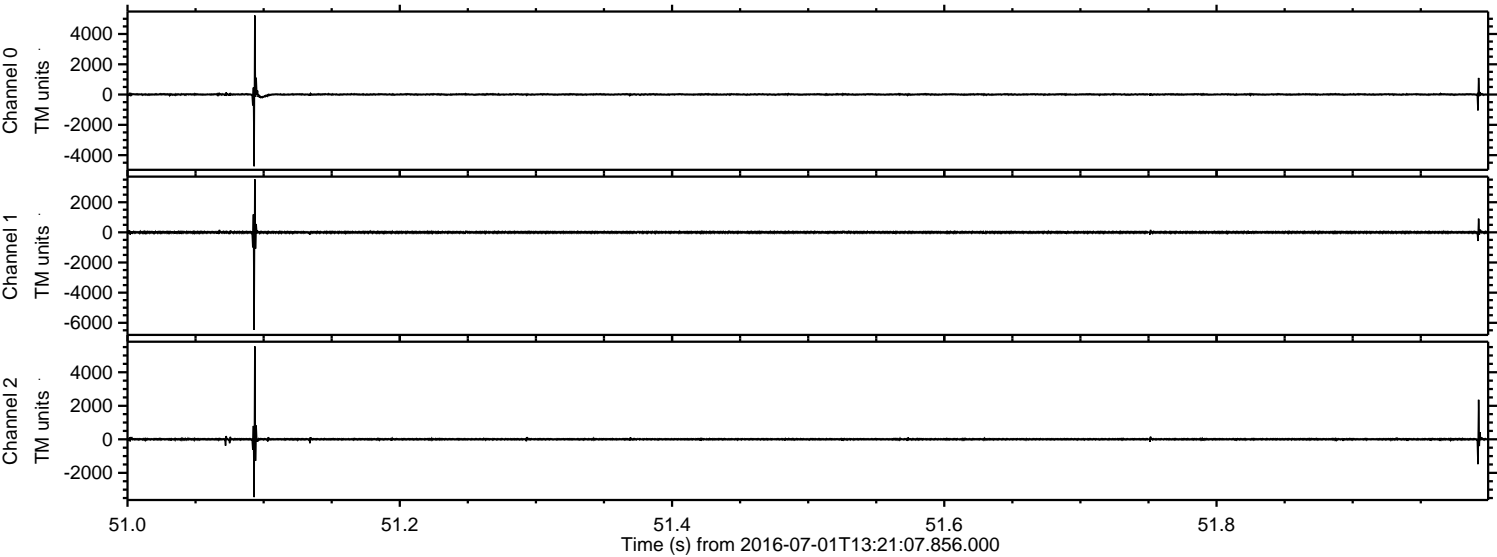


Channel 0
mn: -8803
mx: 2230
 μ : 7.1
 σ : 48.1

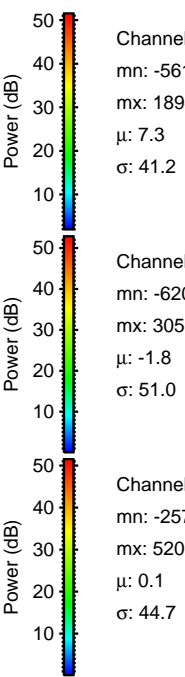
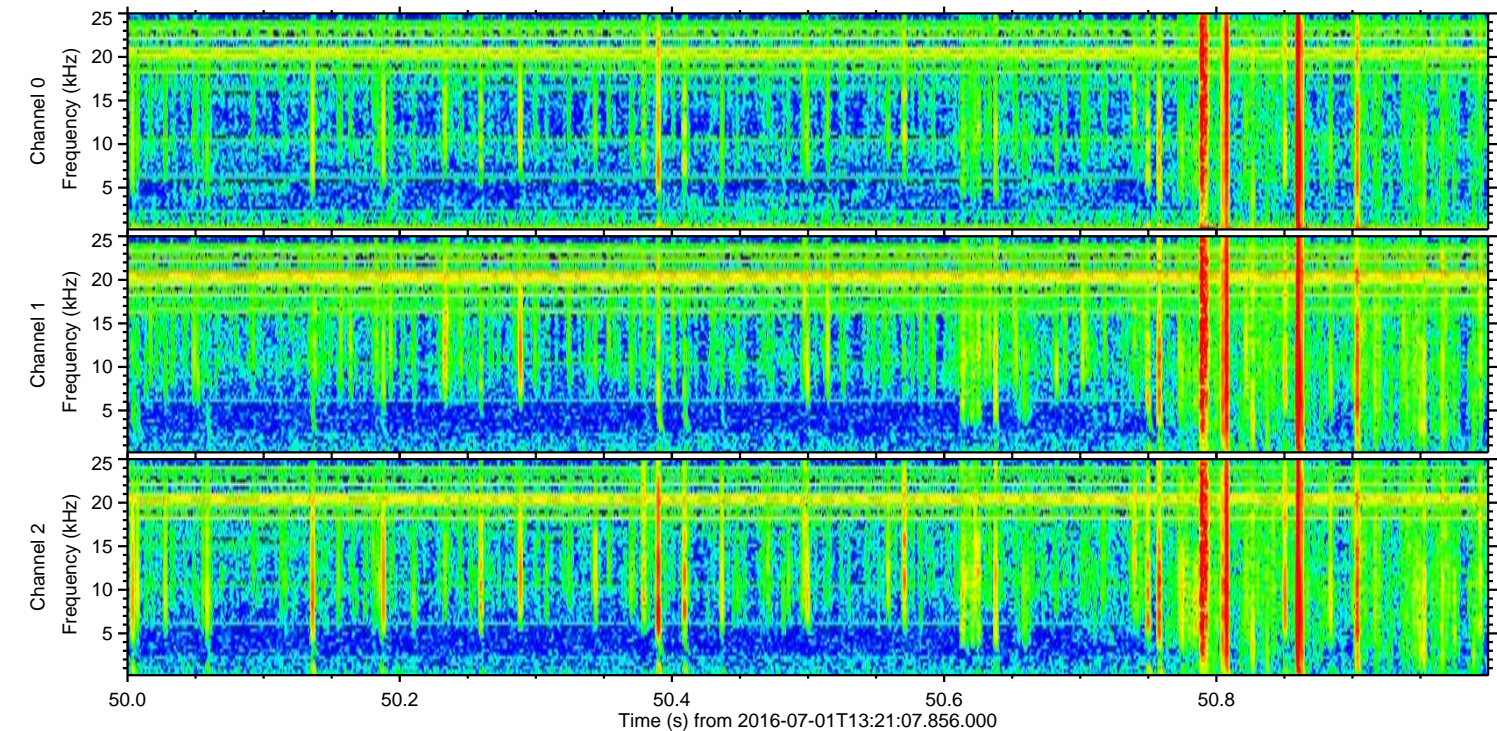
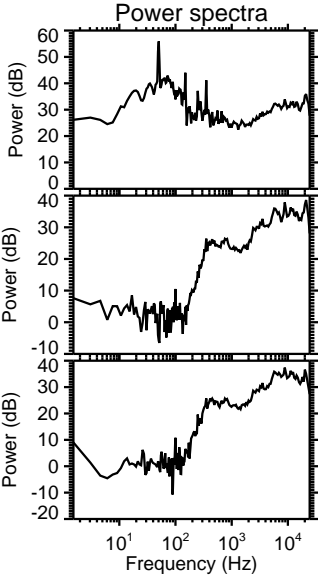
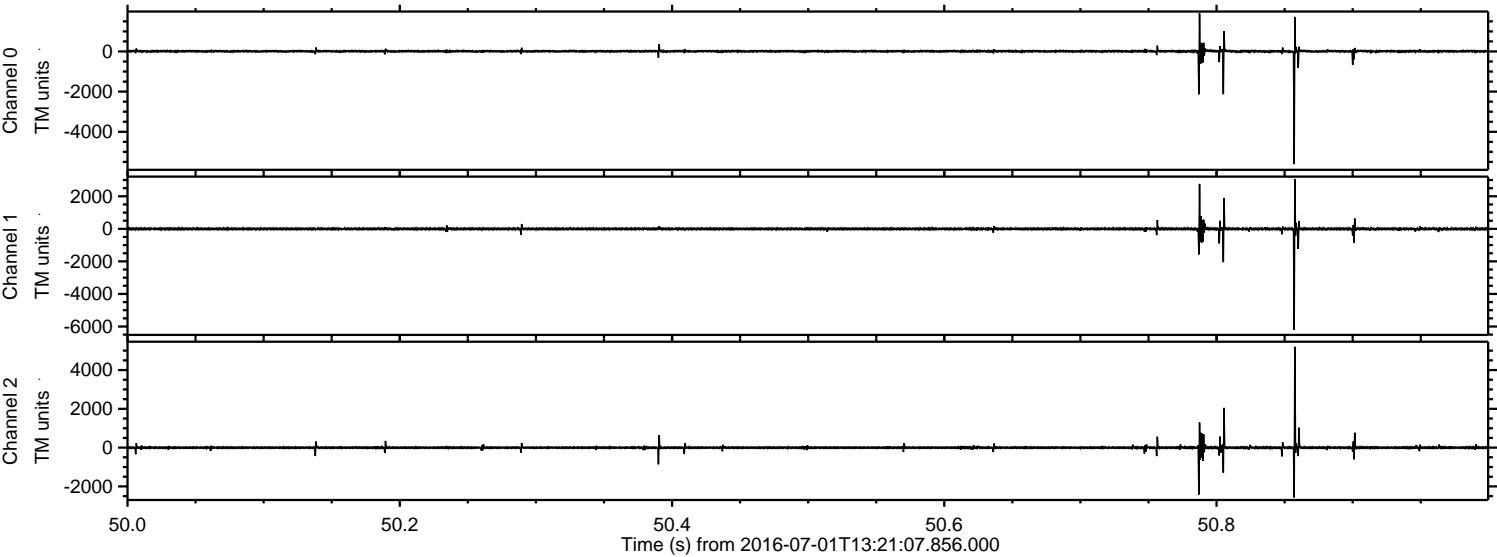
Channel 1
mn: -1362
mx: 926
 μ : -1.7
 σ : 22.9

Channel 2
mn: -5638
mx: 7705
 μ : 0.2
 σ : 64.2

Processed Fri Jul 1 15:29:52 2016 by ELM ver.2012-10-06 from 001__elm20160701_132106__dat00.bin



Processed Fri Jul 1 15:29:53 2016 by ELM ver.2012-10-06 from 001__elm20160701_132106__dat00.bin



Channel 0
mn: -5614
mx: 1894
 μ : 7.3
 σ : 41.2

Channel 1
mn: -6207
mx: 3056
 μ : -1.8
 σ : 51.0

Channel 2
mn: -2572
mx: 5201
 μ : 0.1
 σ : 44.7

Processed Fri Jul 1 15:29:54 2016 by ELM ver.2012-10-06 from 001__elm20160701_132106__dat00.bin

