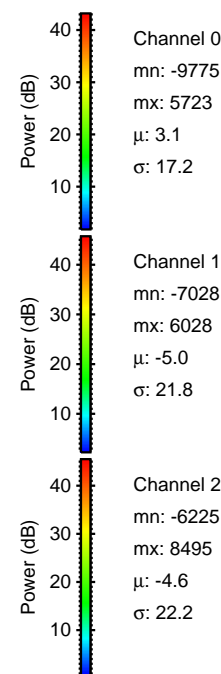
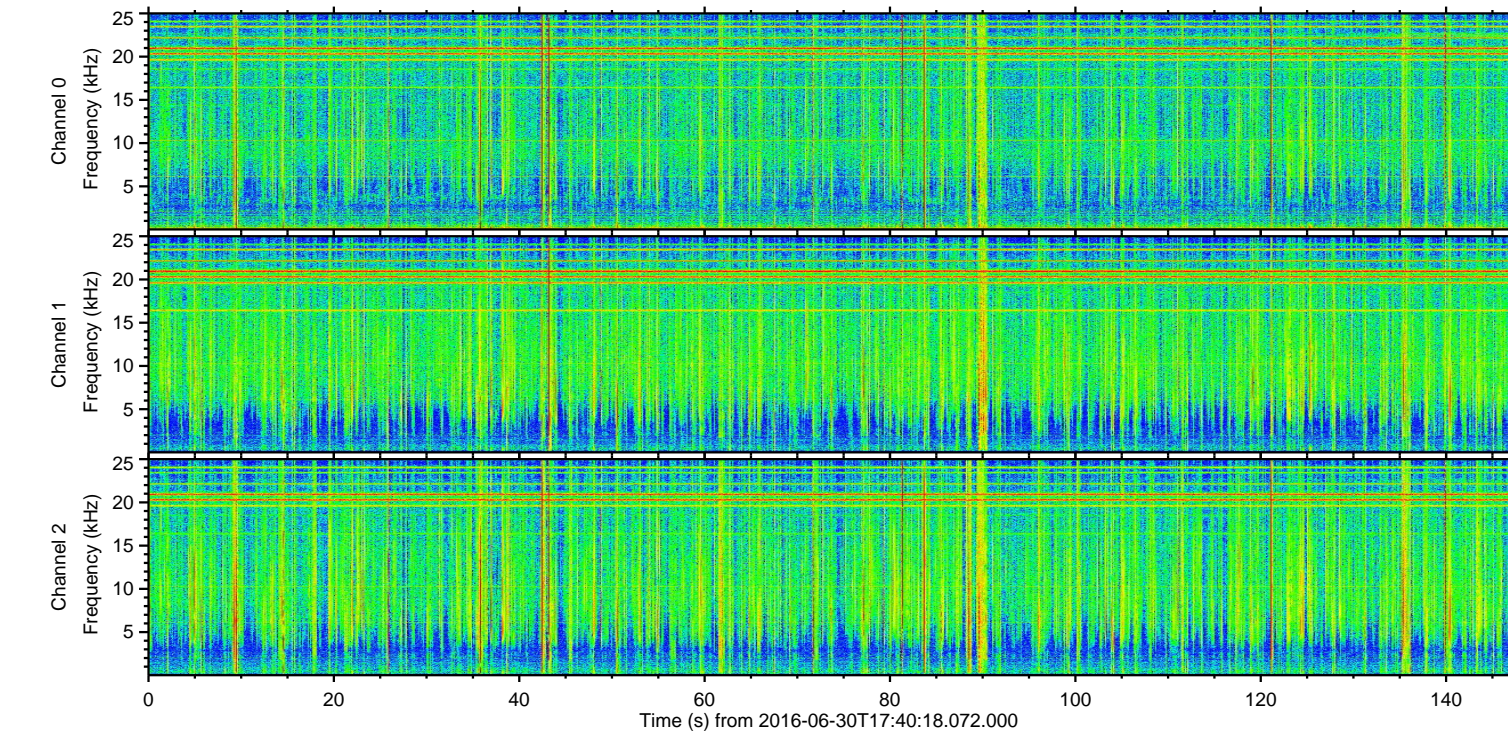
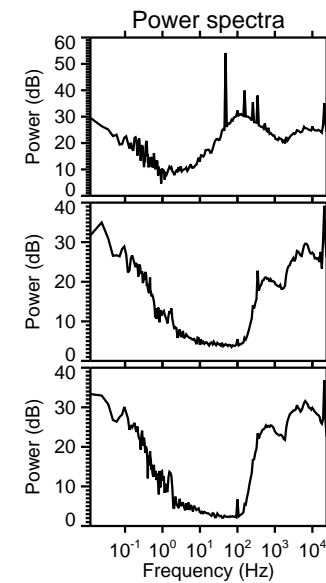
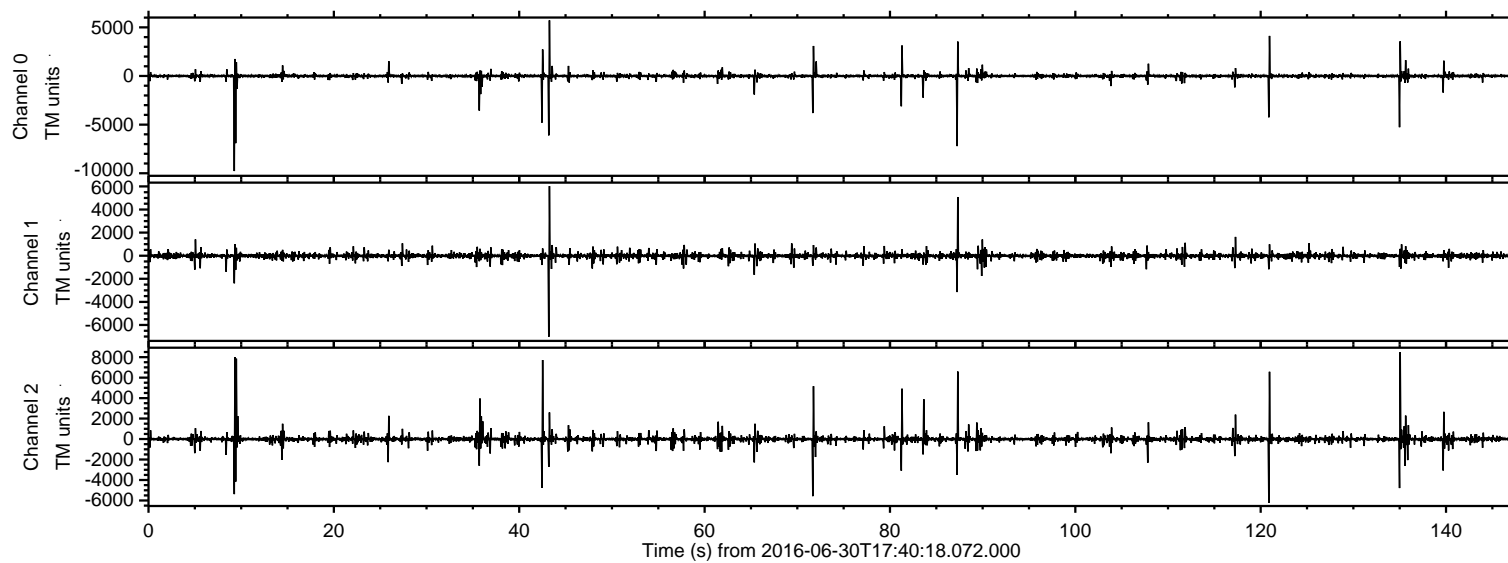


# ELMAVAN 3D WAVEFORMS (Measured data sampled at 50 kHz) 51000 packets of 144 samples from 2016-06-30T17:40:18.072.000.

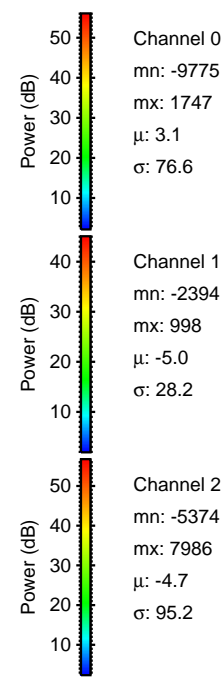
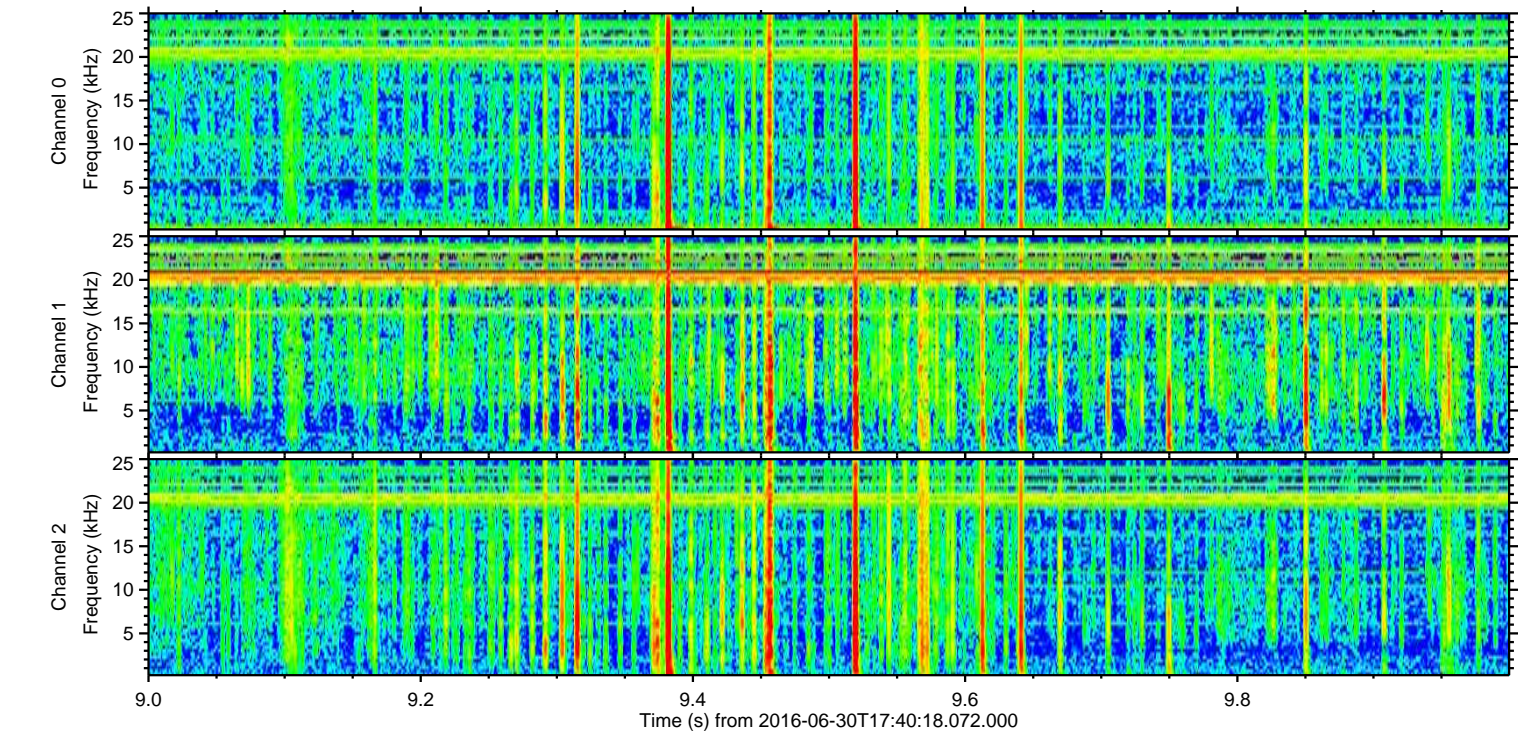
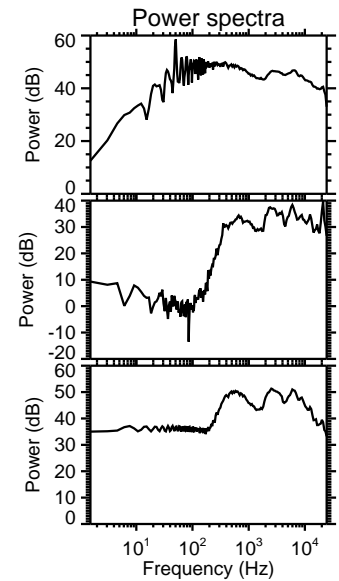
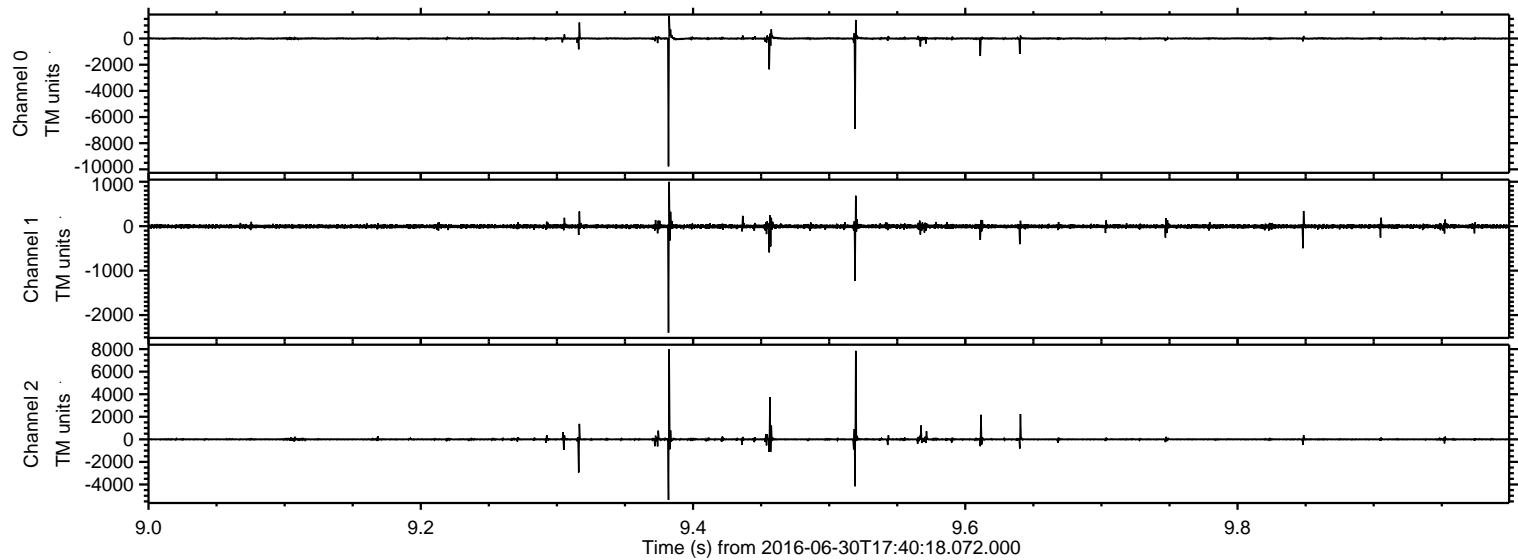
Processed Thu Jun 30 19:48:17 2016 by ELM ver.2012-10-06 from 001\_\_elm20160630\_174017\_\_dat00.bin





ELMAVAN 3D WAVEFORMS (Measured data sampled at 50 kHz) 51000 packets of 144 samples from 2016-06-30T17:40:18.072.000. Part 10/147

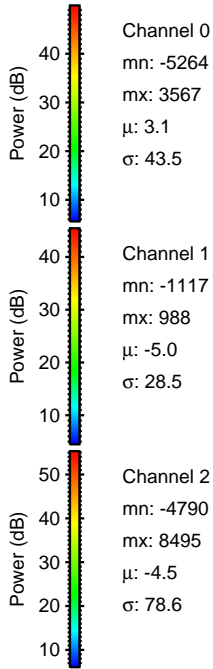
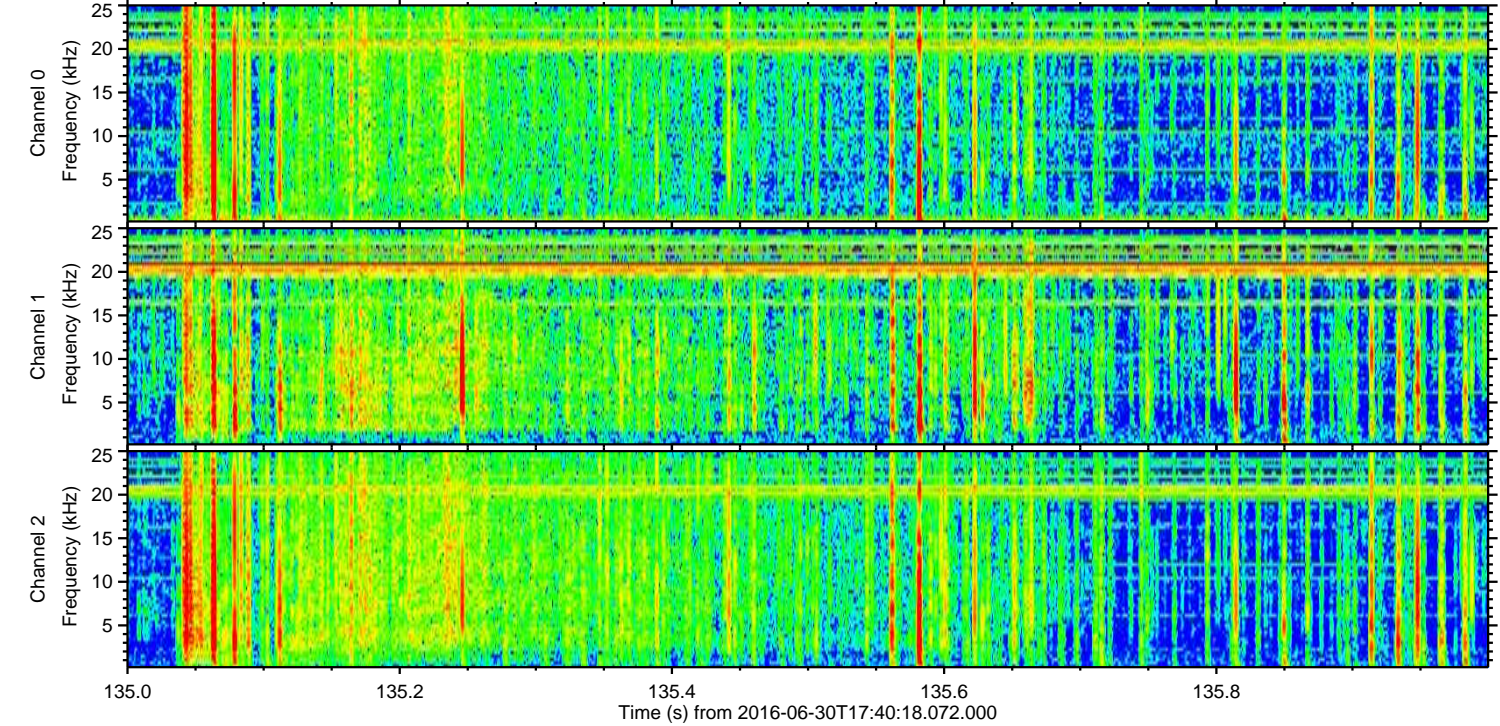
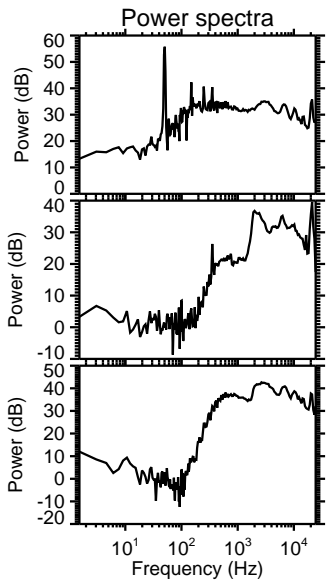
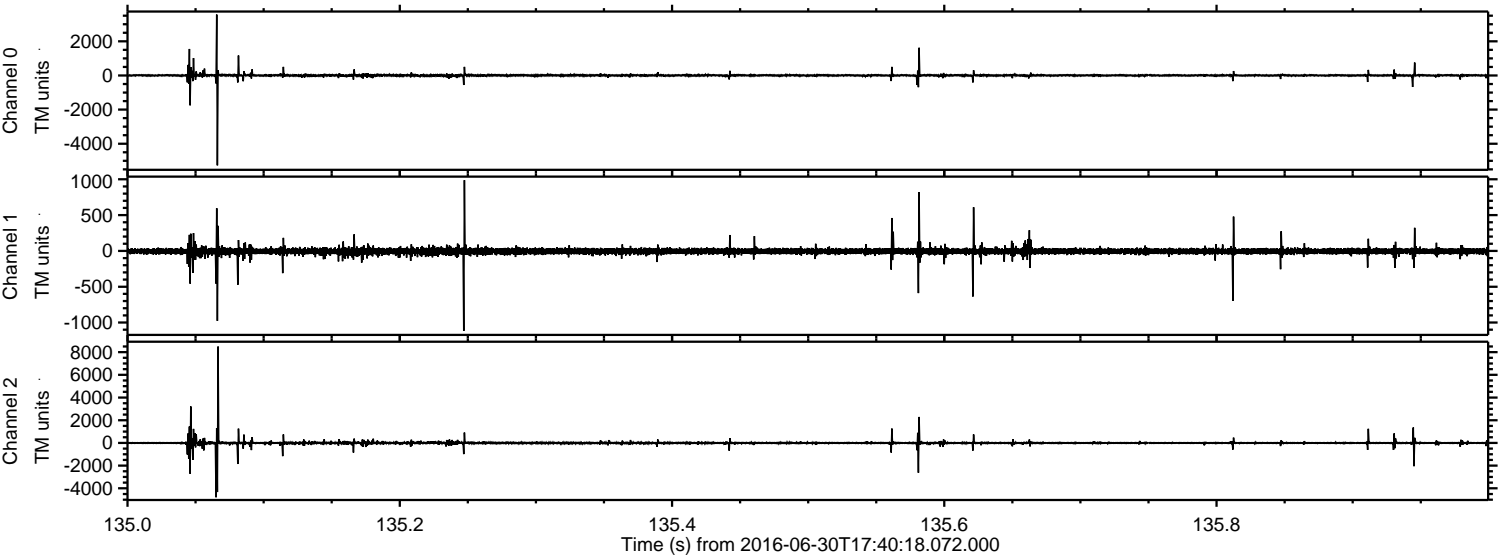
Processed Thu Jun 30 19:48:33 2016 by ELM ver.2012-10-06 from 001\_\_elm20160630\_174017\_\_dat00.bin





ELMAVAN 3D WAVEFORMS (Measured data sampled at 50 kHz) 51000 packets of 144 samples from 2016-06-30T17:40:18.072.000. Part 136/147

Processed Thu Jun 30 19:48:34 2016 by ELM ver.2012-10-06 from 001\_\_elm20160630\_174017\_\_dat00.bin



Channel 0  
mn: -5264  
mx: 3567  
 $\mu$ : 3.1  
 $\sigma$ : 43.5

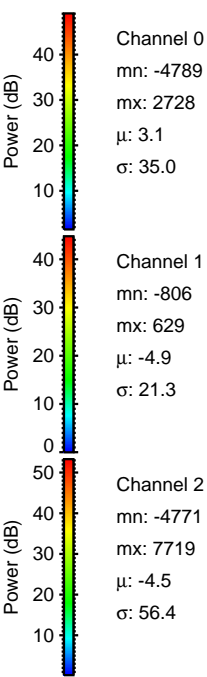
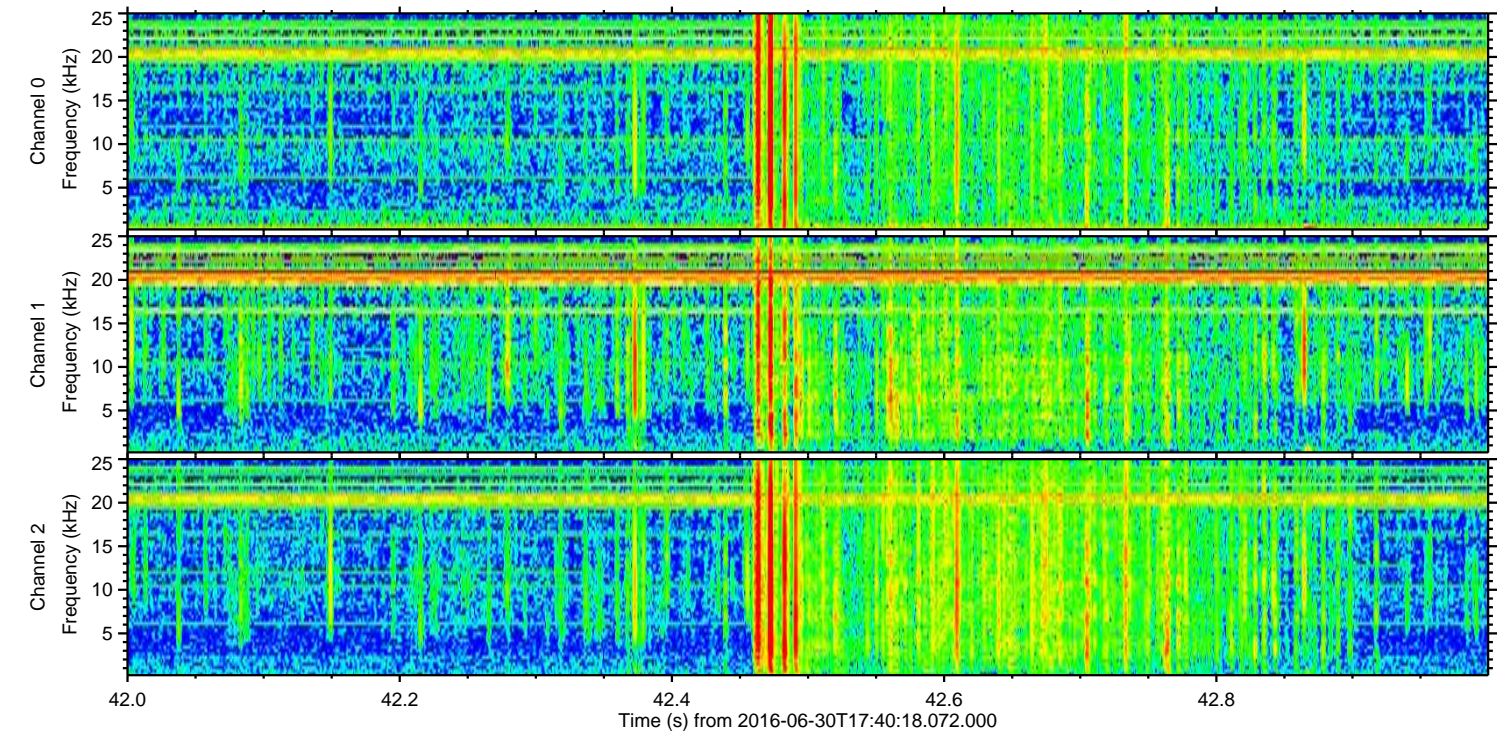
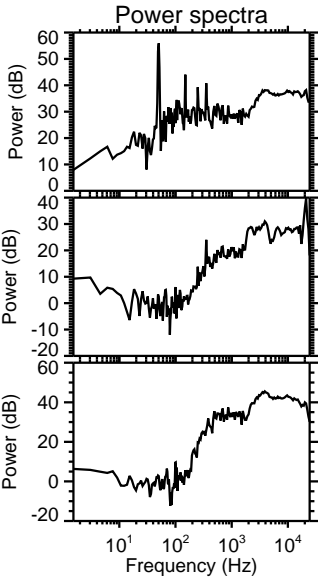
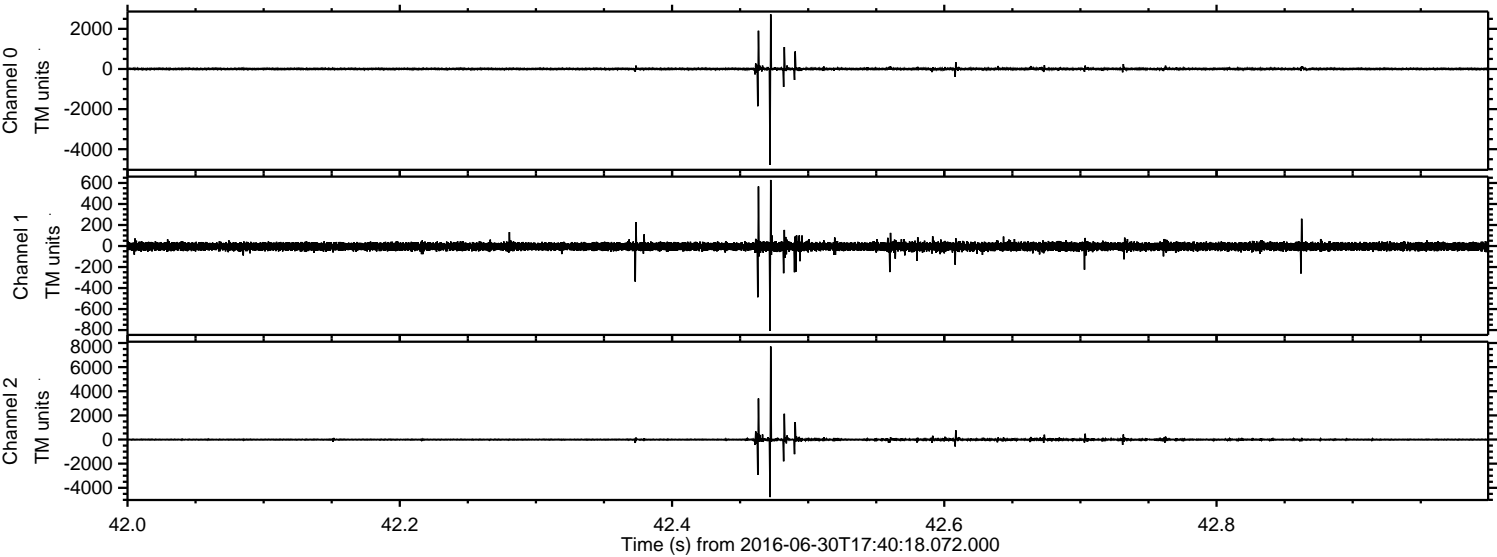
Channel 1  
mn: -1117  
mx: 988  
 $\mu$ : -5.0  
 $\sigma$ : 28.5

Channel 2  
mn: -4790  
mx: 8495  
 $\mu$ : -4.5  
 $\sigma$ : 78.6



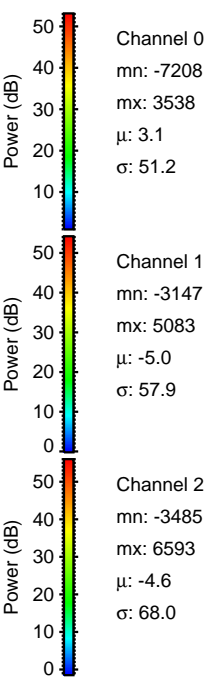
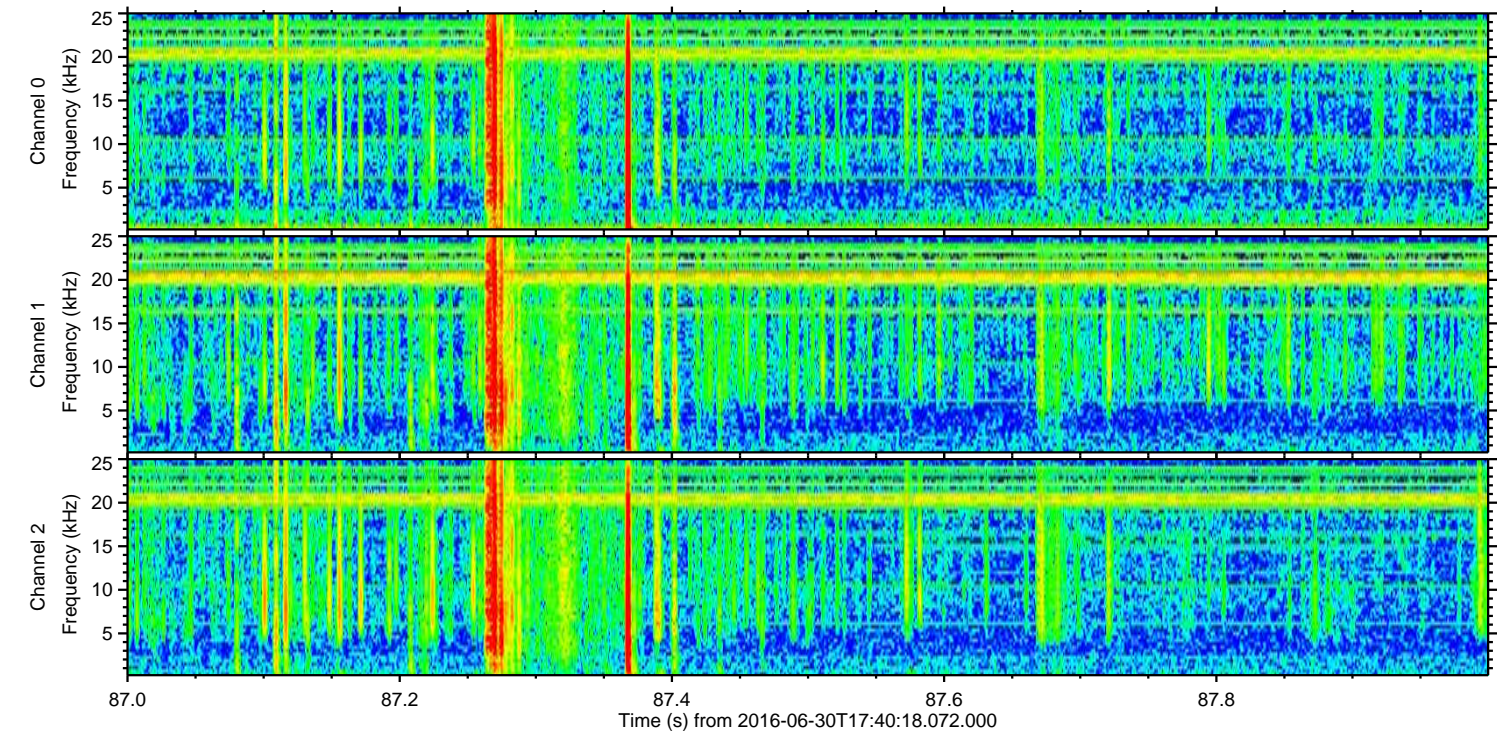
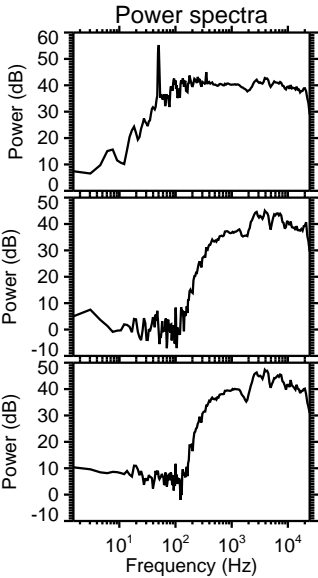
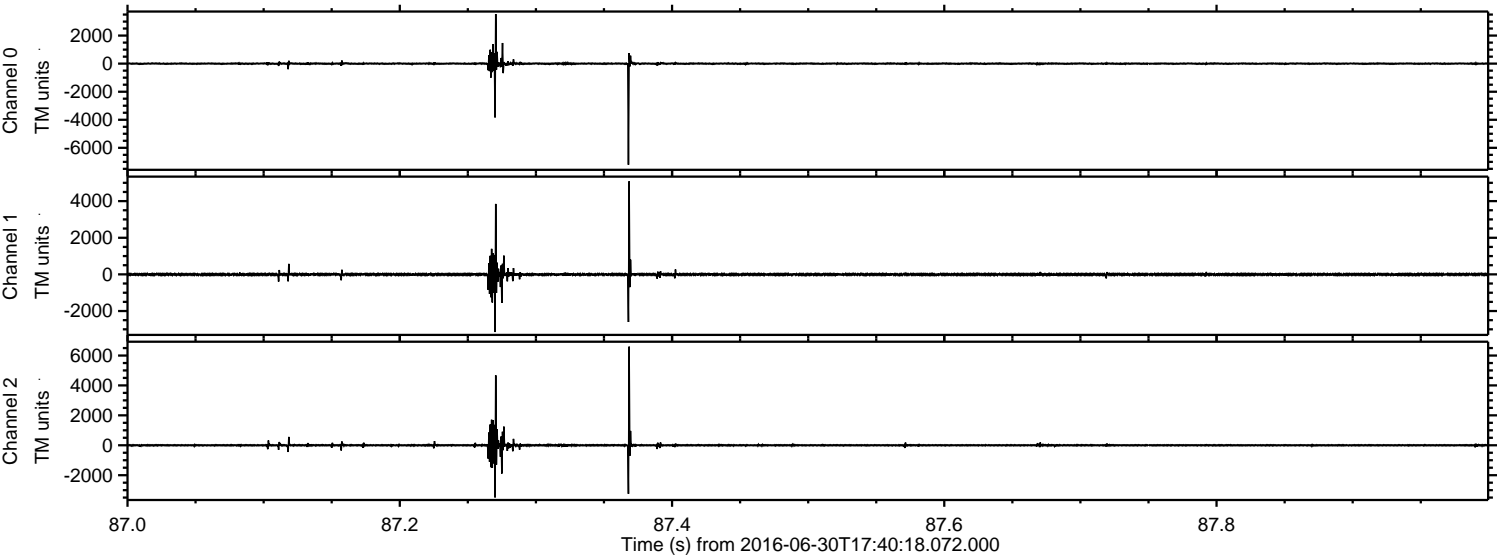
ELMAVAN 3D WAVEFORMS (Measured data sampled at 50 kHz) 51000 packets of 144 samples from 2016-06-30T17:40:18.072.000. Part 43/147

Processed Thu Jun 30 19:48:35 2016 by ELM ver.2012-10-06 from 001\_\_elm20160630\_174017\_\_dat00.bin



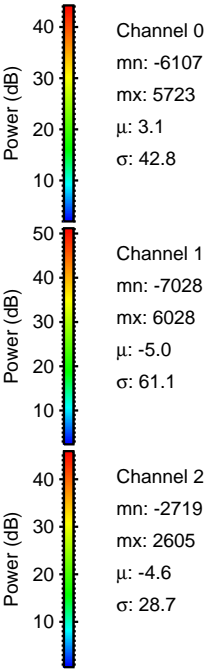
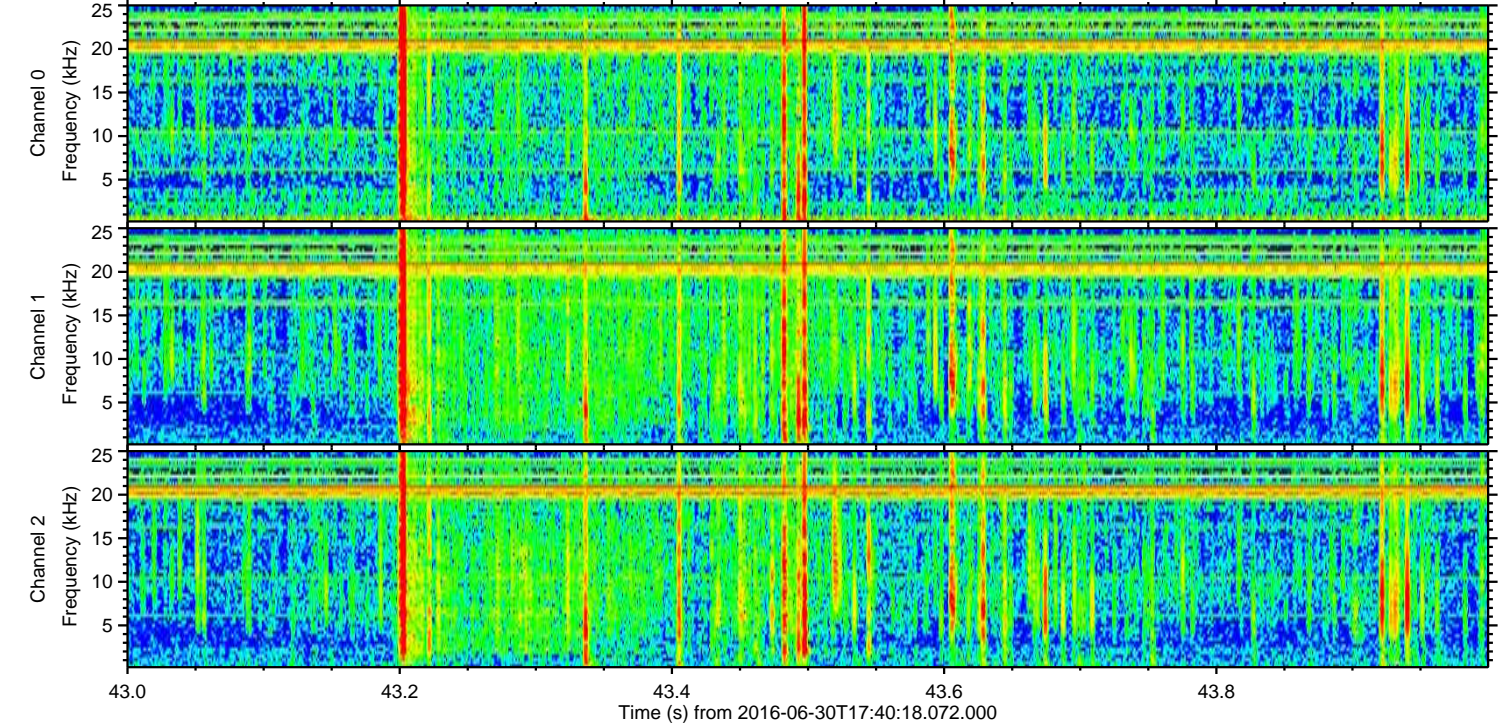
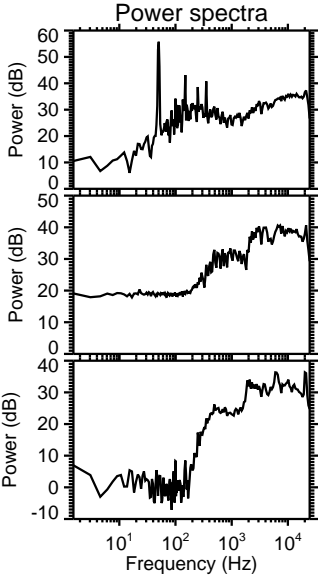
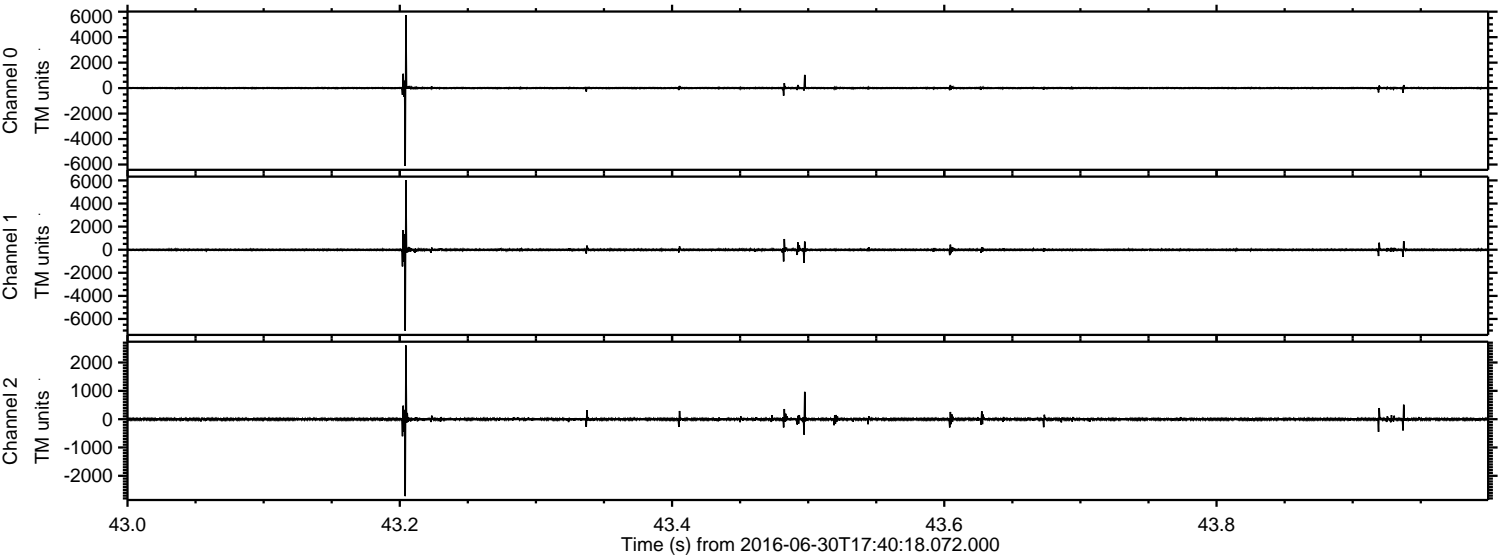


Processed Thu Jun 30 19:48:36 2016 by ELM ver.2012-10-06 from 001\_\_elm20160630\_174017\_\_dat00.bin





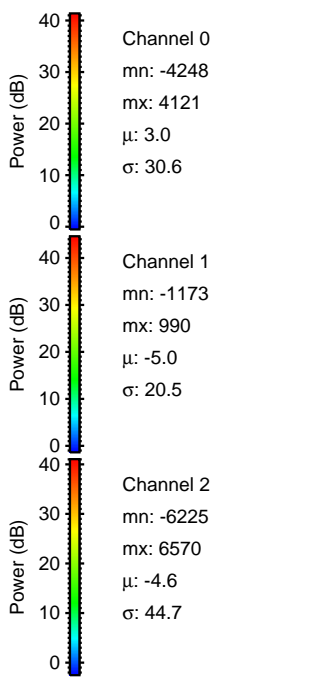
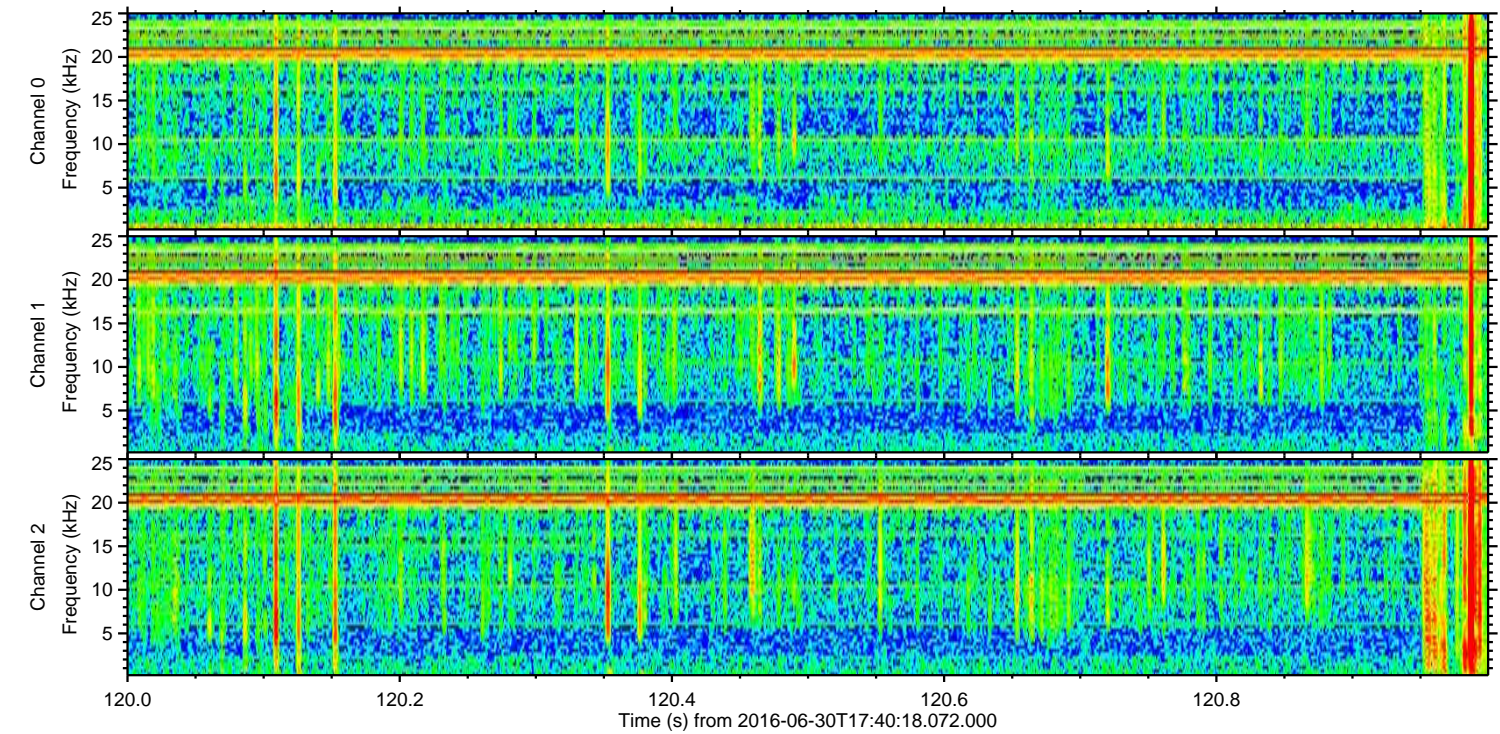
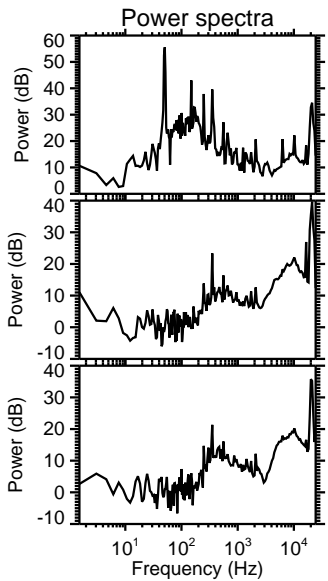
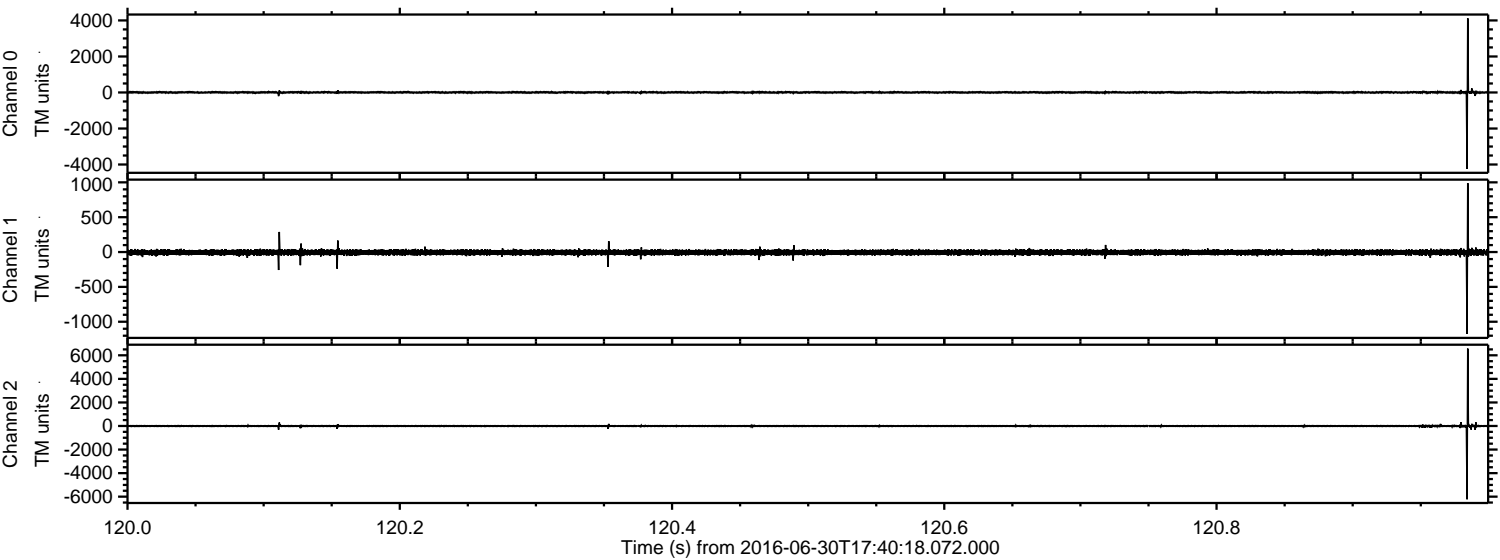
Processed Thu Jun 30 19:48:37 2016 by ELM ver.2012-10-06 from 001\_\_elm20160630\_174017\_\_dat00.bin





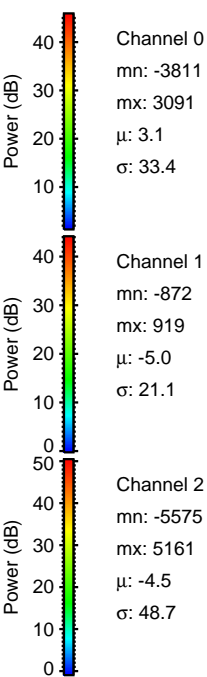
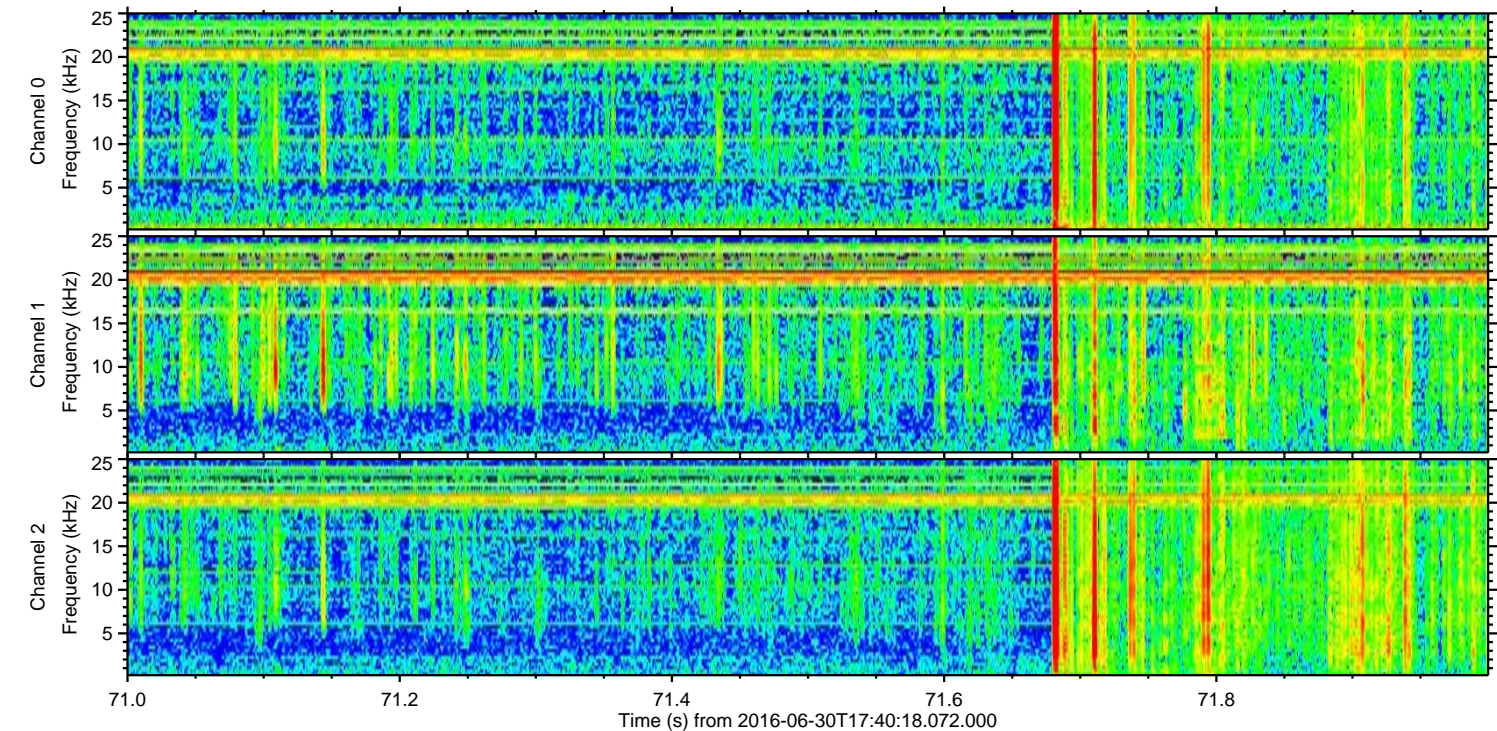
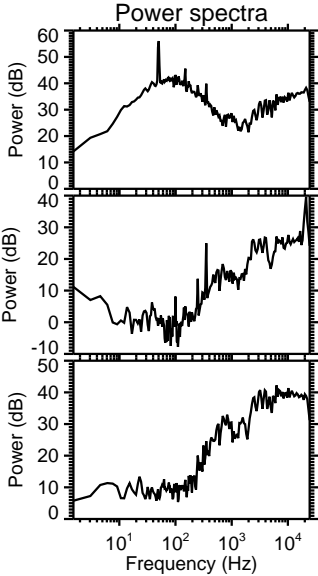
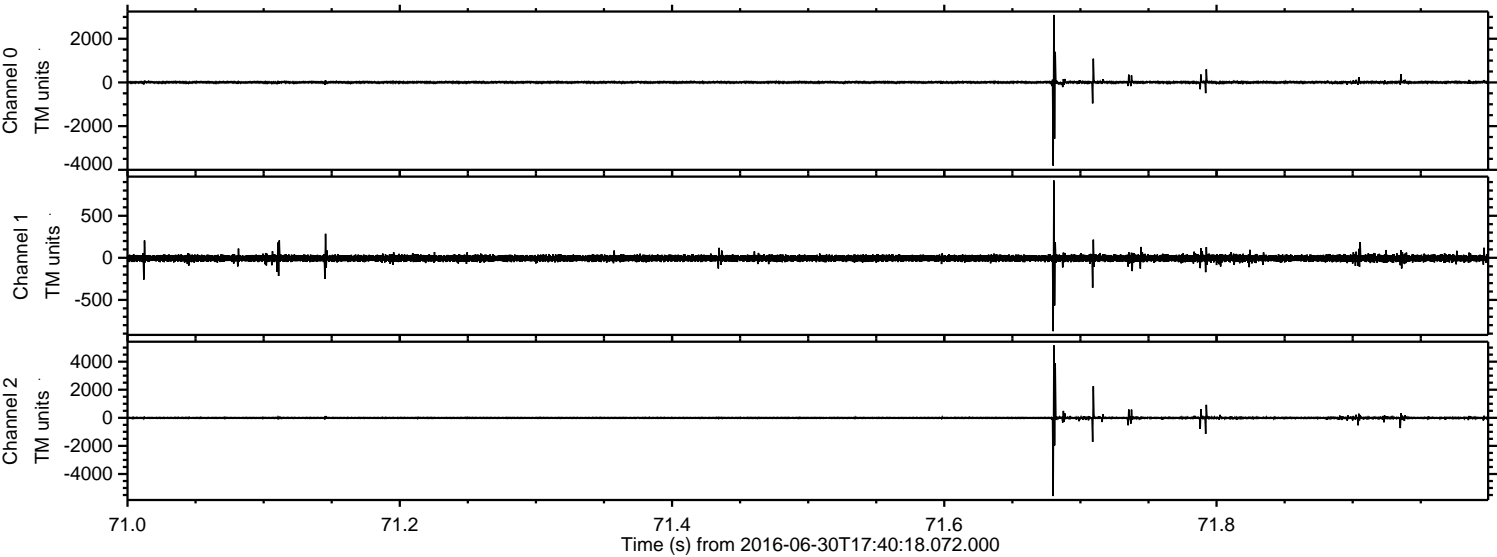
ELMAVAN 3D WAVEFORMS (Measured data sampled at 50 kHz) 51000 packets of 144 samples from 2016-06-30T17:40:18.072.000. Part 121/147

Processed Thu Jun 30 19:48:38 2016 by ELM ver.2012-10-06 from 001\_\_elm20160630\_174017\_\_dat00.bin



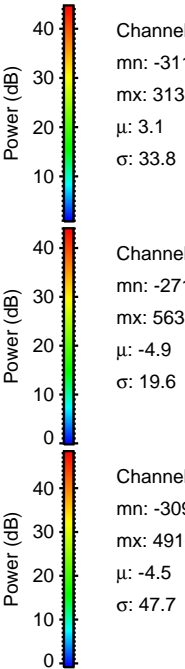
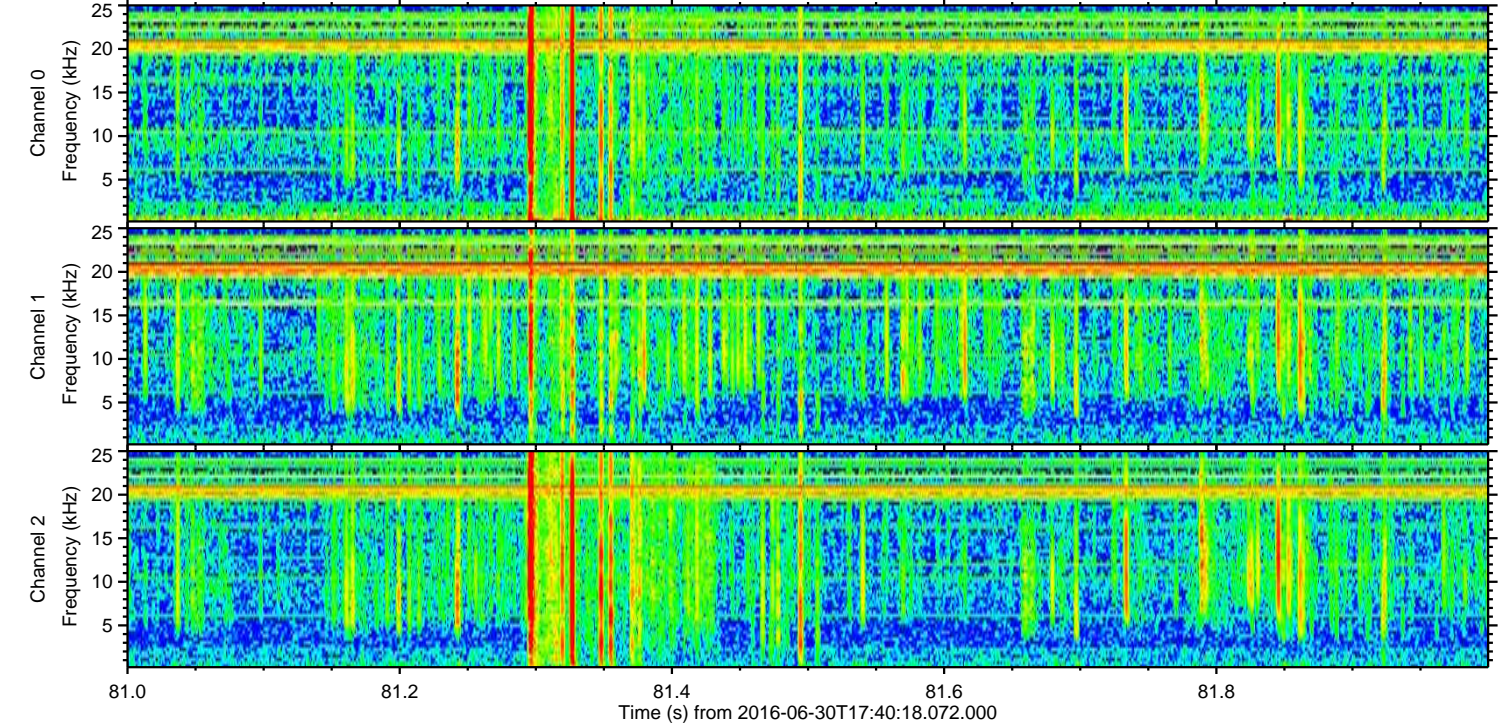
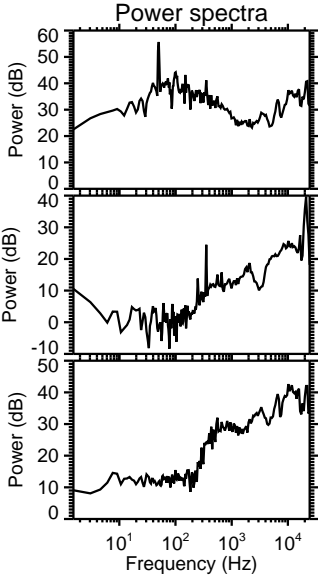
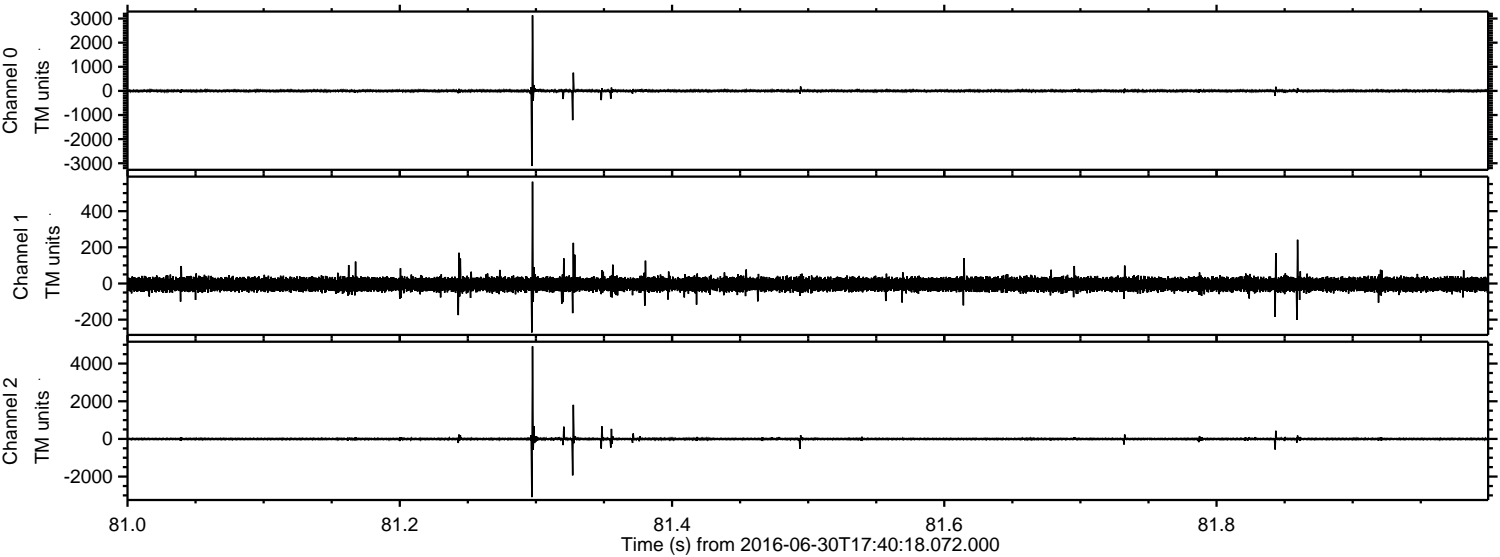


Processed Thu Jun 30 19:48:39 2016 by ELM ver.2012-10-06 from 001\_\_elm20160630\_174017\_\_dat00.bin



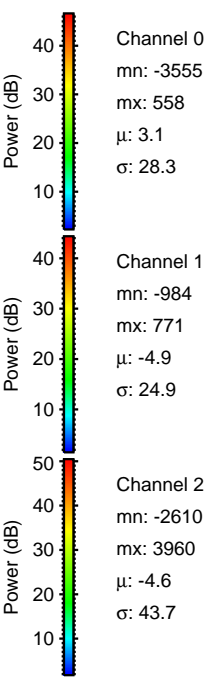
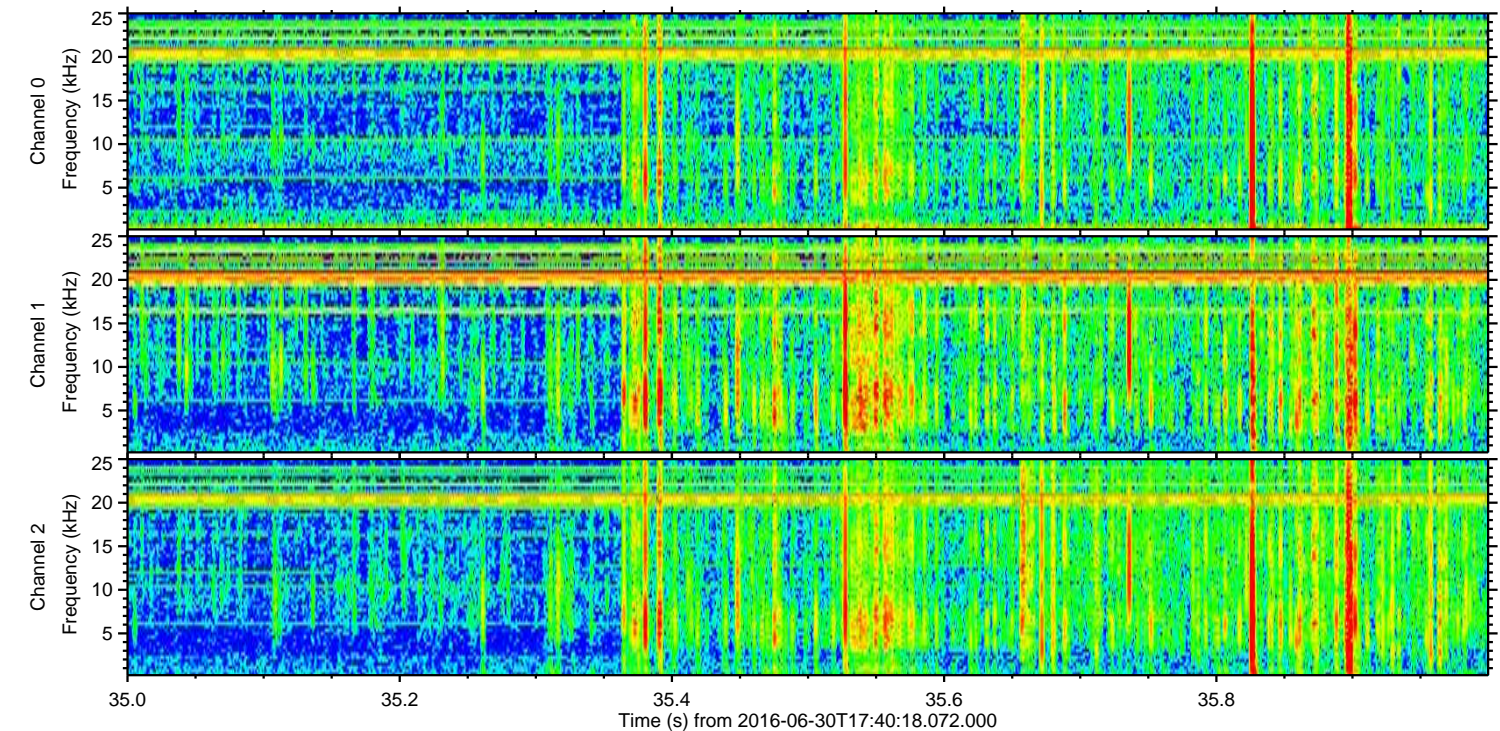
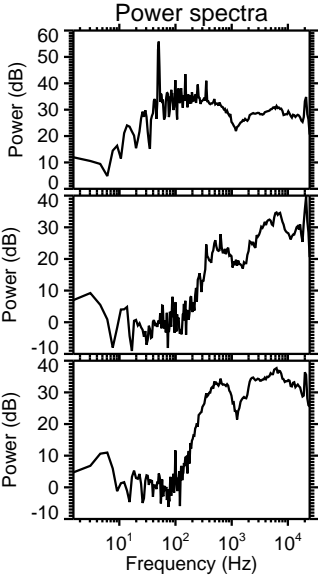
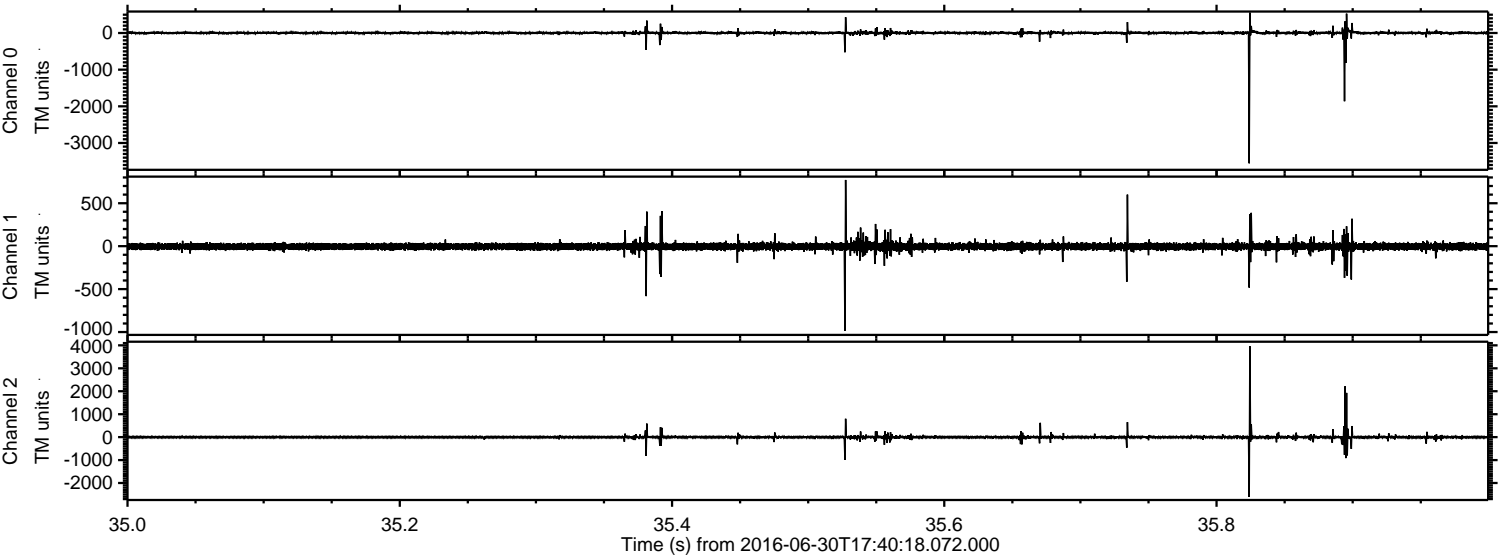


Processed Thu Jun 30 19:48:40 2016 by ELM ver.2012-10-06 from 001\_\_elm20160630\_174017\_\_dat00.bin





Processed Thu Jun 30 19:48:41 2016 by ELM ver.2012-10-06 from 001\_\_elm20160630\_174017\_\_dat00.bin





Processed Thu Jun 30 19:48:42 2016 by ELM ver.2012-10-06 from 001\_\_elm20160630\_174017\_\_dat00.bin

