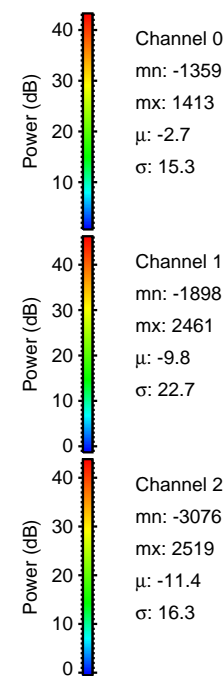
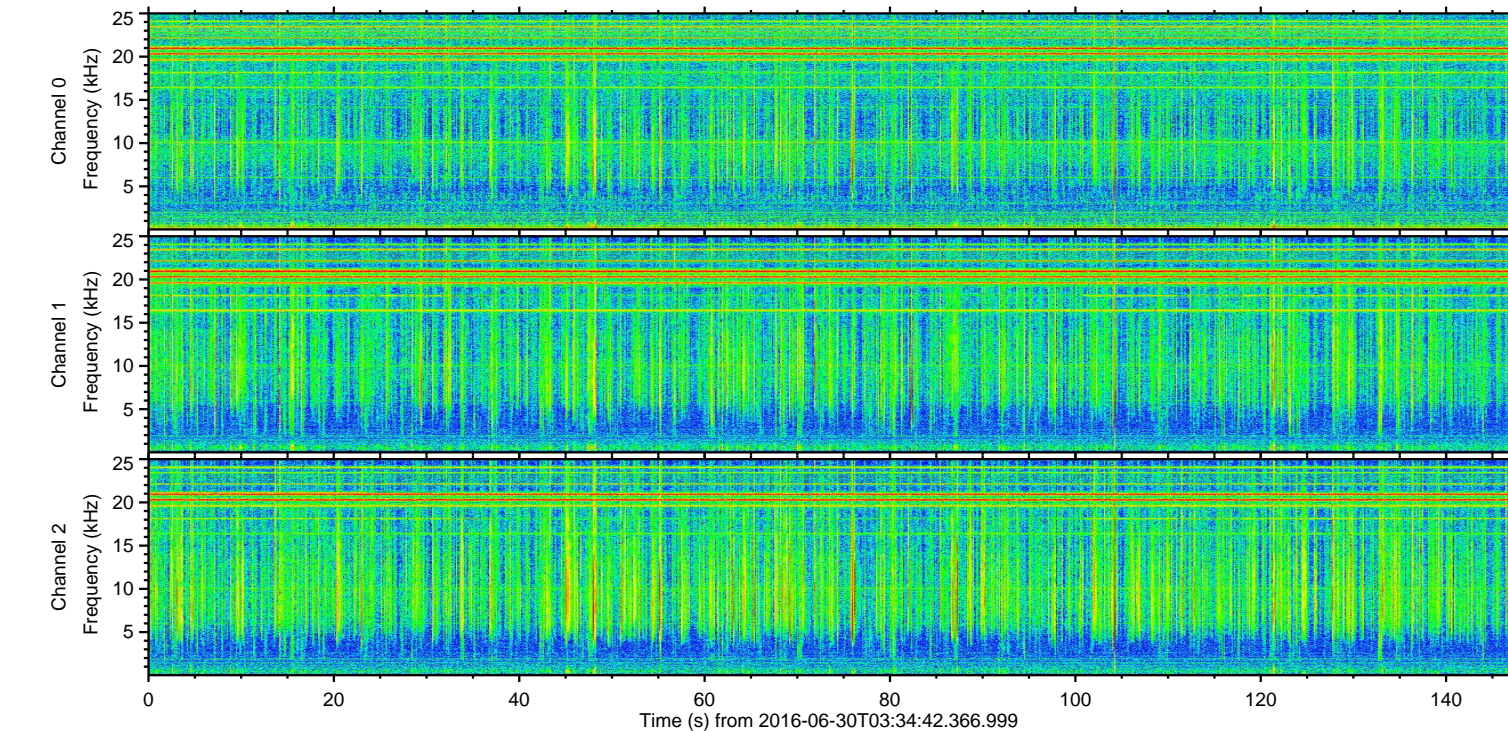
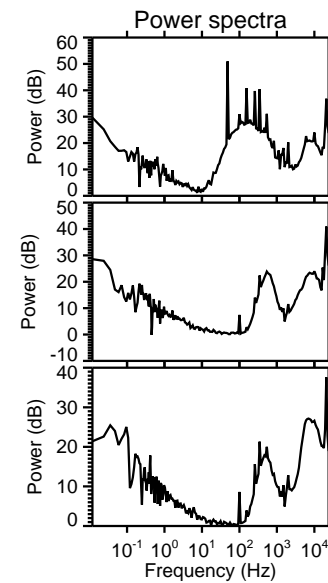
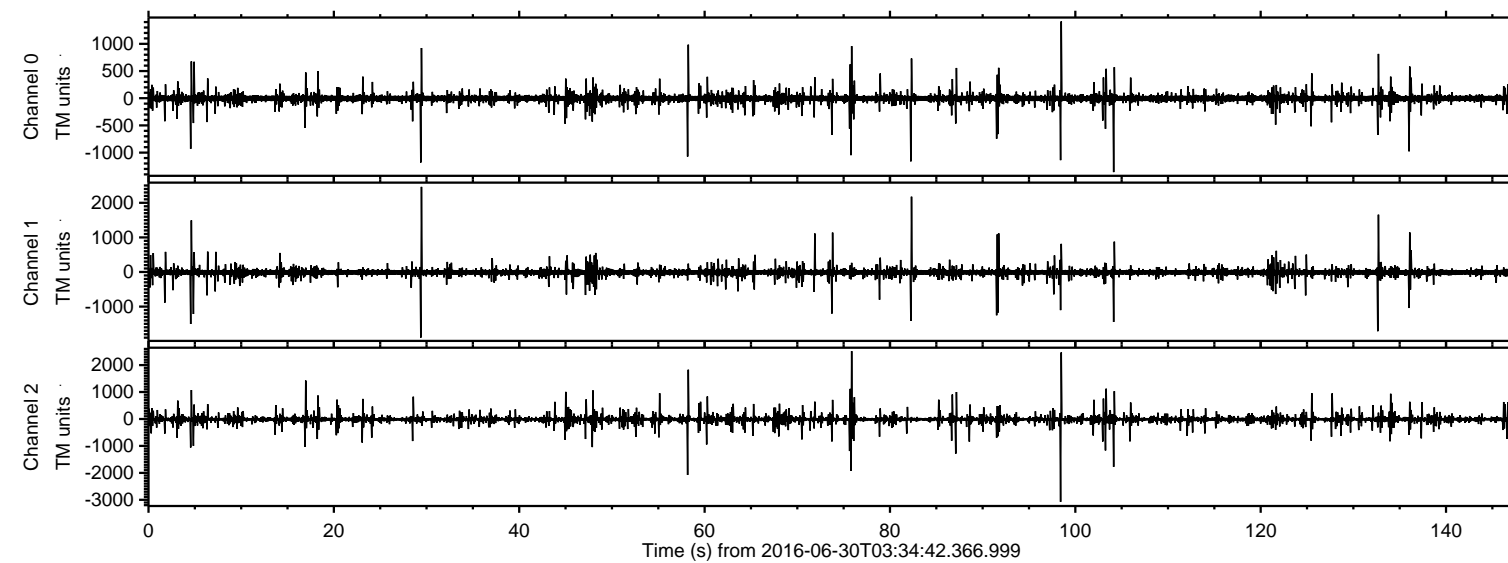
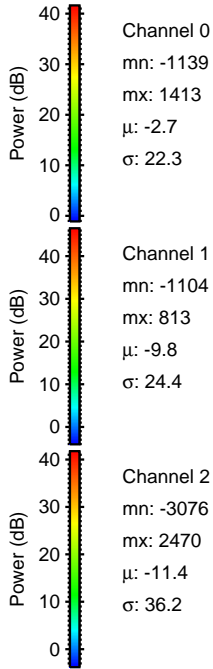
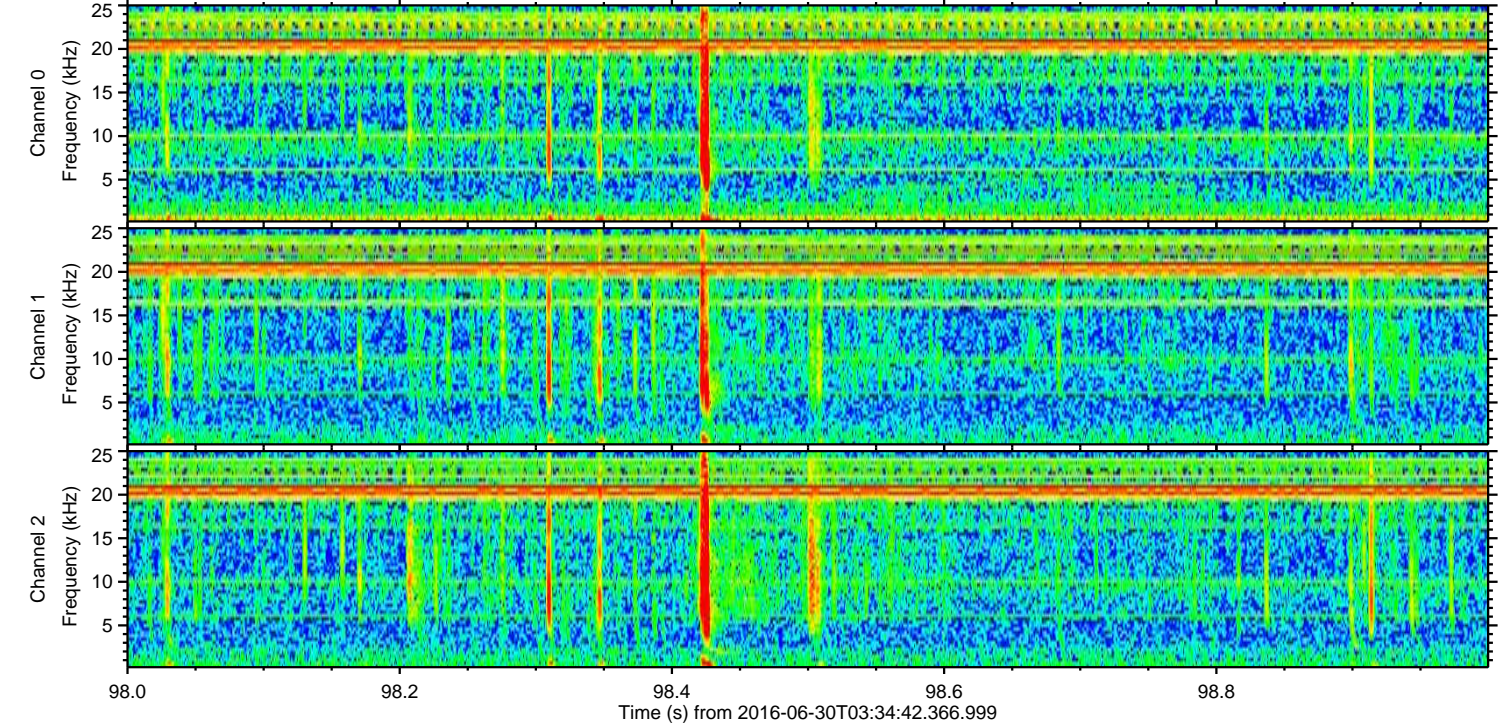
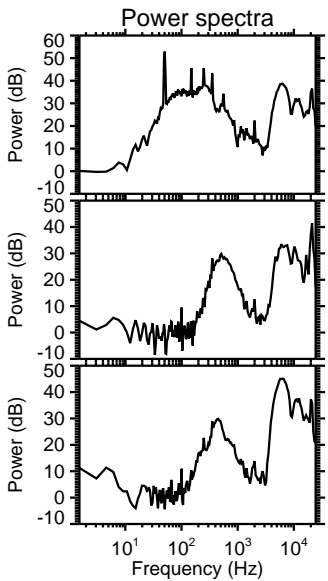
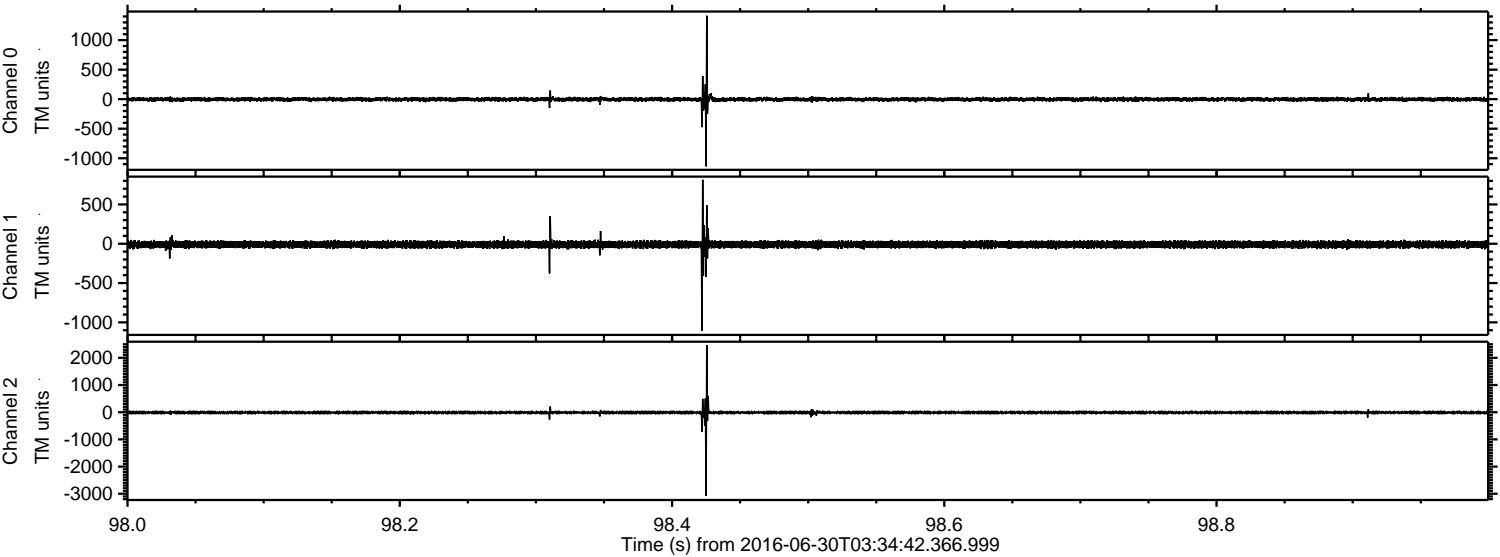


ELMAVAN 3D WAVEFORMS (Measured data sampled at 50 kHz) 51000 packets of 144 samples from 2016-06-30T03:34:42.366.999.

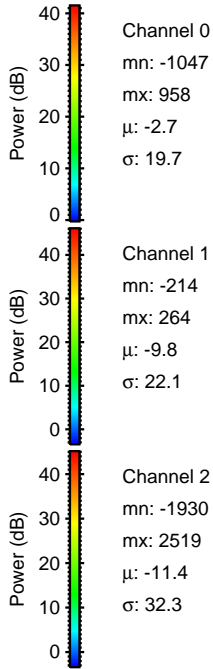
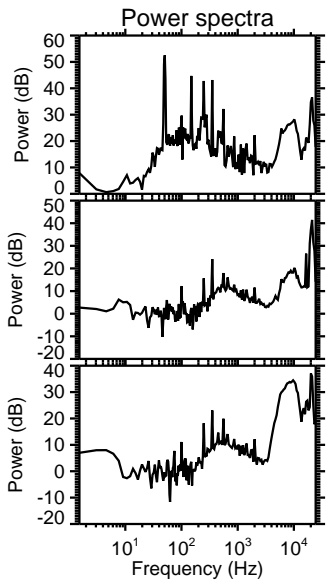
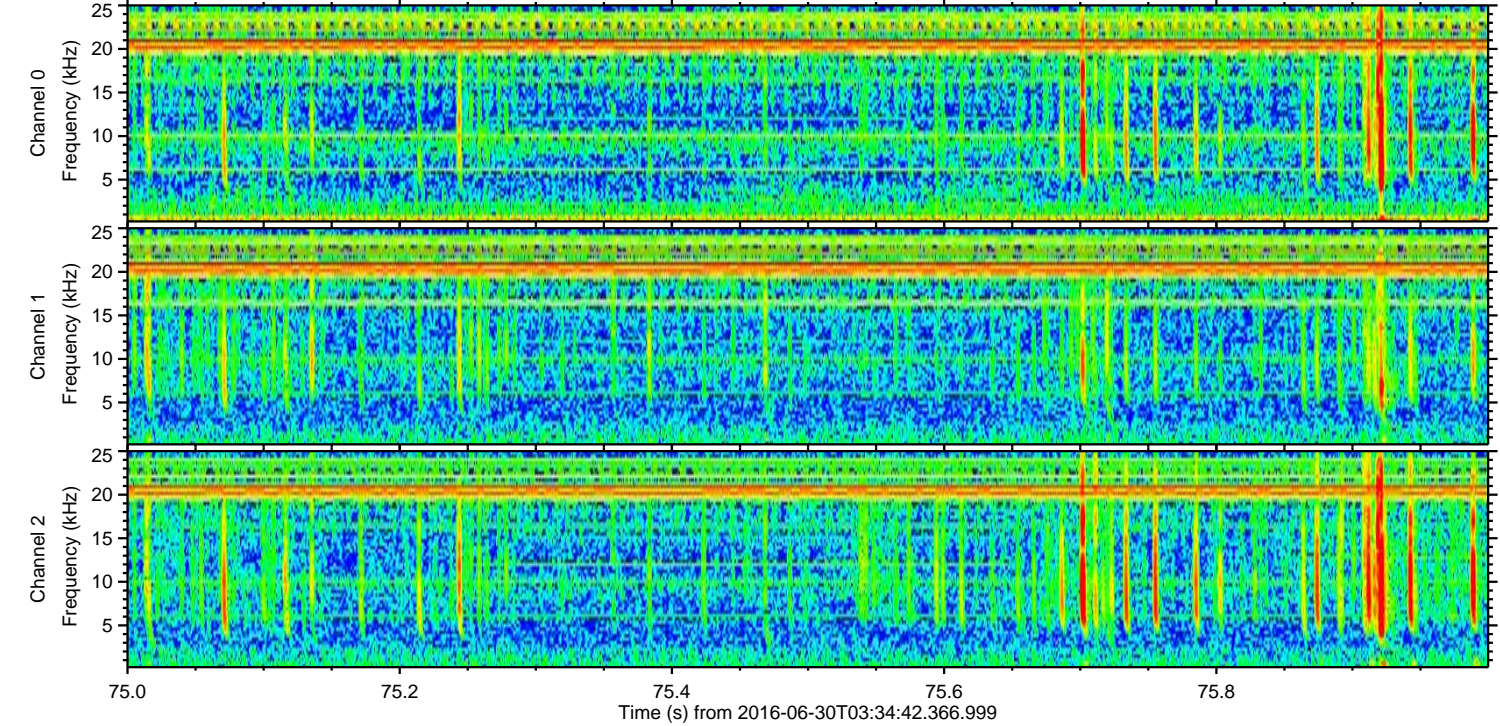
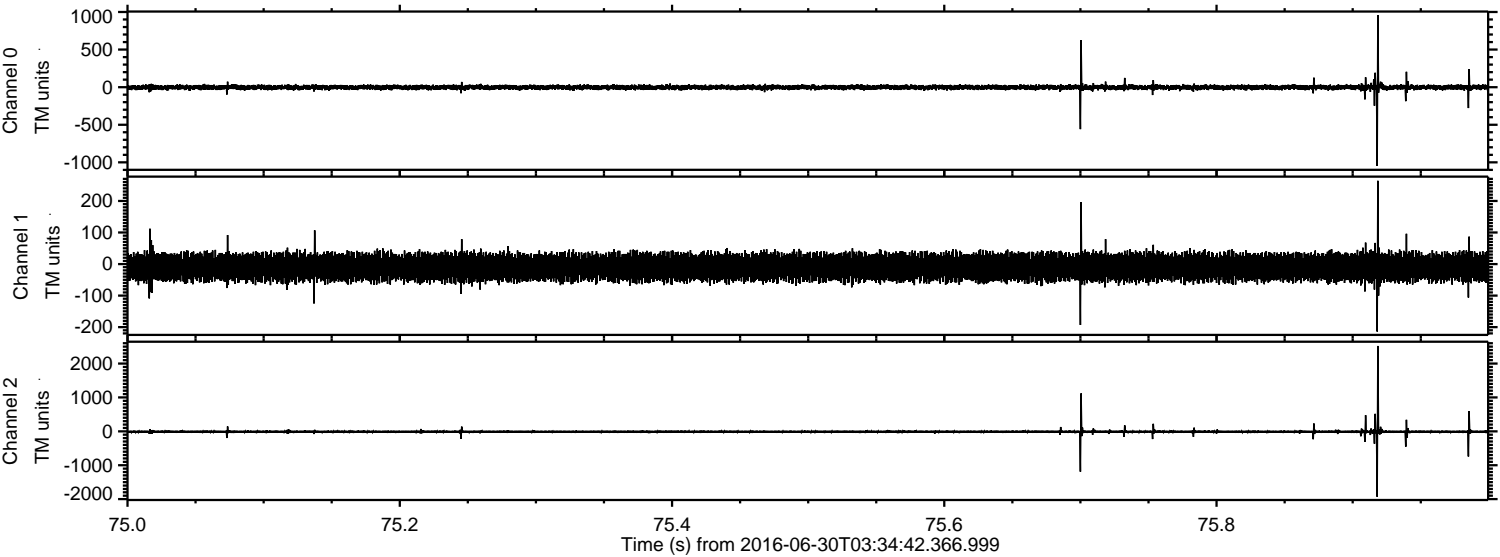
Processed Thu Jun 30 05:42:38 2016 by ELM ver.2012-10-06 from 001__elm20160630_033441__dat00.bin



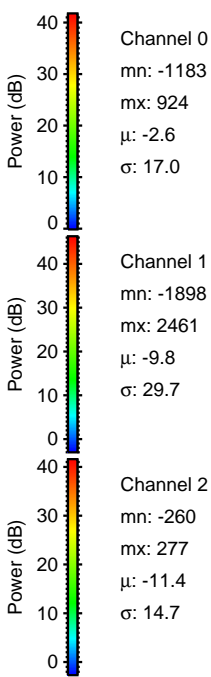
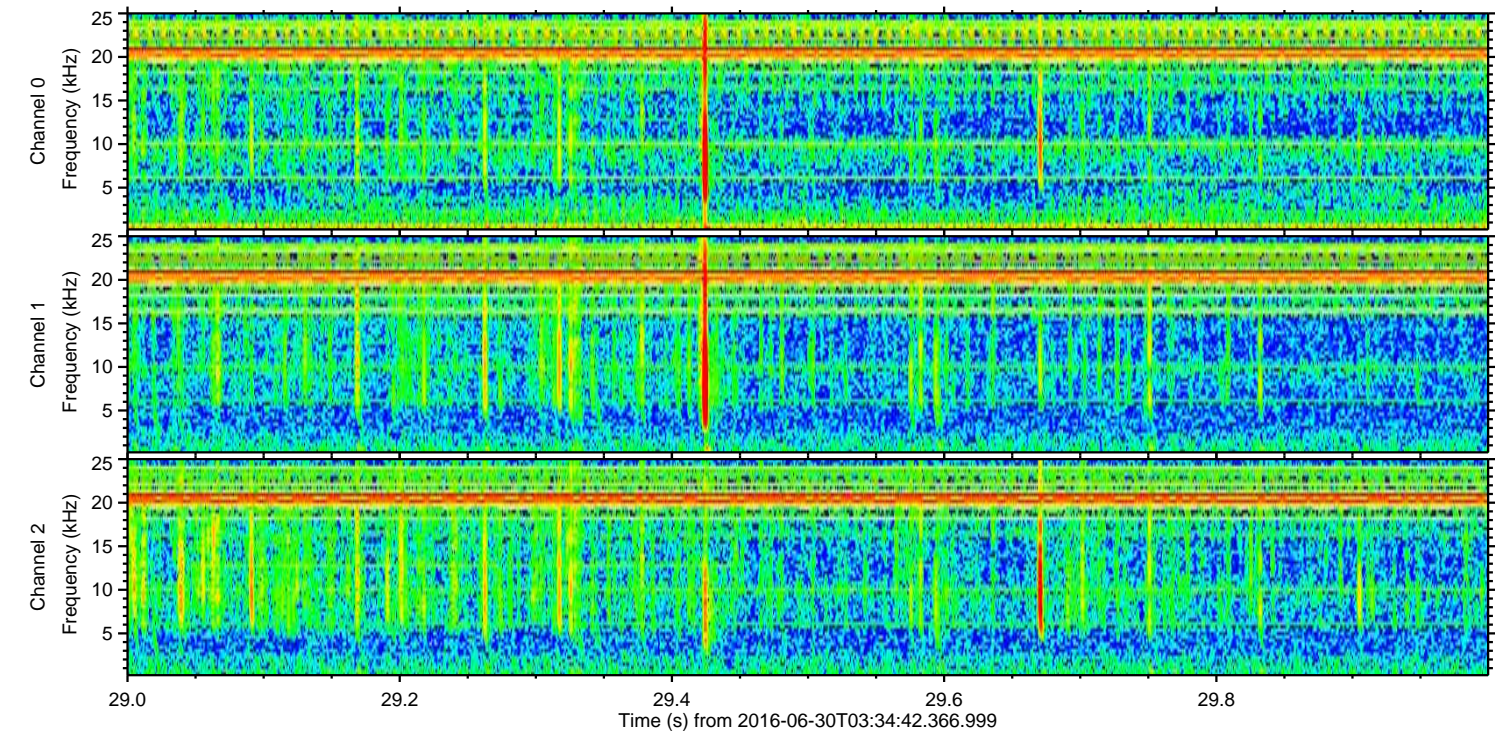
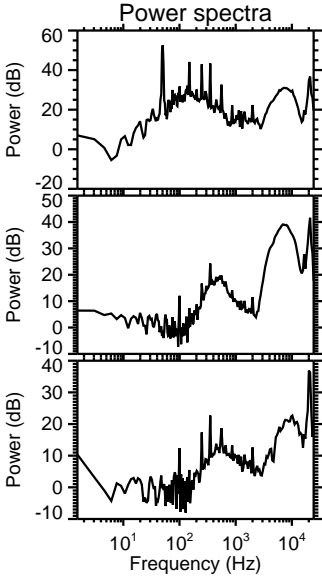
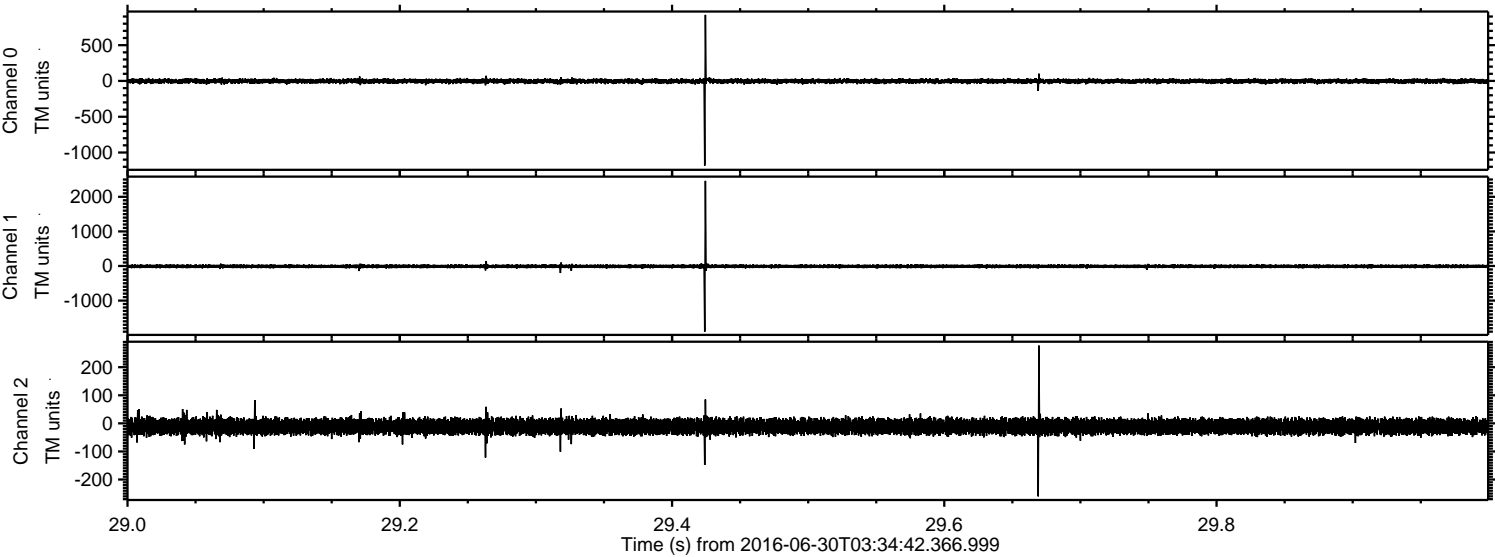
Processed Thu Jun 30 05:42:50 2016 by ELM ver.2012-10-06 from 001__elm20160630_033441__dat00.bin



Processed Thu Jun 30 05:42:51 2016 by ELM ver.2012-10-06 from 001__elm20160630_033441__dat00.bin

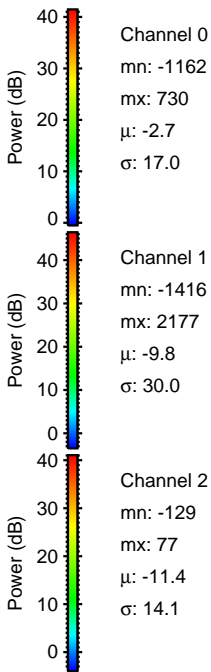
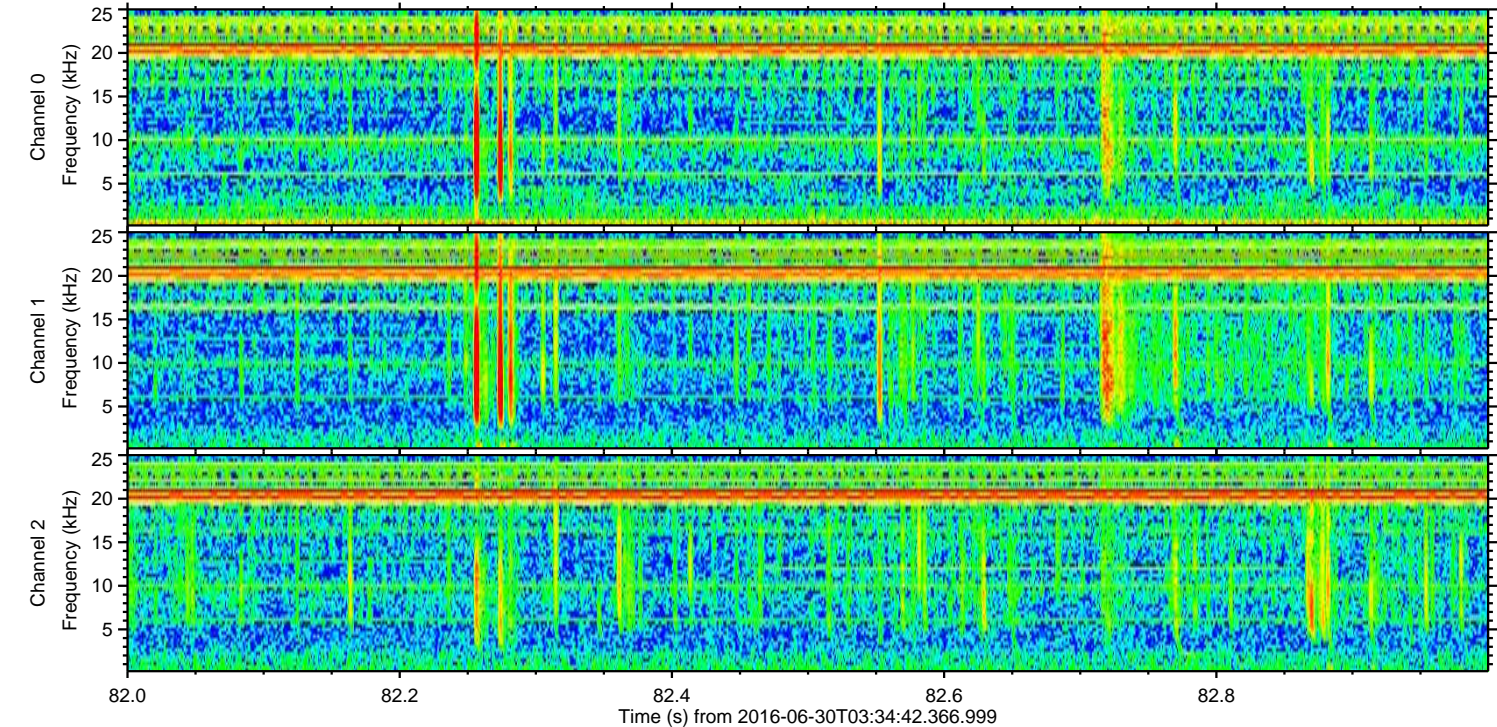
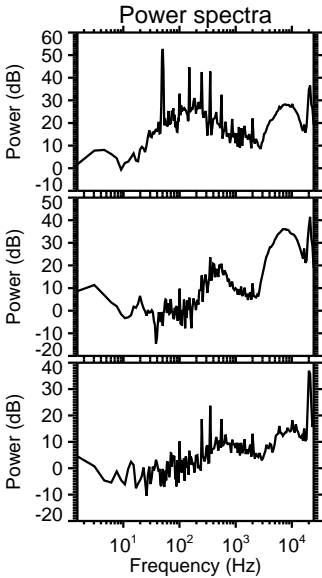
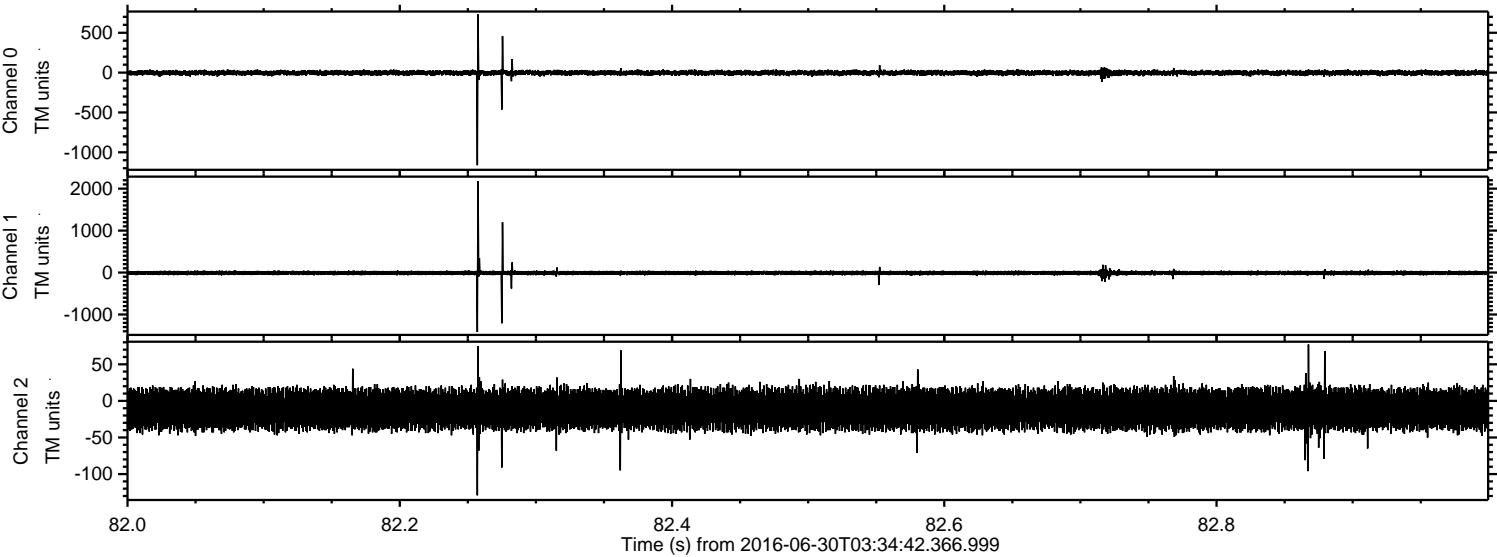


Processed Thu Jun 30 05:42:52 2016 by ELM ver.2012-10-06 from 001__elm20160630_033441__dat00.bin

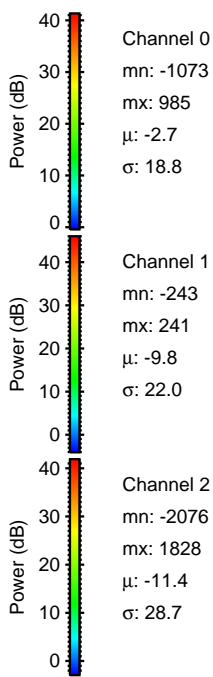
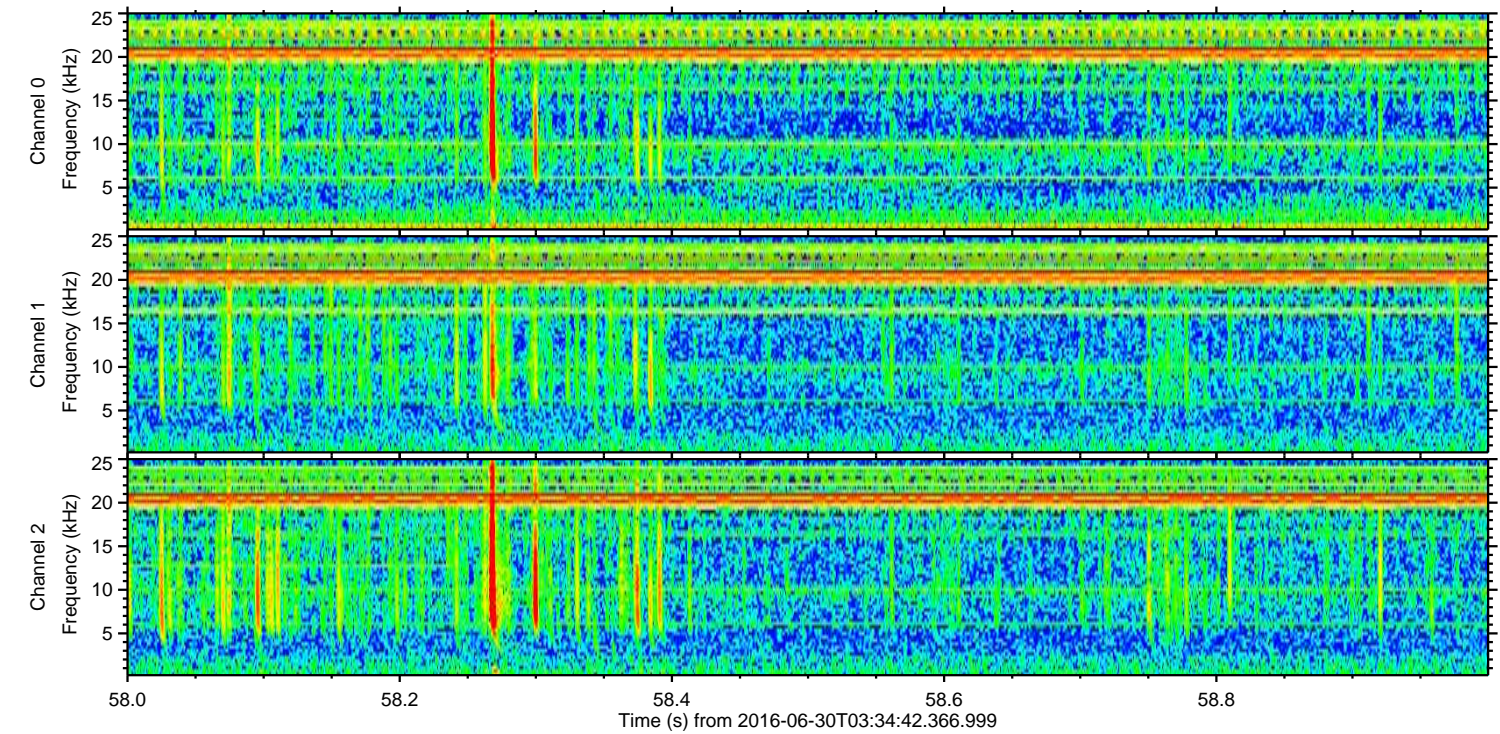
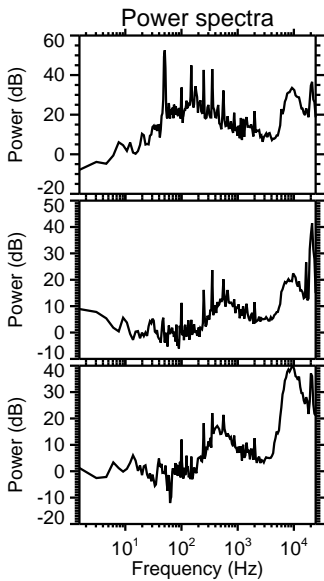
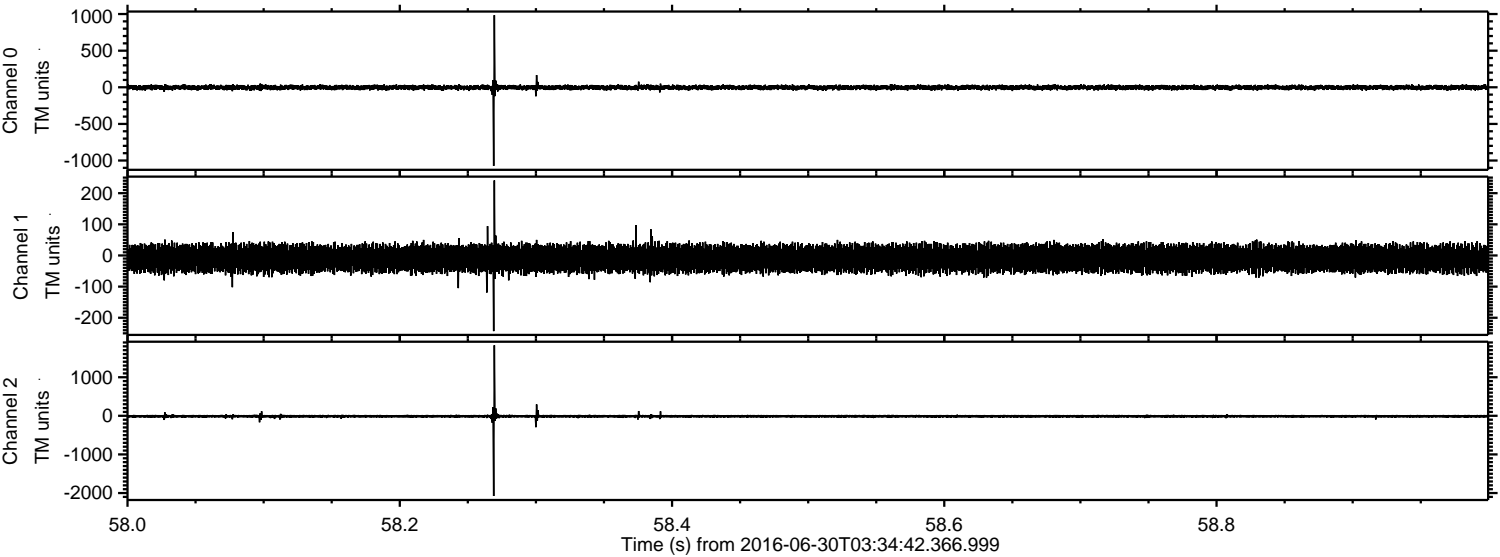


ELMAVAN 3D WAVEFORMS (Measured data sampled at 50 kHz) 51000 packets of 144 samples from 2016-06-30T03:34:42.366.999. Part 83/147

Processed Thu Jun 30 05:42:53 2016 by ELM ver.2012-10-06 from 001__elm20160630_033441__dat00.bin

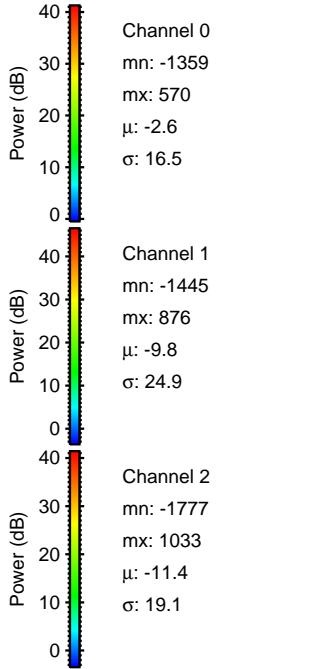
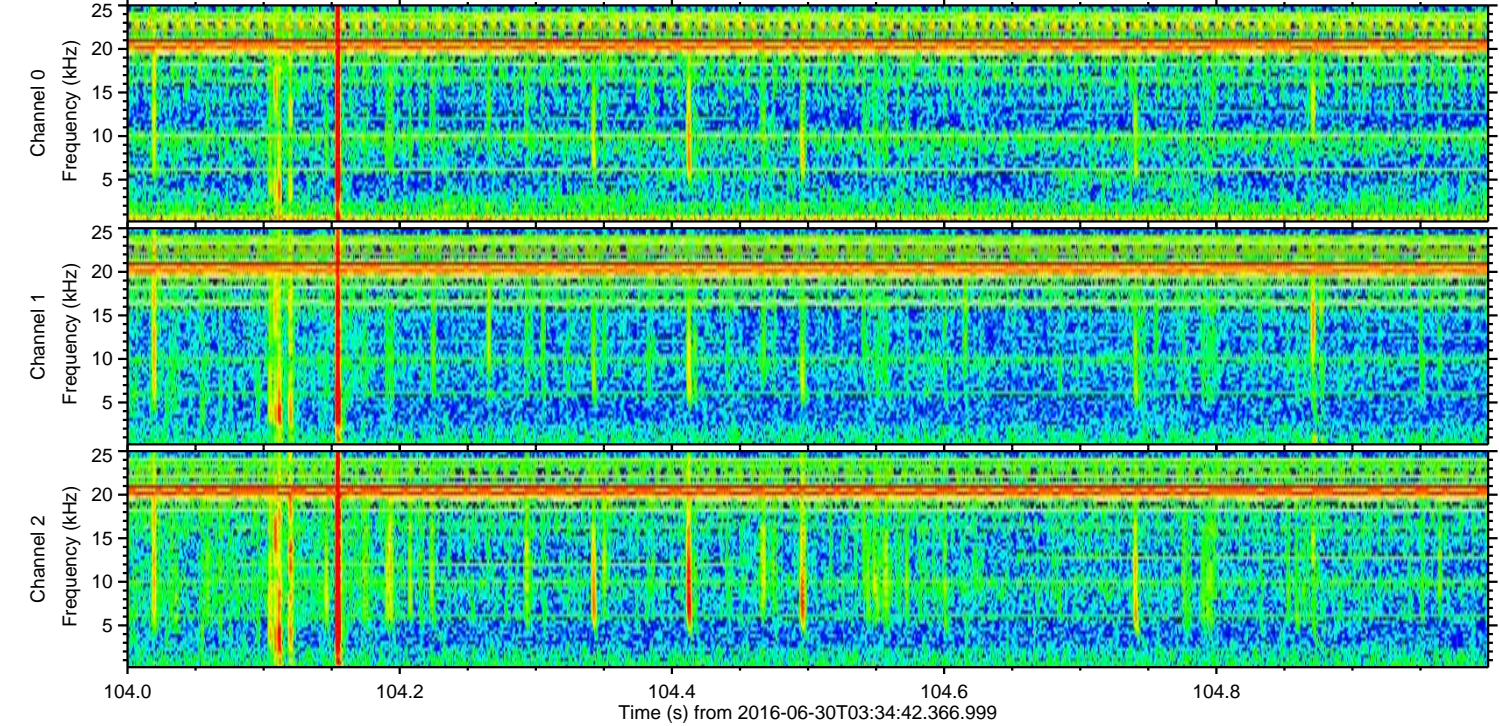
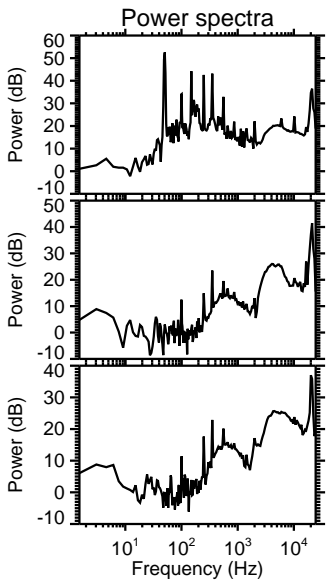
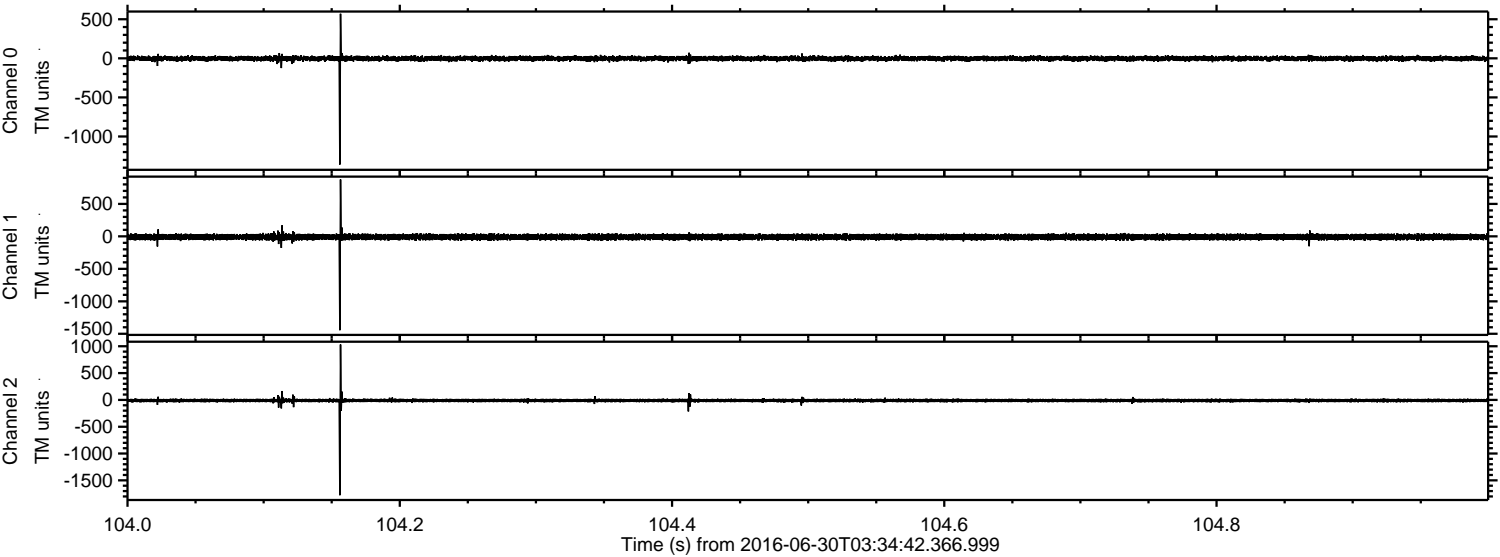


Processed Thu Jun 30 05:42:54 2016 by ELM ver.2012-10-06 from 001__elm20160630_033441__dat00.bin



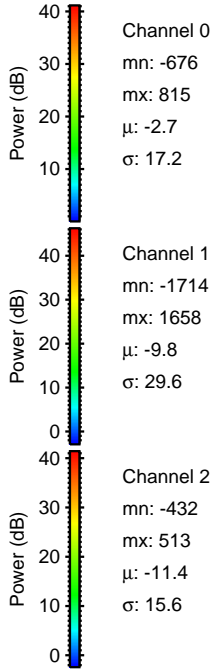
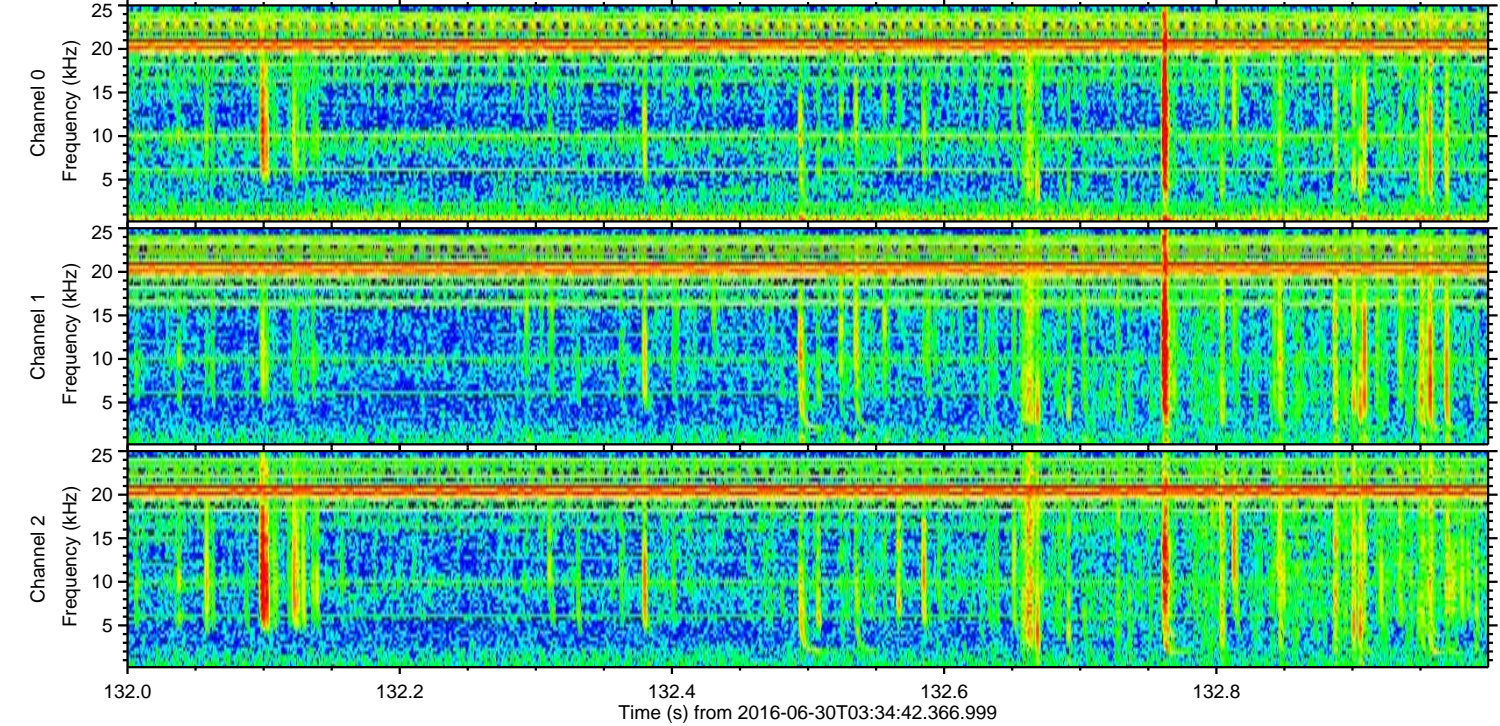
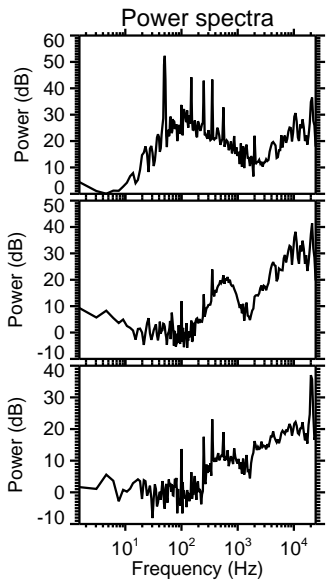
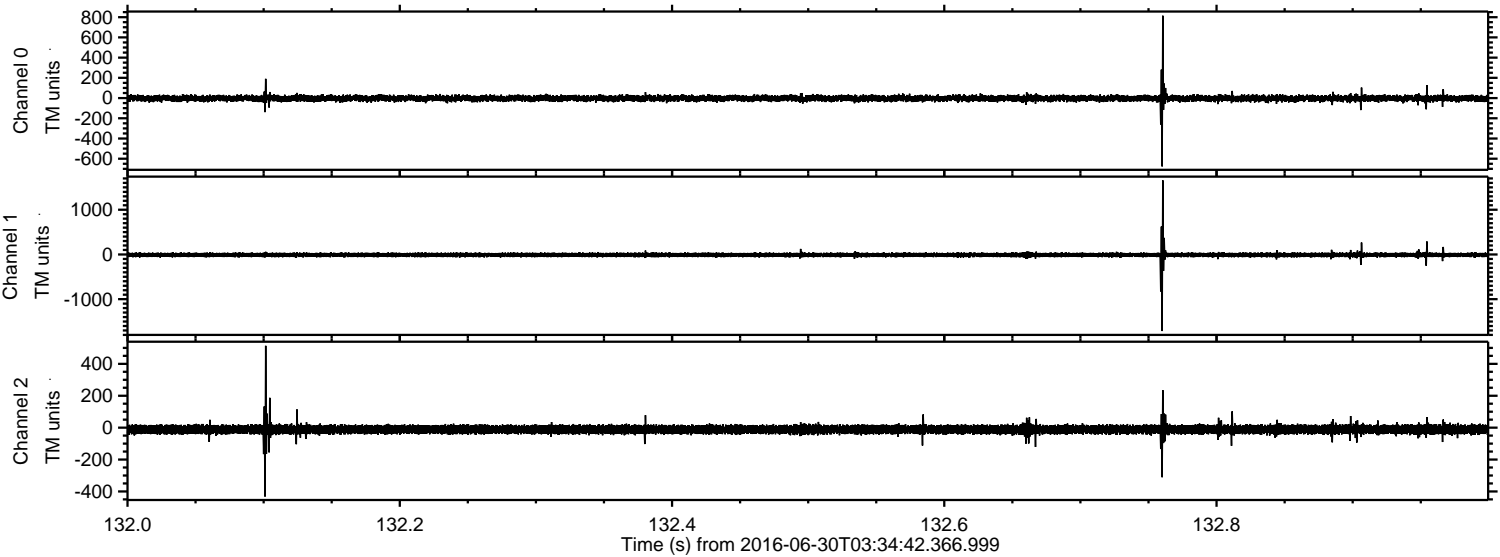
ELMAVAN 3D WAVEFORMS (Measured data sampled at 50 kHz) 51000 packets of 144 samples from 2016-06-30T03:34:42.366.999. Part 105/147

Processed Thu Jun 30 05:42:55 2016 by ELM ver.2012-10-06 from 001__elm20160630_033441__dat00.bin

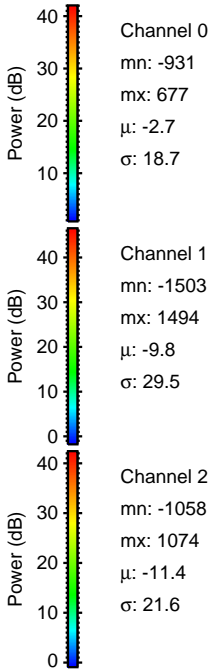
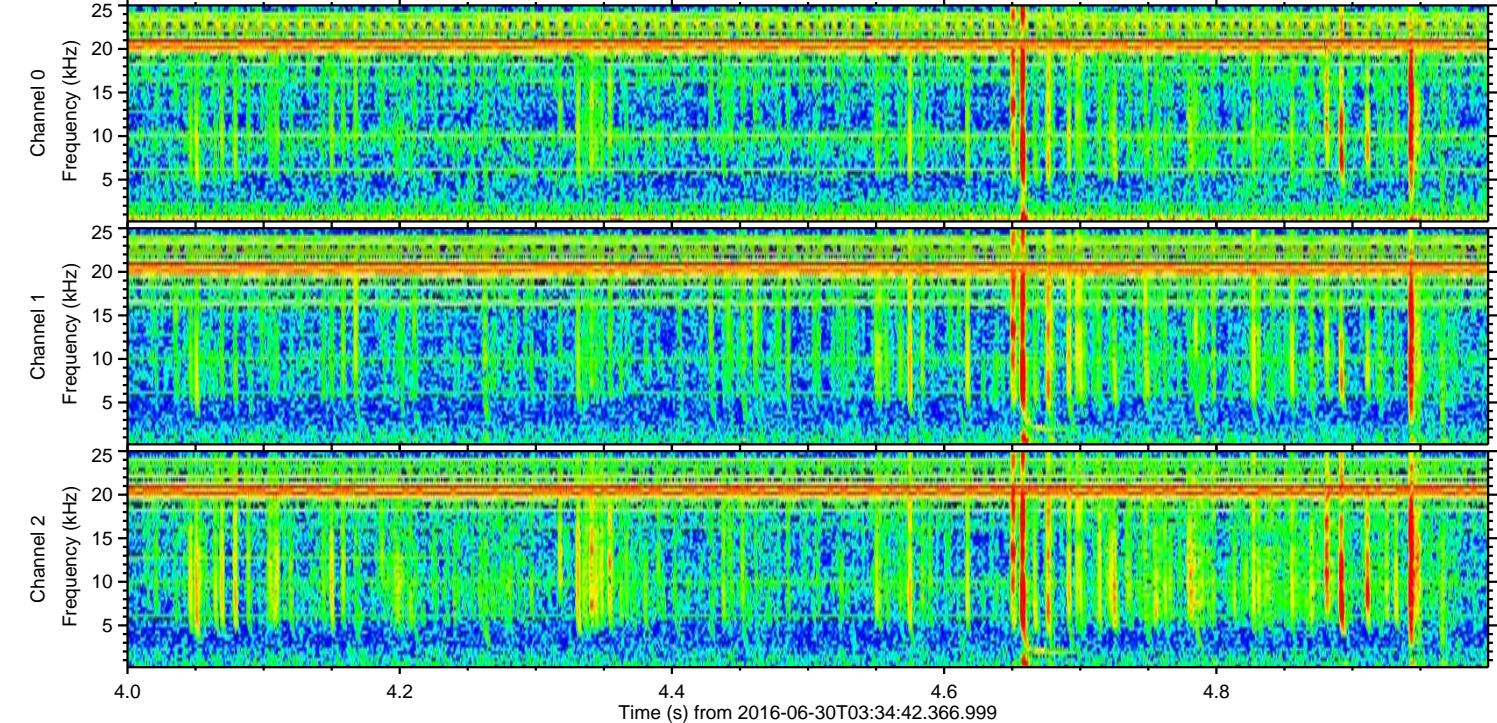
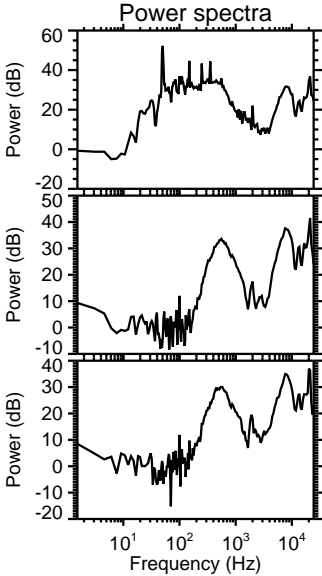
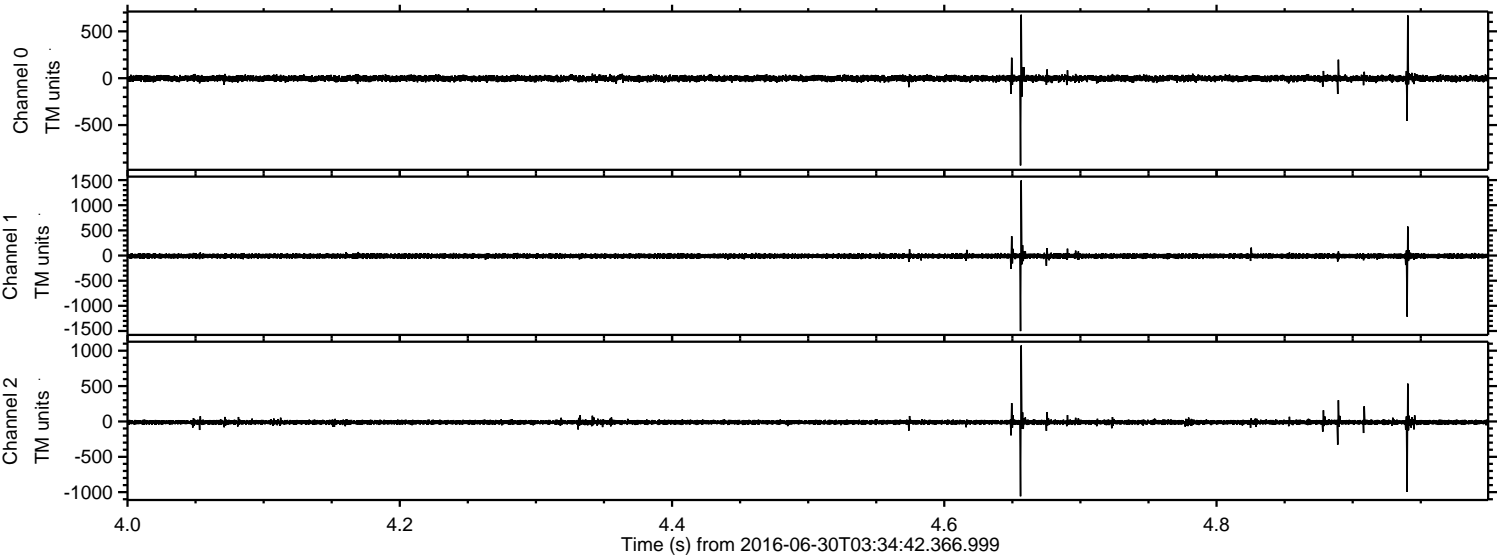


ELMAVAN 3D WAVEFORMS (Measured data sampled at 50 kHz) 51000 packets of 144 samples from 2016-06-30T03:34:42.366.999. Part 133/147

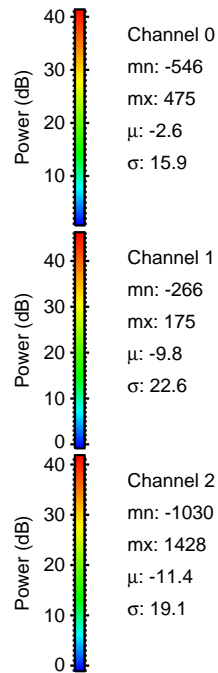
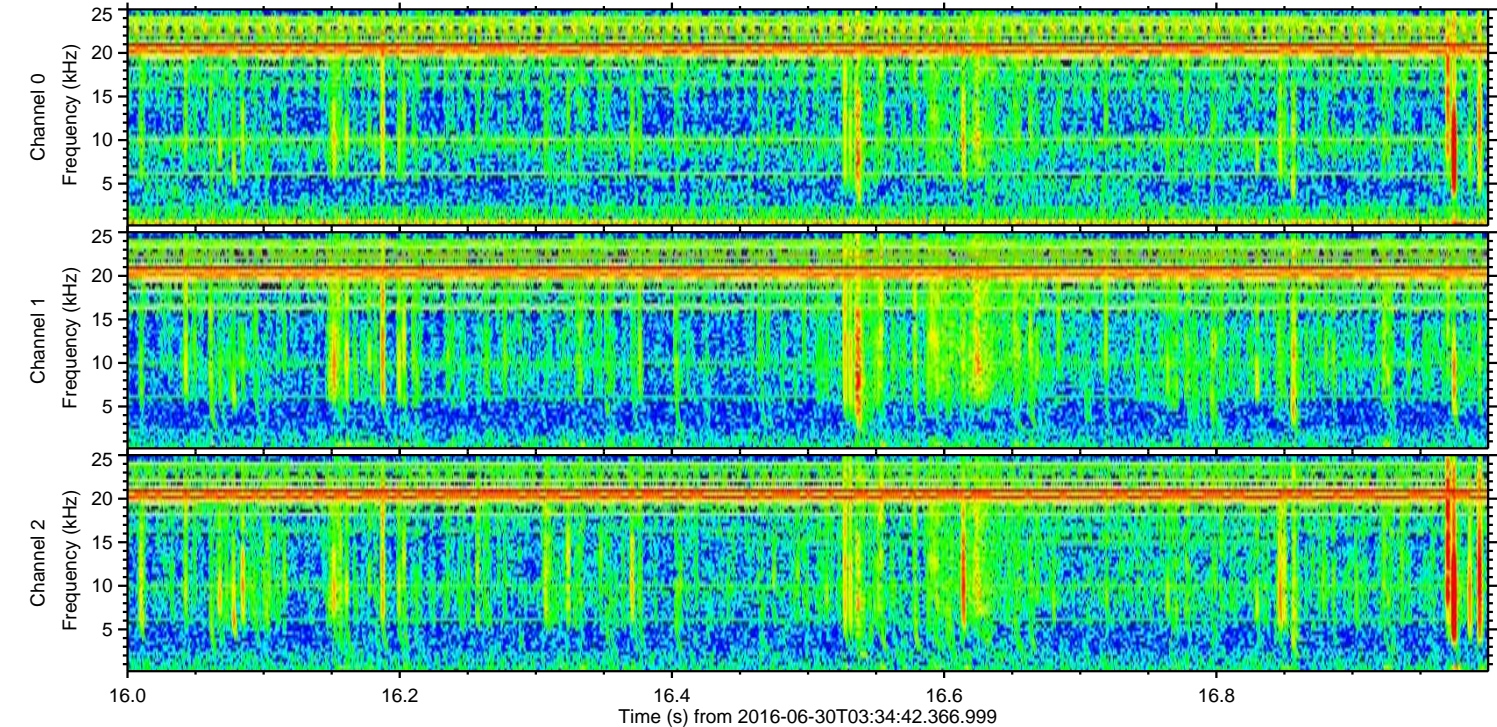
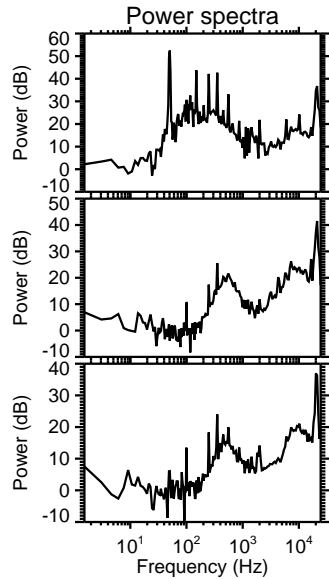
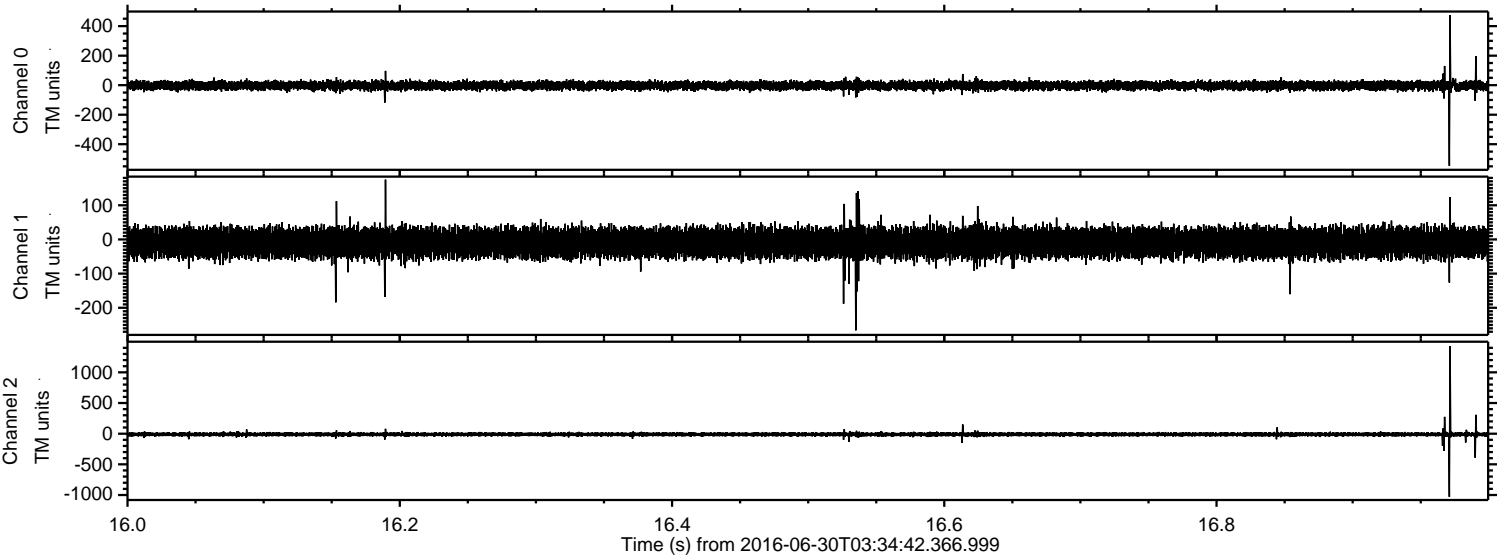
Processed Thu Jun 30 05:42:56 2016 by ELM ver.2012-10-06 from 001__elm20160630_033441__dat00.bin



Processed Thu Jun 30 05:42:57 2016 by ELM ver.2012-10-06 from 001__elm20160630_033441__dat00.bin



Processed Thu Jun 30 05:42:58 2016 by ELM ver.2012-10-06 from 001__elm20160630_033441__dat00.bin



Power spectra

Channel 0
mn: -546
mx: 475
 μ : -2.6
 σ : 15.9

Channel 1
mn: -266
mx: 175
 μ : -9.8
 σ : 22.6

Channel 2
mn: -1030
mx: 1428
 μ : -11.4
 σ : 19.1

