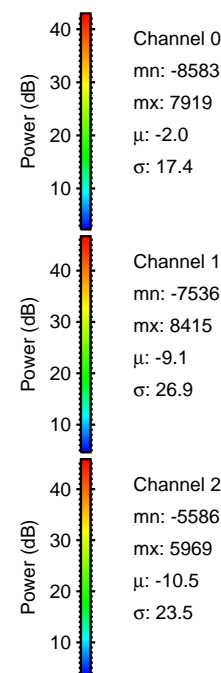
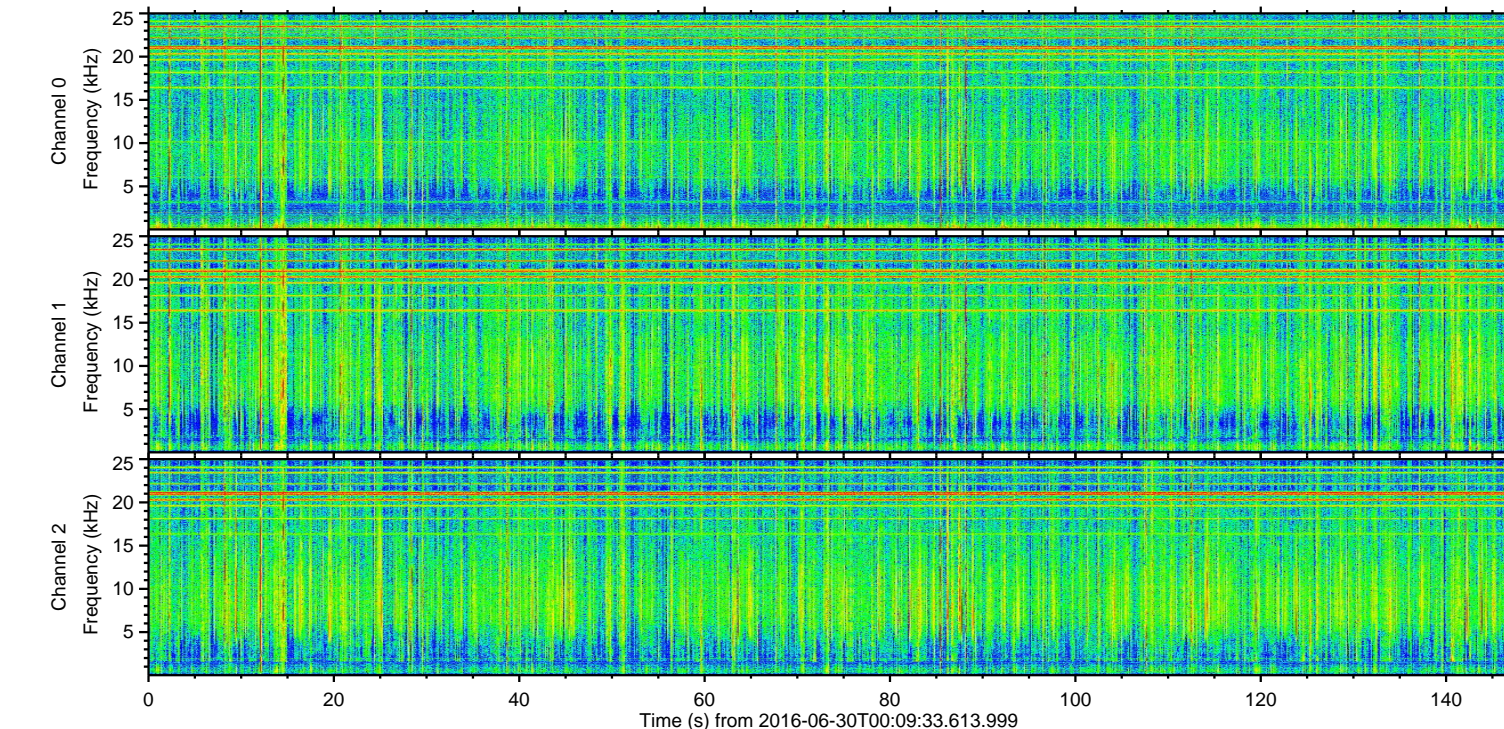
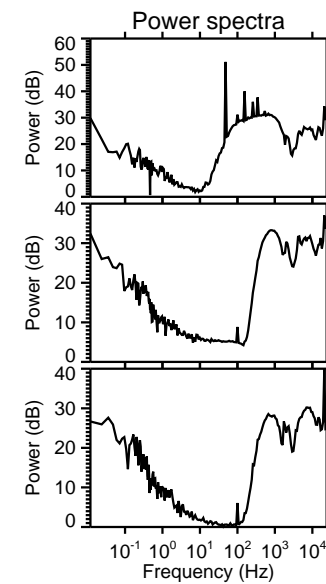
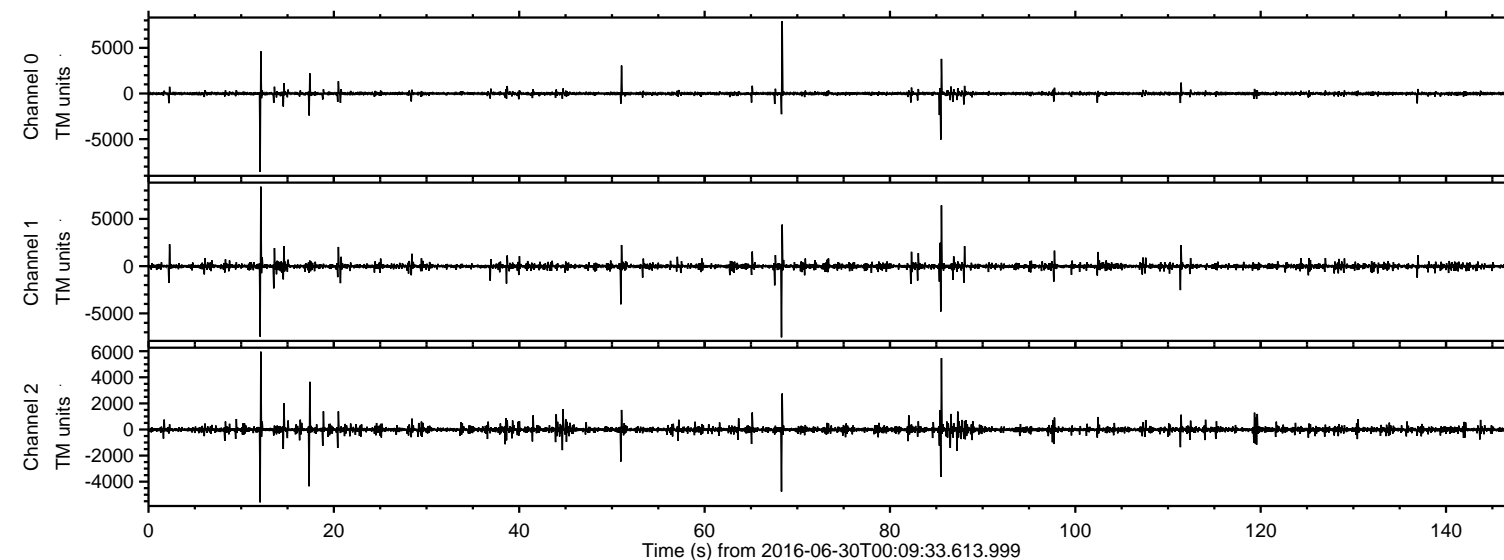


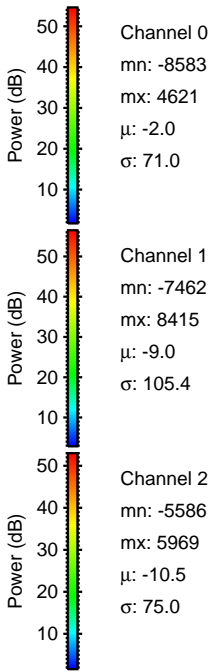
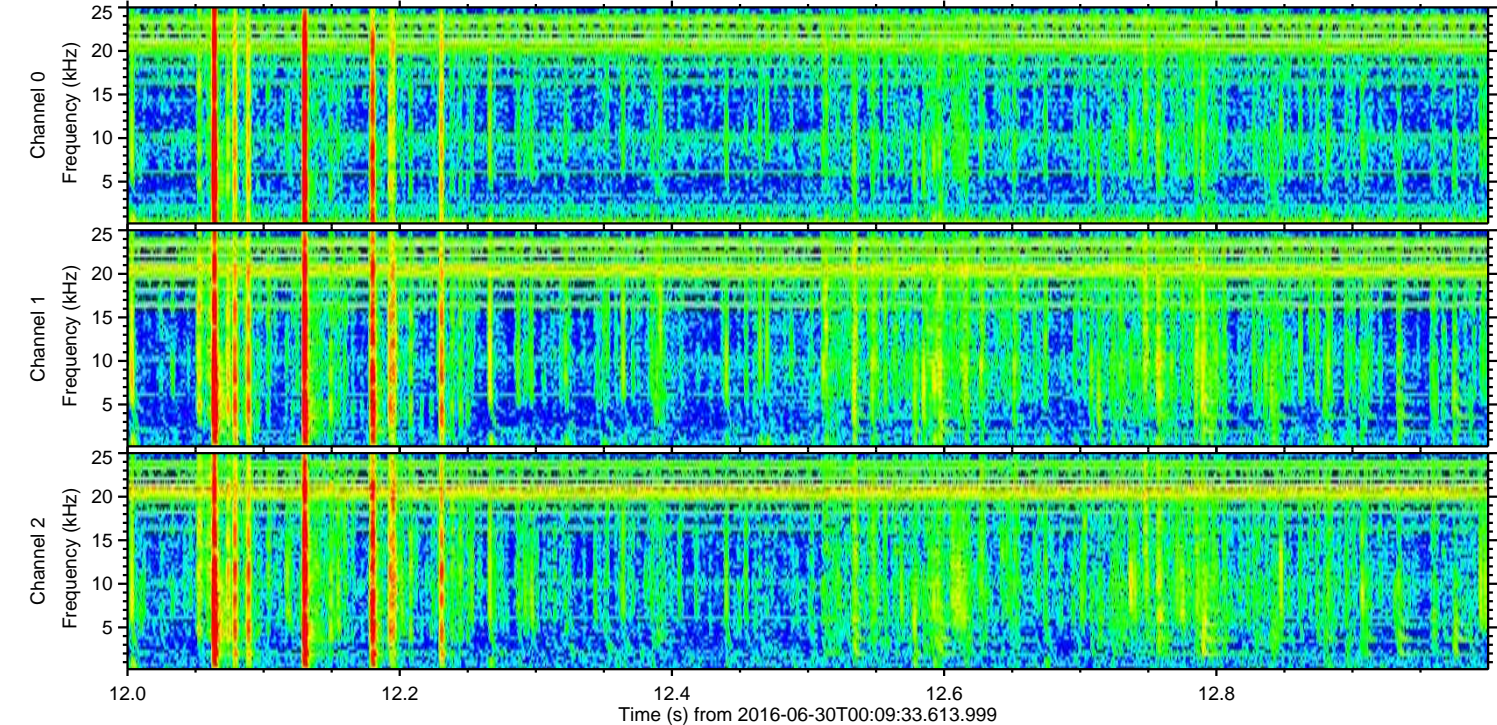
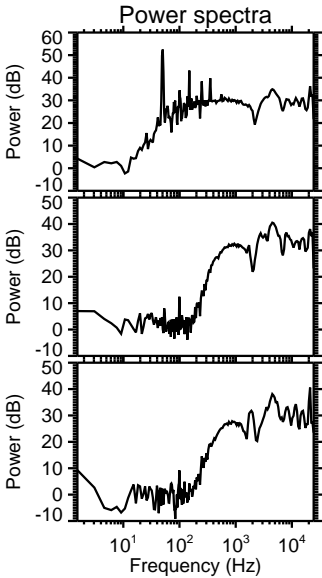
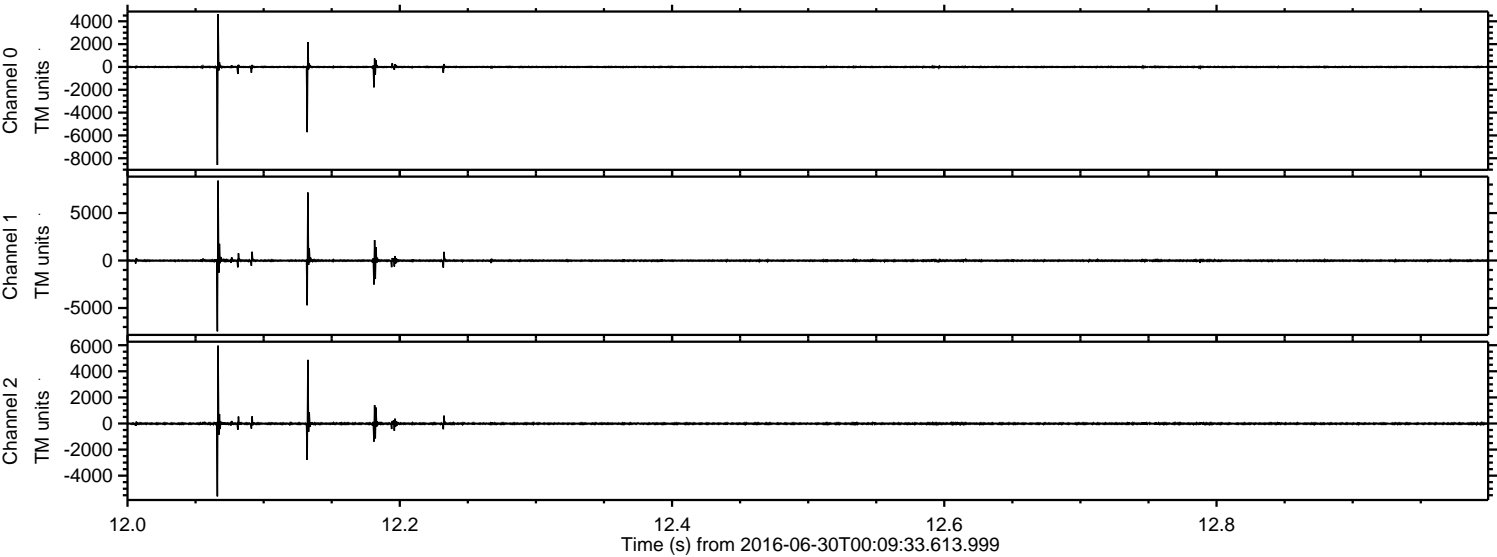
# ELMAVAN 3D WAVEFORMS (Measured data sampled at 50 kHz) 51000 packets of 144 samples from 2016-06-30T00:09:33.613.999.

Processed Thu Jun 30 02:17:05 2016 by ELM ver.2012-10-06 from 001\_\_elm20160630\_000932\_\_dat00.bin



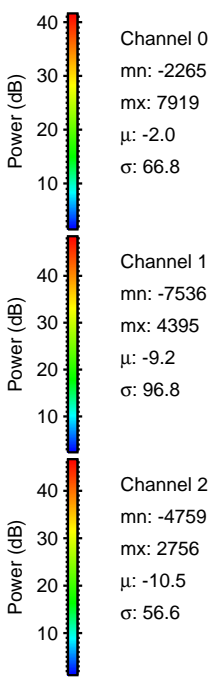
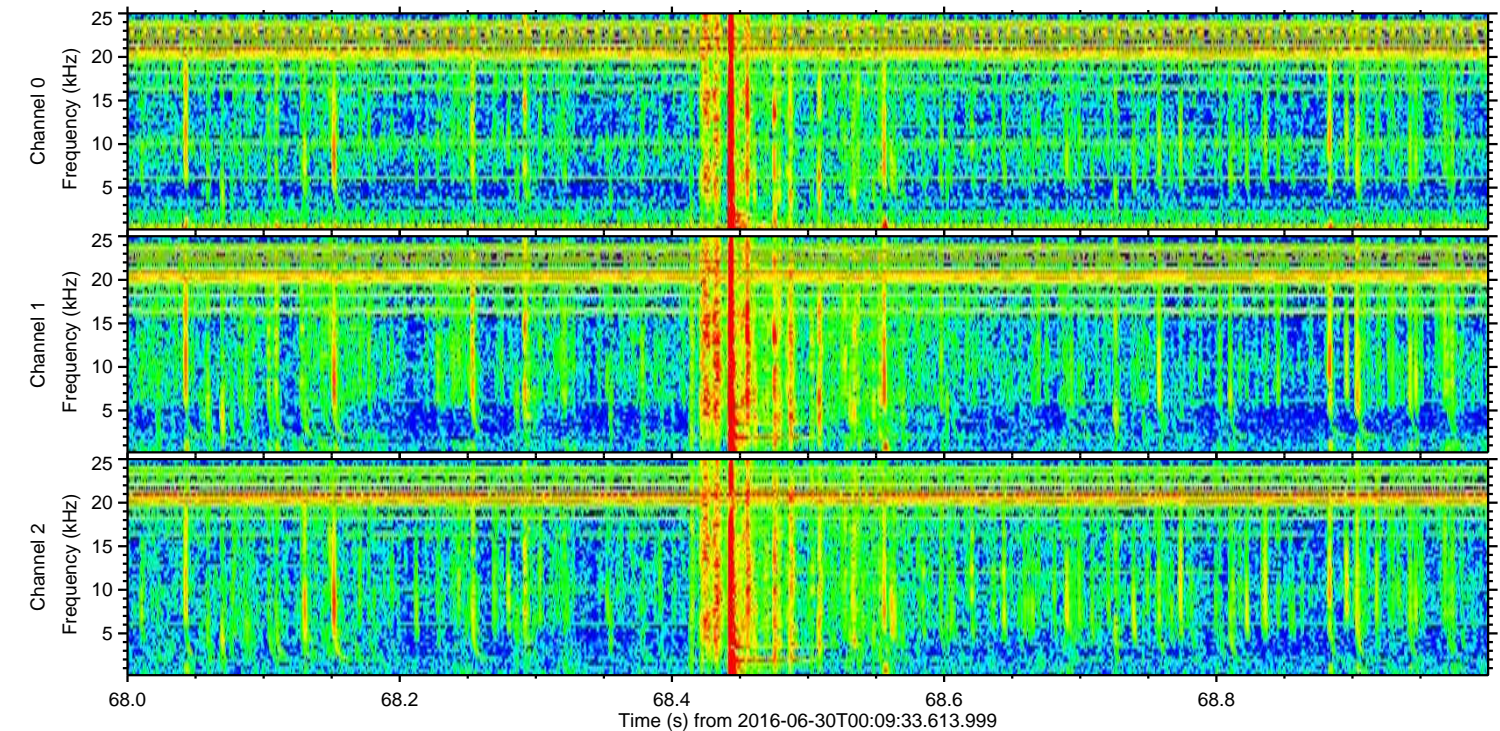
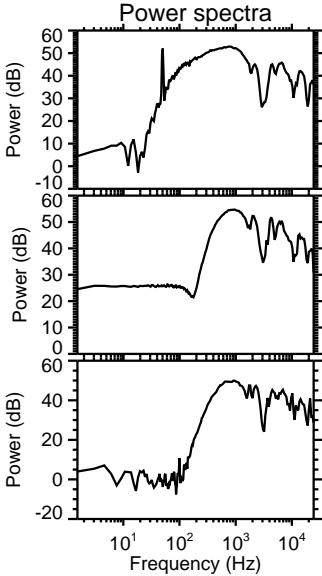
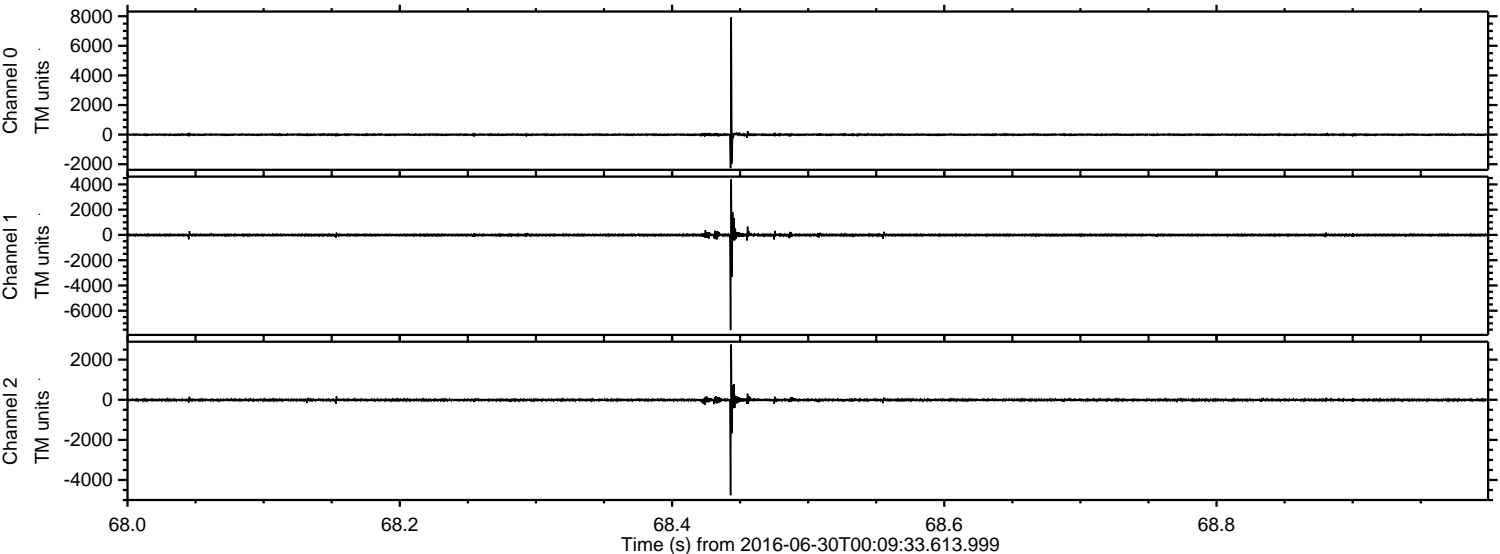


Processed Thu Jun 30 02:17:16 2016 by ELM ver.2012-10-06 from 001\_\_elm20160630\_000932\_\_dat00.bin



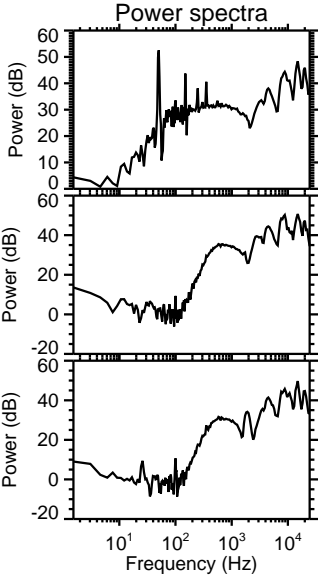
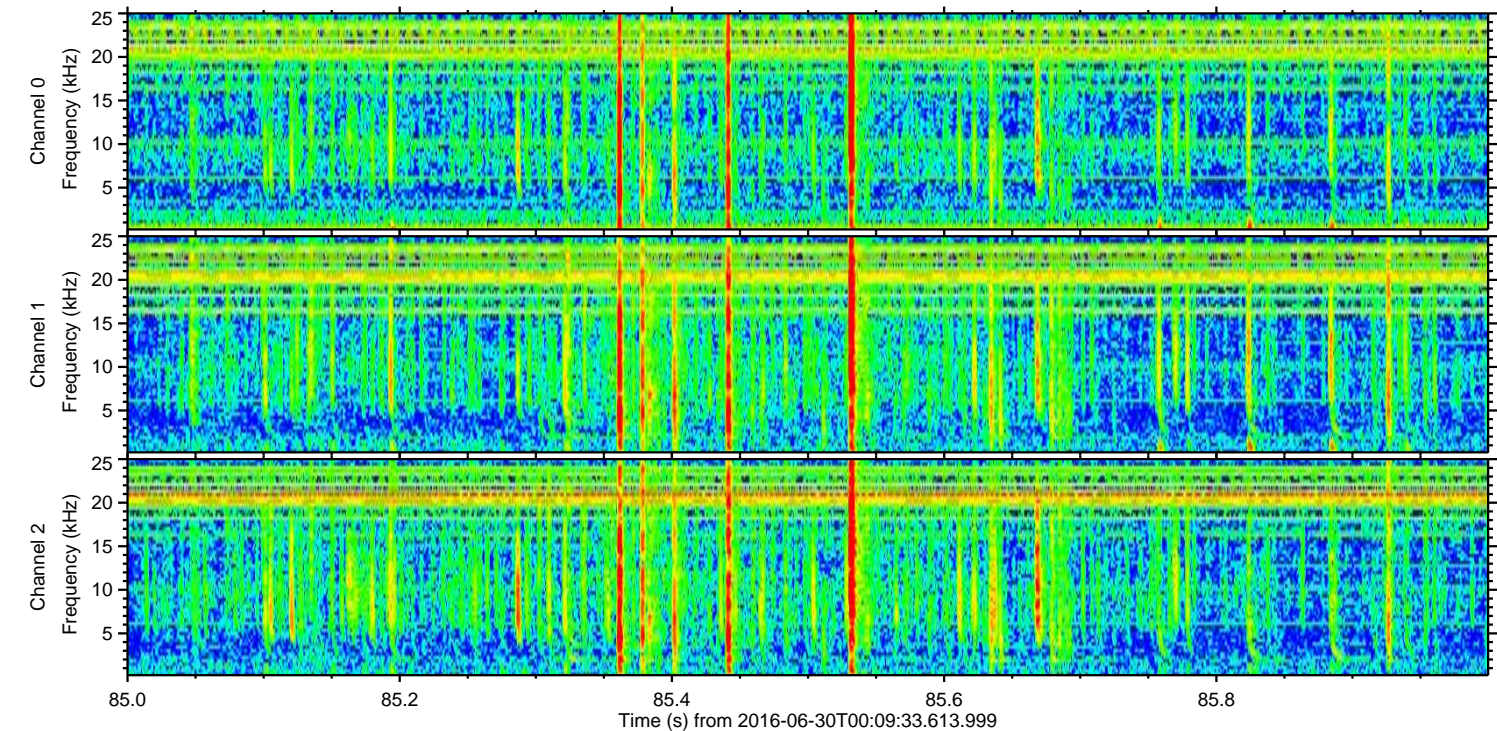
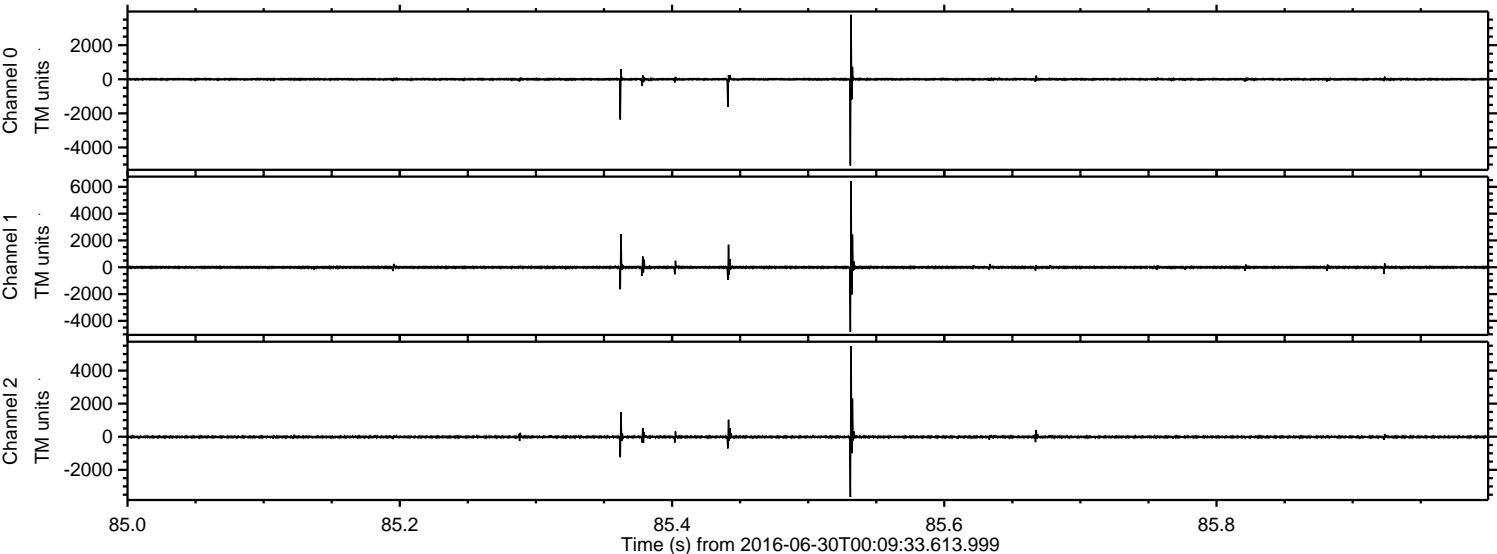


Processed Thu Jun 30 02:17:17 2016 by ELM ver.2012-10-06 from 001\_\_elm20160630\_000932\_\_dat00.bin





Processed Thu Jun 30 02:17:18 2016 by ELM ver.2012-10-06 from 001\_\_elm20160630\_000932\_\_dat00.bin



Channel 0  
mn: -5058  
mx: 3785  
 $\mu$ : -1.9  
 $\sigma$ : 60.5

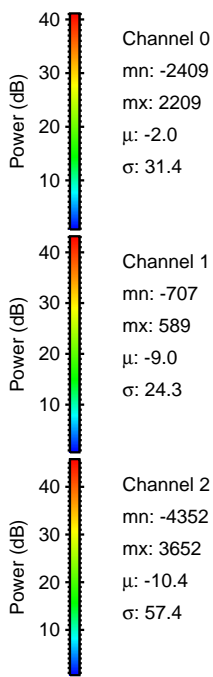
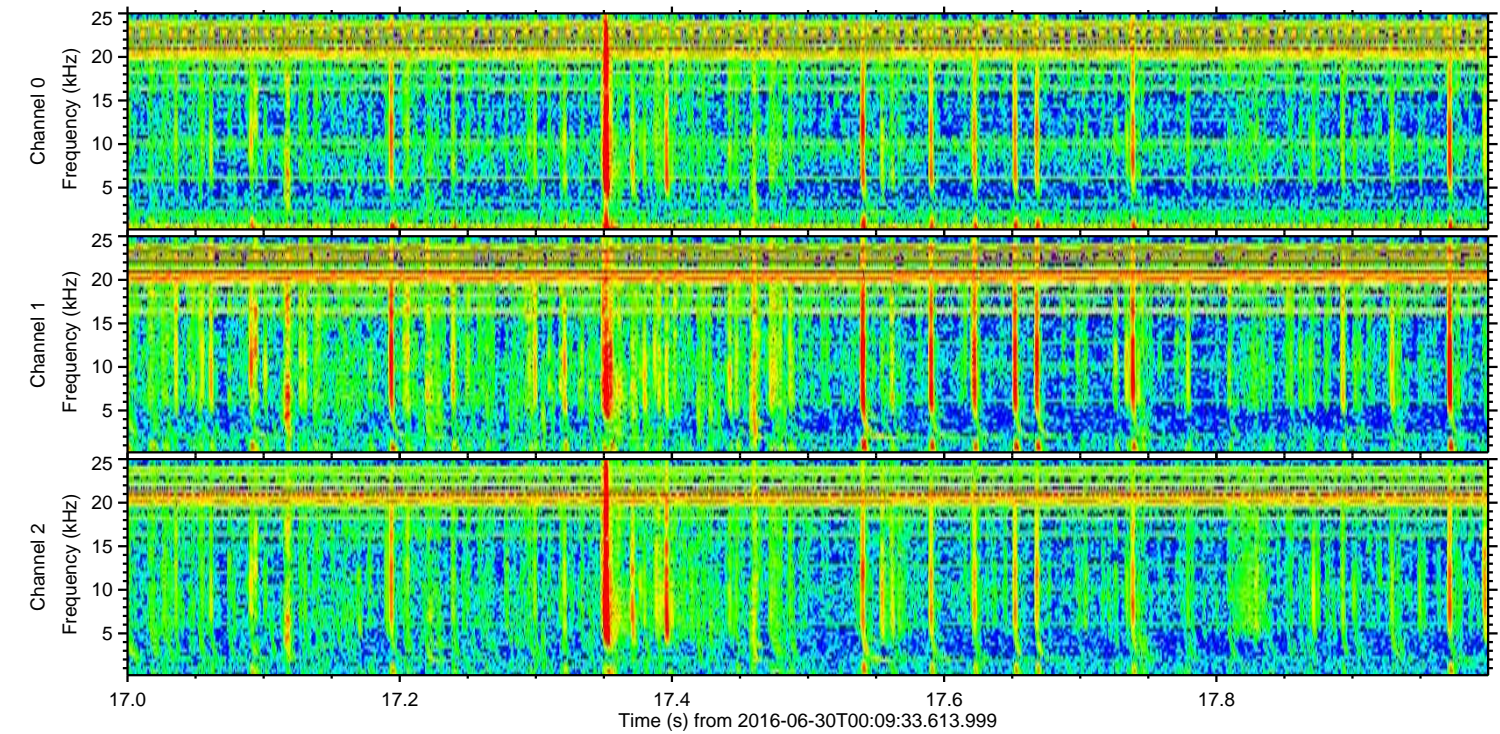
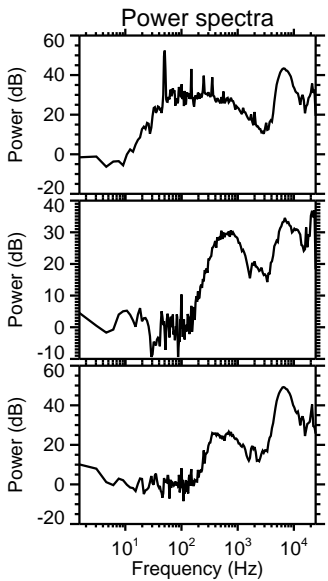
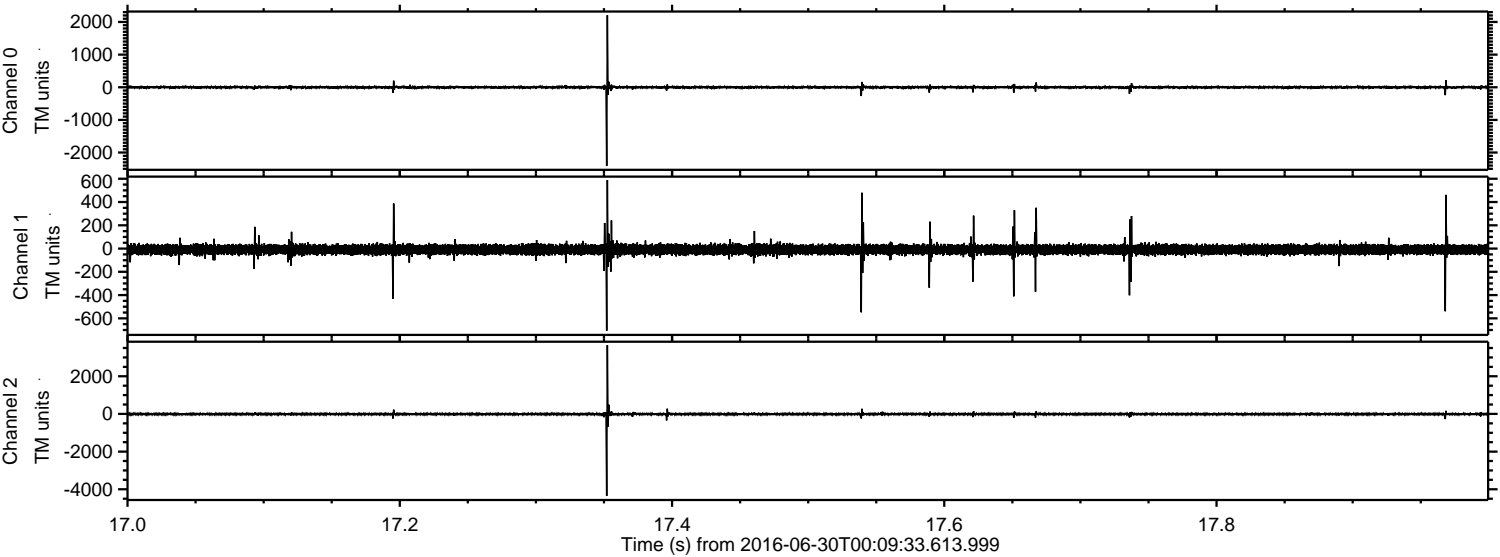
Channel 1  
mn: -4807  
mx: 6439  
 $\mu$ : -9.1  
 $\sigma$ : 87.1

Channel 2  
mn: -3640  
mx: 5470  
 $\mu$ : -10.5  
 $\sigma$ : 64.3



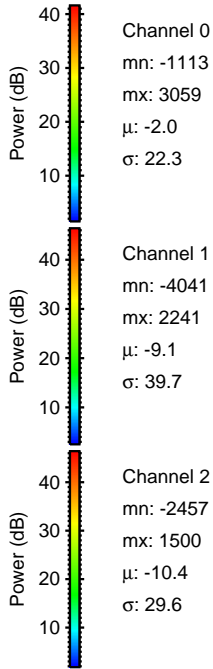
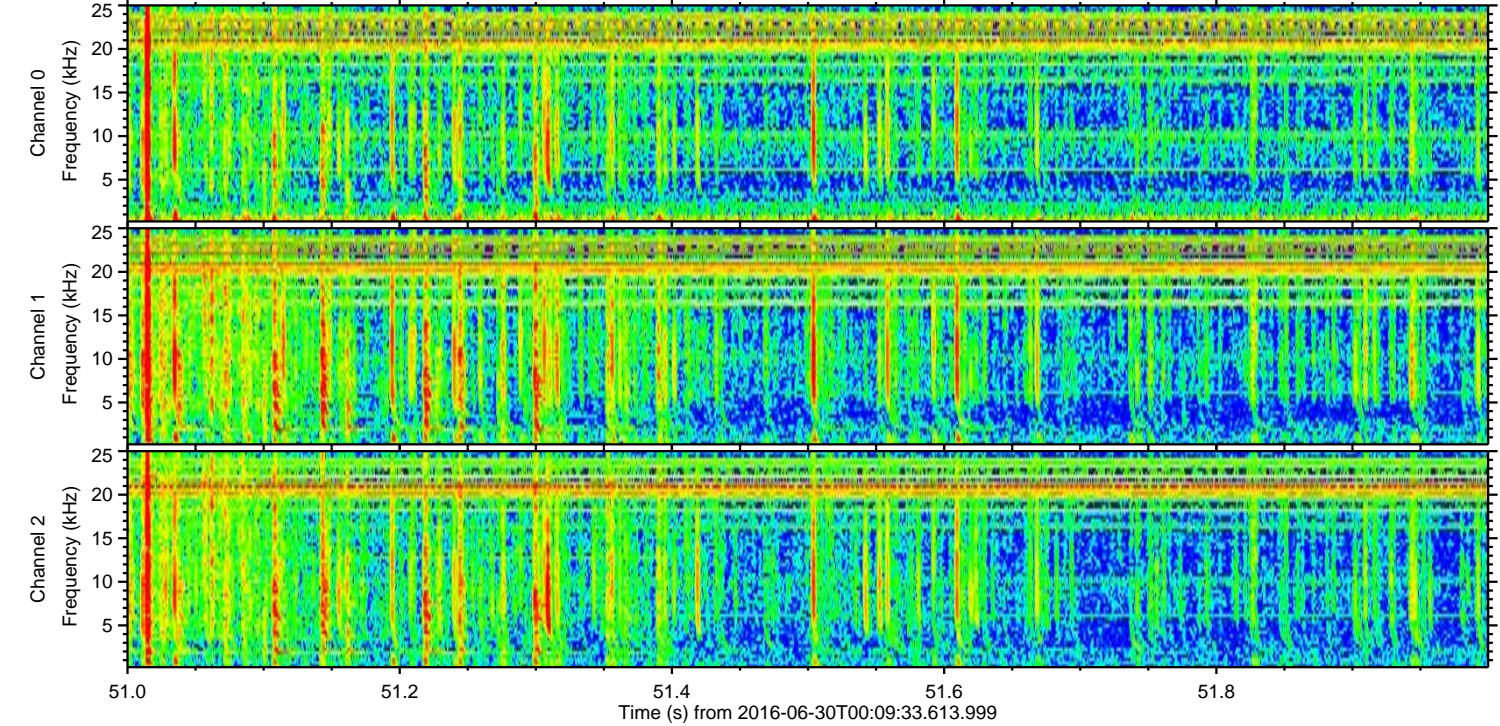
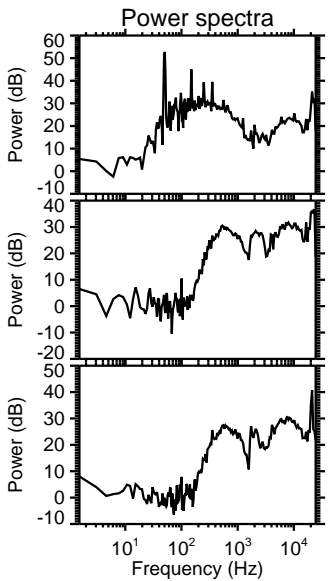
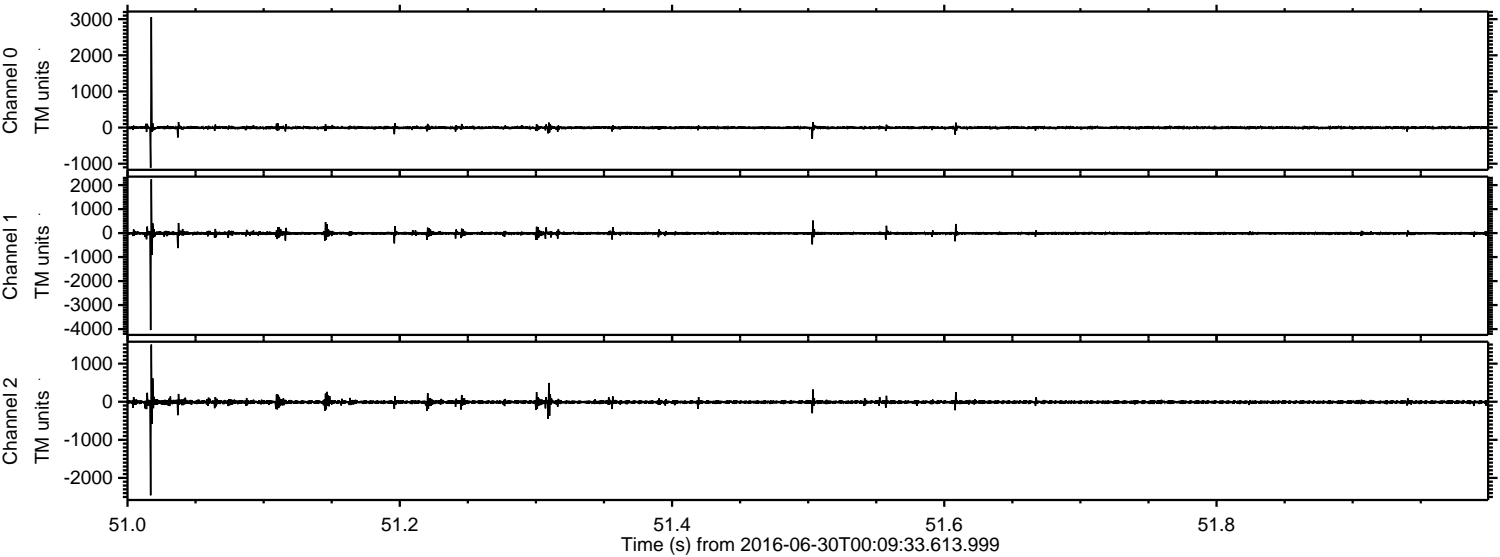
ELMAVAN 3D WAVEFORMS (Measured data sampled at 50 kHz) 51000 packets of 144 samples from 2016-06-30T00:09:33.613.999. Part 18/147

Processed Thu Jun 30 02:17:19 2016 by ELM ver.2012-10-06 from 001\_\_elm20160630\_000932\_\_dat00.bin





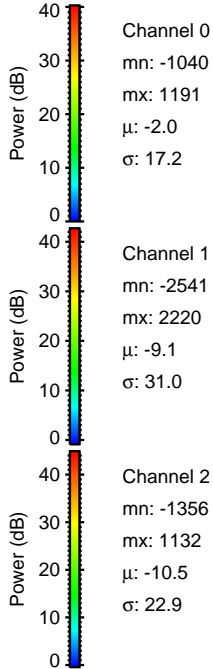
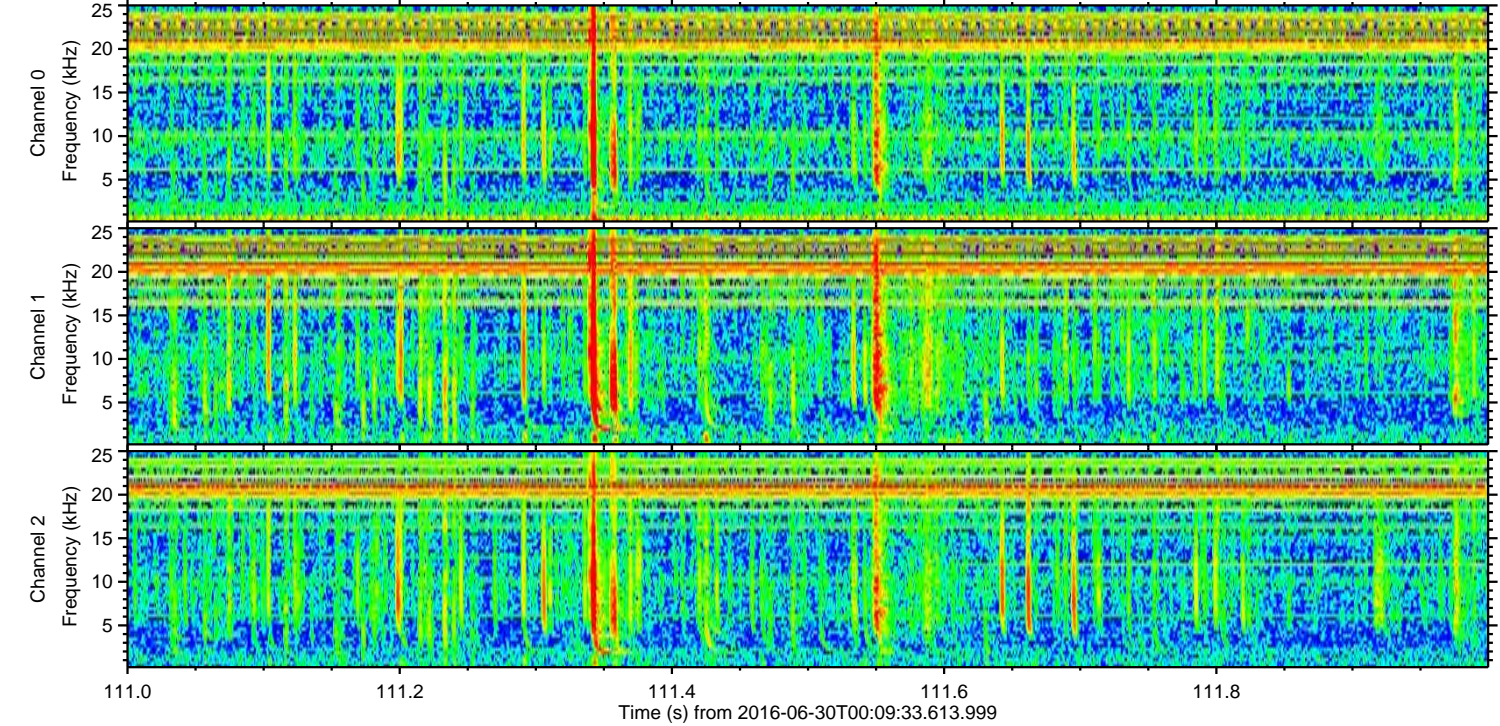
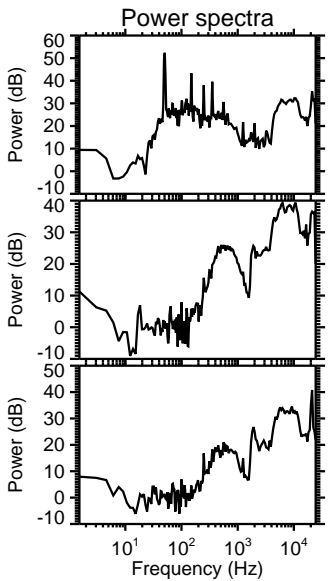
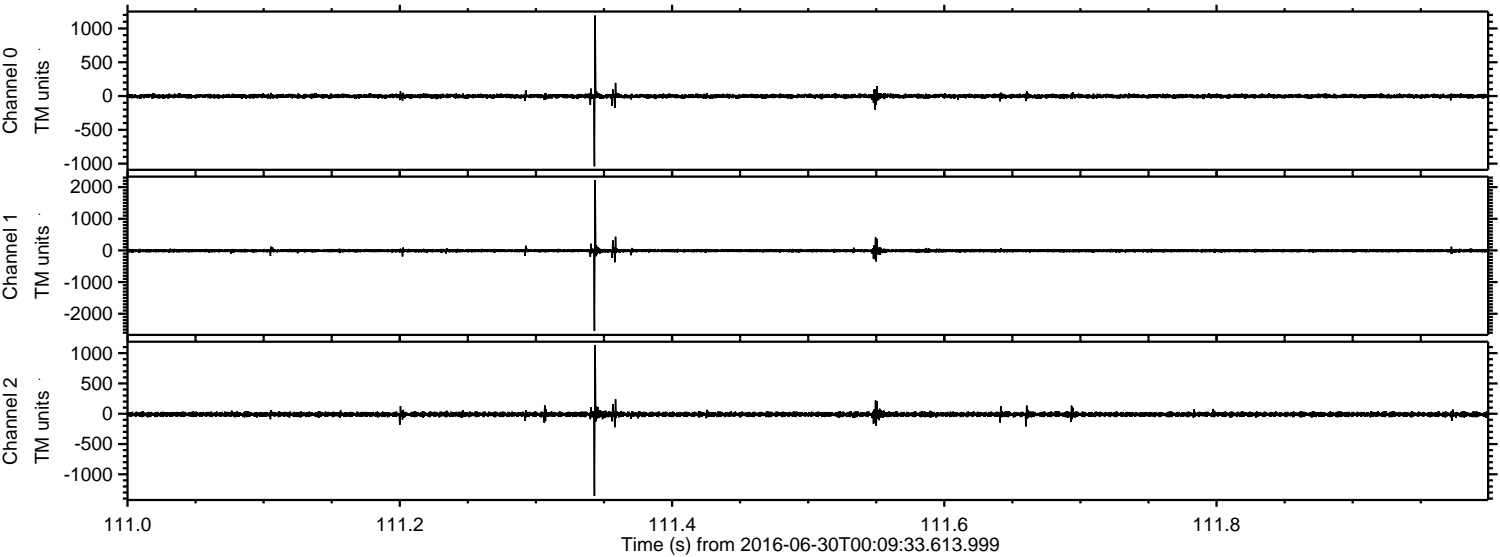
Processed Thu Jun 30 02:17:20 2016 by ELM ver.2012-10-06 from 001\_\_elm20160630\_000932\_\_dat00.bin





ELMAVAN 3D WAVEFORMS (Measured data sampled at 50 kHz) 51000 packets of 144 samples from 2016-06-30T00:09:33.613.999. Part 112/147

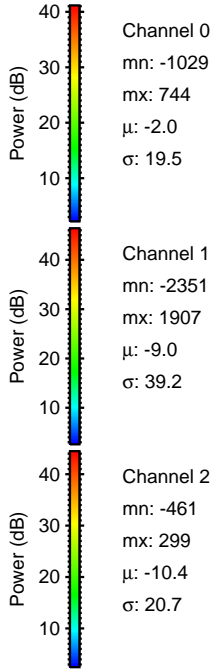
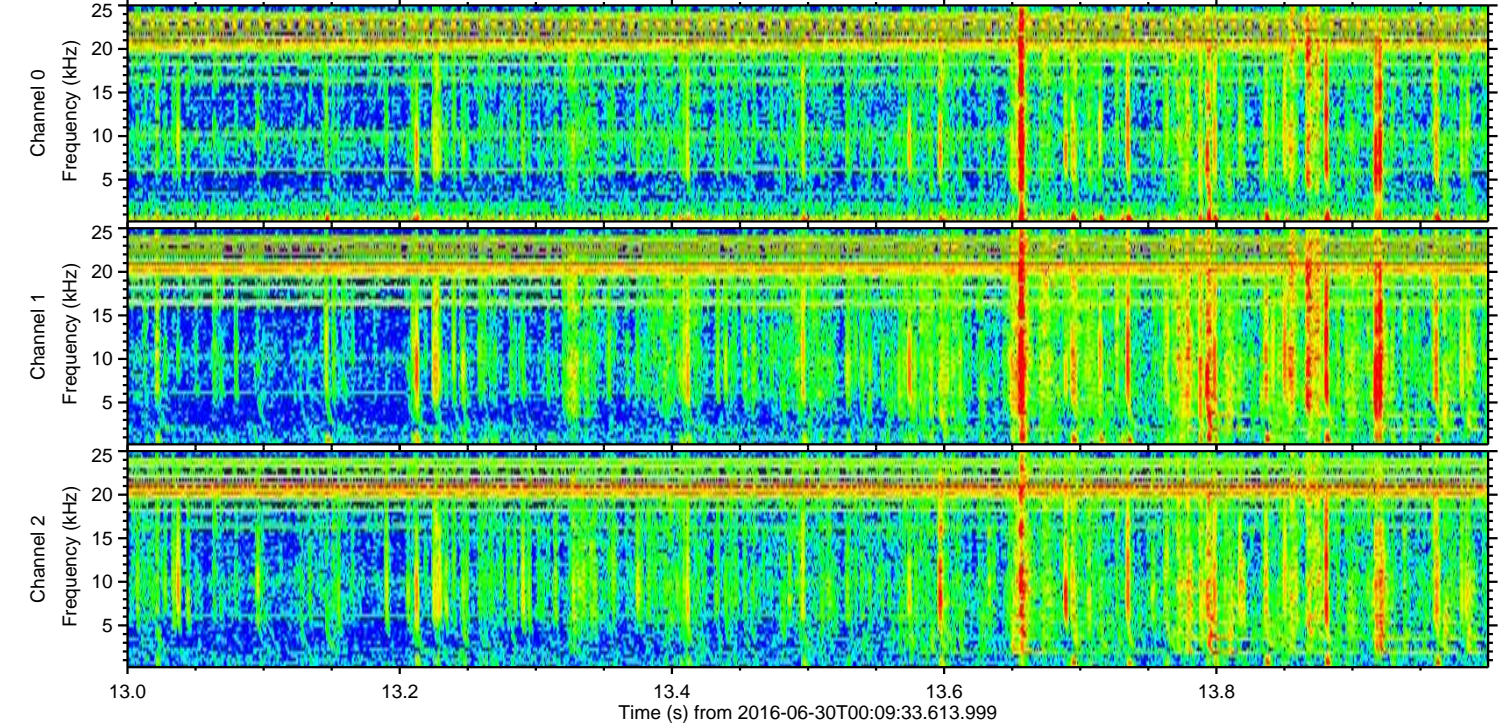
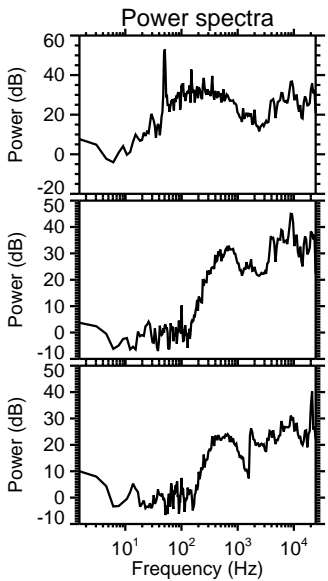
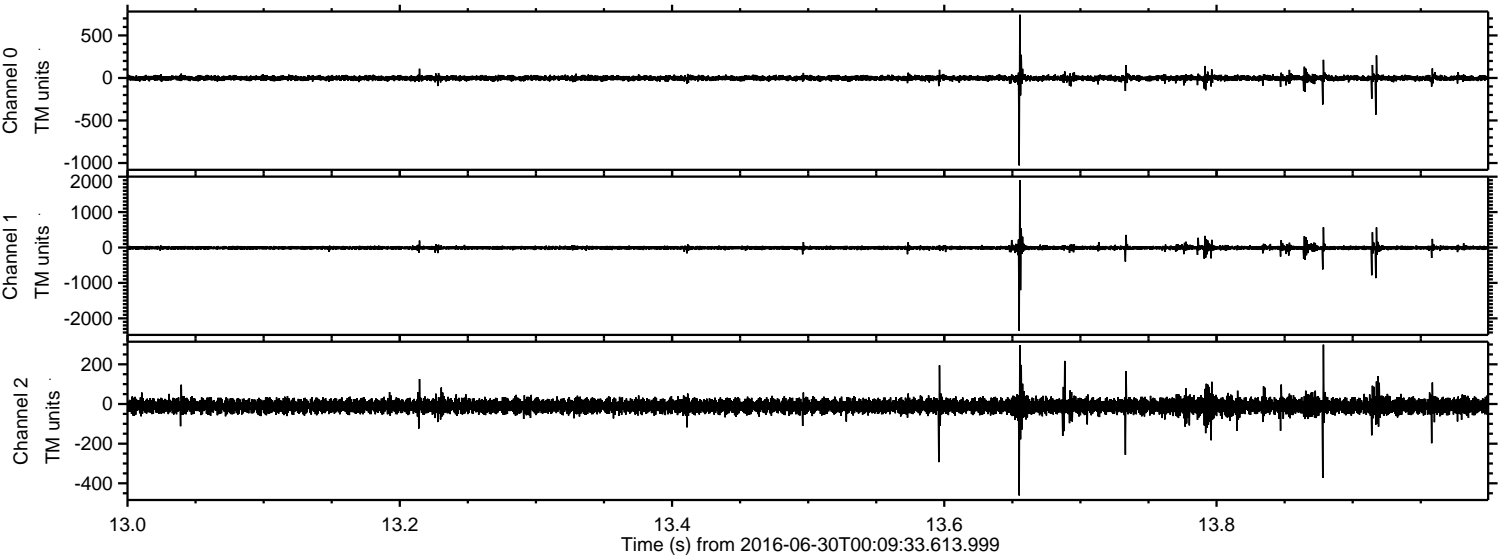
Processed Thu Jun 30 02:17:21 2016 by ELM ver.2012-10-06 from 001\_\_elm20160630\_000932\_\_dat00.bin





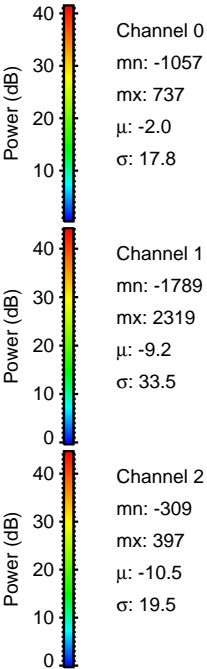
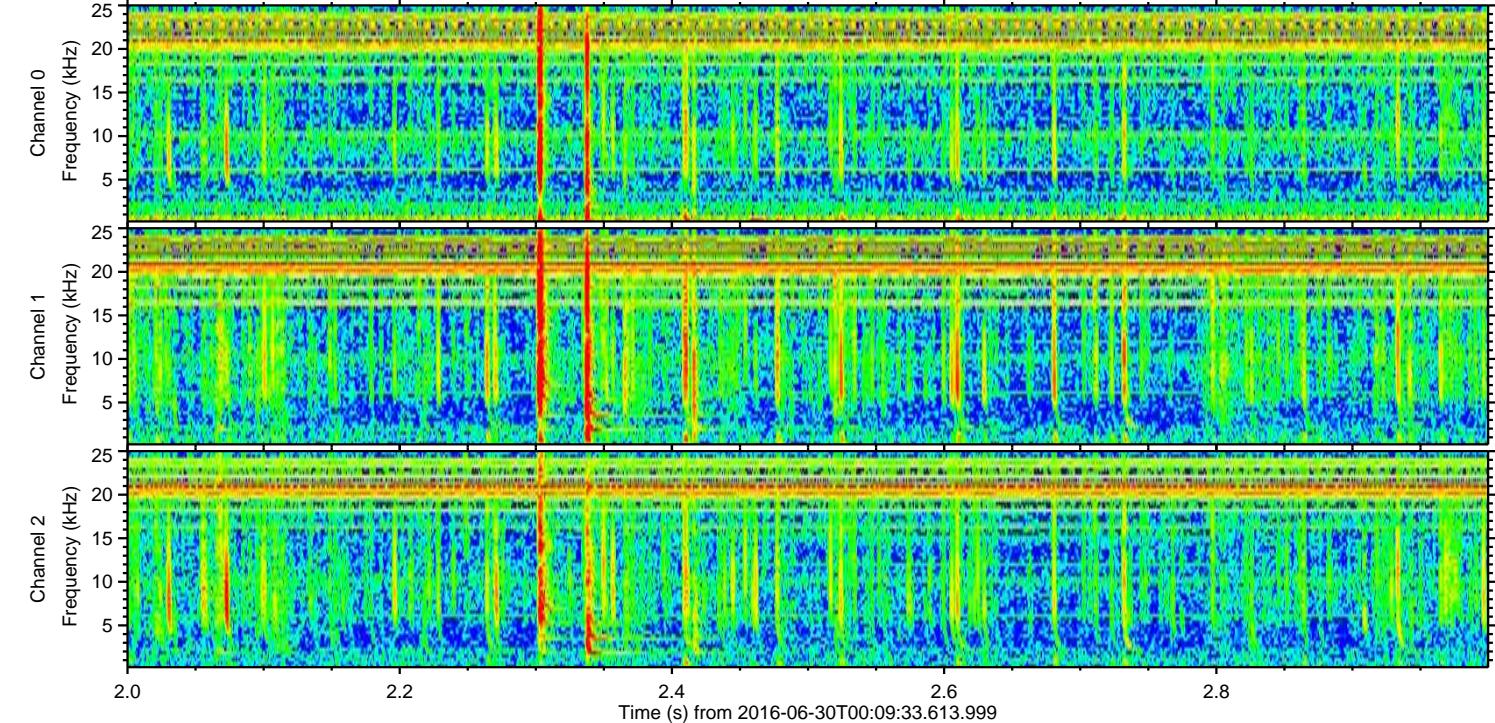
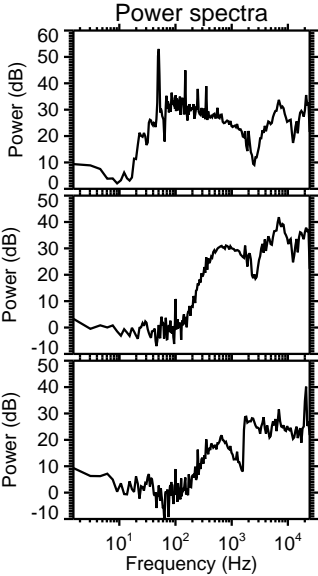
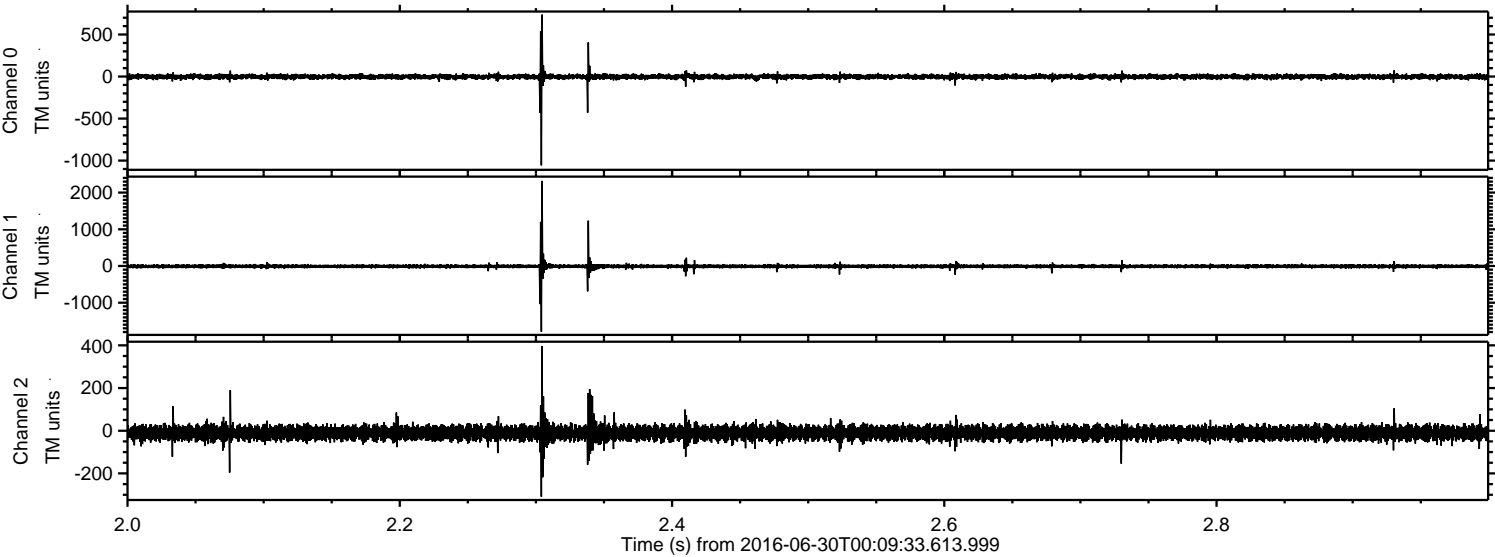
ELMAVAN 3D WAVEFORMS (Measured data sampled at 50 kHz) 51000 packets of 144 samples from 2016-06-30T00:09:33.613.999. Part 14/147

Processed Thu Jun 30 02:17:22 2016 by ELM ver.2012-10-06 from 001\_\_elm20160630\_000932\_\_dat00.bin





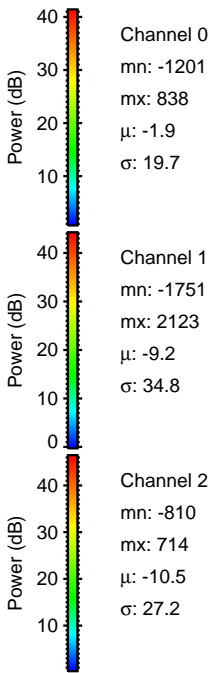
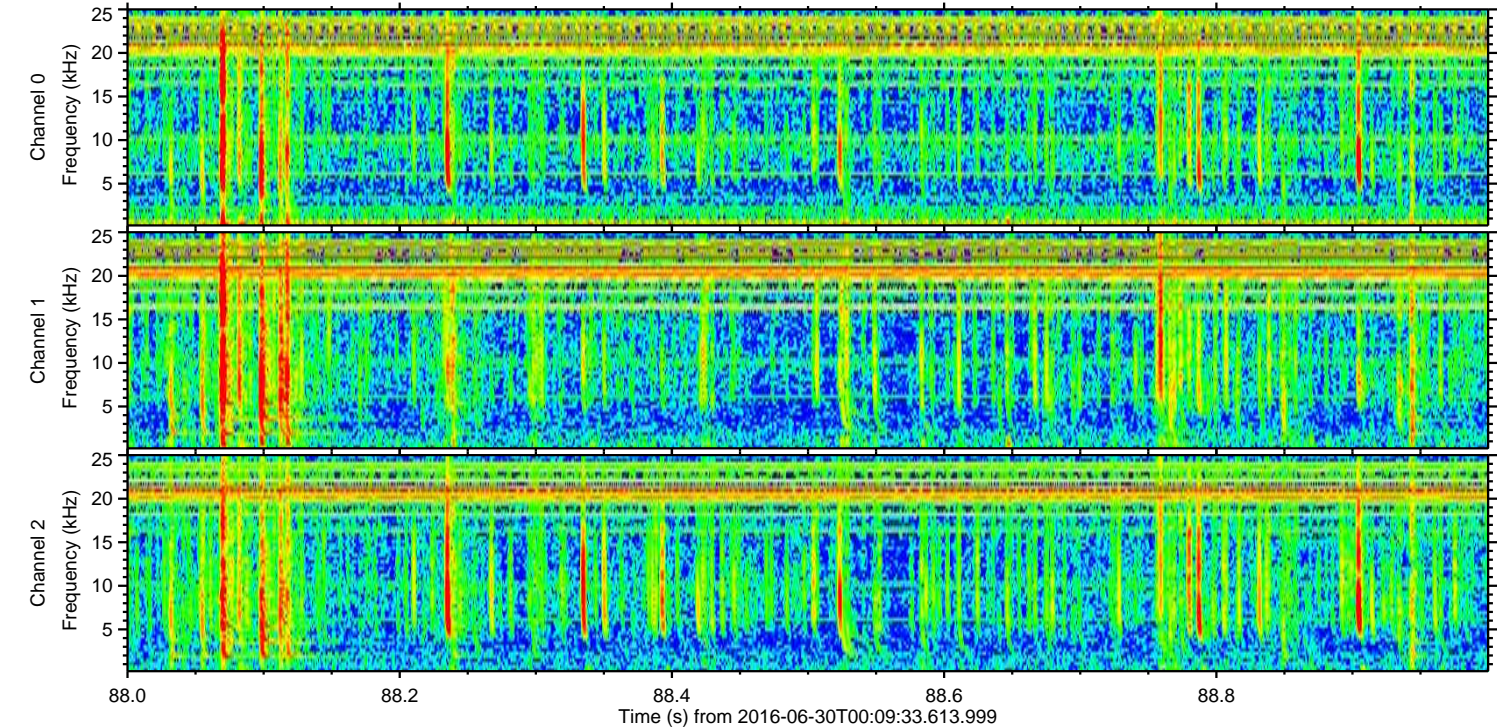
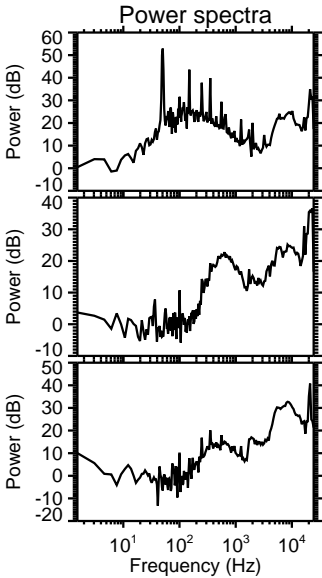
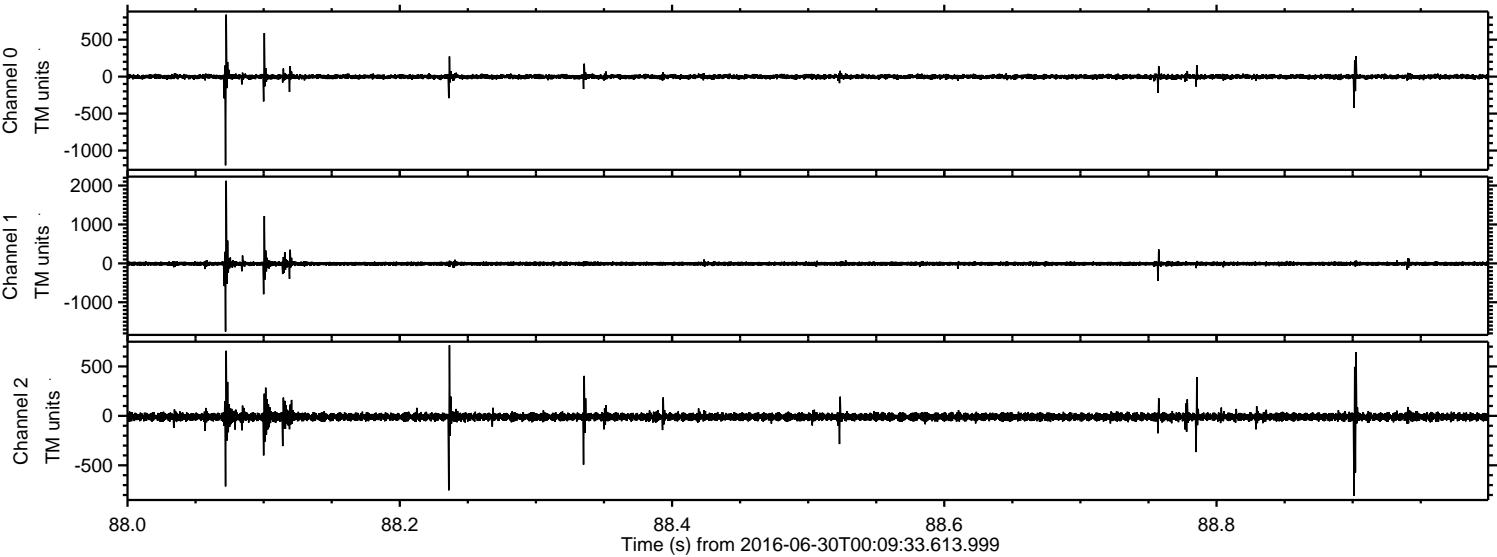
Processed Thu Jun 30 02:17:23 2016 by ELM ver.2012-10-06 from 001\_\_elm20160630\_000932\_\_dat00.bin





ELMAVAN 3D WAVEFORMS (Measured data sampled at 50 kHz) 51000 packets of 144 samples from 2016-06-30T00:09:33.613.999. Part 89/147

Processed Thu Jun 30 02:17:23 2016 by ELM ver.2012-10-06 from 001\_\_elm20160630\_000932\_\_dat00.bin



Power spectra

Channel 0  
mn: -1201  
mx: 838  
 $\mu$ : -1.9  
 $\sigma$ : 19.7

Channel 1  
mn: -1751  
mx: 2123  
 $\mu$ : -9.2  
 $\sigma$ : 34.8

Channel 2  
mn: -810  
mx: 714  
 $\mu$ : -10.5  
 $\sigma$ : 27.2



ELMAVAN 3D WAVEFORMS (Measured data sampled at 50 kHz) 51000 packets of 144 samples from 2016-06-30T00:09:33.613.999. Part 107/147

