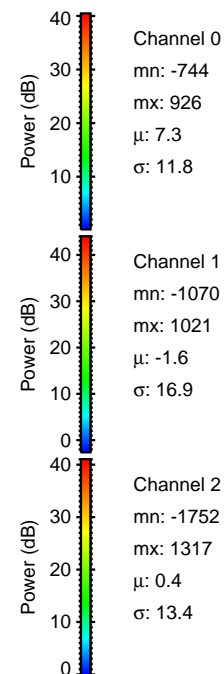
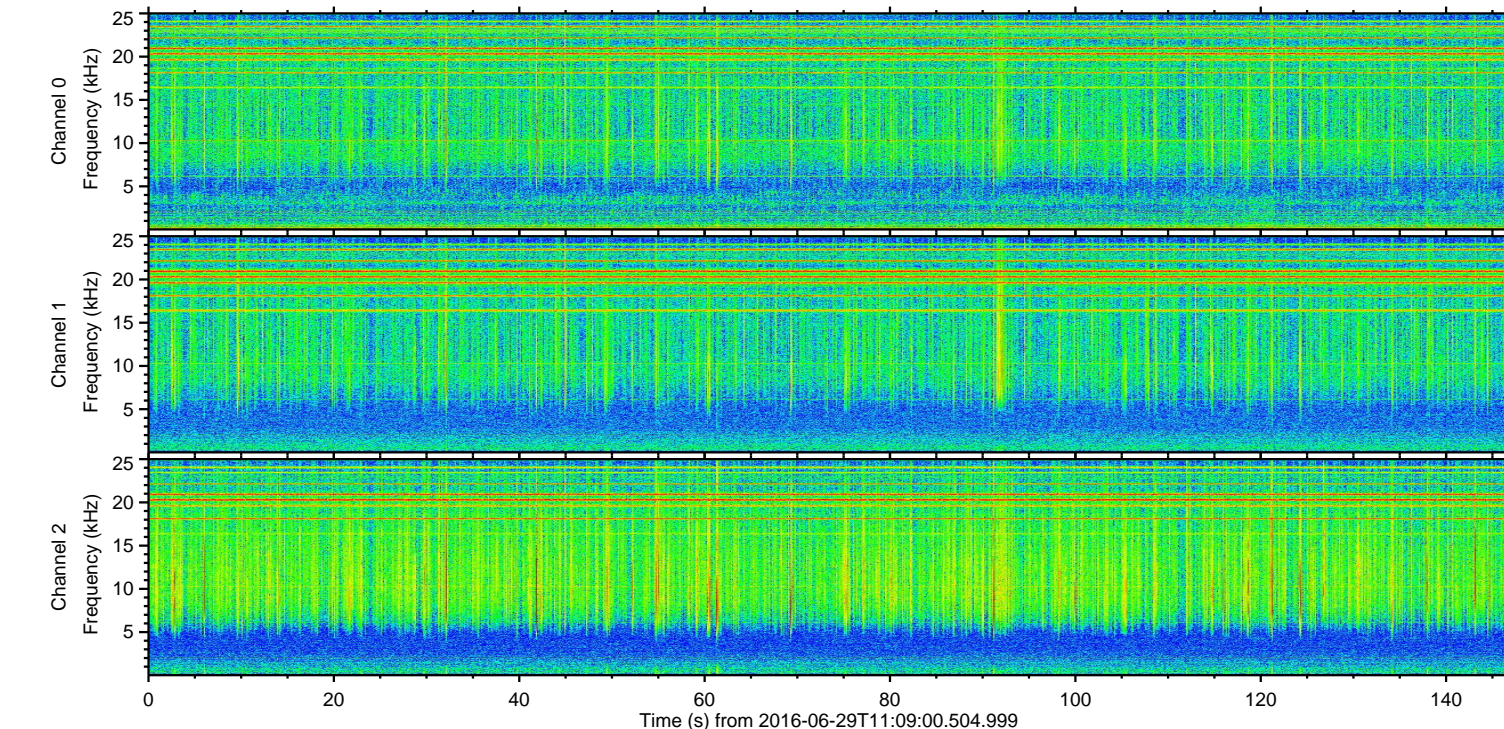
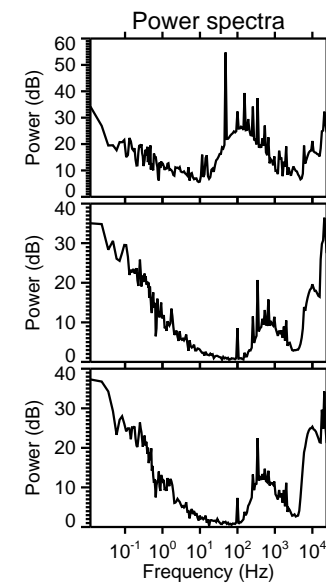
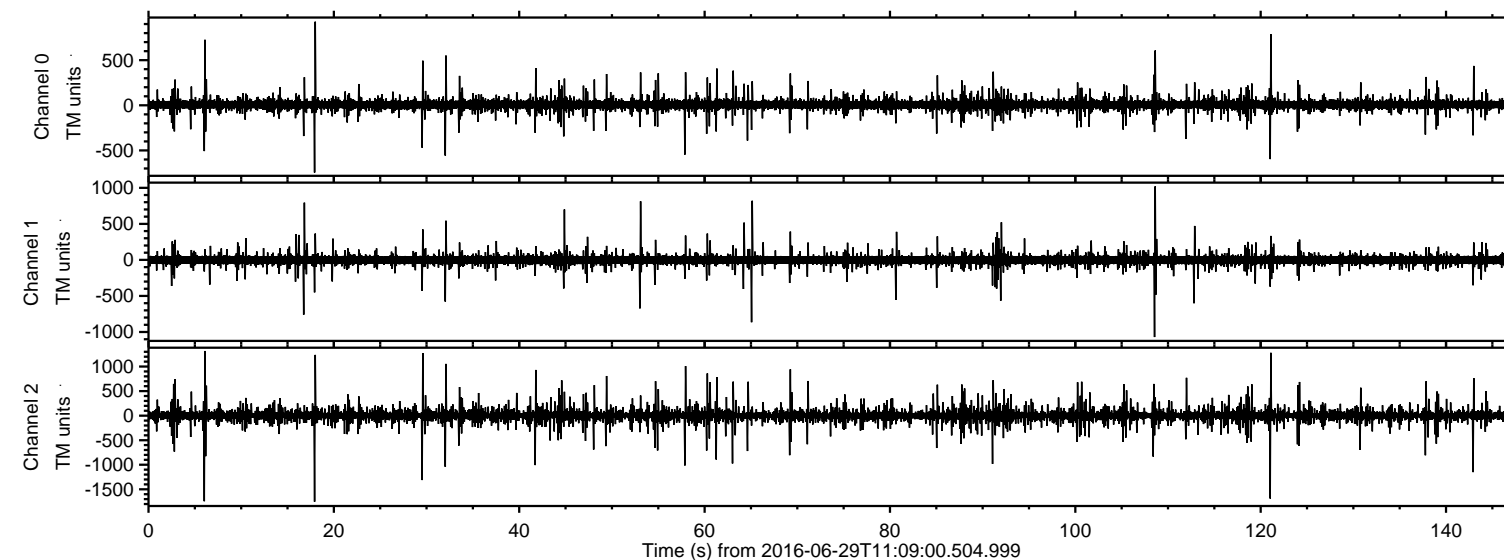
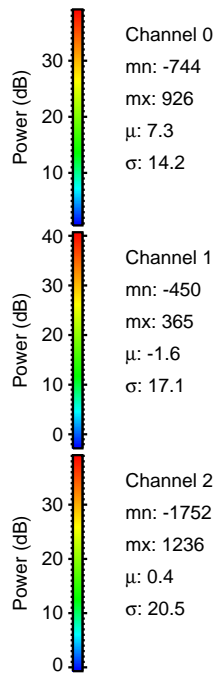
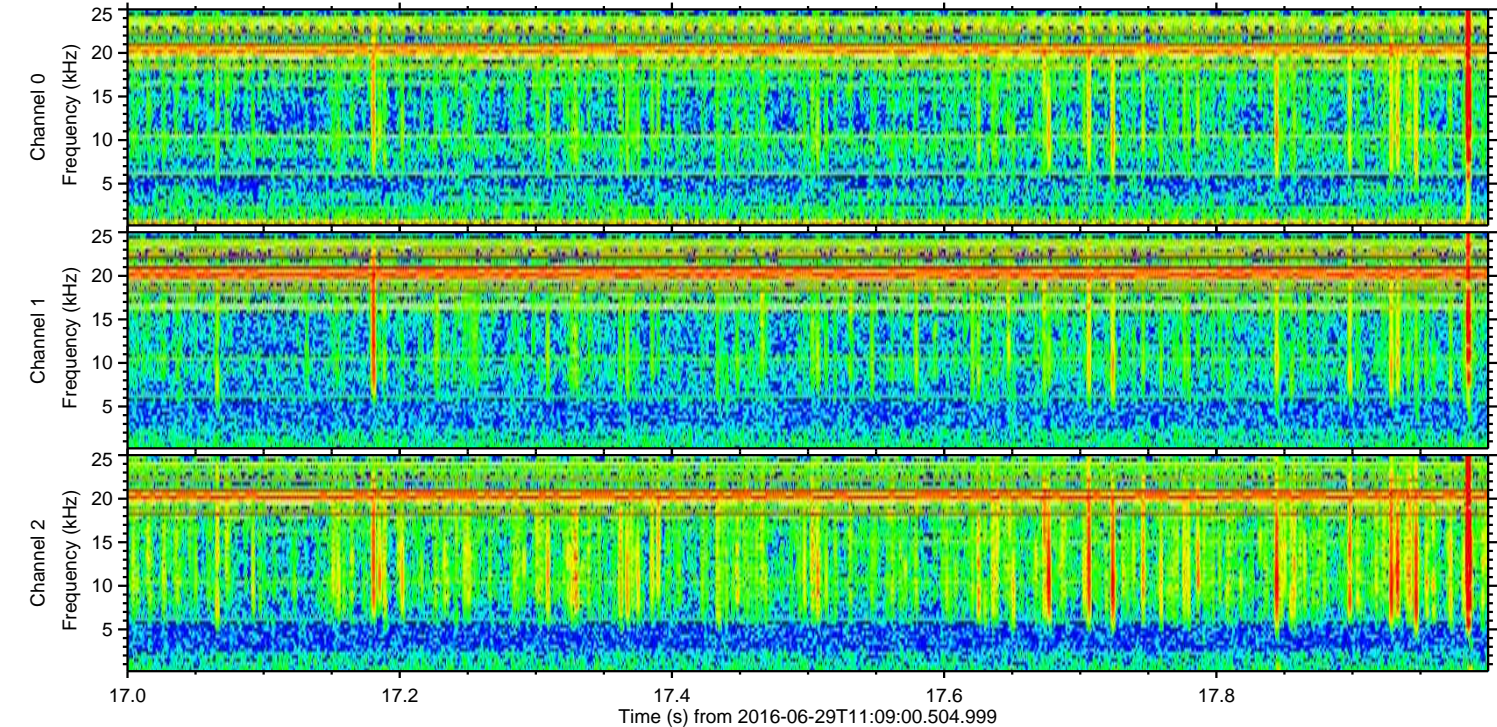
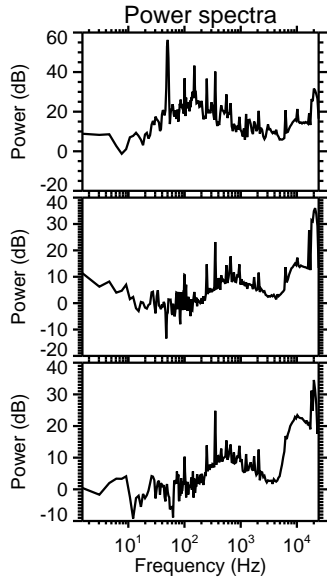
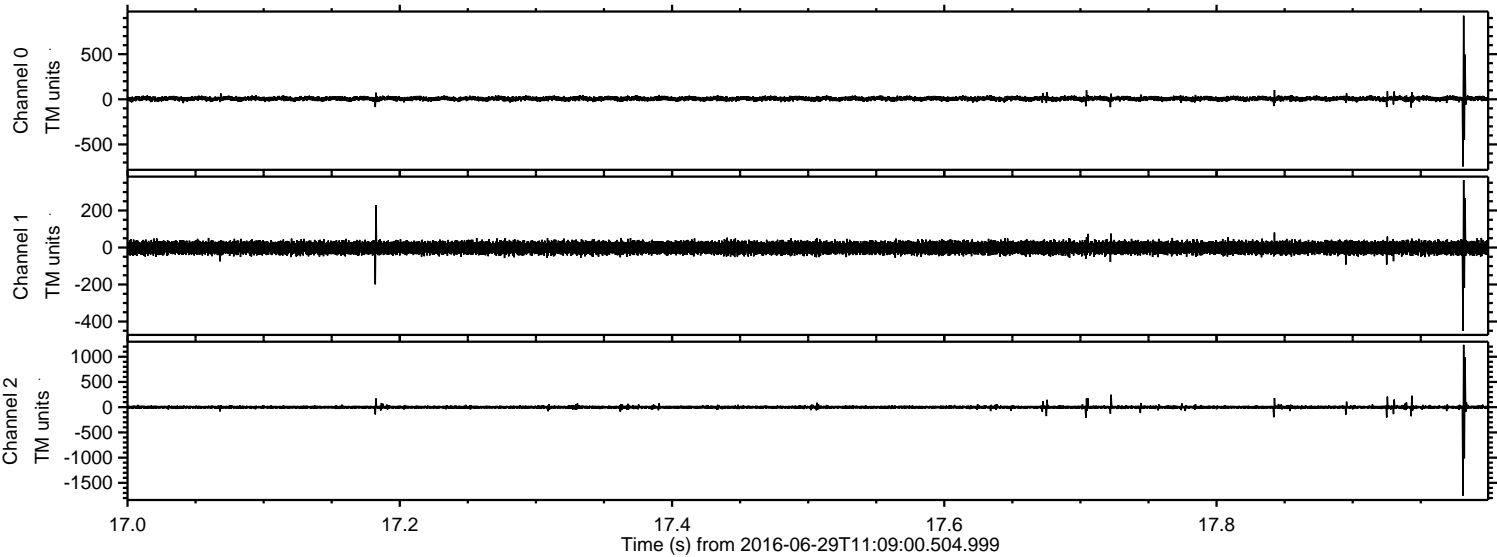


ELMAVAN 3D WAVEFORMS (Measured data sampled at 50 kHz) 51000 packets of 144 samples from 2016-06-29T11:09:00.504.999.

Processed Wed Jun 29 13:16:56 2016 by ELM ver.2012-10-06 from 001__elm20160629_110859__dat00.bin

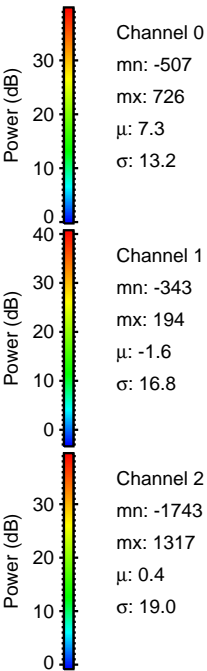
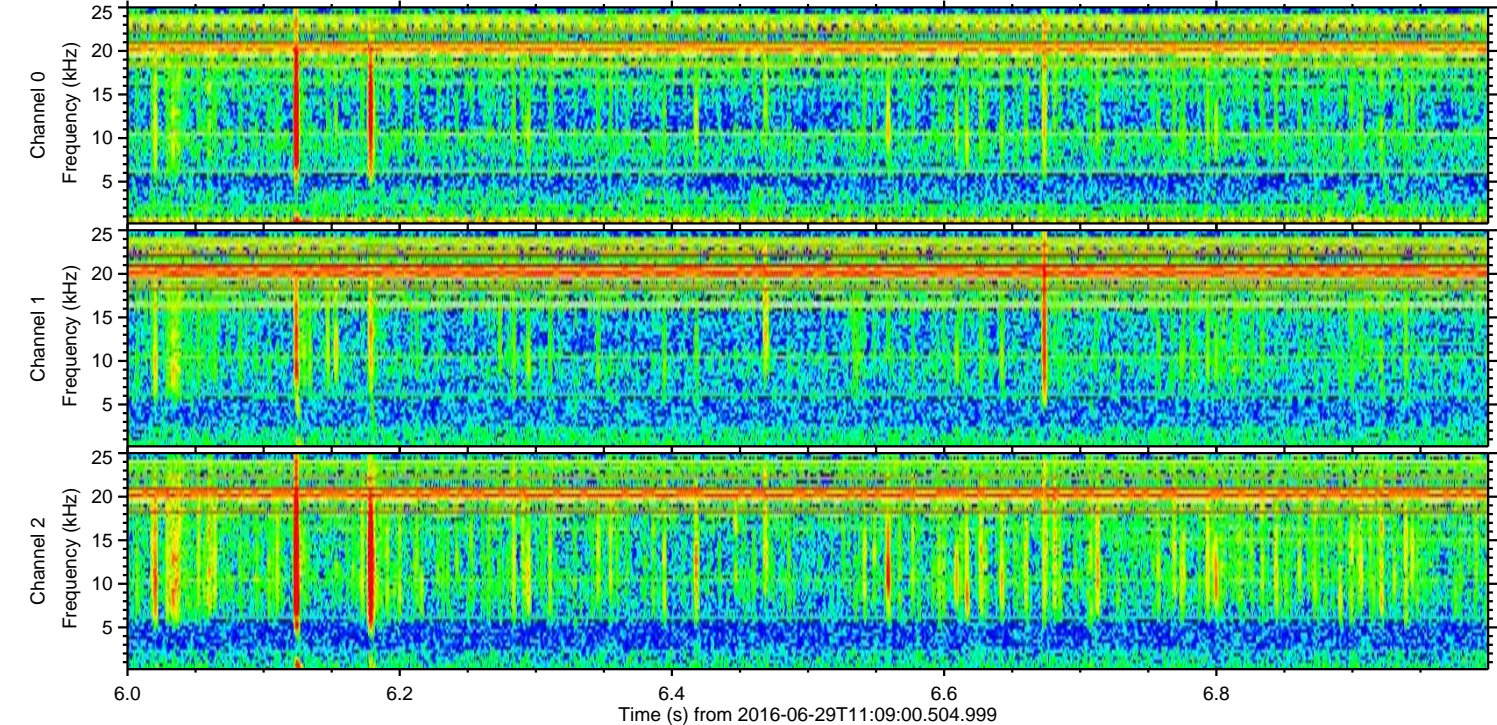
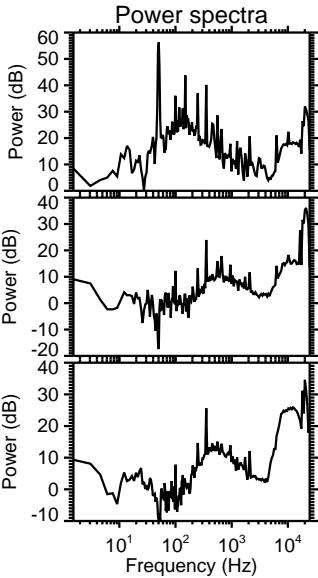
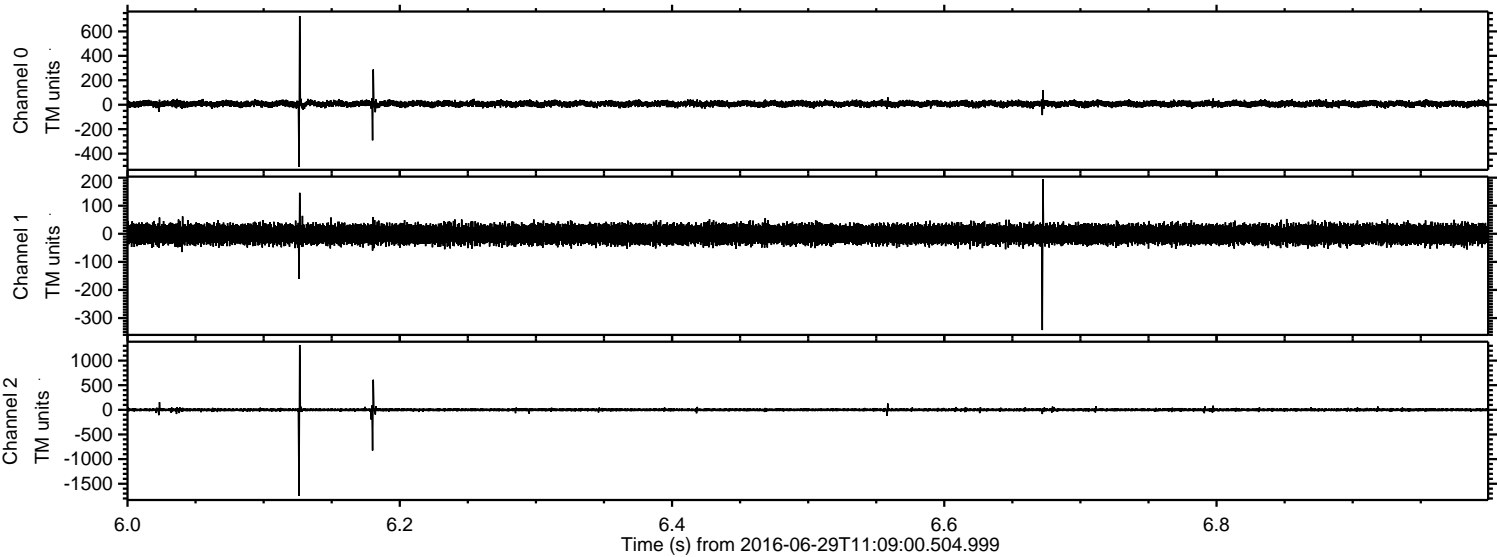


Processed Wed Jun 29 13:17:08 2016 by ELM ver.2012-10-06 from 001__elm20160629_110859__dat00.bin



ELMAVAN 3D WAVEFORMS (Measured data sampled at 50 kHz) 51000 packets of 144 samples from 2016-06-29T11:09:00.504.999. Part 7/147

Processed Wed Jun 29 13:17:09 2016 by ELM ver.2012-10-06 from 001__elm20160629_110859__dat00.bin



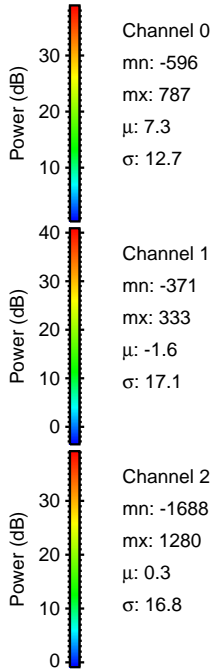
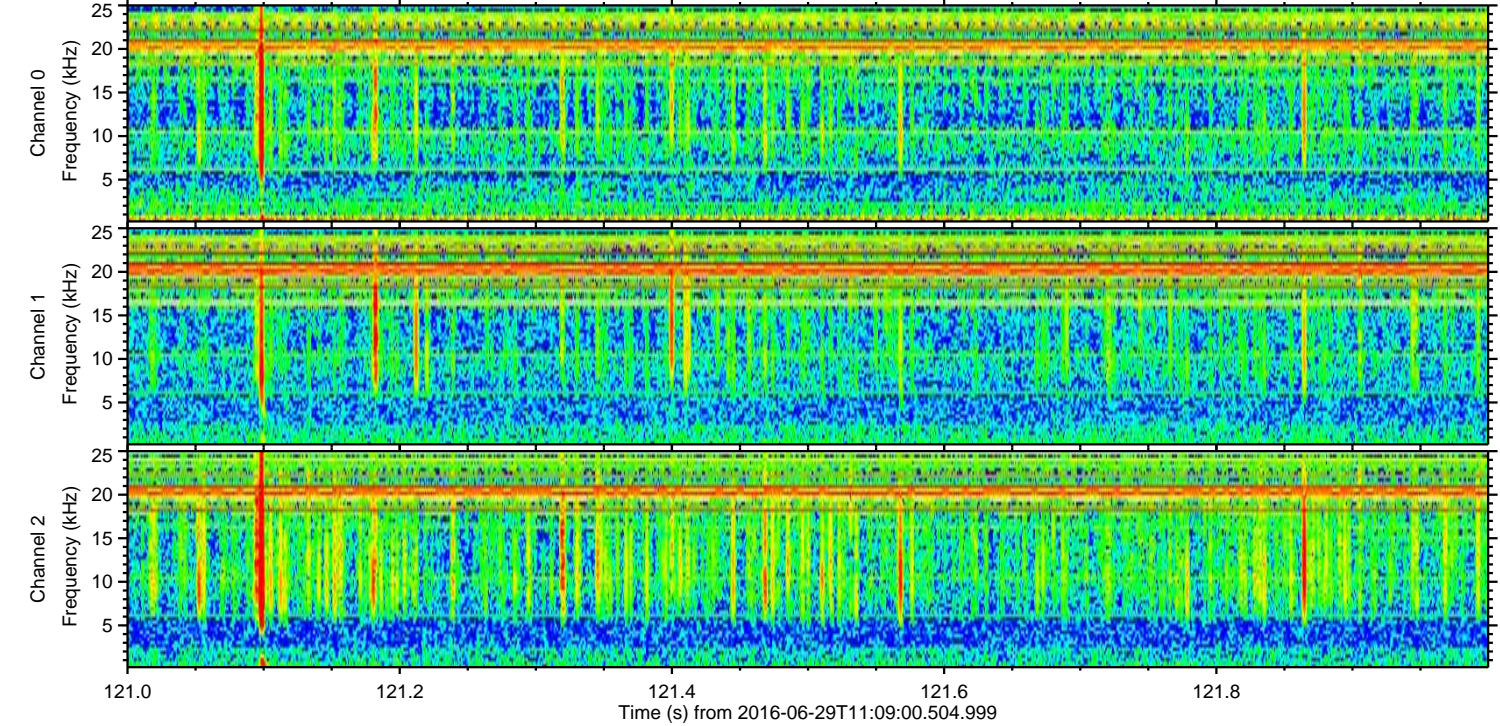
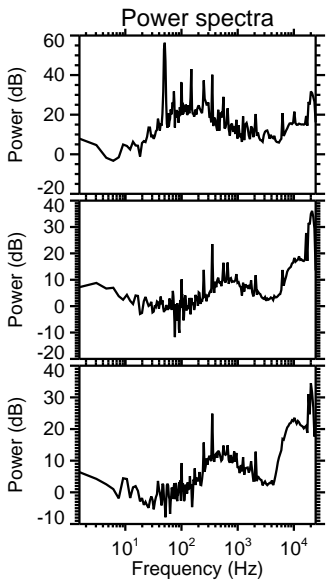
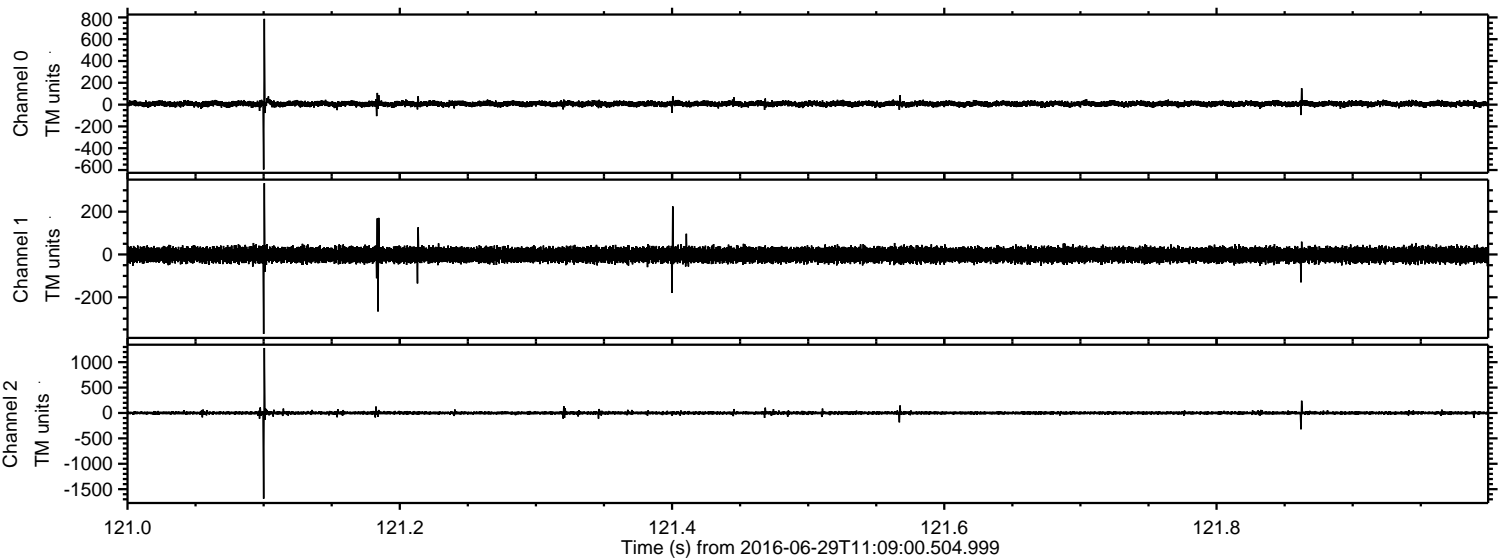
Channel 0
mn: -507
mx: 726
 μ : 7.3
 σ : 13.2

Channel 1
mn: -343
mx: 194
 μ : -1.6
 σ : 16.8

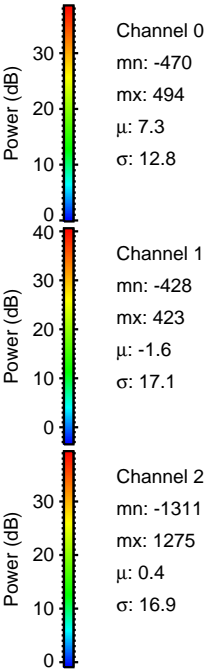
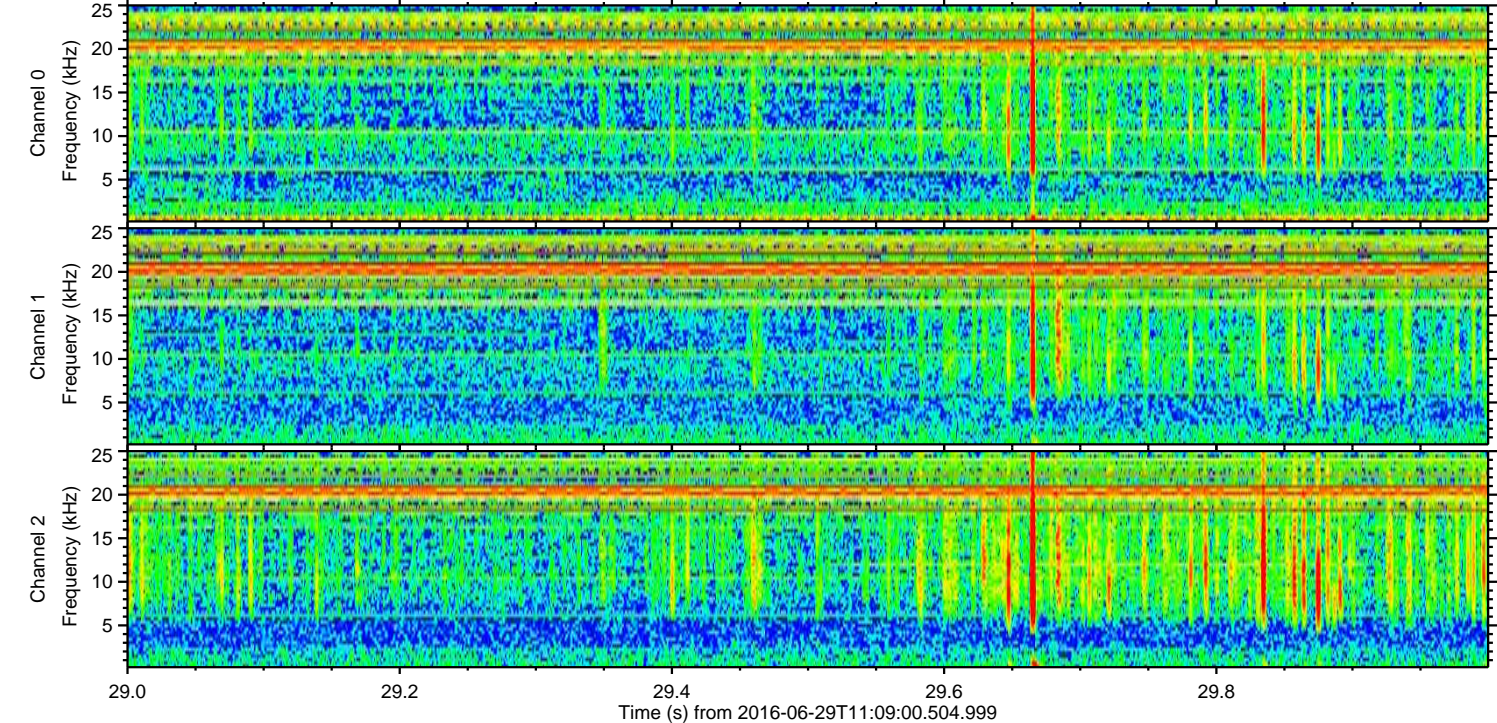
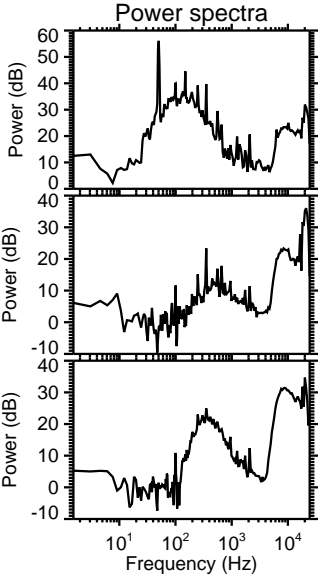
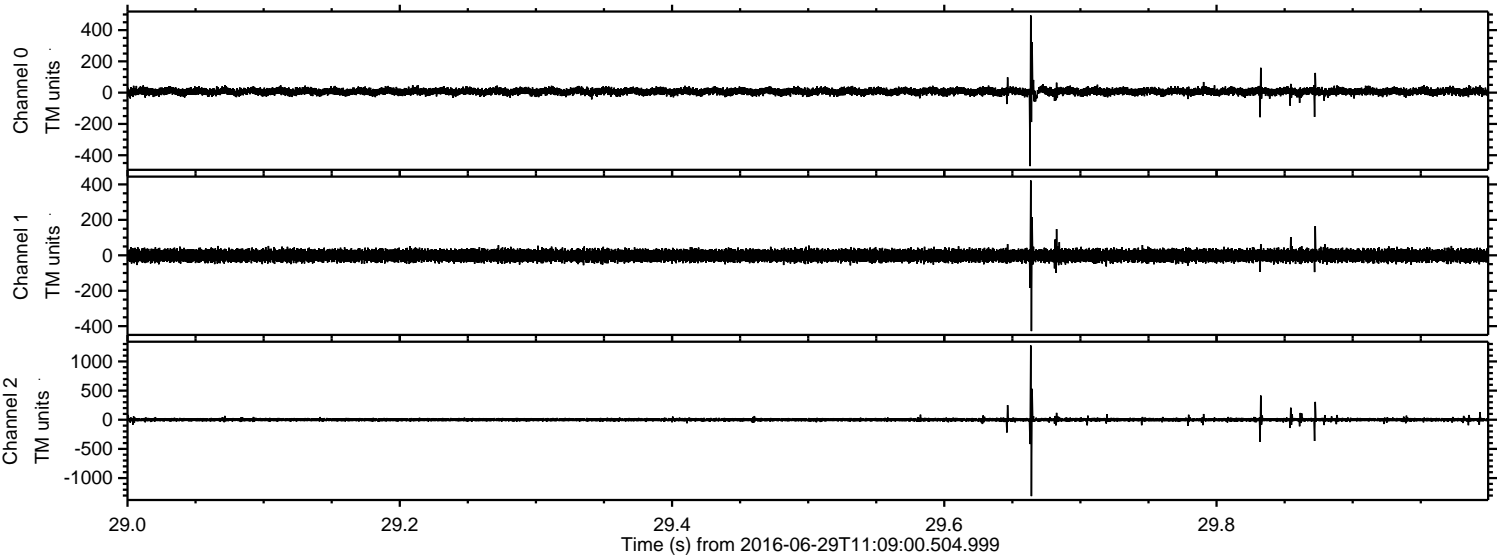
Channel 2
mn: -1743
mx: 1317
 μ : 0.4
 σ : 19.0

ELMAVAN 3D WAVEFORMS (Measured data sampled at 50 kHz) 51000 packets of 144 samples from 2016-06-29T11:09:00.504.999. Part 122/147

Processed Wed Jun 29 13:17:10 2016 by ELM ver.2012-10-06 from 001__elm20160629_110859__dat00.bin

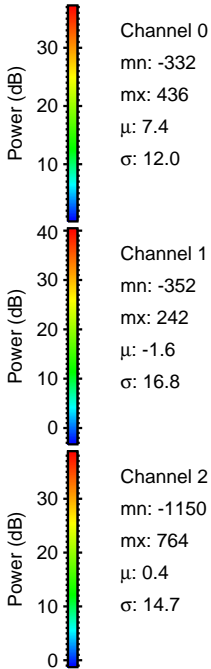
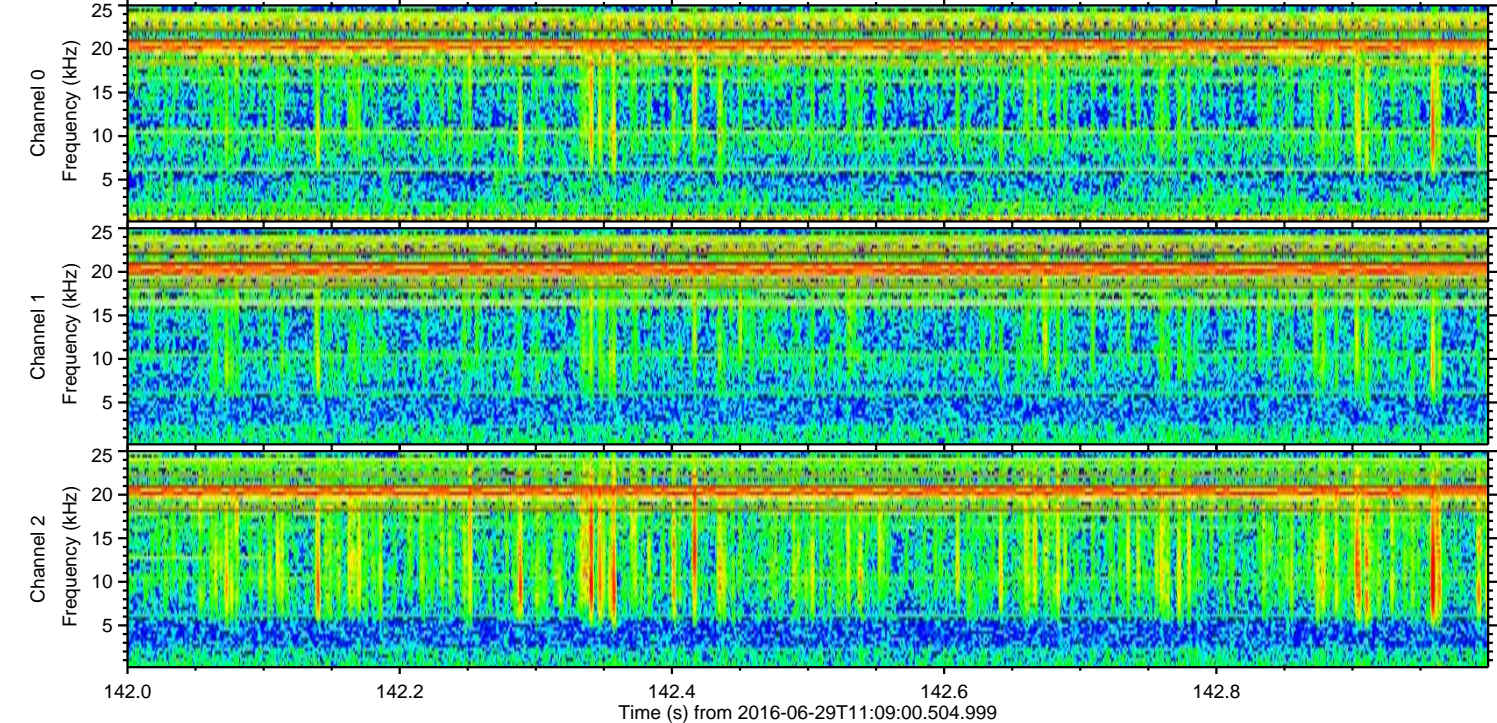
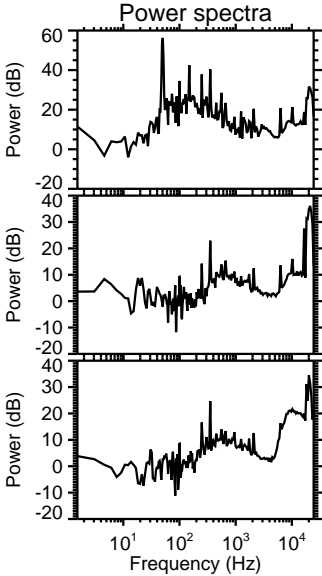
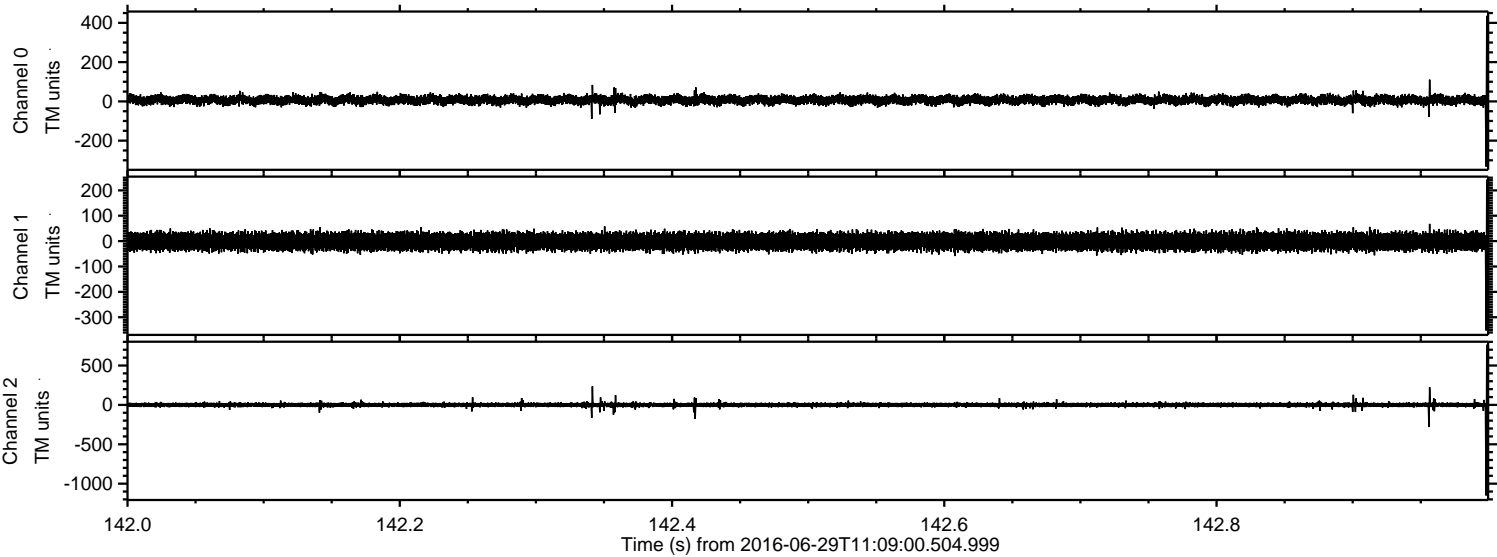


Processed Wed Jun 29 13:17:11 2016 by ELM ver.2012-10-06 from 001__elm20160629_110859__dat00.bin



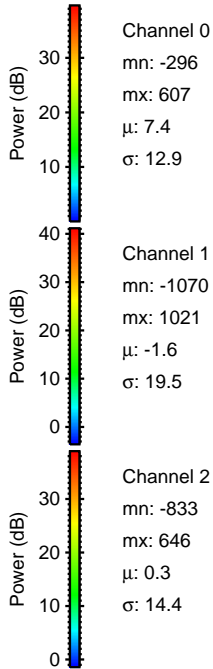
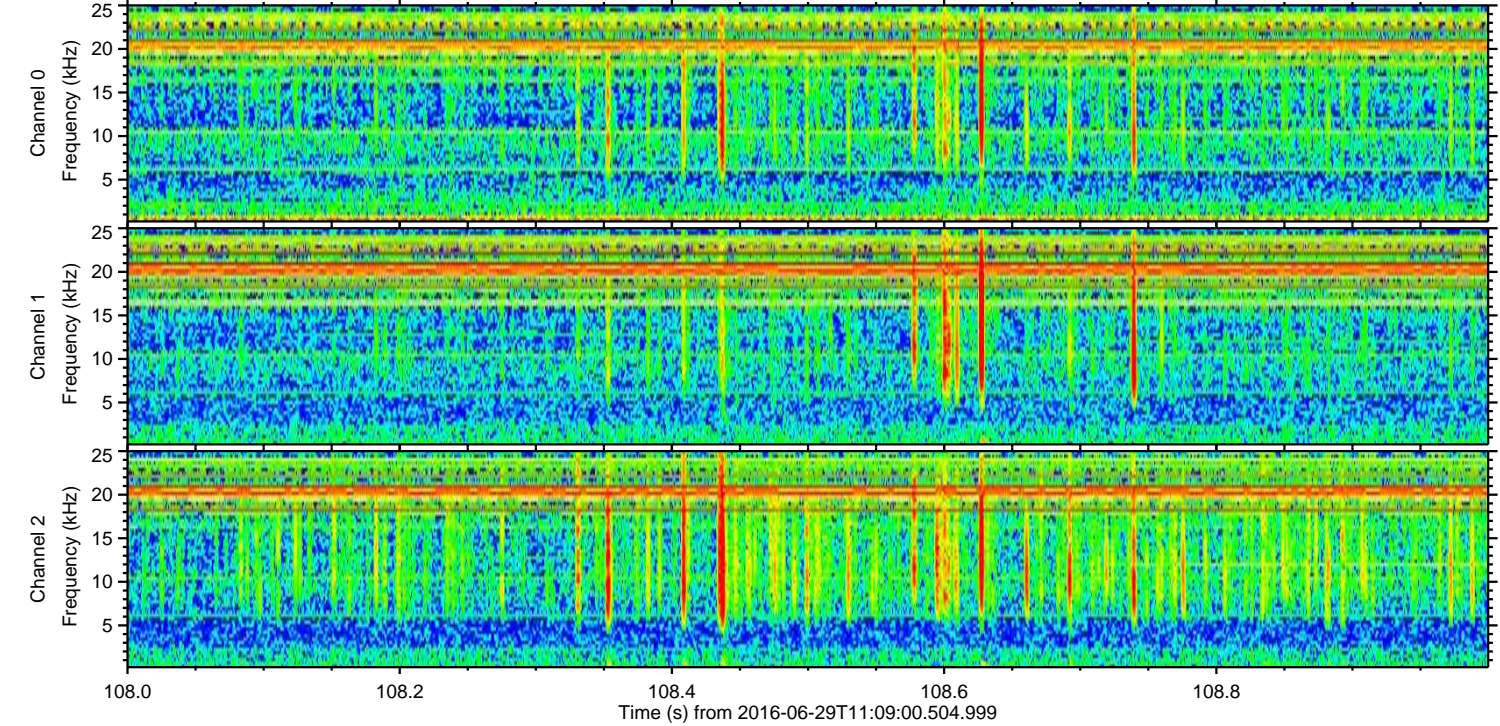
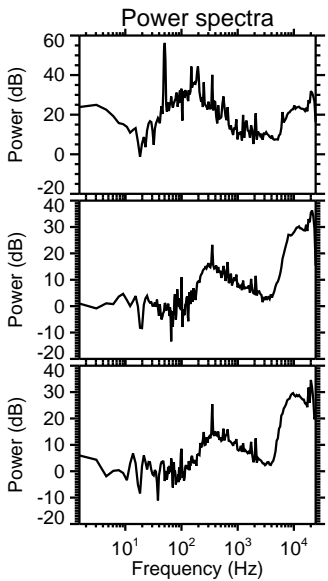
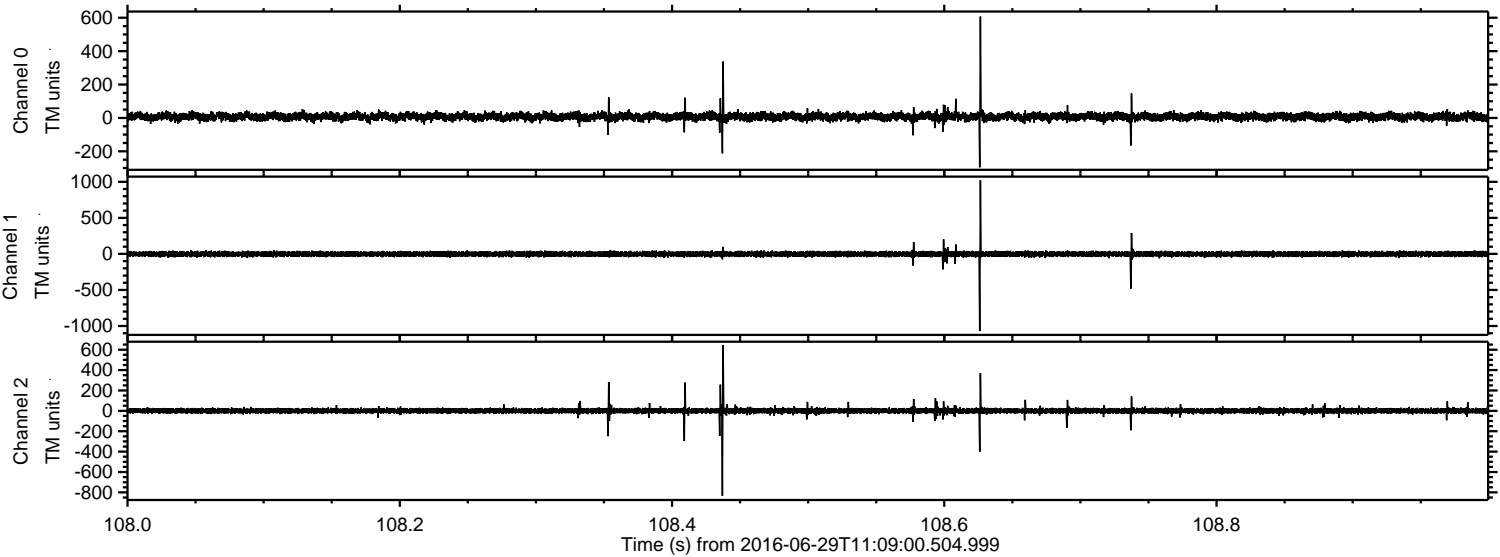
ELMAVAN 3D WAVEFORMS (Measured data sampled at 50 kHz) 51000 packets of 144 samples from 2016-06-29T11:09:00.504.999. Part 143/147

Processed Wed Jun 29 13:17:12 2016 by ELM ver.2012-10-06 from 001__elm20160629_110859__dat00.bin



ELMAVAN 3D WAVEFORMS (Measured data sampled at 50 kHz) 51000 packets of 144 samples from 2016-06-29T11:09:00.504.999. Part 109/147

Processed Wed Jun 29 13:17:13 2016 by ELM ver.2012-10-06 from 001__elm20160629_110859__dat00.bin

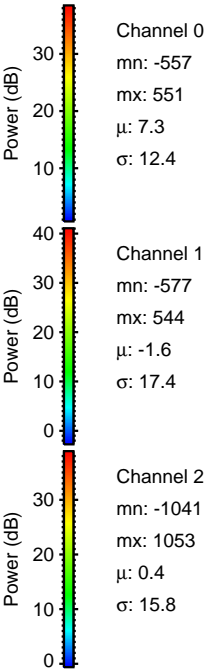
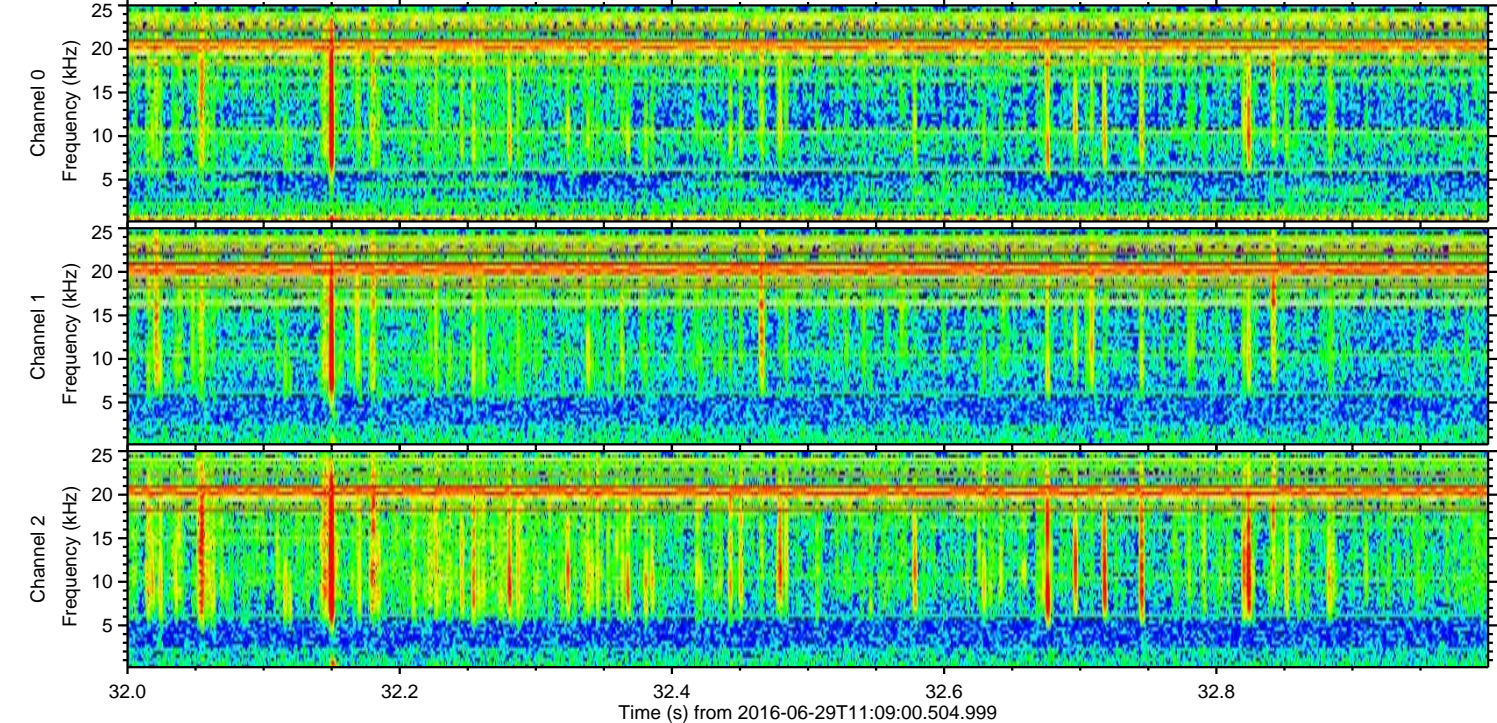
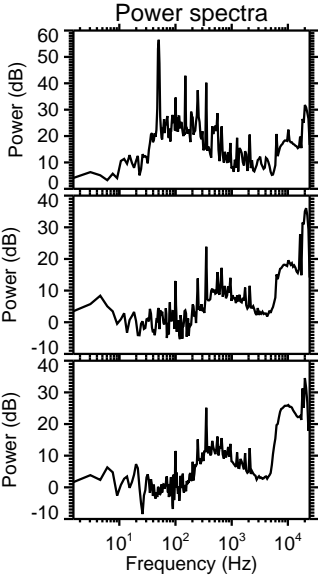
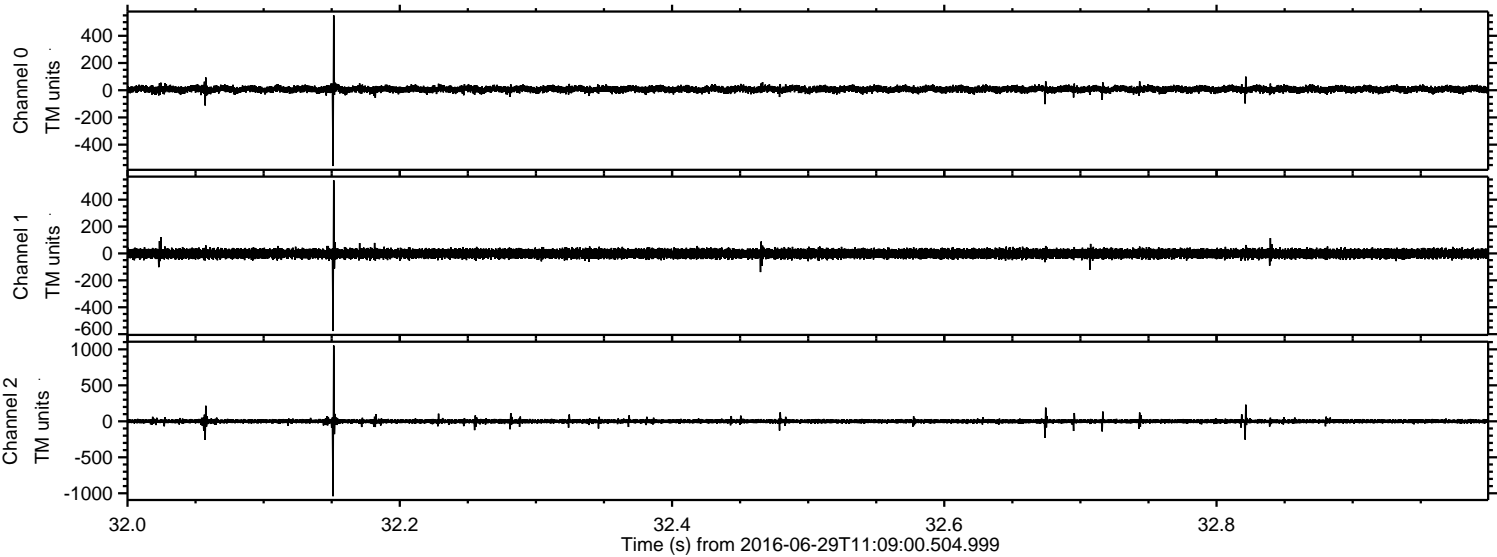


Channel 0
mn: -296
mx: 607
 μ : 7.4
 σ : 12.9

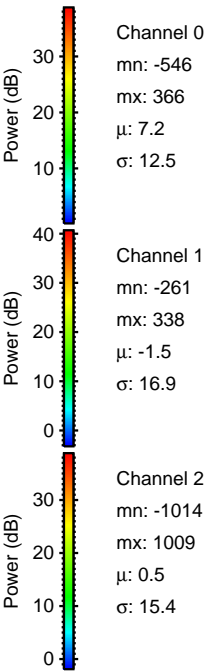
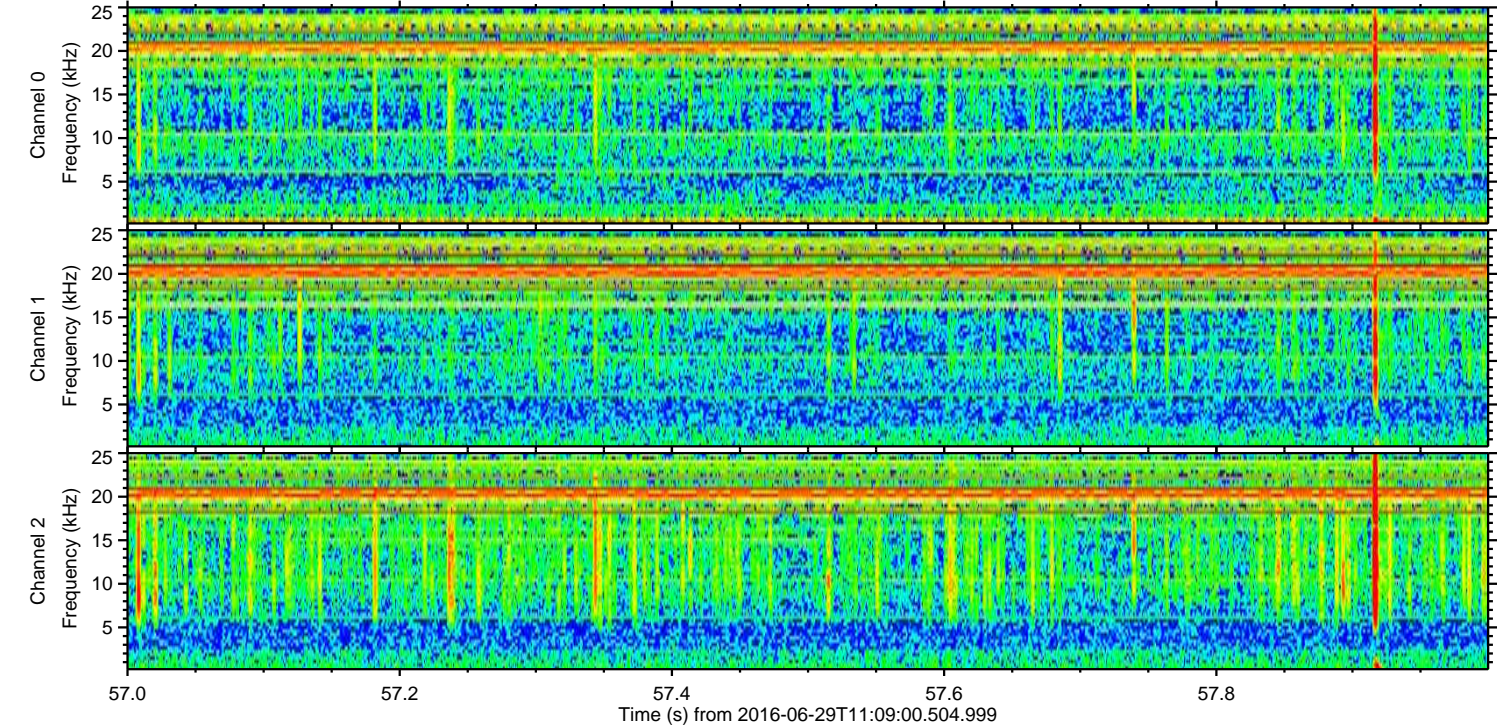
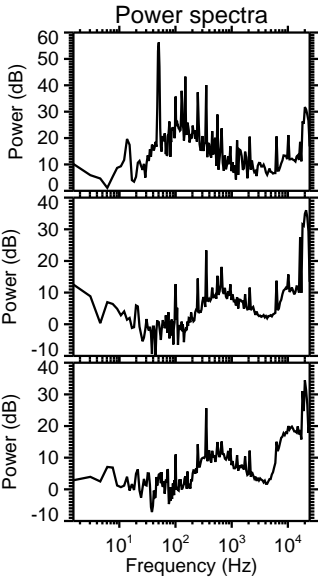
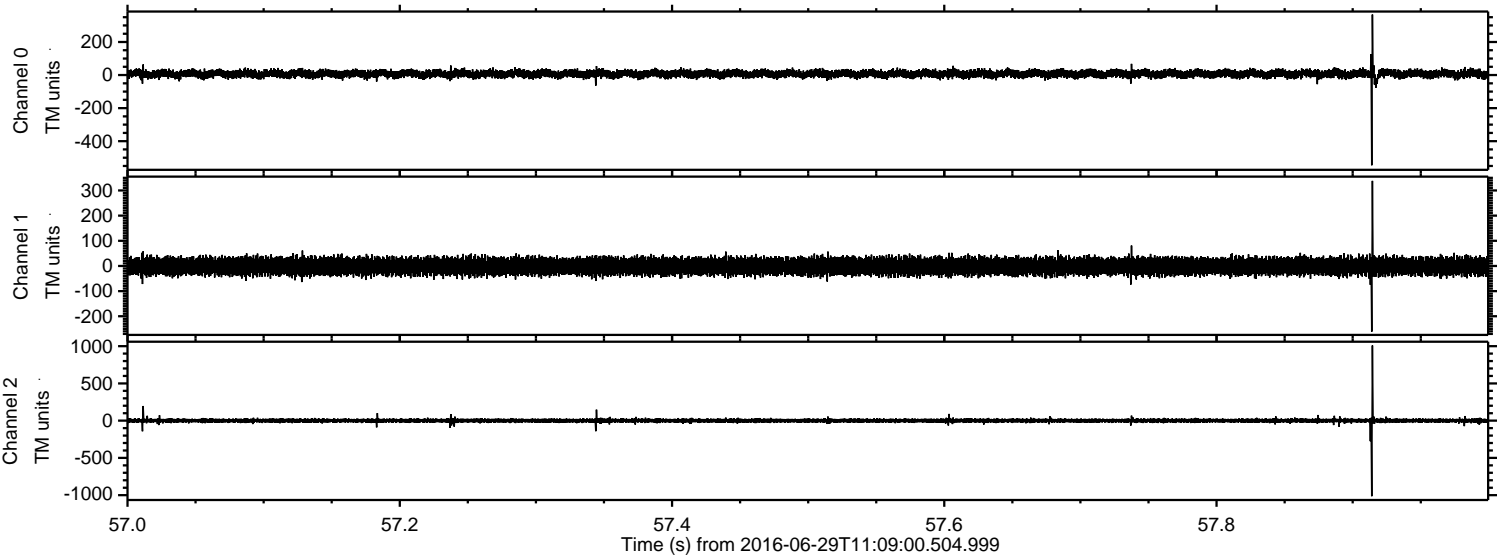
Channel 1
mn: -1070
mx: 1021
 μ : -1.6
 σ : 19.5

Channel 2
mn: -833
mx: 646
 μ : 0.3
 σ : 14.4

Processed Wed Jun 29 13:17:14 2016 by ELM ver.2012-10-06 from 001__elm20160629_110859__dat00.bin



Processed Wed Jun 29 13:17:14 2016 by ELM ver.2012-10-06 from 001__elm20160629_110859__dat00.bin



Processed Wed Jun 29 13:17:15 2016 by ELM ver.2012-10-06 from 001__elm20160629_110859__dat00.bin

