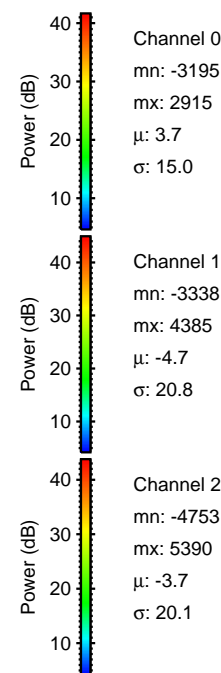
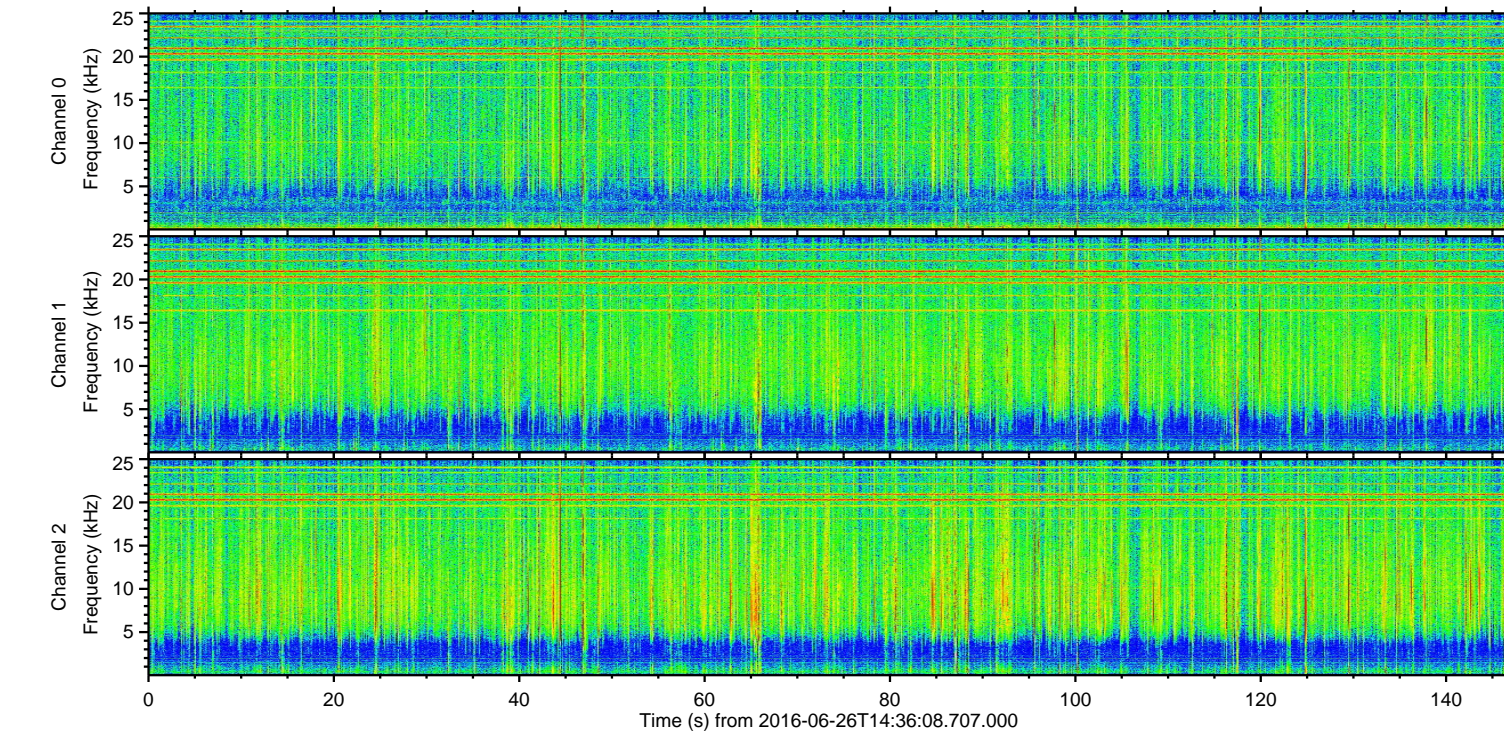
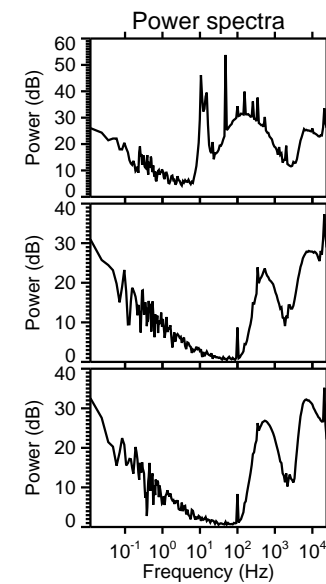
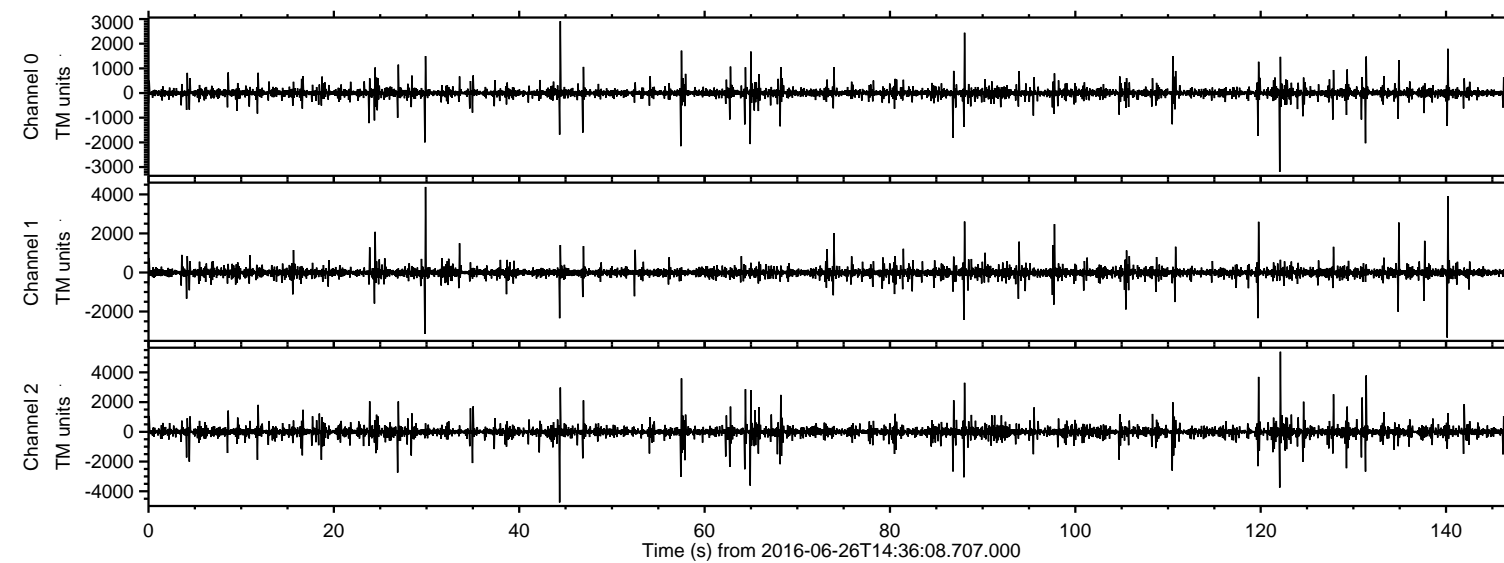


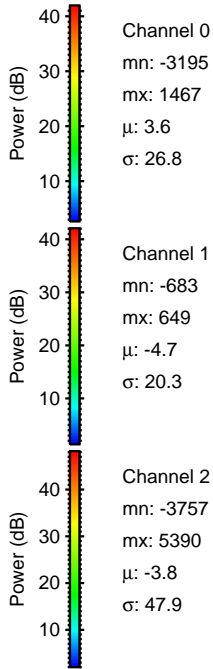
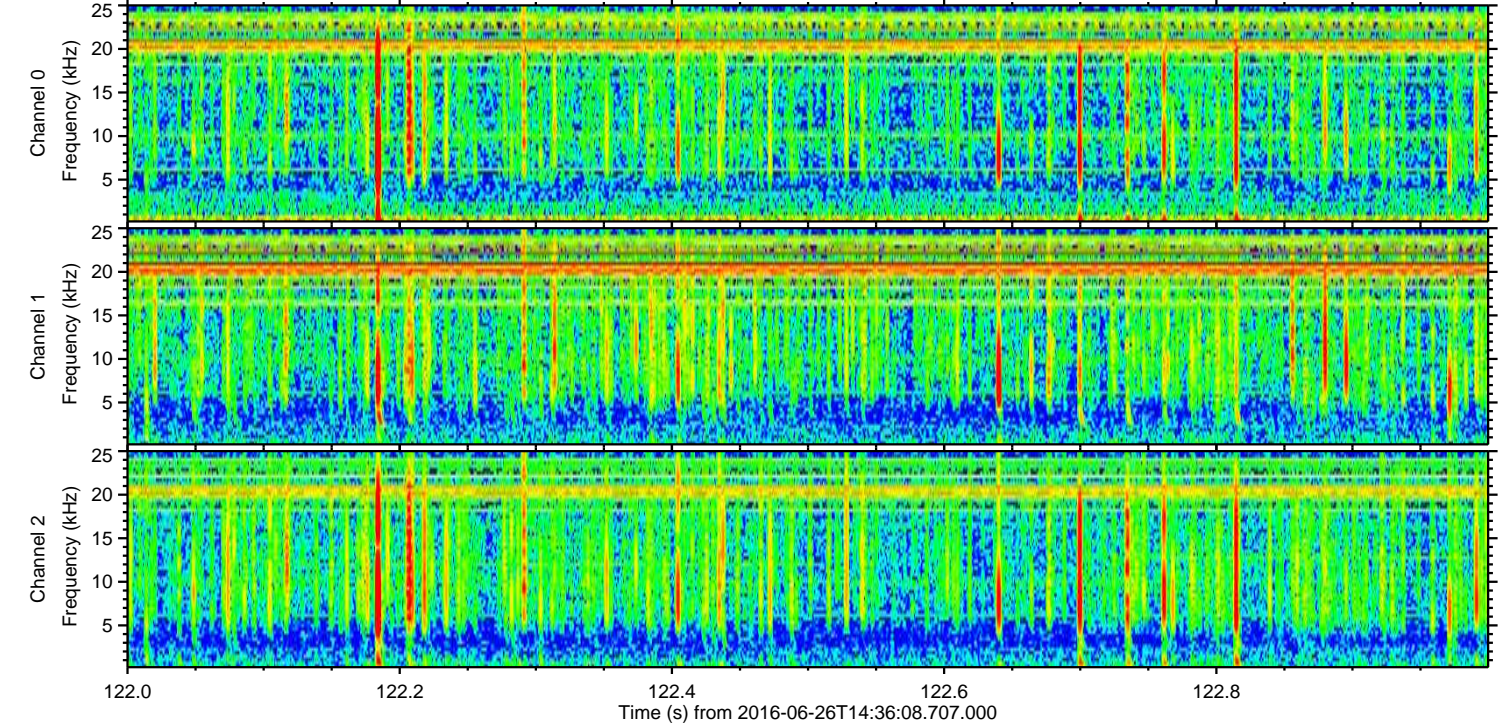
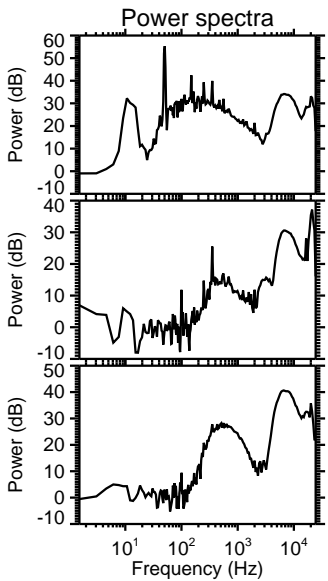
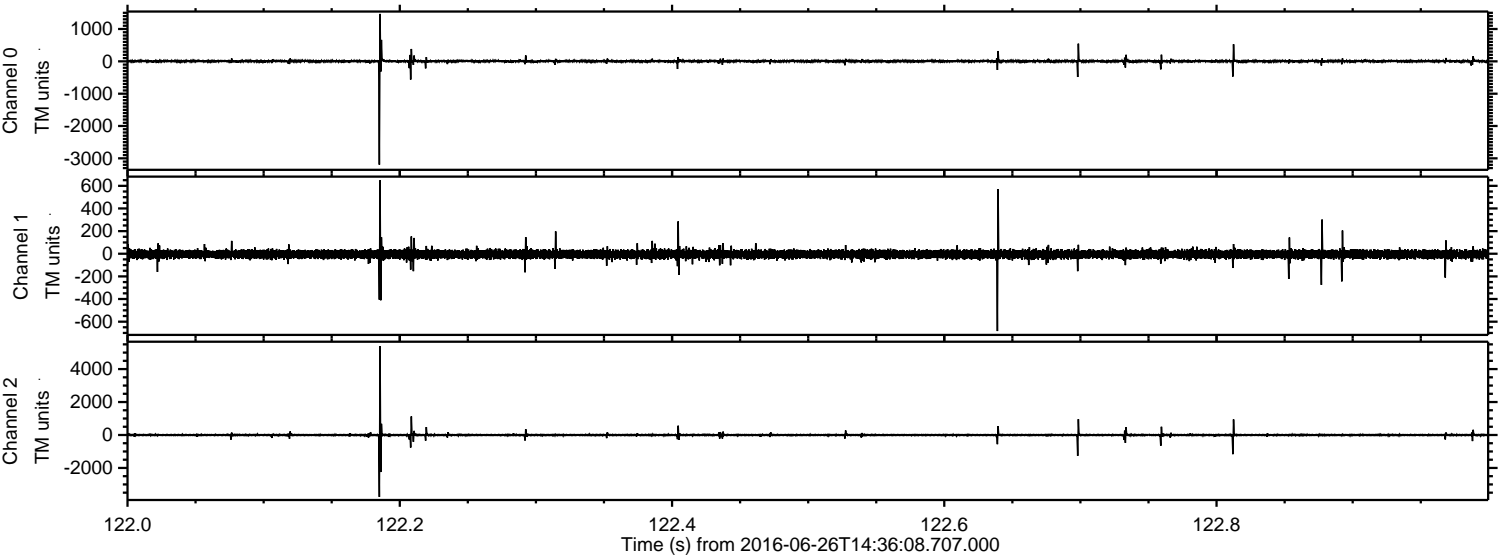
ELMAVAN 3D WAVEFORMS (Measured data sampled at 50 kHz) 51000 packets of 144 samples from 2016-06-26T14:36:08.707.000.

Processed Sun Jun 26 16:44:00 2016 by ELM ver.2012-10-06 from 001__elm20160626_143607__dat00.bin



ELMAVAN 3D WAVEFORMS (Measured data sampled at 50 kHz) 51000 packets of 144 samples from 2016-06-26T14:36:08.707.000. Part 123/147

Processed Sun Jun 26 16:44:11 2016 by ELM ver.2012-10-06 from 001__elm20160626_143607__dat00.bin



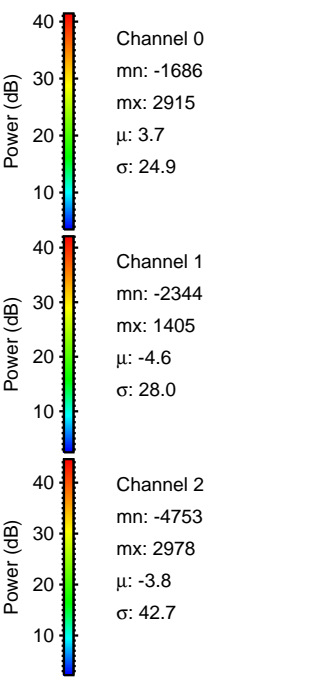
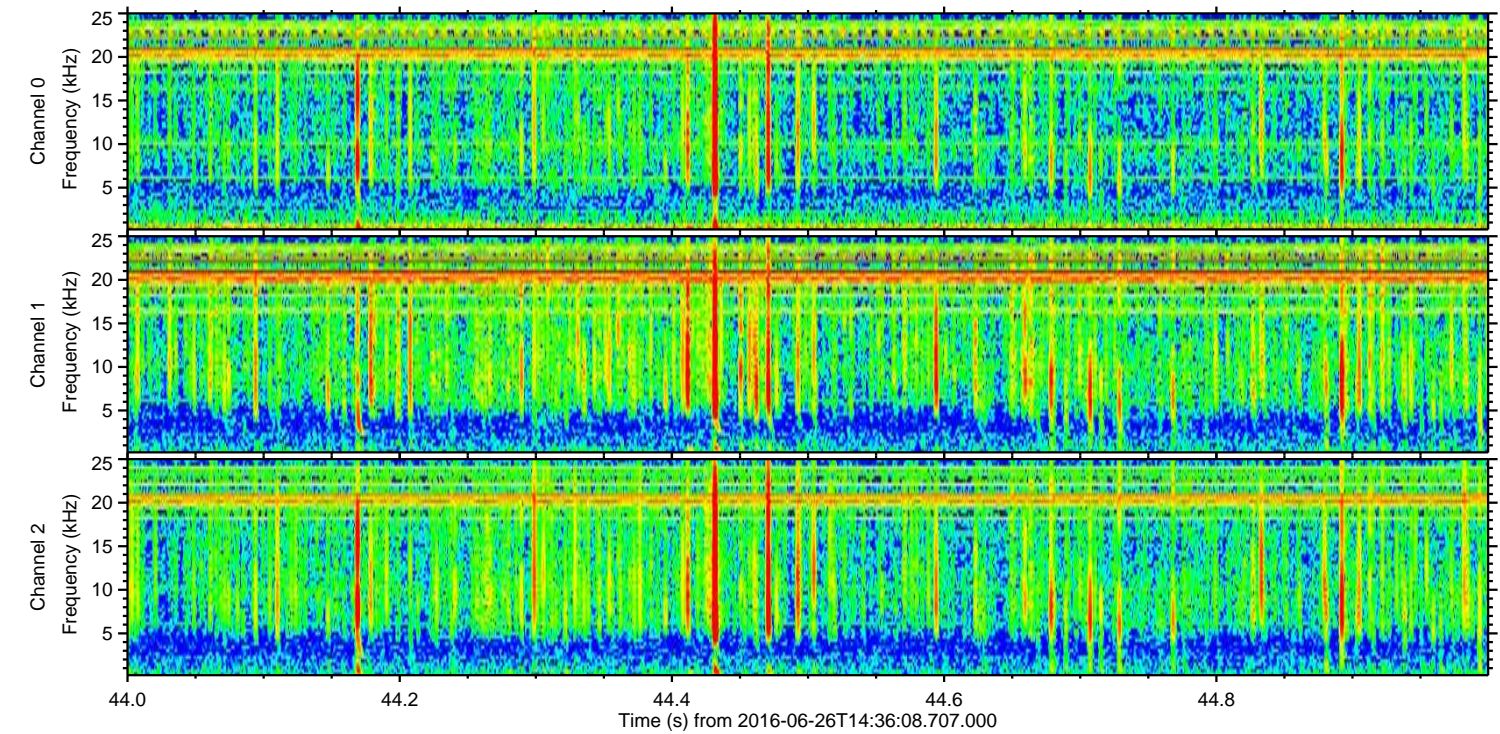
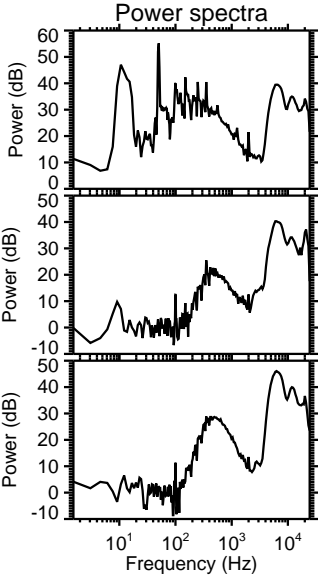
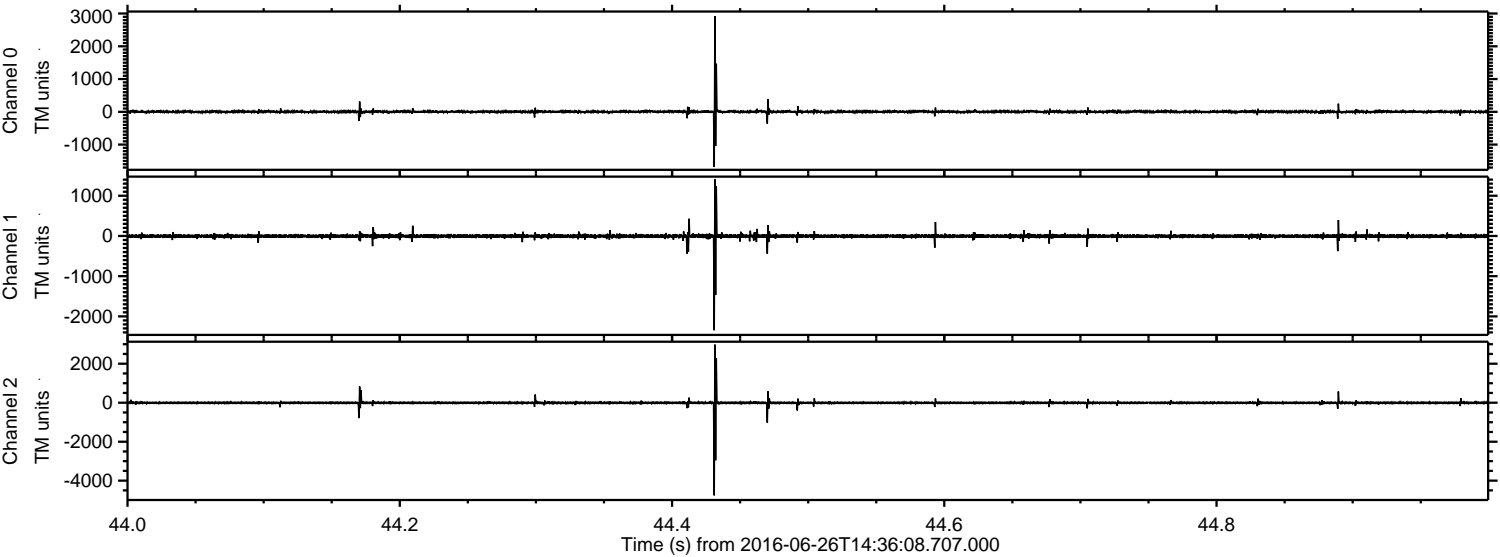
Channel 0
mn: -3195
mx: 1467
 μ : 3.6
 σ : 26.8

Channel 1
mn: -683
mx: 649
 μ : -4.7
 σ : 20.3

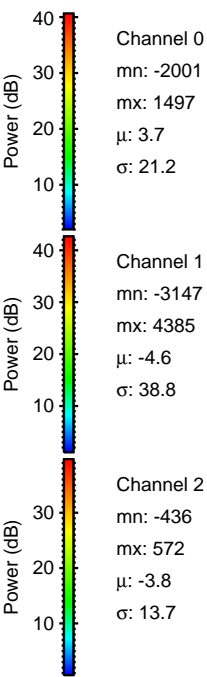
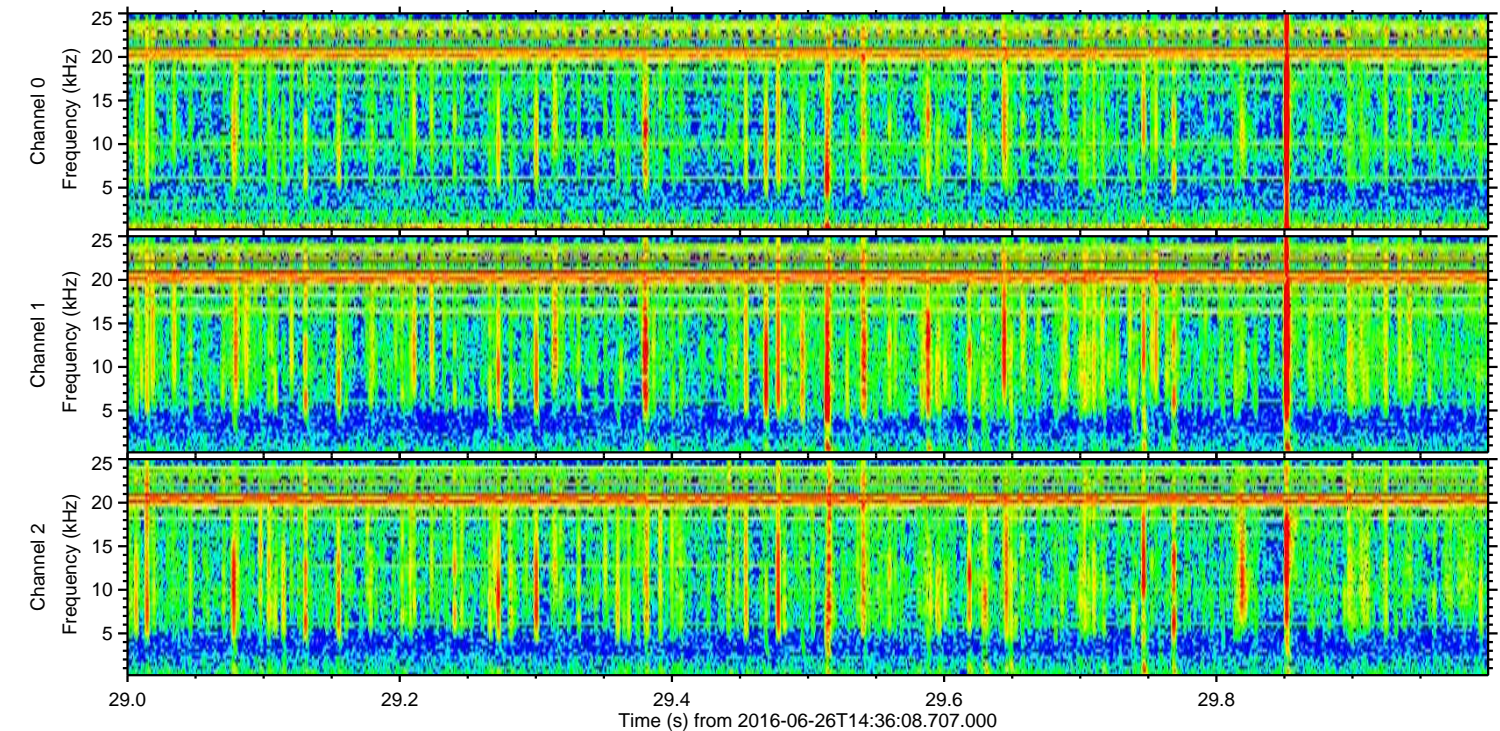
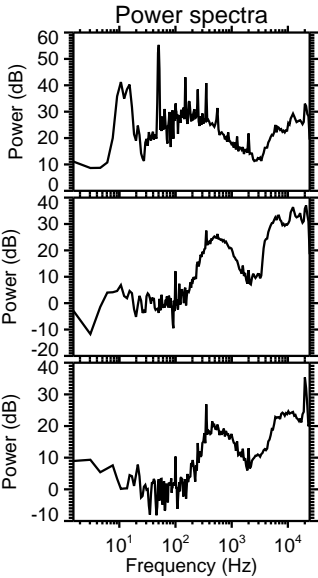
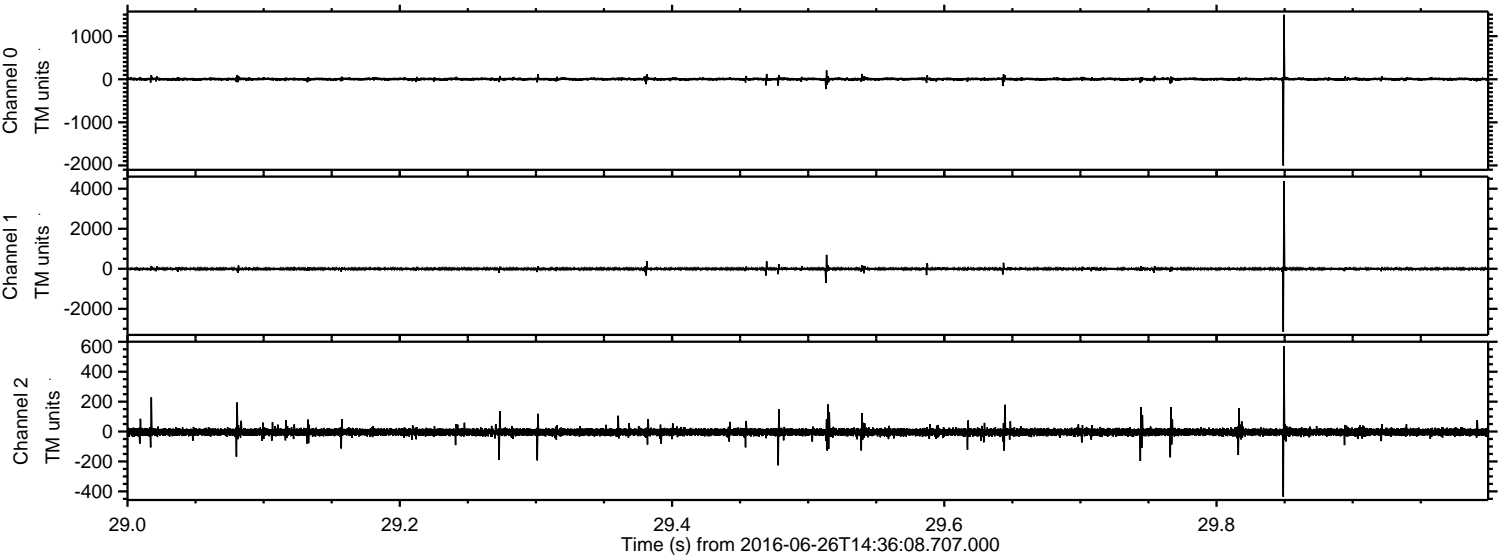
Channel 2
mn: -3757
mx: 5390
 μ : -3.8
 σ : 47.9

ELMAVAN 3D WAVEFORMS (Measured data sampled at 50 kHz) 51000 packets of 144 samples from 2016-06-26T14:36:08.707.000. Part 45/147

Processed Sun Jun 26 16:44:12 2016 by ELM ver.2012-10-06 from 001__elm20160626_143607__dat00.bin

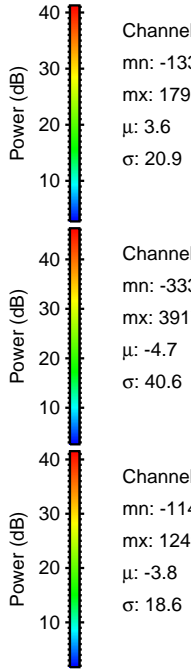
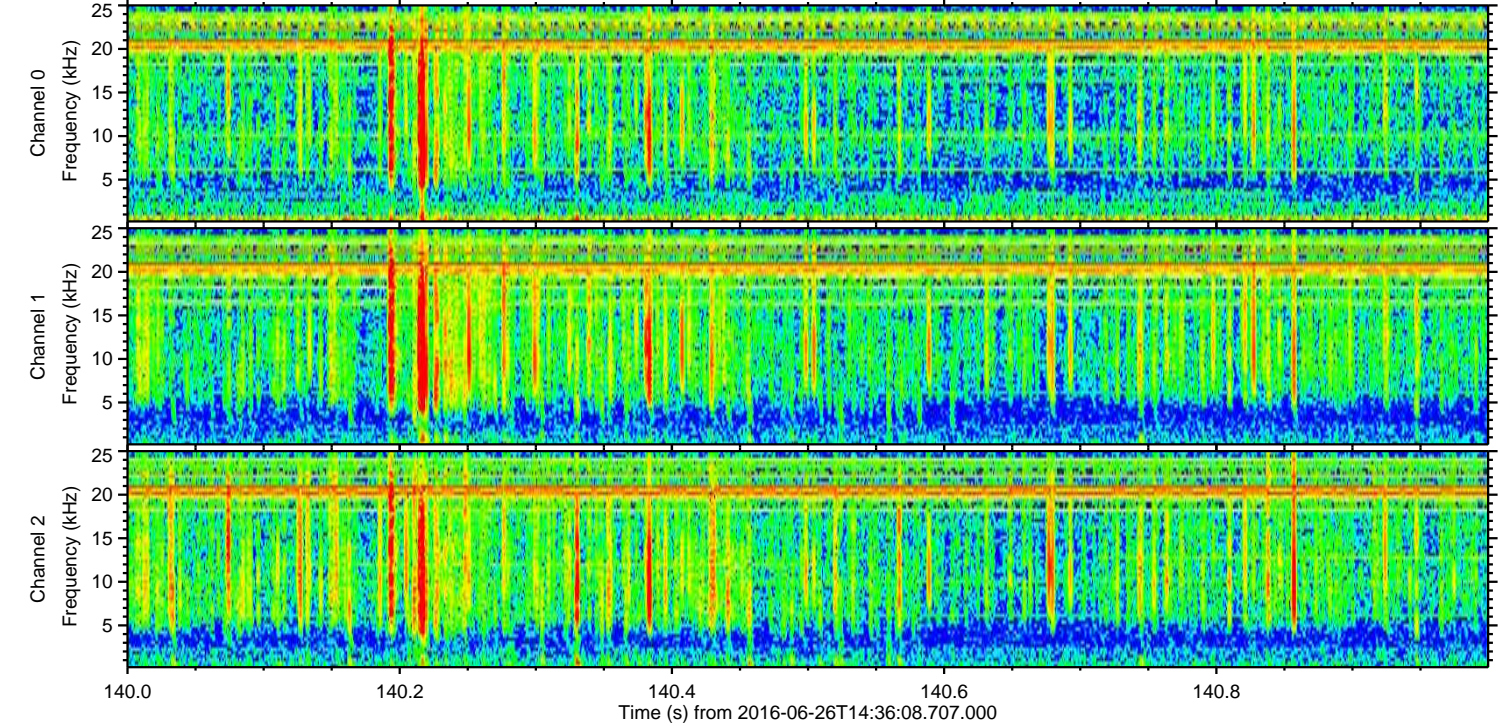
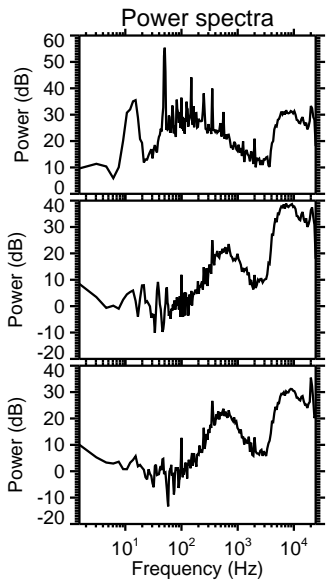
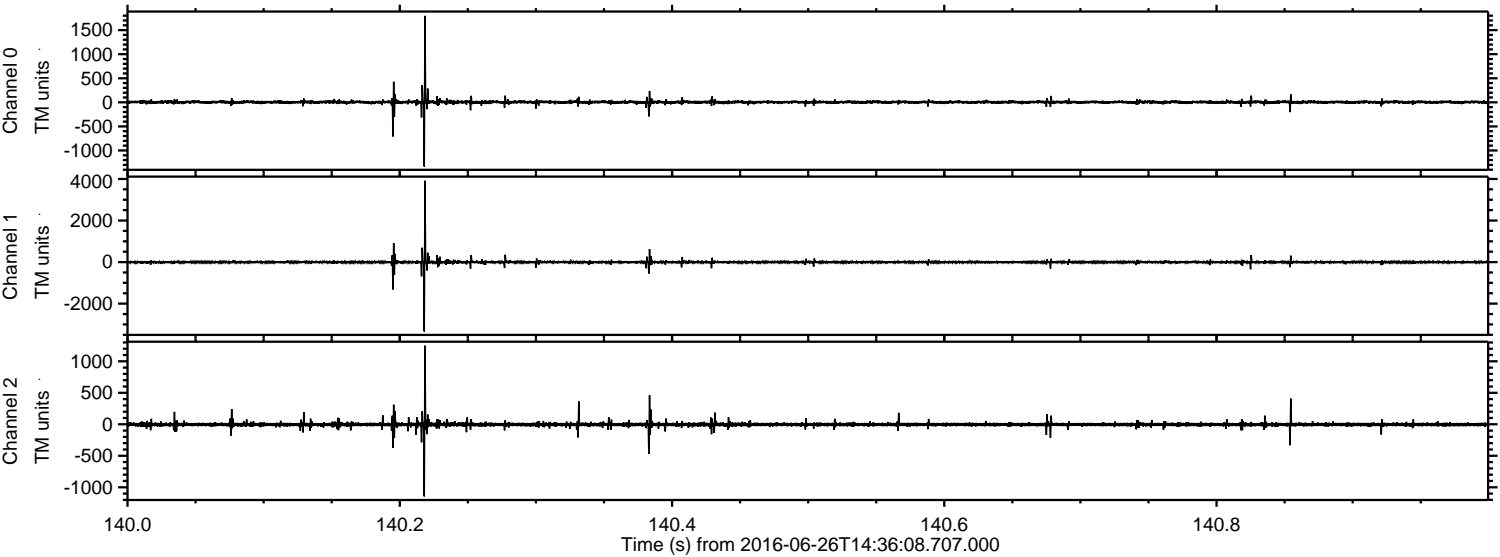


Processed Sun Jun 26 16:44:13 2016 by ELM ver.2012-10-06 from 001__elm20160626_143607__dat00.bin



ELMAVAN 3D WAVEFORMS (Measured data sampled at 50 kHz) 51000 packets of 144 samples from 2016-06-26T14:36:08.707.000. Part 141/147

Processed Sun Jun 26 16:44:14 2016 by ELM ver.2012-10-06 from 001__elm20160626_143607__dat00.bin



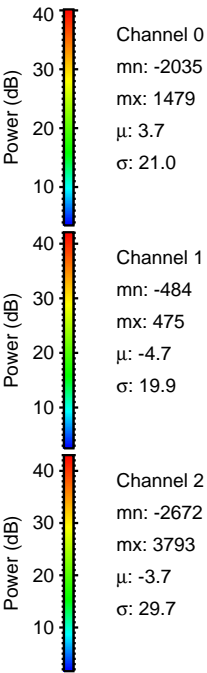
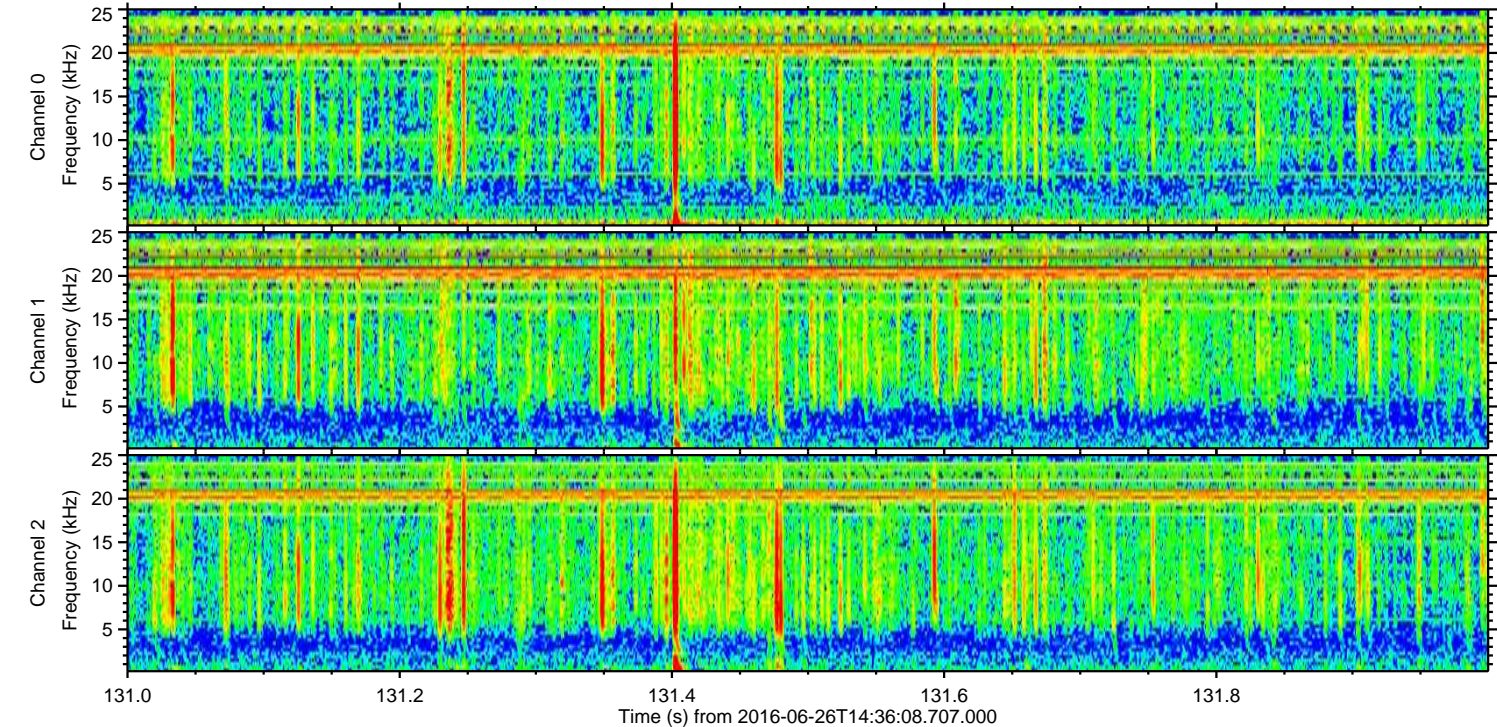
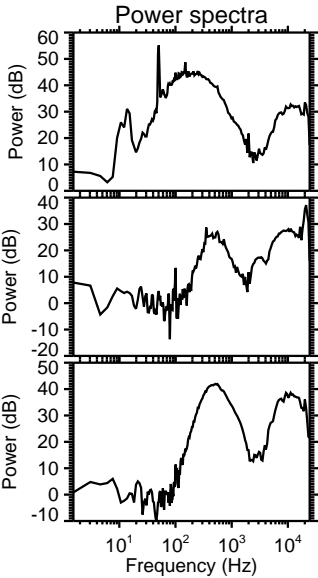
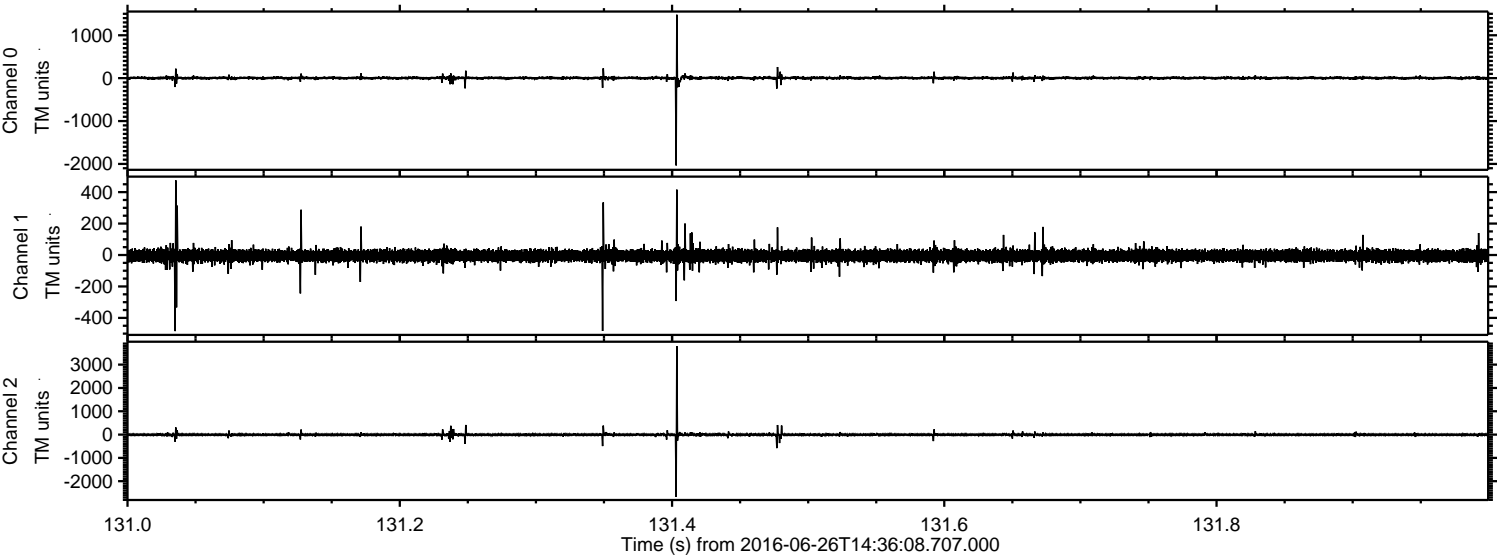
Channel 0
mn: -1335
mx: 1796
 μ : 3.6
 σ : 20.9

Channel 1
mn: -3338
mx: 3917
 μ : -4.7
 σ : 40.6

Channel 2
mn: -1145
mx: 1249
 μ : -3.8
 σ : 18.6

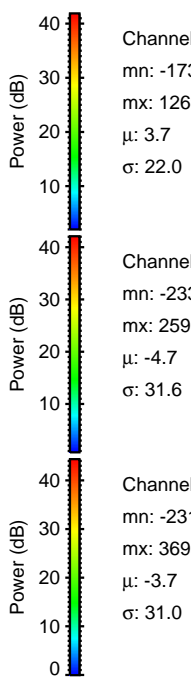
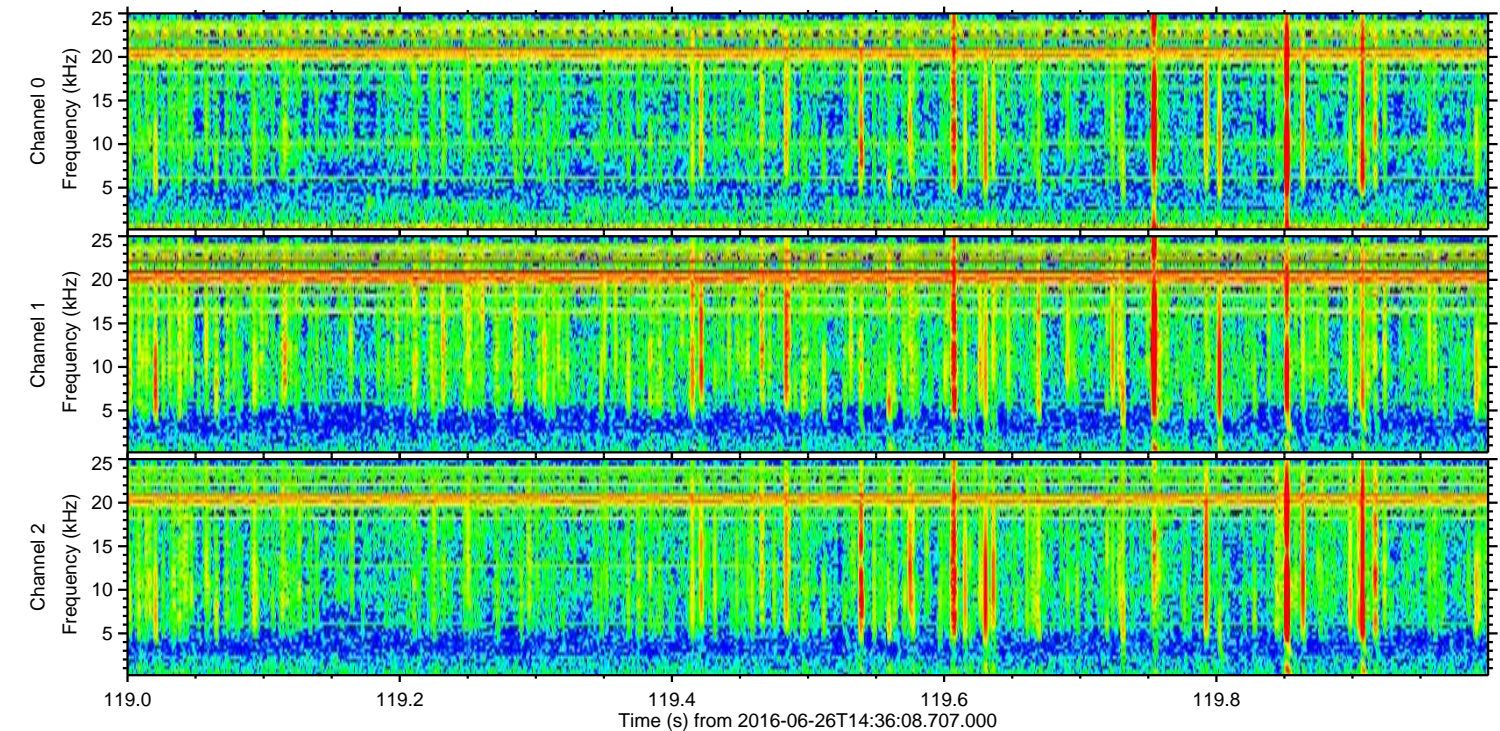
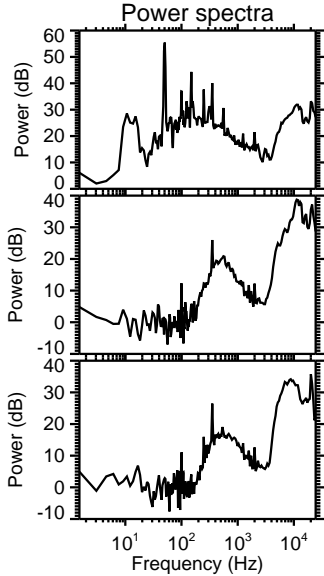
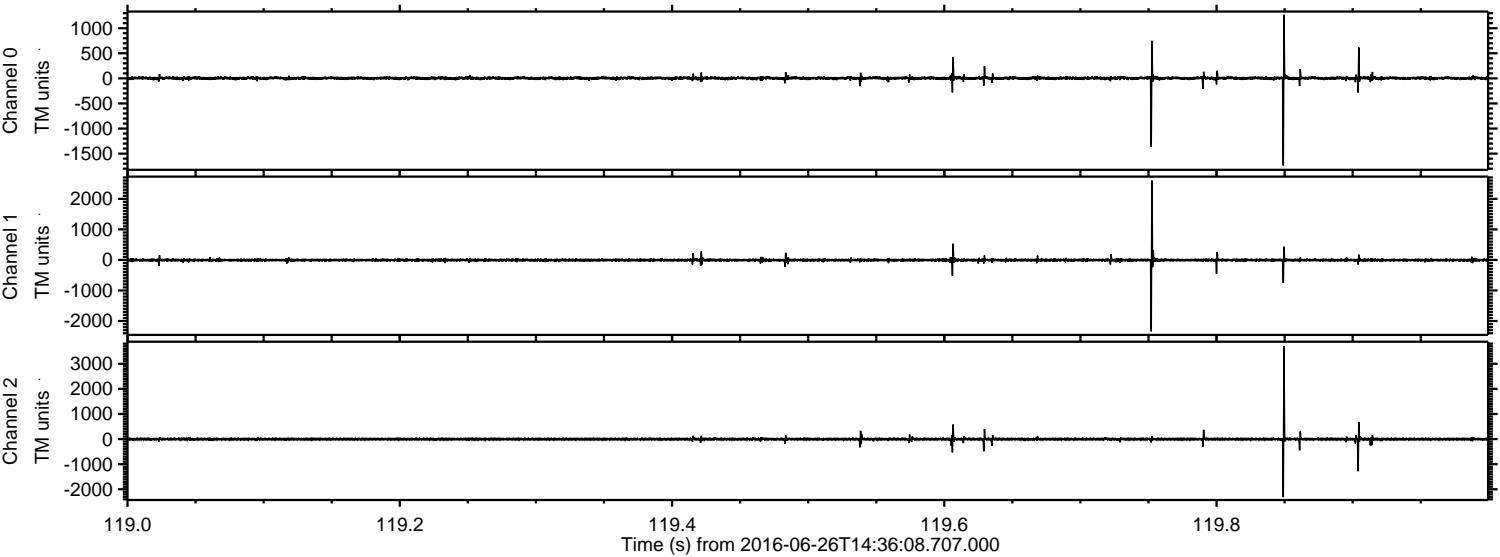
ELMAVAN 3D WAVEFORMS (Measured data sampled at 50 kHz) 51000 packets of 144 samples from 2016-06-26T14:36:08.707.000. Part 132/147

Processed Sun Jun 26 16:44:15 2016 by ELM ver.2012-10-06 from 001__elm20160626_143607__dat00.bin



ELMAVAN 3D WAVEFORMS (Measured data sampled at 50 kHz) 51000 packets of 144 samples from 2016-06-26T14:36:08.707.000. Part 120/147

Processed Sun Jun 26 16:44:16 2016 by ELM ver.2012-10-06 from 001__elm20160626_143607__dat00.bin

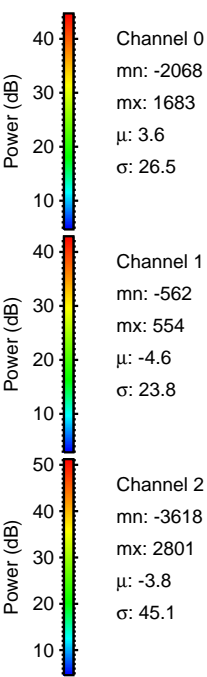
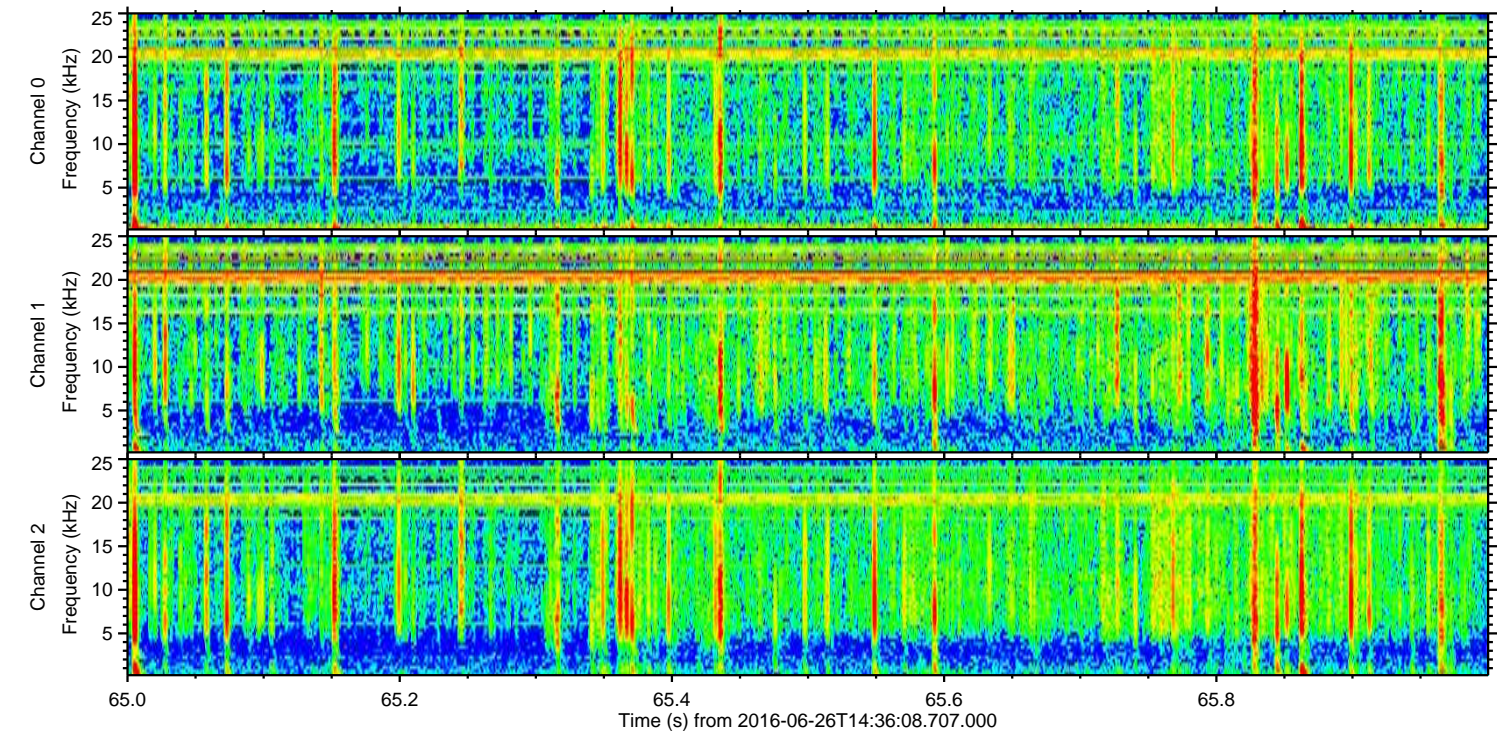
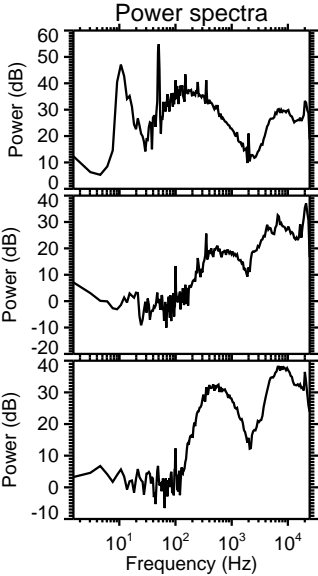
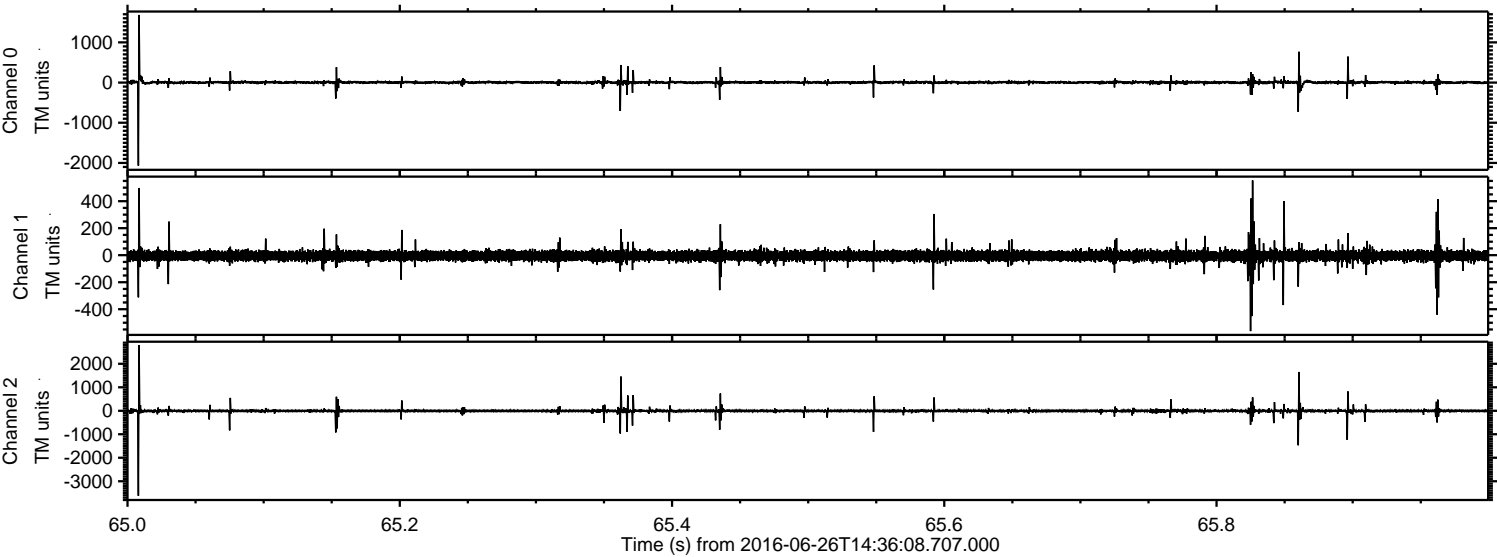


Channel 0
mn: -1736
mx: 1269
 μ : 3.7
 σ : 22.0

Channel 1
mn: -2338
mx: 2598
 μ : -4.7
 σ : 31.6

Channel 2
mn: -2311
mx: 3695
 μ : -3.7
 σ : 31.0

Processed Sun Jun 26 16:44:17 2016 by ELM ver.2012-10-06 from 001__elm20160626_143607__dat00.bin

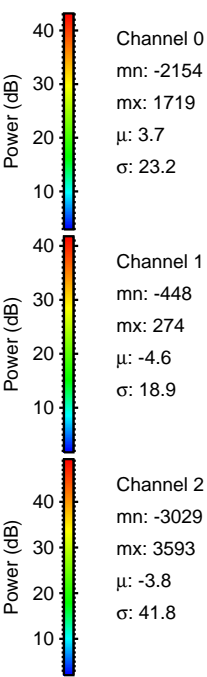
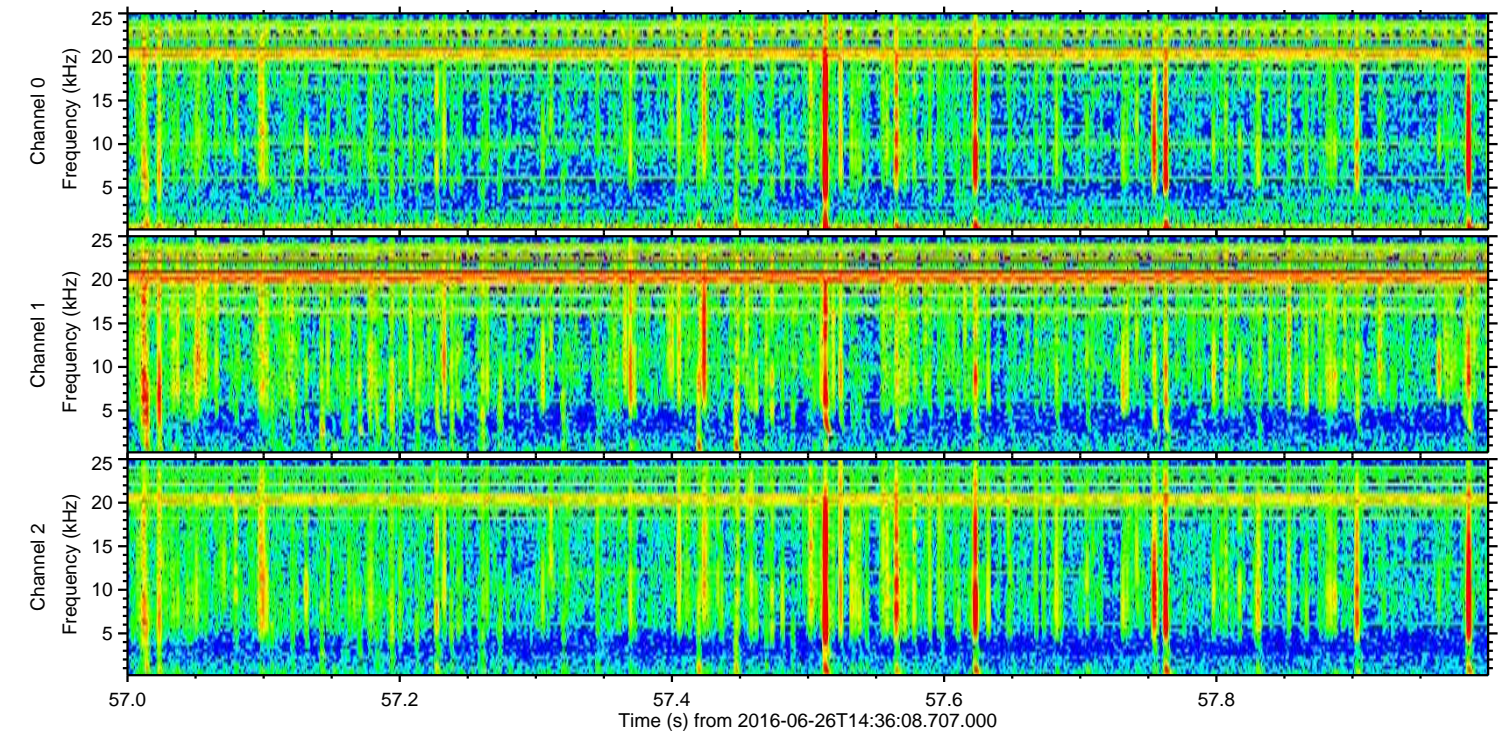
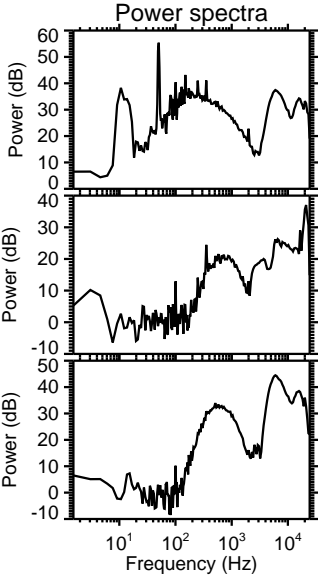
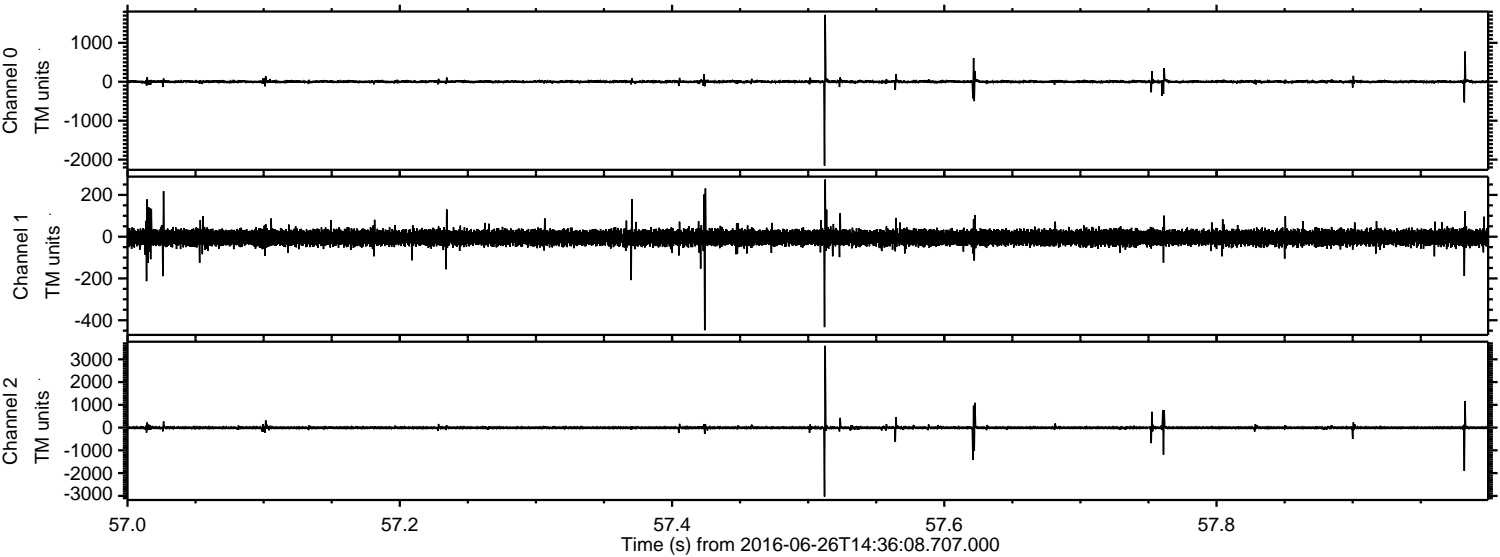


Channel 0
mn: -2068
mx: 1683
 μ : 3.6
 σ : 26.5

Channel 1
mn: -562
mx: 554
 μ : -4.6
 σ : 23.8

Channel 2
mn: -3618
mx: 2801
 μ : -3.8
 σ : 45.1

Processed Sun Jun 26 16:44:18 2016 by ELM ver.2012-10-06 from 001__elm20160626_143607__dat00.bin

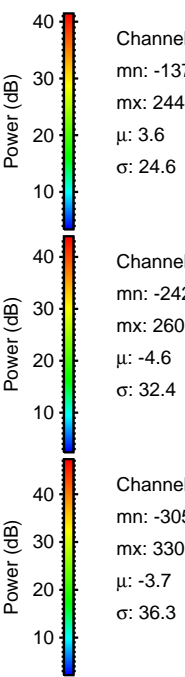
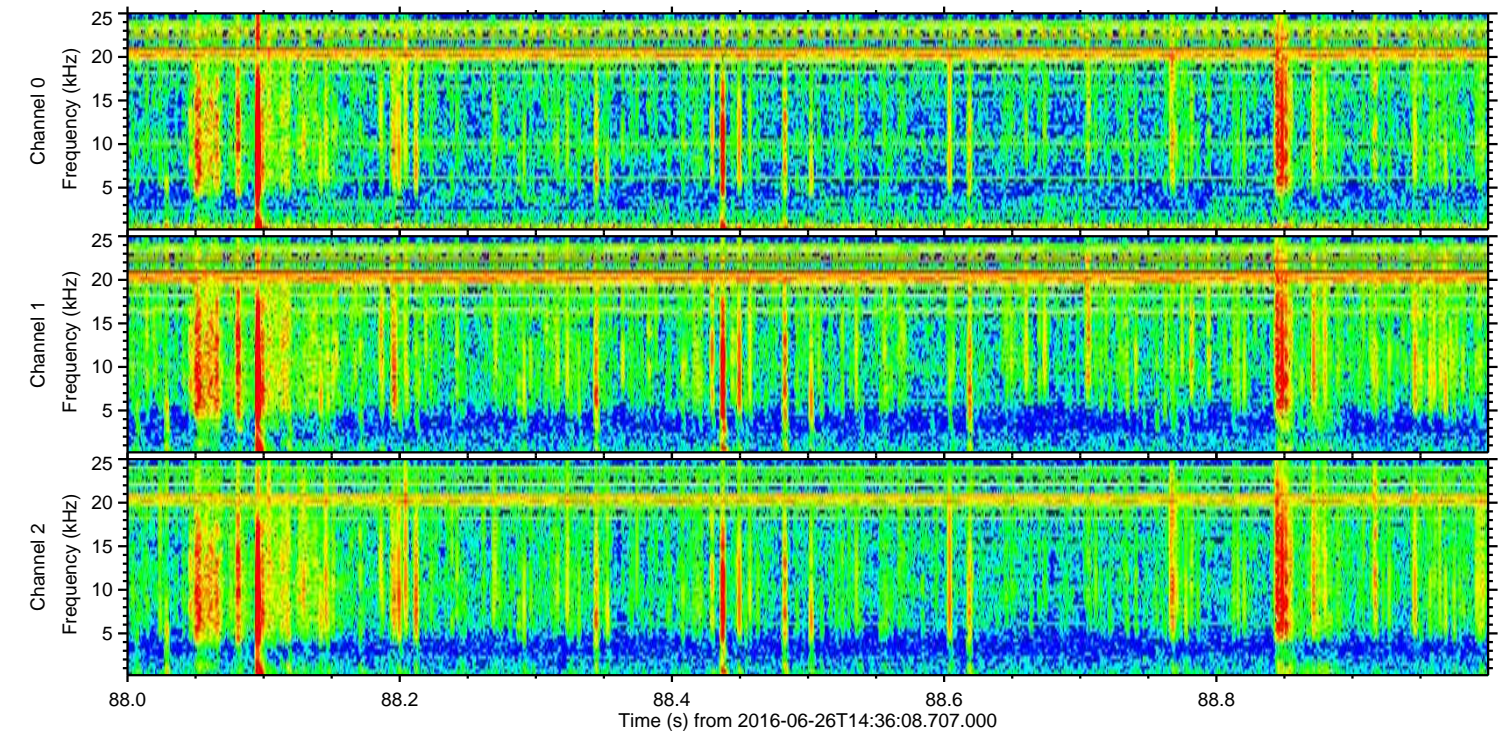
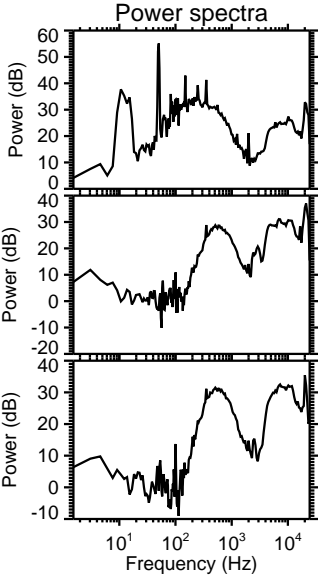
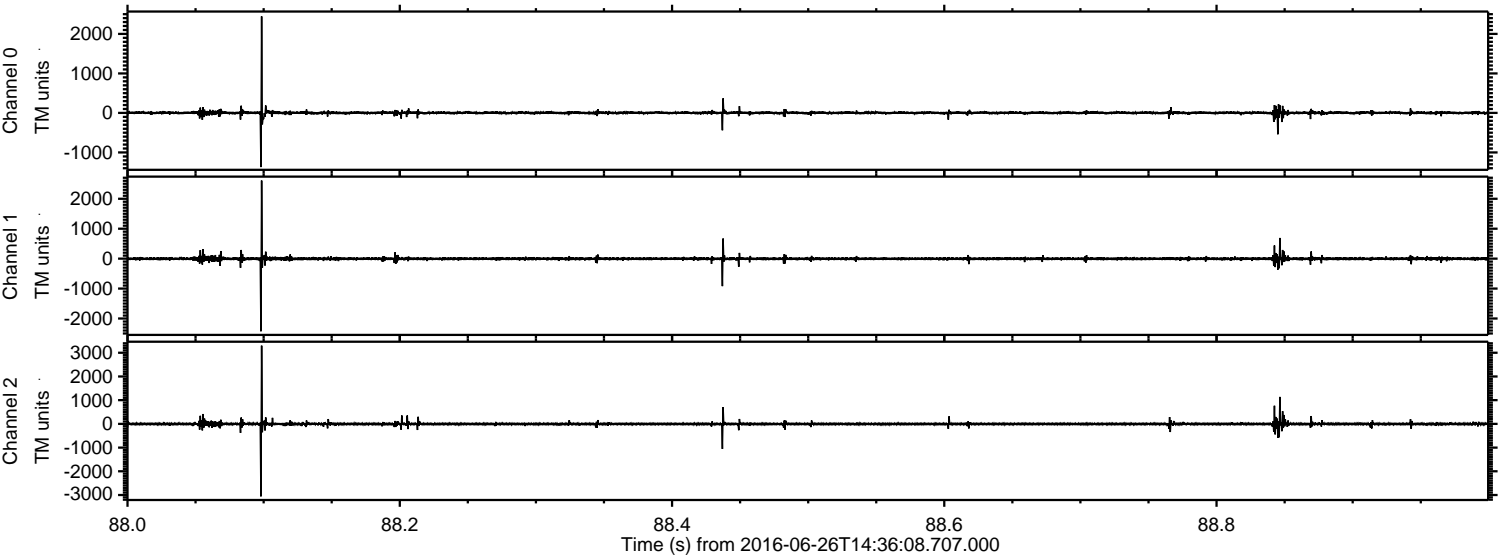


Channel 0
mn: -2154
mx: 1719
 μ : 3.7
 σ : 23.2

Channel 1
mn: -448
mx: 274
 μ : -4.6
 σ : 18.9

Channel 2
mn: -3029
mx: 3593
 μ : -3.8
 σ : 41.8

Processed Sun Jun 26 16:44:19 2016 by ELM ver.2012-10-06 from 001__elm20160626_143607__dat00.bin



Processed Sun Jun 26 16:44:20 2016 by ELM ver.2012-10-06 from 001__elm20160626_143607__dat00.bin

