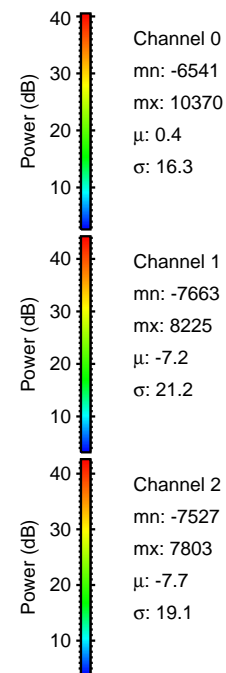
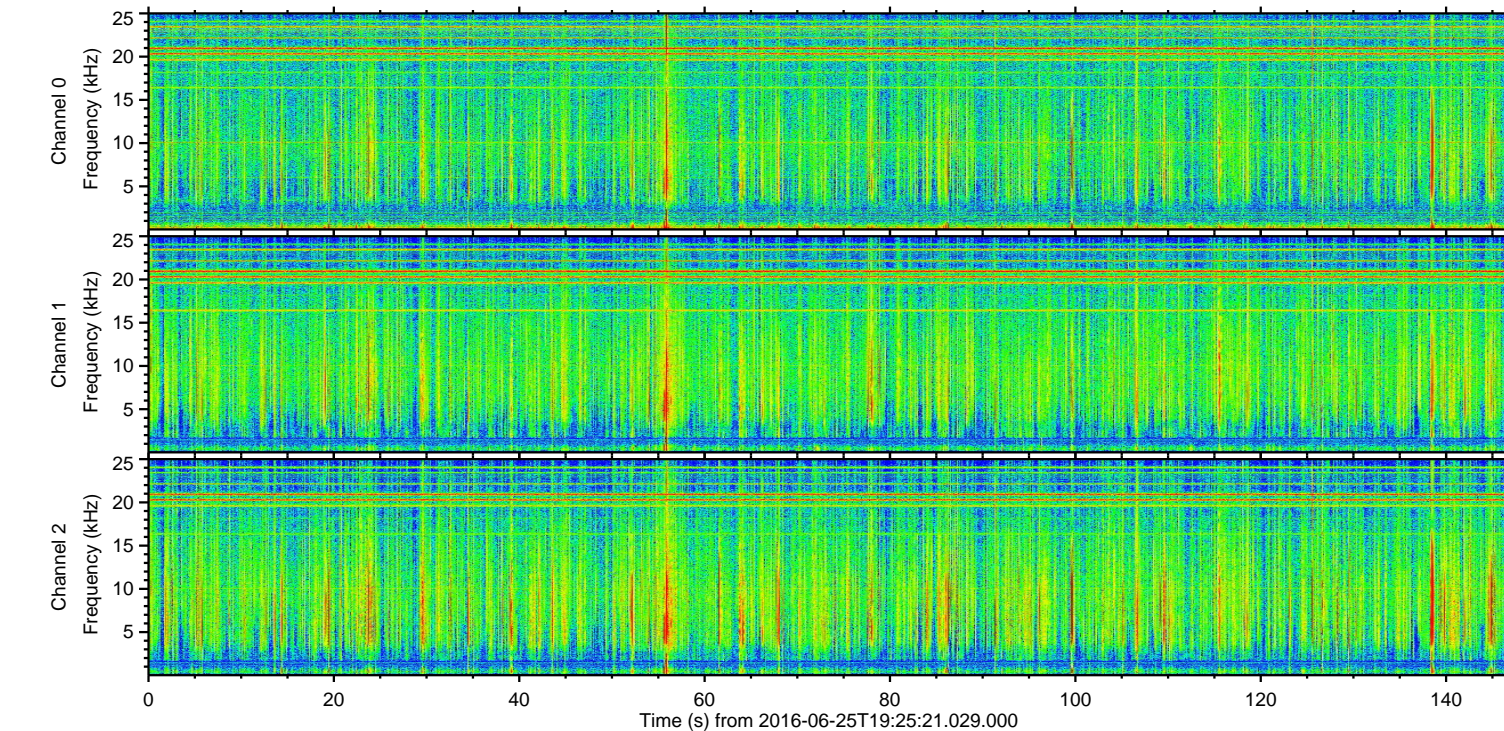
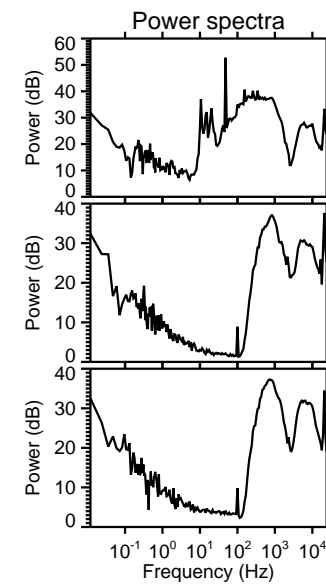
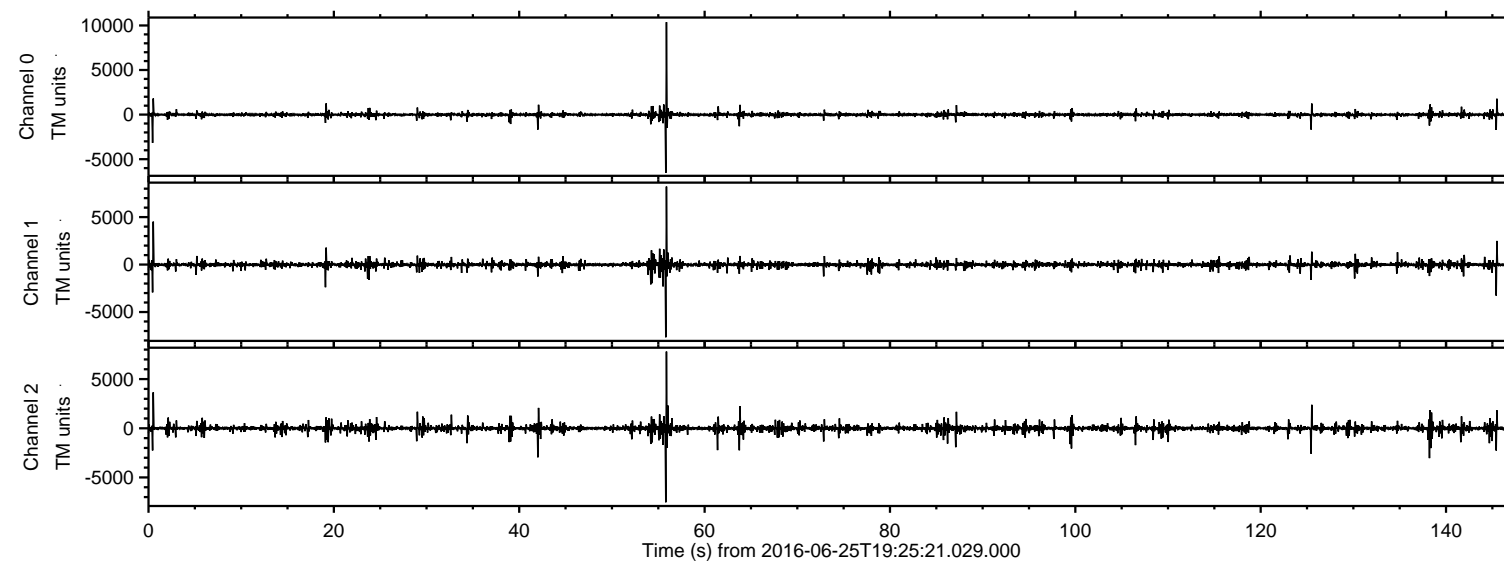


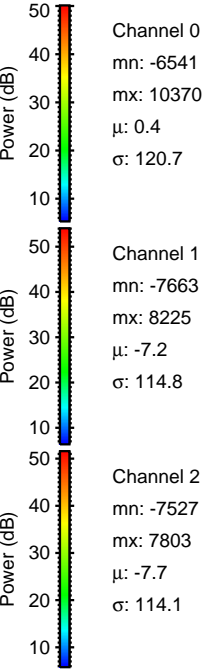
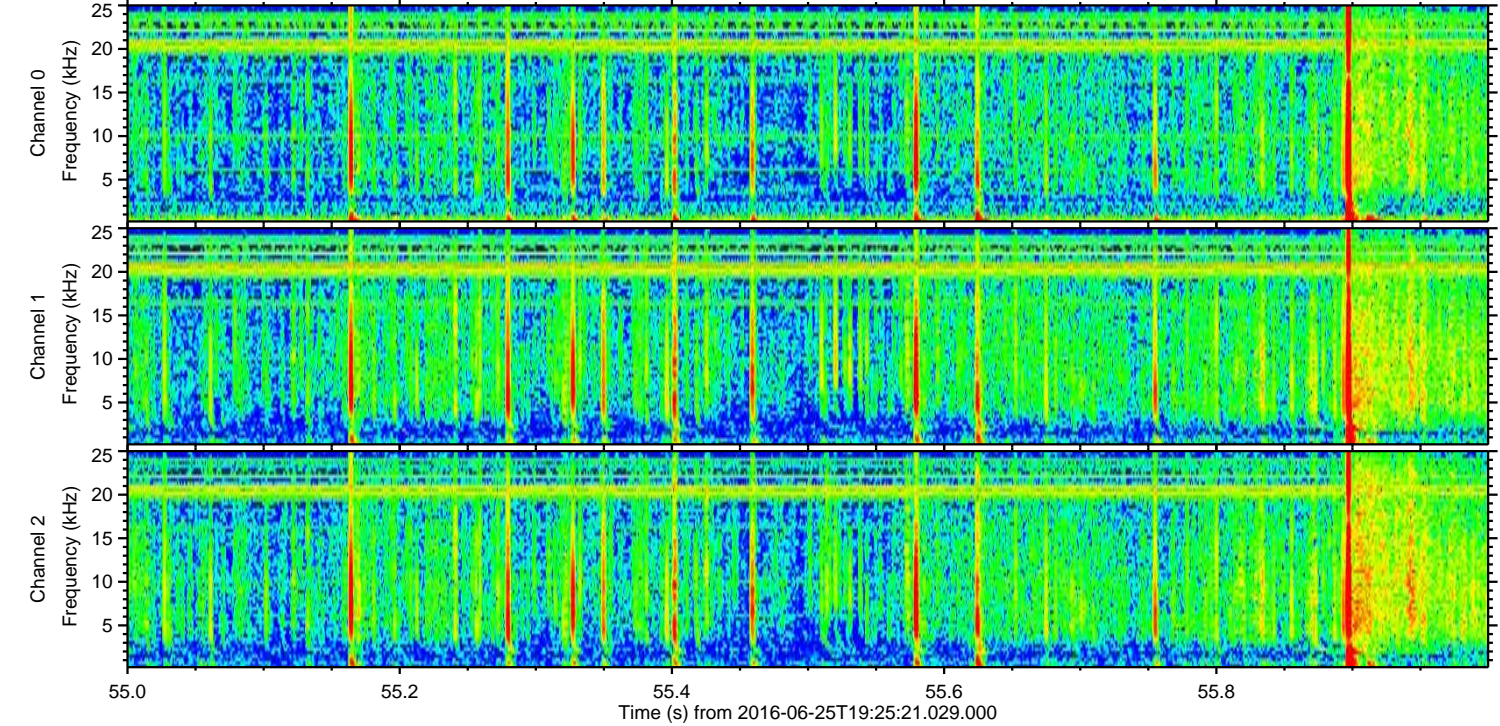
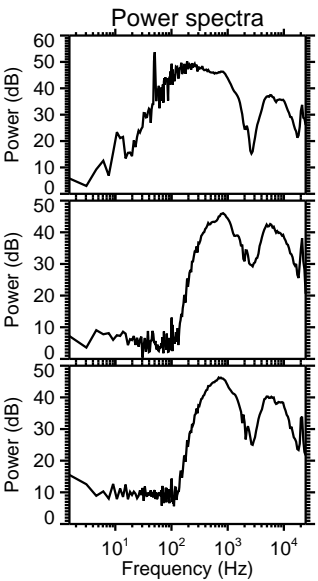
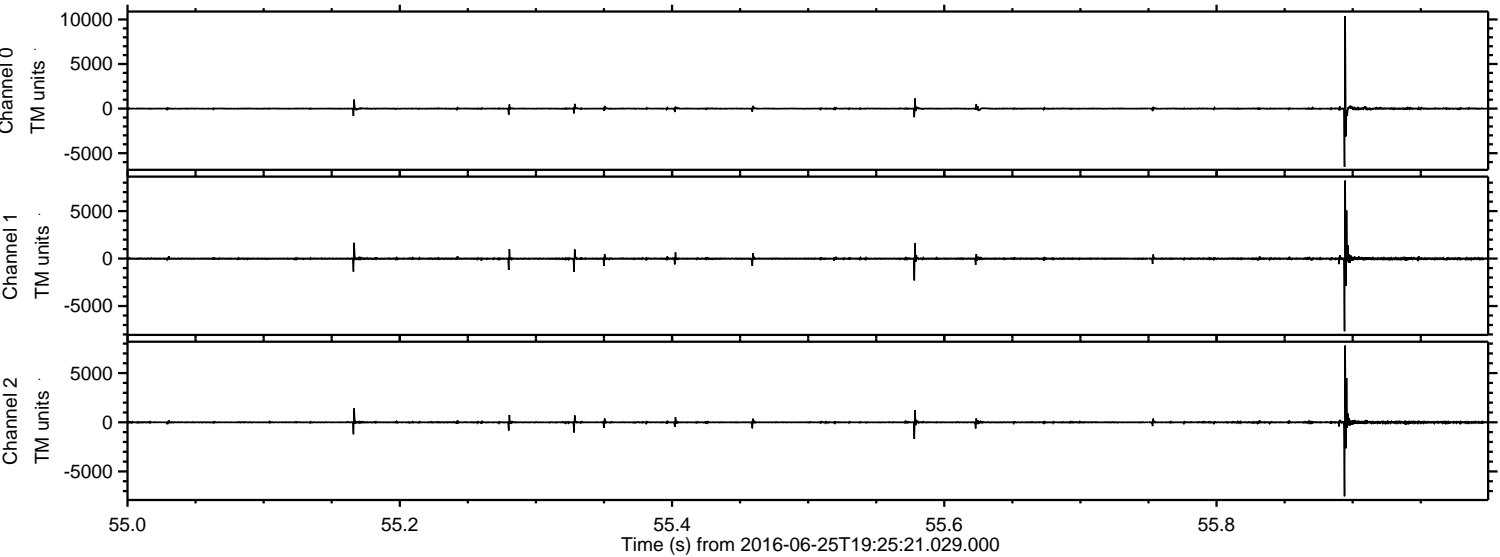
# ELMAVAN 3D WAVEFORMS (Measured data sampled at 50 kHz) 51000 packets of 144 samples from 2016-06-25T19:25:21.029.000.

Processed Sat Jun 25 21:33:24 2016 by ELM ver.2012-10-06 from 001\_\_elm20160625\_192520\_\_dat00.bin





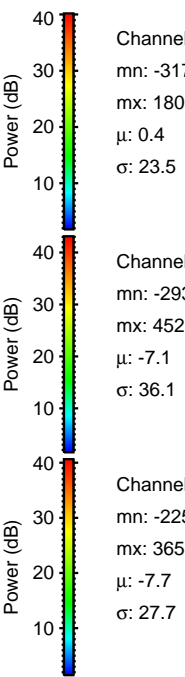
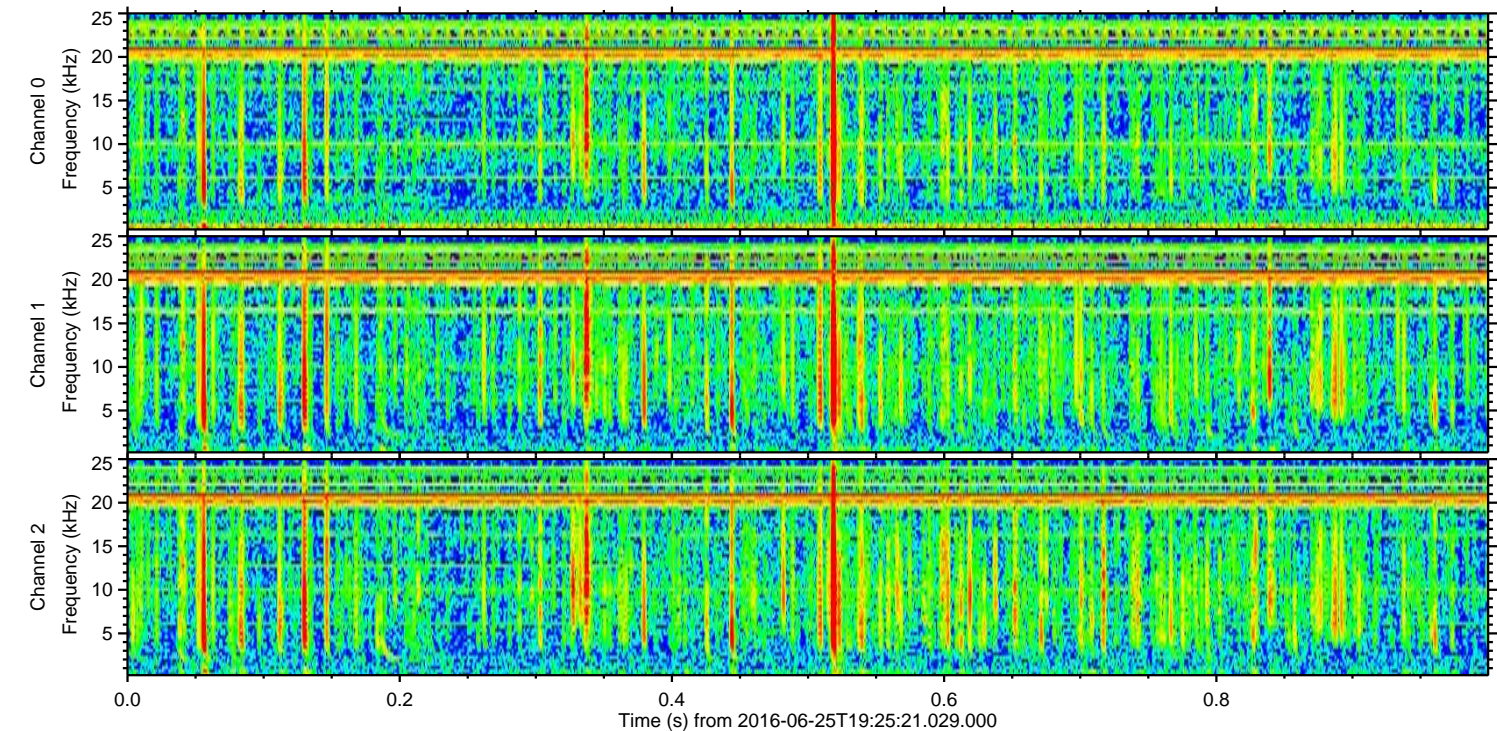
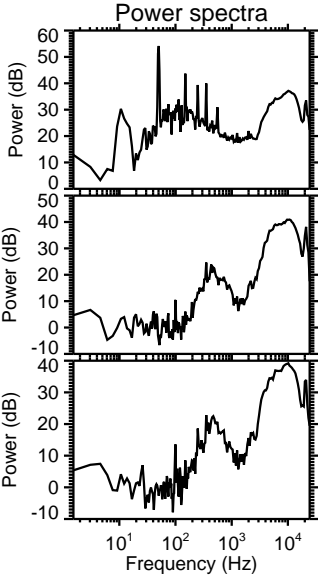
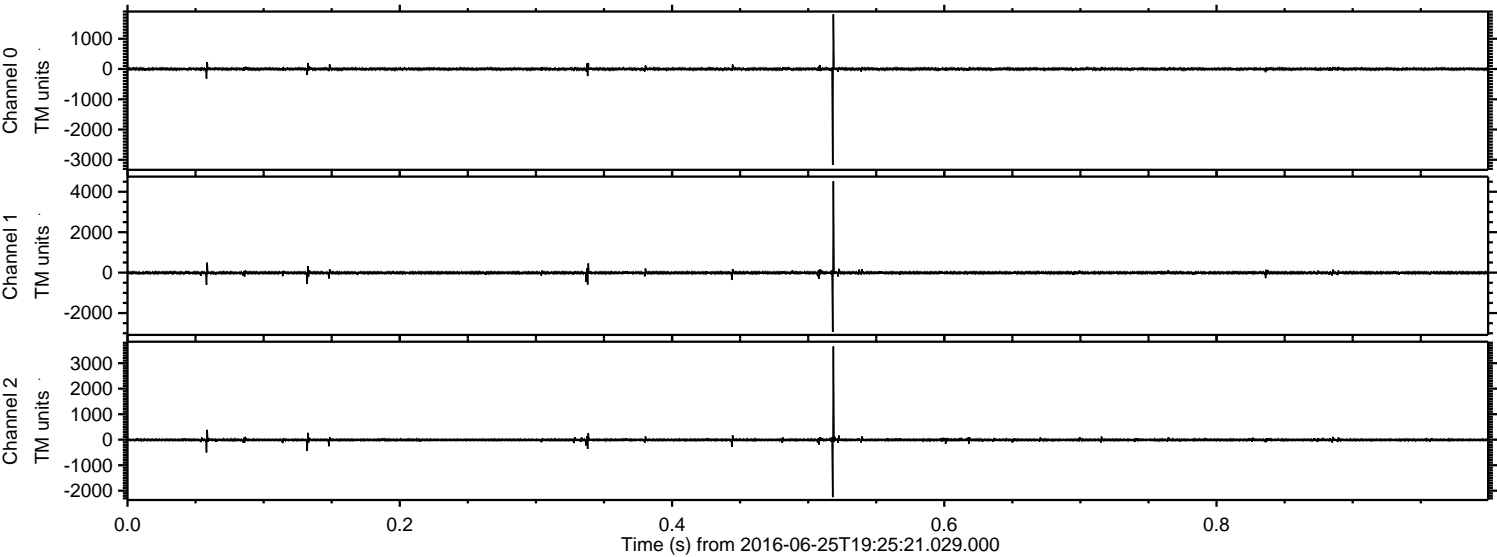
Processed Sat Jun 25 21:33:35 2016 by ELM ver.2012-10-06 from 001\_\_elm20160625\_192520\_\_dat00.bin





ELMAVAN 3D WAVEFORMS (Measured data sampled at 50 kHz) 51000 packets of 144 samples from 2016-06-25T19:25:21.029.000. Part 1/147

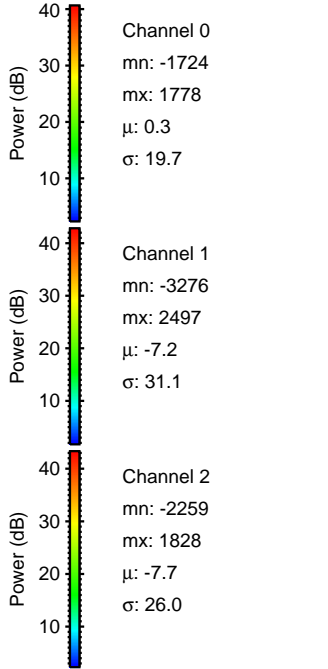
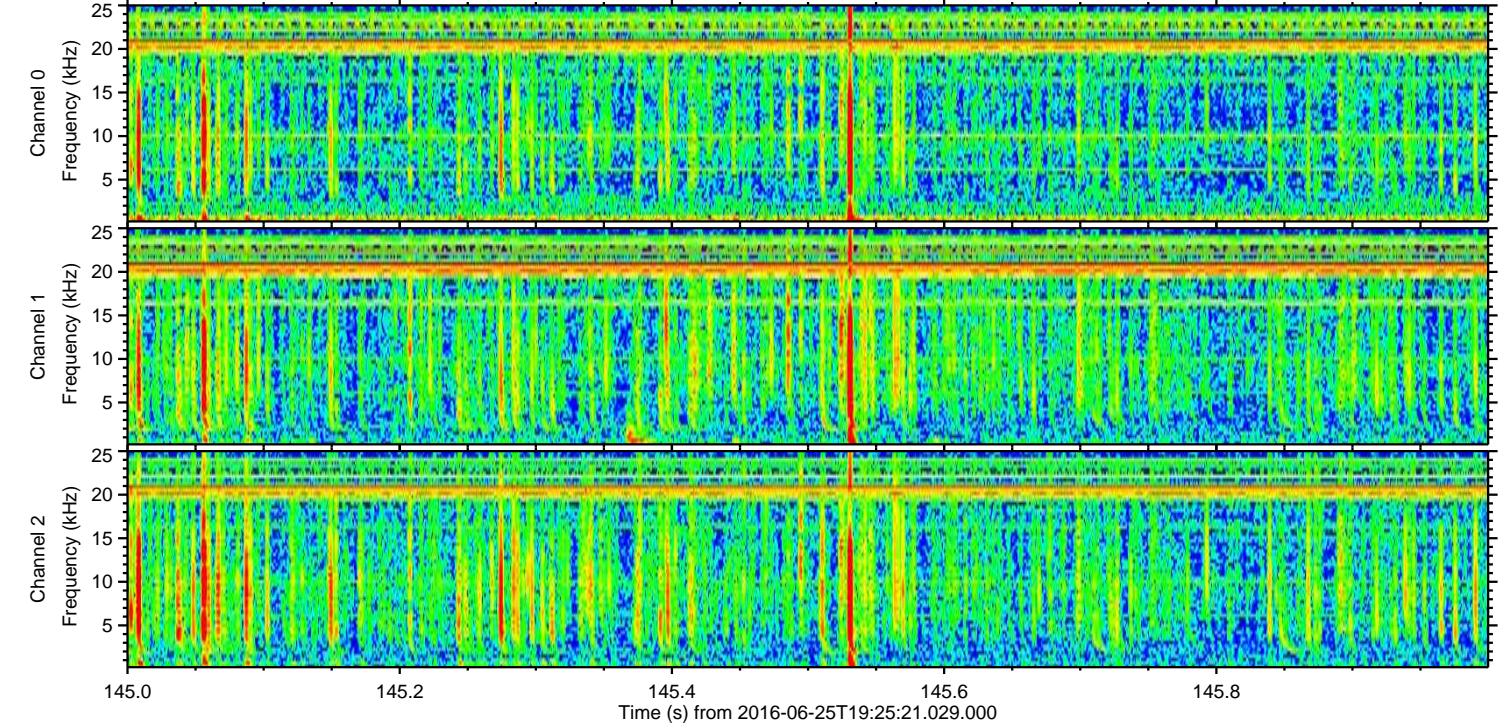
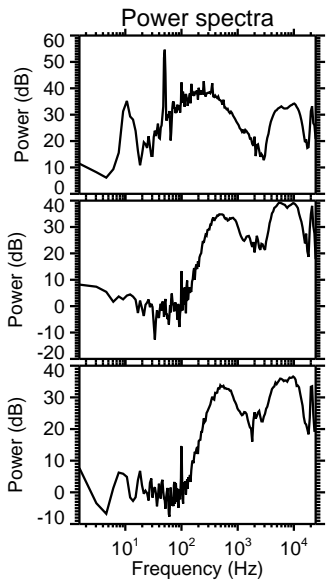
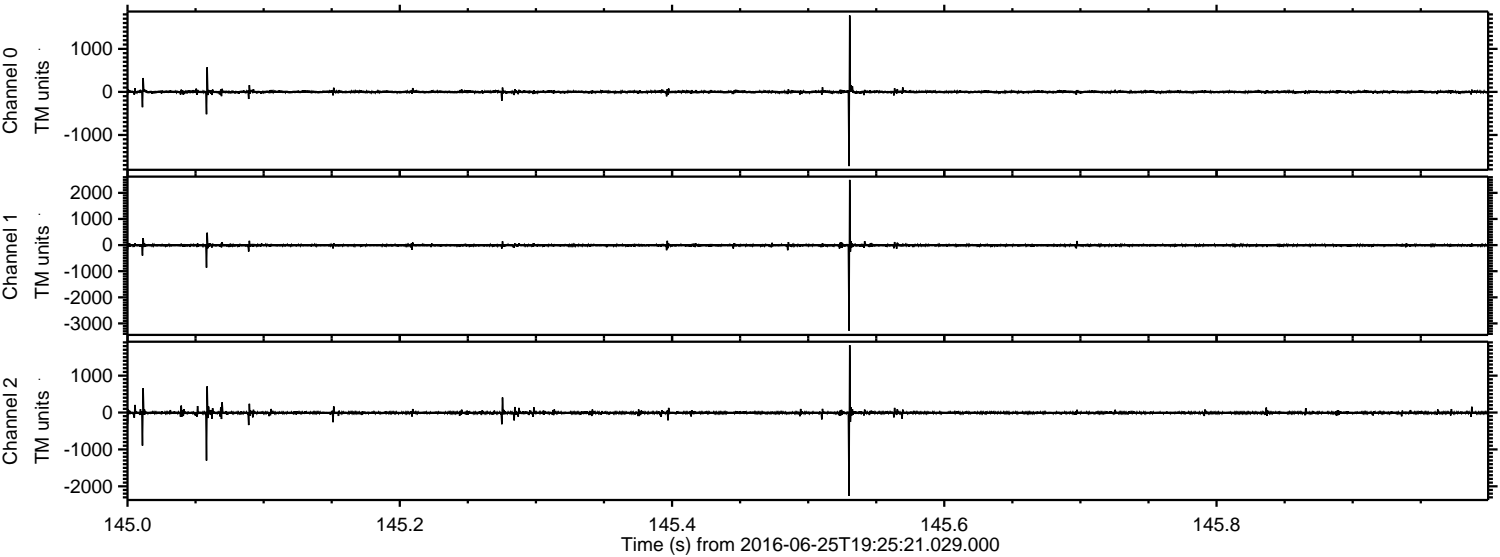
Processed Sat Jun 25 21:33:36 2016 by ELM ver.2012-10-06 from 001\_\_elm20160625\_192520\_\_dat00.bin





ELMAVAN 3D WAVEFORMS (Measured data sampled at 50 kHz) 51000 packets of 144 samples from 2016-06-25T19:25:21.029.000. Part 146/147

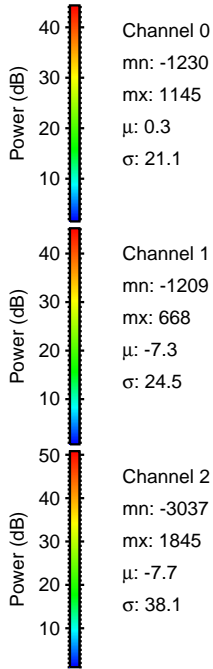
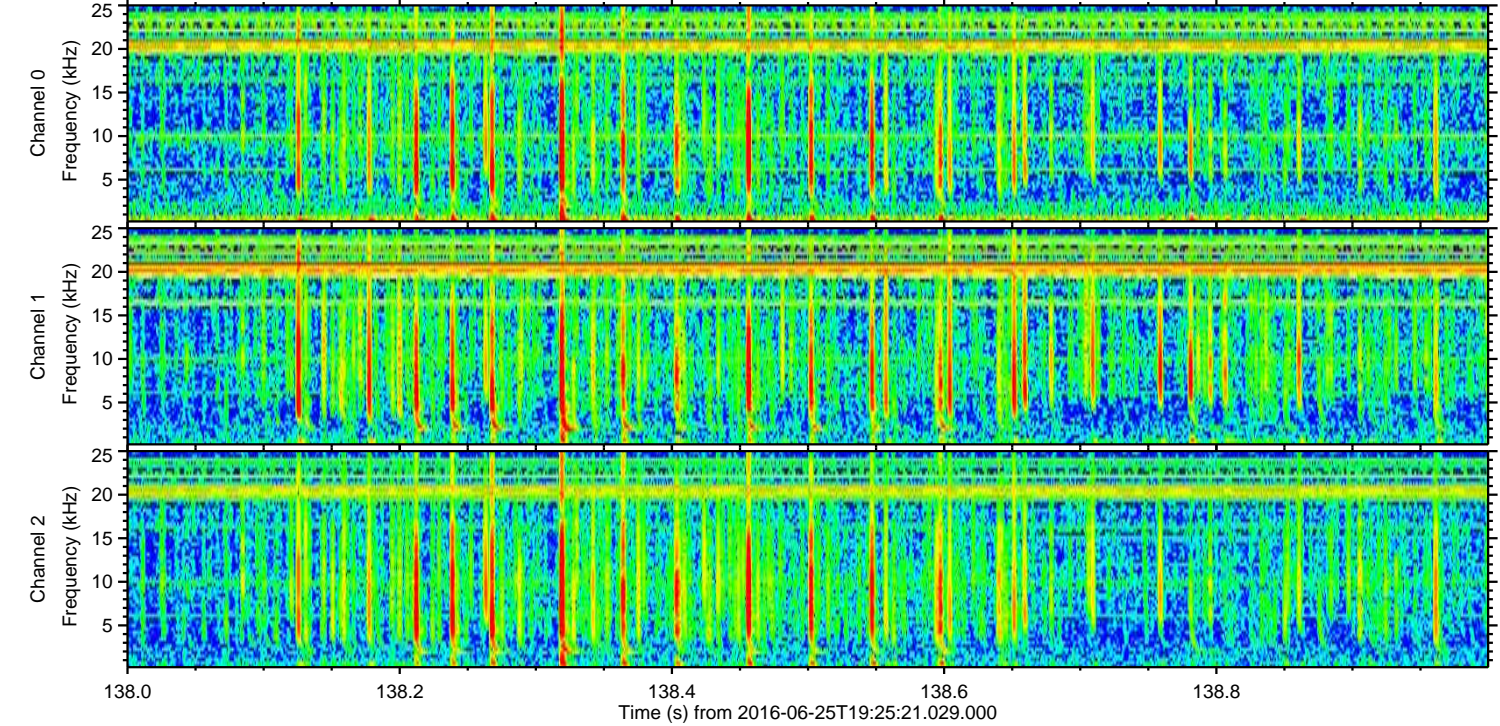
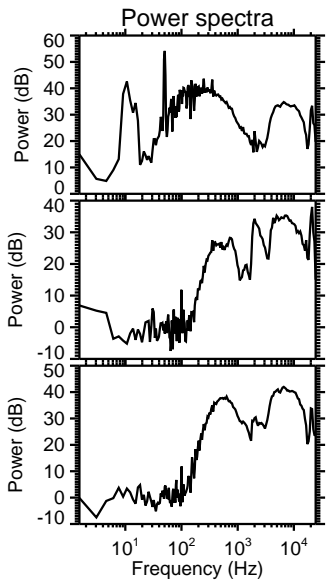
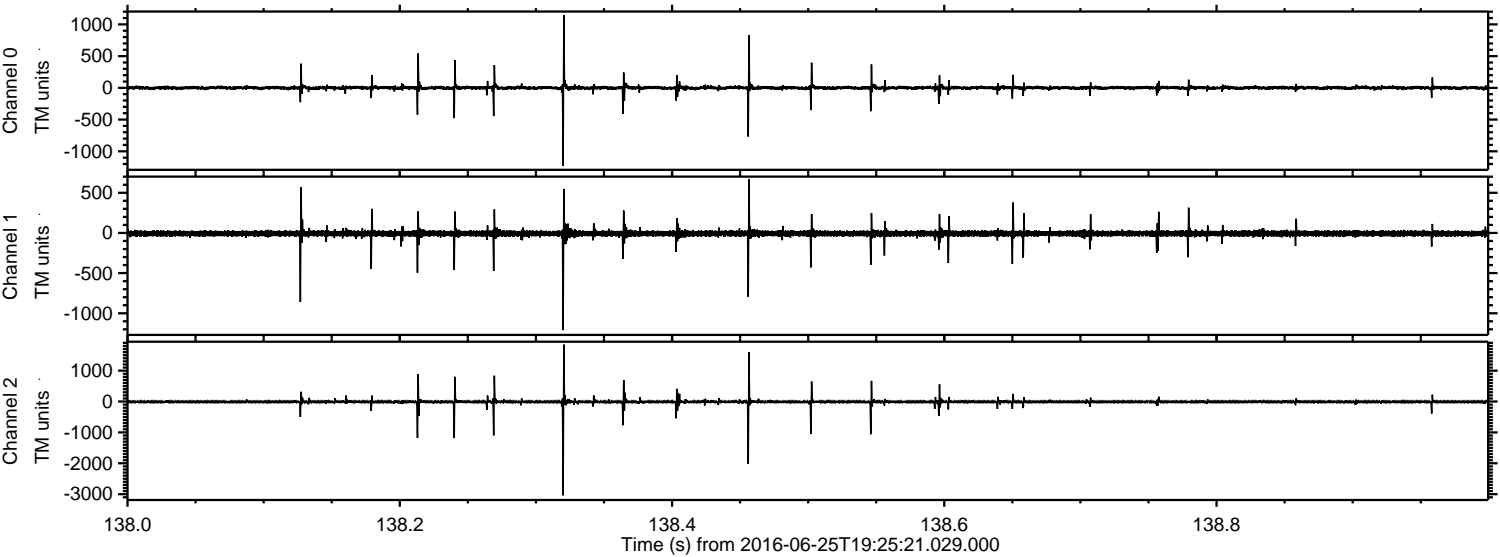
Processed Sat Jun 25 21:33:37 2016 by ELM ver.2012-10-06 from 001\_\_elm20160625\_192520\_\_dat00.bin





ELMAVAN 3D WAVEFORMS (Measured data sampled at 50 kHz) 51000 packets of 144 samples from 2016-06-25T19:25:21.029.000. Part 139/147

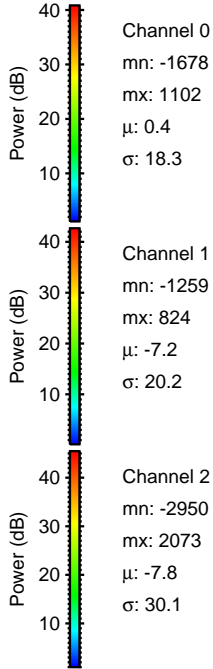
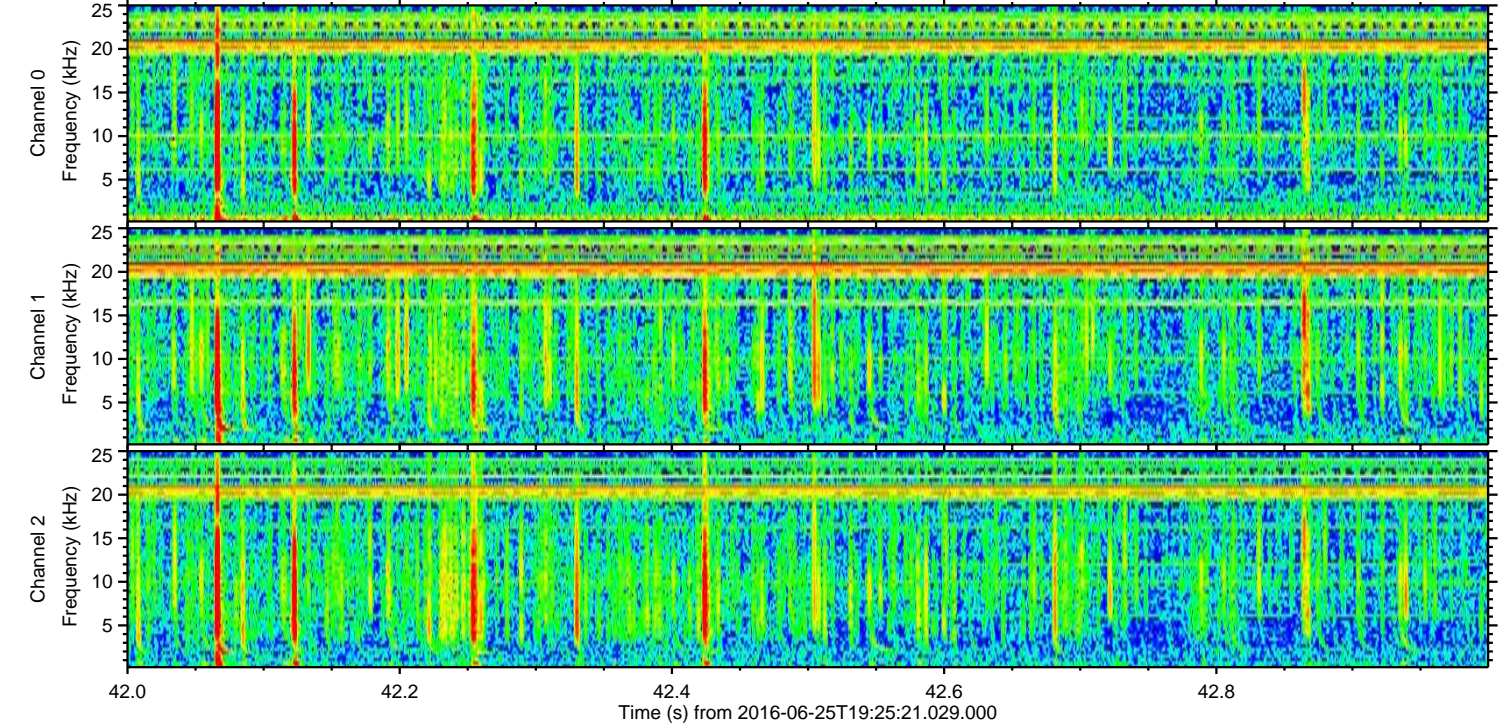
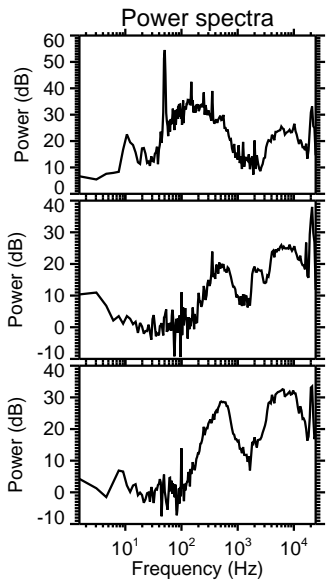
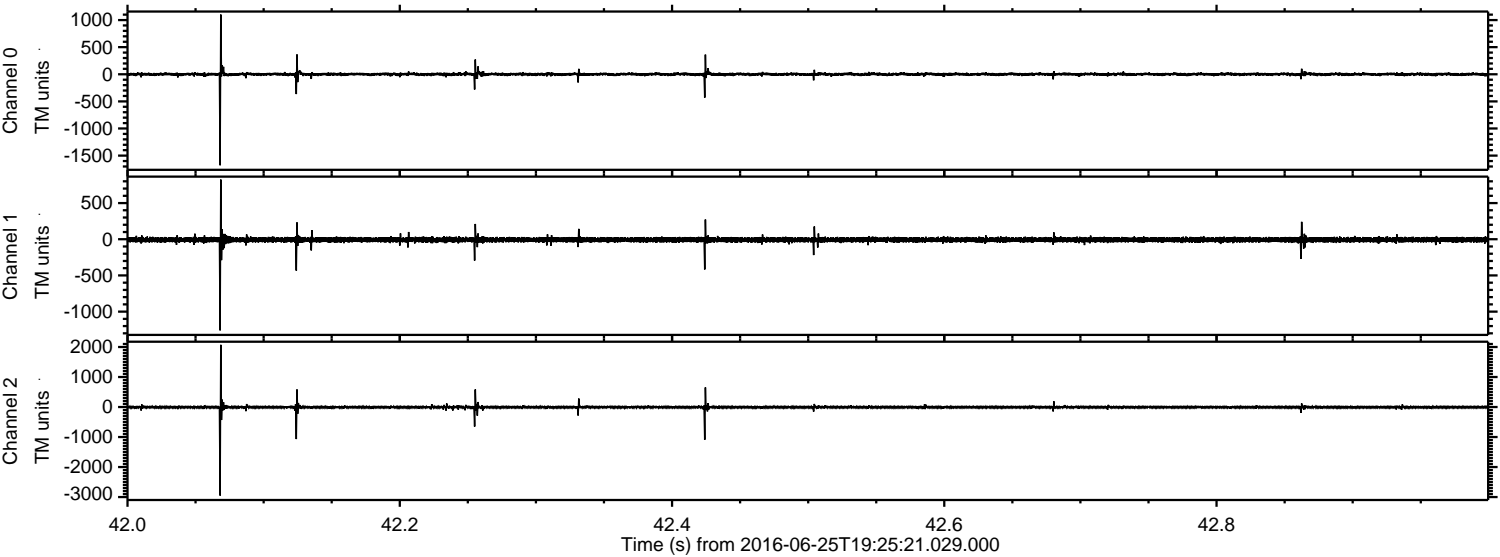
Processed Sat Jun 25 21:33:38 2016 by ELM ver.2012-10-06 from 001\_\_elm20160625\_192520\_\_dat00.bin





ELMAVAN 3D WAVEFORMS (Measured data sampled at 50 kHz) 51000 packets of 144 samples from 2016-06-25T19:25:21.029.000. Part 43/147

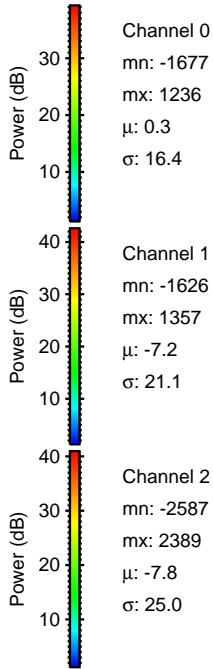
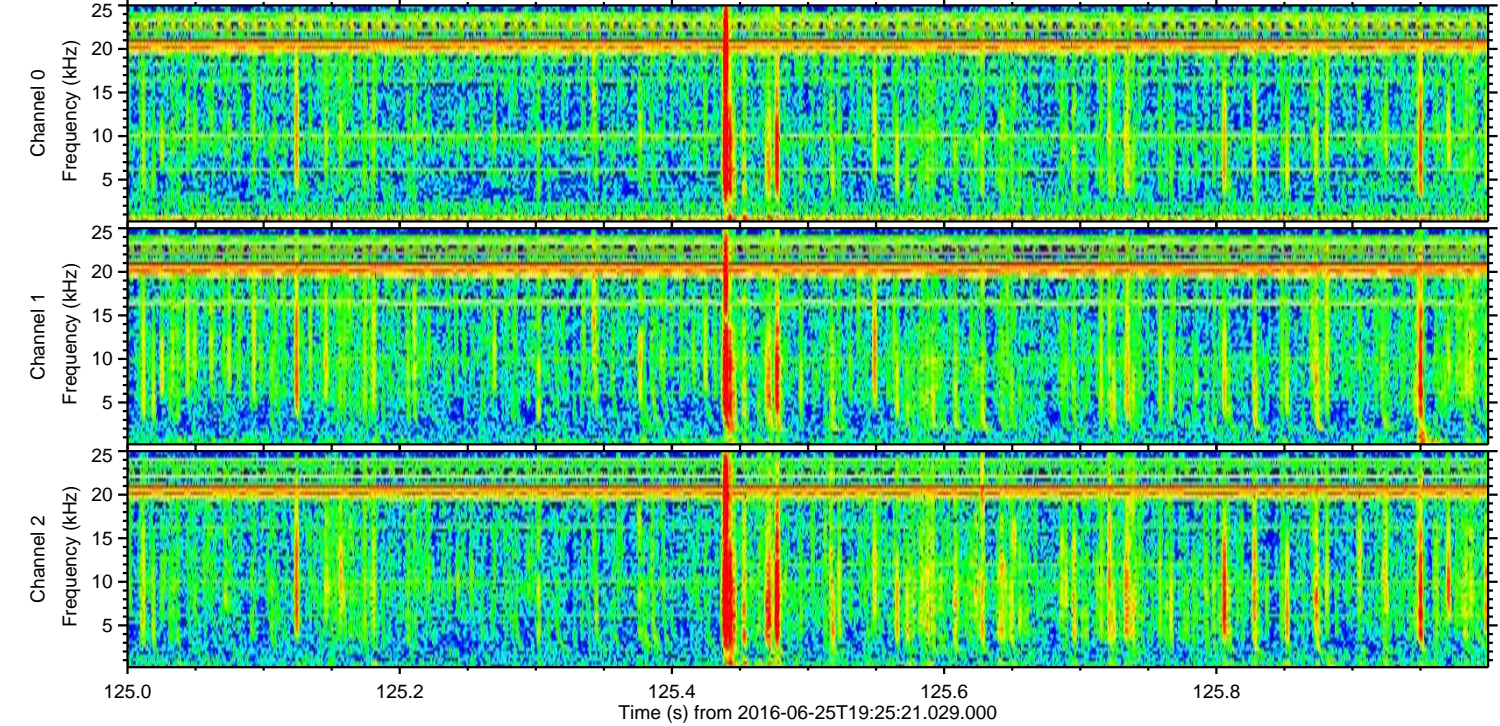
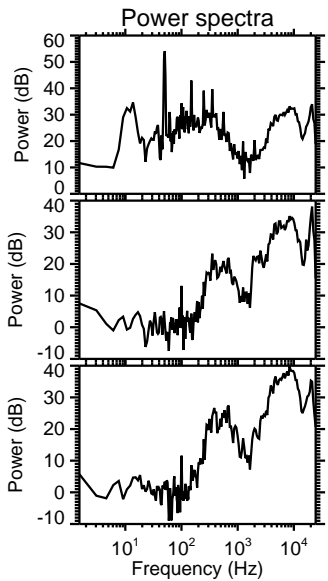
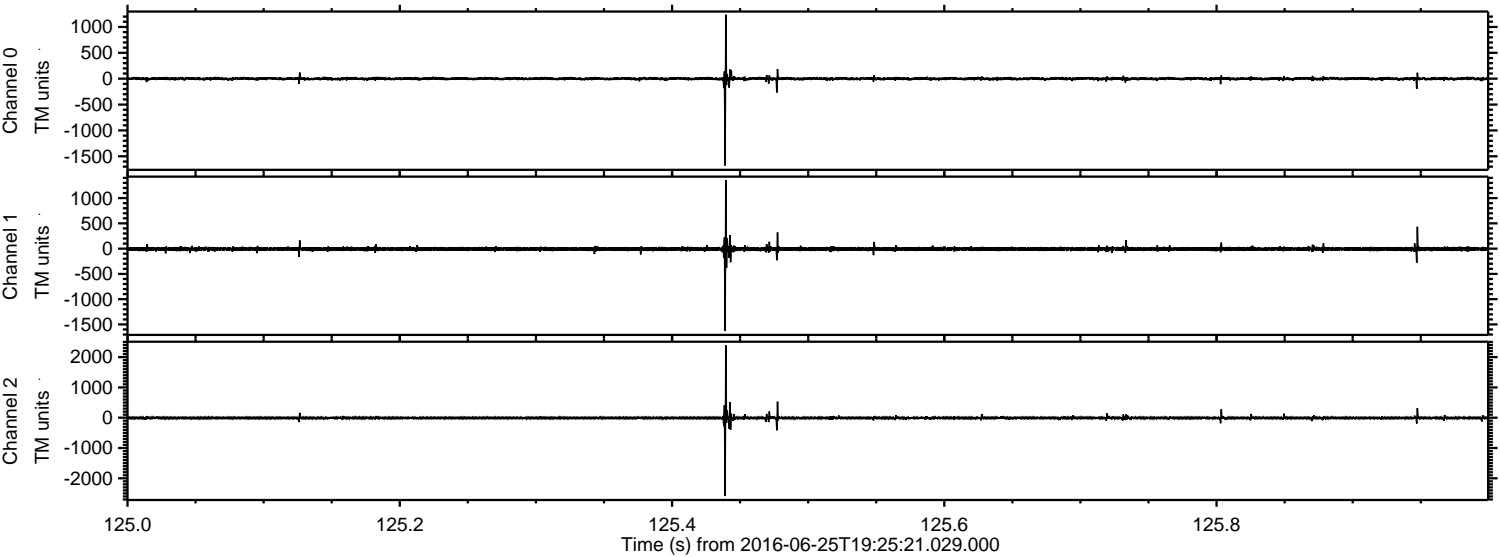
Processed Sat Jun 25 21:33:39 2016 by ELM ver.2012-10-06 from 001\_\_elm20160625\_192520\_\_dat00.bin





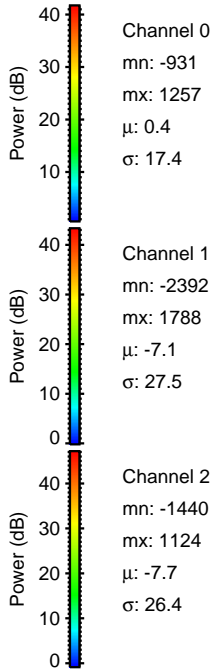
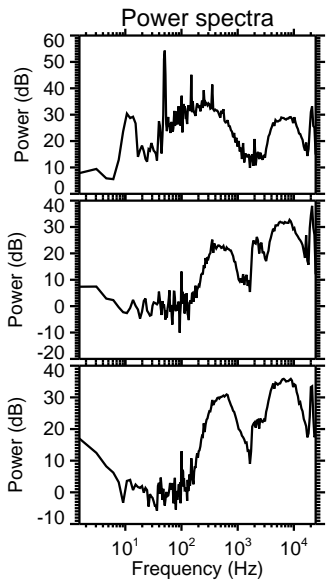
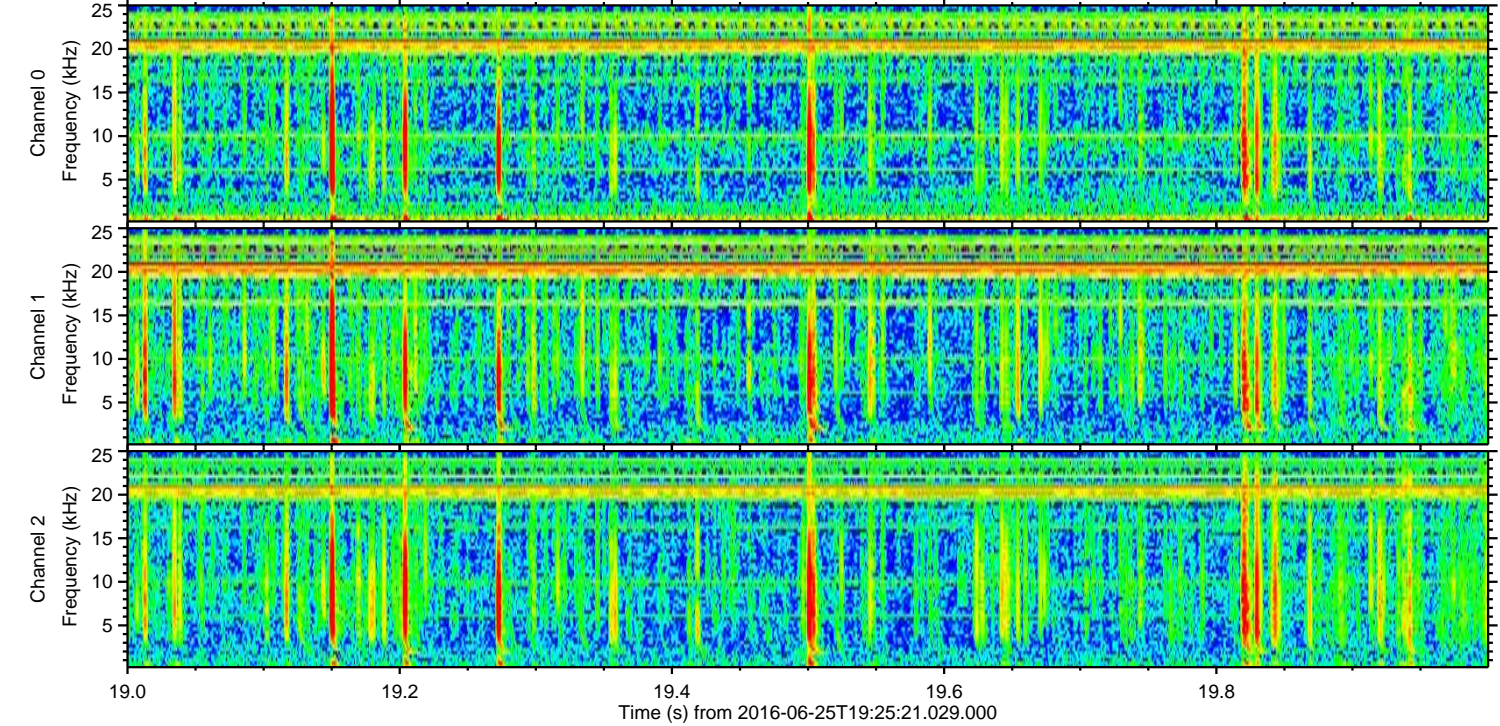
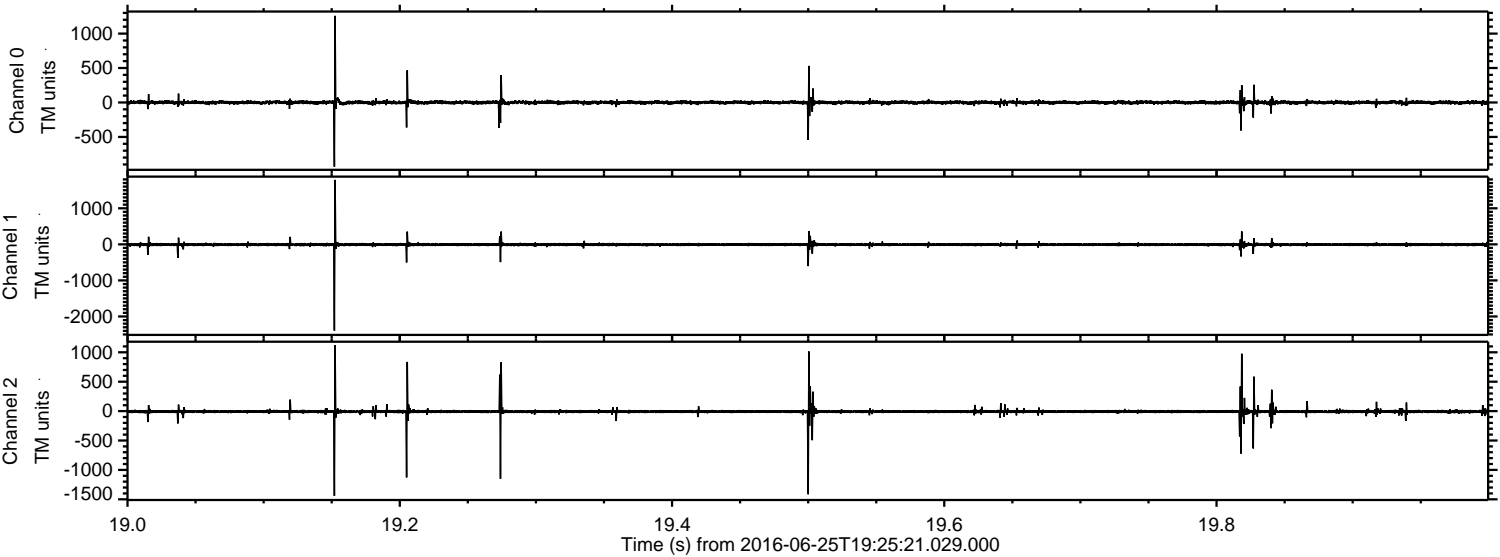
ELMAVAN 3D WAVEFORMS (Measured data sampled at 50 kHz) 51000 packets of 144 samples from 2016-06-25T19:25:21.029.000. Part 126/147

Processed Sat Jun 25 21:33:40 2016 by ELM ver.2012-10-06 from 001\_\_elm20160625\_192520\_\_dat00.bin





Processed Sat Jun 25 21:33:41 2016 by ELM ver.2012-10-06 from 001\_\_elm20160625\_192520\_\_dat00.bin



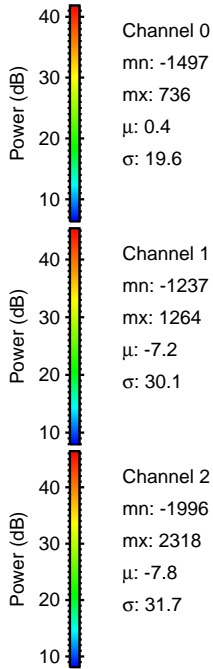
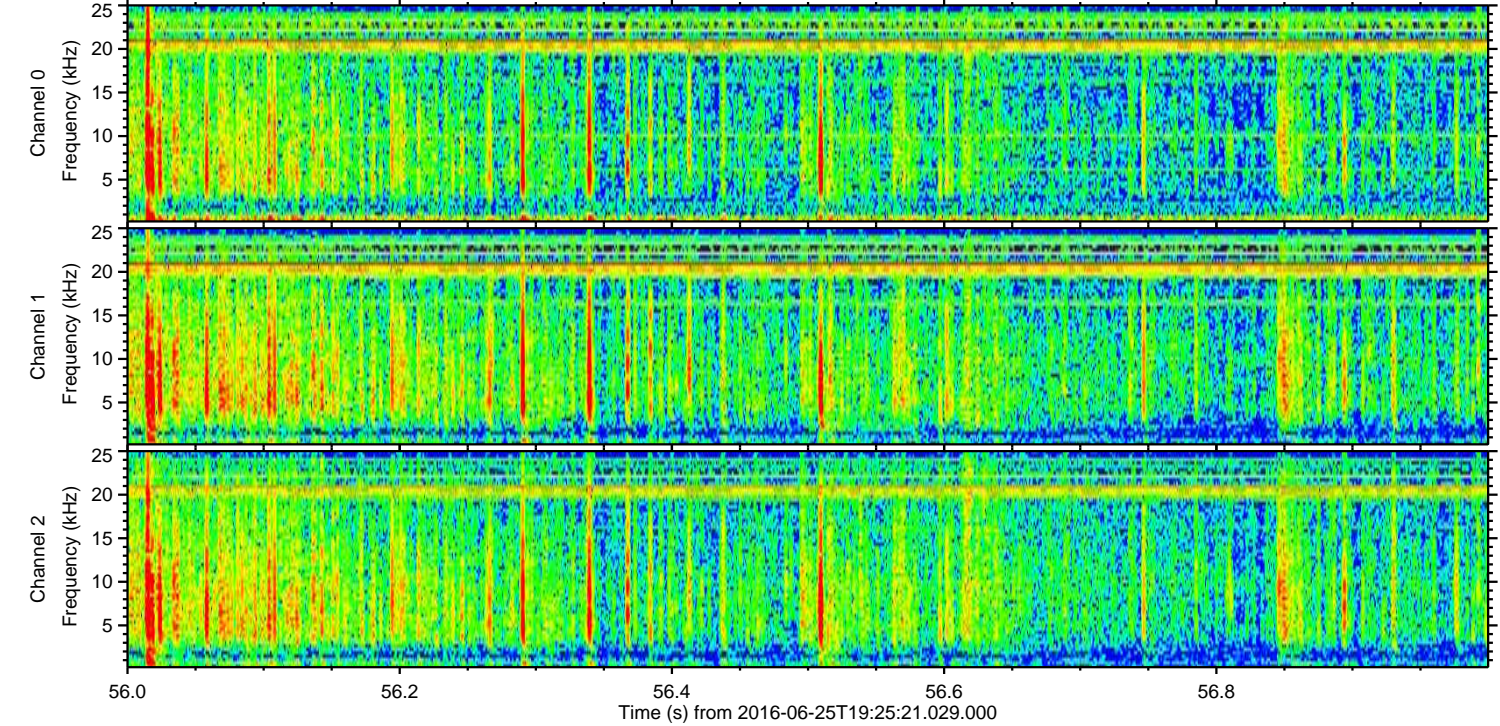
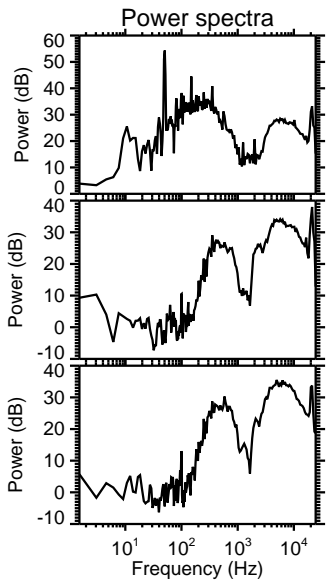
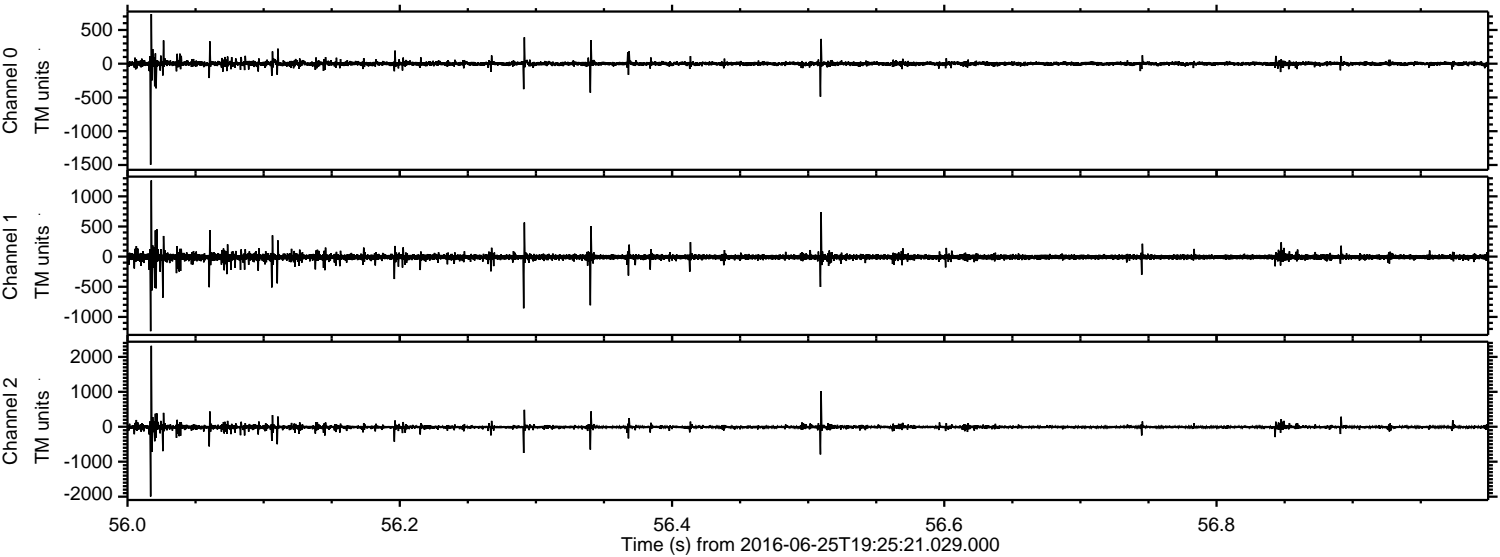
Channel 0  
mn: -931  
mx: 1257  
 $\mu$ : 0.4  
 $\sigma$ : 17.4

Channel 1  
mn: -2392  
mx: 1788  
 $\mu$ : -7.1  
 $\sigma$ : 27.5

Channel 2  
mn: -1440  
mx: 1124  
 $\mu$ : -7.7  
 $\sigma$ : 26.4



Processed Sat Jun 25 21:33:42 2016 by ELM ver.2012-10-06 from 001\_\_elm20160625\_192520\_\_dat00.bin



Power spectra

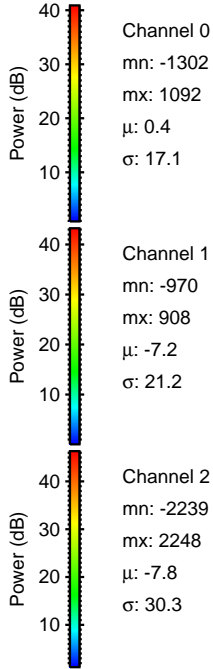
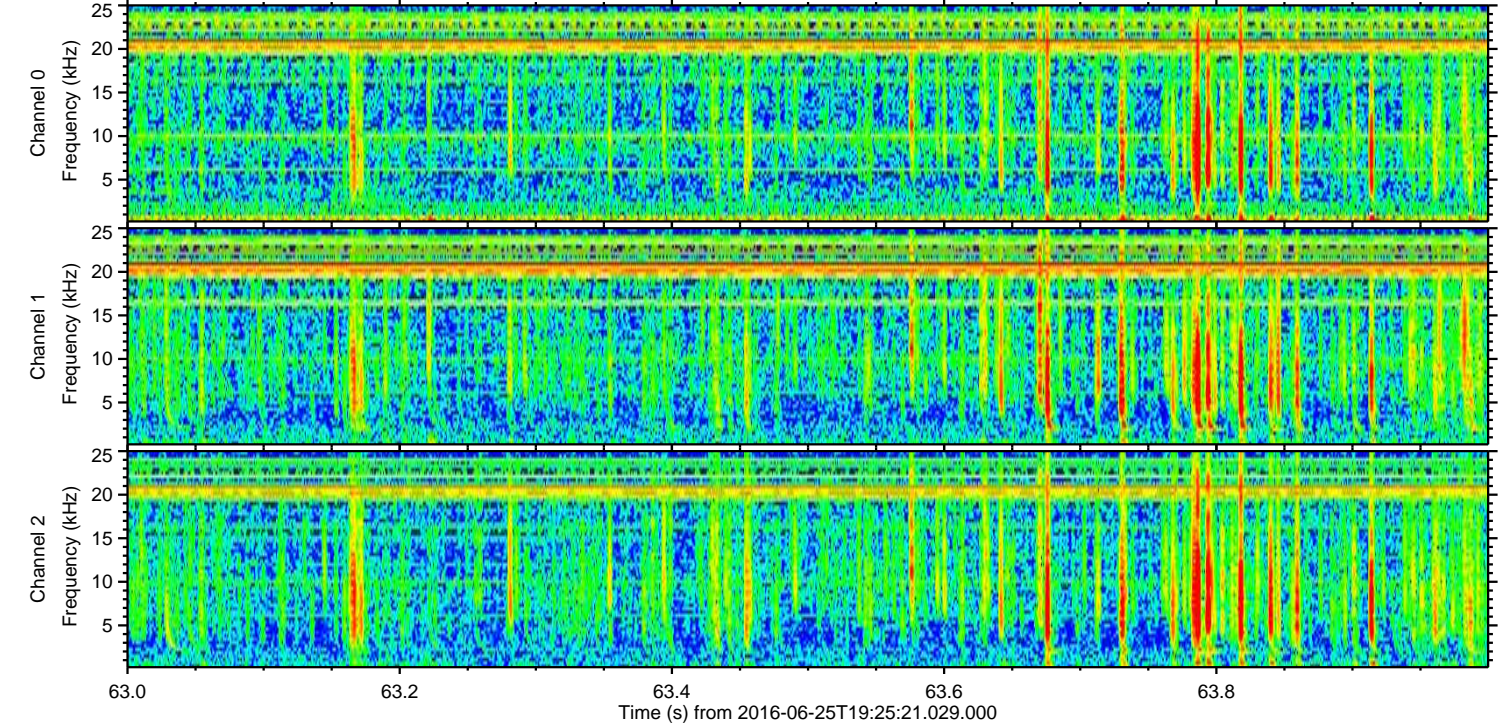
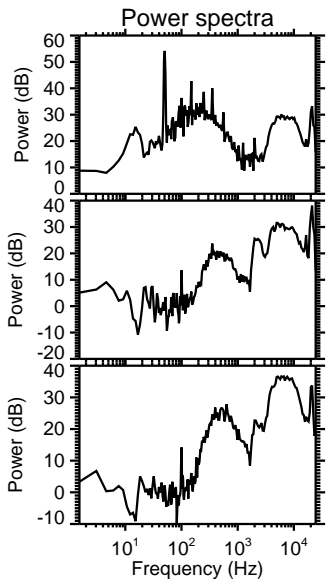
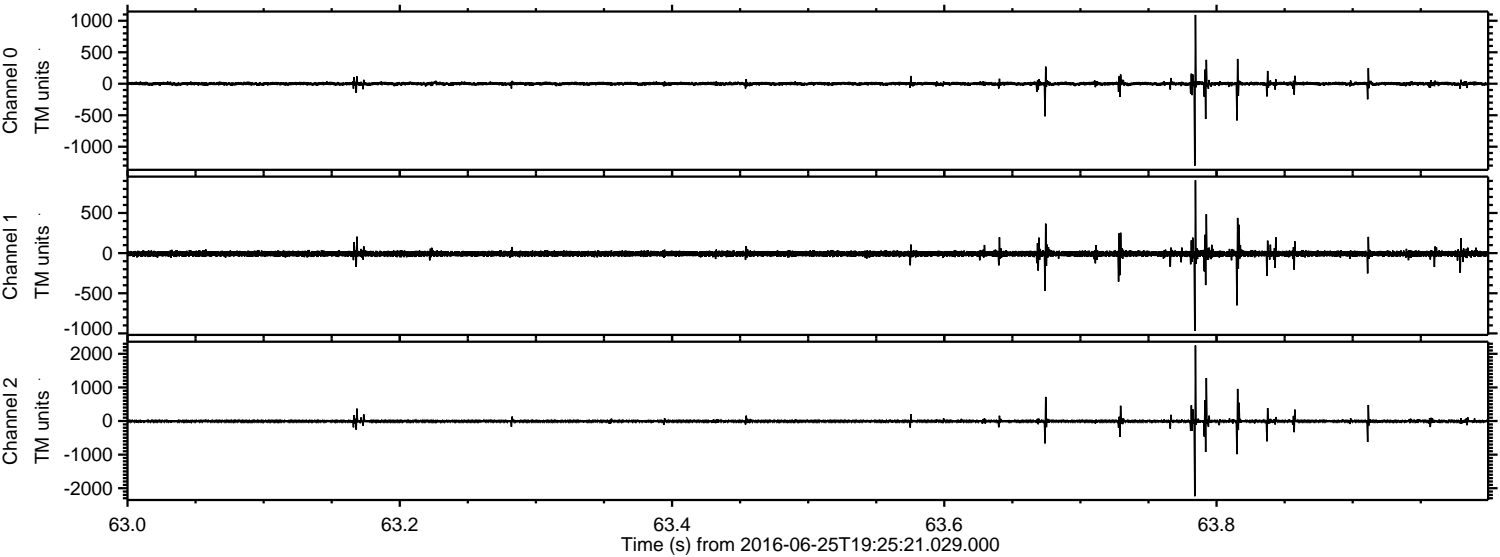
Channel 0  
mn: -1497  
mx: 736  
 $\mu$ : 0.4  
 $\sigma$ : 19.6

Channel 1  
mn: -1237  
mx: 1264  
 $\mu$ : -7.2  
 $\sigma$ : 30.1

Channel 2  
mn: -1996  
mx: 2318  
 $\mu$ : -7.8  
 $\sigma$ : 31.7



Processed Sat Jun 25 21:33:43 2016 by ELM ver.2012-10-06 from 001\_\_elm20160625\_192520\_\_dat00.bin





Processed Sat Jun 25 21:33:44 2016 by ELM ver.2012-10-06 from 001\_\_elm20160625\_192520\_\_dat00.bin

