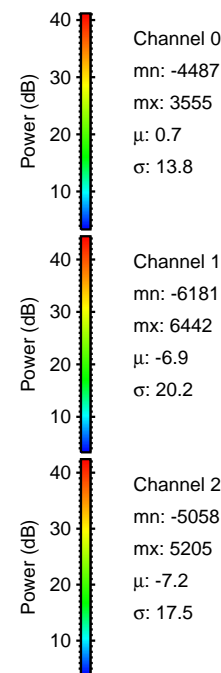
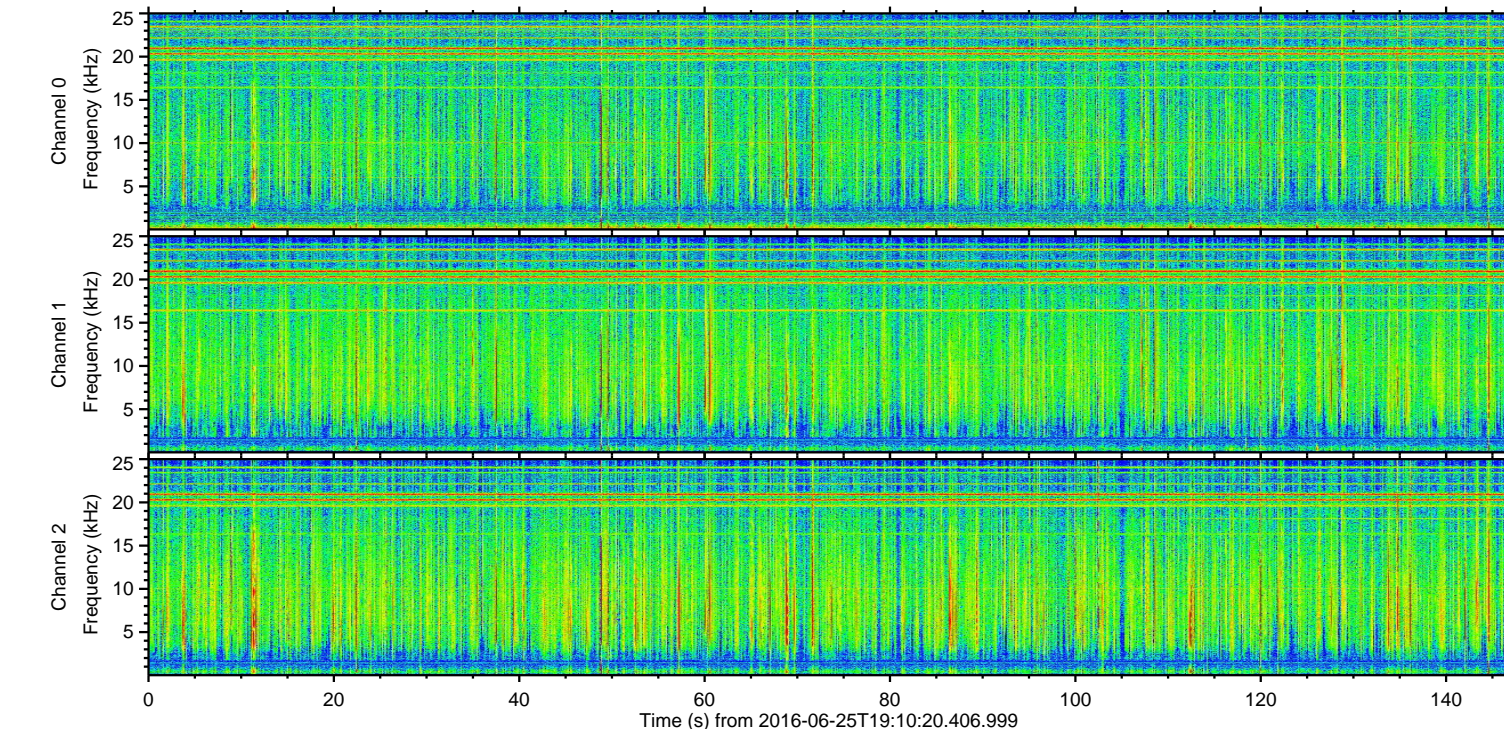
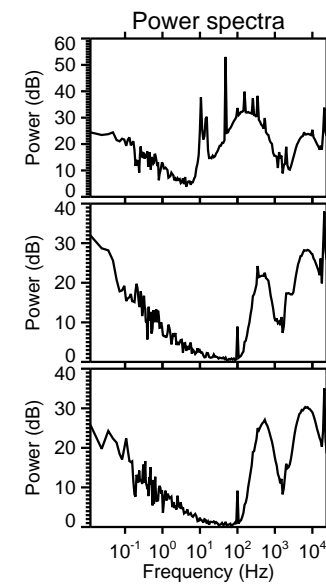
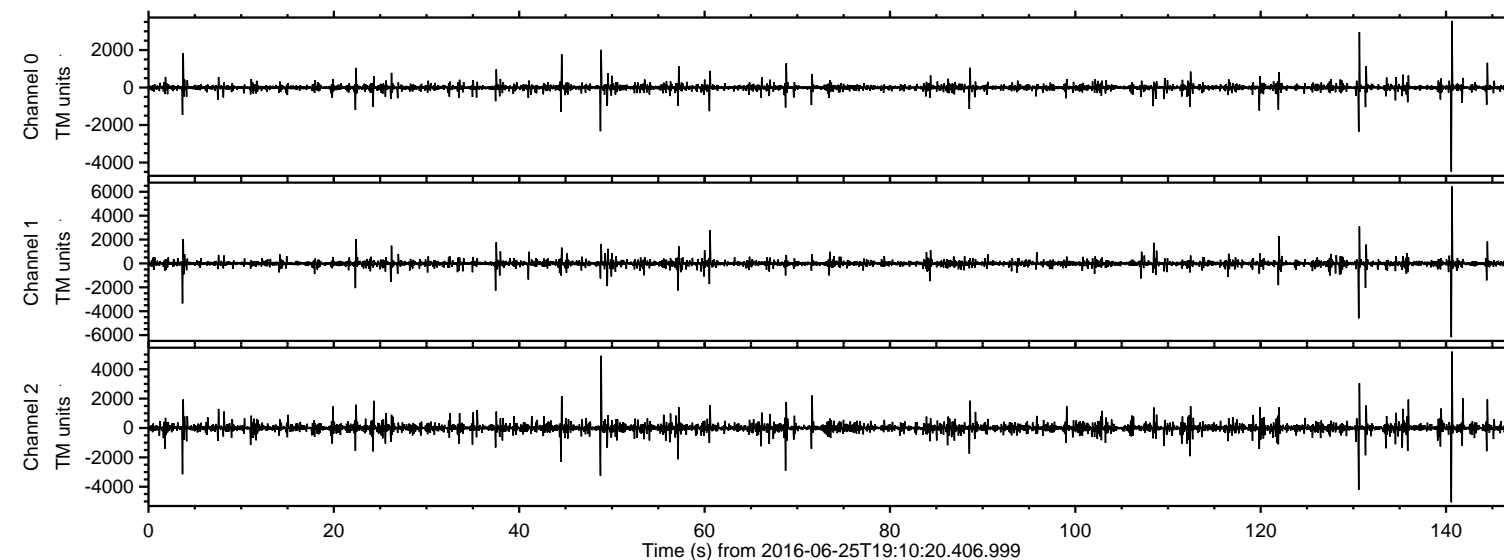


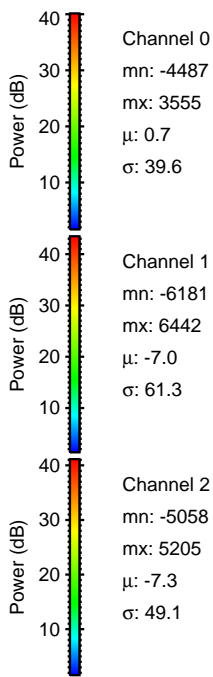
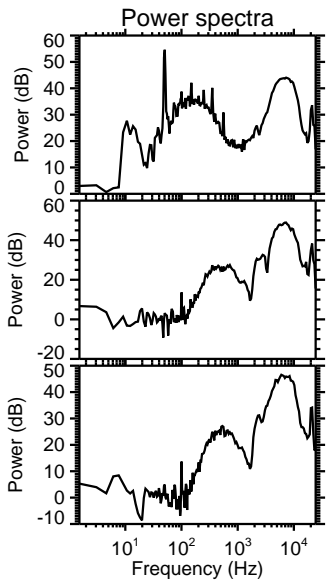
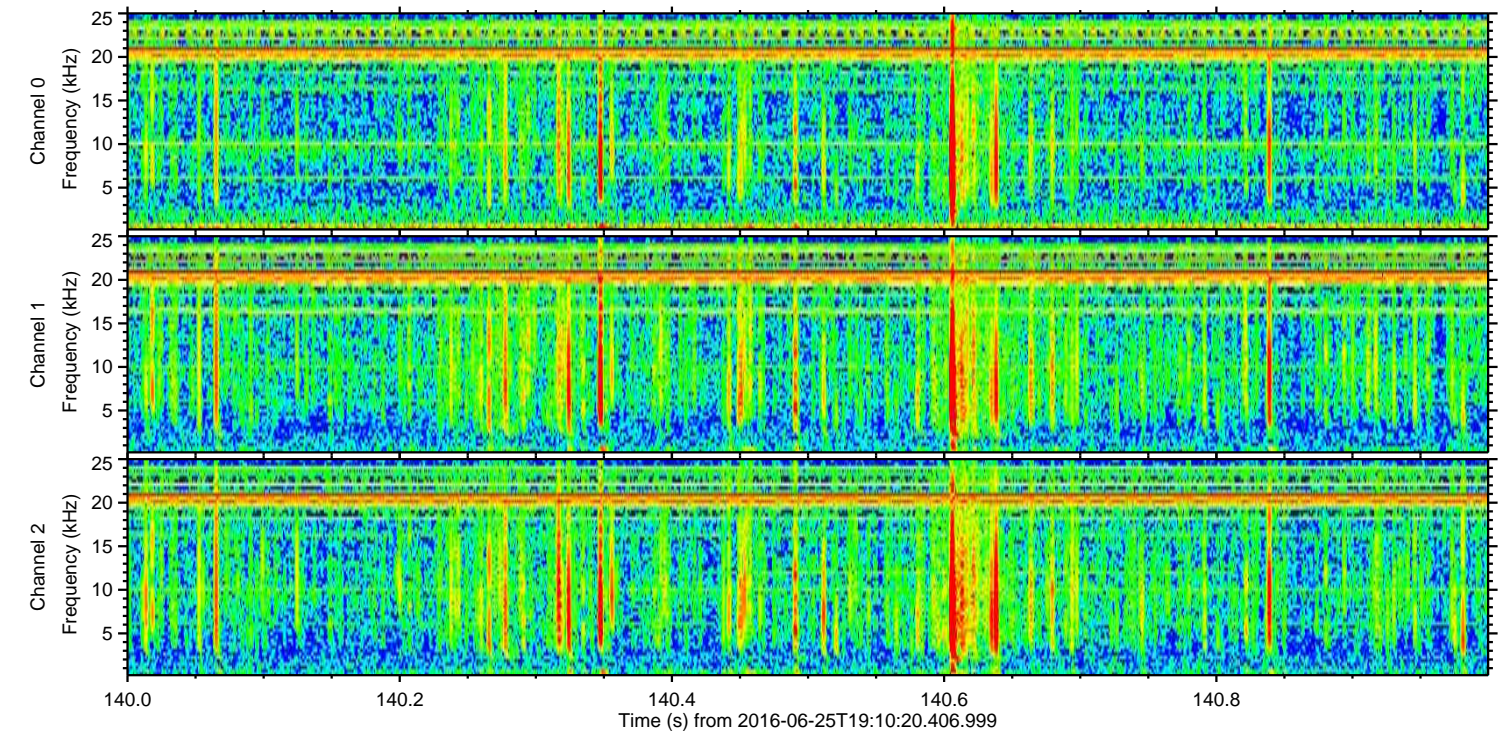
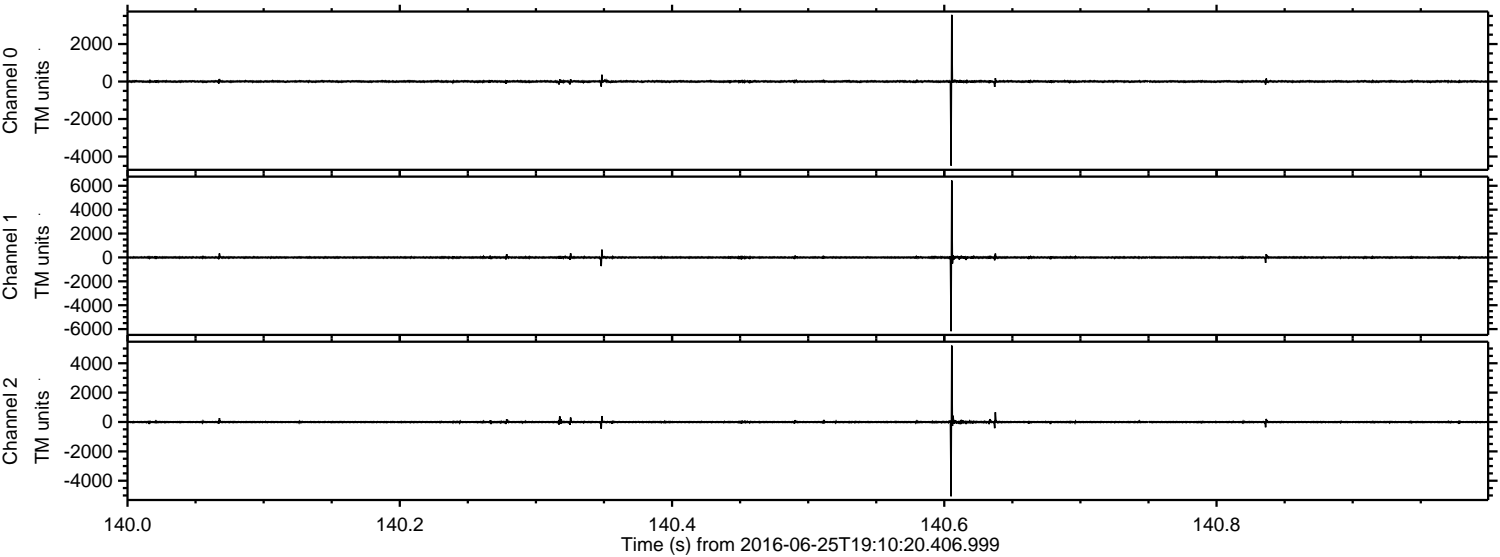
ELMAVAN 3D WAVEFORMS (Measured data sampled at 50 kHz) 51000 packets of 144 samples from 2016-06-25T19:10:20.406.999.

Processed Sat Jun 25 21:18:06 2016 by ELM ver.2012-10-06 from 001__elm20160625_191019__dat00.bin



ELMAVAN 3D WAVEFORMS (Measured data sampled at 50 kHz) 51000 packets of 144 samples from 2016-06-25T19:10:20.406.999. Part 141/147

Processed Sat Jun 25 21:18:21 2016 by ELM ver.2012-10-06 from 001__elm20160625_191019__dat00.bin



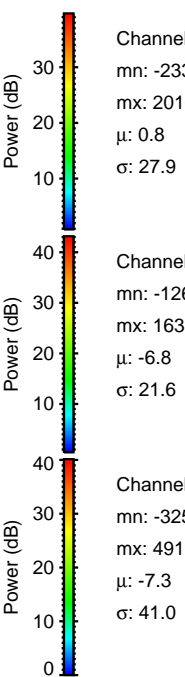
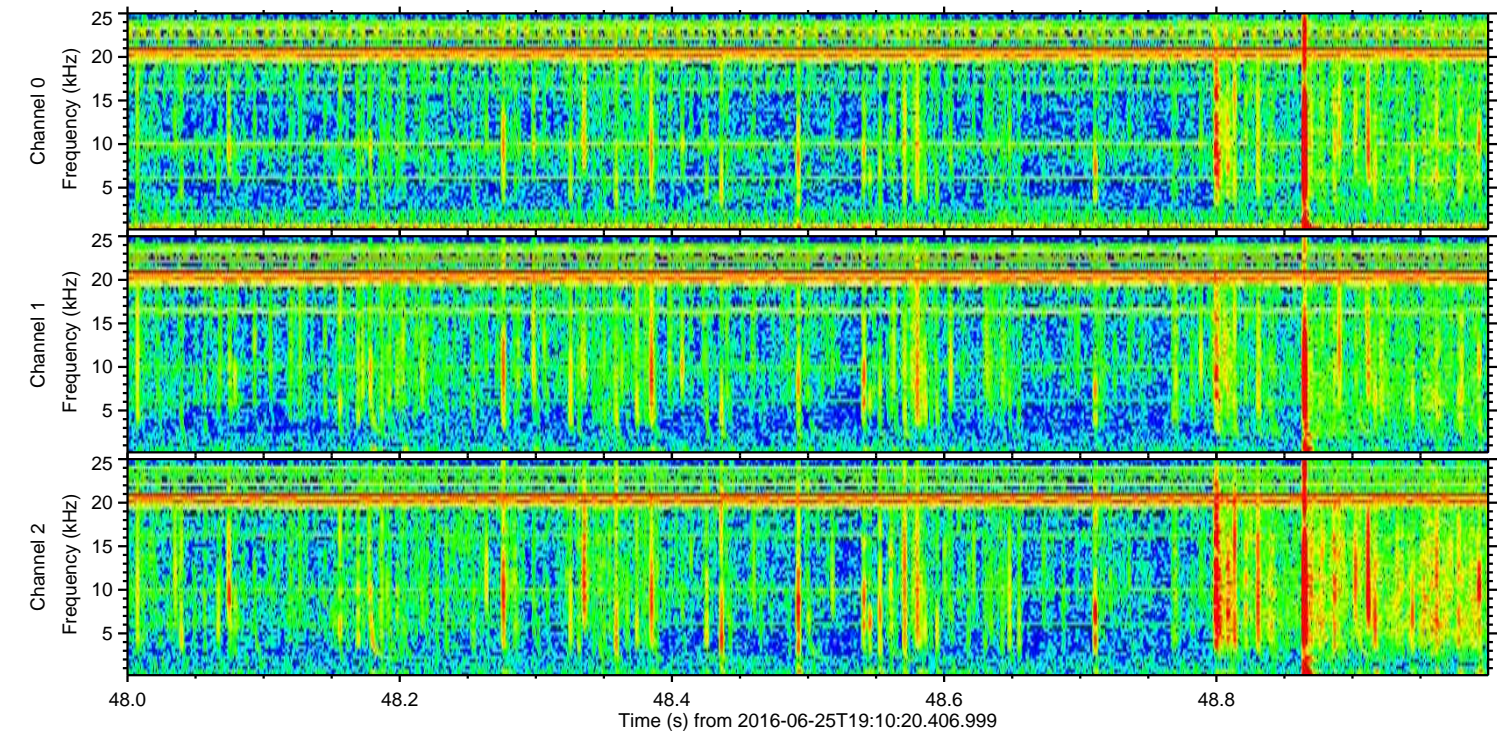
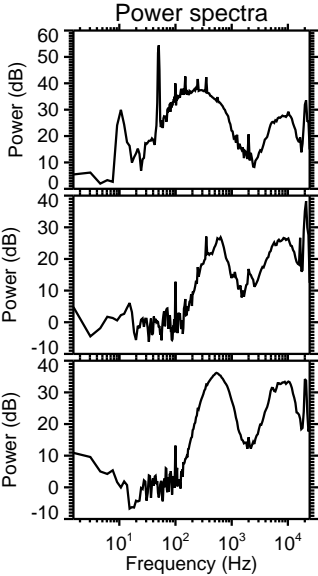
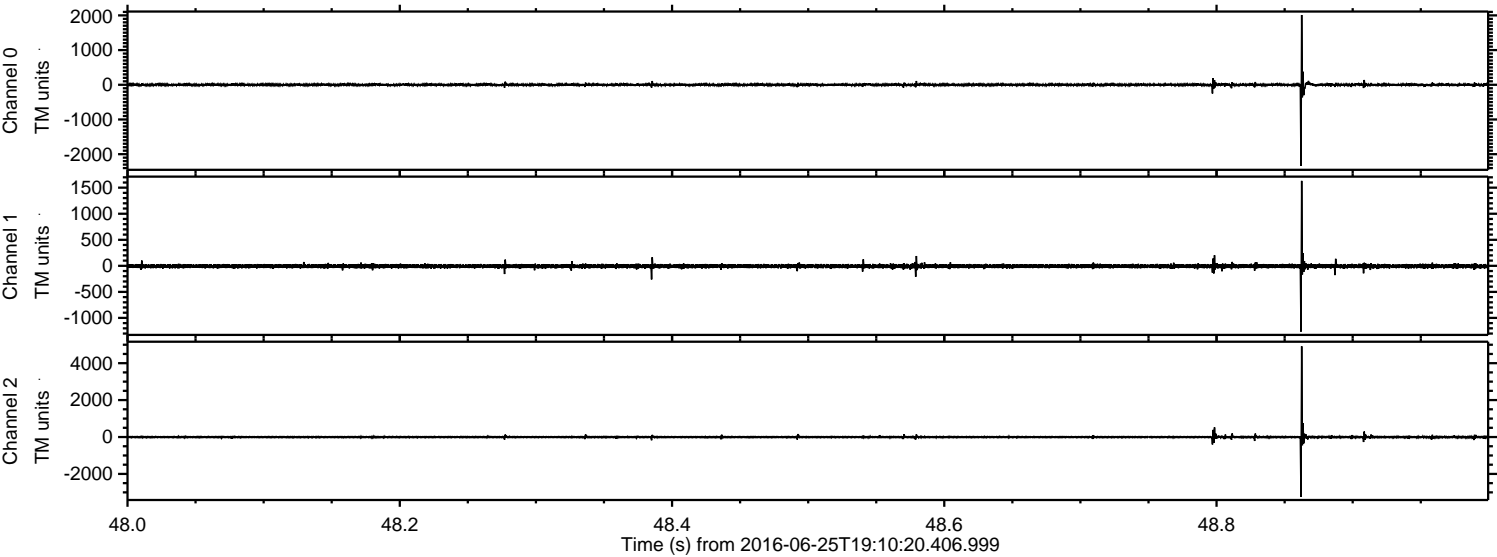
Channel 0
mn: -4487
mx: 3555
 μ : 0.7
 σ : 39.6

Channel 1
mn: -6181
mx: 6442
 μ : -7.0
 σ : 61.3

Channel 2
mn: -5058
mx: 5205
 μ : -7.3
 σ : 49.1

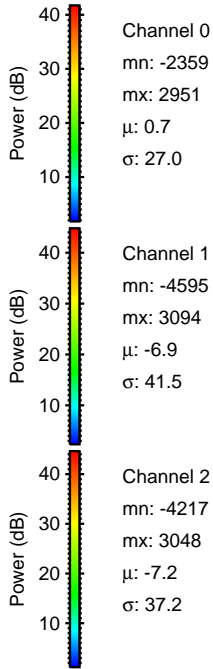
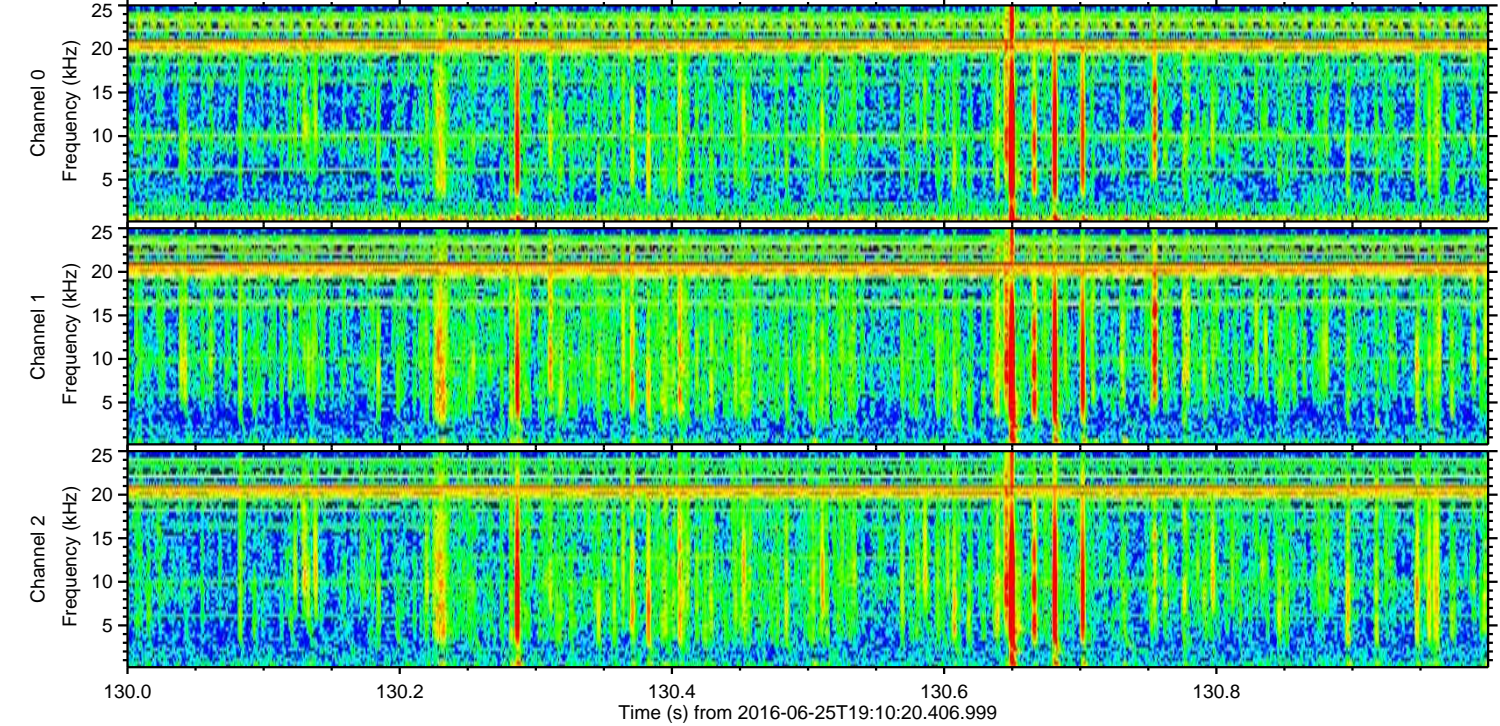
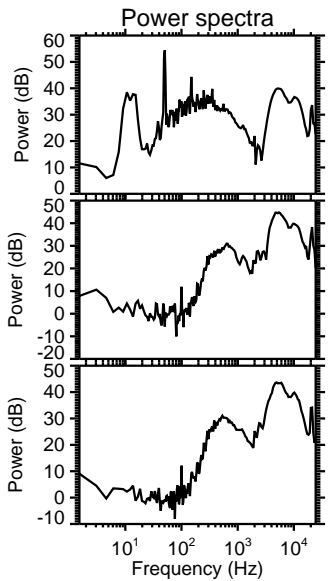
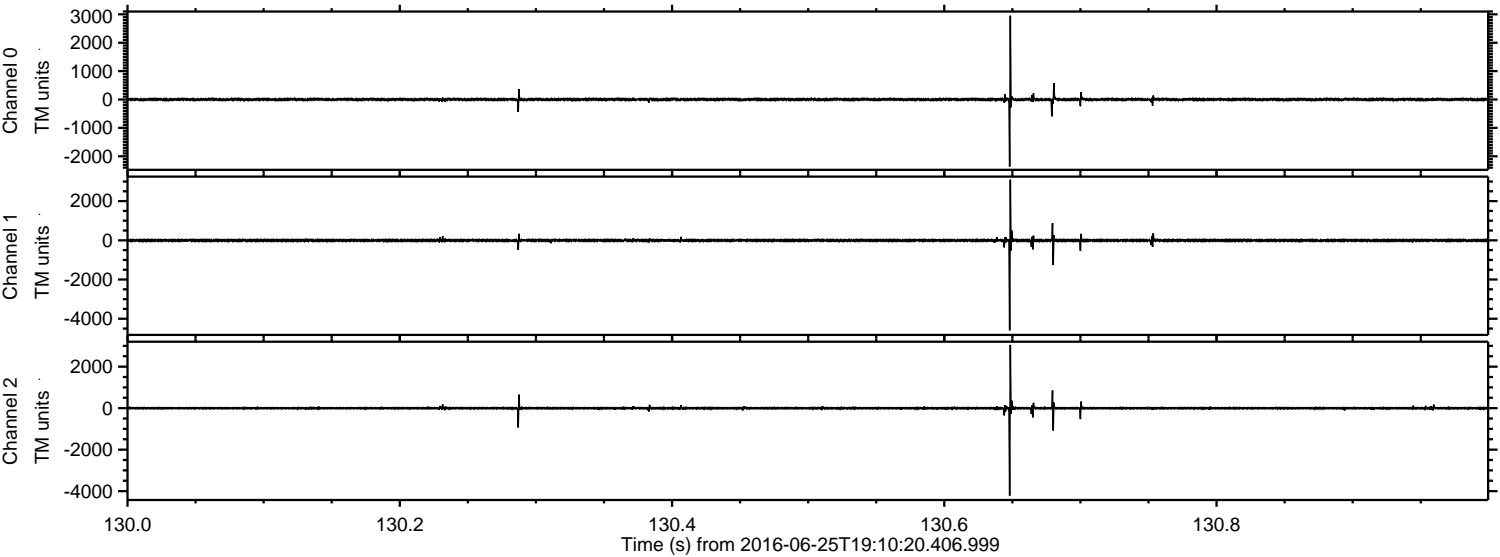
ELMAVAN 3D WAVEFORMS (Measured data sampled at 50 kHz) 51000 packets of 144 samples from 2016-06-25T19:10:20.406.999. Part 49/147

Processed Sat Jun 25 21:18:22 2016 by ELM ver.2012-10-06 from 001__elm20160625_191019__dat00.bin



ELMAVAN 3D WAVEFORMS (Measured data sampled at 50 kHz) 51000 packets of 144 samples from 2016-06-25T19:10:20.406.999. Part 131/147

Processed Sat Jun 25 21:18:23 2016 by ELM ver.2012-10-06 from 001__elm20160625_191019__dat00.bin



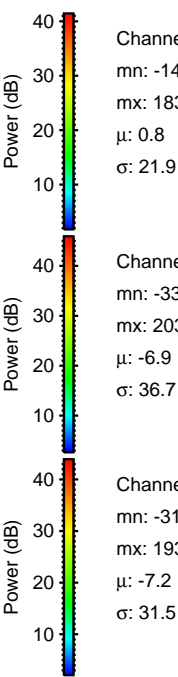
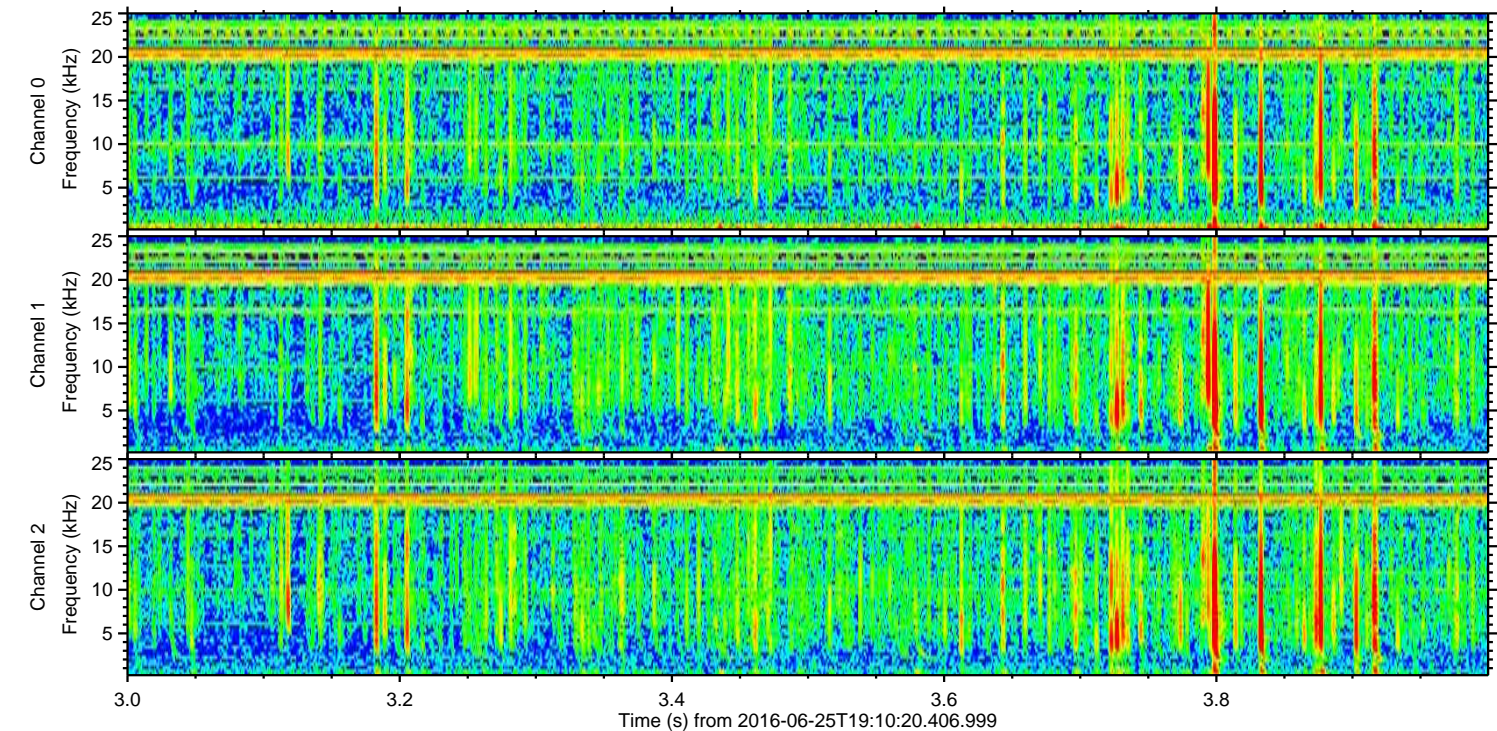
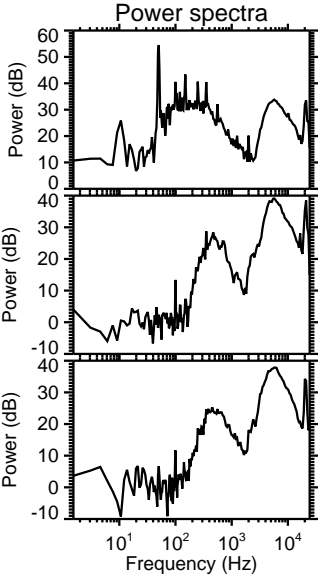
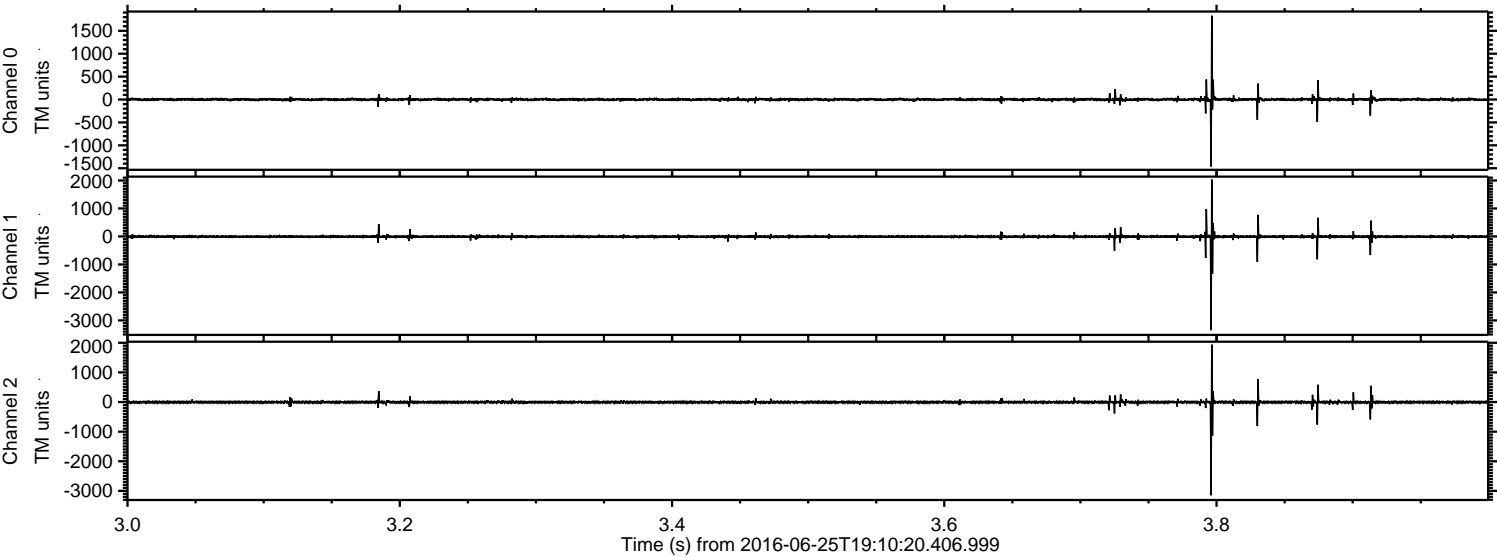
Channel 0
mn: -2359
mx: 2951
 μ : 0.7
 σ : 27.0

Channel 1
mn: -4595
mx: 3094
 μ : -6.9
 σ : 41.5

Channel 2
mn: -4217
mx: 3048
 μ : -7.2
 σ : 37.2

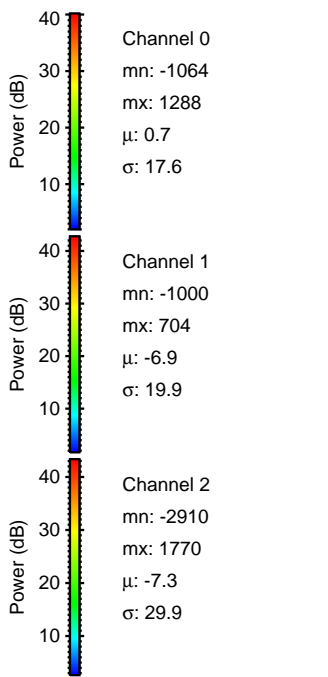
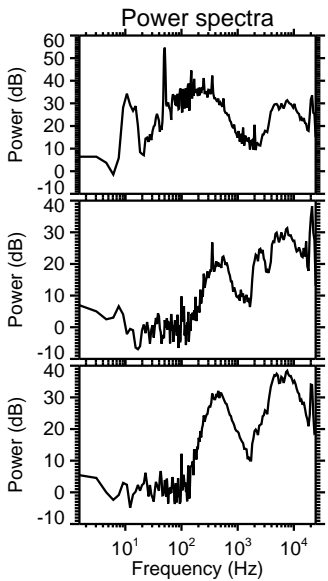
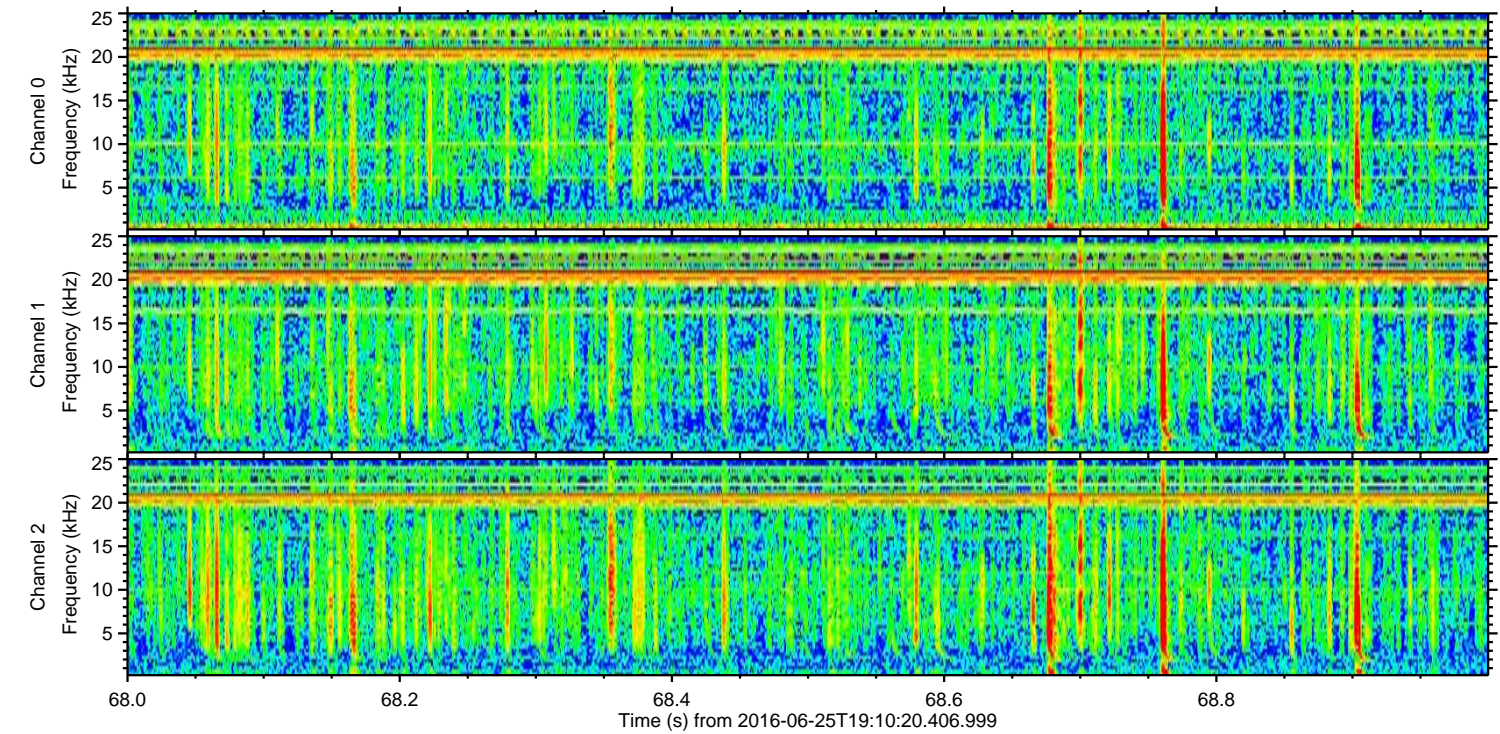
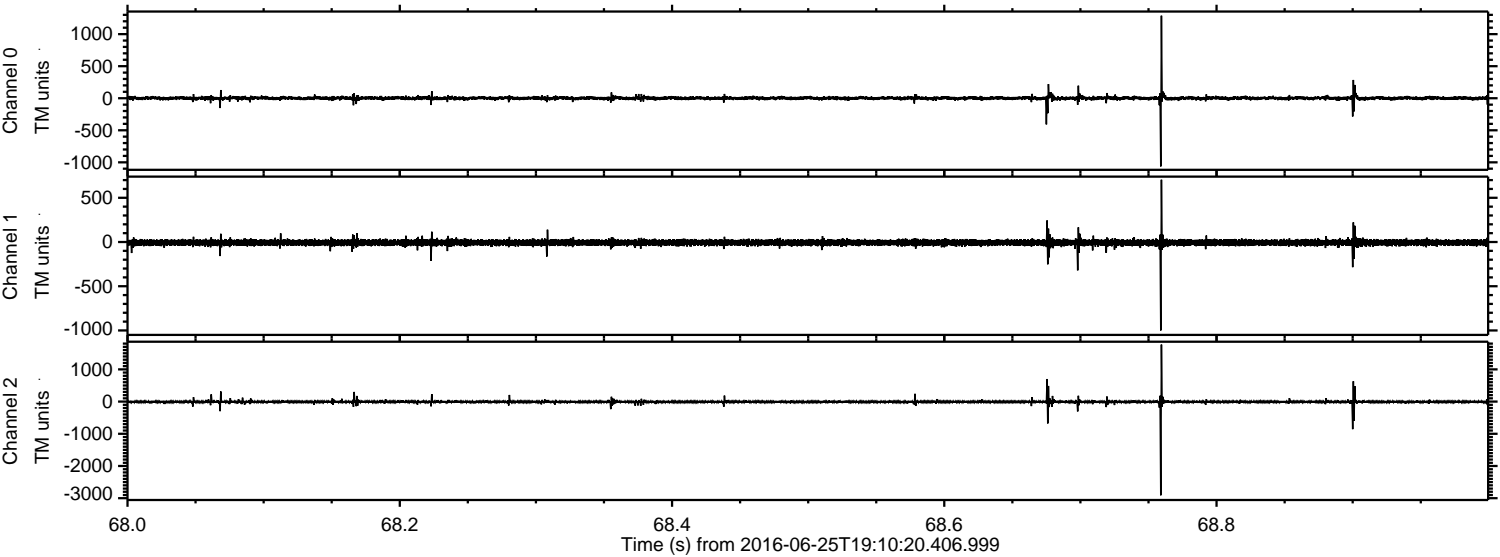
ELMAVAN 3D WAVEFORMS (Measured data sampled at 50 kHz) 51000 packets of 144 samples from 2016-06-25T19:10:20.406.999. Part 4/147

Processed Sat Jun 25 21:18:24 2016 by ELM ver.2012-10-06 from 001__elm20160625_191019__dat00.bin

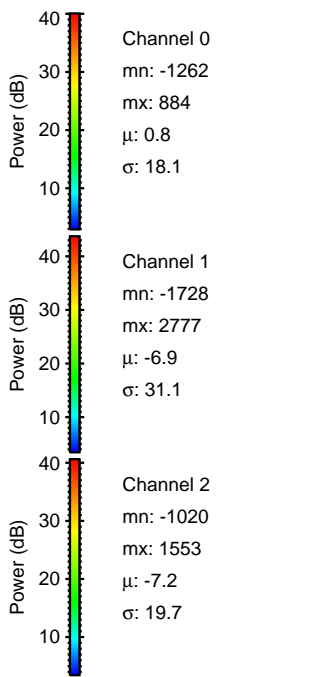
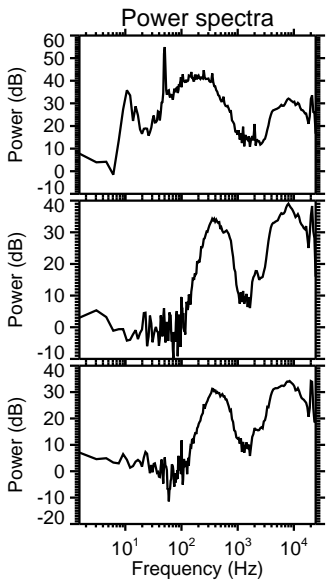
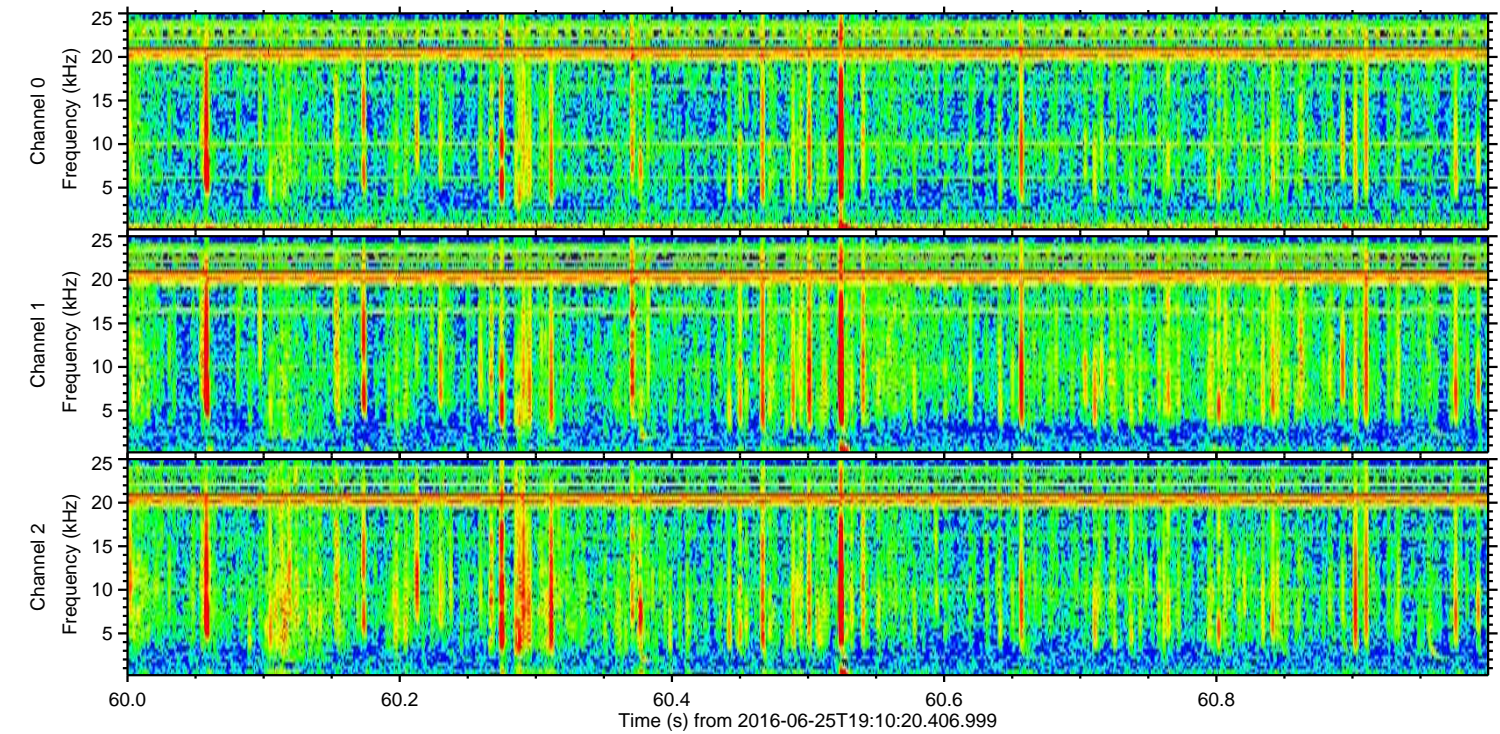
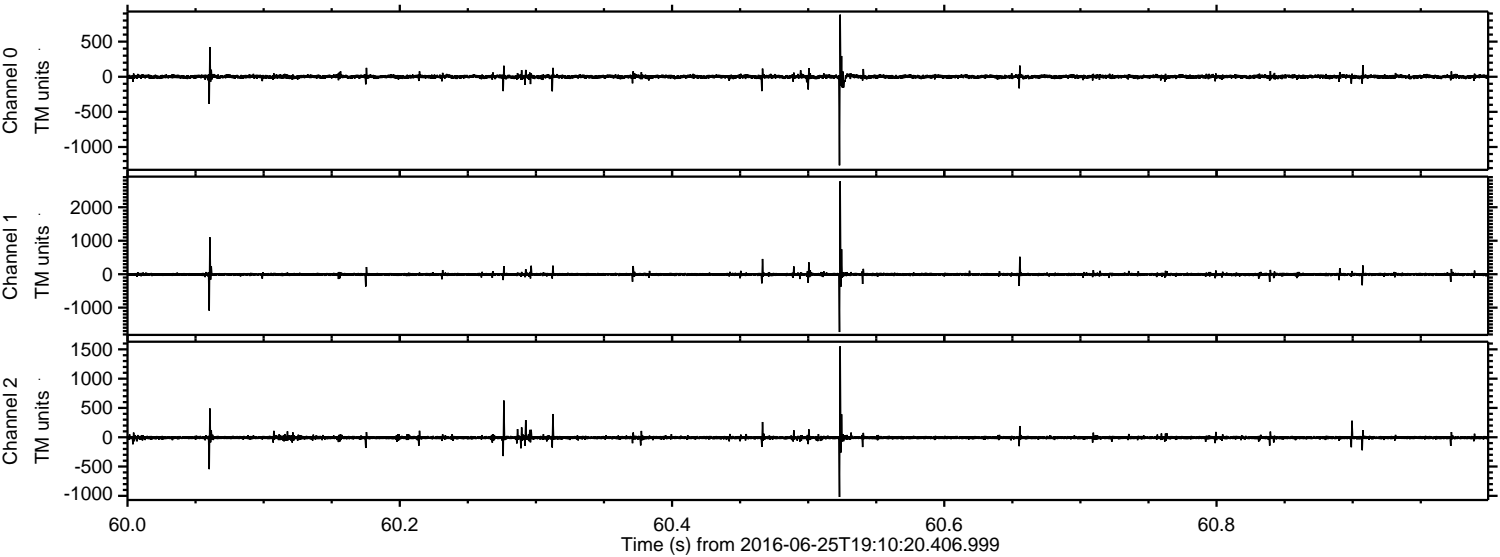


ELMAVAN 3D WAVEFORMS (Measured data sampled at 50 kHz) 51000 packets of 144 samples from 2016-06-25T19:10:20.406.999. Part 69/147

Processed Sat Jun 25 21:18:25 2016 by ELM ver.2012-10-06 from 001__elm20160625_191019__dat00.bin



Processed Sat Jun 25 21:18:26 2016 by ELM ver.2012-10-06 from 001__elm20160625_191019__dat00.bin



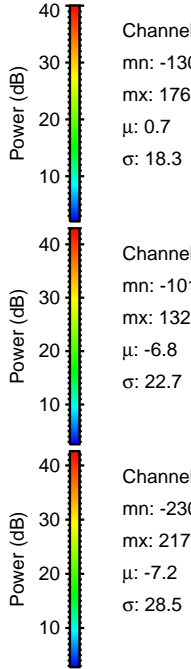
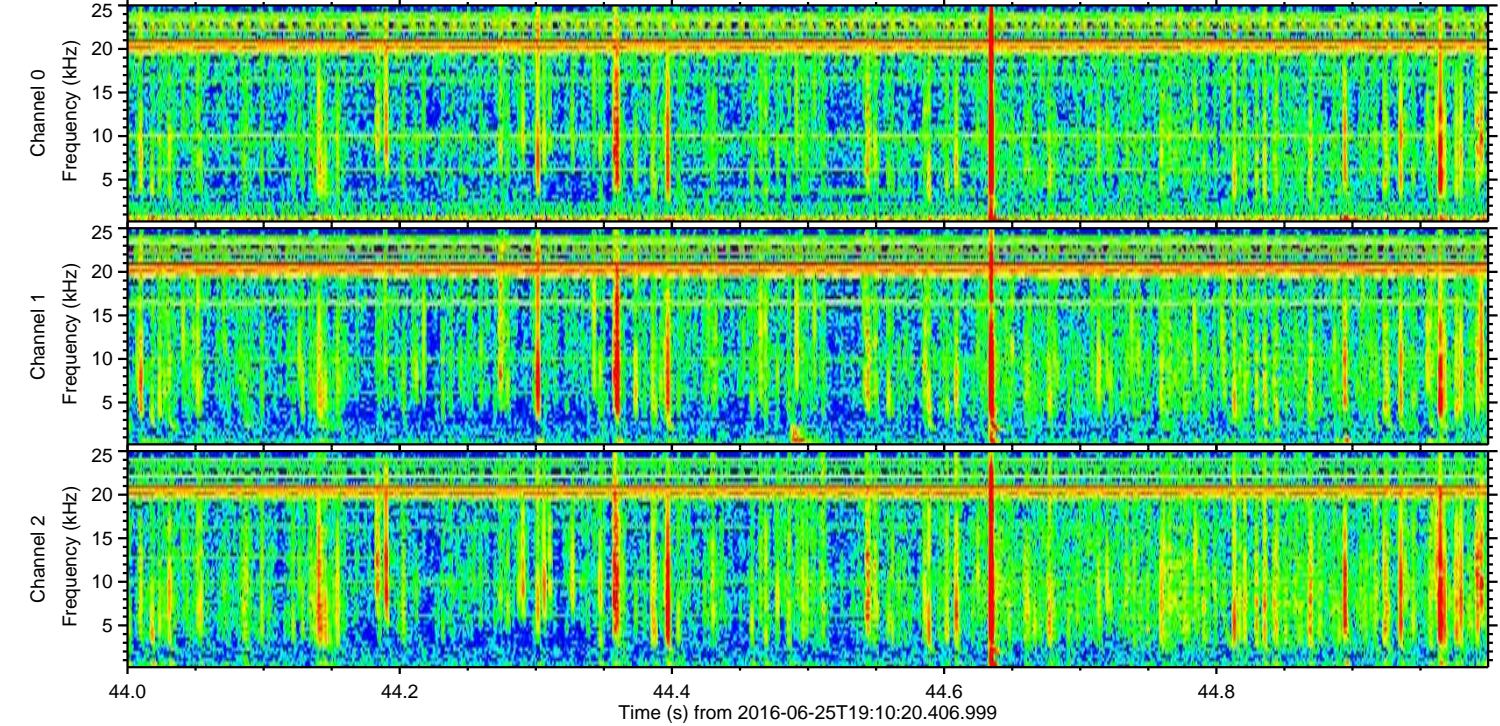
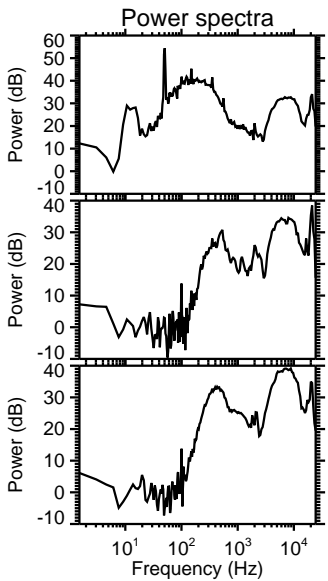
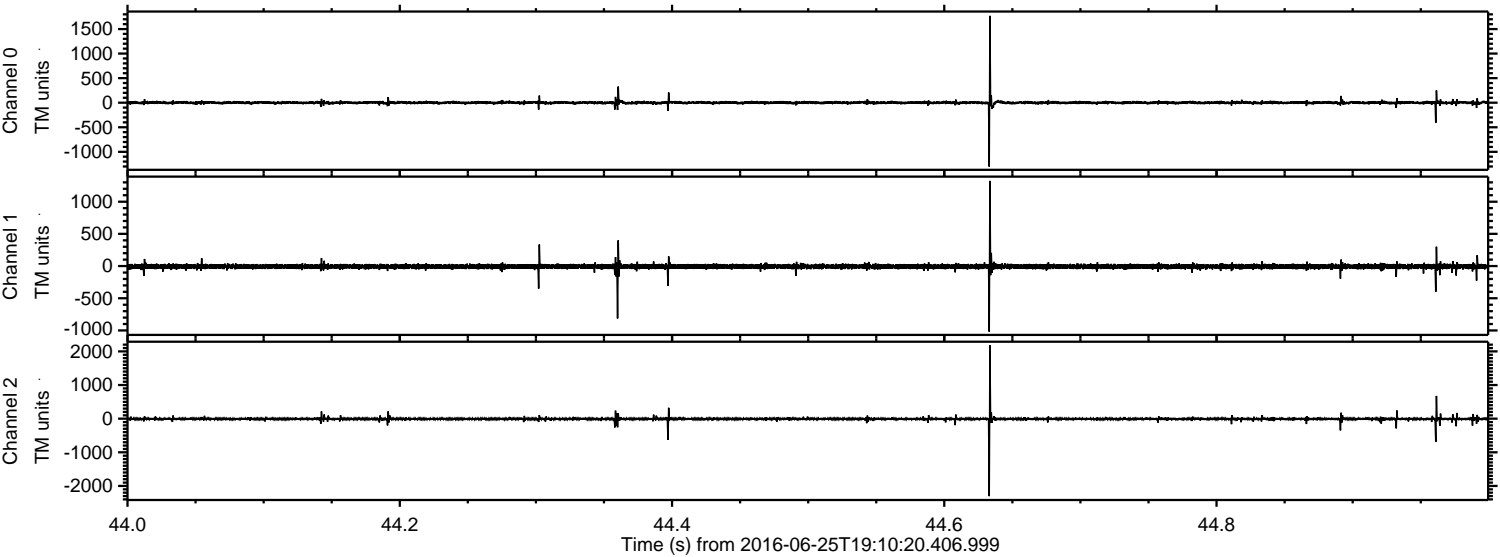
Channel 0
mn: -1262
mx: 884
 μ : 0.8
 σ : 18.1

Channel 1
mn: -1728
mx: 2777
 μ : -6.9
 σ : 31.1

Channel 2
mn: -1020
mx: 1553
 μ : -7.2
 σ : 19.7

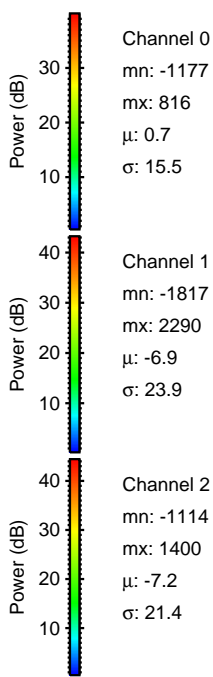
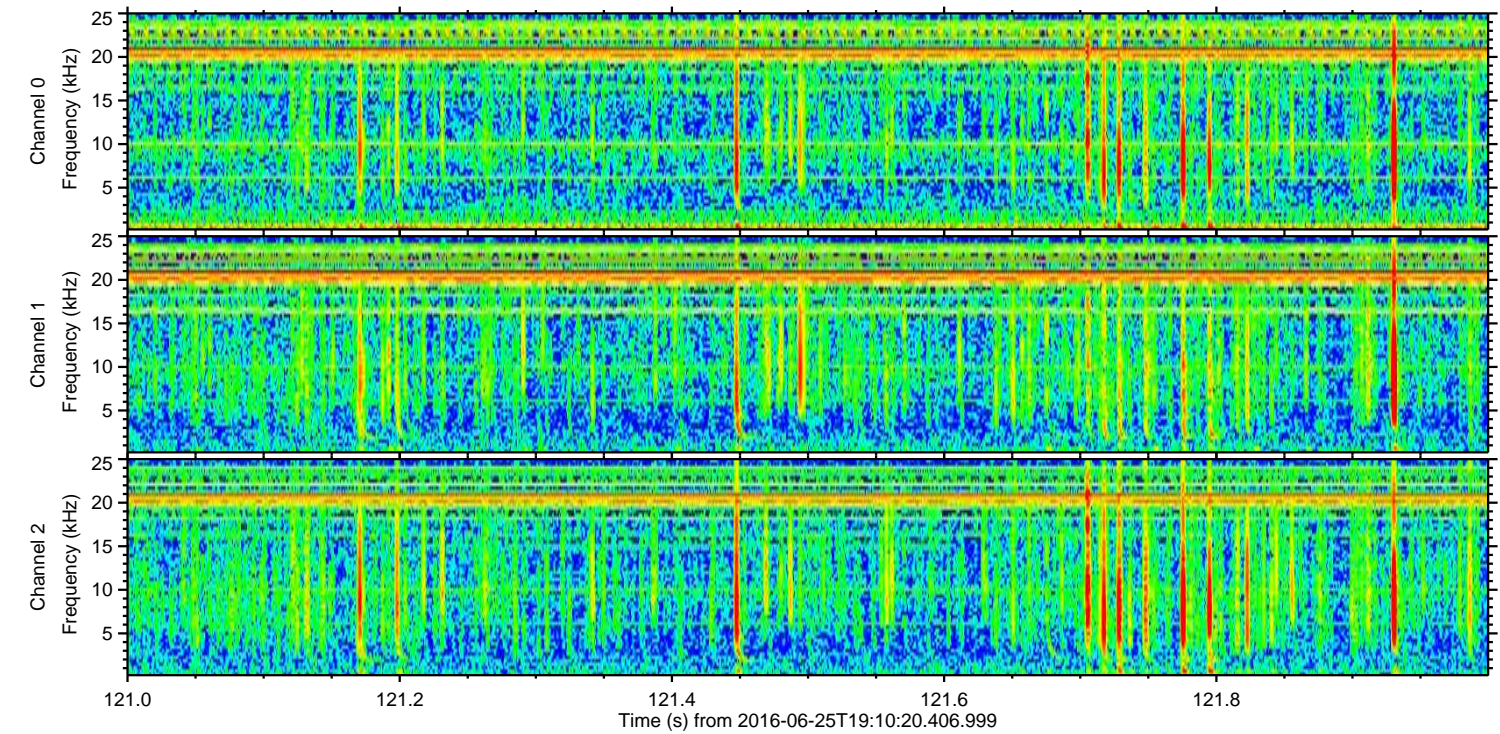
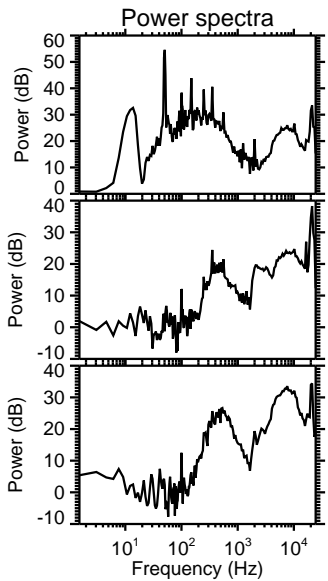
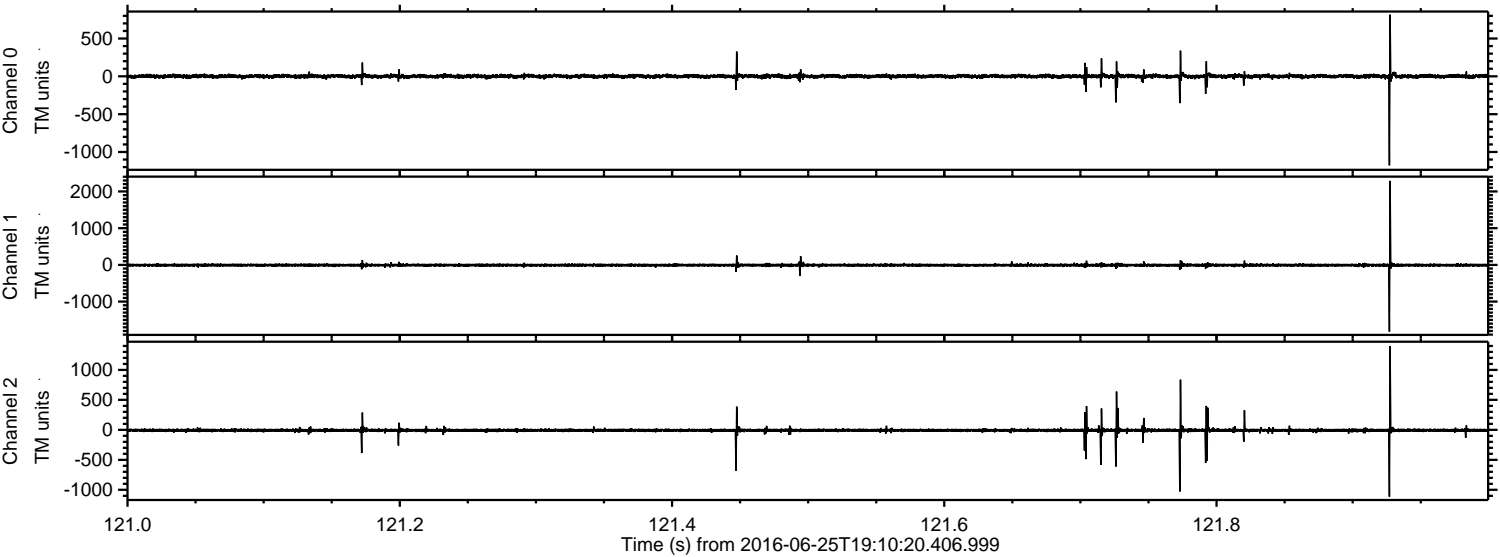
ELMAVAN 3D WAVEFORMS (Measured data sampled at 50 kHz) 51000 packets of 144 samples from 2016-06-25T19:10:20.406.999. Part 45/147

Processed Sat Jun 25 21:18:27 2016 by ELM ver.2012-10-06 from 001__elm20160625_191019__dat00.bin



ELMAVAN 3D WAVEFORMS (Measured data sampled at 50 kHz) 51000 packets of 144 samples from 2016-06-25T19:10:20.406.999. Part 122/147

Processed Sat Jun 25 21:18:28 2016 by ELM ver.2012-10-06 from 001__elm20160625_191019__dat00.bin

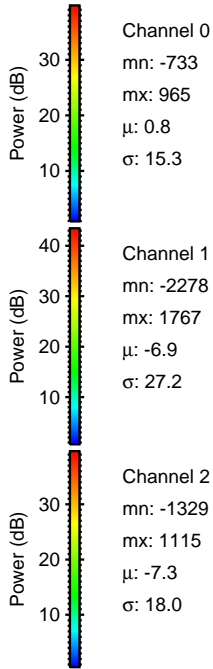
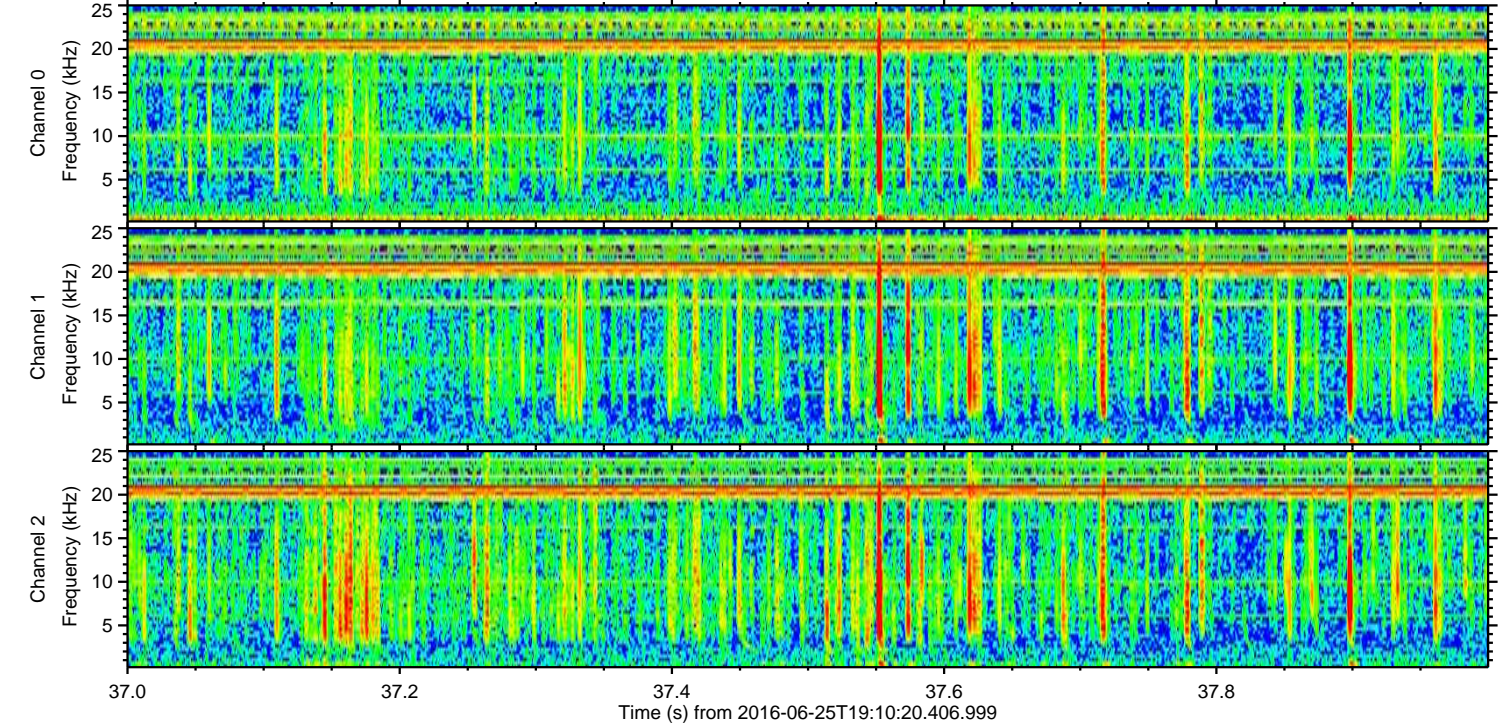
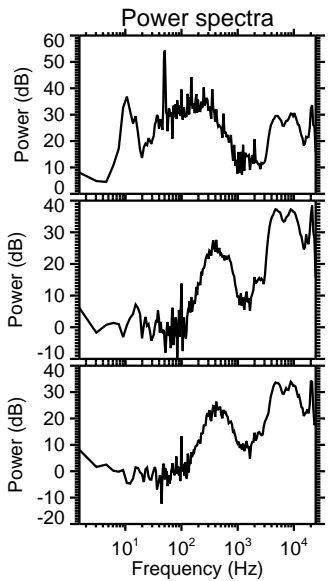
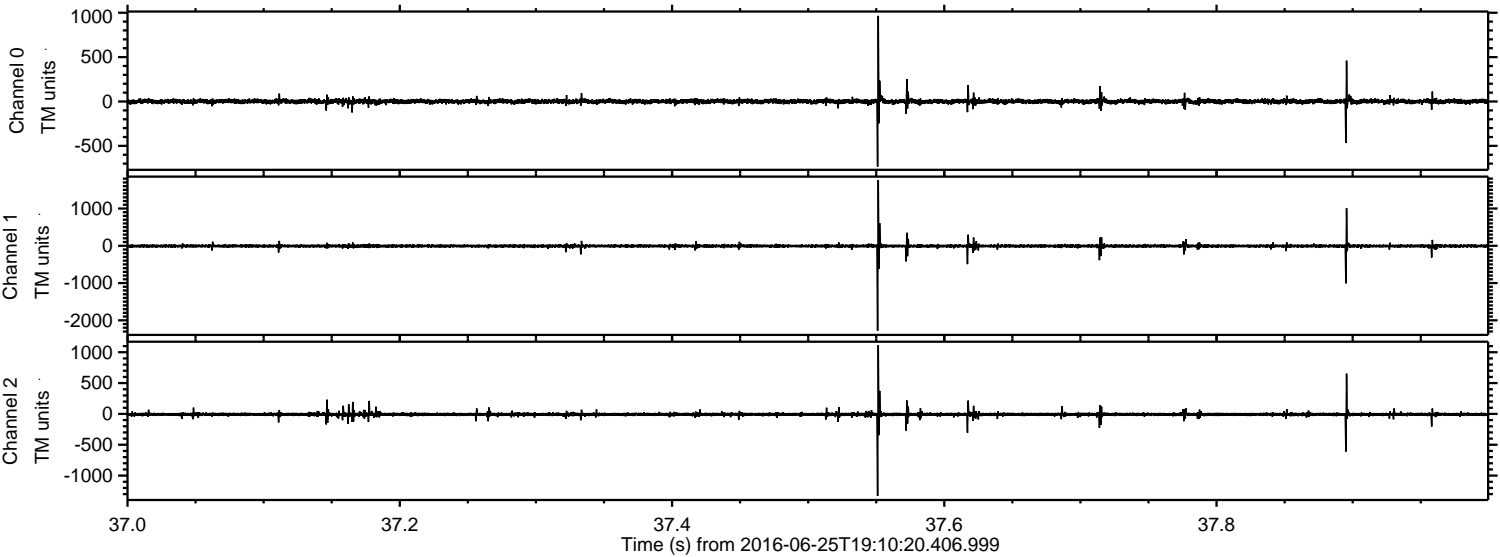


Channel 0
mn: -1177
mx: 816
 μ : 0.7
 σ : 15.5

Channel 1
mn: -1817
mx: 2290
 μ : -6.9
 σ : 23.9

Channel 2
mn: -1114
mx: 1400
 μ : -7.2
 σ : 21.4

Processed Sat Jun 25 21:18:30 2016 by ELM ver.2012-10-06 from 001__elm20160625_191019__dat00.bin



Processed Sat Jun 25 21:18:30 2016 by ELM ver.2012-10-06 from 001__elm20160625_191019__dat00.bin

