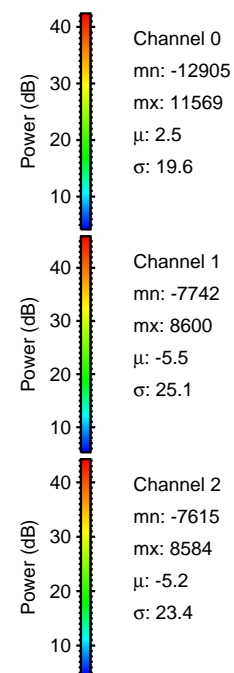
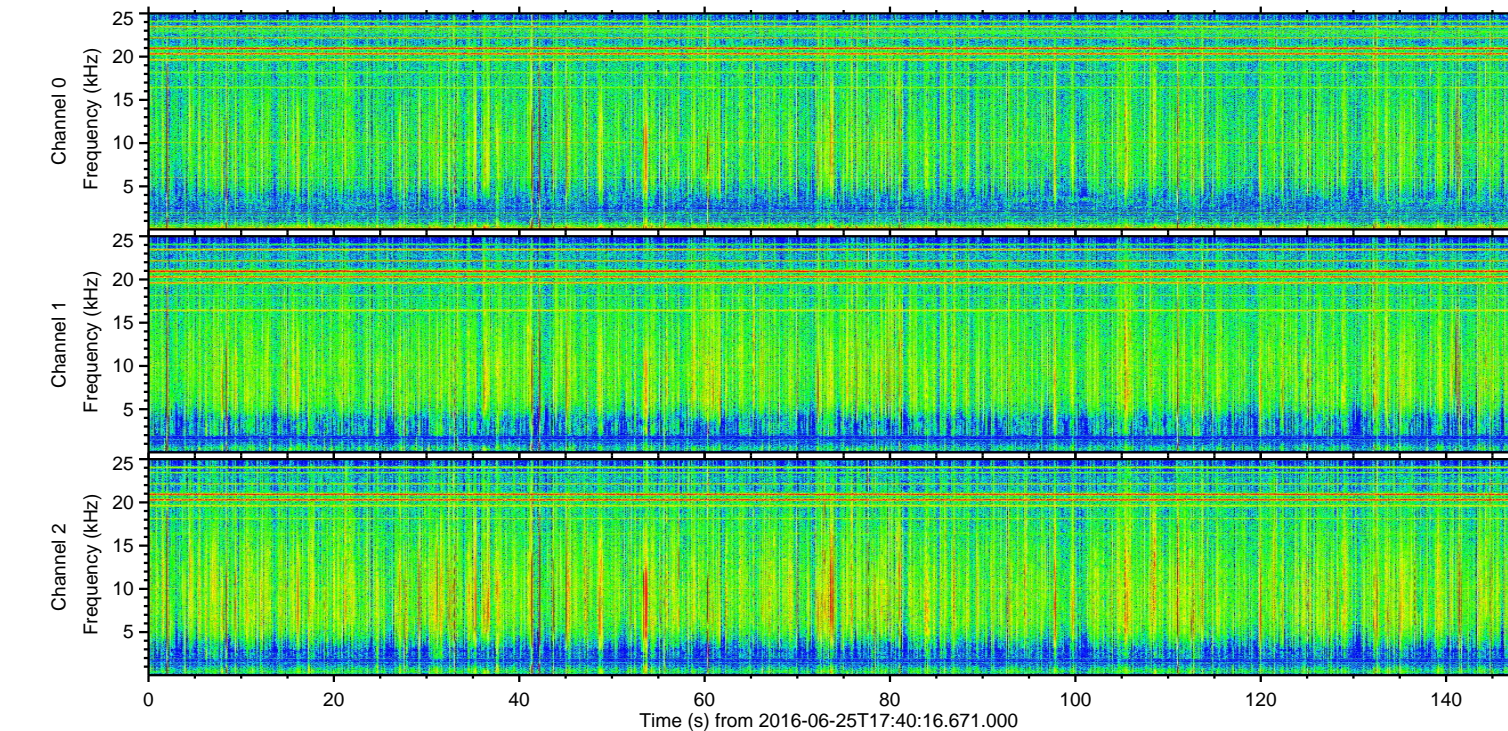
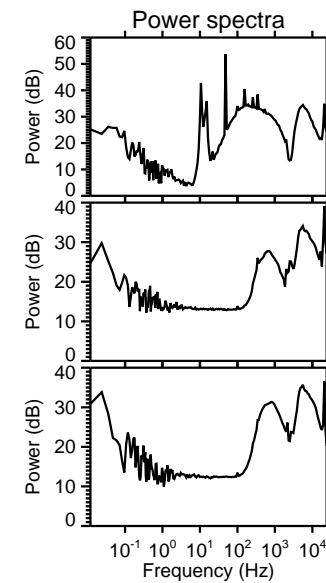
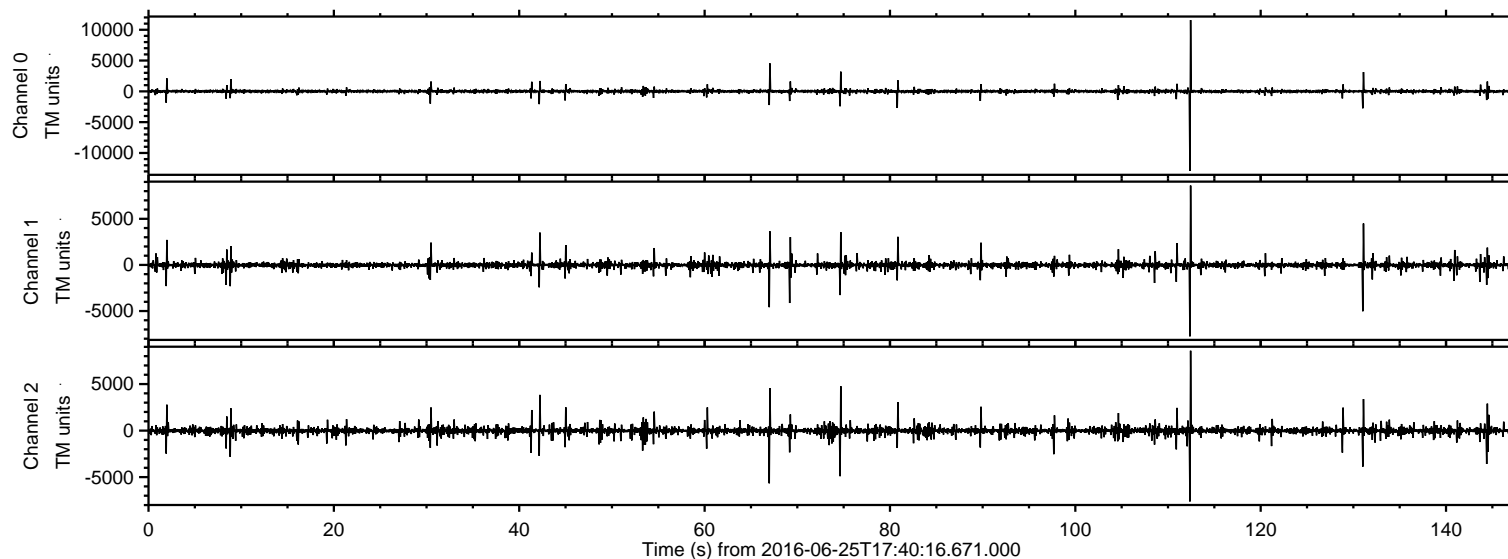


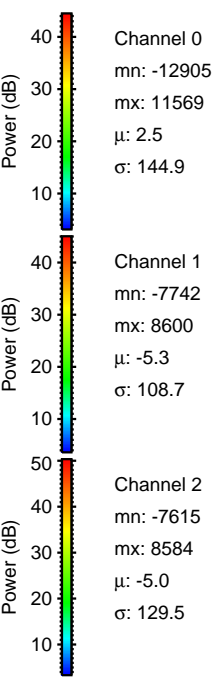
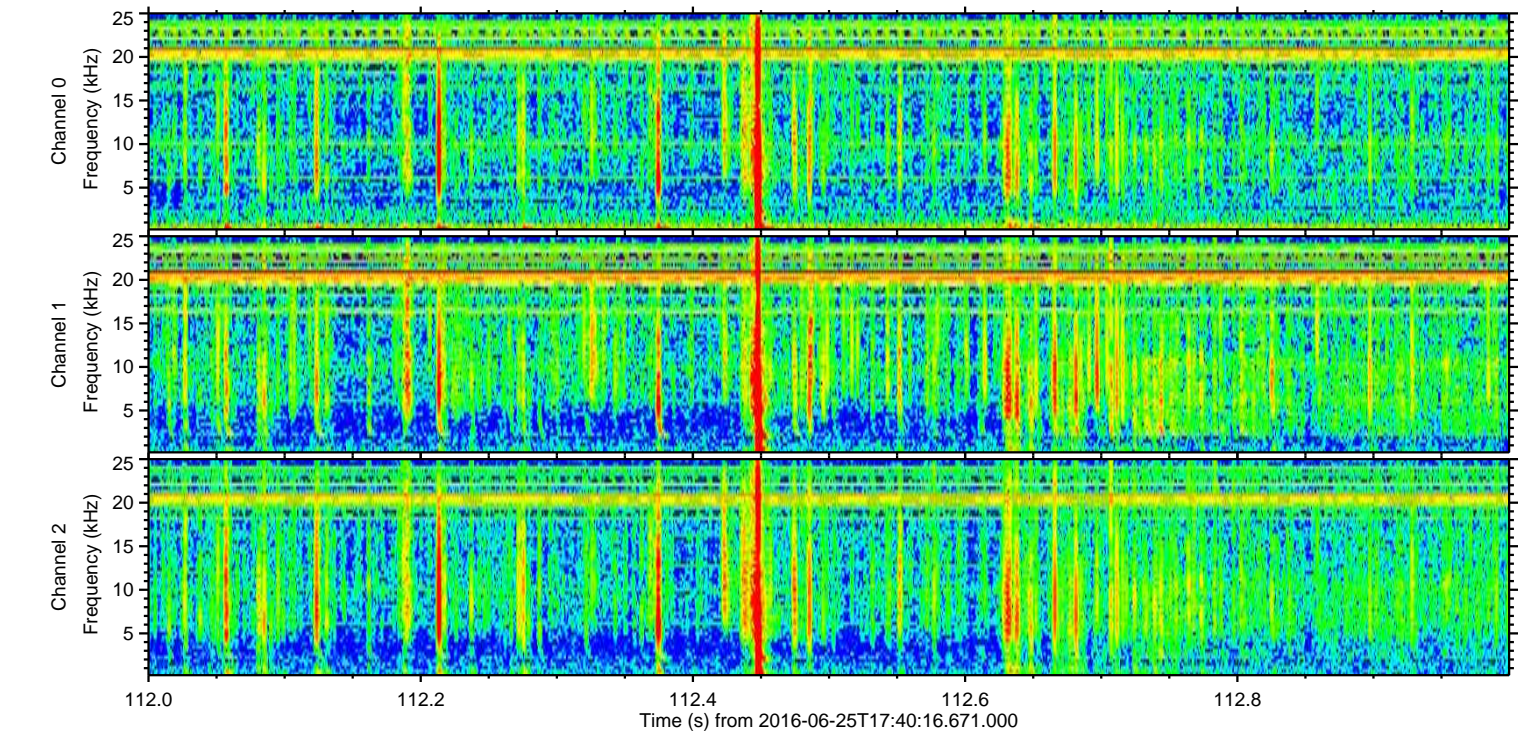
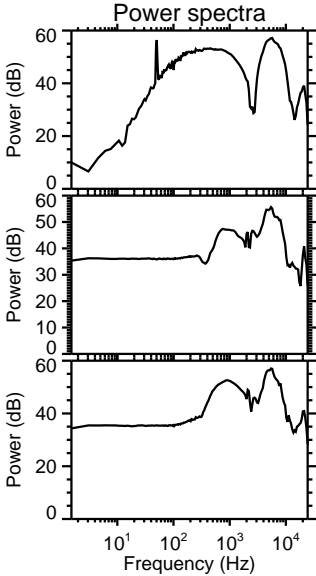
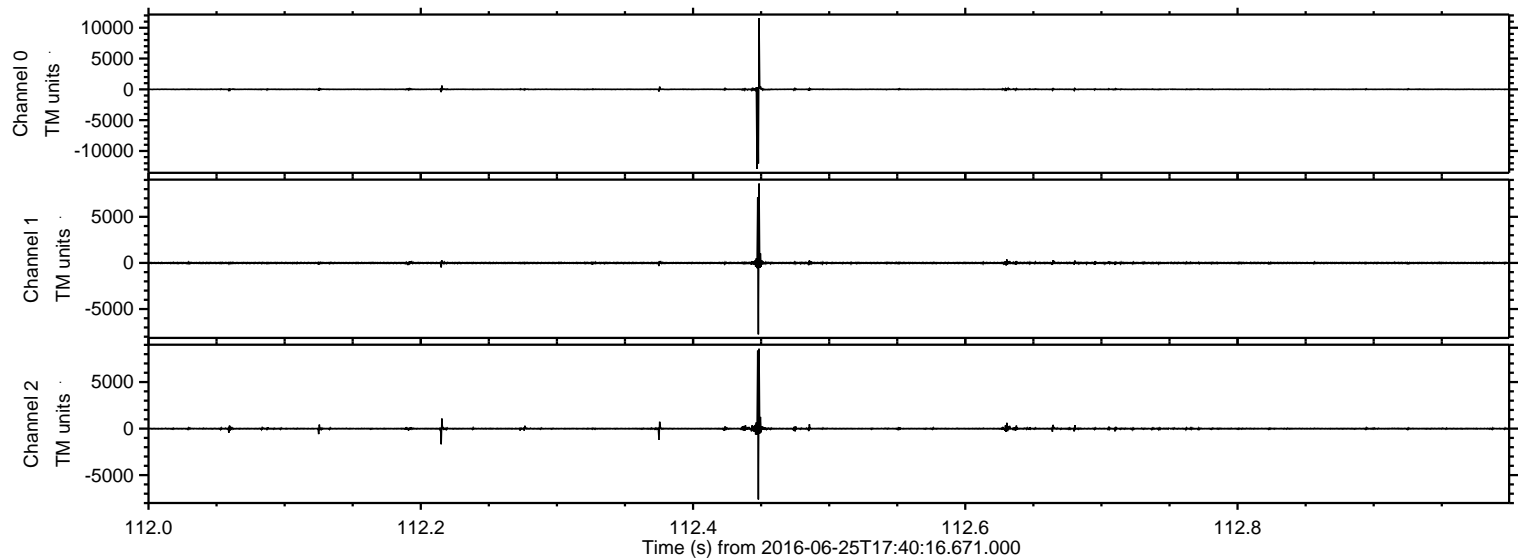
ELMAVAN 3D WAVEFORMS (Measured data sampled at 50 kHz) 51000 packets of 144 samples from 2016-06-25T17:40:16.671.000.

Processed Sat Jun 25 19:48:39 2016 by ELM ver.2012-10-06 from 001__elm20160625_174015__dat00.bin

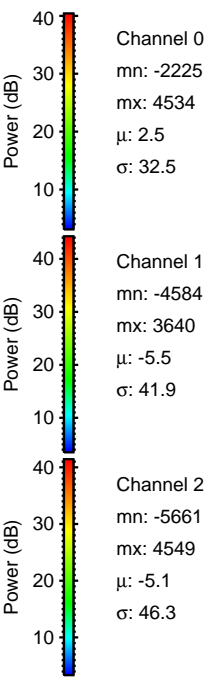
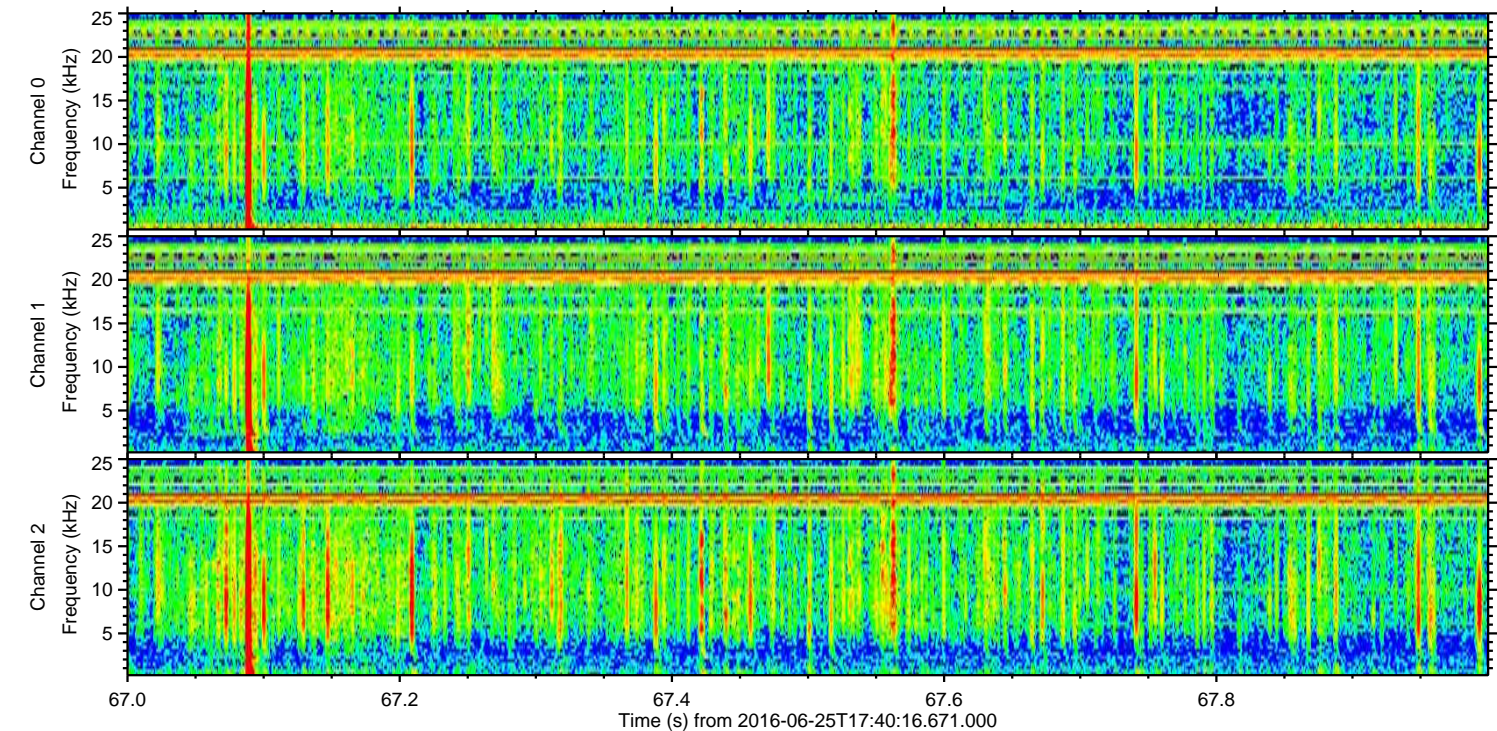
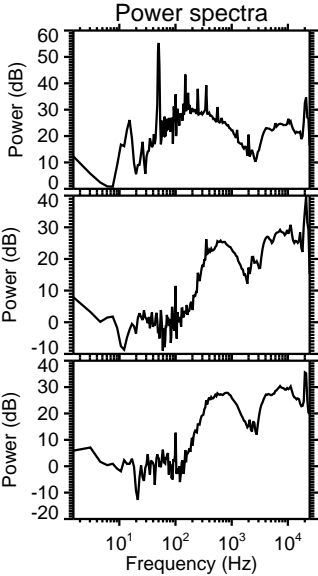
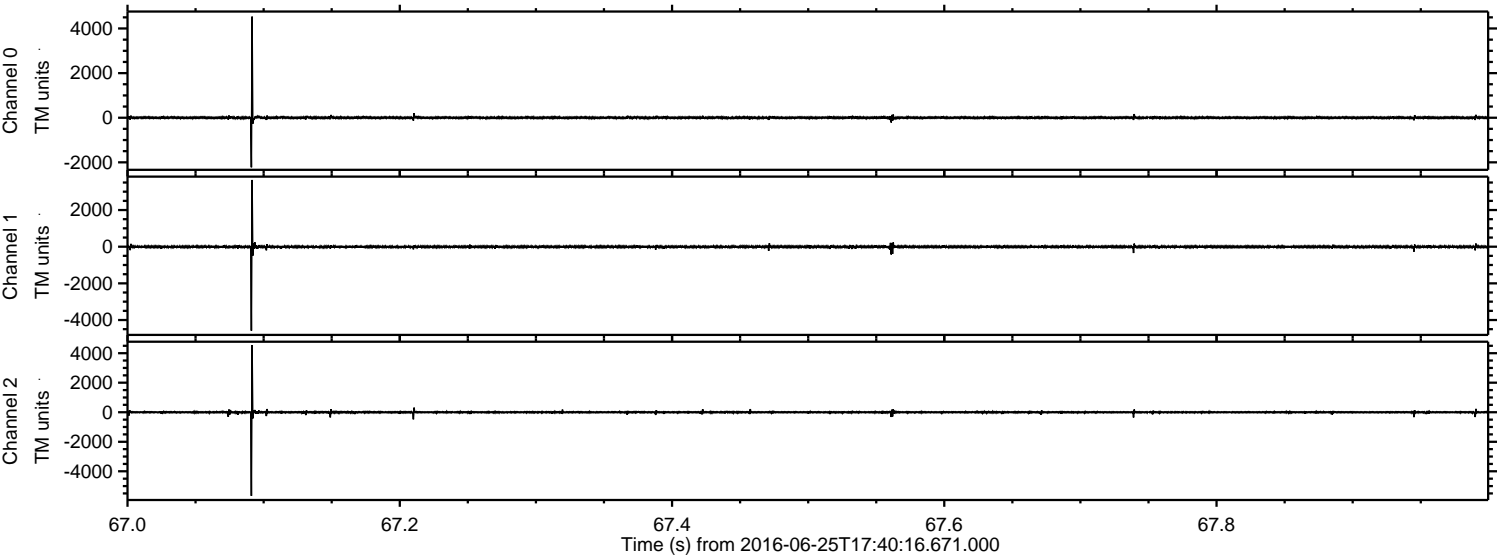


ELMAVAN 3D WAVEFORMS (Measured data sampled at 50 kHz) 51000 packets of 144 samples from 2016-06-25T17:40:16.671.000. Part 113/147

Processed Sat Jun 25 19:48:51 2016 by ELM ver.2012-10-06 from 001__elm20160625_174015__dat00.bin



Processed Sat Jun 25 19:48:52 2016 by ELM ver.2012-10-06 from 001__elm20160625_174015__dat00.bin



Power spectra

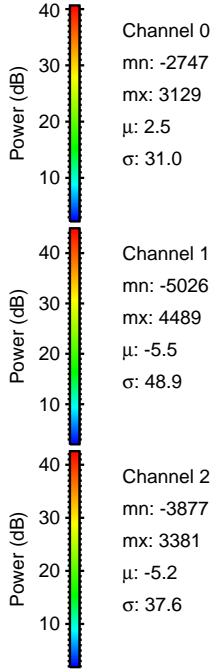
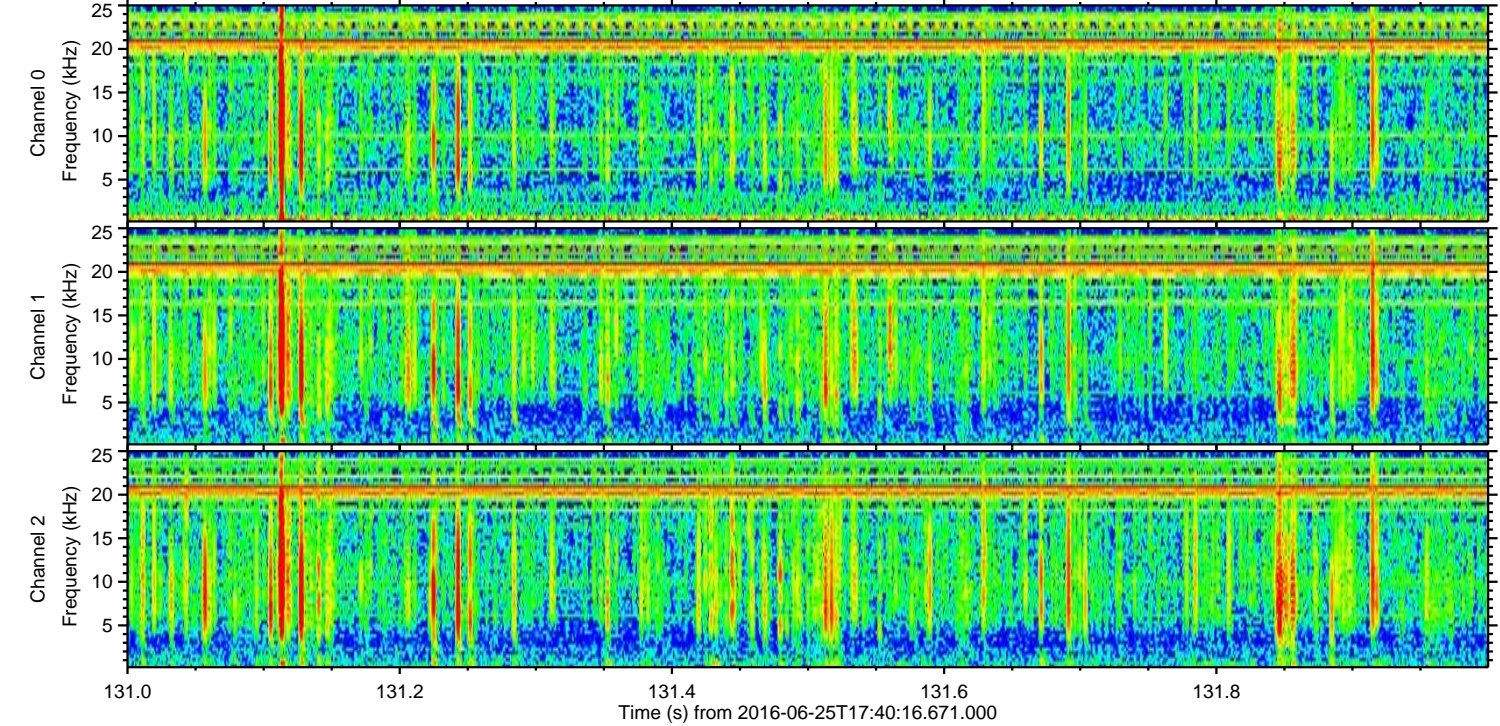
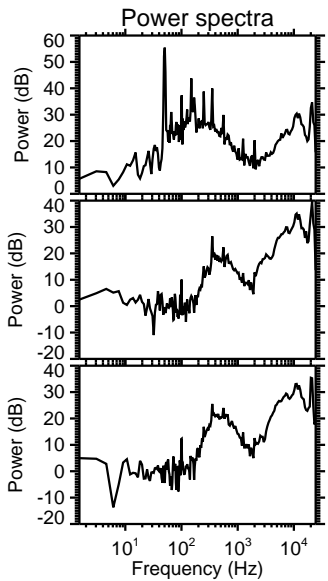
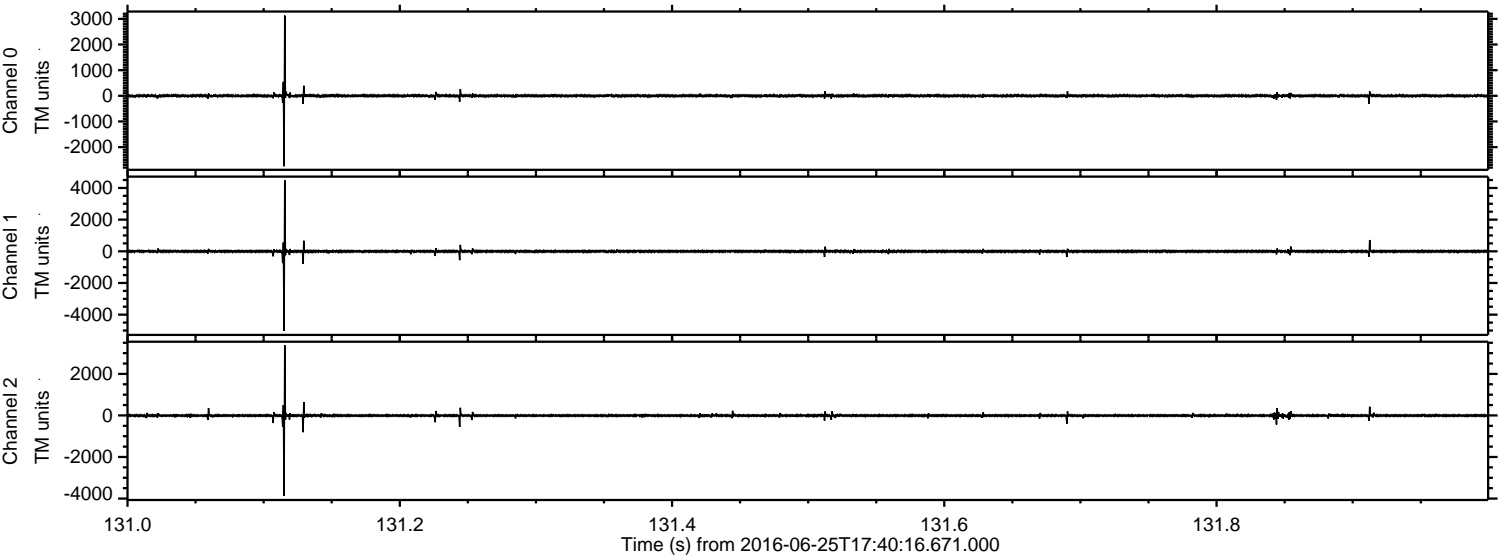
Channel 0
mn: -2225
mx: 4534
 μ : 2.5
 σ : 32.5

Channel 1
mn: -4584
mx: 3640
 μ : -5.5
 σ : 41.9

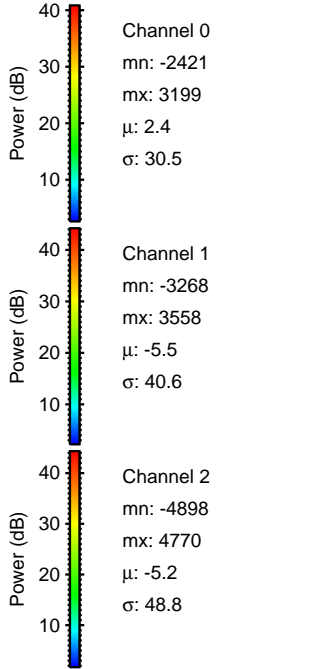
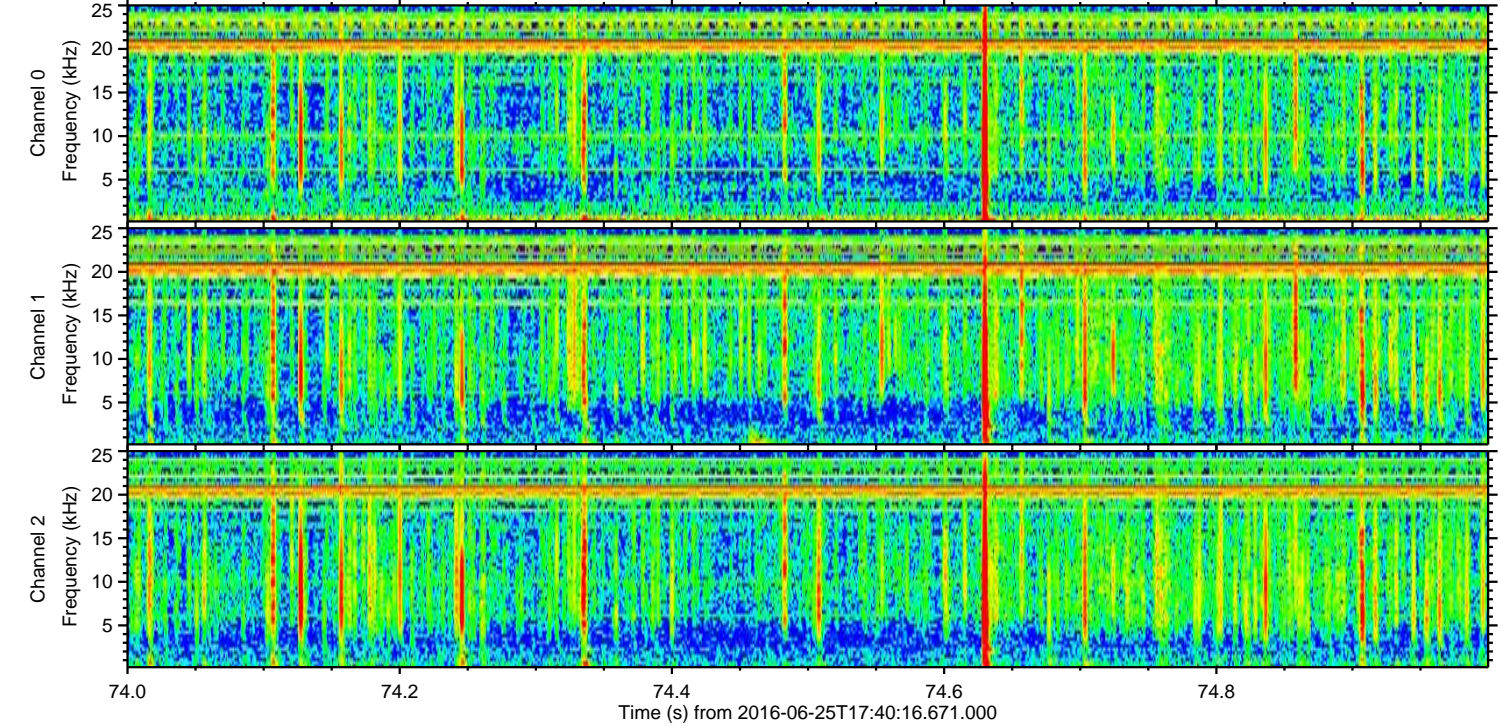
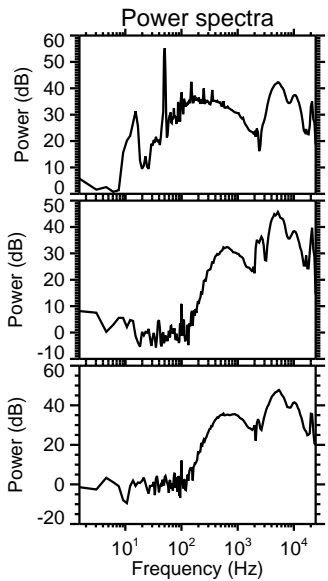
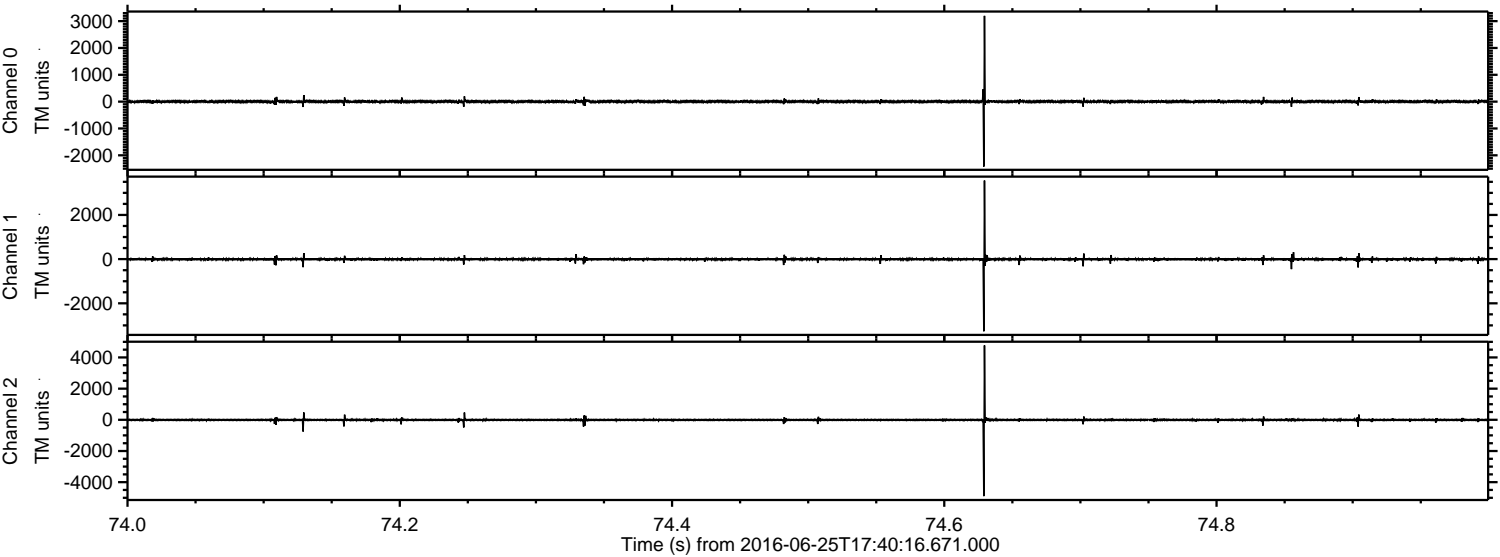
Channel 2
mn: -5661
mx: 4549
 μ : -5.1
 σ : 46.3

ELMAVAN 3D WAVEFORMS (Measured data sampled at 50 kHz) 51000 packets of 144 samples from 2016-06-25T17:40:16.671.000. Part 132/147

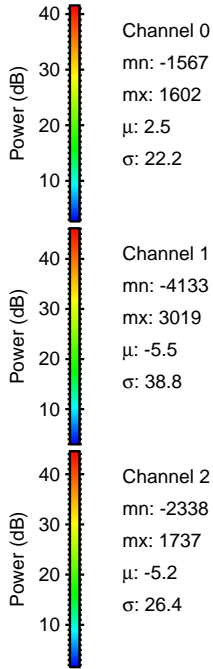
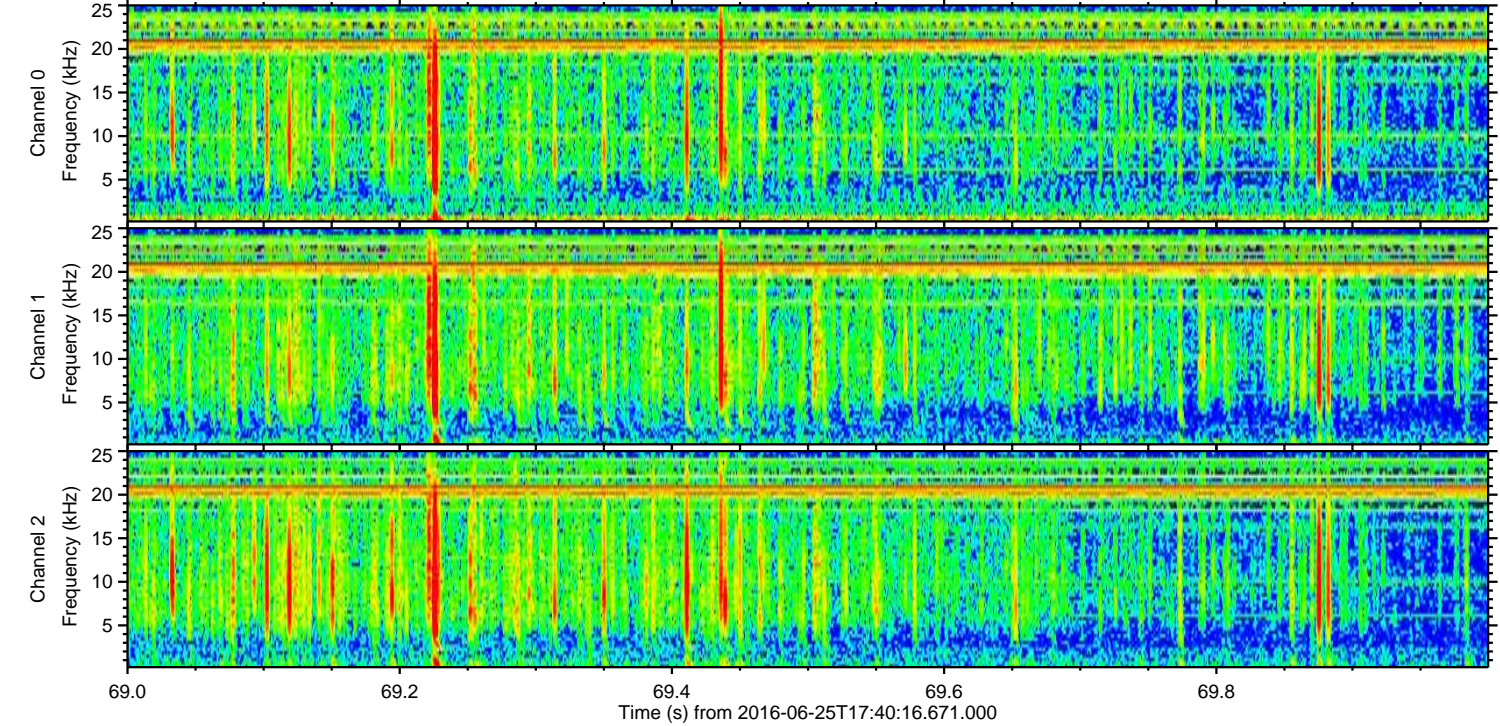
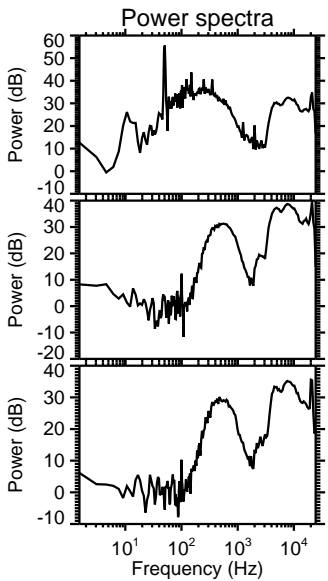
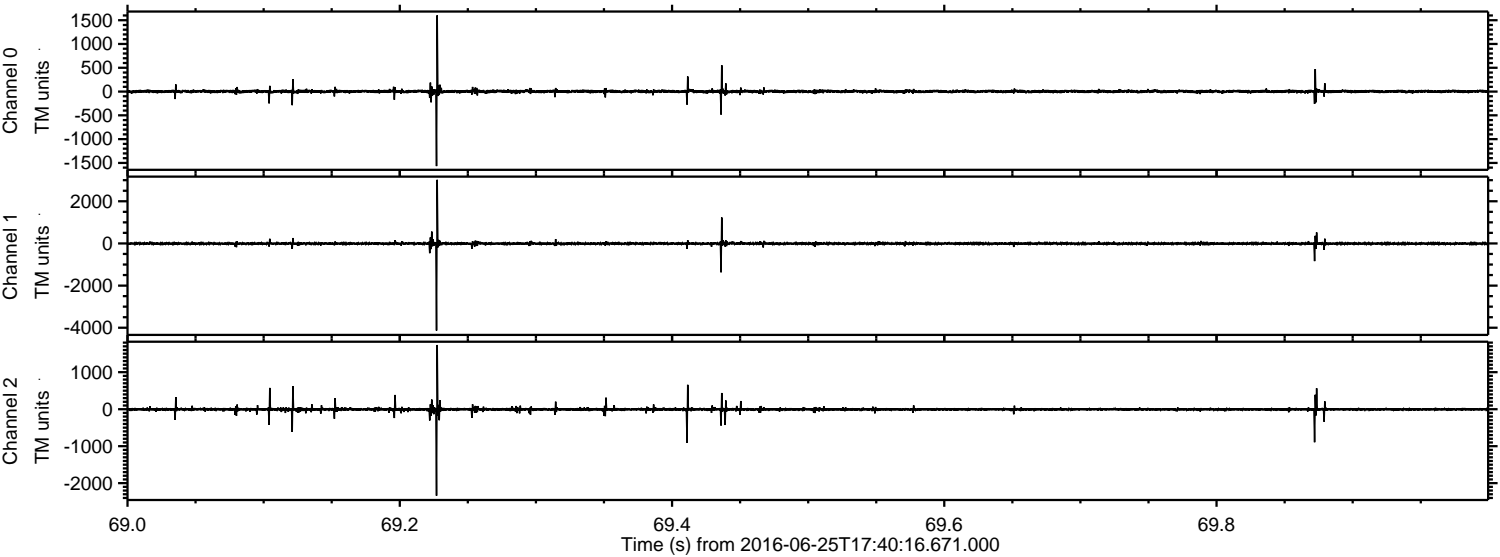
Processed Sat Jun 25 19:48:52 2016 by ELM ver.2012-10-06 from 001__elm20160625_174015__dat00.bin



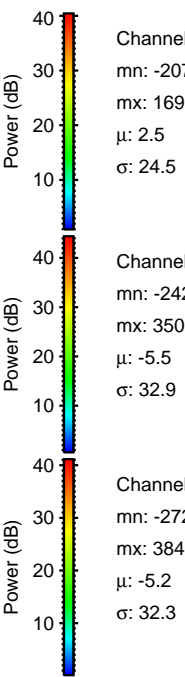
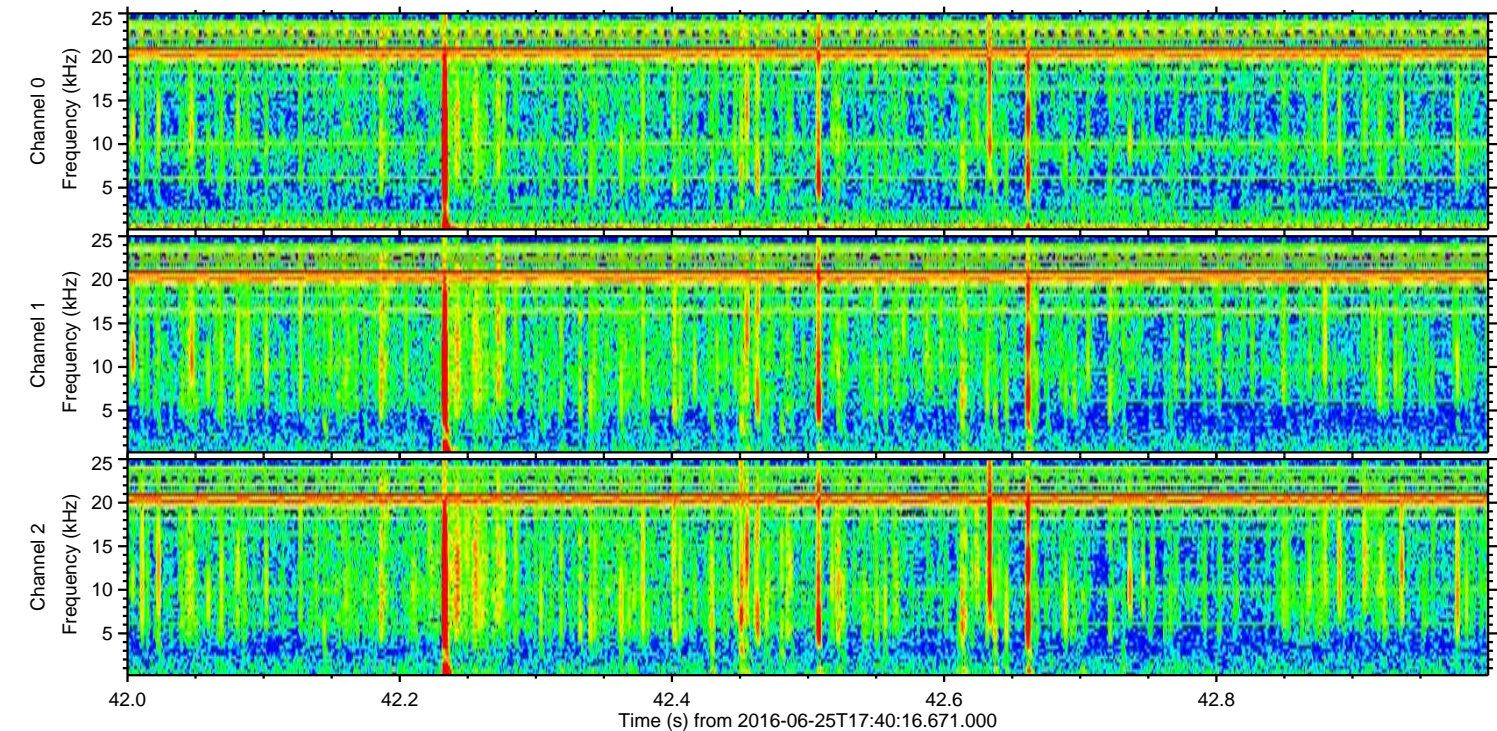
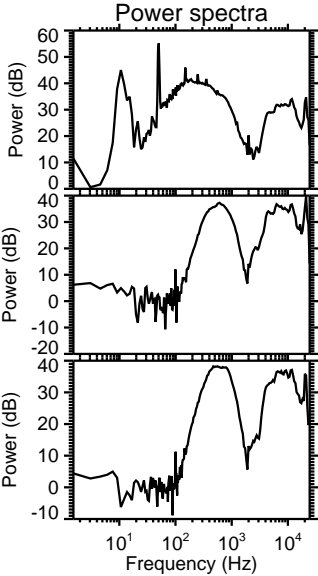
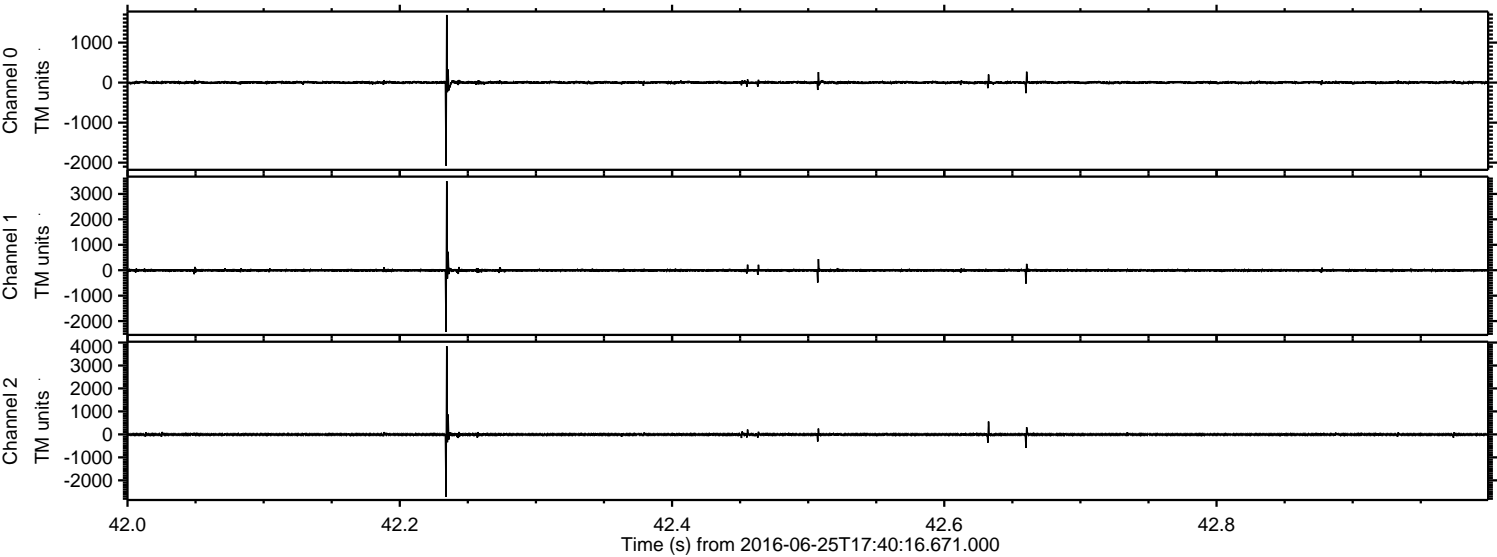
Processed Sat Jun 25 19:48:53 2016 by ELM ver.2012-10-06 from 001__elm20160625_174015__dat00.bin



Processed Sat Jun 25 19:48:54 2016 by ELM ver.2012-10-06 from 001__elm20160625_174015__dat00.bin

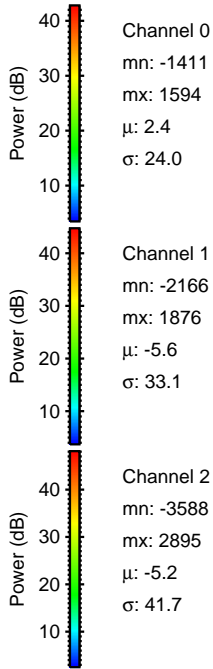
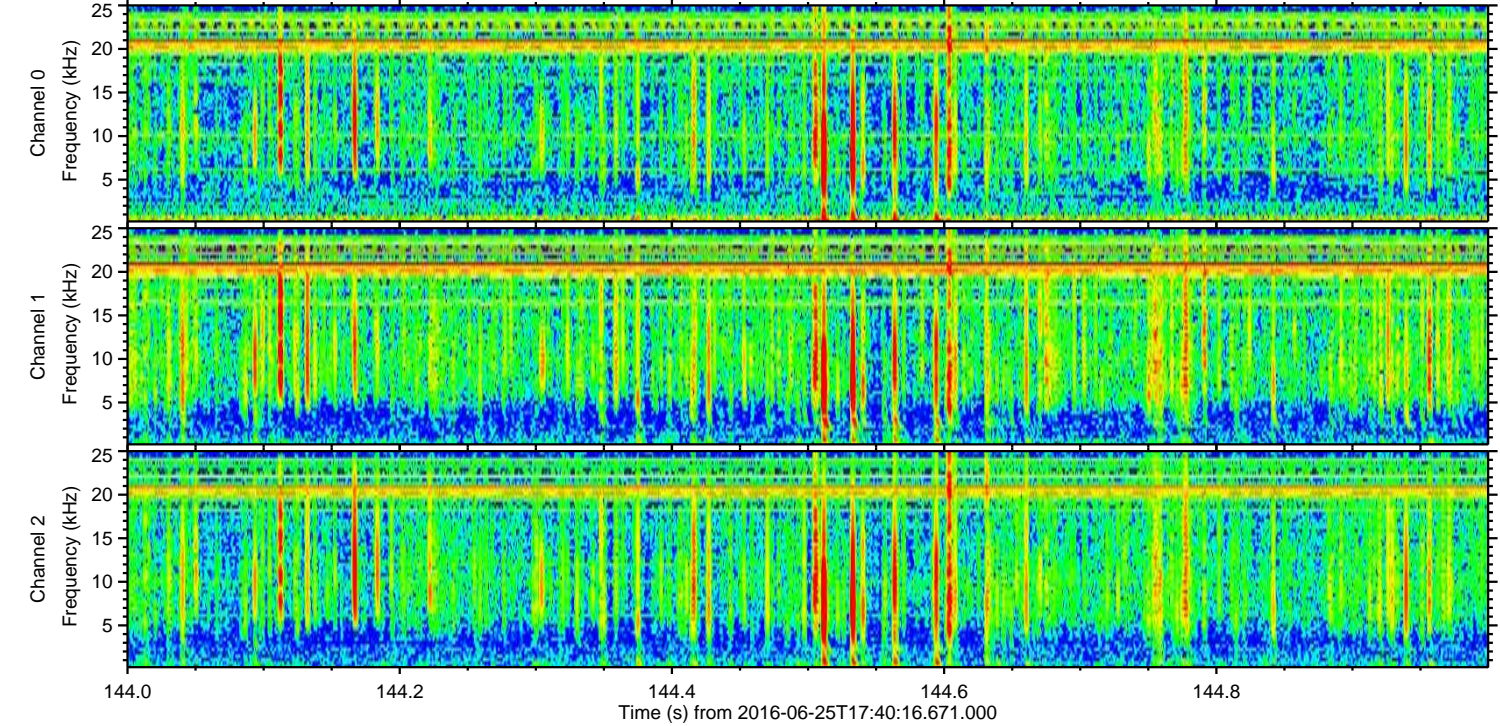
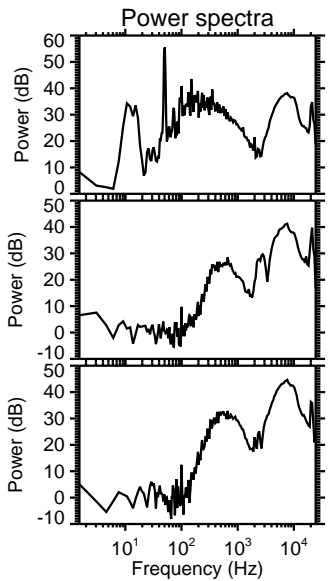
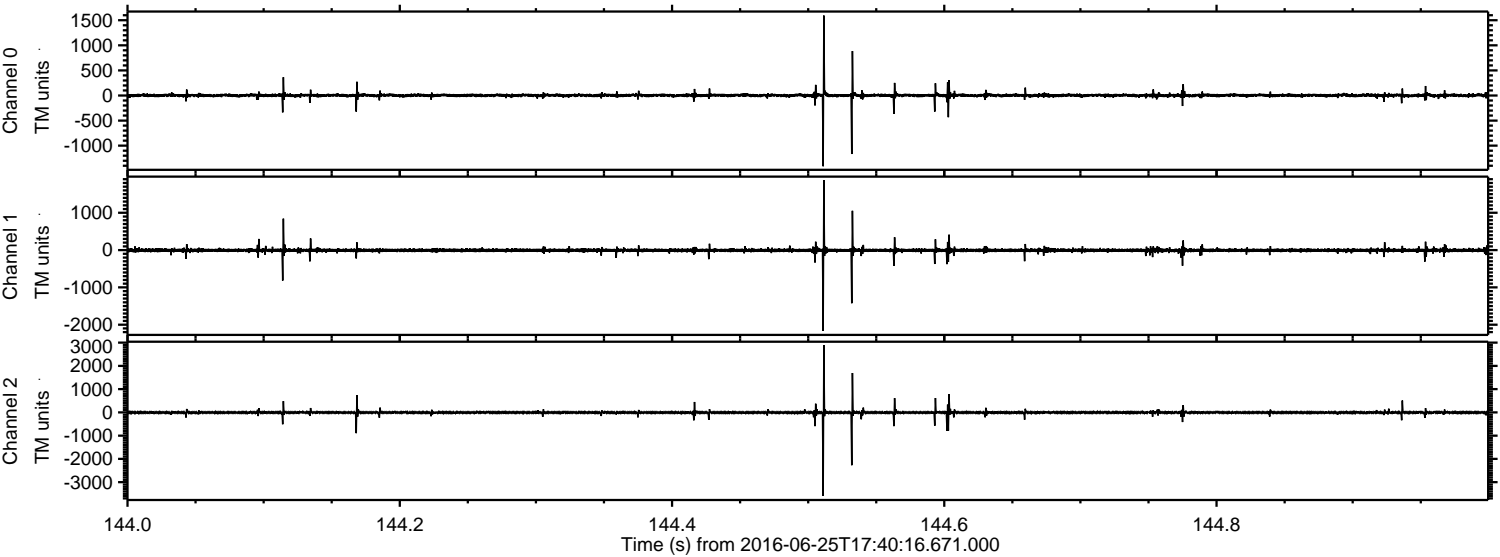


Processed Sat Jun 25 19:48:55 2016 by ELM ver.2012-10-06 from 001__elm20160625_174015__dat00.bin



ELMAVAN 3D WAVEFORMS (Measured data sampled at 50 kHz) 51000 packets of 144 samples from 2016-06-25T17:40:16.671.000. Part 145/147

Processed Sat Jun 25 19:48:56 2016 by ELM ver.2012-10-06 from 001__elm20160625_174015__dat00.bin

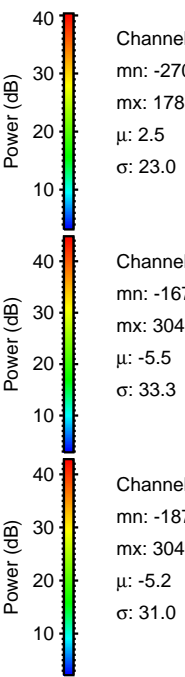
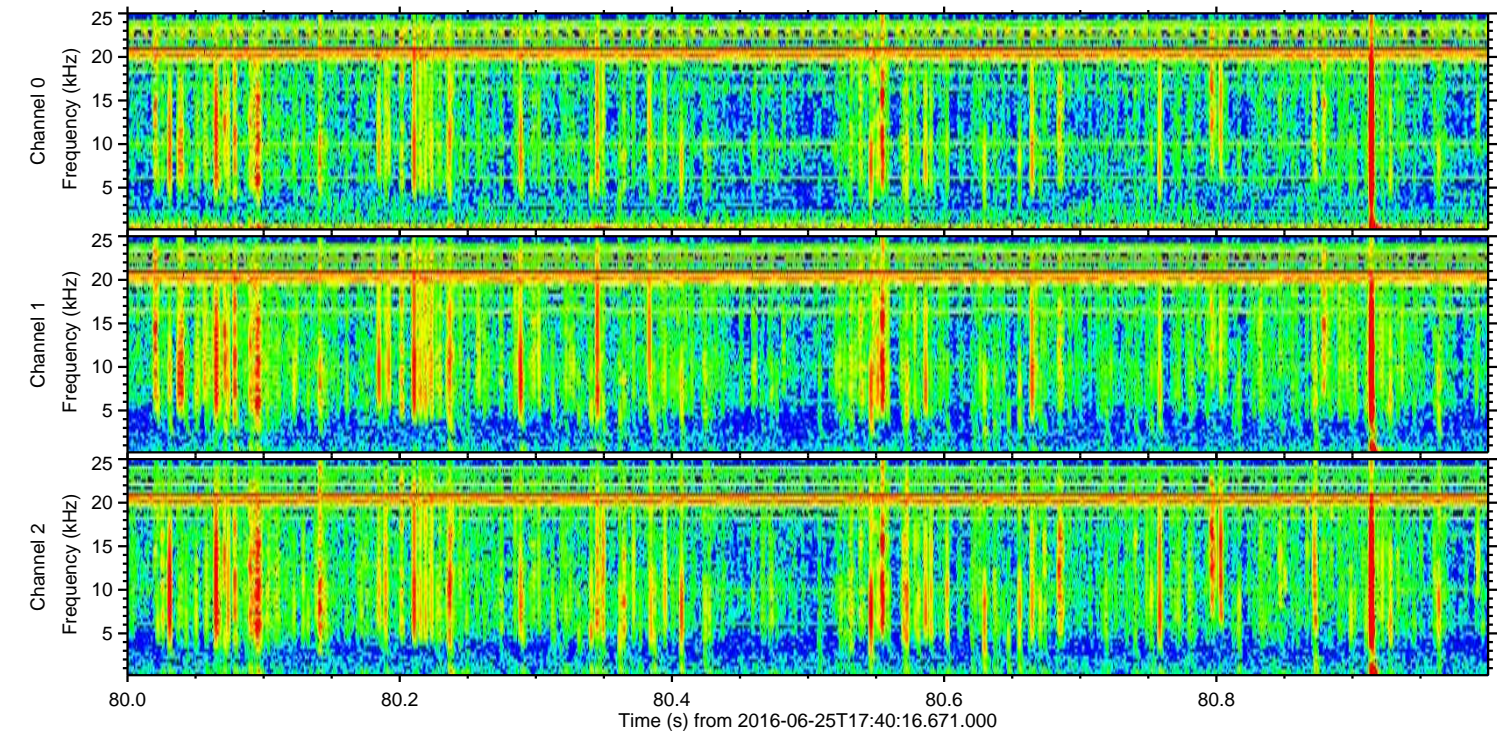
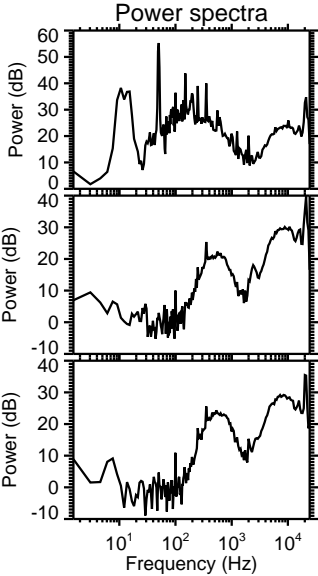
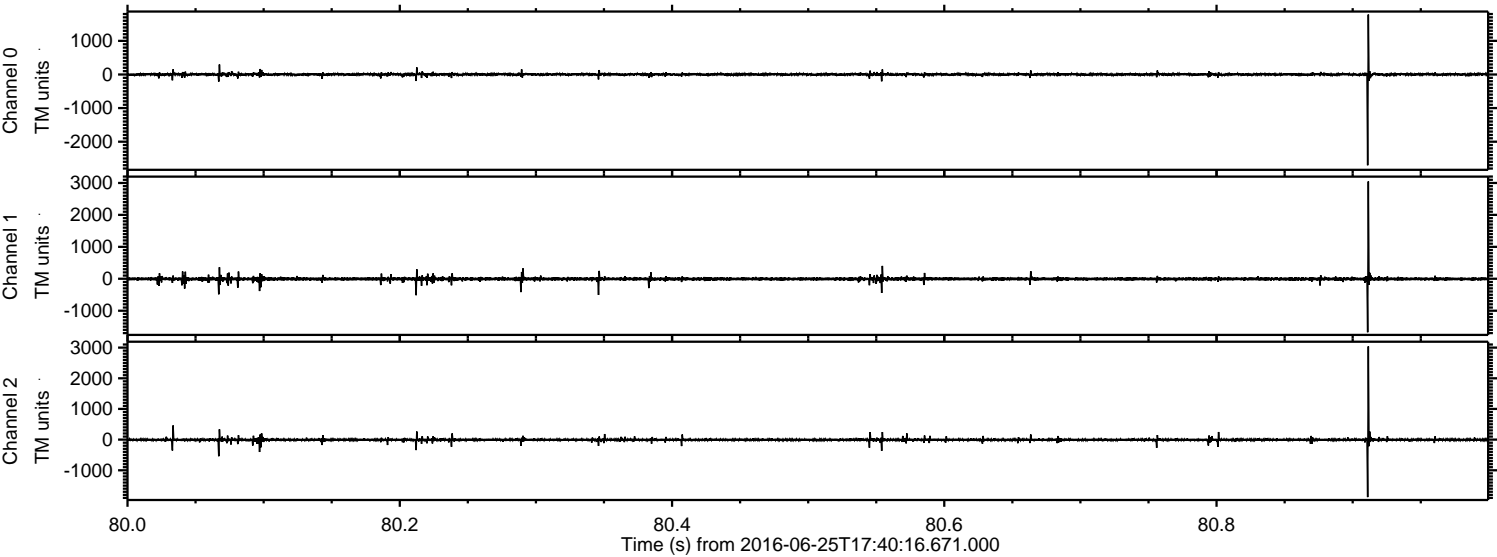


Channel 0
mn: -1411
mx: 1594
 μ : 2.4
 σ : 24.0

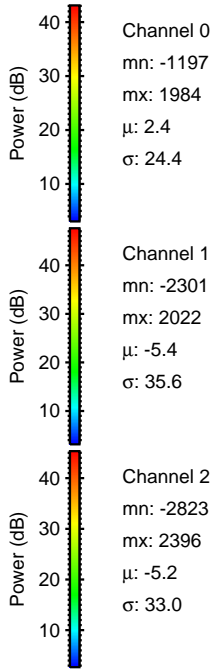
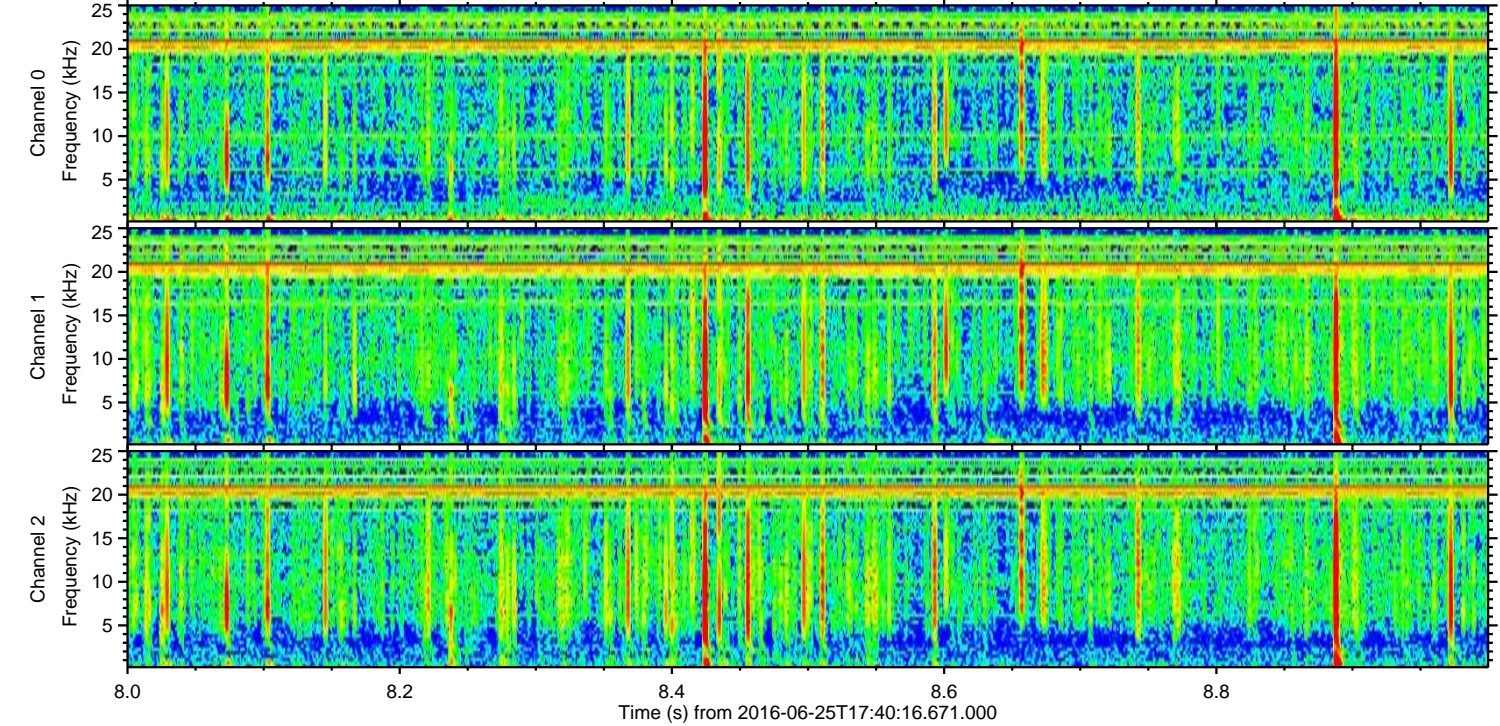
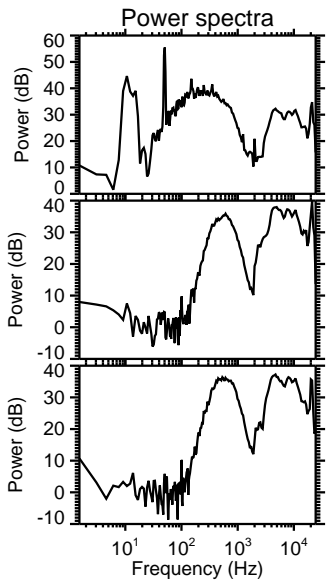
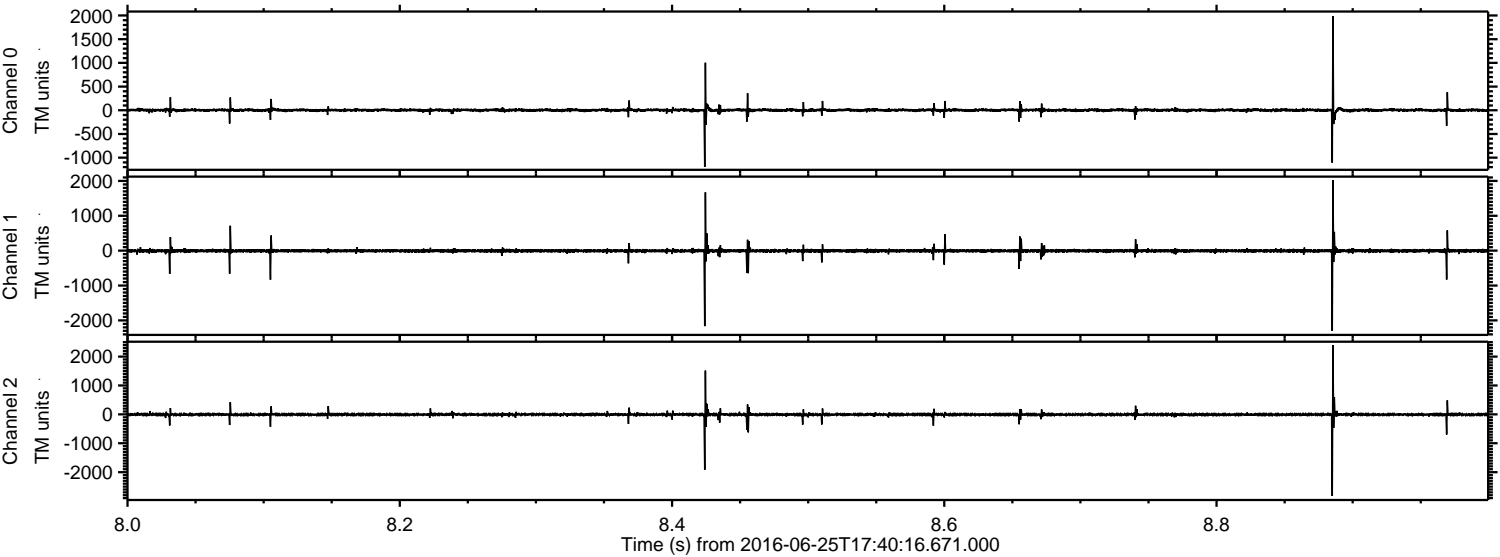
Channel 1
mn: -2166
mx: 1876
 μ : -5.6
 σ : 33.1

Channel 2
mn: -3588
mx: 2895
 μ : -5.2
 σ : 41.7

Processed Sat Jun 25 19:48:57 2016 by ELM ver.2012-10-06 from 001__elm20160625_174015__dat00.bin



Processed Sat Jun 25 19:48:58 2016 by ELM ver.2012-10-06 from 001__elm20160625_174015__dat00.bin



Processed Sat Jun 25 19:48:59 2016 by ELM ver.2012-10-06 from 001__elm20160625_174015__dat00.bin

