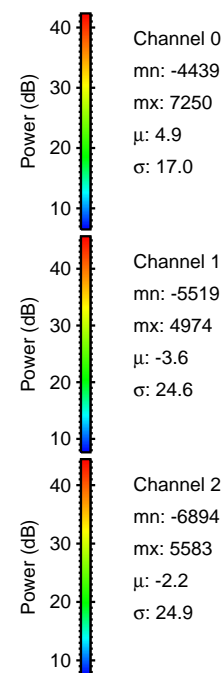
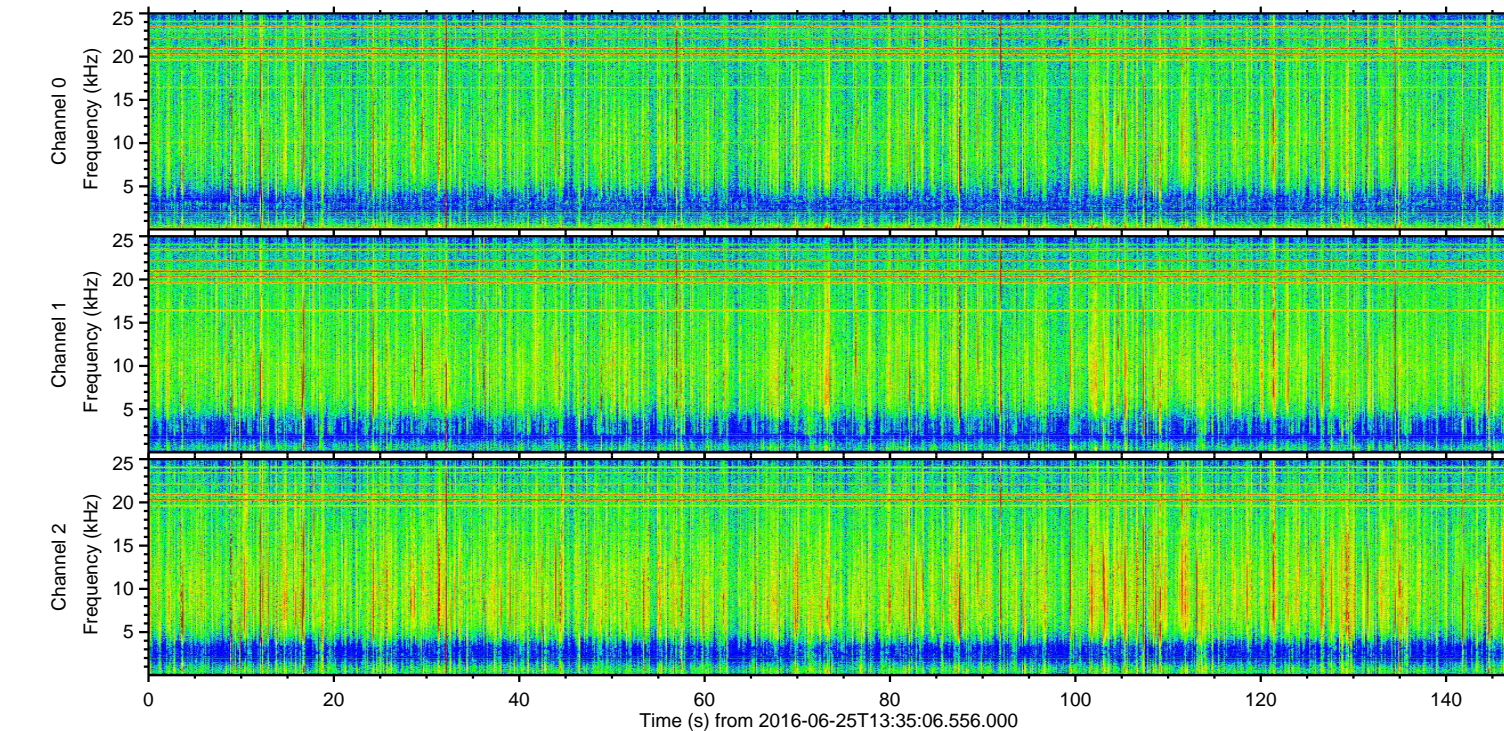
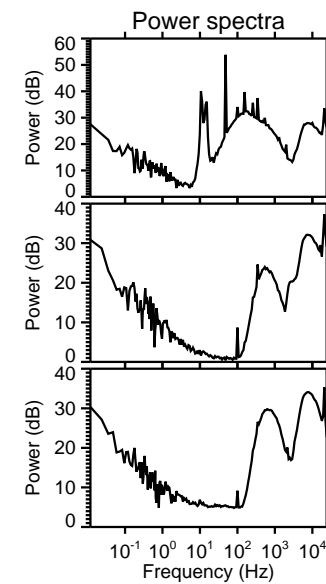
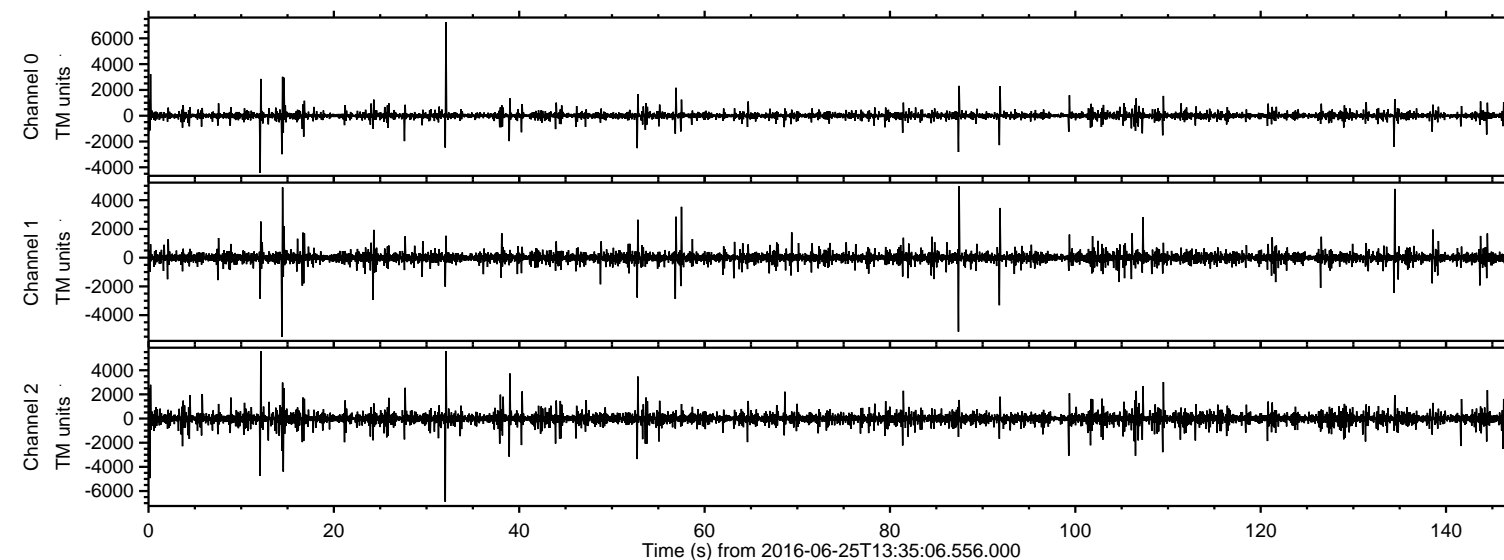
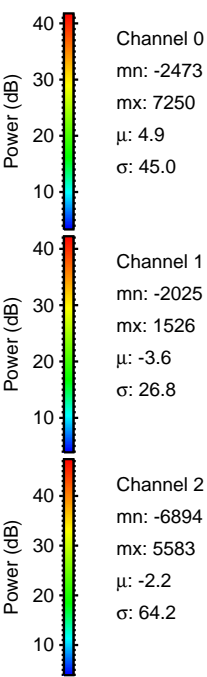
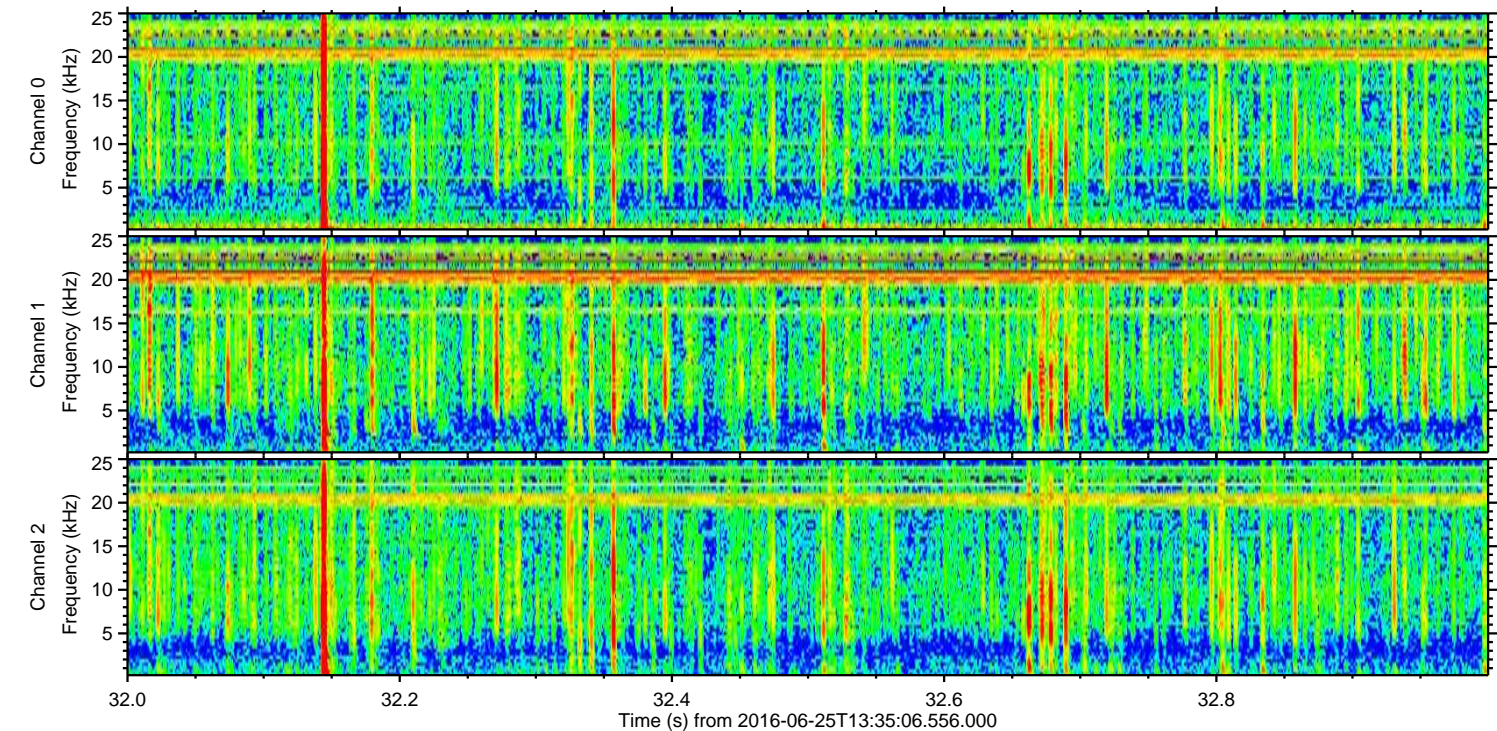
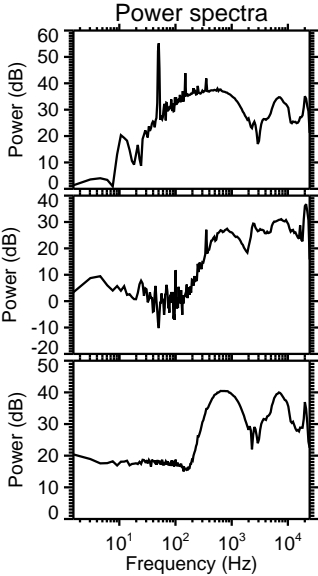
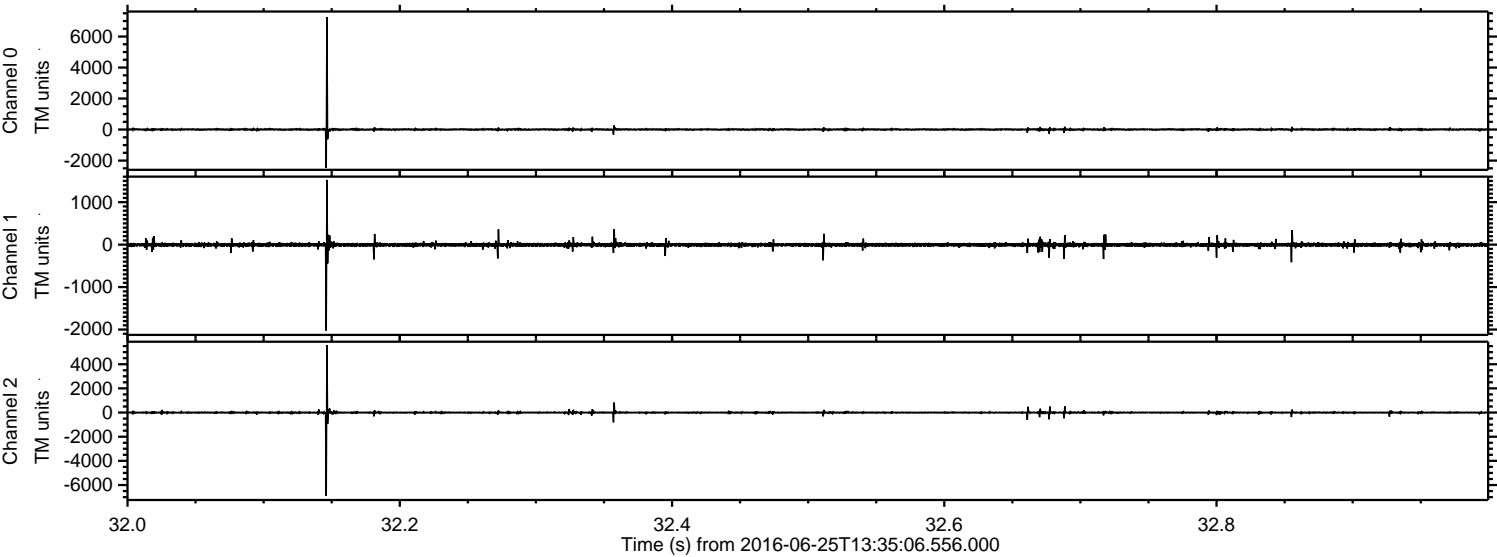


ELMAVAN 3D WAVEFORMS (Measured data sampled at 50 kHz) 51000 packets of 144 samples from 2016-06-25T13:35:06.556.000.

Processed Sat Jun 25 15:42:49 2016 by ELM ver.2012-10-06 from 001__elm20160625_133505__dat00.bin

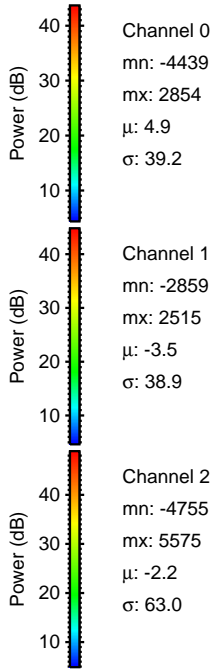
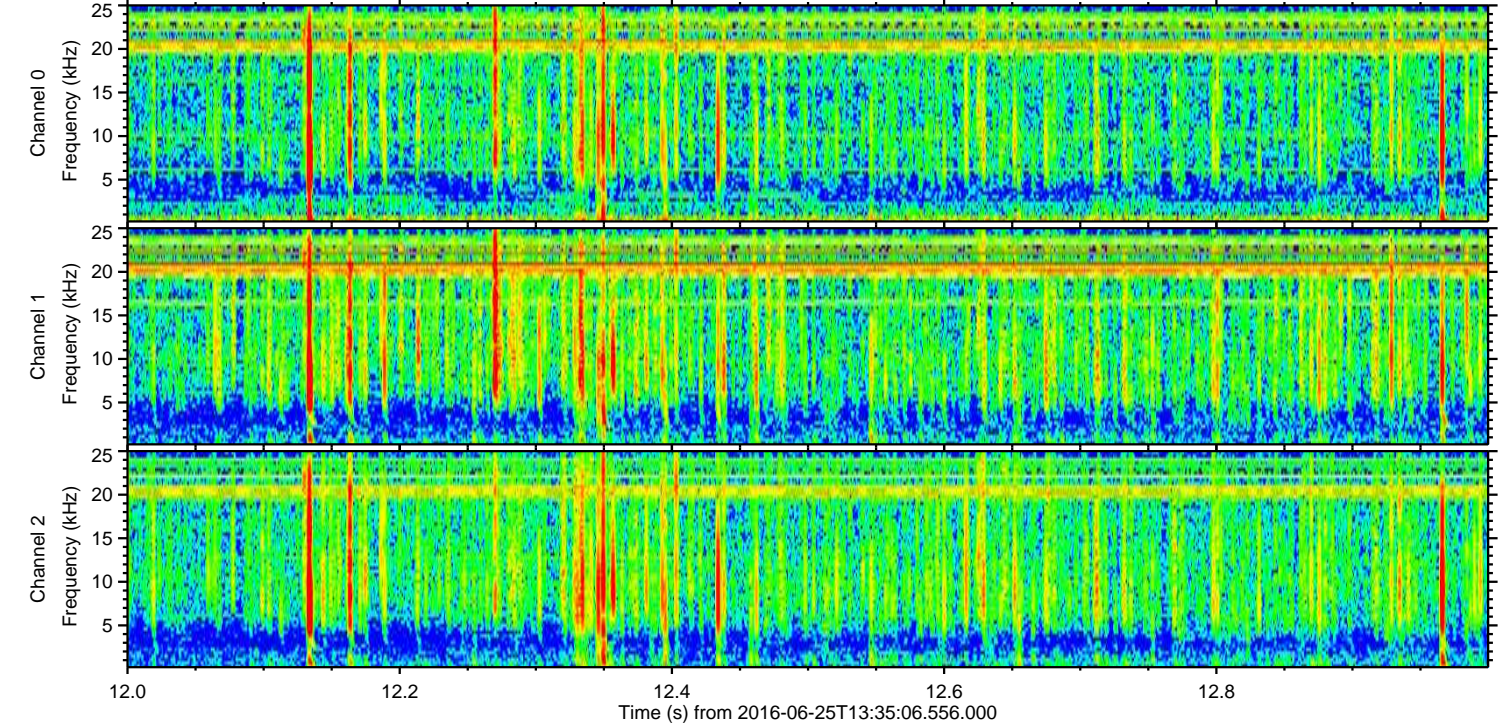
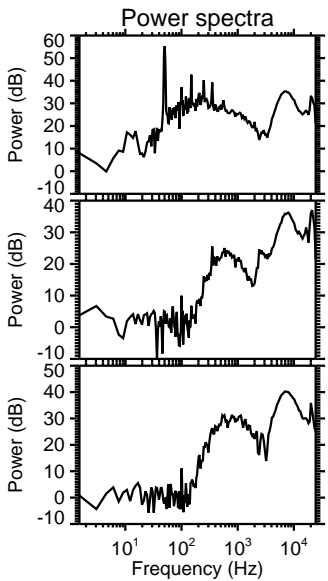
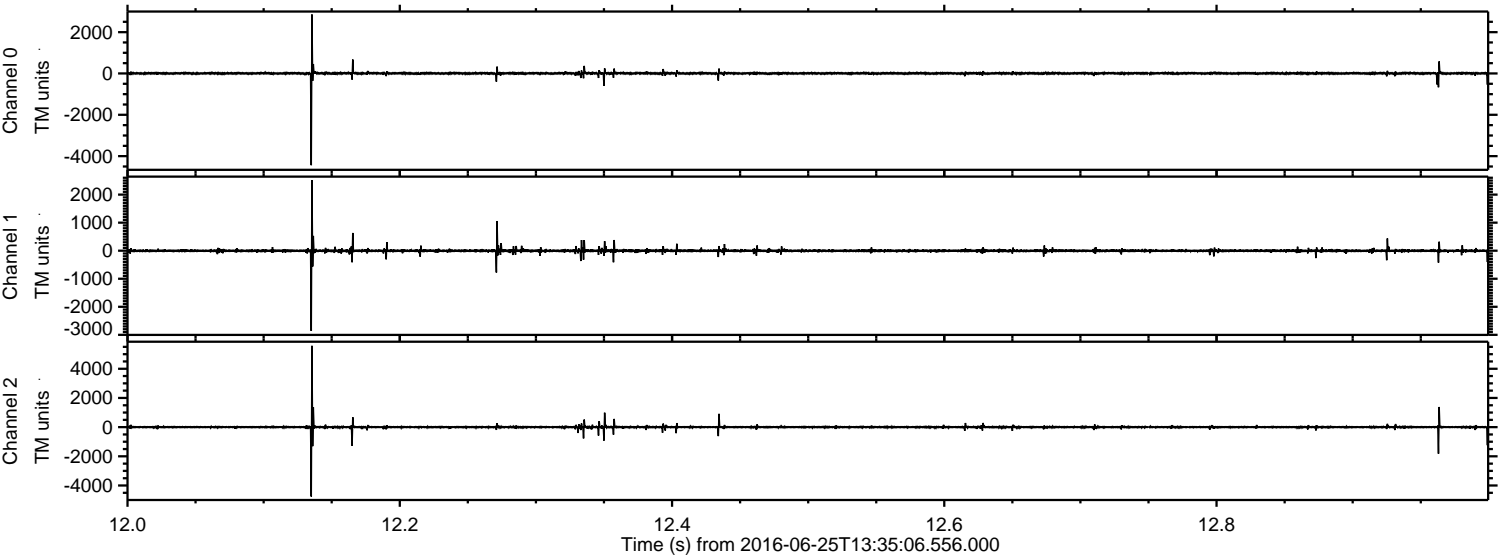


Processed Sat Jun 25 15:43:05 2016 by ELM ver.2012-10-06 from 001__elm20160625_133505__dat00.bin



ELMAVAN 3D WAVEFORMS (Measured data sampled at 50 kHz) 51000 packets of 144 samples from 2016-06-25T13:35:06.556.000. Part 13/147

Processed Sat Jun 25 15:43:06 2016 by ELM ver.2012-10-06 from 001__elm20160625_133505__dat00.bin

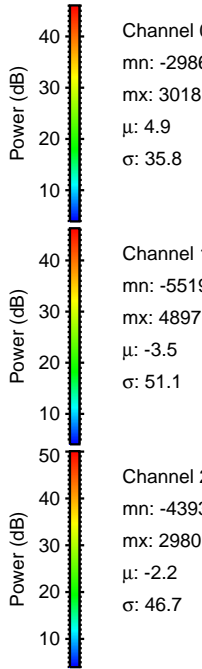
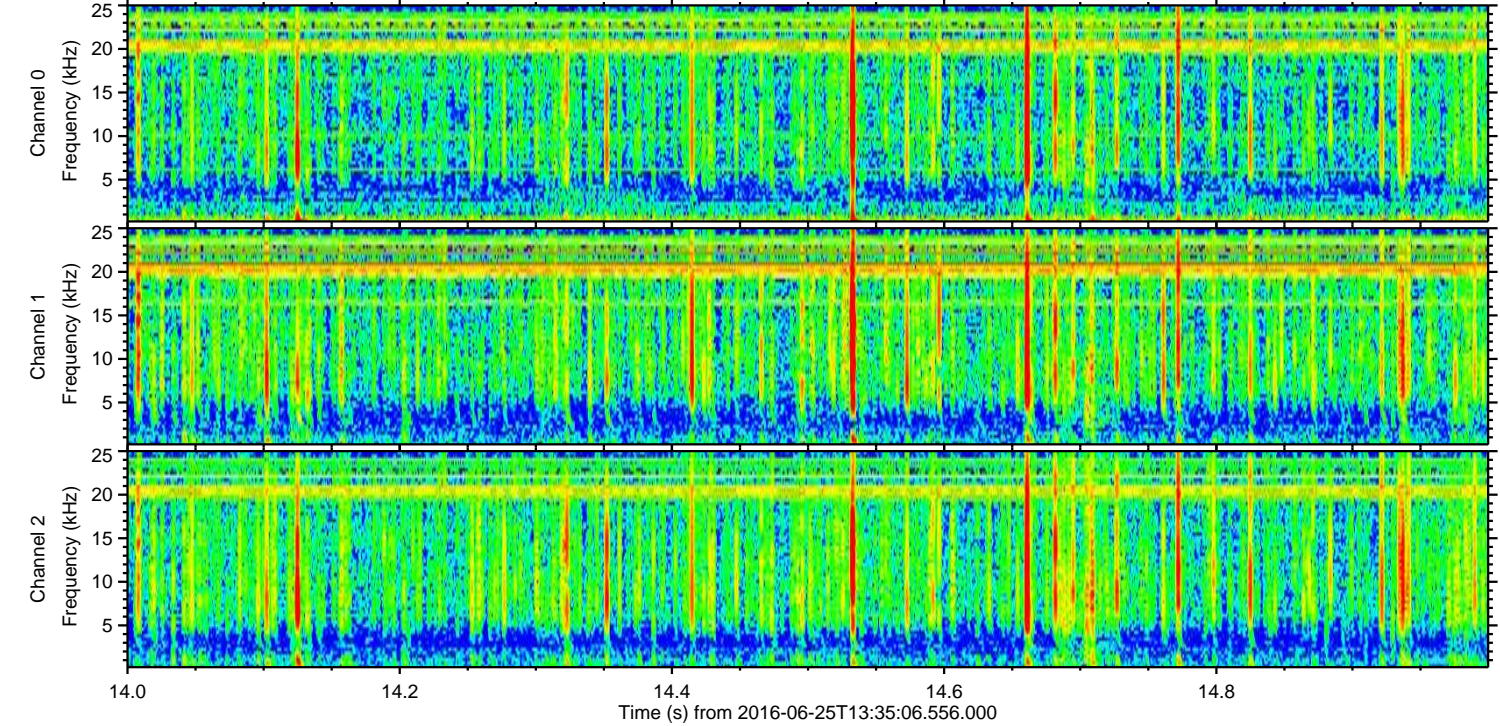
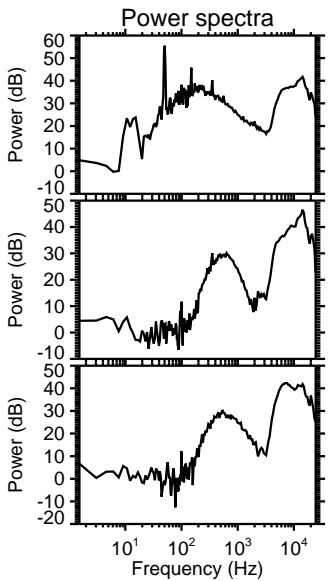
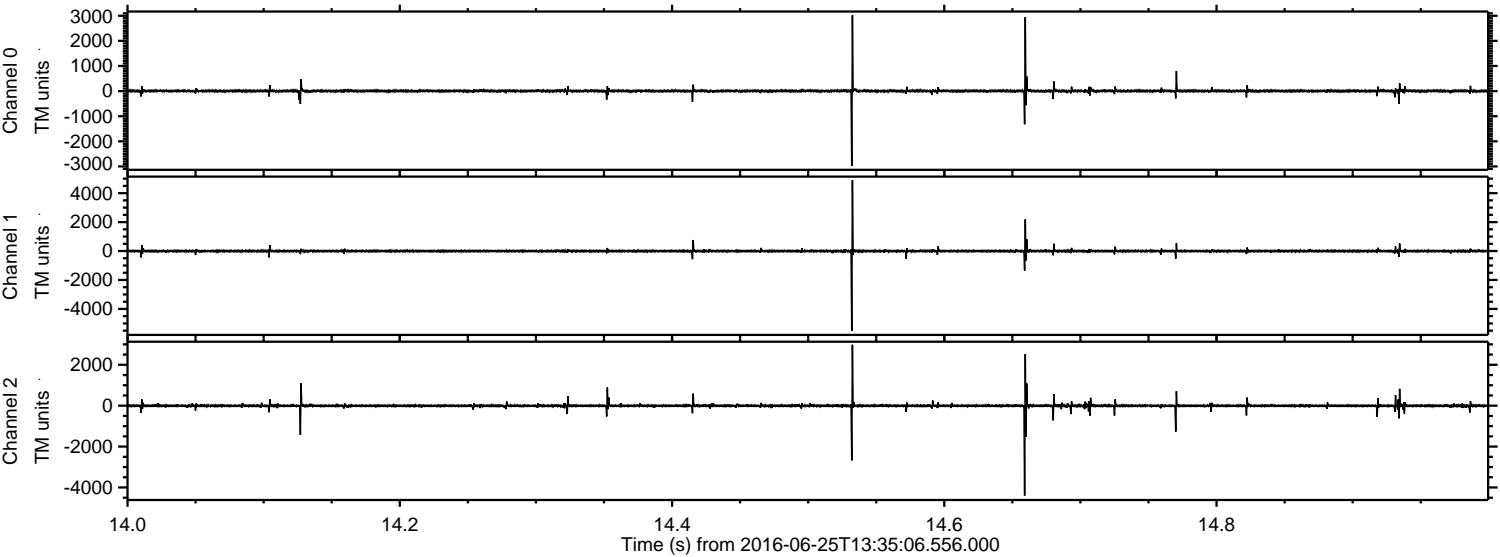


Channel 0
mn: -4439
mx: 2854
 μ : 4.9
 σ : 39.2

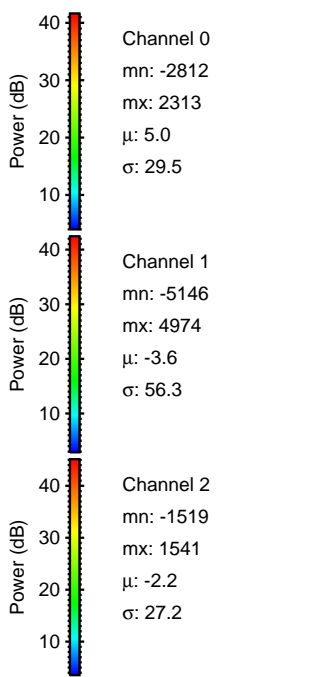
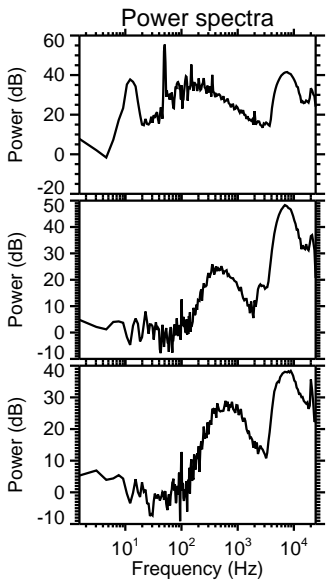
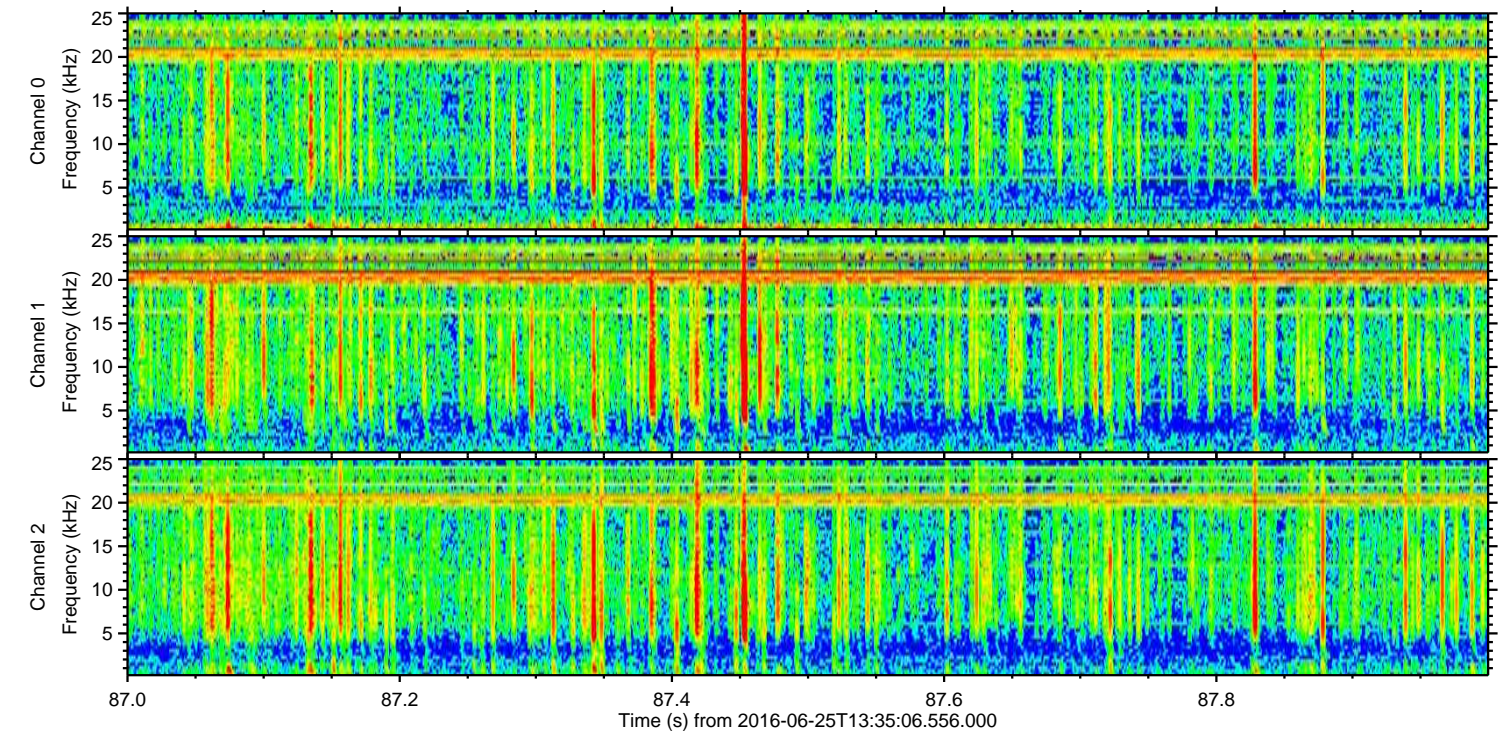
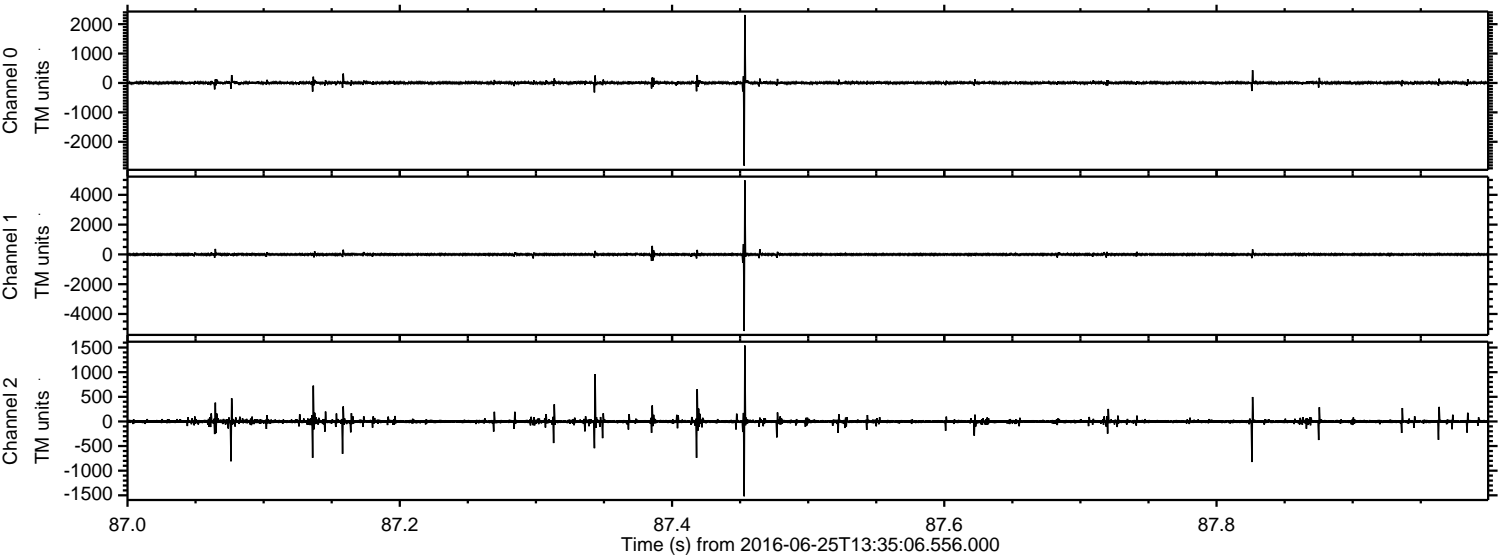
Channel 1
mn: -2859
mx: 2515
 μ : -3.5
 σ : 38.9

Channel 2
mn: -4755
mx: 5575
 μ : -2.2
 σ : 63.0

Processed Sat Jun 25 15:43:07 2016 by ELM ver.2012-10-06 from 001__elm20160625_133505__dat00.bin

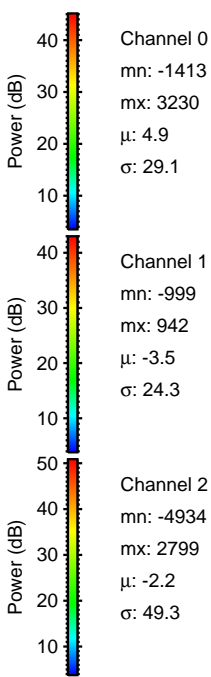
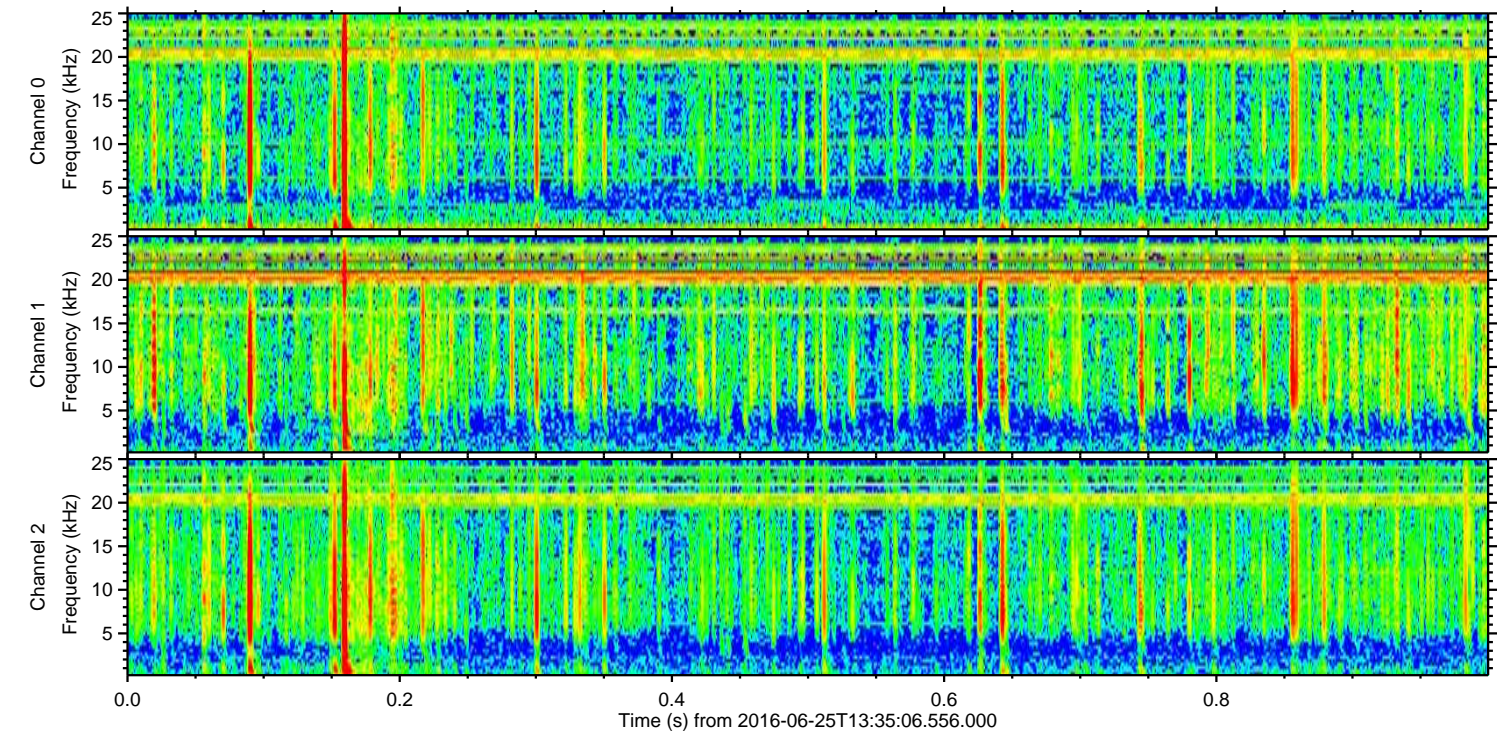
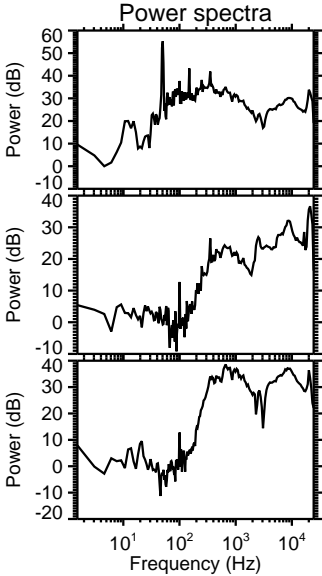
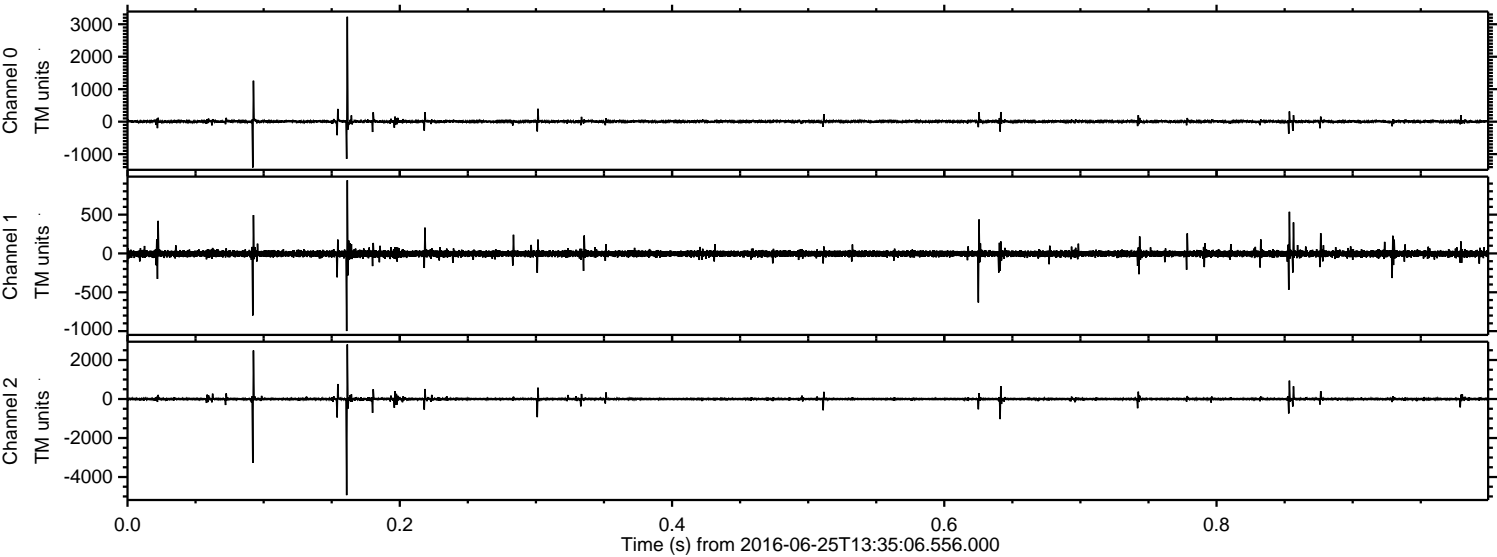


Processed Sat Jun 25 15:43:08 2016 by ELM ver.2012-10-06 from 001__elm20160625_133505__dat00.bin



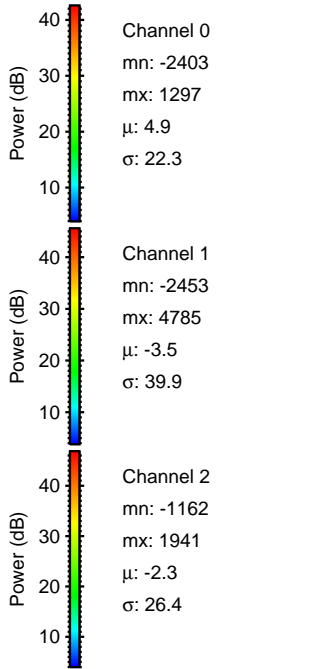
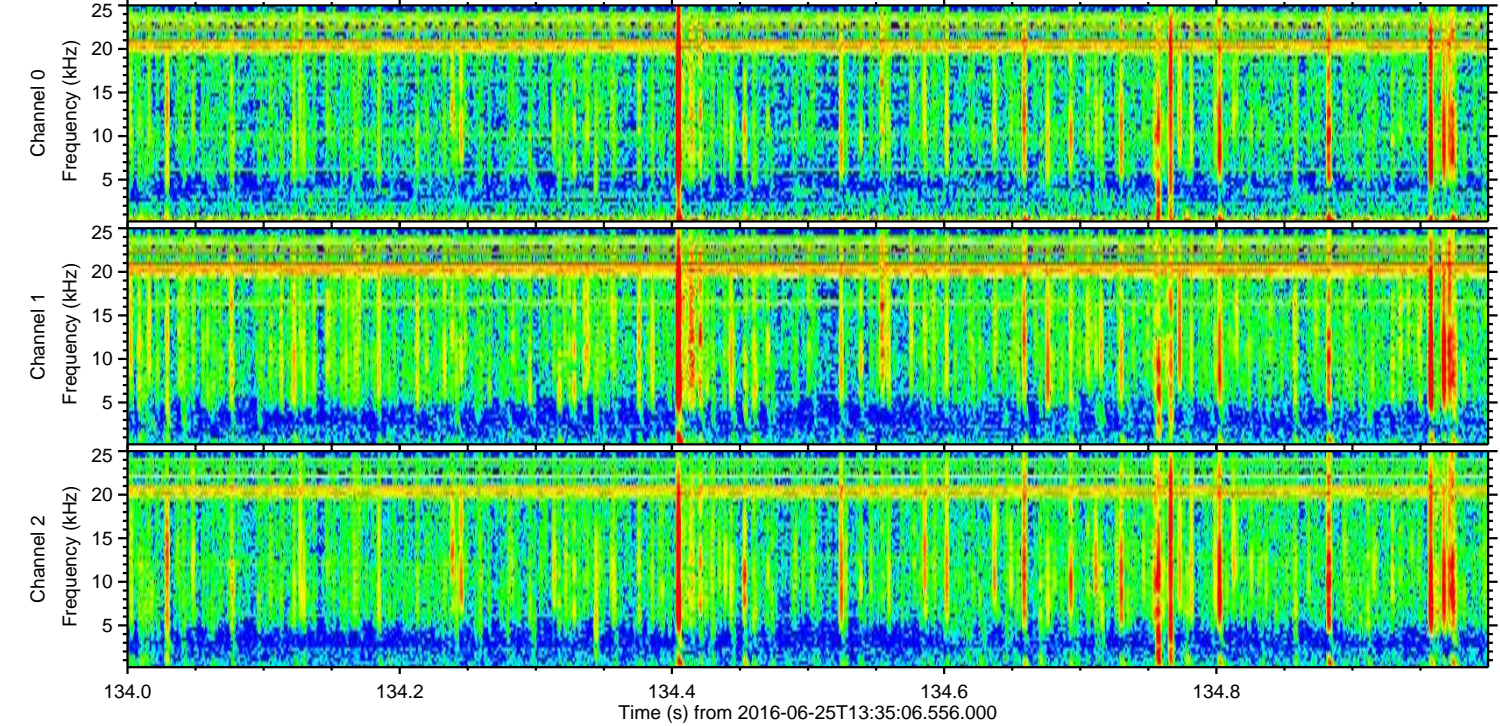
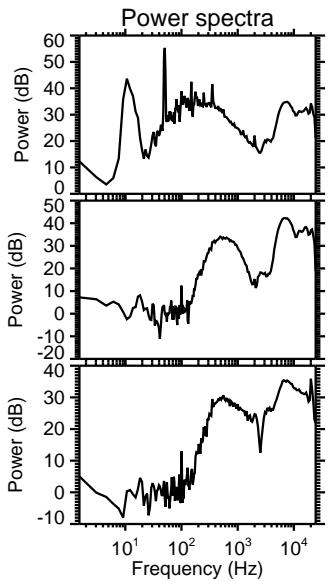
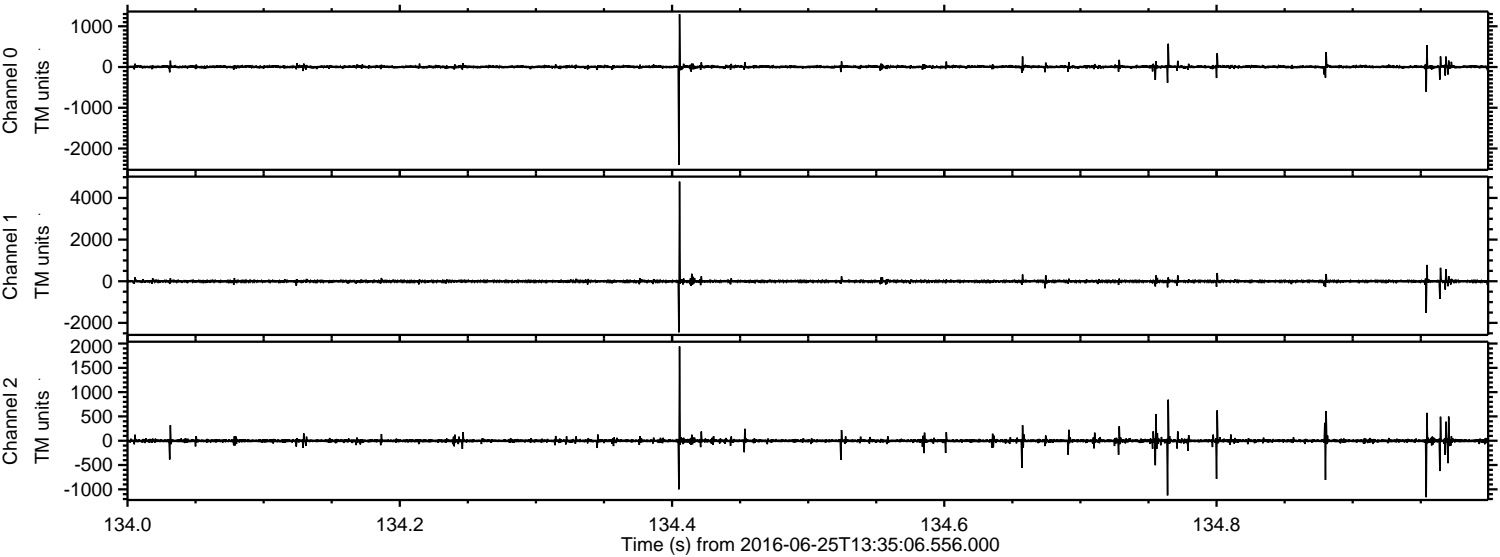
ELMAVAN 3D WAVEFORMS (Measured data sampled at 50 kHz) 51000 packets of 144 samples from 2016-06-25T13:35:06.556.000. Part 1/147

Processed Sat Jun 25 15:43:09 2016 by ELM ver.2012-10-06 from 001__elm20160625_133505__dat00.bin

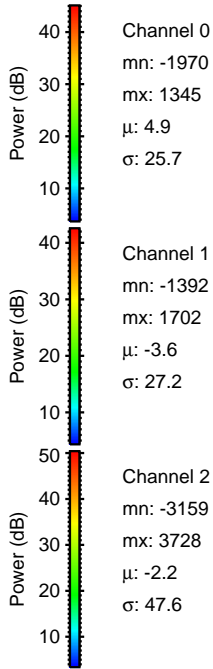
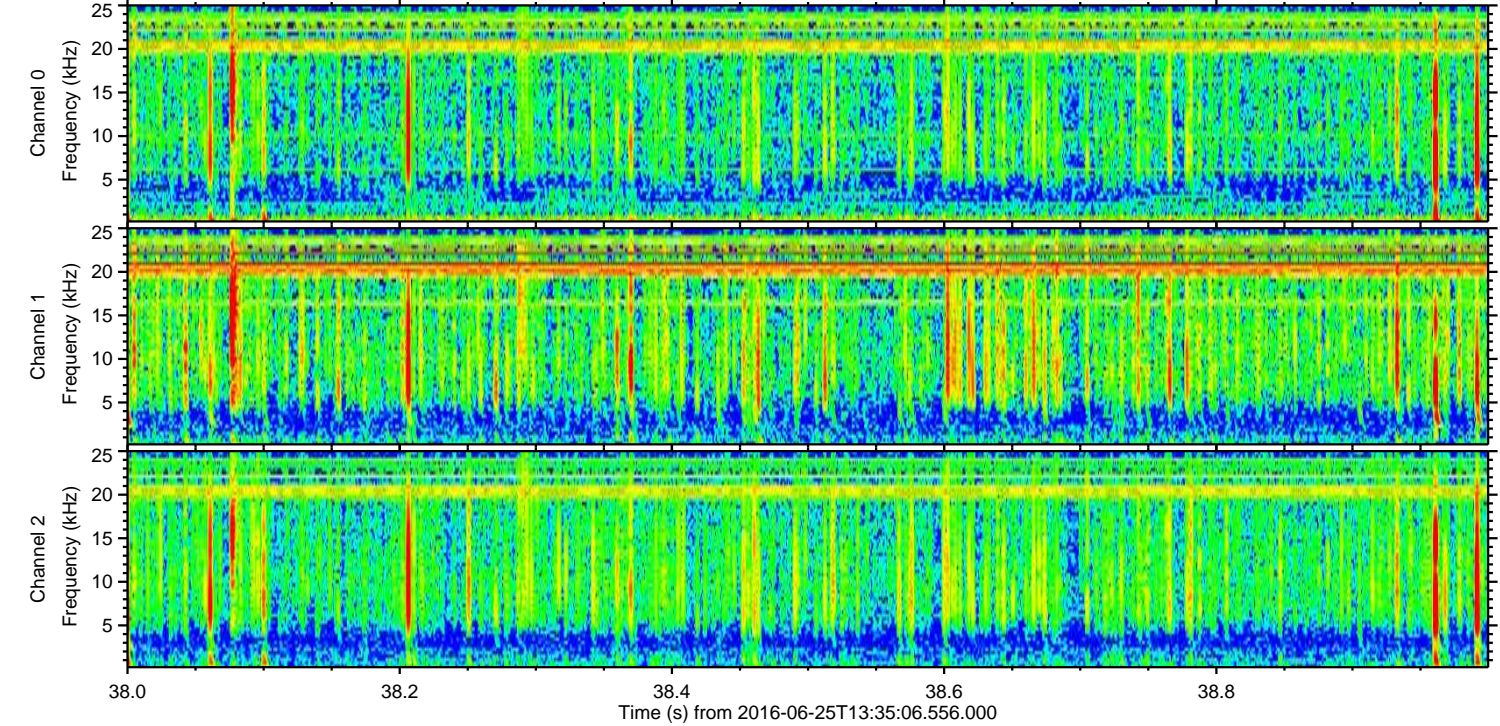
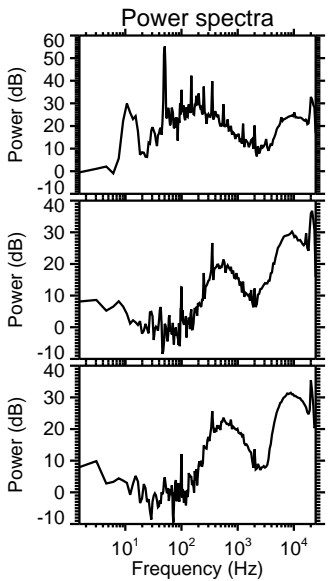
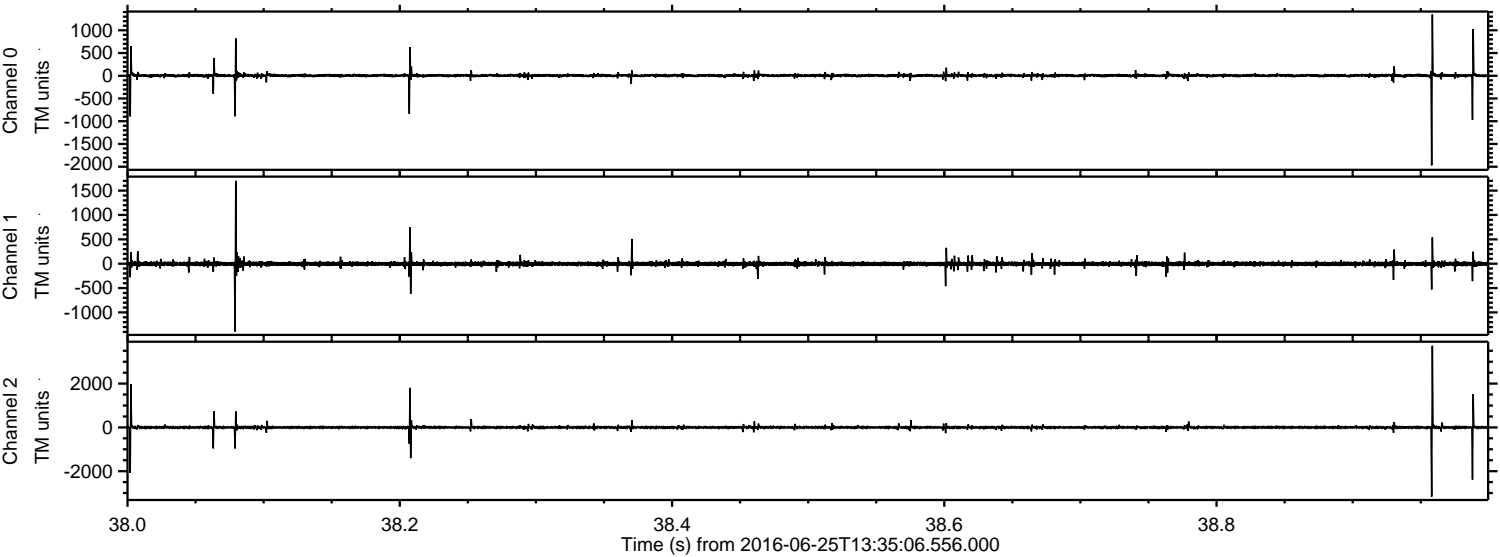


ELMAVAN 3D WAVEFORMS (Measured data sampled at 50 kHz) 51000 packets of 144 samples from 2016-06-25T13:35:06.556.000. Part 135/147

Processed Sat Jun 25 15:43:10 2016 by ELM ver.2012-10-06 from 001__elm20160625_133505__dat00.bin



Processed Sat Jun 25 15:43:11 2016 by ELM ver.2012-10-06 from 001__elm20160625_133505__dat00.bin

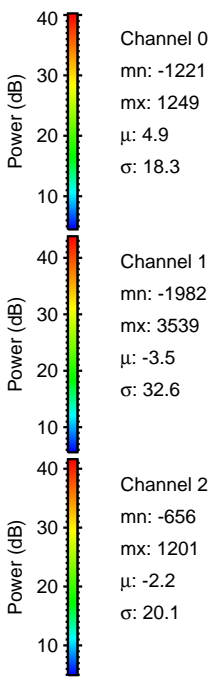
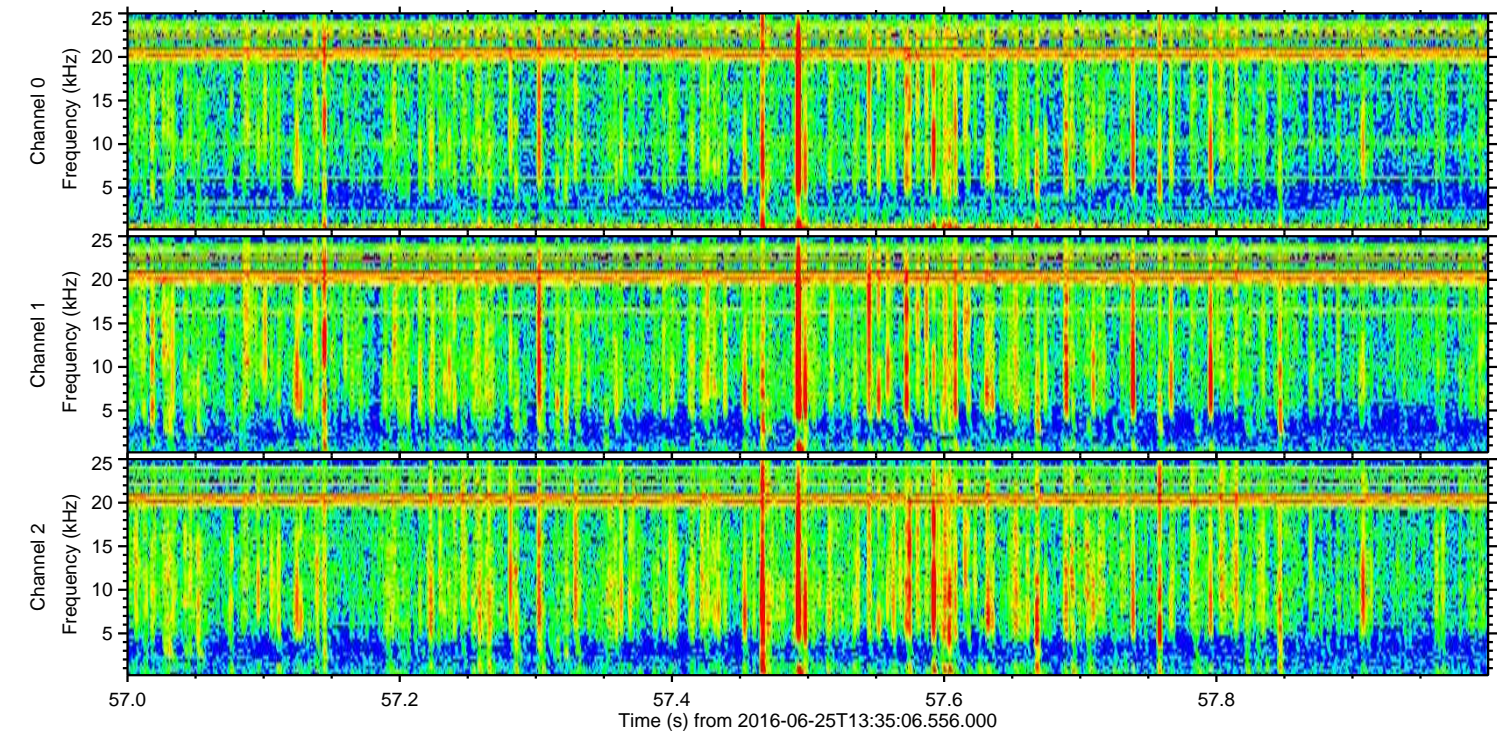
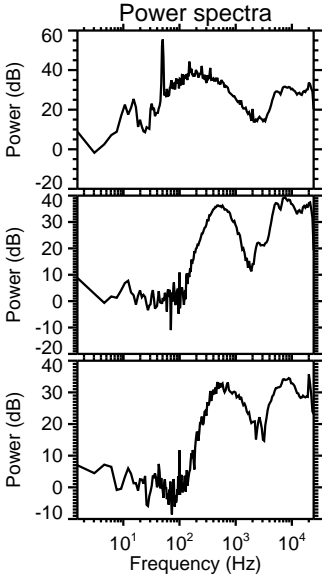
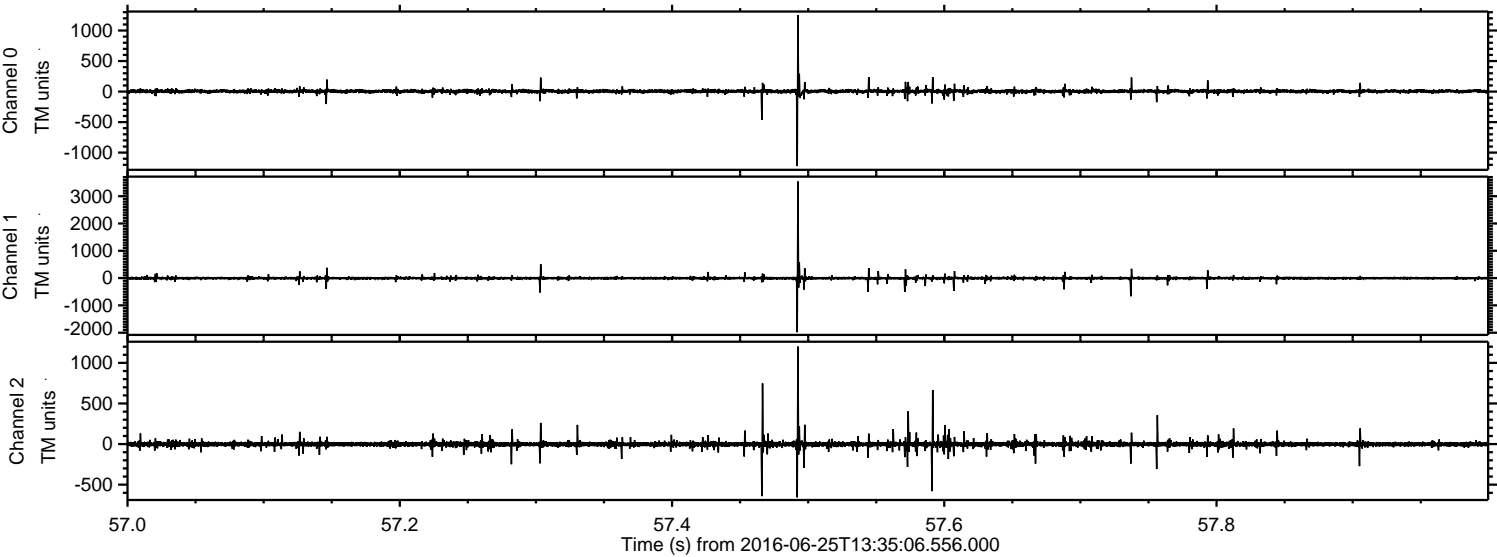


Channel 0
mn: -1970
mx: 1345
 μ : 4.9
 σ : 25.7

Channel 1
mn: -1392
mx: 1702
 μ : -3.6
 σ : 27.2

Channel 2
mn: -3159
mx: 3728
 μ : -2.2
 σ : 47.6

Processed Sat Jun 25 15:43:12 2016 by ELM ver.2012-10-06 from 001__elm20160625_133505__dat00.bin



Processed Sat Jun 25 15:43:13 2016 by ELM ver.2012-10-06 from 001__elm20160625_133505__dat00.bin

