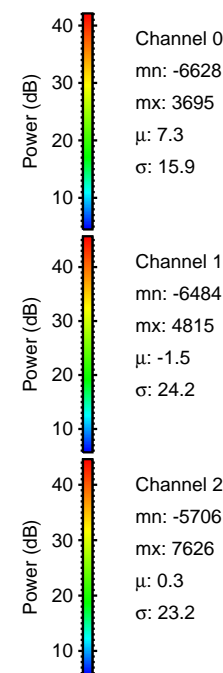
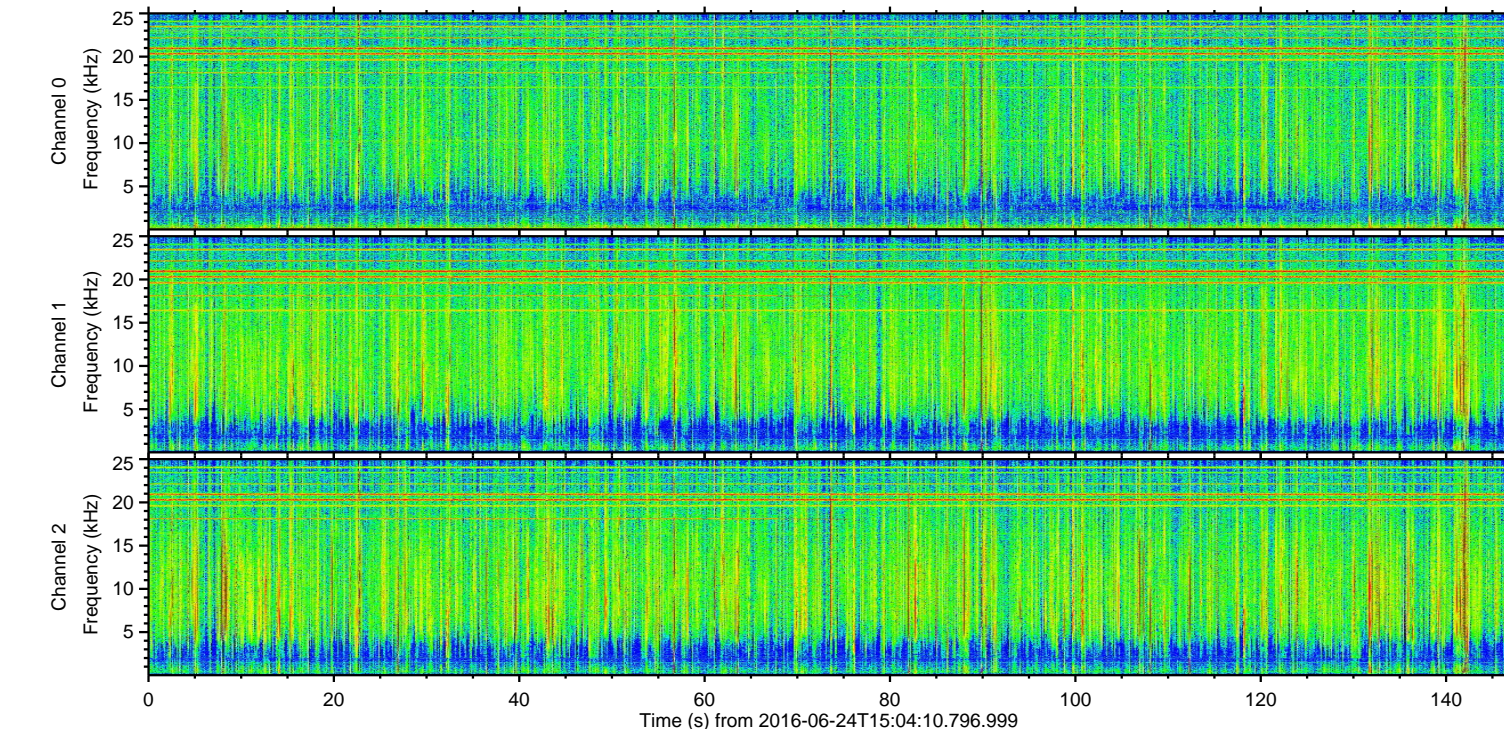
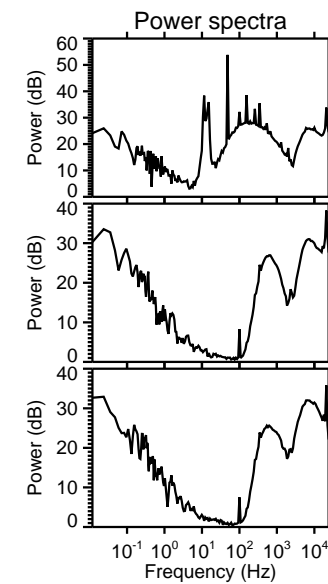
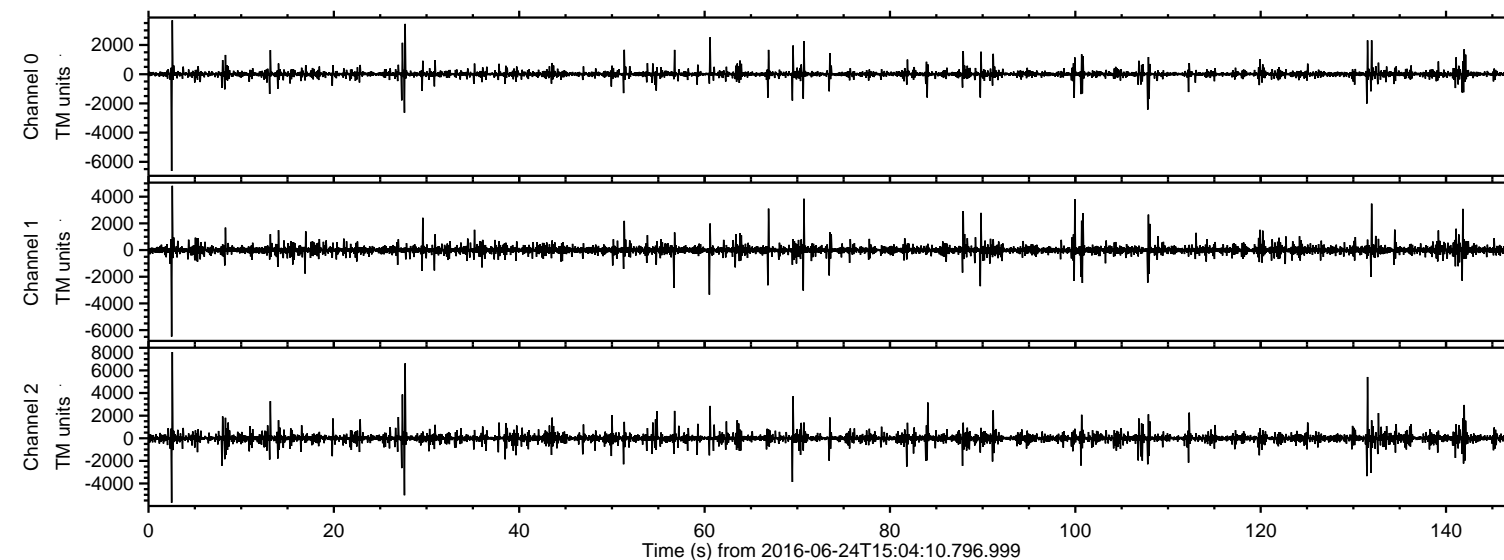


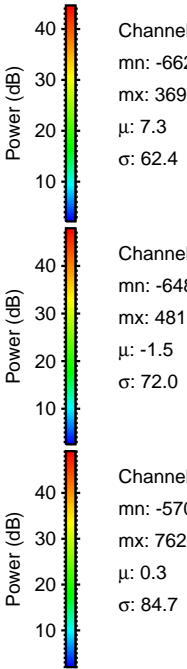
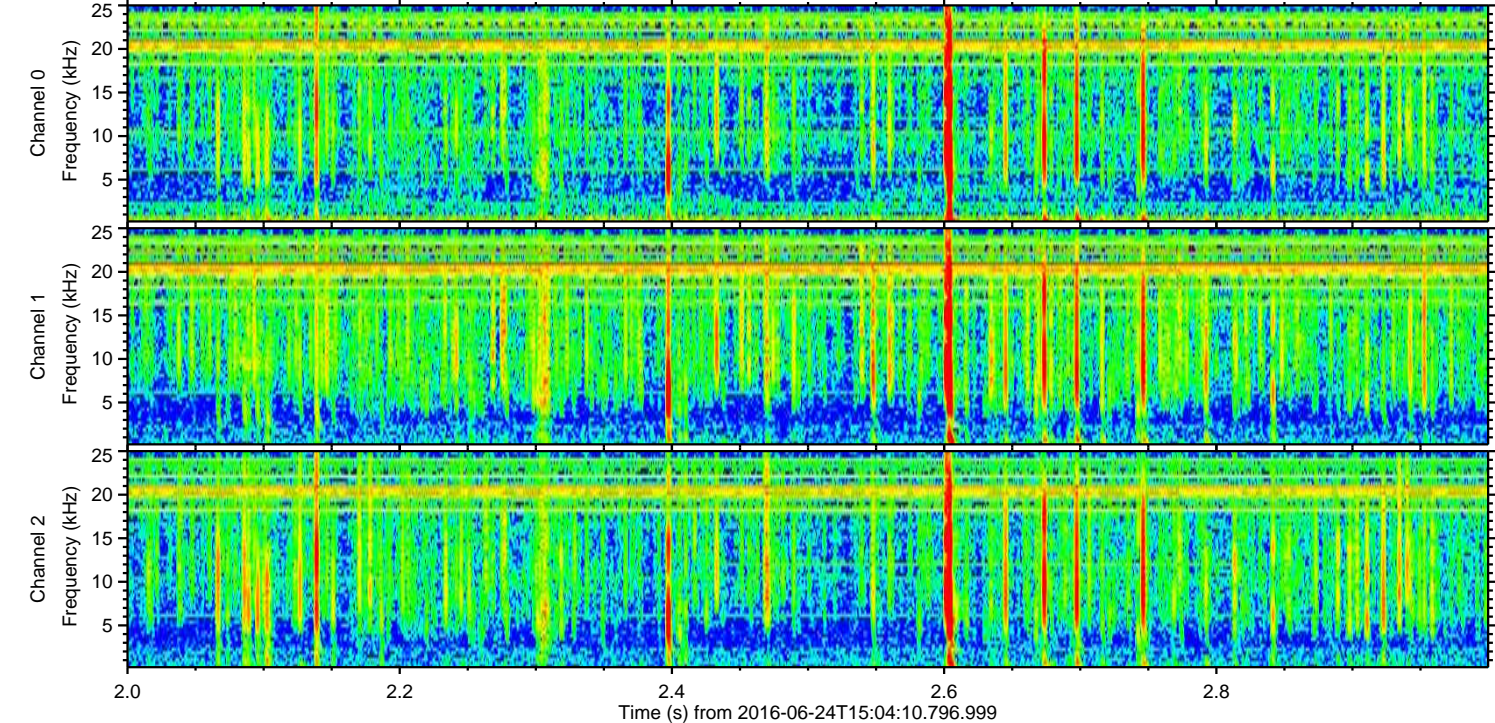
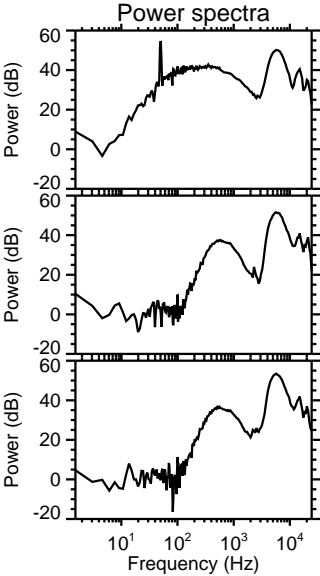
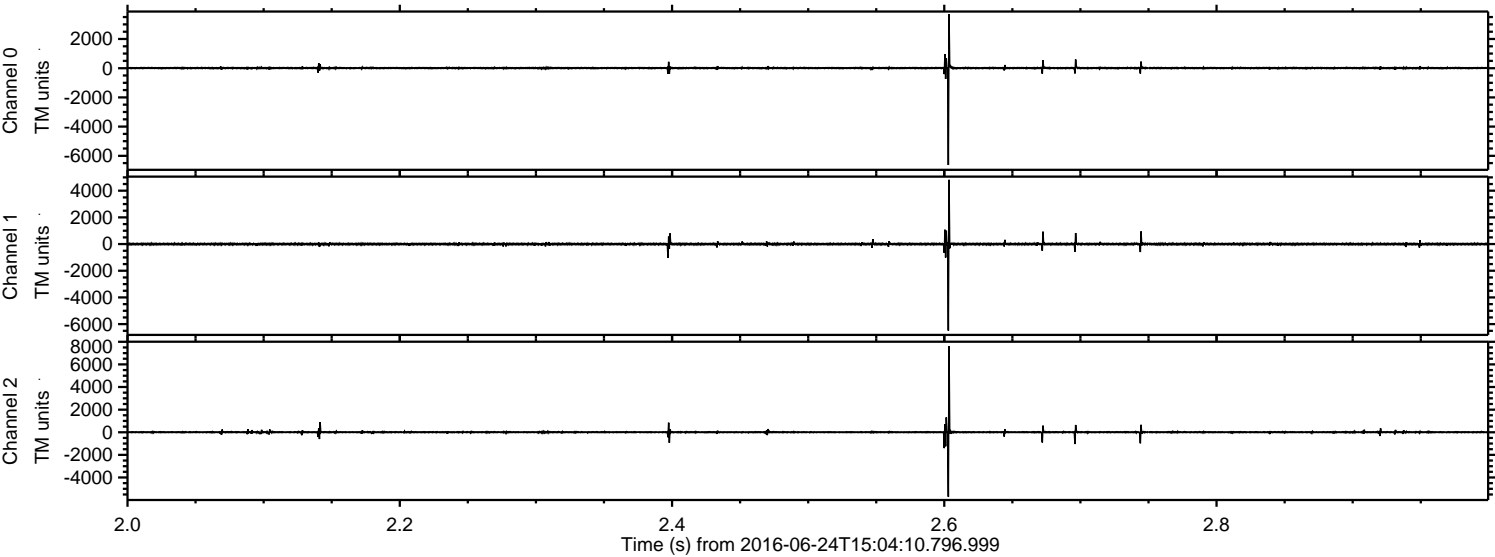
# ELMAVAN 3D WAVEFORMS (Measured data sampled at 50 kHz) 51000 packets of 144 samples from 2016-06-24T15:04:10.796.999.

Processed Fri Jun 24 17:12:44 2016 by ELM ver.2012-10-06 from 001\_\_elm20160624\_150409\_\_dat00.bin



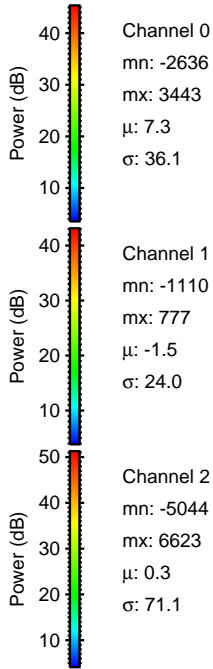
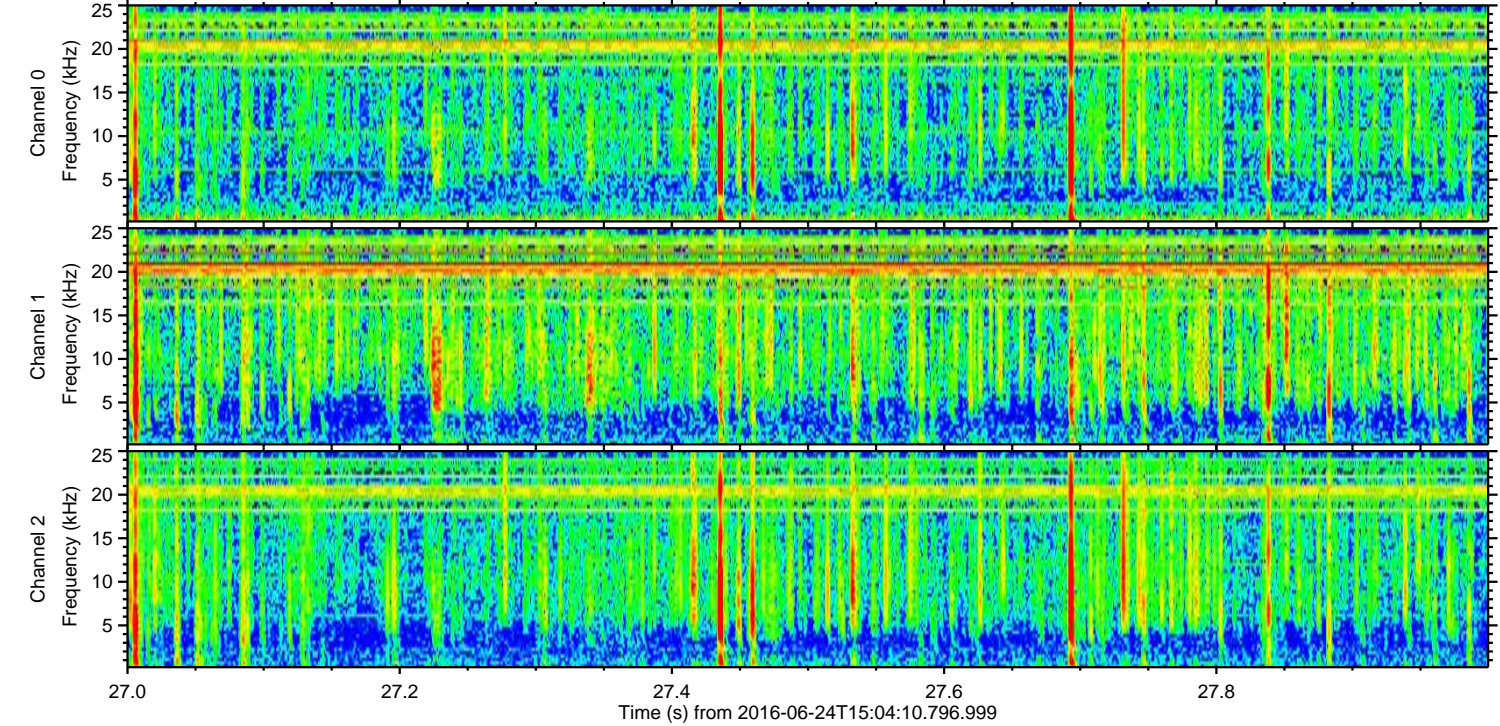
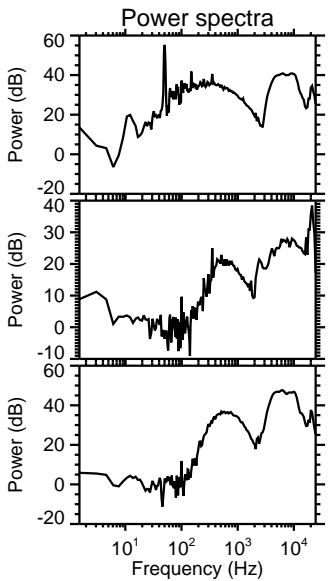
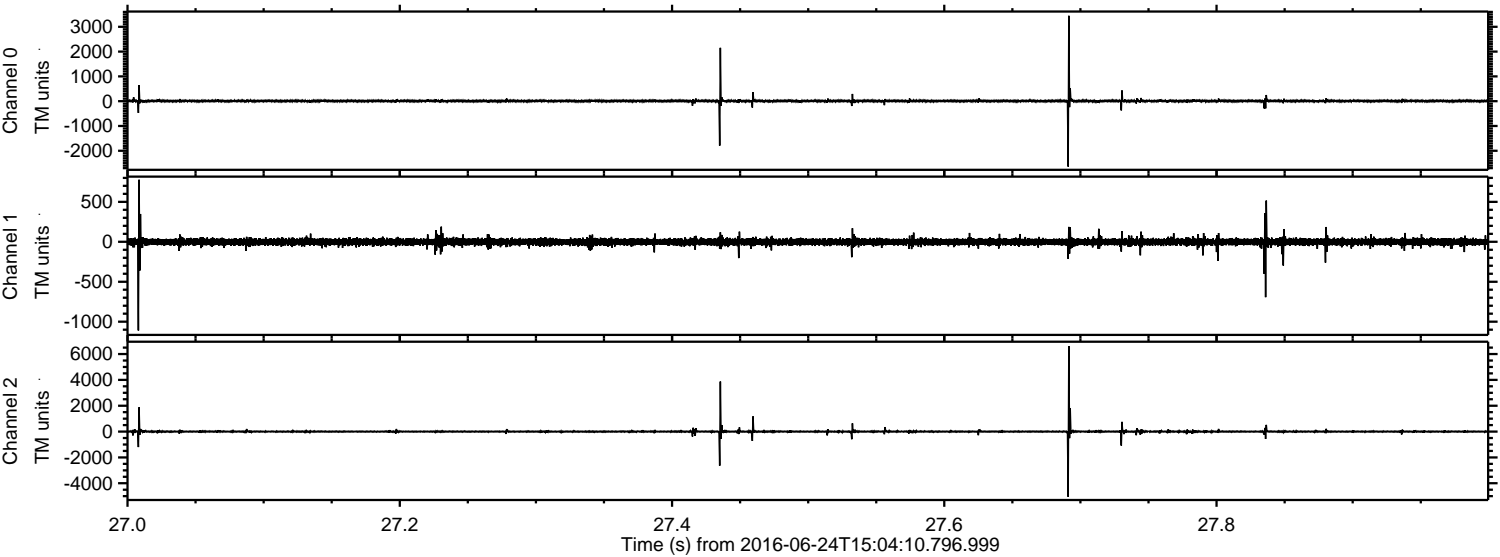


Processed Fri Jun 24 17:12:56 2016 by ELM ver.2012-10-06 from 001\_\_elm20160624\_150409\_\_dat00.bin





Processed Fri Jun 24 17:12:57 2016 by ELM ver.2012-10-06 from 001\_\_elm20160624\_150409\_\_dat00.bin



Channel 0  
mn: -2636  
mx: 3443  
 $\mu$ : 7.3  
 $\sigma$ : 36.1

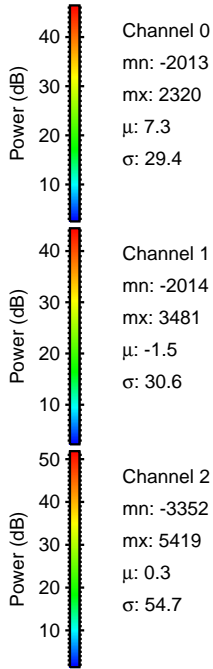
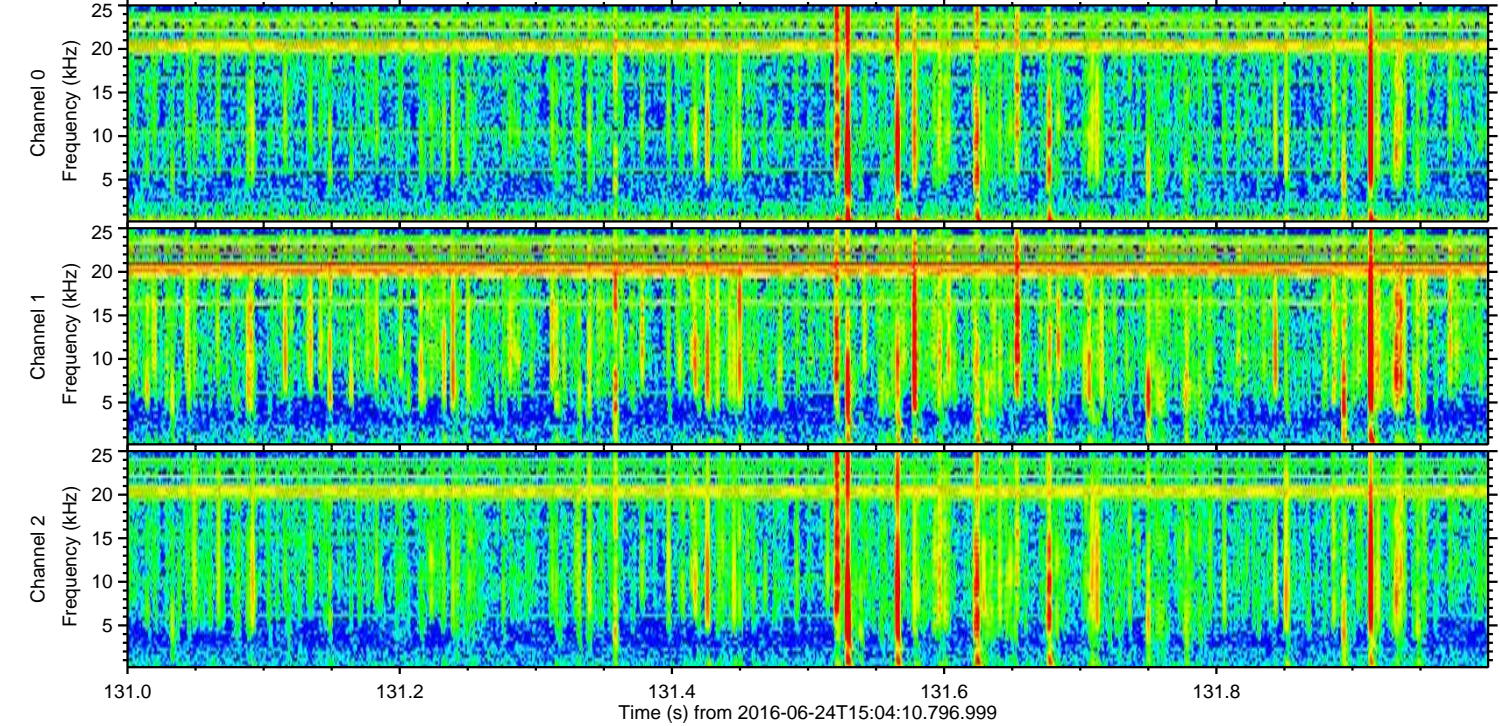
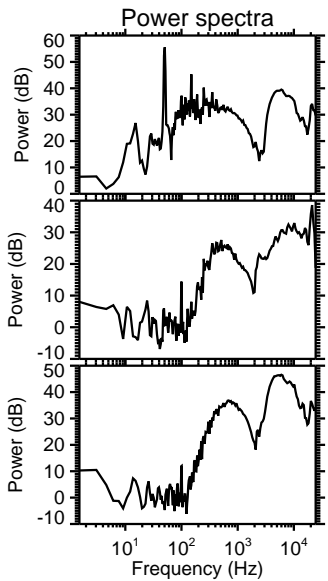
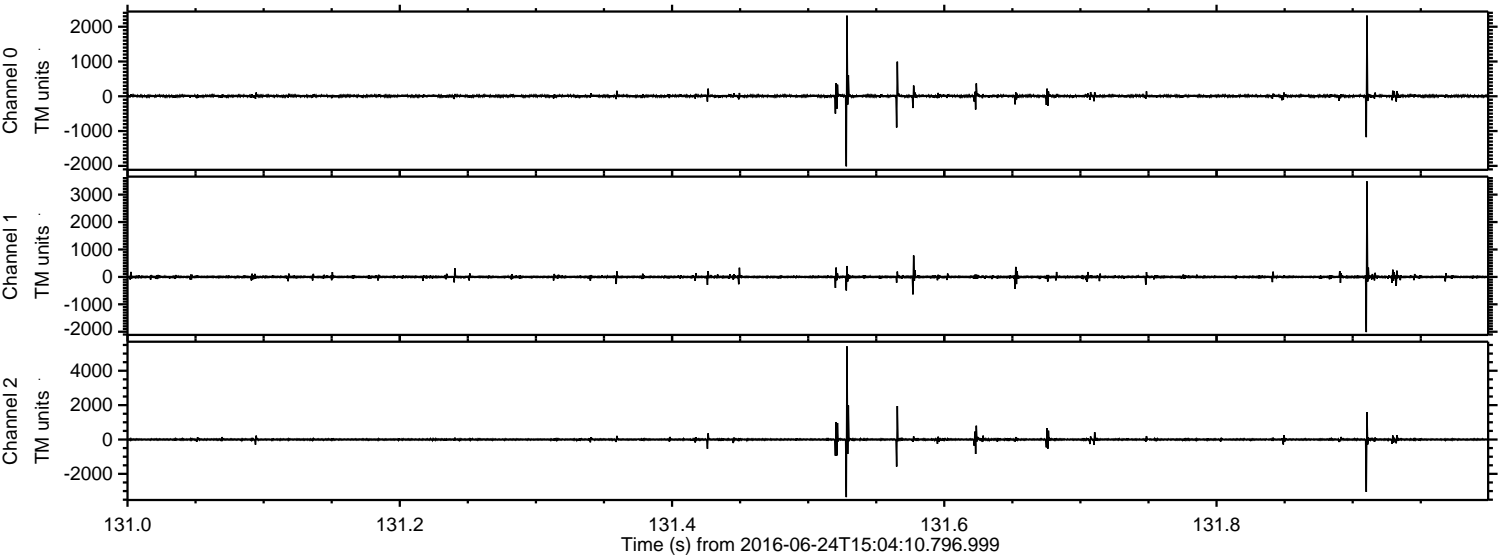
Channel 1  
mn: -1110  
mx: 777  
 $\mu$ : -1.5  
 $\sigma$ : 24.0

Channel 2  
mn: -5044  
mx: 6623  
 $\mu$ : 0.3  
 $\sigma$ : 71.1



ELMAVAN 3D WAVEFORMS (Measured data sampled at 50 kHz) 51000 packets of 144 samples from 2016-06-24T15:04:10.796.999. Part 132/147

Processed Fri Jun 24 17:12:57 2016 by ELM ver.2012-10-06 from 001\_\_elm20160624\_150409\_\_dat00.bin



Channel 0  
mn: -2013  
mx: 2320  
 $\mu$ : 7.3  
 $\sigma$ : 29.4

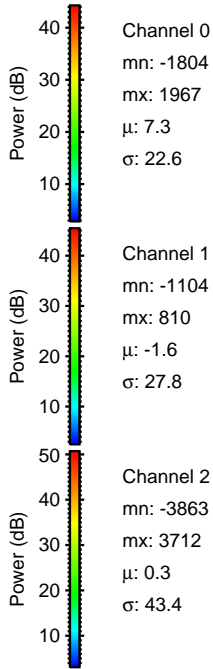
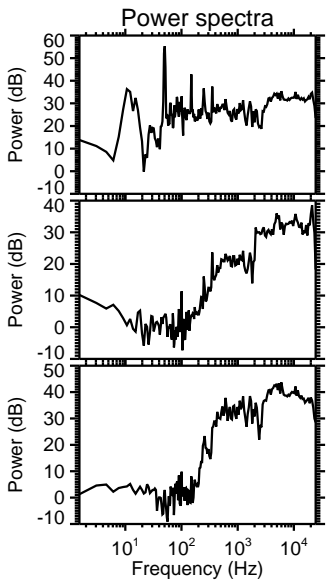
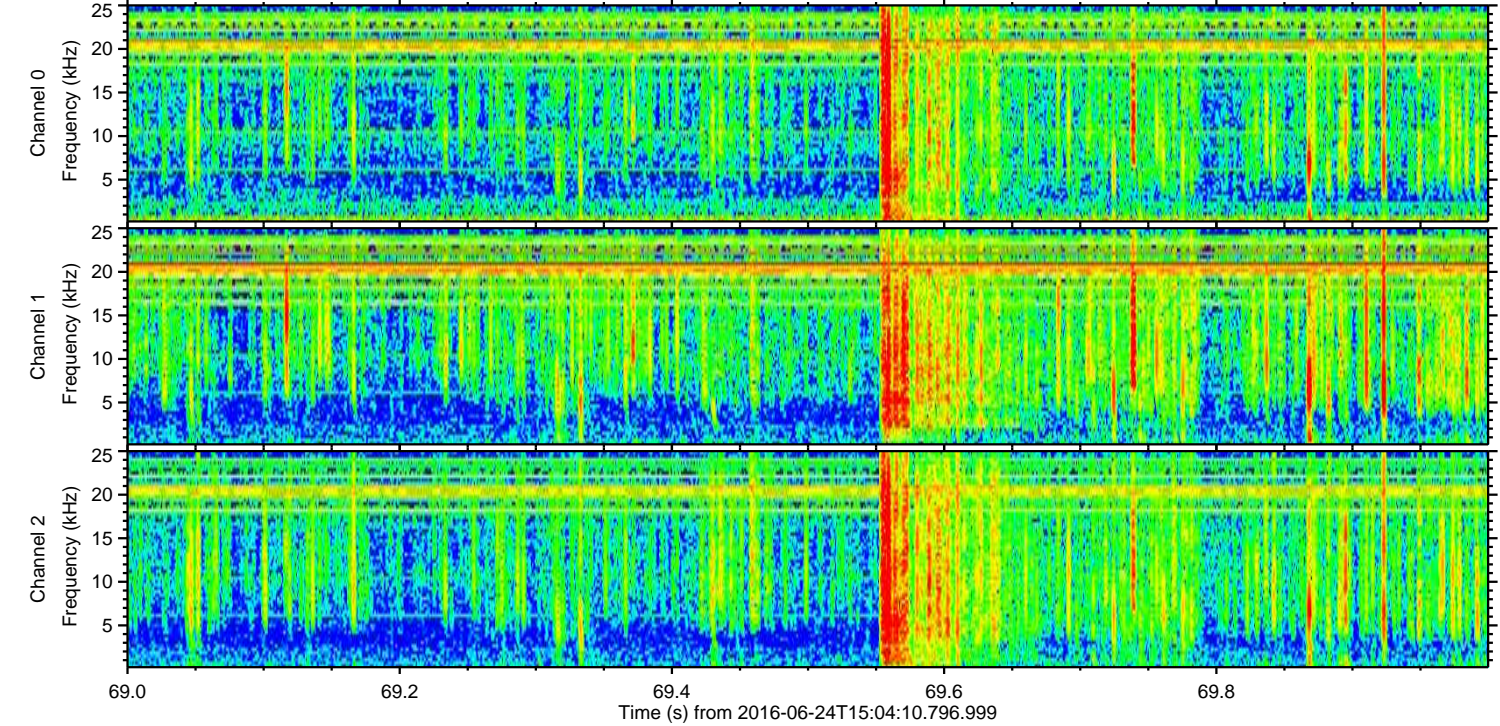
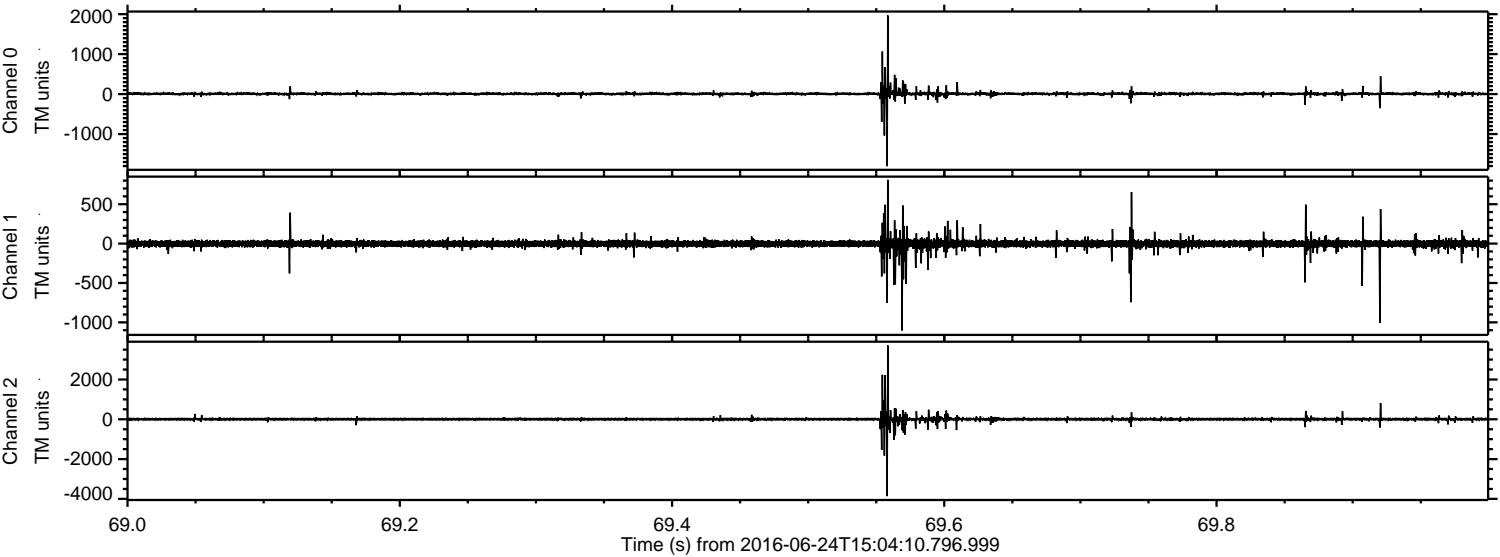
Channel 1  
mn: -2014  
mx: 3481  
 $\mu$ : -1.5  
 $\sigma$ : 30.6

Channel 2  
mn: -3352  
mx: 5419  
 $\mu$ : 0.3  
 $\sigma$ : 54.7



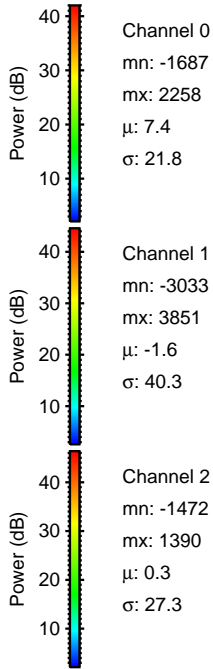
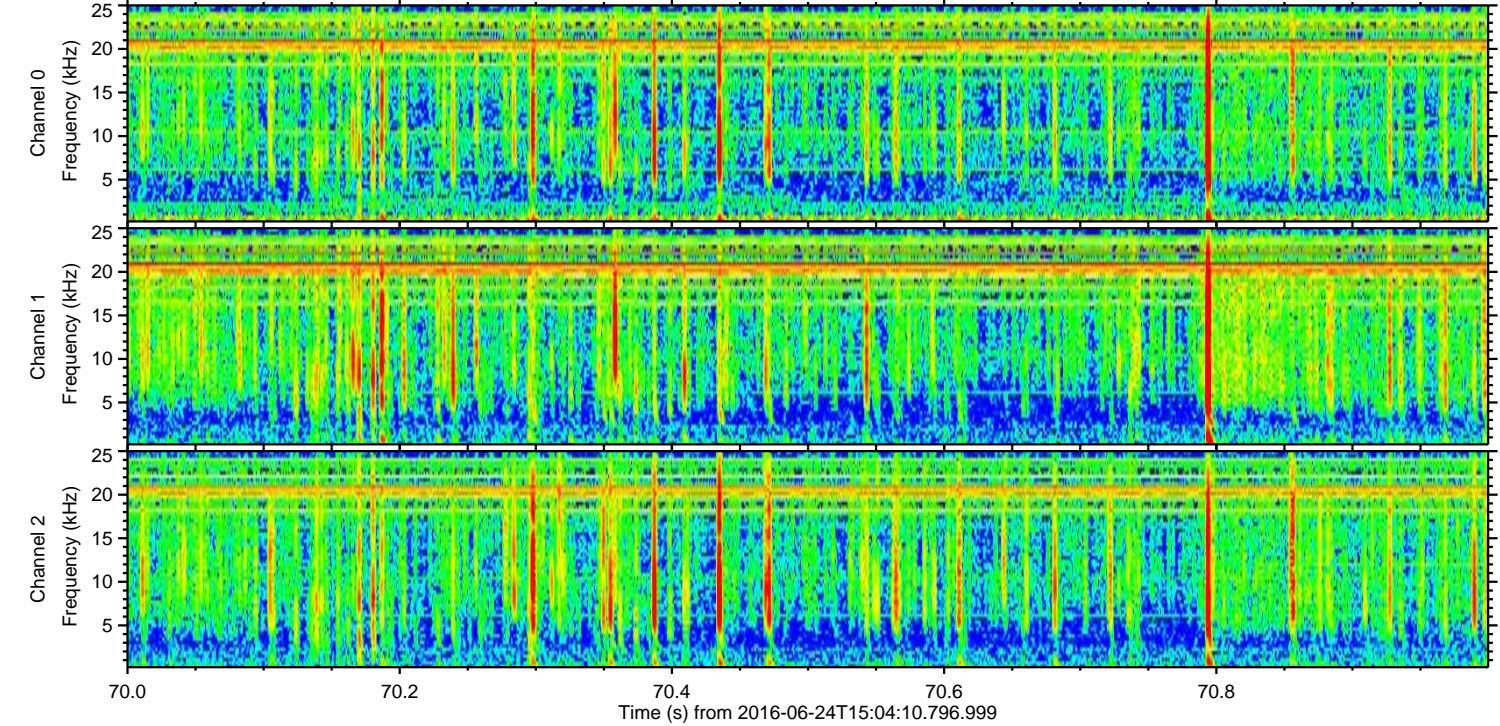
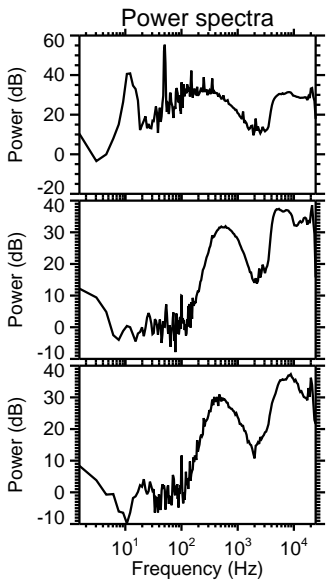
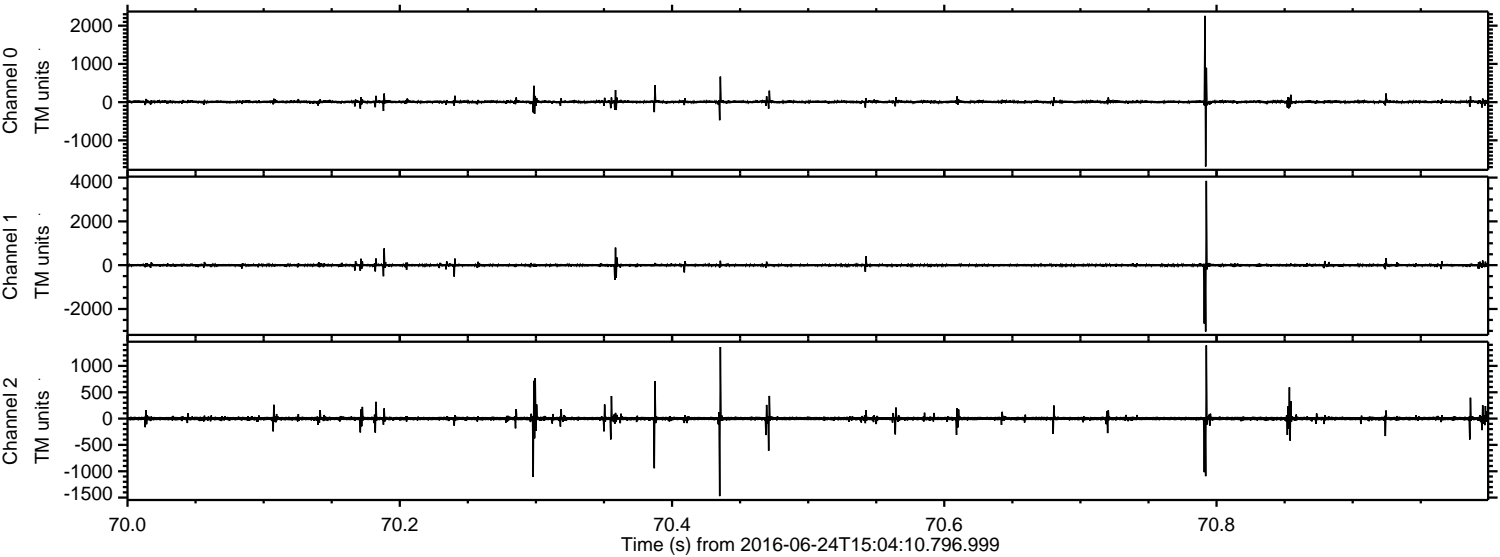
ELMAVAN 3D WAVEFORMS (Measured data sampled at 50 kHz) 51000 packets of 144 samples from 2016-06-24T15:04:10.796.999. Part 70/147

Processed Fri Jun 24 17:12:58 2016 by ELM ver.2012-10-06 from 001\_\_elm20160624\_150409\_\_dat00.bin





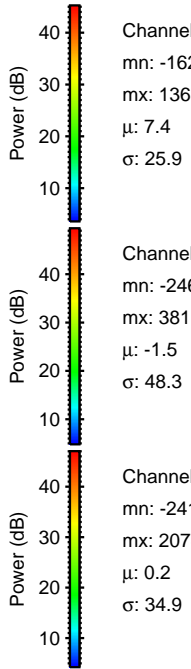
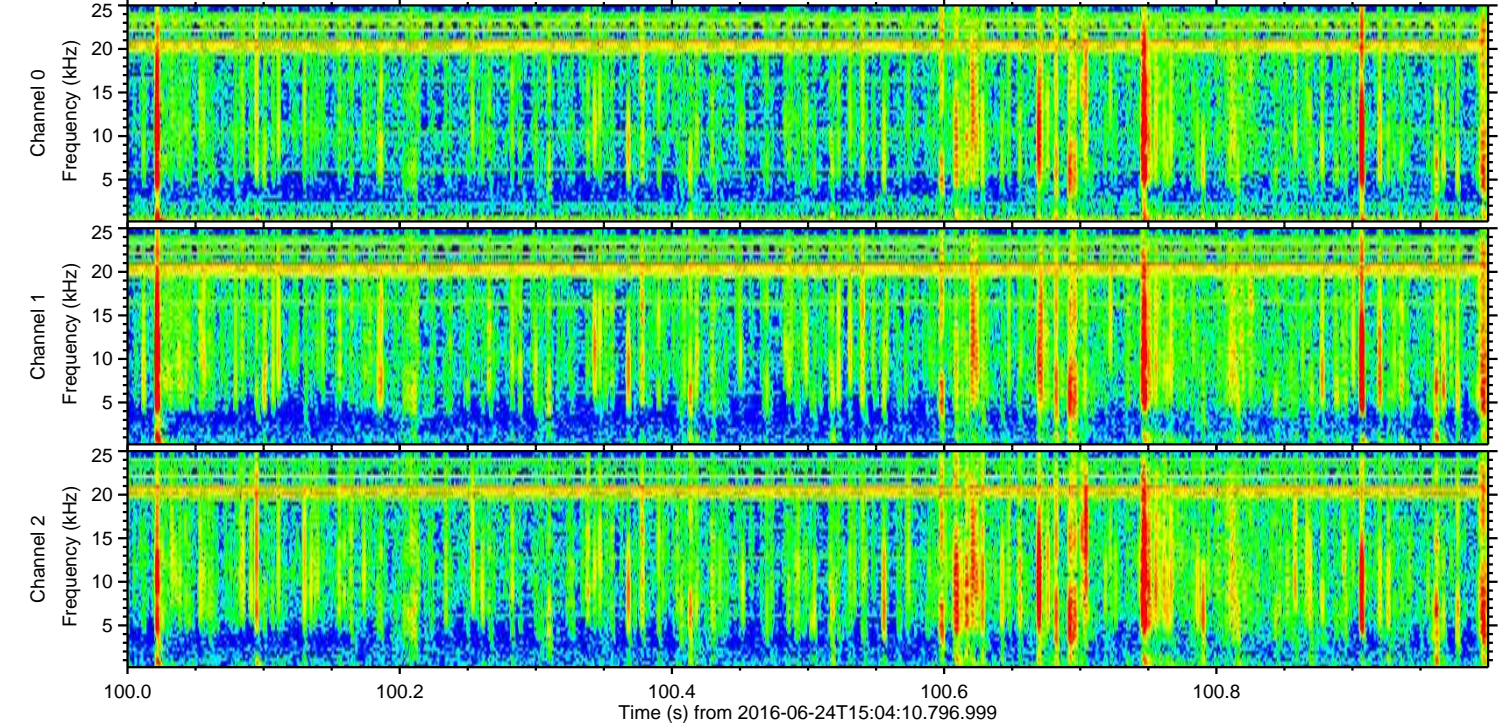
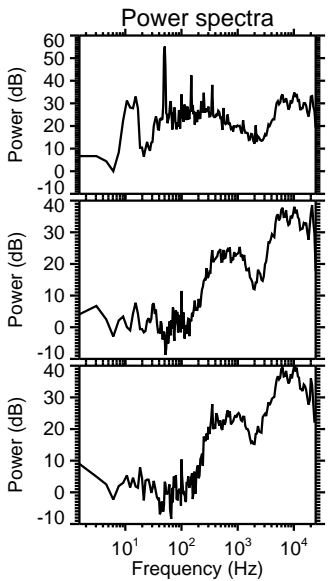
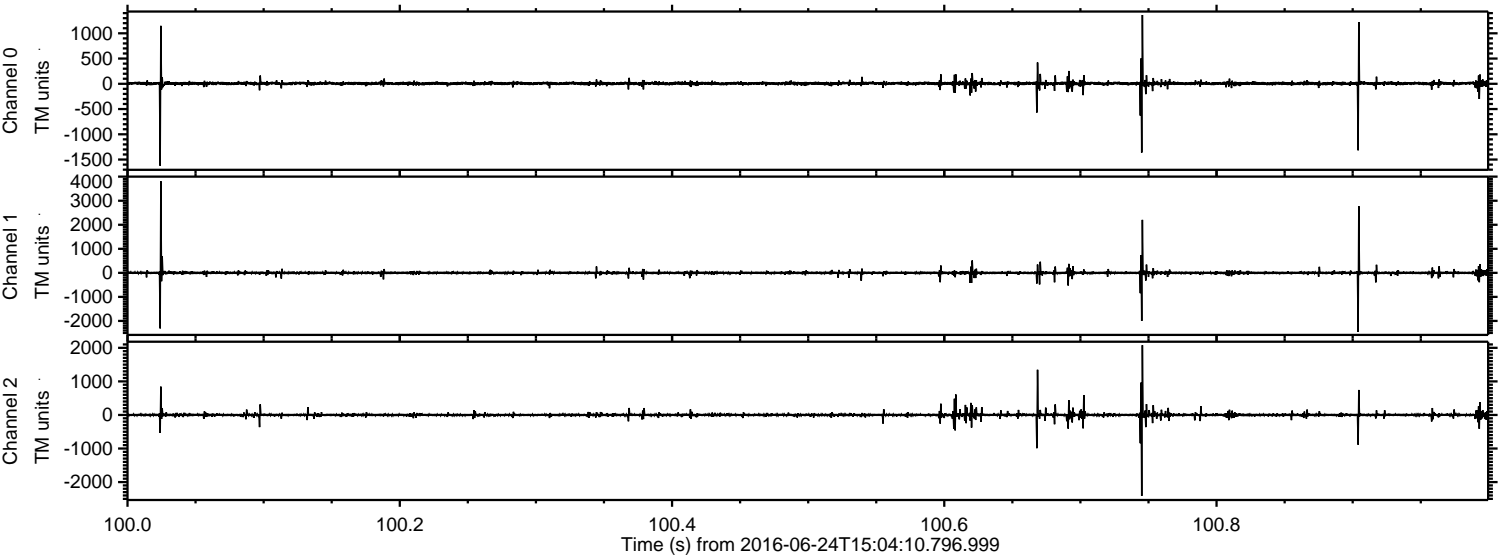
Processed Fri Jun 24 17:12:59 2016 by ELM ver.2012-10-06 from 001\_\_elm20160624\_150409\_\_dat00.bin





ELMAVAN 3D WAVEFORMS (Measured data sampled at 50 kHz) 51000 packets of 144 samples from 2016-06-24T15:04:10.796.999. Part 101/147

Processed Fri Jun 24 17:13:00 2016 by ELM ver.2012-10-06 from 001\_\_elm20160624\_150409\_\_dat00.bin



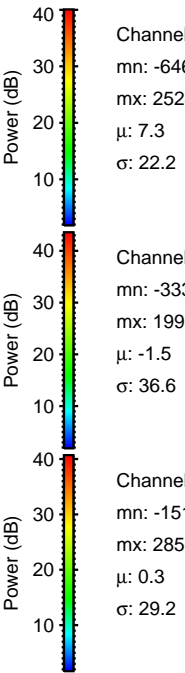
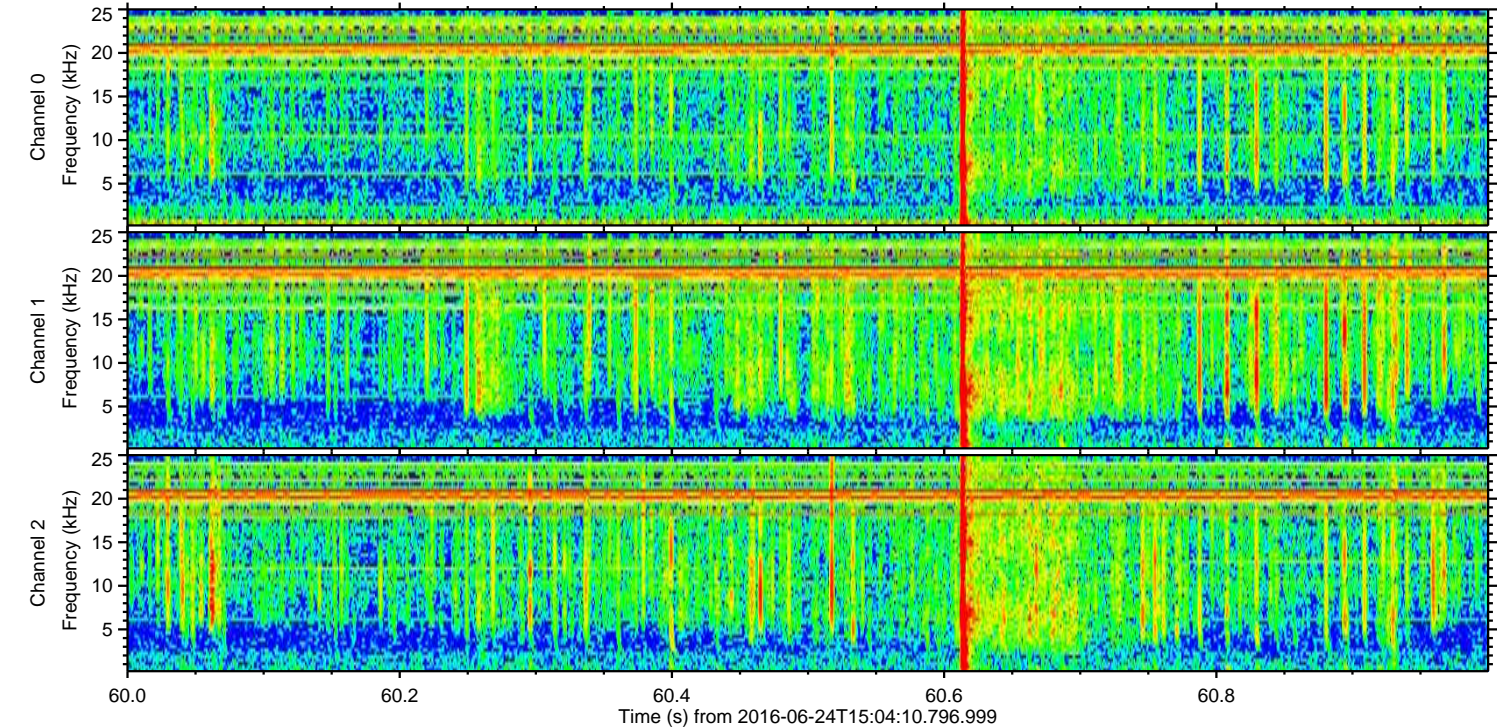
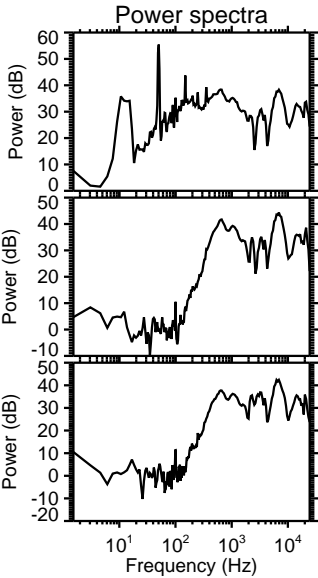
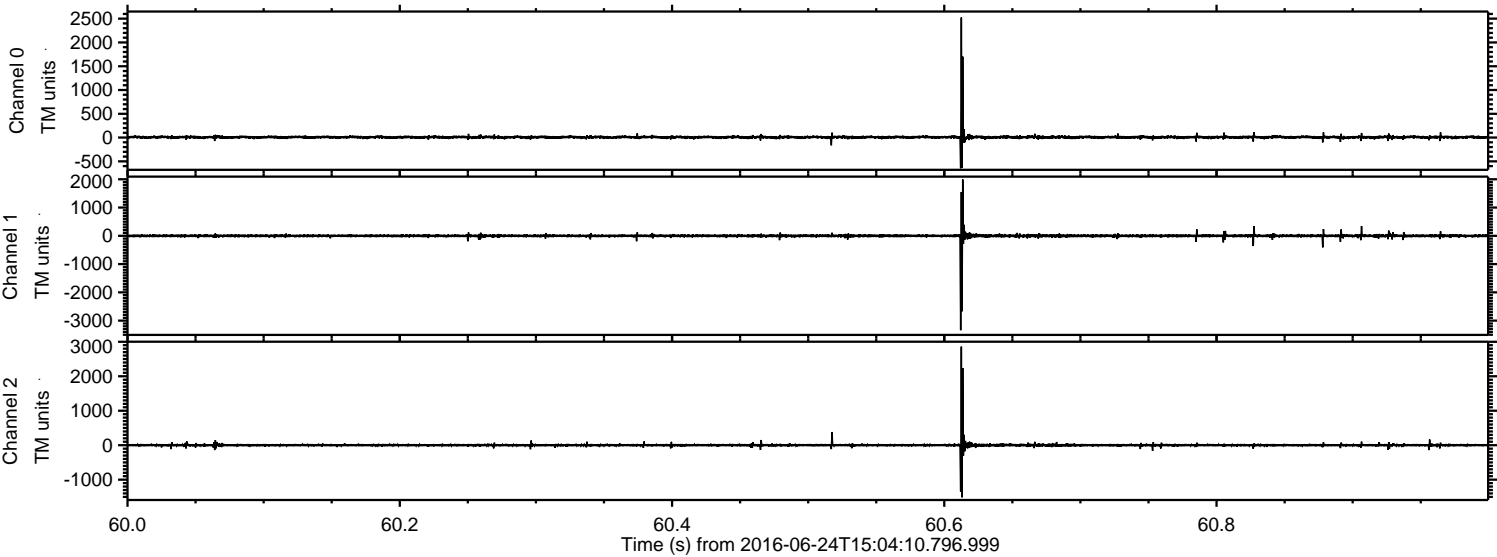
Channel 0  
mn: -1622  
mx: 1363  
 $\mu$ : 7.4  
 $\sigma$ : 25.9

Channel 1  
mn: -2460  
mx: 3811  
 $\mu$ : -1.5  
 $\sigma$ : 48.3

Channel 2  
mn: -2414  
mx: 2078  
 $\mu$ : 0.2  
 $\sigma$ : 34.9



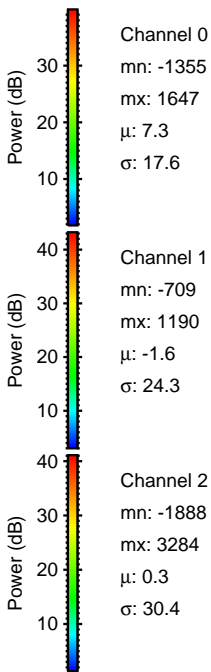
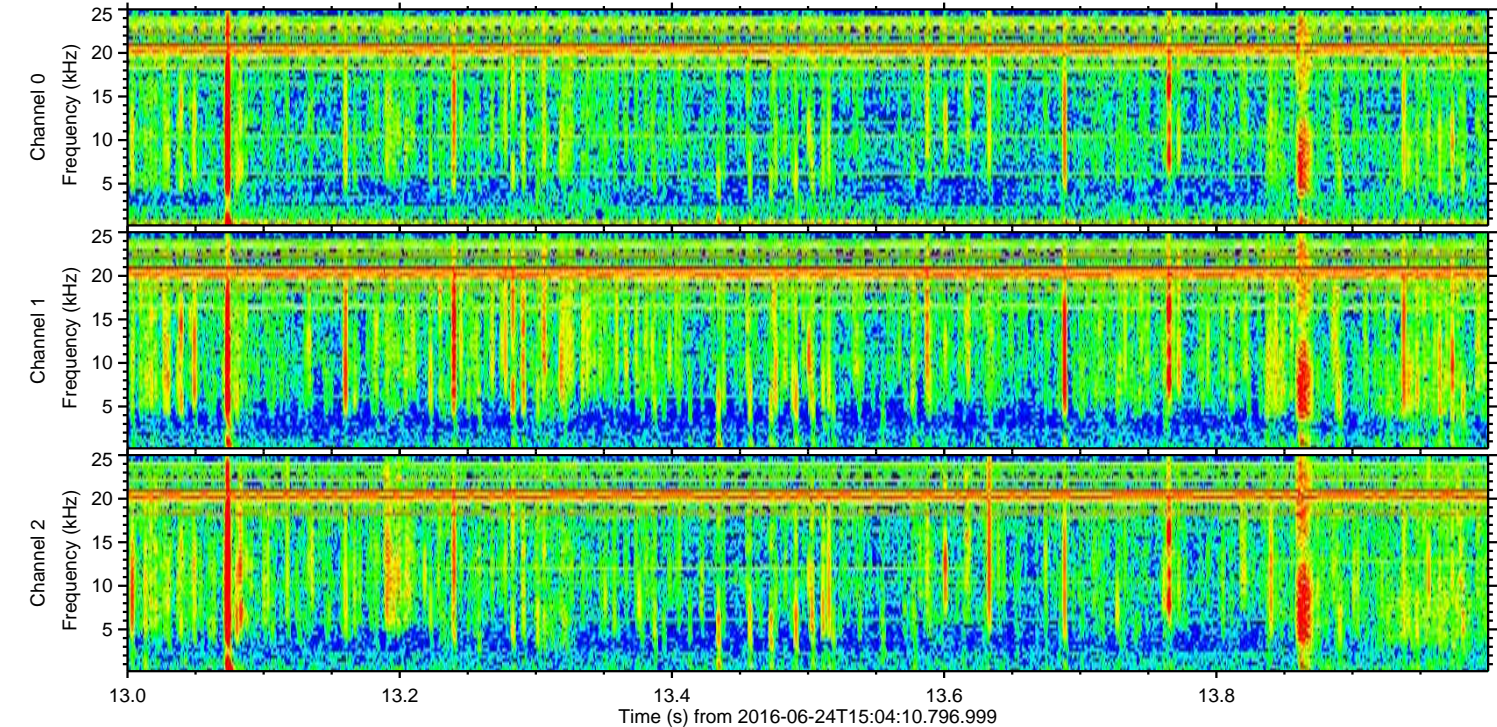
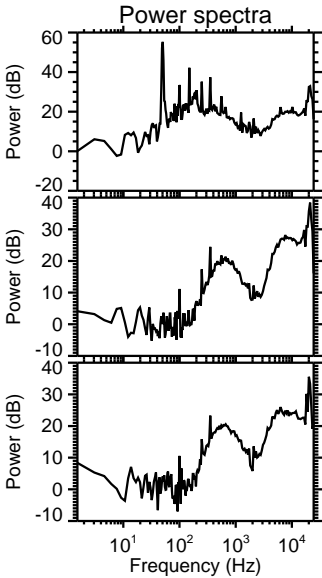
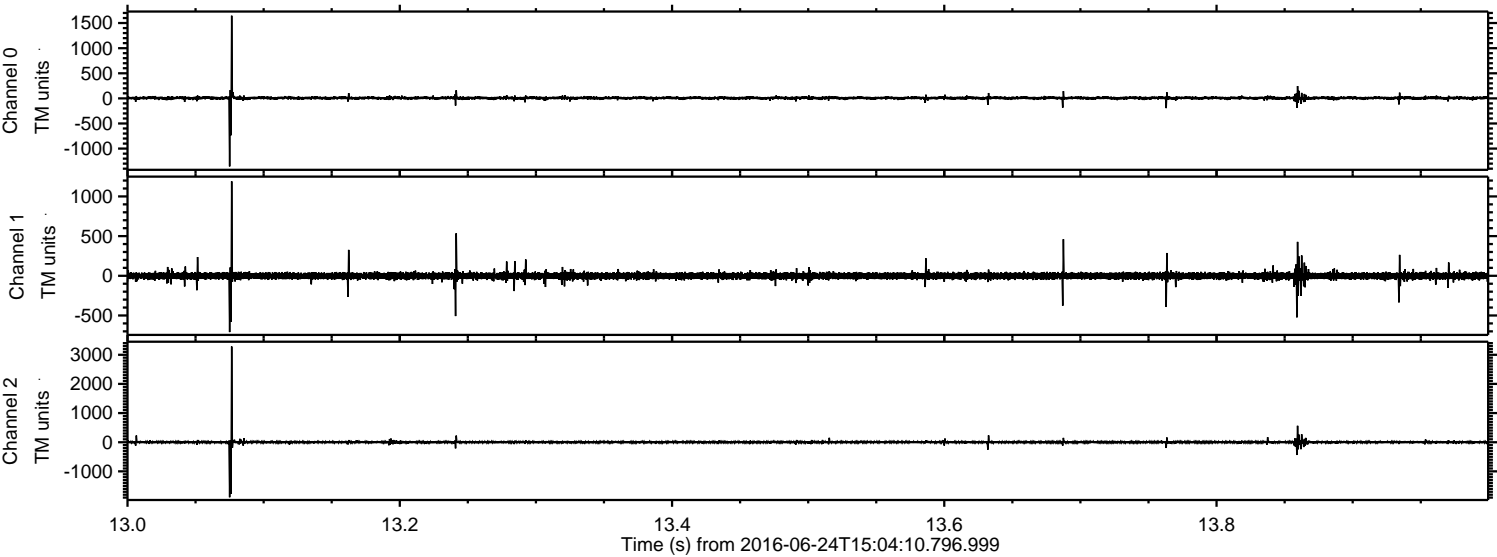
Processed Fri Jun 24 17:13:01 2016 by ELM ver.2012-10-06 from 001\_\_elm20160624\_150409\_\_dat00.bin





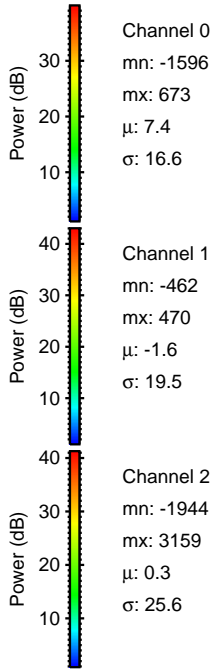
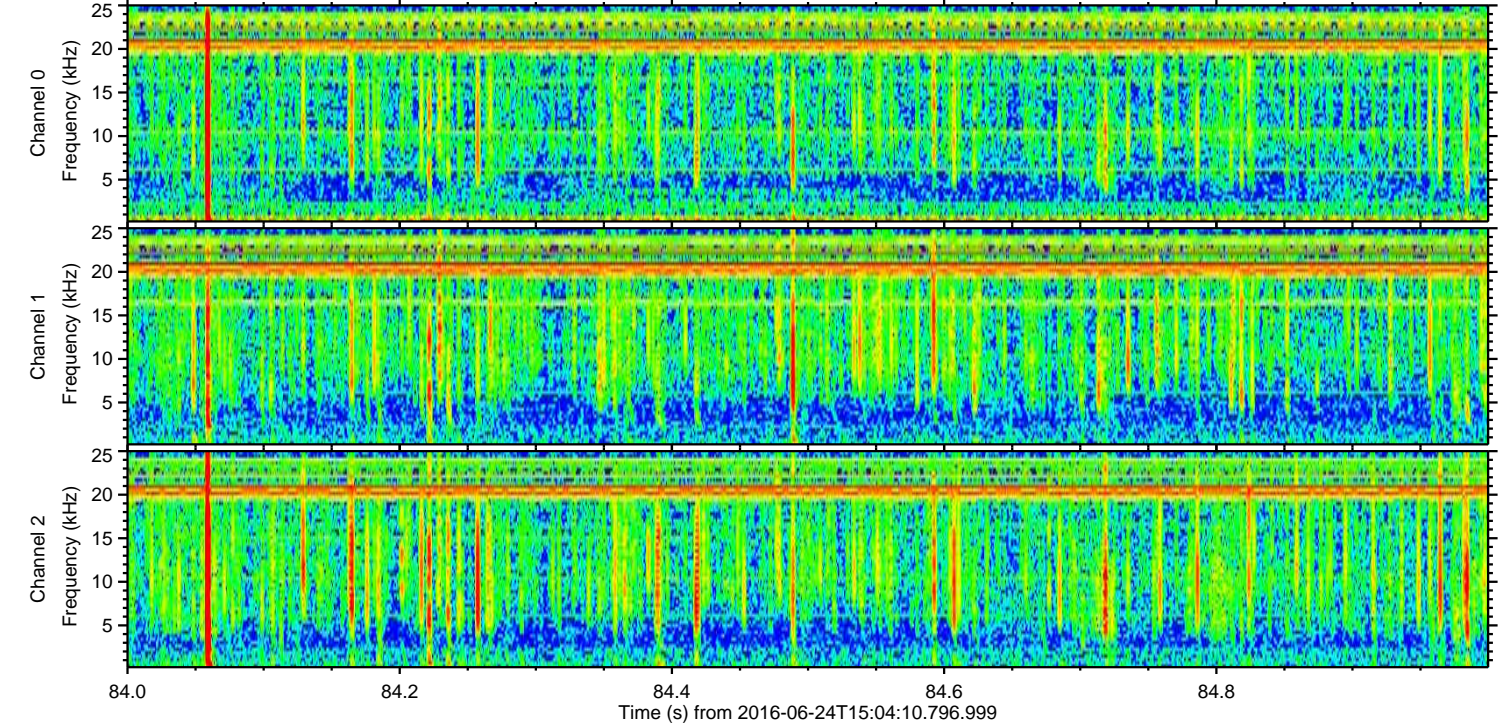
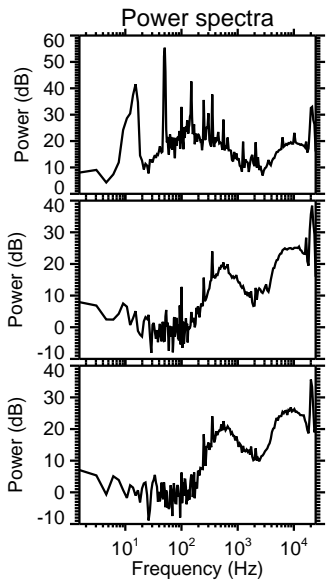
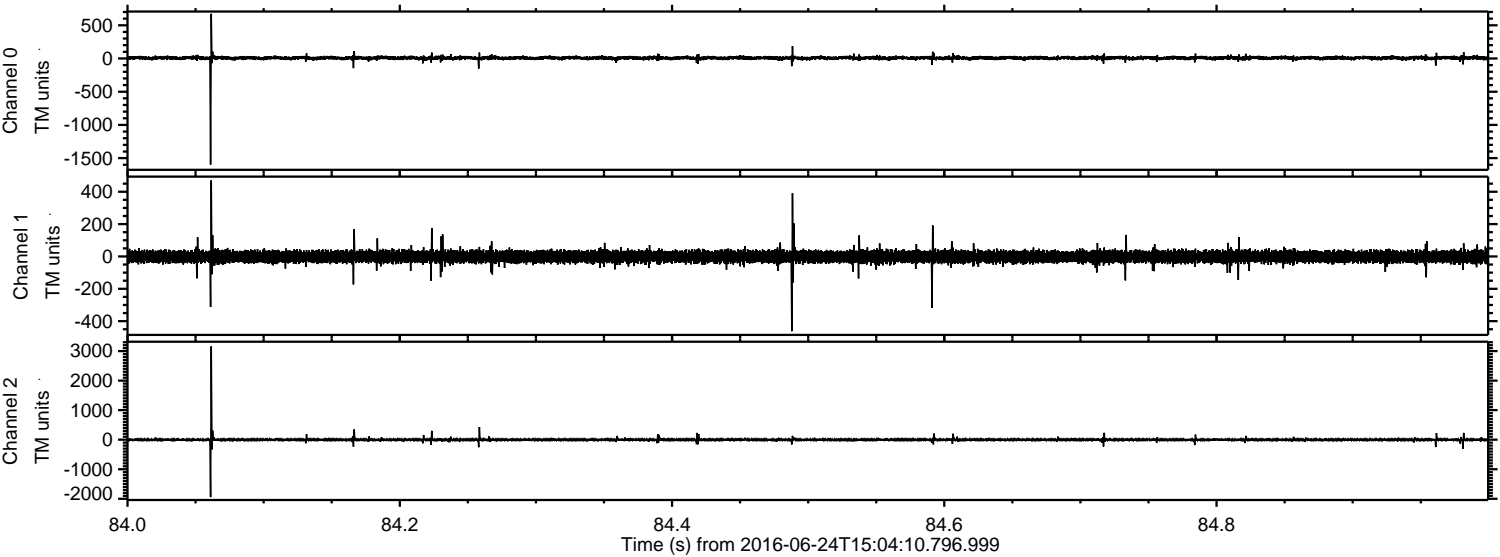
ELMAVAN 3D WAVEFORMS (Measured data sampled at 50 kHz) 51000 packets of 144 samples from 2016-06-24T15:04:10.796.999. Part 14/147

Processed Fri Jun 24 17:13:02 2016 by ELM ver.2012-10-06 from 001\_\_elm20160624\_150409\_\_dat00.bin





Processed Fri Jun 24 17:13:03 2016 by ELM ver.2012-10-06 from 001\_\_elm20160624\_150409\_\_dat00.bin





ELMAVAN 3D WAVEFORMS (Measured data sampled at 50 kHz) 51000 packets of 144 samples from 2016-06-24T15:04:10.796.999. Part 128/147

