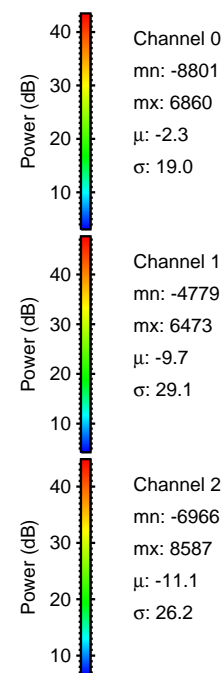
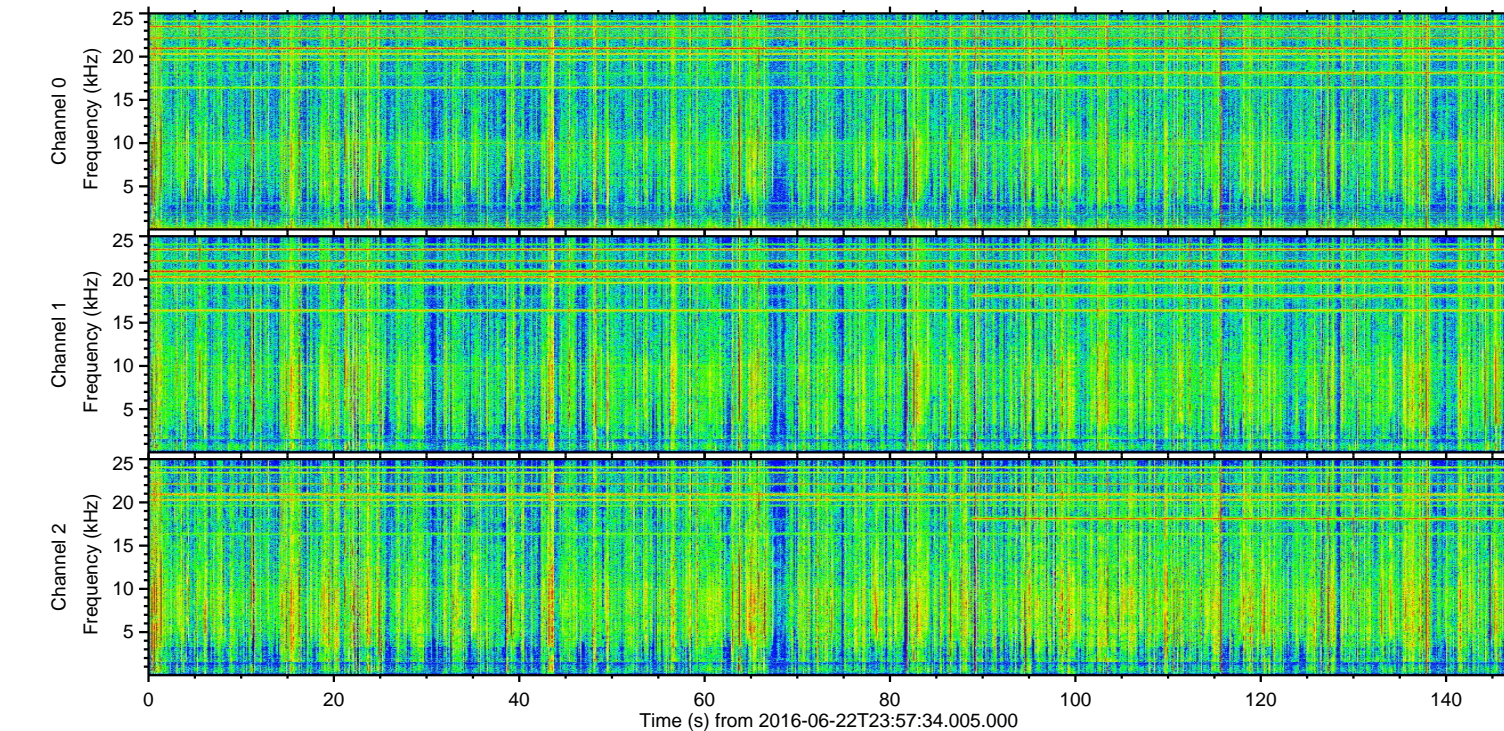
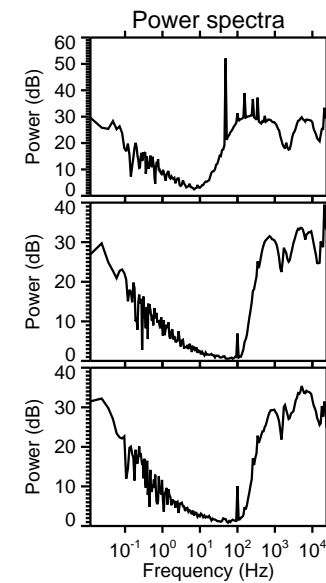
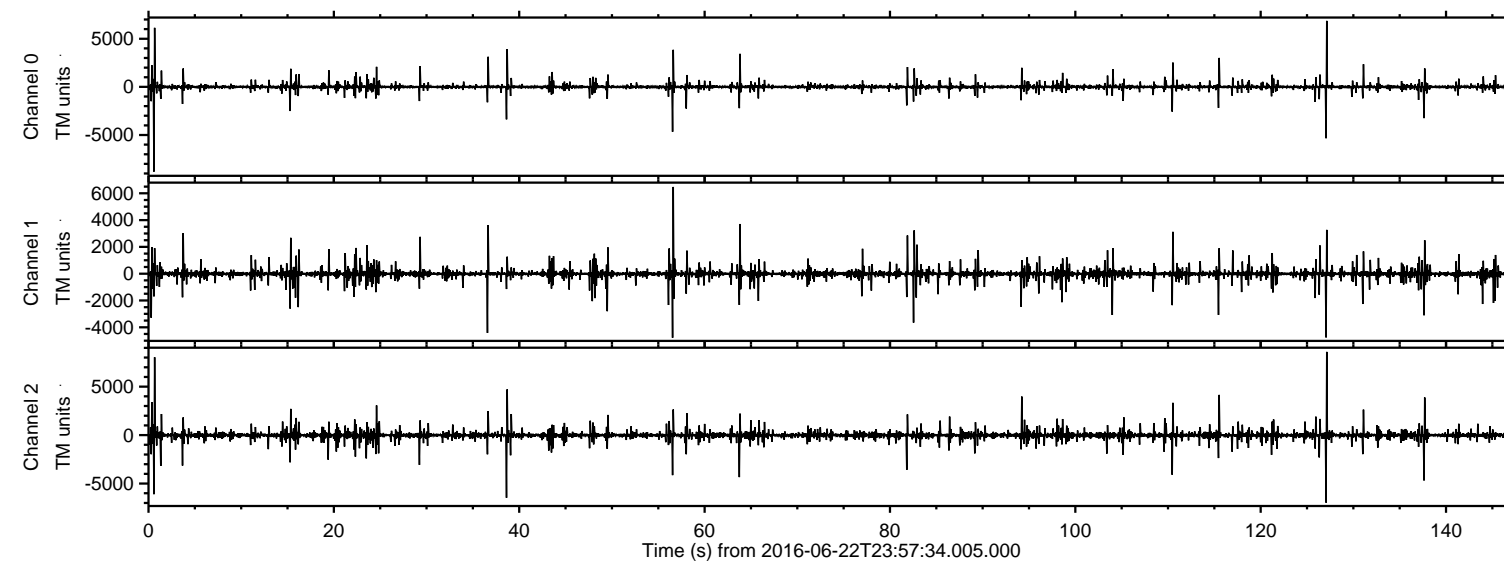


# ELMAVAN 3D WAVEFORMS (Measured data sampled at 50 kHz) 51000 packets of 144 samples from 2016-06-22T23:57:34.005.000.

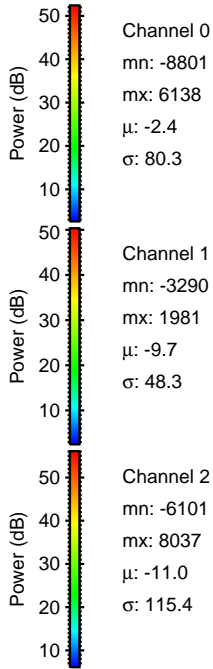
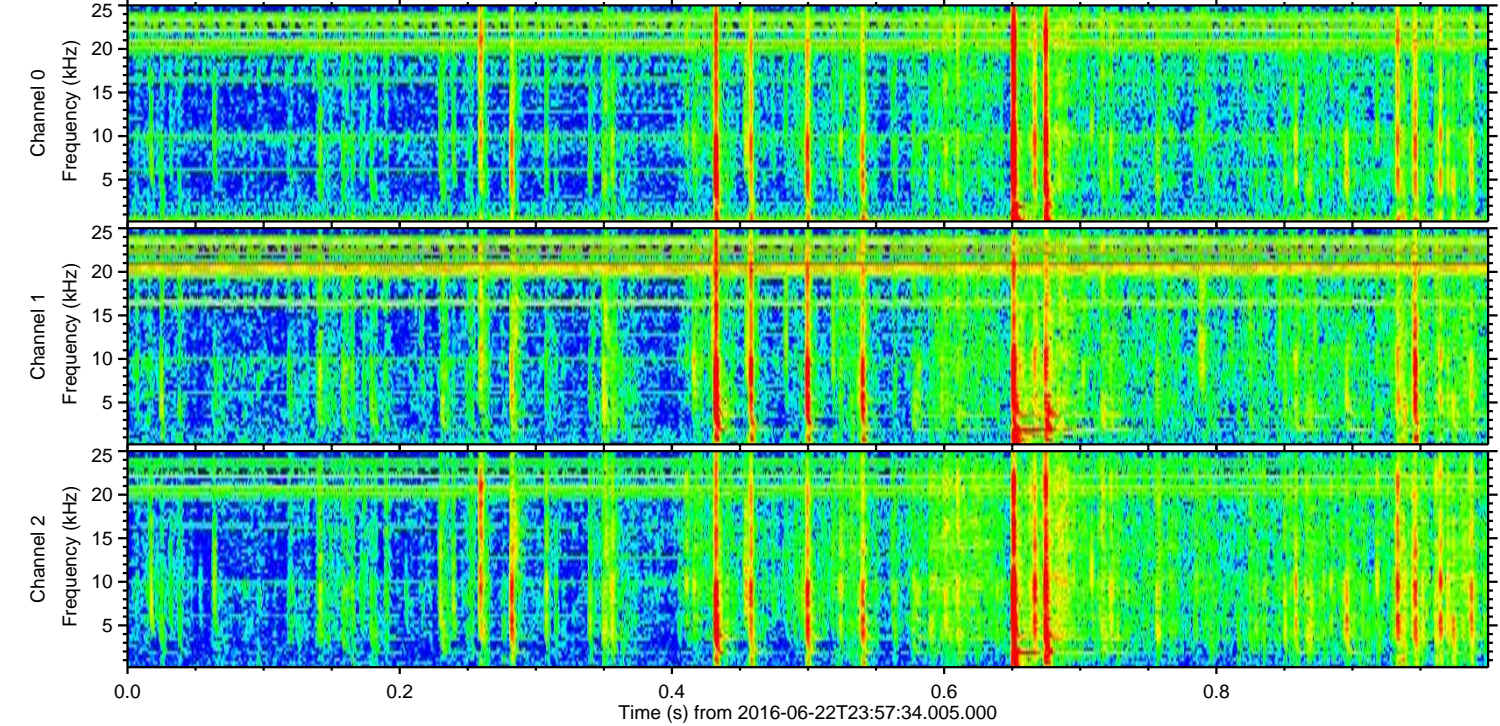
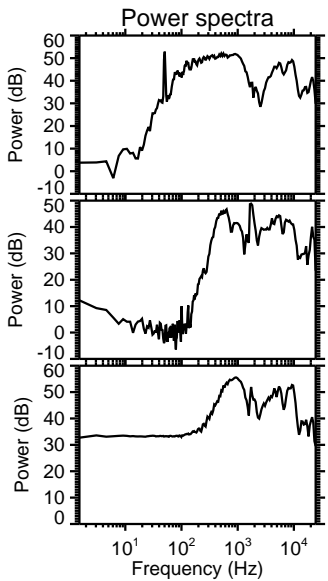
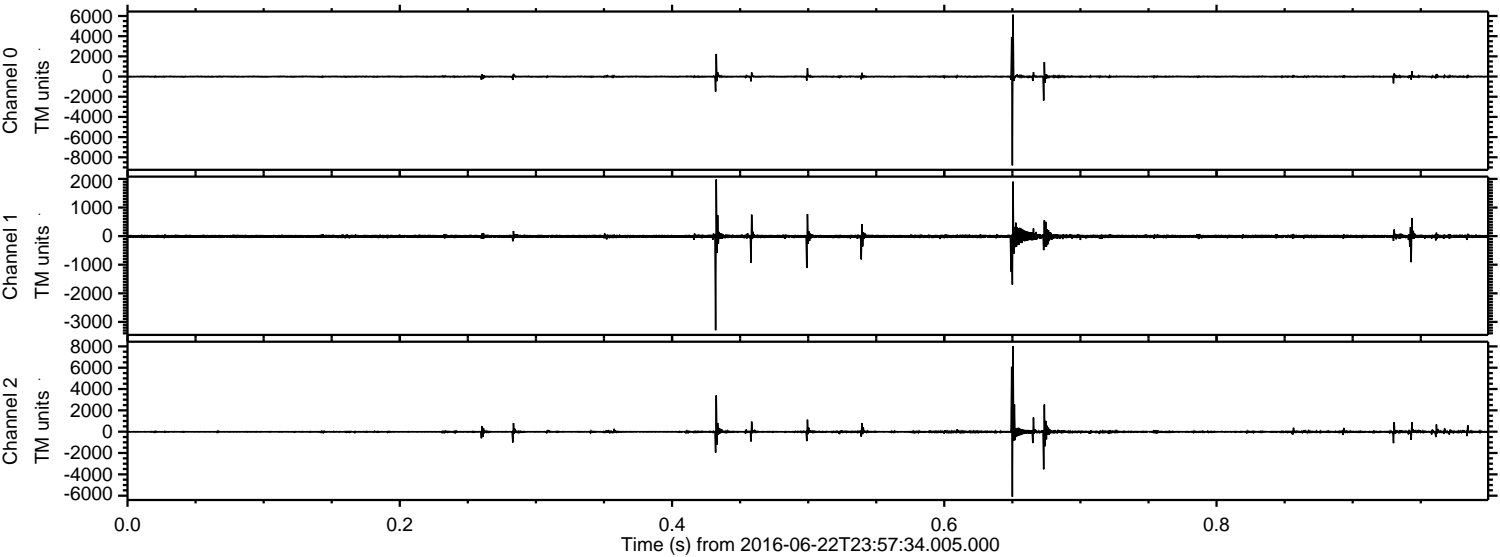
Processed Thu Jun 23 02:05:24 2016 by ELM ver.2012-10-06 from 001\_\_elm20160622\_235732\_\_dat00.bin





ELMAVAN 3D WAVEFORMS (Measured data sampled at 50 kHz) 51000 packets of 144 samples from 2016-06-22T23:57:34.005.000. Part 1/147

Processed Thu Jun 23 02:05:36 2016 by ELM ver.2012-10-06 from 001\_\_elm20160622\_235732\_\_dat00.bin



Channel 0  
mn: -8801  
mx: 6138  
 $\mu$ : -2.4  
 $\sigma$ : 80.3

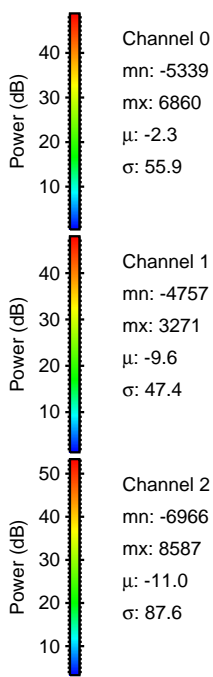
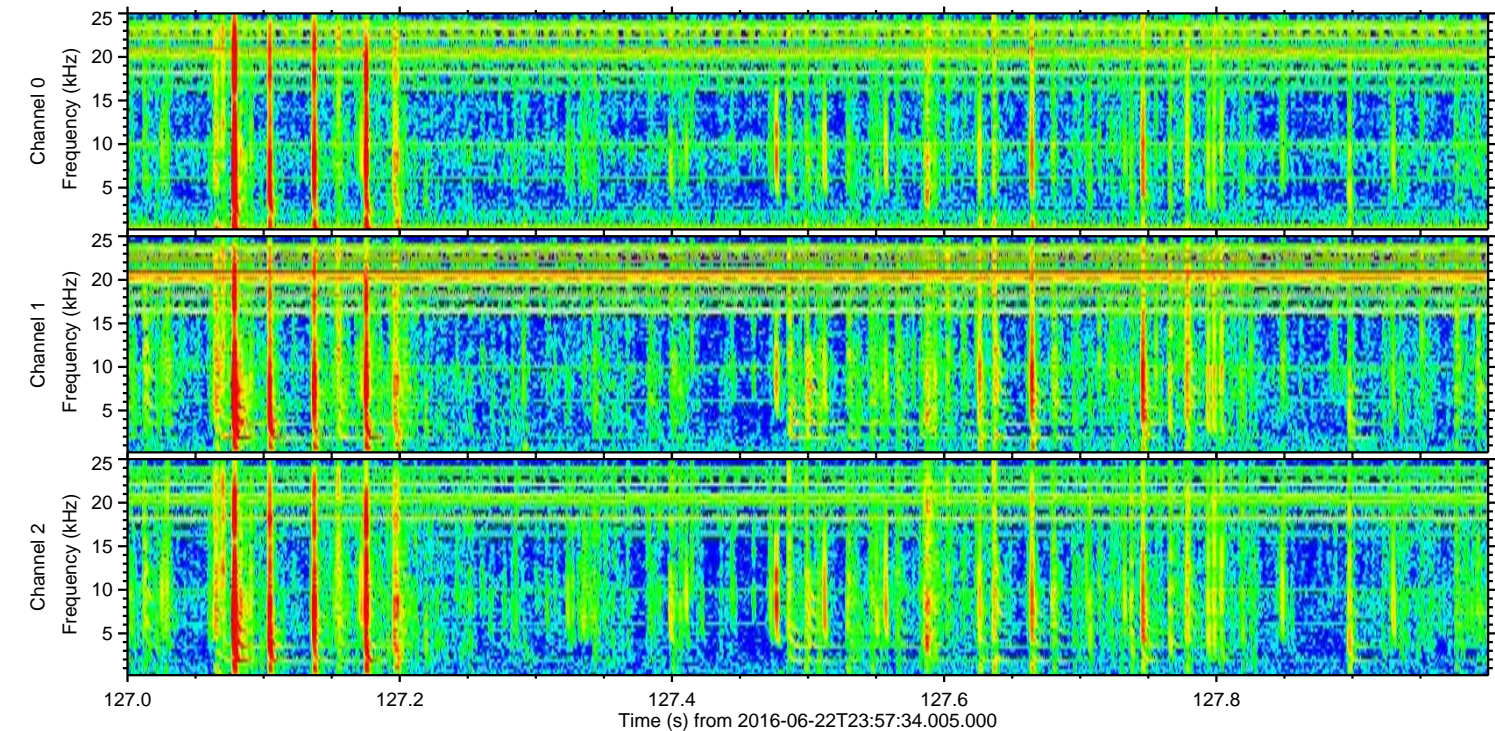
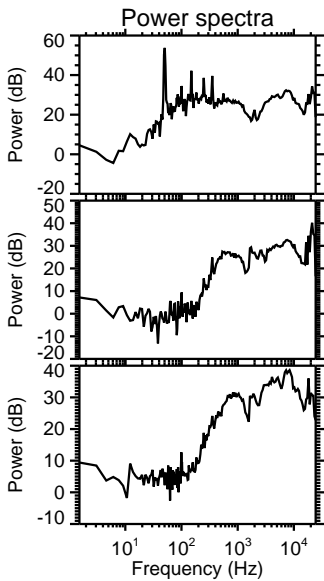
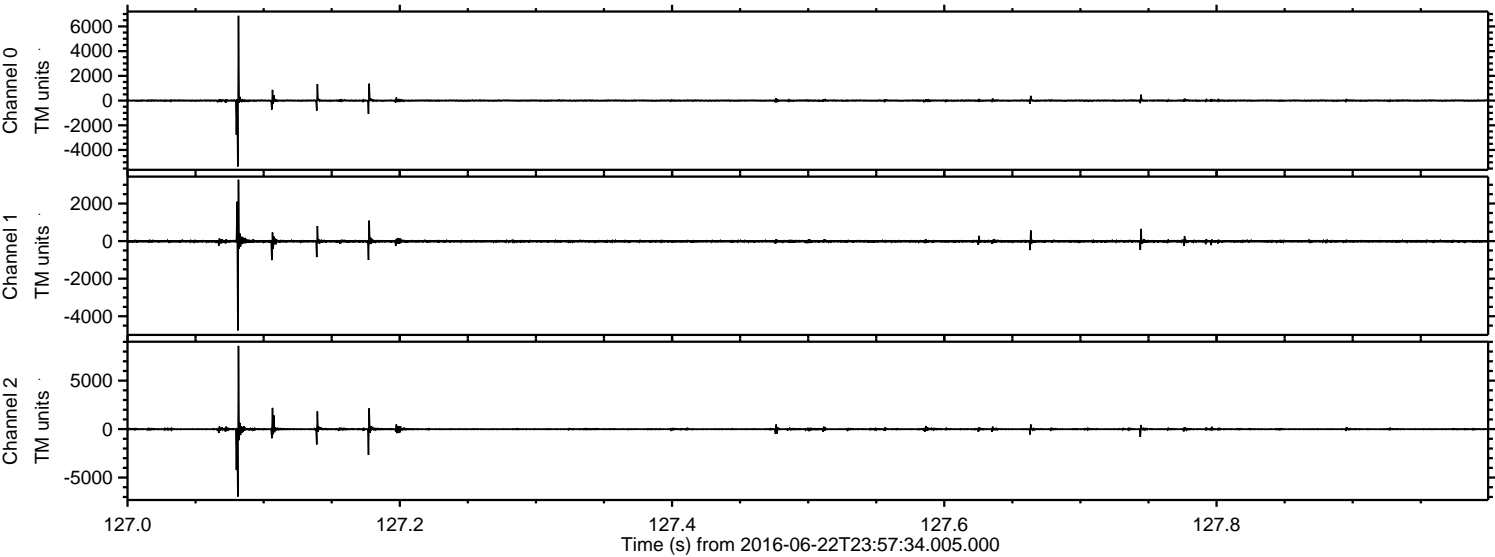
Channel 1  
mn: -3290  
mx: 1981  
 $\mu$ : -9.7  
 $\sigma$ : 48.3

Channel 2  
mn: -6101  
mx: 8037  
 $\mu$ : -11.0  
 $\sigma$ : 115.4



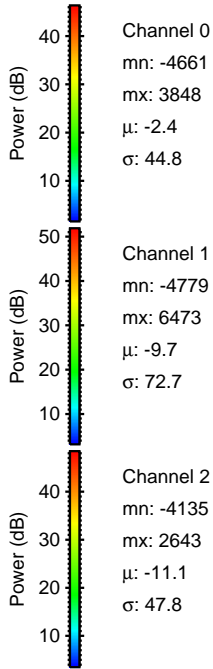
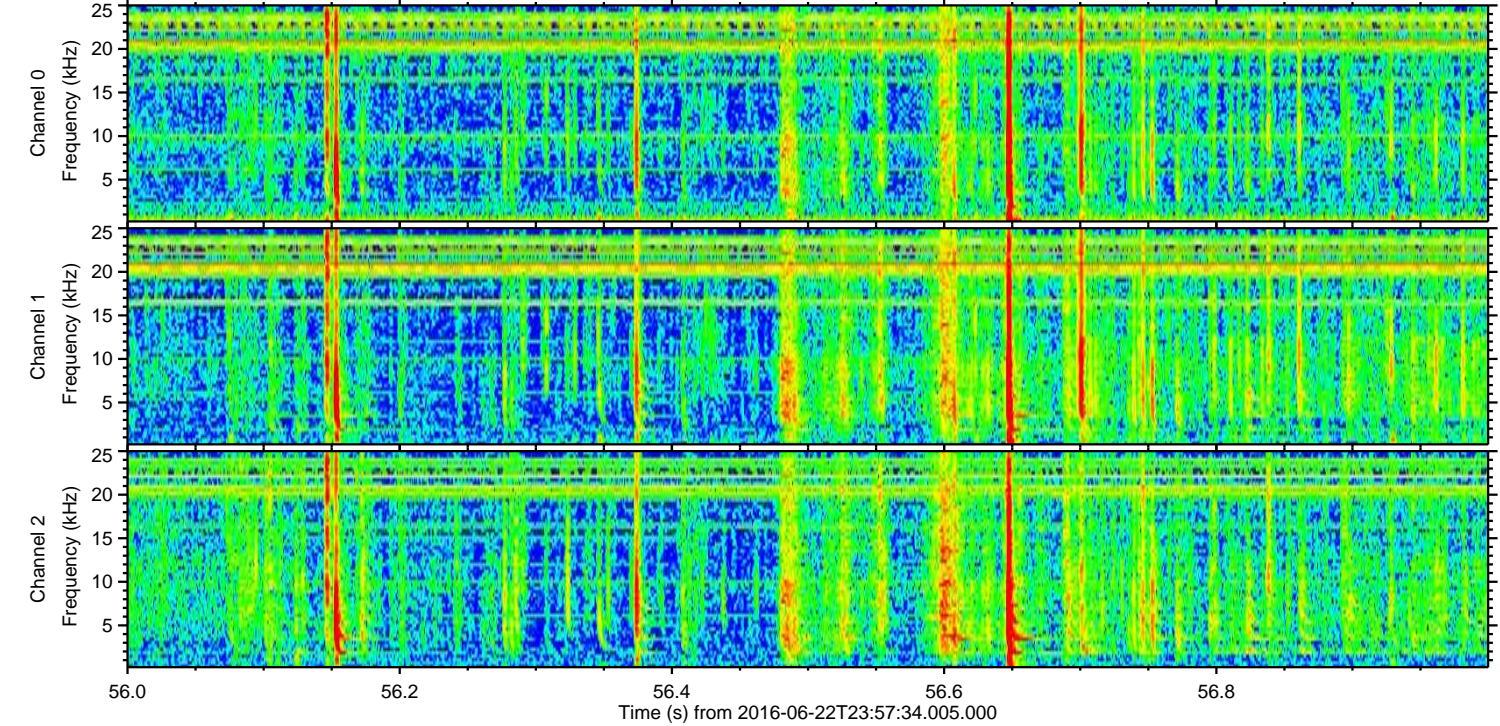
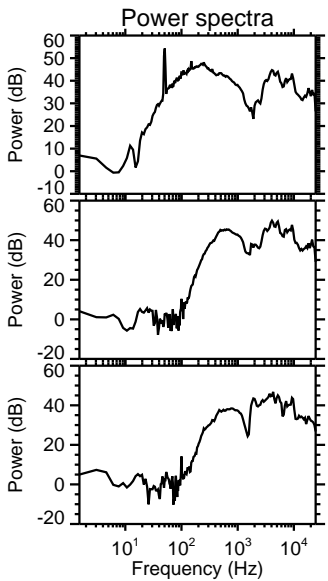
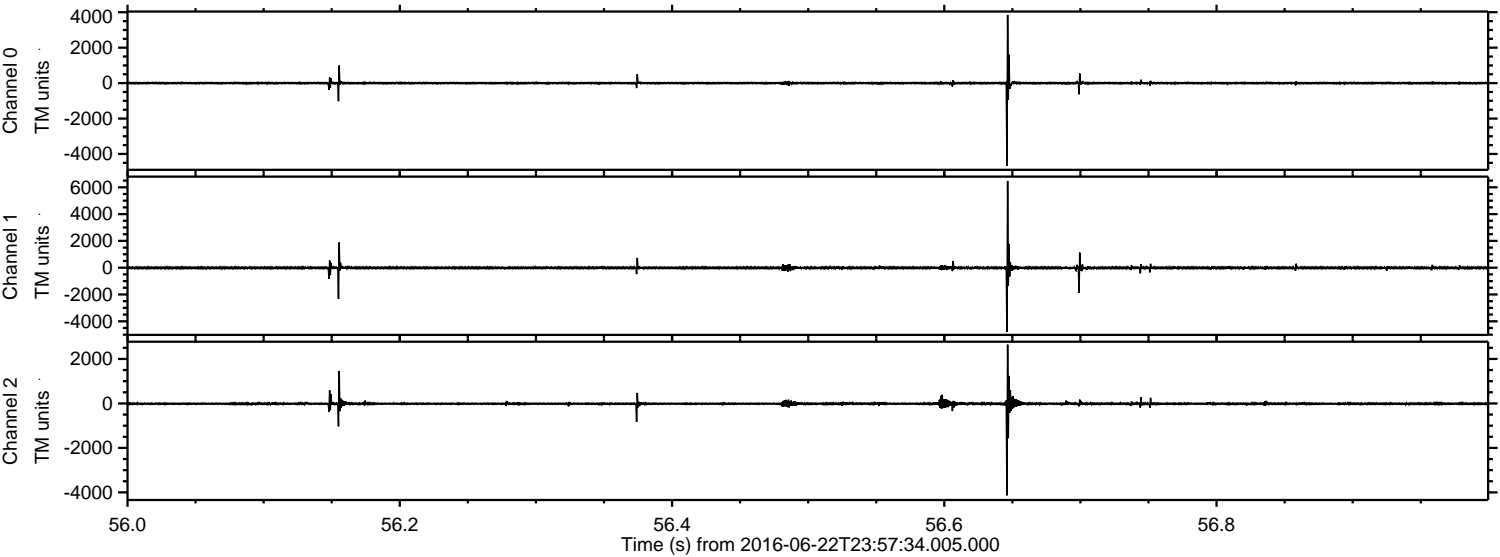
ELMAVAN 3D WAVEFORMS (Measured data sampled at 50 kHz) 51000 packets of 144 samples from 2016-06-22T23:57:34.005.000. Part 128/147

Processed Thu Jun 23 02:05:37 2016 by ELM ver.2012-10-06 from 001\_\_elm20160622\_235732\_\_dat00.bin



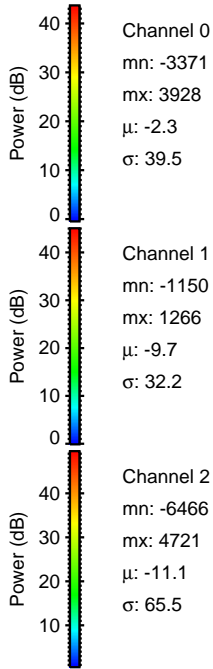
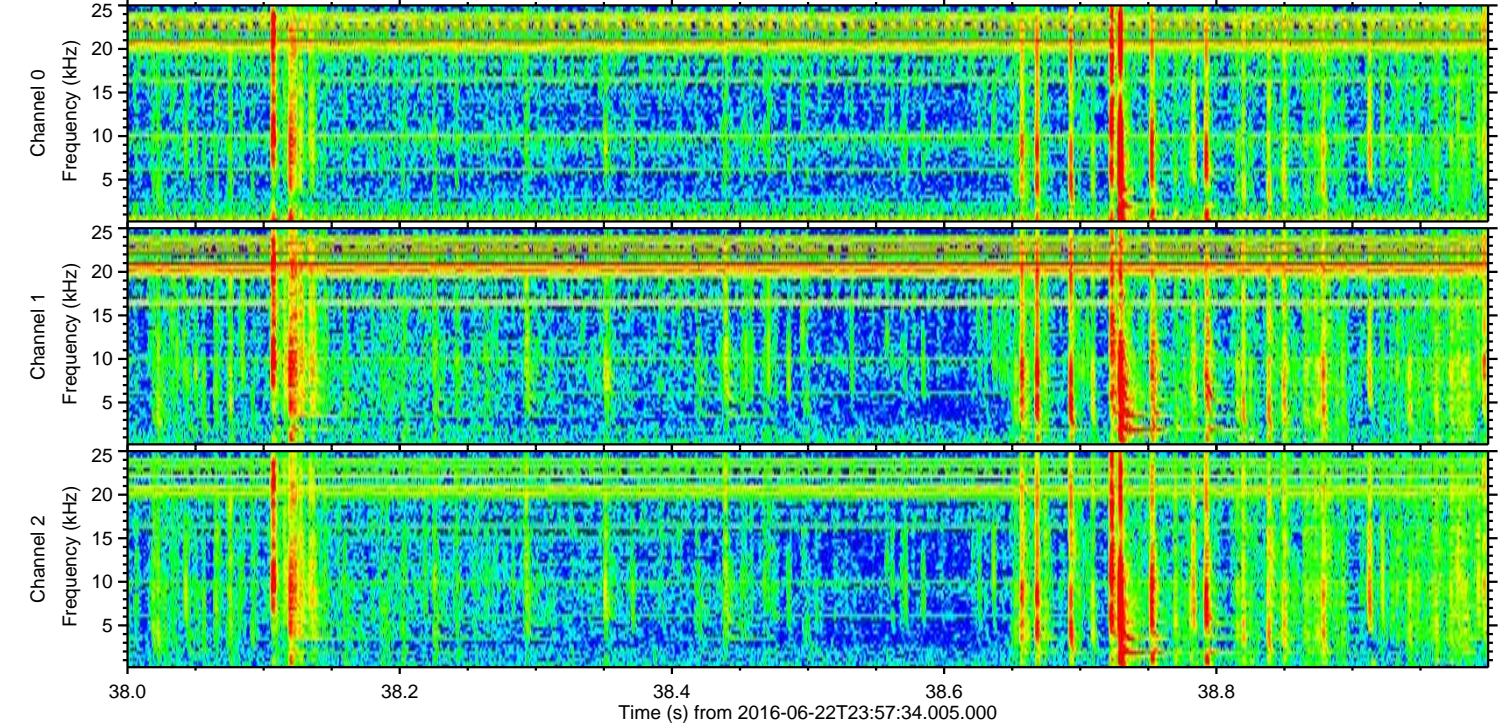
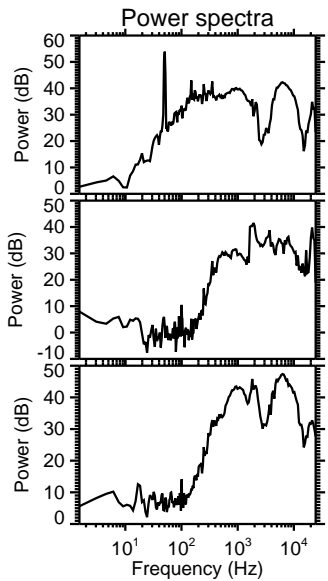
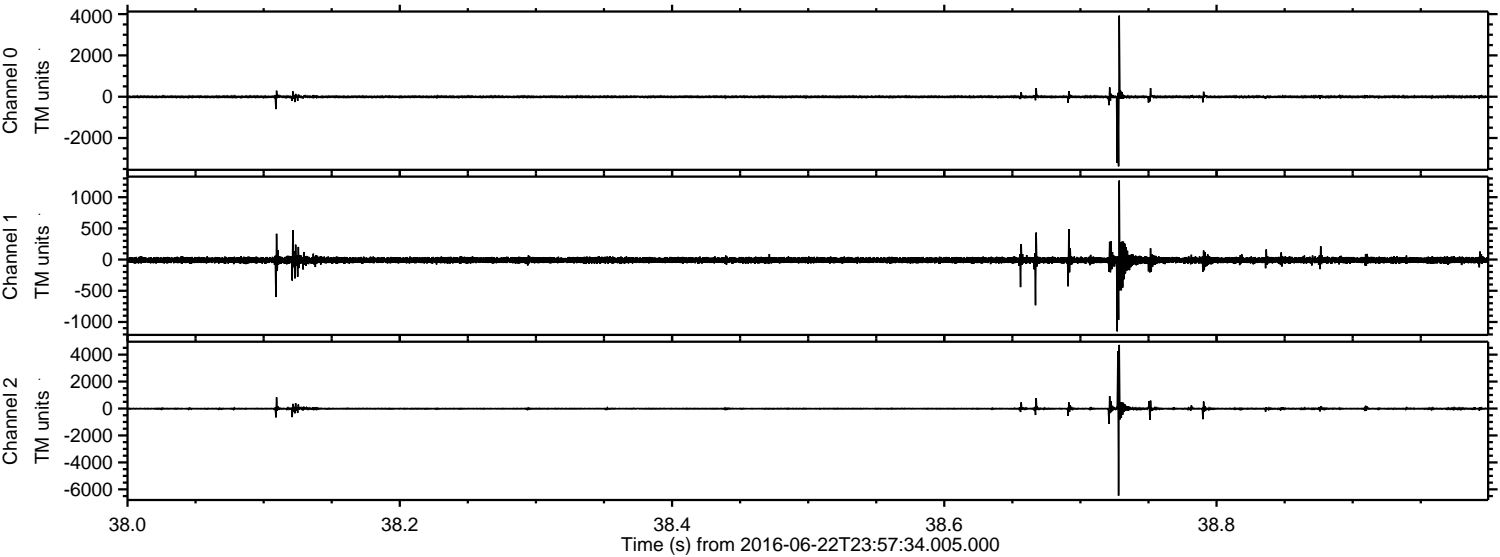


Processed Thu Jun 23 02:05:38 2016 by ELM ver.2012-10-06 from 001\_\_elm20160622\_235732\_\_dat00.bin





Processed Thu Jun 23 02:05:39 2016 by ELM ver.2012-10-06 from 001\_\_elm20160622\_235732\_\_dat00.bin



Channel 0  
mn: -3371  
mx: 3928  
 $\mu$ : -2.3  
 $\sigma$ : 39.5

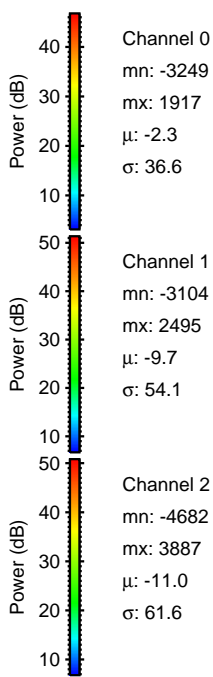
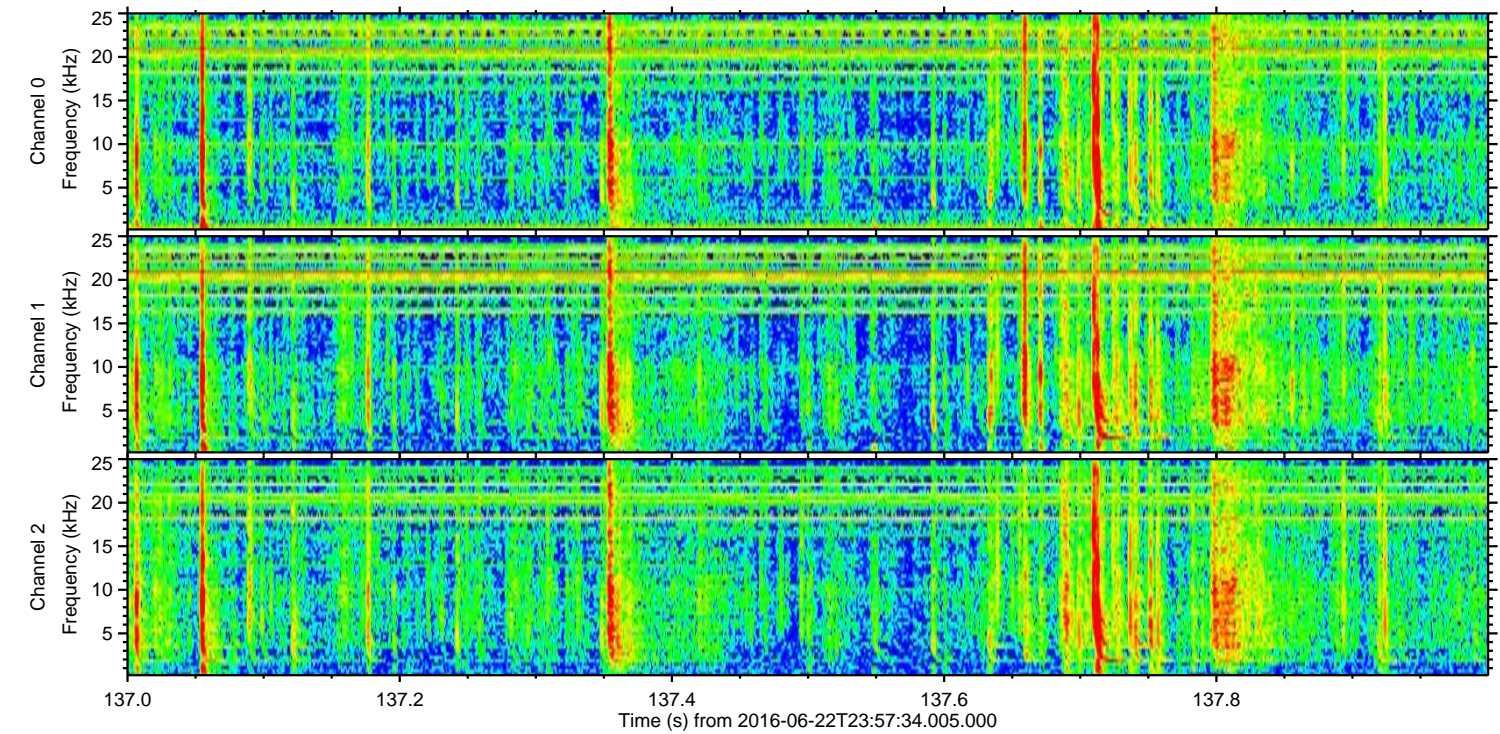
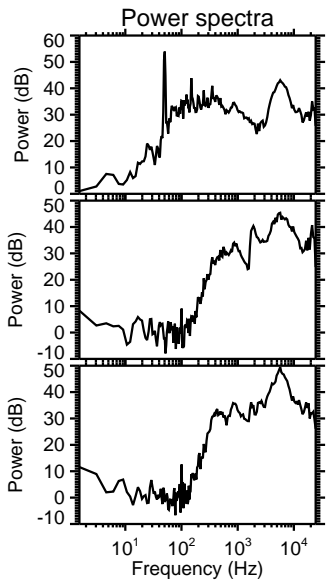
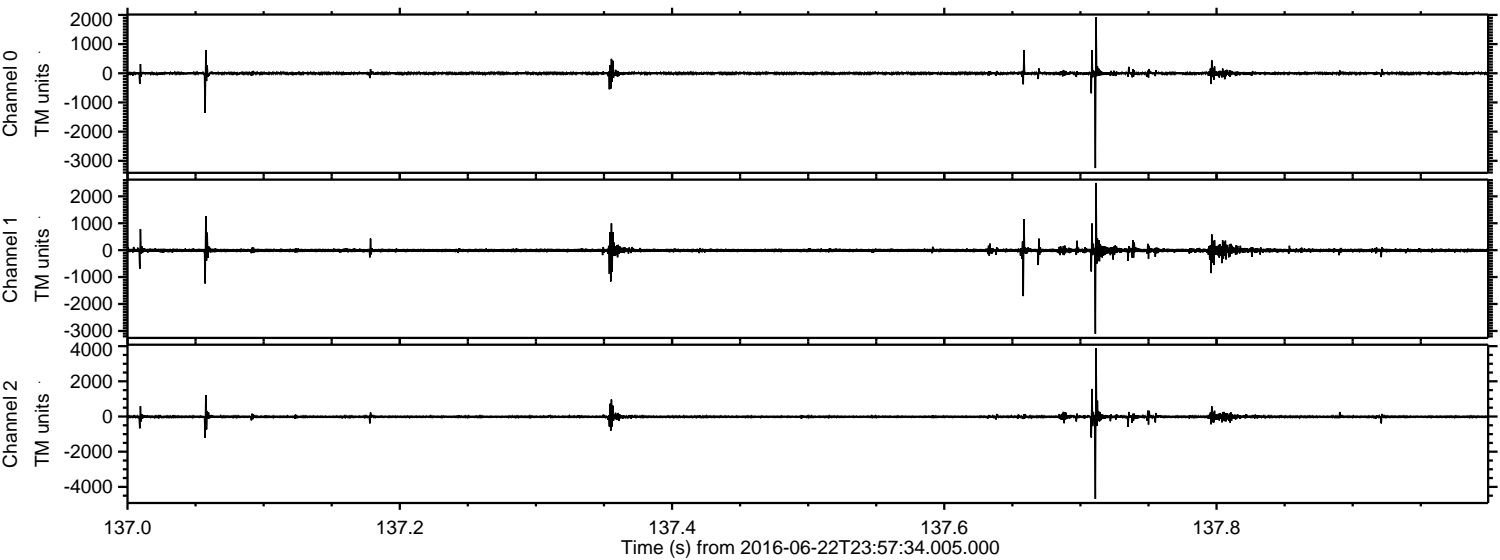
Channel 1  
mn: -1150  
mx: 1266  
 $\mu$ : -9.7  
 $\sigma$ : 32.2

Channel 2  
mn: -6466  
mx: 4721  
 $\mu$ : -11.1  
 $\sigma$ : 65.5



ELMAVAN 3D WAVEFORMS (Measured data sampled at 50 kHz) 51000 packets of 144 samples from 2016-06-22T23:57:34.005.000. Part 138/147

Processed Thu Jun 23 02:05:40 2016 by ELM ver.2012-10-06 from 001\_\_elm20160622\_235732\_\_dat00.bin



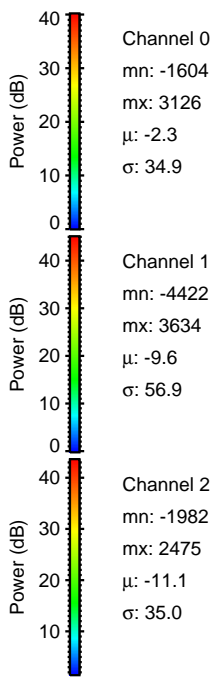
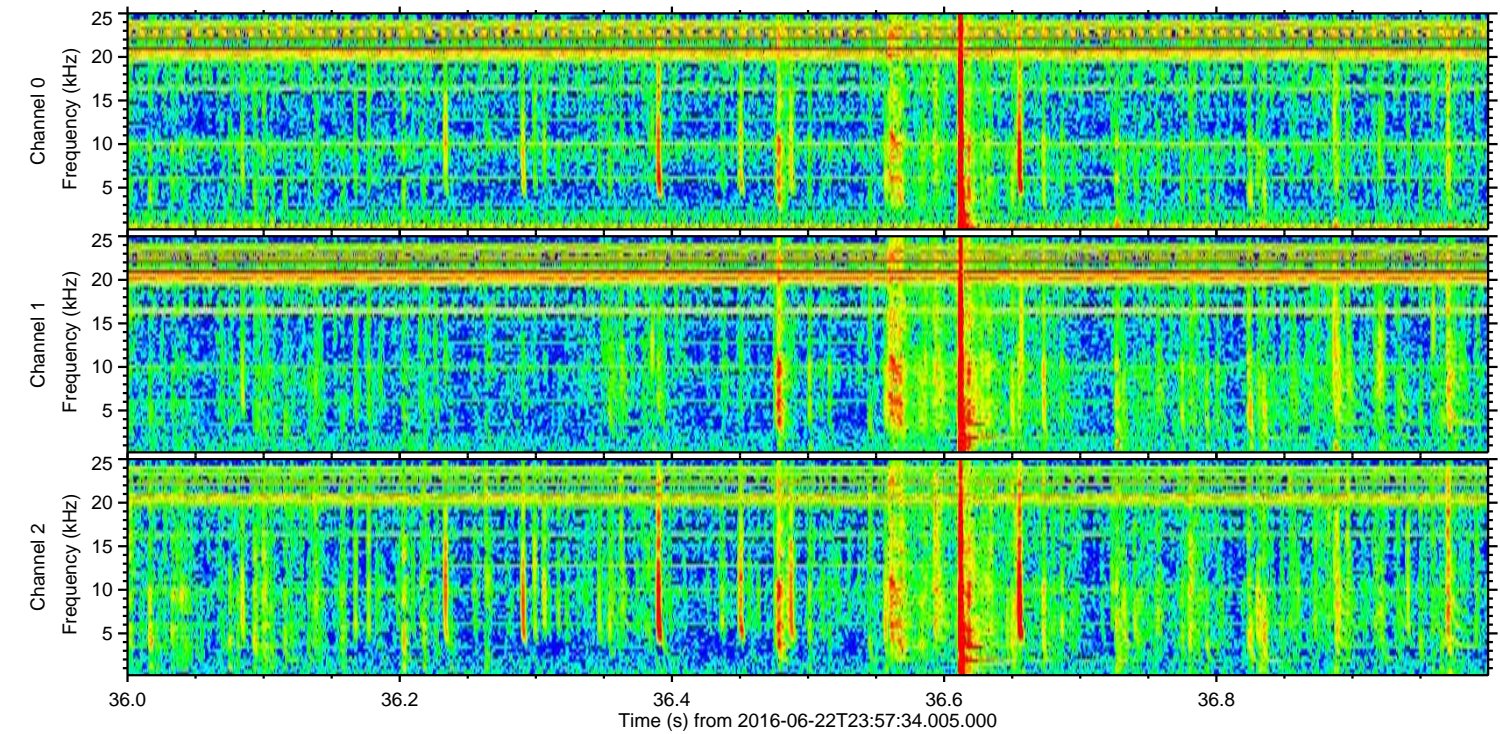
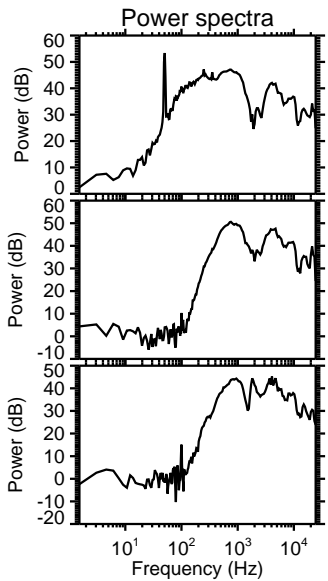
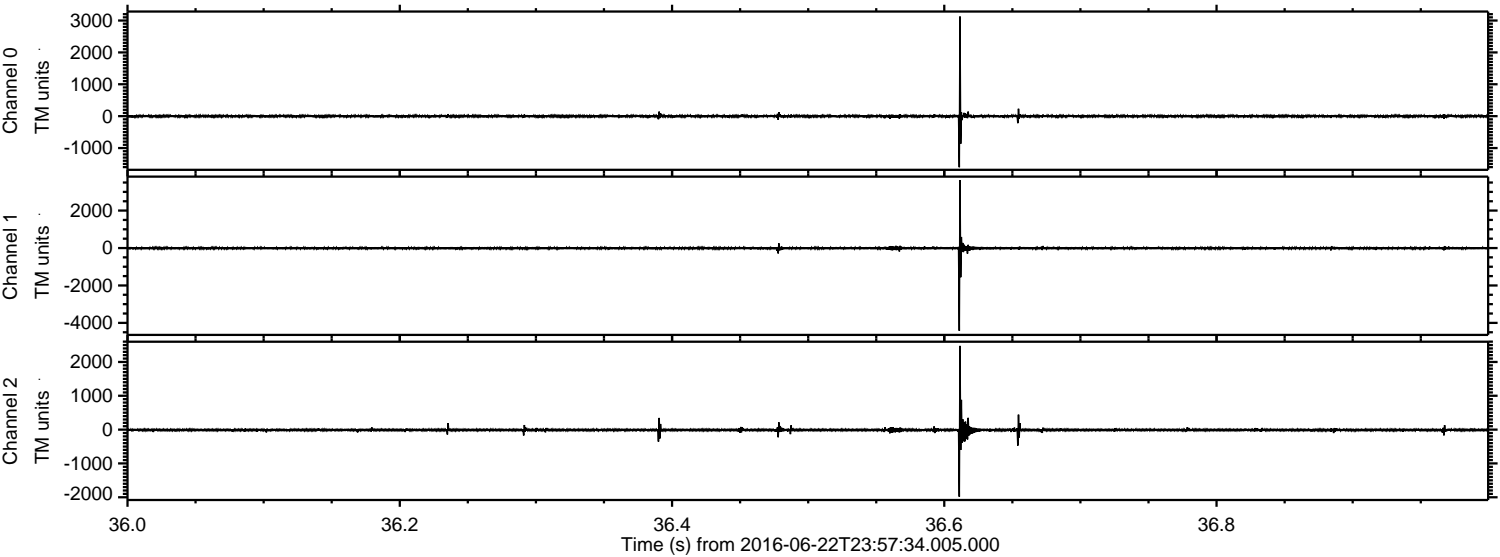
Channel 0  
mn: -3249  
mx: 1917  
 $\mu$ : -2.3  
 $\sigma$ : 36.6

Channel 1  
mn: -3104  
mx: 2495  
 $\mu$ : -9.7  
 $\sigma$ : 54.1

Channel 2  
mn: -4682  
mx: 3887  
 $\mu$ : -11.0  
 $\sigma$ : 61.6



Processed Thu Jun 23 02:05:41 2016 by ELM ver.2012-10-06 from 001\_\_elm20160622\_235732\_\_dat00.bin



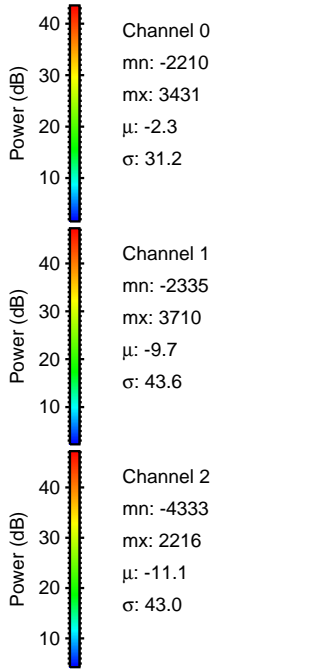
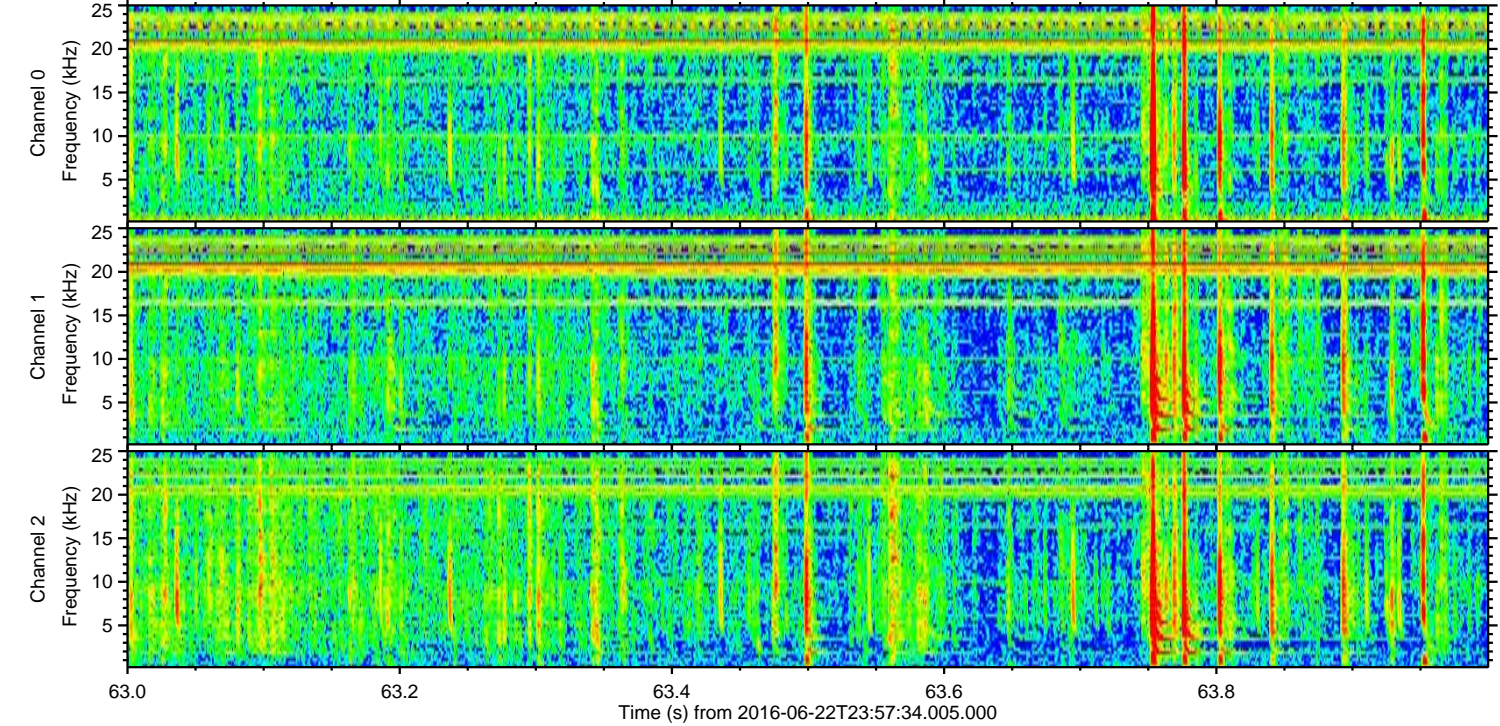
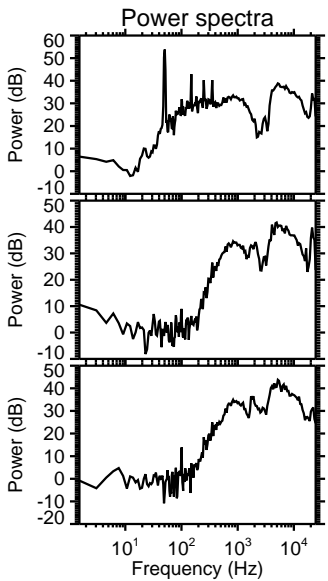
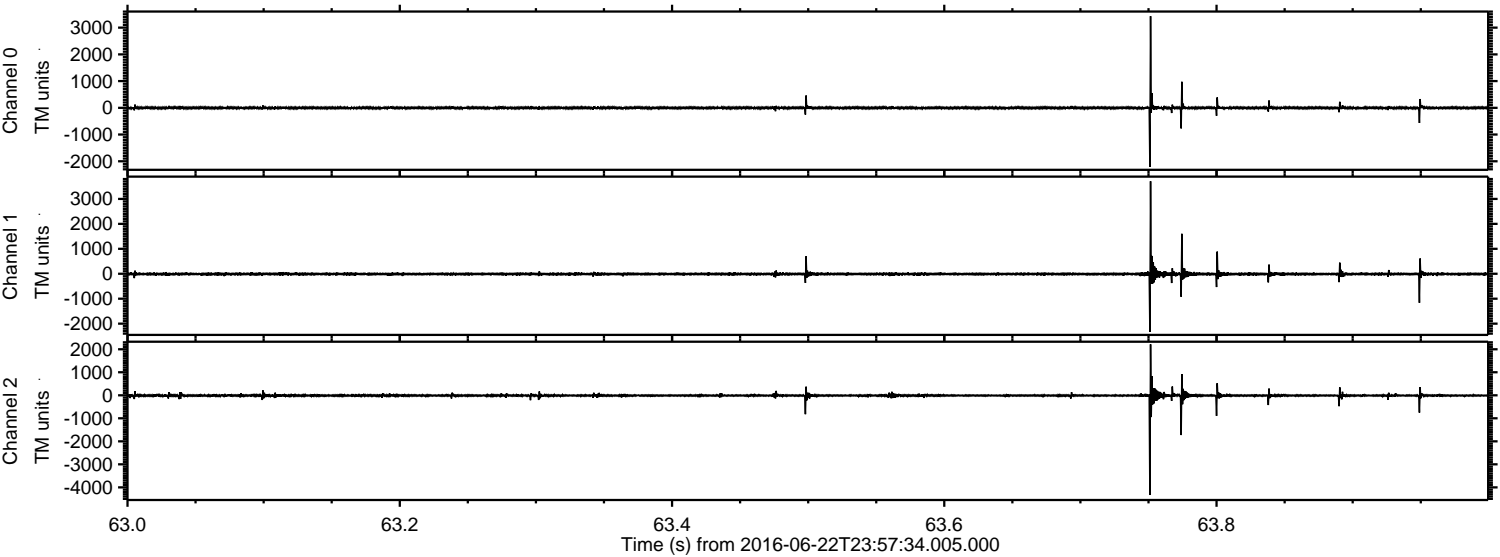
Channel 0  
mn: -1604  
mx: 3126  
 $\mu$ : -2.3  
 $\sigma$ : 34.9

Channel 1  
mn: -4422  
mx: 3634  
 $\mu$ : -9.6  
 $\sigma$ : 56.9

Channel 2  
mn: -1982  
mx: 2475  
 $\mu$ : -11.1  
 $\sigma$ : 35.0



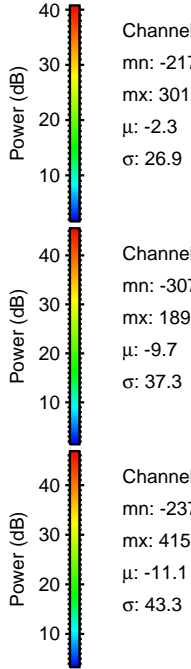
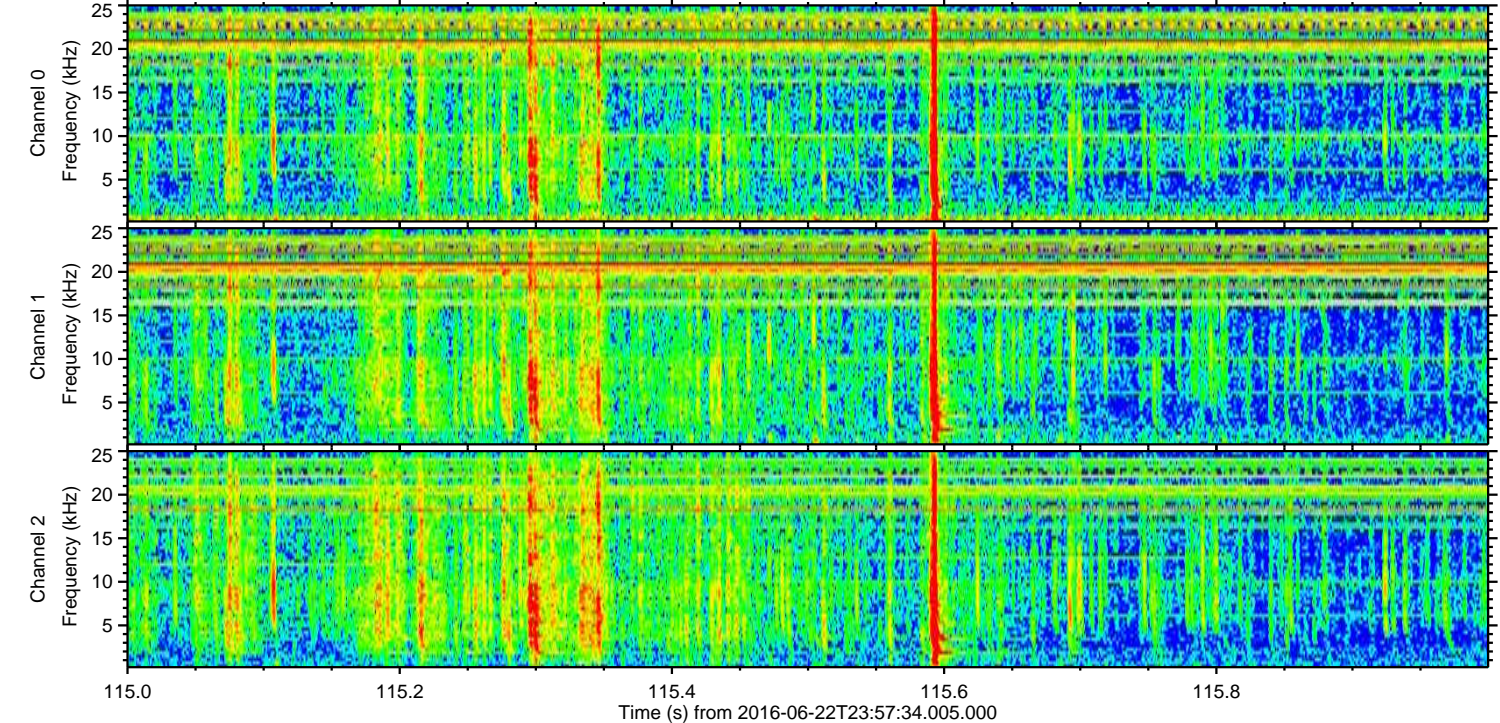
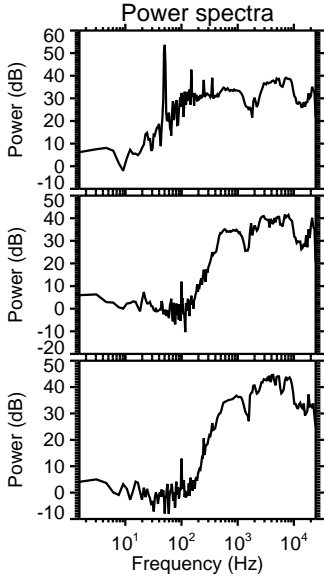
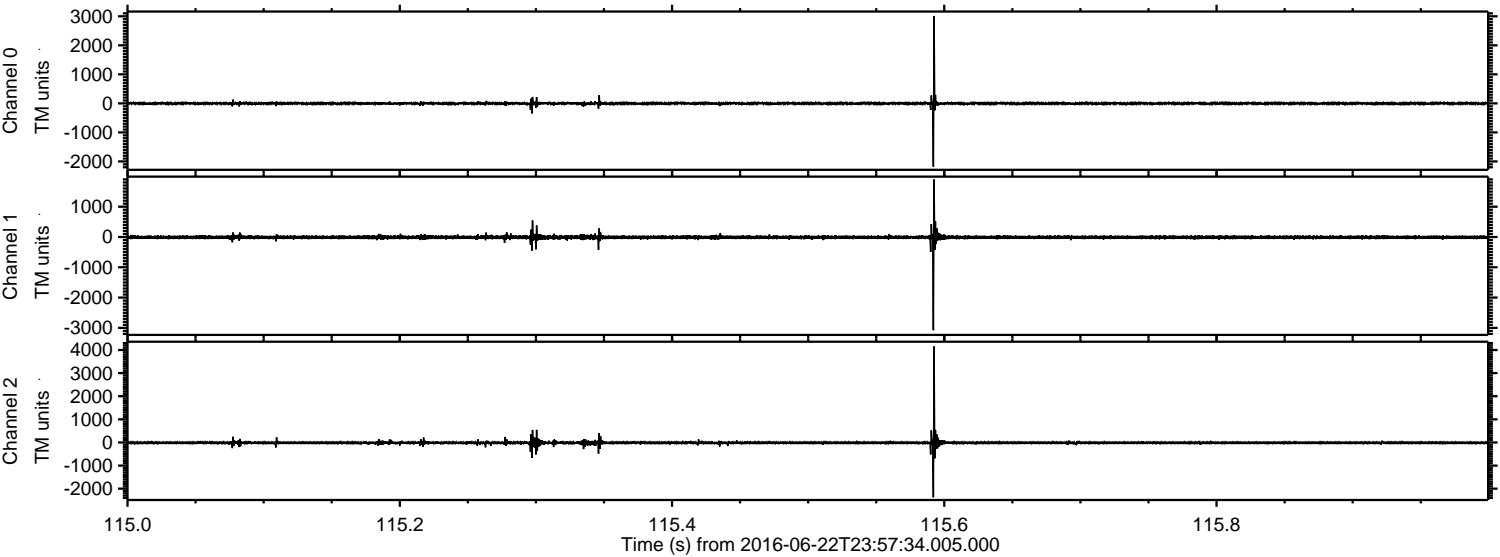
Processed Thu Jun 23 02:05:41 2016 by ELM ver.2012-10-06 from 001\_\_elm20160622\_235732\_\_dat00.bin





ELMAVAN 3D WAVEFORMS (Measured data sampled at 50 kHz) 51000 packets of 144 samples from 2016-06-22T23:57:34.005.000. Part 116/147

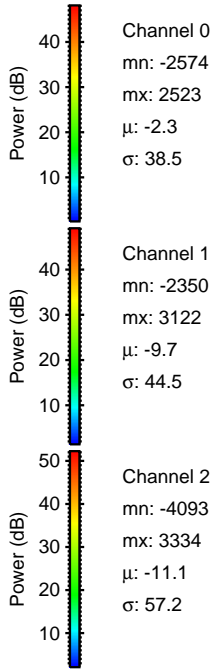
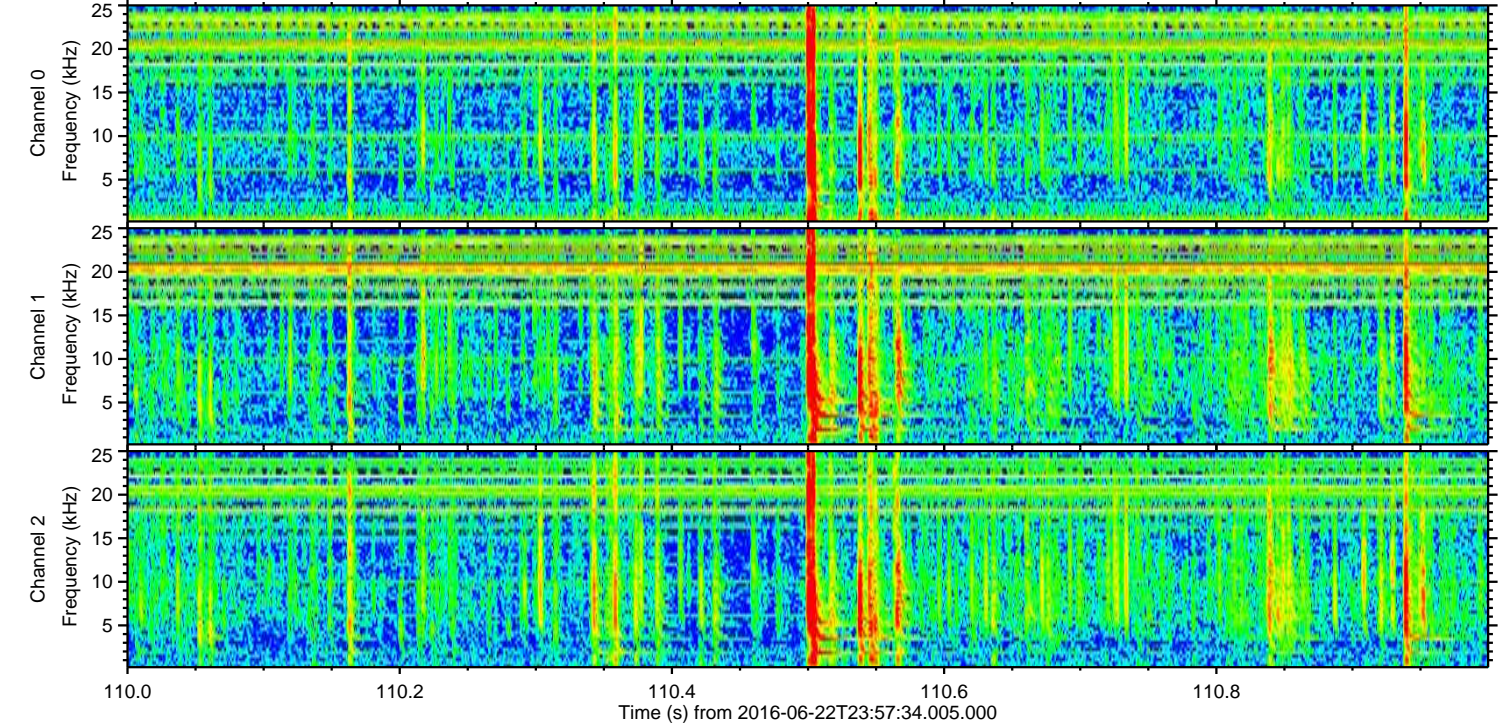
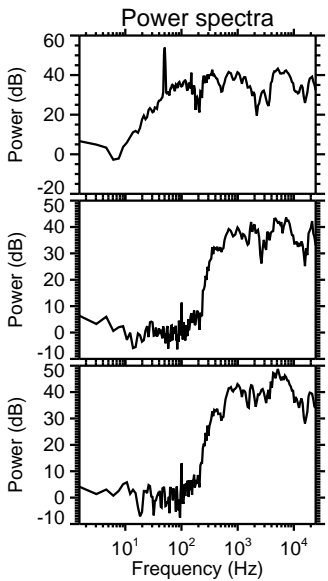
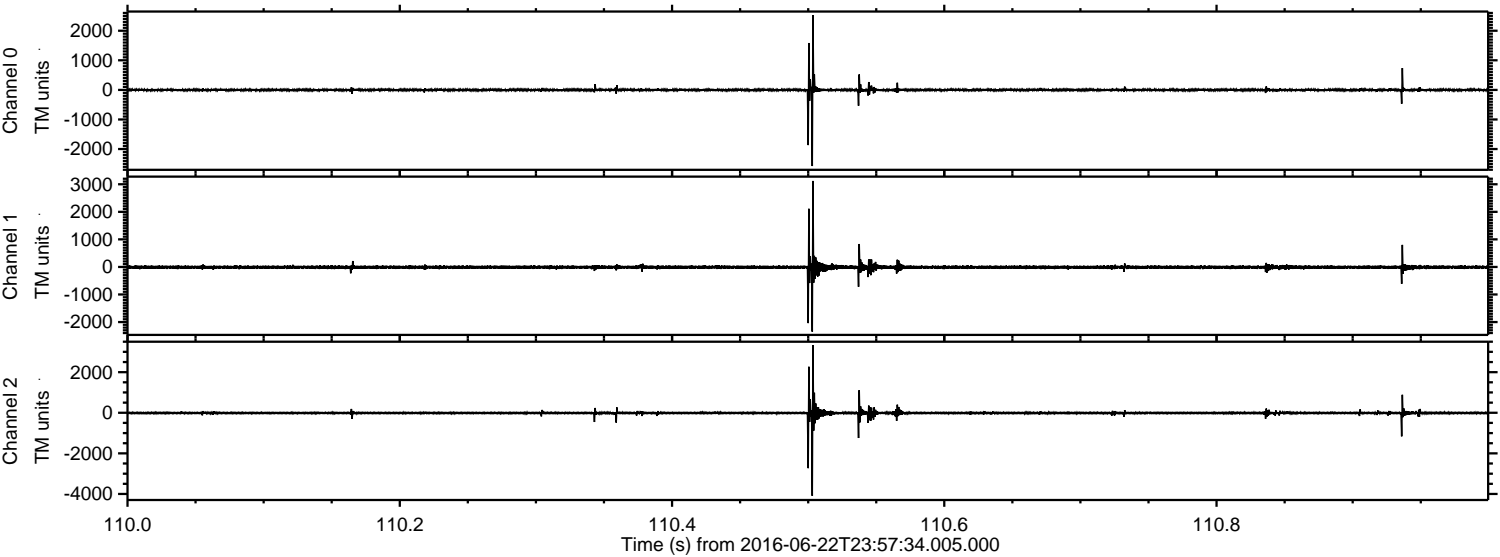
Processed Thu Jun 23 02:05:42 2016 by ELM ver.2012-10-06 from 001\_\_elm20160622\_235732\_\_dat00.bin





ELMAVAN 3D WAVEFORMS (Measured data sampled at 50 kHz) 51000 packets of 144 samples from 2016-06-22T23:57:34.005.000. Part 111/147

Processed Thu Jun 23 02:05:43 2016 by ELM ver.2012-10-06 from 001\_\_elm20160622\_235732\_\_dat00.bin





Processed Thu Jun 23 02:05:44 2016 by ELM ver.2012-10-06 from 001\_\_elm20160622\_235732\_\_dat00.bin

