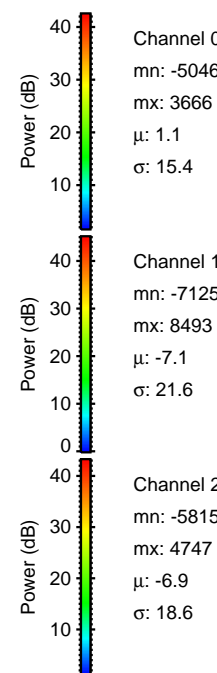
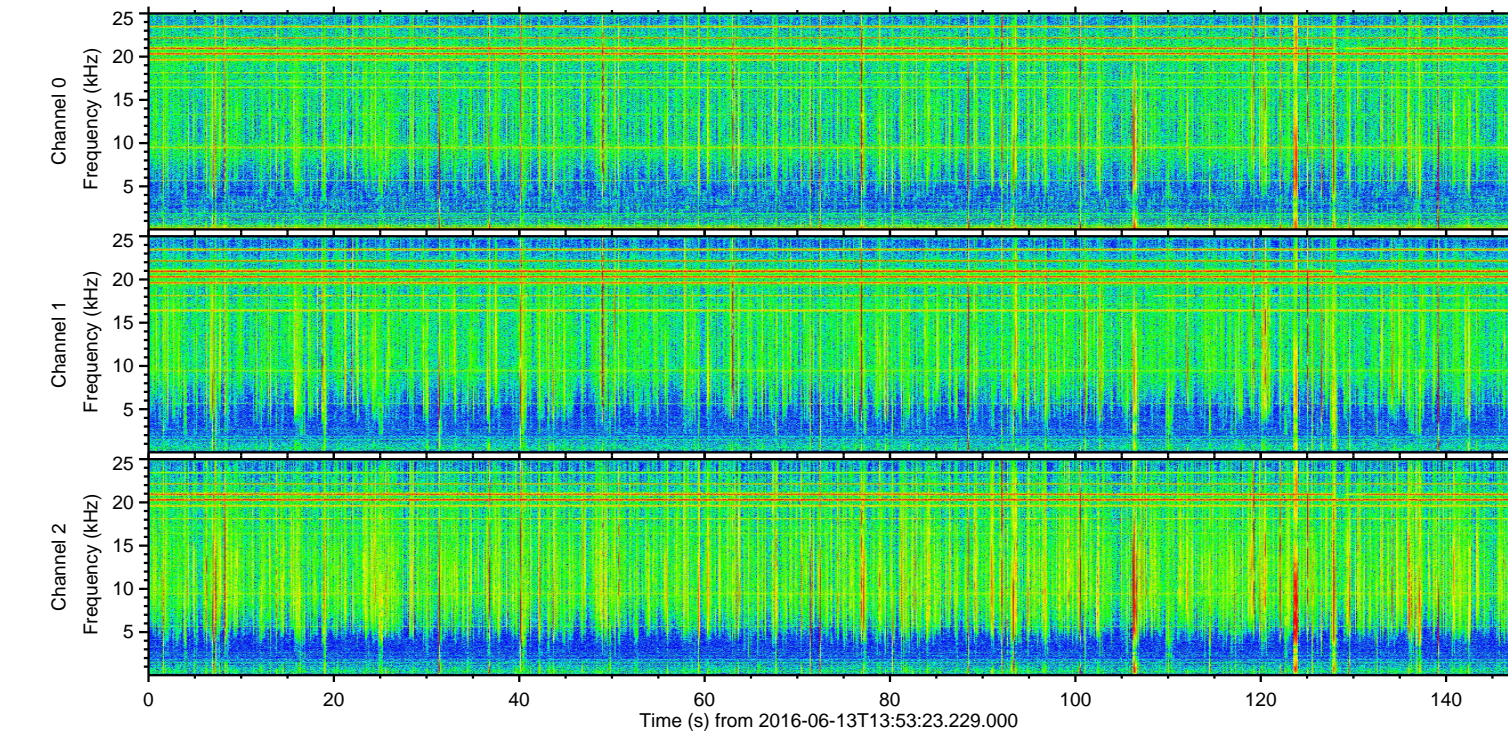
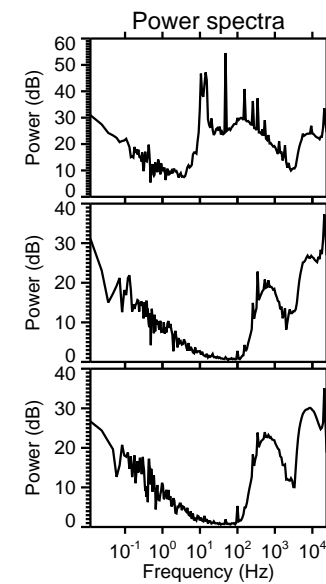
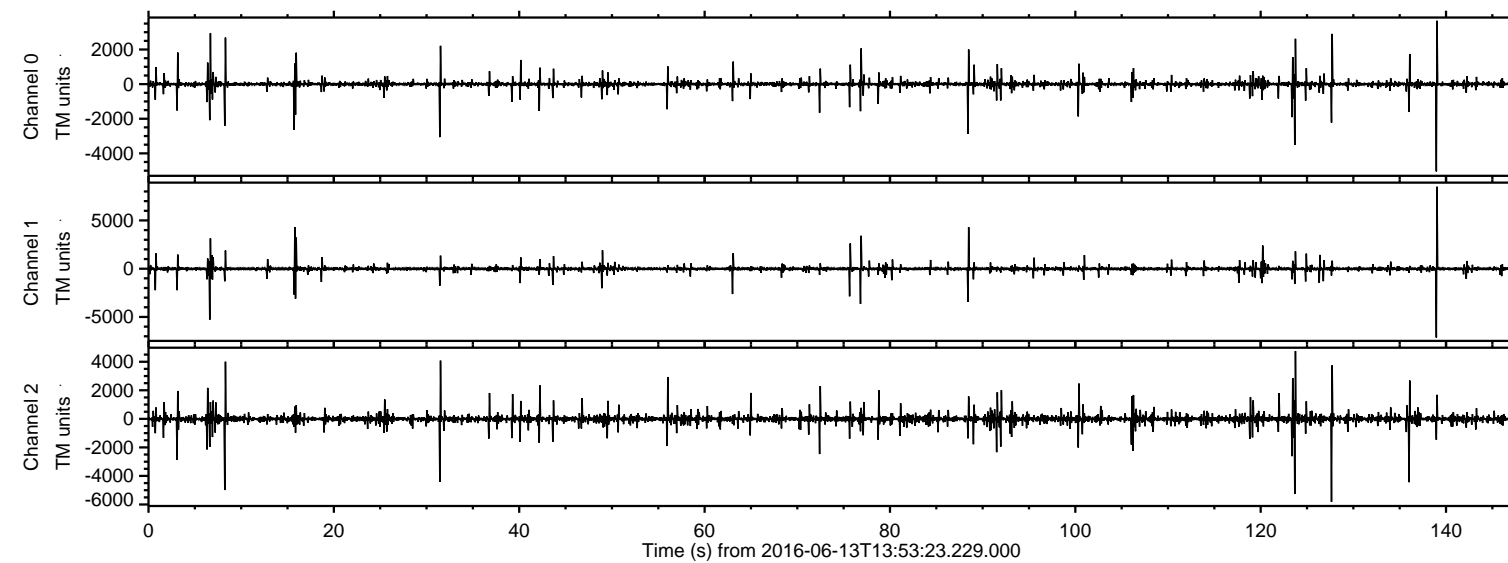


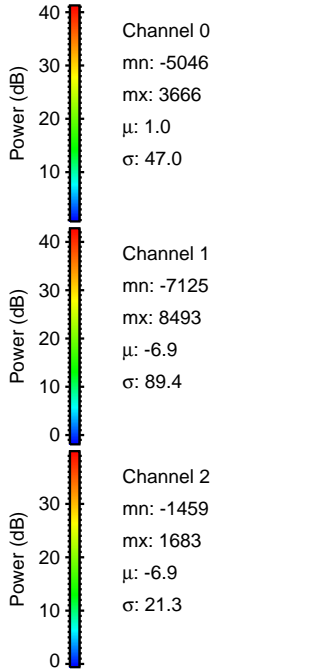
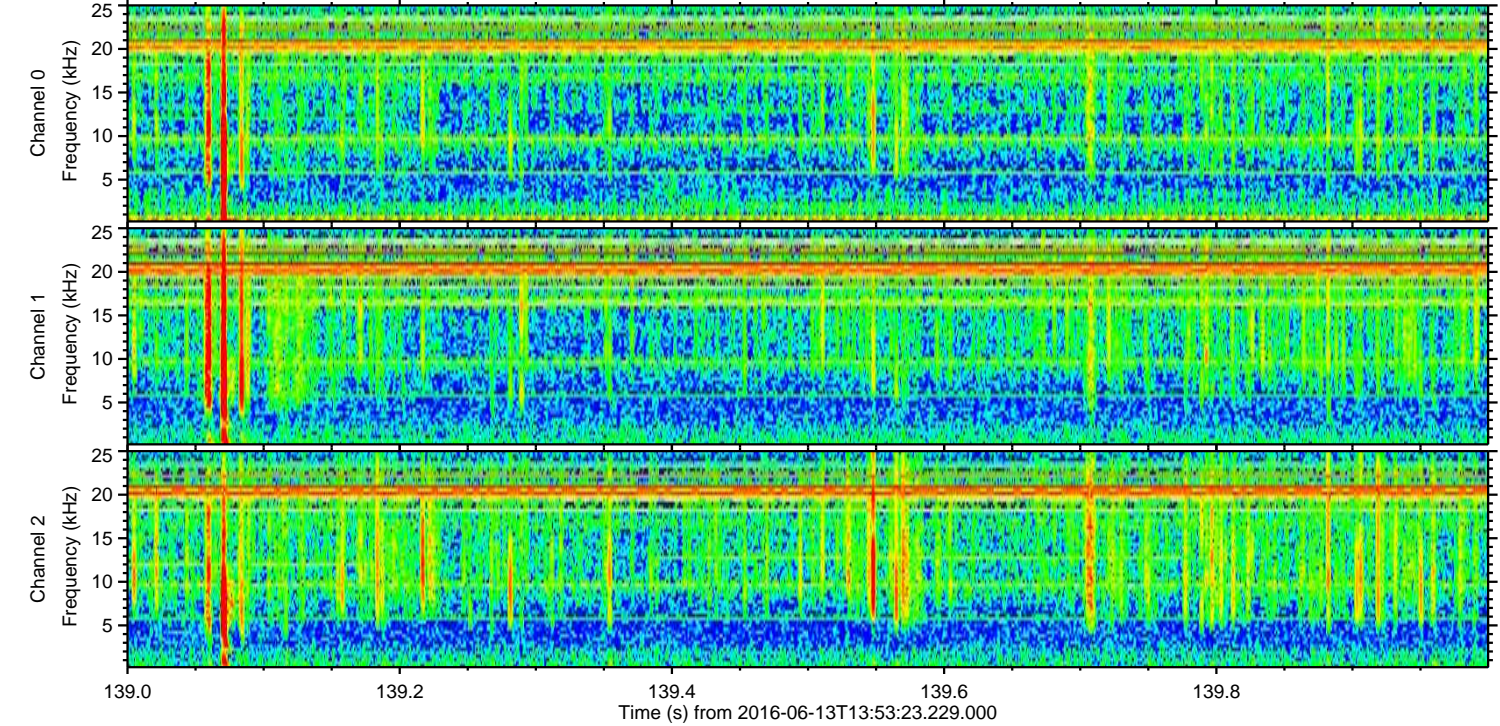
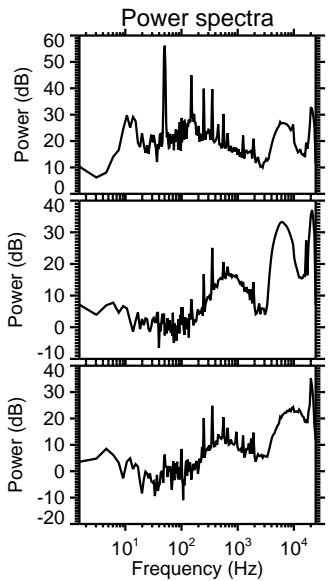
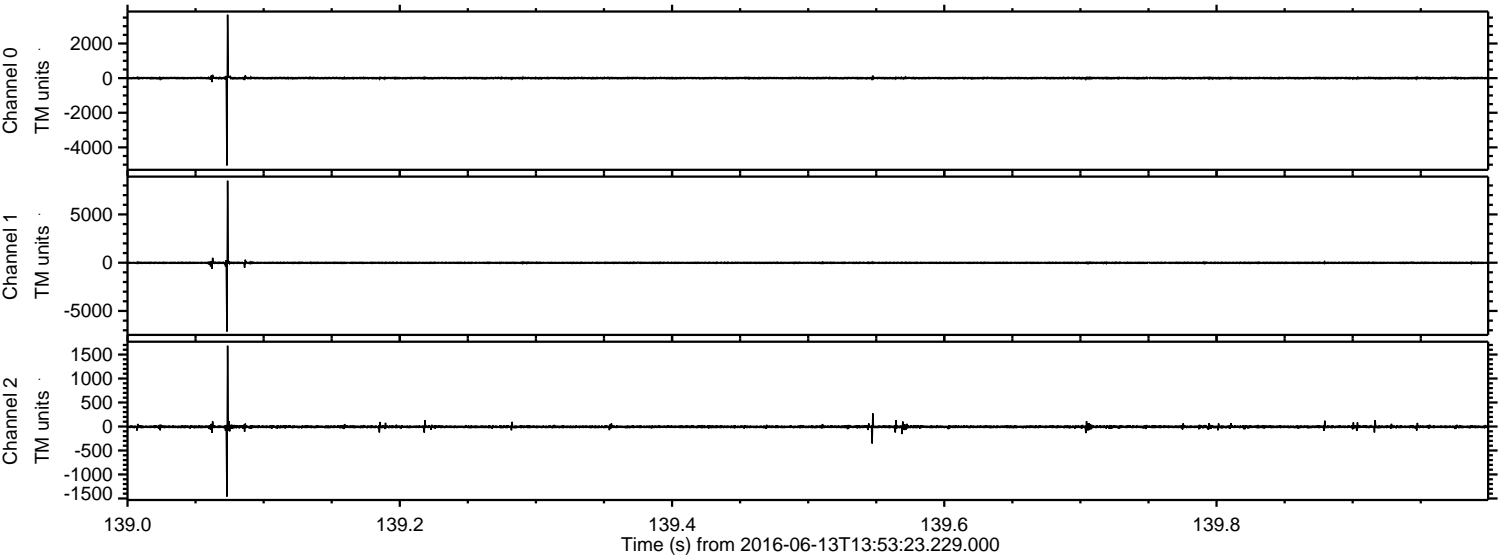
ELMAVAN 3D WAVEFORMS (Measured data sampled at 50 kHz) 51000 packets of 144 samples from 2016-06-13T13:53:23.229.000.

Processed Mon Jun 13 16:01:33 2016 by ELM ver.2012-10-06 from 001_elm20160613_135322__dat00.bin



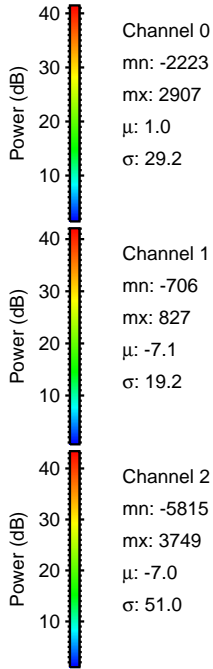
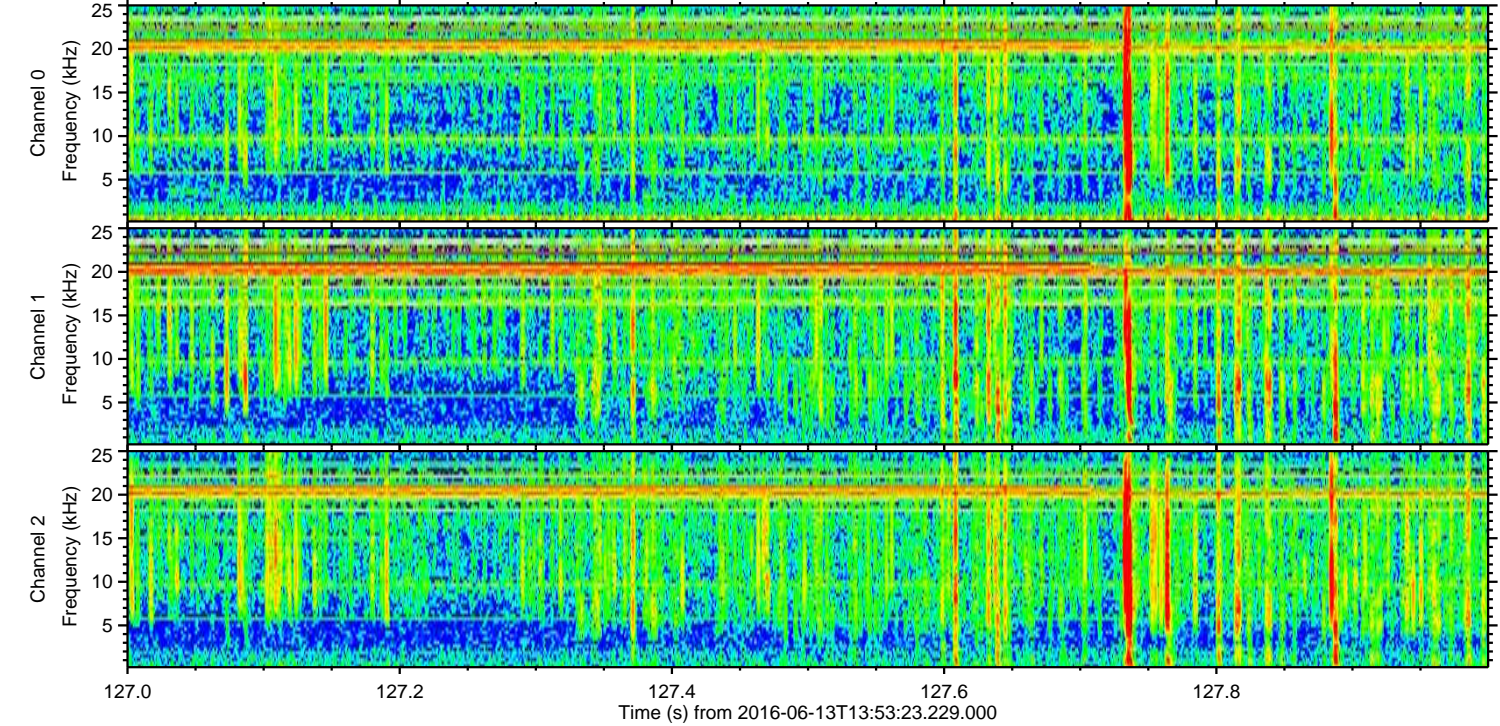
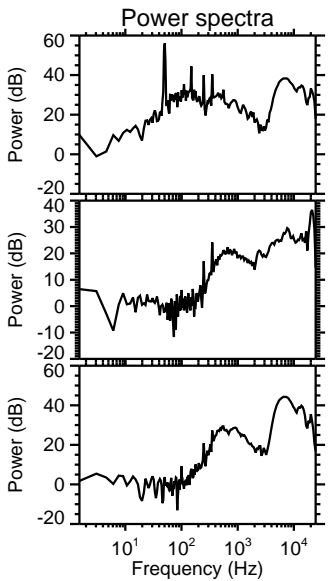
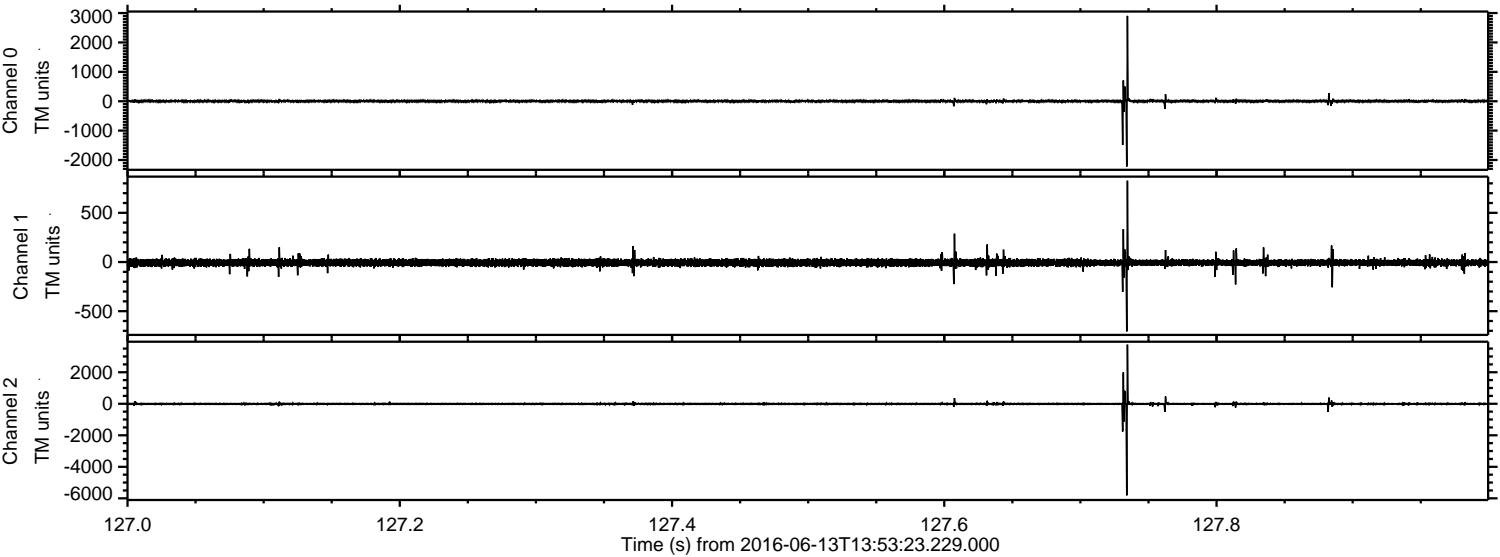
ELMAVAN 3D WAVEFORMS (Measured data sampled at 50 kHz) 51000 packets of 144 samples from 2016-06-13T13:53:23.229.000. Part 140/147

Processed Mon Jun 13 16:01:45 2016 by ELM ver.2012-10-06 from 001__elm20160613_135322__dat00.bin



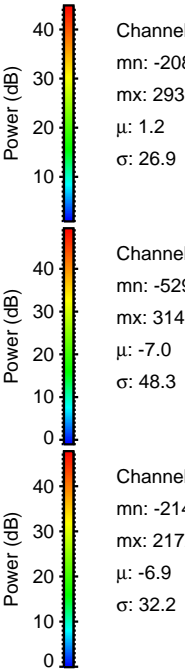
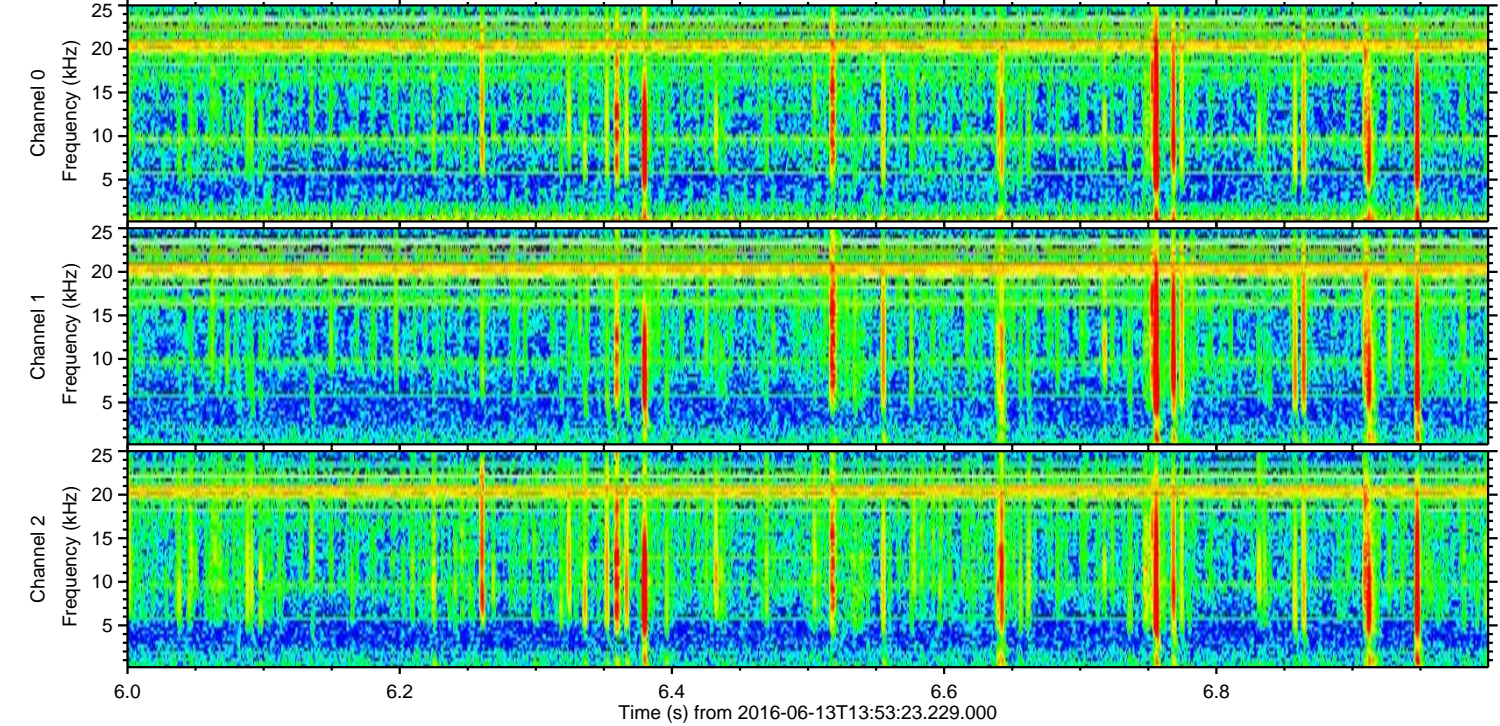
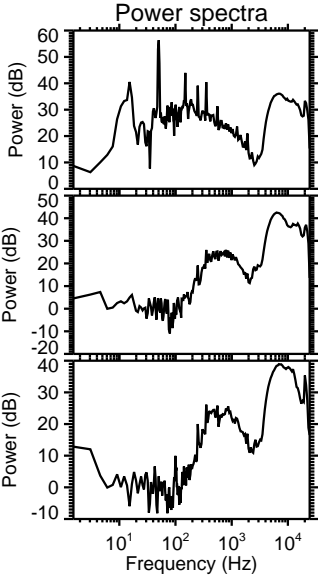
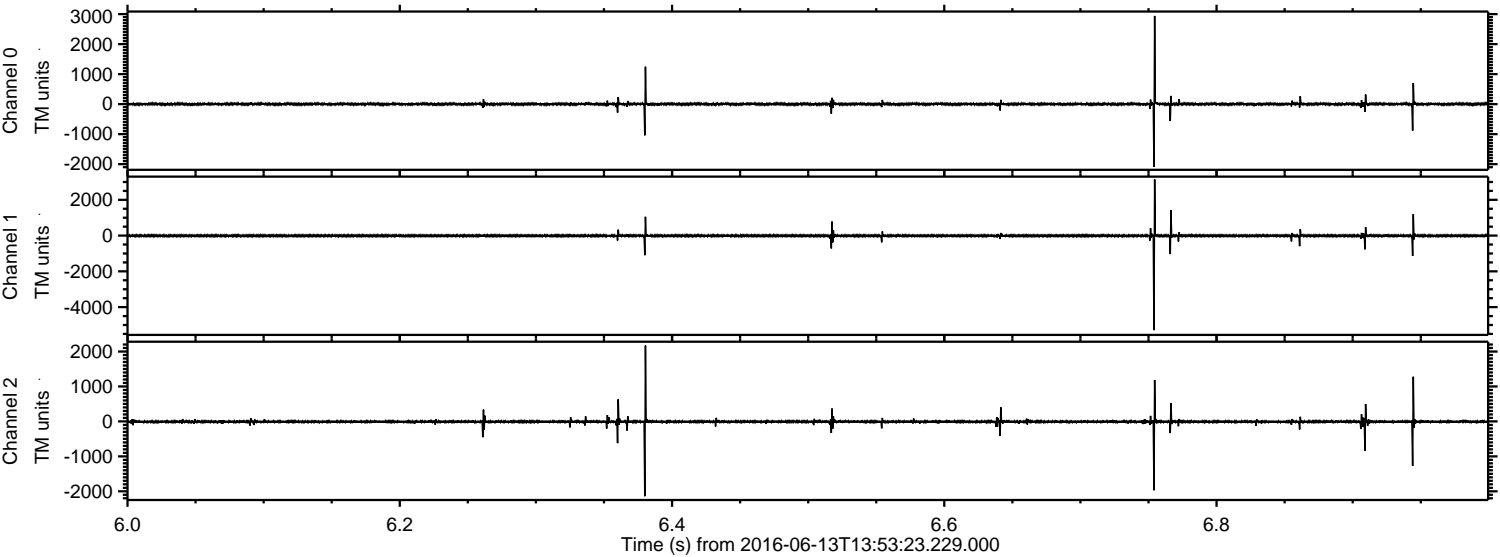
ELMAVAN 3D WAVEFORMS (Measured data sampled at 50 kHz) 51000 packets of 144 samples from 2016-06-13T13:53:23.229.000. Part 128/147

Processed Mon Jun 13 16:01:46 2016 by ELM ver.2012-10-06 from 001__elm20160613_135322__dat00.bin



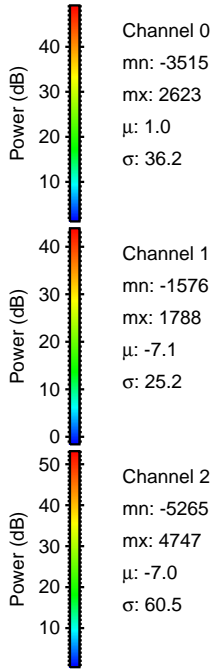
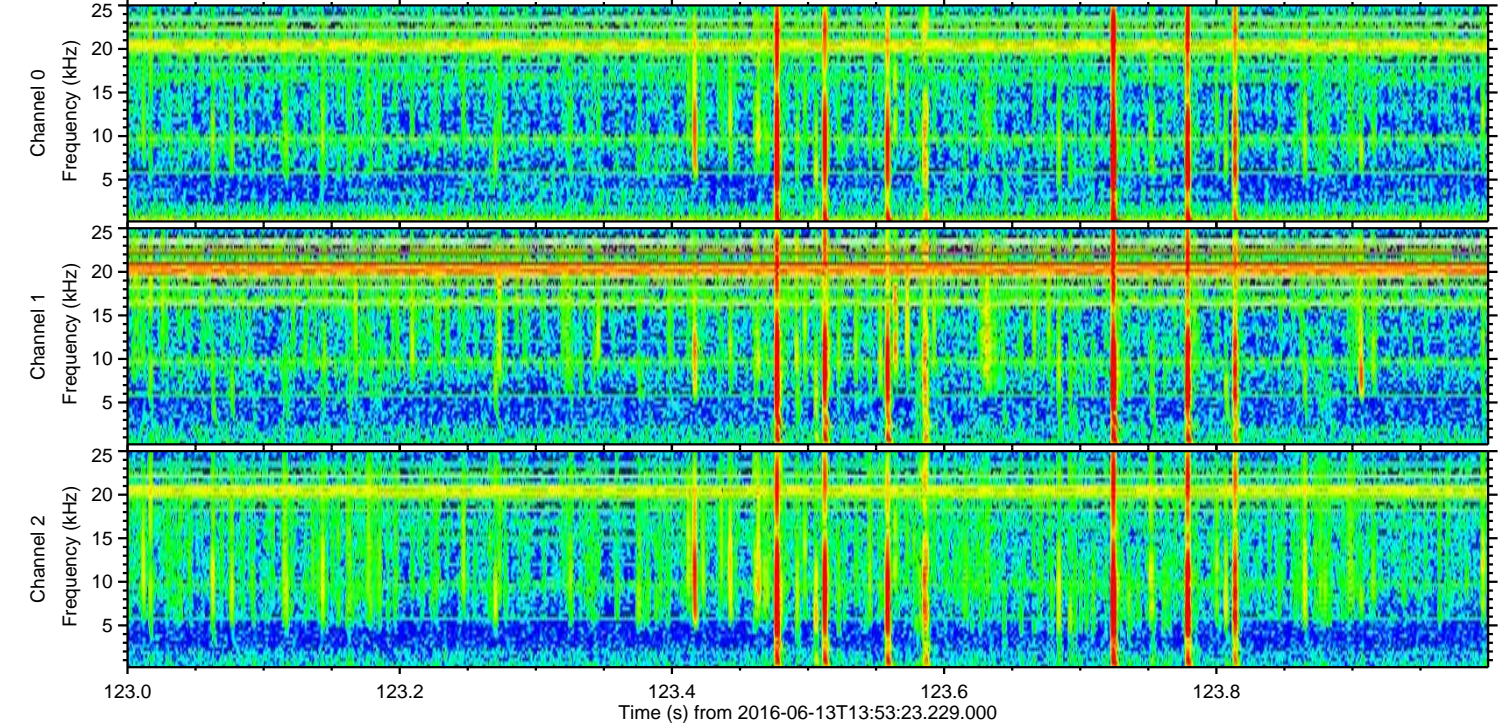
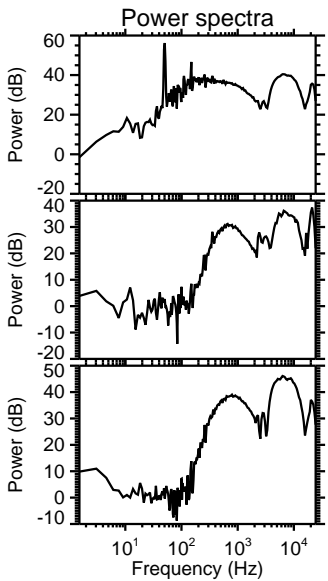
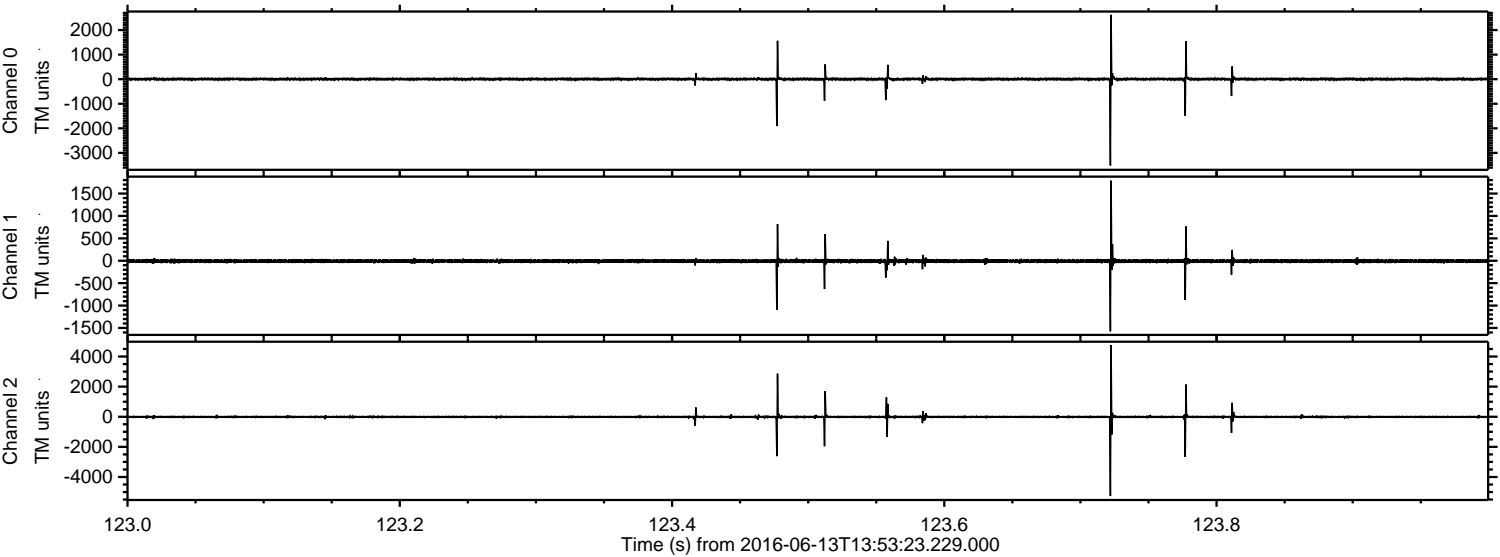
ELMAVAN 3D WAVEFORMS (Measured data sampled at 50 kHz) 51000 packets of 144 samples from 2016-06-13T13:53:23.229.000. Part 7/147

Processed Mon Jun 13 16:01:47 2016 by ELM ver.2012-10-06 from 001__elm20160613_135322__dat00.bin

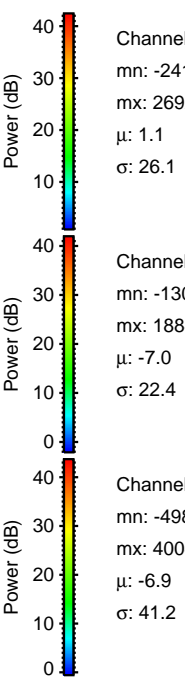
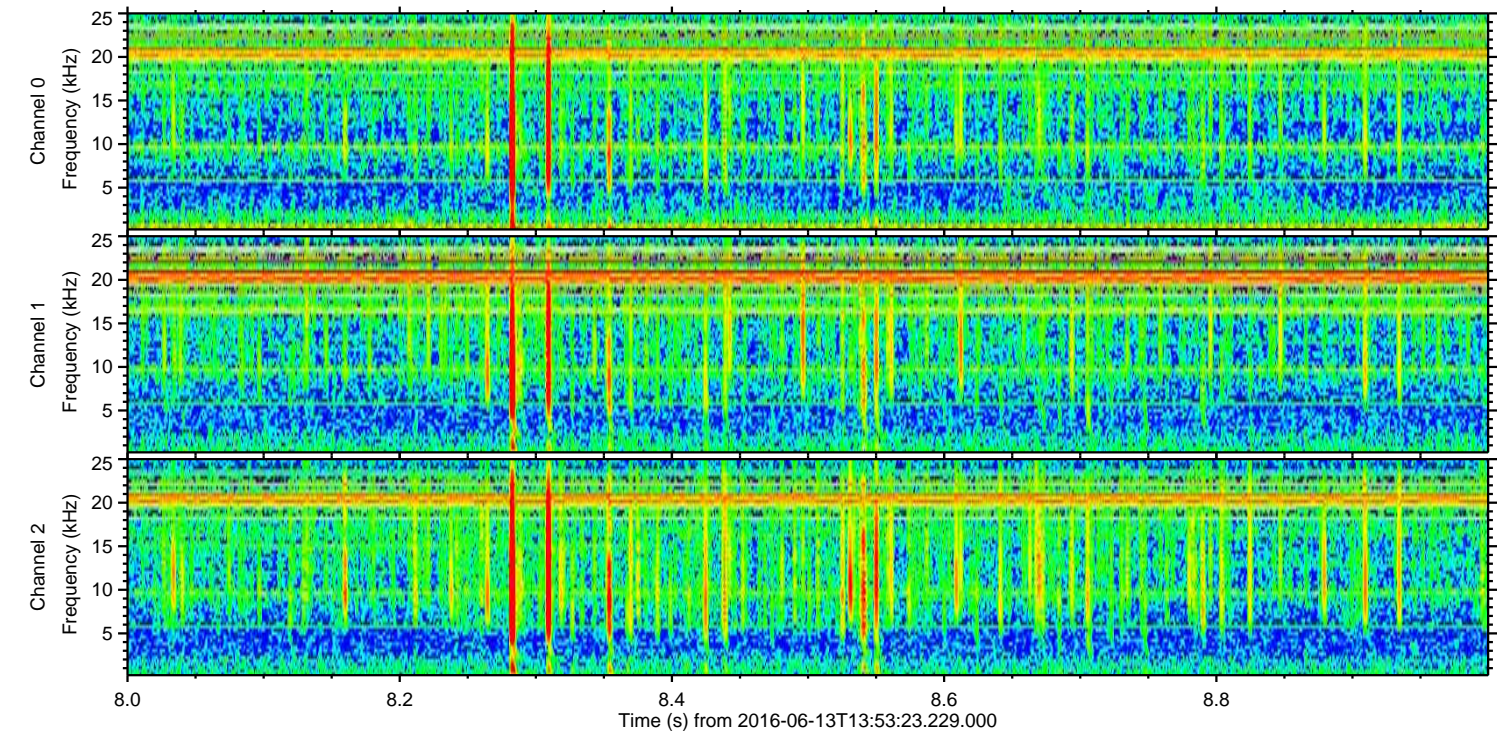
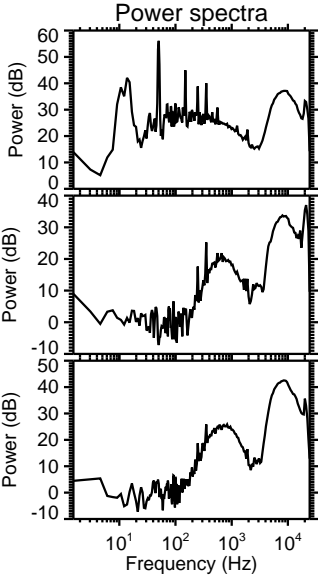
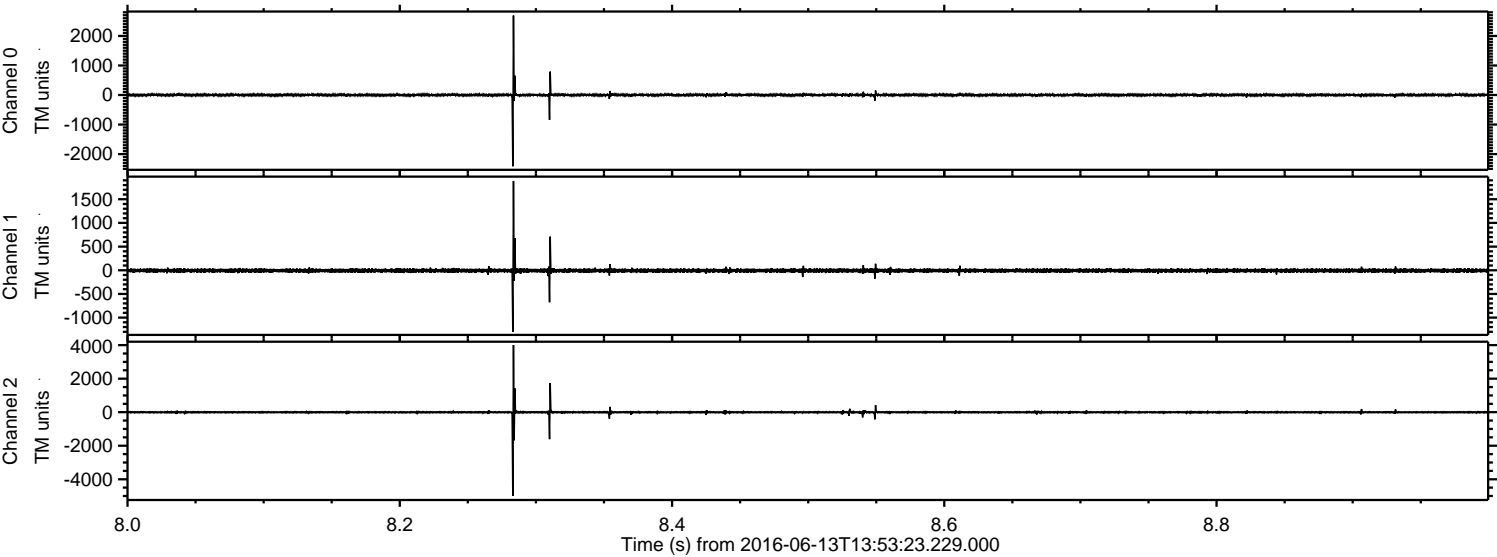


ELMAVAN 3D WAVEFORMS (Measured data sampled at 50 kHz) 51000 packets of 144 samples from 2016-06-13T13:53:23.229.000. Part 124/147

Processed Mon Jun 13 16:01:47 2016 by ELM ver.2012-10-06 from 001__elm20160613_135322__dat00.bin

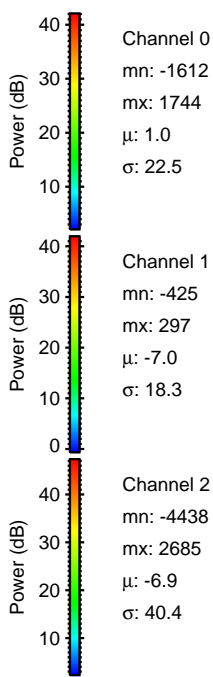
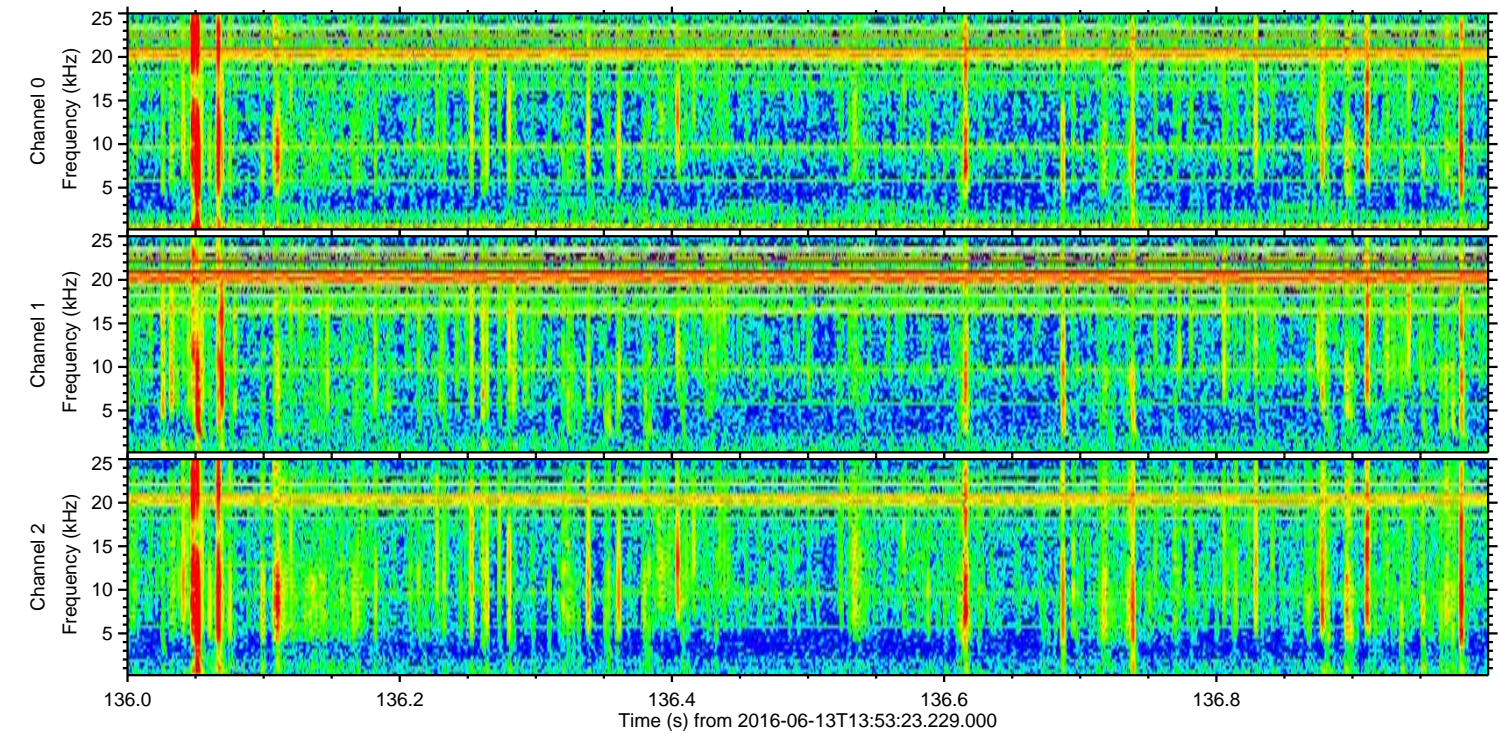
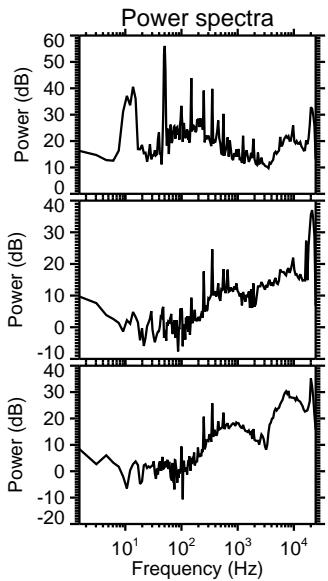
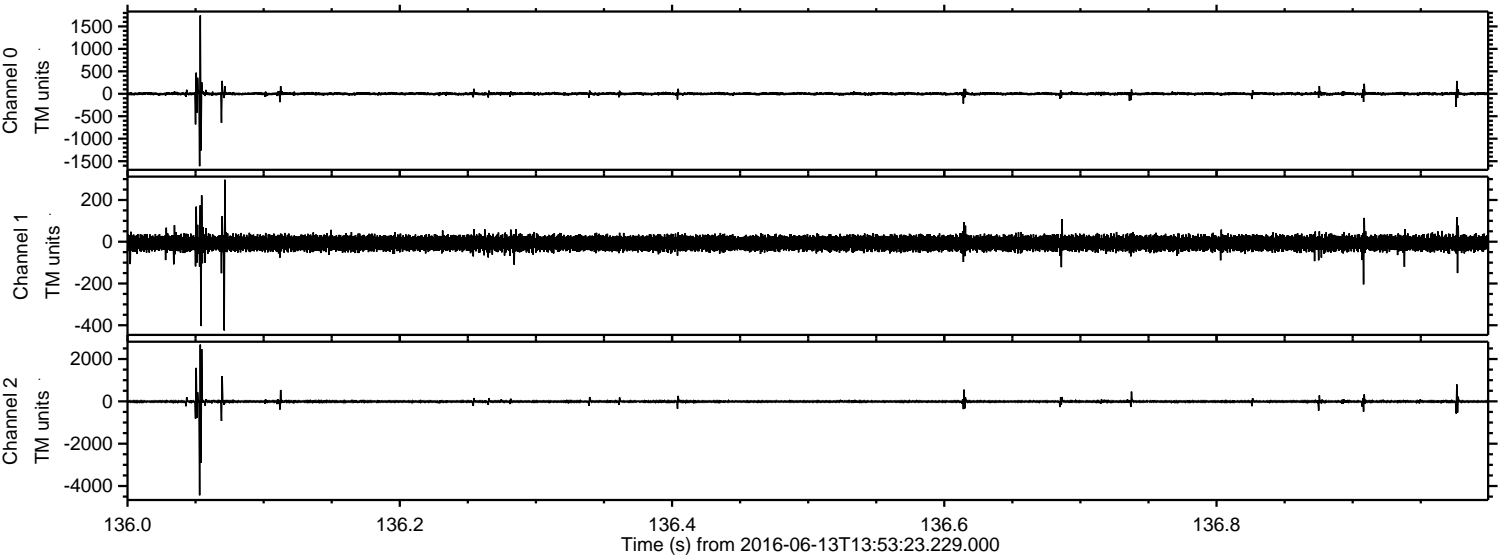


Processed Mon Jun 13 16:01:48 2016 by ELM ver.2012-10-06 from 001__elm20160613_135322__dat00.bin

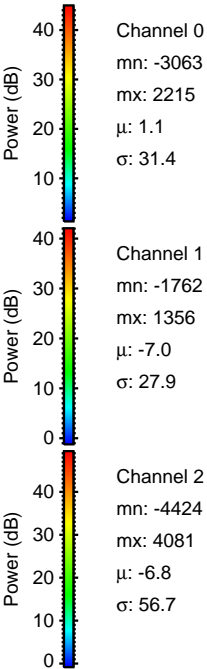
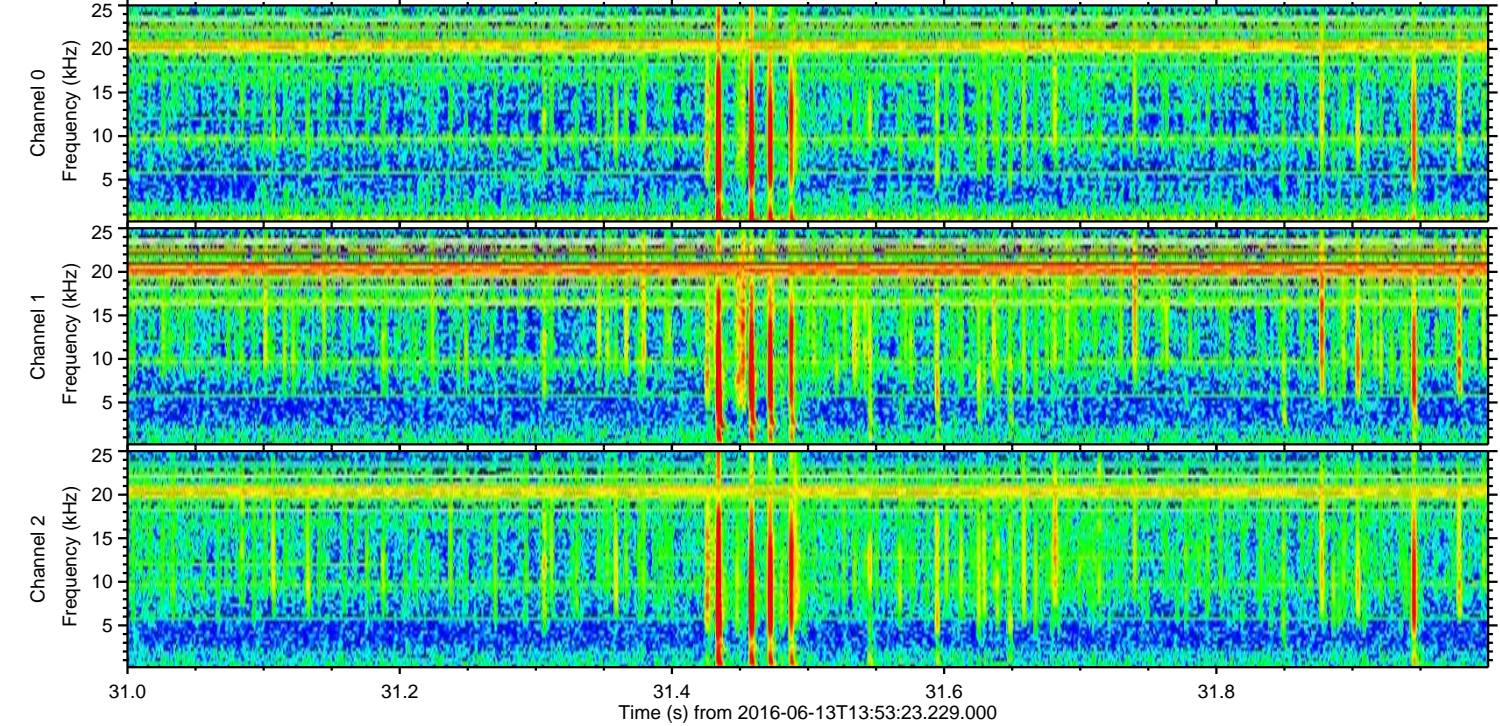
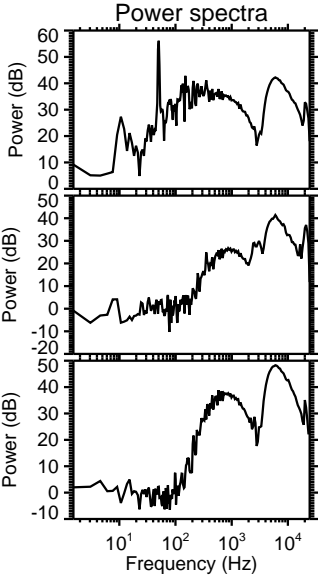
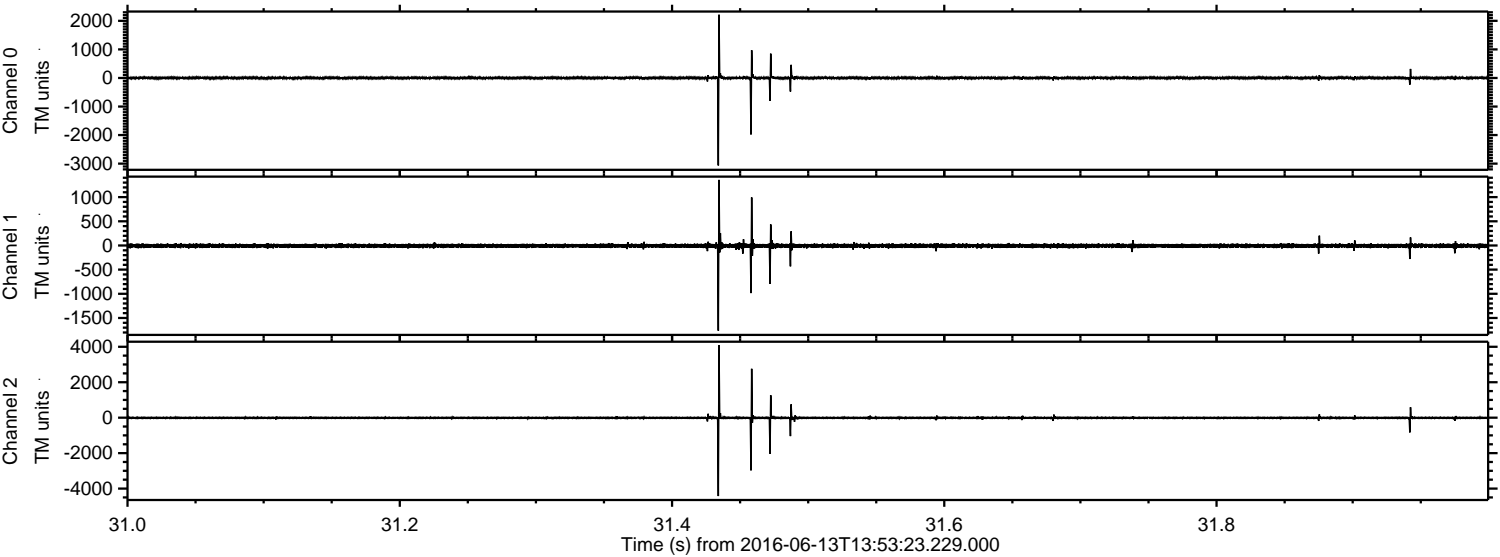


ELMAVAN 3D WAVEFORMS (Measured data sampled at 50 kHz) 51000 packets of 144 samples from 2016-06-13T13:53:23.229.000. Part 137/147

Processed Mon Jun 13 16:01:49 2016 by ELM ver.2012-10-06 from 001__elm20160613_135322__dat00.bin



Processed Mon Jun 13 16:01:50 2016 by ELM ver.2012-10-06 from 001__elm20160613_135322__dat00.bin



Power spectra

Channel 0

mn: -3063
mx: 2215
 μ : 1.1
 σ : 31.4

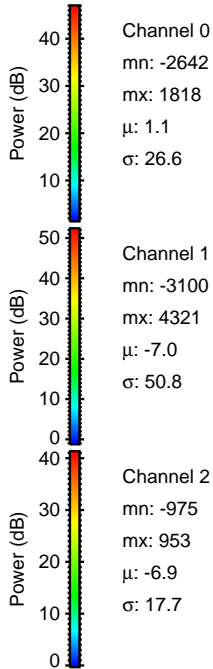
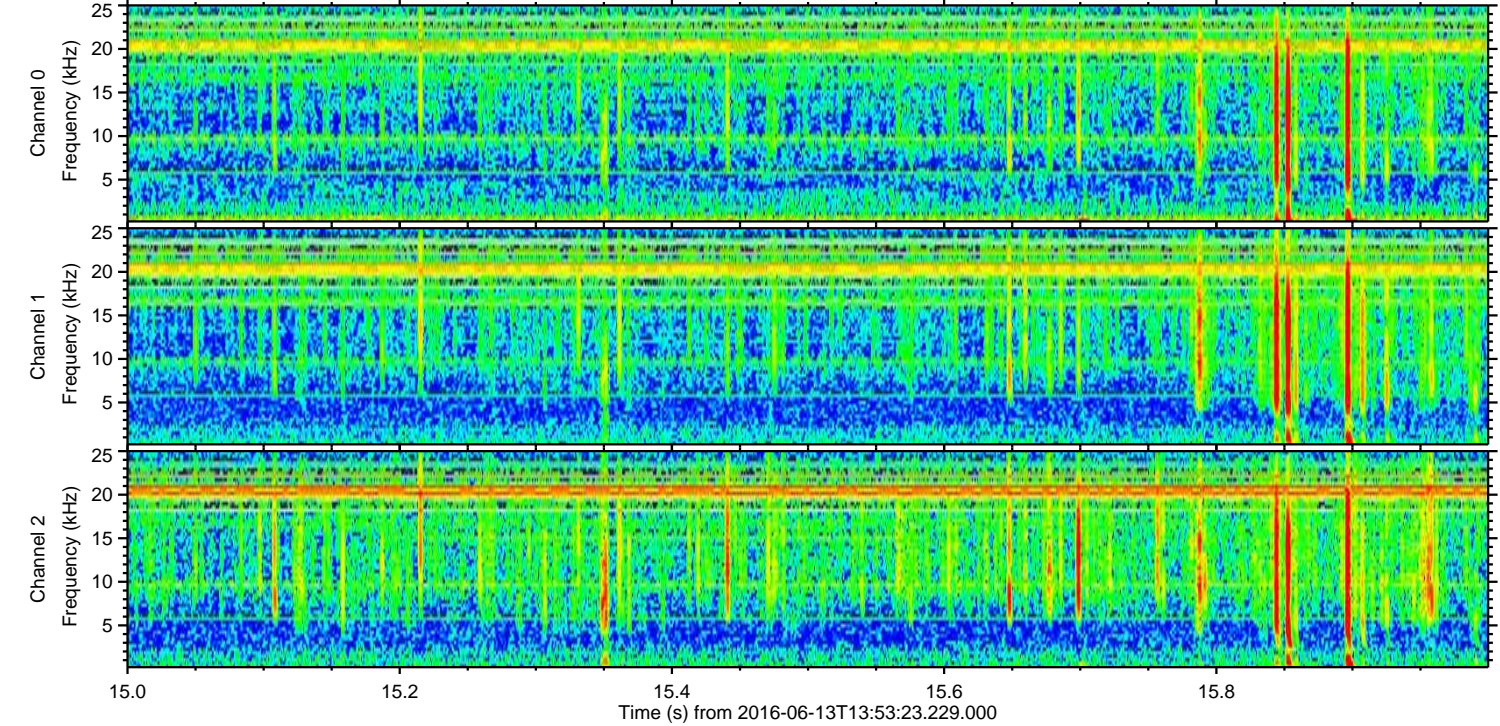
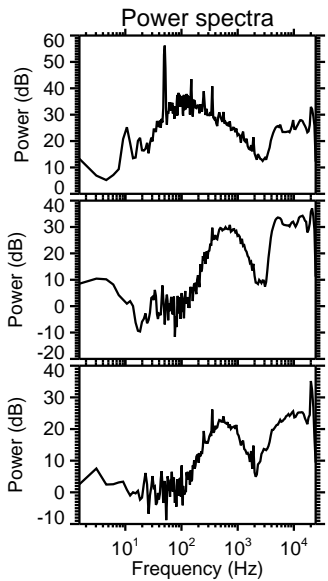
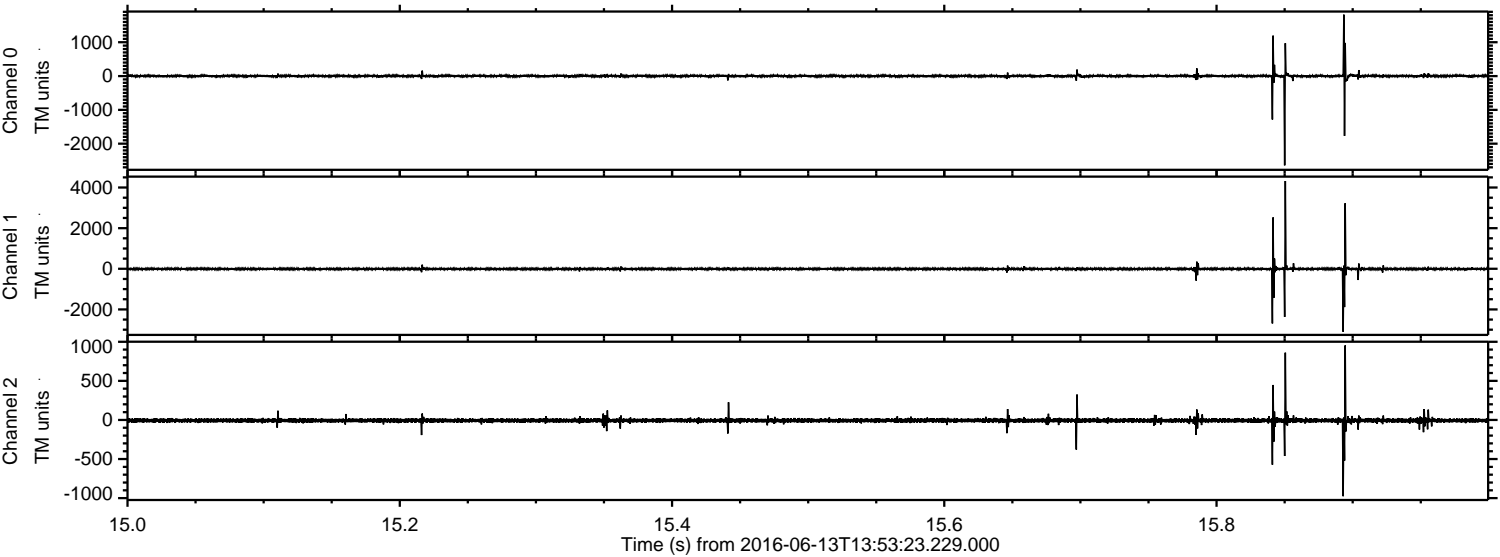
Channel 1

mn: -1762
mx: 1356
 μ : -7.0
 σ : 27.9

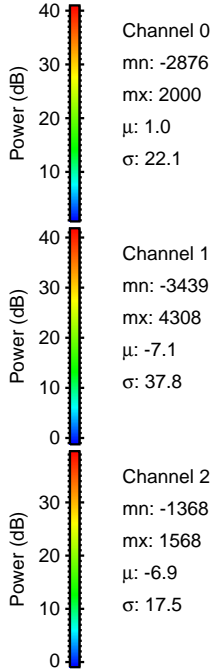
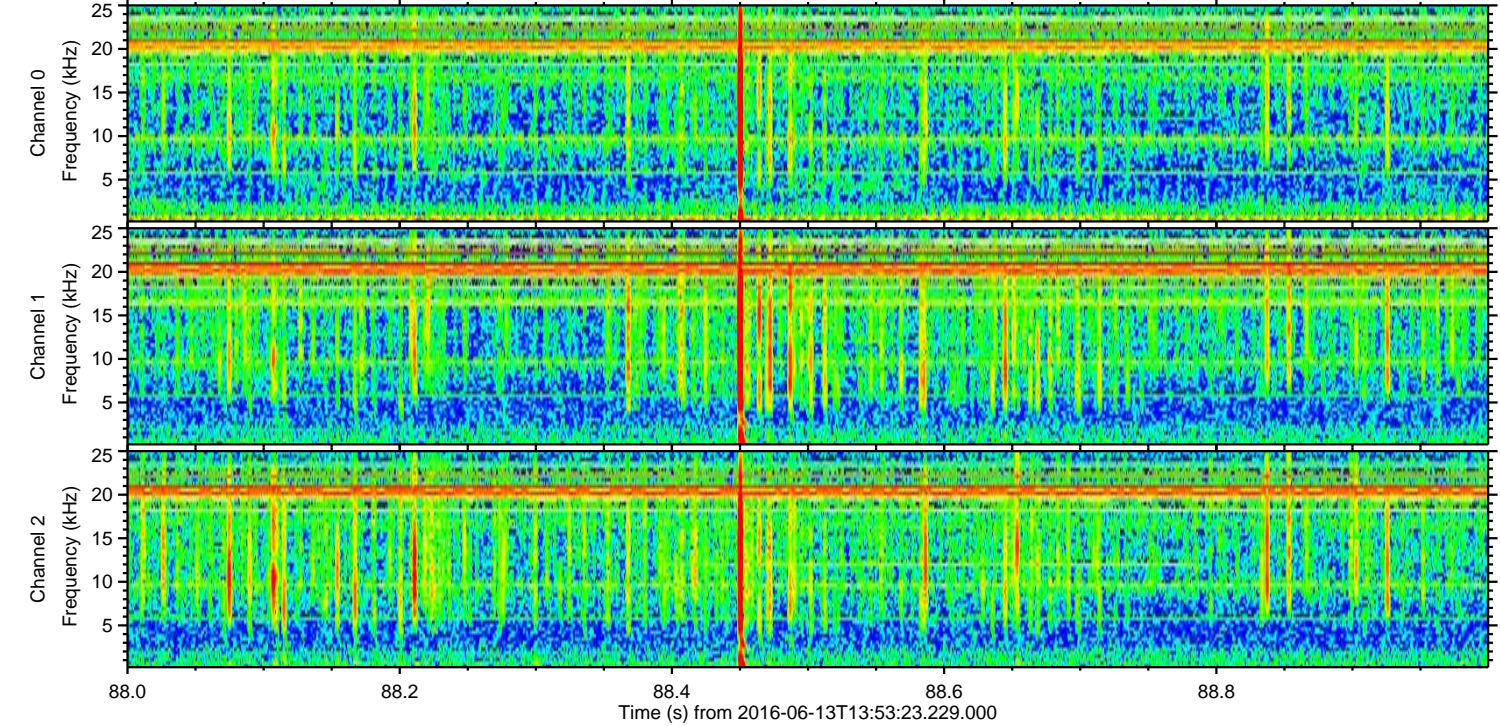
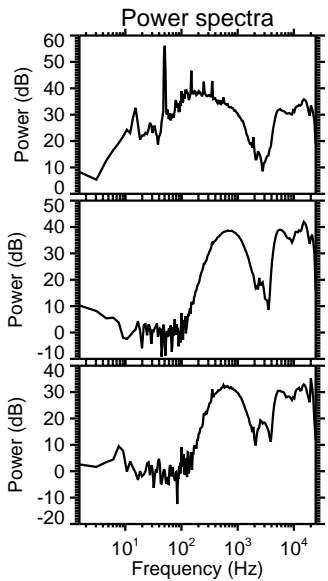
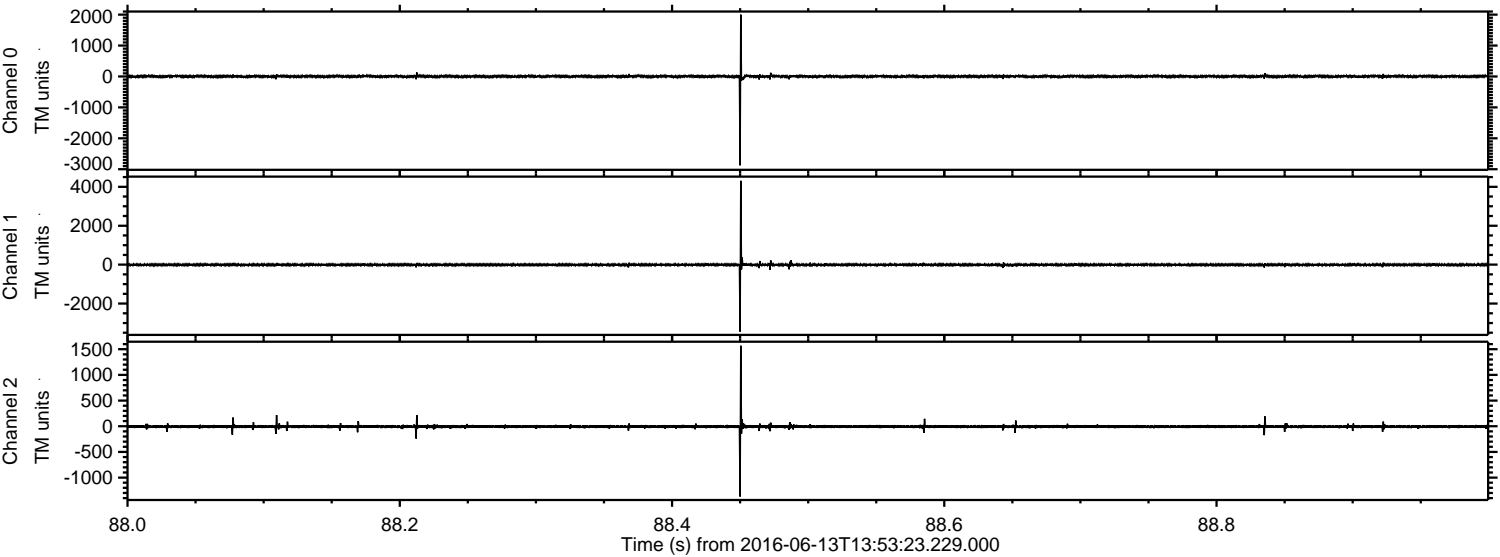
Channel 2

mn: -4424
mx: 4081
 μ : -6.8
 σ : 56.7

Processed Mon Jun 13 16:01:51 2016 by ELM ver.2012-10-06 from 001__elm20160613_135322__dat00.bin



Processed Mon Jun 13 16:01:52 2016 by ELM ver.2012-10-06 from 001__elm20160613_135322__dat00.bin



Channel 0
mn: -2876
mx: 2000
 μ : 1.0
 σ : 22.1

Channel 1
mn: -3439
mx: 4308
 μ : -7.1
 σ : 37.8

Channel 2
mn: -1368
mx: 1568
 μ : -6.9
 σ : 17.5

Processed Mon Jun 13 16:01:53 2016 by ELM ver.2012-10-06 from 001_elm20160613_135322__dat00.bin

