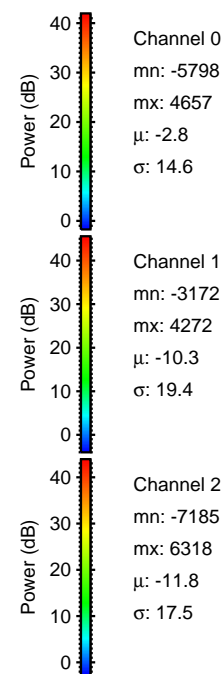
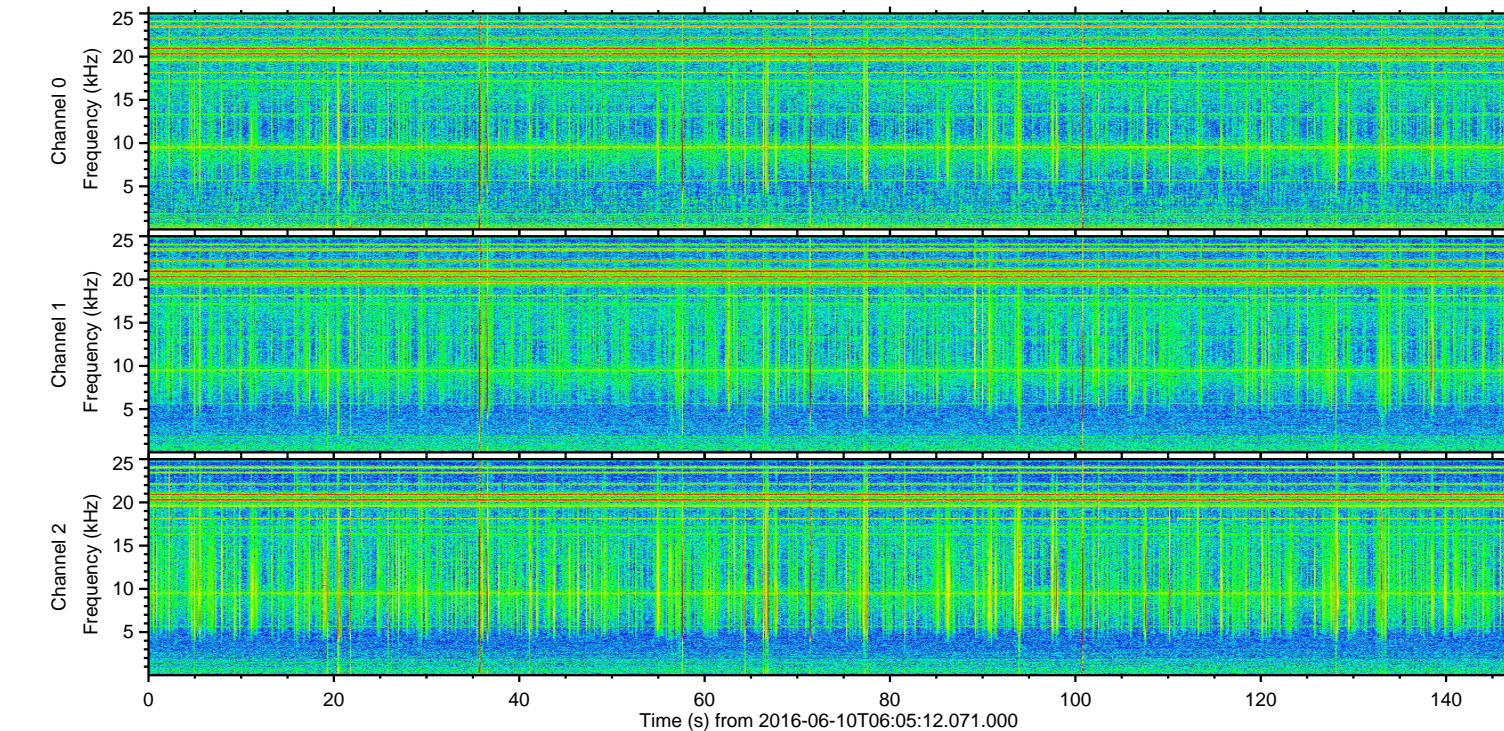
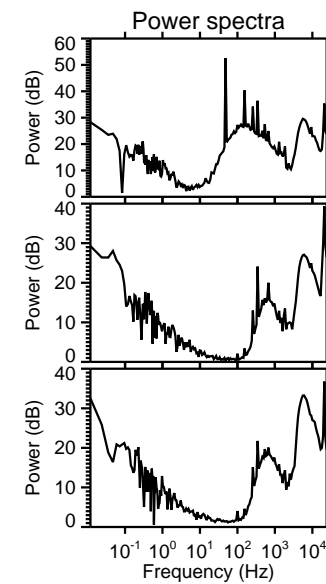
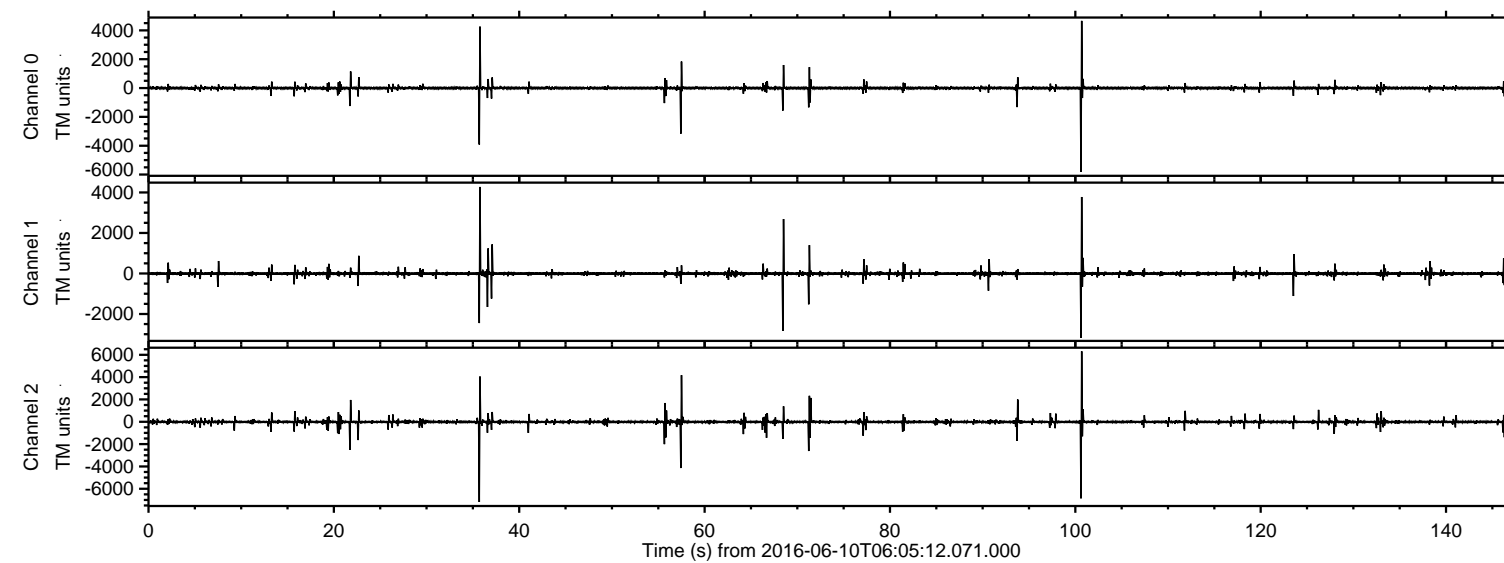


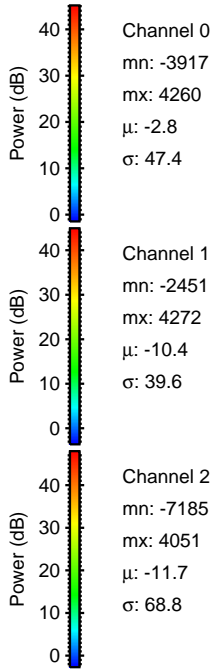
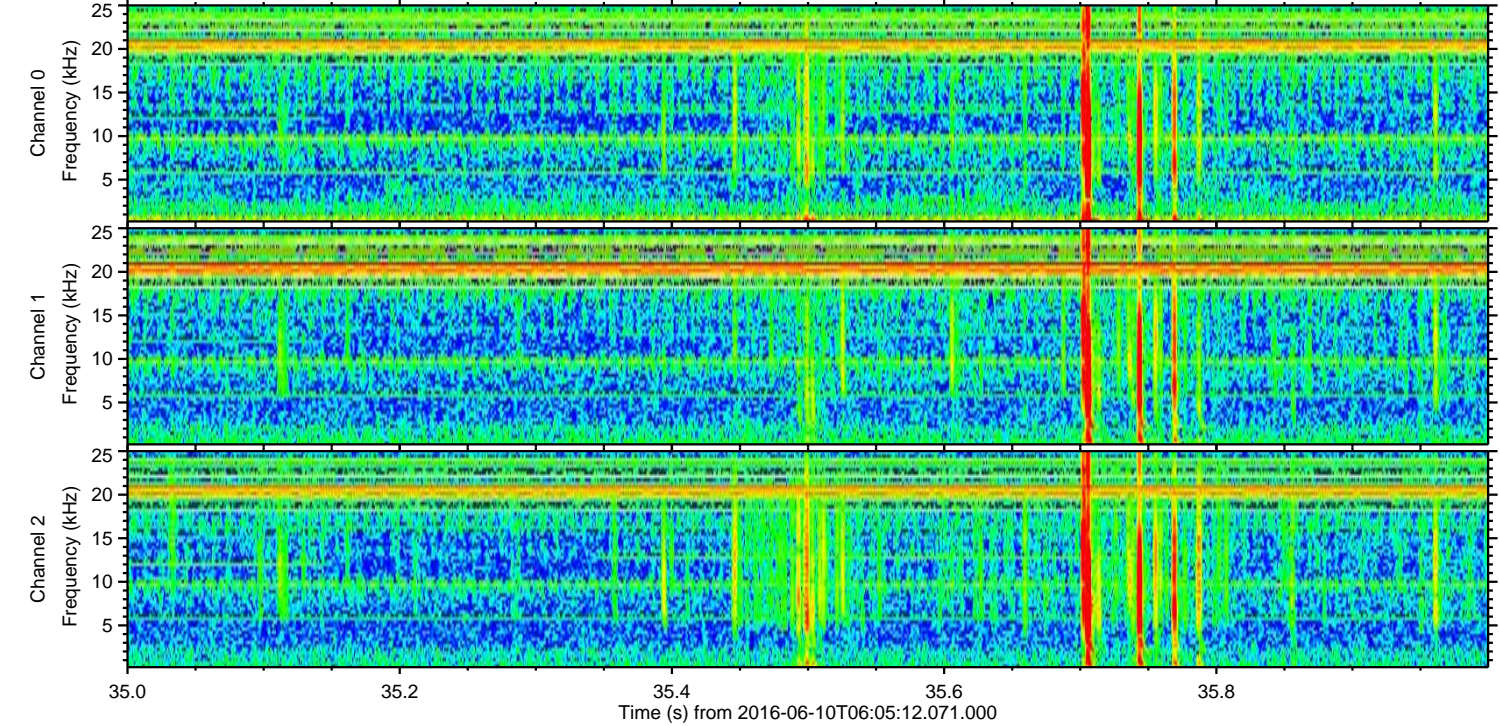
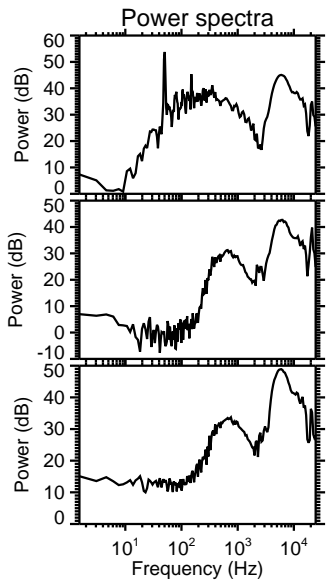
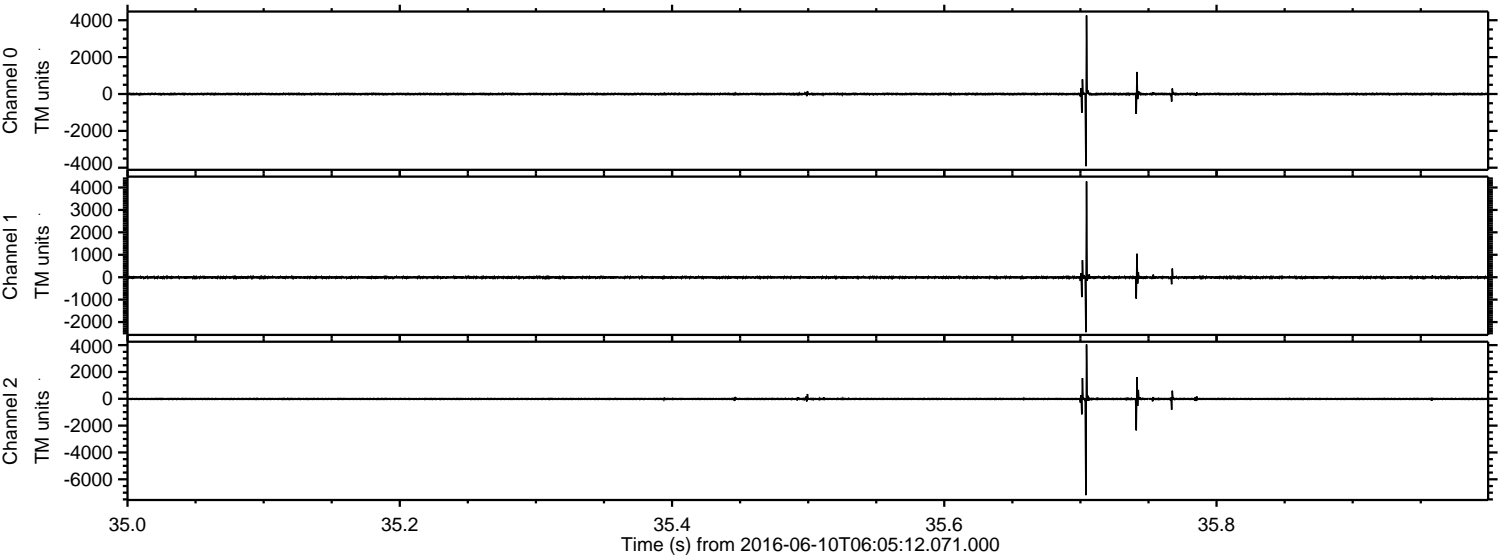
ELMAVAN 3D WAVEFORMS (Measured data sampled at 50 kHz) 51000 packets of 144 samples from 2016-06-10T06:05:12.071.000.

Processed Fri Jun 10 08:12:48 2016 by ELM ver.2012-10-06 from 001\_\_elm20160610\_060511\_\_dat00.bin





Processed Fri Jun 10 08:12:59 2016 by ELM ver.2012-10-06 from 001\_\_elm20160610\_060511\_\_dat00.bin



Channel 0  
mn: -3917  
mx: 4260  
 $\mu$ : -2.8  
 $\sigma$ : 47.4

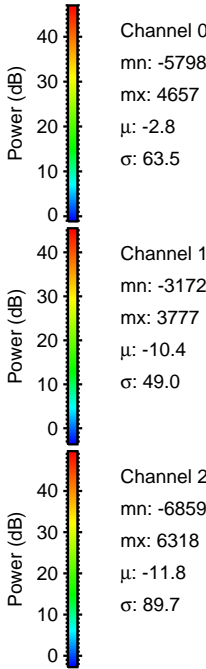
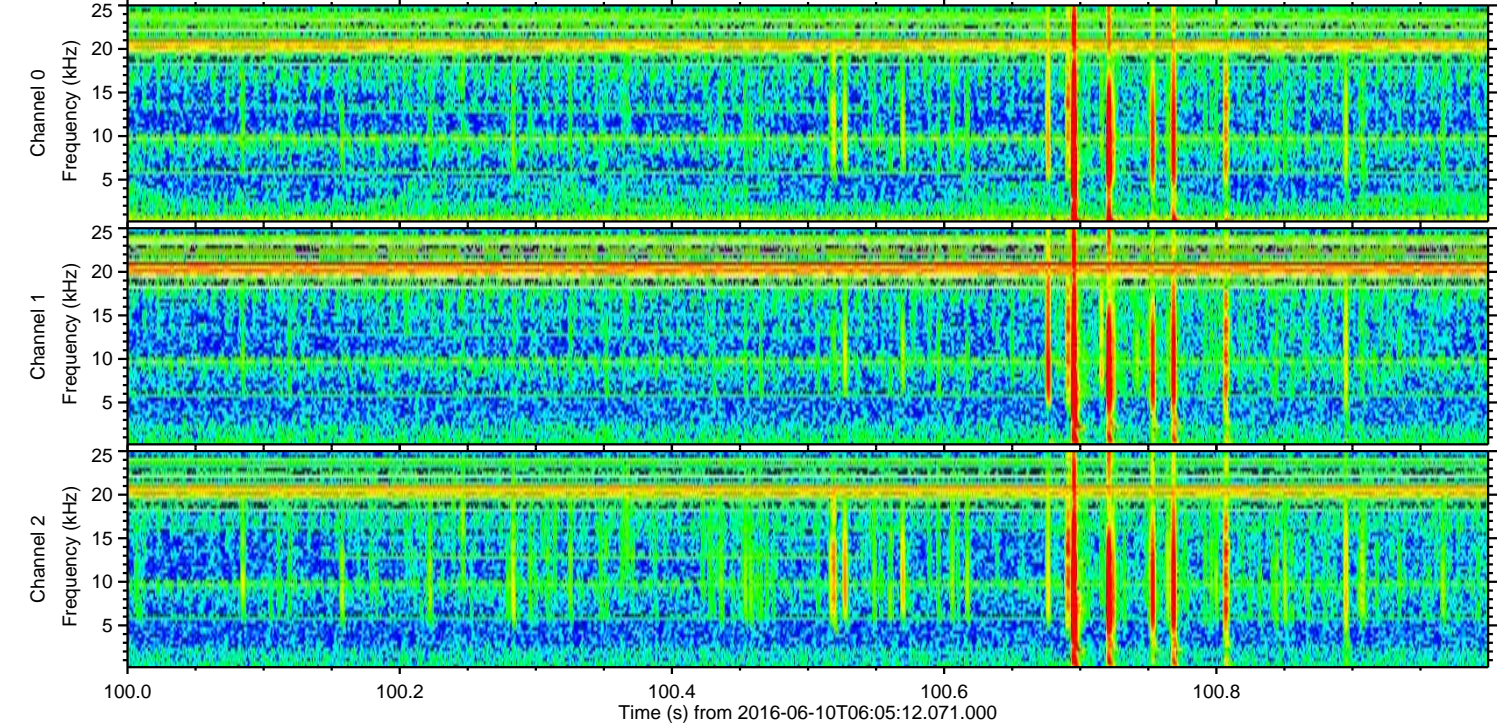
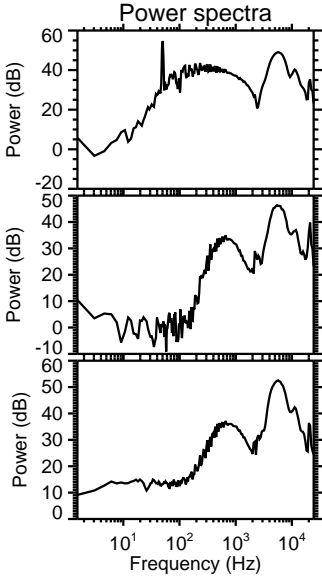
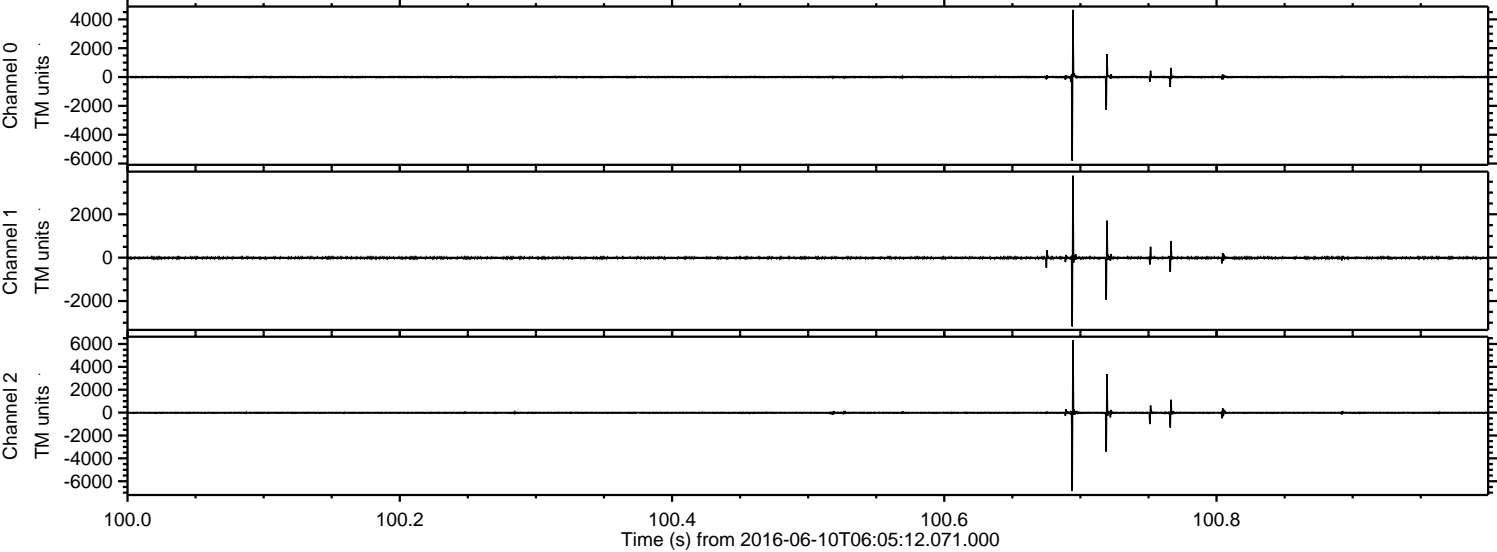
Channel 1  
mn: -2451  
mx: 4272  
 $\mu$ : -10.4  
 $\sigma$ : 39.6

Channel 2  
mn: -7185  
mx: 4051  
 $\mu$ : -11.7  
 $\sigma$ : 68.8



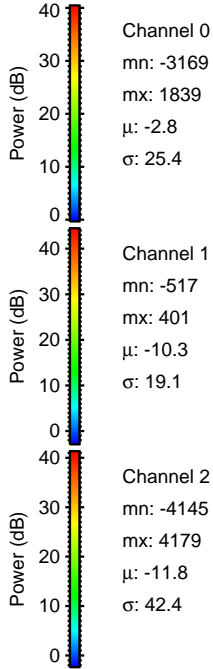
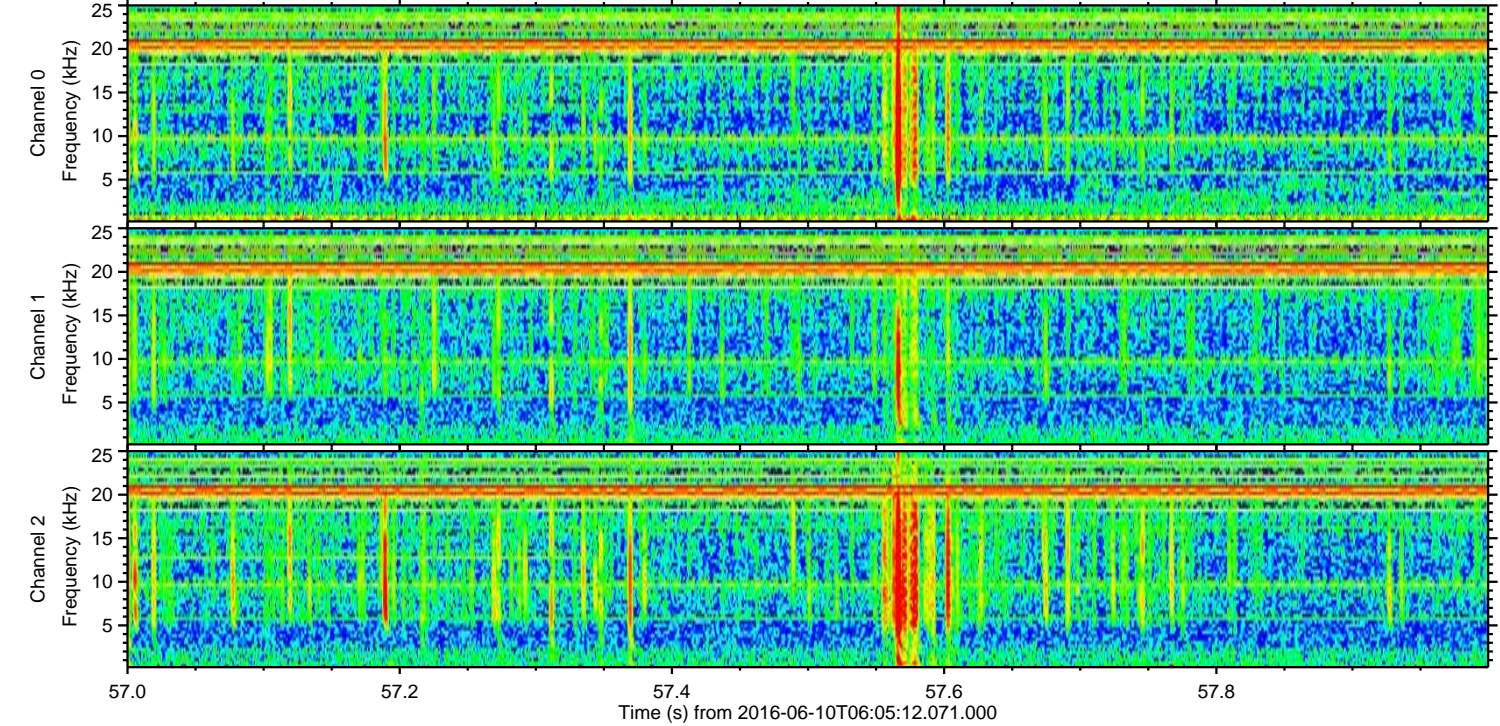
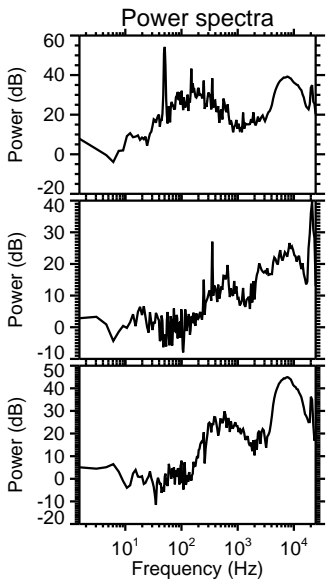
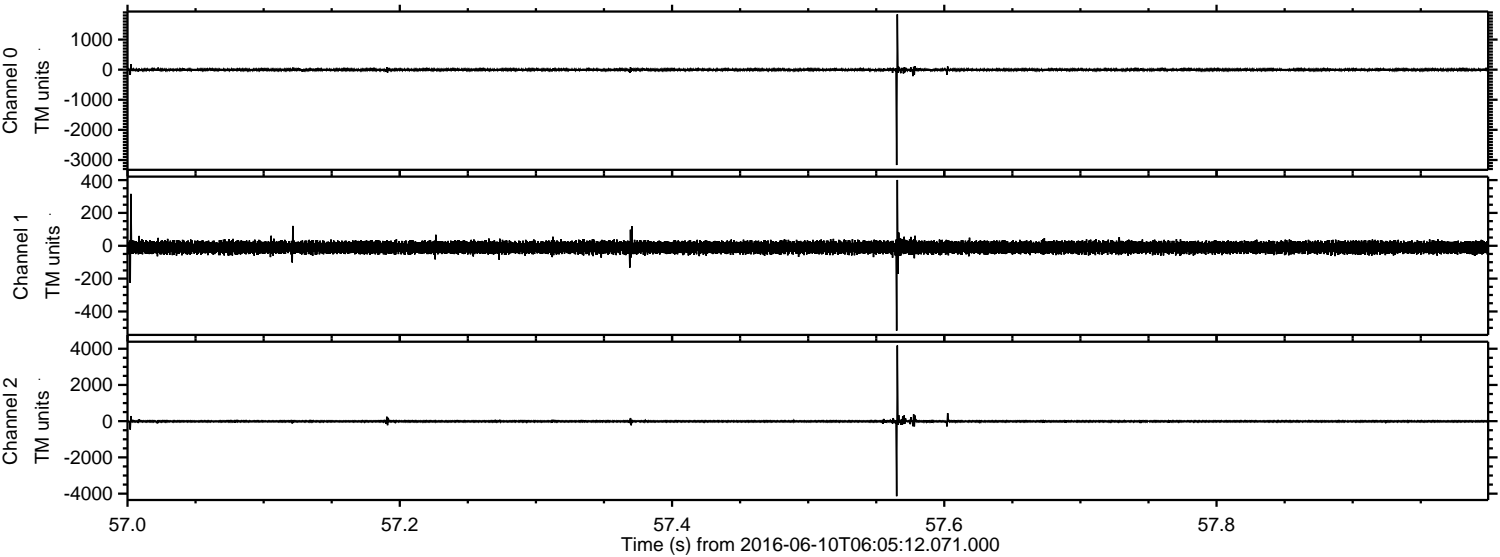
ELMAVAN 3D WAVEFORMS (Measured data sampled at 50 kHz) 51000 packets of 144 samples from 2016-06-10T06:05:12.071.000. Part 101/147

Processed Fri Jun 10 08:13:00 2016 by ELM ver.2012-10-06 from 001\_\_elm20160610\_060511\_\_dat00.bin



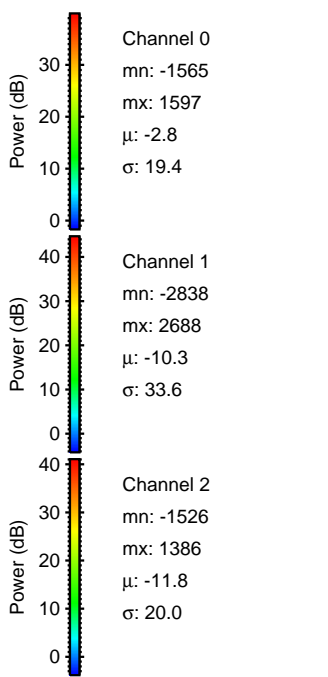
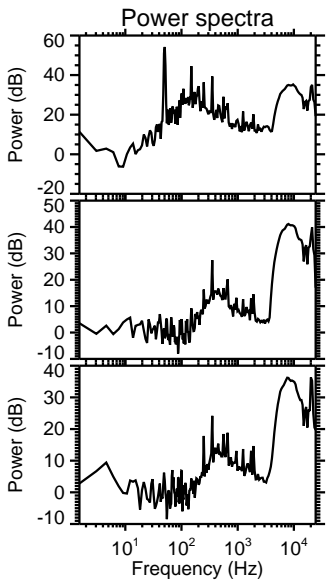
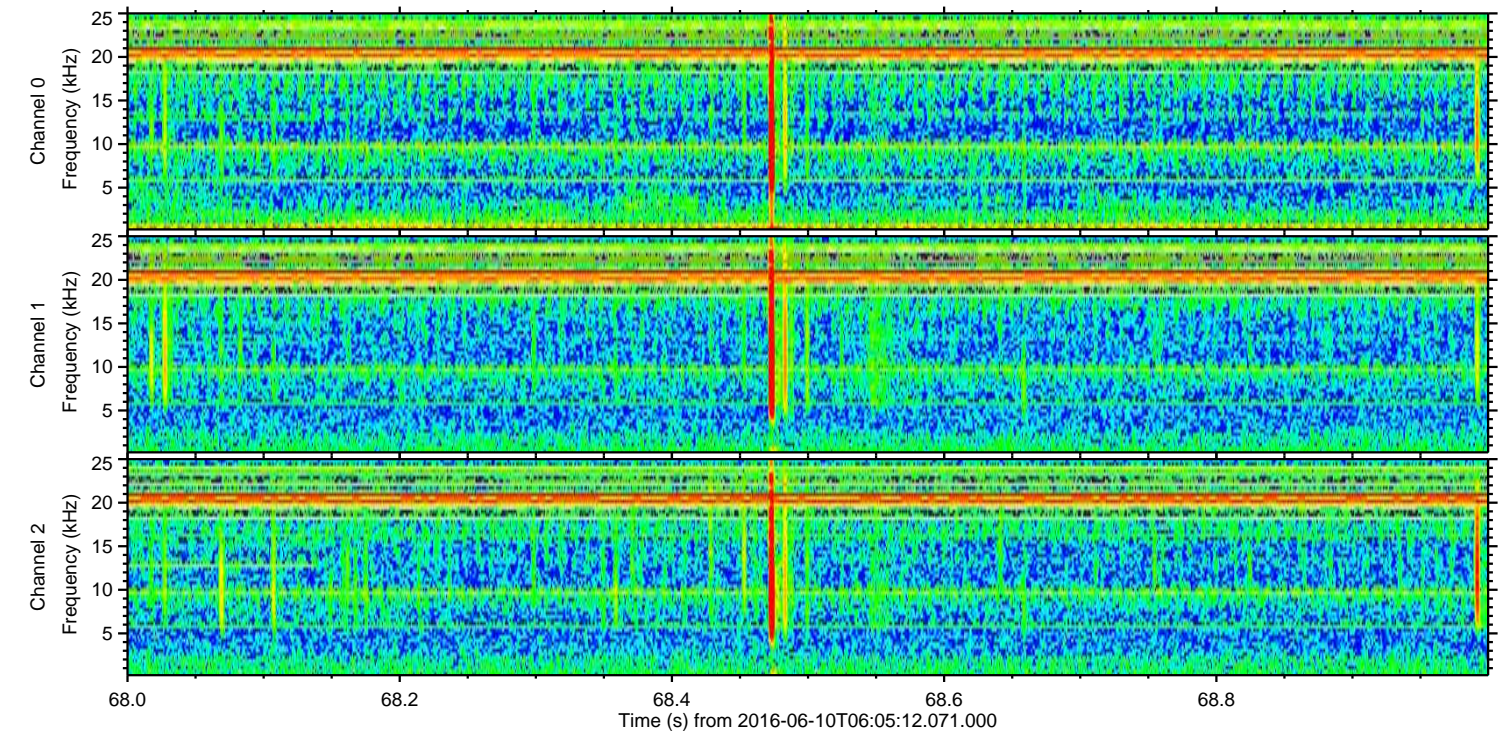
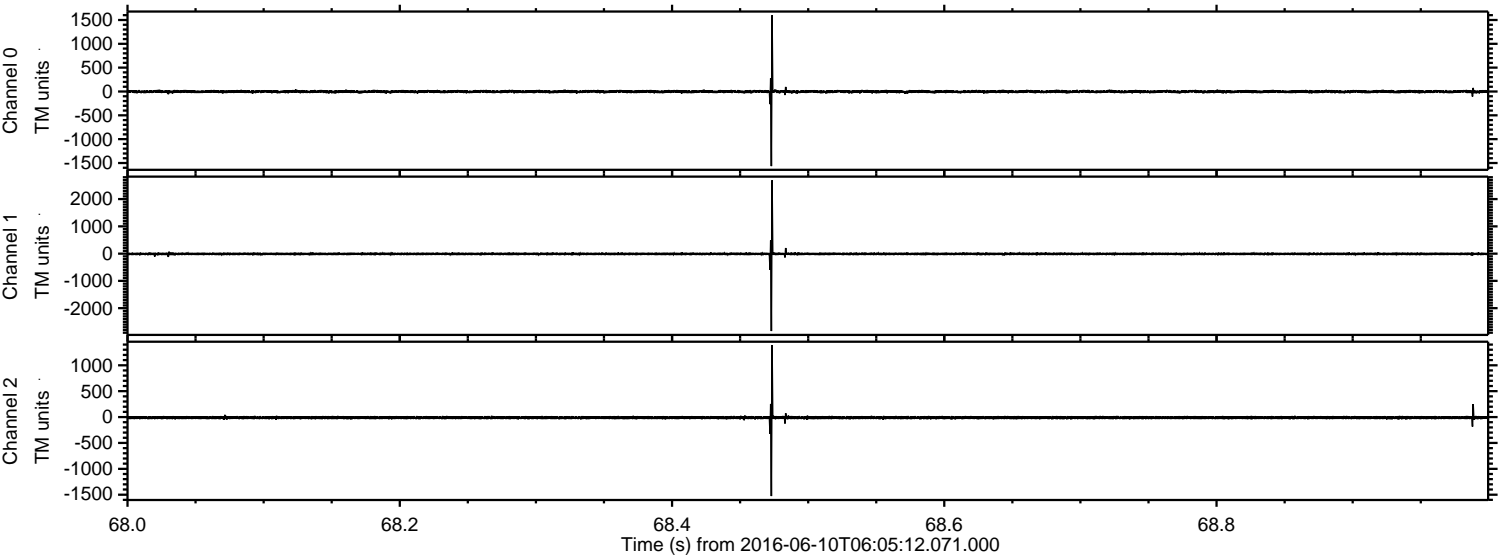


Processed Fri Jun 10 08:13:01 2016 by ELM ver.2012-10-06 from 001\_\_elm20160610\_060511\_\_dat00.bin





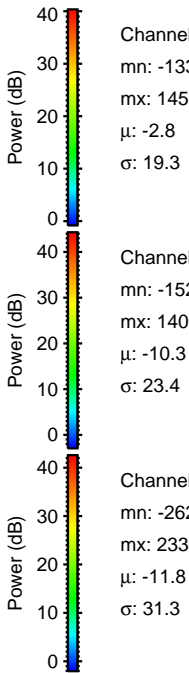
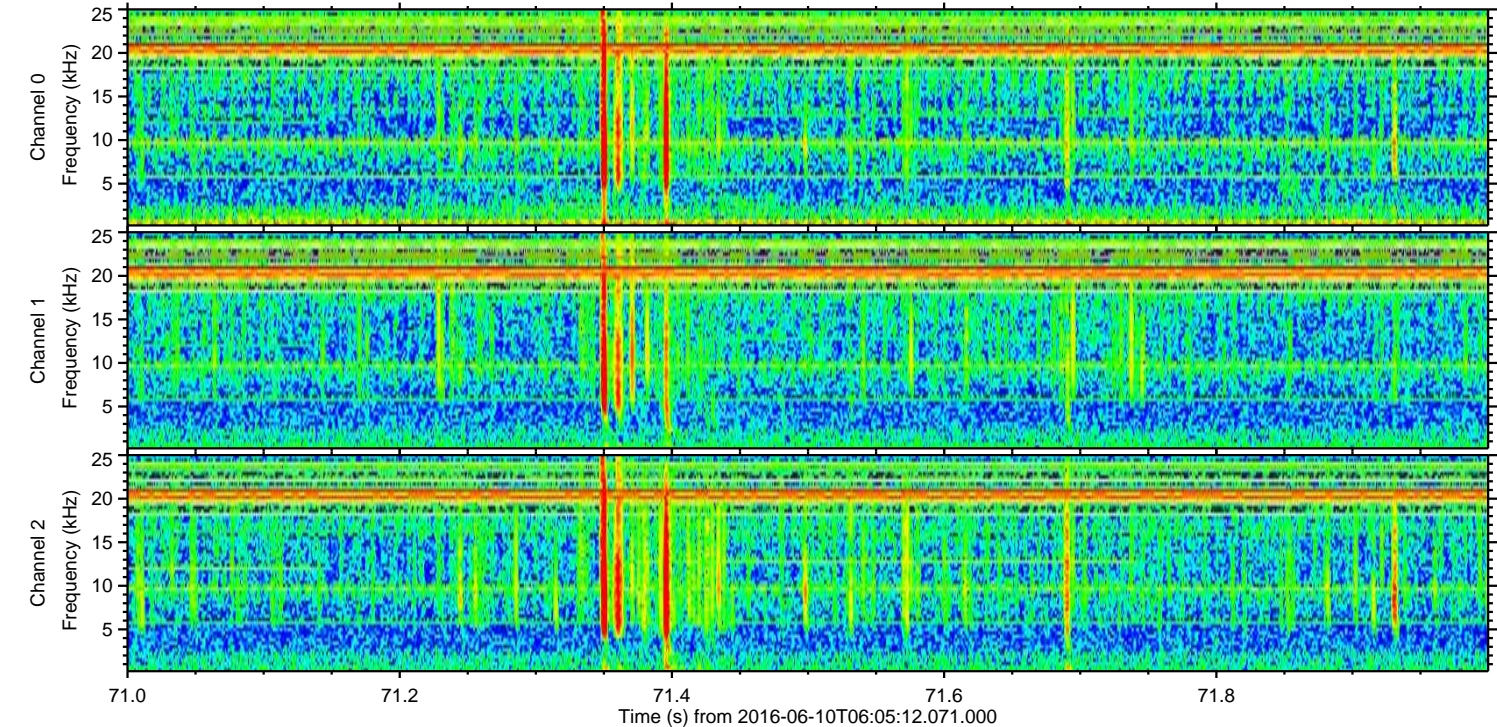
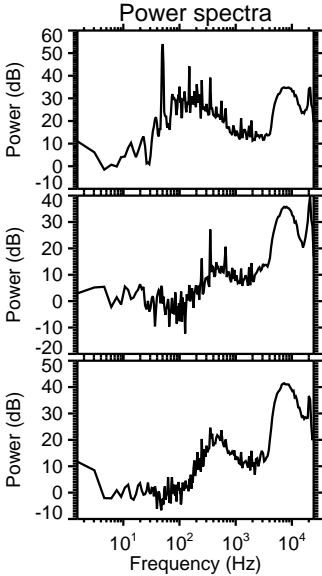
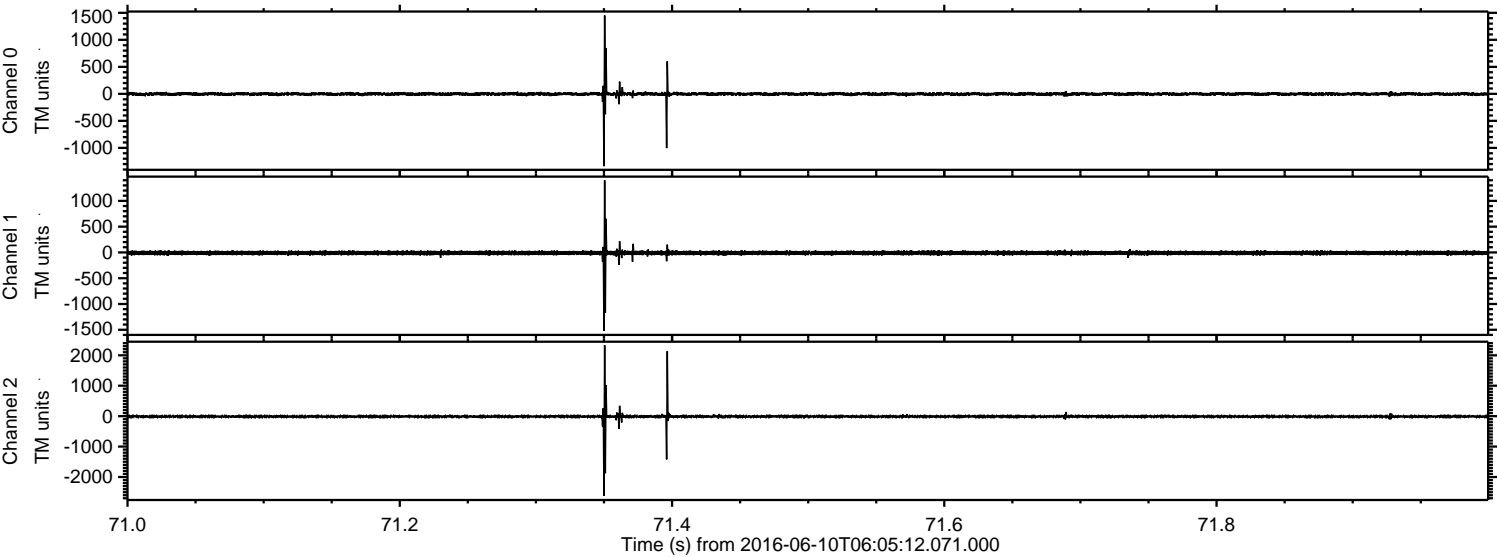
Processed Fri Jun 10 08:13:02 2016 by ELM ver.2012-10-06 from 001\_\_elm20160610\_060511\_\_dat00.bin





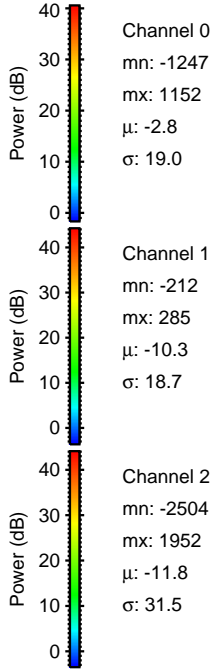
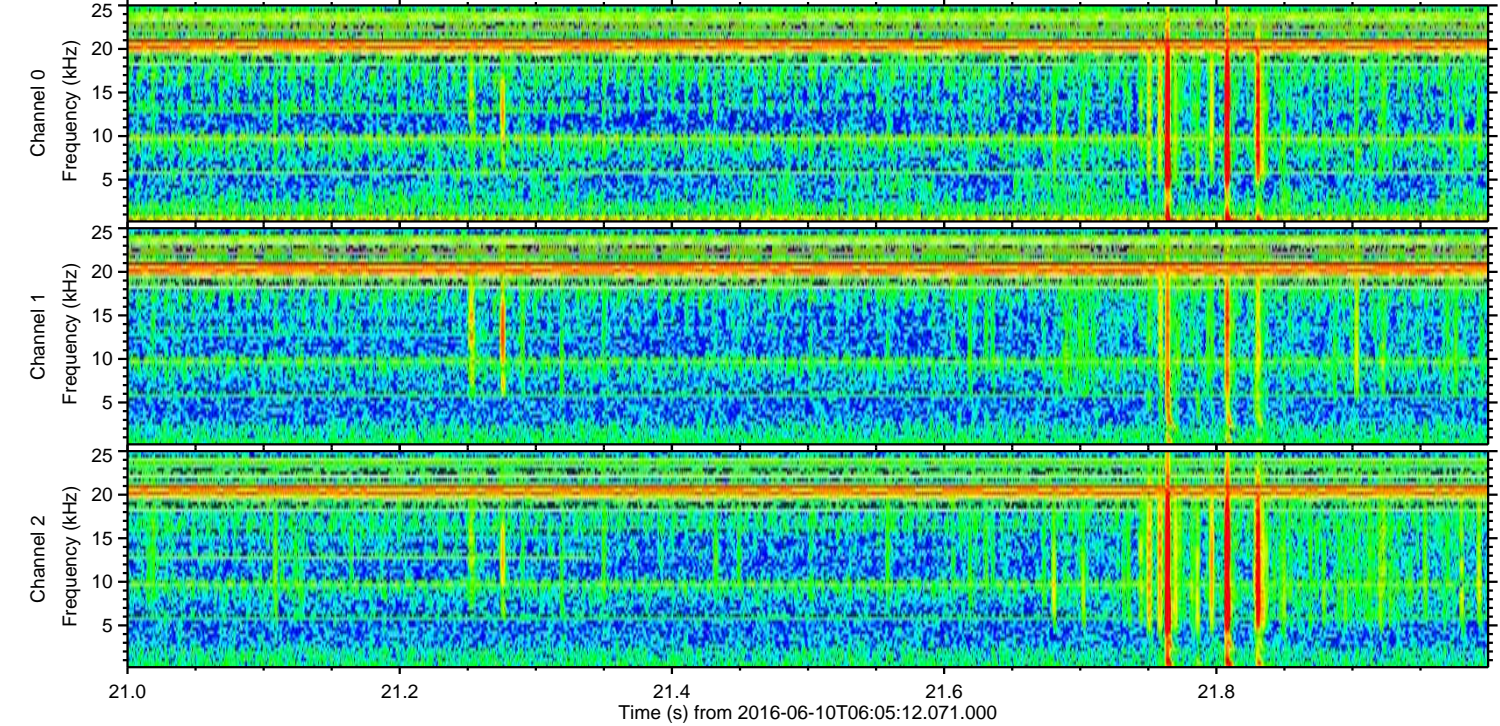
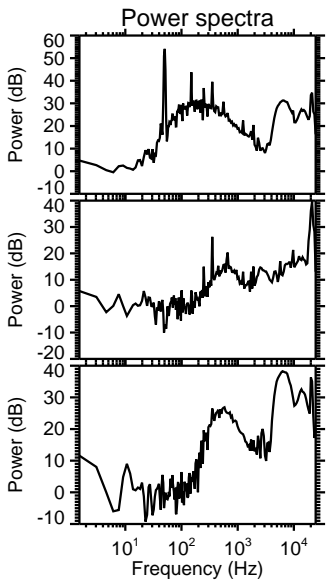
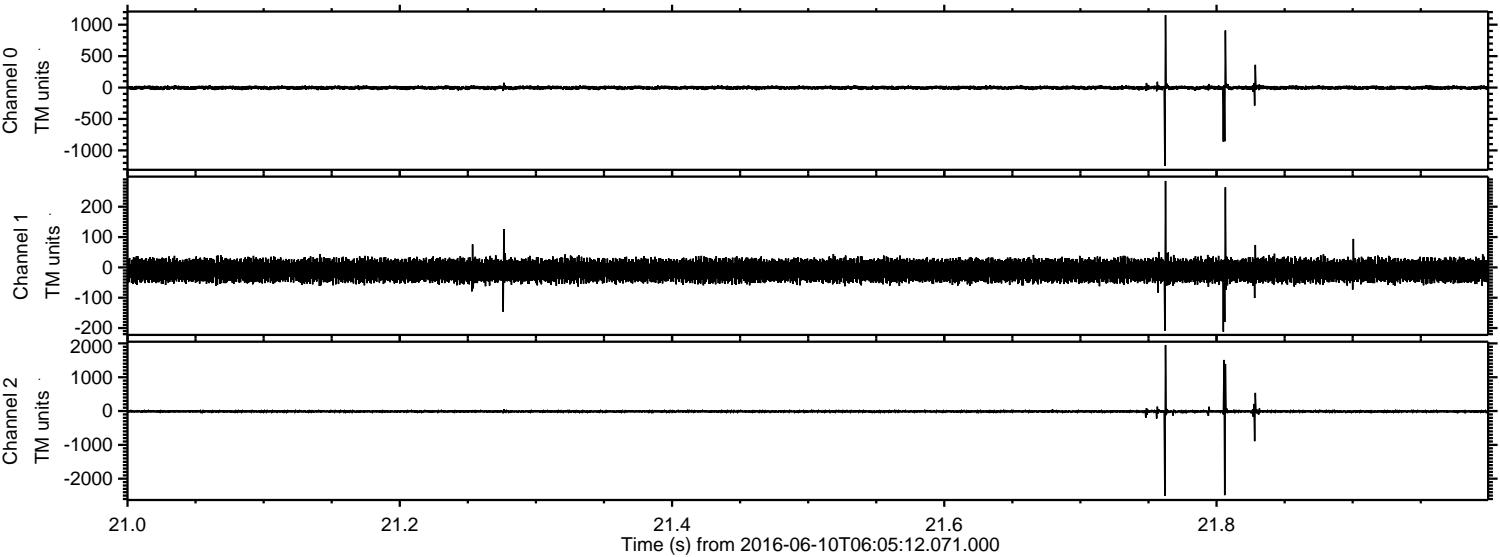
ELMAVAN 3D WAVEFORMS (Measured data sampled at 50 kHz) 51000 packets of 144 samples from 2016-06-10T06:05:12.071.000. Part 72/147

Processed Fri Jun 10 08:13:03 2016 by ELM ver.2012-10-06 from 001\_\_elm20160610\_060511\_\_dat00.bin





Processed Fri Jun 10 08:13:04 2016 by ELM ver.2012-10-06 from 001\_\_elm20160610\_060511\_\_dat00.bin



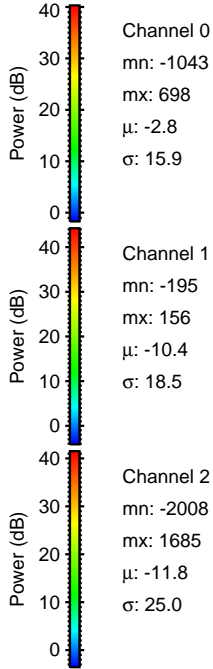
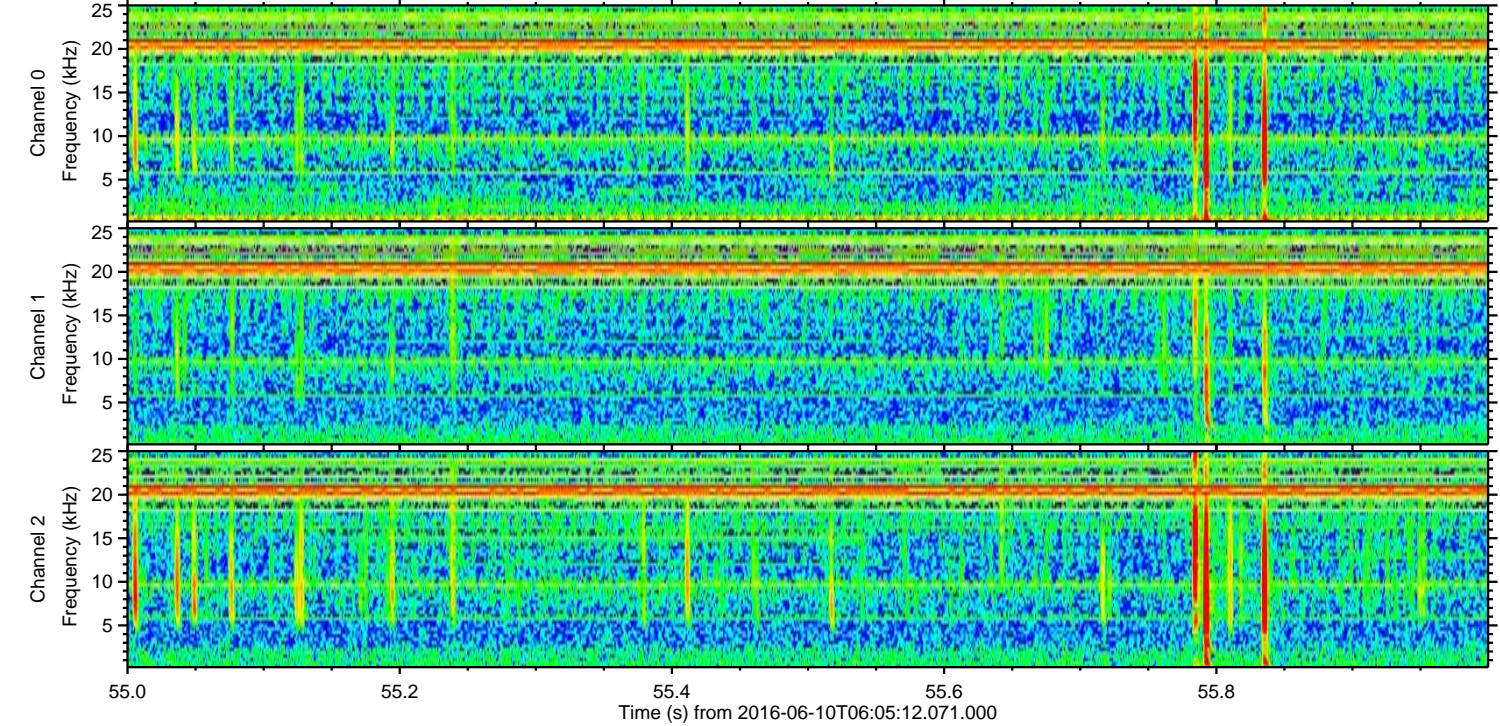
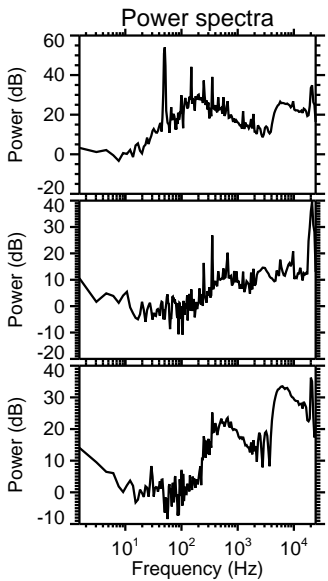
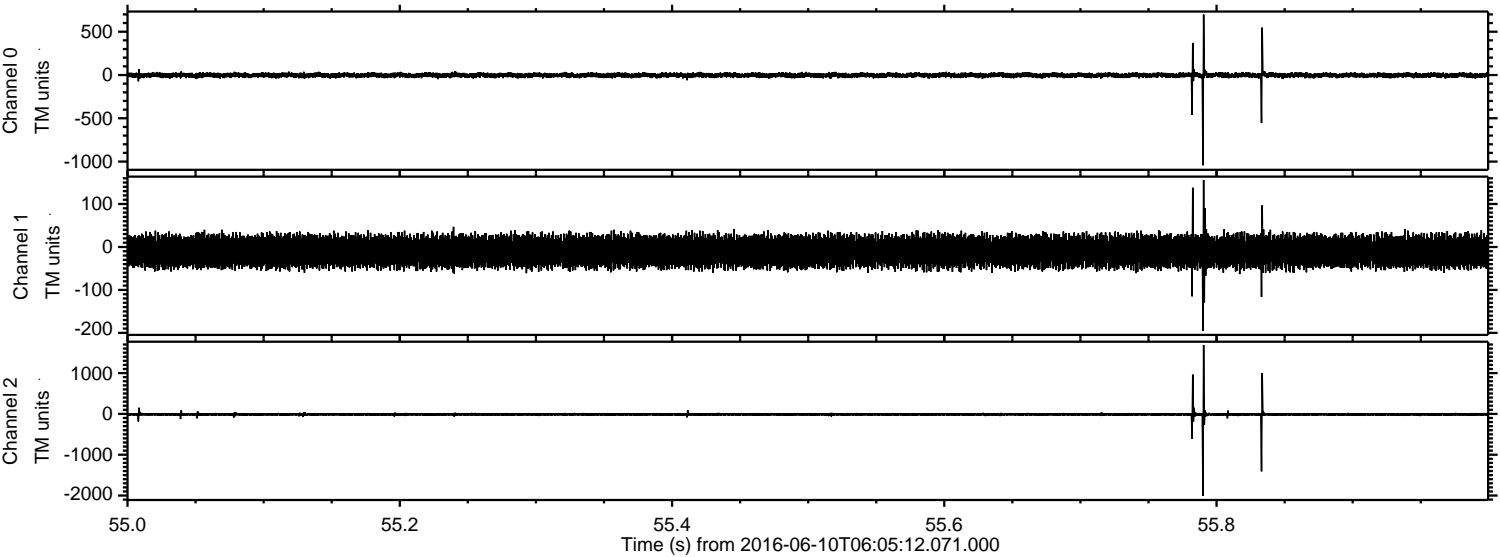
Channel 0  
mn: -1247  
mx: 1152  
 $\mu$ : -2.8  
 $\sigma$ : 19.0

Channel 1  
mn: -212  
mx: 285  
 $\mu$ : -10.3  
 $\sigma$ : 18.7

Channel 2  
mn: -2504  
mx: 1952  
 $\mu$ : -11.8  
 $\sigma$ : 31.5

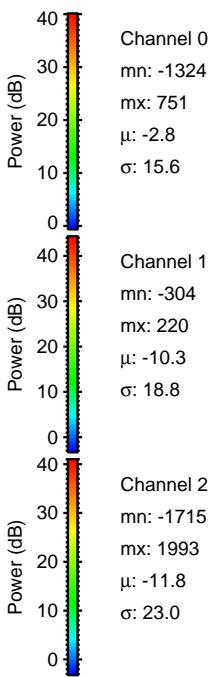
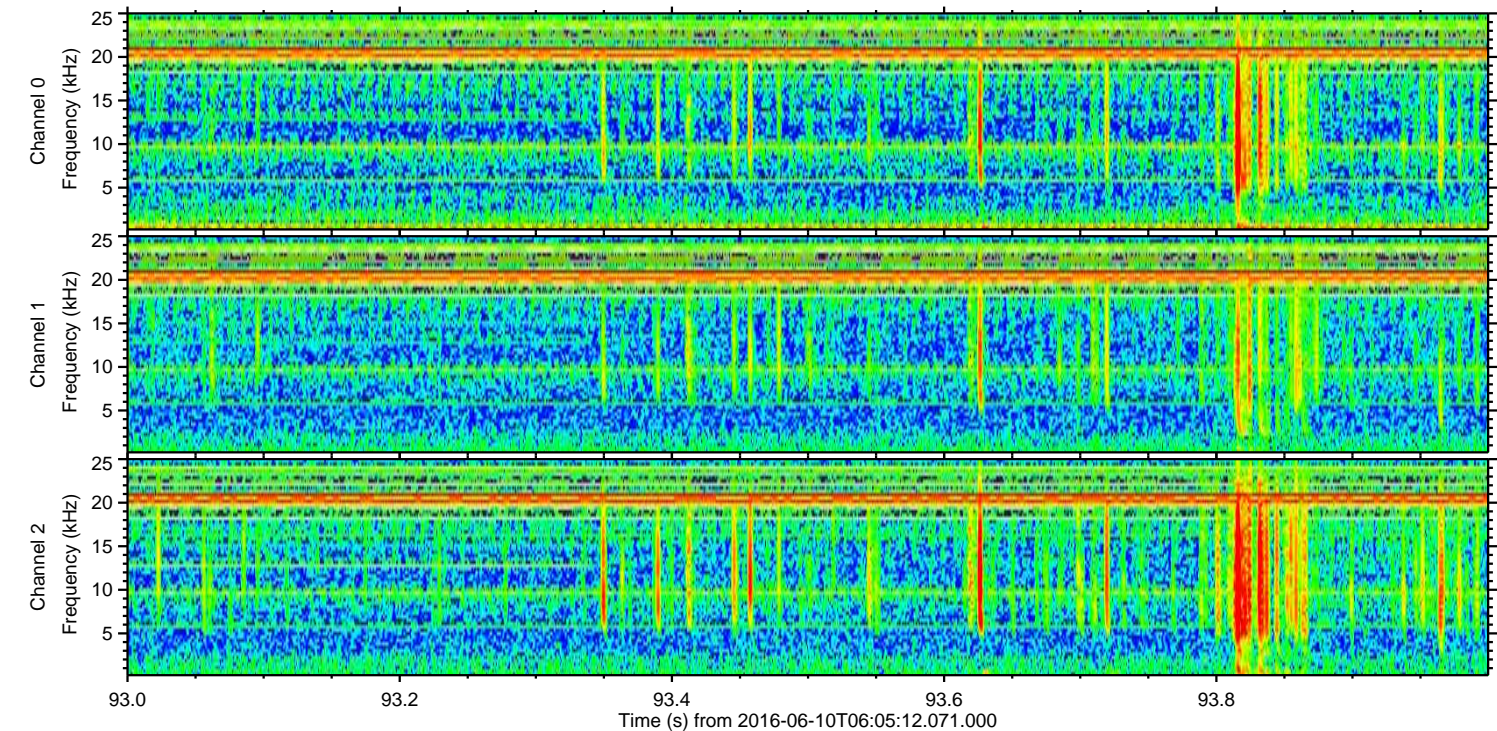
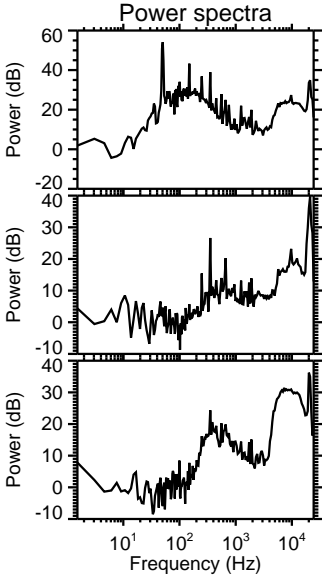
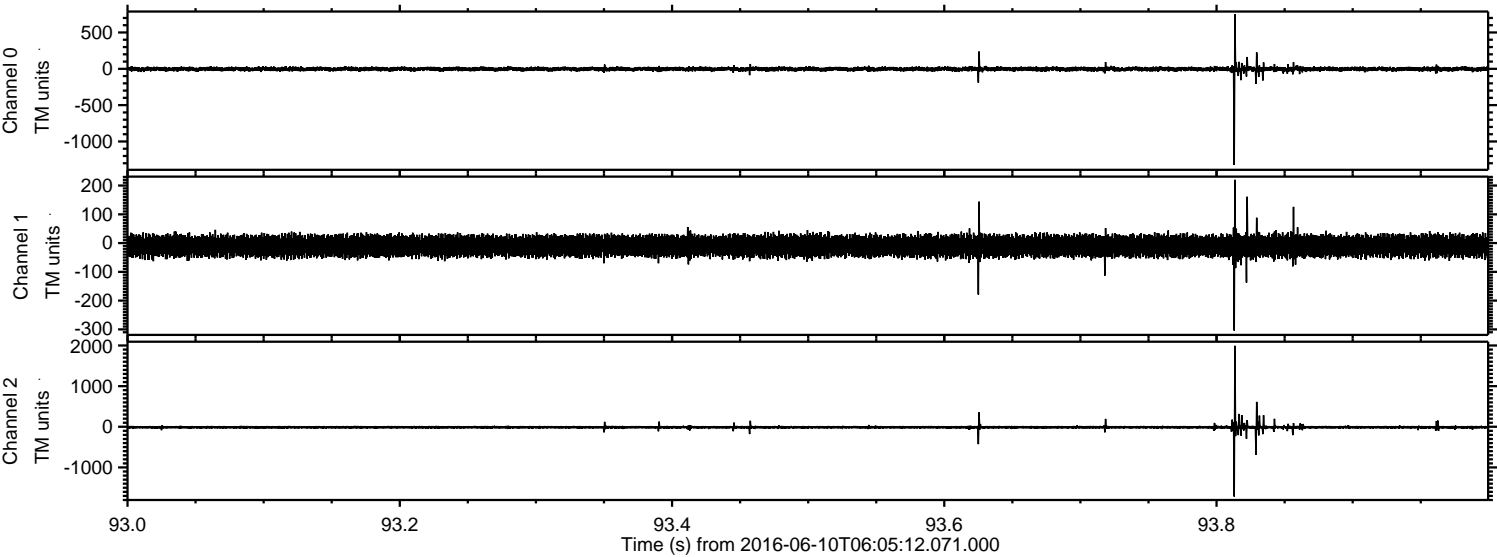


Processed Fri Jun 10 08:13:05 2016 by ELM ver.2012-10-06 from 001\_\_elm20160610\_060511\_\_dat00.bin



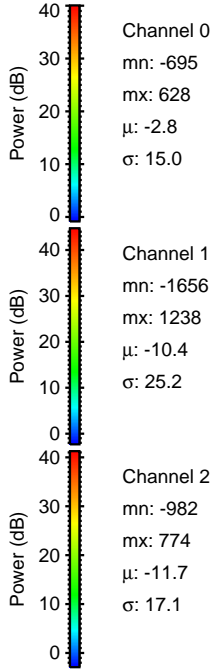
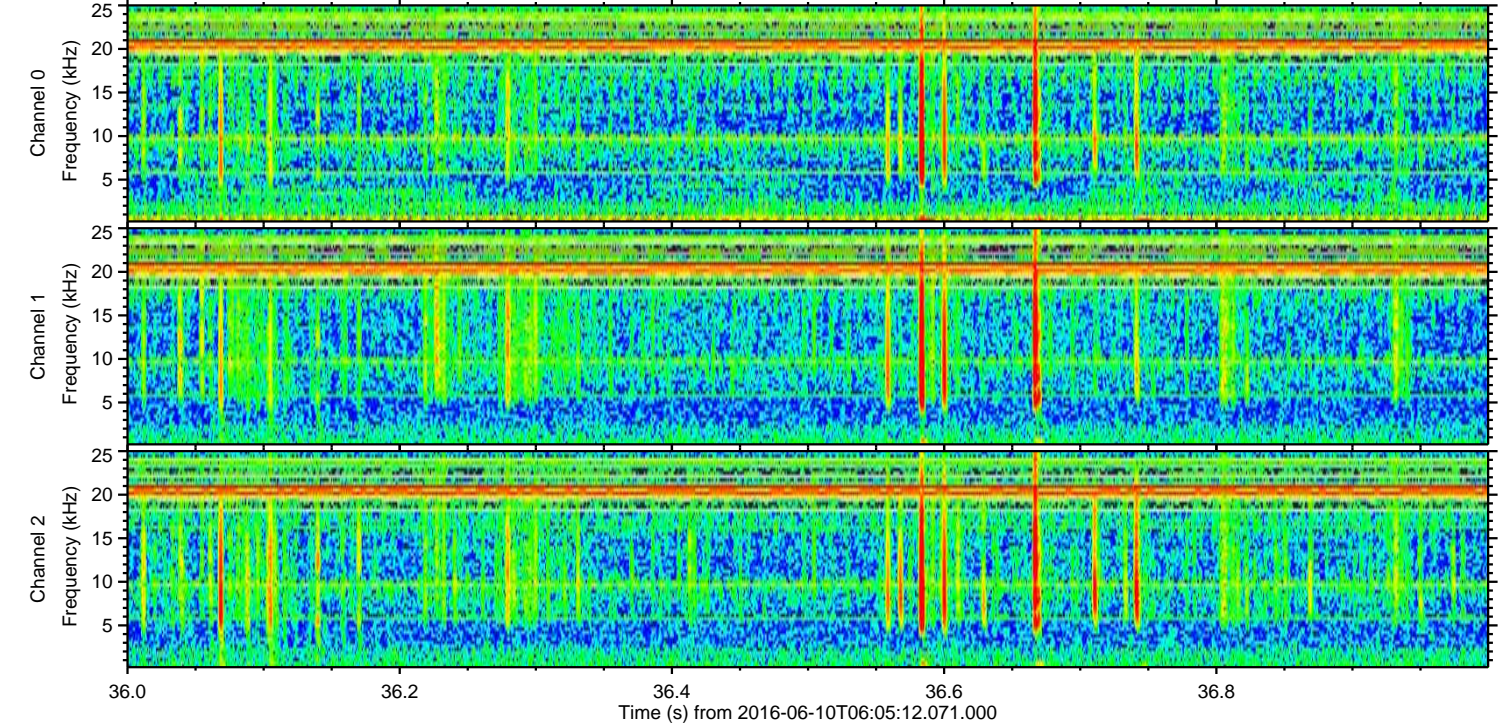
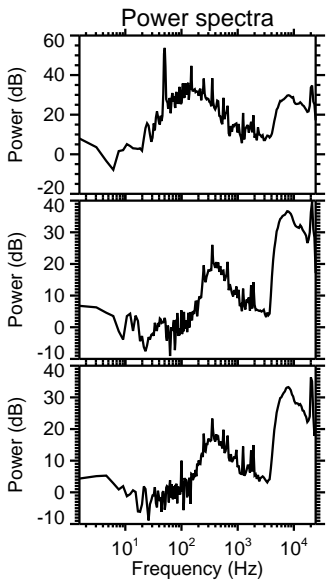
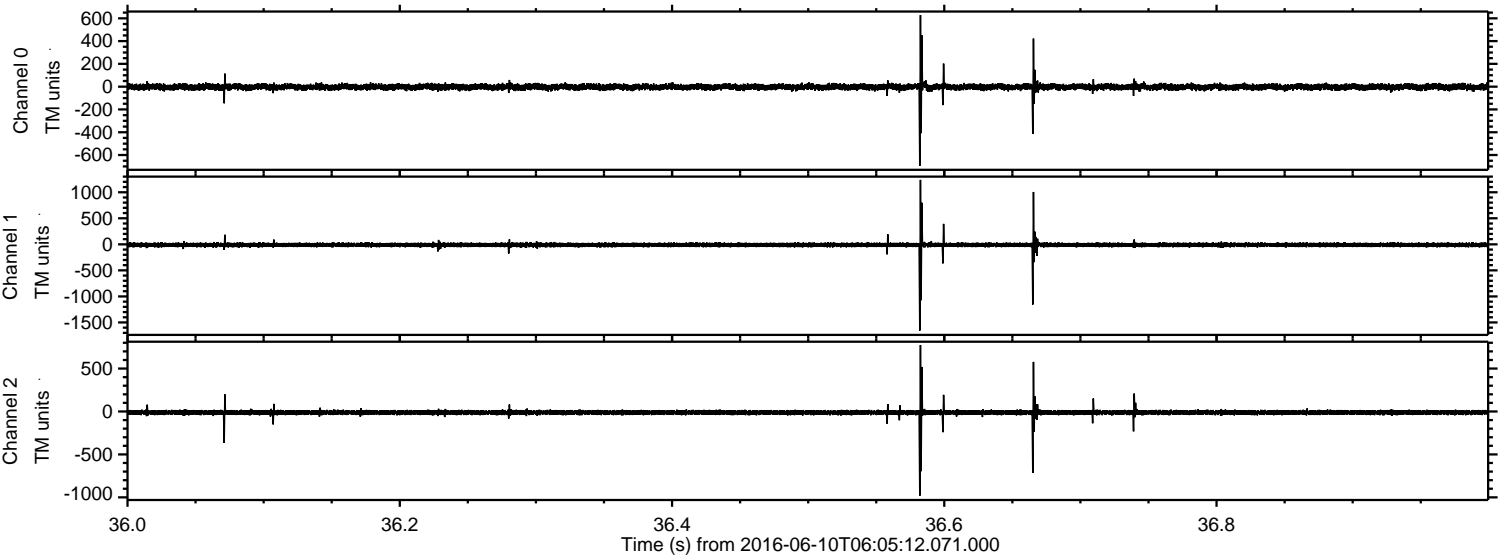


Processed Fri Jun 10 08:13:06 2016 by ELM ver.2012-10-06 from 001\_\_elm20160610\_060511\_\_dat00.bin





Processed Fri Jun 10 08:13:07 2016 by ELM ver.2012-10-06 from 001\_\_elm20160610\_060511\_\_dat00.bin





Processed Fri Jun 10 08:13:08 2016 by ELM ver.2012-10-06 from 001\_\_elm20160610\_060511\_\_dat00.bin

