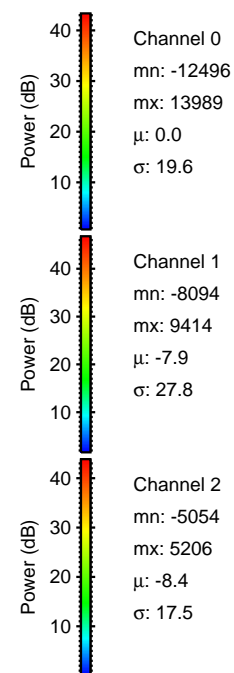
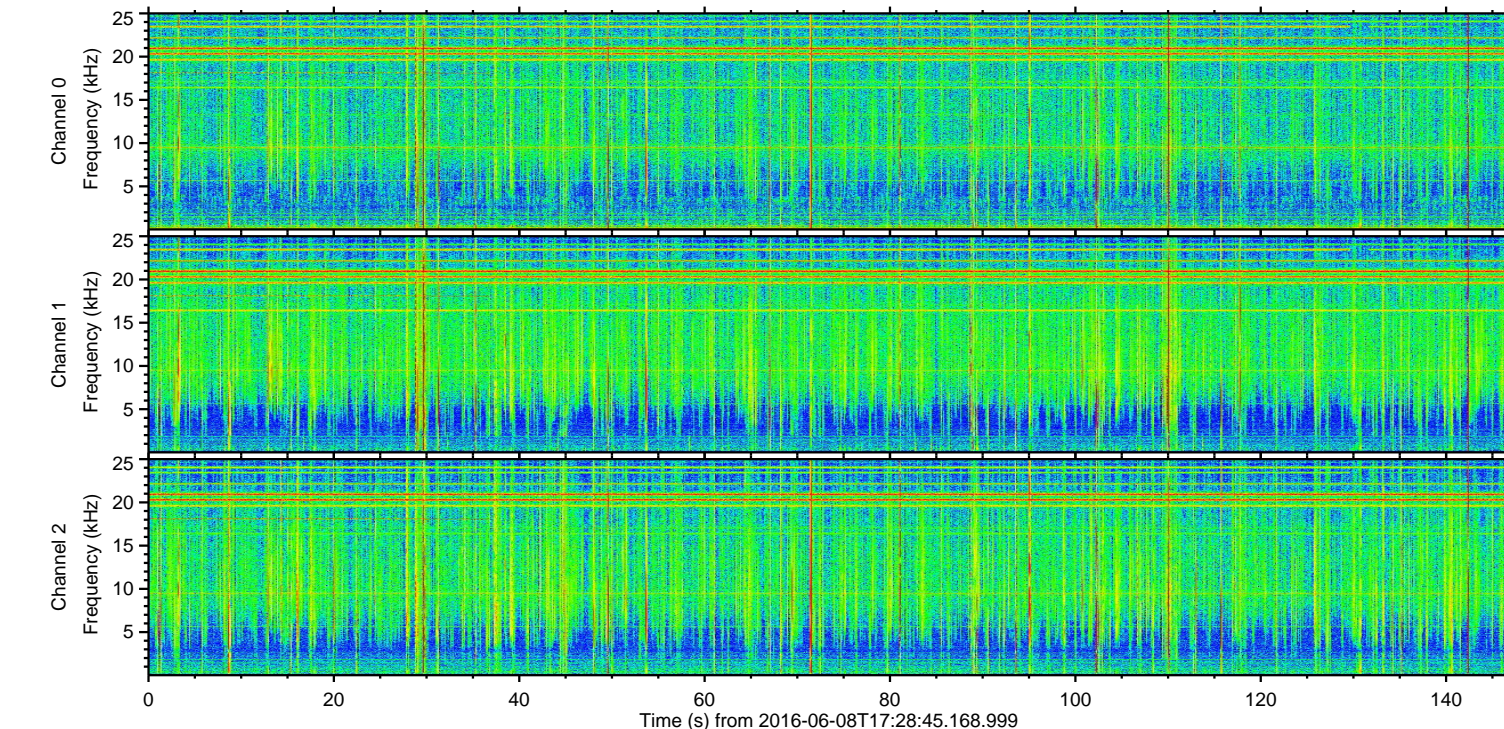
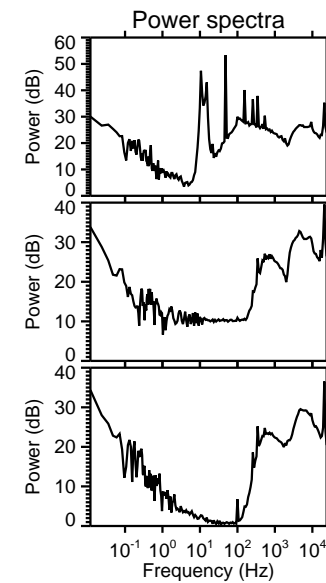
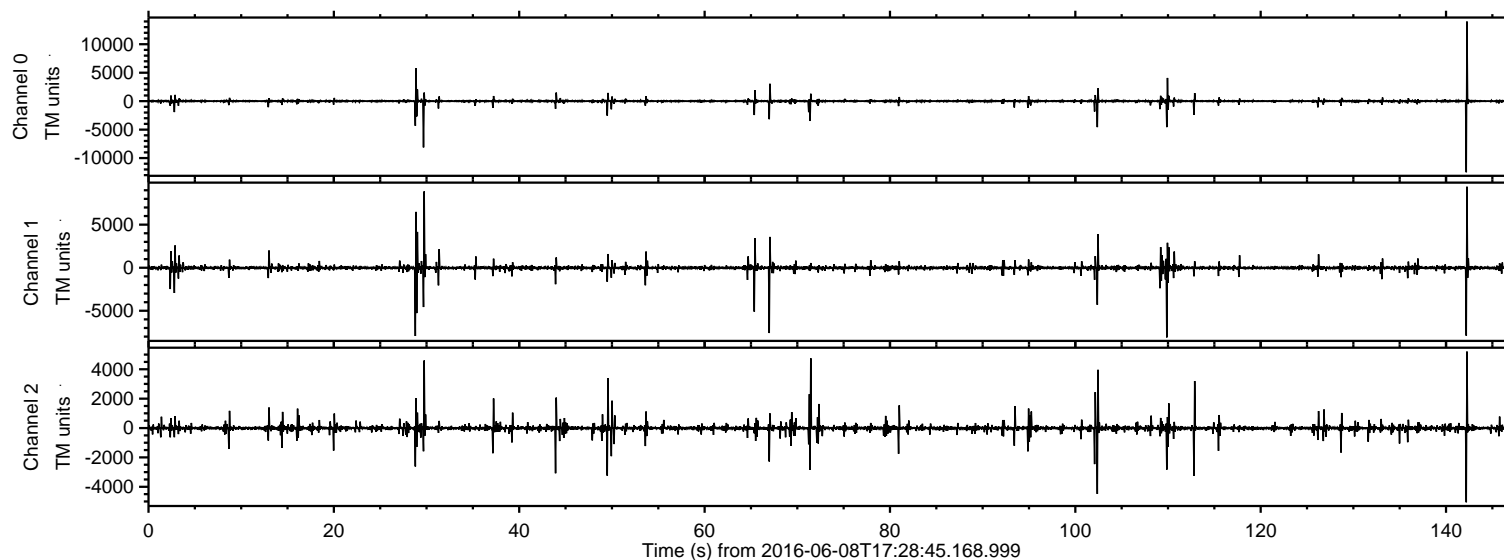


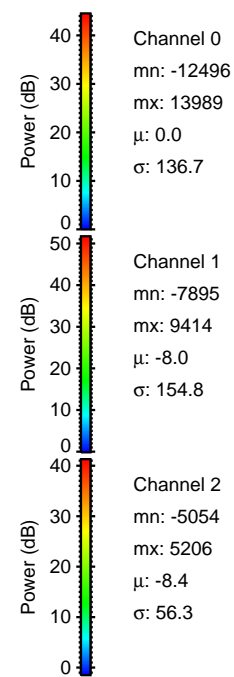
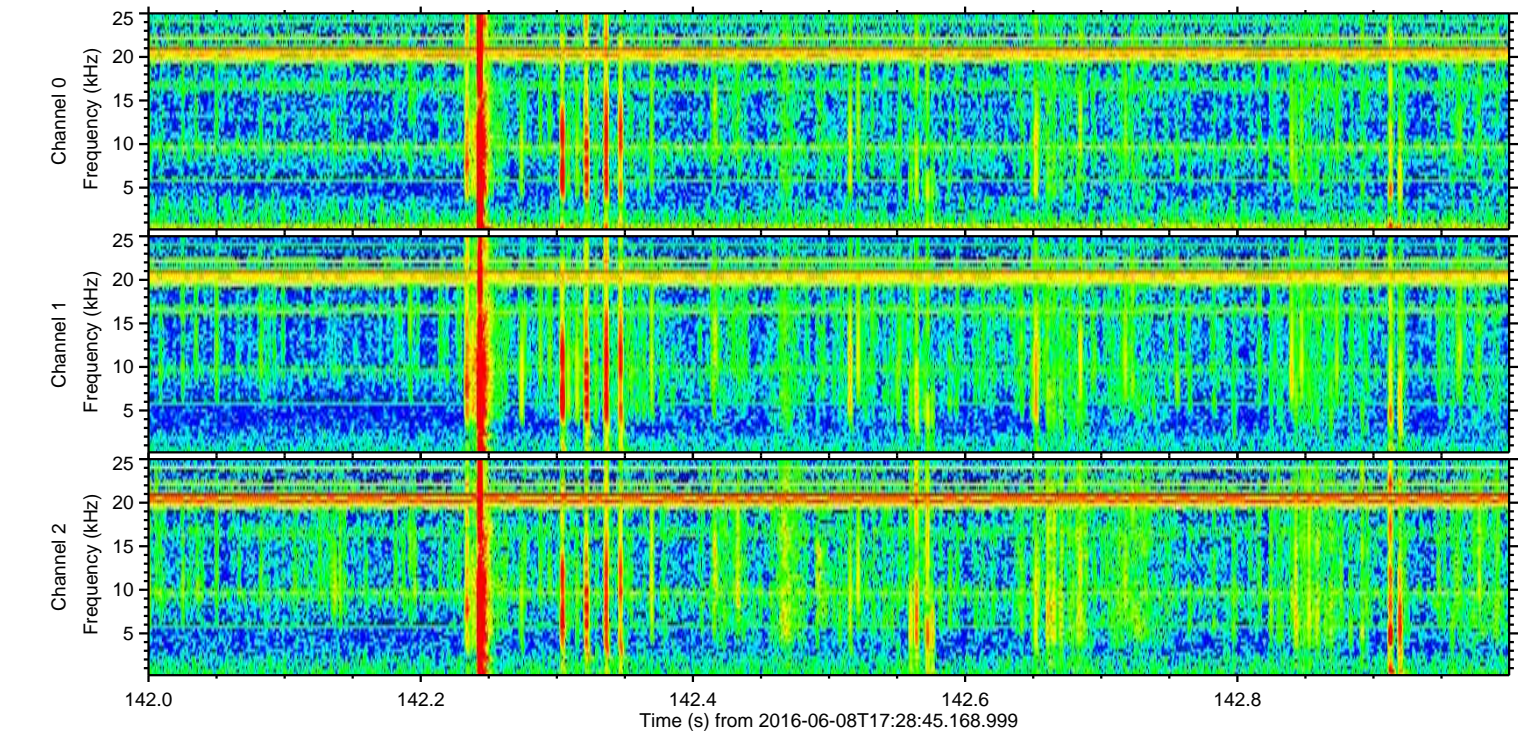
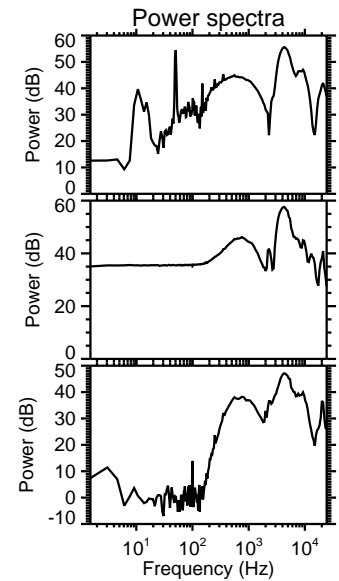
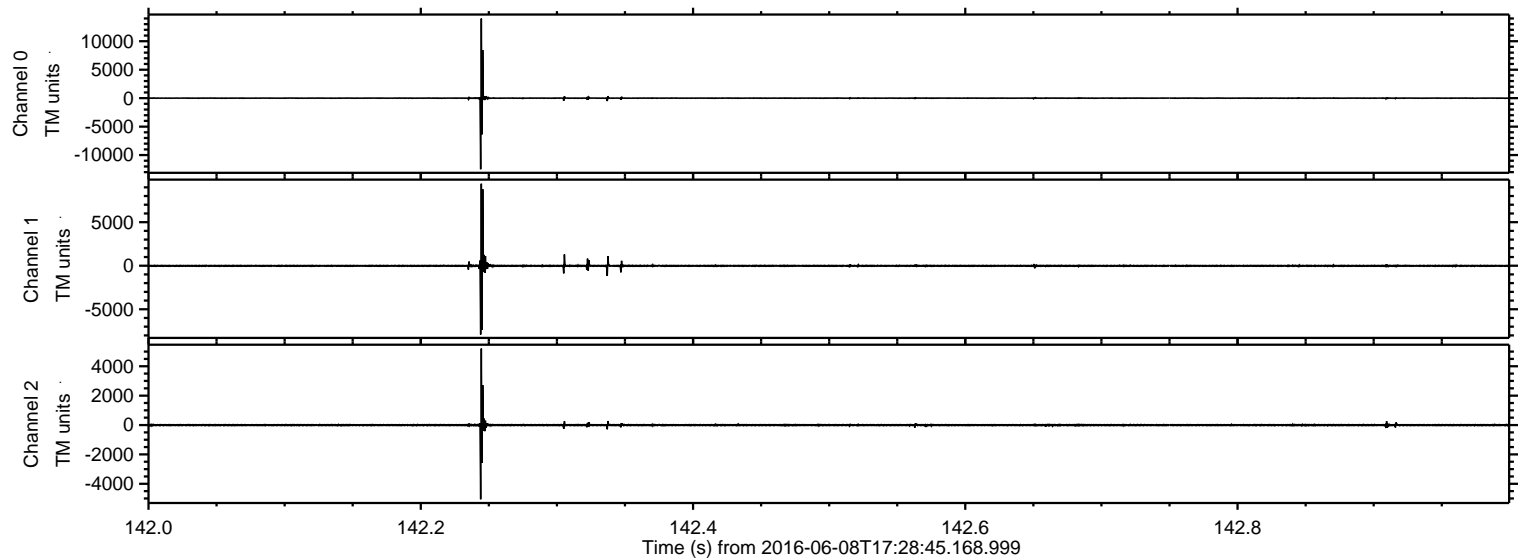
ELMAVAN 3D WAVEFORMS (Measured data sampled at 50 kHz) 51000 packets of 144 samples from 2016-06-08T17:28:45.168.999.

Processed Wed Jun 8 19:36:55 2016 by ELM ver.2012-10-06 from 001__elm20160608_172844__dat00.bin

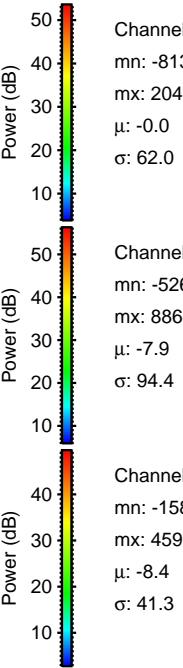
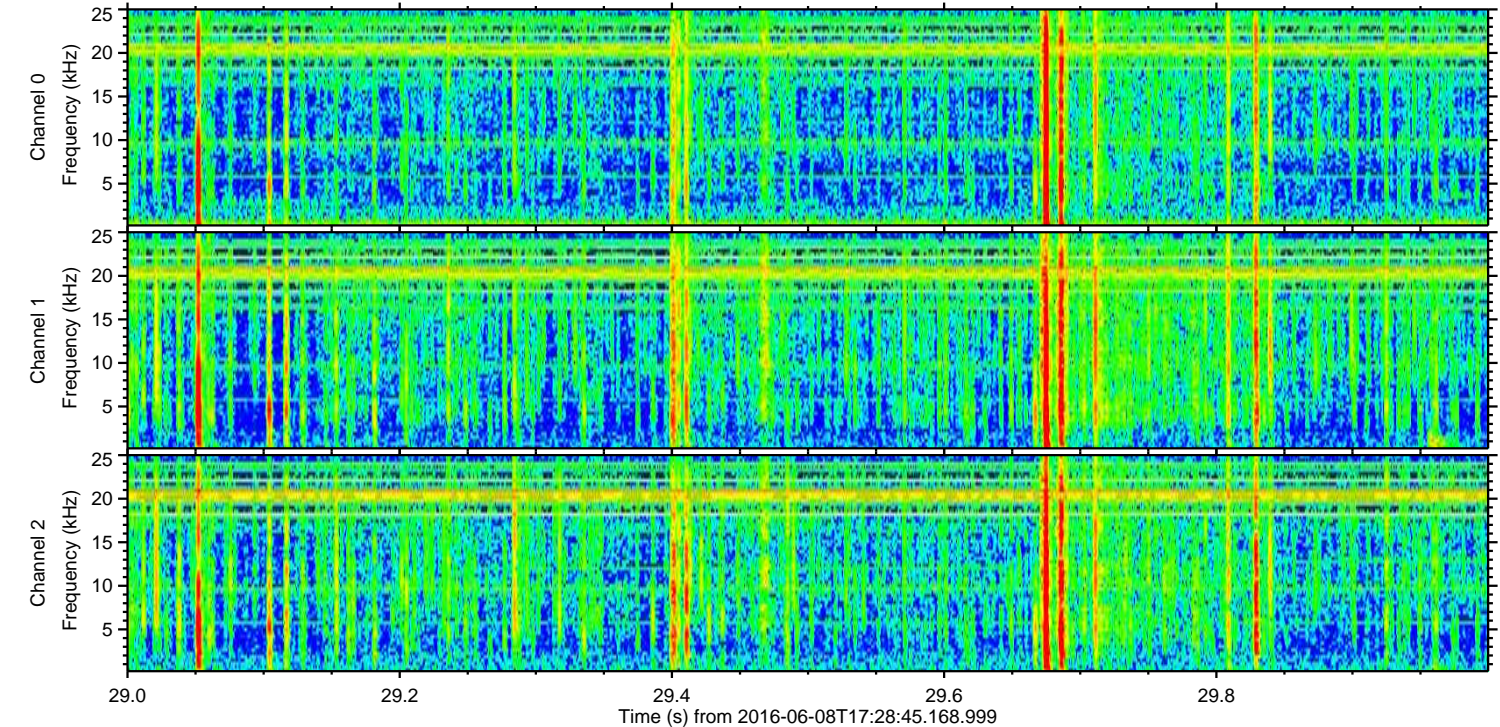
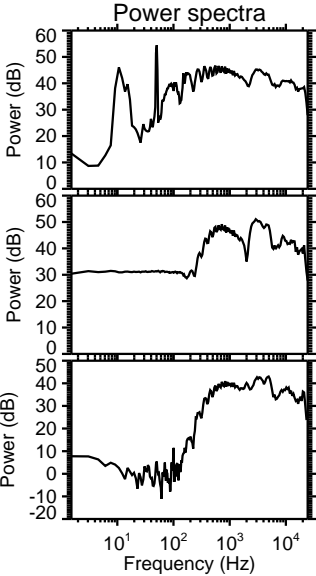
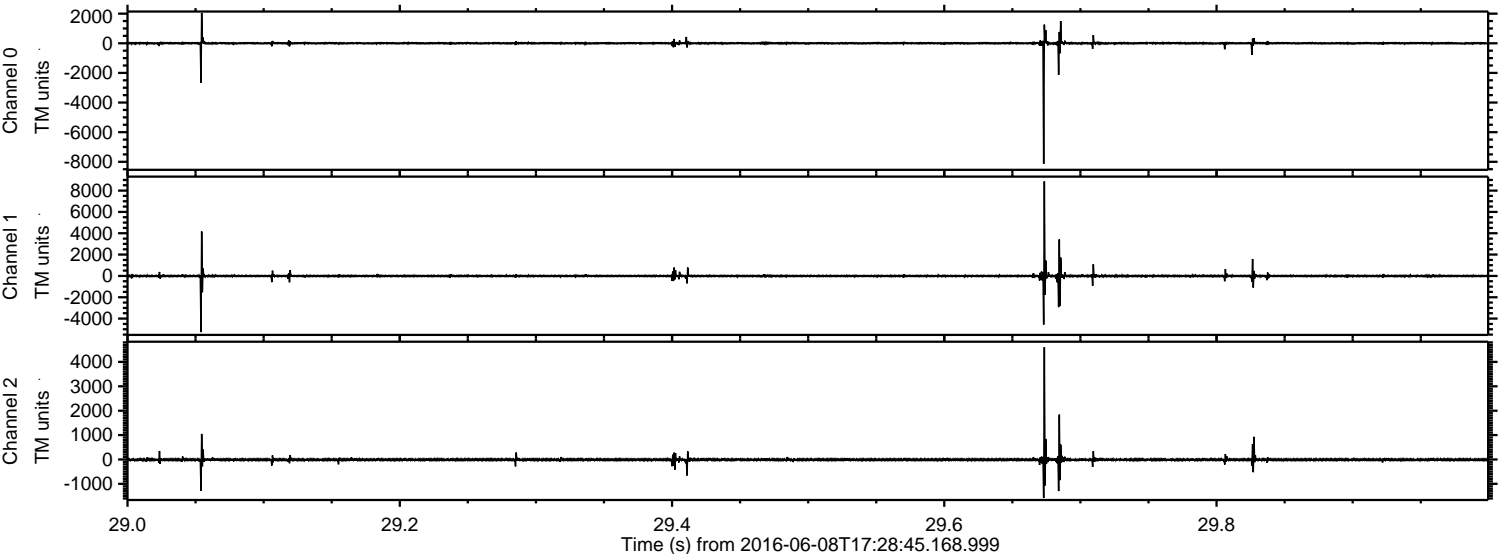


ELMAVAN 3D WAVEFORMS (Measured data sampled at 50 kHz) 51000 packets of 144 samples from 2016-06-08T17:28:45.168.999. Part 143/147

Processed Wed Jun 8 19:37:06 2016 by ELM ver.2012-10-06 from 001__elm20160608_172844__dat00.bin

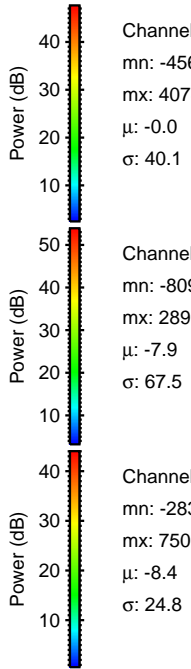
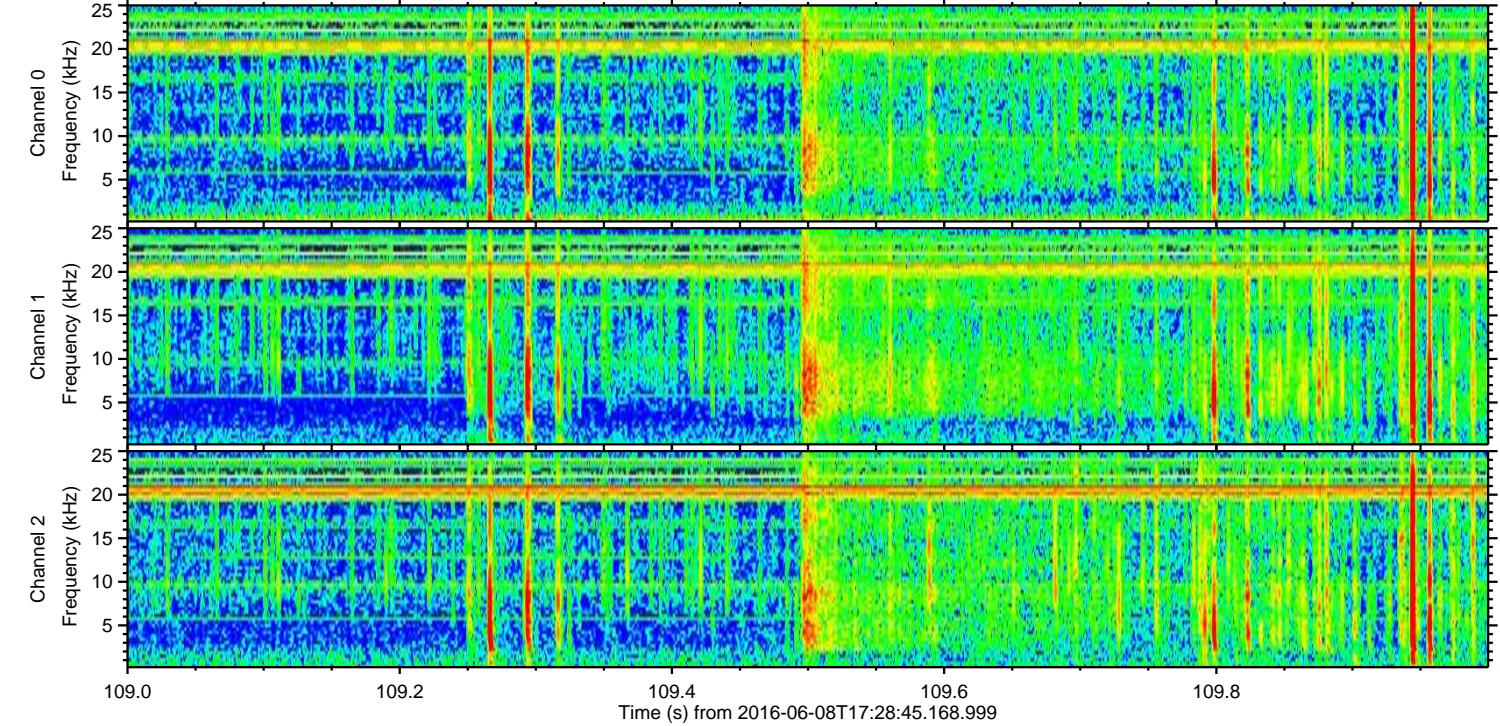
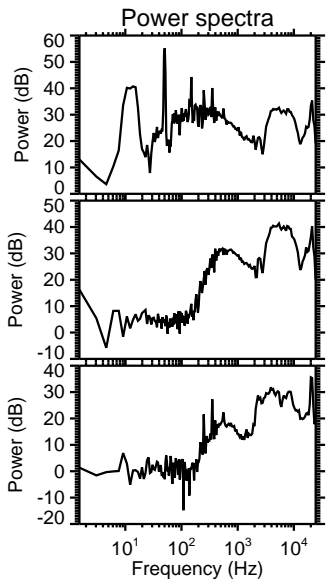
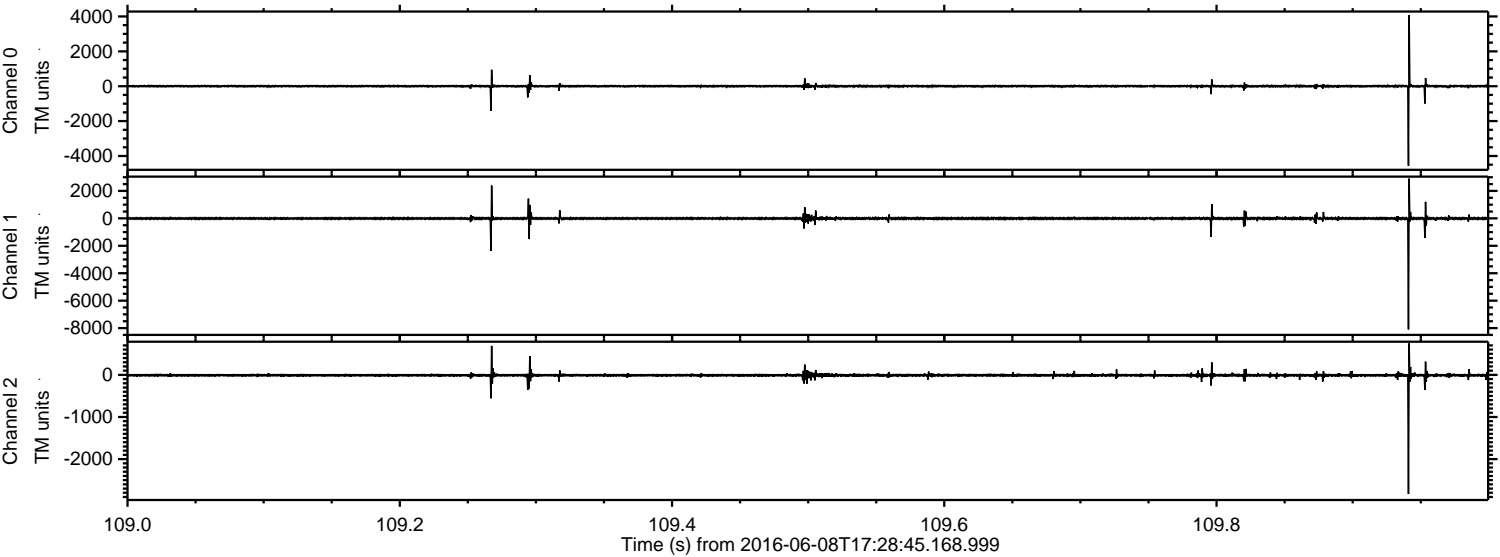


Processed Wed Jun 8 19:37:07 2016 by ELM ver.2012-10-06 from 001__elm20160608_172844__dat00.bin

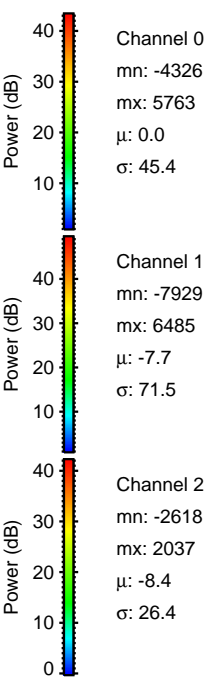
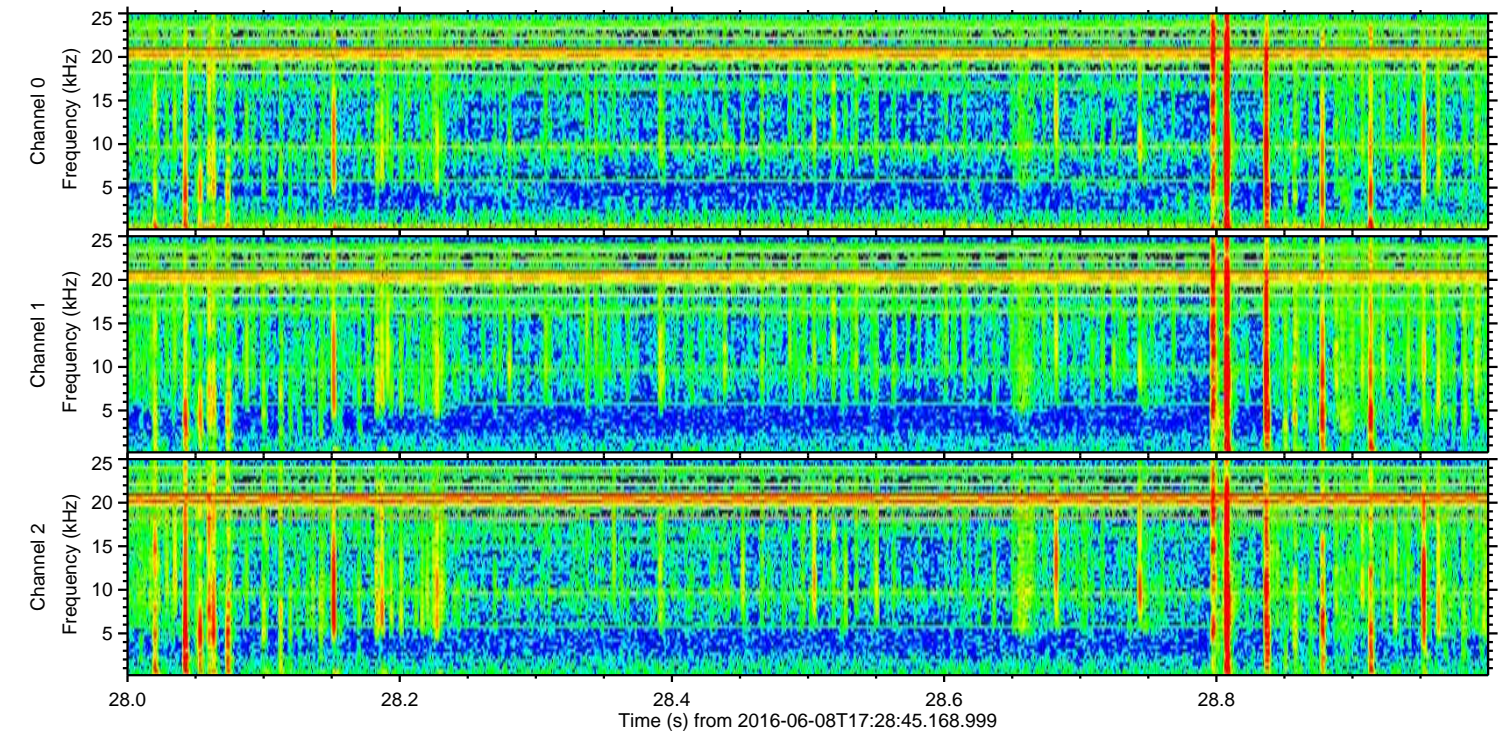
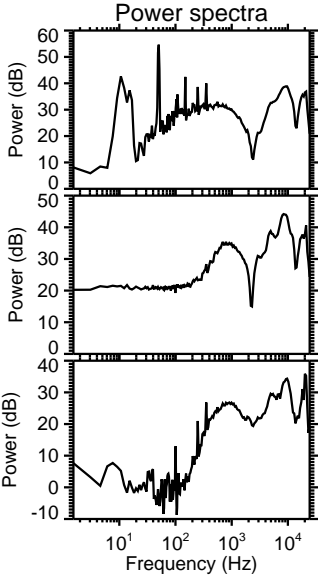
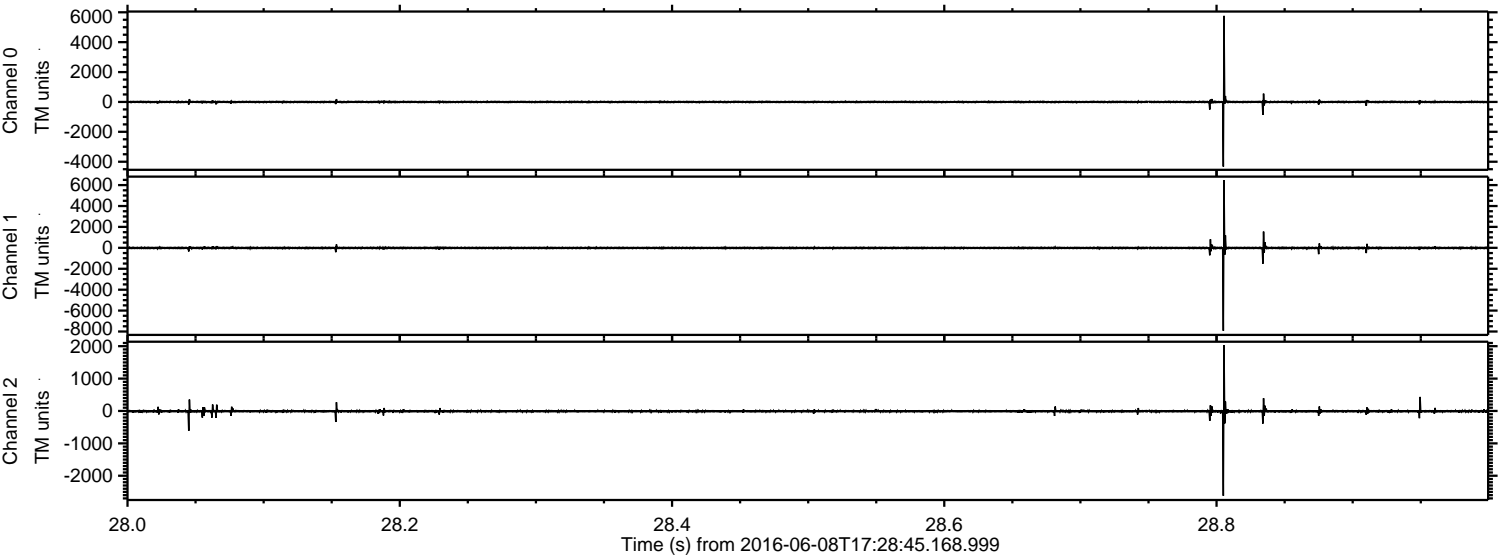


ELMAVAN 3D WAVEFORMS (Measured data sampled at 50 kHz) 51000 packets of 144 samples from 2016-06-08T17:28:45.168.999. Part 110/147

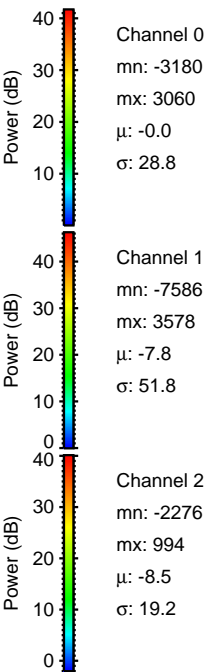
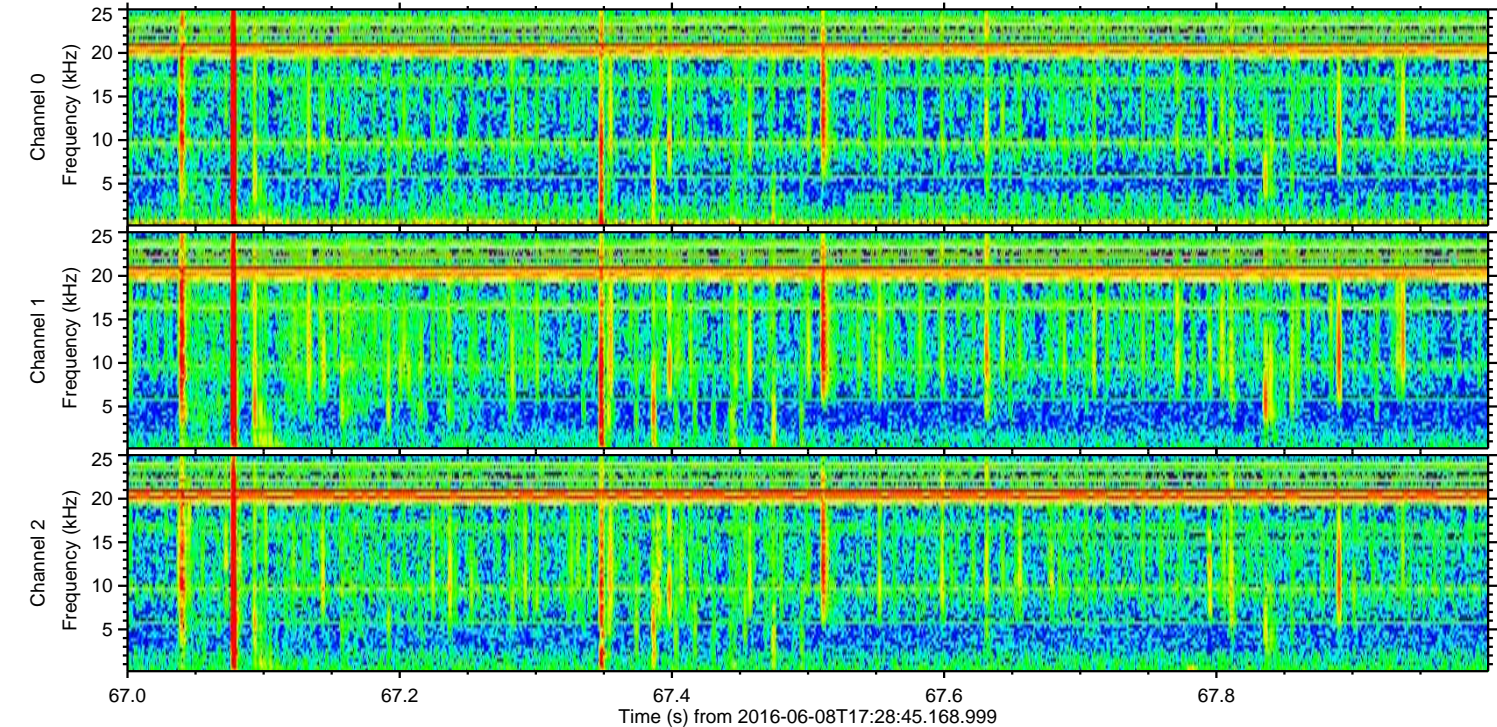
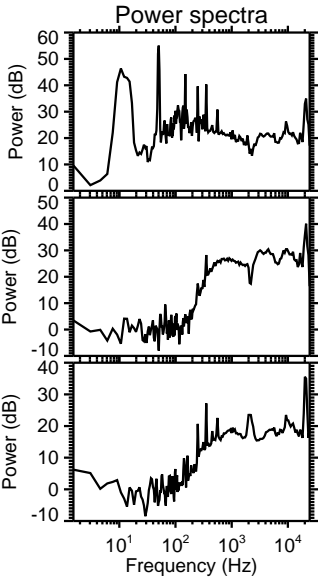
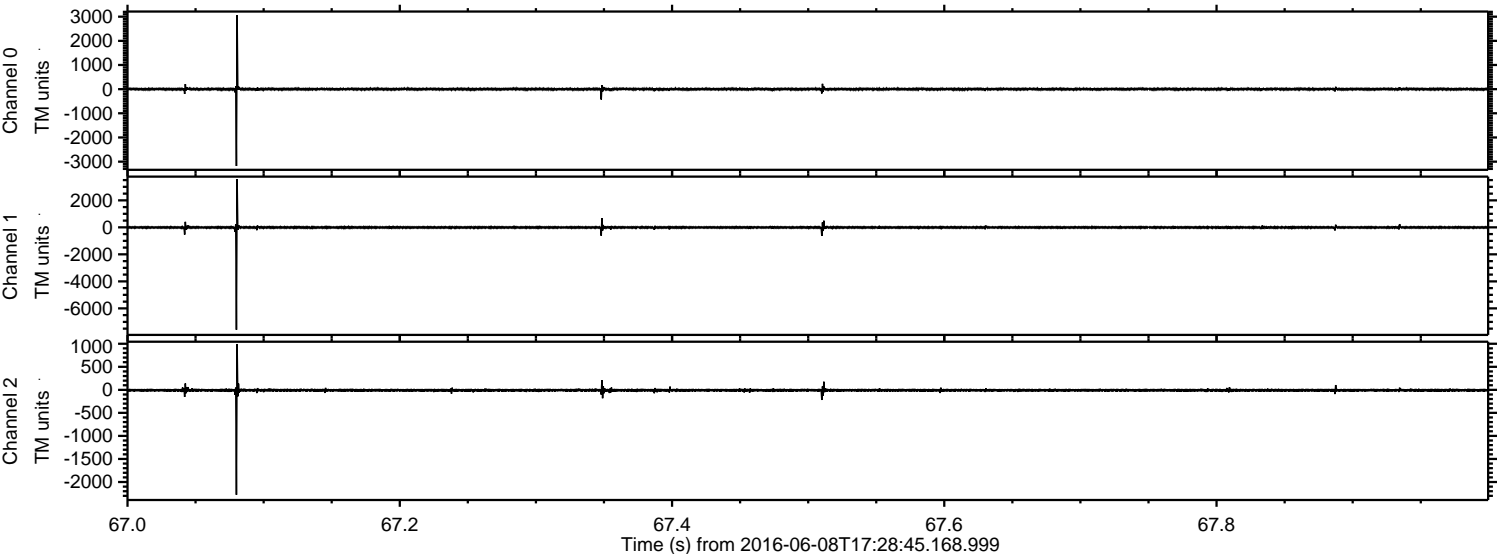
Processed Wed Jun 8 19:37:08 2016 by ELM ver.2012-10-06 from 001__elm20160608_172844__dat00.bin



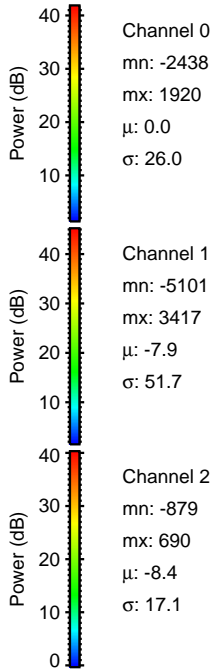
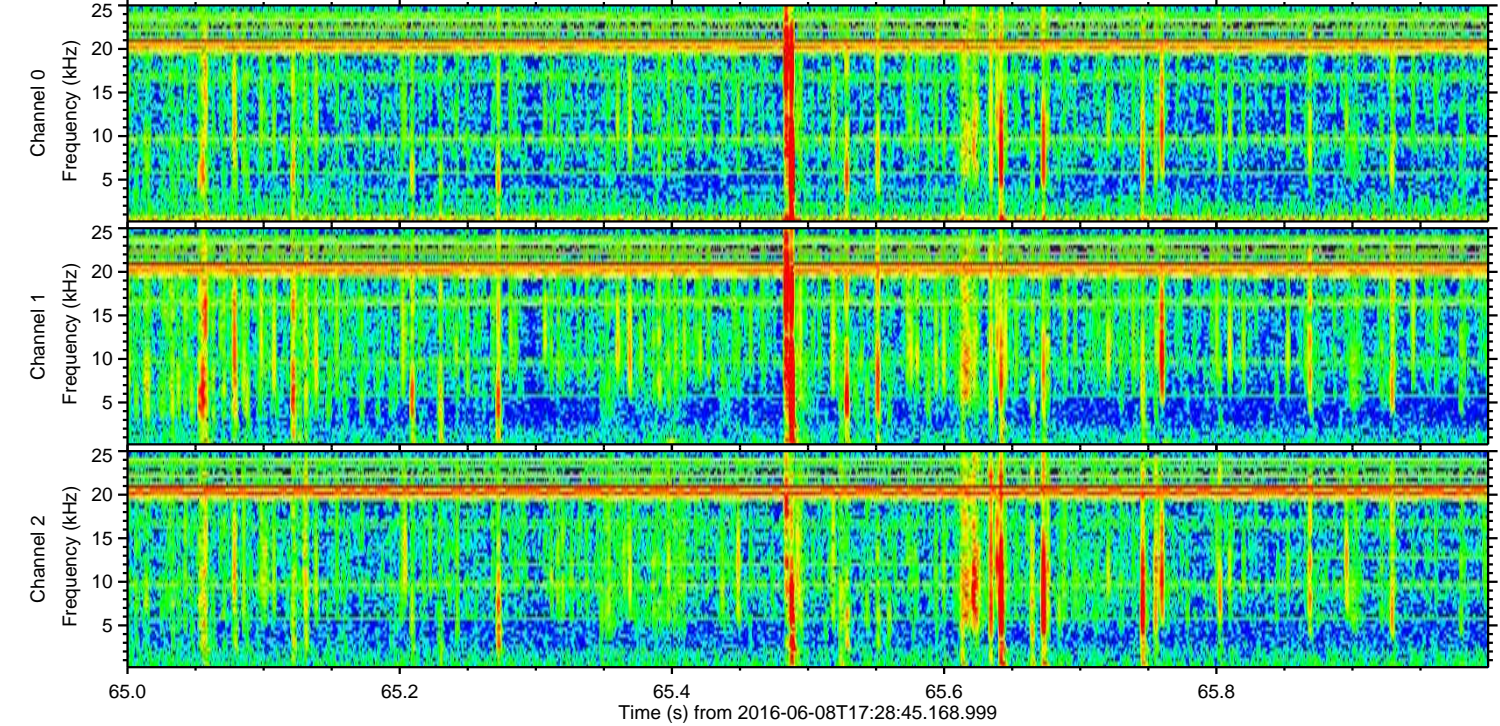
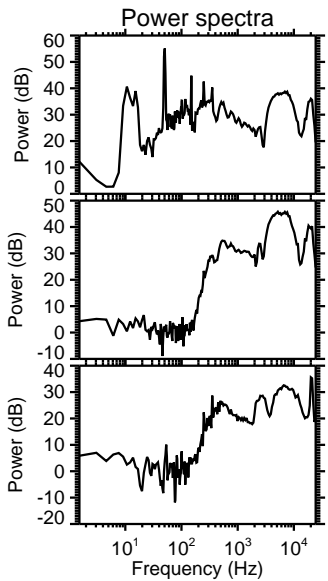
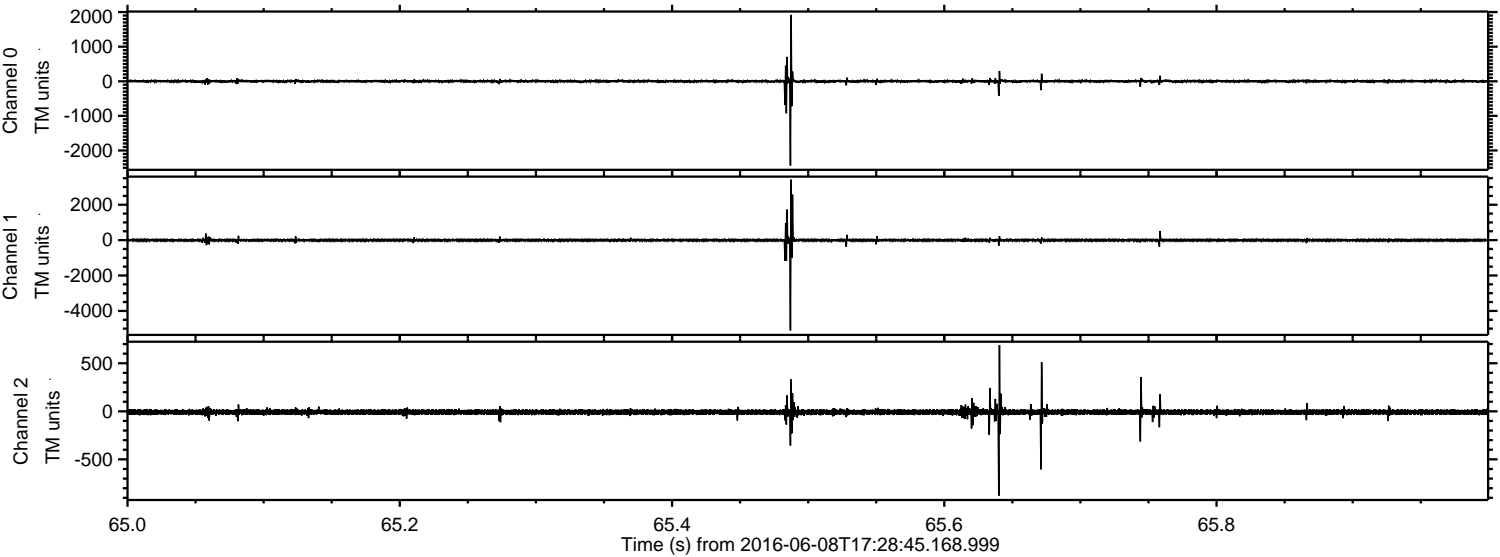
Processed Wed Jun 8 19:37:09 2016 by ELM ver.2012-10-06 from 001__elm20160608_172844__dat00.bin



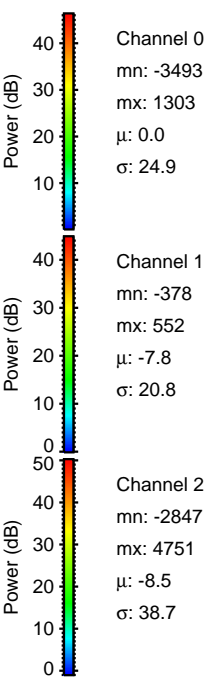
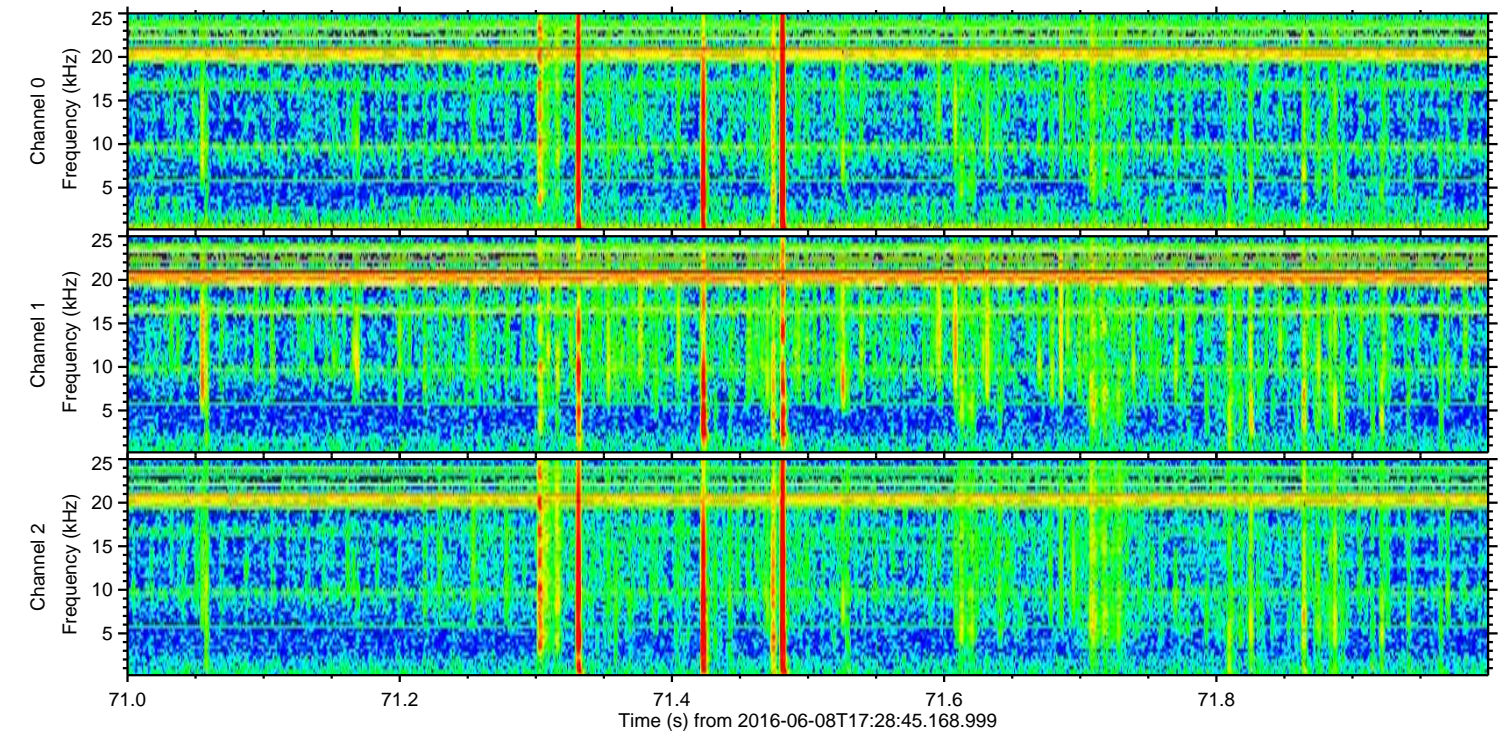
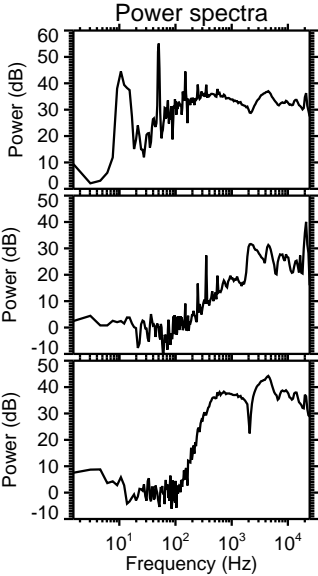
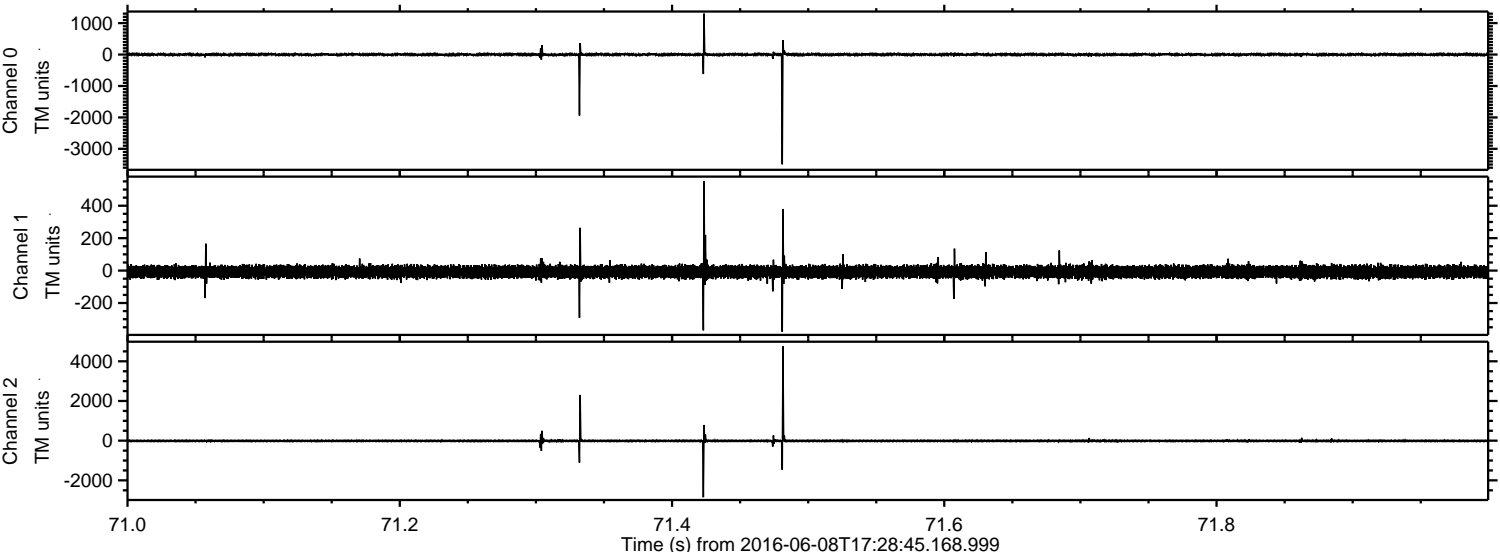
Processed Wed Jun 8 19:37:10 2016 by ELM ver.2012-10-06 from 001__elm20160608_172844__dat00.bin



Processed Wed Jun 8 19:37:11 2016 by ELM ver.2012-10-06 from 001__elm20160608_172844__dat00.bin

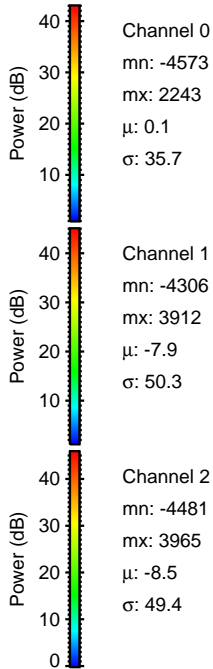
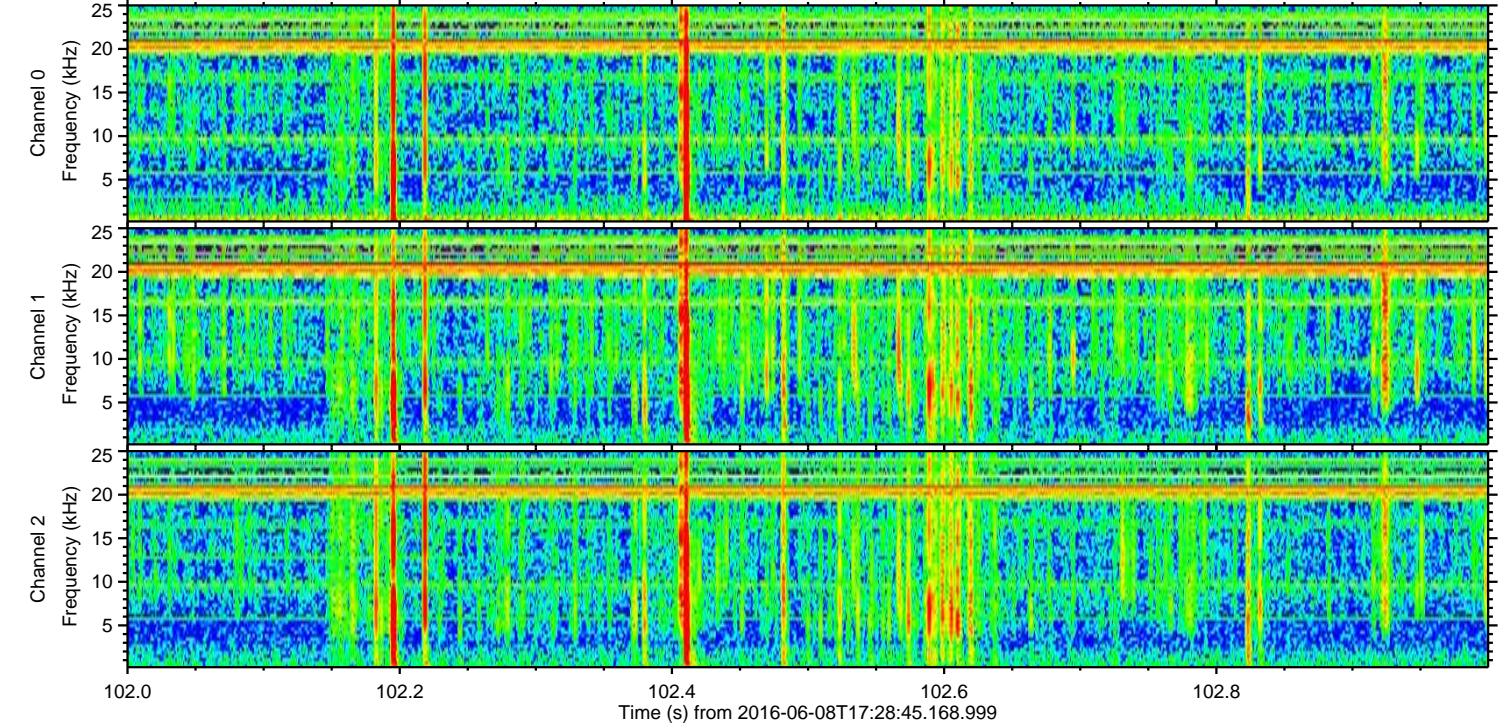
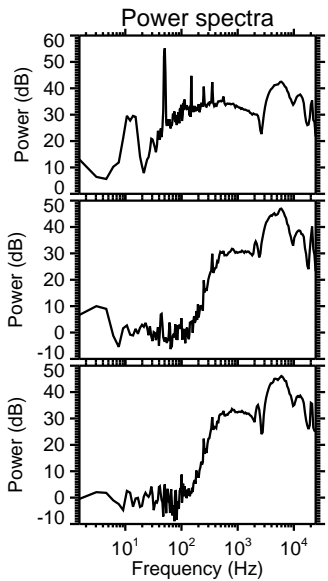
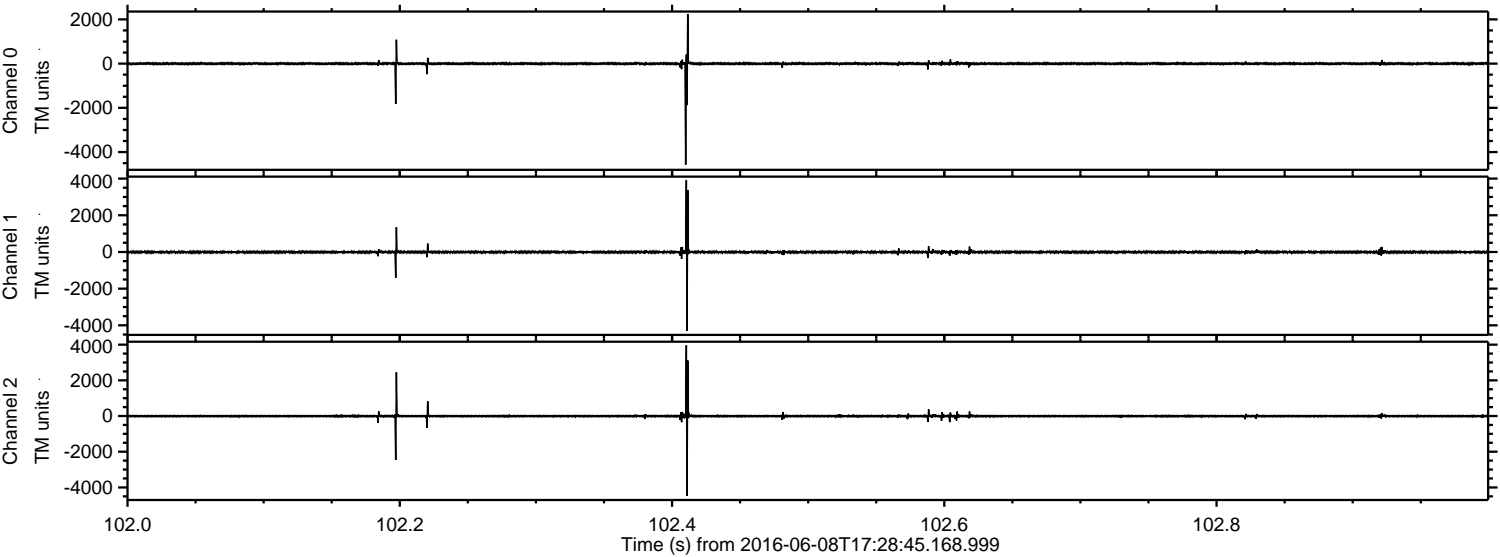


Processed Wed Jun 8 19:37:12 2016 by ELM ver.2012-10-06 from 001__elm20160608_172844__dat00.bin



ELMAVAN 3D WAVEFORMS (Measured data sampled at 50 kHz) 51000 packets of 144 samples from 2016-06-08T17:28:45.168.999. Part 103/147

Processed Wed Jun 8 19:37:13 2016 by ELM ver.2012-10-06 from 001__elm20160608_172844__dat00.bin

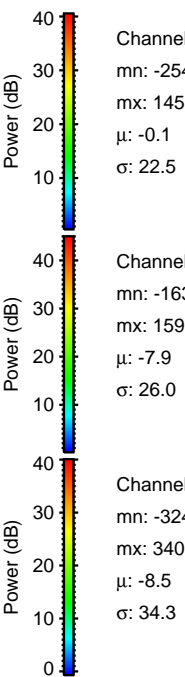
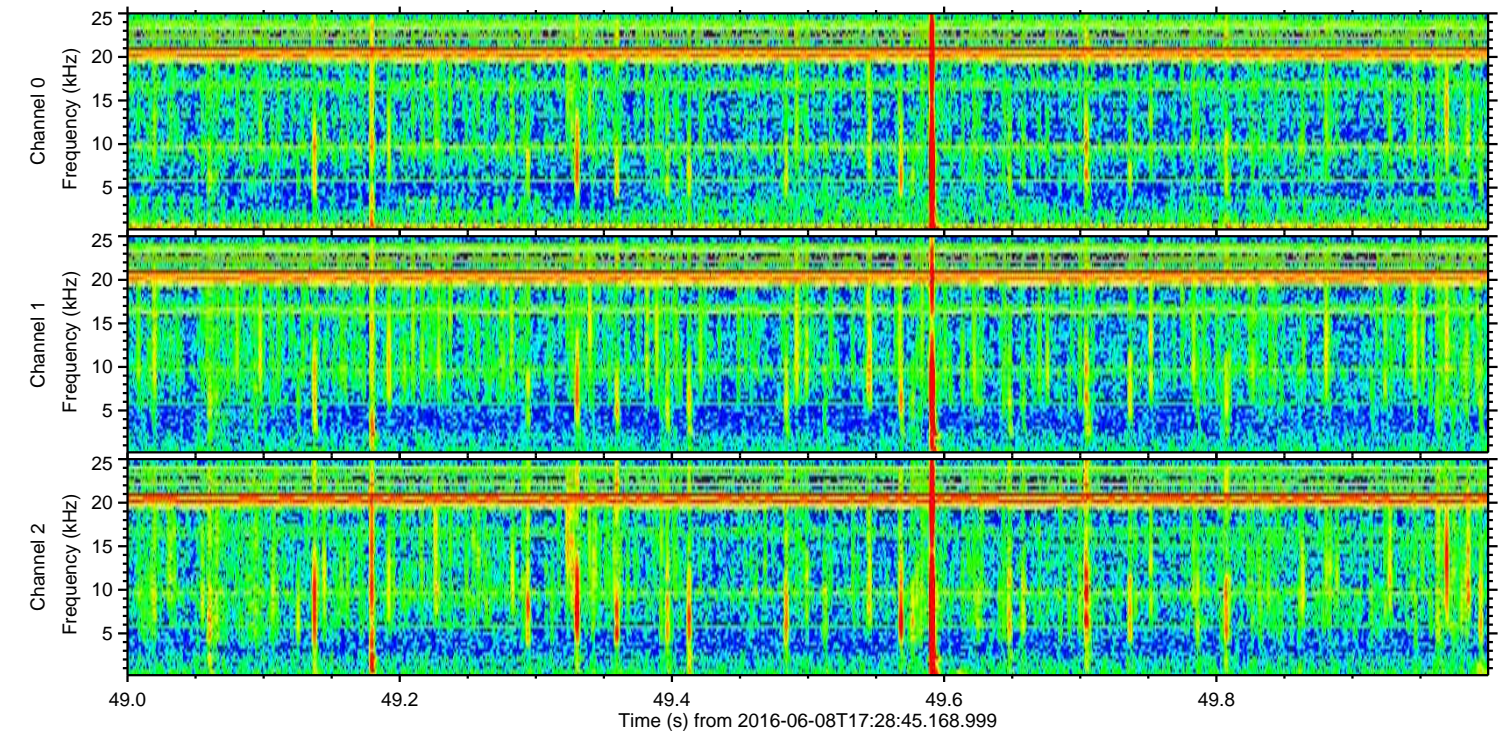
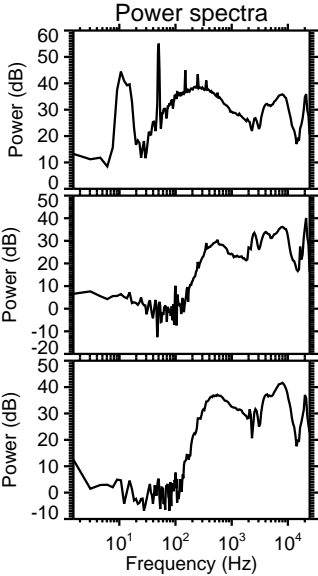
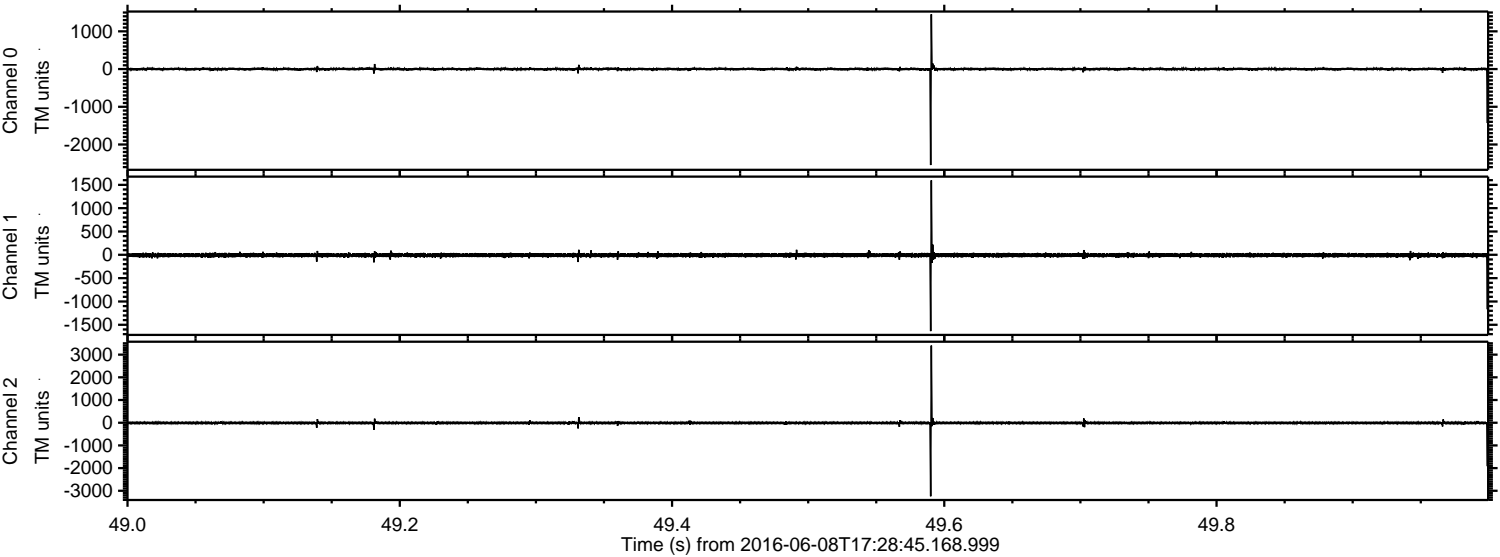


Channel 0
mn: -4573
mx: 2243
 μ : 0.1
 σ : 35.7

Channel 1
mn: -4306
mx: 3912
 μ : -7.9
 σ : 50.3

Channel 2
mn: -4481
mx: 3965
 μ : -8.5
 σ : 49.4

Processed Wed Jun 8 19:37:14 2016 by ELM ver.2012-10-06 from 001__elm20160608_172844__dat00.bin



Processed Wed Jun 8 19:37:14 2016 by ELM ver.2012-10-06 from 001__elm20160608_172844__dat00.bin

