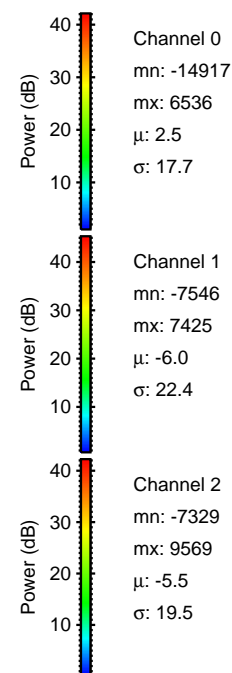
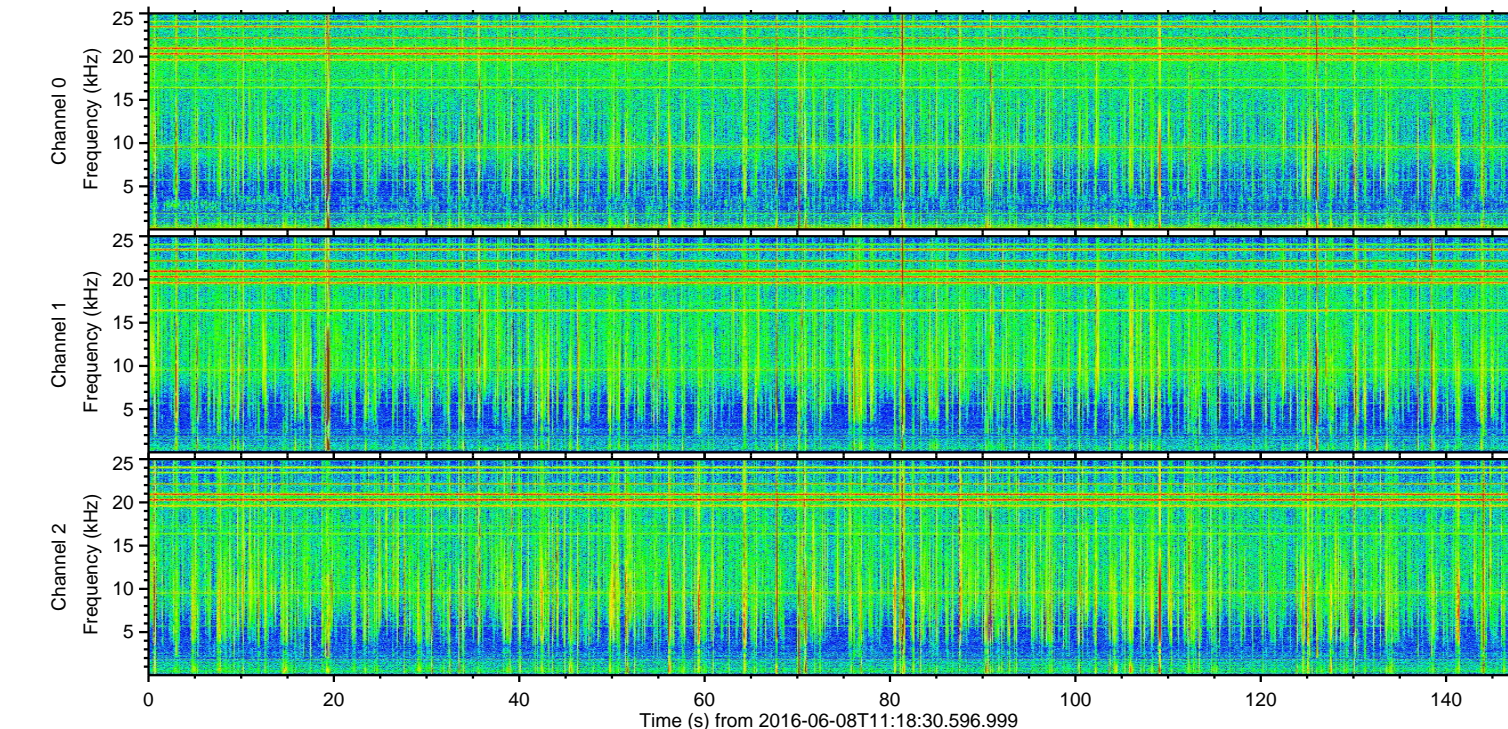
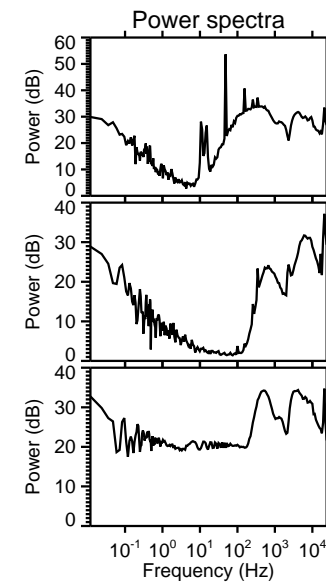
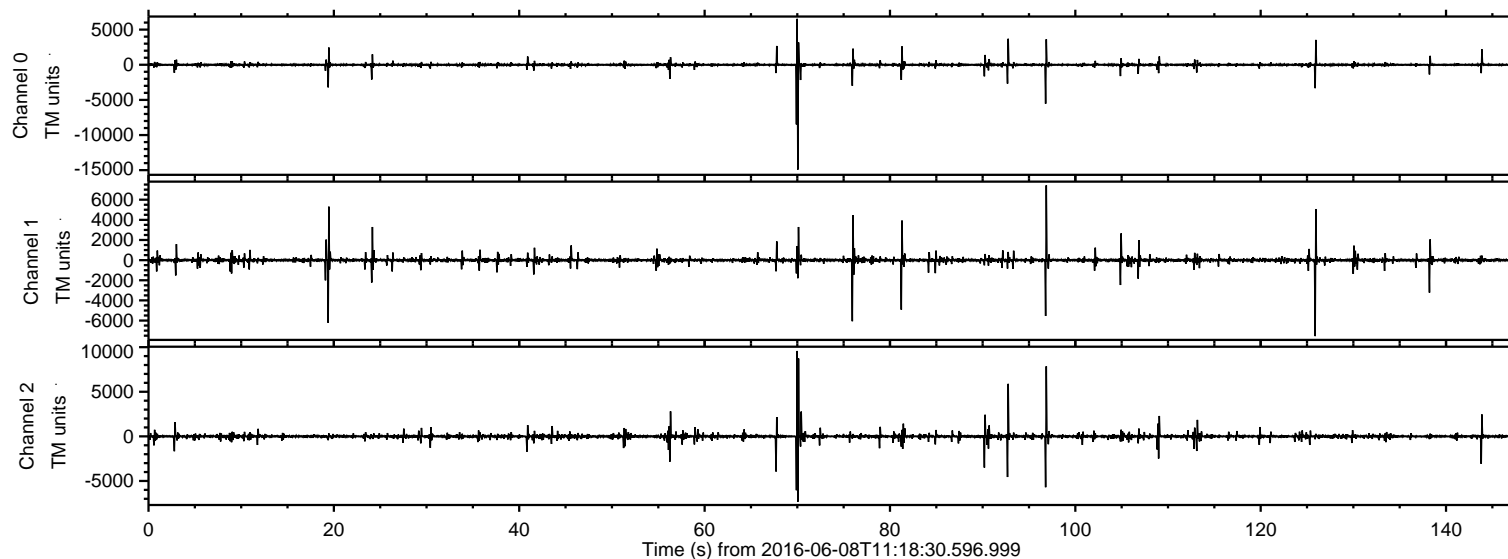


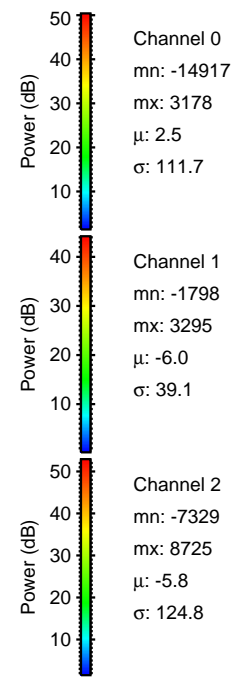
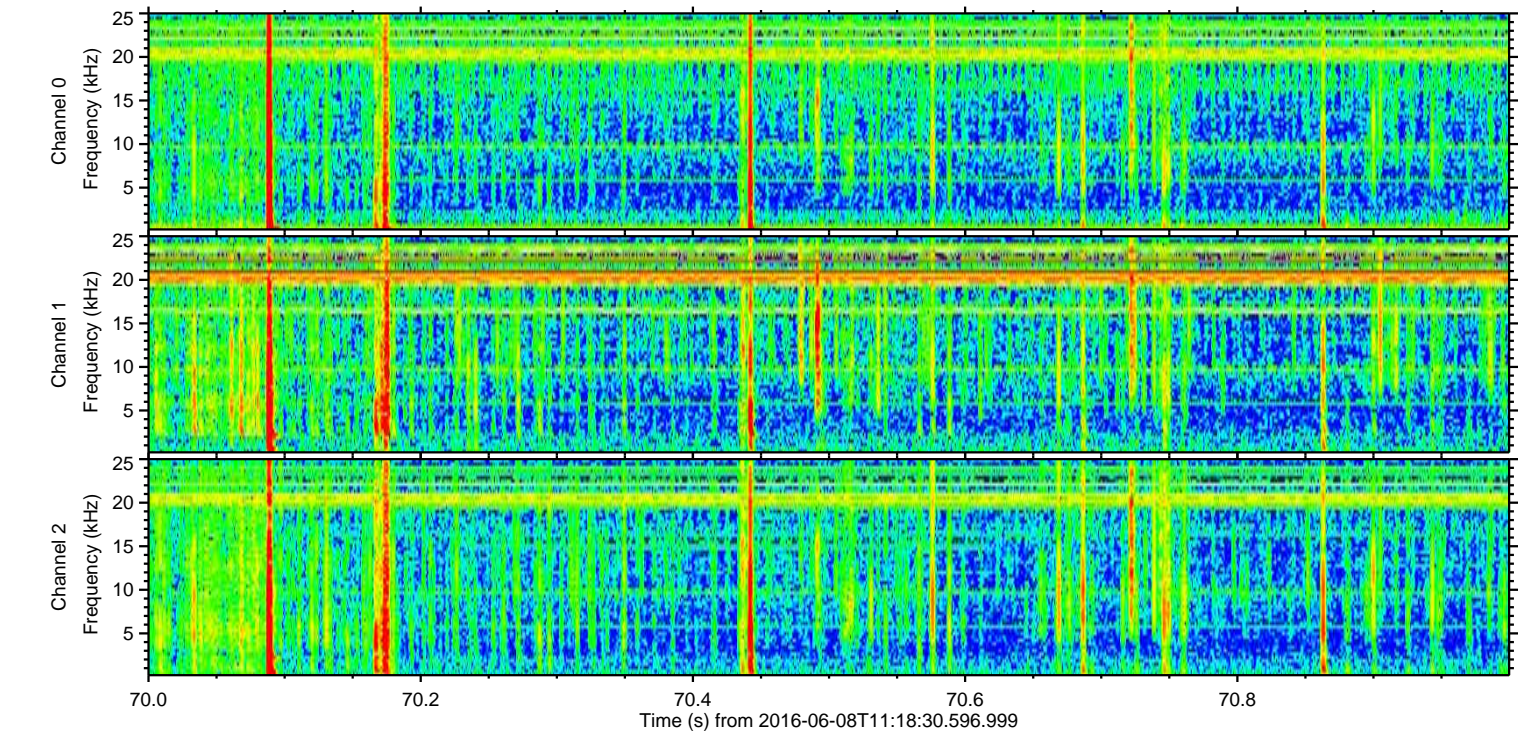
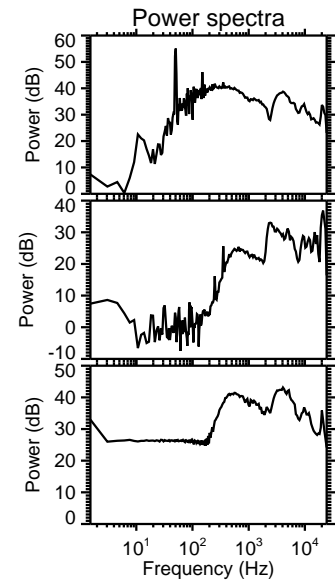
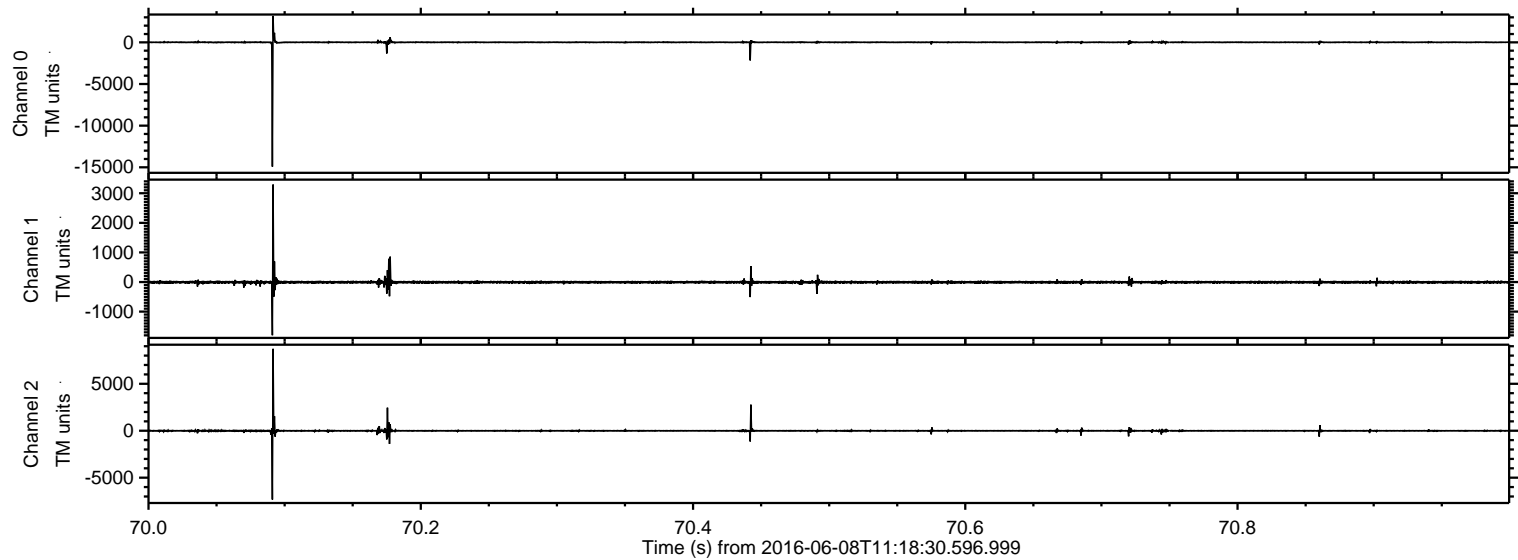
# ELMAVAN 3D WAVEFORMS (Measured data sampled at 50 kHz) 51000 packets of 144 samples from 2016-06-08T11:18:30.596.999.

Processed Wed Jun 8 13:26:15 2016 by ELM ver.2012-10-06 from 001\_\_elm20160608\_111829\_\_dat00.bin



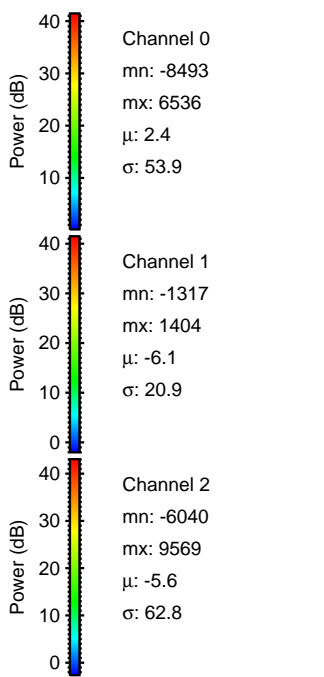
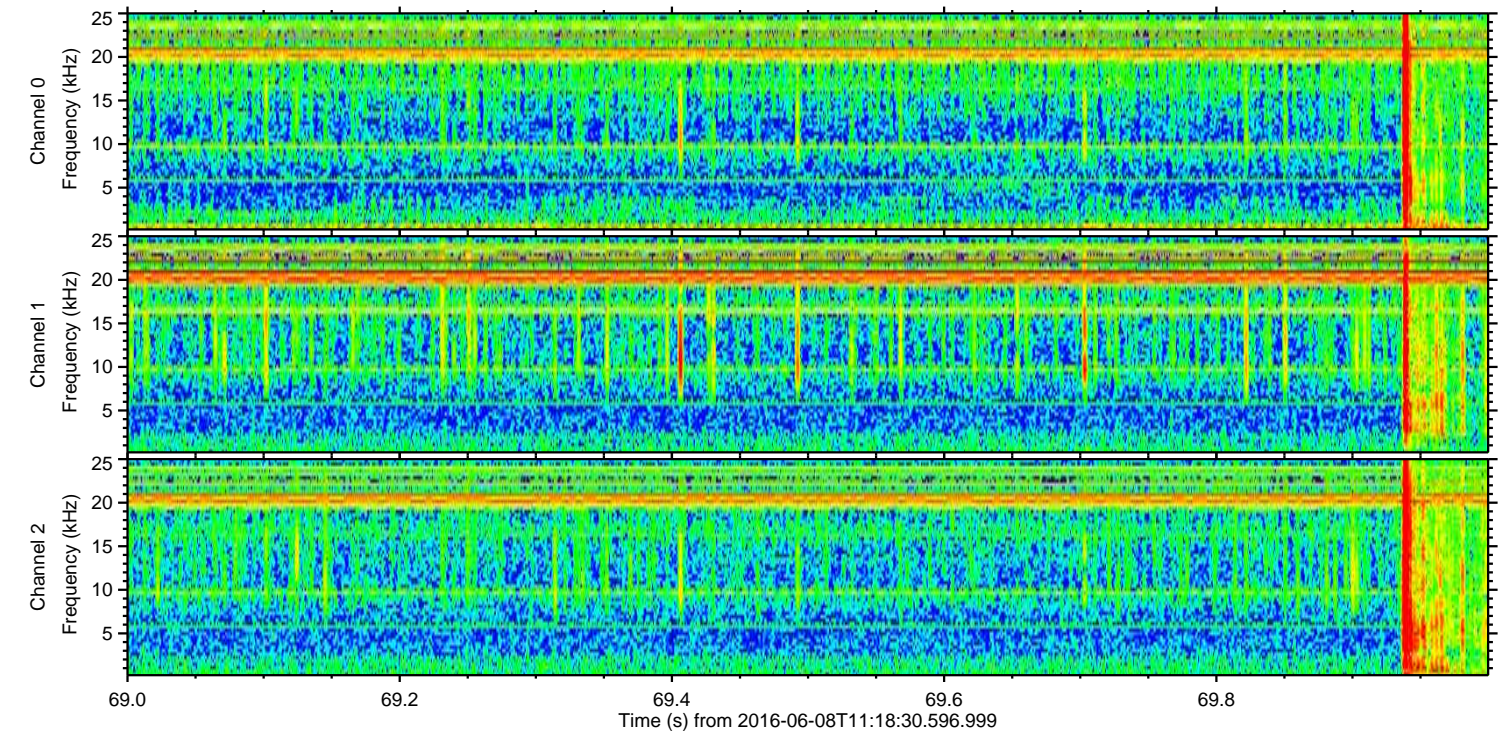
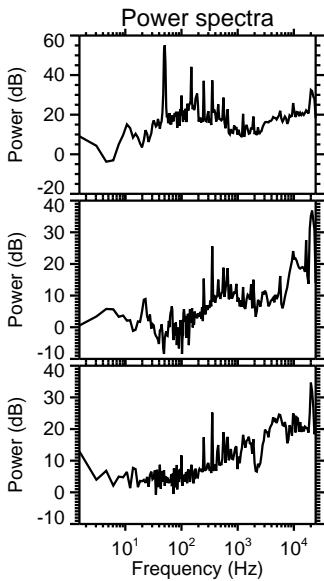
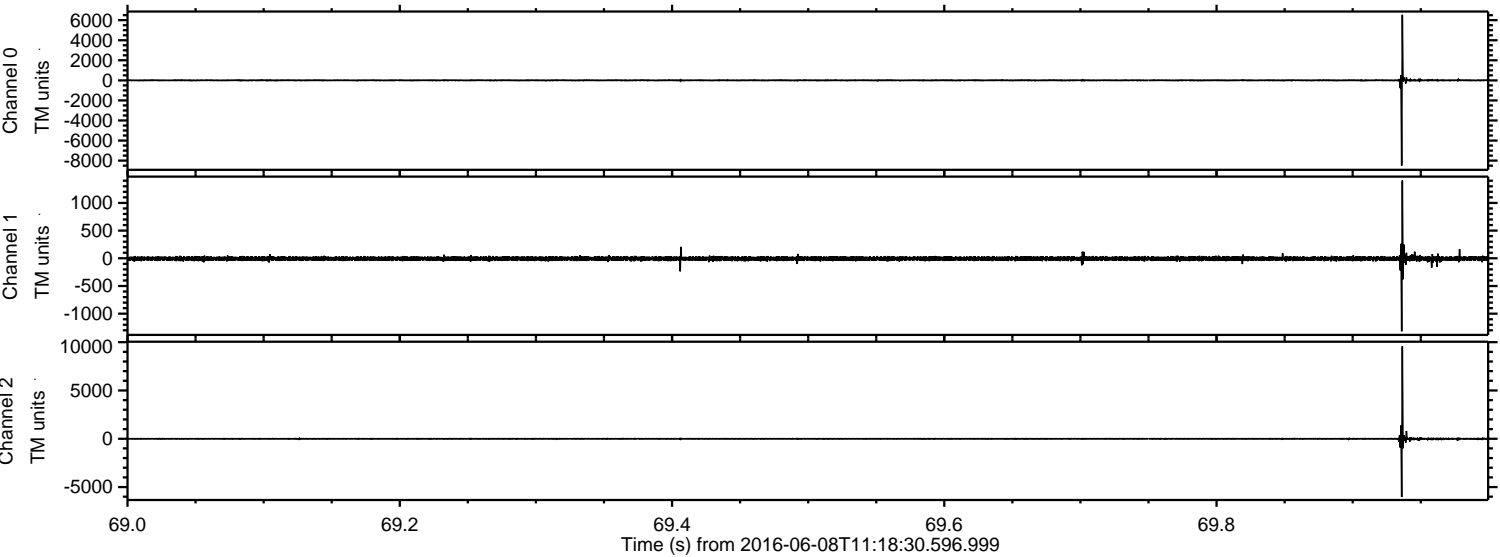


Processed Wed Jun 8 13:26:31 2016 by ELM ver.2012-10-06 from 001\_\_elm20160608\_111829\_\_dat00.bin



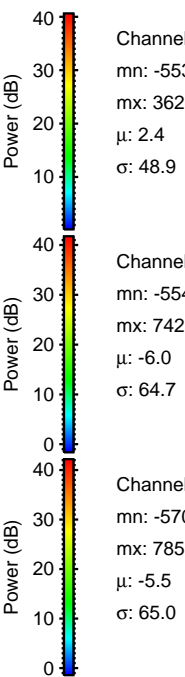
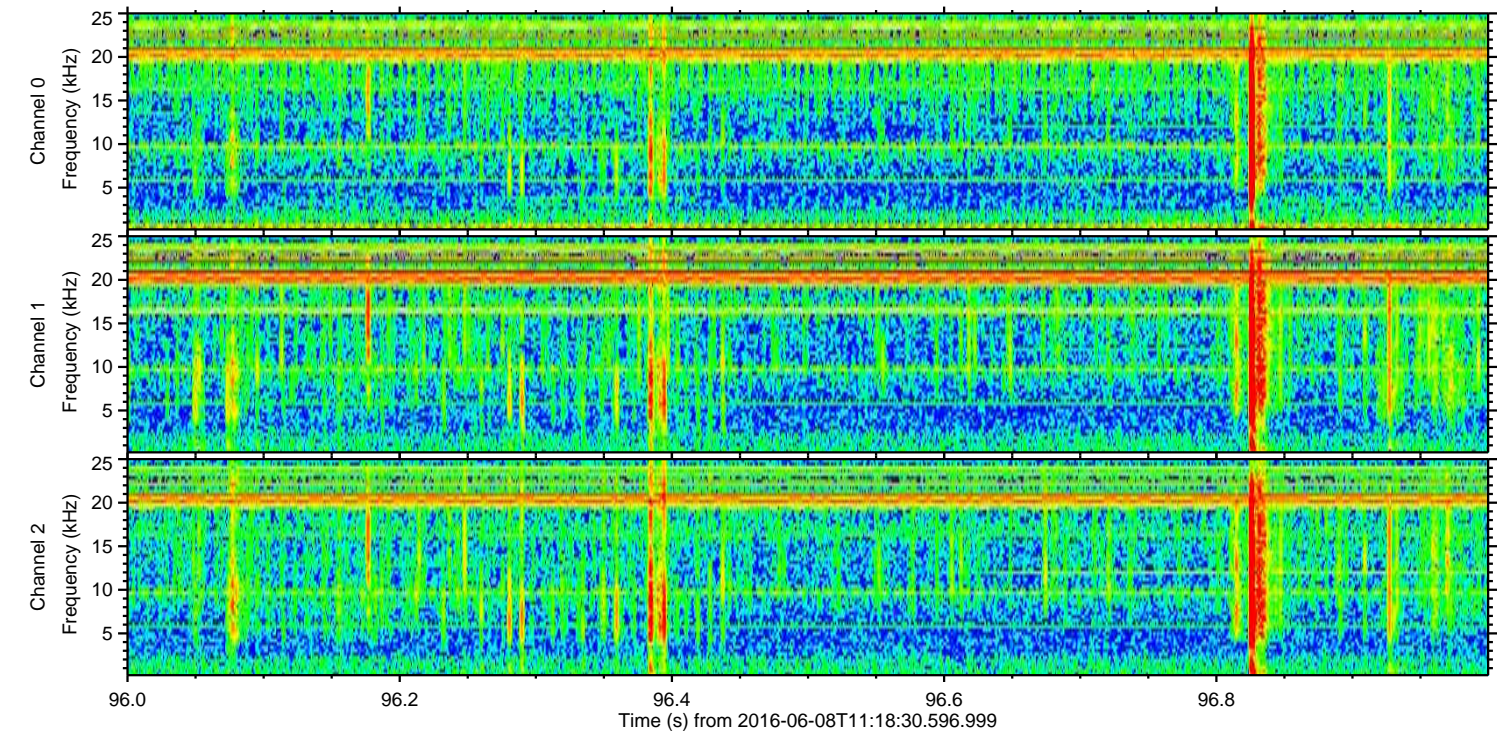
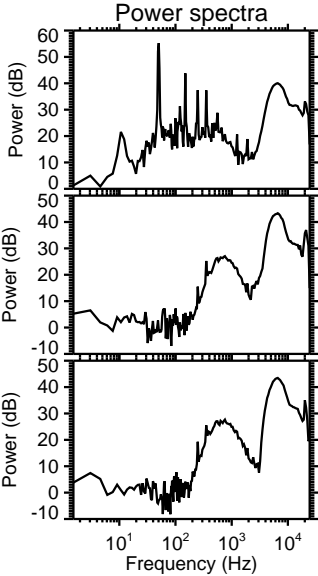
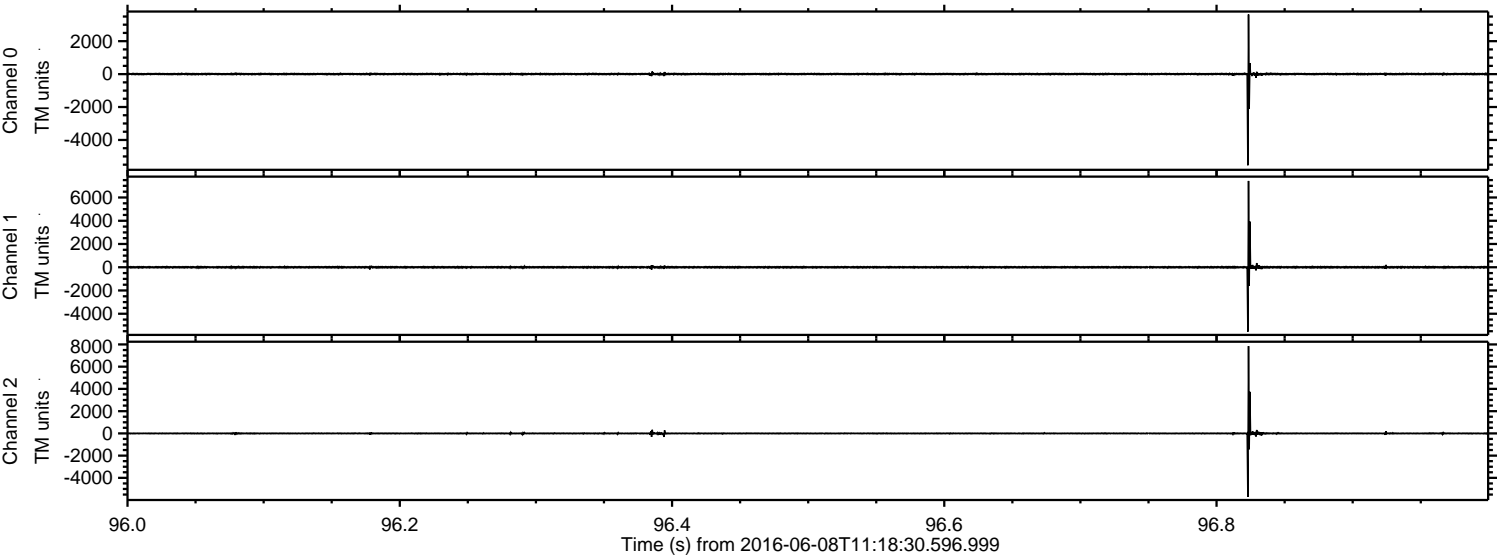


Processed Wed Jun 8 13:26:32 2016 by ELM ver.2012-10-06 from 001\_\_elm20160608\_111829\_\_dat00.bin





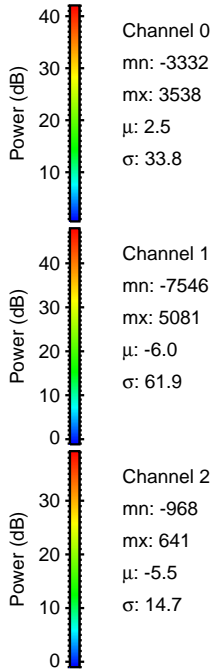
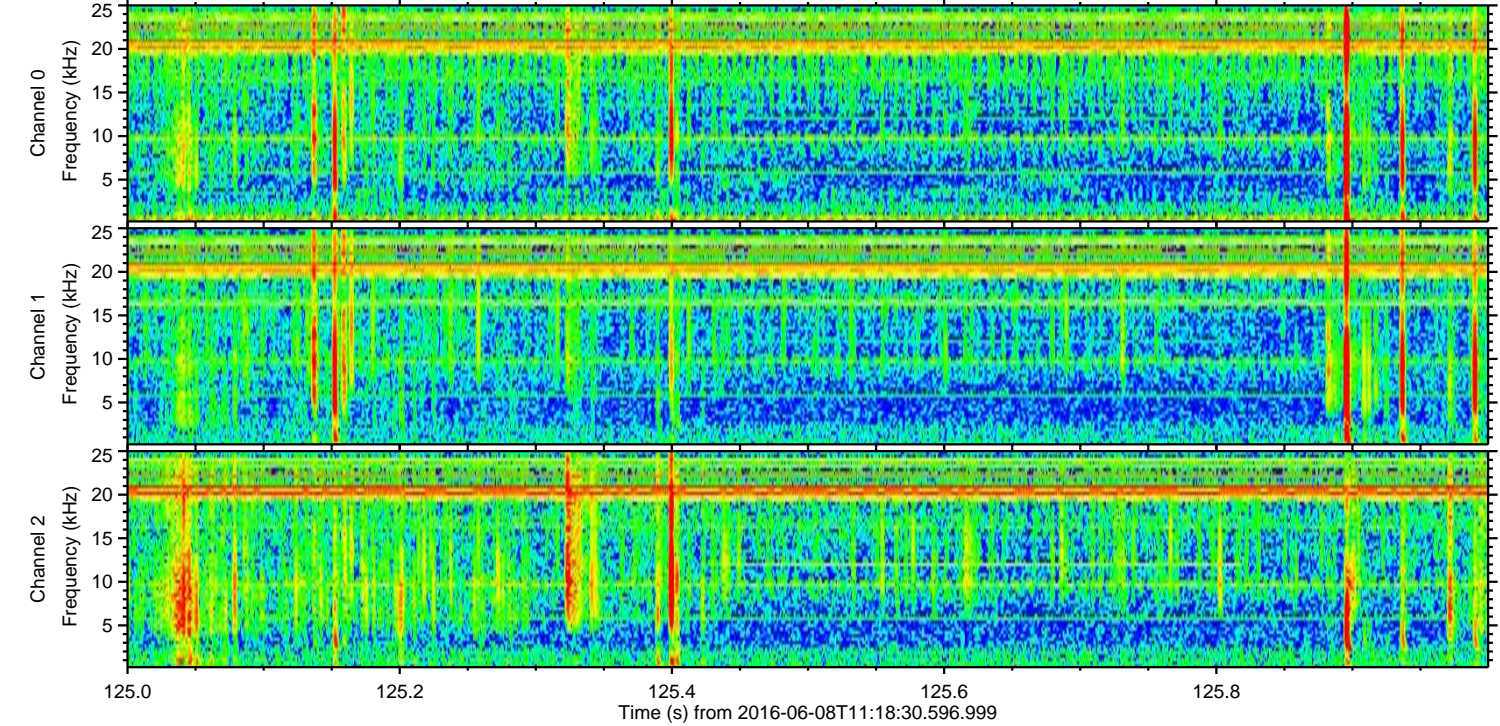
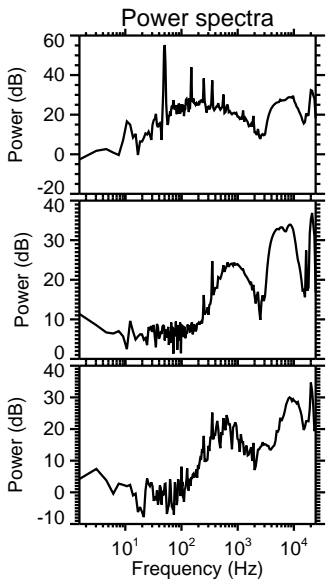
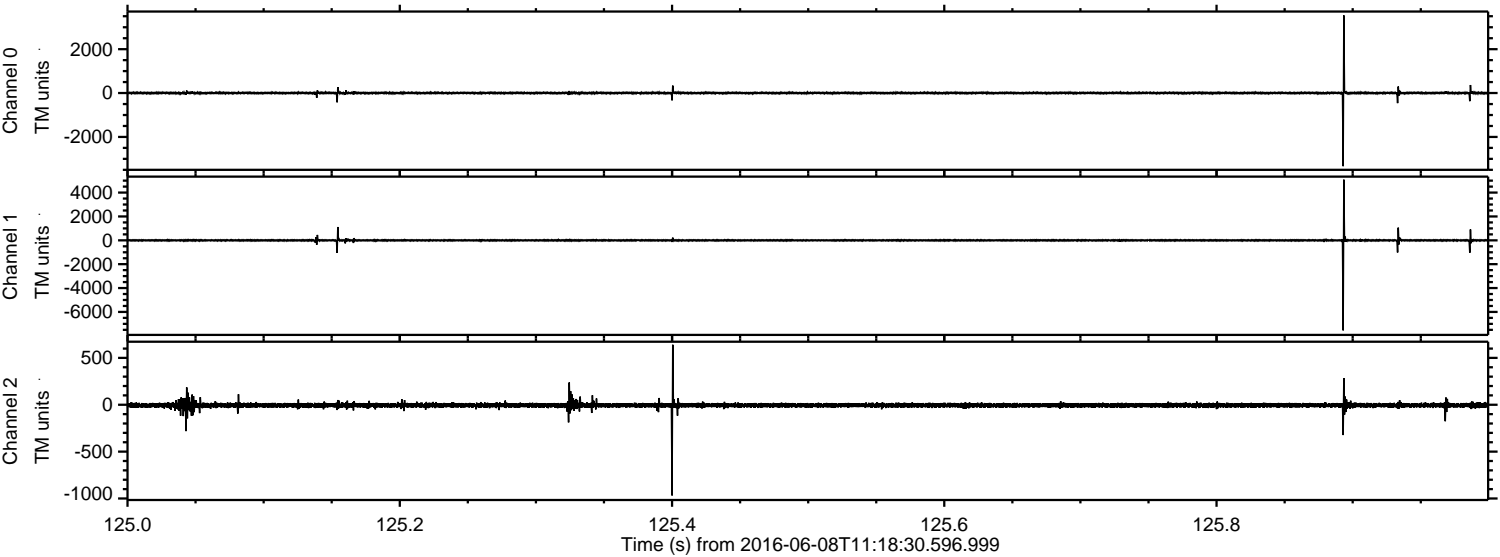
Processed Wed Jun 8 13:26:33 2016 by ELM ver.2012-10-06 from 001\_\_elm20160608\_111829\_\_dat00.bin





ELMAVAN 3D WAVEFORMS (Measured data sampled at 50 kHz) 51000 packets of 144 samples from 2016-06-08T11:18:30.596.999. Part 126/147

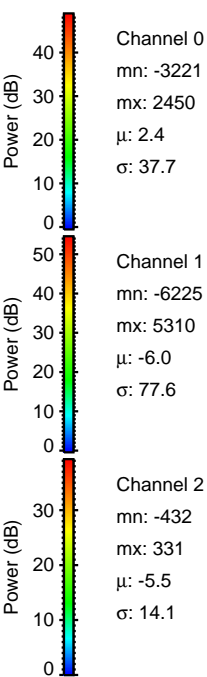
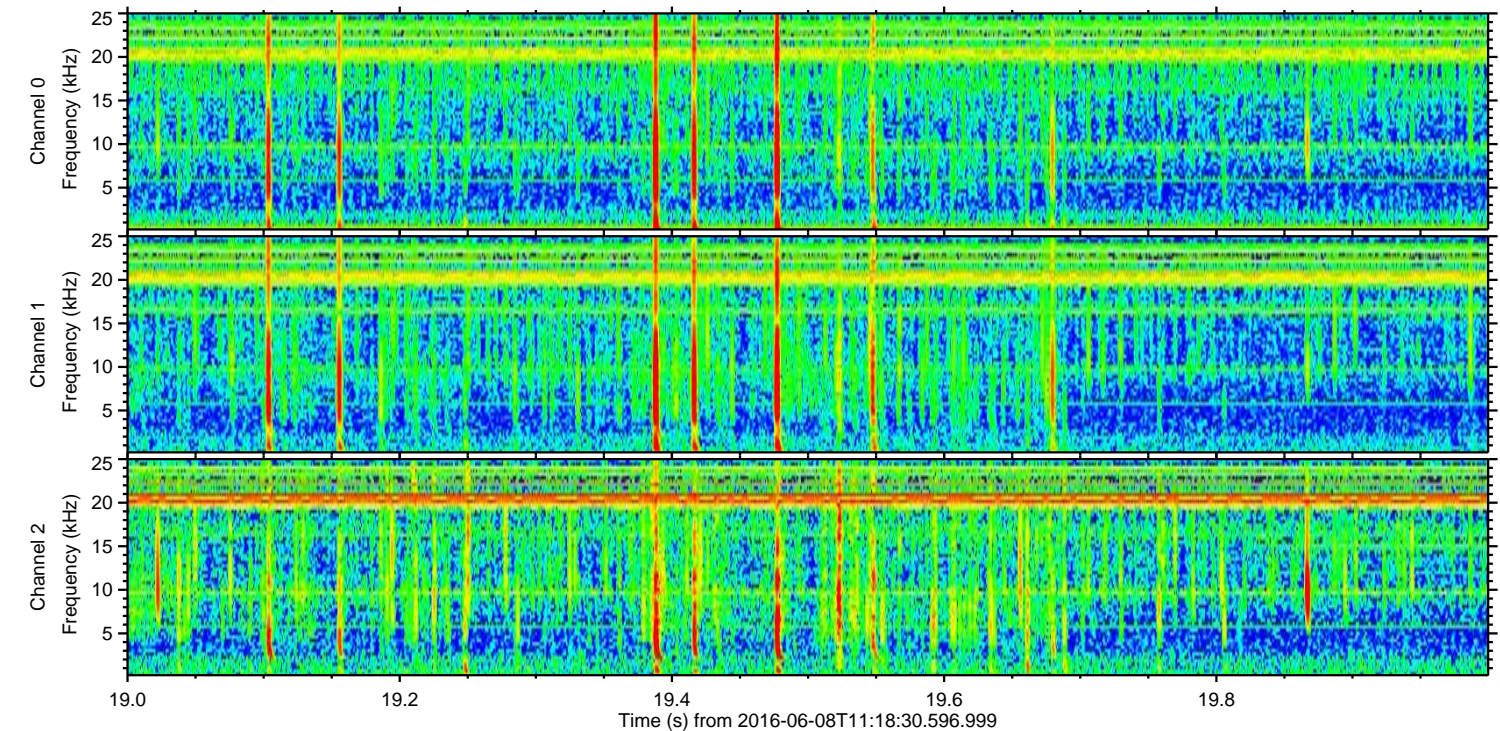
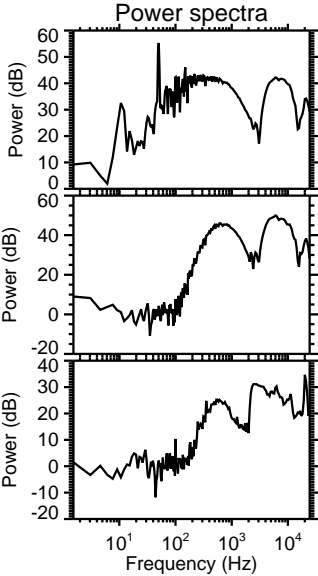
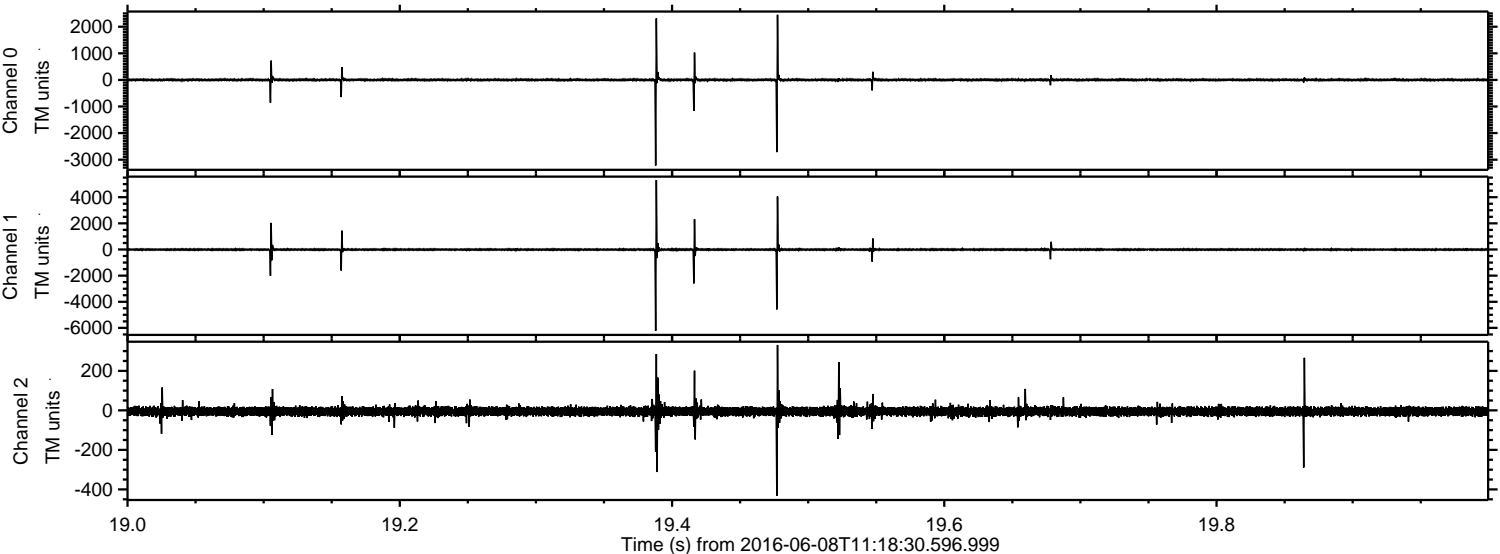
Processed Wed Jun 8 13:26:34 2016 by ELM ver.2012-10-06 from 001\_\_elm20160608\_111829\_\_dat00.bin





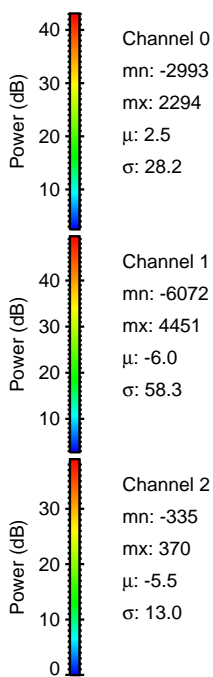
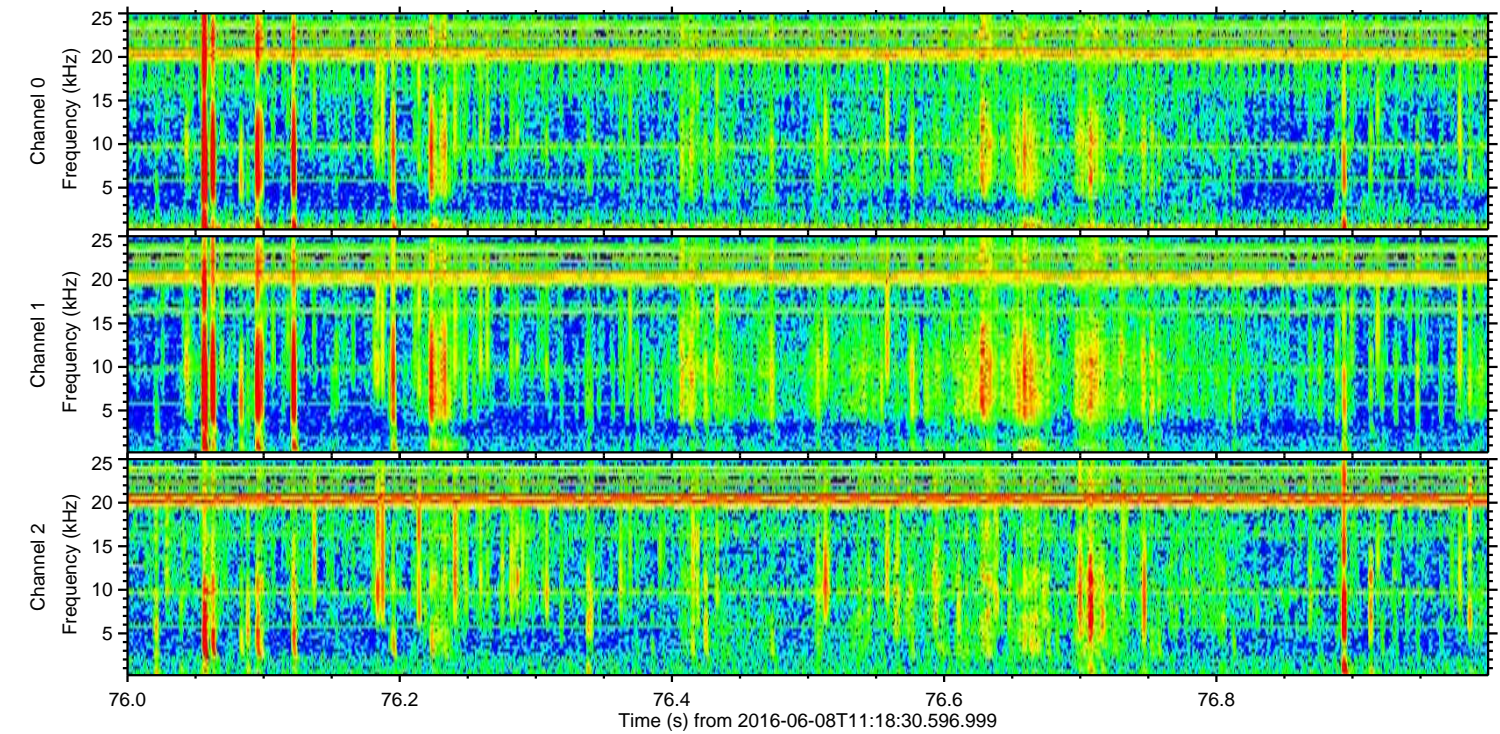
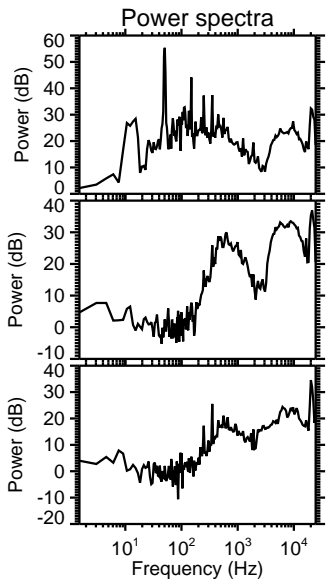
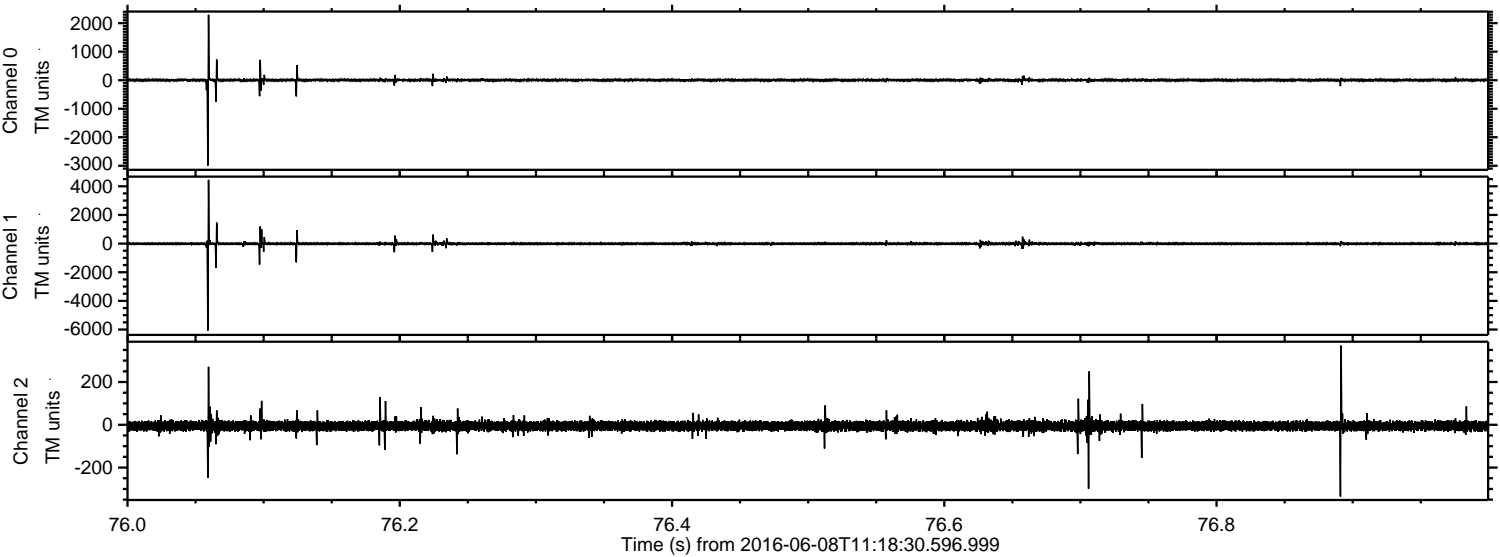
ELMAVAN 3D WAVEFORMS (Measured data sampled at 50 kHz) 51000 packets of 144 samples from 2016-06-08T11:18:30.596.999. Part 20/147

Processed Wed Jun 8 13:26:35 2016 by ELM ver.2012-10-06 from 001\_\_elm20160608\_111829\_\_dat00.bin



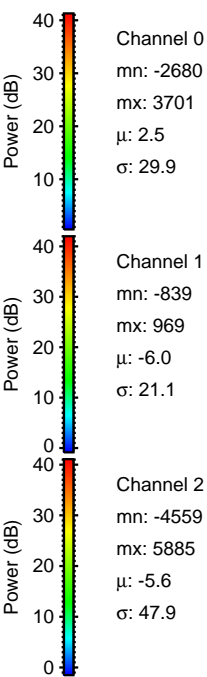
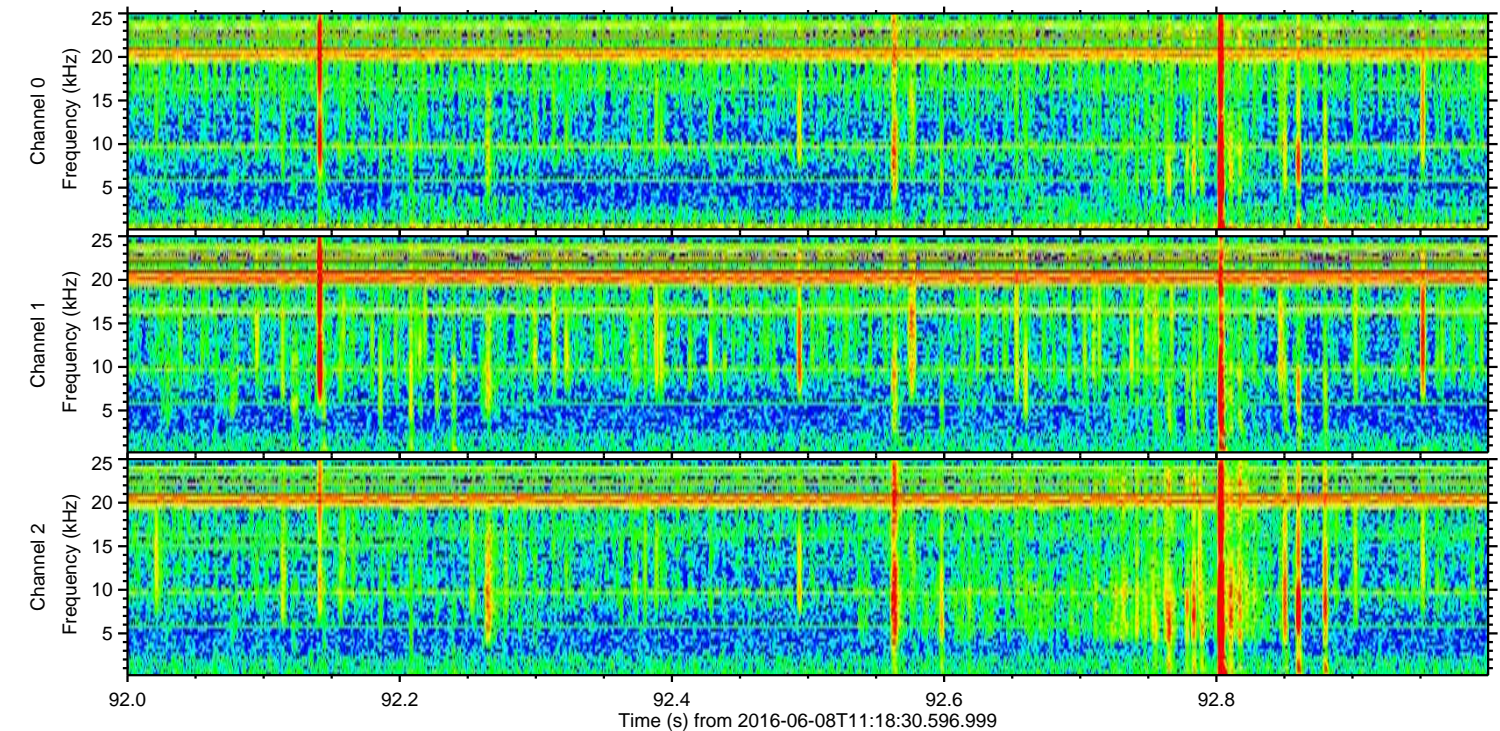
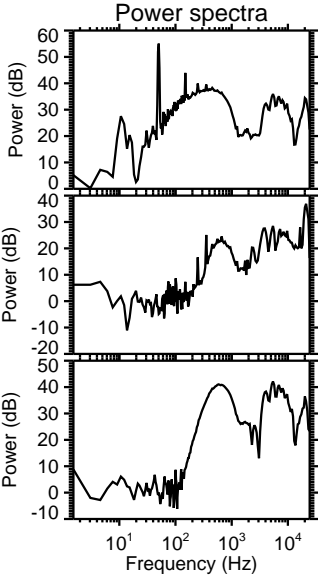
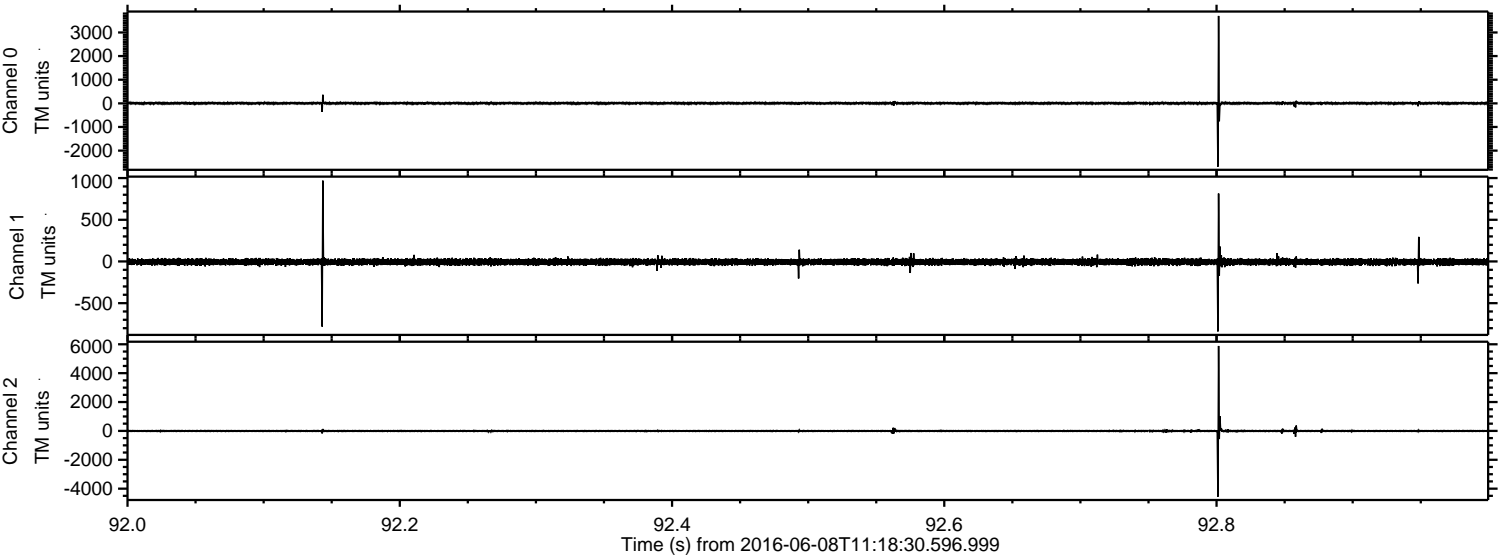


Processed Wed Jun 8 13:26:36 2016 by ELM ver.2012-10-06 from 001\_\_elm20160608\_111829\_\_dat00.bin



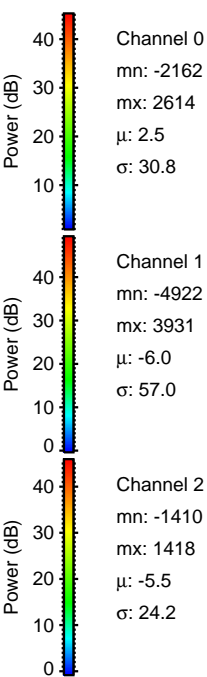
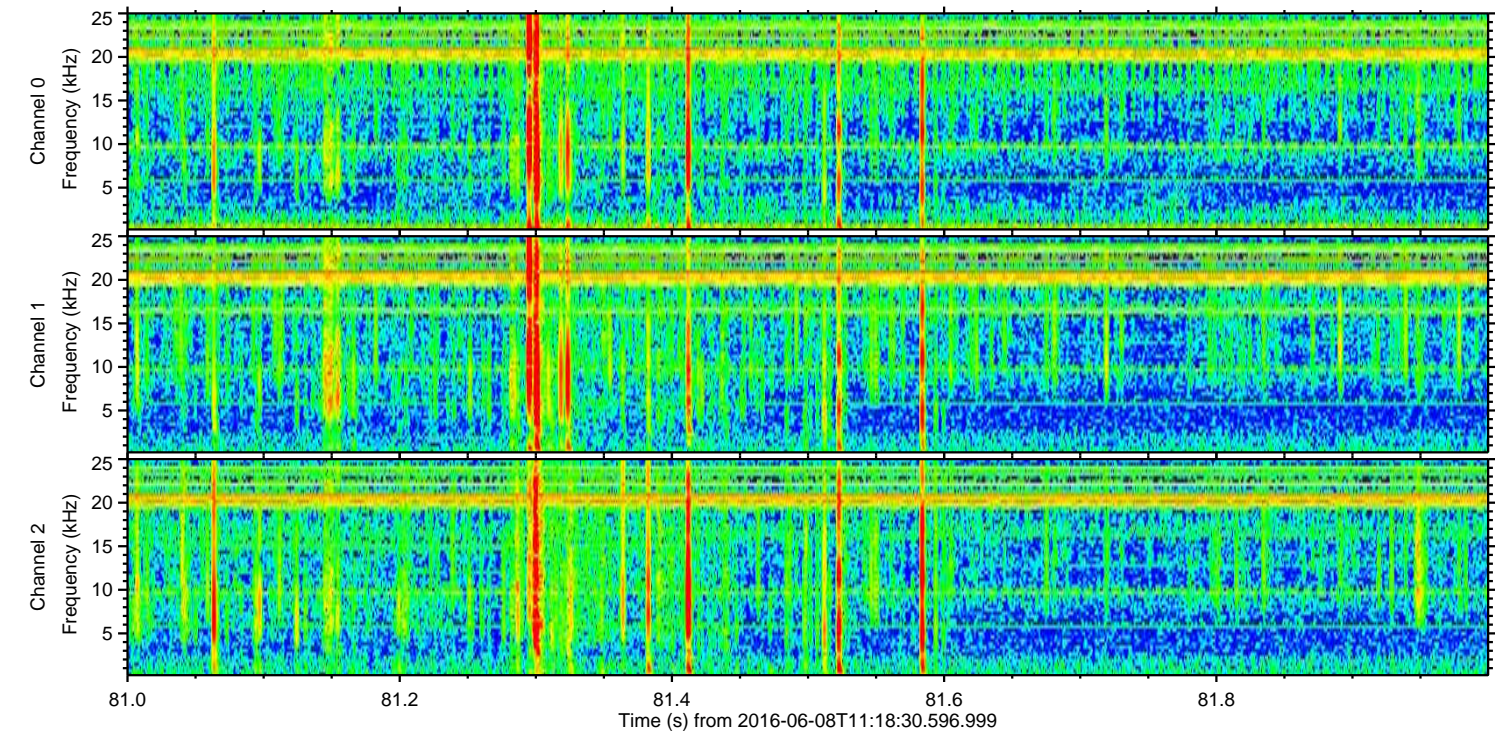
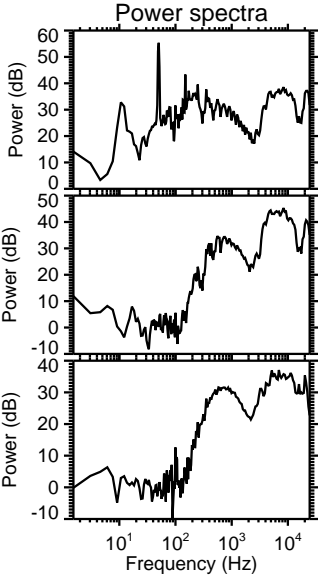
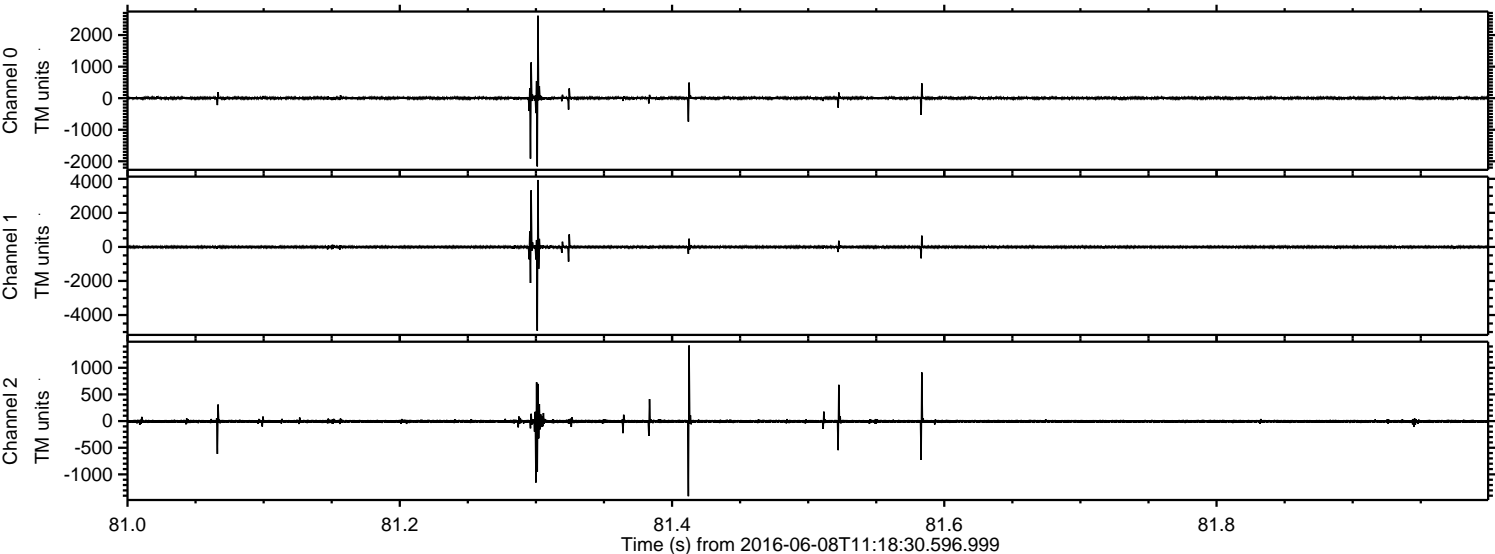


Processed Wed Jun 8 13:26:37 2016 by ELM ver.2012-10-06 from 001\_\_elm20160608\_111829\_\_dat00.bin





Processed Wed Jun 8 13:26:38 2016 by ELM ver.2012-10-06 from 001\_\_elm20160608\_111829\_\_dat00.bin





Processed Wed Jun 8 13:26:39 2016 by ELM ver.2012-10-06 from 001\_\_elm20160608\_111829\_\_dat00.bin

